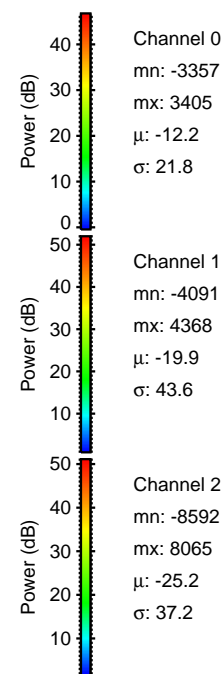
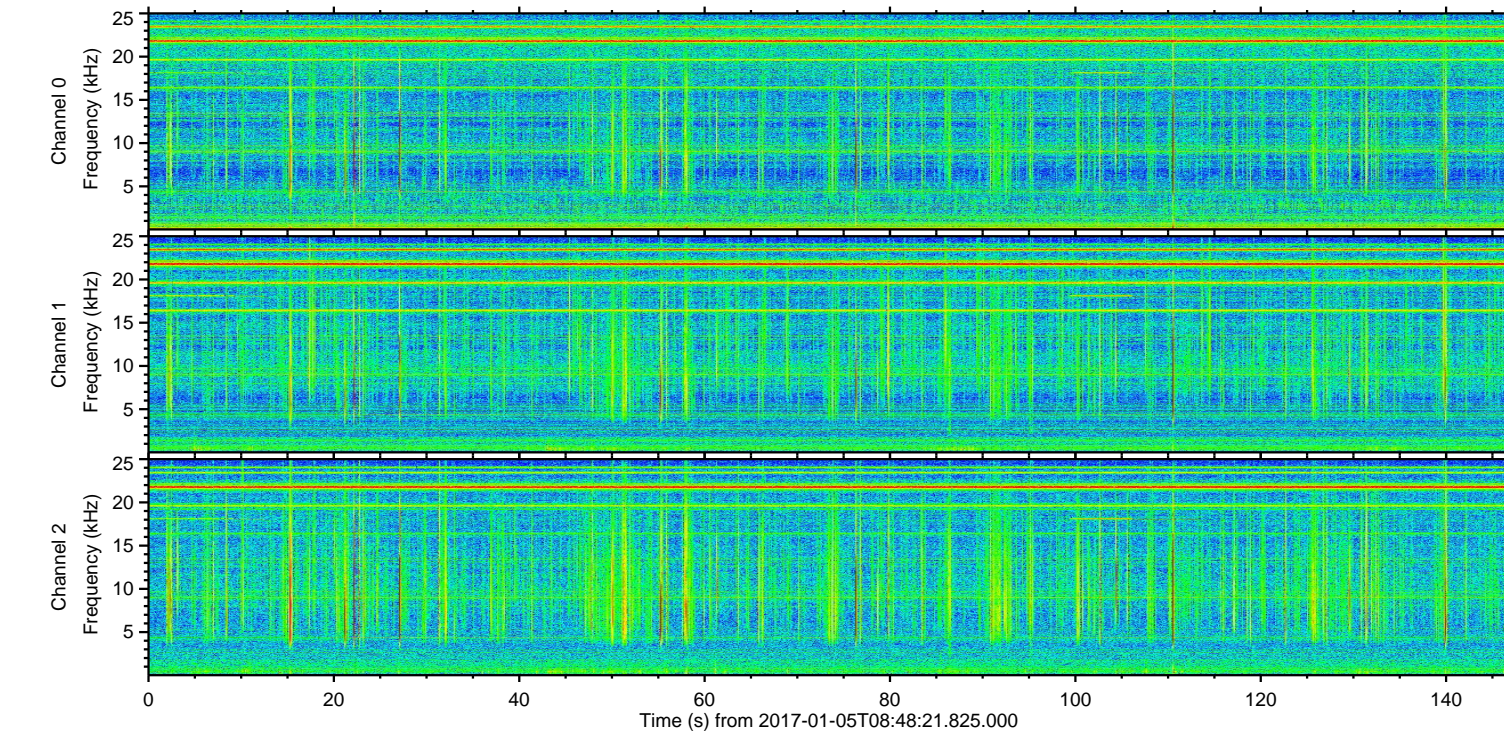
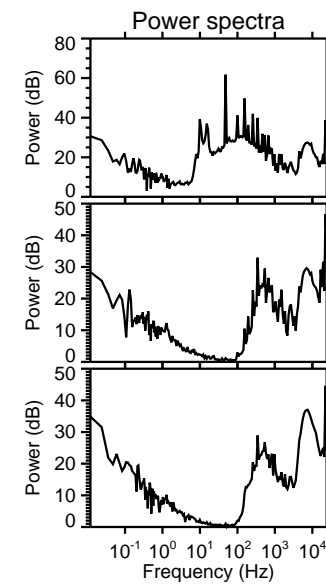
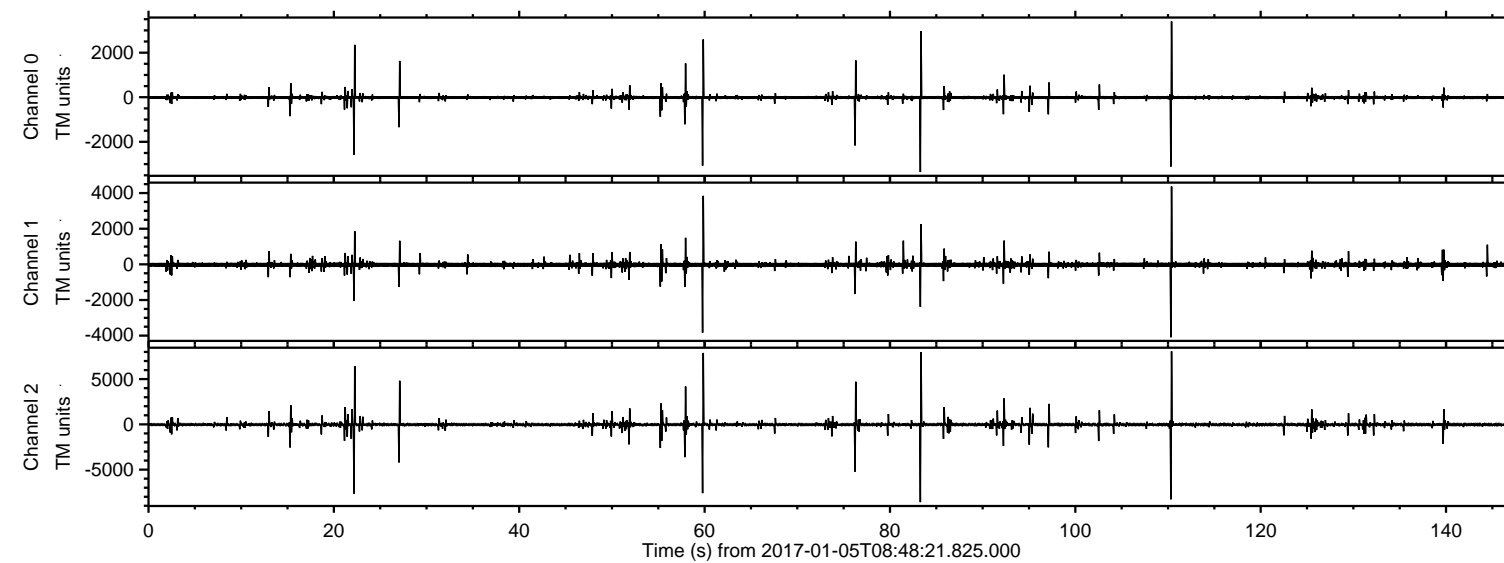


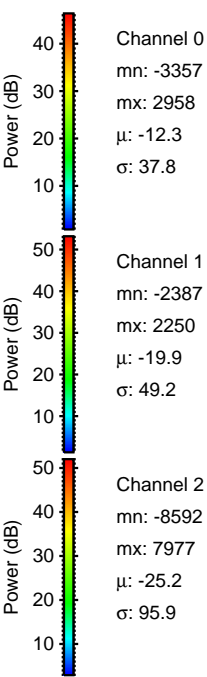
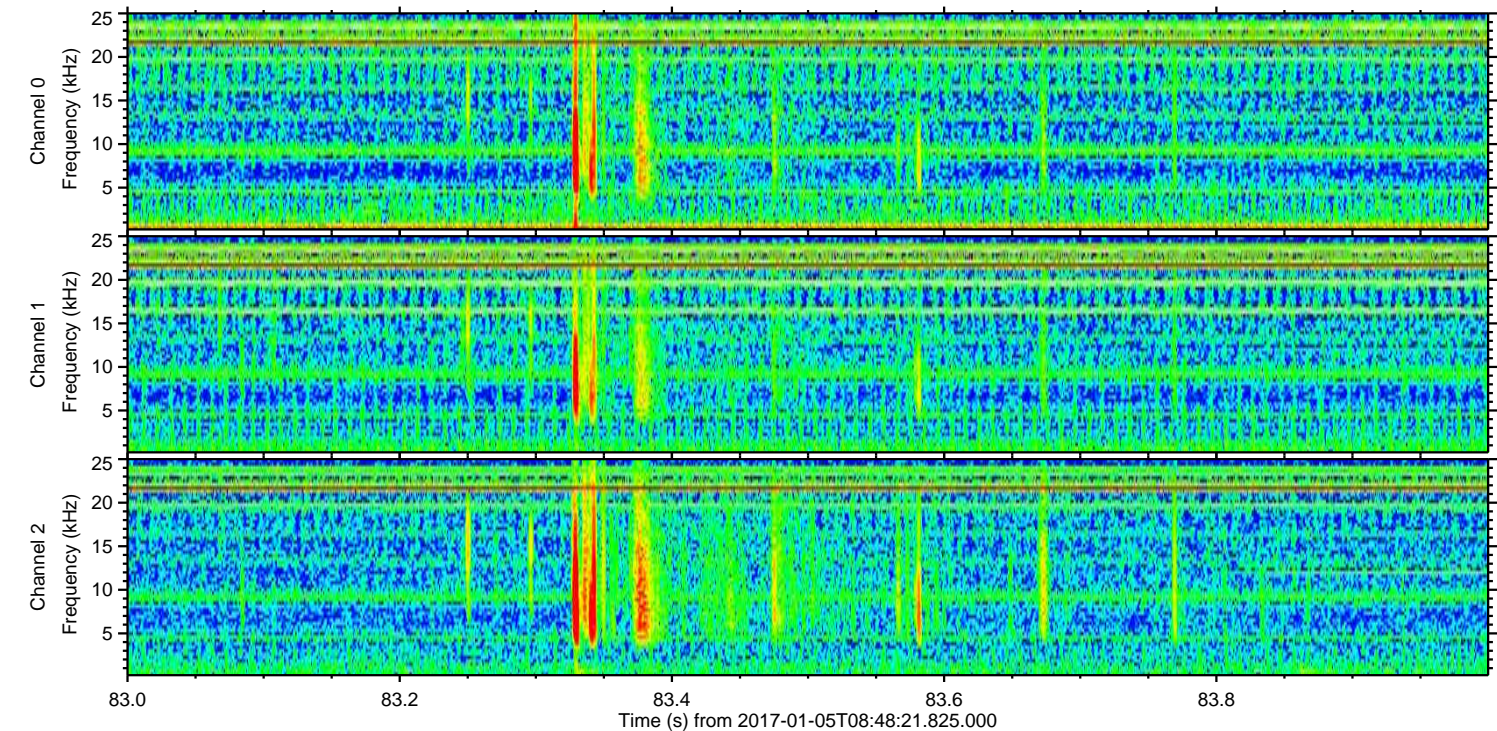
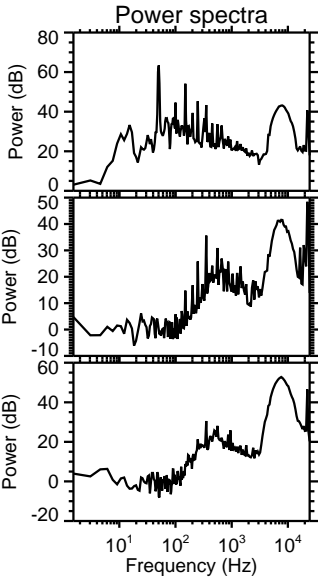
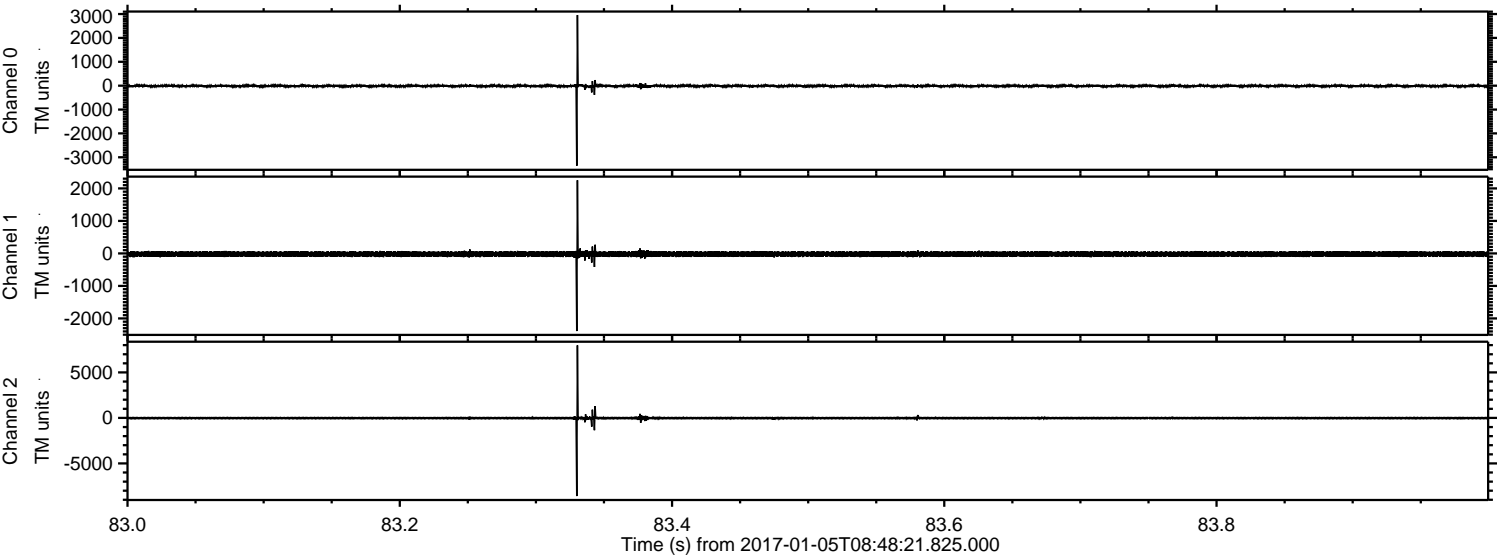
ELMAVAN 3D WAVEFORMS (Measured data sampled at 50 kHz) 51000 packets of 144 samples from 2017-01-05T08:48:21.825.000.

Processed Thu Jan 5 09:56:07 2017 by ELM ver.2012-10-06 from 001__elm20170105_084820__dat00.bin



ELMAVAN 3D WAVEFORMS (Measured data sampled at 50 kHz) 51000 packets of 144 samples from 2017-01-05T08:48:21.825.000. Part 84/147

Processed Thu Jan 5 09:56:19 2017 by ELM ver.2012-10-06 from 001__elm20170105_084820__dat00.bin



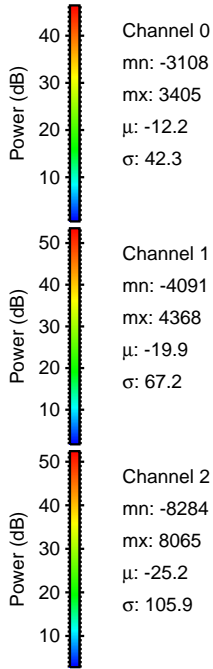
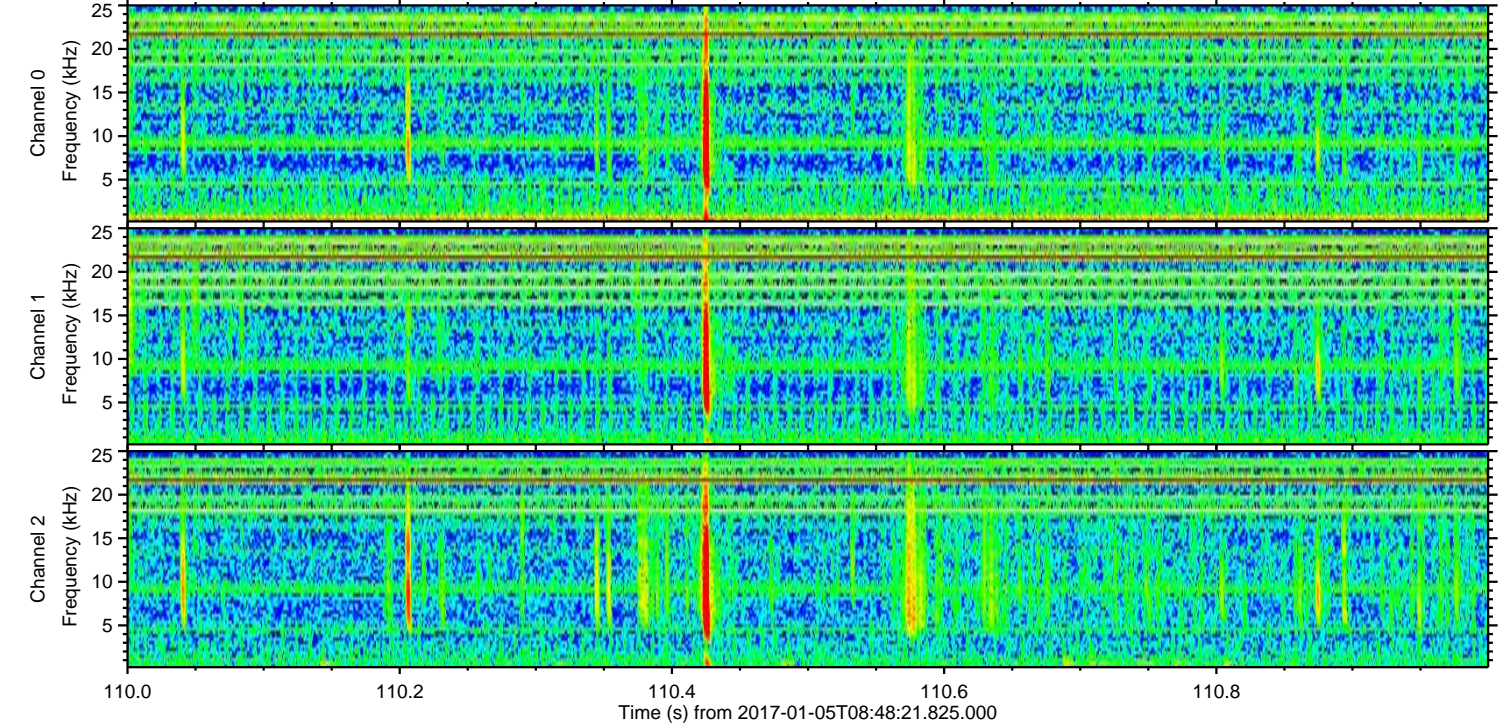
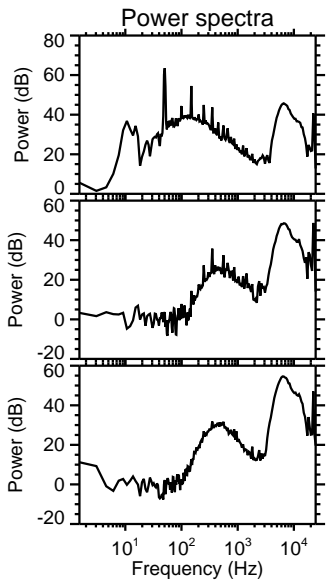
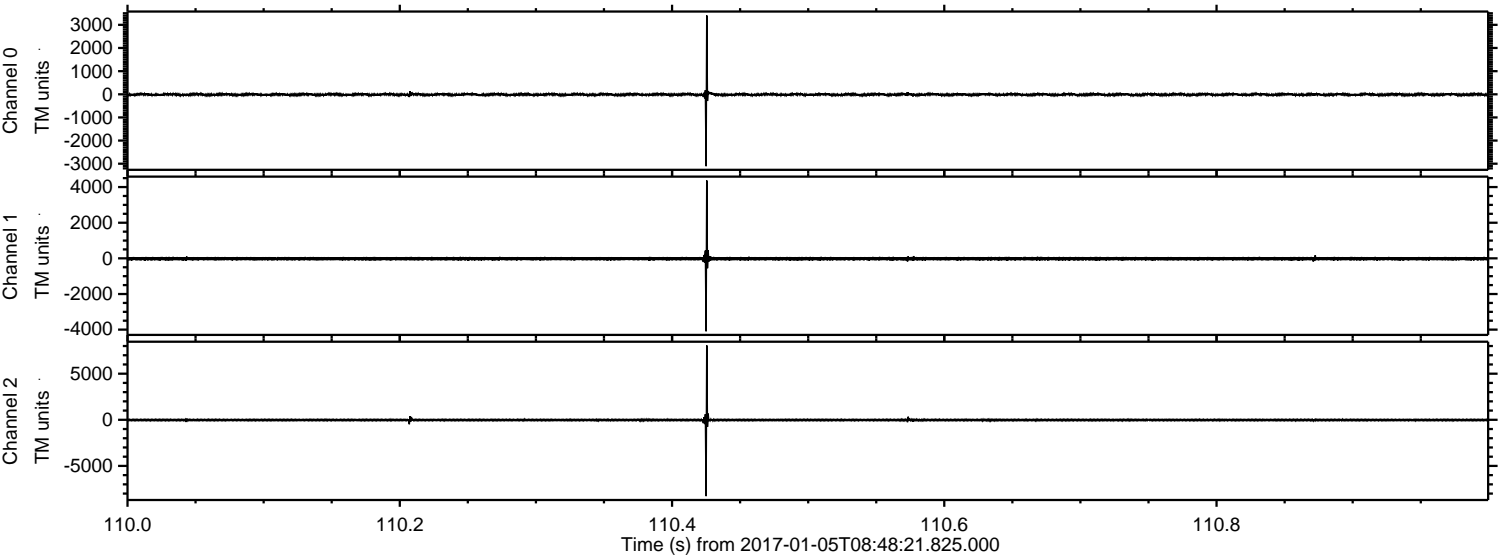
Channel 0
mn: -3357
mx: 2958
 μ : -12.3
 σ : 37.8

Channel 1
mn: -2387
mx: 2250
 μ : -19.9
 σ : 49.2

Channel 2
mn: -8592
mx: 7977
 μ : -25.2
 σ : 95.9

ELMAVAN 3D WAVEFORMS (Measured data sampled at 50 kHz) 51000 packets of 144 samples from 2017-01-05T08:48:21.825.000. Part 111/147

Processed Thu Jan 5 09:56:20 2017 by ELM ver.2012-10-06 from 001__elm20170105_084820__dat00.bin

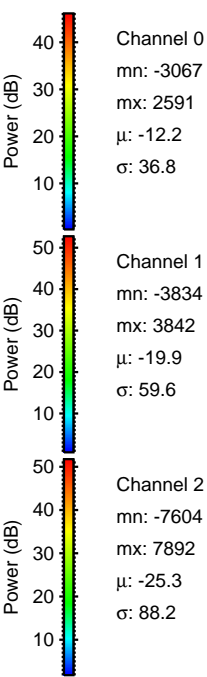
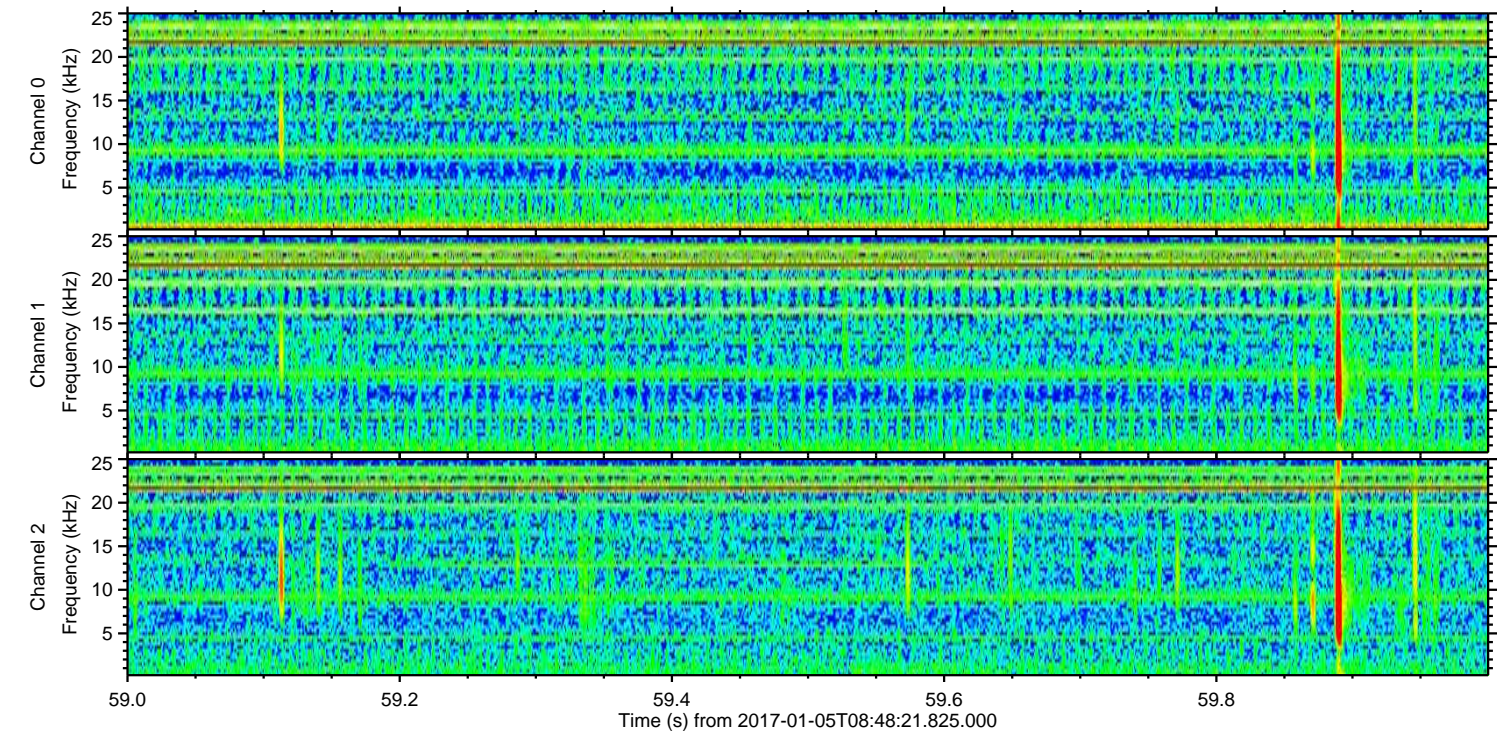
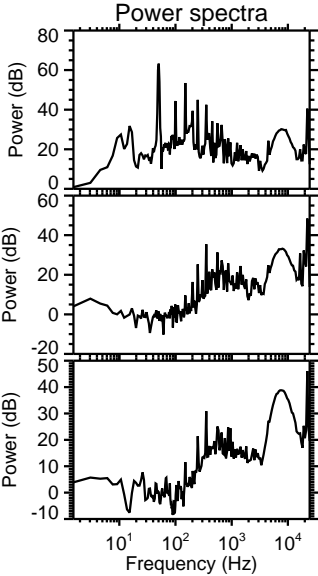
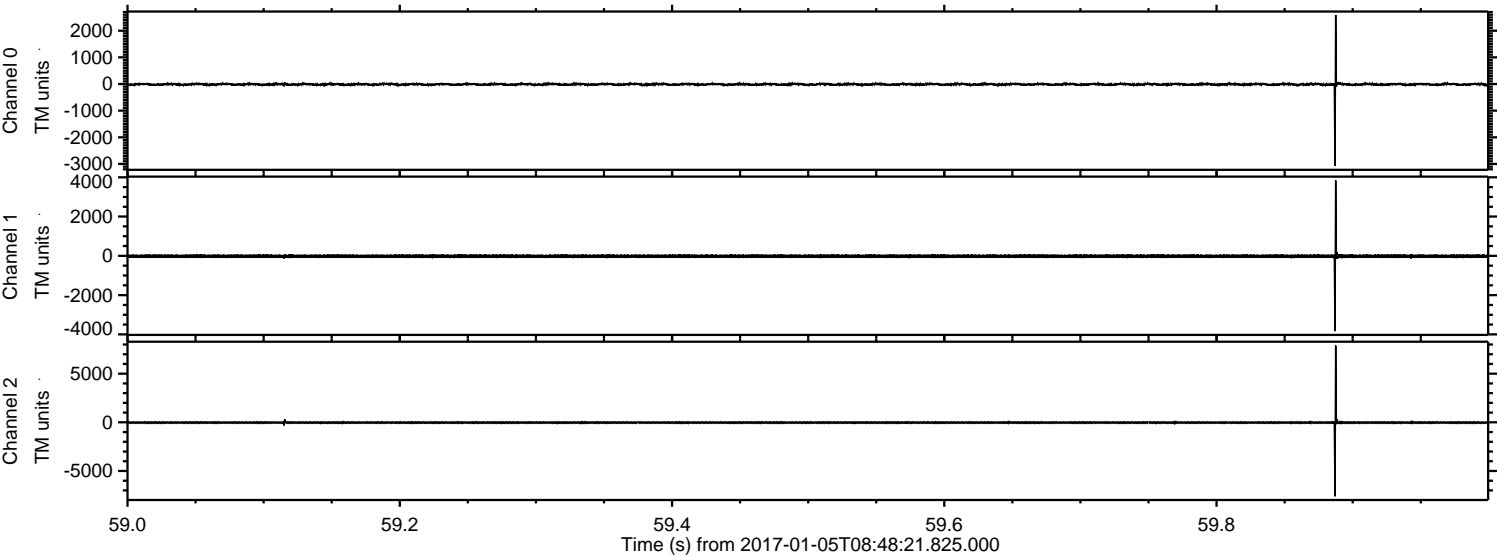


Channel 0
mn: -3108
mx: 3405
 μ : -12.2
 σ : 42.3

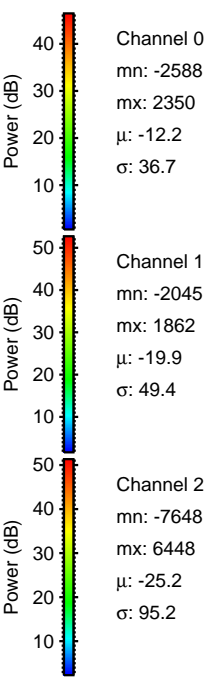
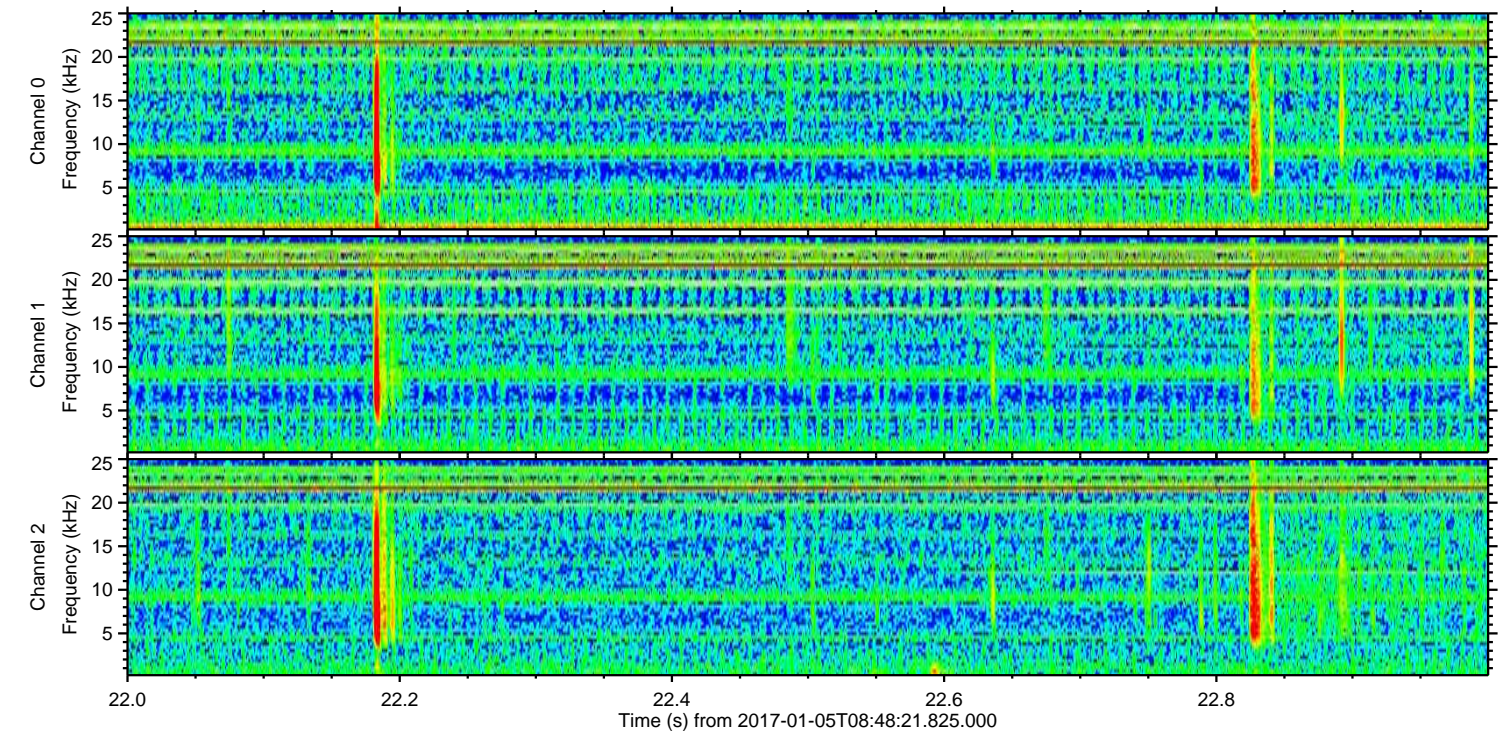
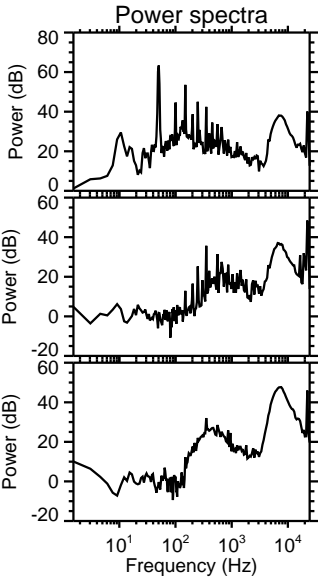
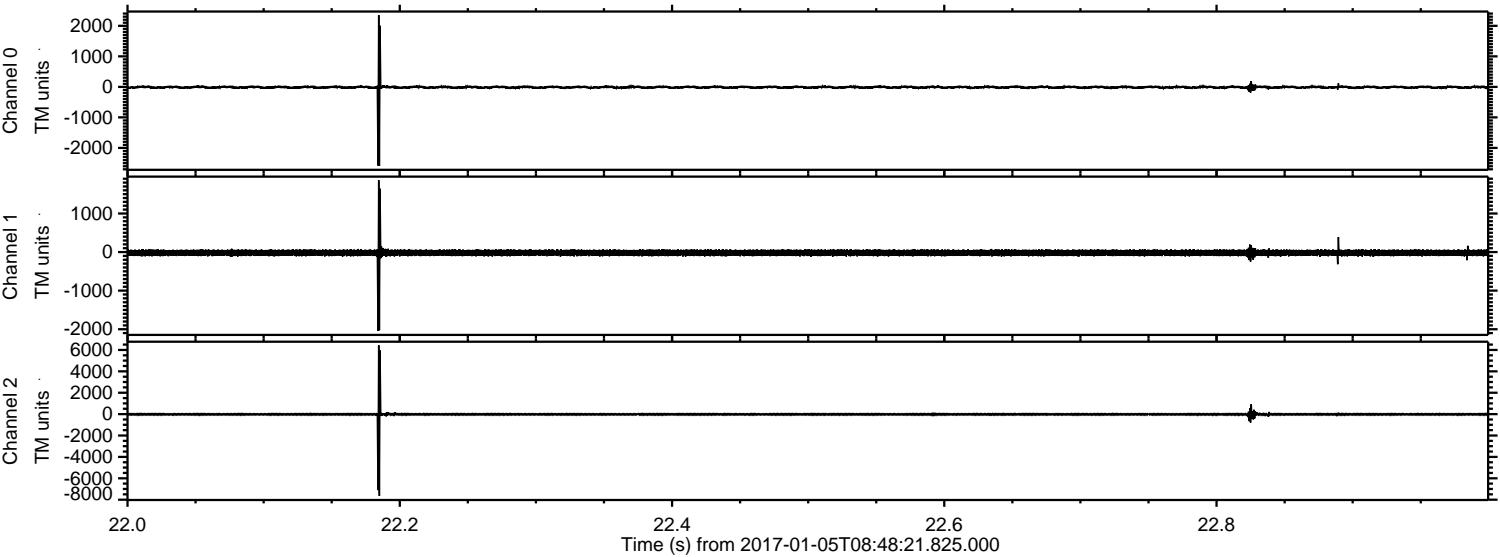
Channel 1
mn: -4091
mx: 4368
 μ : -19.9
 σ : 67.2

Channel 2
mn: -8284
mx: 8065
 μ : -25.2
 σ : 105.9

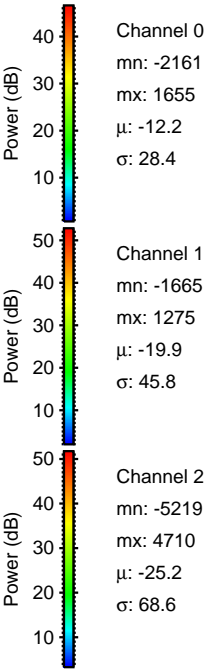
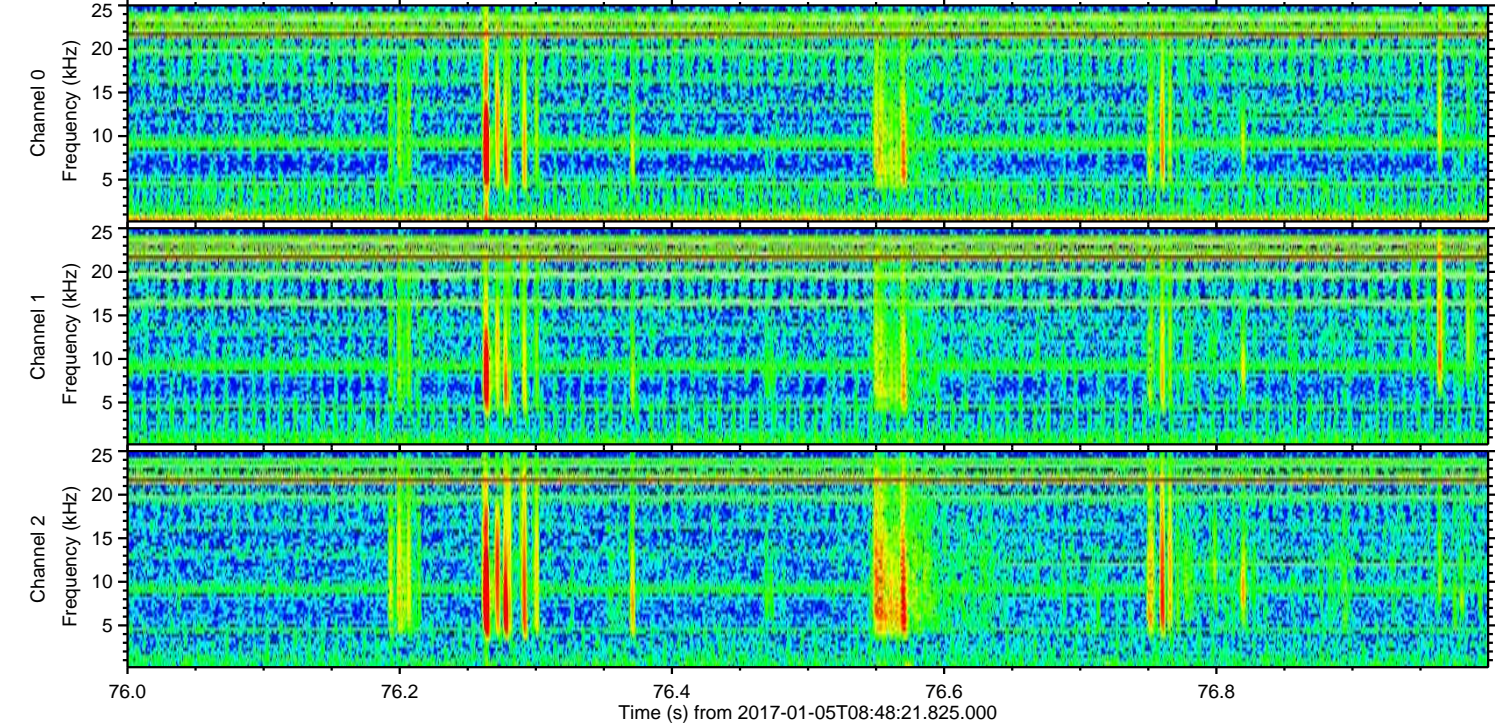
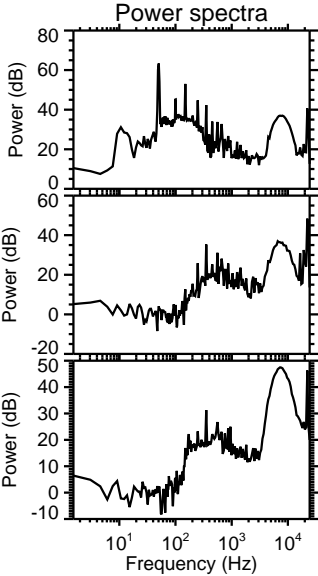
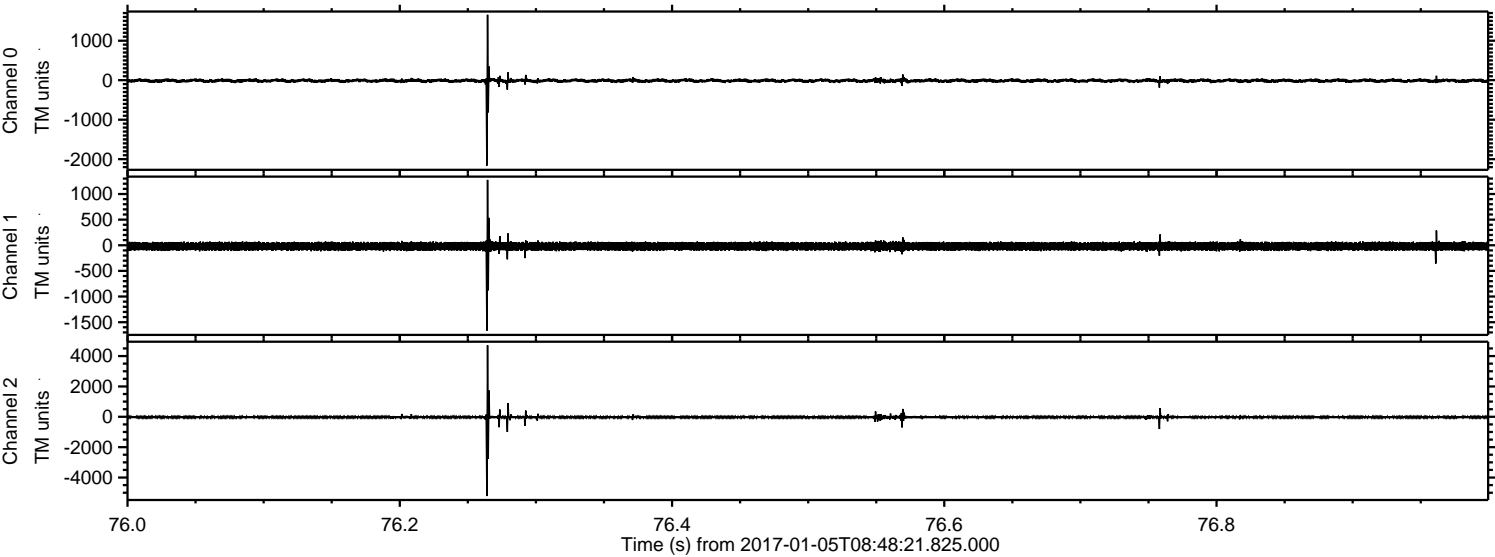
Processed Thu Jan 5 09:56:21 2017 by ELM ver.2012-10-06 from 001__elm20170105_084820__dat00.bin



Processed Thu Jan 5 09:56:22 2017 by ELM ver.2012-10-06 from 001__elm20170105_084820__dat00.bin

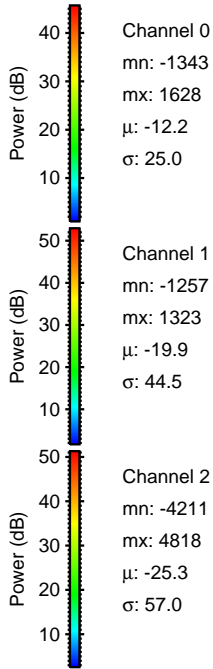
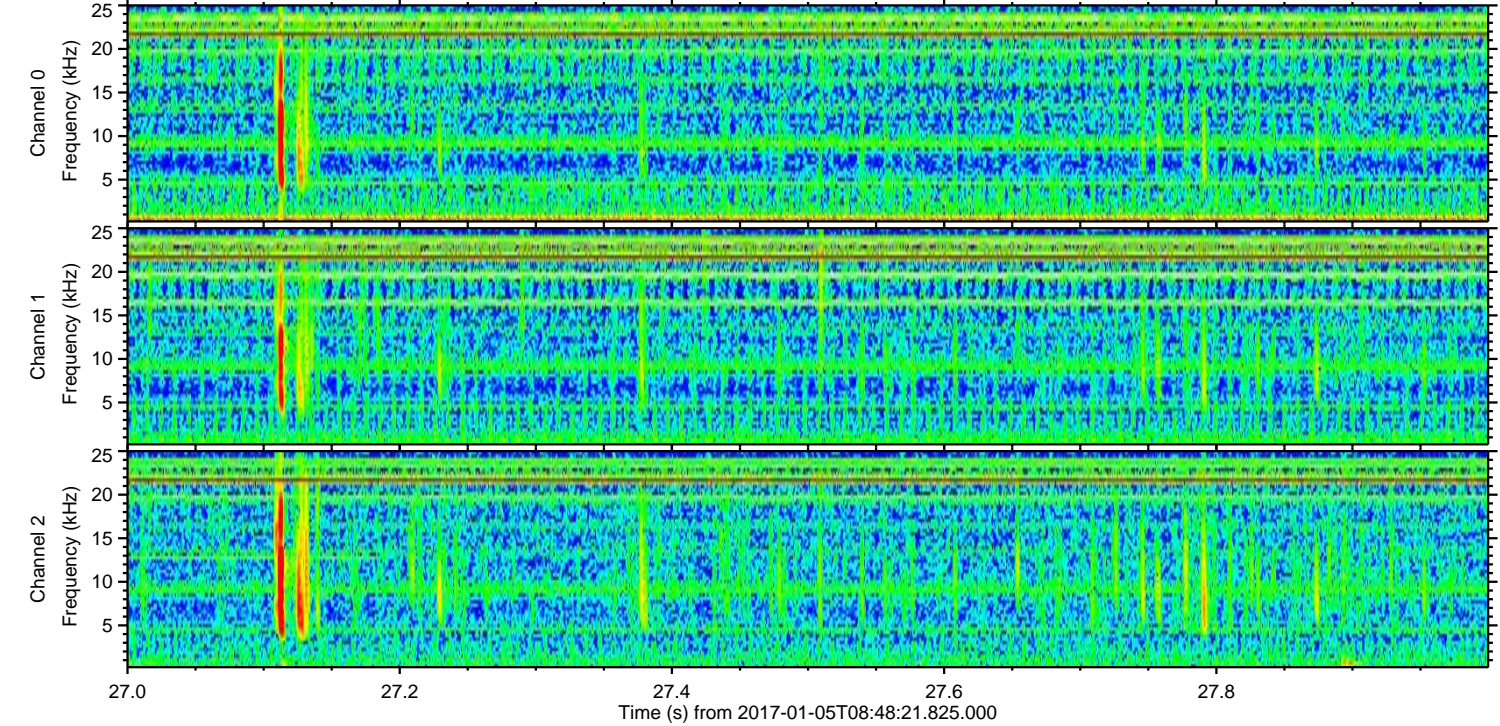
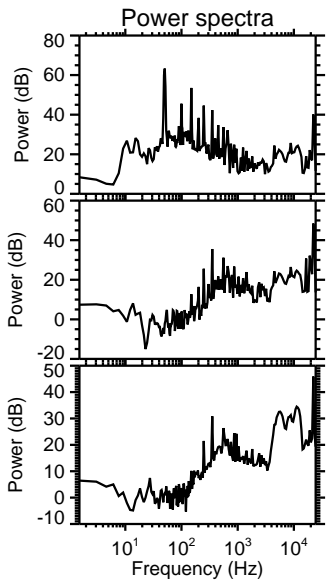
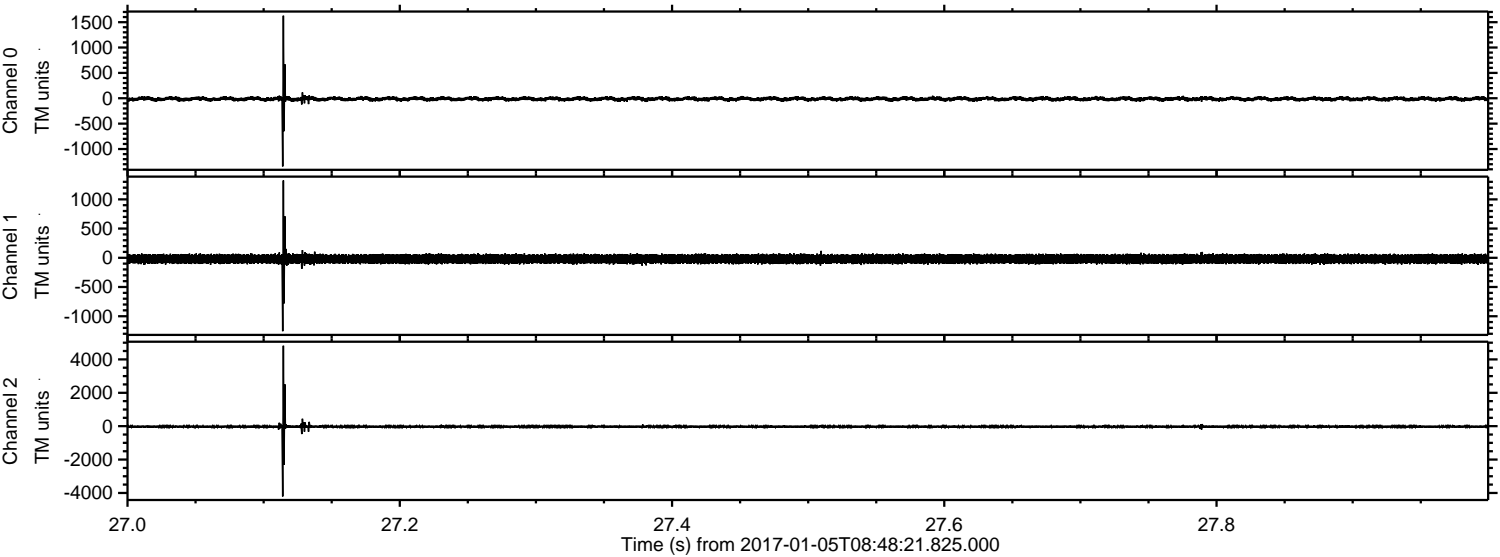


Processed Thu Jan 5 09:56:22 2017 by ELM ver.2012-10-06 from 001__elm20170105_084820__dat00.bin



ELMAVAN 3D WAVEFORMS (Measured data sampled at 50 kHz) 51000 packets of 144 samples from 2017-01-05T08:48:21.825.000. Part 28/147

Processed Thu Jan 5 09:56:23 2017 by ELM ver.2012-10-06 from 001__elm20170105_084820__dat00.bin

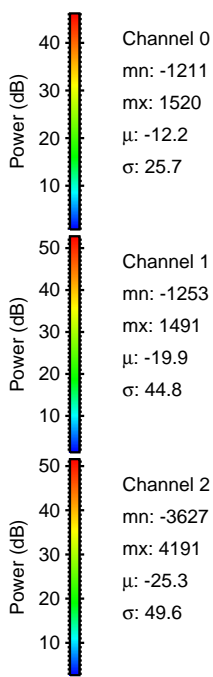
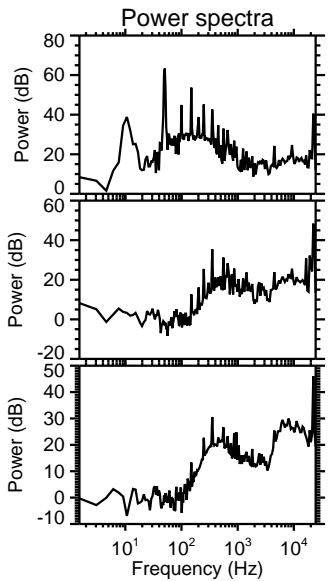
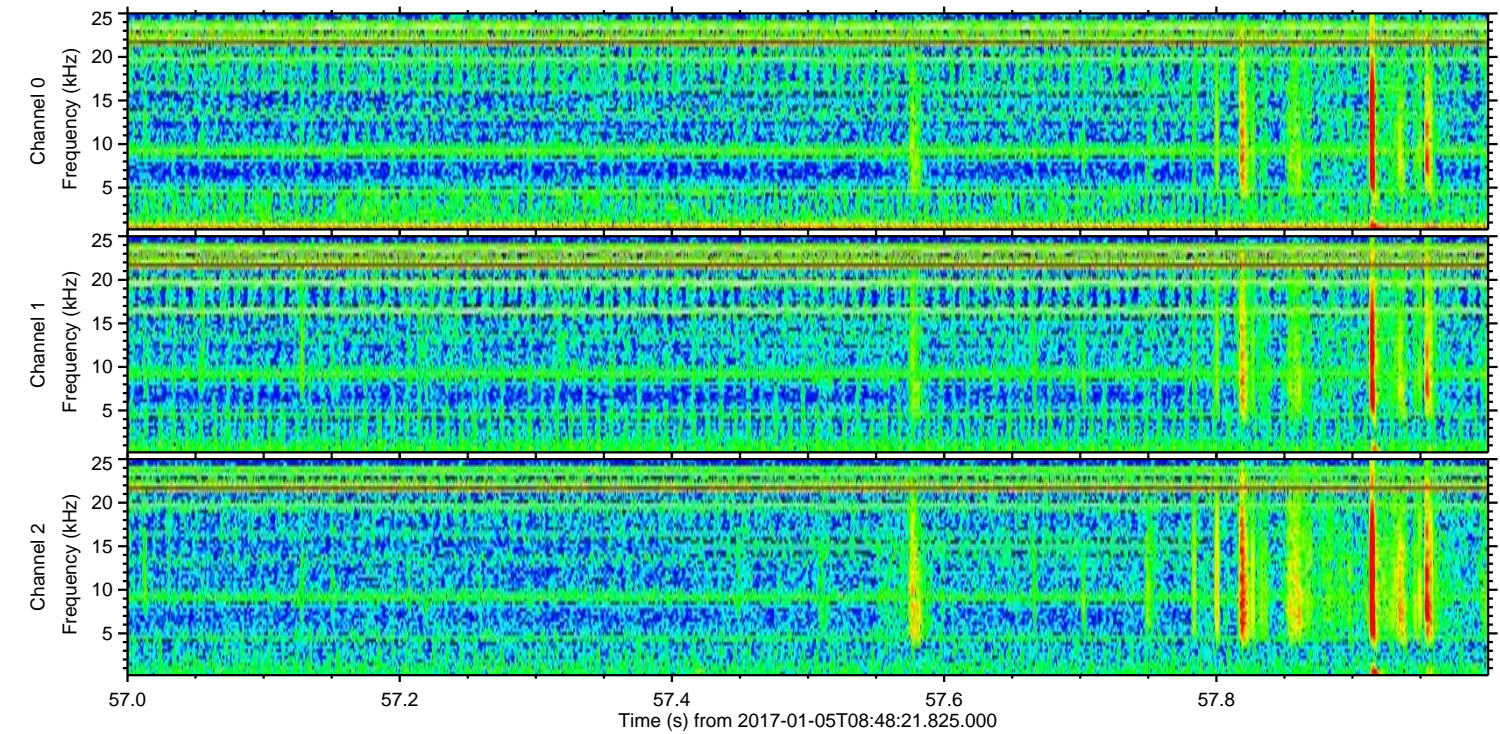
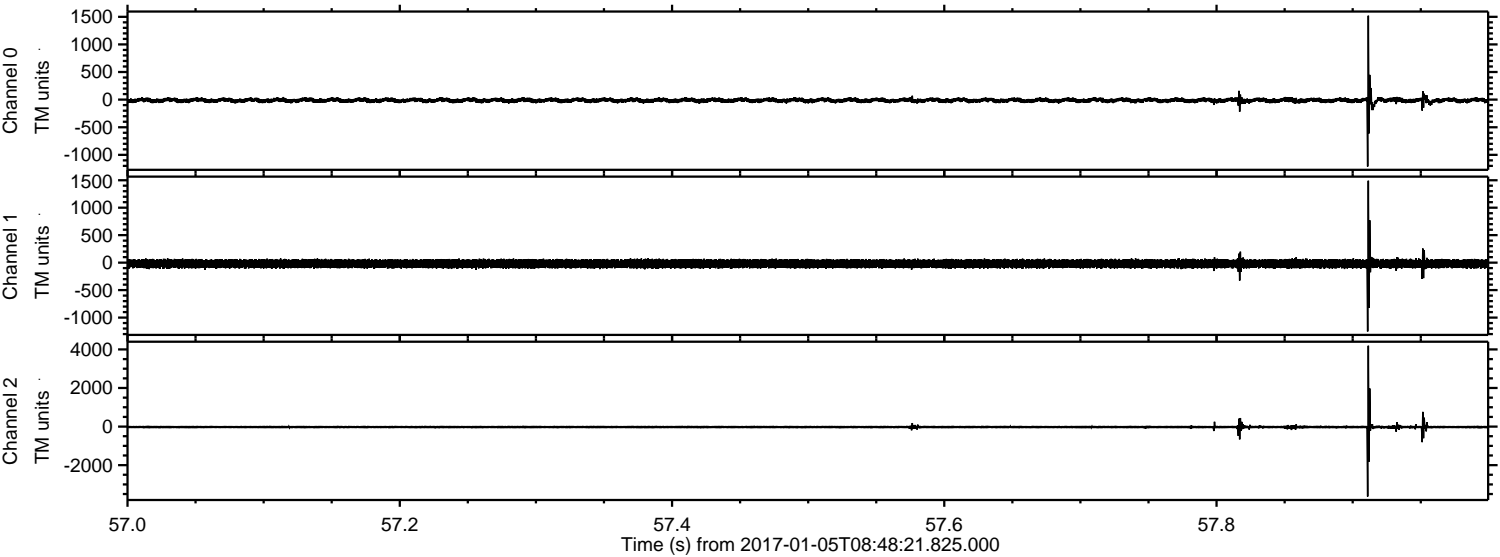


Channel 0
mn: -1343
mx: 1628
 μ : -12.2
 σ : 25.0

Channel 1
mn: -1257
mx: 1323
 μ : -19.9
 σ : 44.5

Channel 2
mn: -4211
mx: 4818
 μ : -25.3
 σ : 57.0

Processed Thu Jan 5 09:56:24 2017 by ELM ver.2012-10-06 from 001__elm20170105_084820__dat00.bin



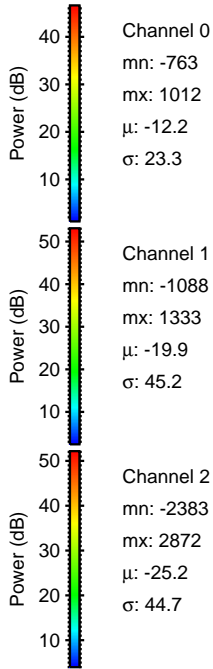
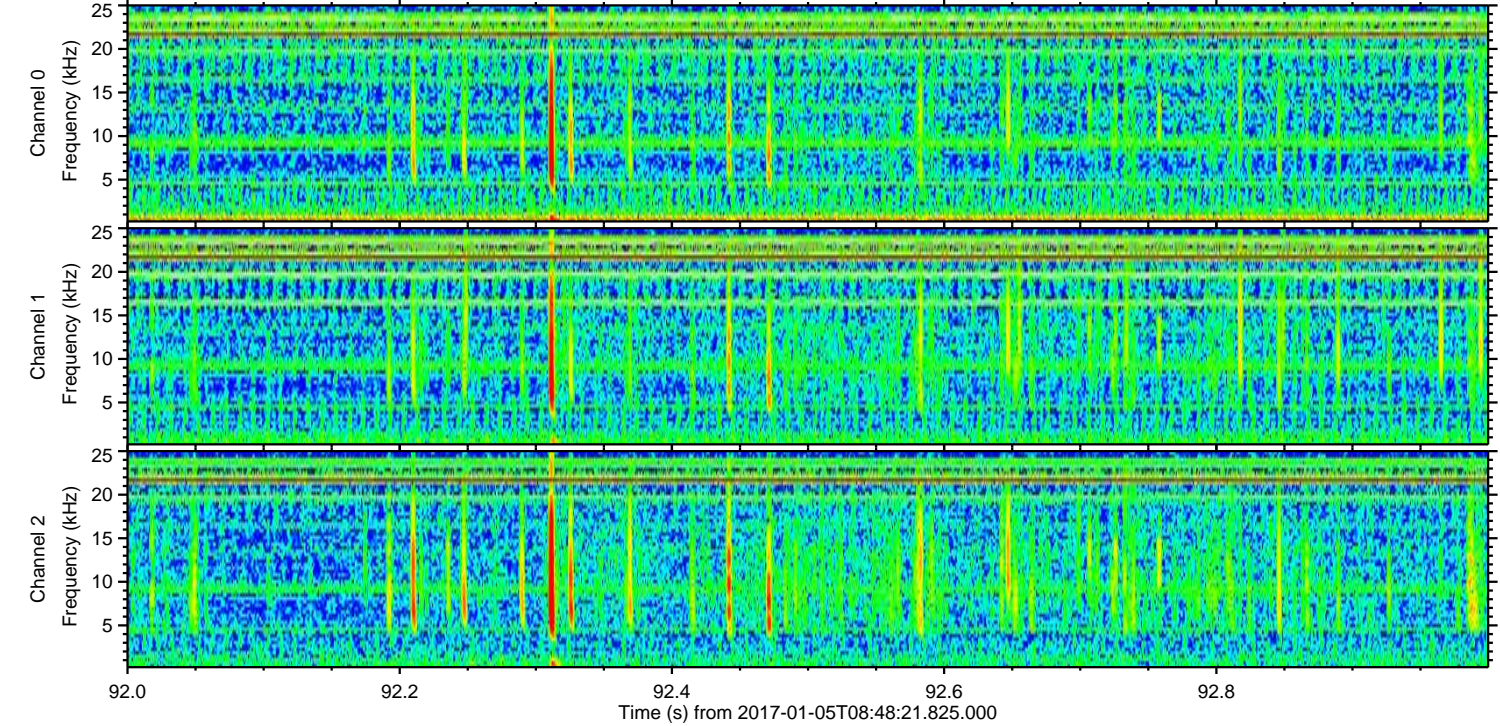
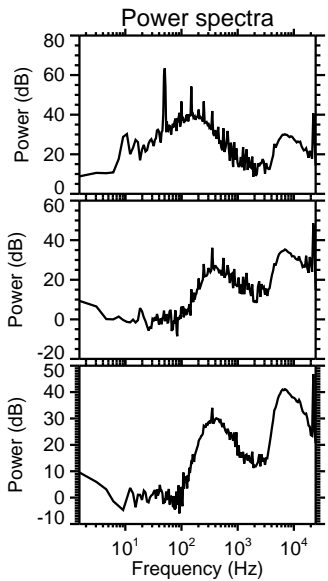
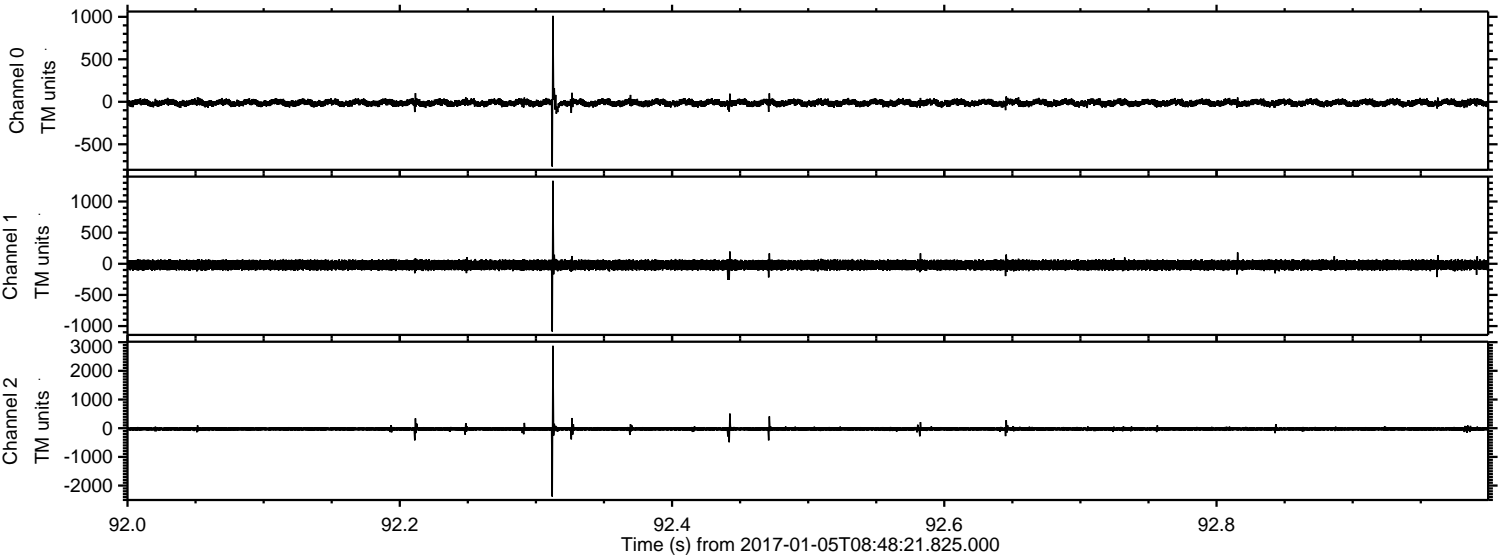
Channel 0
mn: -1211
mx: 1520
 μ : -12.2
 σ : 25.7

Channel 1
mn: -1253
mx: 1491
 μ : -19.9
 σ : 44.8

Channel 2
mn: -3627
mx: 4191
 μ : -25.3
 σ : 49.6

ELMAVAN 3D WAVEFORMS (Measured data sampled at 50 kHz) 51000 packets of 144 samples from 2017-01-05T08:48:21.825.000. Part 93/147

Processed Thu Jan 5 09:56:25 2017 by ELM ver.2012-10-06 from 001__elm20170105_084820__dat00.bin



Channel 0

mn: -763
mx: 1012
 μ : -12.2
 σ : 23.3

Channel 1

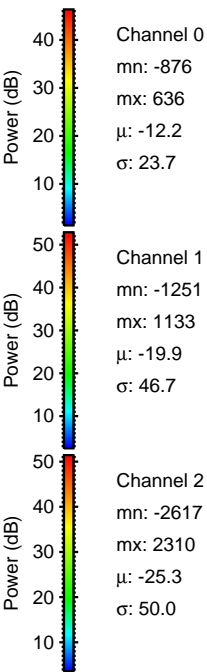
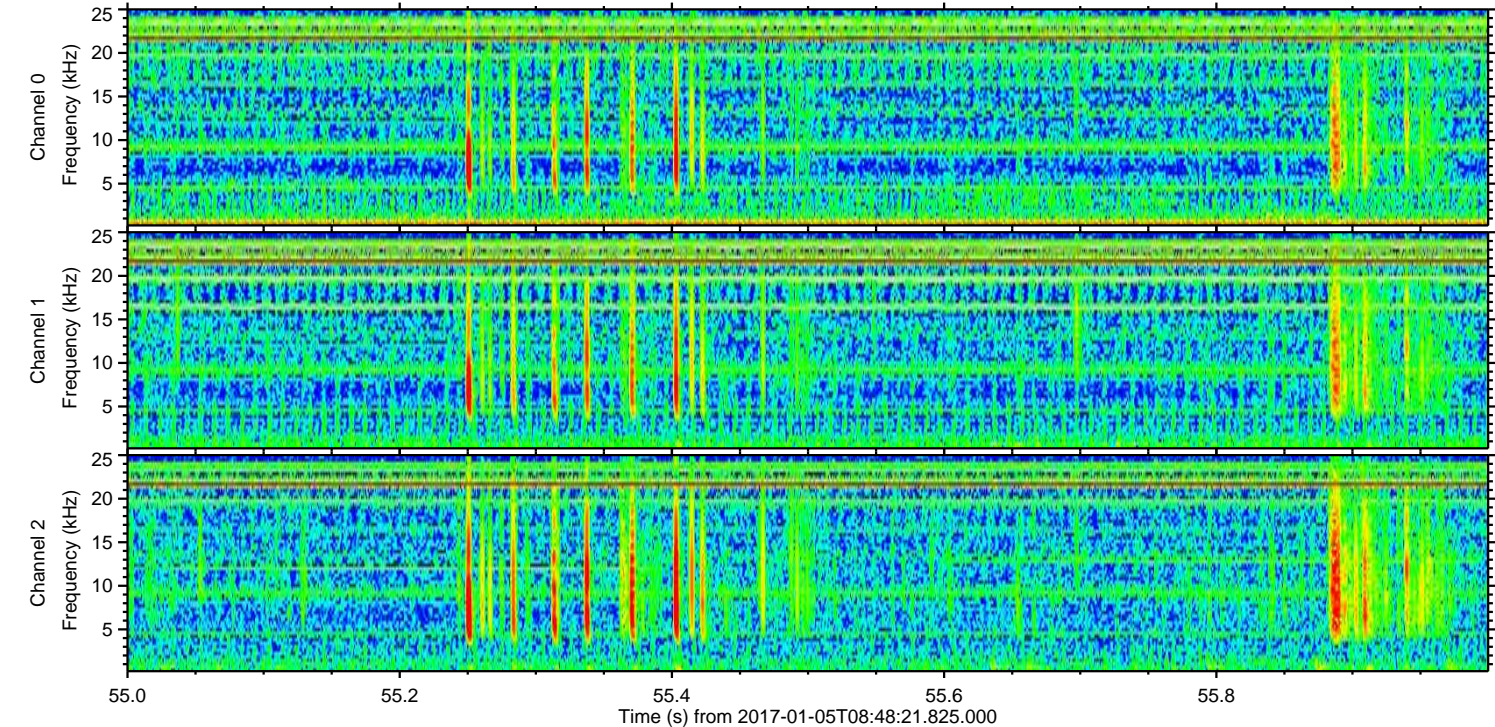
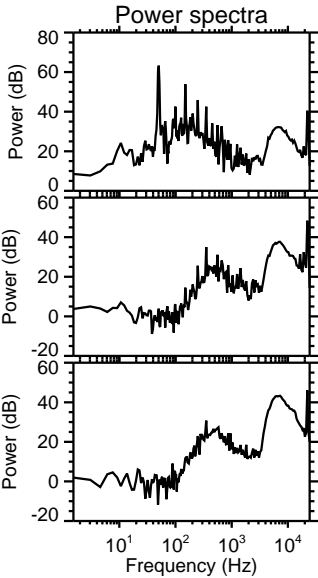
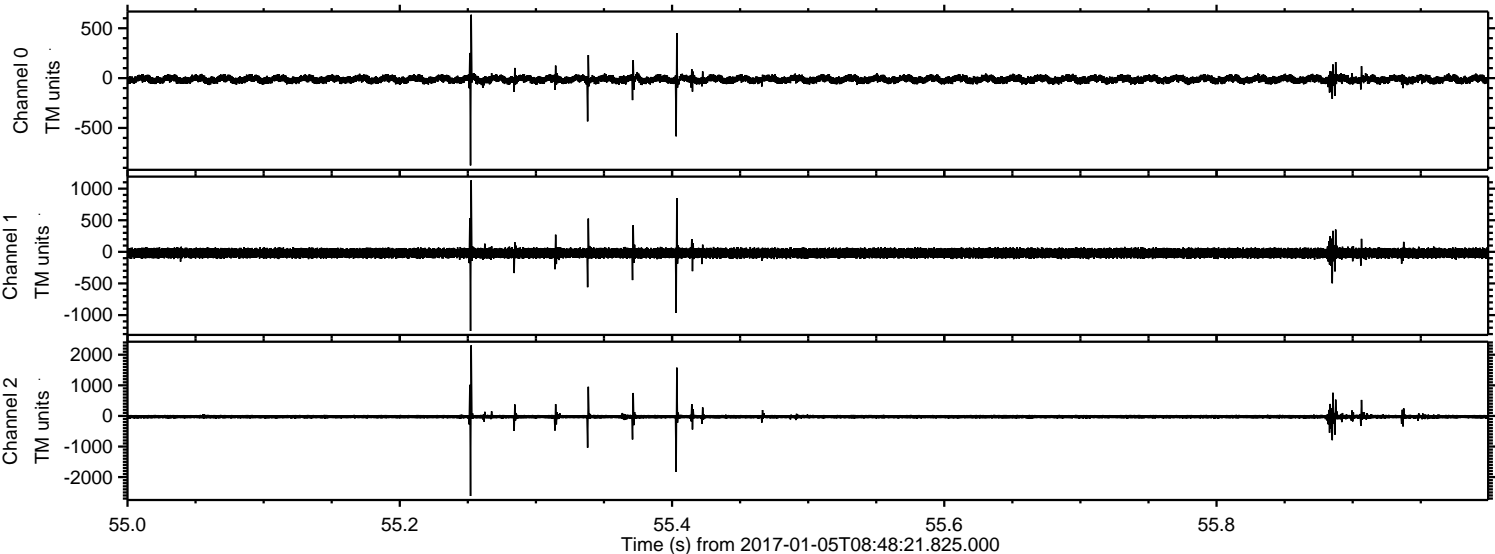
mn: -1088
mx: 1333
 μ : -19.9
 σ : 45.2

Channel 2

mn: -2383
mx: 2872
 μ : -25.2
 σ : 44.7

ELMAVAN 3D WAVEFORMS (Measured data sampled at 50 kHz) 51000 packets of 144 samples from 2017-01-05T08:48:21.825.000. Part 56/147

Processed Thu Jan 5 09:56:26 2017 by ELM ver.2012-10-06 from 001__elm20170105_084820__dat00.bin



ELMAVAN 3D WAVEFORMS (Measured data sampled at 50 kHz) 51000 packets of 144 samples from 2017-01-05T08:48:21.825.000. Part 1/147

Processed Thu Jan 5 09:56:27 2017 by ELM ver.2012-10-06 from 001__elm20170105_084820__dat00.bin

