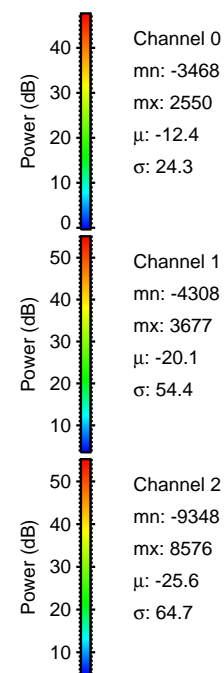
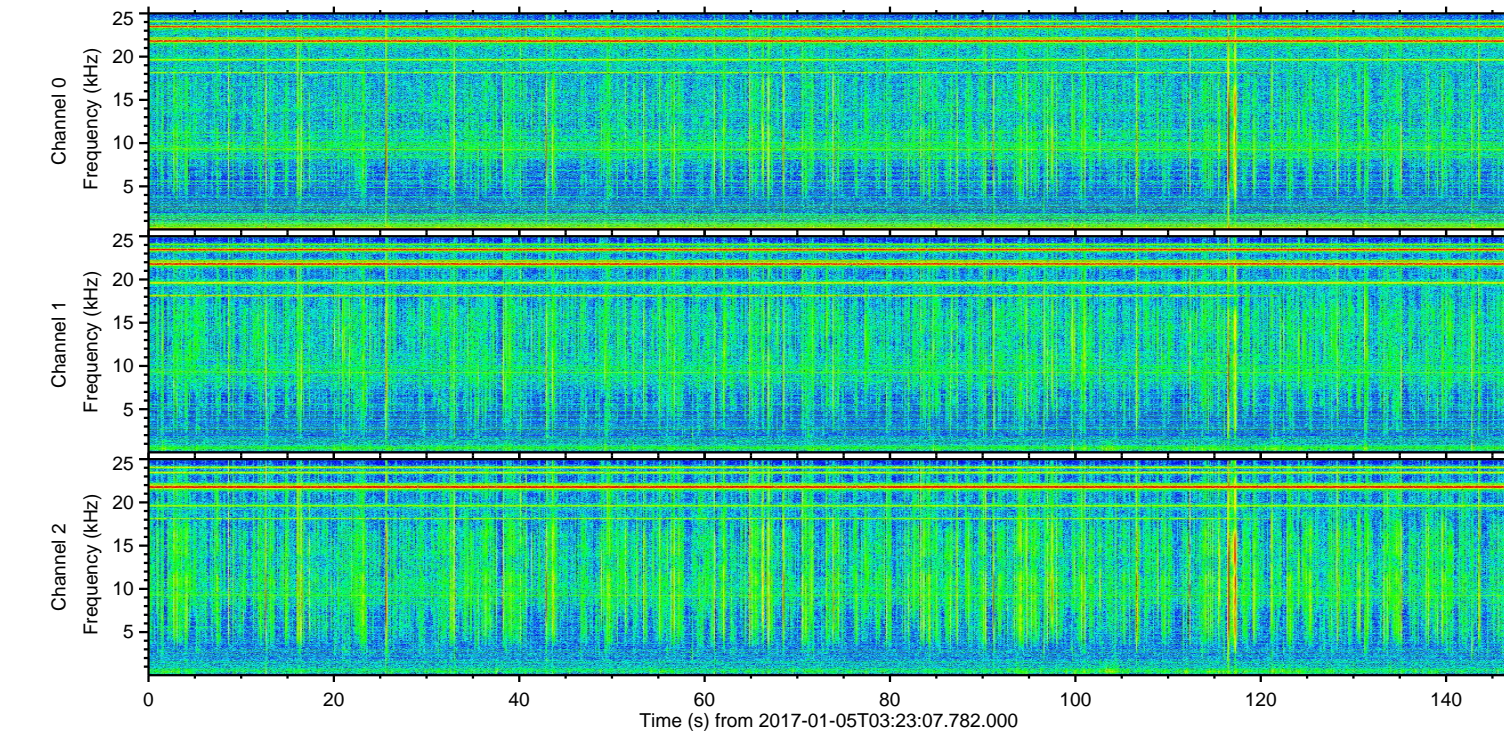
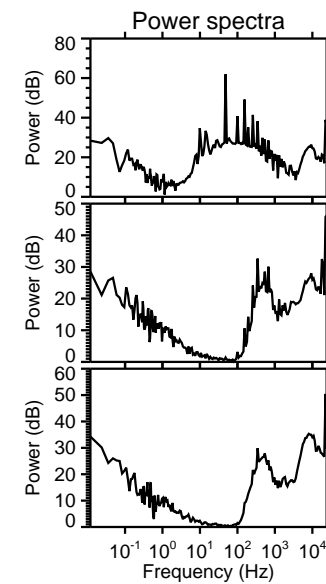
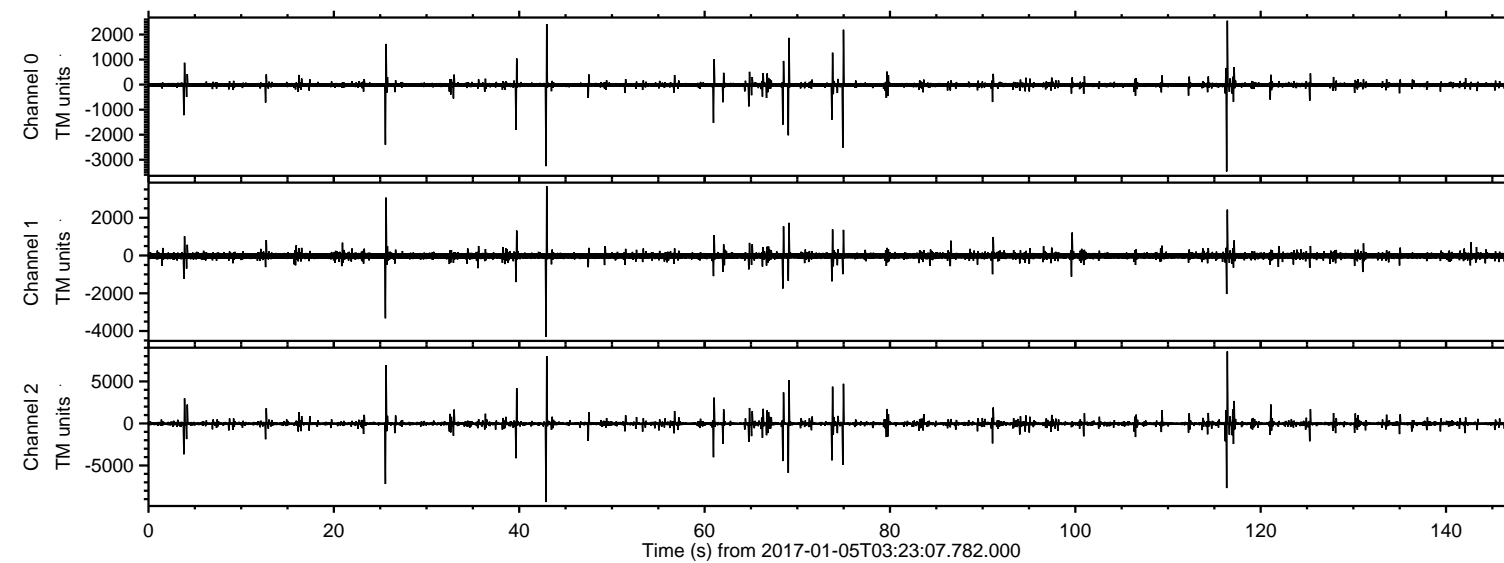


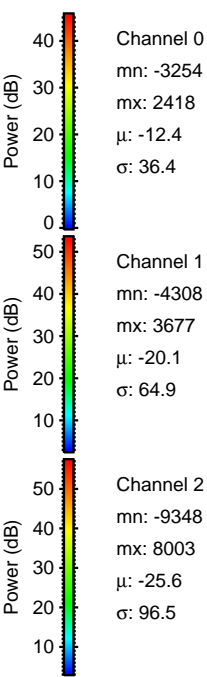
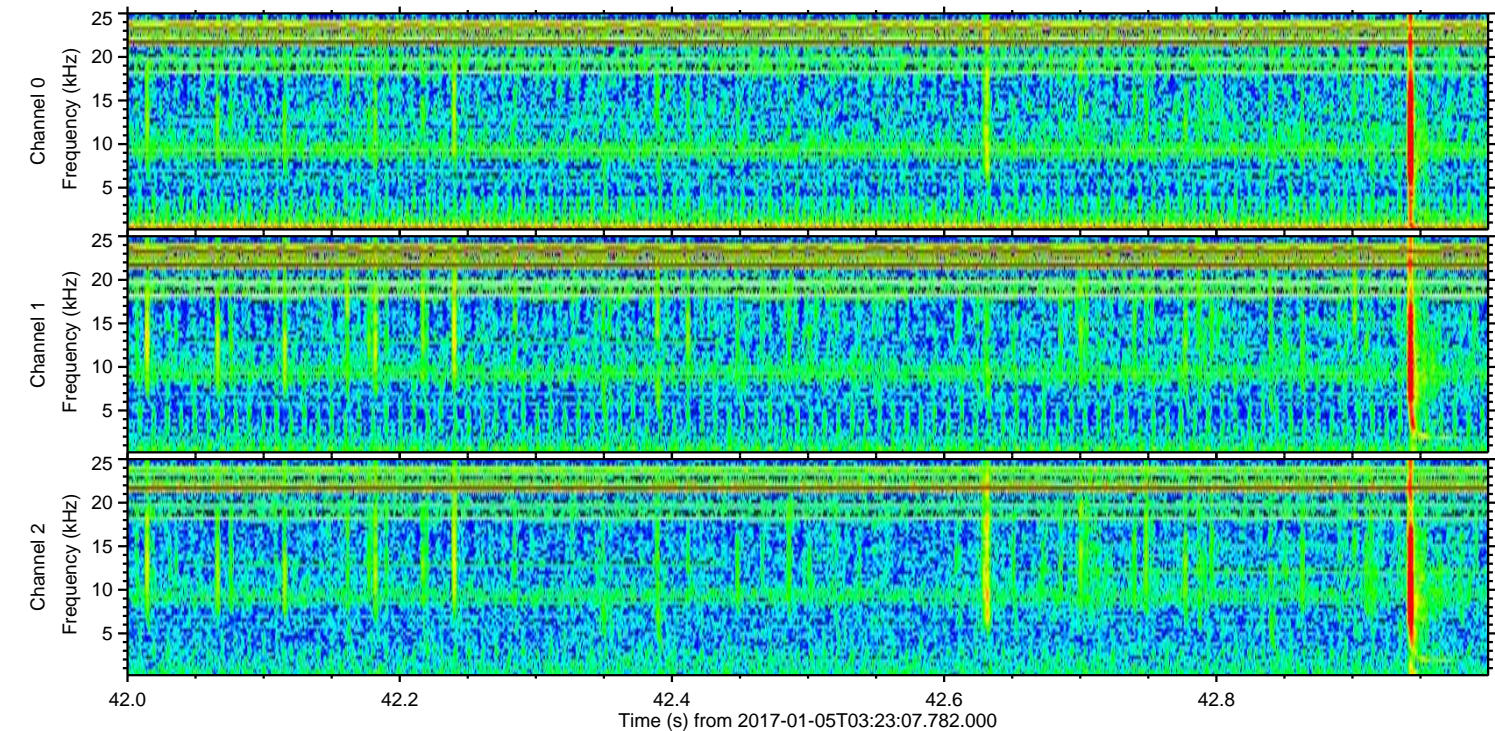
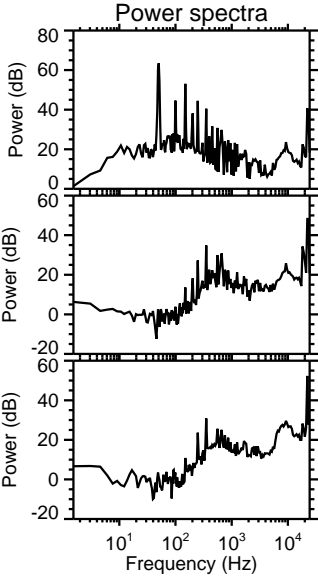
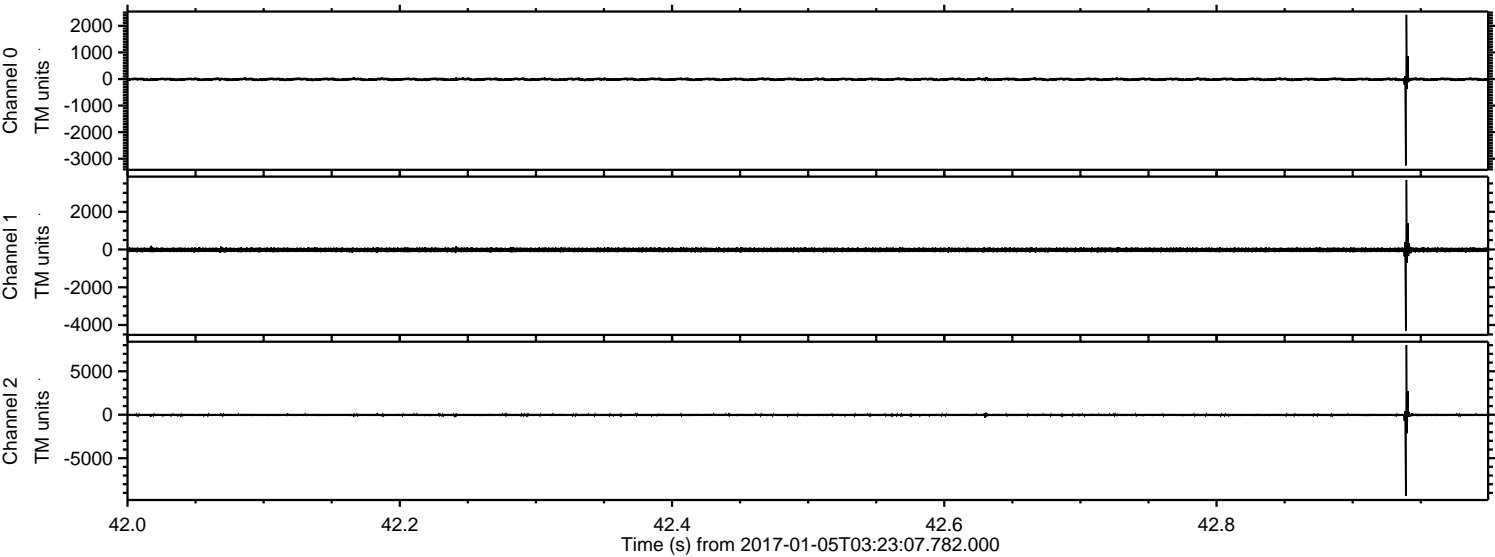
ELMAVAN 3D WAVEFORMS (Measured data sampled at 50 kHz) 51000 packets of 144 samples from 2017-01-05T03:23:07.782.000.

Processed Thu Jan 5 04:31:19 2017 by ELM ver.2012-10-06 from 001__elm20170105_032306__dat00.bin



ELMAVAN 3D WAVEFORMS (Measured data sampled at 50 kHz) 51000 packets of 144 samples from 2017-01-05T03:23:07.782.000. Part 43/147

Processed Thu Jan 5 04:31:30 2017 by ELM ver.2012-10-06 from 001__elm20170105_032306__dat00.bin



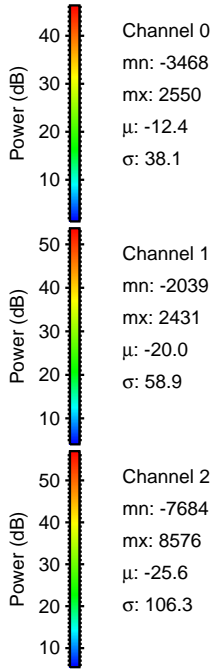
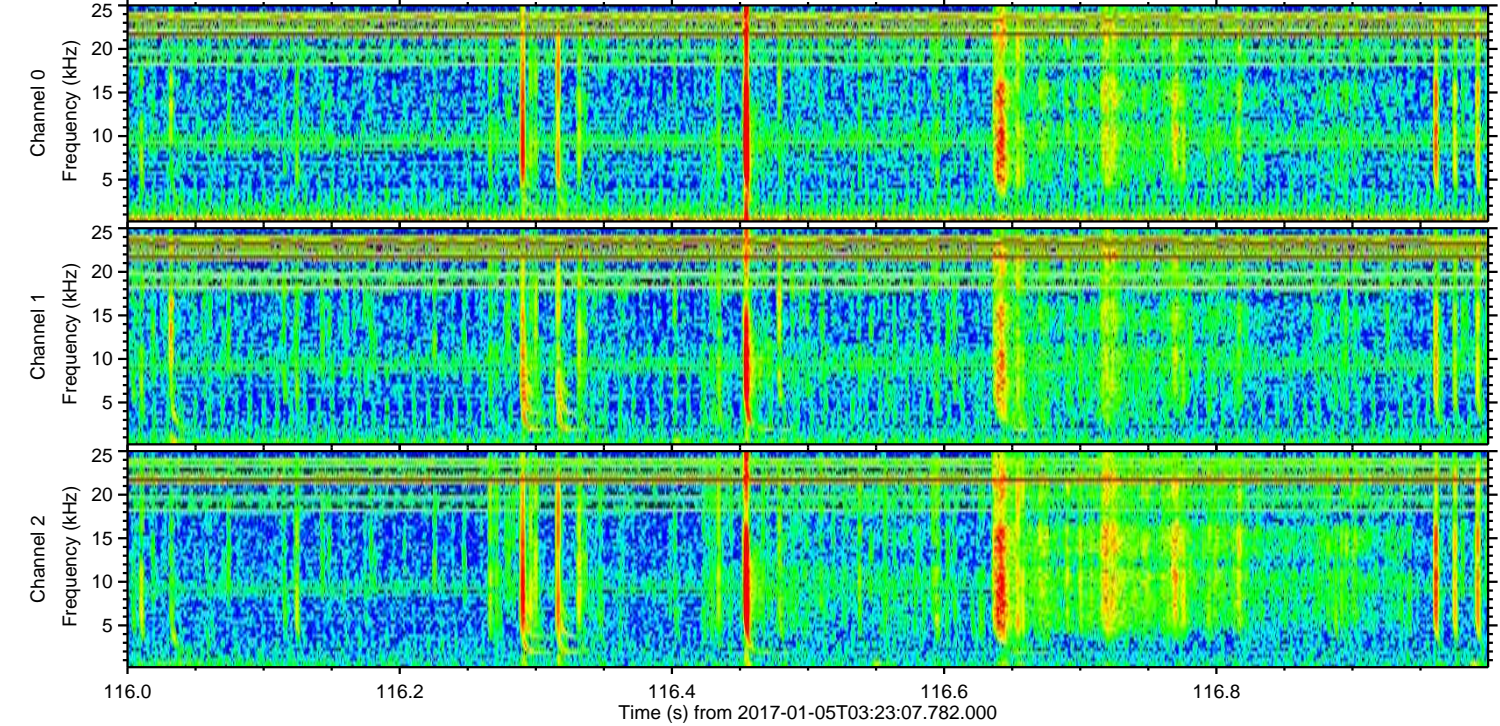
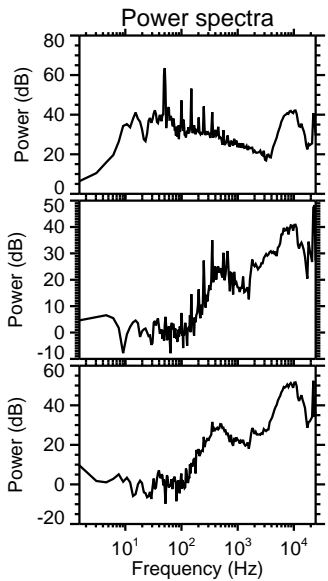
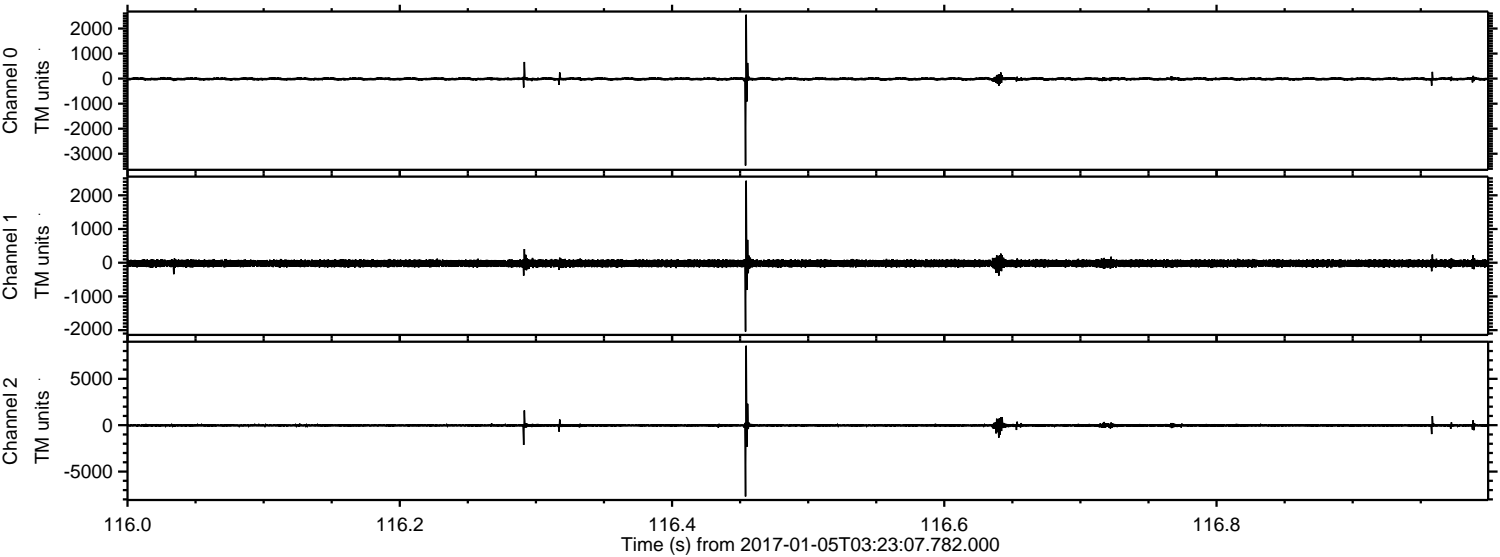
Channel 0
mn: -3254
mx: 2418
 μ : -12.4
 σ : 36.4

Channel 1
mn: -4308
mx: 3677
 μ : -20.1
 σ : 64.9

Channel 2
mn: -9348
mx: 8003
 μ : -25.6
 σ : 96.5

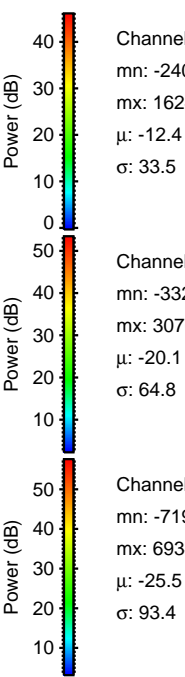
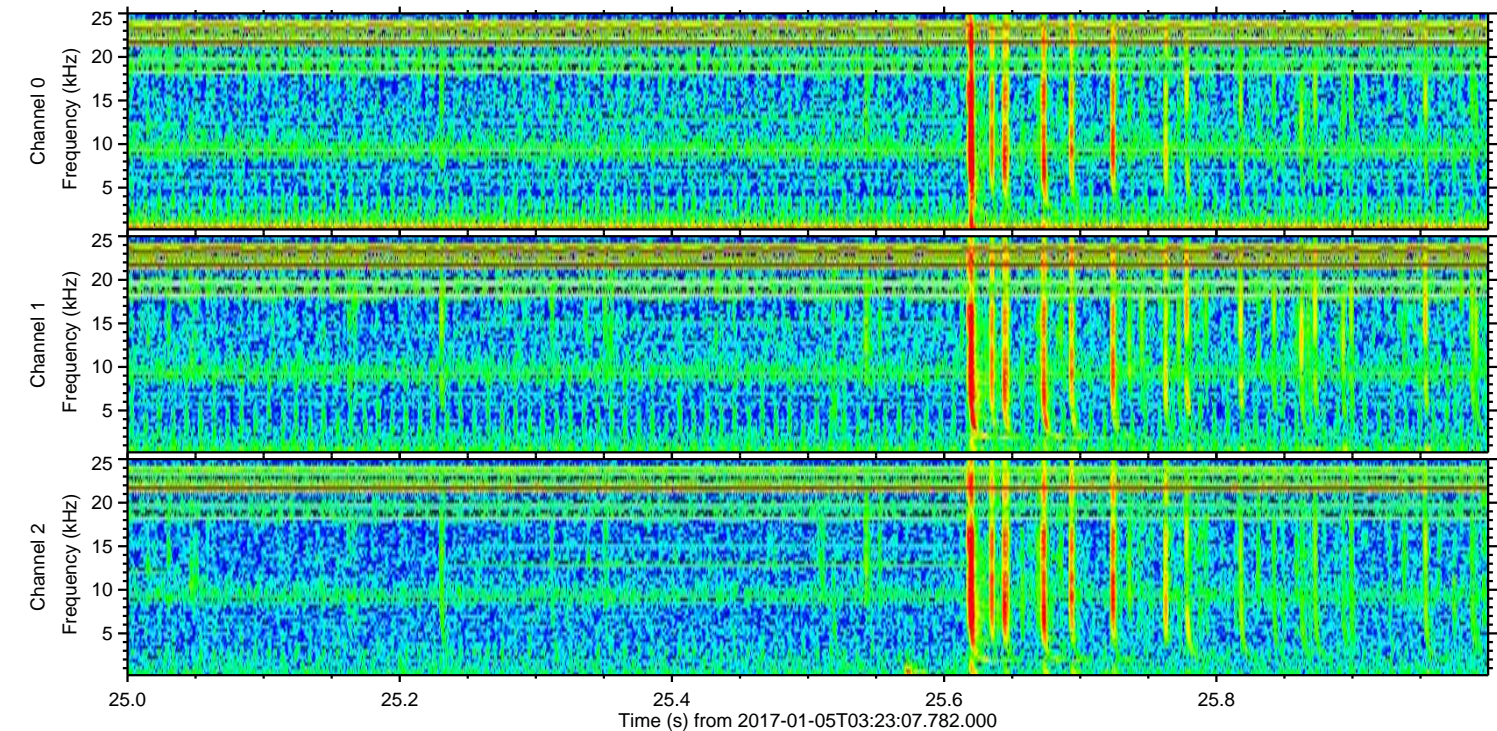
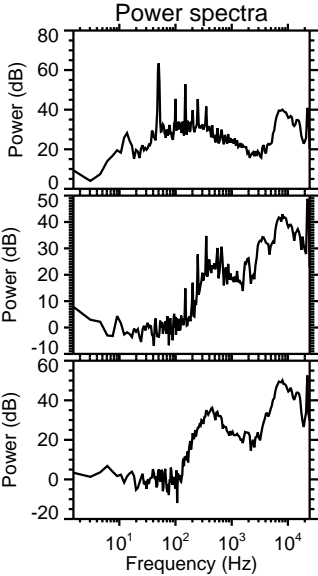
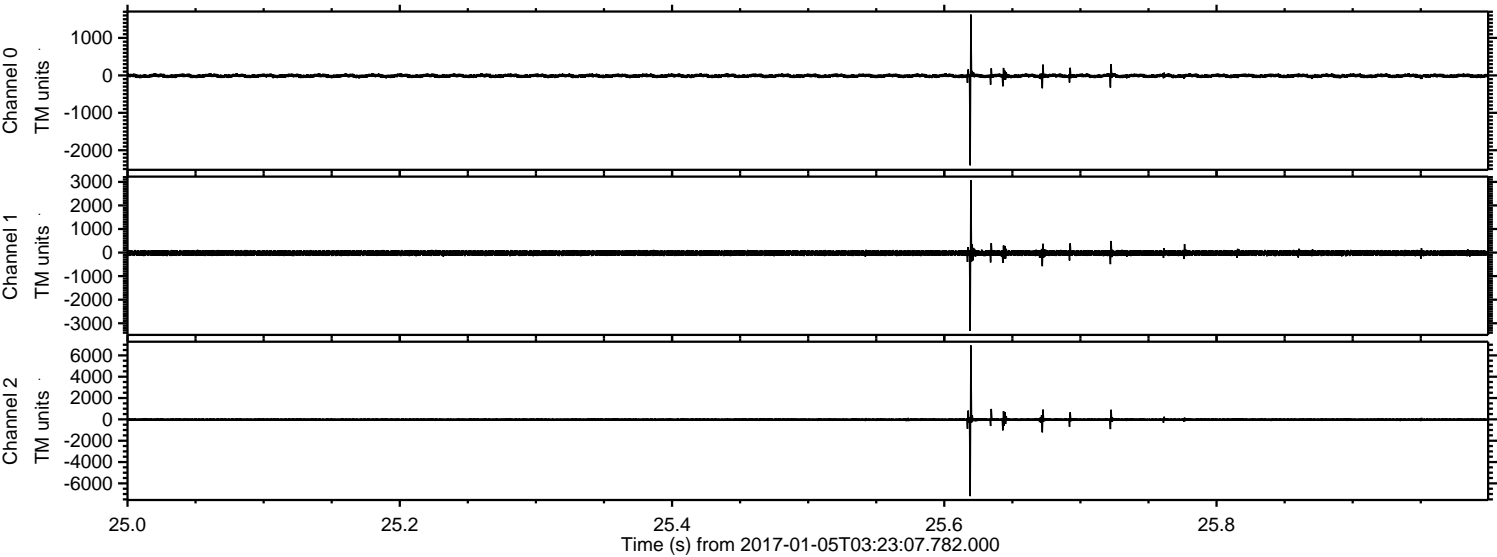
ELMAVAN 3D WAVEFORMS (Measured data sampled at 50 kHz) 51000 packets of 144 samples from 2017-01-05T03:23:07.782.000. Part 117/147

Processed Thu Jan 5 04:31:31 2017 by ELM ver.2012-10-06 from 001__elm20170105_032306__dat00.bin

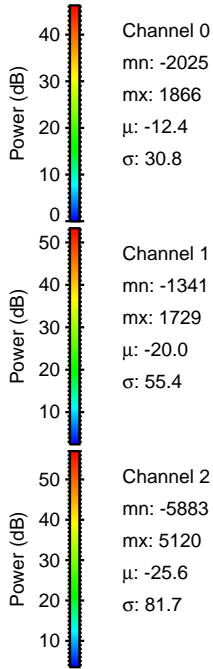
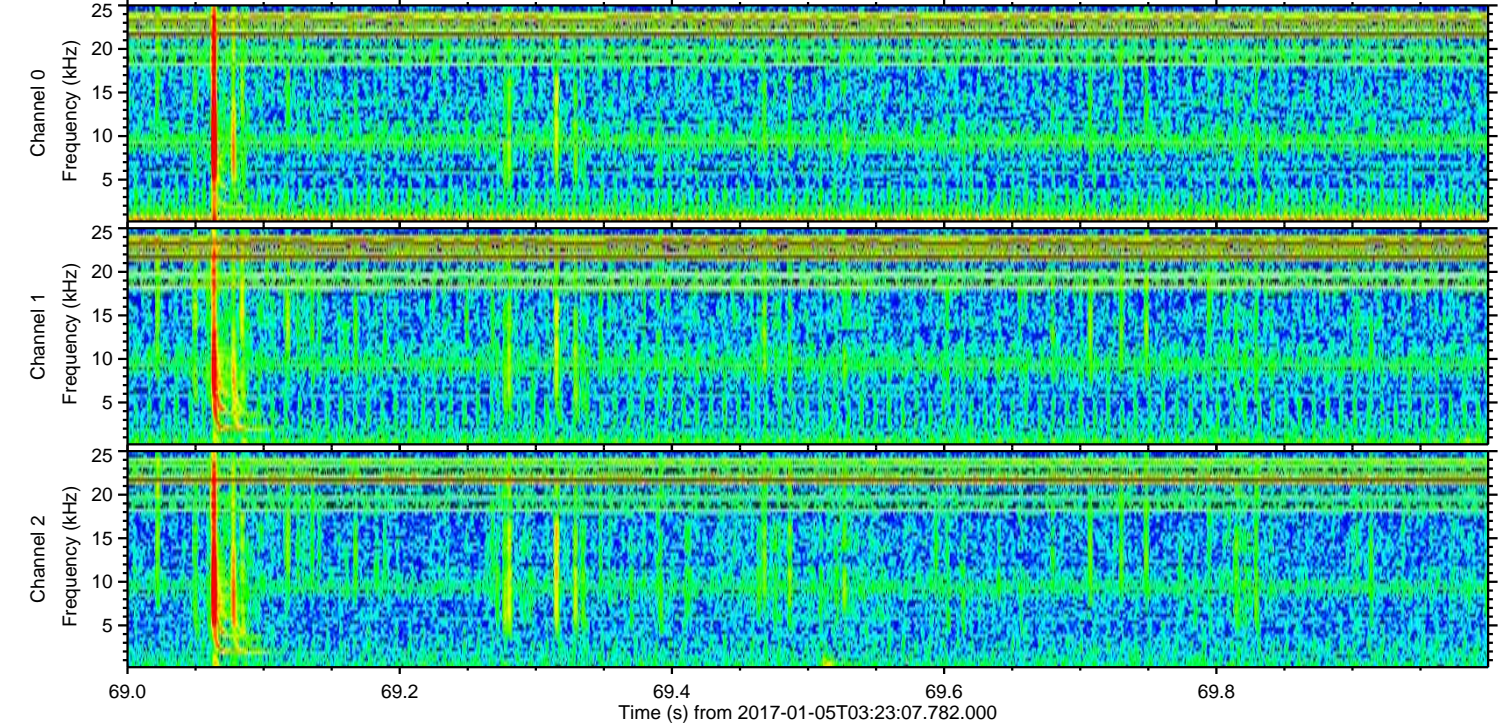
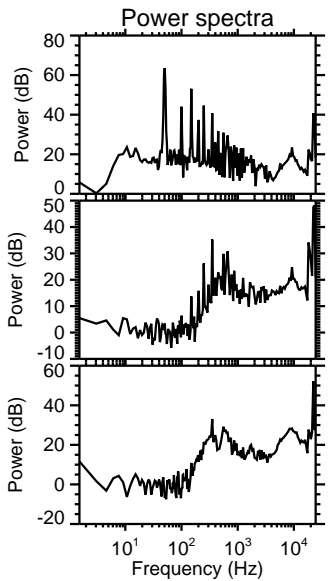
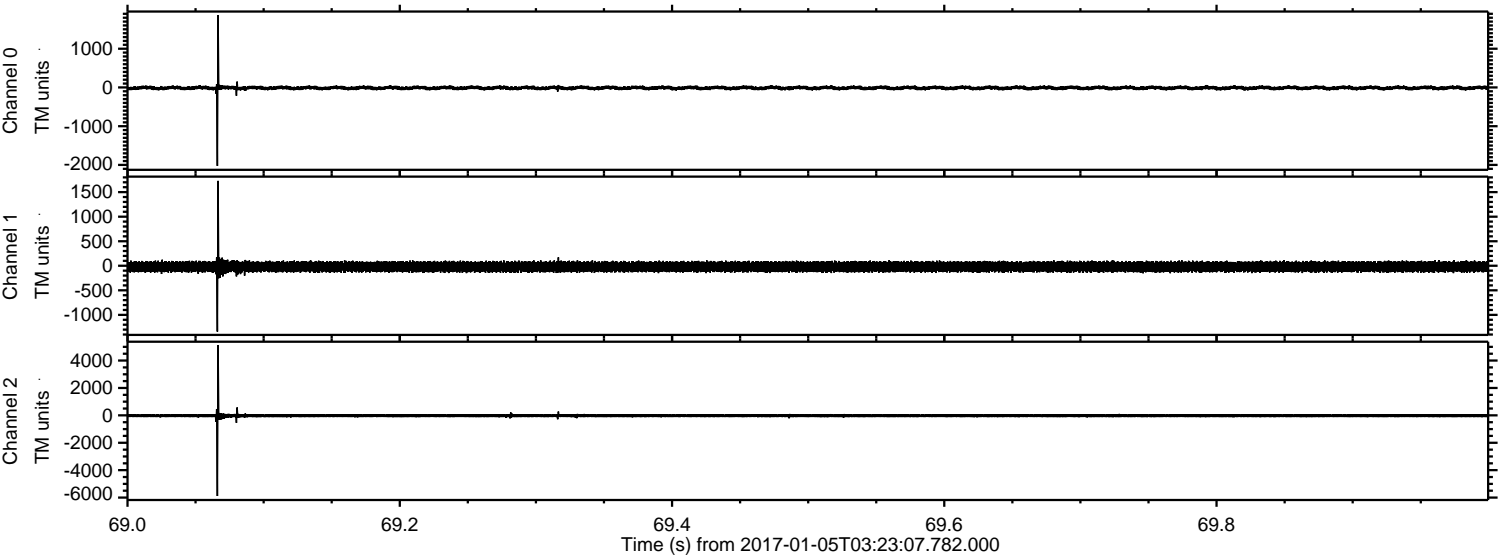


ELMAVAN 3D WAVEFORMS (Measured data sampled at 50 kHz) 51000 packets of 144 samples from 2017-01-05T03:23:07.782.000. Part 26/147

Processed Thu Jan 5 04:31:32 2017 by ELM ver.2012-10-06 from 001__elm20170105_032306__dat00.bin

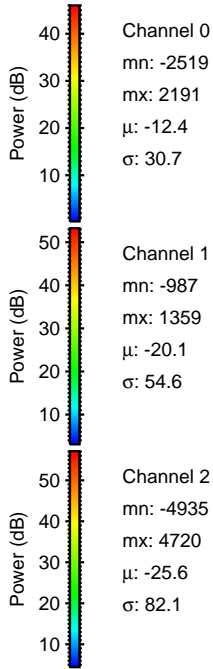
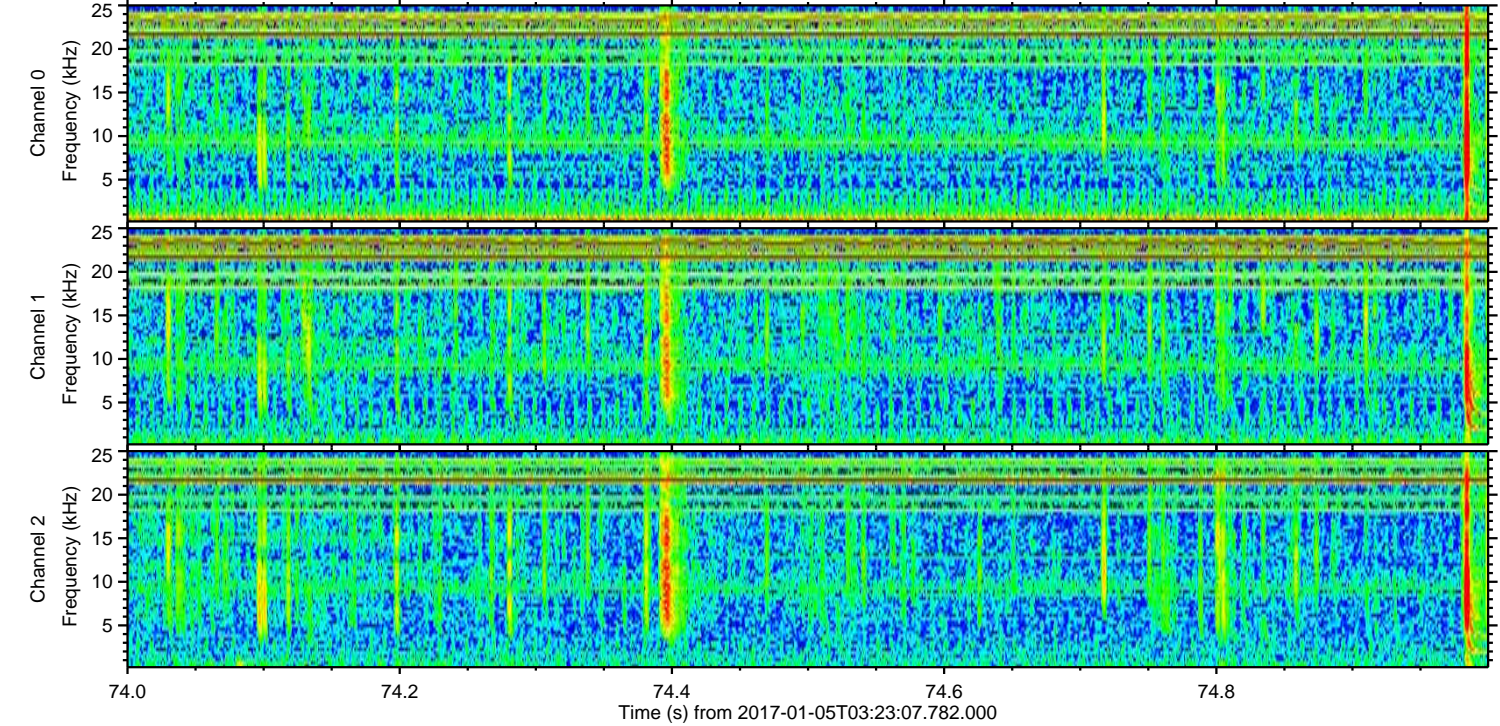
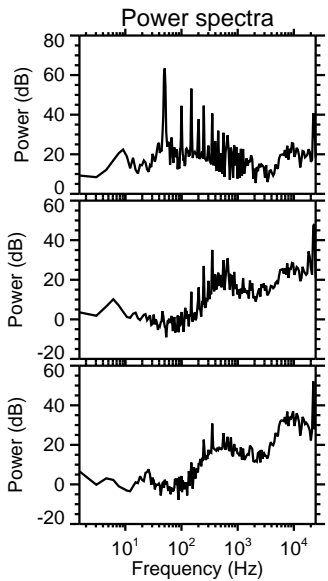
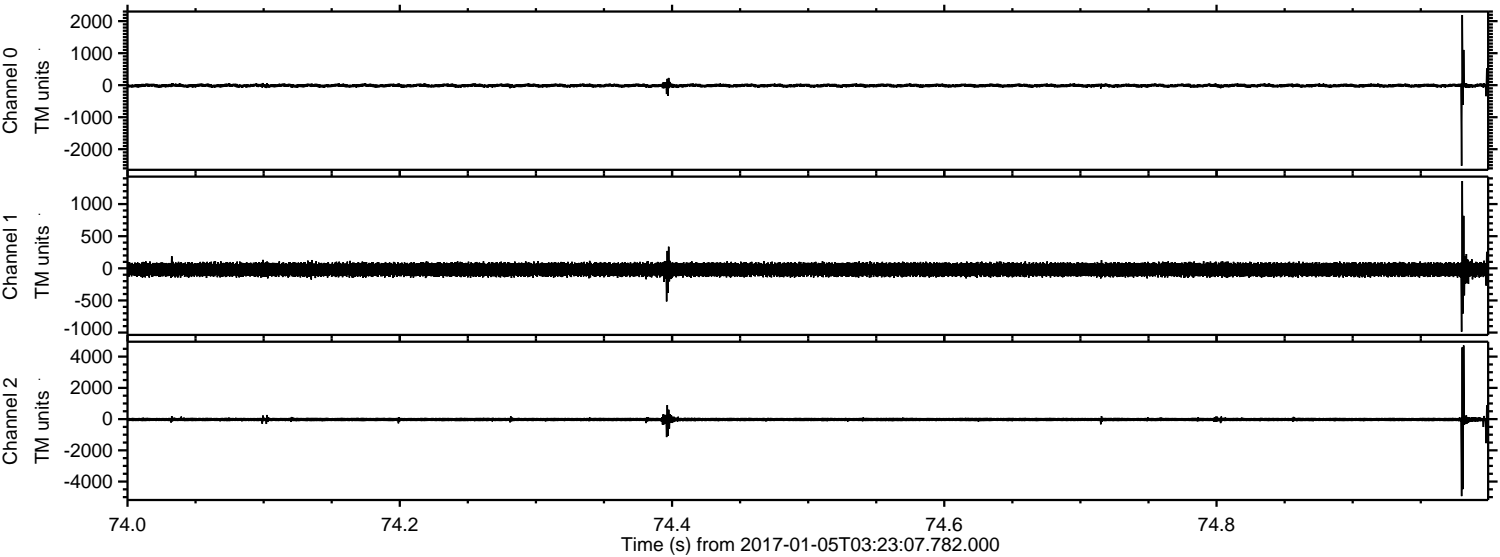


Processed Thu Jan 5 04:31:33 2017 by ELM ver.2012-10-06 from 001__elm20170105_032306__dat00.bin



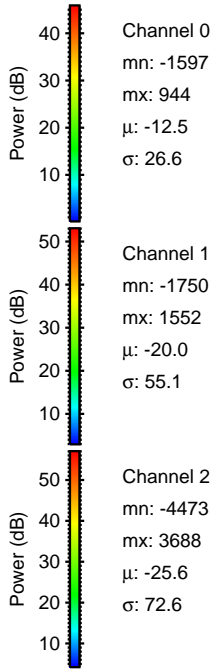
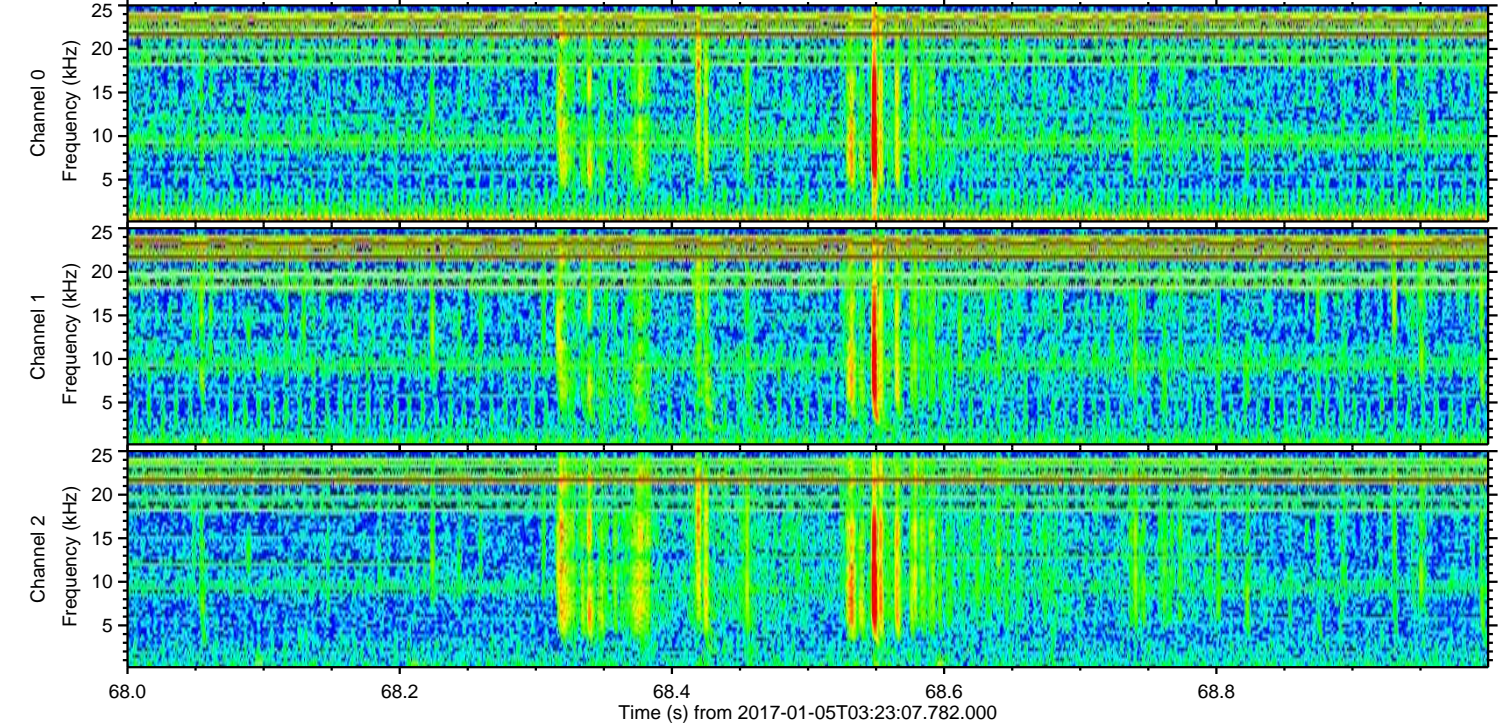
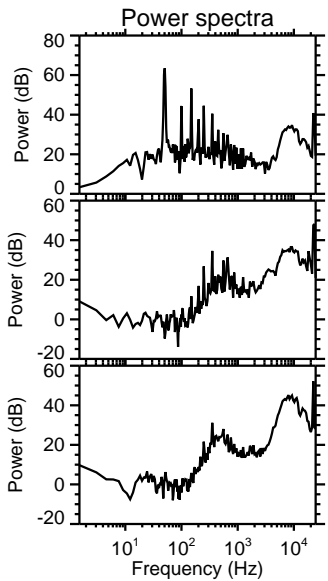
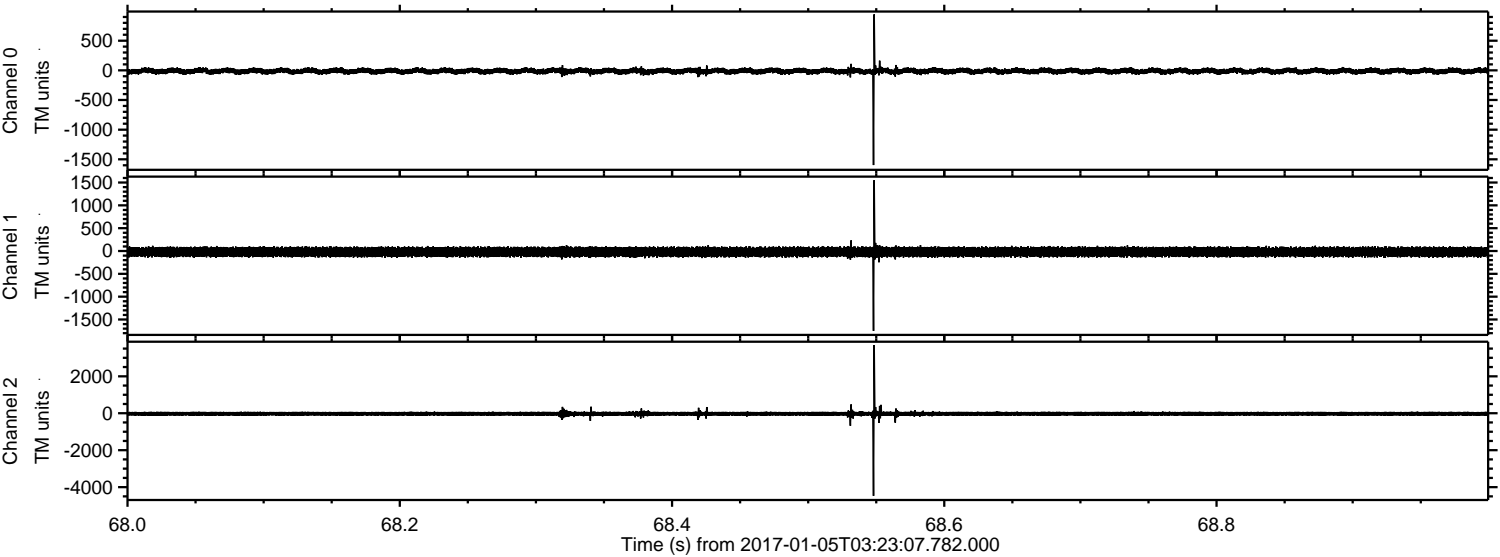
ELMAVAN 3D WAVEFORMS (Measured data sampled at 50 kHz) 51000 packets of 144 samples from 2017-01-05T03:23:07.782.000. Part 75/147

Processed Thu Jan 5 04:31:34 2017 by ELM ver.2012-10-06 from 001__elm20170105_032306__dat00.bin



ELMAVAN 3D WAVEFORMS (Measured data sampled at 50 kHz) 51000 packets of 144 samples from 2017-01-05T03:23:07.782.000. Part 69/147

Processed Thu Jan 5 04:31:35 2017 by ELM ver.2012-10-06 from 001__elm20170105_032306__dat00.bin



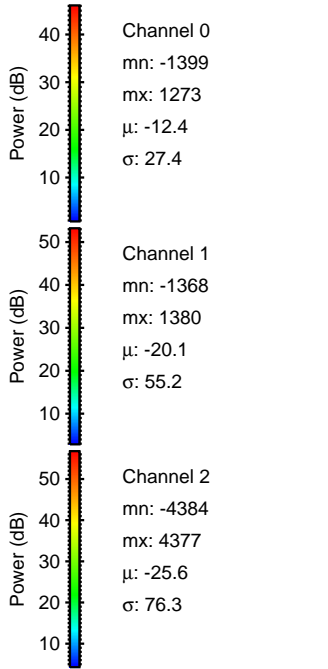
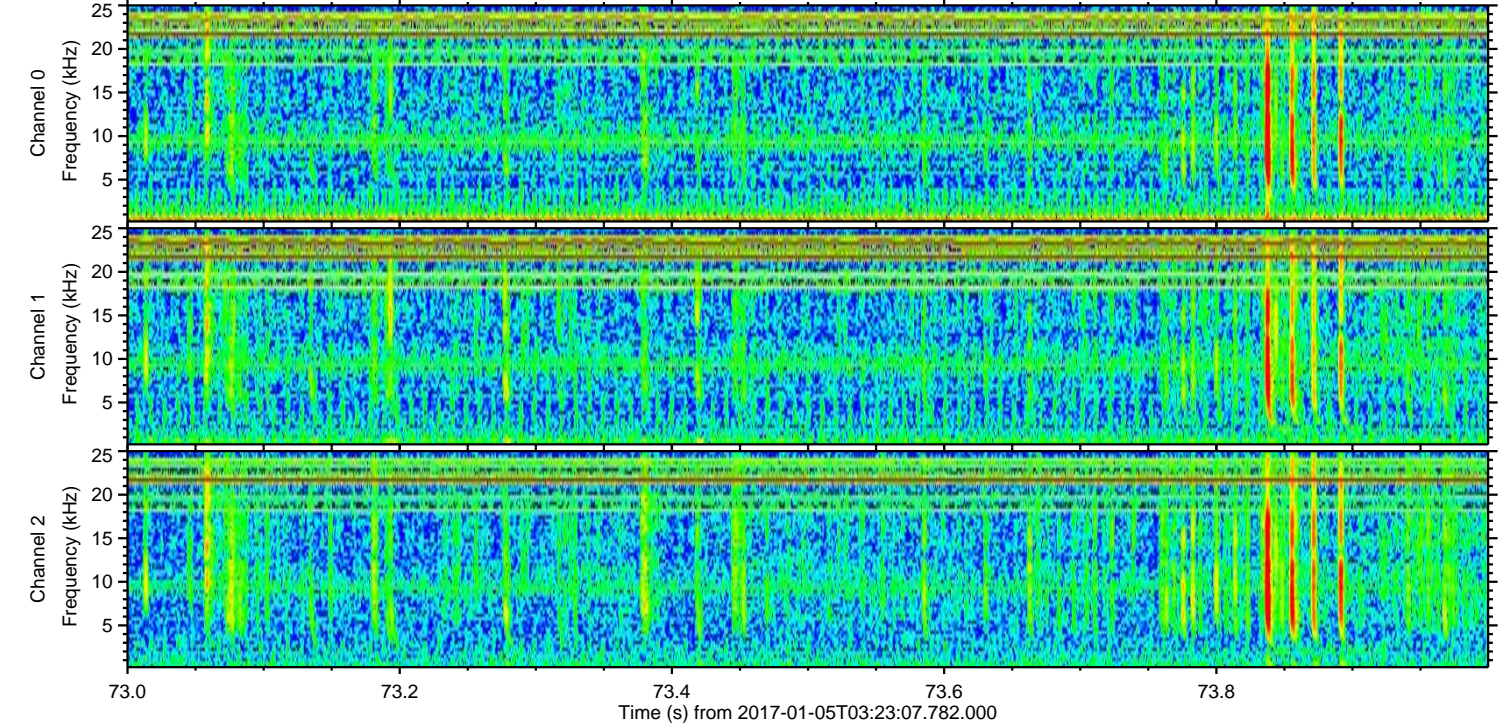
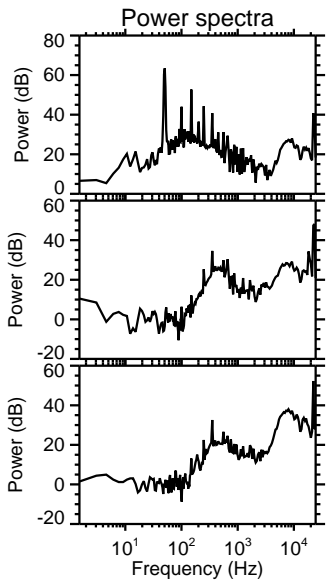
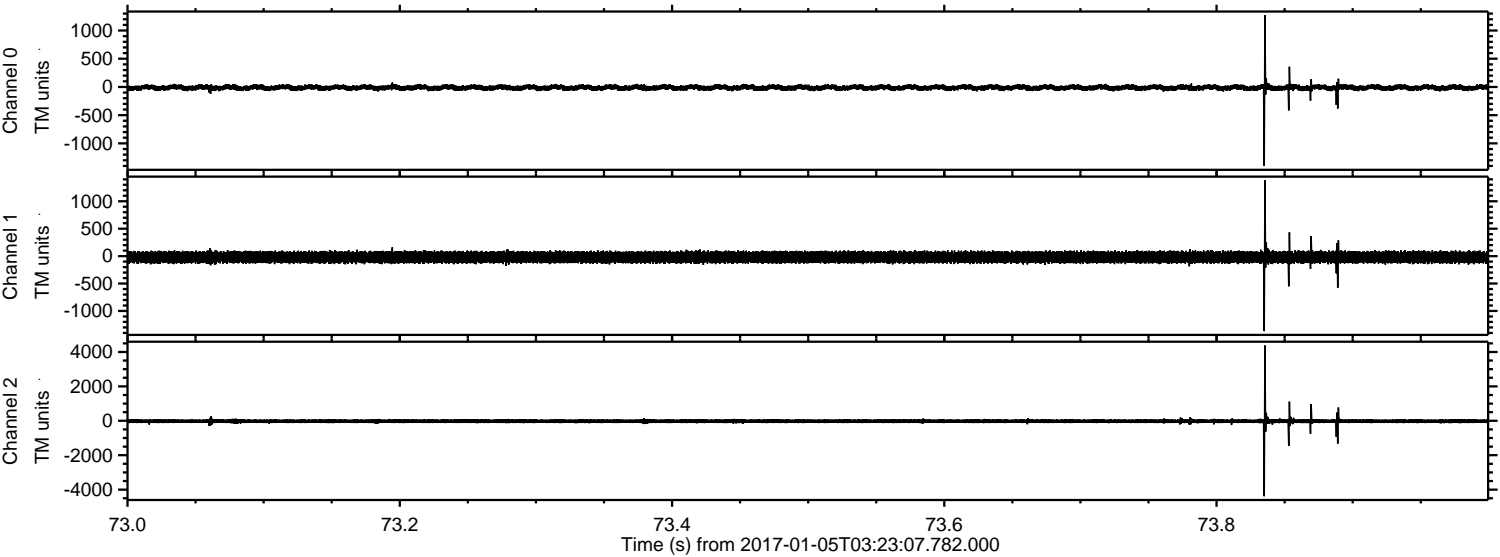
Channel 0
mn: -1597
mx: 944
 μ : -12.5
 σ : 26.6

Channel 1
mn: -1750
mx: 1552
 μ : -20.0
 σ : 55.1

Channel 2
mn: -4473
mx: 3688
 μ : -25.6
 σ : 72.6

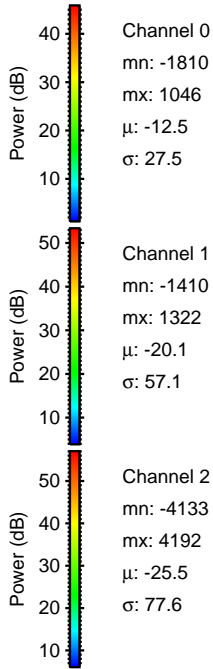
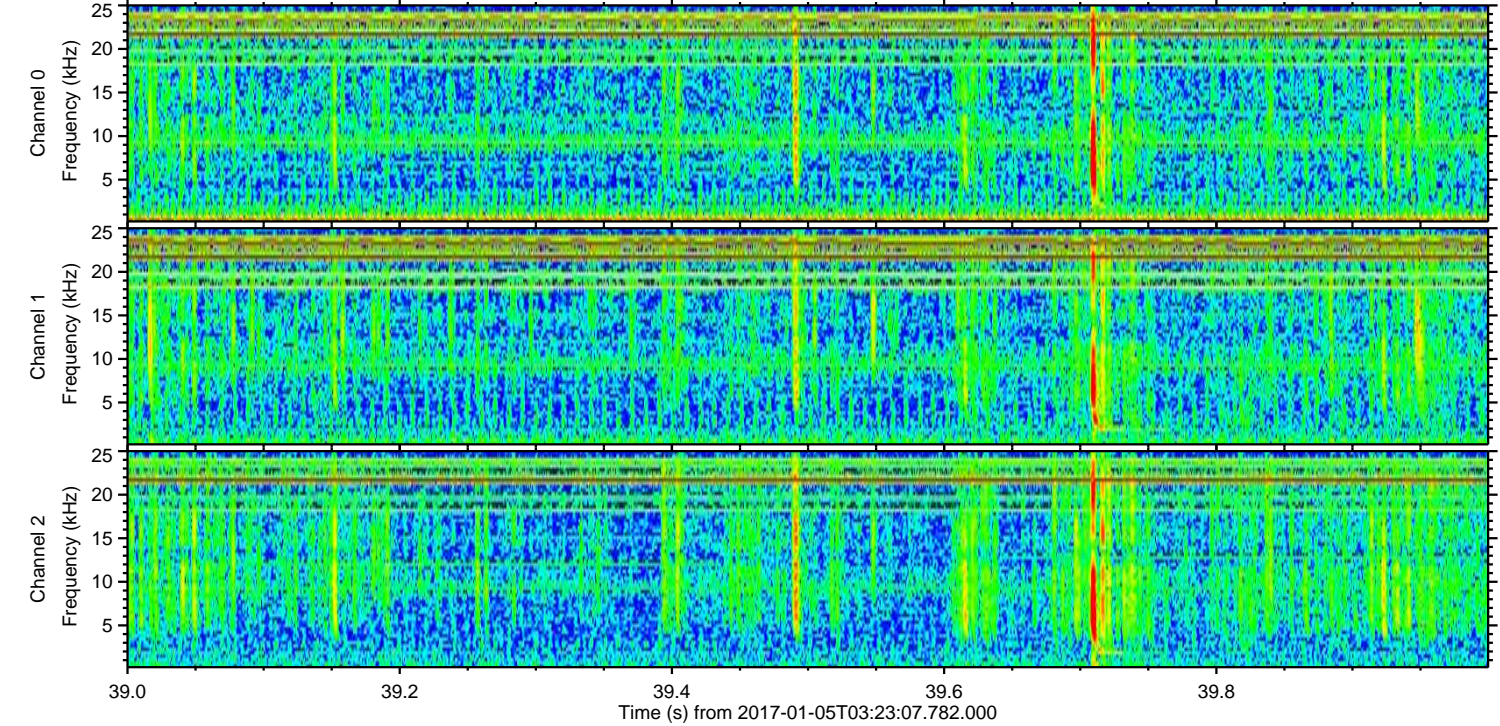
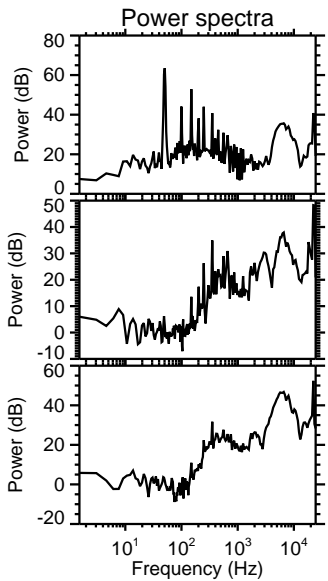
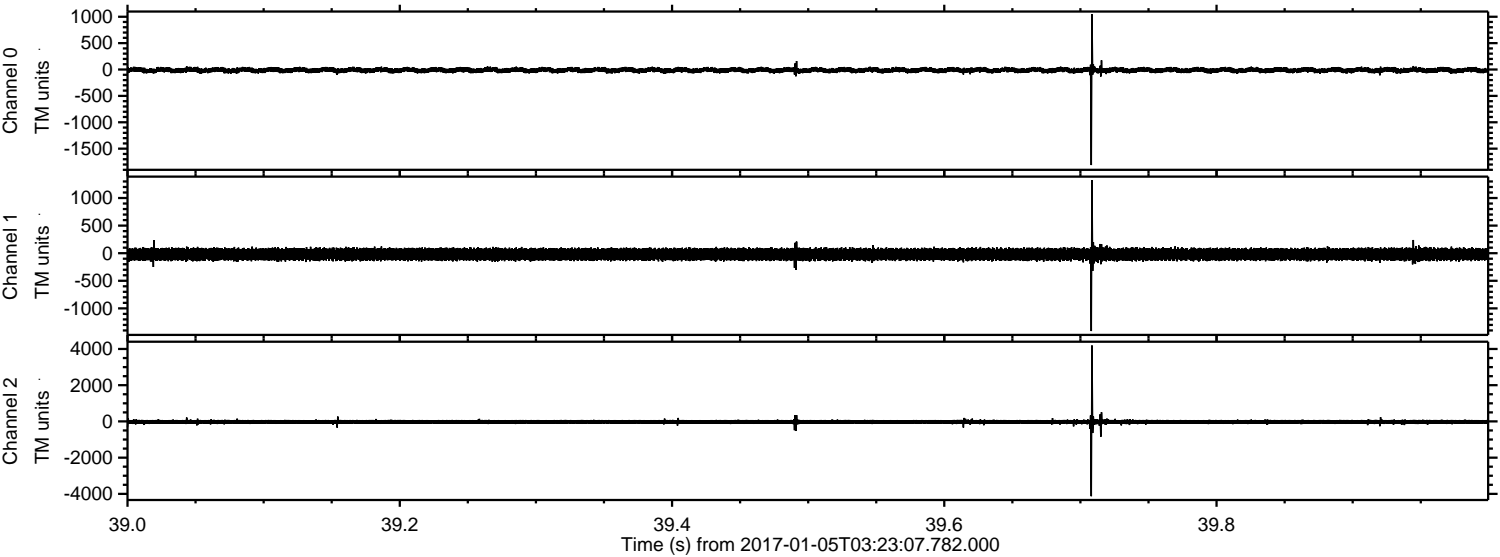
ELMAVAN 3D WAVEFORMS (Measured data sampled at 50 kHz) 51000 packets of 144 samples from 2017-01-05T03:23:07.782.000. Part 74/147

Processed Thu Jan 5 04:31:36 2017 by ELM ver.2012-10-06 from 001__elm20170105_032306__dat00.bin



ELMAVAN 3D WAVEFORMS (Measured data sampled at 50 kHz) 51000 packets of 144 samples from 2017-01-05T03:23:07.782.000. Part 40/147

Processed Thu Jan 5 04:31:37 2017 by ELM ver.2012-10-06 from 001__elm20170105_032306__dat00.bin

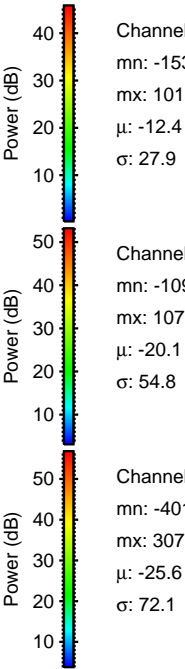
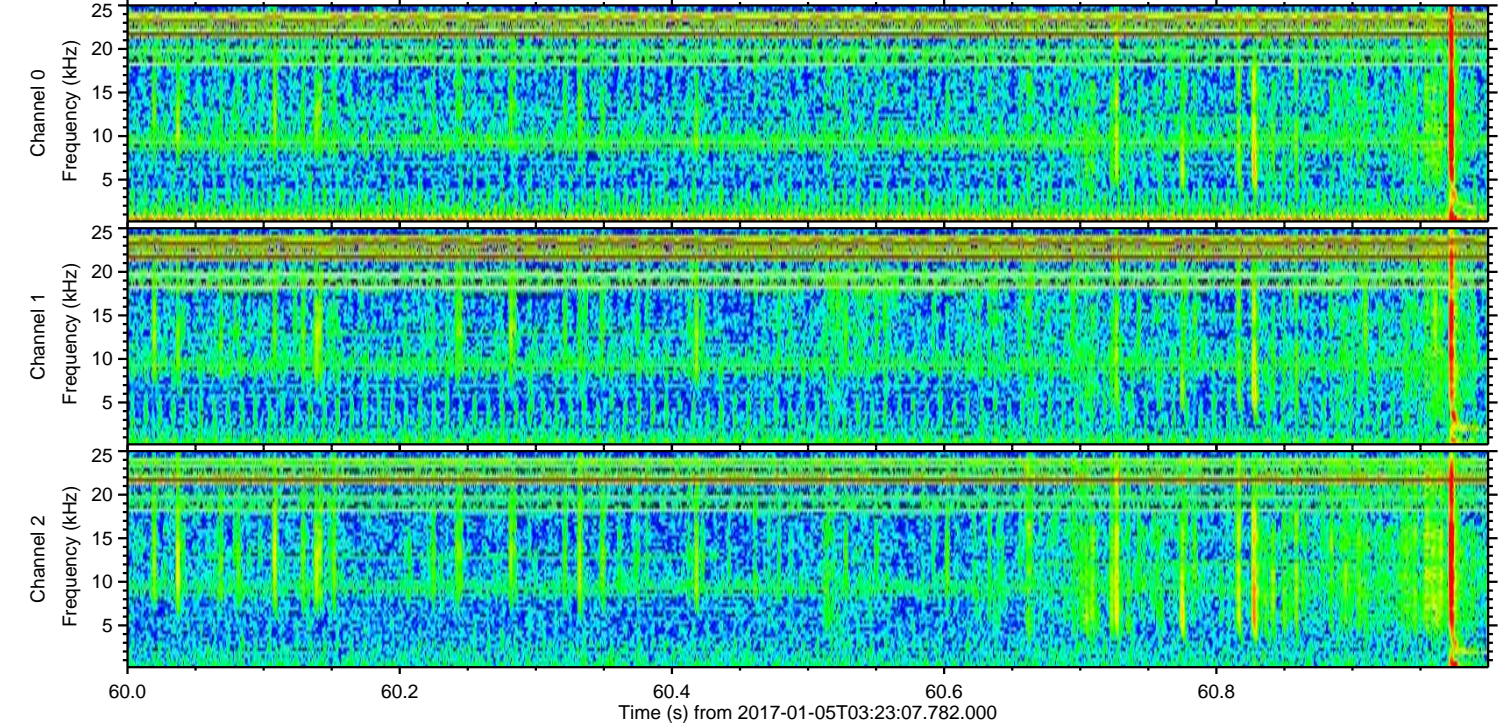
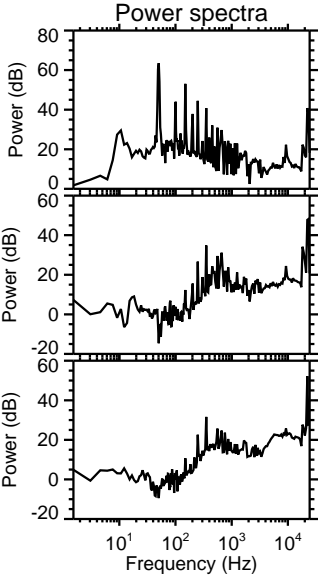
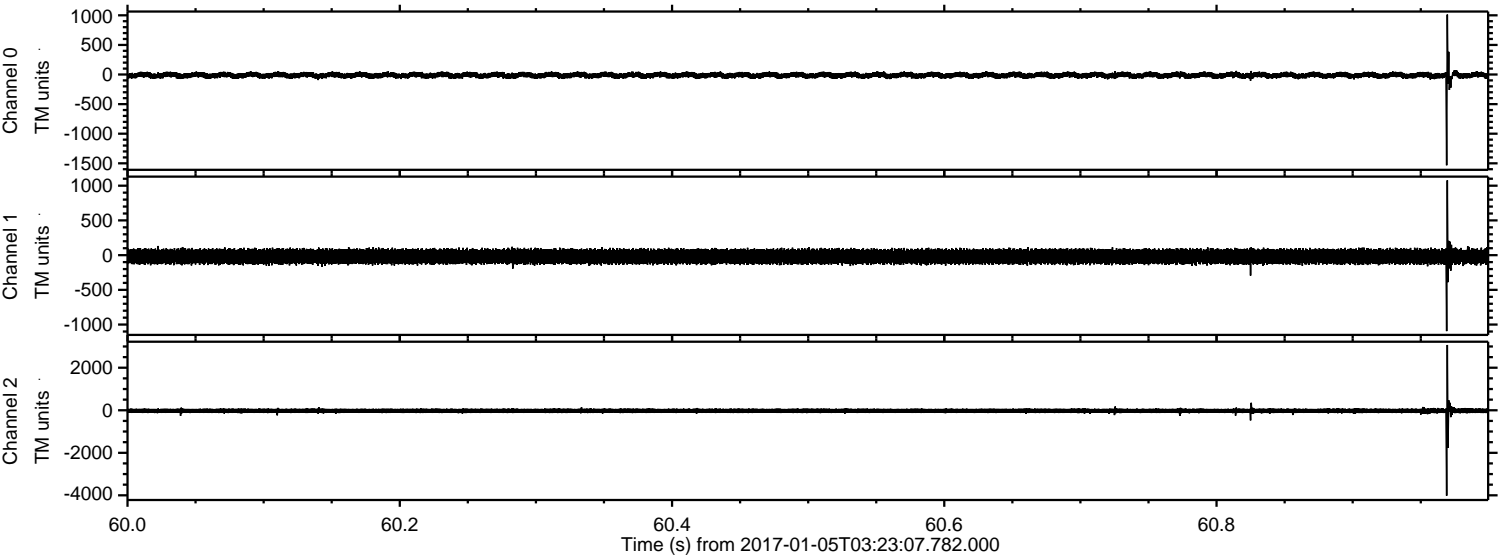


Channel 0
mn: -1810
mx: 1046
 μ : -12.5
 σ : 27.5

Channel 1
mn: -1410
mx: 1322
 μ : -20.1
 σ : 57.1

Channel 2
mn: -4133
mx: 4192
 μ : -25.5
 σ : 77.6

Processed Thu Jan 5 04:31:38 2017 by ELM ver.2012-10-06 from 001__elm20170105_032306__dat00.bin



Processed Thu Jan 5 04:31:38 2017 by ELM ver.2012-10-06 from 001__elm20170105_032306__dat00.bin

