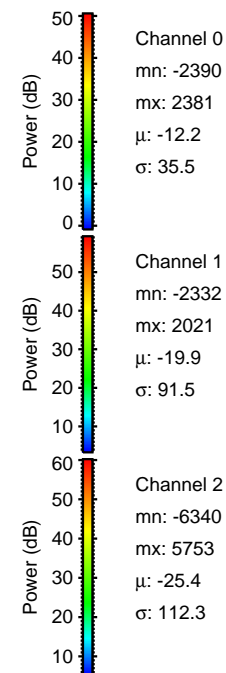
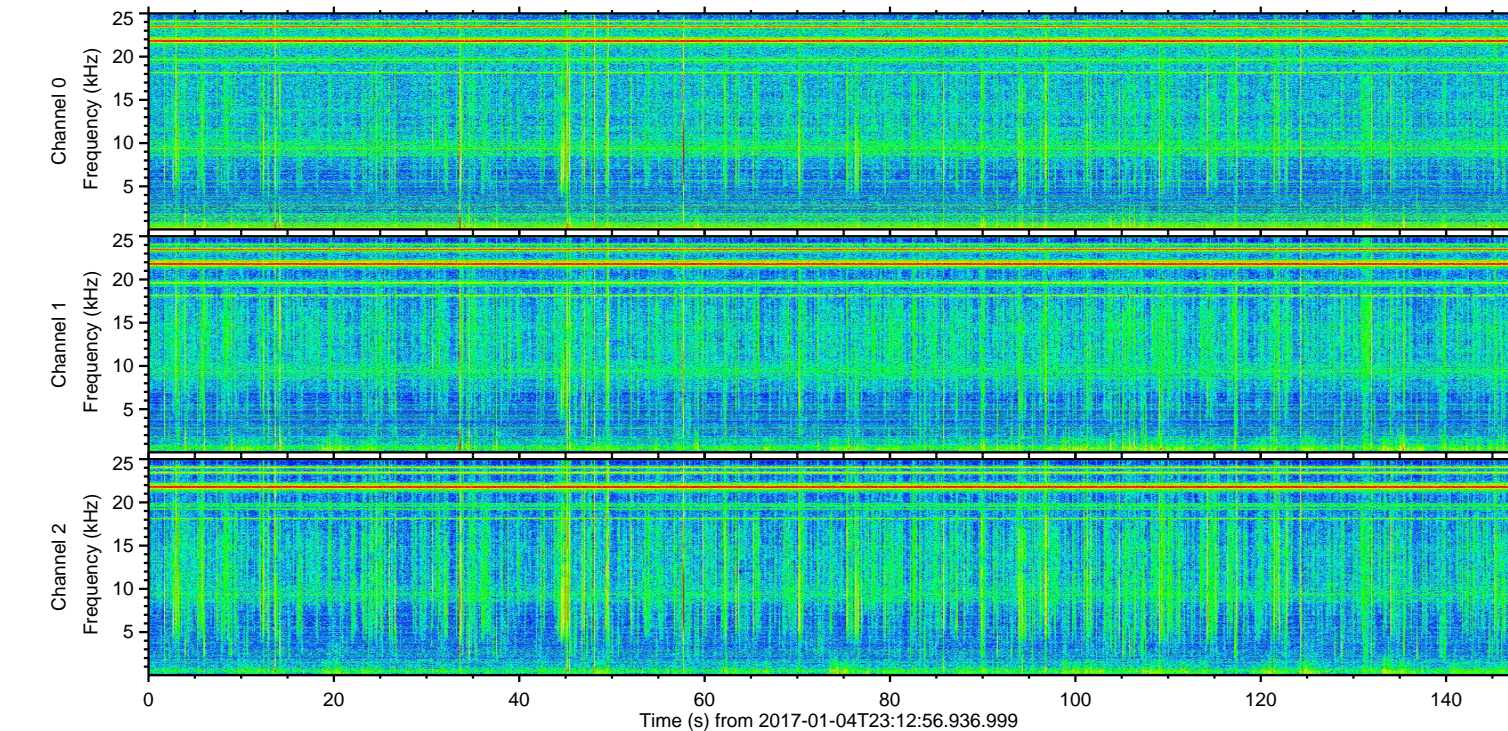
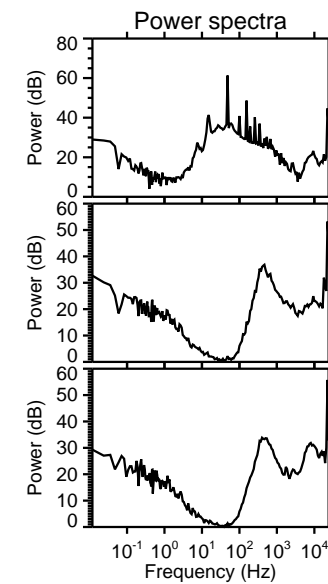
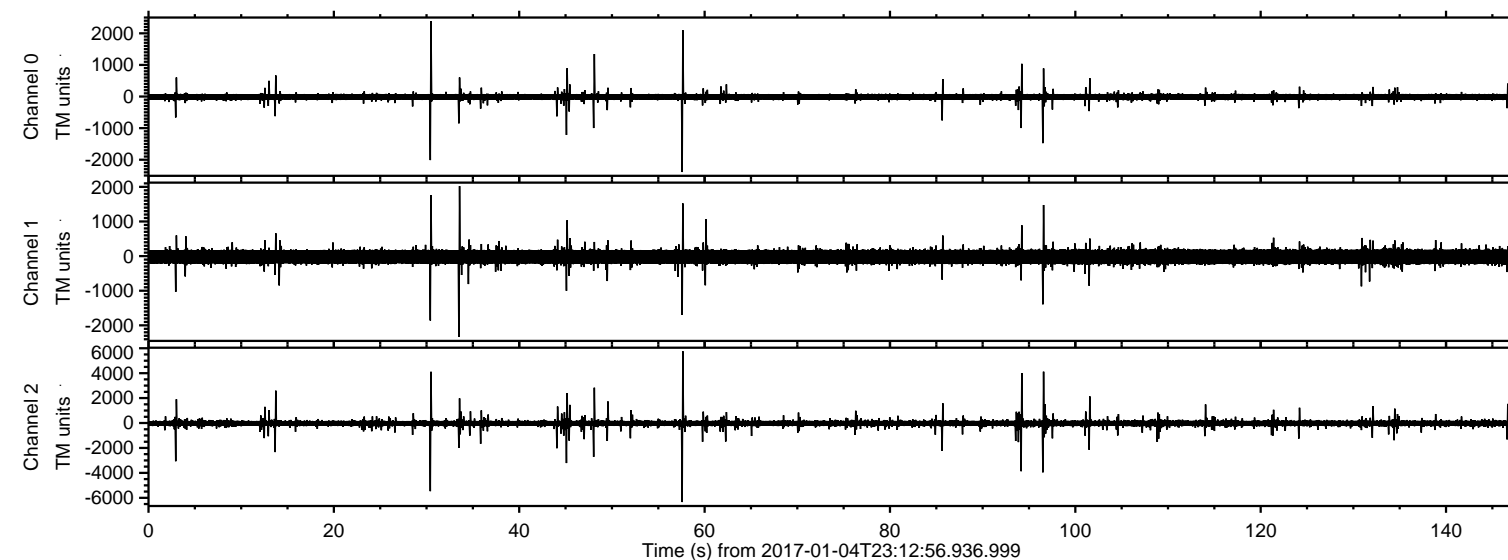


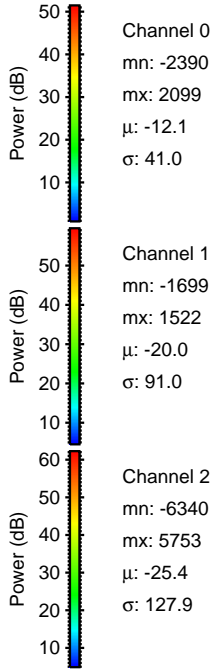
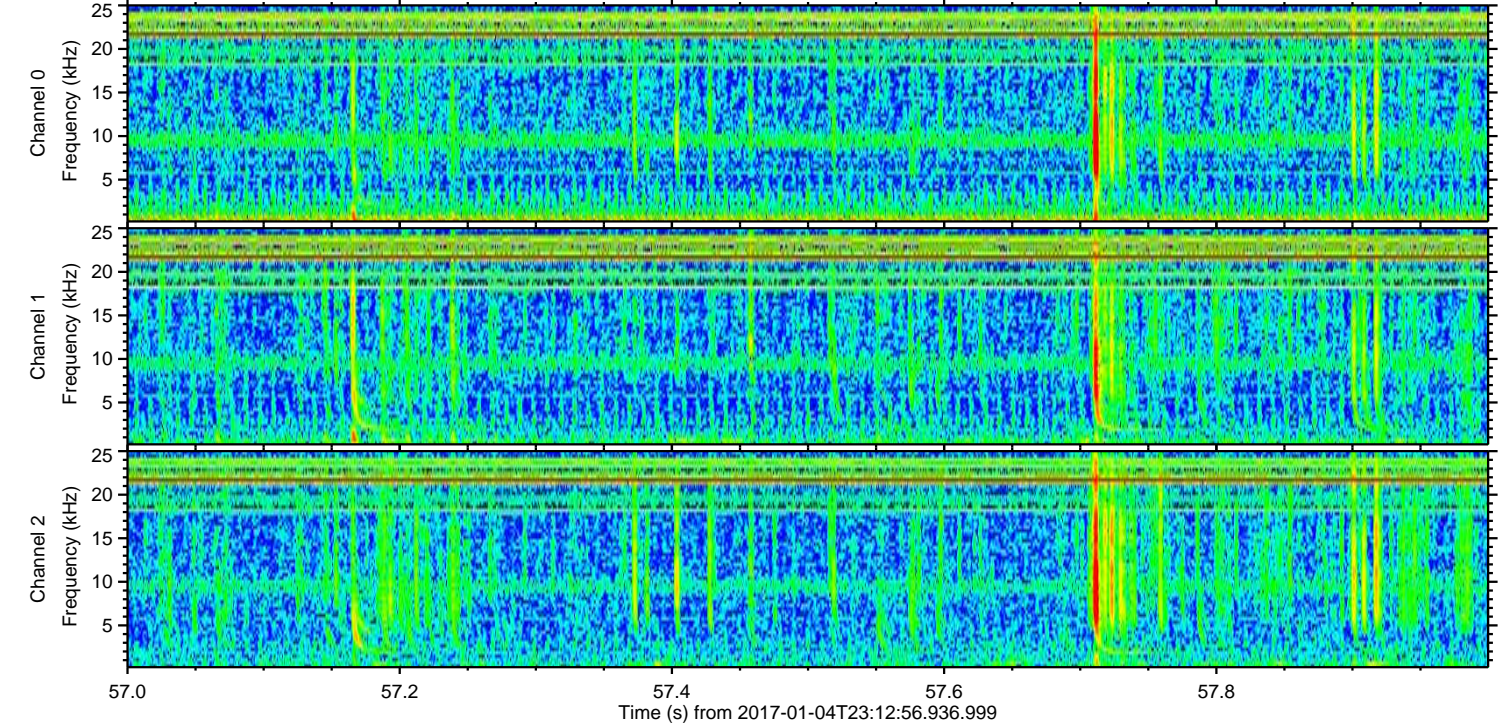
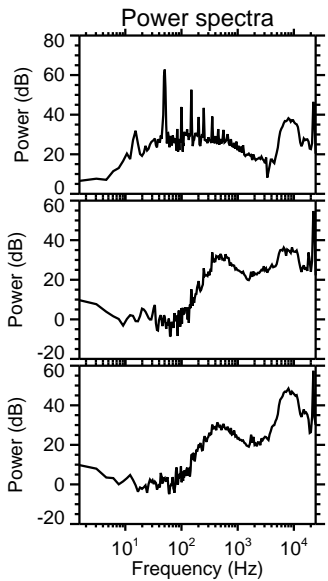
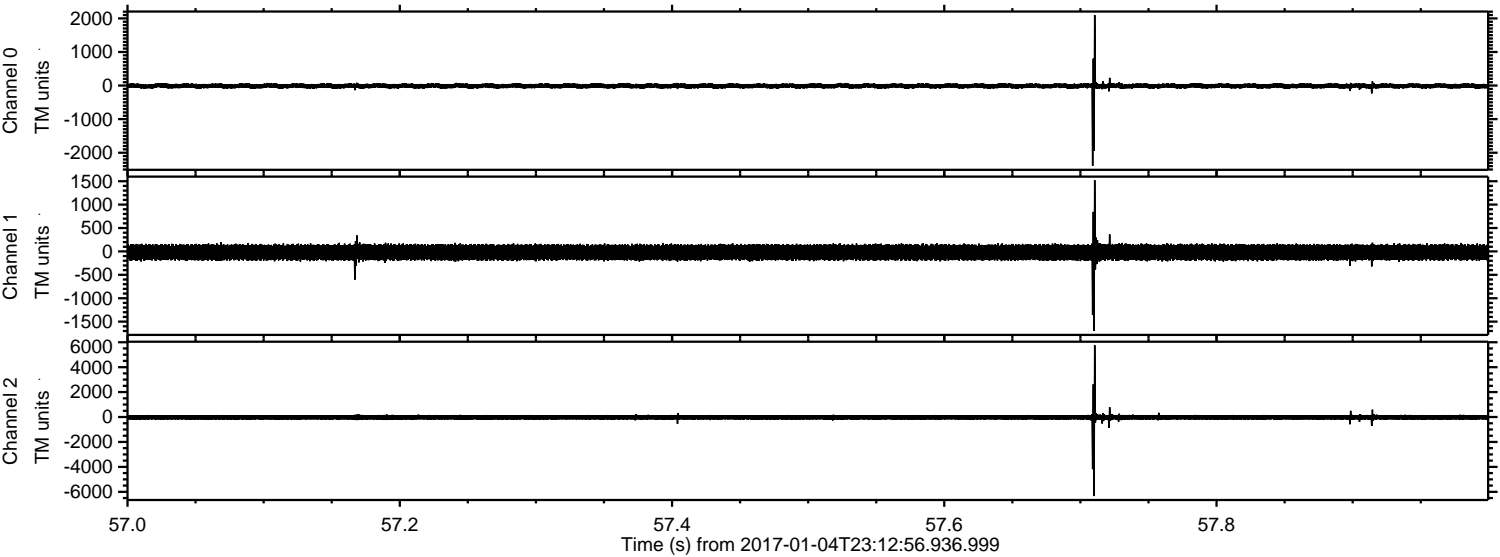
ELMAVAN 3D WAVEFORMS (Measured data sampled at 50 kHz) 51000 packets of 144 samples from 2017-01-04T23:12:56.936.999.

Processed Thu Jan 5 00:20:21 2017 by ELM ver.2012-10-06 from 001__elm20170104_231255__dat00.bin



ELMAVAN 3D WAVEFORMS (Measured data sampled at 50 kHz) 51000 packets of 144 samples from 2017-01-04T23:12:56.936.999. Part 58/147

Processed Thu Jan 5 00:20:32 2017 by ELM ver.2012-10-06 from 001__elm20170104_231255__dat00.bin



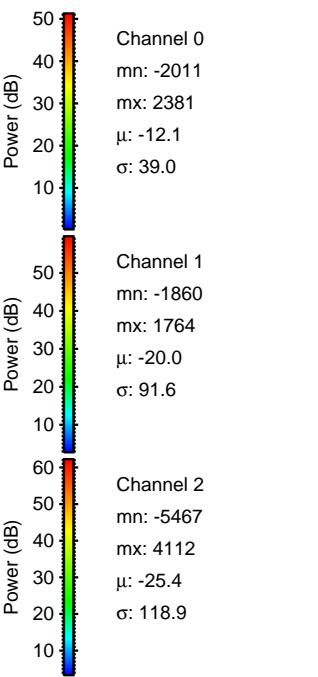
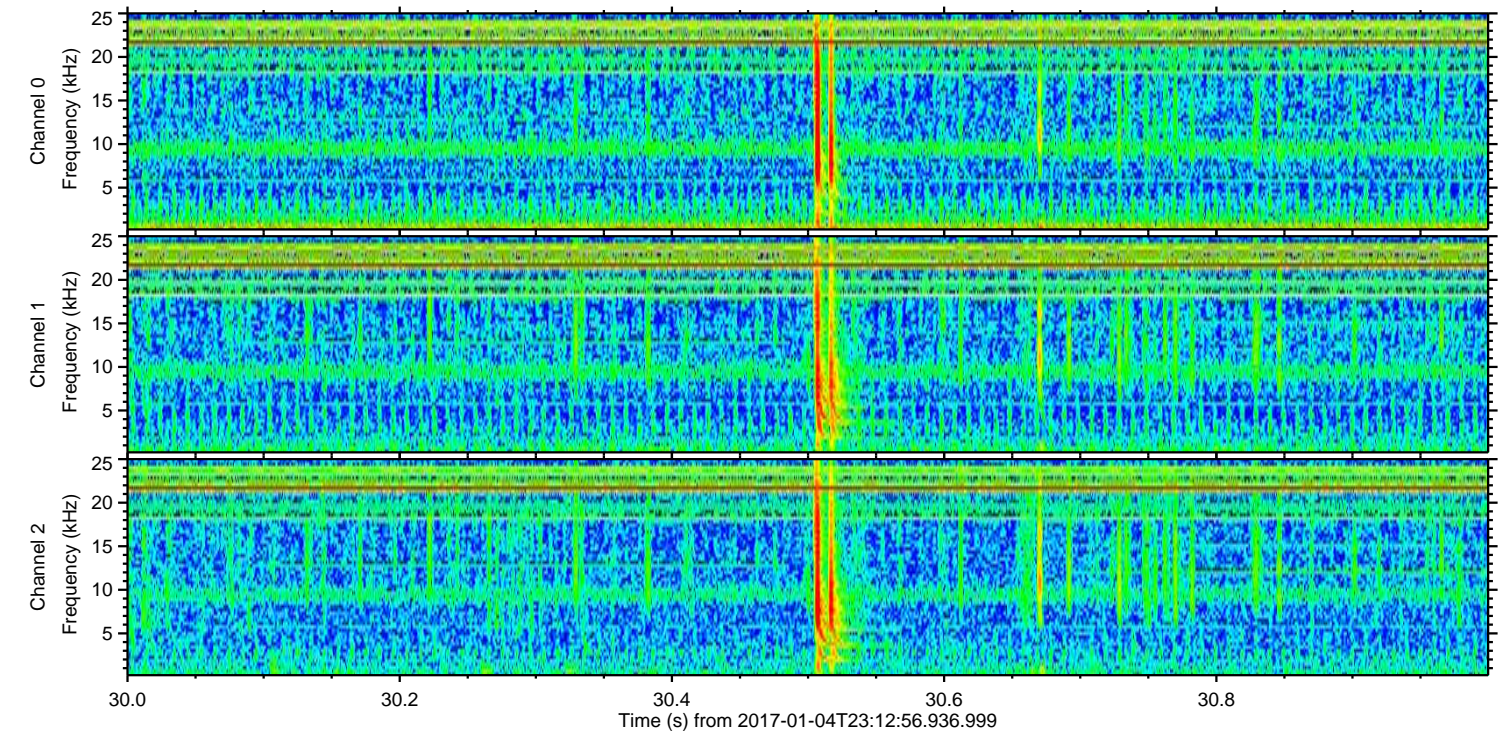
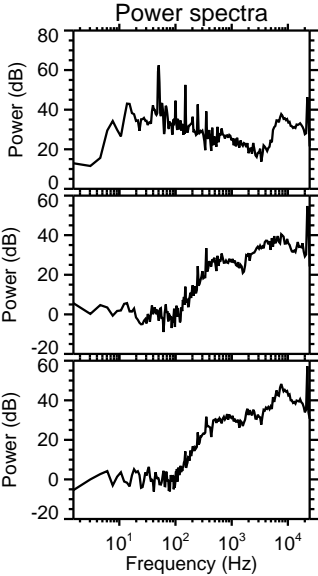
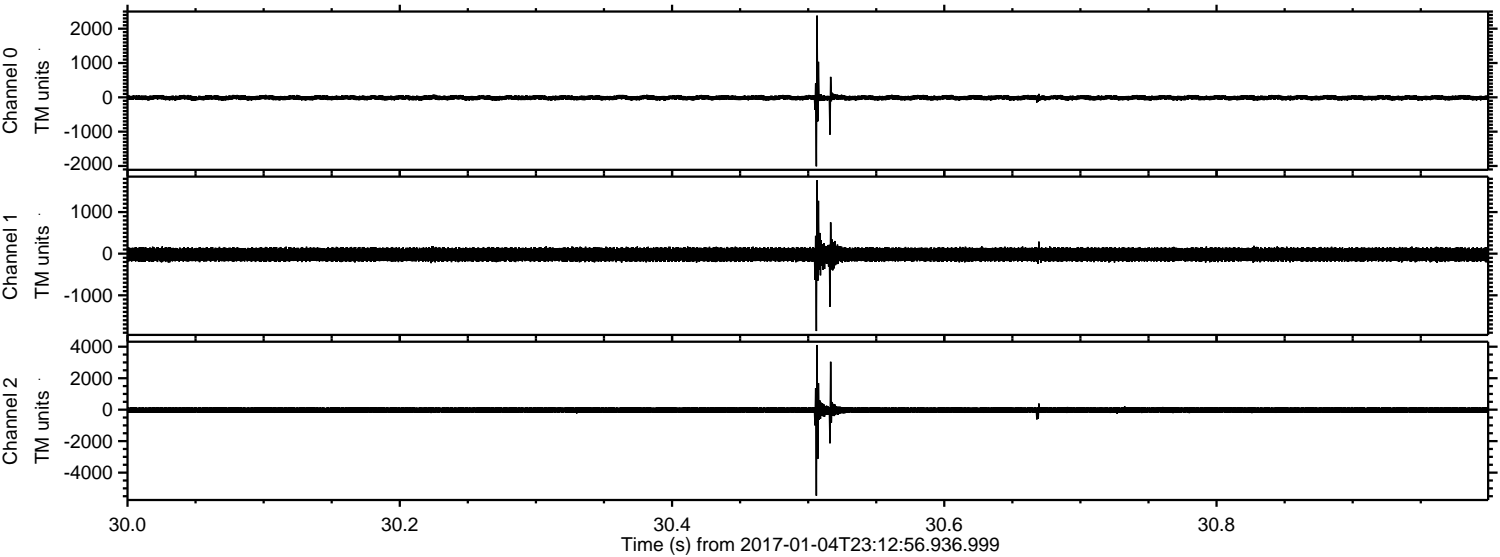
Channel 0
mn: -2390
mx: 2099
 μ : -12.1
 σ : 41.0

Channel 1
mn: -1699
mx: 1522
 μ : -20.0
 σ : 91.0

Channel 2
mn: -6340
mx: 5753
 μ : -25.4
 σ : 127.9

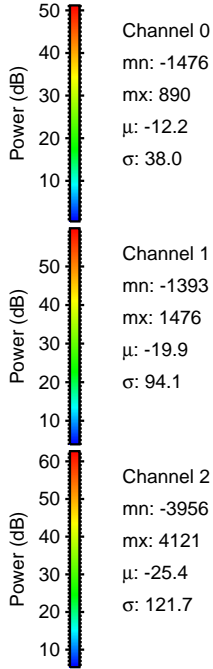
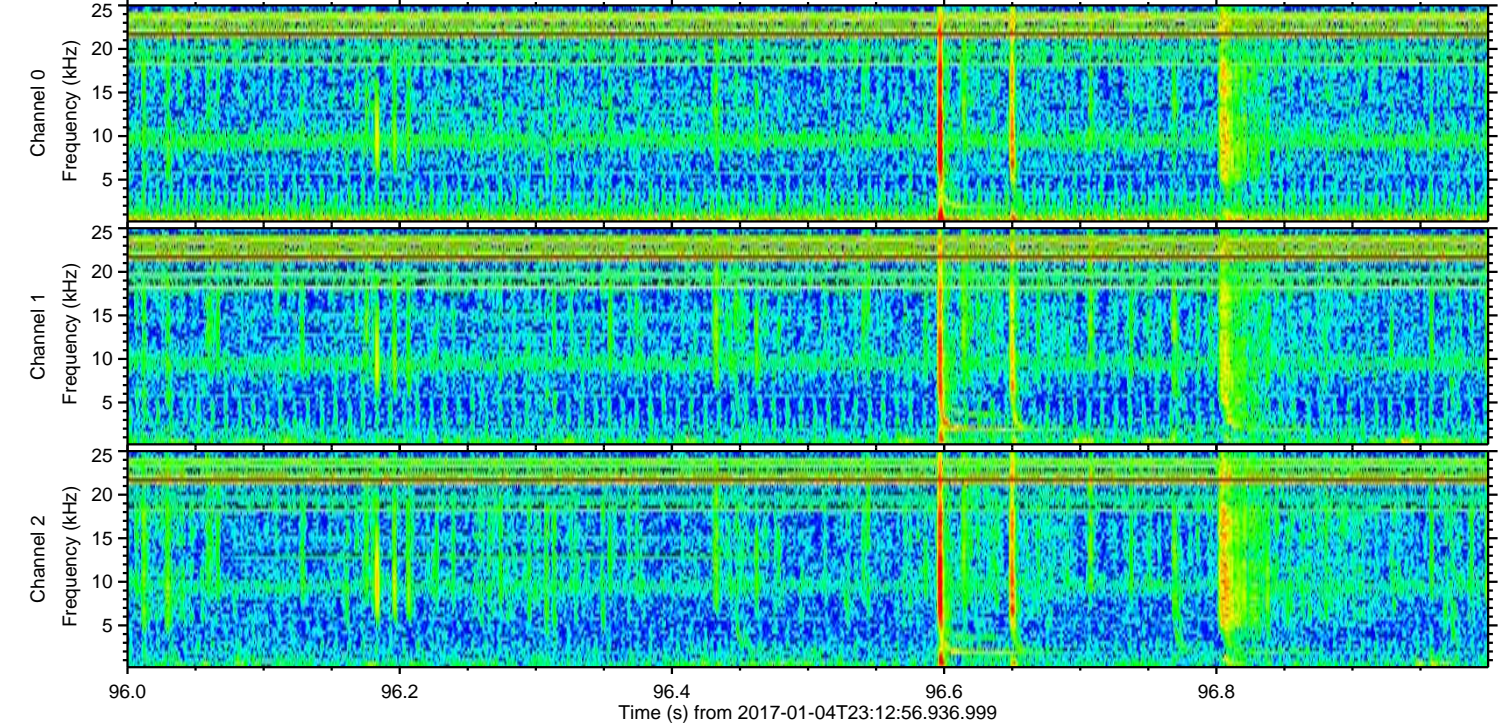
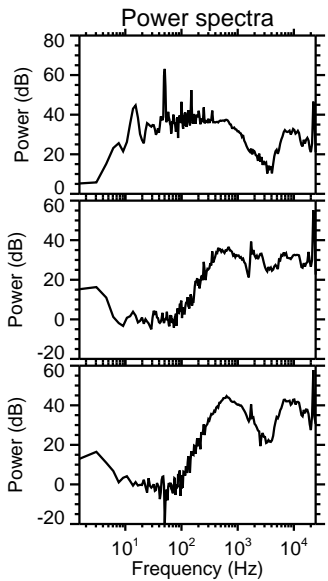
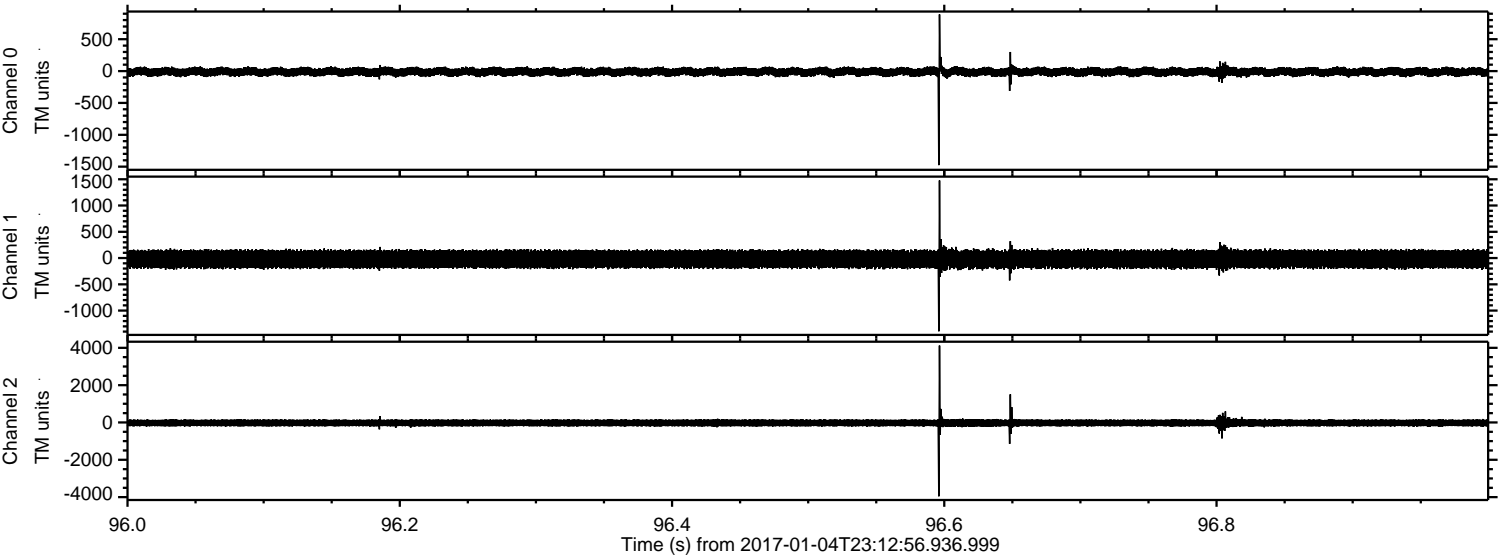
ELMAVAN 3D WAVEFORMS (Measured data sampled at 50 kHz) 51000 packets of 144 samples from 2017-01-04T23:12:56.936.999. Part 31/147

Processed Thu Jan 5 00:20:33 2017 by ELM ver.2012-10-06 from 001__elm20170104_231255__dat00.bin



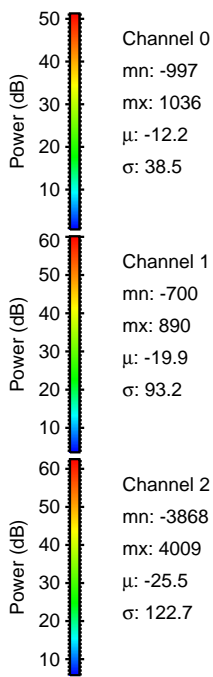
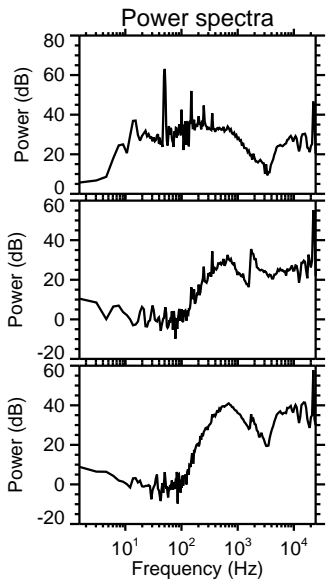
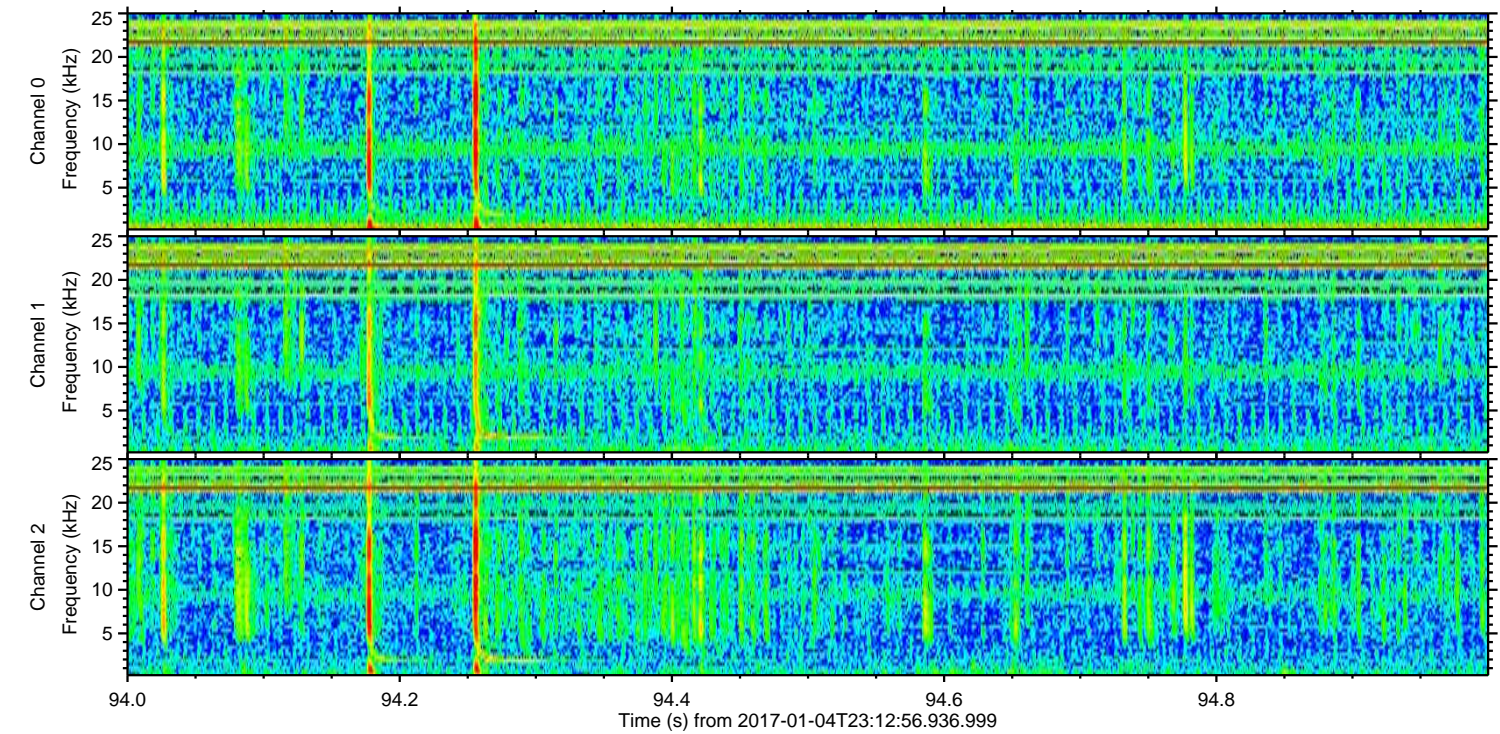
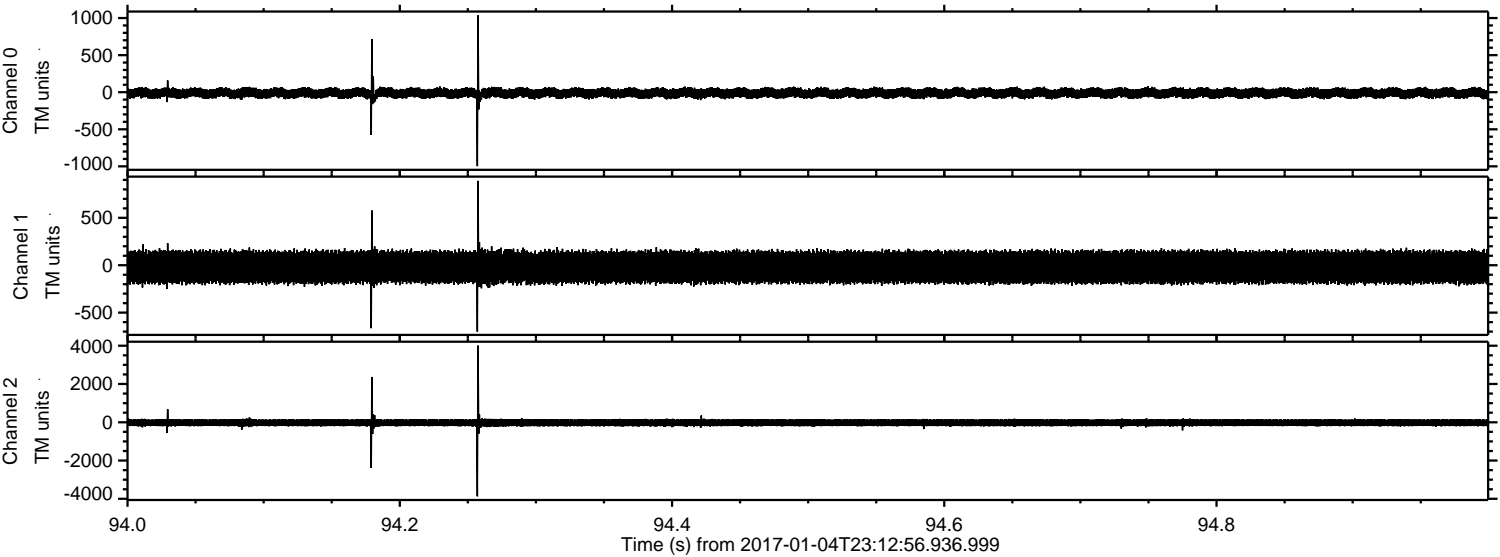
ELMAVAN 3D WAVEFORMS (Measured data sampled at 50 kHz) 51000 packets of 144 samples from 2017-01-04T23:12:56.936.999. Part 97/147

Processed Thu Jan 5 00:20:34 2017 by ELM ver.2012-10-06 from 001__elm20170104_231255__dat00.bin



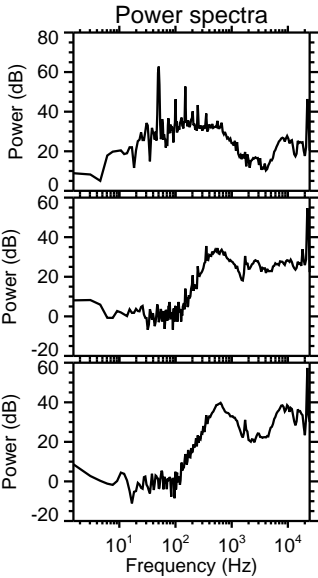
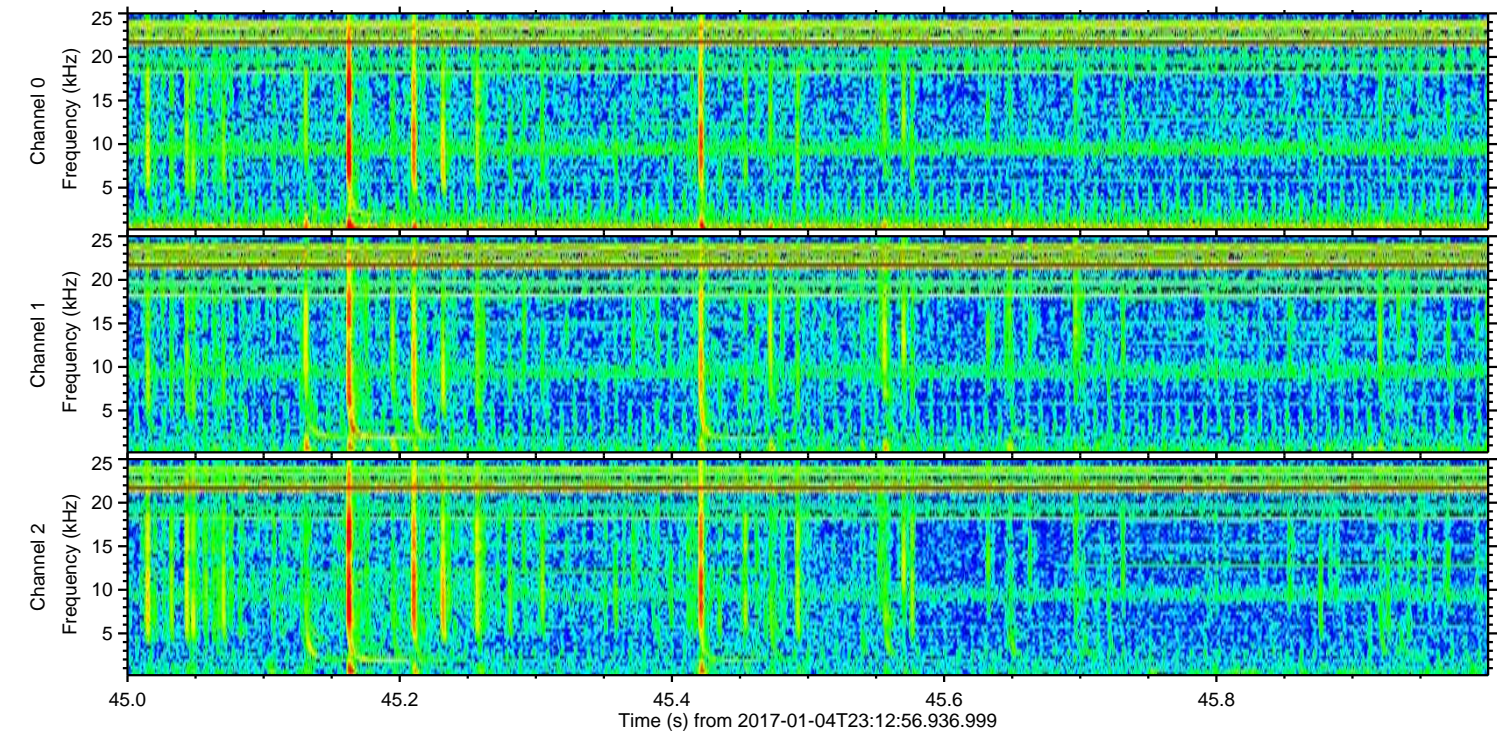
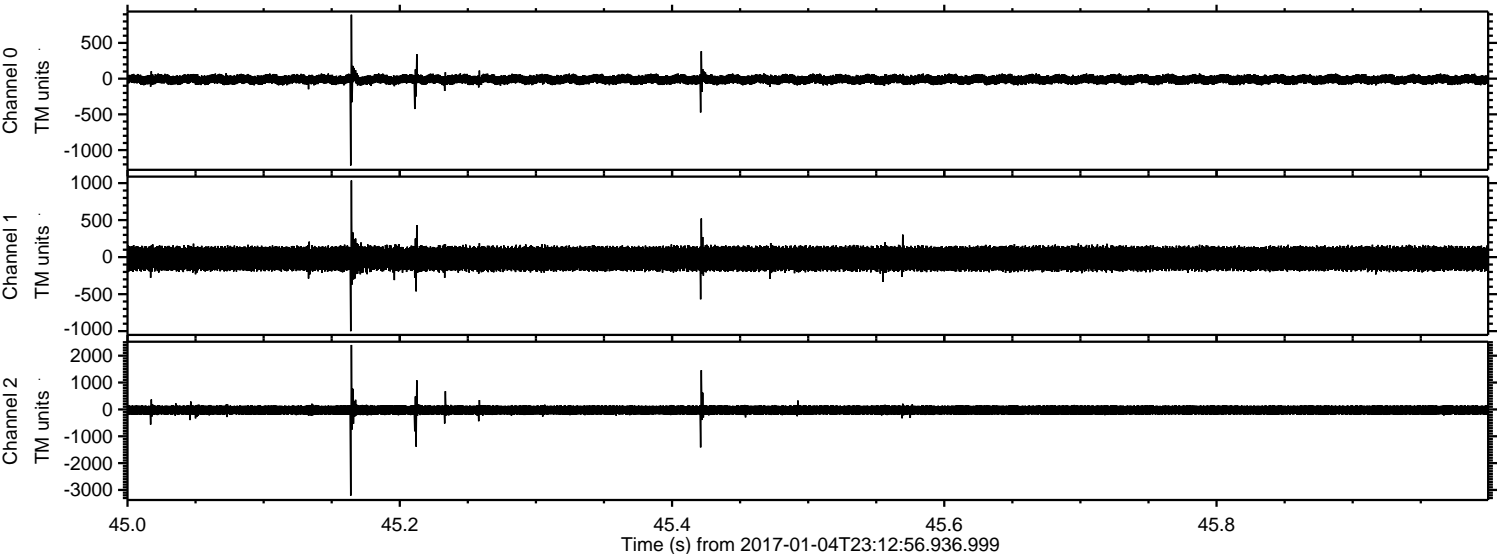
ELMAVAN 3D WAVEFORMS (Measured data sampled at 50 kHz) 51000 packets of 144 samples from 2017-01-04T23:12:56.936.999. Part 95/147

Processed Thu Jan 5 00:20:35 2017 by ELM ver.2012-10-06 from 001__elm20170104_231255__dat00.bin



ELMAVAN 3D WAVEFORMS (Measured data sampled at 50 kHz) 51000 packets of 144 samples from 2017-01-04T23:12:56.936.999. Part 46/147

Processed Thu Jan 5 00:20:36 2017 by ELM ver.2012-10-06 from 001__elm20170104_231255__dat00.bin

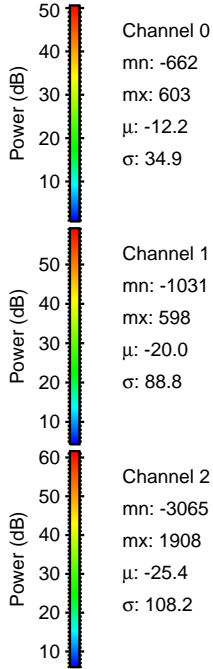
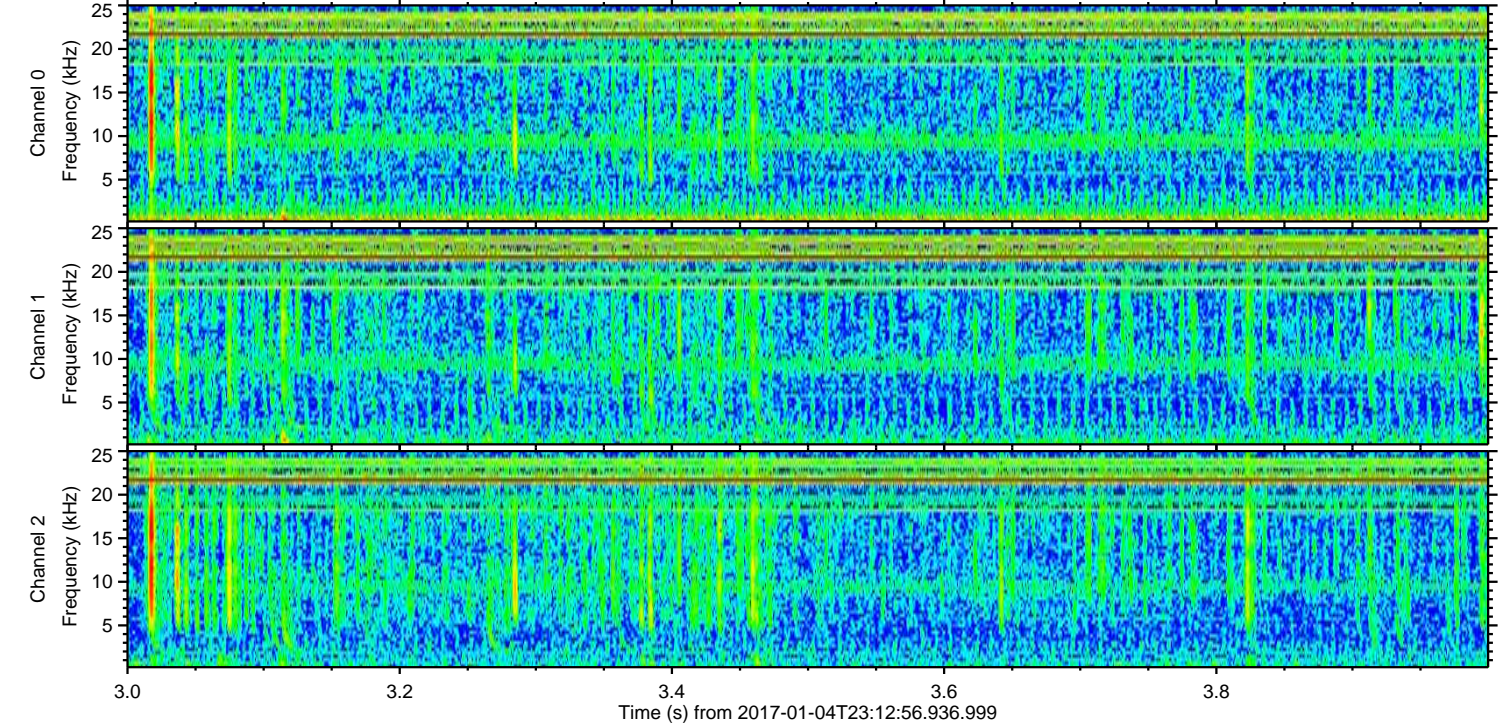
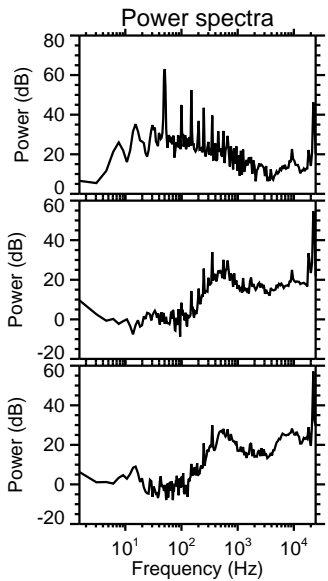
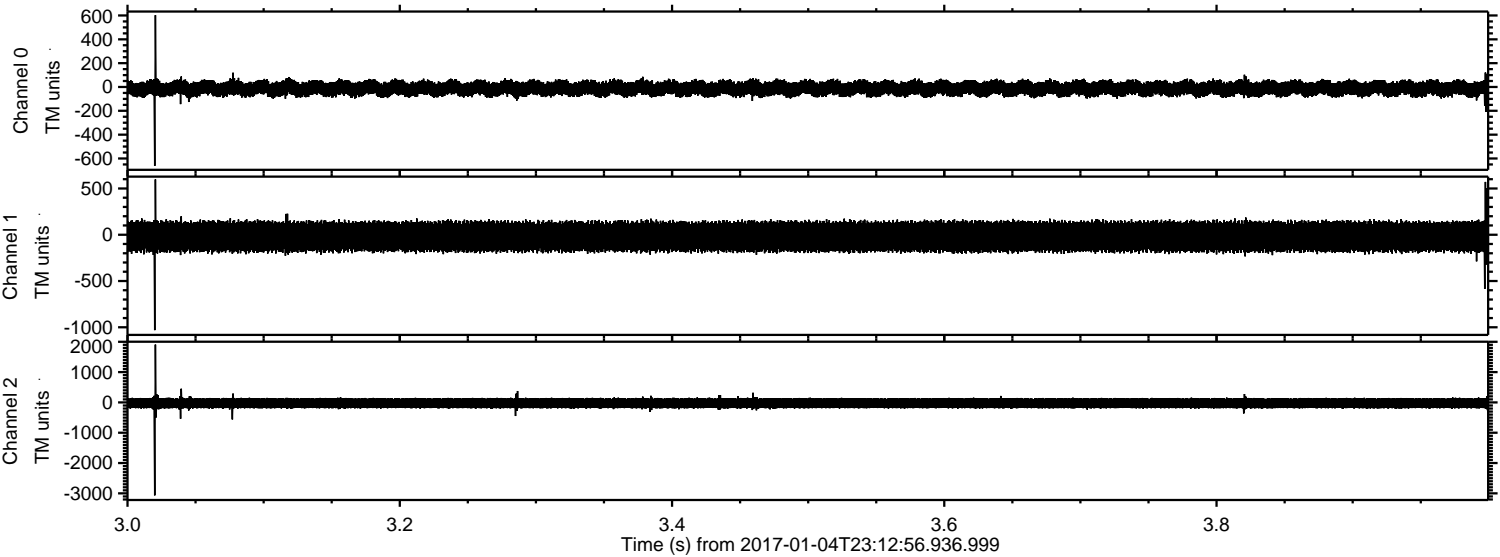


Channel 0
mn: -1215
mx: 894
 μ : -12.2
 σ : 37.0

Channel 1
mn: -1001
mx: 1036
 μ : -19.9
 σ : 89.3

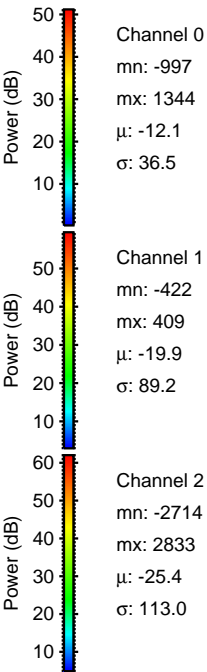
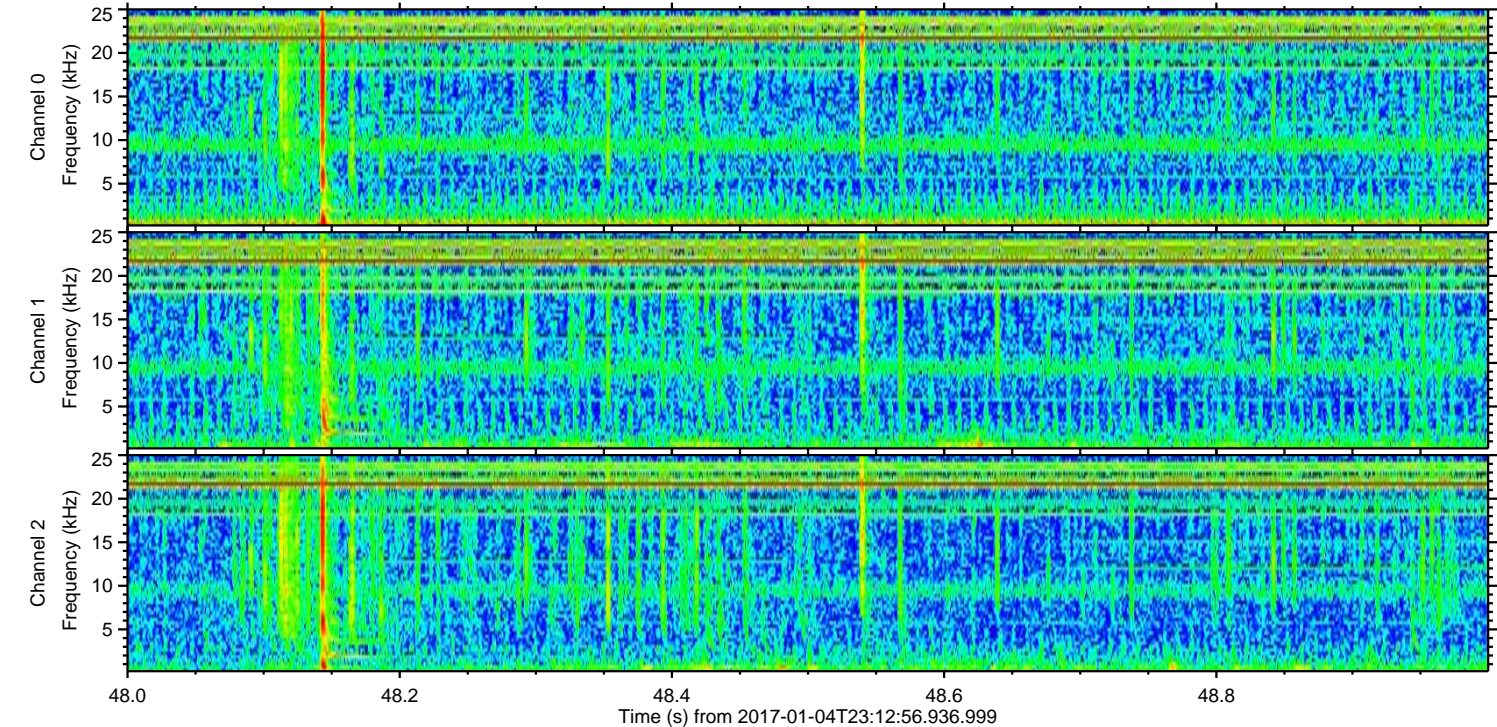
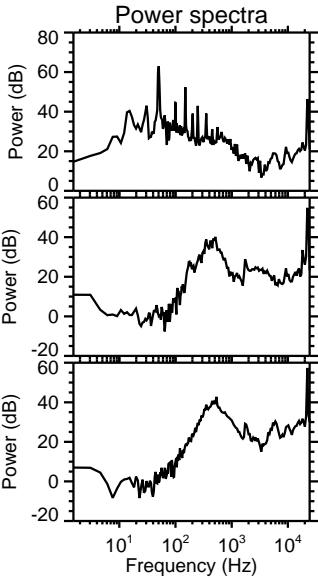
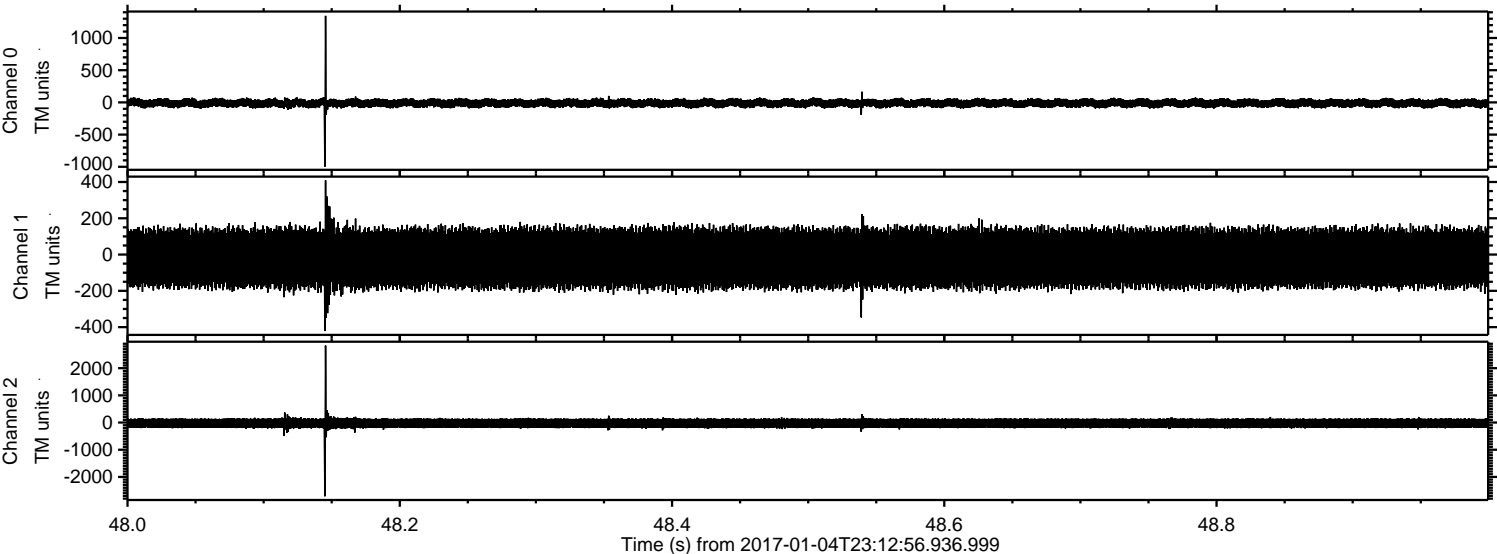
Channel 2
mn: -3213
mx: 2401
 μ : -25.4
 σ : 116.2

Processed Thu Jan 5 00:20:37 2017 by ELM ver.2012-10-06 from 001__elm20170104_231255__dat00.bin

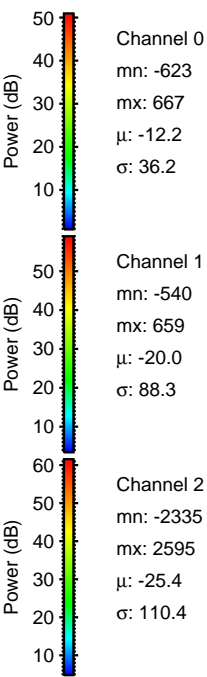
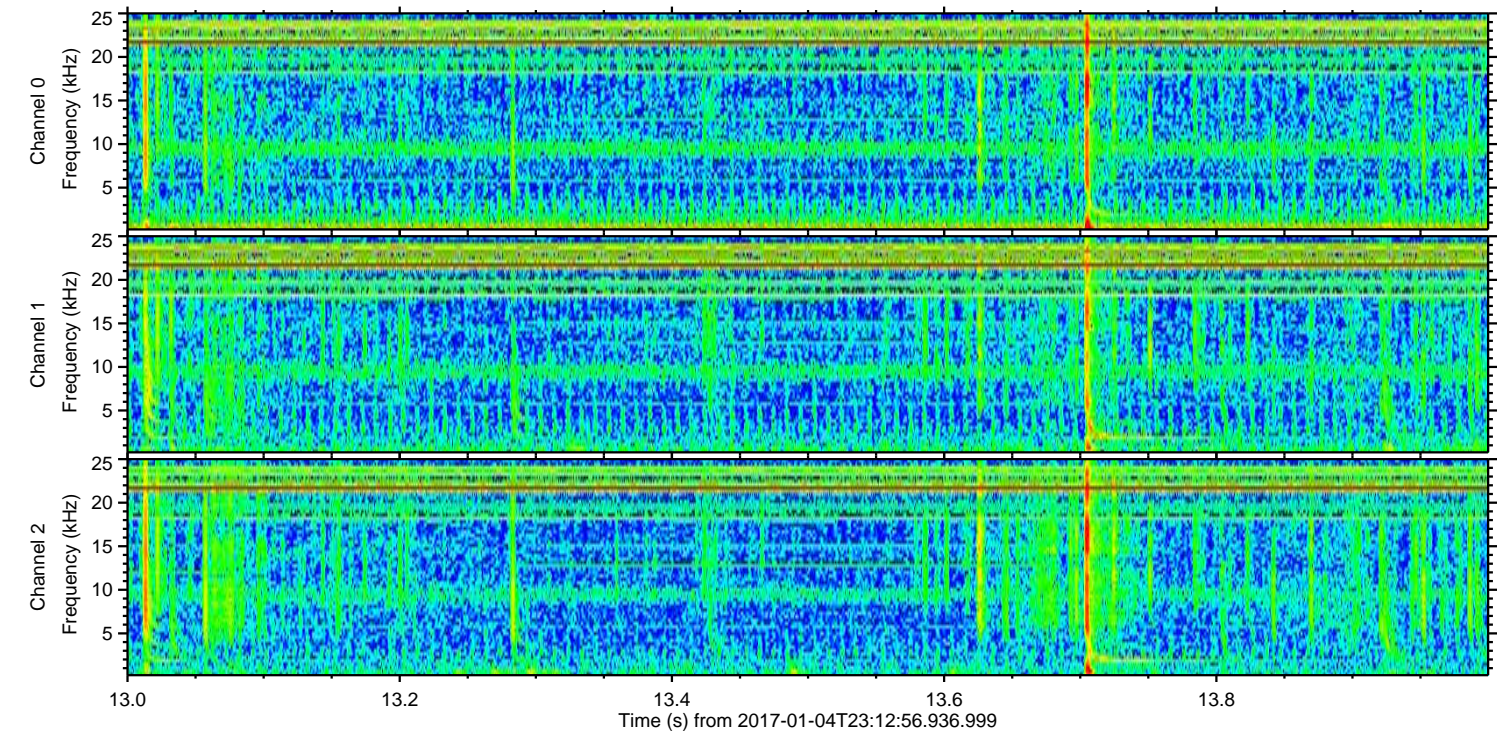
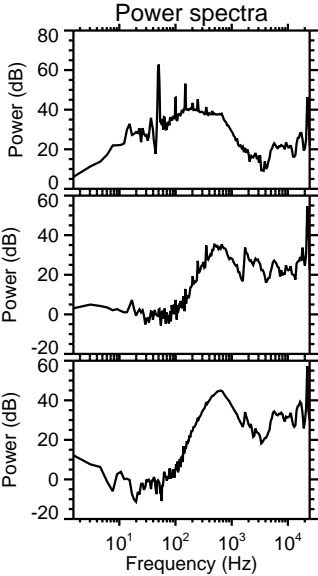
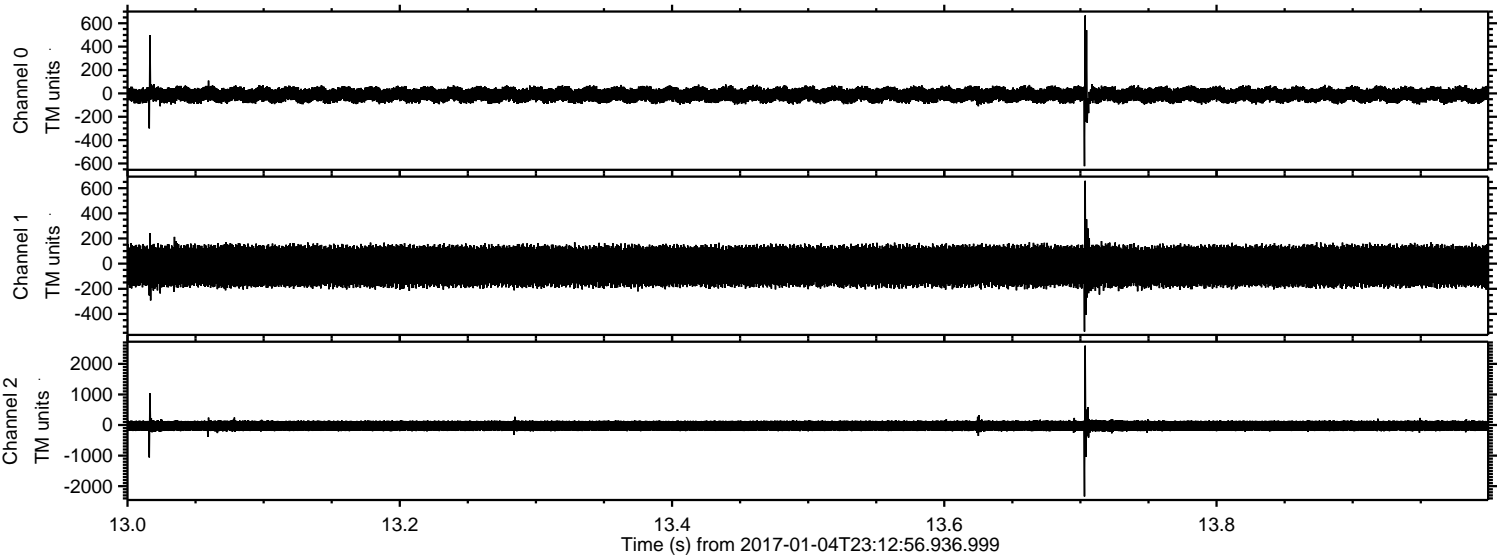


ELMAVAN 3D WAVEFORMS (Measured data sampled at 50 kHz) 51000 packets of 144 samples from 2017-01-04T23:12:56.936.999. Part 49/147

Processed Thu Jan 5 00:20:38 2017 by ELM ver.2012-10-06 from 001__elm20170104_231255__dat00.bin

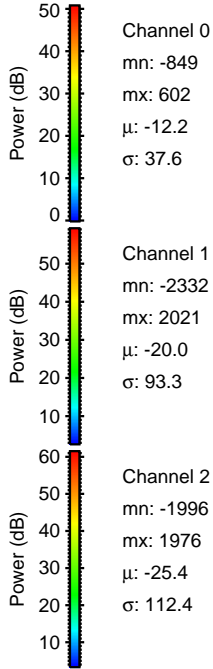
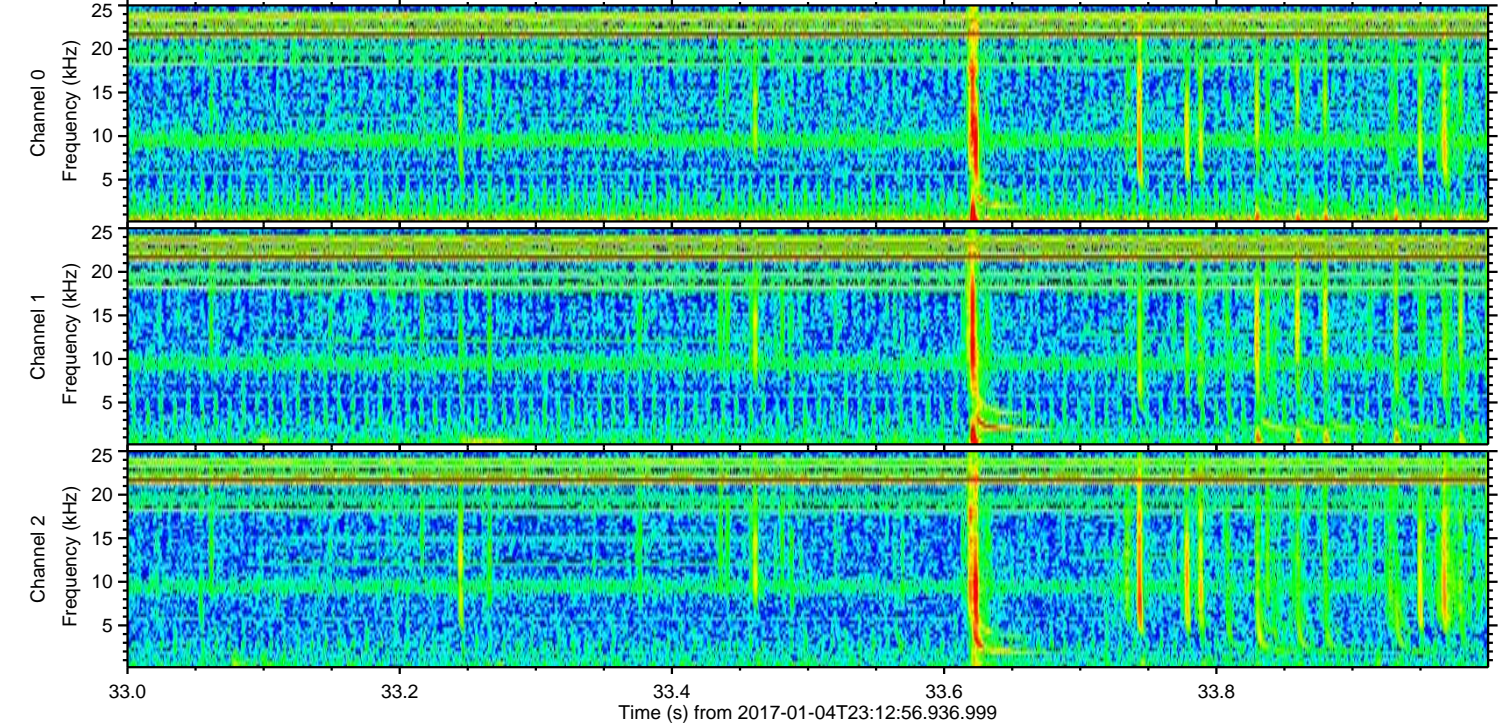
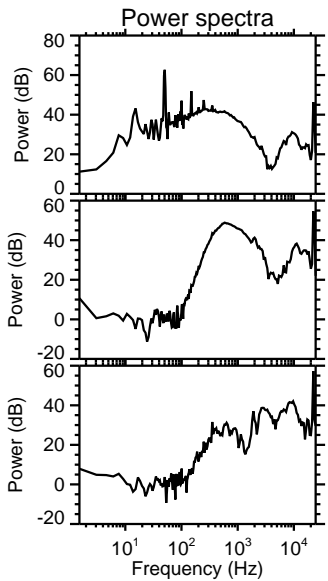
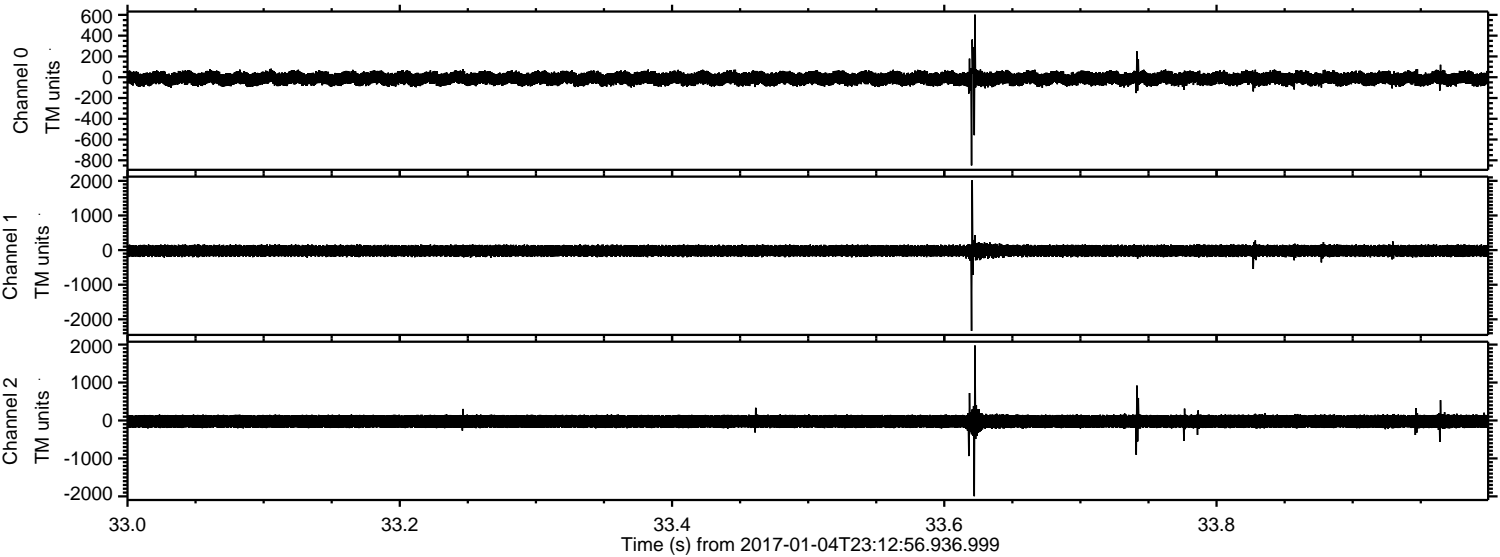


Processed Thu Jan 5 00:20:39 2017 by ELM ver.2012-10-06 from 001__elm20170104_231255__dat00.bin



ELMAVAN 3D WAVEFORMS (Measured data sampled at 50 kHz) 51000 packets of 144 samples from 2017-01-04T23:12:56.936.999. Part 34/147

Processed Thu Jan 5 00:20:40 2017 by ELM ver.2012-10-06 from 001__elm20170104_231255__dat00.bin



Channel 0
mn: -849
mx: 602
 μ : -12.2
 σ : 37.6

Channel 1
mn: -2332
mx: 2021
 μ : -20.0
 σ : 93.3

Channel 2
mn: -1996
mx: 1976
 μ : -25.4
 σ : 112.4

ELMAVAN 3D WAVEFORMS (Measured data sampled at 50 kHz) 51000 packets of 144 samples from 2017-01-04T23:12:56.936.999. Part 42/147

Processed Thu Jan 5 00:20:41 2017 by ELM ver.2012-10-06 from 001__elm20170104_231255__dat00.bin

