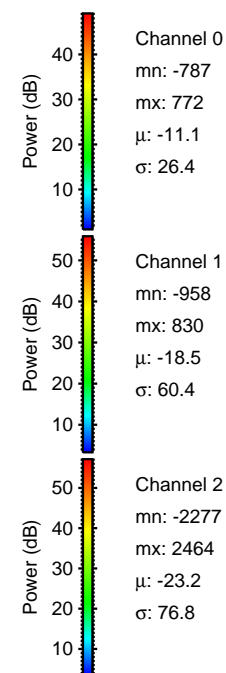
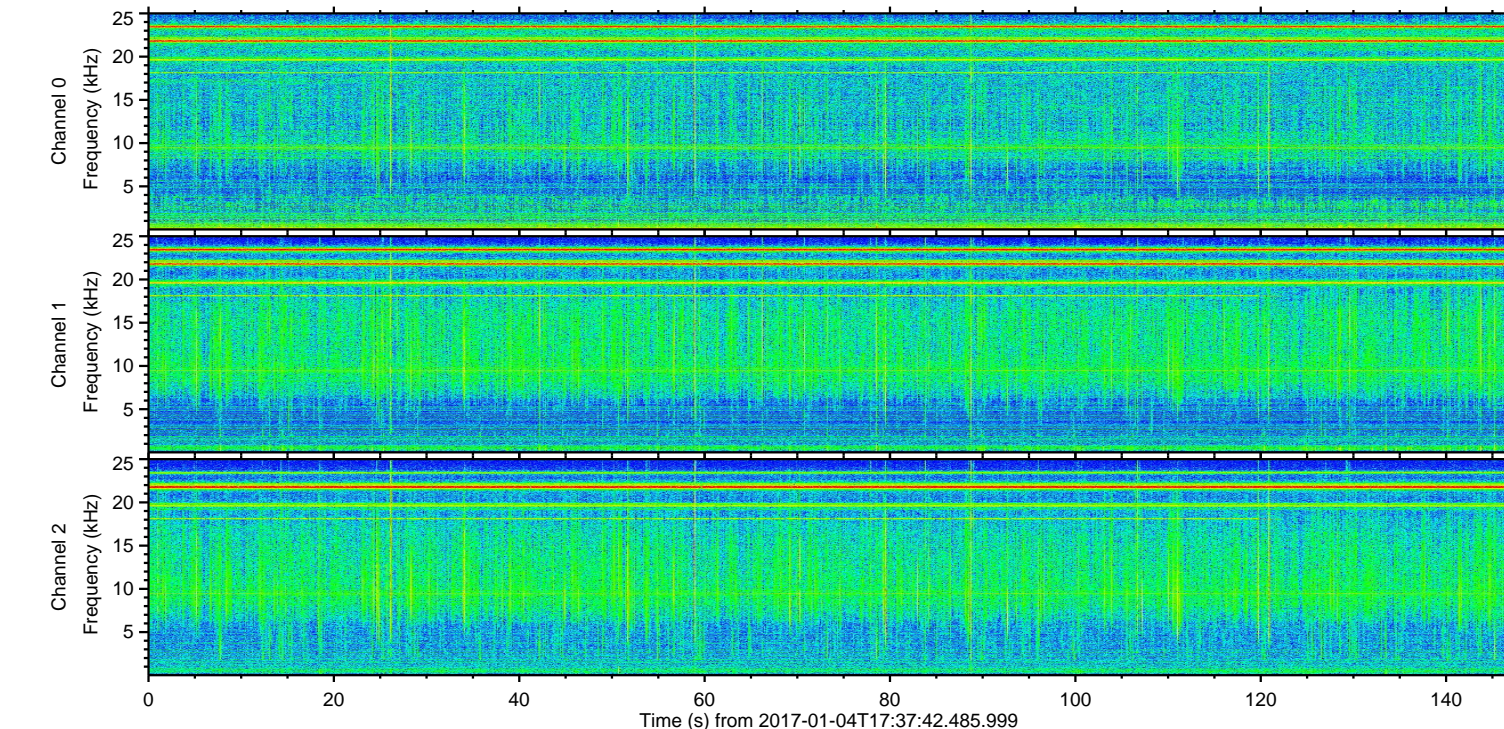
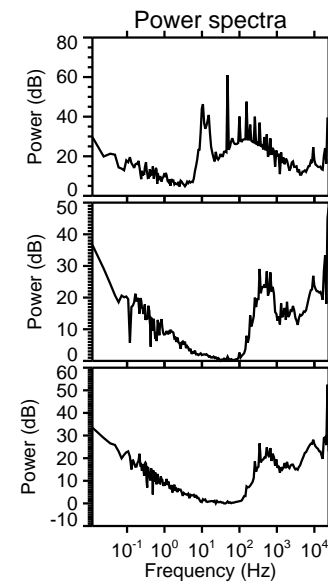
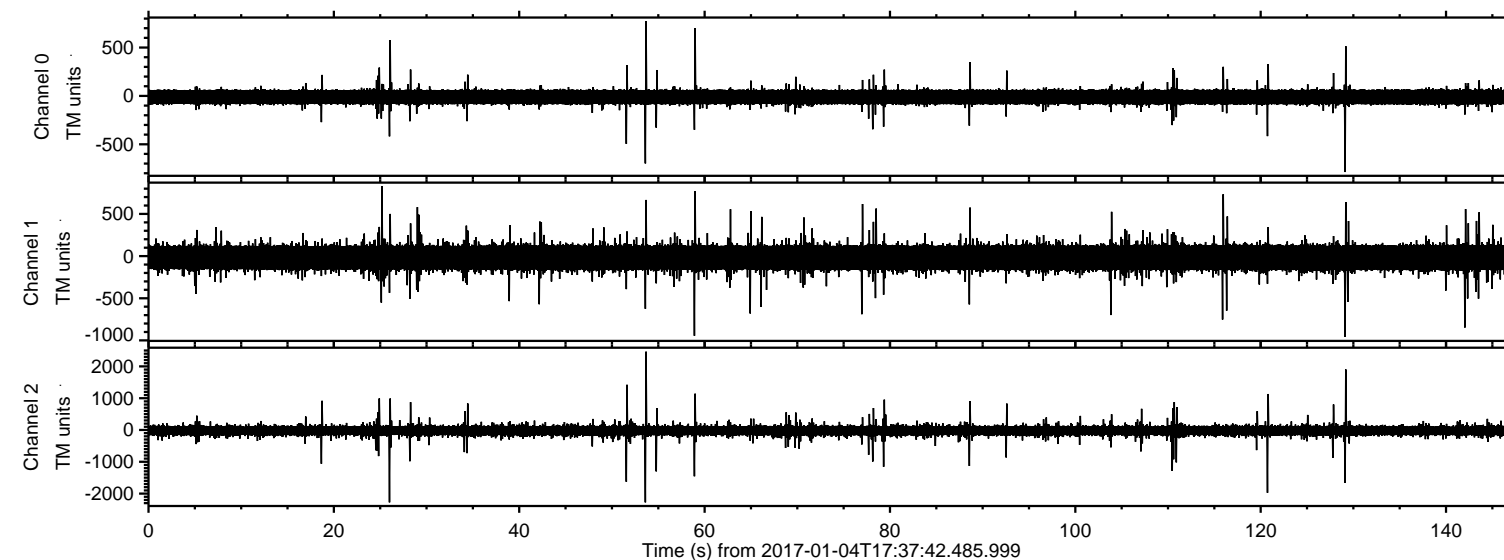


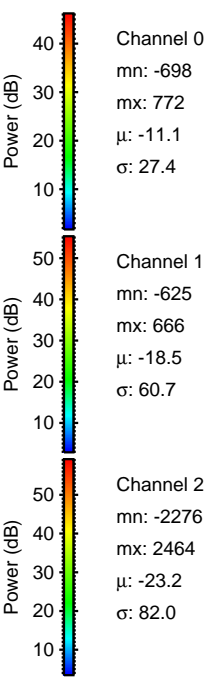
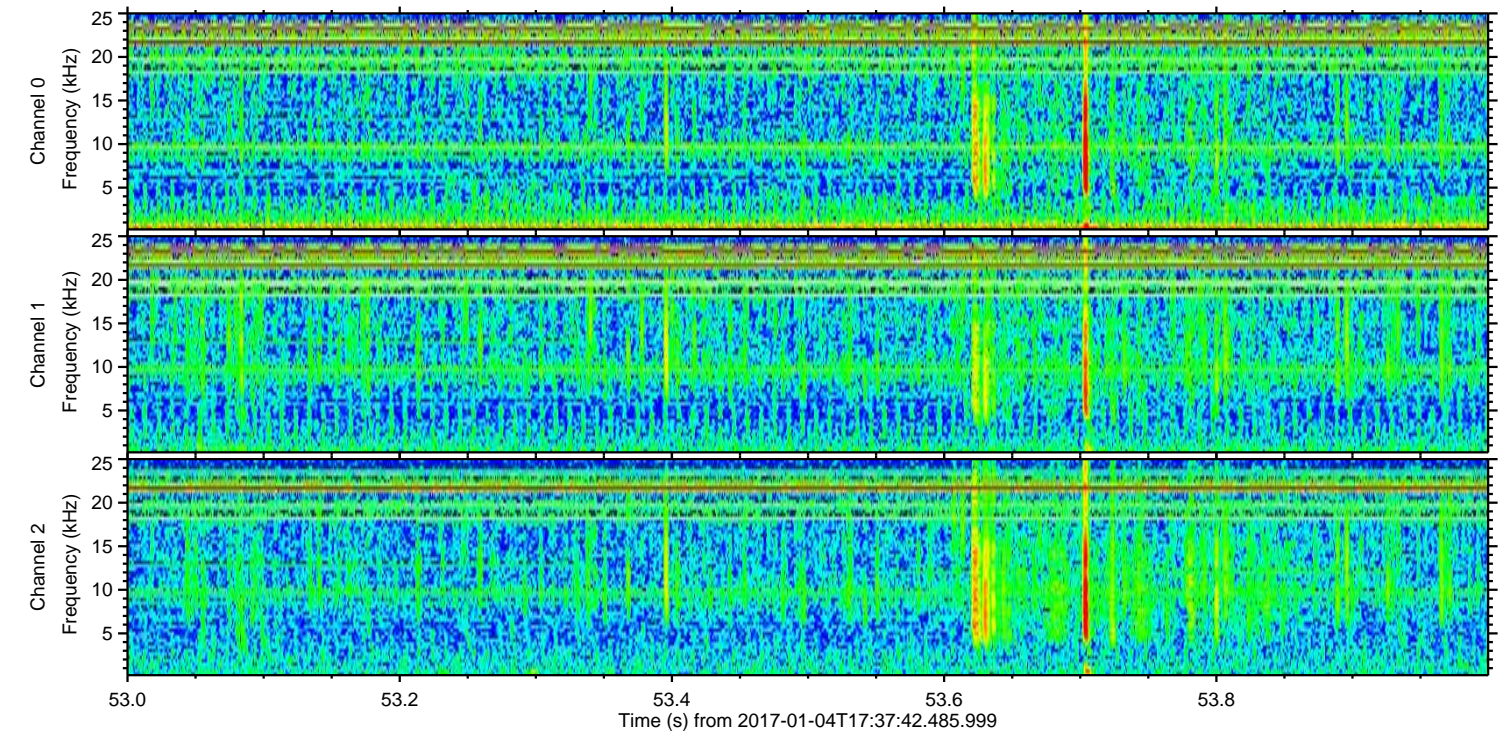
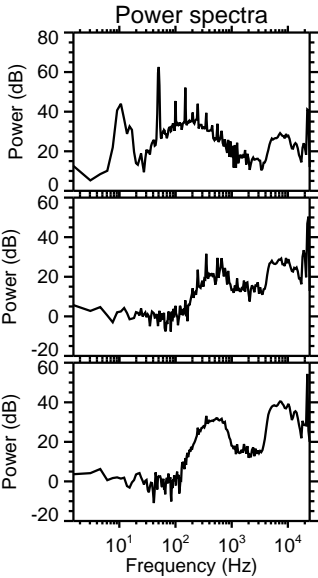
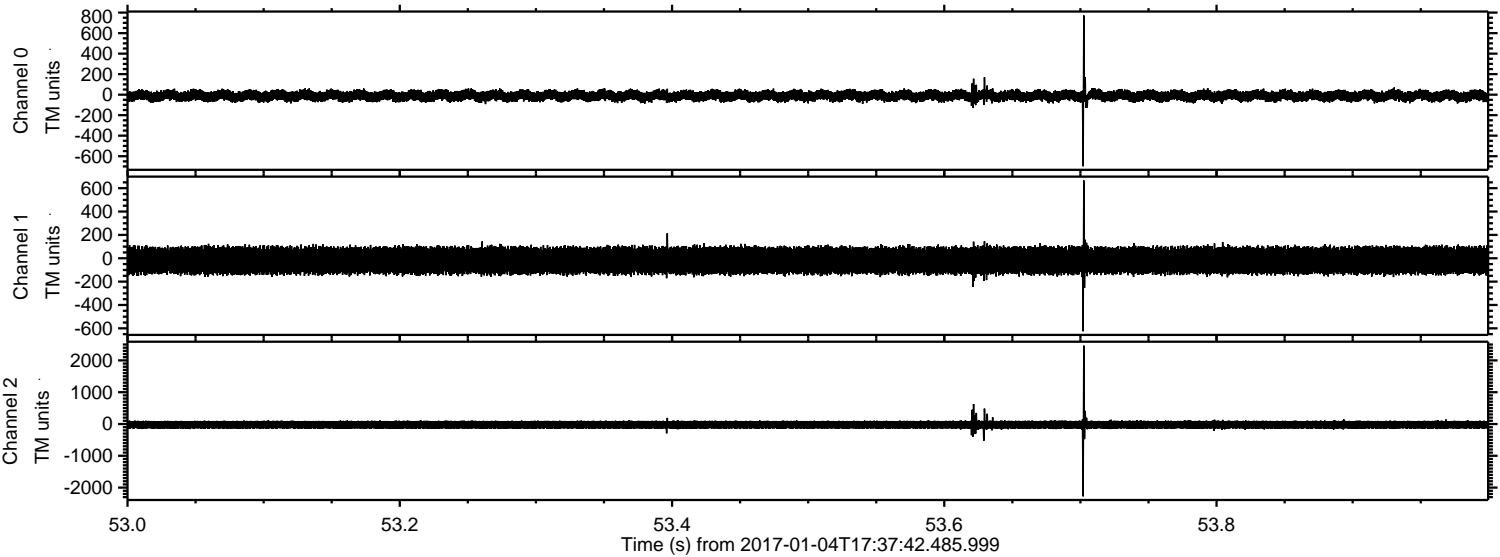
ELMAVAN 3D WAVEFORMS (Measured data sampled at 50 kHz) 51000 packets of 144 samples from 2017-01-04T17:37:42.485.999.

Processed Wed Jan 4 18:45:26 2017 by ELM ver.2012-10-06 from 001__elm20170104_173741__dat00.bin



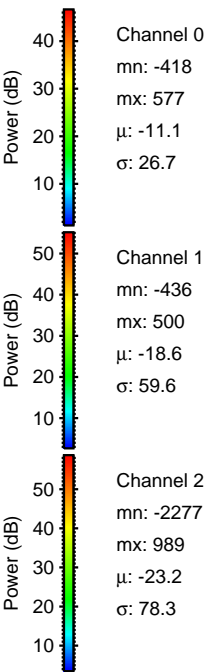
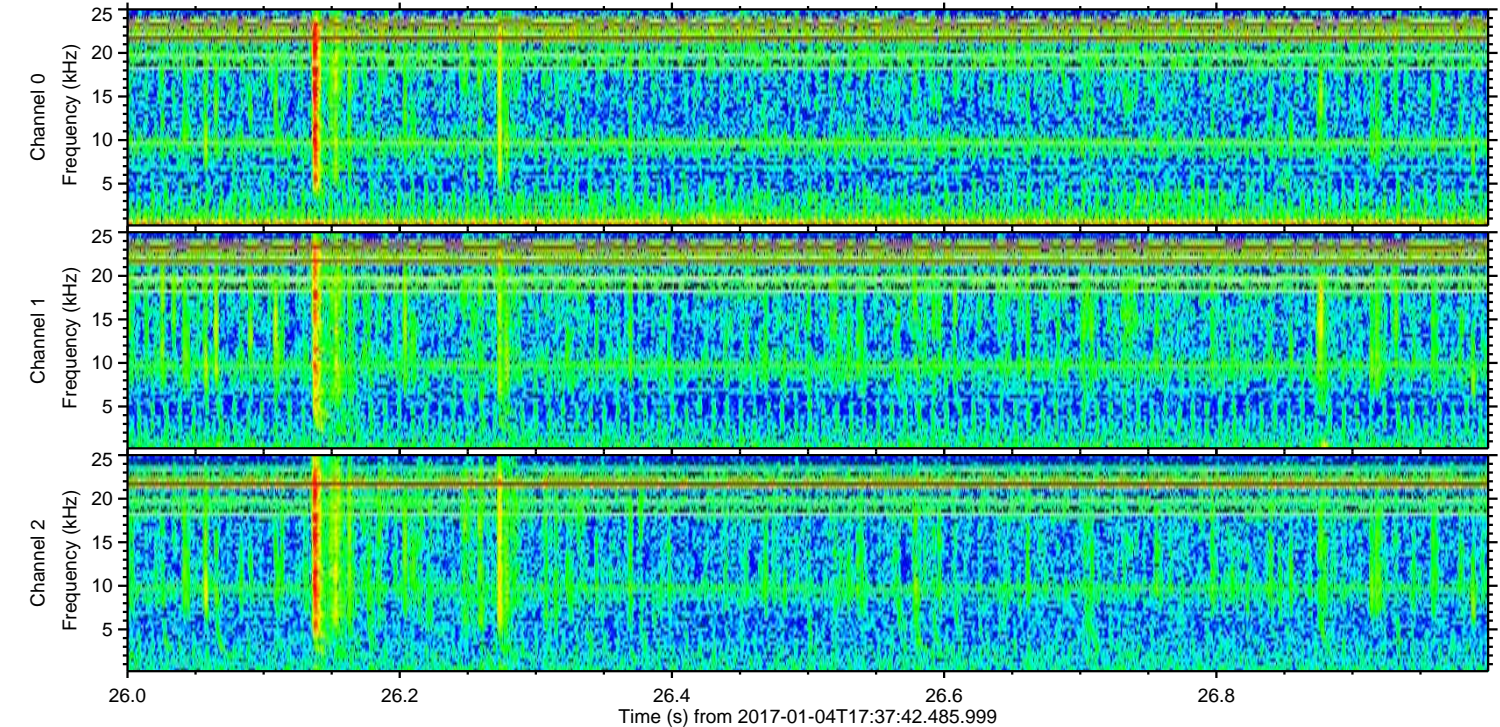
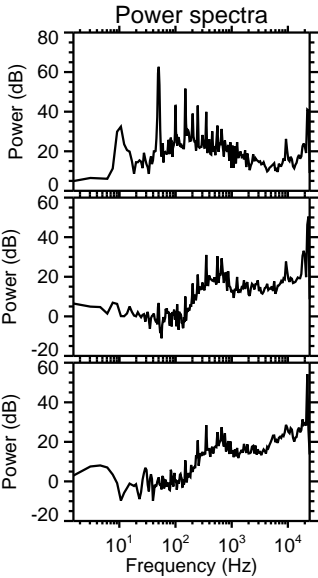
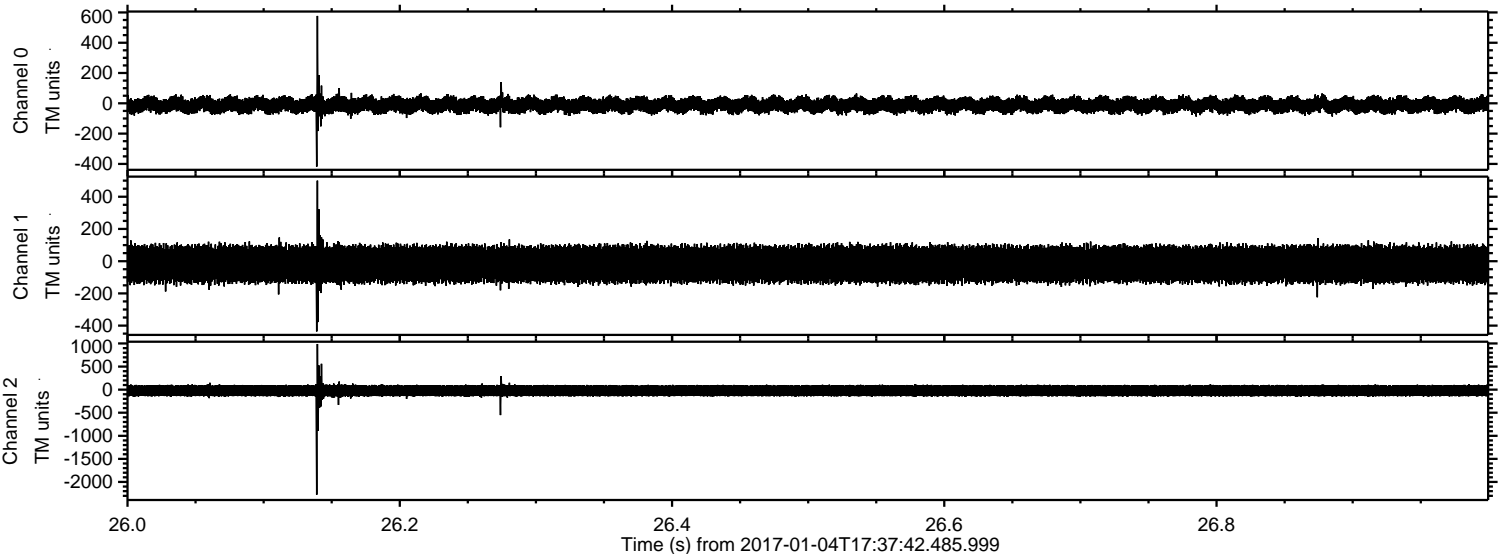
ELMAVAN 3D WAVEFORMS (Measured data sampled at 50 kHz) 51000 packets of 144 samples from 2017-01-04T17:37:42.485.999. Part 54/147

Processed Wed Jan 4 18:45:38 2017 by ELM ver.2012-10-06 from 001__elm20170104_173741__dat00.bin



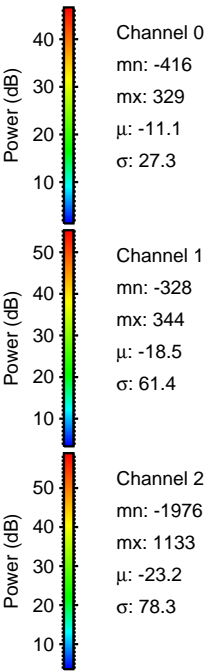
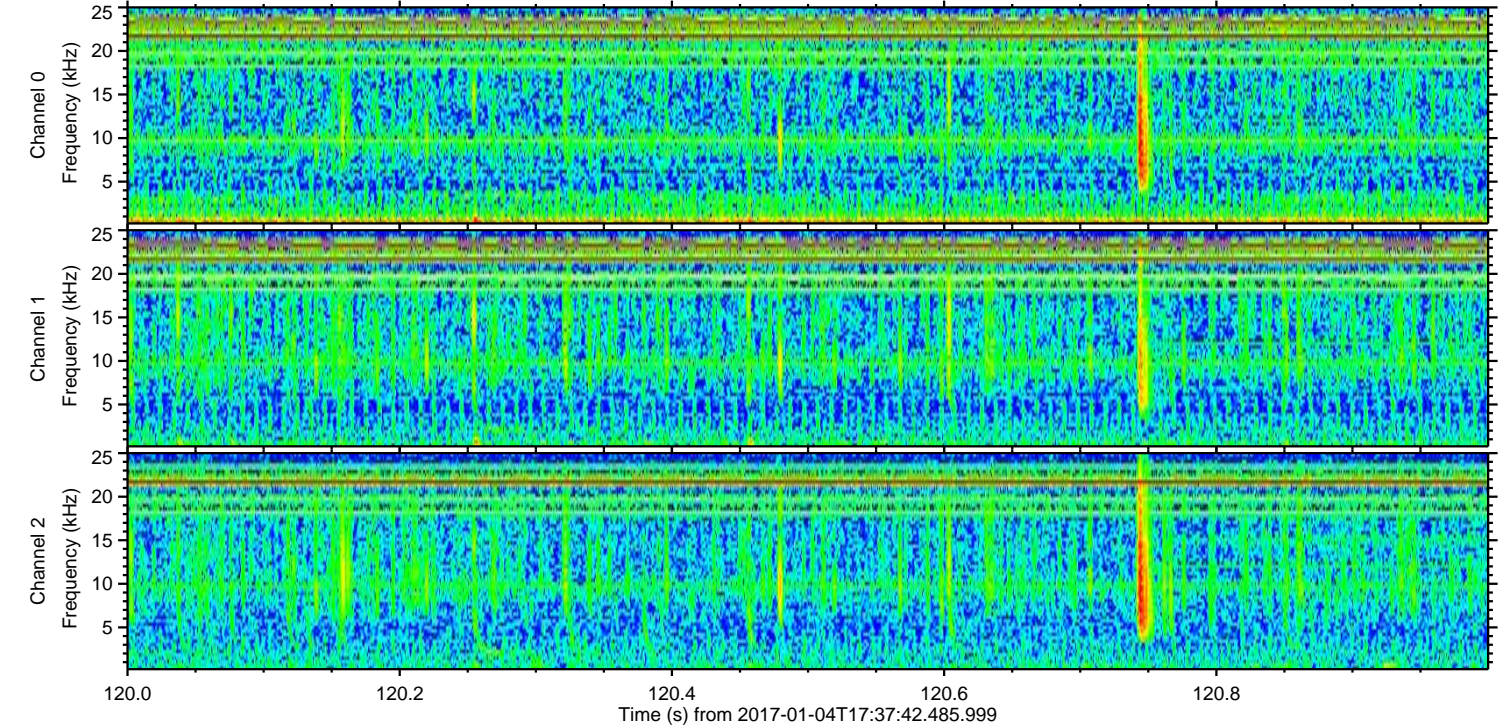
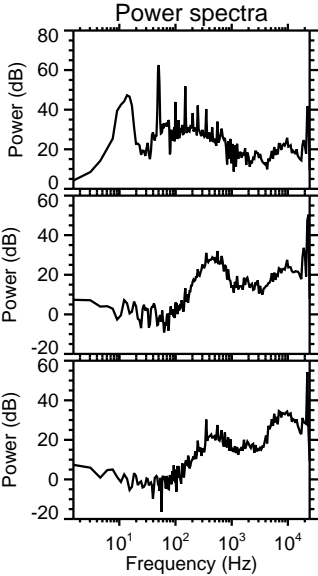
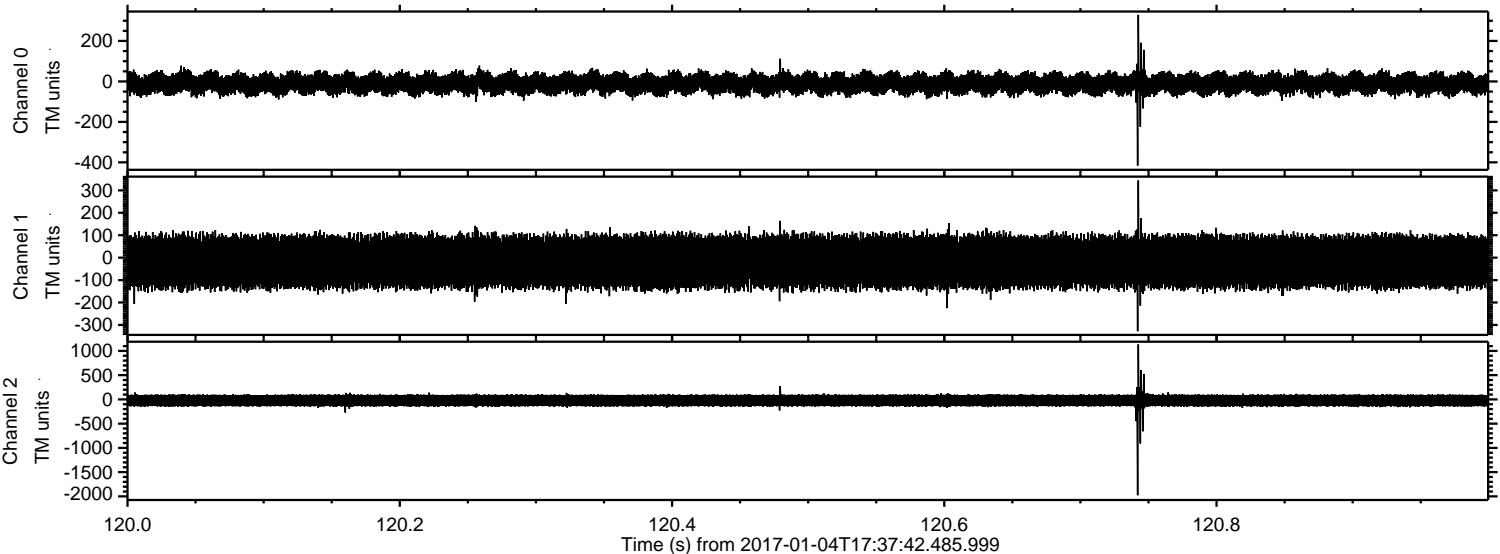
ELMAVAN 3D WAVEFORMS (Measured data sampled at 50 kHz) 51000 packets of 144 samples from 2017-01-04T17:37:42.485.999. Part 27/147

Processed Wed Jan 4 18:45:39 2017 by ELM ver.2012-10-06 from 001__elm20170104_173741__dat00.bin



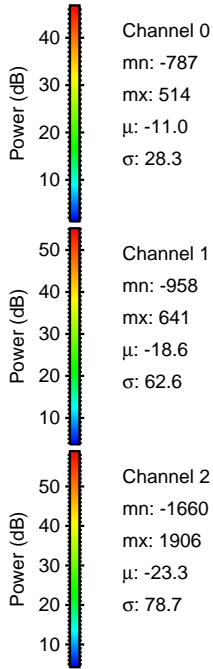
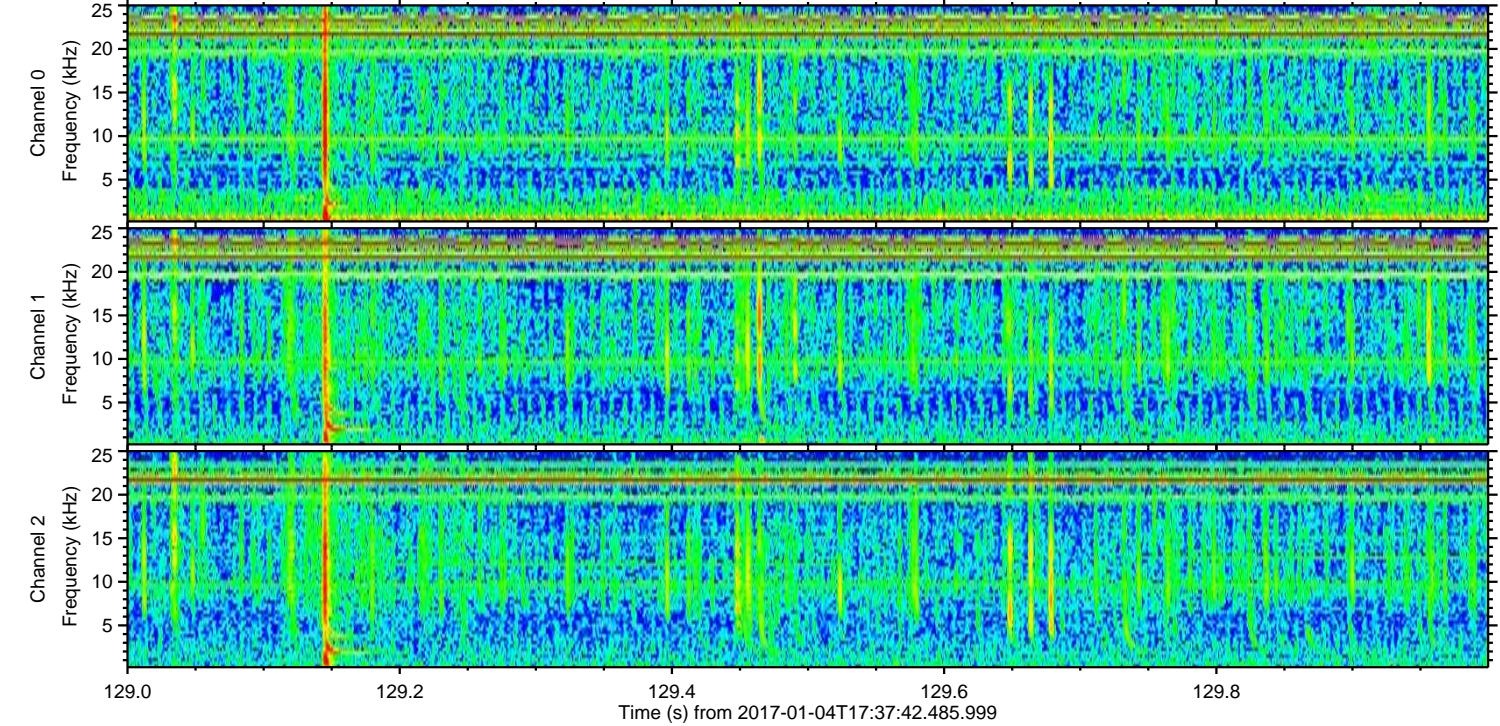
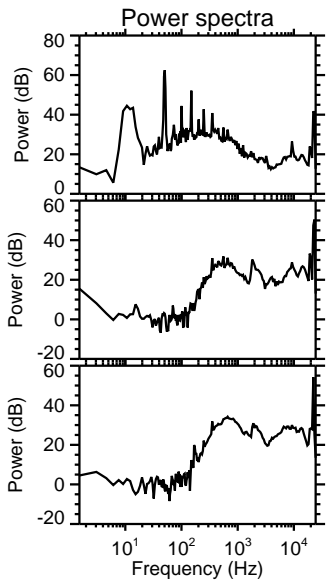
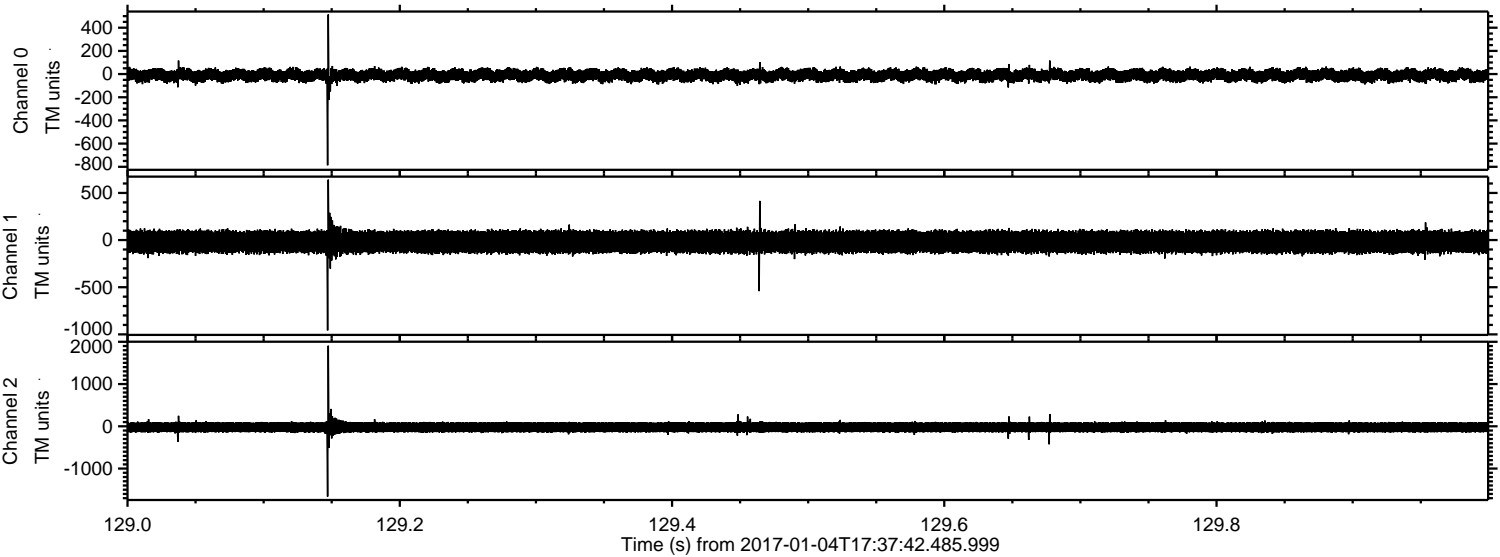
ELMAVAN 3D WAVEFORMS (Measured data sampled at 50 kHz) 51000 packets of 144 samples from 2017-01-04T17:37:42.485.999. Part 121/147

Processed Wed Jan 4 18:45:40 2017 by ELM ver.2012-10-06 from 001__elm20170104_173741__dat00.bin

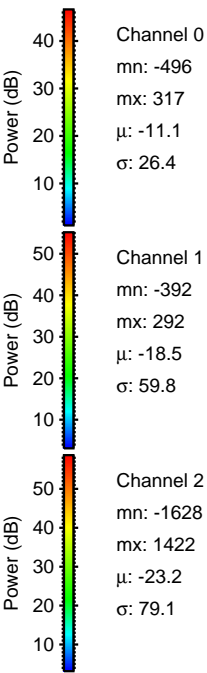
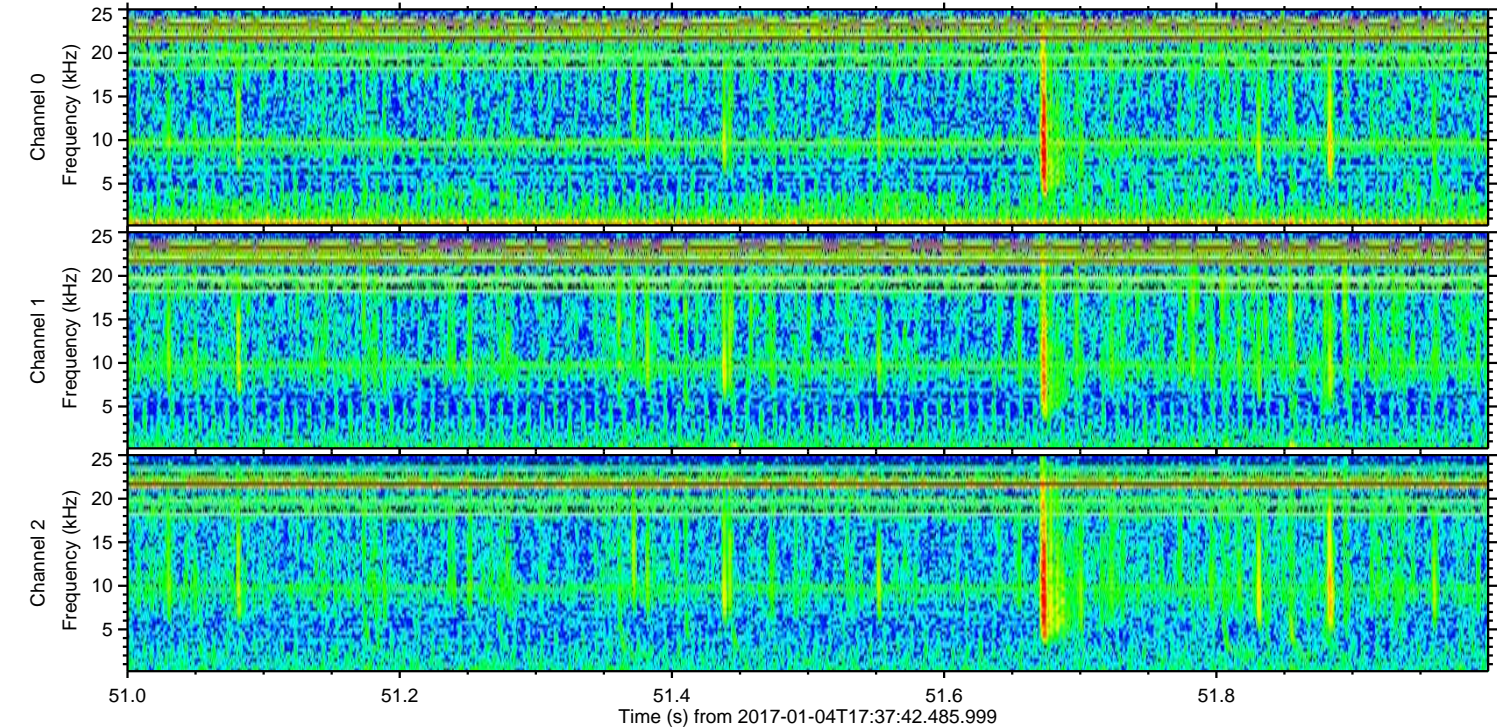
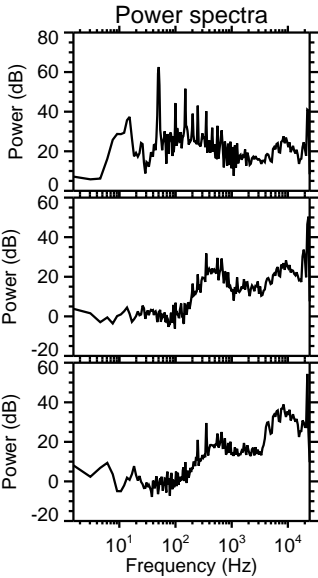
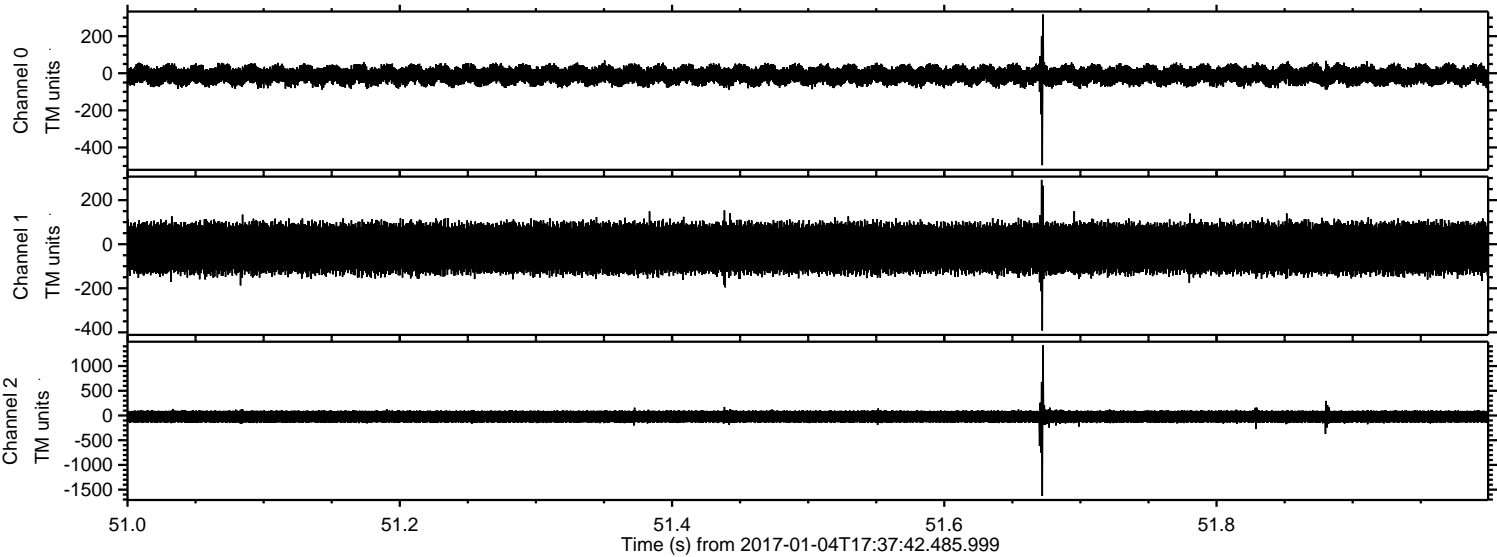


ELMAVAN 3D WAVEFORMS (Measured data sampled at 50 kHz) 51000 packets of 144 samples from 2017-01-04T17:37:42.485.999. Part 130/147

Processed Wed Jan 4 18:45:41 2017 by ELM ver.2012-10-06 from 001__elm20170104_173741__dat00.bin



Processed Wed Jan 4 18:45:41 2017 by ELM ver.2012-10-06 from 001__elm20170104_173741__dat00.bin



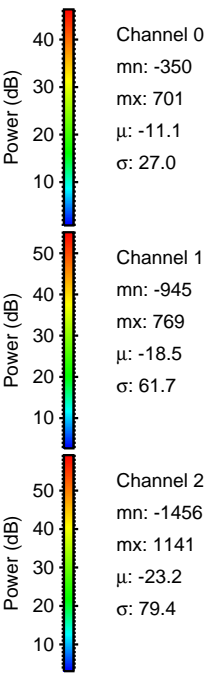
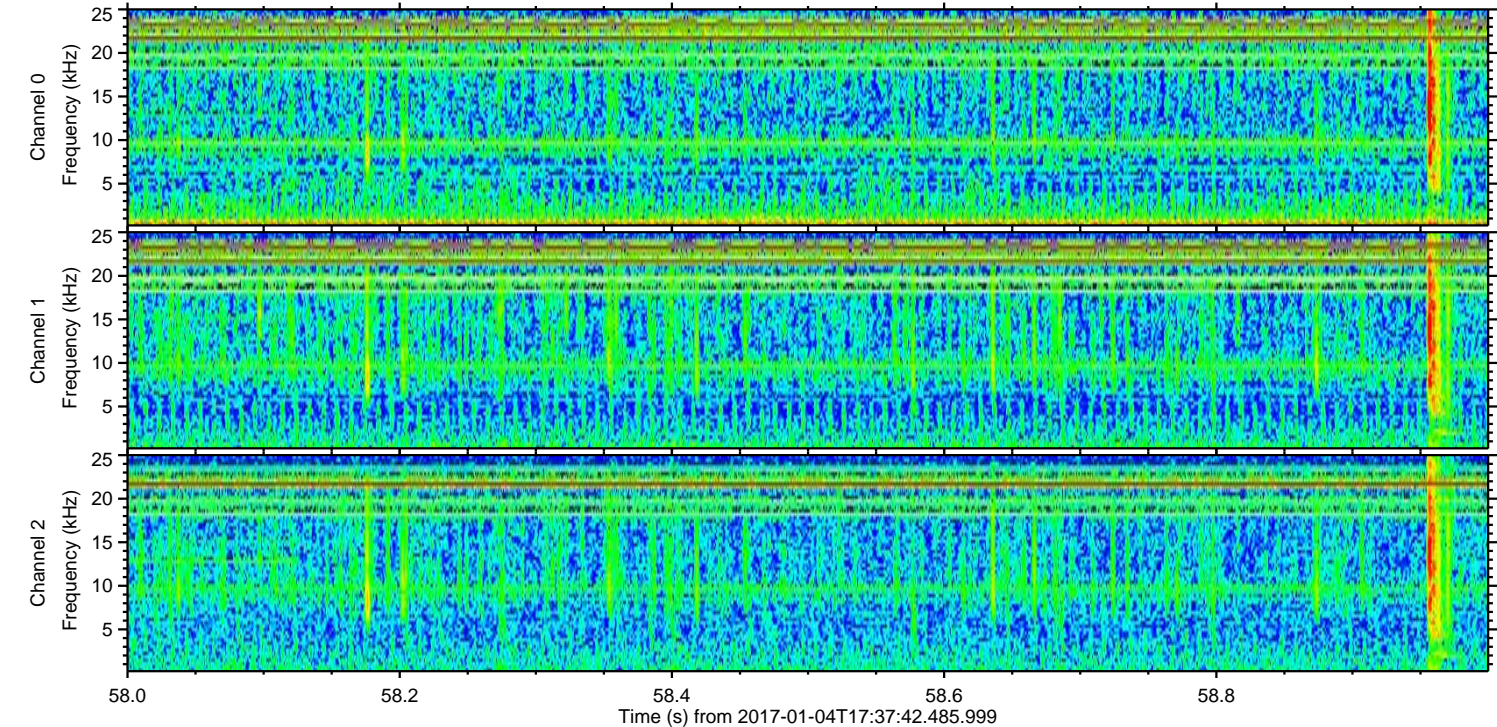
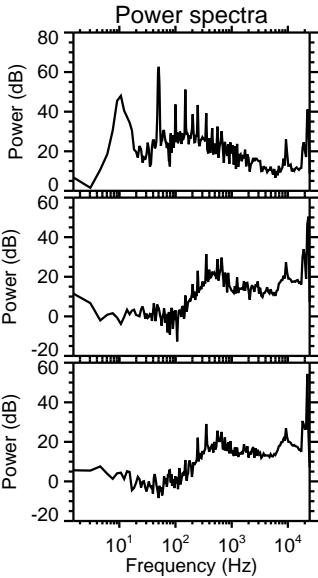
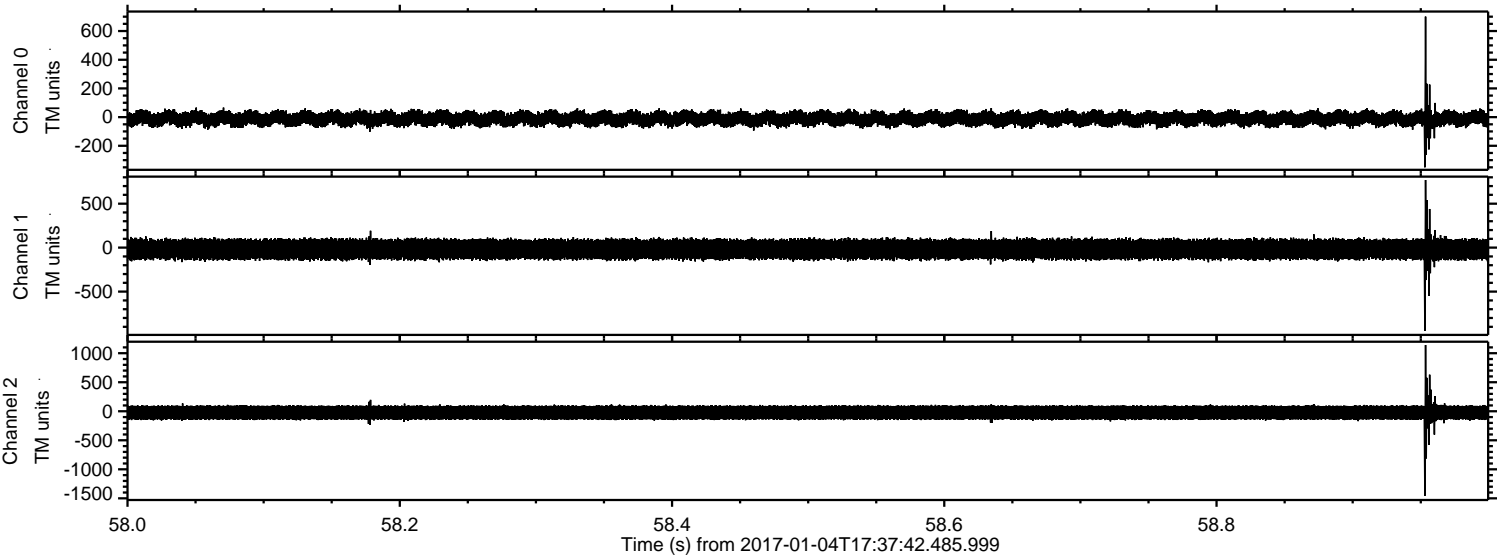
Channel 0
mn: -496
mx: 317
 μ : -11.1
 σ : 26.4

Channel 1
mn: -392
mx: 292
 μ : -18.5
 σ : 59.8

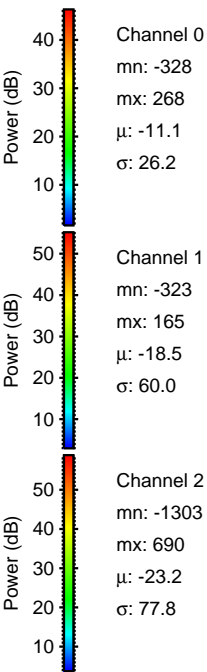
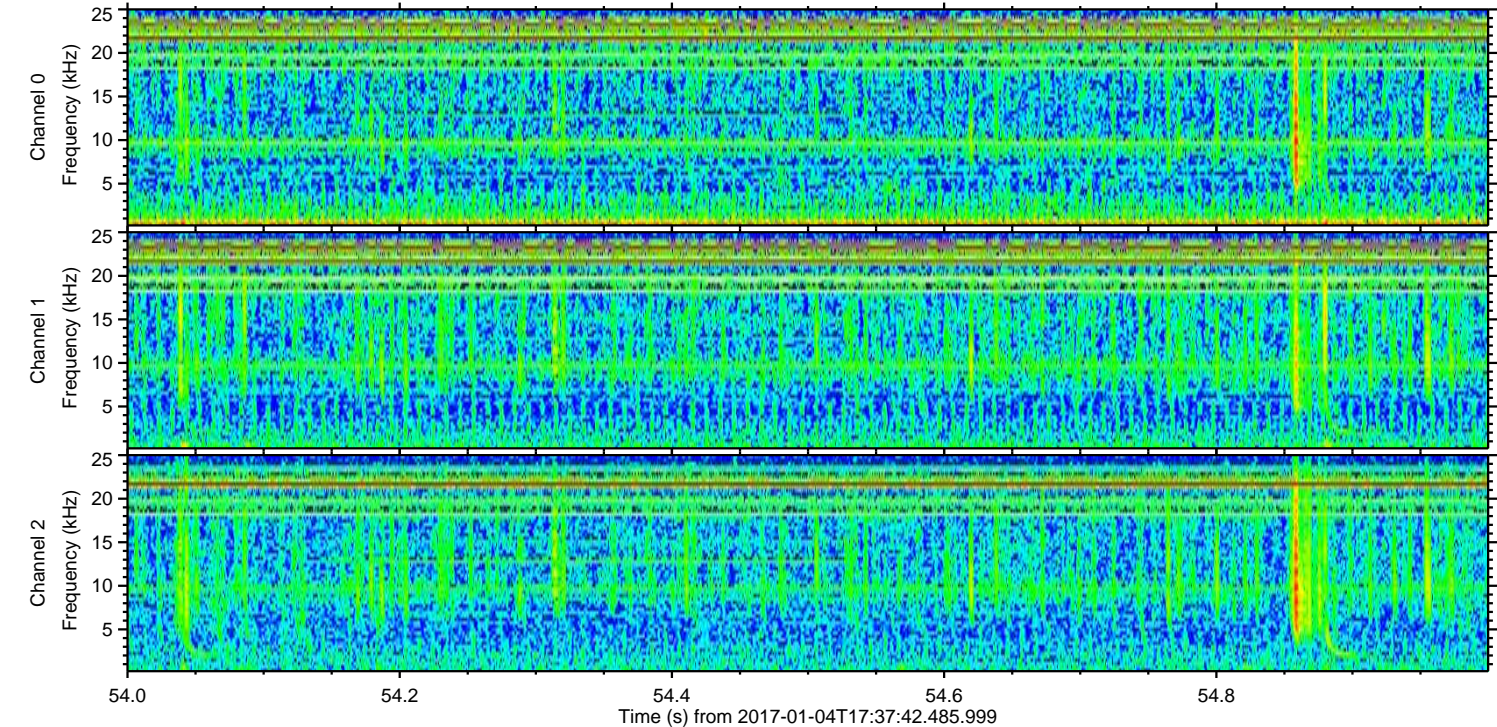
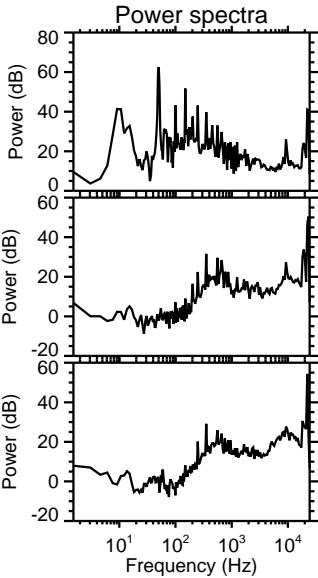
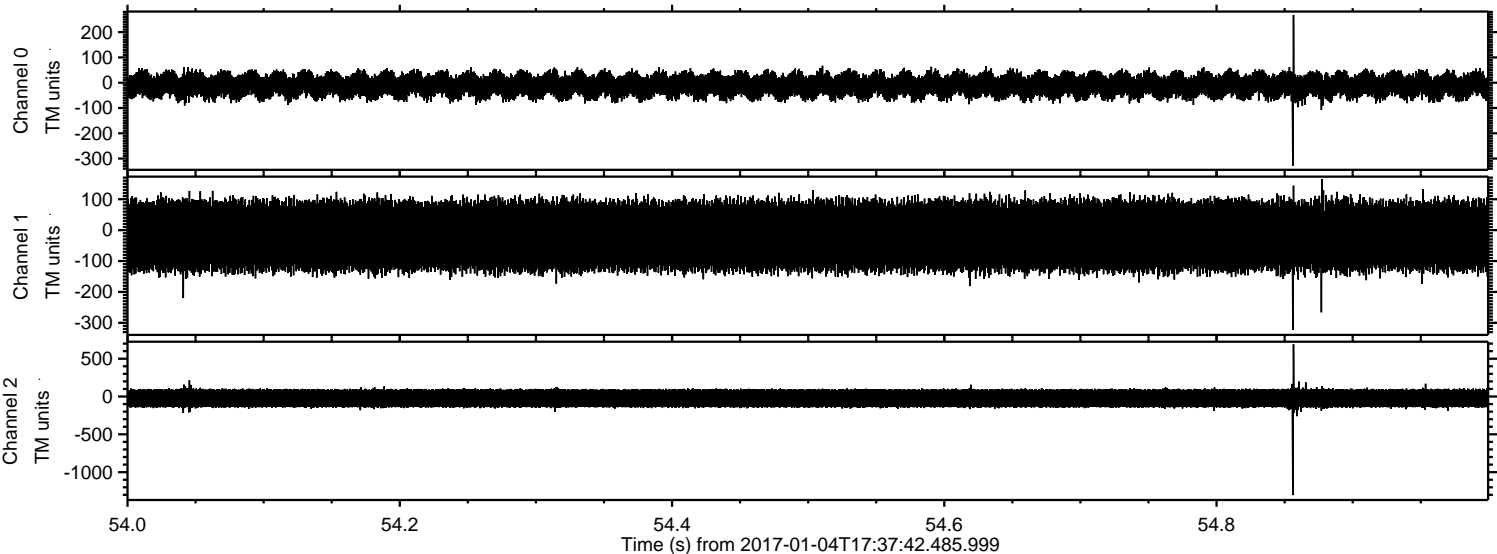
Channel 2
mn: -1628
mx: 1422
 μ : -23.2
 σ : 79.1

ELMAVAN 3D WAVEFORMS (Measured data sampled at 50 kHz) 51000 packets of 144 samples from 2017-01-04T17:37:42.485.999. Part 59/147

Processed Wed Jan 4 18:45:42 2017 by ELM ver.2012-10-06 from 001__elm20170104_173741__dat00.bin

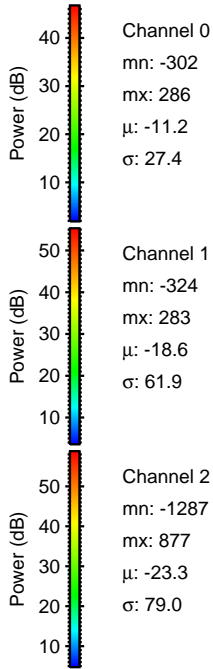
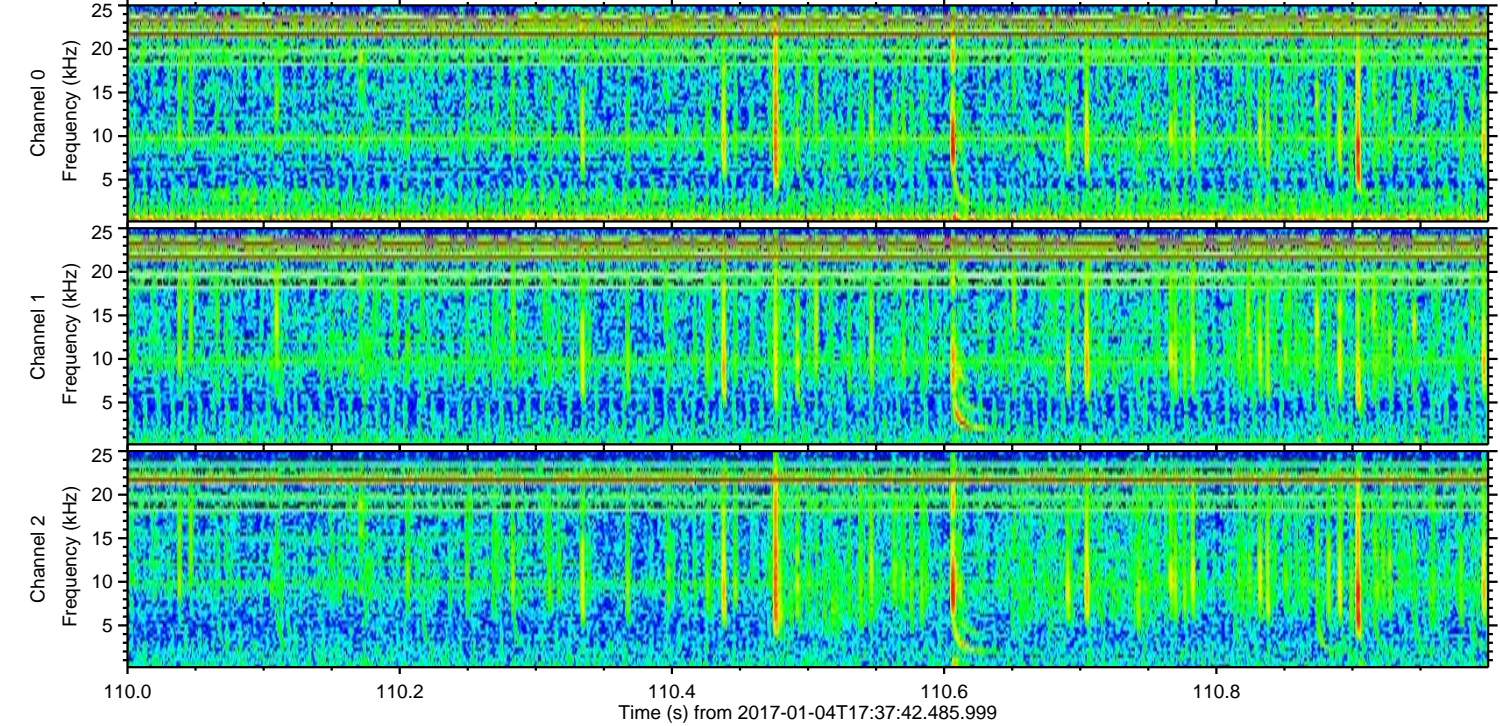
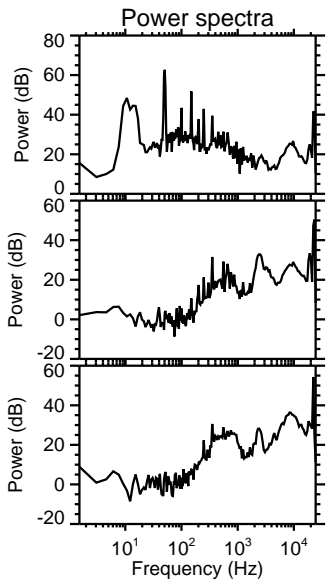
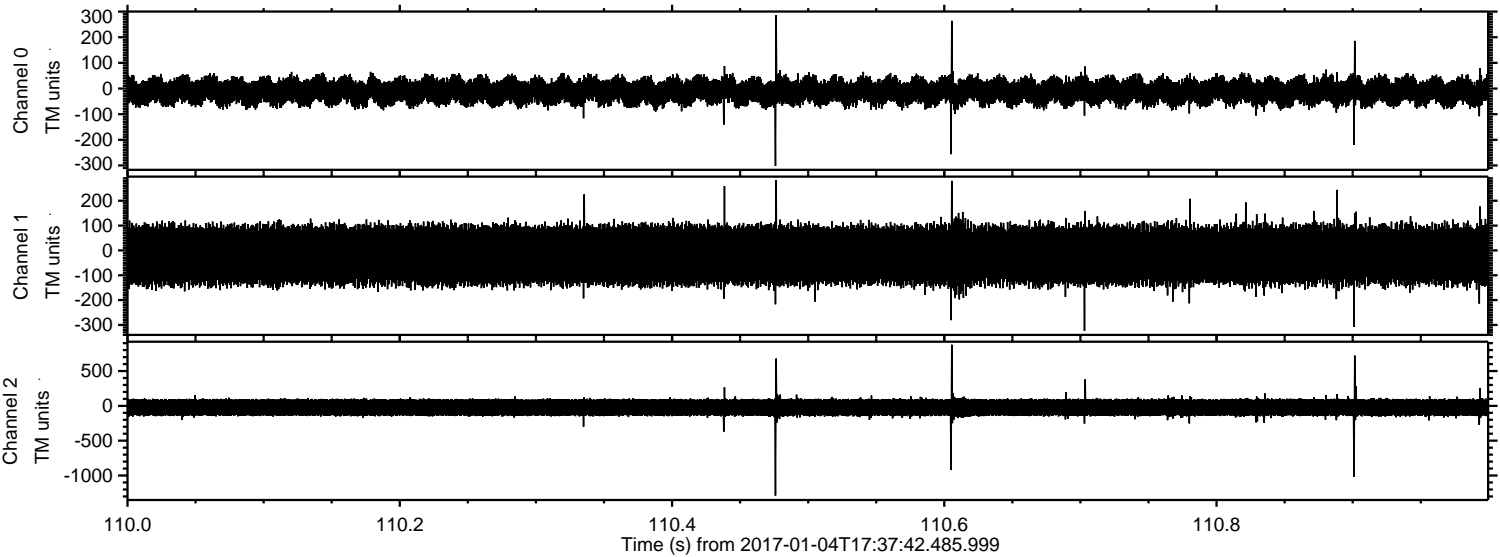


Processed Wed Jan 4 18:45:43 2017 by ELM ver.2012-10-06 from 001__elm20170104_173741__dat00.bin



ELMAVAN 3D WAVEFORMS (Measured data sampled at 50 kHz) 51000 packets of 144 samples from 2017-01-04T17:37:42.485.999. Part 111/147

Processed Wed Jan 4 18:45:44 2017 by ELM ver.2012-10-06 from 001__elm20170104_173741__dat00.bin

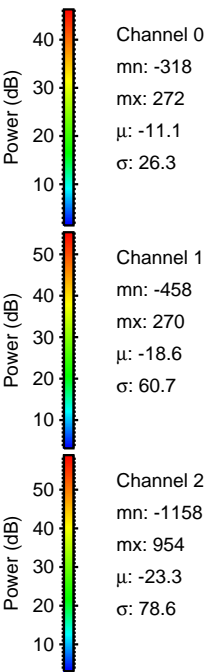
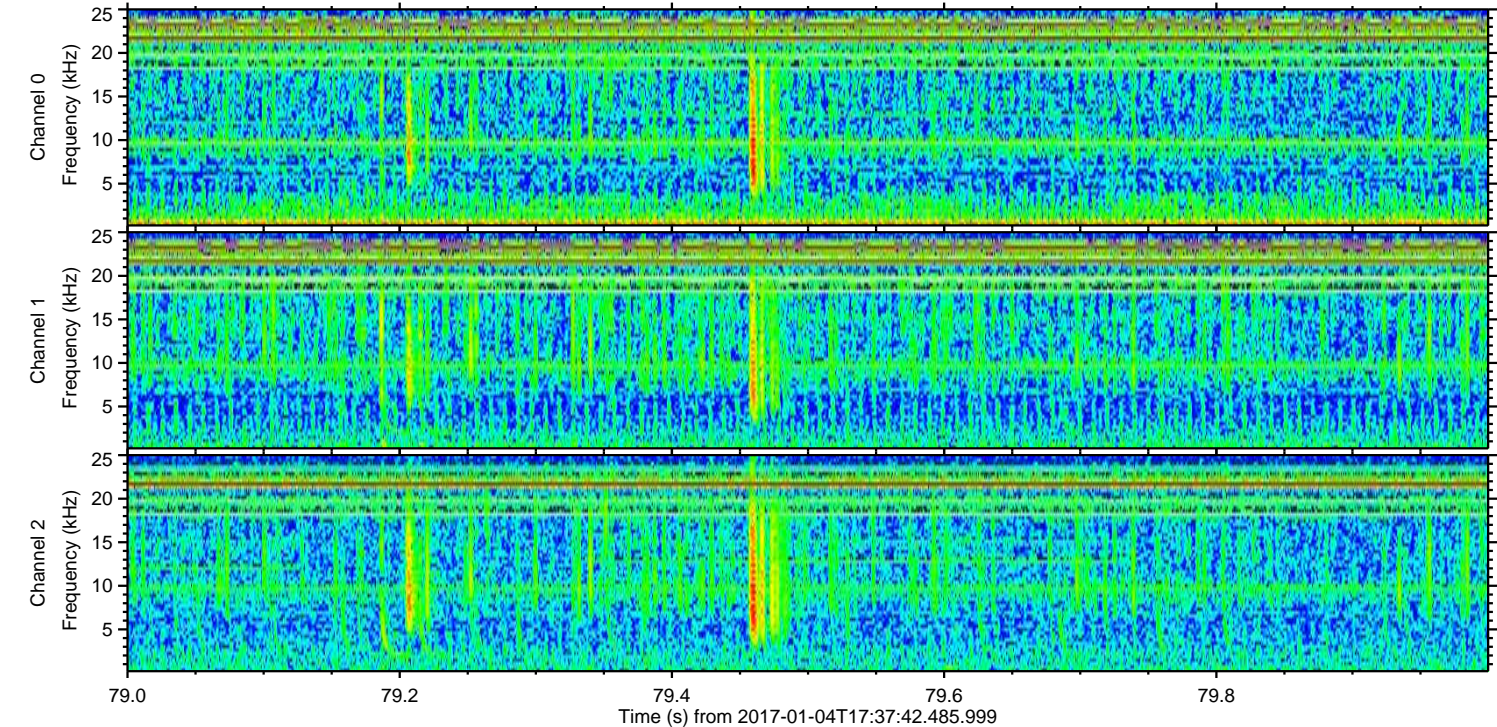
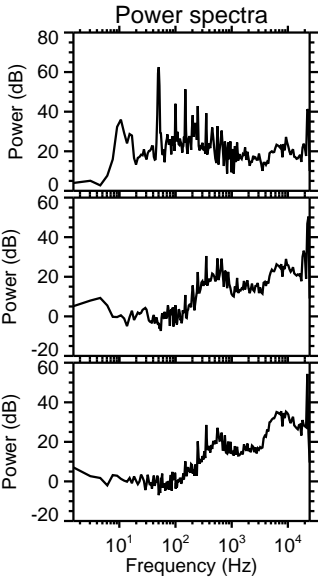
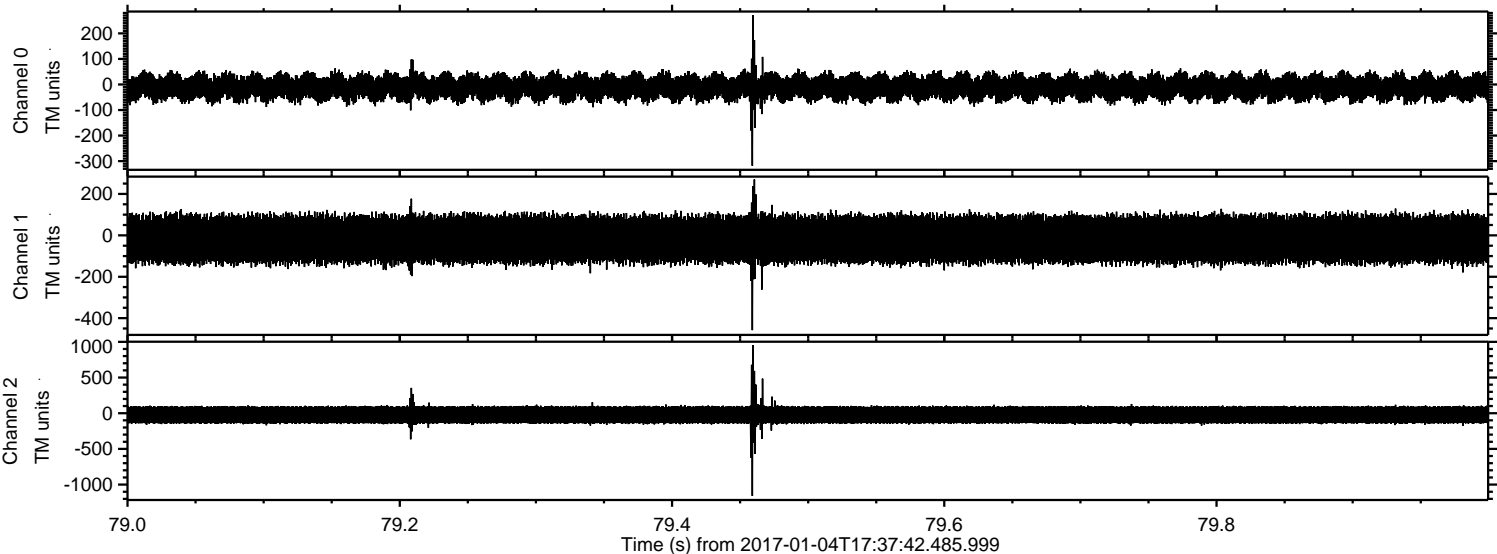


Channel 0
mn: -302
mx: 286
 μ : -11.2
 σ : 27.4

Channel 1
mn: -324
mx: 283
 μ : -18.6
 σ : 61.9

Channel 2
mn: -1287
mx: 877
 μ : -23.3
 σ : 79.0

Processed Wed Jan 4 18:45:45 2017 by ELM ver.2012-10-06 from 001__elm20170104_173741__dat00.bin



ELMAVAN 3D WAVEFORMS (Measured data sampled at 50 kHz) 51000 packets of 144 samples from 2017-01-04T17:37:42.485.999. Part 37/147

Processed Wed Jan 4 18:45:46 2017 by ELM ver.2012-10-06 from 001__elm20170104_173741__dat00.bin

