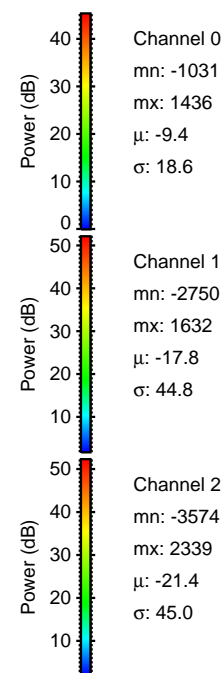
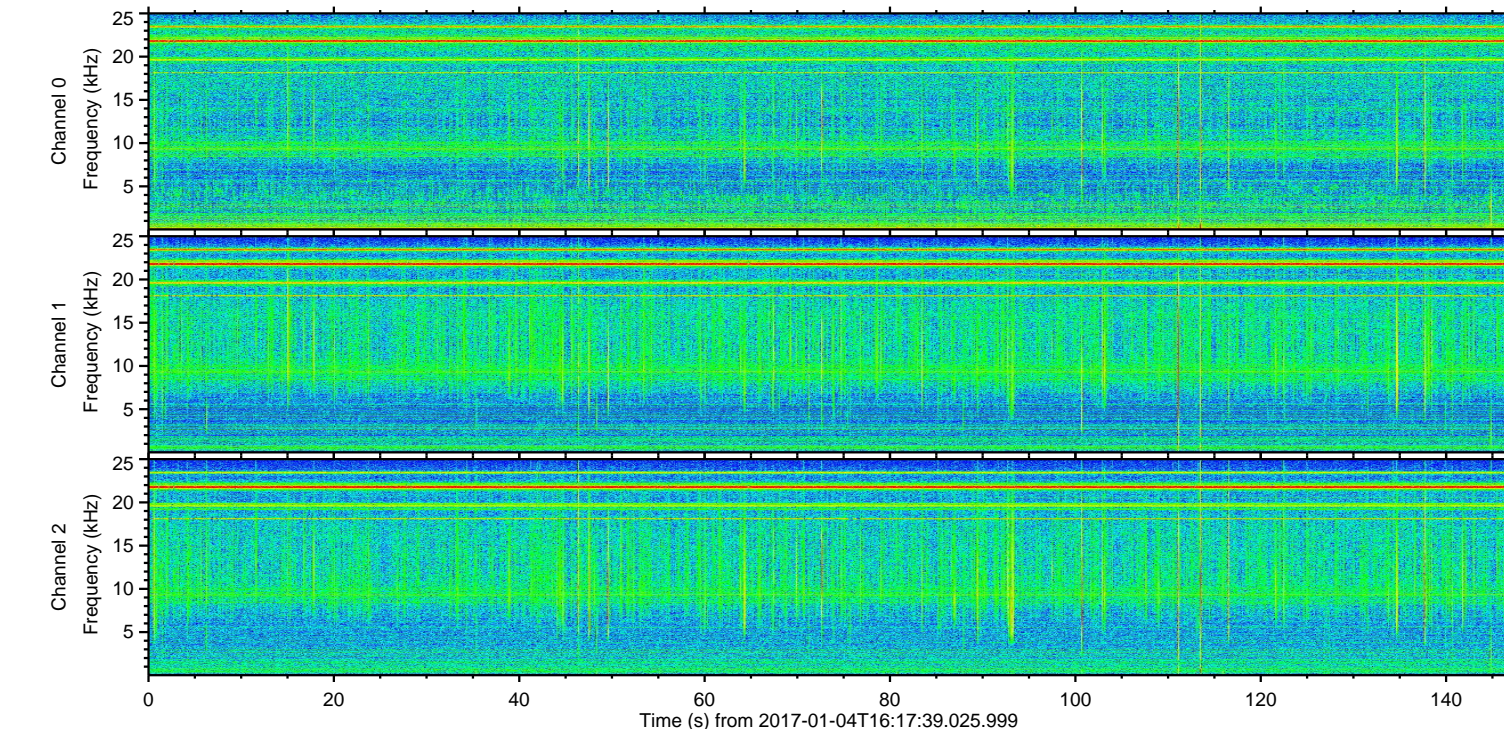
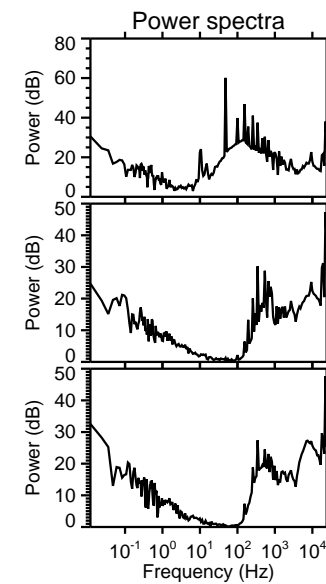
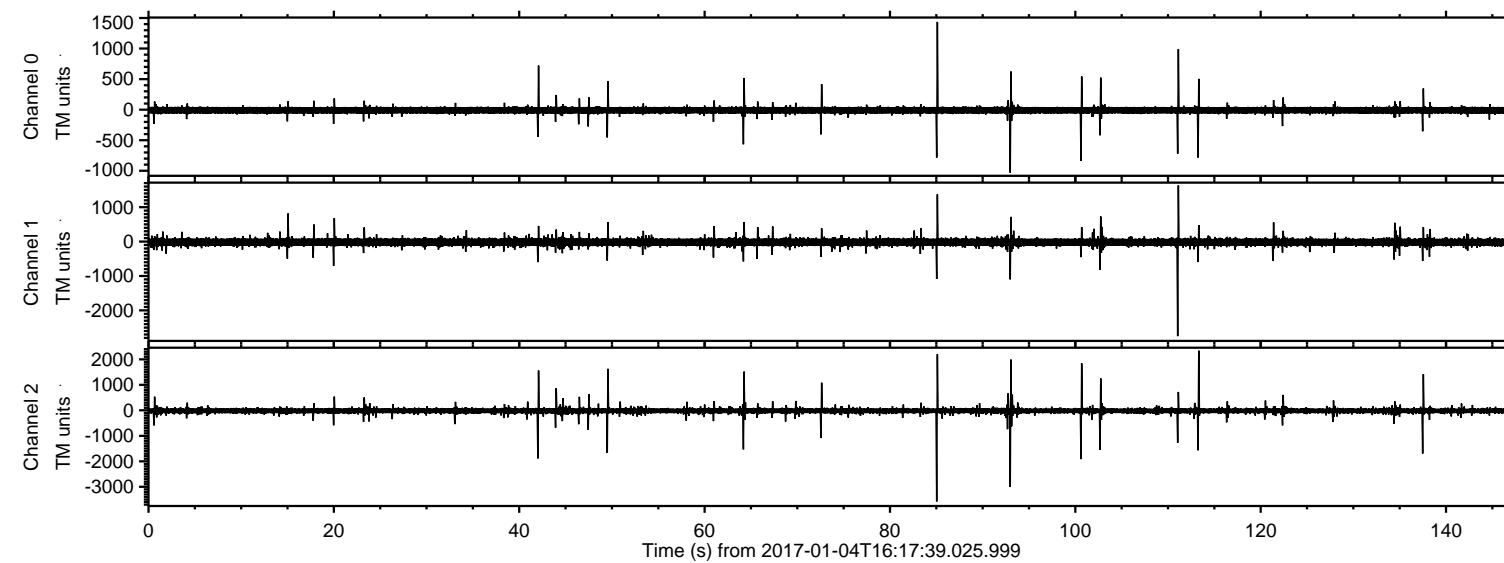


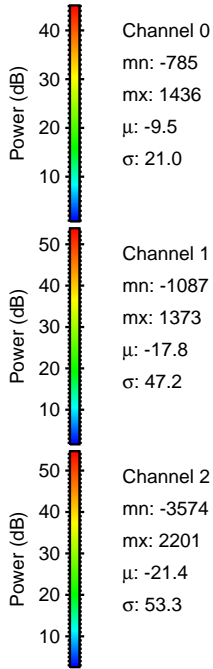
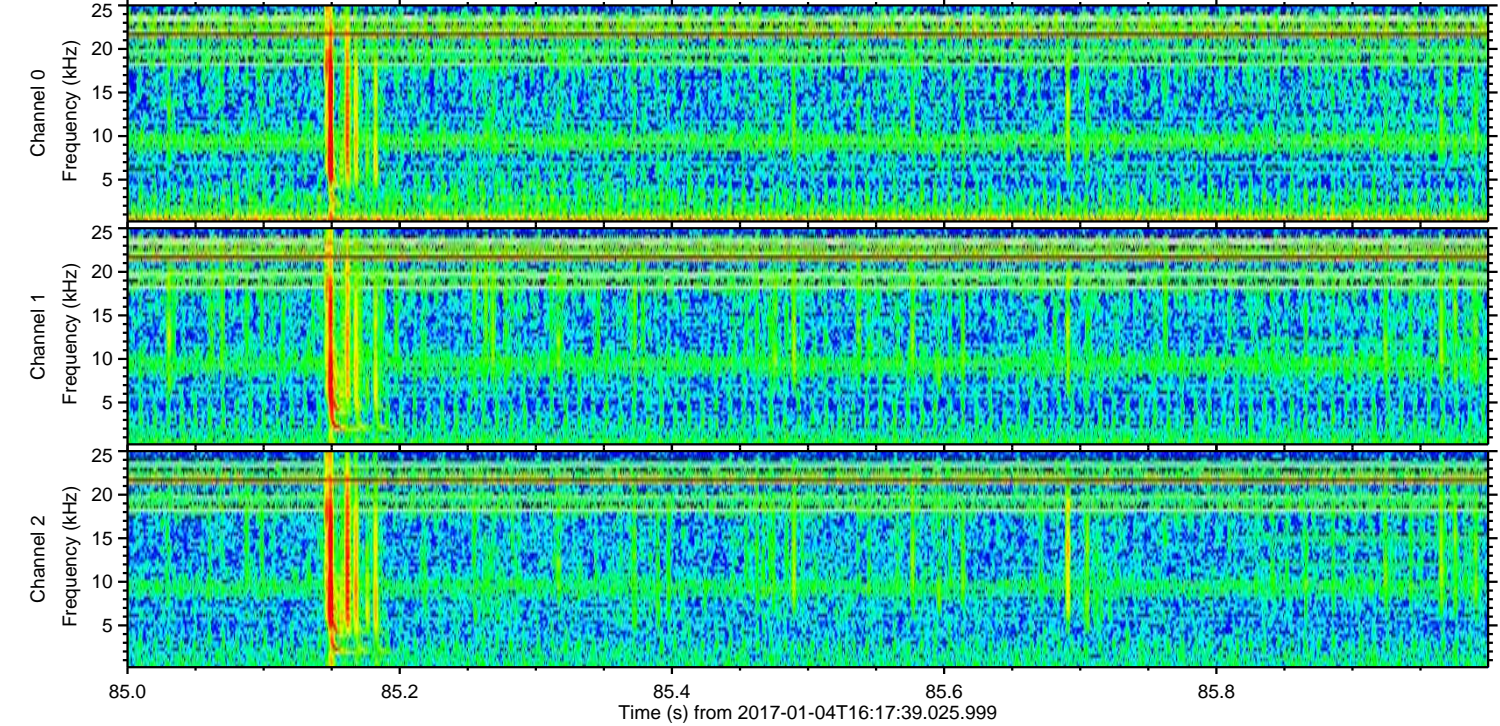
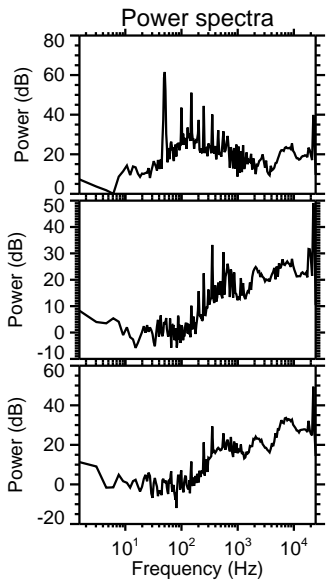
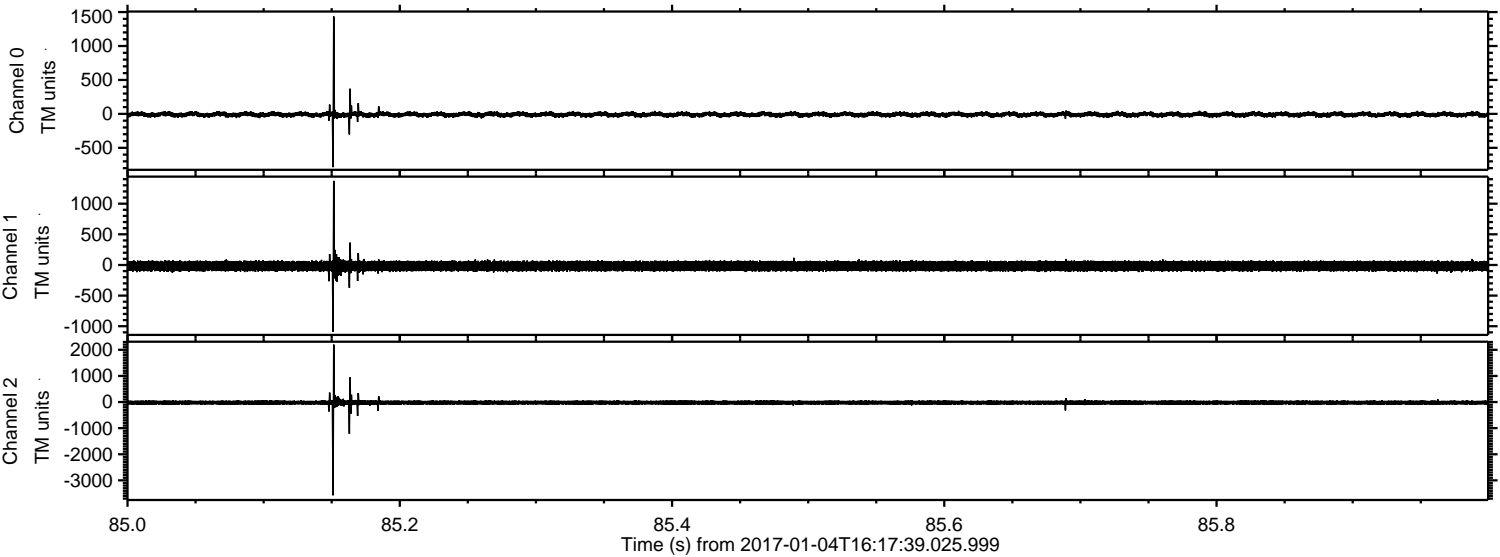
ELMAVAN 3D WAVEFORMS (Measured data sampled at 50 kHz) 51000 packets of 144 samples from 2017-01-04T16:17:39.025.999.

Processed Wed Jan 4 17:25:04 2017 by ELM ver.2012-10-06 from 001__elm20170104_161738__dat00.bin



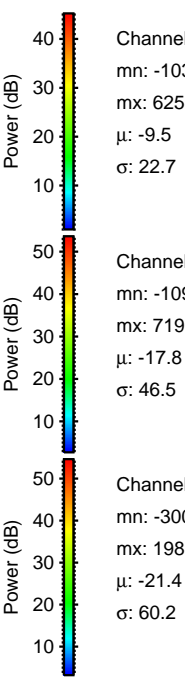
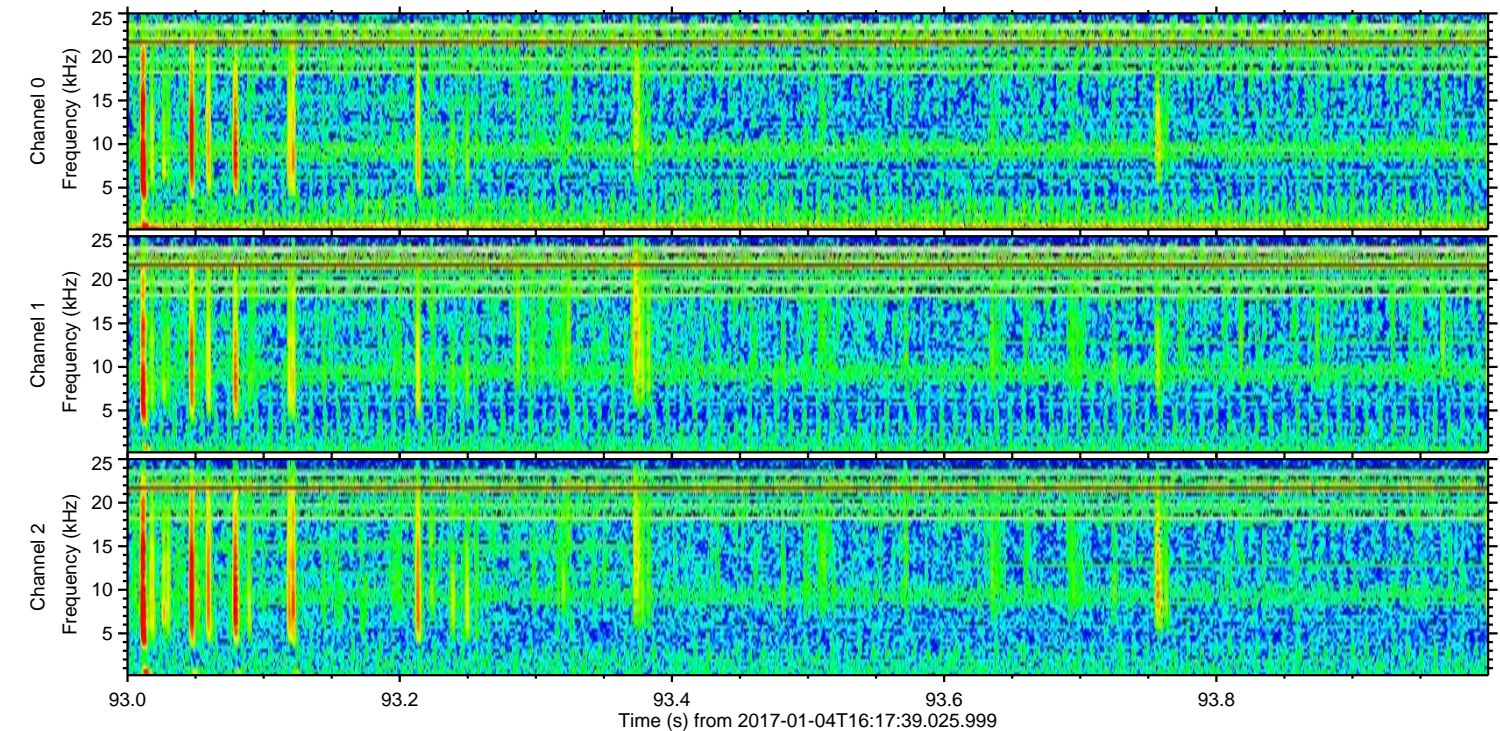
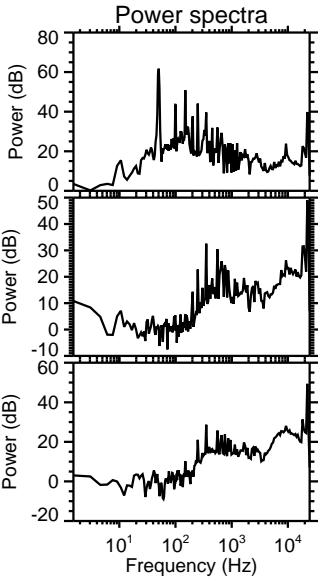
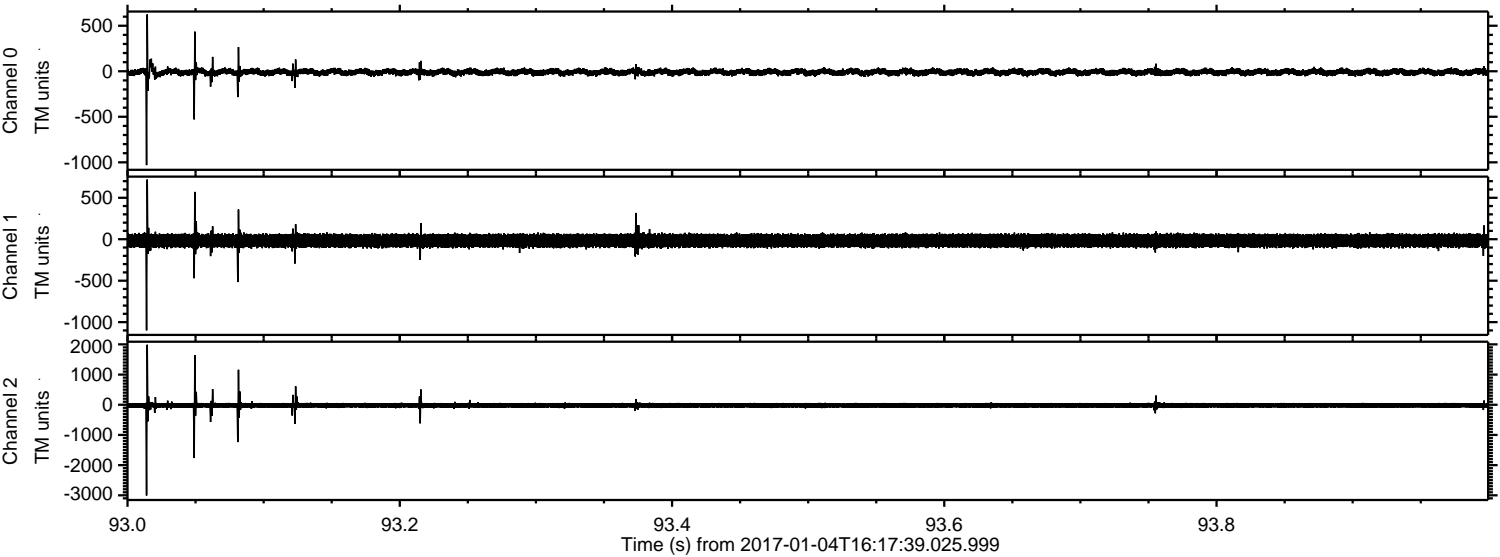
ELMAVAN 3D WAVEFORMS (Measured data sampled at 50 kHz) 51000 packets of 144 samples from 2017-01-04T16:17:39.025.999. Part 86/147

Processed Wed Jan 4 17:25:15 2017 by ELM ver.2012-10-06 from 001__elm20170104_161738__dat00.bin



ELMAVAN 3D WAVEFORMS (Measured data sampled at 50 kHz) 51000 packets of 144 samples from 2017-01-04T16:17:39.025.999. Part 94/147

Processed Wed Jan 4 17:25:16 2017 by ELM ver.2012-10-06 from 001__elm20170104_161738__dat00.bin



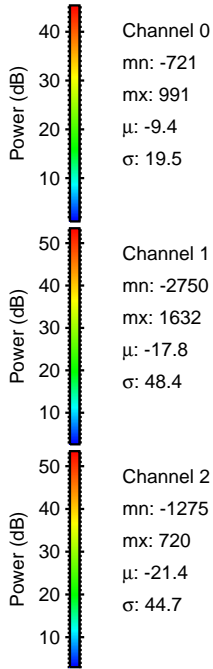
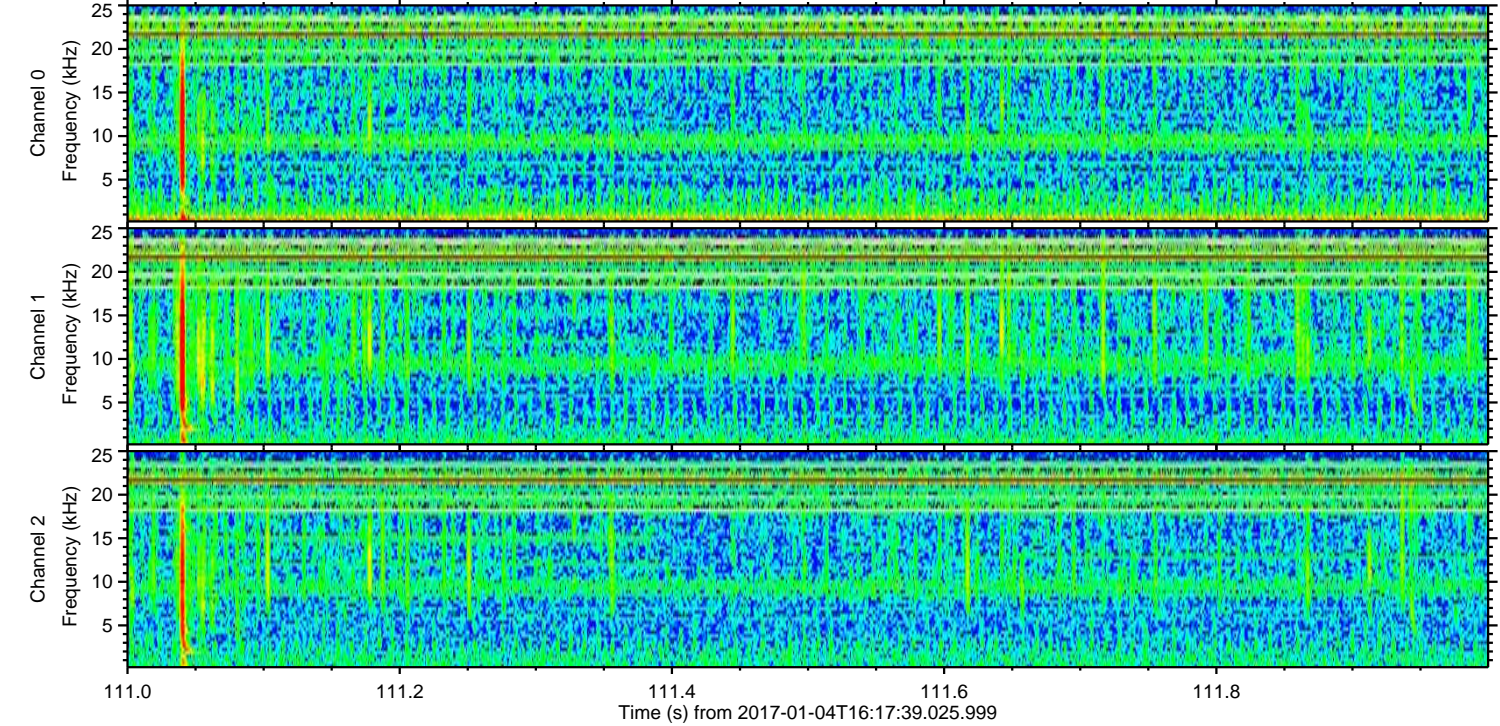
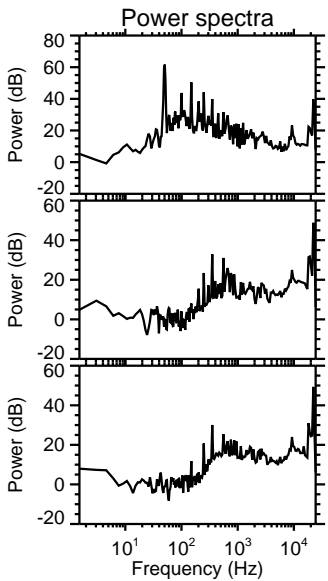
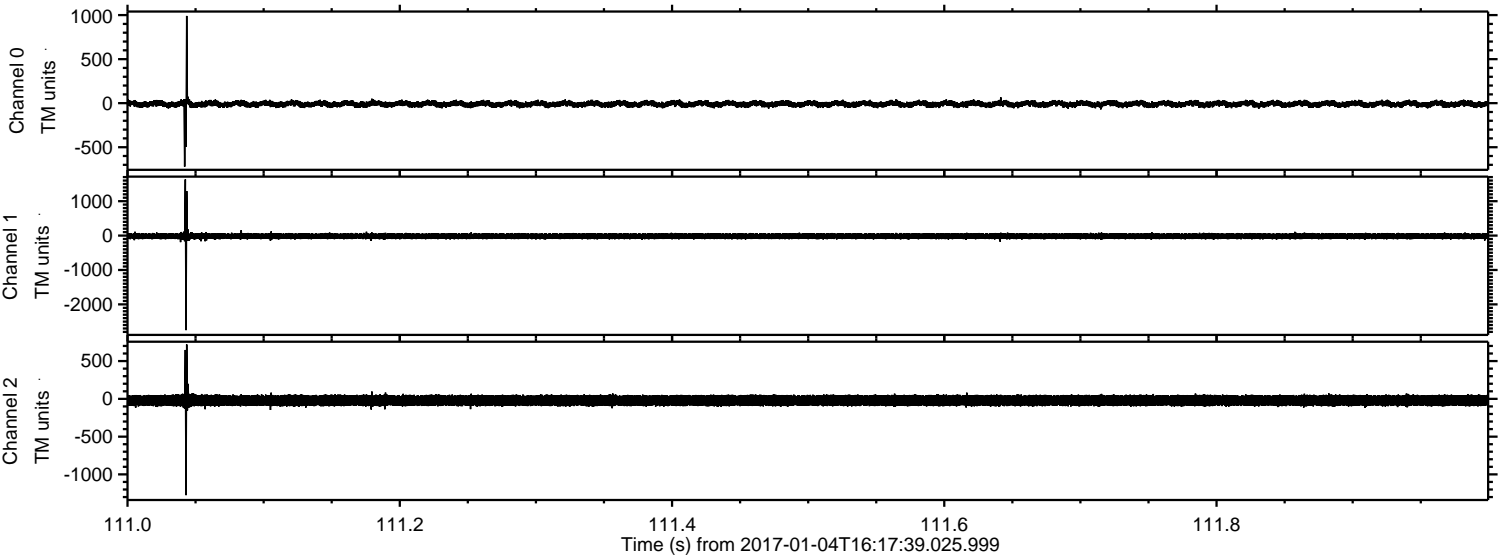
Channel 0
mn: -1031
mx: 625
 μ : -9.5
 σ : 22.7

Channel 1
mn: -1099
mx: 719
 μ : -17.8
 σ : 46.5

Channel 2
mn: -3005
mx: 1989
 μ : -21.4
 σ : 60.2

ELMAVAN 3D WAVEFORMS (Measured data sampled at 50 kHz) 51000 packets of 144 samples from 2017-01-04T16:17:39.025.999. Part 112/147

Processed Wed Jan 4 17:25:17 2017 by ELM ver.2012-10-06 from 001__elm20170104_161738__dat00.bin



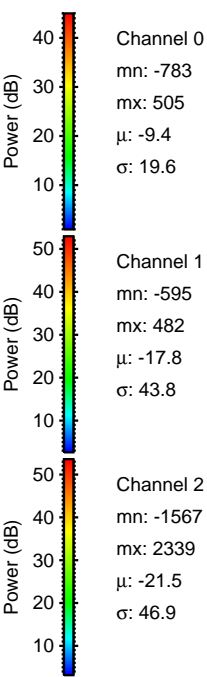
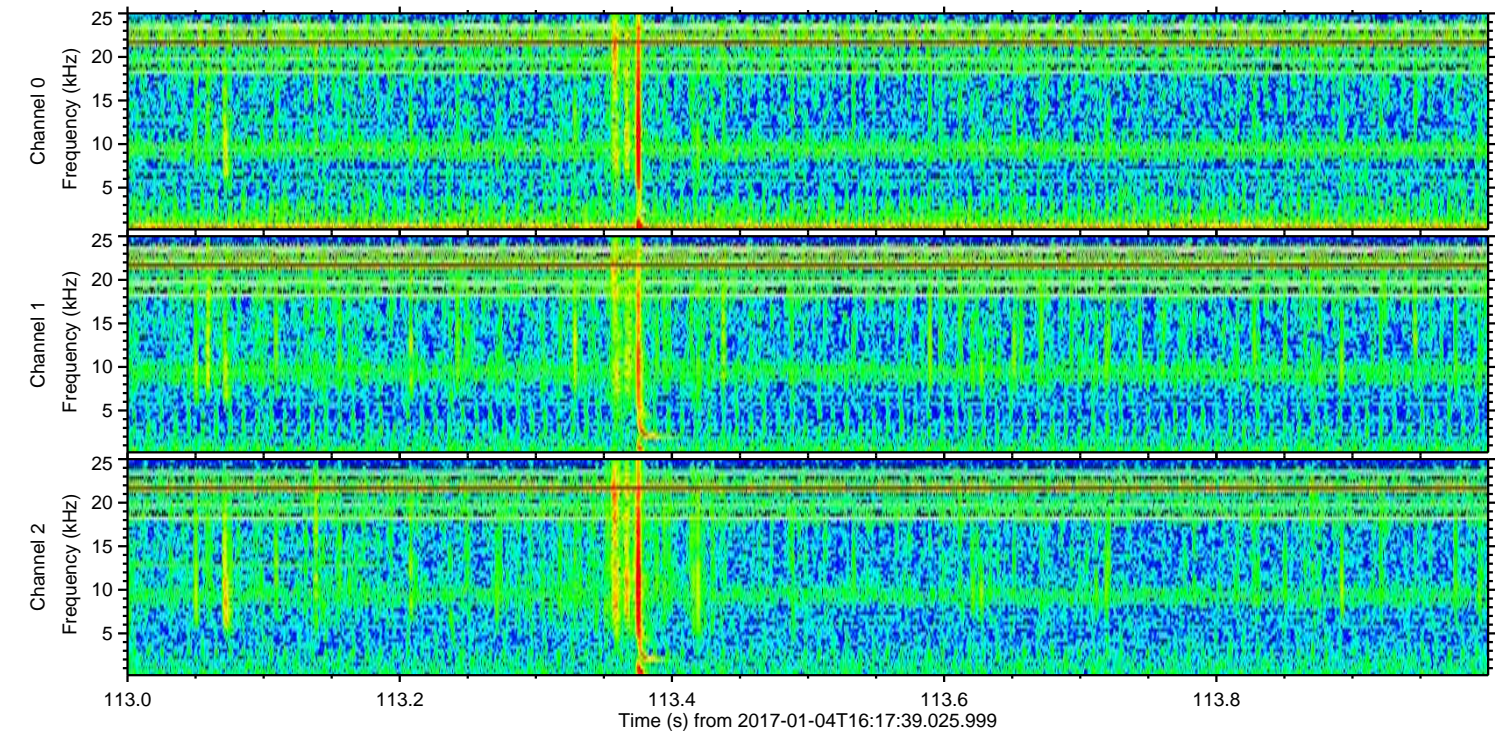
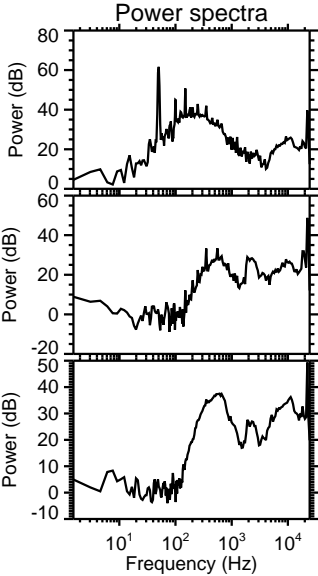
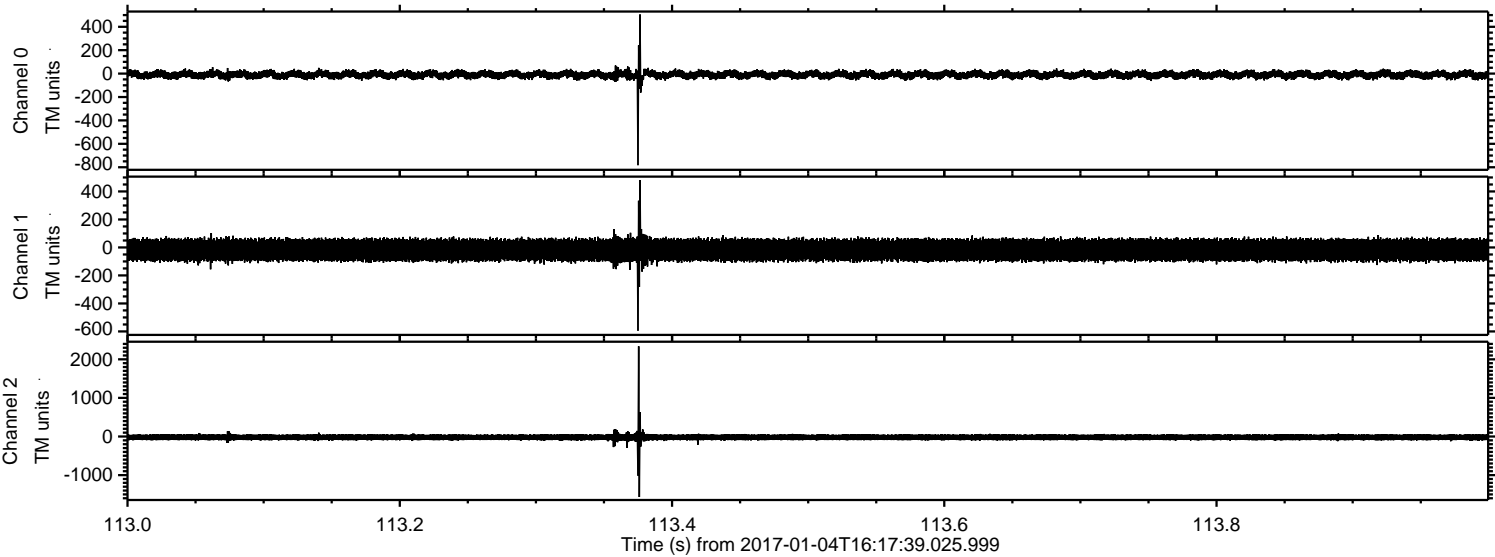
Channel 0
mn: -721
mx: 991
 μ : -9.4
 σ : 19.5

Channel 1
mn: -2750
mx: 1632
 μ : -17.8
 σ : 48.4

Channel 2
mn: -1275
mx: 720
 μ : -21.4
 σ : 44.7

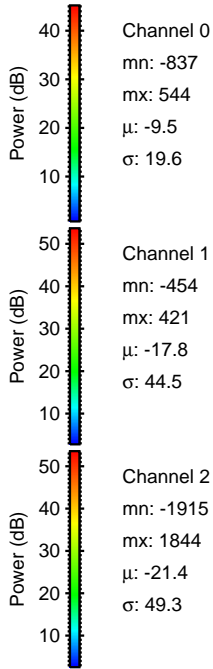
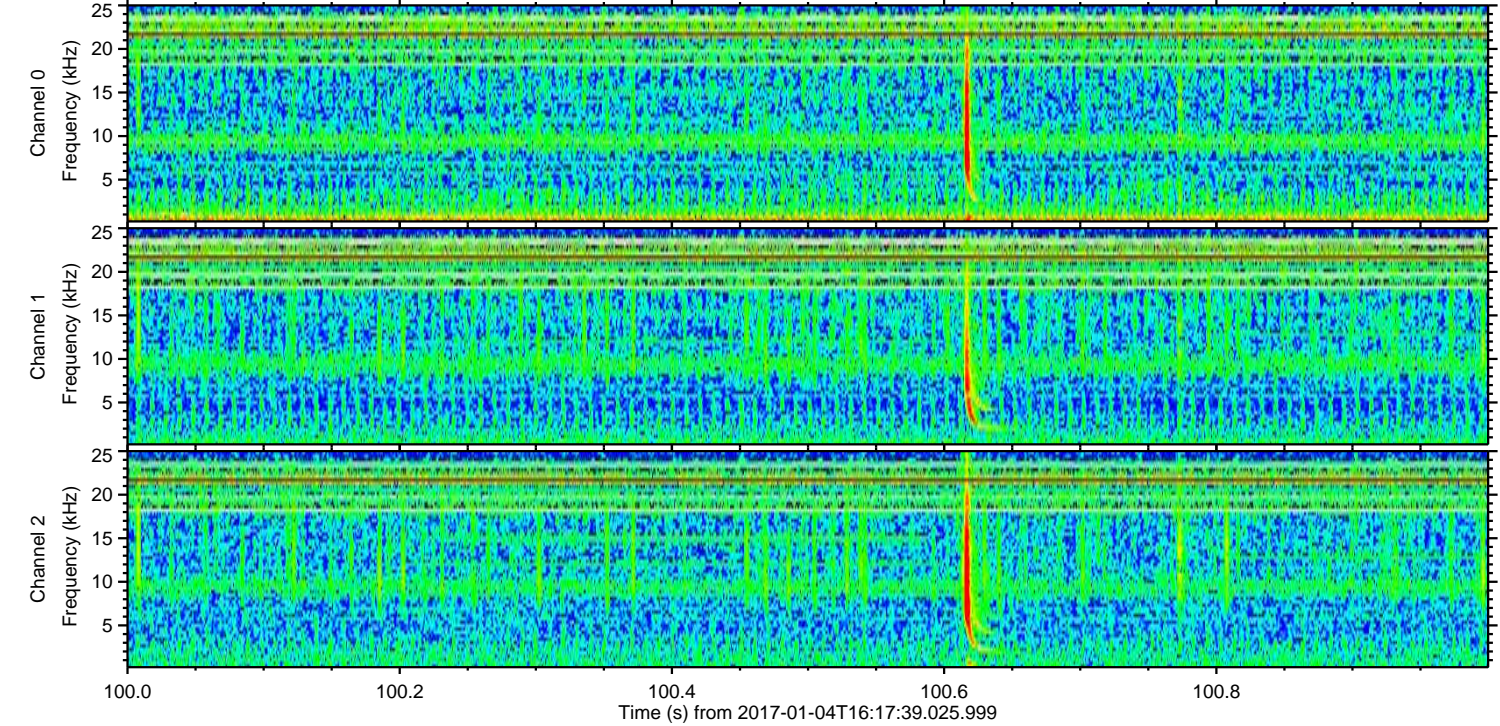
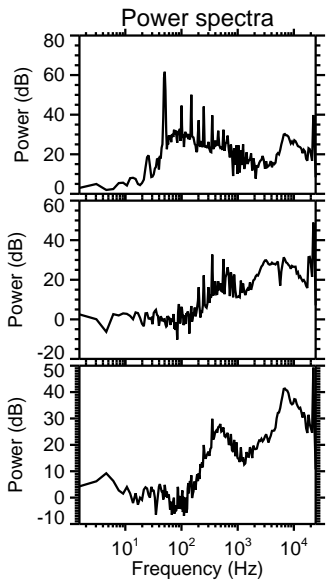
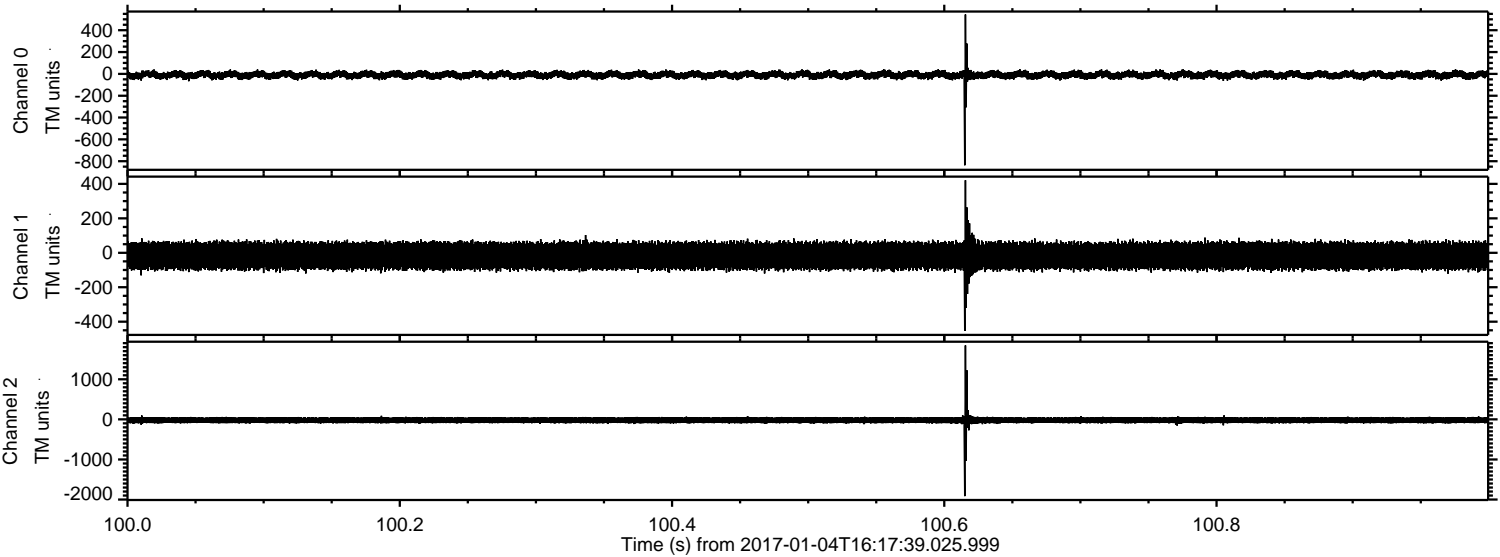
ELMAVAN 3D WAVEFORMS (Measured data sampled at 50 kHz) 51000 packets of 144 samples from 2017-01-04T16:17:39.025.999. Part 114/147

Processed Wed Jan 4 17:25:18 2017 by ELM ver.2012-10-06 from 001__elm20170104_161738__dat00.bin



ELMAVAN 3D WAVEFORMS (Measured data sampled at 50 kHz) 51000 packets of 144 samples from 2017-01-04T16:17:39.025.999. Part 101/147

Processed Wed Jan 4 17:25:19 2017 by ELM ver.2012-10-06 from 001__elm20170104_161738__dat00.bin



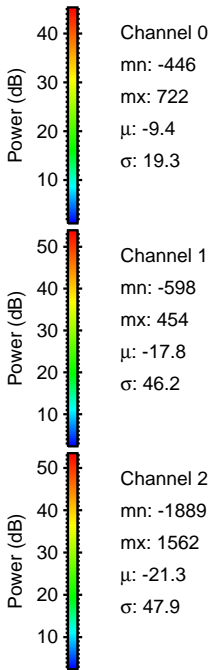
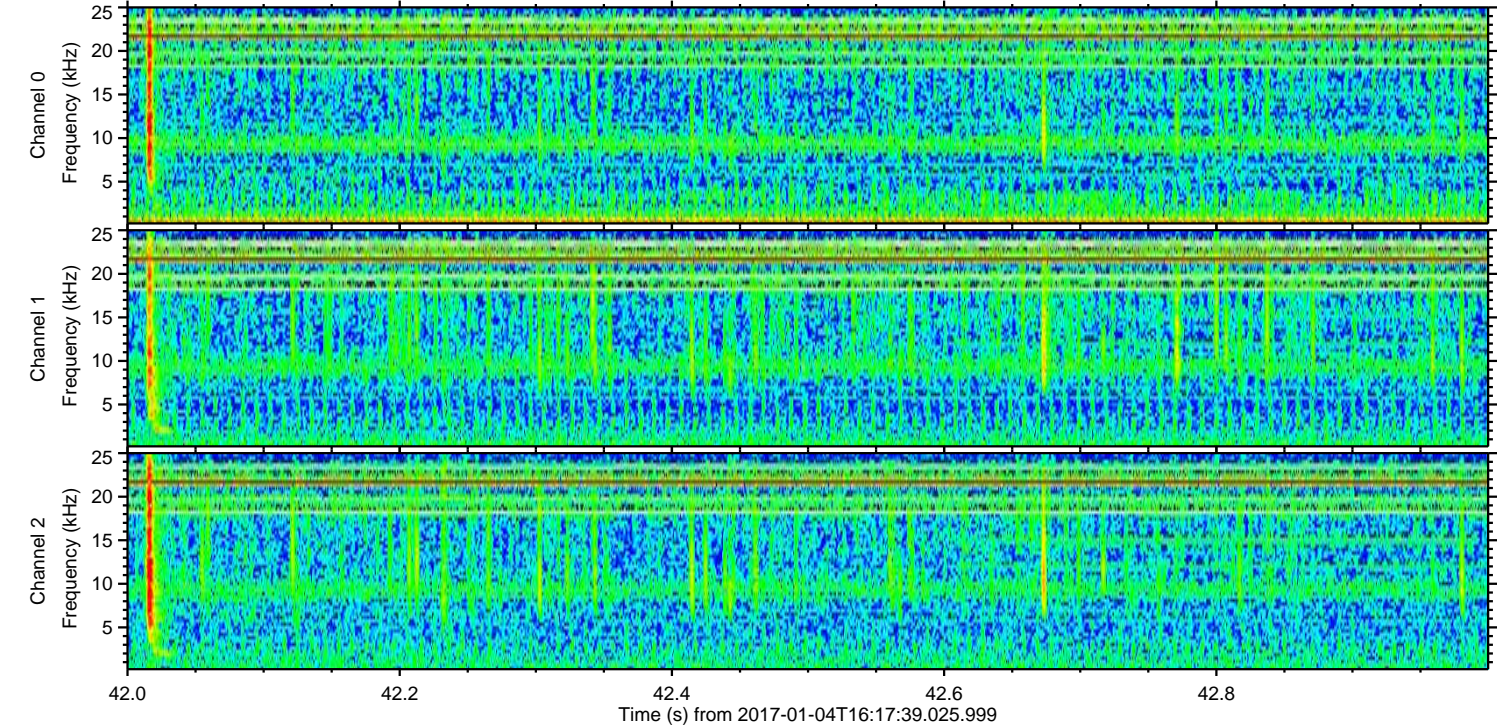
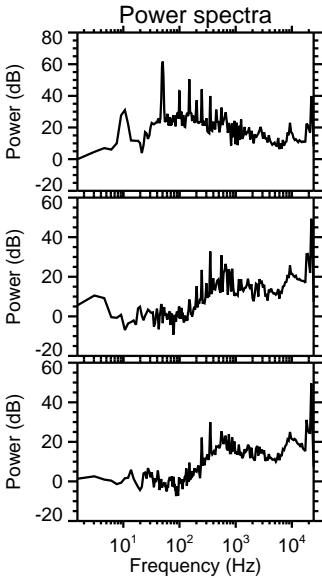
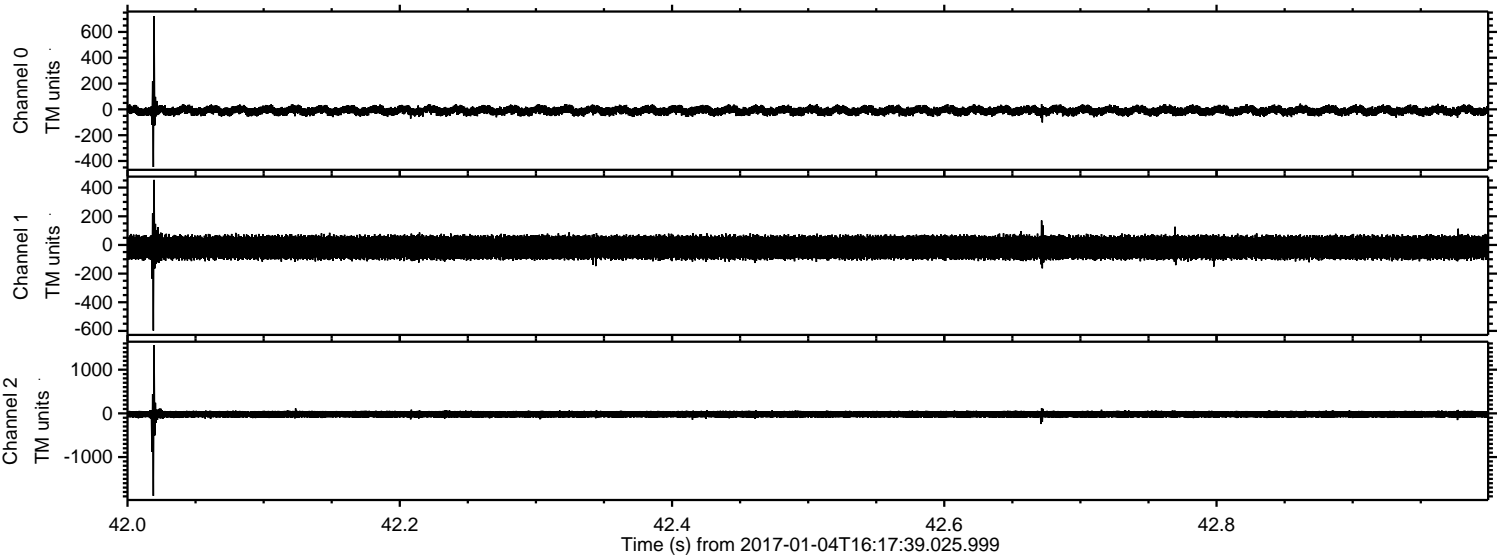
Channel 0
mn: -837
mx: 544
 μ : -9.5
 σ : 19.6

Channel 1
mn: -454
mx: 421
 μ : -17.8
 σ : 44.5

Channel 2
mn: -1915
mx: 1844
 μ : -21.4
 σ : 49.3

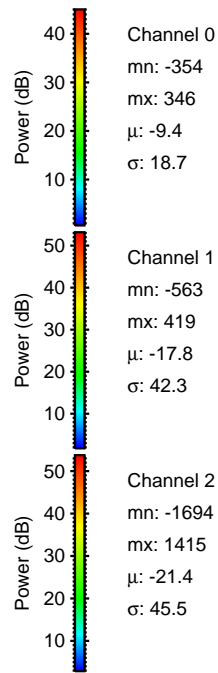
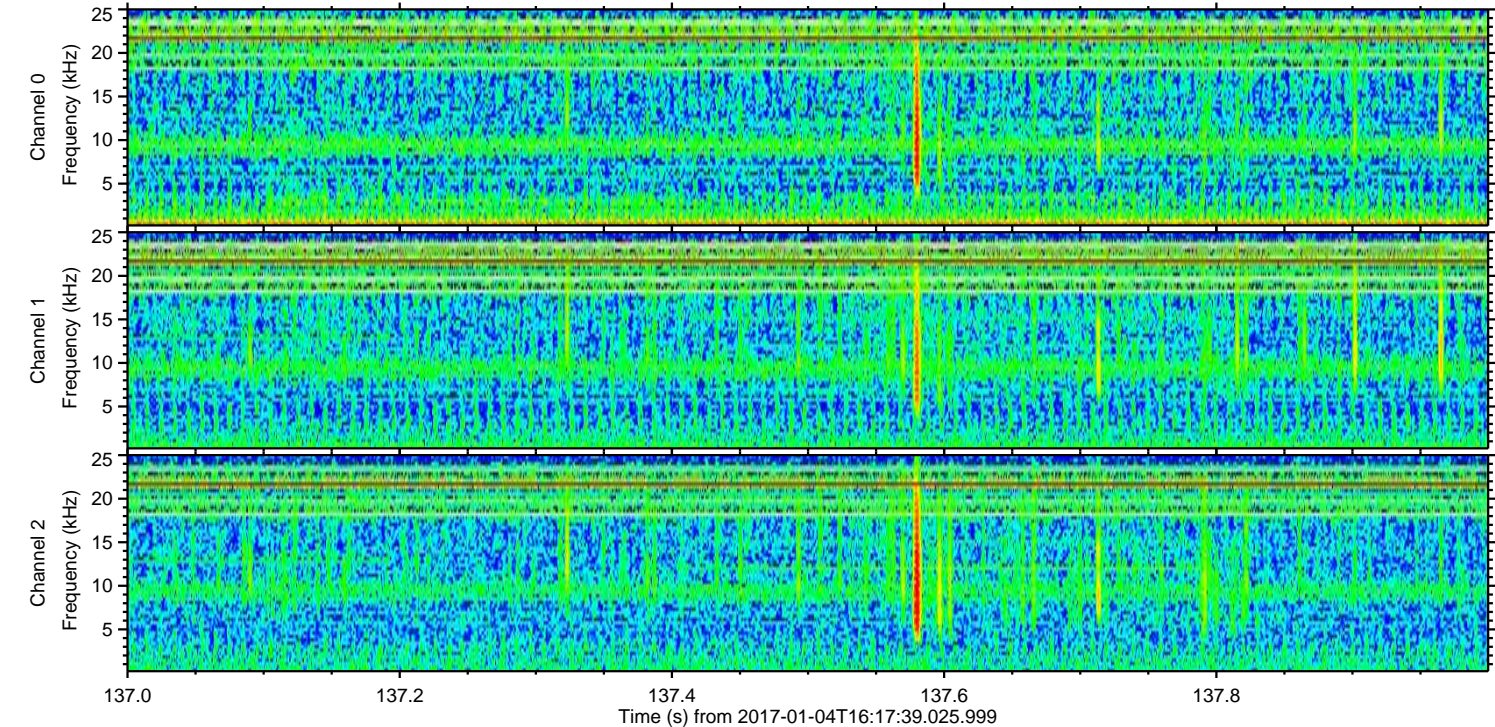
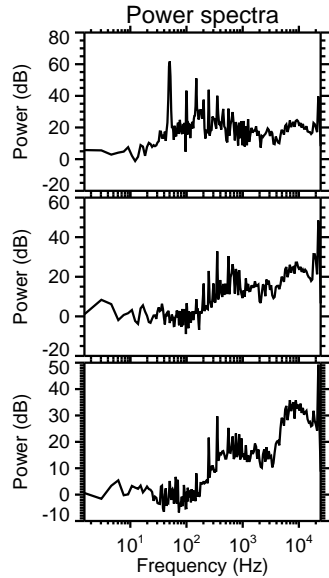
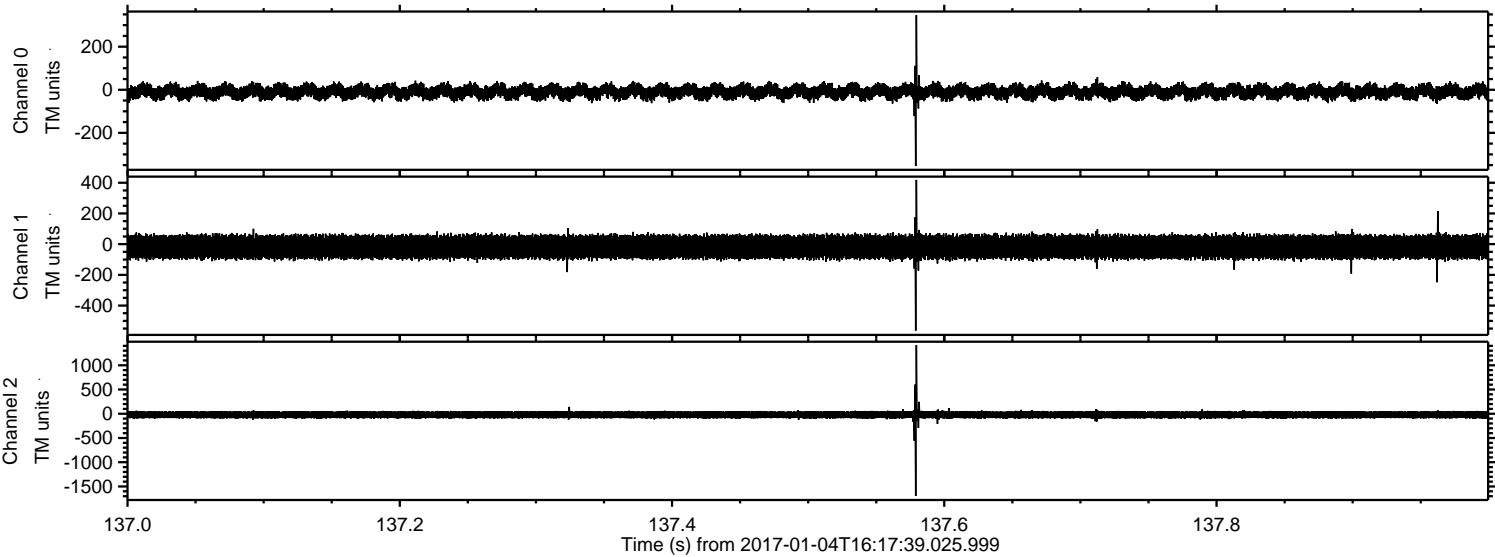
ELMAVAN 3D WAVEFORMS (Measured data sampled at 50 kHz) 51000 packets of 144 samples from 2017-01-04T16:17:39.025.999. Part 43/147

Processed Wed Jan 4 17:25:20 2017 by ELM ver.2012-10-06 from 001__elm20170104_161738__dat00.bin

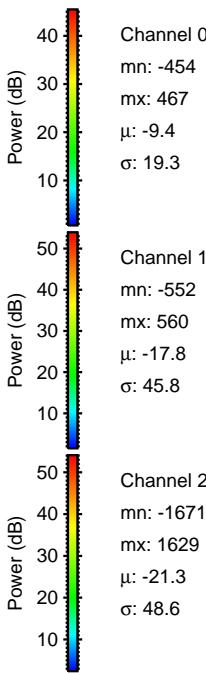
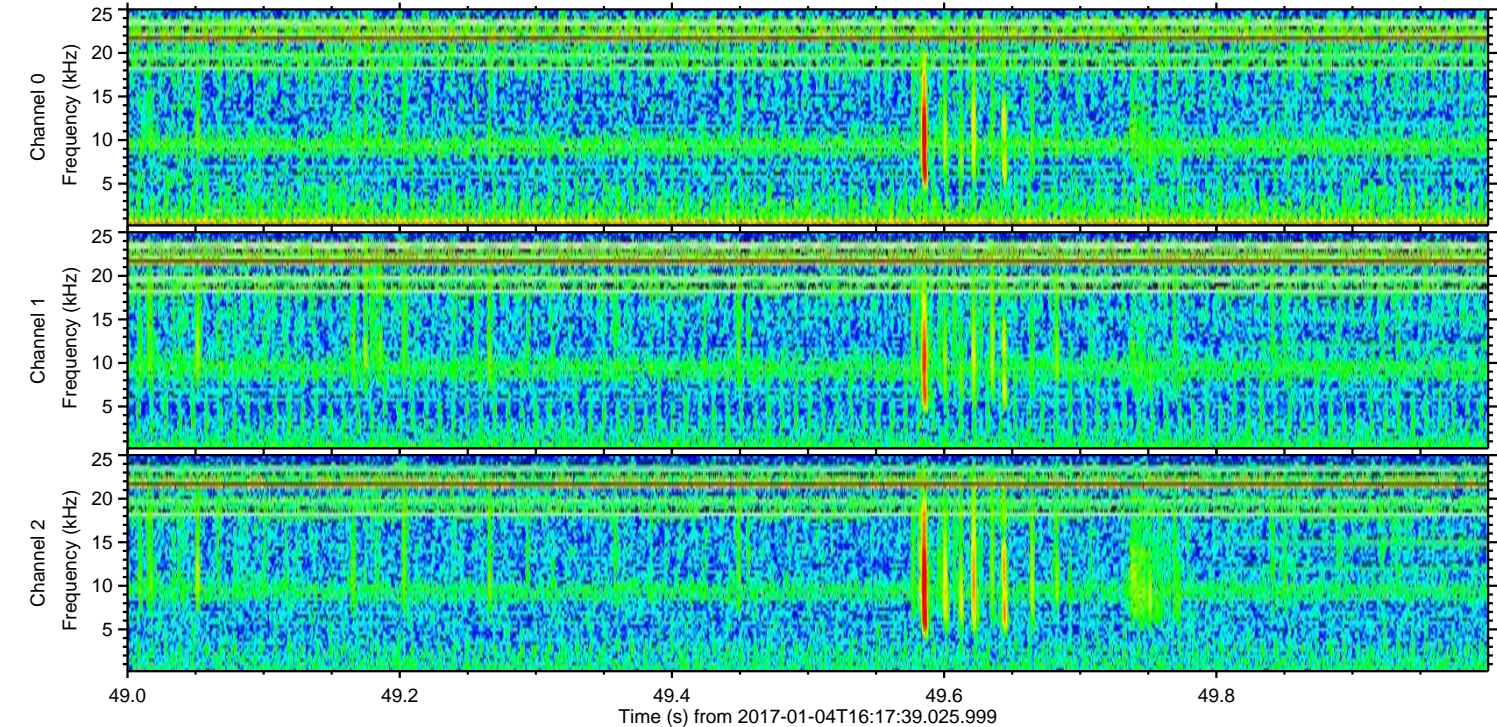
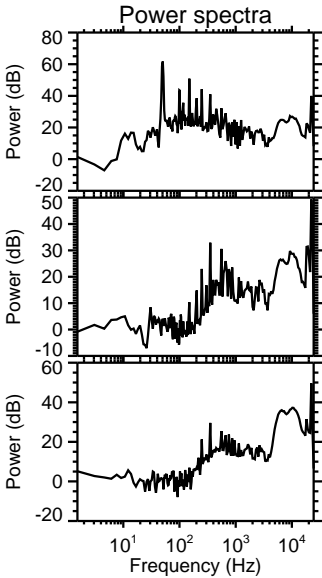
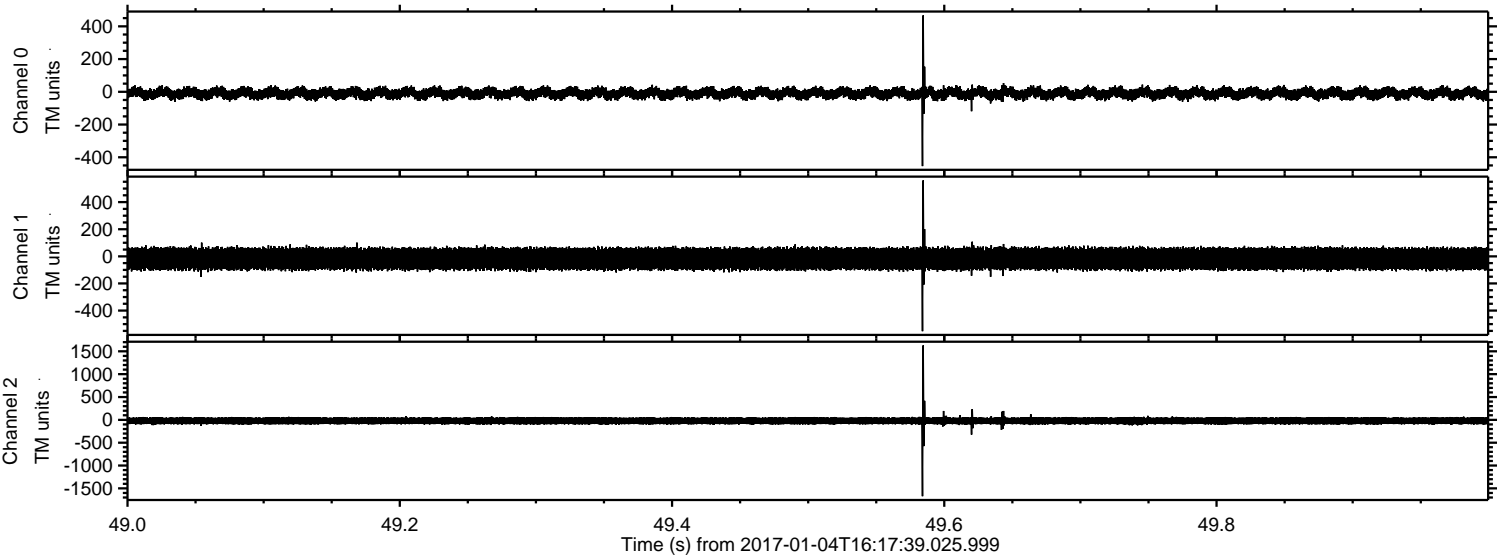


ELMAVAN 3D WAVEFORMS (Measured data sampled at 50 kHz) 51000 packets of 144 samples from 2017-01-04T16:17:39.025.999. Part 138/147

Processed Wed Jan 4 17:25:21 2017 by ELM ver.2012-10-06 from 001__elm20170104_161738__dat00.bin

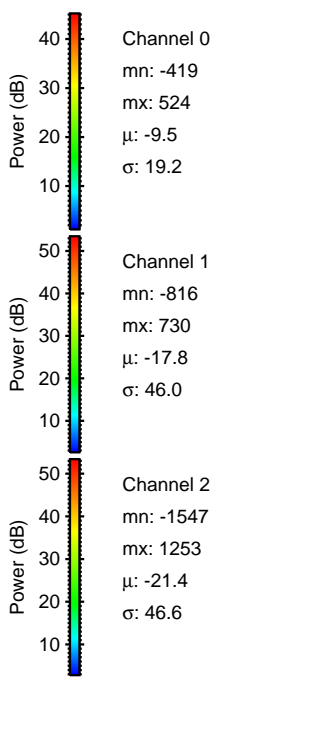
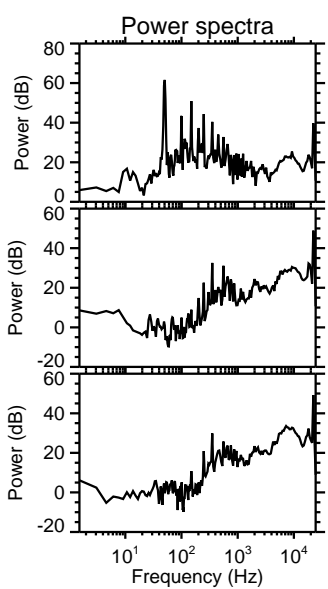
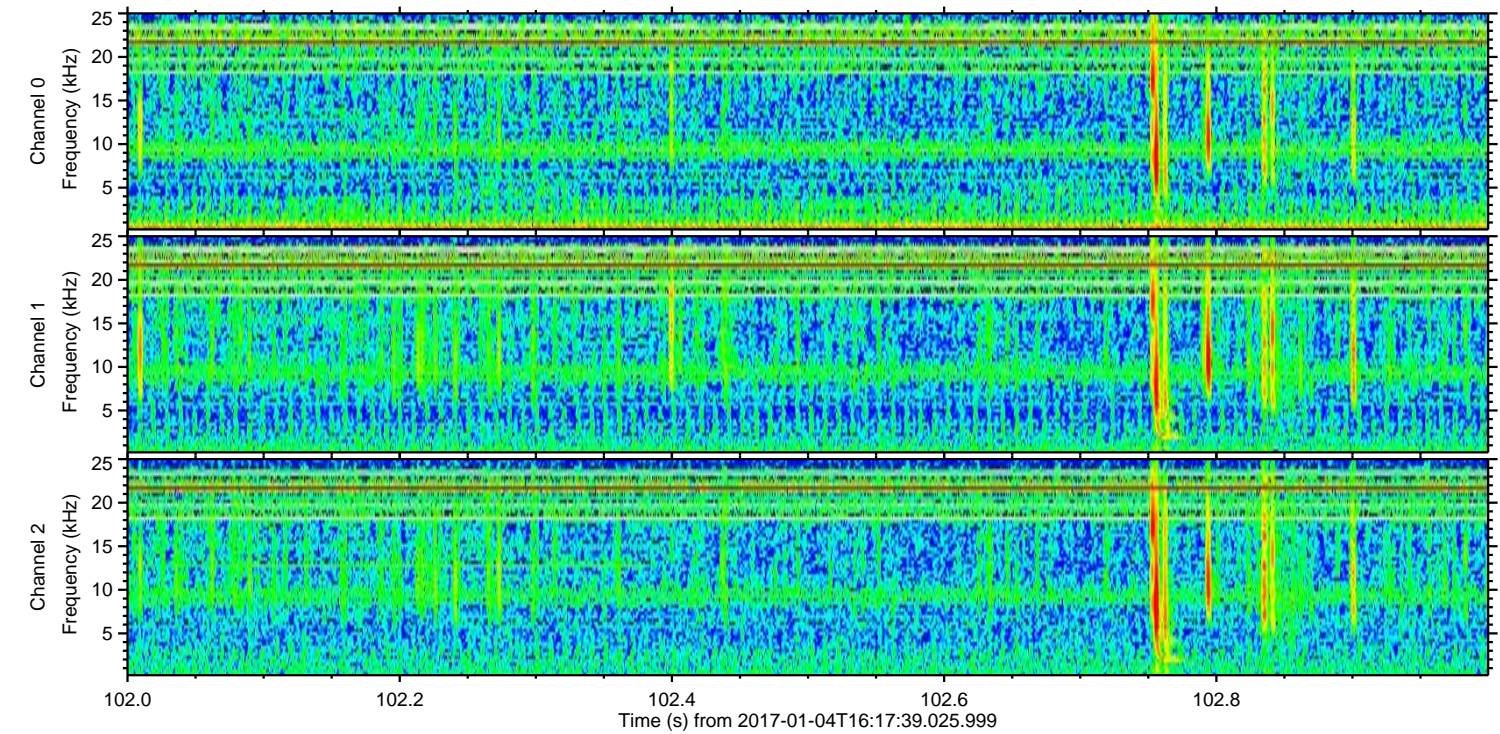
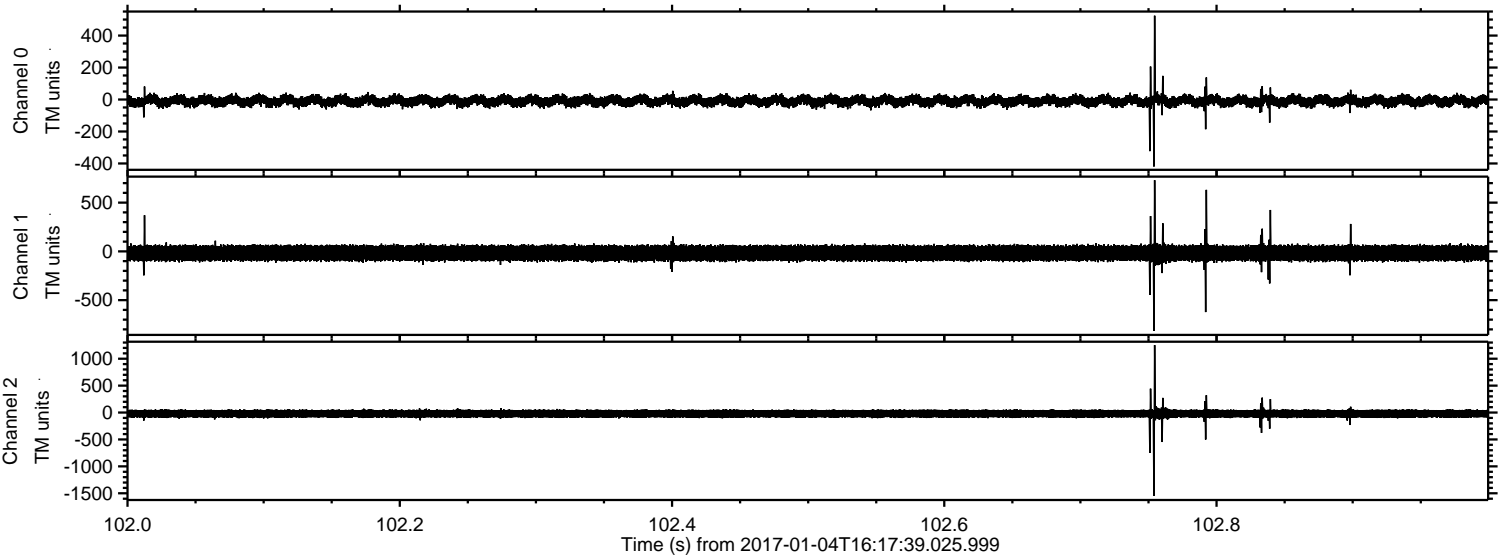


Processed Wed Jan 4 17:25:22 2017 by ELM ver.2012-10-06 from 001__elm20170104_161738__dat00.bin



ELMAVAN 3D WAVEFORMS (Measured data sampled at 50 kHz) 51000 packets of 144 samples from 2017-01-04T16:17:39.025.999. Part 103/147

Processed Wed Jan 4 17:25:23 2017 by ELM ver.2012-10-06 from 001__elm20170104_161738__dat00.bin



Processed Wed Jan 4 17:25:24 2017 by ELM ver.2012-10-06 from 001__elm20170104_161738__dat00.bin

