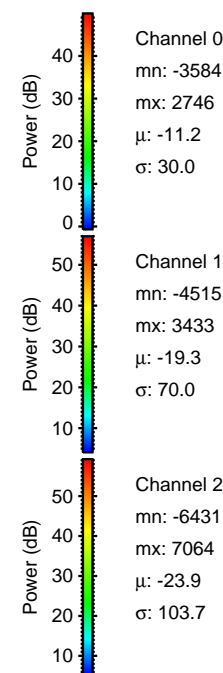
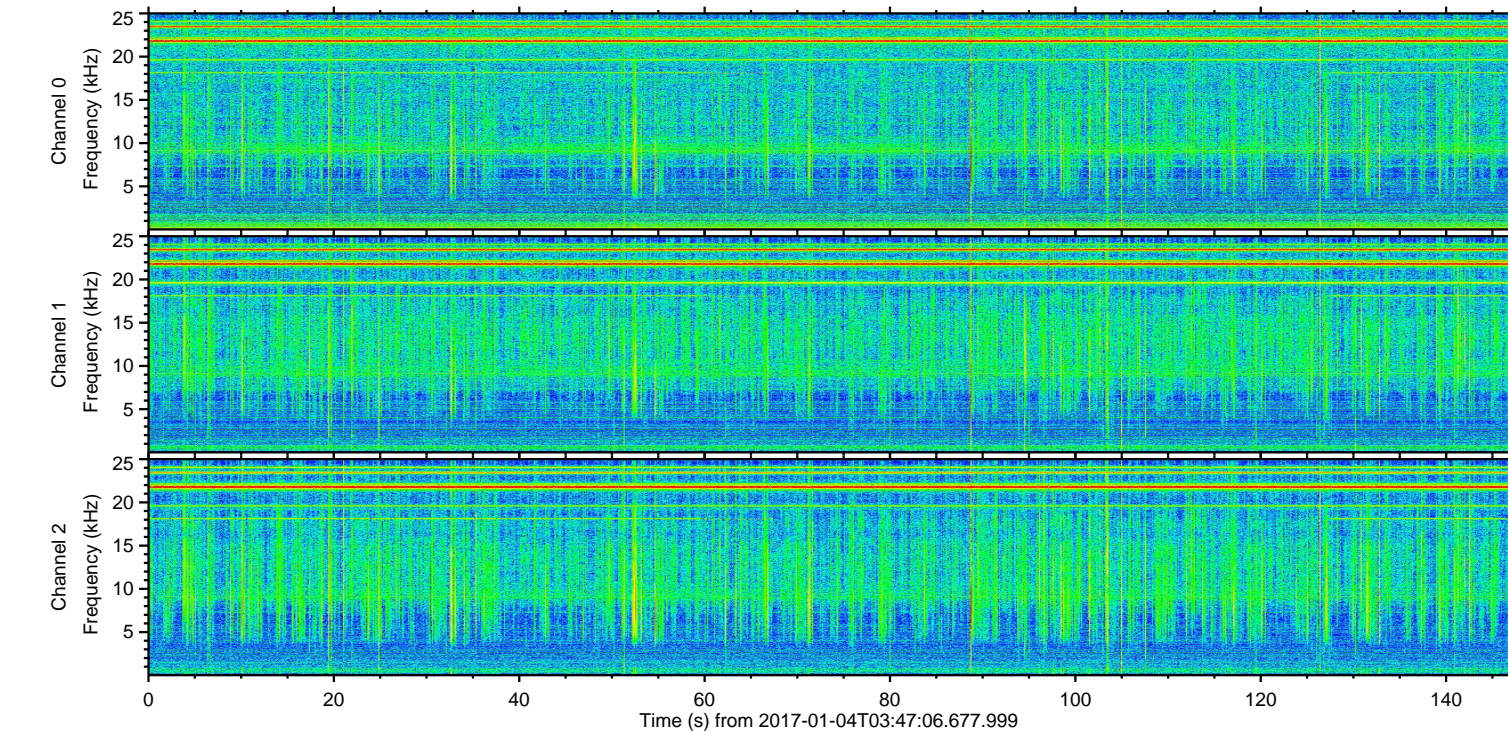
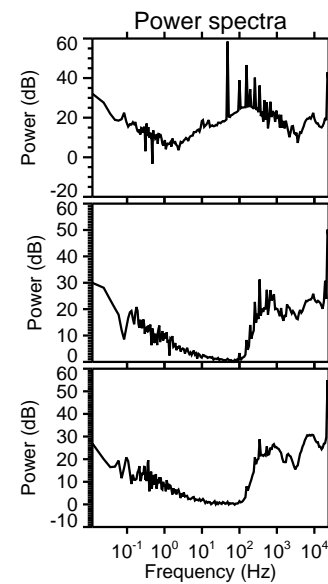
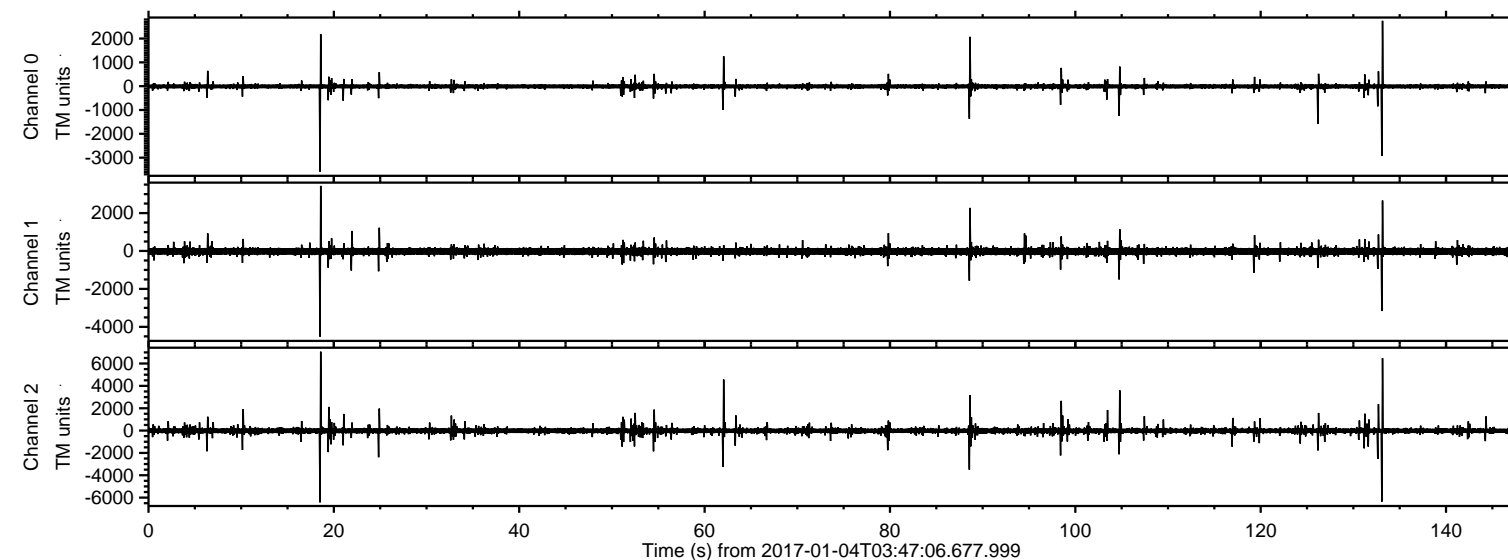


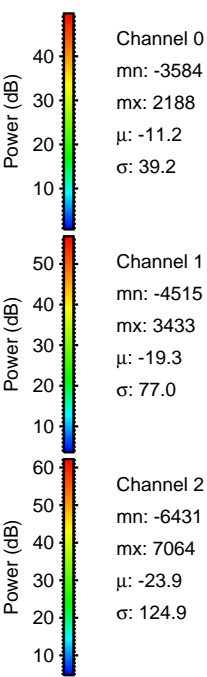
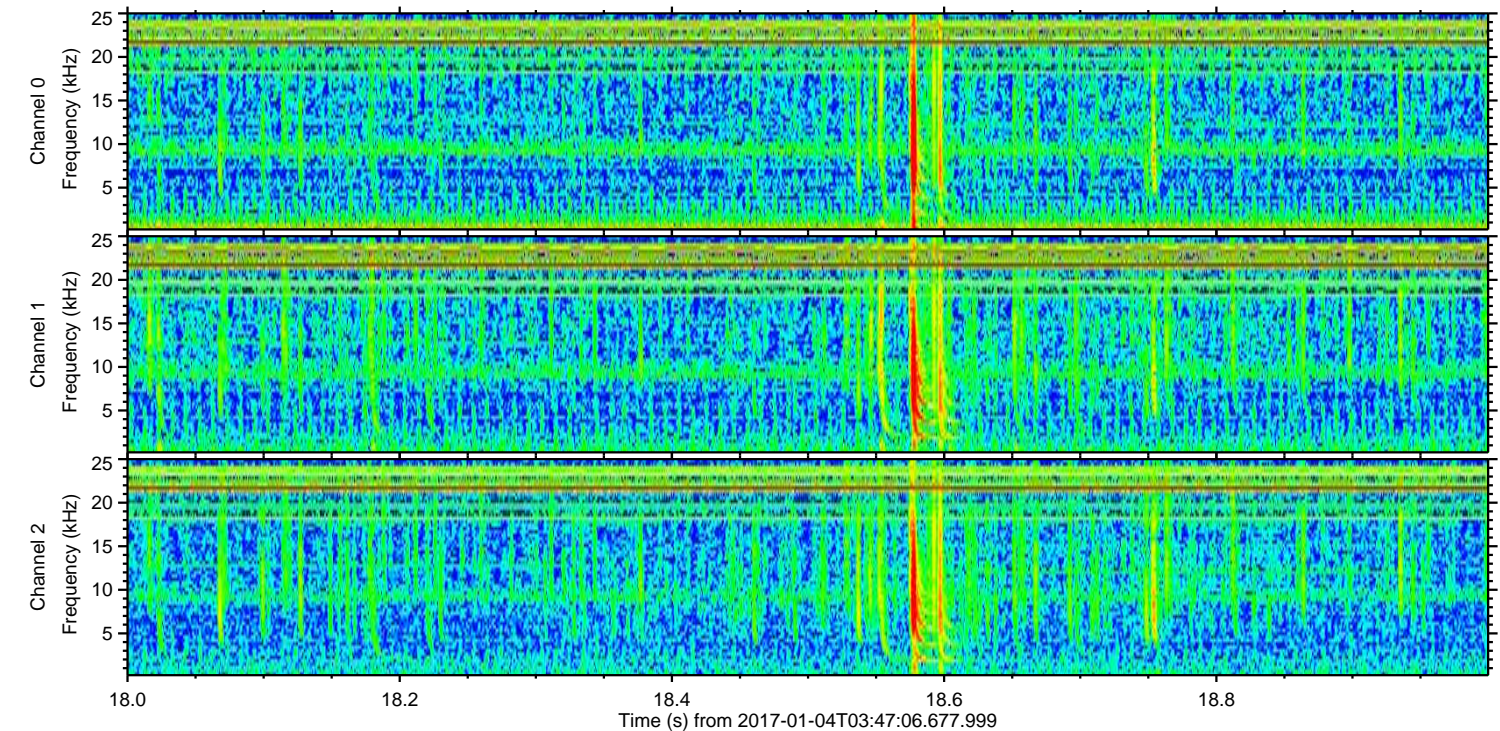
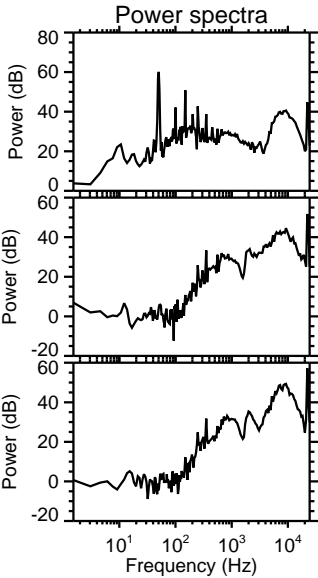
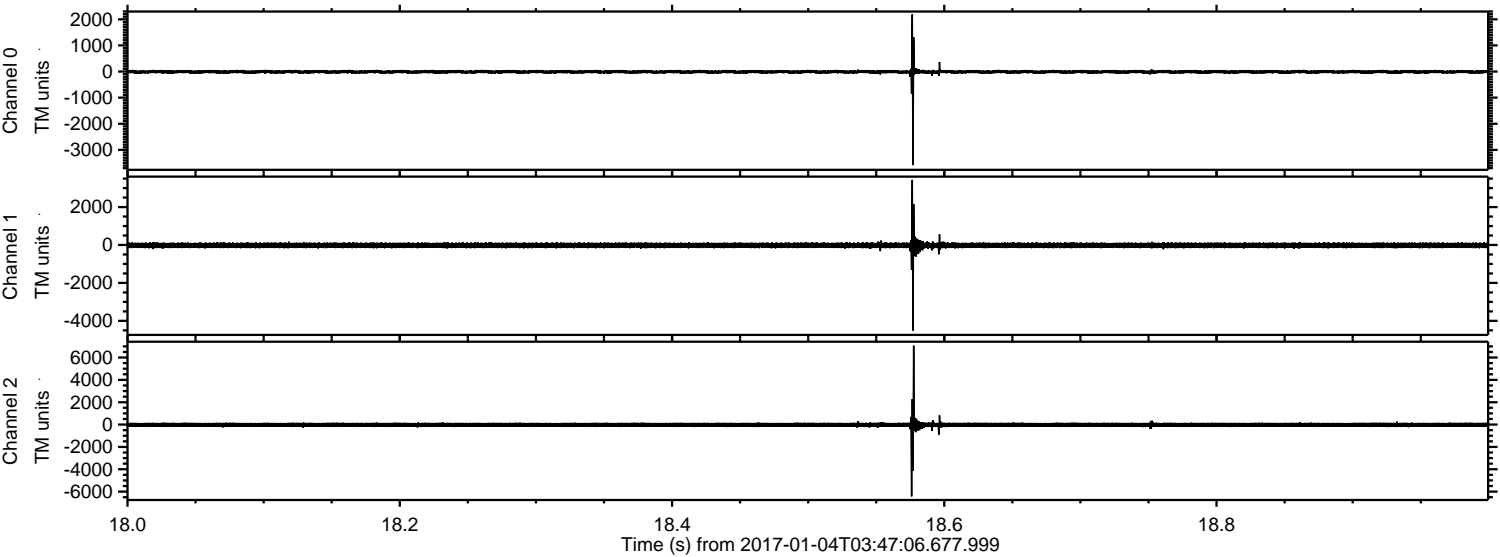
ELMAVAN 3D WAVEFORMS (Measured data sampled at 50 kHz) 51000 packets of 144 samples from 2017-01-04T03:47:06.677.999.

Processed Wed Jan 4 04:54:37 2017 by ELM ver.2012-10-06 from 001__elm20170104_034705__dat00.bin



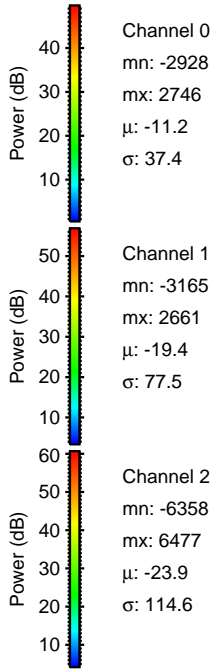
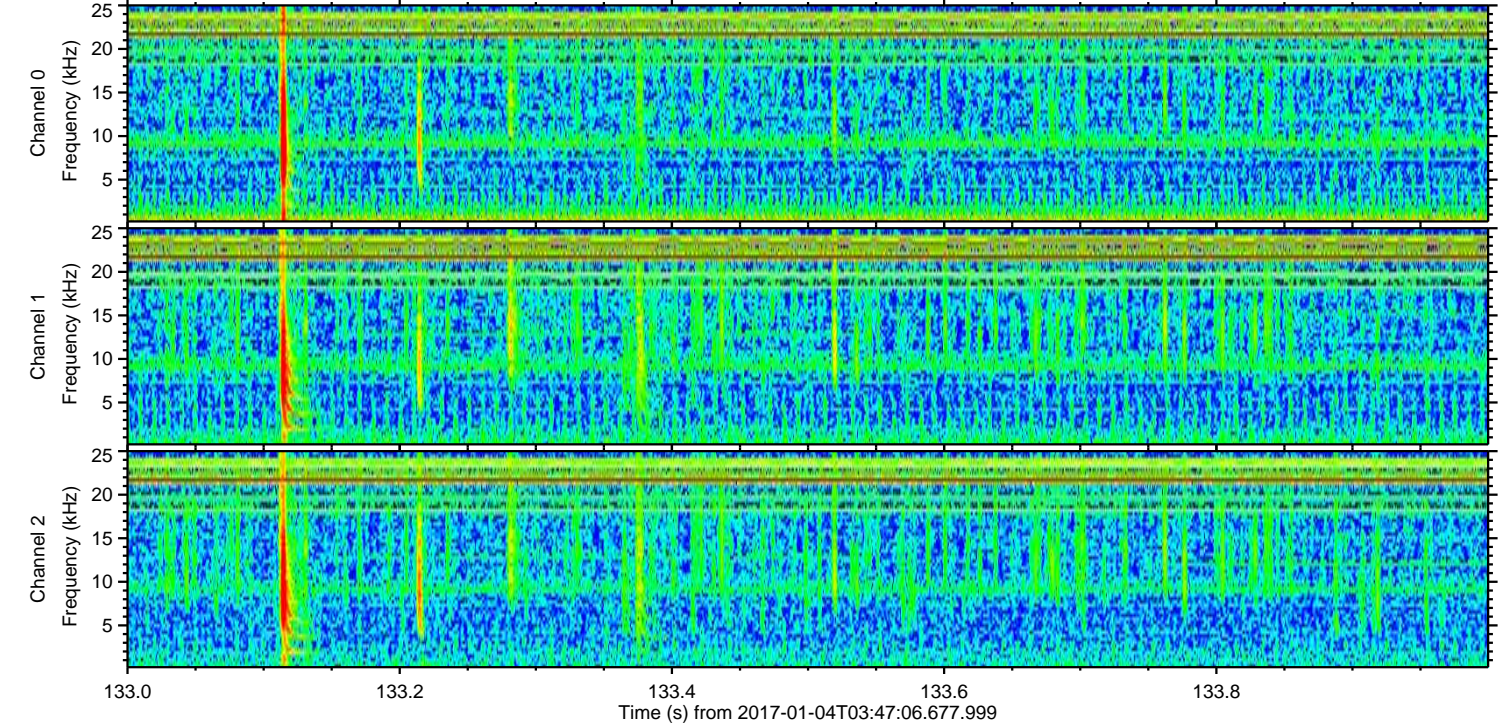
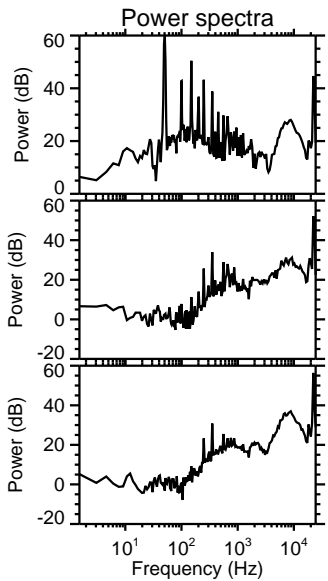
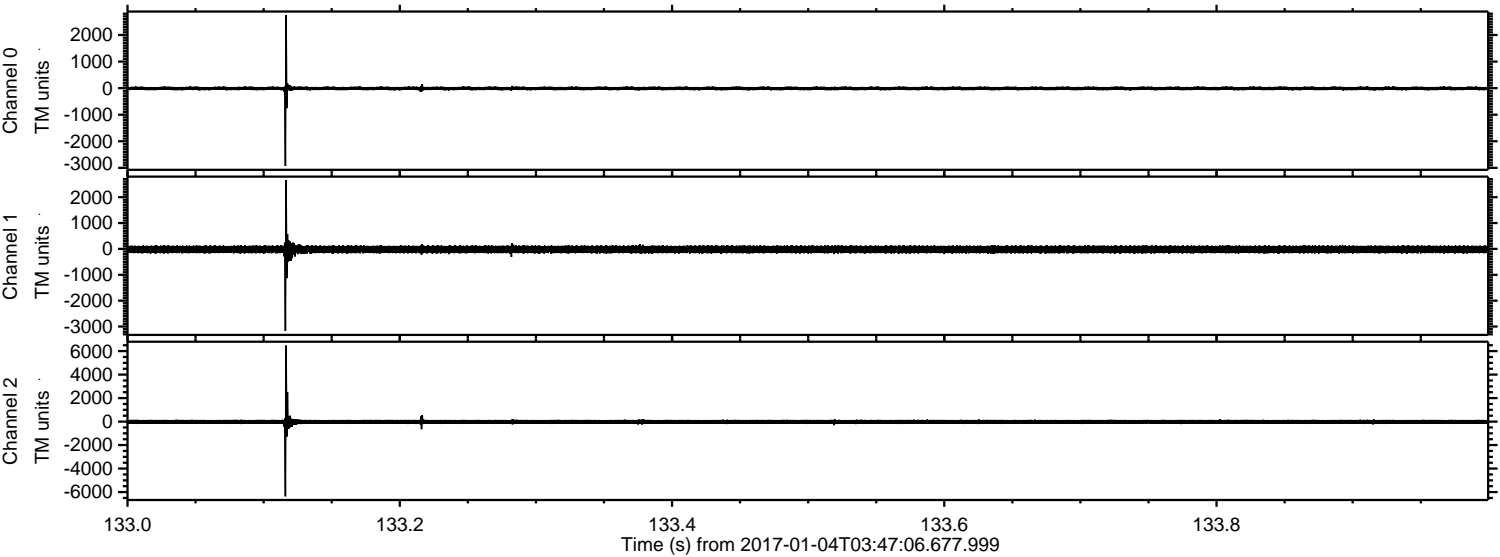
ELMAVAN 3D WAVEFORMS (Measured data sampled at 50 kHz) 51000 packets of 144 samples from 2017-01-04T03:47:06.677.999. Part 19/147

Processed Wed Jan 4 04:54:48 2017 by ELM ver.2012-10-06 from 001__elm20170104_034705__dat00.bin



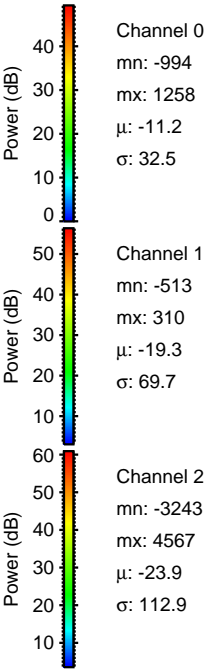
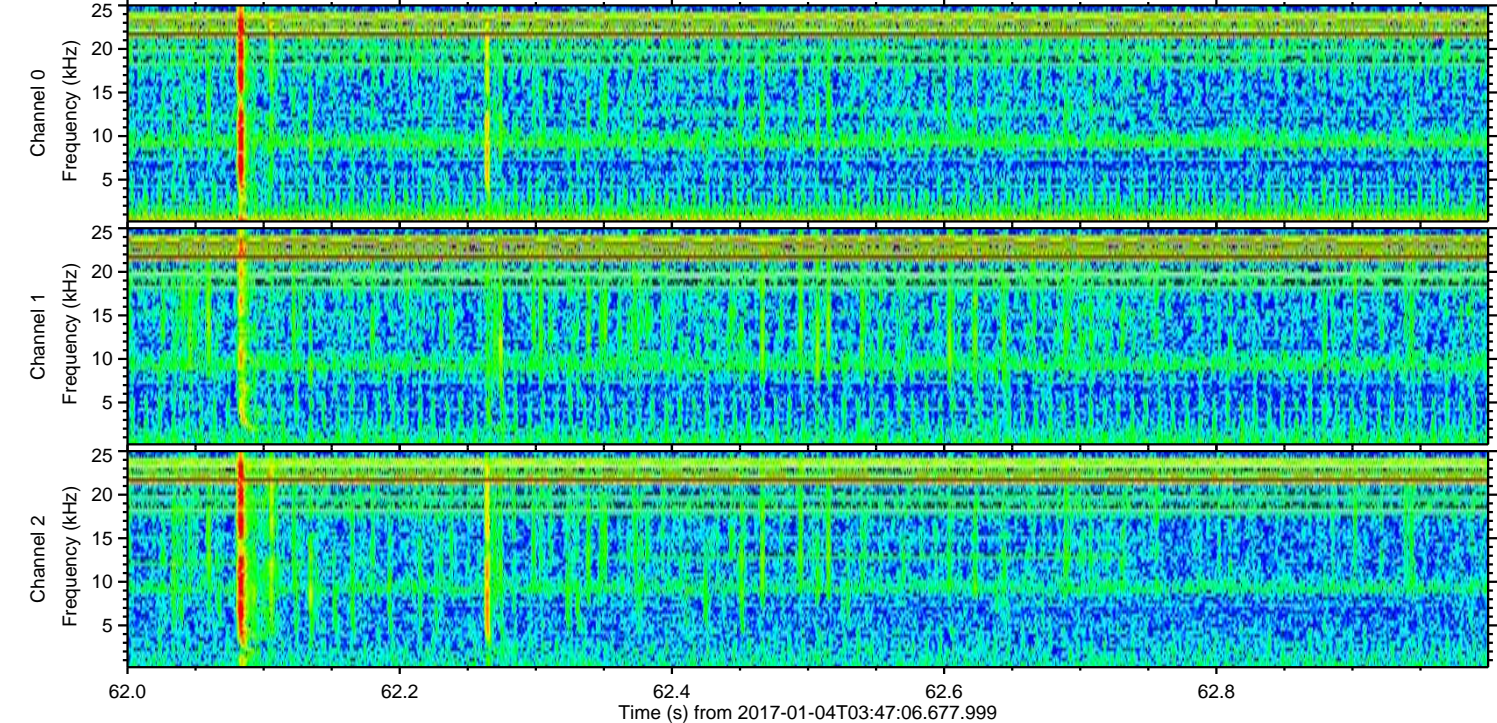
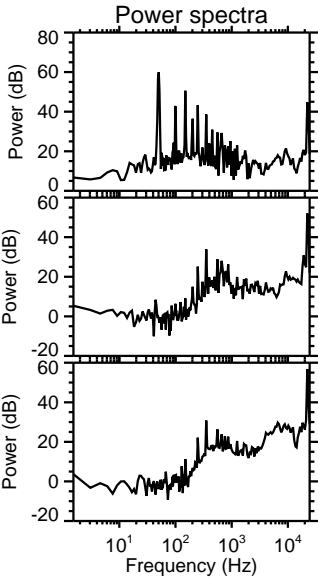
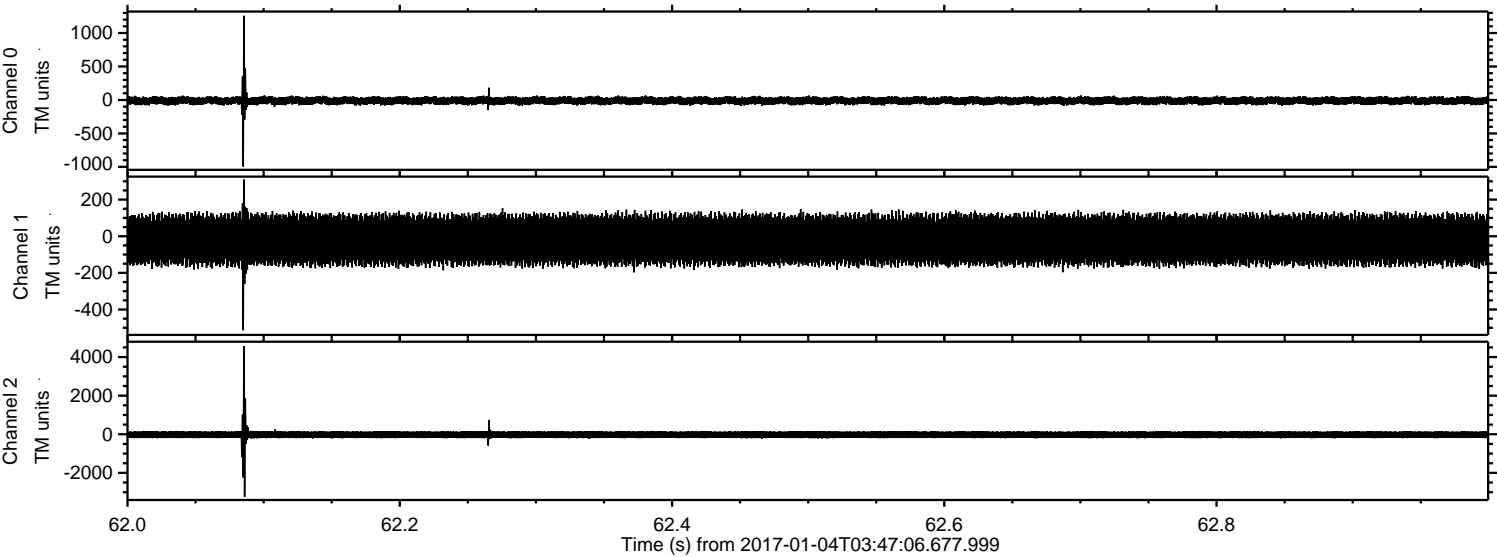
ELMAVAN 3D WAVEFORMS (Measured data sampled at 50 kHz) 51000 packets of 144 samples from 2017-01-04T03:47:06.677.999. Part 134/147

Processed Wed Jan 4 04:54:49 2017 by ELM ver.2012-10-06 from 001__elm20170104_034705__dat00.bin



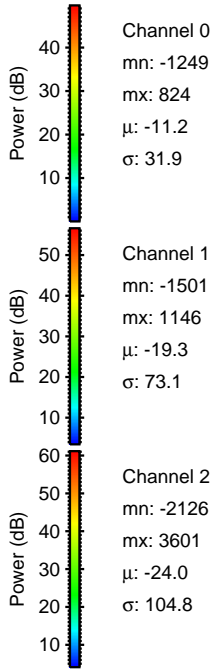
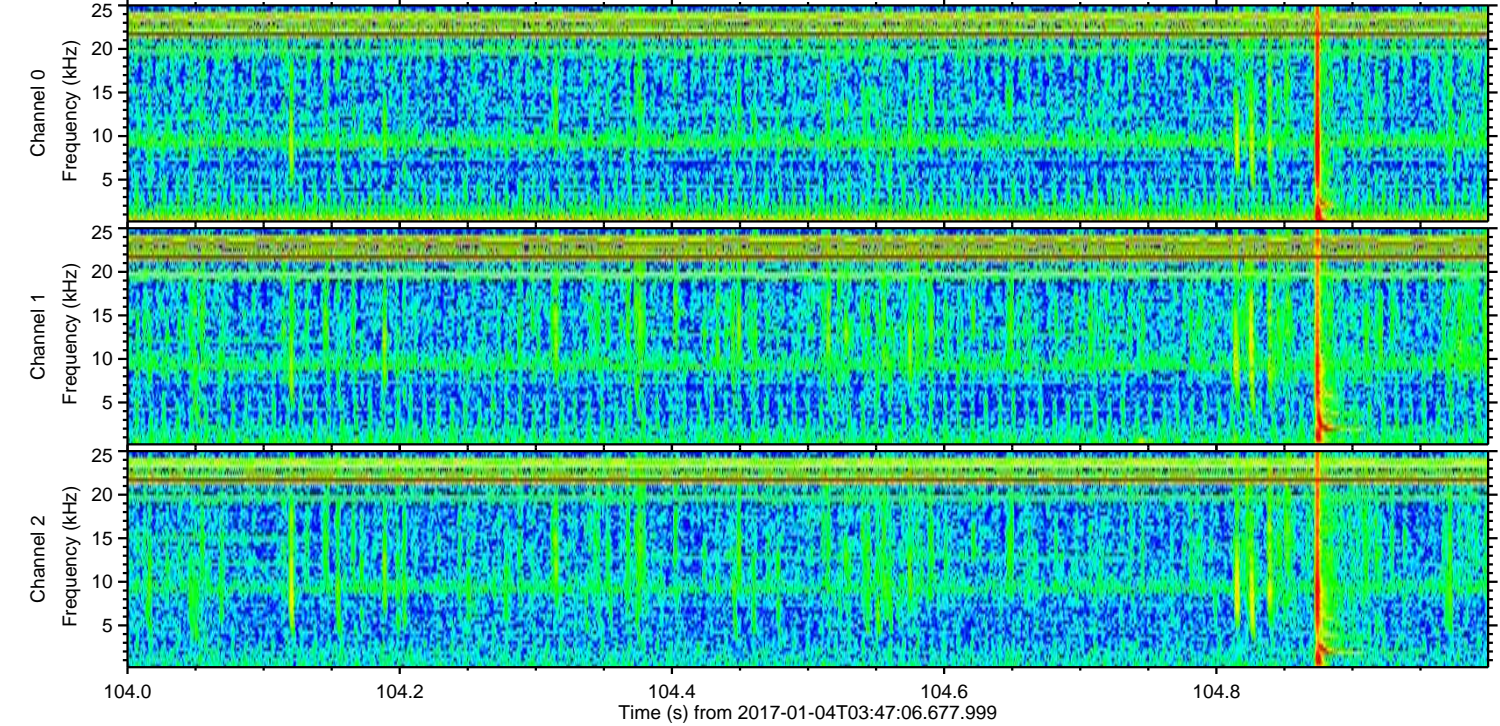
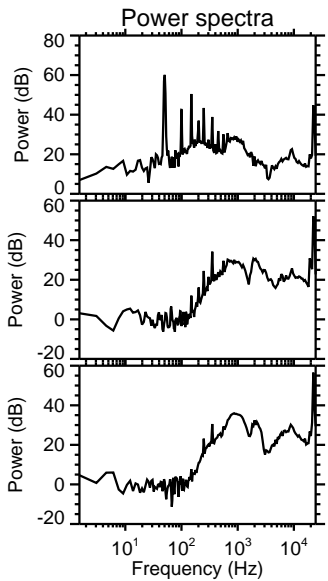
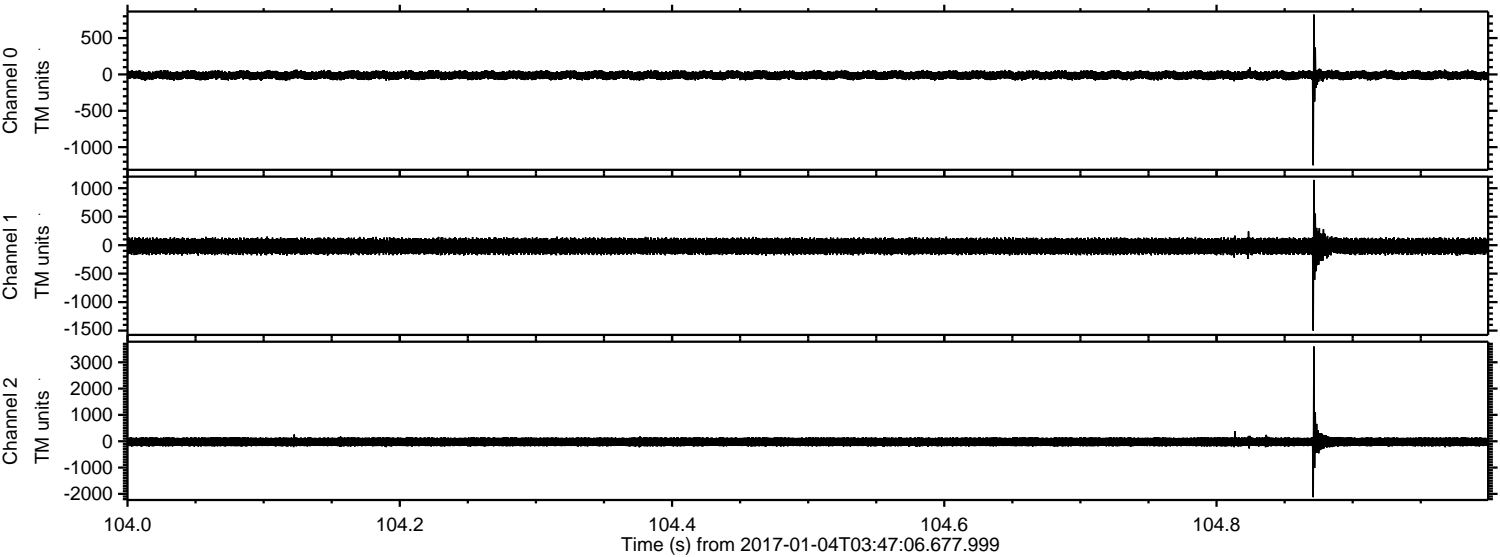
ELMAVAN 3D WAVEFORMS (Measured data sampled at 50 kHz) 51000 packets of 144 samples from 2017-01-04T03:47:06.677.999. Part 63/147

Processed Wed Jan 4 04:54:50 2017 by ELM ver.2012-10-06 from 001__elm20170104_034705__dat00.bin



ELMAVAN 3D WAVEFORMS (Measured data sampled at 50 kHz) 51000 packets of 144 samples from 2017-01-04T03:47:06.677.999. Part 105/147

Processed Wed Jan 4 04:54:51 2017 by ELM ver.2012-10-06 from 001__elm20170104_034705__dat00.bin



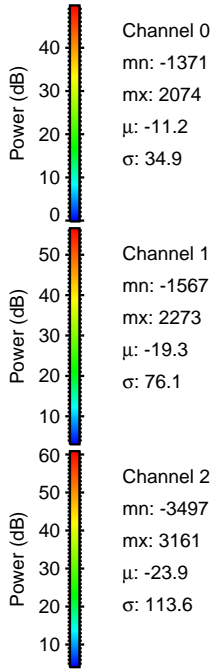
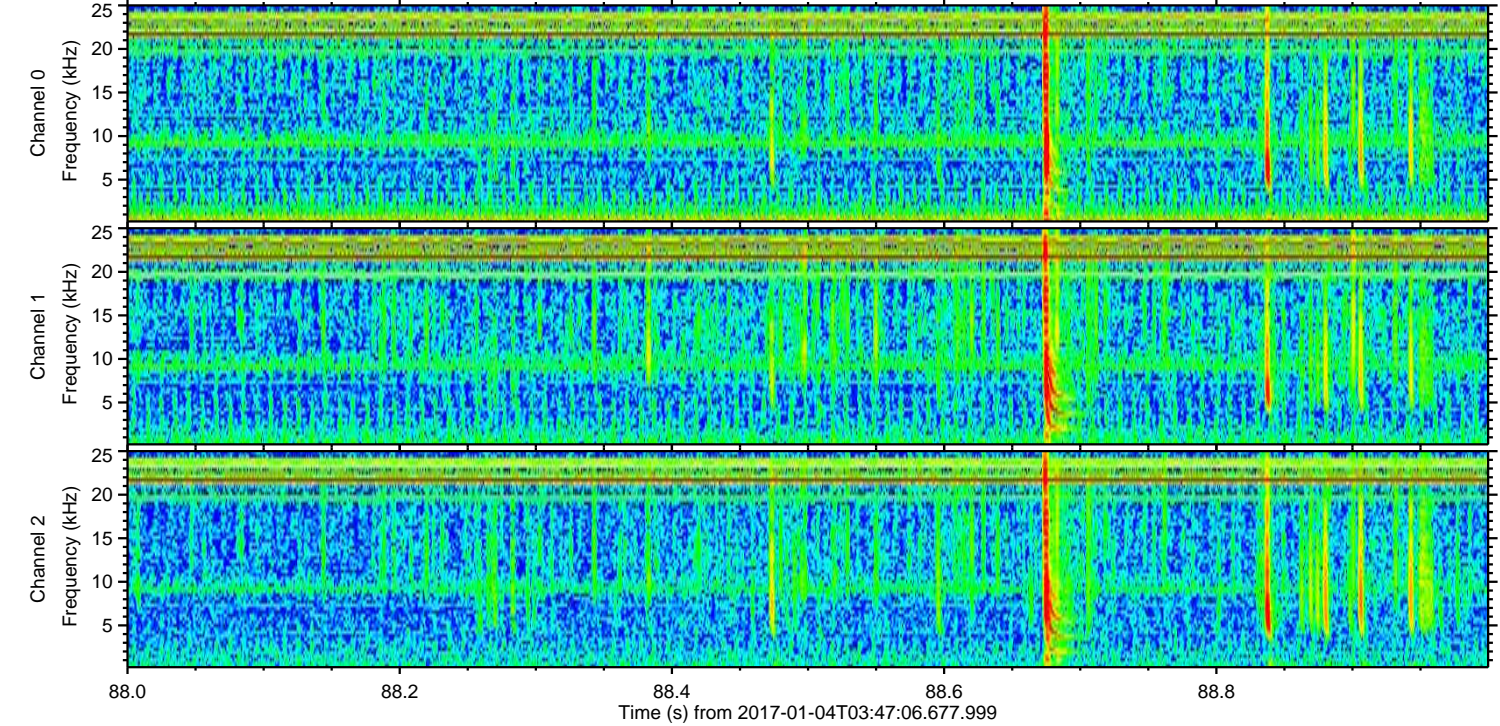
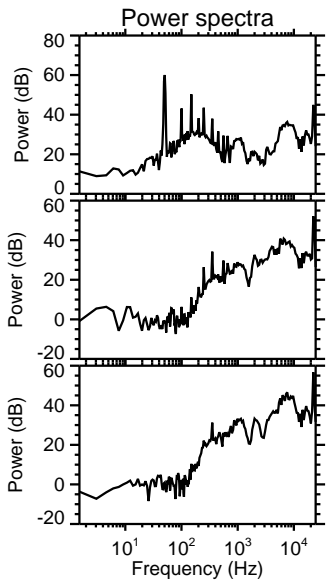
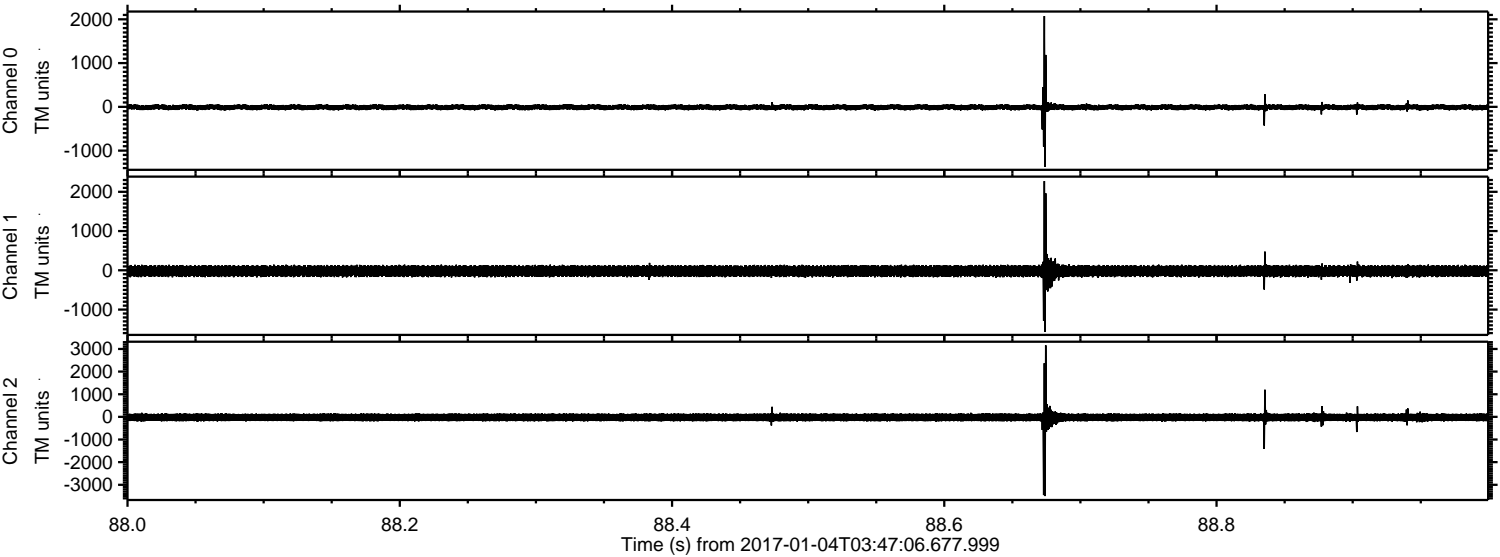
Channel 0
mn: -1249
mx: 824
 μ : -11.2
 σ : 31.9

Channel 1
mn: -1501
mx: 1146
 μ : -19.3
 σ : 73.1

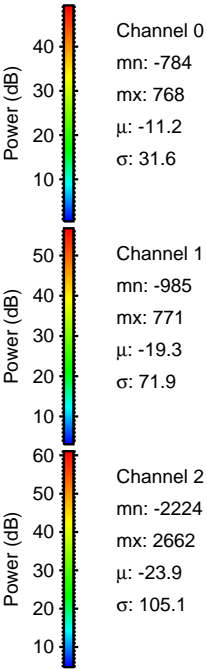
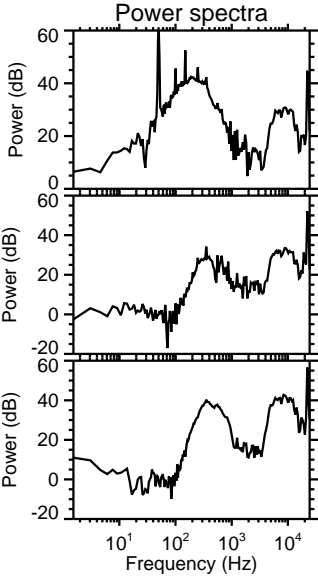
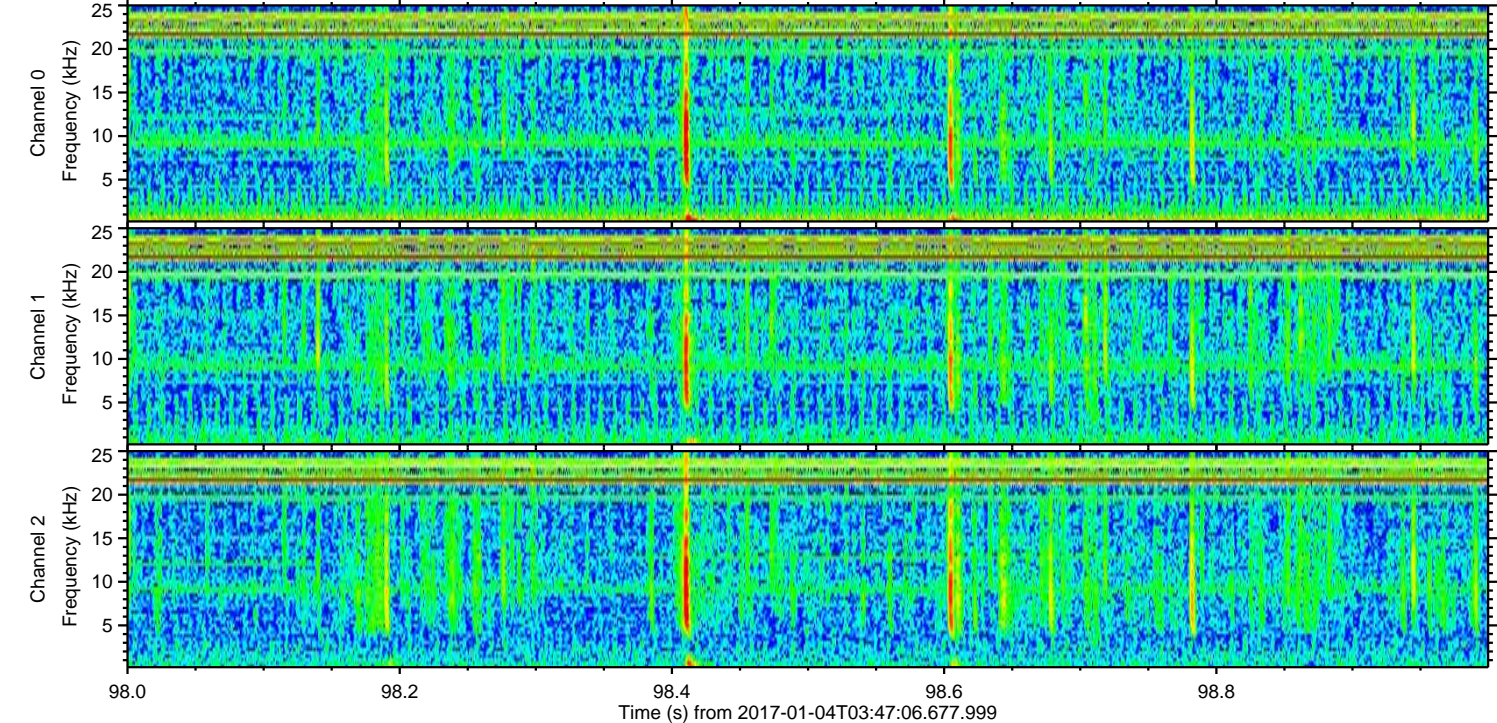
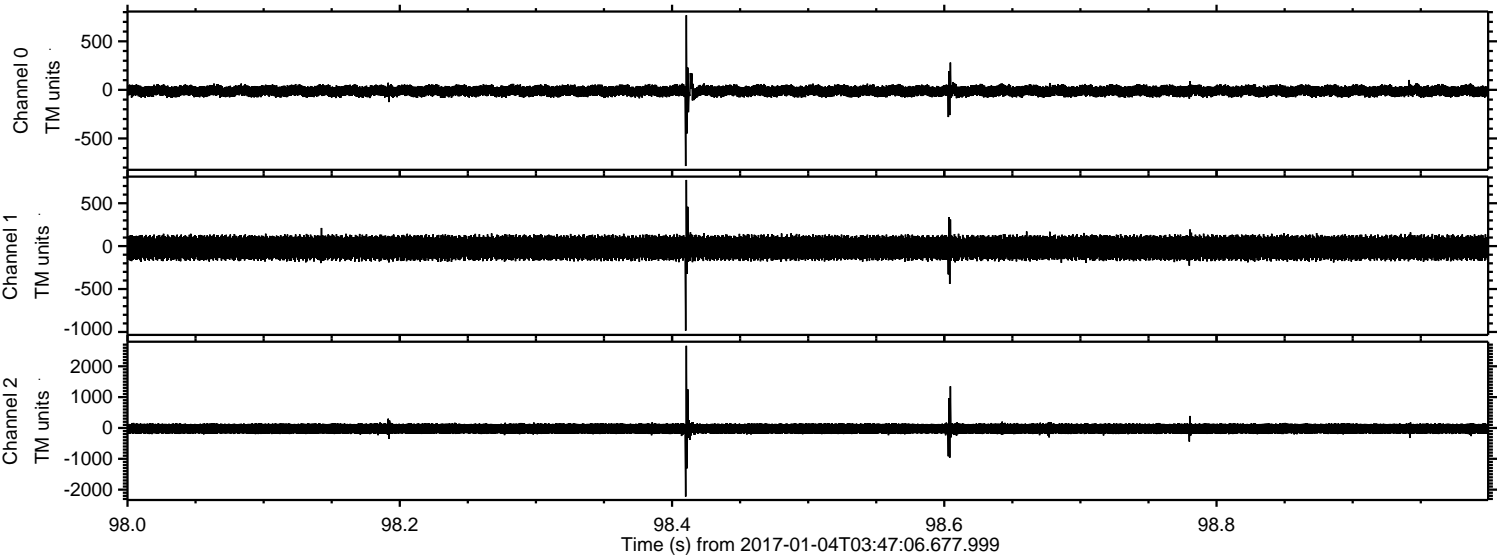
Channel 2
mn: -2126
mx: 3601
 μ : -24.0
 σ : 104.8

ELMAVAN 3D WAVEFORMS (Measured data sampled at 50 kHz) 51000 packets of 144 samples from 2017-01-04T03:47:06.677.999. Part 89/147

Processed Wed Jan 4 04:54:52 2017 by ELM ver.2012-10-06 from 001__elm20170104_034705__dat00.bin

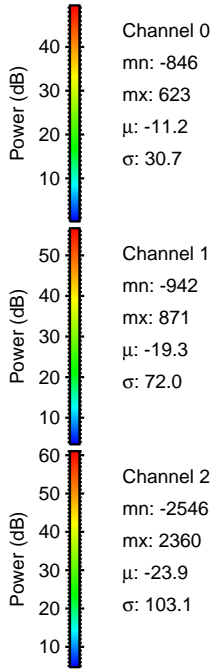
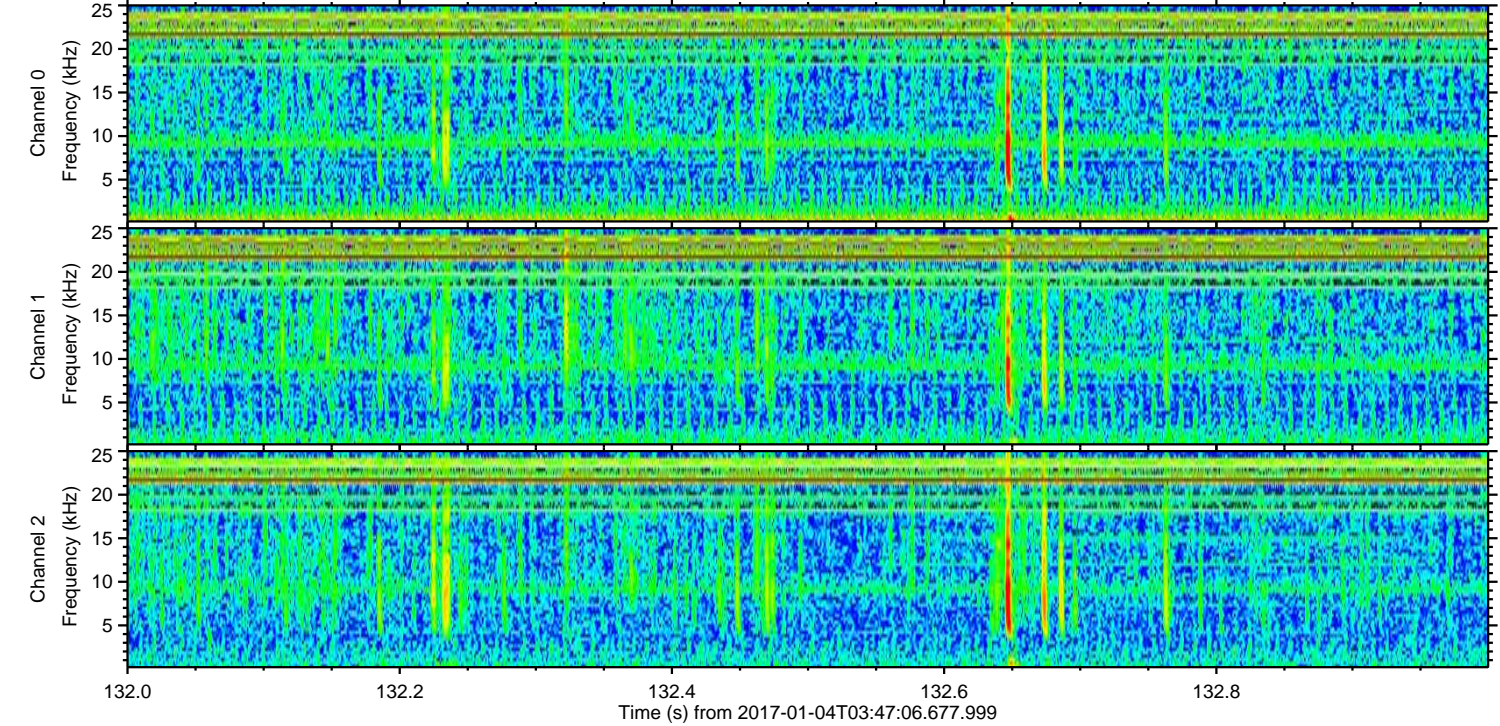
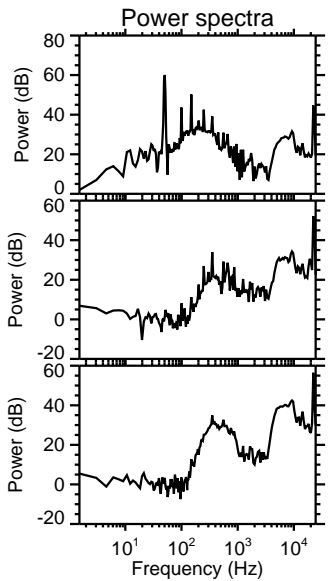
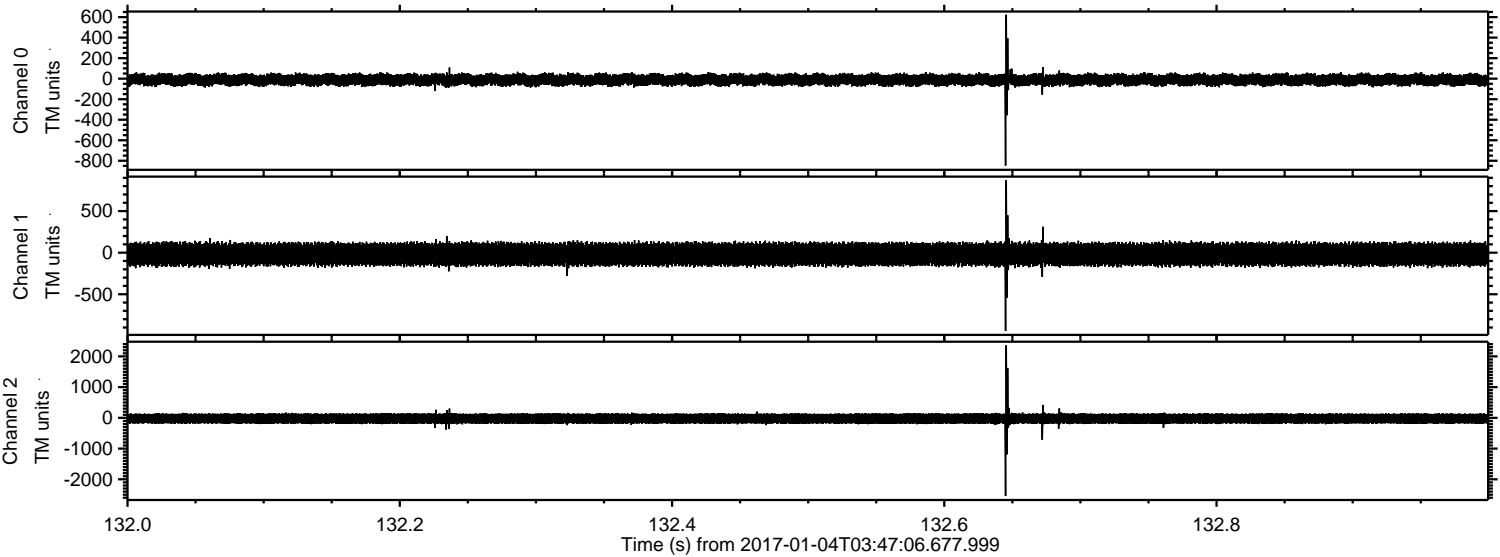


Processed Wed Jan 4 04:54:53 2017 by ELM ver.2012-10-06 from 001__elm20170104_034705__dat00.bin



ELMAVAN 3D WAVEFORMS (Measured data sampled at 50 kHz) 51000 packets of 144 samples from 2017-01-04T03:47:06.677.999. Part 133/147

Processed Wed Jan 4 04:54:54 2017 by ELM ver.2012-10-06 from 001__elm20170104_034705__dat00.bin



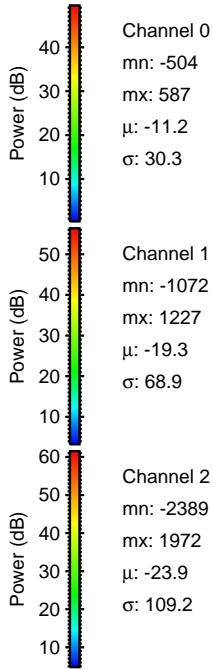
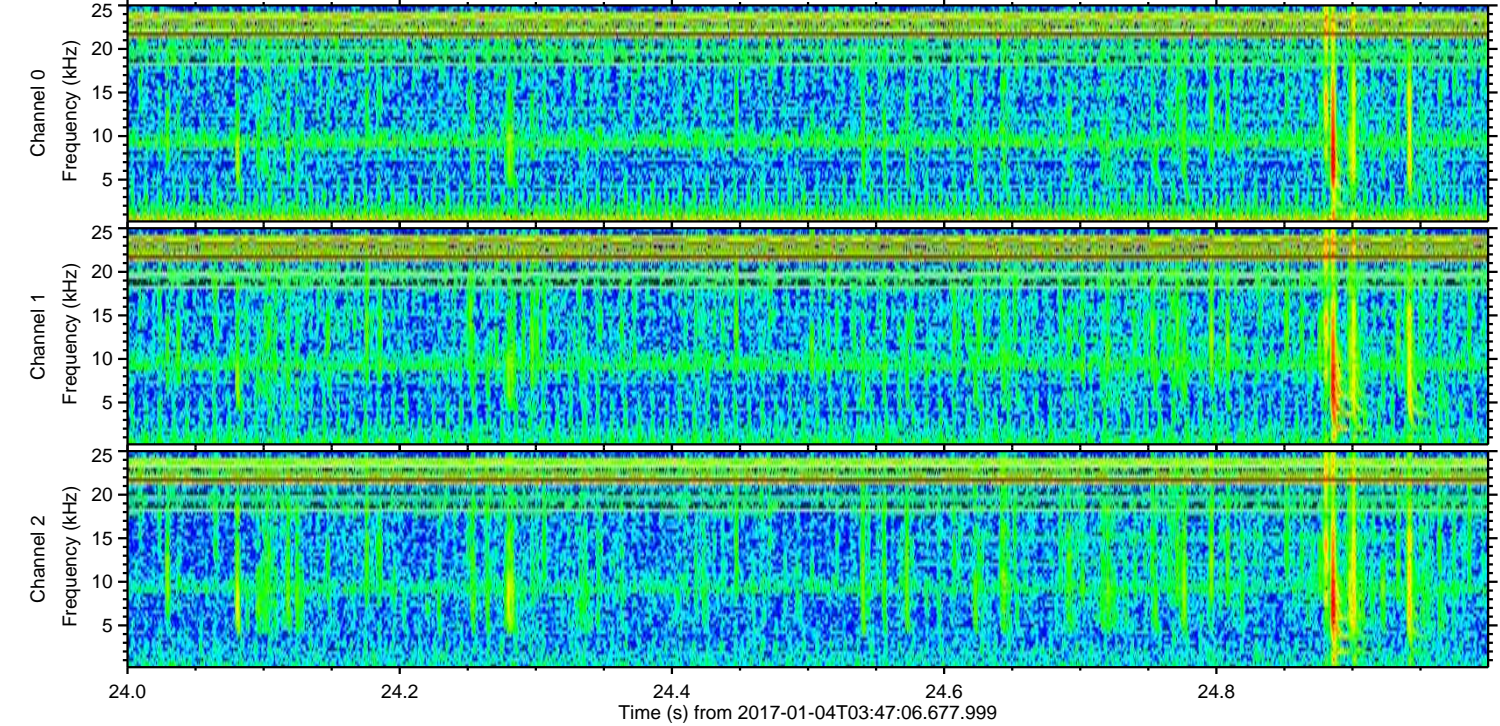
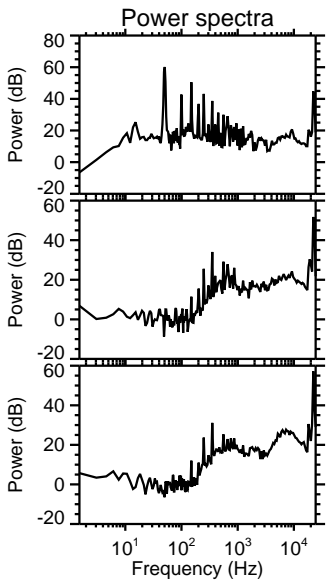
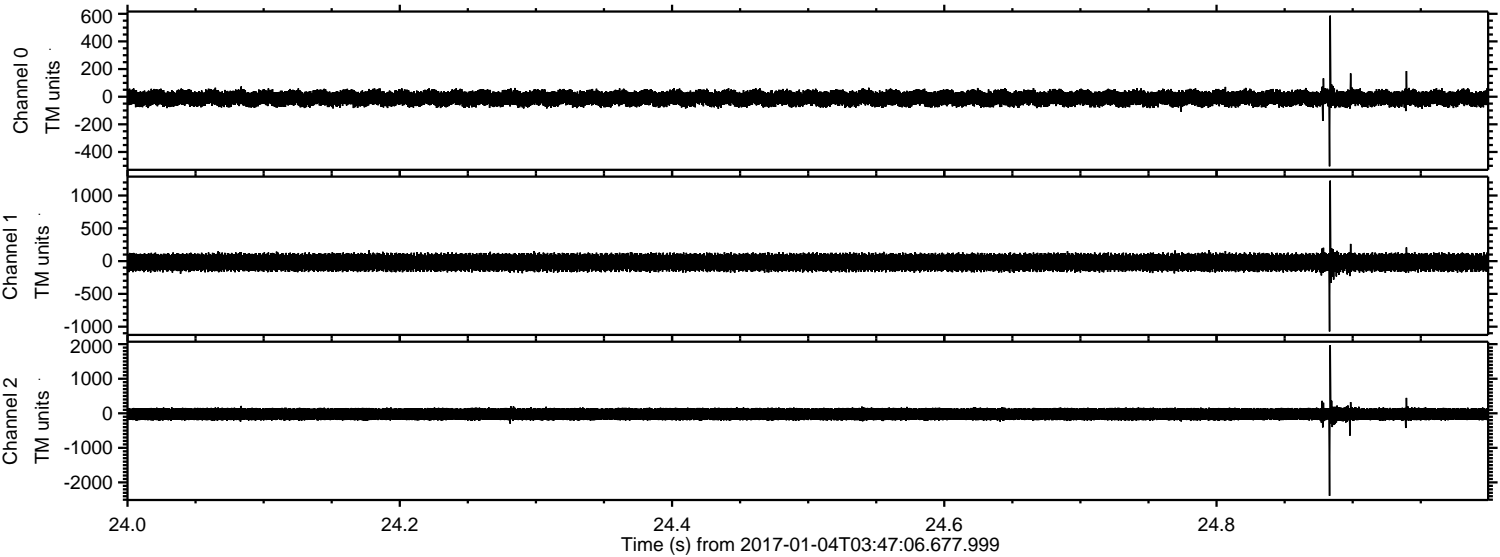
Channel 0
mn: -846
mx: 623
 μ : -11.2
 σ : 30.7

Channel 1
mn: -942
mx: 871
 μ : -19.3
 σ : 72.0

Channel 2
mn: -2546
mx: 2360
 μ : -23.9
 σ : 103.1

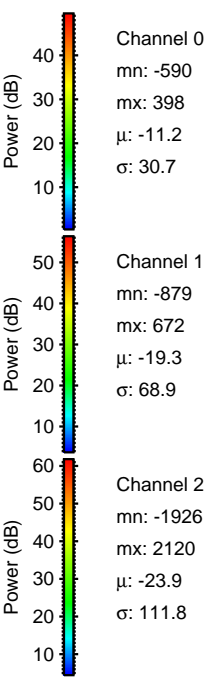
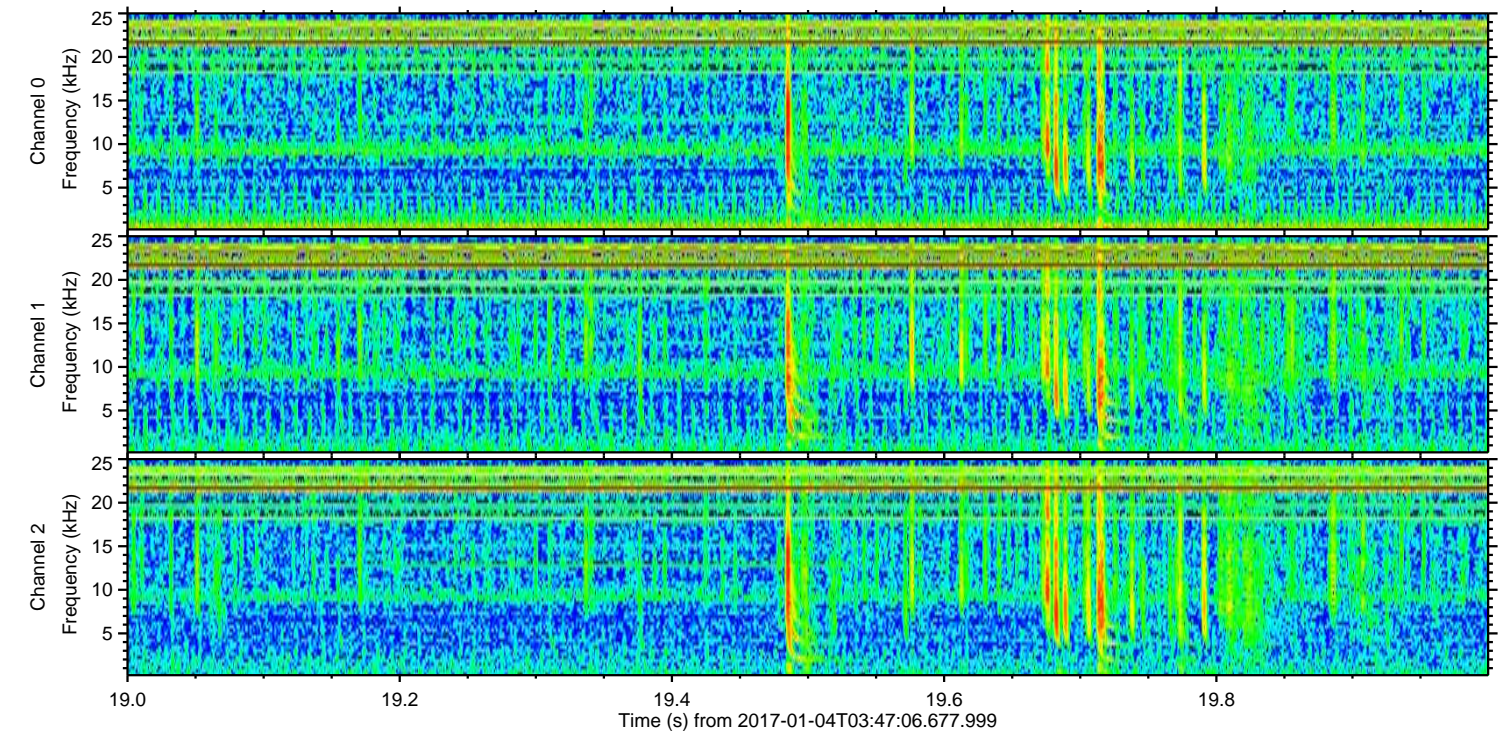
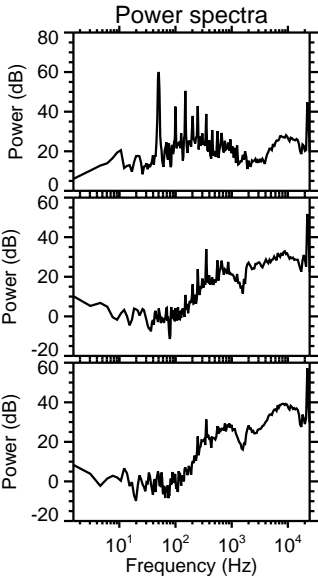
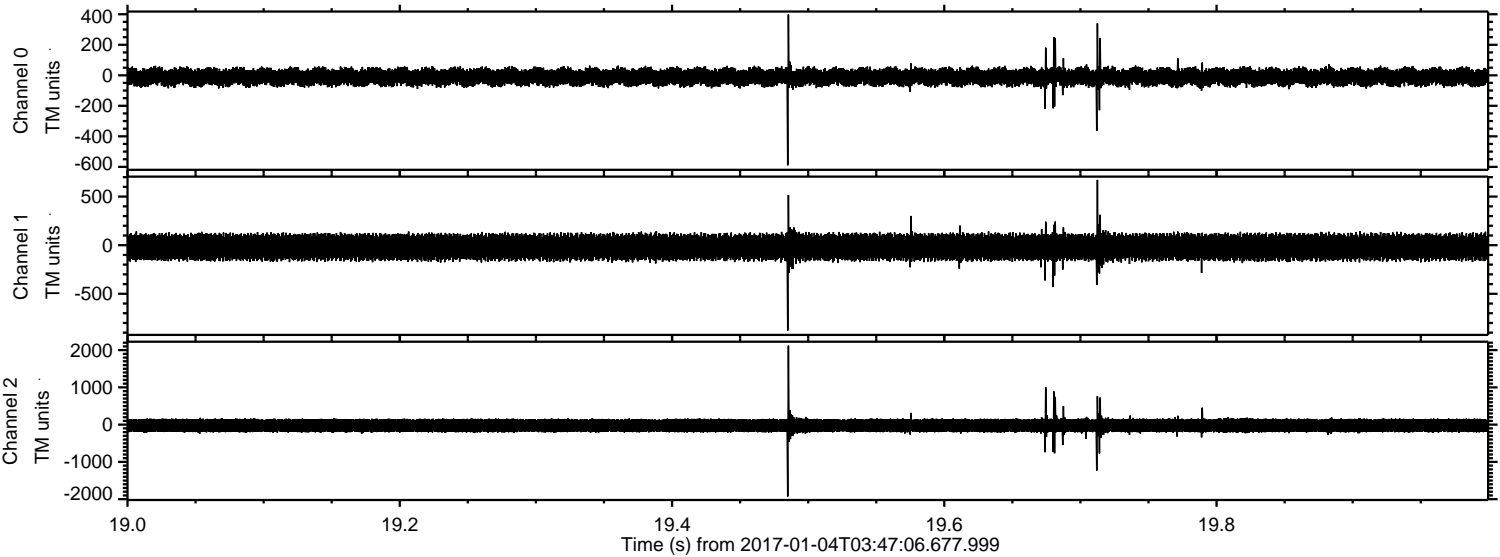
ELMAVAN 3D WAVEFORMS (Measured data sampled at 50 kHz) 51000 packets of 144 samples from 2017-01-04T03:47:06.677.999. Part 25/147

Processed Wed Jan 4 04:54:55 2017 by ELM ver.2012-10-06 from 001__elm20170104_034705__dat00.bin



ELMAVAN 3D WAVEFORMS (Measured data sampled at 50 kHz) 51000 packets of 144 samples from 2017-01-04T03:47:06.677.999. Part 20/147

Processed Wed Jan 4 04:54:56 2017 by ELM ver.2012-10-06 from 001__elm20170104_034705__dat00.bin



ELMAVAN 3D WAVEFORMS (Measured data sampled at 50 kHz) 51000 packets of 144 samples from 2017-01-04T03:47:06.677.999. Part 40/147

Processed Wed Jan 4 04:54:57 2017 by ELM ver.2012-10-06 from 001__elm20170104_034705__dat00.bin

