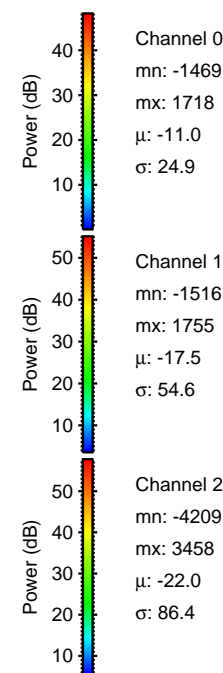
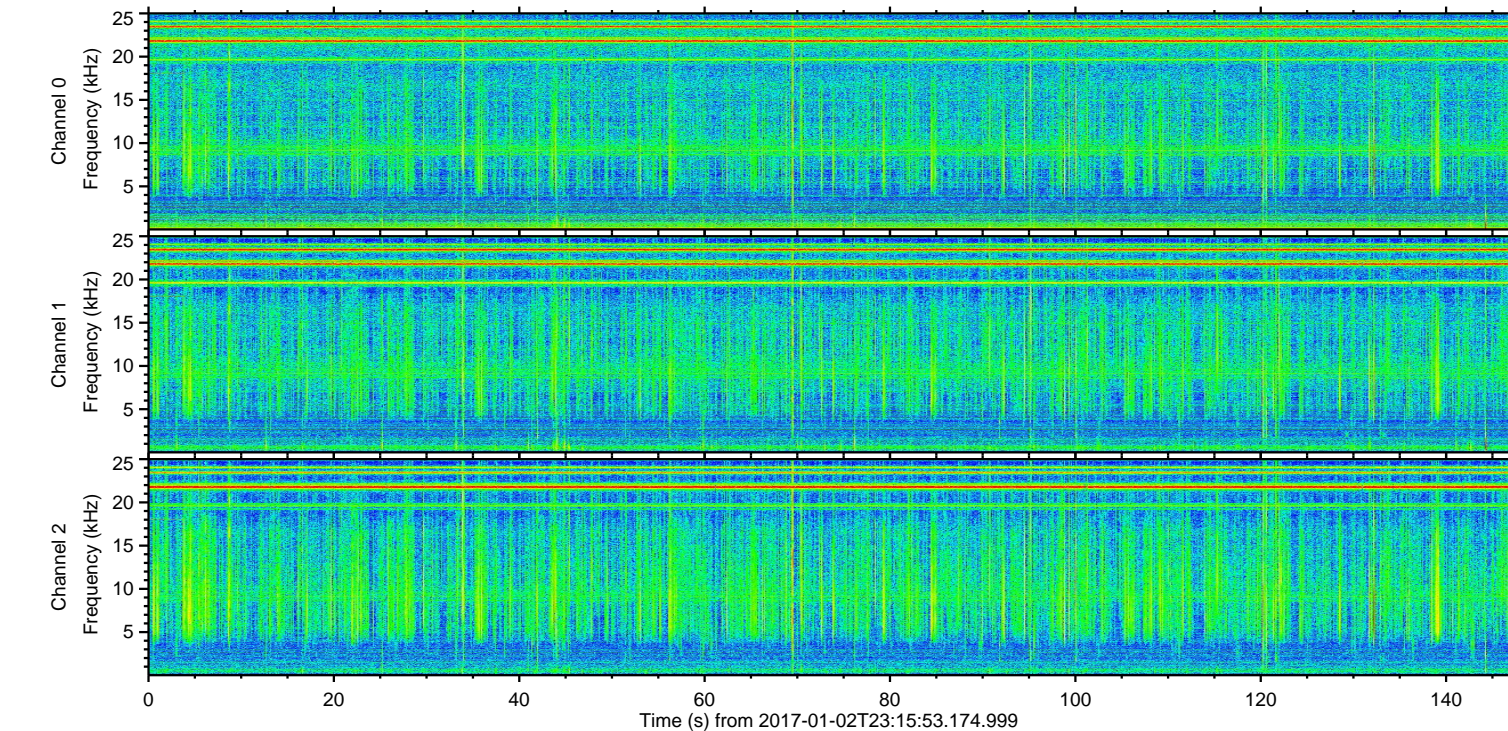
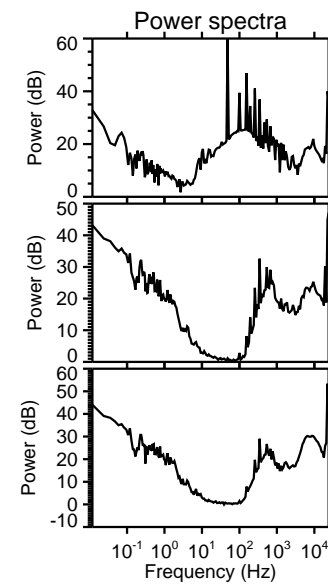
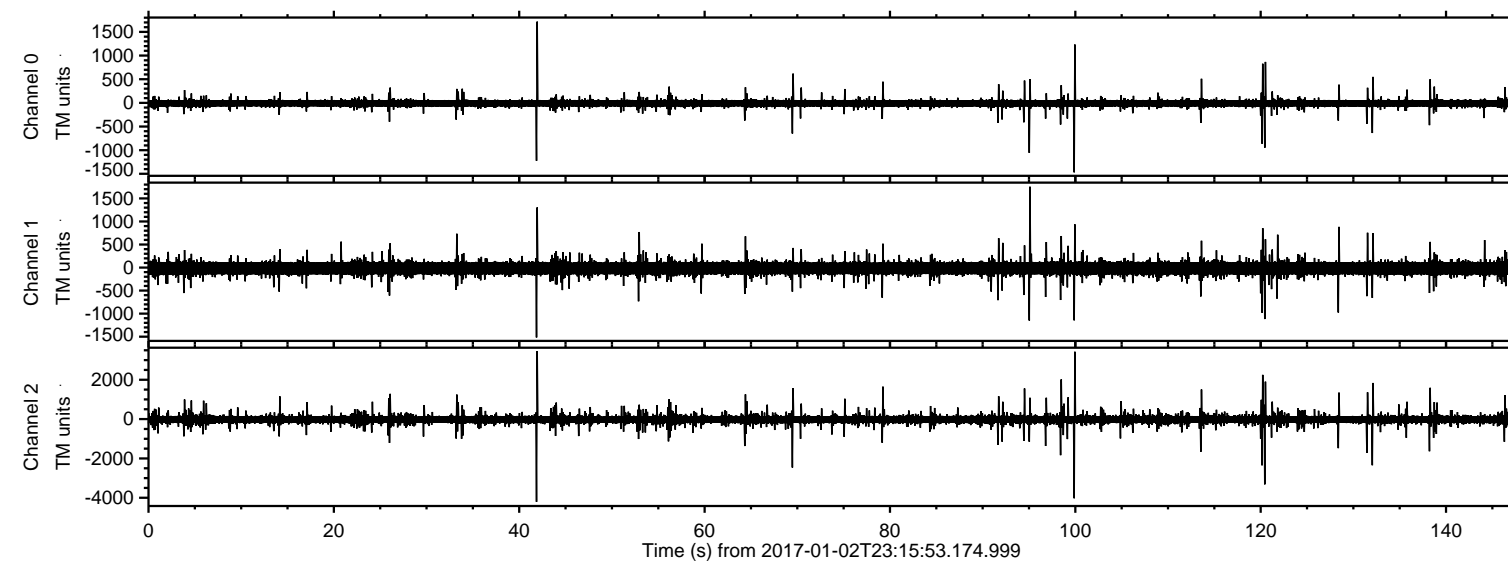


ELMAVAN 3D WAVEFORMS (Measured data sampled at 50 kHz) 51000 packets of 144 samples from 2017-01-02T23:15:53.174.999.

Processed Tue Jan 3 00:23:11 2017 by ELM ver.2012-10-06 from 001__elm20170102_231552__dat00.bin



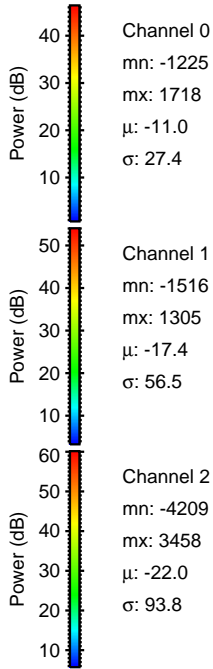
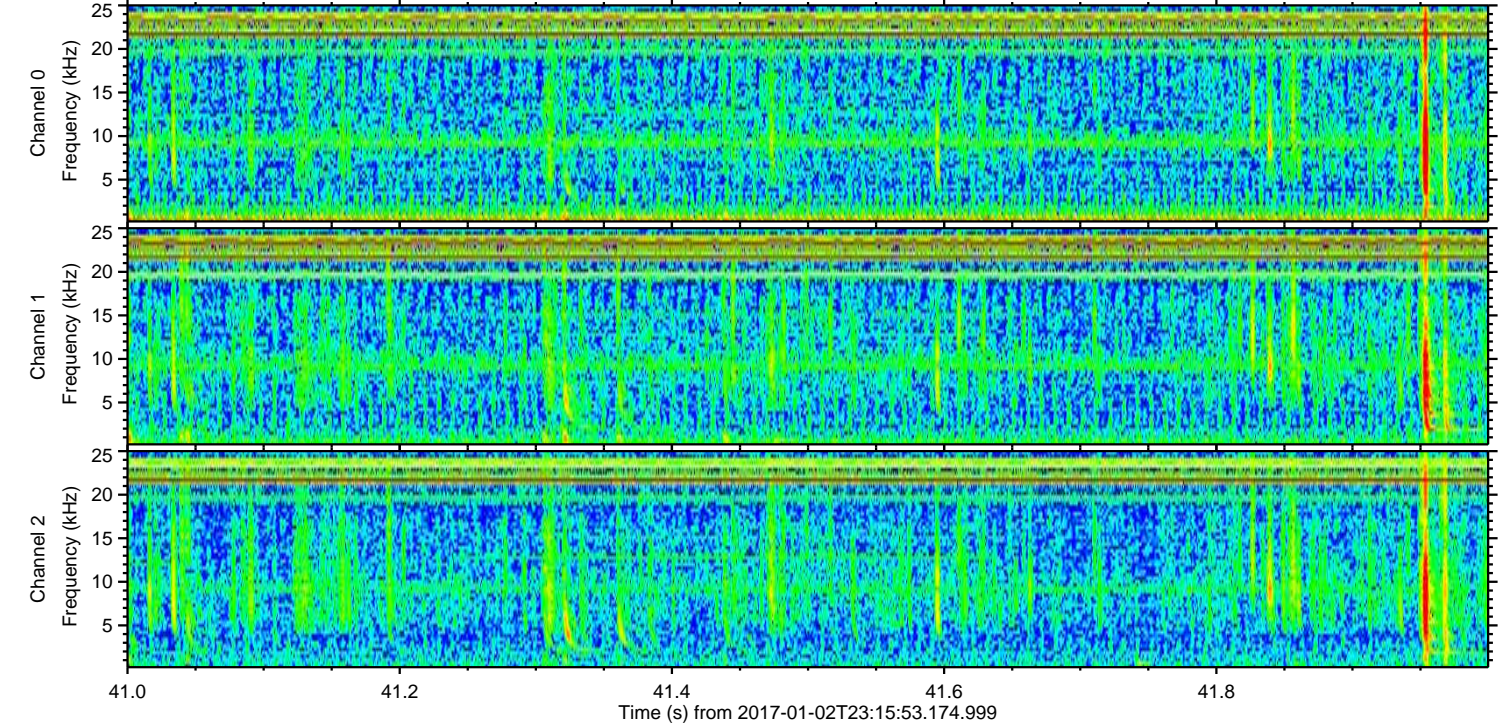
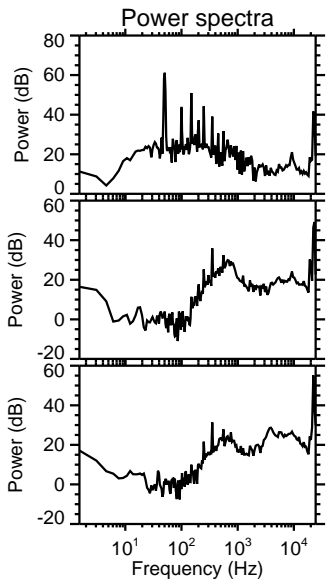
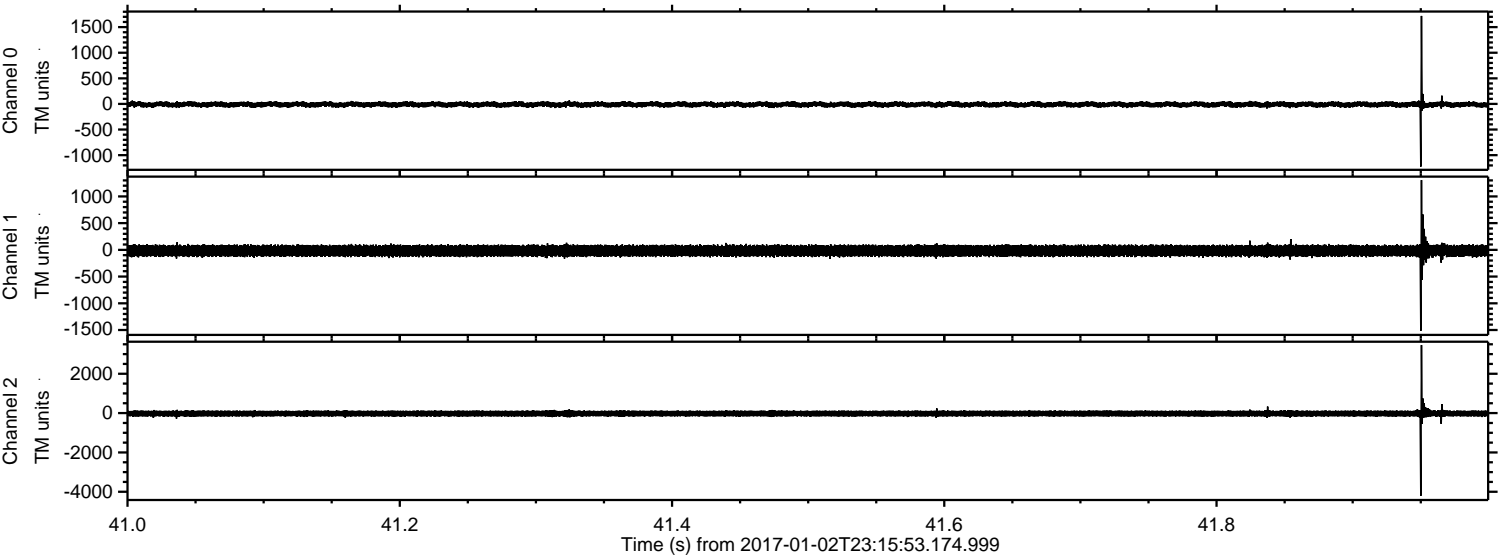
Channel 0
mn: -1469
mx: 1718
 μ : -11.0
 σ : 24.9

Channel 1
mn: -1516
mx: 1755
 μ : -17.5
 σ : 54.6

Channel 2
mn: -4209
mx: 3458
 μ : -22.0
 σ : 86.4

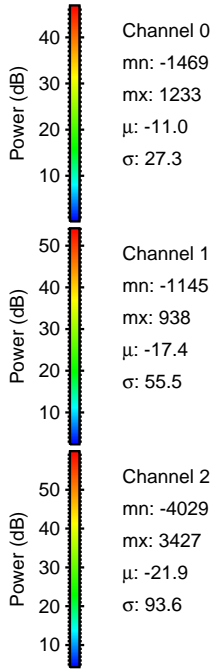
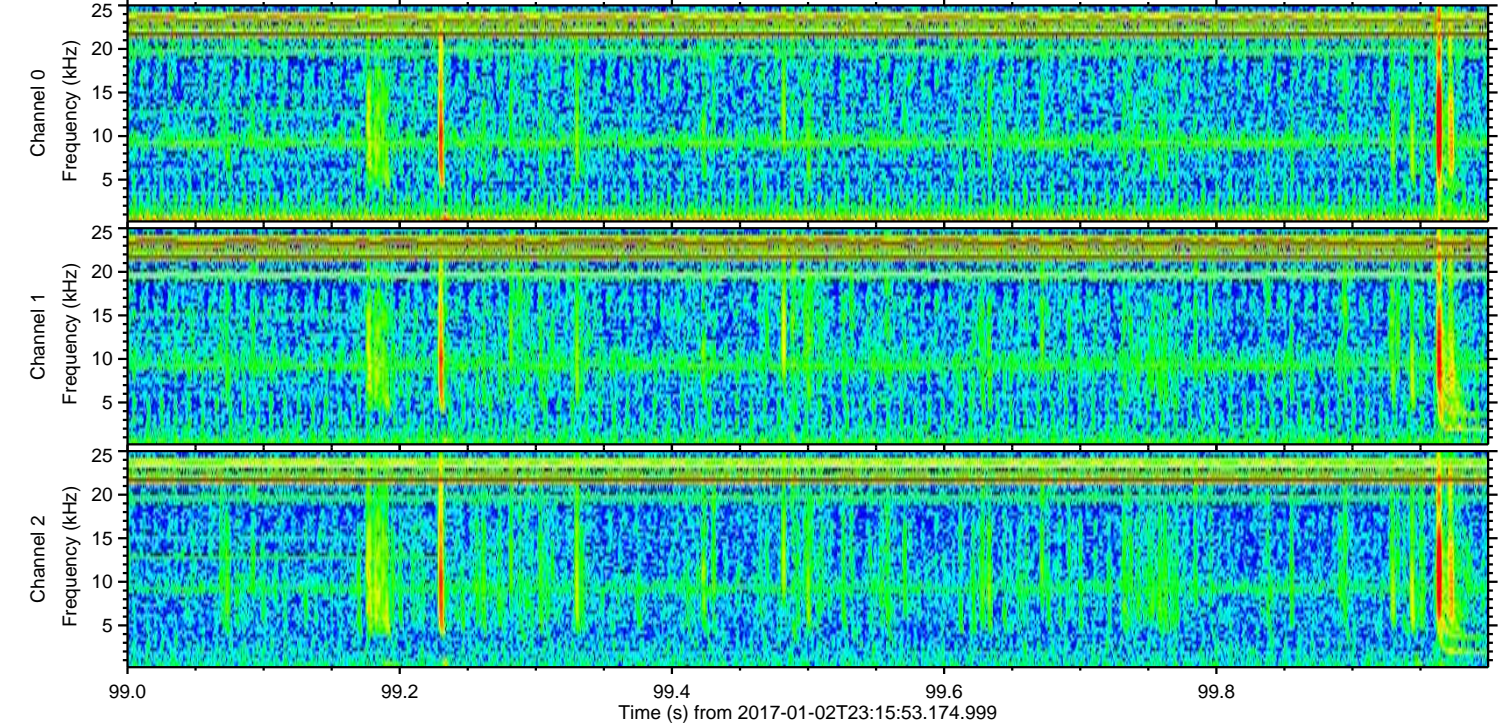
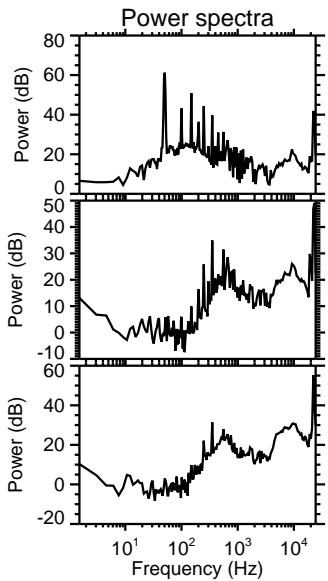
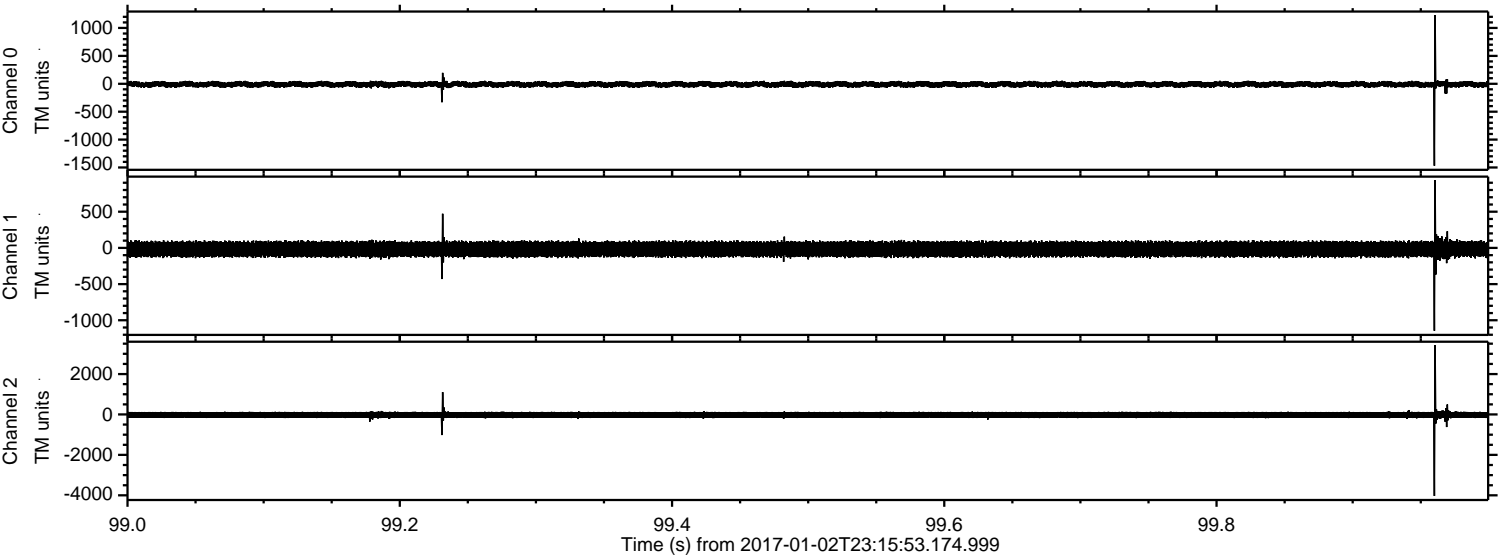
ELMAVAN 3D WAVEFORMS (Measured data sampled at 50 kHz) 51000 packets of 144 samples from 2017-01-02T23:15:53.174.999. Part 42/147

Processed Tue Jan 3 00:23:27 2017 by ELM ver.2012-10-06 from 001__elm20170102_231552__dat00.bin



ELMAVAN 3D WAVEFORMS (Measured data sampled at 50 kHz) 51000 packets of 144 samples from 2017-01-02T23:15:53.174.999. Part 100/147

Processed Tue Jan 3 00:23:29 2017 by ELM ver.2012-10-06 from 001__elm20170102_231552__dat00.bin



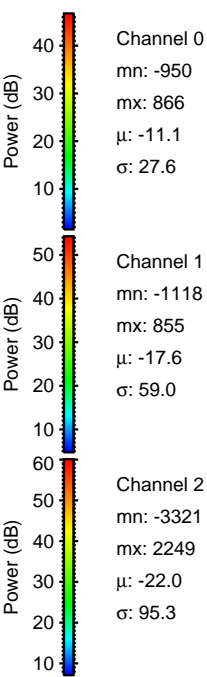
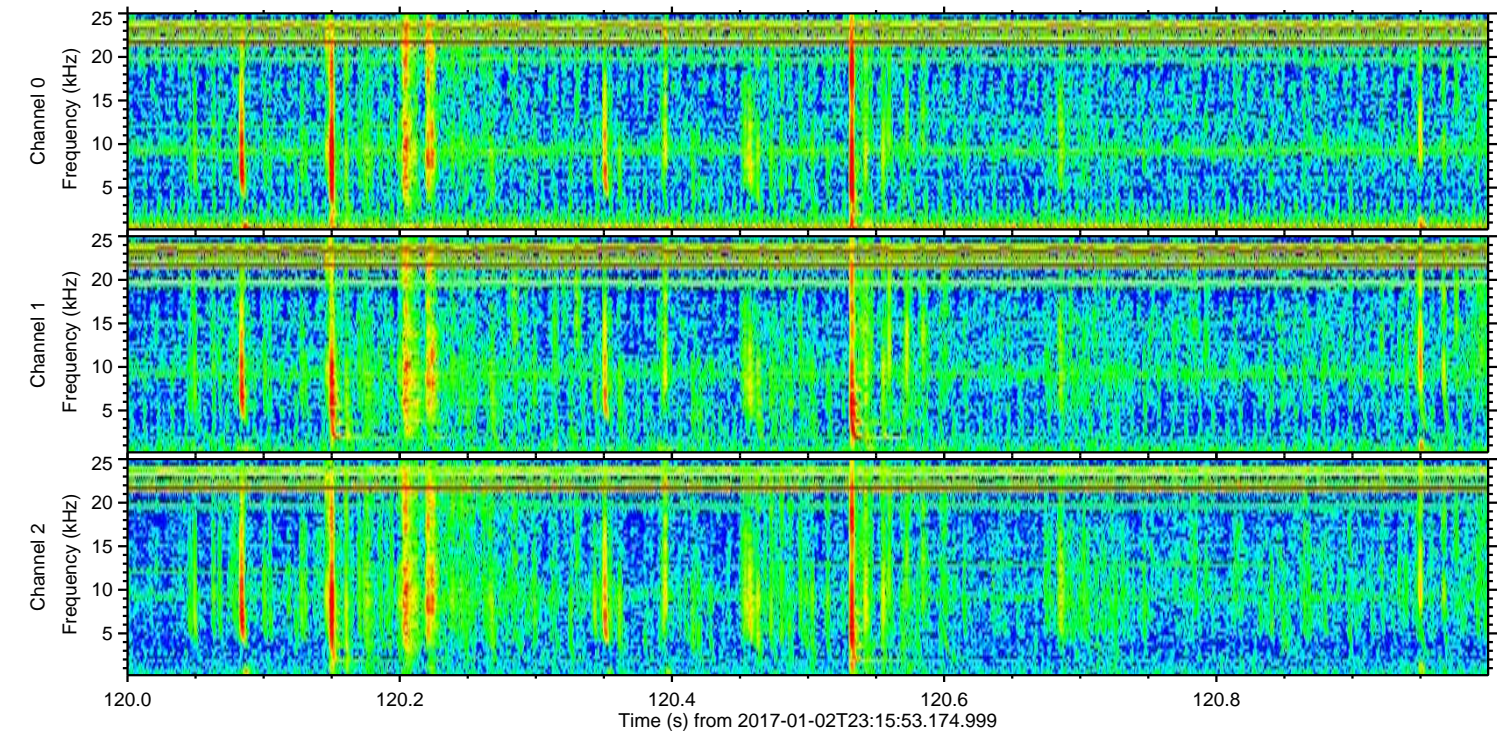
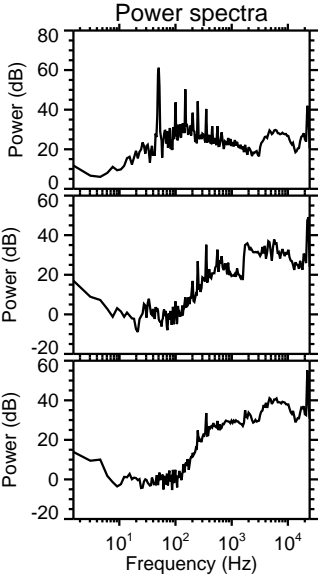
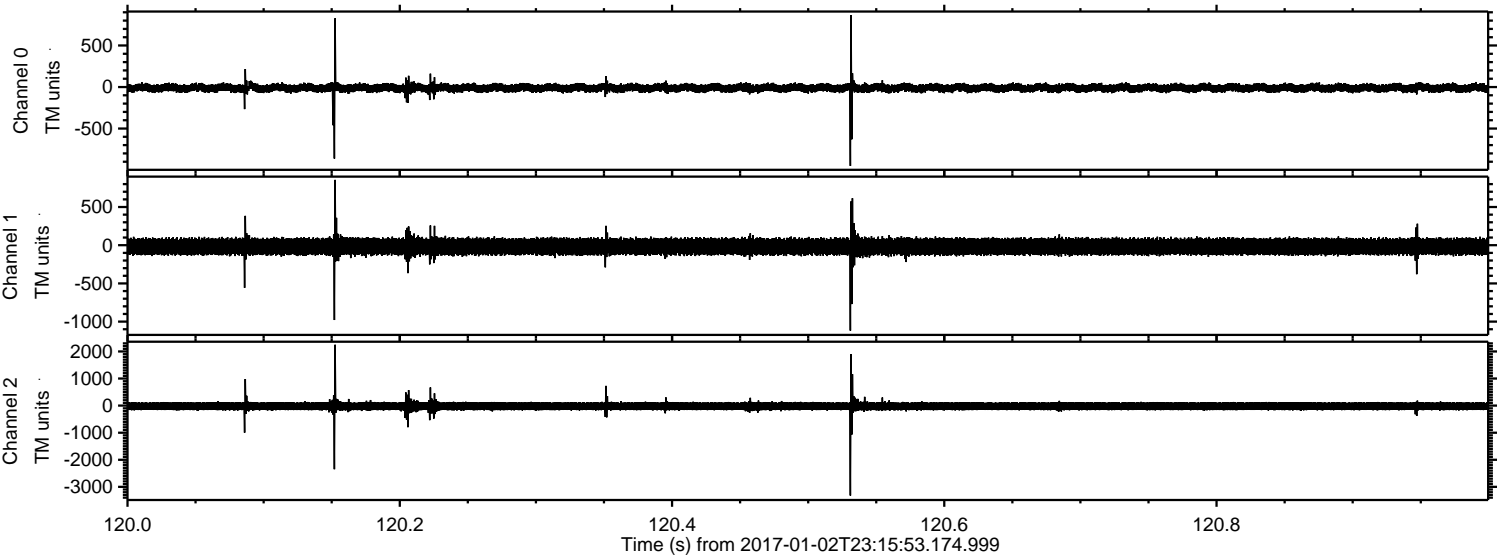
Channel 0
mn: -1469
mx: 1233
 μ : -11.0
 σ : 27.3

Channel 1
mn: -1145
mx: 938
 μ : -17.4
 σ : 55.5

Channel 2
mn: -4029
mx: 3427
 μ : -21.9
 σ : 93.6

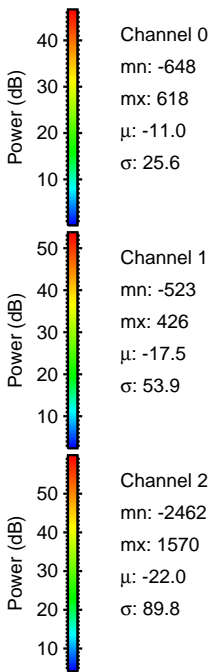
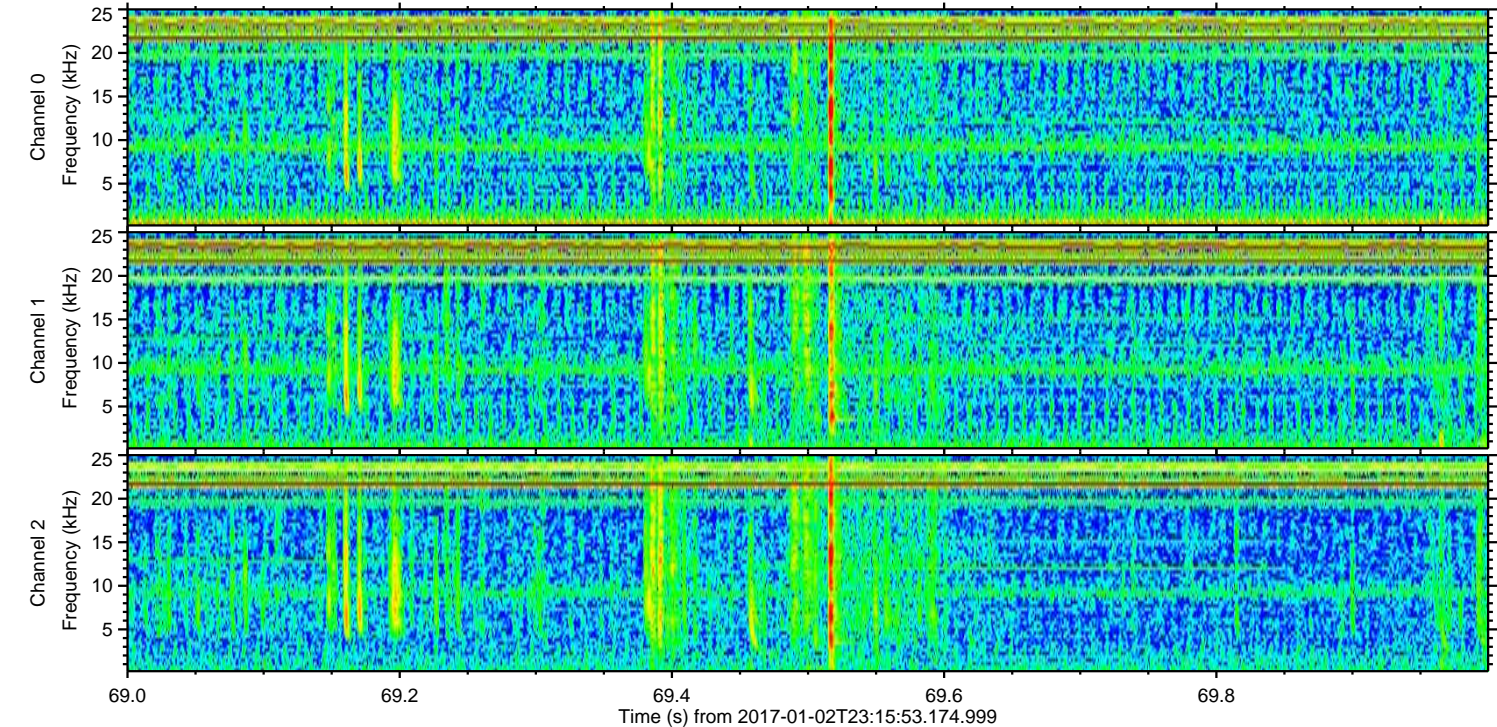
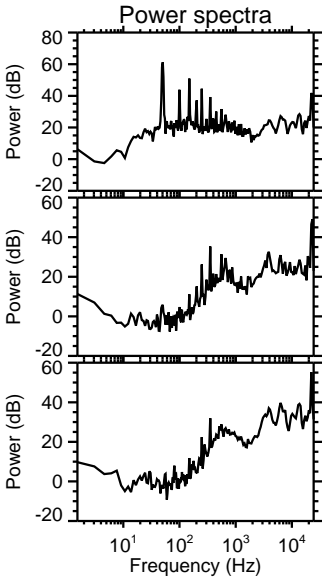
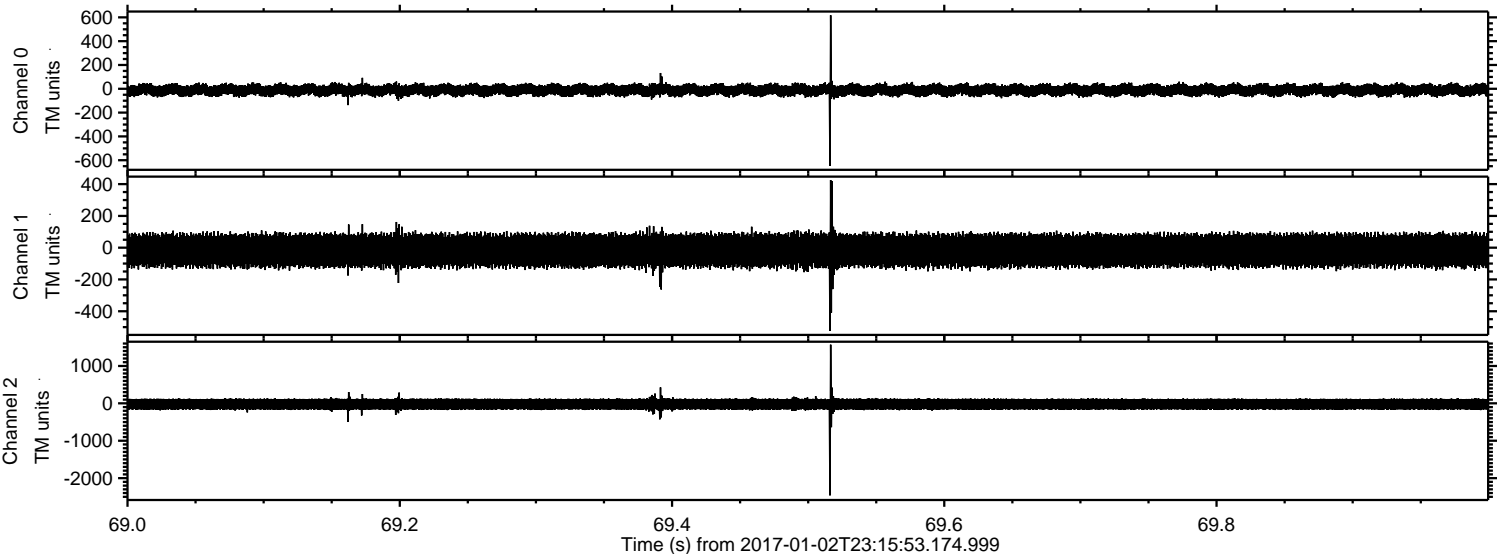
ELMAVAN 3D WAVEFORMS (Measured data sampled at 50 kHz) 51000 packets of 144 samples from 2017-01-02T23:15:53.174.999. Part 121/147

Processed Tue Jan 3 00:23:30 2017 by ELM ver.2012-10-06 from 001__elm20170102_231552__dat00.bin



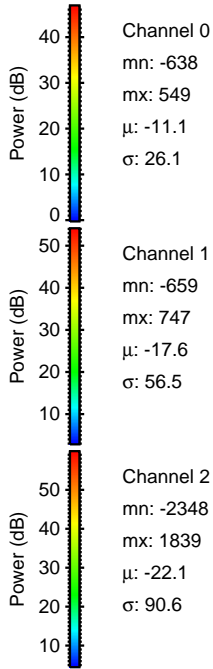
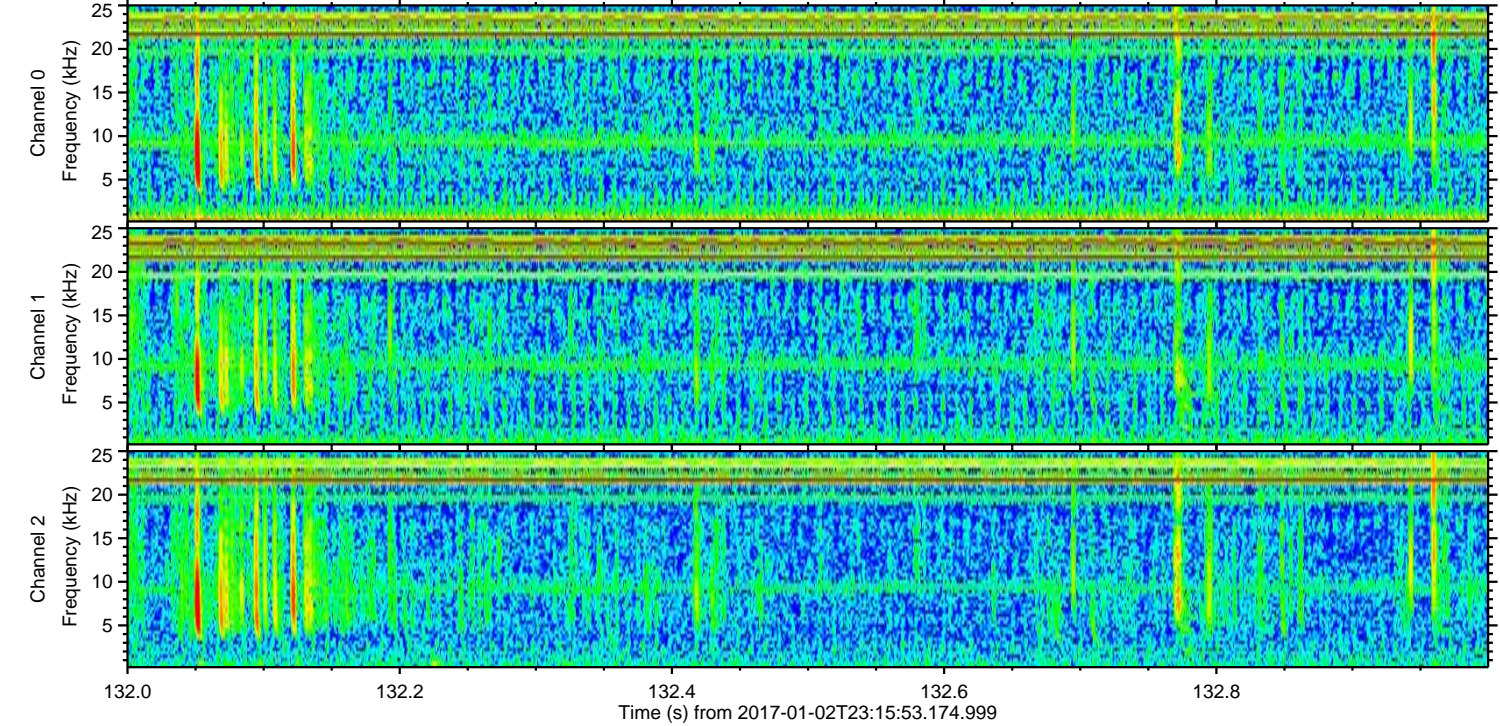
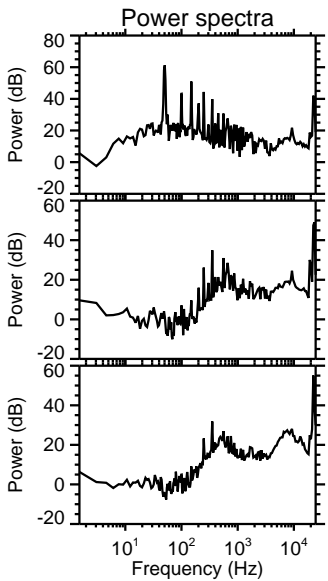
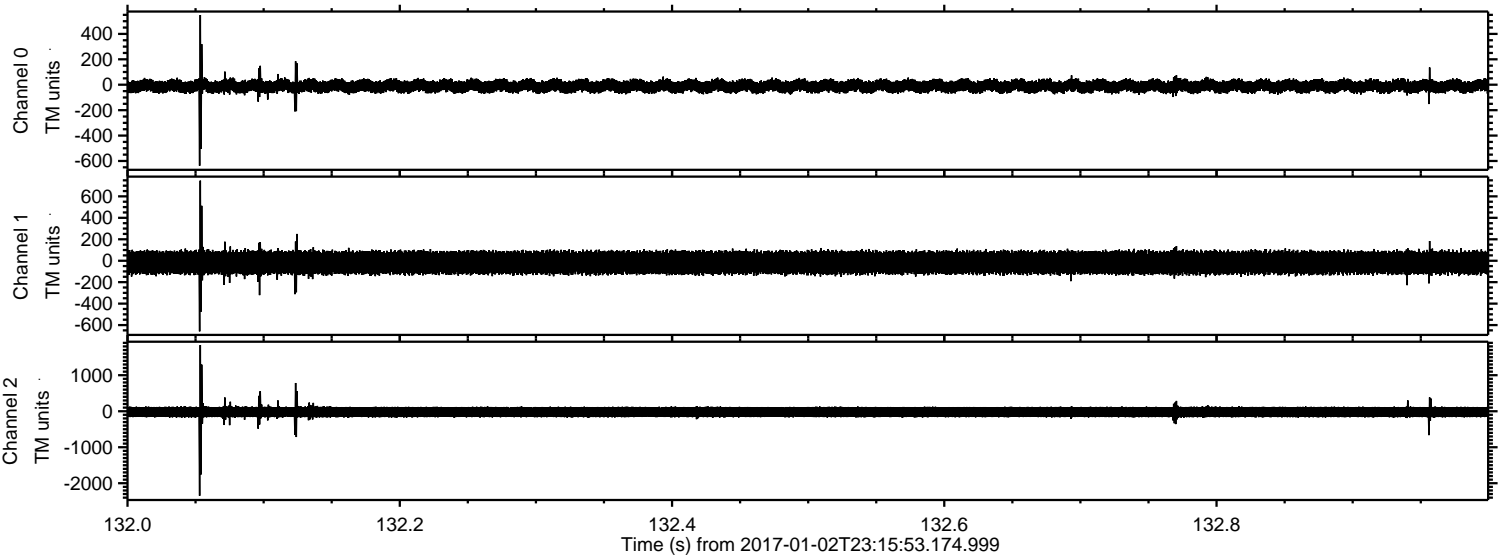
ELMAVAN 3D WAVEFORMS (Measured data sampled at 50 kHz) 51000 packets of 144 samples from 2017-01-02T23:15:53.174.999. Part 70/147

Processed Tue Jan 3 00:23:31 2017 by ELM ver.2012-10-06 from 001__elm20170102_231552__dat00.bin



ELMAVAN 3D WAVEFORMS (Measured data sampled at 50 kHz) 51000 packets of 144 samples from 2017-01-02T23:15:53.174.999. Part 133/147

Processed Tue Jan 3 00:23:32 2017 by ELM ver.2012-10-06 from 001__elm20170102_231552__dat00.bin



Power spectra

Channel 0

mn: -638
mx: 549
 μ : -11.1
 σ : 26.1

Channel 1

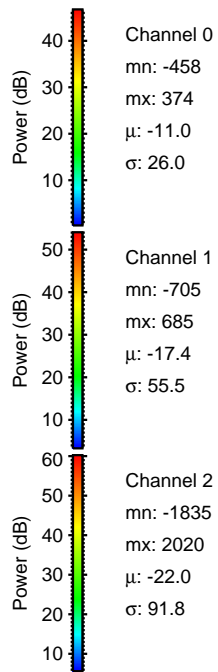
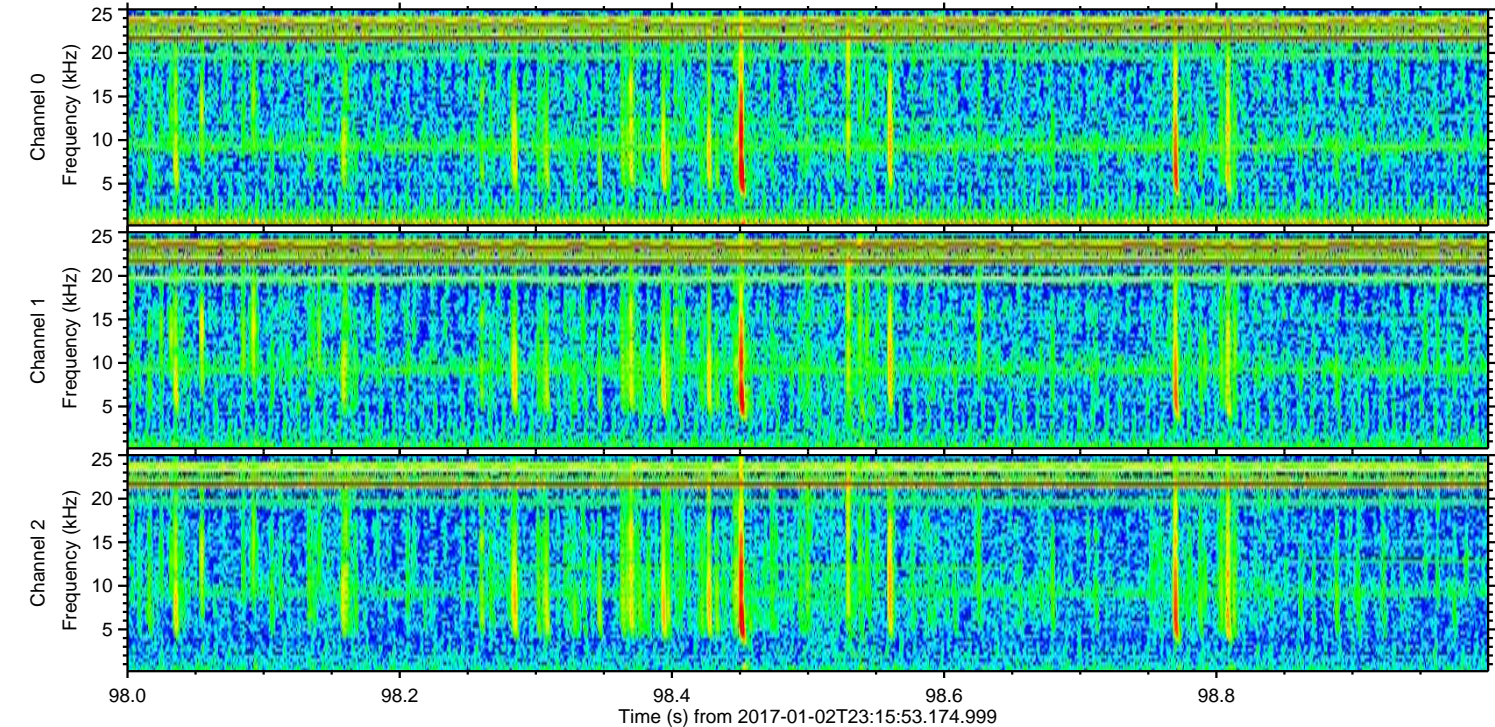
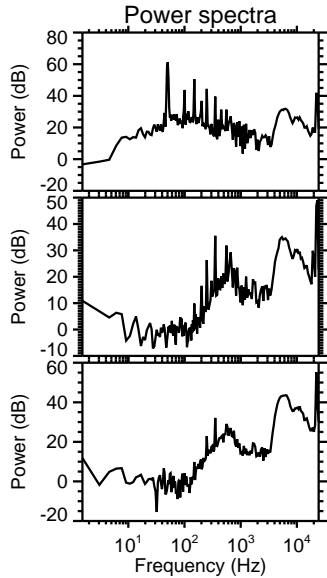
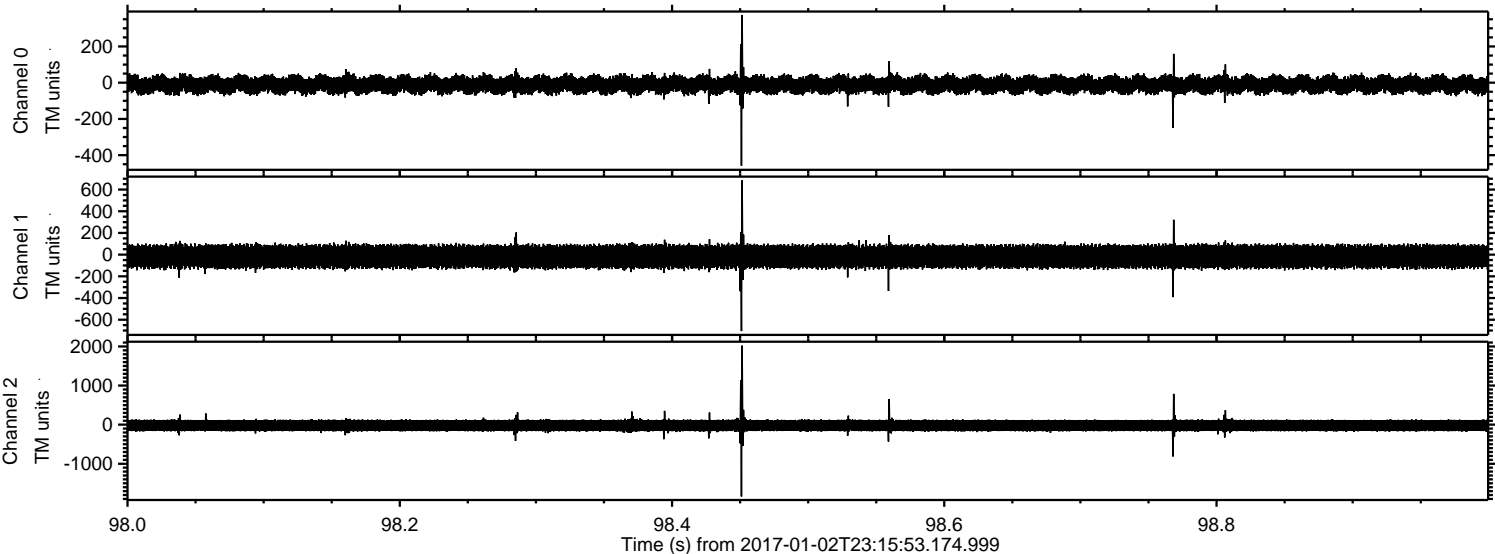
mn: -659
mx: 747
 μ : -17.6
 σ : 56.5

Channel 2

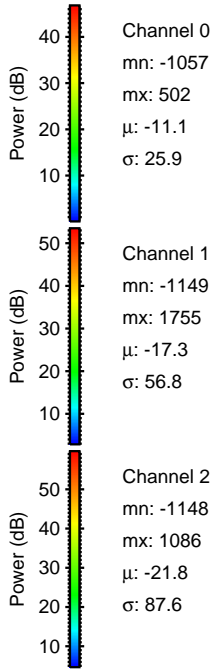
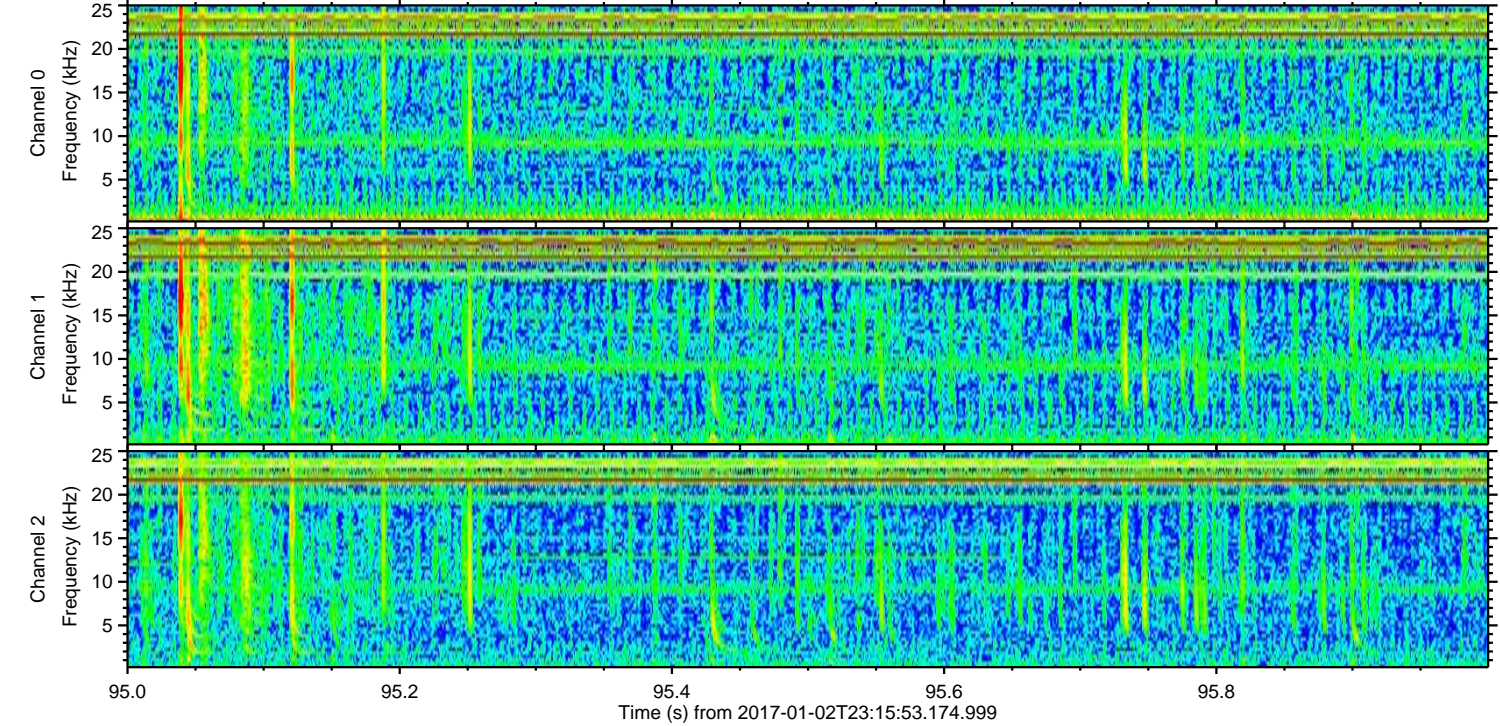
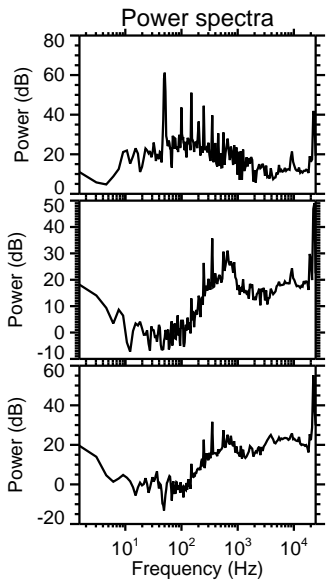
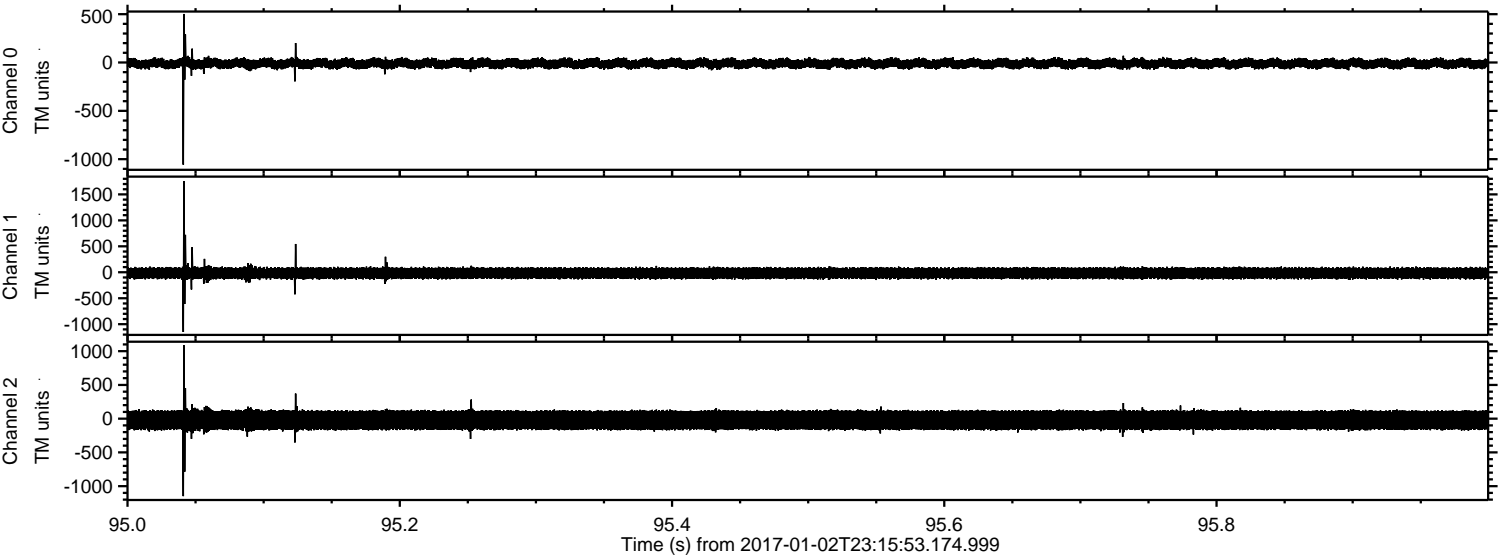
mn: -2348
mx: 1839
 μ : -22.1
 σ : 90.6

ELMAVAN 3D WAVEFORMS (Measured data sampled at 50 kHz) 51000 packets of 144 samples from 2017-01-02T23:15:53.174.999. Part 99/147

Processed Tue Jan 3 00:23:33 2017 by ELM ver.2012-10-06 from 001__elm20170102_231552__dat00.bin

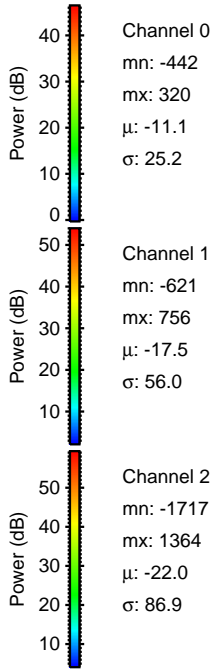
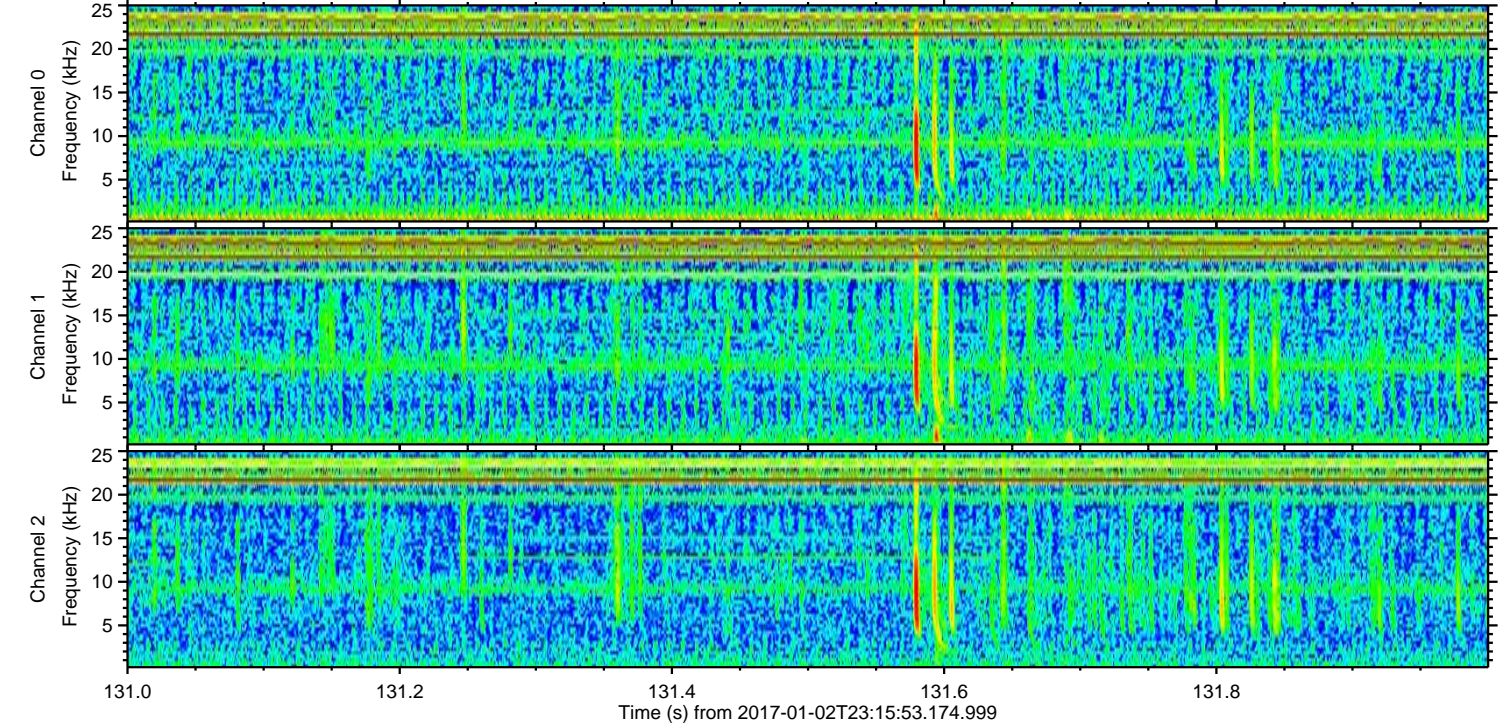
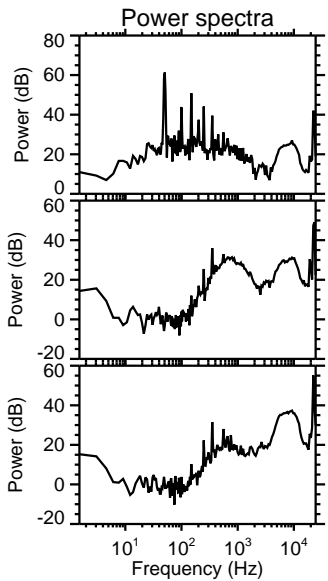
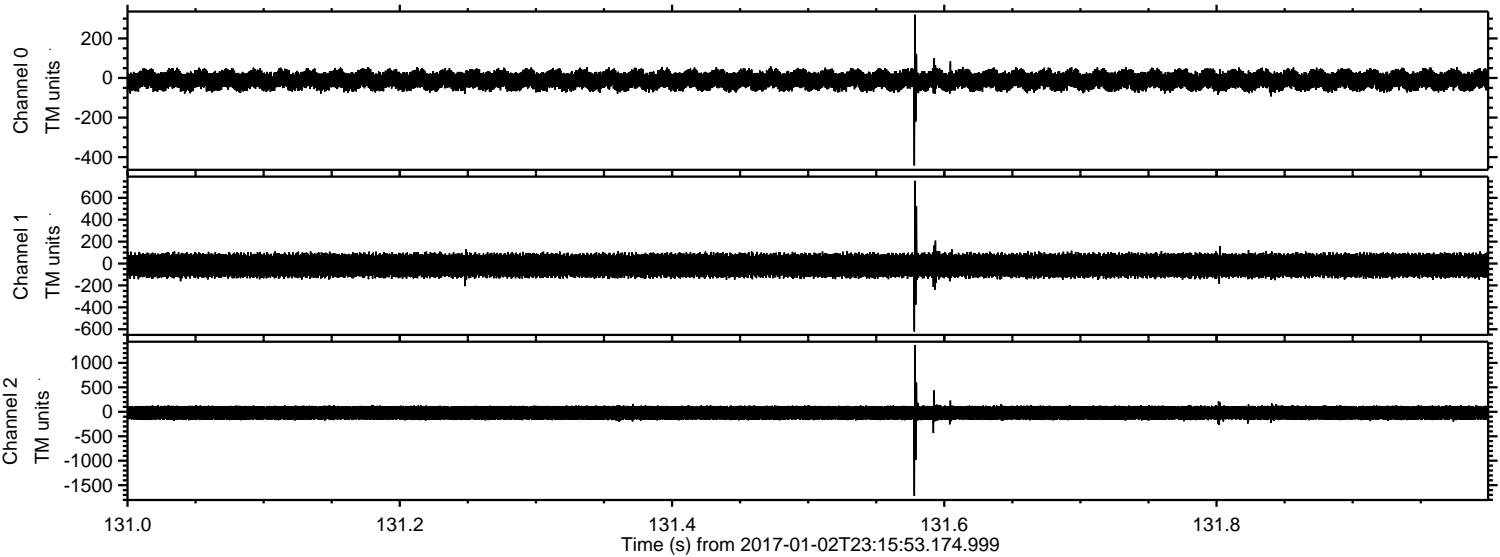


Processed Tue Jan 3 00:23:34 2017 by ELM ver.2012-10-06 from 001__elm20170102_231552__dat00.bin



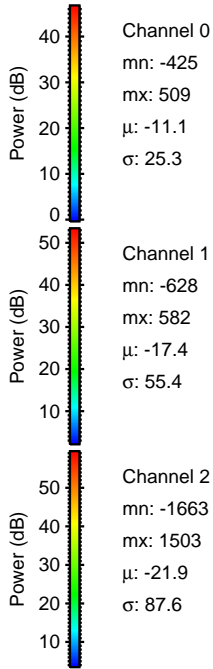
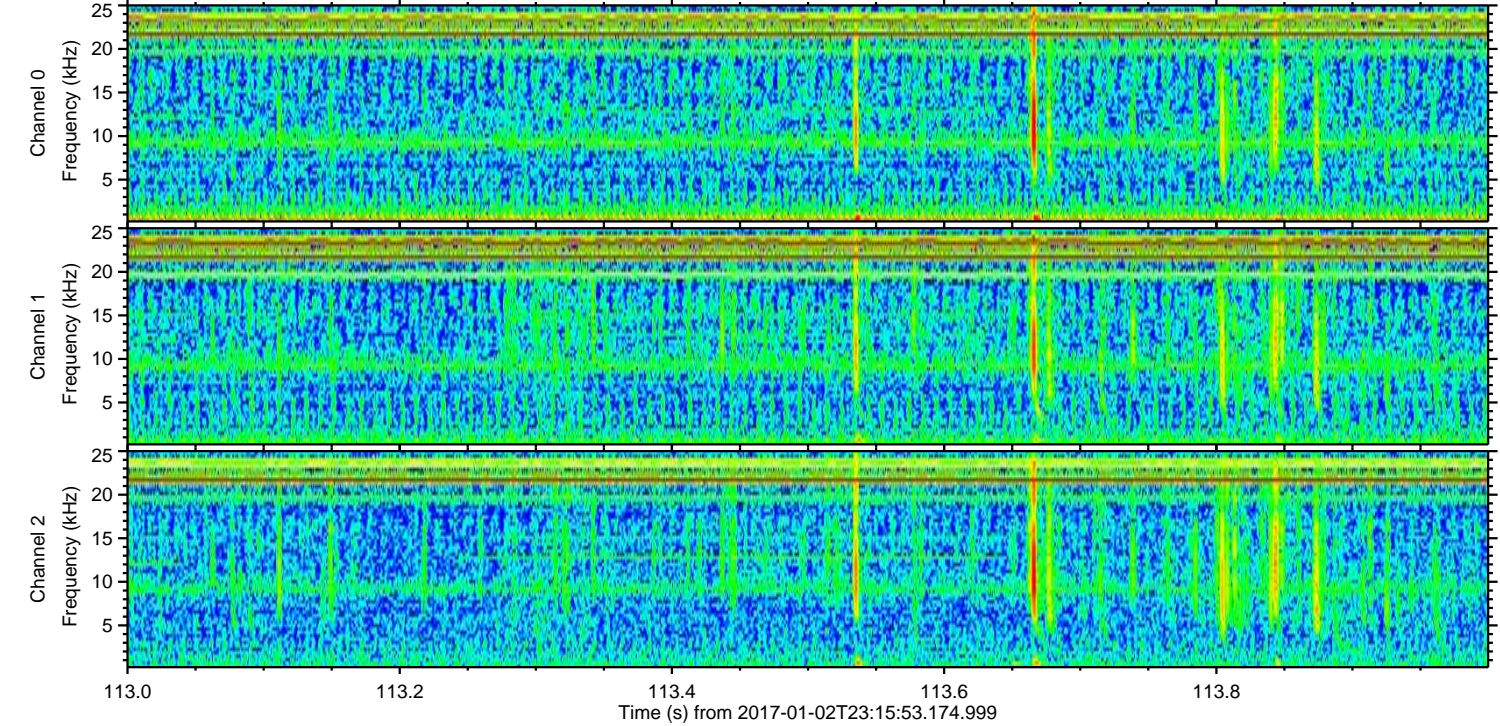
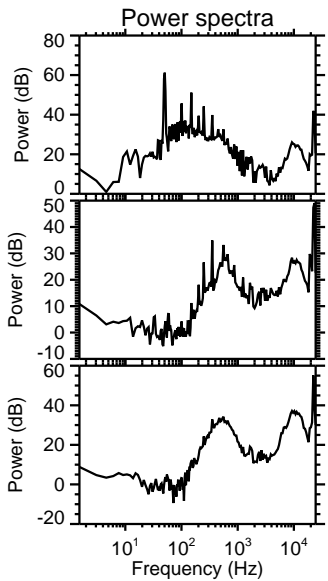
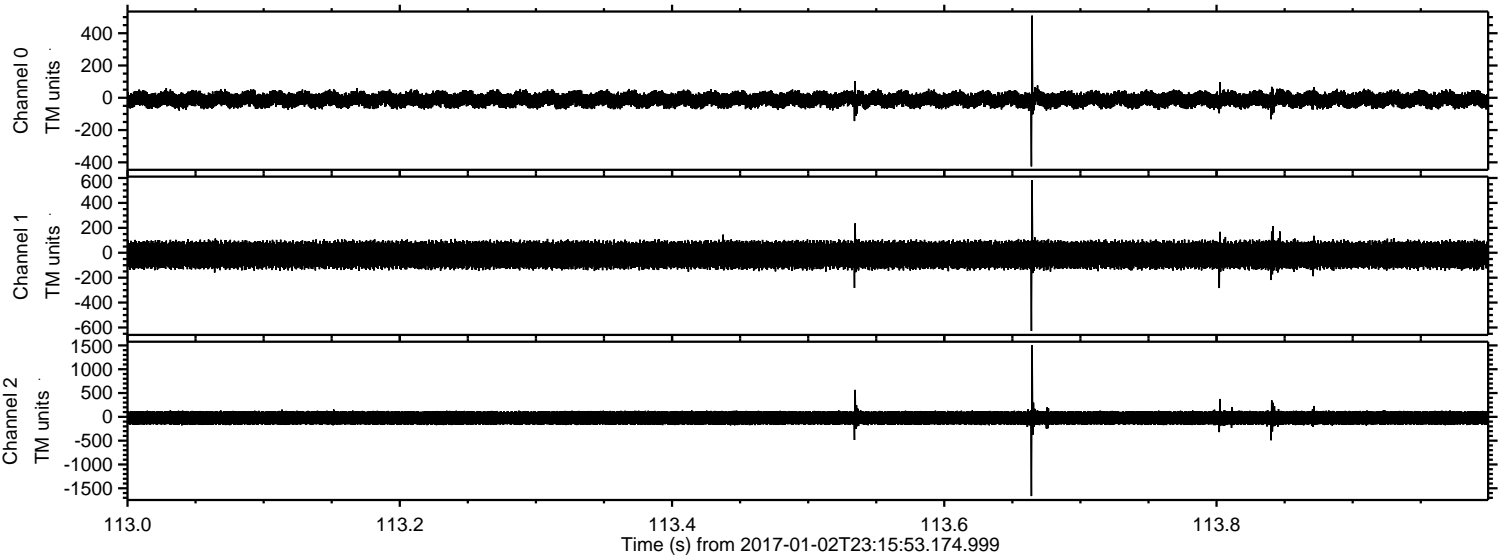
ELMAVAN 3D WAVEFORMS (Measured data sampled at 50 kHz) 51000 packets of 144 samples from 2017-01-02T23:15:53.174.999. Part 132/147

Processed Tue Jan 3 00:23:35 2017 by ELM ver.2012-10-06 from 001__elm20170102_231552__dat00.bin



ELMAVAN 3D WAVEFORMS (Measured data sampled at 50 kHz) 51000 packets of 144 samples from 2017-01-02T23:15:53.174.999. Part 114/147

Processed Tue Jan 3 00:23:36 2017 by ELM ver.2012-10-06 from 001__elm20170102_231552__dat00.bin



Channel 0
mn: -425
mx: 509
 μ : -11.1
 σ : 25.3

Channel 1
mn: -628
mx: 582
 μ : -17.4
 σ : 55.4

Channel 2
mn: -1663
mx: 1503
 μ : -21.9
 σ : 87.6

Processed Tue Jan 3 00:23:37 2017 by ELM ver.2012-10-06 from 001__elm20170102_231552__dat00.bin

