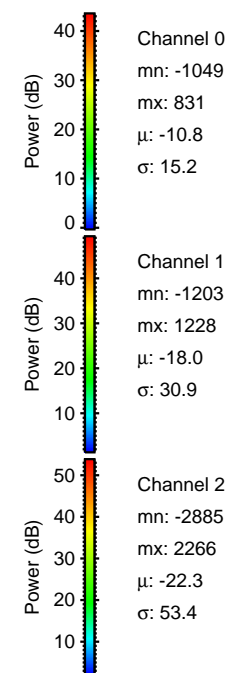
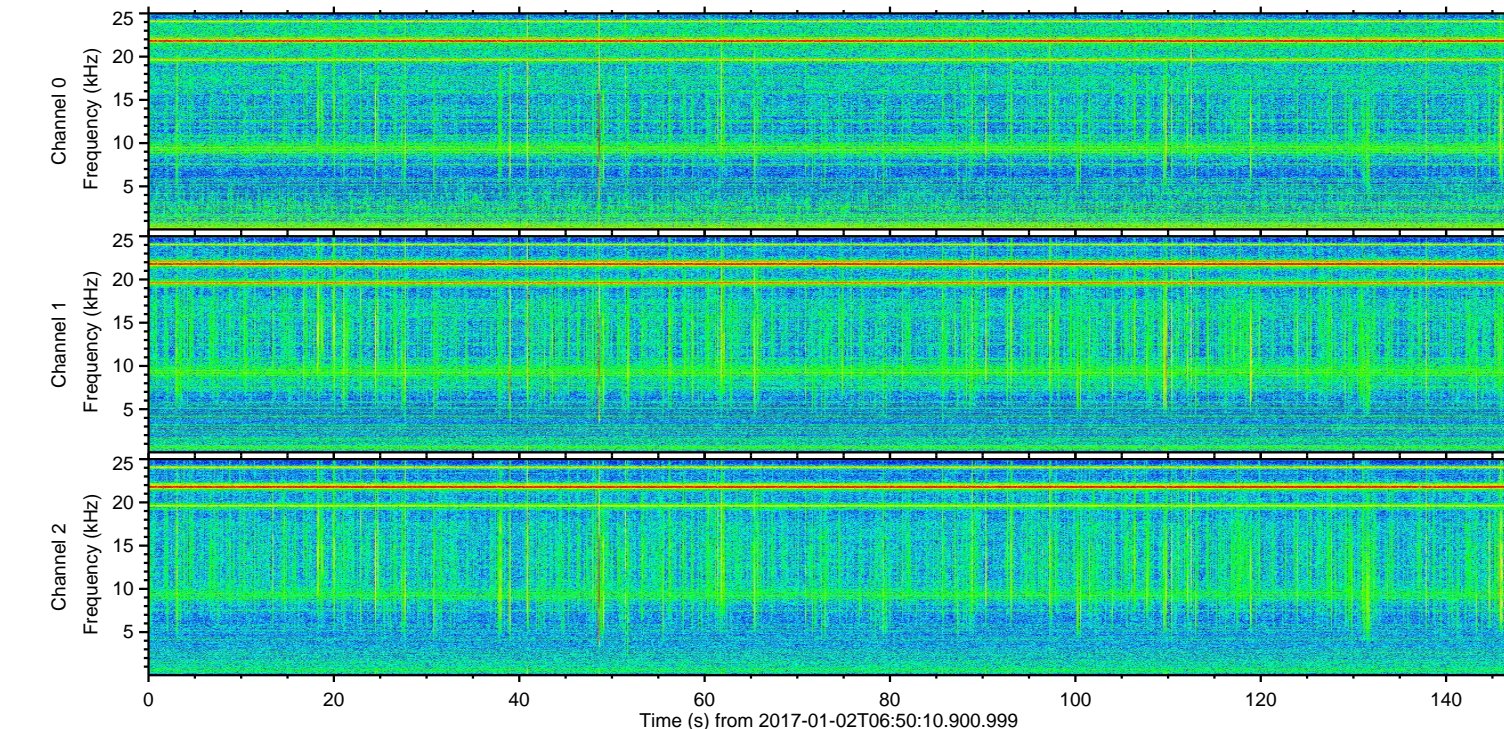
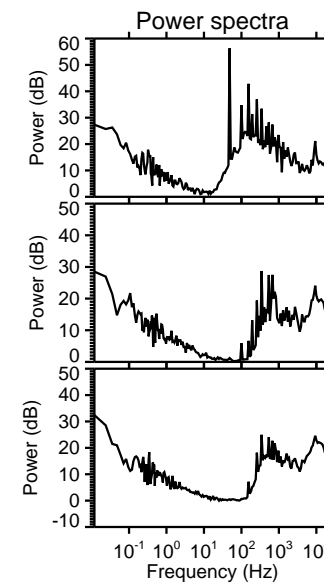
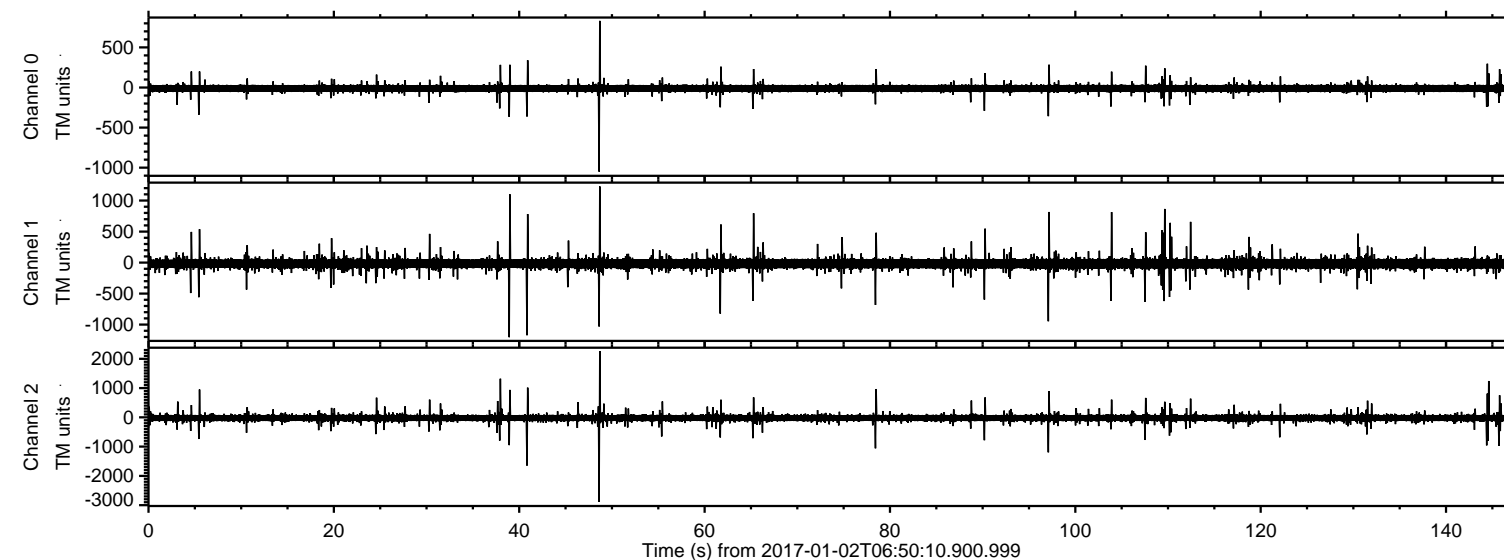


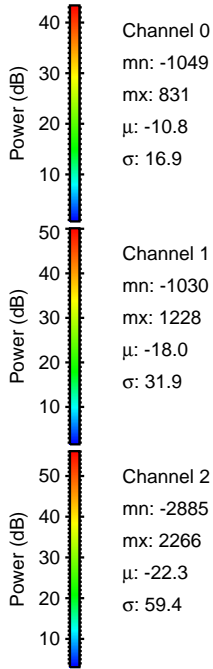
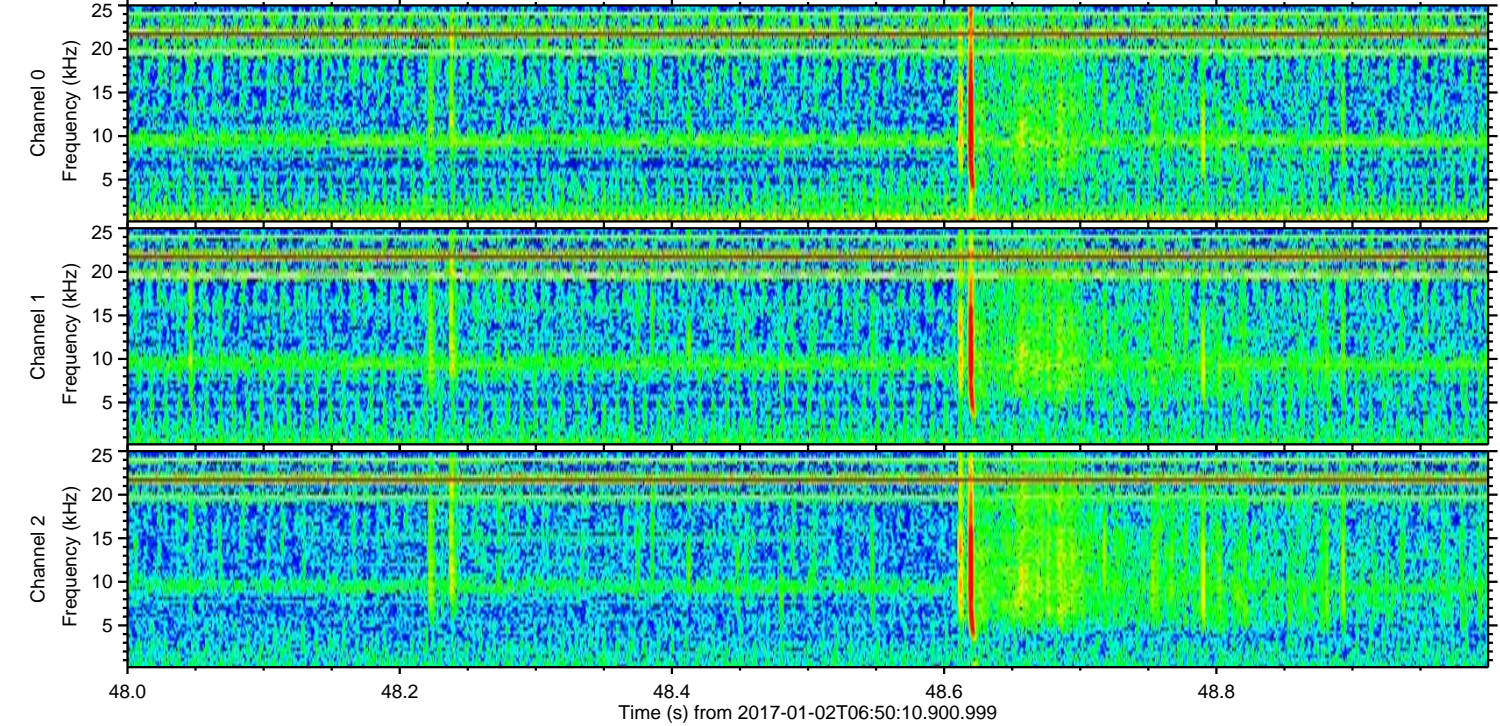
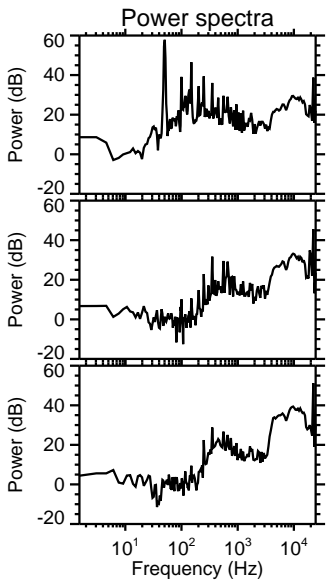
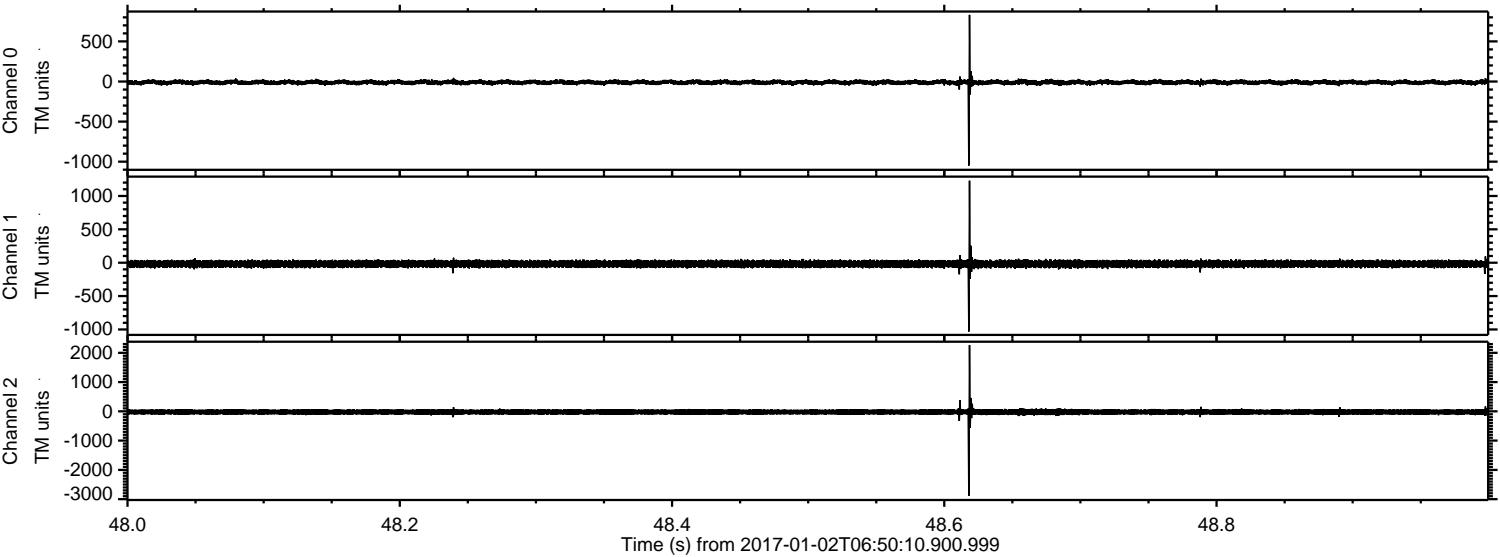
ELMAVAN 3D WAVEFORMS (Measured data sampled at 50 kHz) 51000 packets of 144 samples from 2017-01-02T06:50:10.900.999.

Processed Mon Jan 2 07:57:51 2017 by ELM ver.2012-10-06 from 001__elm20170102_065009__dat00.bin

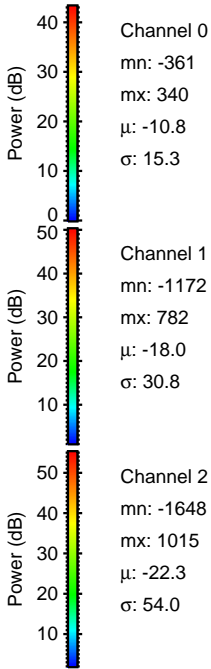
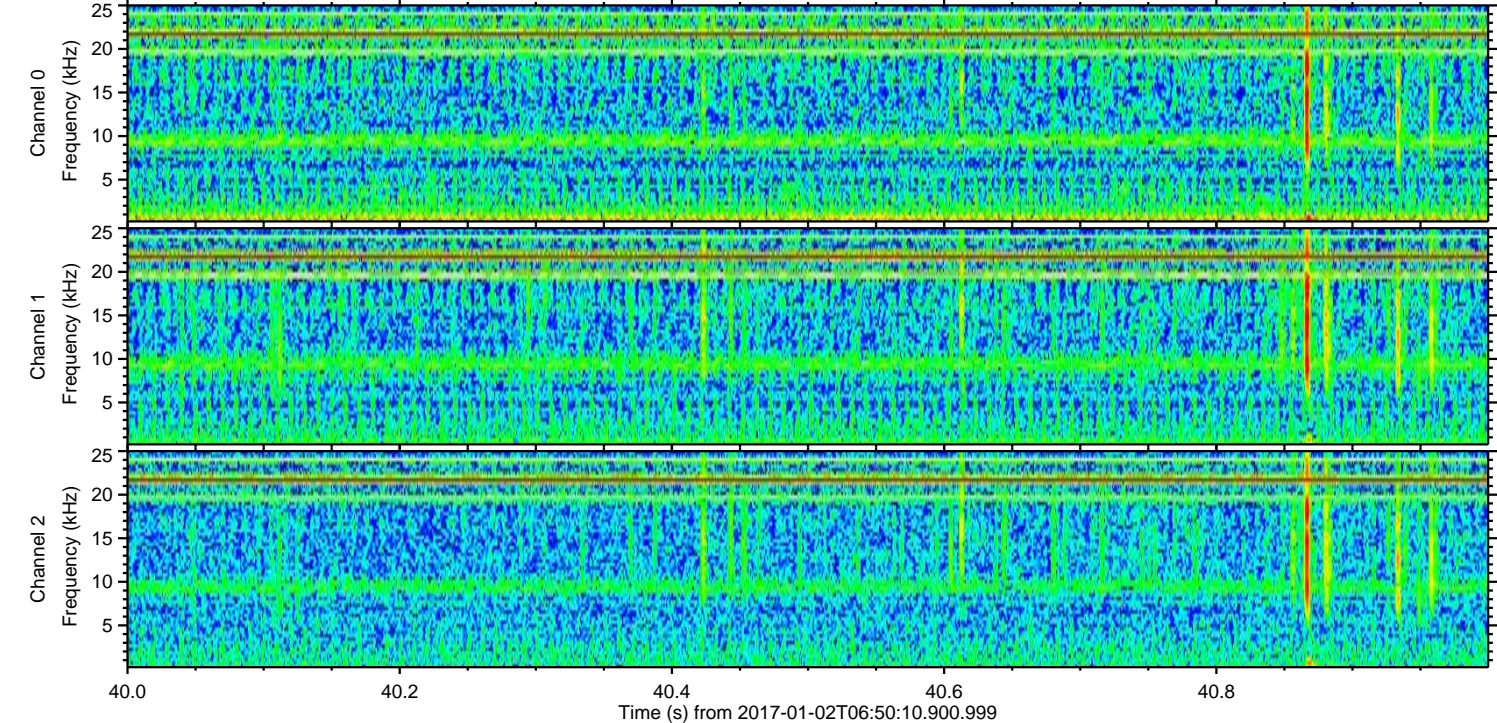
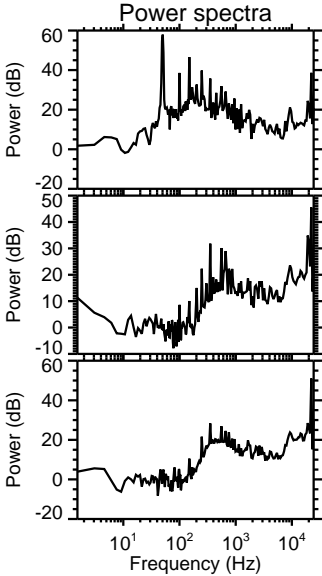
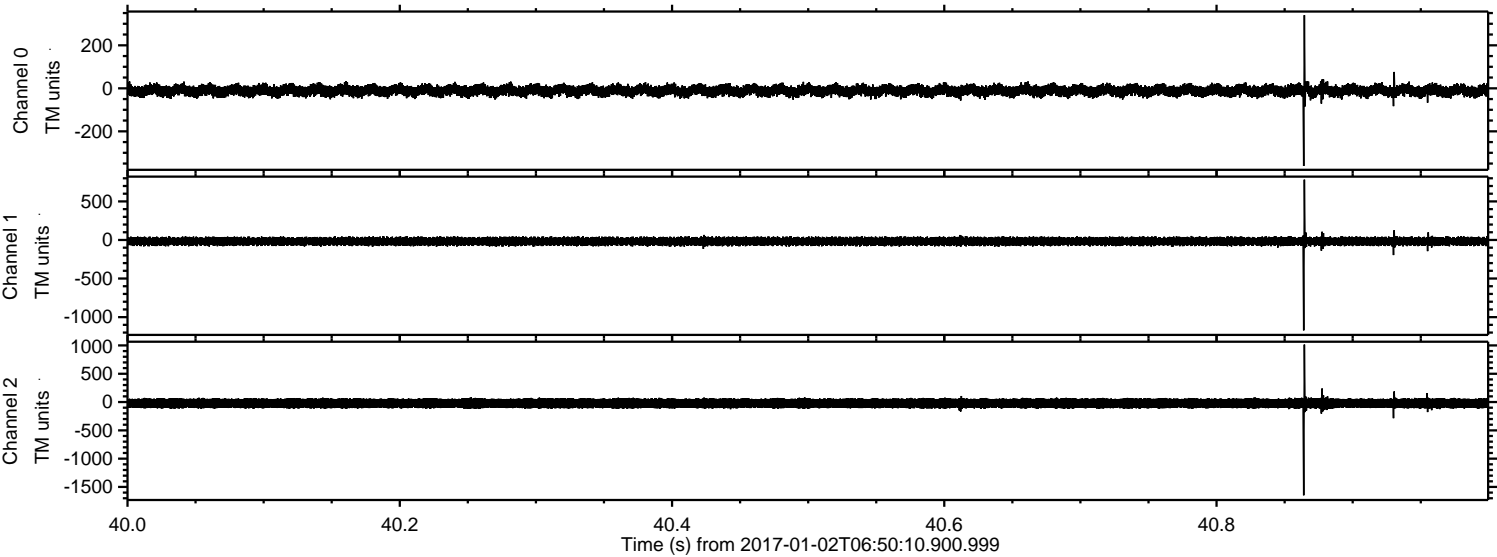


ELMAVAN 3D WAVEFORMS (Measured data sampled at 50 kHz) 51000 packets of 144 samples from 2017-01-02T06:50:10.900.999. Part 49/147

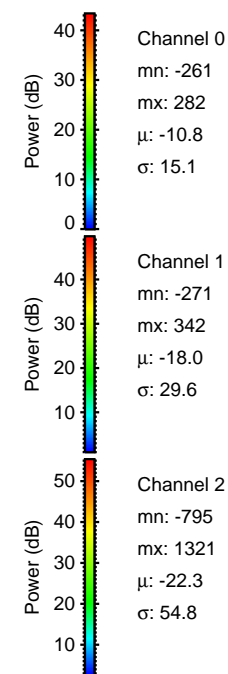
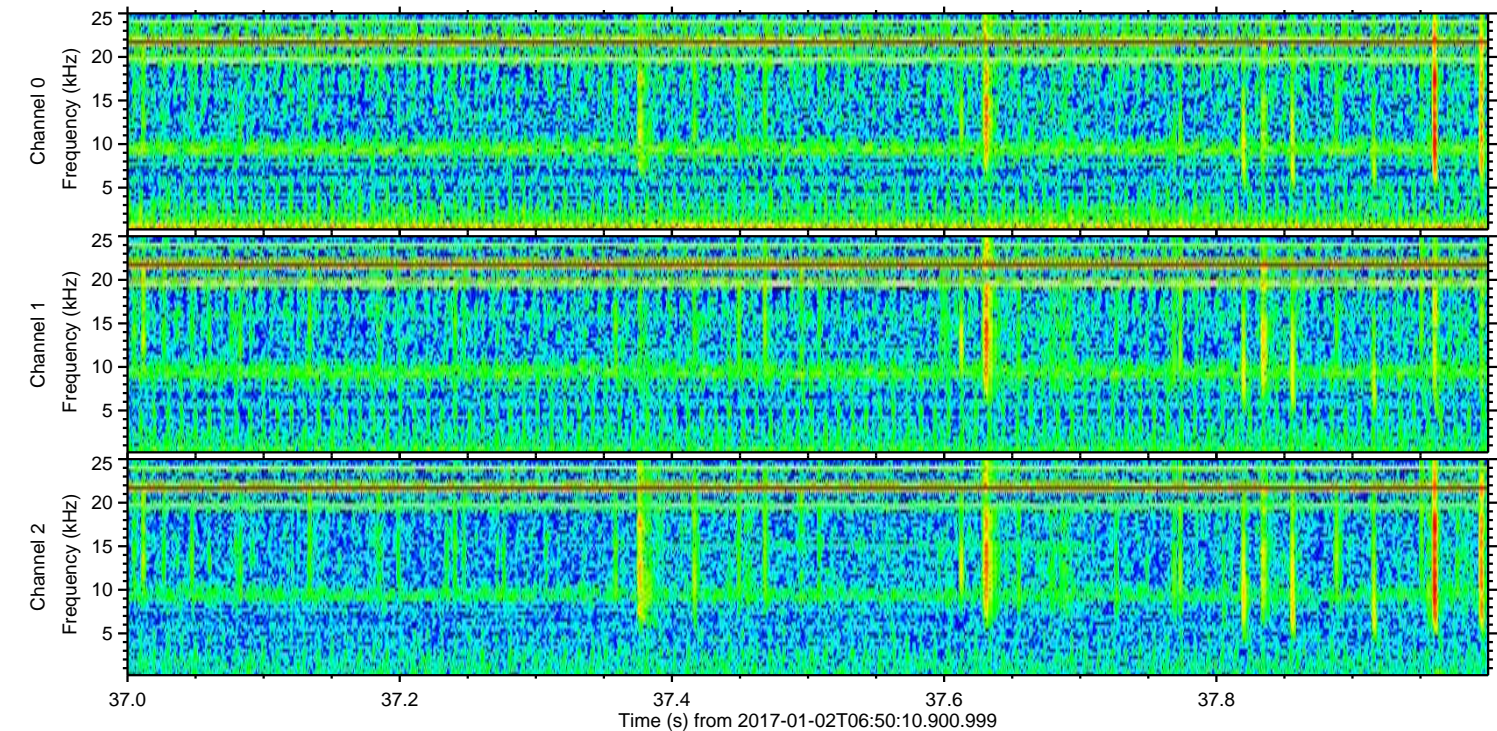
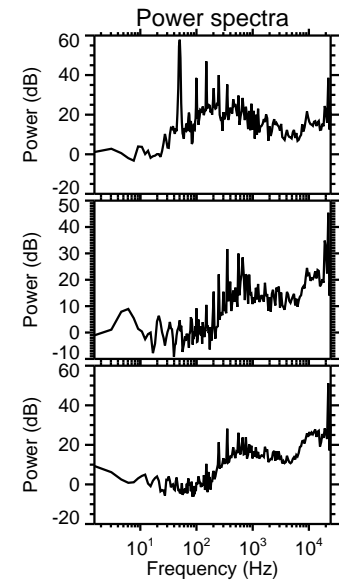
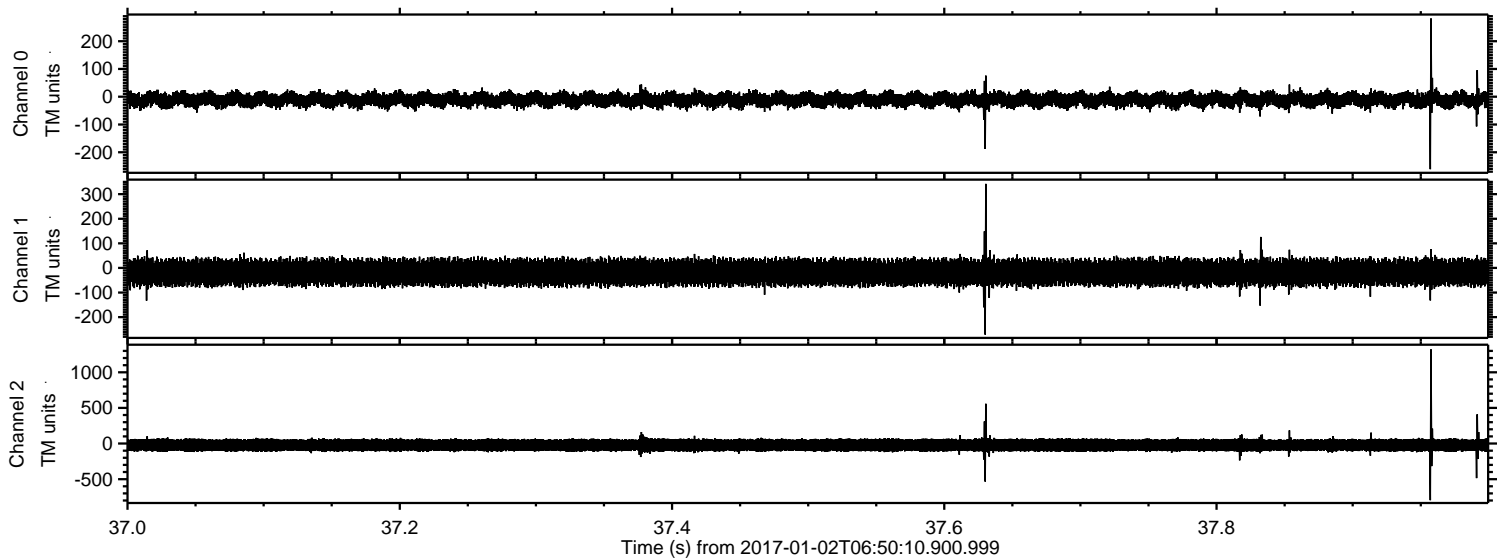
Processed Mon Jan 2 07:58:03 2017 by ELM ver.2012-10-06 from 001__elm20170102_065009__dat00.bin



Processed Mon Jan 2 07:58:04 2017 by ELM ver.2012-10-06 from 001__elm20170102_065009__dat00.bin

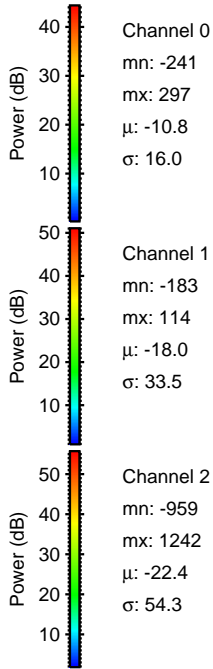
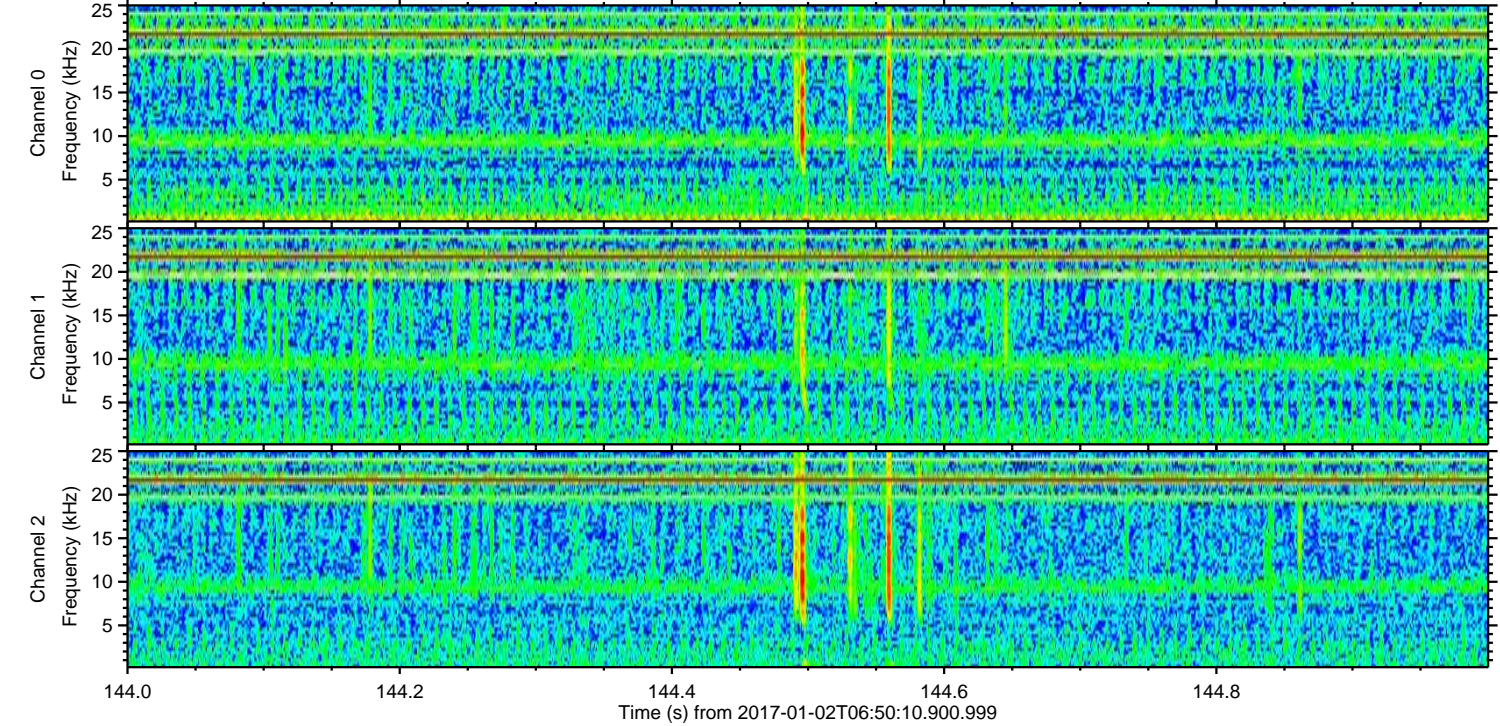
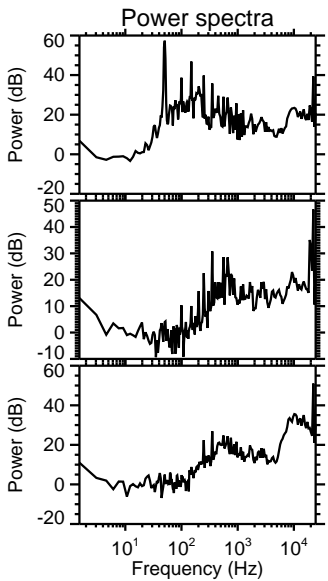
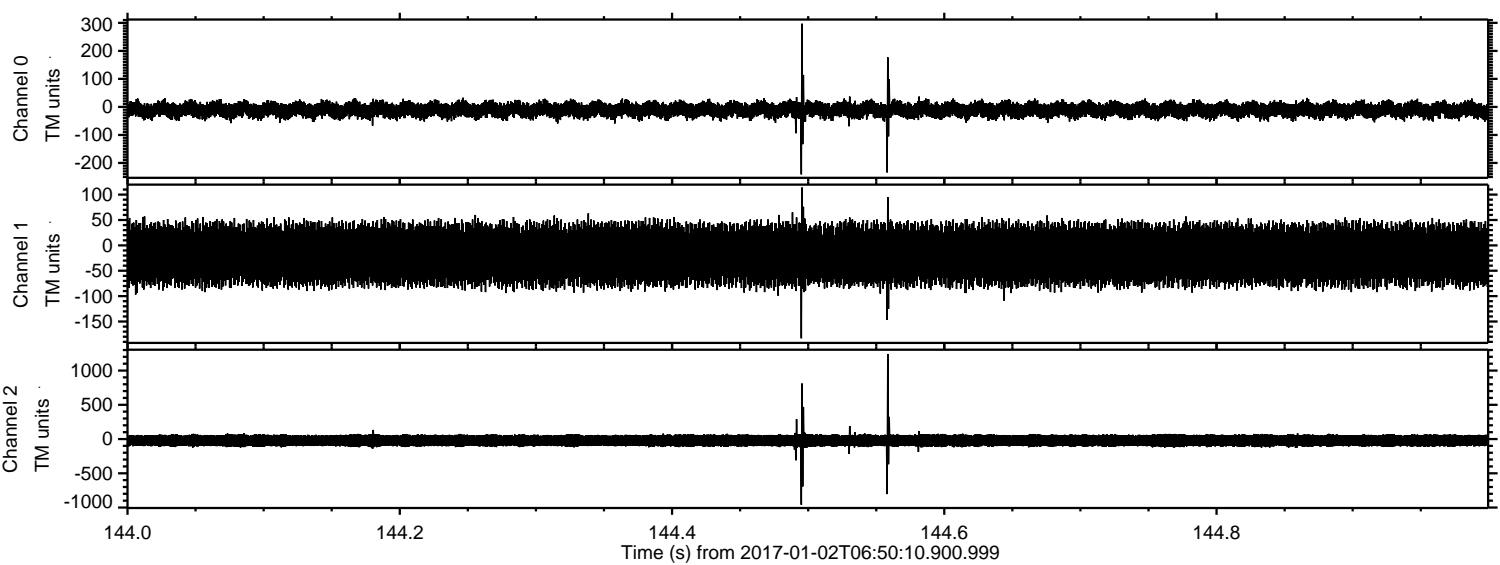


Processed Mon Jan 2 07:58:04 2017 by ELM ver.2012-10-06 from 001__elm20170102_065009__dat00.bin

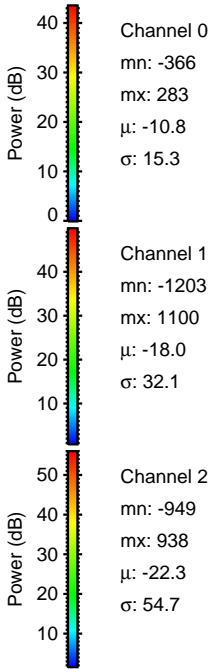
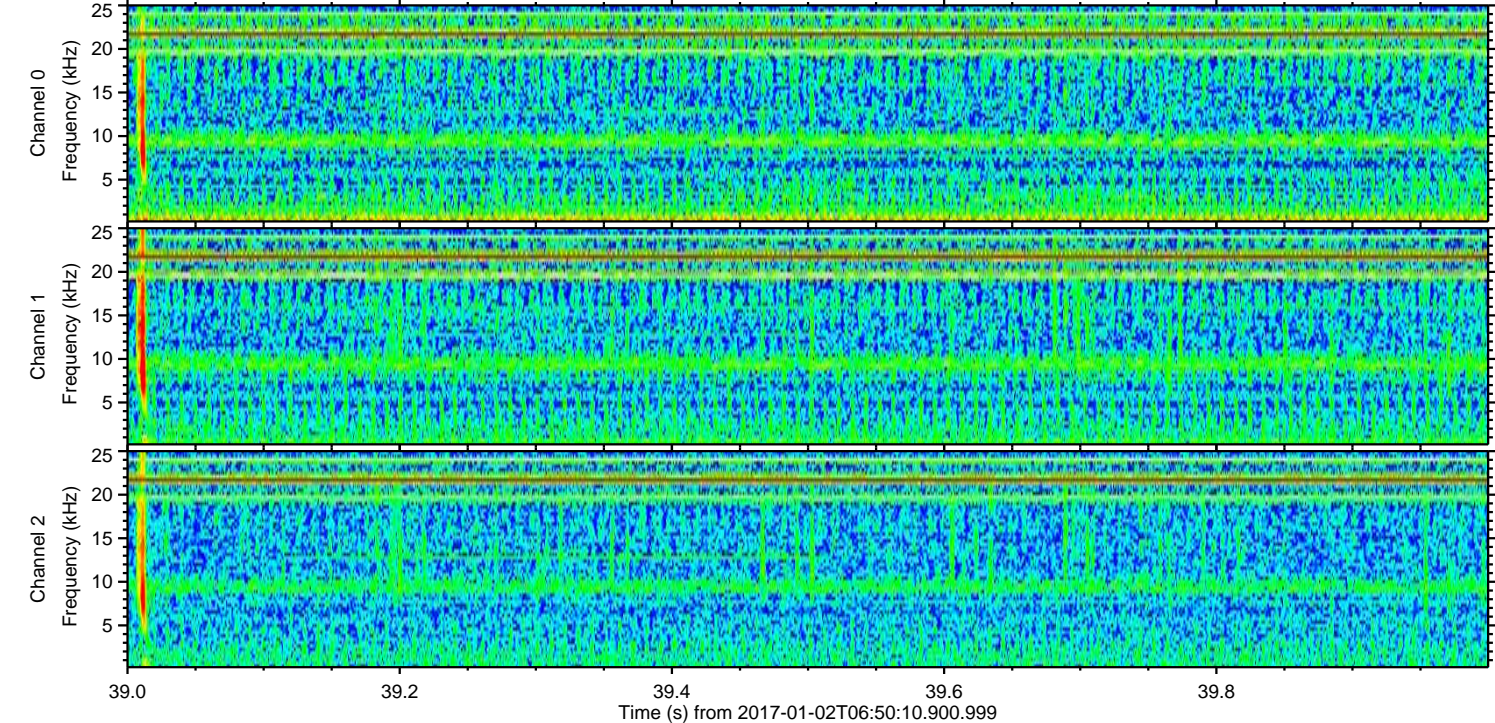
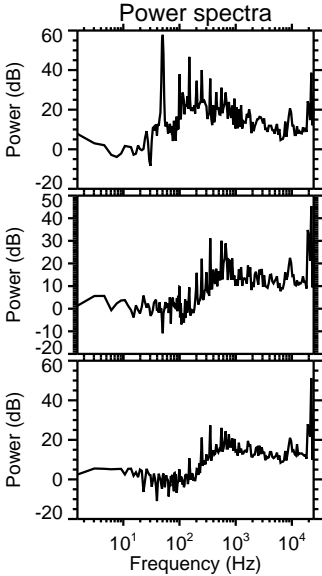
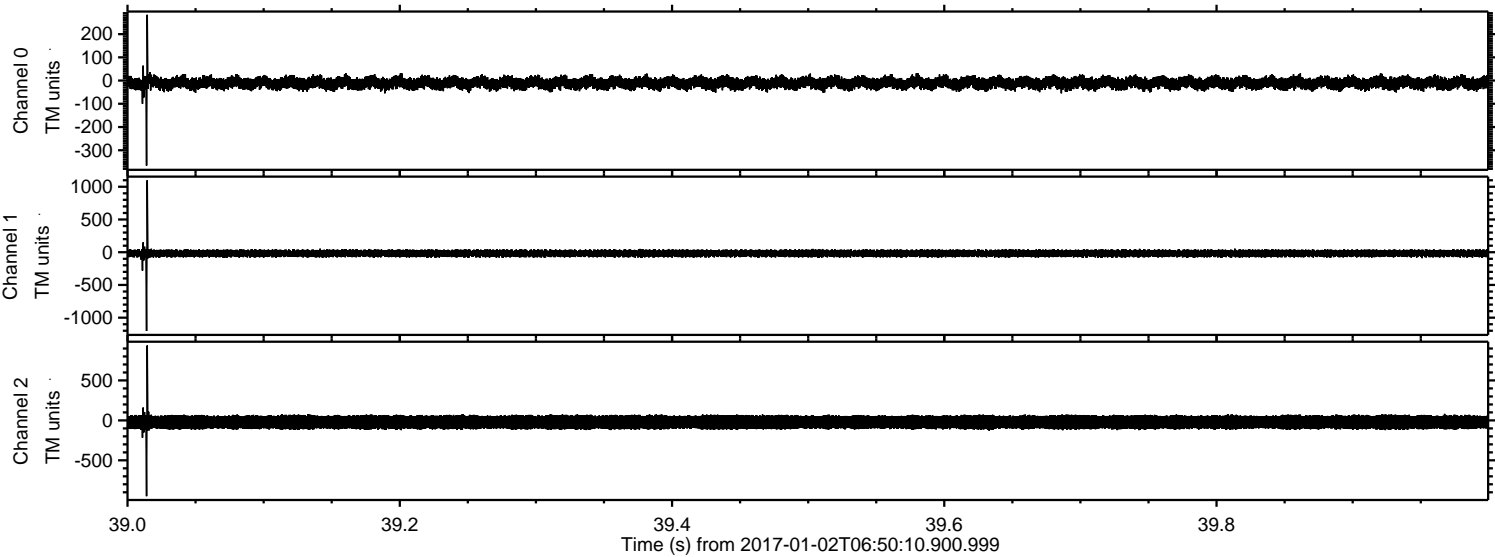


ELMAVAN 3D WAVEFORMS (Measured data sampled at 50 kHz) 51000 packets of 144 samples from 2017-01-02T06:50:10.900.999. Part 145/147

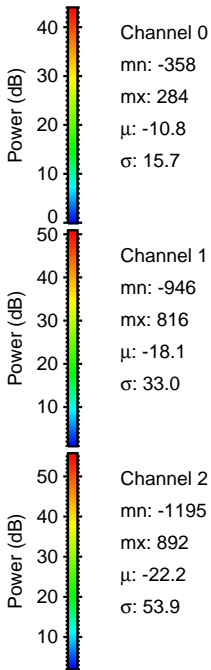
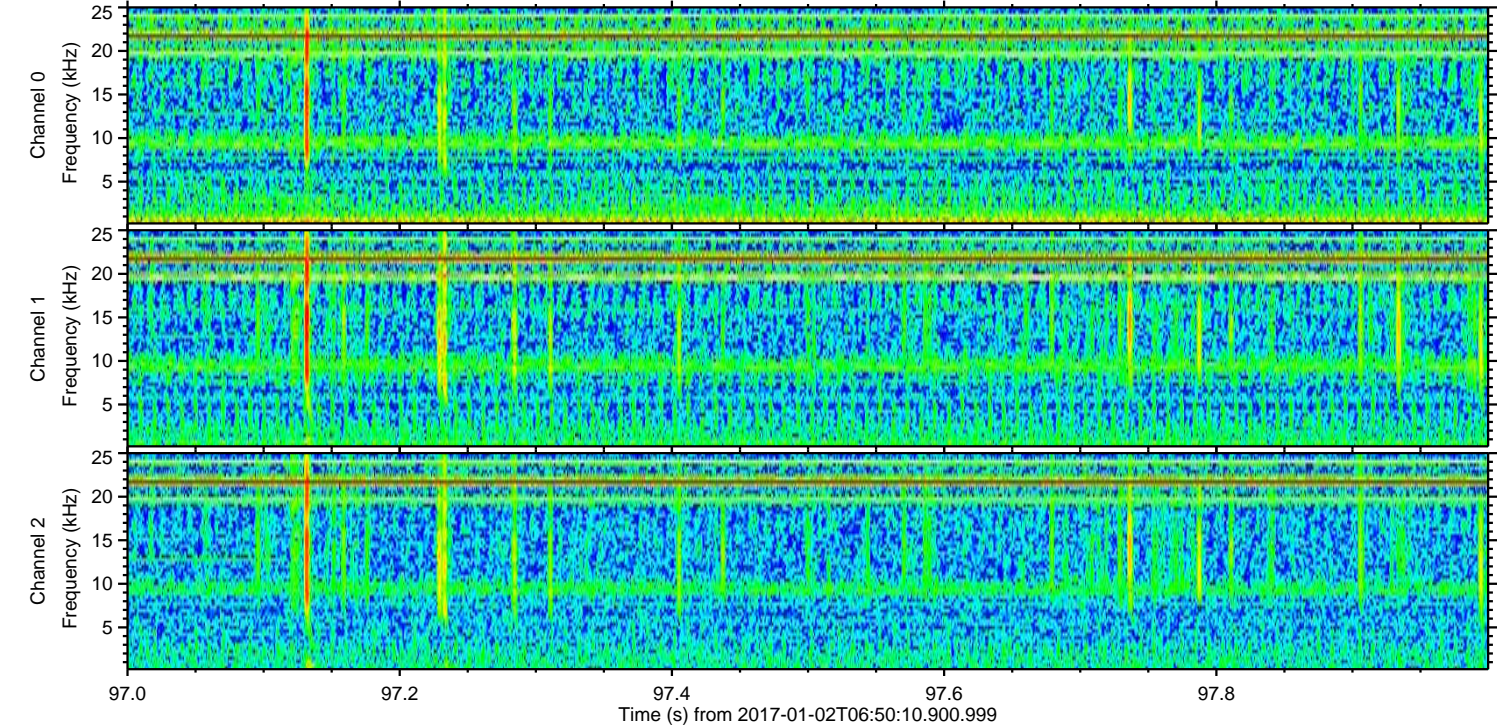
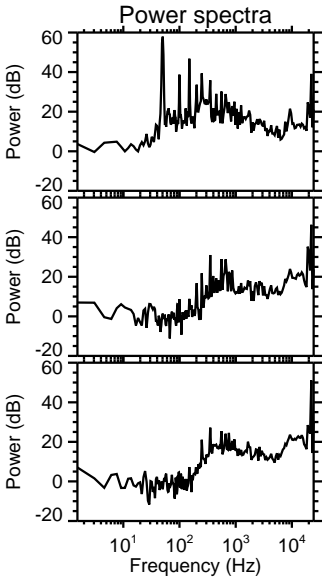
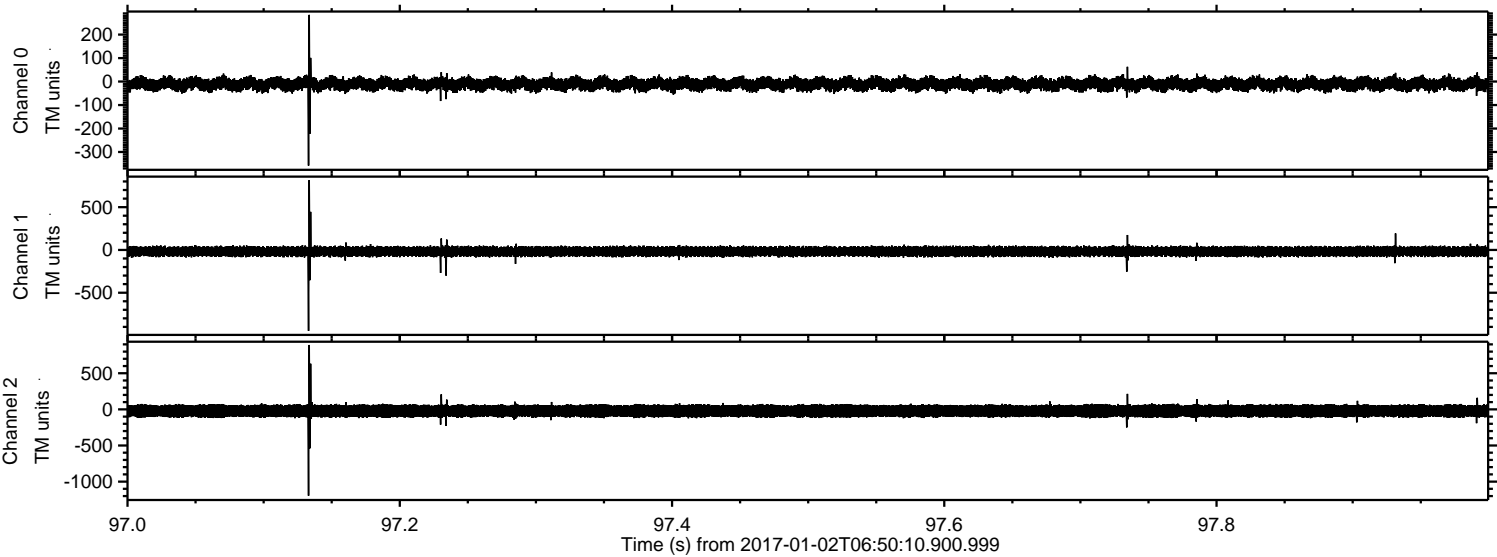
Processed Mon Jan 2 07:58:05 2017 by ELM ver.2012-10-06 from 001__elm20170102_065009__dat00.bin



Processed Mon Jan 2 07:58:06 2017 by ELM ver.2012-10-06 from 001__elm20170102_065009__dat00.bin



Processed Mon Jan 2 07:58:07 2017 by ELM ver.2012-10-06 from 001__elm20170102_065009__dat00.bin

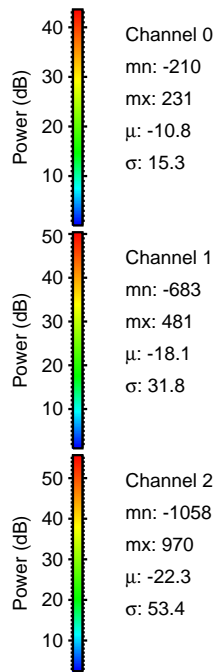
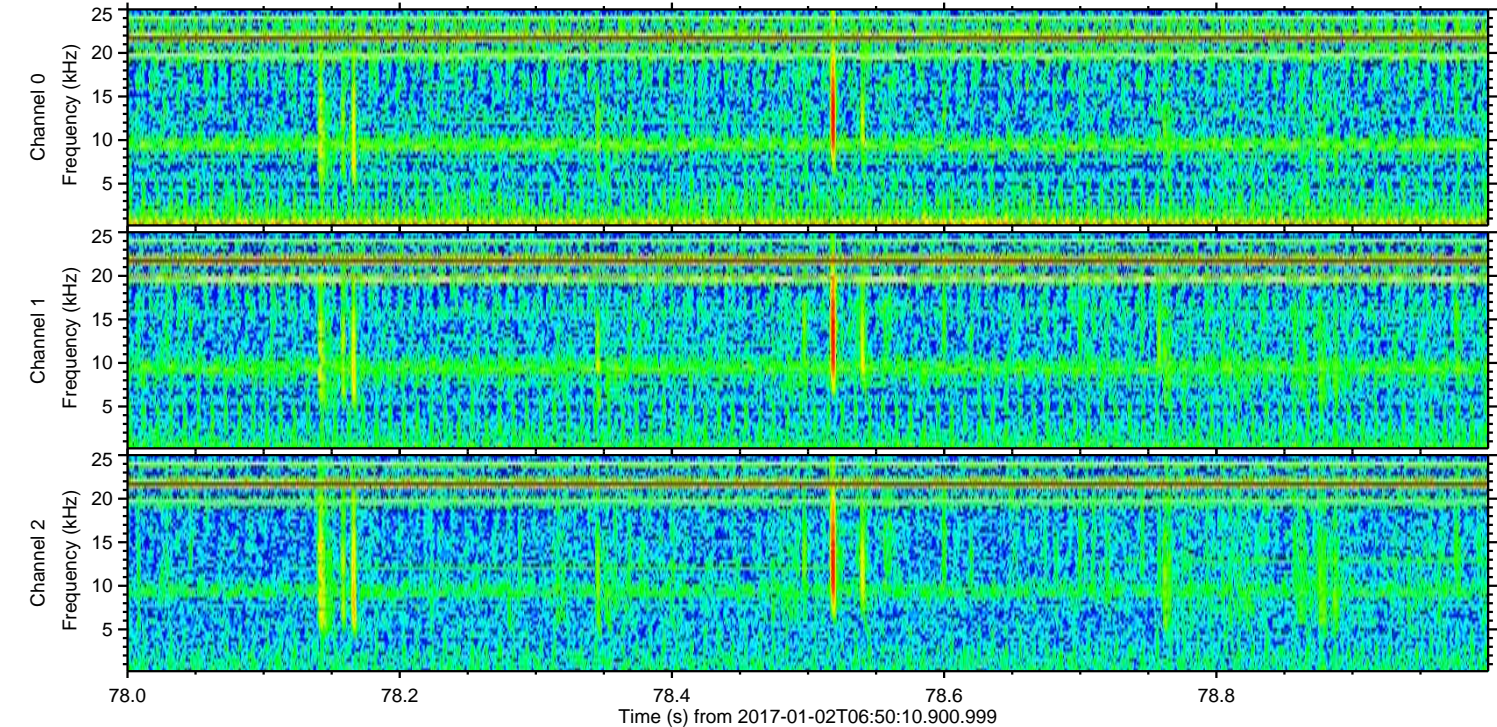
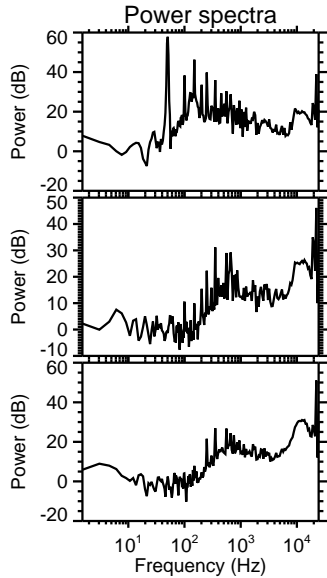
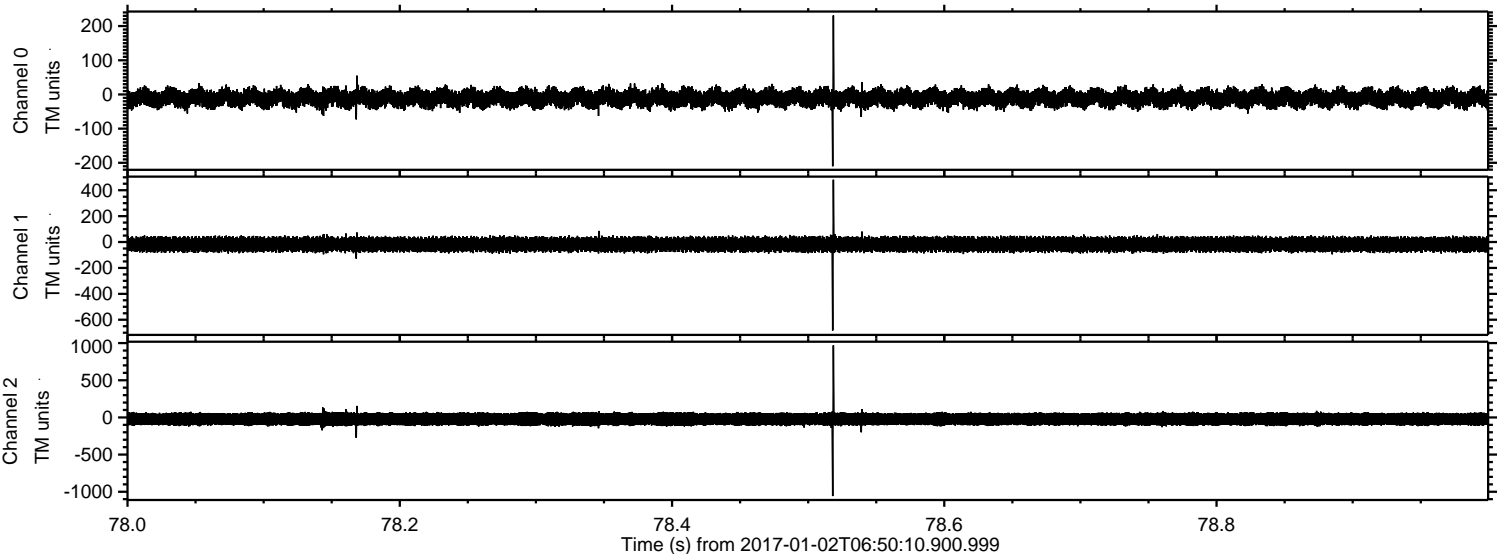


Channel 0
mn: -358
mx: 284
 μ : -10.8
 σ : 15.7

Channel 1
mn: -946
mx: 816
 μ : -18.1
 σ : 33.0

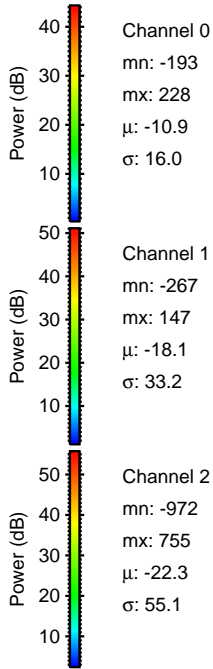
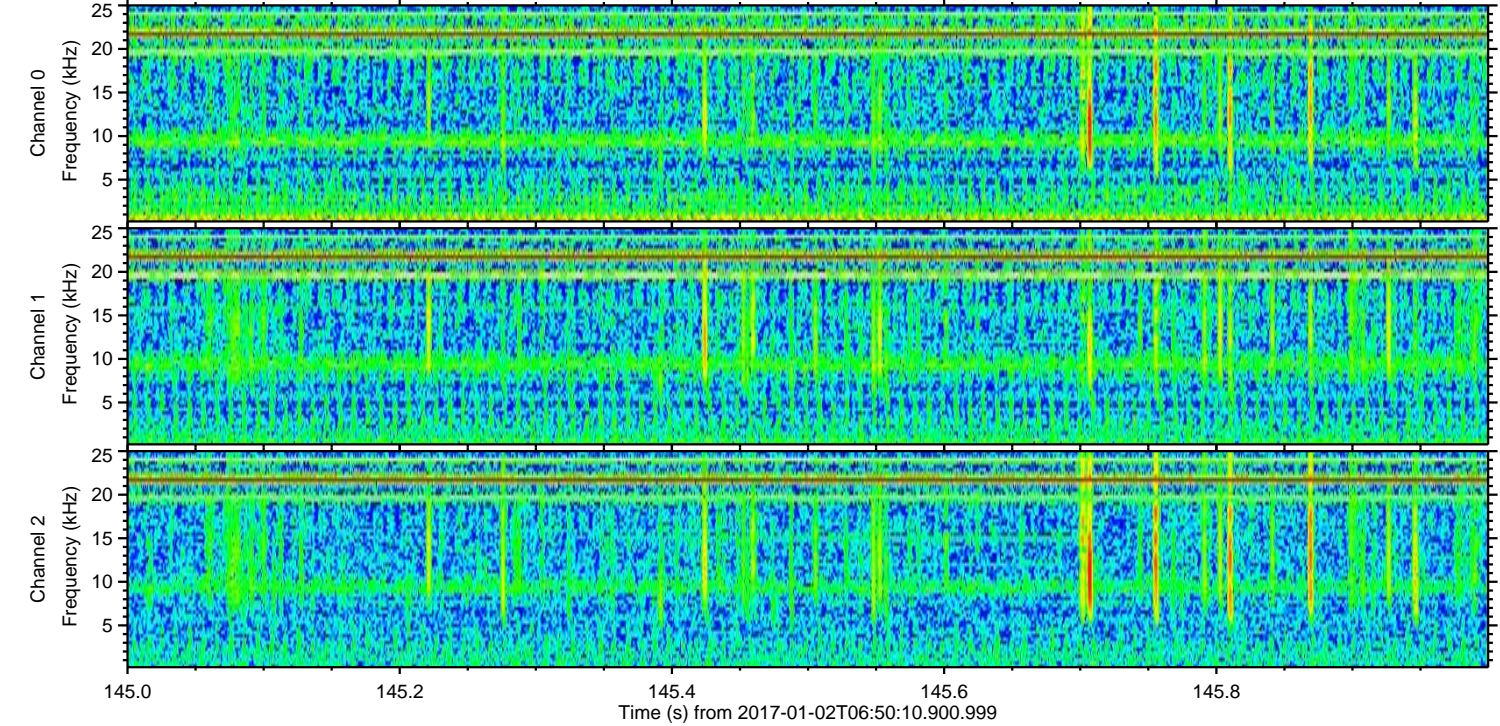
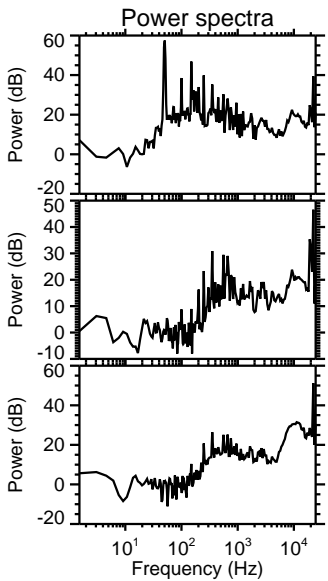
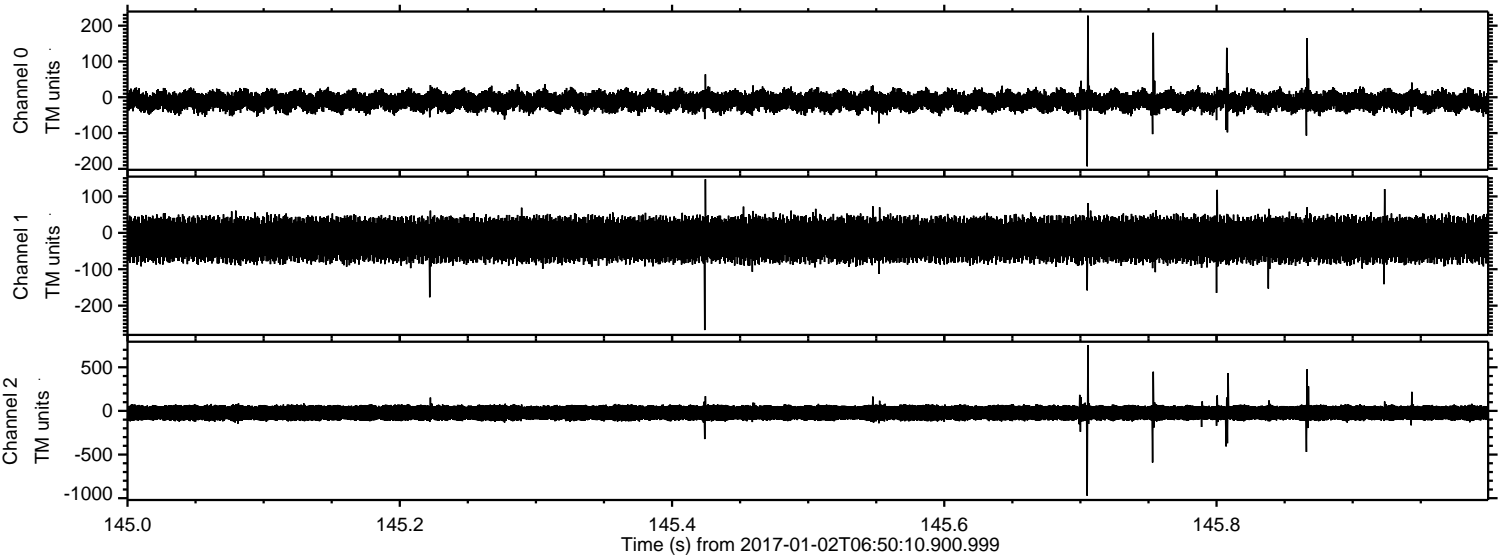
Channel 2
mn: -1195
mx: 892
 μ : -22.2
 σ : 53.9

Processed Mon Jan 2 07:58:08 2017 by ELM ver.2012-10-06 from 001__elm20170102_065009__dat00.bin

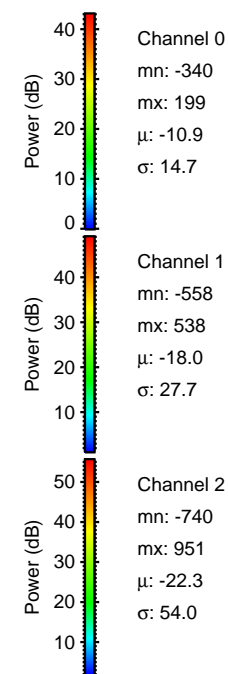
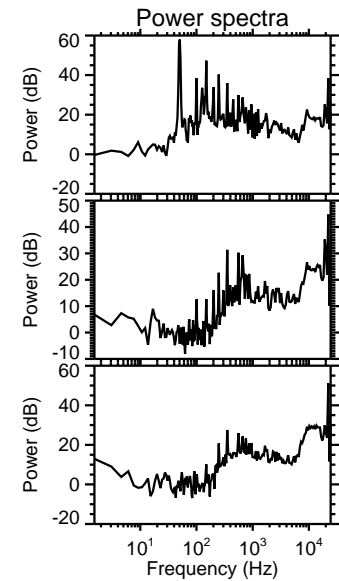
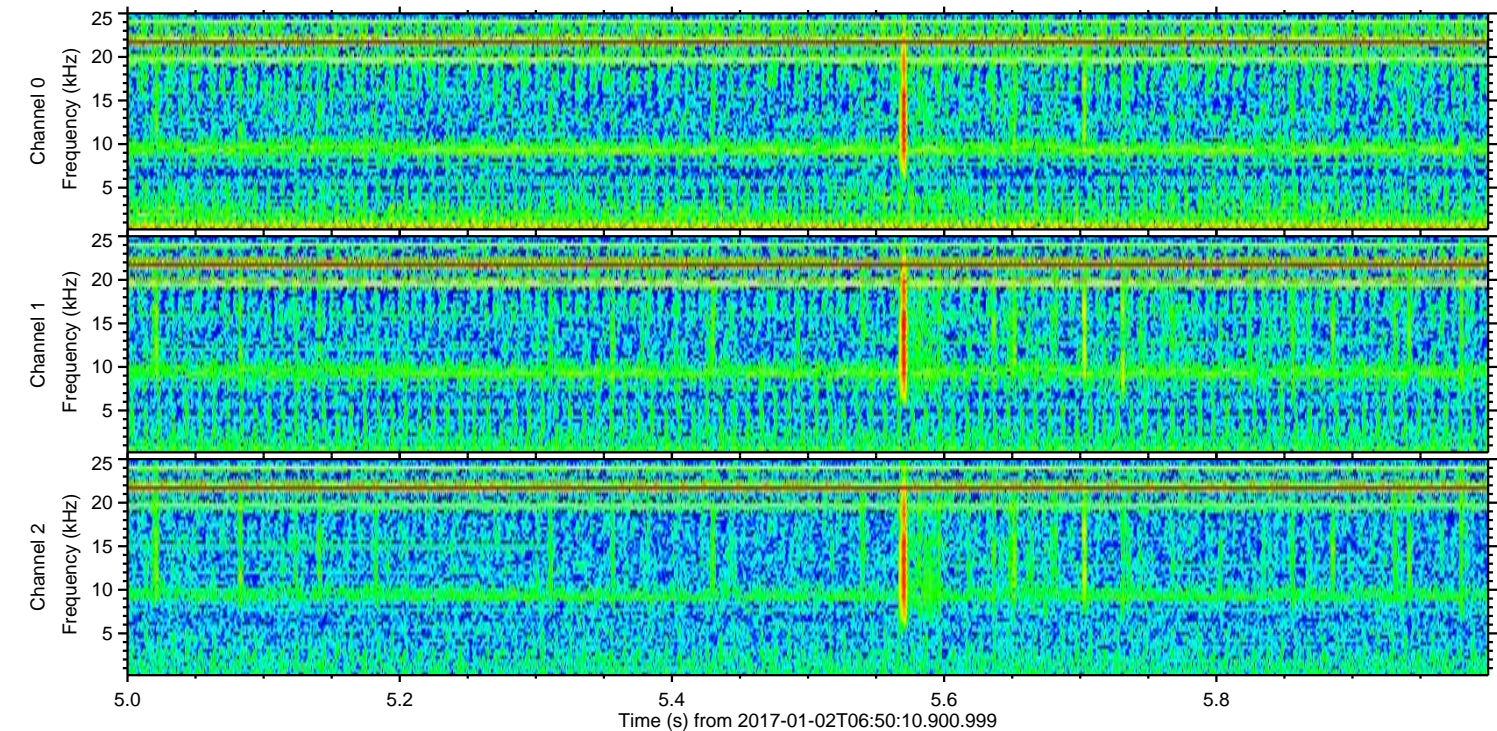
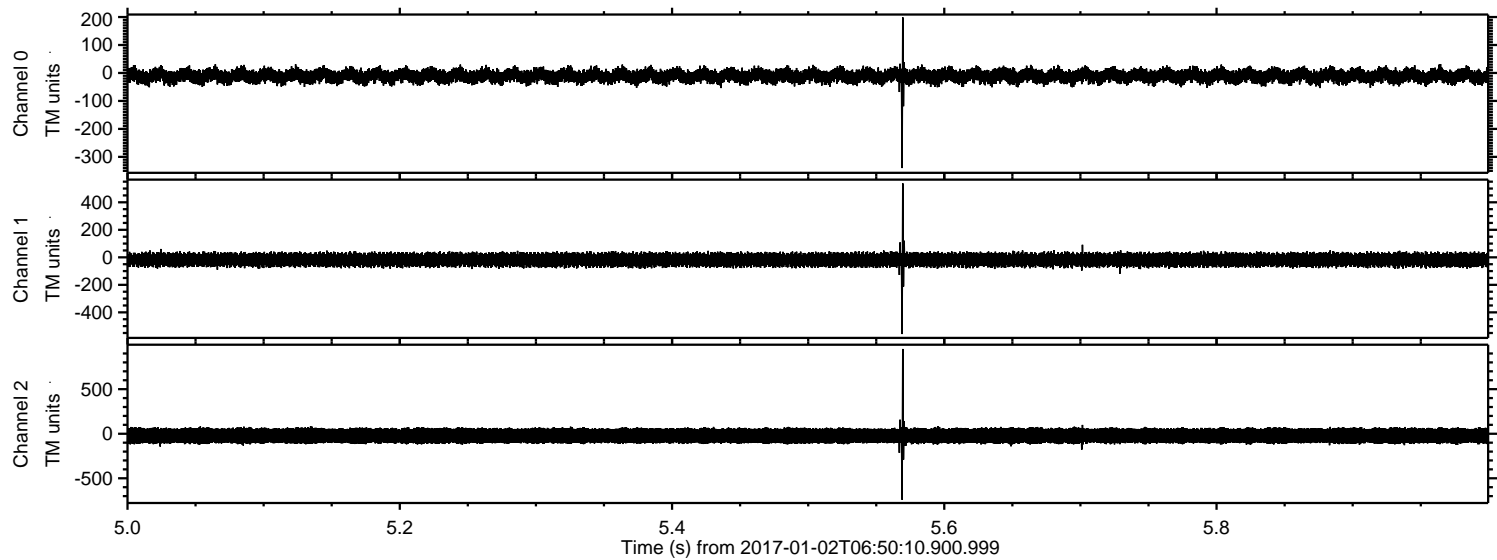


ELMAVAN 3D WAVEFORMS (Measured data sampled at 50 kHz) 51000 packets of 144 samples from 2017-01-02T06:50:10.900.999. Part 146/147

Processed Mon Jan 2 07:58:09 2017 by ELM ver.2012-10-06 from 001__elm20170102_065009__dat00.bin



Processed Mon Jan 2 07:58:10 2017 by ELM ver.2012-10-06 from 001__elm20170102_065009__dat00.bin



Channel 0
mn: -340
mx: 199
 μ : -10.9
 σ : 14.7

Channel 1
mn: -558
mx: 538
 μ : -18.0
 σ : 27.7

Channel 2
mn: -740
mx: 951
 μ : -22.3
 σ : 54.0

Processed Mon Jan 2 07:58:11 2017 by ELM ver.2012-10-06 from 001__elm20170102_065009__dat00.bin

