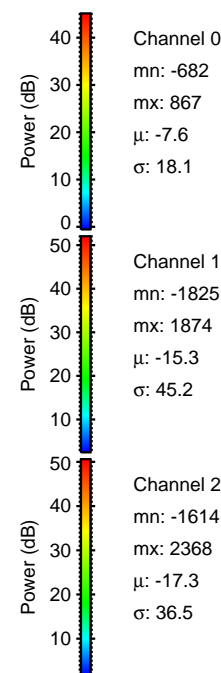
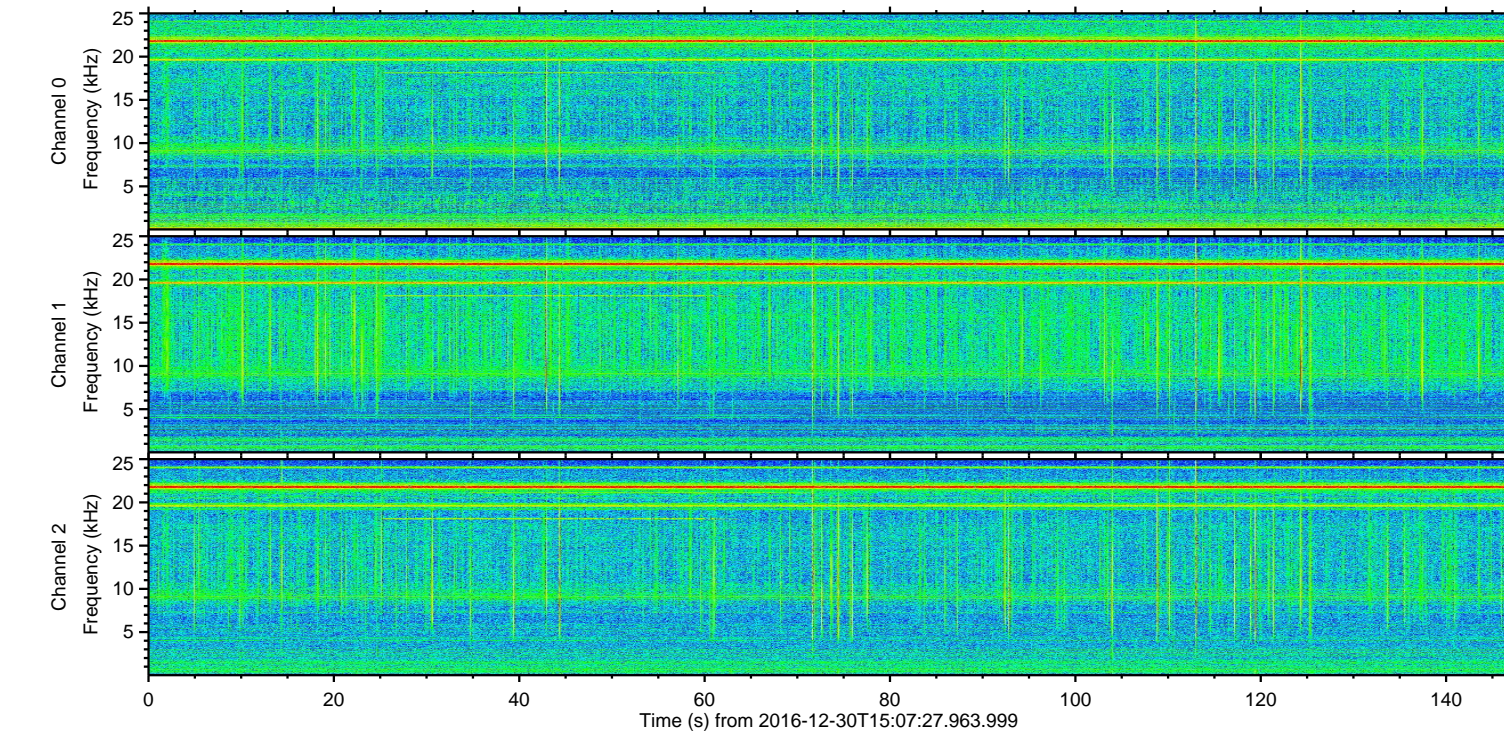
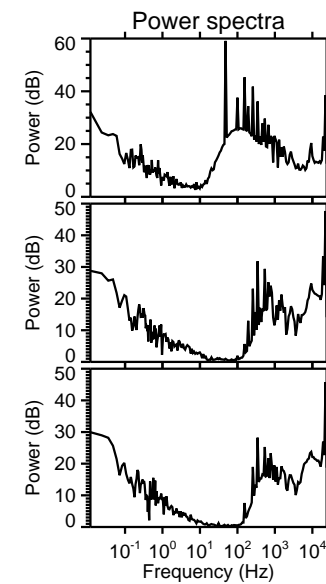
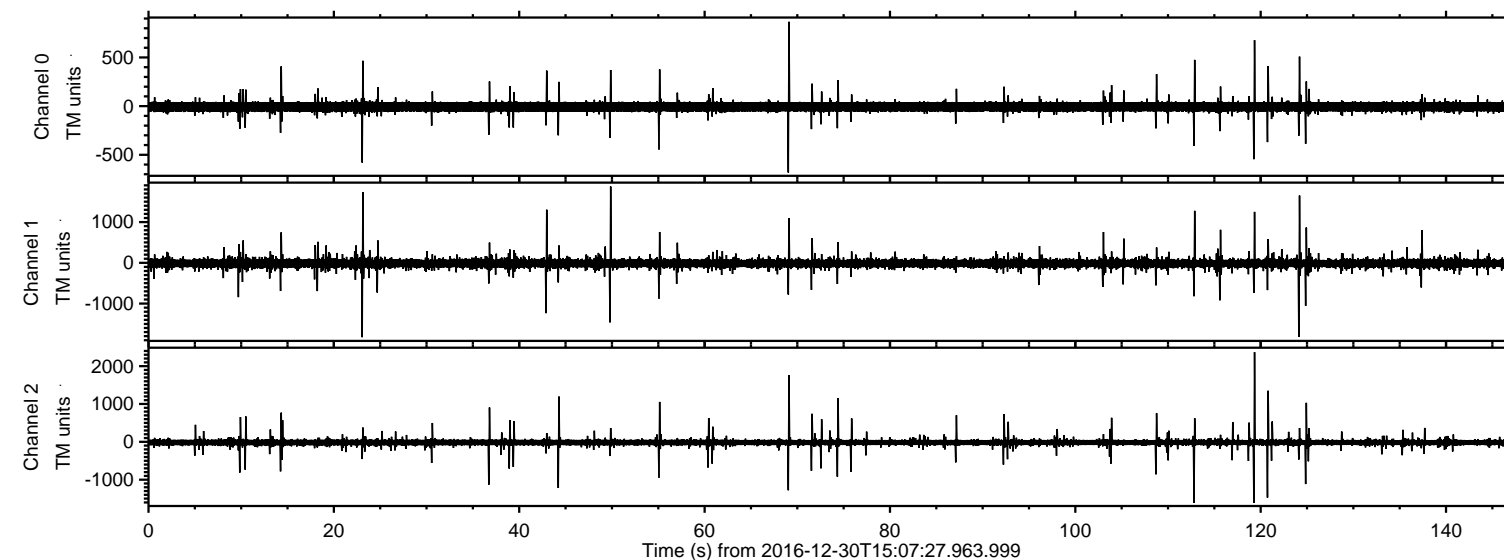


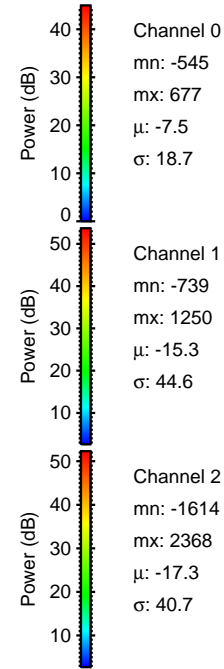
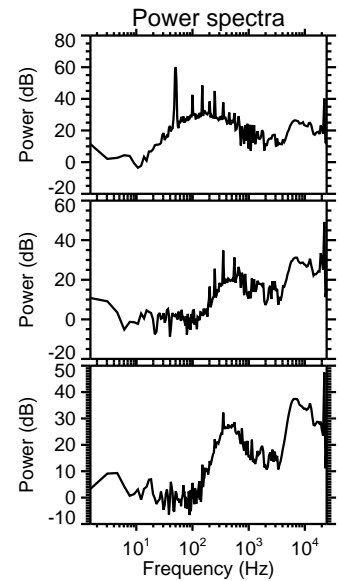
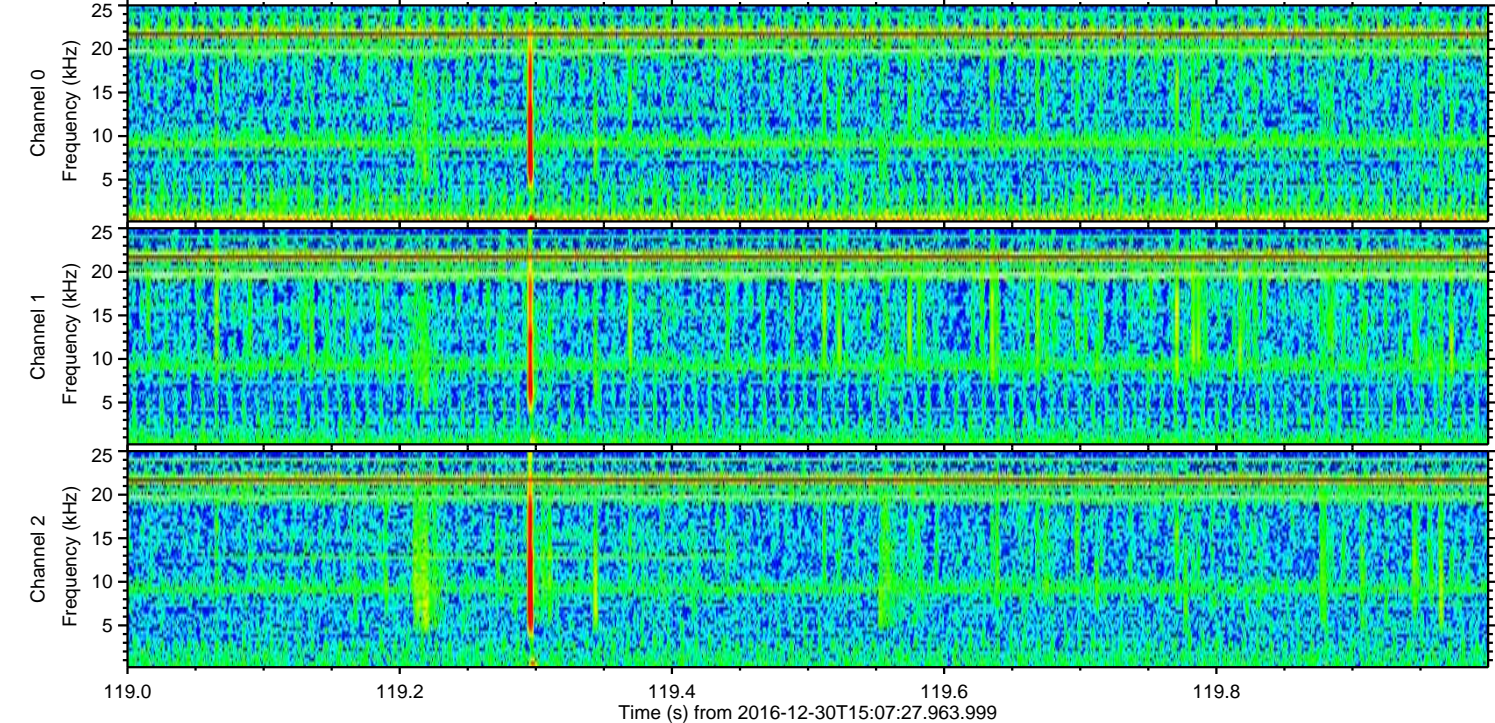
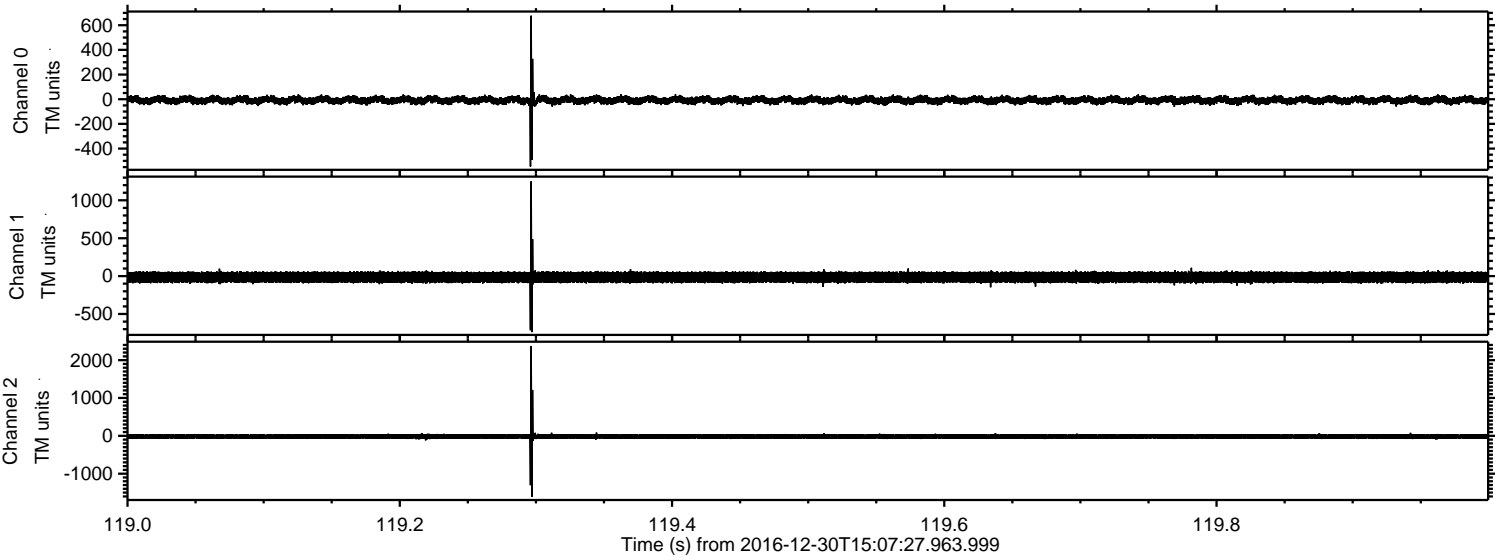
ELMAVAN 3D WAVEFORMS (Measured data sampled at 50 kHz) 51000 packets of 144 samples from 2016-12-30T15:07:27.963.999.

Processed Fri Dec 30 16:15:13 2016 by ELM ver.2012-10-06 from 001__elm20161230_150726__dat00.bin

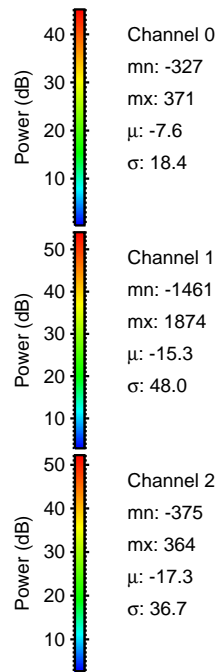
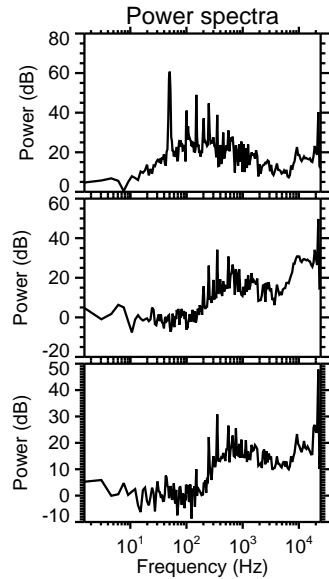
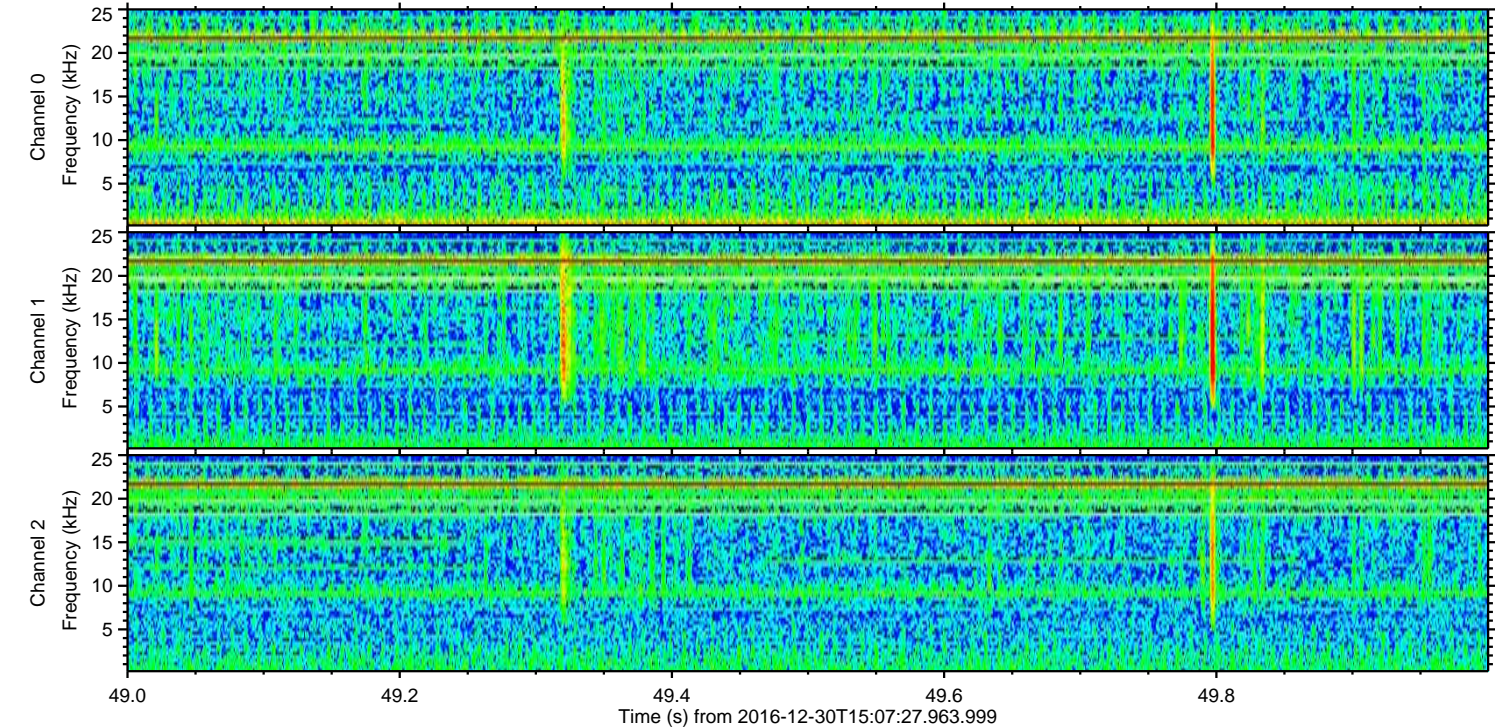
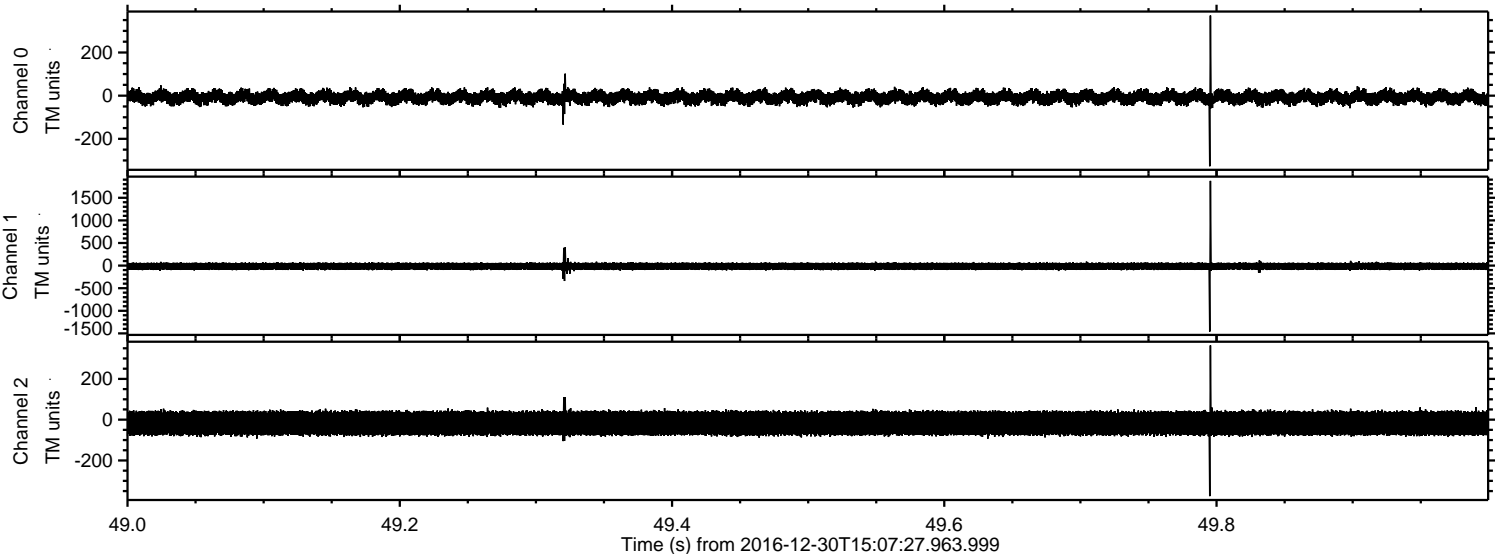


ELMAVAN 3D WAVEFORMS (Measured data sampled at 50 kHz) 51000 packets of 144 samples from 2016-12-30T15:07:27.963.999. Part 120/147

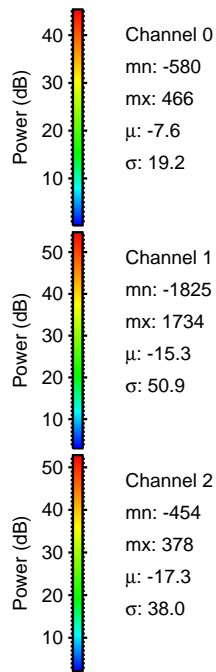
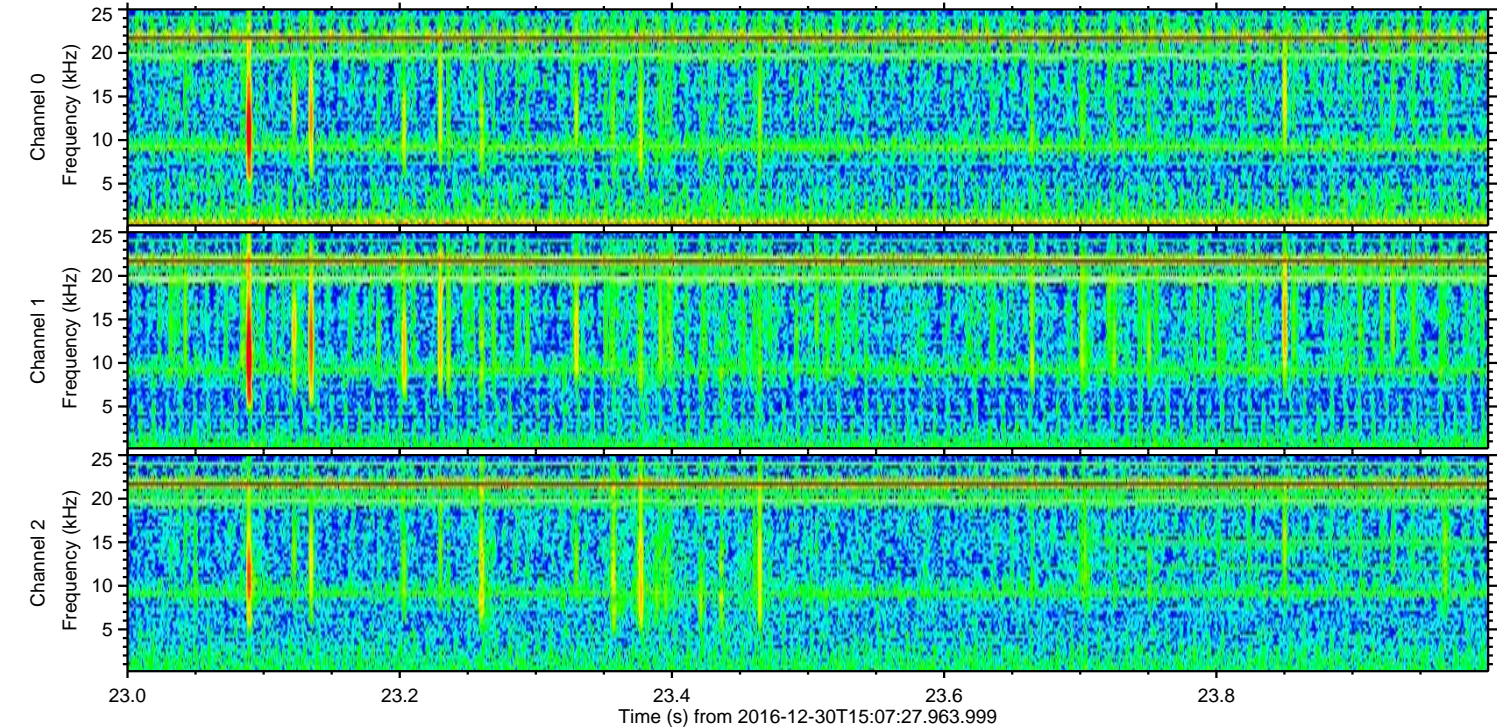
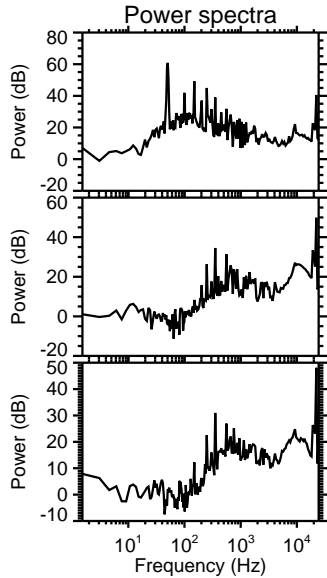
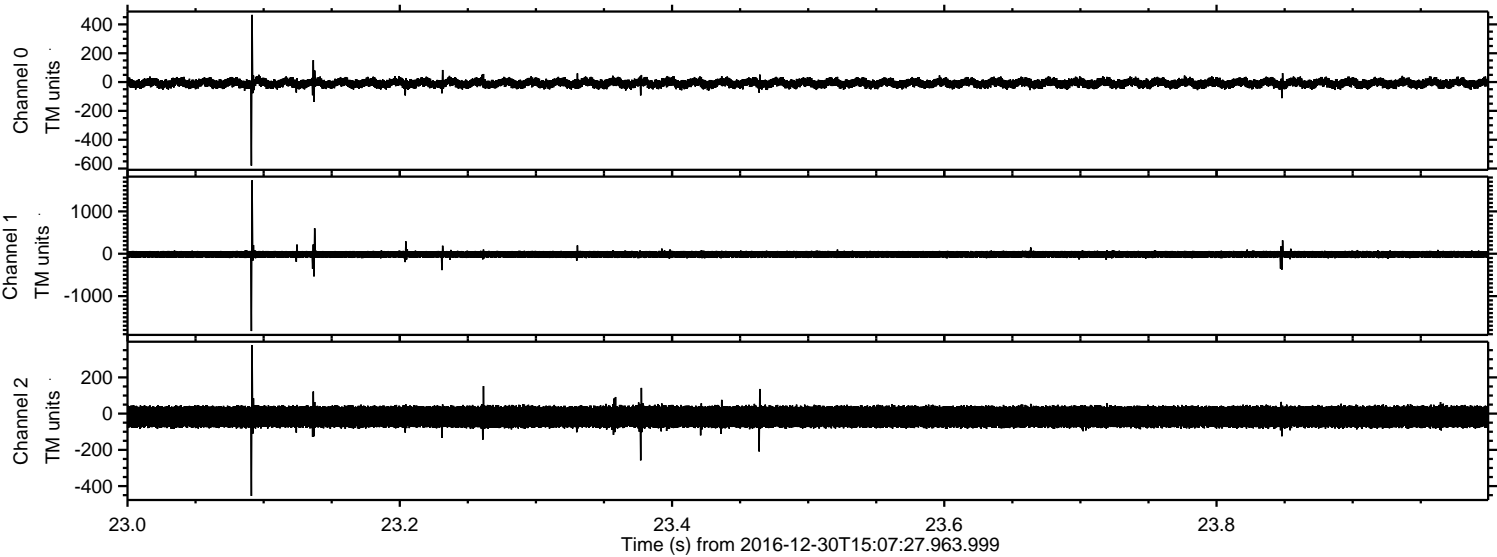
Processed Fri Dec 30 16:15:25 2016 by ELM ver.2012-10-06 from 001__elm20161230_150726__dat00.bin



Processed Fri Dec 30 16:15:26 2016 by ELM ver.2012-10-06 from 001__elm20161230_150726__dat00.bin

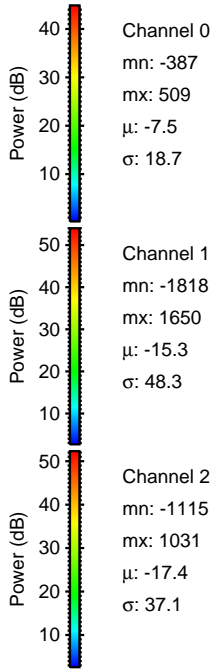
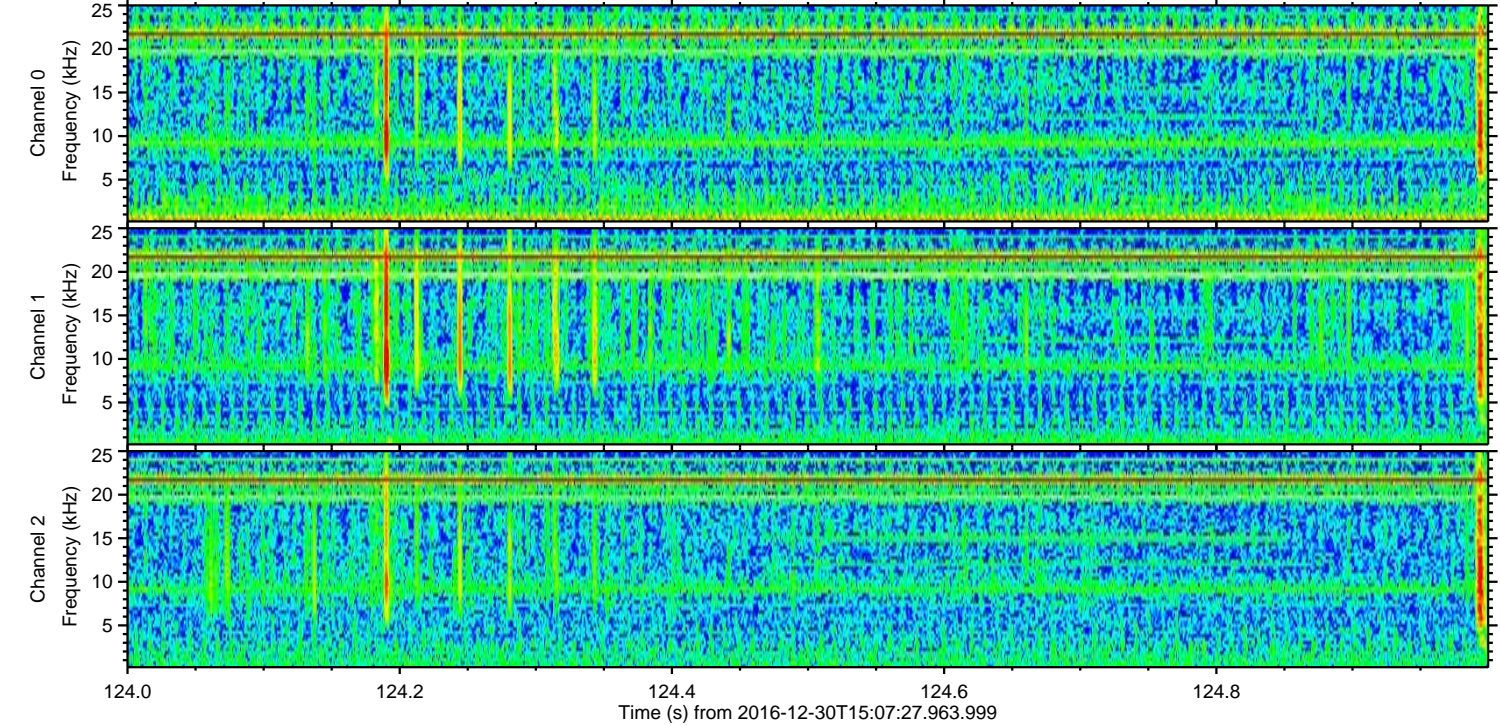
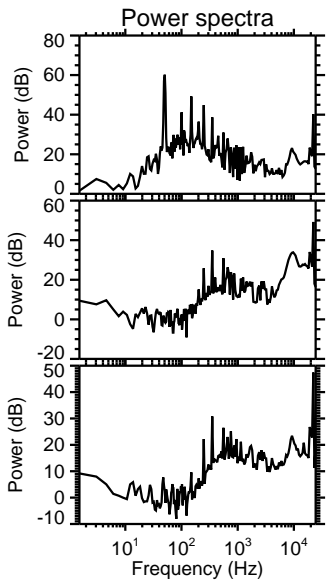
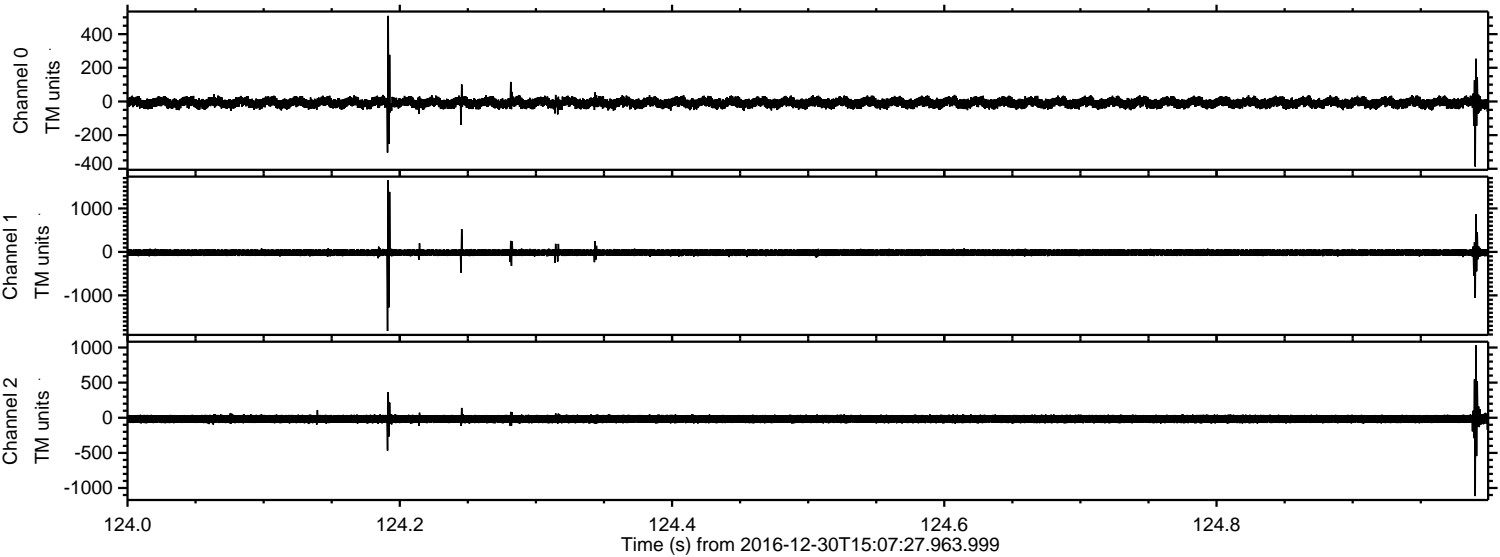


Processed Fri Dec 30 16:15:27 2016 by ELM ver.2012-10-06 from 001__elm20161230_150726__dat00.bin



ELMAVAN 3D WAVEFORMS (Measured data sampled at 50 kHz) 51000 packets of 144 samples from 2016-12-30T15:07:27.963.999. Part 125/147

Processed Fri Dec 30 16:15:28 2016 by ELM ver.2012-10-06 from 001__elm20161230_150726__dat00.bin

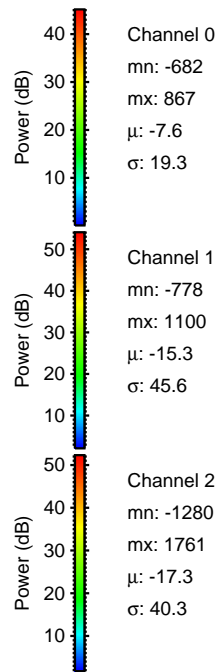
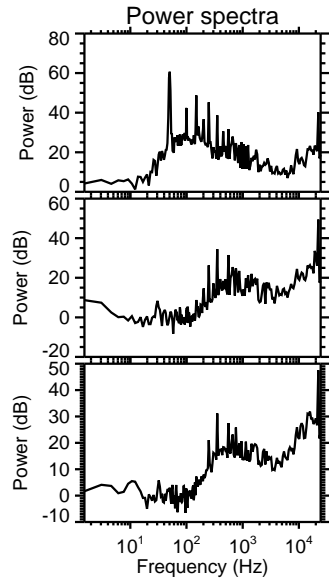
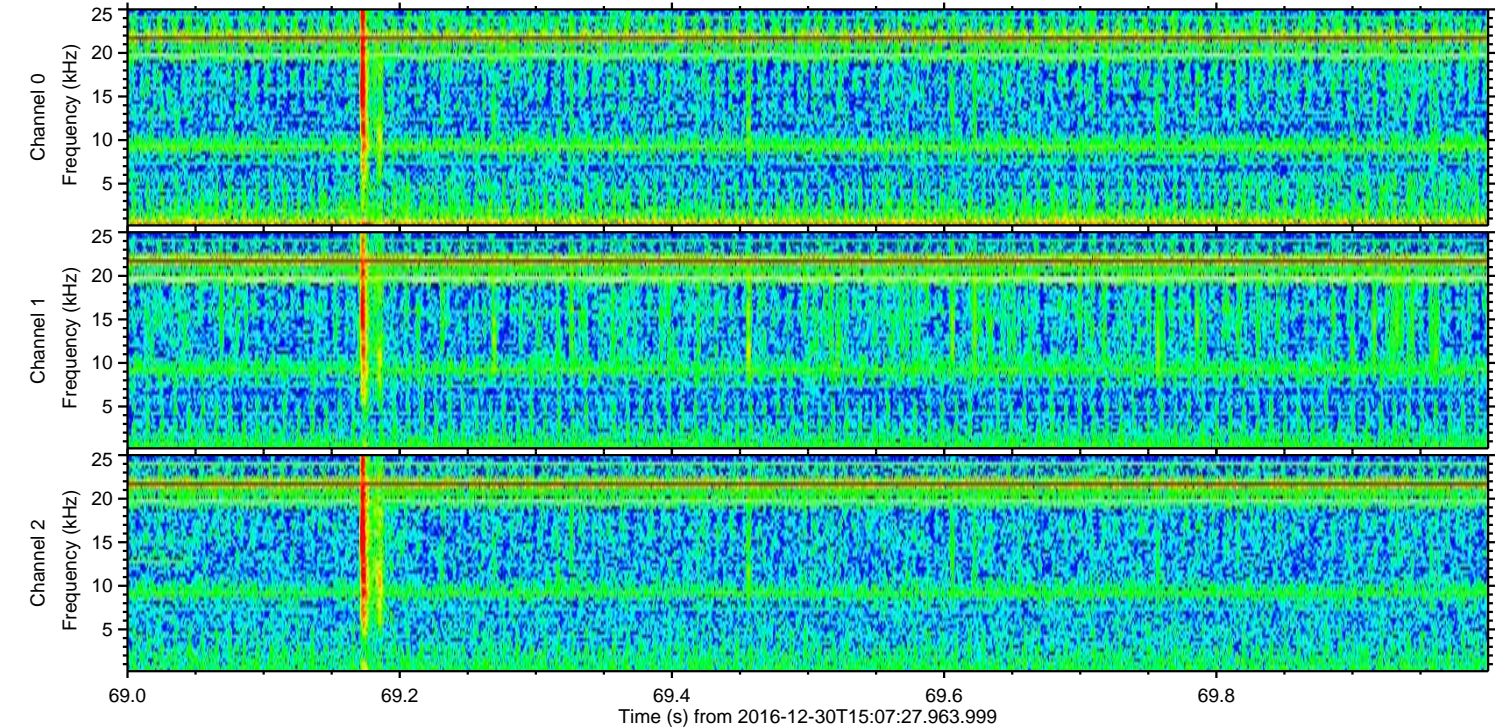
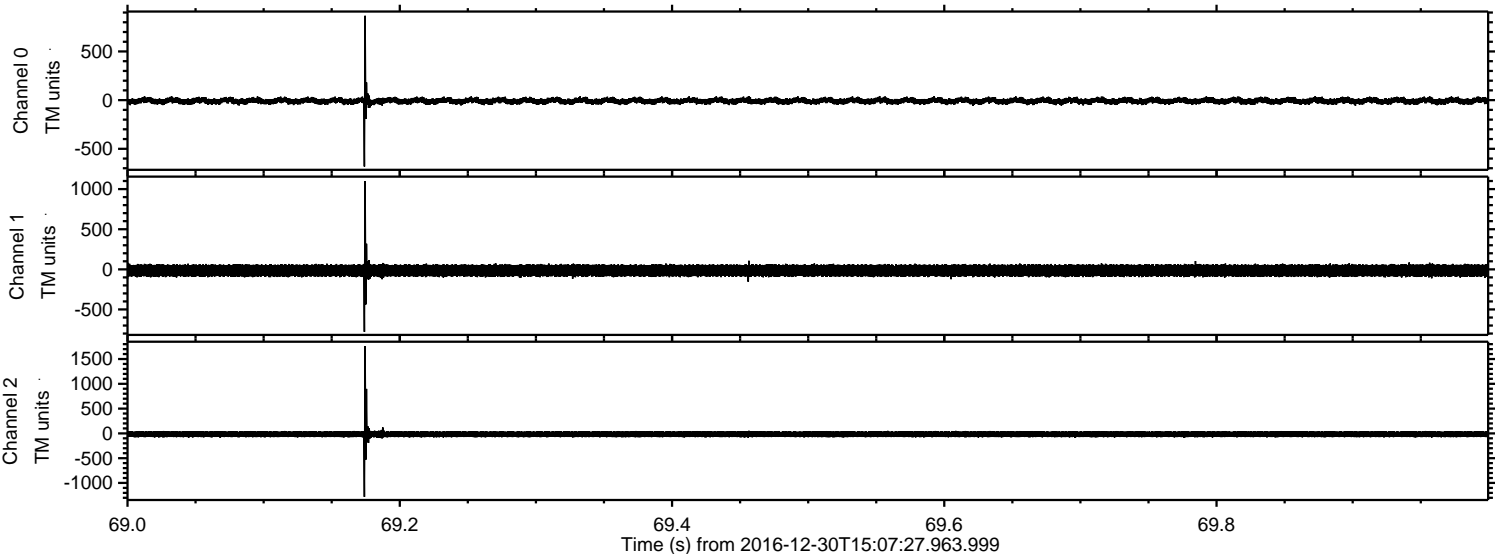


Channel 0
mn: -387
mx: 509
 μ : -7.5
 σ : 18.7

Channel 1
mn: -1818
mx: 1650
 μ : -15.3
 σ : 48.3

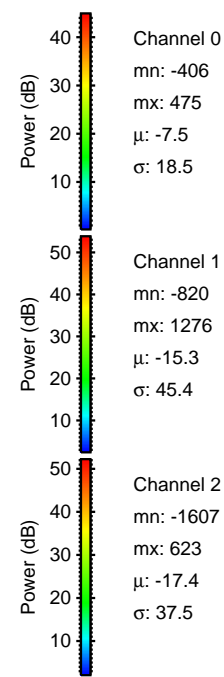
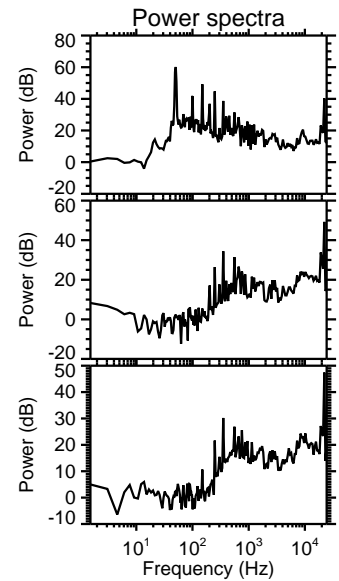
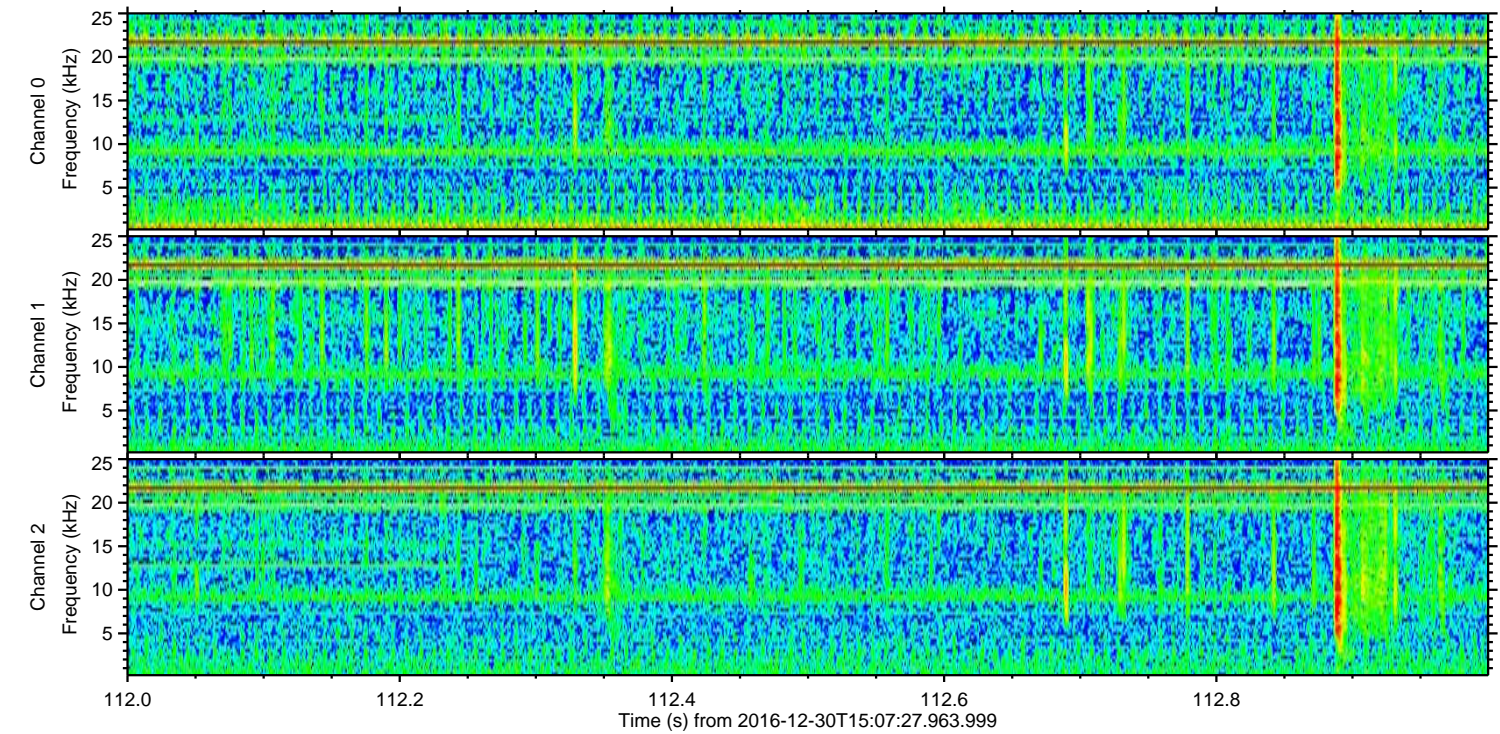
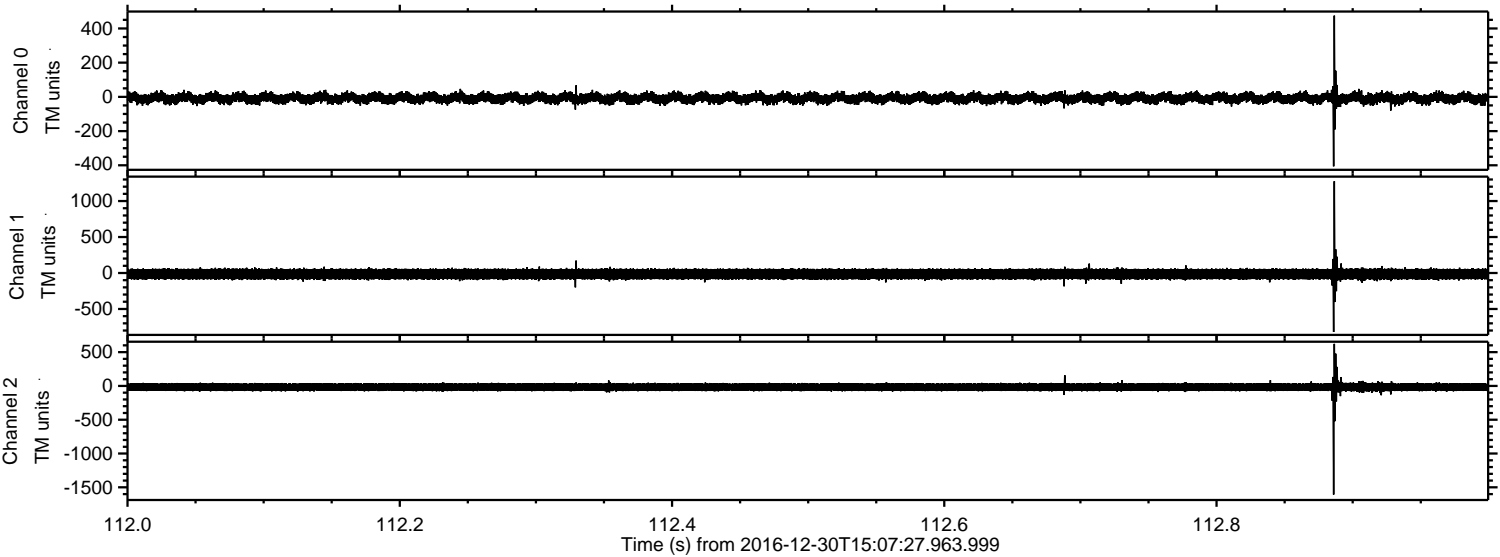
Channel 2
mn: -1115
mx: 1031
 μ : -17.4
 σ : 37.1

Processed Fri Dec 30 16:15:29 2016 by ELM ver.2012-10-06 from 001__elm20161230_150726__dat00.bin



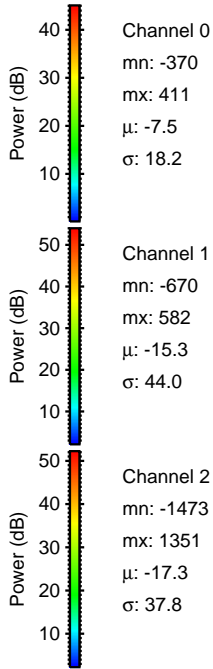
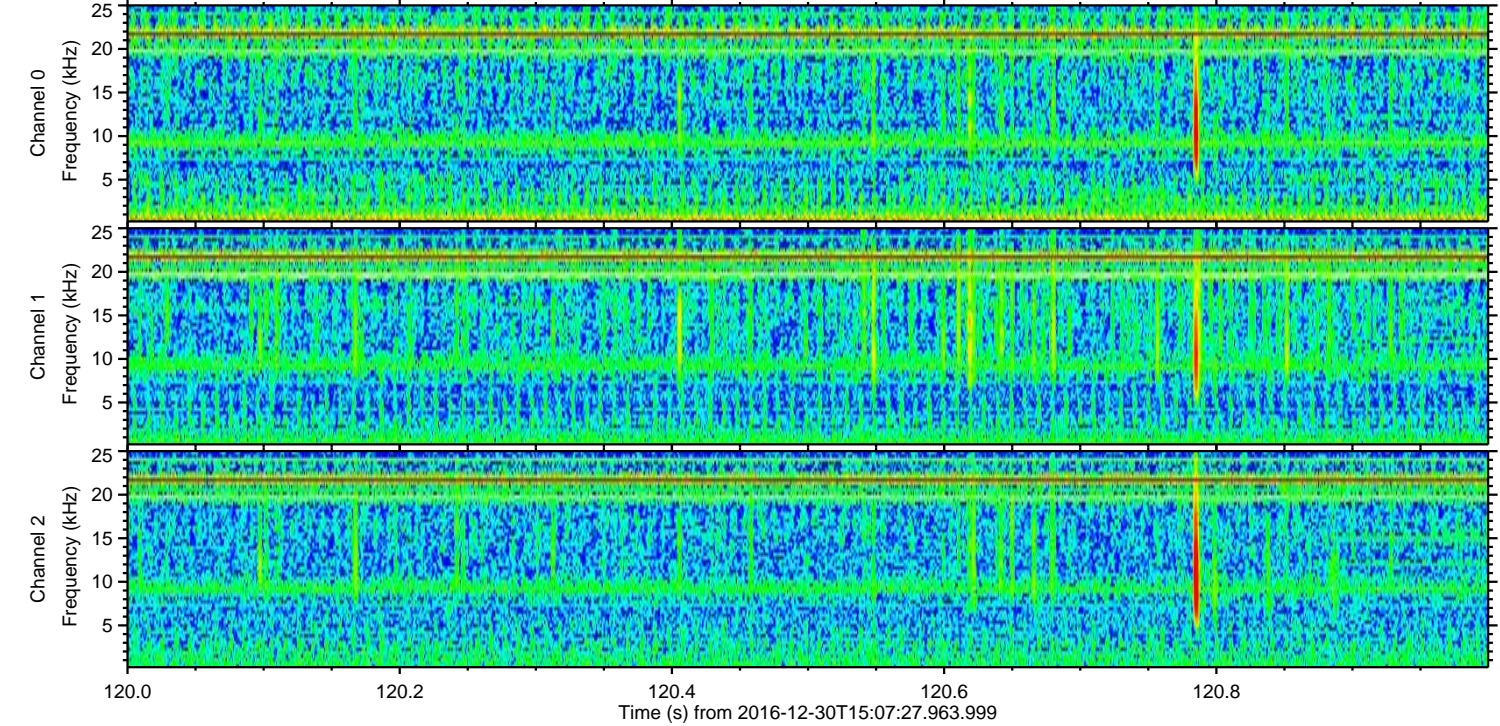
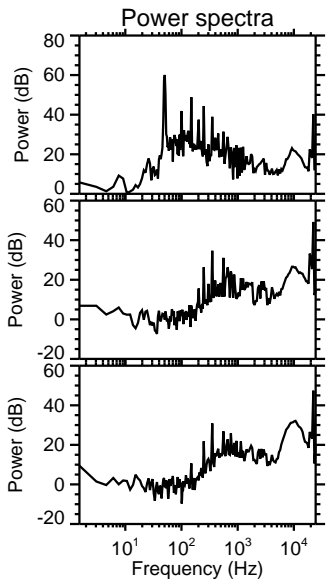
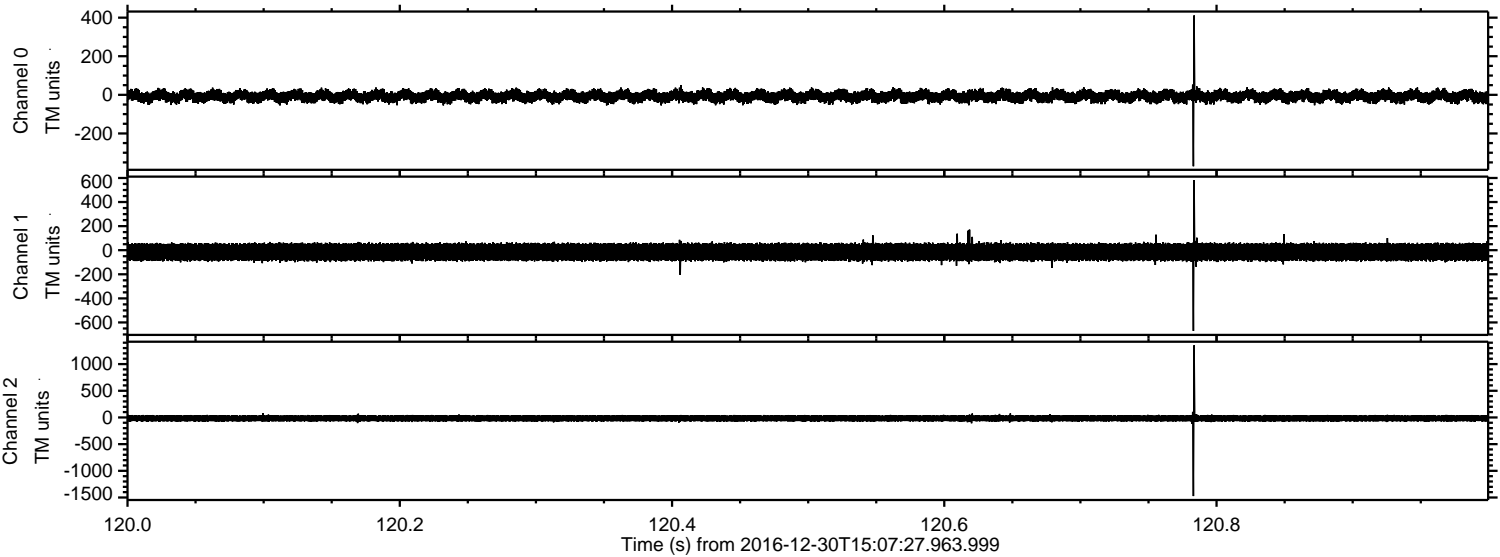
ELMAVAN 3D WAVEFORMS (Measured data sampled at 50 kHz) 51000 packets of 144 samples from 2016-12-30T15:07:27.963.999. Part 113/147

Processed Fri Dec 30 16:15:30 2016 by ELM ver.2012-10-06 from 001__elm20161230_150726__dat00.bin

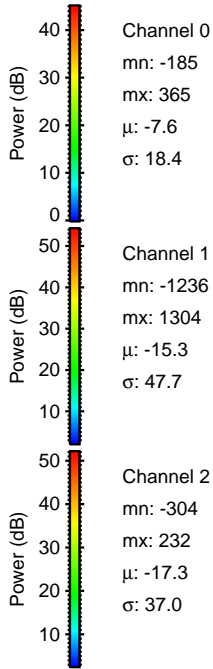
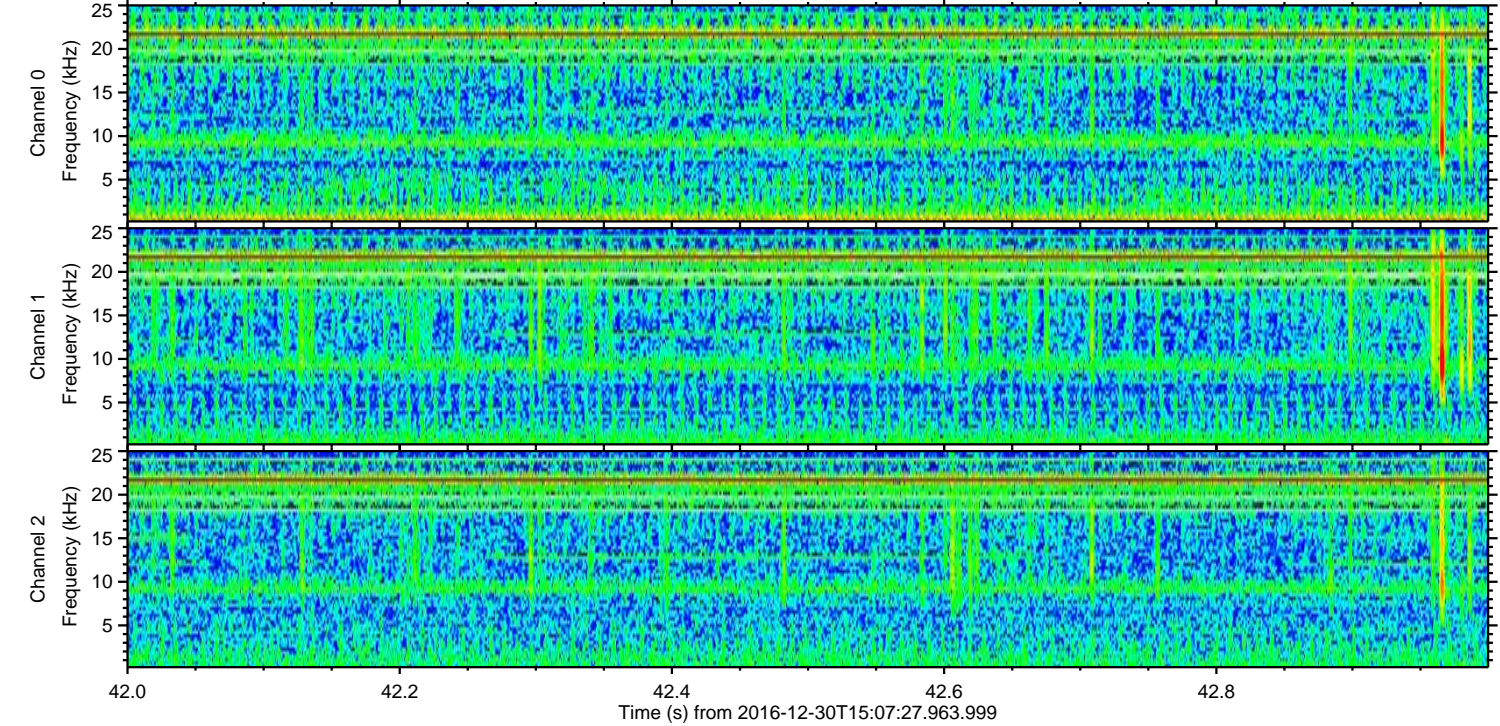
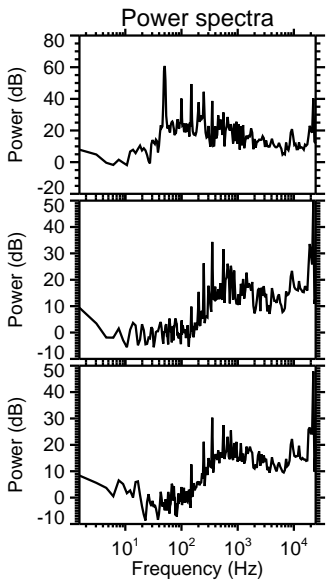
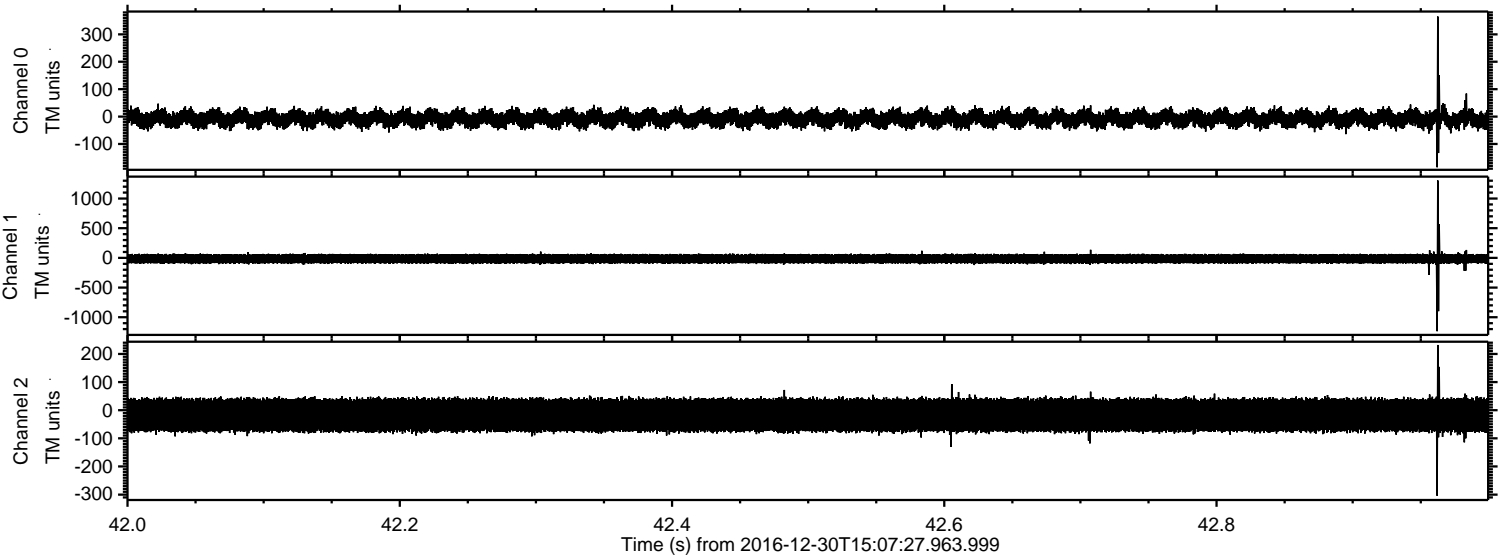


ELMAVAN 3D WAVEFORMS (Measured data sampled at 50 kHz) 51000 packets of 144 samples from 2016-12-30T15:07:27.963.999. Part 121/147

Processed Fri Dec 30 16:15:30 2016 by ELM ver.2012-10-06 from 001__elm20161230_150726__dat00.bin



Processed Fri Dec 30 16:15:31 2016 by ELM ver.2012-10-06 from 001__elm20161230_150726__dat00.bin



Channel 0
mn: -185
mx: 365
 μ : -7.6
 σ : 18.4

Channel 1
mn: -1236
mx: 1304
 μ : -15.3
 σ : 47.7

Channel 2
mn: -304
mx: 232
 μ : -17.3
 σ : 37.0

Processed Fri Dec 30 16:15:32 2016 by ELM ver.2012-10-06 from 001__elm20161230_150726__dat00.bin

