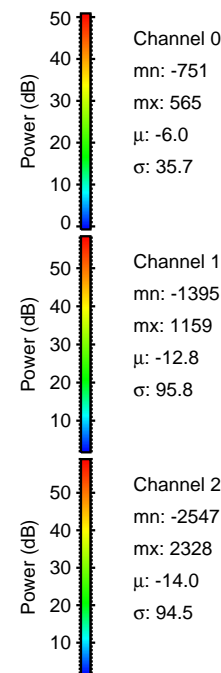
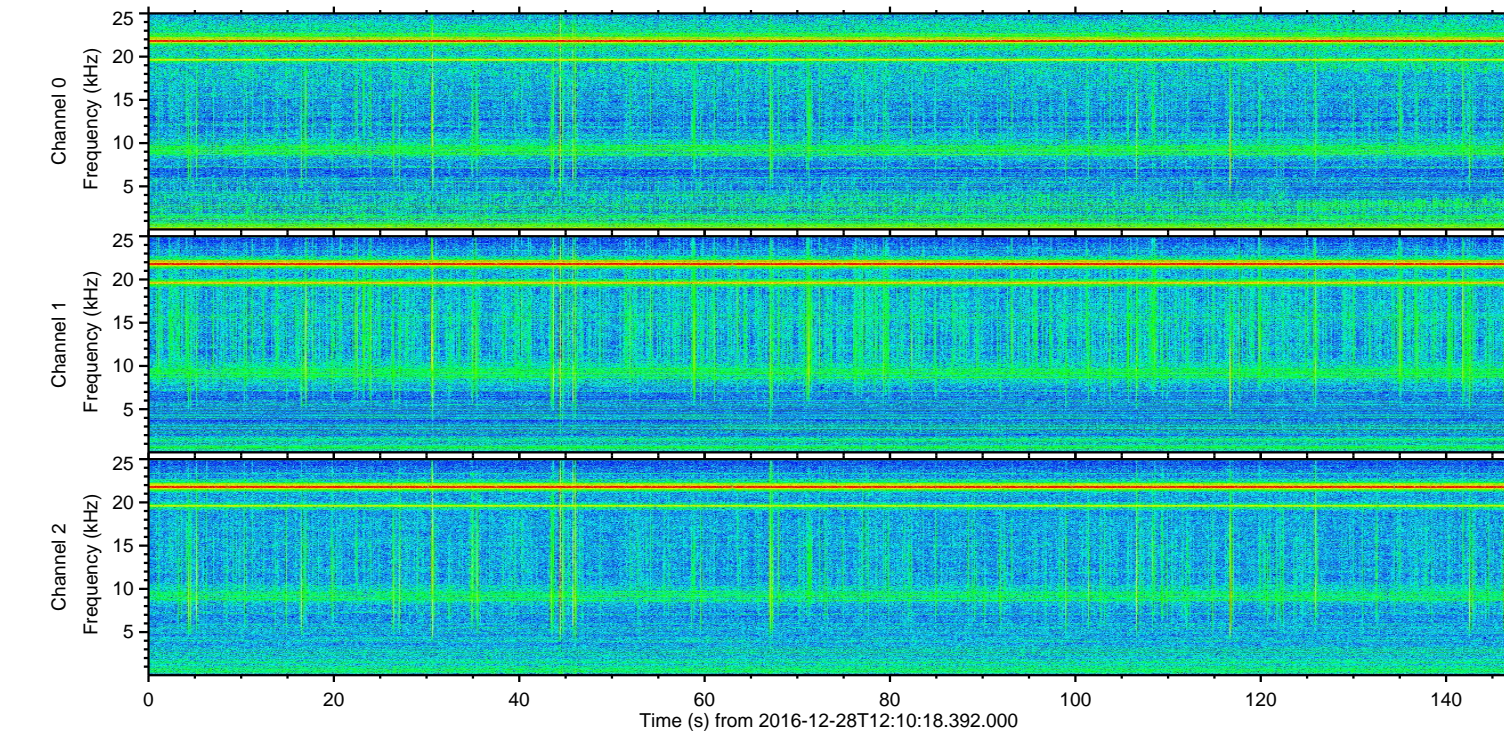
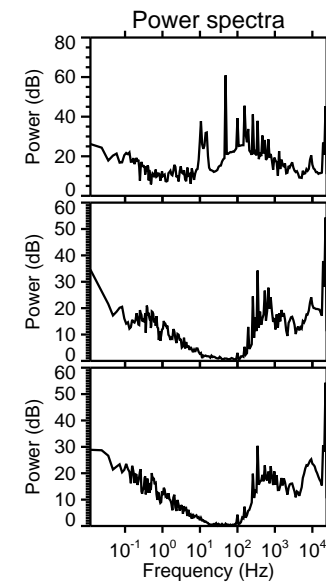
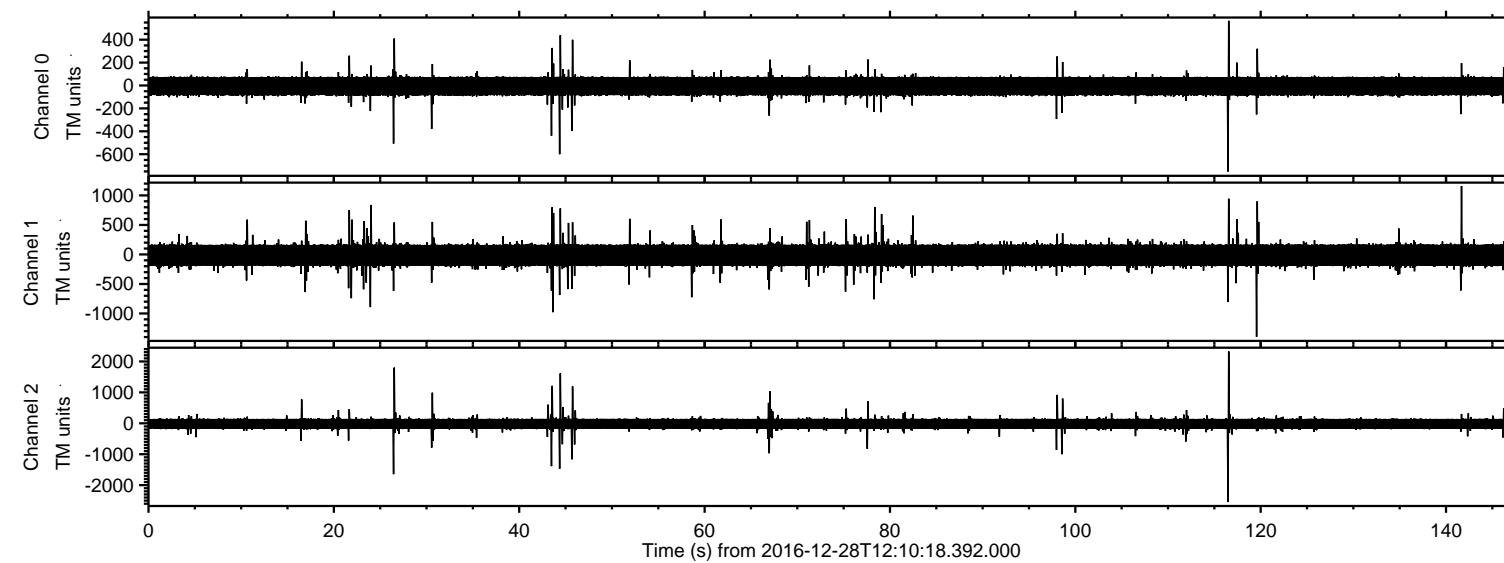


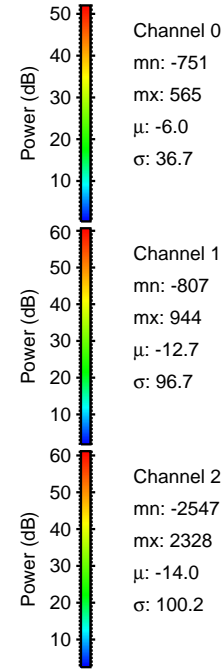
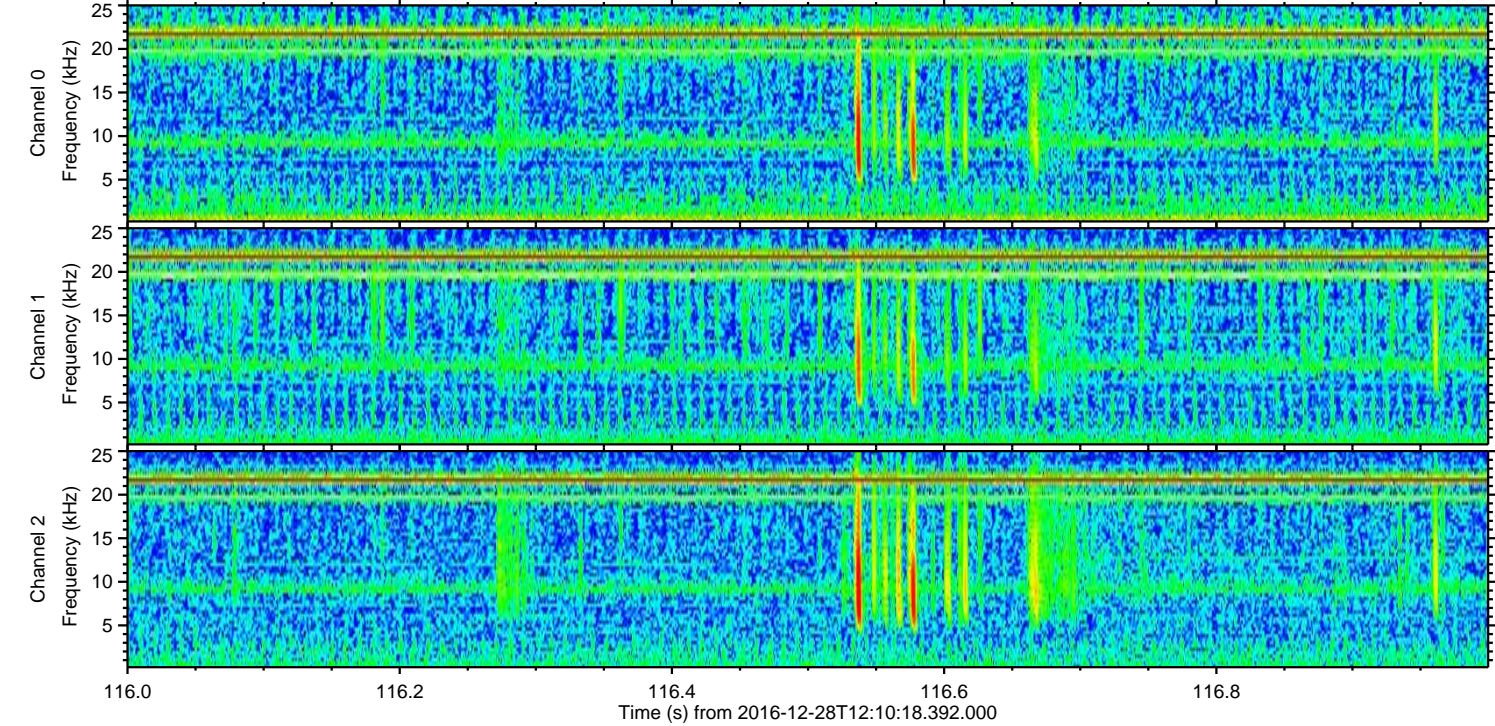
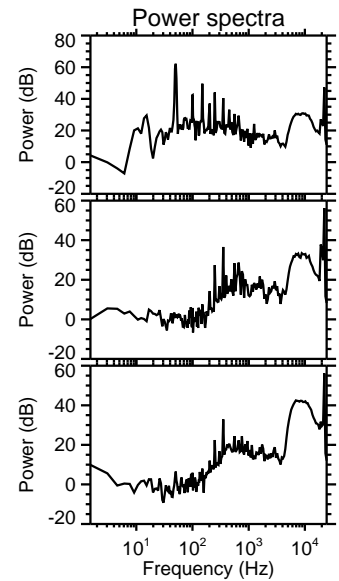
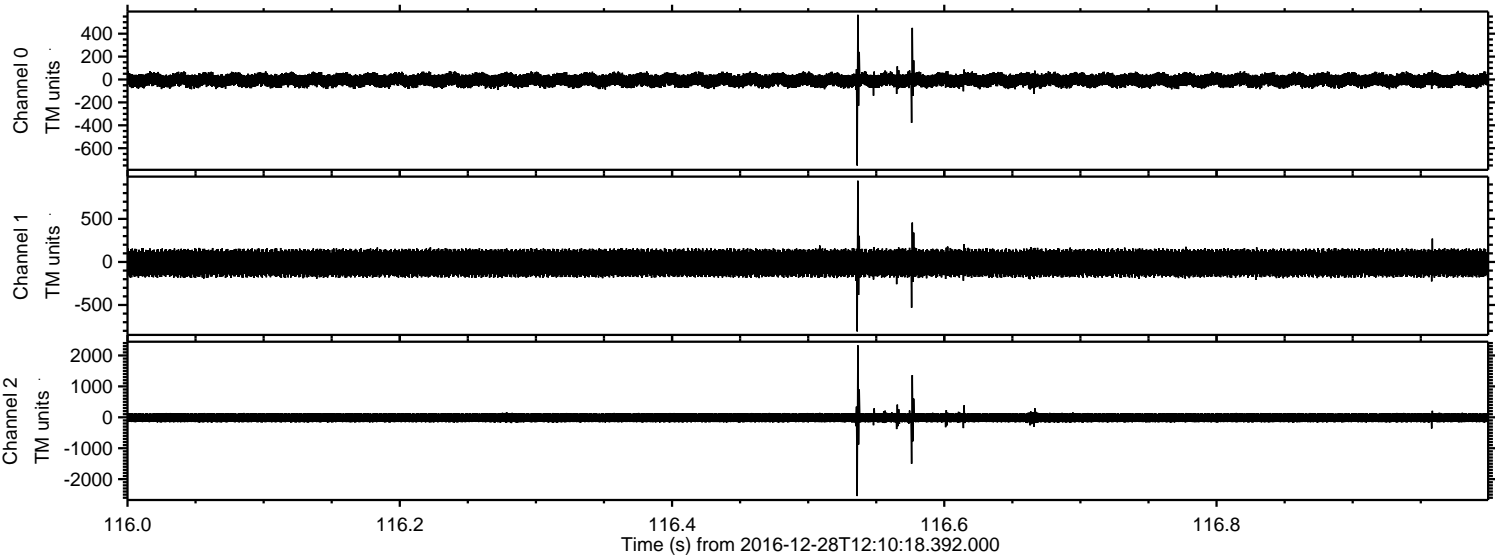
ELMAVAN 3D WAVEFORMS (Measured data sampled at 50 kHz) 51000 packets of 144 samples from 2016-12-28T12:10:18.392.000.

Processed Wed Dec 28 13:17:48 2016 by ELM ver.2012-10-06 from 001__elm20161228_121017__dat00.bin



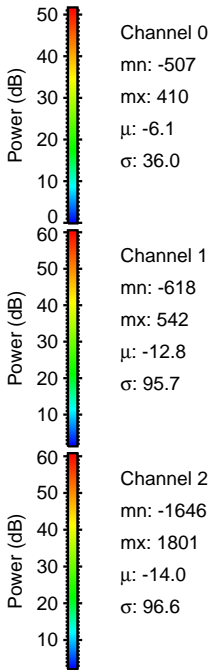
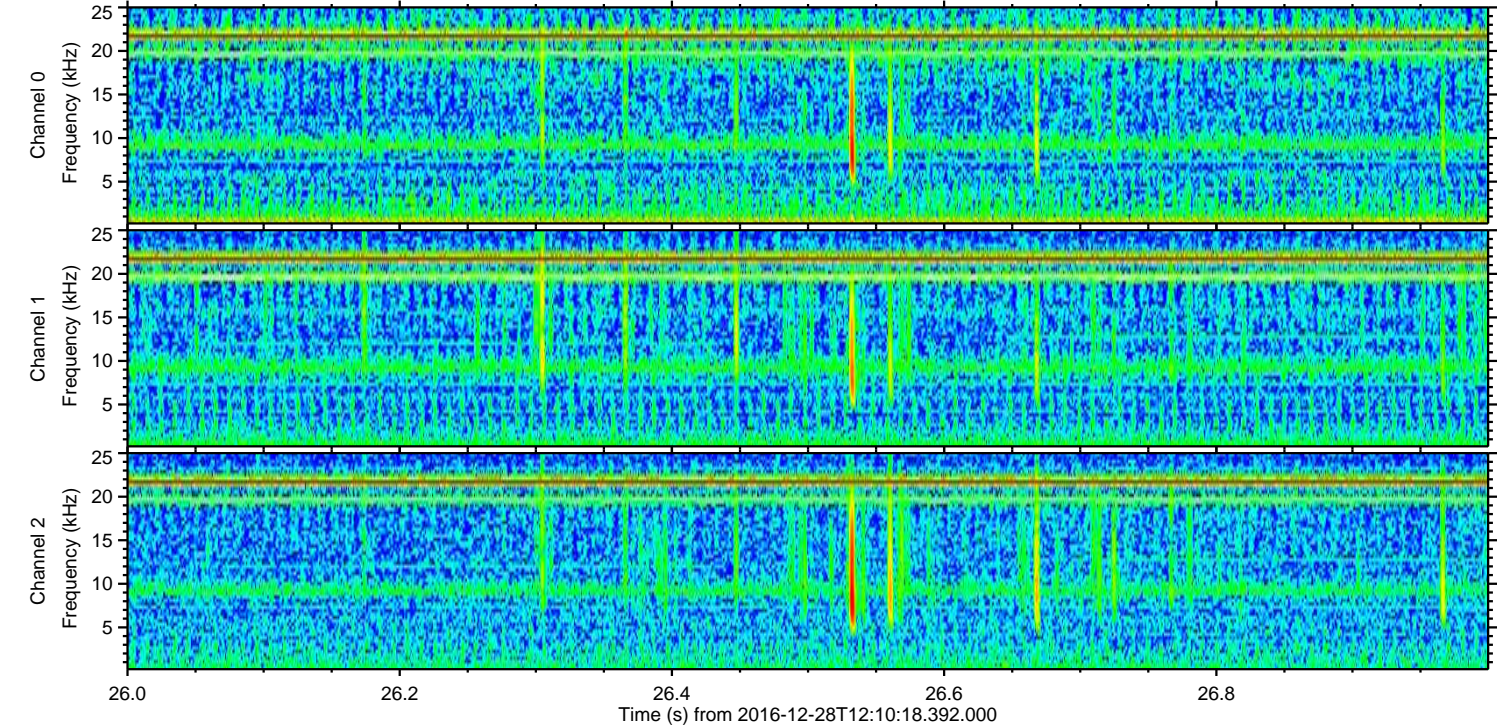
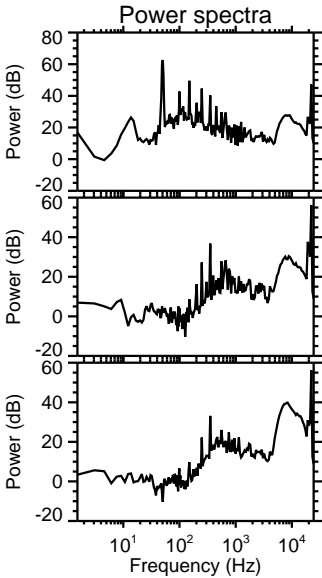
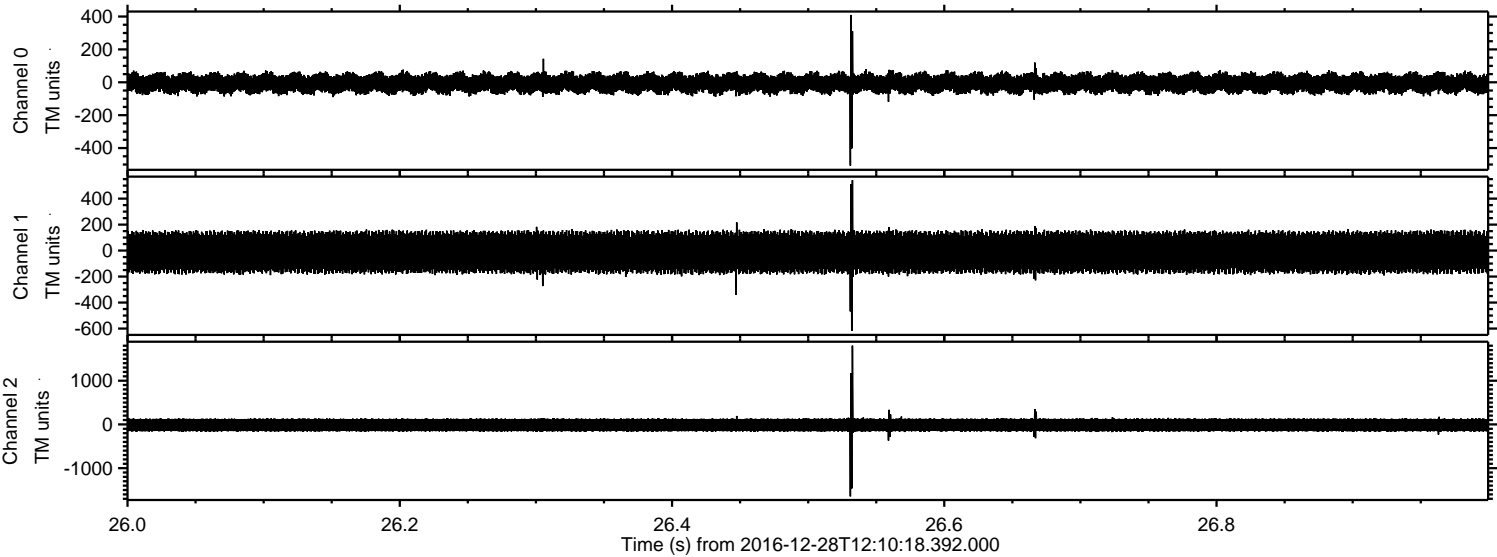
ELMAVAN 3D WAVEFORMS (Measured data sampled at 50 kHz) 51000 packets of 144 samples from 2016-12-28T12:10:18.392.000. Part 117/147

Processed Wed Dec 28 13:18:00 2016 by ELM ver.2012-10-06 from 001__elm20161228_121017__dat00.bin



ELMAVAN 3D WAVEFORMS (Measured data sampled at 50 kHz) 51000 packets of 144 samples from 2016-12-28T12:10:18.392.000. Part 27/147

Processed Wed Dec 28 13:18:01 2016 by ELM ver.2012-10-06 from 001__elm20161228_121017__dat00.bin

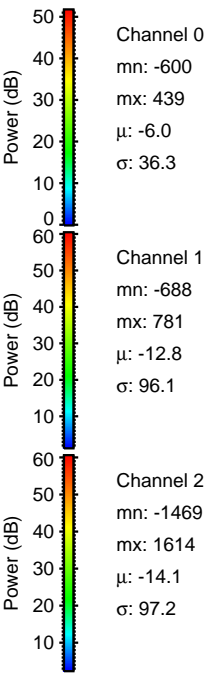
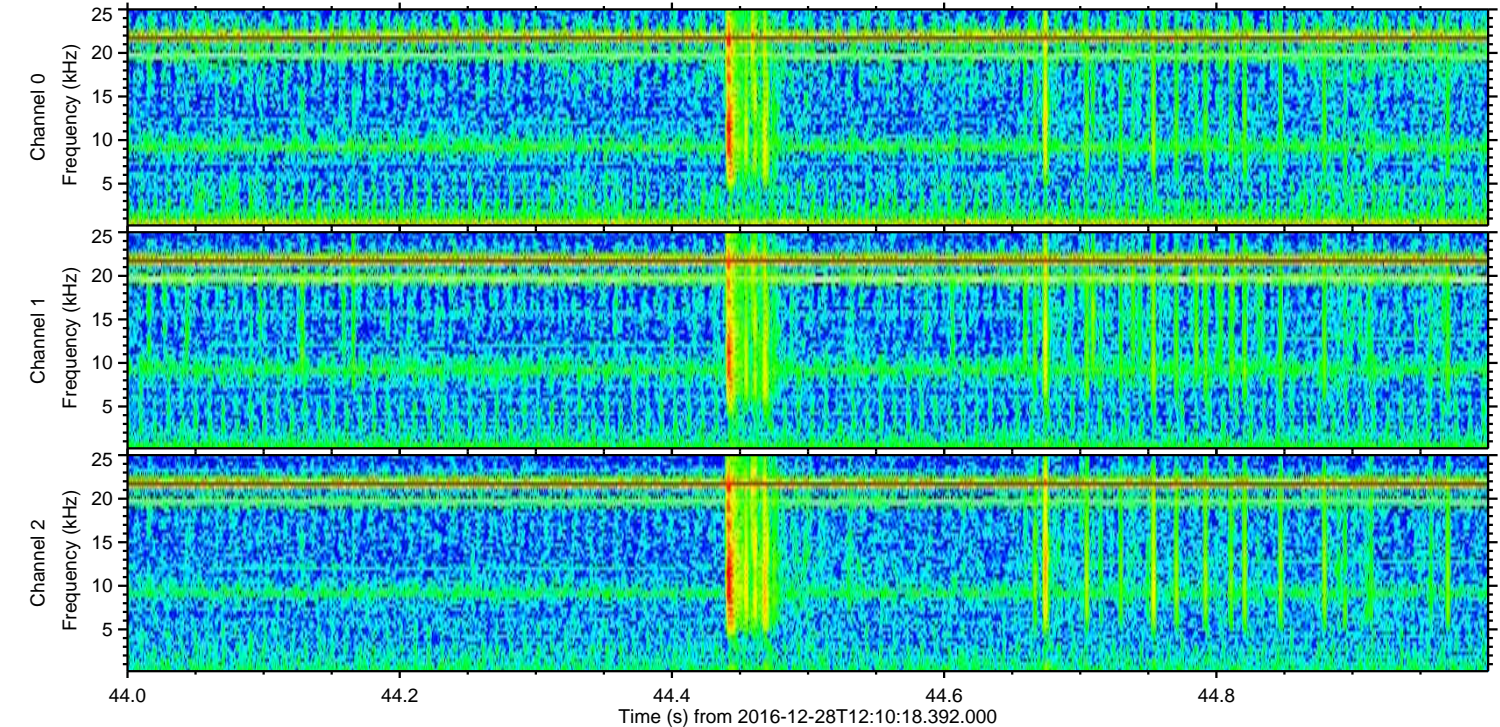
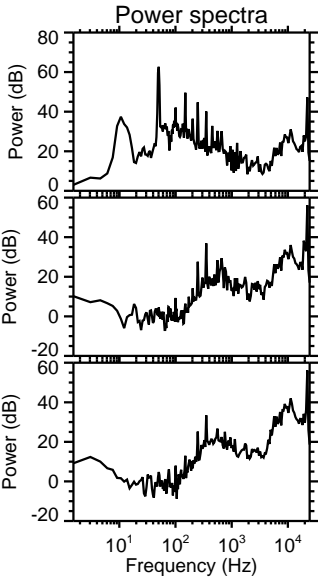
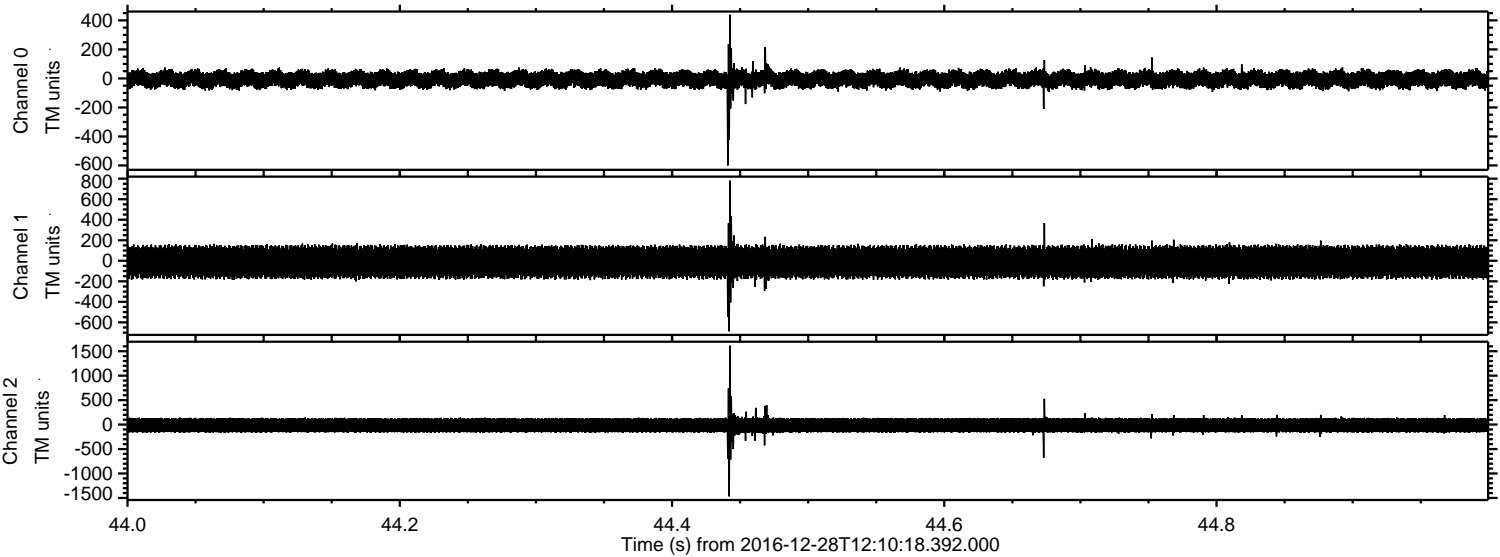


Channel 0
mn: -507
mx: 410
 μ : -6.1
 σ : 36.0

Channel 1
mn: -618
mx: 542
 μ : -12.8
 σ : 95.7

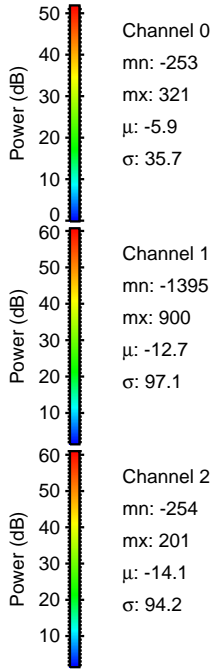
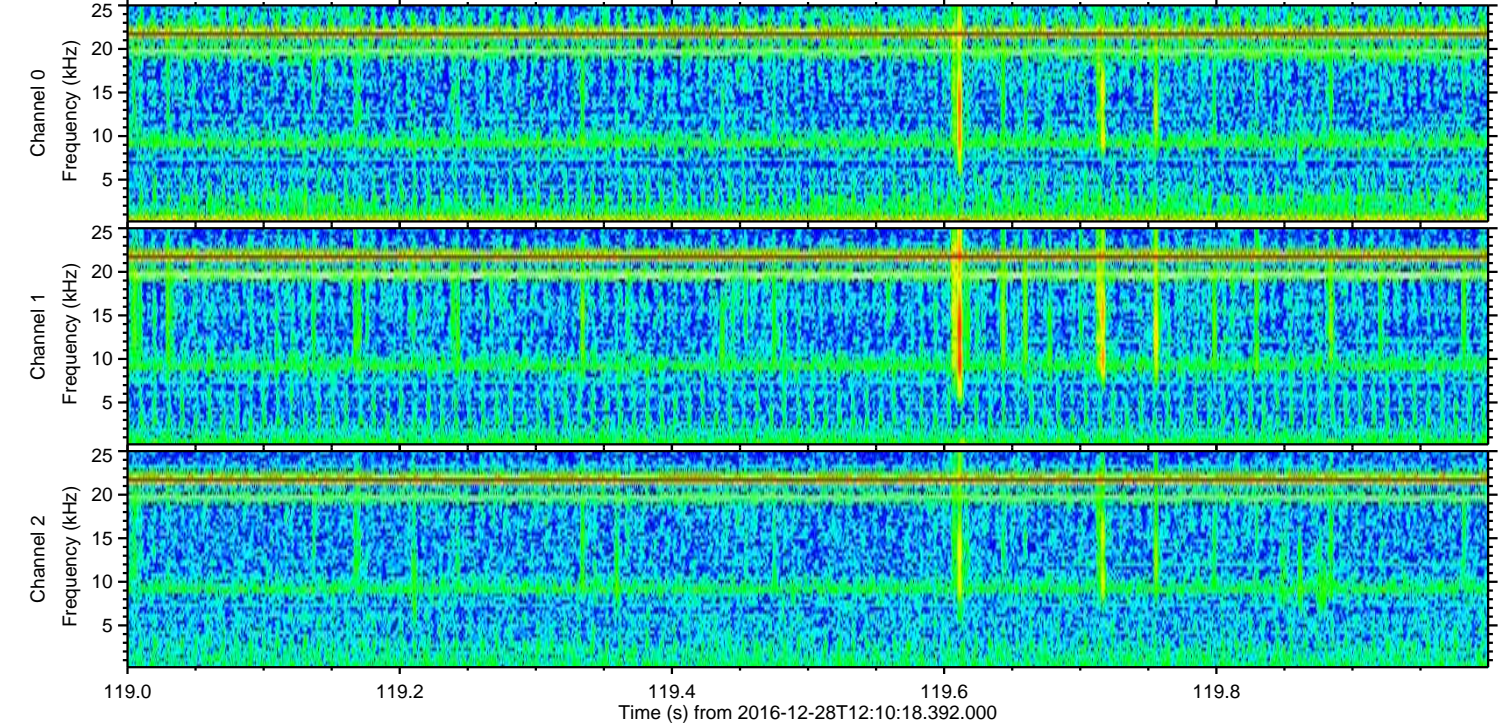
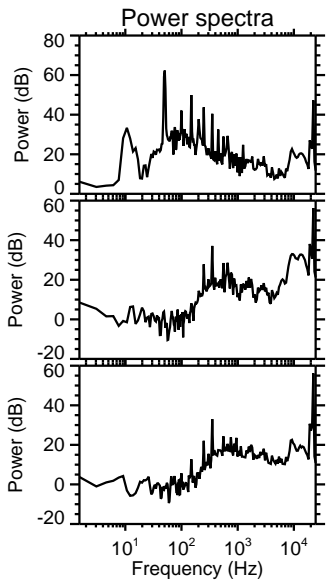
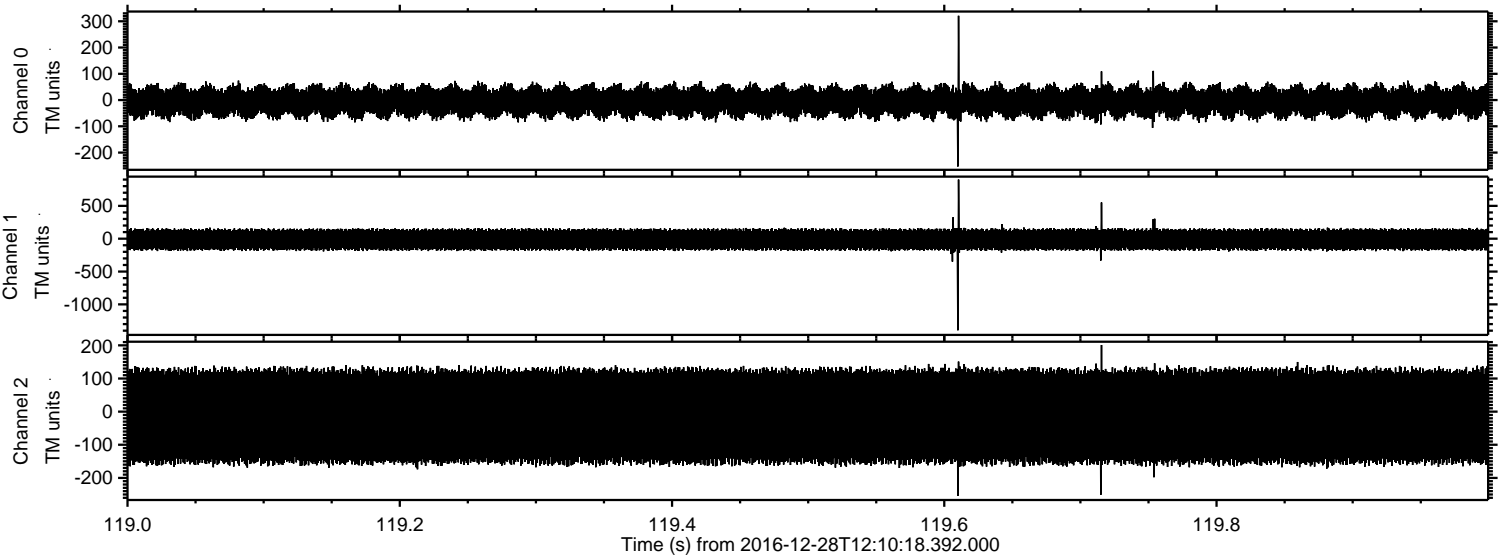
Channel 2
mn: -1646
mx: 1801
 μ : -14.0
 σ : 96.6

Processed Wed Dec 28 13:18:02 2016 by ELM ver.2012-10-06 from 001__elm20161228_121017__dat00.bin



ELMAVAN 3D WAVEFORMS (Measured data sampled at 50 kHz) 51000 packets of 144 samples from 2016-12-28T12:10:18.392.000. Part 120/147

Processed Wed Dec 28 13:18:02 2016 by ELM ver.2012-10-06 from 001__elm20161228_121017__dat00.bin

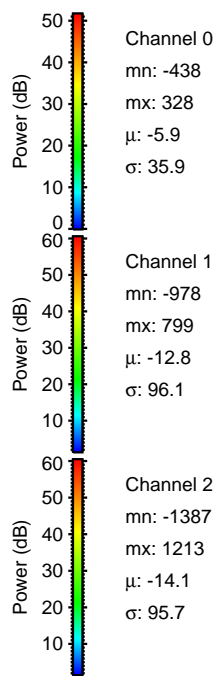
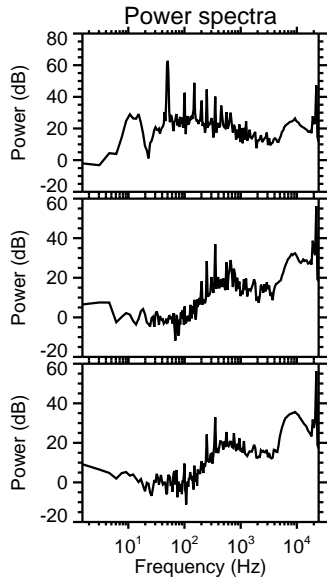
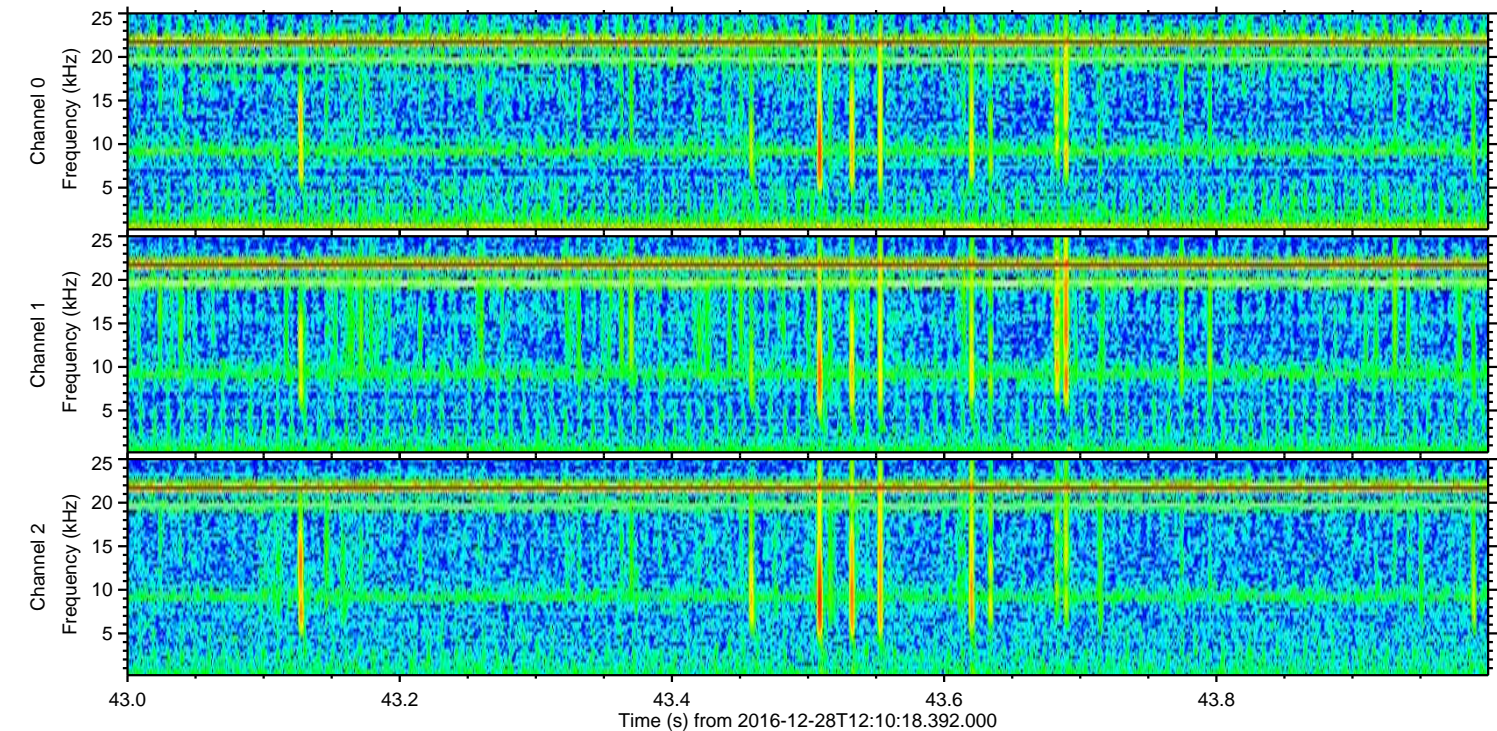
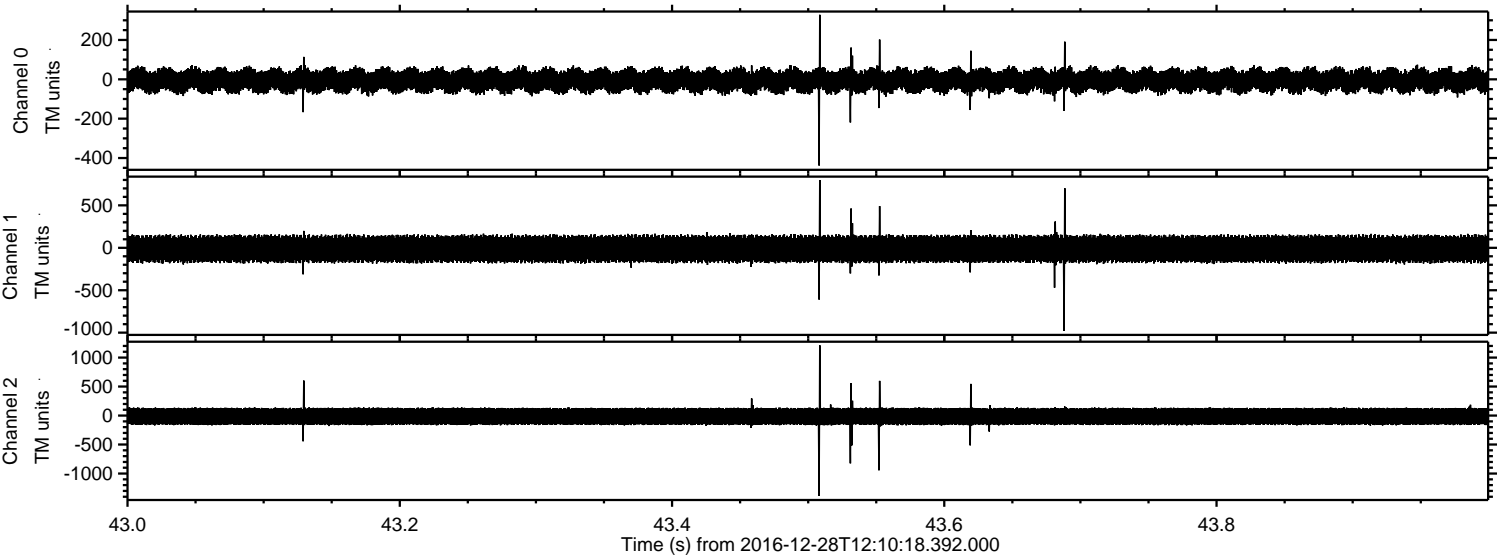


Channel 0
mn: -253
mx: 321
 μ : -5.9
 σ : 35.7

Channel 1
mn: -1395
mx: 900
 μ : -12.7
 σ : 97.1

Channel 2
mn: -254
mx: 201
 μ : -14.1
 σ : 94.2

Processed Wed Dec 28 13:18:03 2016 by ELM ver.2012-10-06 from 001__elm20161228_121017__dat00.bin

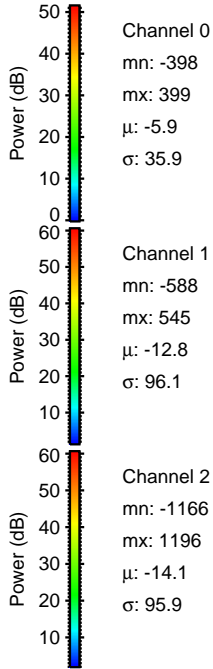
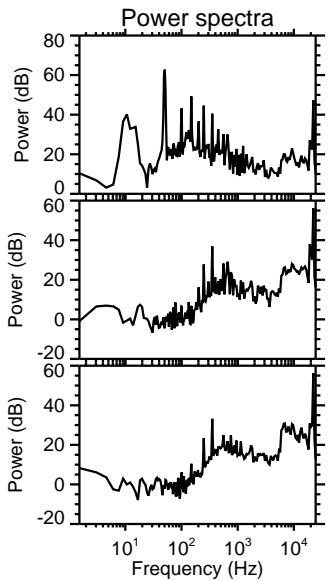
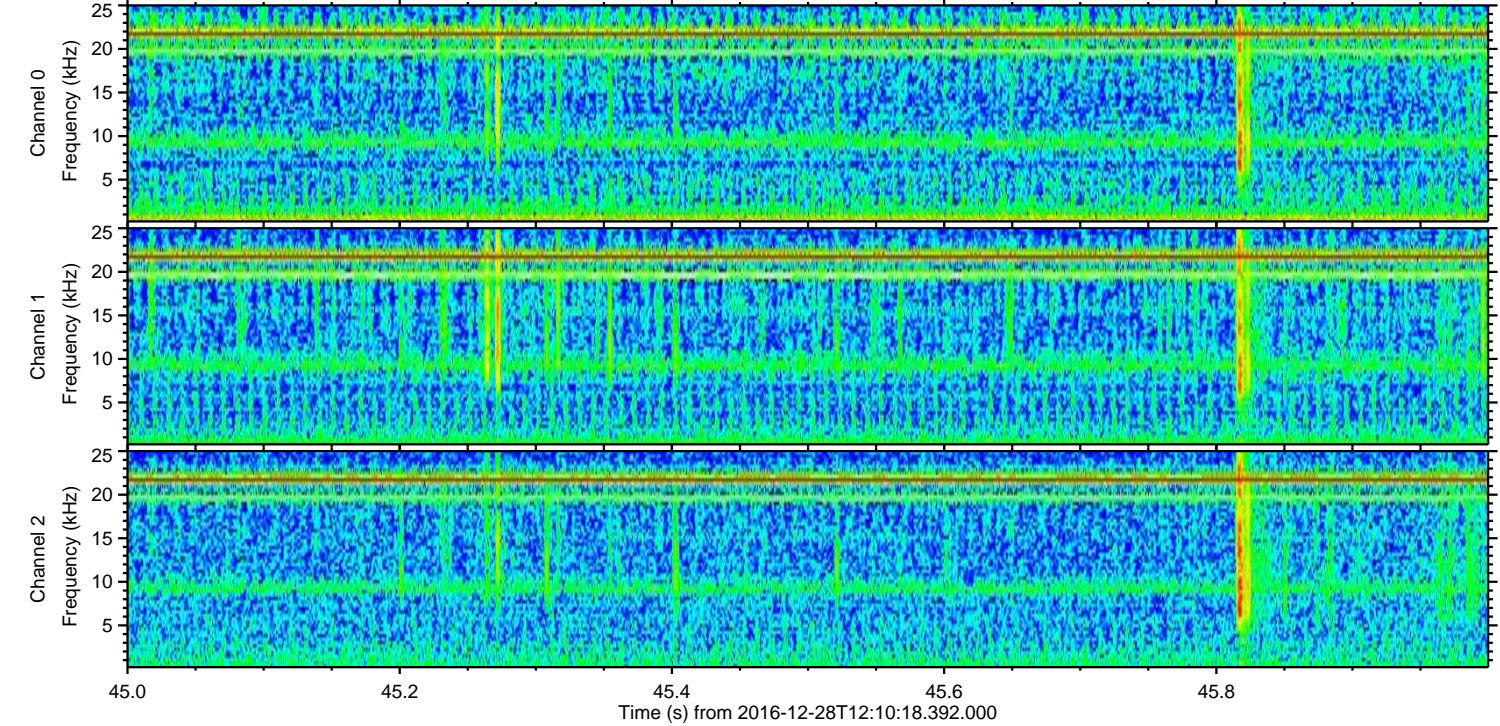
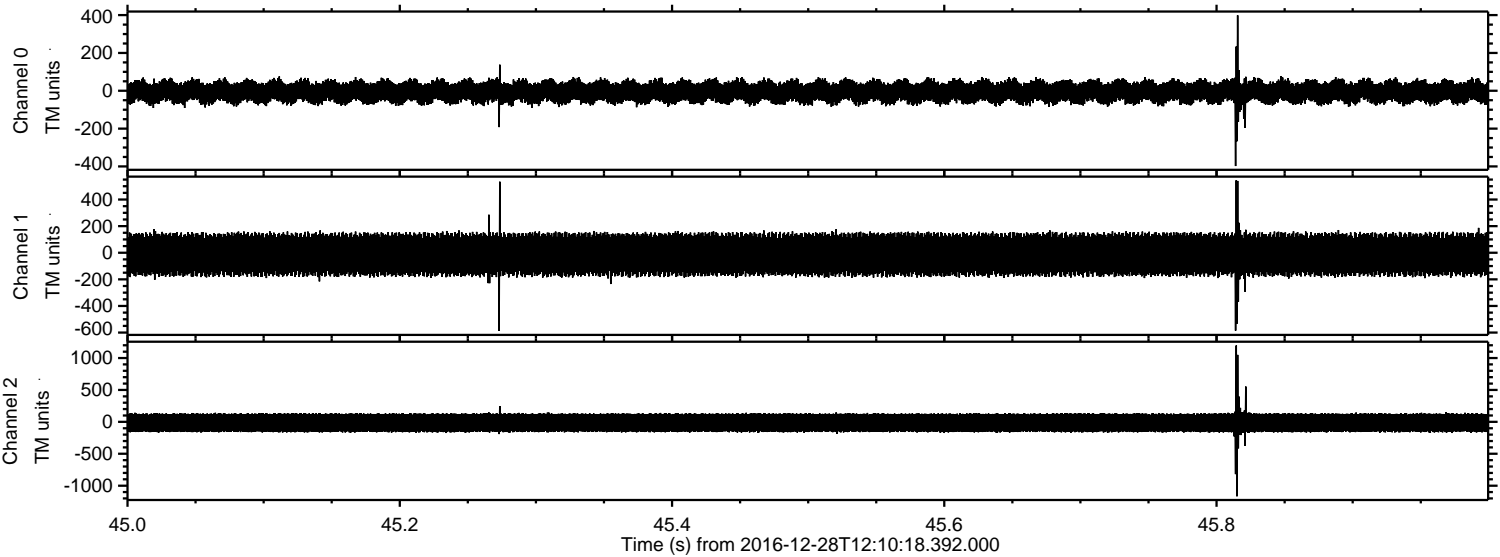


Channel 0
mn: -438
mx: 328
 μ : -5.9
 σ : 35.9

Channel 1
mn: -978
mx: 799
 μ : -12.8
 σ : 96.1

Channel 2
mn: -1387
mx: 1213
 μ : -14.1
 σ : 95.7

Processed Wed Dec 28 13:18:04 2016 by ELM ver.2012-10-06 from 001__elm20161228_121017__dat00.bin

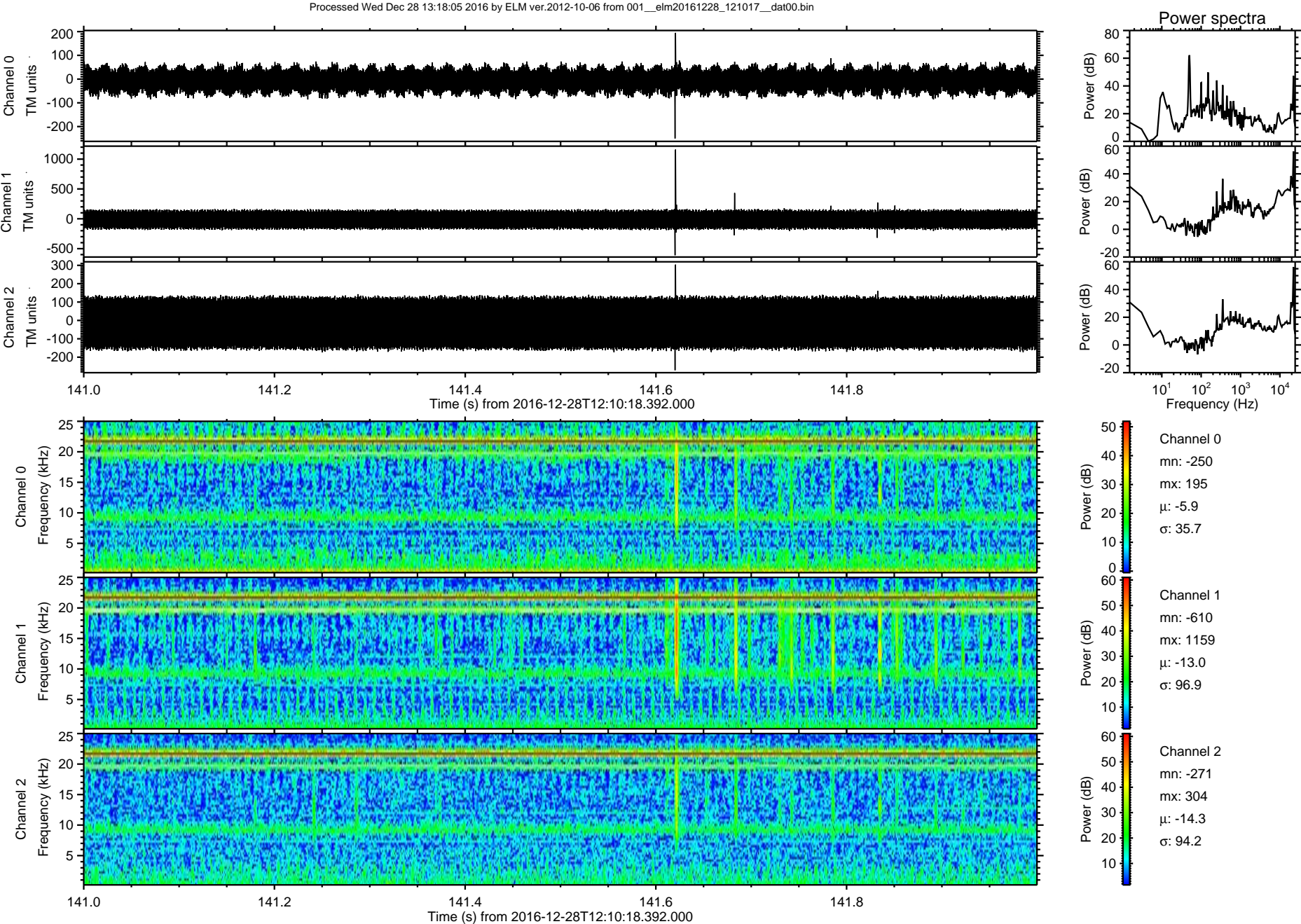


Channel 0
mn: -398
mx: 399
 μ : -5.9
 σ : 35.9

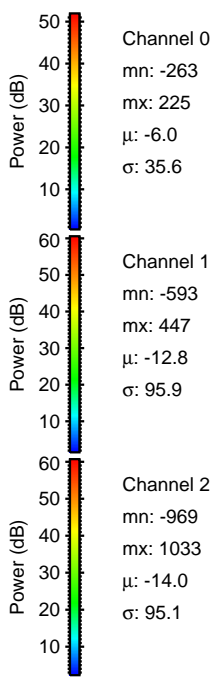
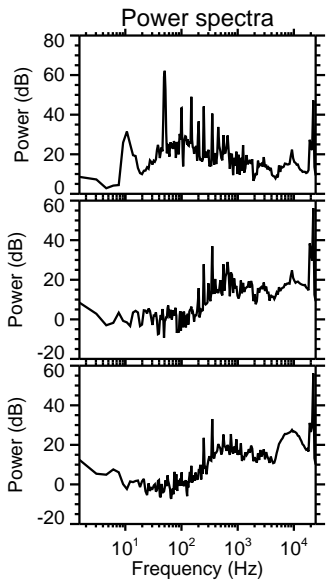
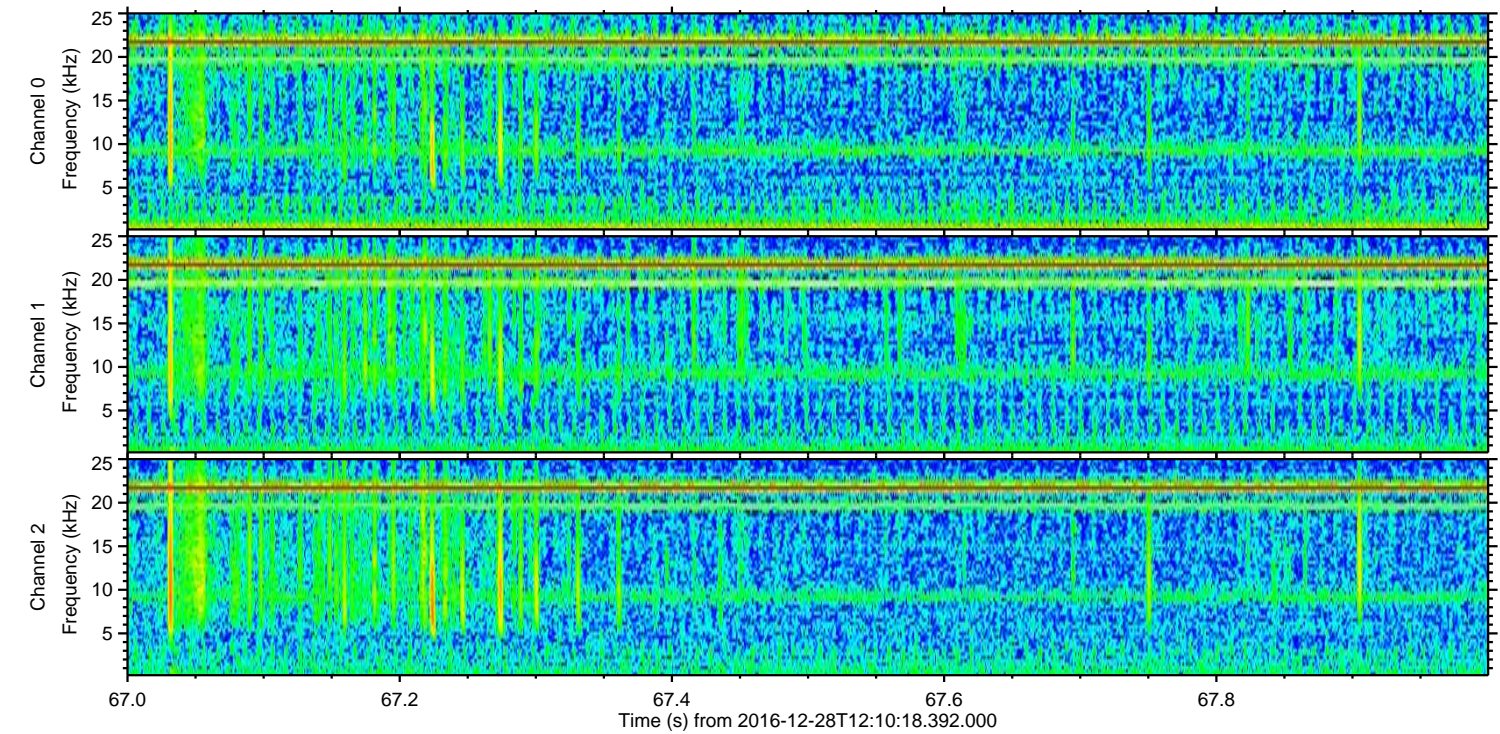
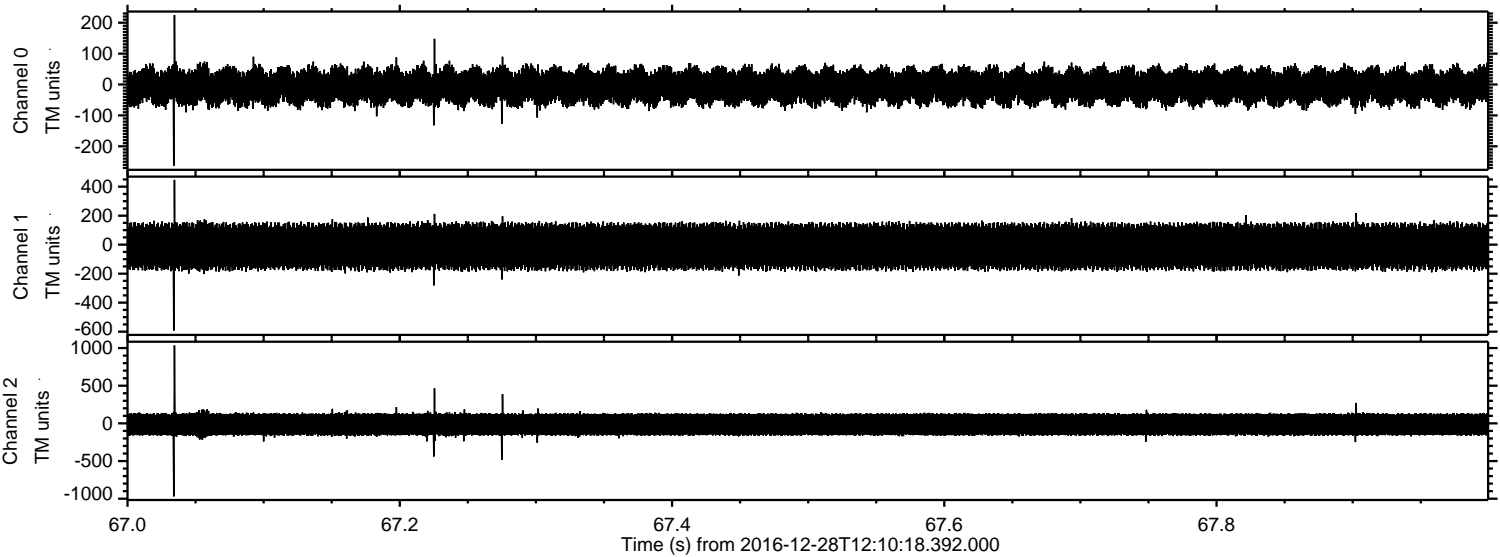
Channel 1
mn: -588
mx: 545
 μ : -12.8
 σ : 96.1

Channel 2
mn: -1166
mx: 1196
 μ : -14.1
 σ : 95.9

ELMAVAN 3D WAVEFORMS (Measured data sampled at 50 kHz) 51000 packets of 144 samples from 2016-12-28T12:10:18.392.000. Part 142/147



Processed Wed Dec 28 13:18:06 2016 by ELM ver.2012-10-06 from 001__elm20161228_121017__dat00.bin

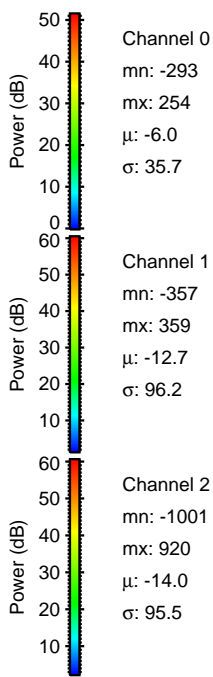
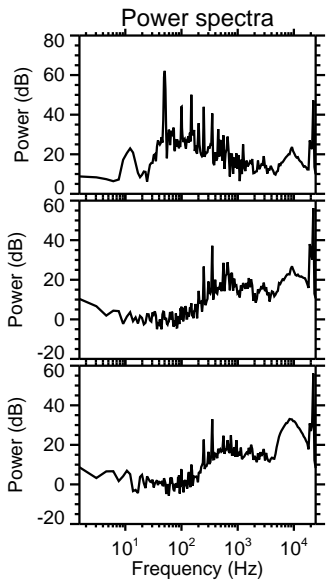
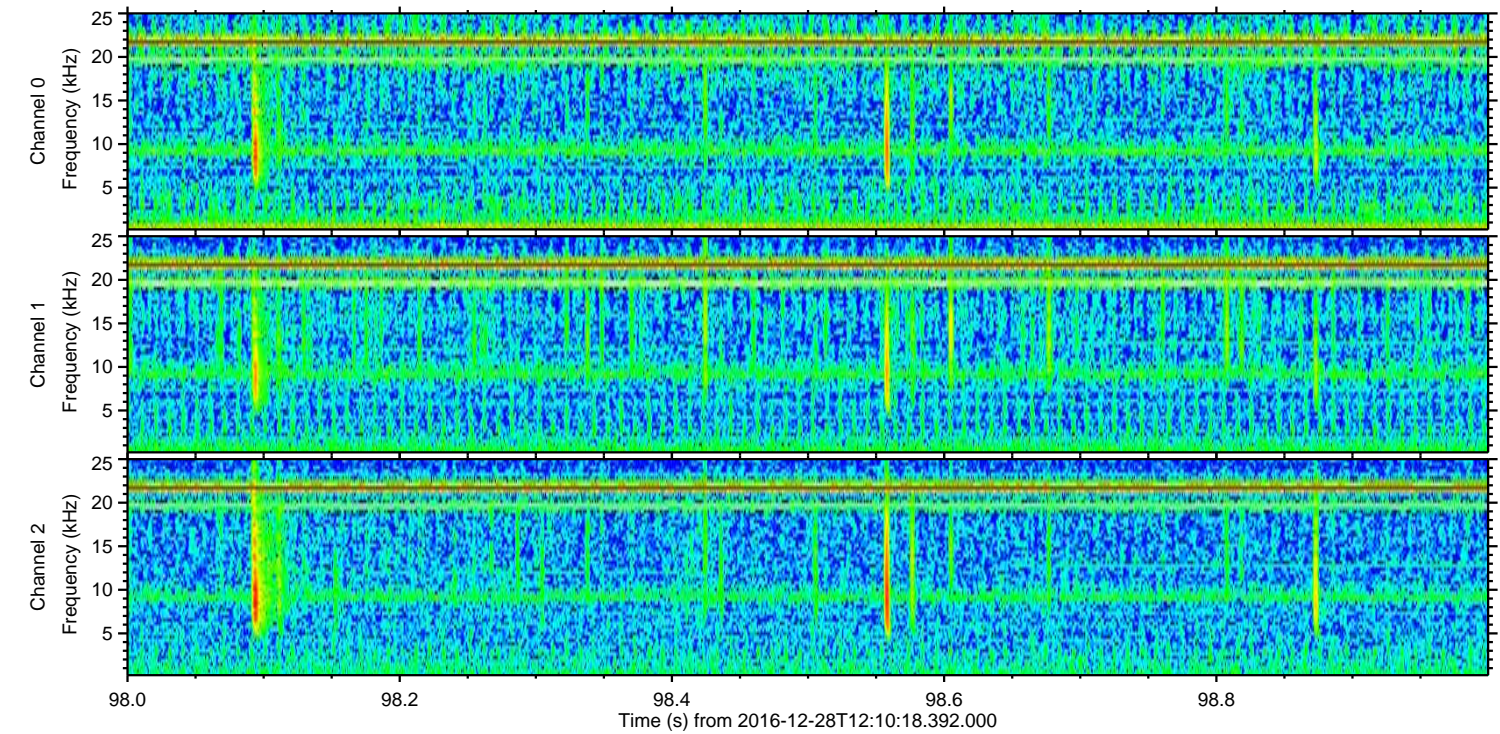
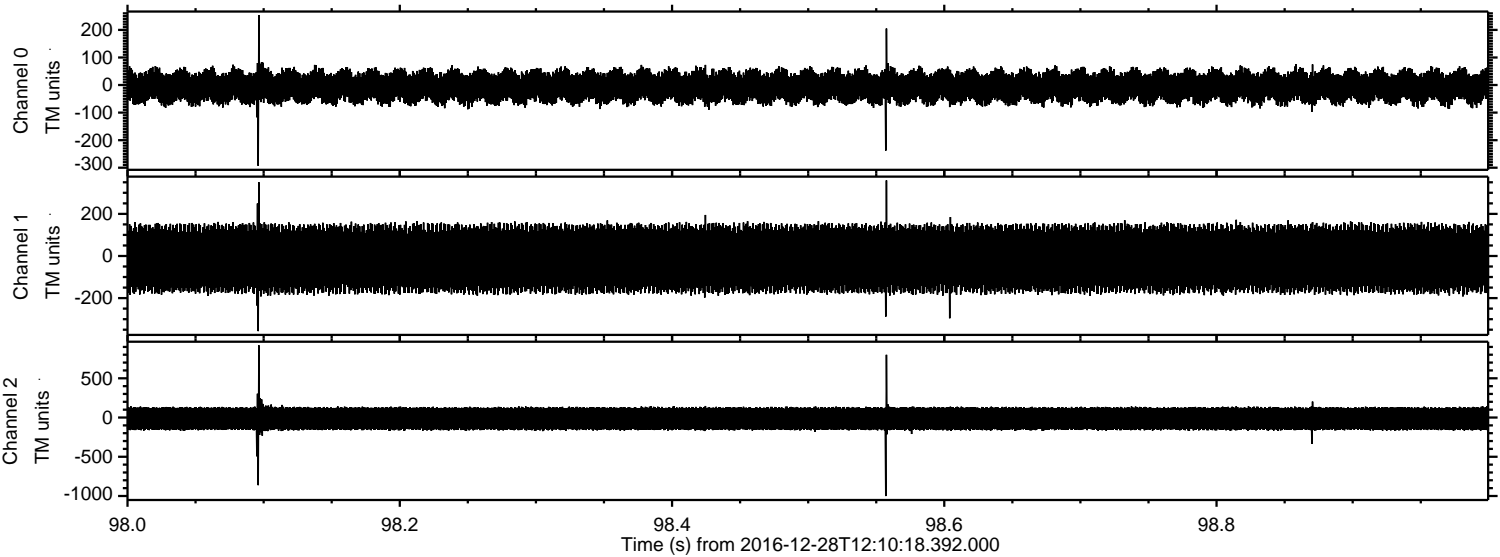


Channel 0
mn: -263
mx: 225
 μ : -6.0
 σ : 35.6

Channel 1
mn: -593
mx: 447
 μ : -12.8
 σ : 95.9

Channel 2
mn: -969
mx: 1033
 μ : -14.0
 σ : 95.1

Processed Wed Dec 28 13:18:07 2016 by ELM ver.2012-10-06 from 001__elm20161228_121017__dat00.bin



Channel 0
mn: -293
mx: 254
 μ : -6.0
 σ : 35.7

Channel 1
mn: -357
mx: 359
 μ : -12.7
 σ : 96.2

Channel 2
mn: -1001
mx: 920
 μ : -14.0
 σ : 95.5

Processed Wed Dec 28 13:18:08 2016 by ELM ver.2012-10-06 from 001__elm20161228_121017__dat00.bin

