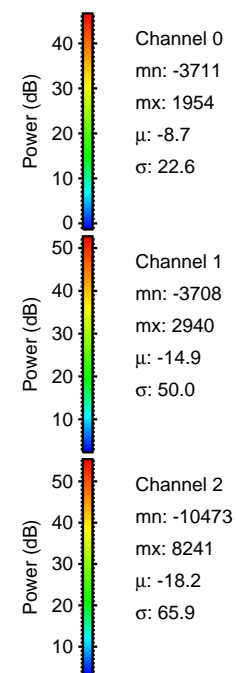
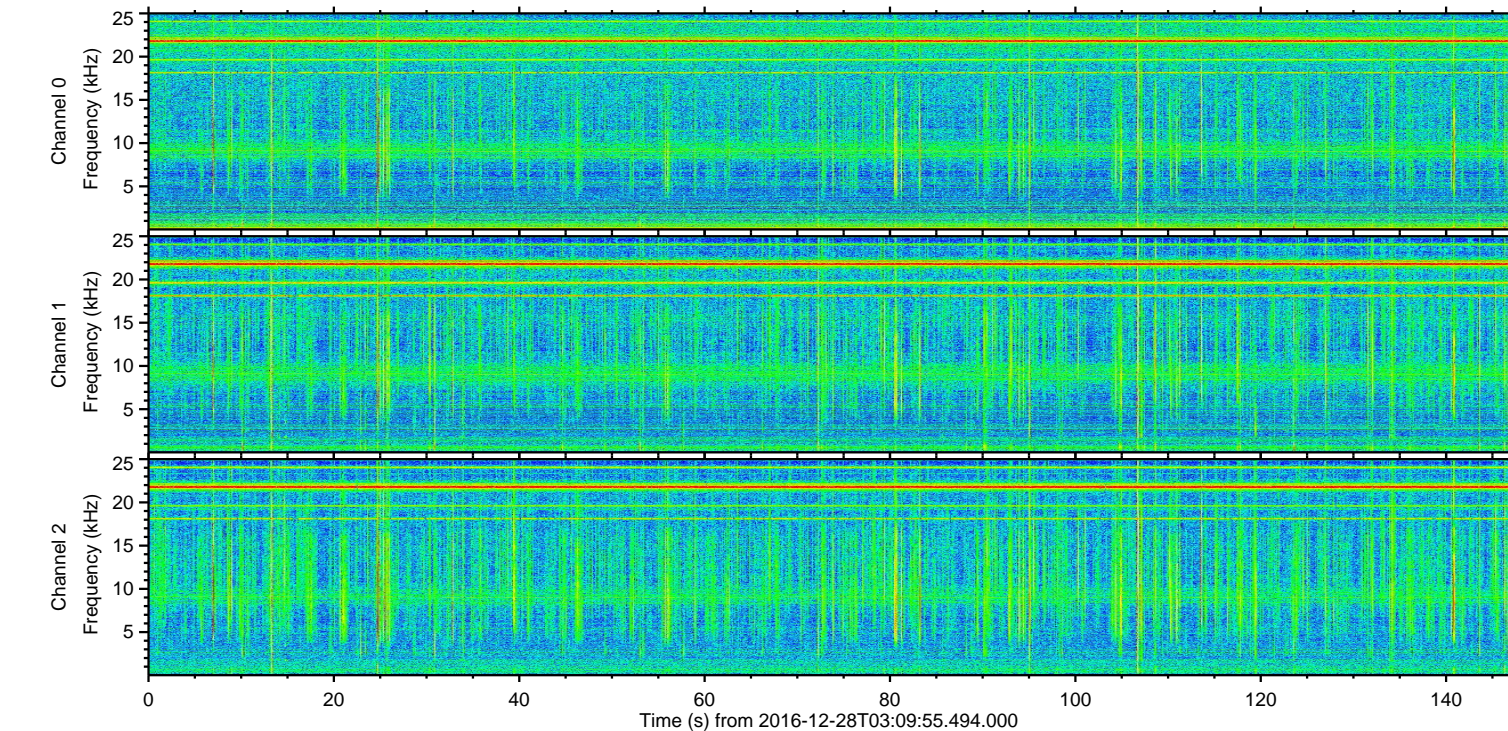
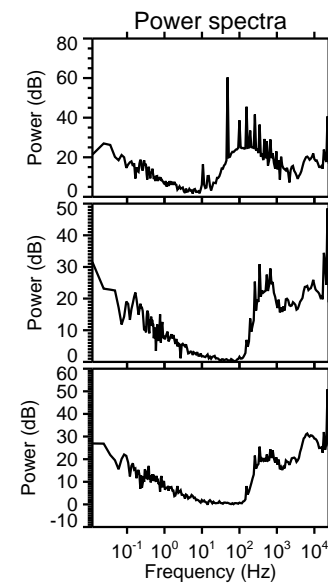
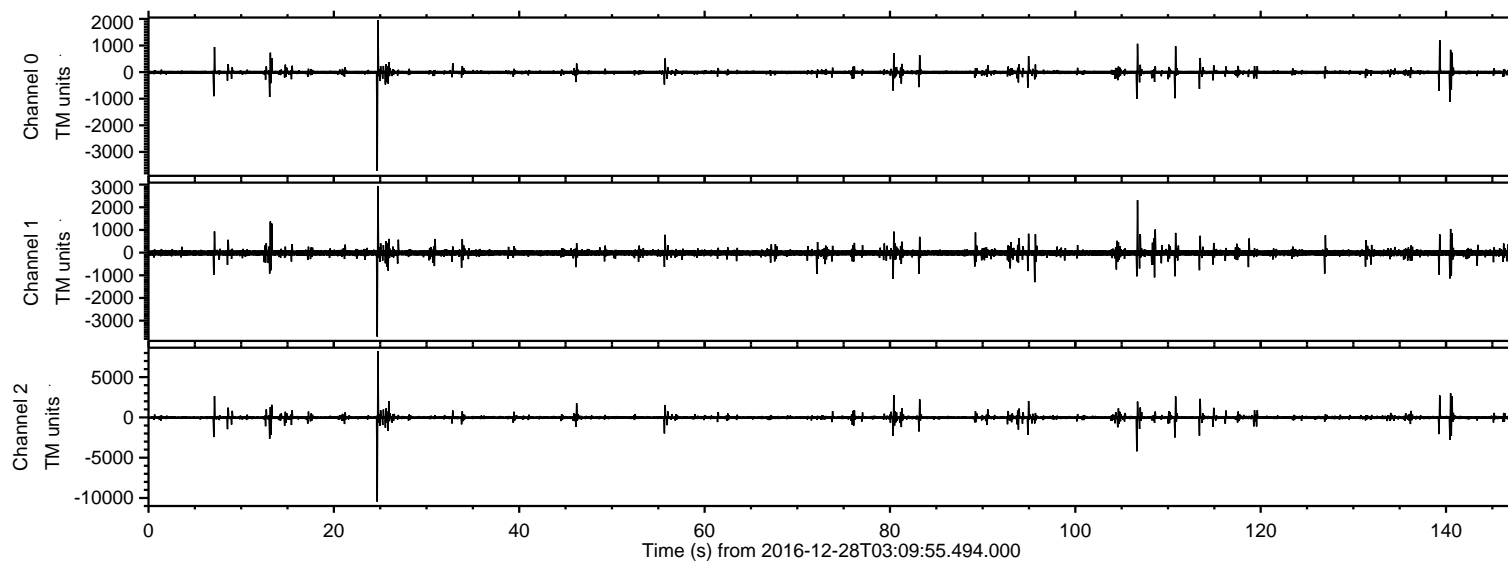


# ELMAVAN 3D WAVEFORMS (Measured data sampled at 50 kHz) 51000 packets of 144 samples from 2016-12-28T03:09:55.494.000.

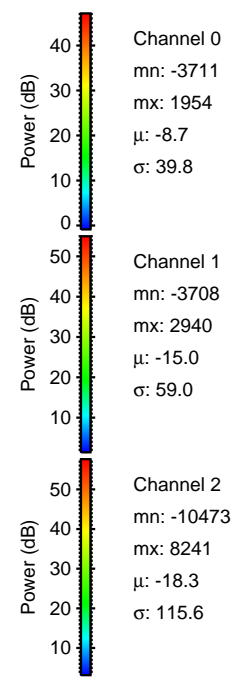
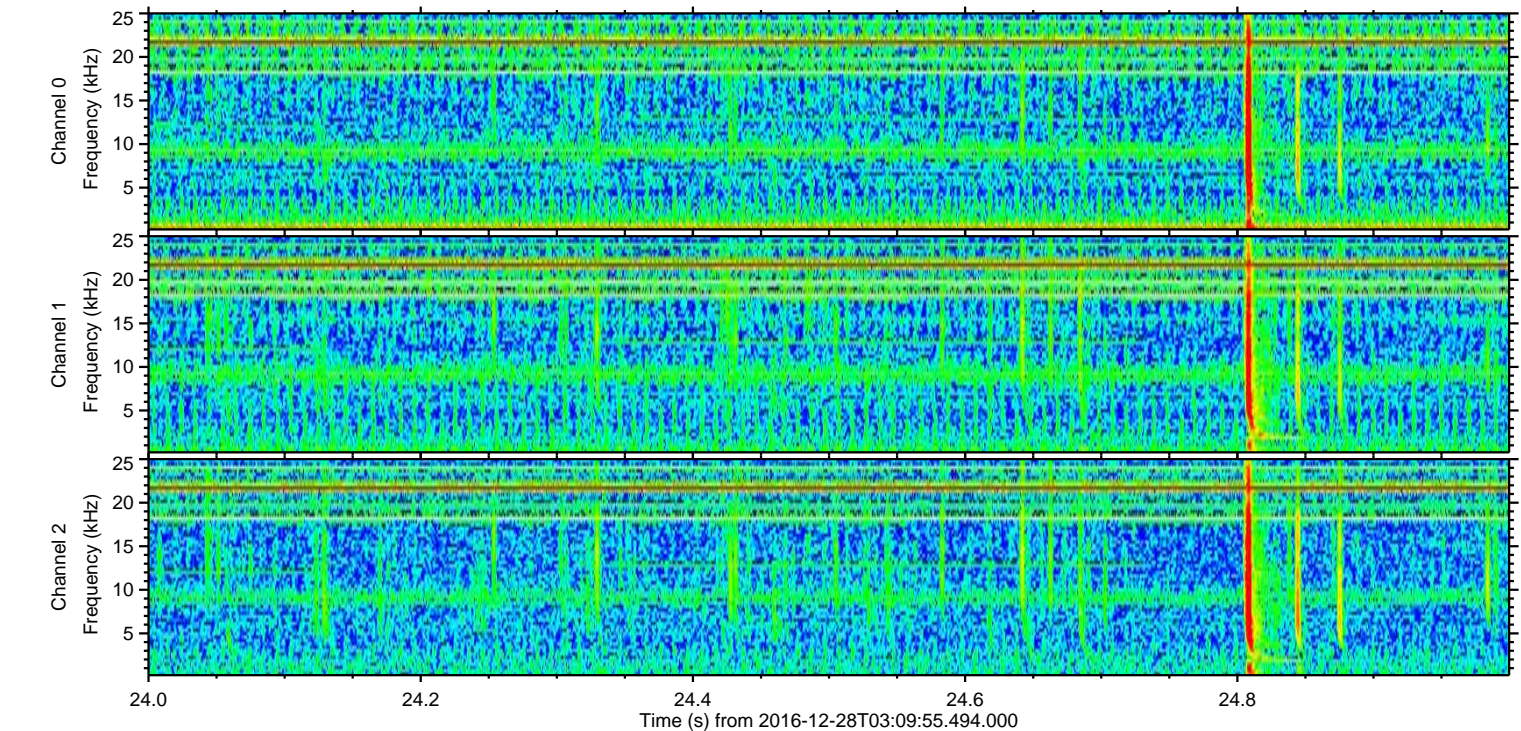
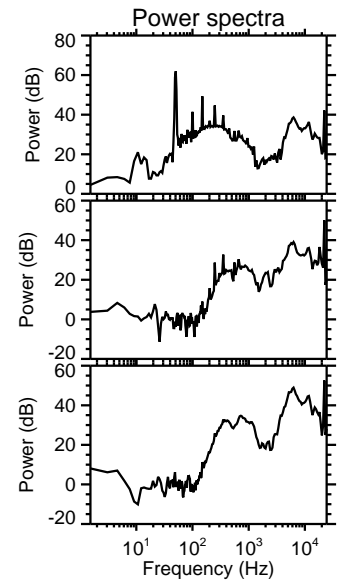
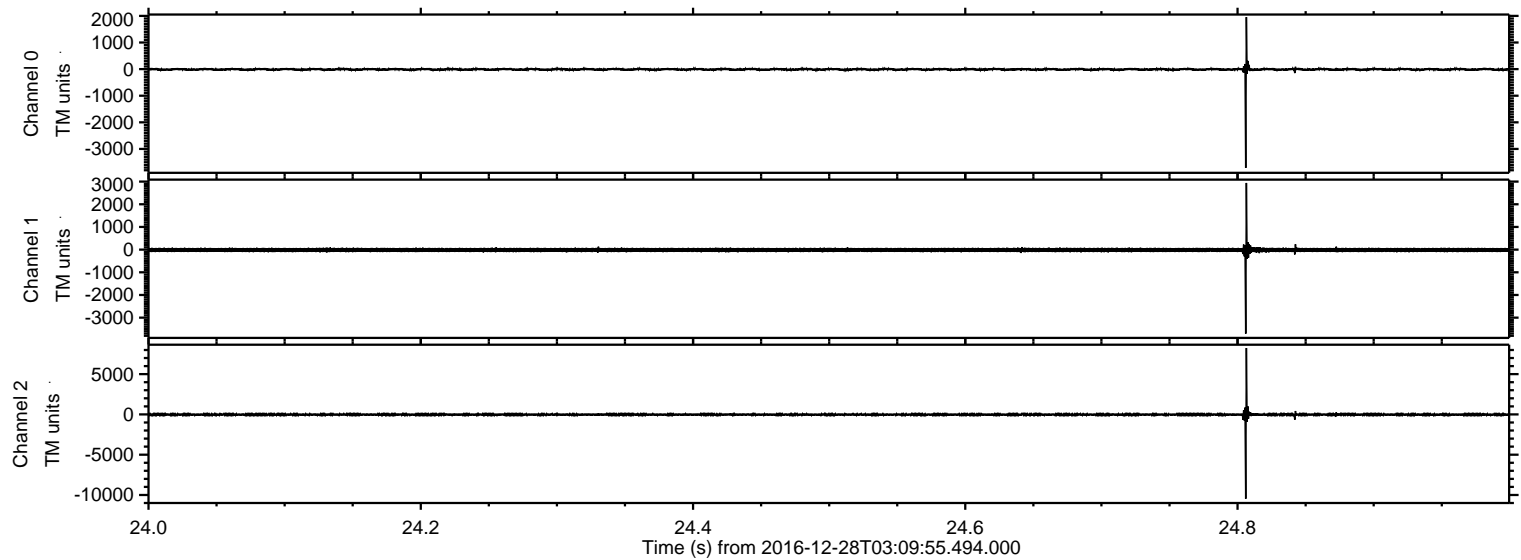
Processed Wed Dec 28 04:17:51 2016 by ELM ver.2012-10-06 from 001\_\_elm20161228\_030954\_\_dat00.bin





ELMAVAN 3D WAVEFORMS (Measured data sampled at 50 kHz) 51000 packets of 144 samples from 2016-12-28T03:09:55.494.000. Part 25/147

Processed Wed Dec 28 04:18:03 2016 by ELM ver.2012-10-06 from 001\_\_elm20161228\_030954\_\_dat00.bin



Channel 0  
mn: -3711  
mx: 1954  
 $\mu$ : -8.7  
 $\sigma$ : 39.8

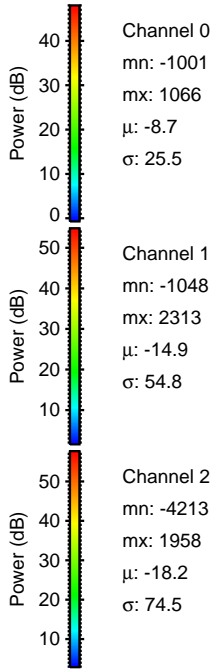
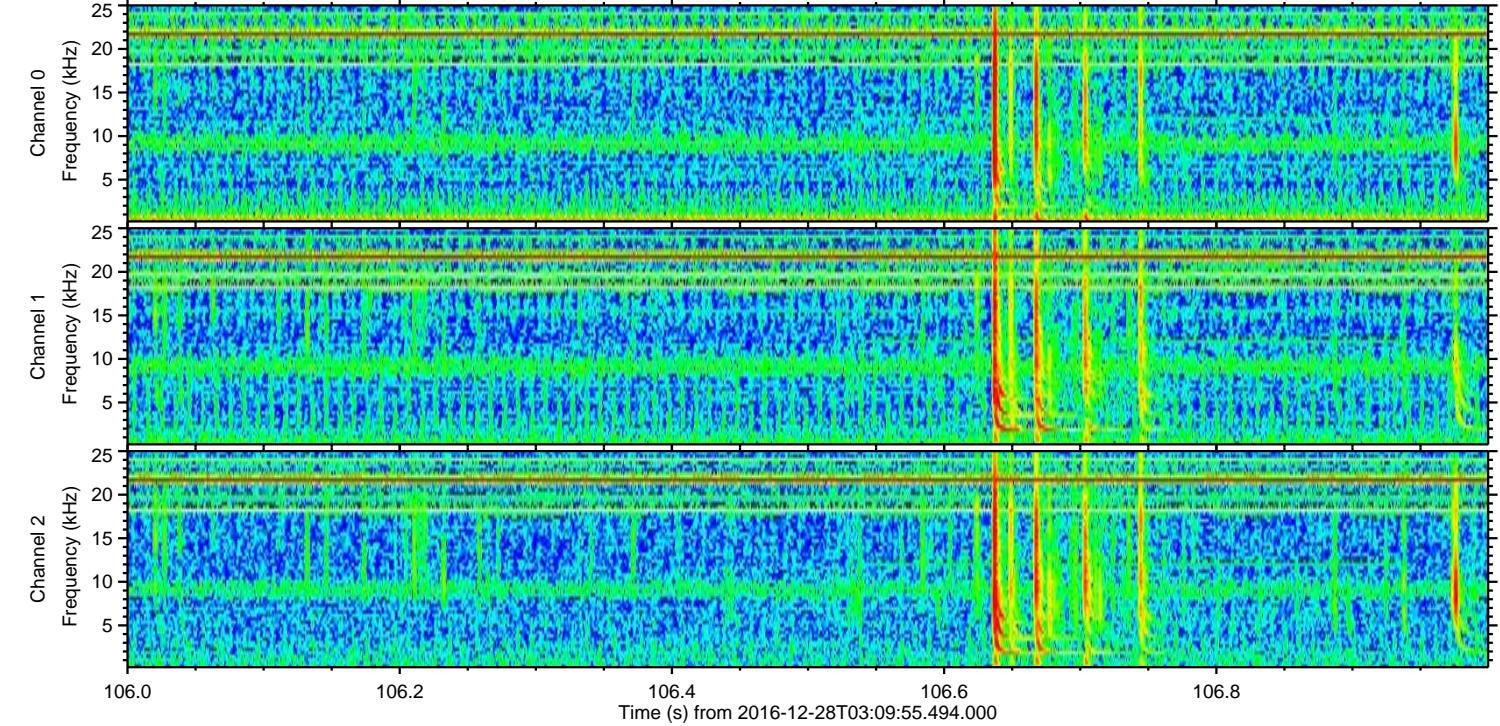
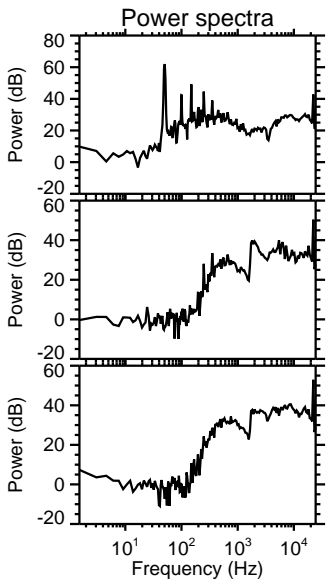
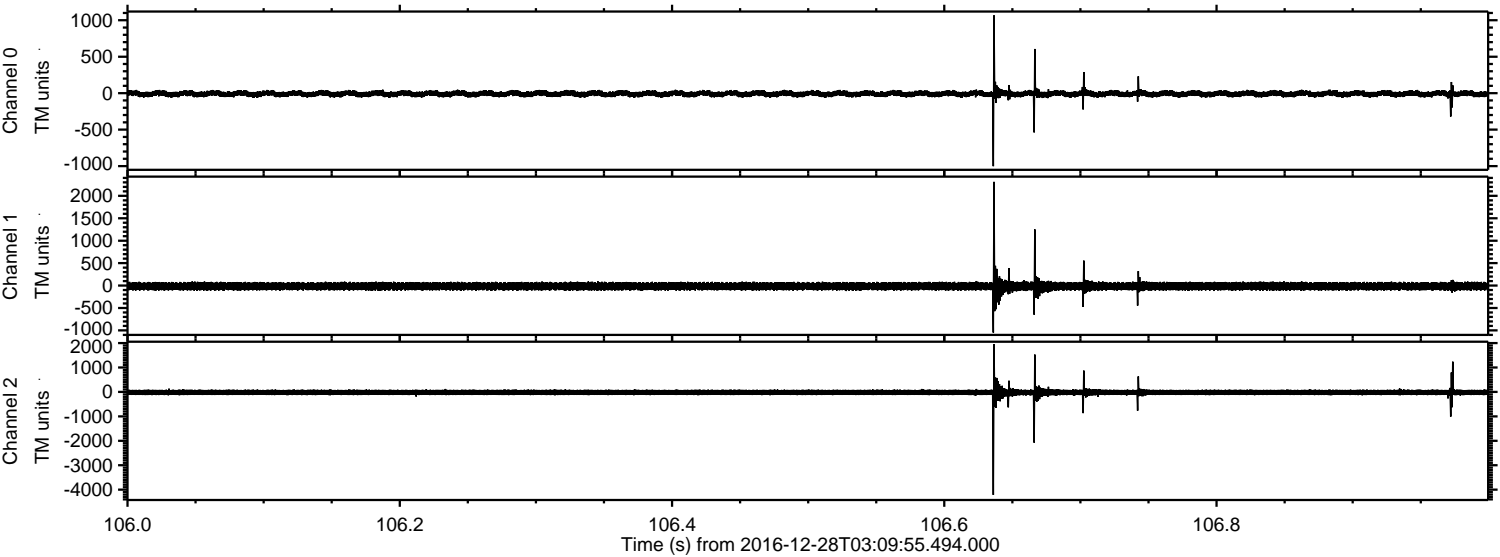
Channel 1  
mn: -3708  
mx: 2940  
 $\mu$ : -15.0  
 $\sigma$ : 59.0

Channel 2  
mn: -10473  
mx: 8241  
 $\mu$ : -18.3  
 $\sigma$ : 115.6



ELMAVAN 3D WAVEFORMS (Measured data sampled at 50 kHz) 51000 packets of 144 samples from 2016-12-28T03:09:55.494.000. Part 107/147

Processed Wed Dec 28 04:18:03 2016 by ELM ver.2012-10-06 from 001\_\_elm20161228\_030954\_\_dat00.bin



Channel 0  
mn: -1001  
mx: 1066  
 $\mu$ : -8.7  
 $\sigma$ : 25.5

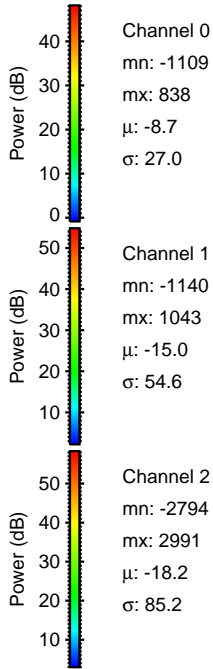
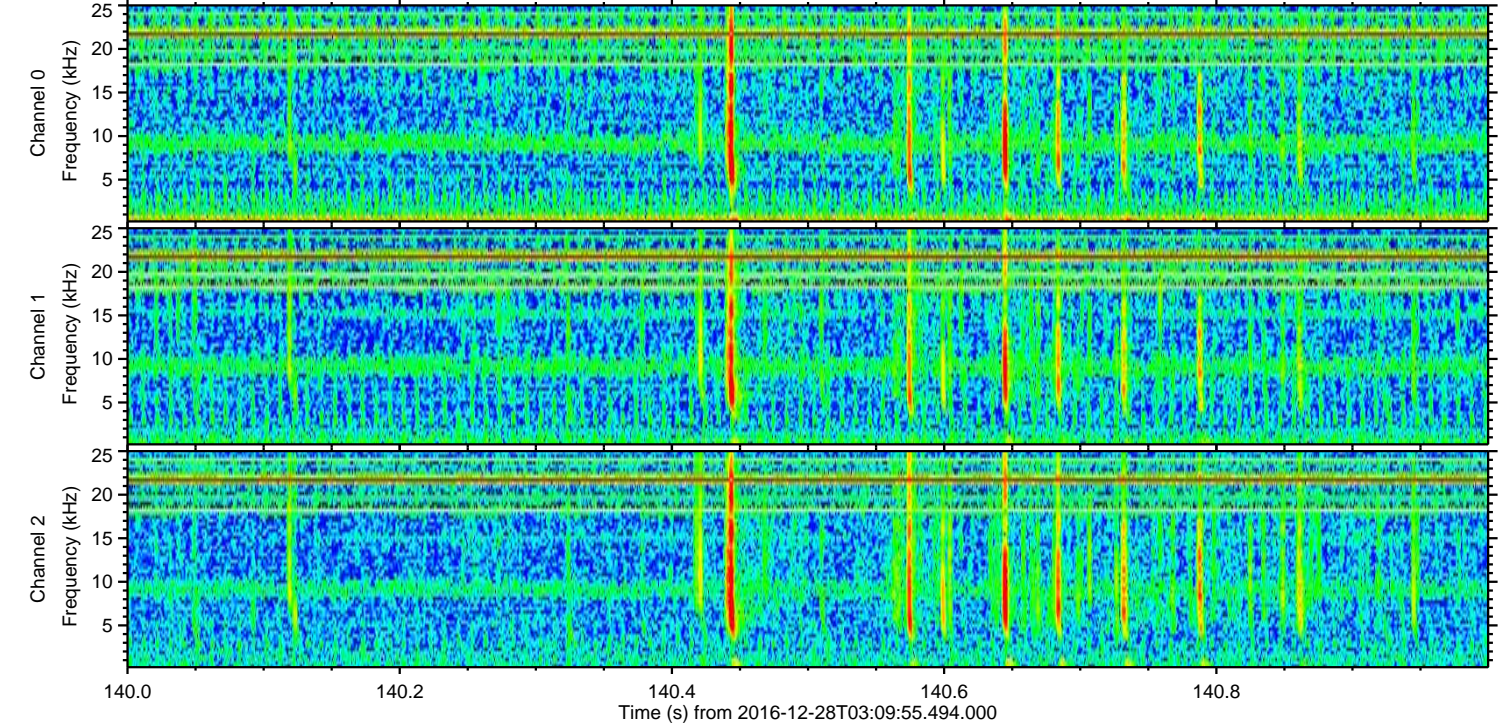
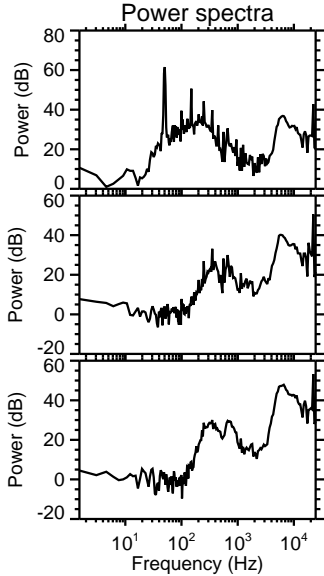
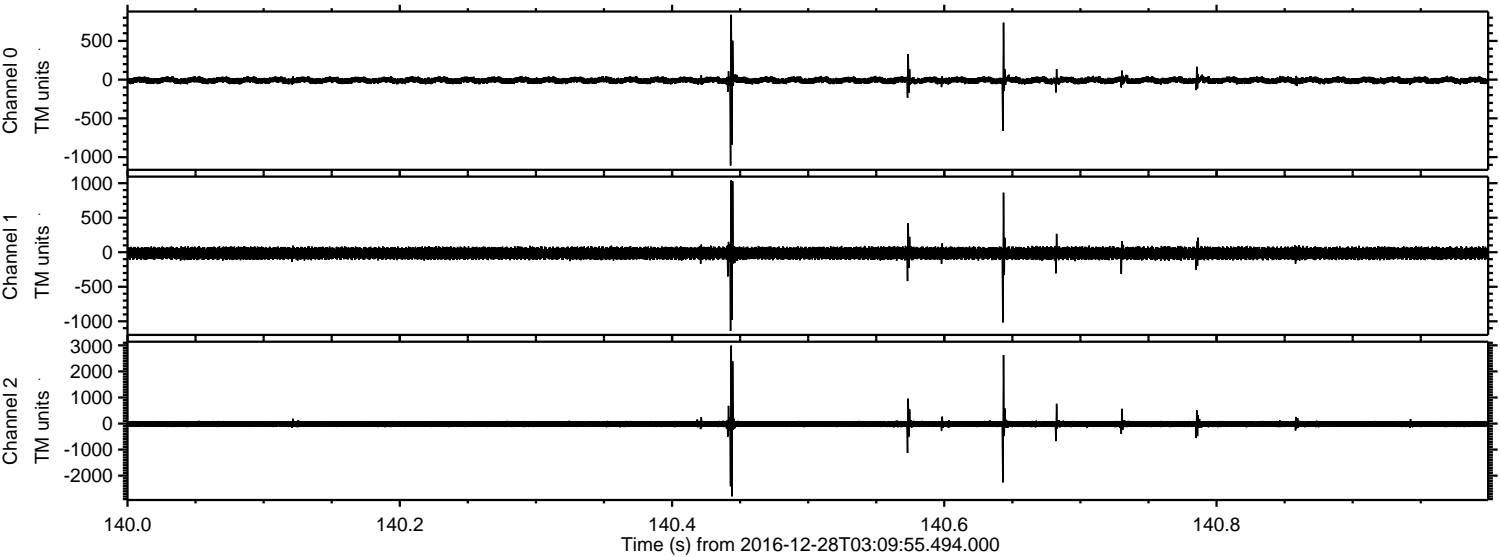
Channel 1  
mn: -1048  
mx: 2313  
 $\mu$ : -14.9  
 $\sigma$ : 54.8

Channel 2  
mn: -4213  
mx: 1958  
 $\mu$ : -18.2  
 $\sigma$ : 74.5



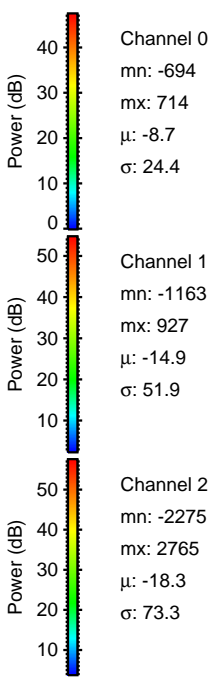
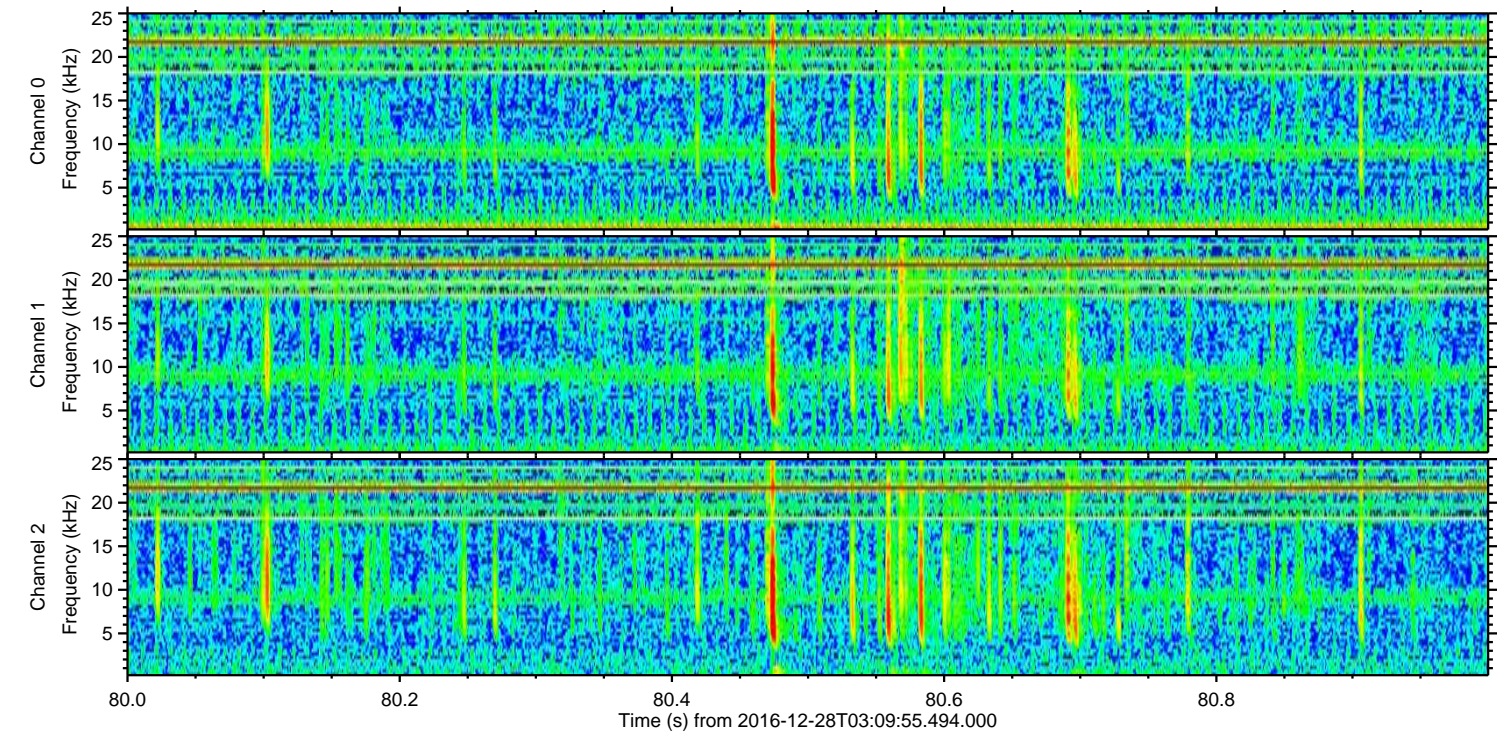
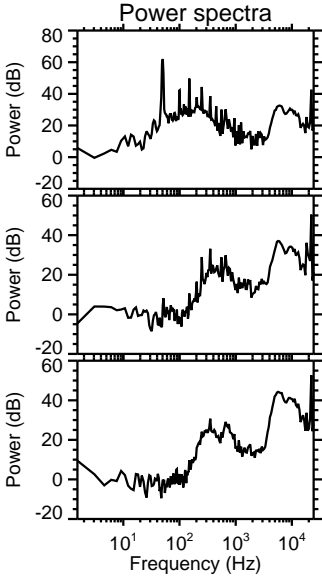
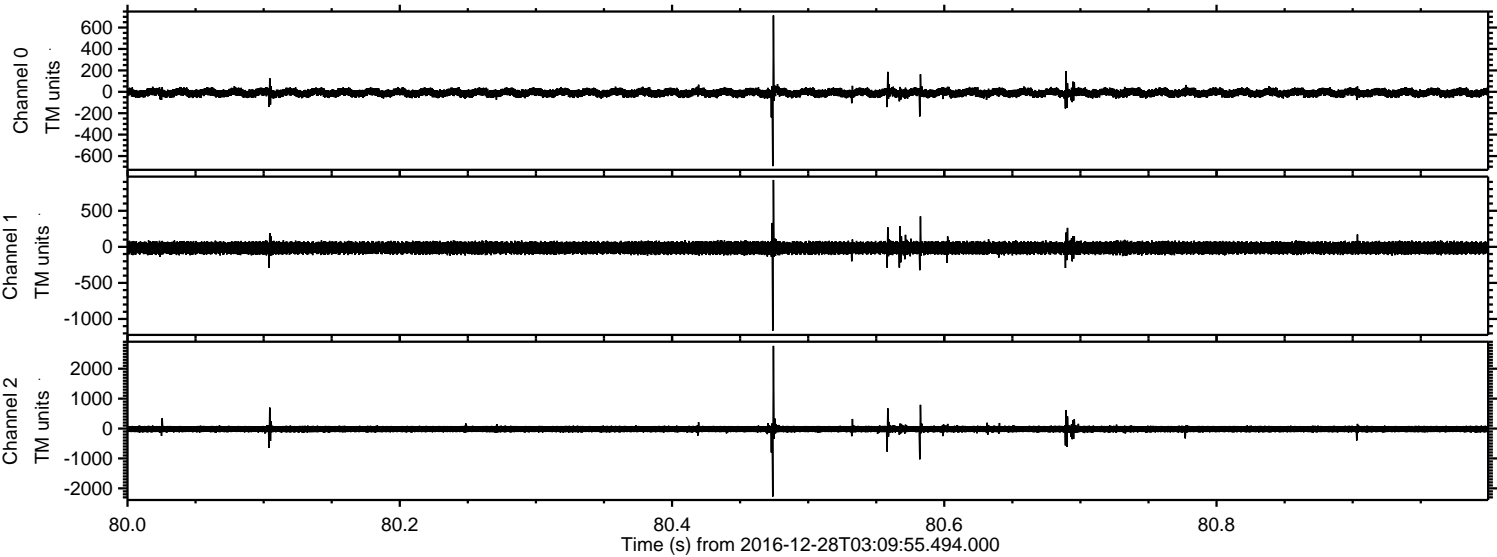
ELMAVAN 3D WAVEFORMS (Measured data sampled at 50 kHz) 51000 packets of 144 samples from 2016-12-28T03:09:55.494.000. Part 141/147

Processed Wed Dec 28 04:18:04 2016 by ELM ver.2012-10-06 from 001\_\_elm20161228\_030954\_\_dat00.bin





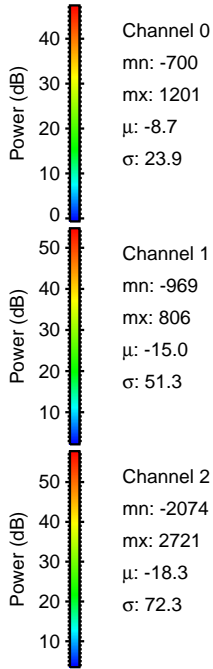
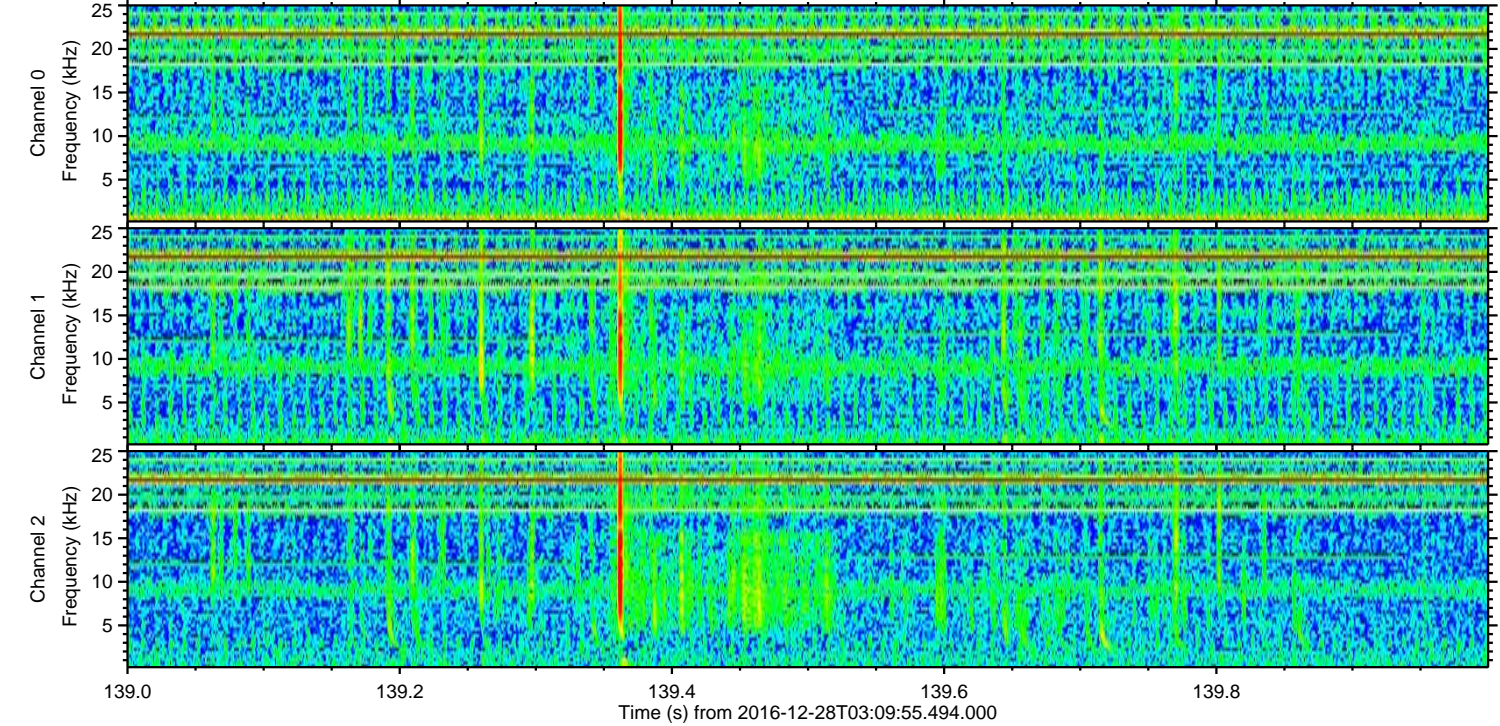
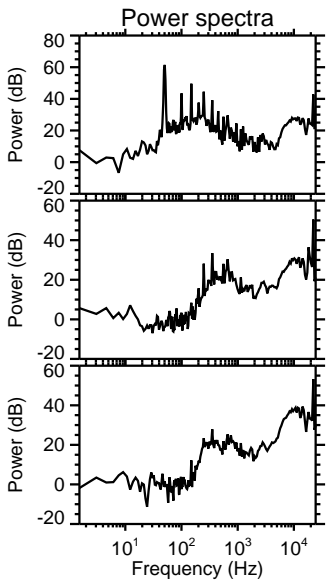
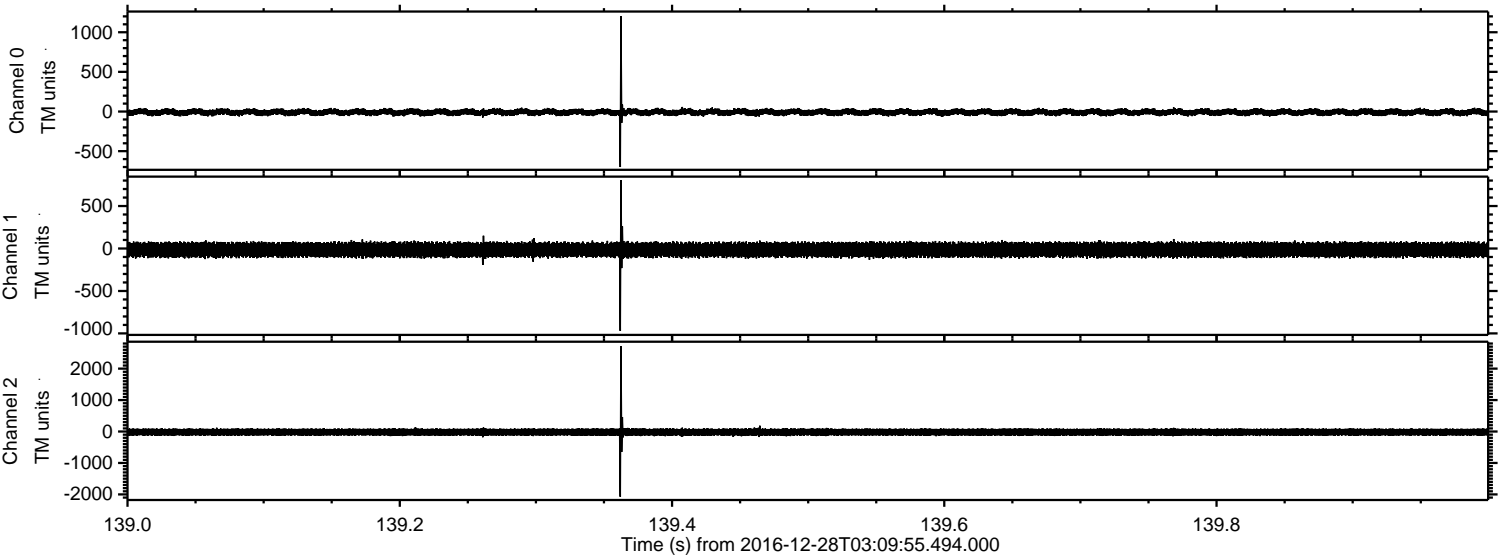
Processed Wed Dec 28 04:18:05 2016 by ELM ver.2012-10-06 from 001\_\_elm20161228\_030954\_\_dat00.bin





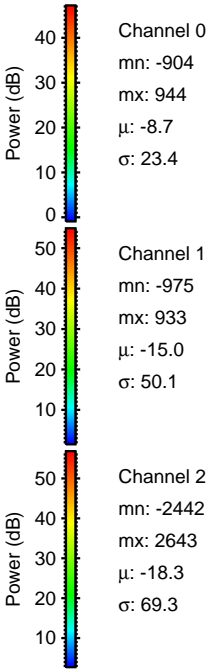
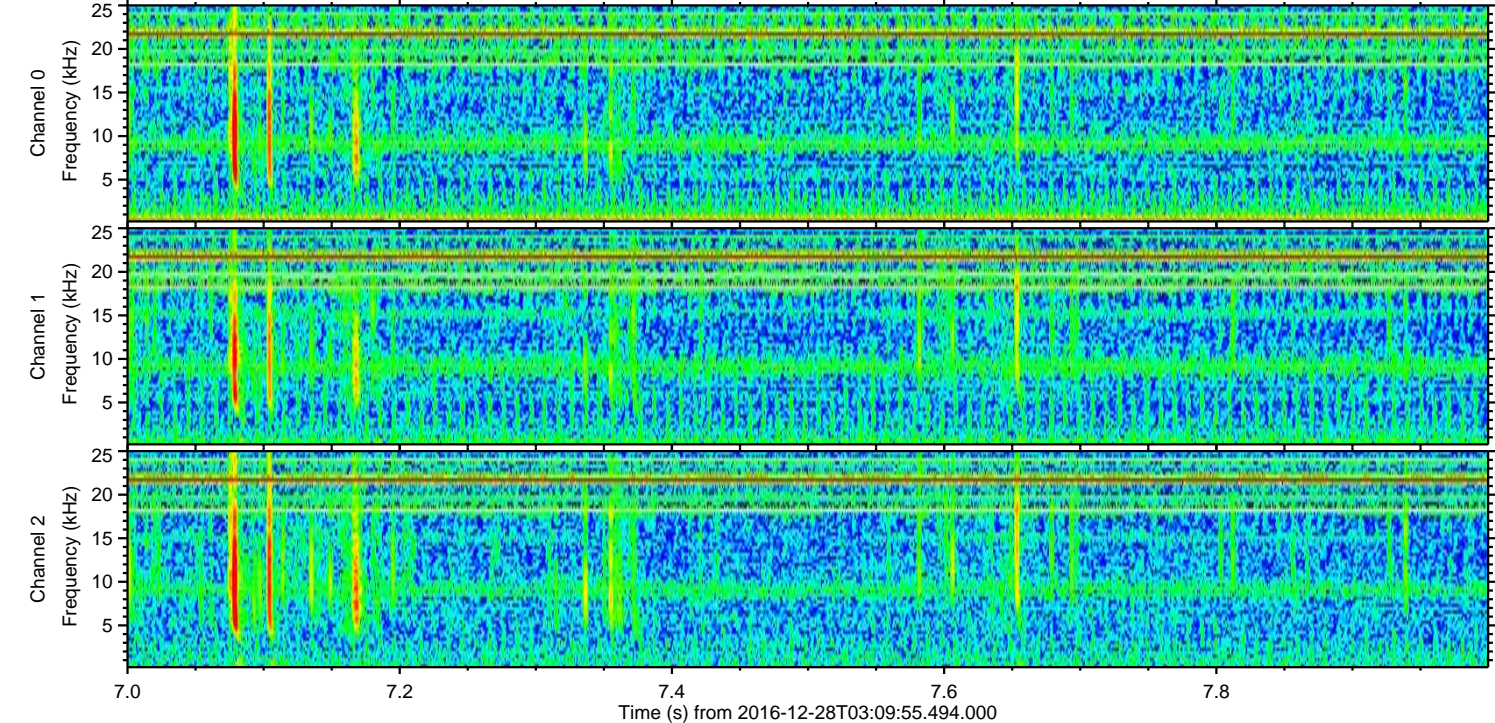
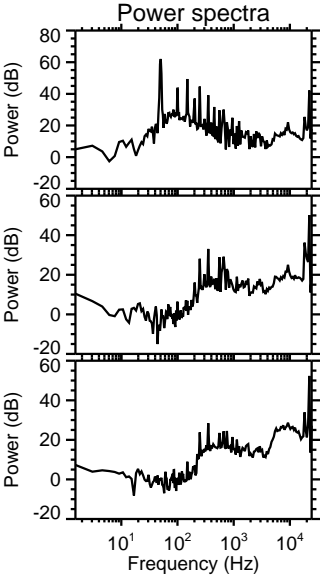
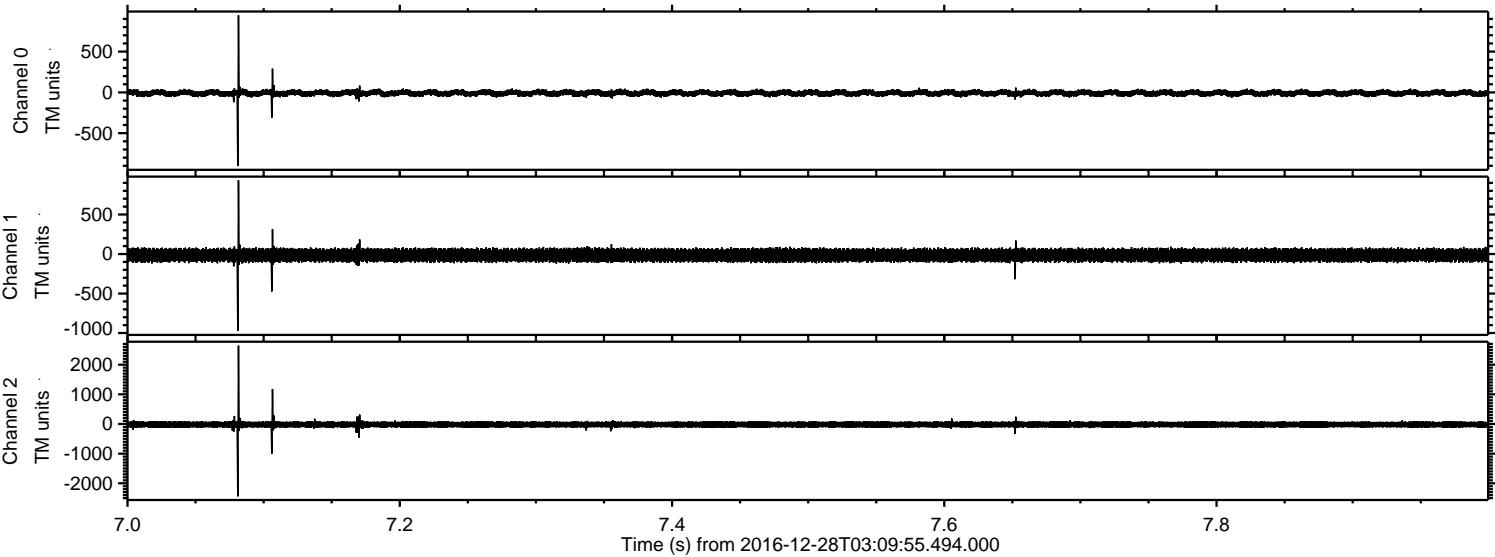
ELMAVAN 3D WAVEFORMS (Measured data sampled at 50 kHz) 51000 packets of 144 samples from 2016-12-28T03:09:55.494.000. Part 140/147

Processed Wed Dec 28 04:18:06 2016 by ELM ver.2012-10-06 from 001\_\_elm20161228\_030954\_\_dat00.bin



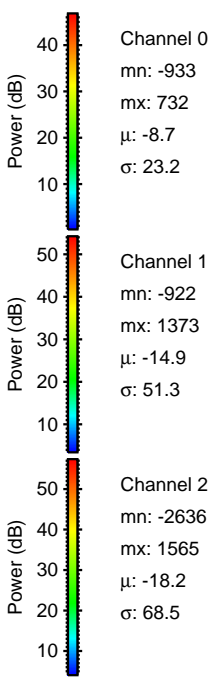
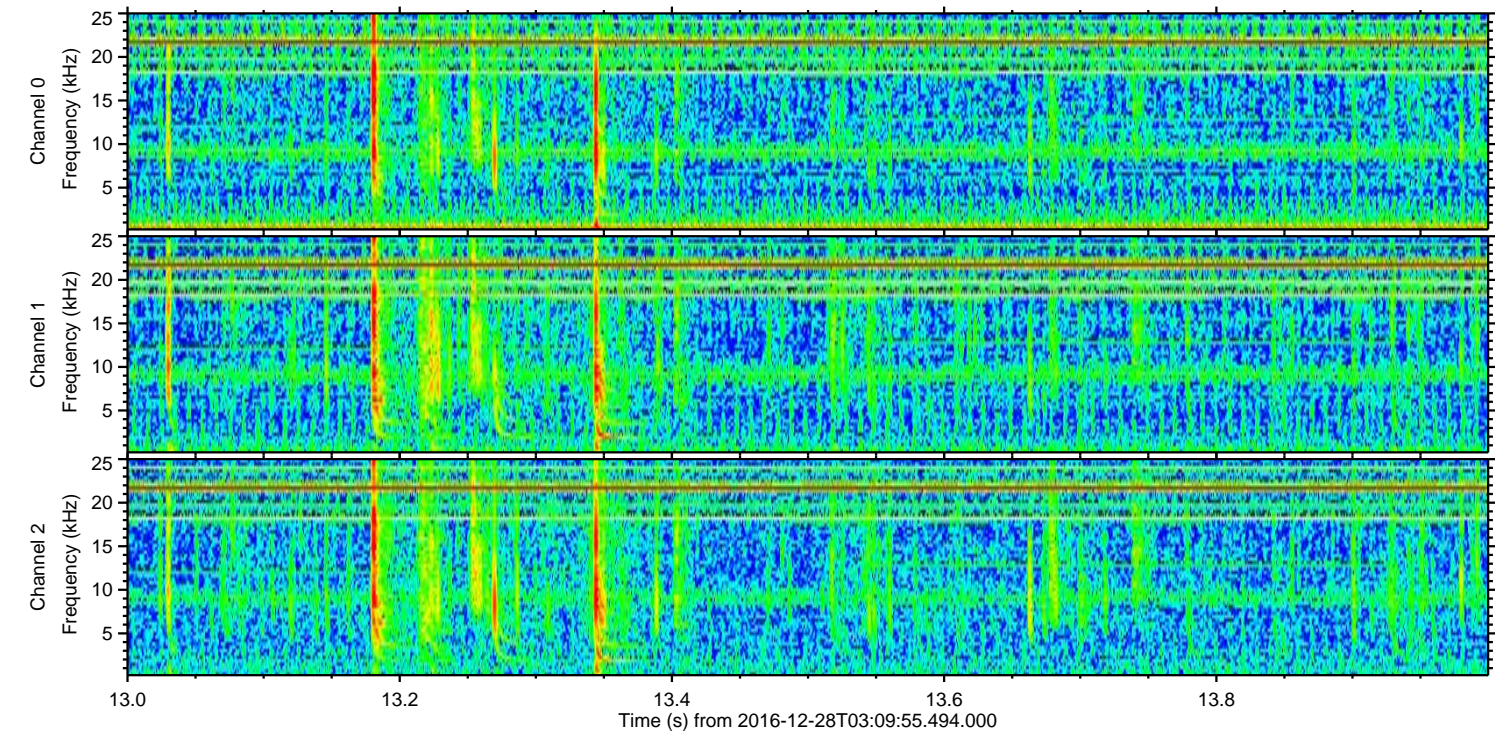
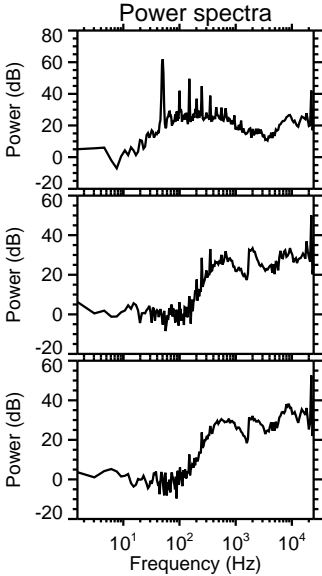
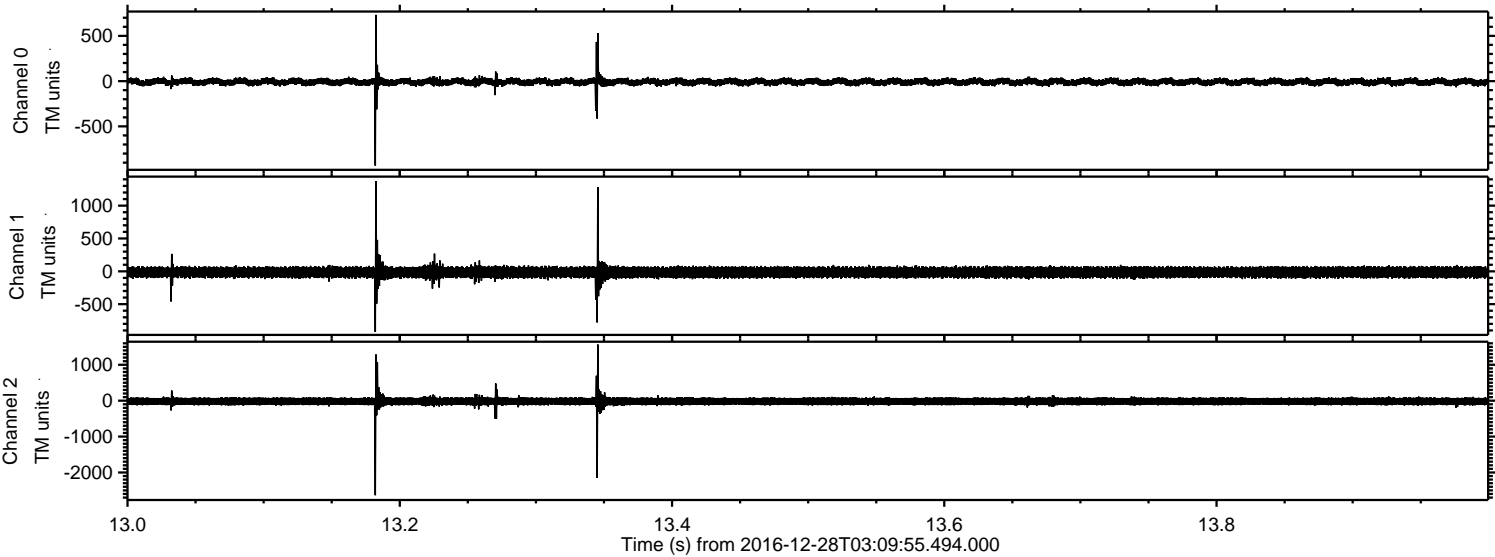


Processed Wed Dec 28 04:18:07 2016 by ELM ver.2012-10-06 from 001\_\_elm20161228\_030954\_\_dat00.bin





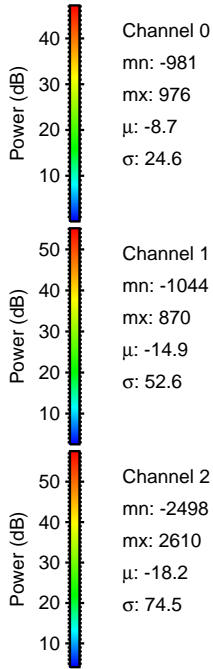
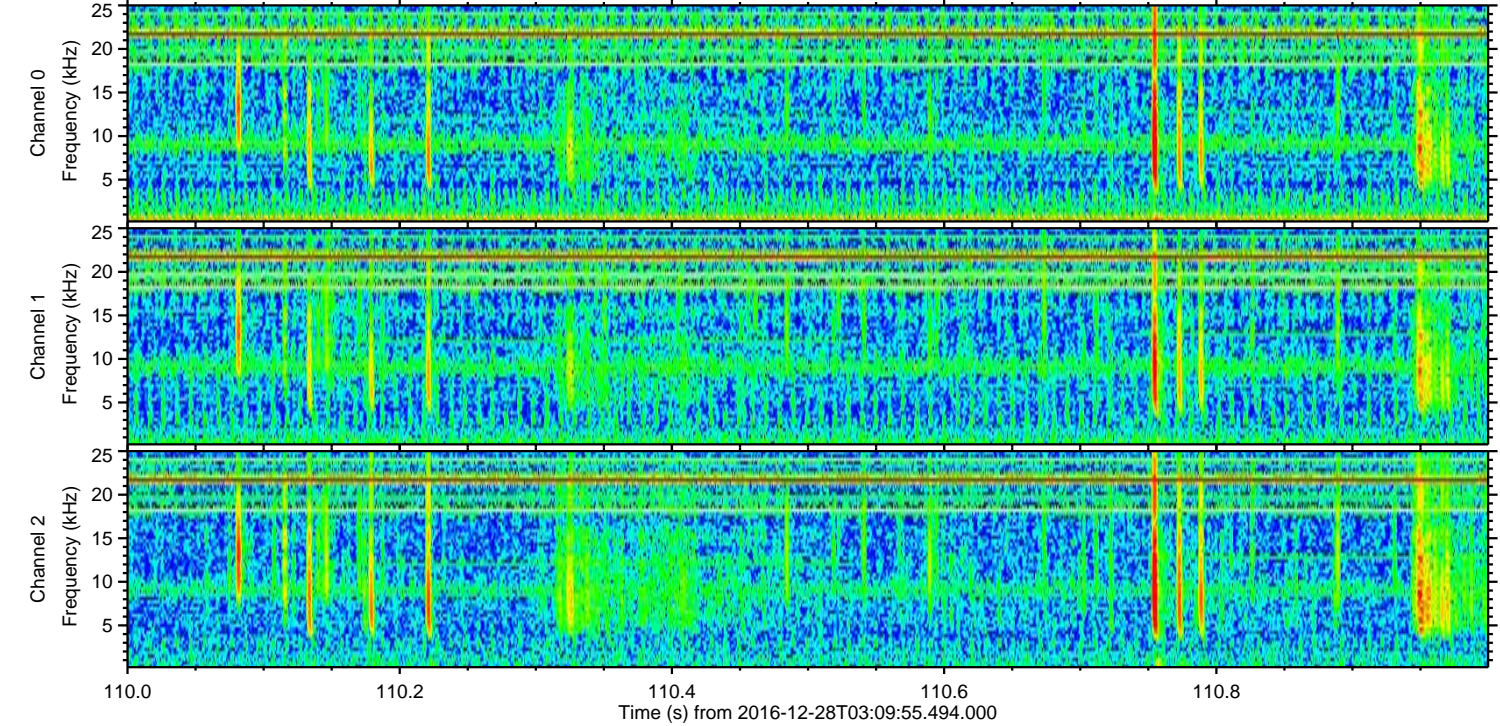
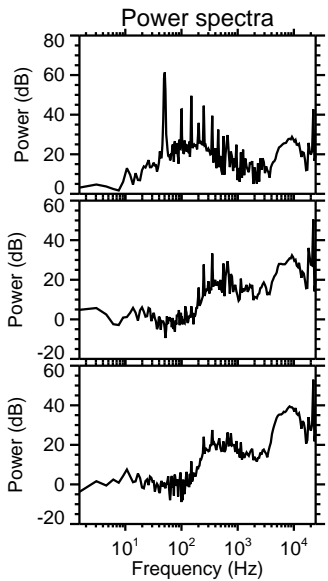
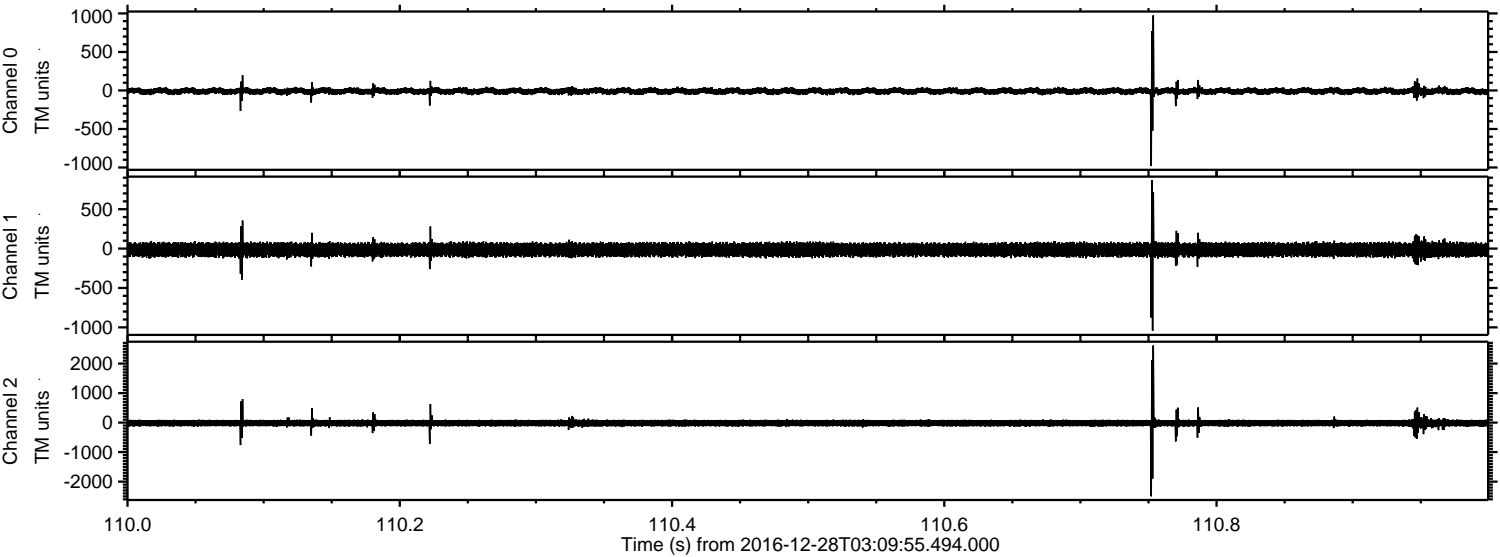
Processed Wed Dec 28 04:18:08 2016 by ELM ver.2012-10-06 from 001\_\_elm20161228\_030954\_\_dat00.bin





ELMAVAN 3D WAVEFORMS (Measured data sampled at 50 kHz) 51000 packets of 144 samples from 2016-12-28T03:09:55.494.000. Part 111/147

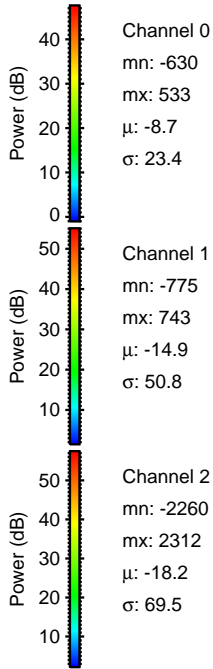
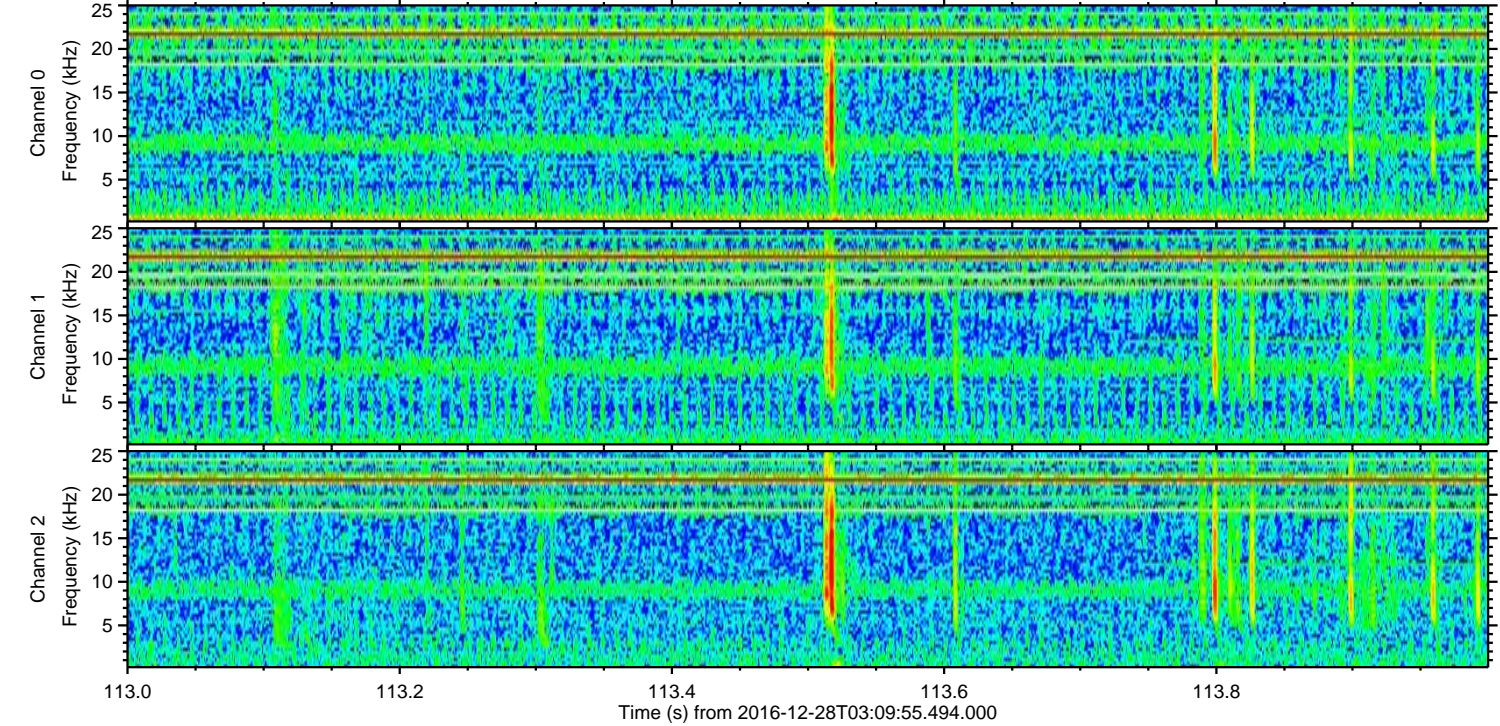
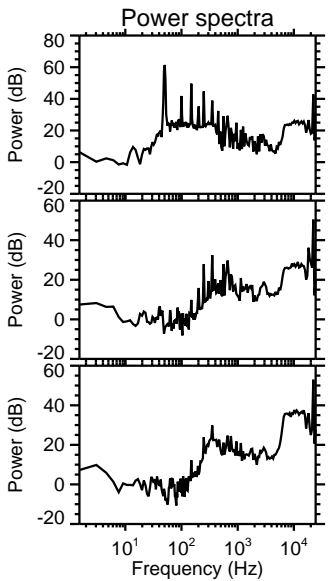
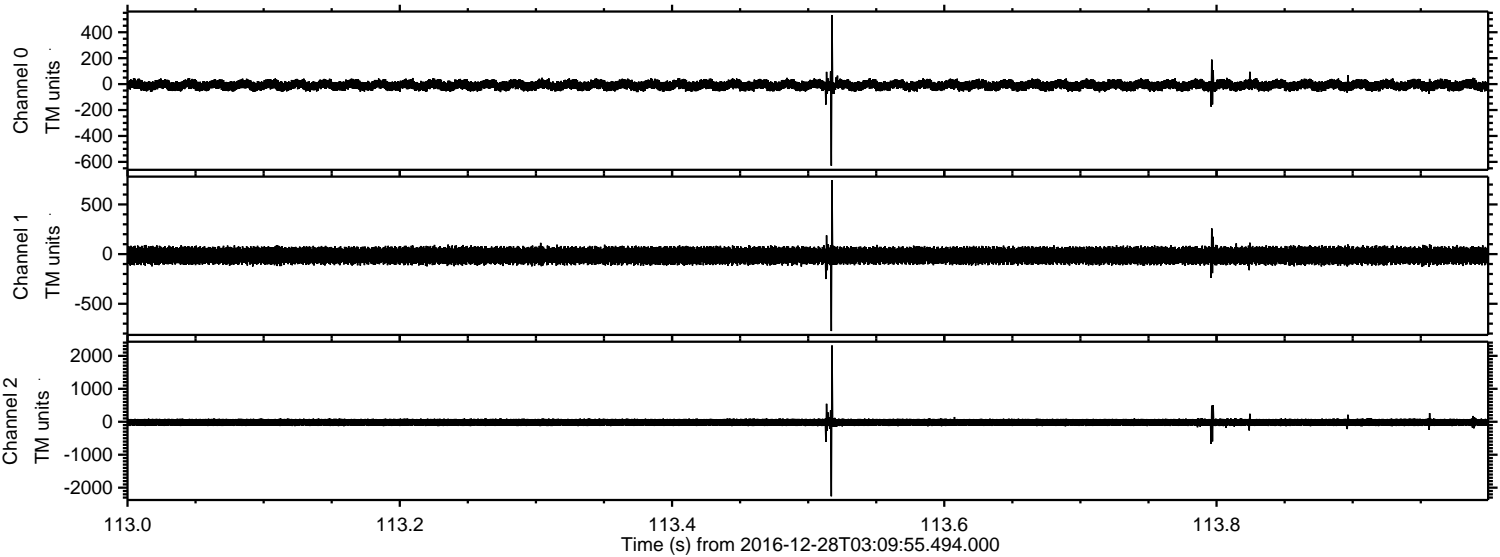
Processed Wed Dec 28 04:18:09 2016 by ELM ver.2012-10-06 from 001\_\_elm20161228\_030954\_\_dat00.bin





ELMAVAN 3D WAVEFORMS (Measured data sampled at 50 kHz) 51000 packets of 144 samples from 2016-12-28T03:09:55.494.000. Part 114/147

Processed Wed Dec 28 04:18:10 2016 by ELM ver.2012-10-06 from 001\_\_elm20161228\_030954\_\_dat00.bin





Processed Wed Dec 28 04:18:11 2016 by ELM ver.2012-10-06 from 001\_\_elm20161228\_030954\_\_dat00.bin

