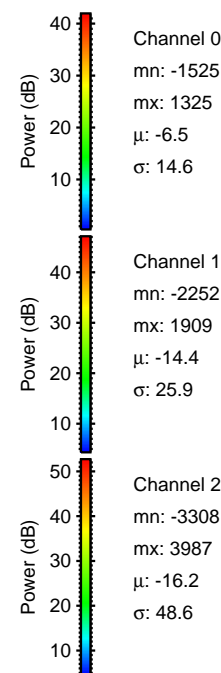
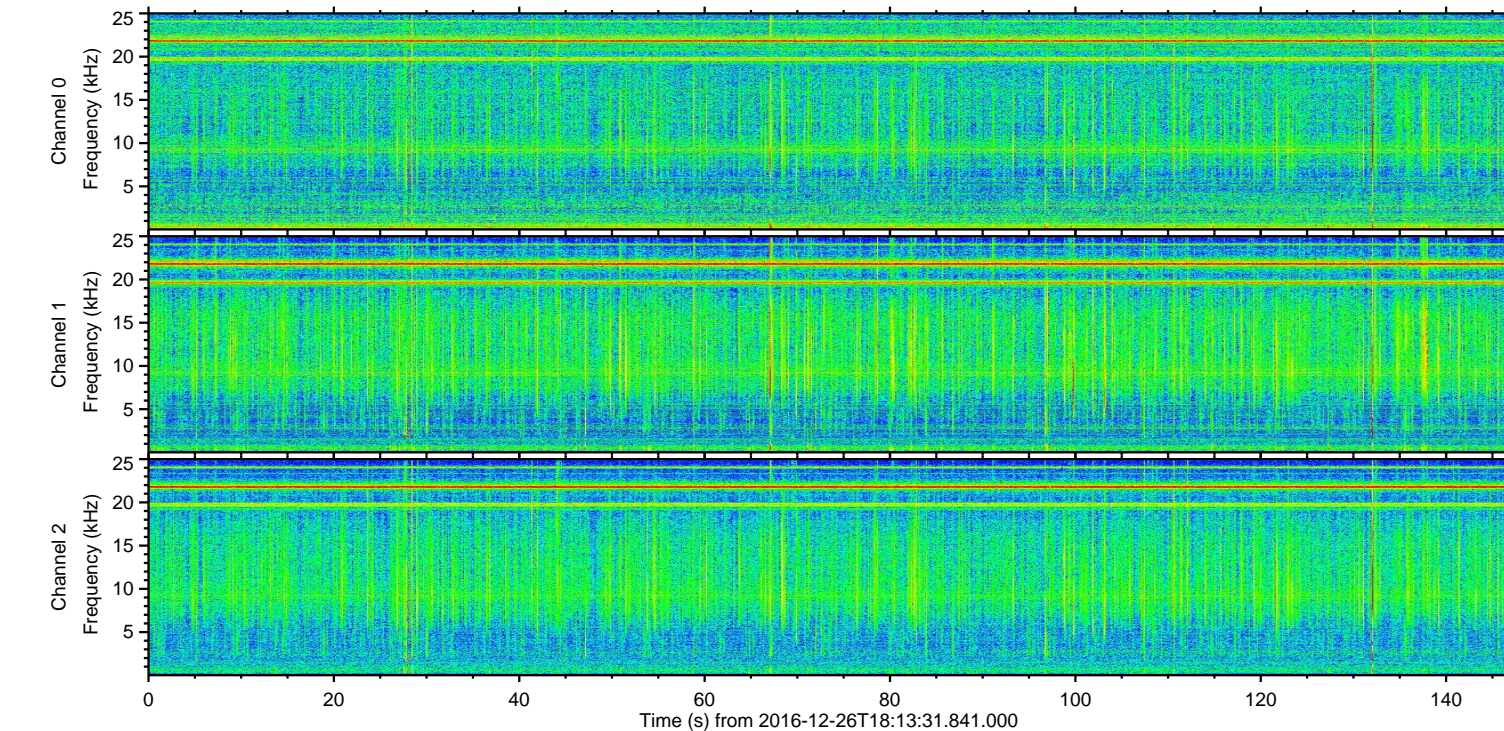
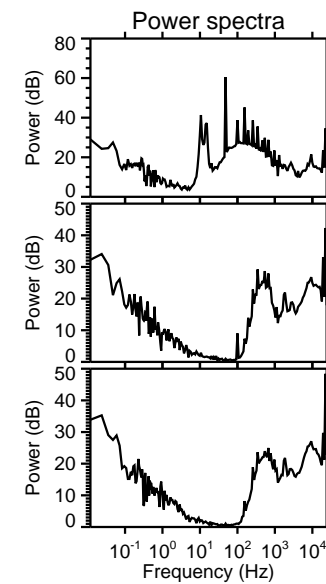
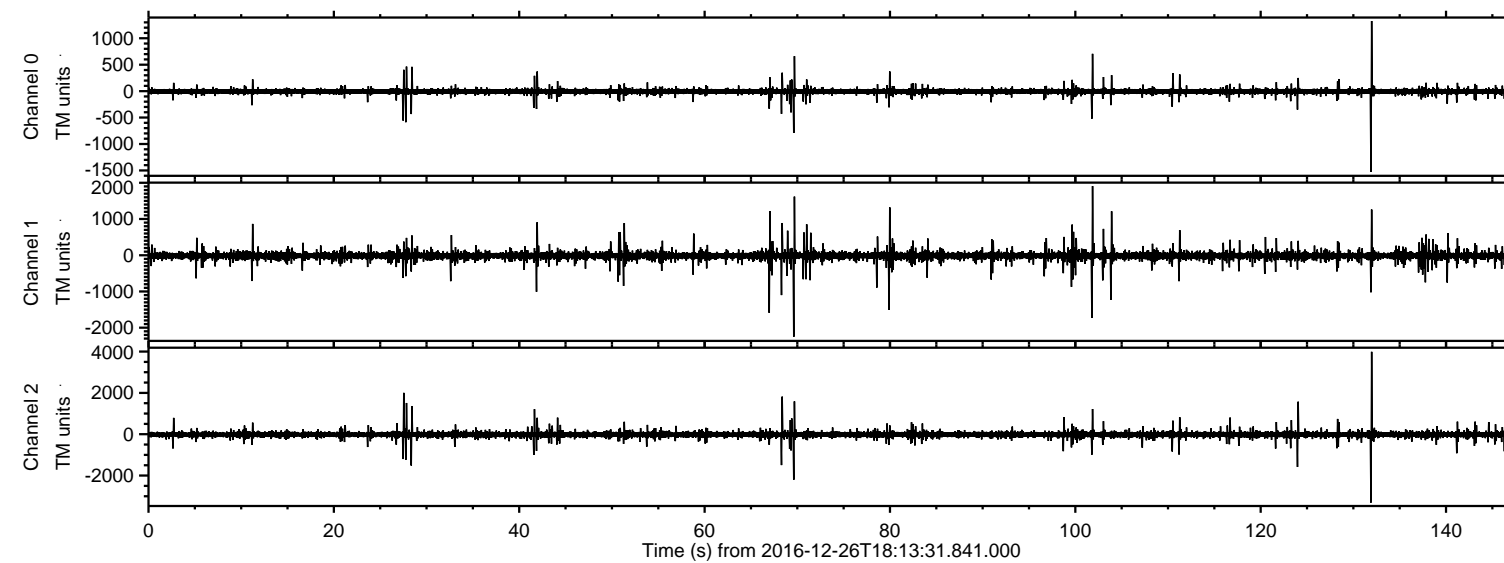


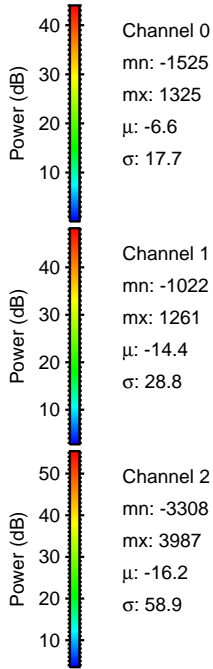
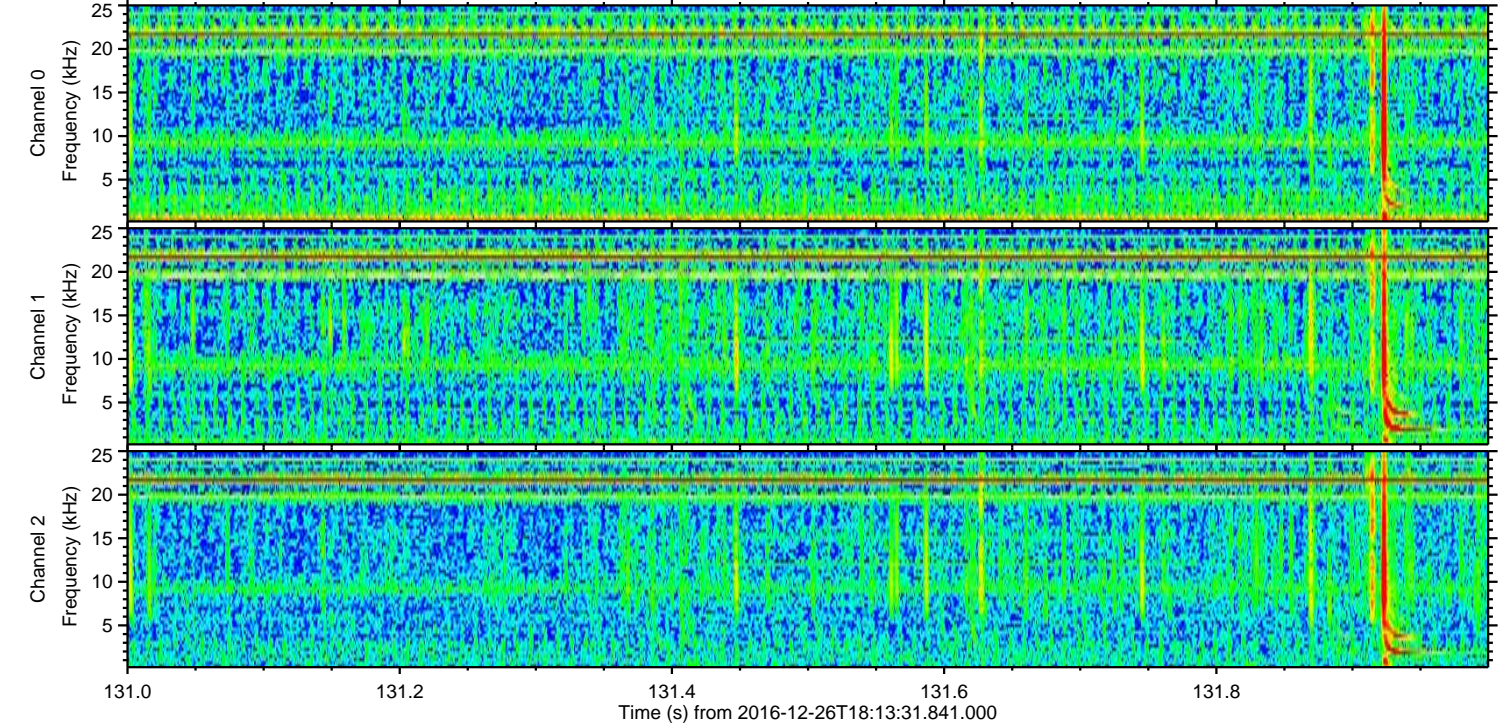
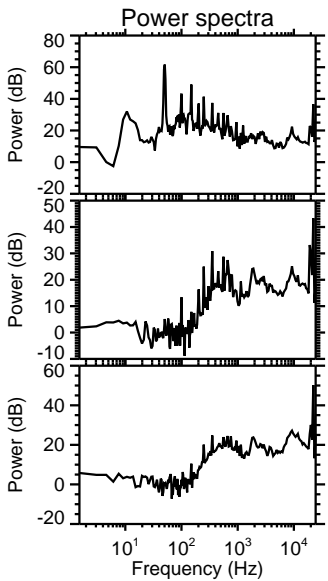
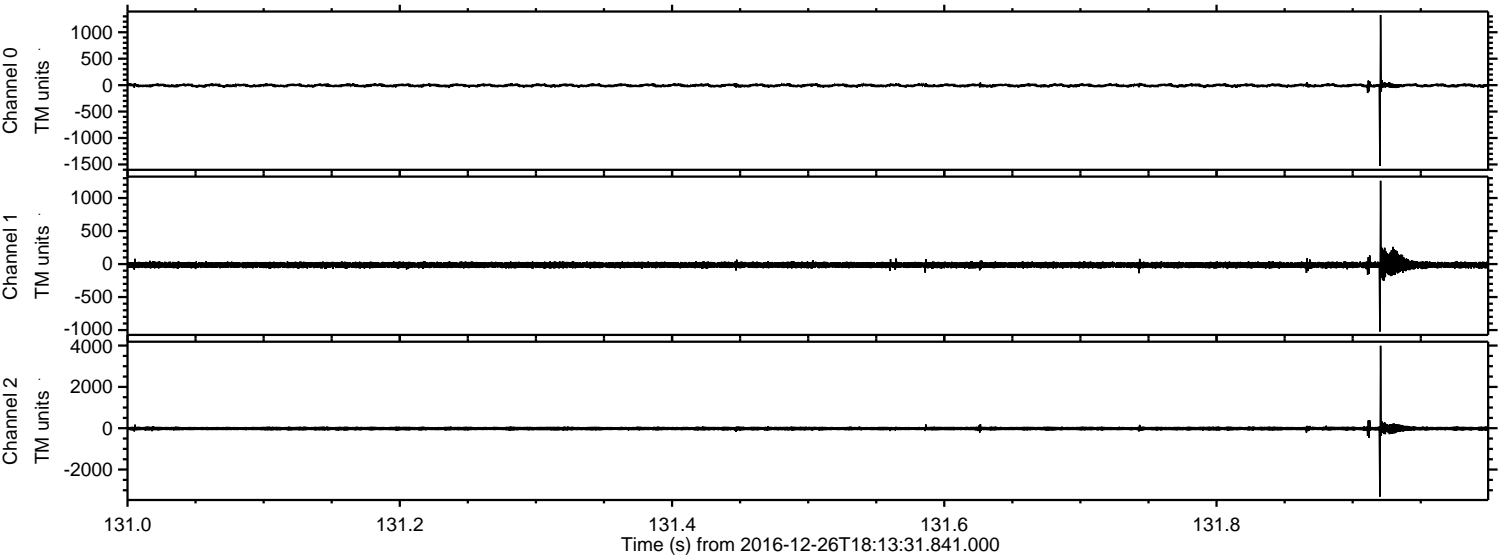
ELMAVAN 3D WAVEFORMS (Measured data sampled at 50 kHz) 51000 packets of 144 samples from 2016-12-26T18:13:31.841.000.

Processed Mon Dec 26 19:21:35 2016 by ELM ver.2012-10-06 from 001__elm20161226_181330__dat00.bin



ELMAVAN 3D WAVEFORMS (Measured data sampled at 50 kHz) 51000 packets of 144 samples from 2016-12-26T18:13:31.841.000. Part 132/147

Processed Mon Dec 26 19:21:50 2016 by ELM ver.2012-10-06 from 001__elm20161226_181330__dat00.bin

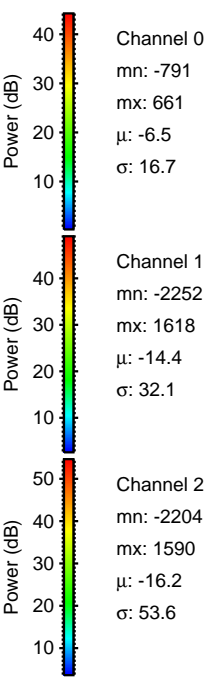
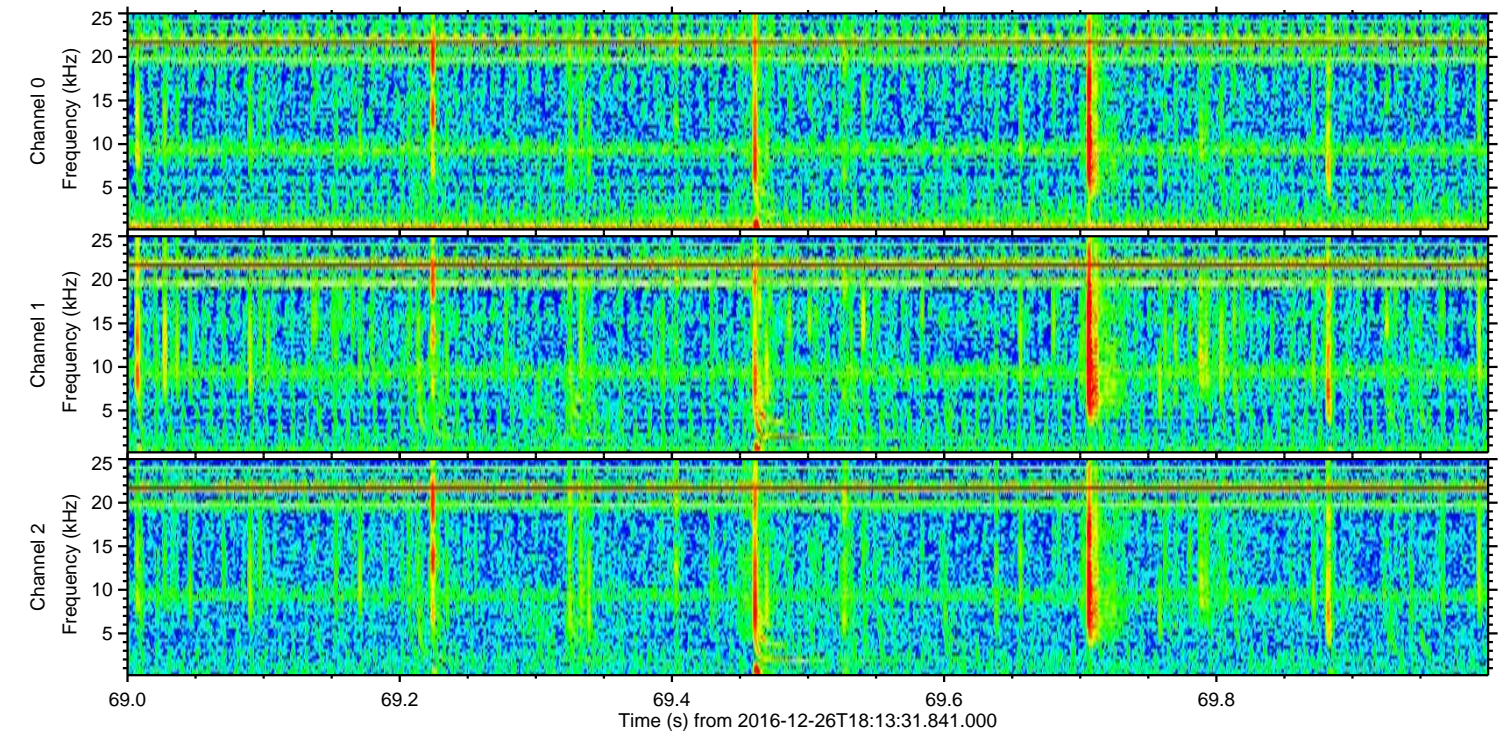
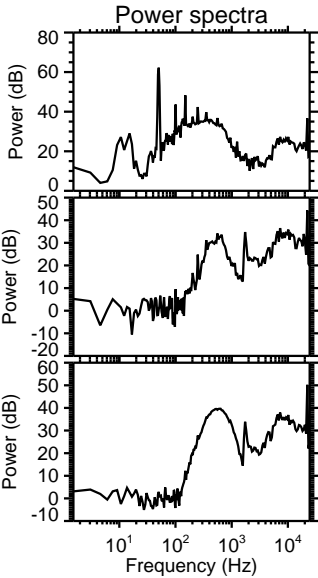
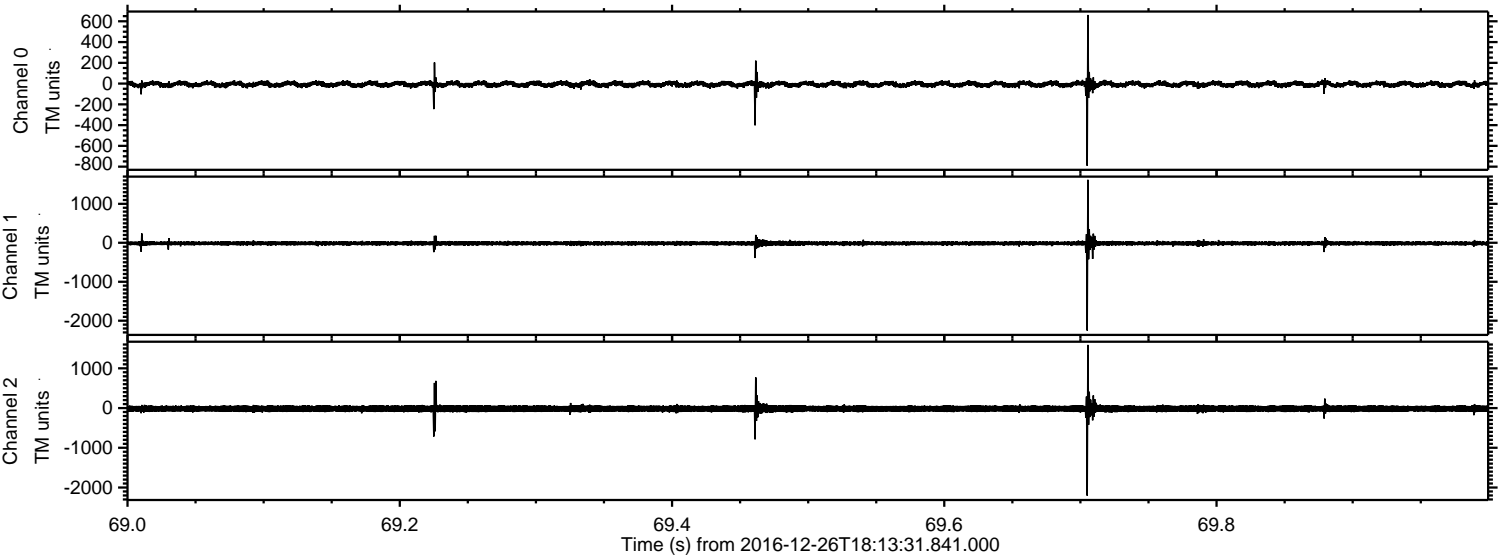


Channel 0
mn: -1525
mx: 1325
 μ : -6.6
 σ : 17.7

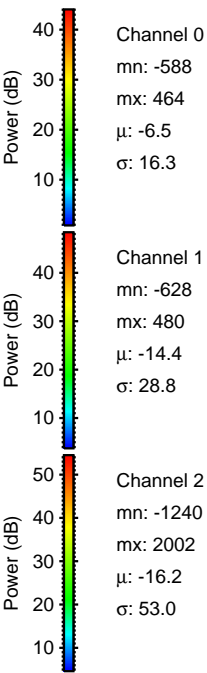
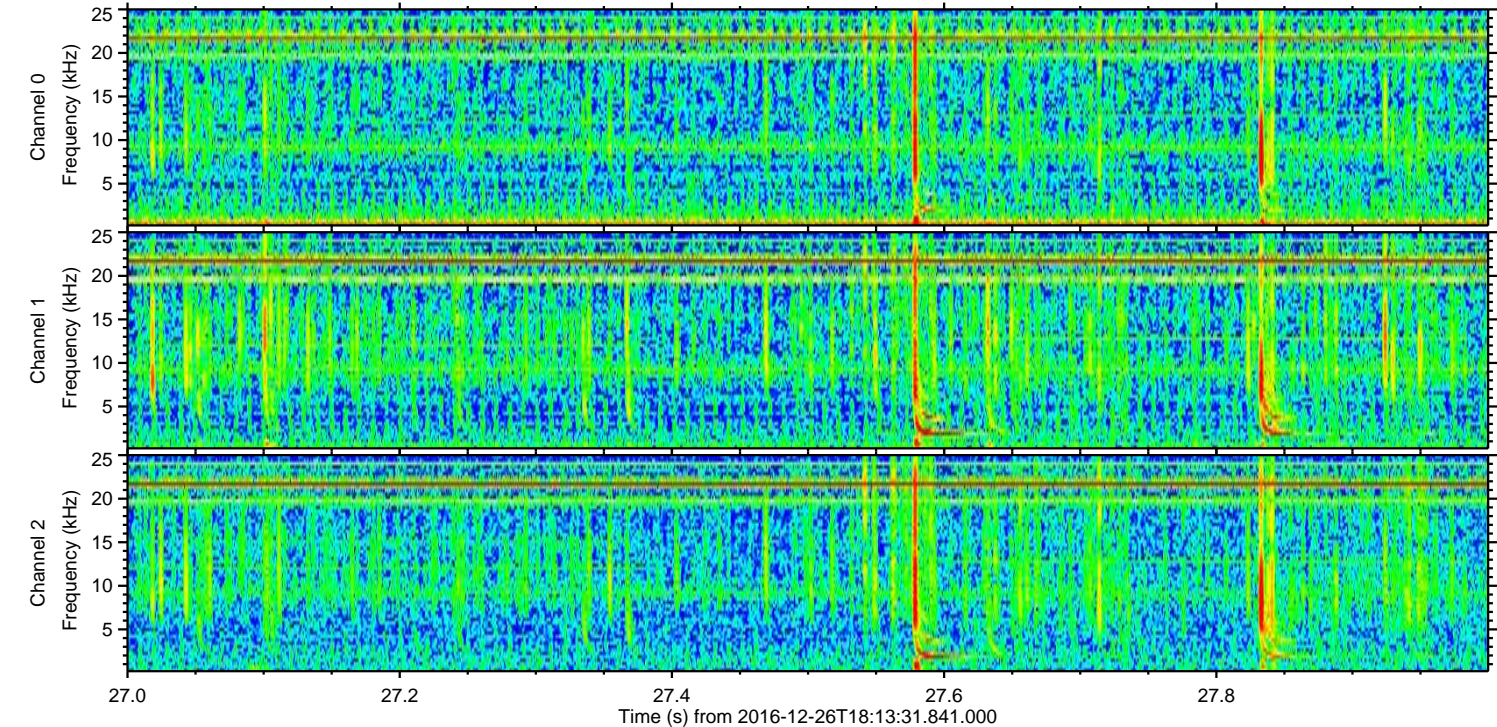
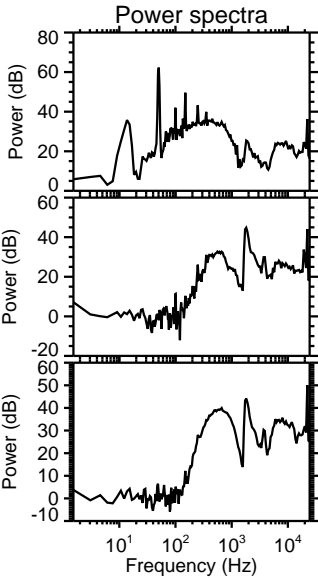
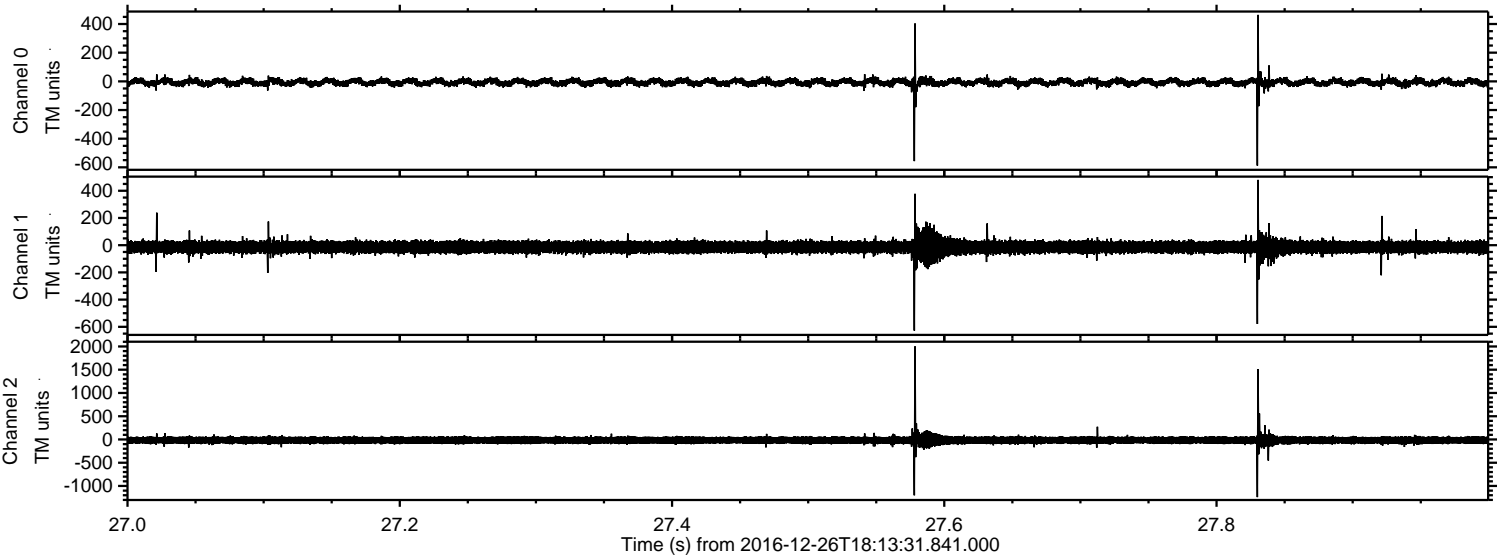
Channel 1
mn: -1022
mx: 1261
 μ : -14.4
 σ : 28.8

Channel 2
mn: -3308
mx: 3987
 μ : -16.2
 σ : 58.9

Processed Mon Dec 26 19:21:51 2016 by ELM ver.2012-10-06 from 001__elm20161226_181330__dat00.bin

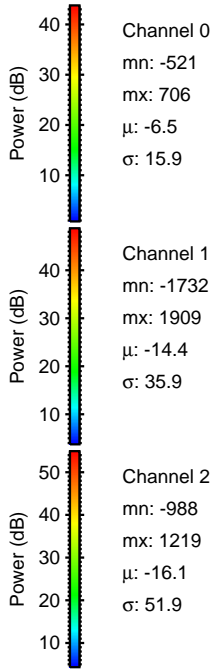
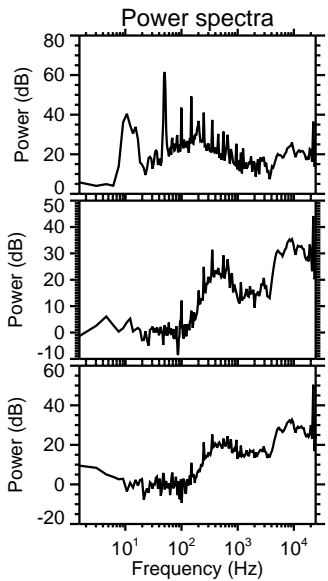
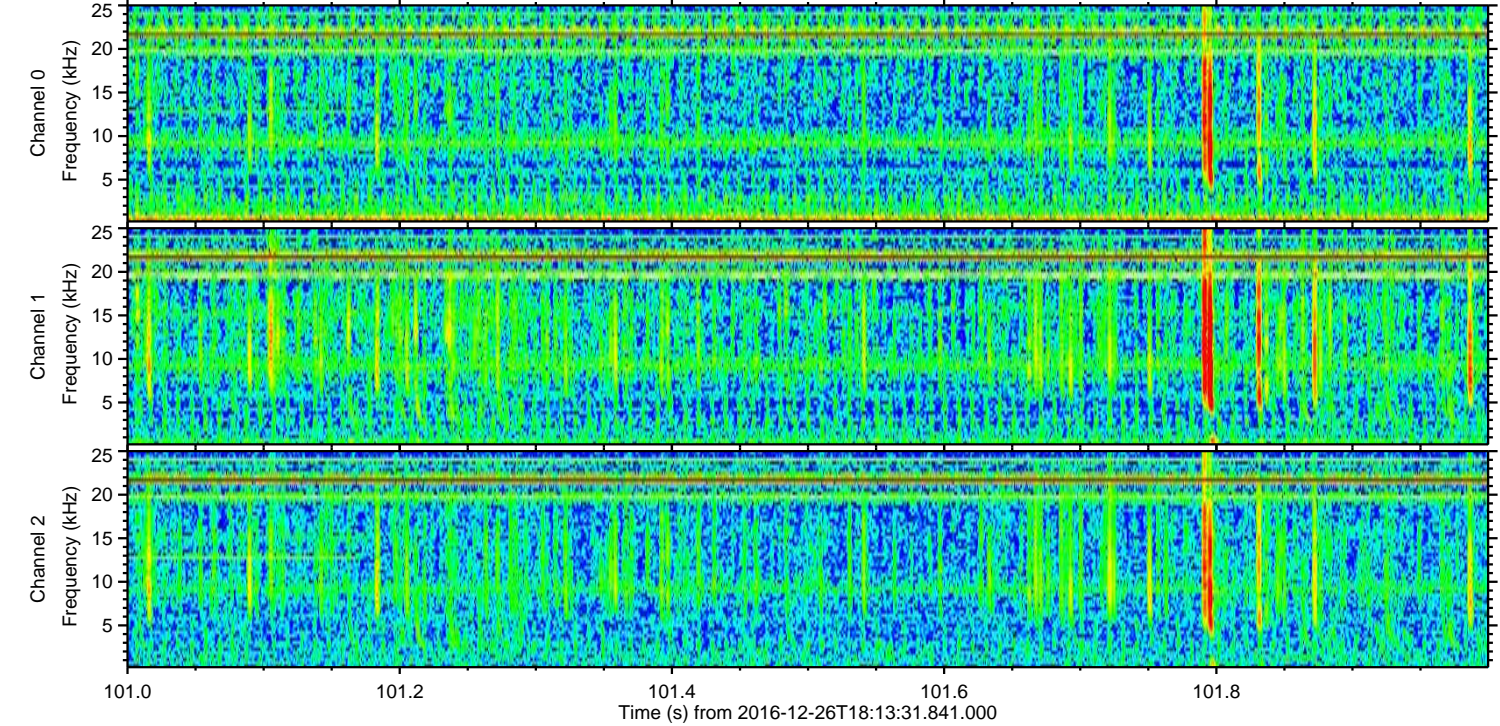
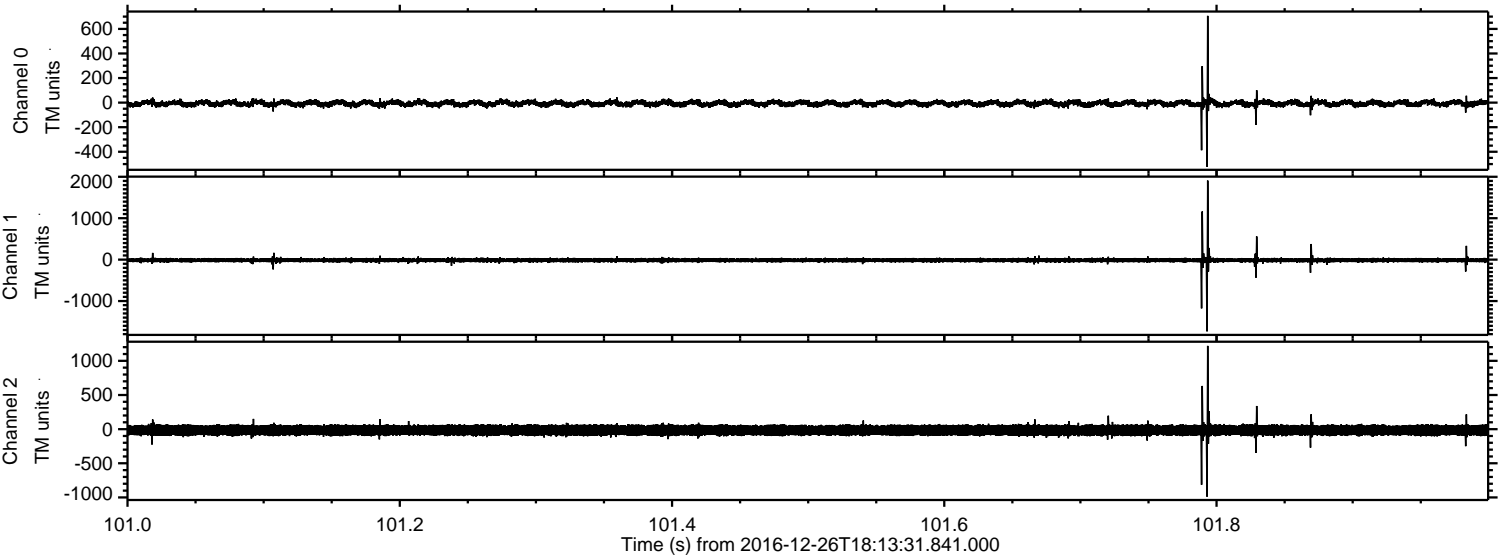


Processed Mon Dec 26 19:21:52 2016 by ELM ver.2012-10-06 from 001__elm20161226_181330__dat00.bin

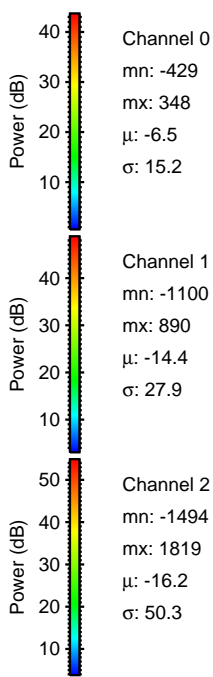
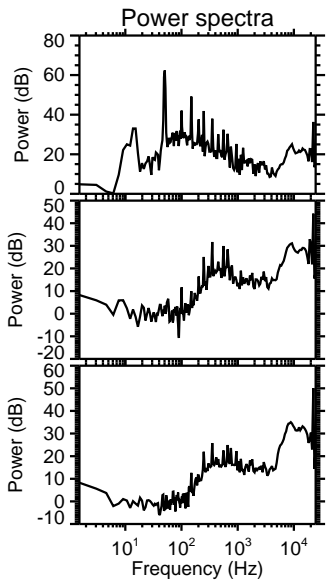
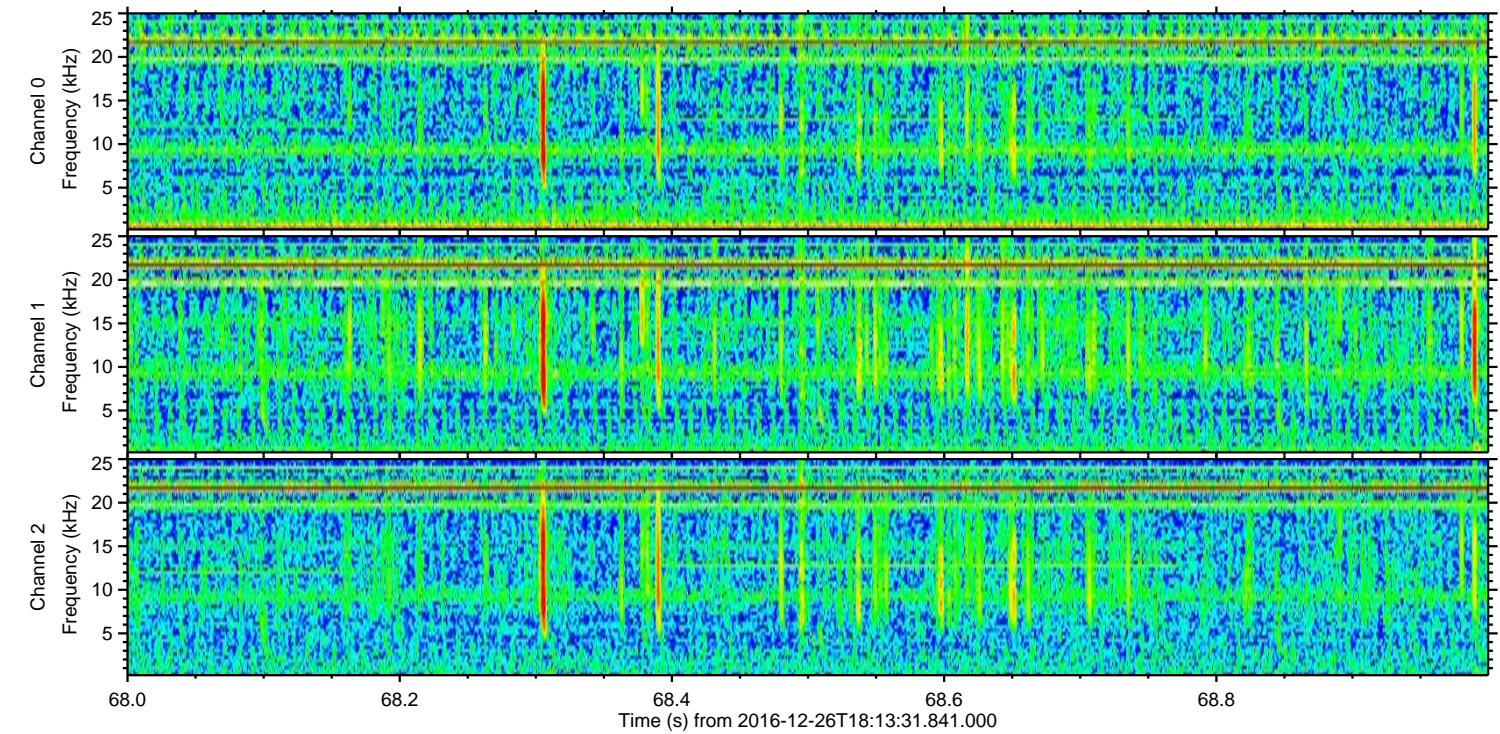
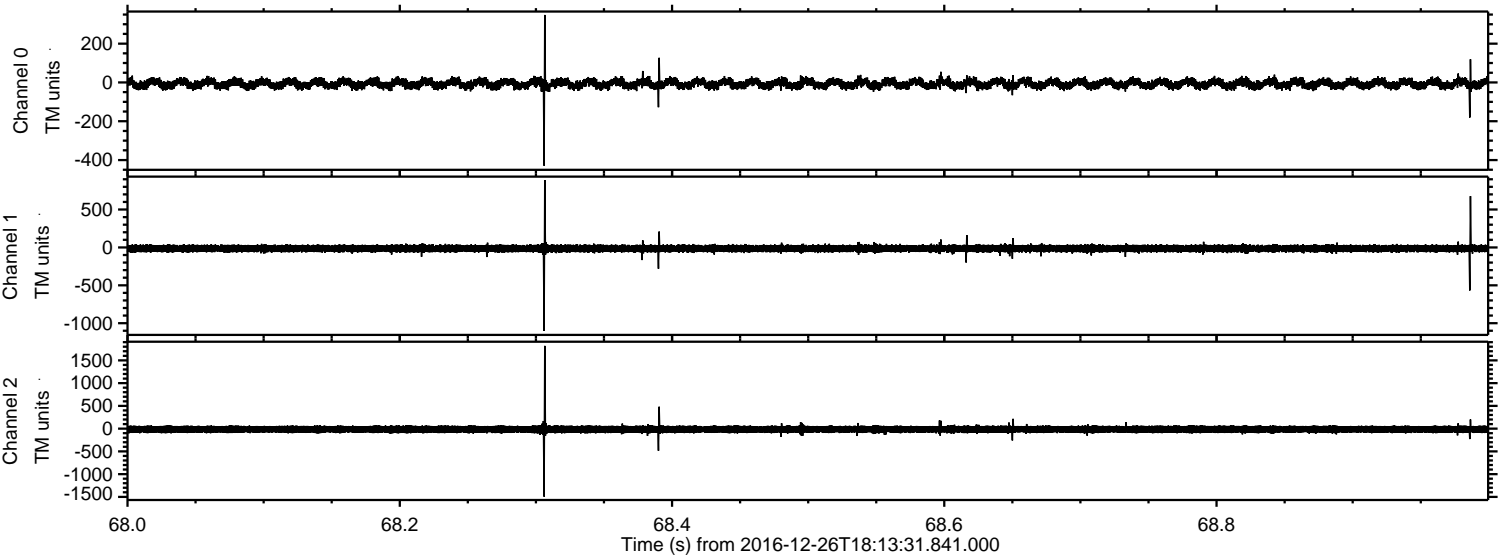


ELMAVAN 3D WAVEFORMS (Measured data sampled at 50 kHz) 51000 packets of 144 samples from 2016-12-26T18:13:31.841.000. Part 102/147

Processed Mon Dec 26 19:21:53 2016 by ELM ver.2012-10-06 from 001__elm20161226_181330__dat00.bin



Processed Mon Dec 26 19:21:54 2016 by ELM ver.2012-10-06 from 001__elm20161226_181330__dat00.bin

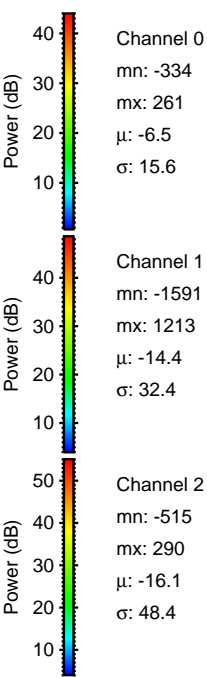
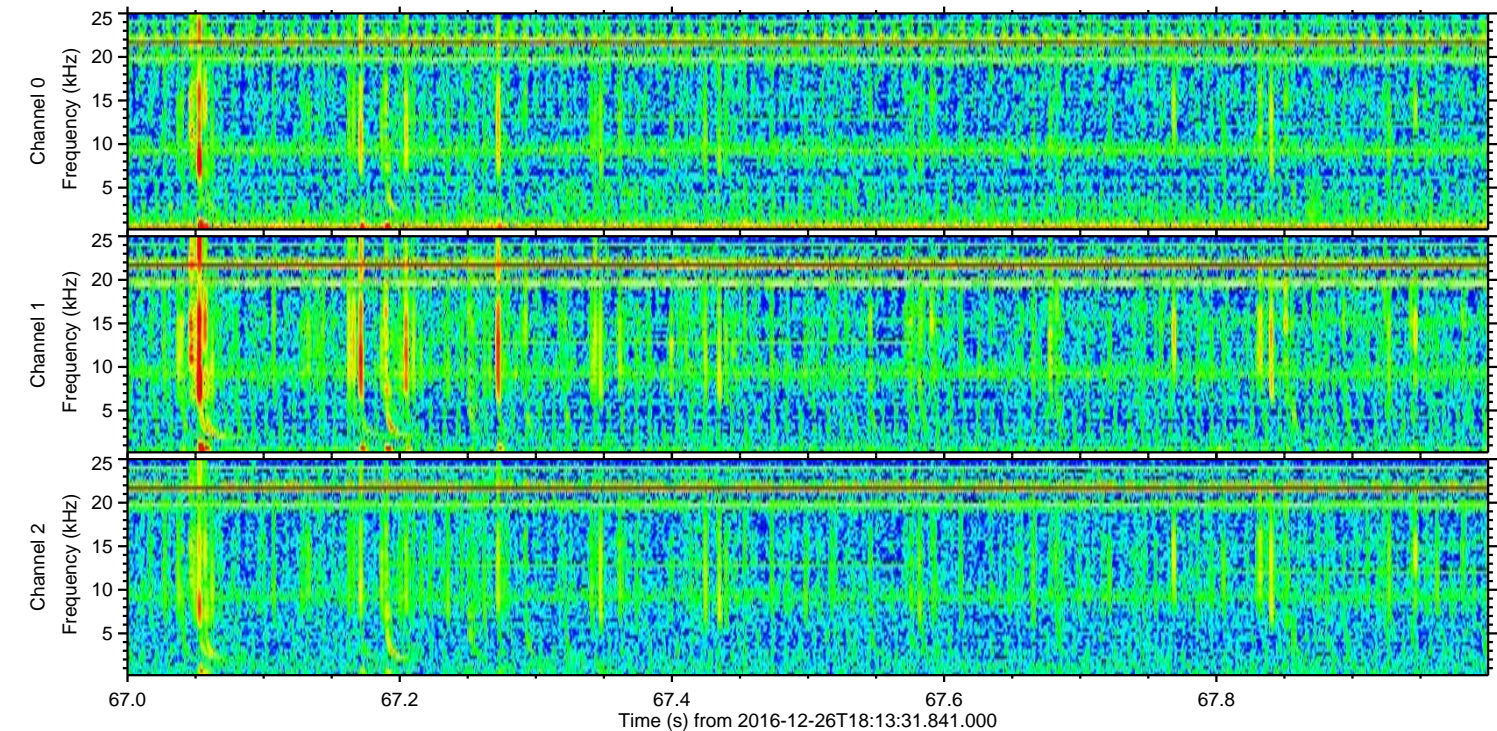
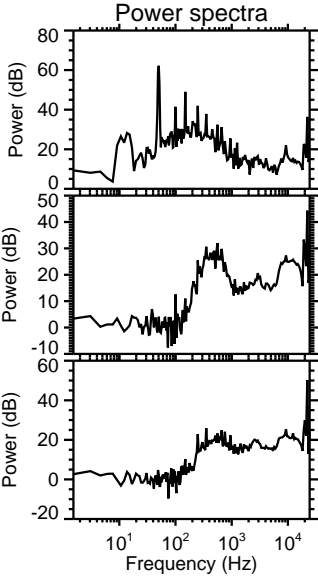
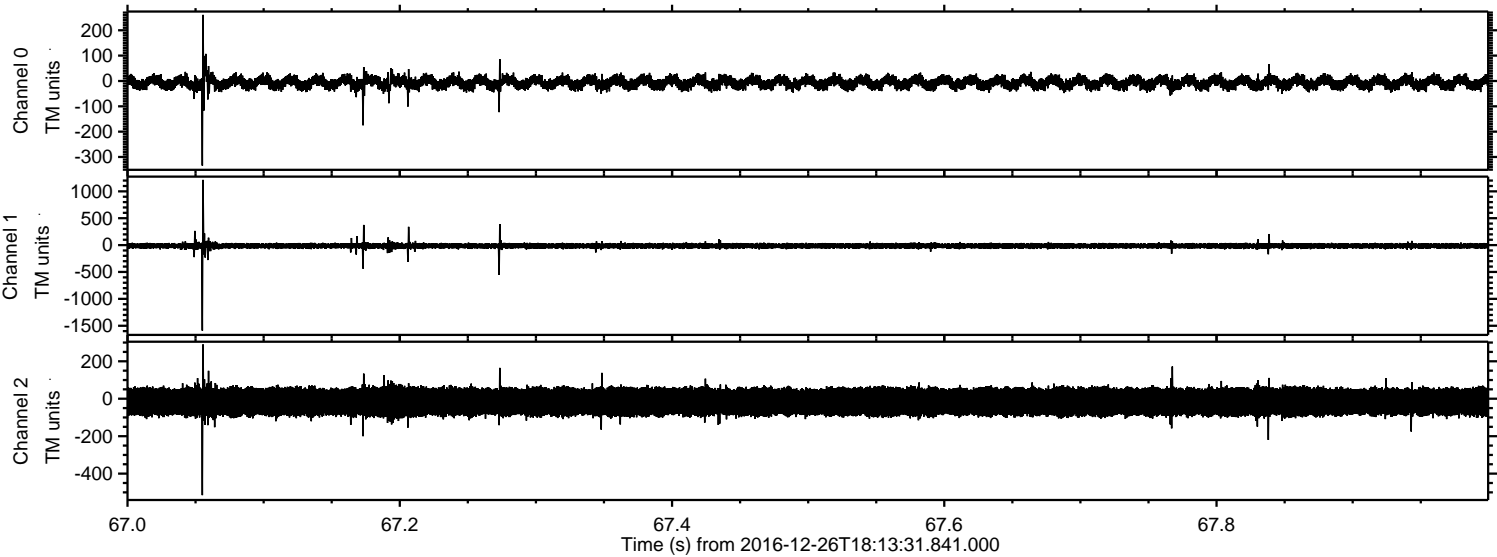


Channel 0
mn: -429
mx: 348
 μ : -6.5
 σ : 15.2

Channel 1
mn: -1100
mx: 890
 μ : -14.4
 σ : 27.9

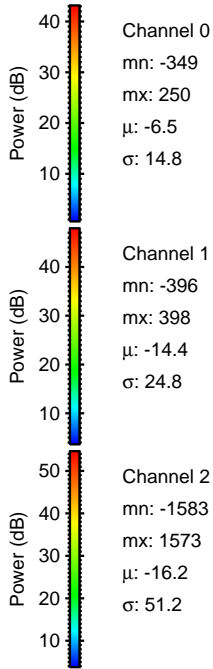
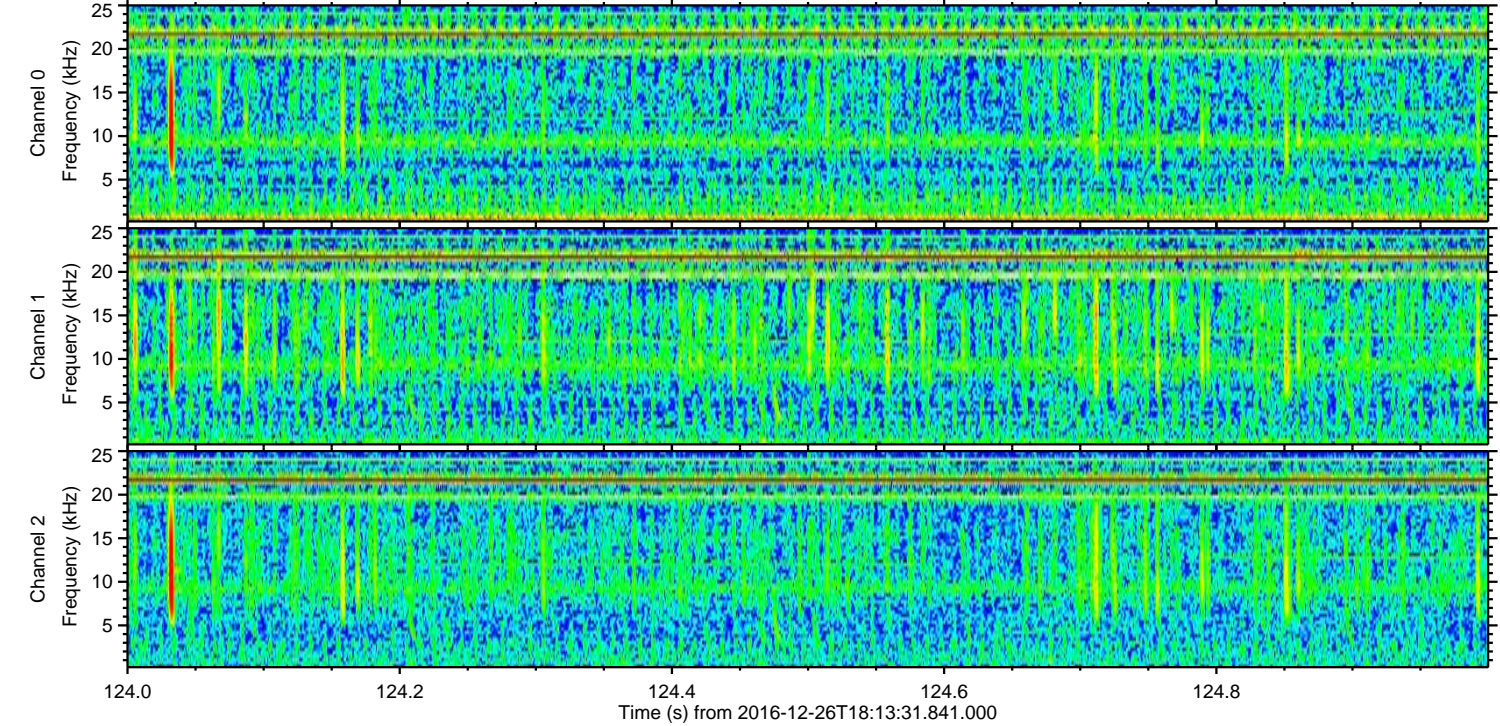
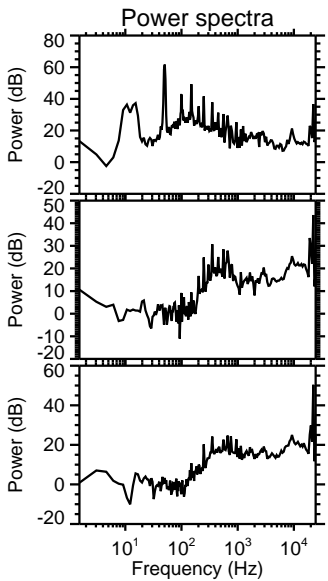
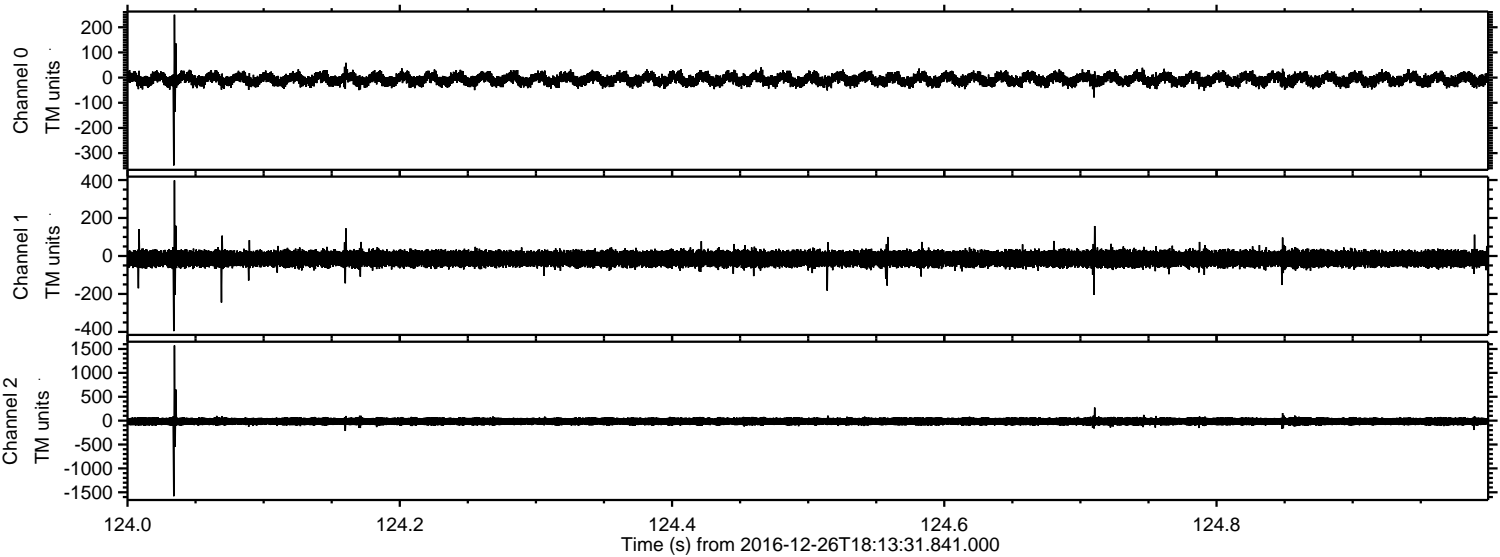
Channel 2
mn: -1494
mx: 1819
 μ : -16.2
 σ : 50.3

Processed Mon Dec 26 19:21:55 2016 by ELM ver.2012-10-06 from 001__elm20161226_181330__dat00.bin



ELMAVAN 3D WAVEFORMS (Measured data sampled at 50 kHz) 51000 packets of 144 samples from 2016-12-26T18:13:31.841.000. Part 125/147

Processed Mon Dec 26 19:21:56 2016 by ELM ver.2012-10-06 from 001__elm20161226_181330__dat00.bin

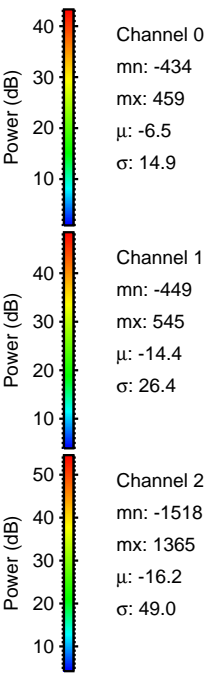
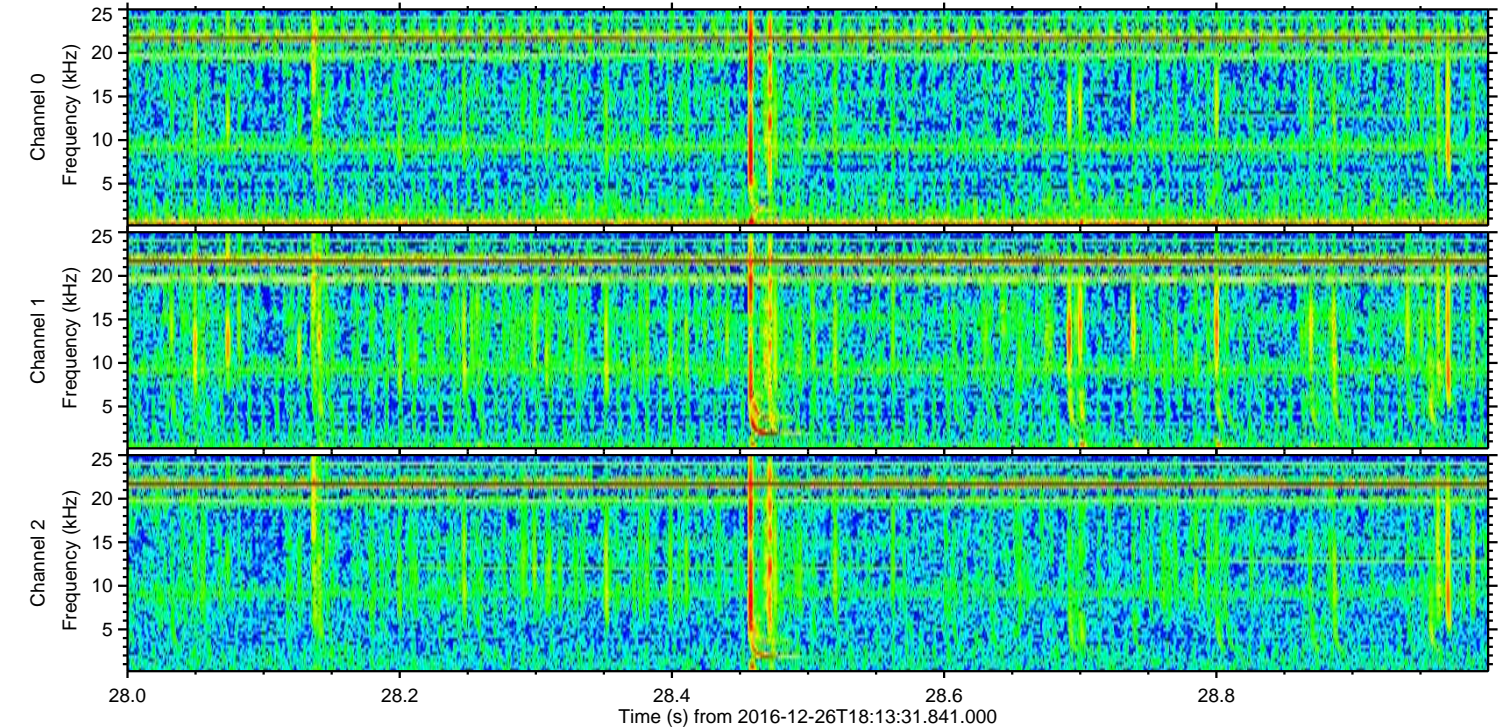
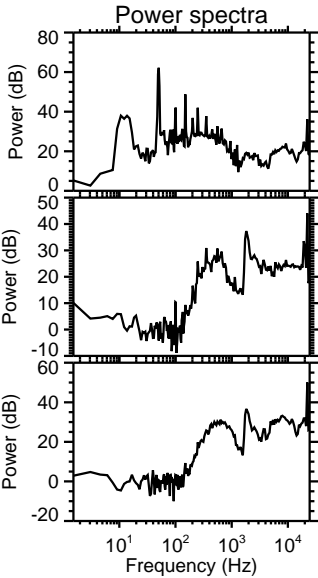
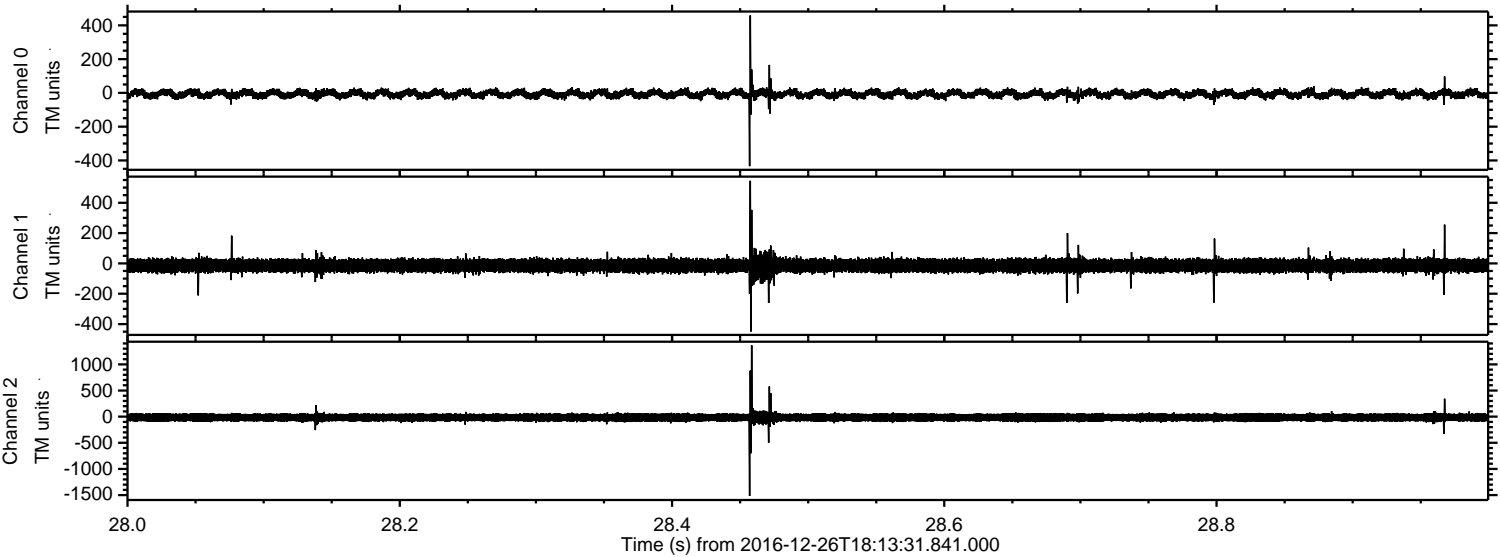


Channel 0
mn: -349
mx: 250
 μ : -6.5
 σ : 14.8

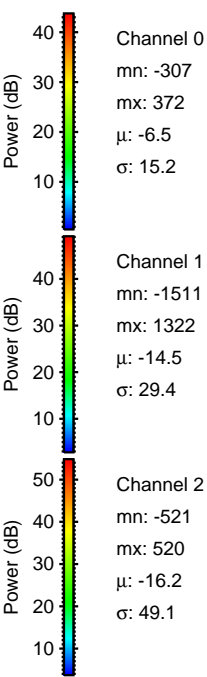
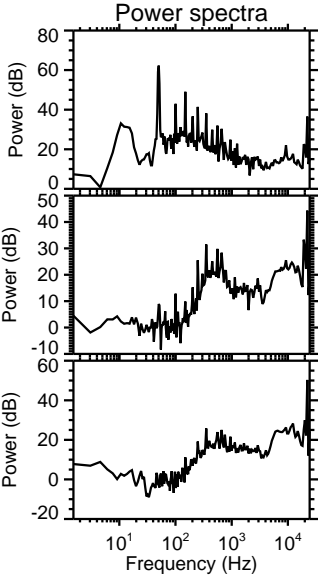
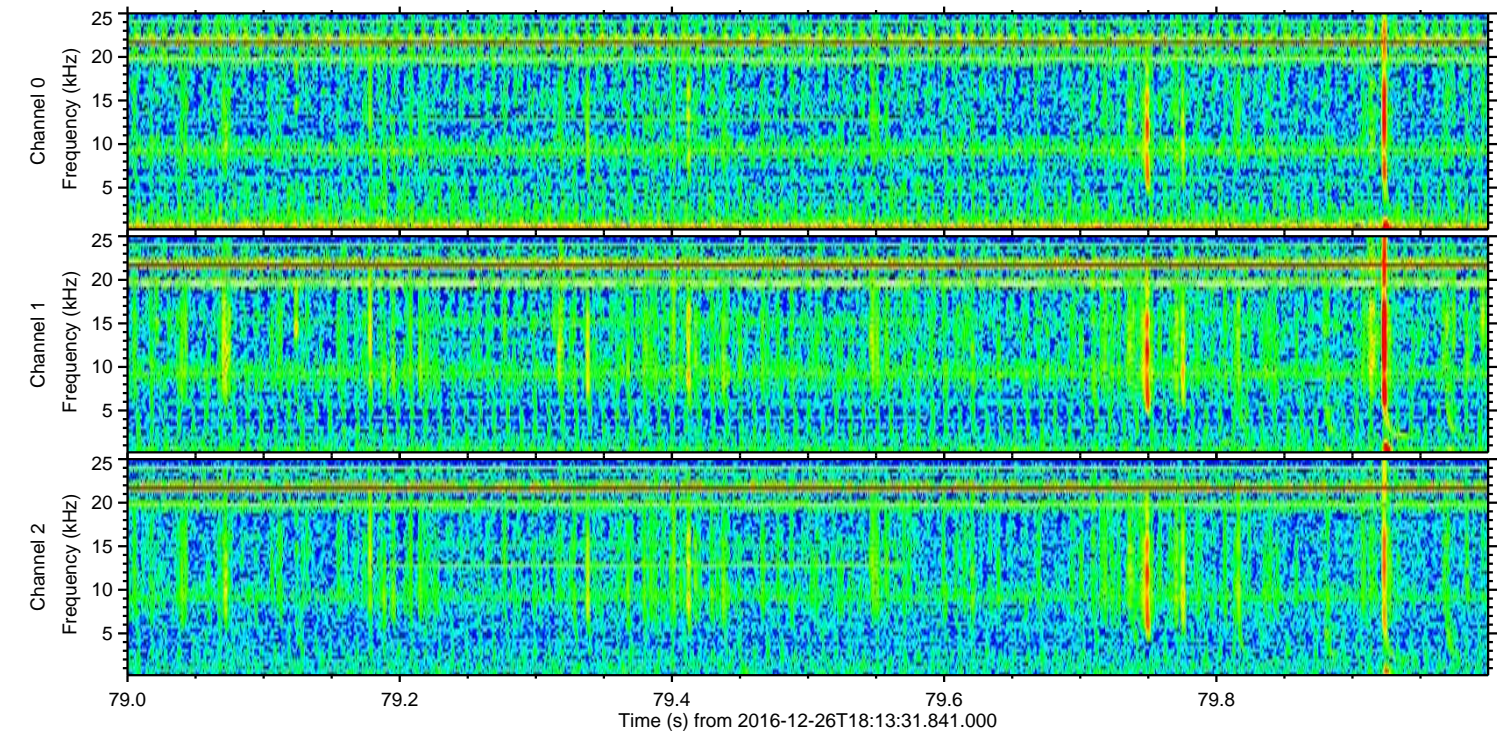
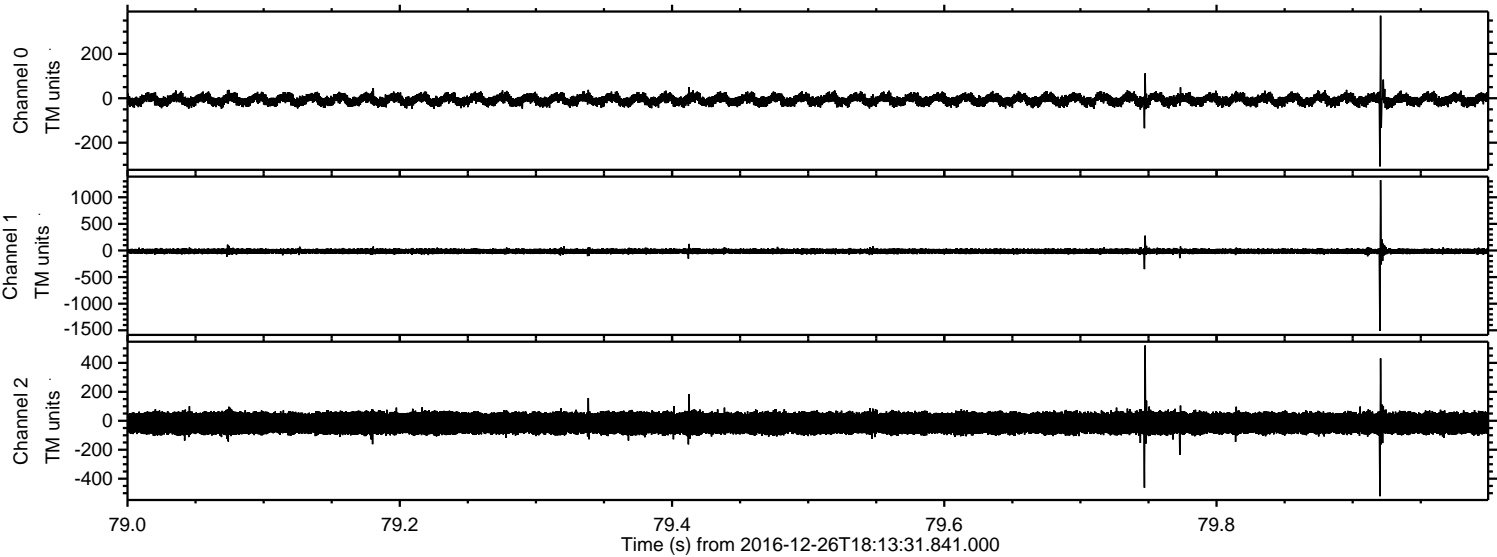
Channel 1
mn: -396
mx: 398
 μ : -14.4
 σ : 24.8

Channel 2
mn: -1583
mx: 1573
 μ : -16.2
 σ : 51.2

Processed Mon Dec 26 19:21:57 2016 by ELM ver.2012-10-06 from 001__elm20161226_181330__dat00.bin



Processed Mon Dec 26 19:21:58 2016 by ELM ver.2012-10-06 from 001__elm20161226_181330__dat00.bin



Processed Mon Dec 26 19:21:59 2016 by ELM ver.2012-10-06 from 001__elm20161226_181330__dat00.bin

