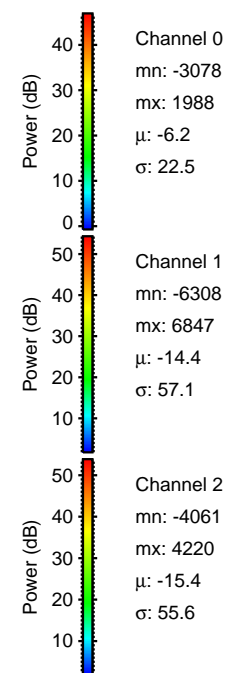
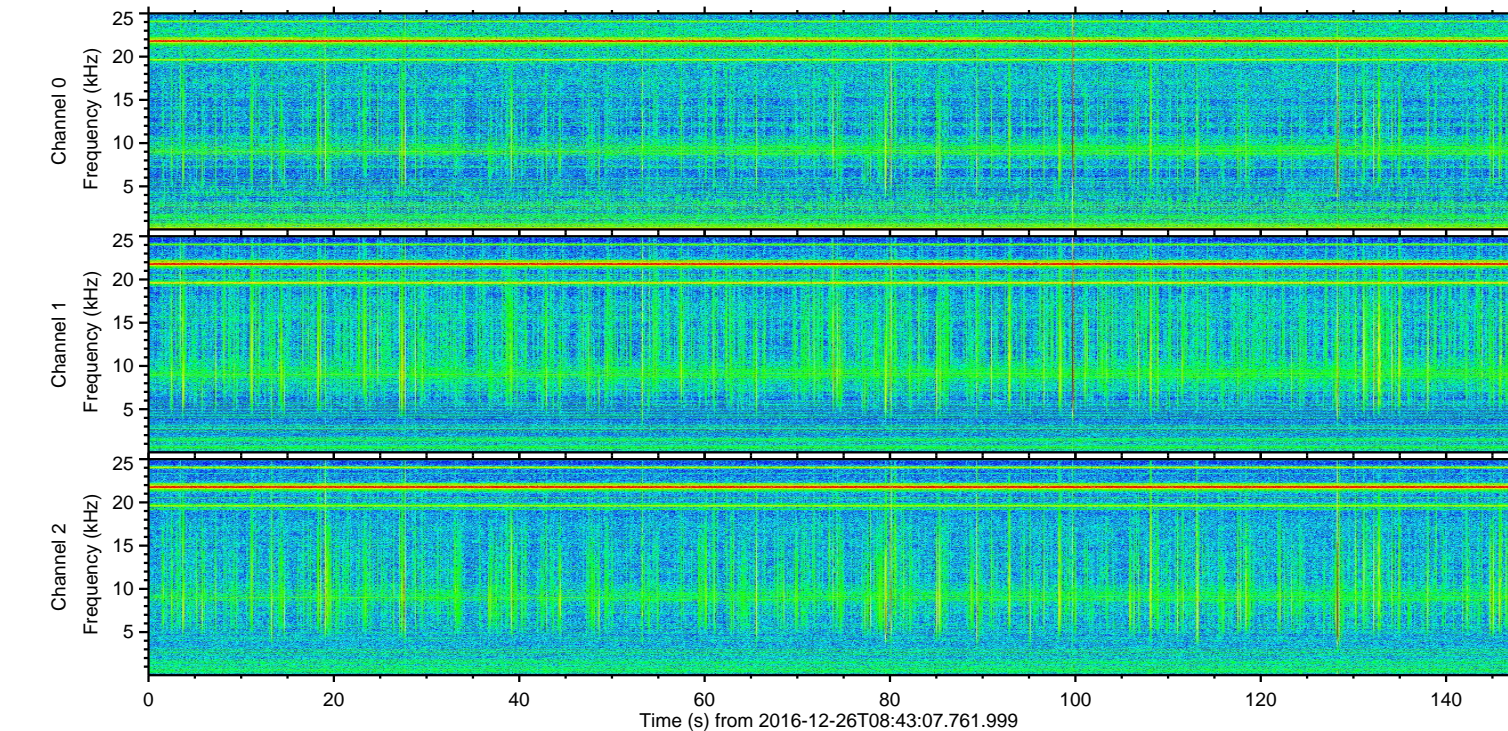
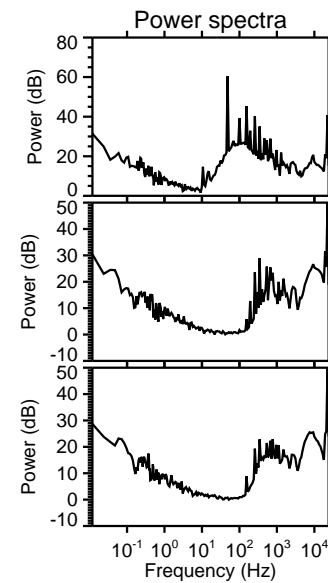
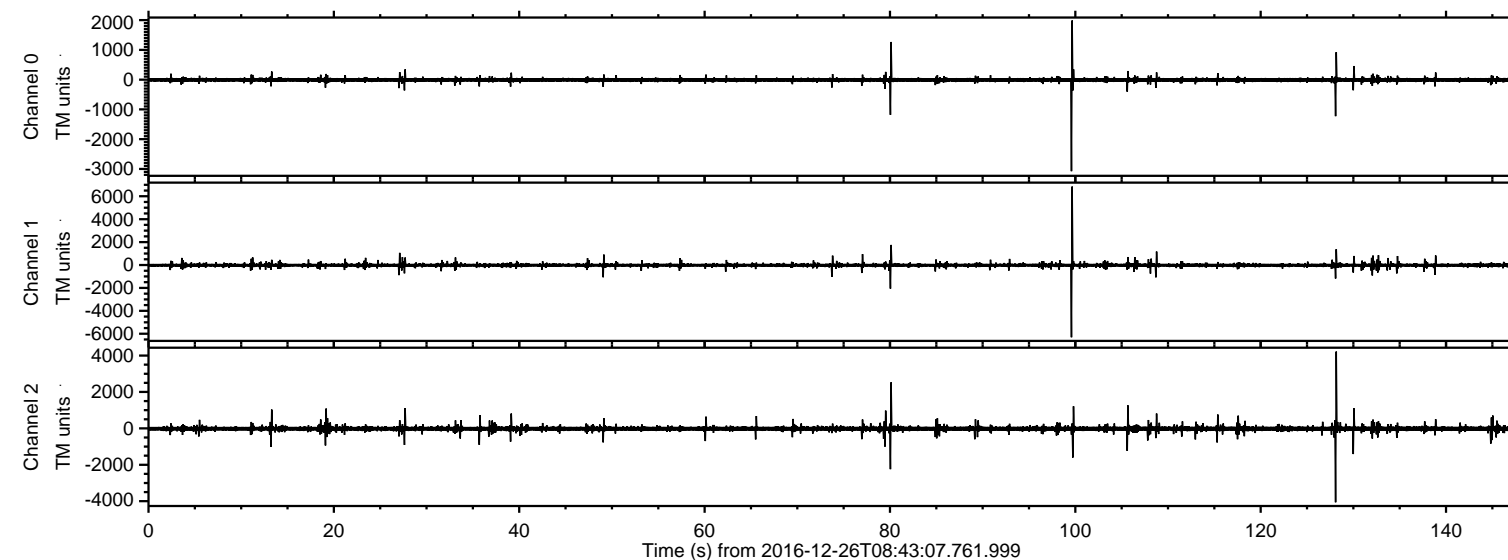


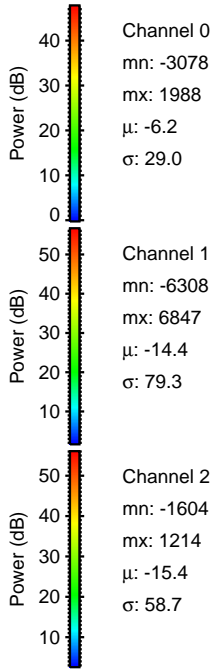
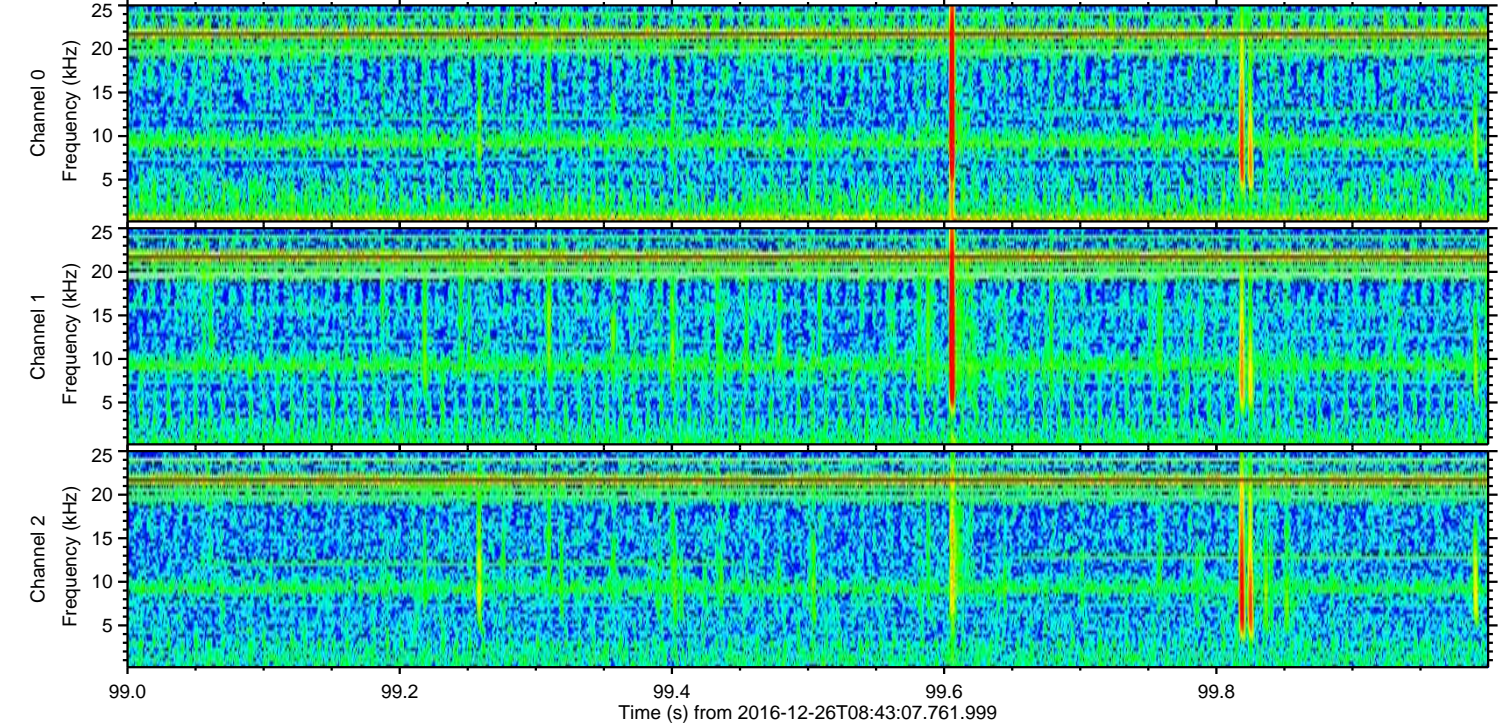
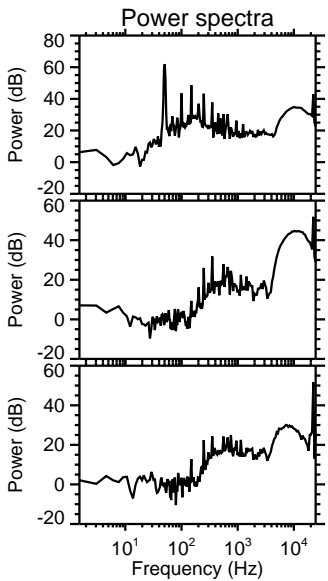
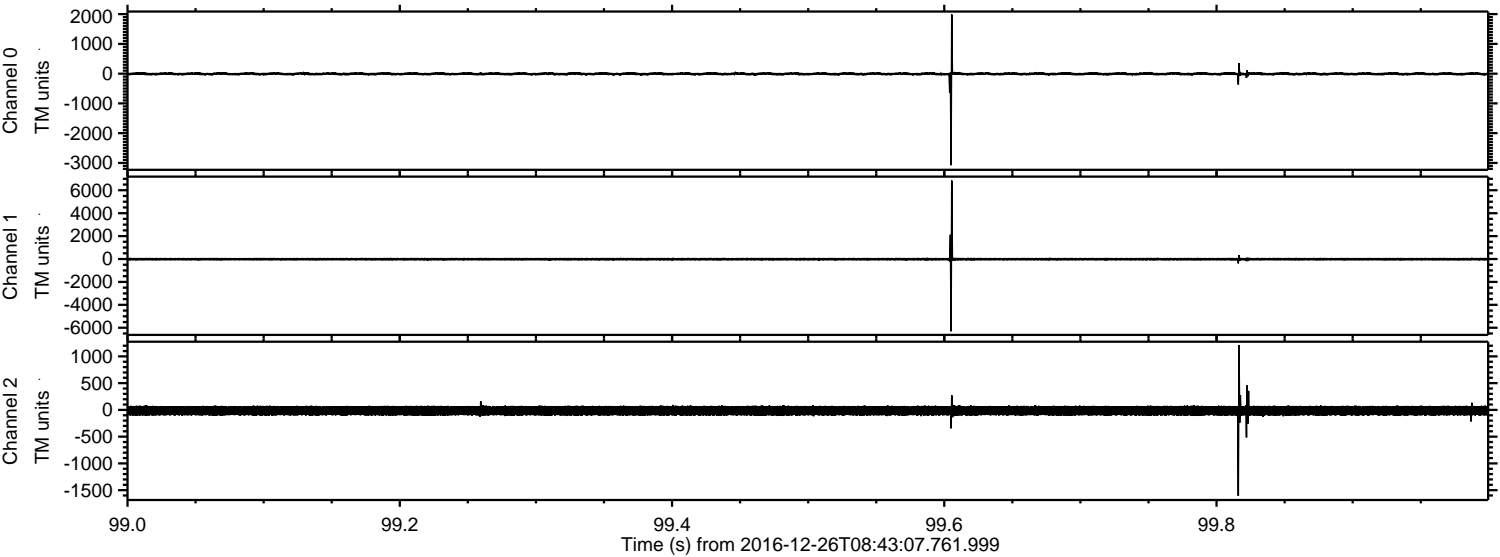
ELMAVAN 3D WAVEFORMS (Measured data sampled at 50 kHz) 51000 packets of 144 samples from 2016-12-26T08:43:07.761.999.

Processed Mon Dec 26 09:50:36 2016 by ELM ver.2012-10-06 from 001__elm20161226_084306__dat00.bin



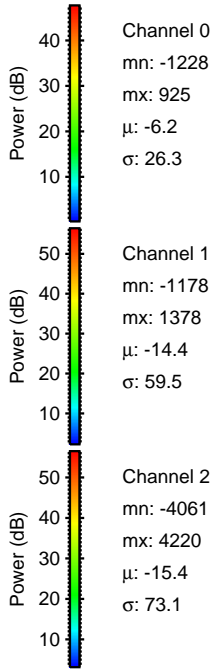
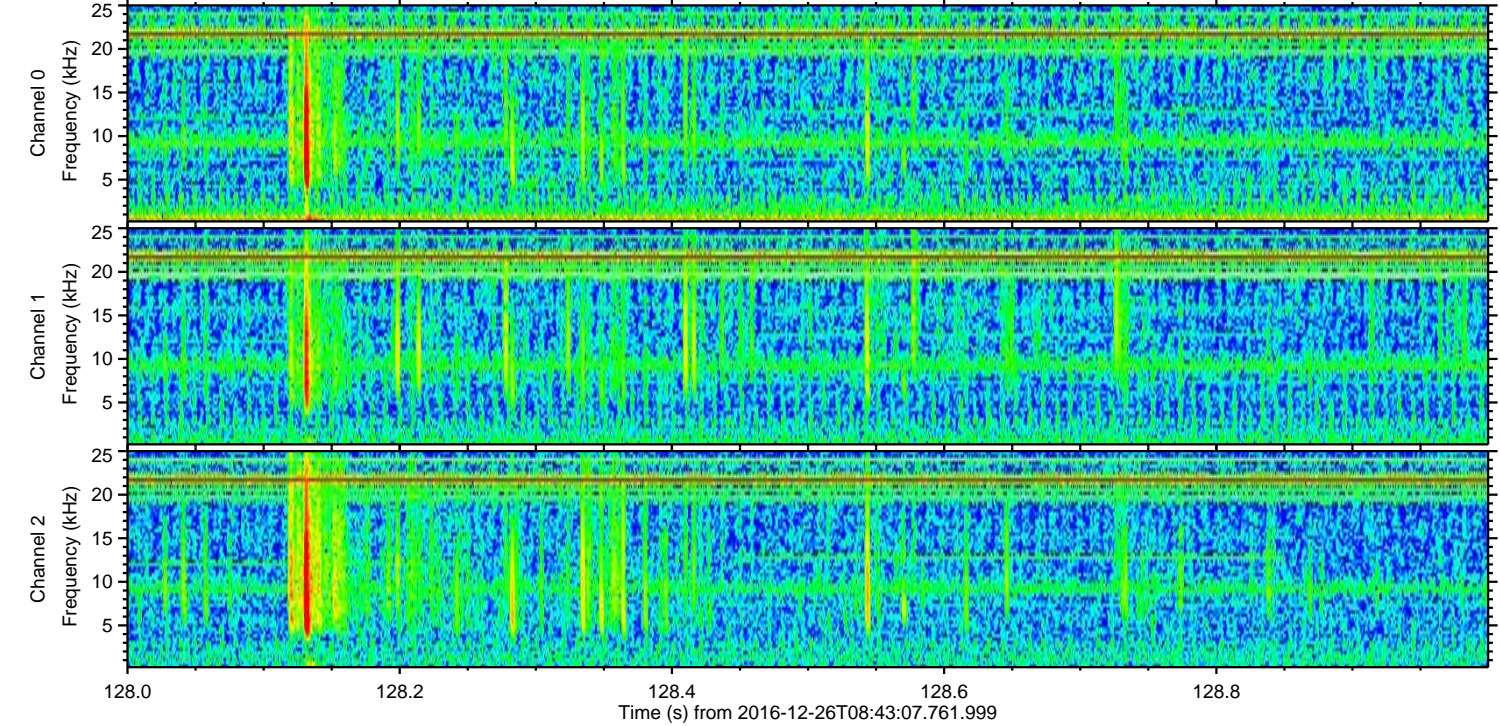
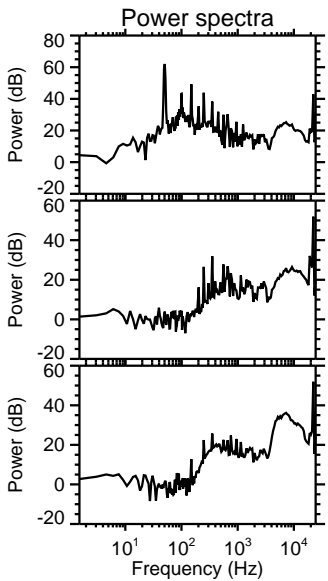
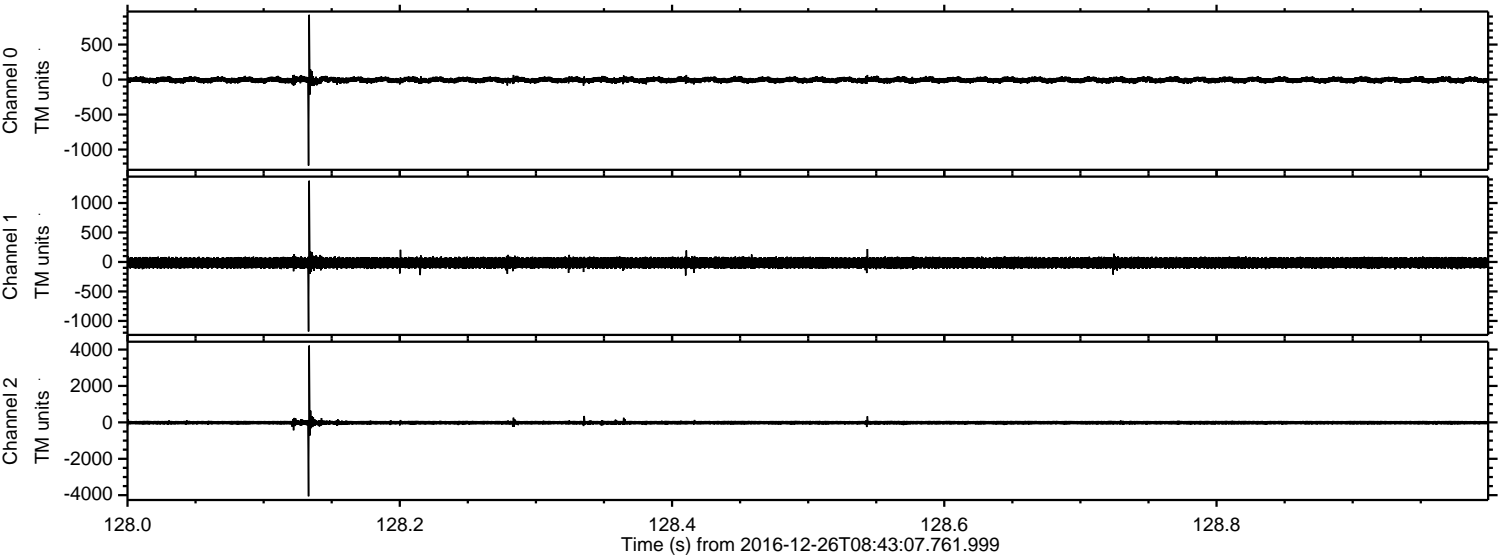
ELMAVAN 3D WAVEFORMS (Measured data sampled at 50 kHz) 51000 packets of 144 samples from 2016-12-26T08:43:07.761.999. Part 100/147

Processed Mon Dec 26 09:50:48 2016 by ELM ver.2012-10-06 from 001__elm20161226_084306__dat00.bin

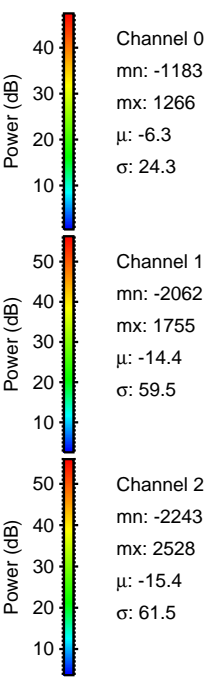
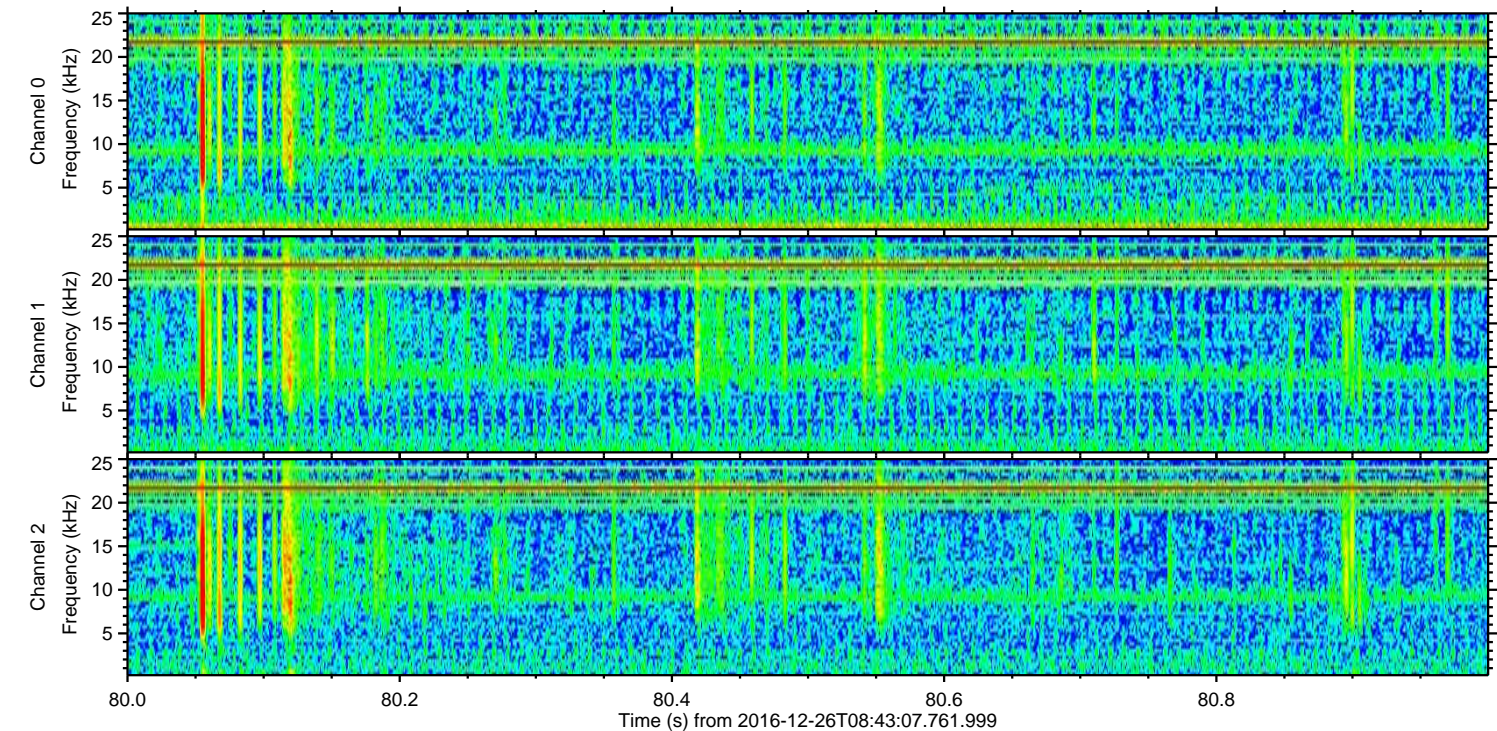
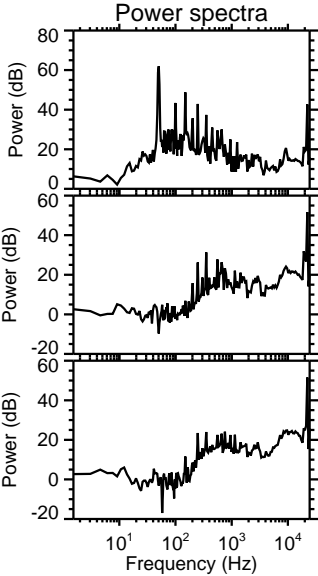
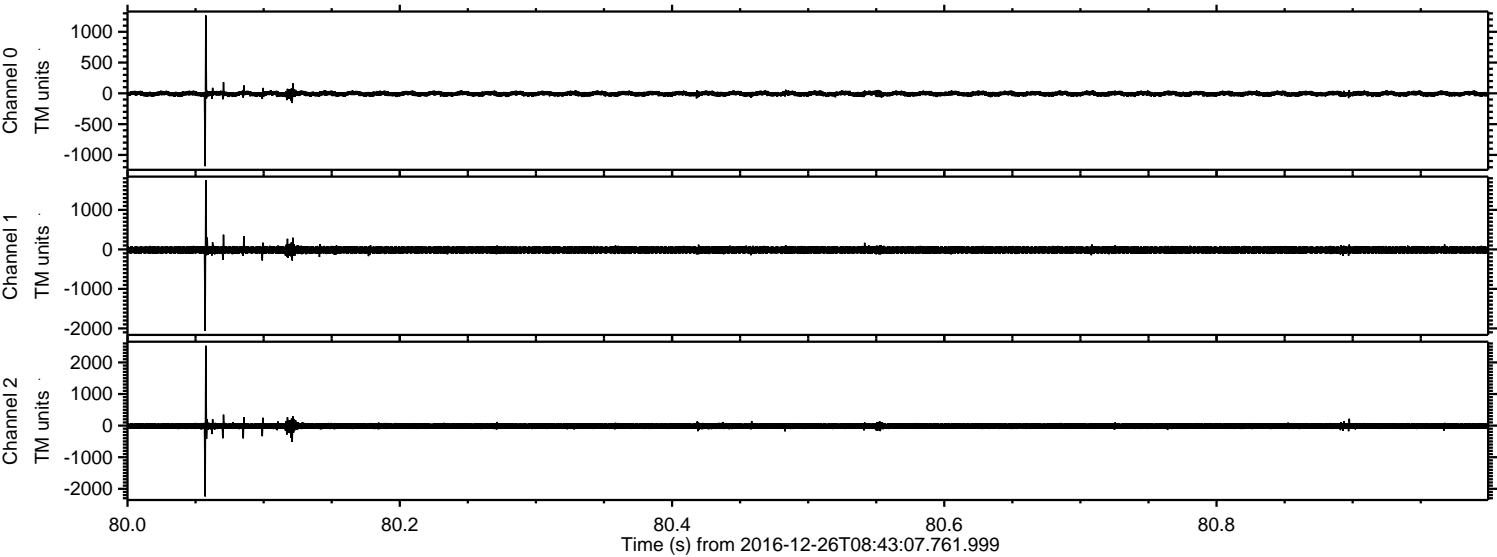


ELMAVAN 3D WAVEFORMS (Measured data sampled at 50 kHz) 51000 packets of 144 samples from 2016-12-26T08:43:07.761.999. Part 129/147

Processed Mon Dec 26 09:50:49 2016 by ELM ver.2012-10-06 from 001__elm20161226_084306__dat00.bin

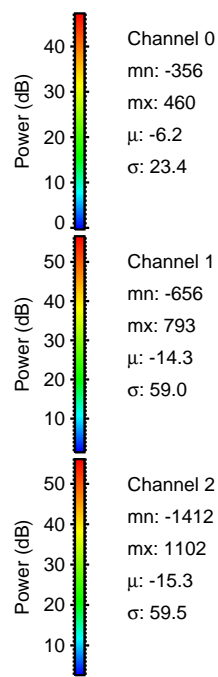
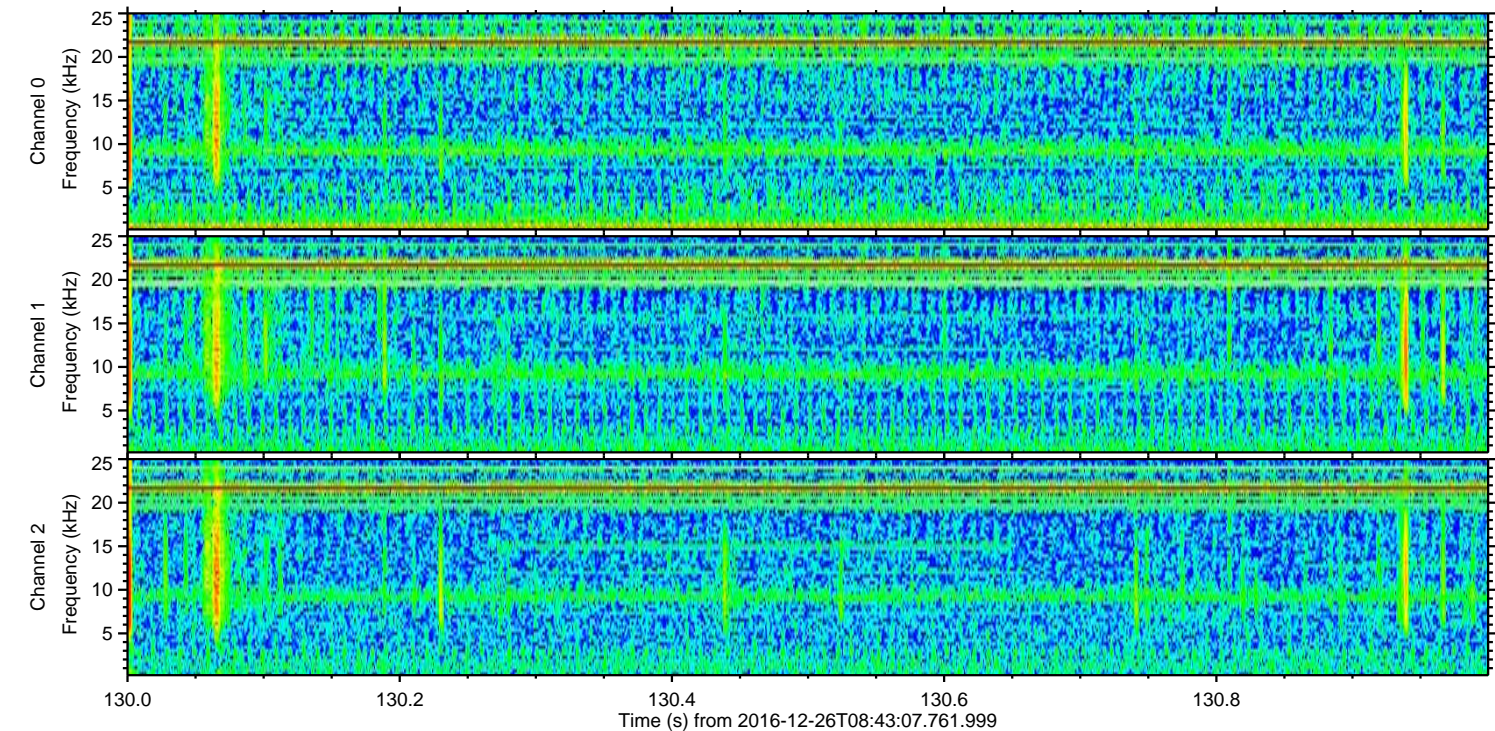
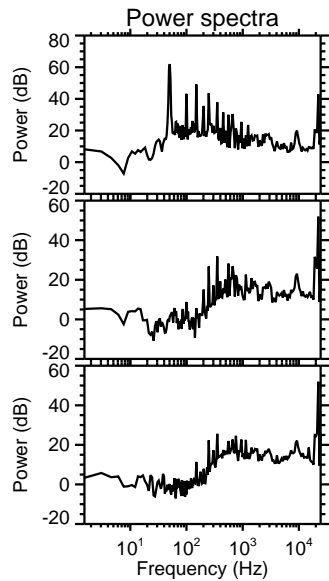
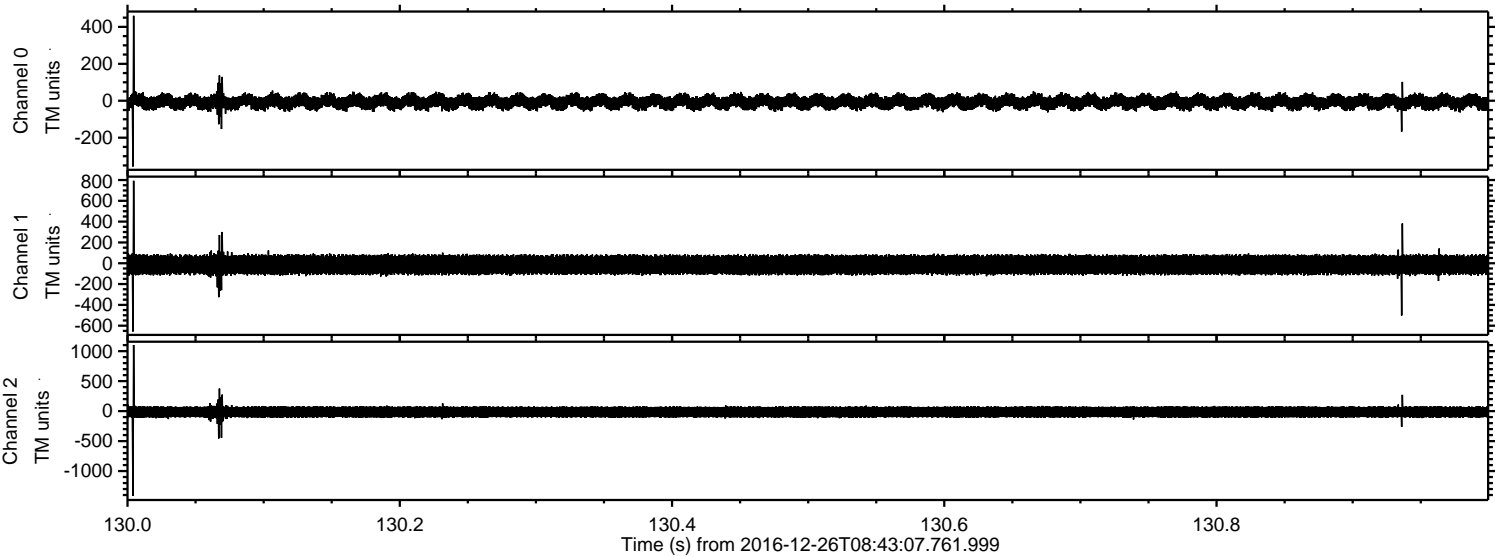


Processed Mon Dec 26 09:50:50 2016 by ELM ver.2012-10-06 from 001__elm20161226_084306__dat00.bin

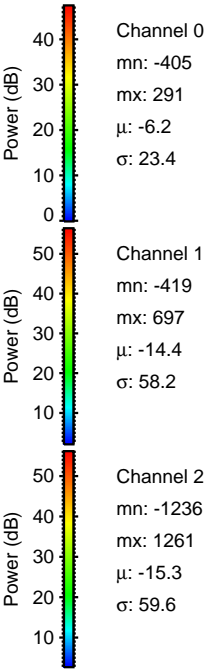
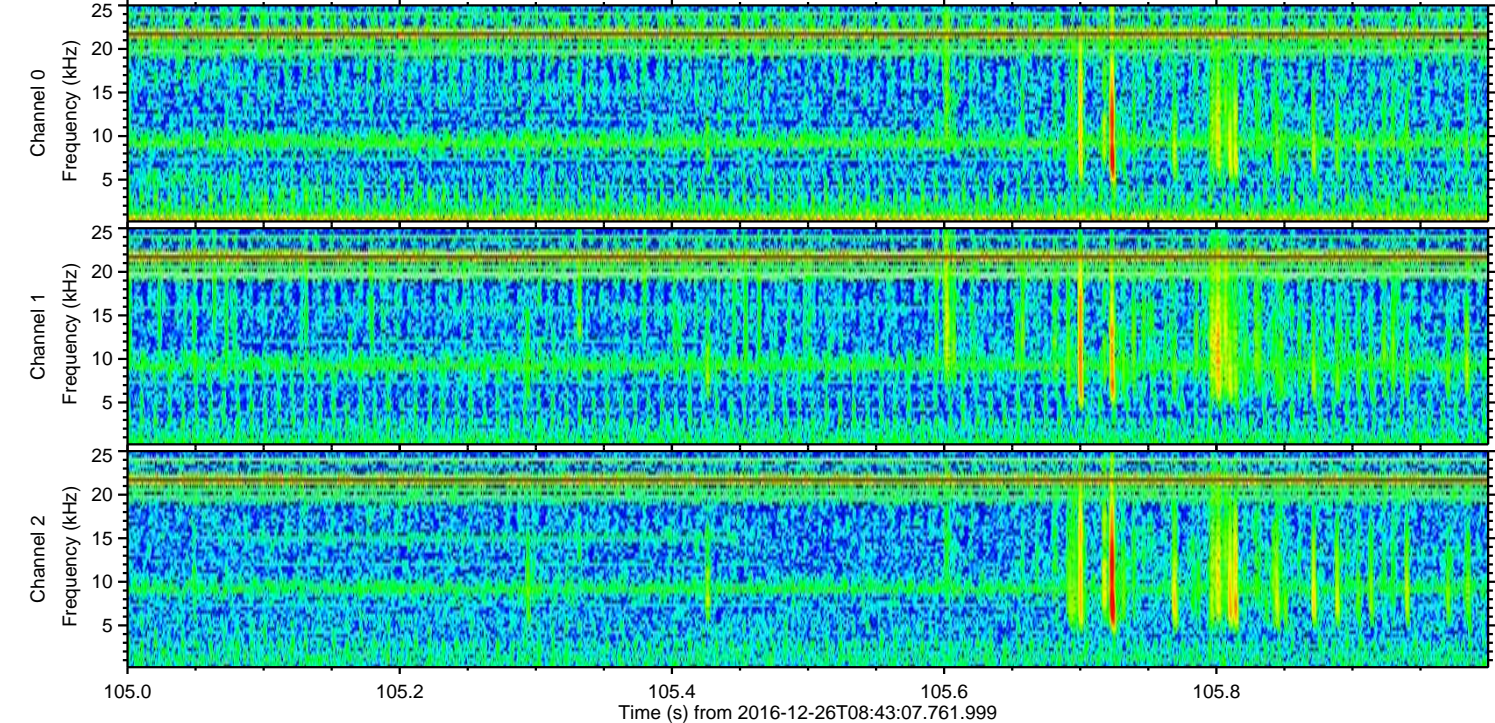
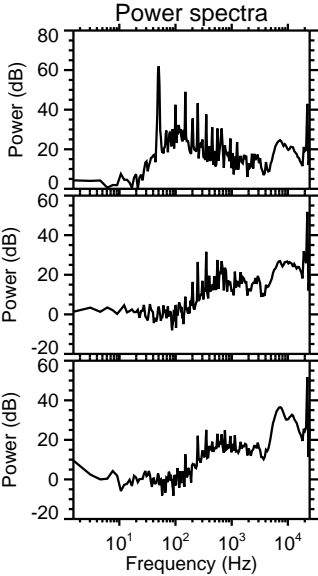
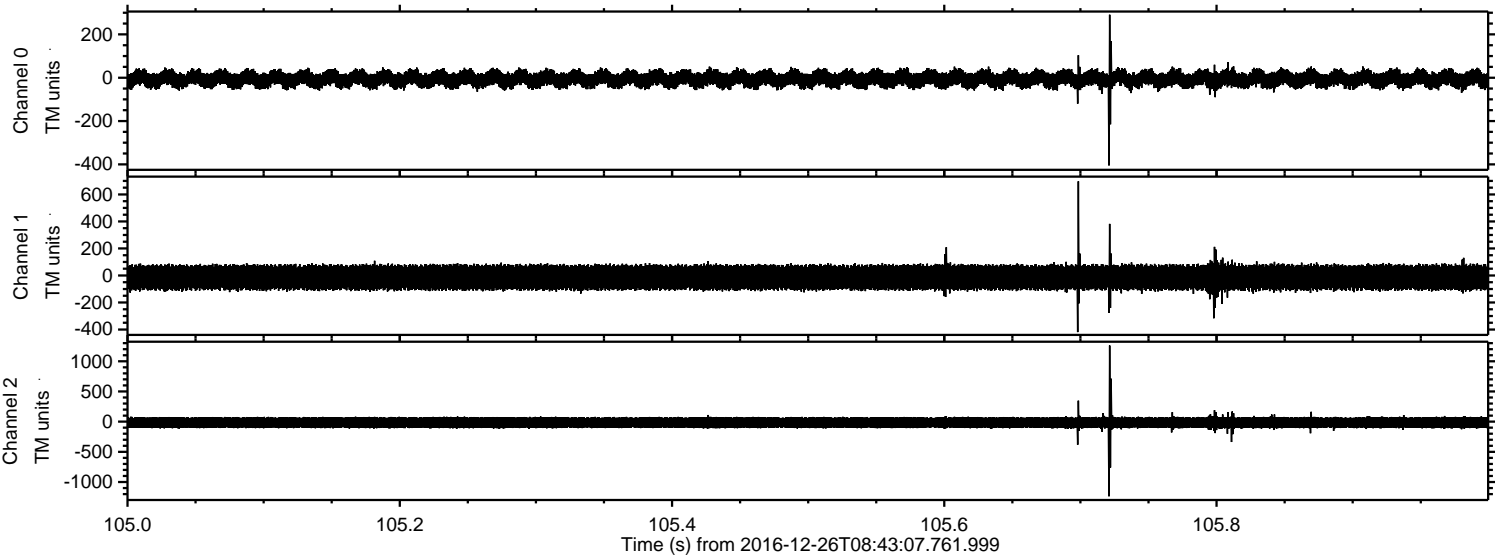


ELMAVAN 3D WAVEFORMS (Measured data sampled at 50 kHz) 51000 packets of 144 samples from 2016-12-26T08:43:07.761.999. Part 131/147

Processed Mon Dec 26 09:50:50 2016 by ELM ver.2012-10-06 from 001__elm20161226_084306__dat00.bin

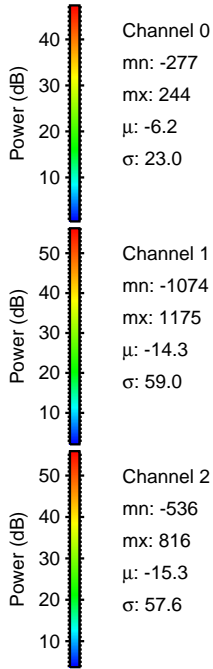
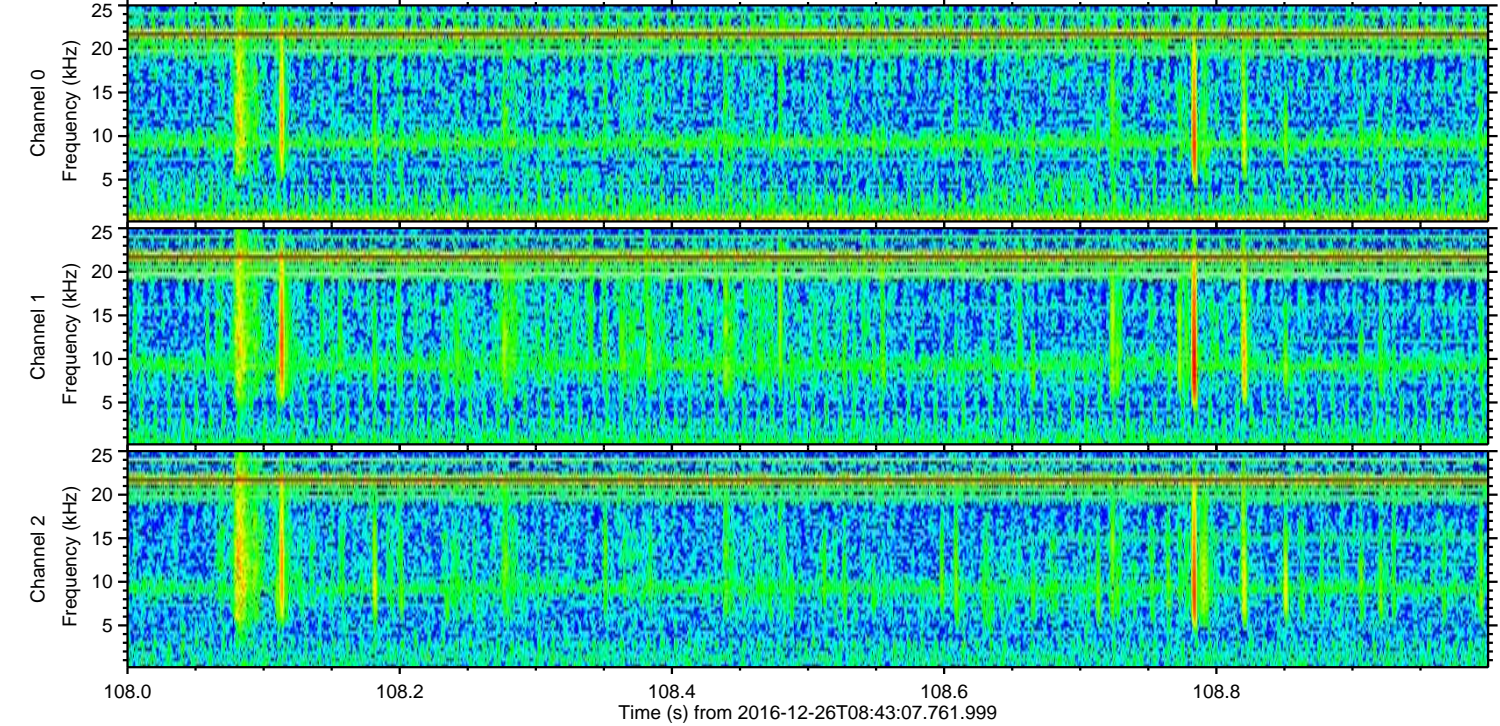
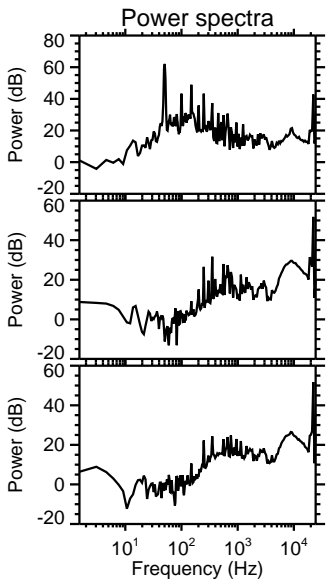
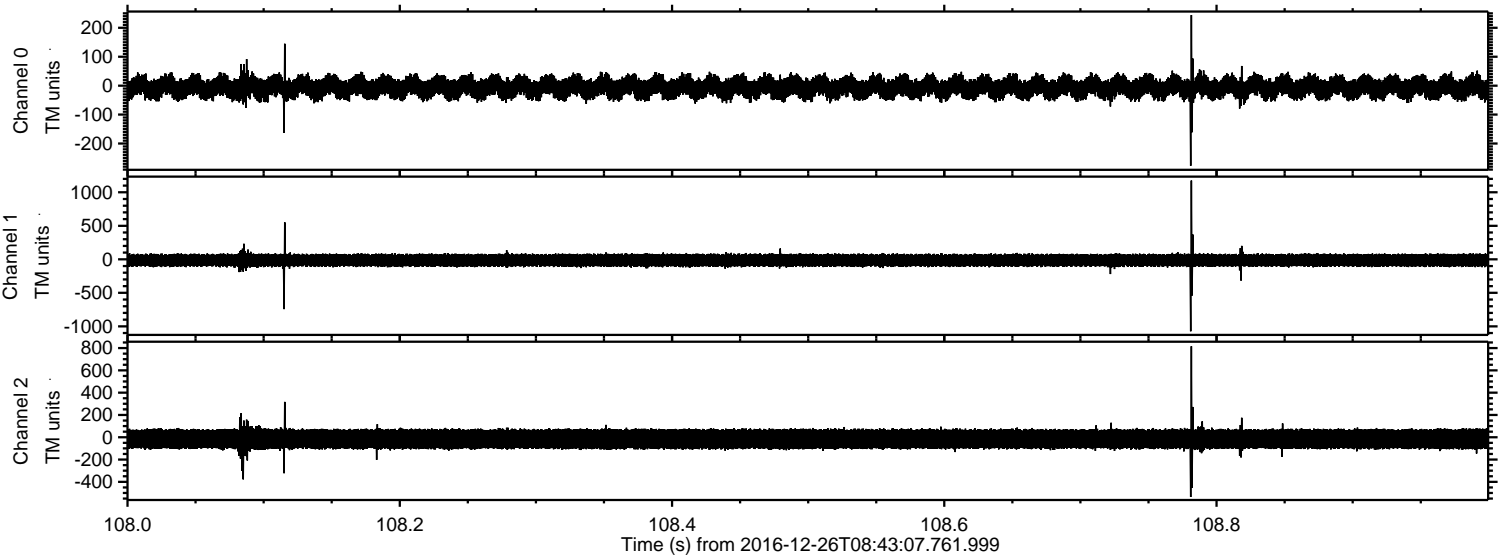


Processed Mon Dec 26 09:50:51 2016 by ELM ver.2012-10-06 from 001__elm20161226_084306__dat00.bin

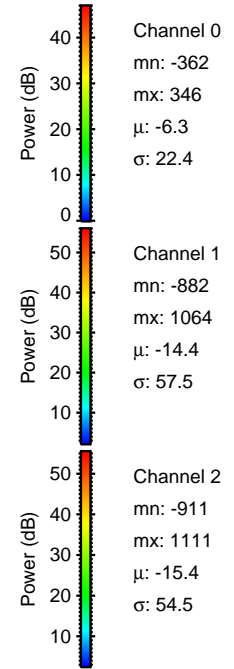
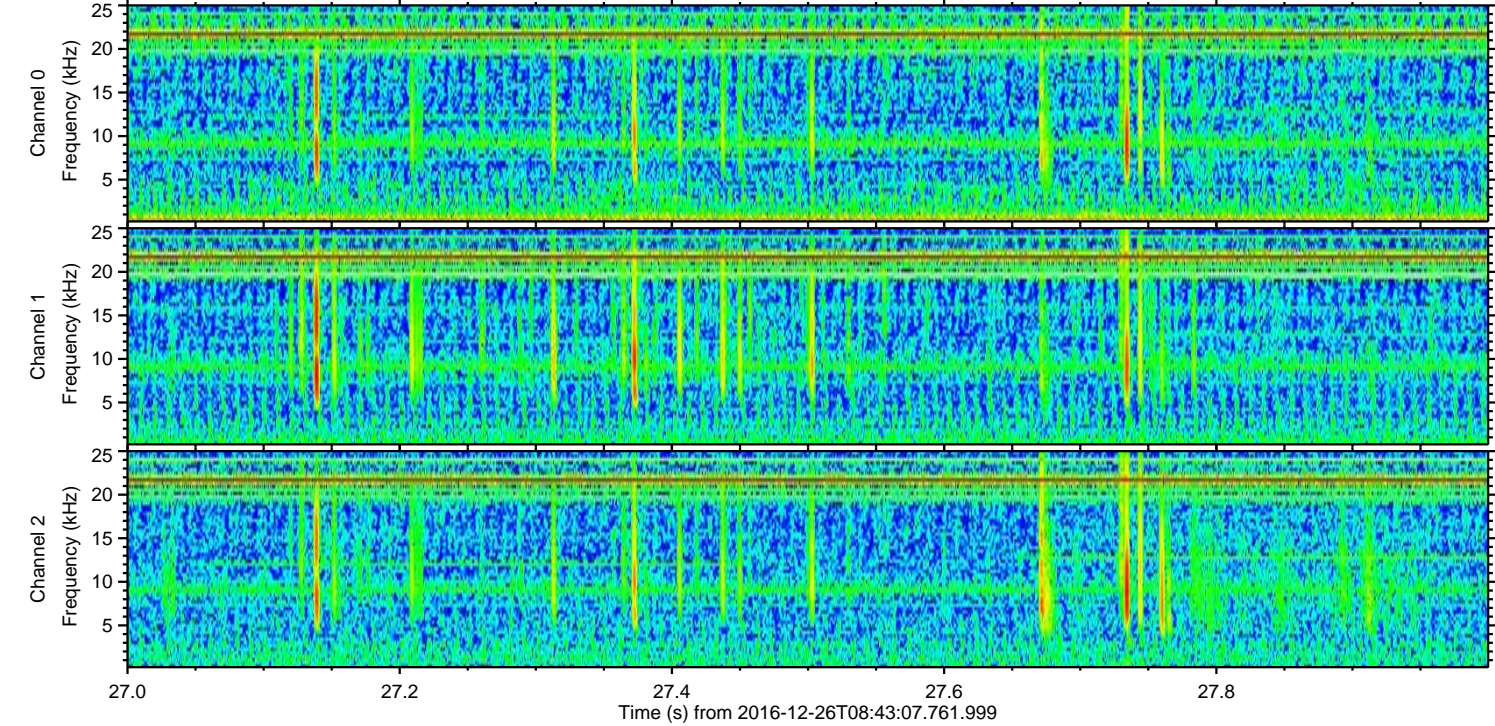
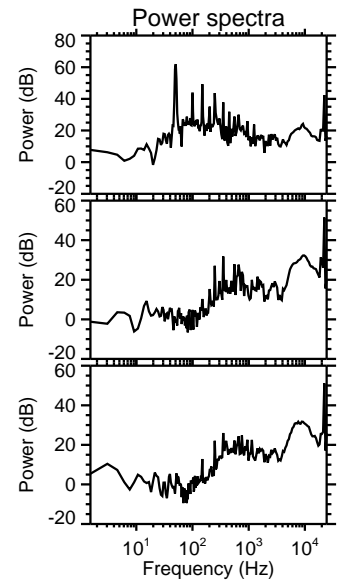
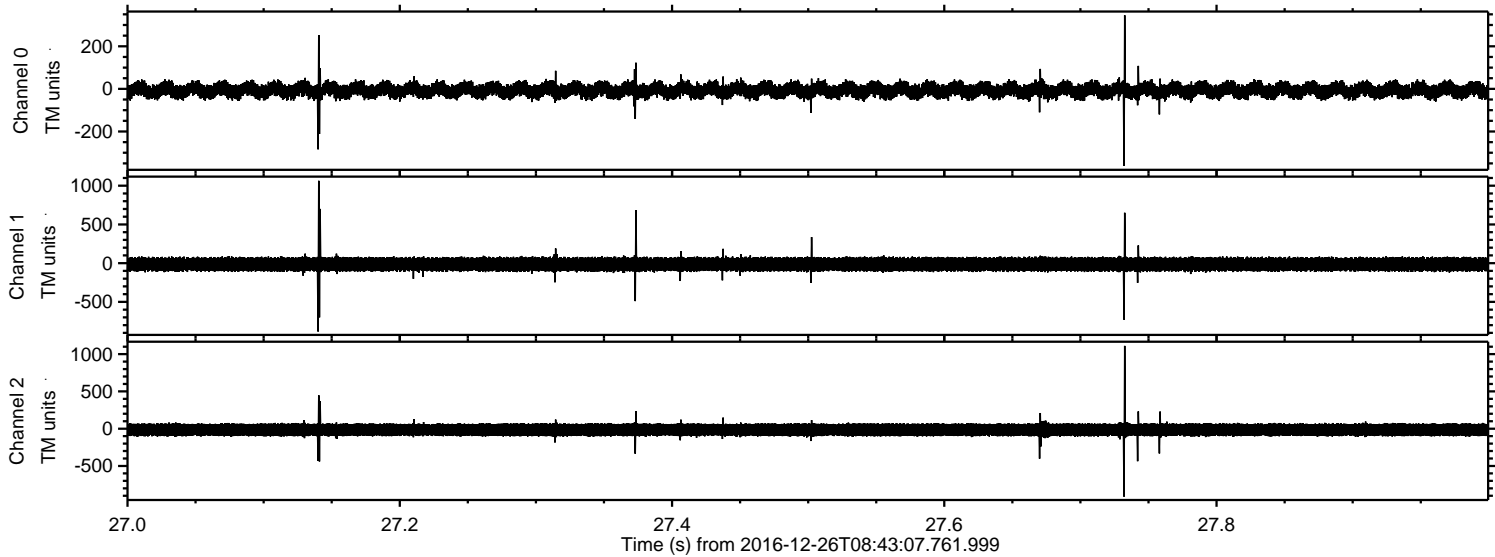


ELMAVAN 3D WAVEFORMS (Measured data sampled at 50 kHz) 51000 packets of 144 samples from 2016-12-26T08:43:07.761.999. Part 109/147

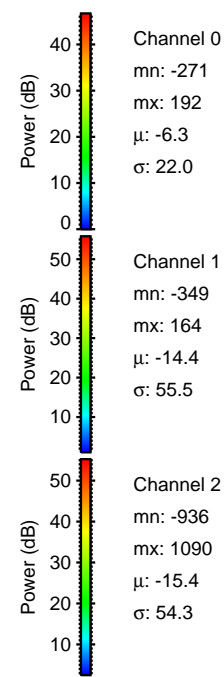
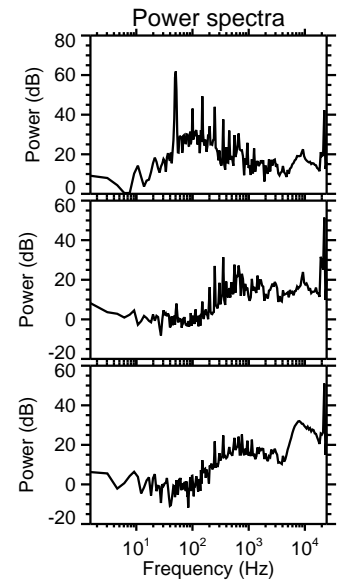
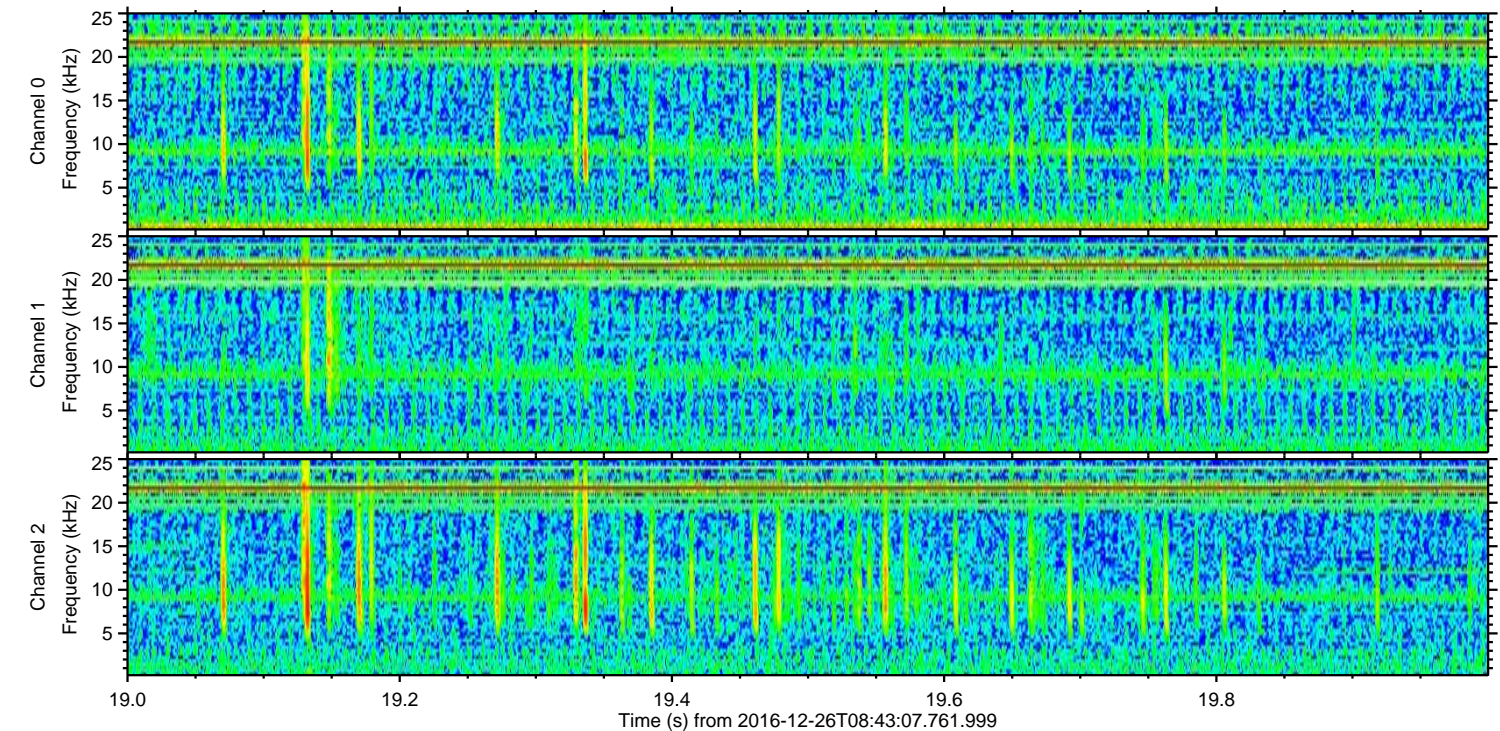
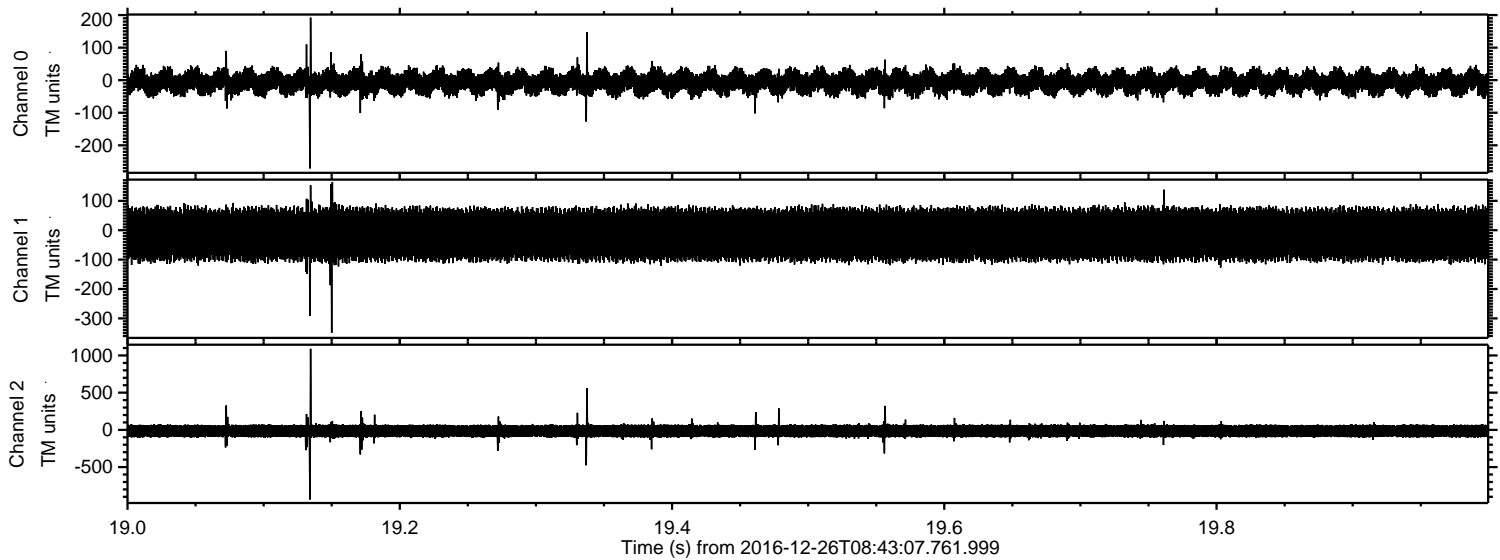
Processed Mon Dec 26 09:50:52 2016 by ELM ver.2012-10-06 from 001__elm20161226_084306__dat00.bin



Processed Mon Dec 26 09:50:53 2016 by ELM ver.2012-10-06 from 001__elm20161226_084306__dat00.bin



Processed Mon Dec 26 09:50:54 2016 by ELM ver.2012-10-06 from 001__elm20161226_084306__dat00.bin



Channel 0
mn: -271
mx: 192
 μ : -6.3
 σ : 22.0

Channel 1
mn: -349
mx: 164
 μ : -14.4
 σ : 55.5

Channel 2
mn: -936
mx: 1090
 μ : -15.4
 σ : 54.3

Processed Mon Dec 26 09:50:55 2016 by ELM ver.2012-10-06 from 001__elm20161226_084306__dat00.bin

