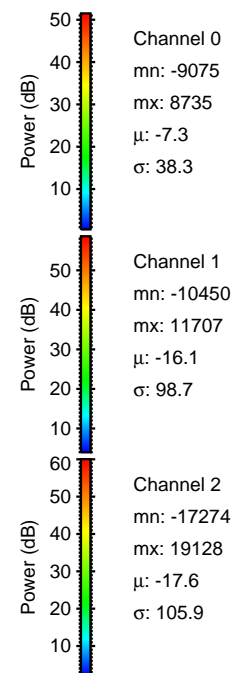
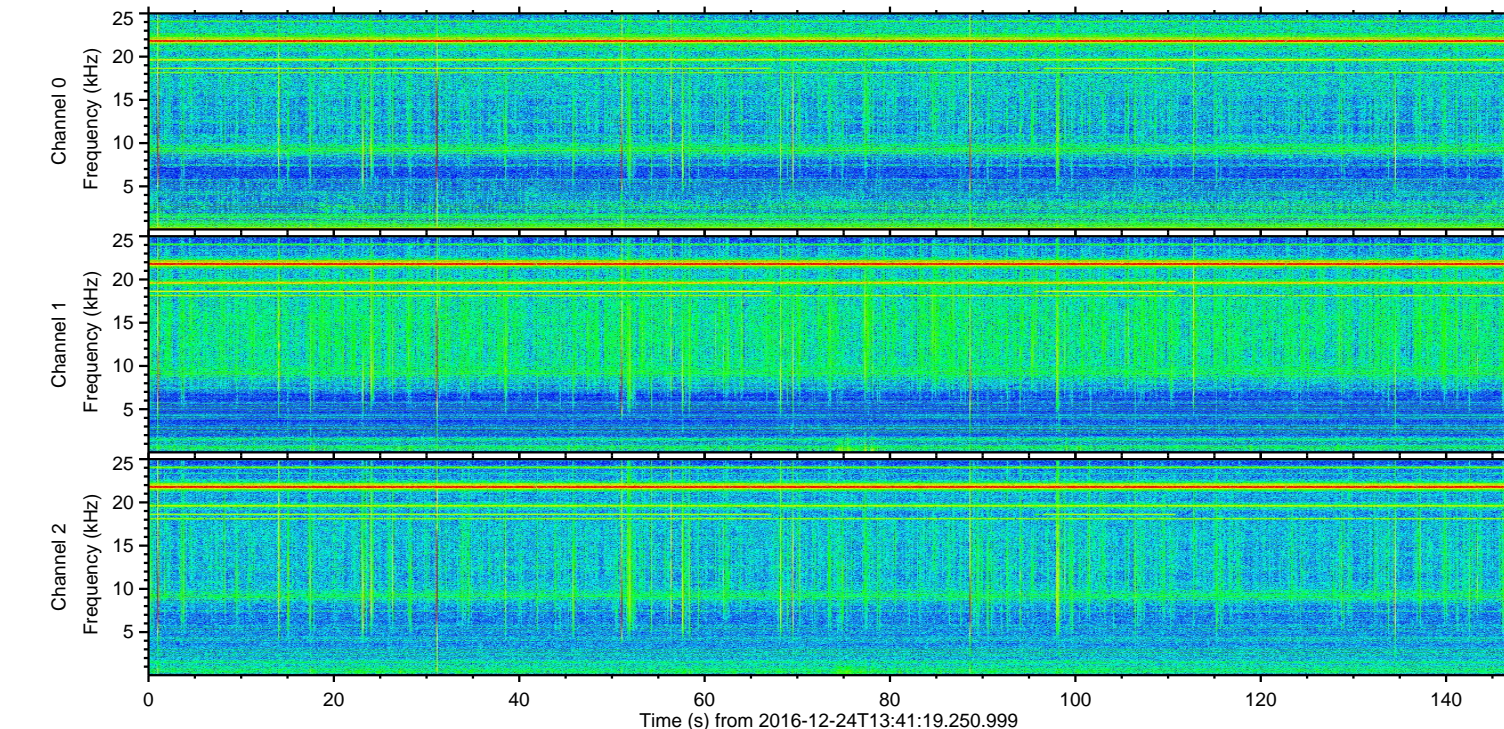
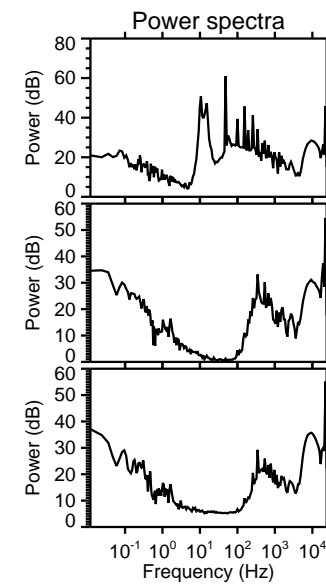
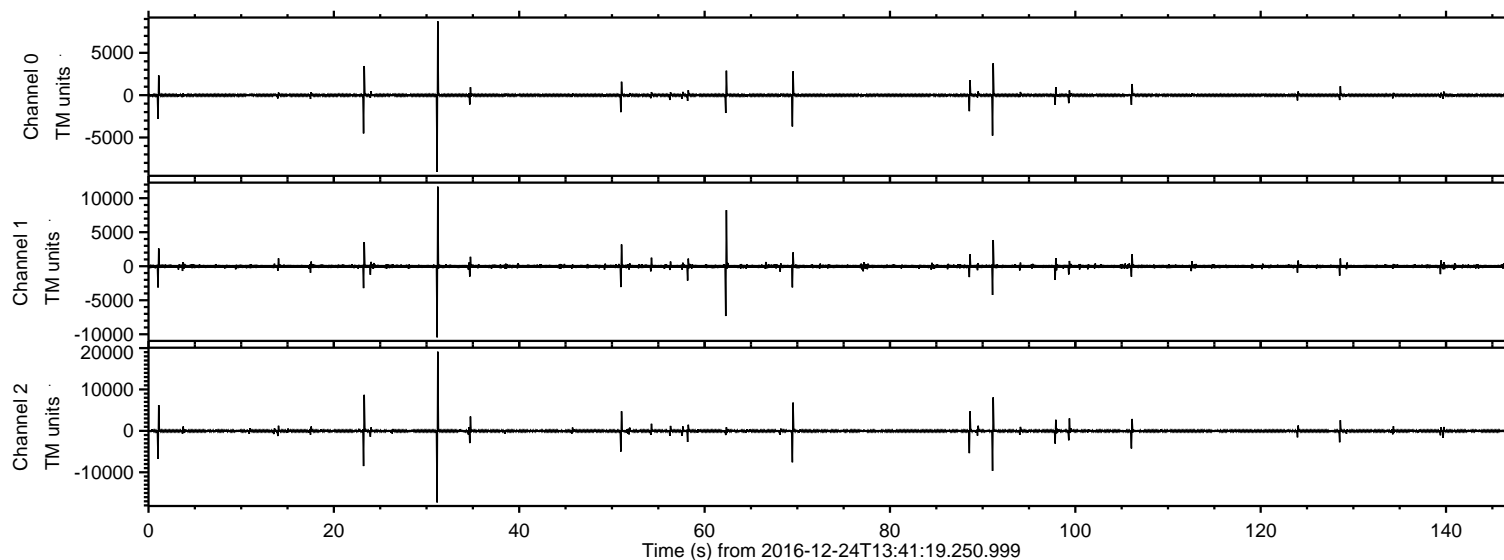
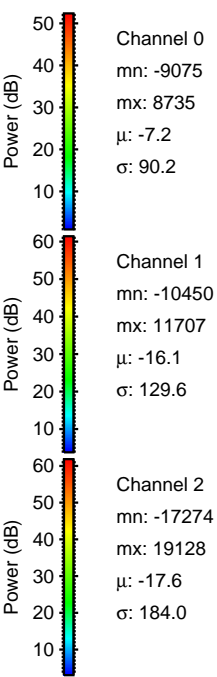
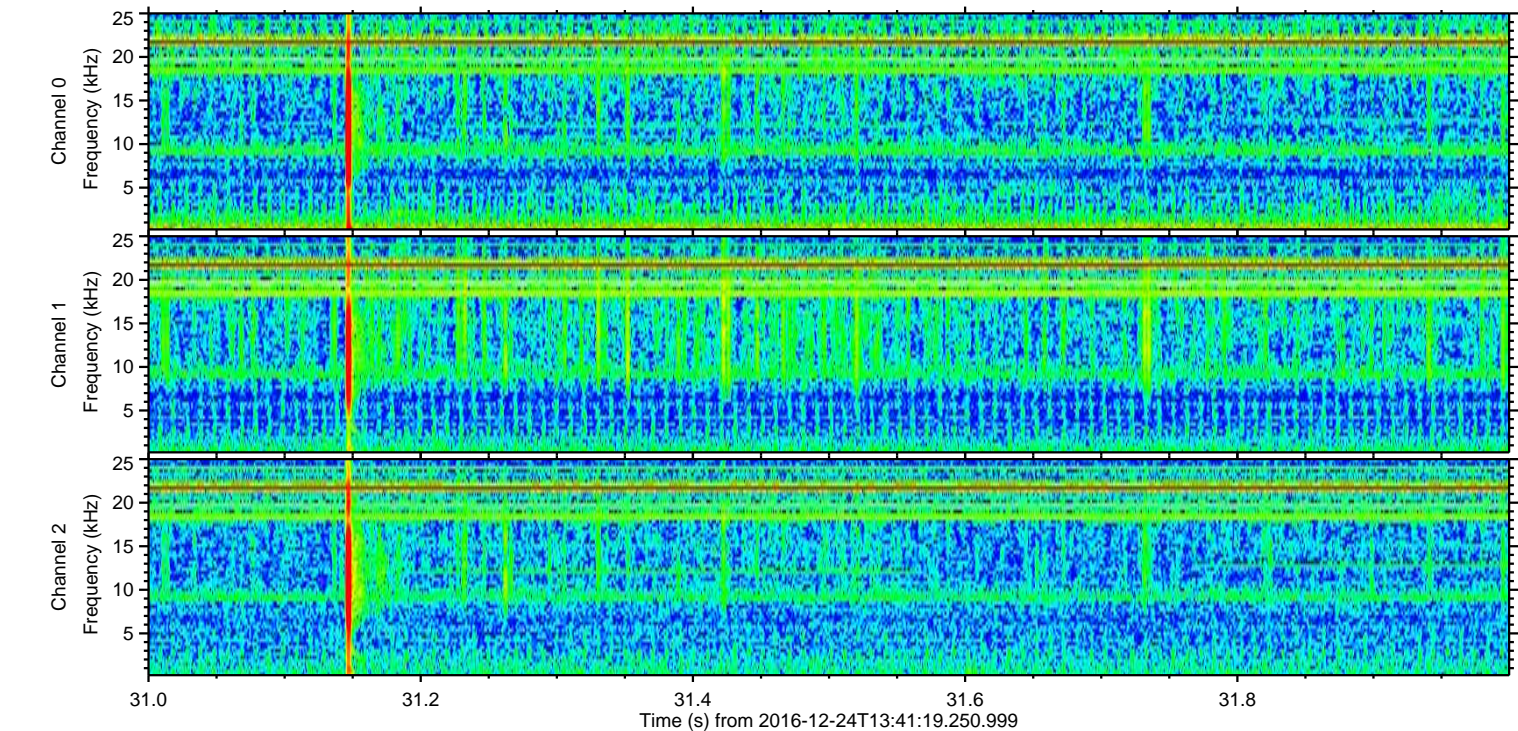
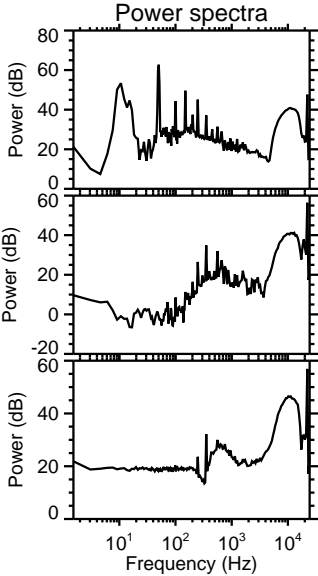
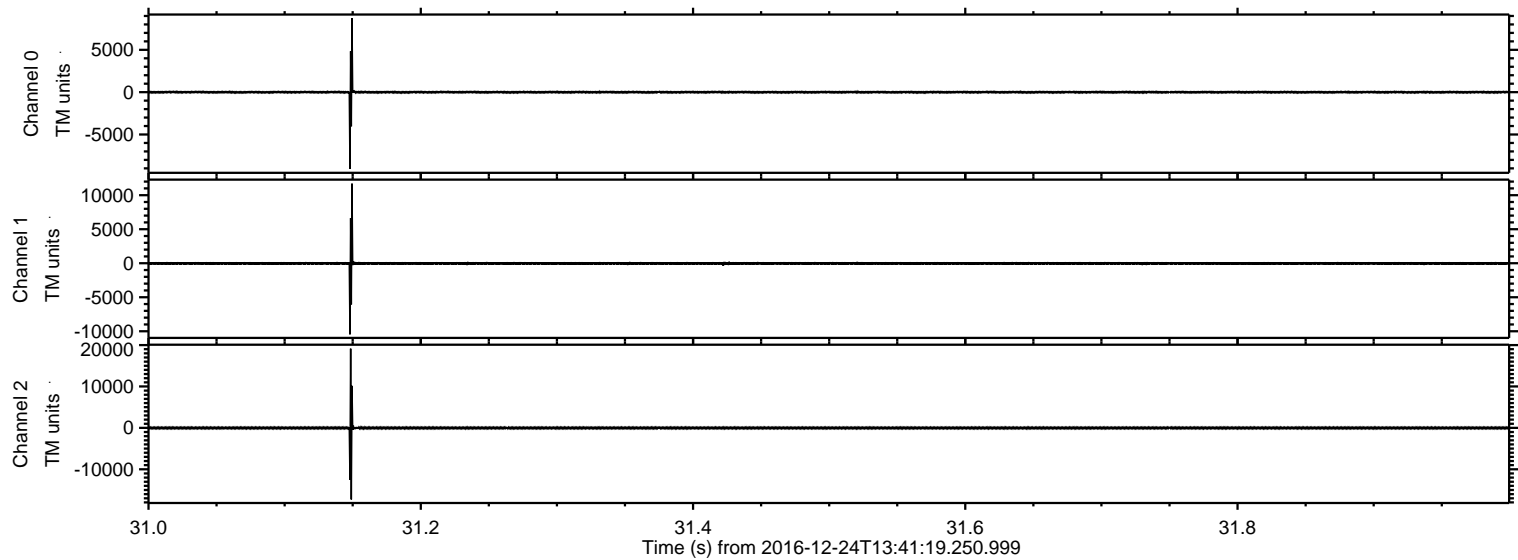


ELMAVAN 3D WAVEFORMS (Measured data sampled at 50 kHz) 51000 packets of 144 samples from 2016-12-24T13:41:19.250.999.

Processed Sat Dec 24 14:49:23 2016 by ELM ver.2012-10-06 from 001__elm20161224_134118__dat00.bin

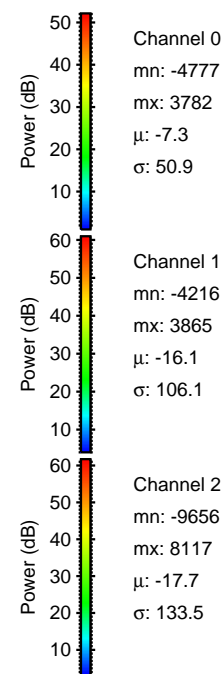
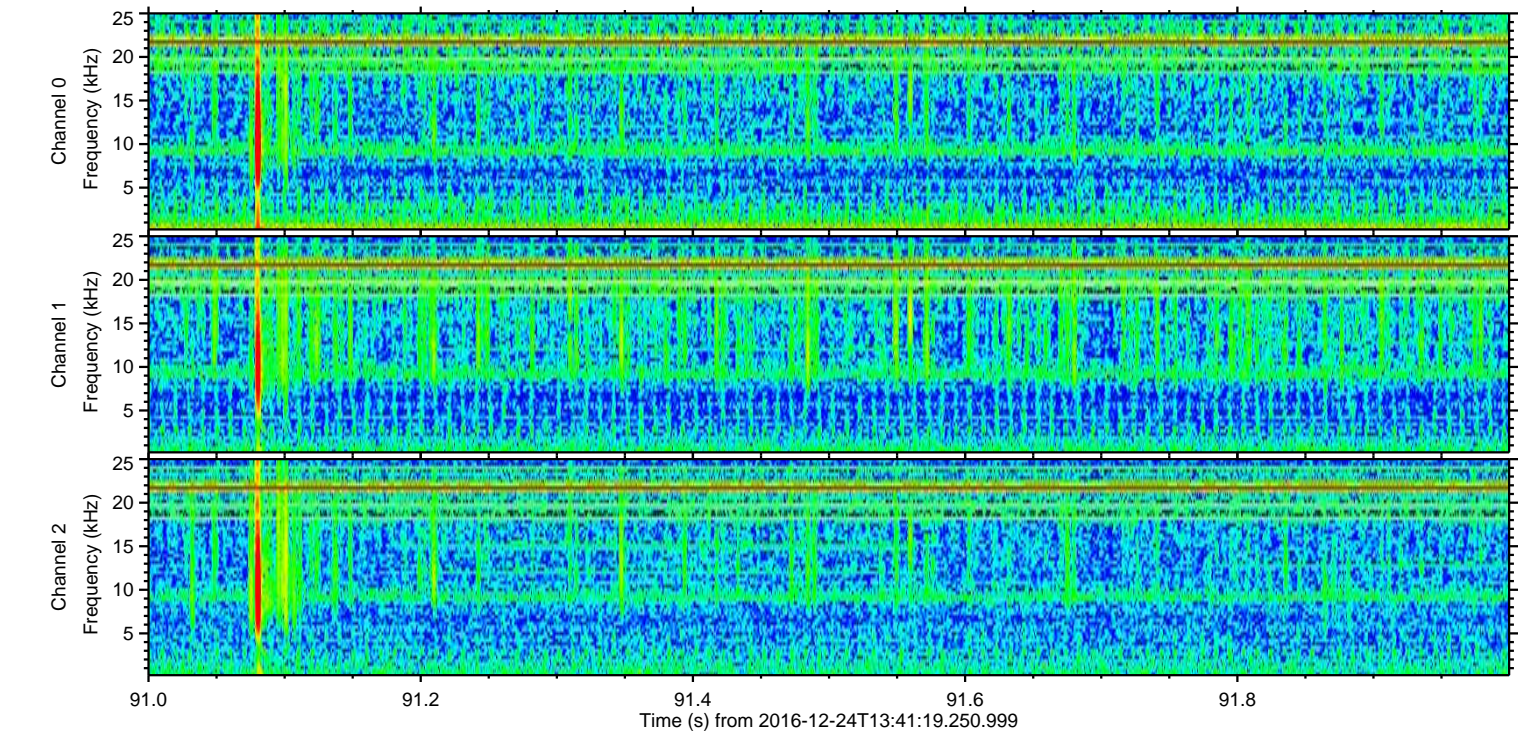
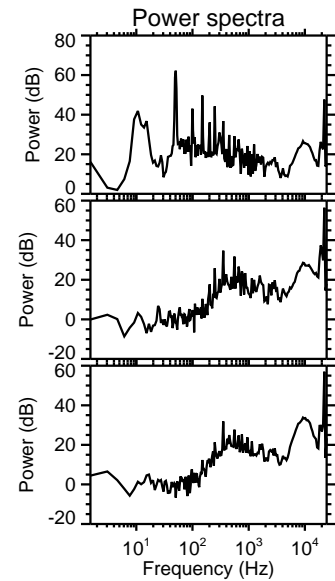
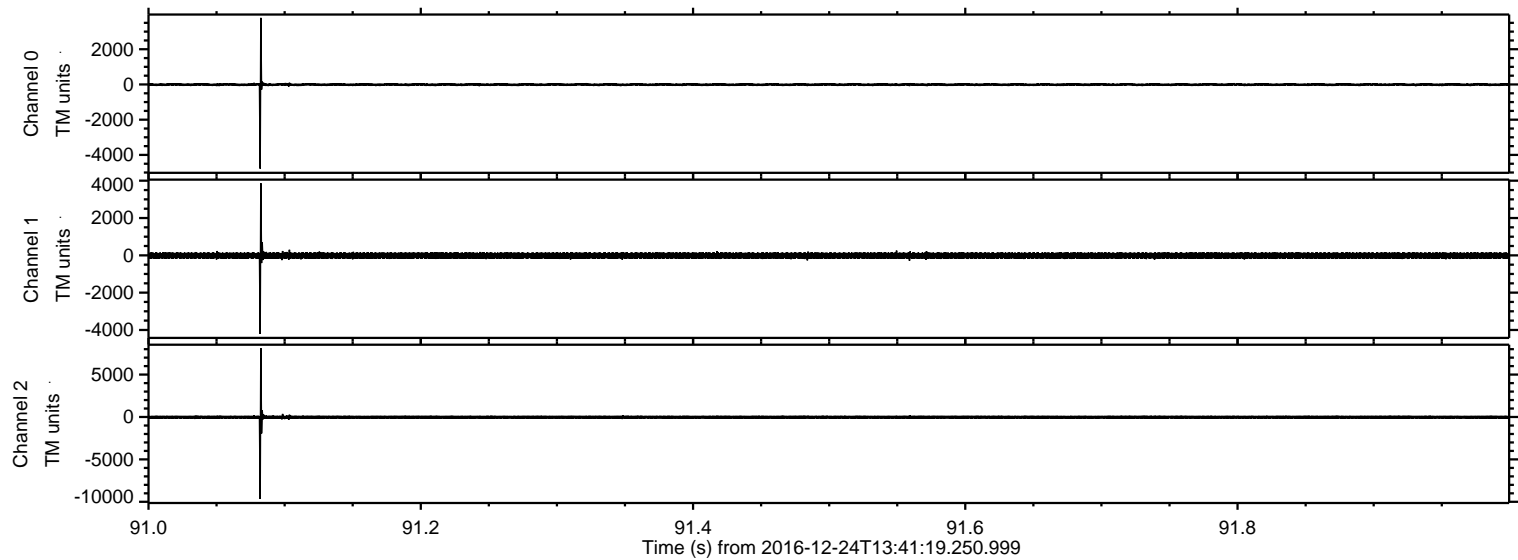


Processed Sat Dec 24 14:49:35 2016 by ELM ver.2012-10-06 from 001__elm20161224_134118__dat00.bin



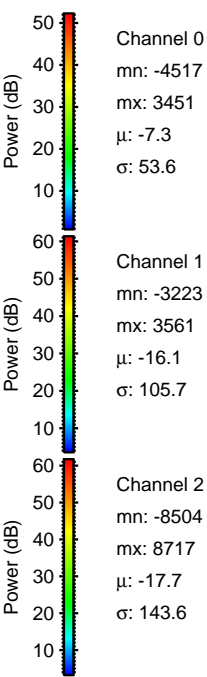
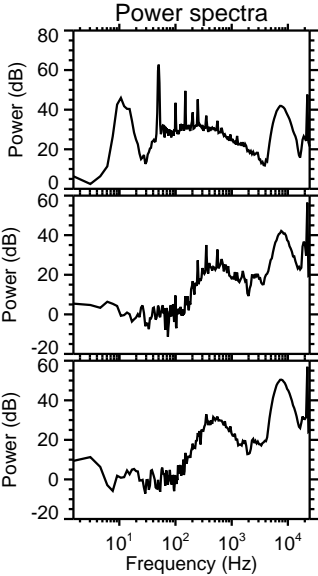
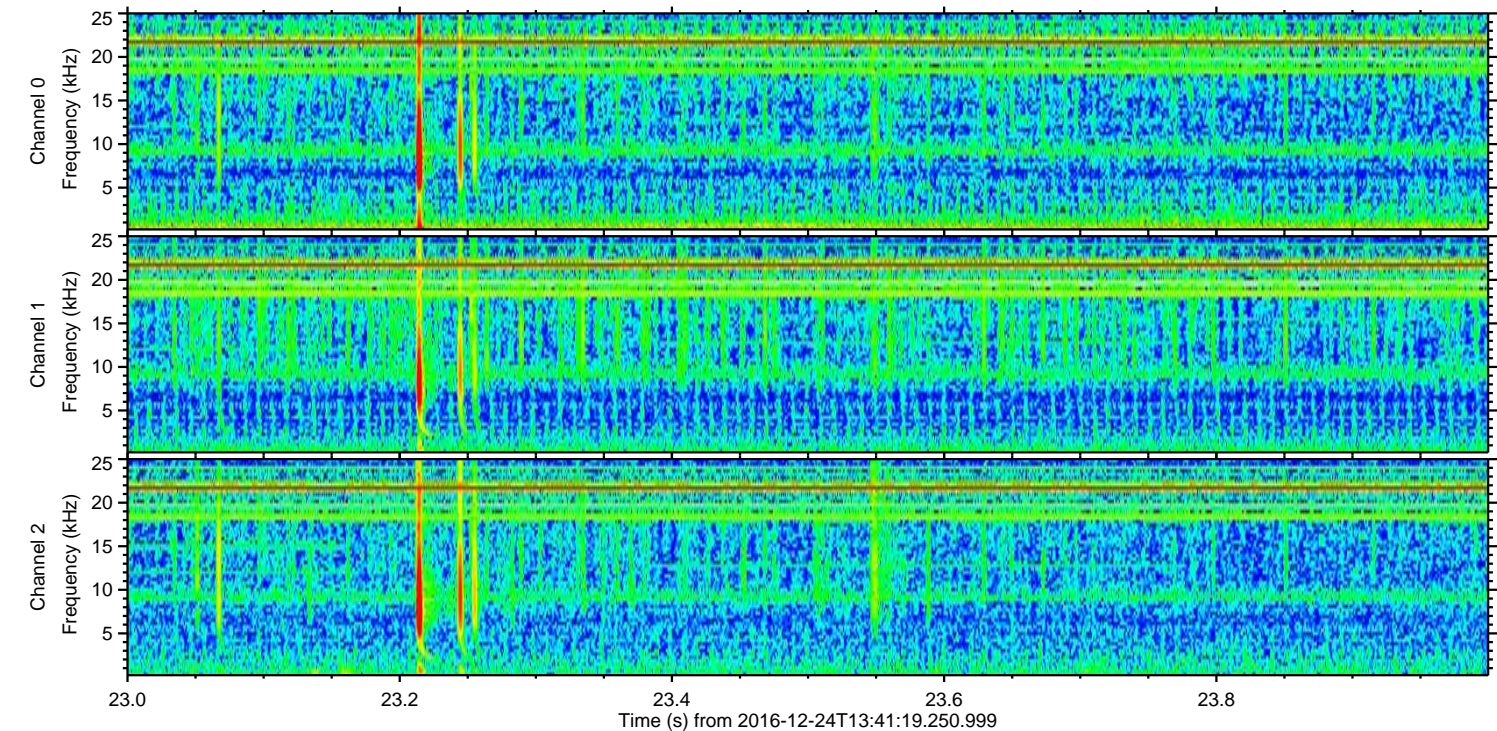
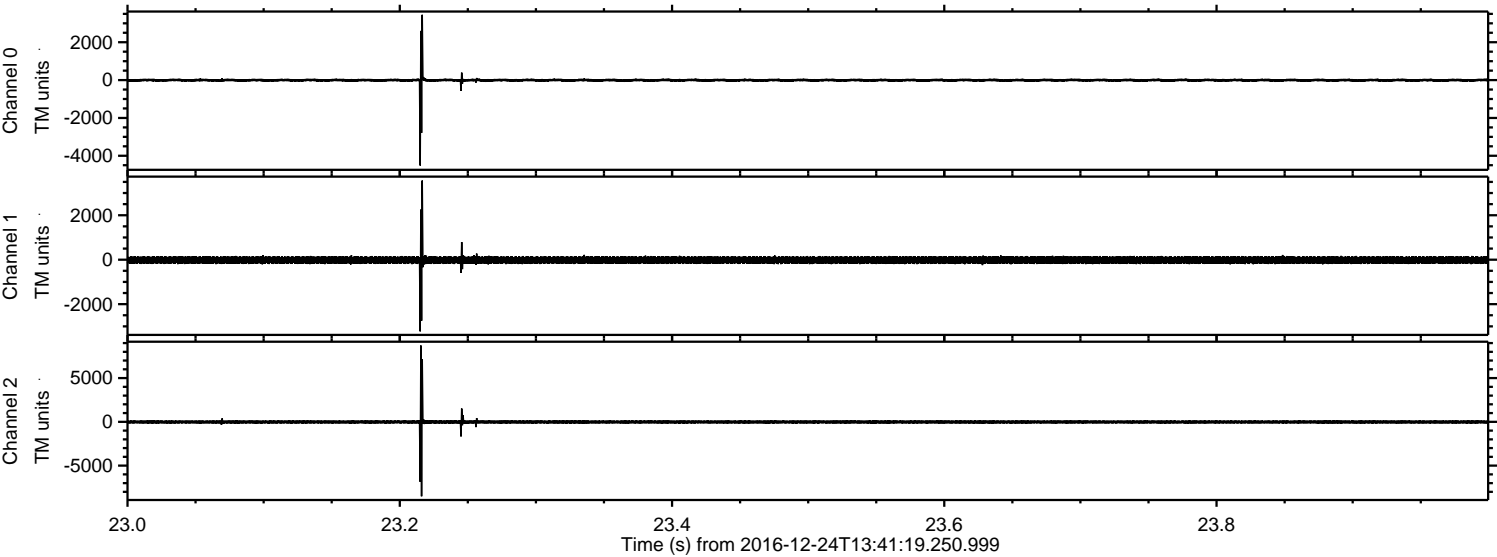
ELMAVAN 3D WAVEFORMS (Measured data sampled at 50 kHz) 51000 packets of 144 samples from 2016-12-24T13:41:19.250.999. Part 92/147

Processed Sat Dec 24 14:49:36 2016 by ELM ver.2012-10-06 from 001__elm20161224_134118__dat00.bin



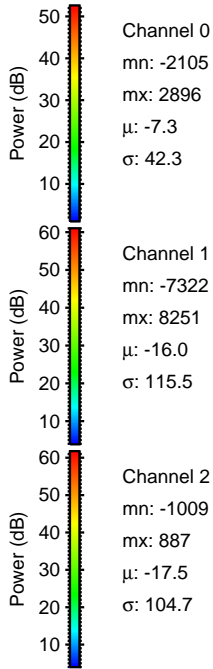
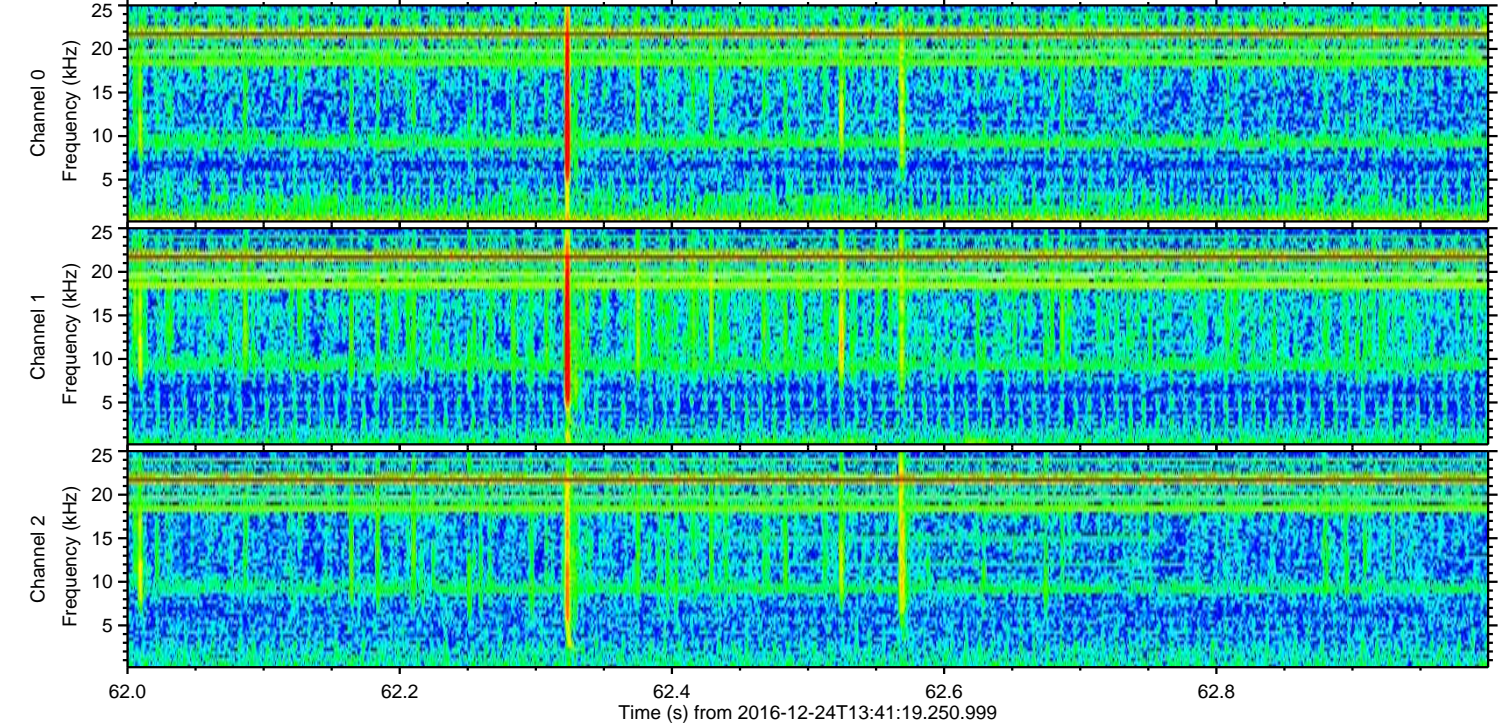
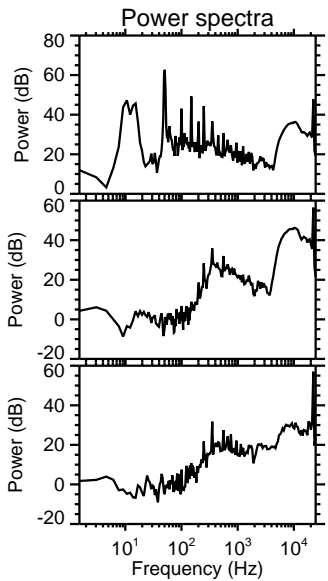
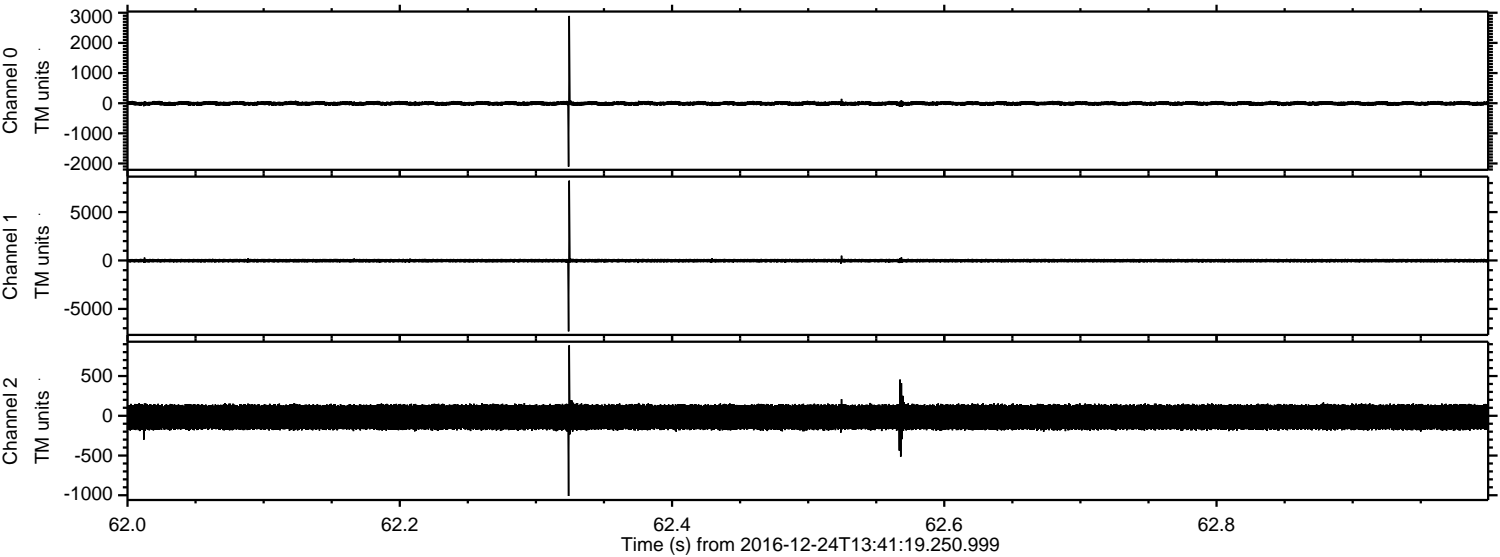
ELMAVAN 3D WAVEFORMS (Measured data sampled at 50 kHz) 51000 packets of 144 samples from 2016-12-24T13:41:19.250.999. Part 24/147

Processed Sat Dec 24 14:49:37 2016 by ELM ver.2012-10-06 from 001__elm20161224_134118__dat00.bin



ELMAVAN 3D WAVEFORMS (Measured data sampled at 50 kHz) 51000 packets of 144 samples from 2016-12-24T13:41:19.250.999. Part 63/147

Processed Sat Dec 24 14:49:38 2016 by ELM ver.2012-10-06 from 001__elm20161224_134118__dat00.bin



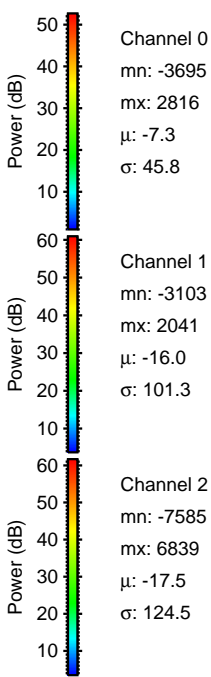
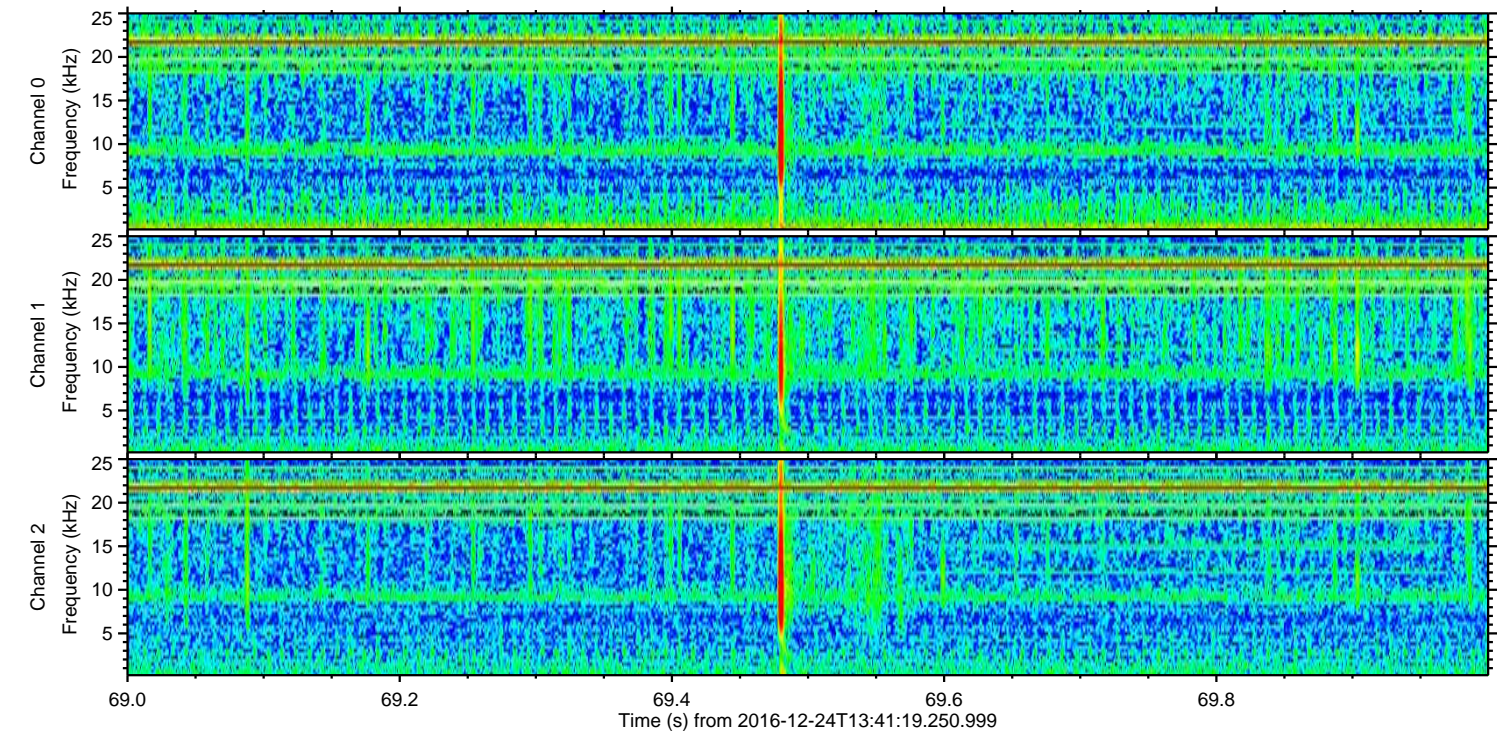
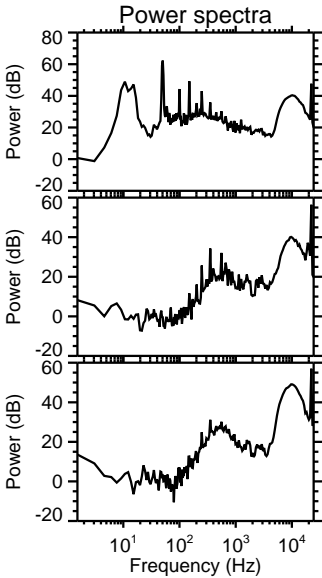
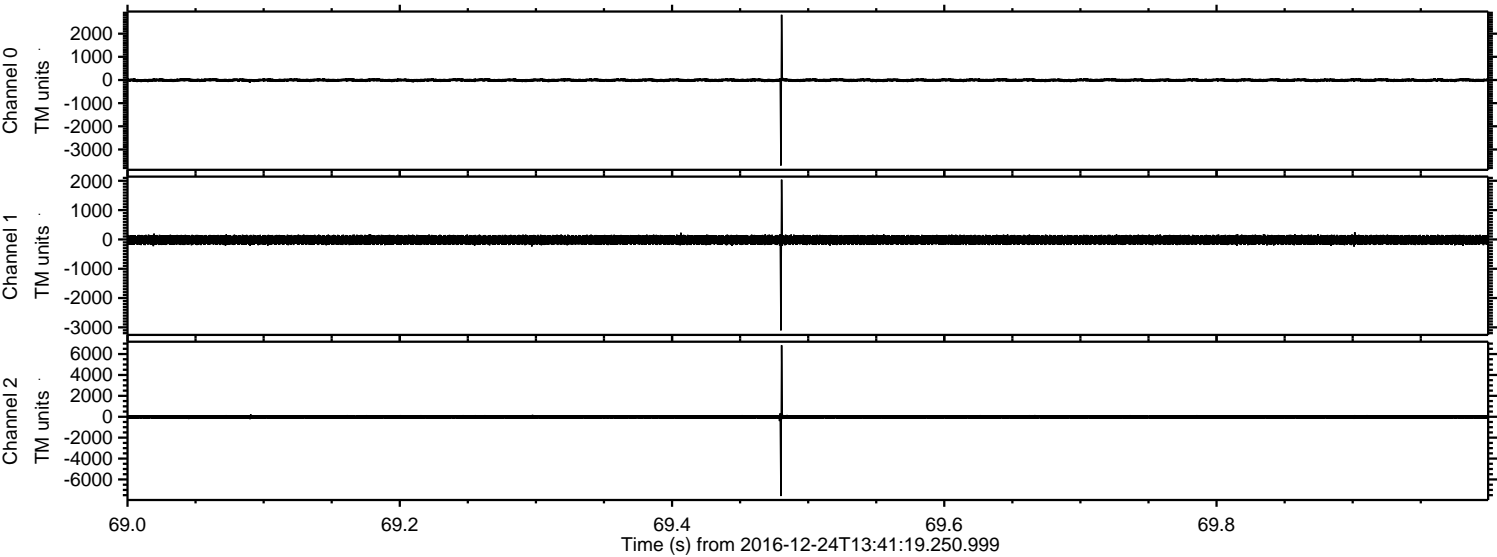
Channel 0
mn: -2105
mx: 2896
 μ : -7.3
 σ : 42.3

Channel 1
mn: -7322
mx: 8251
 μ : -16.0
 σ : 115.5

Channel 2
mn: -1009
mx: 887
 μ : -17.5
 σ : 104.7

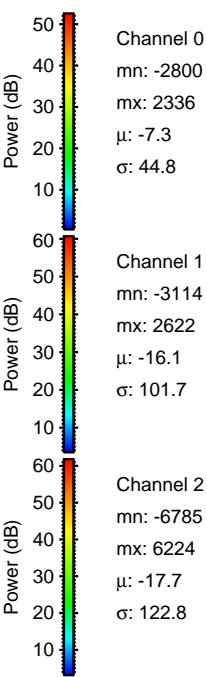
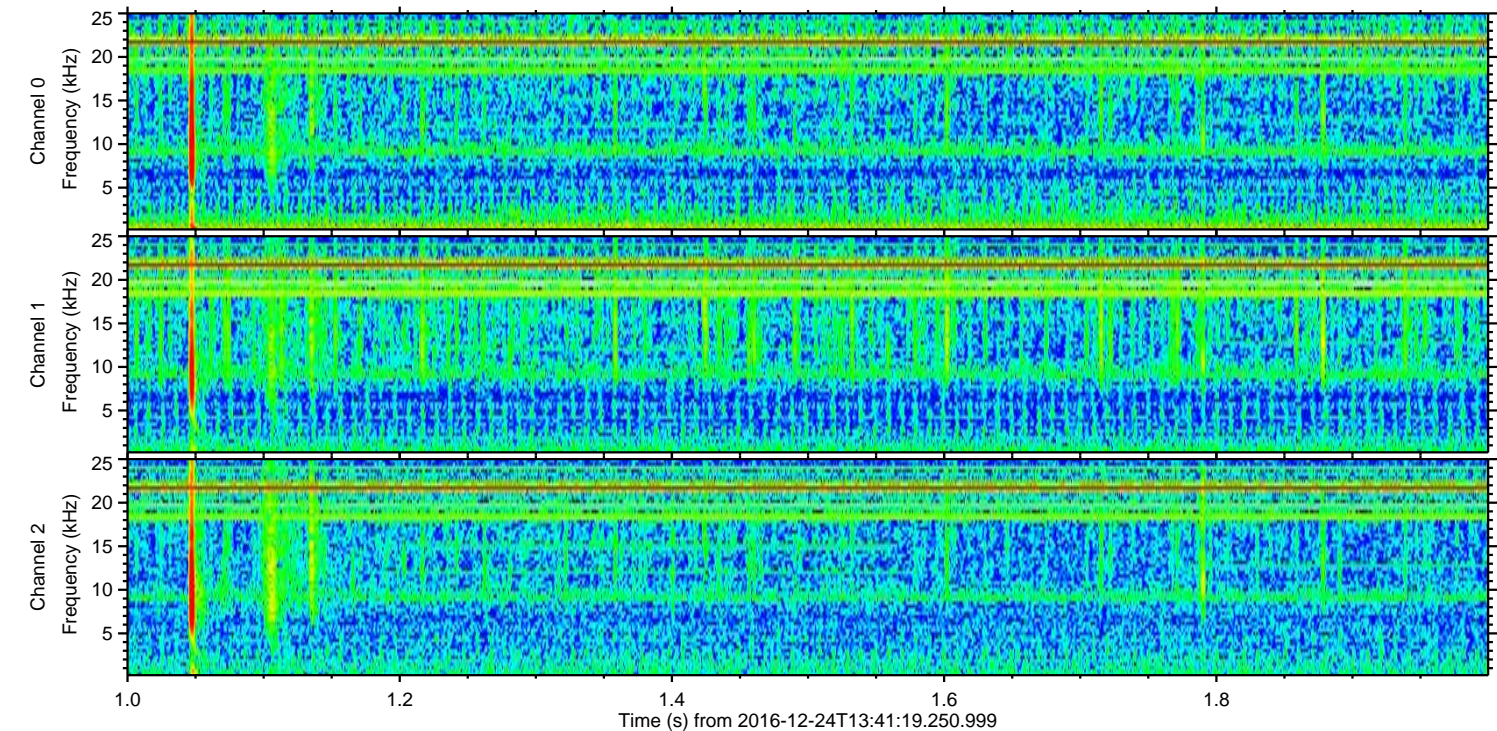
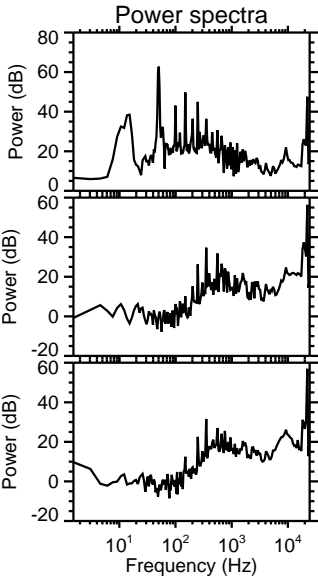
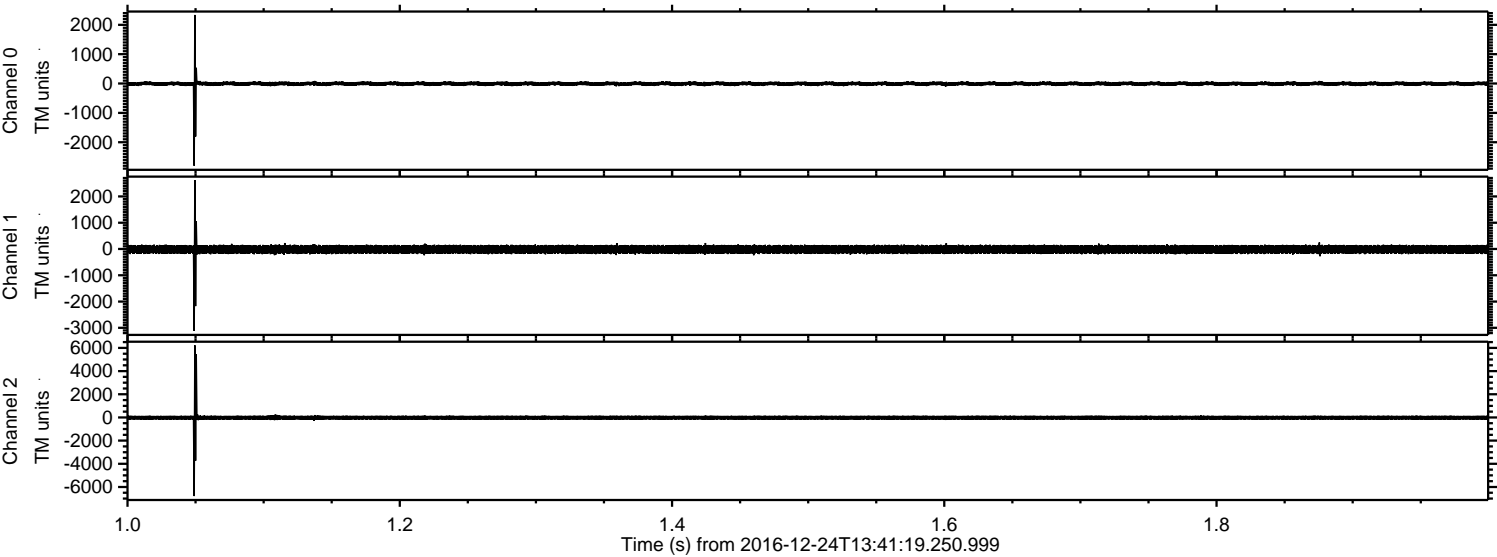
ELMAVAN 3D WAVEFORMS (Measured data sampled at 50 kHz) 51000 packets of 144 samples from 2016-12-24T13:41:19.250.999. Part 70/147

Processed Sat Dec 24 14:49:39 2016 by ELM ver.2012-10-06 from 001__elm20161224_134118__dat00.bin

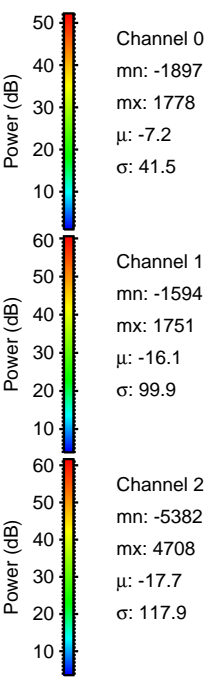
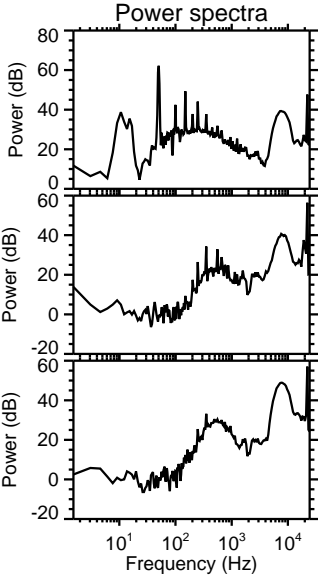
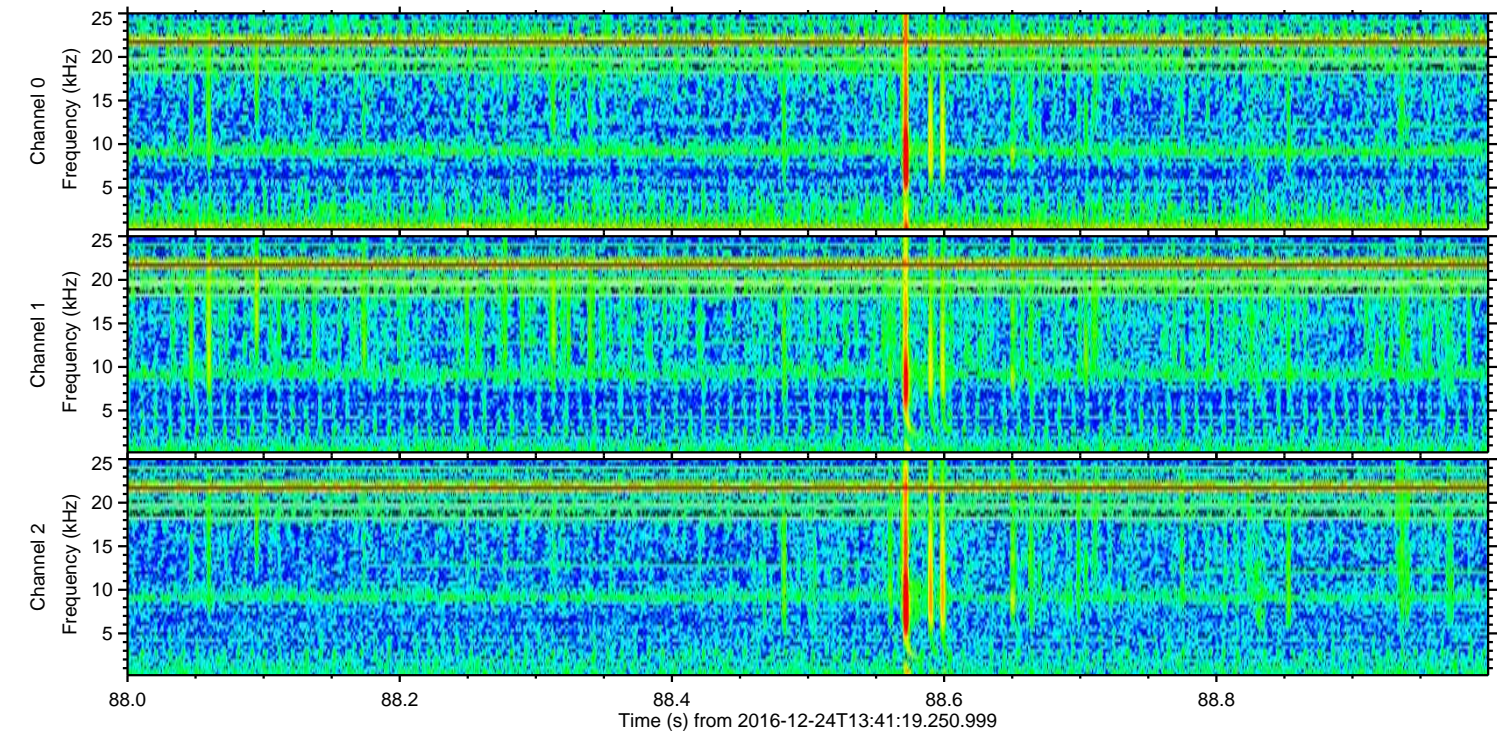
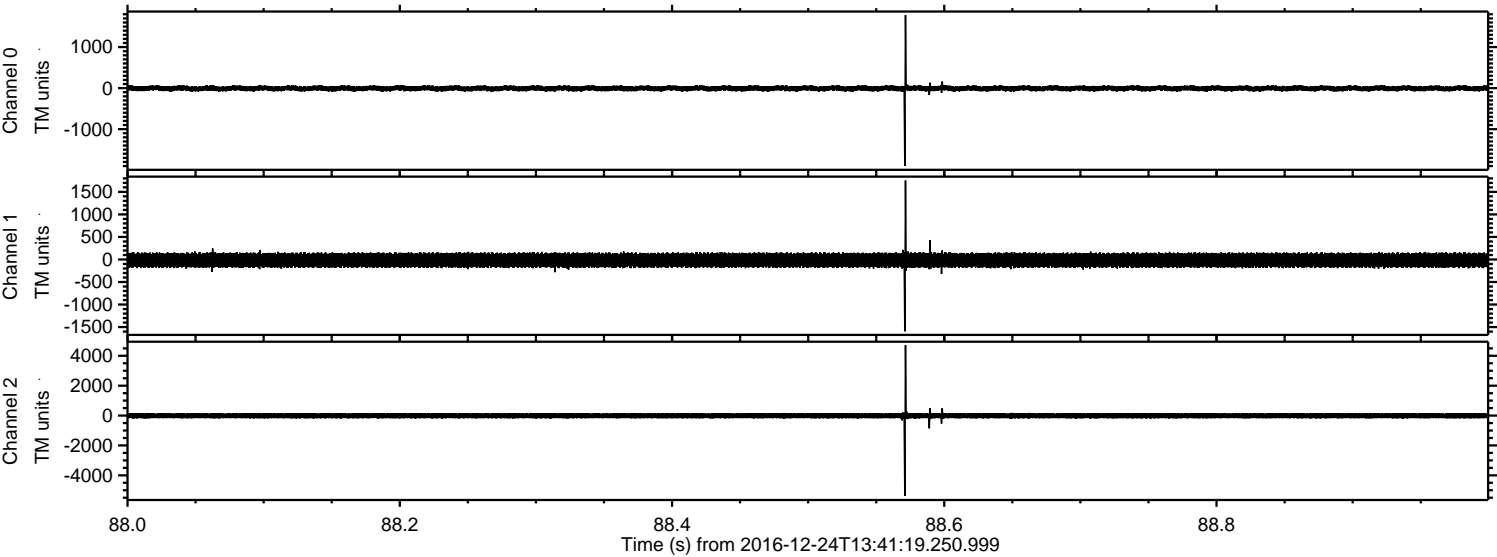


ELMAVAN 3D WAVEFORMS (Measured data sampled at 50 kHz) 51000 packets of 144 samples from 2016-12-24T13:41:19.250.999. Part 2/147

Processed Sat Dec 24 14:49:40 2016 by ELM ver.2012-10-06 from 001__elm20161224_134118__dat00.bin



Processed Sat Dec 24 14:49:41 2016 by ELM ver.2012-10-06 from 001__elm20161224_134118__dat00.bin

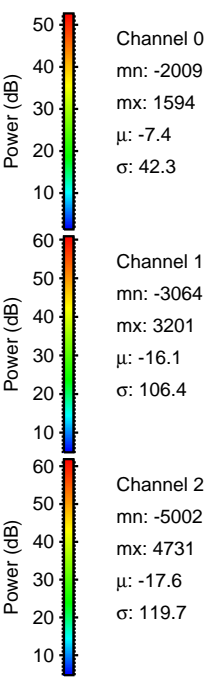
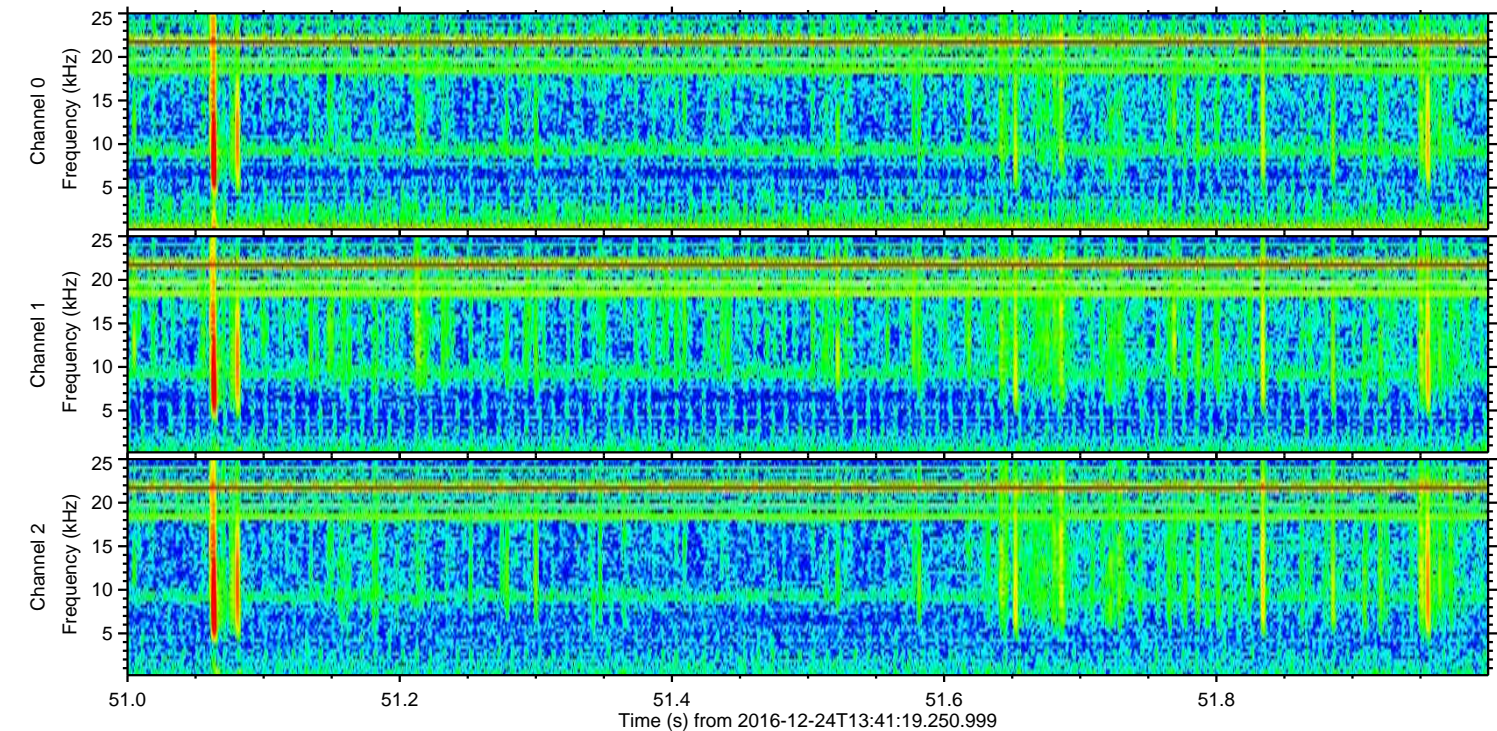
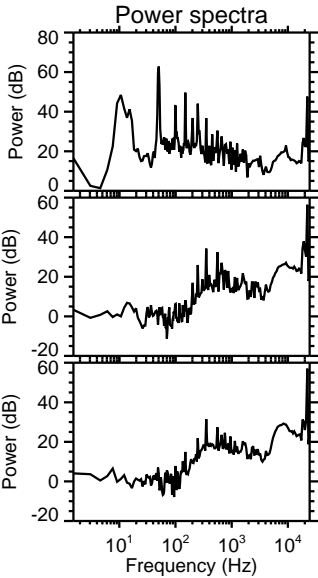
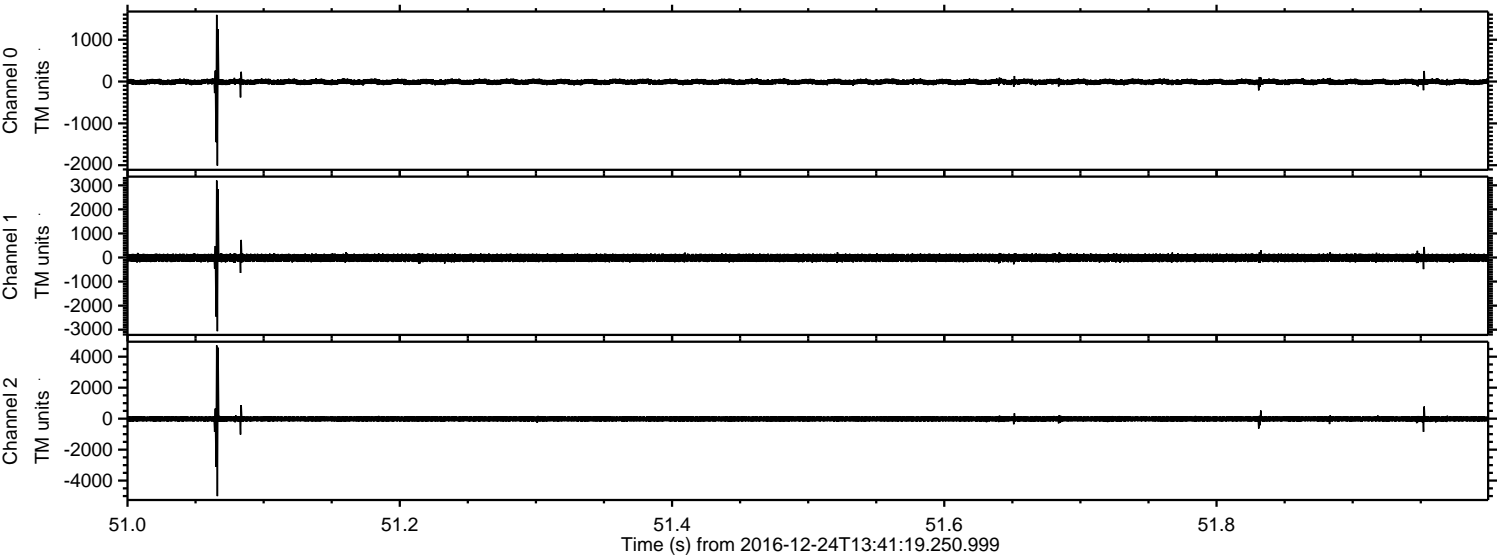


Channel 0
mn: -1897
mx: 1778
 μ : -7.2
 σ : 41.5

Channel 1
mn: -1594
mx: 1751
 μ : -16.1
 σ : 99.9

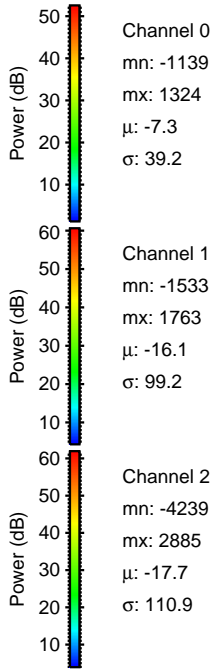
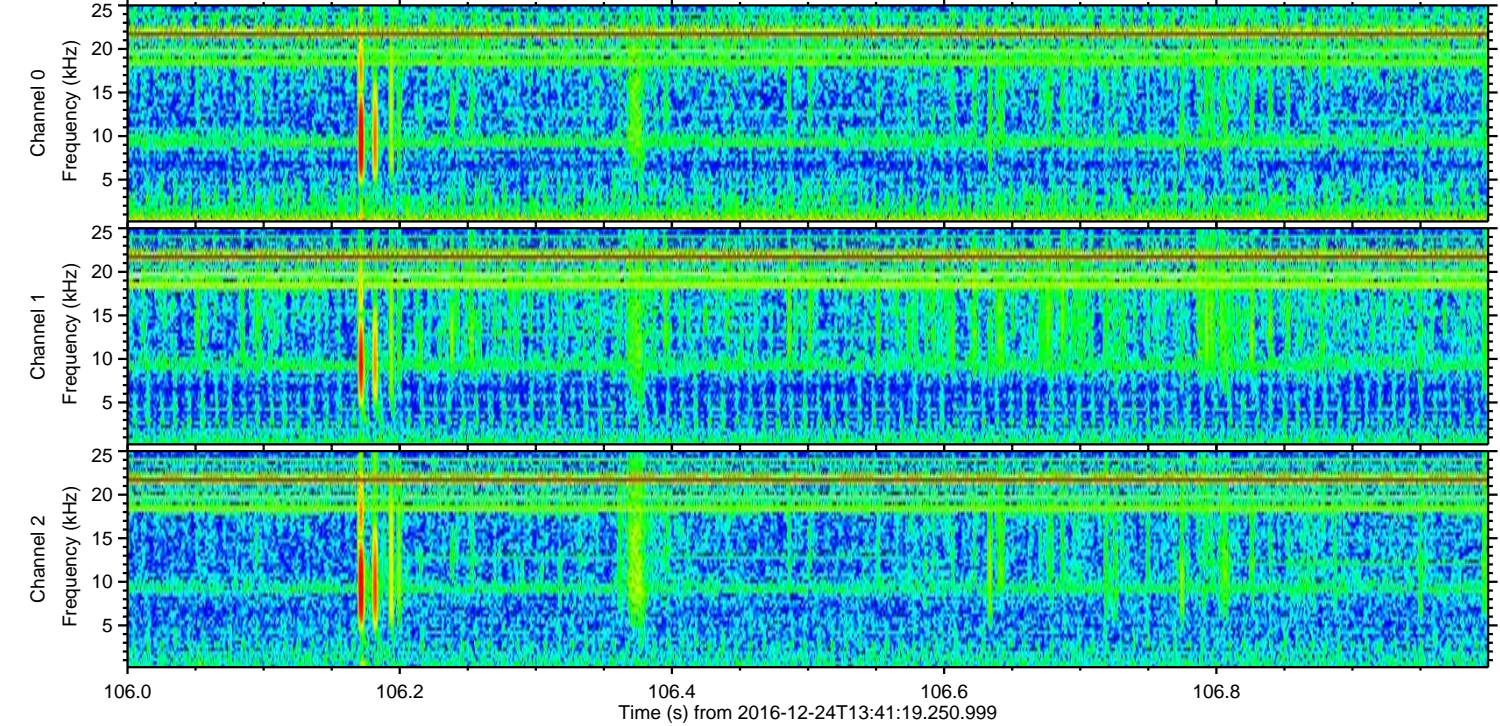
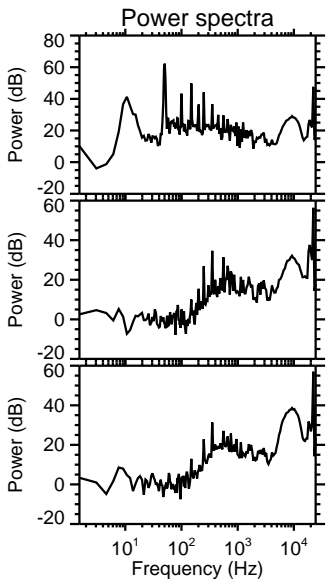
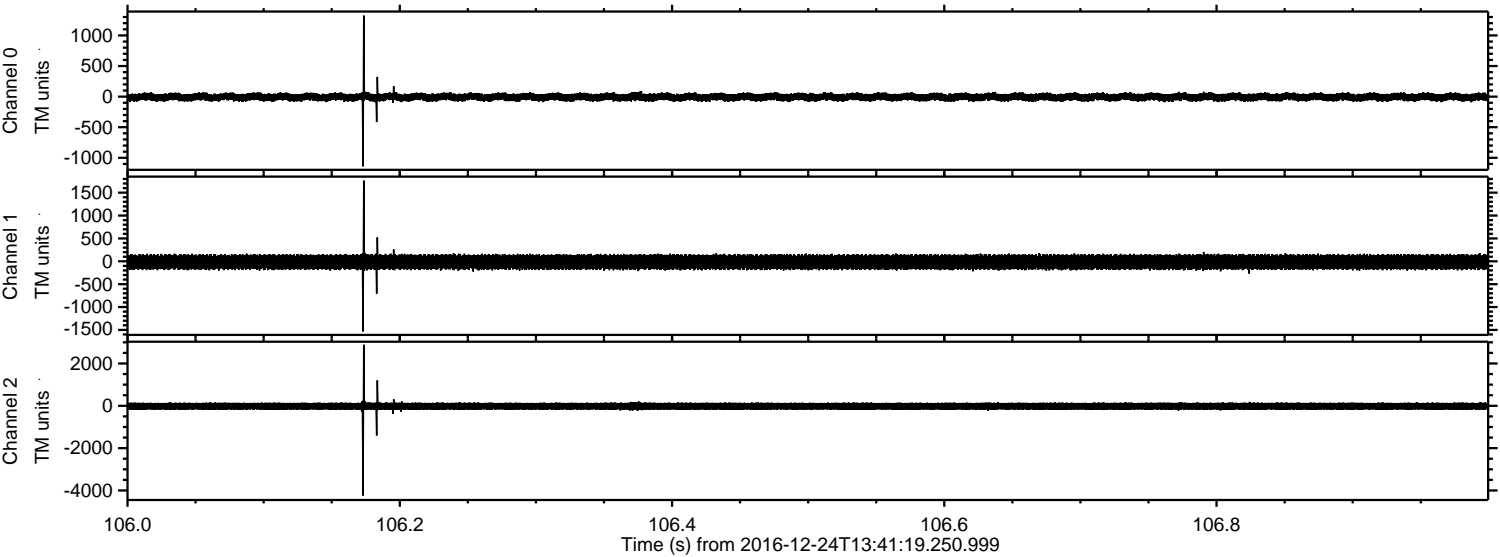
Channel 2
mn: -5382
mx: 4708
 μ : -17.7
 σ : 117.9

Processed Sat Dec 24 14:49:41 2016 by ELM ver.2012-10-06 from 001__elm20161224_134118__dat00.bin



ELMAVAN 3D WAVEFORMS (Measured data sampled at 50 kHz) 51000 packets of 144 samples from 2016-12-24T13:41:19.250.999. Part 107/147

Processed Sat Dec 24 14:49:42 2016 by ELM ver.2012-10-06 from 001__elm20161224_134118__dat00.bin



ELMAVAN 3D WAVEFORMS (Measured data sampled at 50 kHz) 51000 packets of 144 samples from 2016-12-24T13:41:19.250.999. Part 17/147

Processed Sat Dec 24 14:49:43 2016 by ELM ver.2012-10-06 from 001__elm20161224_134118__dat00.bin

