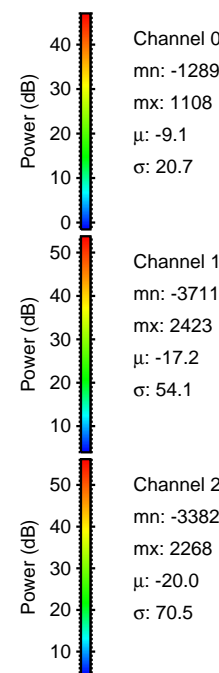
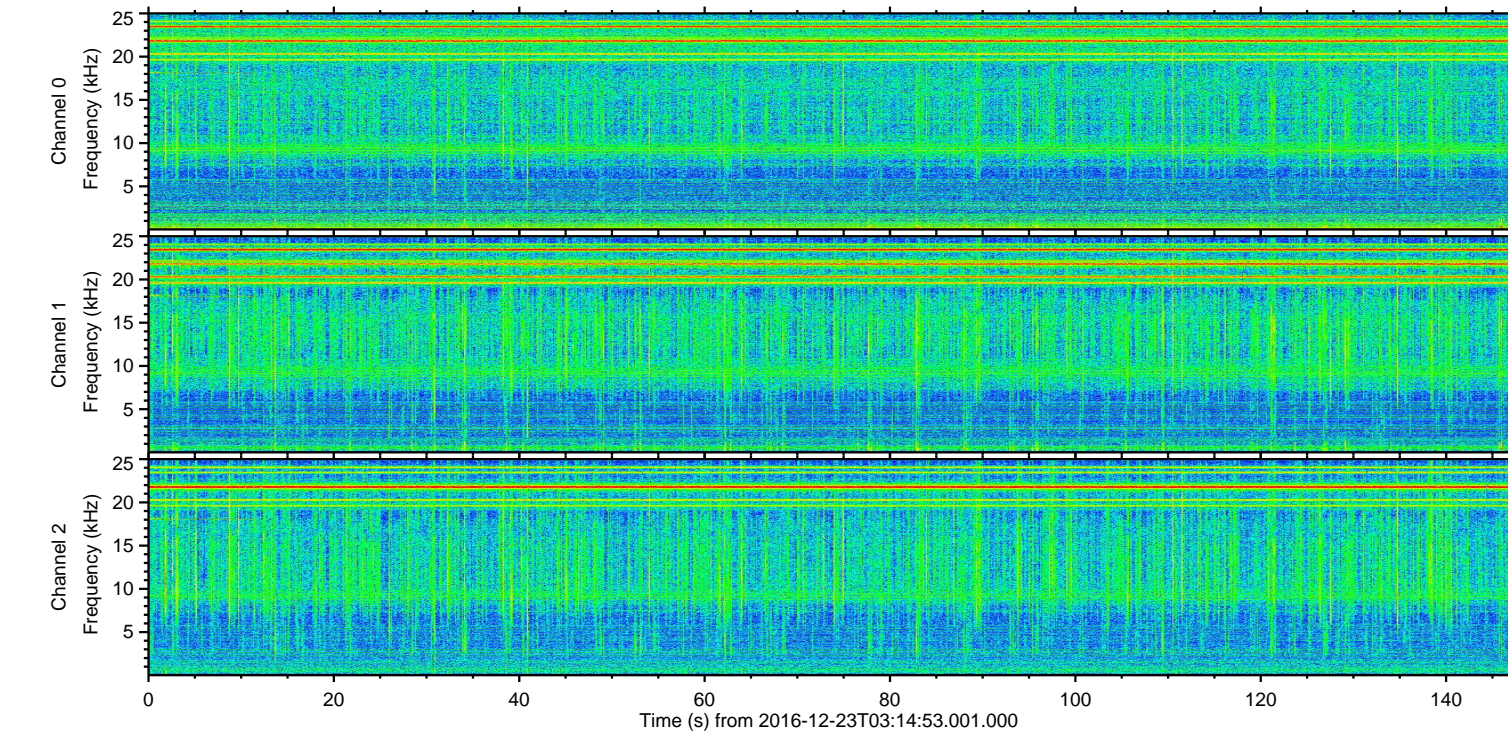
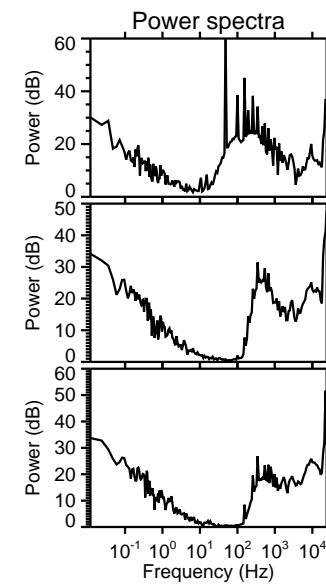
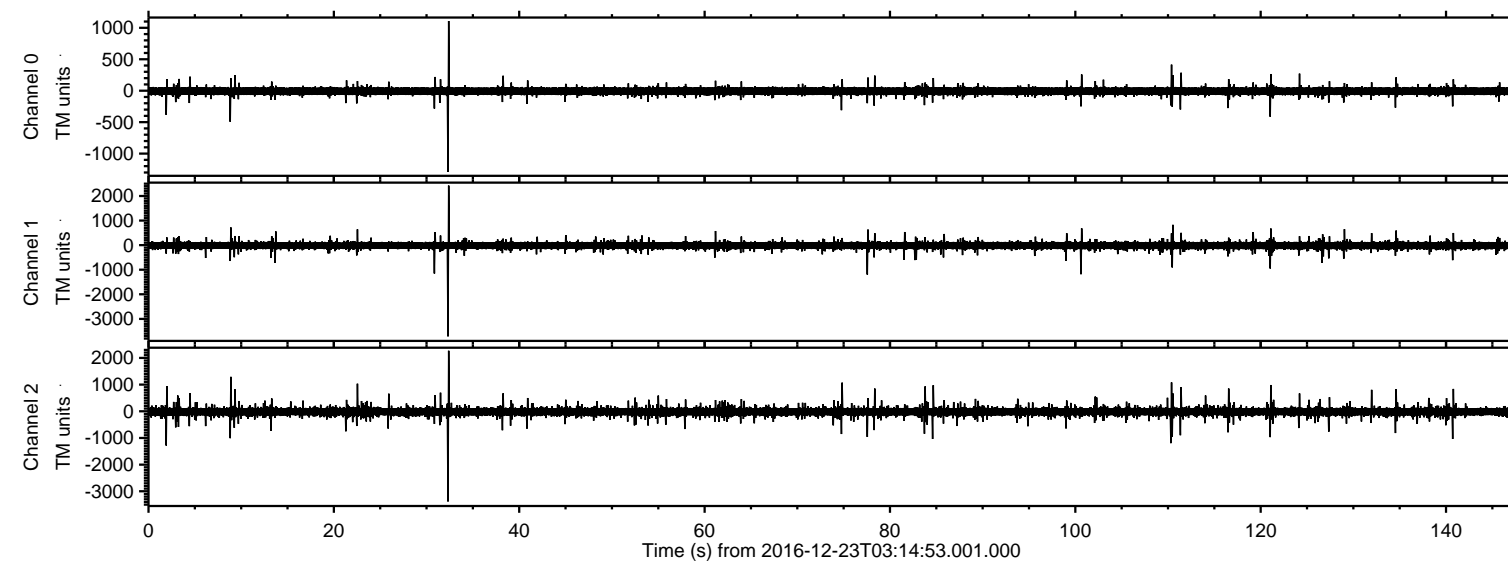
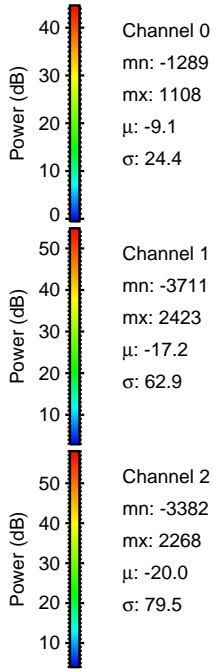
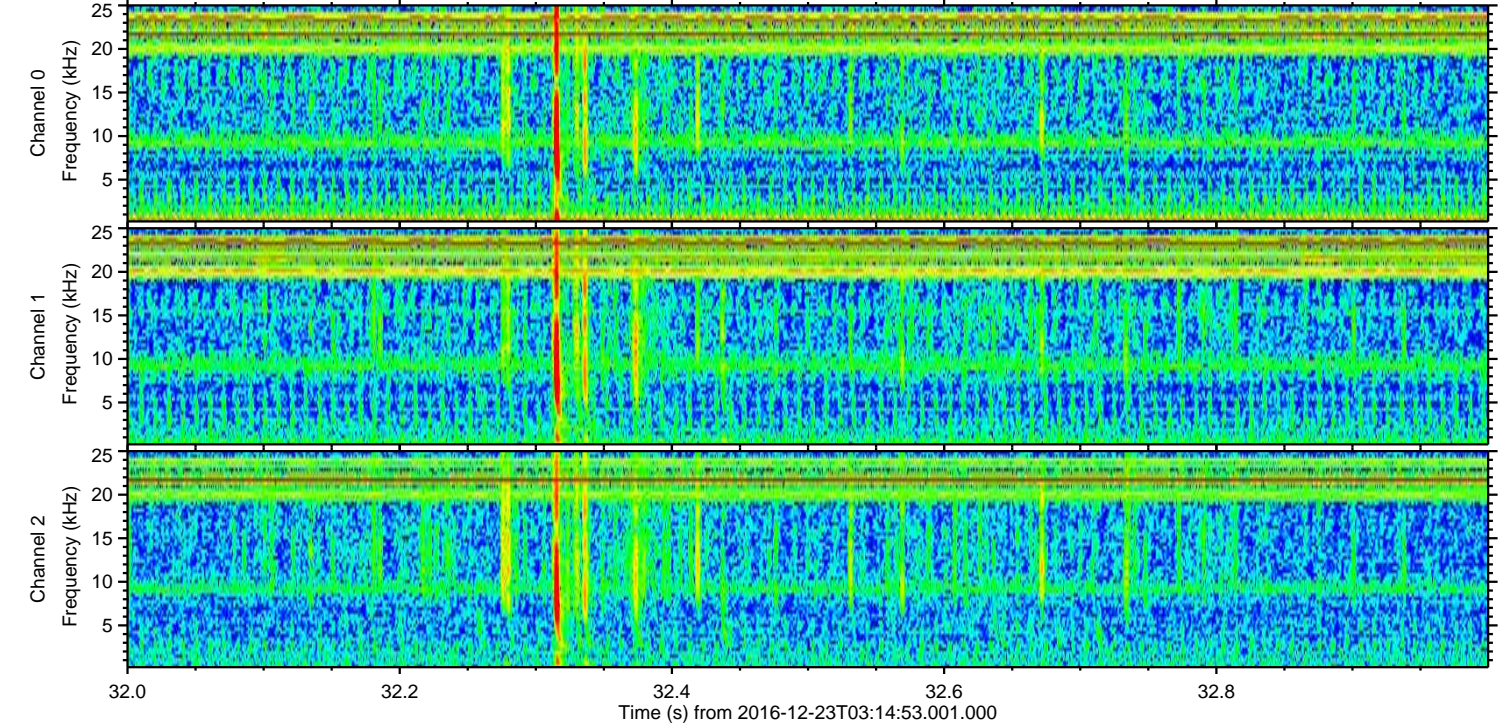
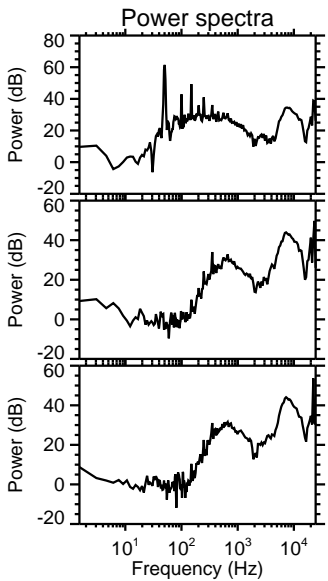
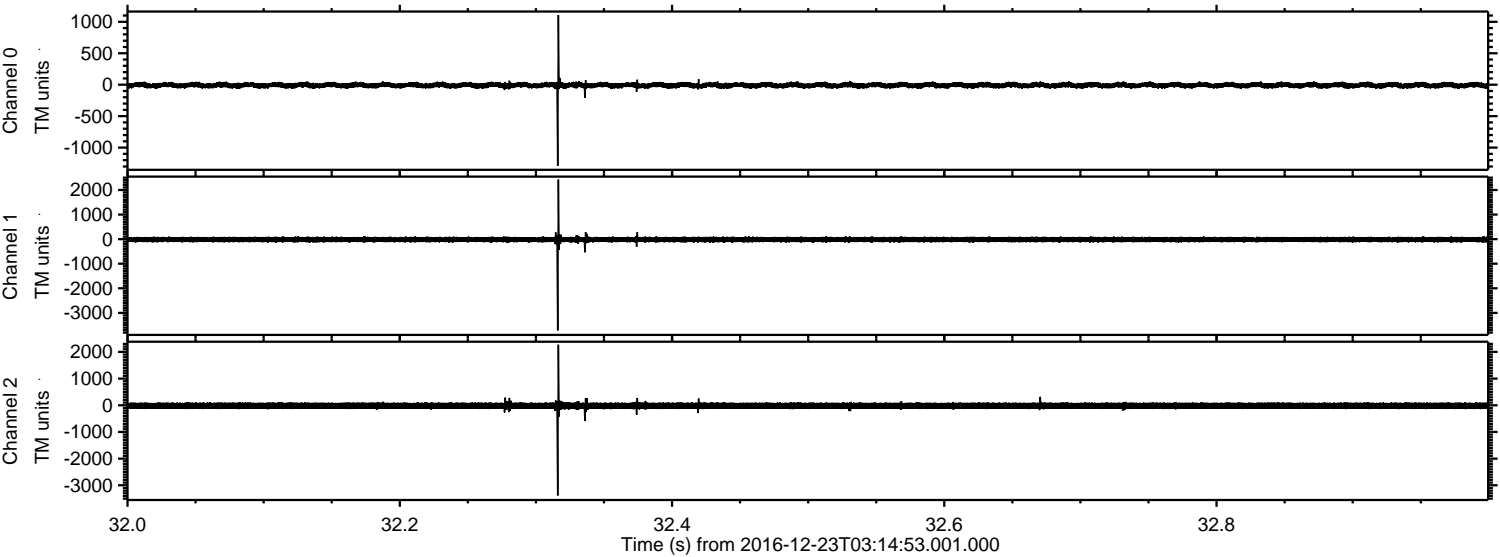


ELMAVAN 3D WAVEFORMS (Measured data sampled at 50 kHz) 51000 packets of 144 samples from 2016-12-23T03:14:53.001.000.

Processed Fri Dec 23 04:22:40 2016 by ELM ver.2012-10-06 from 001__elm20161223_031451__dat00.bin



Processed Fri Dec 23 04:22:51 2016 by ELM ver.2012-10-06 from 001__elm20161223_031451__dat00.bin

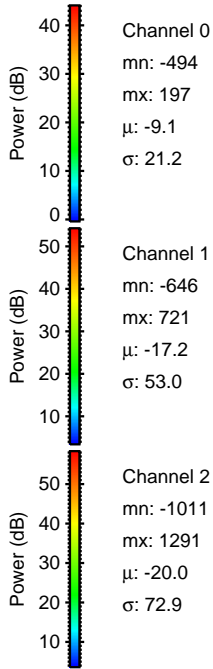
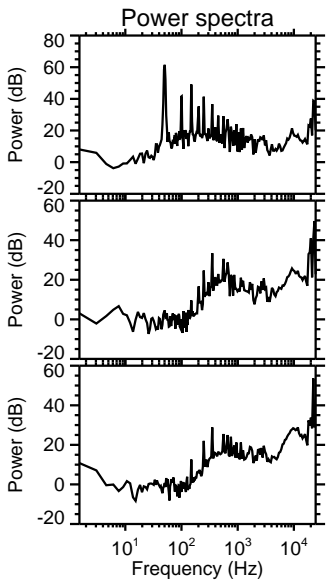
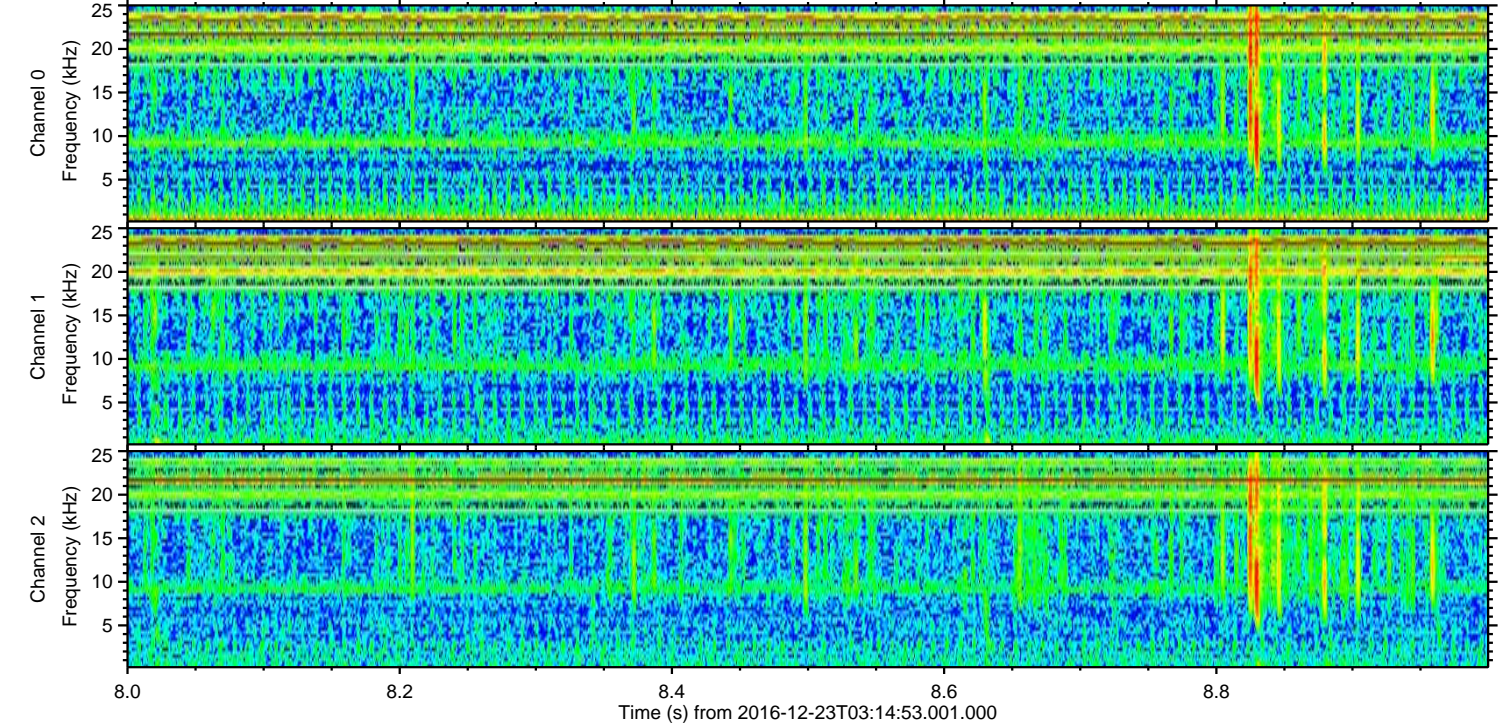
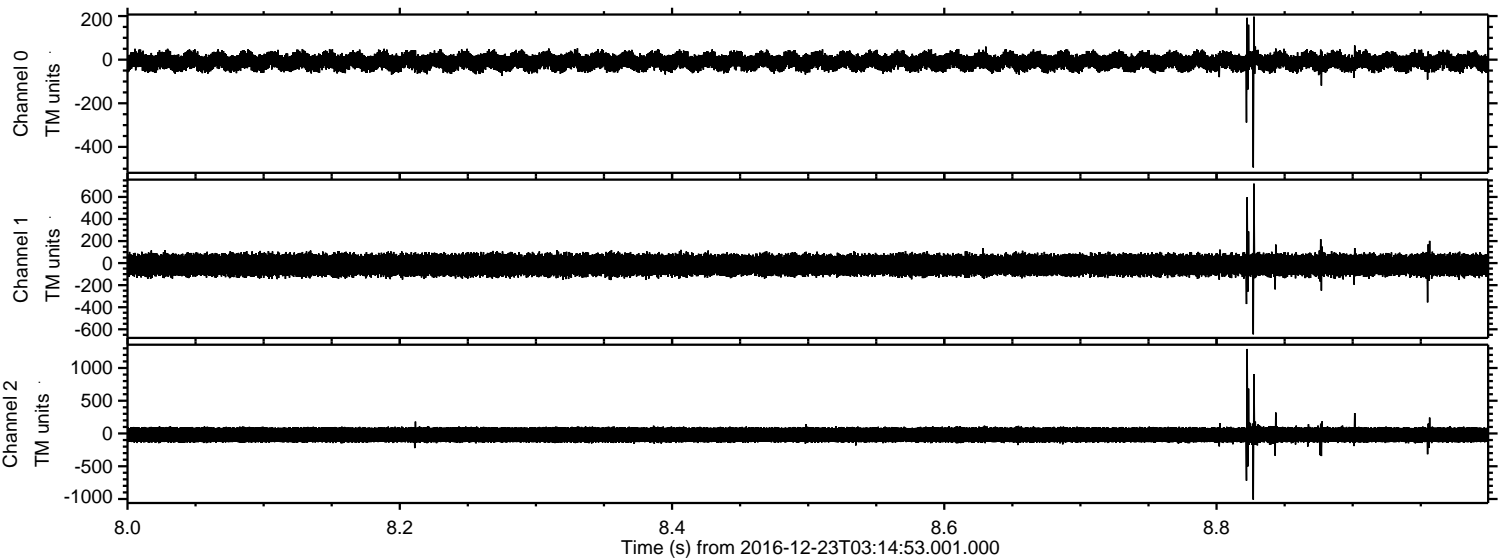


Channel 0
mn: -1289
mx: 1108
 μ : -9.1
 σ : 24.4

Channel 1
mn: -3711
mx: 2423
 μ : -17.2
 σ : 62.9

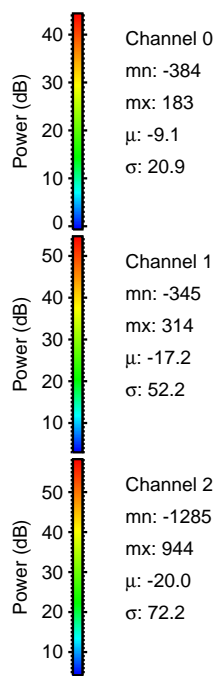
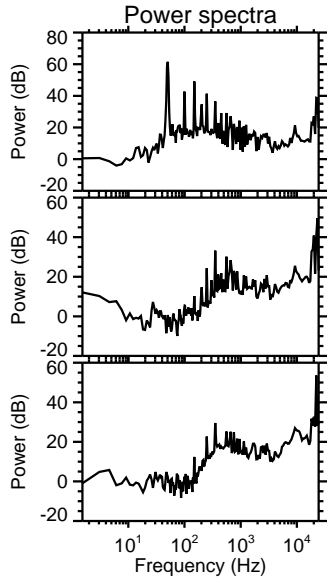
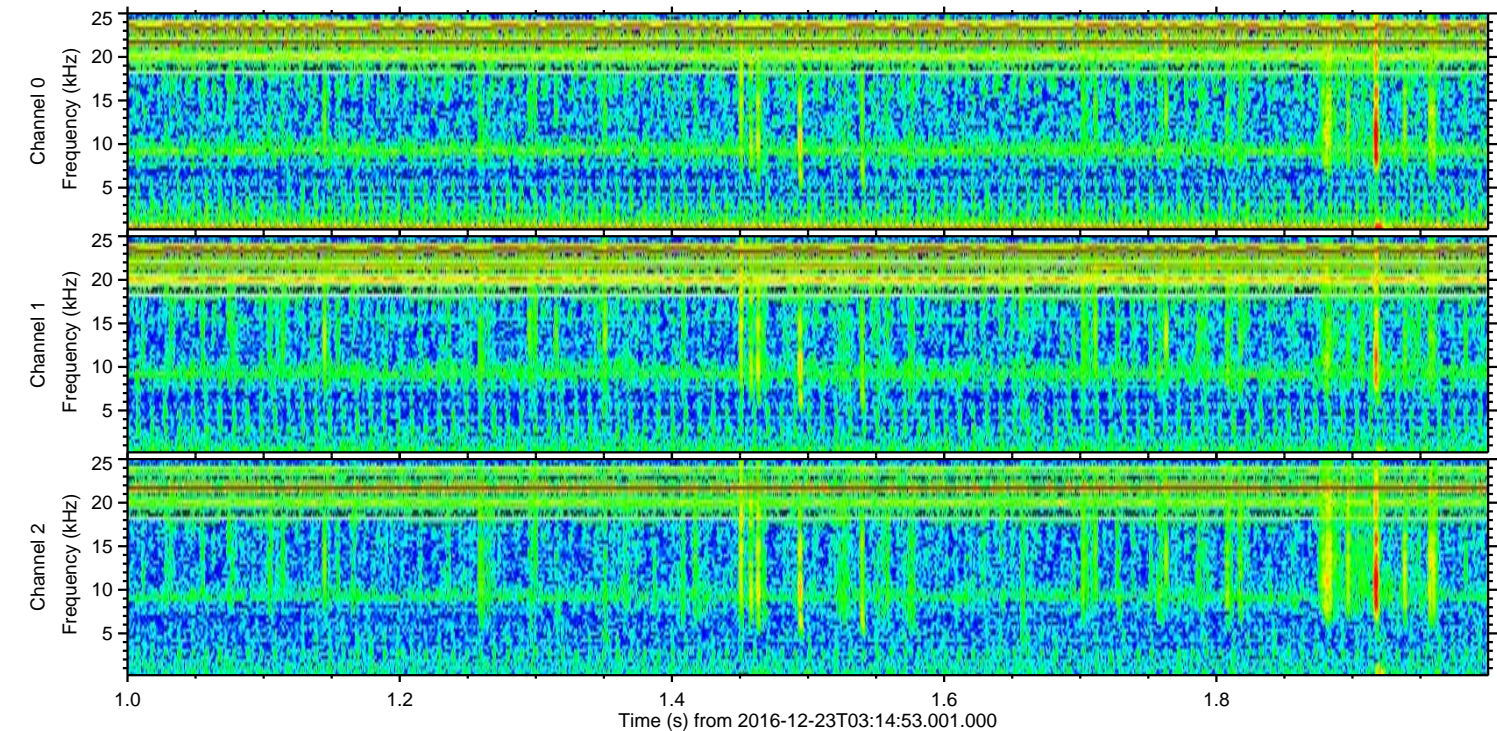
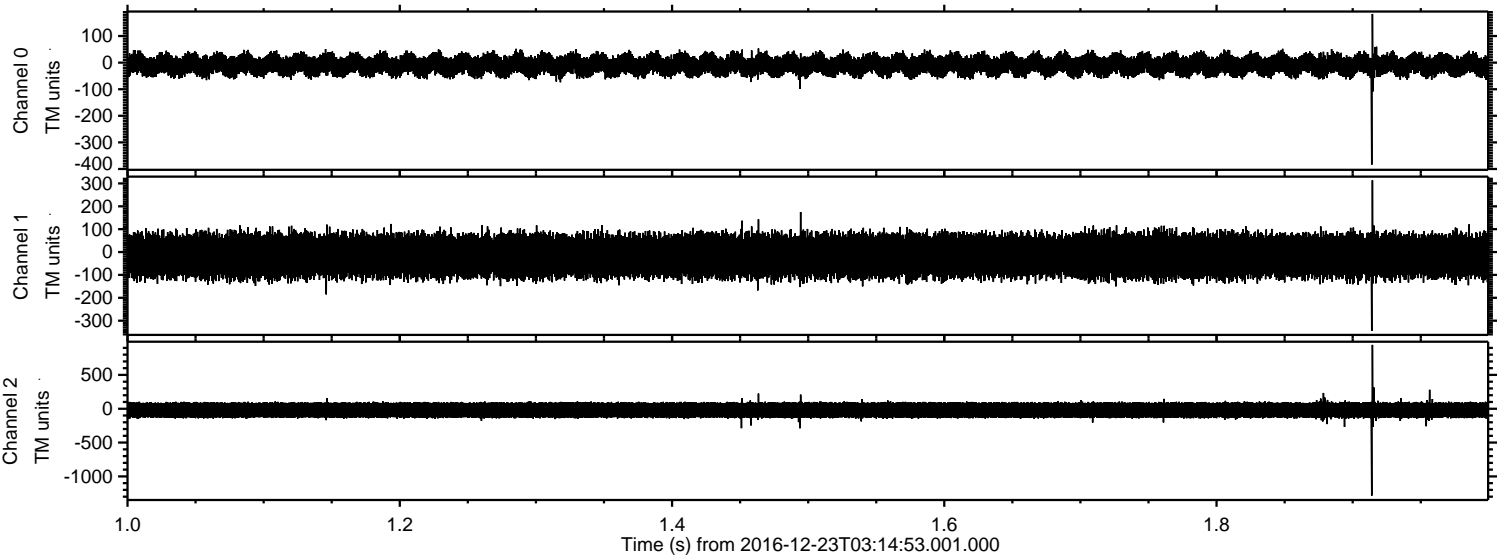
Channel 2
mn: -3382
mx: 2268
 μ : -20.0
 σ : 79.5

Processed Fri Dec 23 04:22:52 2016 by ELM ver.2012-10-06 from 001__elm20161223_031451__dat00.bin



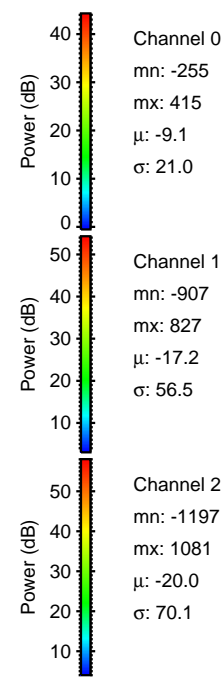
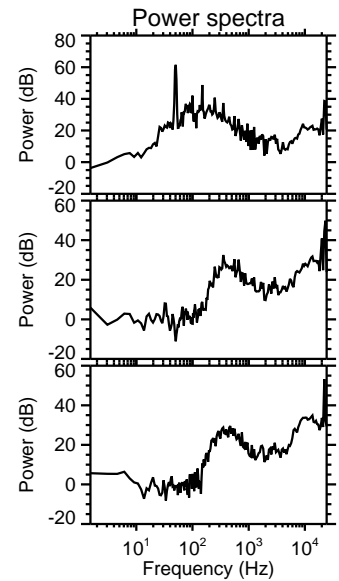
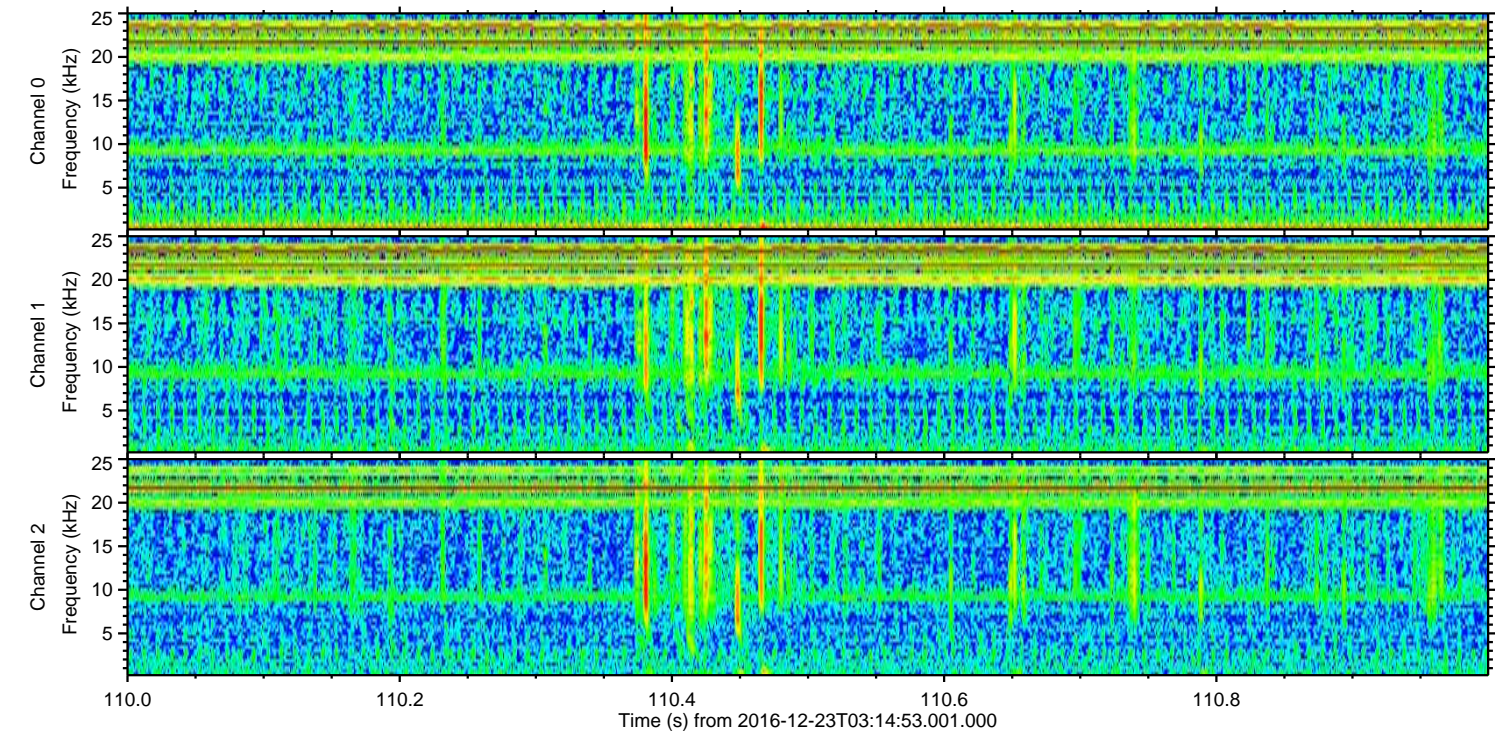
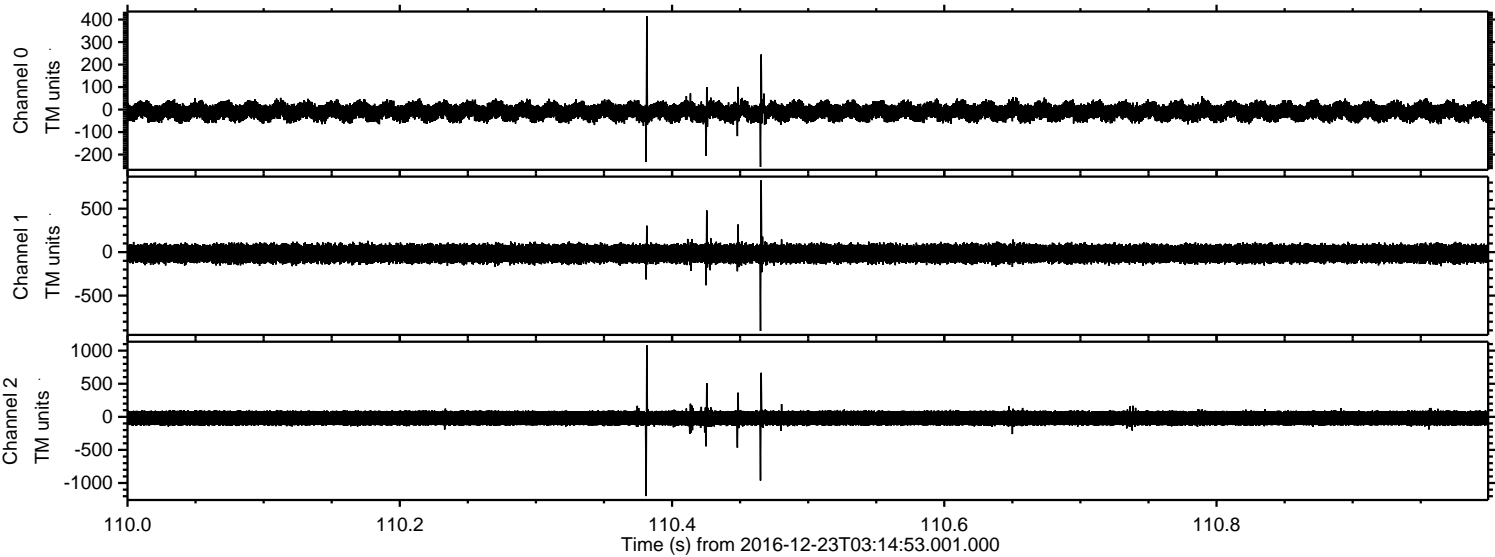
ELMAVAN 3D WAVEFORMS (Measured data sampled at 50 kHz) 51000 packets of 144 samples from 2016-12-23T03:14:53.001.000. Part 2/147

Processed Fri Dec 23 04:22:53 2016 by ELM ver.2012-10-06 from 001__elm20161223_031451__dat00.bin

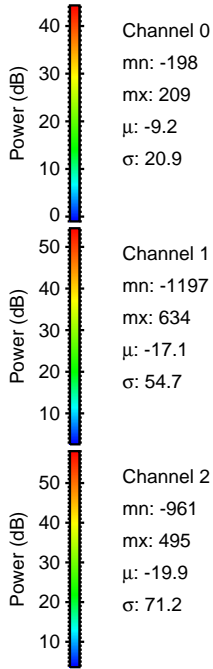
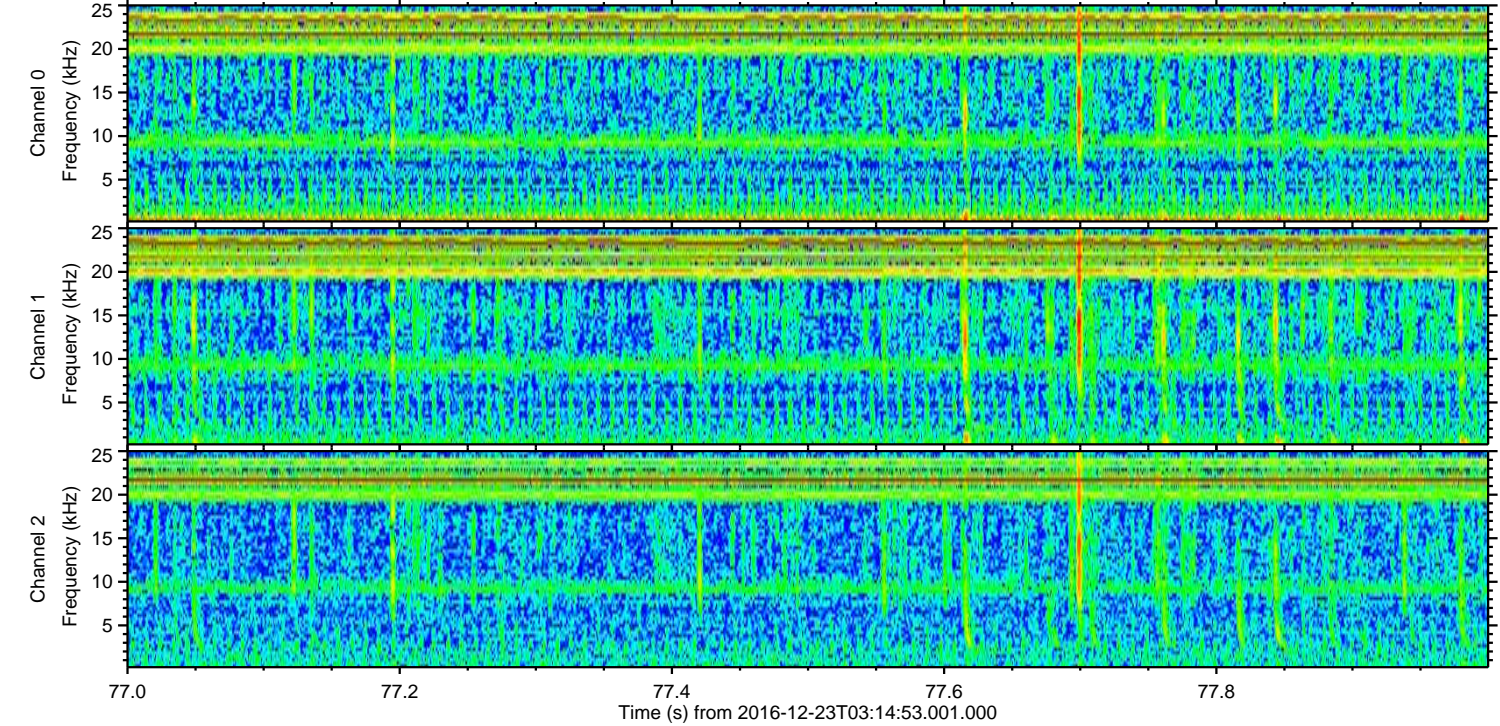
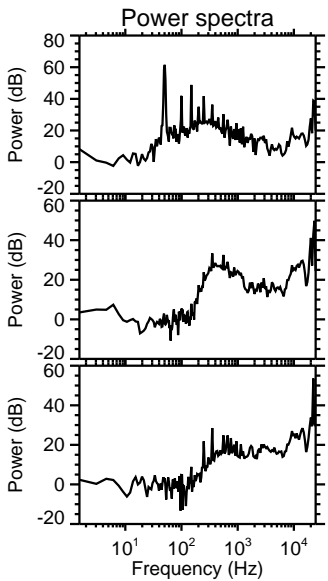
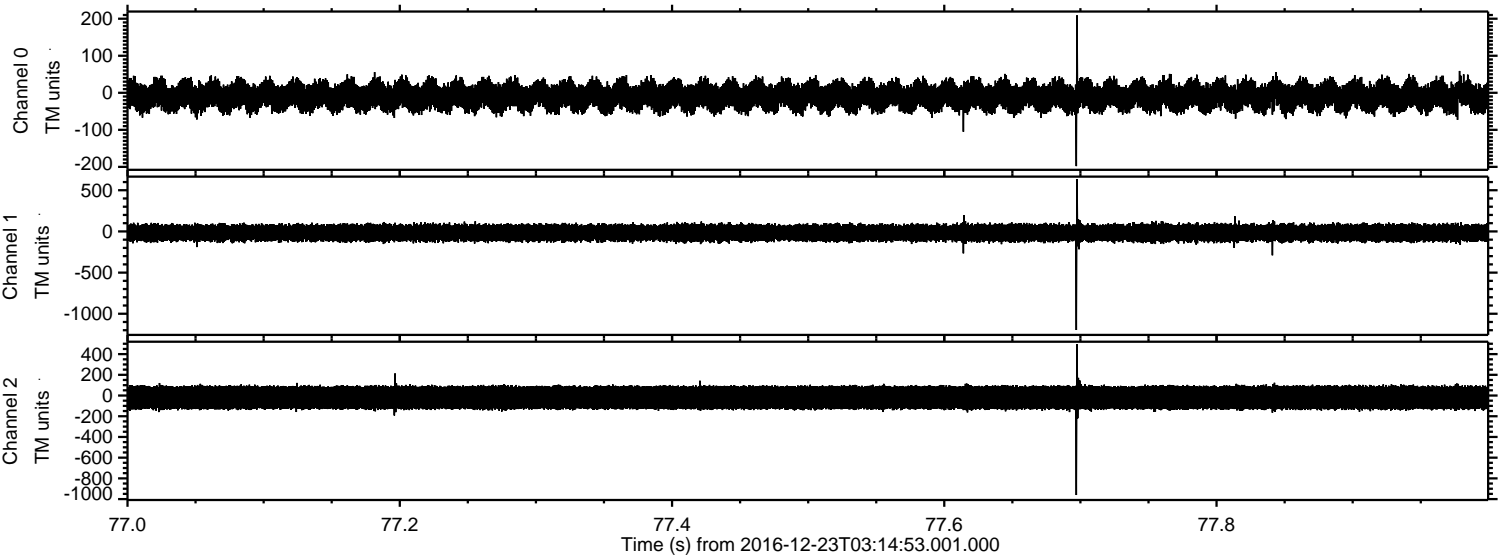


ELMAVAN 3D WAVEFORMS (Measured data sampled at 50 kHz) 51000 packets of 144 samples from 2016-12-23T03:14:53.001.000. Part 111/147

Processed Fri Dec 23 04:22:54 2016 by ELM ver.2012-10-06 from 001__elm20161223_031451__dat00.bin

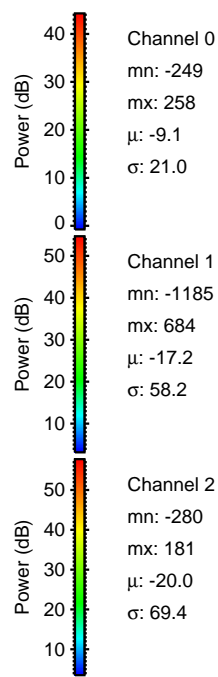
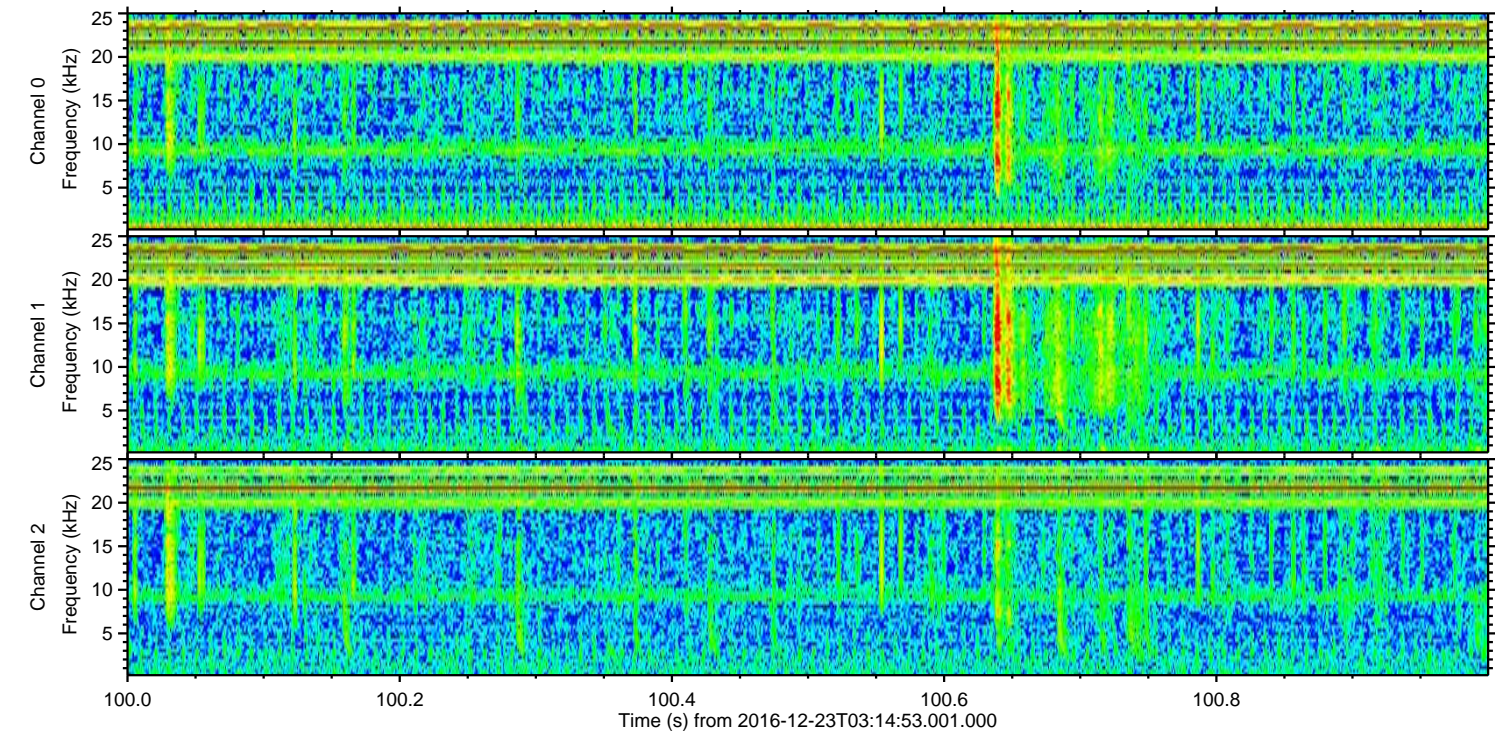
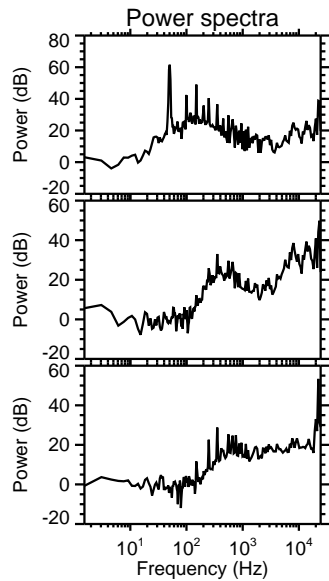
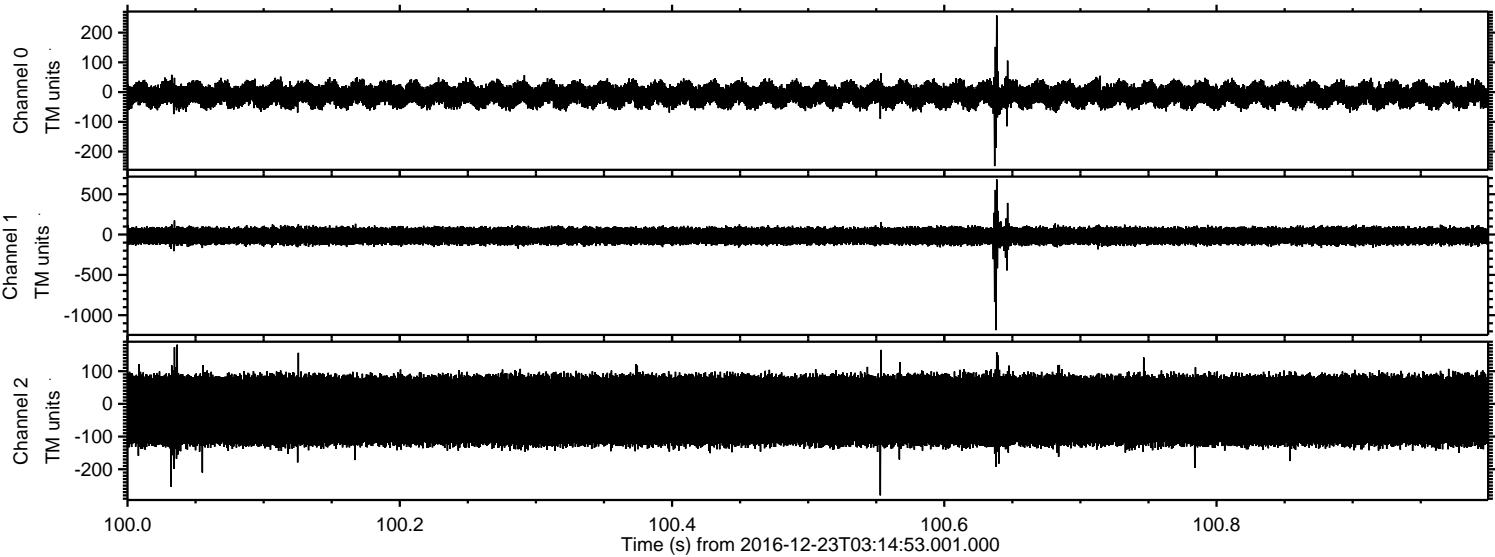


Processed Fri Dec 23 04:22:55 2016 by ELM ver.2012-10-06 from 001__elm20161223_031451__dat00.bin



ELMAVAN 3D WAVEFORMS (Measured data sampled at 50 kHz) 51000 packets of 144 samples from 2016-12-23T03:14:53.001.000. Part 101/147

Processed Fri Dec 23 04:22:56 2016 by ELM ver.2012-10-06 from 001__elm20161223_031451__dat00.bin

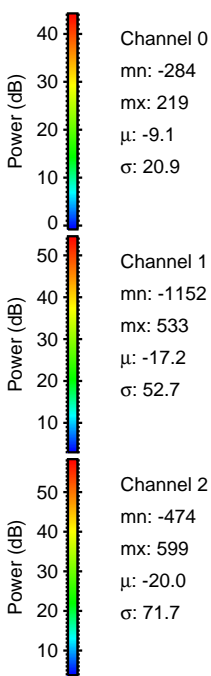
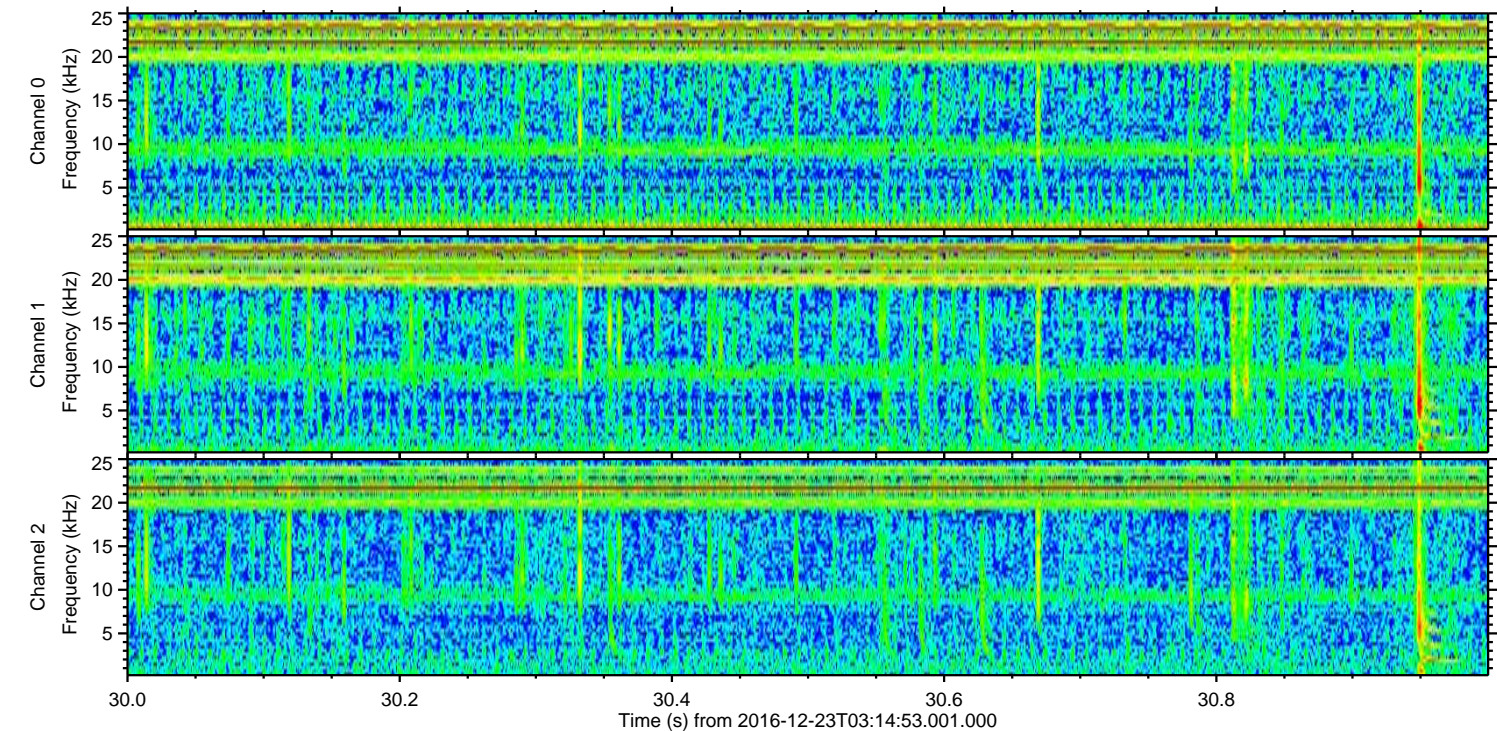
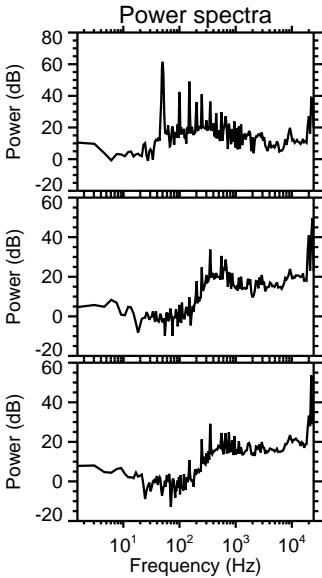
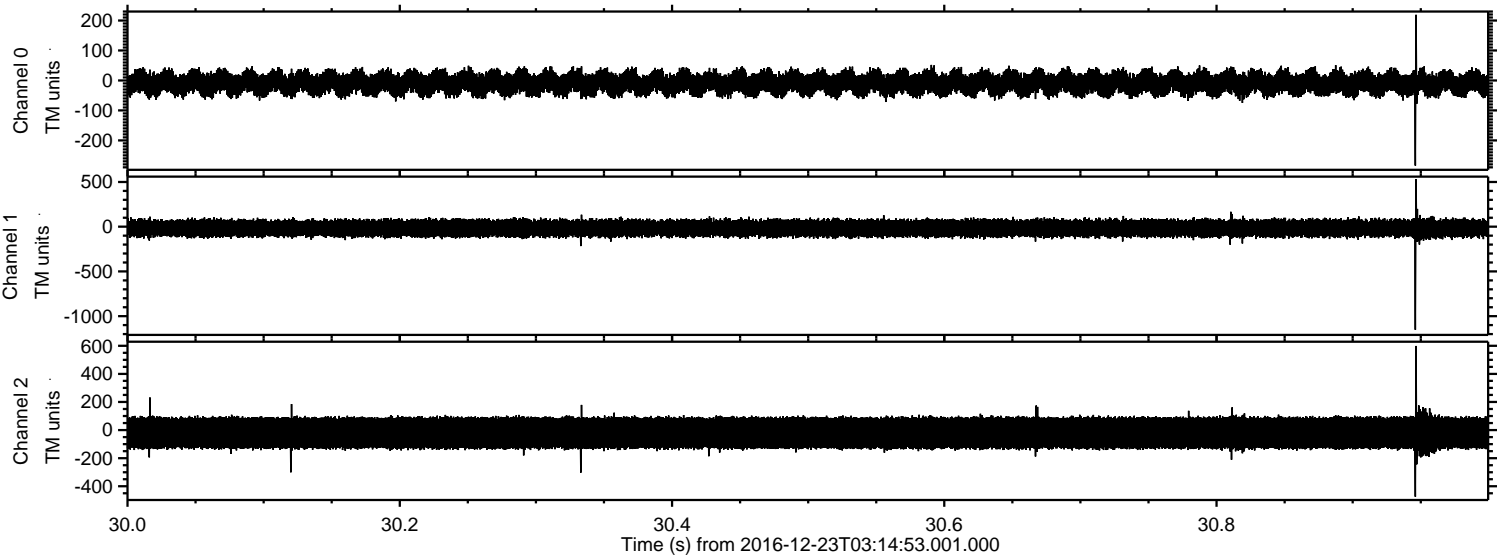


Channel 0
mn: -249
mx: 258
 μ : -9.1
 σ : 21.0

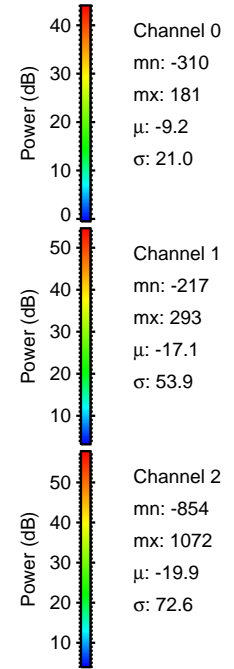
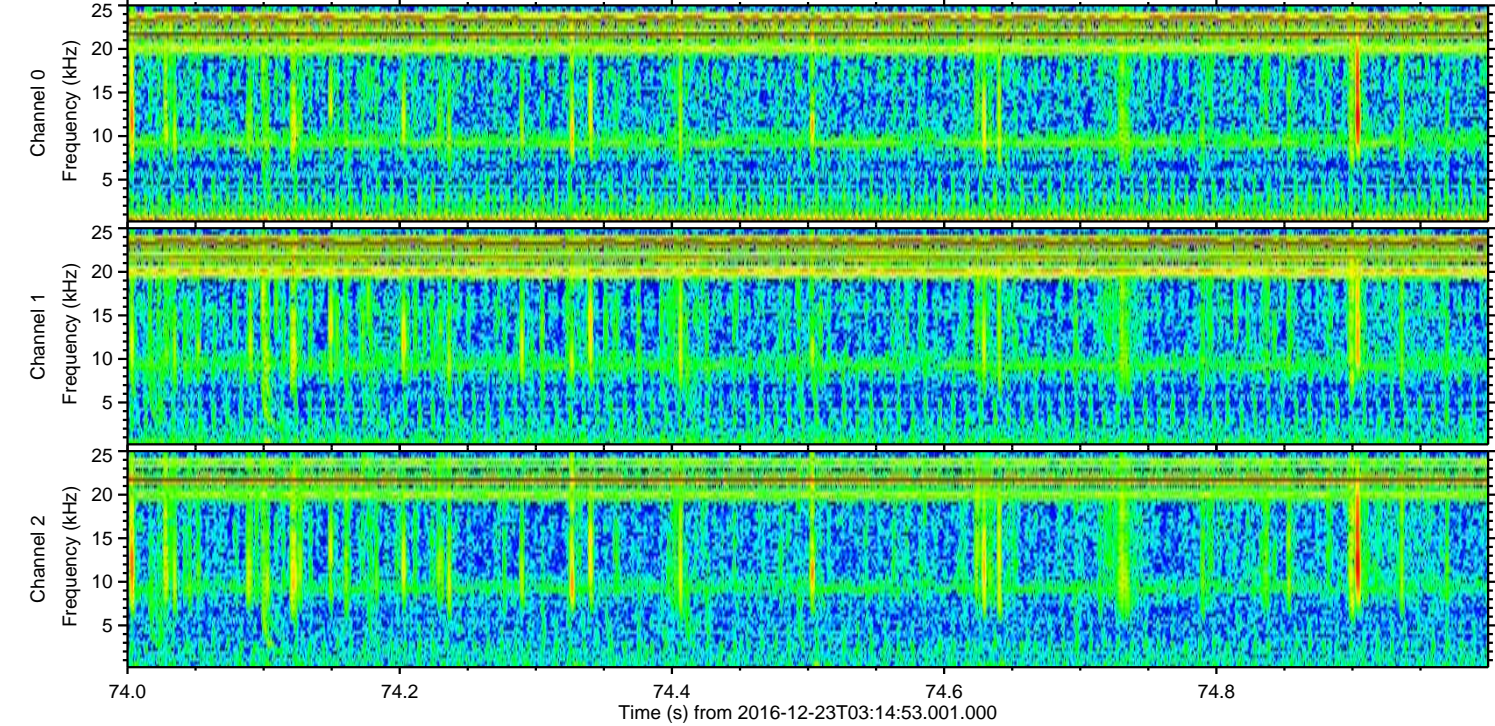
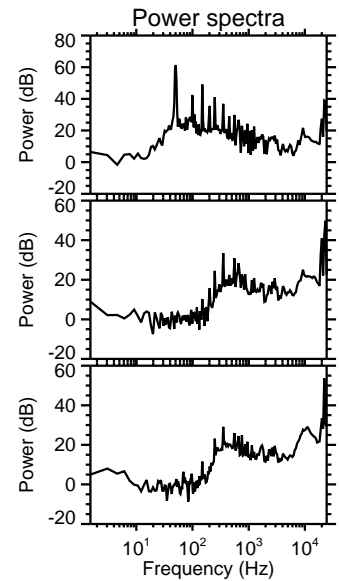
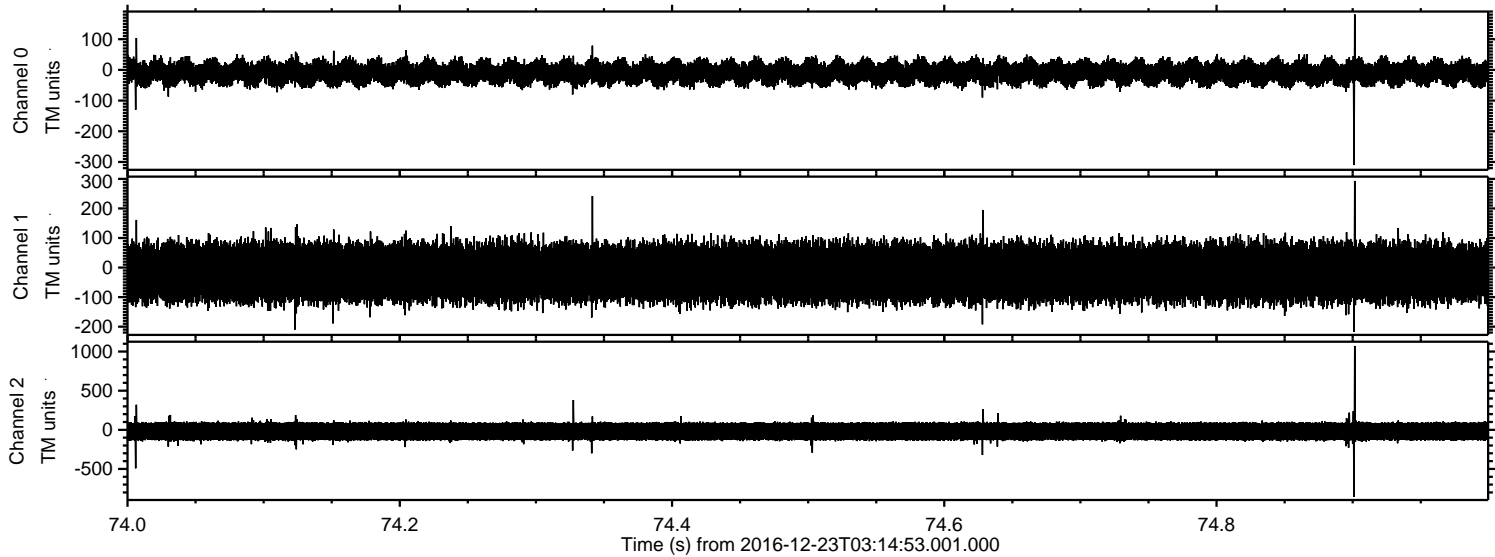
Channel 1
mn: -1185
mx: 684
 μ : -17.2
 σ : 58.2

Channel 2
mn: -280
mx: 181
 μ : -20.0
 σ : 69.4

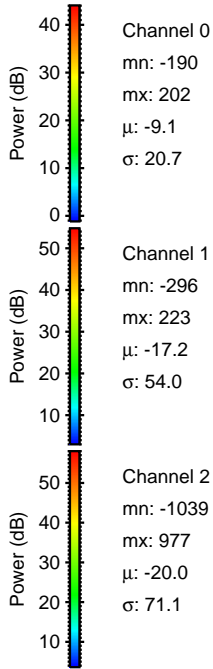
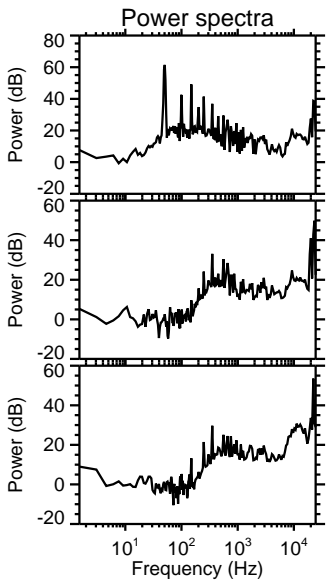
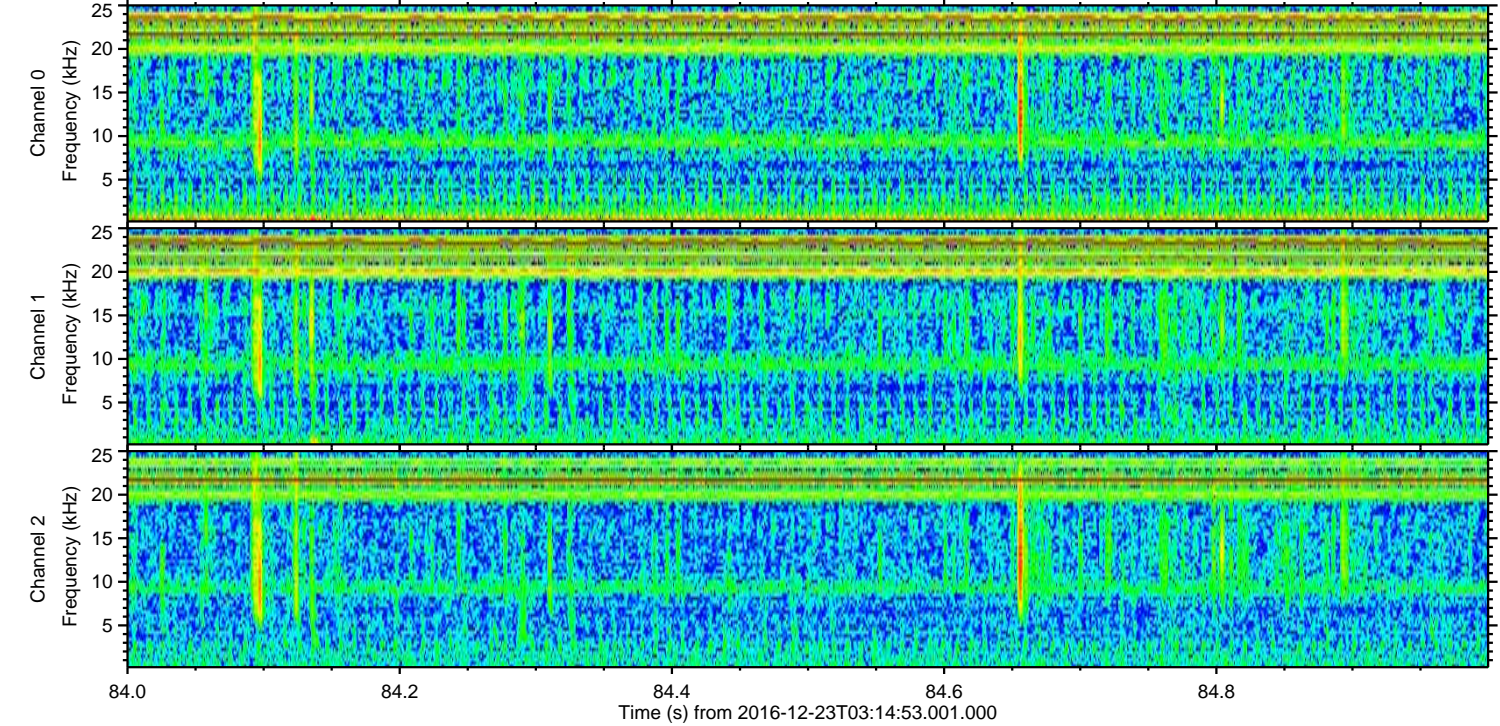
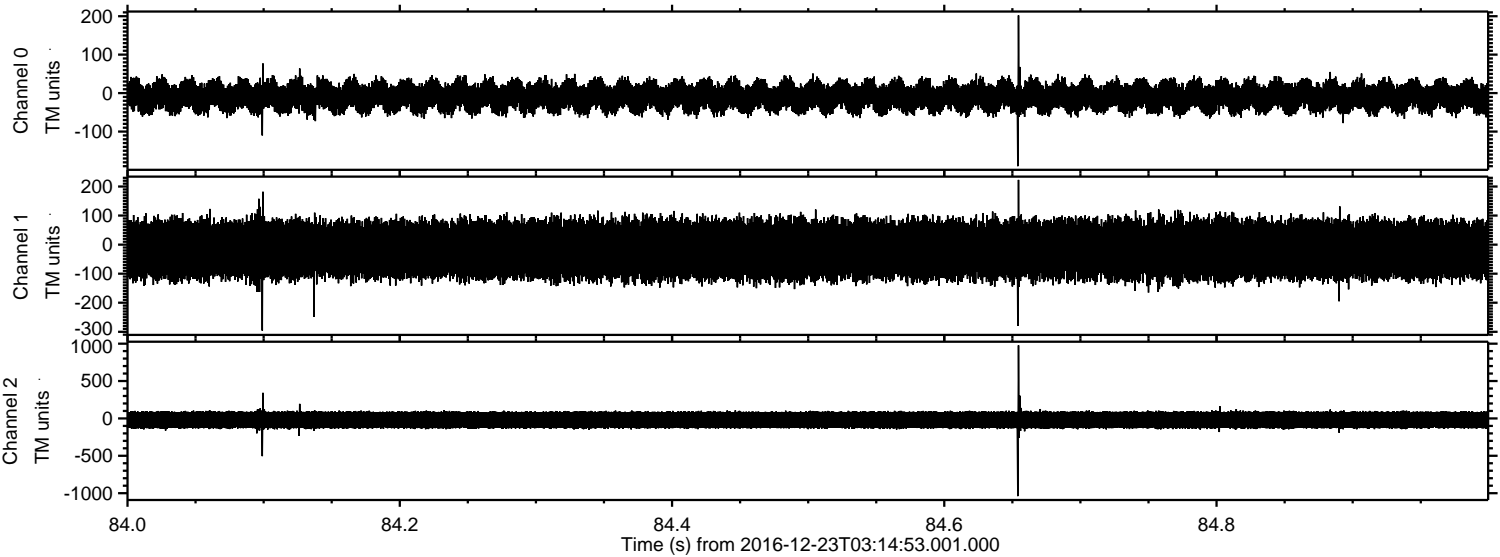
Processed Fri Dec 23 04:22:57 2016 by ELM ver.2012-10-06 from 001__elm20161223_031451__dat00.bin



Processed Fri Dec 23 04:22:57 2016 by ELM ver.2012-10-06 from 001__elm20161223_031451__dat00.bin



Processed Fri Dec 23 04:22:58 2016 by ELM ver.2012-10-06 from 001__elm20161223_031451__dat00.bin



Processed Fri Dec 23 04:22:59 2016 by ELM ver.2012-10-06 from 001__elm20161223_031451__dat00.bin

