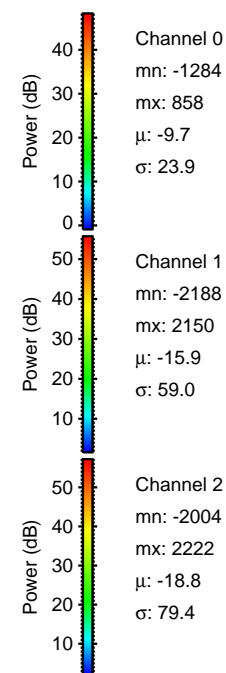
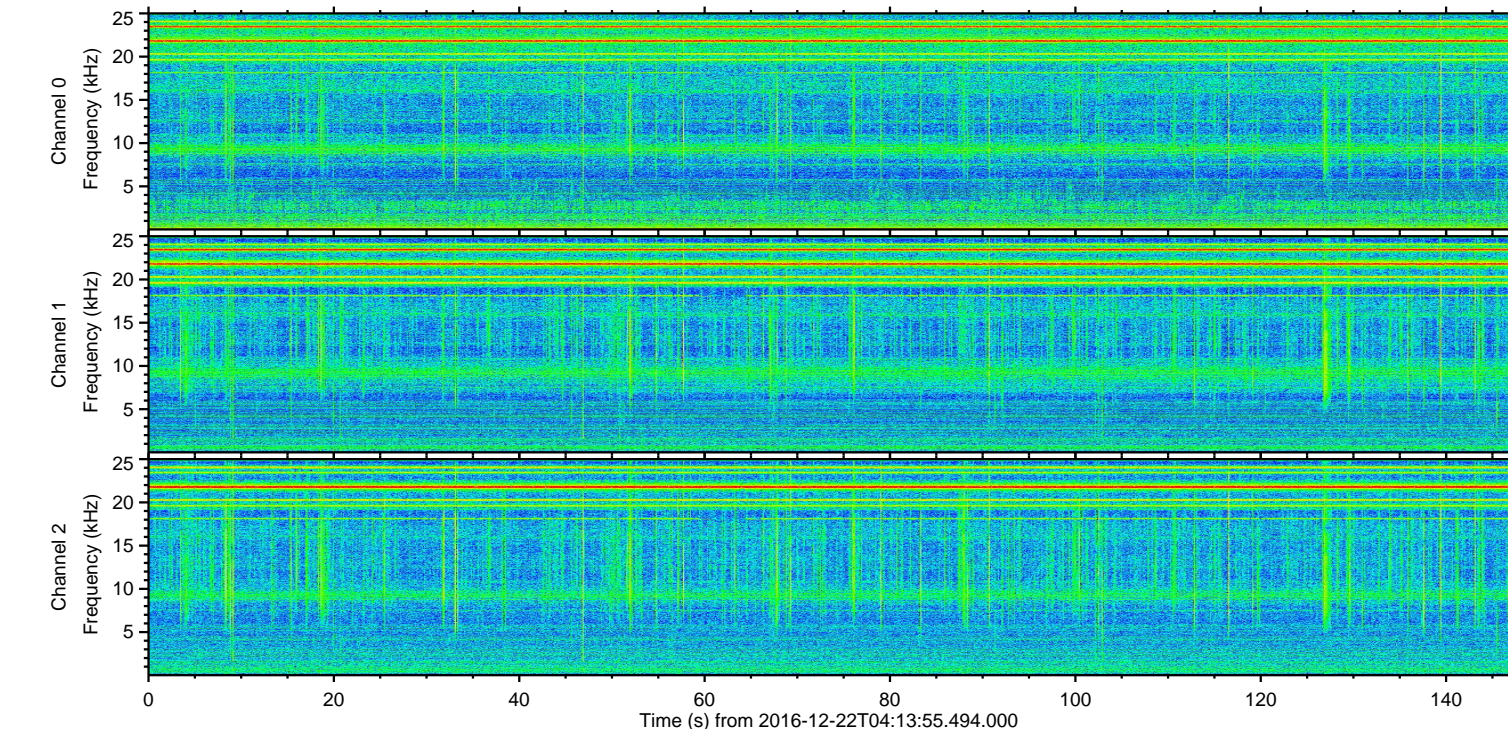
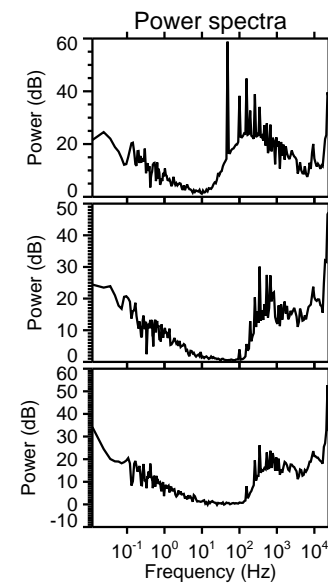
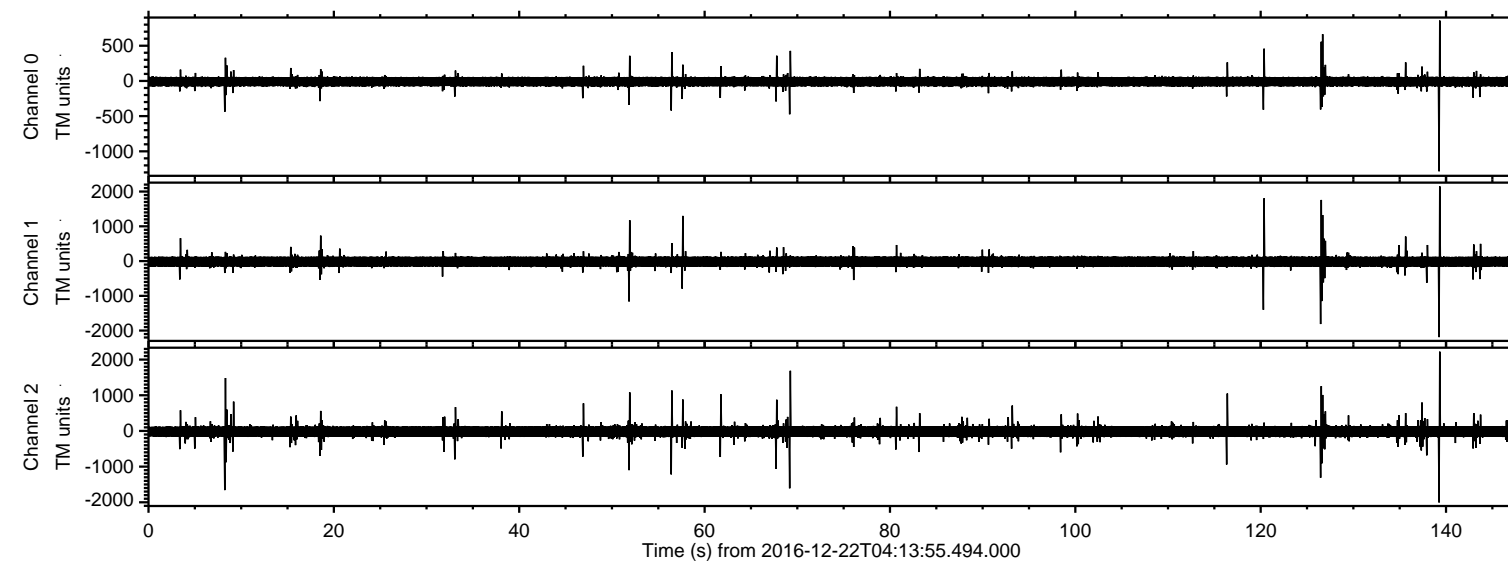


ELMAVAN 3D WAVEFORMS (Measured data sampled at 50 kHz) 51000 packets of 144 samples from 2016-12-22T04:13:55.494.000.

Processed Thu Dec 22 05:21:31 2016 by ELM ver.2012-10-06 from 001__elm20161222_041354__dat00.bin



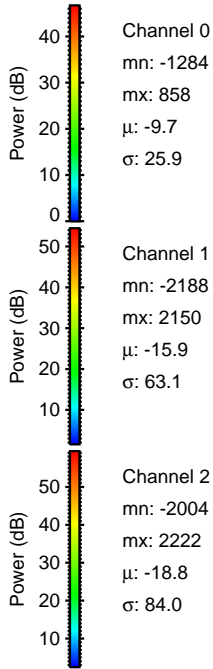
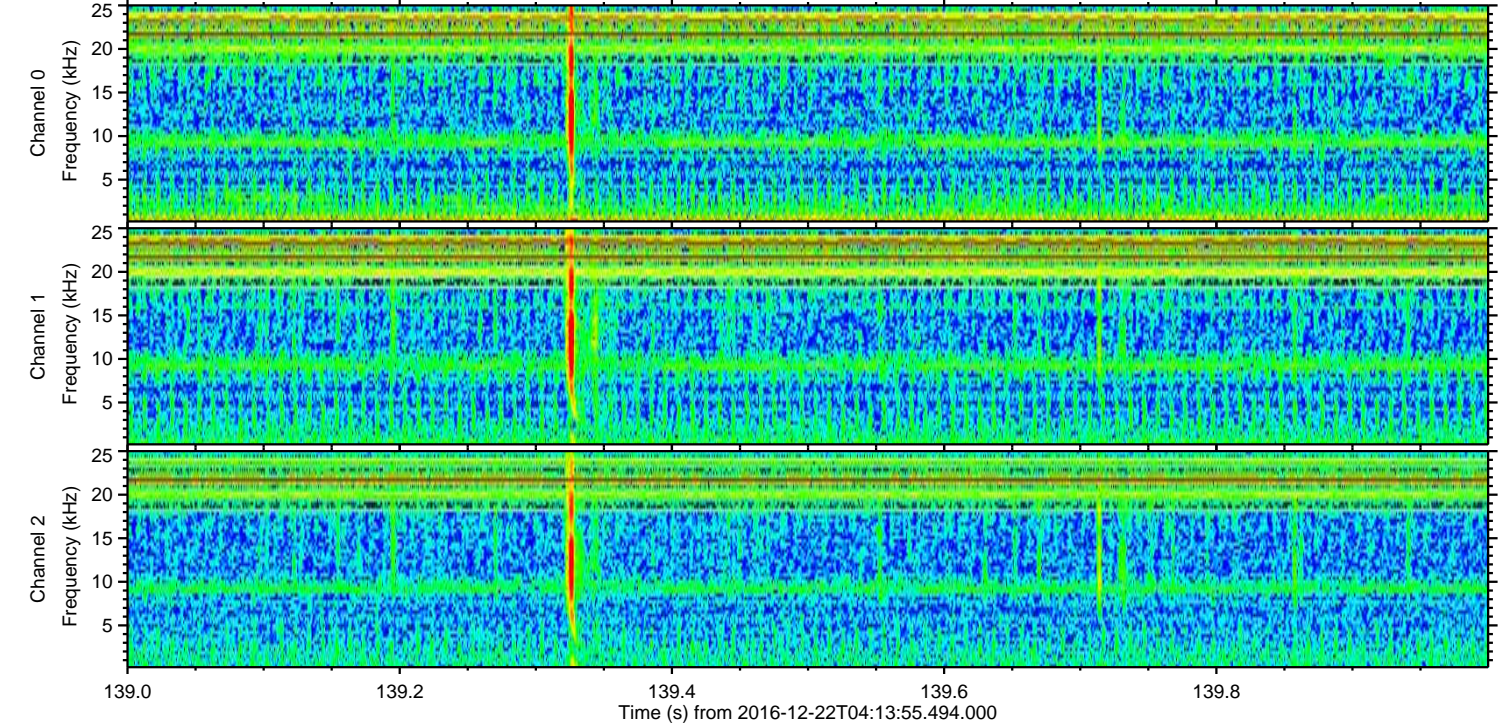
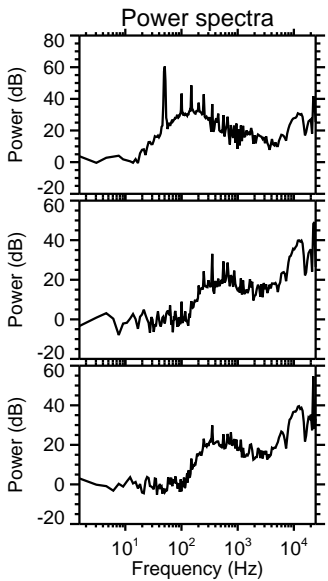
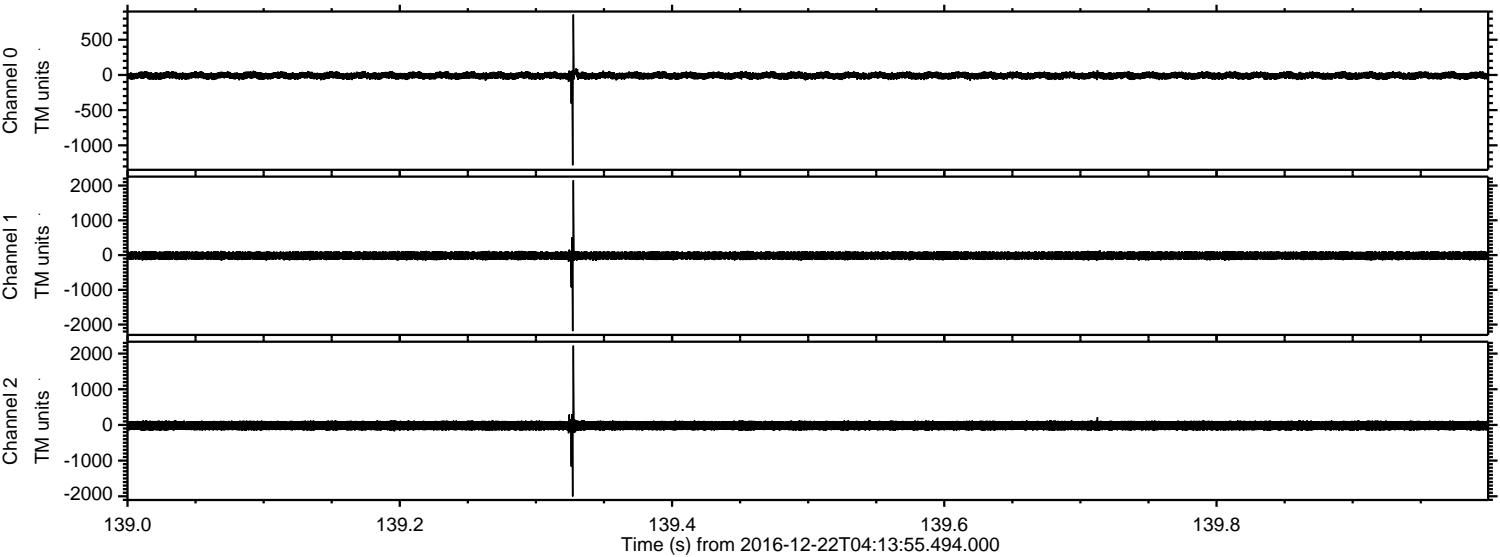
Channel 0
mn: -1284
mx: 858
 μ : -9.7
 σ : 23.9

Channel 1
mn: -2188
mx: 2150
 μ : -15.9
 σ : 59.0

Channel 2
mn: -2004
mx: 2222
 μ : -18.8
 σ : 79.4

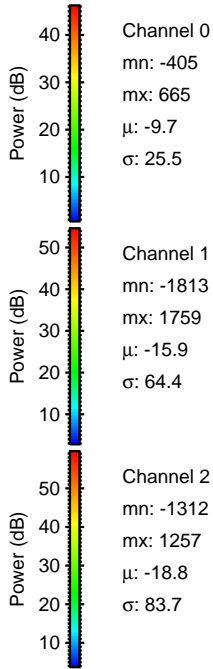
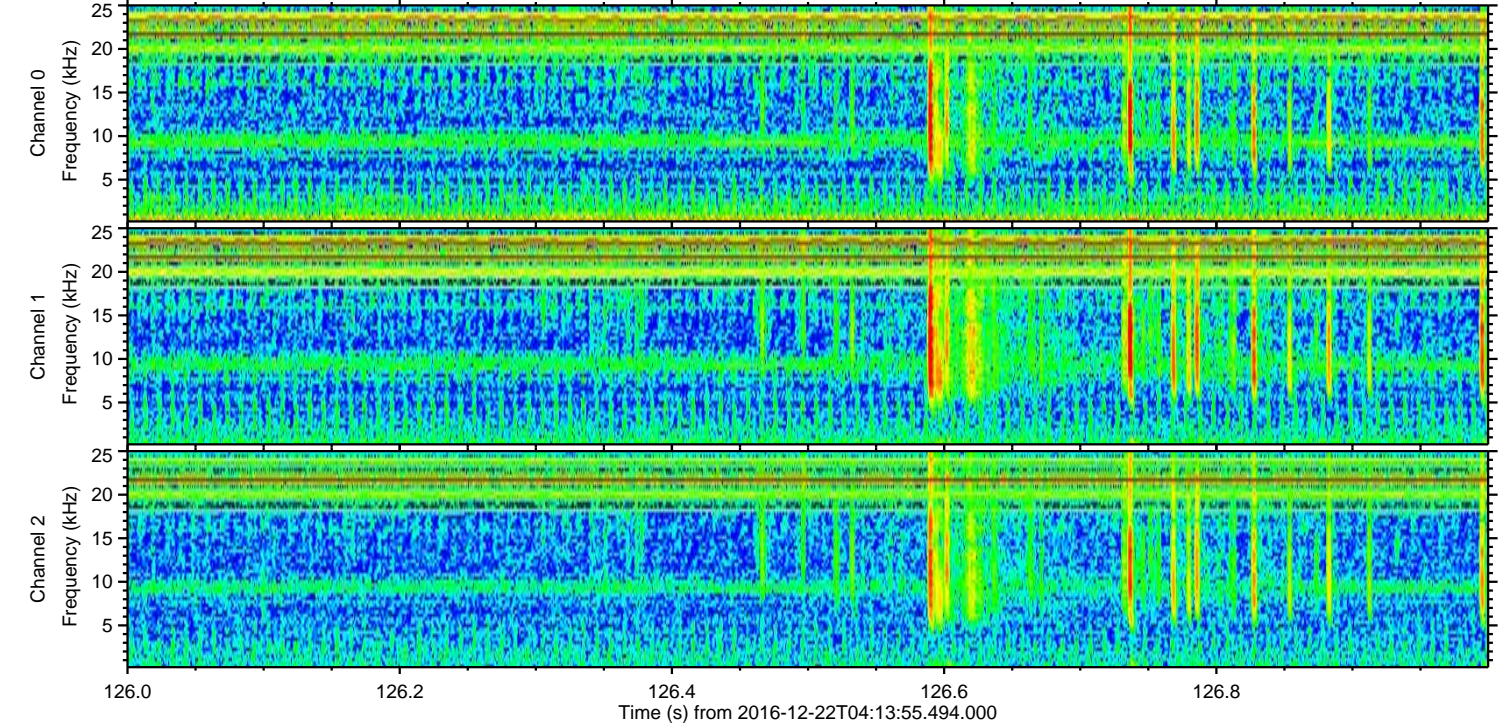
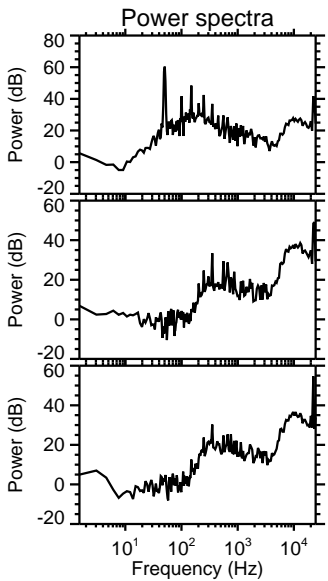
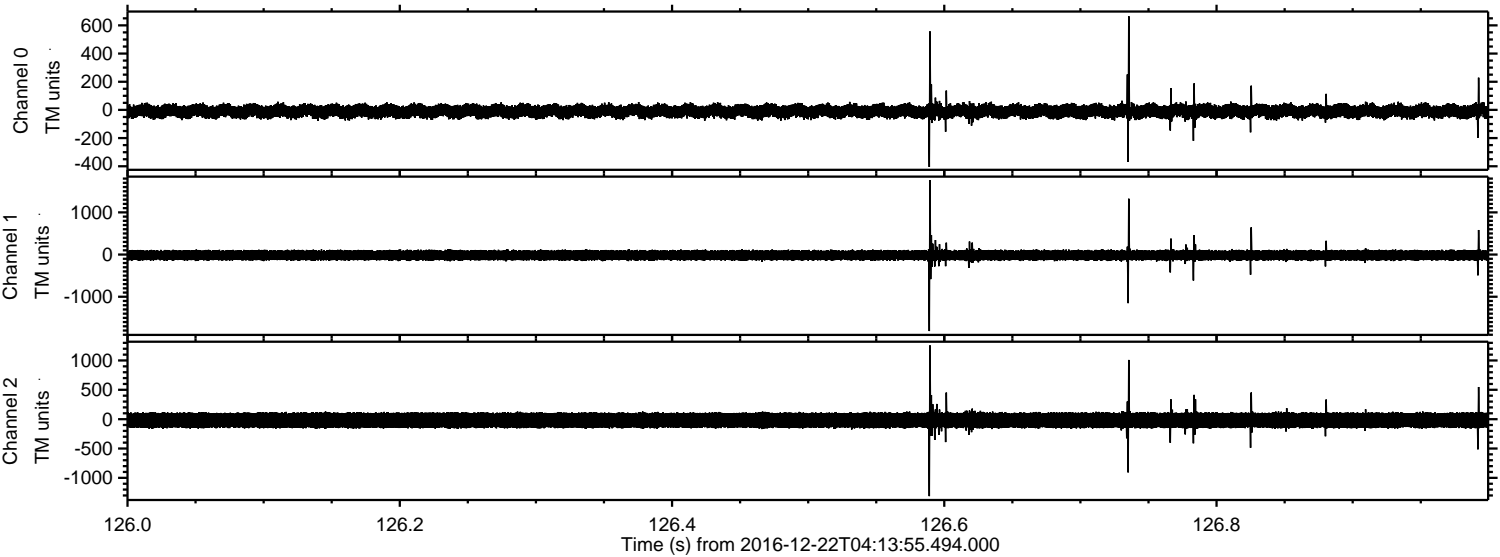
ELMAVAN 3D WAVEFORMS (Measured data sampled at 50 kHz) 51000 packets of 144 samples from 2016-12-22T04:13:55.494.000. Part 140/147

Processed Thu Dec 22 05:21:43 2016 by ELM ver.2012-10-06 from 001__elm20161222_041354__dat00.bin



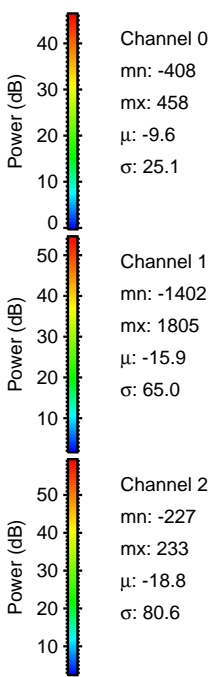
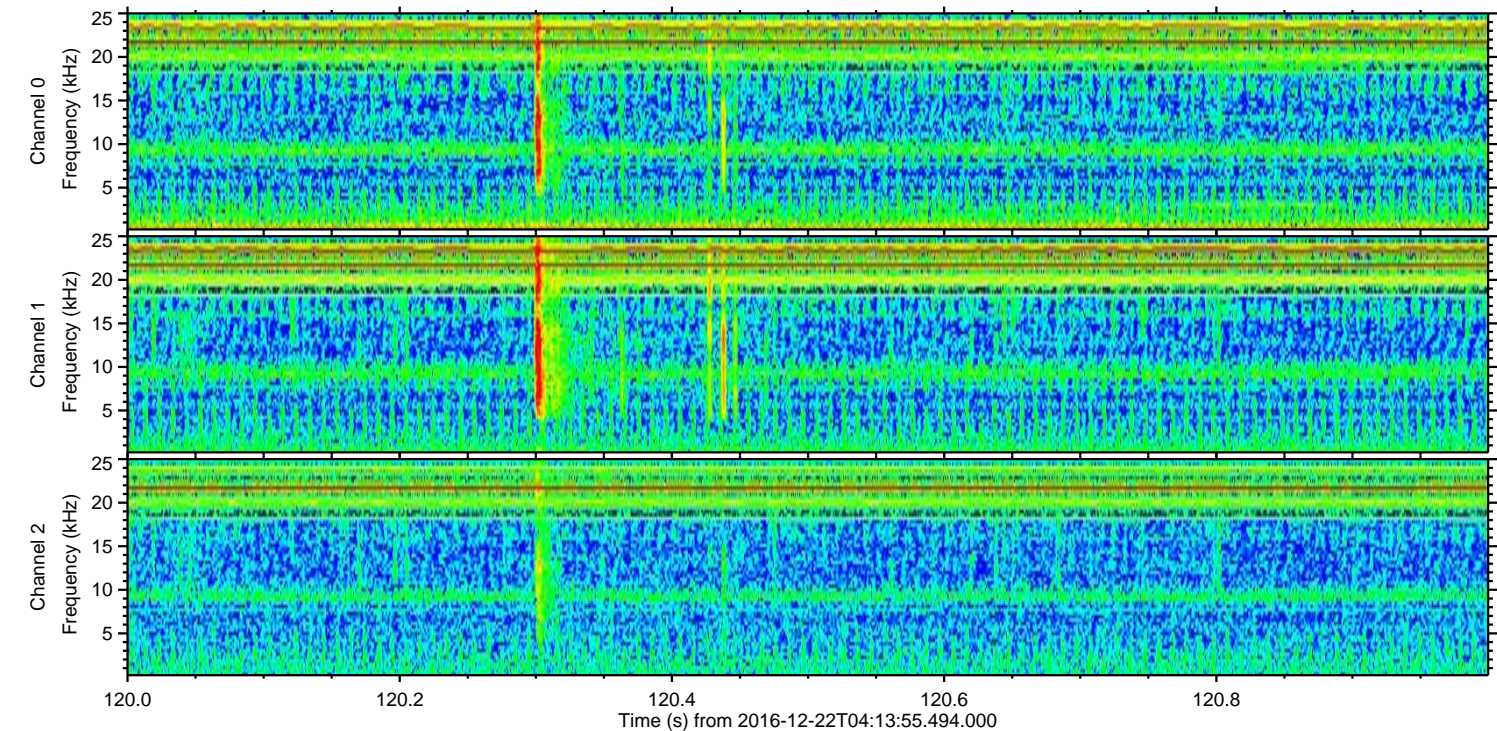
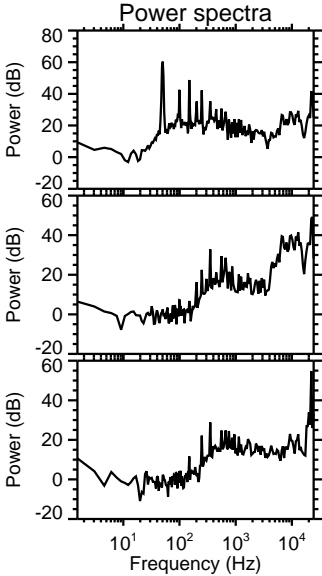
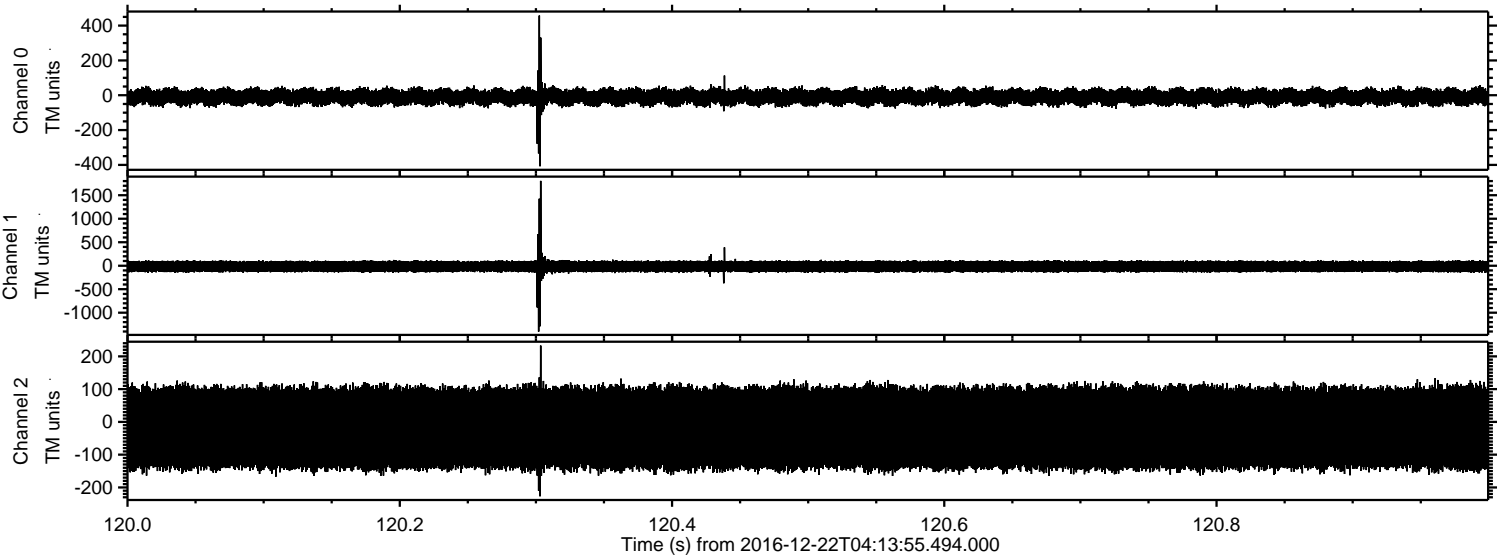
ELMAVAN 3D WAVEFORMS (Measured data sampled at 50 kHz) 51000 packets of 144 samples from 2016-12-22T04:13:55.494.000. Part 127/147

Processed Thu Dec 22 05:21:43 2016 by ELM ver.2012-10-06 from 001__elm20161222_041354__dat00.bin

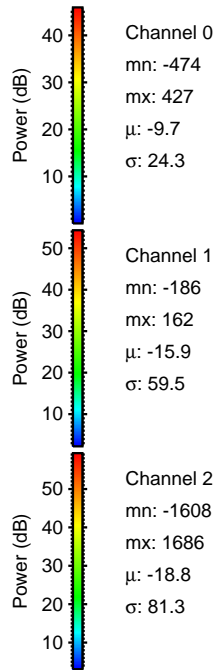
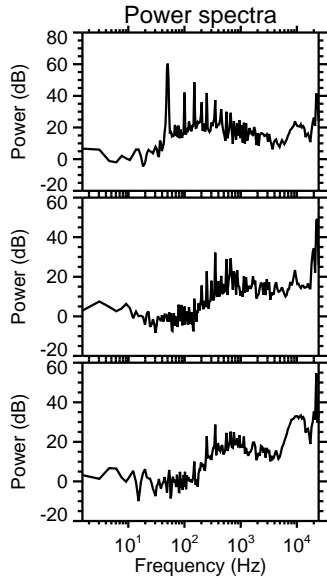
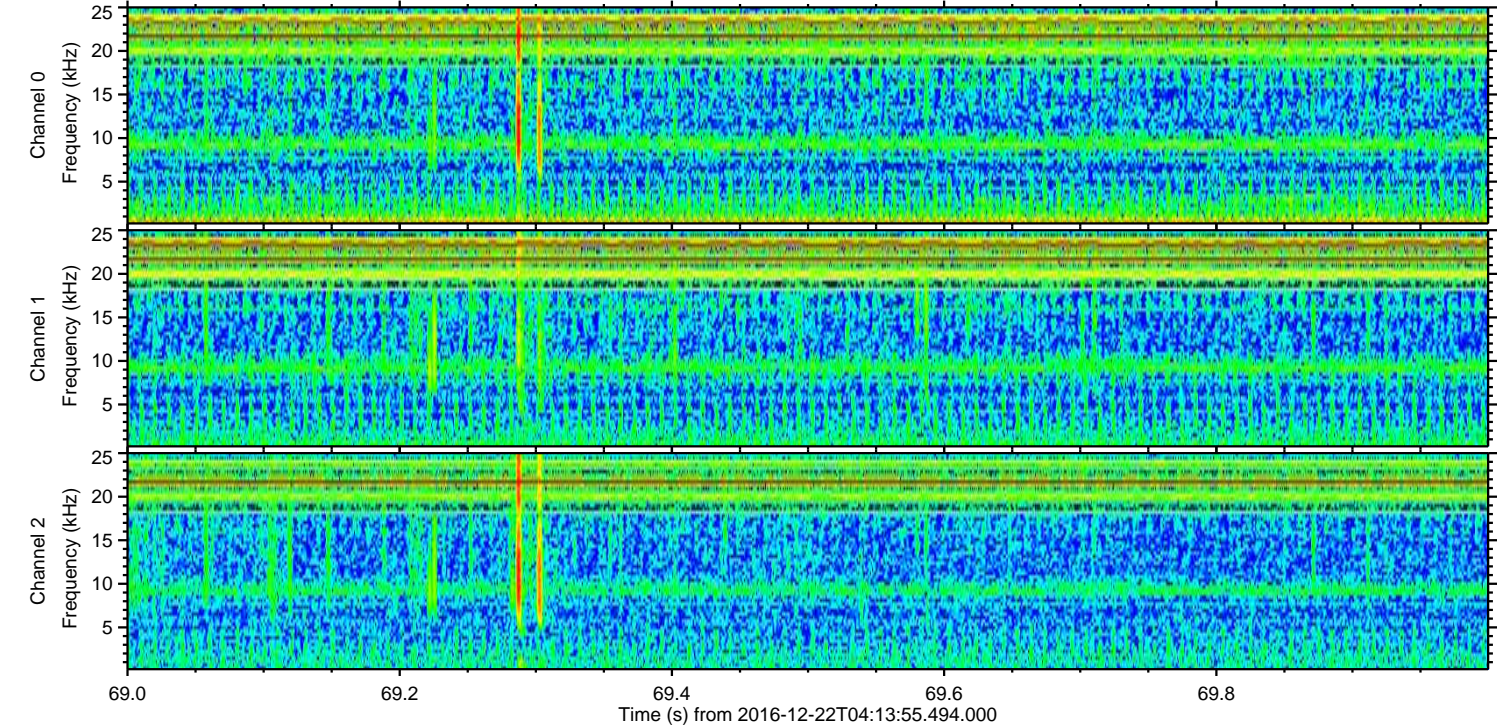
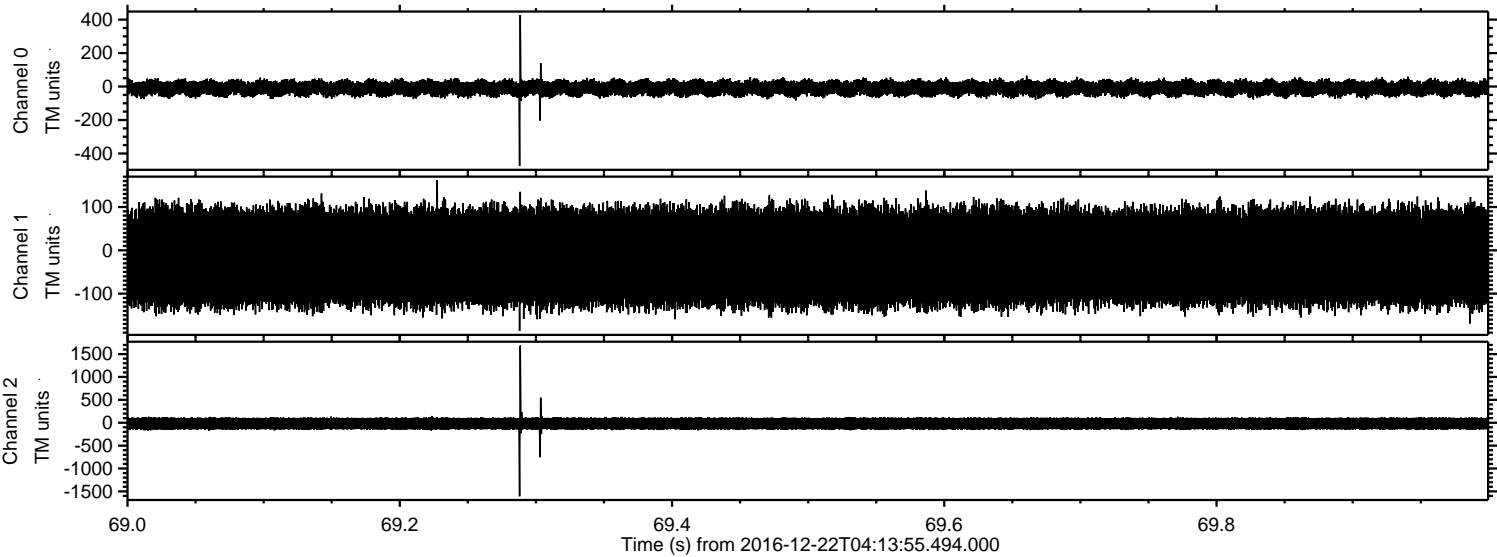


ELMAVAN 3D WAVEFORMS (Measured data sampled at 50 kHz) 51000 packets of 144 samples from 2016-12-22T04:13:55.494.000. Part 121/147

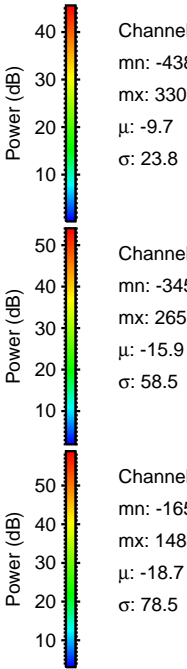
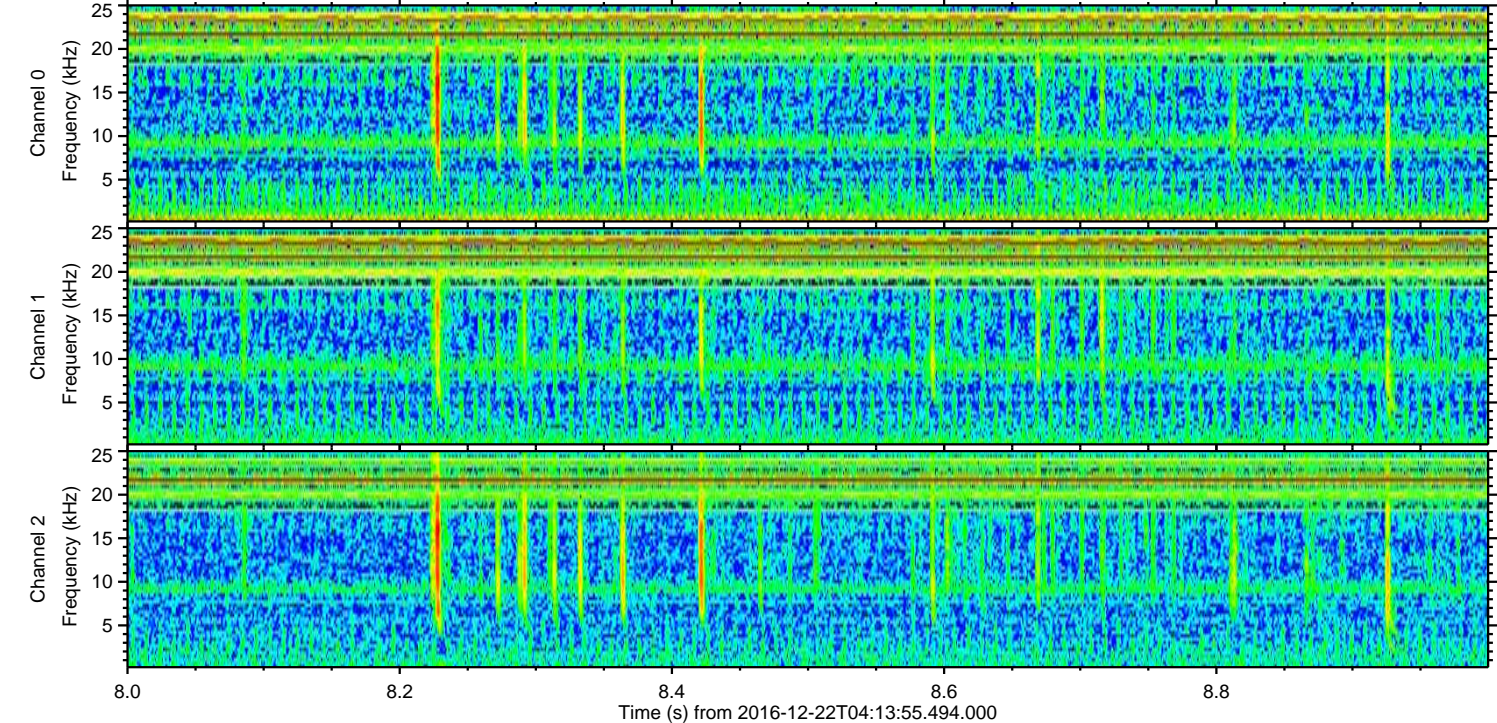
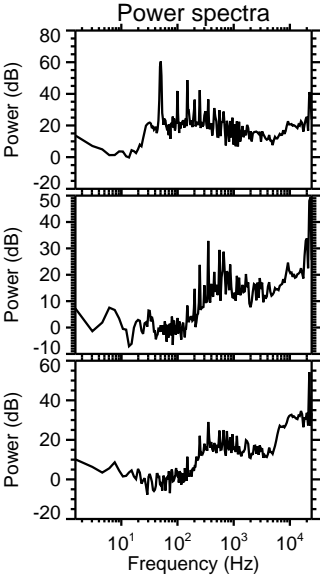
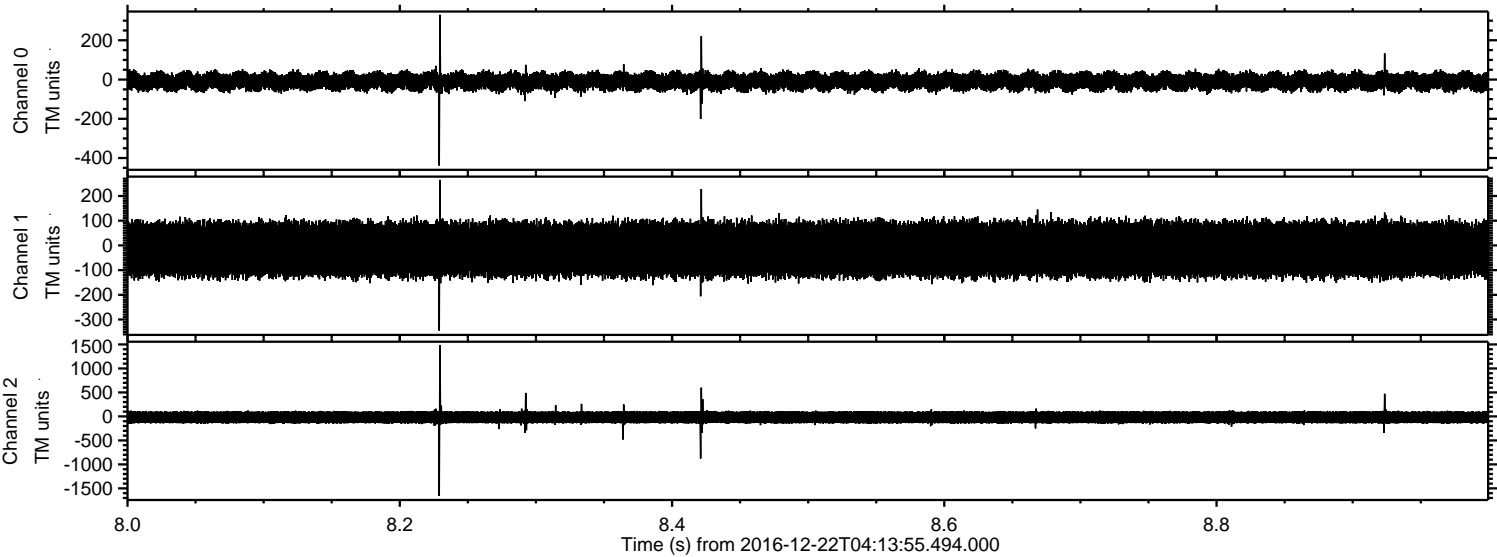
Processed Thu Dec 22 05:21:44 2016 by ELM ver.2012-10-06 from 001__elm20161222_041354__dat00.bin



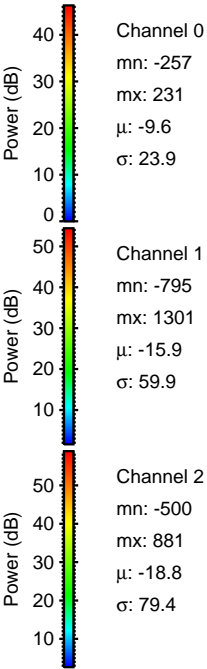
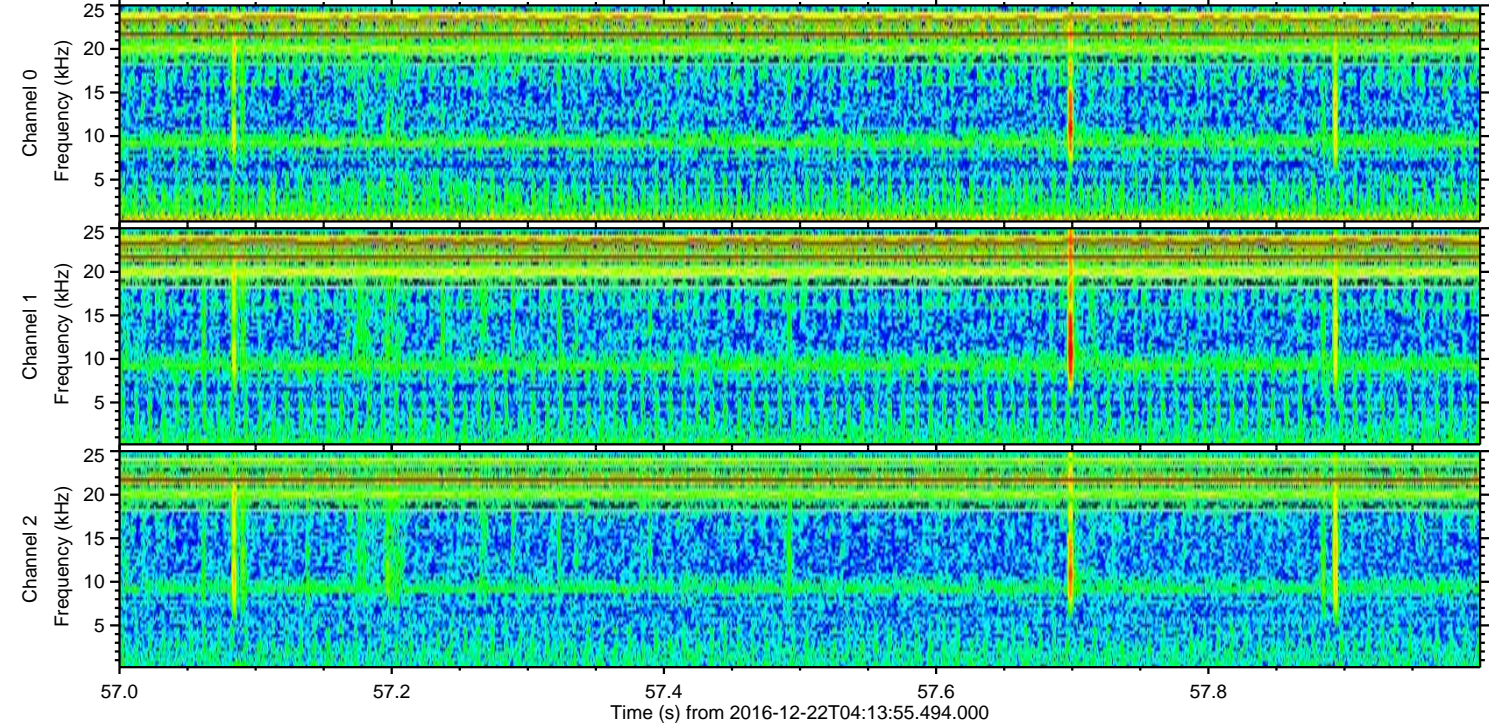
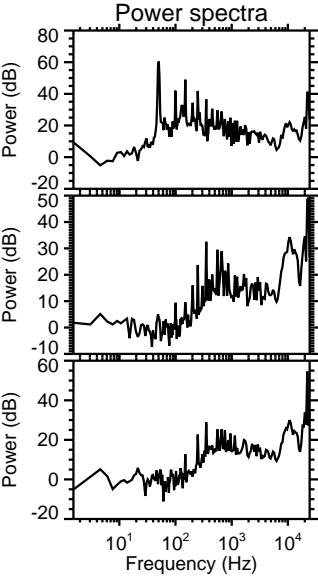
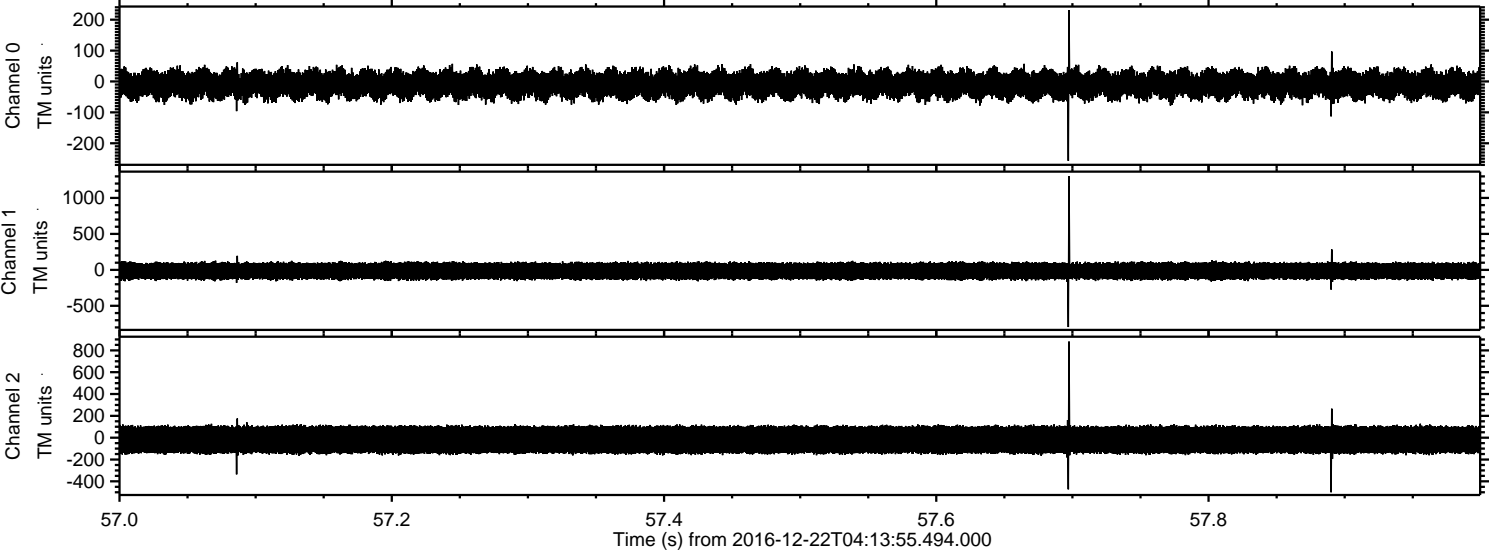
Processed Thu Dec 22 05:21:45 2016 by ELM ver.2012-10-06 from 001__elm20161222_041354__dat00.bin



Processed Thu Dec 22 05:21:46 2016 by ELM ver.2012-10-06 from 001__elm20161222_041354__dat00.bin



Processed Thu Dec 22 05:21:47 2016 by ELM ver.2012-10-06 from 001__elm20161222_041354__dat00.bin

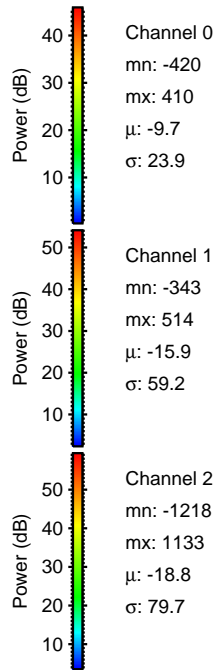
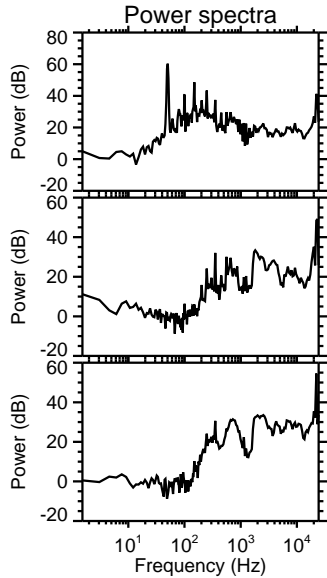
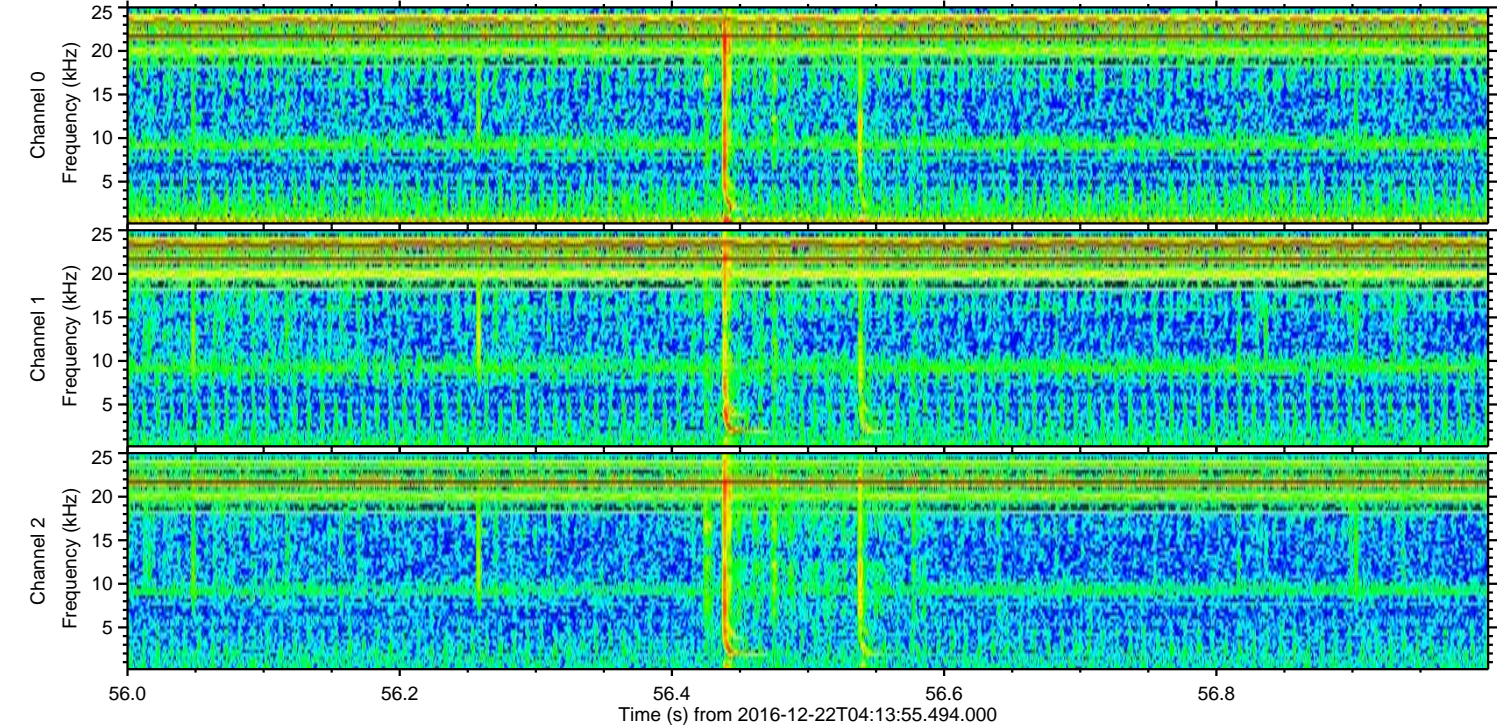
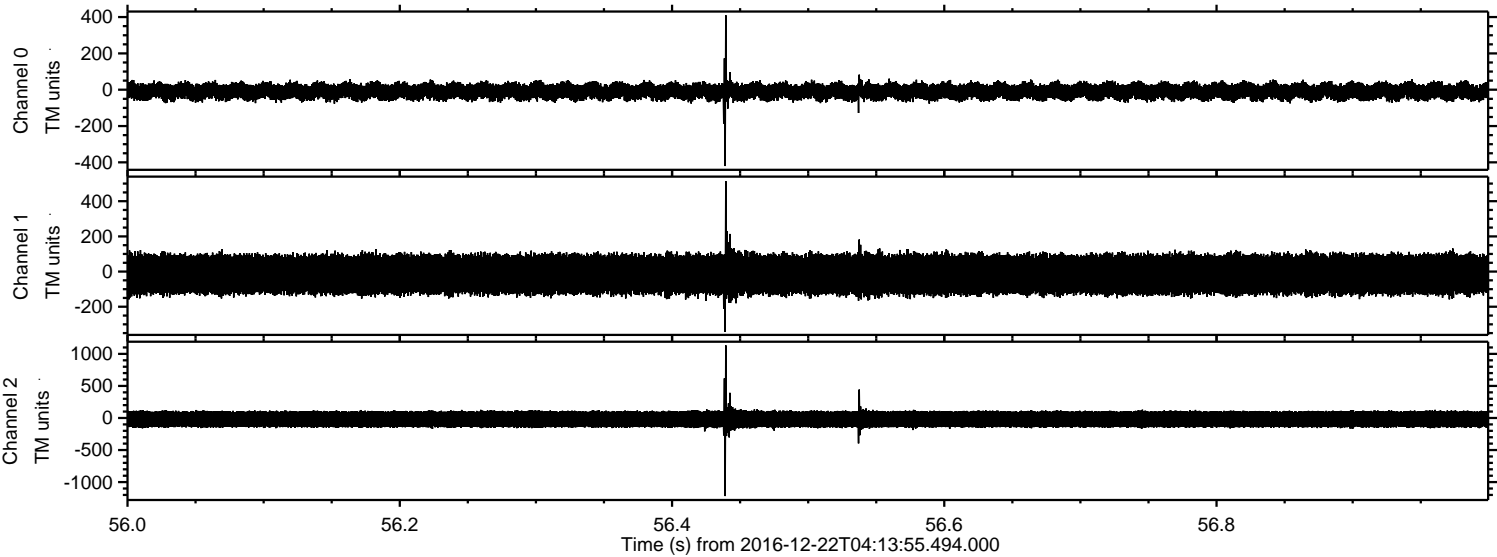


Channel 0
mn: -257
mx: 231
 μ : -9.6
 σ : 23.9

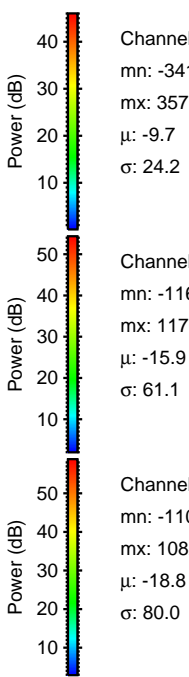
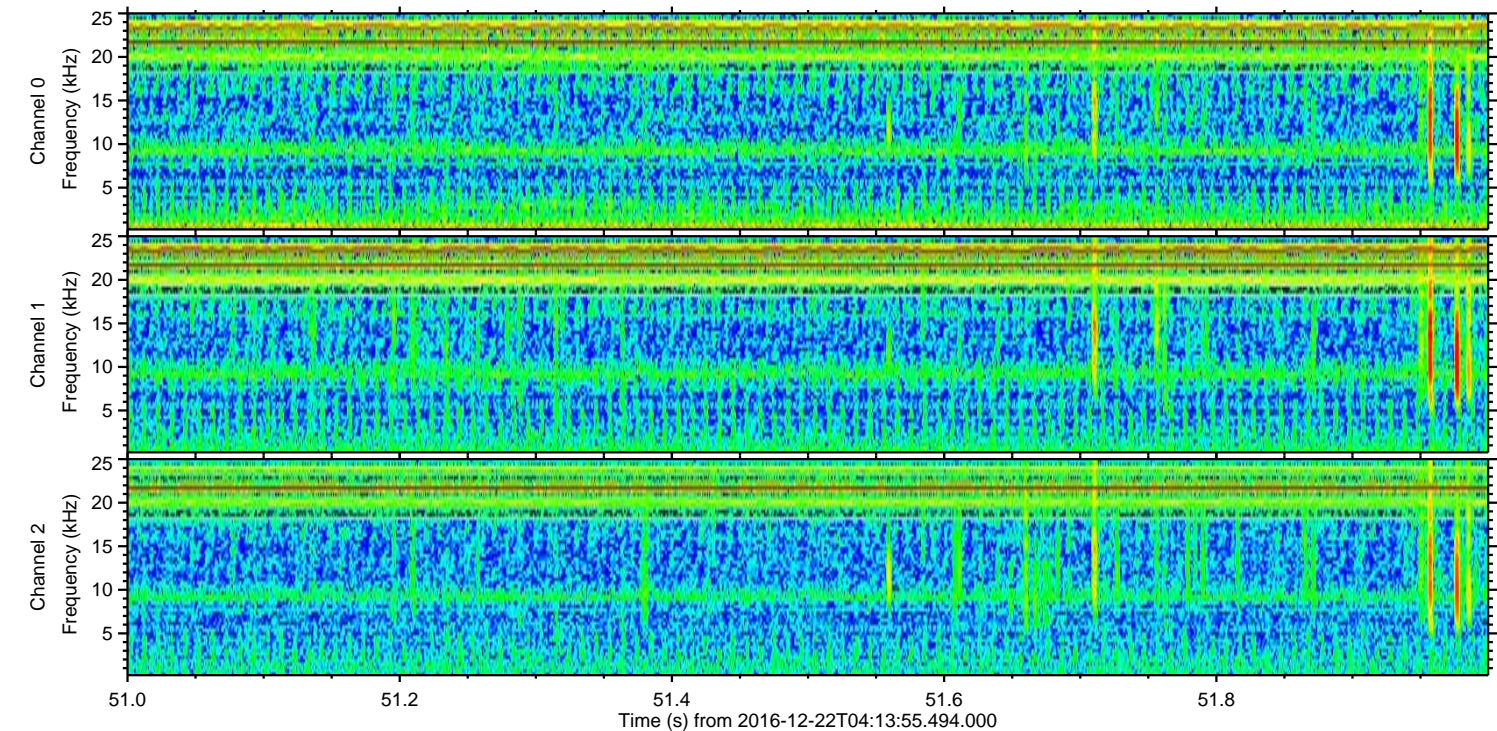
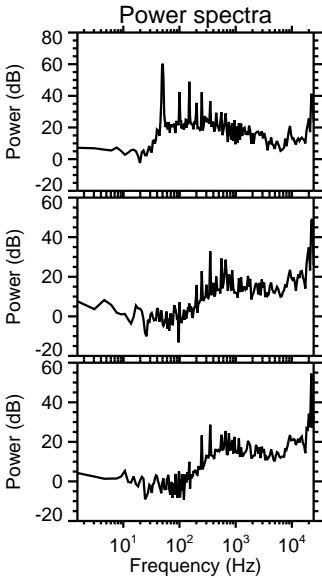
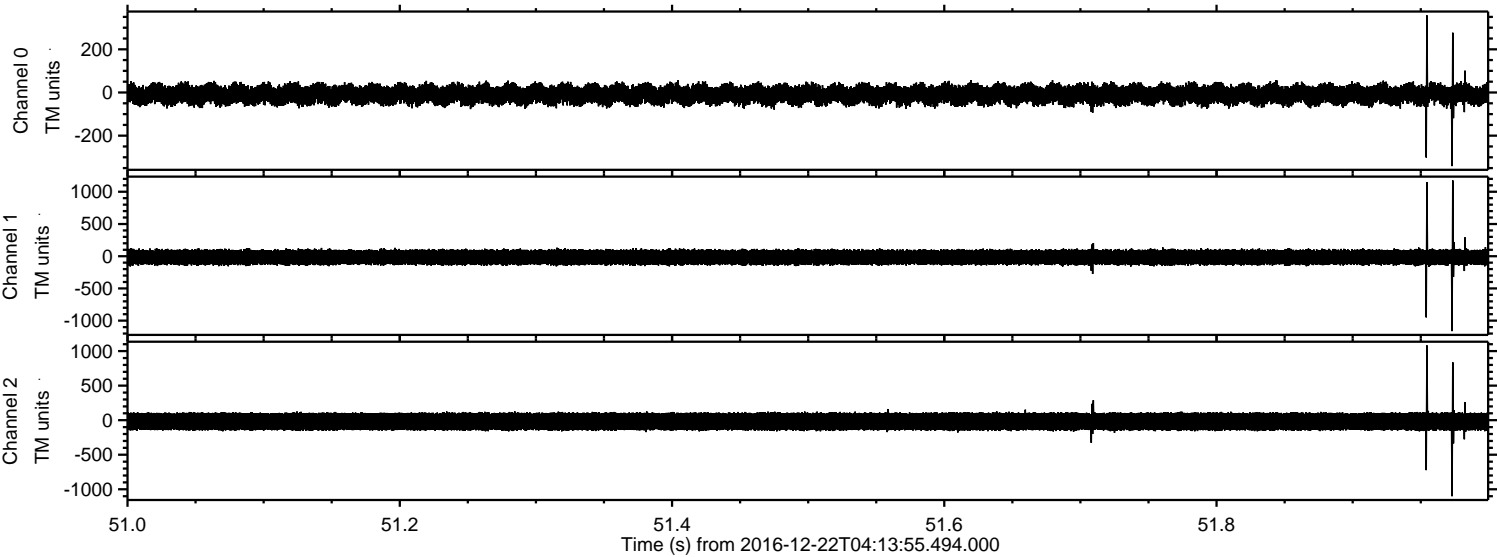
Channel 1
mn: -795
mx: 1301
 μ : -15.9
 σ : 59.9

Channel 2
mn: -500
mx: 881
 μ : -18.8
 σ : 79.4

Processed Thu Dec 22 05:21:48 2016 by ELM ver.2012-10-06 from 001__elm20161222_041354__dat00.bin



Processed Thu Dec 22 05:21:49 2016 by ELM ver.2012-10-06 from 001__elm20161222_041354__dat00.bin

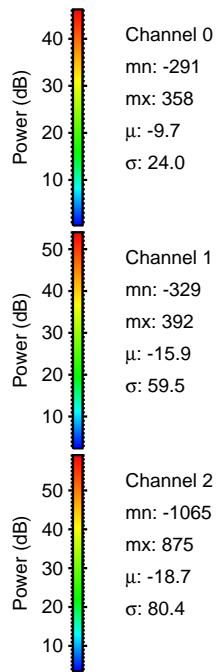
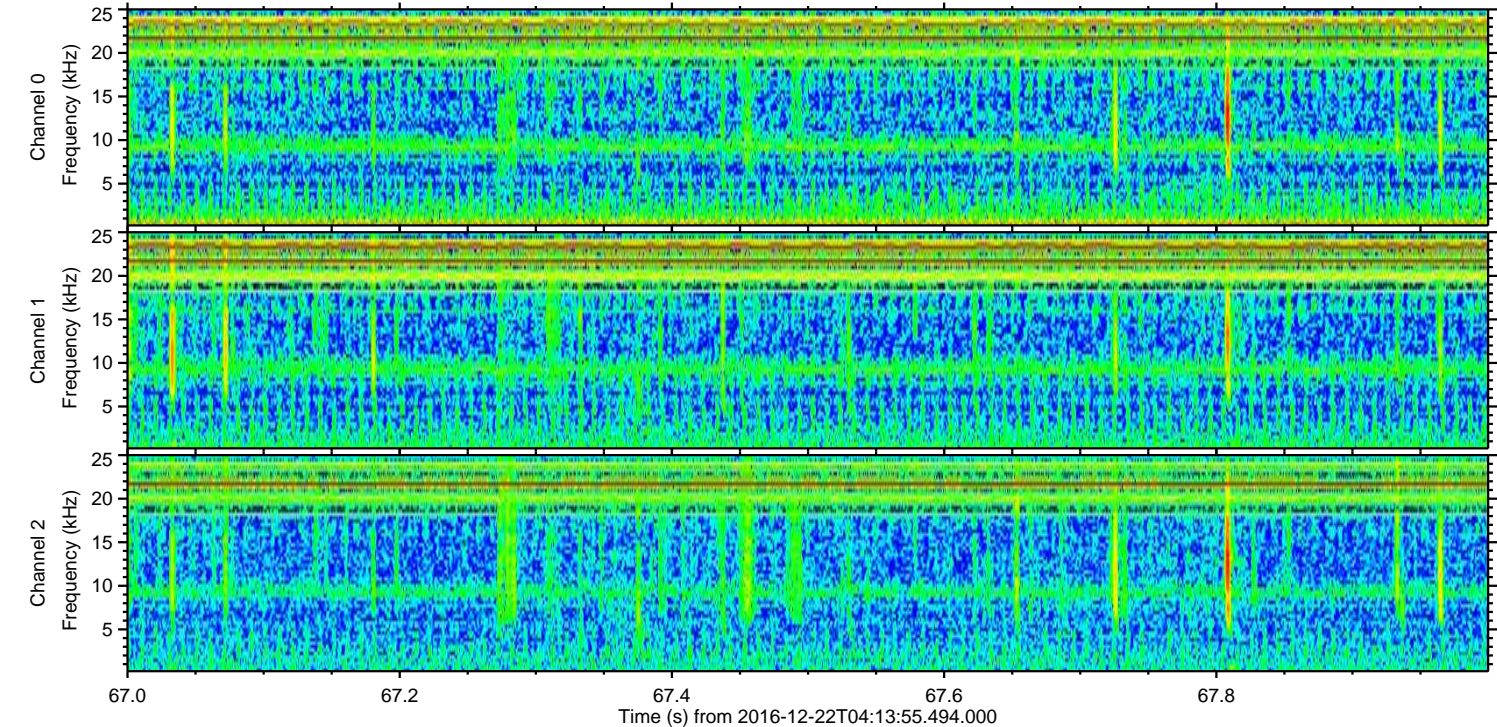
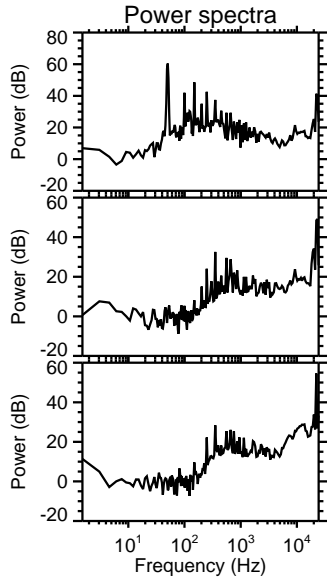
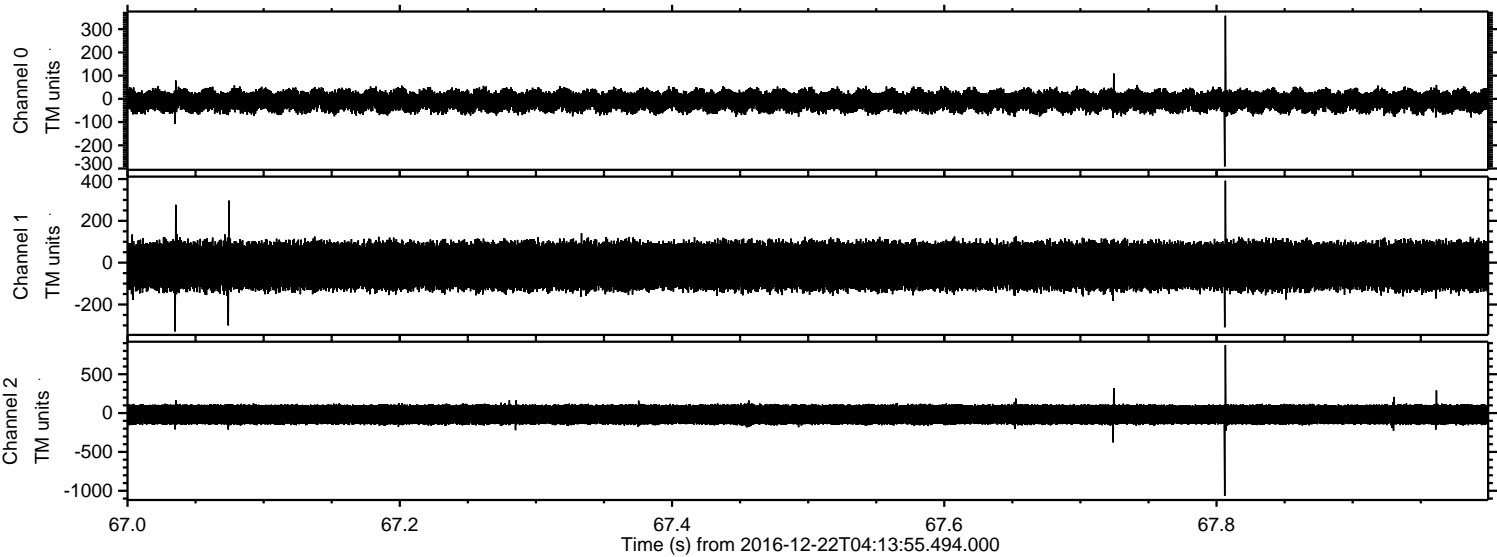


Channel 0
mn: -341
mx: 357
 μ : -9.7
 σ : 24.2

Channel 1
mn: -1163
mx: 1176
 μ : -15.9
 σ : 61.1

Channel 2
mn: -1100
mx: 1082
 μ : -18.8
 σ : 80.0

Processed Thu Dec 22 05:21:50 2016 by ELM ver.2012-10-06 from 001__elm20161222_041354__dat00.bin



Processed Thu Dec 22 05:21:51 2016 by ELM ver.2012-10-06 from 001__elm20161222_041354__dat00.bin

