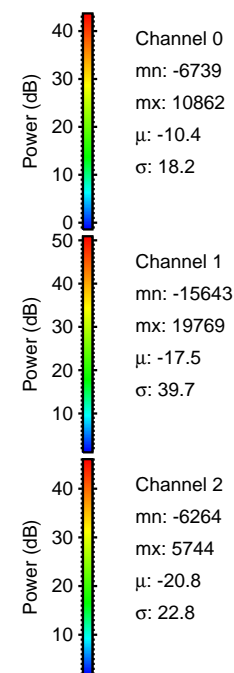
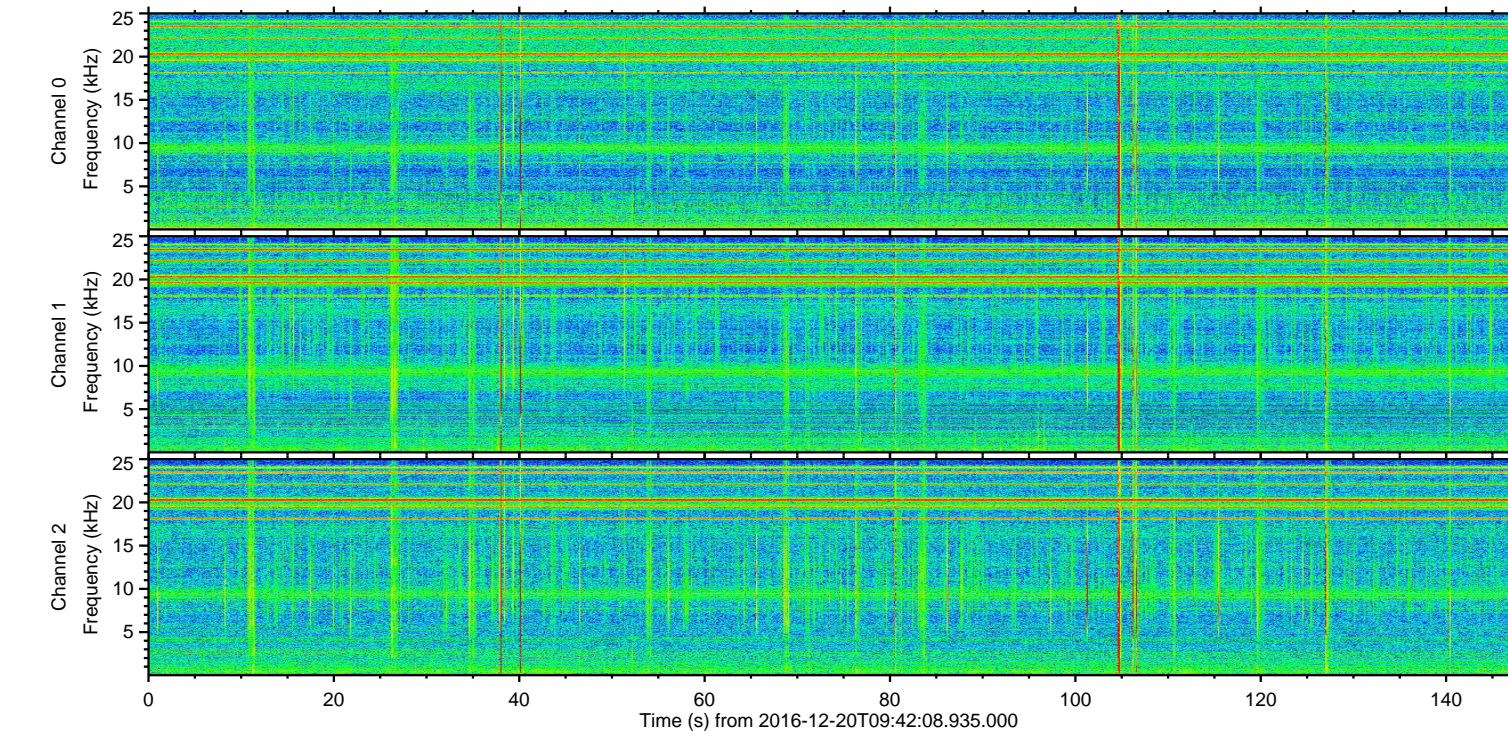
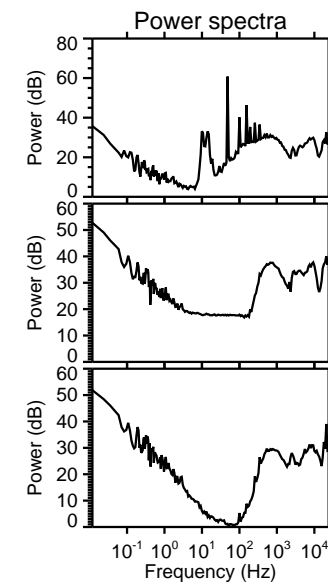
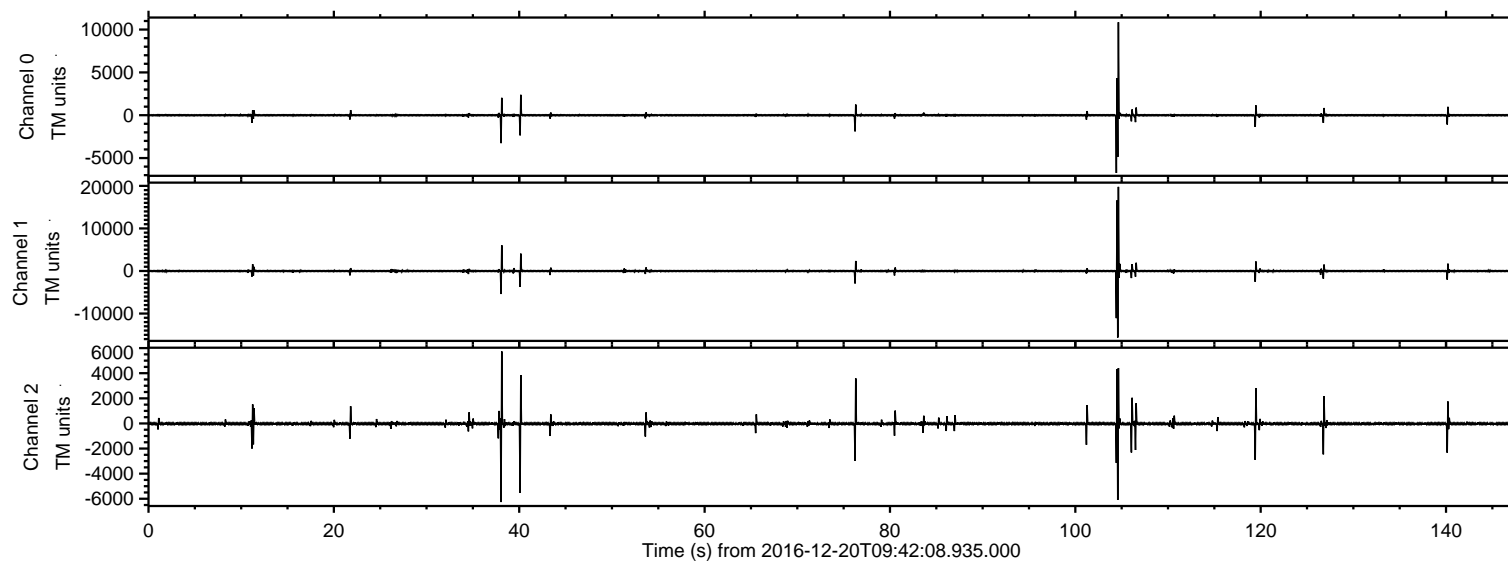


# ELMAVAN 3D WAVEFORMS (Measured data sampled at 50 kHz) 51000 packets of 144 samples from 2016-12-20T09:42:08.935.000.

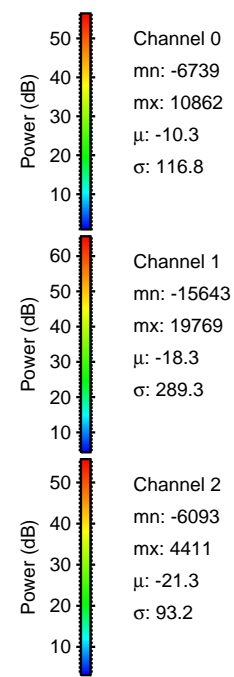
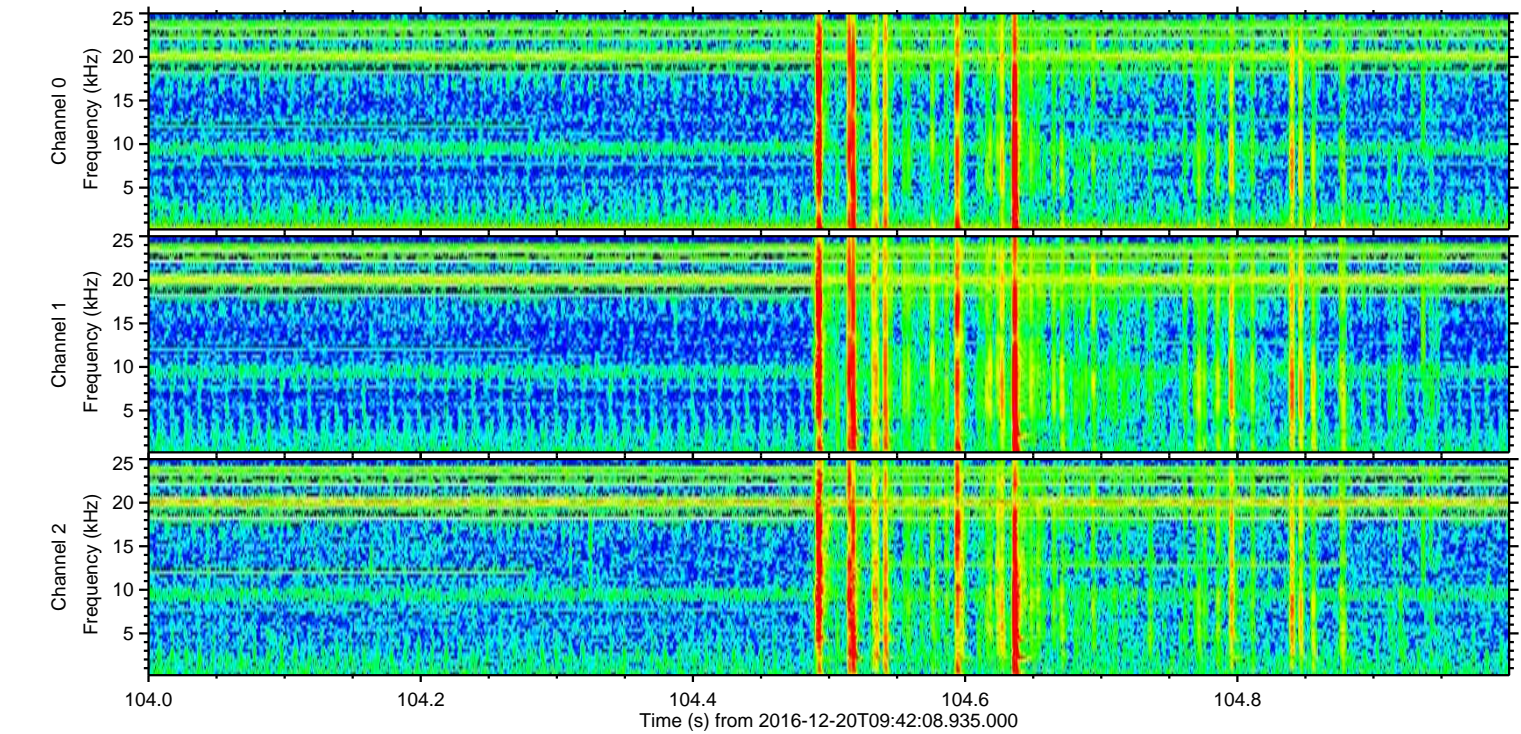
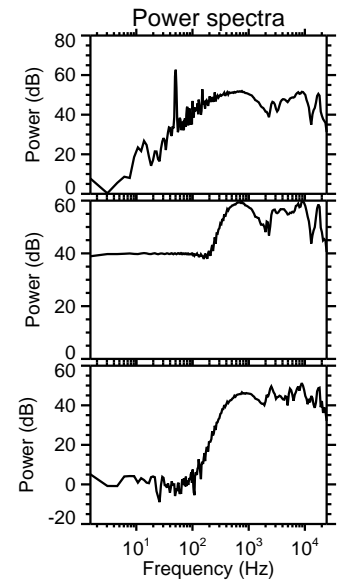
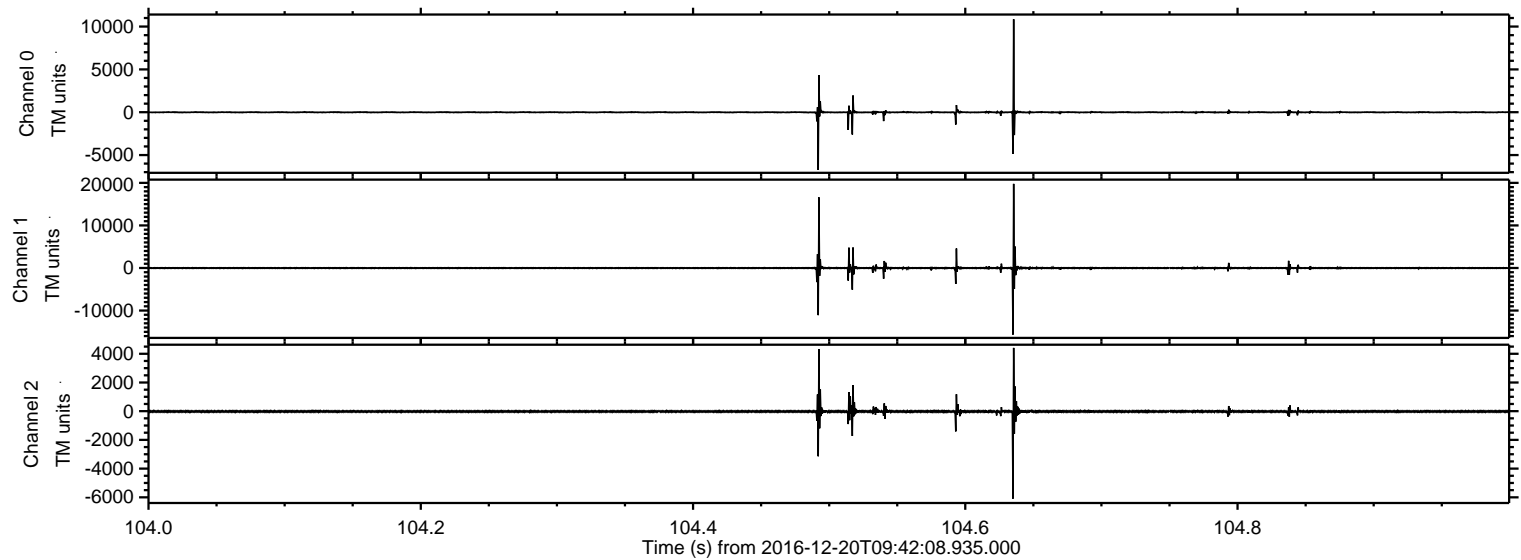
Processed Tue Dec 20 10:50:17 2016 by ELM ver.2012-10-06 from 001\_\_elm20161220\_094207\_\_dat00.bin





ELMAVAN 3D WAVEFORMS (Measured data sampled at 50 kHz) 51000 packets of 144 samples from 2016-12-20T09:42:08.935.000. Part 105/147

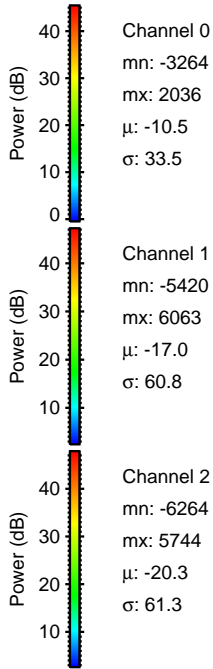
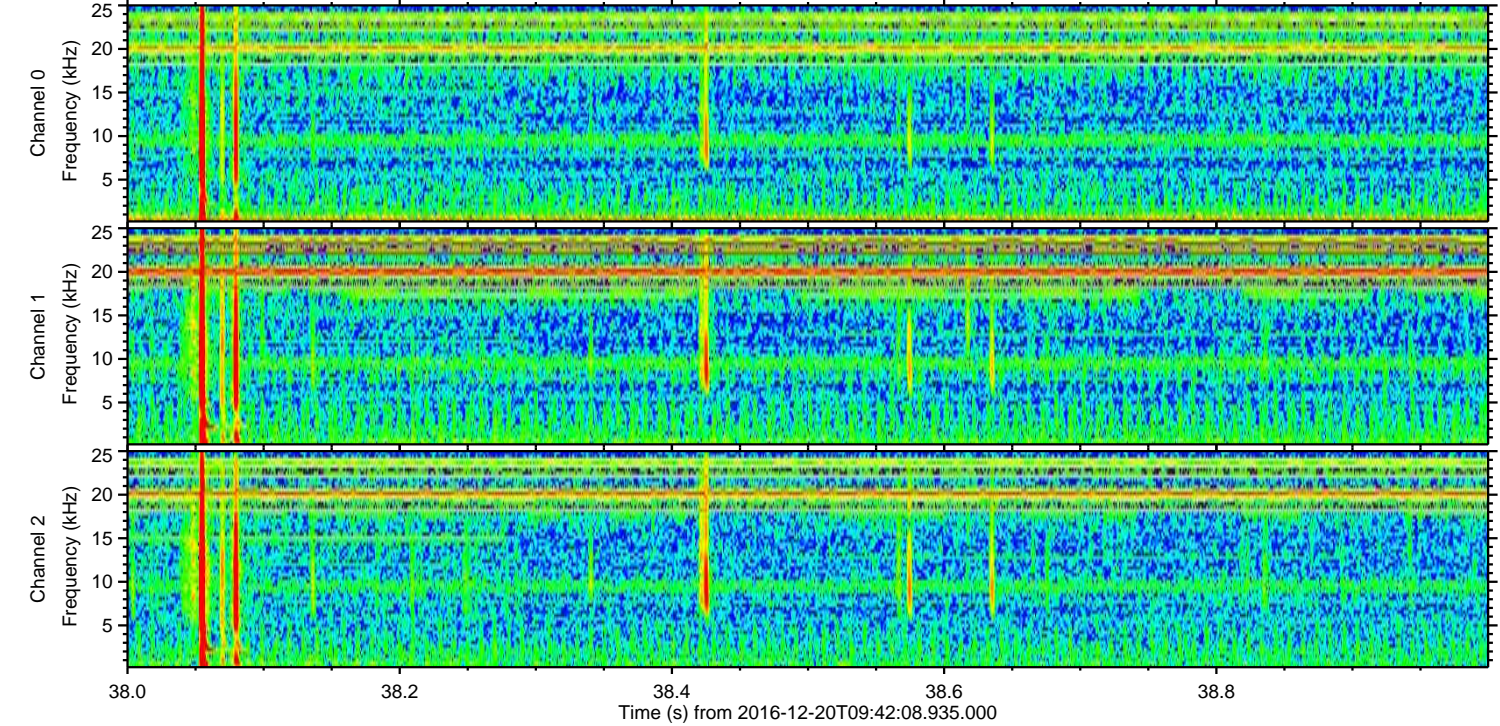
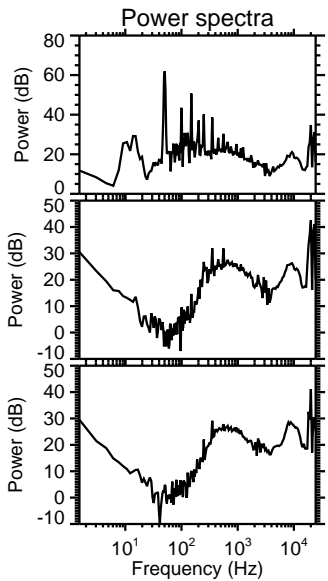
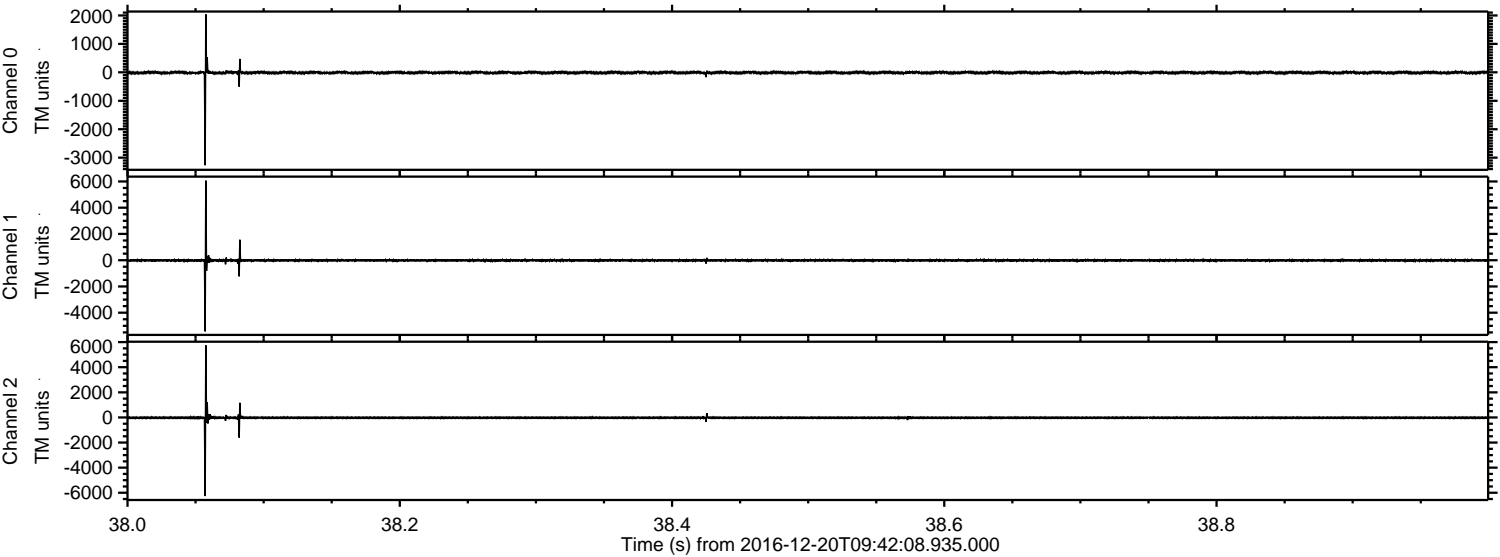
Processed Tue Dec 20 10:50:29 2016 by ELM ver.2012-10-06 from 001\_\_elm20161220\_094207\_\_dat00.bin





ELMAVAN 3D WAVEFORMS (Measured data sampled at 50 kHz) 51000 packets of 144 samples from 2016-12-20T09:42:08.935.000. Part 39/147

Processed Tue Dec 20 10:50:29 2016 by ELM ver.2012-10-06 from 001\_\_elm20161220\_094207\_\_dat00.bin



Channel 0  
mn: -3264  
mx: 2036  
 $\mu$ : -10.5  
 $\sigma$ : 33.5

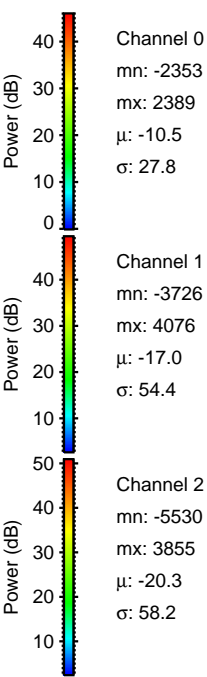
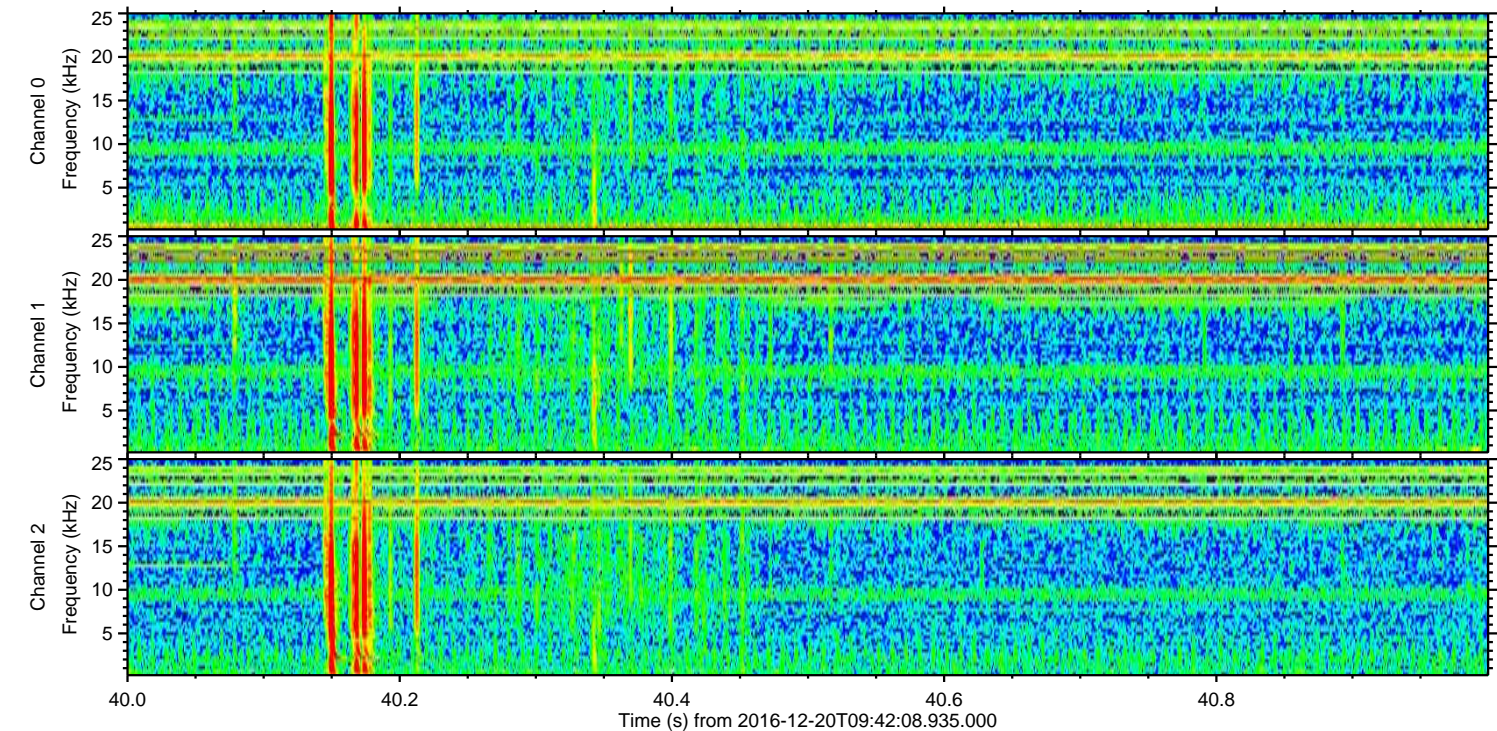
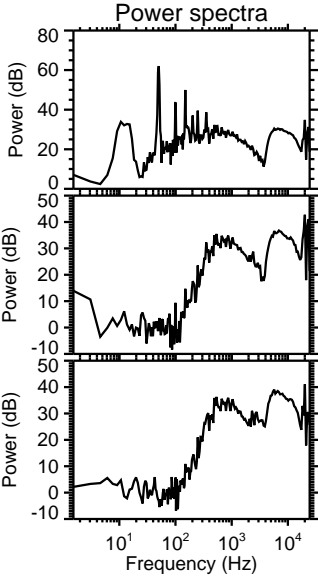
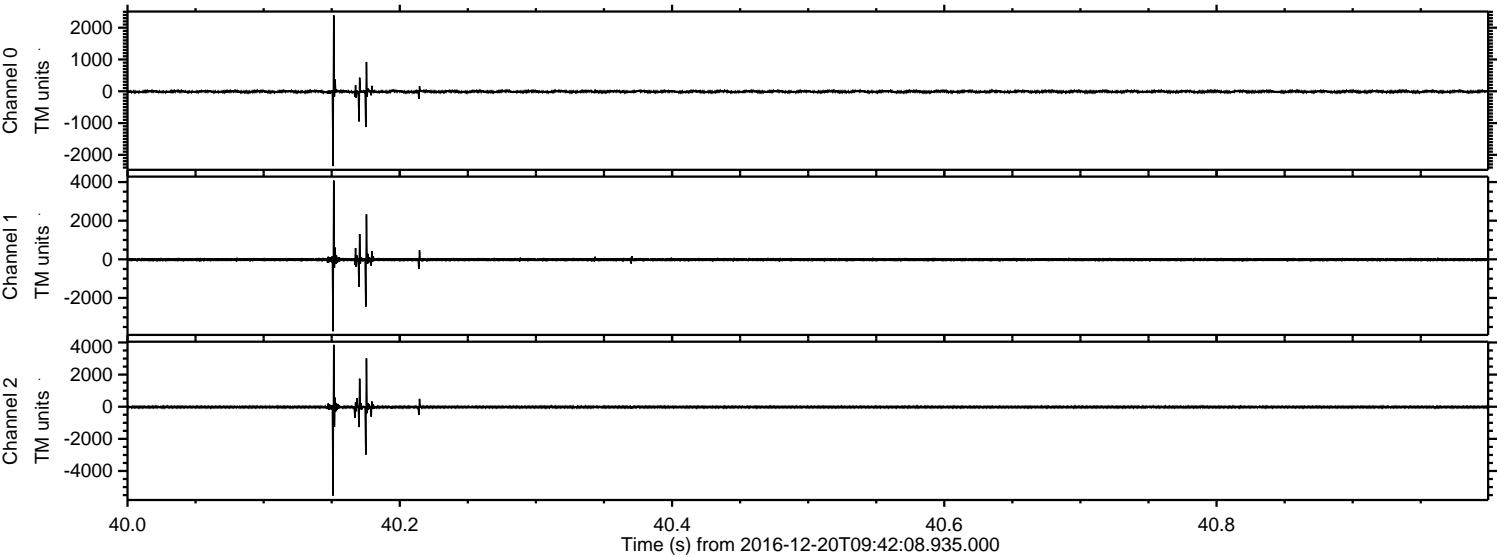
Channel 1  
mn: -5420  
mx: 6063  
 $\mu$ : -17.0  
 $\sigma$ : 60.8

Channel 2  
mn: -6264  
mx: 5744  
 $\mu$ : -20.3  
 $\sigma$ : 61.3



ELMAVAN 3D WAVEFORMS (Measured data sampled at 50 kHz) 51000 packets of 144 samples from 2016-12-20T09:42:08.935.000. Part 41/147

Processed Tue Dec 20 10:50:30 2016 by ELM ver.2012-10-06 from 001\_\_elm20161220\_094207\_\_dat00.bin



Channel 0  
mn: -2353  
mx: 2389  
 $\mu$ : -10.5  
 $\sigma$ : 27.8

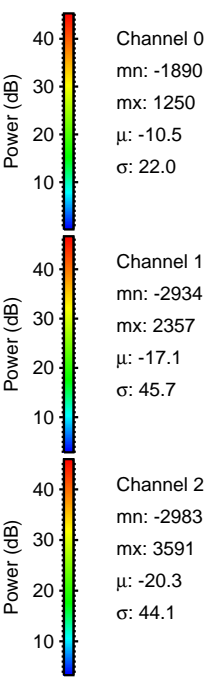
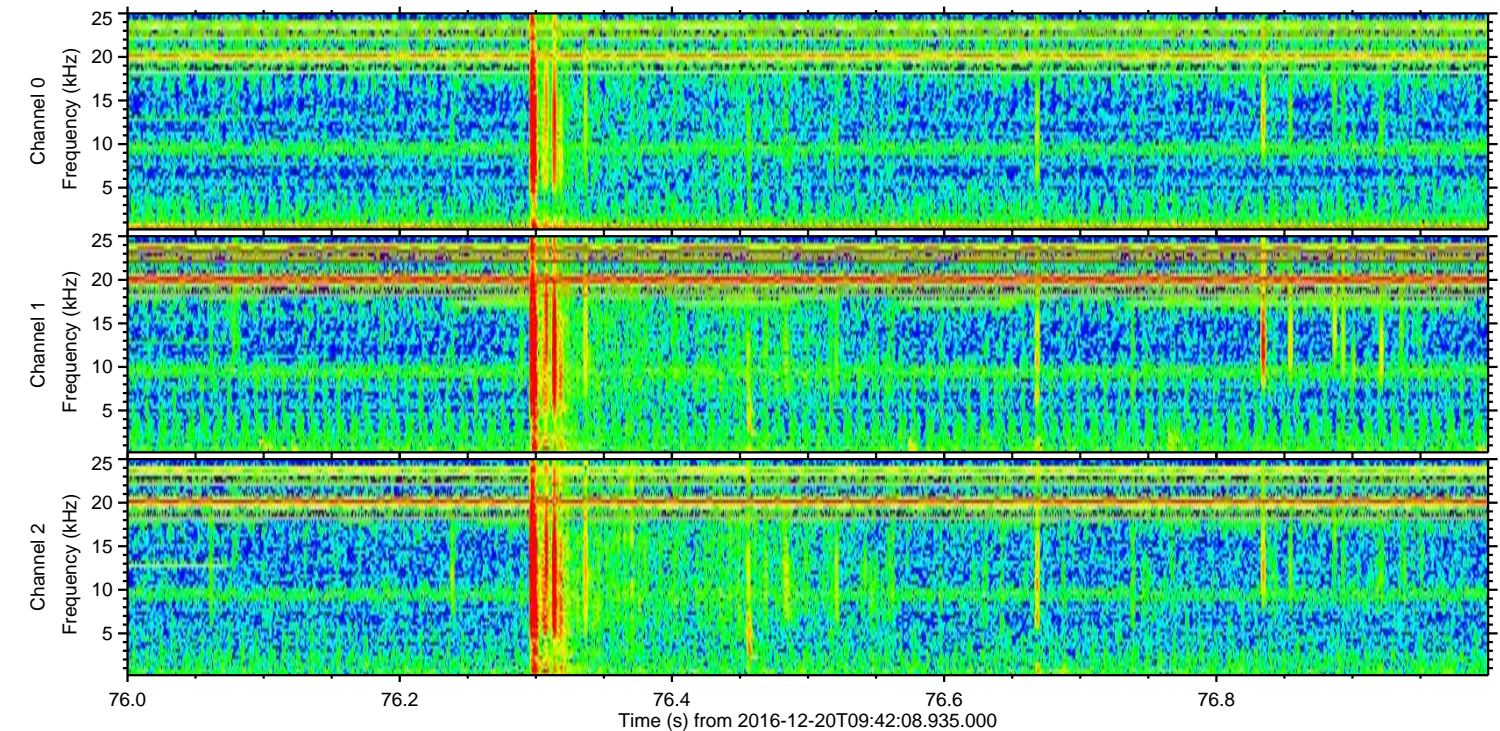
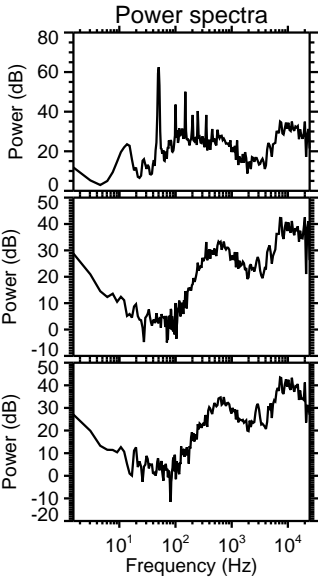
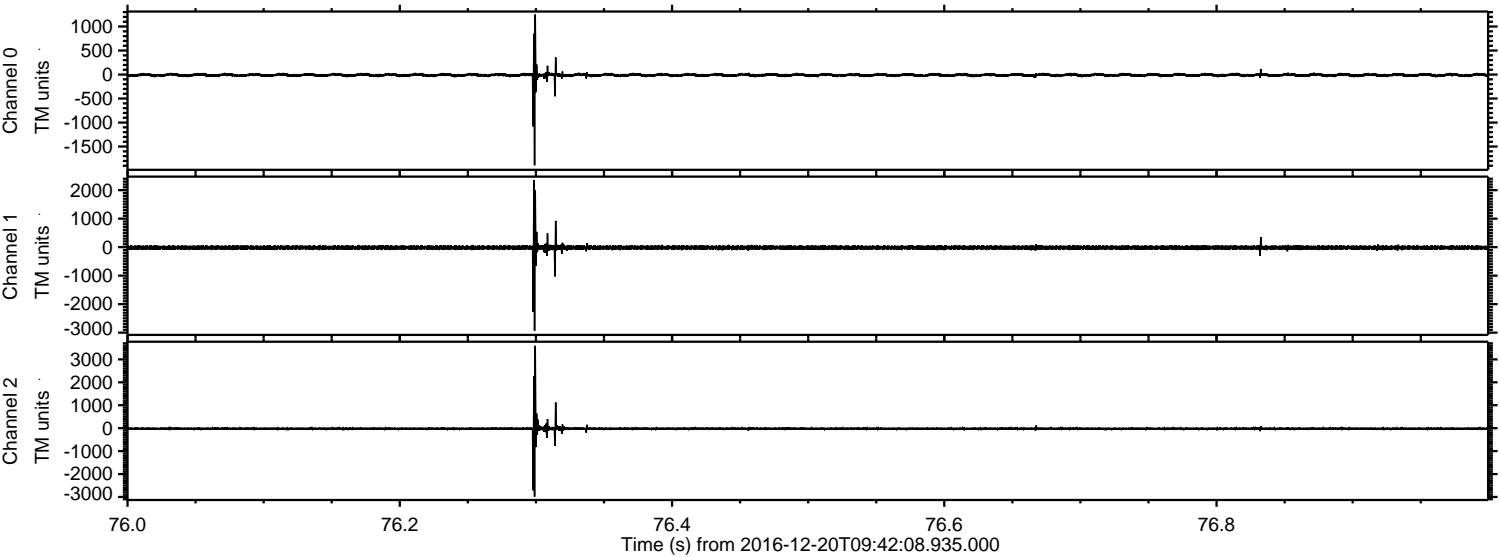
Channel 1  
mn: -3726  
mx: 4076  
 $\mu$ : -17.0  
 $\sigma$ : 54.4

Channel 2  
mn: -5530  
mx: 3855  
 $\mu$ : -20.3  
 $\sigma$ : 58.2



ELMAVAN 3D WAVEFORMS (Measured data sampled at 50 kHz) 51000 packets of 144 samples from 2016-12-20T09:42:08.935.000. Part 77/147

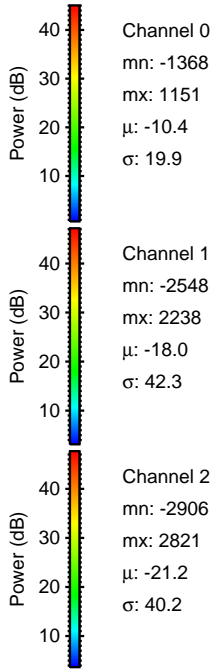
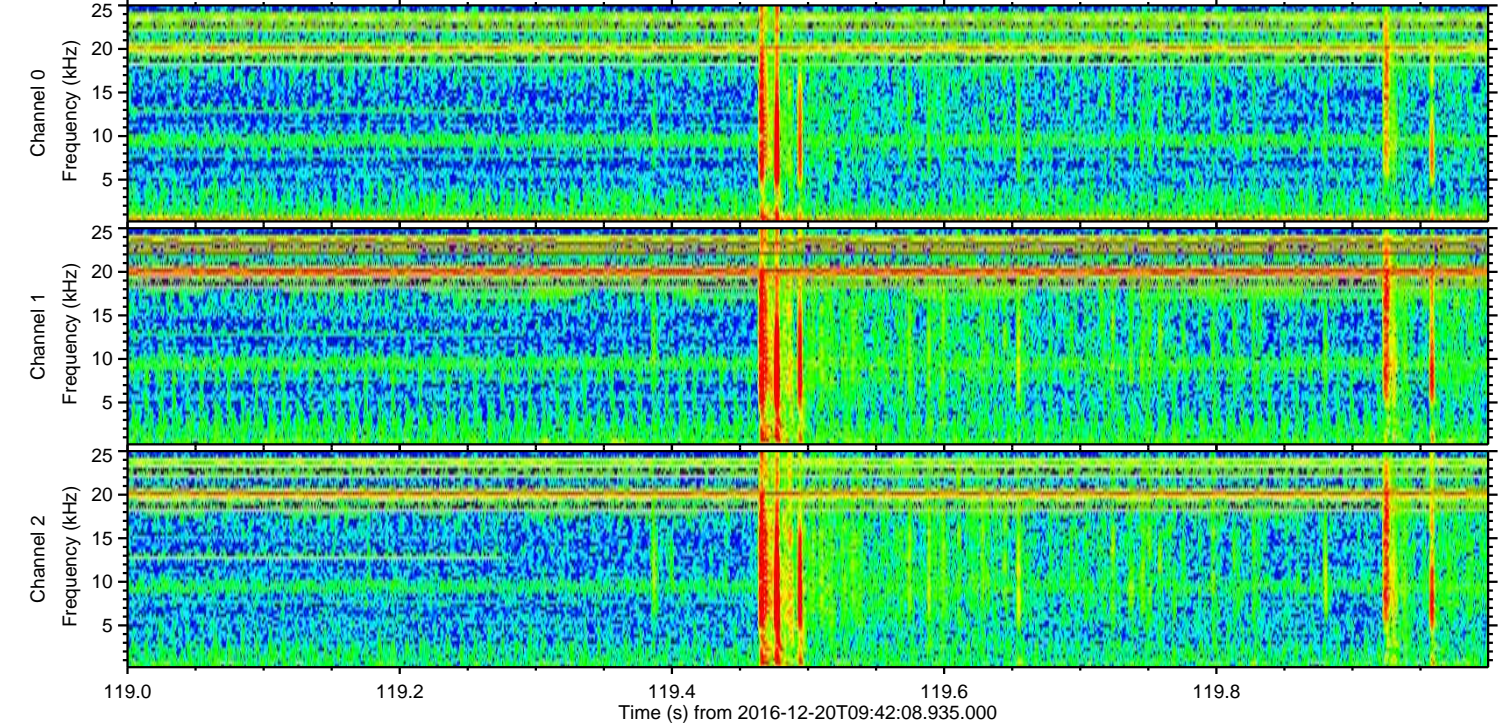
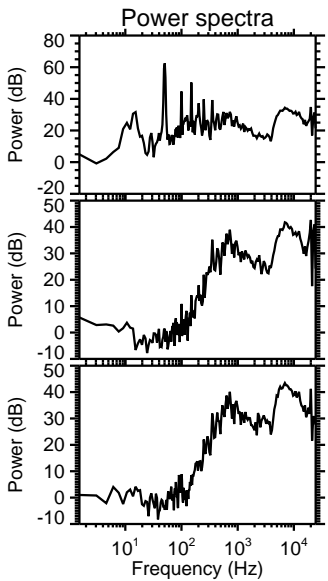
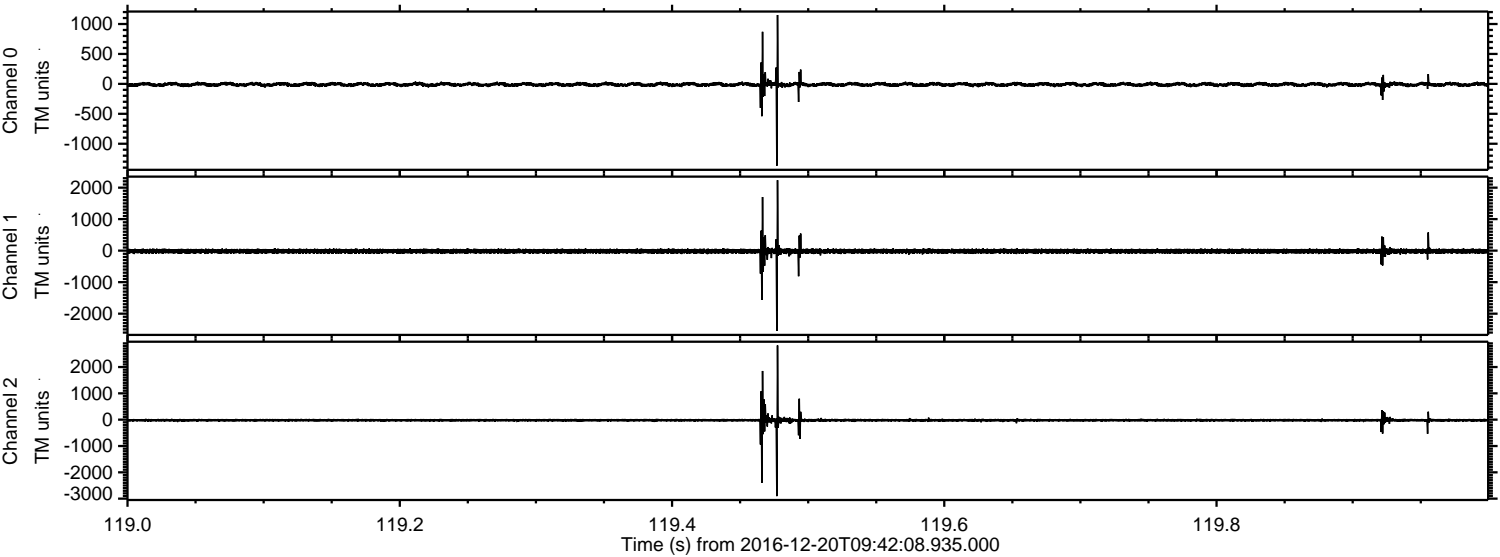
Processed Tue Dec 20 10:50:31 2016 by ELM ver.2012-10-06 from 001\_\_elm20161220\_094207\_\_dat00.bin





ELMAVAN 3D WAVEFORMS (Measured data sampled at 50 kHz) 51000 packets of 144 samples from 2016-12-20T09:42:08.935.000. Part 120/147

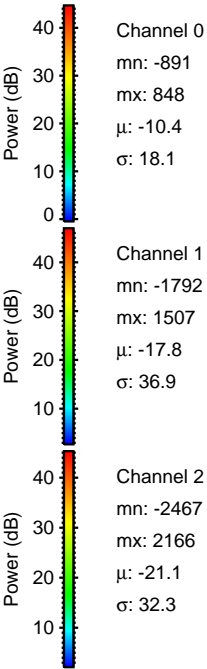
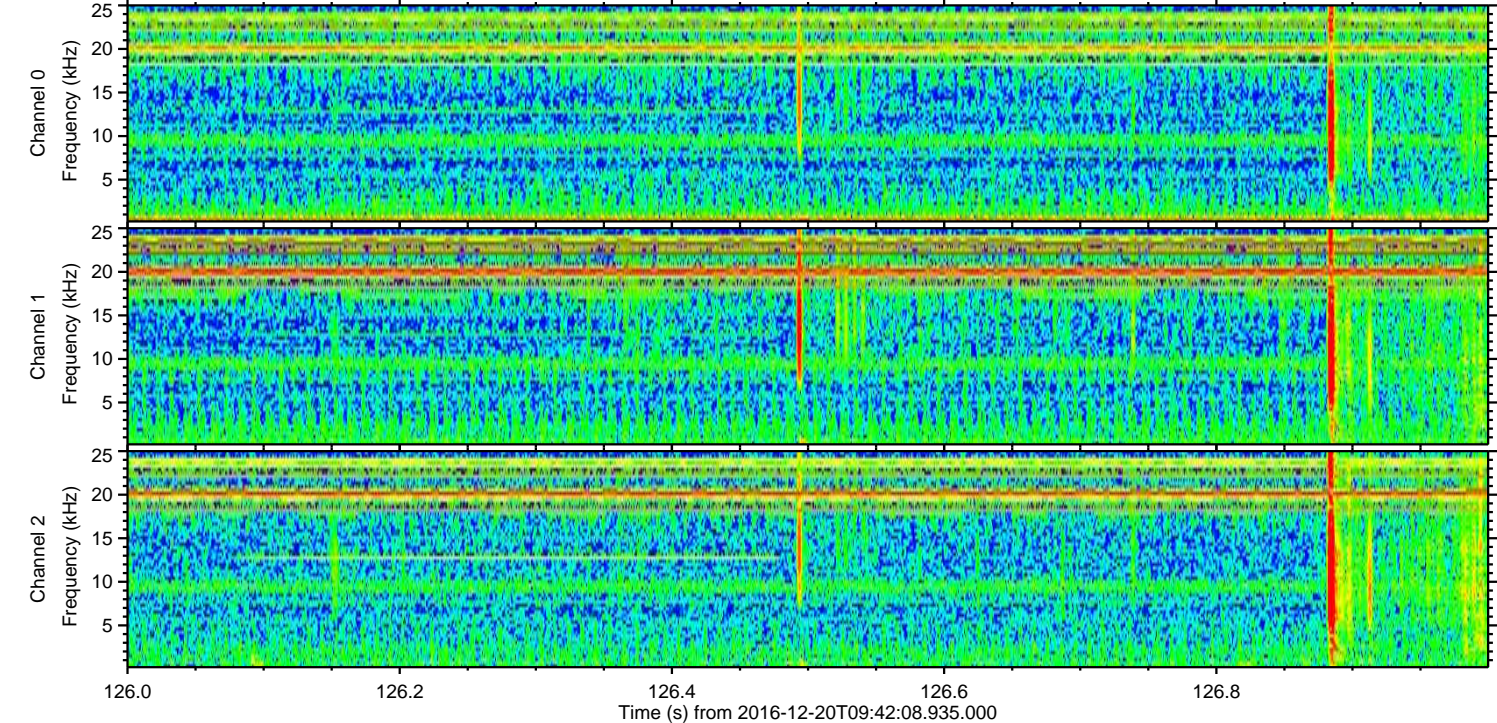
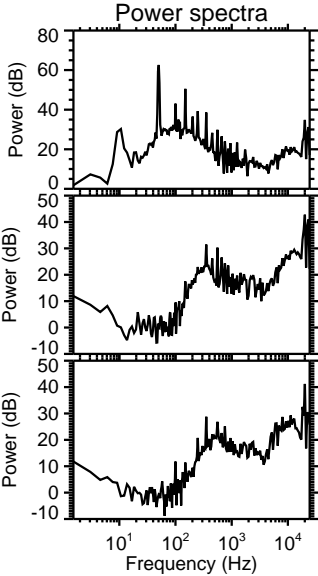
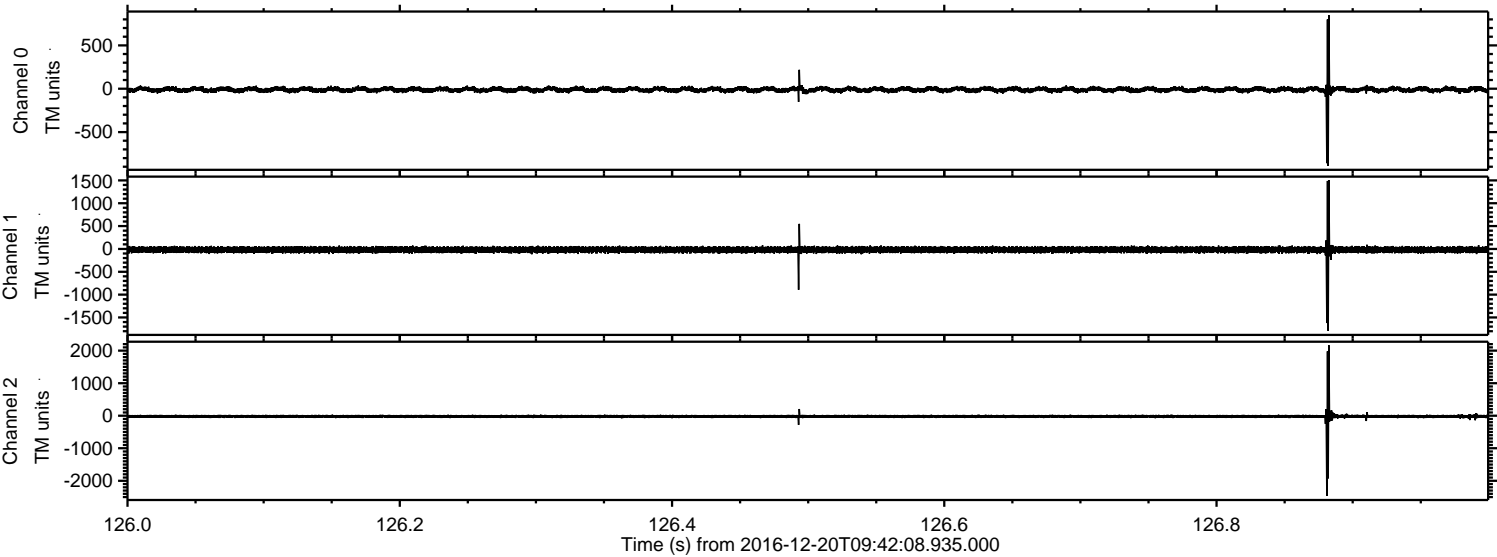
Processed Tue Dec 20 10:50:32 2016 by ELM ver.2012-10-06 from 001\_\_elm20161220\_094207\_\_dat00.bin





ELMAVAN 3D WAVEFORMS (Measured data sampled at 50 kHz) 51000 packets of 144 samples from 2016-12-20T09:42:08.935.000. Part 127/147

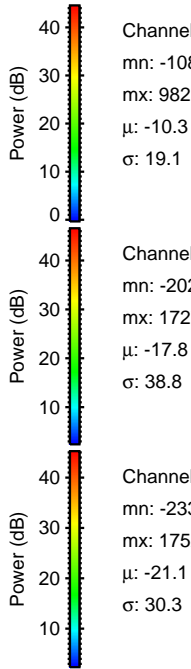
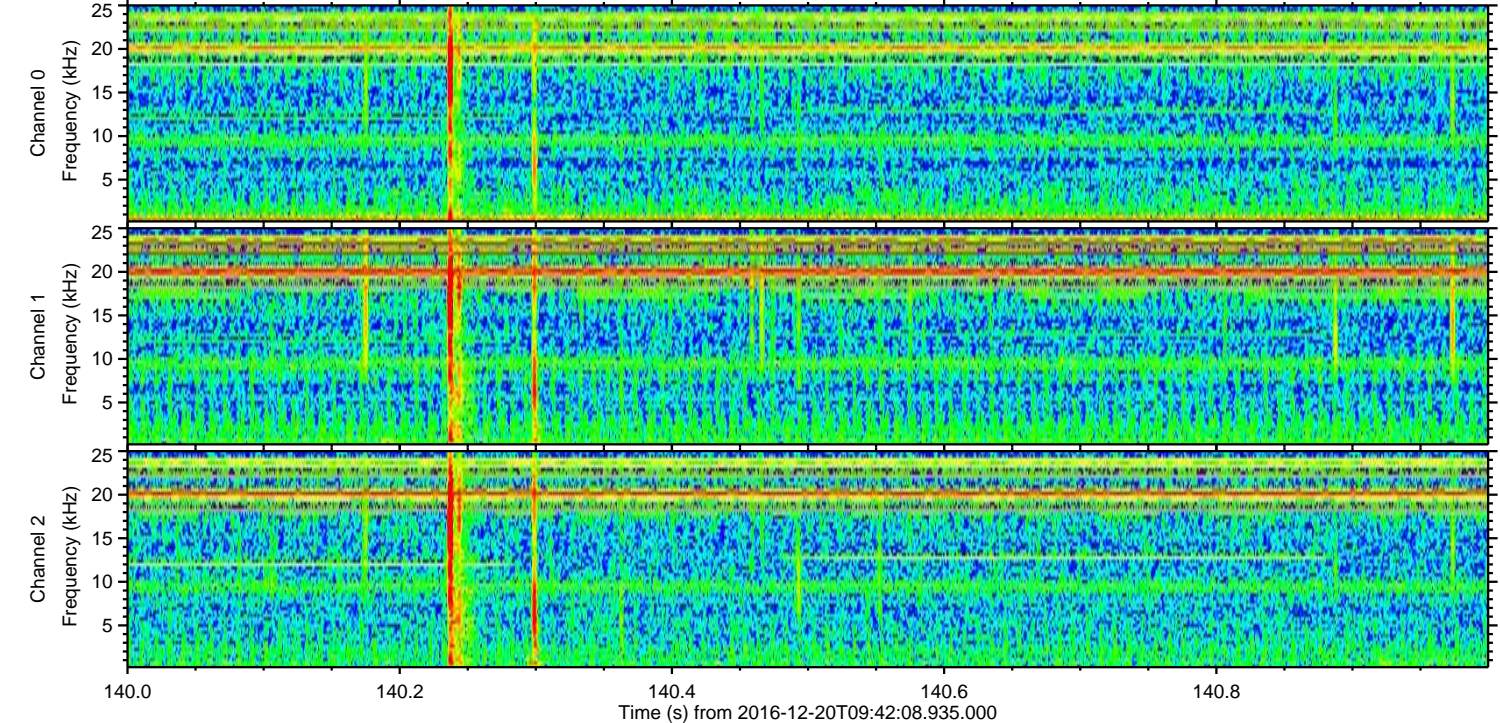
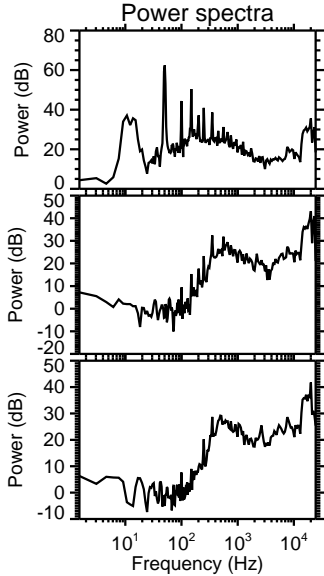
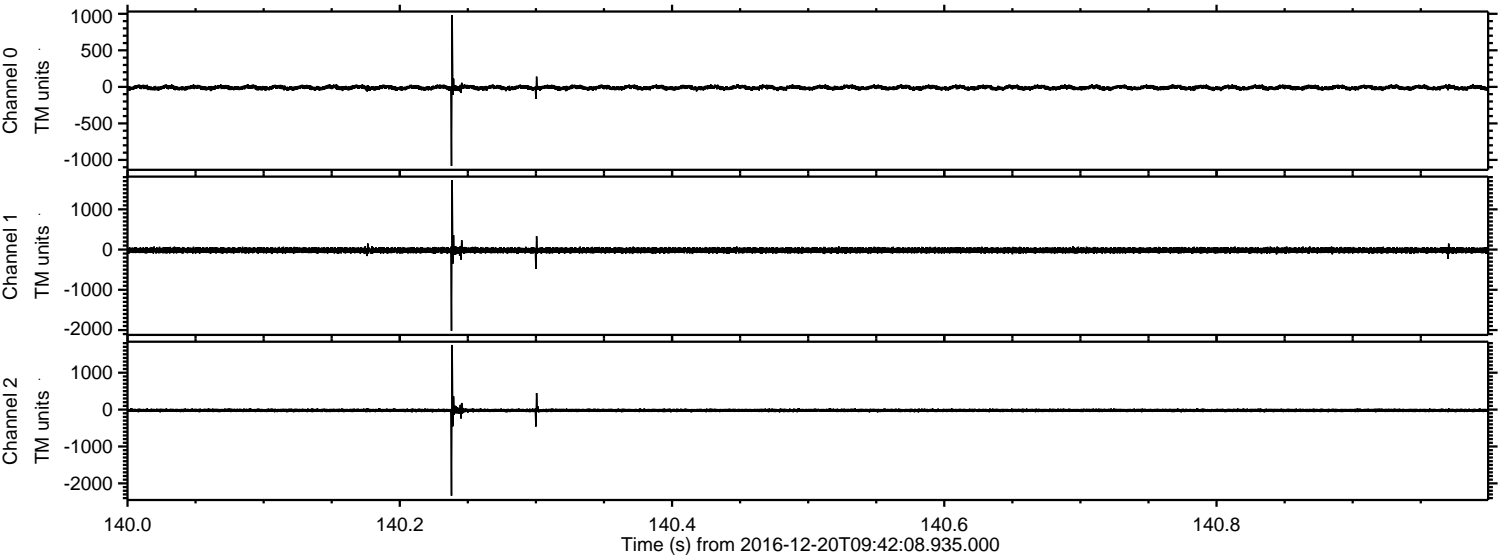
Processed Tue Dec 20 10:50:33 2016 by ELM ver.2012-10-06 from 001\_\_elm20161220\_094207\_\_dat00.bin





ELMAVAN 3D WAVEFORMS (Measured data sampled at 50 kHz) 51000 packets of 144 samples from 2016-12-20T09:42:08.935.000. Part 141/147

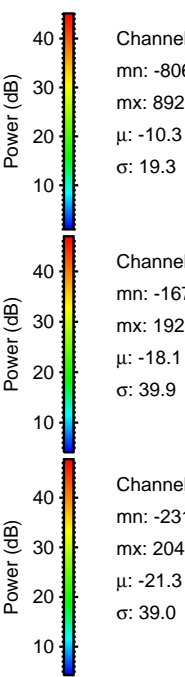
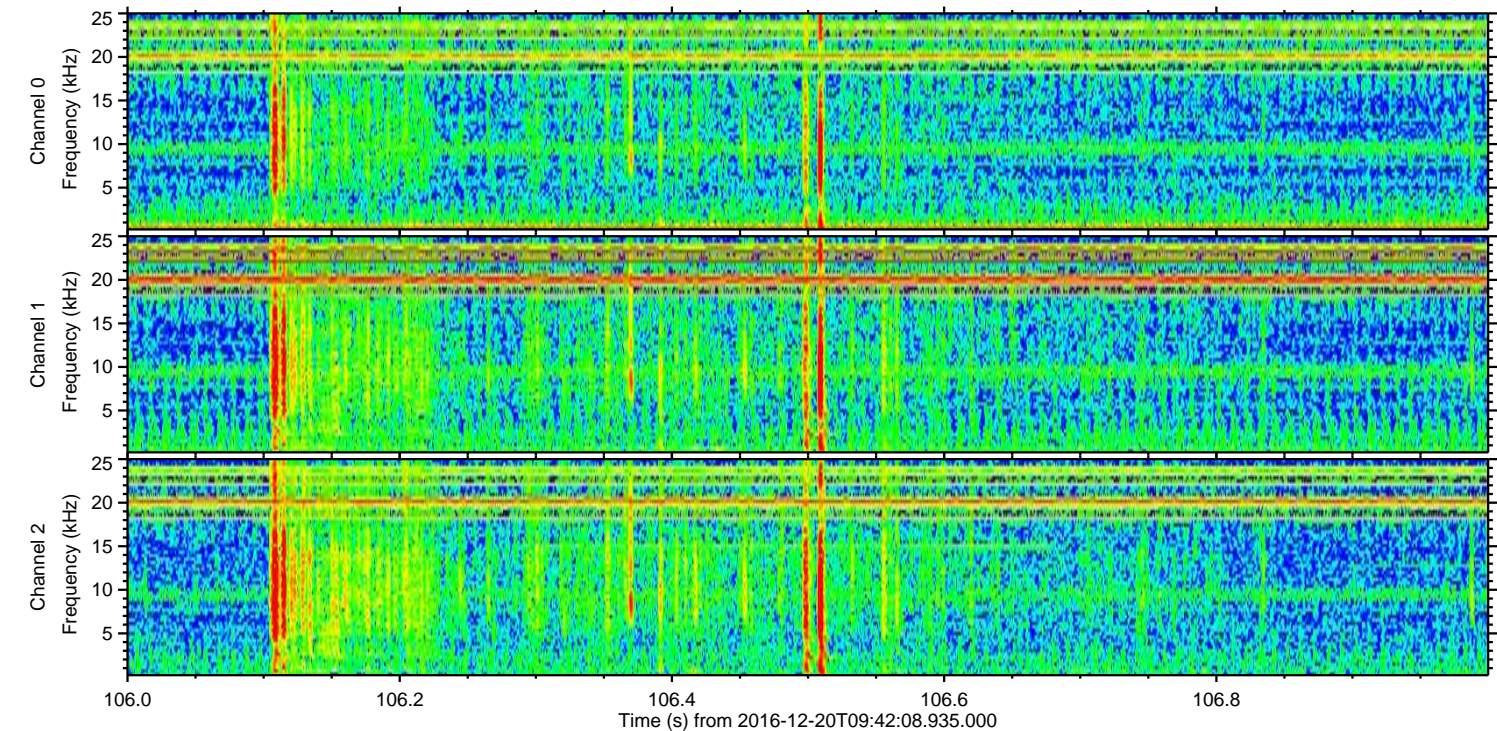
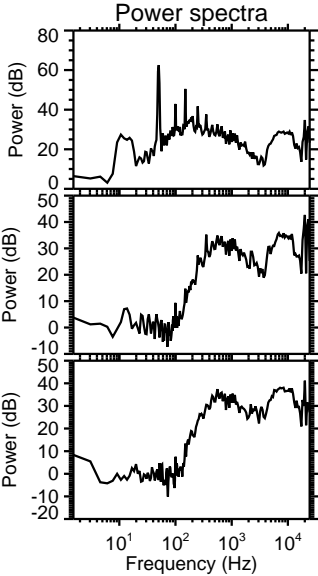
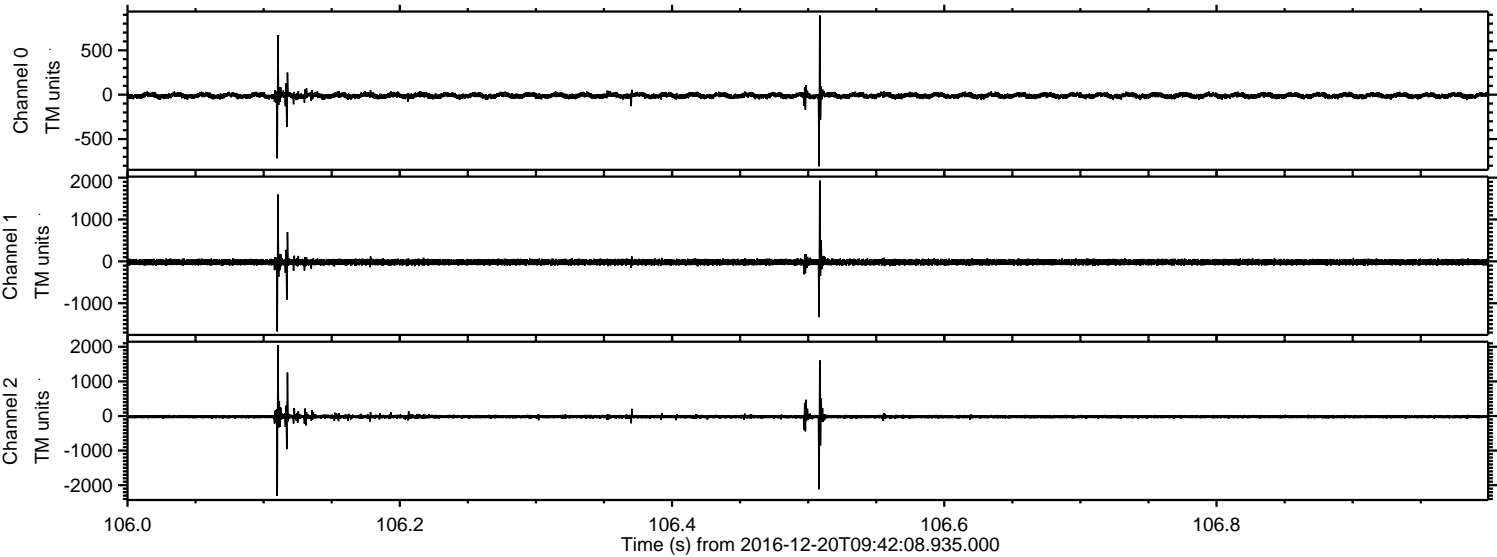
Processed Tue Dec 20 10:50:34 2016 by ELM ver.2012-10-06 from 001\_\_elm20161220\_094207\_\_dat00.bin





ELMAVAN 3D WAVEFORMS (Measured data sampled at 50 kHz) 51000 packets of 144 samples from 2016-12-20T09:42:08.935.000. Part 107/147

Processed Tue Dec 20 10:50:35 2016 by ELM ver.2012-10-06 from 001\_\_elm20161220\_094207\_\_dat00.bin



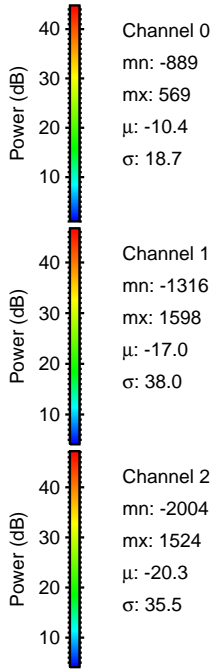
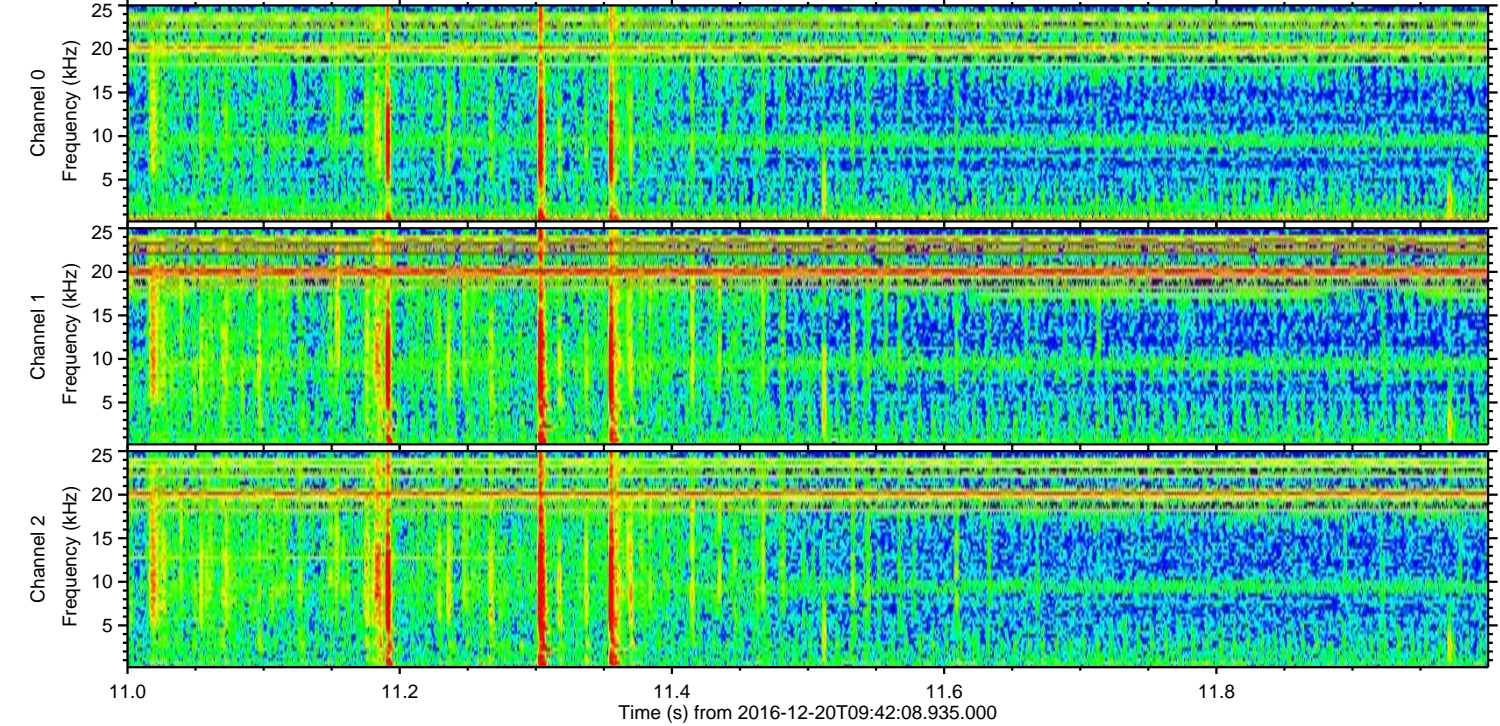
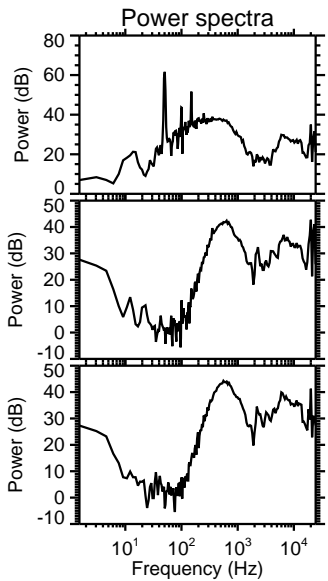
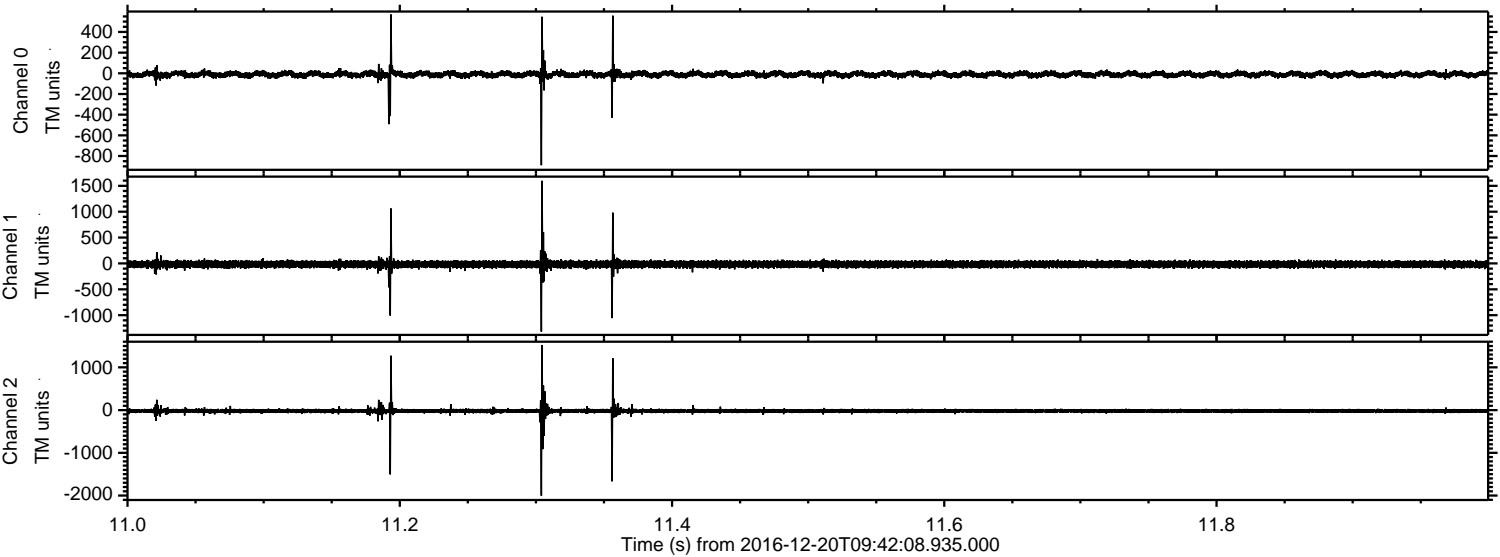
Channel 0  
mn: -806  
mx: 892  
 $\mu$ : -10.3  
 $\sigma$ : 19.3

Channel 1  
mn: -1672  
mx: 1928  
 $\mu$ : -18.1  
 $\sigma$ : 39.9

Channel 2  
mn: -2312  
mx: 2044  
 $\mu$ : -21.3  
 $\sigma$ : 39.0



Processed Tue Dec 20 10:50:36 2016 by ELM ver.2012-10-06 from 001\_\_elm20161220\_094207\_\_dat00.bin



Channel 0  
mn: -889  
mx: 569  
 $\mu$ : -10.4  
 $\sigma$ : 18.7

Channel 1  
mn: -1316  
mx: 1598  
 $\mu$ : -17.0  
 $\sigma$ : 38.0

Channel 2  
mn: -2004  
mx: 1524  
 $\mu$ : -20.3  
 $\sigma$ : 35.5



Processed Tue Dec 20 10:50:37 2016 by ELM ver.2012-10-06 from 001\_\_elm20161220\_094207\_\_dat00.bin

