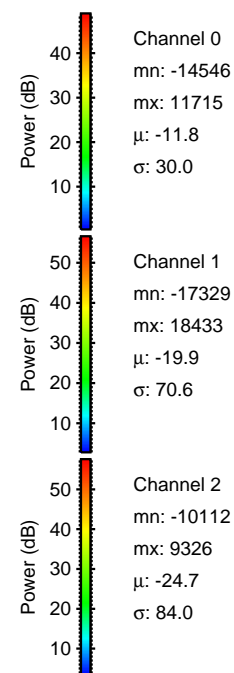
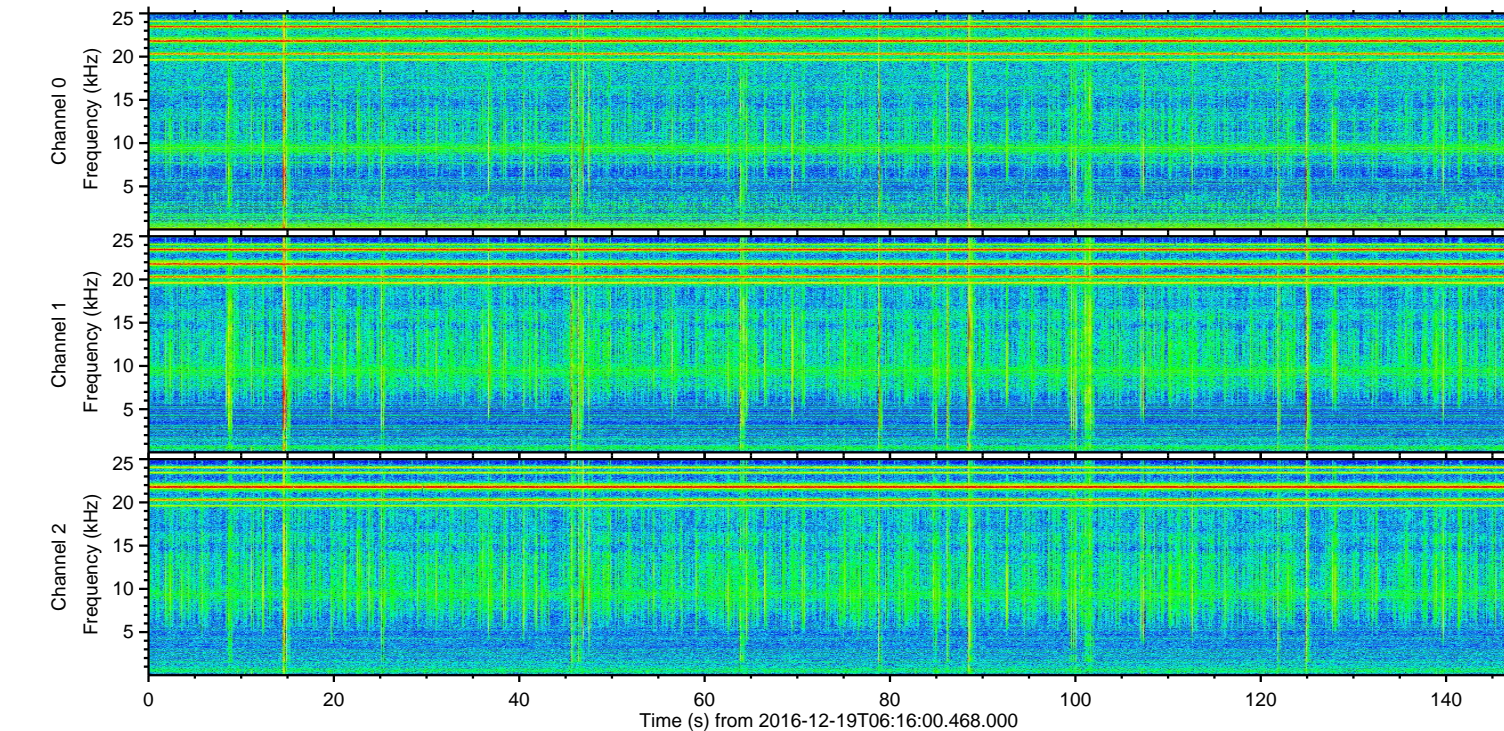
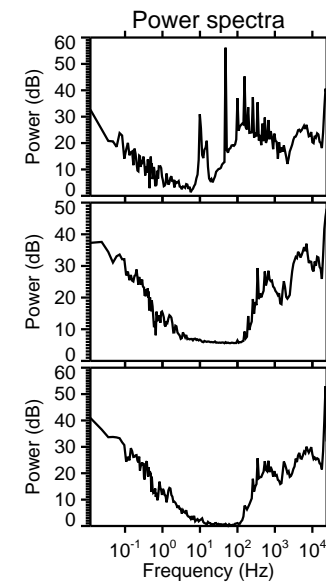
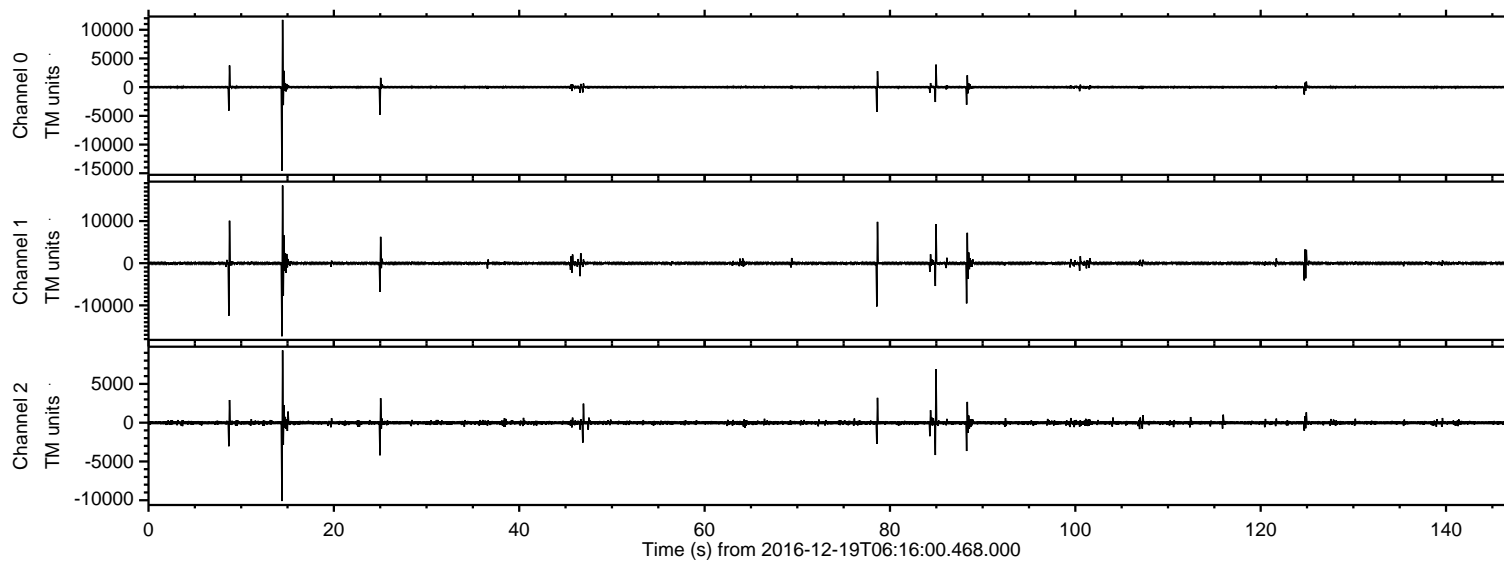


# ELMAVAN 3D WAVEFORMS (Measured data sampled at 50 kHz) 51000 packets of 144 samples from 2016-12-19T06:16:00.468.000.

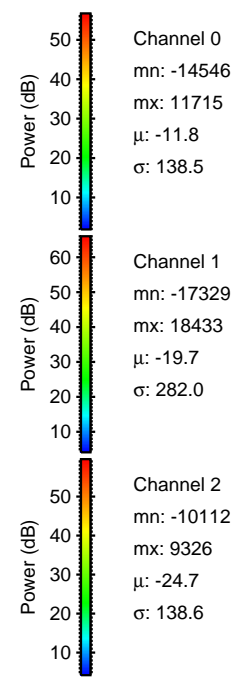
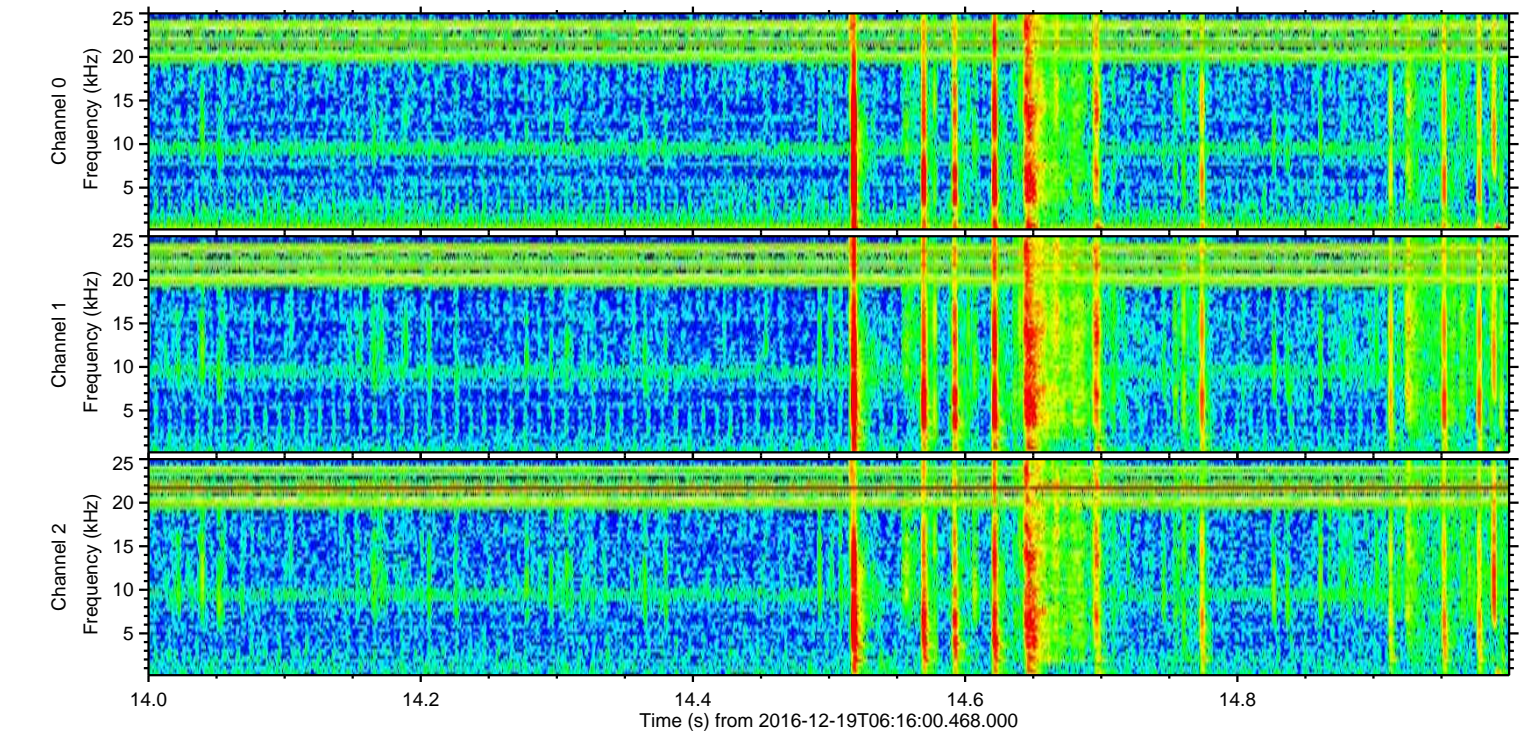
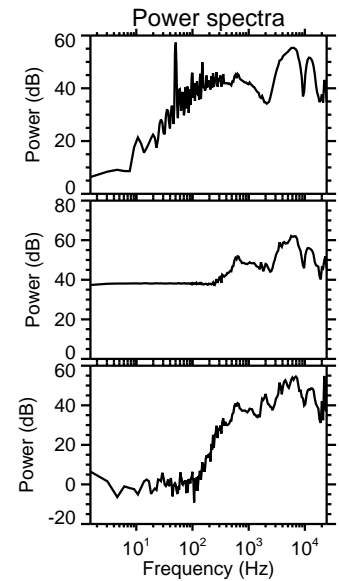
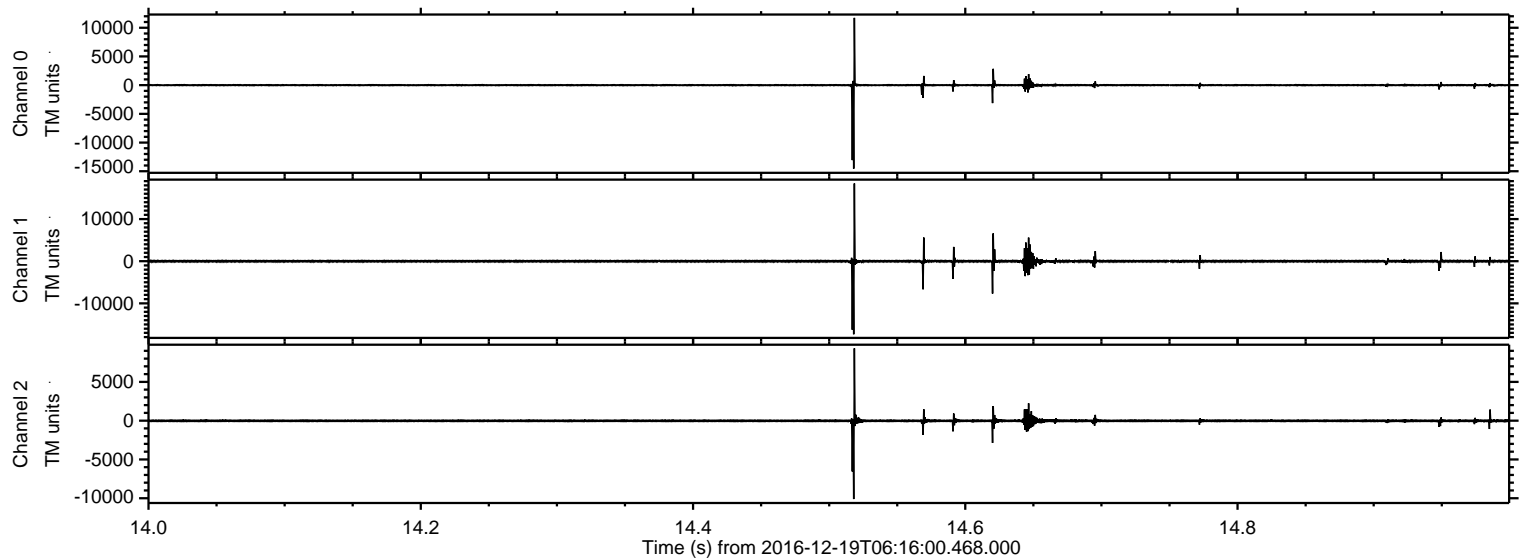
Processed Mon Dec 19 07:24:10 2016 by ELM ver.2012-10-06 from 001\_\_elm20161219\_061559\_\_dat00.bin





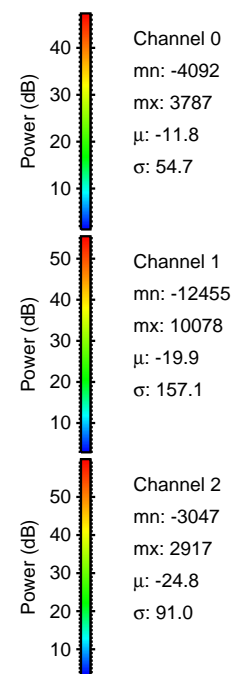
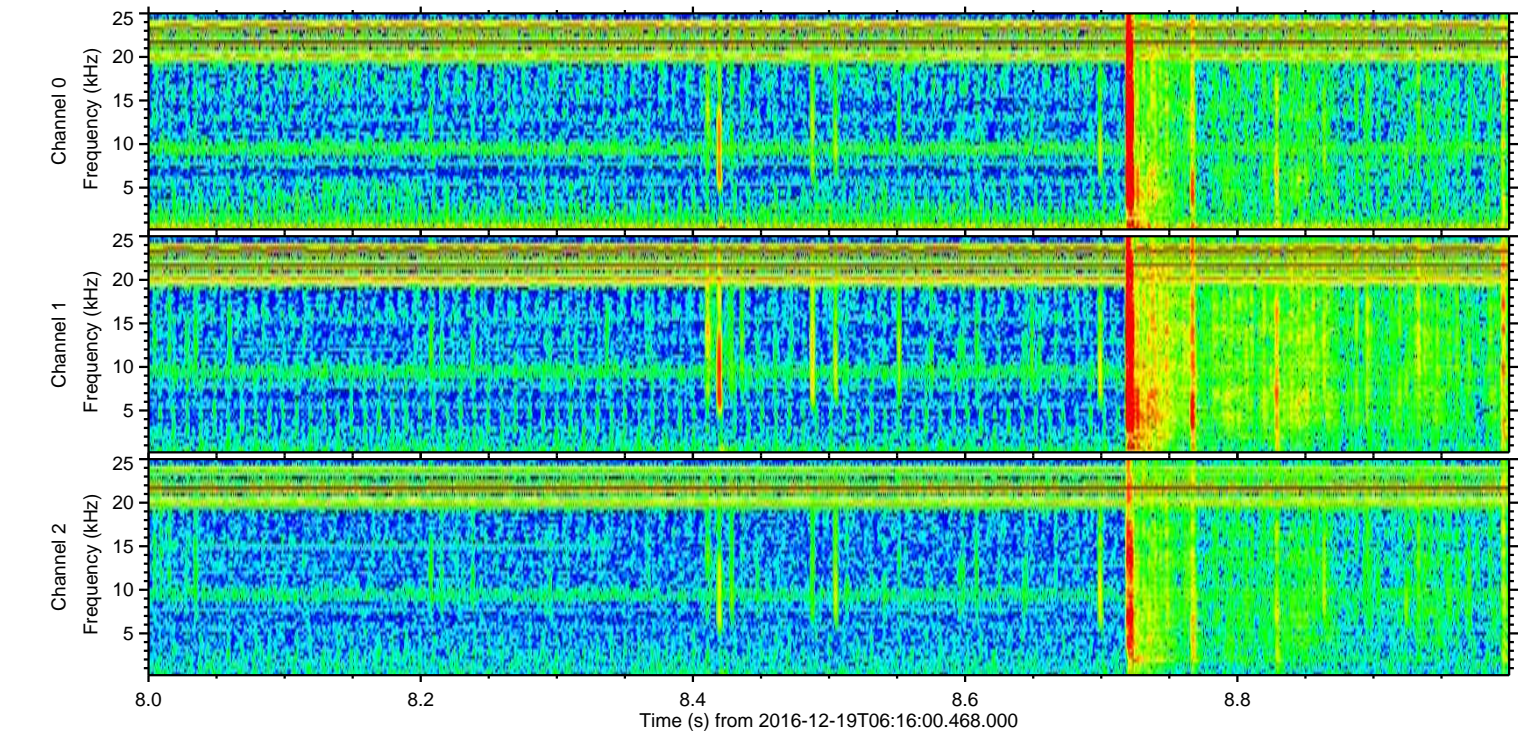
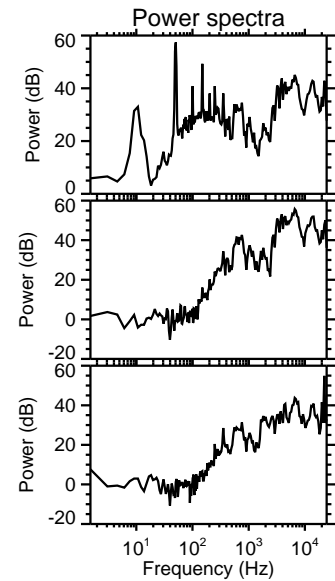
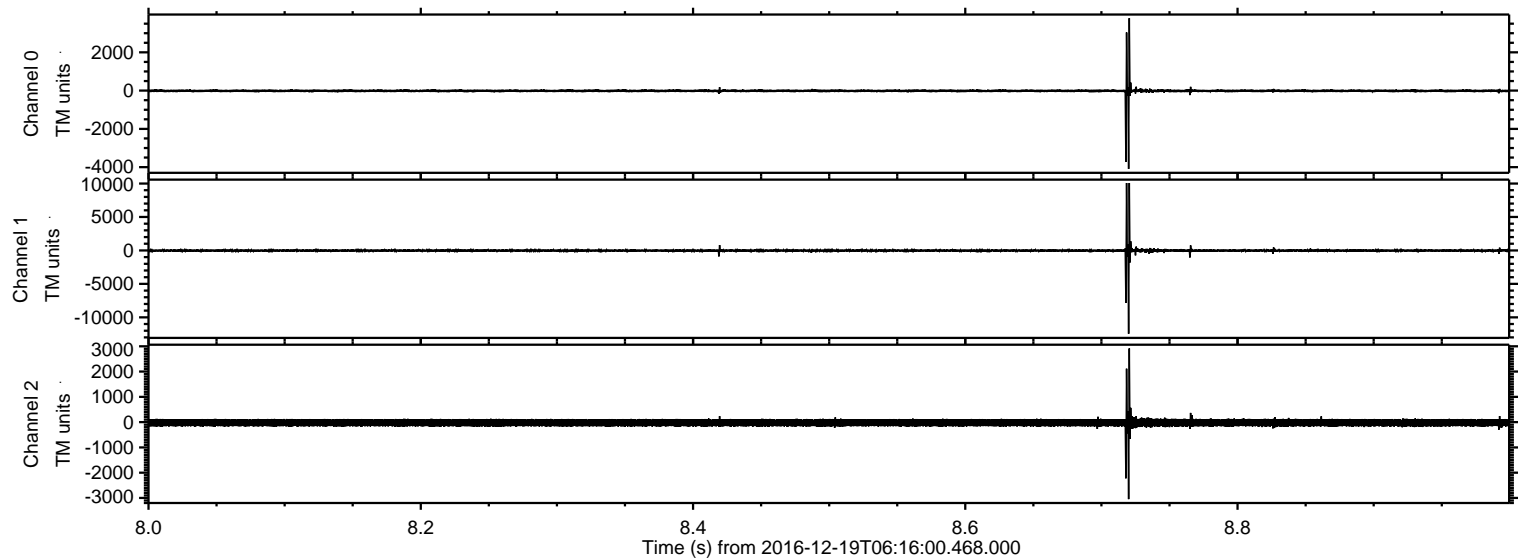
ELMAVAN 3D WAVEFORMS (Measured data sampled at 50 kHz) 51000 packets of 144 samples from 2016-12-19T06:16:00.468.000. Part 15/147

Processed Mon Dec 19 07:24:22 2016 by ELM ver.2012-10-06 from 001\_\_elm20161219\_061559\_\_dat00.bin





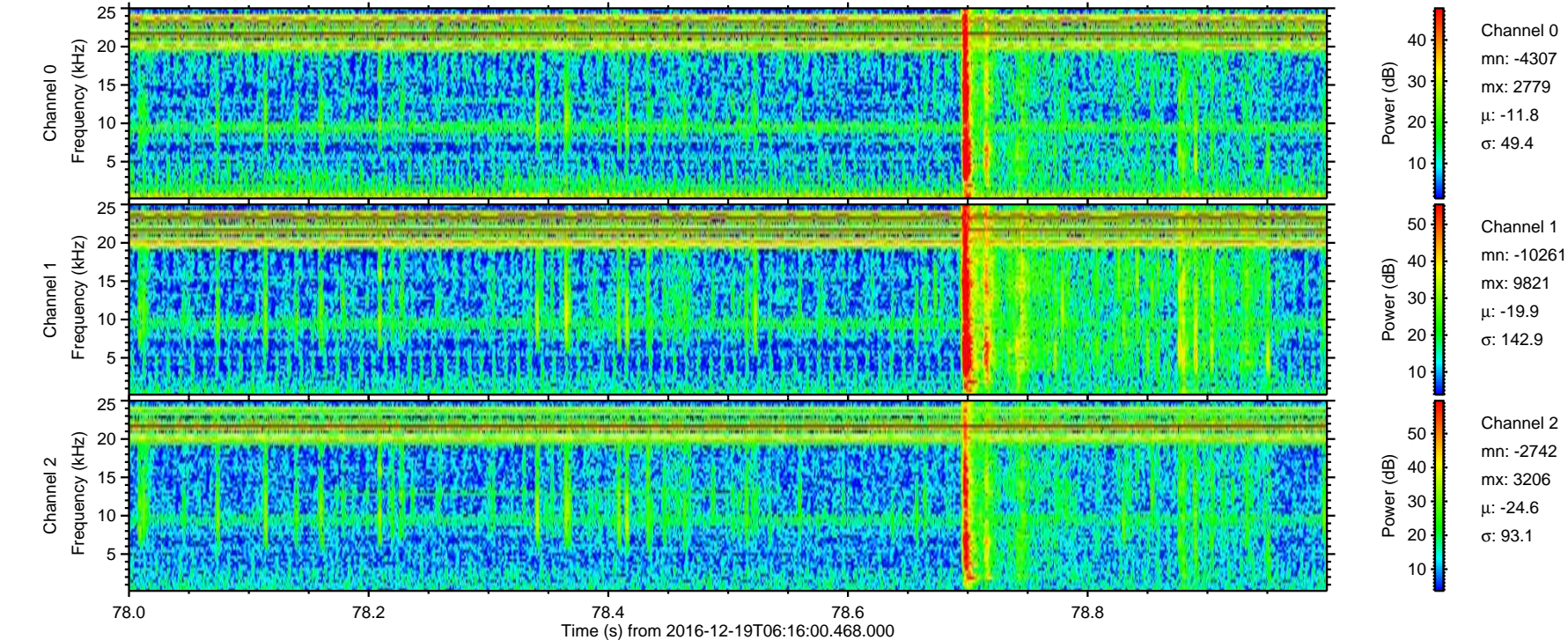
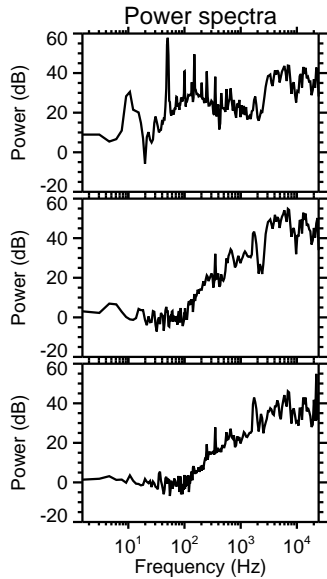
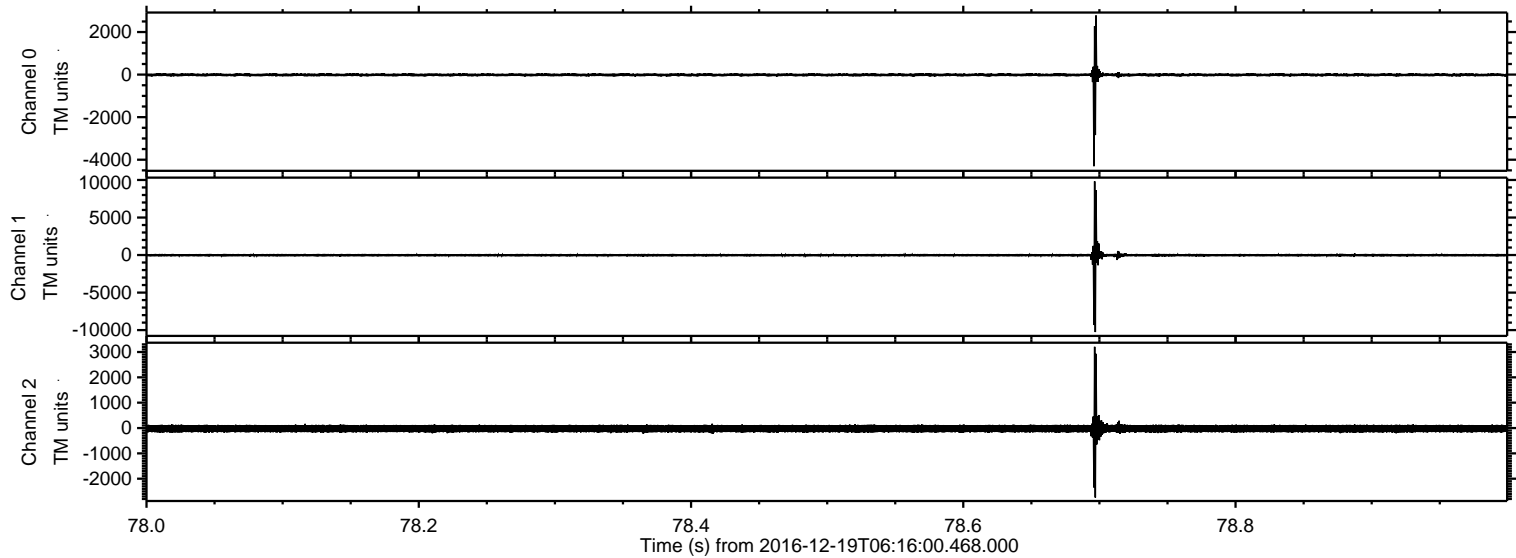
Processed Mon Dec 19 07:24:23 2016 by ELM ver.2012-10-06 from 001\_\_elm20161219\_061559\_\_dat00.bin





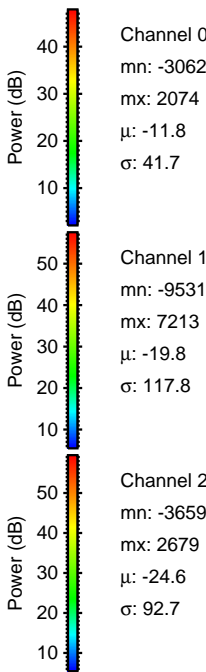
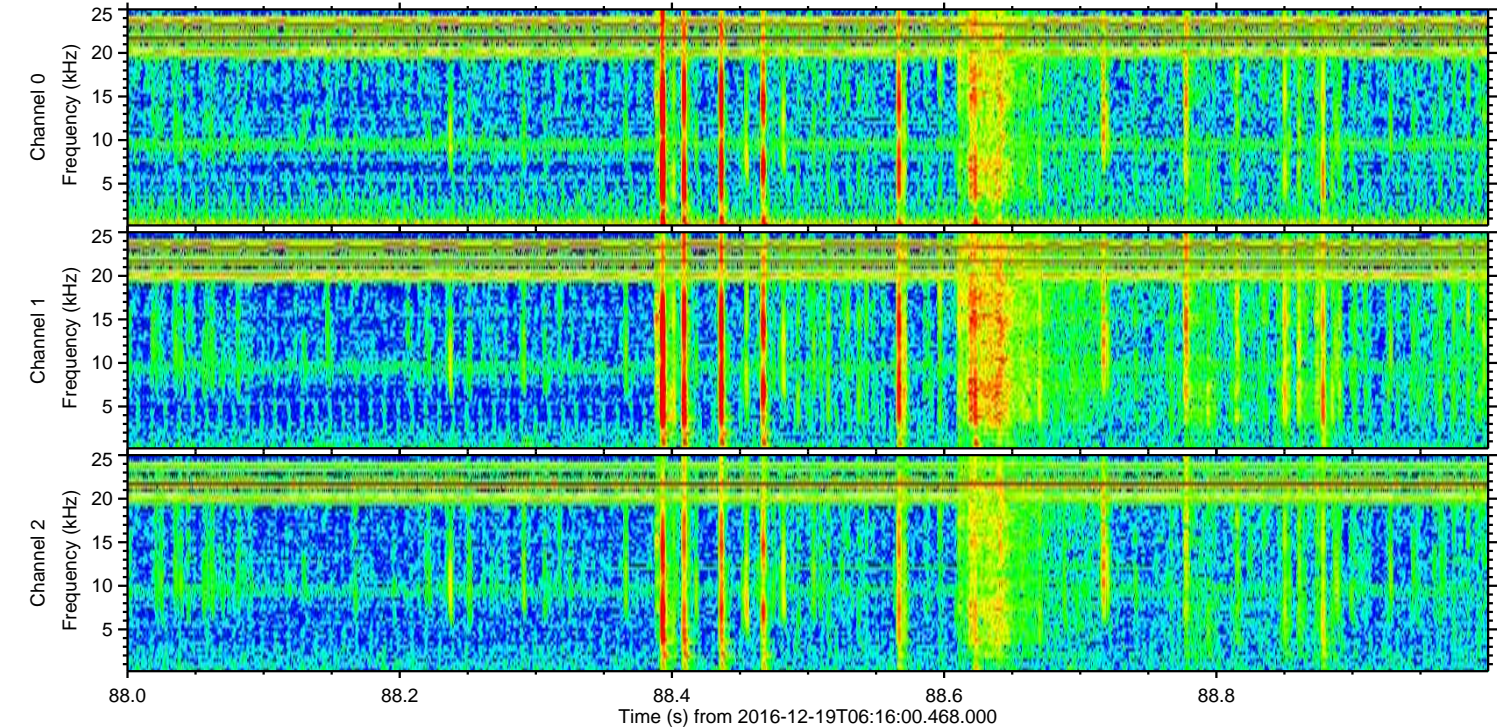
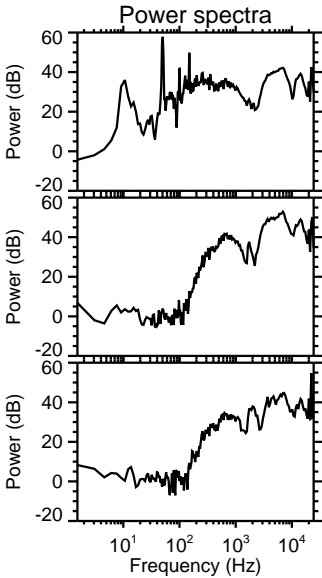
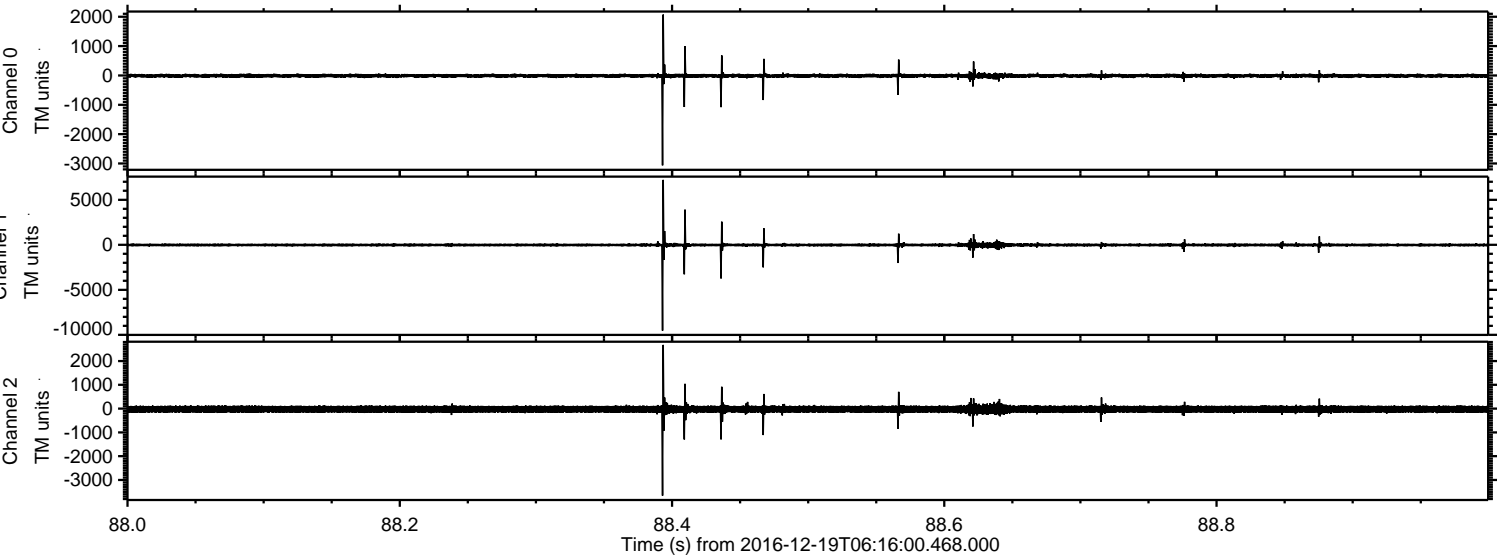
ELMAVAN 3D WAVEFORMS (Measured data sampled at 50 kHz) 51000 packets of 144 samples from 2016-12-19T06:16:00.468.000. Part 79/147

Processed Mon Dec 19 07:24:24 2016 by ELM ver.2012-10-06 from 001\_\_elm20161219\_061559\_\_dat00.bin





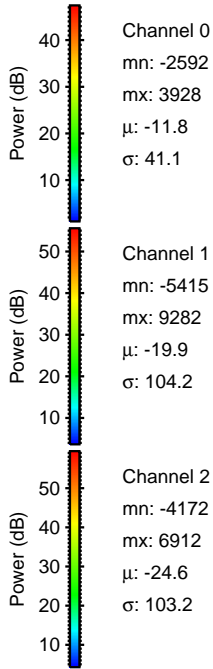
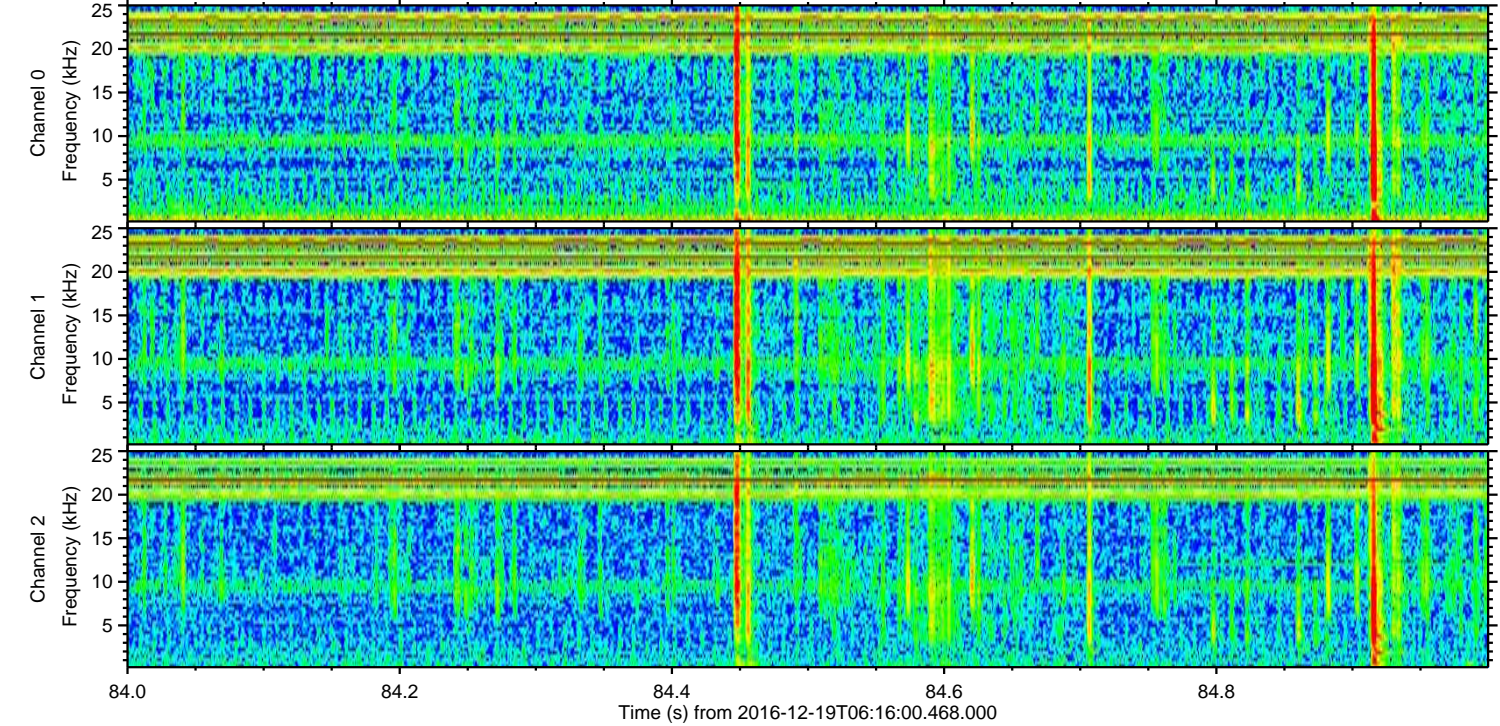
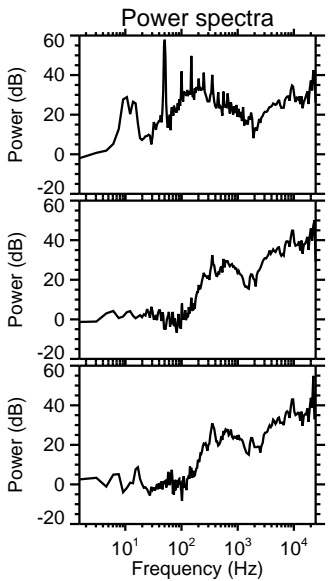
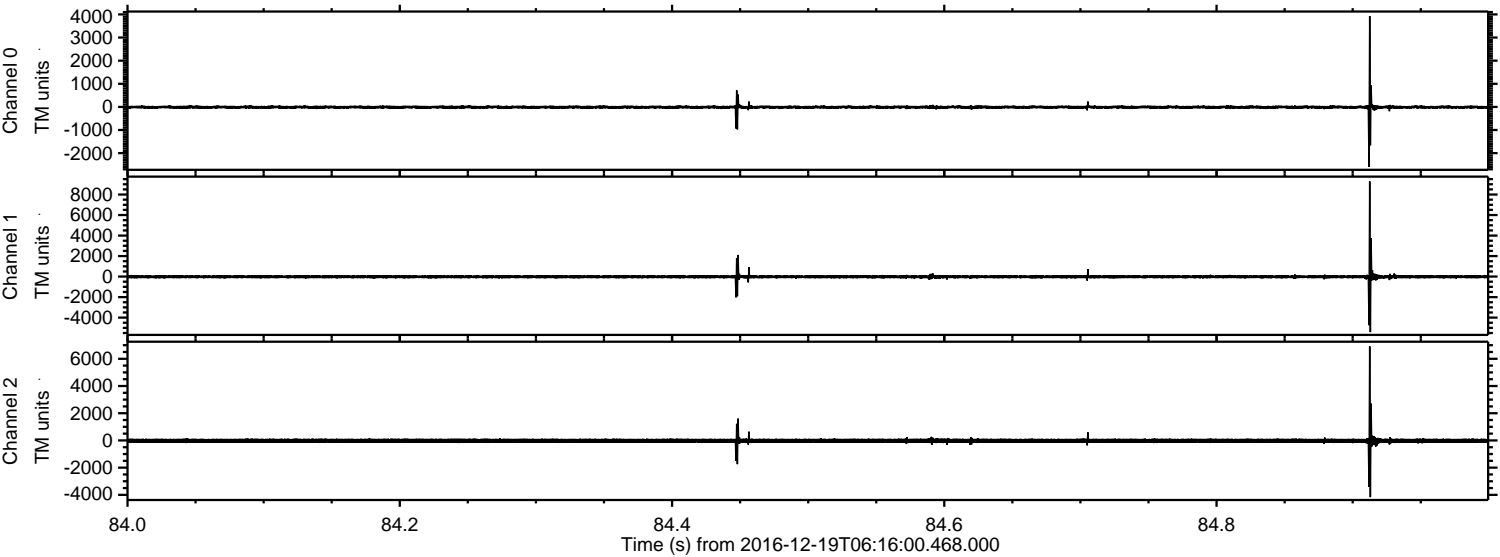
Processed Mon Dec 19 07:24:25 2016 by ELM ver.2012-10-06 from 001\_\_elm20161219\_061559\_\_dat00.bin





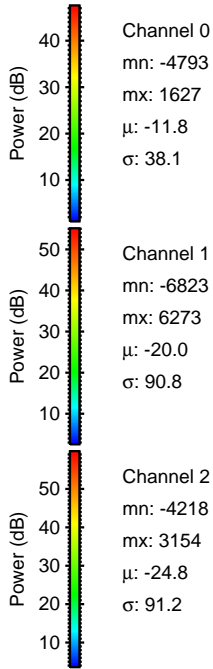
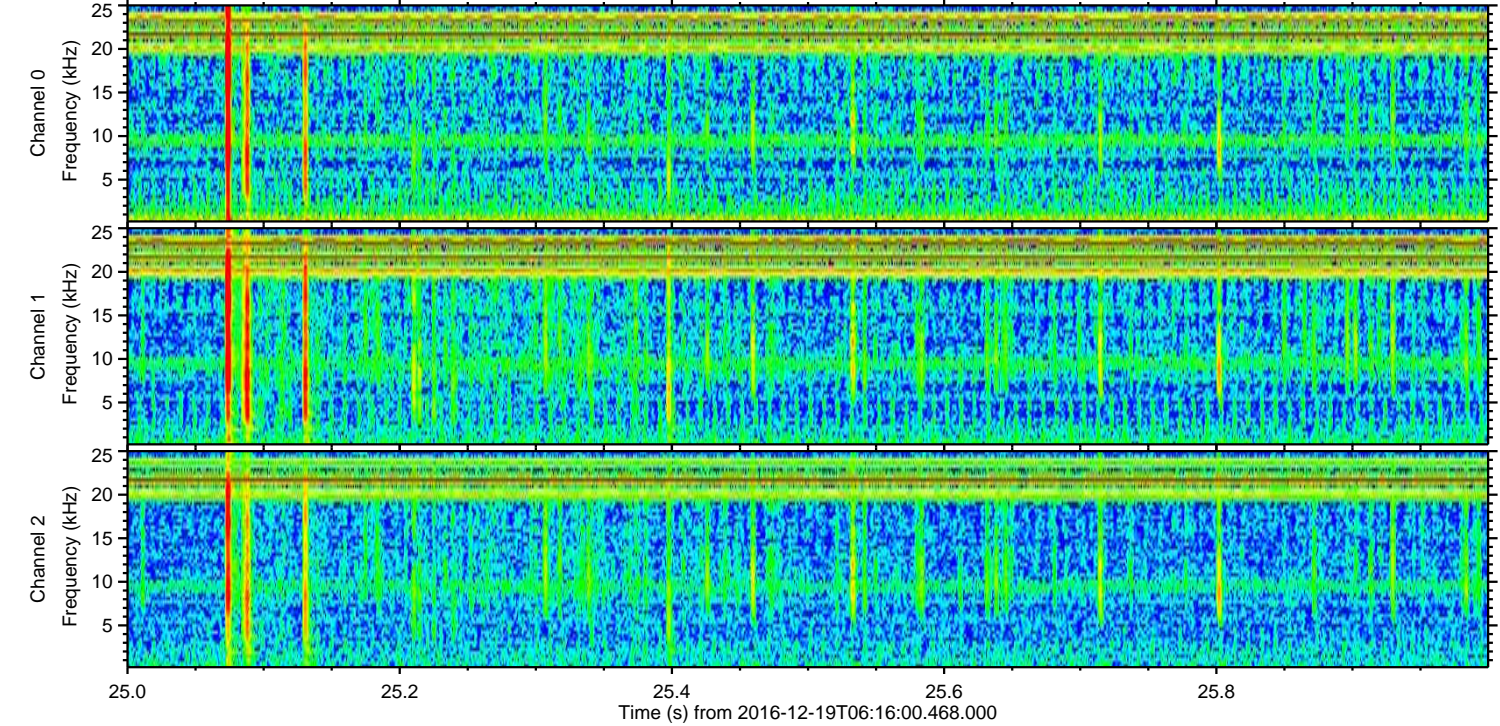
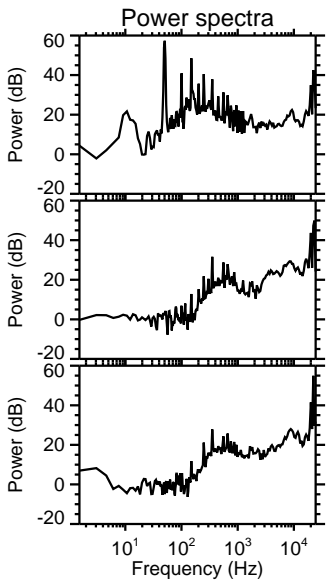
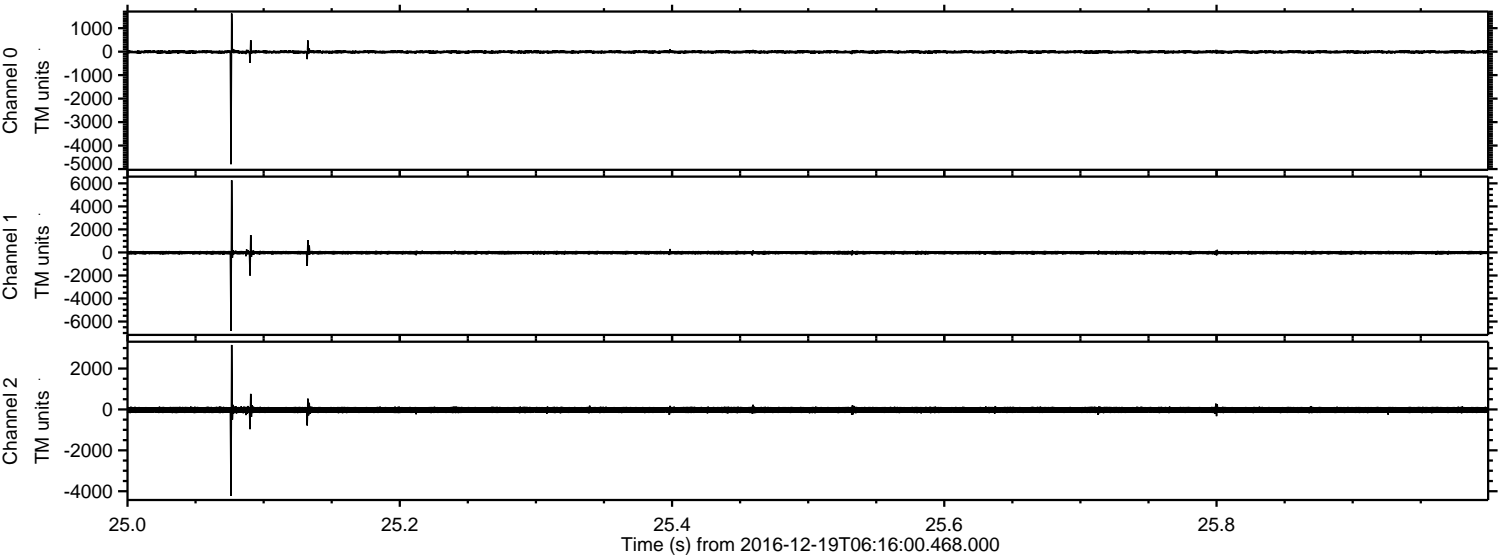
ELMAVAN 3D WAVEFORMS (Measured data sampled at 50 kHz) 51000 packets of 144 samples from 2016-12-19T06:16:00.468.000. Part 85/147

Processed Mon Dec 19 07:24:25 2016 by ELM ver.2012-10-06 from 001\_\_elm20161219\_061559\_\_dat00.bin





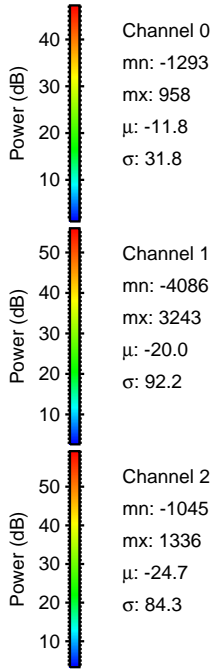
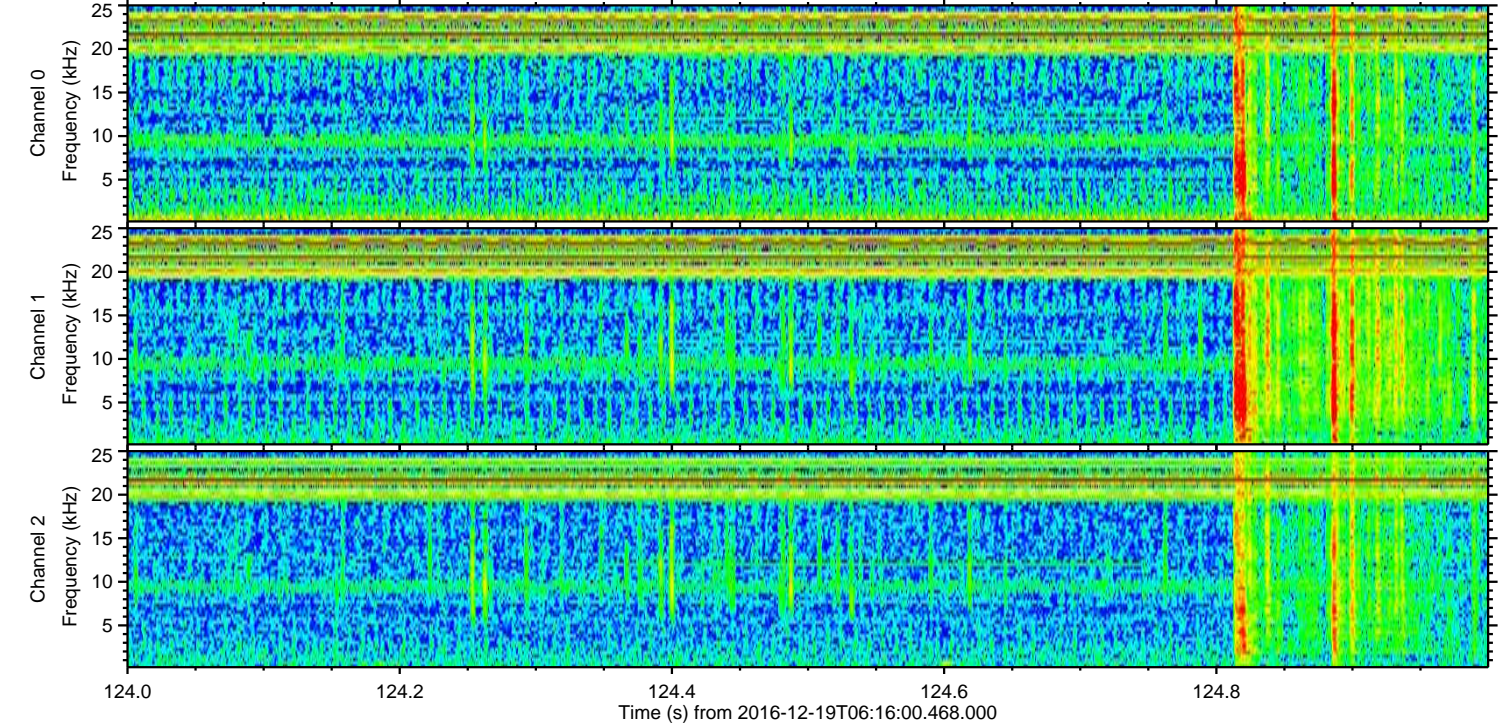
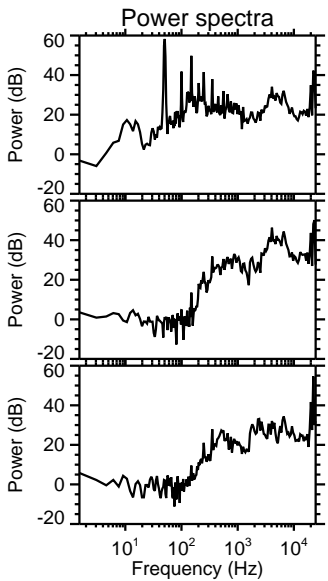
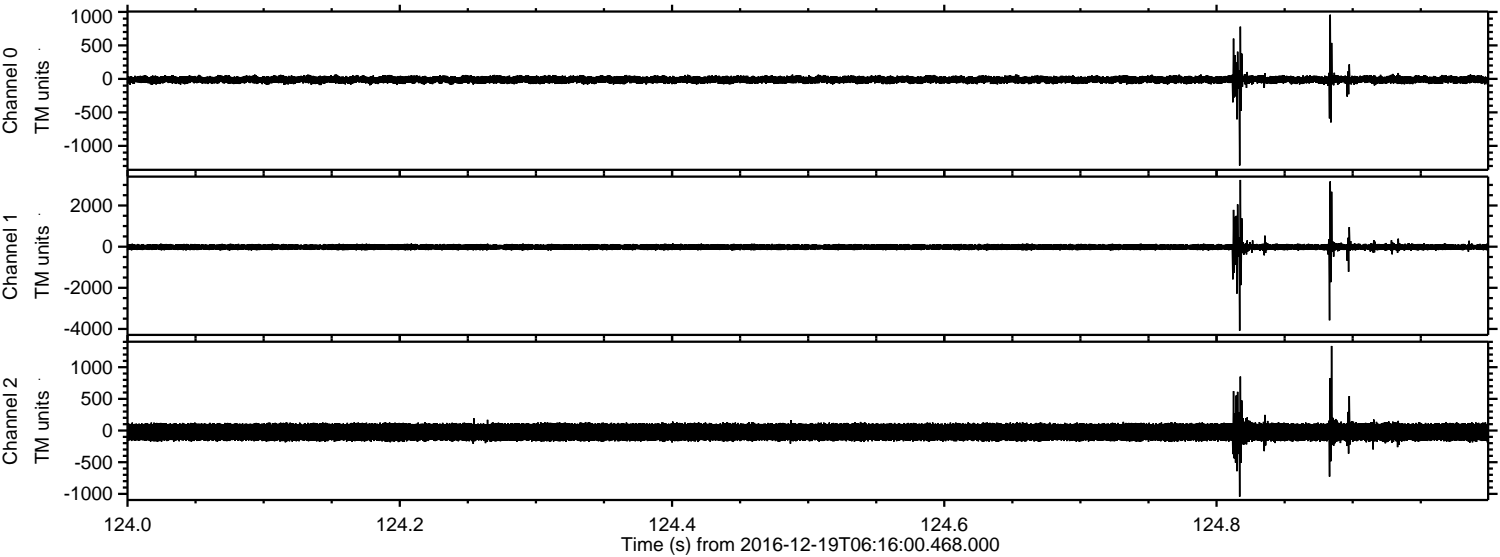
Processed Mon Dec 19 07:24:26 2016 by ELM ver.2012-10-06 from 001\_\_elm20161219\_061559\_\_dat00.bin





ELMAVAN 3D WAVEFORMS (Measured data sampled at 50 kHz) 51000 packets of 144 samples from 2016-12-19T06:16:00.468.000. Part 125/147

Processed Mon Dec 19 07:24:27 2016 by ELM ver.2012-10-06 from 001\_\_elm20161219\_061559\_\_dat00.bin



Channel 0  
mn: -1293  
mx: 958  
 $\mu$ : -11.8  
 $\sigma$ : 31.8

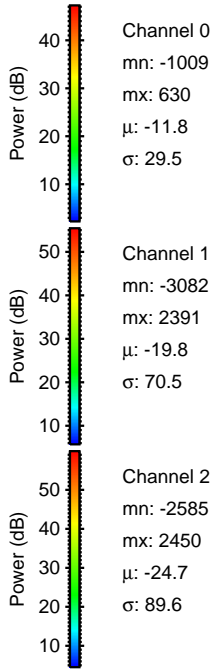
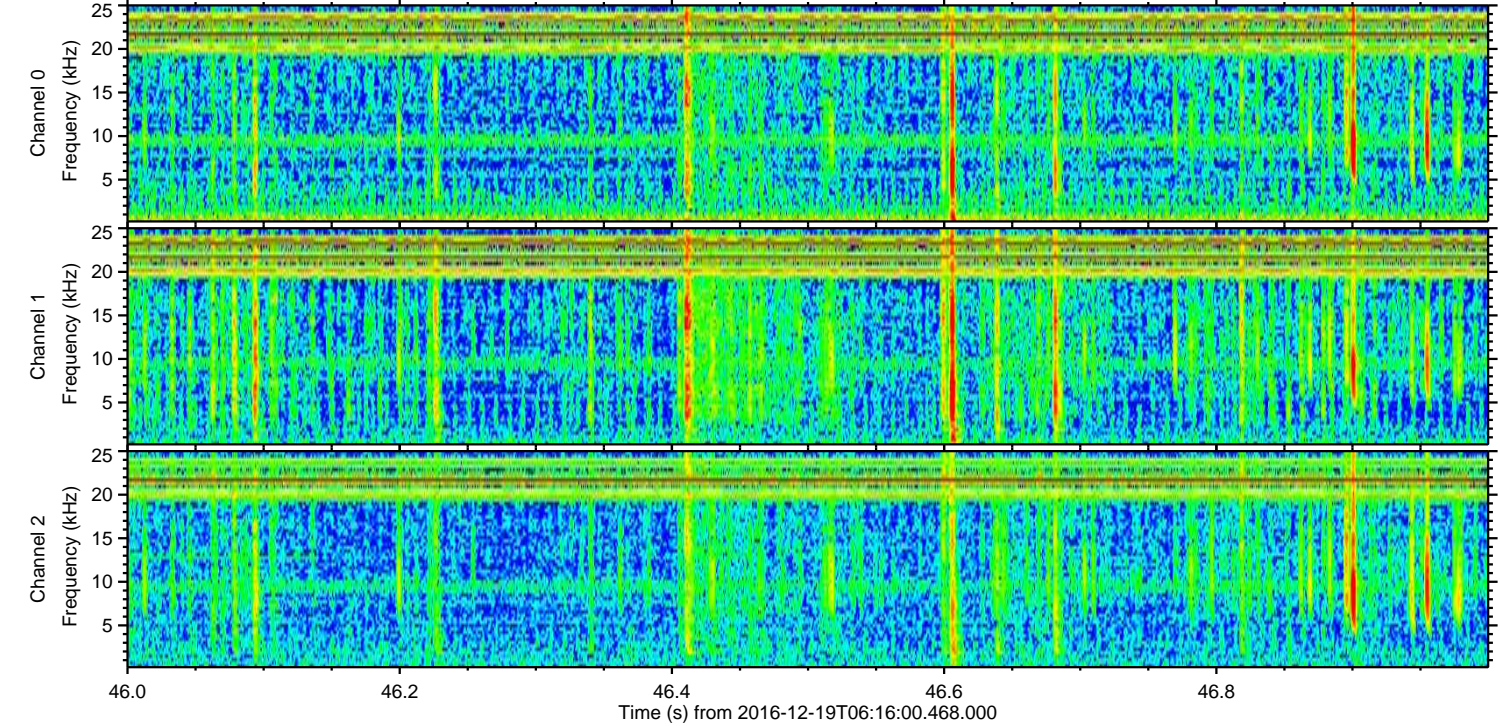
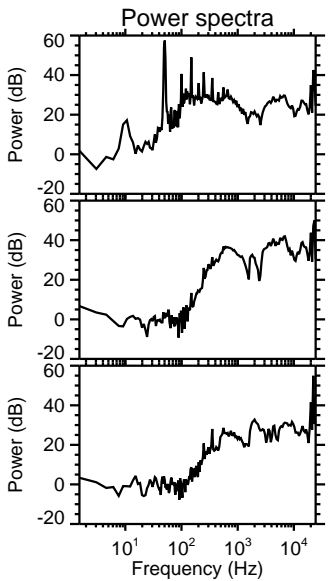
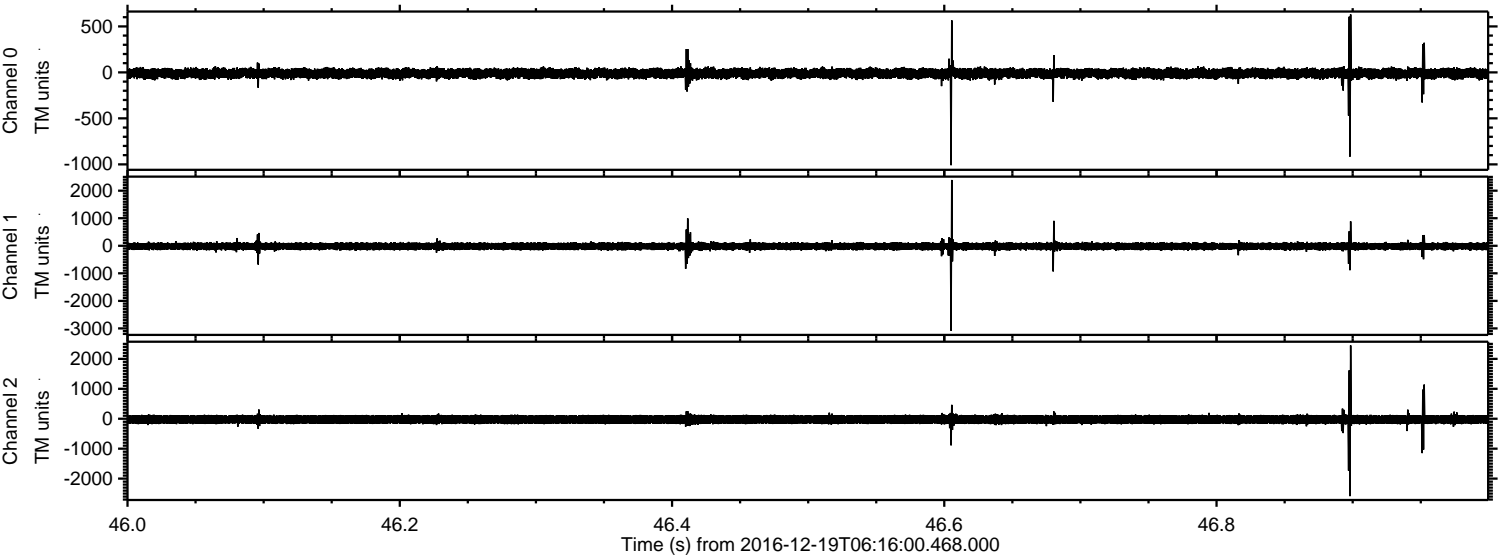
Channel 1  
mn: -4086  
mx: 3243  
 $\mu$ : -20.0  
 $\sigma$ : 92.2

Channel 2  
mn: -1045  
mx: 1336  
 $\mu$ : -24.7  
 $\sigma$ : 84.3



ELMAVAN 3D WAVEFORMS (Measured data sampled at 50 kHz) 51000 packets of 144 samples from 2016-12-19T06:16:00.468.000. Part 47/147

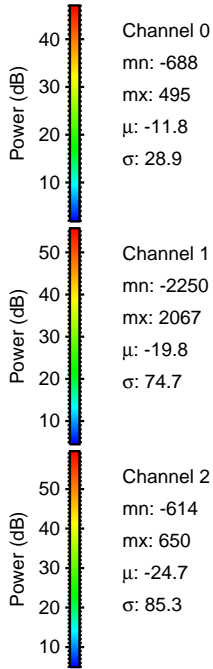
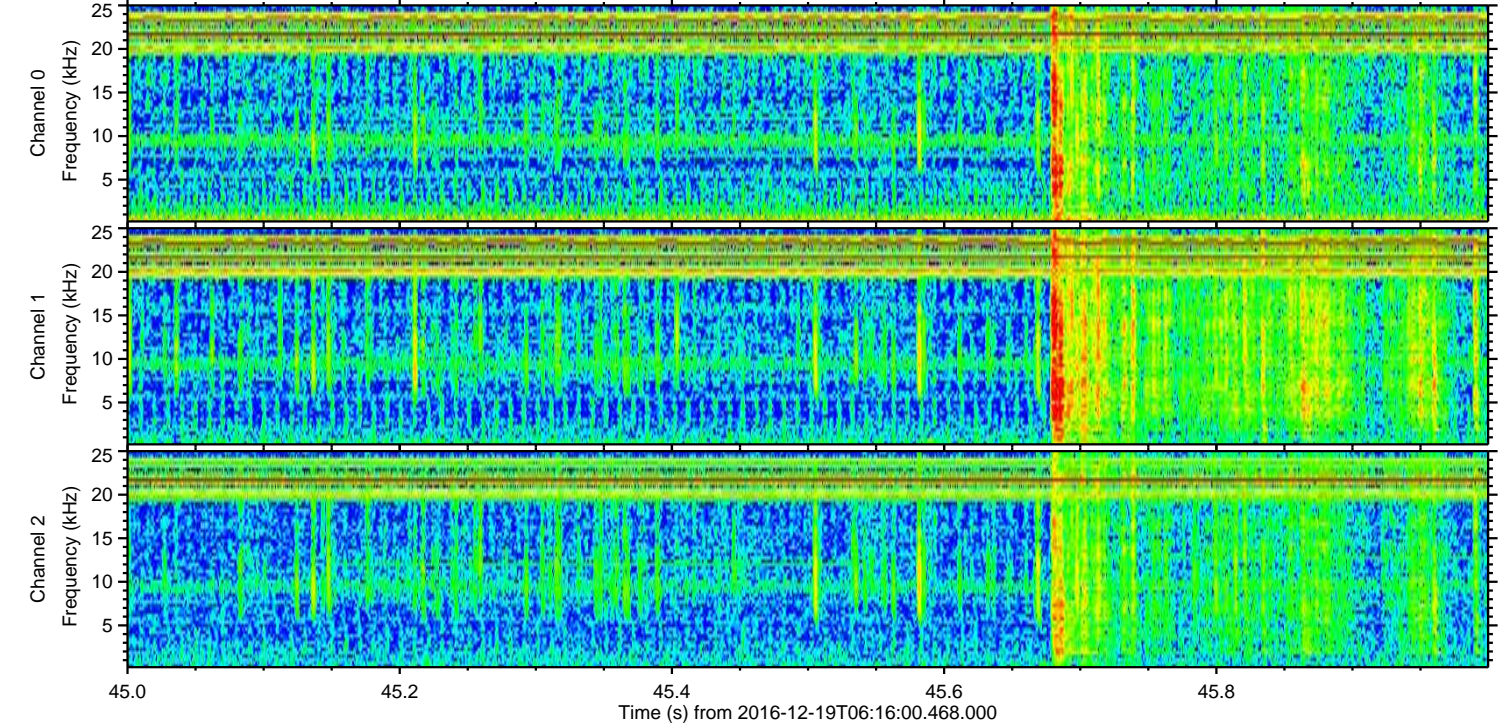
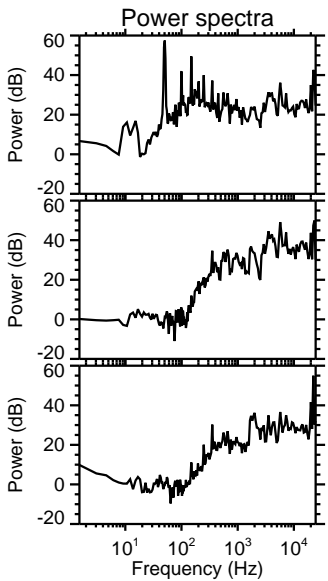
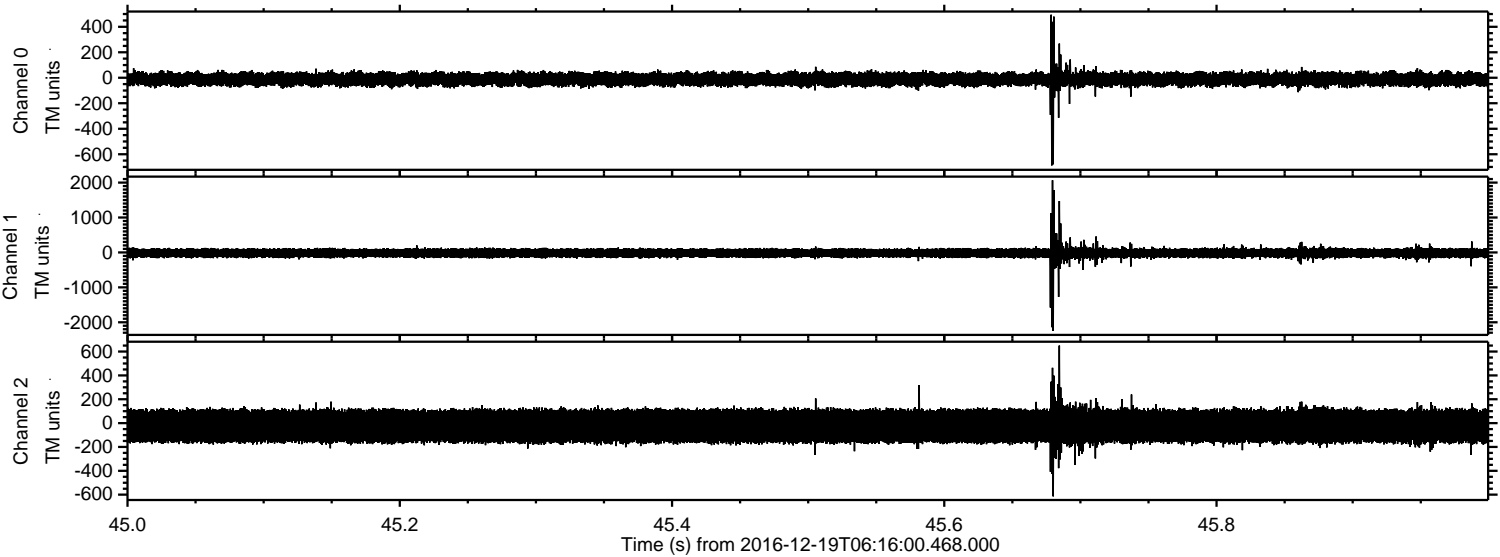
Processed Mon Dec 19 07:24:28 2016 by ELM ver.2012-10-06 from 001\_\_elm20161219\_061559\_\_dat00.bin





ELMAVAN 3D WAVEFORMS (Measured data sampled at 50 kHz) 51000 packets of 144 samples from 2016-12-19T06:16:00.468.000. Part 46/147

Processed Mon Dec 19 07:24:29 2016 by ELM ver.2012-10-06 from 001\_\_elm20161219\_061559\_\_dat00.bin



Channel 0  
mn: -688  
mx: 495  
 $\mu$ : -11.8  
 $\sigma$ : 28.9

Channel 1  
mn: -2250  
mx: 2067  
 $\mu$ : -19.8  
 $\sigma$ : 74.7

Channel 2  
mn: -614  
mx: 650  
 $\mu$ : -24.7  
 $\sigma$ : 85.3



ELMAVAN 3D WAVEFORMS (Measured data sampled at 50 kHz) 51000 packets of 144 samples from 2016-12-19T06:16:00.468.000. Part 118/147

Processed Mon Dec 19 07:24:30 2016 by ELM ver.2012-10-06 from 001\_\_elm20161219\_061559\_\_dat00.bin

