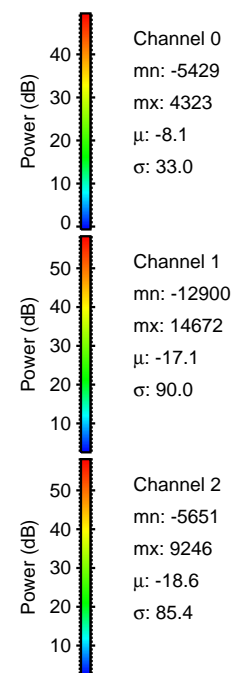
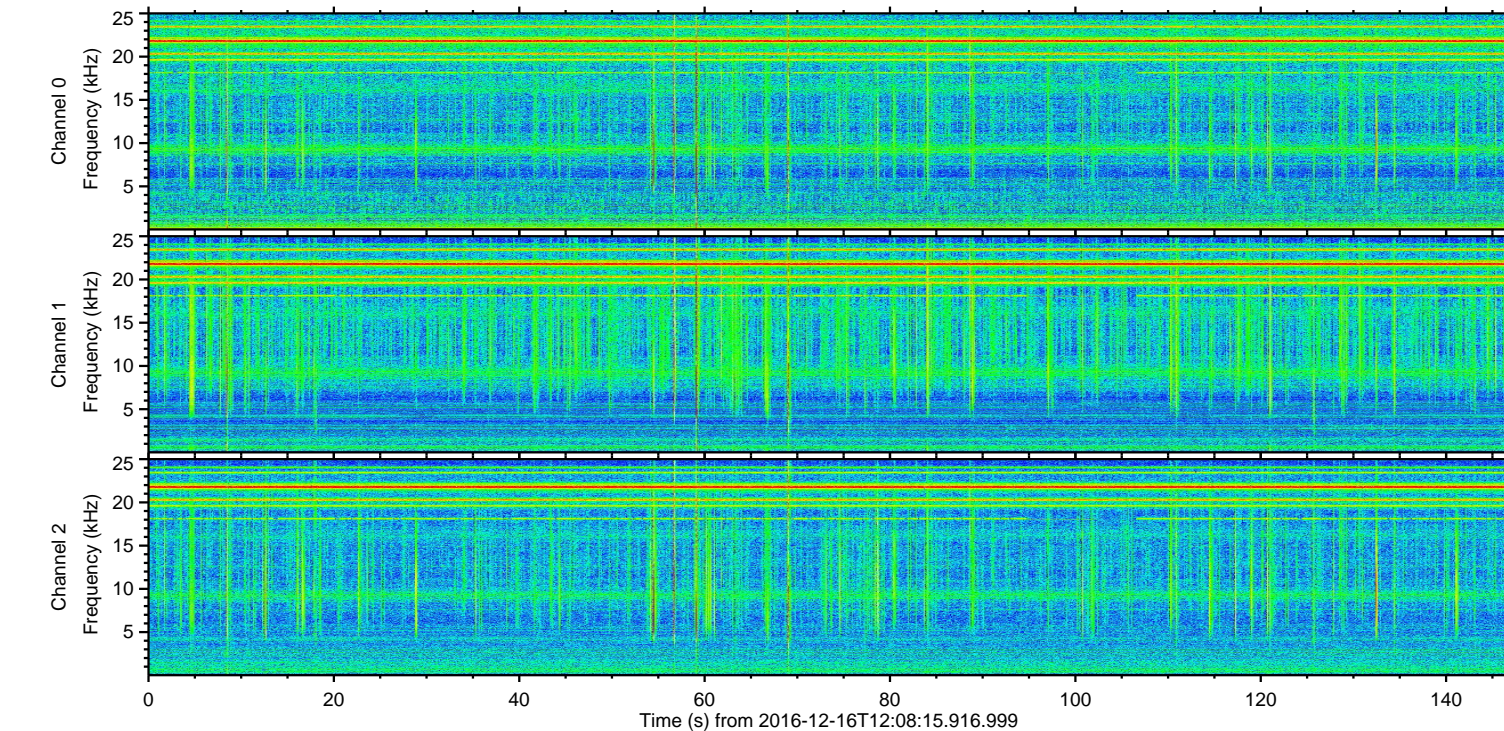
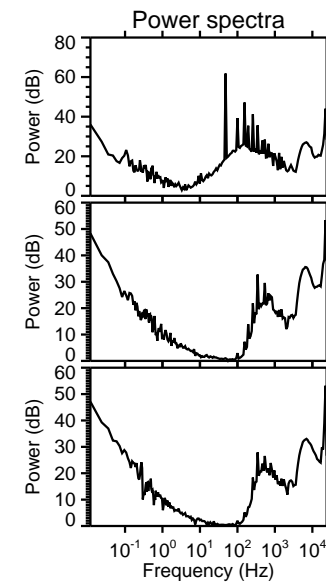
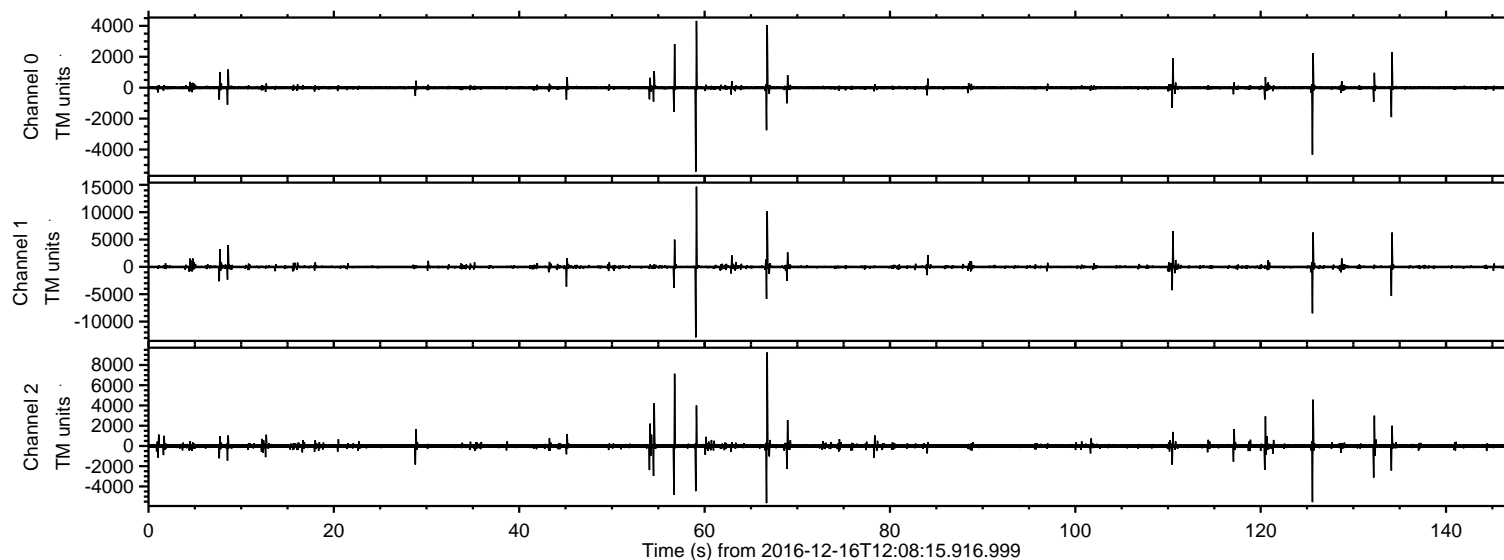


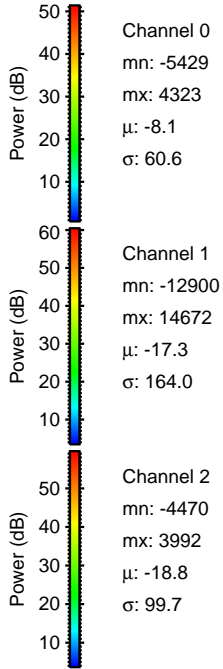
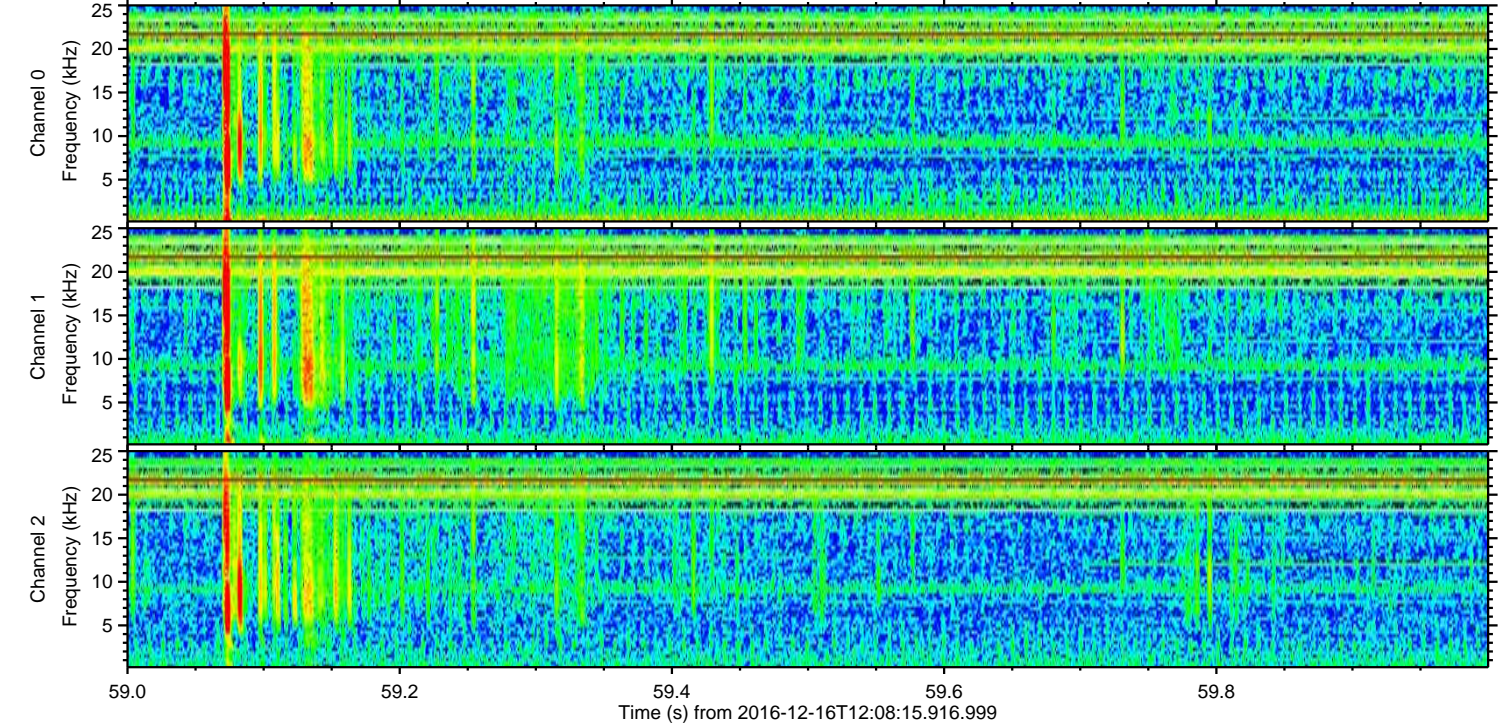
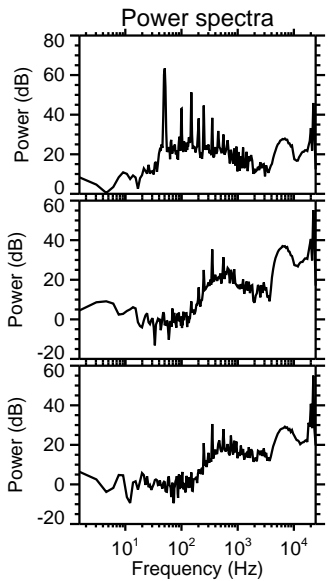
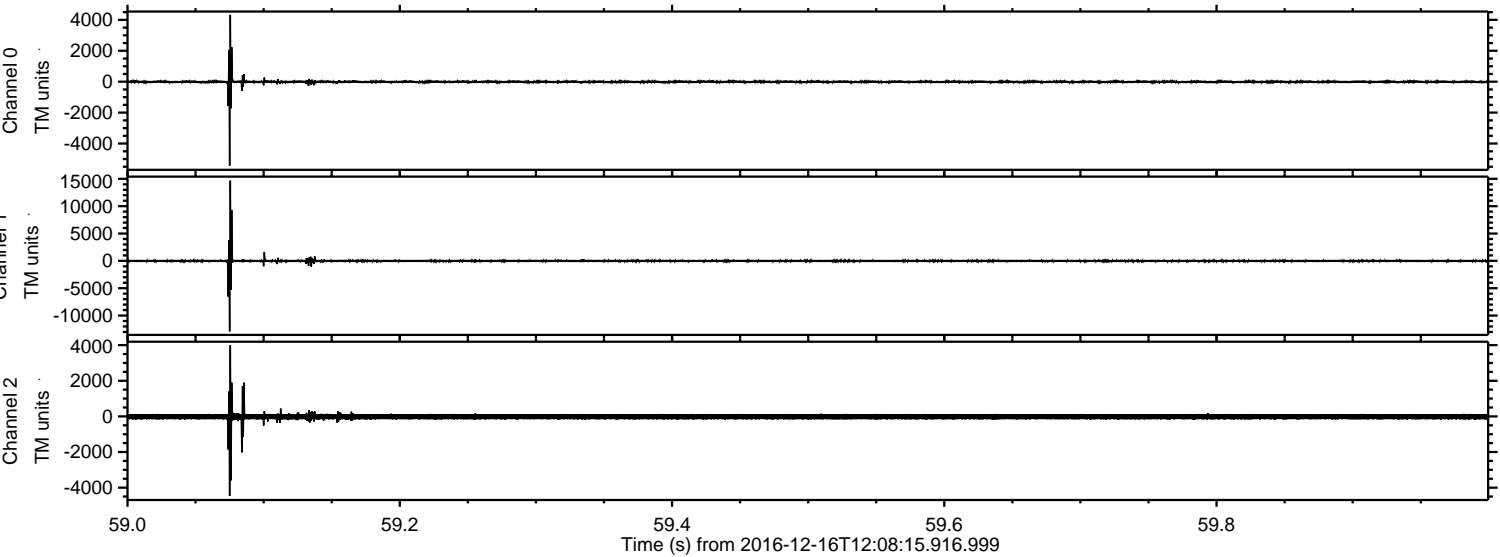
ELMAVAN 3D WAVEFORMS (Measured data sampled at 50 kHz) 51000 packets of 144 samples from 2016-12-16T12:08:15.916.999.

Processed Fri Dec 16 13:16:03 2016 by ELM ver.2012-10-06 from 001__elm20161216_120814__dat00.bin



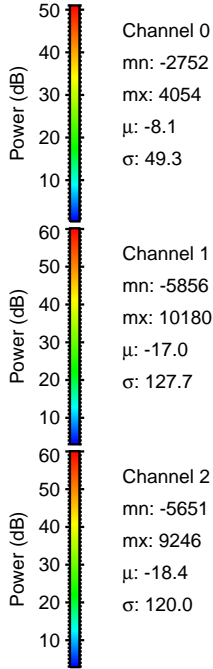
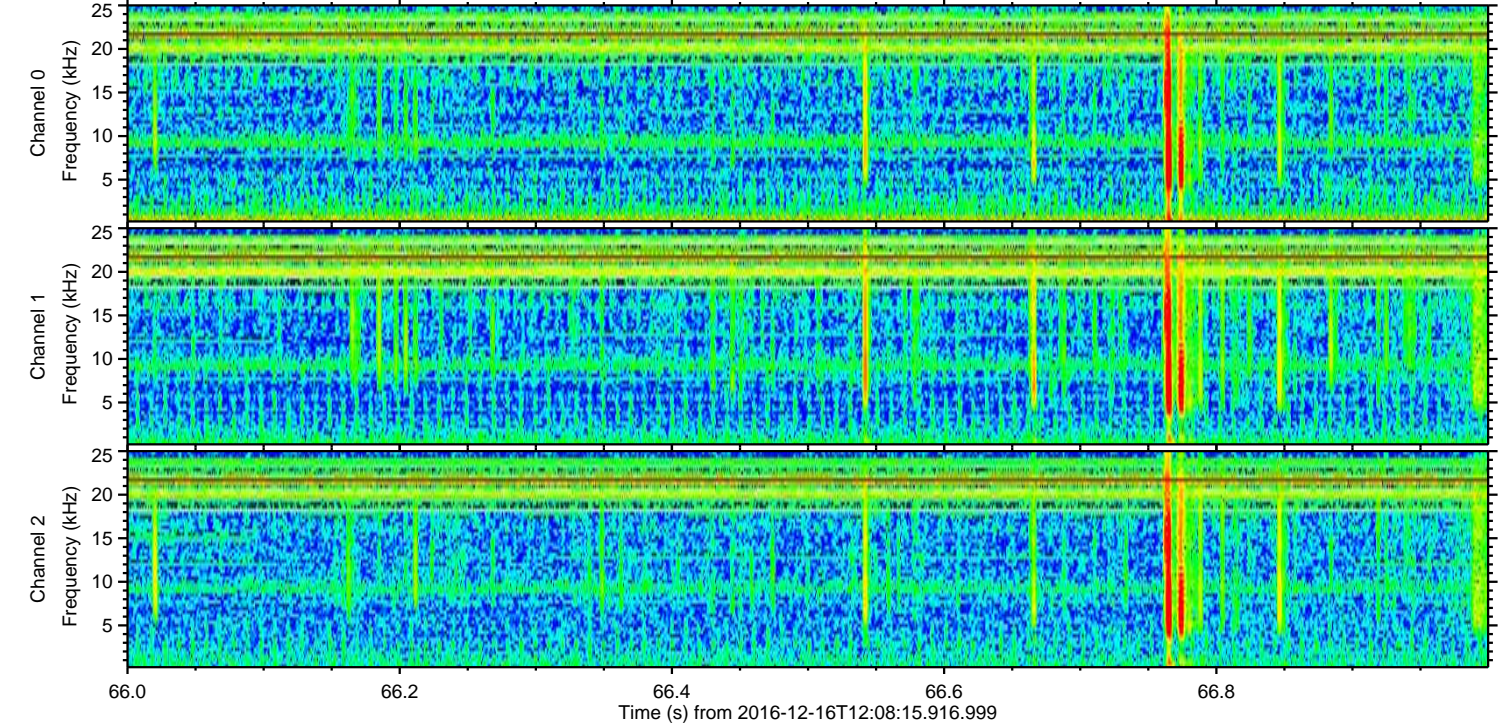
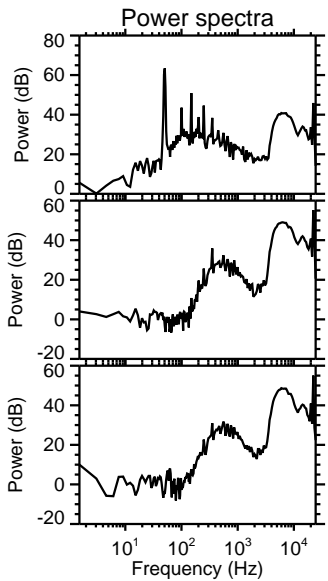
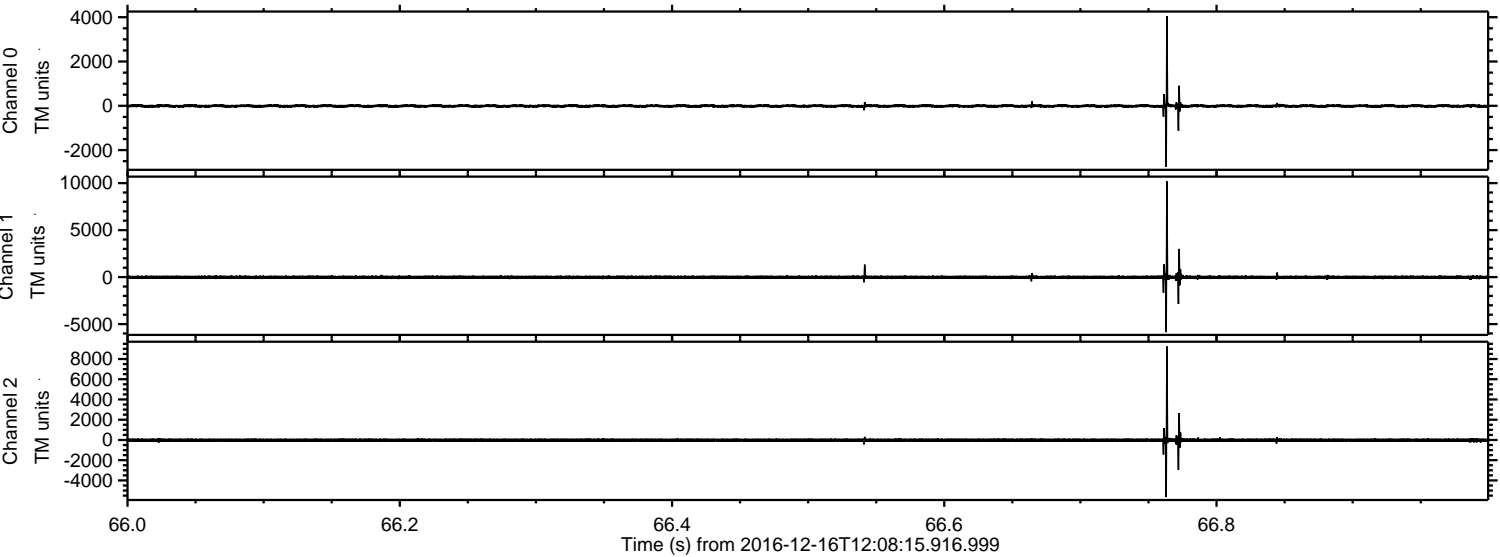
ELMAVAN 3D WAVEFORMS (Measured data sampled at 50 kHz) 51000 packets of 144 samples from 2016-12-16T12:08:15.916.999. Part 60/147

Processed Fri Dec 16 13:16:15 2016 by ELM ver.2012-10-06 from 001__elm20161216_120814__dat00.bin



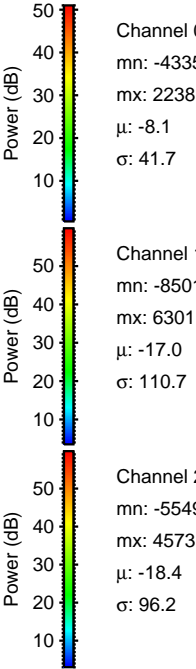
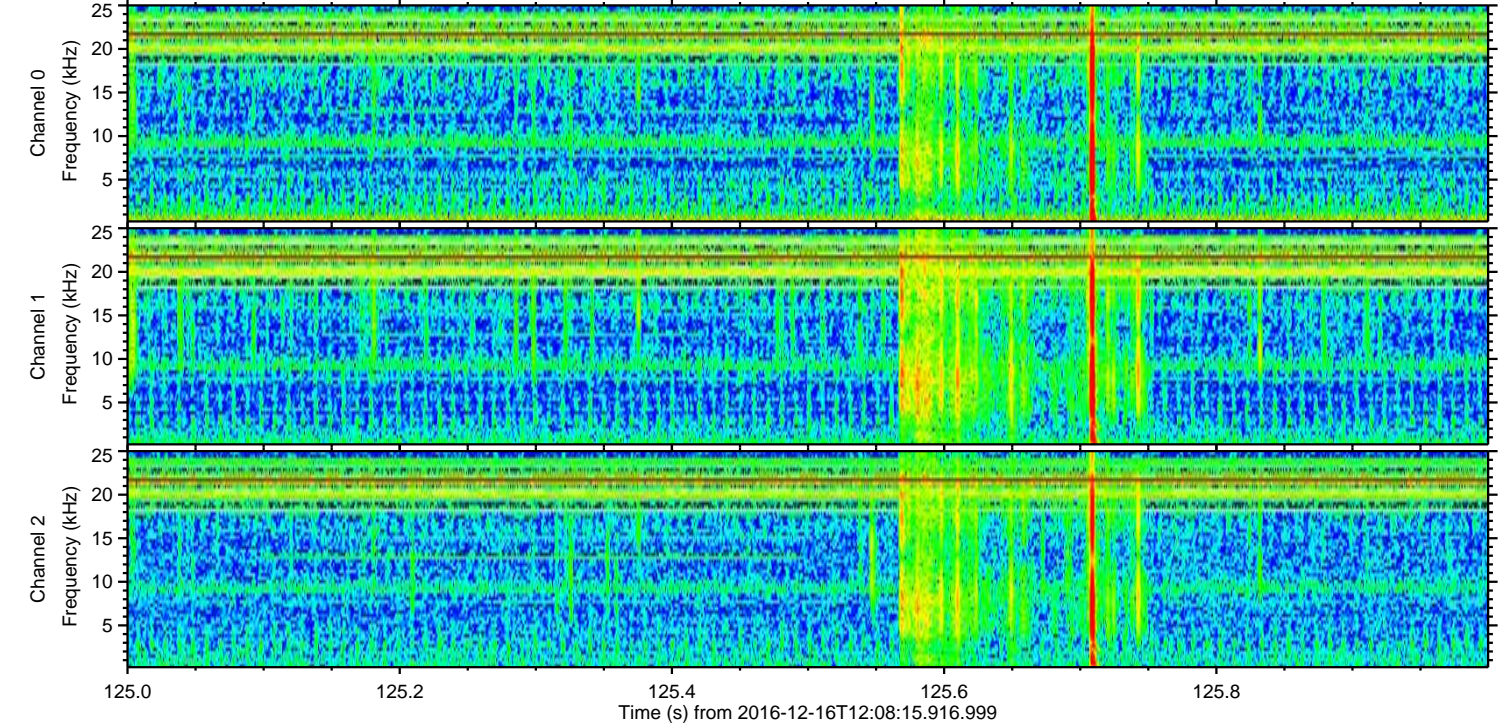
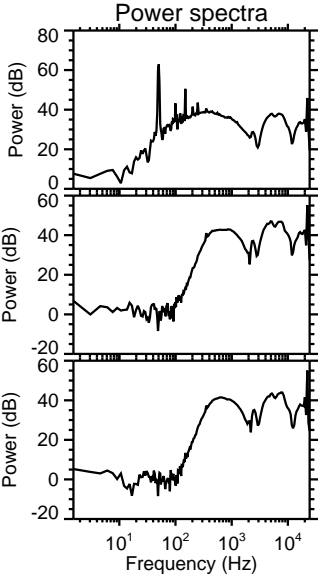
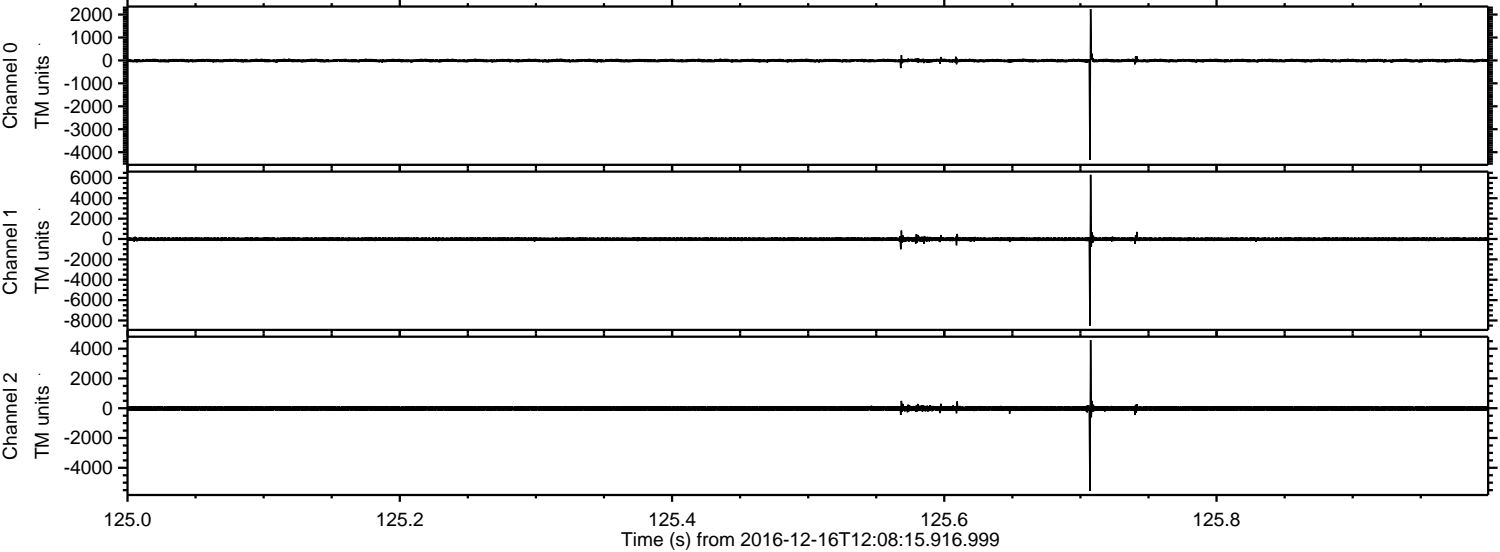
ELMAVAN 3D WAVEFORMS (Measured data sampled at 50 kHz) 51000 packets of 144 samples from 2016-12-16T12:08:15.916.999. Part 67/147

Processed Fri Dec 16 13:16:16 2016 by ELM ver.2012-10-06 from 001__elm20161216_120814__dat00.bin

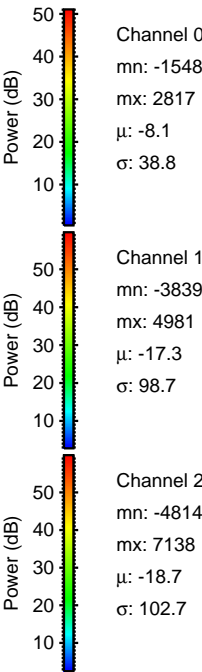
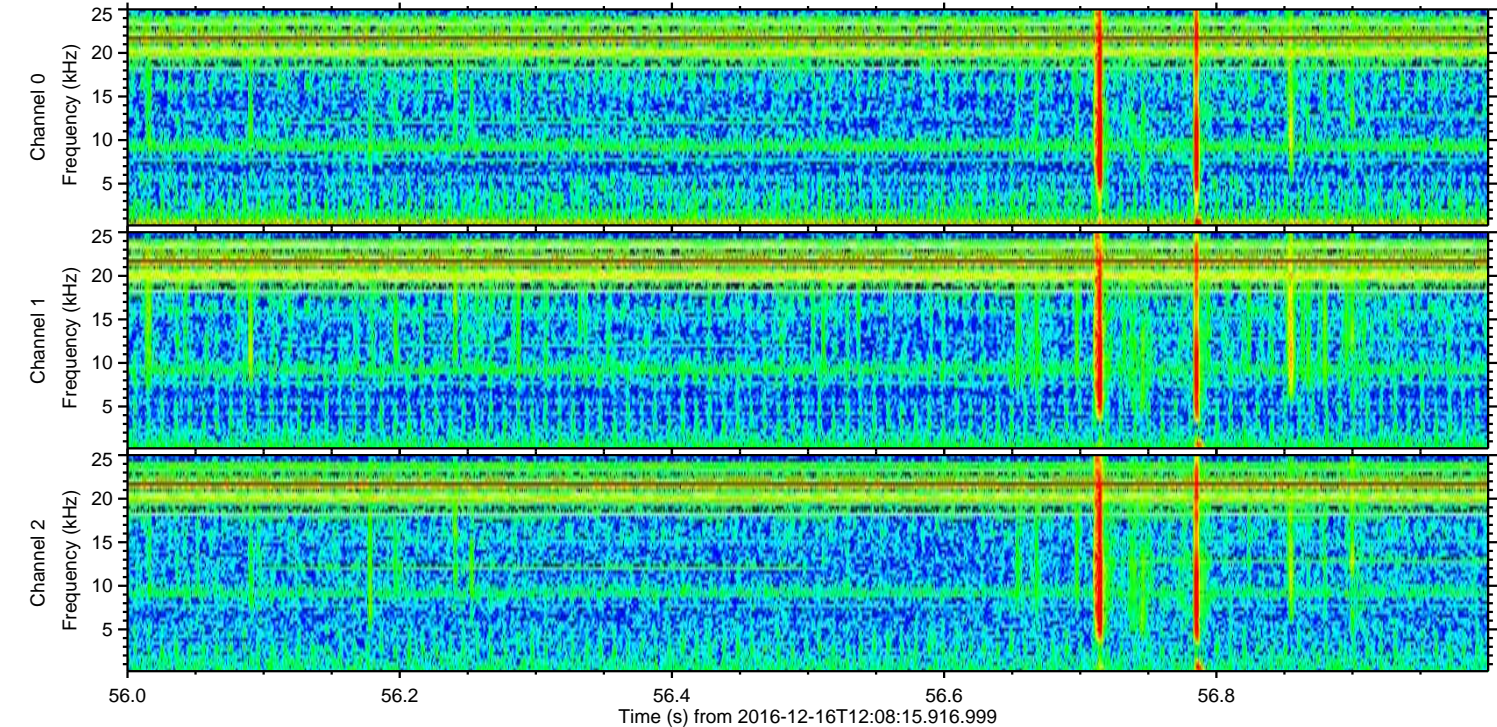
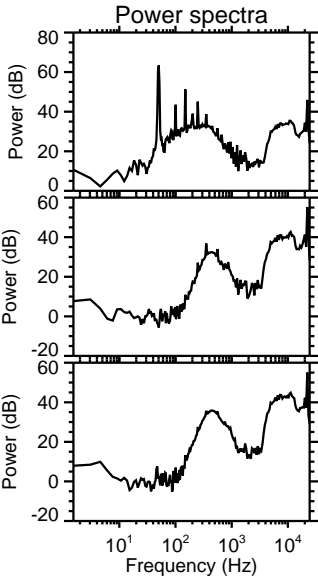
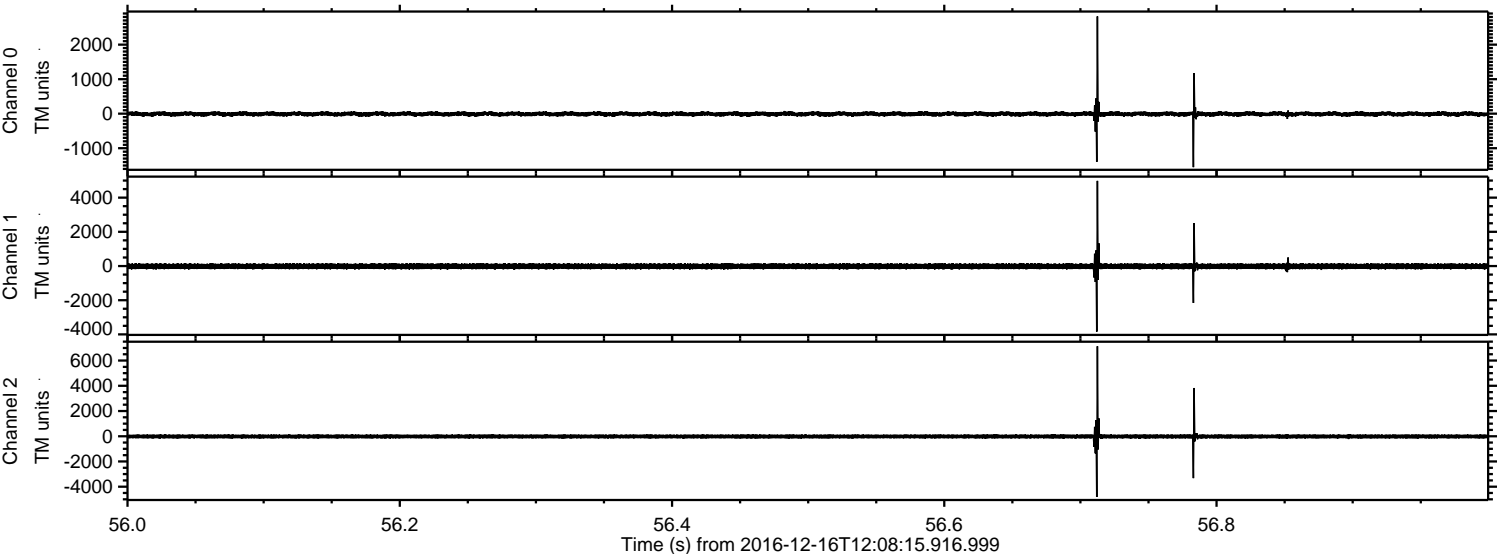


ELMAVAN 3D WAVEFORMS (Measured data sampled at 50 kHz) 51000 packets of 144 samples from 2016-12-16T12:08:15.916.999. Part 126/147

Processed Fri Dec 16 13:16:17 2016 by ELM ver.2012-10-06 from 001__elm20161216_120814__dat00.bin

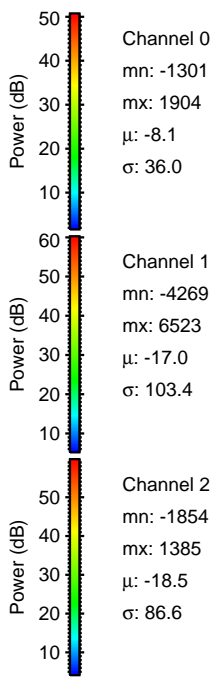
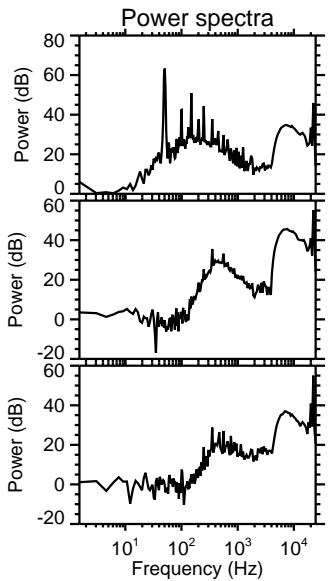
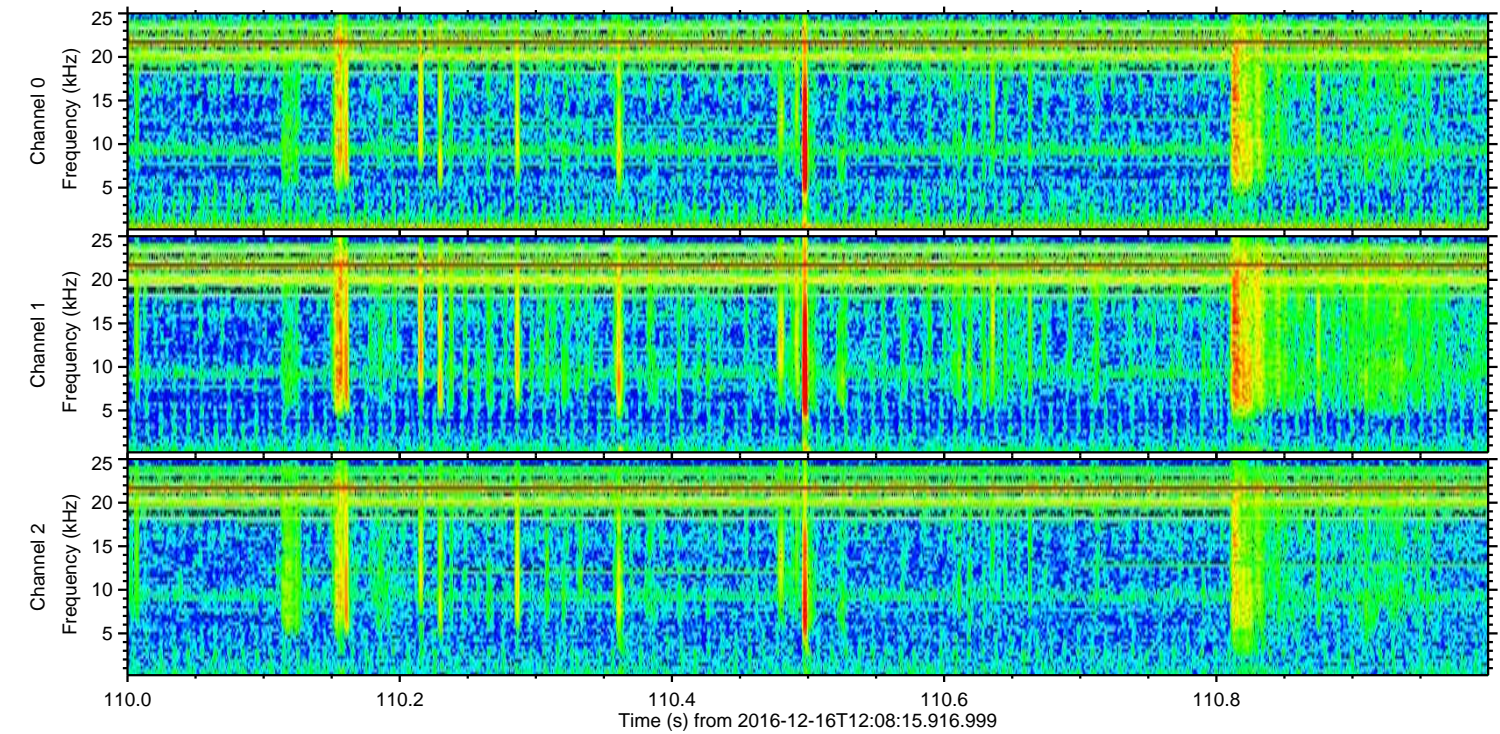
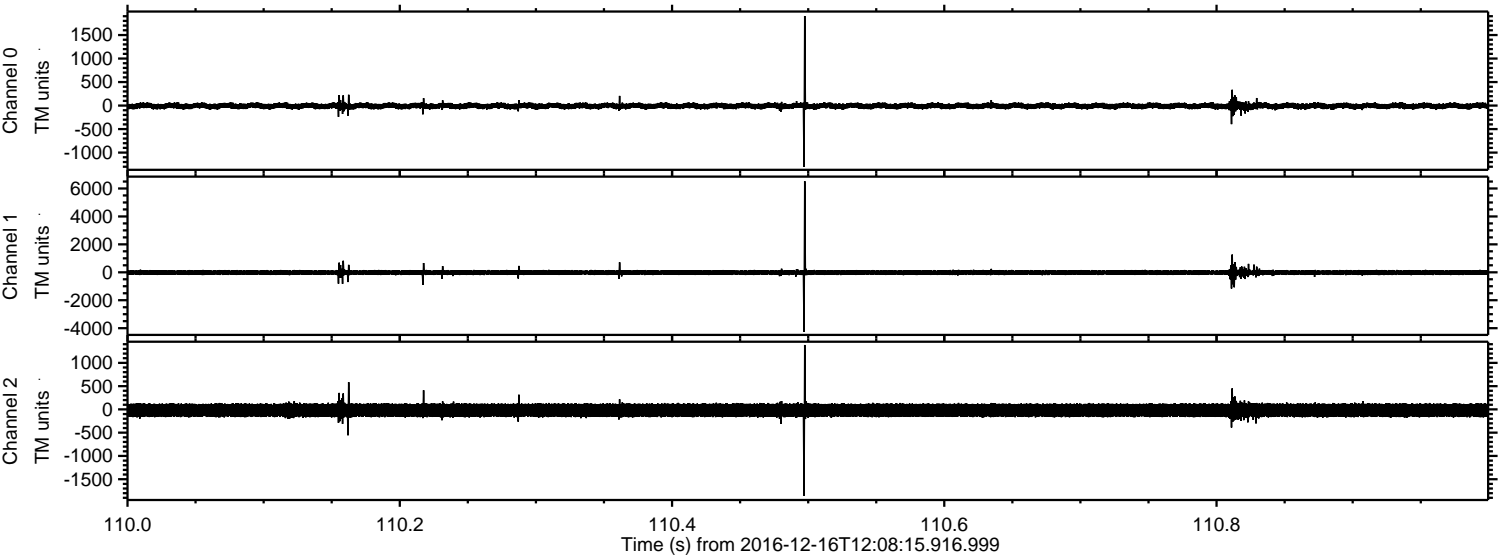


Processed Fri Dec 16 13:16:17 2016 by ELM ver.2012-10-06 from 001__elm20161216_120814__dat00.bin



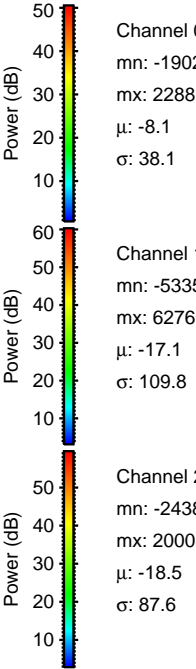
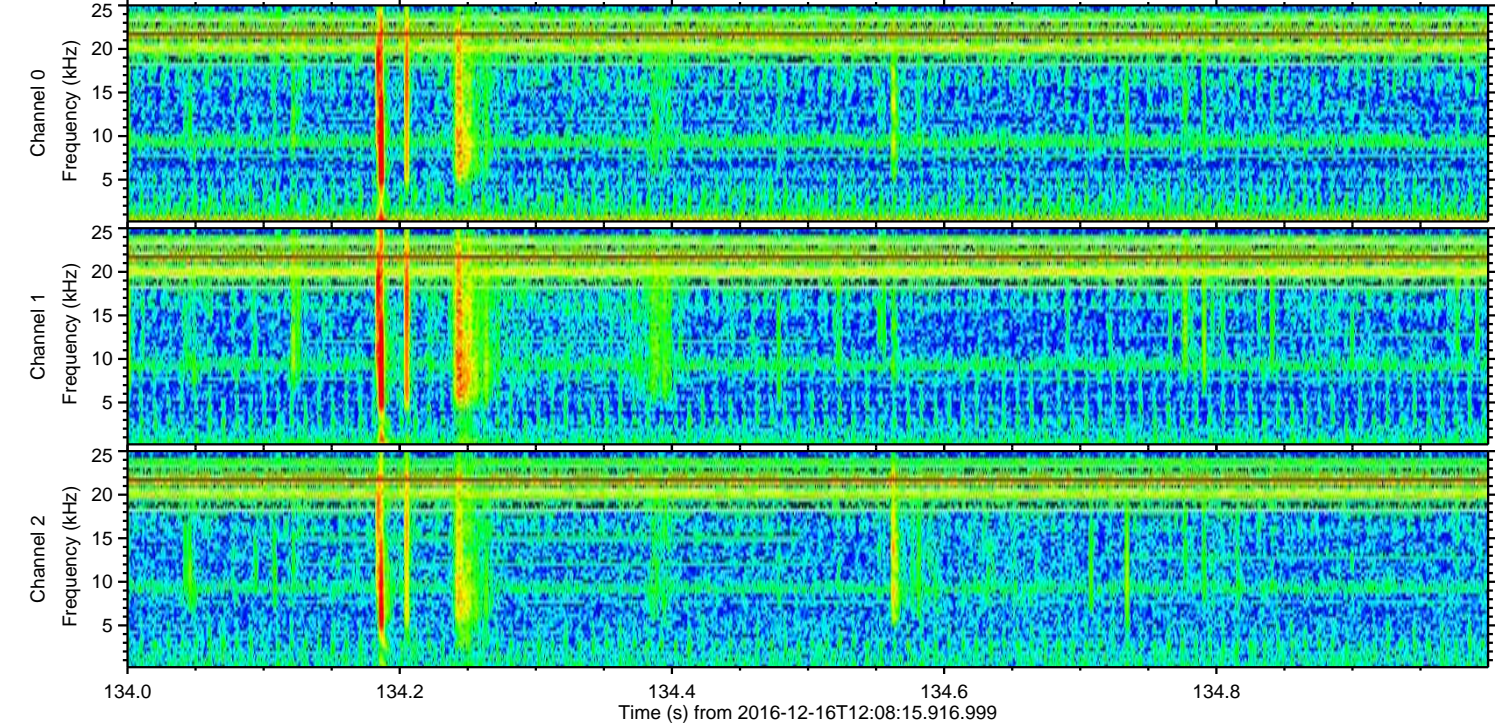
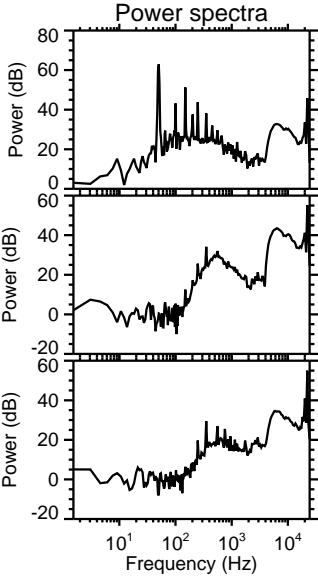
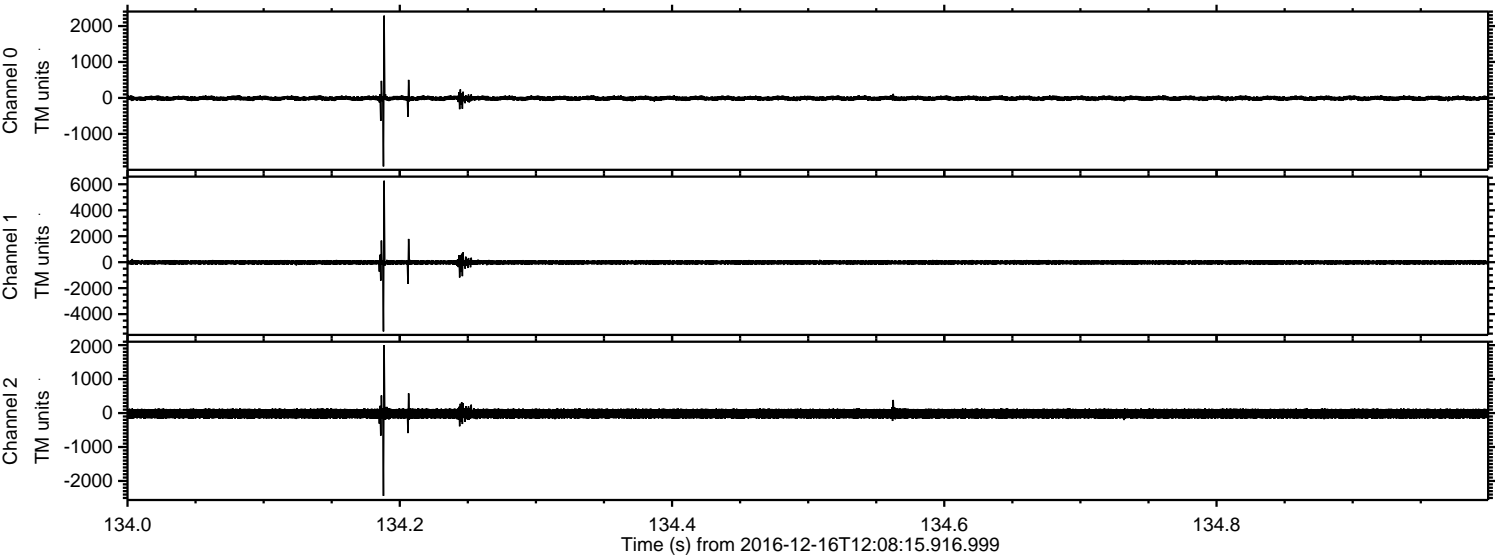
ELMAVAN 3D WAVEFORMS (Measured data sampled at 50 kHz) 51000 packets of 144 samples from 2016-12-16T12:08:15.916.999. Part 111/147

Processed Fri Dec 16 13:16:18 2016 by ELM ver.2012-10-06 from 001__elm20161216_120814__dat00.bin



ELMAVAN 3D WAVEFORMS (Measured data sampled at 50 kHz) 51000 packets of 144 samples from 2016-12-16T12:08:15.916.999. Part 135/147

Processed Fri Dec 16 13:16:19 2016 by ELM ver.2012-10-06 from 001__elm20161216_120814__dat00.bin

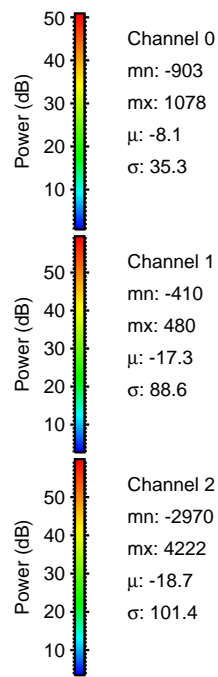
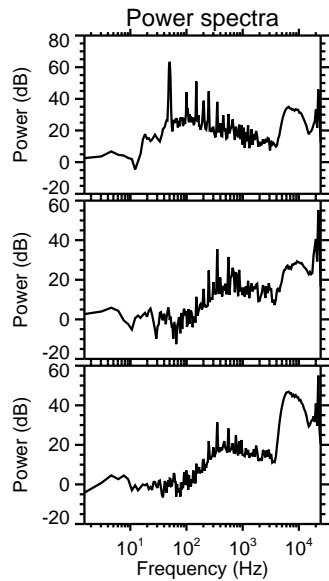
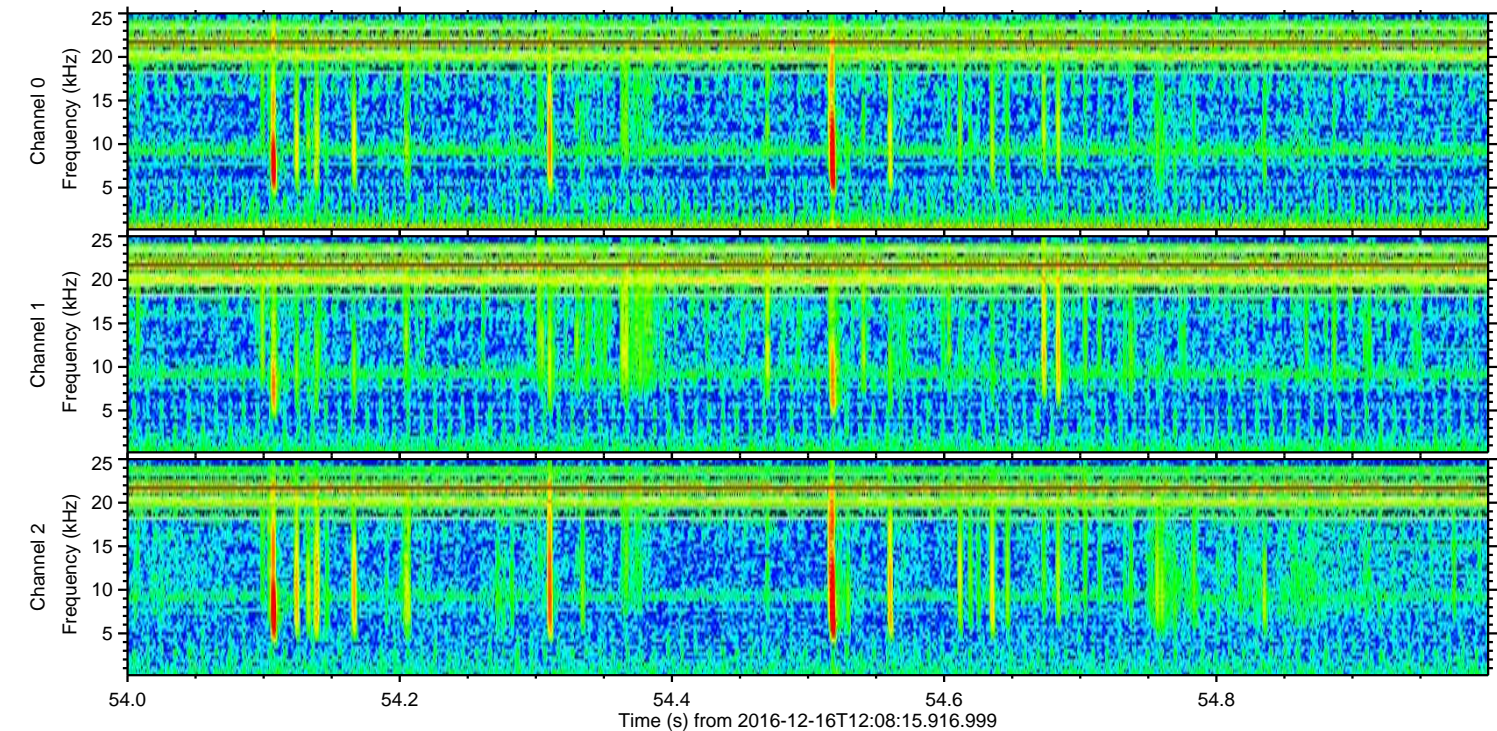
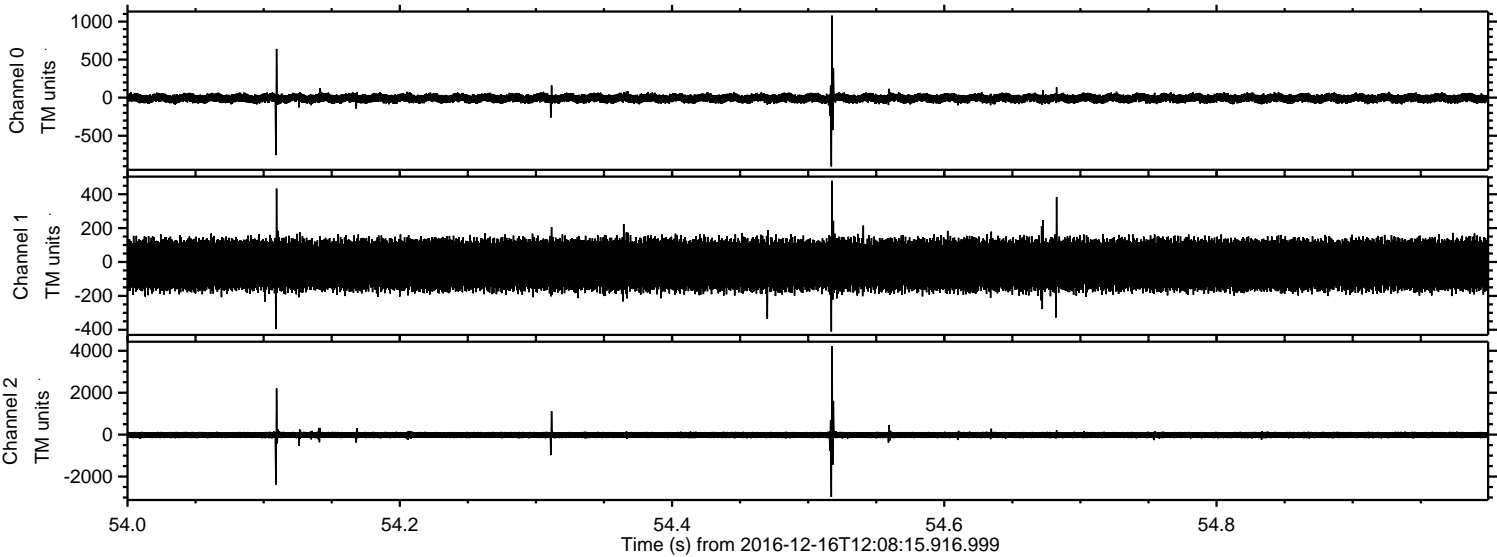


Channel 0
mn: -1902
mx: 2288
 μ : -8.1
 σ : 38.1

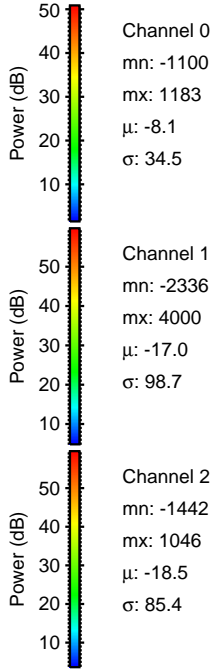
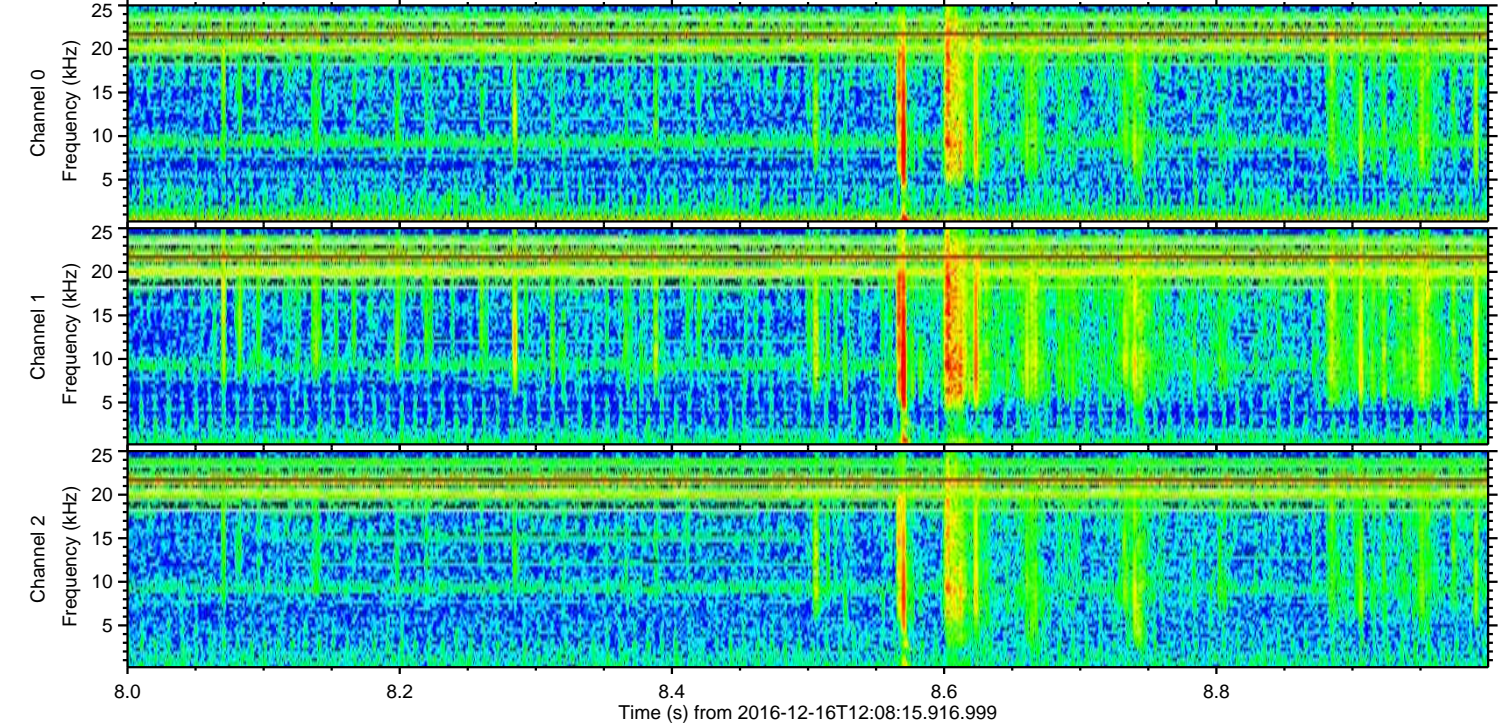
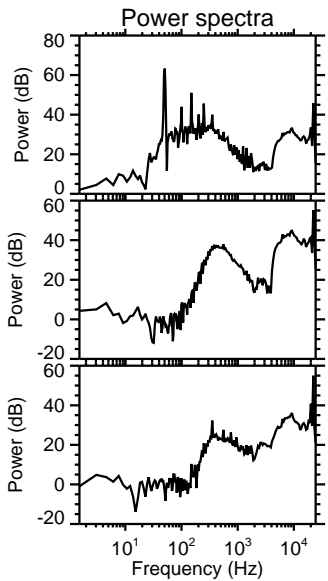
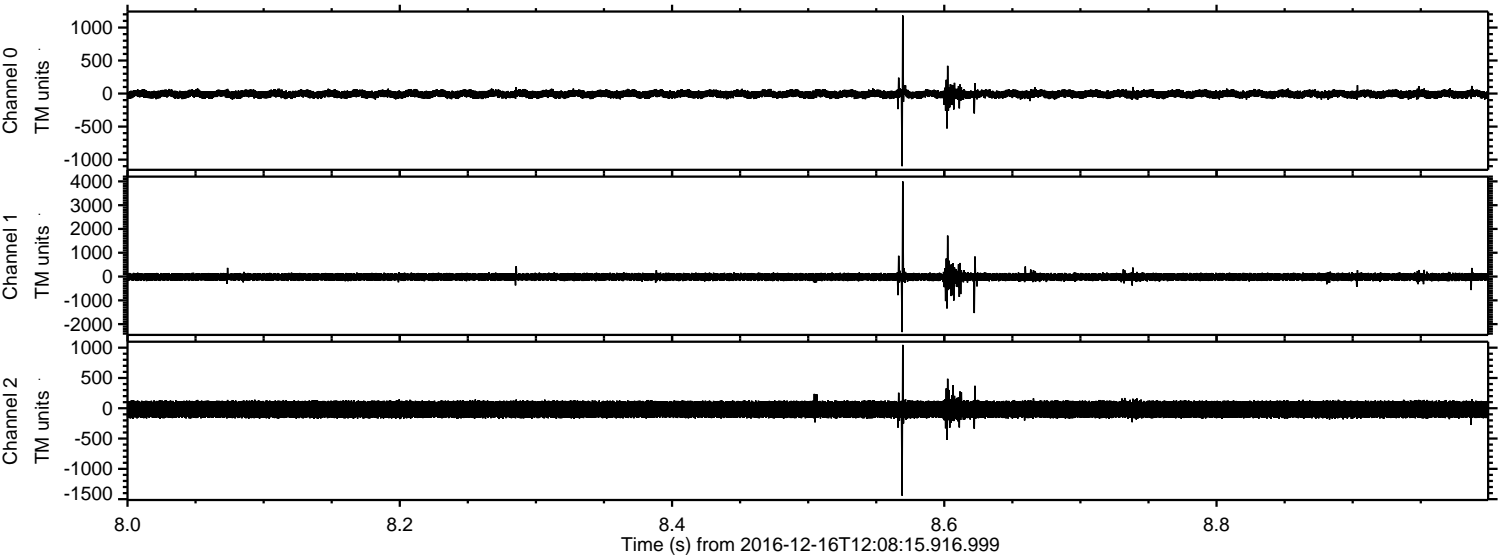
Channel 1
mn: -5335
mx: 6276
 μ : -17.1
 σ : 109.8

Channel 2
mn: -2438
mx: 2000
 μ : -18.5
 σ : 87.6

Processed Fri Dec 16 13:16:20 2016 by ELM ver.2012-10-06 from 001__elm20161216_120814__dat00.bin

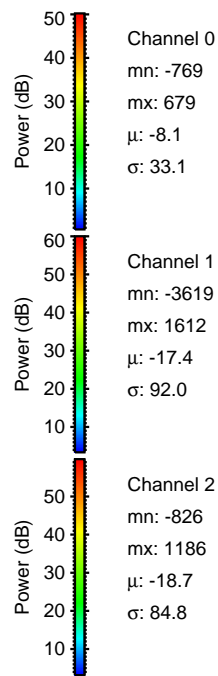
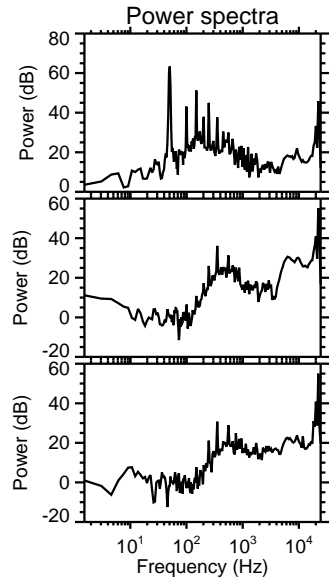
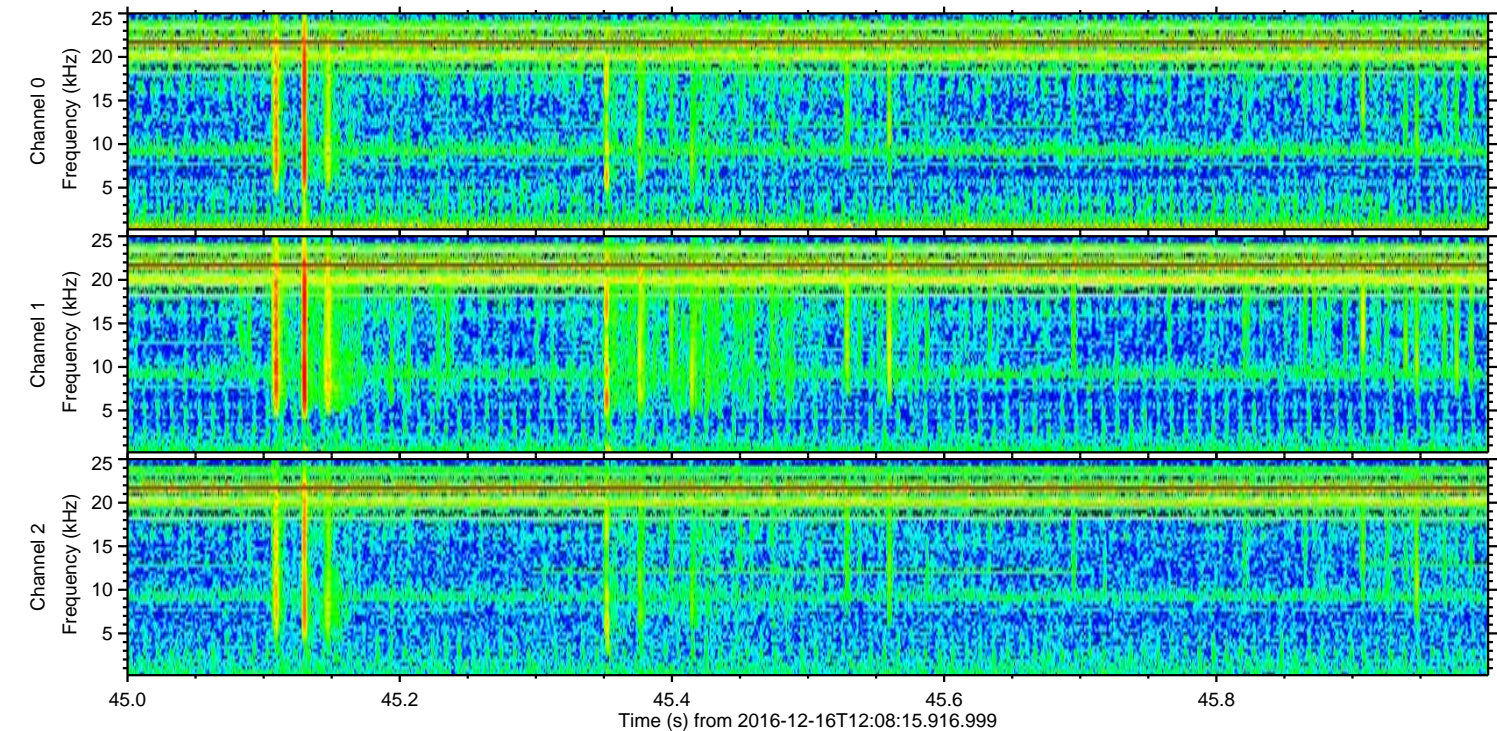
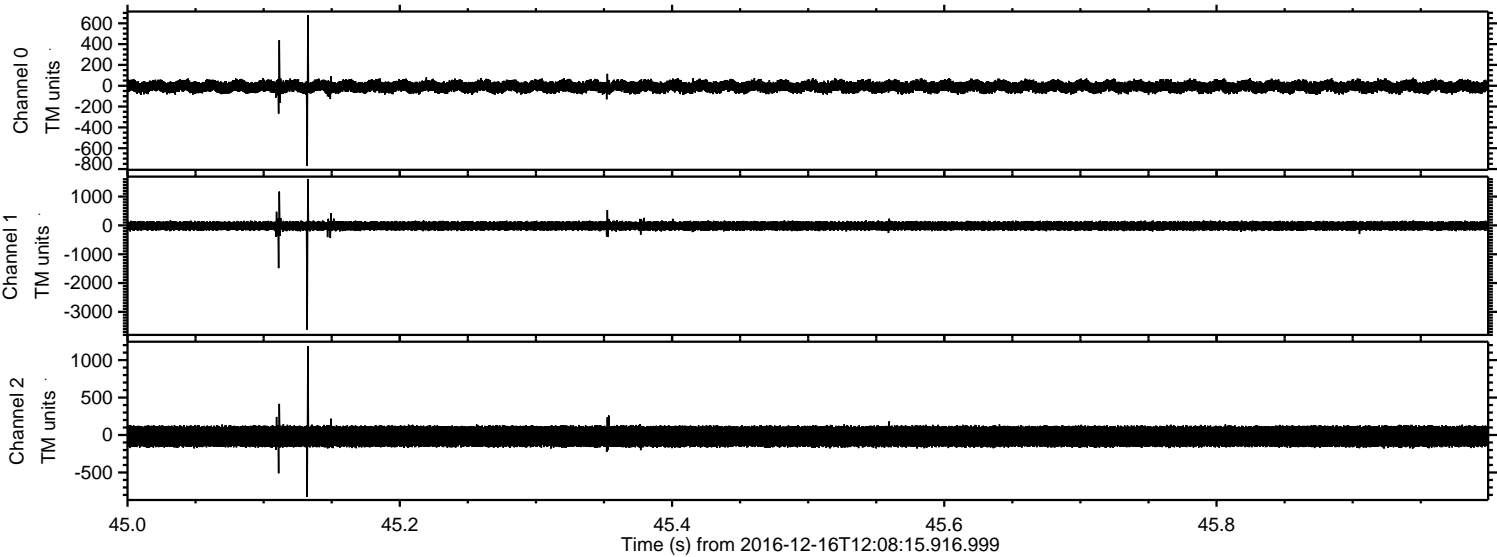


Processed Fri Dec 16 13:16:21 2016 by ELM ver.2012-10-06 from 001__elm20161216_120814__dat000.bin



ELMAVAN 3D WAVEFORMS (Measured data sampled at 50 kHz) 51000 packets of 144 samples from 2016-12-16T12:08:15.916.999. Part 46/147

Processed Fri Dec 16 13:16:22 2016 by ELM ver.2012-10-06 from 001__elm20161216_120814__dat00.bin



Power spectra

Channel 0
mn: -769
mx: 679
 μ : -8.1
 σ : 33.1

Channel 1
mn: -3619
mx: 1612
 μ : -17.4
 σ : 92.0

Channel 2
mn: -826
mx: 1186
 μ : -18.7
 σ : 84.8

ELMAVAN 3D WAVEFORMS (Measured data sampled at 50 kHz) 51000 packets of 144 samples from 2016-12-16T12:08:15.916.999. Part 125/147

