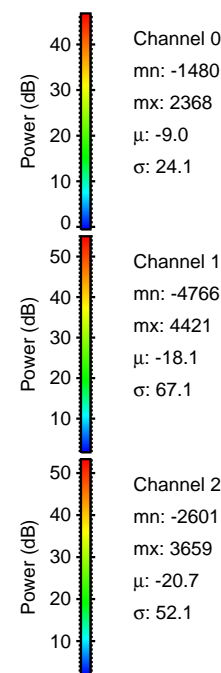
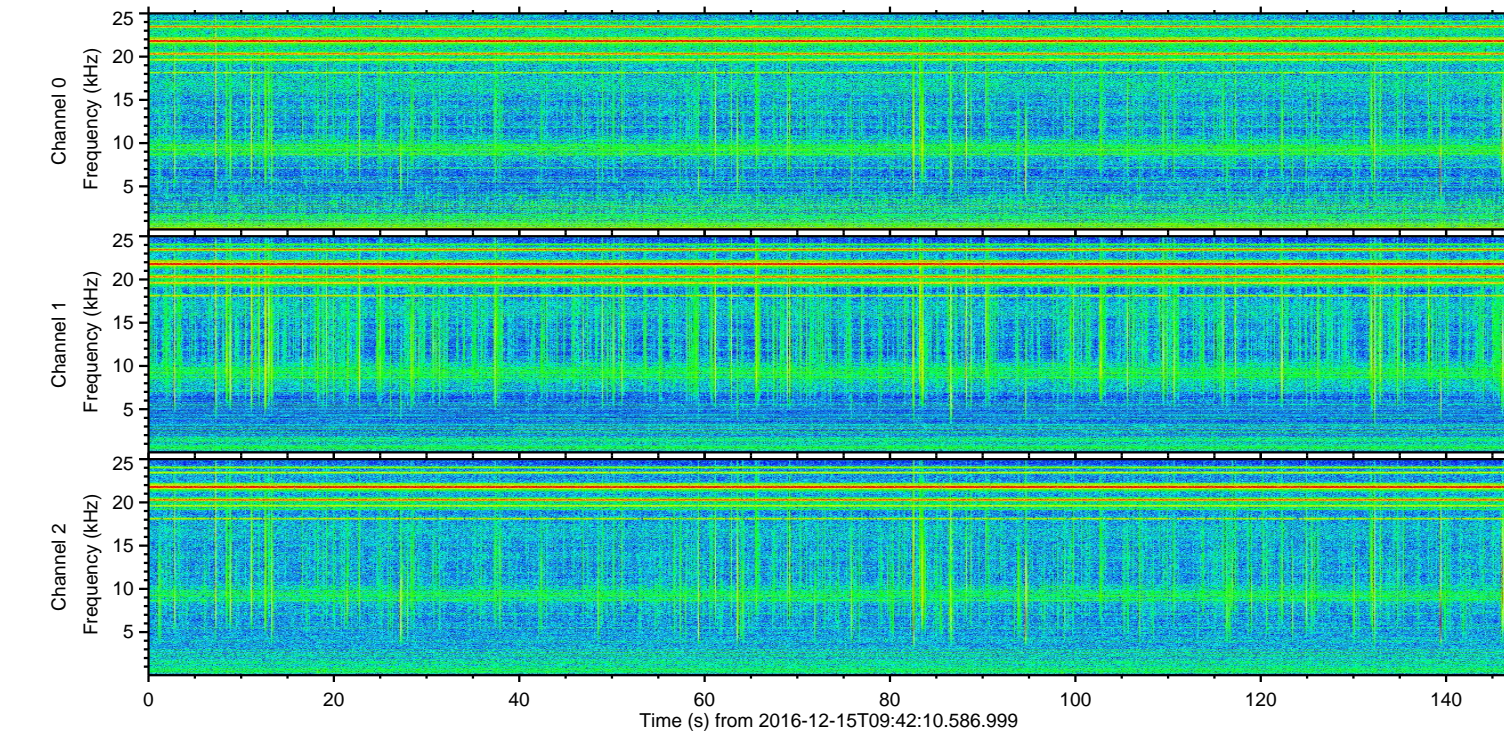
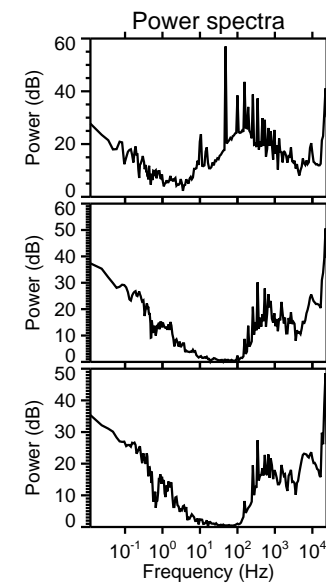
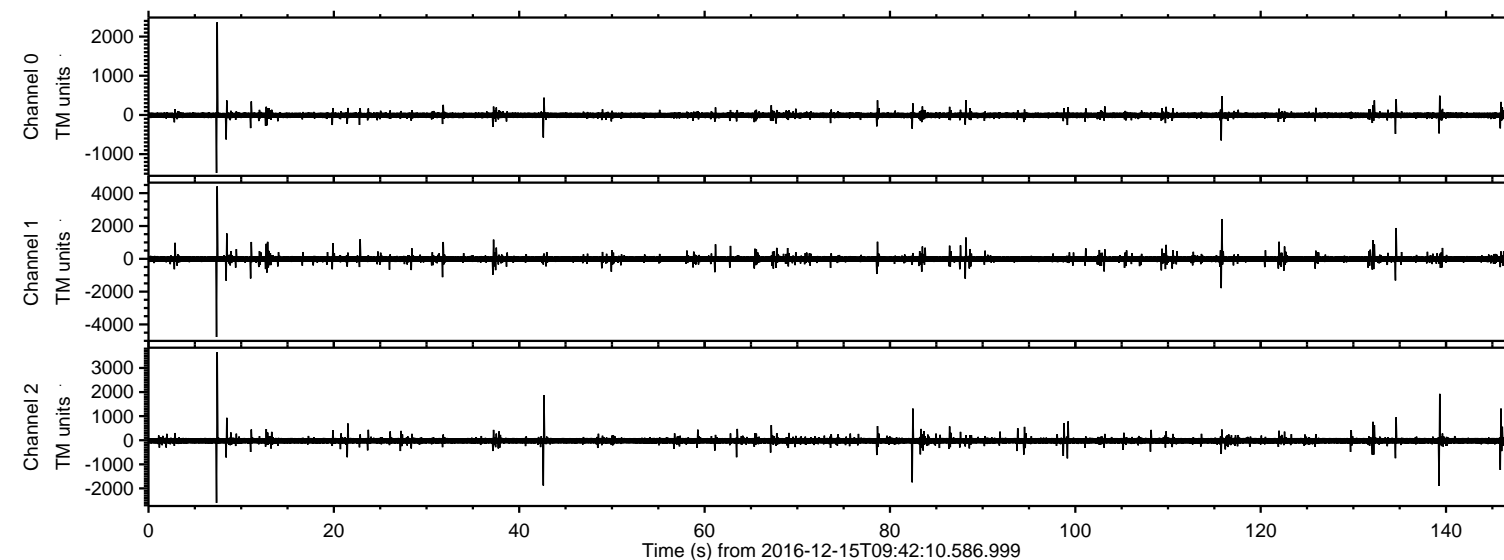
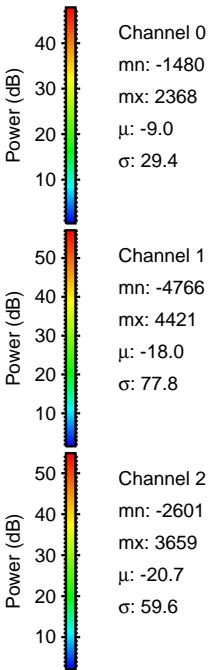
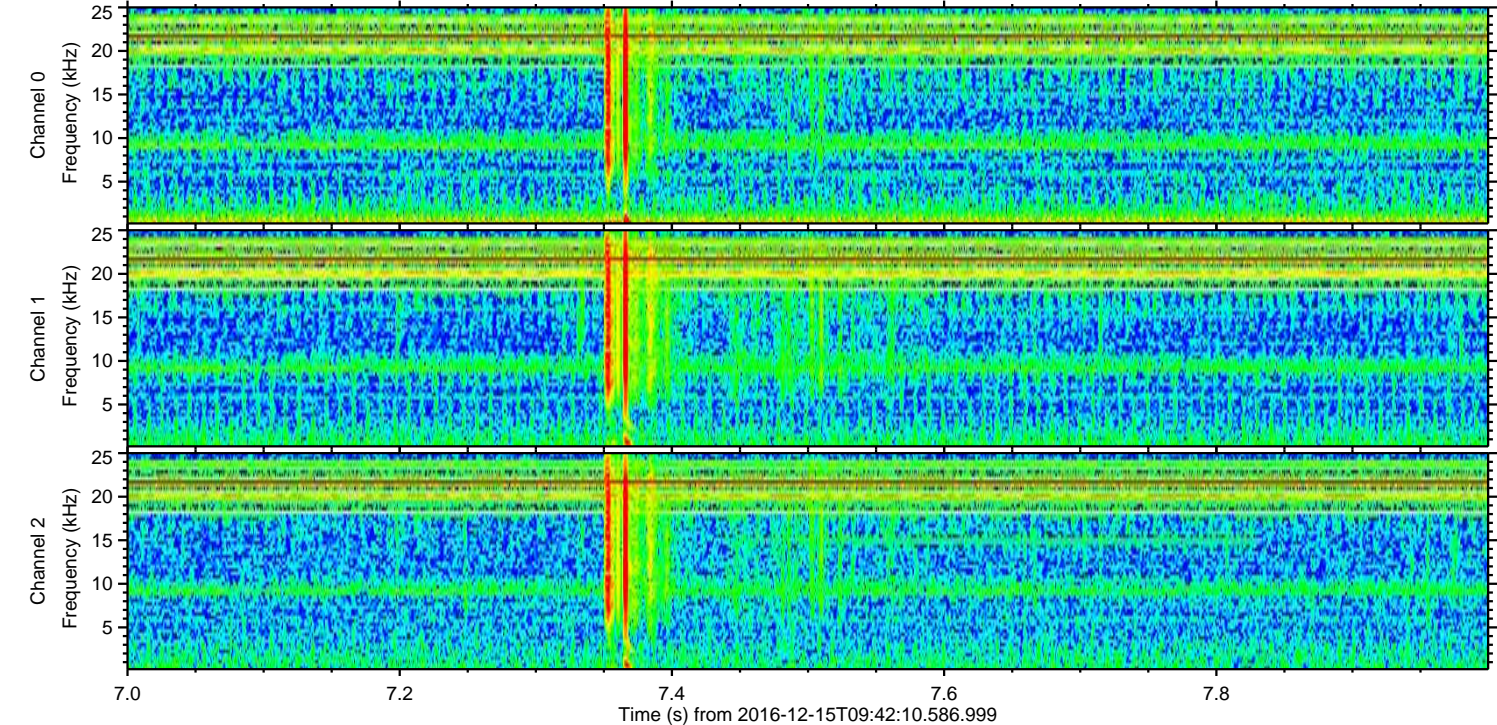
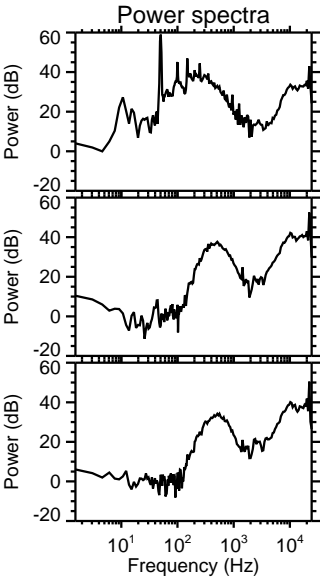
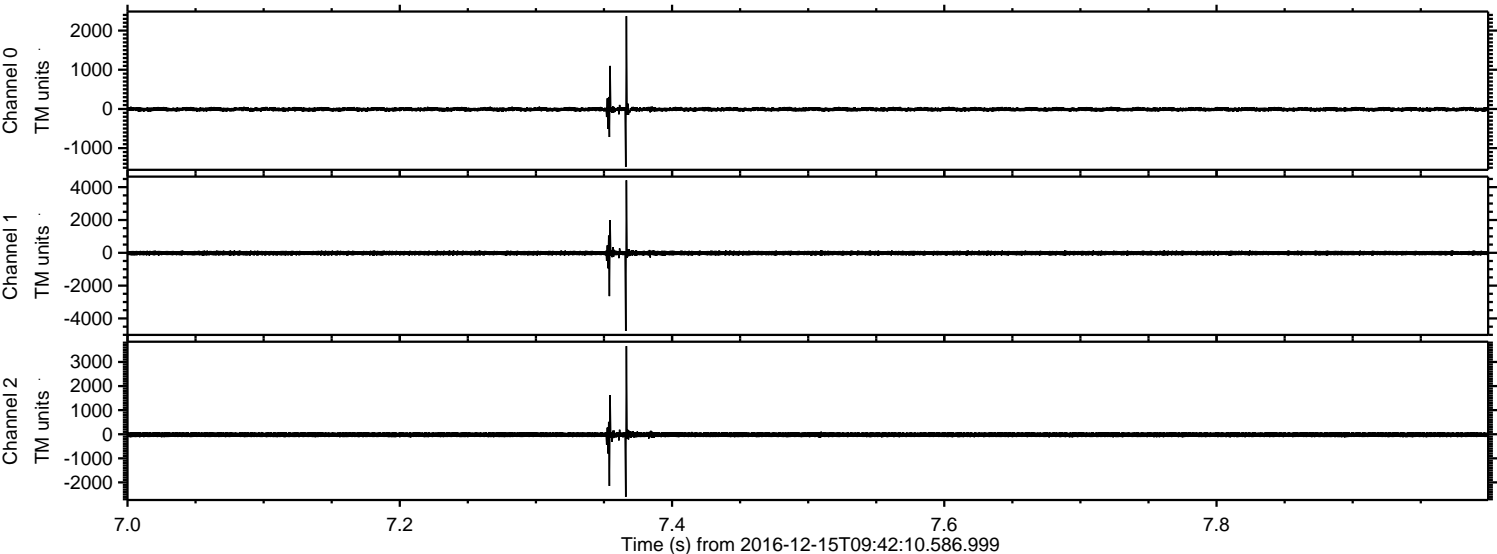


ELMAVAN 3D WAVEFORMS (Measured data sampled at 50 kHz) 51000 packets of 144 samples from 2016-12-15T09:42:10.586.999.

Processed Thu Dec 15 10:50:15 2016 by ELM ver.2012-10-06 from 001__elm20161215_094209__dat00.bin

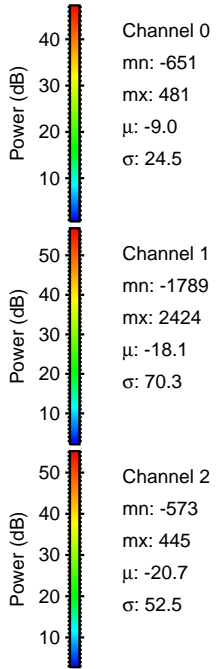
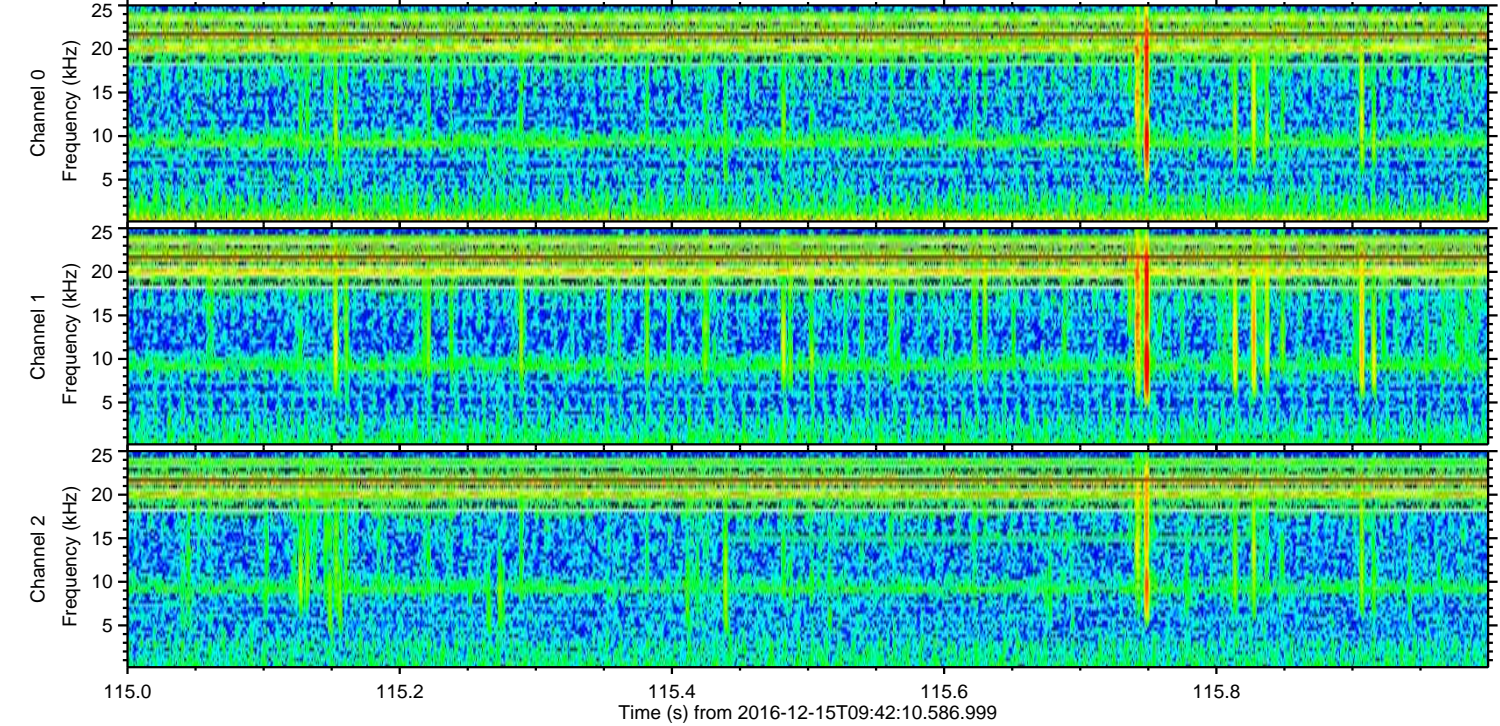
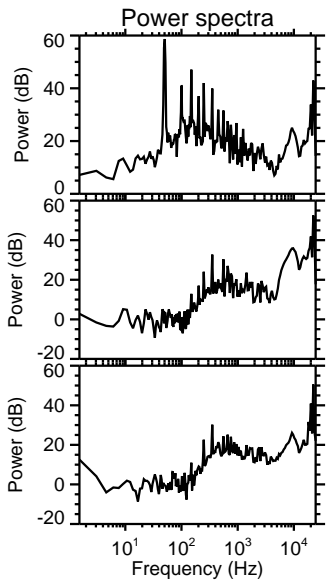
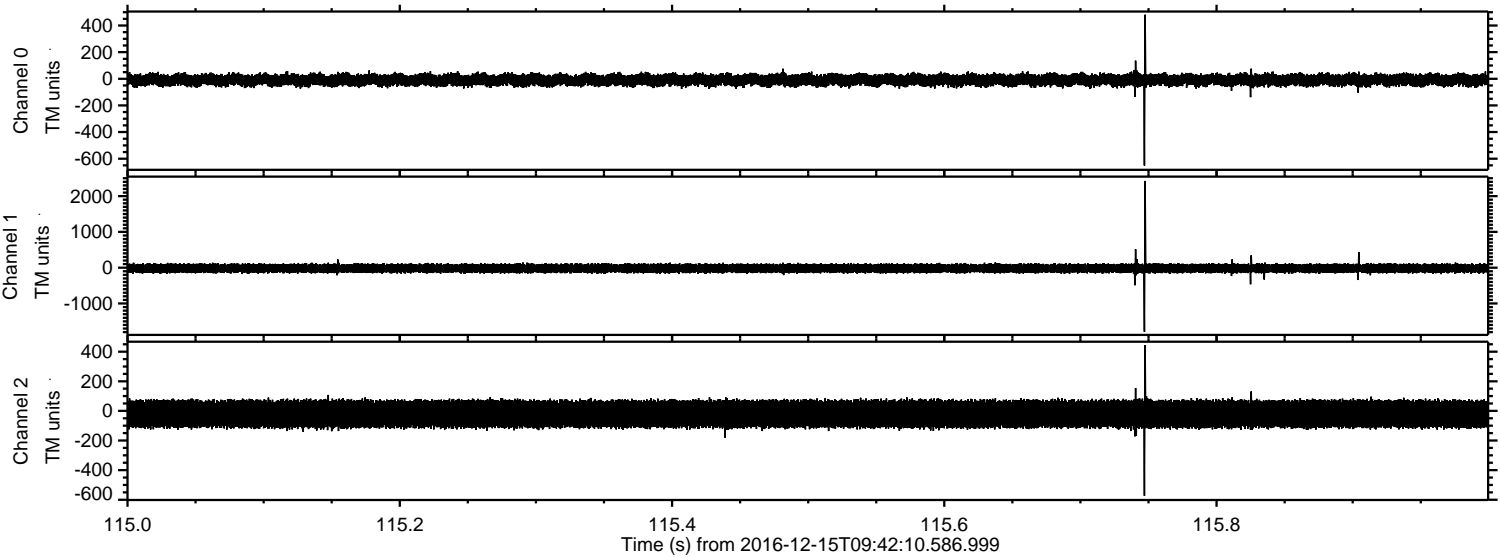


Processed Thu Dec 15 10:50:27 2016 by ELM ver.2012-10-06 from 001__elm20161215_094209__dat00.bin



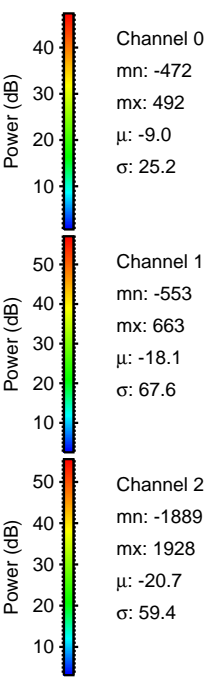
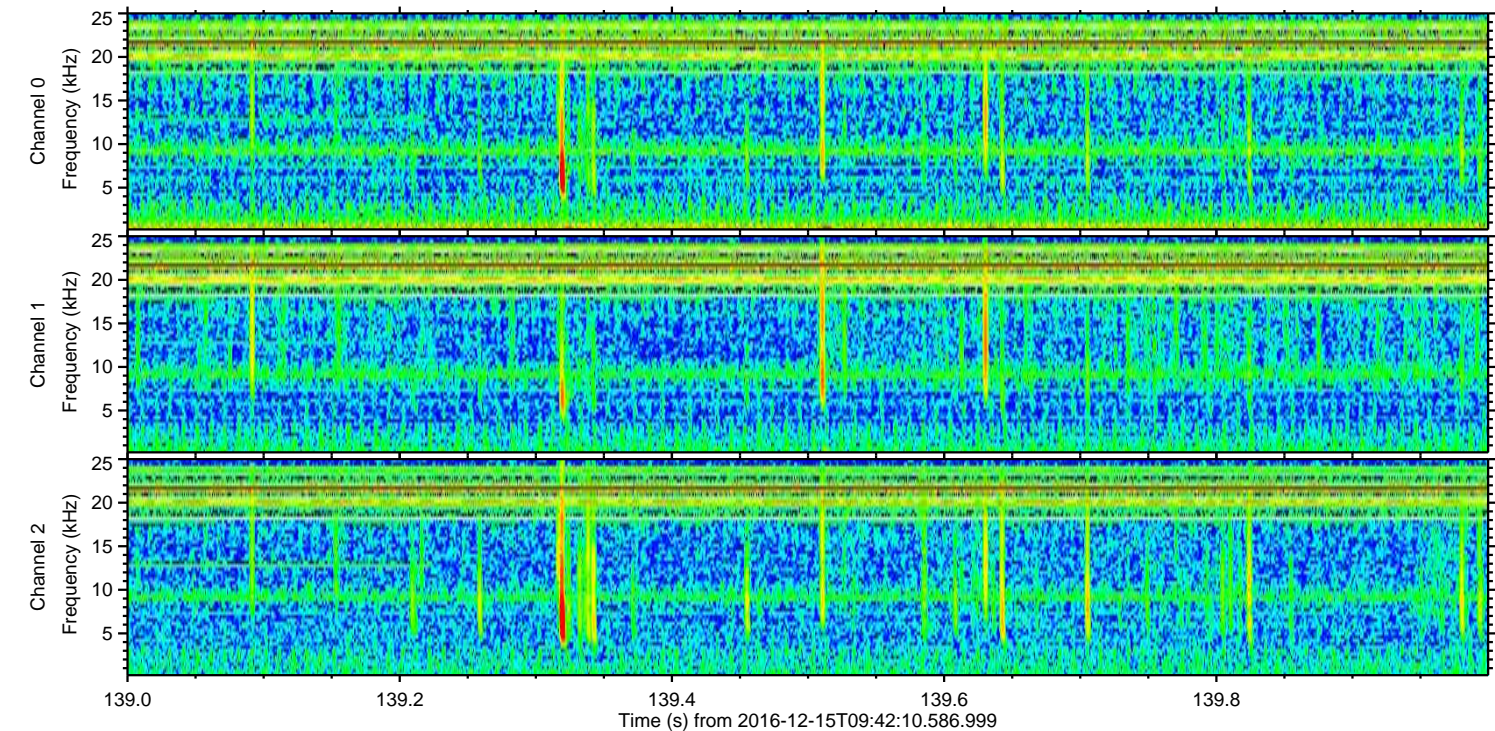
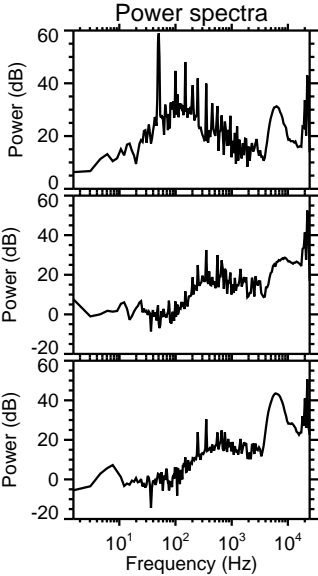
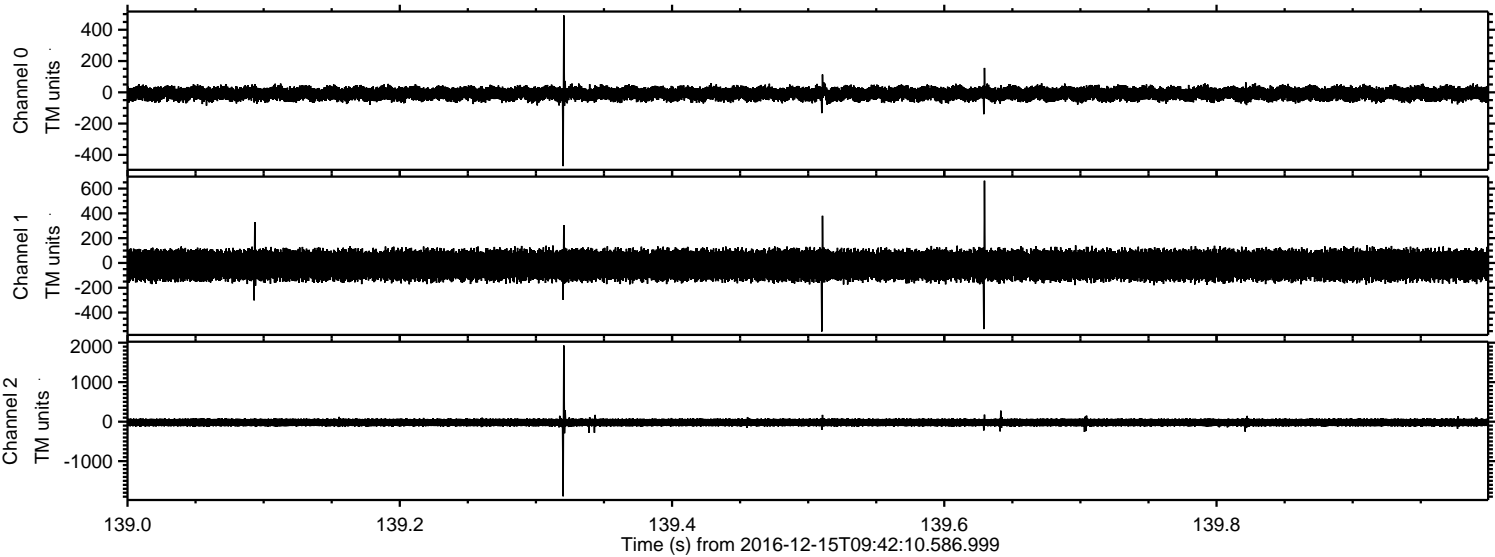
ELMAVAN 3D WAVEFORMS (Measured data sampled at 50 kHz) 51000 packets of 144 samples from 2016-12-15T09:42:10.586.999. Part 116/147

Processed Thu Dec 15 10:50:28 2016 by ELM ver.2012-10-06 from 001__elm20161215_094209__dat00.bin



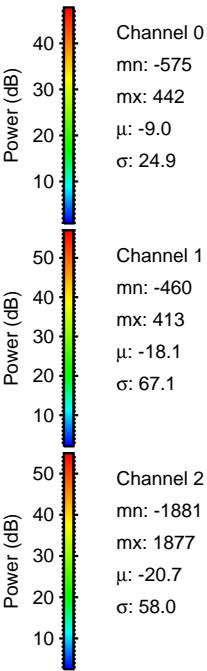
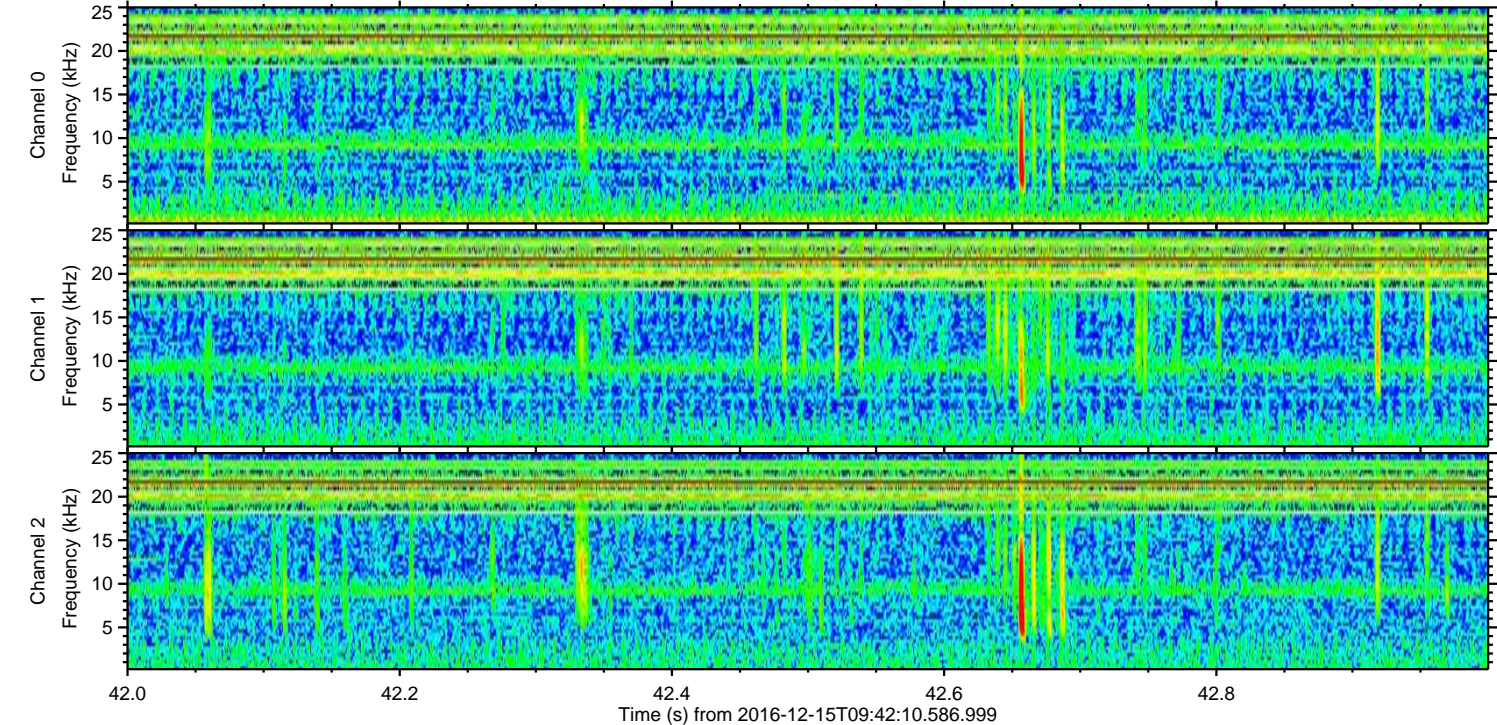
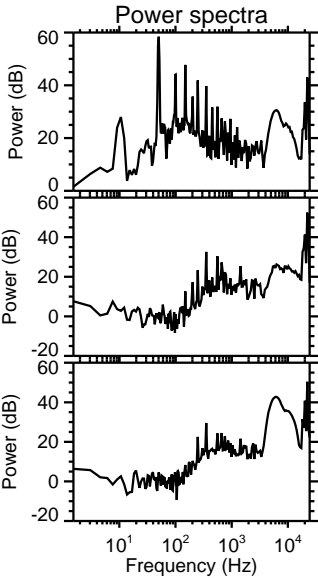
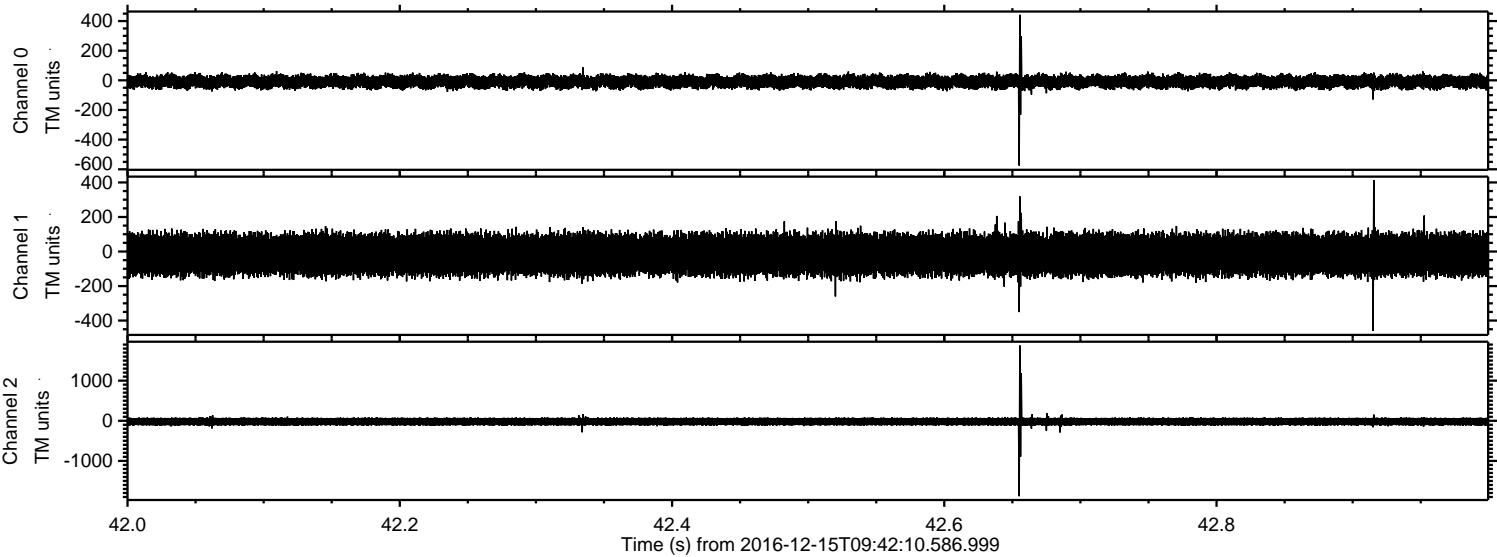
ELMAVAN 3D WAVEFORMS (Measured data sampled at 50 kHz) 51000 packets of 144 samples from 2016-12-15T09:42:10.586.999. Part 140/147

Processed Thu Dec 15 10:50:28 2016 by ELM ver.2012-10-06 from 001__elm20161215_094209__dat00.bin



ELMAVAN 3D WAVEFORMS (Measured data sampled at 50 kHz) 51000 packets of 144 samples from 2016-12-15T09:42:10.586.999. Part 43/147

Processed Thu Dec 15 10:50:29 2016 by ELM ver.2012-10-06 from 001__elm20161215_094209__dat00.bin



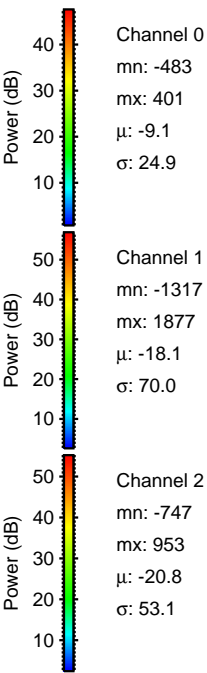
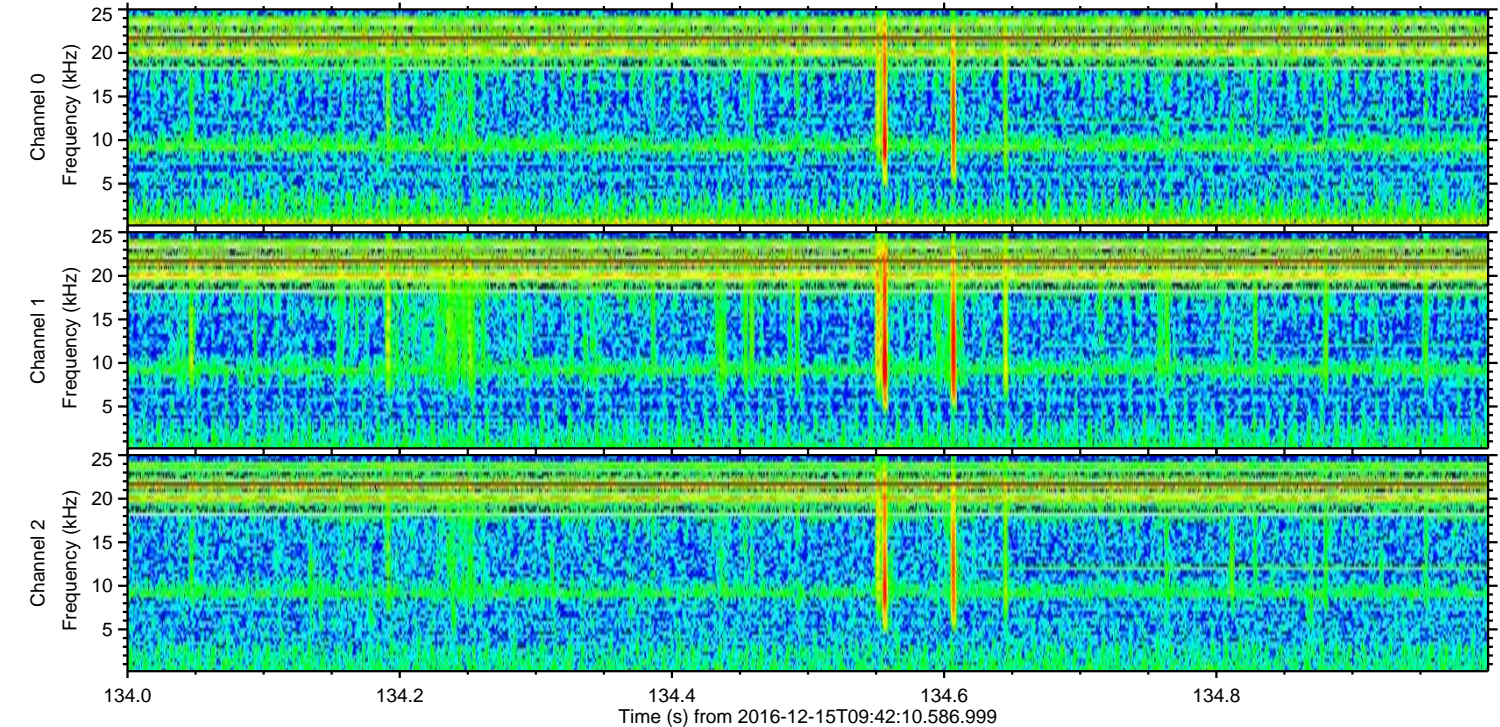
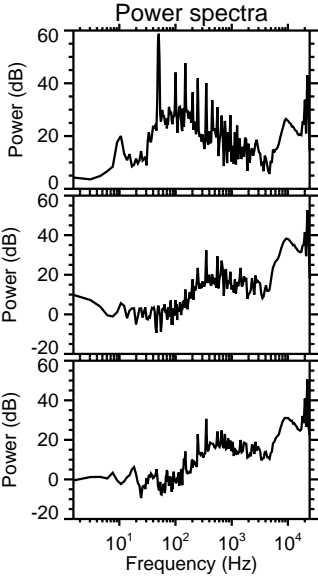
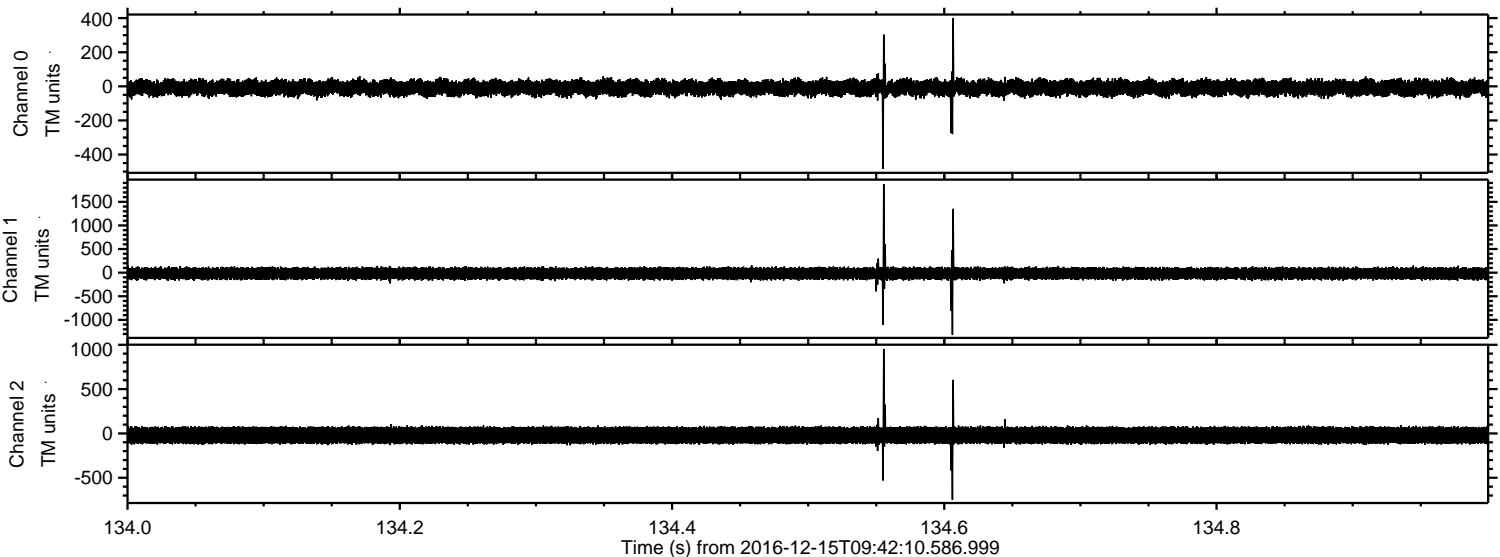
Channel 0
mn: -575
mx: 442
 μ : -9.0
 σ : 24.9

Channel 1
mn: -460
mx: 413
 μ : -18.1
 σ : 67.1

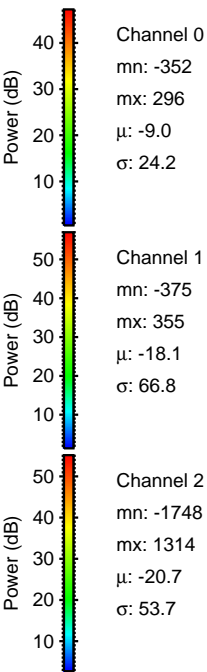
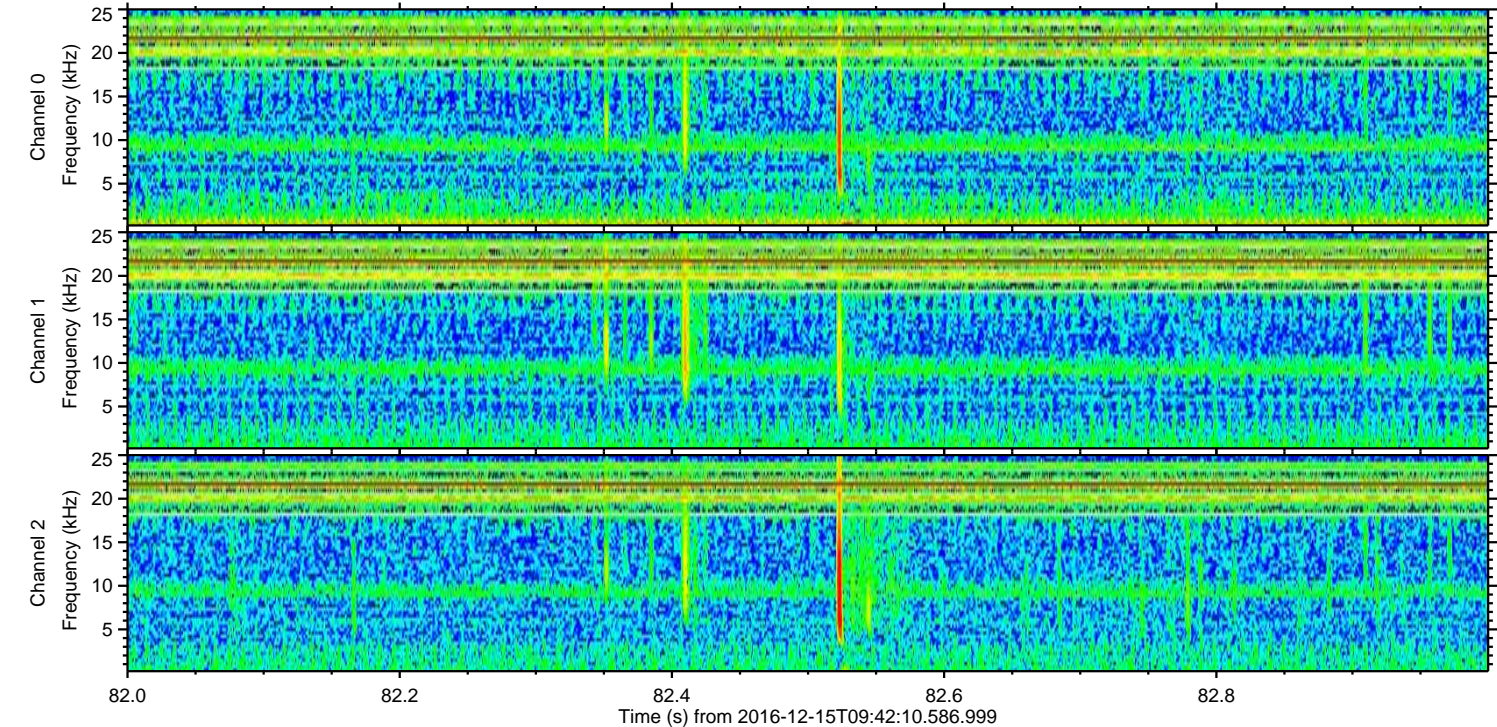
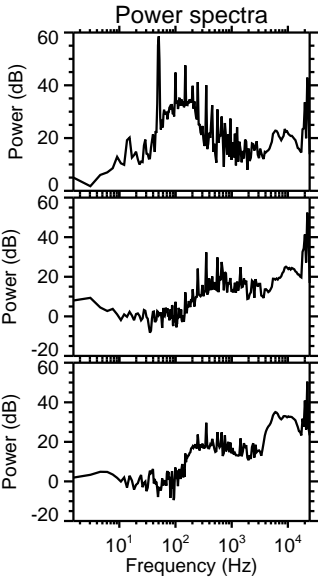
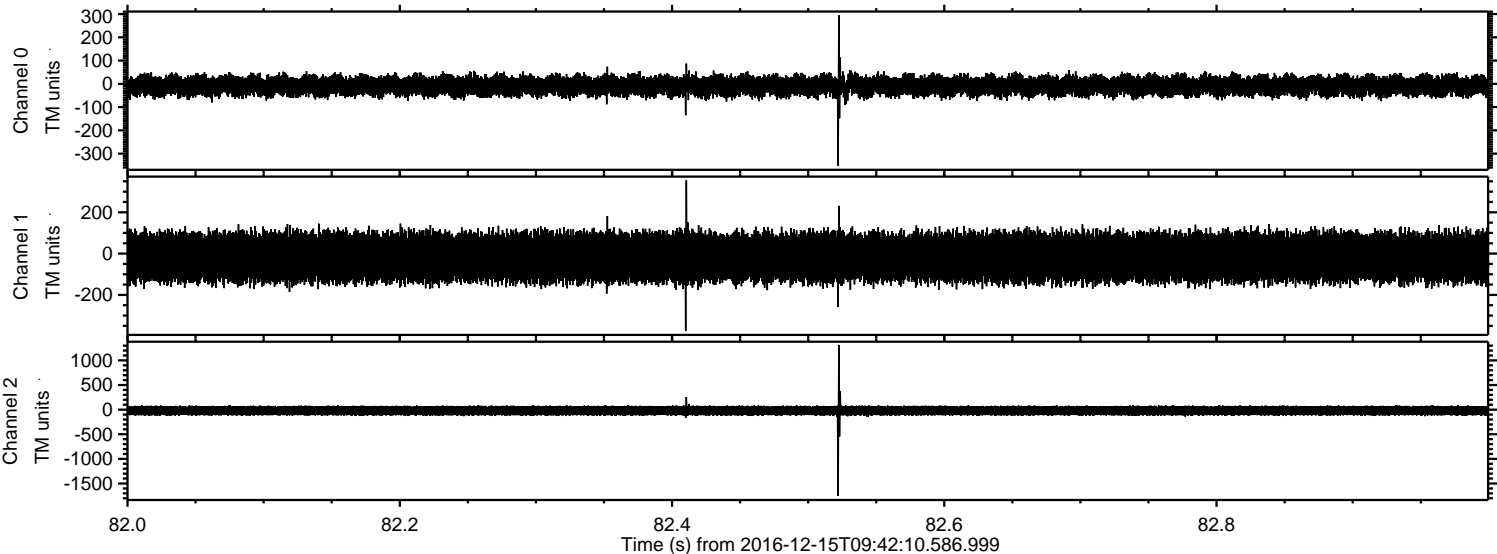
Channel 2
mn: -1881
mx: 1877
 μ : -20.7
 σ : 58.0

ELMAVAN 3D WAVEFORMS (Measured data sampled at 50 kHz) 51000 packets of 144 samples from 2016-12-15T09:42:10.586.999. Part 135/147

Processed Thu Dec 15 10:50:30 2016 by ELM ver.2012-10-06 from 001__elm20161215_094209__dat00.bin



Processed Thu Dec 15 10:50:31 2016 by ELM ver.2012-10-06 from 001__elm20161215_094209__dat00.bin

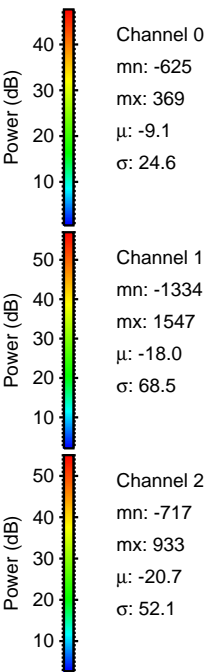
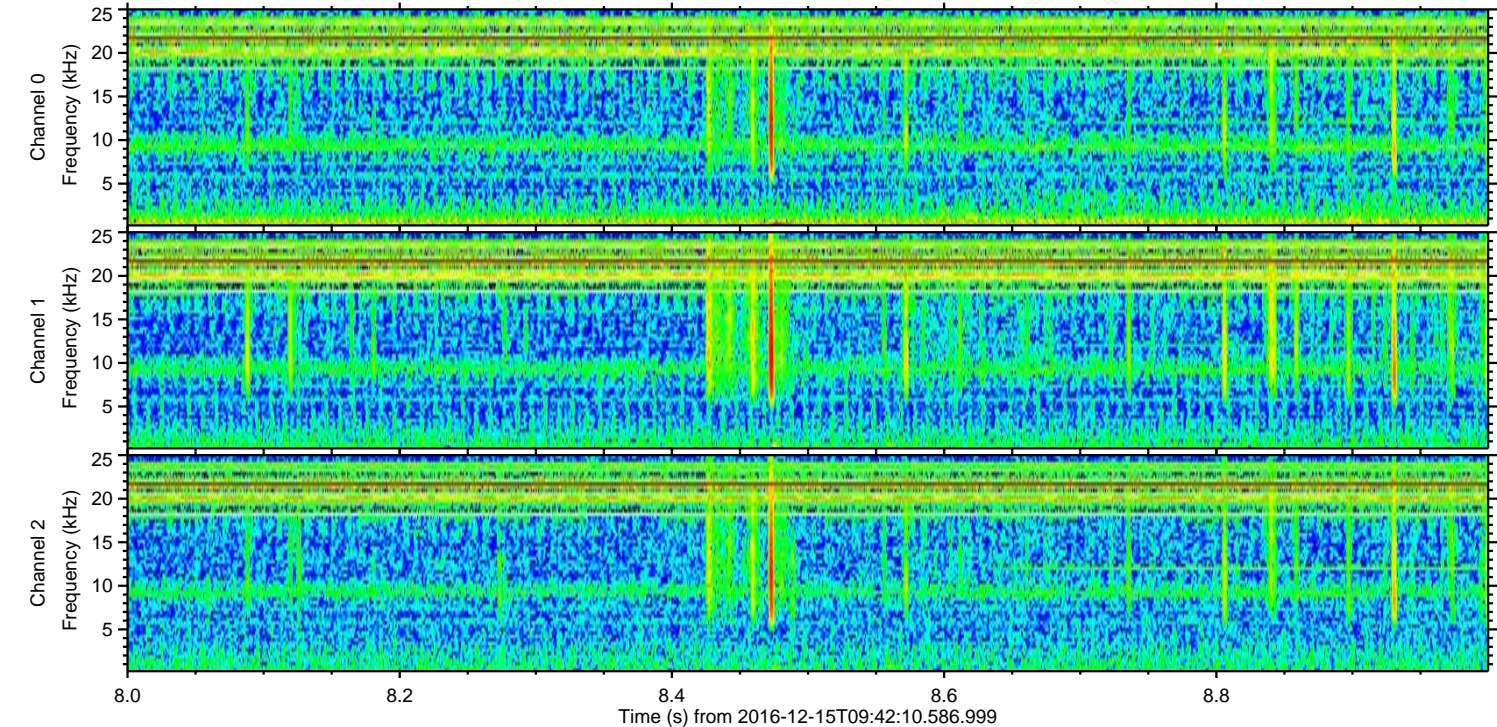
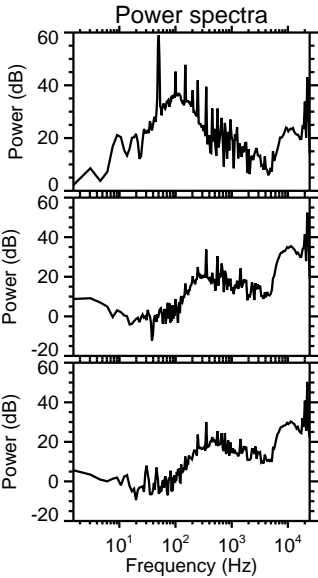
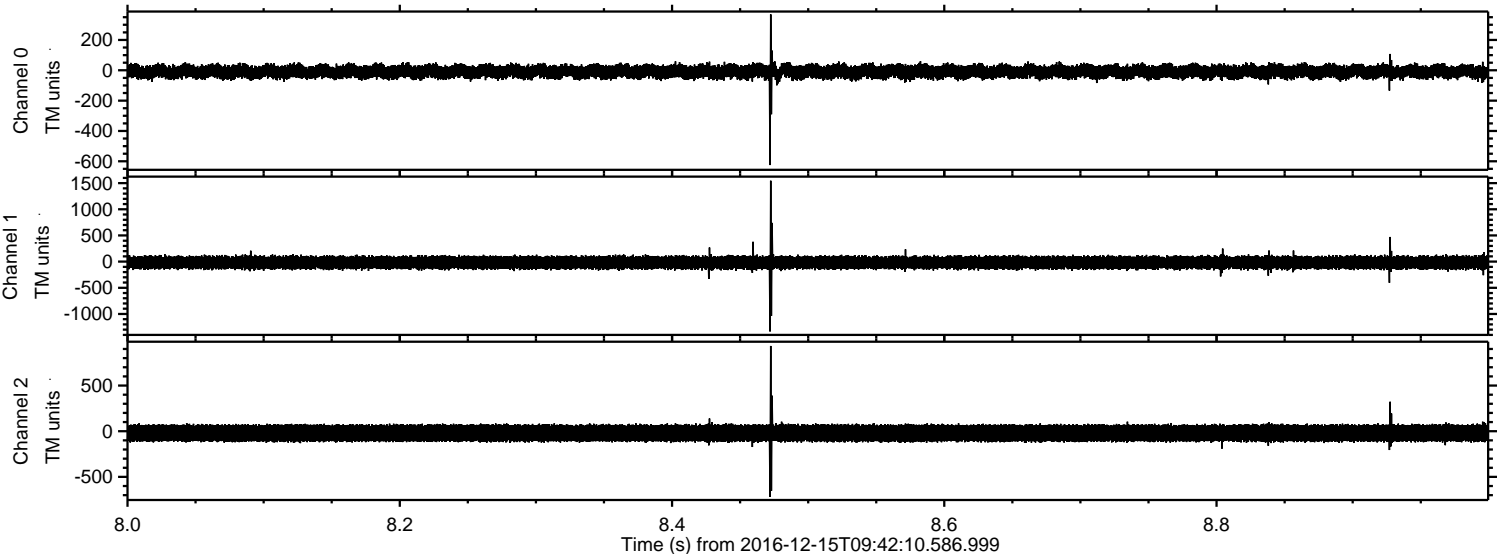


Channel 0
mn: -352
mx: 296
μ: -9.0
σ: 24.2

Channel 1
mn: -375
mx: 355
μ: -18.1
σ: 66.8

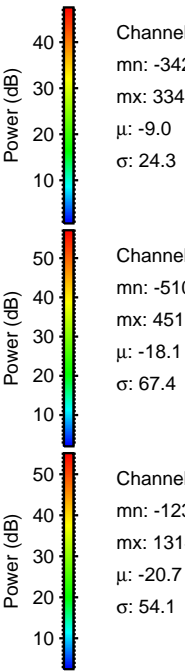
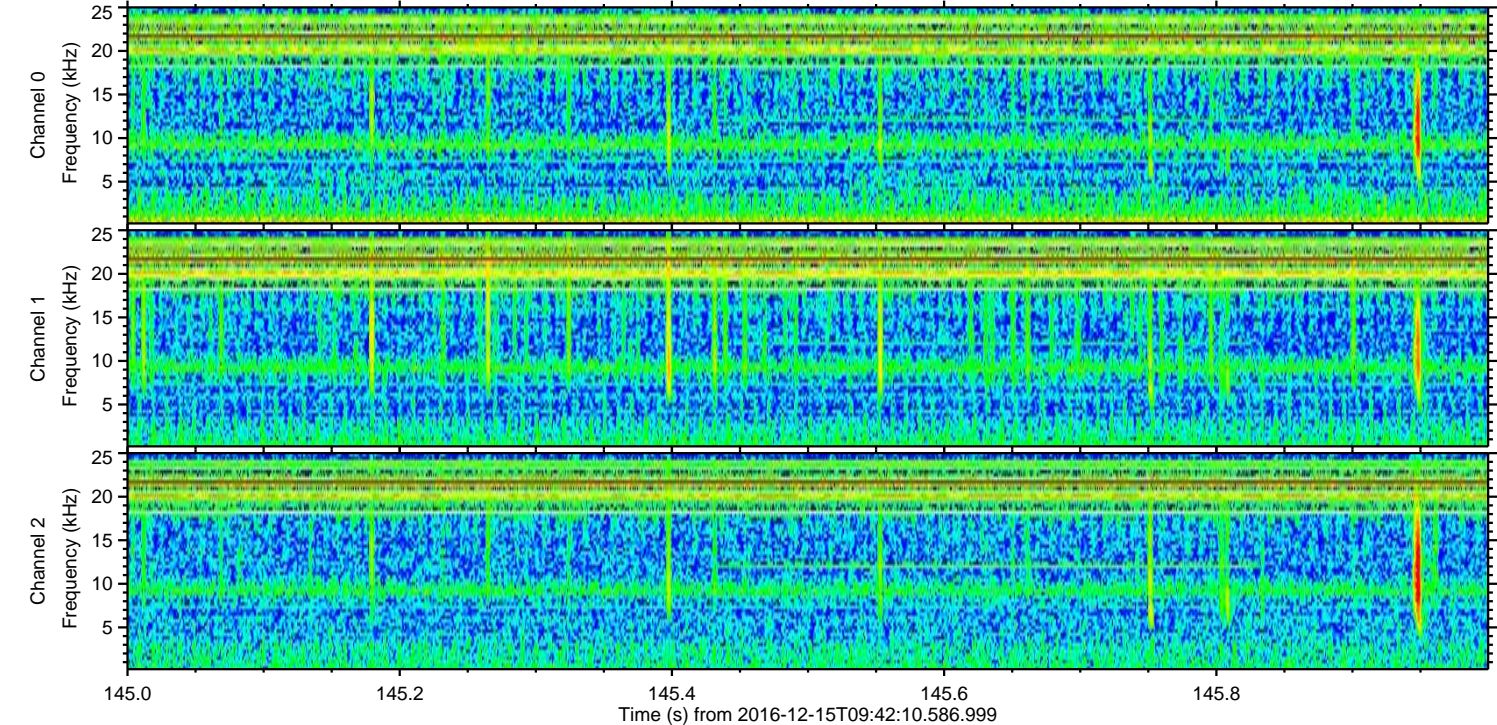
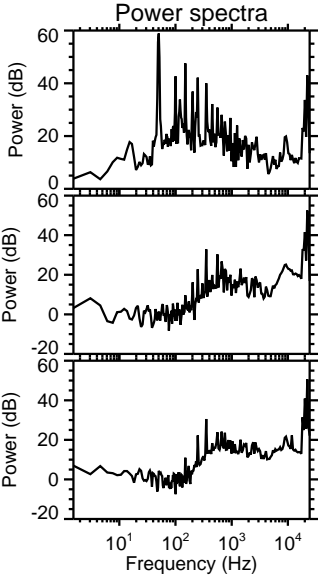
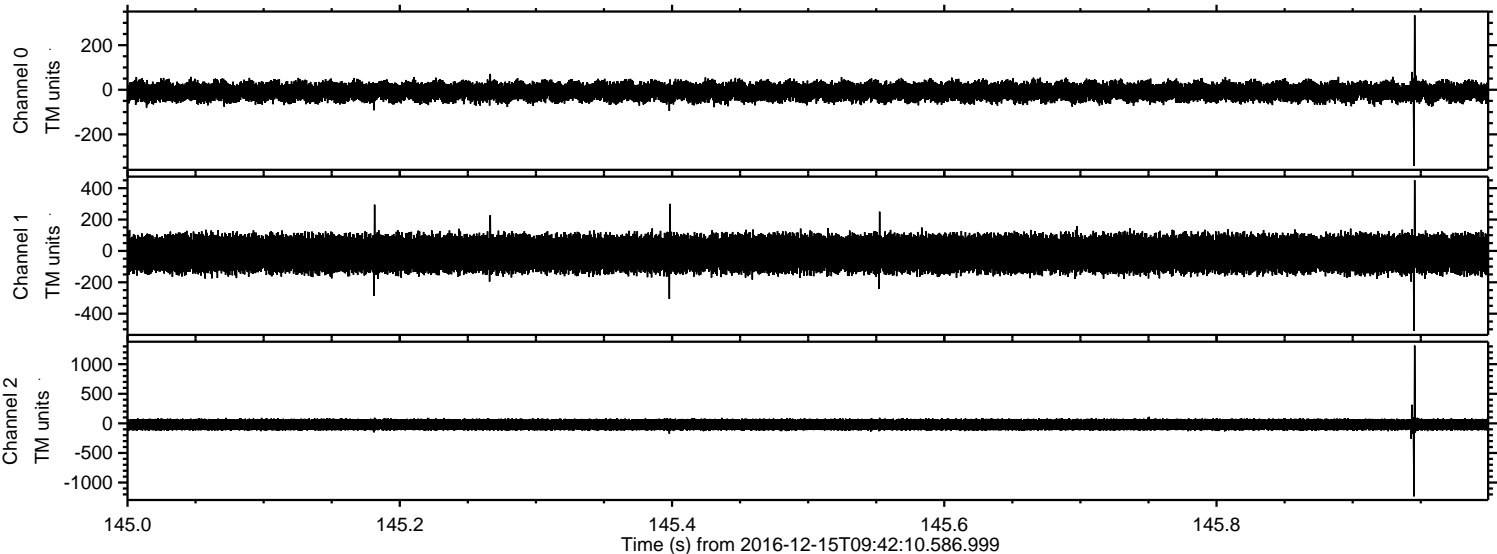
Channel 2
mn: -1748
mx: 1314
μ: -20.7
σ: 53.7

Processed Thu Dec 15 10:50:32 2016 by ELM ver.2012-10-06 from 001__elm20161215_094209__dat00.bin



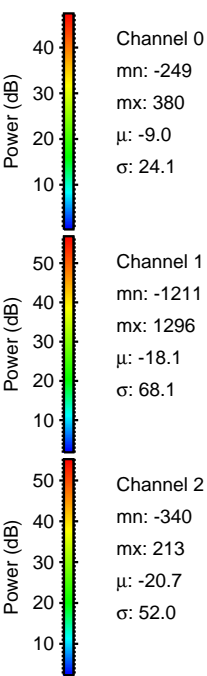
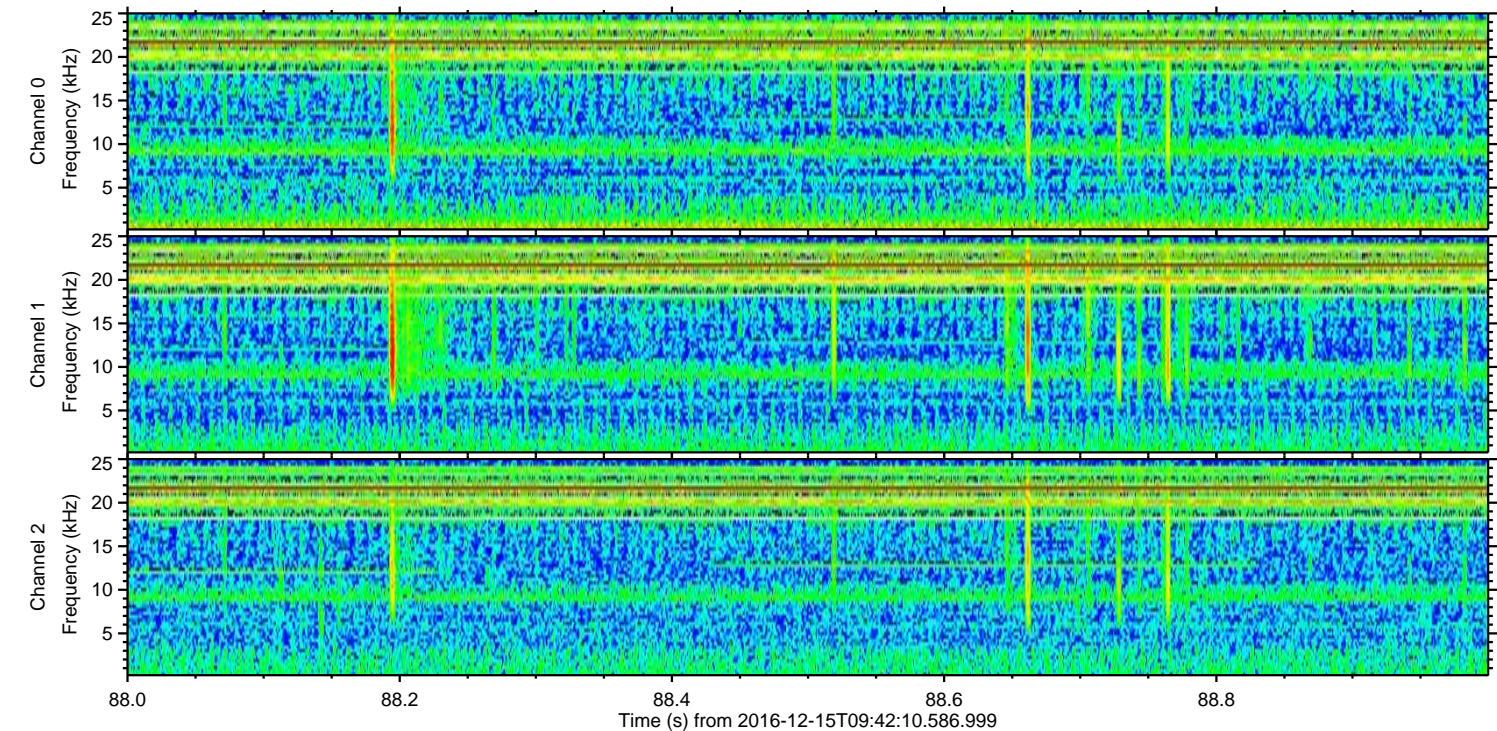
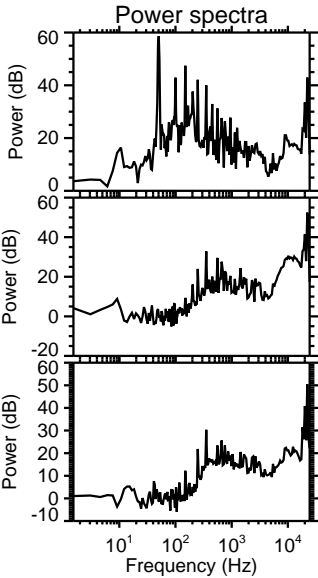
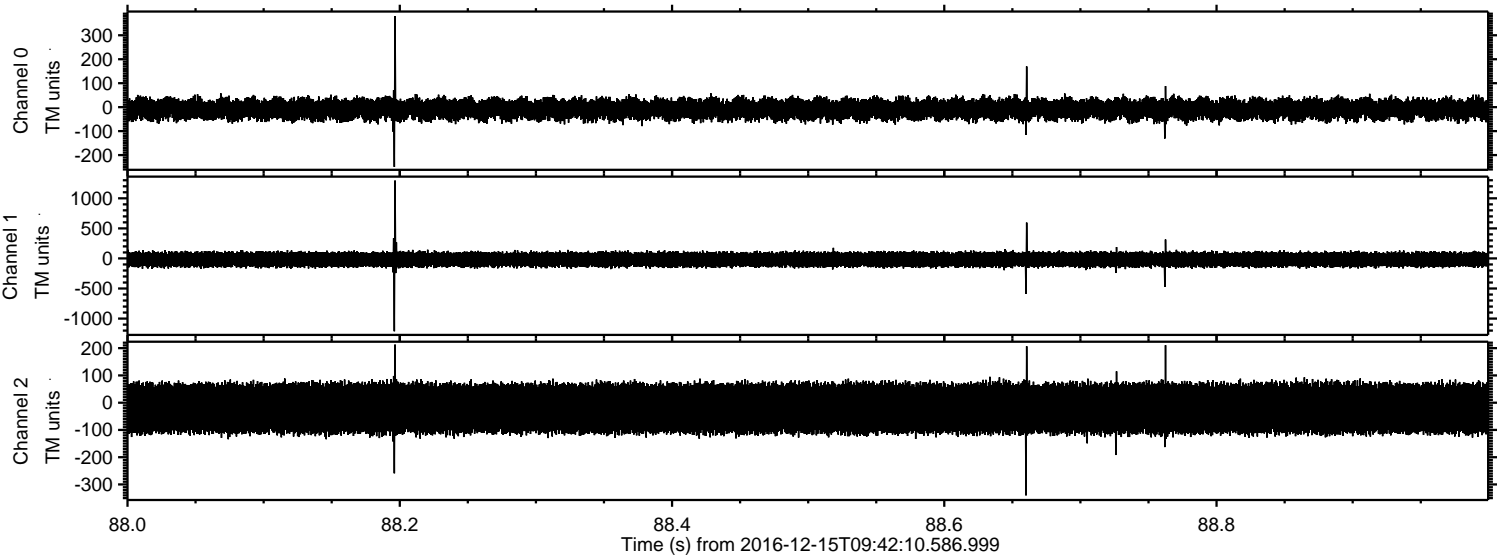
ELMAVAN 3D WAVEFORMS (Measured data sampled at 50 kHz) 51000 packets of 144 samples from 2016-12-15T09:42:10.586.999. Part 146/147

Processed Thu Dec 15 10:50:33 2016 by ELM ver.2012-10-06 from 001__elm20161215_094209__dat00.bin



ELMAVAN 3D WAVEFORMS (Measured data sampled at 50 kHz) 51000 packets of 144 samples from 2016-12-15T09:42:10.586.999. Part 89/147

Processed Thu Dec 15 10:50:34 2016 by ELM ver.2012-10-06 from 001__elm20161215_094209__dat00.bin



Channel 0
mn: -249
mx: 380
 μ : -9.0
 σ : 24.1

Channel 1
mn: -1211
mx: 1296
 μ : -18.1
 σ : 68.1

Channel 2
mn: -340
mx: 213
 μ : -20.7
 σ : 52.0

ELMAVAN 3D WAVEFORMS (Measured data sampled at 50 kHz) 51000 packets of 144 samples from 2016-12-15T09:42:10.586.999. Part 78/147

Processed Thu Dec 15 10:50:35 2016 by ELM ver.2012-10-06 from 001__elm20161215_094209__dat00.bin

