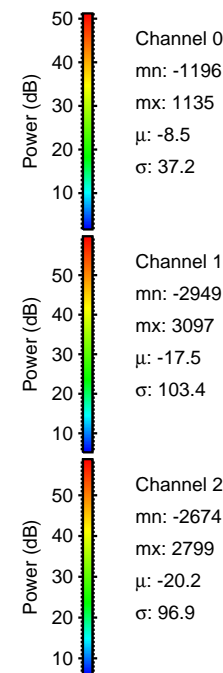
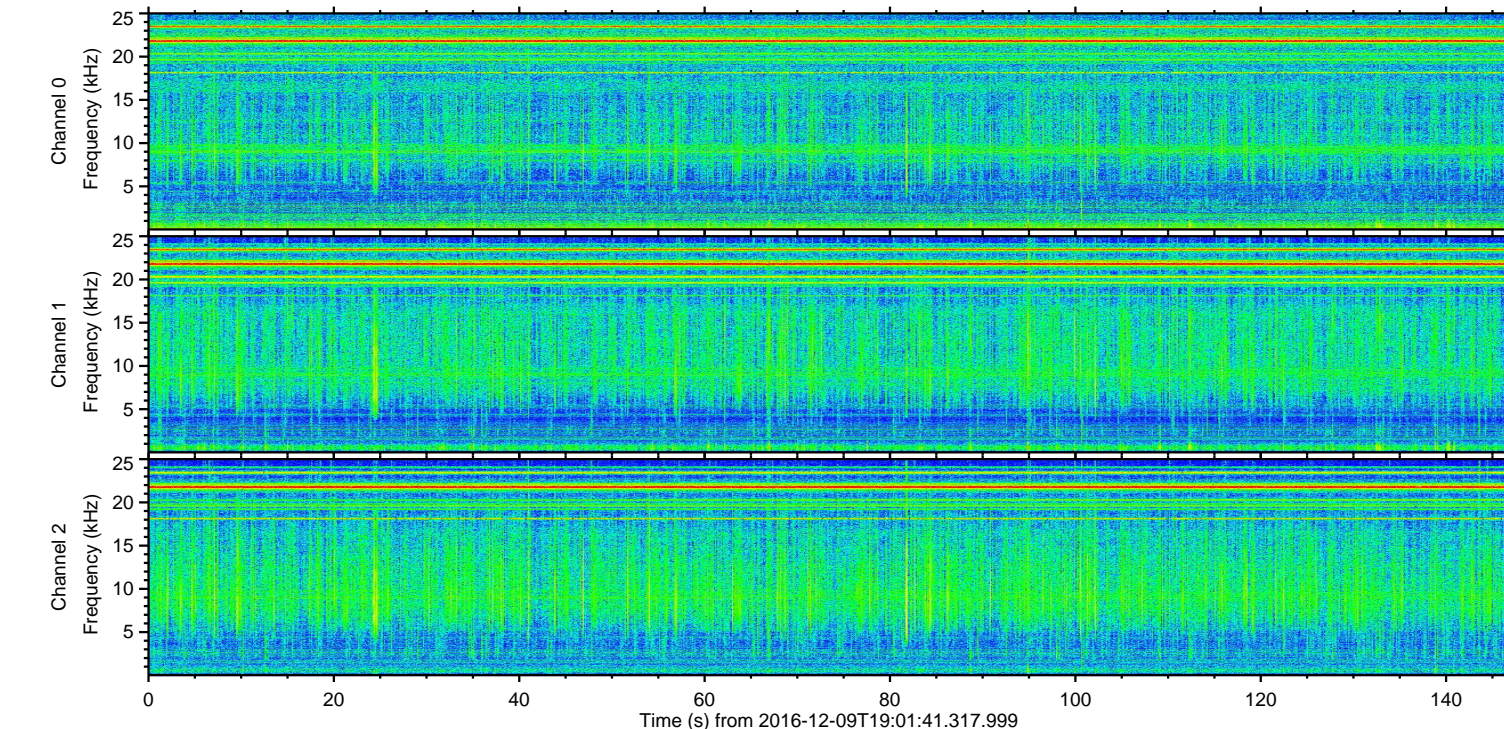
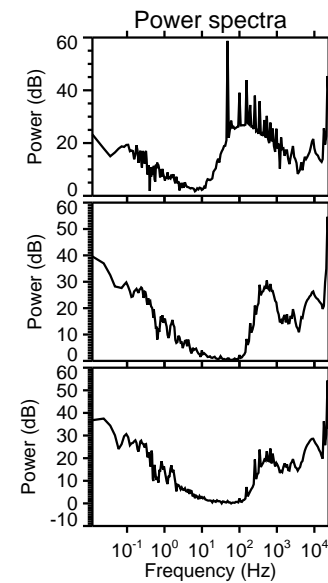
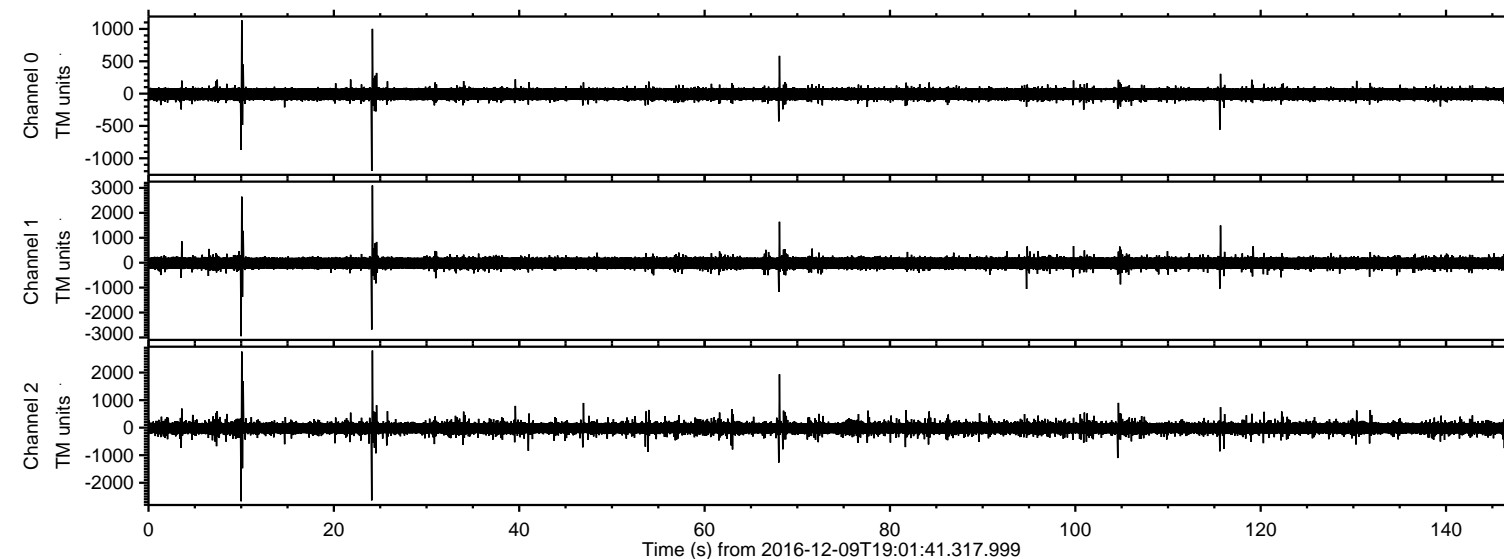


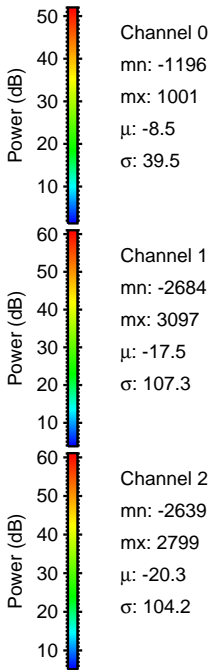
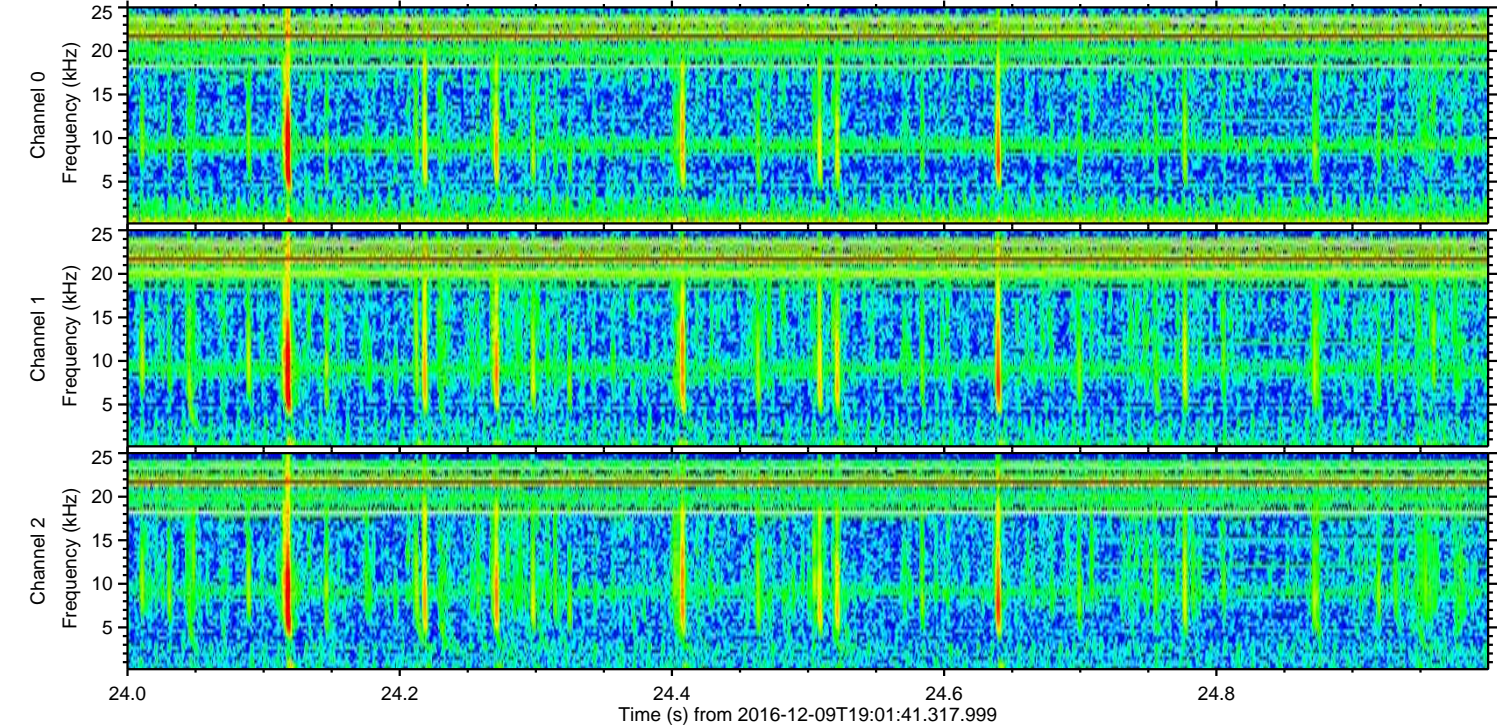
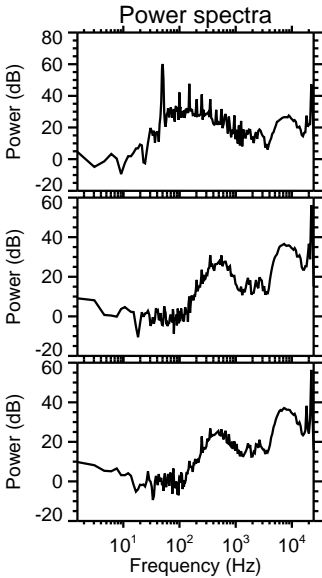
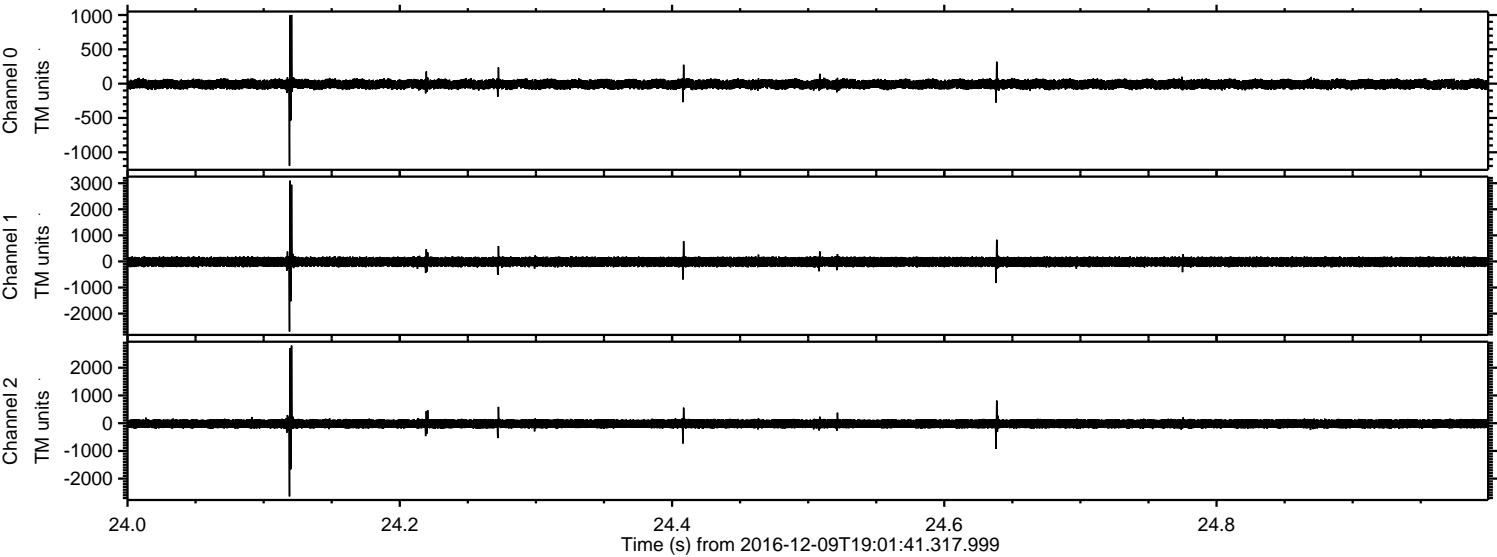
ELMAVAN 3D WAVEFORMS (Measured data sampled at 50 kHz) 51000 packets of 144 samples from 2016-12-09T19:01:41.317.999.

Processed Fri Dec 9 20:09:38 2016 by ELM ver.2012-10-06 from 001__elm20161209_190140__dat00.bin



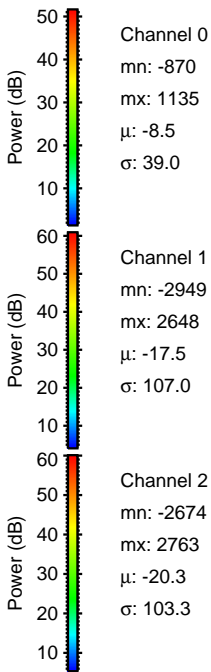
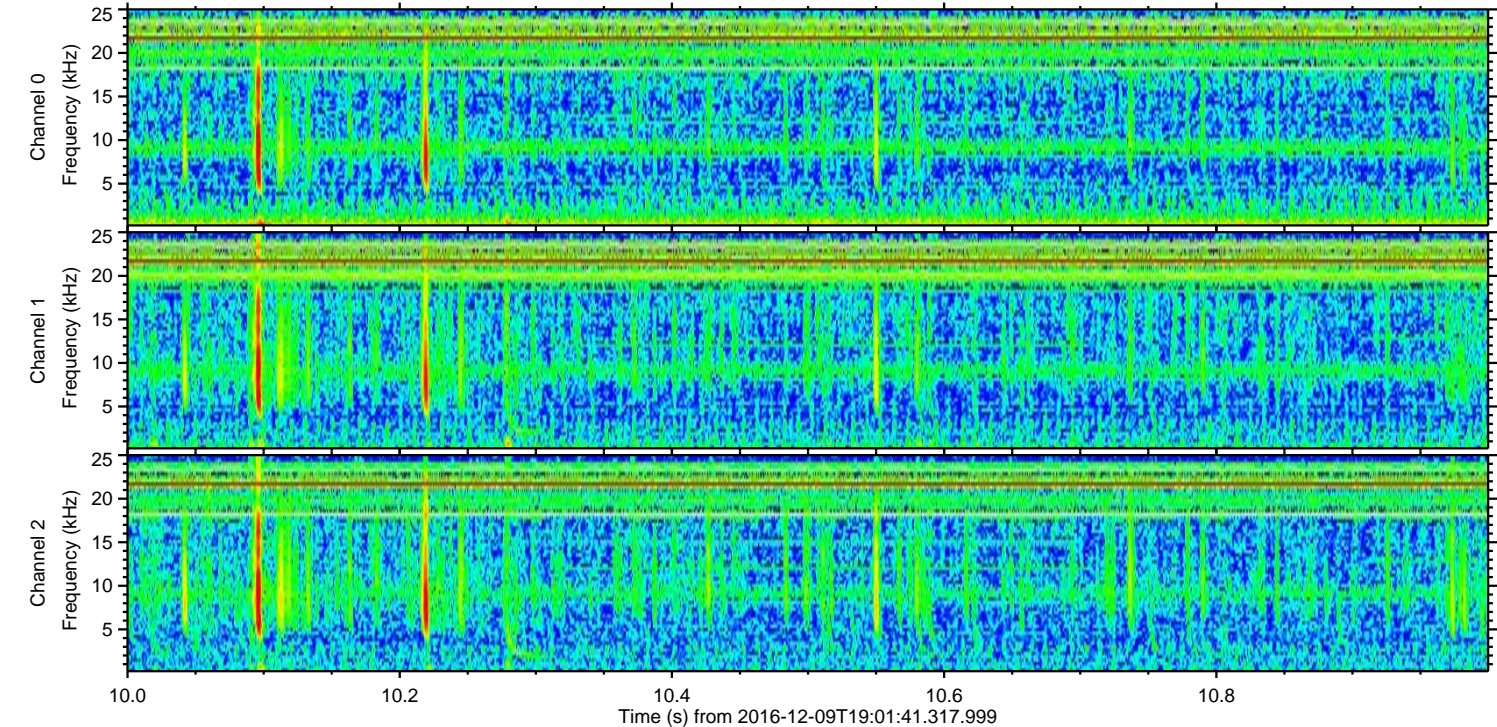
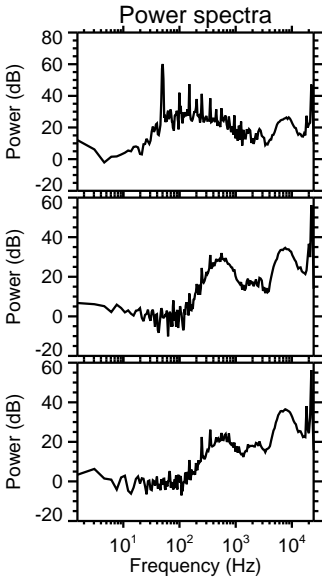
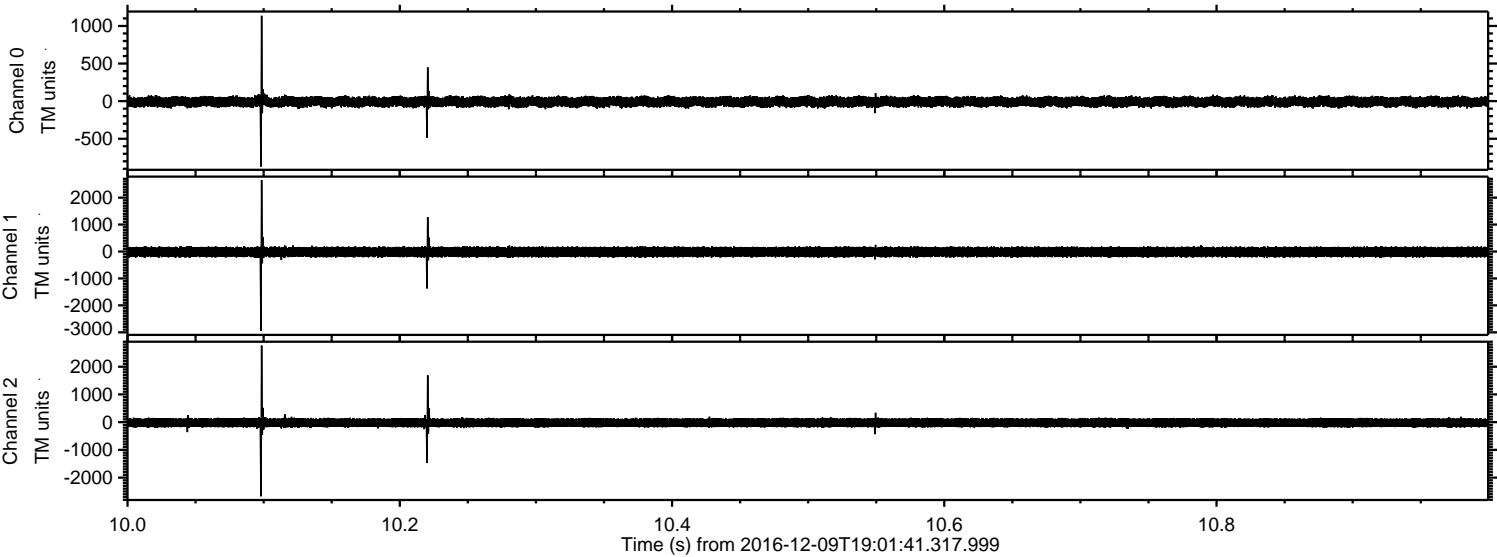
ELMAVAN 3D WAVEFORMS (Measured data sampled at 50 kHz) 51000 packets of 144 samples from 2016-12-09T19:01:41.317.999. Part 25/147

Processed Fri Dec 9 20:09:50 2016 by ELM ver.2012-10-06 from 001__elm20161209_190140__dat00.bin

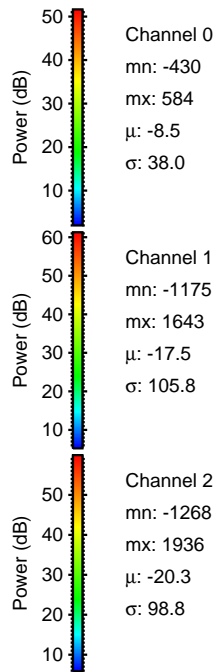
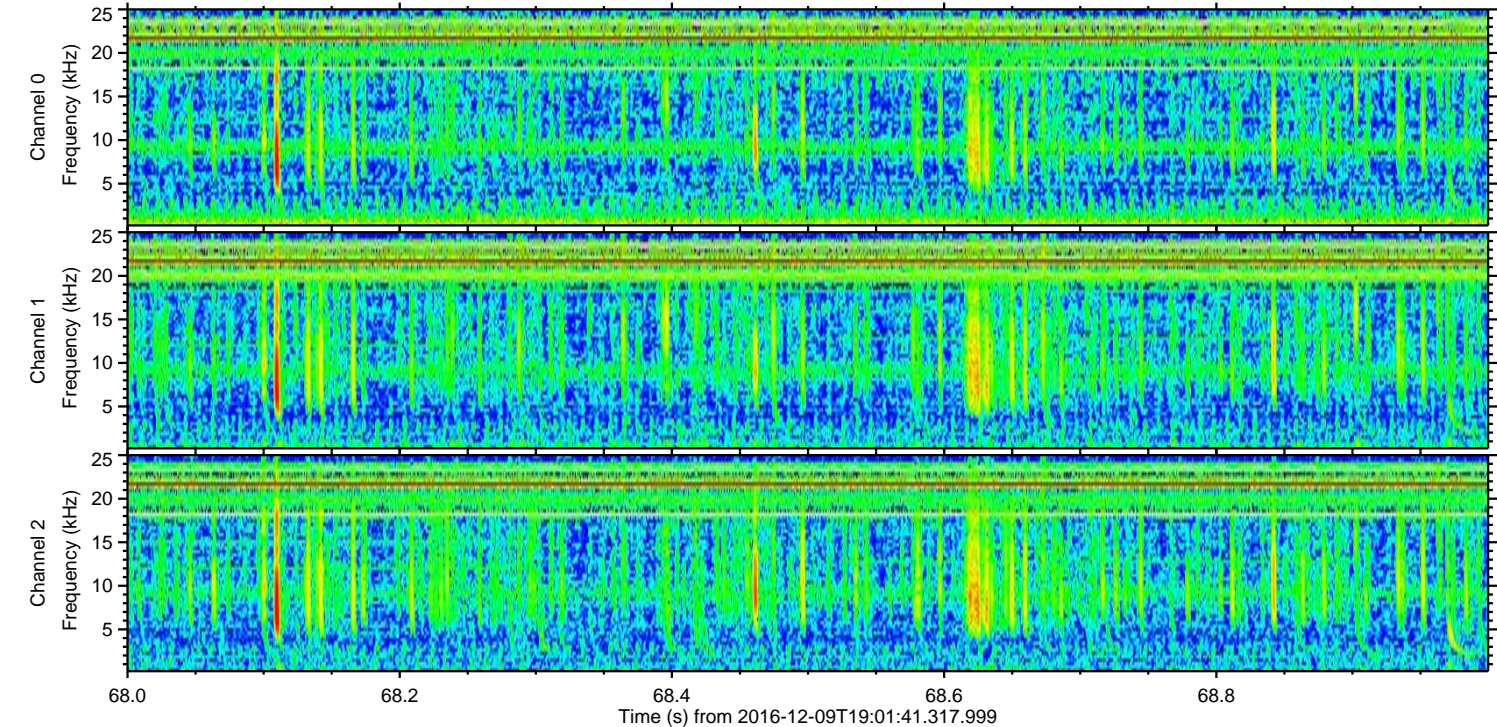
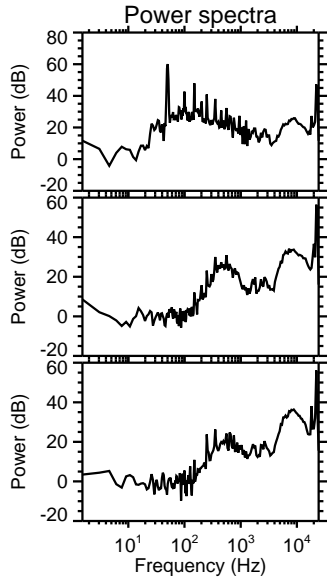
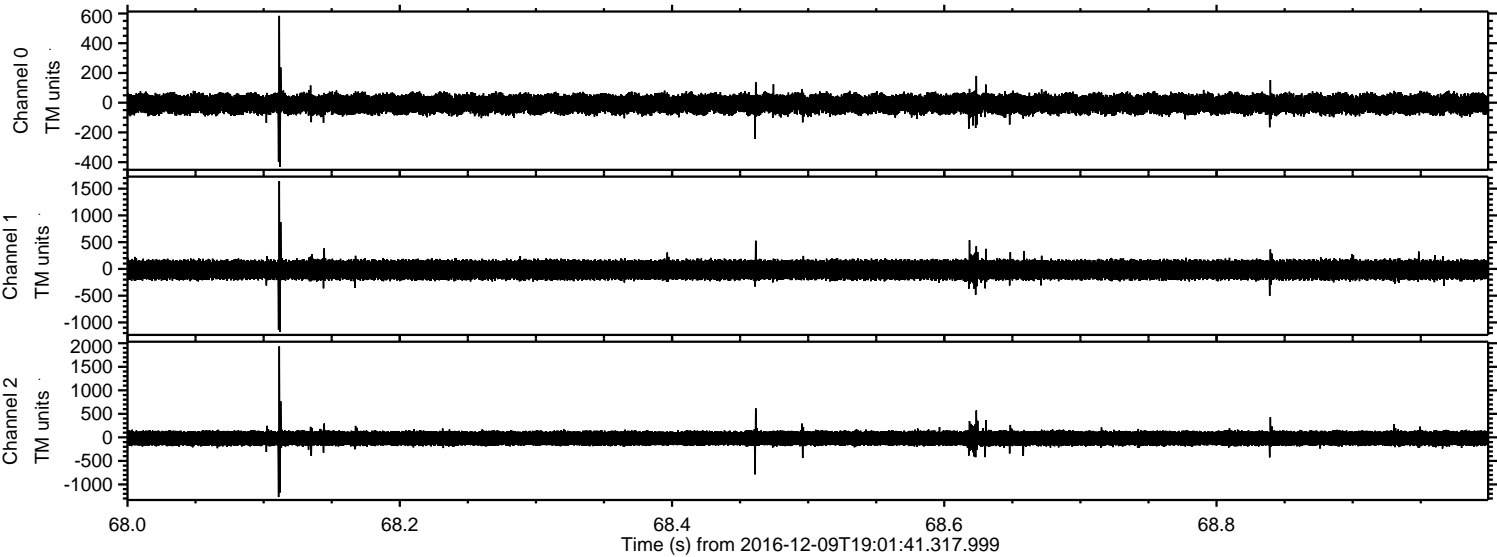


ELMAVAN 3D WAVEFORMS (Measured data sampled at 50 kHz) 51000 packets of 144 samples from 2016-12-09T19:01:41.317.999. Part 11/147

Processed Fri Dec 9 20:09:51 2016 by ELM ver.2012-10-06 from 001__elm20161209_190140__dat00.bin

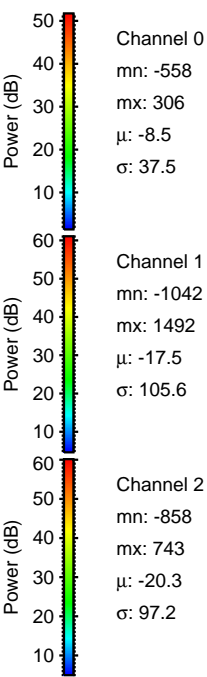
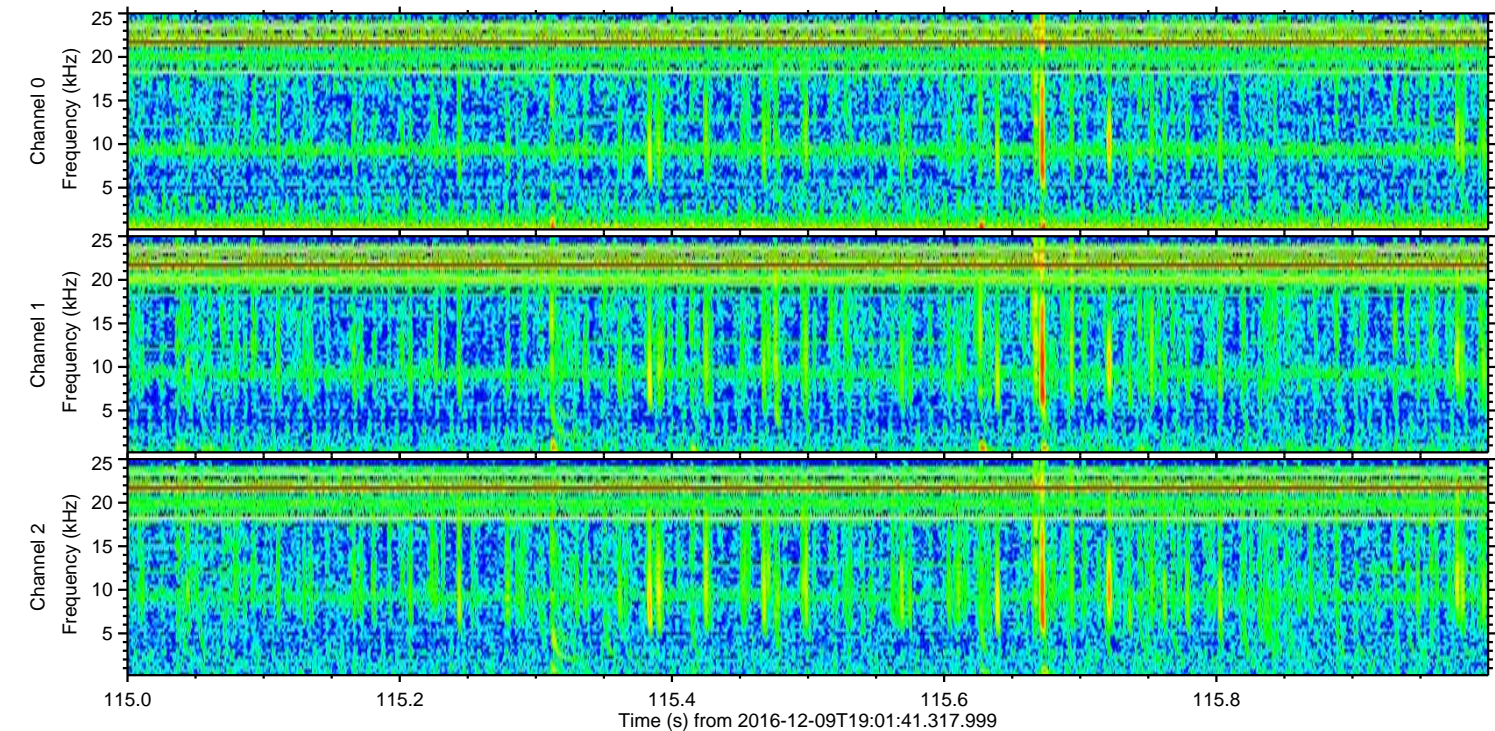
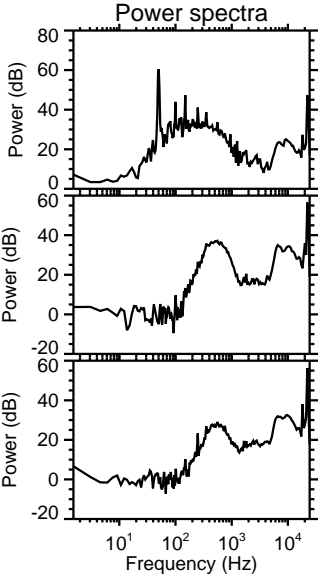
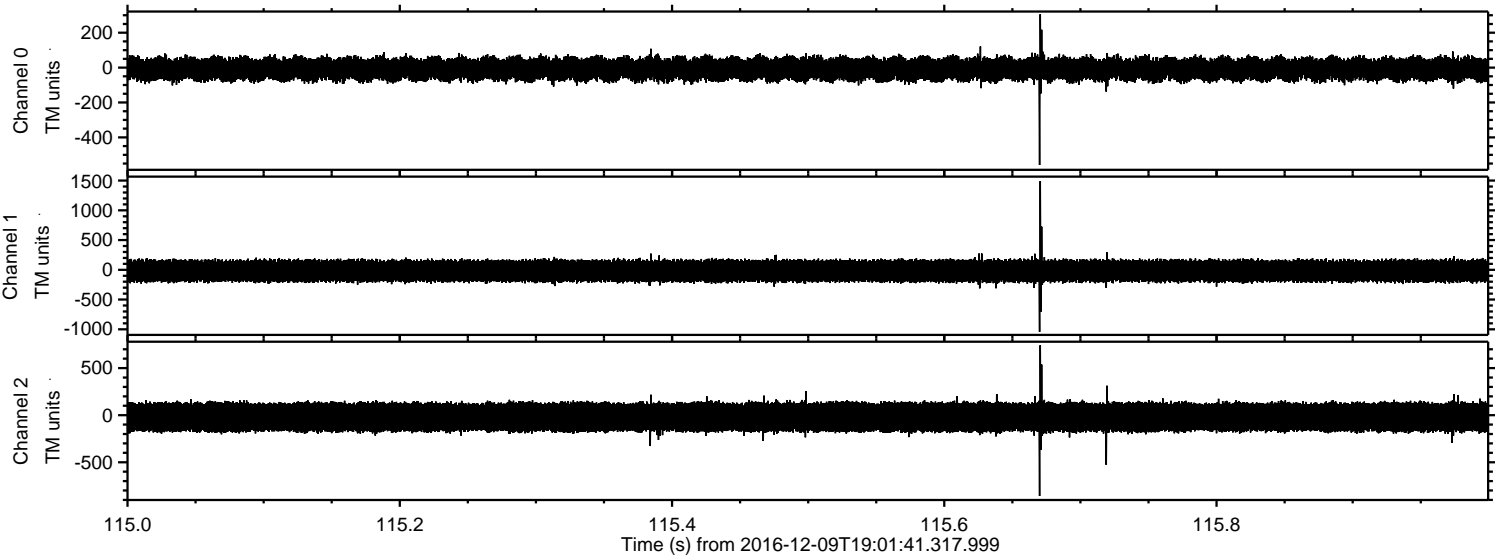


Processed Fri Dec 9 20:09:52 2016 by ELM ver.2012-10-06 from 001__elm20161209_190140__dat00.bin



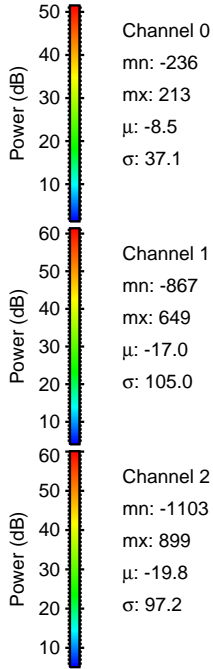
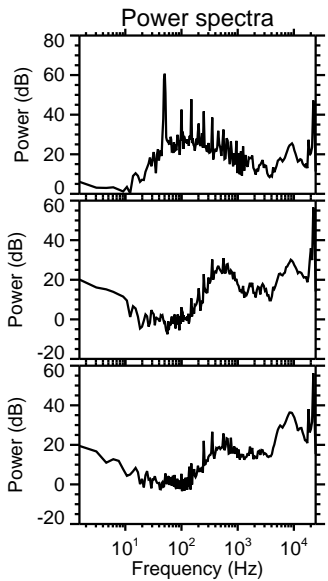
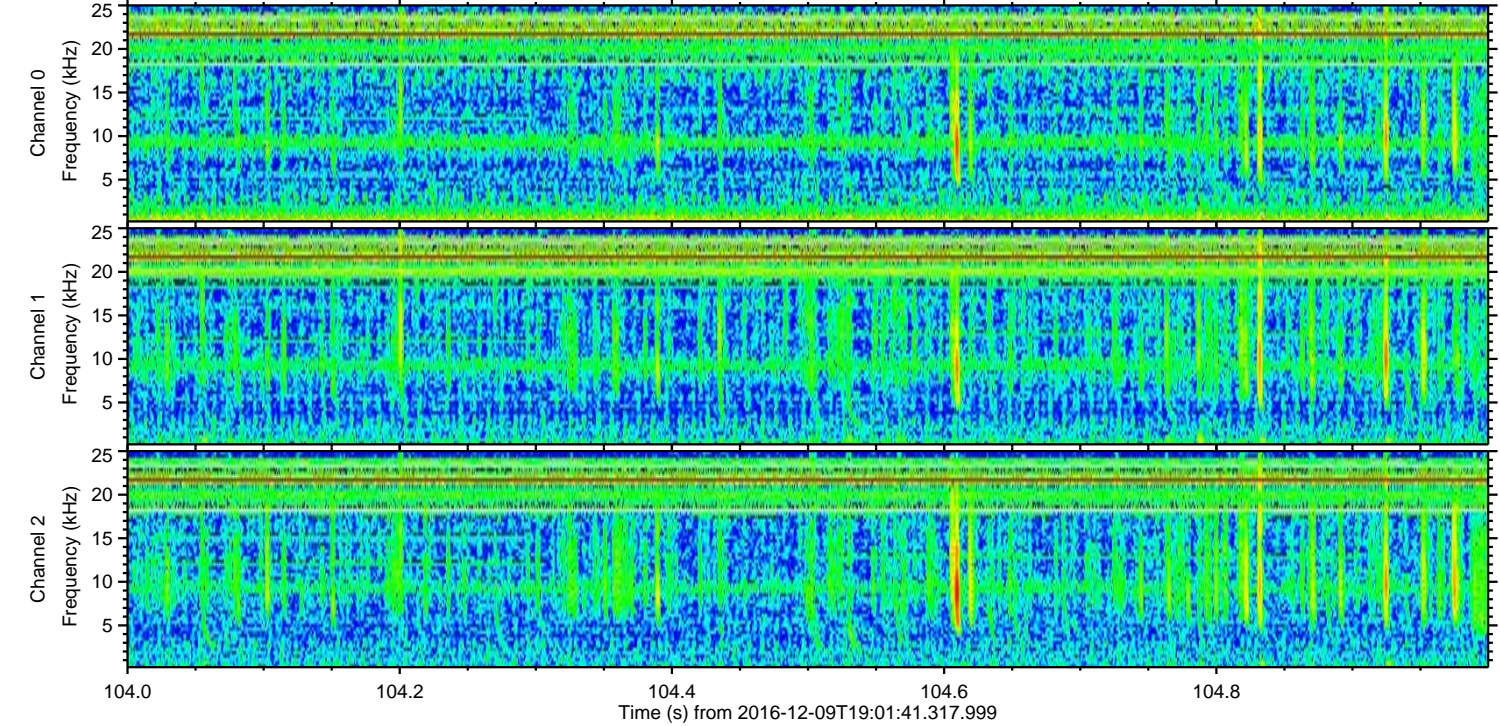
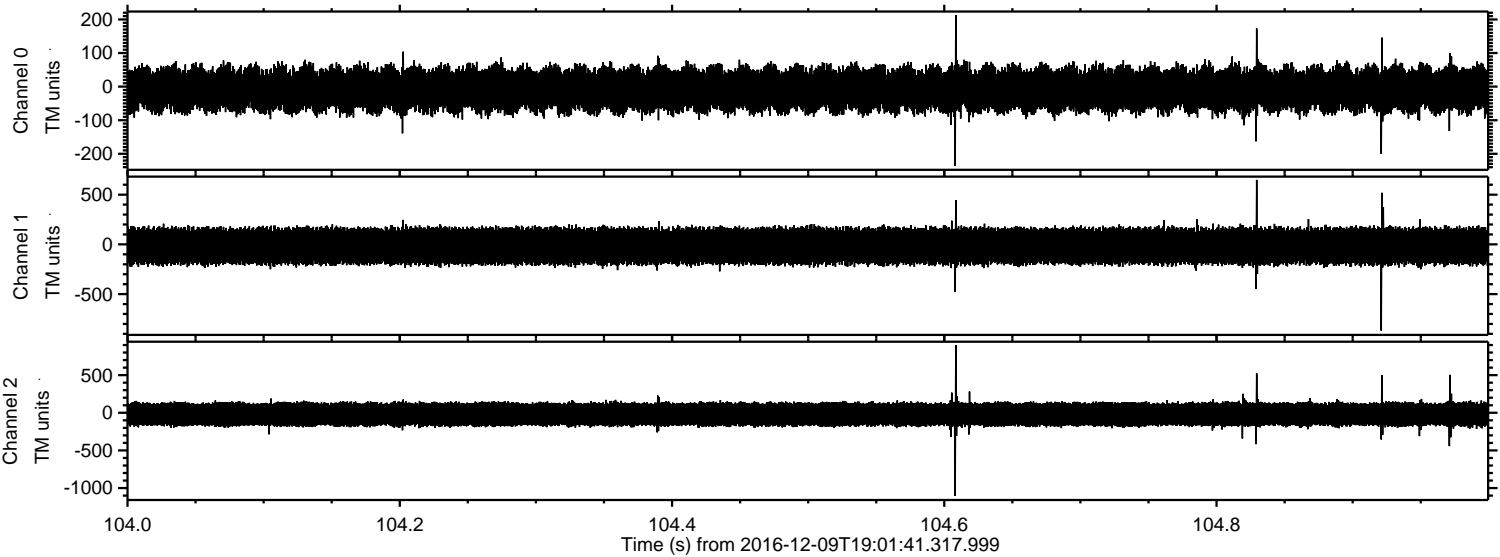
ELMAVAN 3D WAVEFORMS (Measured data sampled at 50 kHz) 51000 packets of 144 samples from 2016-12-09T19:01:41.317.999. Part 116/147

Processed Fri Dec 9 20:09:53 2016 by ELM ver.2012-10-06 from 001__elm20161209_190140__dat00.bin

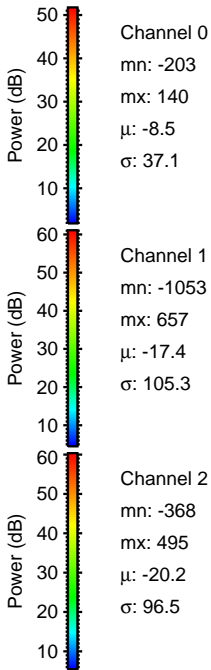
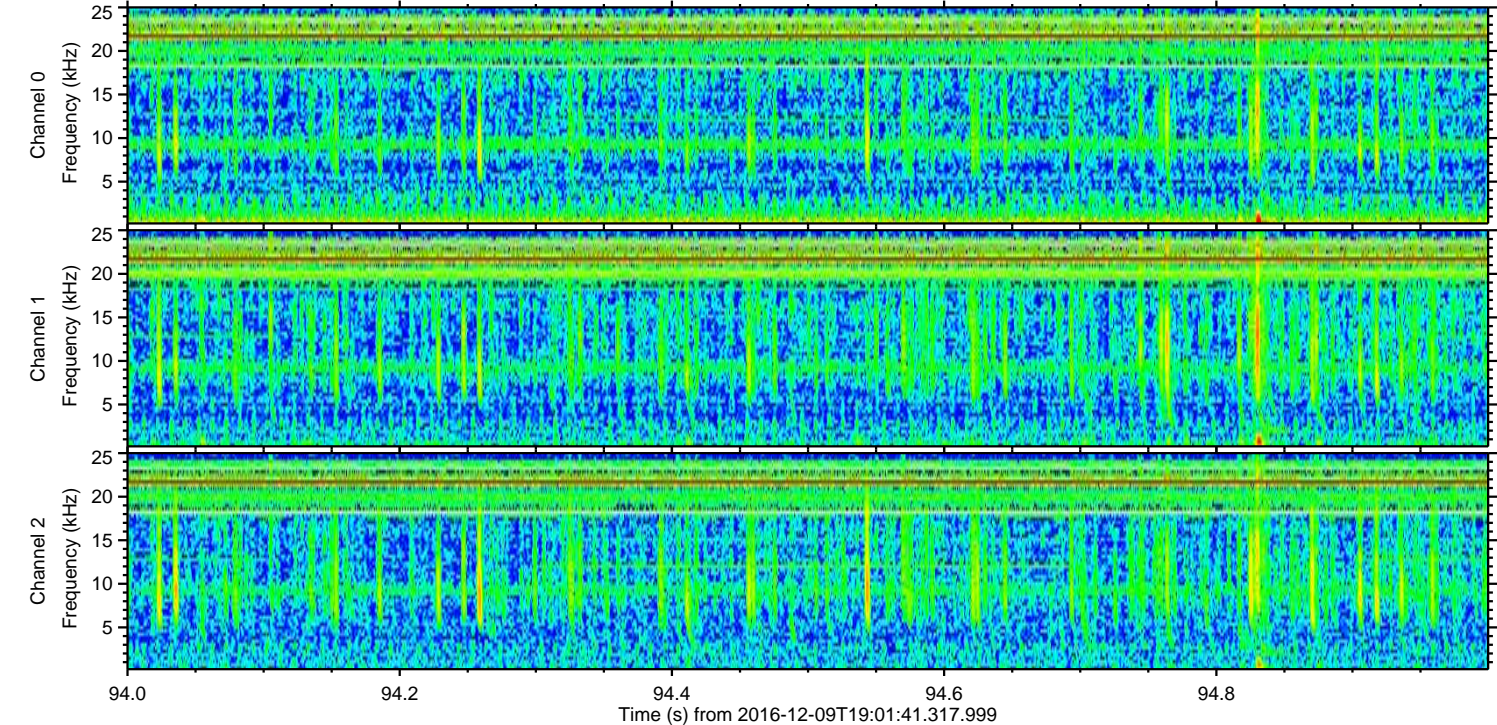
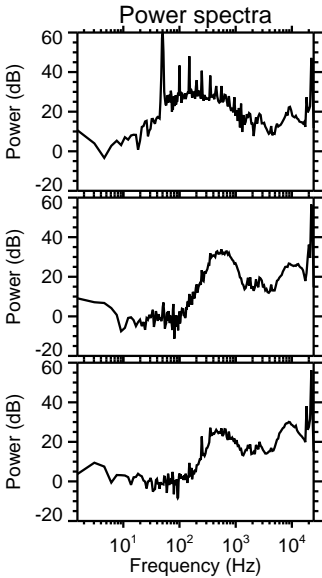
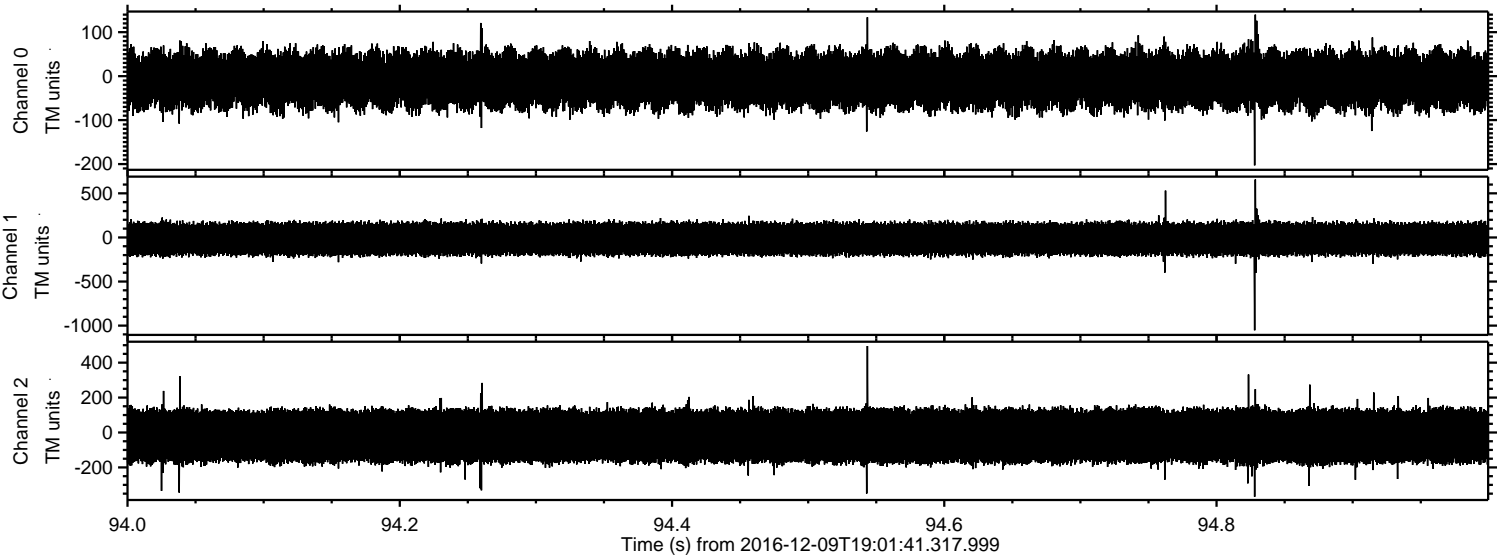


ELMAVAN 3D WAVEFORMS (Measured data sampled at 50 kHz) 51000 packets of 144 samples from 2016-12-09T19:01:41.317.999. Part 105/147

Processed Fri Dec 9 20:09:54 2016 by ELM ver.2012-10-06 from 001__elm20161209_190140__dat00.bin

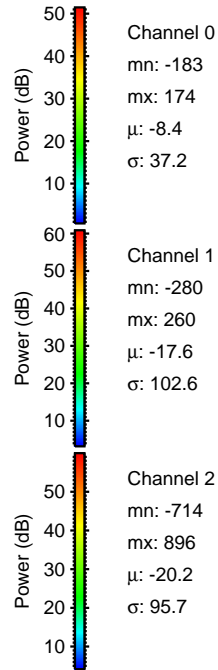
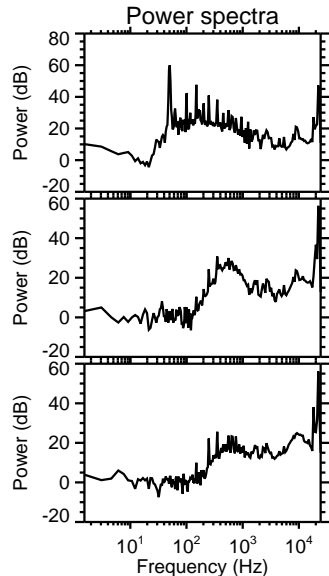
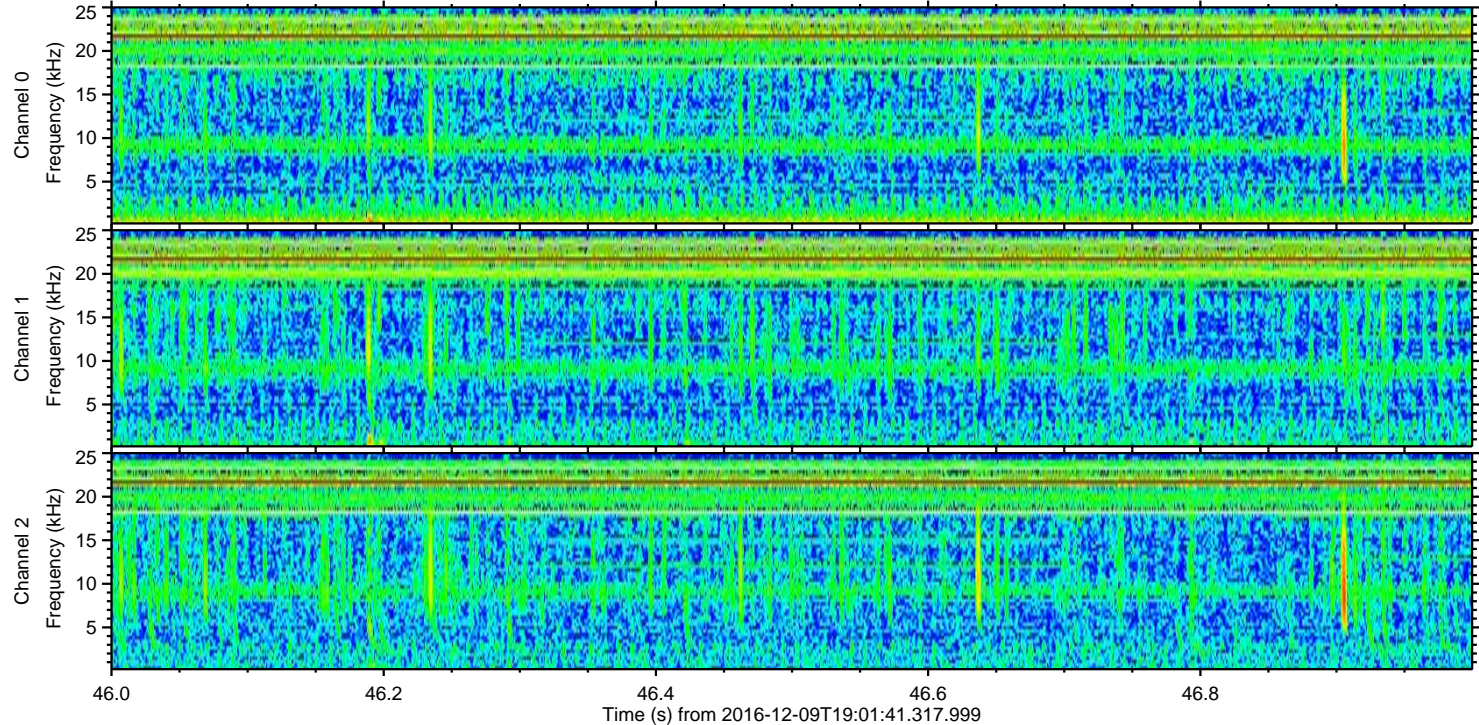
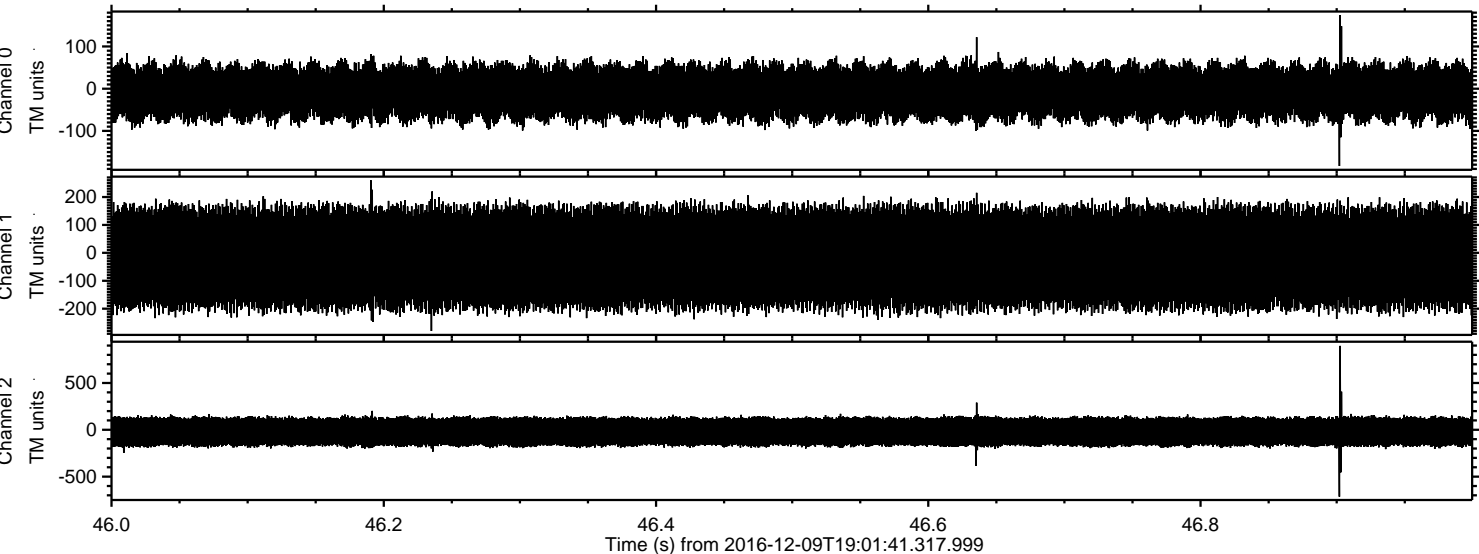


Processed Fri Dec 9 20:09:55 2016 by ELM ver.2012-10-06 from 001__elm20161209_190140__dat00.bin



ELMAVAN 3D WAVEFORMS (Measured data sampled at 50 kHz) 51000 packets of 144 samples from 2016-12-09T19:01:41.317.999. Part 47/147

Processed Fri Dec 9 20:09:56 2016 by ELM ver.2012-10-06 from 001__elm20161209_190140__dat00.bin



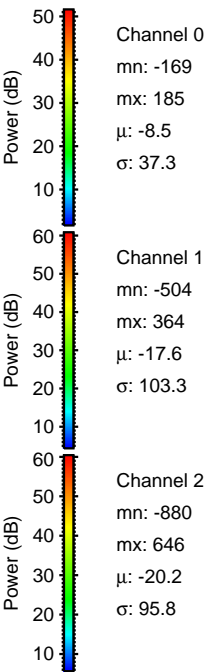
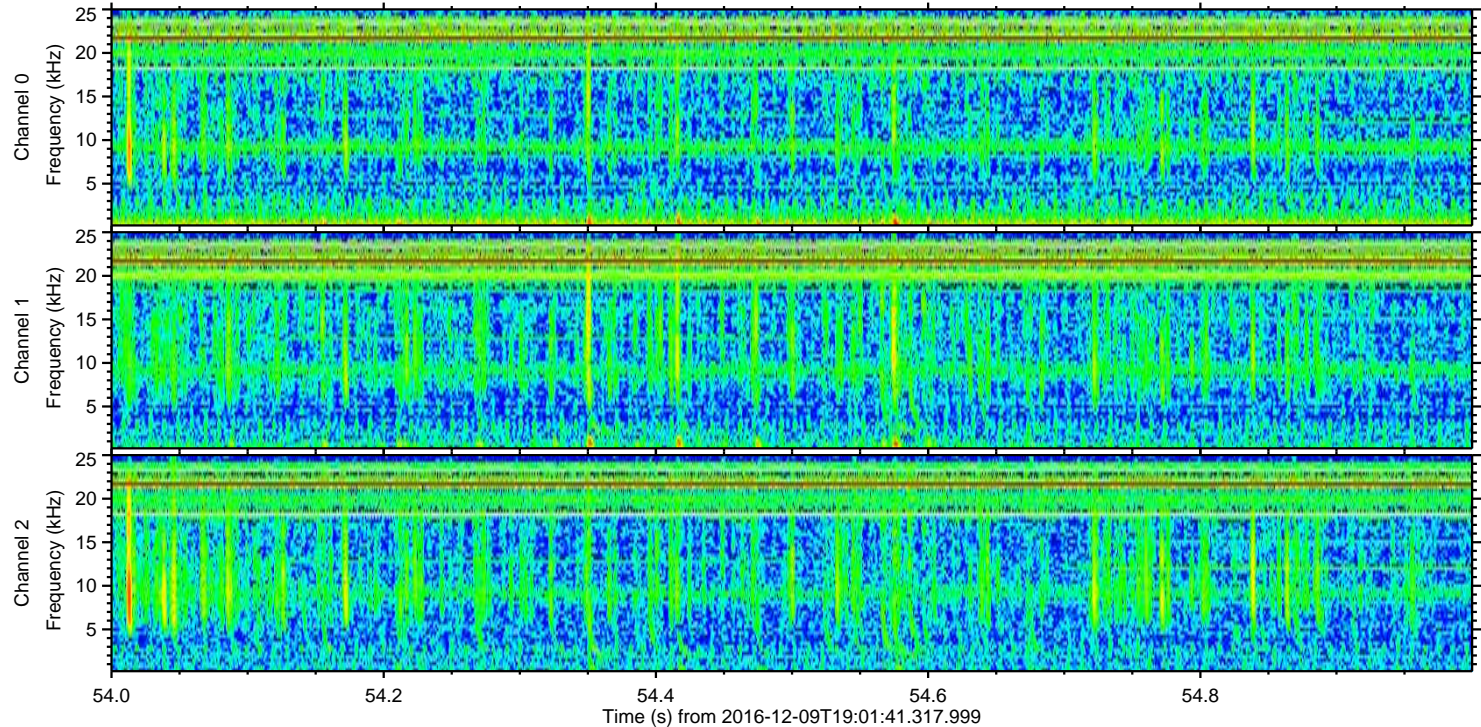
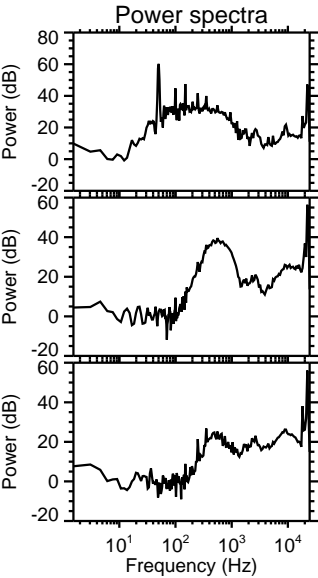
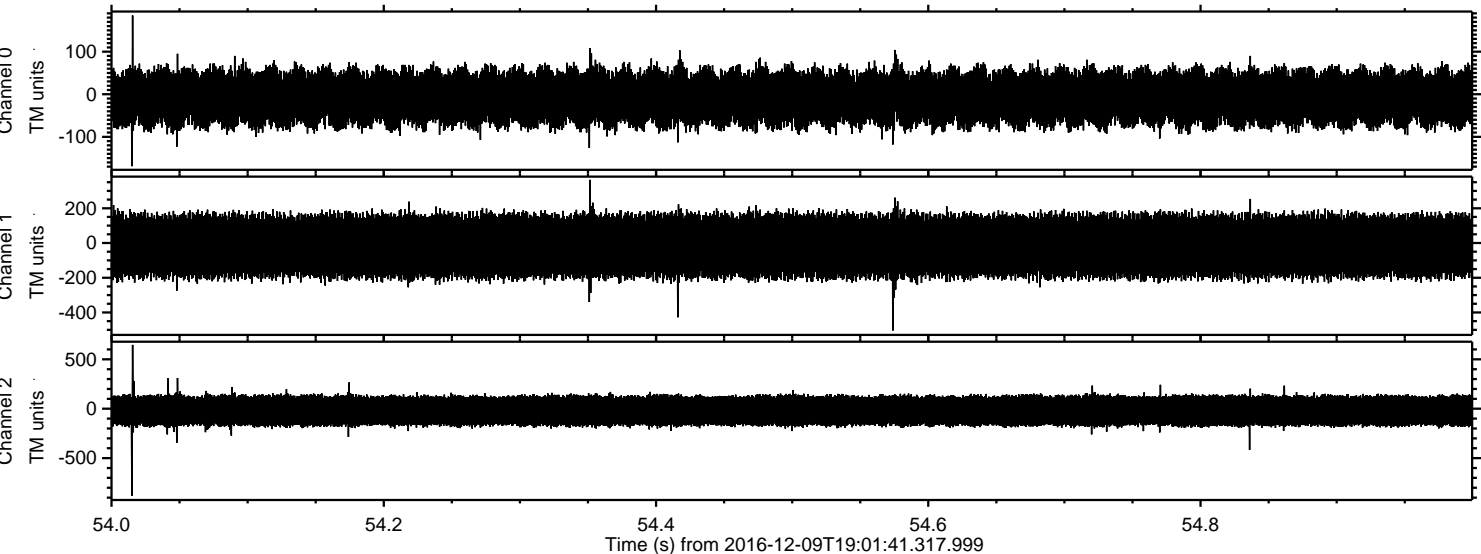
Power spectra

Channel 0
mn: -183
mx: 174
 μ : -8.4
 σ : 37.2

Channel 1
mn: -280
mx: 260
 μ : -17.6
 σ : 102.6

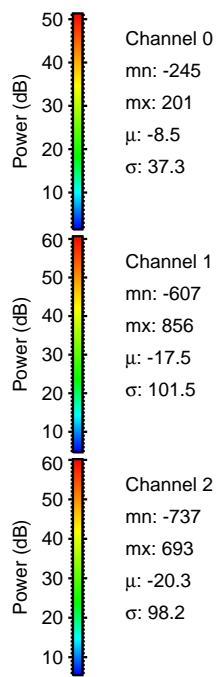
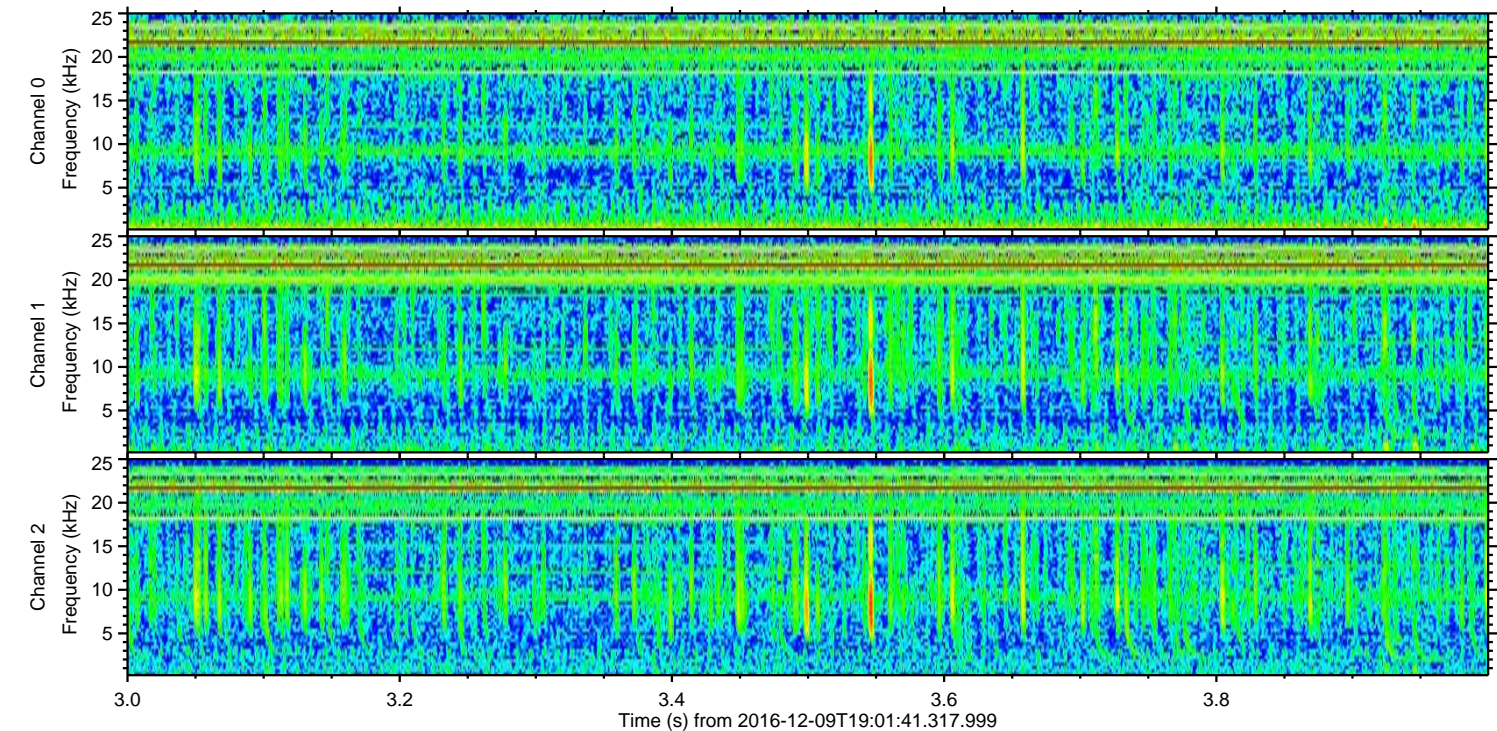
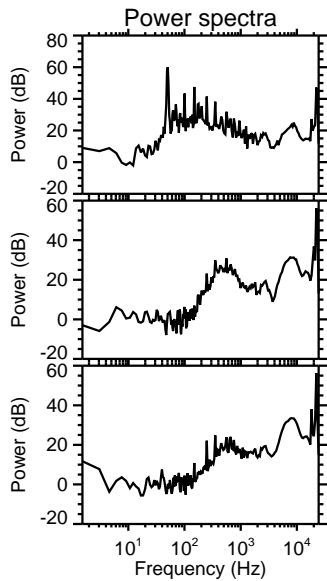
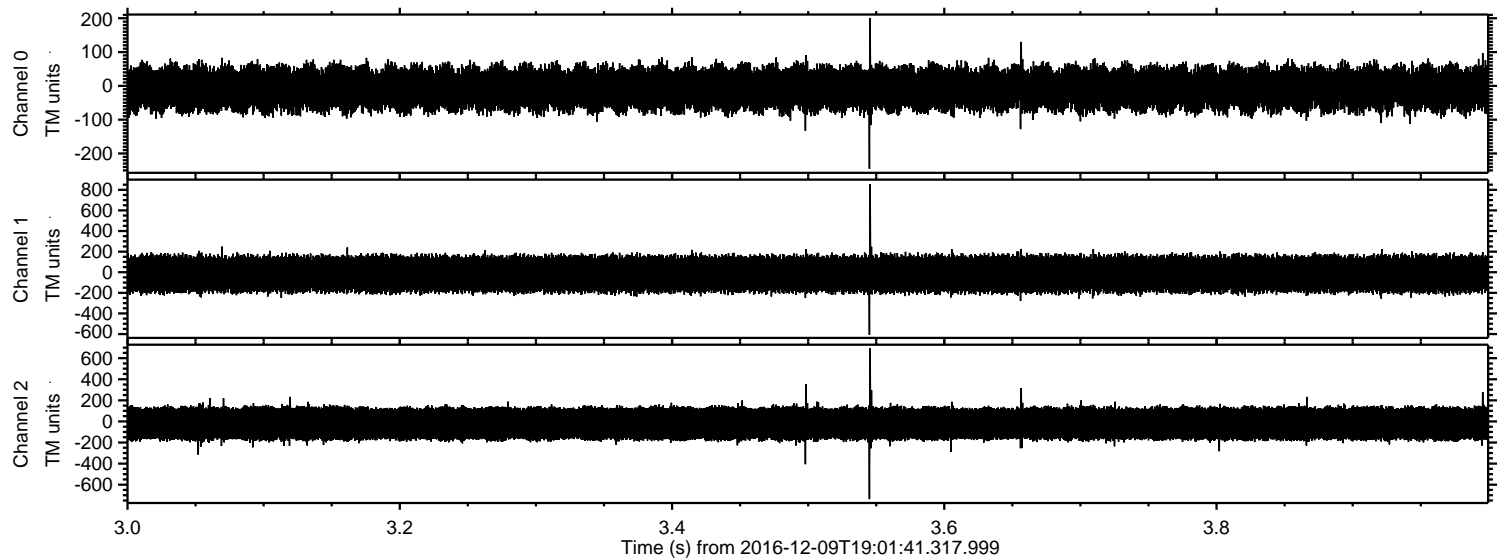
Channel 2
mn: -714
mx: 896
 μ : -20.2
 σ : 95.7

Processed Fri Dec 9 20:09:57 2016 by ELM ver.2012-10-06 from 001__elm20161209_190140__dat00.bin



ELMAVAN 3D WAVEFORMS (Measured data sampled at 50 kHz) 51000 packets of 144 samples from 2016-12-09T19:01:41.317.999. Part 4/147

Processed Fri Dec 9 20:09:57 2016 by ELM ver.2012-10-06 from 001__elm20161209_190140__dat00.bin



ELMAVAN 3D WAVEFORMS (Measured data sampled at 50 kHz) 51000 packets of 144 samples from 2016-12-09T19:01:41.317.999. Part 127/147

Processed Fri Dec 9 20:09:58 2016 by ELM ver.2012-10-06 from 001__elm20161209_190140__dat00.bin

