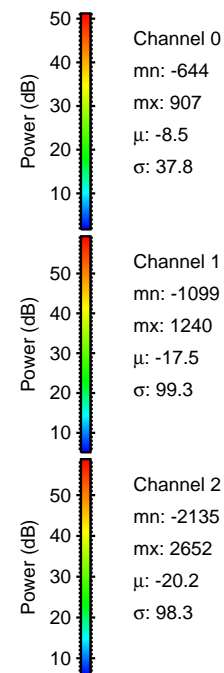
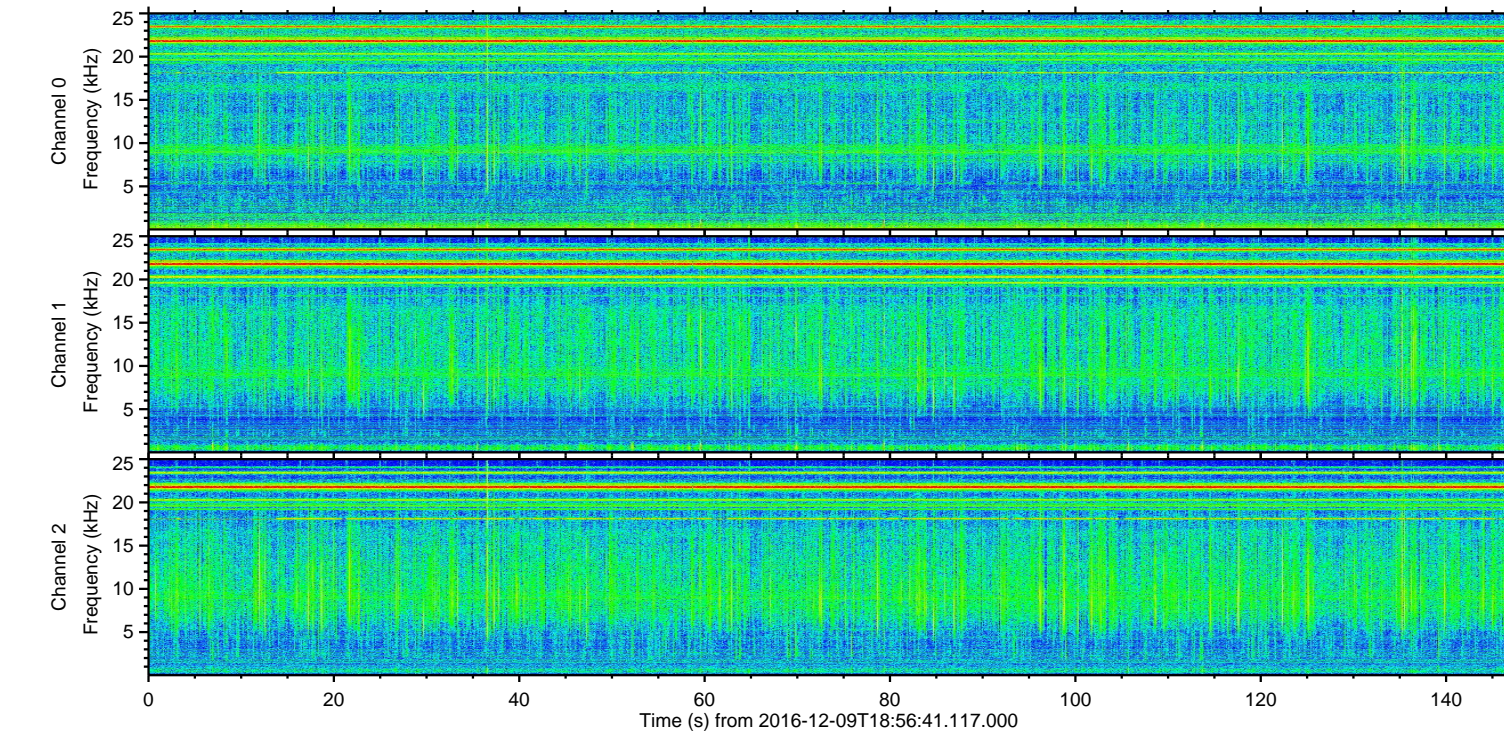
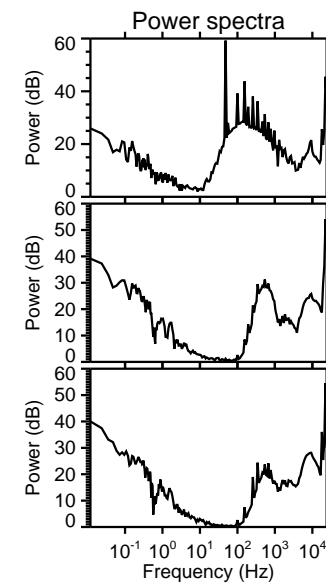
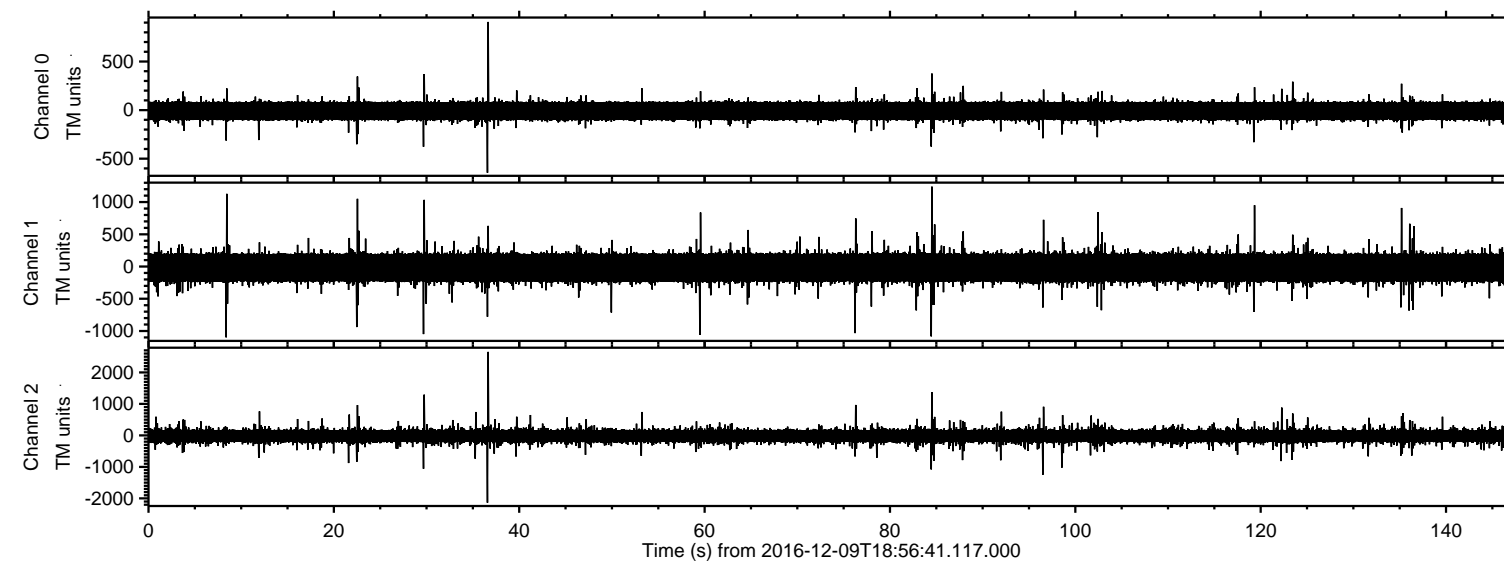


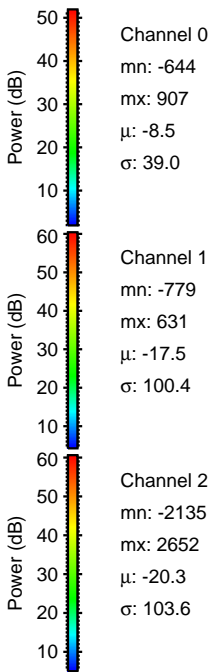
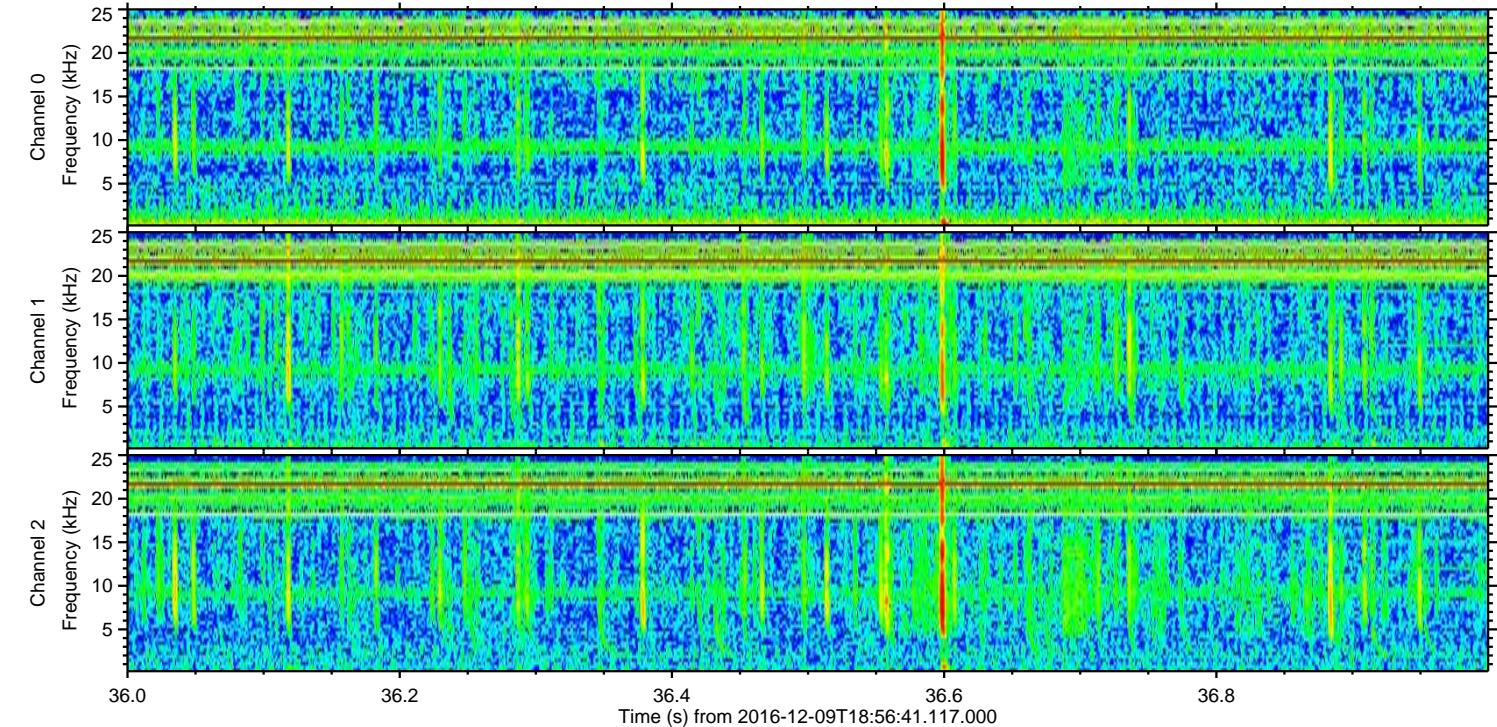
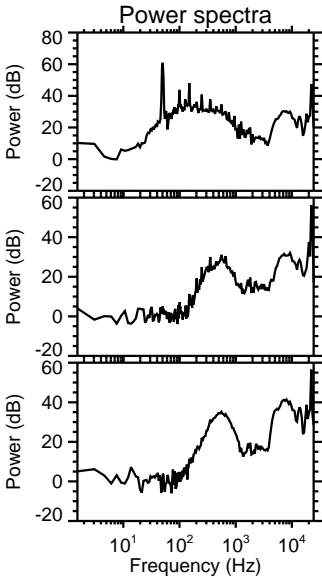
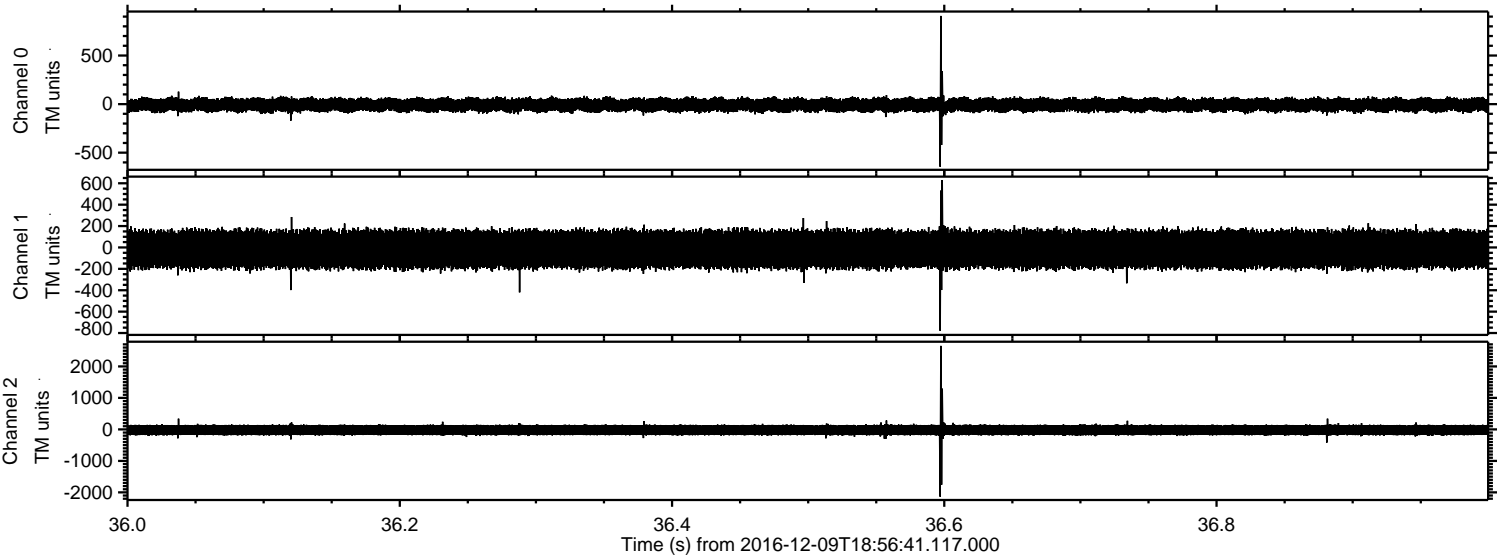
ELMAVAN 3D WAVEFORMS (Measured data sampled at 50 kHz) 51000 packets of 144 samples from 2016-12-09T18:56:41.117.000.

Processed Fri Dec 9 20:04:22 2016 by ELM ver.2012-10-06 from 001__elm20161209_185640__dat00.bin

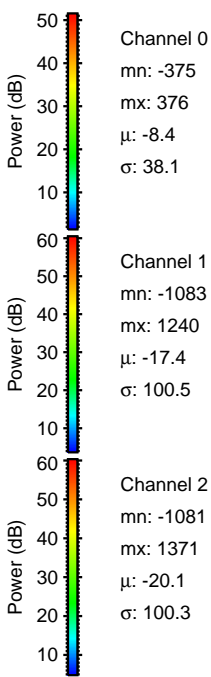
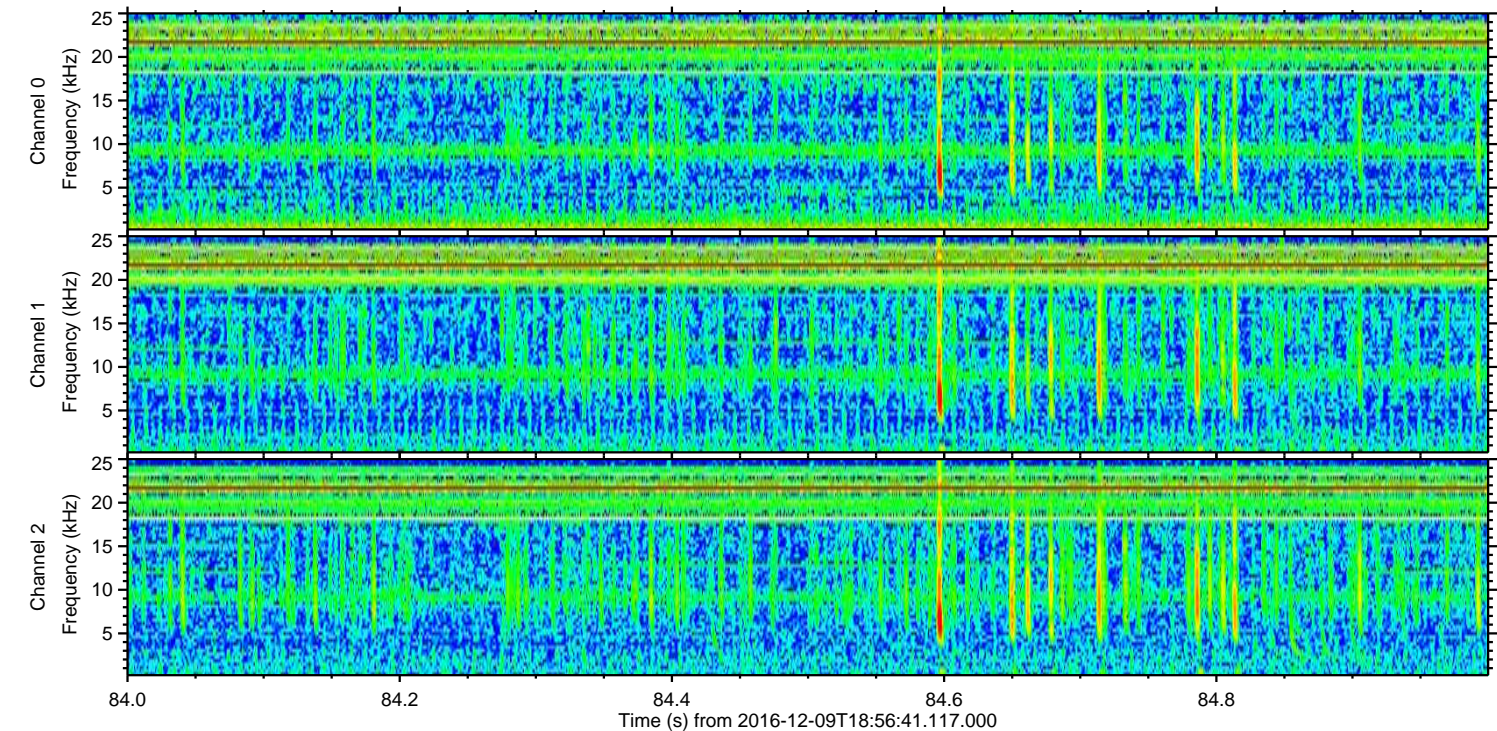
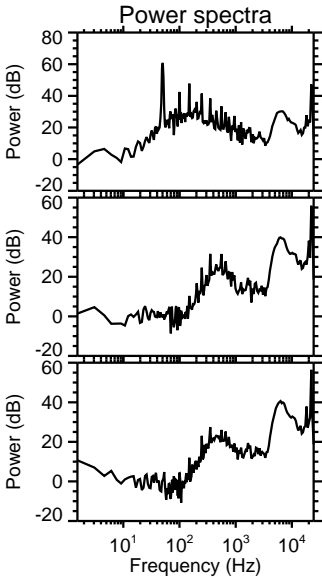
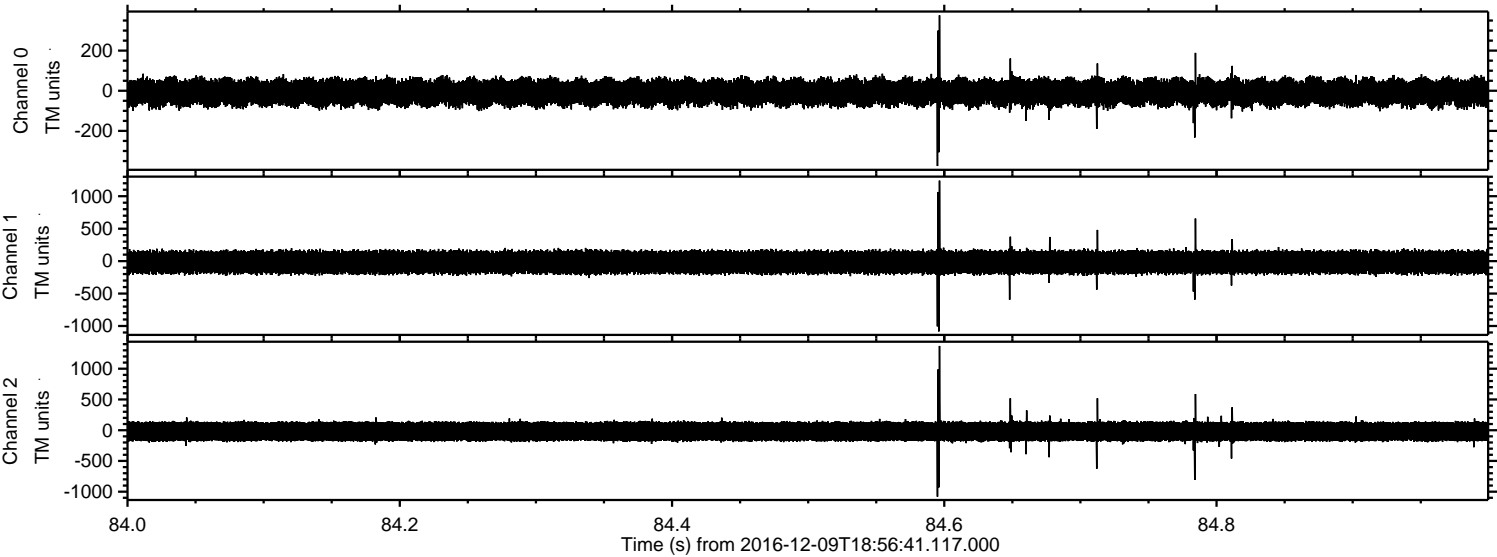


ELMAVAN 3D WAVEFORMS (Measured data sampled at 50 kHz) 51000 packets of 144 samples from 2016-12-09T18:56:41.117.000. Part 37/147

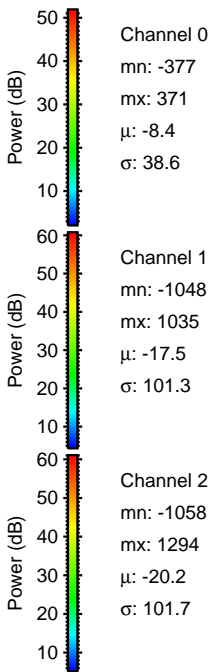
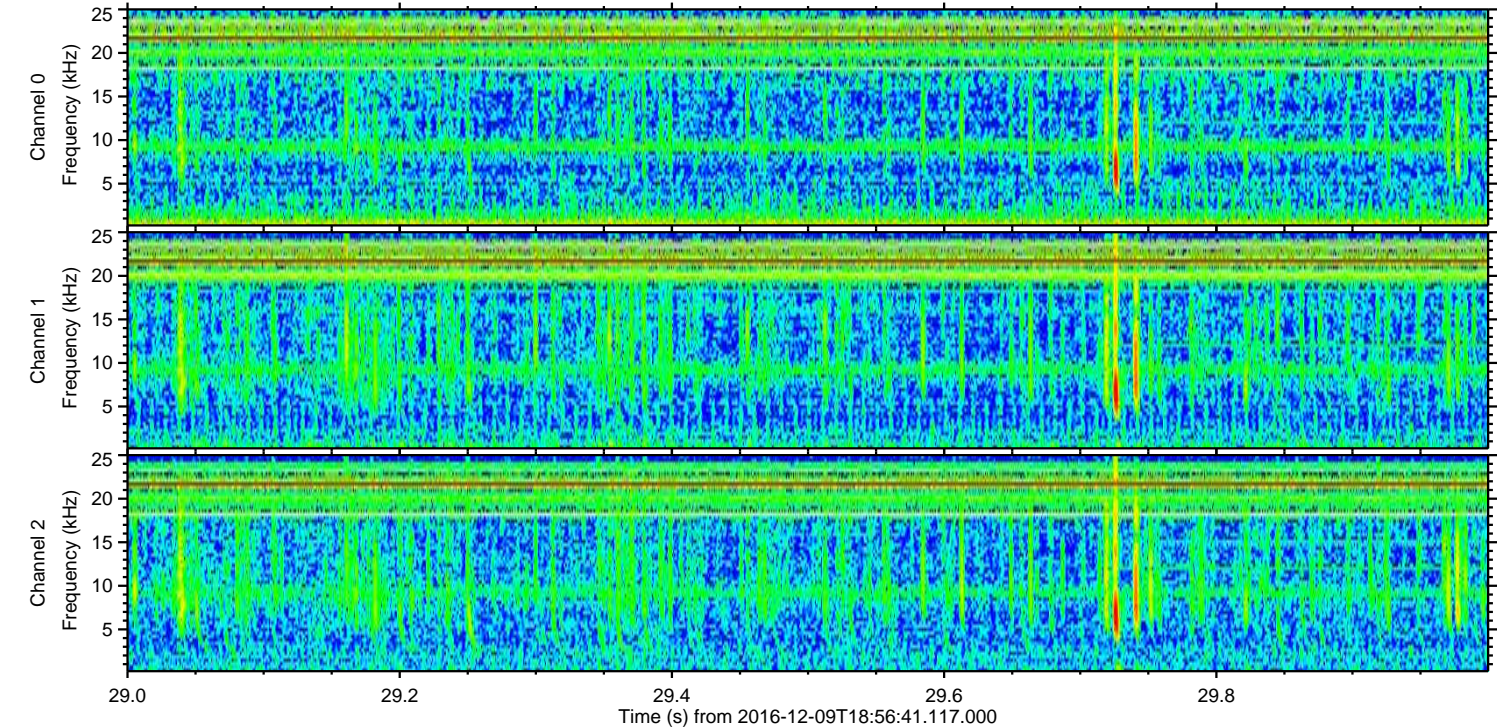
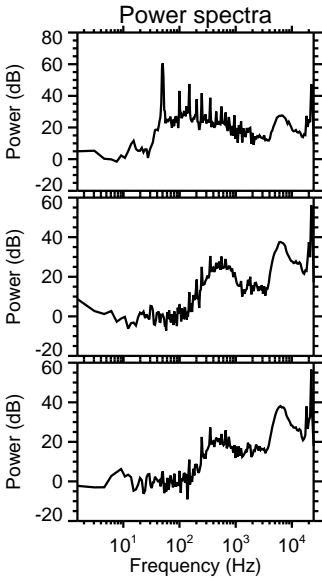
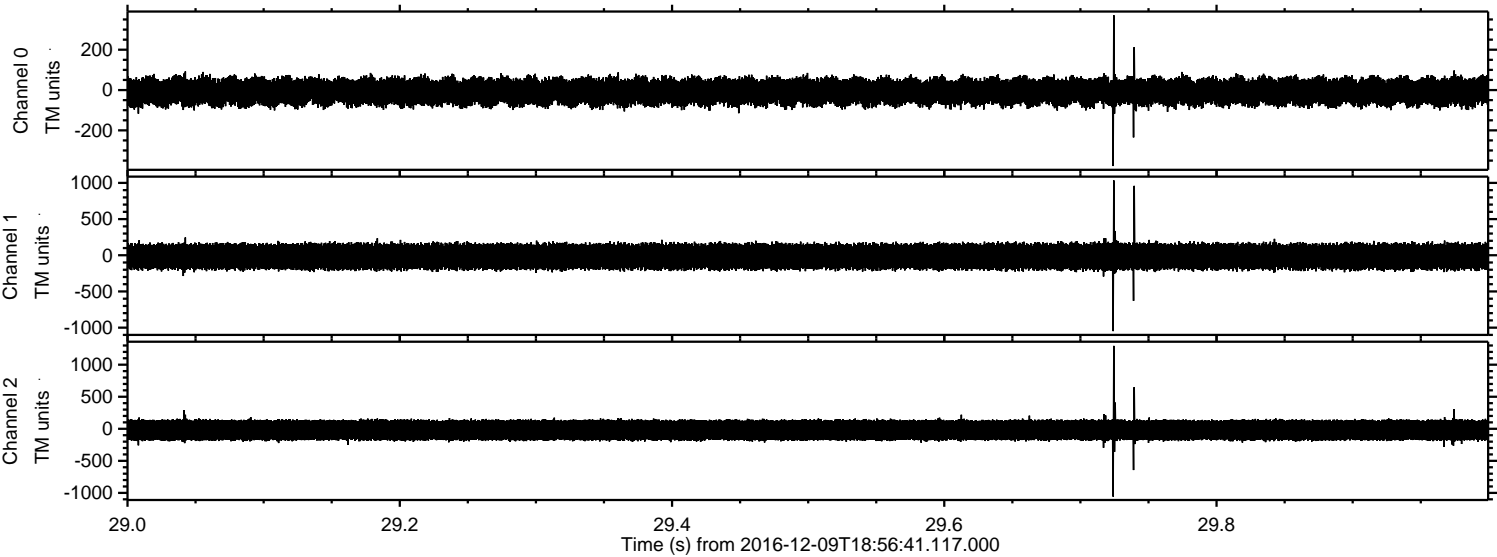
Processed Fri Dec 9 20:04:33 2016 by ELM ver.2012-10-06 from 001__elm20161209_185640__dat00.bin



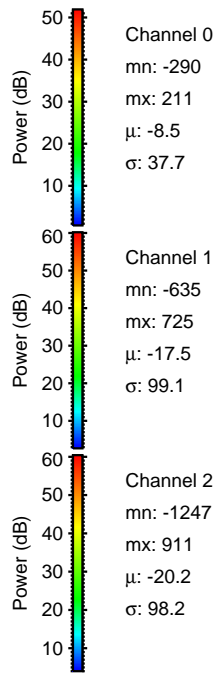
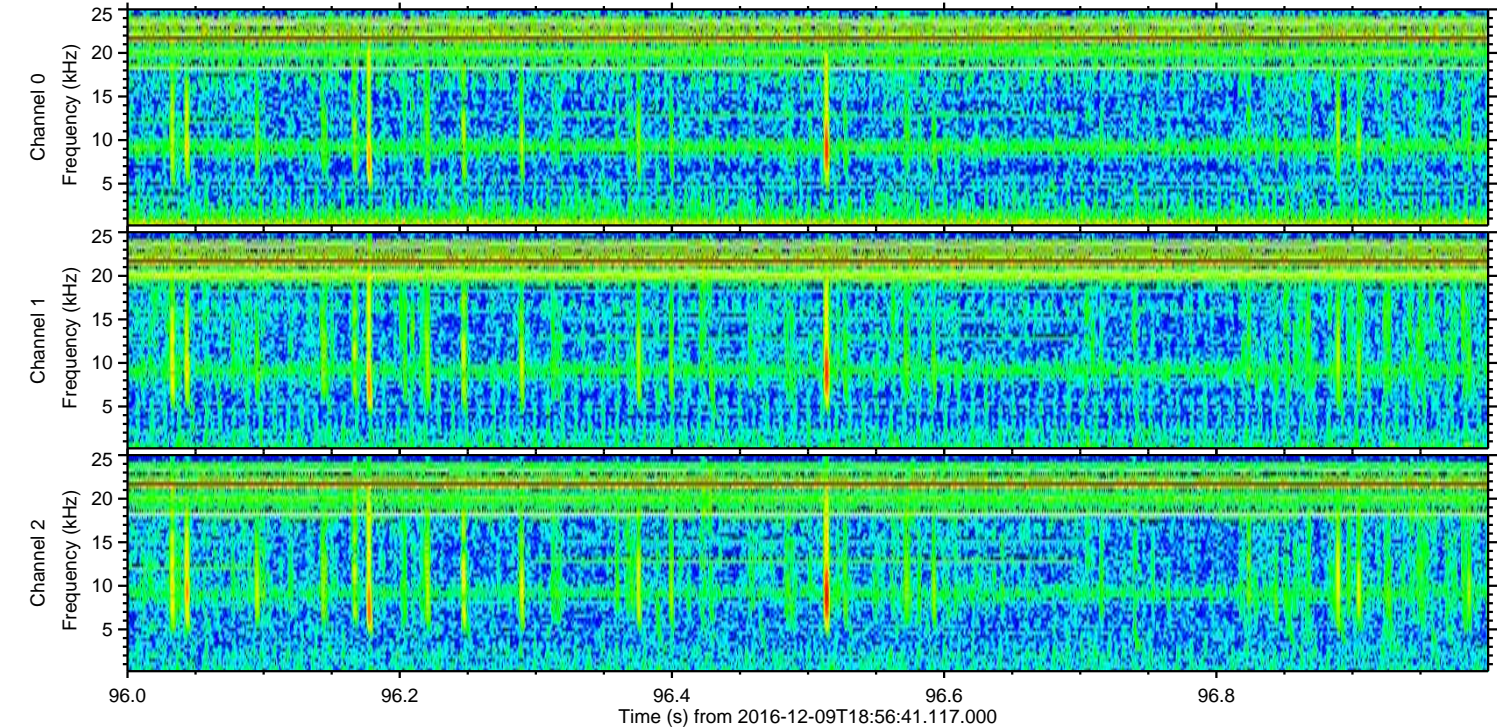
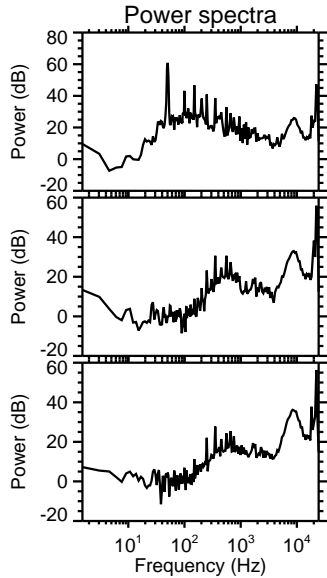
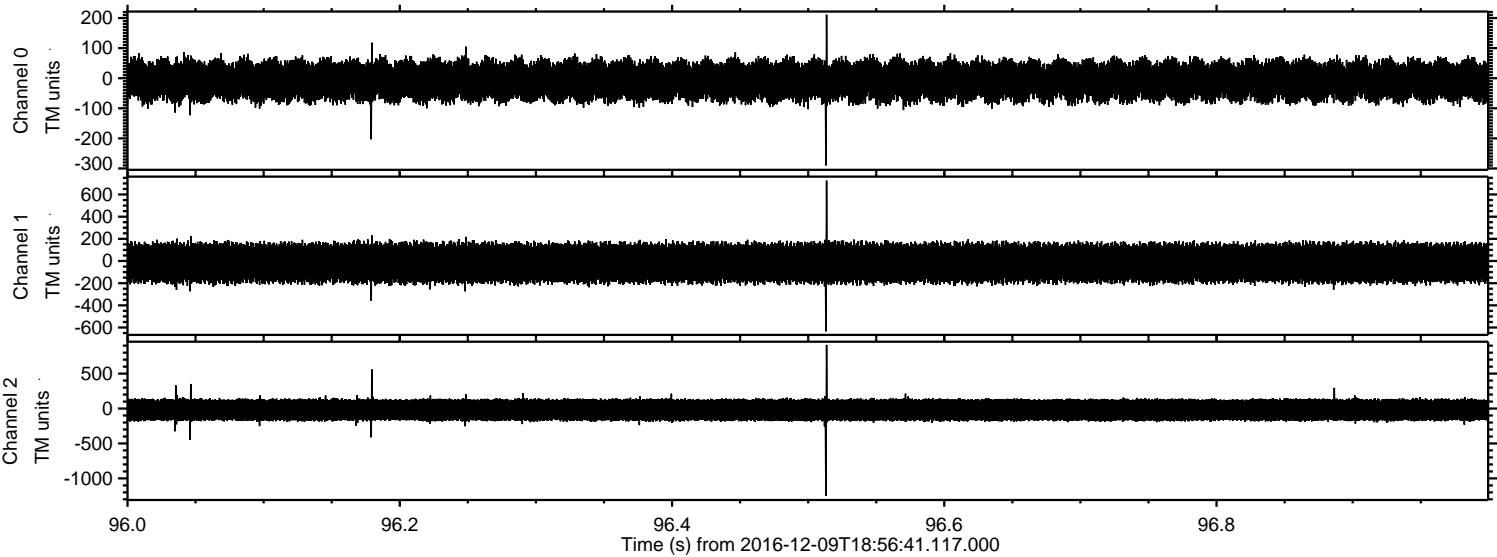
Processed Fri Dec 9 20:04:34 2016 by ELM ver.2012-10-06 from 001__elm20161209_185640__dat00.bin



Processed Fri Dec 9 20:04:35 2016 by ELM ver.2012-10-06 from 001__elm20161209_185640__dat00.bin

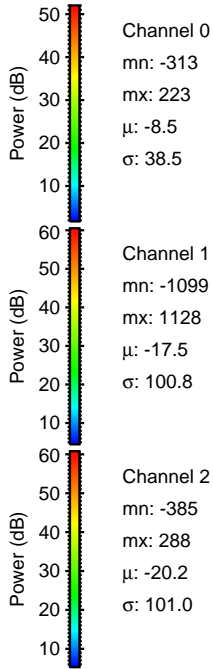
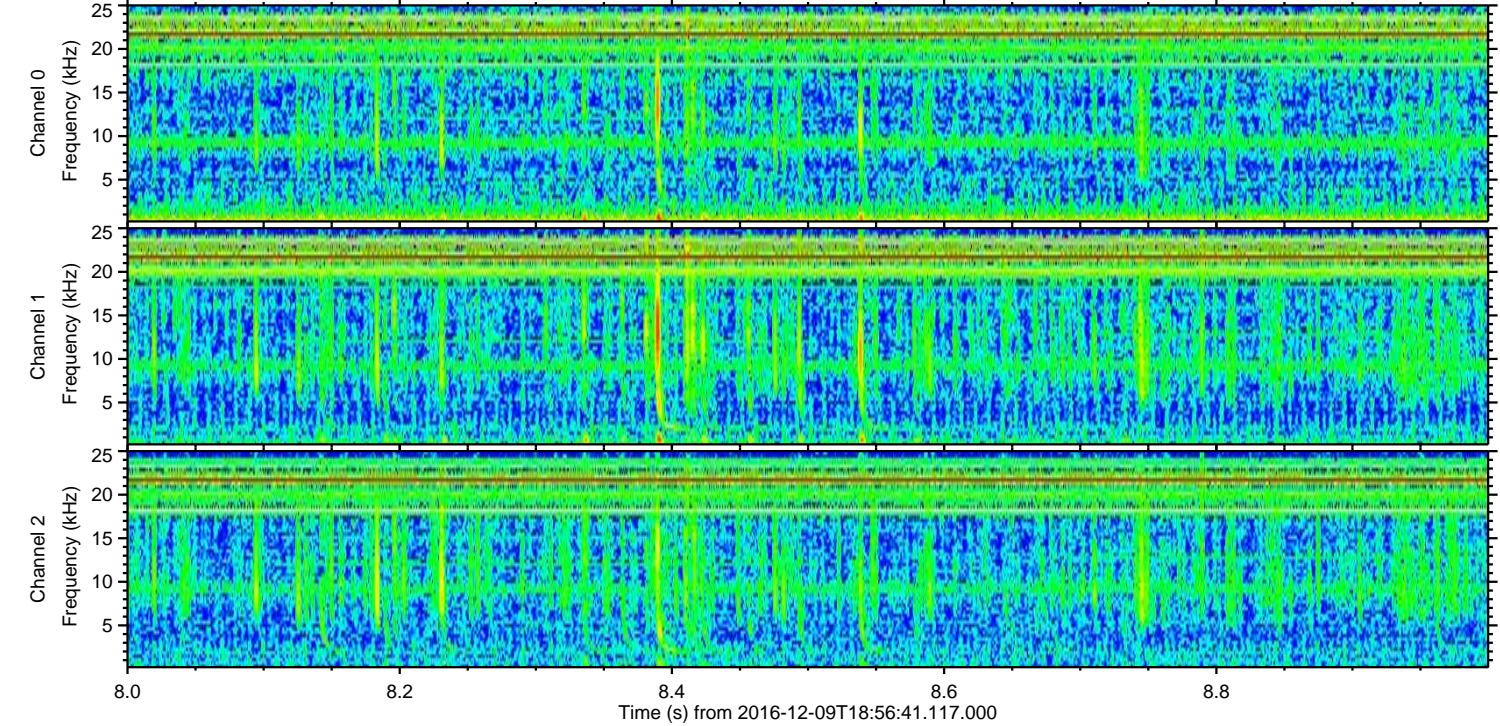
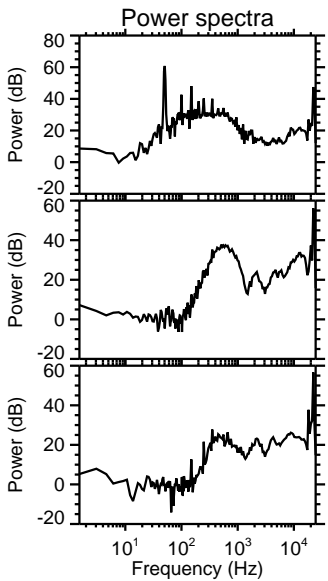
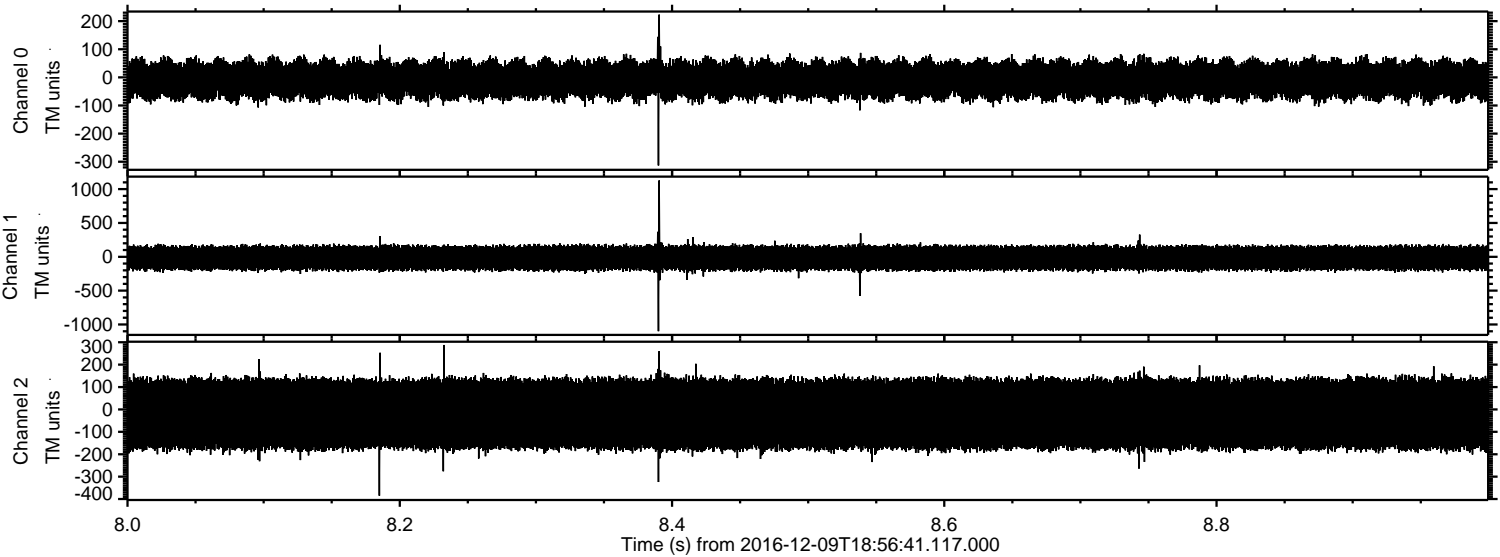


Processed Fri Dec 9 20:04:36 2016 by ELM ver.2012-10-06 from 001__elm20161209_185640__dat00.bin

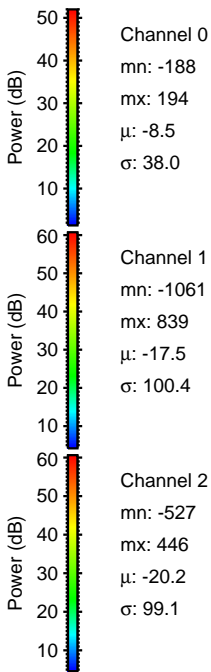
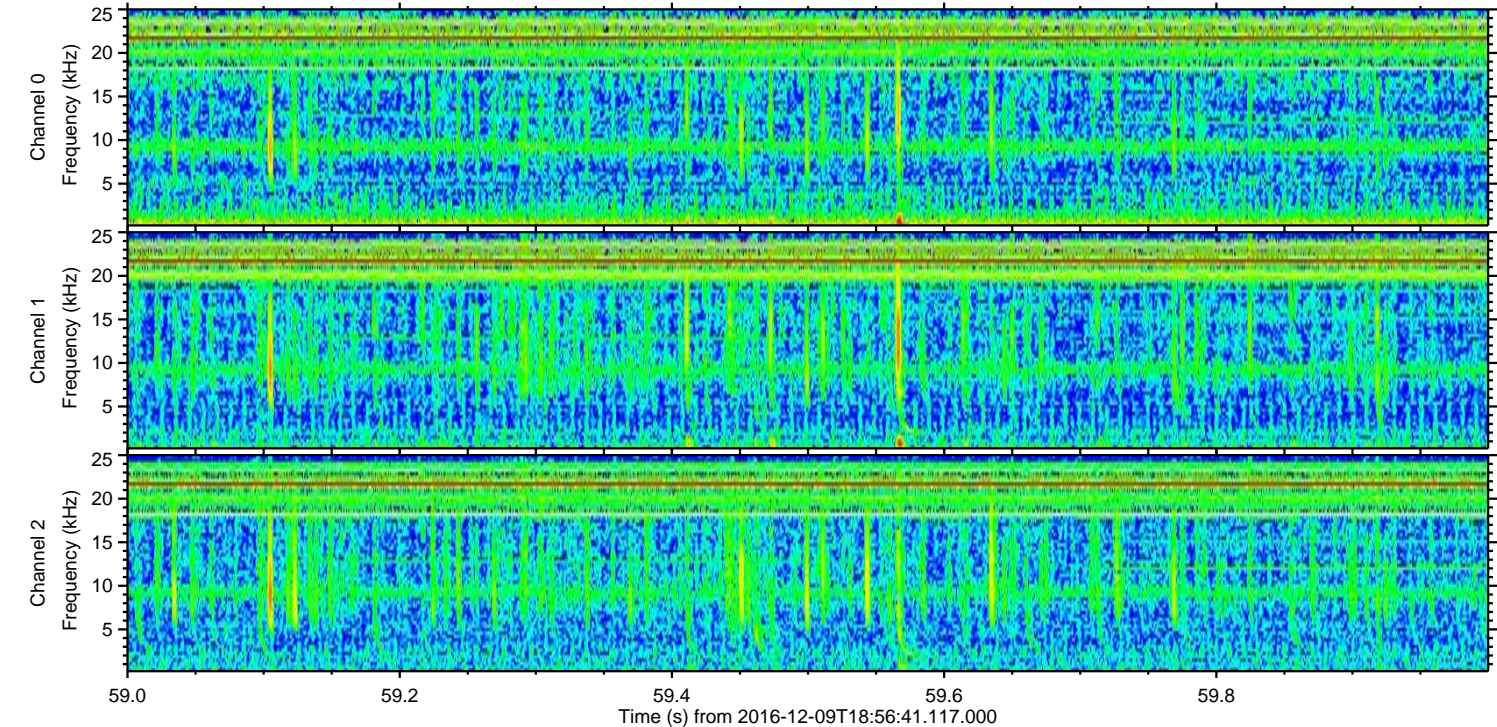
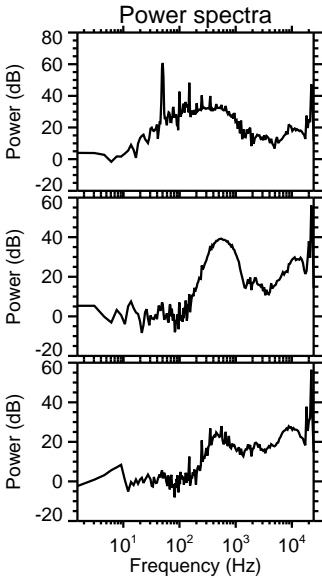
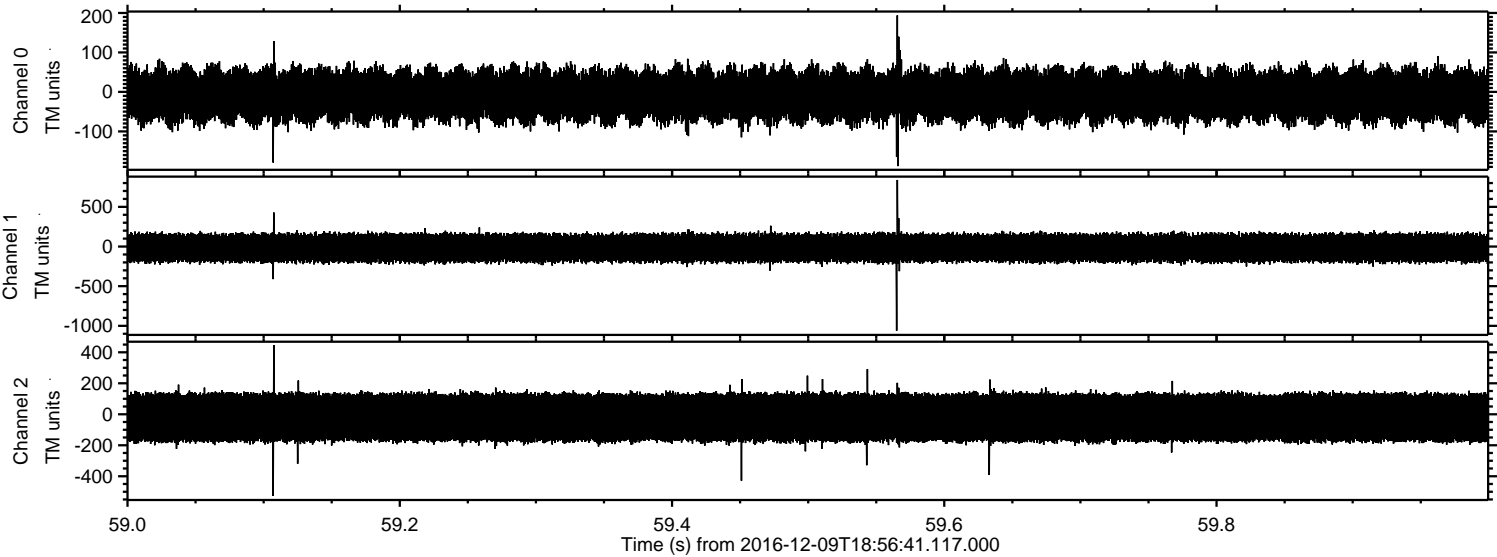


ELMAVAN 3D WAVEFORMS (Measured data sampled at 50 kHz) 51000 packets of 144 samples from 2016-12-09T18:56:41.117.000. Part 9/147

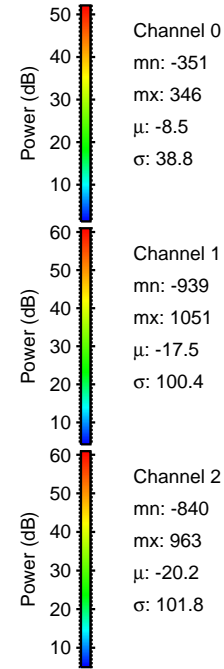
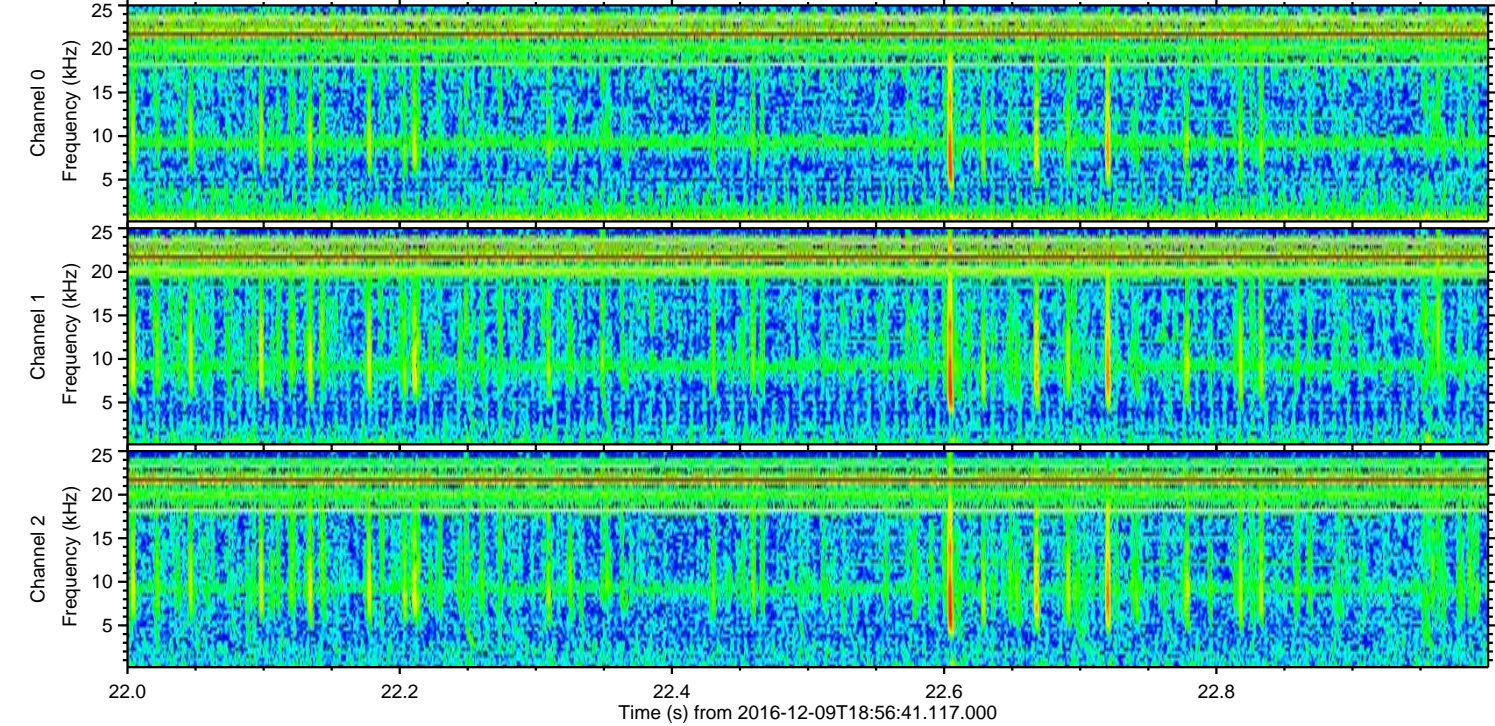
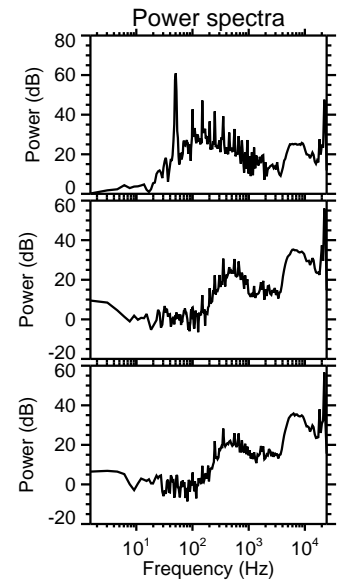
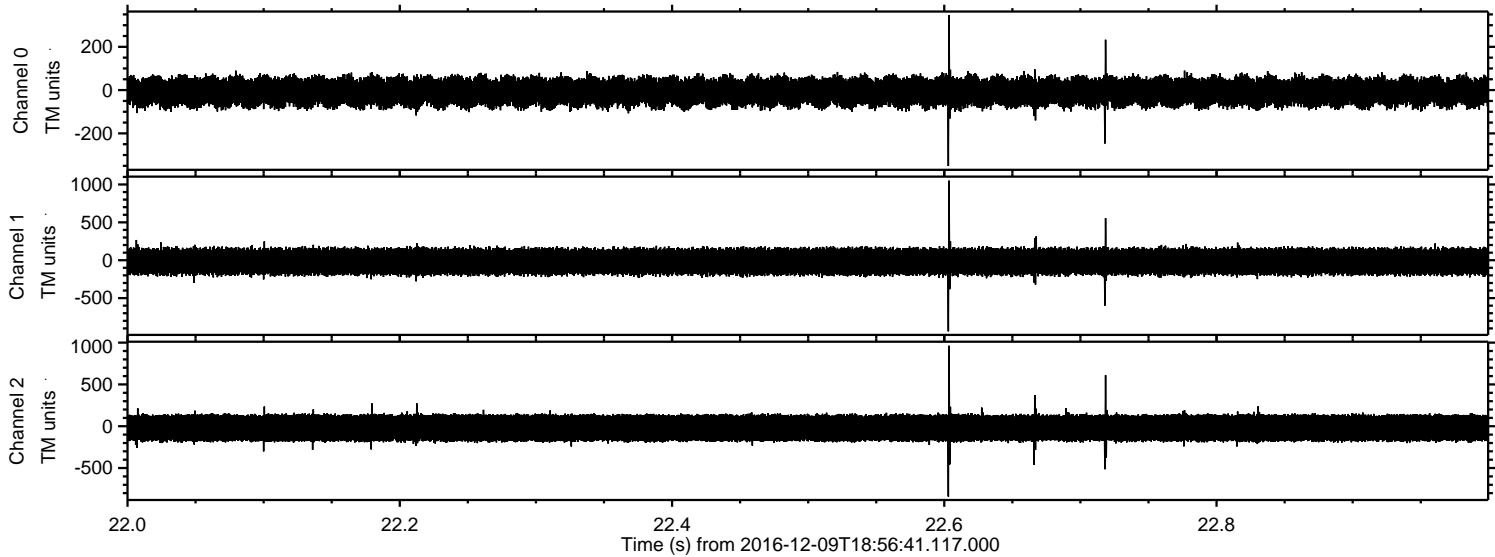
Processed Fri Dec 9 20:04:37 2016 by ELM ver.2012-10-06 from 001__elm20161209_185640__dat00.bin



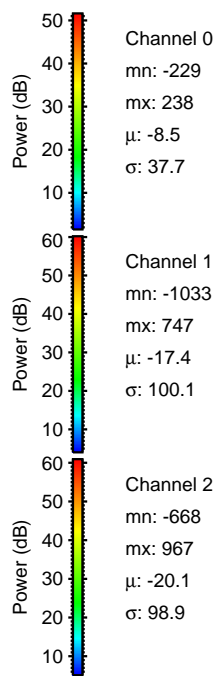
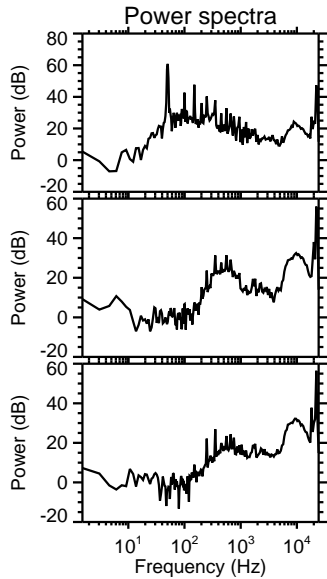
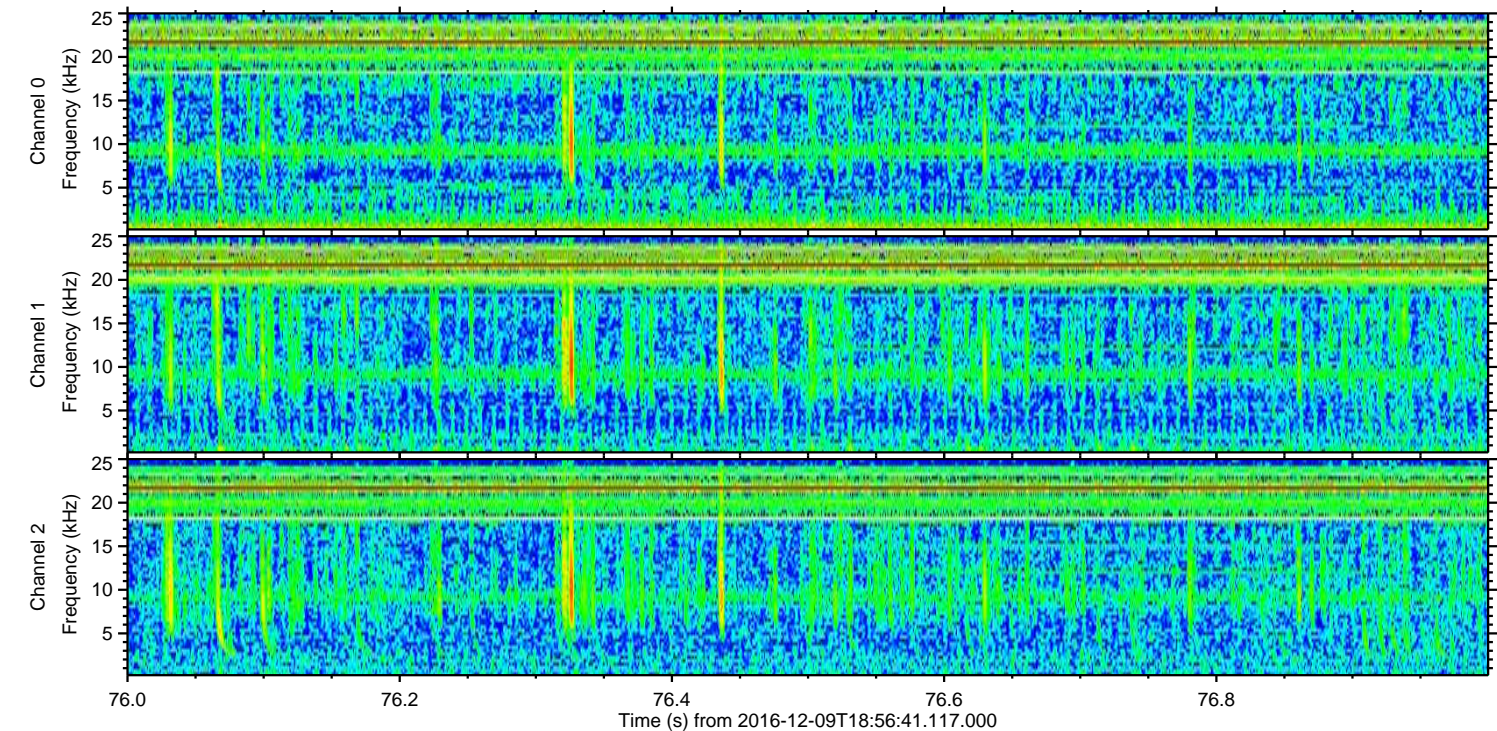
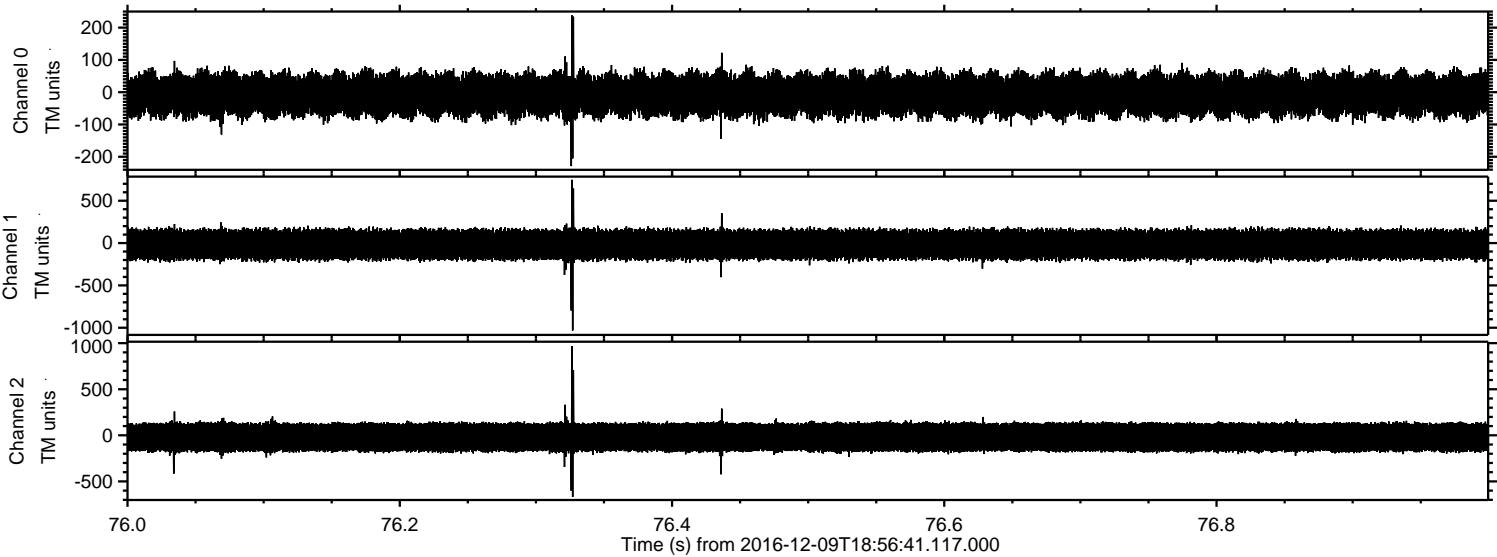
Processed Fri Dec 9 20:04:38 2016 by ELM ver.2012-10-06 from 001__elm20161209_185640__dat00.bin



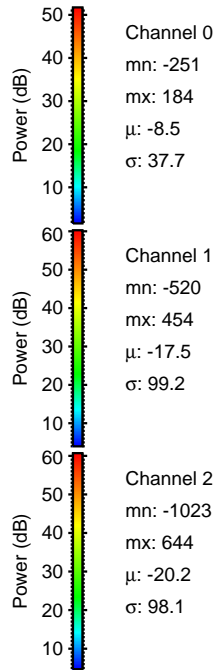
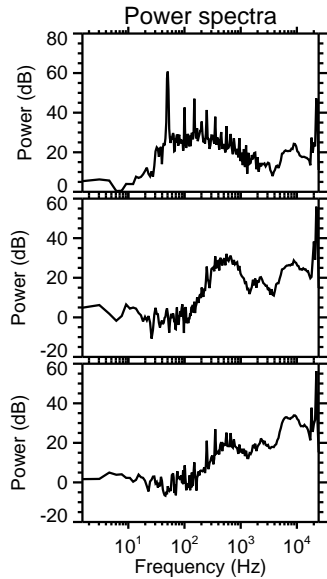
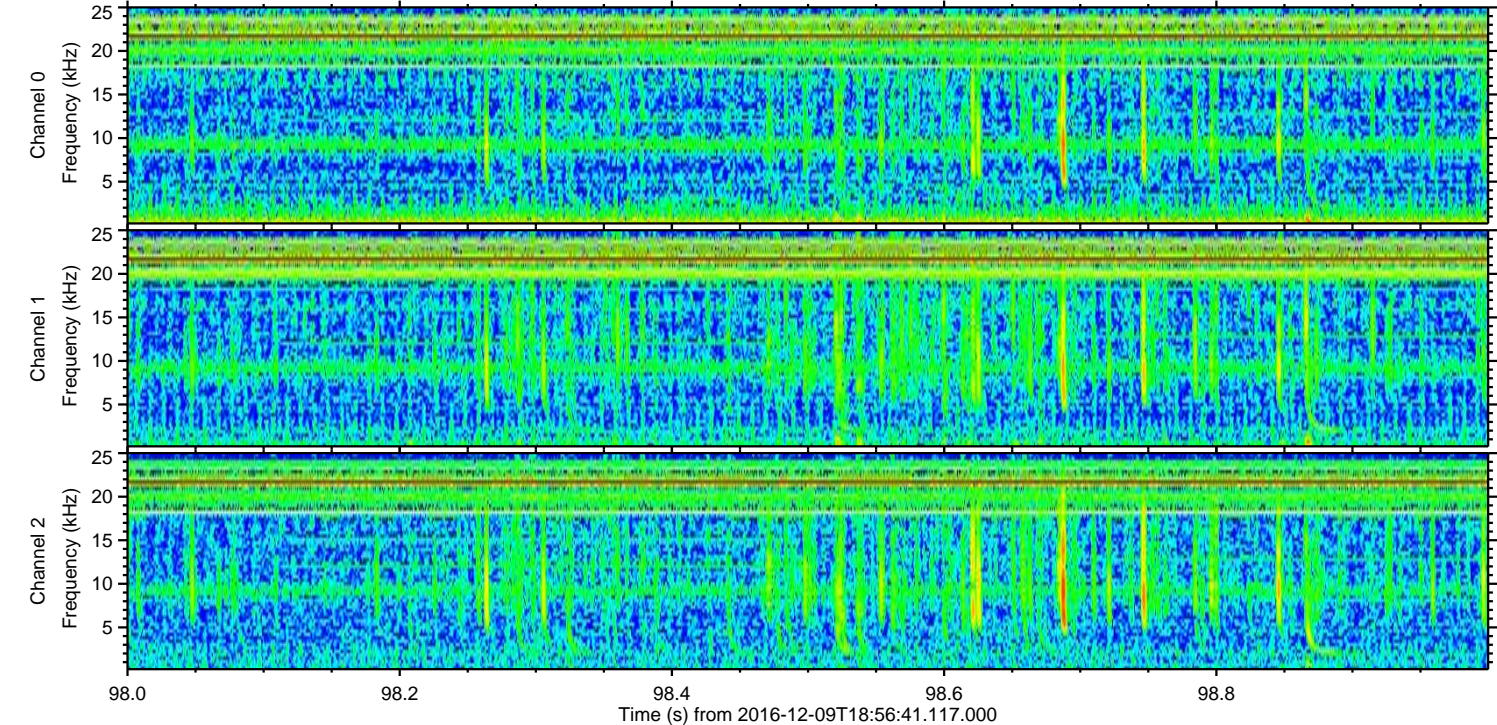
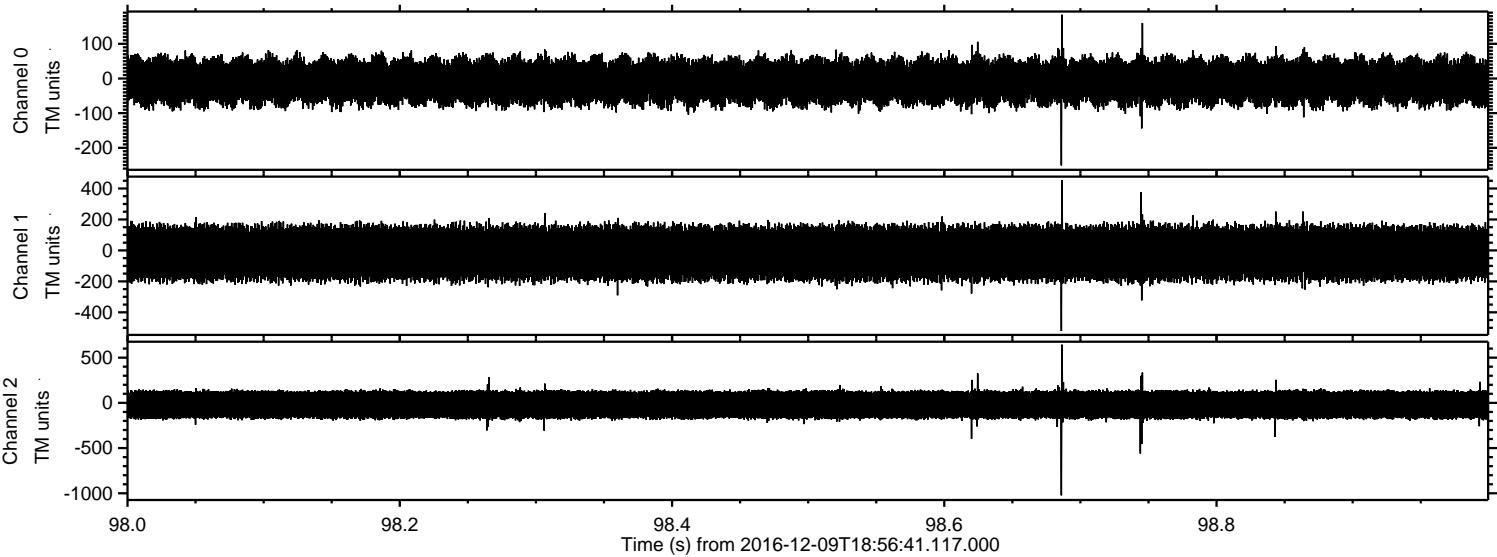
Processed Fri Dec 9 20:04:39 2016 by ELM ver.2012-10-06 from 001__elm20161209_185640__dat00.bin



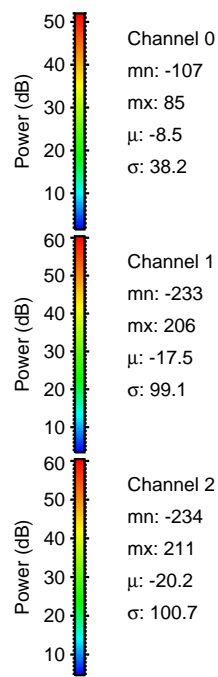
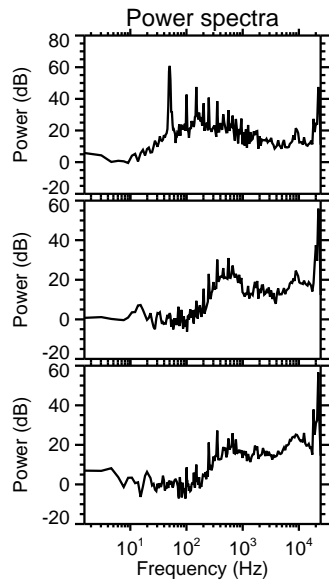
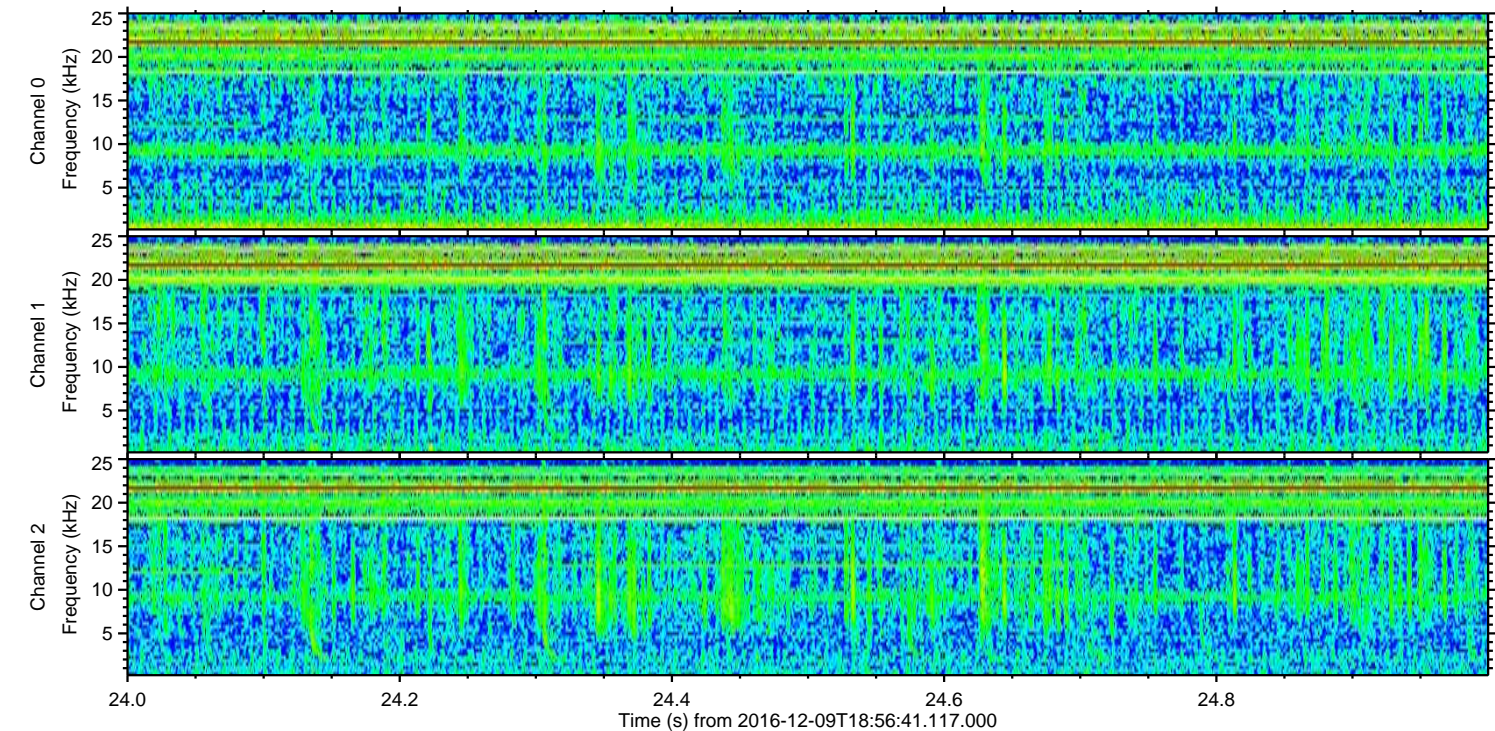
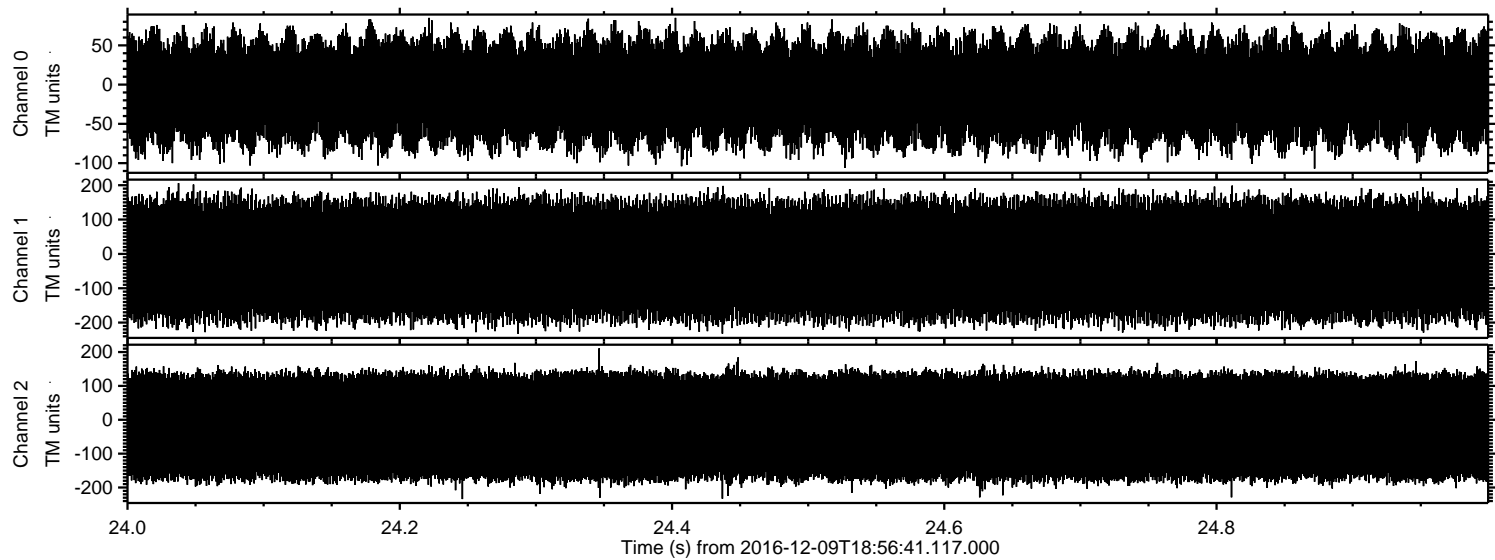
Processed Fri Dec 9 20:04:40 2016 by ELM ver.2012-10-06 from 001__elm20161209_185640__dat00.bin



Processed Fri Dec 9 20:04:40 2016 by ELM ver.2012-10-06 from 001__elm20161209_185640__dat00.bin



Processed Fri Dec 9 20:04:41 2016 by ELM ver.2012-10-06 from 001__elm20161209_185640__dat00.bin



Channel 0
mn: -107
mx: 85
 μ : -8.5
 σ : 38.2

Channel 1
mn: -233
mx: 206
 μ : -17.5
 σ : 99.1

Channel 2
mn: -234
mx: 211
 μ : -20.2
 σ : 100.7