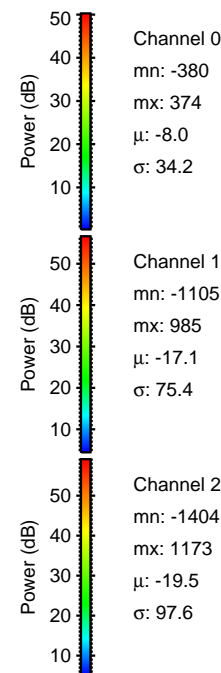
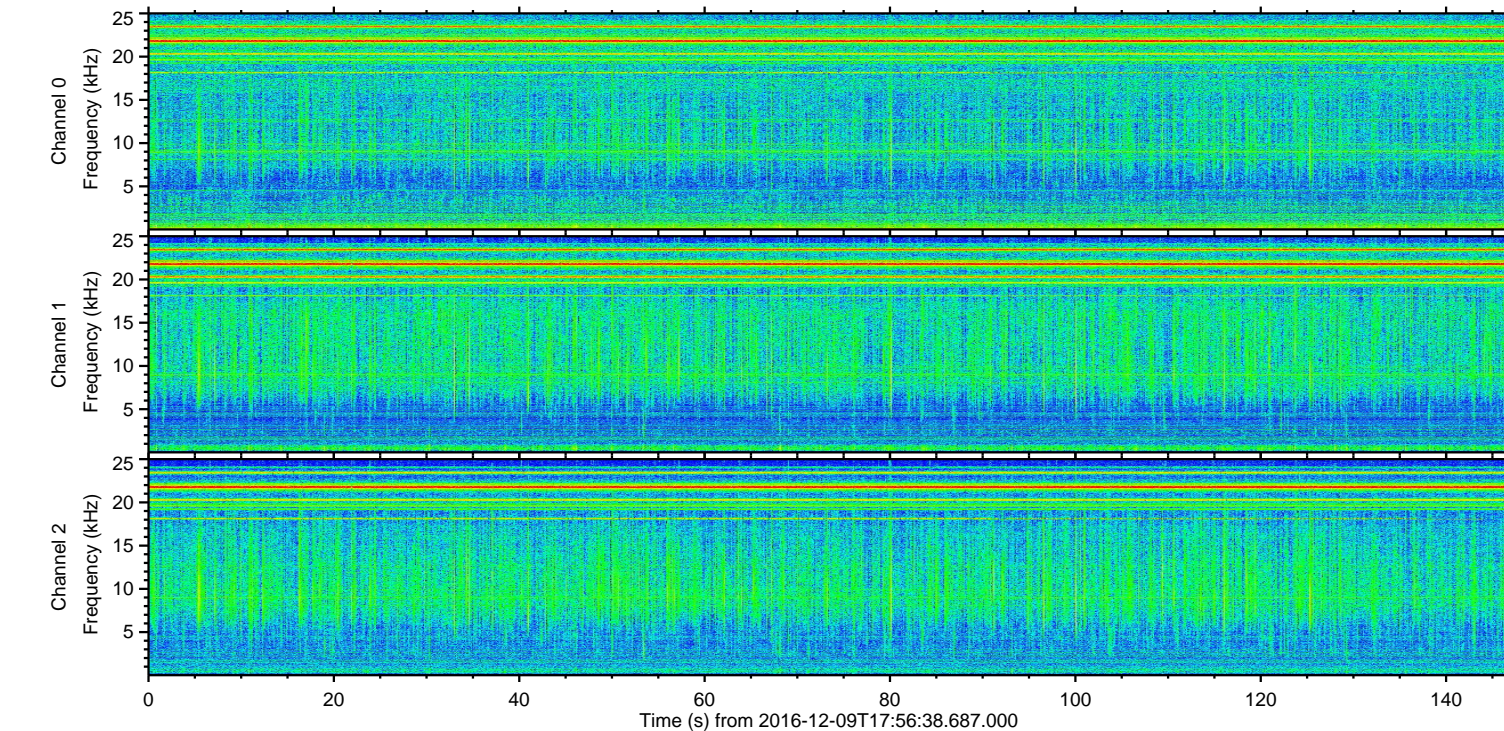
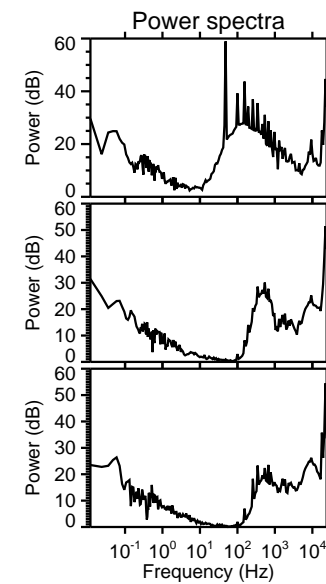
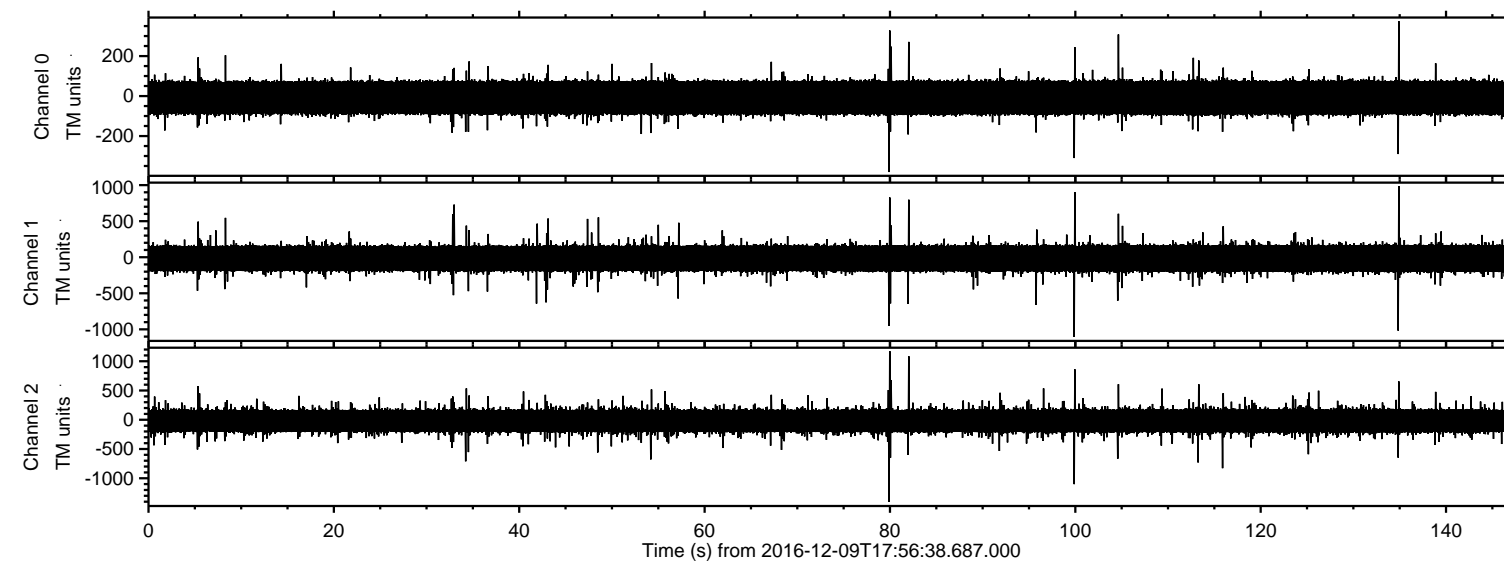
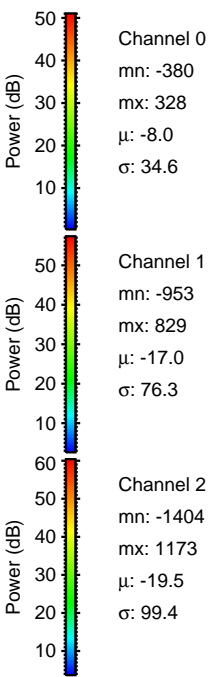
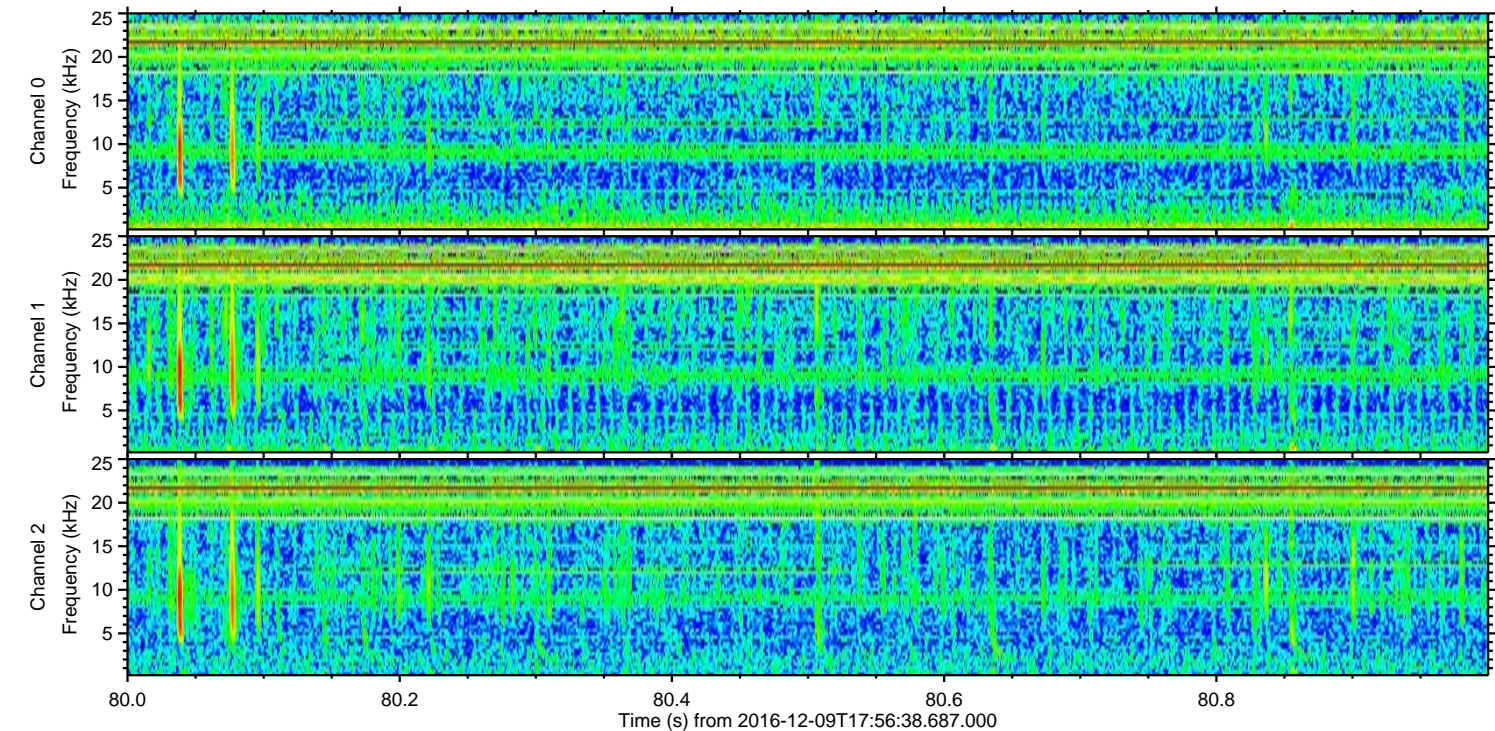
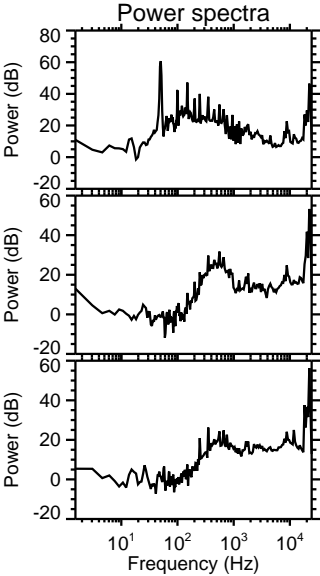
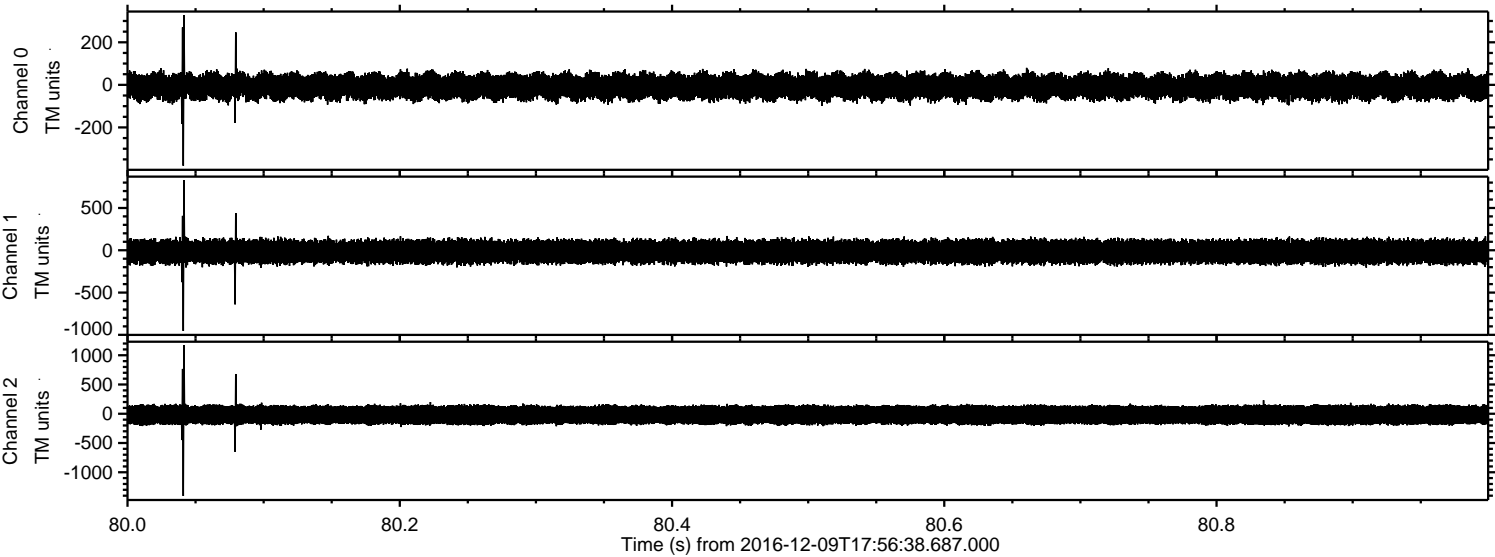


ELMAVAN 3D WAVEFORMS (Measured data sampled at 50 kHz) 51000 packets of 144 samples from 2016-12-09T17:56:38.687.000.

Processed Fri Dec 9 19:04:39 2016 by ELM ver.2012-10-06 from 001__elm20161209_175637__dat00.bin

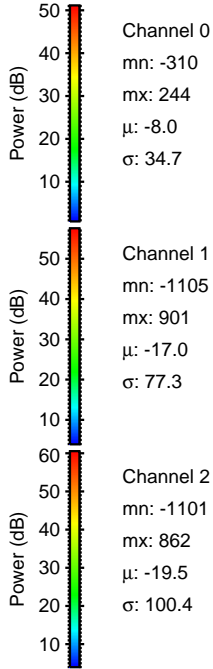
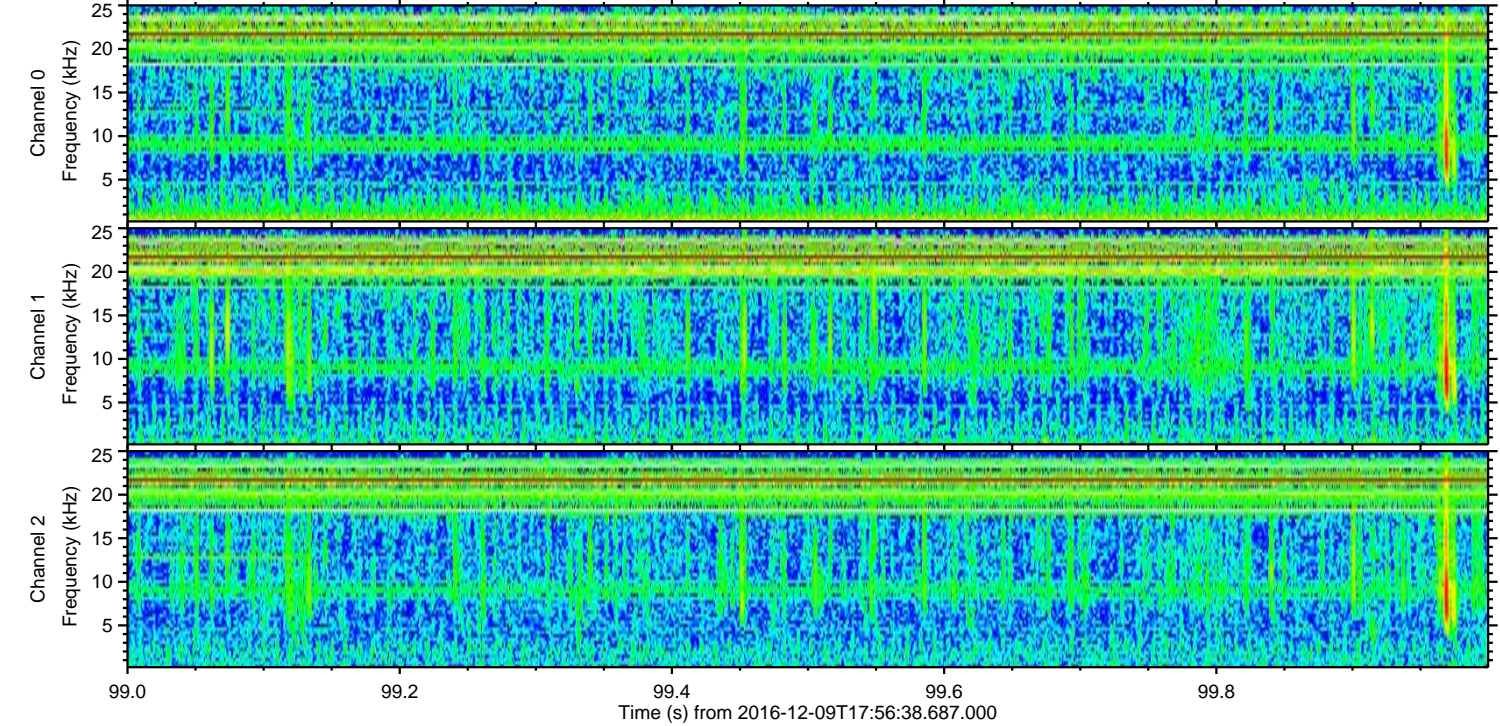
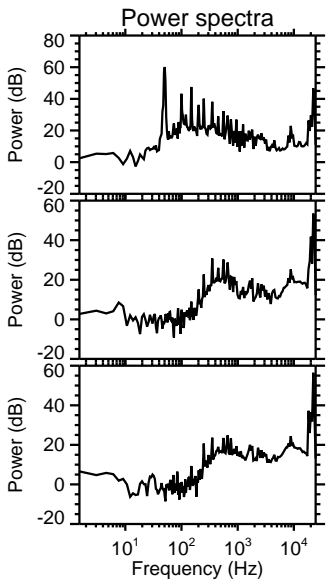
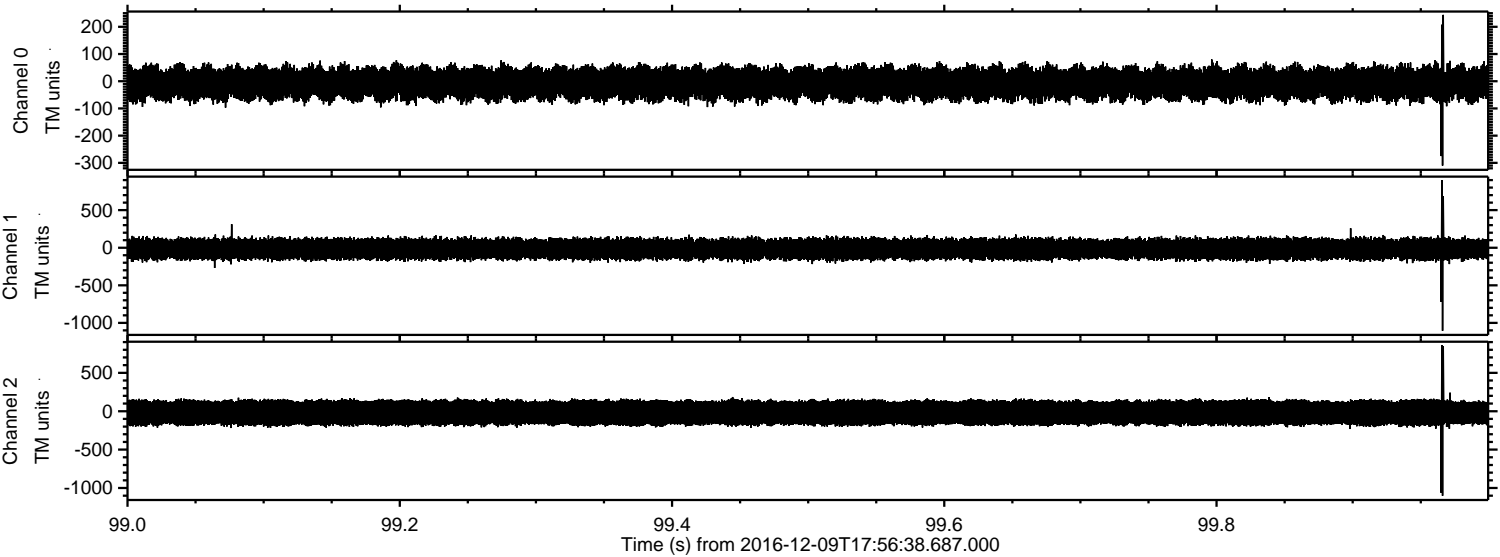


Processed Fri Dec 9 19:04:50 2016 by ELM ver.2012-10-06 from 001__elm20161209_175637__dat00.bin

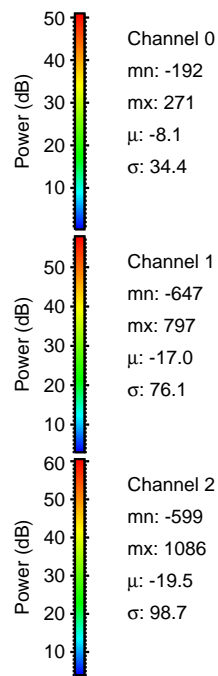
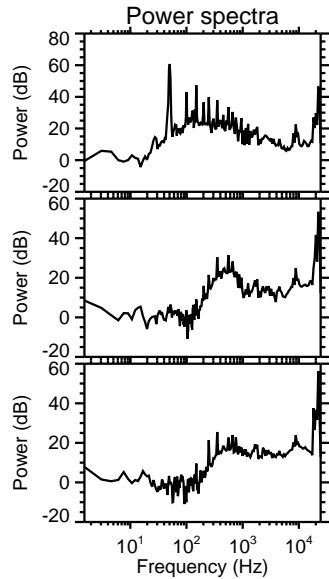
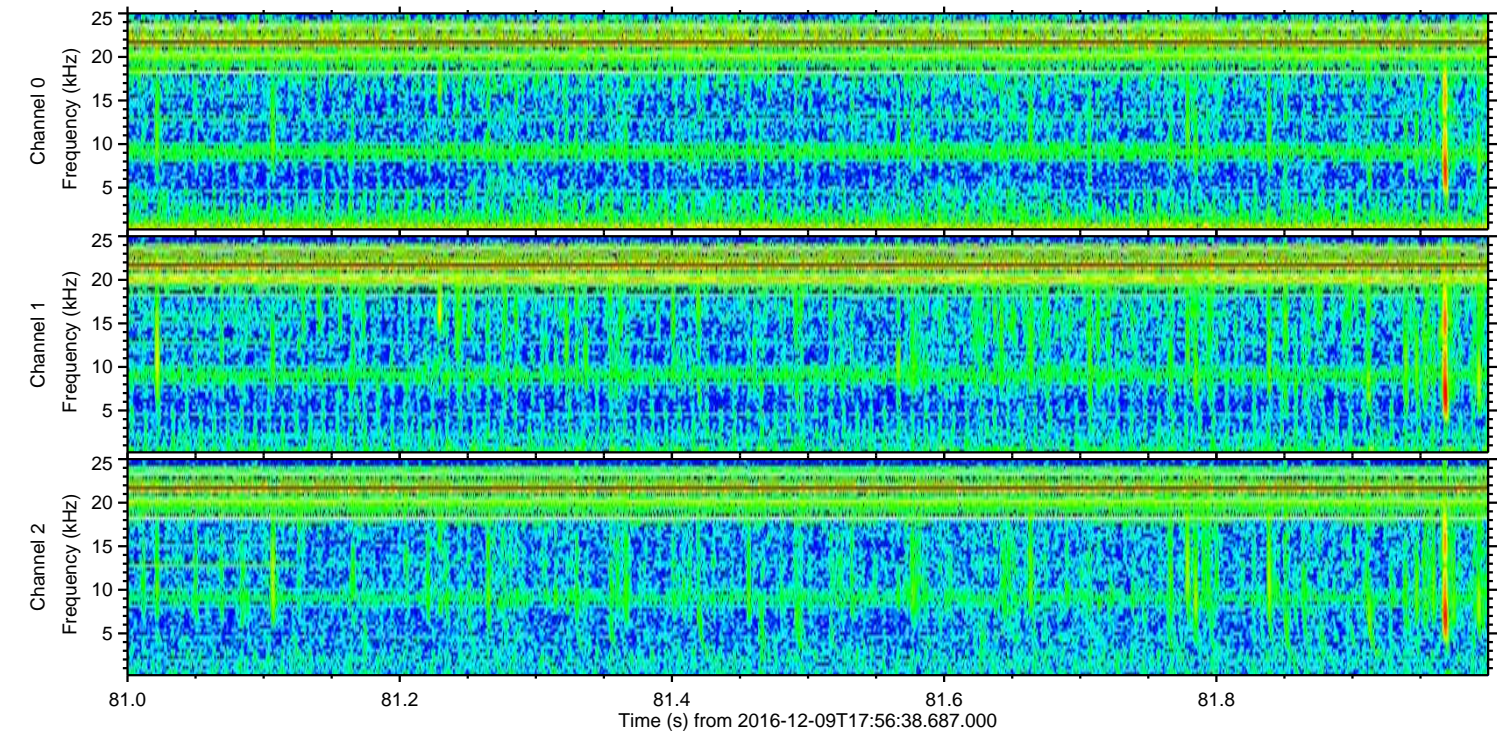
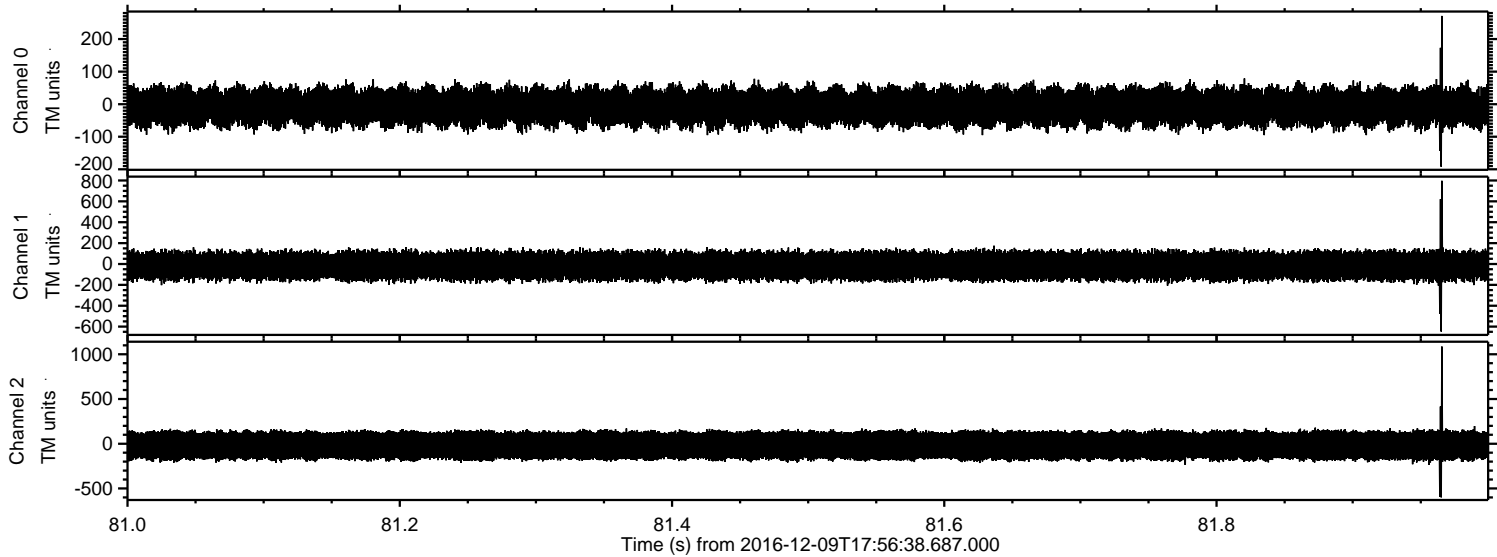


ELMAVAN 3D WAVEFORMS (Measured data sampled at 50 kHz) 51000 packets of 144 samples from 2016-12-09T17:56:38.687.000. Part 100/147

Processed Fri Dec 9 19:04:51 2016 by ELM ver.2012-10-06 from 001__elm20161209_175637__dat00.bin

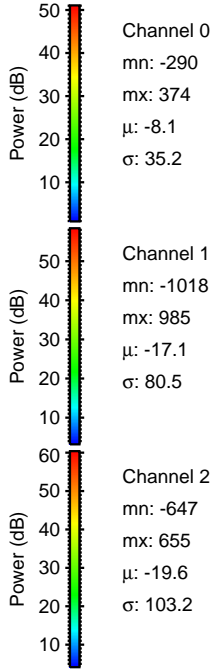
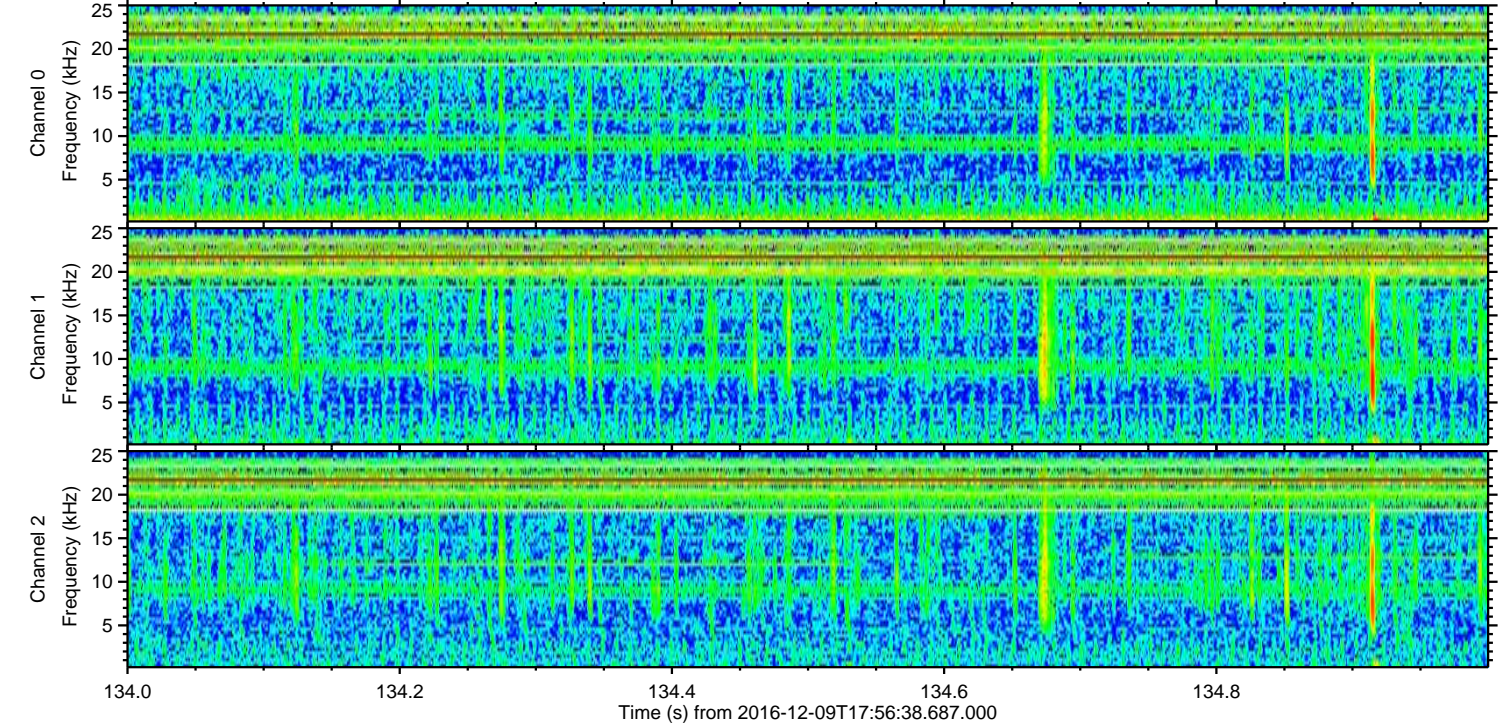
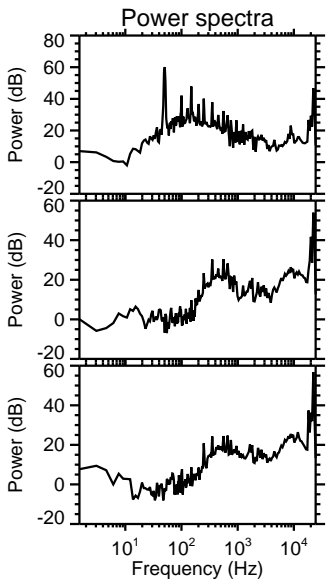
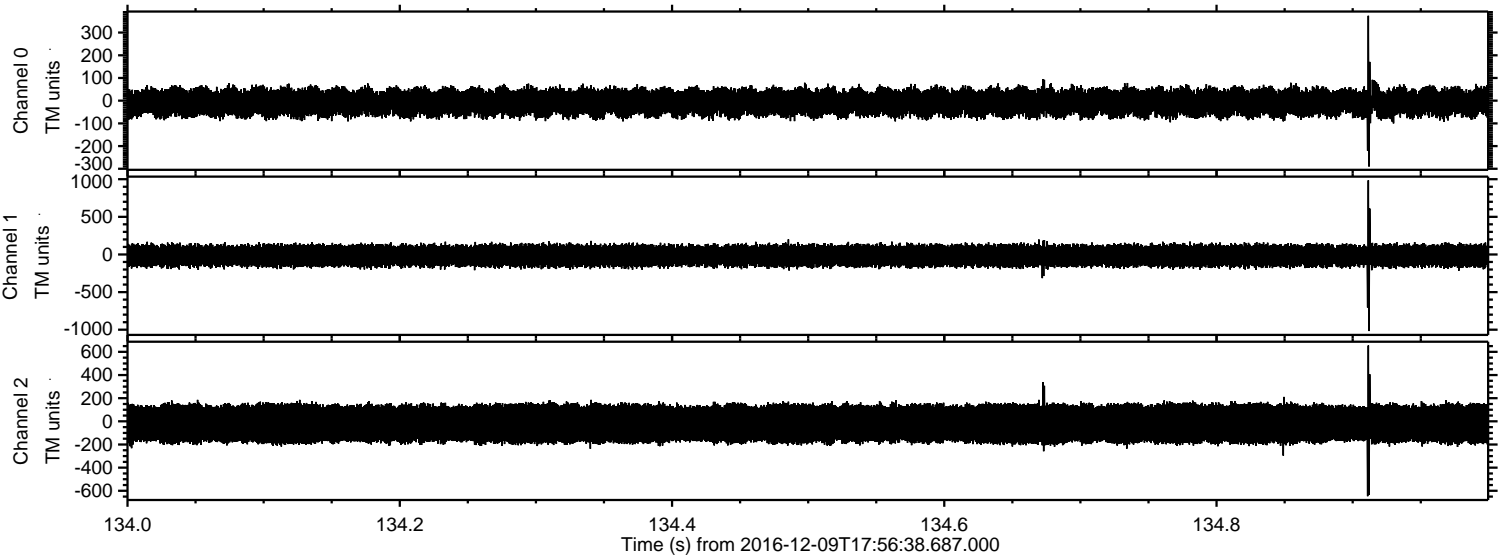


Processed Fri Dec 9 19:04:52 2016 by ELM ver.2012-10-06 from 001__elm20161209_175637__dat00.bin



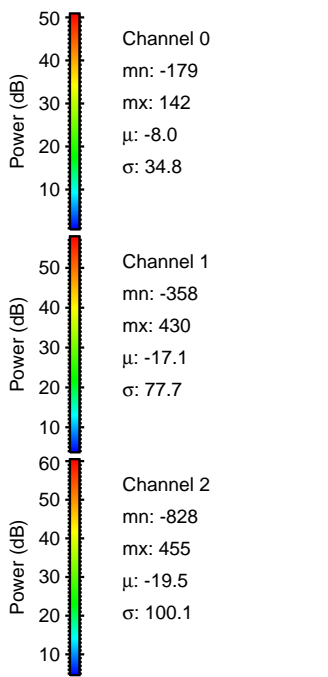
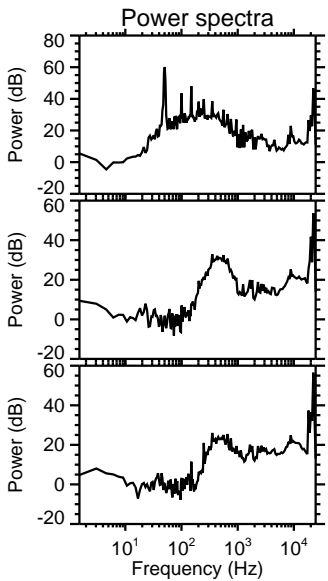
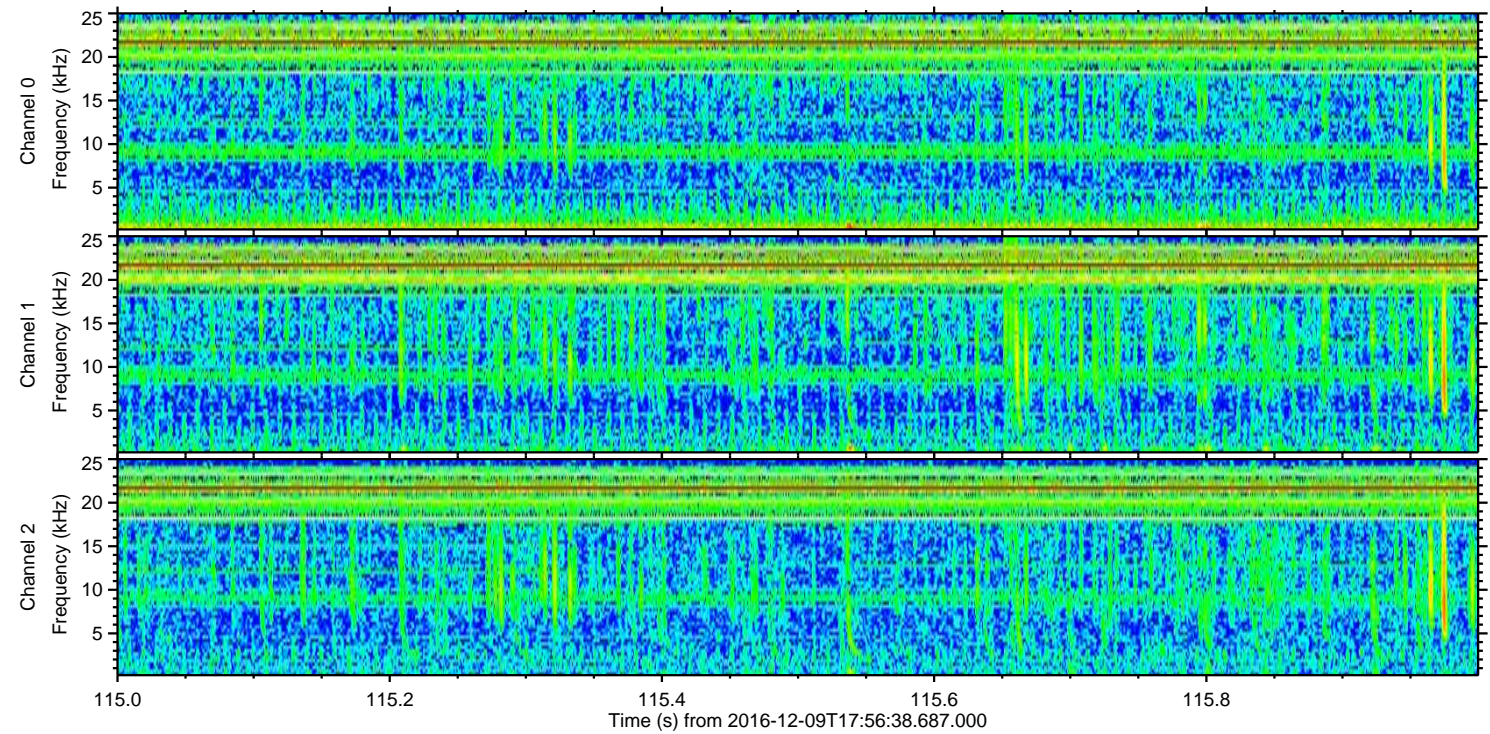
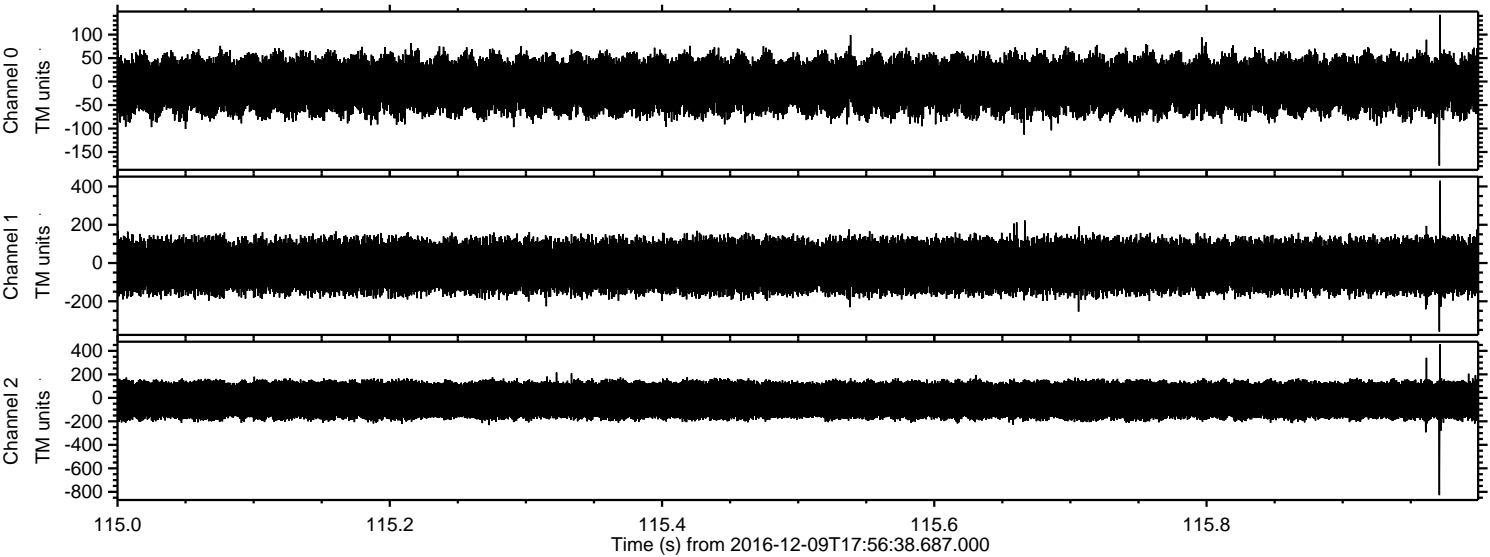
ELMAVAN 3D WAVEFORMS (Measured data sampled at 50 kHz) 51000 packets of 144 samples from 2016-12-09T17:56:38.687.000. Part 135/147

Processed Fri Dec 9 19:04:53 2016 by ELM ver.2012-10-06 from 001__elm20161209_175637__dat00.bin

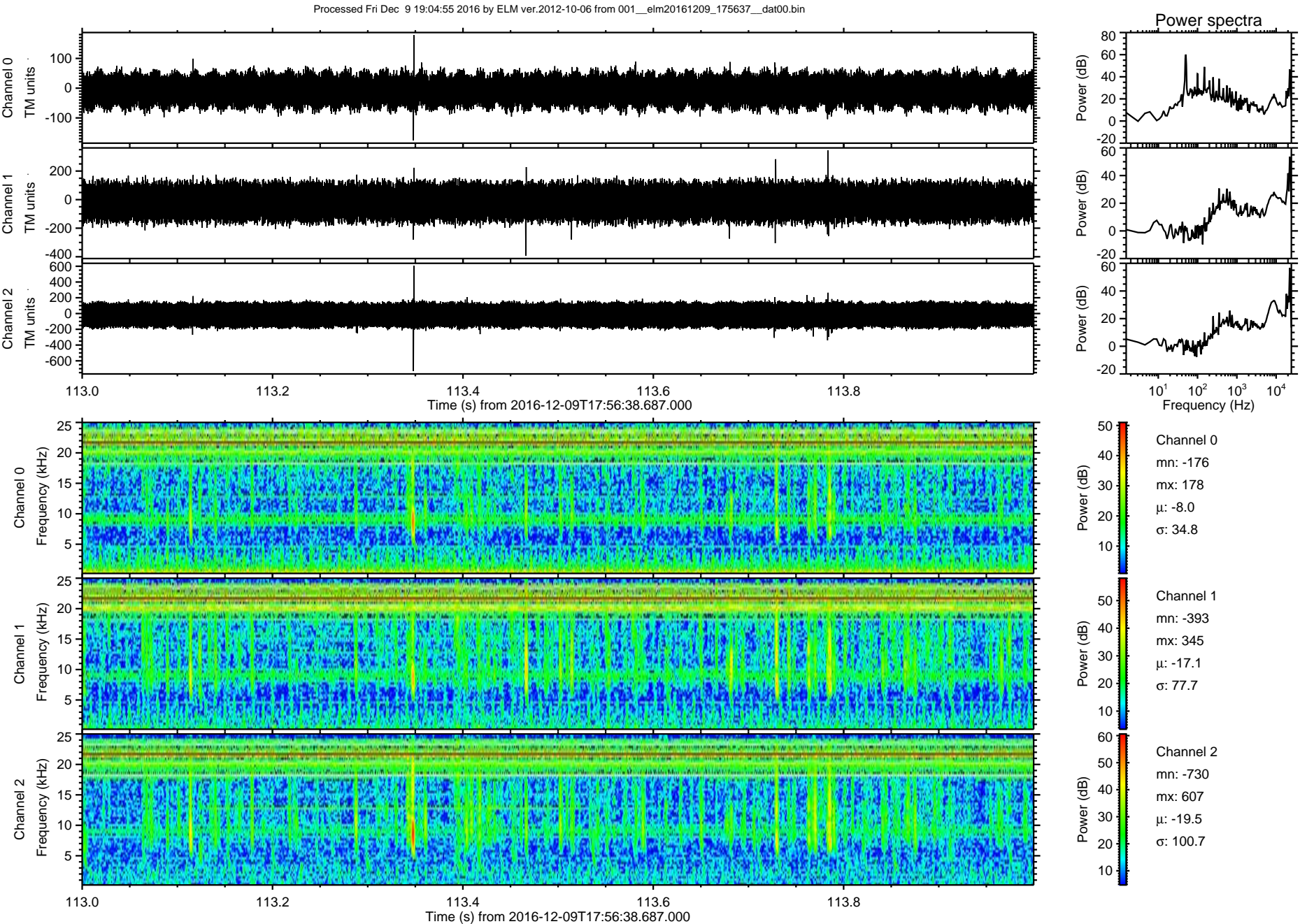


ELMAVAN 3D WAVEFORMS (Measured data sampled at 50 kHz) 51000 packets of 144 samples from 2016-12-09T17:56:38.687.000. Part 116/147

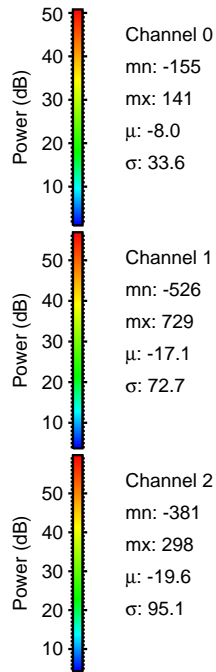
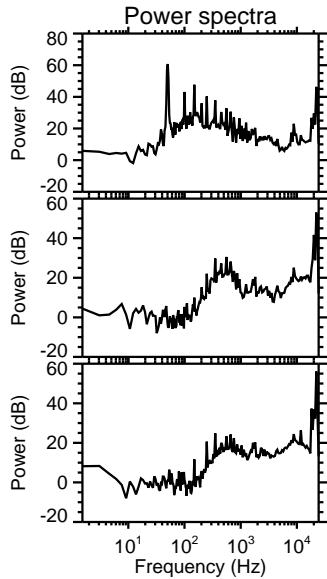
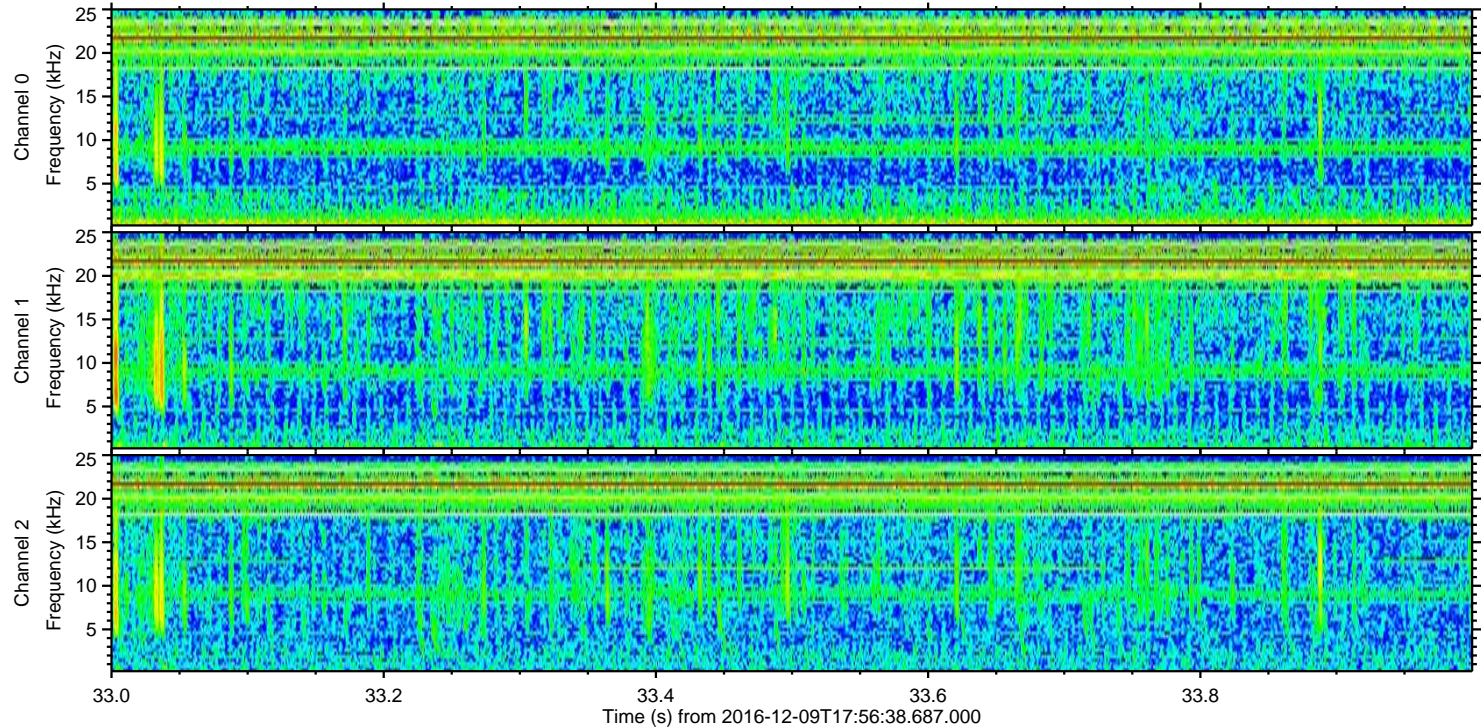
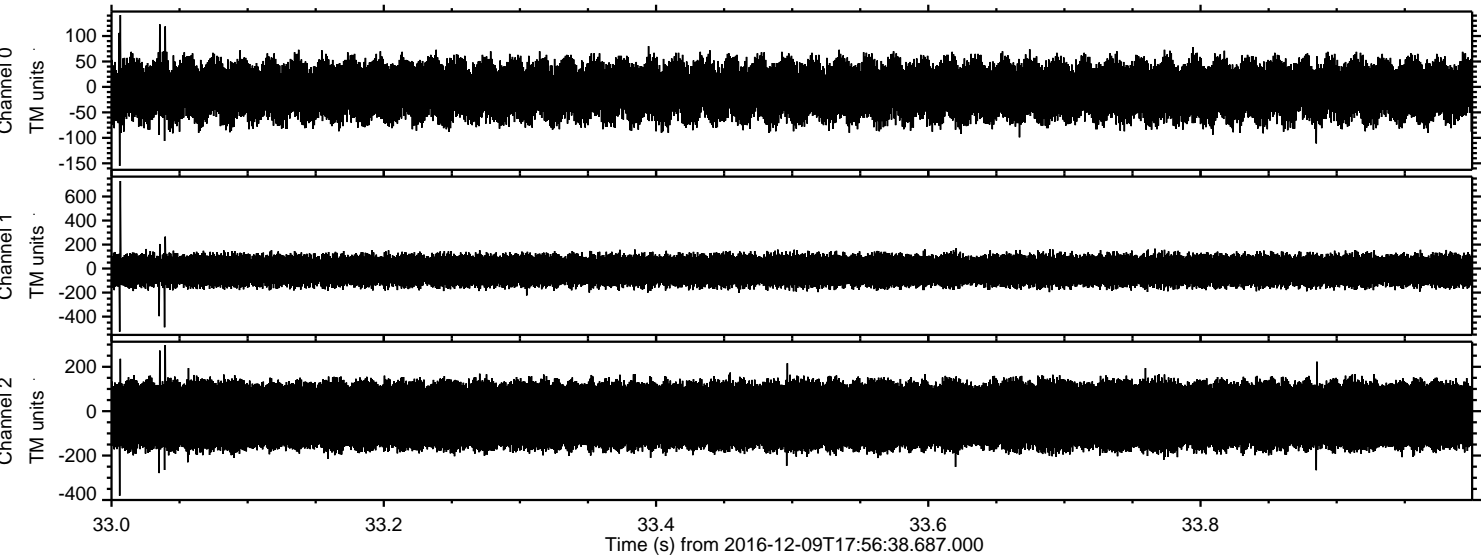
Processed Fri Dec 9 19:04:54 2016 by ELM ver.2012-10-06 from 001__elm20161209_175637__dat00.bin



ELMAVAN 3D WAVEFORMS (Measured data sampled at 50 kHz) 51000 packets of 144 samples from 2016-12-09T17:56:38.687.000. Part 114/147



Processed Fri Dec 9 19:04:56 2016 by ELM ver.2012-10-06 from 001__elm20161209_175637__dat00.bin



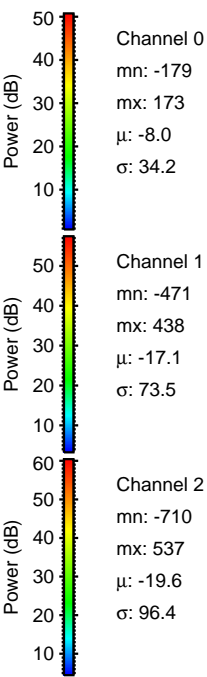
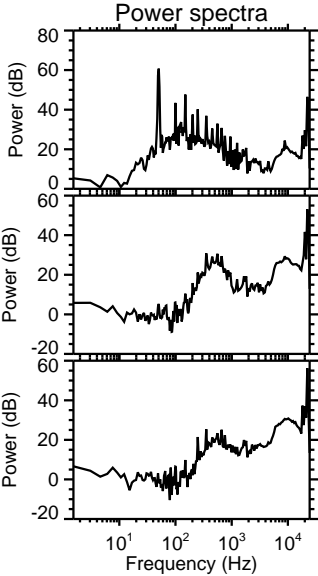
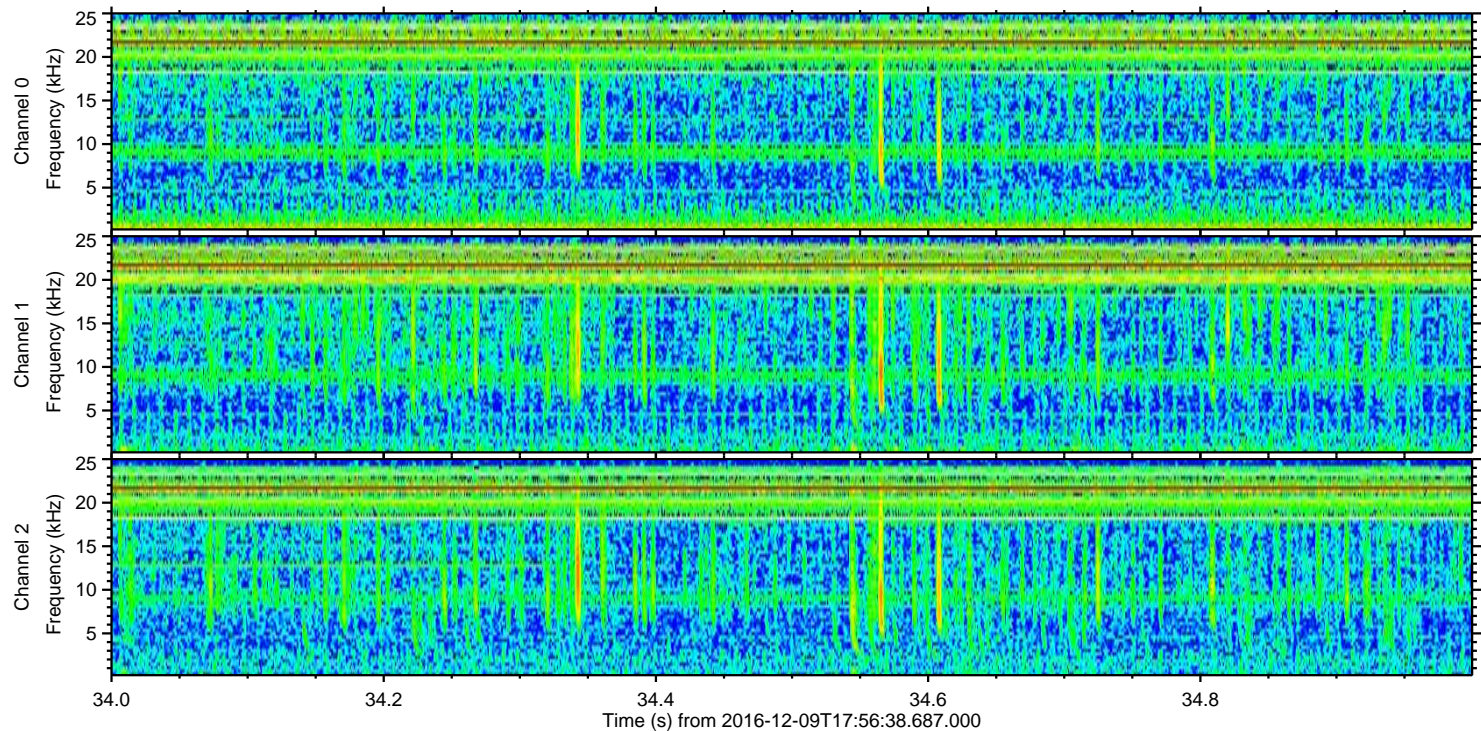
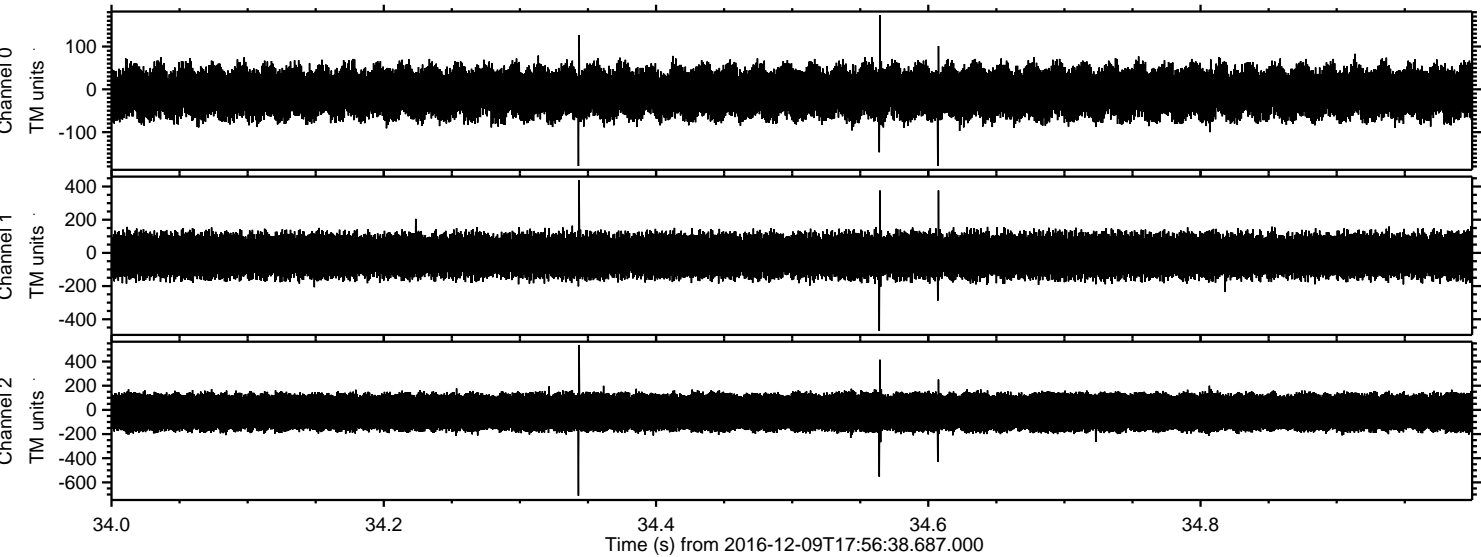
Power spectra

Channel 0
mn: -155
mx: 141
 μ : -8.0
 σ : 33.6

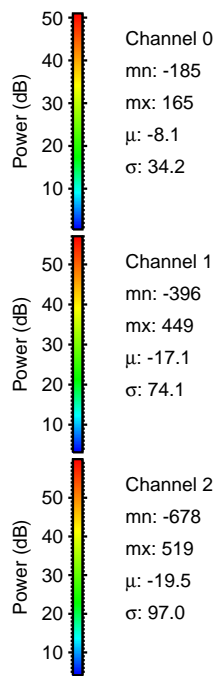
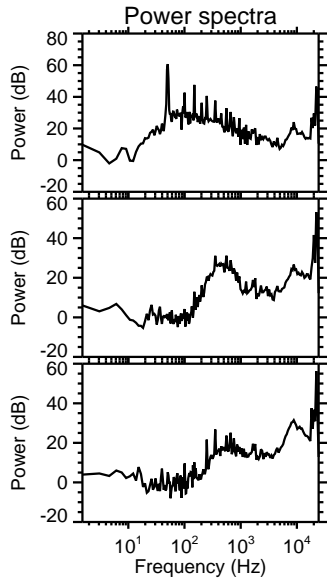
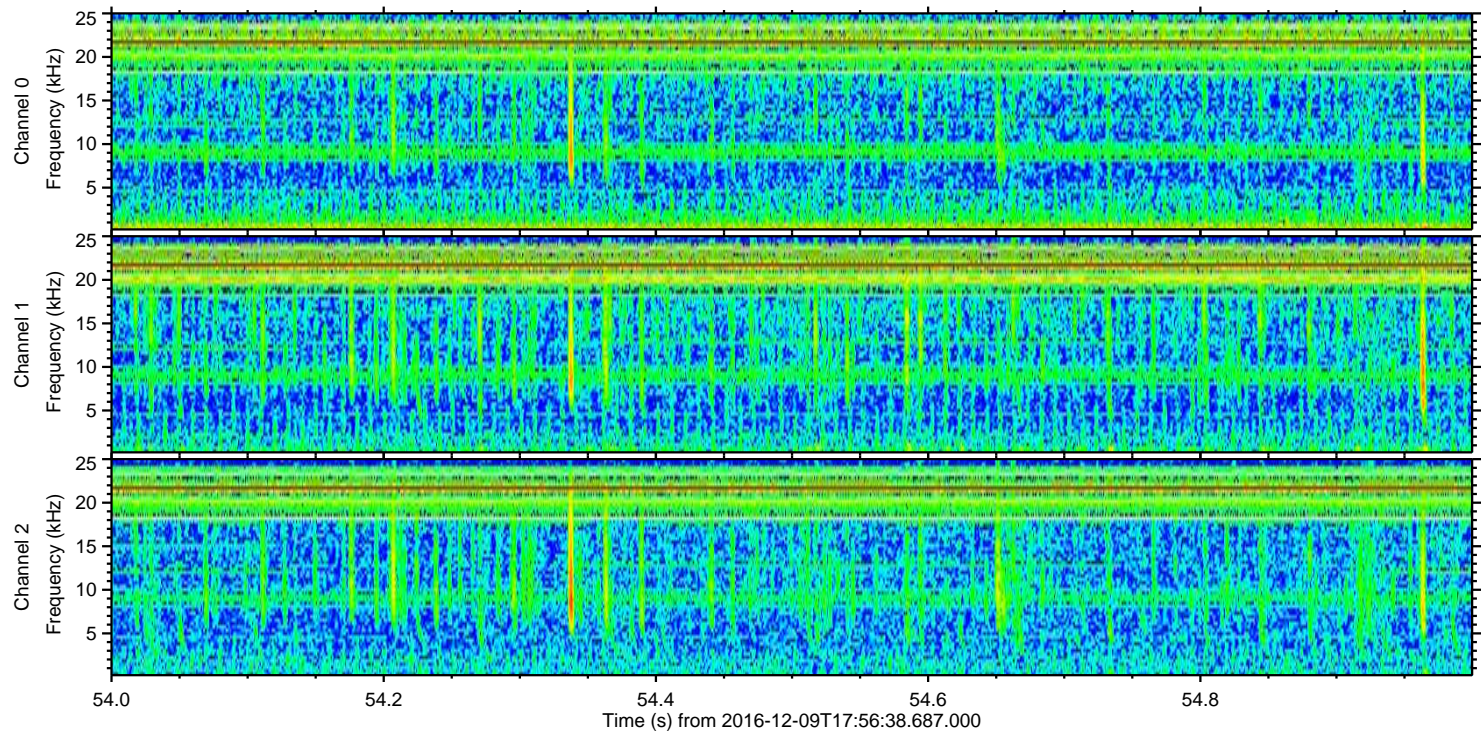
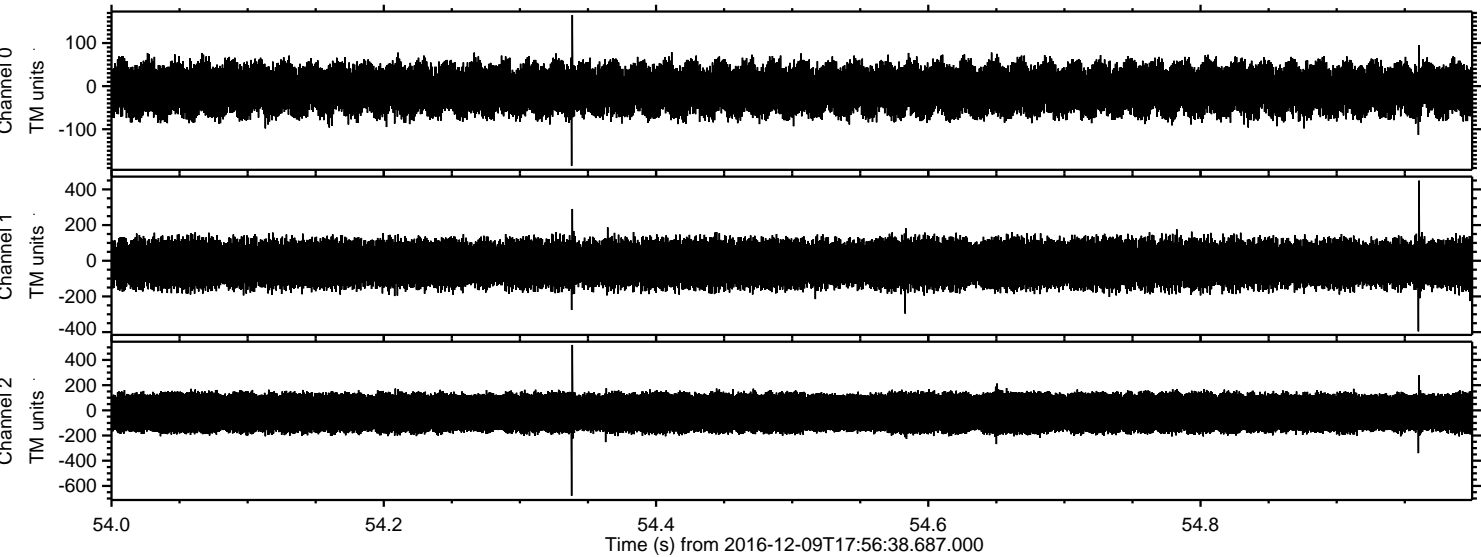
Channel 1
mn: -526
mx: 729
 μ : -17.1
 σ : 72.7

Channel 2
mn: -381
mx: 298
 μ : -19.6
 σ : 95.1

Processed Fri Dec 9 19:04:57 2016 by ELM ver.2012-10-06 from 001__elm20161209_175637__dat00.bin



Processed Fri Dec 9 19:04:58 2016 by ELM ver.2012-10-06 from 001__elm20161209_175637__dat00.bin



Channel 0
mn: -185
mx: 165
 μ : -8.1
 σ : 34.2

Channel 1
mn: -396
mx: 449
 μ : -17.1
 σ : 74.1

Channel 2
mn: -678
mx: 519
 μ : -19.5
 σ : 97.0

Processed Fri Dec 9 19:04:59 2016 by ELM ver.2012-10-06 from 001__elm20161209_175637__dat00.bin

