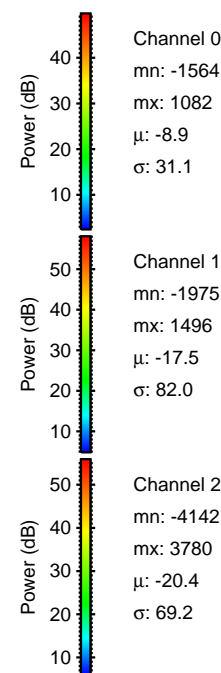
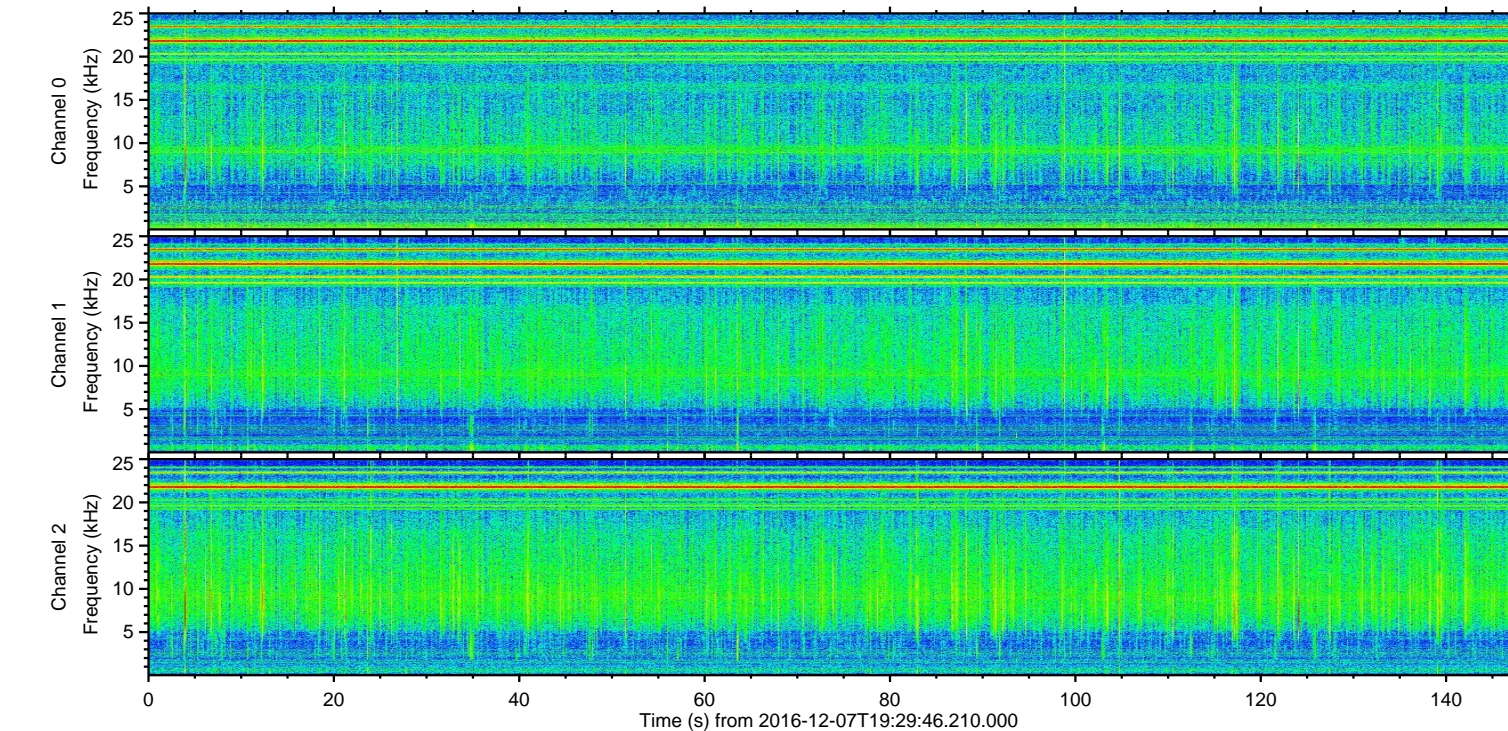
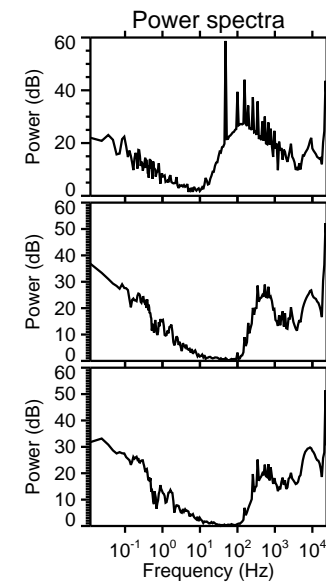
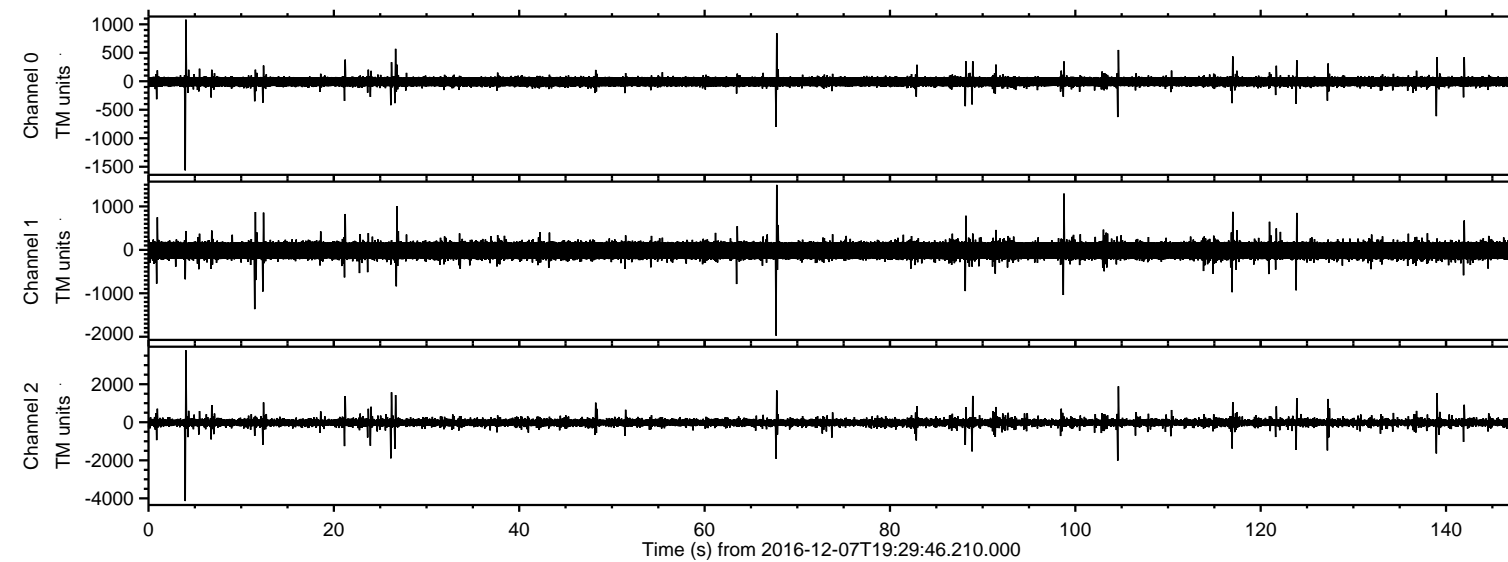


# ELMAVAN 3D WAVEFORMS (Measured data sampled at 50 kHz) 51000 packets of 144 samples from 2016-12-07T19:29:46.210.000.

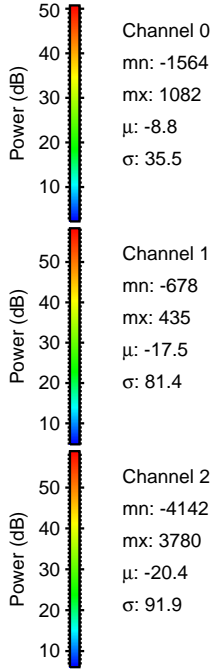
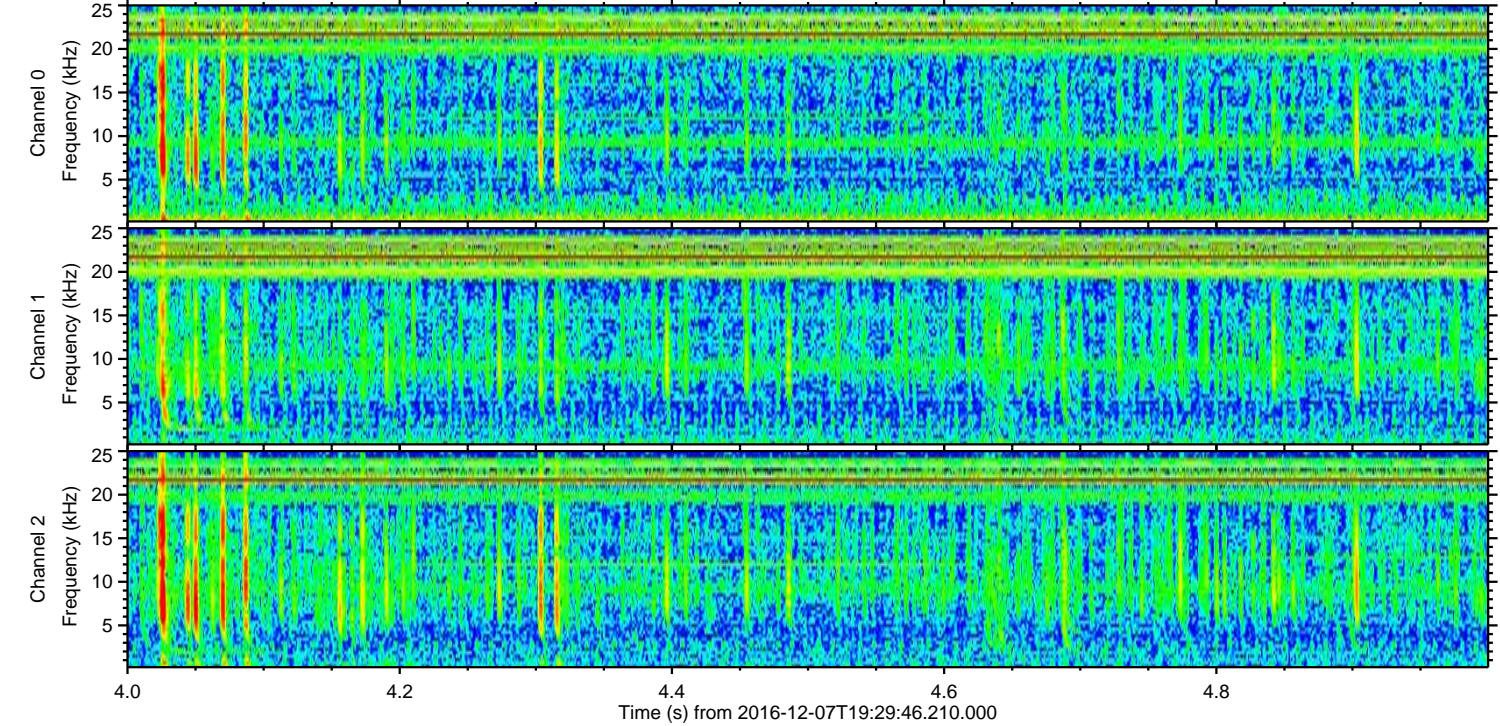
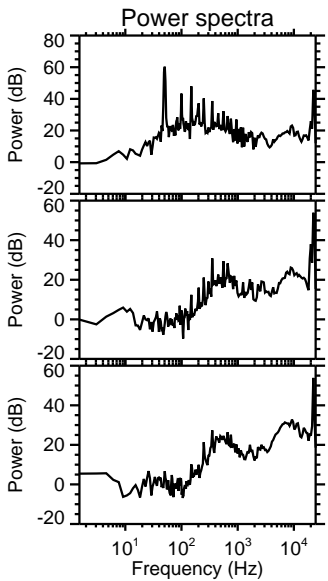
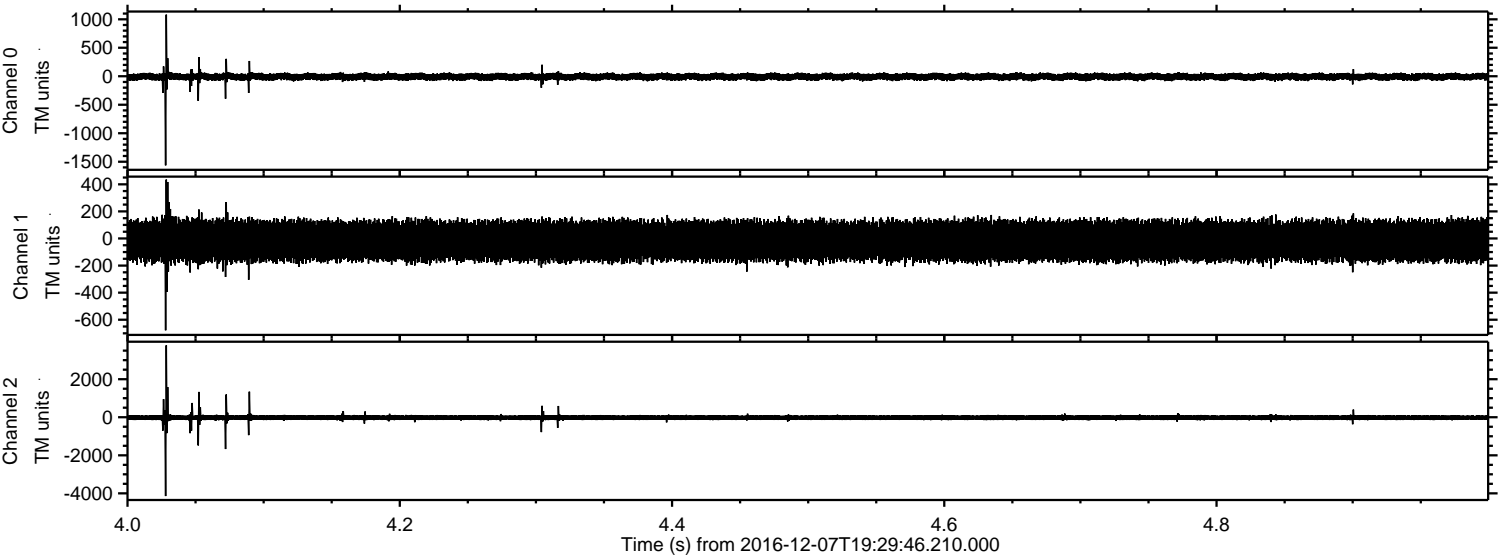
Processed Wed Dec 7 20:37:15 2016 by ELM ver.2012-10-06 from 001\_\_elm20161207\_192945\_\_dat00.bin





ELMAVAN 3D WAVEFORMS (Measured data sampled at 50 kHz) 51000 packets of 144 samples from 2016-12-07T19:29:46.210.000. Part 5/147

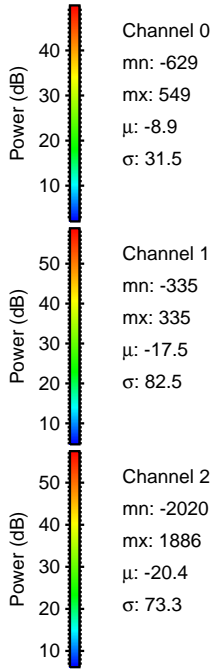
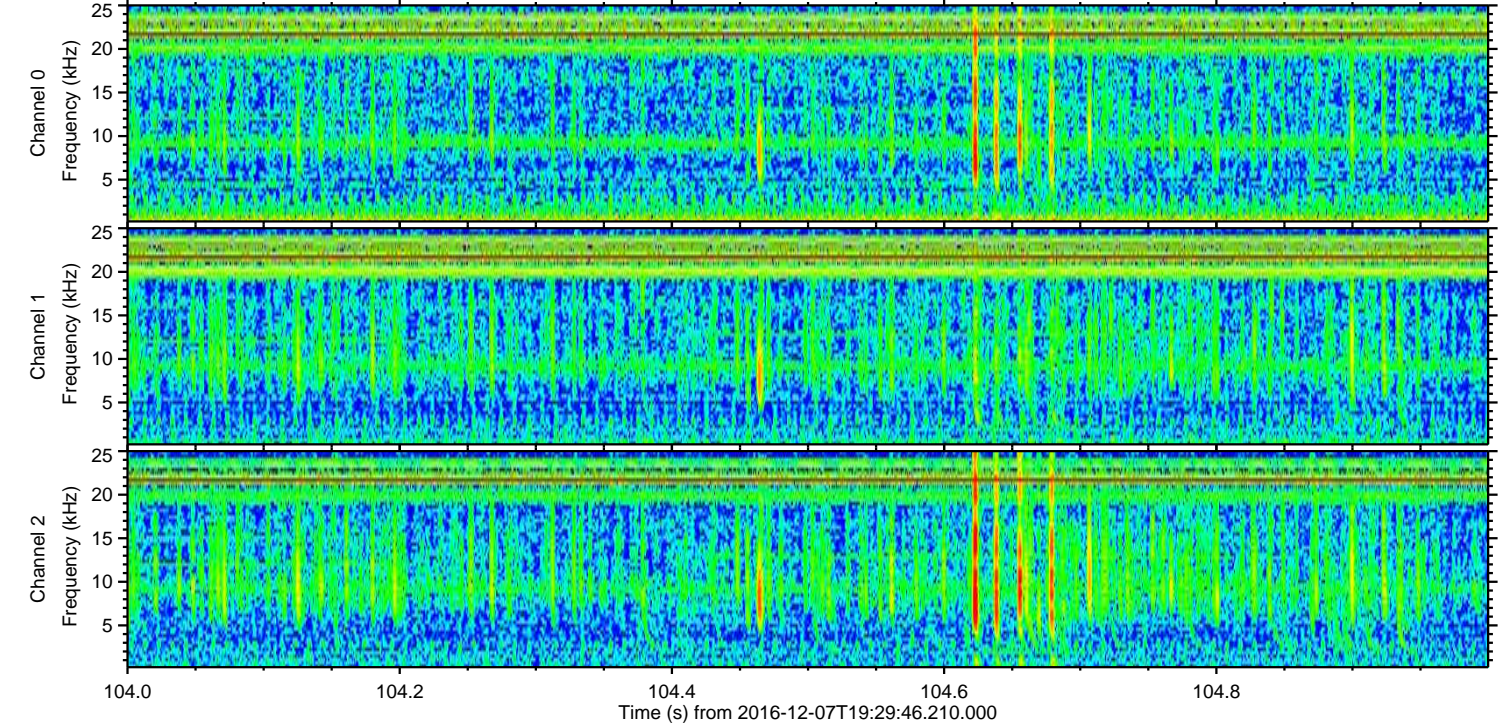
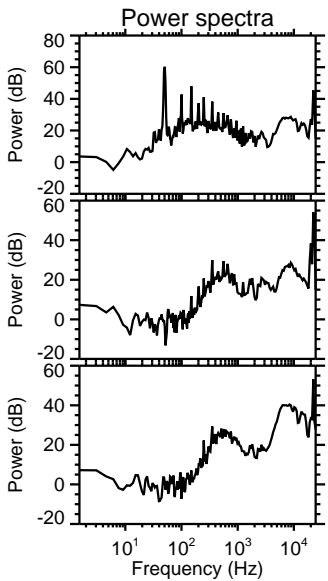
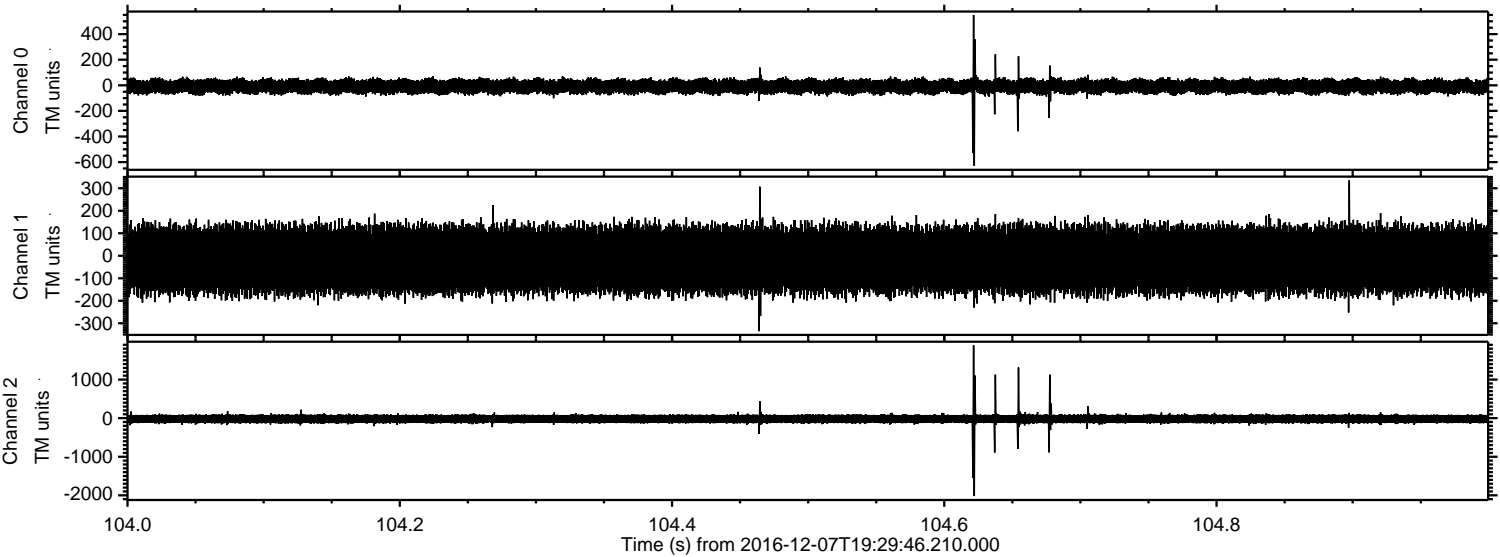
Processed Wed Dec 7 20:37:30 2016 by ELM ver.2012-10-06 from 001\_\_elm20161207\_192945\_\_dat00.bin





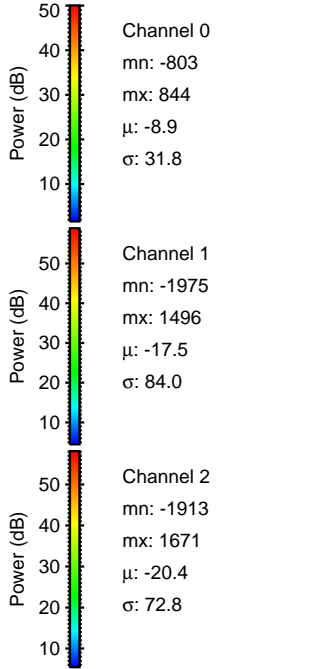
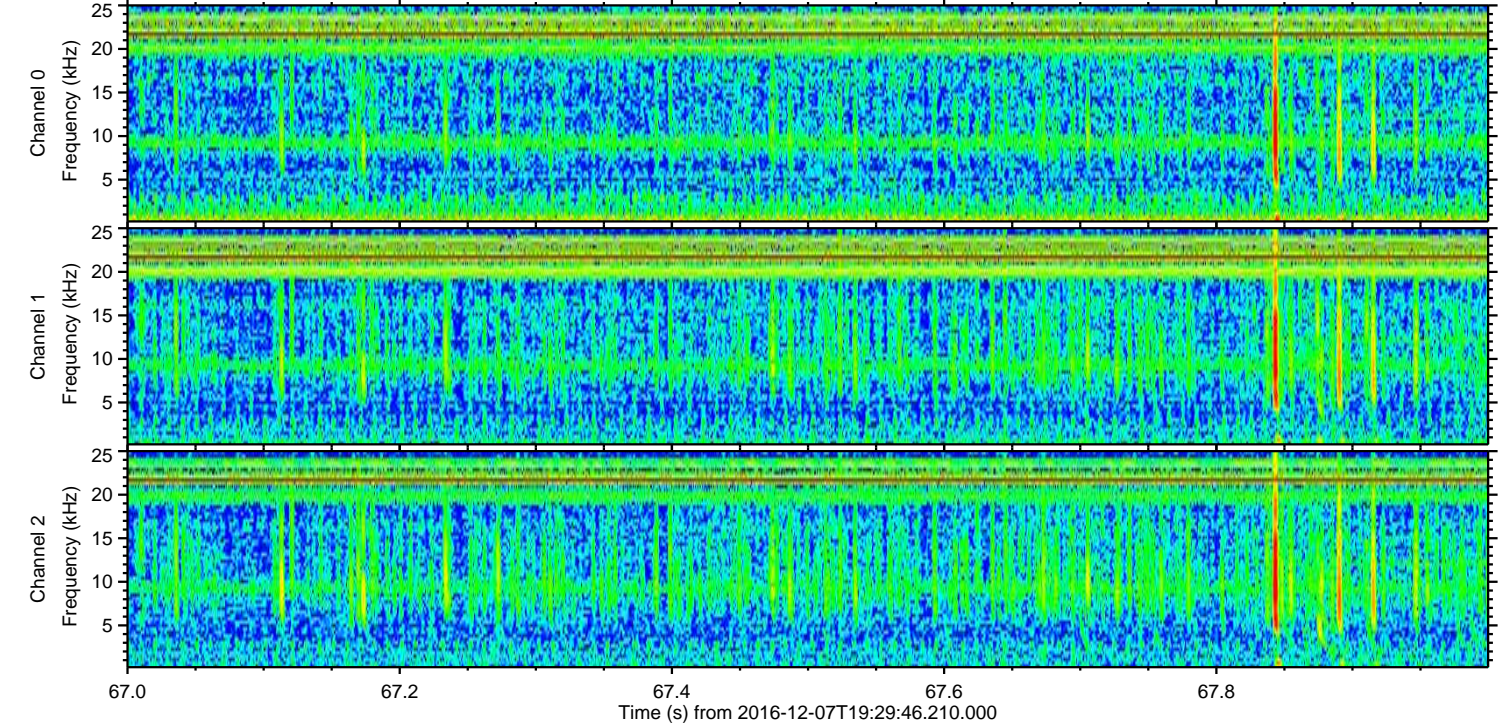
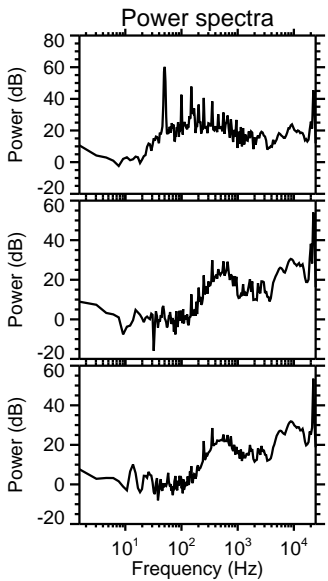
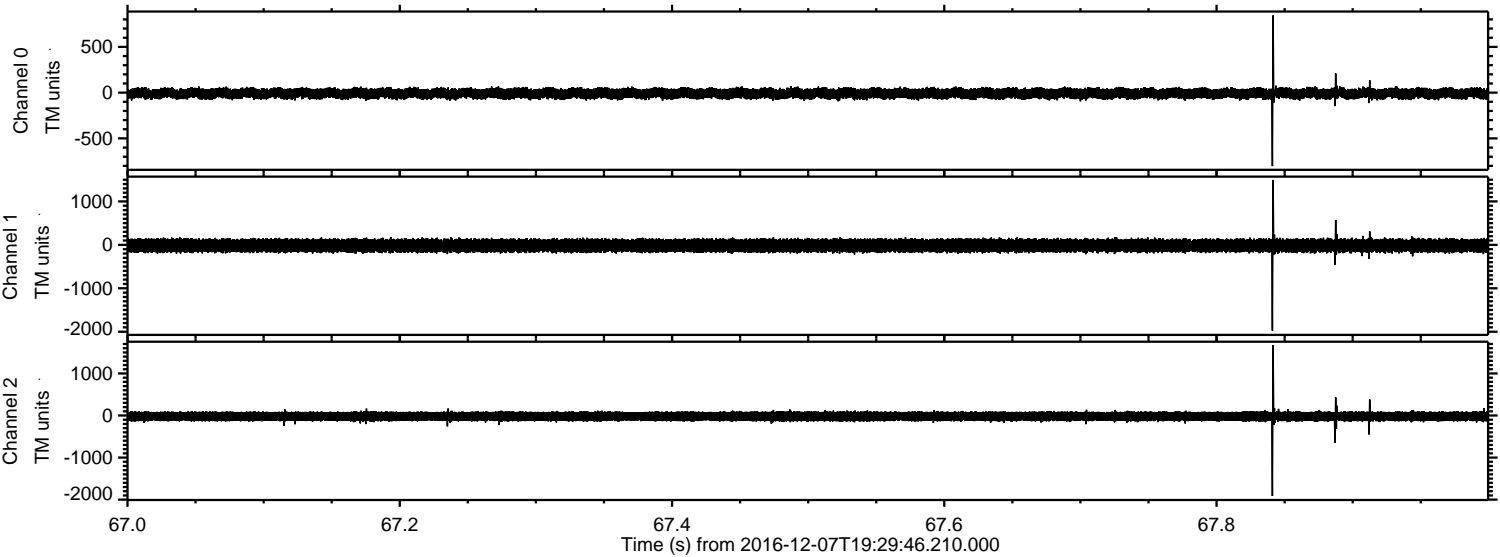
ELMAVAN 3D WAVEFORMS (Measured data sampled at 50 kHz) 51000 packets of 144 samples from 2016-12-07T19:29:46.210.000. Part 105/147

Processed Wed Dec 7 20:37:31 2016 by ELM ver.2012-10-06 from 001\_\_elm20161207\_192945\_\_dat00.bin





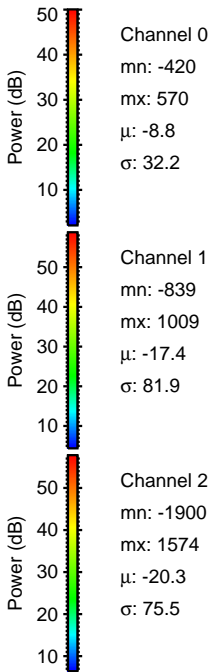
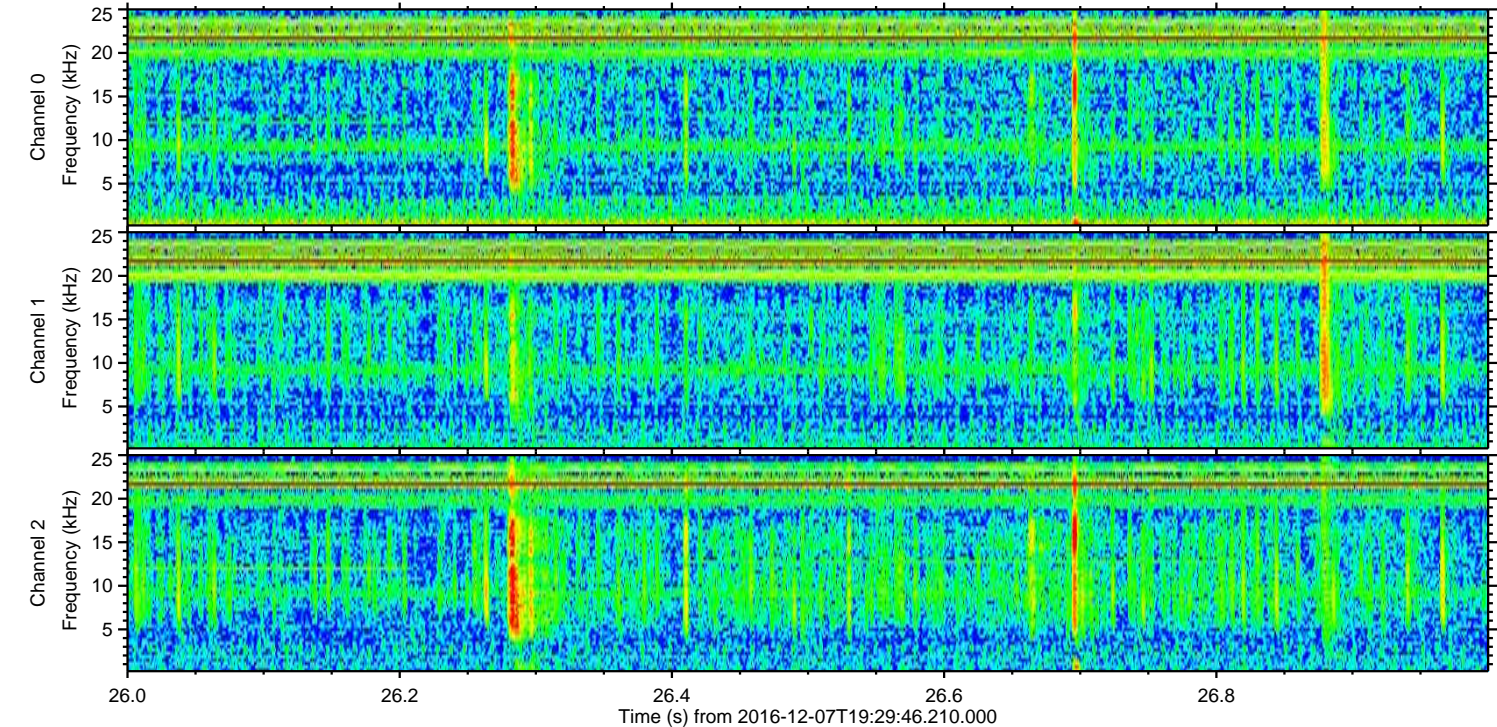
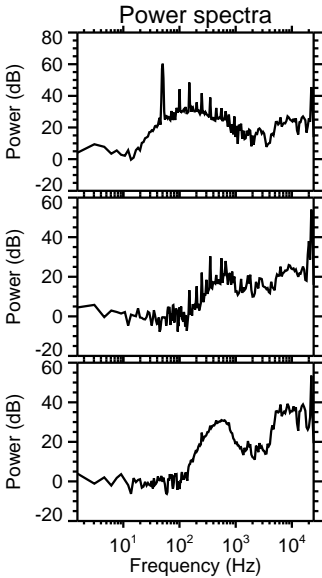
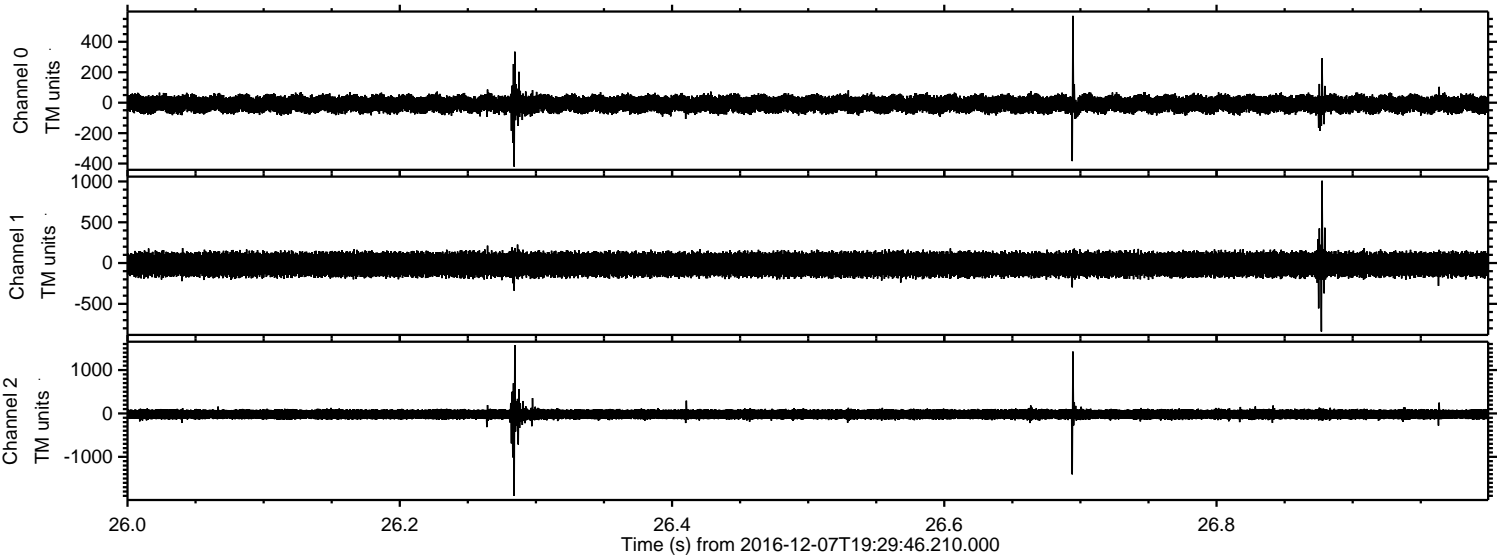
Processed Wed Dec 7 20:37:32 2016 by ELM ver.2012-10-06 from 001\_\_elm20161207\_192945\_\_dat00.bin





ELMAVAN 3D WAVEFORMS (Measured data sampled at 50 kHz) 51000 packets of 144 samples from 2016-12-07T19:29:46.210.000. Part 27/147

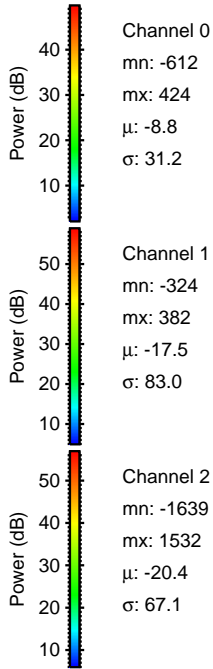
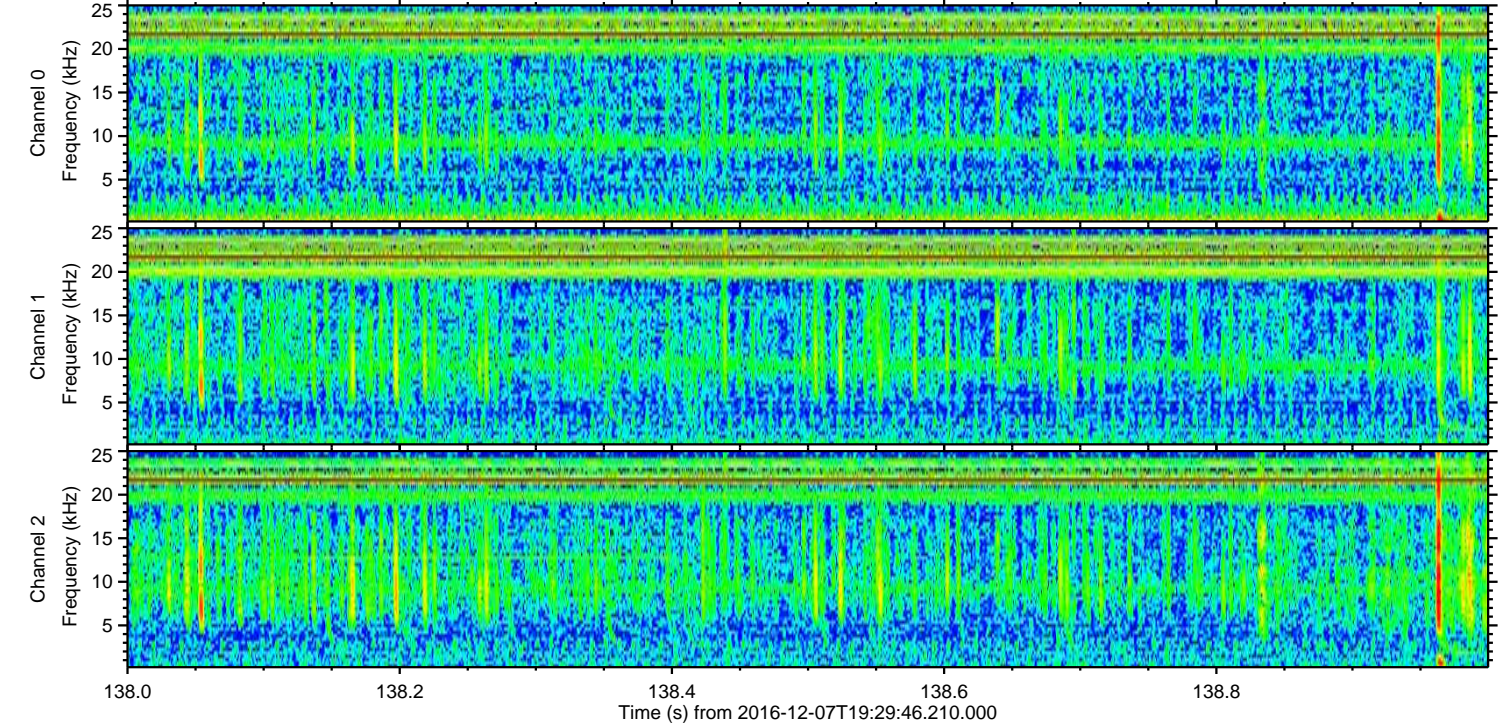
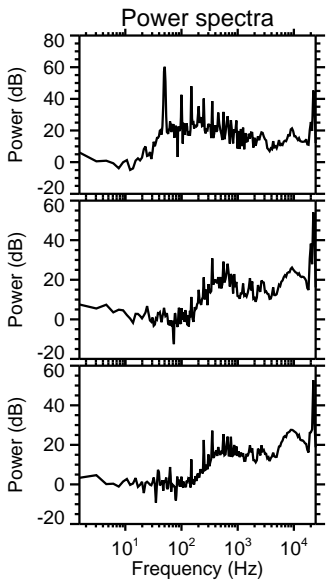
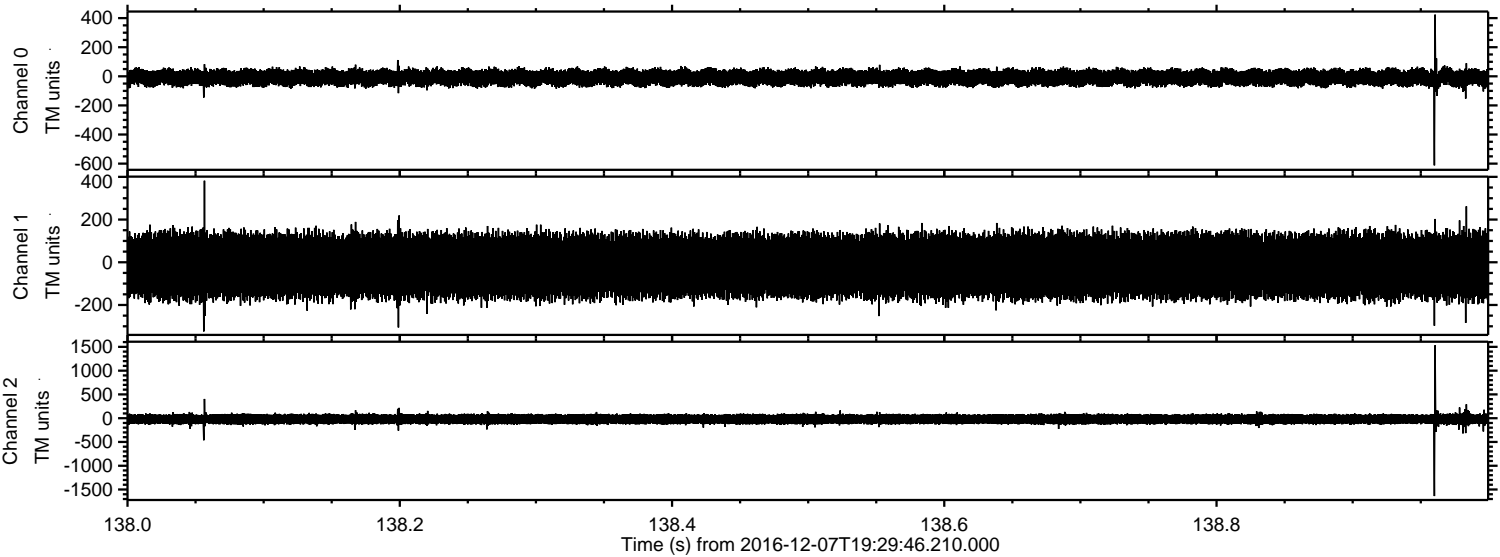
Processed Wed Dec 7 20:37:33 2016 by ELM ver.2012-10-06 from 001\_\_elm20161207\_192945\_\_dat00.bin





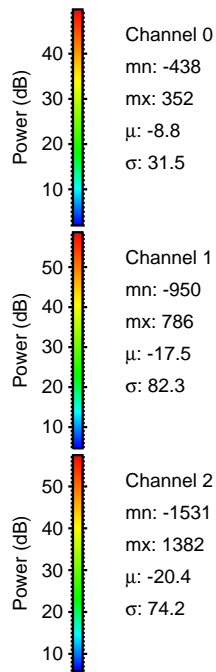
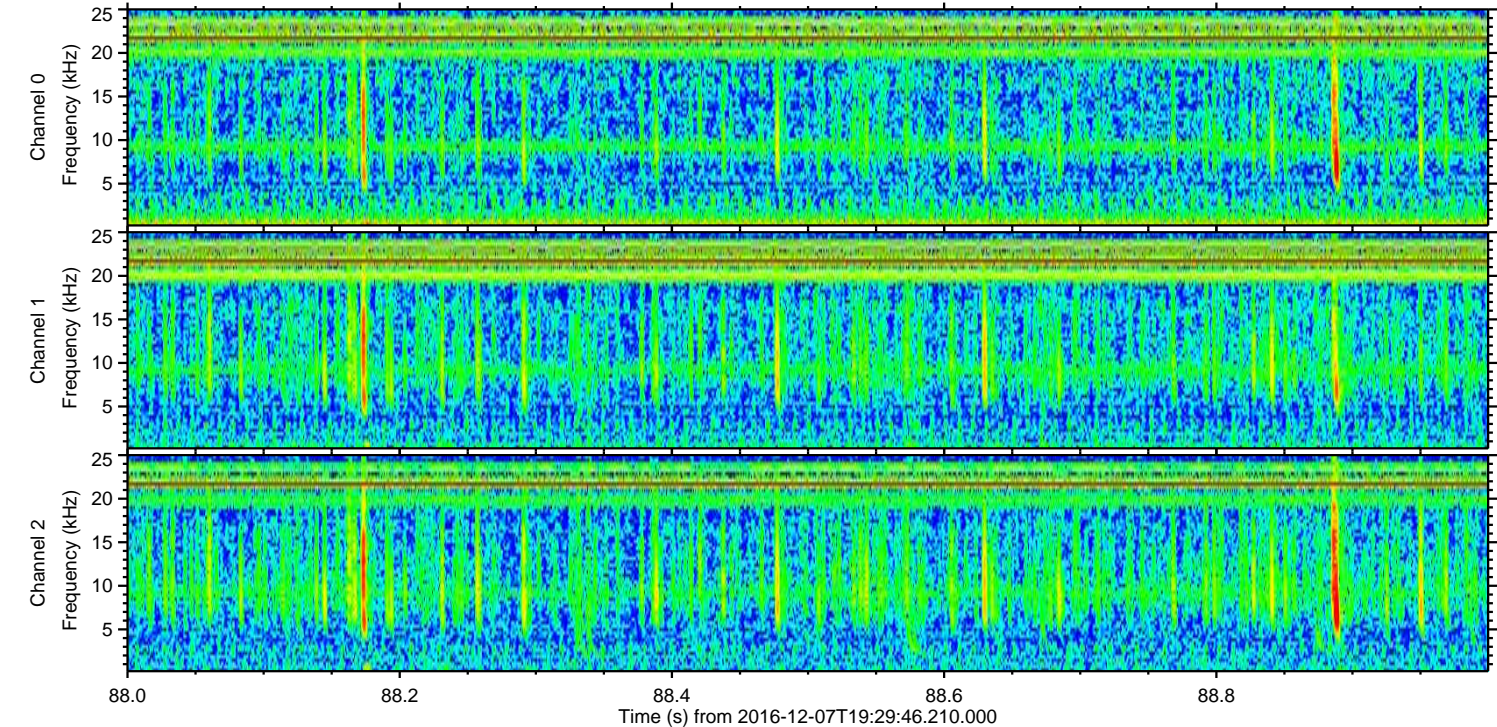
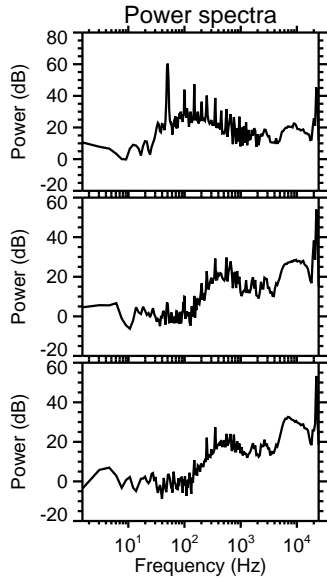
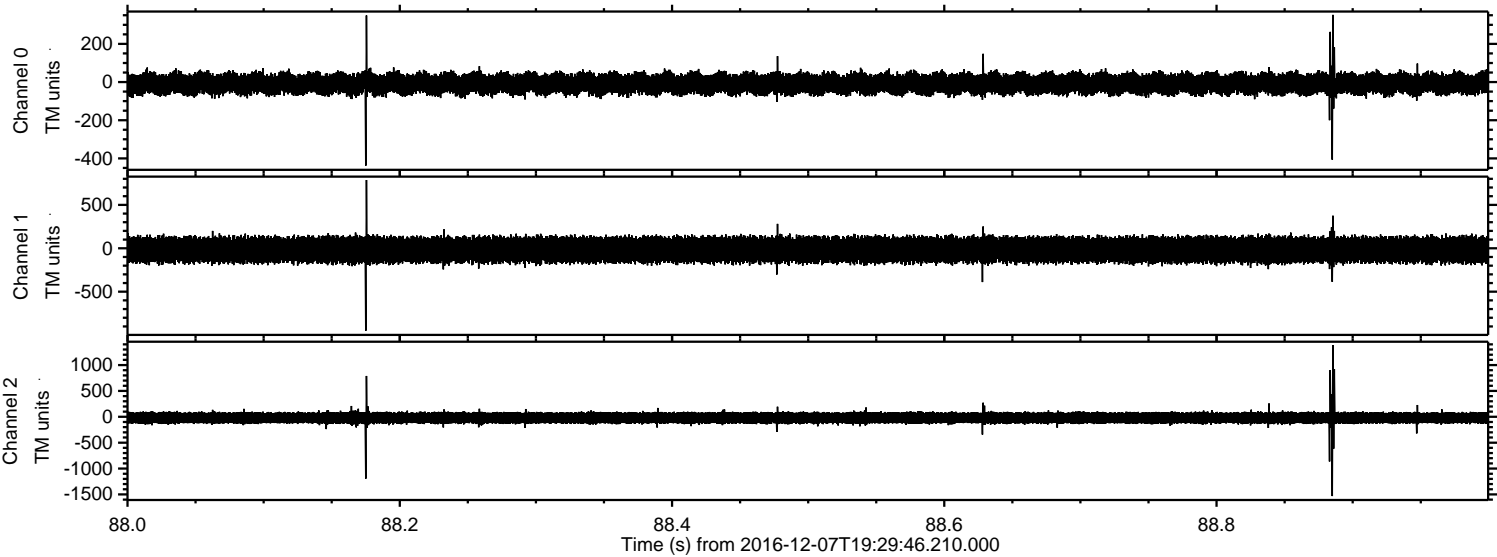
ELMAVAN 3D WAVEFORMS (Measured data sampled at 50 kHz) 51000 packets of 144 samples from 2016-12-07T19:29:46.210.000. Part 139/147

Processed Wed Dec 7 20:37:34 2016 by ELM ver.2012-10-06 from 001\_\_elm20161207\_192945\_\_dat00.bin





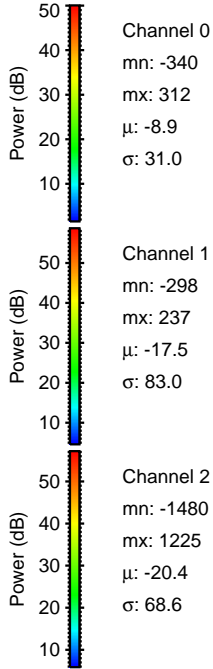
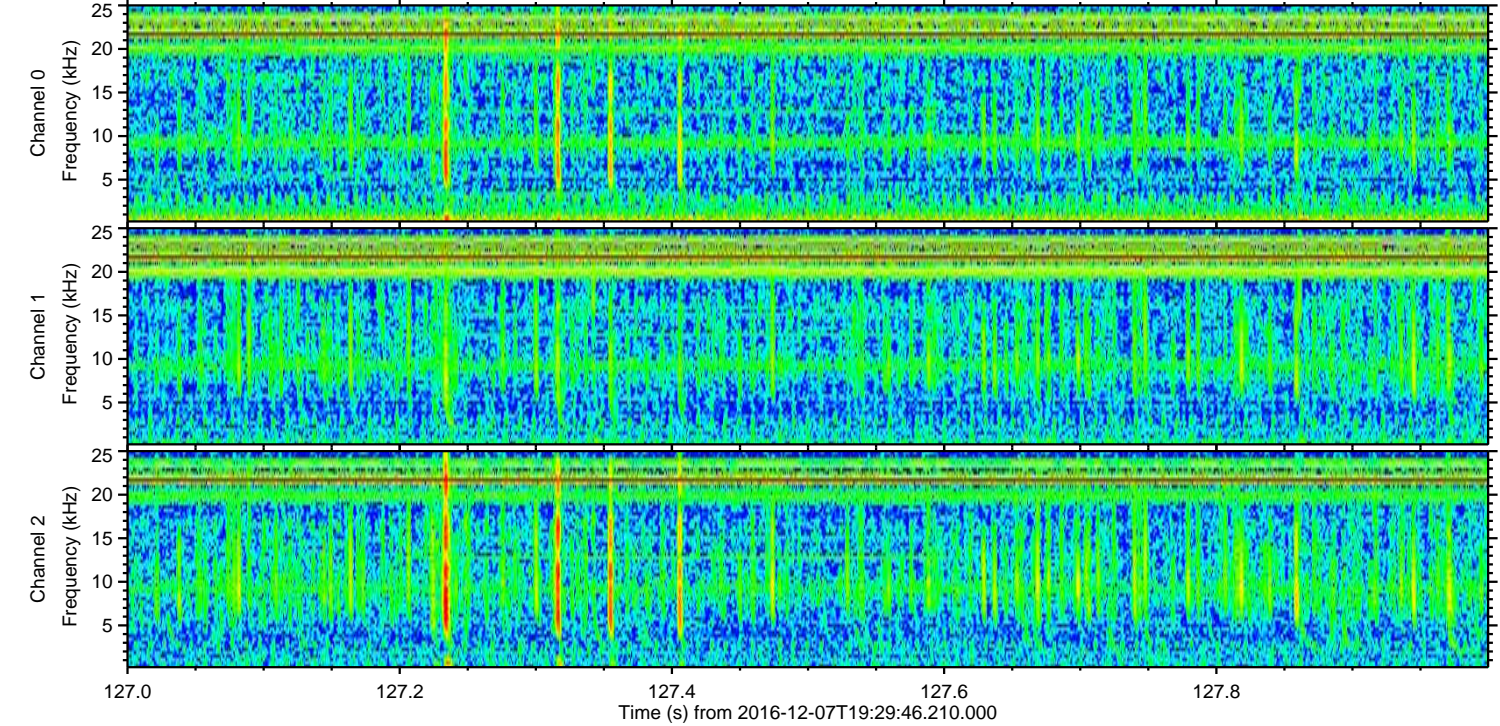
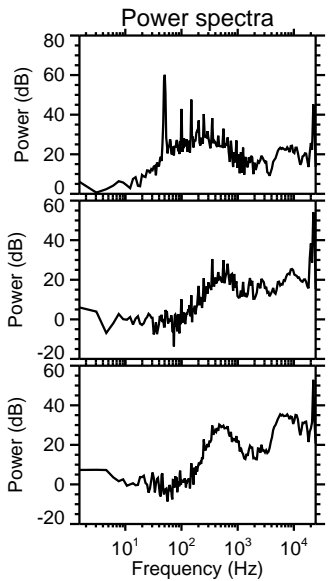
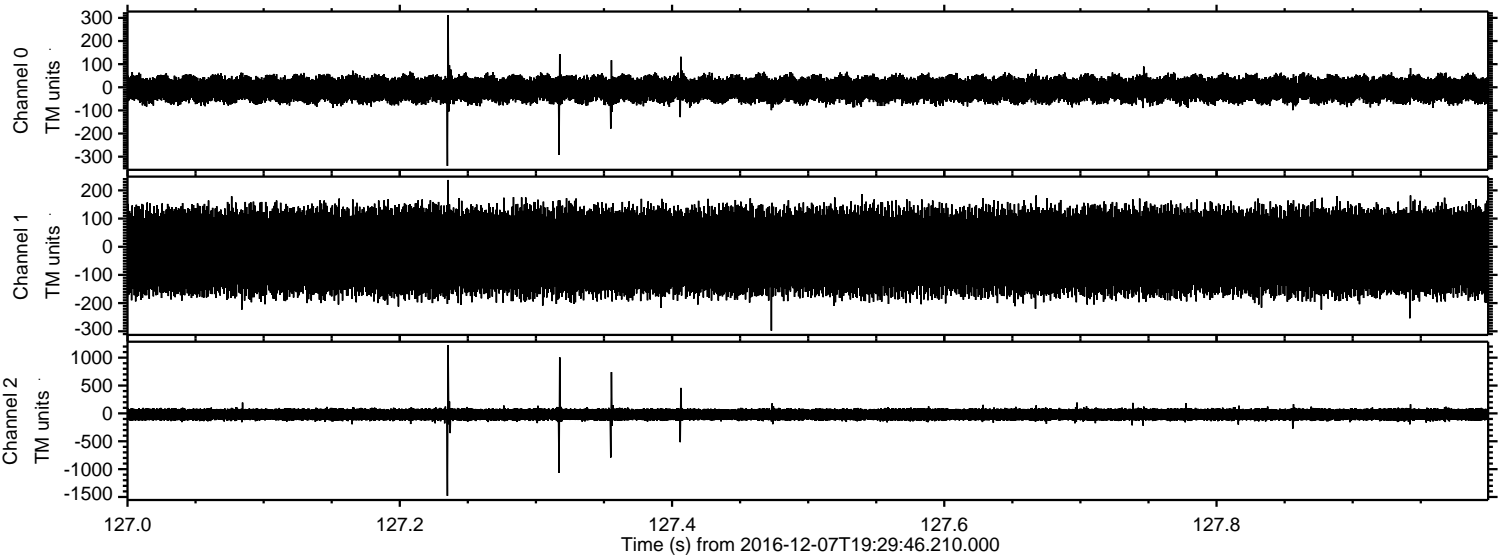
Processed Wed Dec 7 20:37:35 2016 by ELM ver.2012-10-06 from 001\_\_elm20161207\_192945\_\_dat00.bin





ELMAVAN 3D WAVEFORMS (Measured data sampled at 50 kHz) 51000 packets of 144 samples from 2016-12-07T19:29:46.210.000. Part 128/147

Processed Wed Dec 7 20:37:36 2016 by ELM ver.2012-10-06 from 001\_\_elm20161207\_192945\_\_dat00.bin



Channel 0  
mn: -340  
mx: 312  
 $\mu$ : -8.9  
 $\sigma$ : 31.0

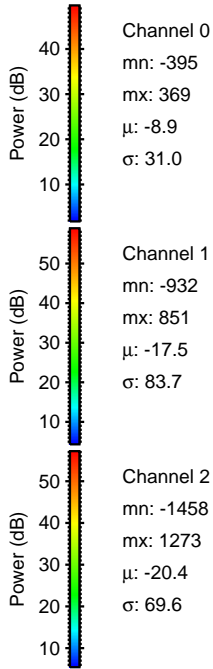
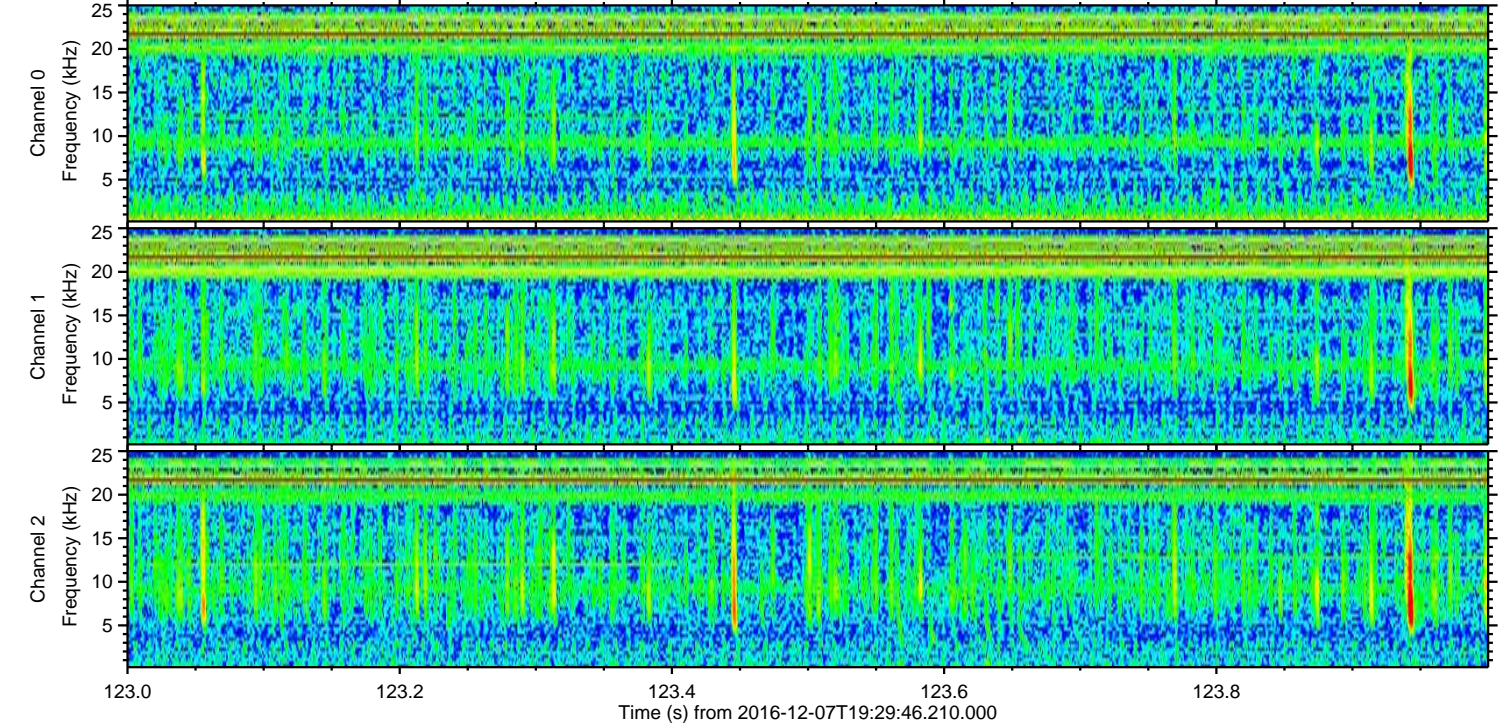
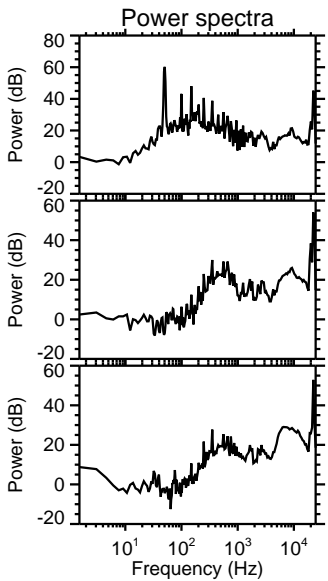
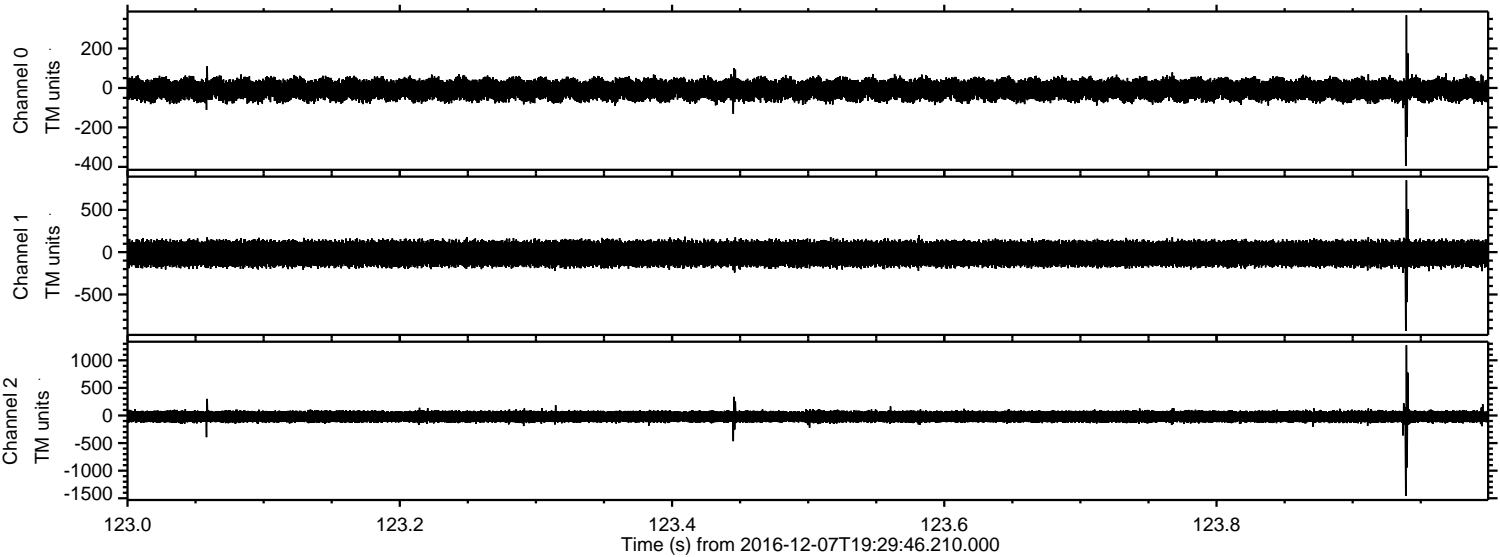
Channel 1  
mn: -298  
mx: 237  
 $\mu$ : -17.5  
 $\sigma$ : 83.0

Channel 2  
mn: -1480  
mx: 1225  
 $\mu$ : -20.4  
 $\sigma$ : 68.6



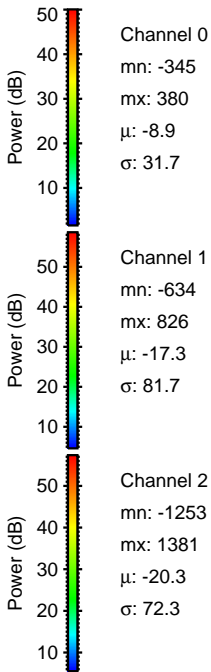
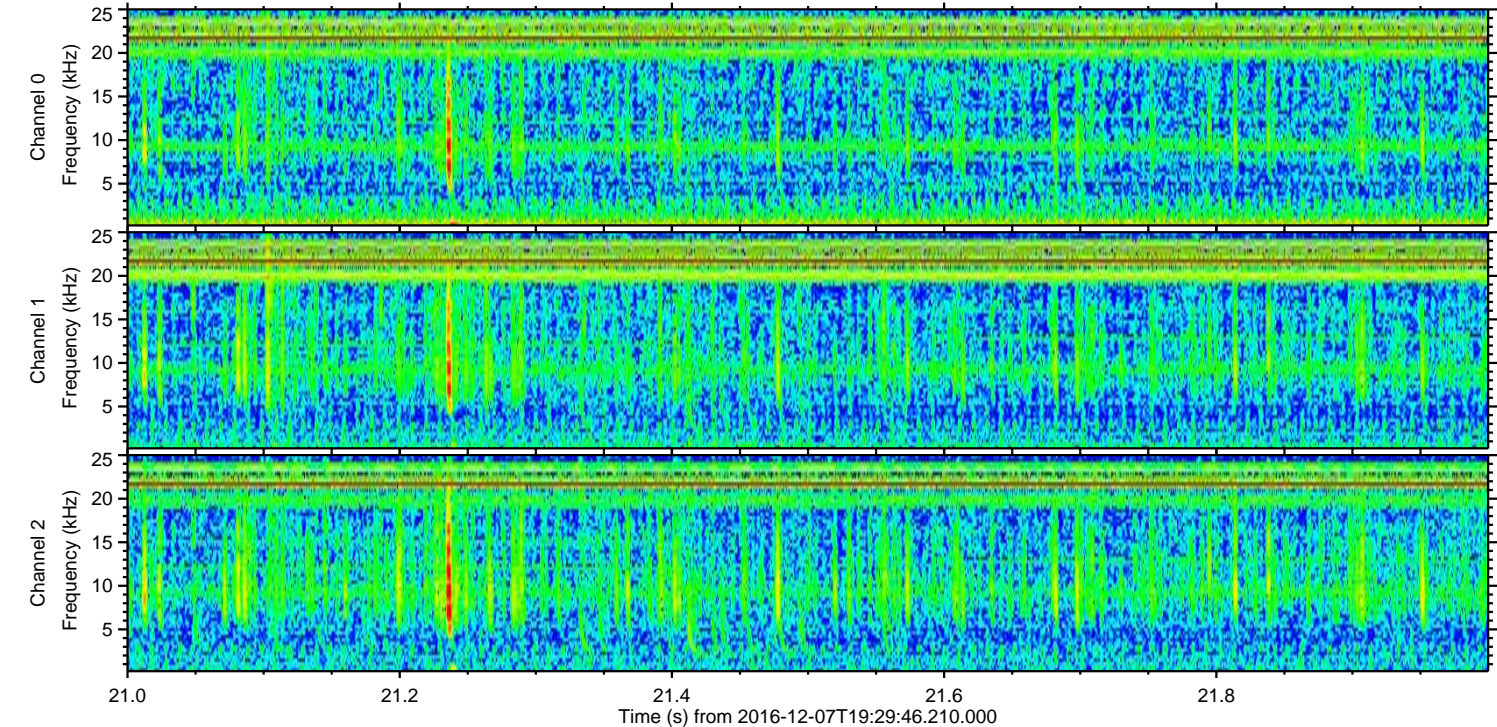
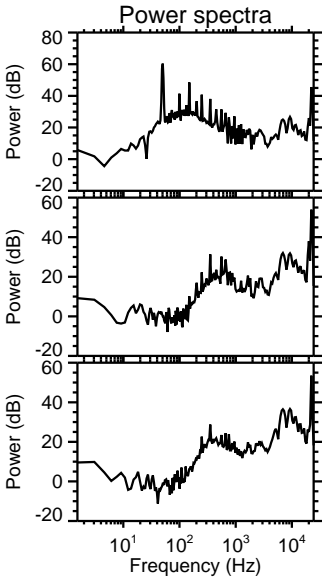
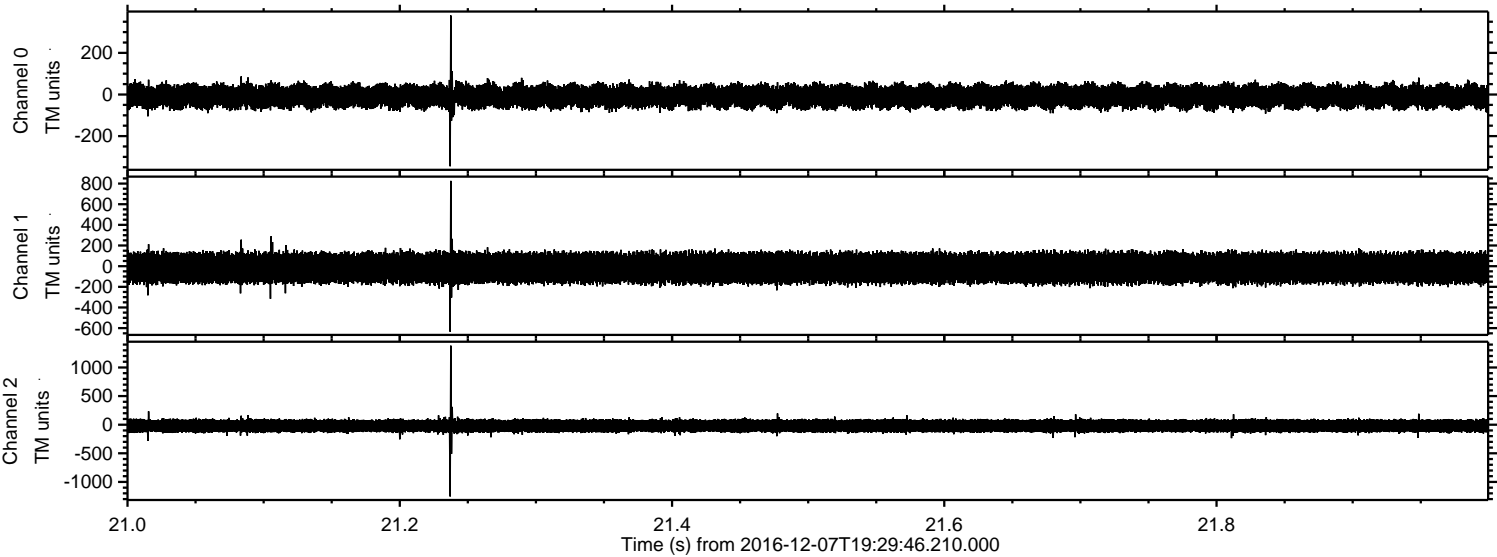
ELMAVAN 3D WAVEFORMS (Measured data sampled at 50 kHz) 51000 packets of 144 samples from 2016-12-07T19:29:46.210.000. Part 124/147

Processed Wed Dec 7 20:37:37 2016 by ELM ver.2012-10-06 from 001\_\_elm20161207\_192945\_\_dat00.bin





Processed Wed Dec 7 20:37:38 2016 by ELM ver.2012-10-06 from 001\_\_elm20161207\_192945\_\_dat00.bin





ELMAVAN 3D WAVEFORMS (Measured data sampled at 50 kHz) 51000 packets of 144 samples from 2016-12-07T19:29:46.210.000. Part 119/147

Processed Wed Dec 7 20:37:40 2016 by ELM ver.2012-10-06 from 001\_\_elm20161207\_192945\_\_dat00.bin

