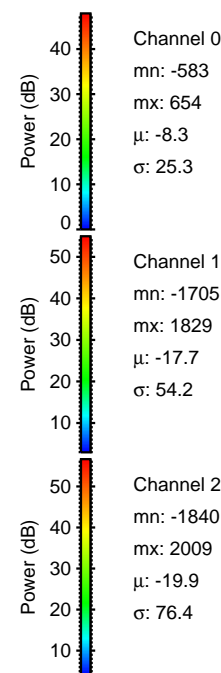
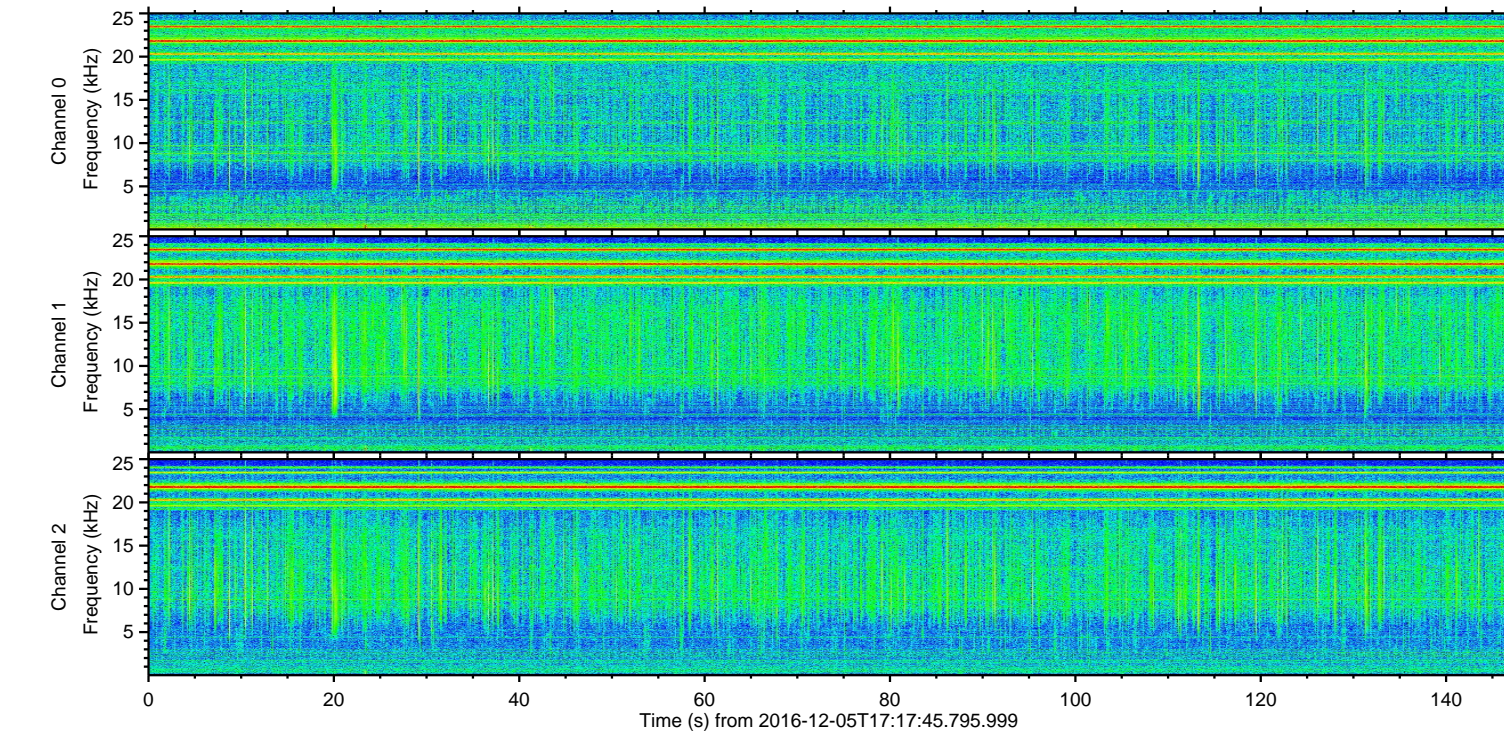
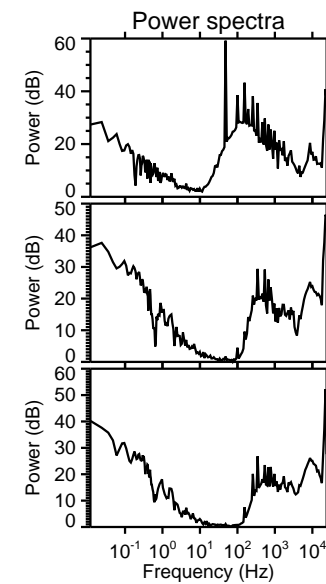
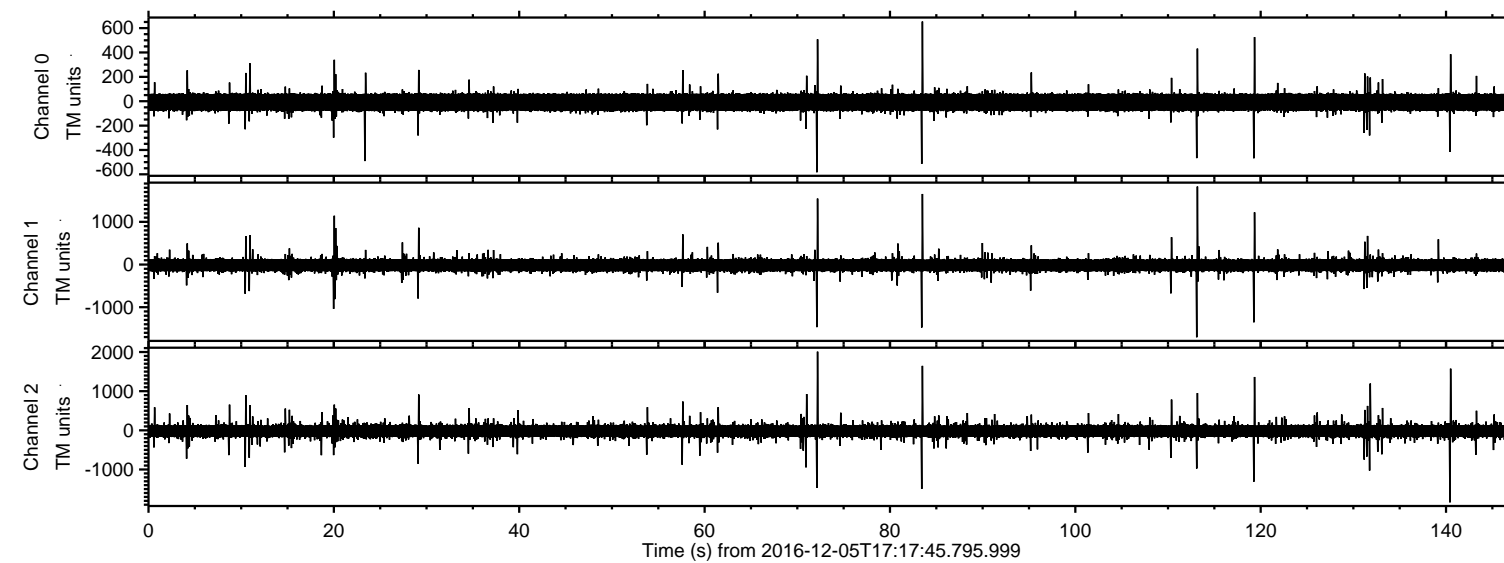


# ELMAVAN 3D WAVEFORMS (Measured data sampled at 50 kHz) 51000 packets of 144 samples from 2016-12-05T17:17:45.795.999.

Processed Mon Dec 5 18:25:55 2016 by ELM ver.2012-10-06 from 001\_\_elm20161205\_171744\_\_dat00.bin



Channel 0  
mn: -583  
mx: 654  
 $\mu$ : -8.3  
 $\sigma$ : 25.3

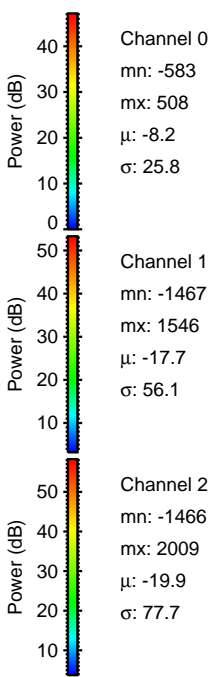
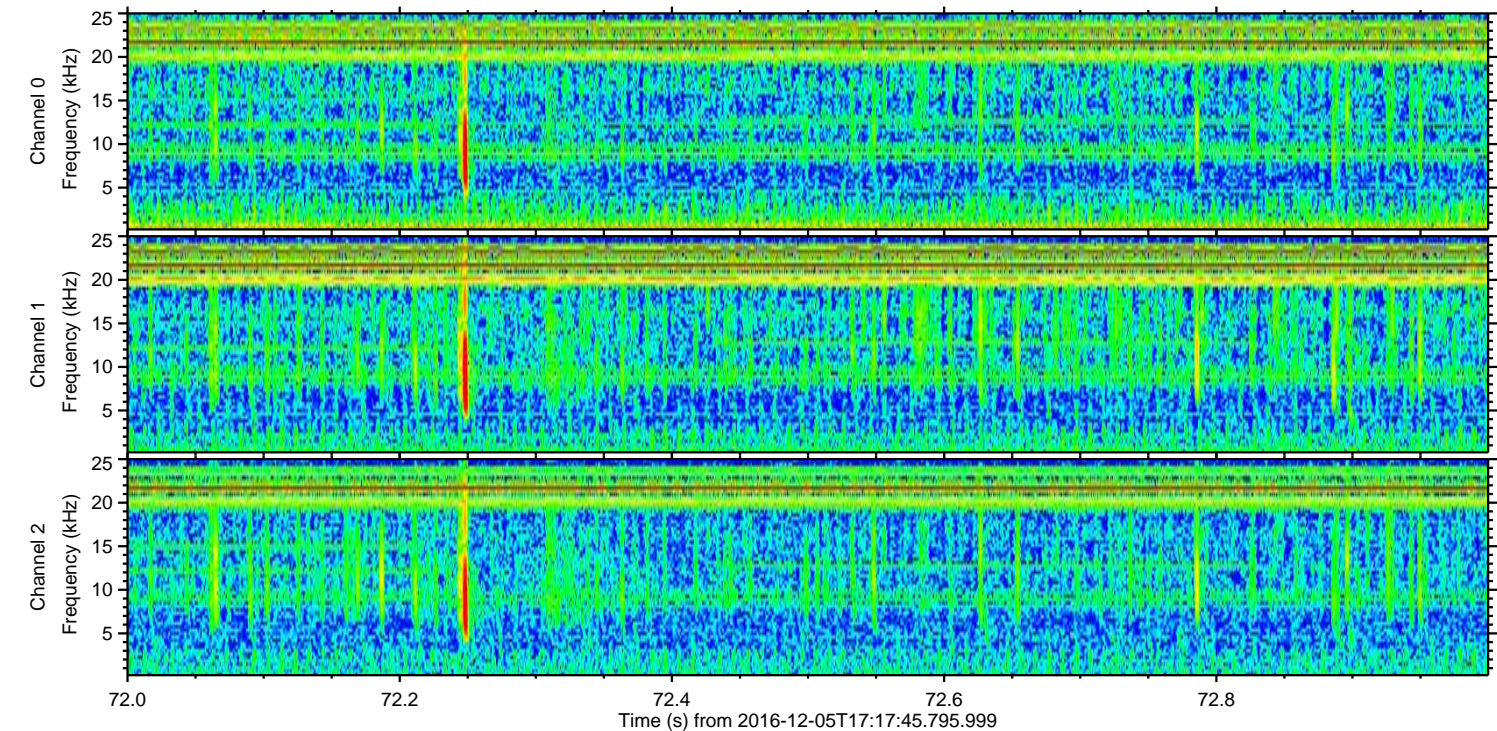
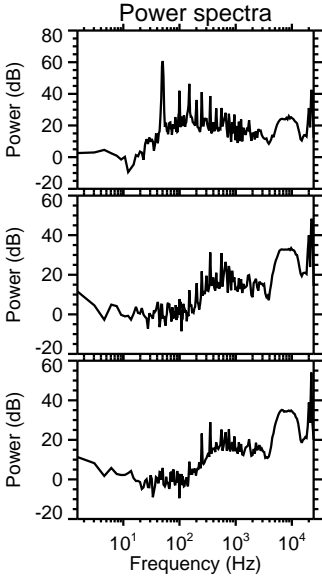
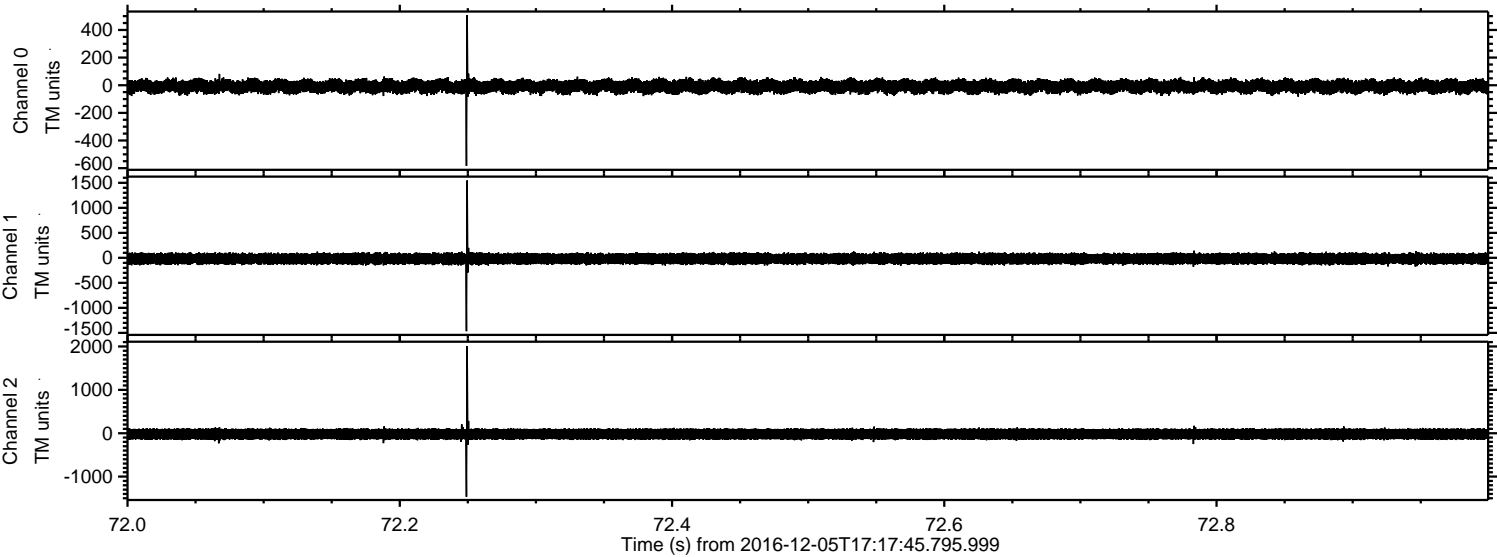
Channel 1  
mn: -1705  
mx: 1829  
 $\mu$ : -17.7  
 $\sigma$ : 54.2

Channel 2  
mn: -1840  
mx: 2009  
 $\mu$ : -19.9  
 $\sigma$ : 76.4



ELMAVAN 3D WAVEFORMS (Measured data sampled at 50 kHz) 51000 packets of 144 samples from 2016-12-05T17:17:45.795.999. Part 73/147

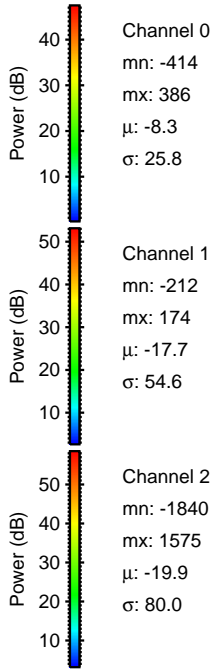
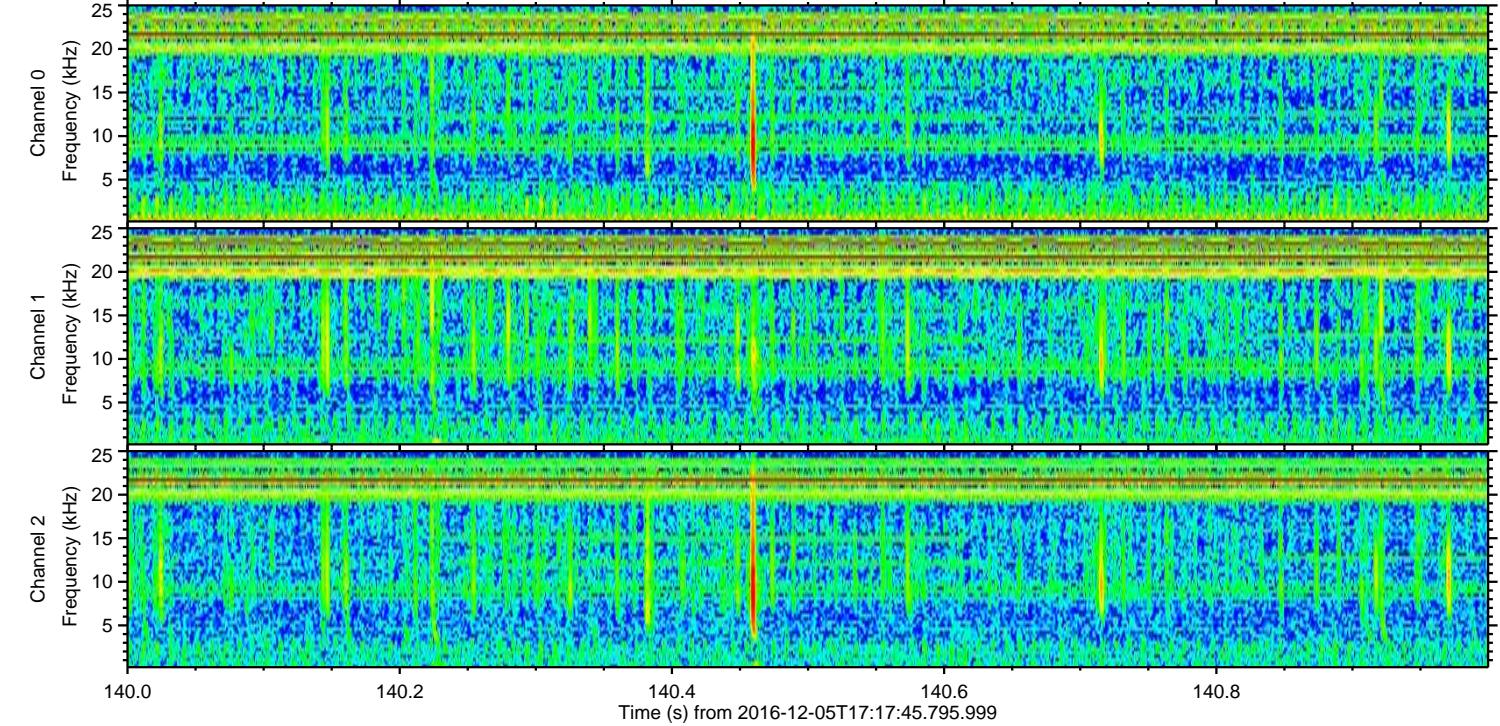
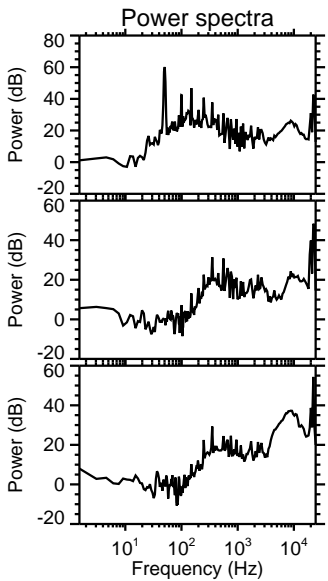
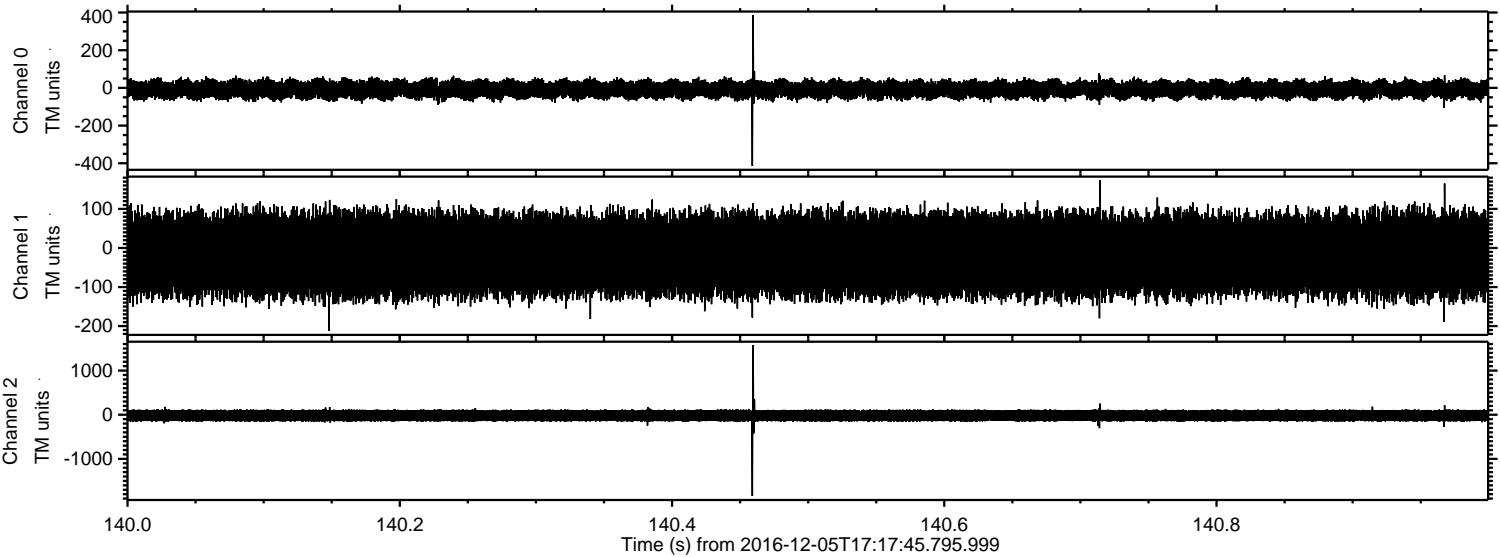
Processed Mon Dec 5 18:26:07 2016 by ELM ver.2012-10-06 from 001\_\_elm20161205\_171744\_\_dat00.bin





ELMAVAN 3D WAVEFORMS (Measured data sampled at 50 kHz) 51000 packets of 144 samples from 2016-12-05T17:17:45.795.999. Part 141/147

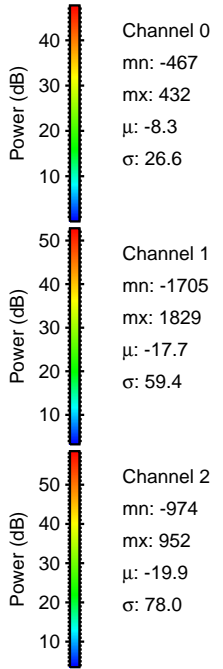
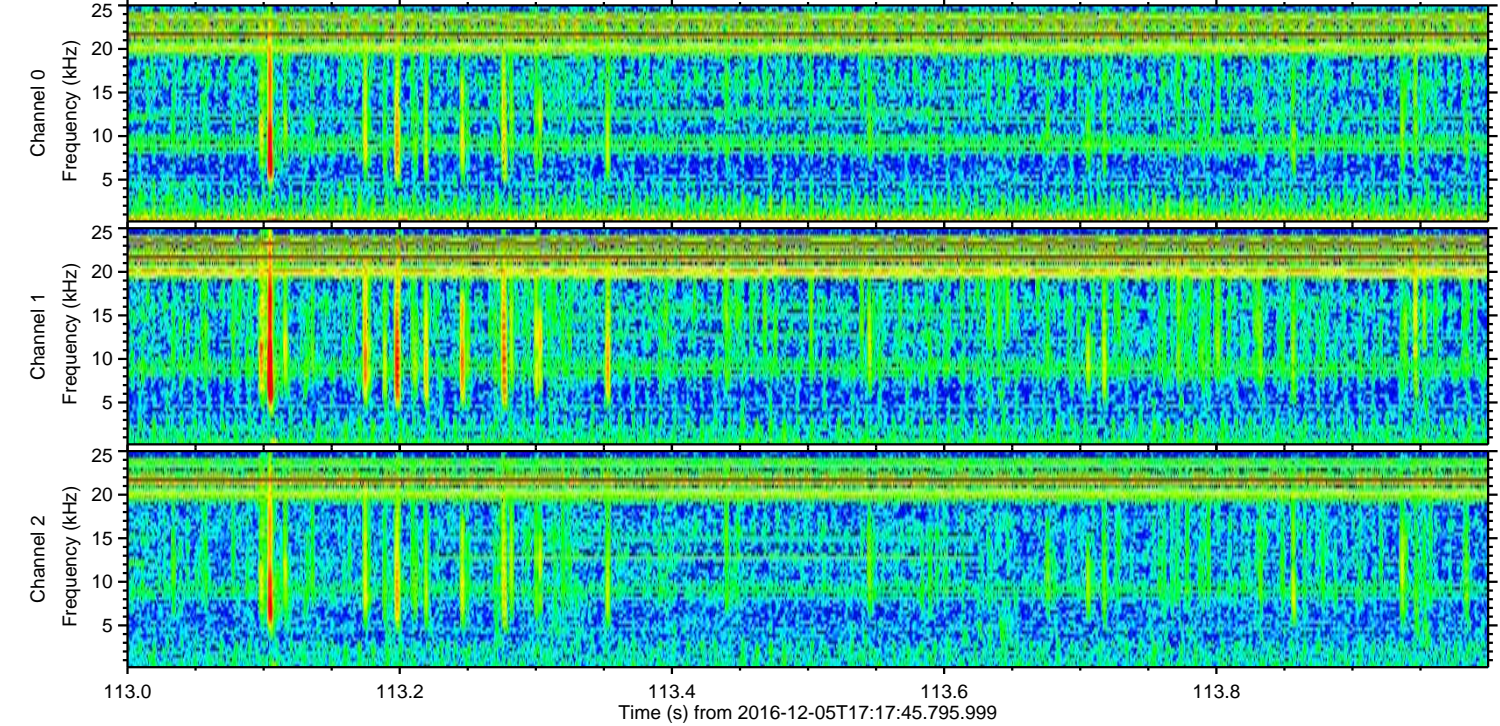
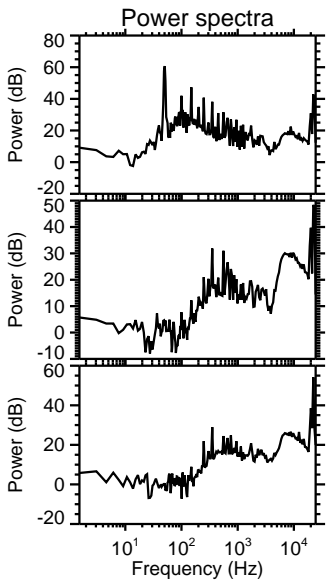
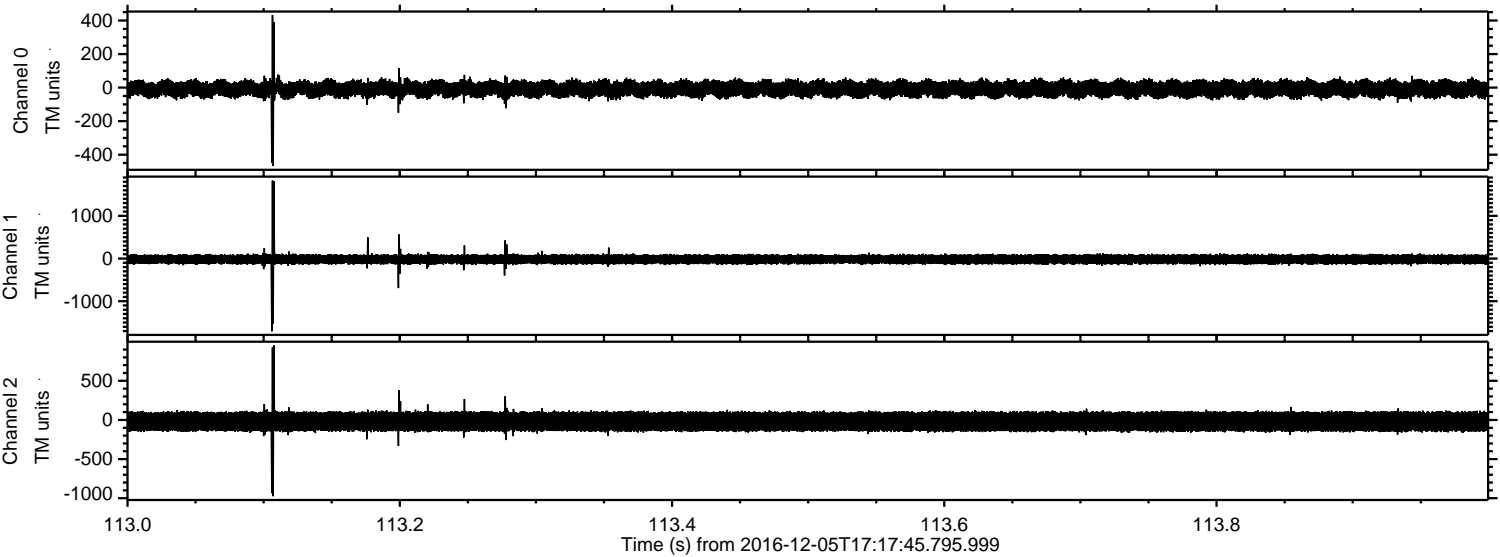
Processed Mon Dec 5 18:26:08 2016 by ELM ver.2012-10-06 from 001\_\_elm20161205\_171744\_\_dat00.bin





ELMAVAN 3D WAVEFORMS (Measured data sampled at 50 kHz) 51000 packets of 144 samples from 2016-12-05T17:17:45.795.999. Part 114/147

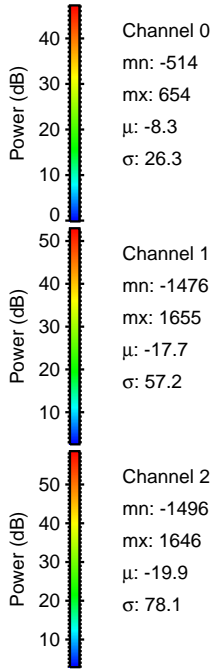
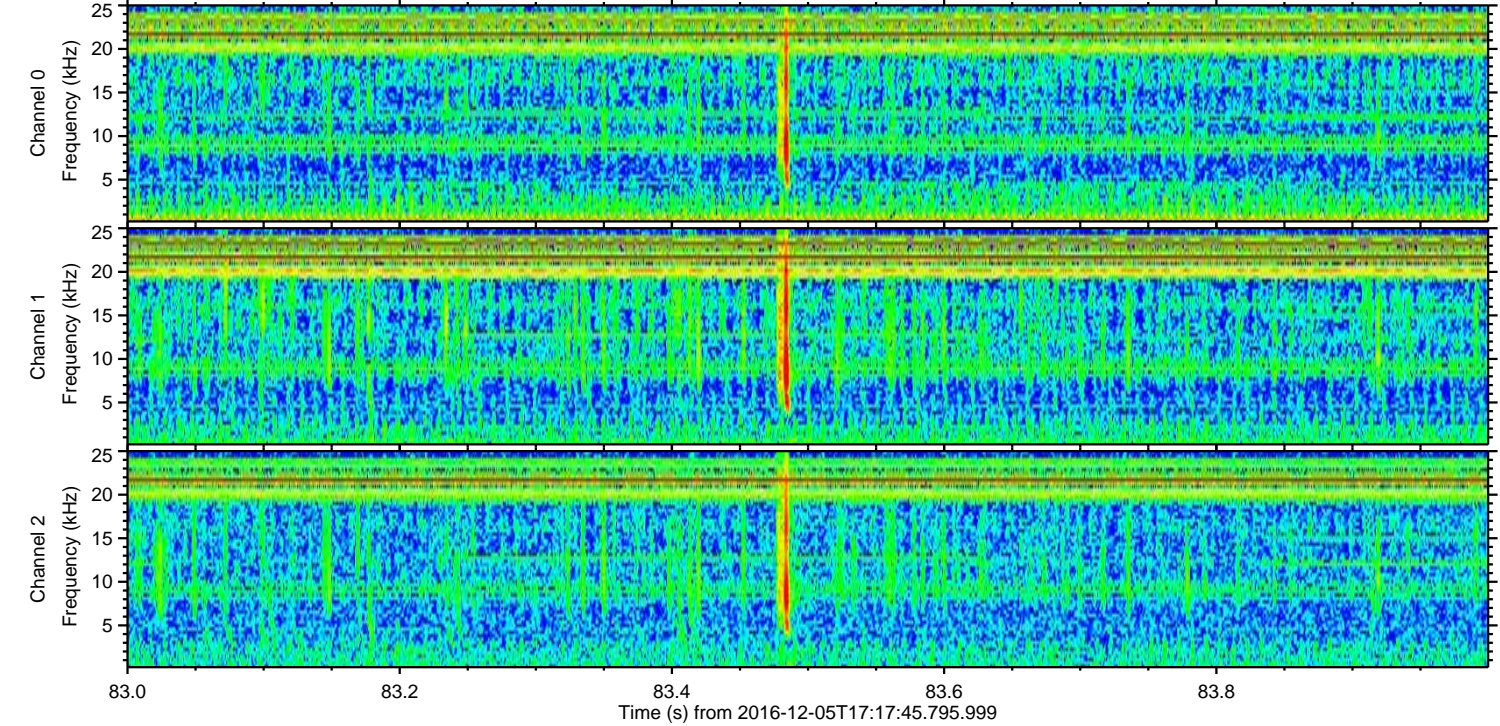
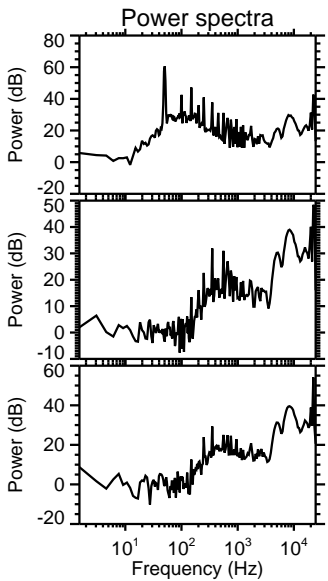
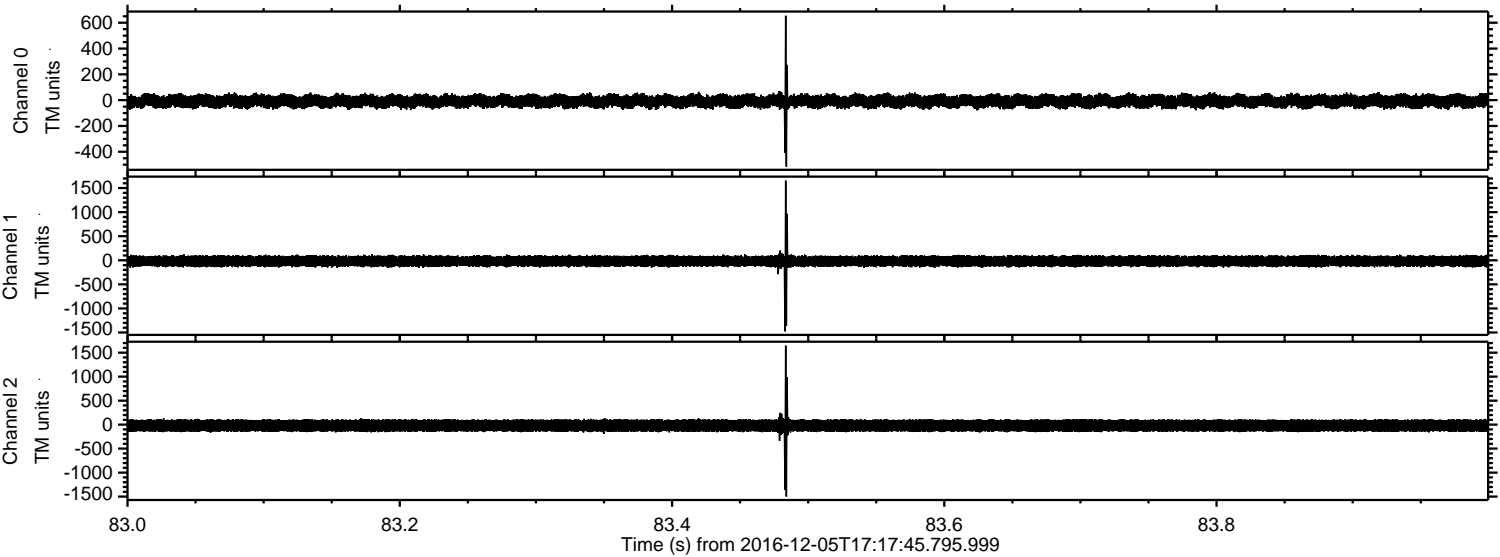
Processed Mon Dec 5 18:26:09 2016 by ELM ver.2012-10-06 from 001\_\_elm20161205\_171744\_\_dat00.bin





ELMAVAN 3D WAVEFORMS (Measured data sampled at 50 kHz) 51000 packets of 144 samples from 2016-12-05T17:17:45.795.999. Part 84/147

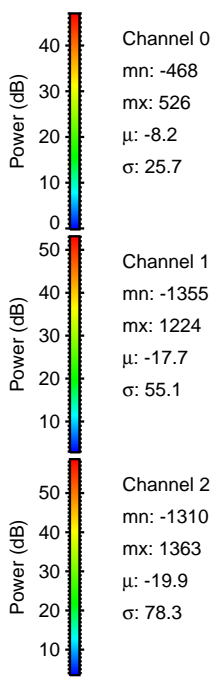
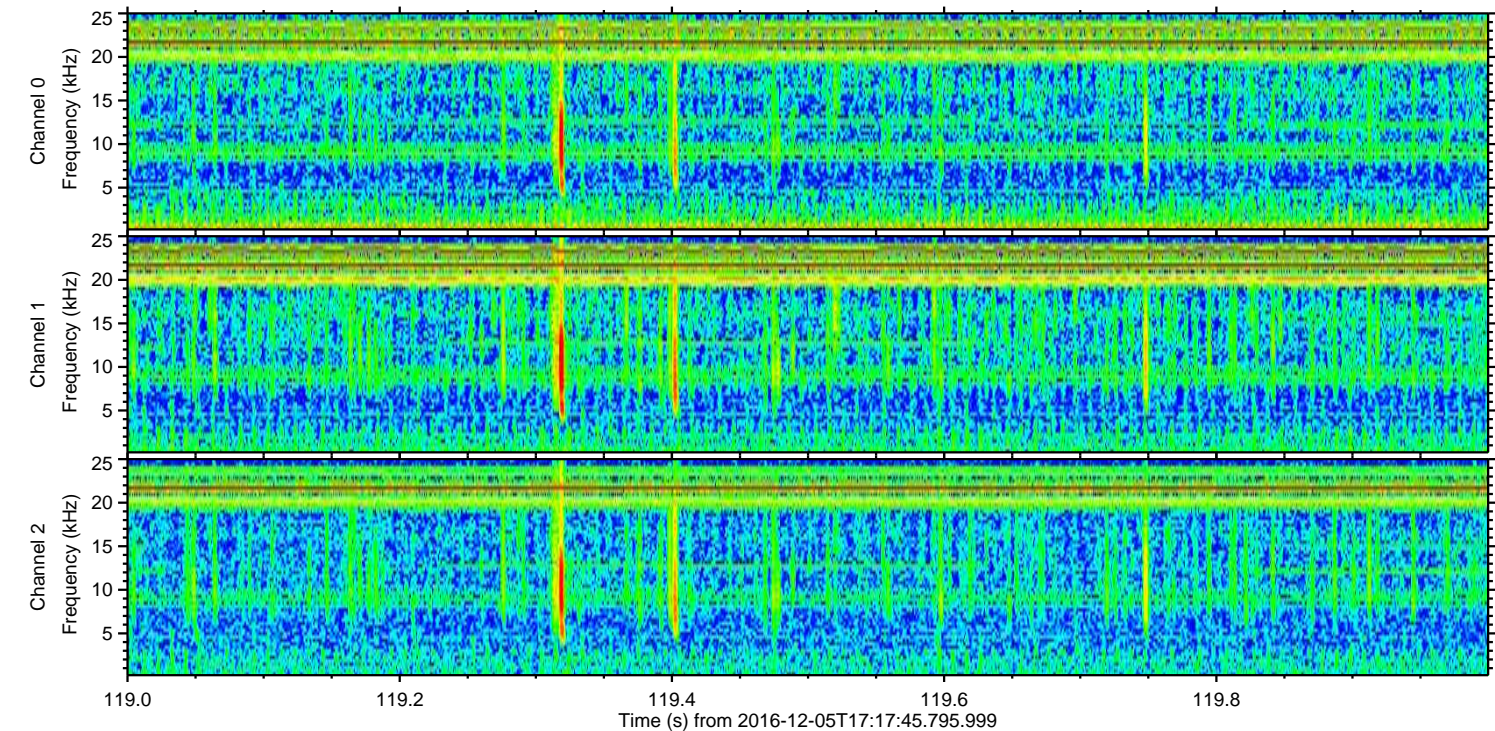
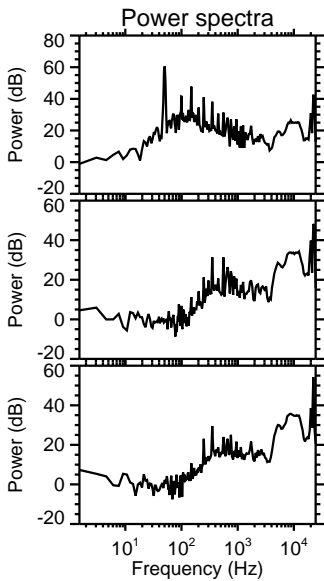
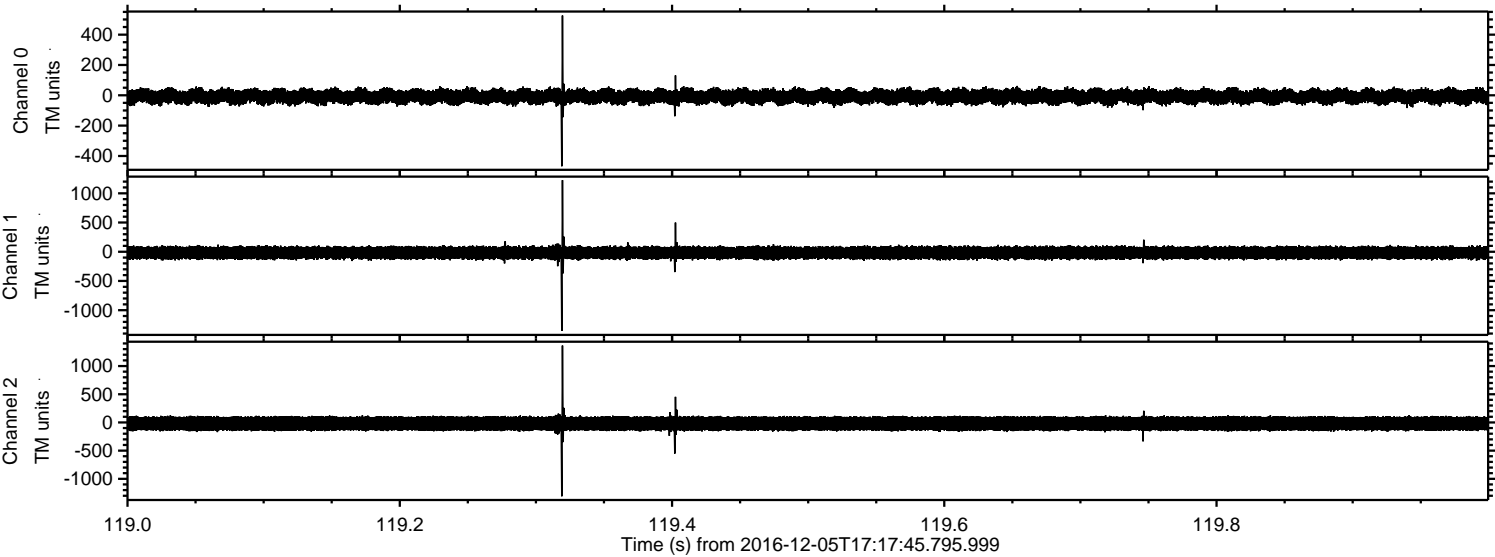
Processed Mon Dec 5 18:26:10 2016 by ELM ver.2012-10-06 from 001\_\_elm20161205\_171744\_\_dat00.bin





ELMAVAN 3D WAVEFORMS (Measured data sampled at 50 kHz) 51000 packets of 144 samples from 2016-12-05T17:17:45.795.999. Part 120/147

Processed Mon Dec 5 18:26:10 2016 by ELM ver.2012-10-06 from 001\_\_elm20161205\_171744\_\_dat00.bin



Channel 0  
mn: -468  
mx: 526  
 $\mu$ : -8.2  
 $\sigma$ : 25.7

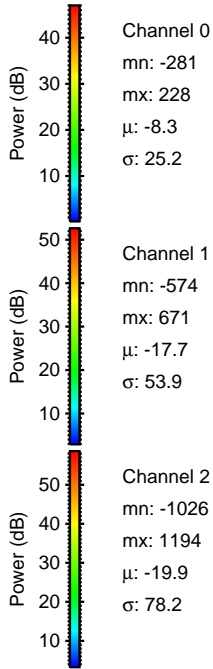
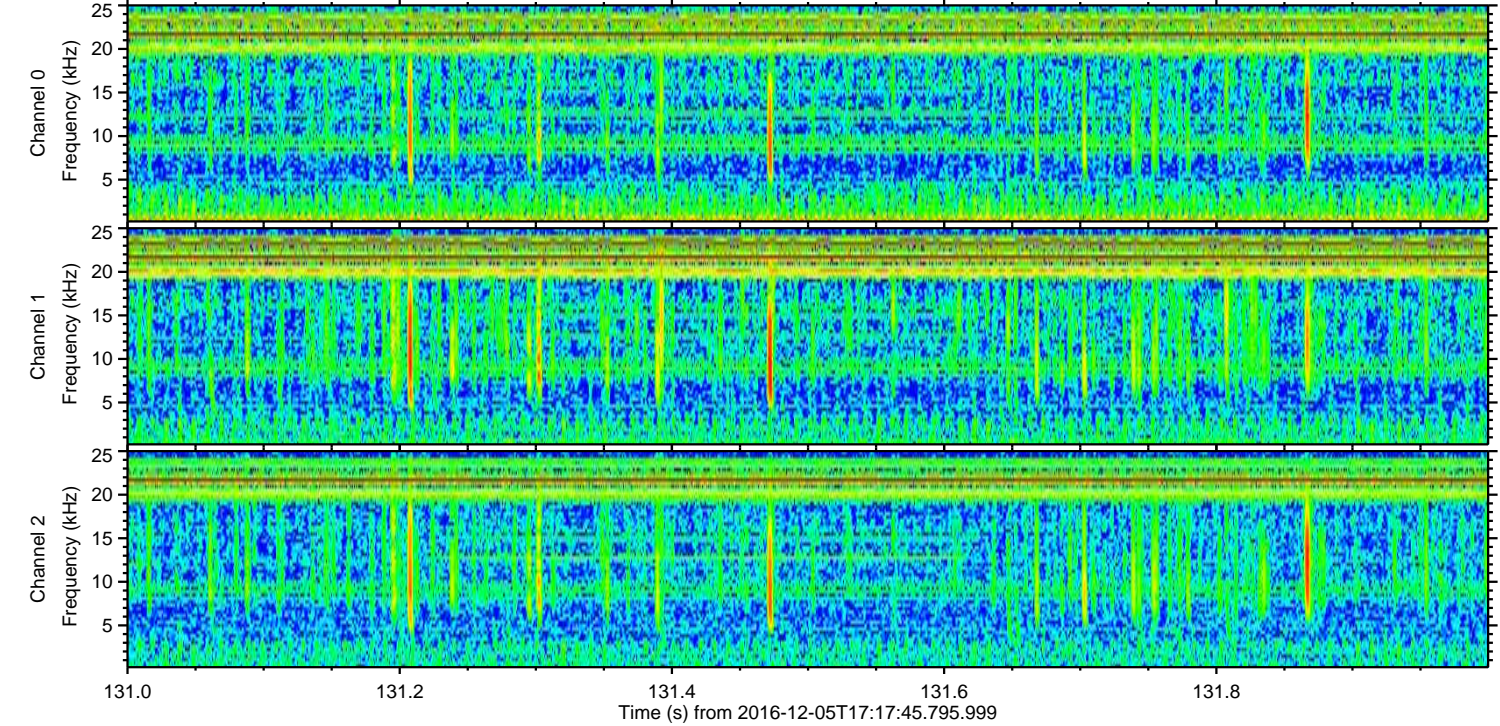
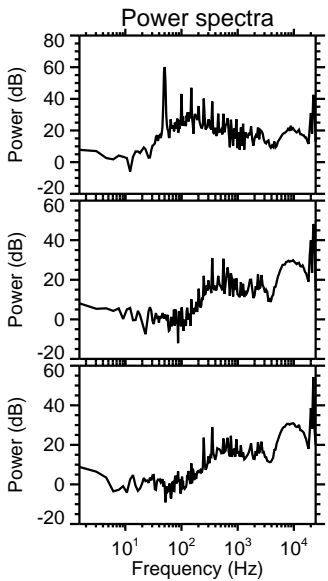
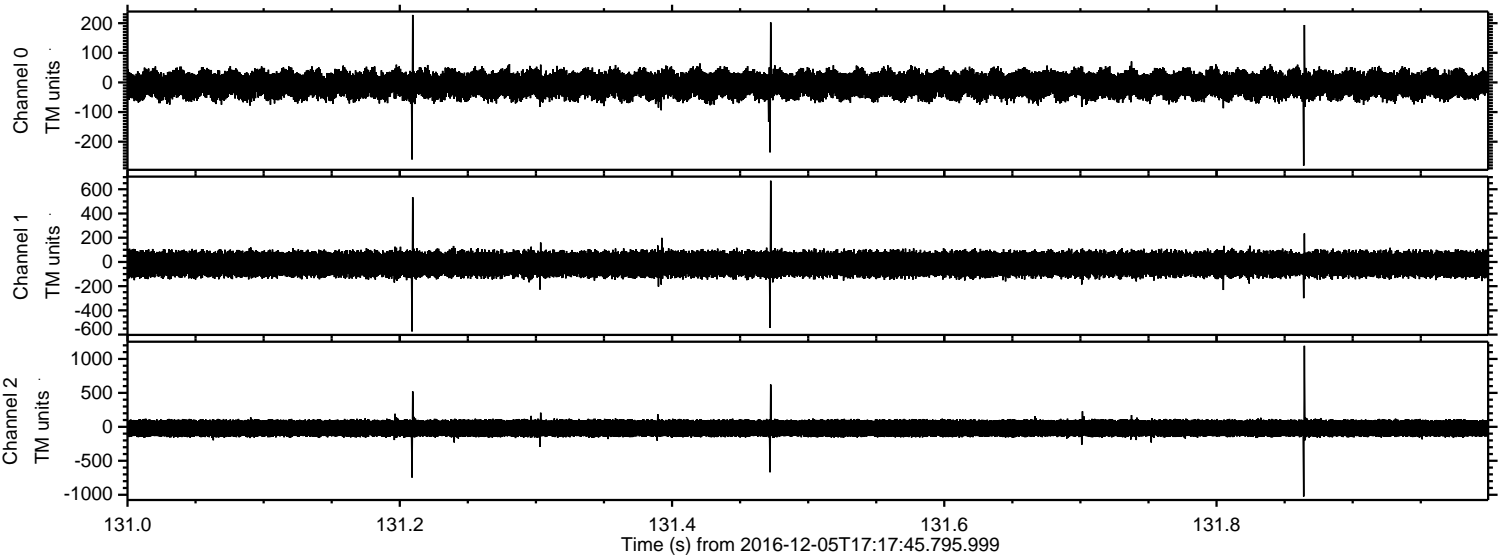
Channel 1  
mn: -1355  
mx: 1224  
 $\mu$ : -17.7  
 $\sigma$ : 55.1

Channel 2  
mn: -1310  
mx: 1363  
 $\mu$ : -19.9  
 $\sigma$ : 78.3



ELMAVAN 3D WAVEFORMS (Measured data sampled at 50 kHz) 51000 packets of 144 samples from 2016-12-05T17:17:45.795.999. Part 132/147

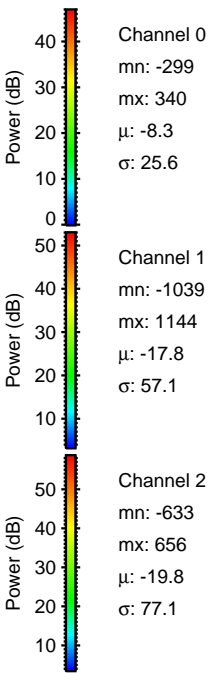
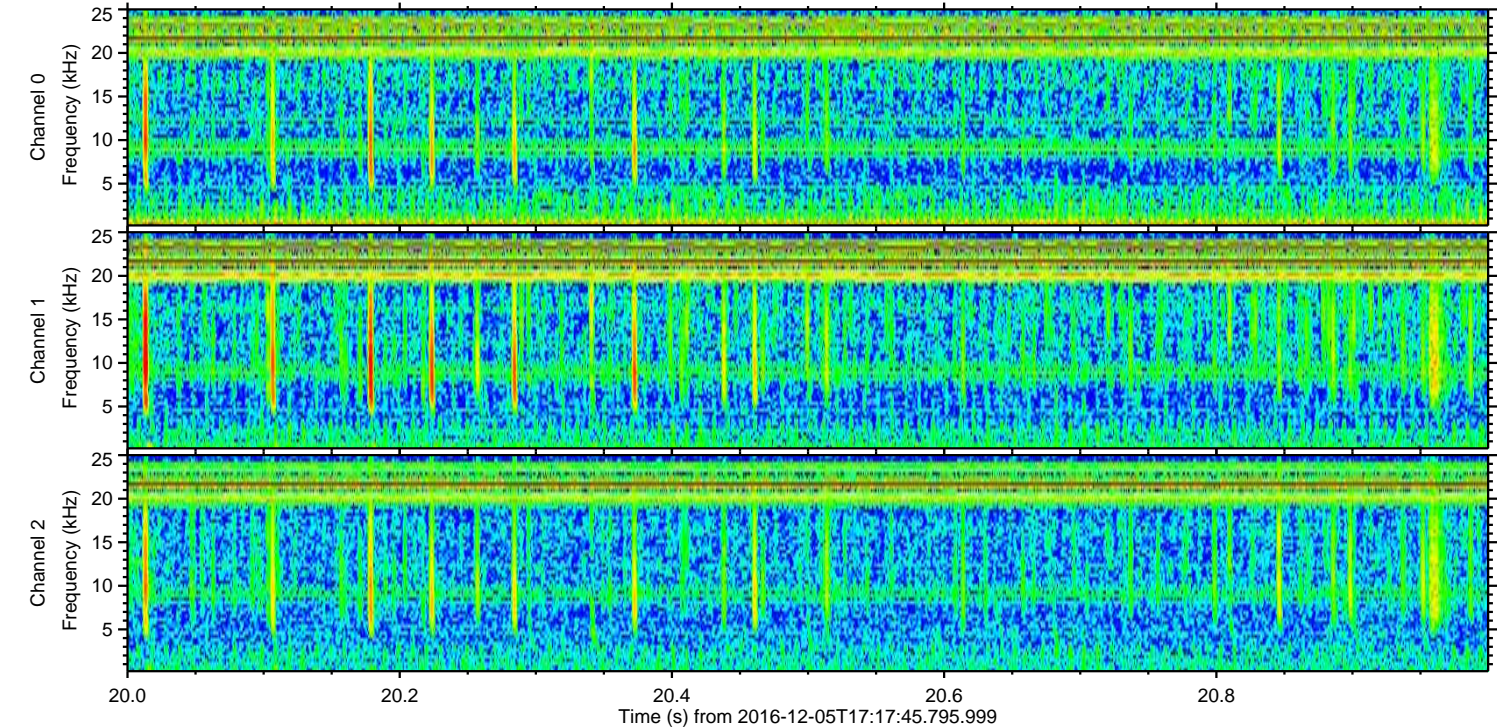
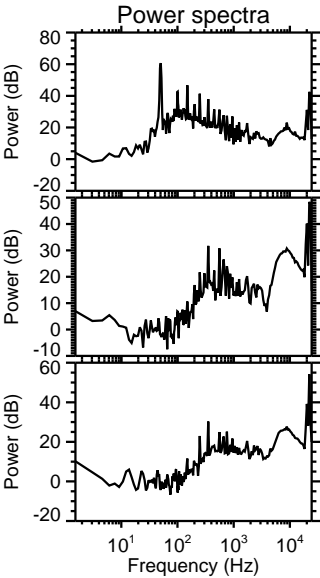
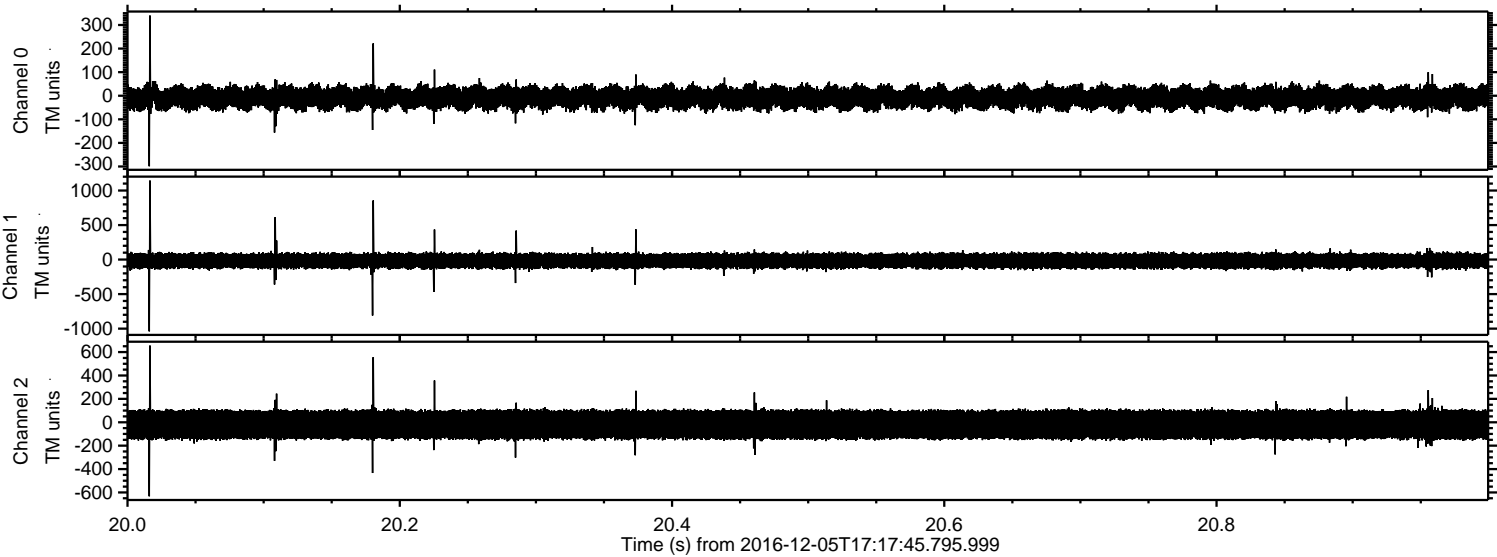
Processed Mon Dec 5 18:26:11 2016 by ELM ver.2012-10-06 from 001\_\_elm20161205\_171744\_\_dat00.bin





ELMAVAN 3D WAVEFORMS (Measured data sampled at 50 kHz) 51000 packets of 144 samples from 2016-12-05T17:17:45.795.999. Part 21/147

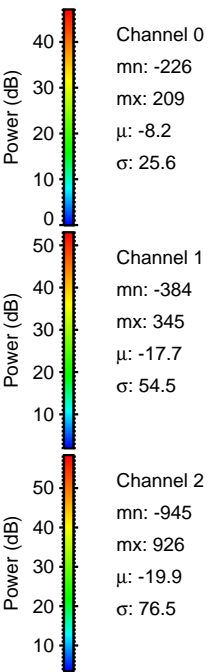
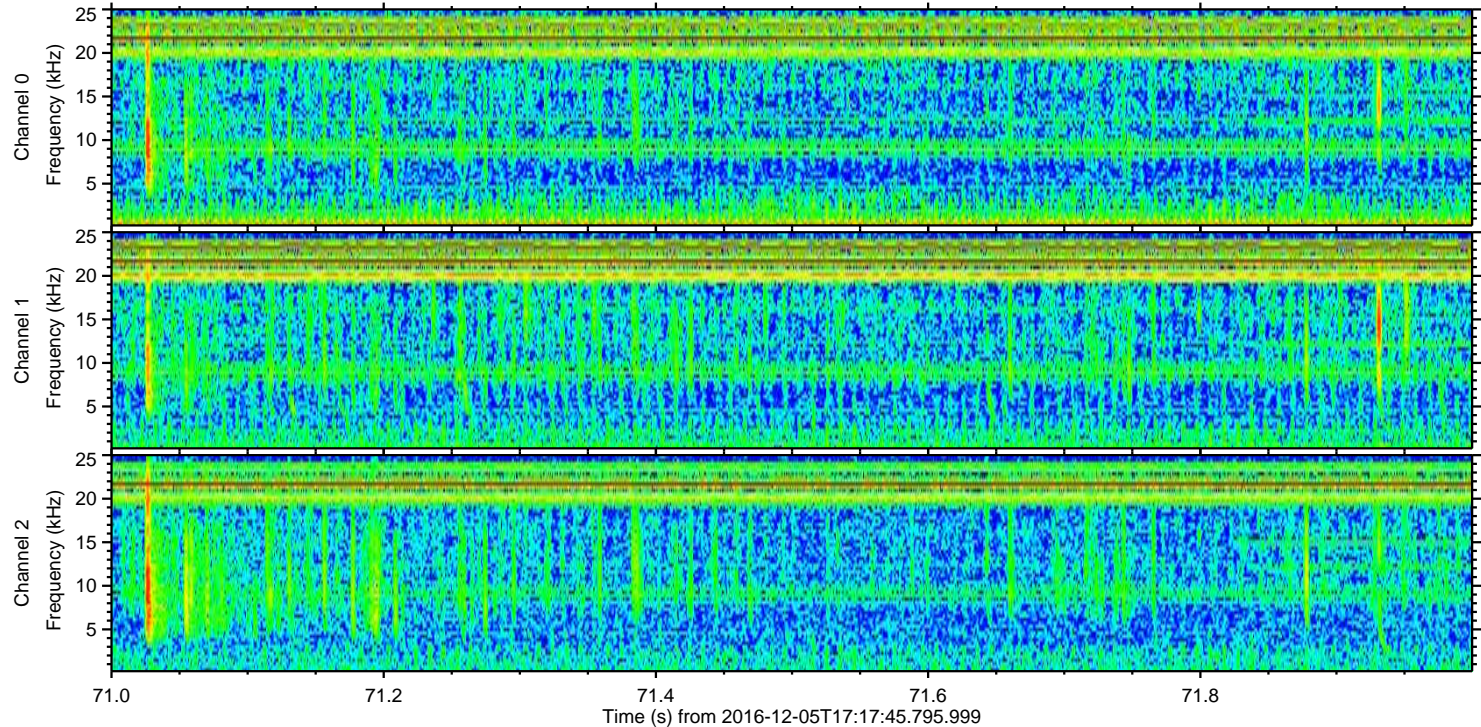
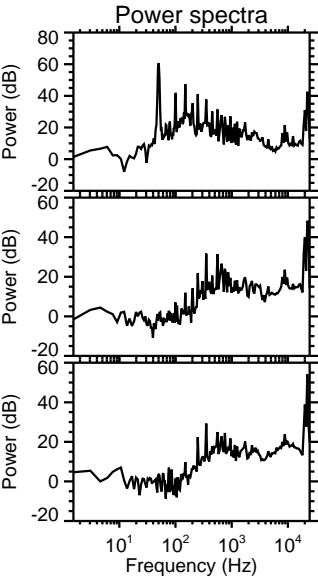
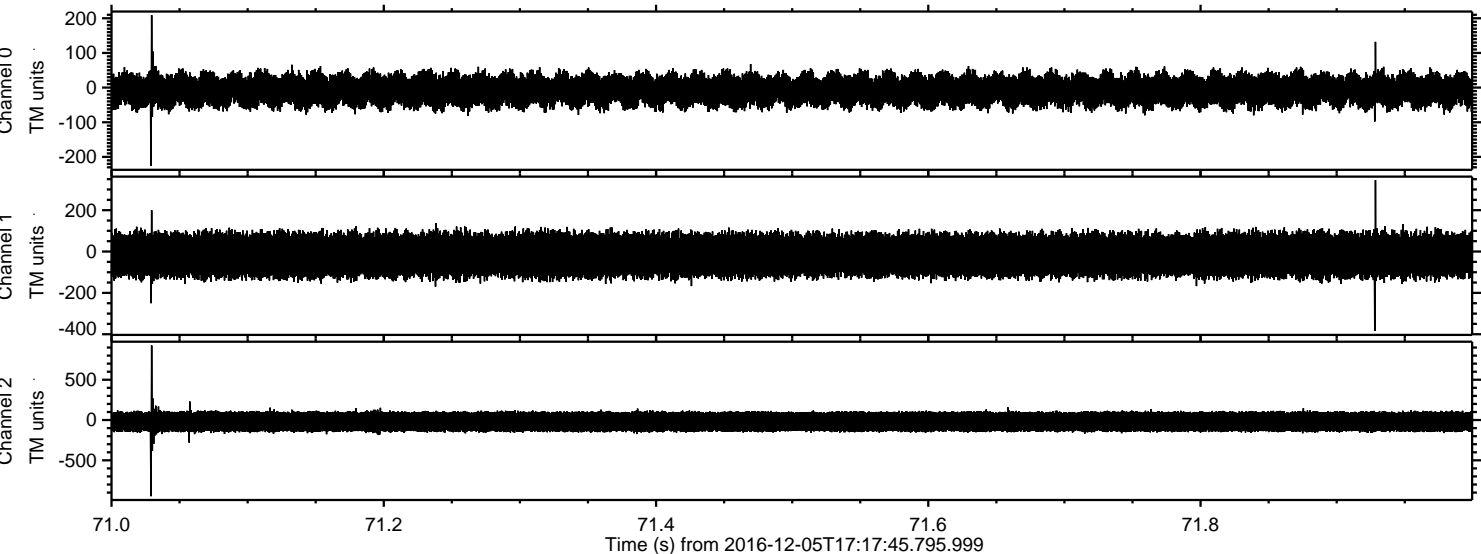
Processed Mon Dec 5 18:26:12 2016 by ELM ver.2012-10-06 from 001\_\_elm20161205\_171744\_\_dat00.bin





ELMAVAN 3D WAVEFORMS (Measured data sampled at 50 kHz) 51000 packets of 144 samples from 2016-12-05T17:17:45.795.999. Part 72/147

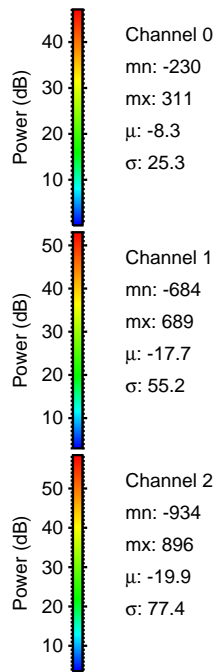
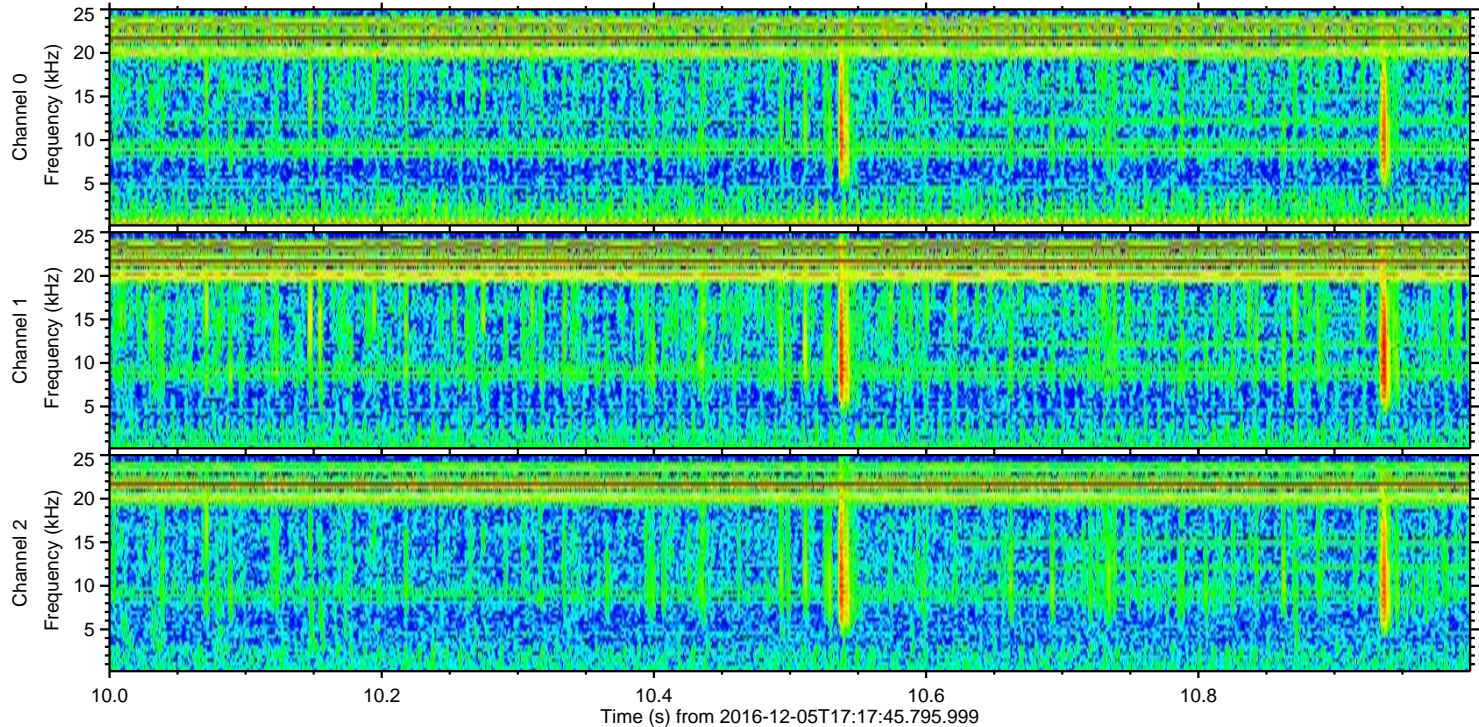
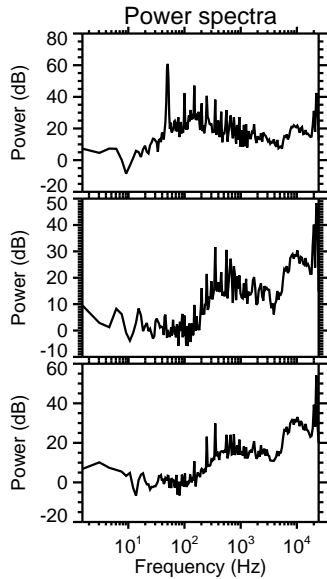
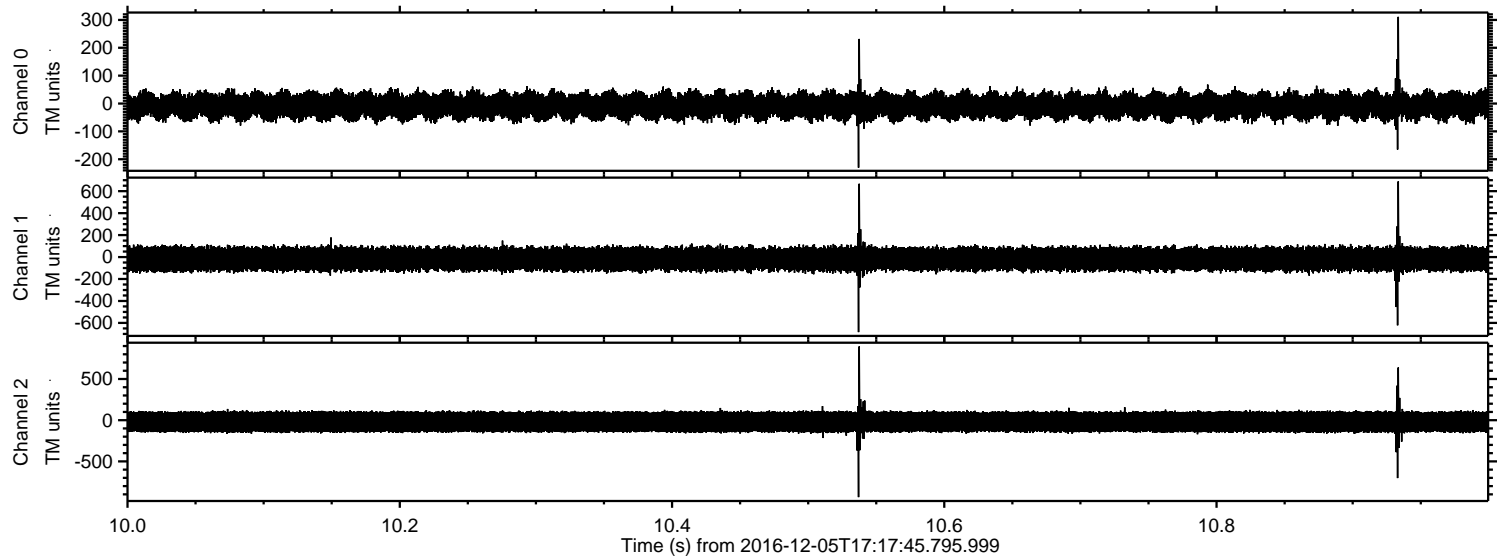
Processed Mon Dec 5 18:26:13 2016 by ELM ver.2012-10-06 from 001\_\_elm20161205\_171744\_\_dat00.bin





ELMAVAN 3D WAVEFORMS (Measured data sampled at 50 kHz) 51000 packets of 144 samples from 2016-12-05T17:17:45.795.999. Part 11/147

Processed Mon Dec 5 18:26:14 2016 by ELM ver.2012-10-06 from 001\_\_elm20161205\_171744\_\_dat00.bin



Channel 0  
mn: -230  
mx: 311  
 $\mu$ : -8.3  
 $\sigma$ : 25.3

Channel 1  
mn: -684  
mx: 689  
 $\mu$ : -17.7  
 $\sigma$ : 55.2

Channel 2  
mn: -934  
mx: 896  
 $\mu$ : -19.9  
 $\sigma$ : 77.4



Processed Mon Dec 5 18:26:15 2016 by ELM ver.2012-10-06 from 001\_\_elm20161205\_171744\_\_dat00.bin

