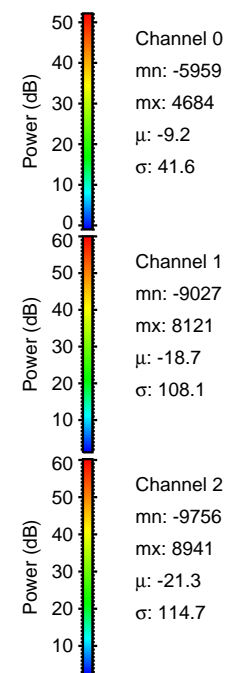
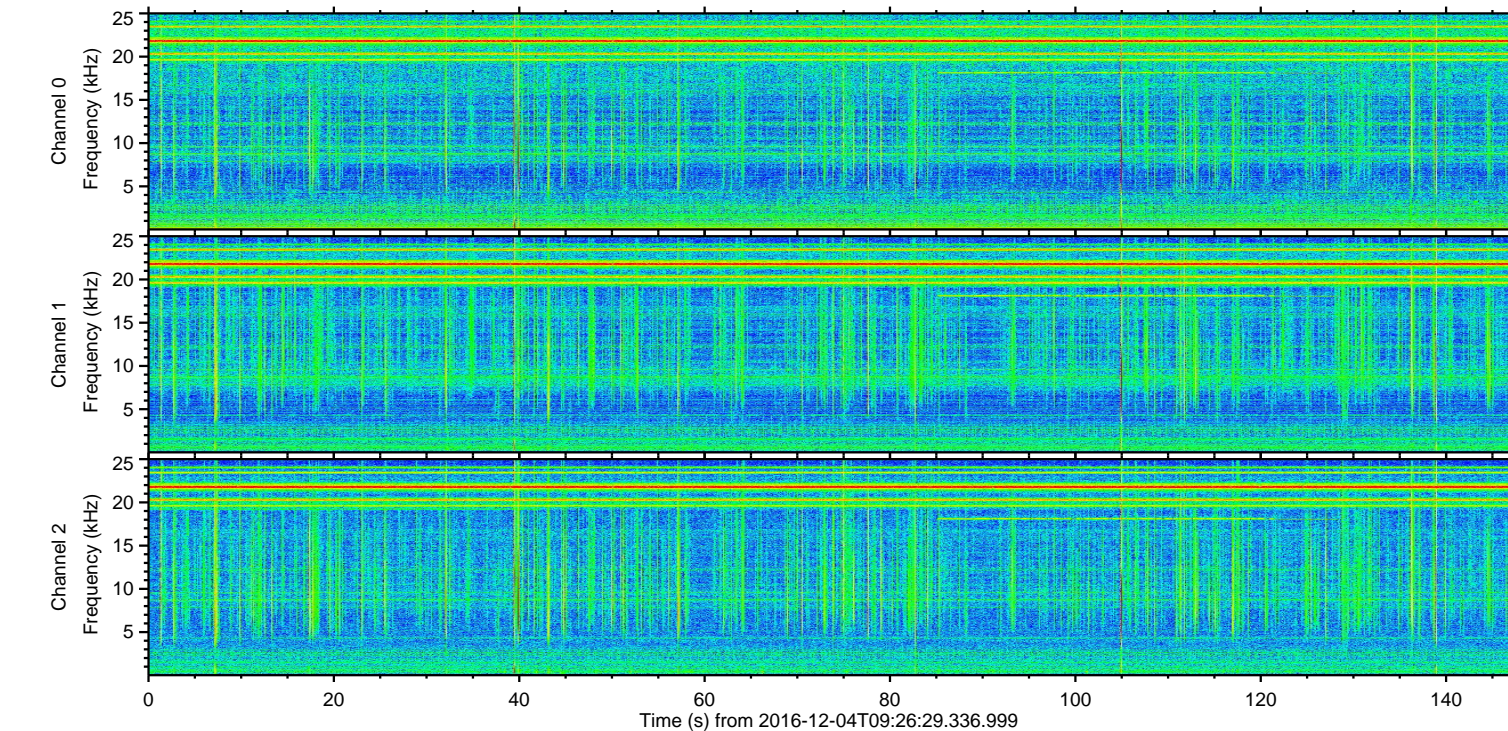
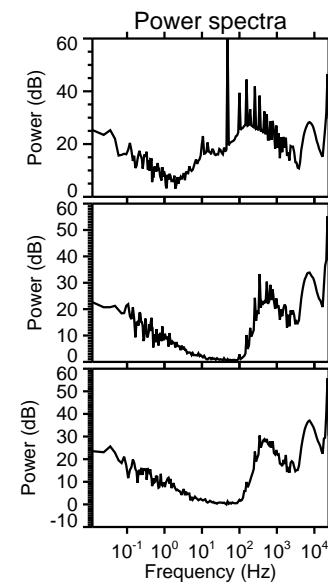
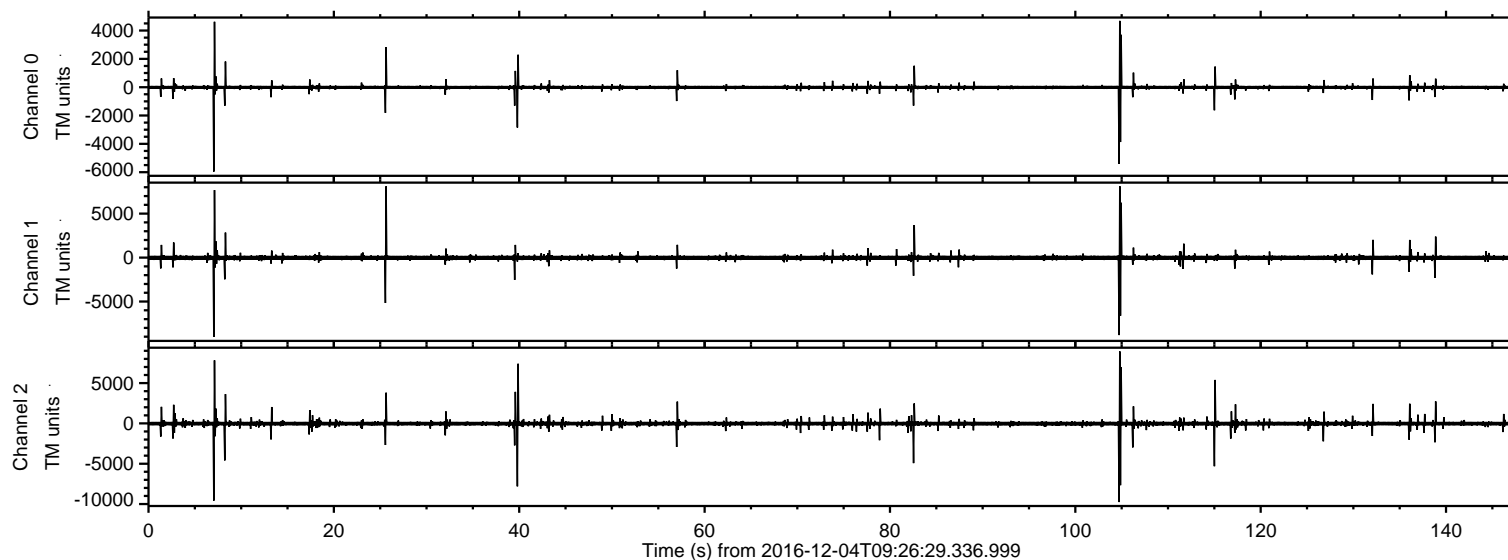


# ELMAVAN 3D WAVEFORMS (Measured data sampled at 50 kHz) 51000 packets of 144 samples from 2016-12-04T09:26:29.336.999.

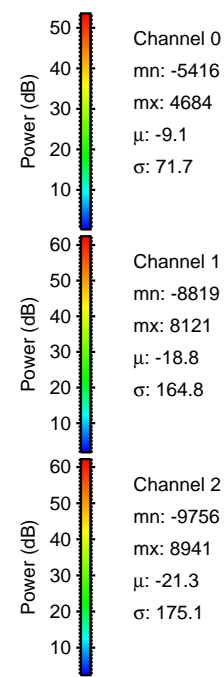
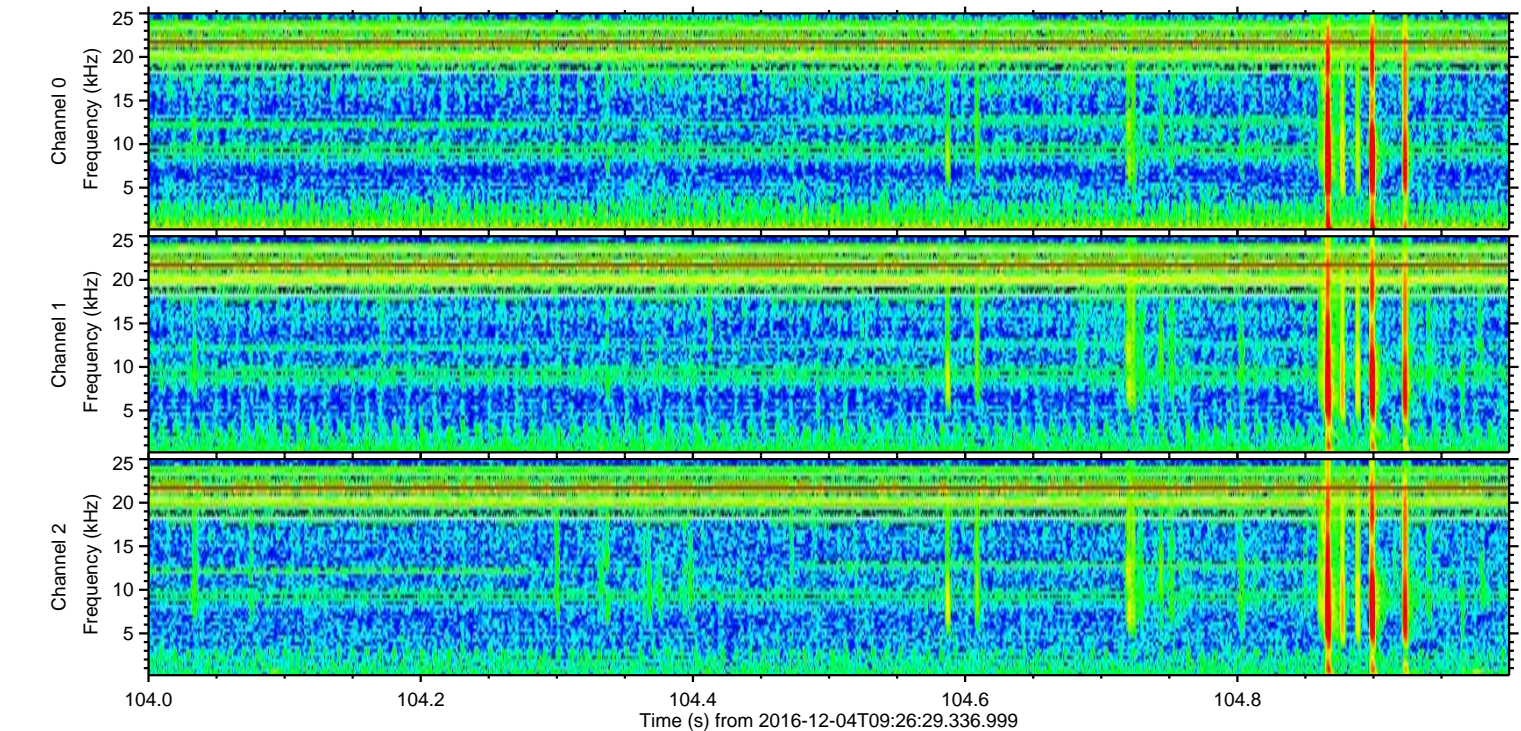
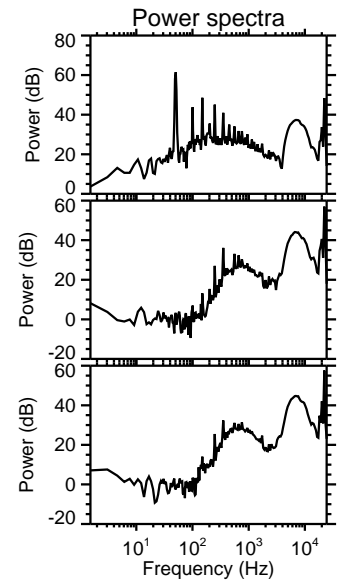
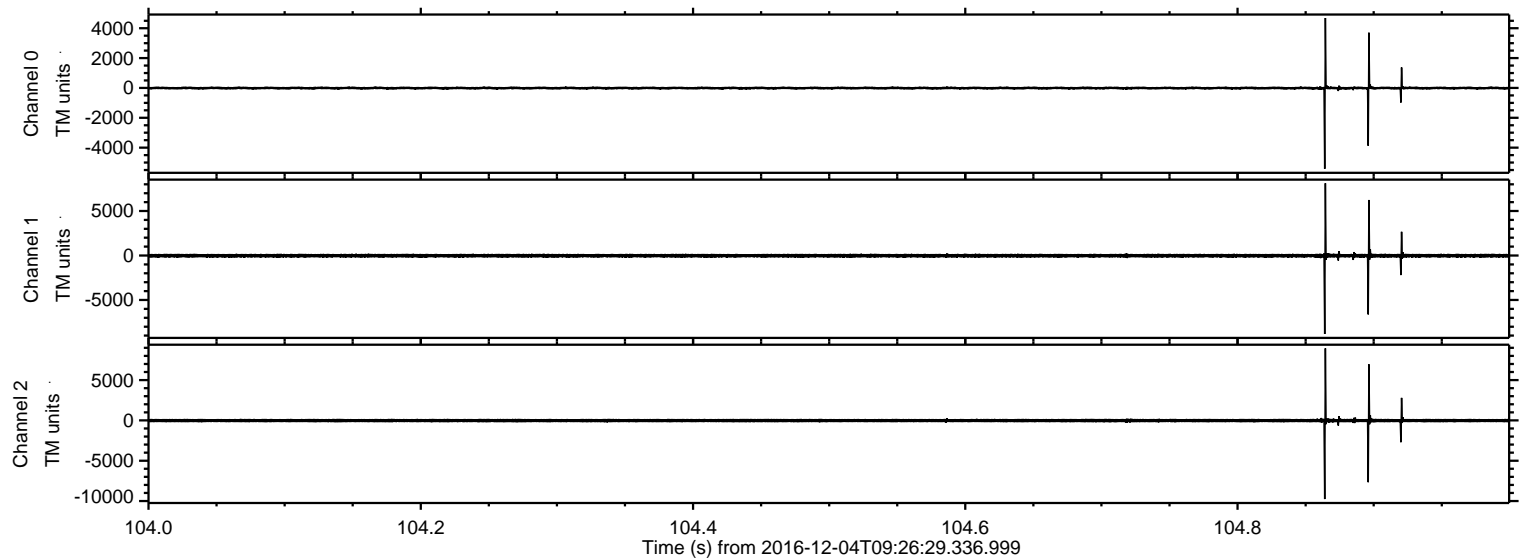
Processed Sun Dec 4 21:26:06 2016 by ELM ver.2012-10-06 from 001\_\_elm20161204\_092628\_\_dat00.bin





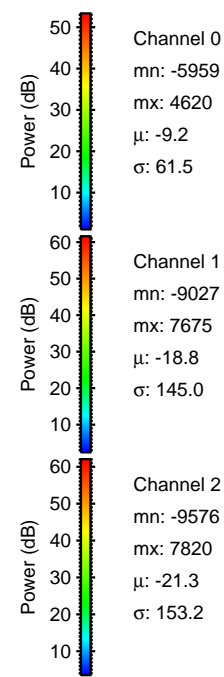
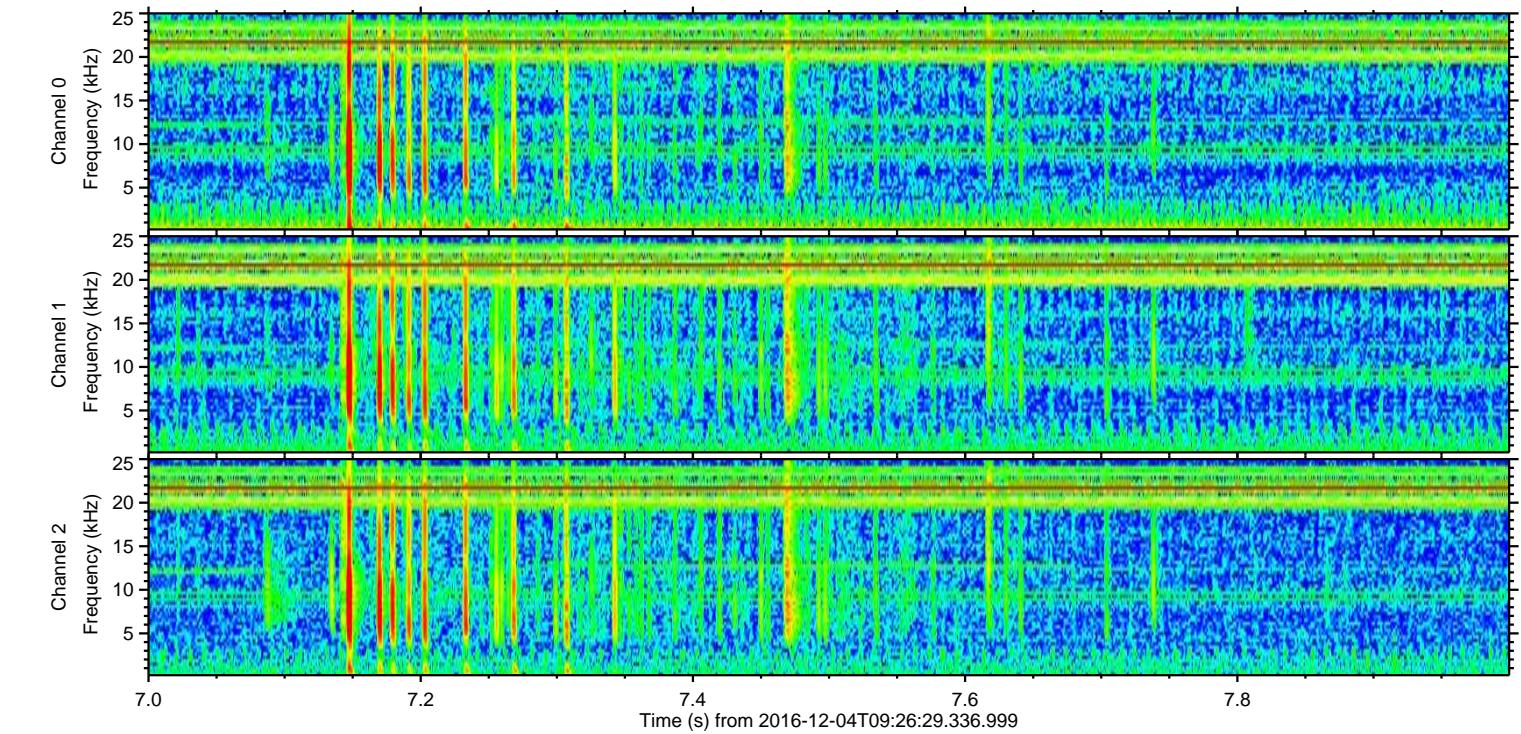
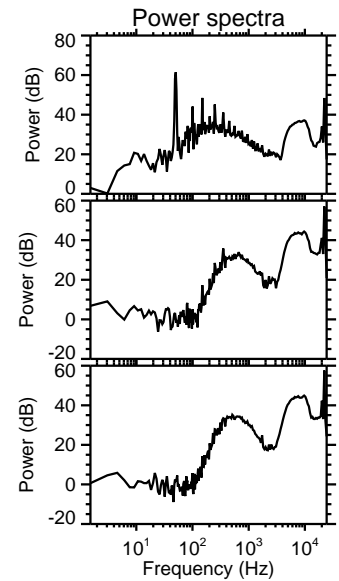
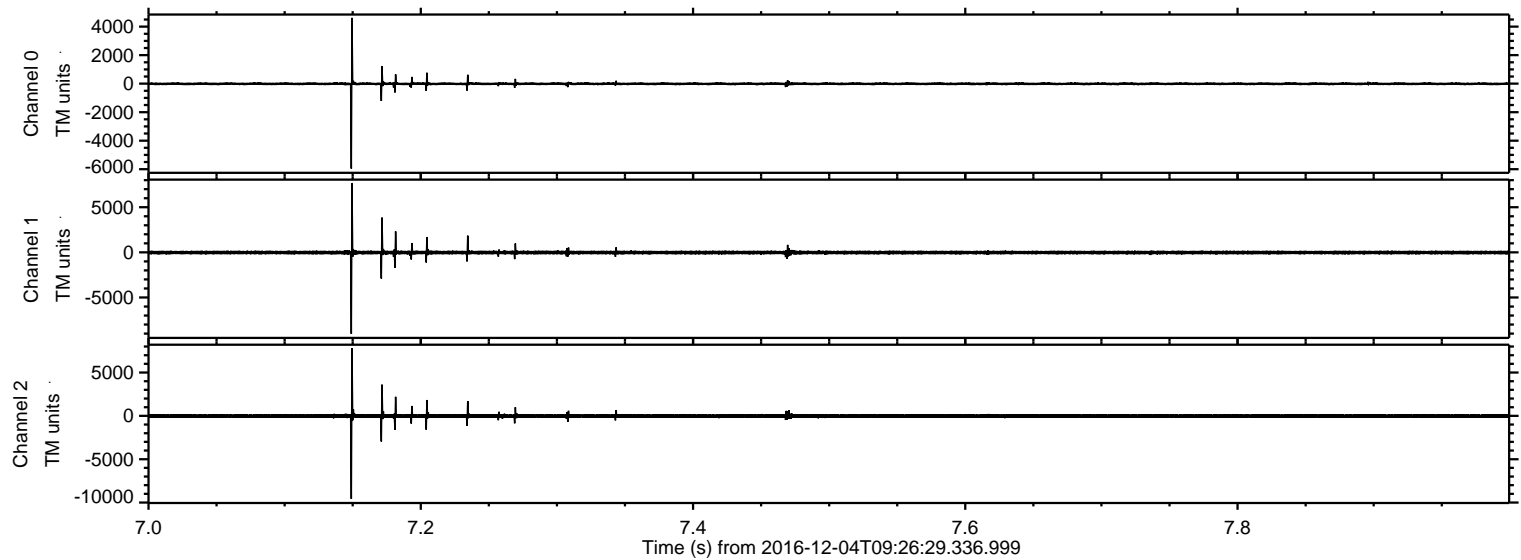
ELMAVAN 3D WAVEFORMS (Measured data sampled at 50 kHz) 51000 packets of 144 samples from 2016-12-04T09:26:29.336.999. Part 105/147

Processed Sun Dec 4 21:26:17 2016 by ELM ver.2012-10-06 from 001\_\_elm20161204\_092628\_\_dat00.bin





Processed Sun Dec 4 21:26:18 2016 by ELM ver.2012-10-06 from 001\_\_elm20161204\_092628\_\_dat00.bin



Channel 0  
mn: -5959  
mx: 4620  
 $\mu$ : -9.2  
 $\sigma$ : 61.5

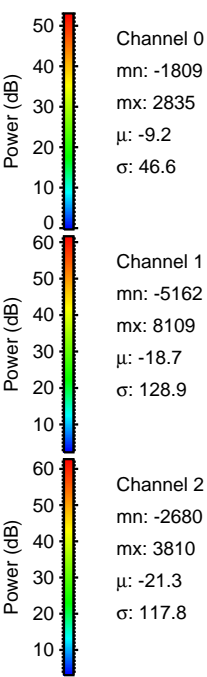
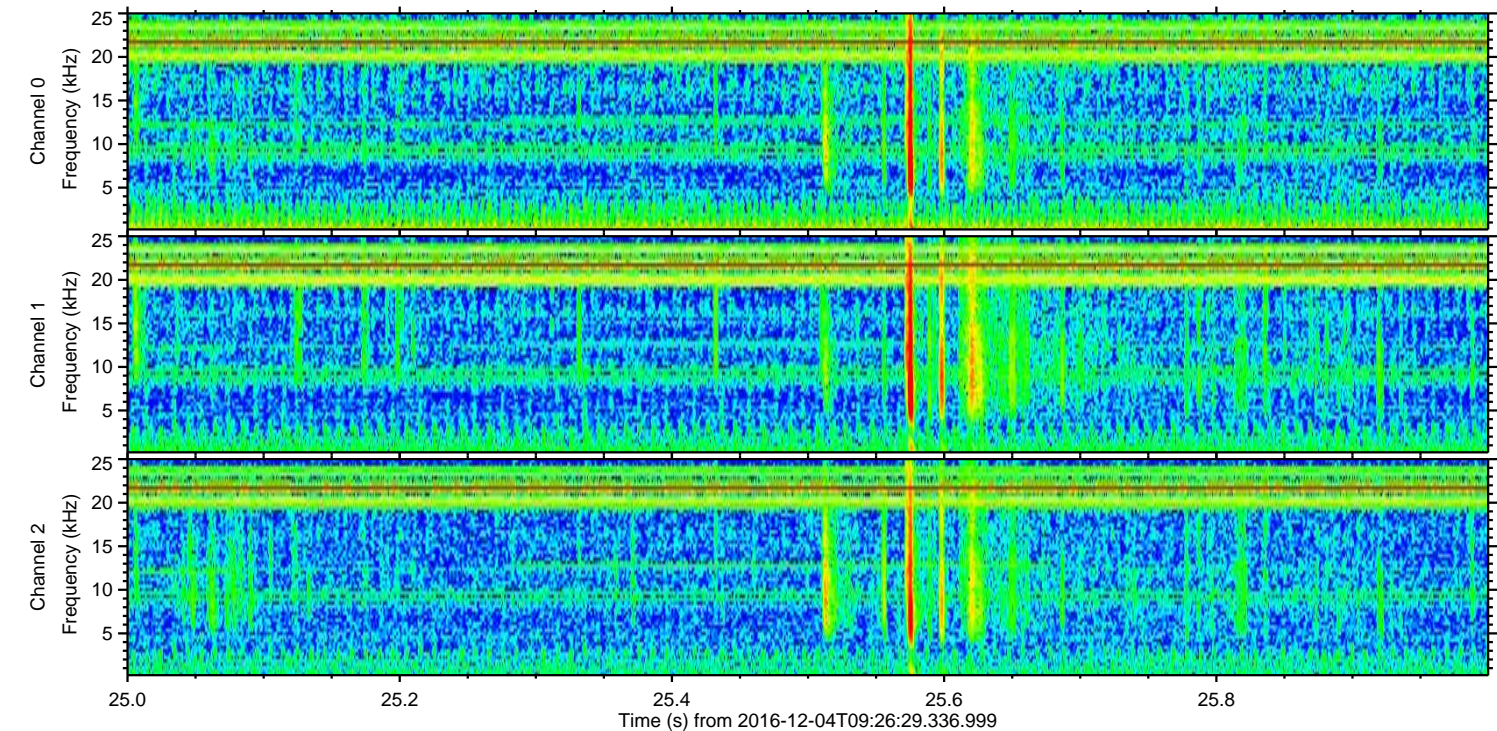
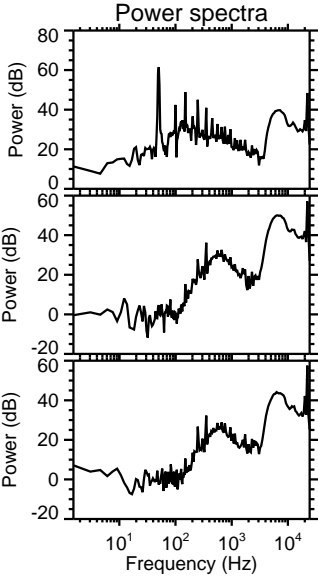
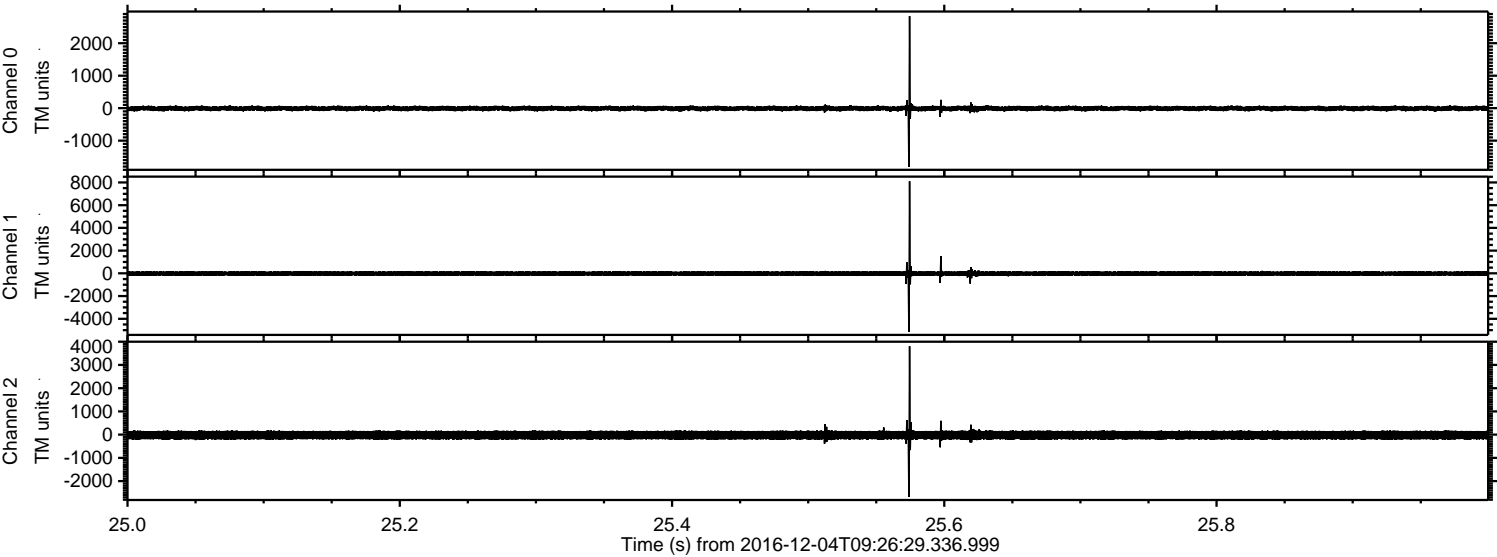
Channel 1  
mn: -9027  
mx: 7675  
 $\mu$ : -18.8  
 $\sigma$ : 145.0

Channel 2  
mn: -9576  
mx: 7820  
 $\mu$ : -21.3  
 $\sigma$ : 153.2



ELMAVAN 3D WAVEFORMS (Measured data sampled at 50 kHz) 51000 packets of 144 samples from 2016-12-04T09:26:29.336.999. Part 26/147

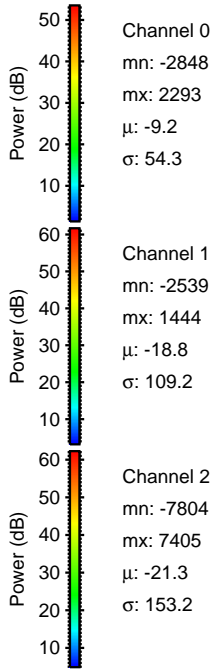
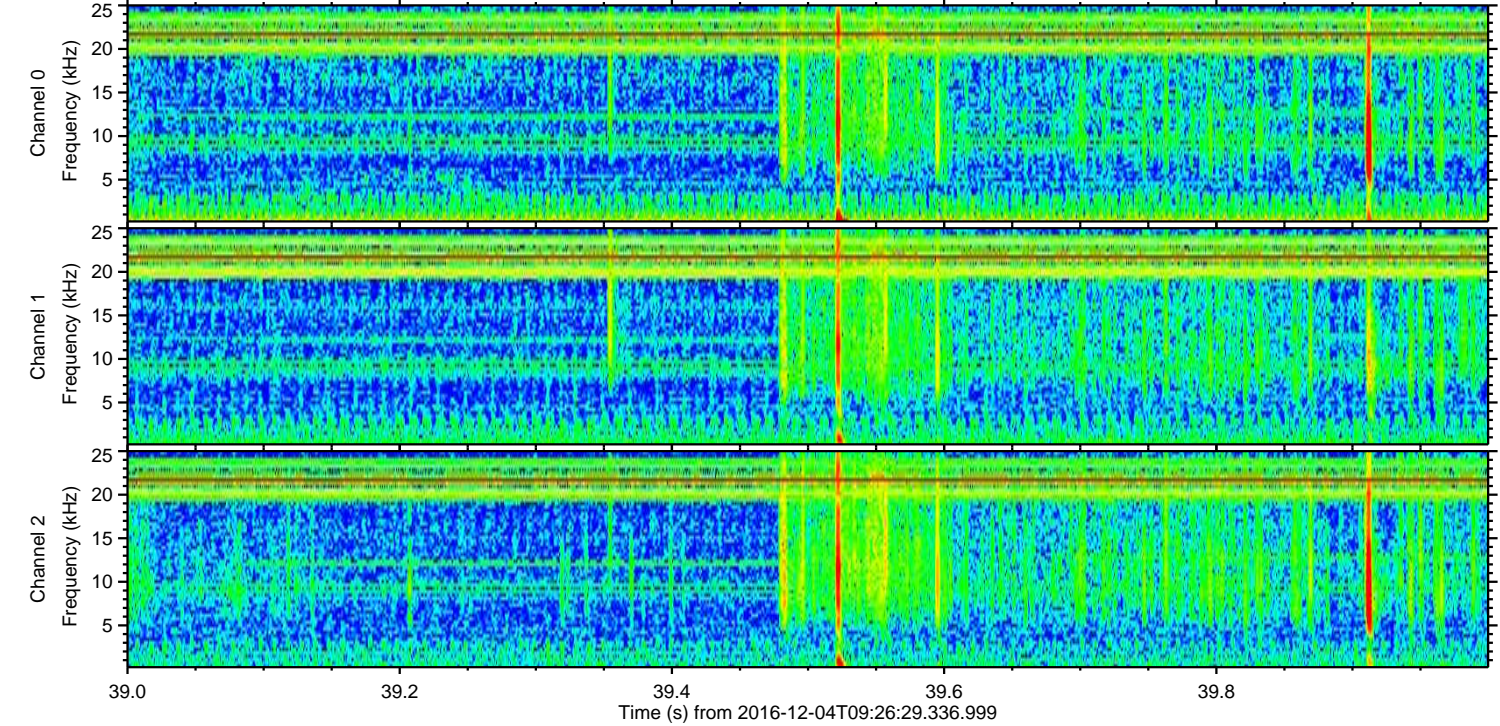
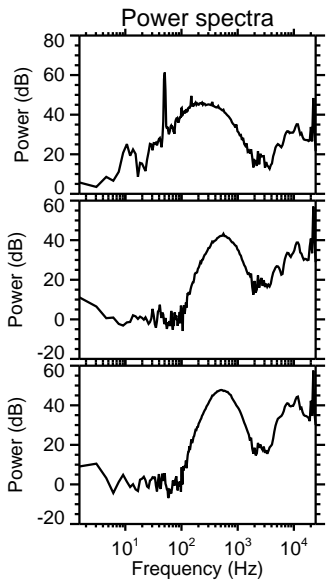
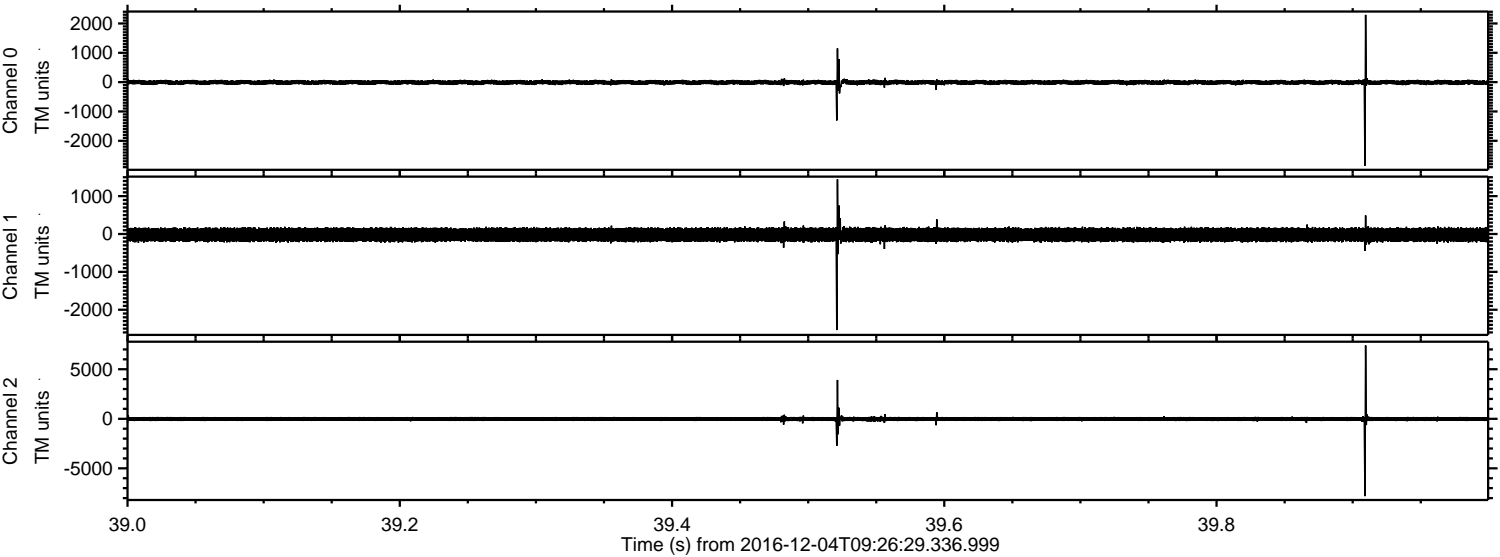
Processed Sun Dec 4 21:26:19 2016 by ELM ver.2012-10-06 from 001\_\_elm20161204\_092628\_\_dat00.bin





ELMAVAN 3D WAVEFORMS (Measured data sampled at 50 kHz) 51000 packets of 144 samples from 2016-12-04T09:26:29.336.999. Part 40/147

Processed Sun Dec 4 21:26:20 2016 by ELM ver.2012-10-06 from 001\_\_elm20161204\_092628\_\_dat00.bin



Channel 0  
mn: -2848  
mx: 2293  
 $\mu$ : -9.2  
 $\sigma$ : 54.3

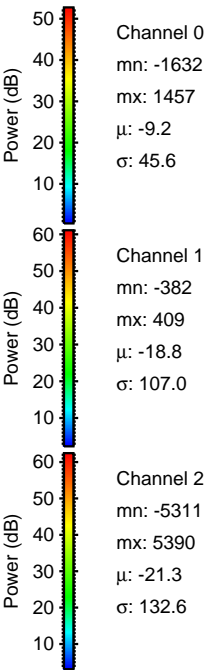
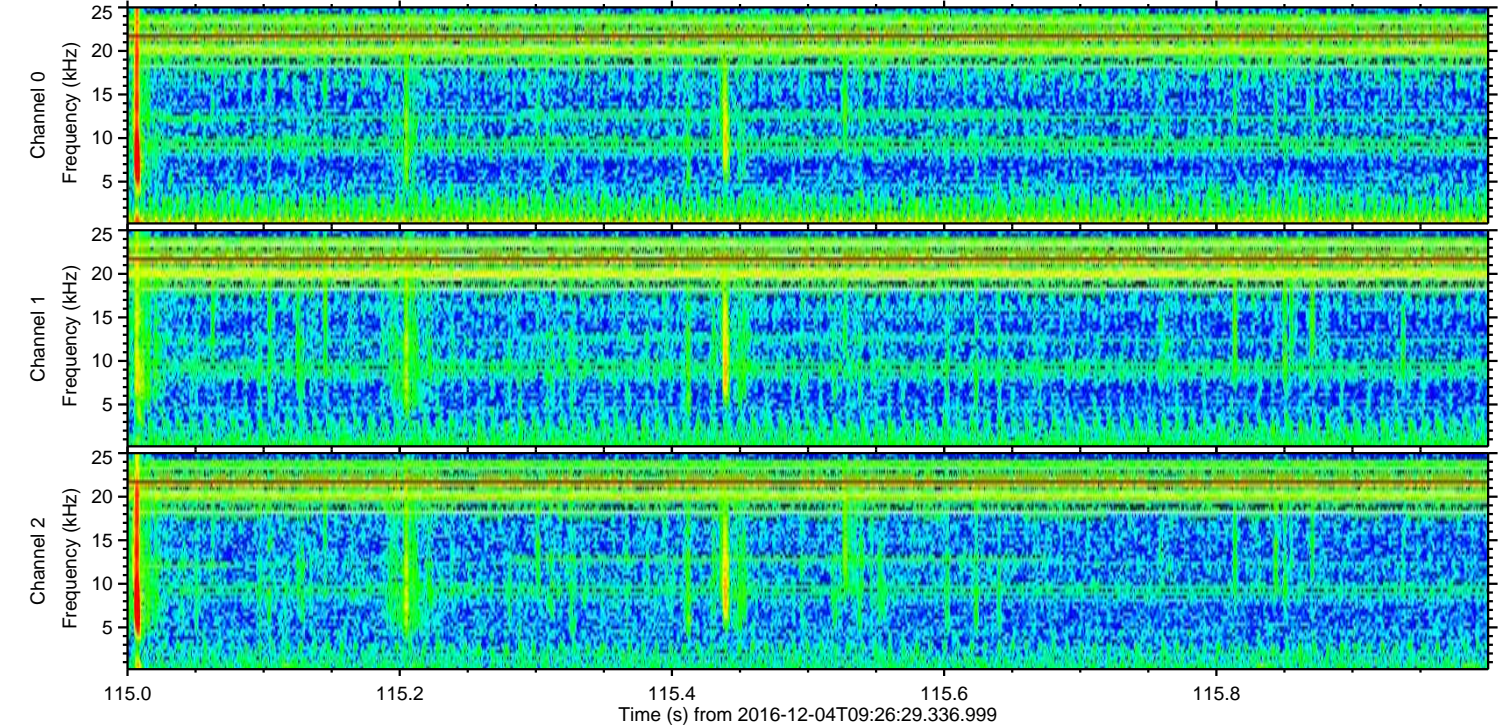
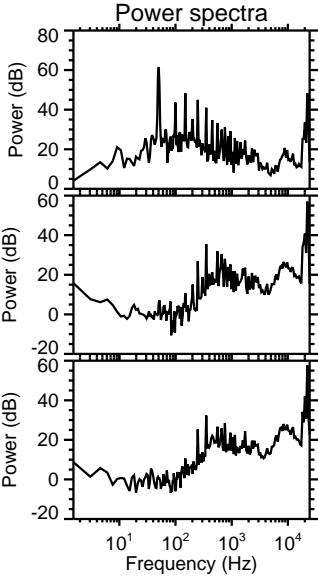
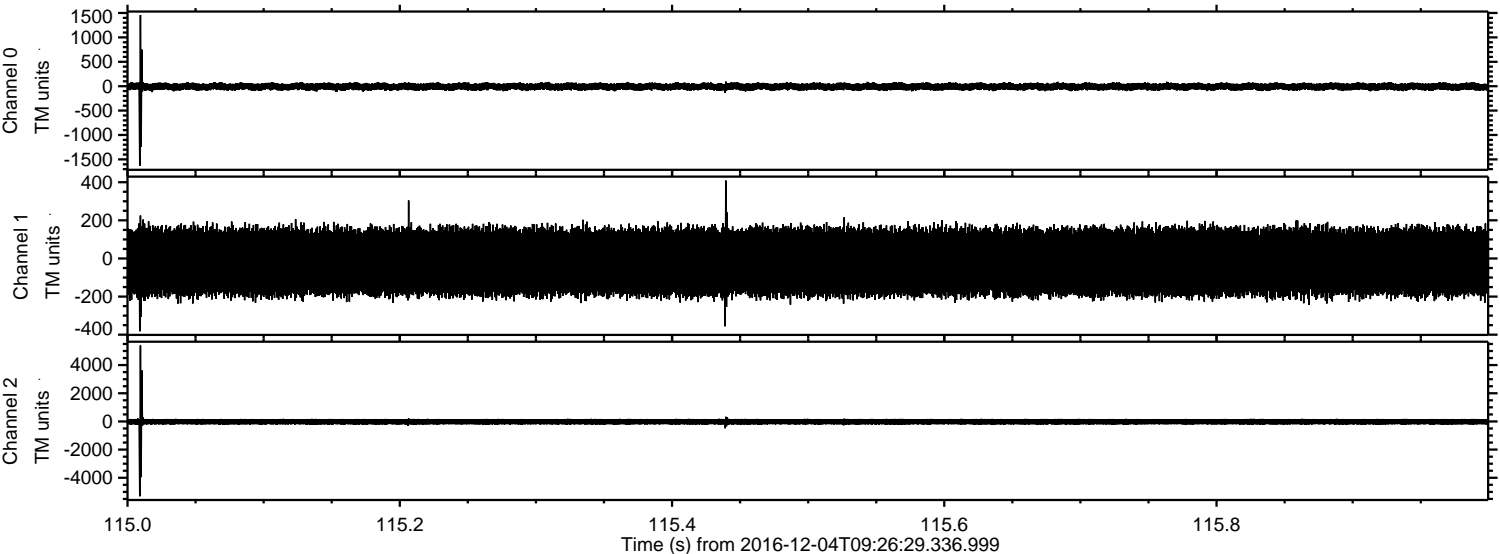
Channel 1  
mn: -2539  
mx: 1444  
 $\mu$ : -18.8  
 $\sigma$ : 109.2

Channel 2  
mn: -7804  
mx: 7405  
 $\mu$ : -21.3  
 $\sigma$ : 153.2



ELMAVAN 3D WAVEFORMS (Measured data sampled at 50 kHz) 51000 packets of 144 samples from 2016-12-04T09:26:29.336.999. Part 116/147

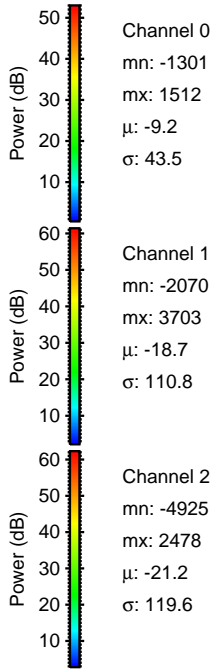
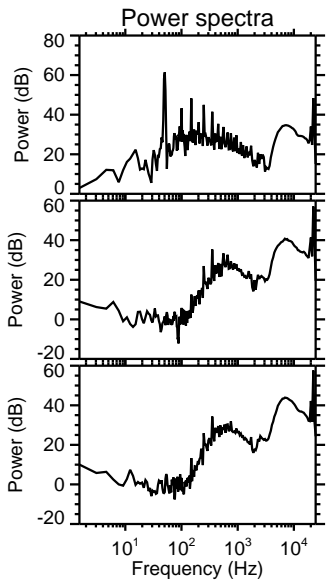
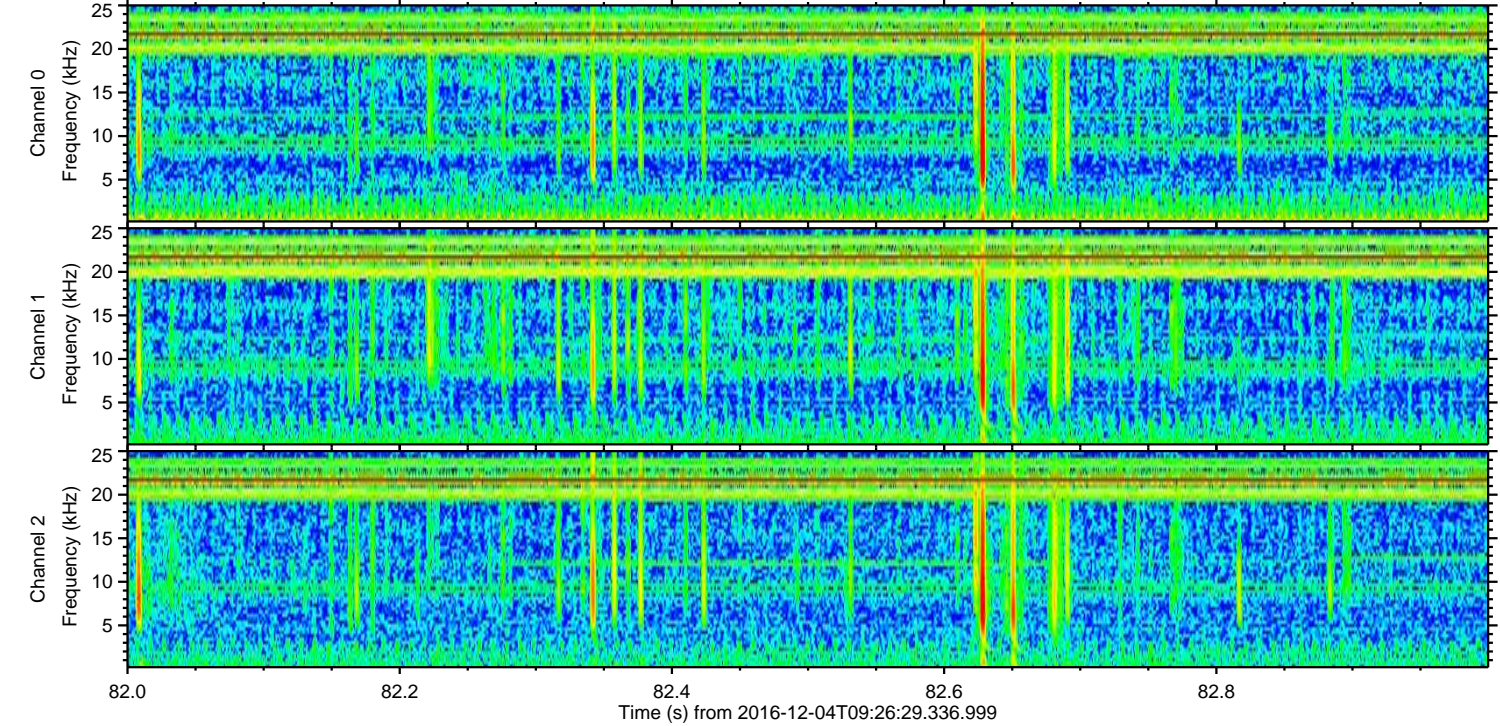
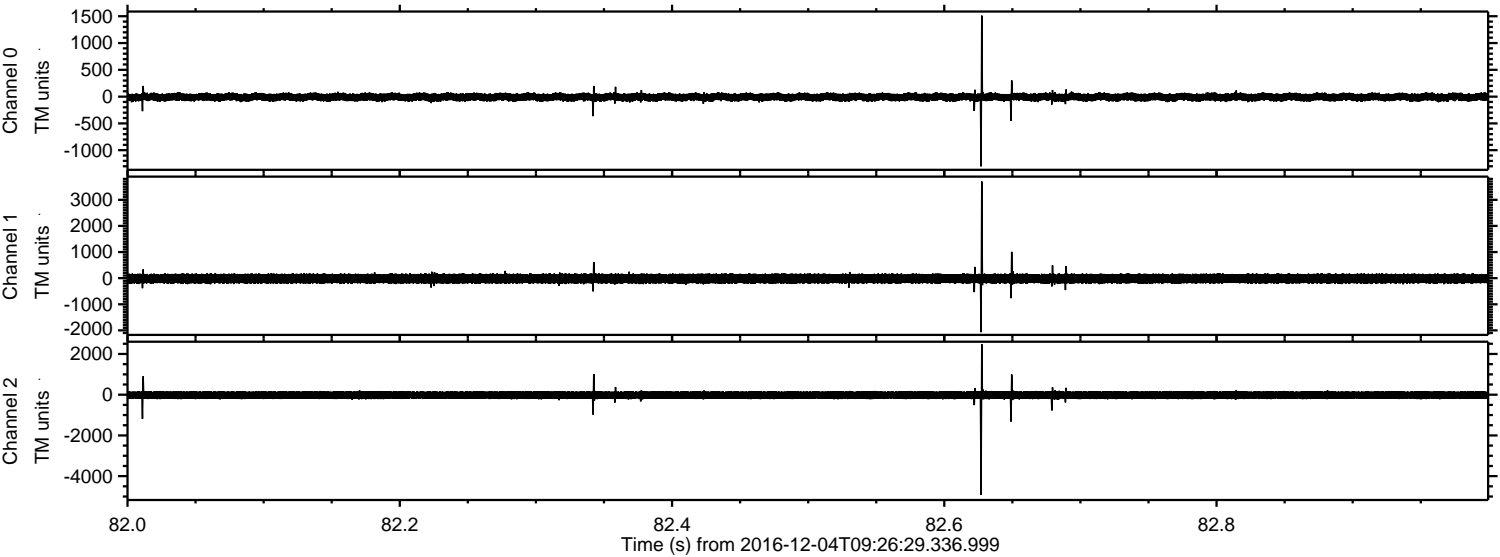
Processed Sun Dec 4 21:26:21 2016 by ELM ver.2012-10-06 from 001\_\_elm20161204\_092628\_\_dat00.bin





ELMAVAN 3D WAVEFORMS (Measured data sampled at 50 kHz) 51000 packets of 144 samples from 2016-12-04T09:26:29.336.999. Part 83/147

Processed Sun Dec 4 21:26:22 2016 by ELM ver.2012-10-06 from 001\_\_elm20161204\_092628\_\_dat00.bin



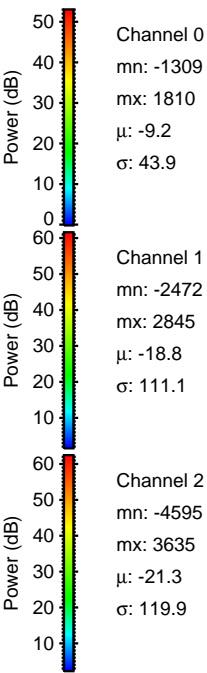
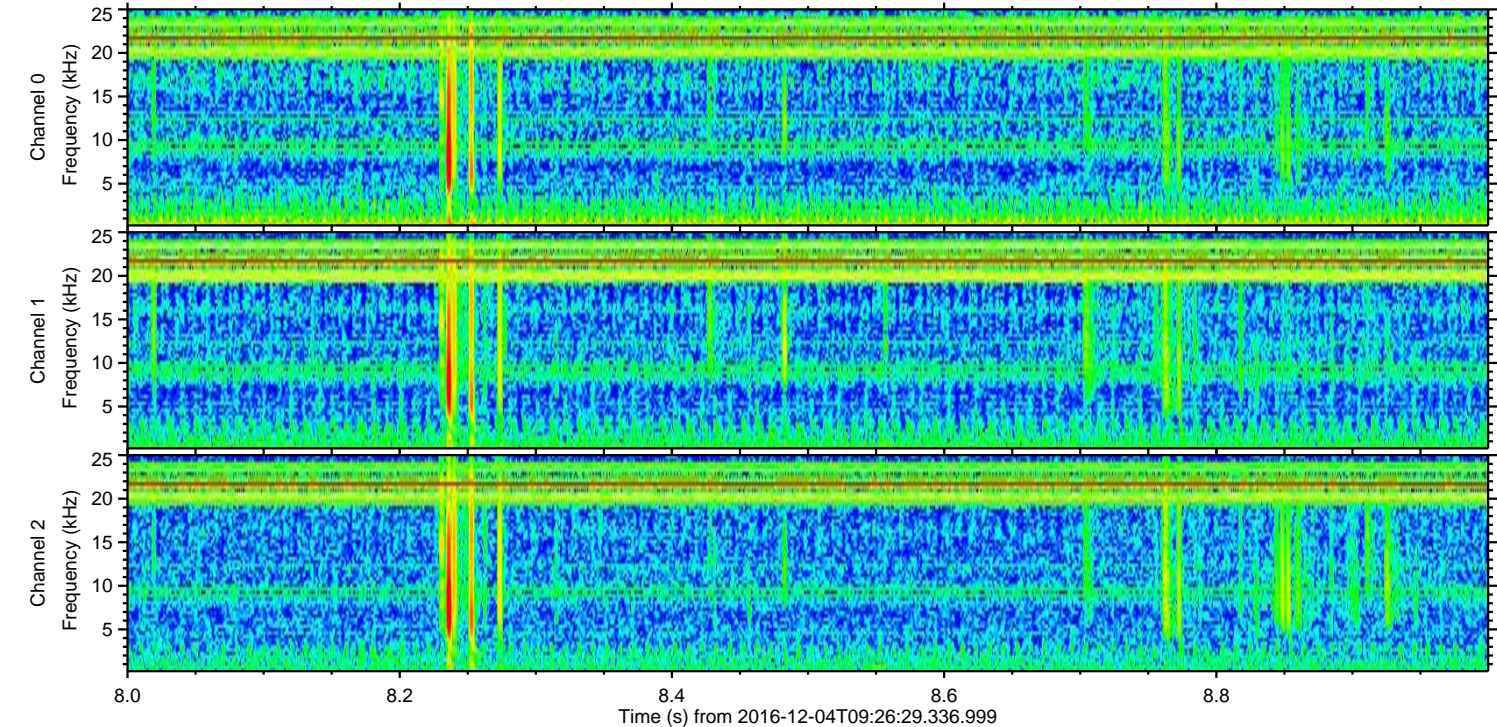
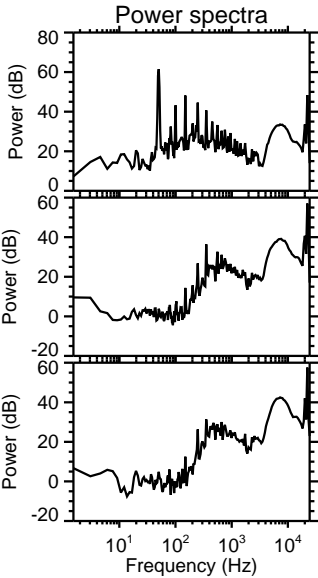
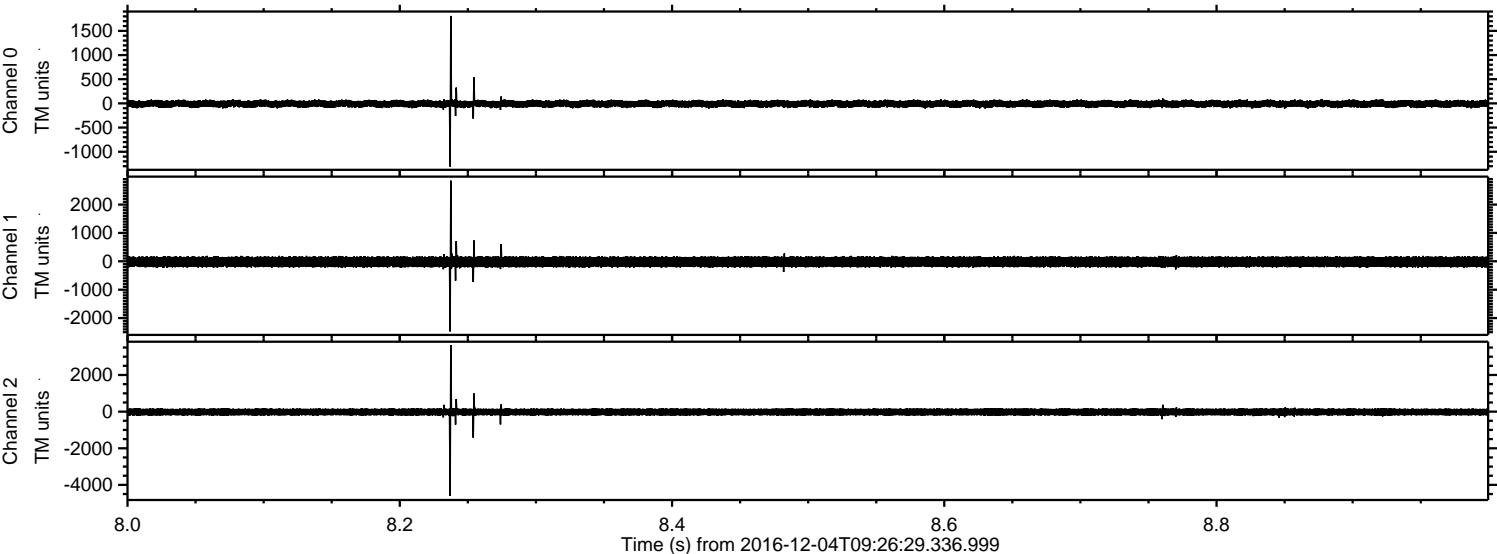
Channel 0  
mn: -1301  
mx: 1512  
 $\mu$ : -9.2  
 $\sigma$ : 43.5

Channel 1  
mn: -2070  
mx: 3703  
 $\mu$ : -18.7  
 $\sigma$ : 110.8

Channel 2  
mn: -4925  
mx: 2478  
 $\mu$ : -21.2  
 $\sigma$ : 119.6



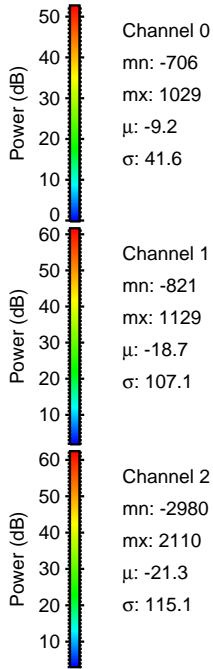
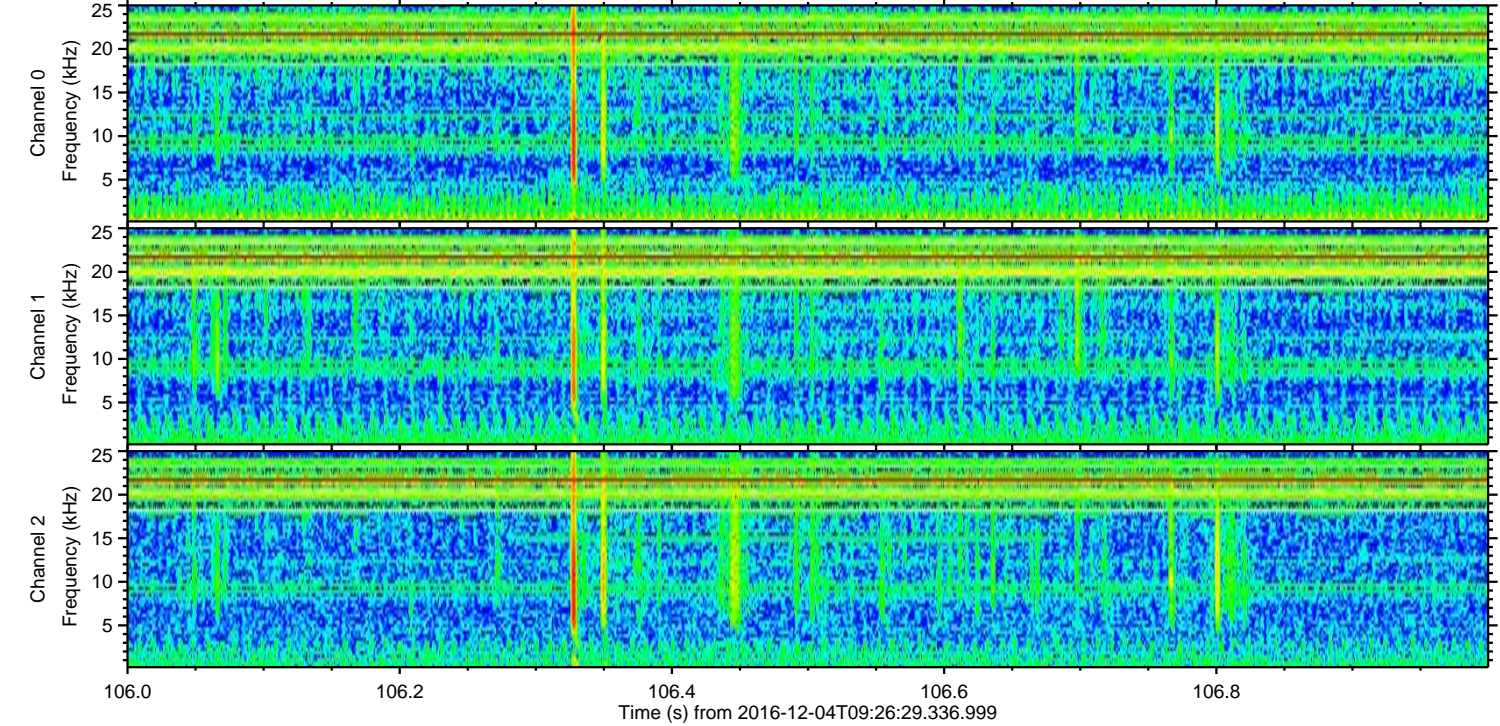
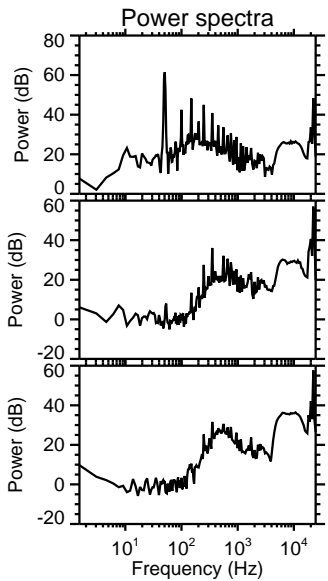
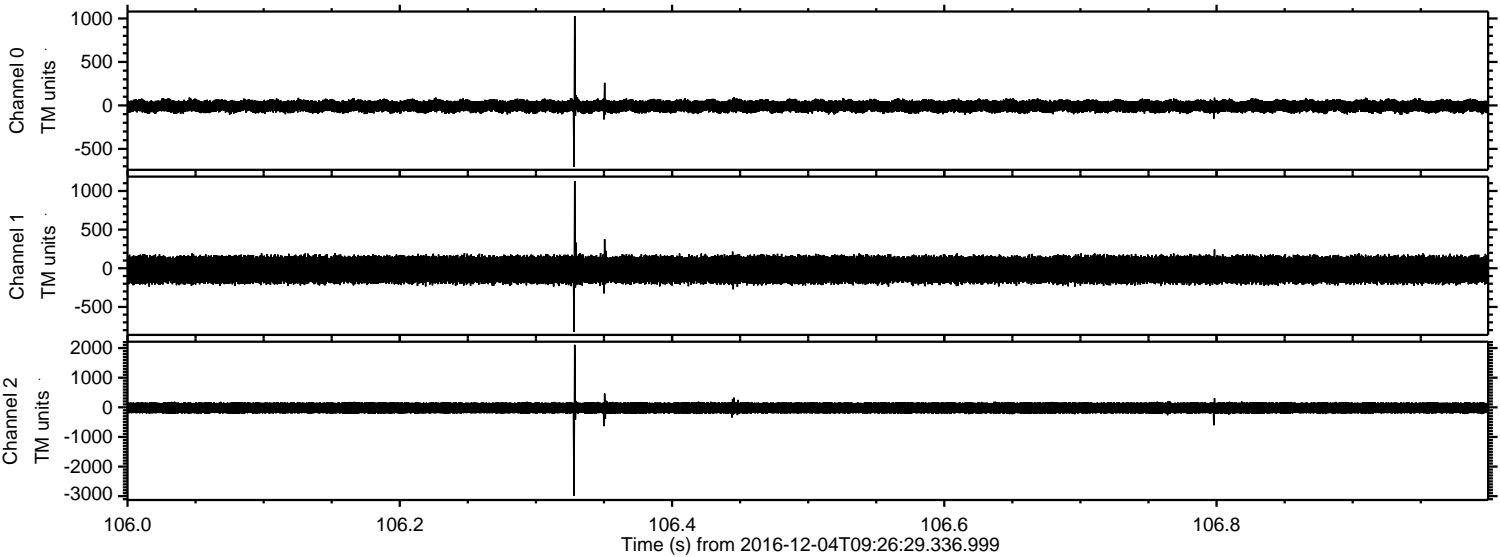
Processed Sun Dec 4 21:26:23 2016 by ELM ver.2012-10-06 from 001\_\_elm20161204\_092628\_\_dat00.bin





ELMAVAN 3D WAVEFORMS (Measured data sampled at 50 kHz) 51000 packets of 144 samples from 2016-12-04T09:26:29.336.999. Part 107/147

Processed Sun Dec 4 21:26:24 2016 by ELM ver.2012-10-06 from 001\_\_elm20161204\_092628\_\_dat00.bin



Channel 0  
mn: -706  
mx: 1029  
 $\mu$ : -9.2  
 $\sigma$ : 41.6

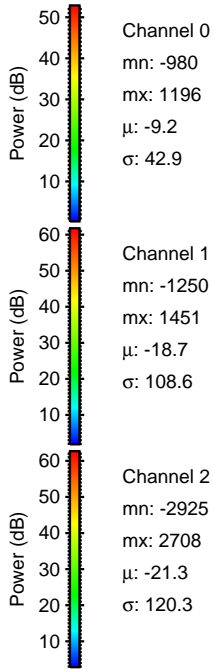
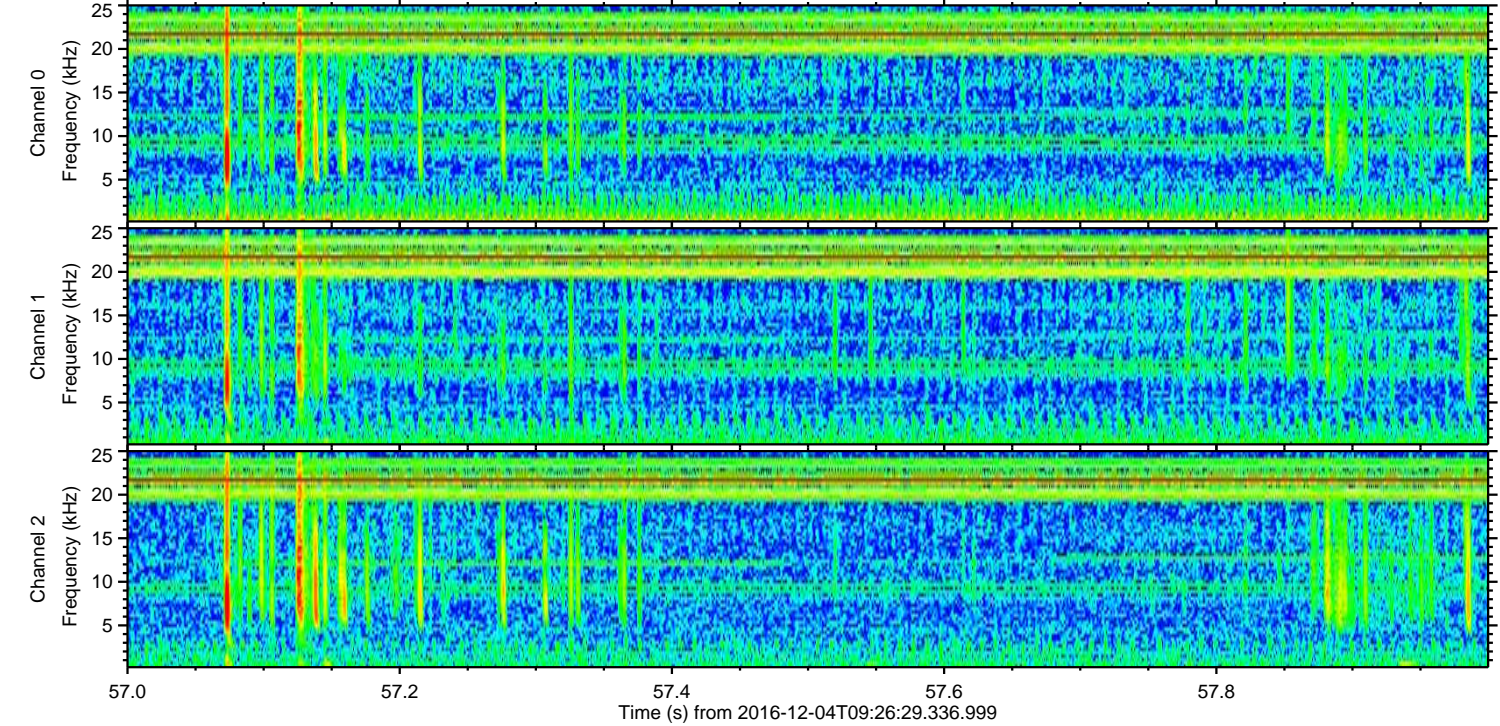
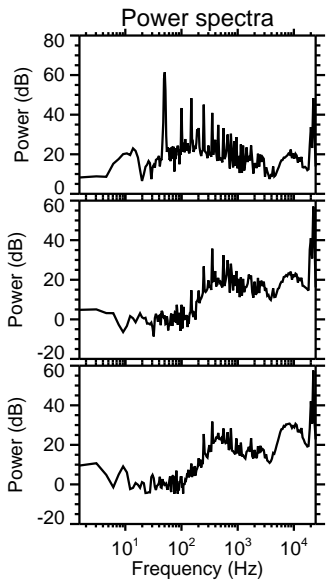
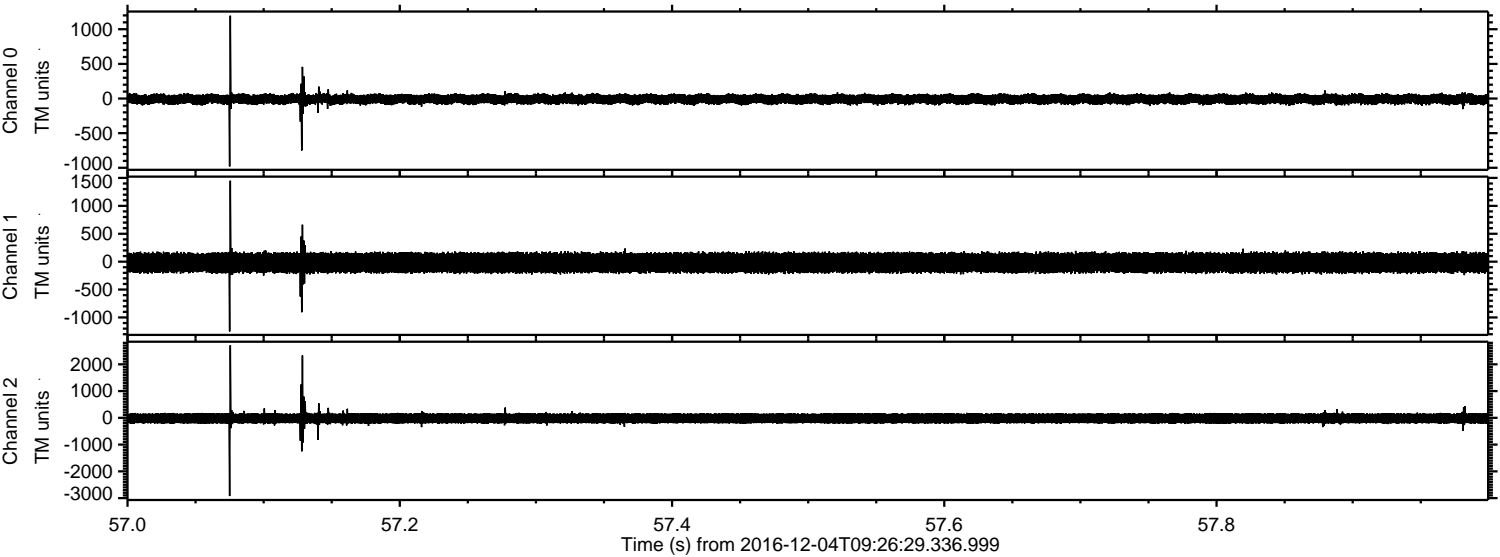
Channel 1  
mn: -821  
mx: 1129  
 $\mu$ : -18.7  
 $\sigma$ : 107.1

Channel 2  
mn: -2980  
mx: 2110  
 $\mu$ : -21.3  
 $\sigma$ : 115.1



ELMAVAN 3D WAVEFORMS (Measured data sampled at 50 kHz) 51000 packets of 144 samples from 2016-12-04T09:26:29.336.999. Part 58/147

Processed Sun Dec 4 21:26:25 2016 by ELM ver.2012-10-06 from 001\_\_elm20161204\_092628\_\_dat00.bin





Processed Sun Dec 4 21:26:25 2016 by ELM ver.2012-10-06 from 001\_\_elm20161204\_092628\_\_dat00.bin

