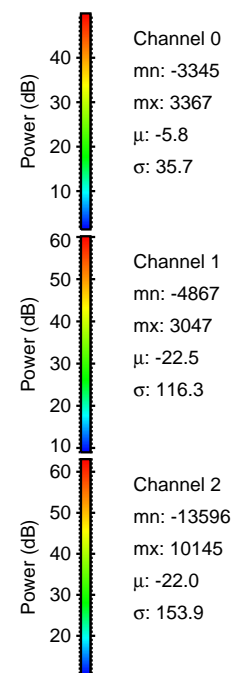
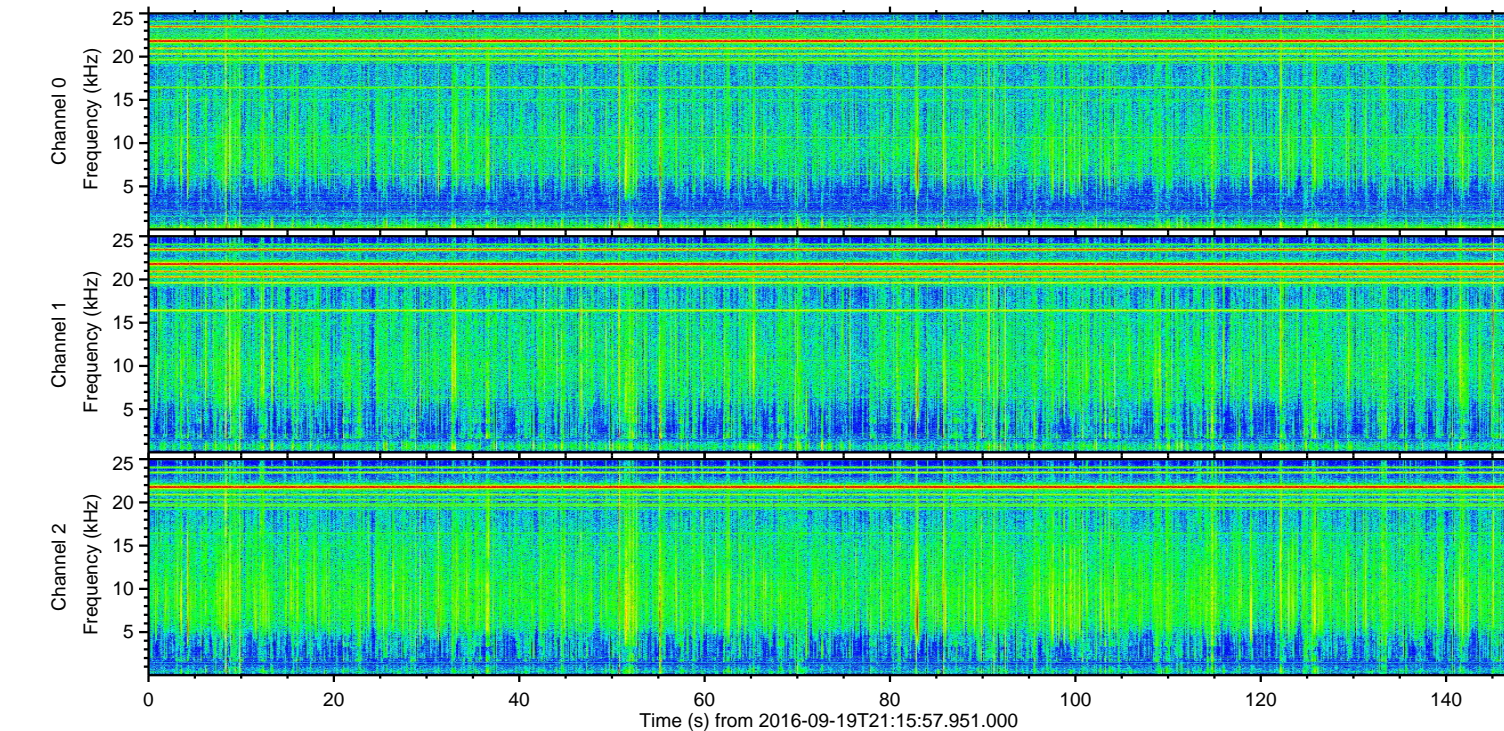
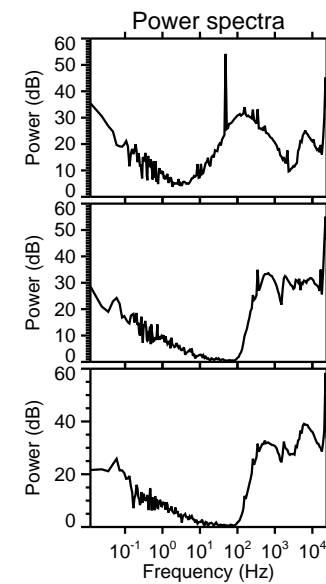
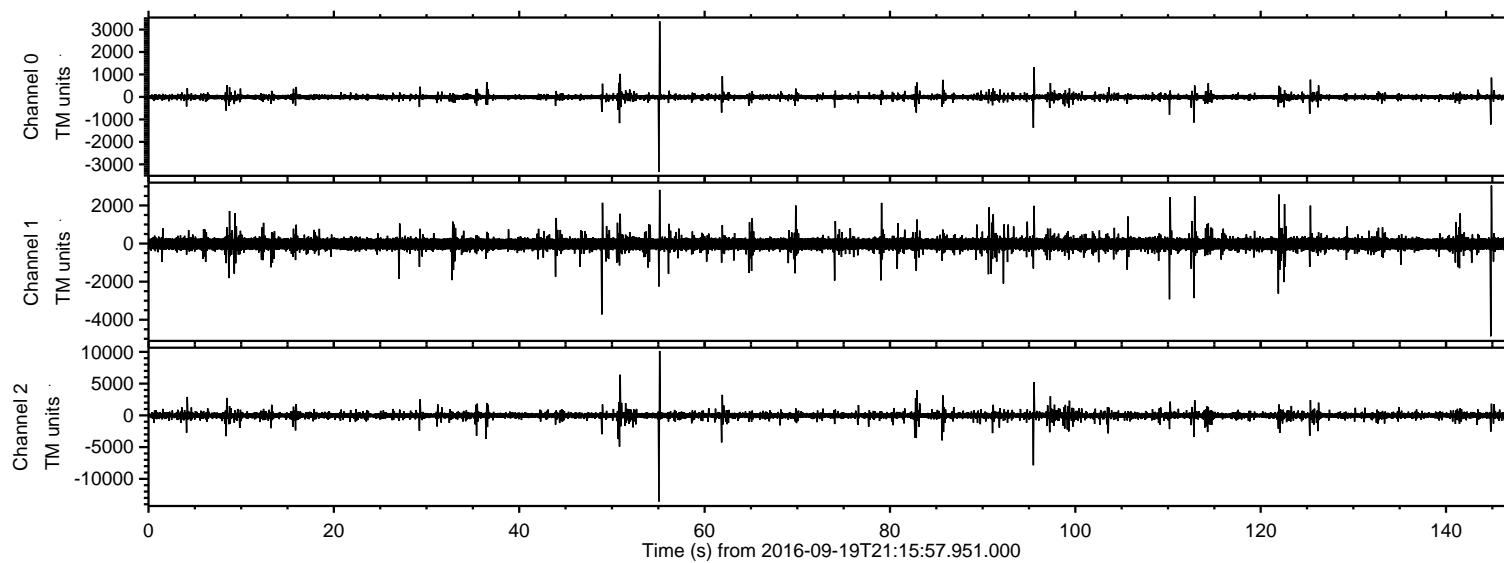


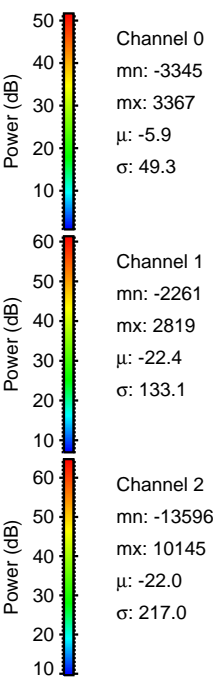
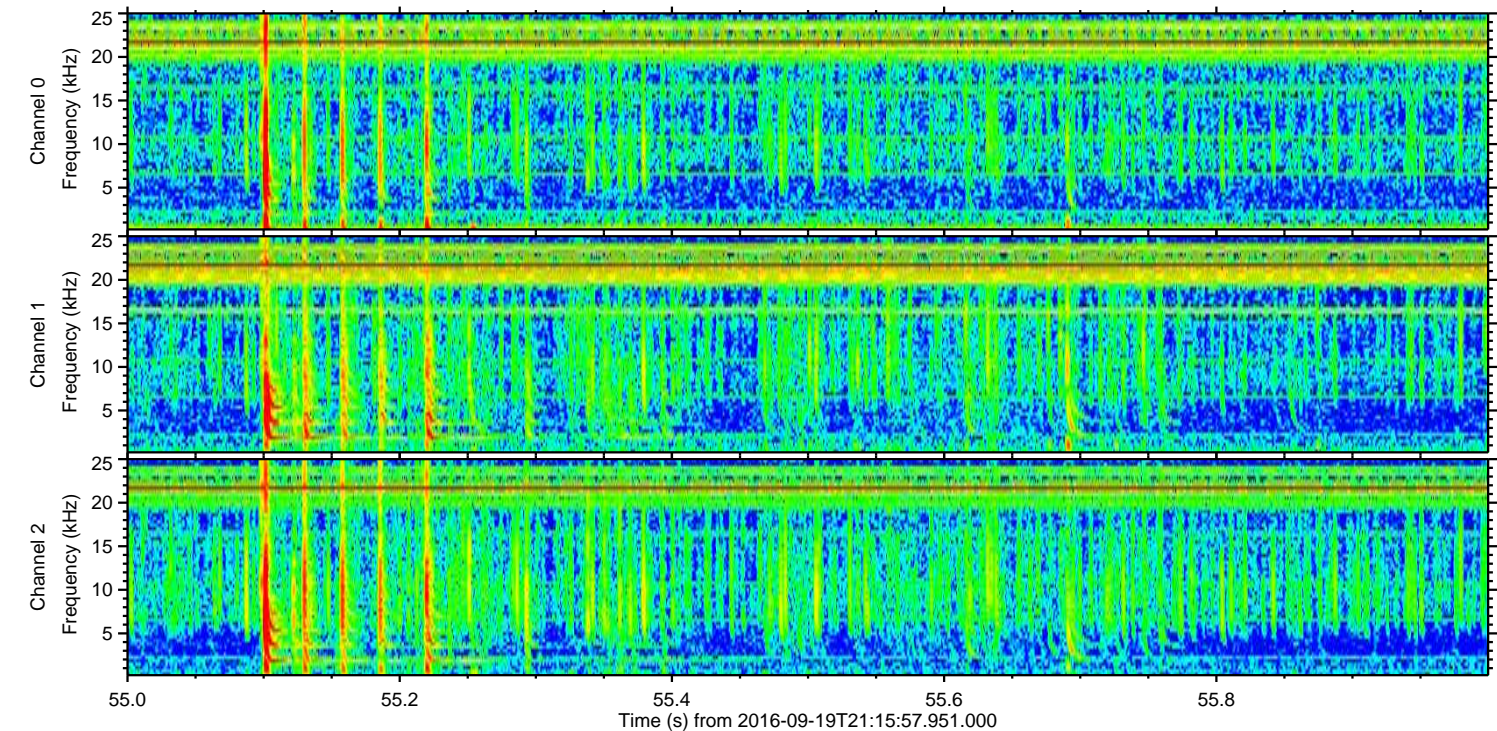
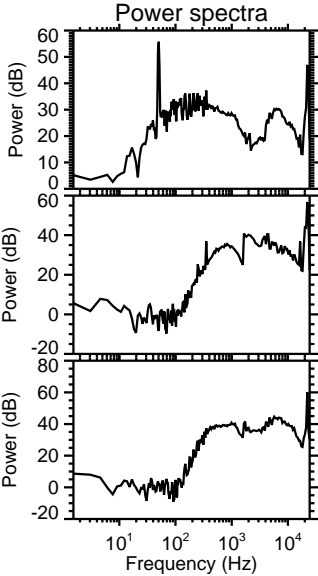
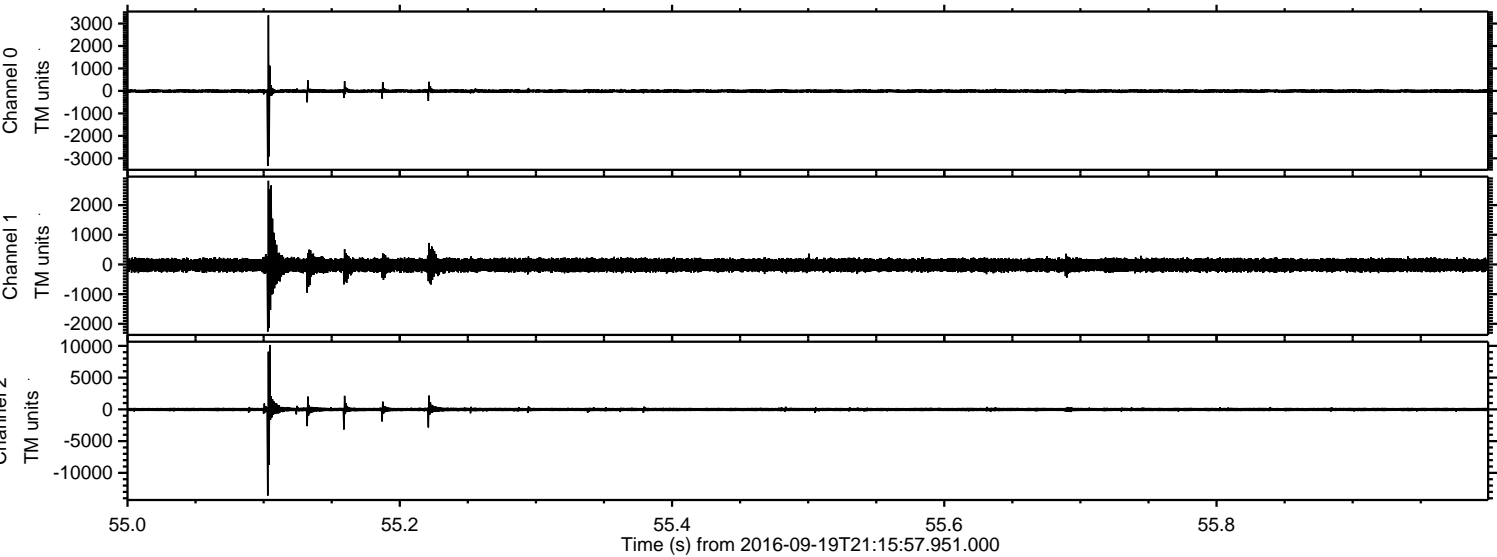
ELMAVAN 3D WAVEFORMS (Measured data sampled at 50 kHz) 51000 packets of 144 samples from 2016-09-19T21:15:57.951.000.

Processed Mon Sep 19 23:23:37 2016 by ELM ver.2012-10-06 from 001\_\_elm20160919\_211556\_\_dat00.bin



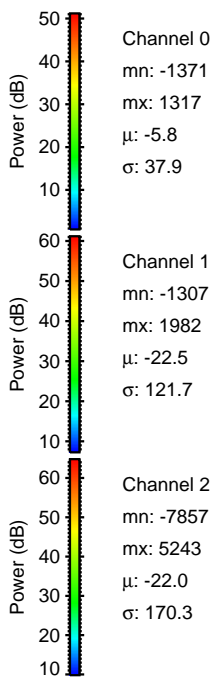
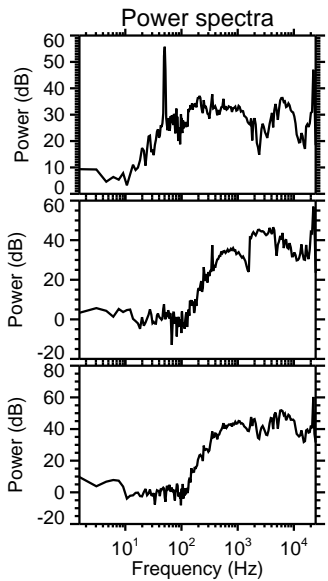
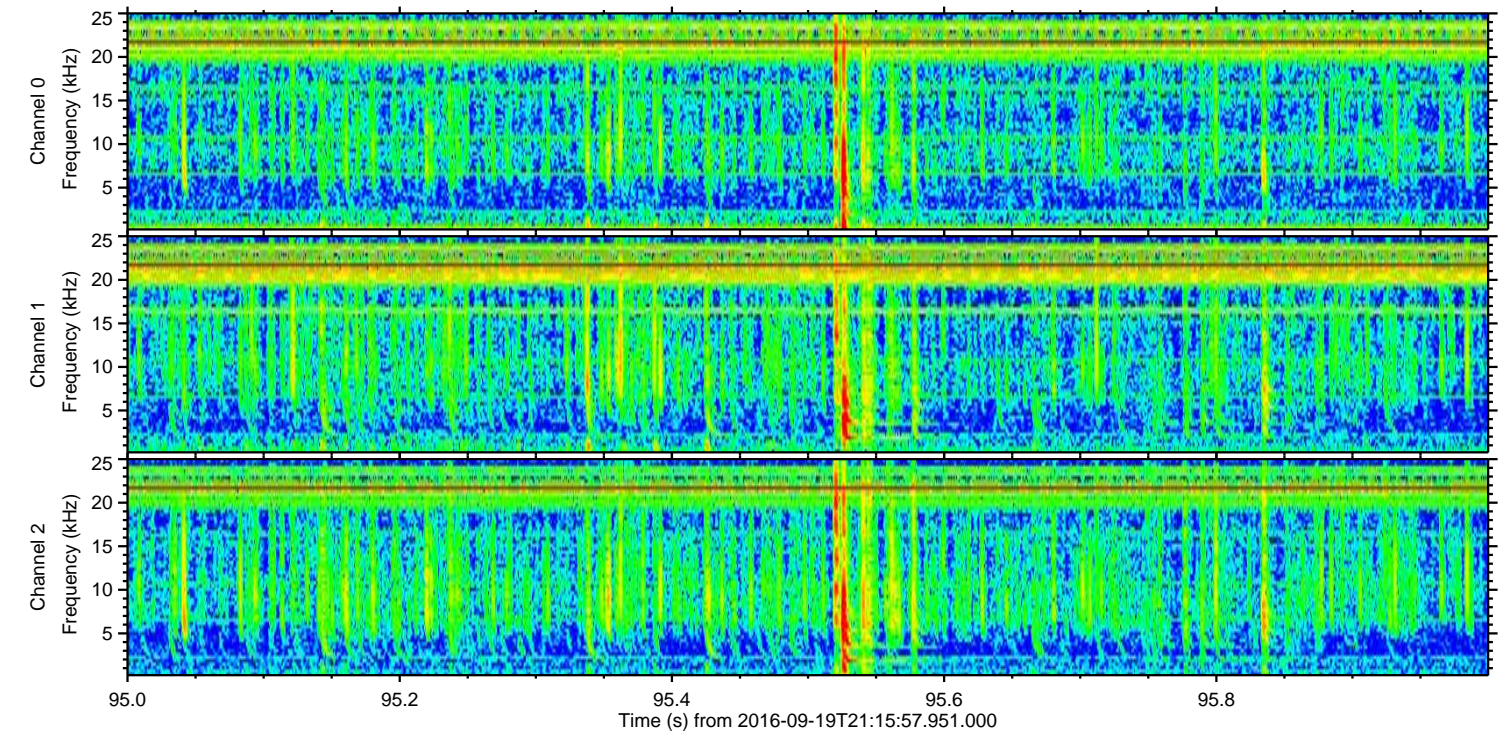
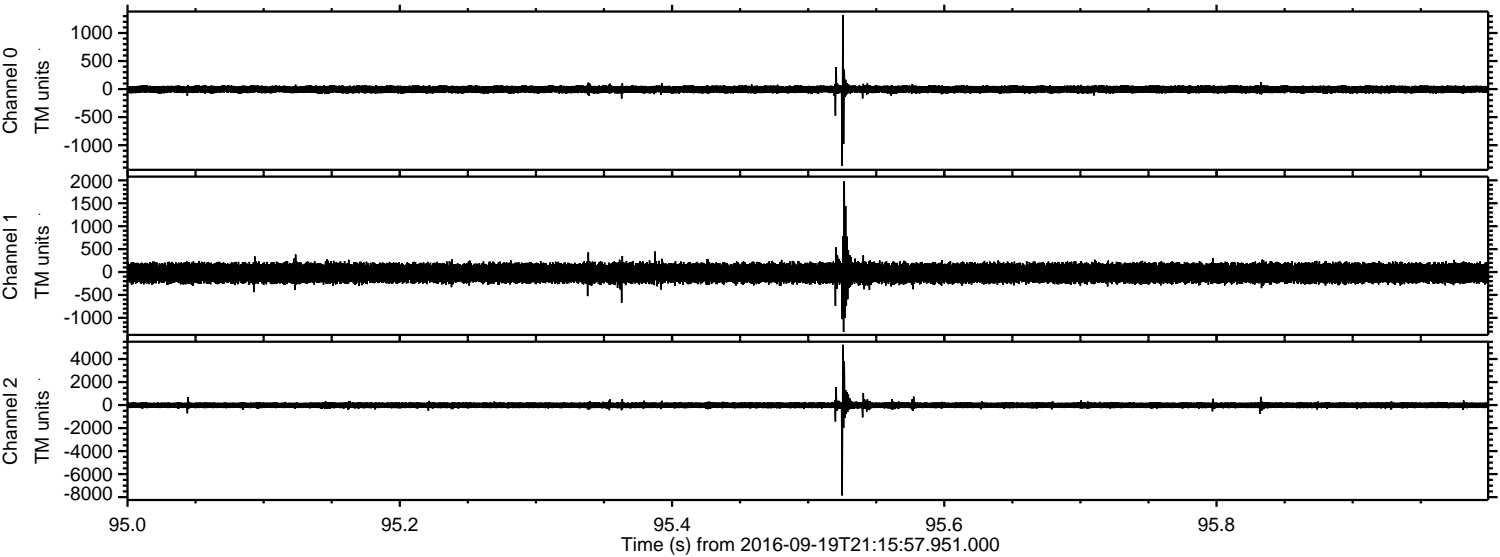


Processed Mon Sep 19 23:23:51 2016 by ELM ver.2012-10-06 from 001\_\_elm20160919\_211556\_\_dat00.bin



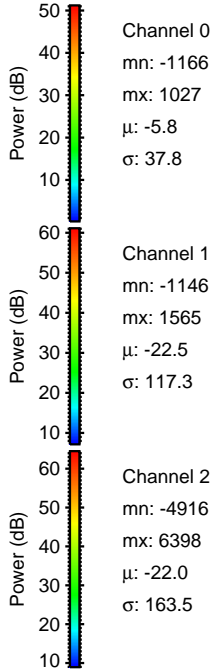
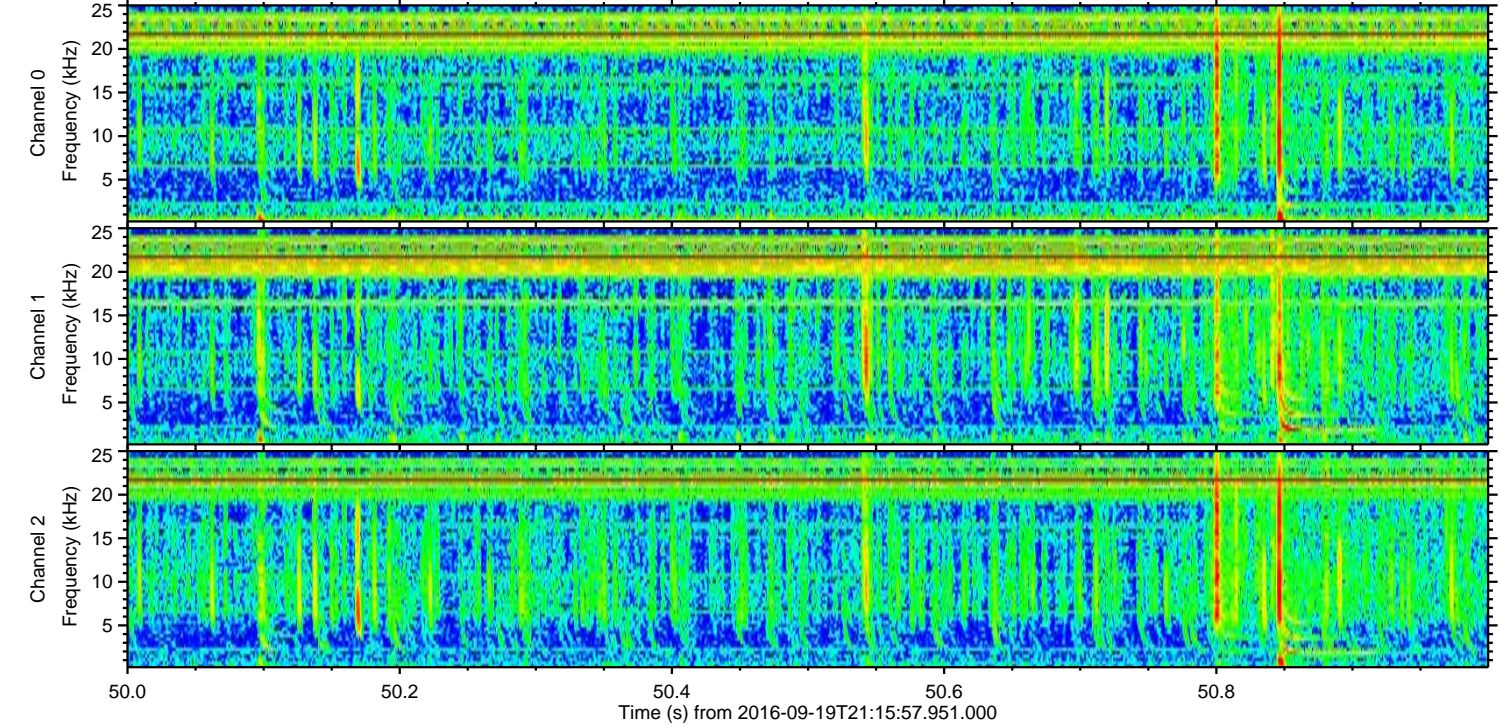
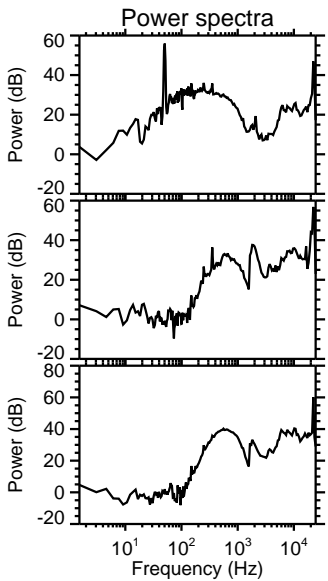
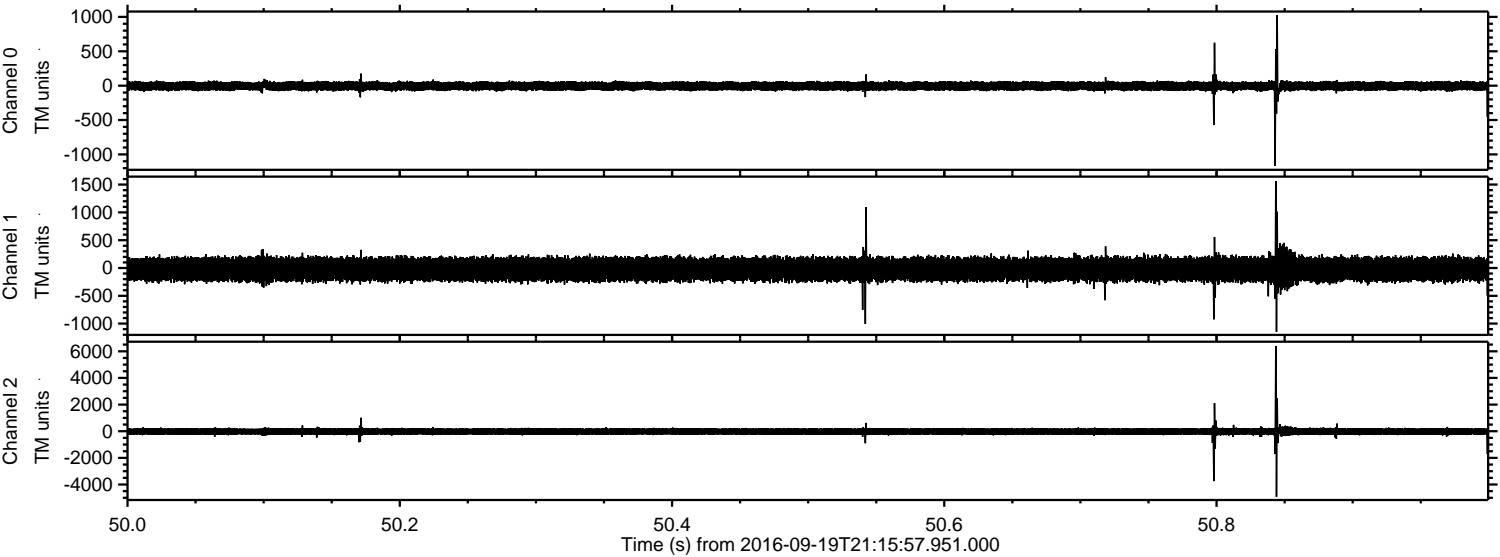


Processed Mon Sep 19 23:23:52 2016 by ELM ver.2012-10-06 from 001\_\_elm20160919\_211556\_\_dat00.bin





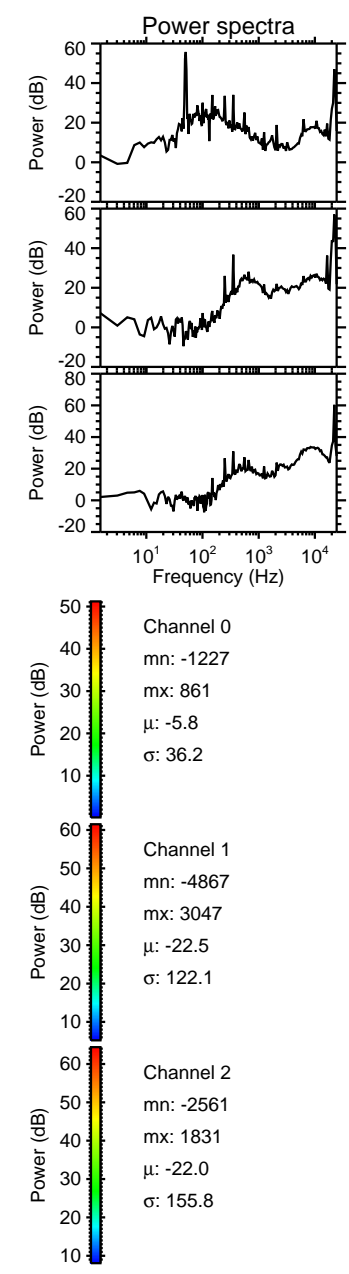
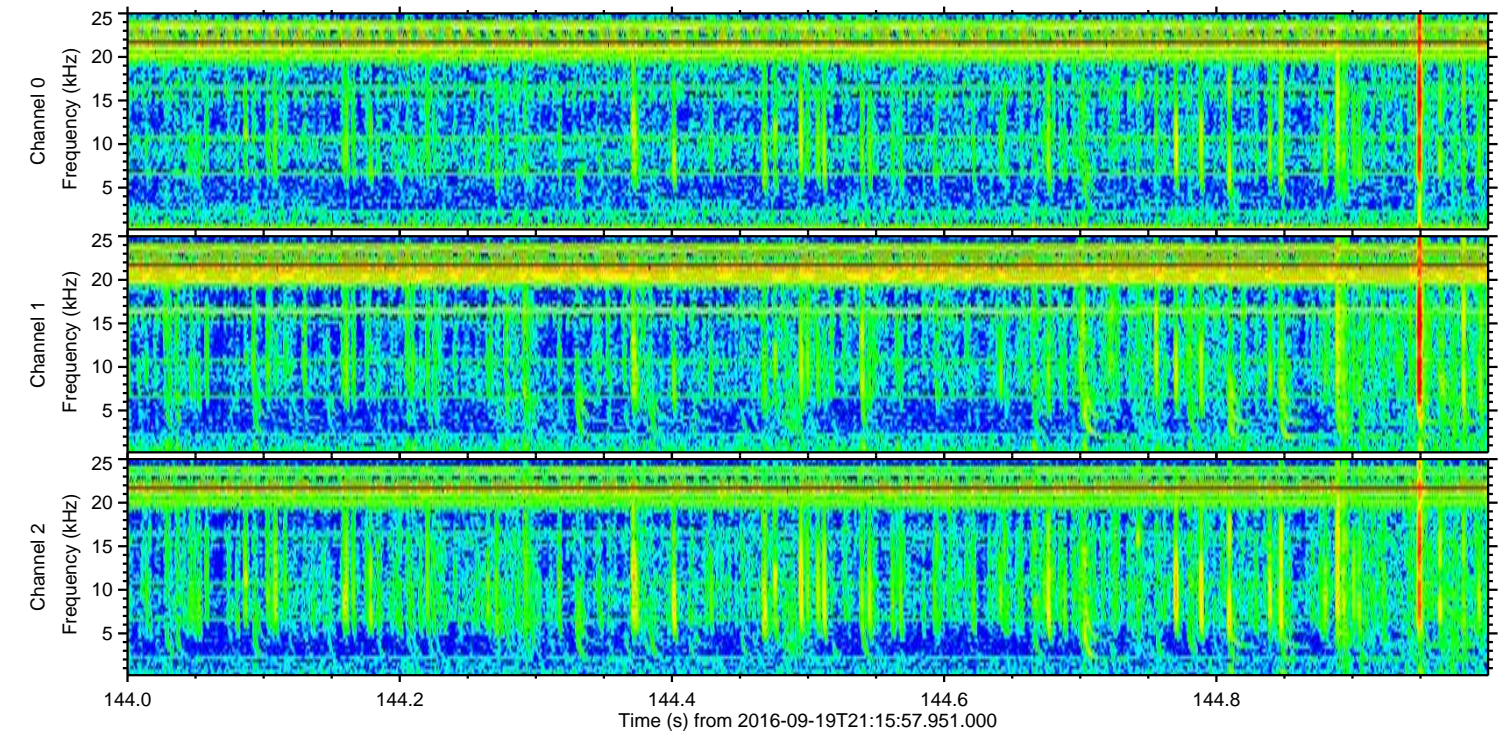
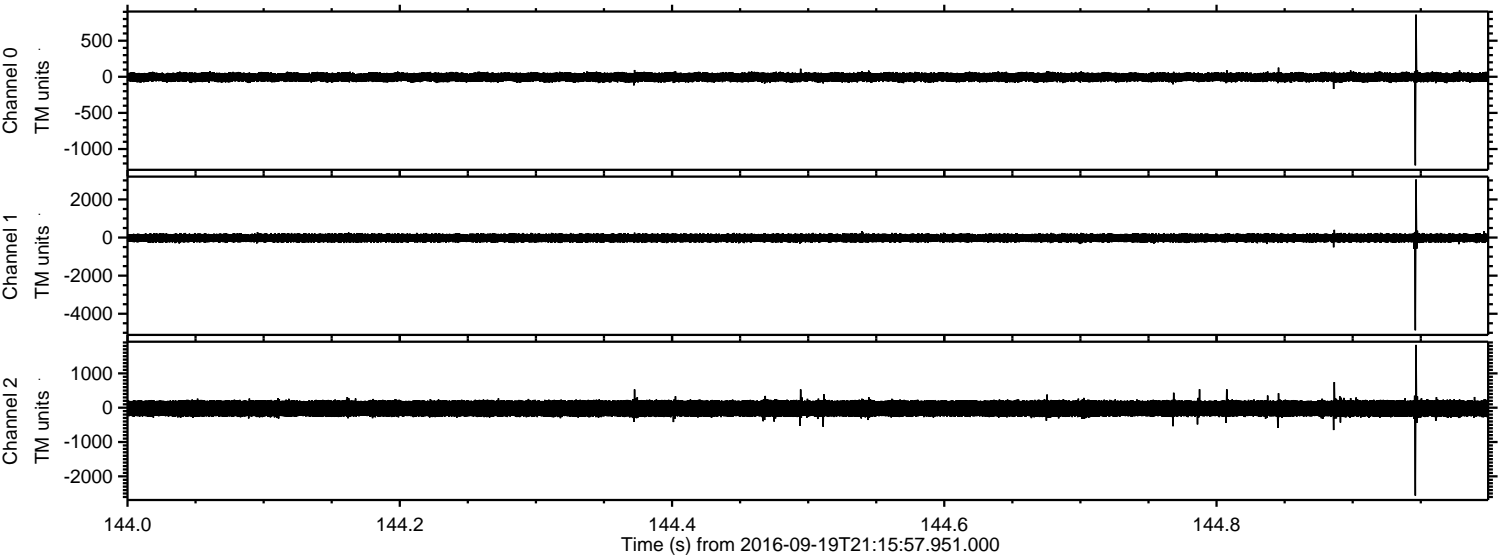
Processed Mon Sep 19 23:23:53 2016 by ELM ver.2012-10-06 from 001\_\_elm20160919\_211556\_\_dat00.bin





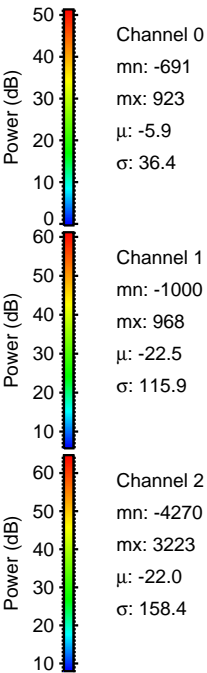
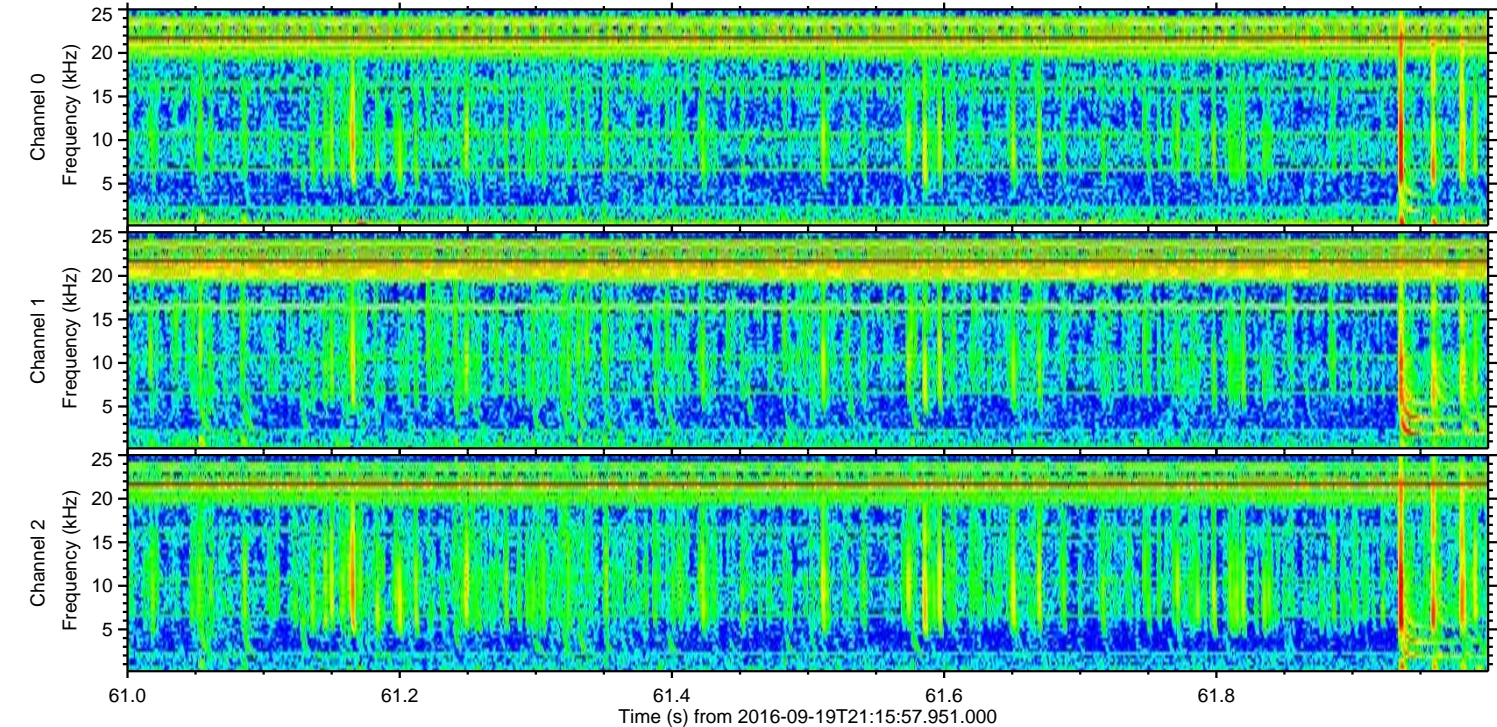
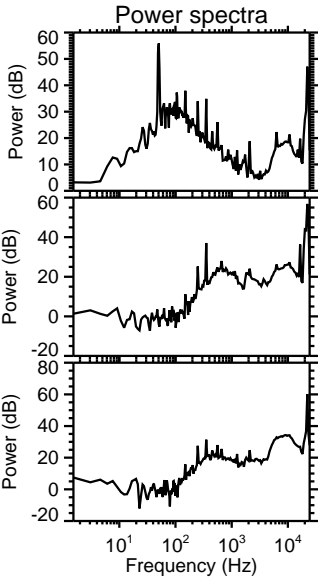
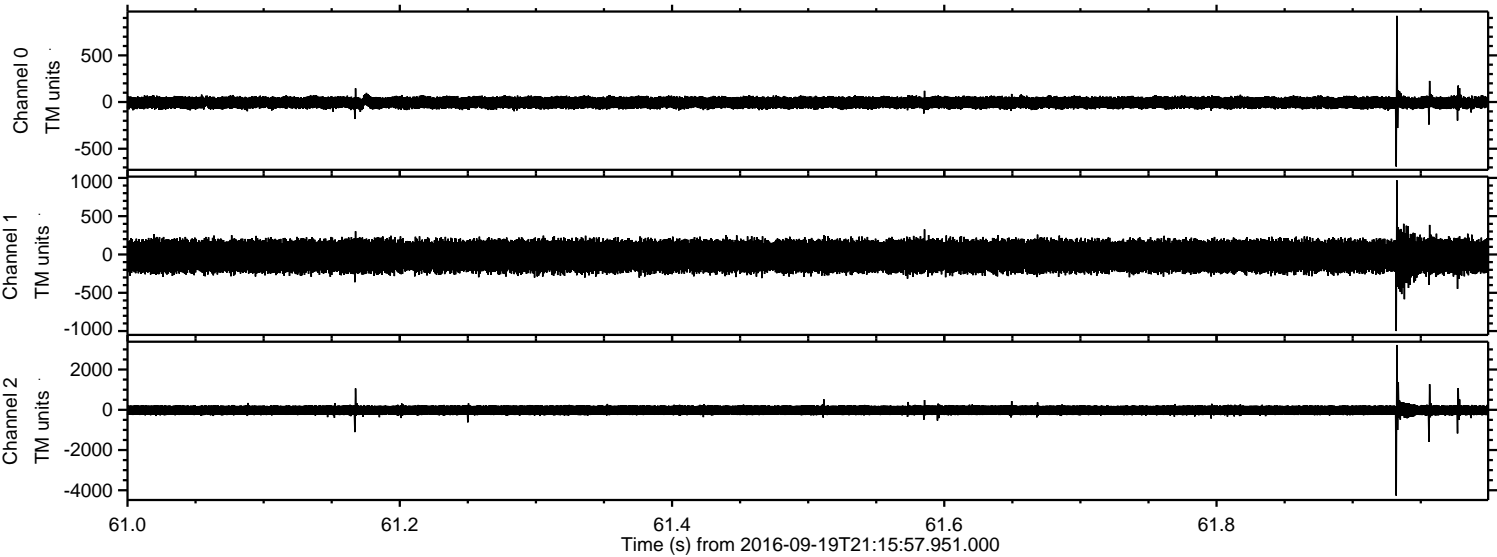
ELMAVAN 3D WAVEFORMS (Measured data sampled at 50 kHz) 51000 packets of 144 samples from 2016-09-19T21:15:57.951.000. Part 145/147

Processed Mon Sep 19 23:23:55 2016 by ELM ver.2012-10-06 from 001\_\_elm20160919\_211556\_\_dat00.bin



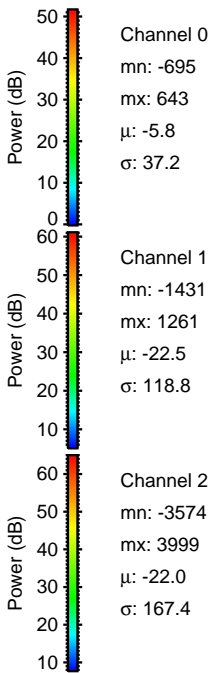
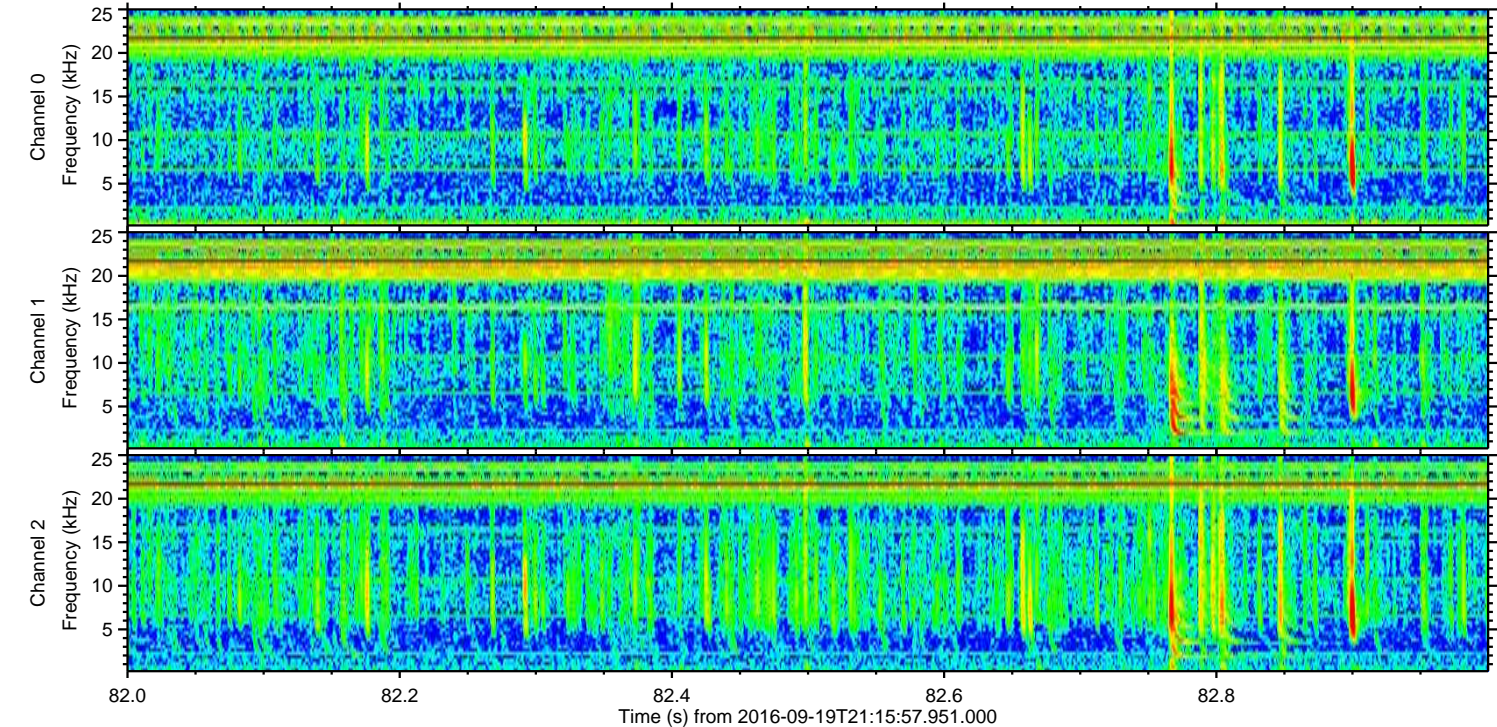
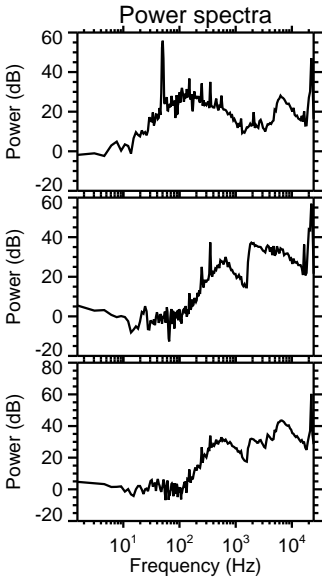
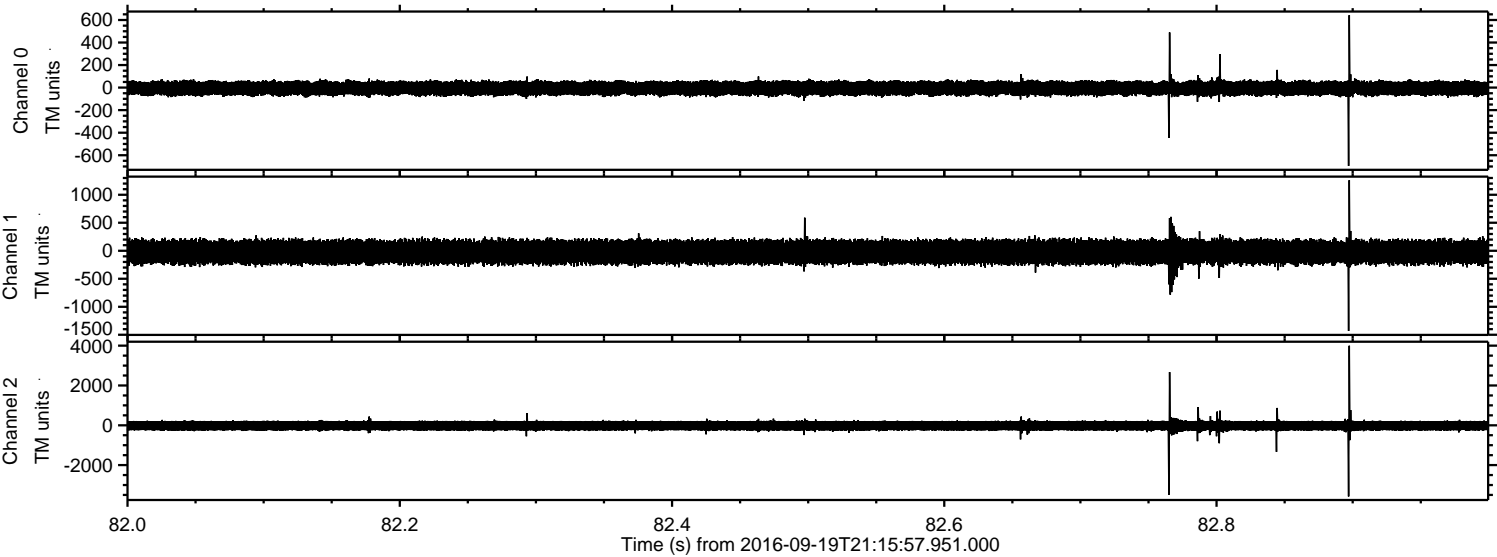


Processed Mon Sep 19 23:23:56 2016 by ELM ver.2012-10-06 from 001\_\_elm20160919\_211556\_\_dat00.bin



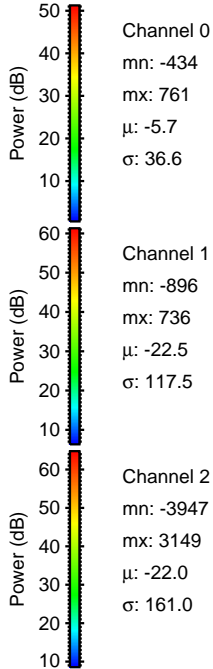
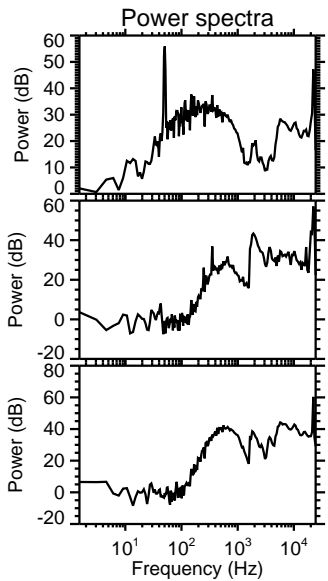
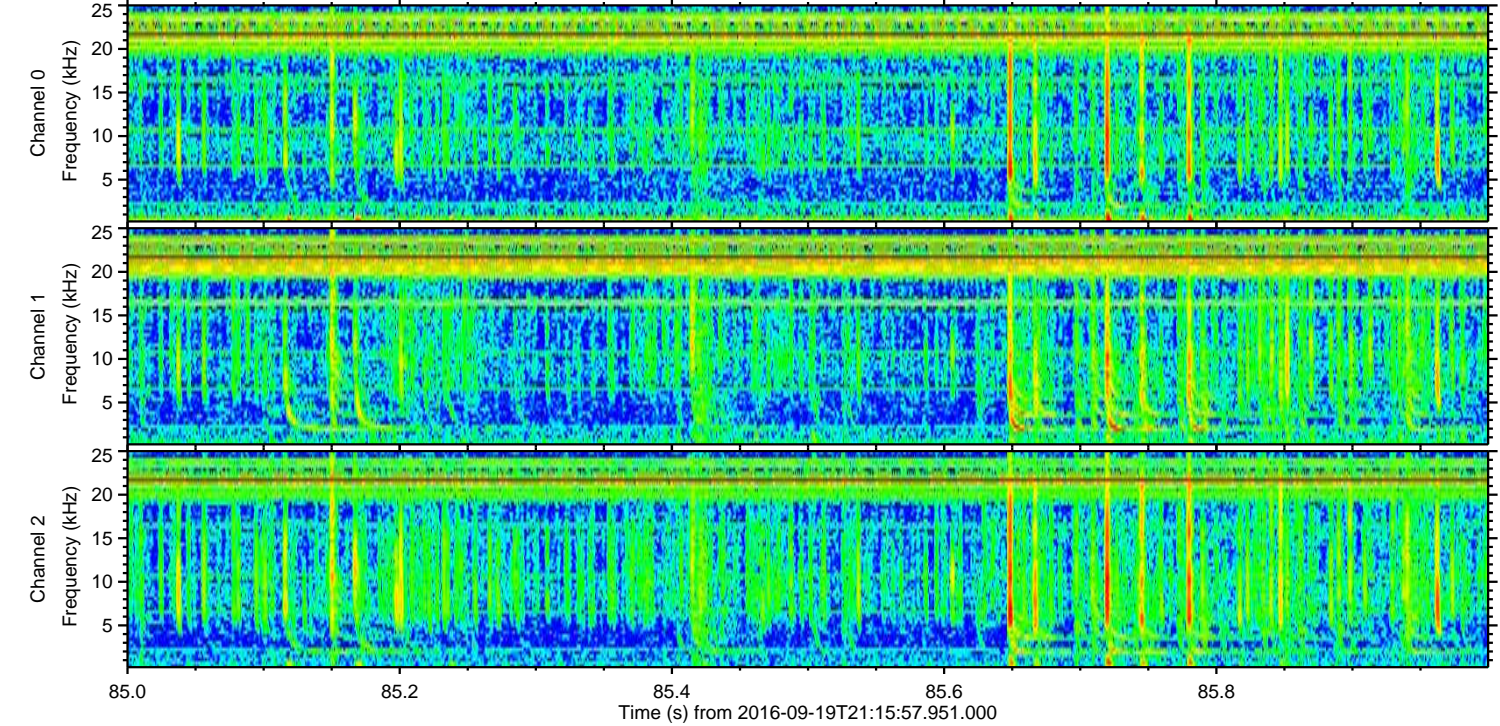
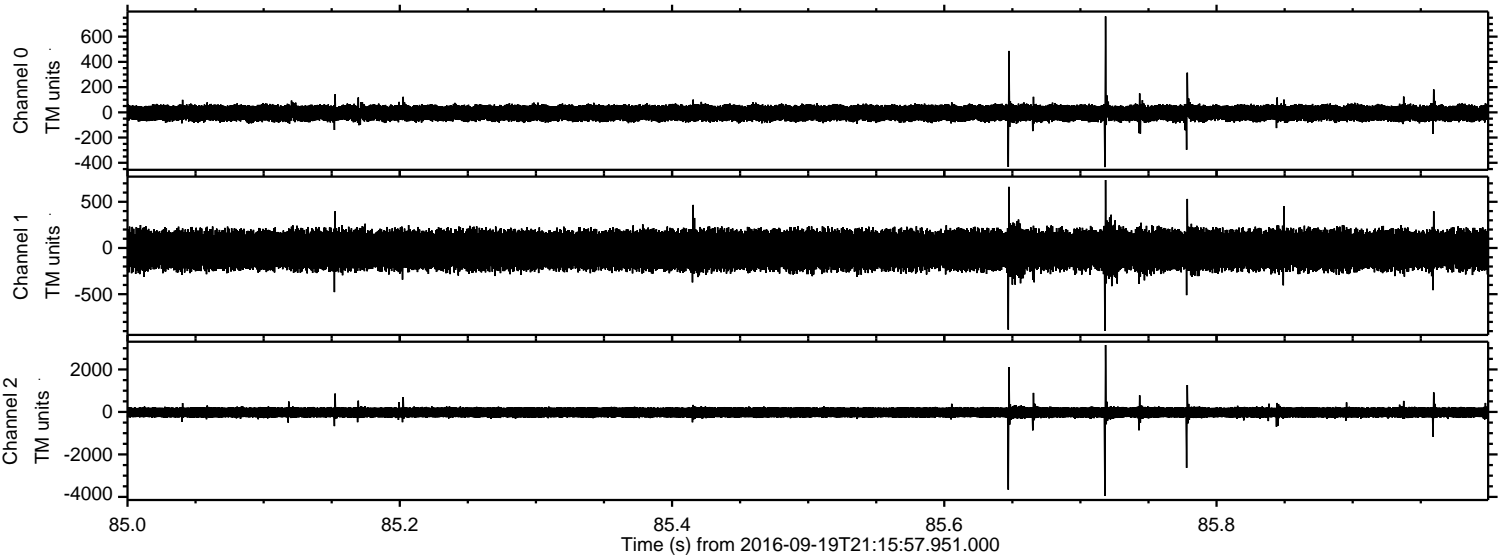


Processed Mon Sep 19 23:23:57 2016 by ELM ver.2012-10-06 from 001\_\_elm20160919\_211556\_\_dat00.bin





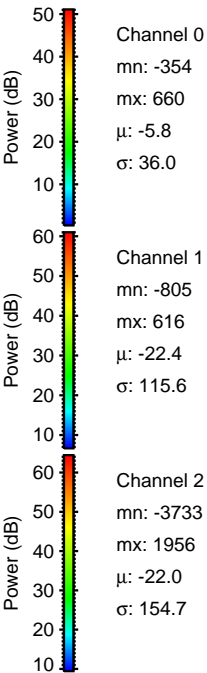
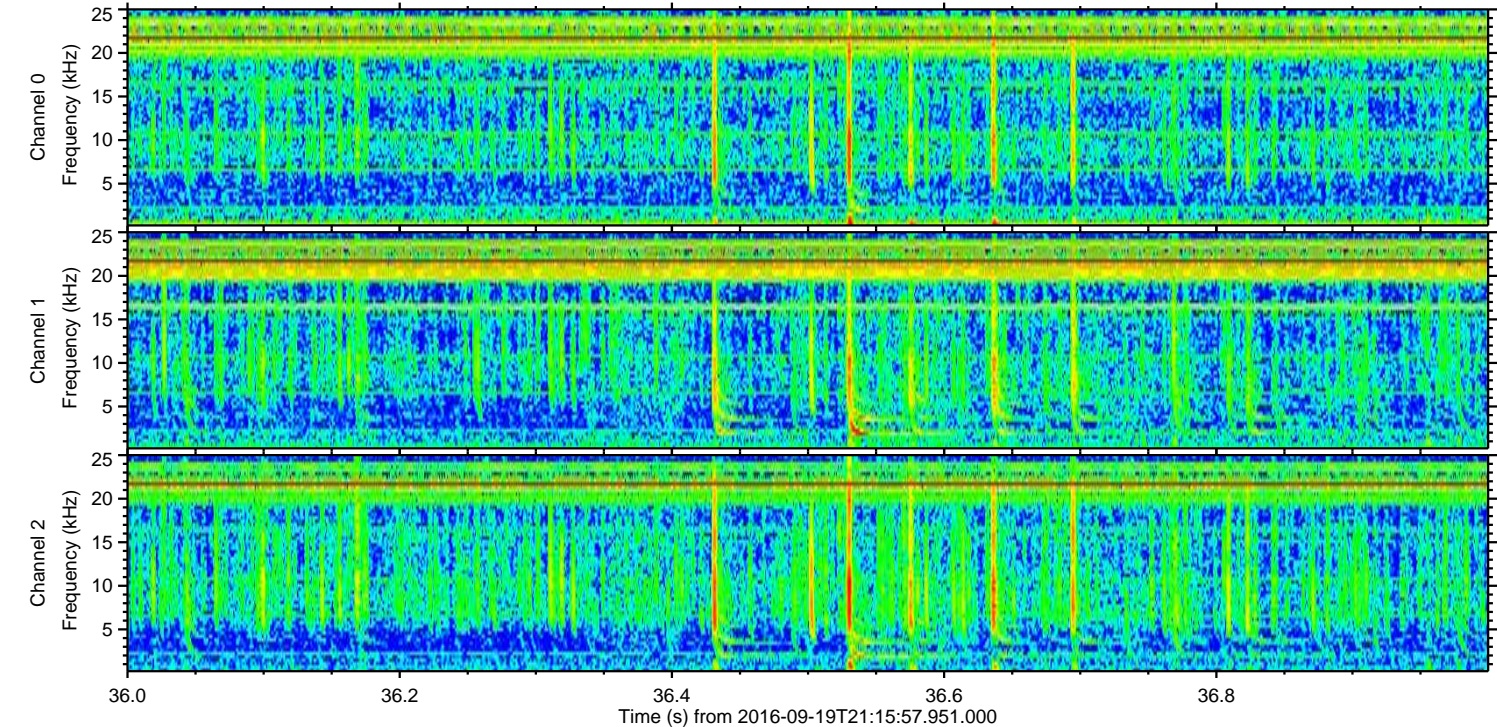
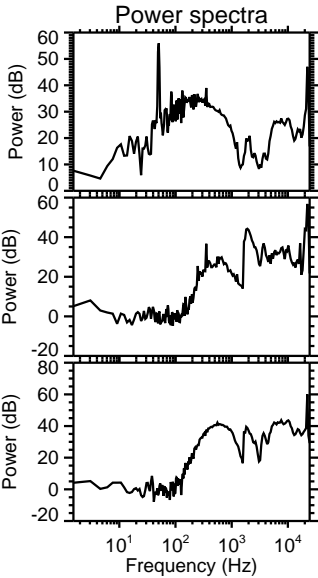
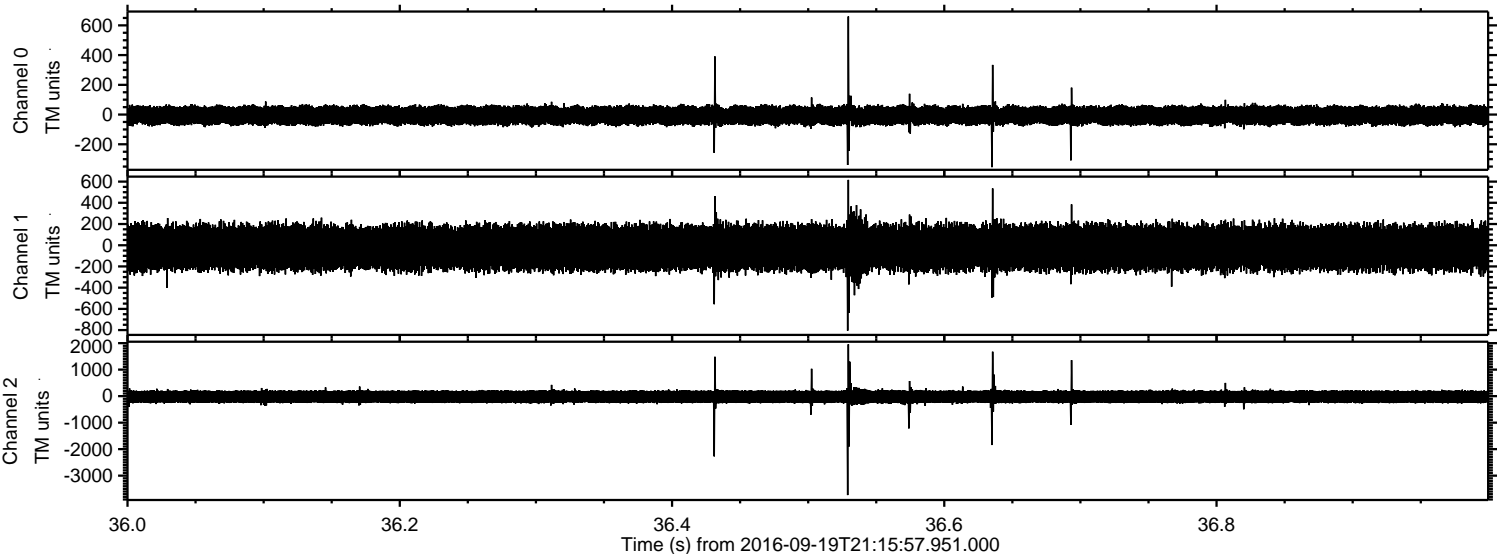
Processed Mon Sep 19 23:23:58 2016 by ELM ver.2012-10-06 from 001\_\_elm20160919\_211556\_\_dat00.bin





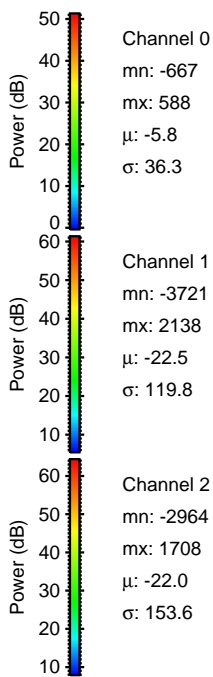
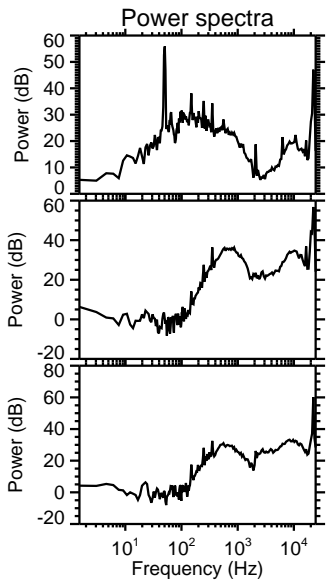
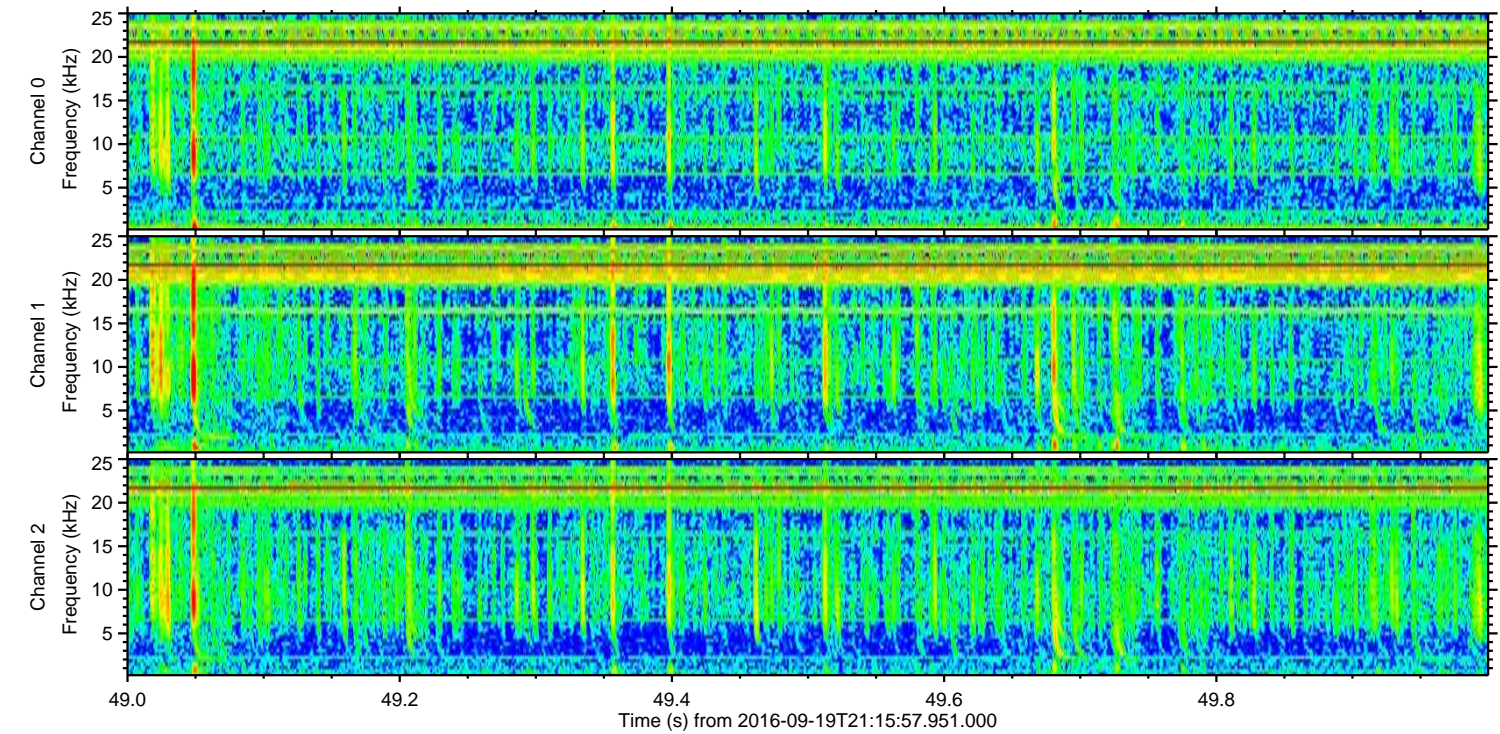
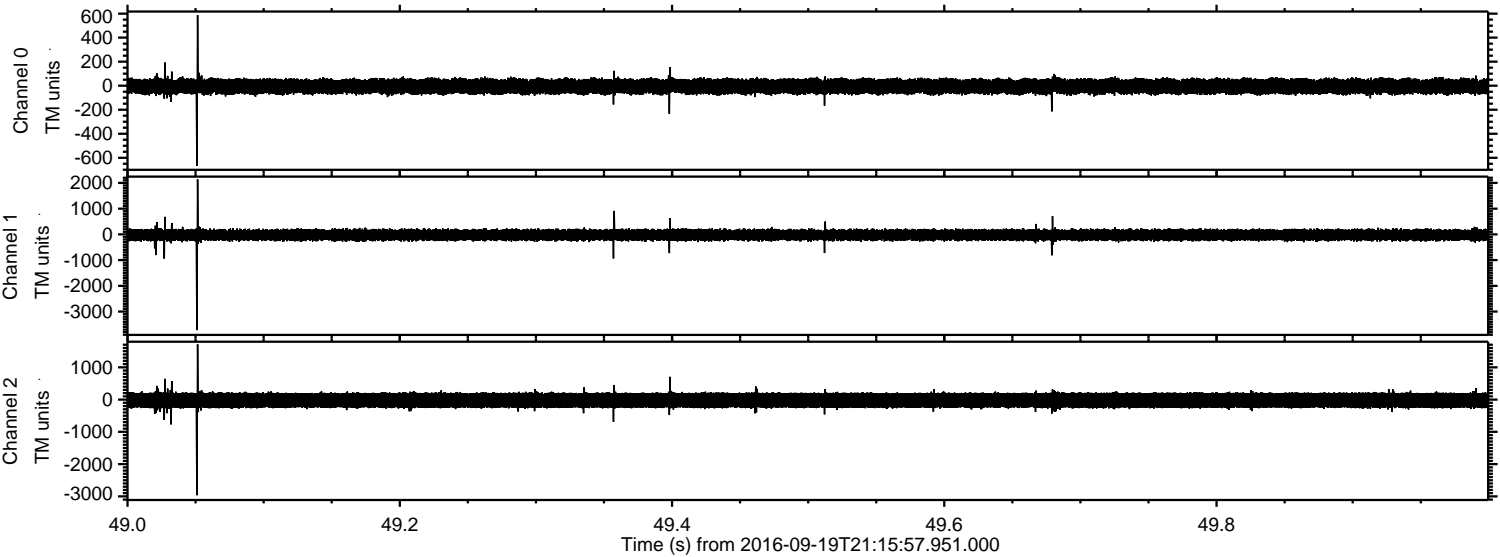
ELMAVAN 3D WAVEFORMS (Measured data sampled at 50 kHz) 51000 packets of 144 samples from 2016-09-19T21:15:57.951.000. Part 37/147

Processed Mon Sep 19 23:23:59 2016 by ELM ver.2012-10-06 from 001\_\_elm20160919\_211556\_\_dat00.bin





Processed Mon Sep 19 23:24:00 2016 by ELM ver.2012-10-06 from 001\_\_elm20160919\_211556\_\_dat00.bin



Channel 0  
mn: -667  
mx: 588  
μ: -5.8  
σ: 36.3

Channel 1  
mn: -3721  
mx: 2138  
μ: -22.5  
σ: 119.8

Channel 2  
mn: -2964  
mx: 1708  
μ: -22.0  
σ: 153.6



Processed Mon Sep 19 23:24:01 2016 by ELM ver.2012-10-06 from 001\_\_elm20160919\_211556\_\_dat00.bin

