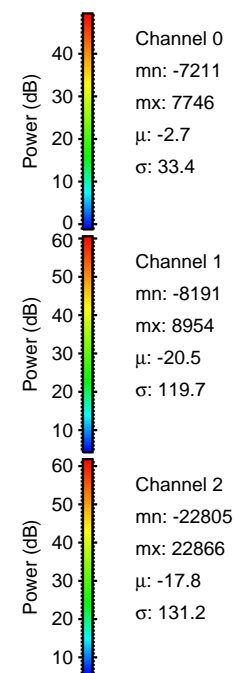
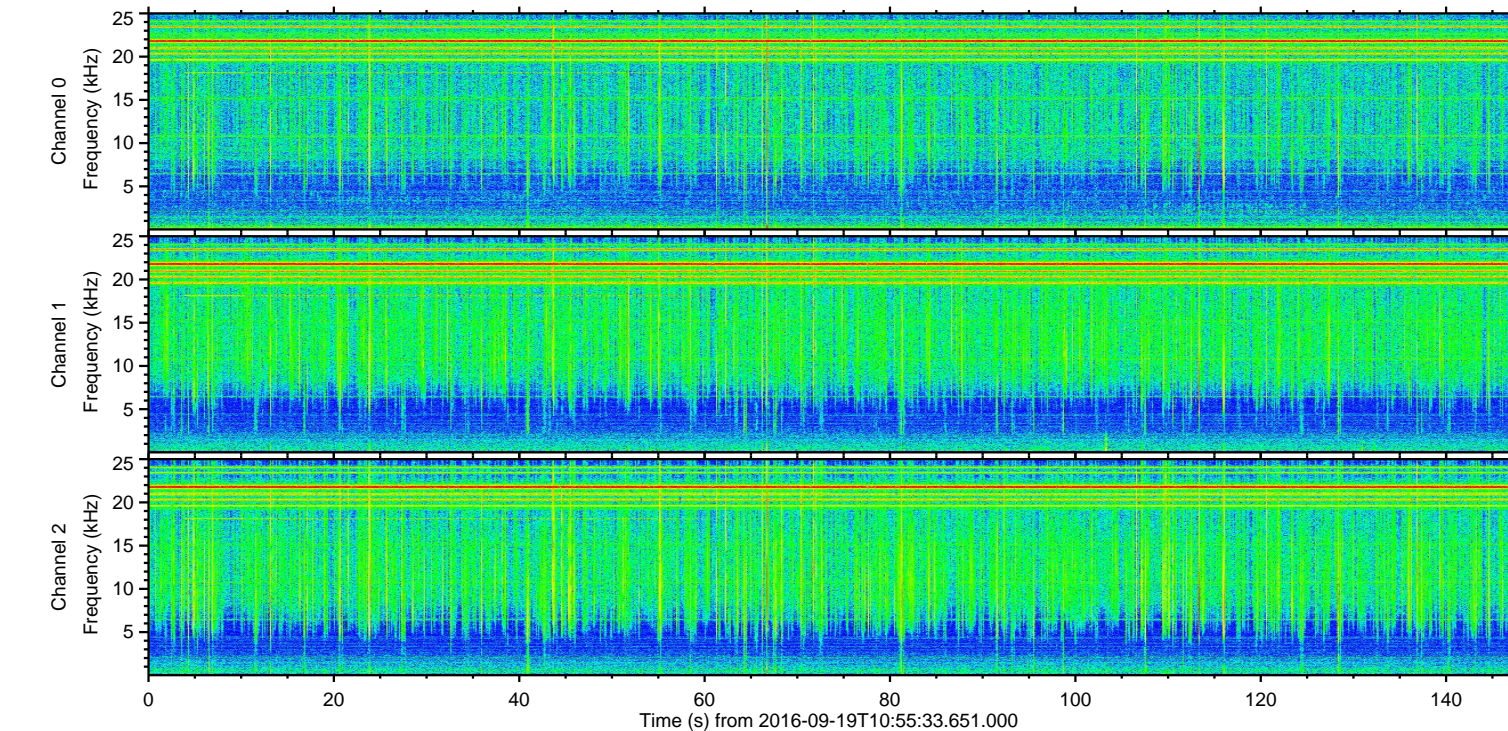
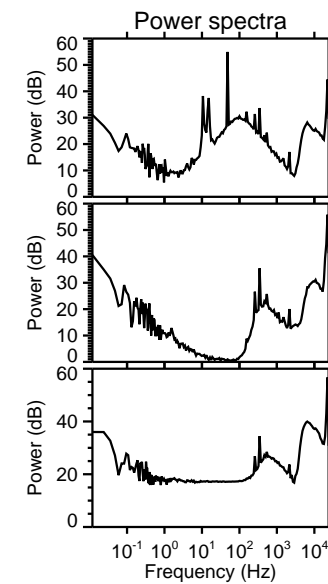
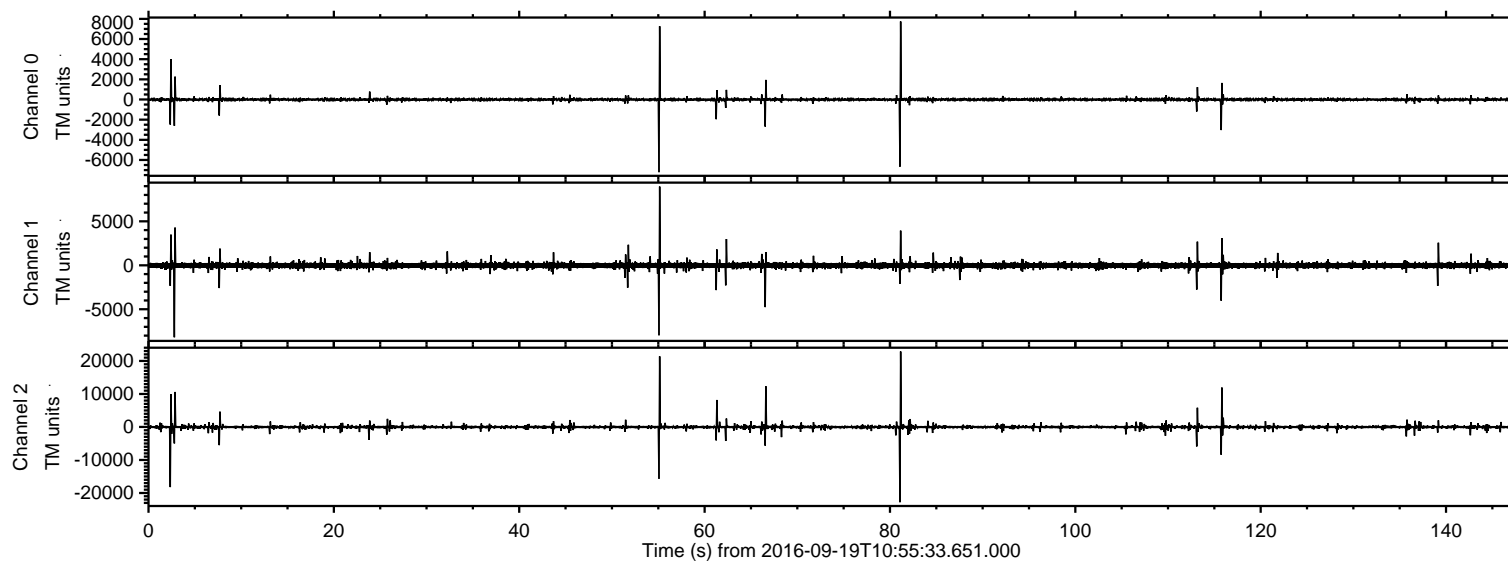
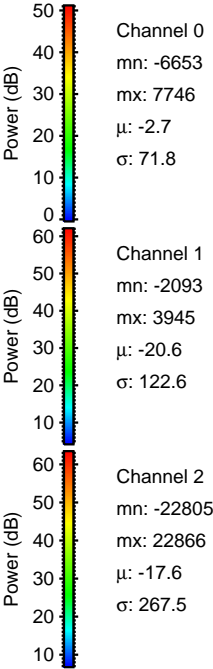
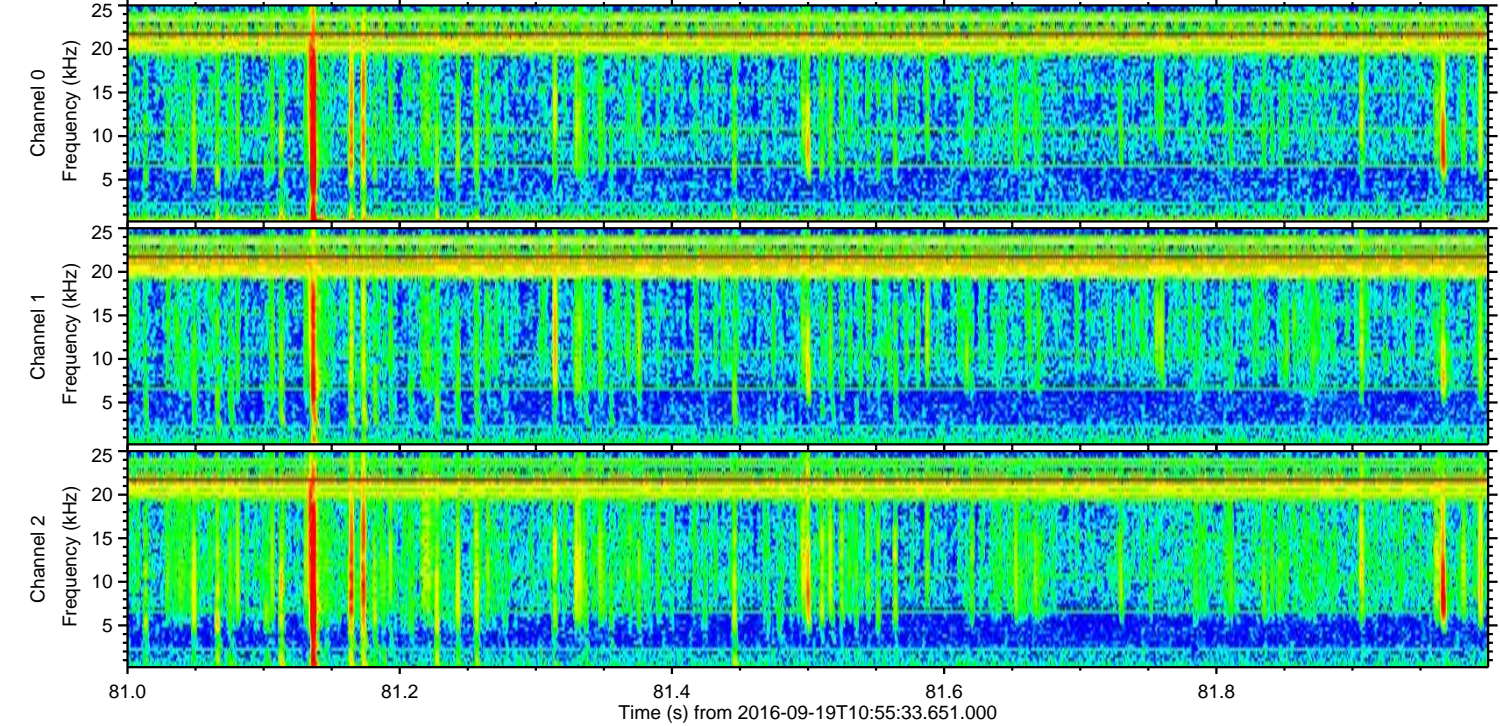
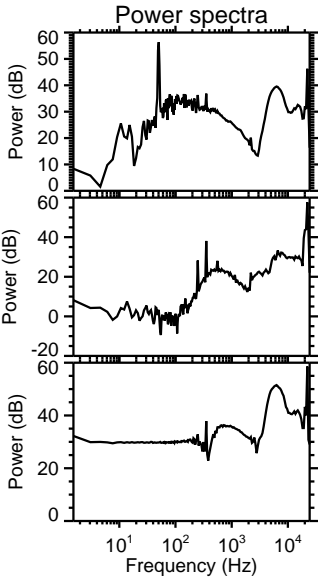
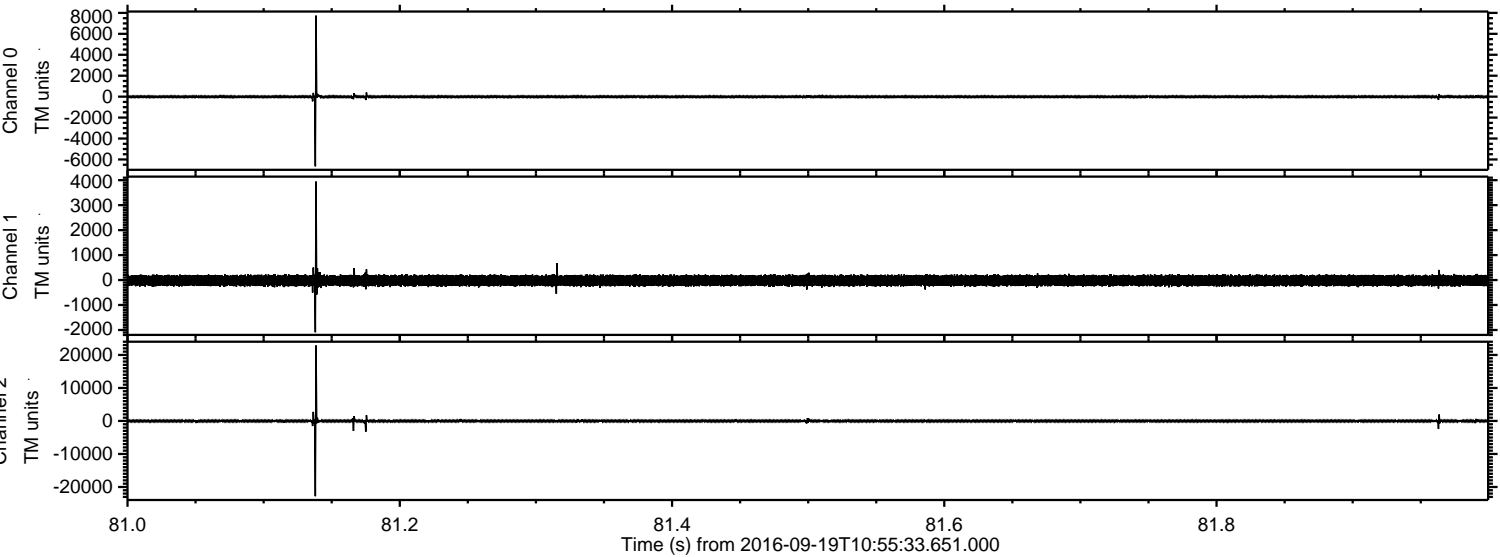


ELMAVAN 3D WAVEFORMS (Measured data sampled at 50 kHz) 51000 packets of 144 samples from 2016-09-19T10:55:33.651.000.

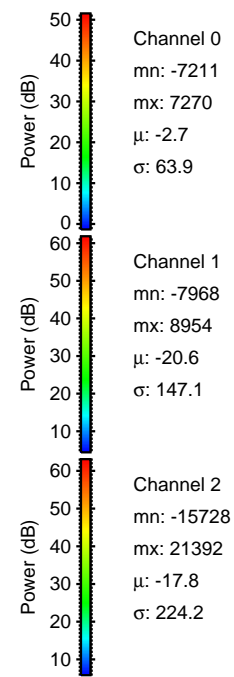
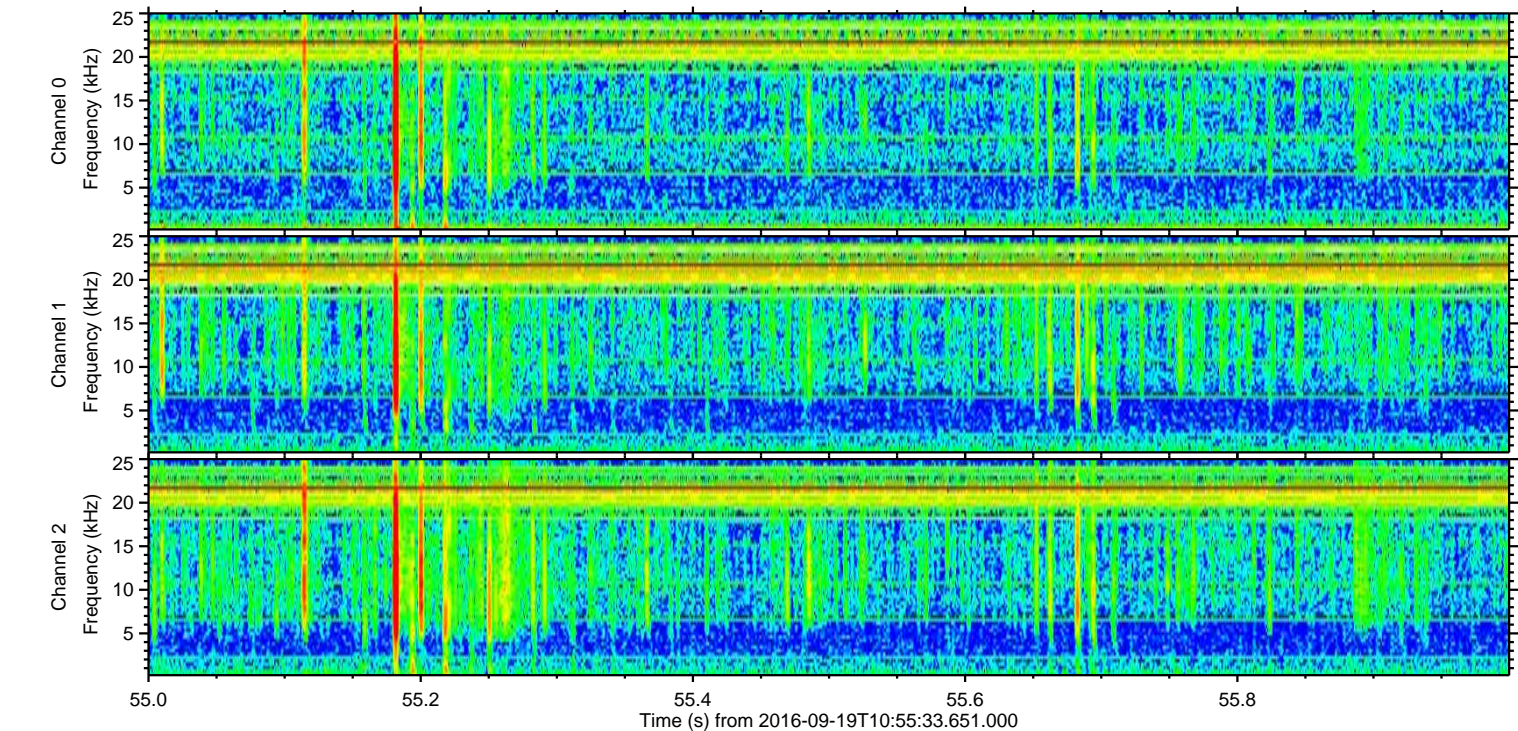
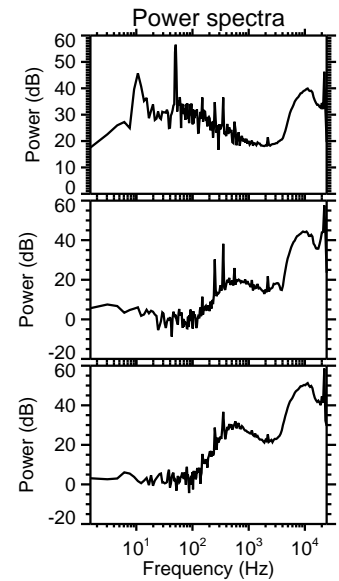
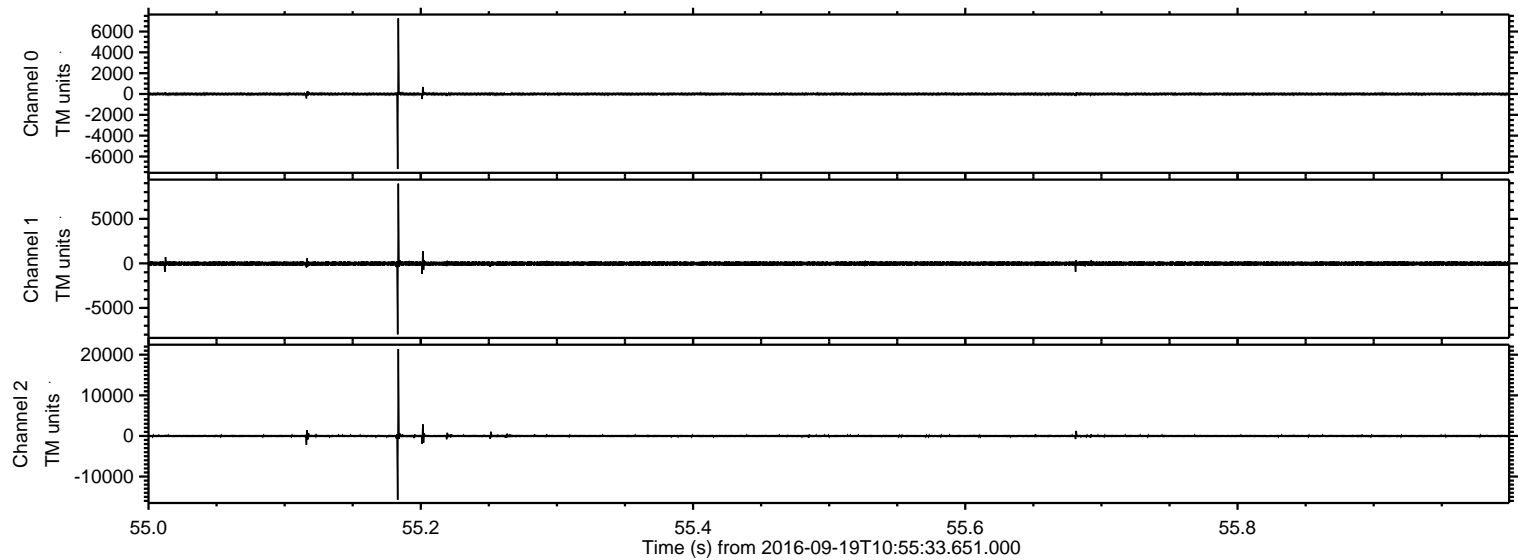
Processed Mon Sep 19 13:03:28 2016 by ELM ver.2012-10-06 from 001__elm20160919_105532__dat00.bin



Processed Mon Sep 19 13:03:39 2016 by ELM ver.2012-10-06 from 001__elm20160919_105532__dat00.bin

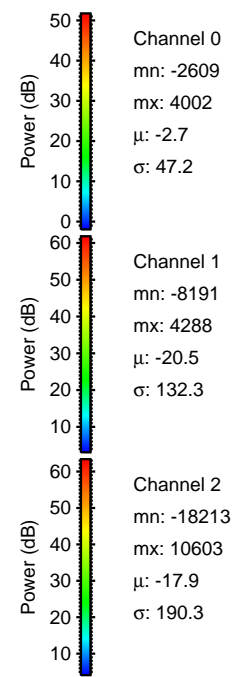
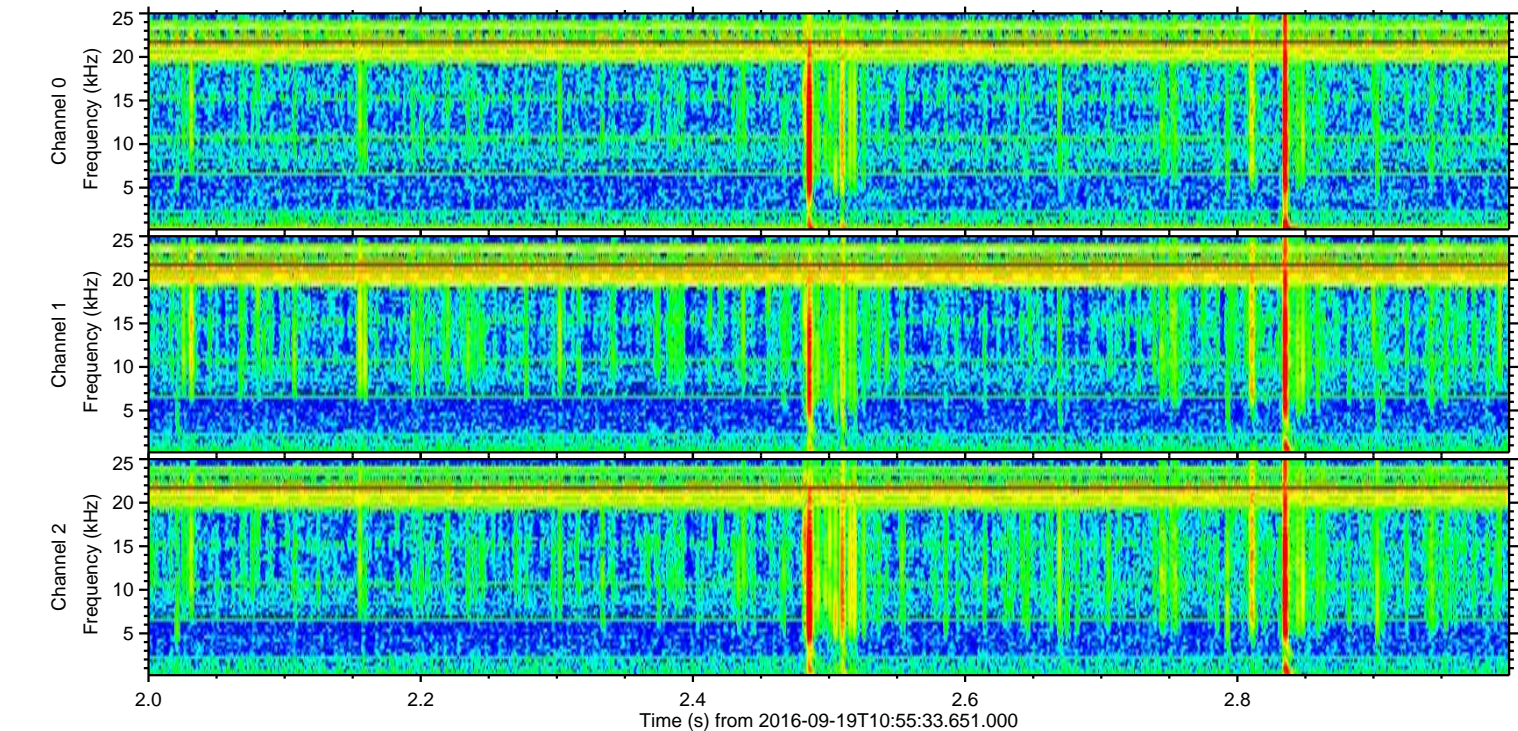
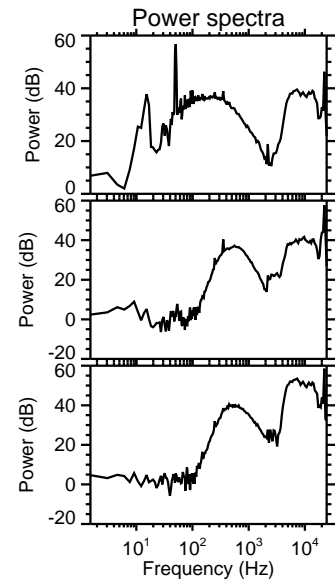
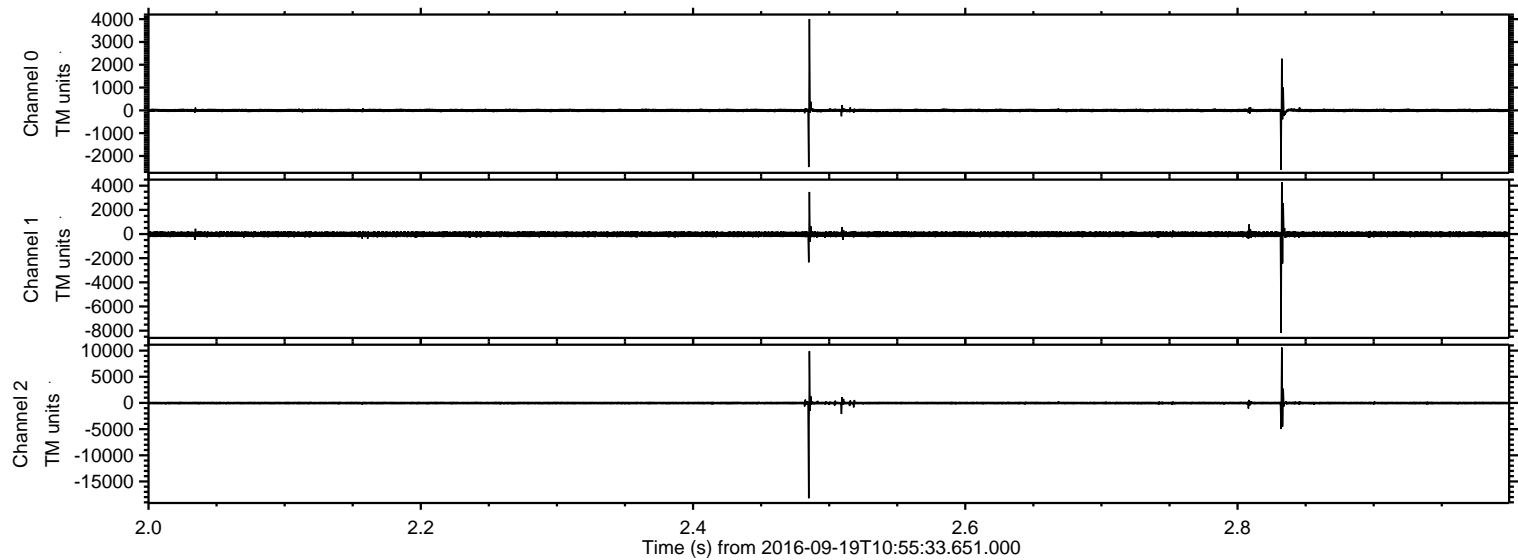


Processed Mon Sep 19 13:03:40 2016 by ELM ver.2012-10-06 from 001__elm20160919_105532__dat00.bin

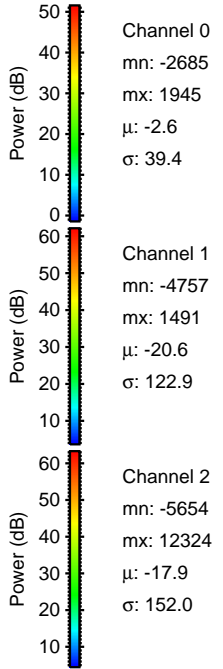
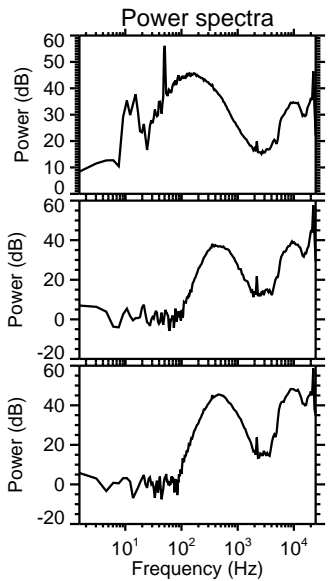
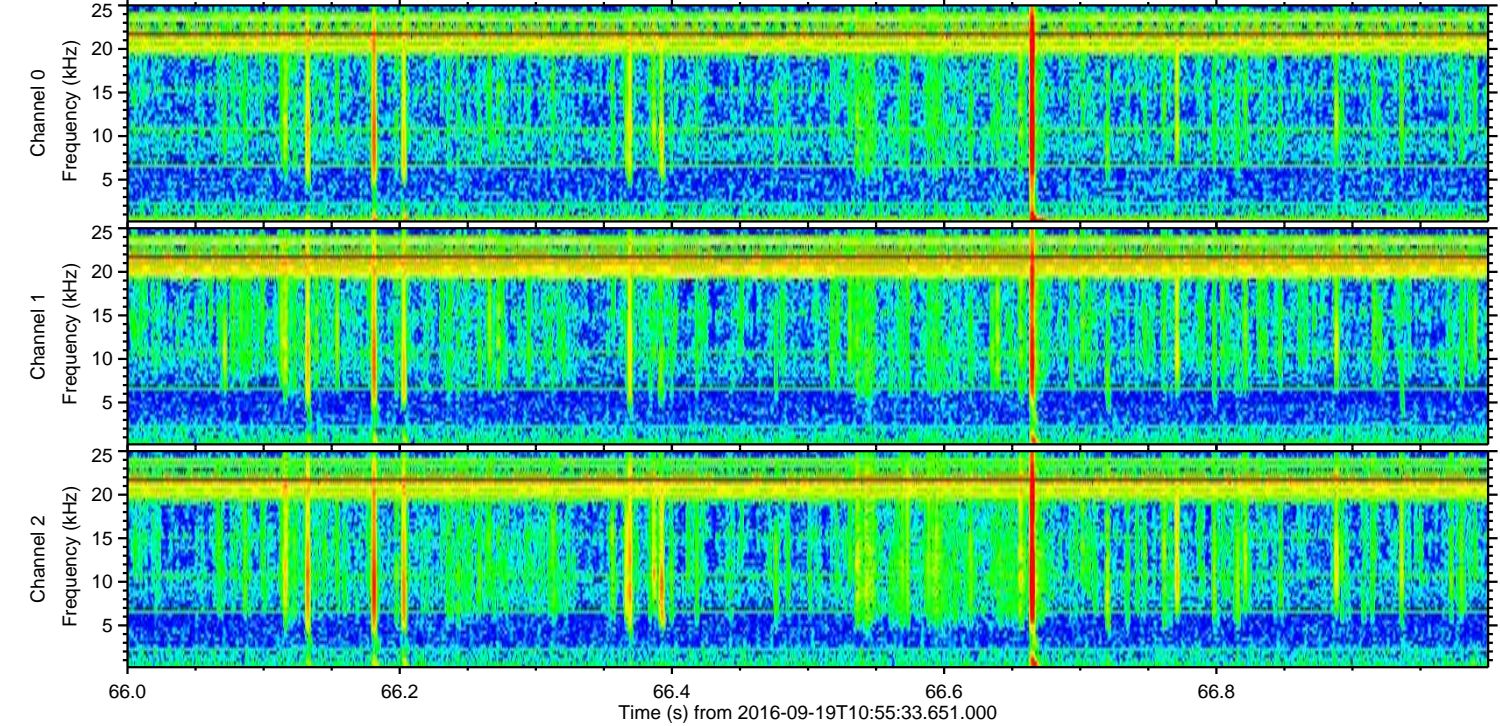
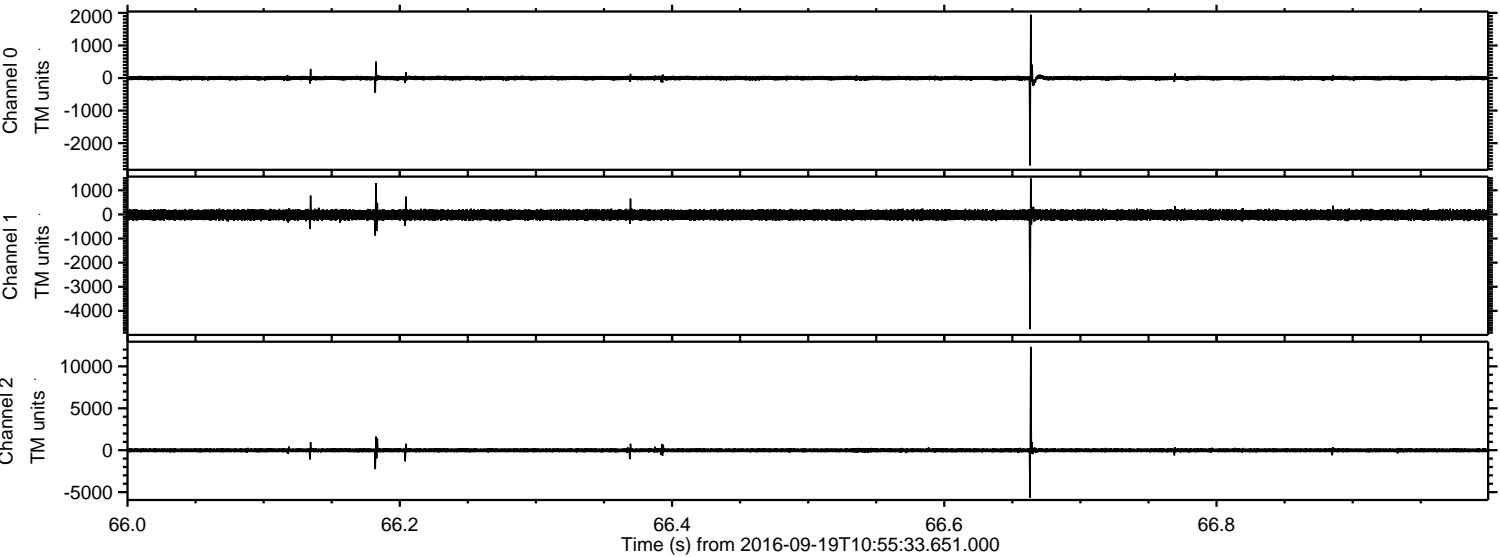


ELMAVAN 3D WAVEFORMS (Measured data sampled at 50 kHz) 51000 packets of 144 samples from 2016-09-19T10:55:33.651.000. Part 3/147

Processed Mon Sep 19 13:03:41 2016 by ELM ver.2012-10-06 from 001__elm20160919_105532__dat00.bin

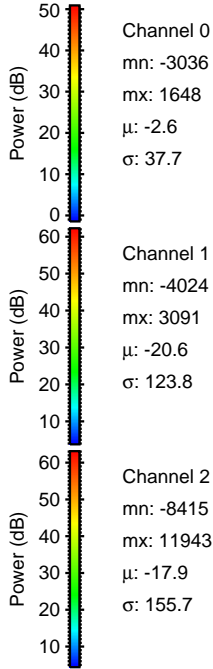
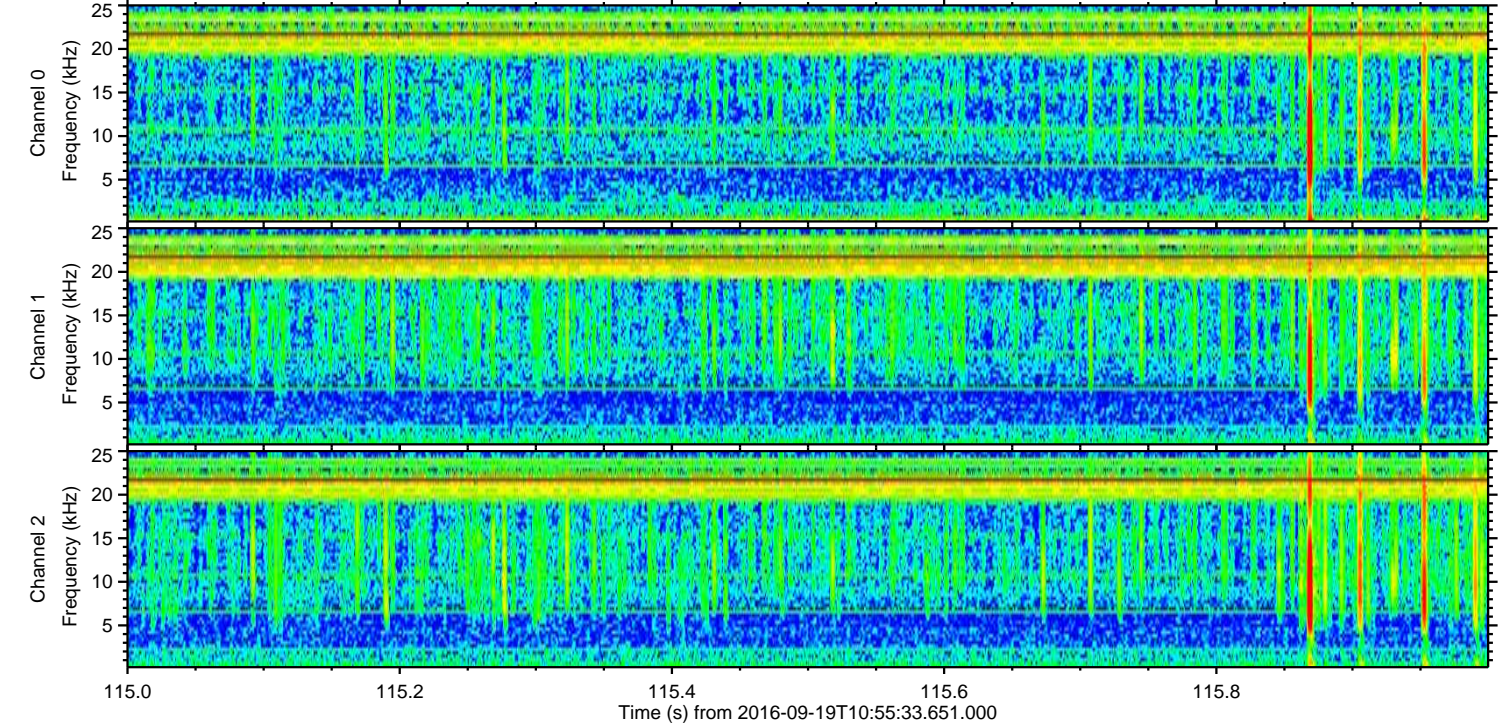
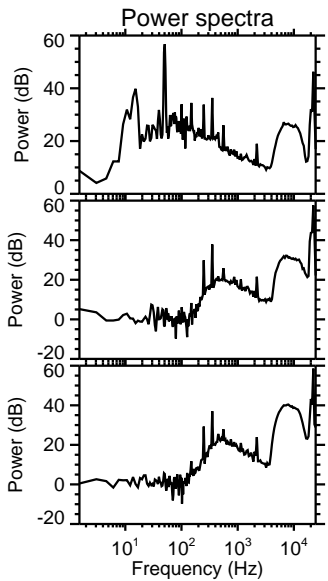
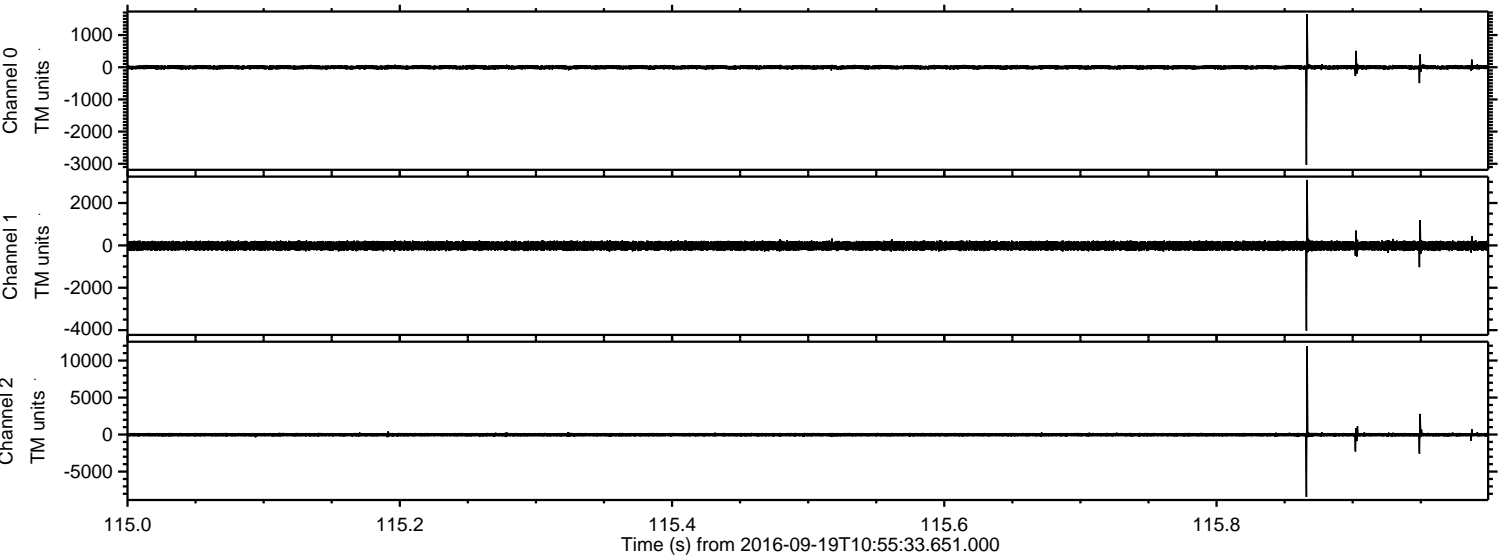


Processed Mon Sep 19 13:03:42 2016 by ELM ver.2012-10-06 from 001__elm20160919_105532__dat00.bin

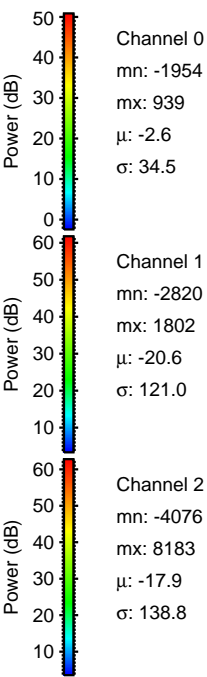
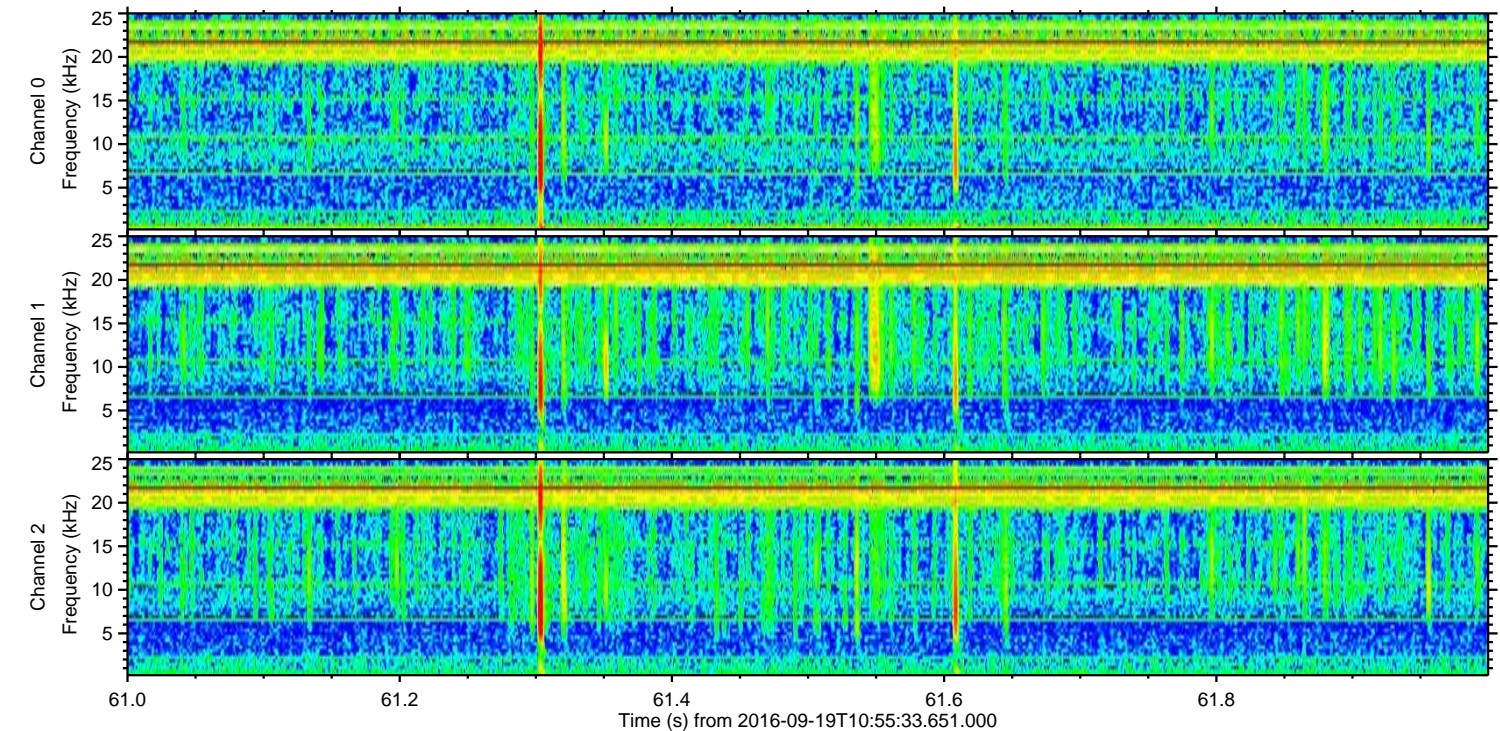
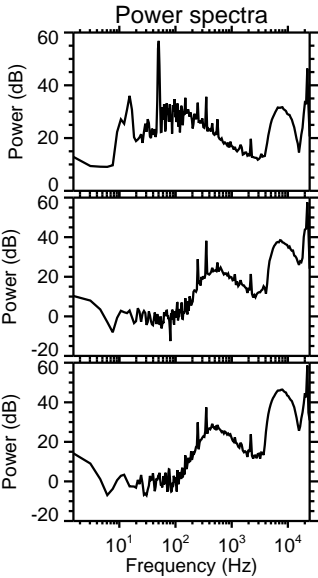
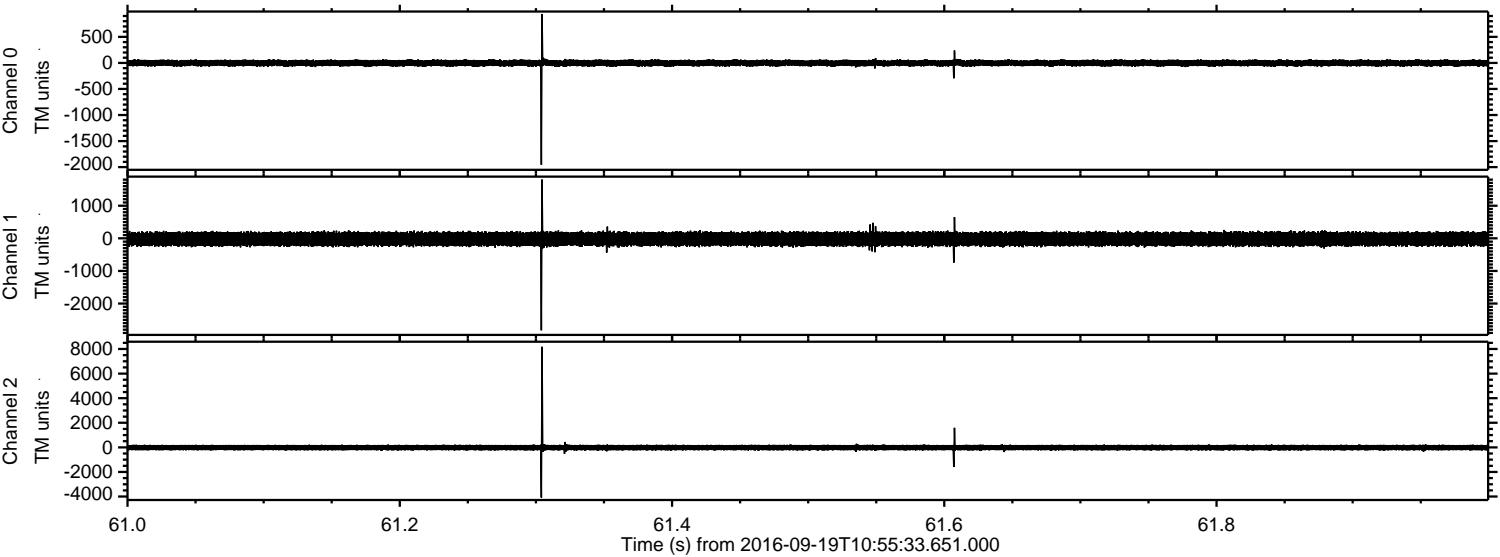


ELMAVAN 3D WAVEFORMS (Measured data sampled at 50 kHz) 51000 packets of 144 samples from 2016-09-19T10:55:33.651.000. Part 116/147

Processed Mon Sep 19 13:03:43 2016 by ELM ver.2012-10-06 from 001__elm20160919_105532__dat00.bin

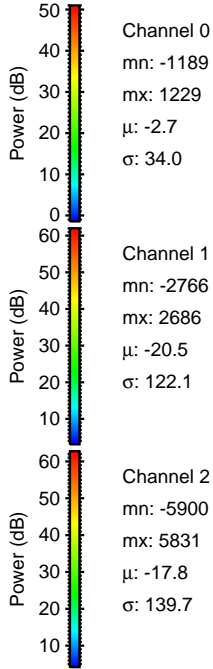
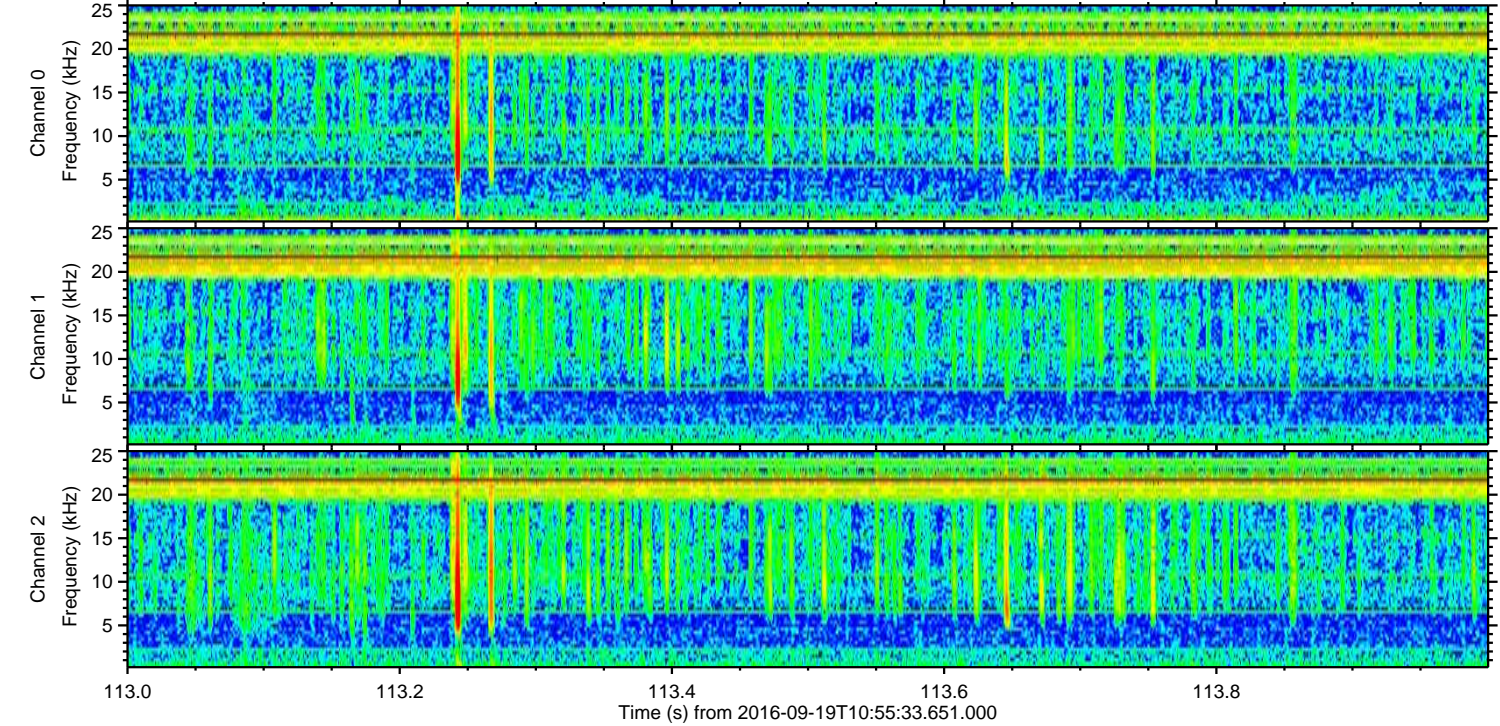
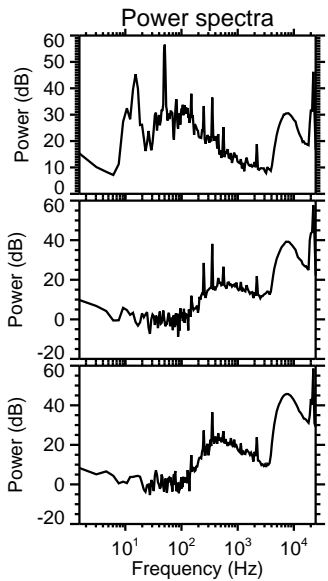
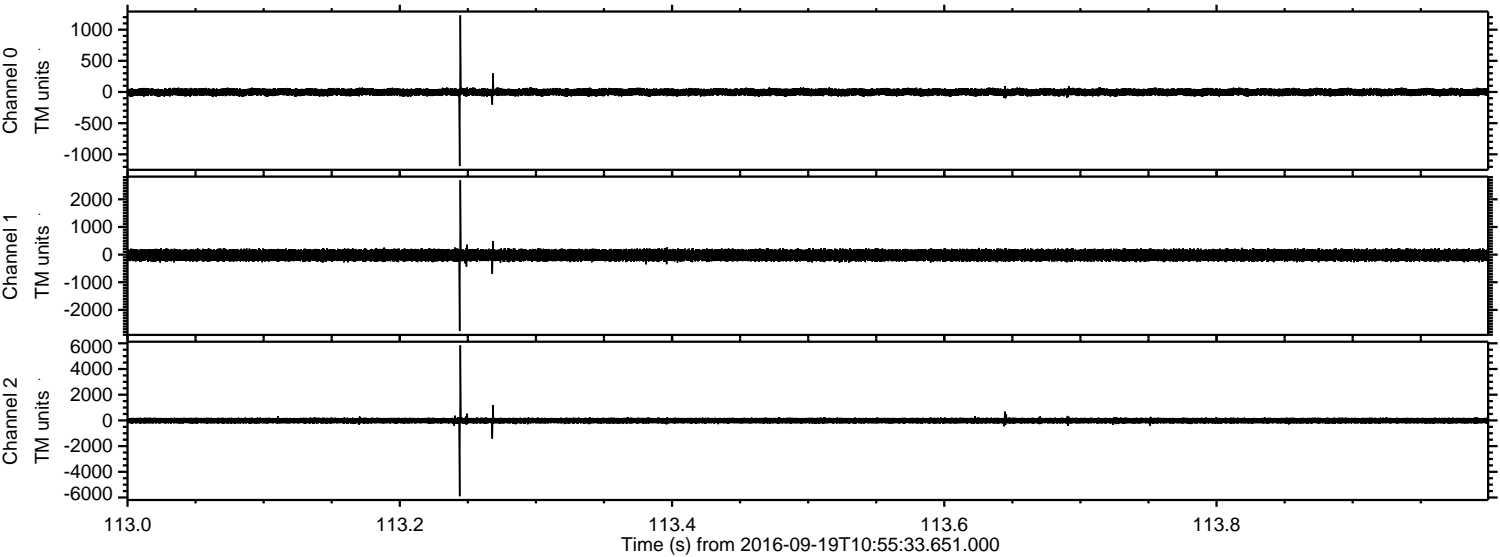


Processed Mon Sep 19 13:03:44 2016 by ELM ver.2012-10-06 from 001__elm20160919_105532__dat00.bin



ELMAVAN 3D WAVEFORMS (Measured data sampled at 50 kHz) 51000 packets of 144 samples from 2016-09-19T10:55:33.651.000. Part 114/147

Processed Mon Sep 19 13:03:45 2016 by ELM ver.2012-10-06 from 001__elm20160919_105532__dat00.bin

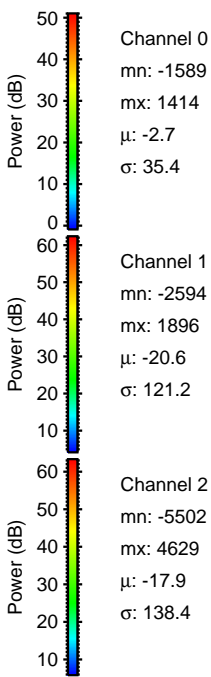
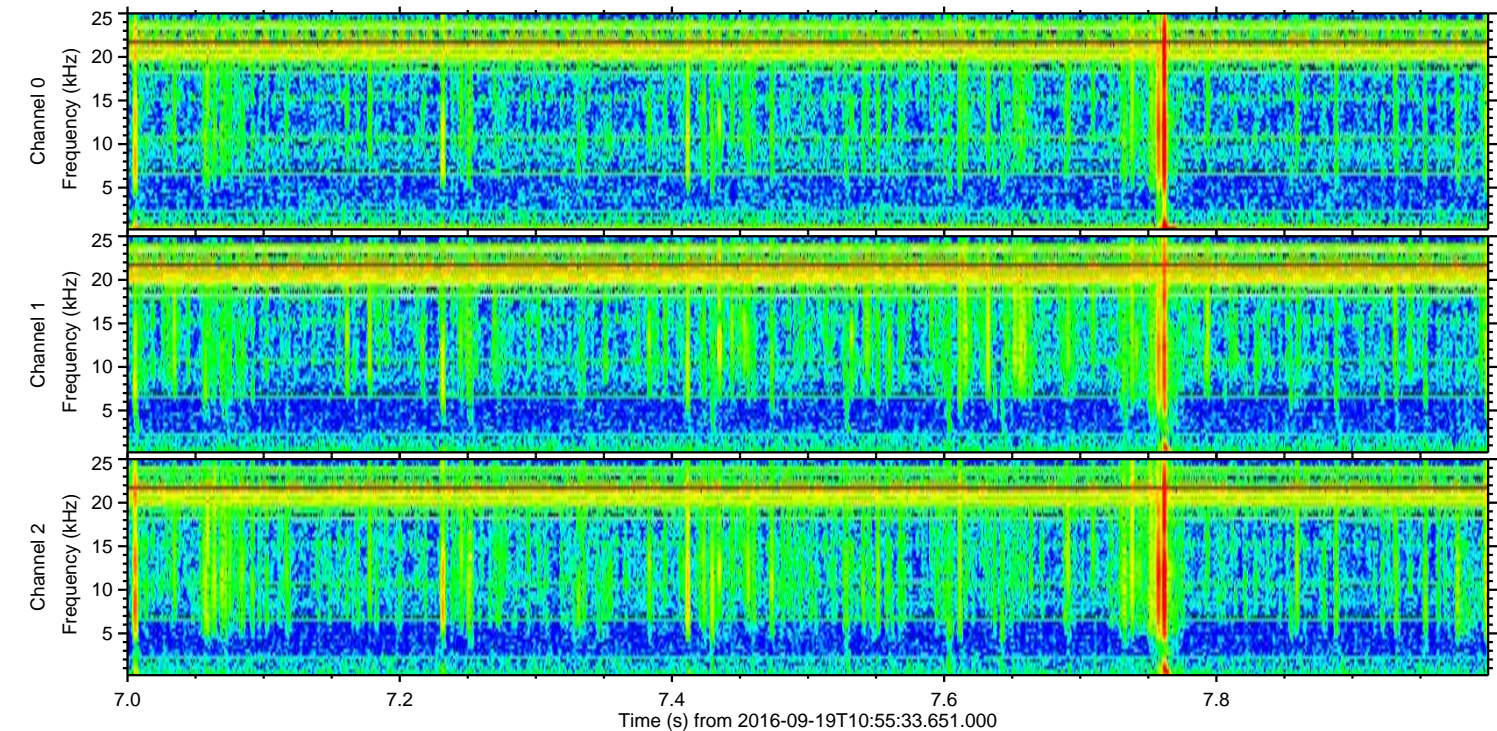
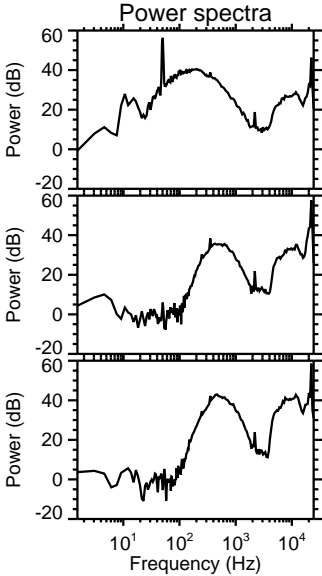
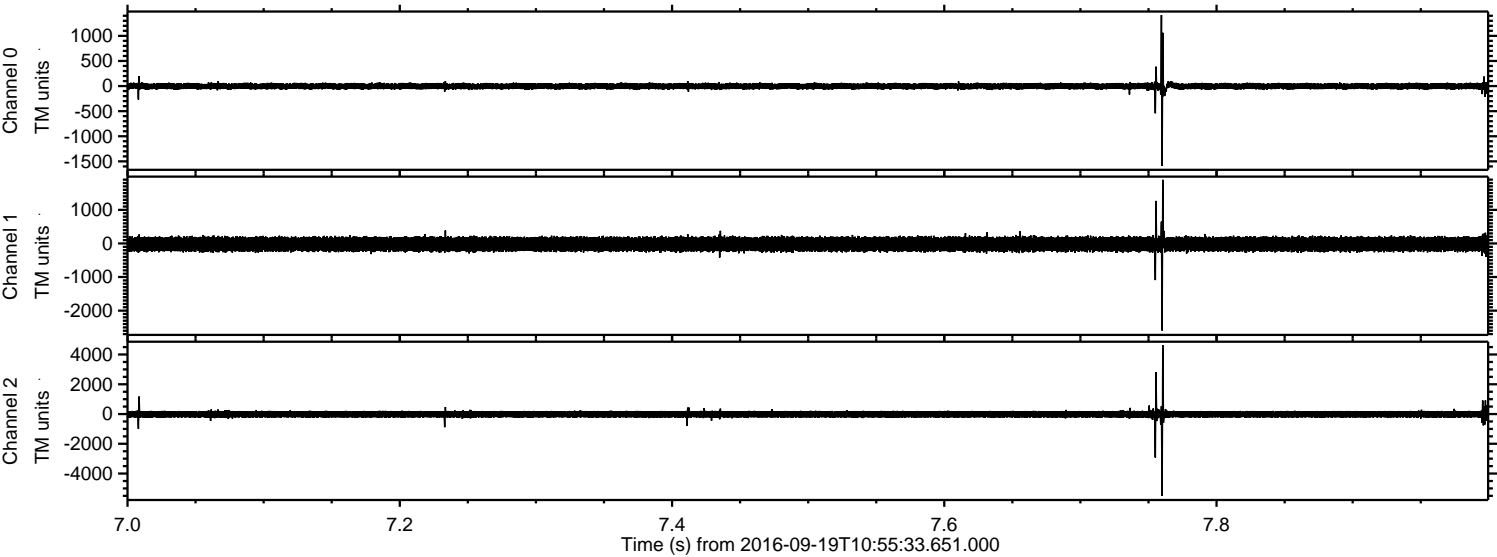


Channel 0
mn: -1189
mx: 1229
 μ : -2.7
 σ : 34.0

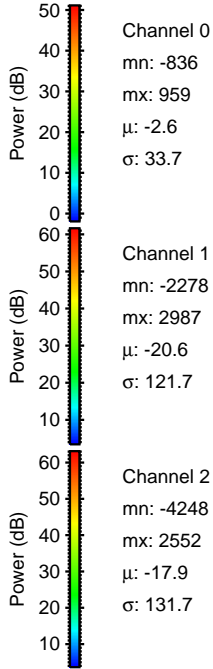
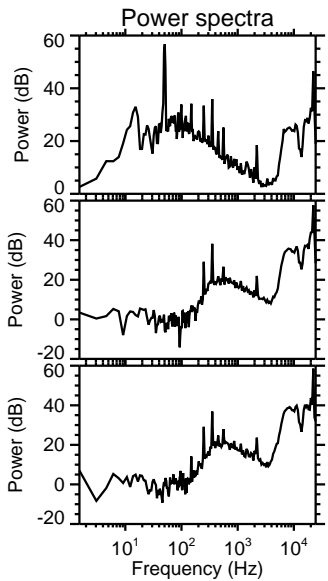
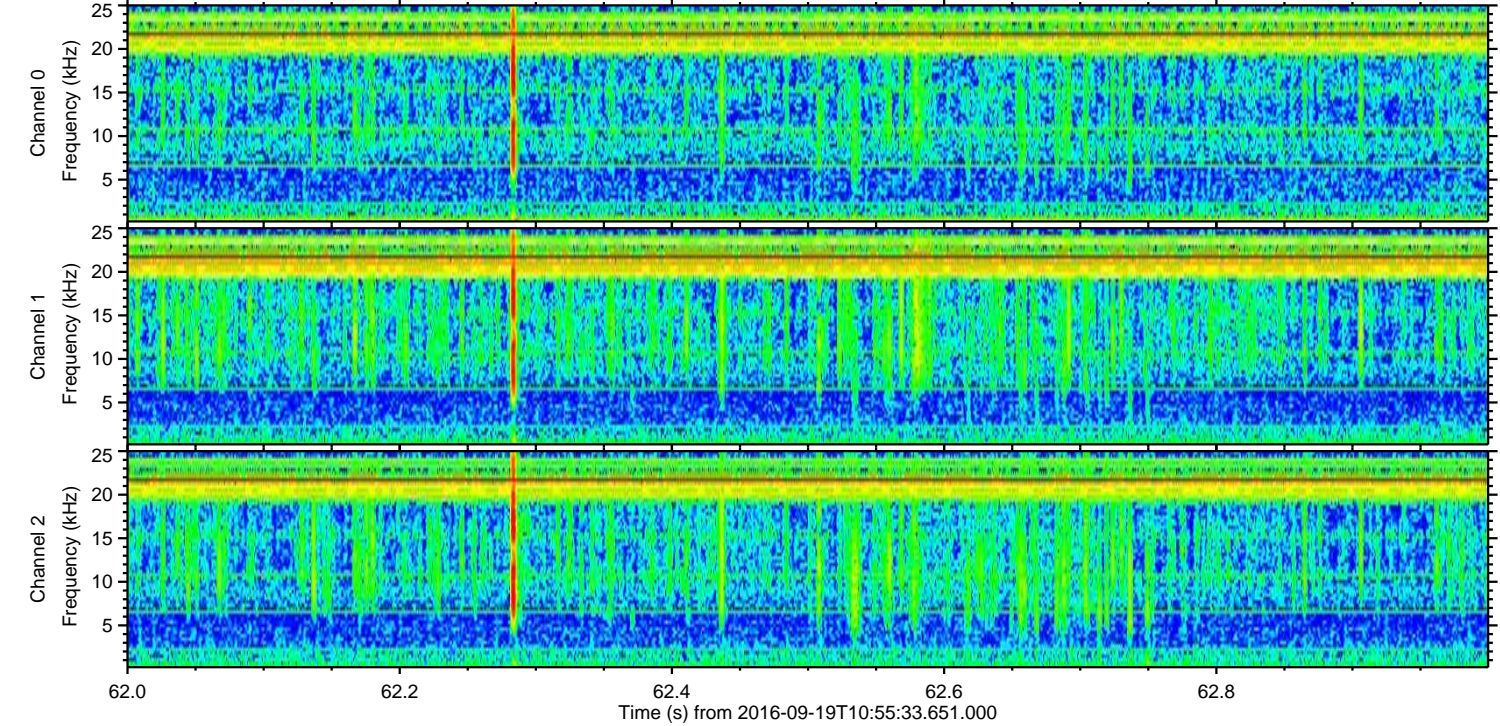
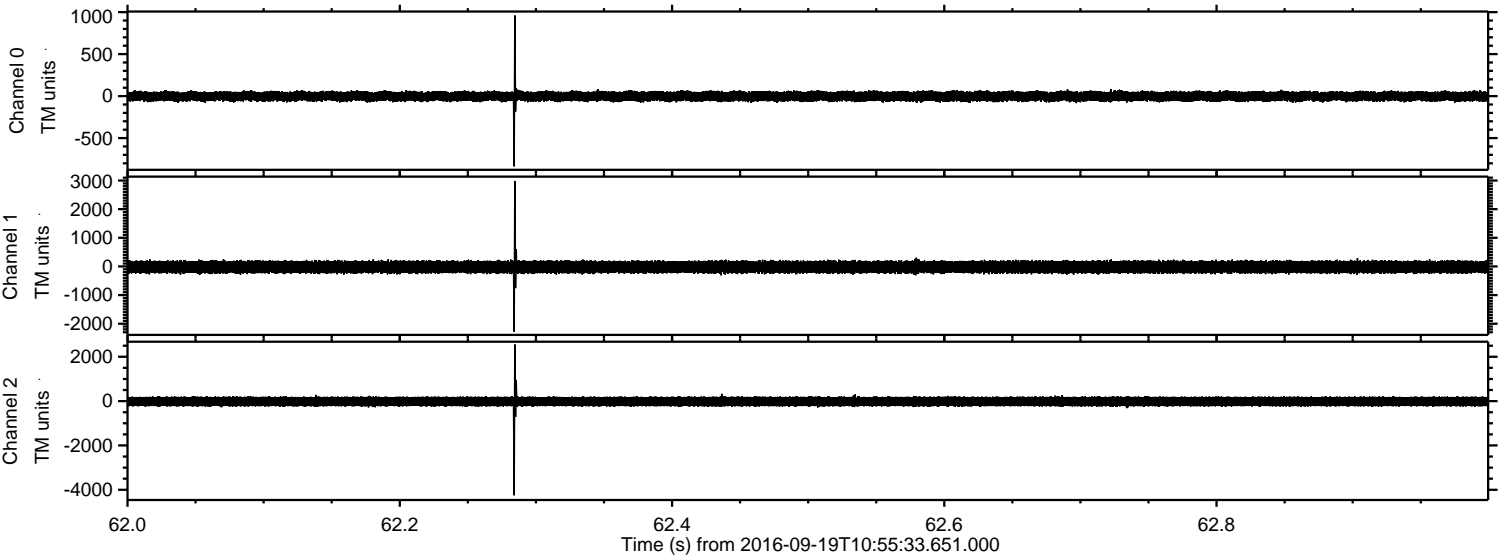
Channel 1
mn: -2766
mx: 2686
 μ : -20.5
 σ : 122.1

Channel 2
mn: -5900
mx: 5831
 μ : -17.8
 σ : 139.7

Processed Mon Sep 19 13:03:46 2016 by ELM ver.2012-10-06 from 001__elm20160919_105532__dat00.bin



Processed Mon Sep 19 13:03:47 2016 by ELM ver.2012-10-06 from 001__elm20160919_105532__dat00.bin



Processed Mon Sep 19 13:03:48 2016 by ELM ver.2012-10-06 from 001__elm20160919_105532__dat00.bin

