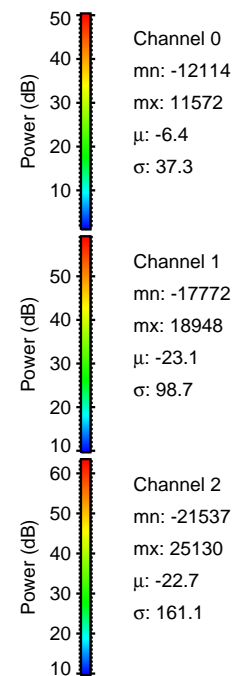
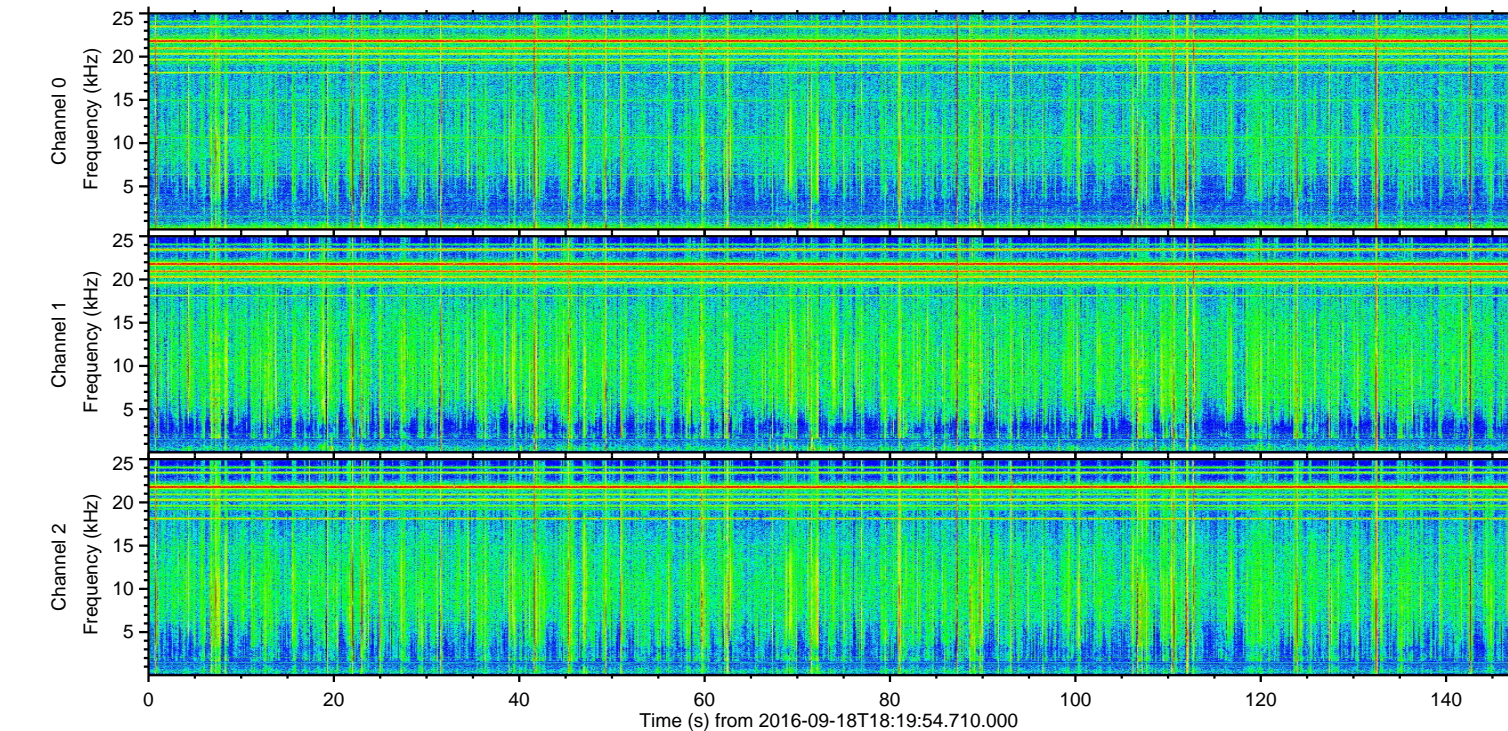
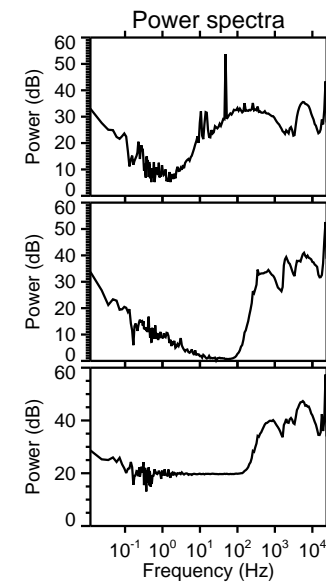
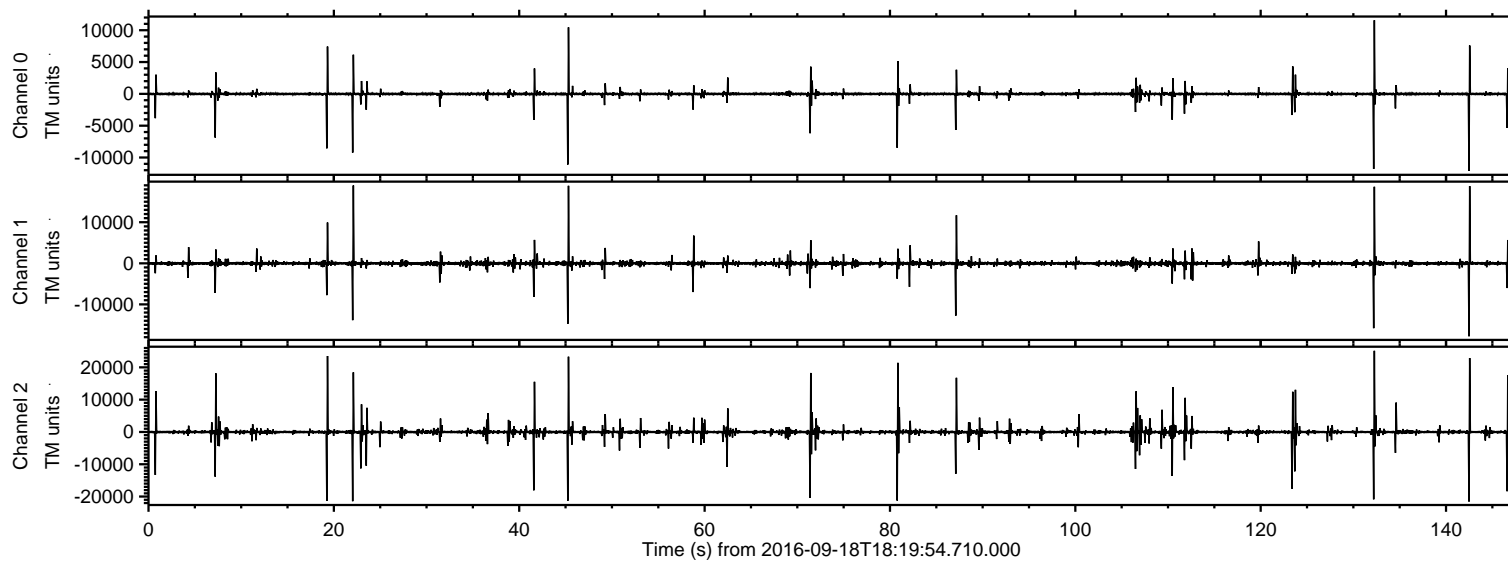


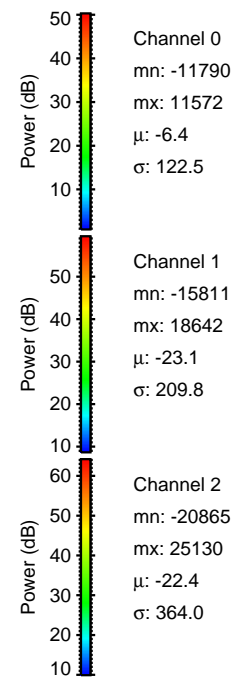
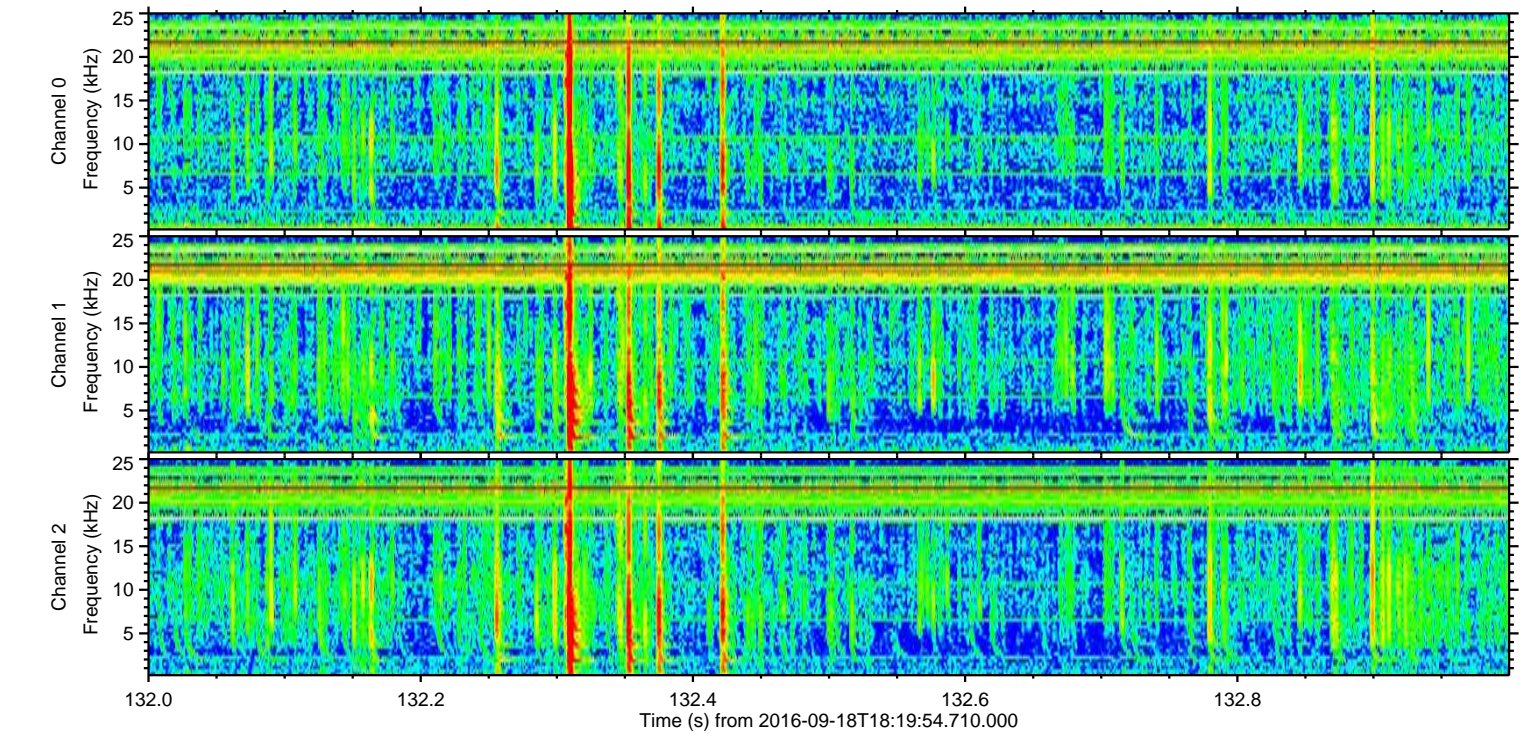
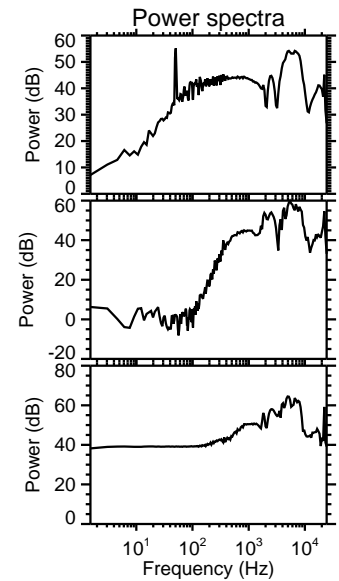
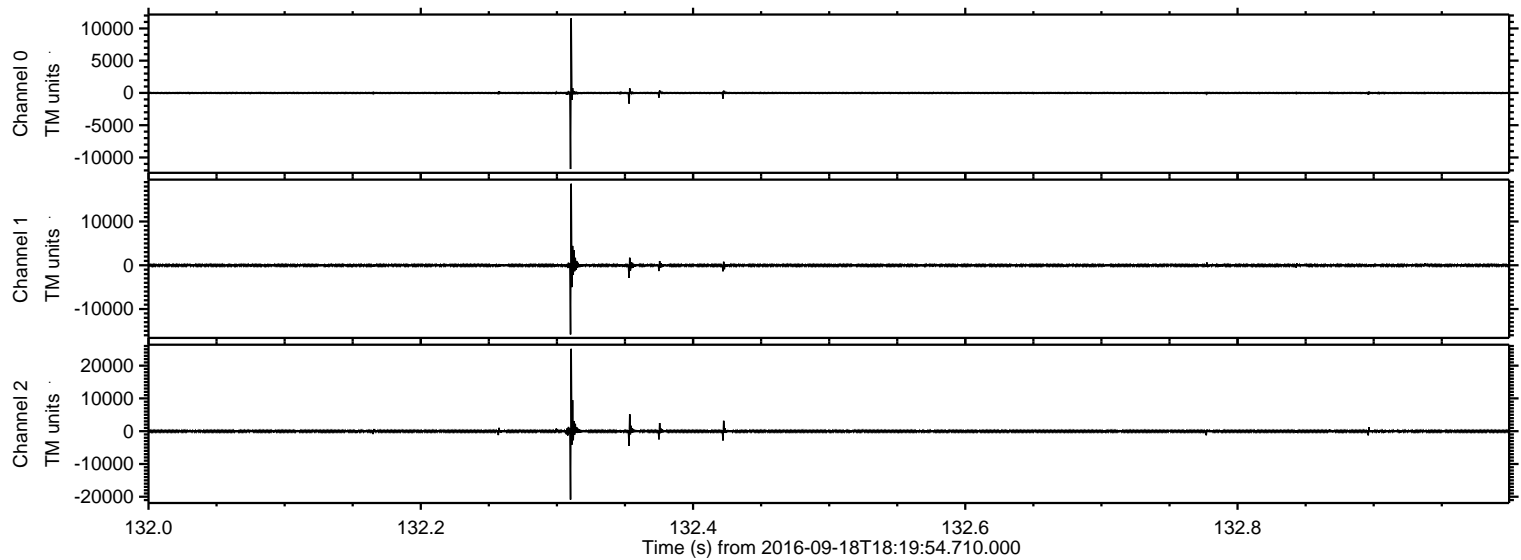
ELMAVAN 3D WAVEFORMS (Measured data sampled at 50 kHz) 51000 packets of 144 samples from 2016-09-18T18:19:54.710.000.

Processed Sun Sep 18 20:28:36 2016 by ELM ver.2012-10-06 from 001__elm20160918_181953__dat00.bin

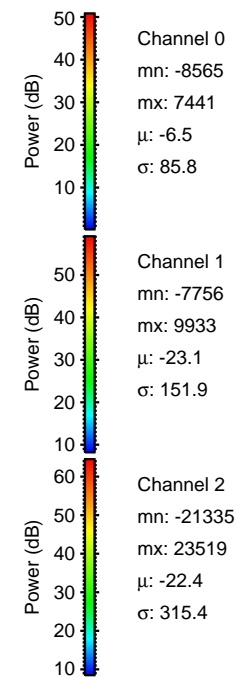
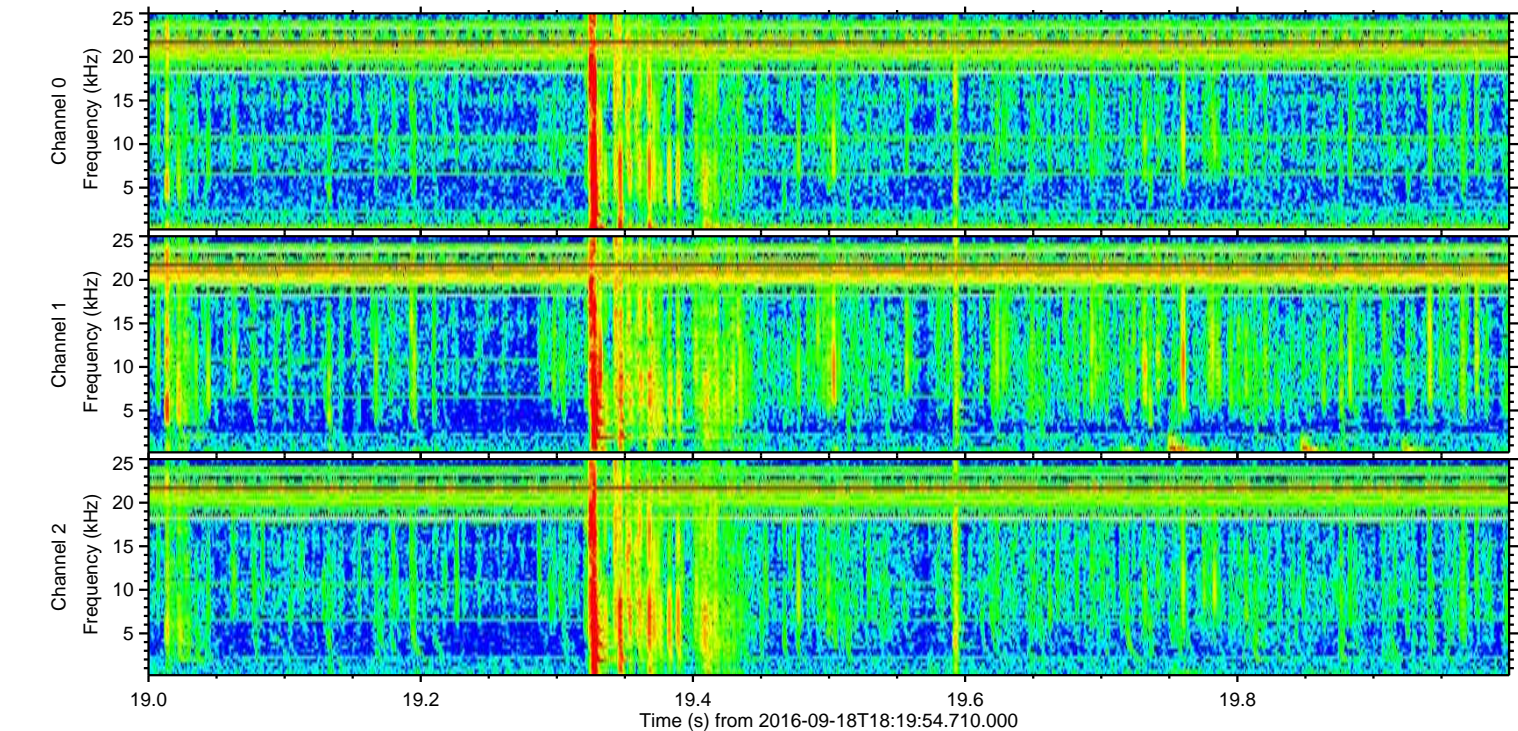
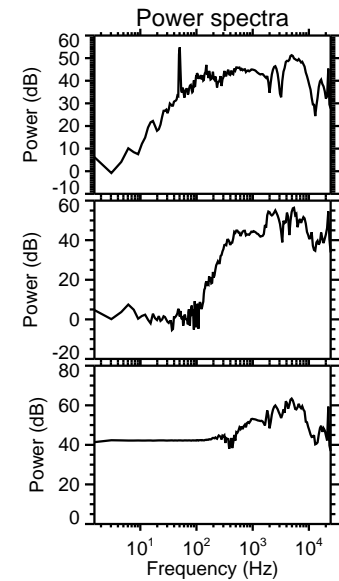
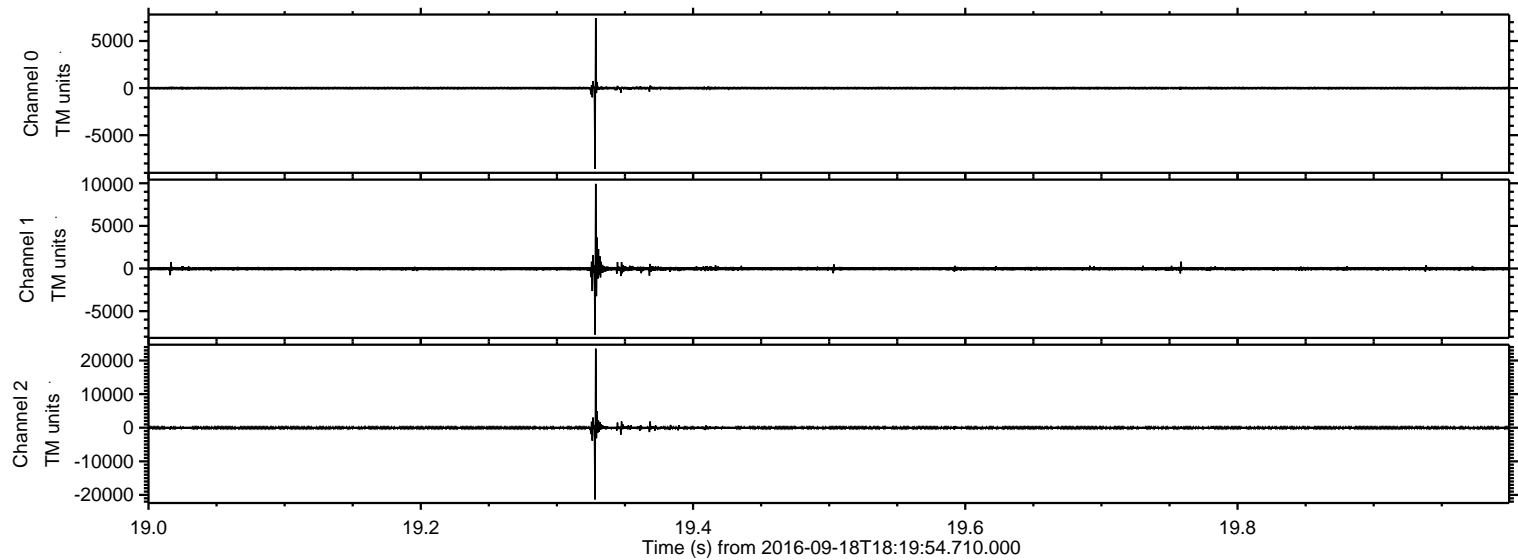


ELMAVAN 3D WAVEFORMS (Measured data sampled at 50 kHz) 51000 packets of 144 samples from 2016-09-18T18:19:54.710.000. Part 133/147

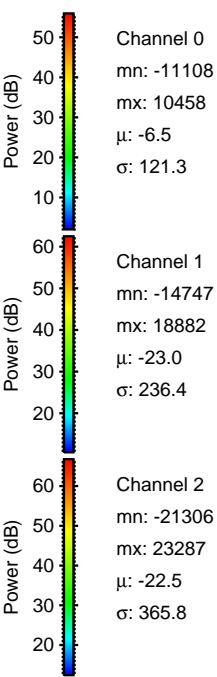
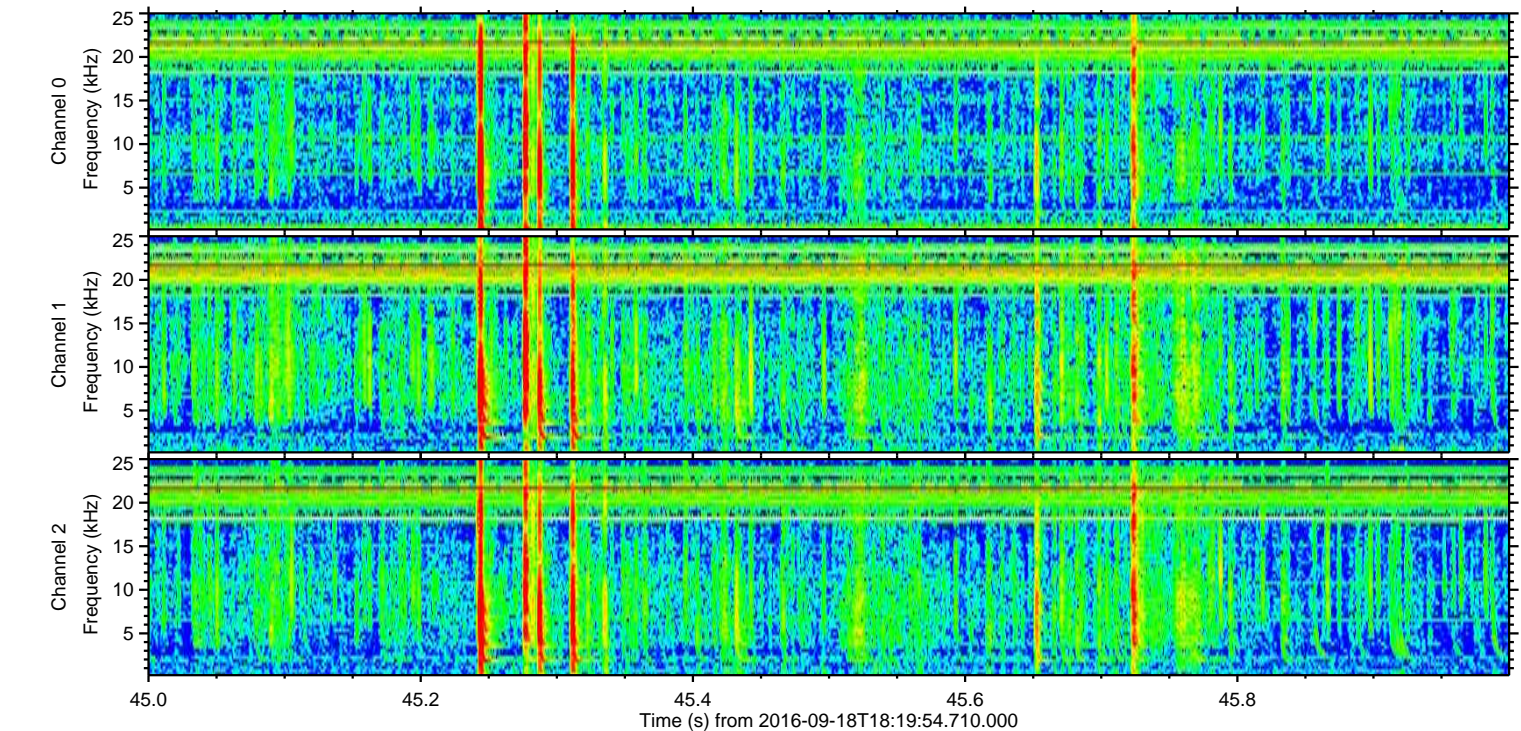
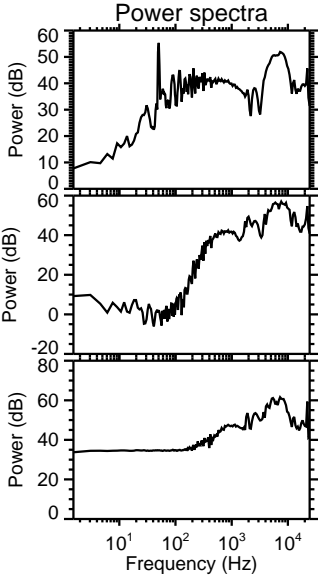
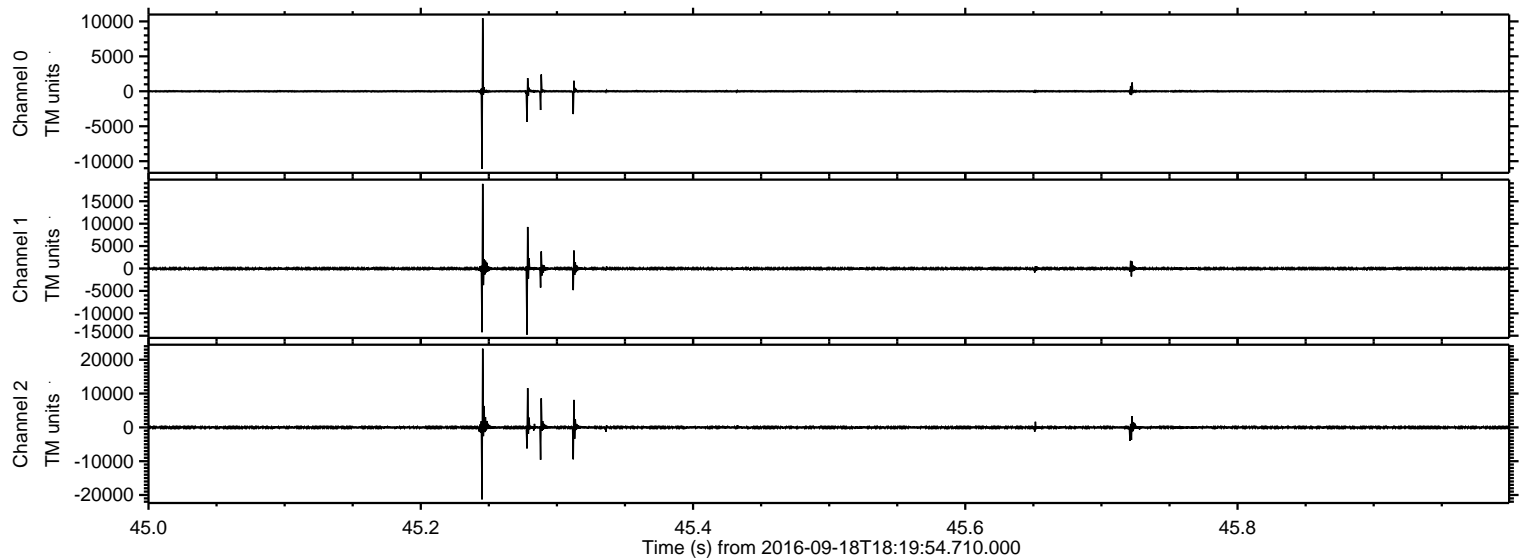
Processed Sun Sep 18 20:28:51 2016 by ELM ver.2012-10-06 from 001__elm20160918_181953__dat00.bin



Processed Sun Sep 18 20:28:52 2016 by ELM ver.2012-10-06 from 001__elm20160918_181953__dat00.bin

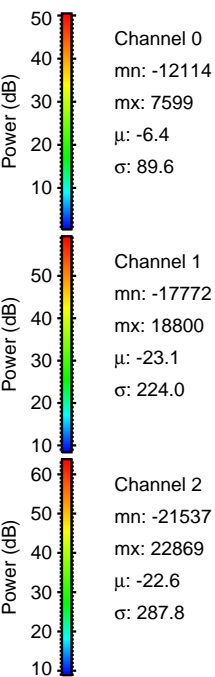
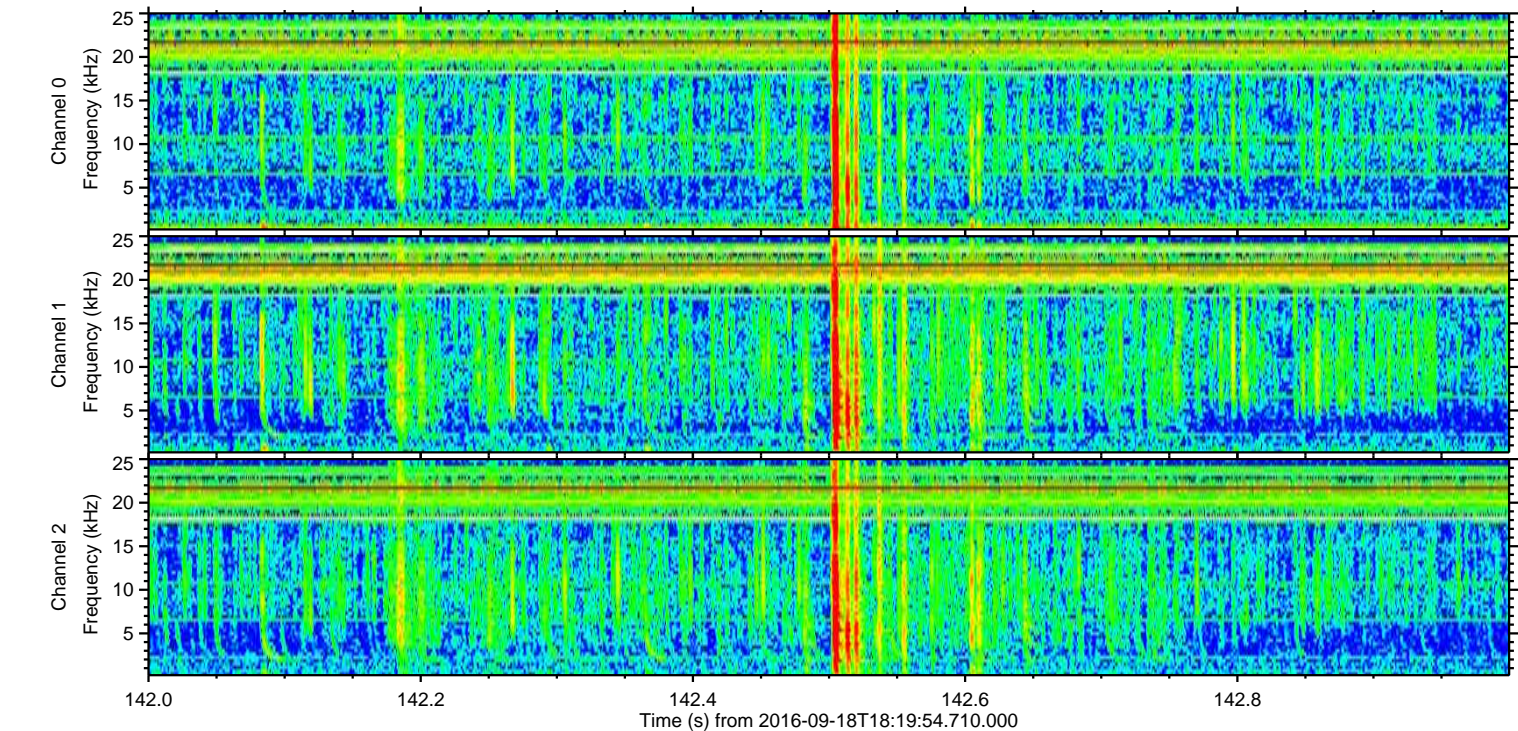
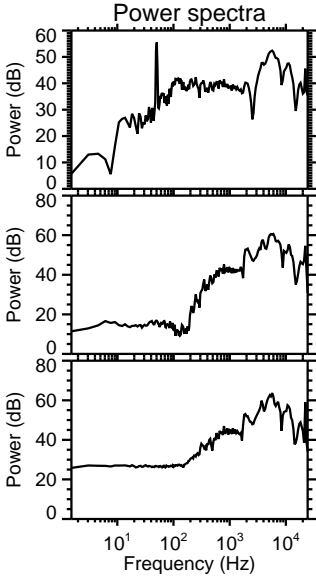
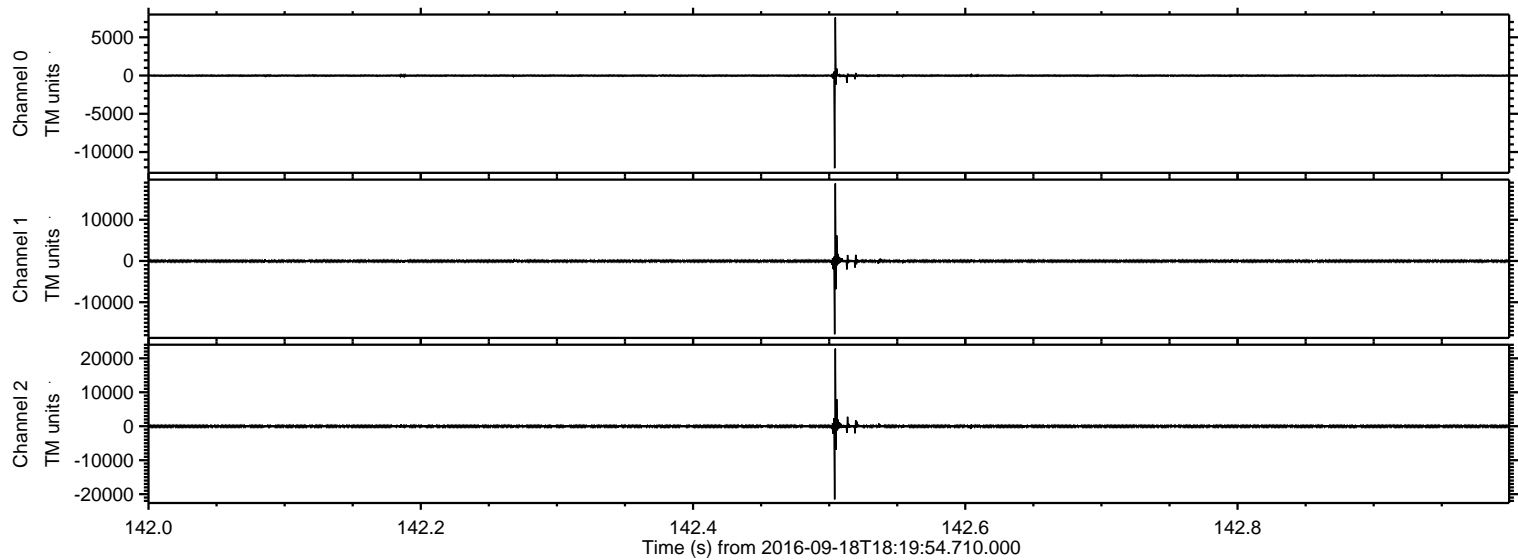


Processed Sun Sep 18 20:28:53 2016 by ELM ver.2012-10-06 from 001__elm20160918_181953__dat00.bin

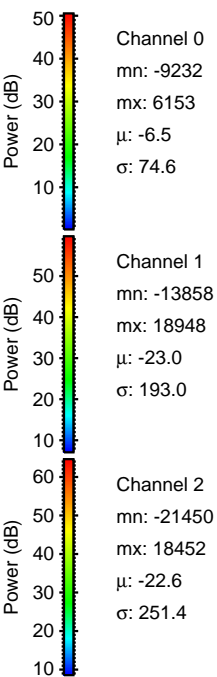
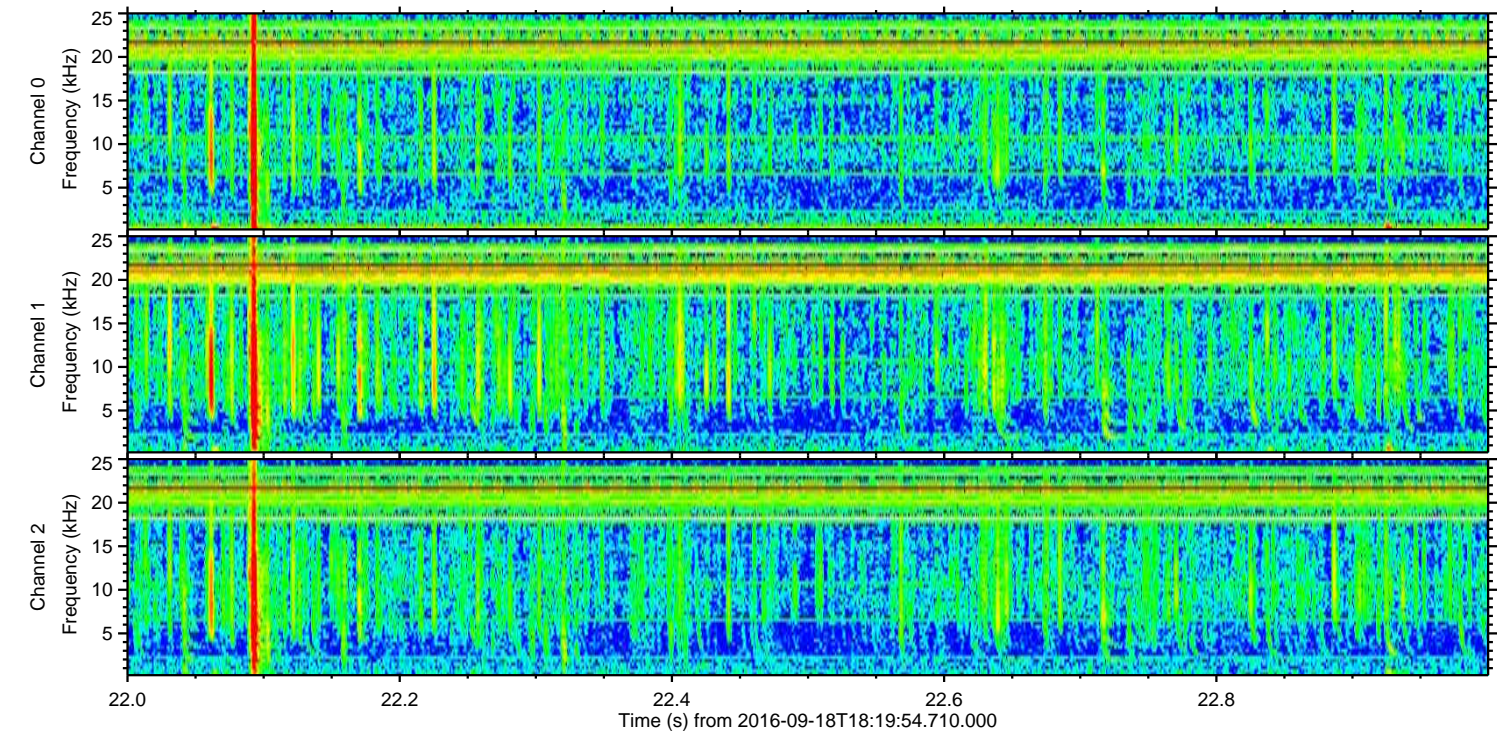
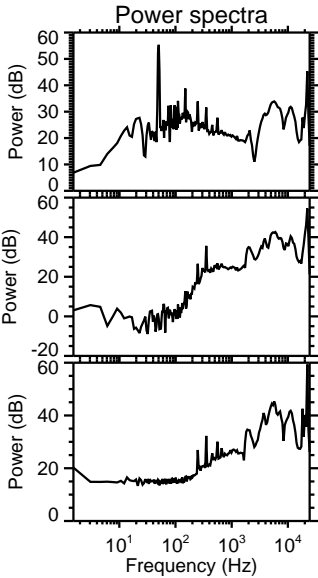
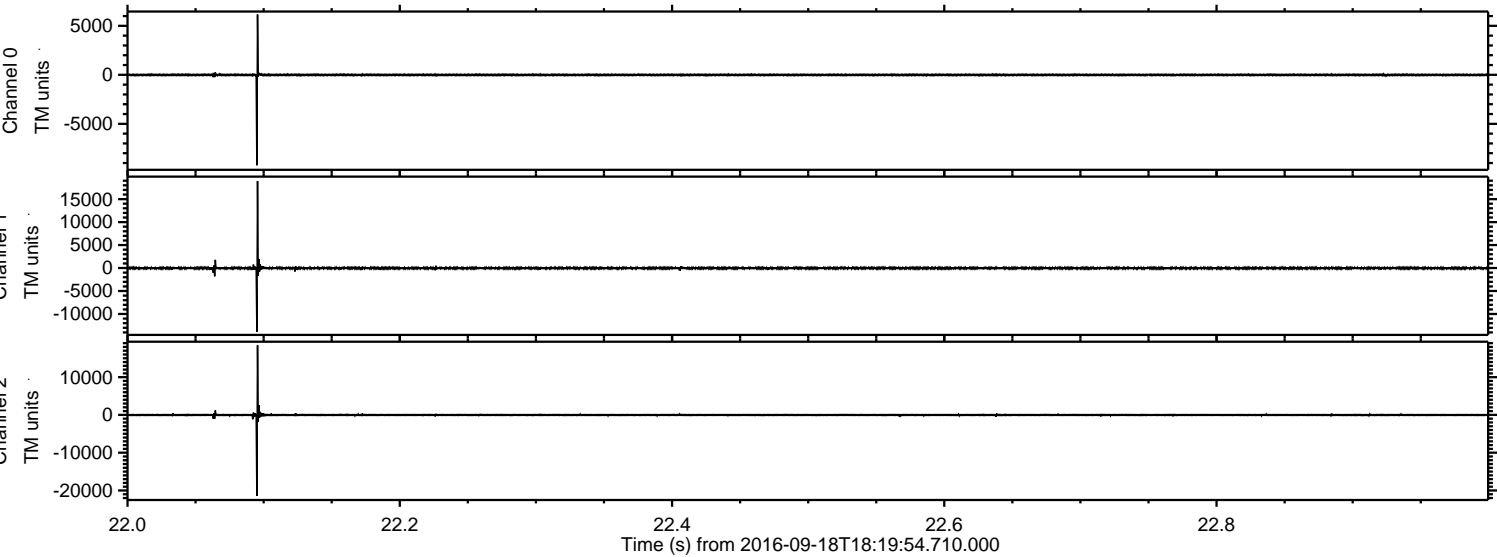


ELMAVAN 3D WAVEFORMS (Measured data sampled at 50 kHz) 51000 packets of 144 samples from 2016-09-18T18:19:54.710.000. Part 143/147

Processed Sun Sep 18 20:28:54 2016 by ELM ver.2012-10-06 from 001__elm20160918_181953__dat00.bin

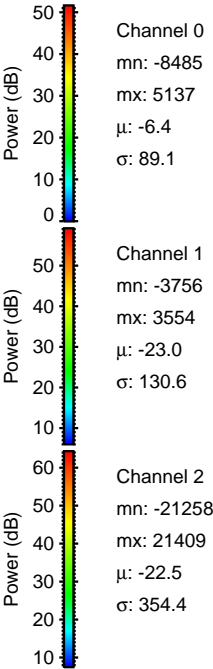
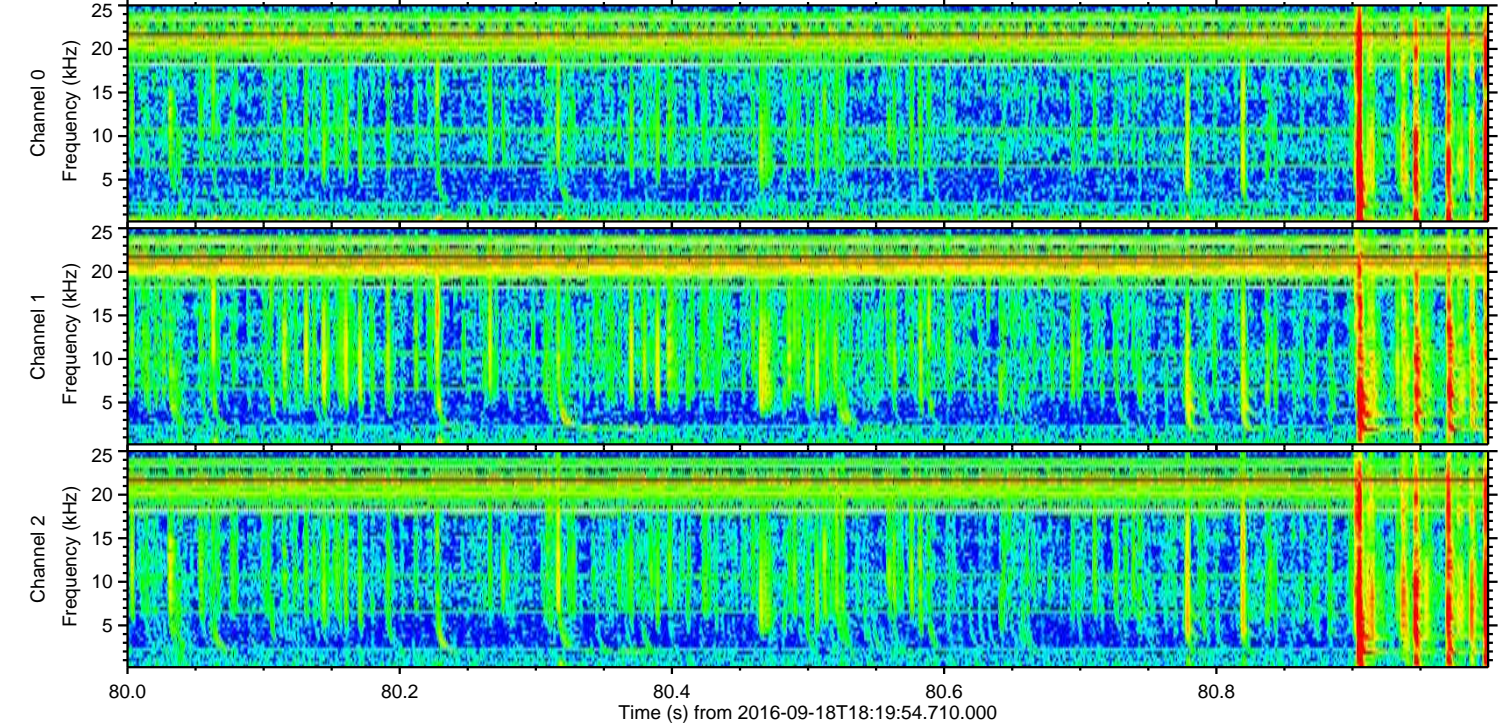
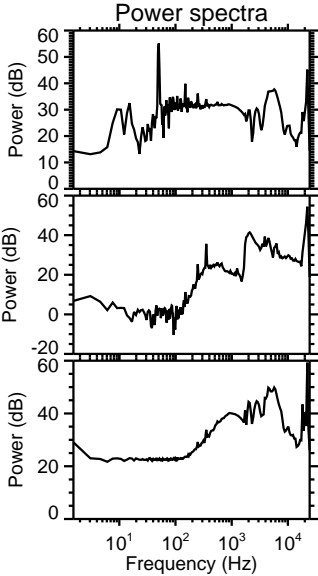
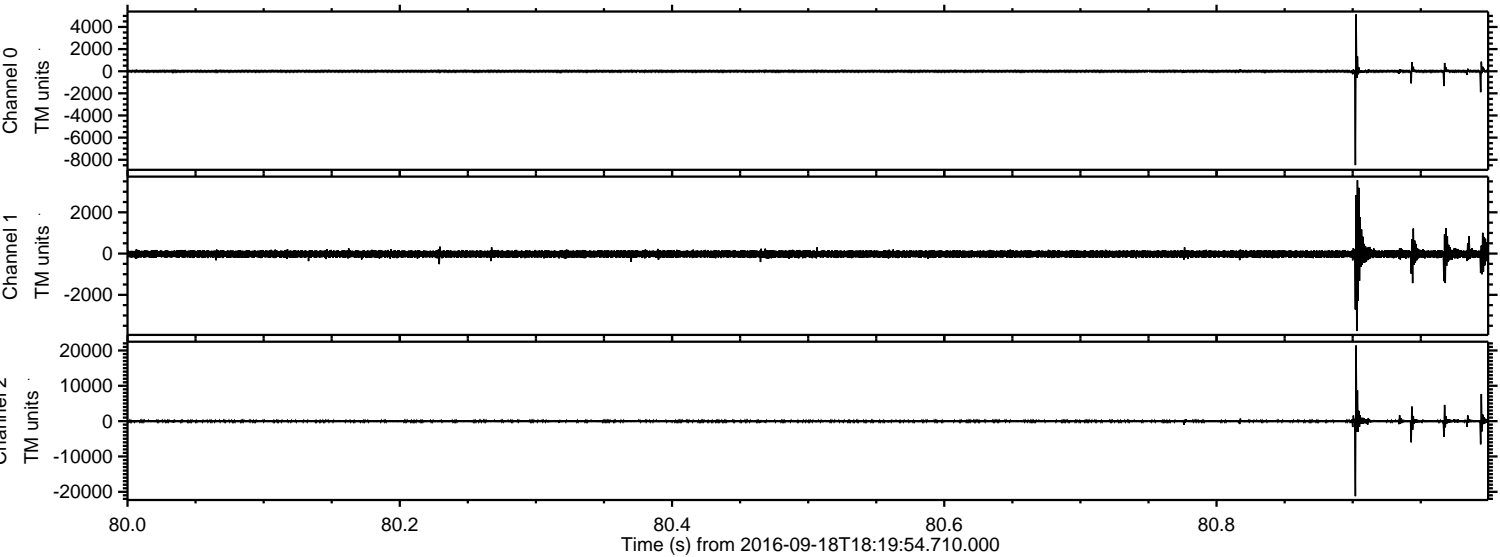


Processed Sun Sep 18 20:28:55 2016 by ELM ver.2012-10-06 from 001__elm20160918_181953__dat00.bin

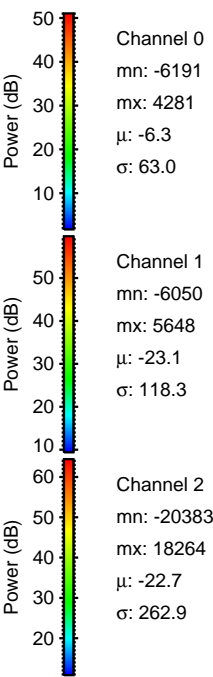
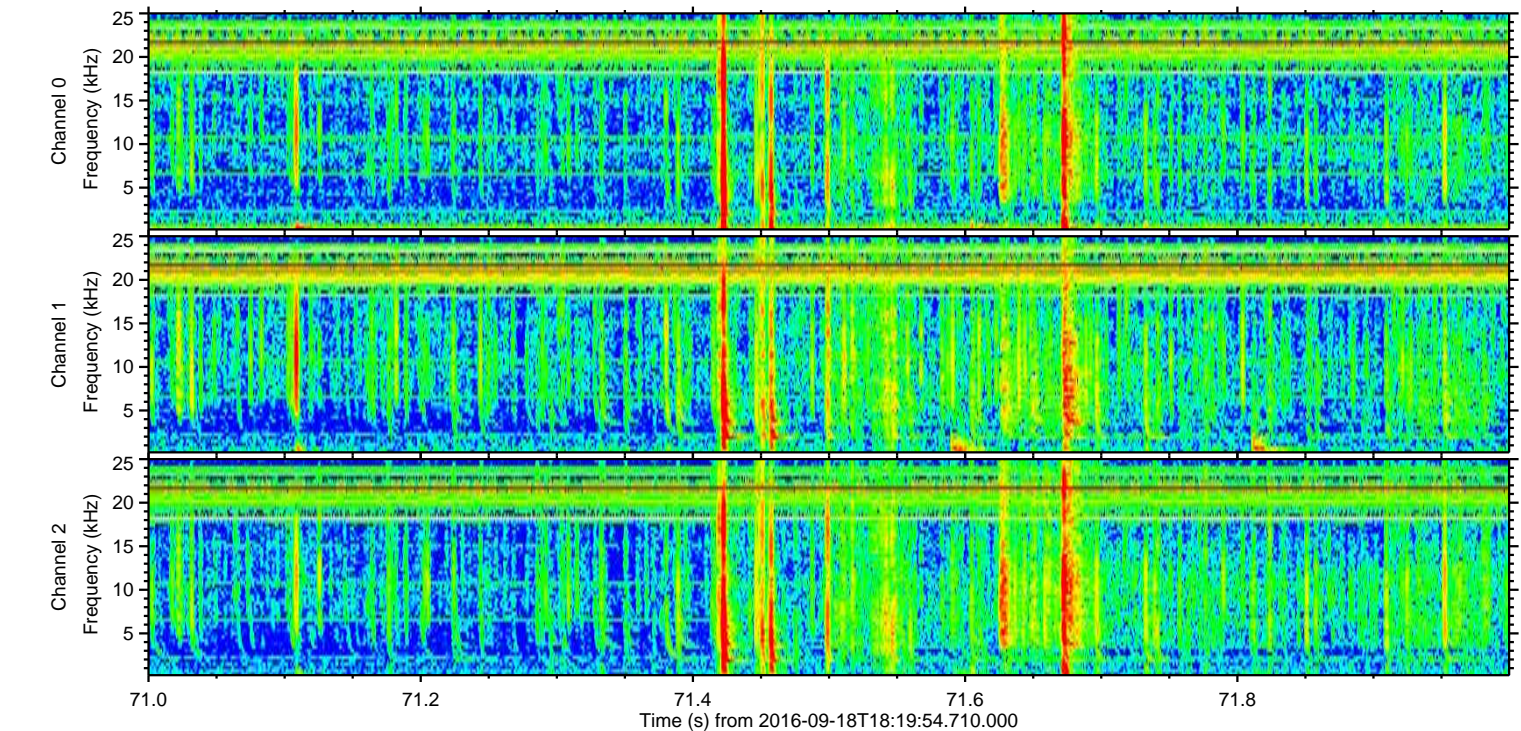
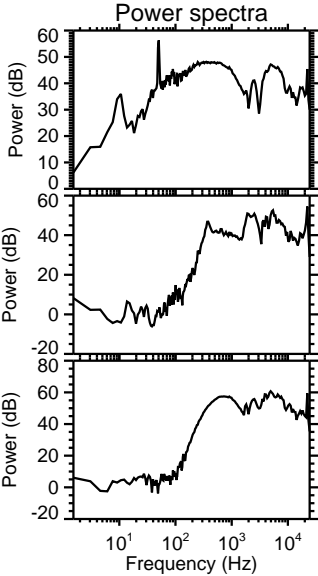
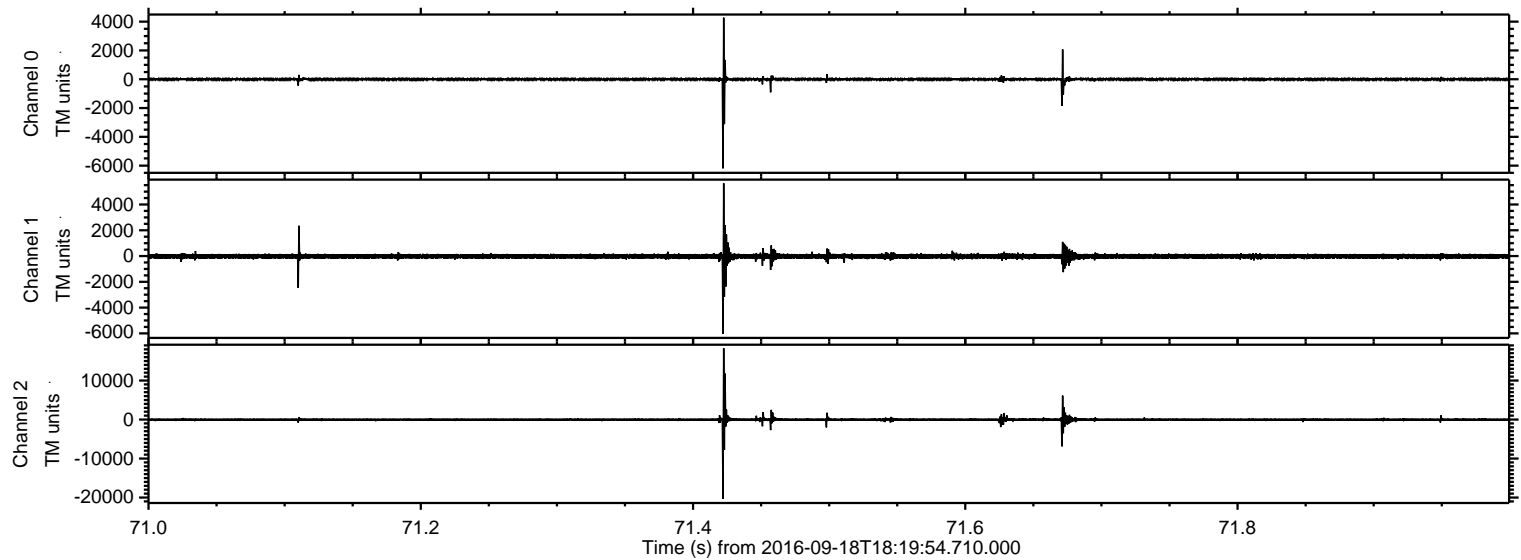


ELMAVAN 3D WAVEFORMS (Measured data sampled at 50 kHz) 51000 packets of 144 samples from 2016-09-18T18:19:54.710.000. Part 81/147

Processed Sun Sep 18 20:28:56 2016 by ELM ver.2012-10-06 from 001__elm20160918_181953__dat00.bin



Processed Sun Sep 18 20:28:57 2016 by ELM ver.2012-10-06 from 001__elm20160918_181953__dat00.bin

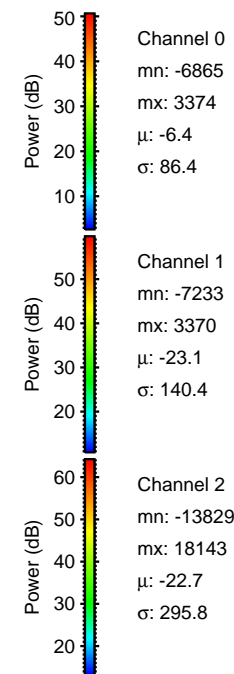
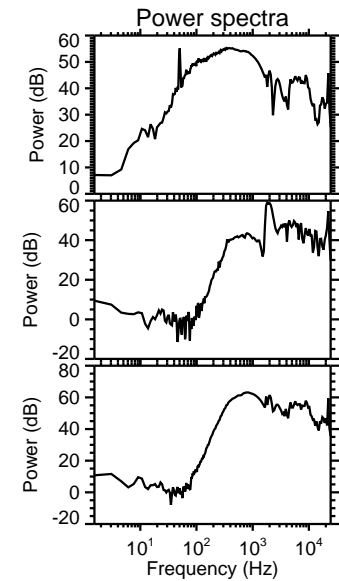
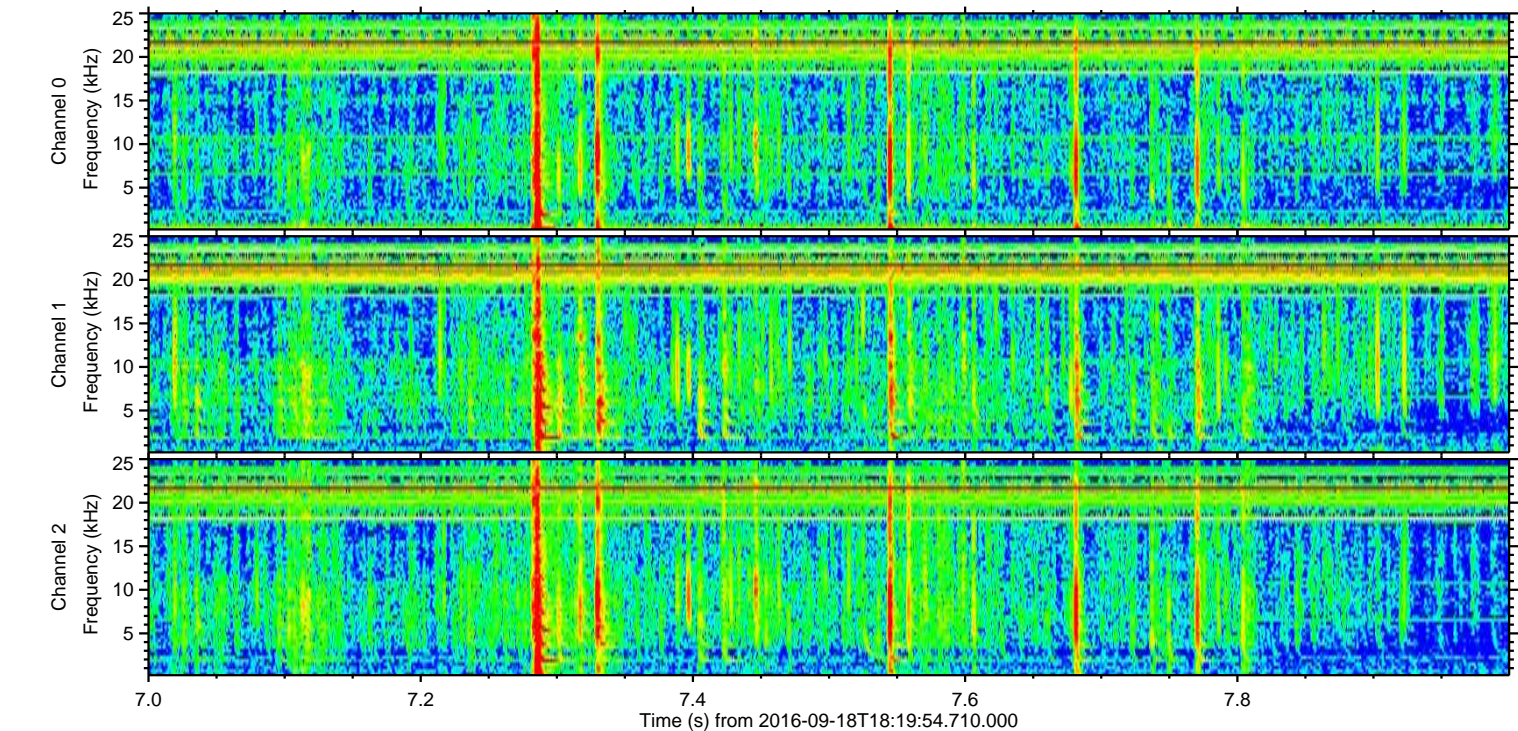
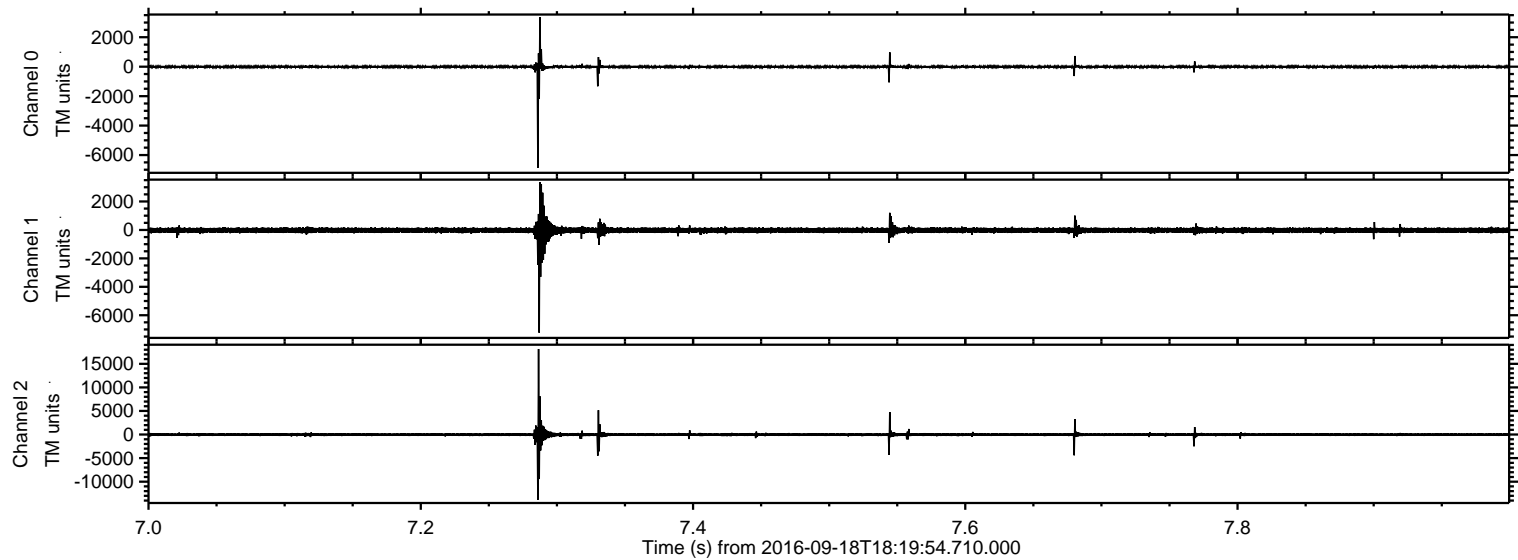


Channel 0
mn: -6191
mx: 4281
 μ : -6.3
 σ : 63.0

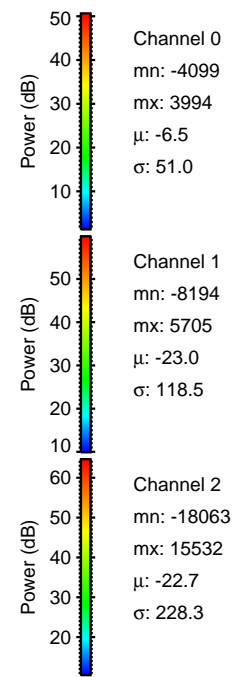
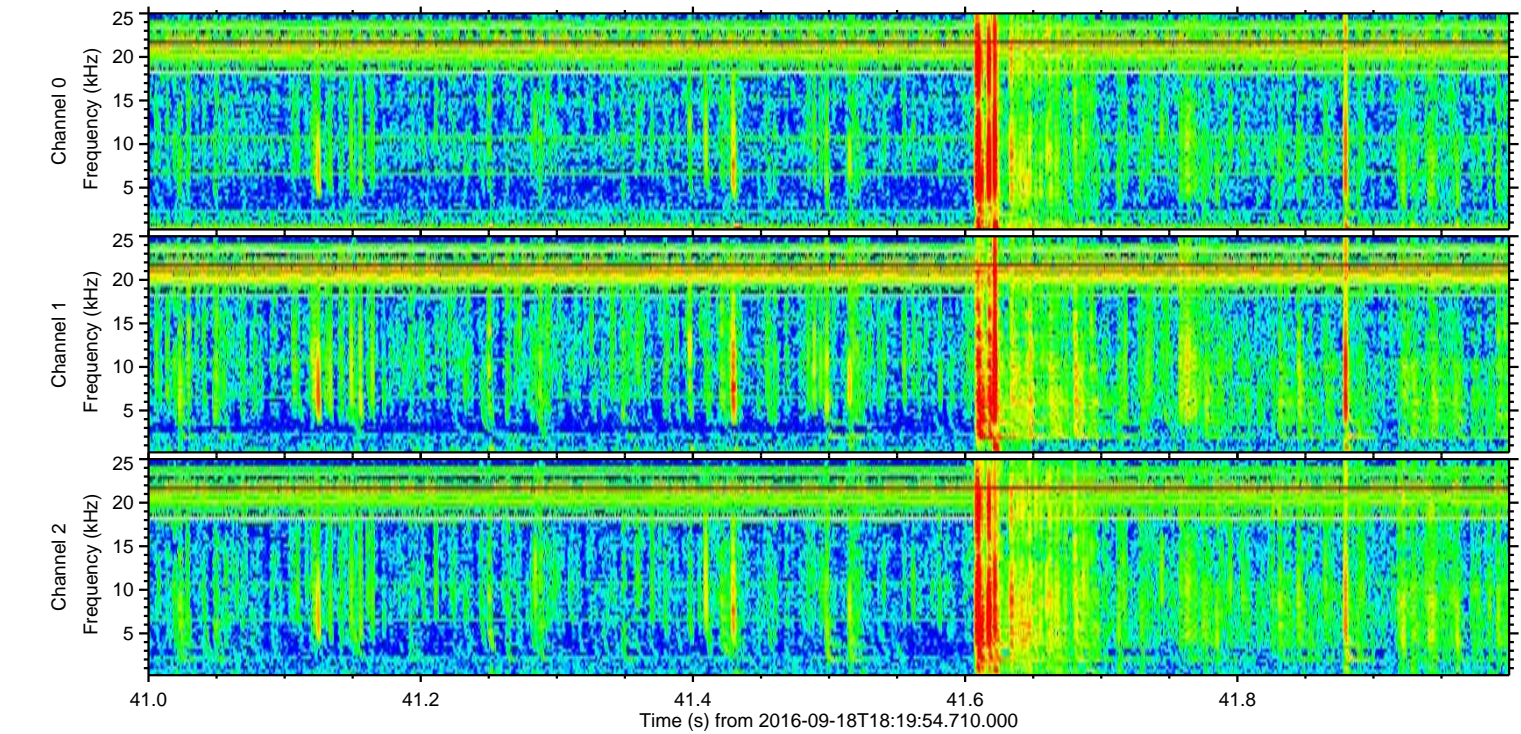
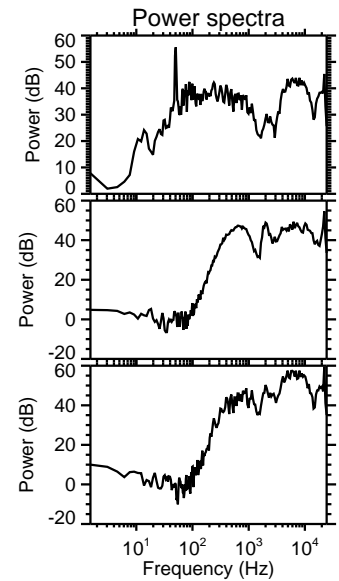
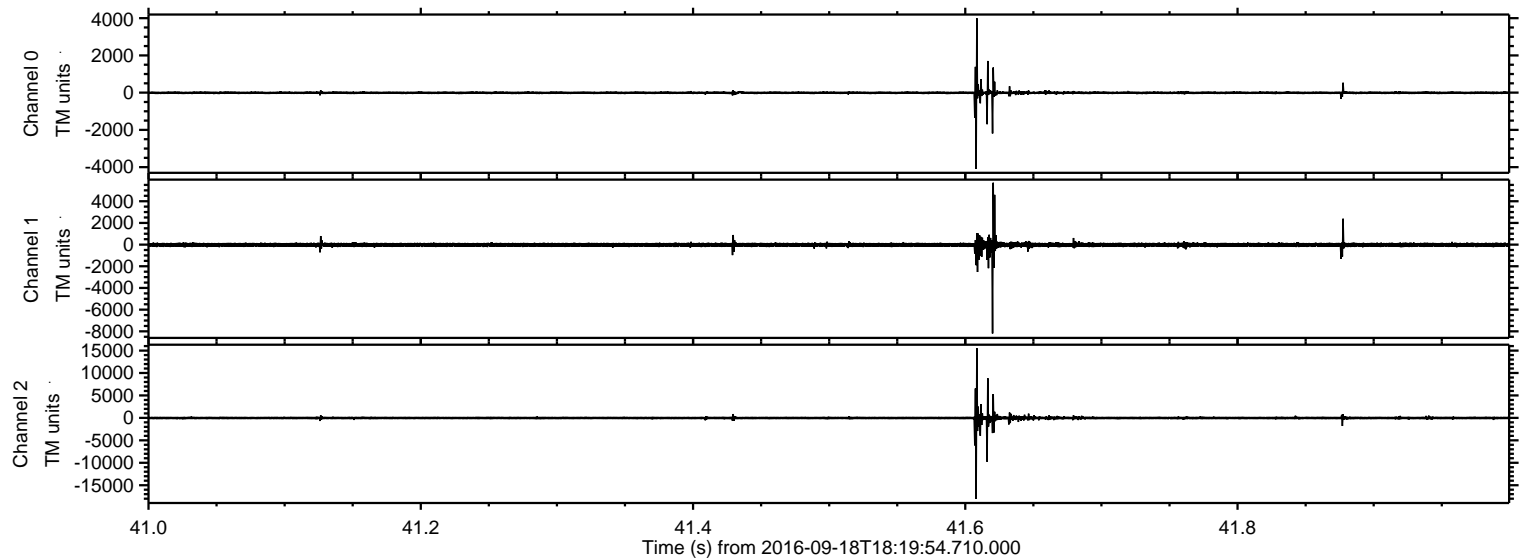
Channel 1
mn: -6050
mx: 5648
 μ : -23.1
 σ : 118.3

Channel 2
mn: -20383
mx: 18264
 μ : -22.7
 σ : 262.9

Processed Sun Sep 18 20:28:59 2016 by ELM ver.2012-10-06 from 001__elm20160918_181953__dat00.bin



Processed Sun Sep 18 20:29:00 2016 by ELM ver.2012-10-06 from 001__elm20160918_181953__dat00.bin



Processed Sun Sep 18 20:29:01 2016 by ELM ver.2012-10-06 from 001__elm20160918_181953__dat00.bin

