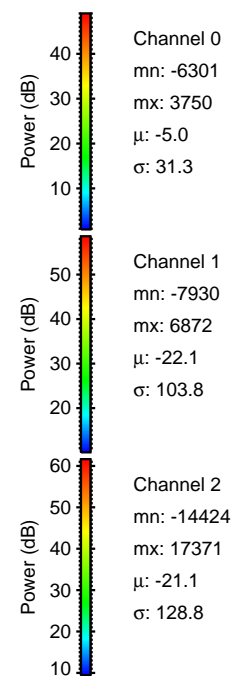
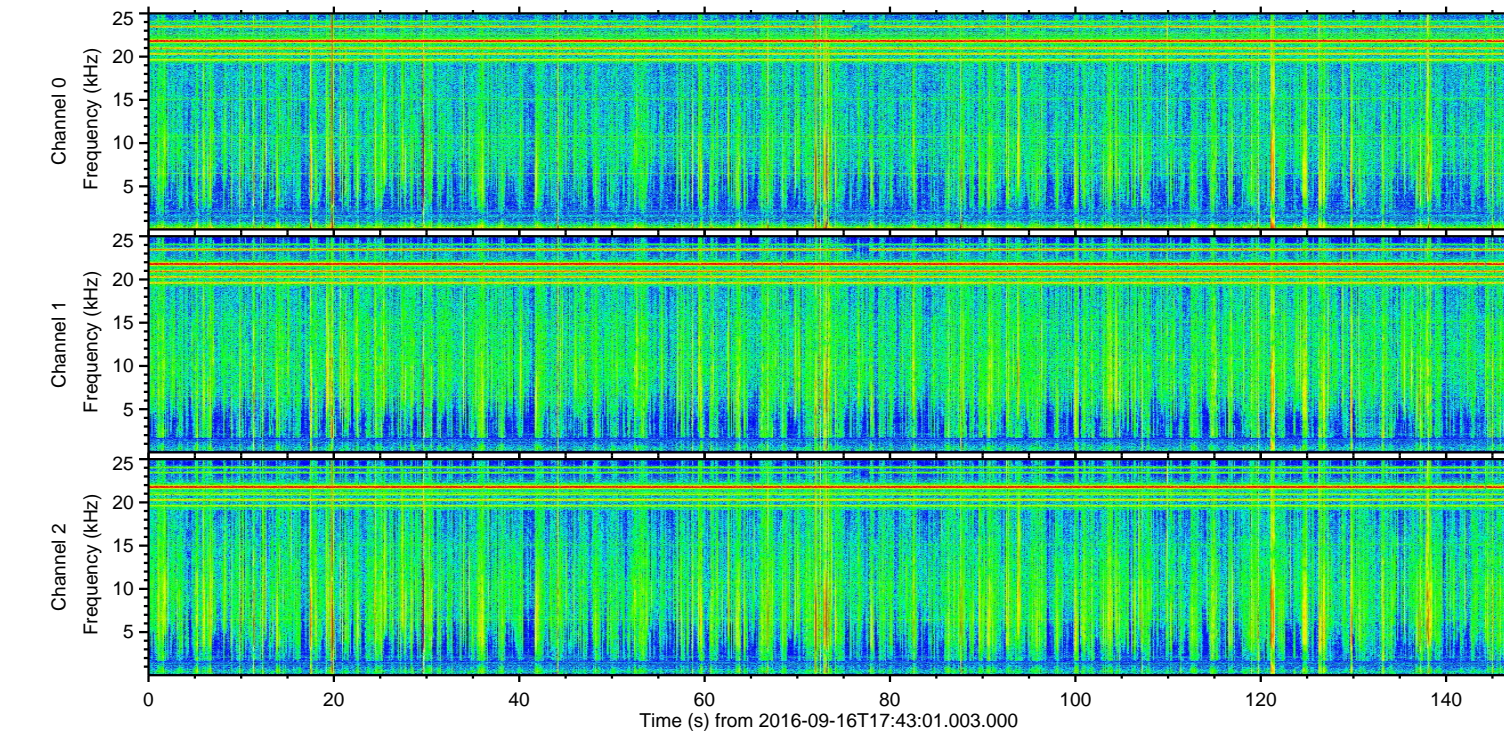
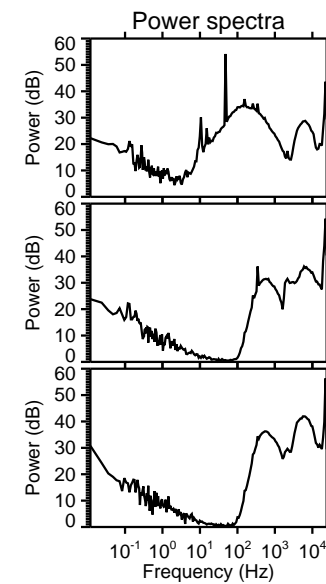
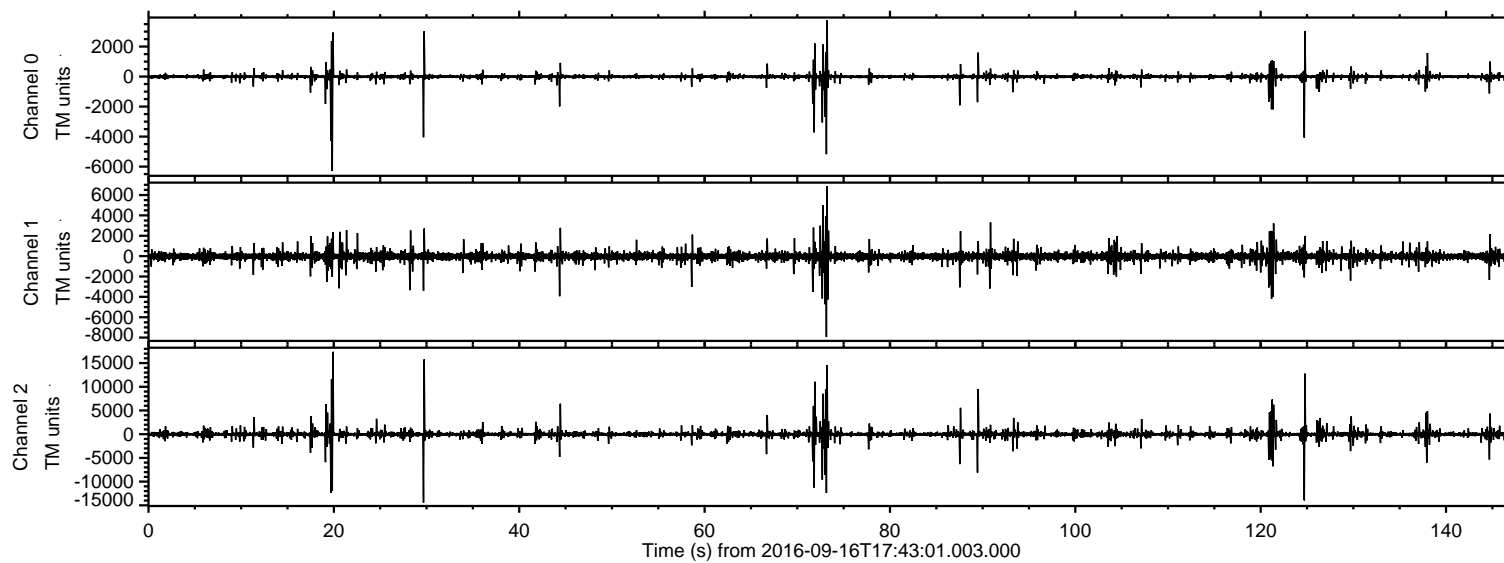


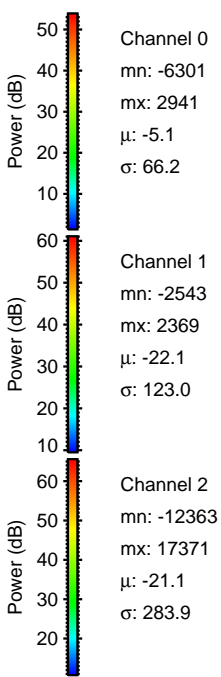
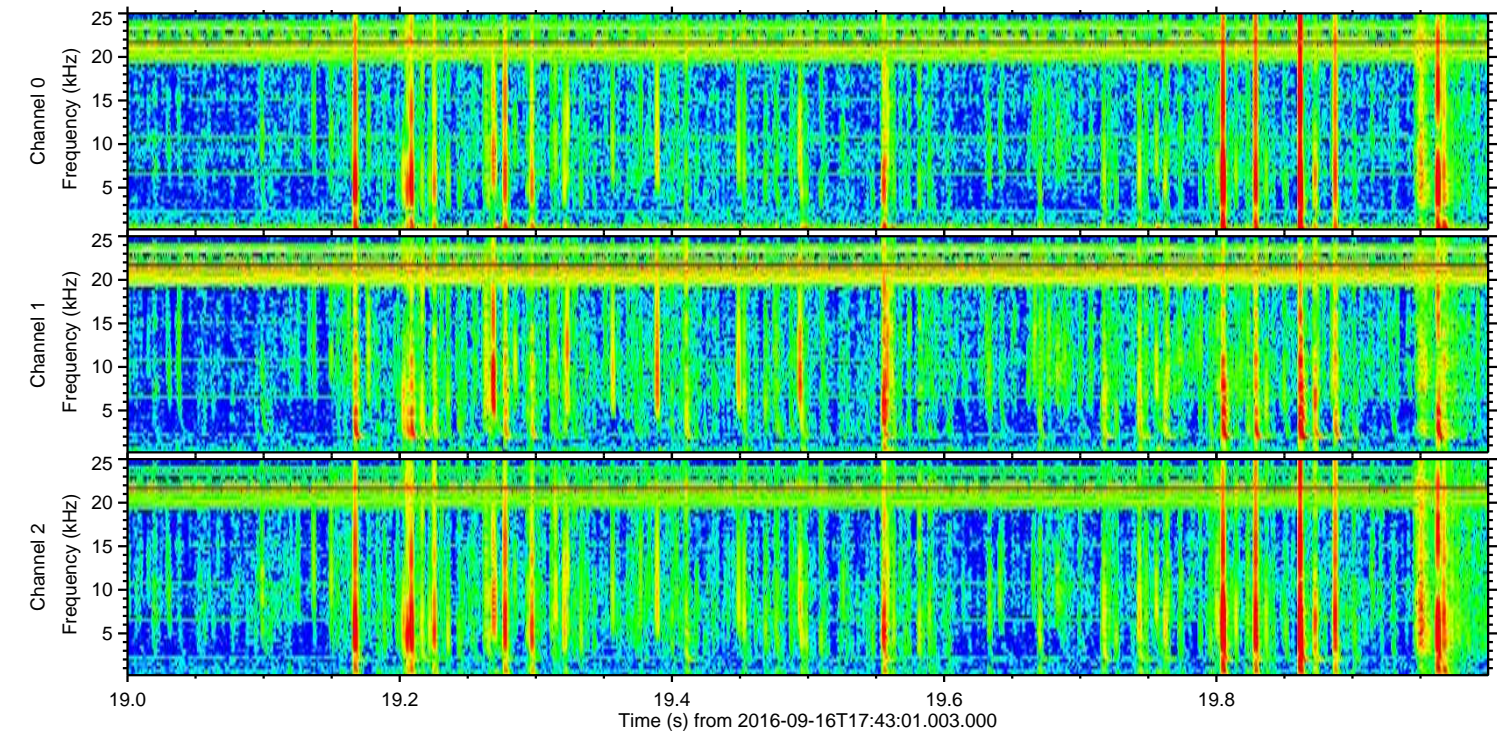
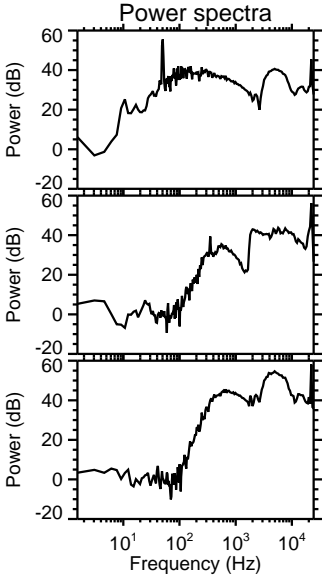
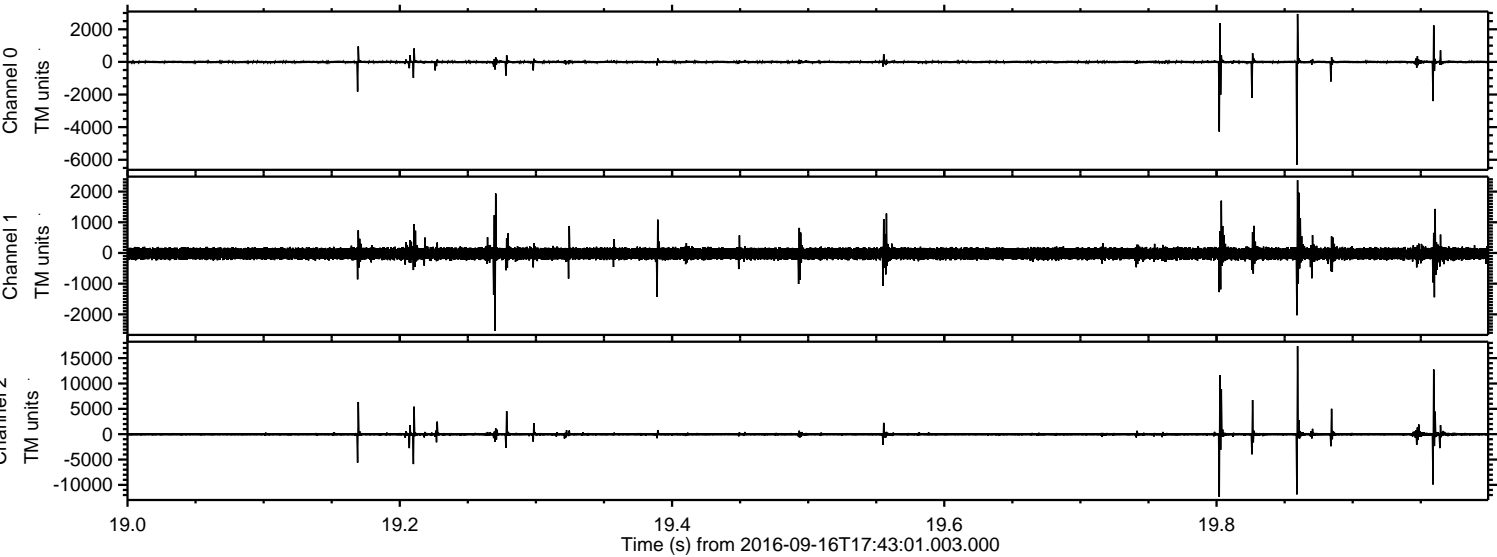
# ELMAVAN 3D WAVEFORMS (Measured data sampled at 50 kHz) 51000 packets of 144 samples from 2016-09-16T17:43:01.003.000.

Processed Fri Sep 16 19:51:23 2016 by ELM ver.2012-10-06 from 001\_\_elm20160916\_174259\_\_dat00.bin

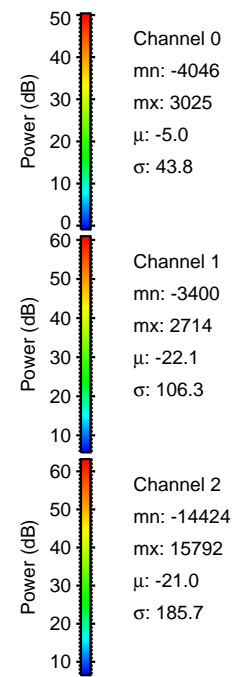
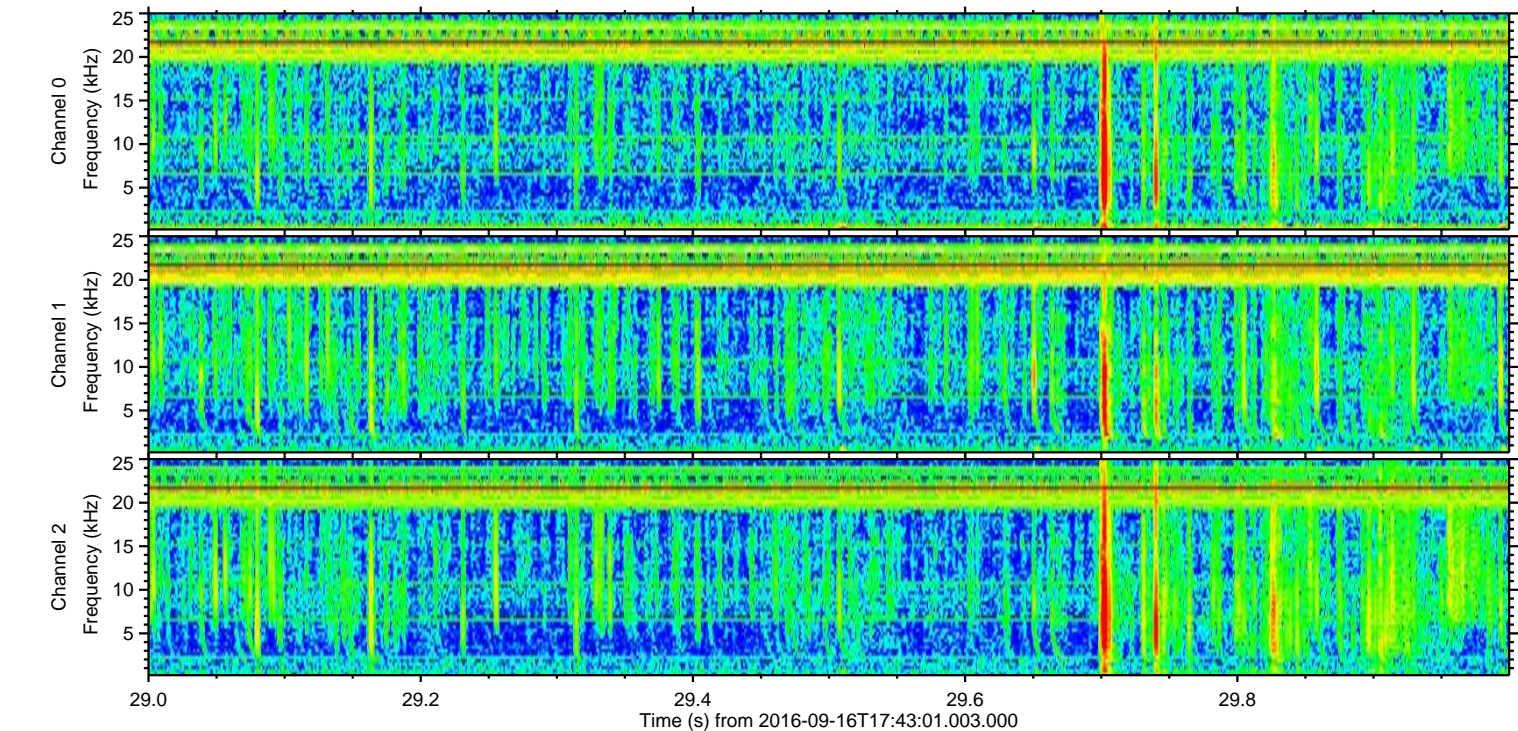
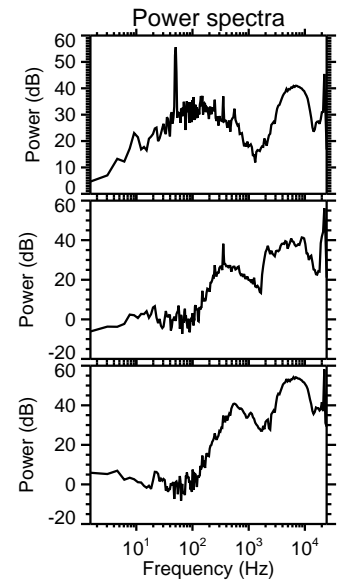
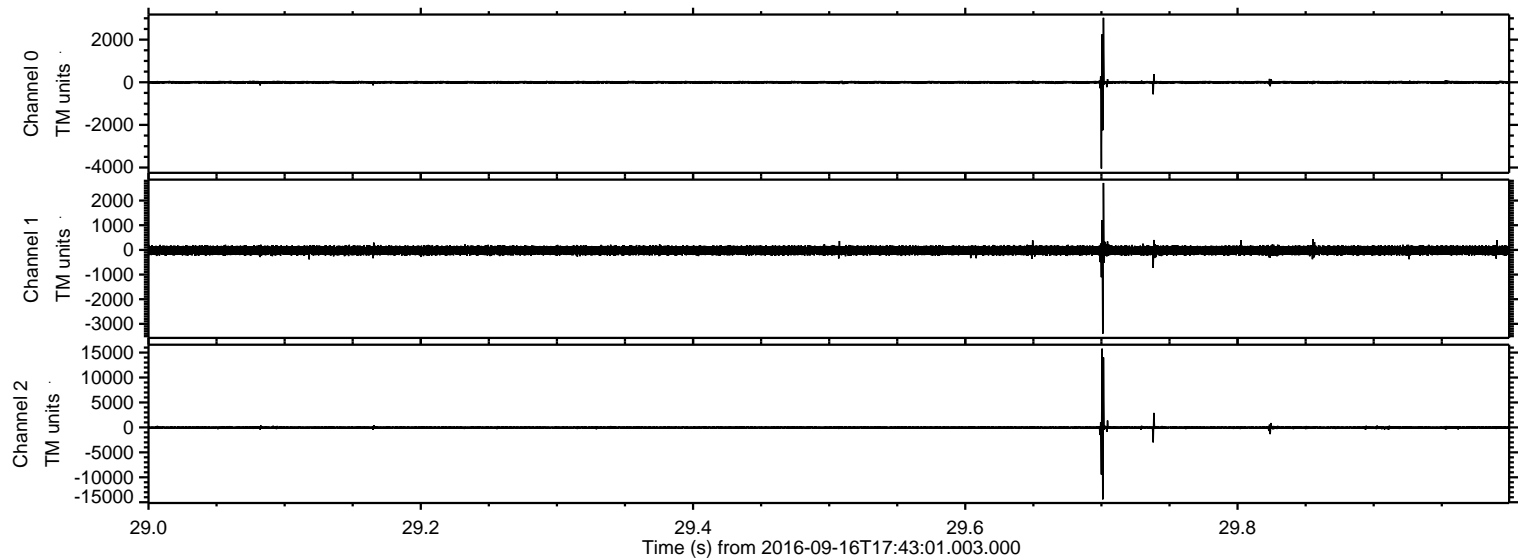




Processed Fri Sep 16 19:51:38 2016 by ELM ver.2012-10-06 from 001\_\_elm20160916\_174259\_\_dat00.bin

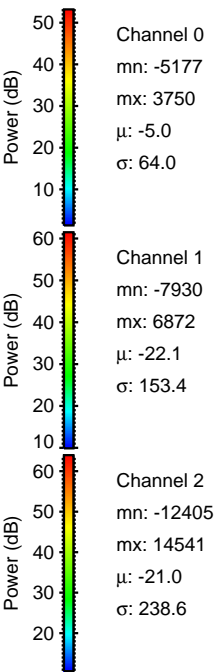
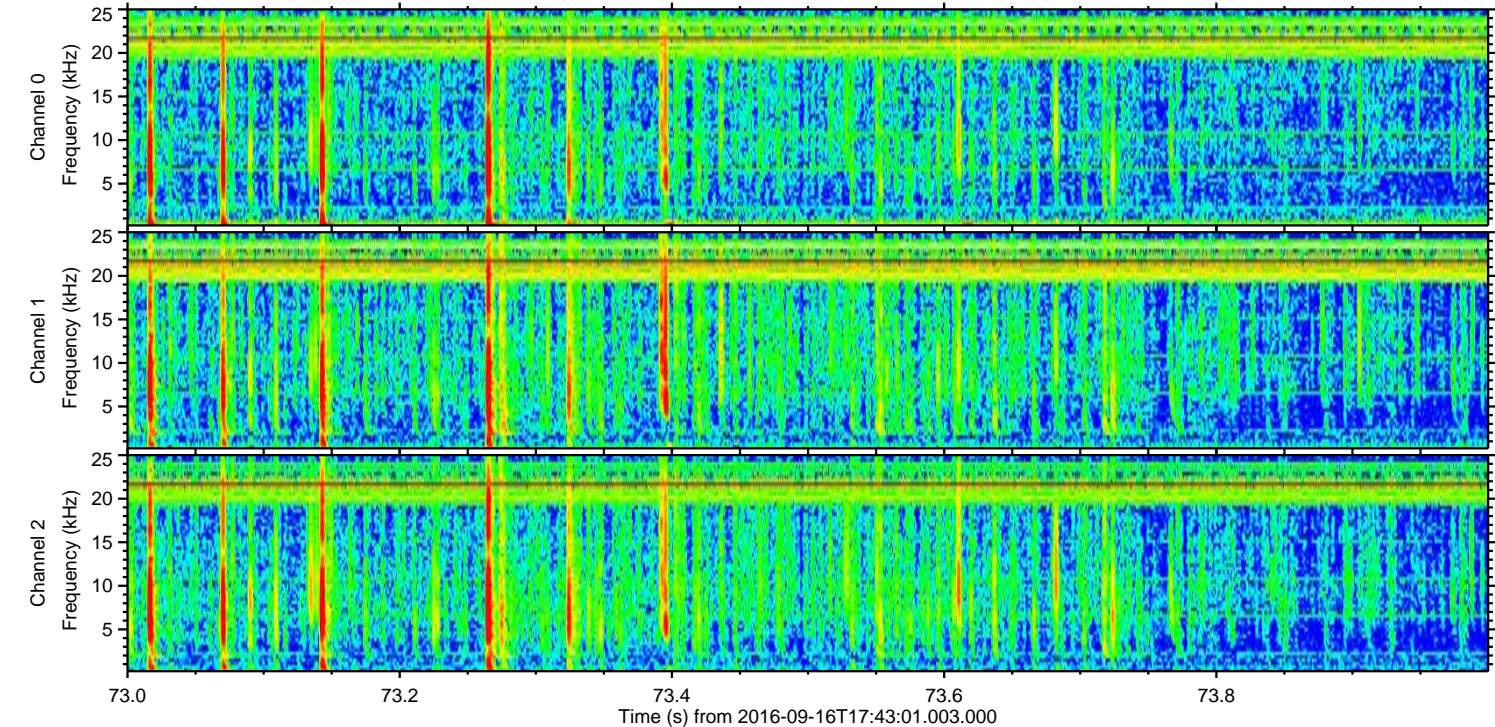
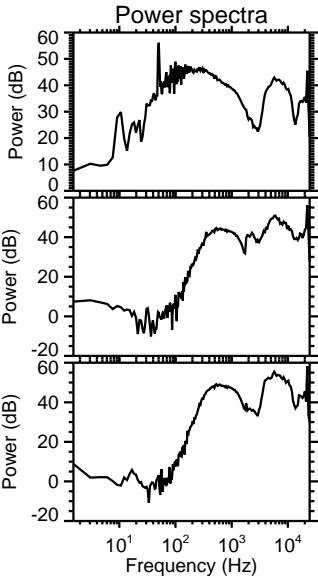
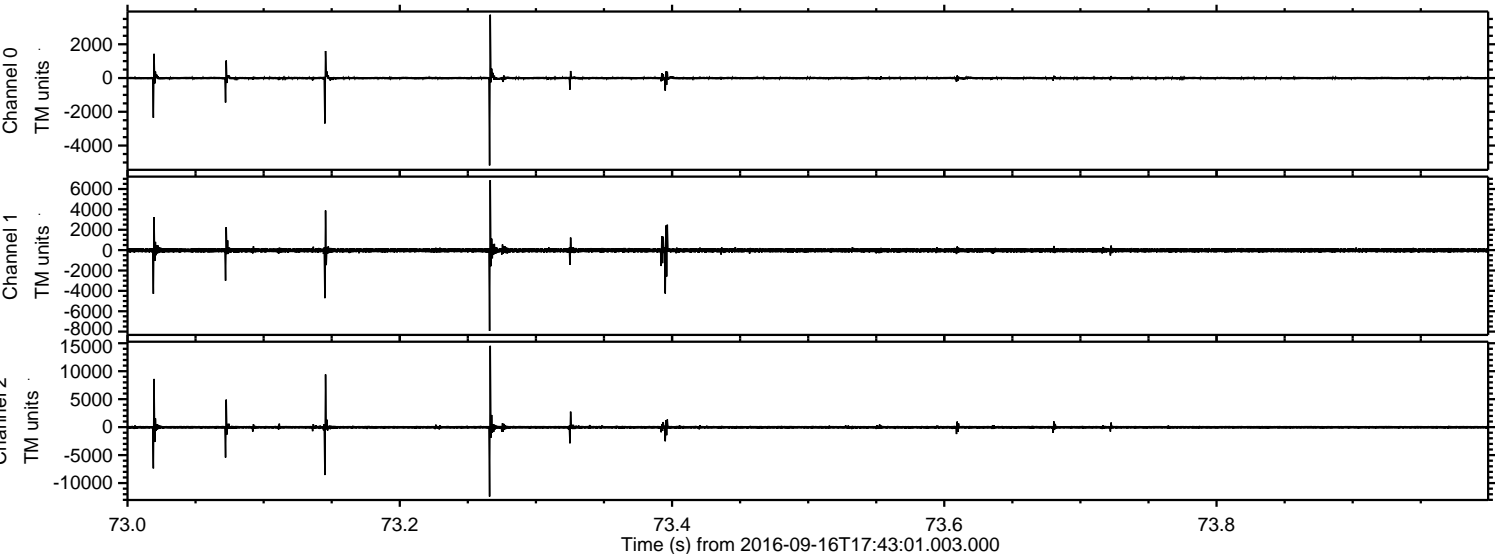


Processed Fri Sep 16 19:51:39 2016 by ELM ver.2012-10-06 from 001\_\_elm20160916\_174259\_\_dat00.bin





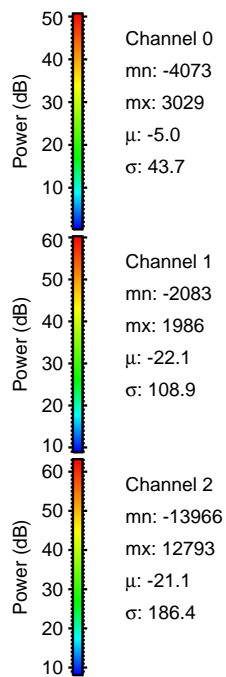
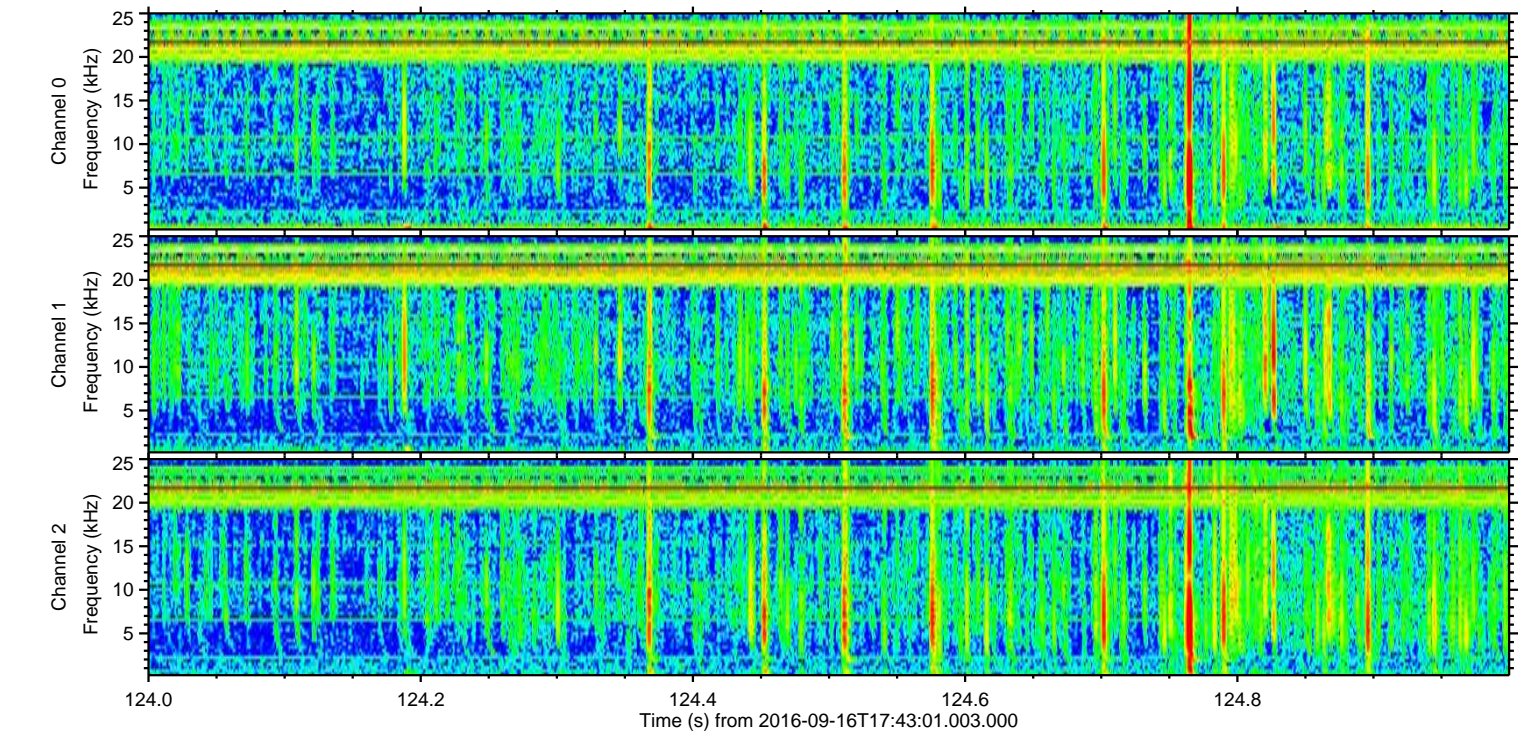
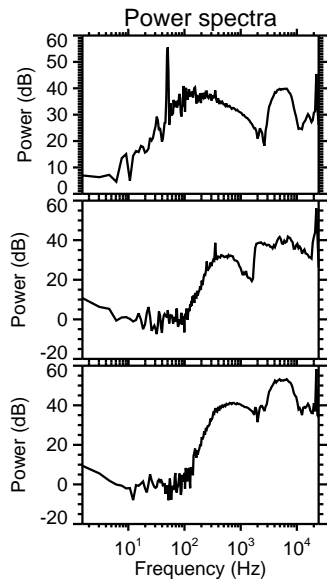
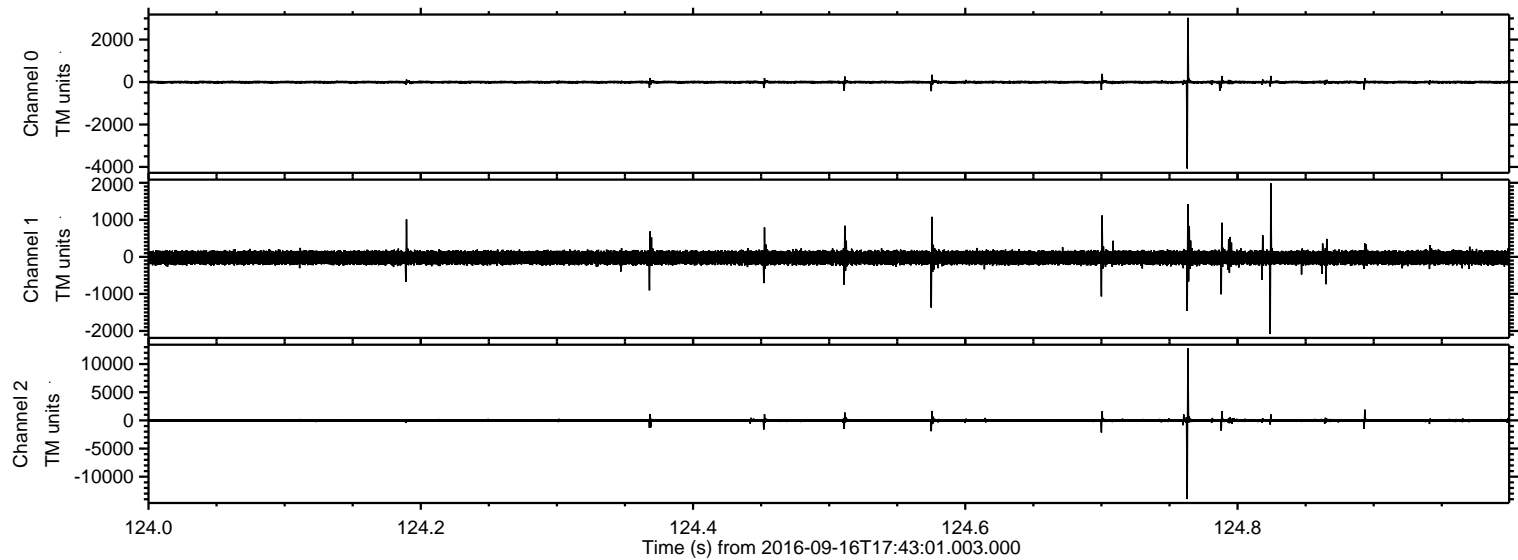
Processed Fri Sep 16 19:51:40 2016 by ELM ver.2012-10-06 from 001\_\_elm20160916\_174259\_\_dat00.bin





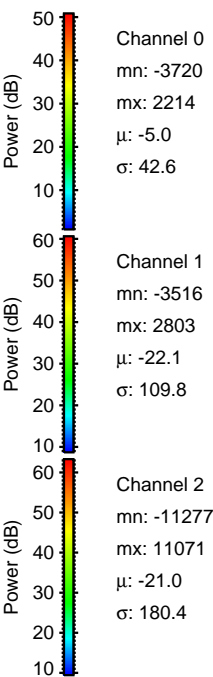
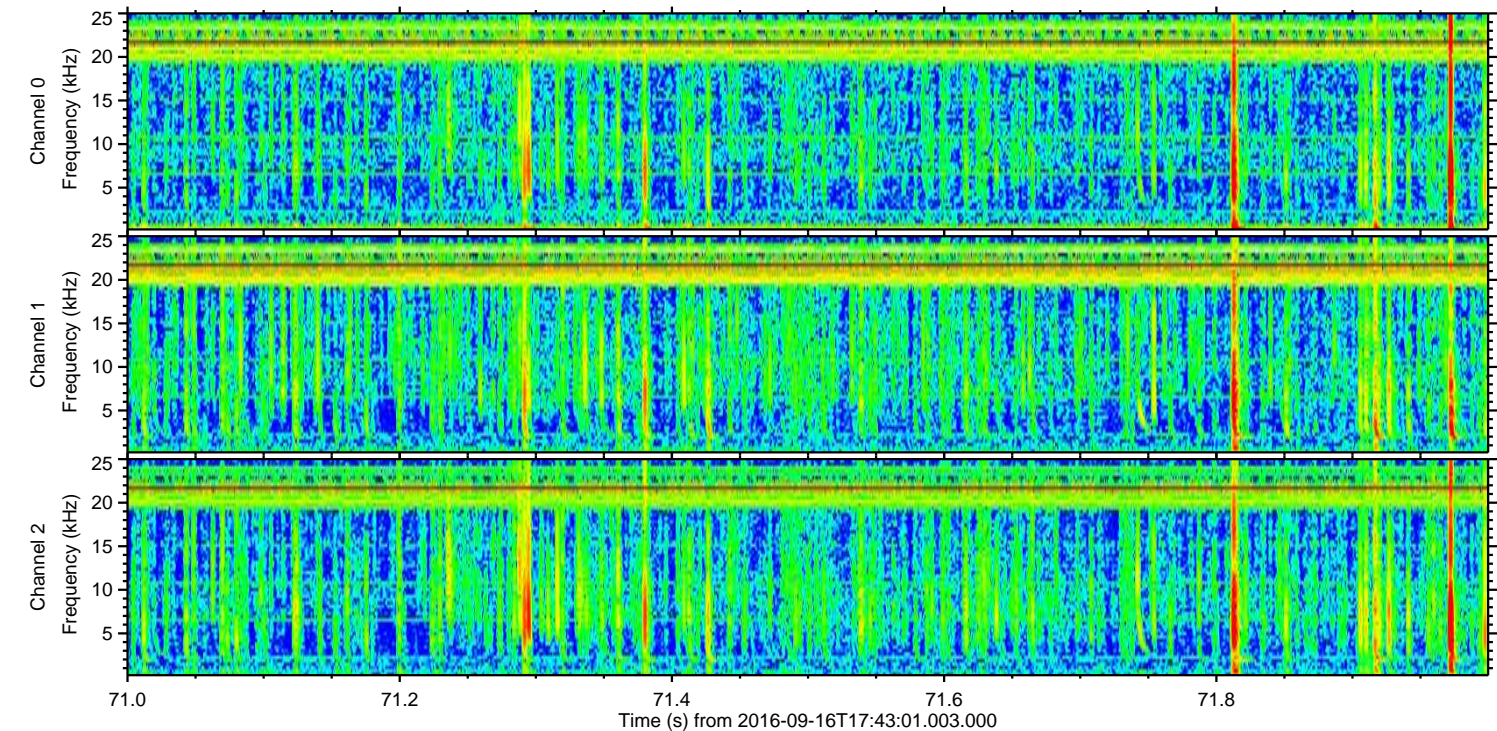
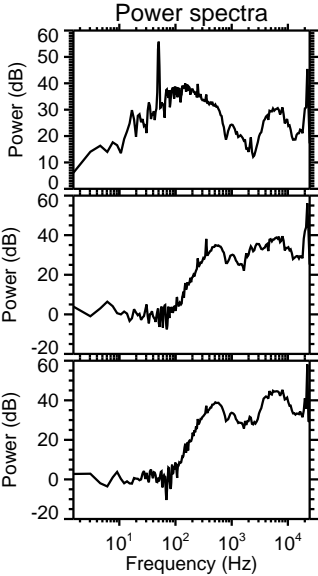
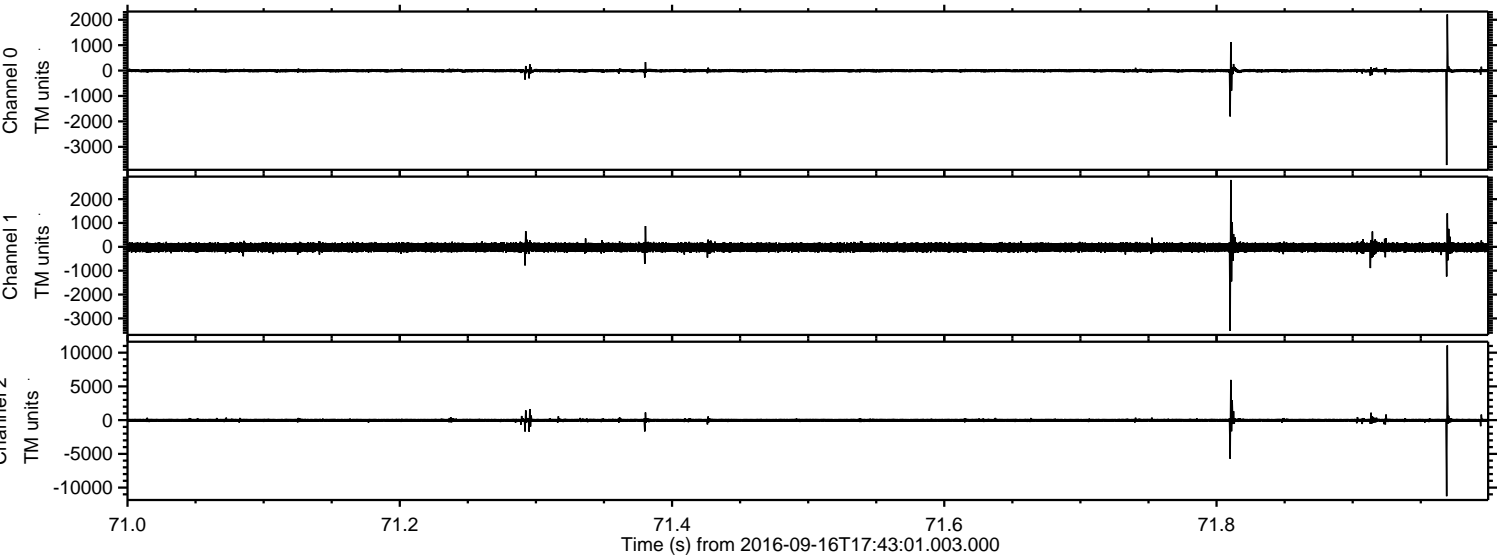
ELMAVAN 3D WAVEFORMS (Measured data sampled at 50 kHz) 51000 packets of 144 samples from 2016-09-16T17:43:01.003.000. Part 125/147

Processed Fri Sep 16 19:51:41 2016 by ELM ver.2012-10-06 from 001\_\_elm20160916\_174259\_\_dat00.bin



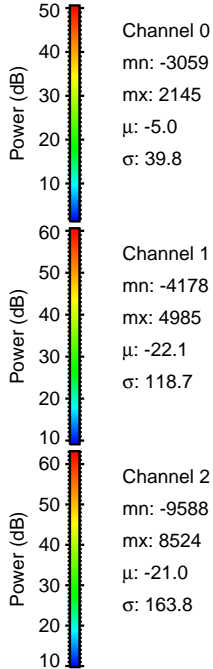
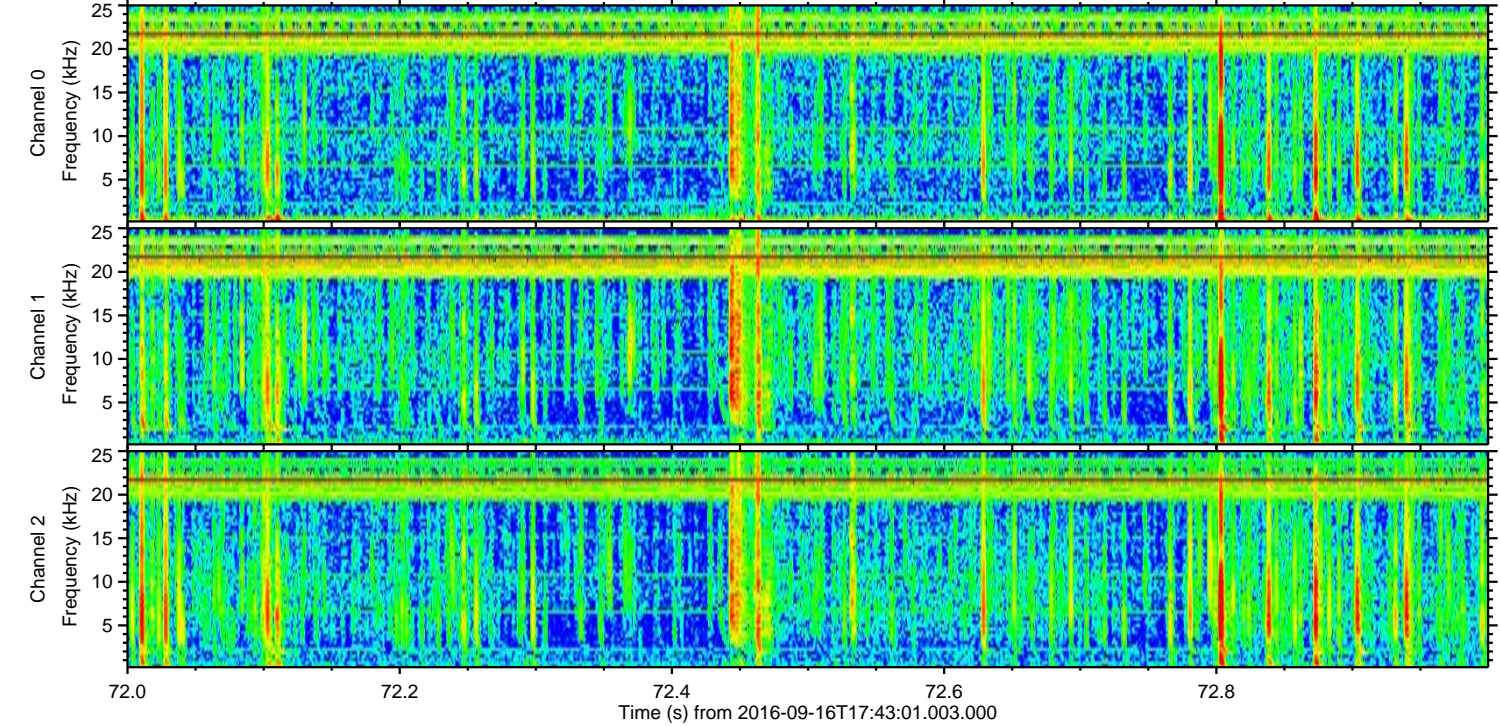
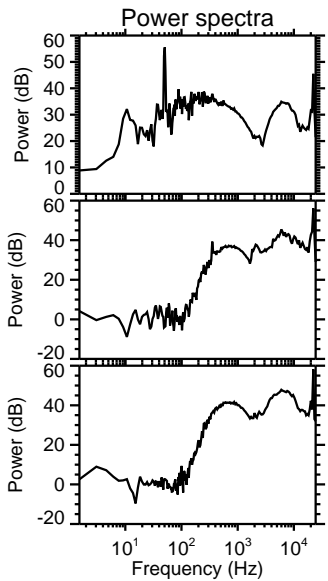
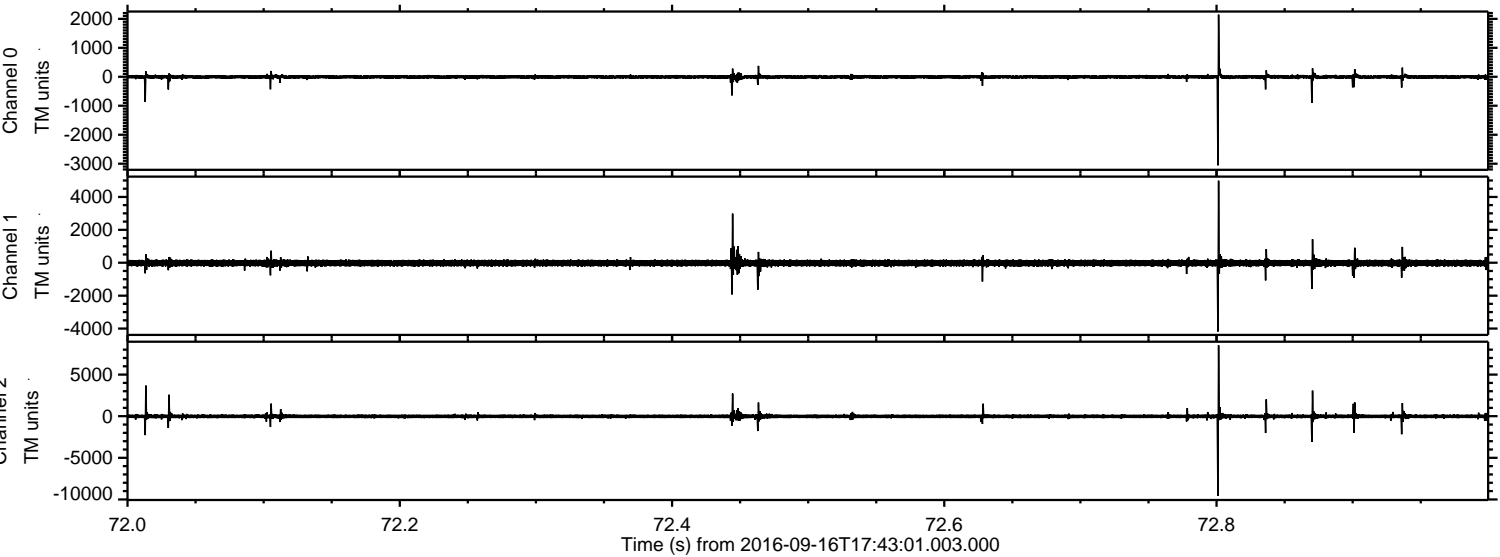


Processed Fri Sep 16 19:51:42 2016 by ELM ver.2012-10-06 from 001\_\_elm20160916\_174259\_\_dat00.bin



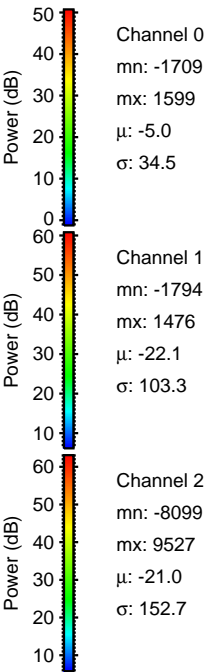
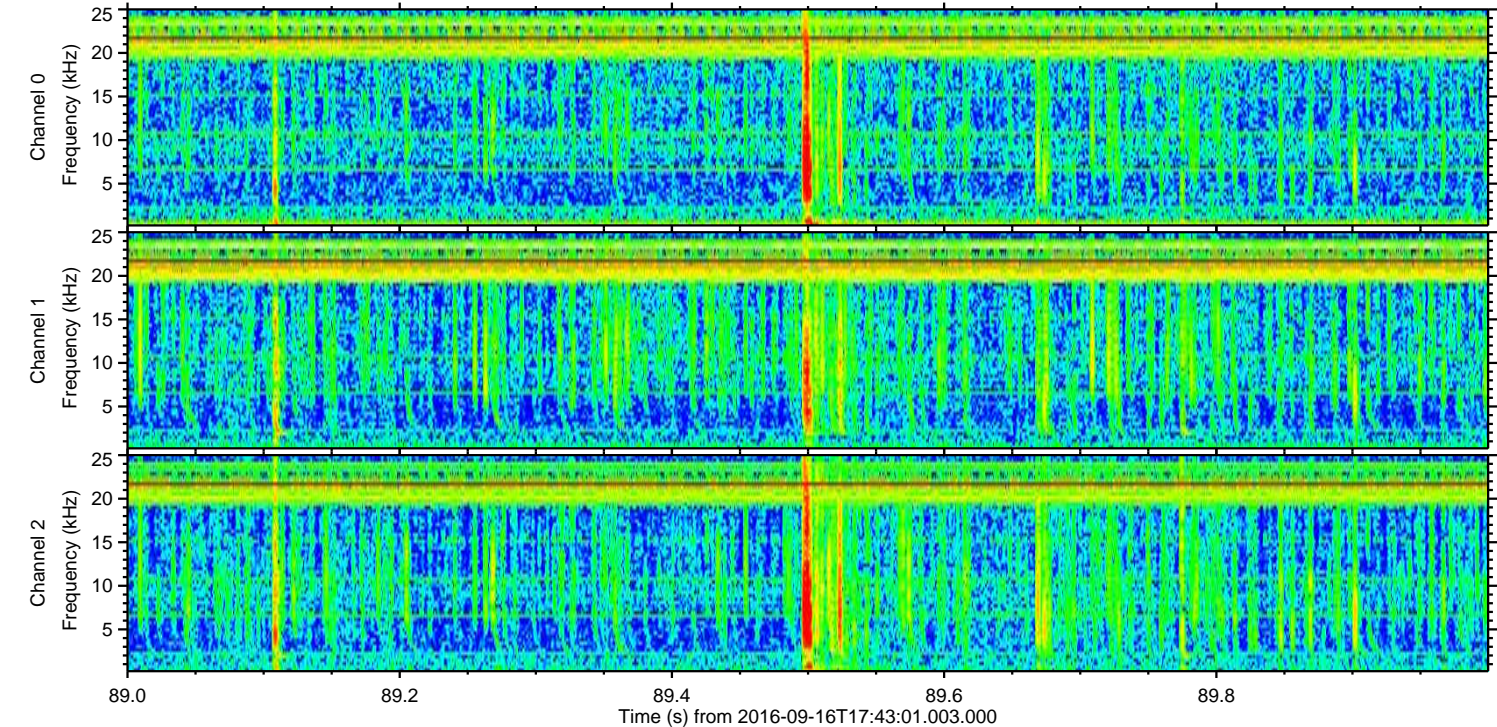
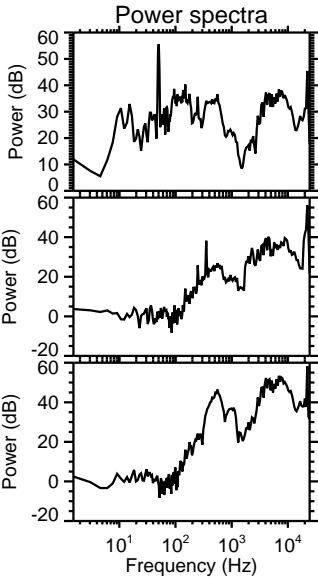
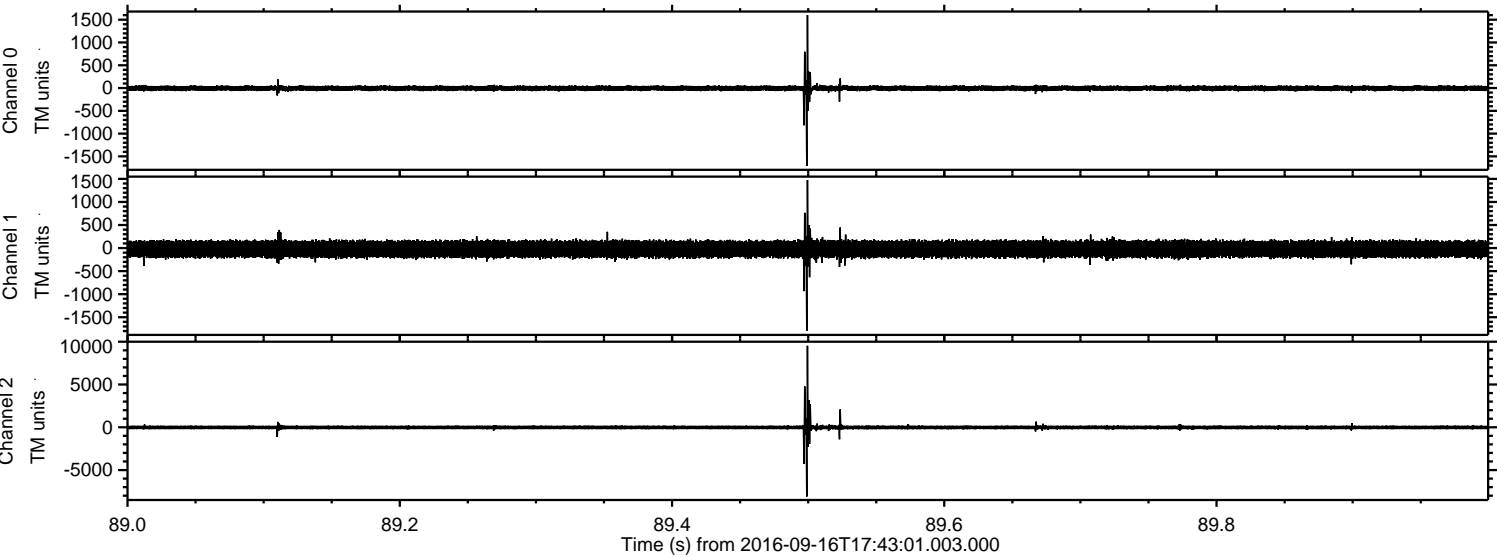


Processed Fri Sep 16 19:51:43 2016 by ELM ver.2012-10-06 from 001\_\_elm20160916\_174259\_\_dat00.bin





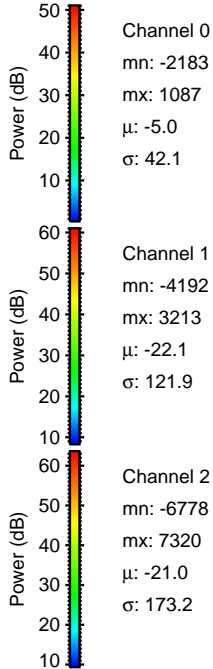
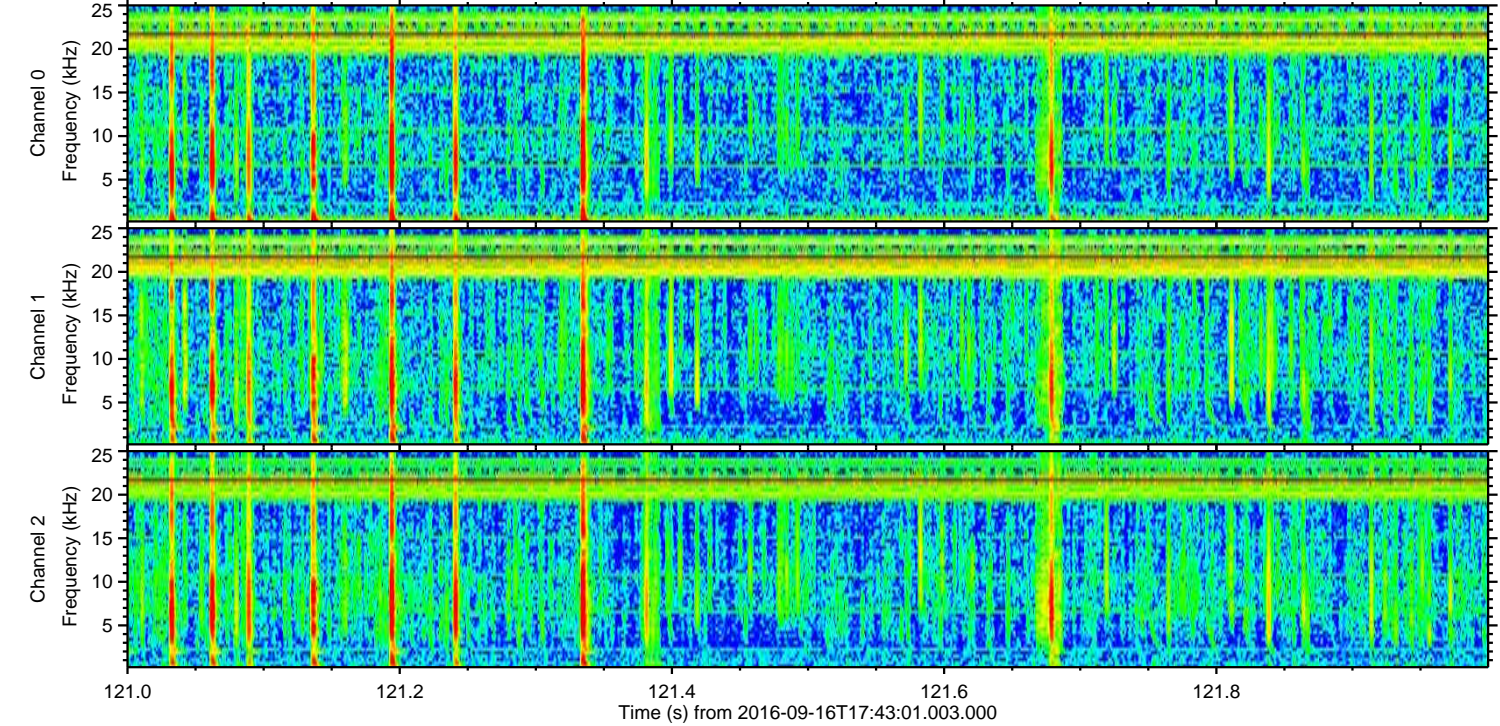
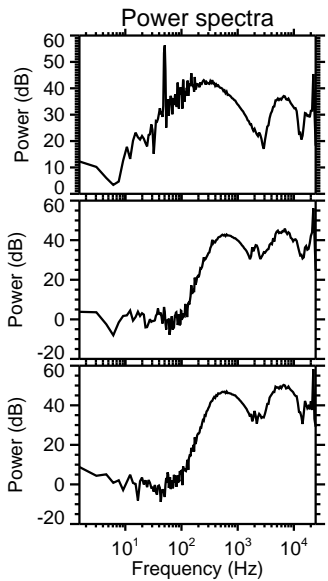
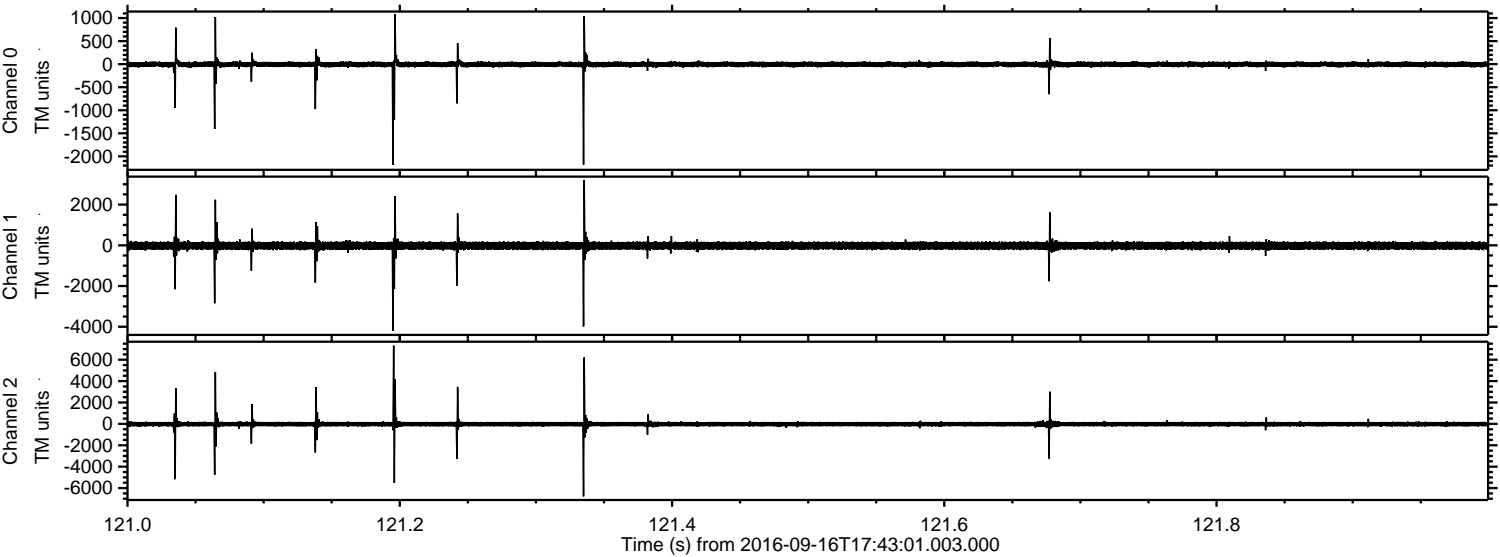
Processed Fri Sep 16 19:51:44 2016 by ELM ver.2012-10-06 from 001\_\_elm20160916\_174259\_\_dat00.bin





ELMAVAN 3D WAVEFORMS (Measured data sampled at 50 kHz) 51000 packets of 144 samples from 2016-09-16T17:43:01.003.000. Part 122/147

Processed Fri Sep 16 19:51:45 2016 by ELM ver.2012-10-06 from 001\_\_elm20160916\_174259\_\_dat00.bin



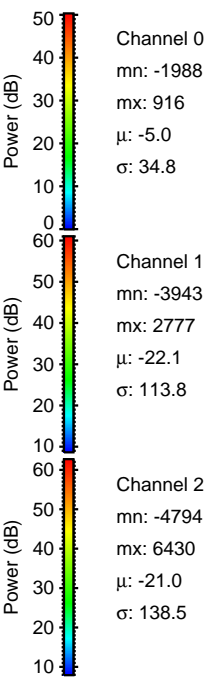
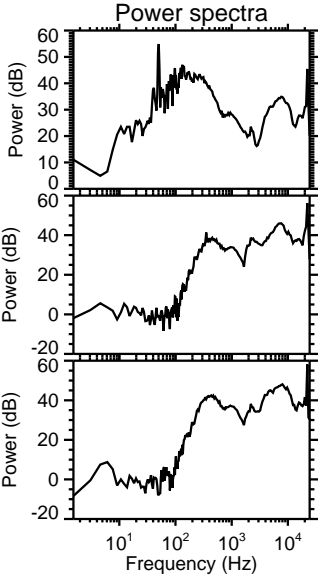
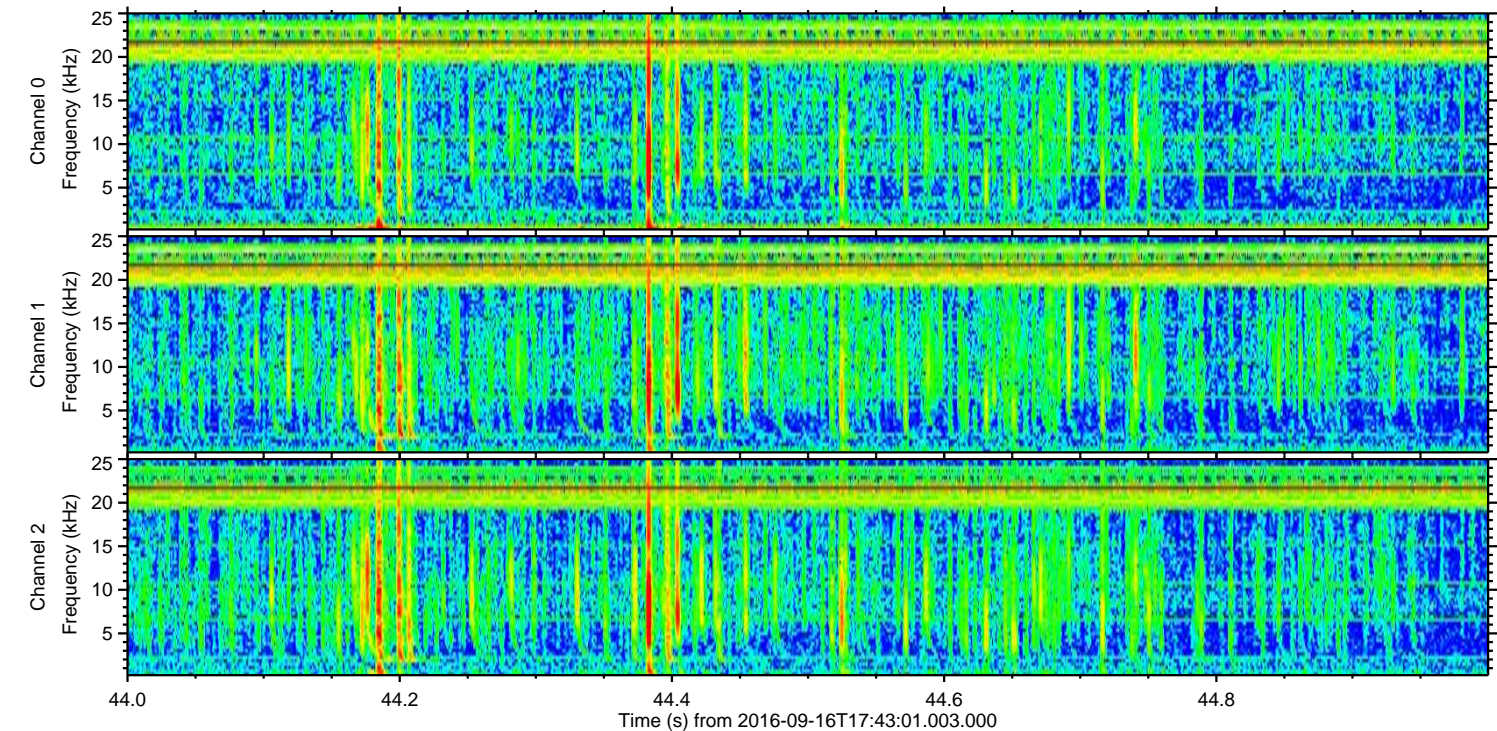
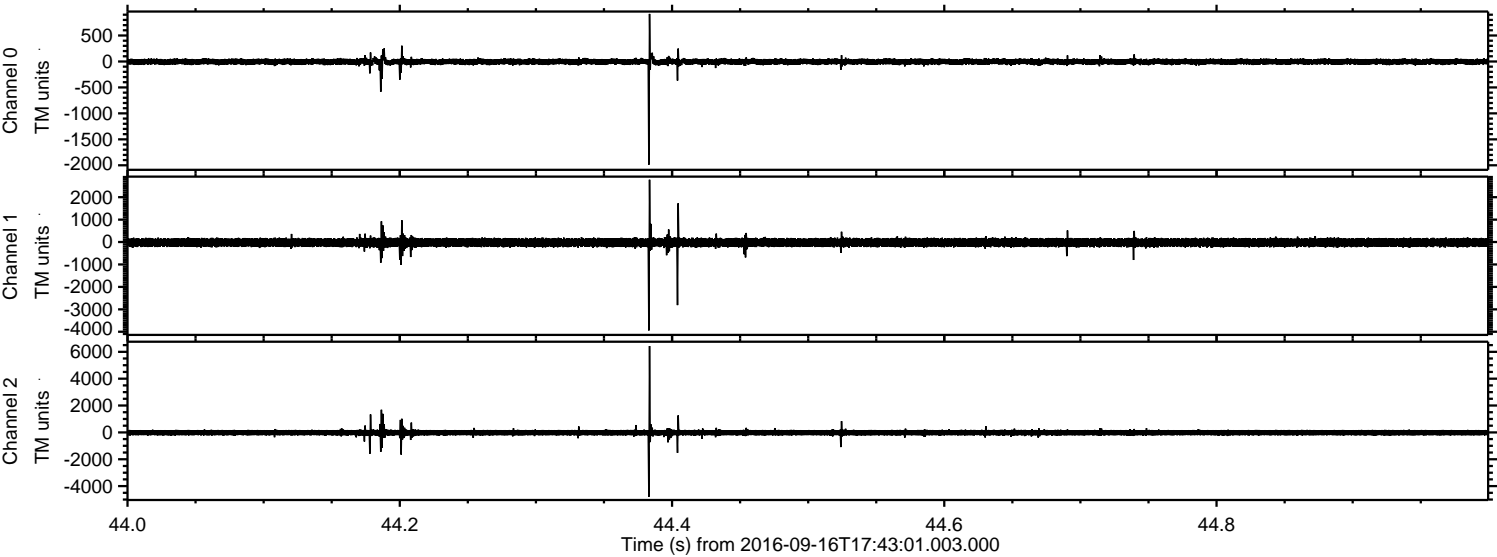
Channel 0  
mn: -2183  
mx: 1087  
 $\mu$ : -5.0  
 $\sigma$ : 42.1

Channel 1  
mn: -4192  
mx: 3213  
 $\mu$ : -22.1  
 $\sigma$ : 121.9

Channel 2  
mn: -6778  
mx: 7320  
 $\mu$ : -21.0  
 $\sigma$ : 173.2

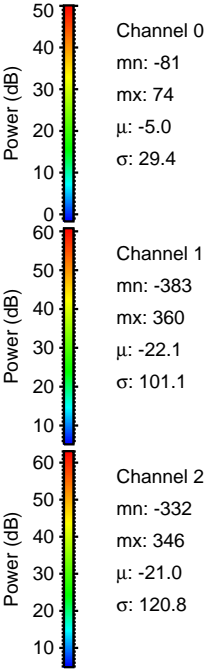
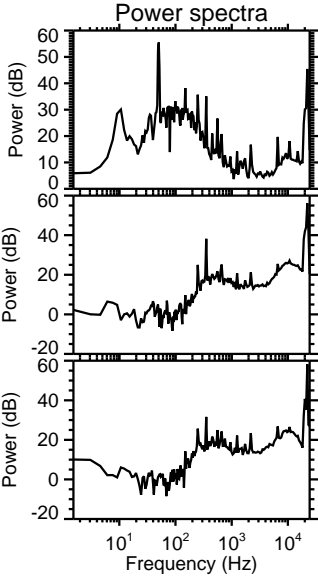
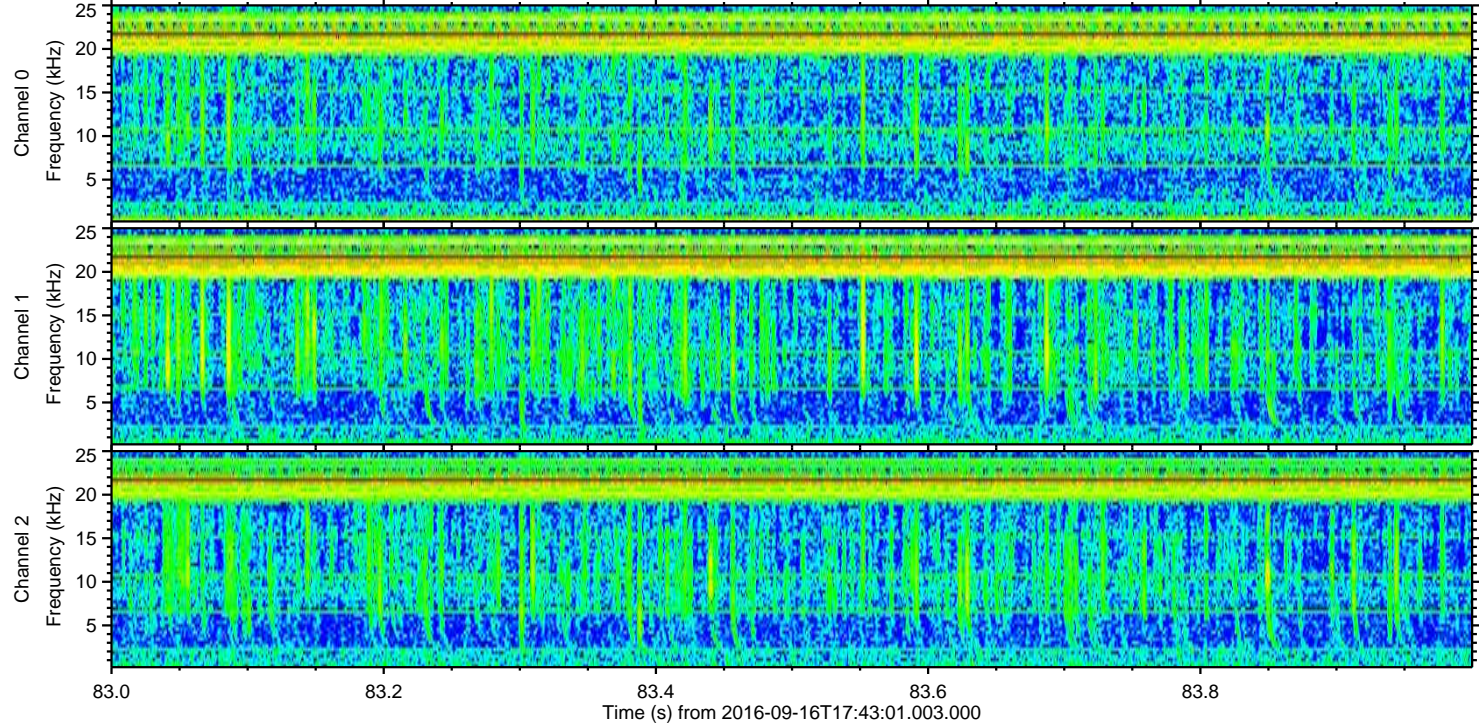
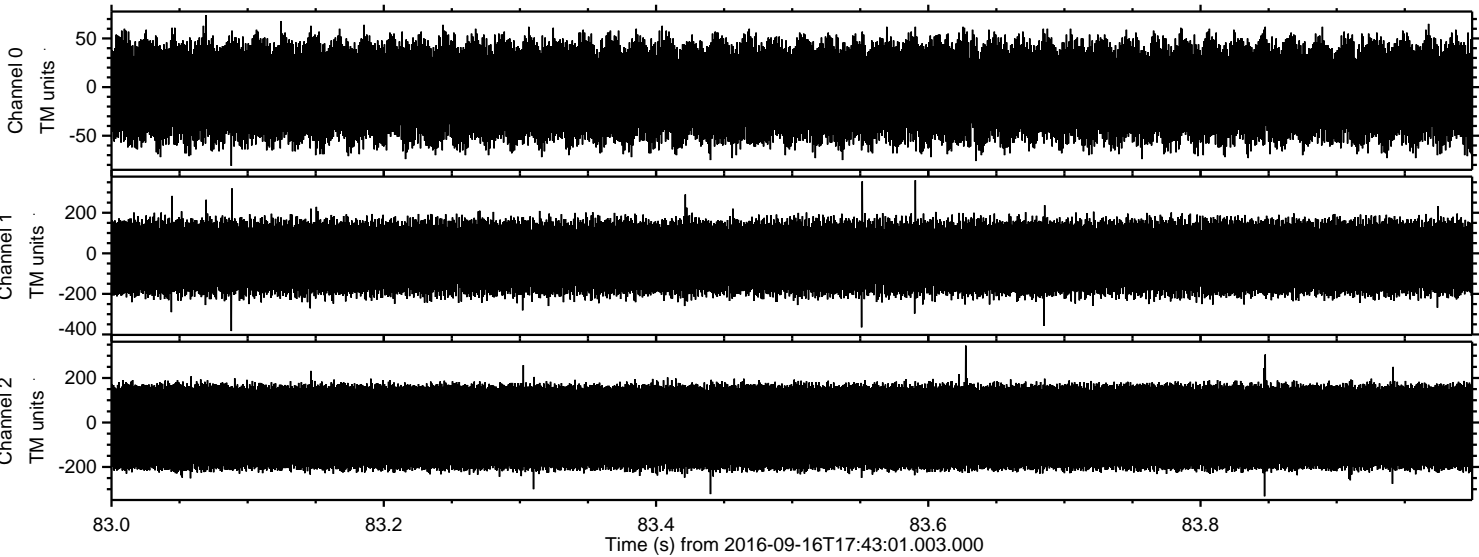


Processed Fri Sep 16 19:51:46 2016 by ELM ver.2012-10-06 from 001\_\_elm20160916\_174259\_\_dat00.bin





Processed Fri Sep 16 19:51:47 2016 by ELM ver.2012-10-06 from 001\_\_elm20160916\_174259\_\_dat00.bin



Channel 0  
mn: -81  
mx: 74  
 $\mu$ : -5.0  
 $\sigma$ : 29.4

Channel 1  
mn: -383  
mx: 360  
 $\mu$ : -22.1  
 $\sigma$ : 101.1

Channel 2  
mn: -332  
mx: 346  
 $\mu$ : -21.0  
 $\sigma$ : 120.8