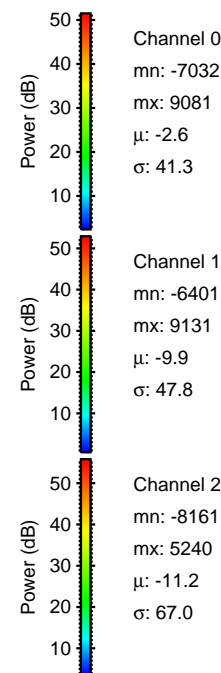
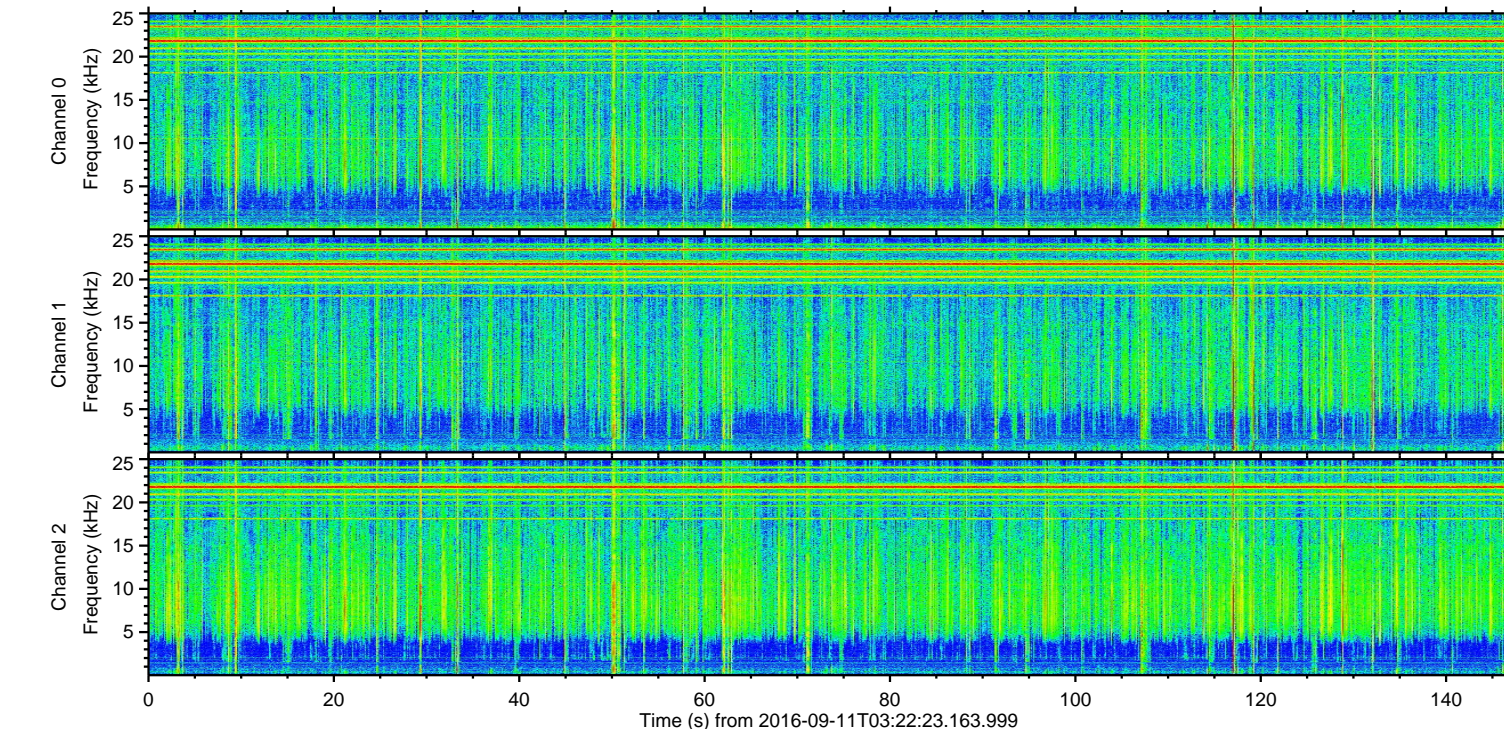
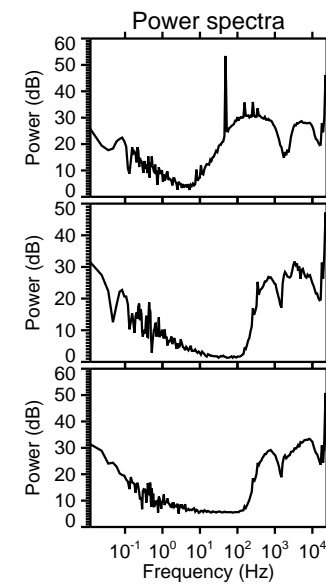
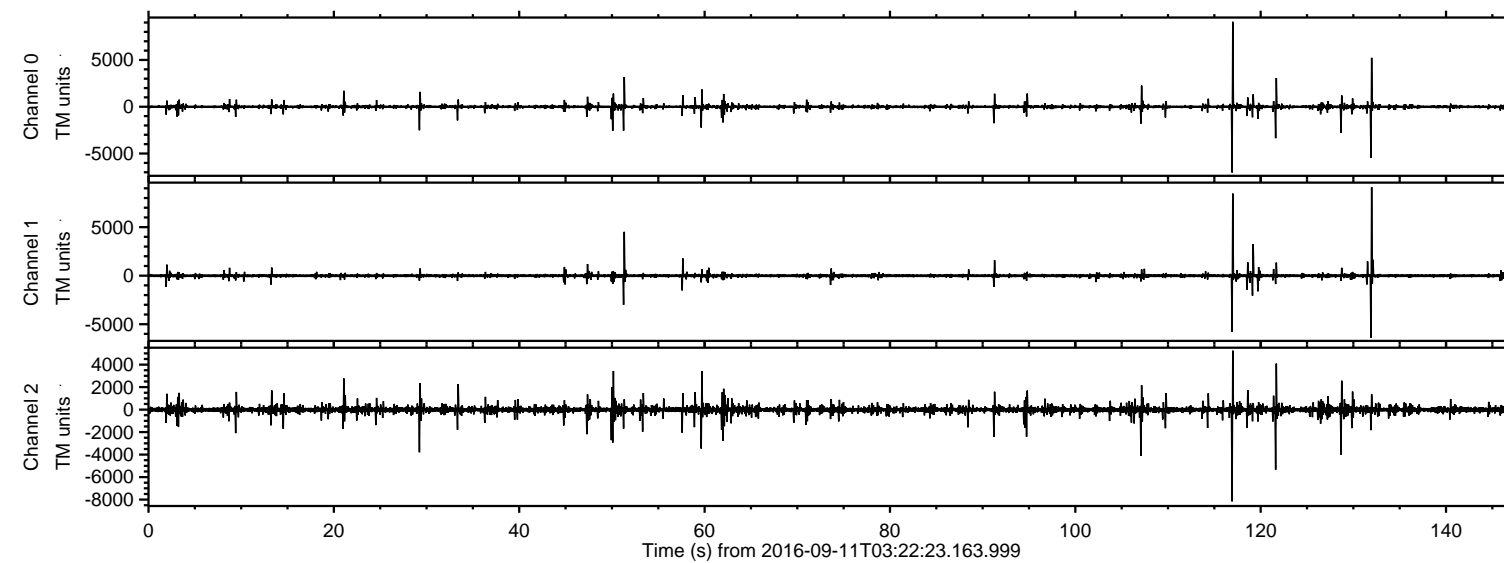


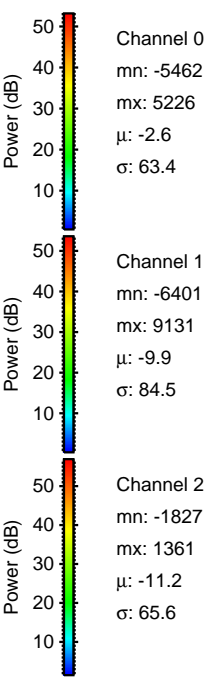
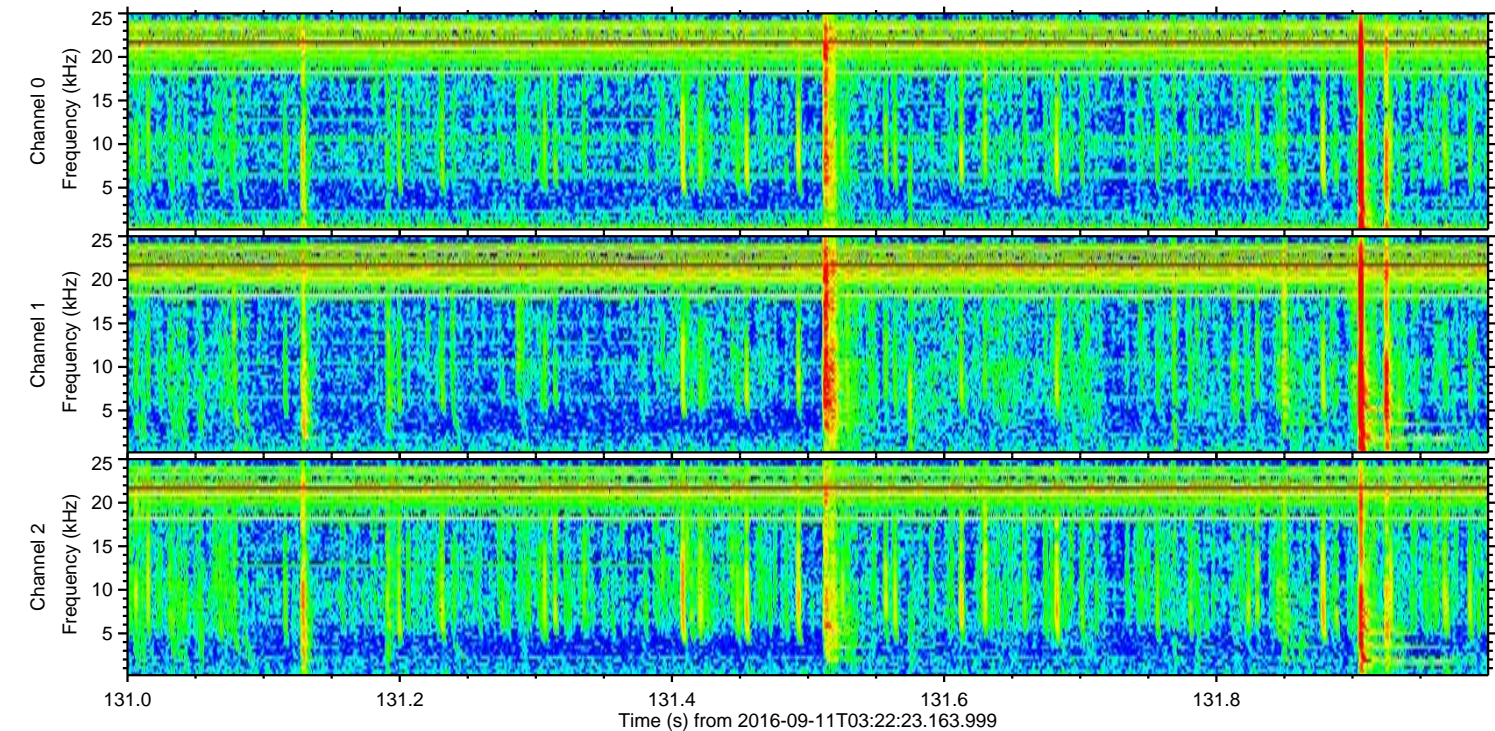
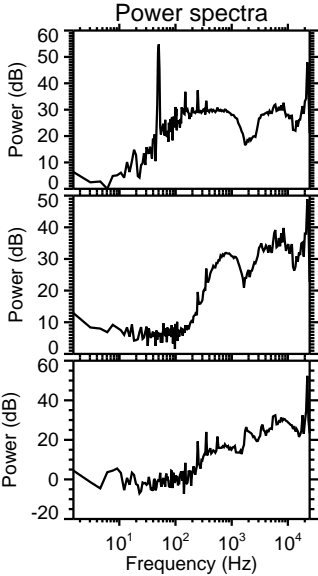
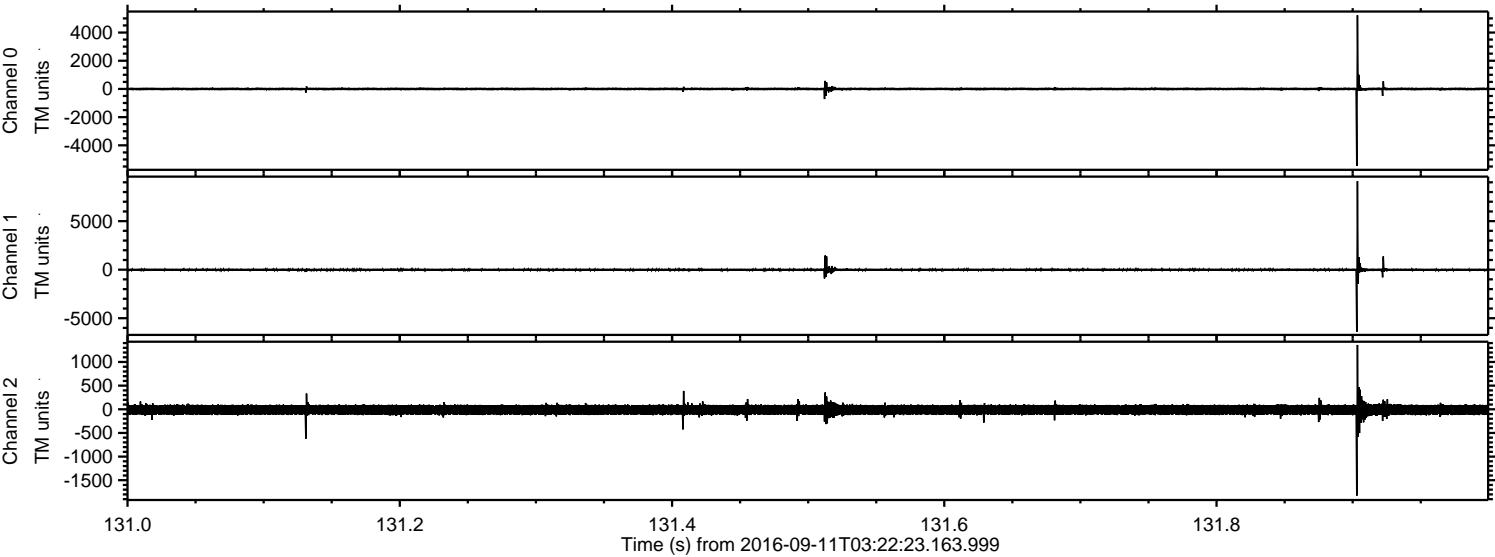
ELMAVAN 3D WAVEFORMS (Measured data sampled at 50 kHz) 51000 packets of 144 samples from 2016-09-11T03:22:23.163.999.

Processed Sun Sep 11 05:30:37 2016 by ELM ver.2012-10-06 from 001__elm20160911_032222__dat00.bin



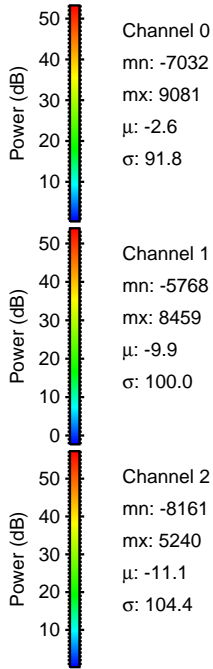
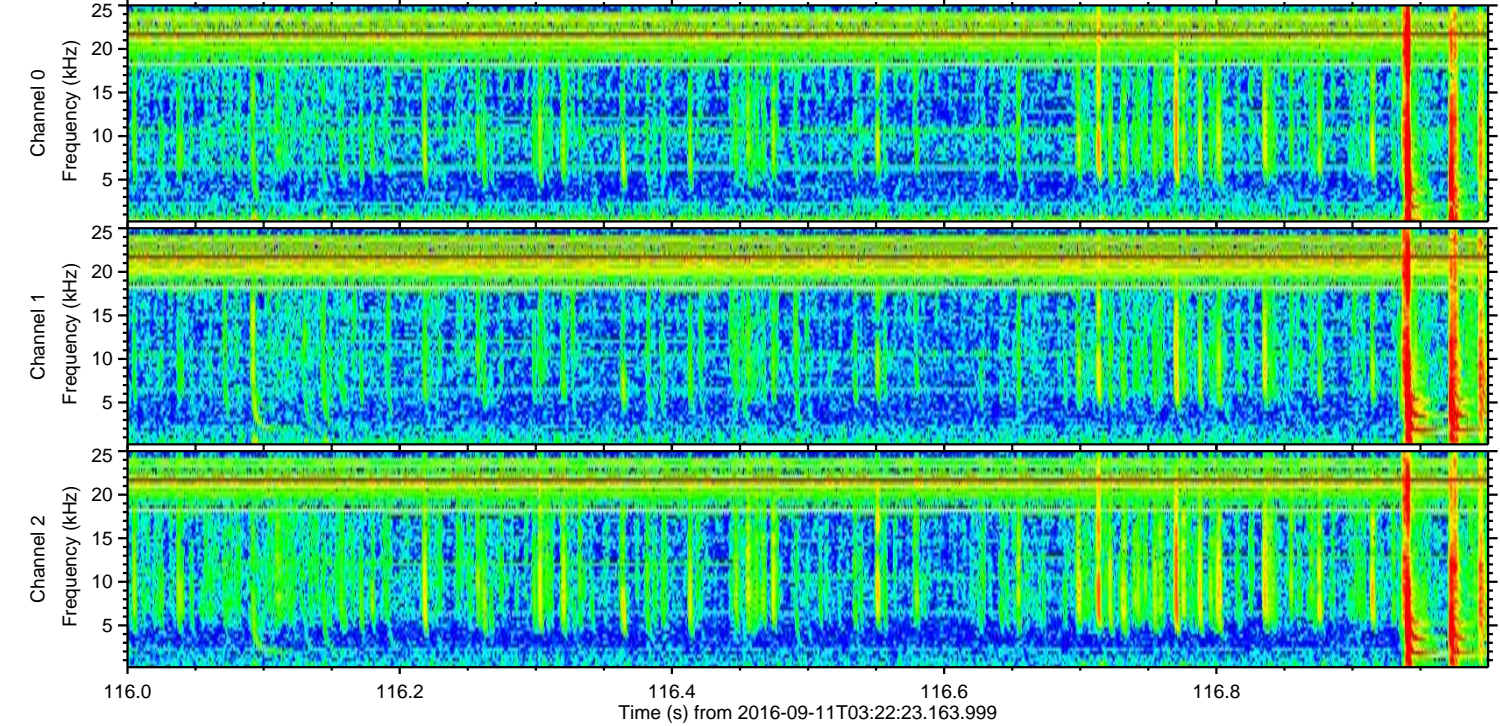
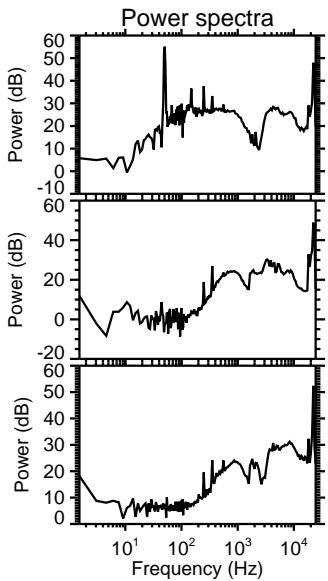
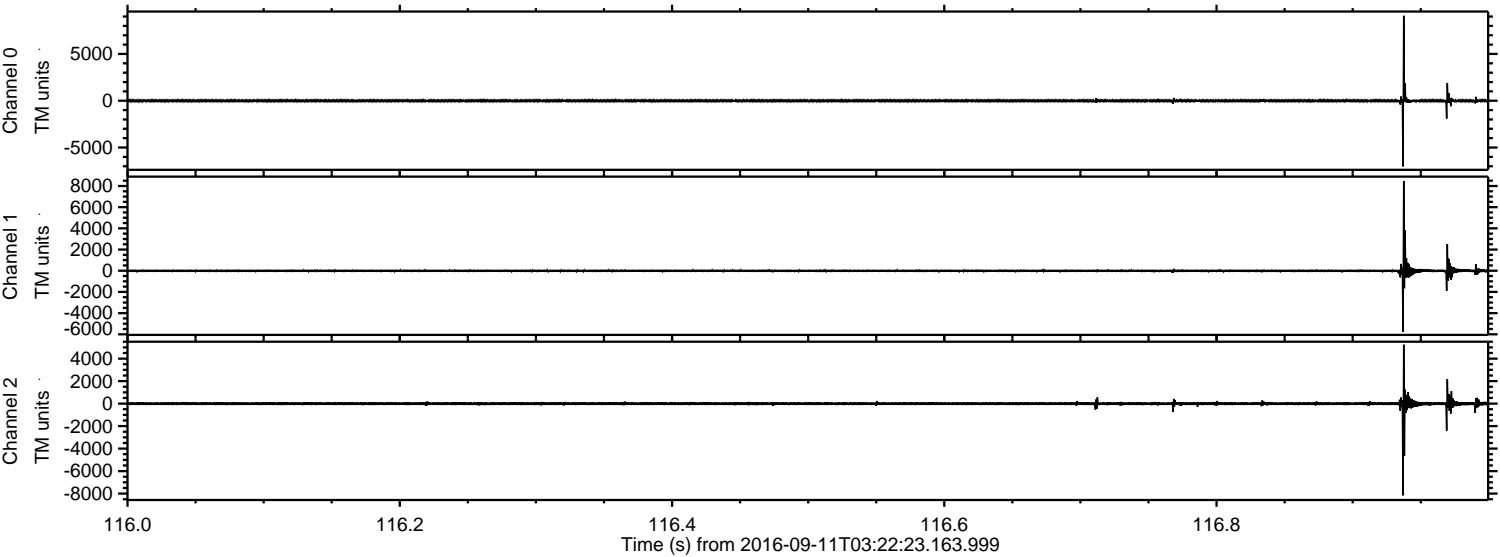
ELMAVAN 3D WAVEFORMS (Measured data sampled at 50 kHz) 51000 packets of 144 samples from 2016-09-11T03:22:23.163.999. Part 132/147

Processed Sun Sep 11 05:30:52 2016 by ELM ver.2012-10-06 from 001__elm20160911_032222__dat00.bin



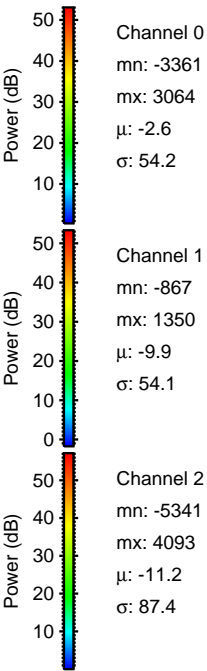
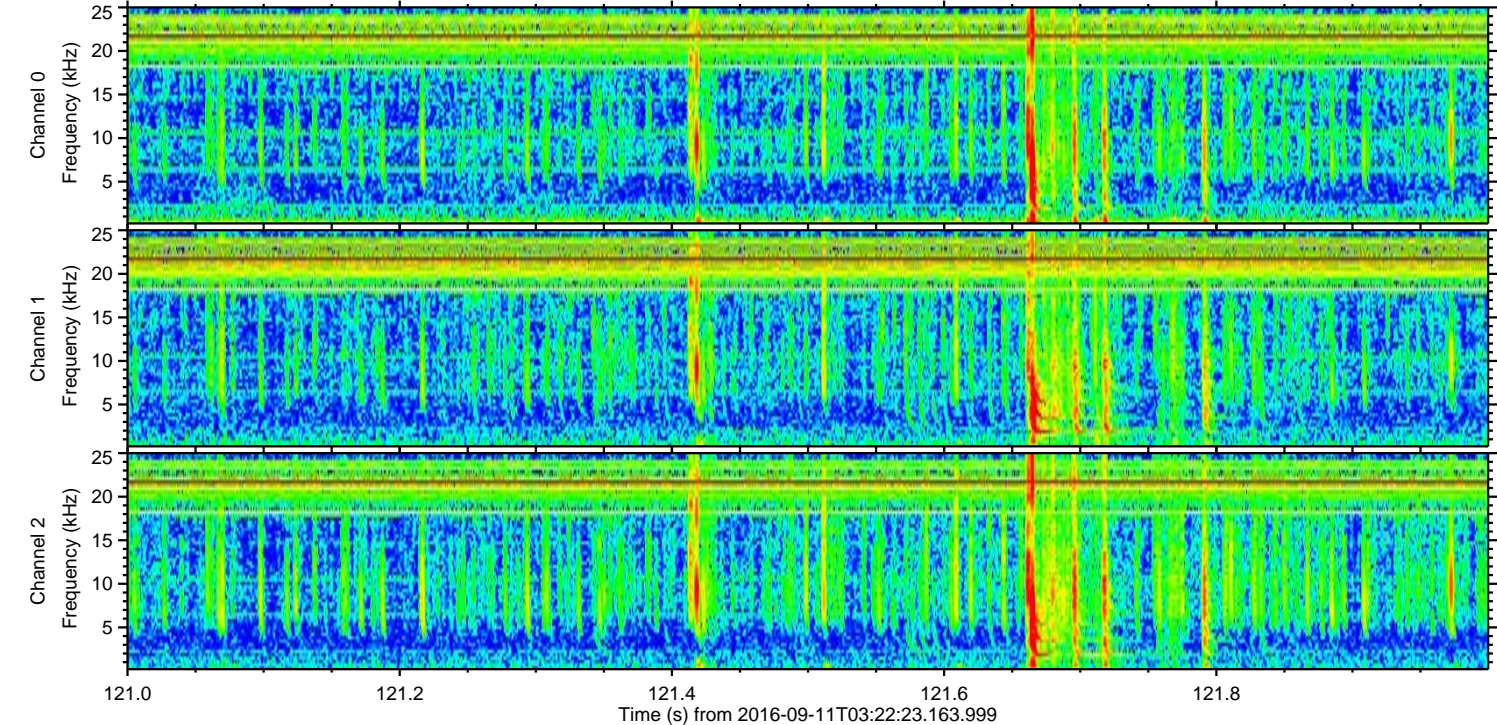
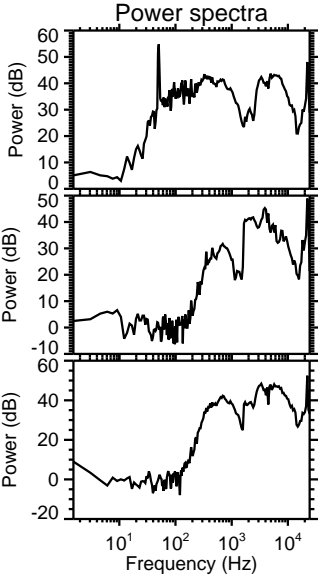
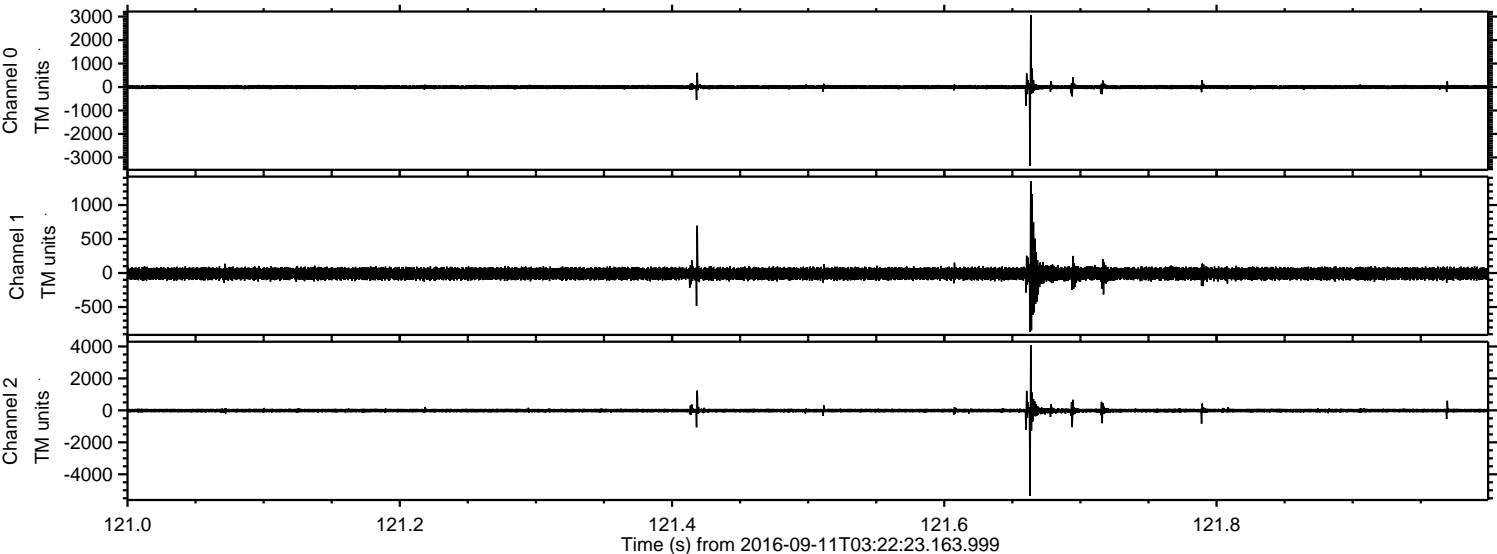
ELMAVAN 3D WAVEFORMS (Measured data sampled at 50 kHz) 51000 packets of 144 samples from 2016-09-11T03:22:23.163.999. Part 117/147

Processed Sun Sep 11 05:30:53 2016 by ELM ver.2012-10-06 from 001__elm20160911_032222__dat00.bin

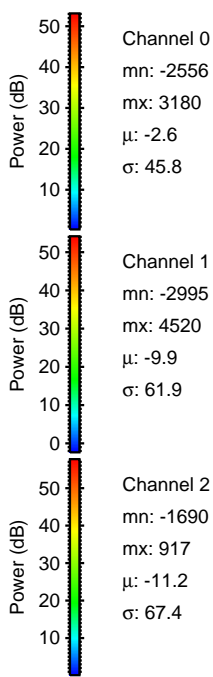
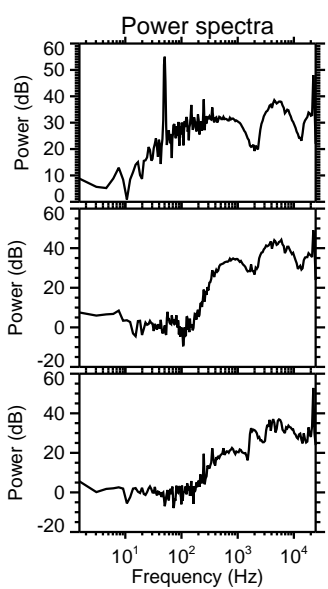
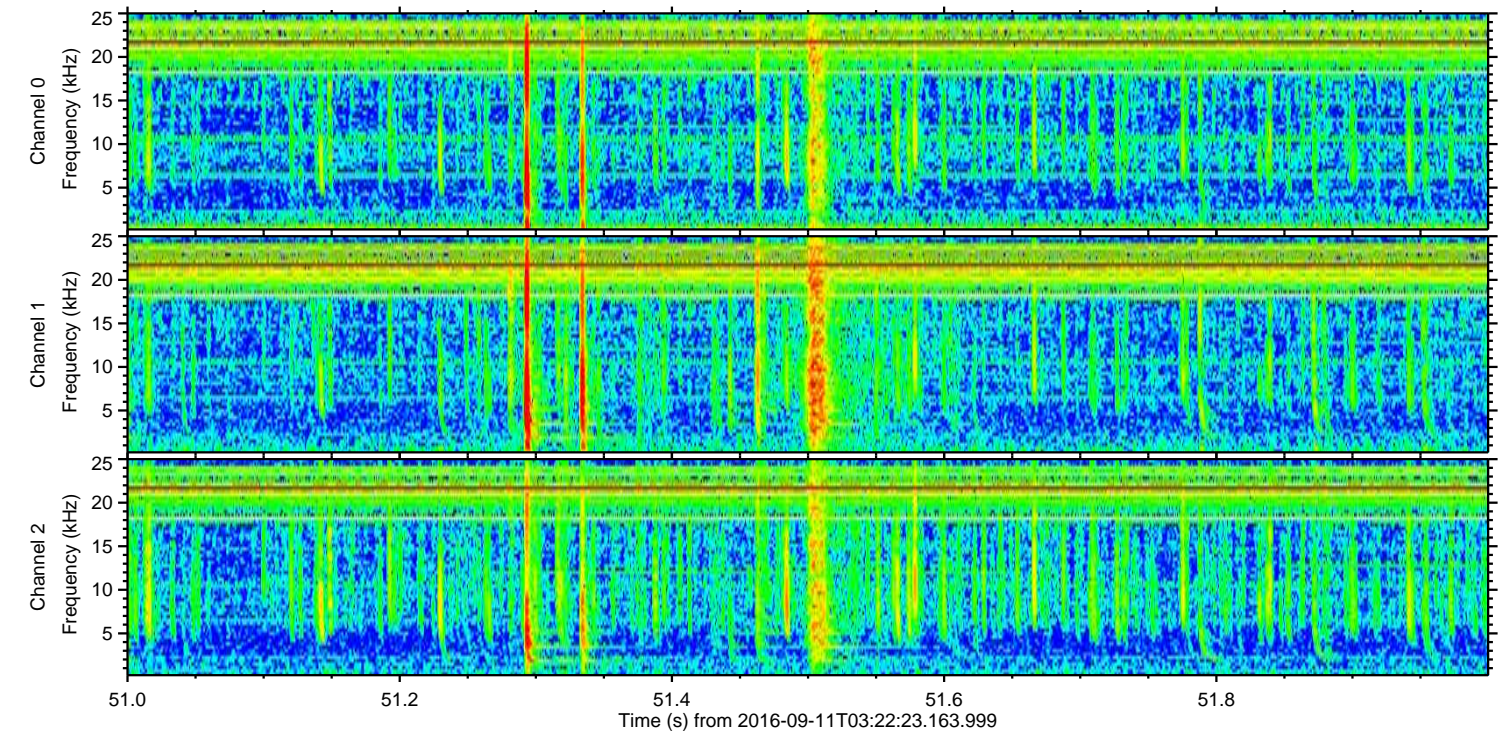
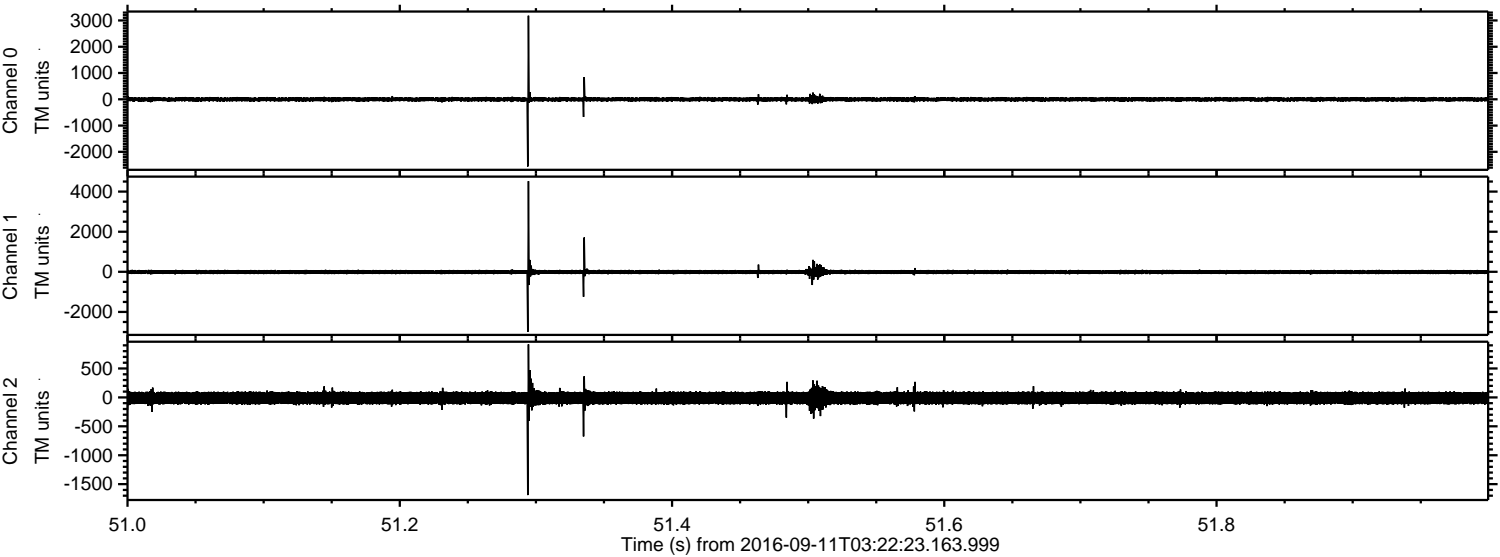


ELMAVAN 3D WAVEFORMS (Measured data sampled at 50 kHz) 51000 packets of 144 samples from 2016-09-11T03:22:23.163.999. Part 122/147

Processed Sun Sep 11 05:30:54 2016 by ELM ver.2012-10-06 from 001__elm20160911_032222__dat00.bin

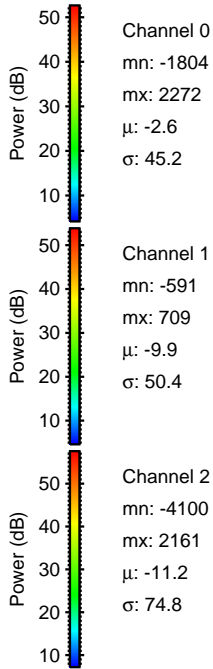
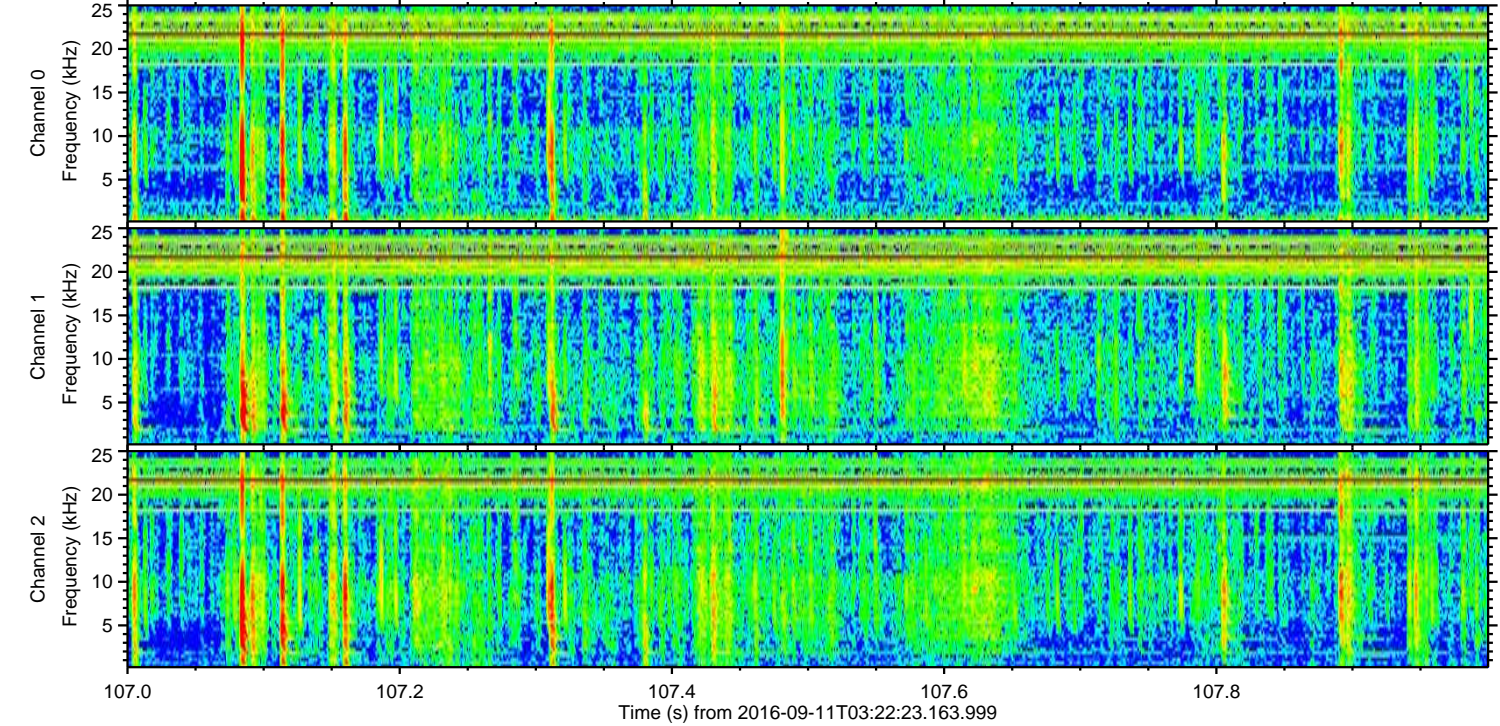
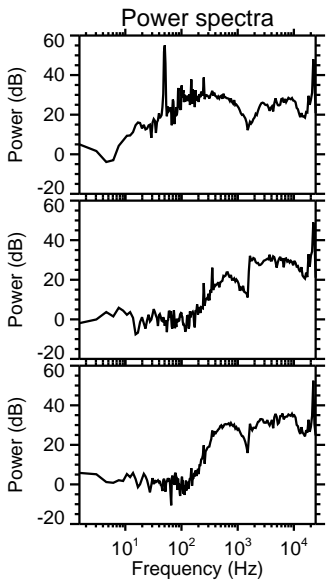
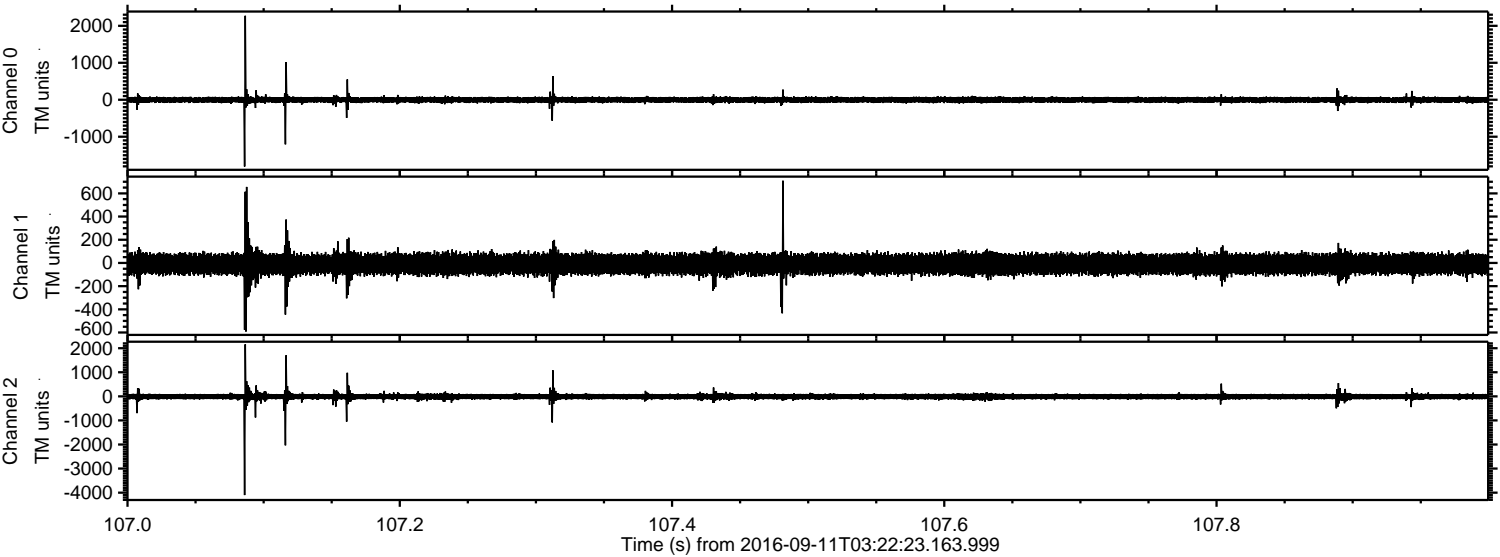


Processed Sun Sep 11 05:30:55 2016 by ELM ver.2012-10-06 from 001__elm20160911_032222__dat00.bin



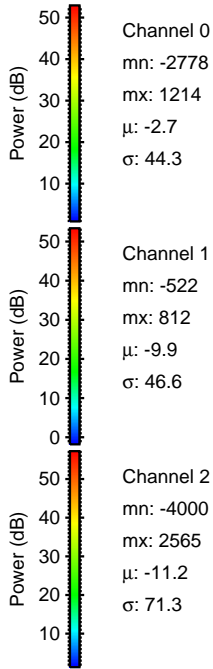
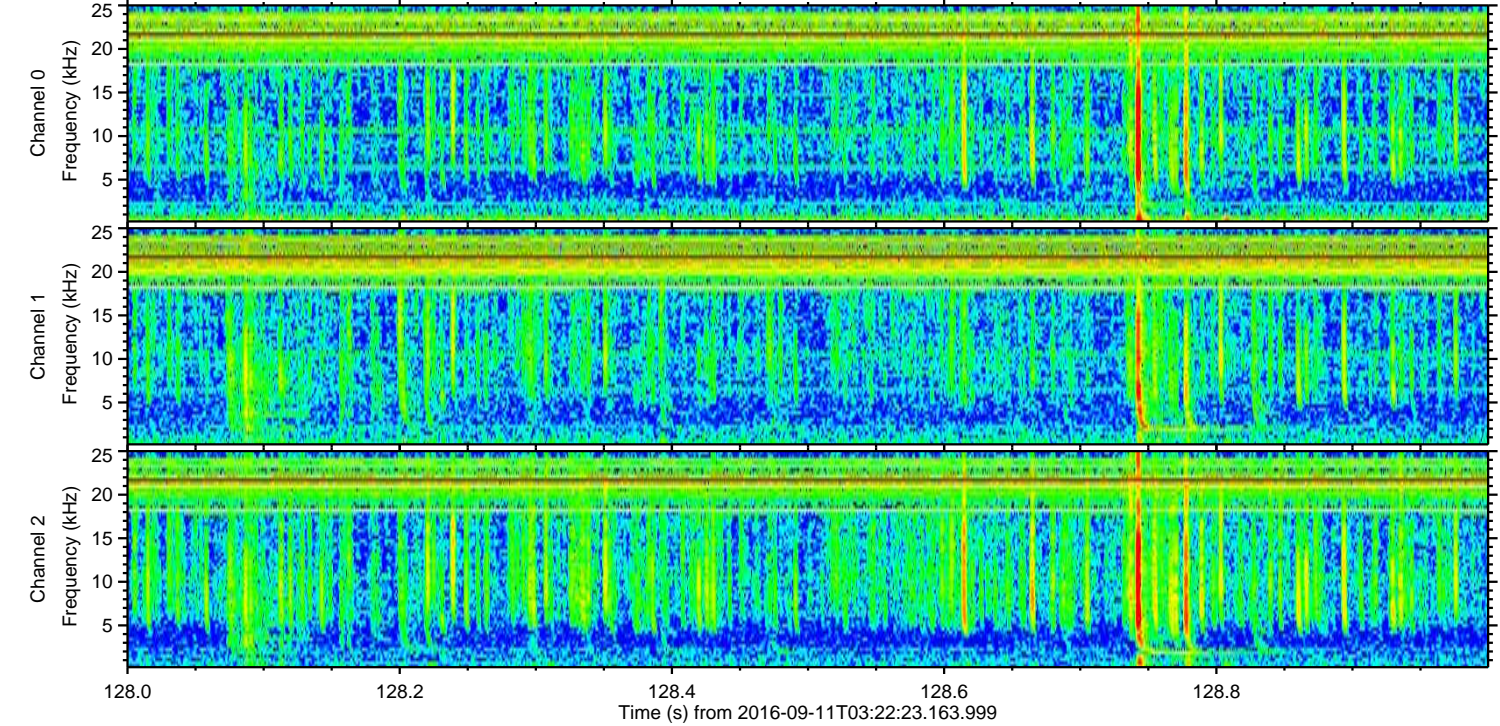
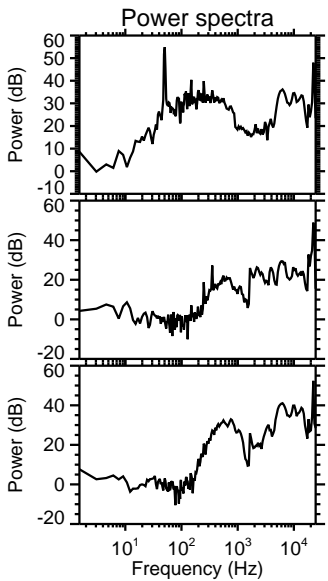
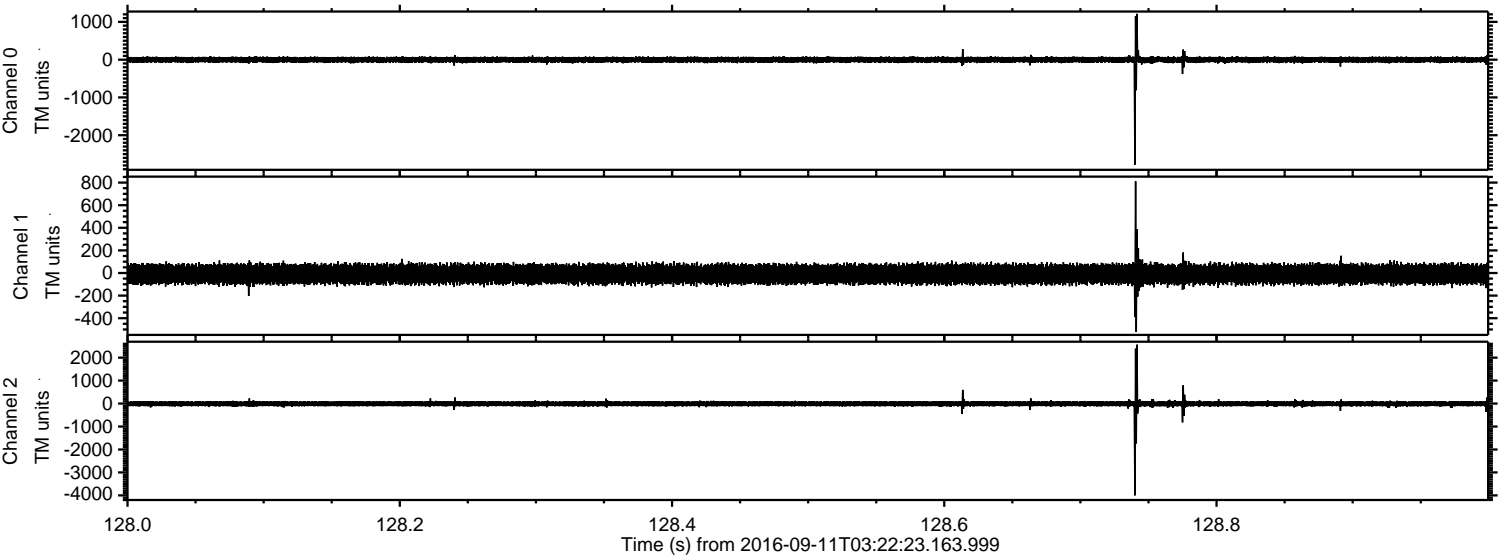
ELMAVAN 3D WAVEFORMS (Measured data sampled at 50 kHz) 51000 packets of 144 samples from 2016-09-11T03:22:23.163.999. Part 108/147

Processed Sun Sep 11 05:30:57 2016 by ELM ver.2012-10-06 from 001__elm20160911_032222__dat00.bin



ELMAVAN 3D WAVEFORMS (Measured data sampled at 50 kHz) 51000 packets of 144 samples from 2016-09-11T03:22:23.163.999. Part 129/147

Processed Sun Sep 11 05:30:58 2016 by ELM ver.2012-10-06 from 001__elm20160911_032222__dat00.bin

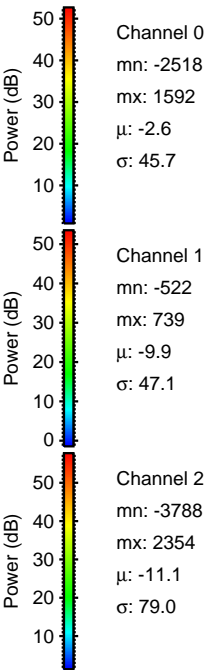
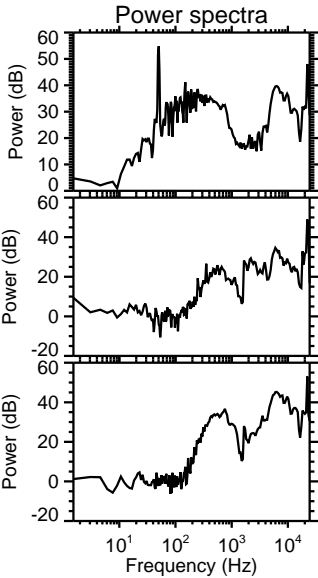
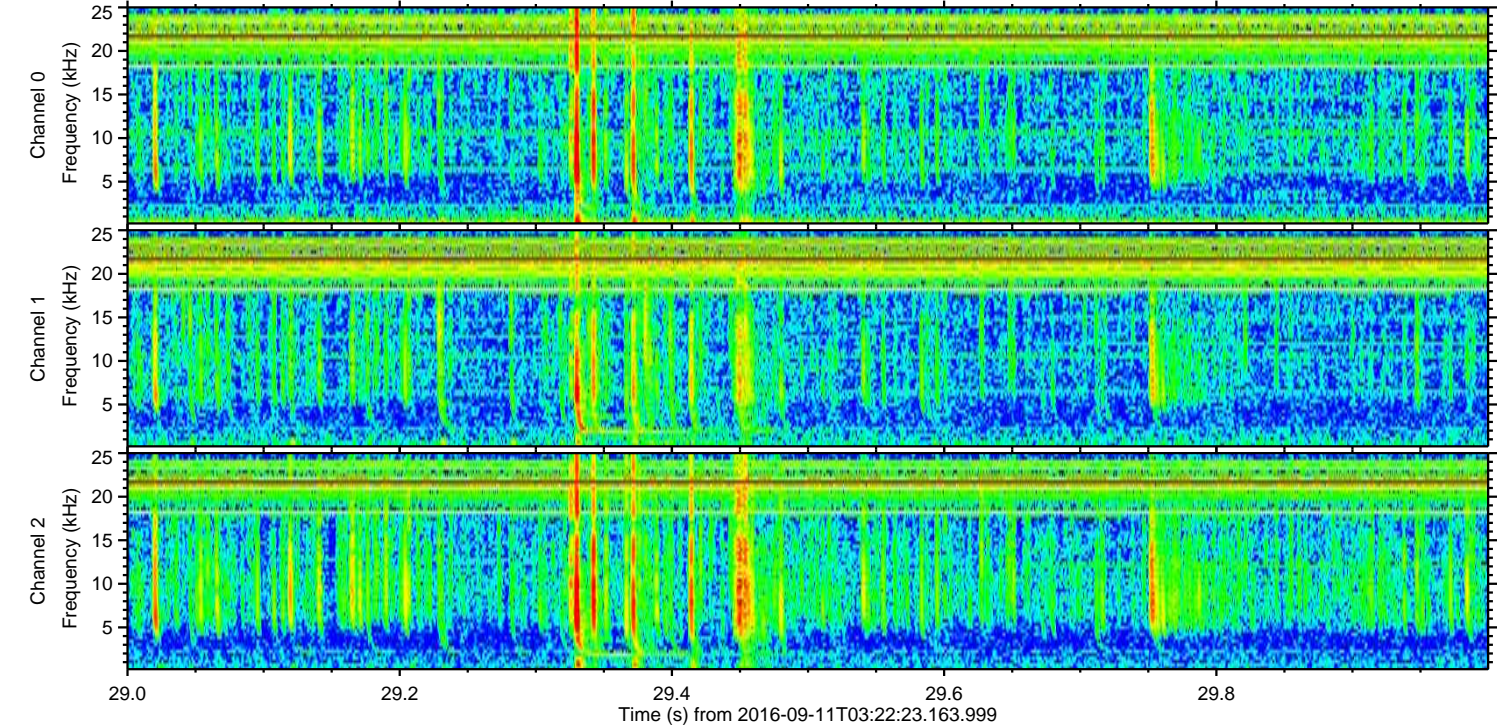
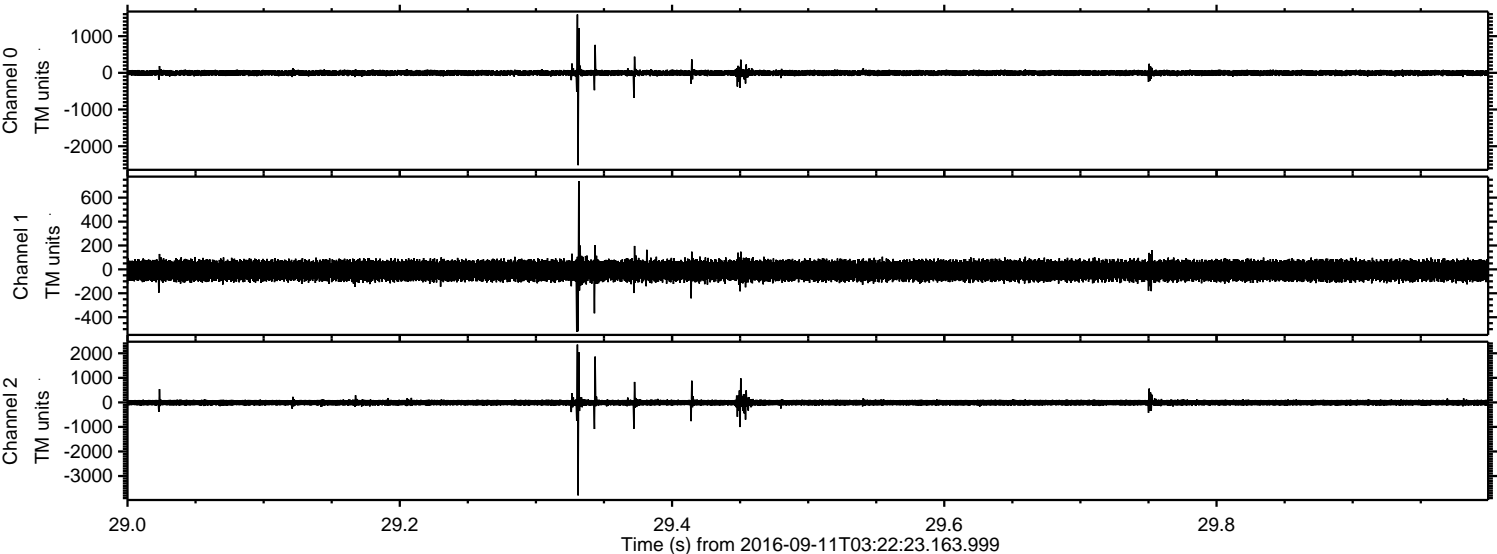


Channel 0
mn: -2778
mx: 1214
 μ : -2.7
 σ : 44.3

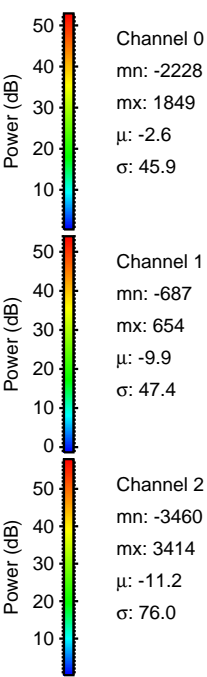
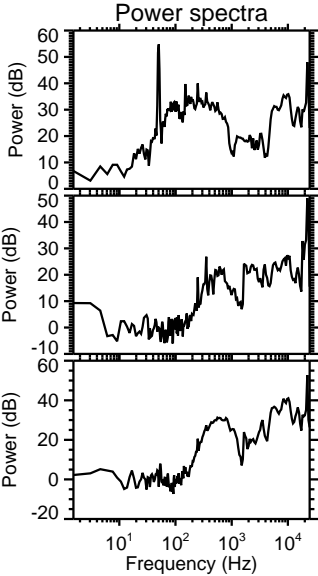
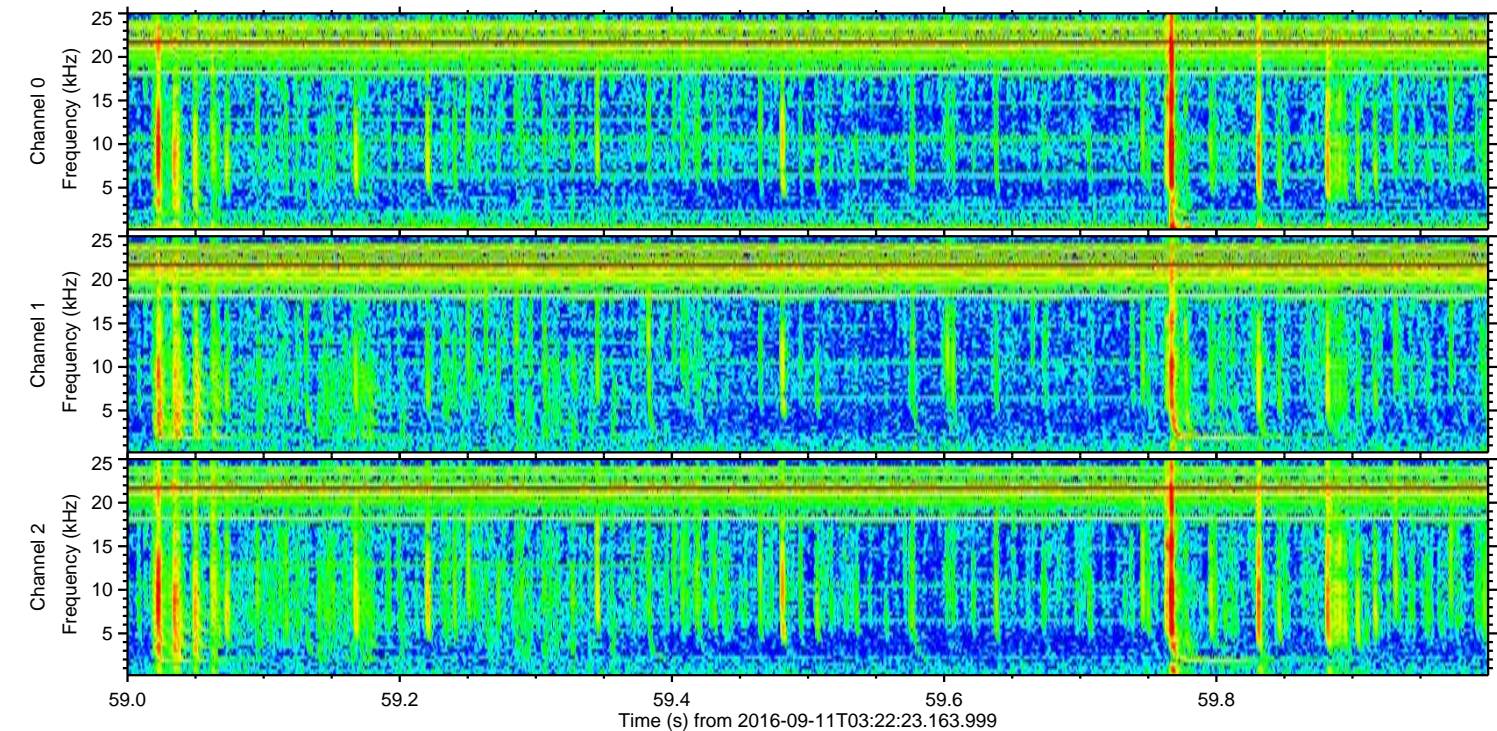
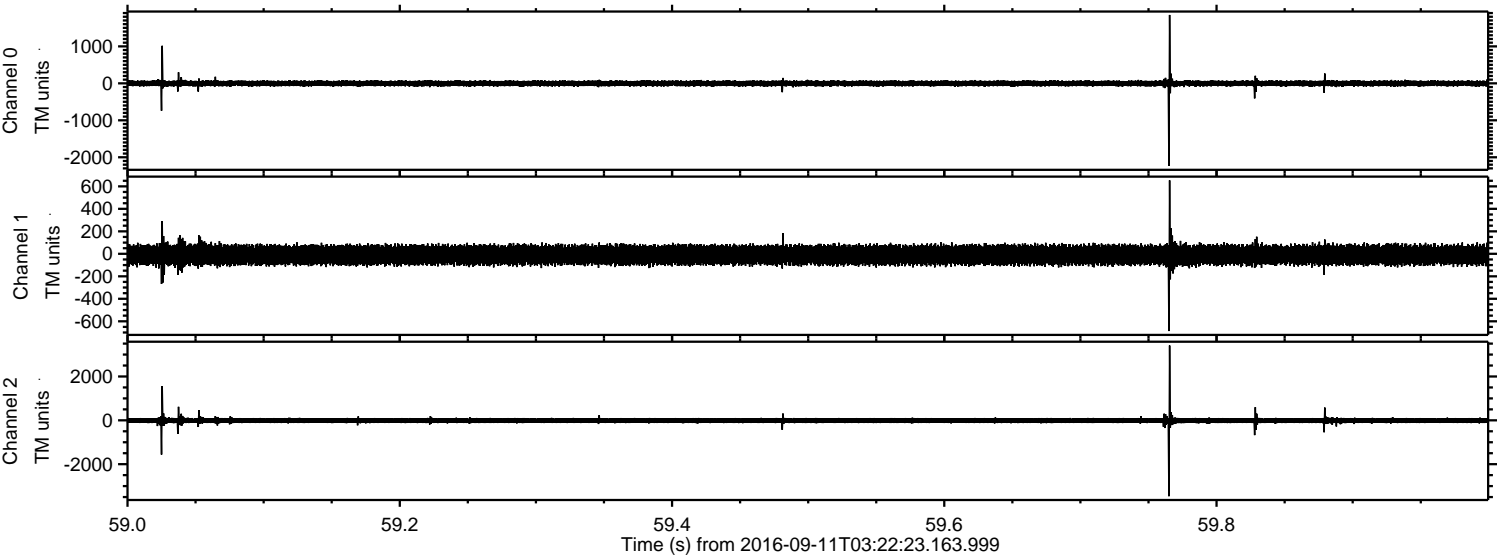
Channel 1
mn: -522
mx: 812
 μ : -9.9
 σ : 46.6

Channel 2
mn: -4000
mx: 2565
 μ : -11.2
 σ : 71.3

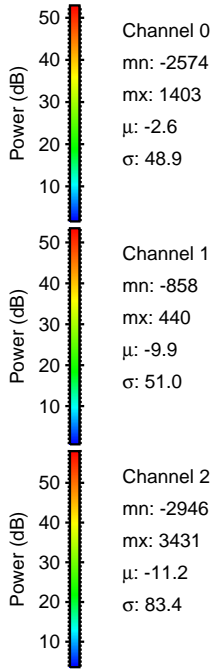
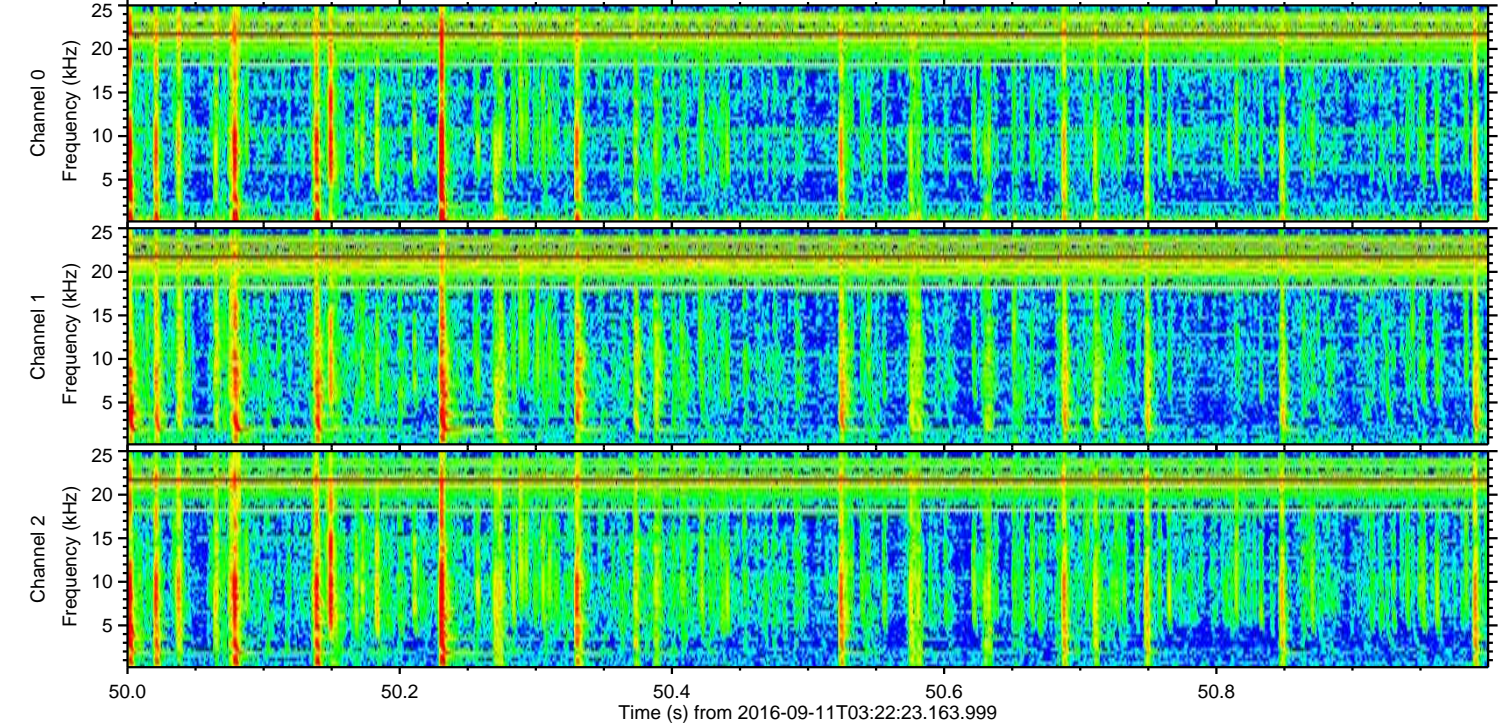
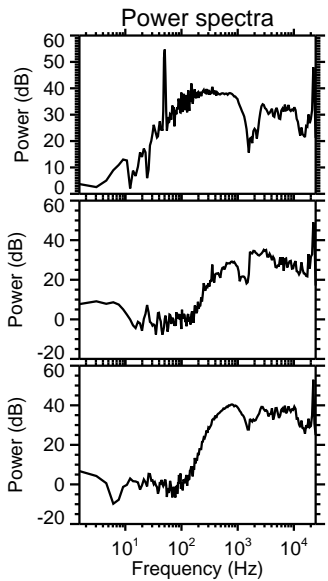
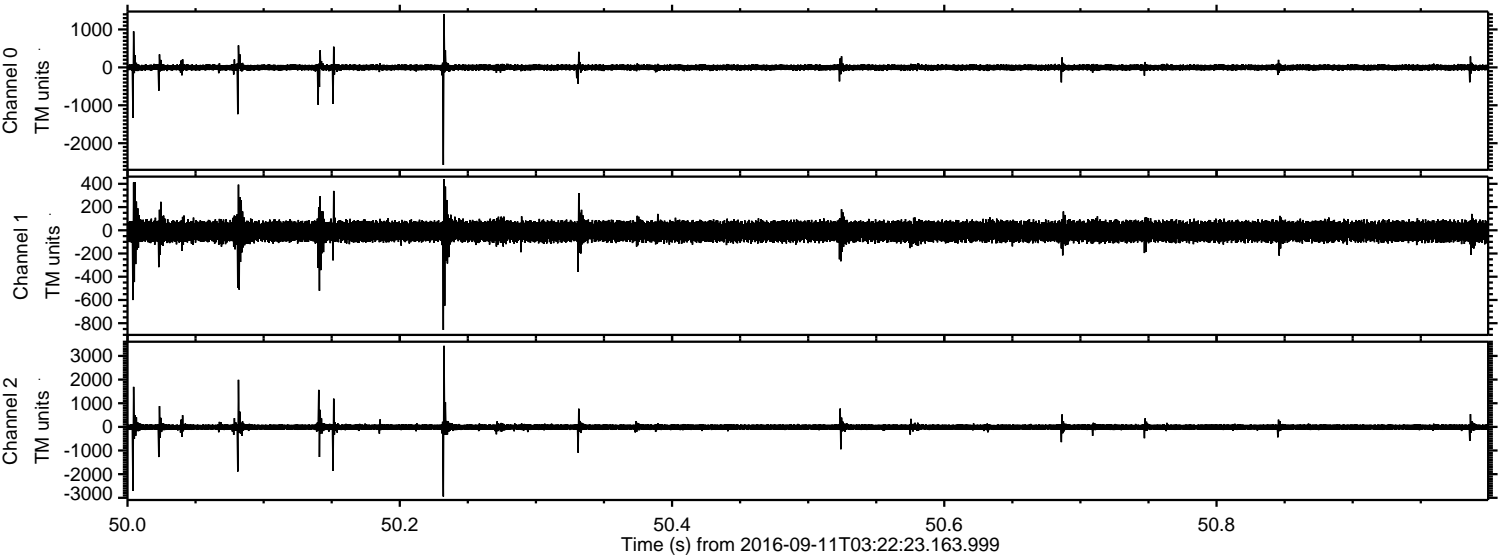
Processed Sun Sep 11 05:30:59 2016 by ELM ver.2012-10-06 from 001__elm20160911_032222__dat00.bin



Processed Sun Sep 11 05:31:00 2016 by ELM ver.2012-10-06 from 001__elm20160911_032222__dat00.bin



Processed Sun Sep 11 05:31:01 2016 by ELM ver.2012-10-06 from 001__elm20160911_032222__dat00.bin



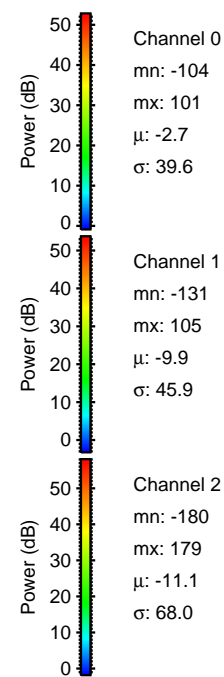
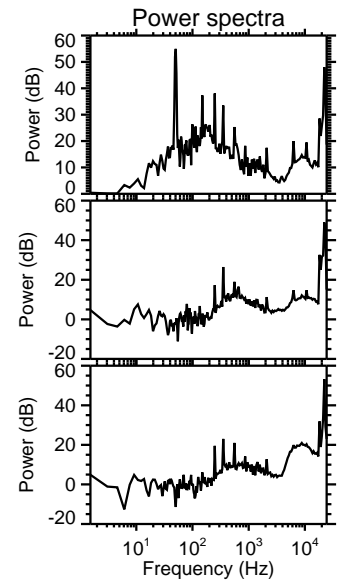
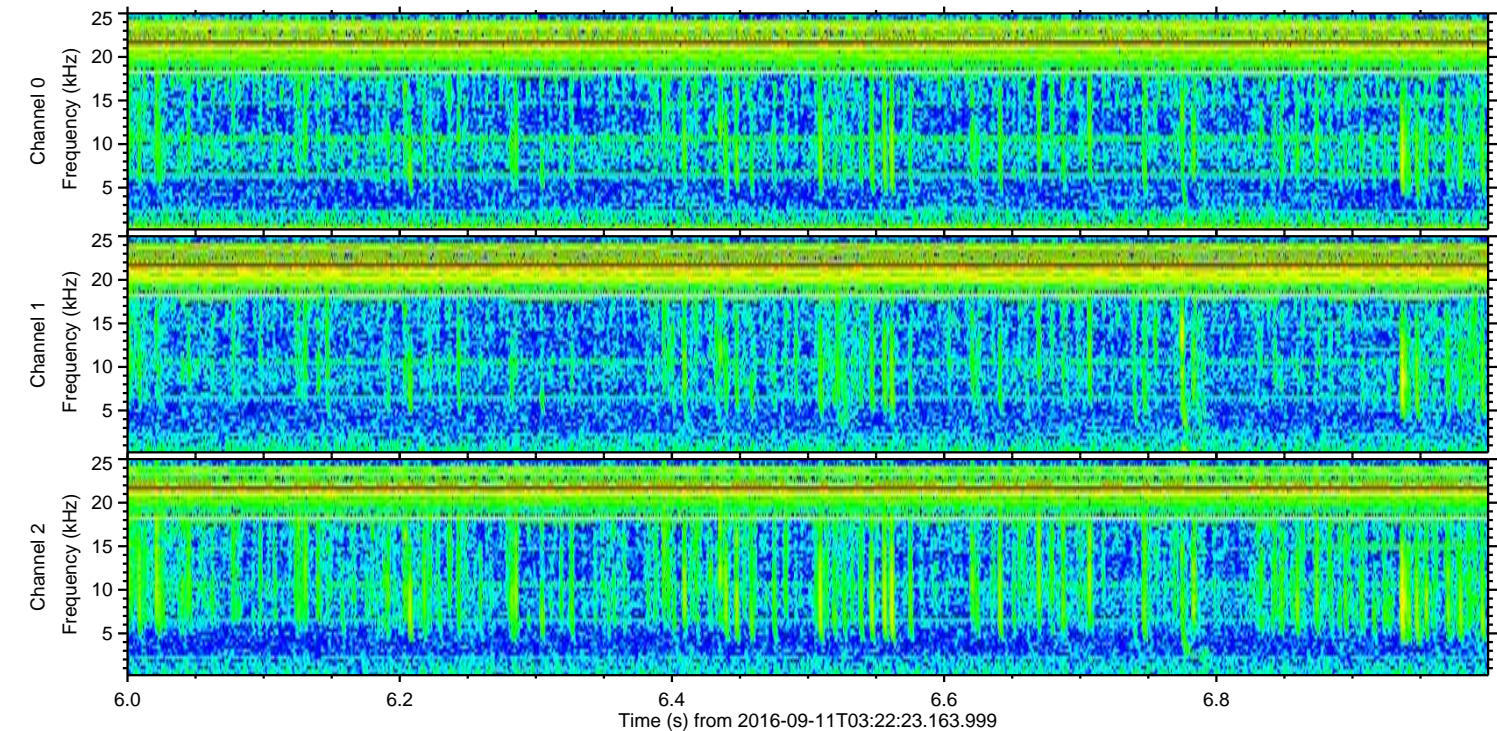
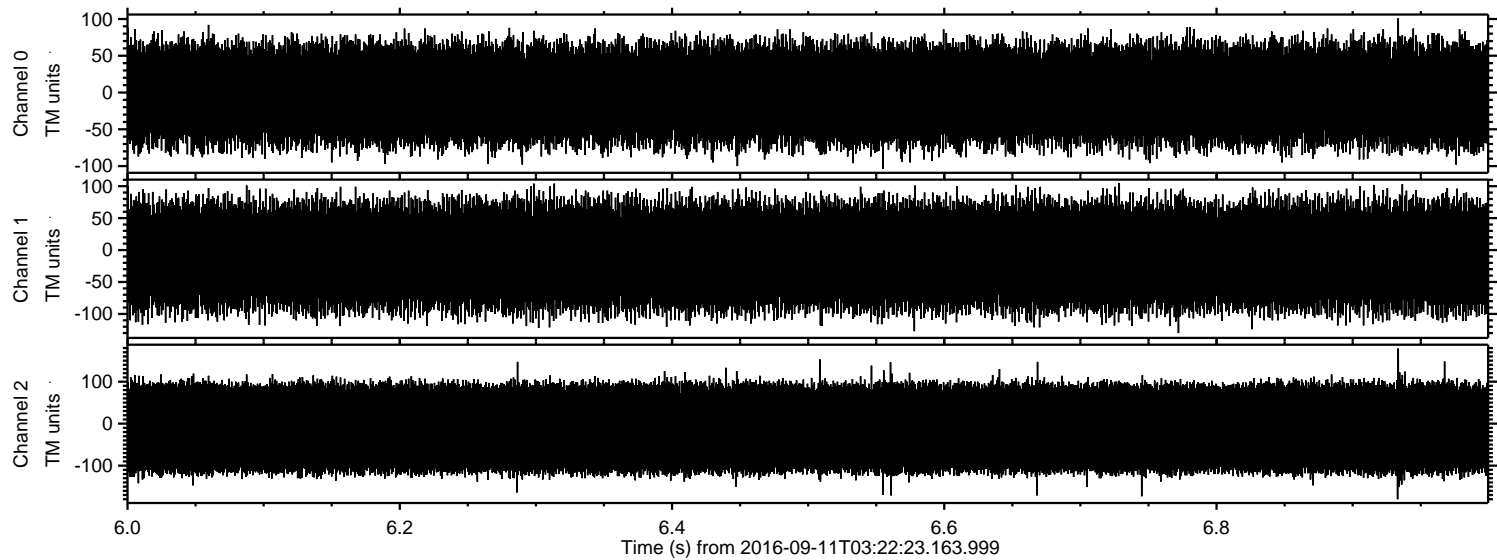
Channel 0
mn: -2574
mx: 1403
 μ : -2.6
 σ : 48.9

Channel 1
mn: -858
mx: 440
 μ : -9.9
 σ : 51.0

Channel 2
mn: -2946
mx: 3431
 μ : -11.2
 σ : 83.4

ELMAVAN 3D WAVEFORMS (Measured data sampled at 50 kHz) 51000 packets of 144 samples from 2016-09-11T03:22:23.163.999. Part 7/147

Processed Sun Sep 11 05:31:02 2016 by ELM ver.2012-10-06 from 001__elm20160911_032222__dat00.bin



Channel 0
mn: -104
mx: 101
 μ : -2.7
 σ : 39.6

Channel 1
mn: -131
mx: 105
 μ : -9.9
 σ : 45.9

Channel 2
mn: -180
mx: 179
 μ : -11.1
 σ : 68.0