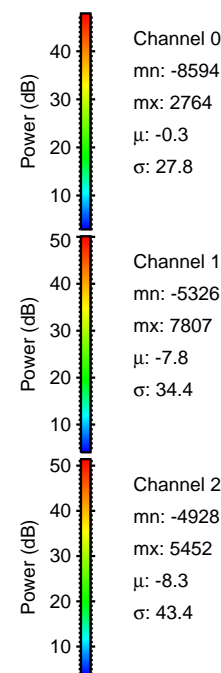
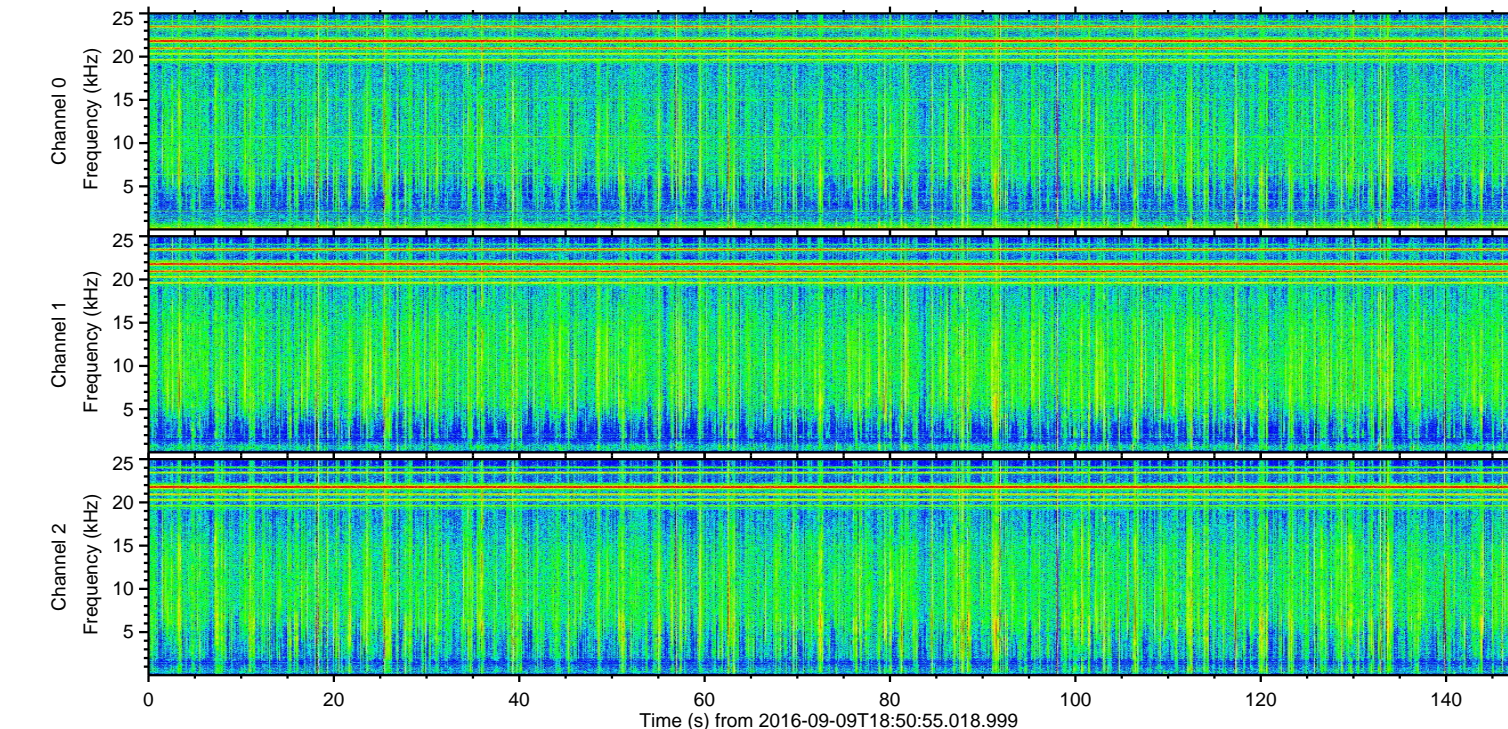
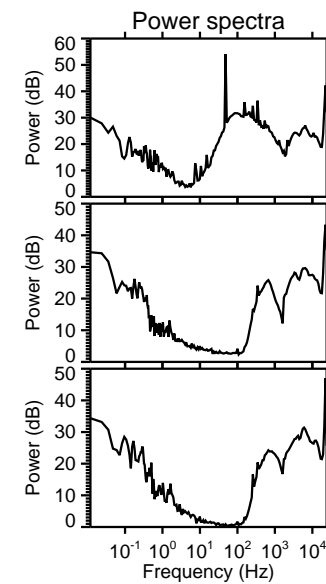
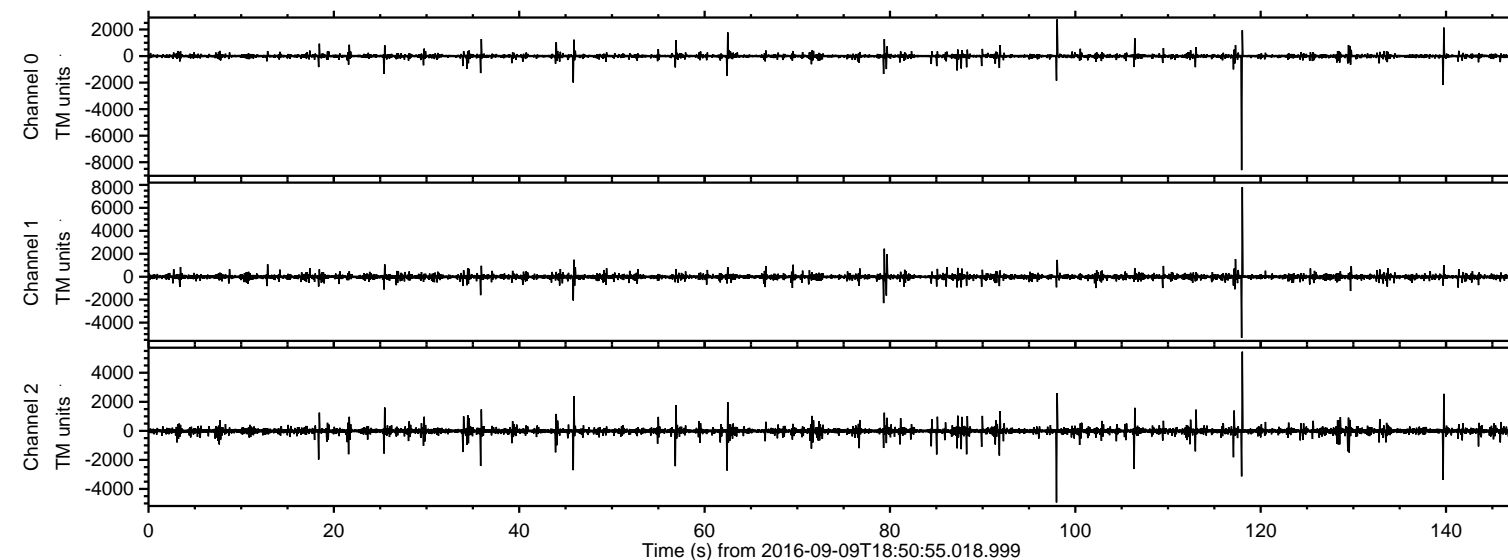


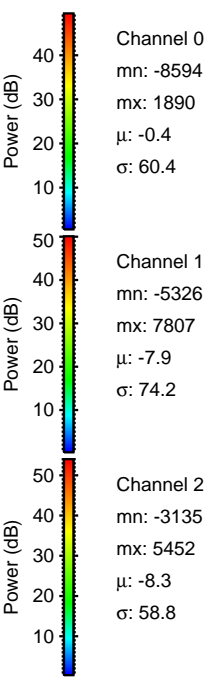
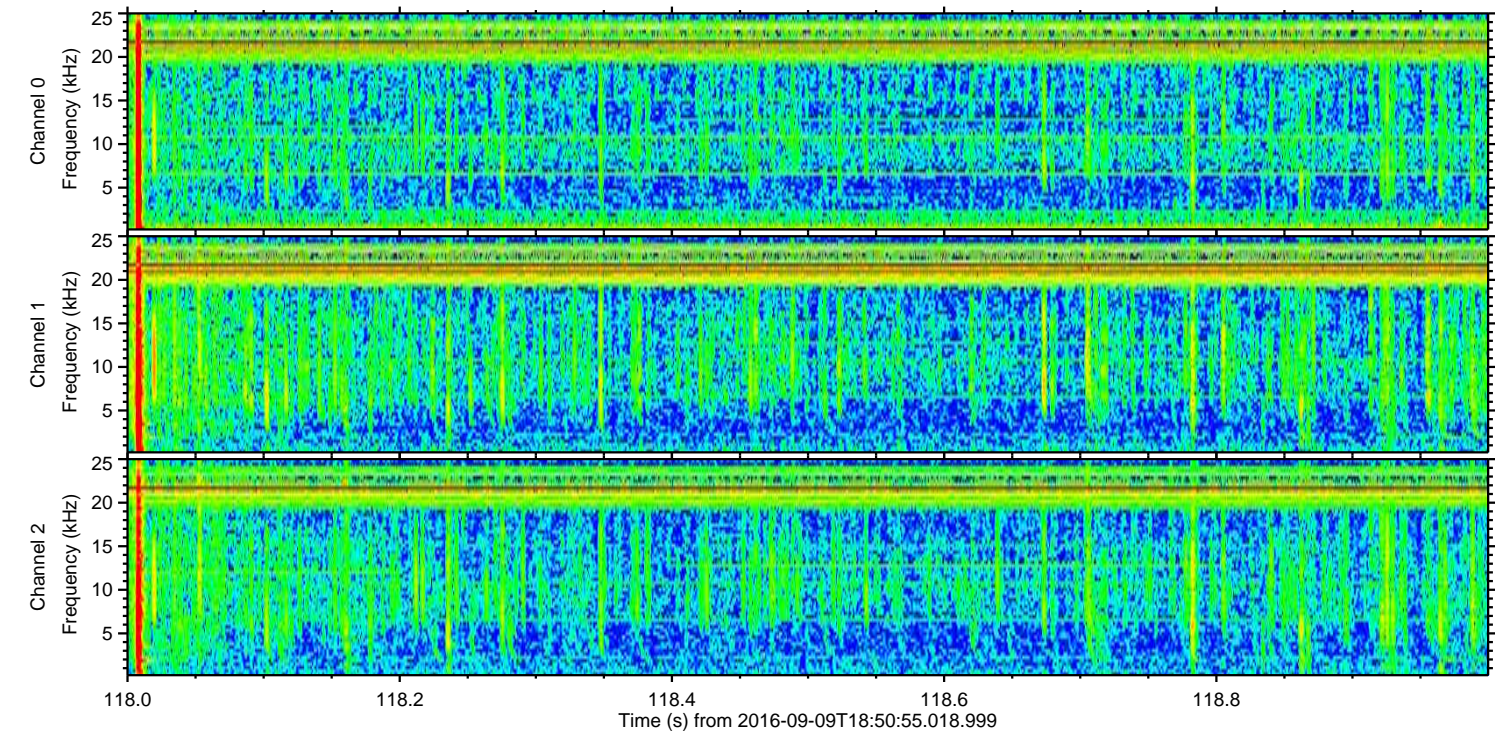
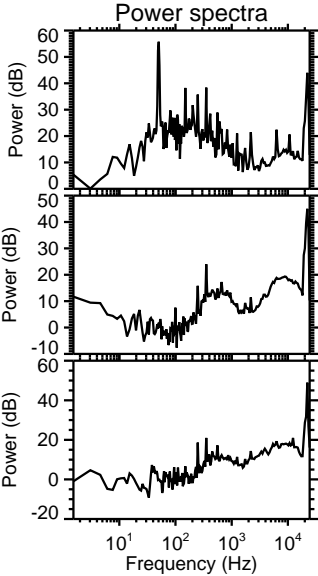
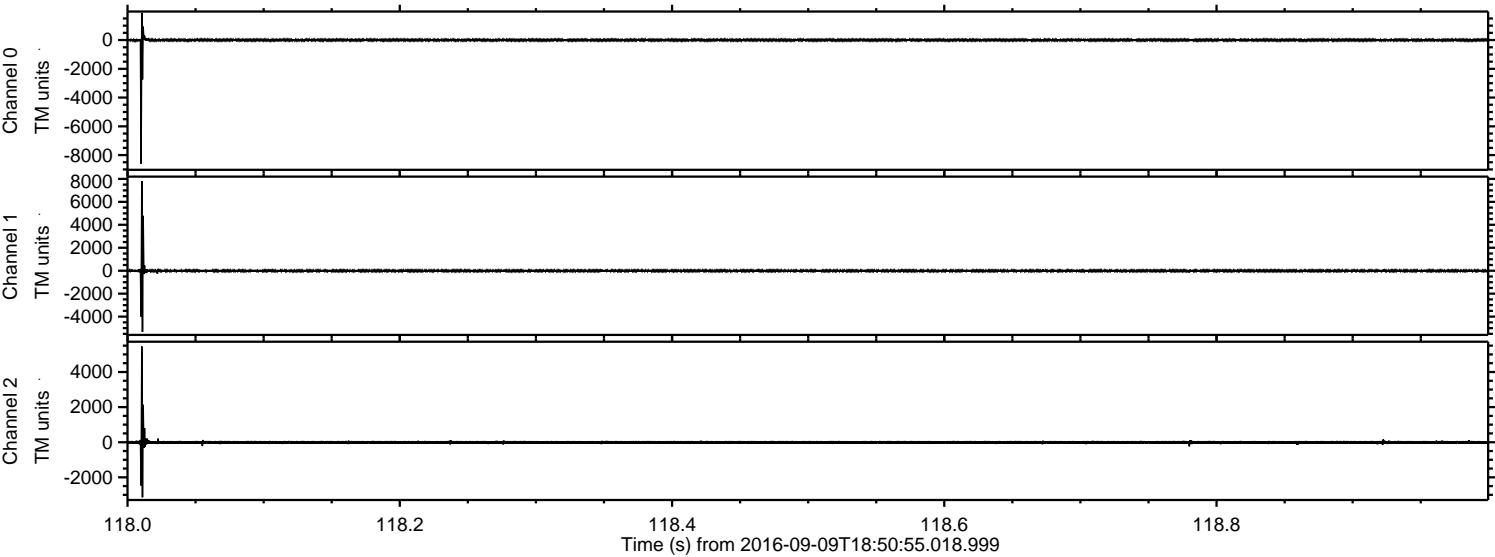
ELMAVAN 3D WAVEFORMS (Measured data sampled at 50 kHz) 51000 packets of 144 samples from 2016-09-09T18:50:55.018.999.

Processed Fri Sep 9 20:59:05 2016 by ELM ver.2012-10-06 from 001__elm20160909_185054__dat00.bin

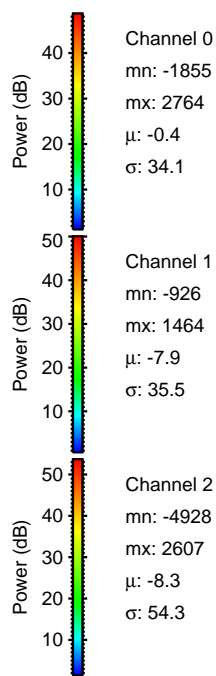
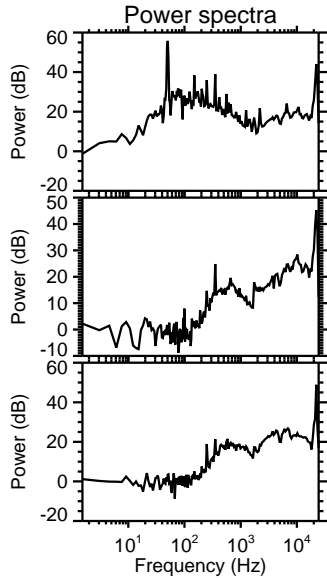
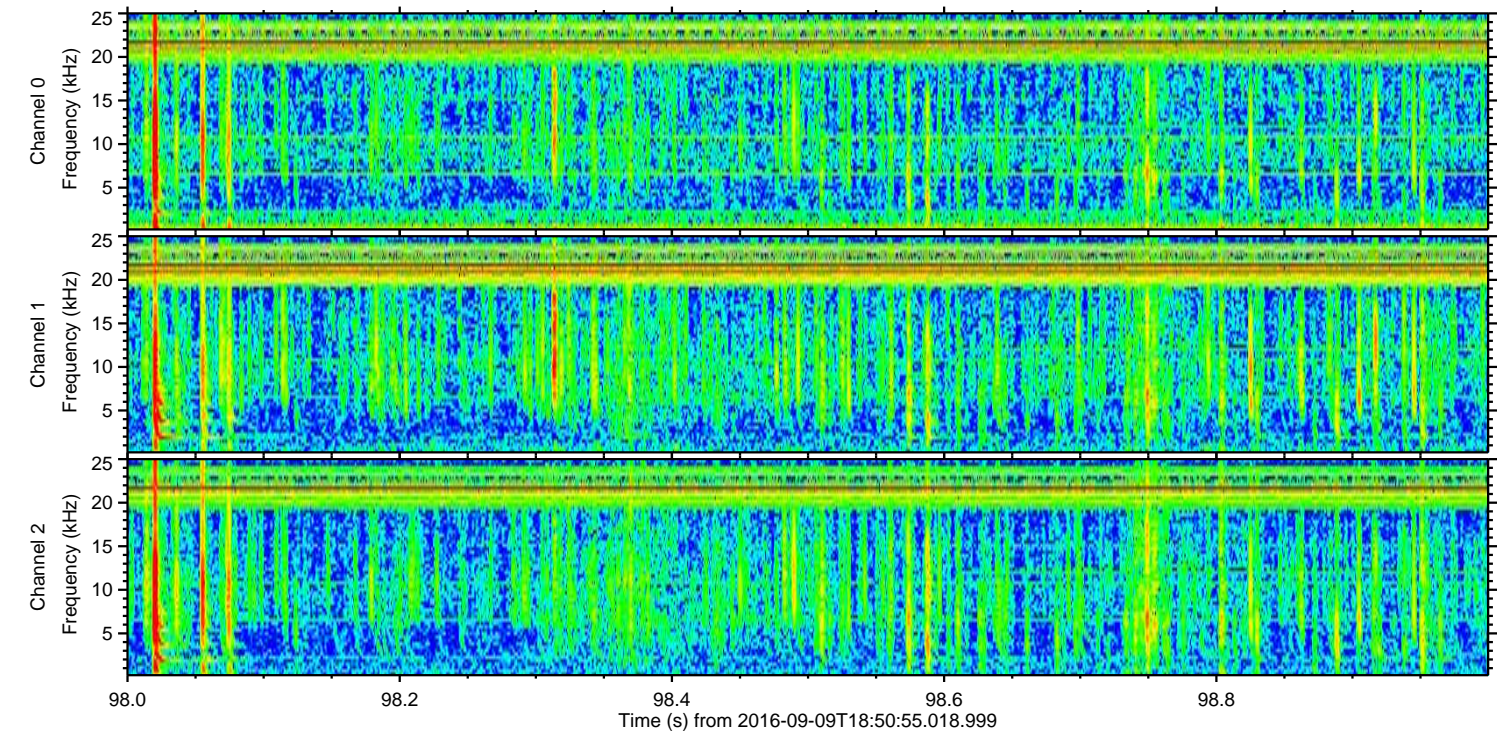
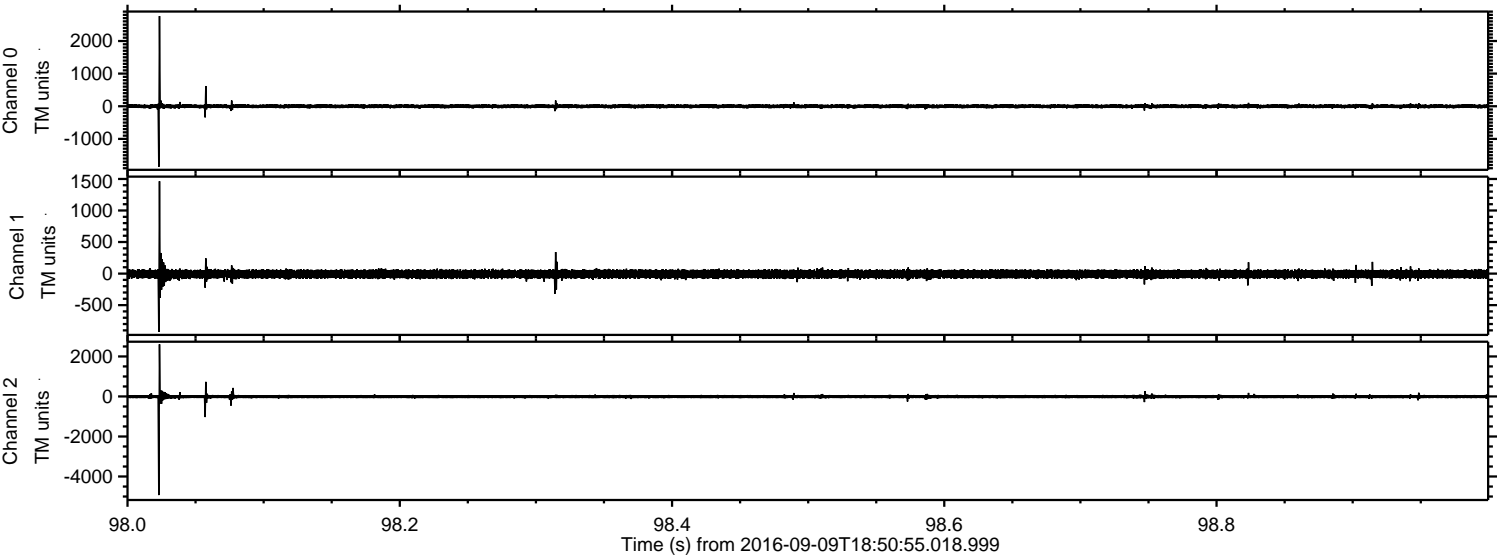


ELMAVAN 3D WAVEFORMS (Measured data sampled at 50 kHz) 51000 packets of 144 samples from 2016-09-09T18:50:55.018.999. Part 119/147

Processed Fri Sep 9 20:59:17 2016 by ELM ver.2012-10-06 from 001__elm20160909_185054__dat00.bin



Processed Fri Sep 9 20:59:18 2016 by ELM ver.2012-10-06 from 001__elm20160909_185054__dat00.bin



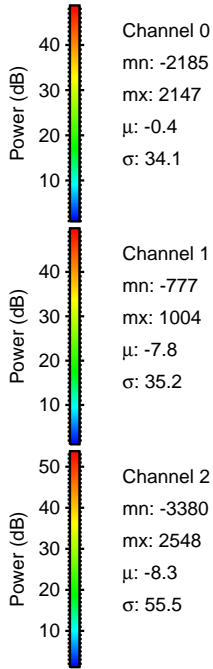
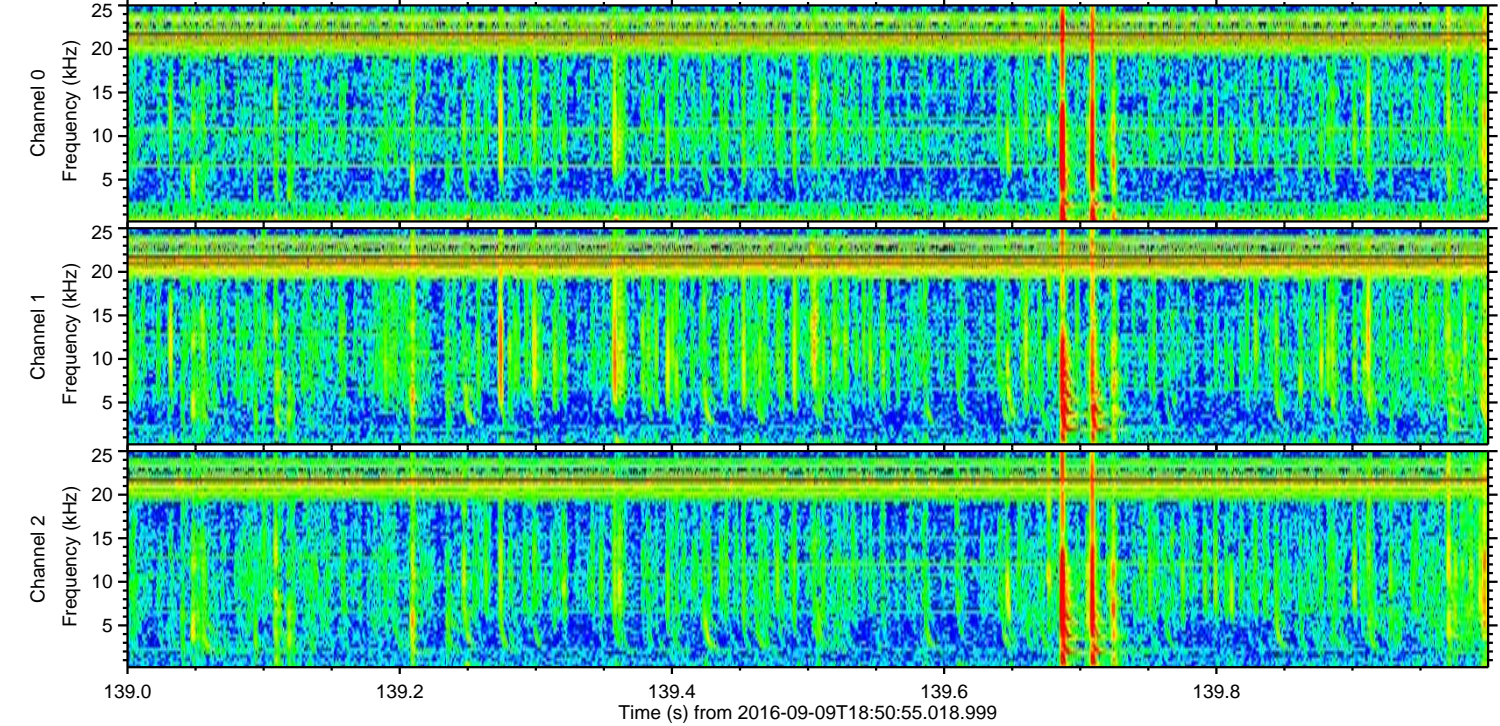
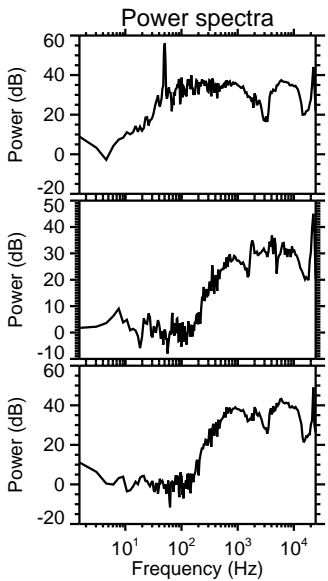
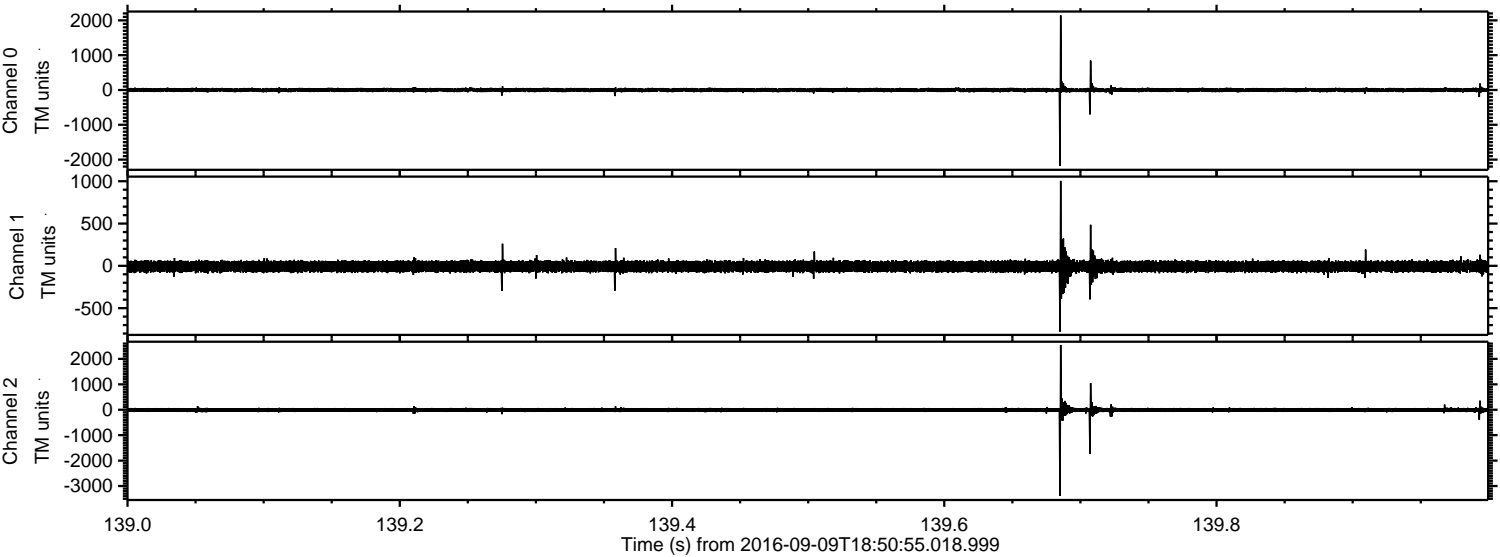
Channel 0
mn: -1855
mx: 2764
 μ : -0.4
 σ : 34.1

Channel 1
mn: -926
mx: 1464
 μ : -7.9
 σ : 35.5

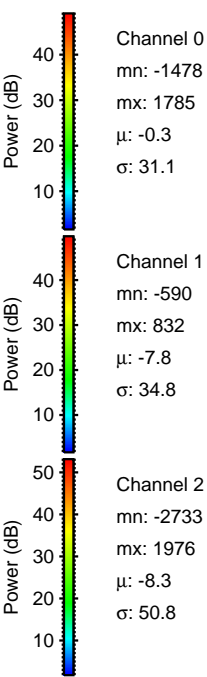
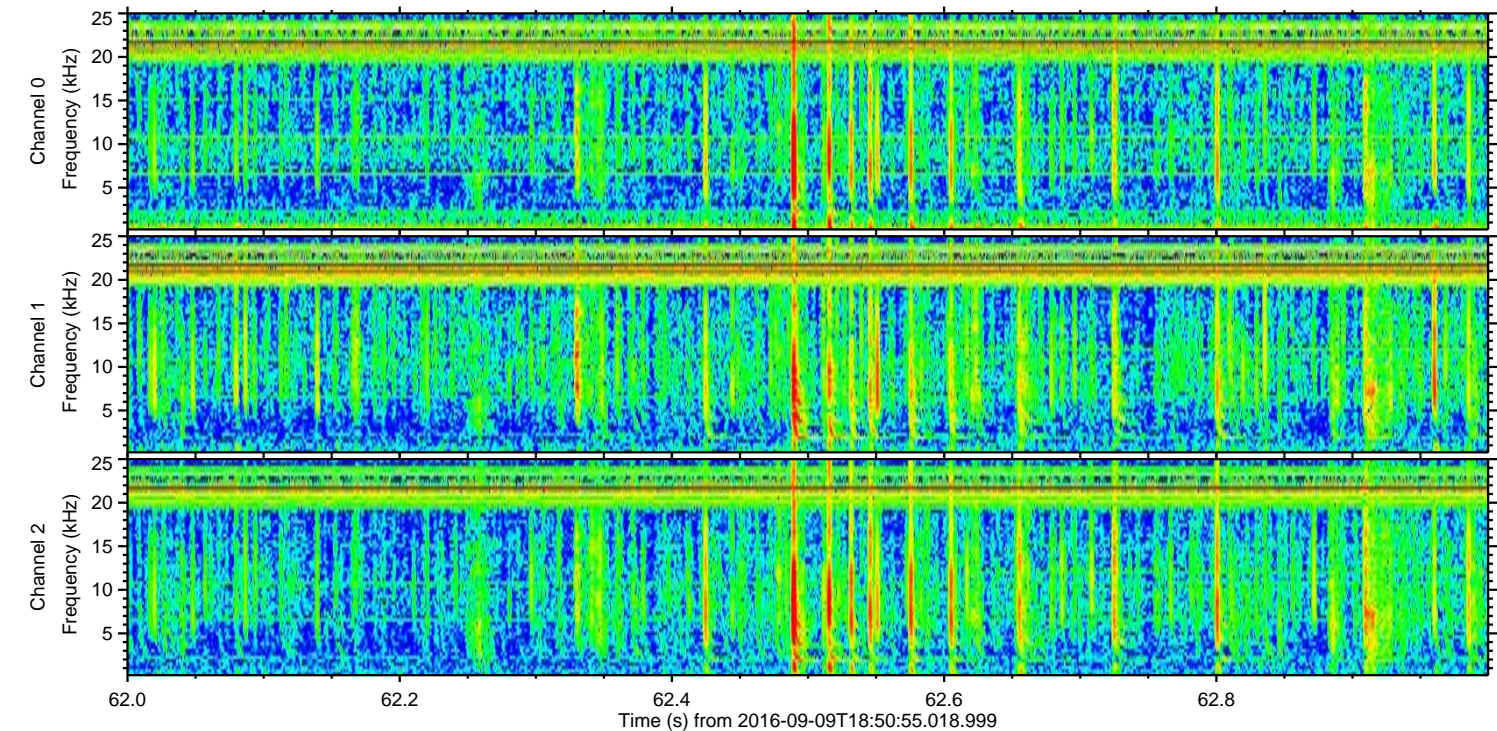
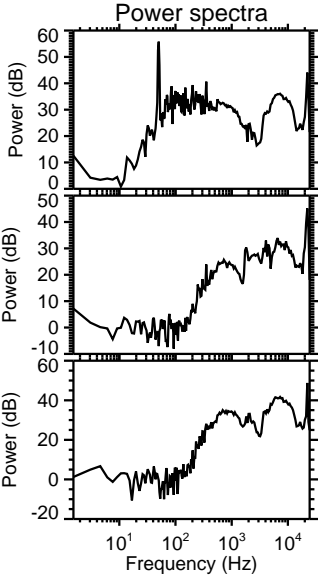
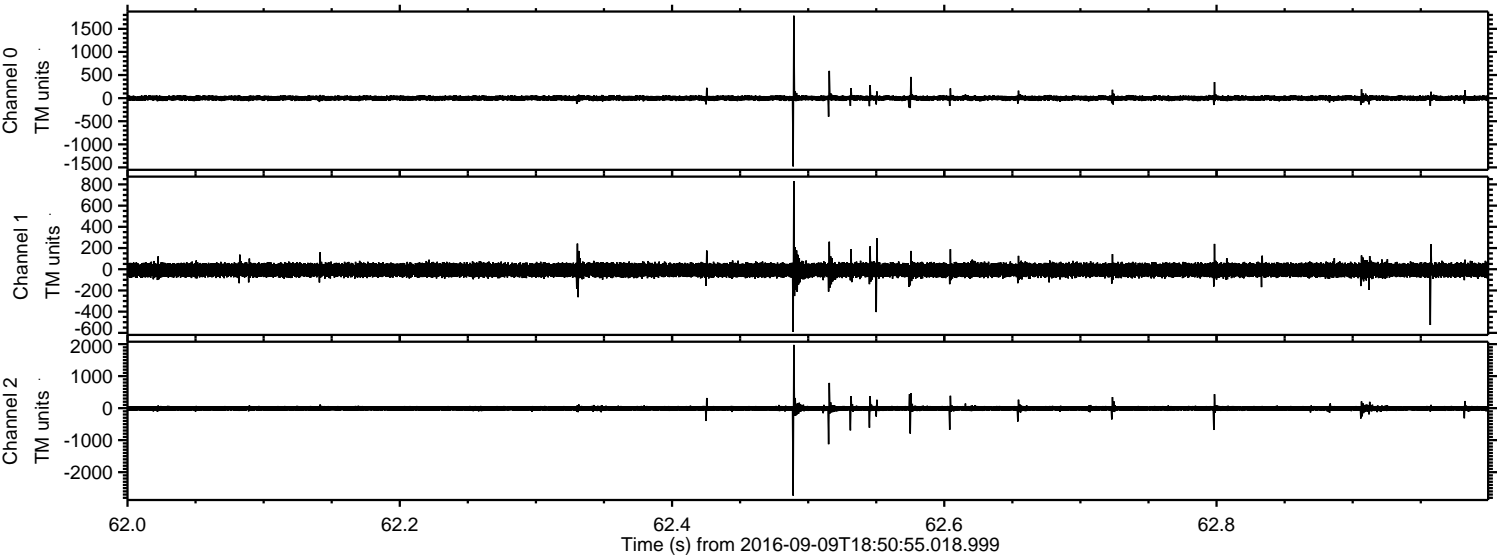
Channel 2
mn: -4928
mx: 2607
 μ : -8.3
 σ : 54.3

ELMAVAN 3D WAVEFORMS (Measured data sampled at 50 kHz) 51000 packets of 144 samples from 2016-09-09T18:50:55.018.999. Part 140/147

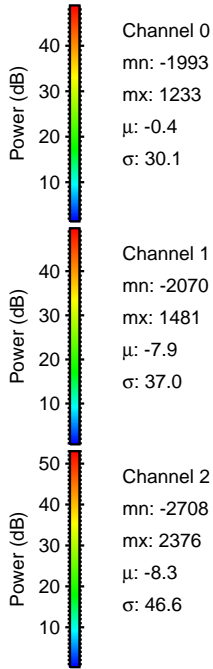
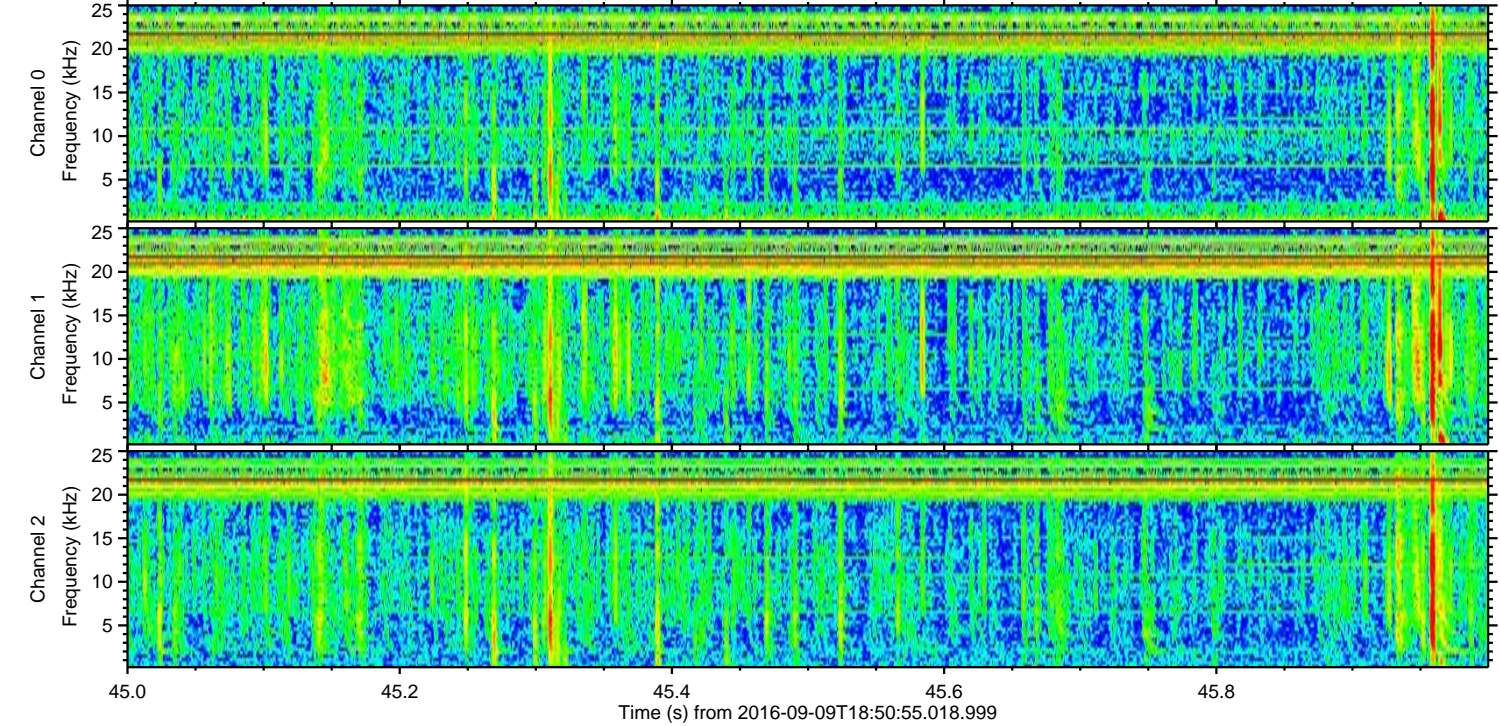
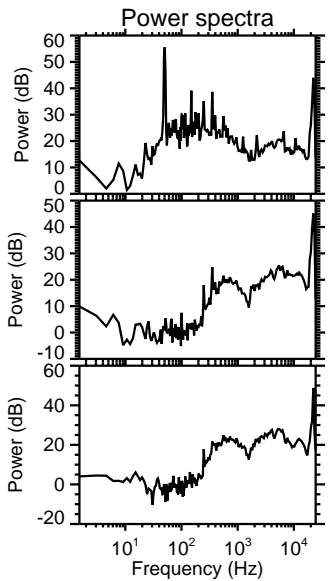
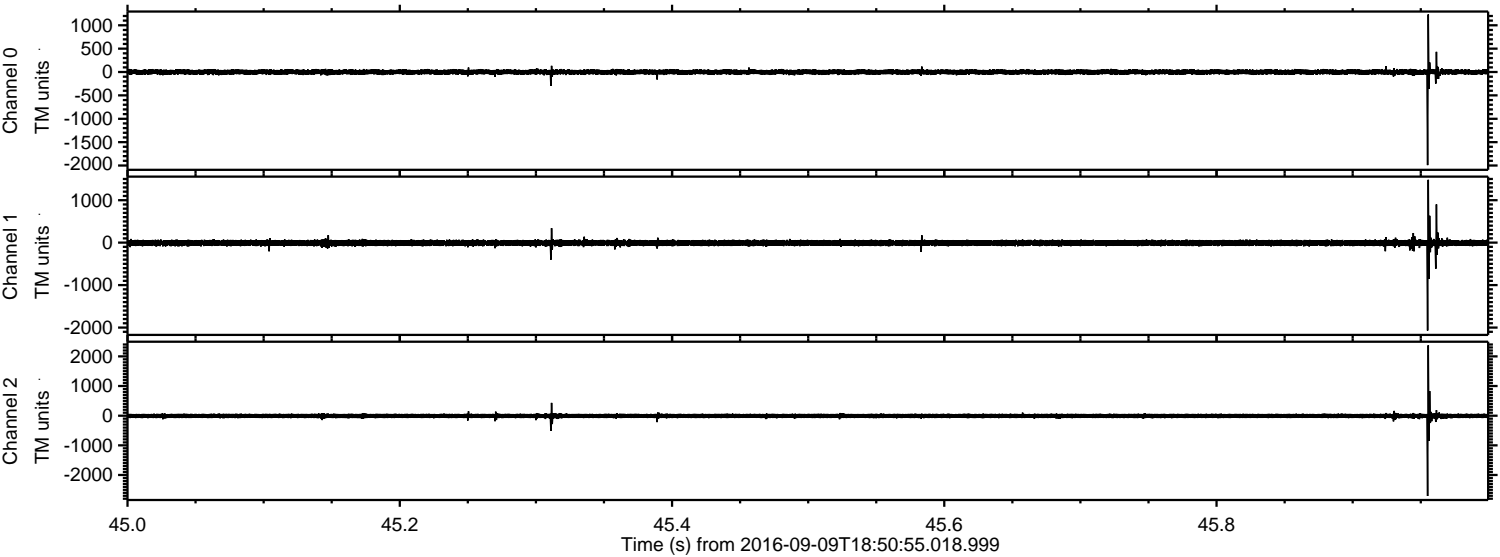
Processed Fri Sep 9 20:59:19 2016 by ELM ver.2012-10-06 from 001__elm20160909_185054__dat00.bin



Processed Fri Sep 9 20:59:20 2016 by ELM ver.2012-10-06 from 001__elm20160909_185054__dat00.bin

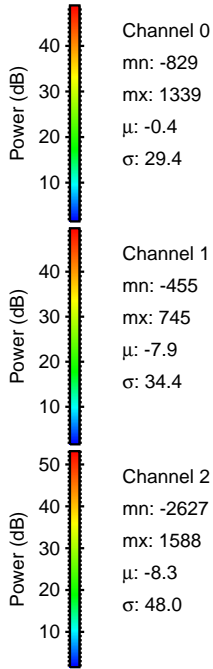
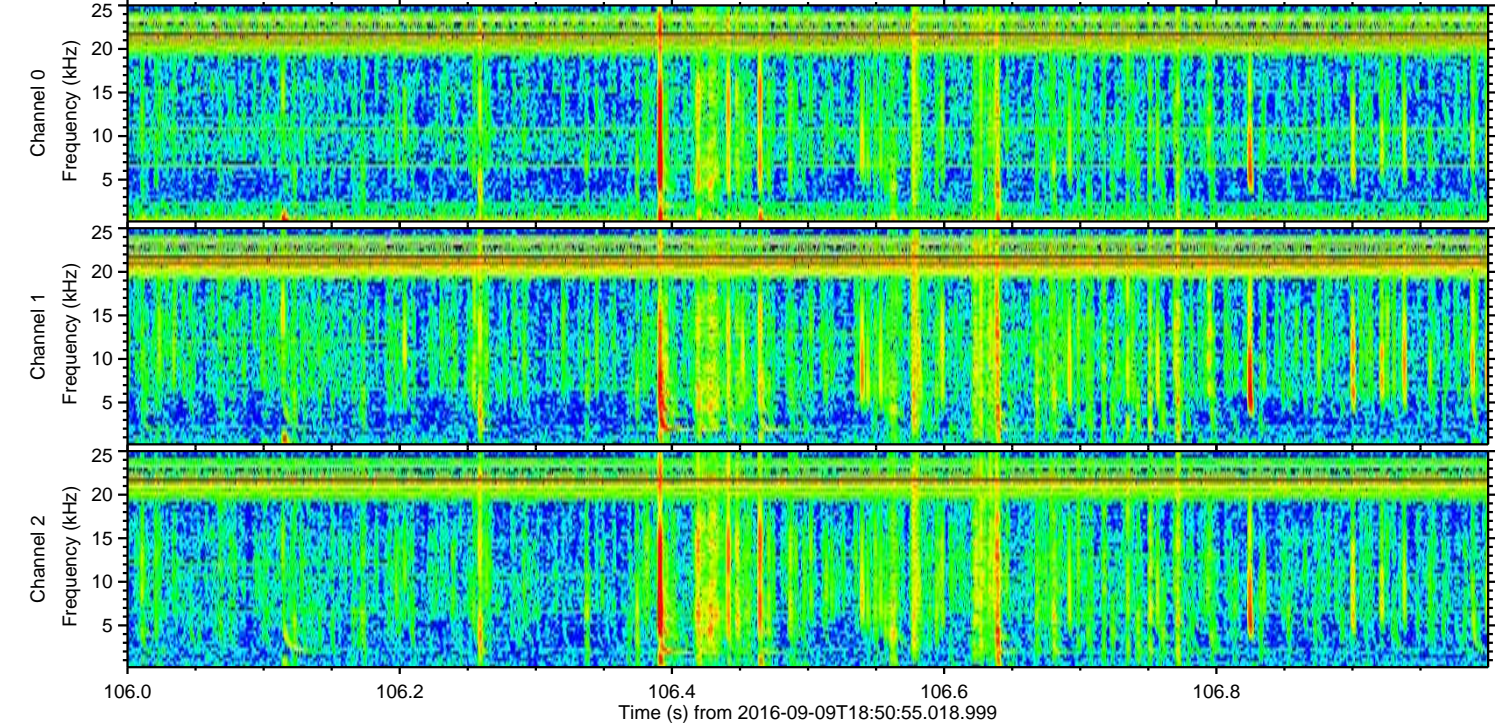
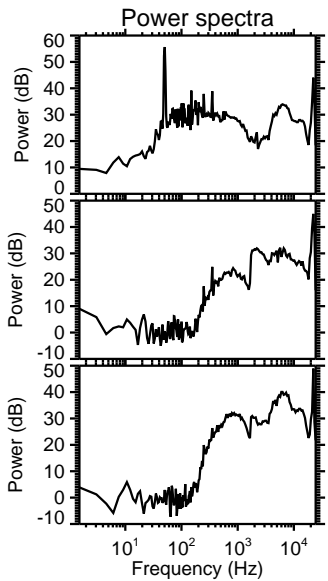
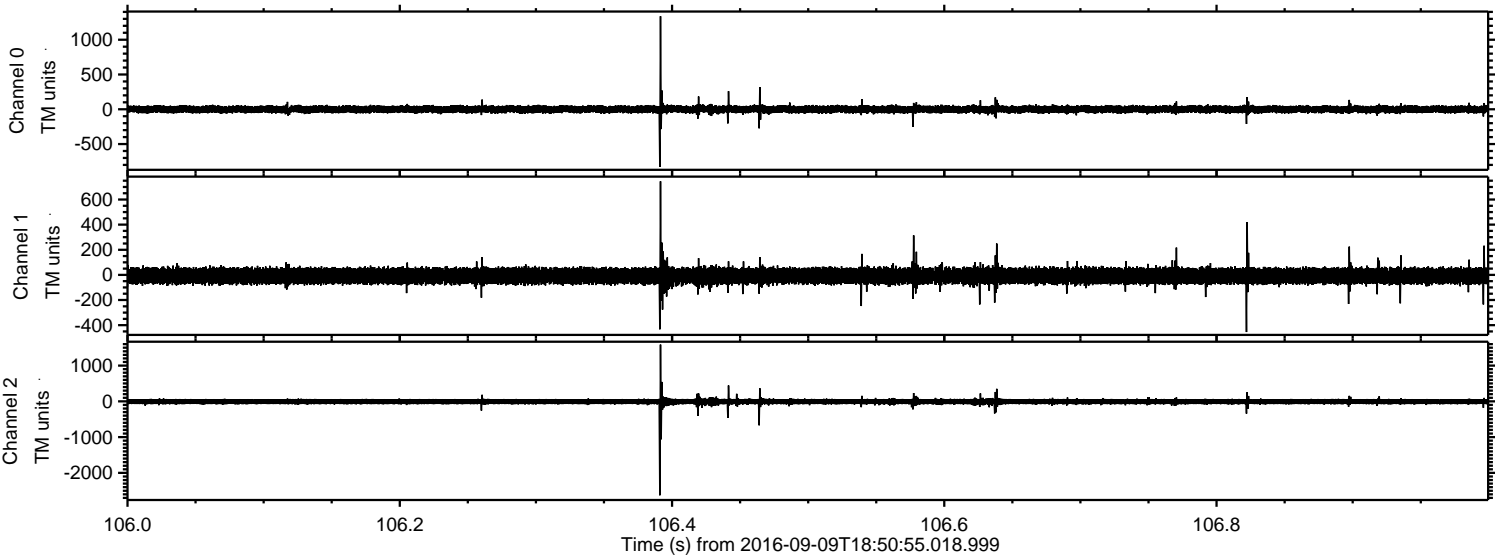


Processed Fri Sep 9 20:59:21 2016 by ELM ver.2012-10-06 from 001__elm20160909_185054__dat00.bin



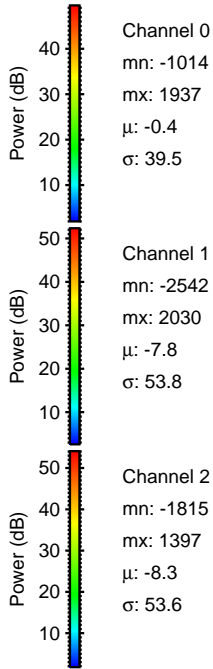
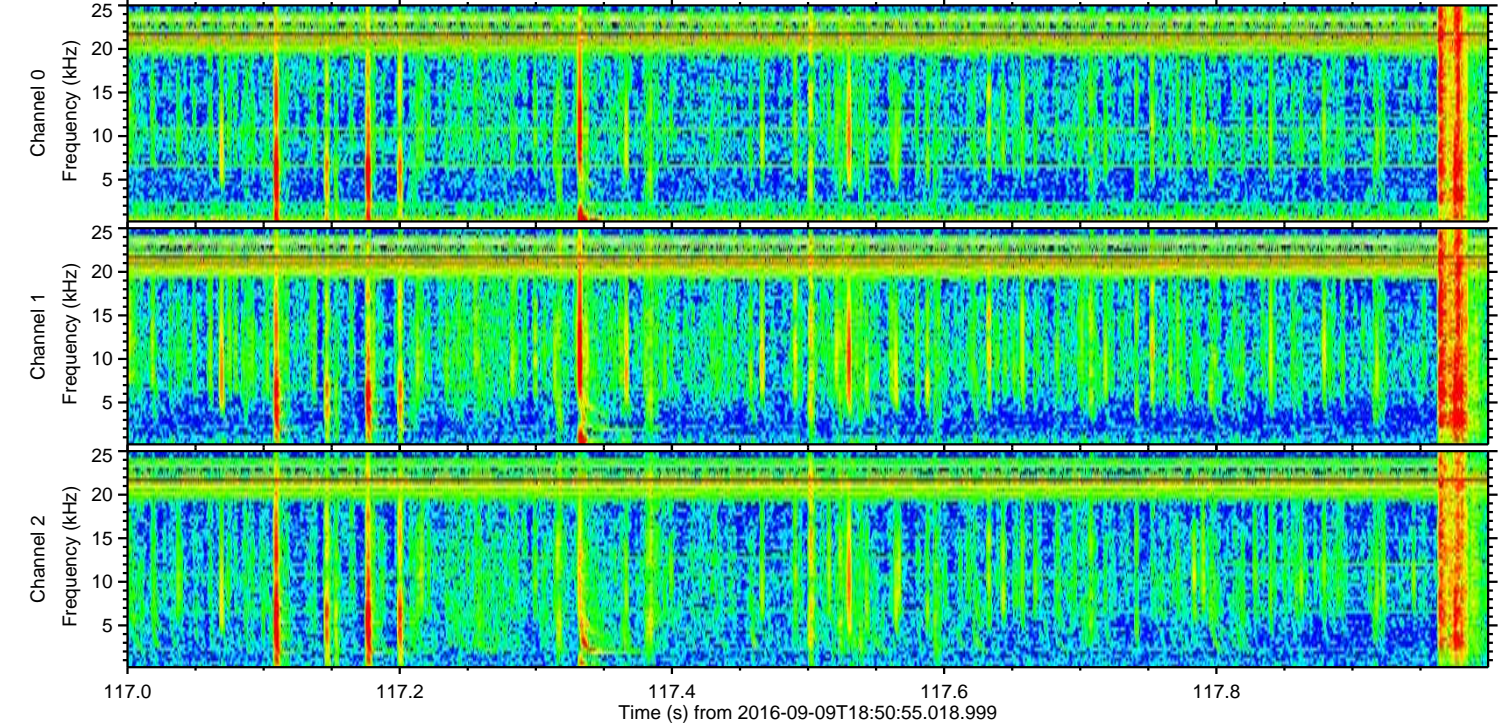
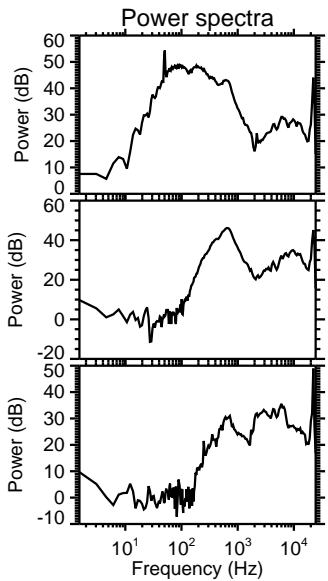
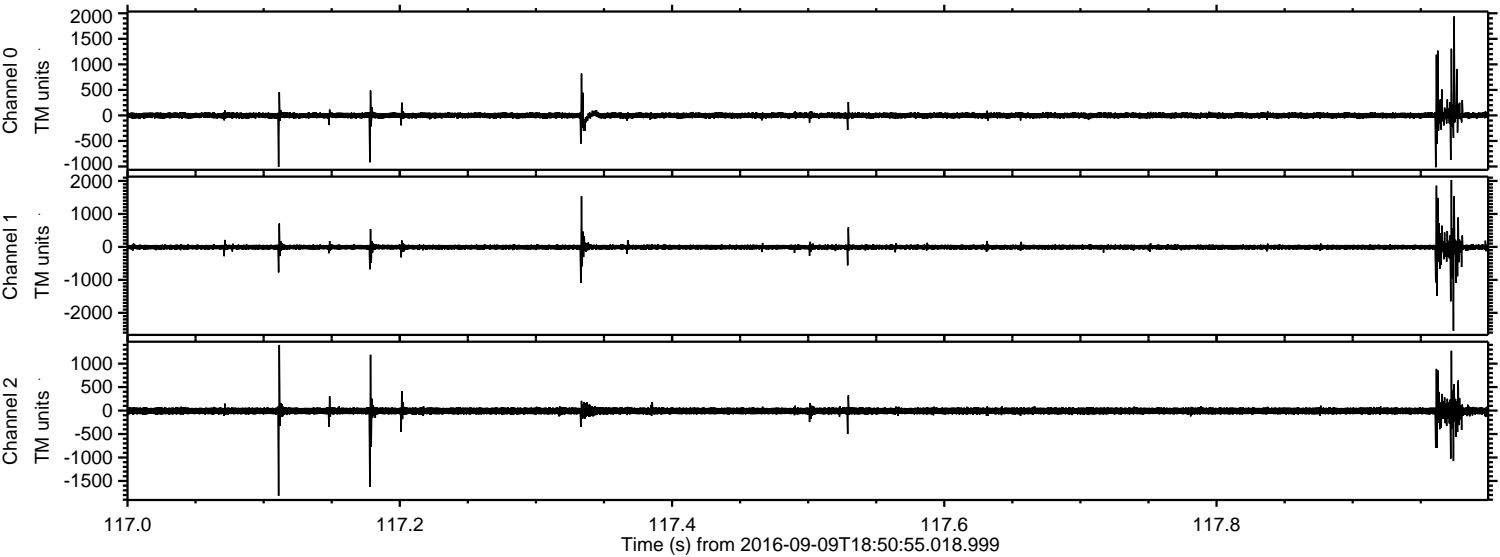
ELMAVAN 3D WAVEFORMS (Measured data sampled at 50 kHz) 51000 packets of 144 samples from 2016-09-09T18:50:55.018.999. Part 107/147

Processed Fri Sep 9 20:59:22 2016 by ELM ver.2012-10-06 from 001__elm20160909_185054__dat00.bin

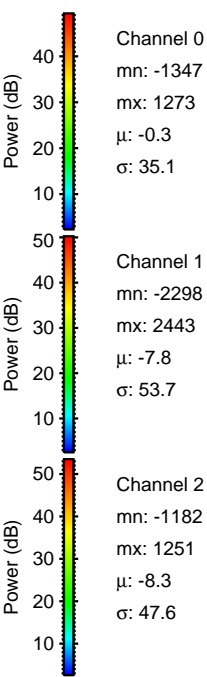
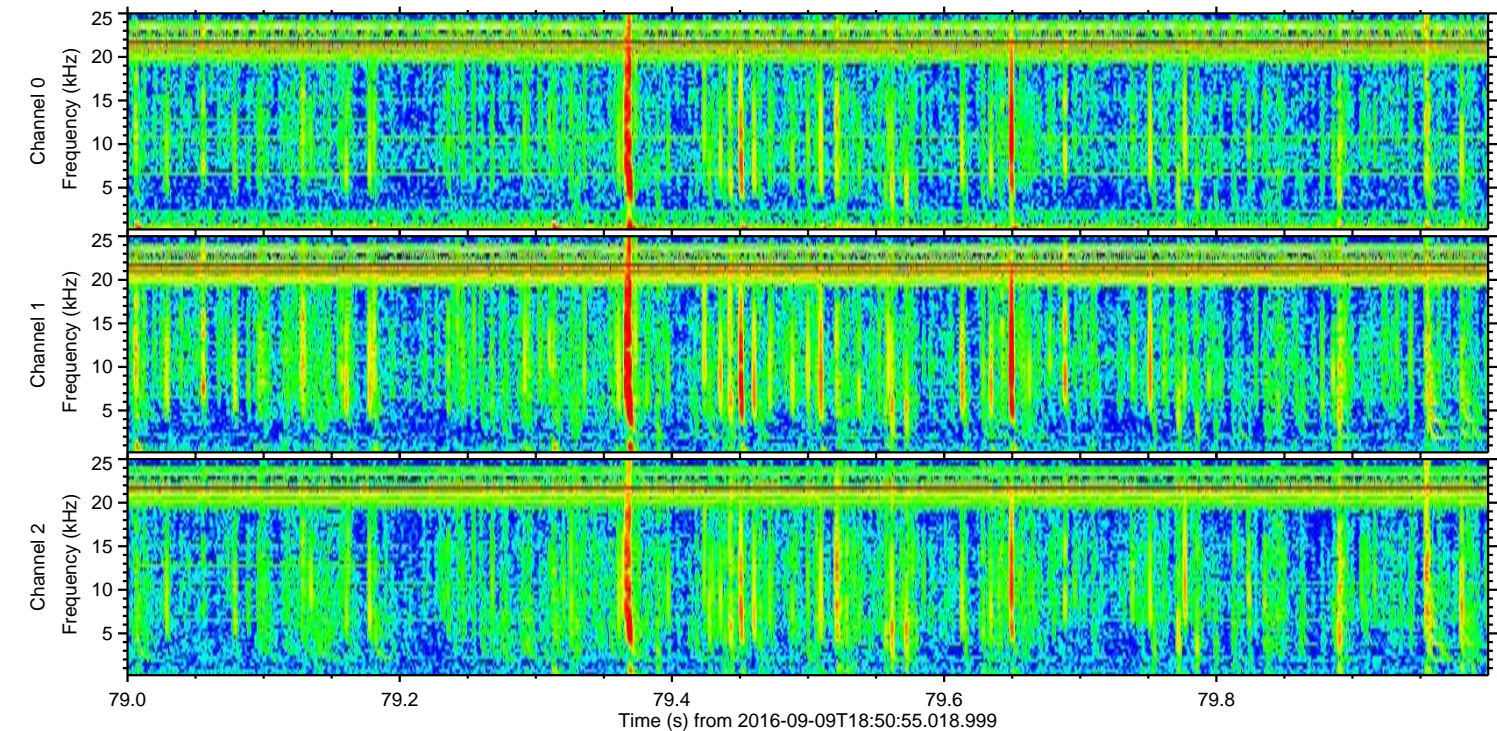
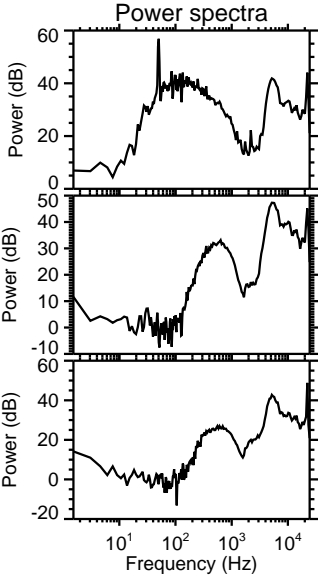
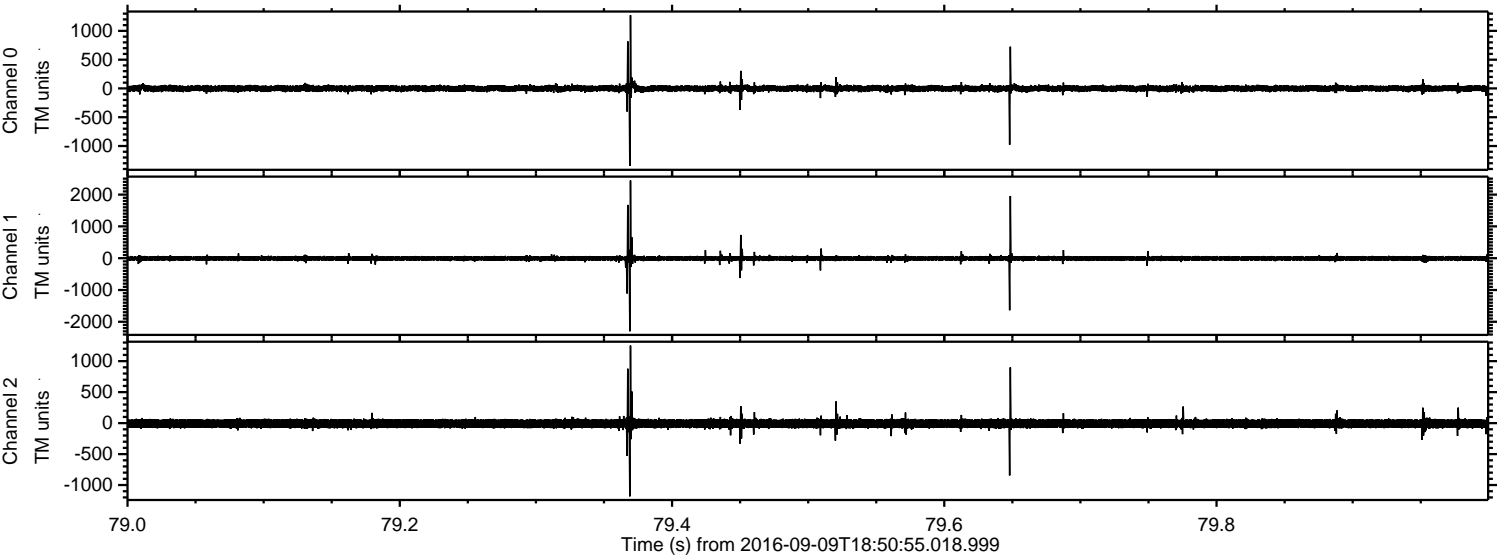


ELMAVAN 3D WAVEFORMS (Measured data sampled at 50 kHz) 51000 packets of 144 samples from 2016-09-09T18:50:55.018.999. Part 118/147

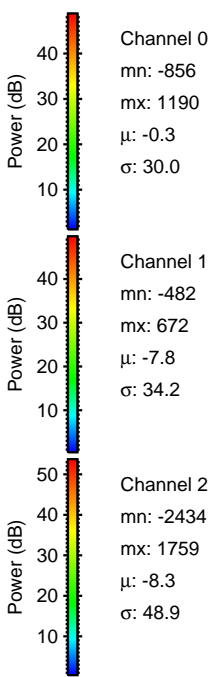
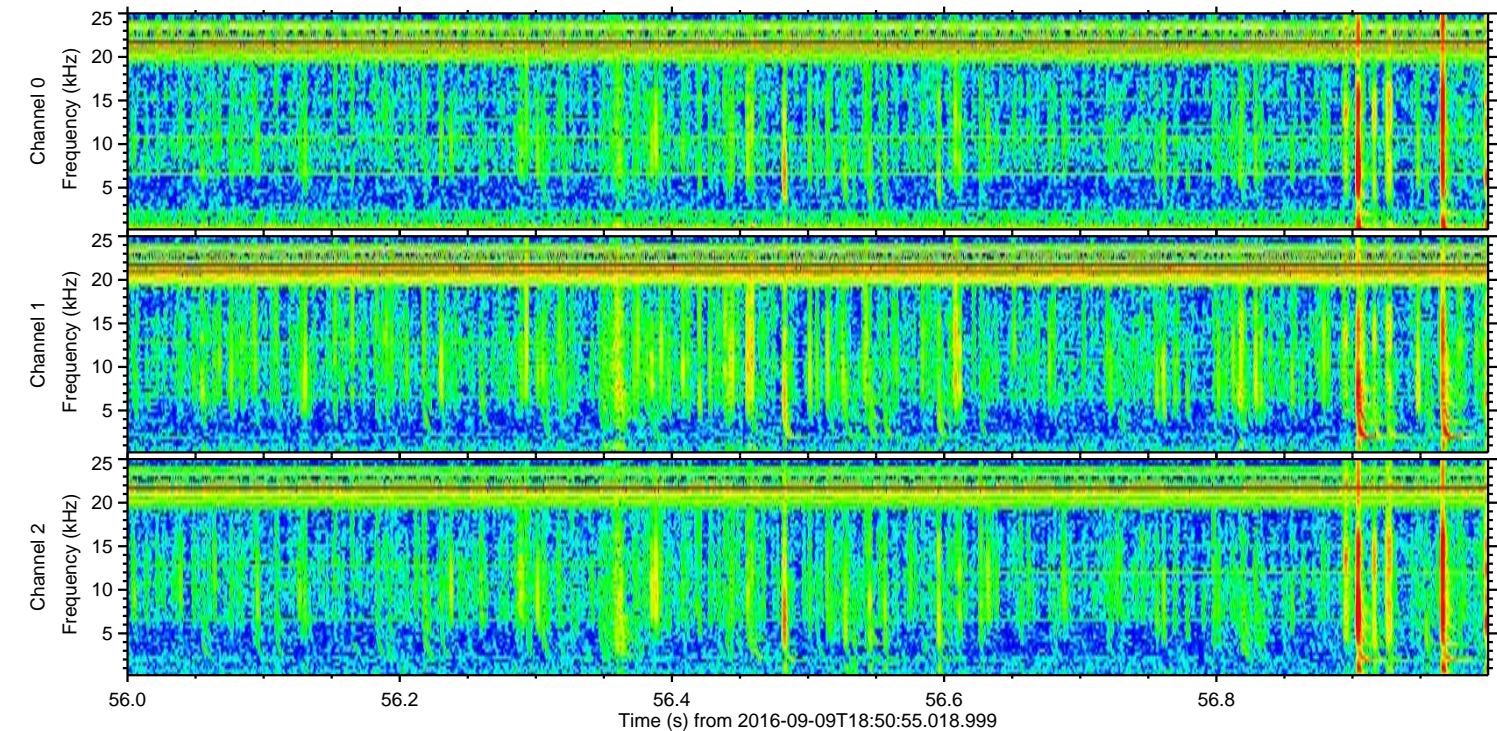
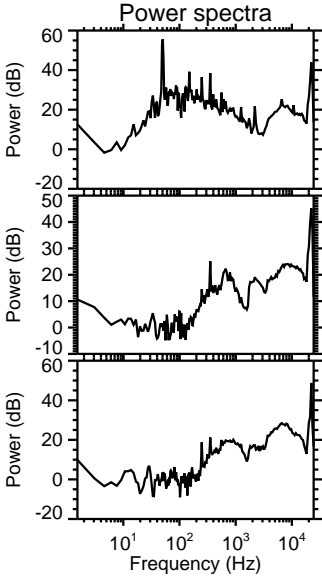
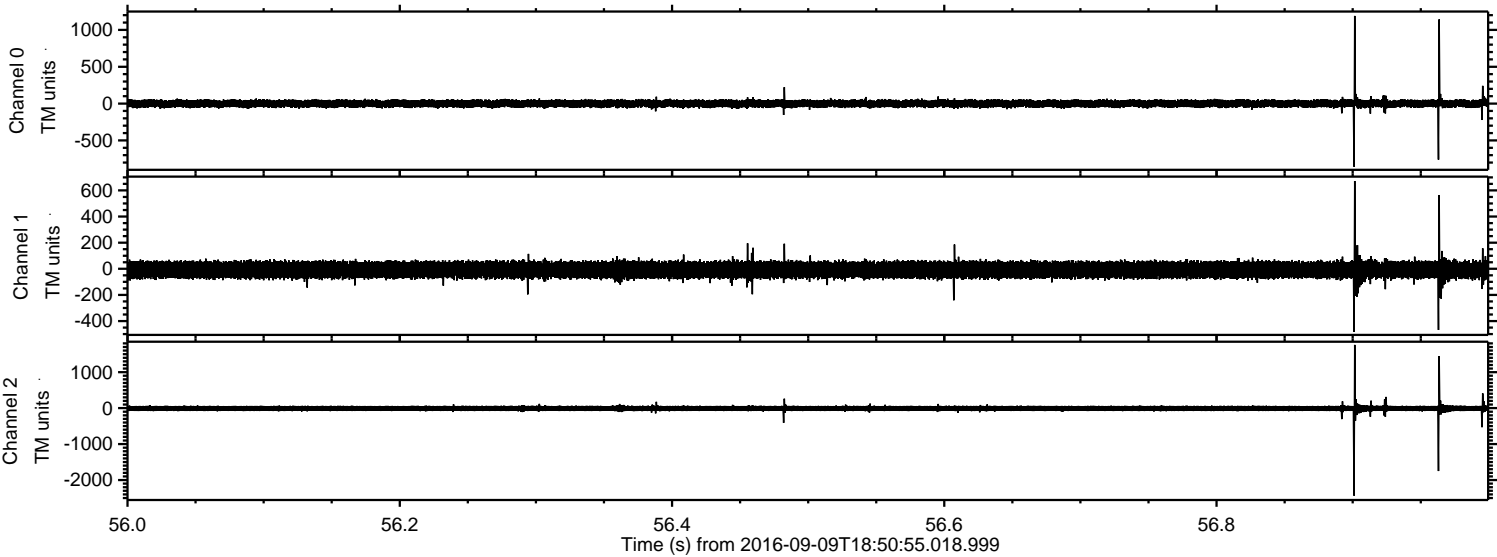
Processed Fri Sep 9 20:59:23 2016 by ELM ver.2012-10-06 from 001__elm20160909_185054__dat00.bin



Processed Fri Sep 9 20:59:24 2016 by ELM ver.2012-10-06 from 001__elm20160909_185054__dat00.bin



Processed Fri Sep 9 20:59:25 2016 by ELM ver.2012-10-06 from 001__elm20160909_185054__dat00.bin



Channel 0
mn: -856
mx: 1190
 μ : -0.3
 σ : 30.0

Channel 1
mn: -482
mx: 672
 μ : -7.8
 σ : 34.2

Channel 2
mn: -2434
mx: 1759
 μ : -8.3
 σ : 48.9

Processed Fri Sep 9 20:59:25 2016 by ELM ver.2012-10-06 from 001__elm20160909_185054__dat00.bin

