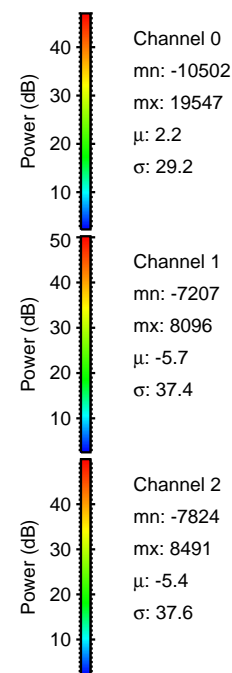
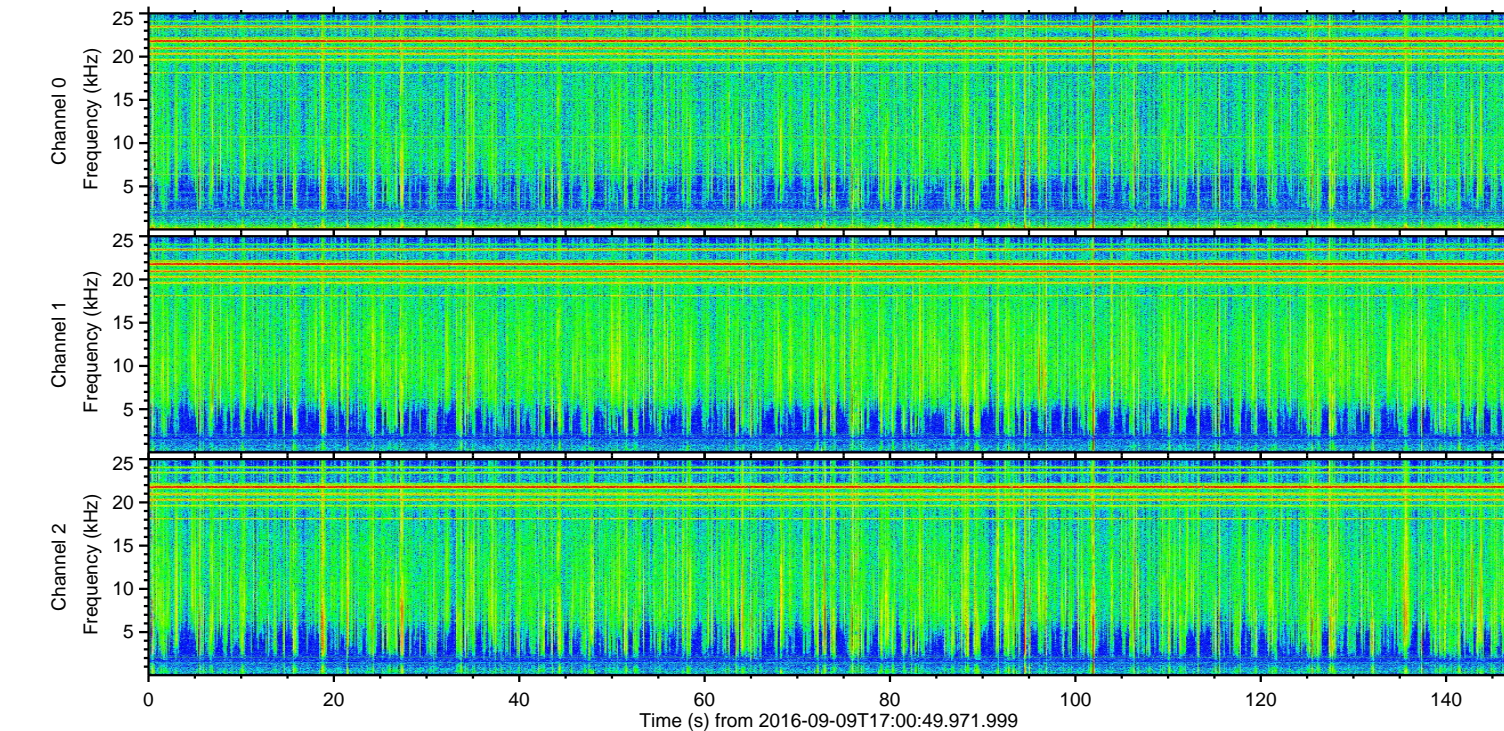
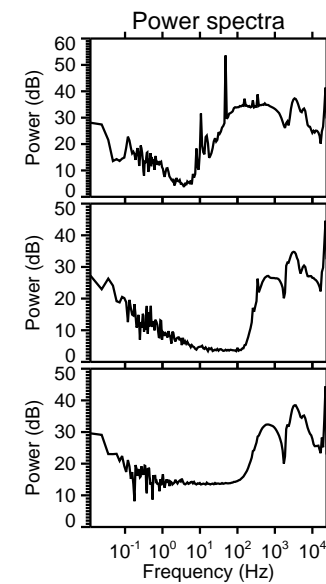
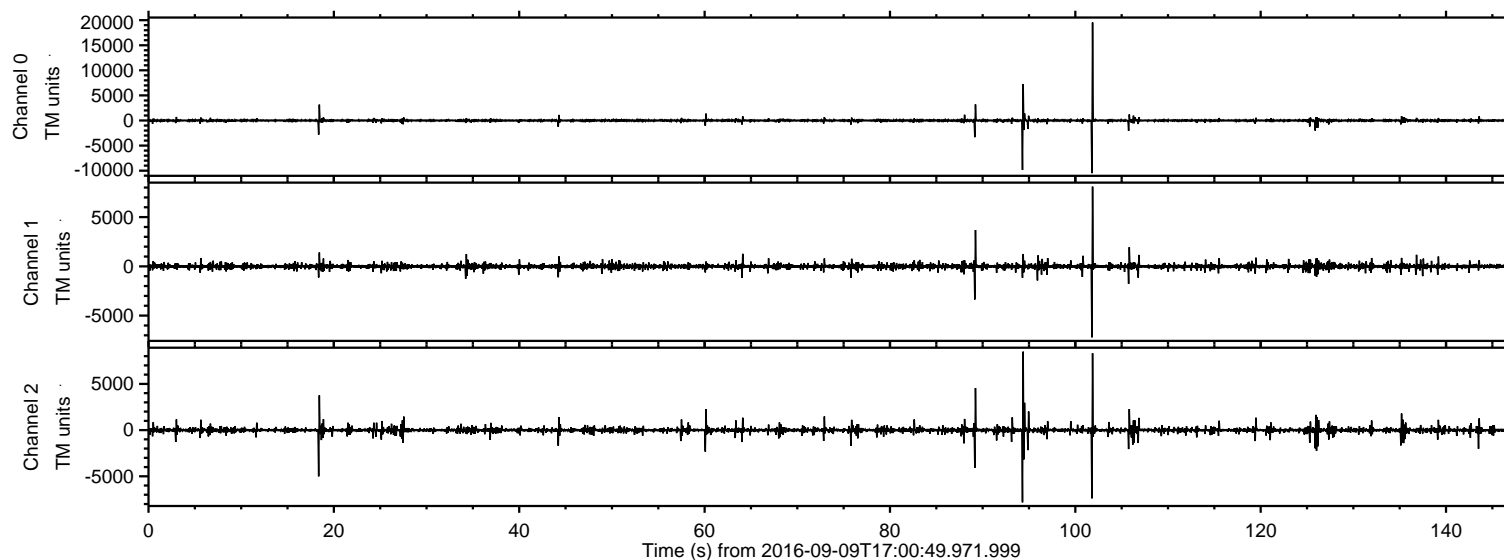


# ELMAVAN 3D WAVEFORMS (Measured data sampled at 50 kHz) 51000 packets of 144 samples from 2016-09-09T17:00:49.971.999.

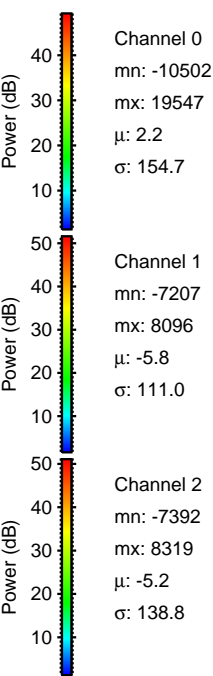
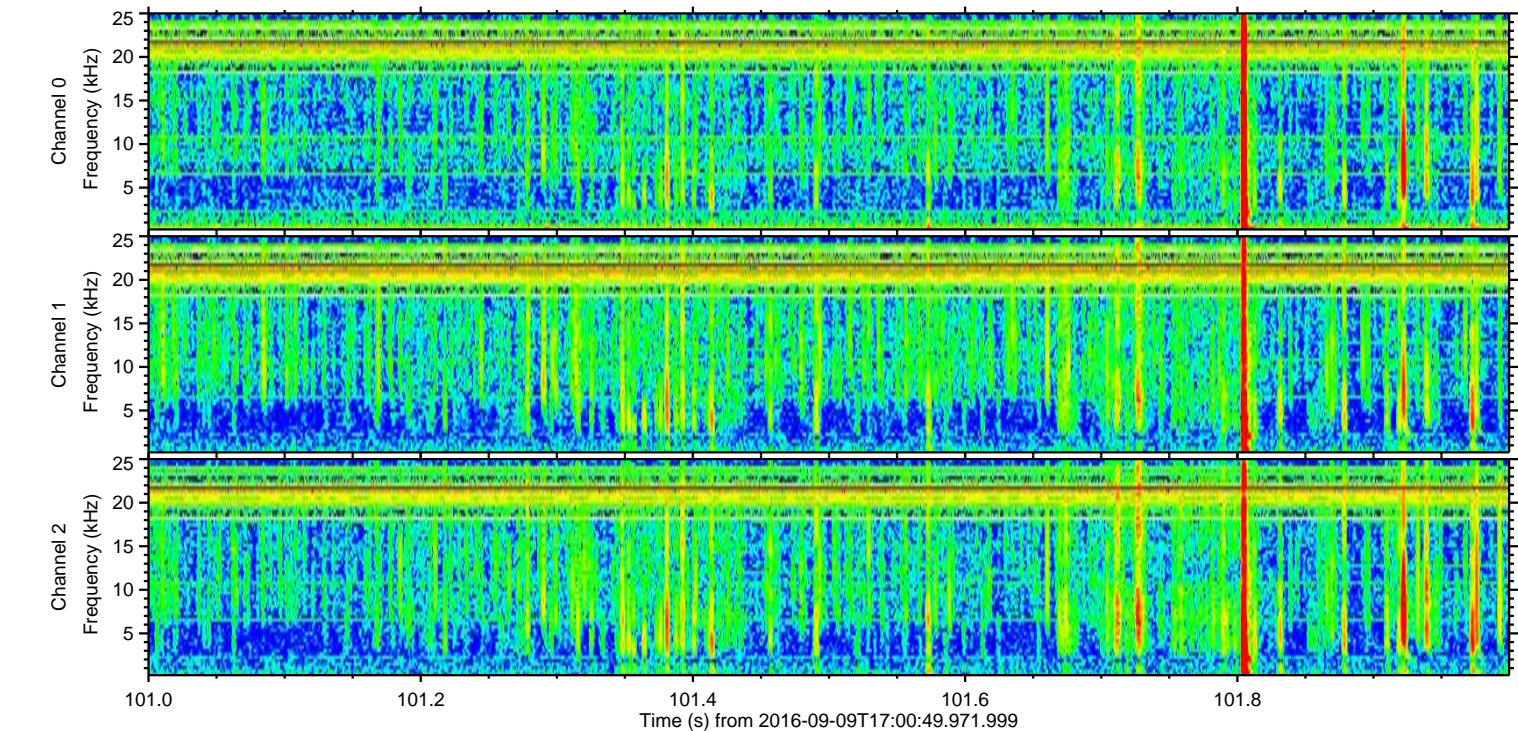
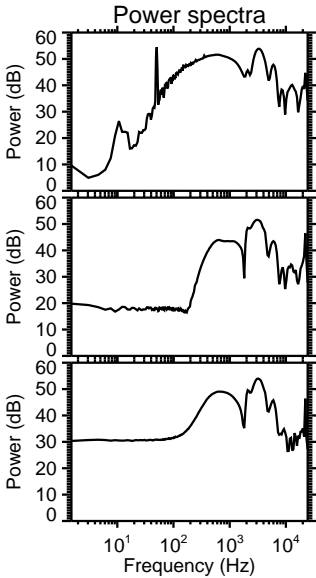
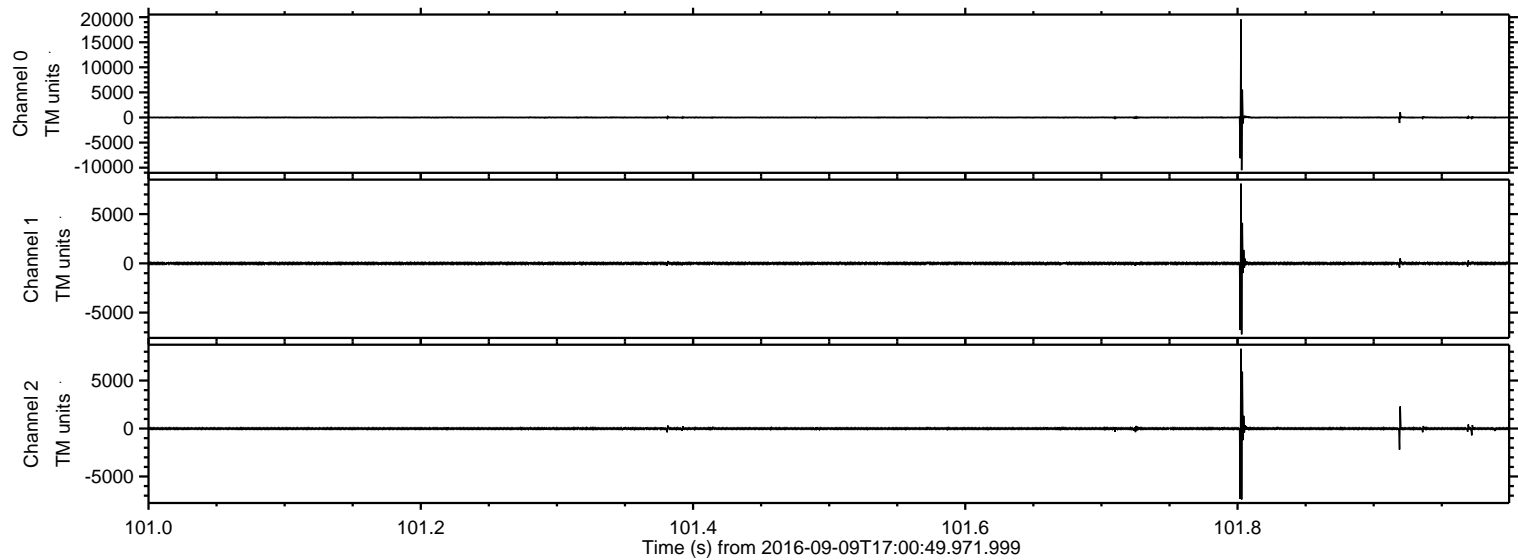
Processed Fri Sep 9 19:08:58 2016 by ELM ver.2012-10-06 from 001\_\_elm20160909\_170048\_\_dat00.bin





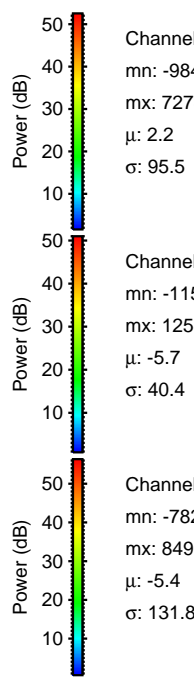
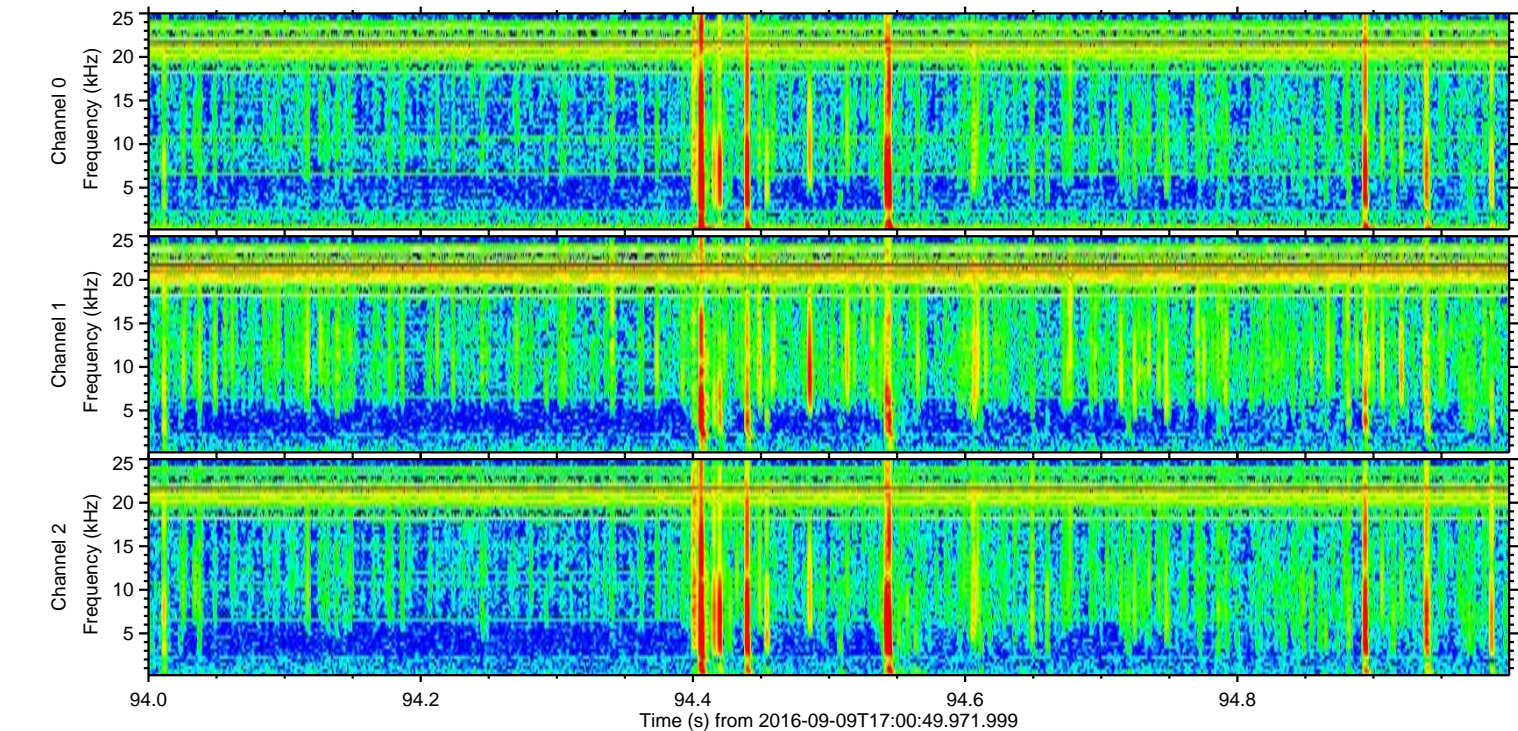
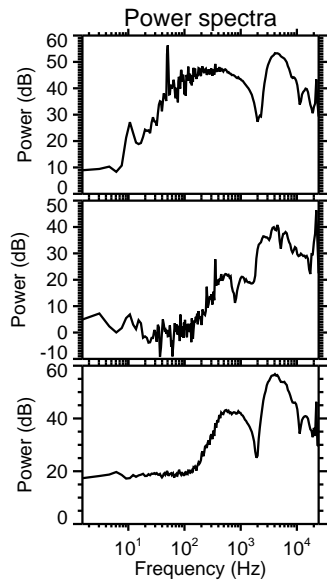
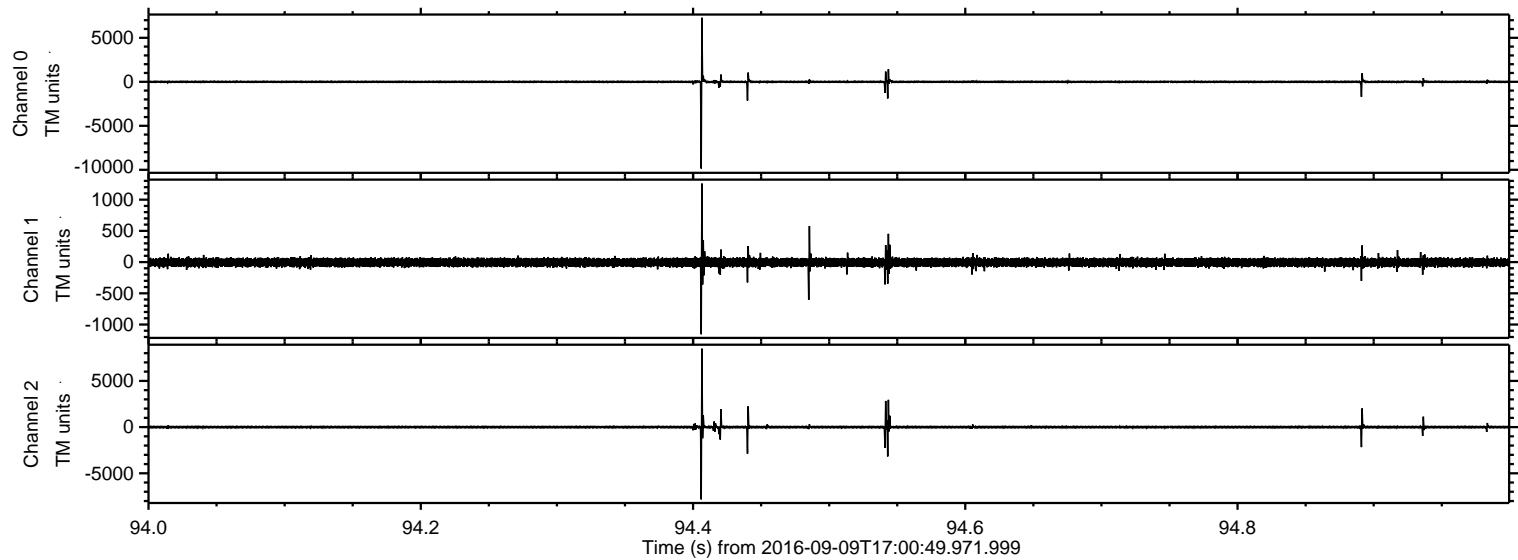
ELMAVAN 3D WAVEFORMS (Measured data sampled at 50 kHz) 51000 packets of 144 samples from 2016-09-09T17:00:49.971.999. Part 102/147

Processed Fri Sep 9 19:09:09 2016 by ELM ver.2012-10-06 from 001\_\_elm20160909\_170048\_\_dat00.bin





Processed Fri Sep 9 19:09:10 2016 by ELM ver.2012-10-06 from 001\_\_elm20160909\_170048\_\_dat00.bin



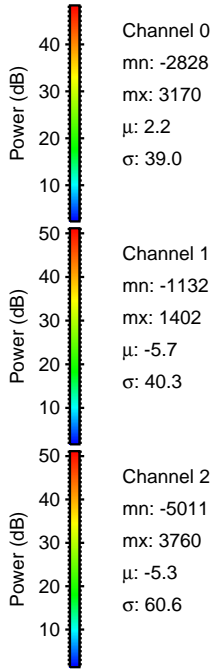
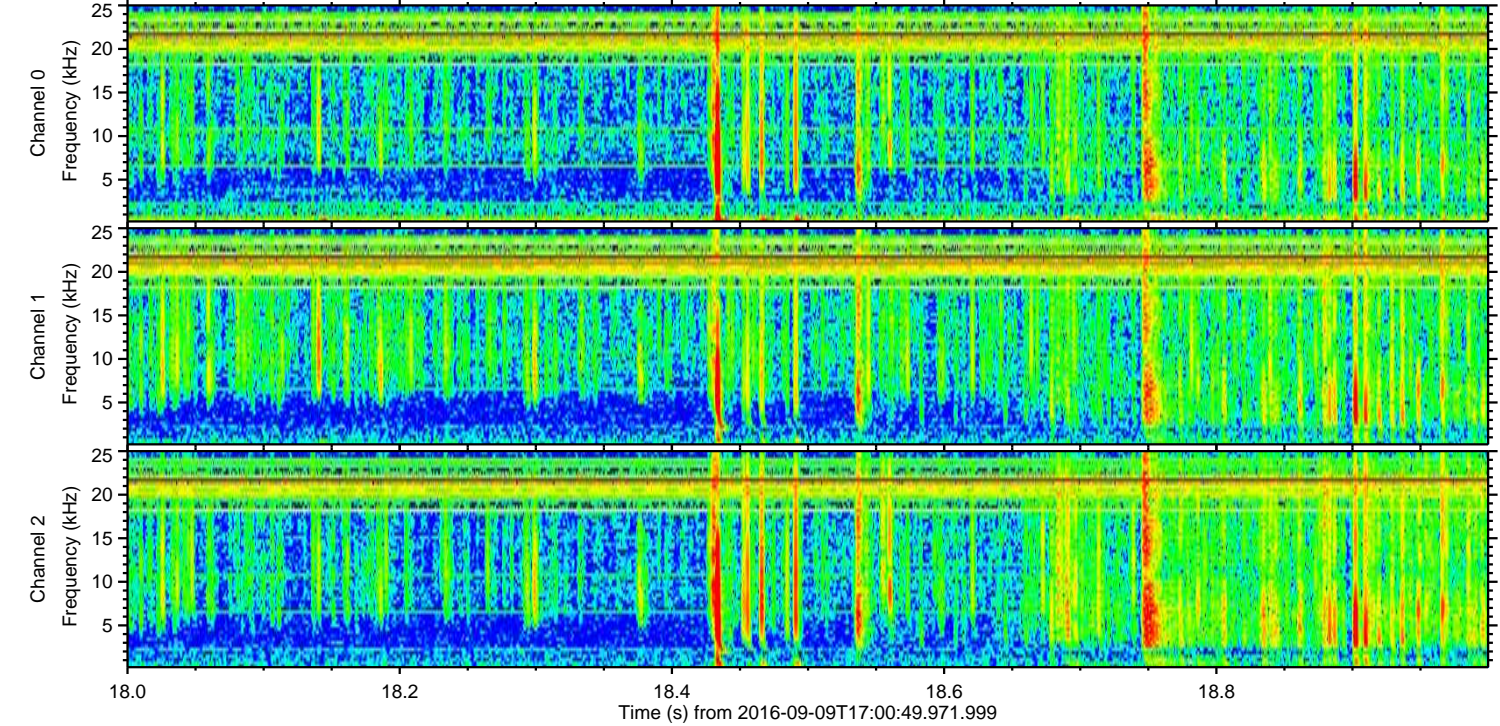
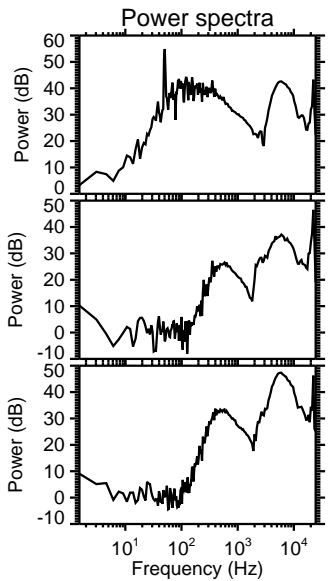
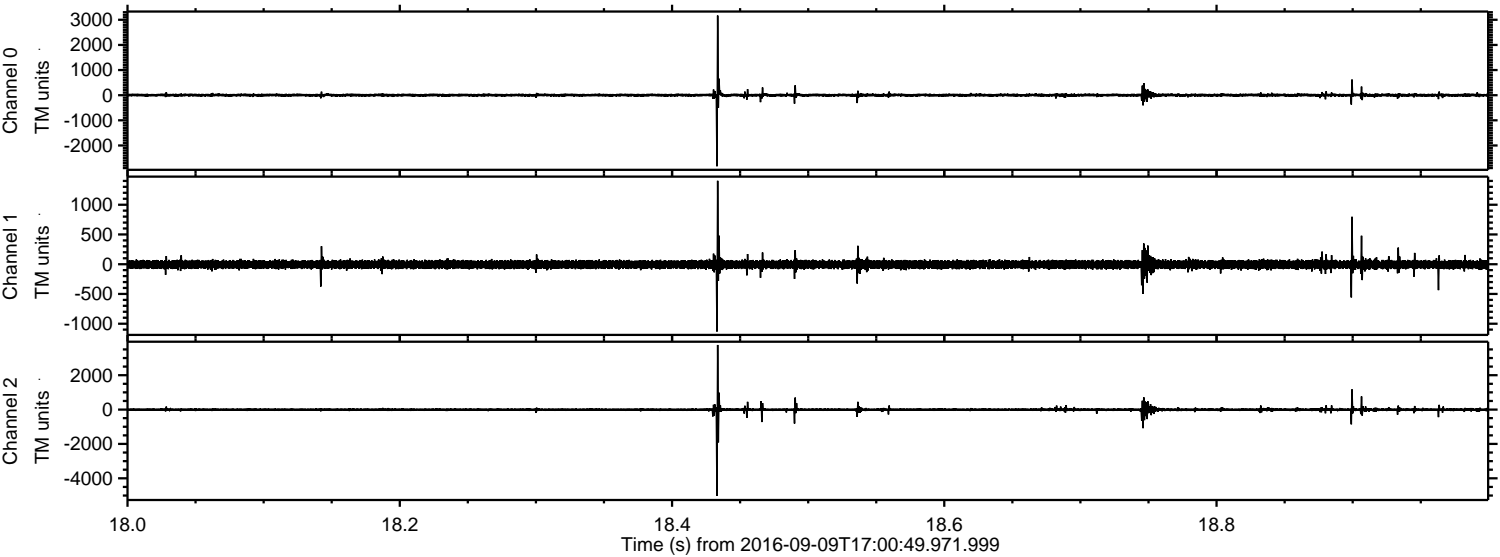
Channel 0  
mn: -9849  
mx: 7278  
 $\mu$ : 2.2  
 $\sigma$ : 95.5

Channel 1  
mn: -1157  
mx: 1258  
 $\mu$ : -5.7  
 $\sigma$ : 40.4

Channel 2  
mn: -7824  
mx: 8491  
 $\mu$ : -5.4  
 $\sigma$ : 131.8

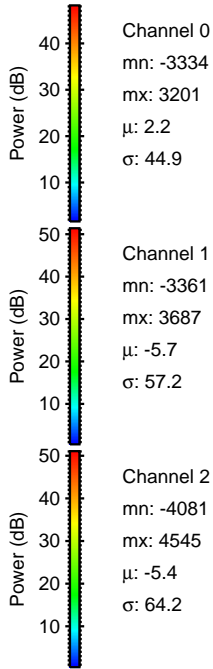
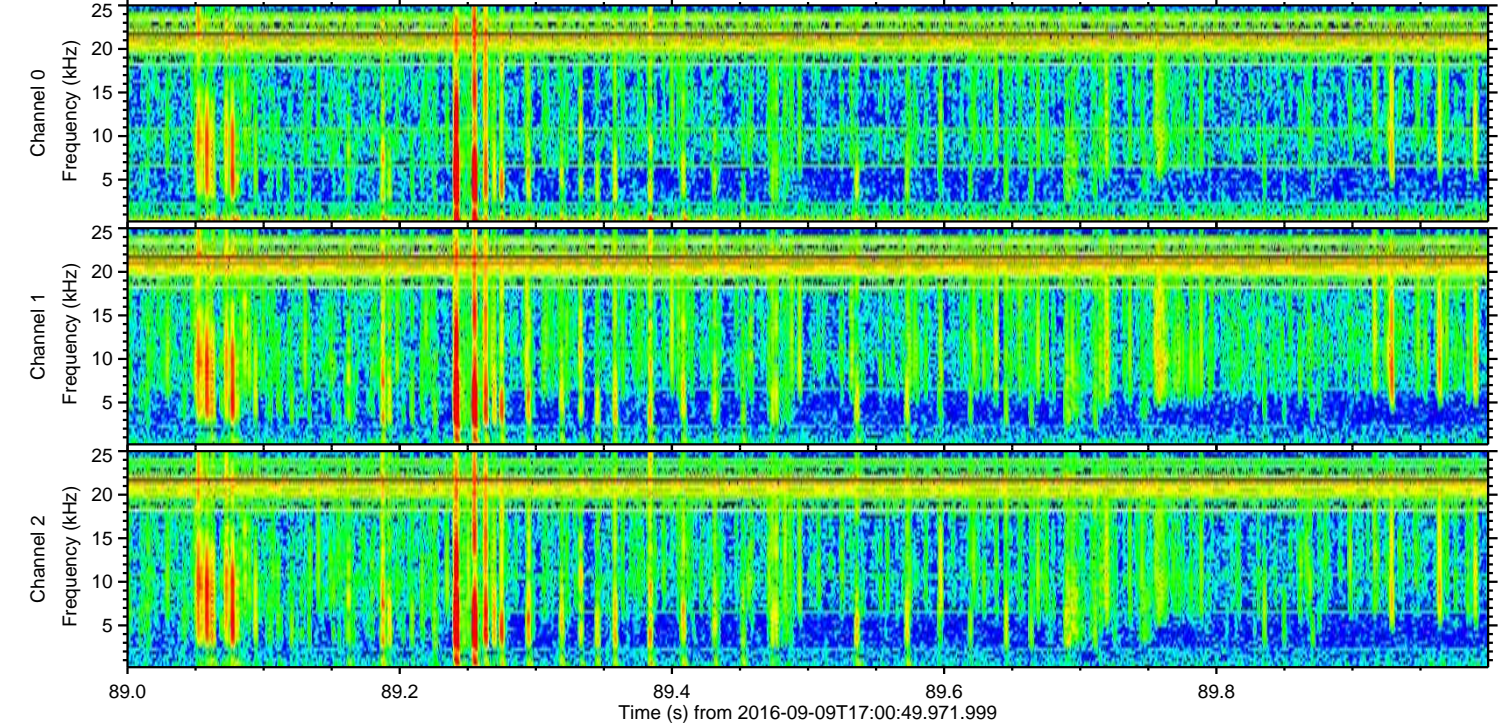
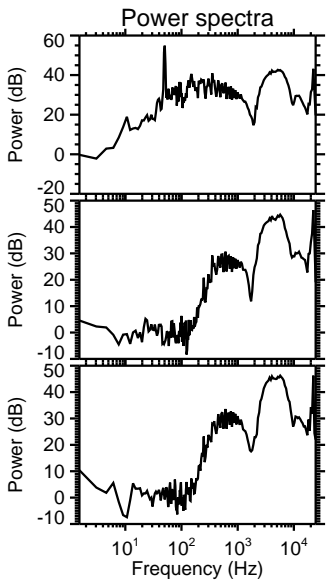
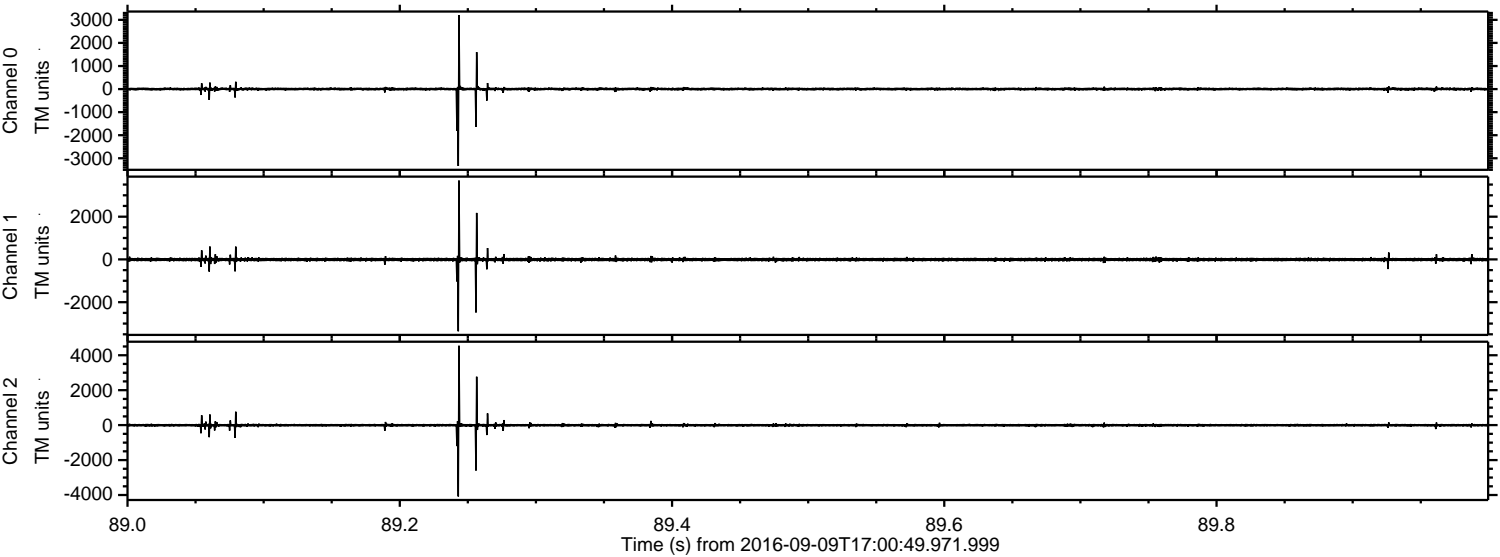
ELMAVAN 3D WAVEFORMS (Measured data sampled at 50 kHz) 51000 packets of 144 samples from 2016-09-09T17:00:49.971.999. Part 19/147

Processed Fri Sep 9 19:09:11 2016 by ELM ver.2012-10-06 from 001\_\_elm20160909\_170048\_\_dat00.bin





Processed Fri Sep 9 19:09:12 2016 by ELM ver.2012-10-06 from 001\_\_elm20160909\_170048\_\_dat00.bin



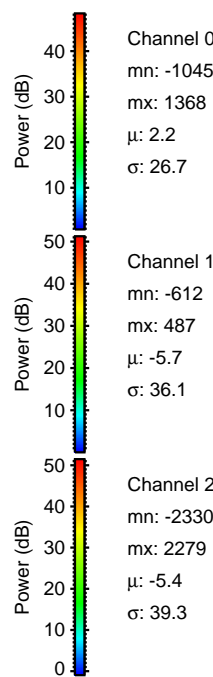
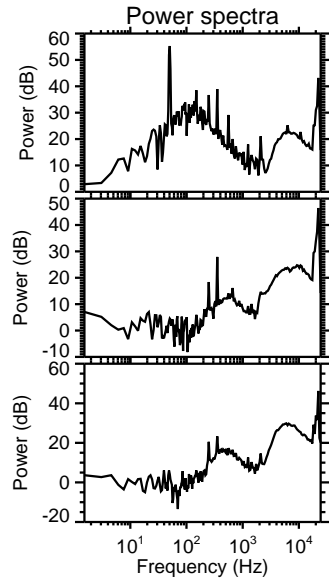
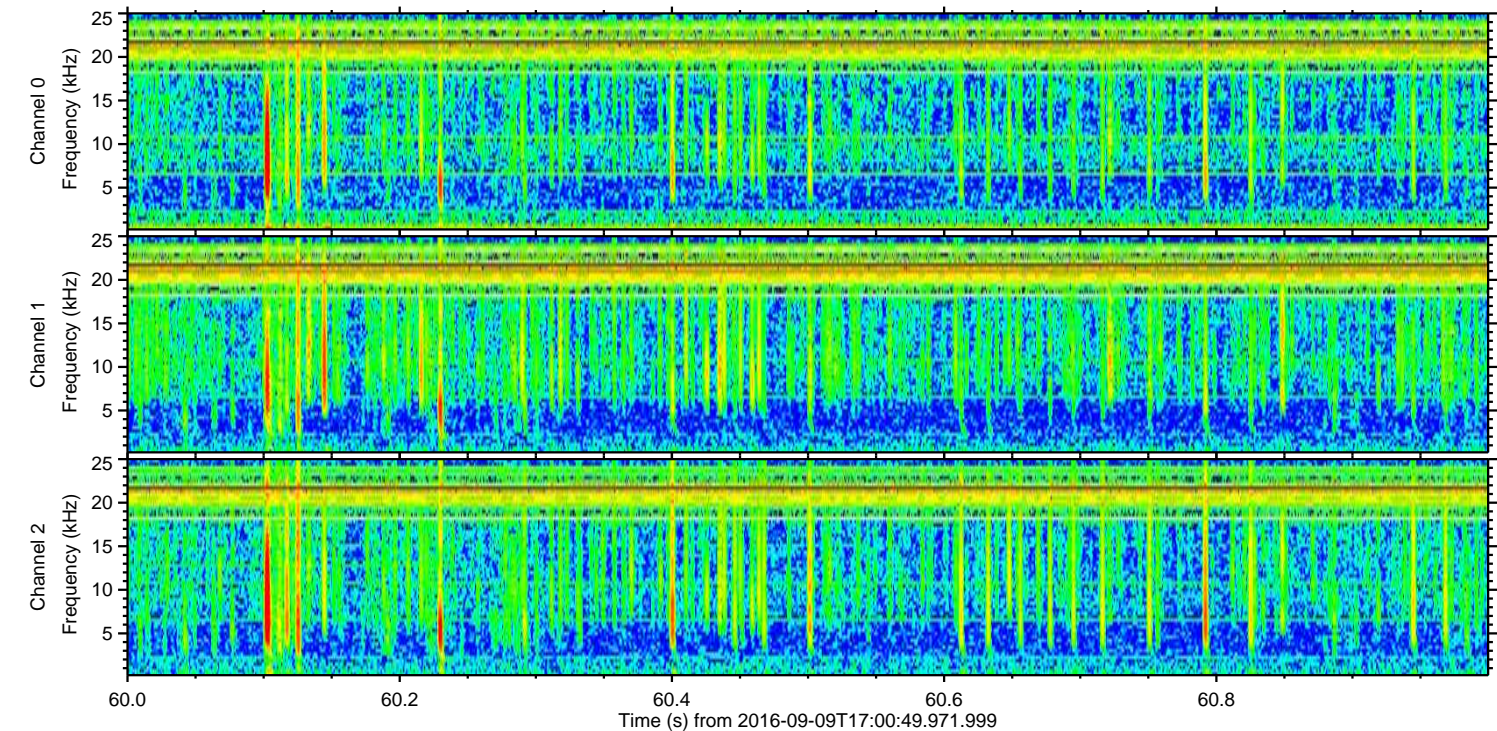
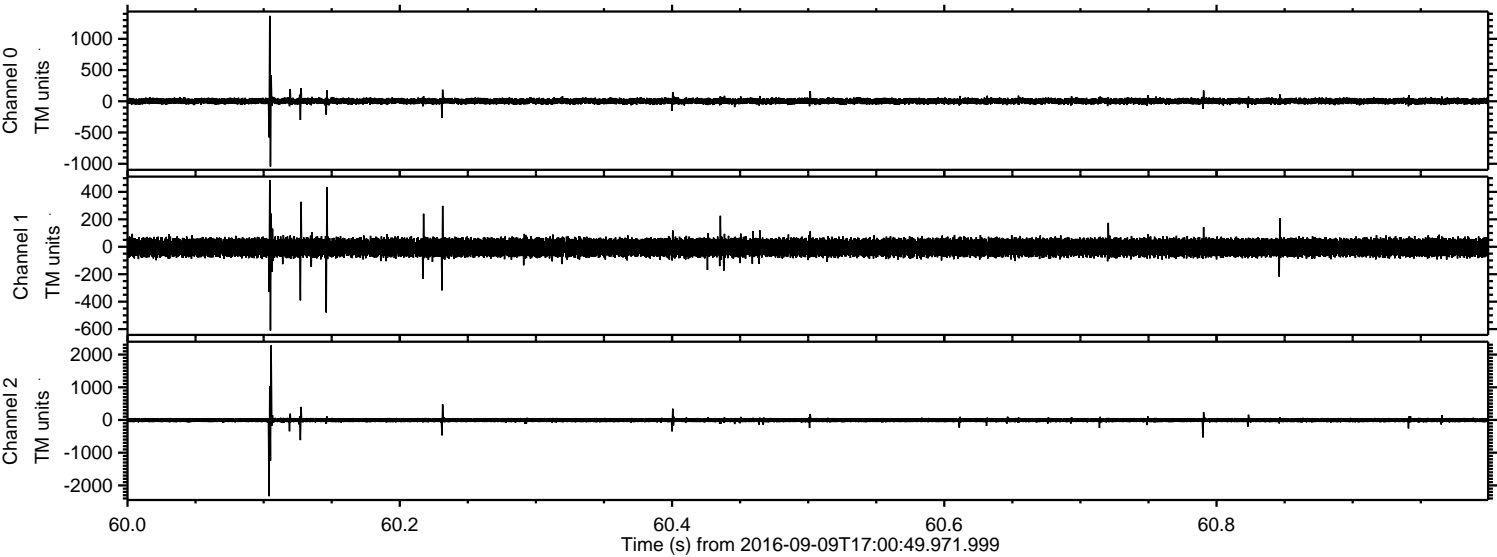
Channel 0  
mn: -3334  
mx: 3201  
 $\mu$ : 2.2  
 $\sigma$ : 44.9

Channel 1  
mn: -3361  
mx: 3687  
 $\mu$ : -5.7  
 $\sigma$ : 57.2

Channel 2  
mn: -4081  
mx: 4545  
 $\mu$ : -5.4  
 $\sigma$ : 64.2



Processed Fri Sep 9 19:09:13 2016 by ELM ver.2012-10-06 from 001\_\_elm20160909\_170048\_\_dat00.bin



Channel 0  
mn: -1045  
mx: 1368  
 $\mu$ : 2.2  
 $\sigma$ : 26.7

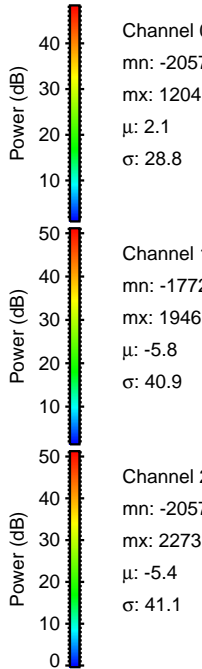
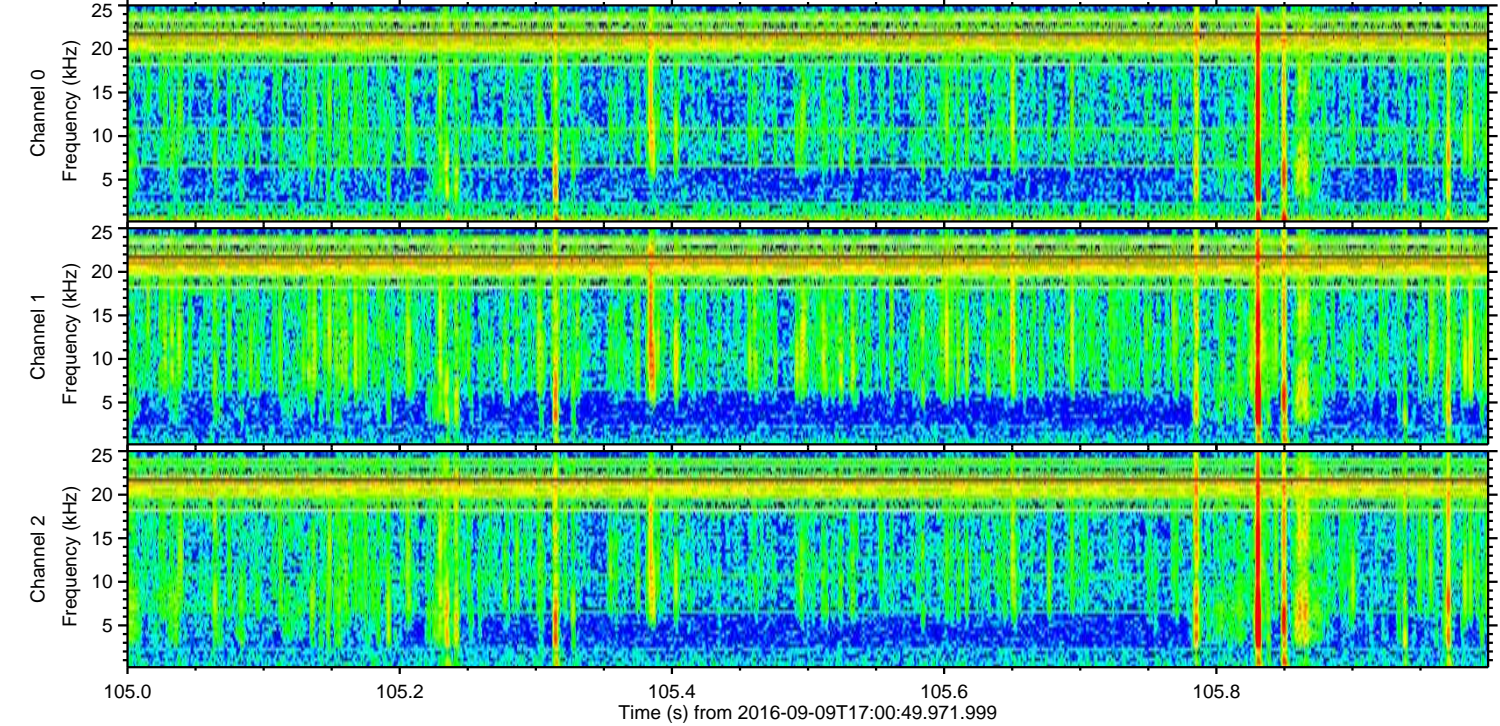
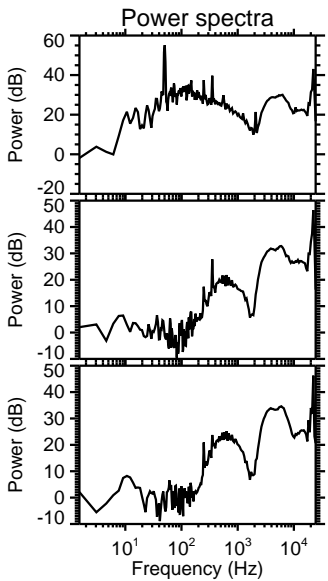
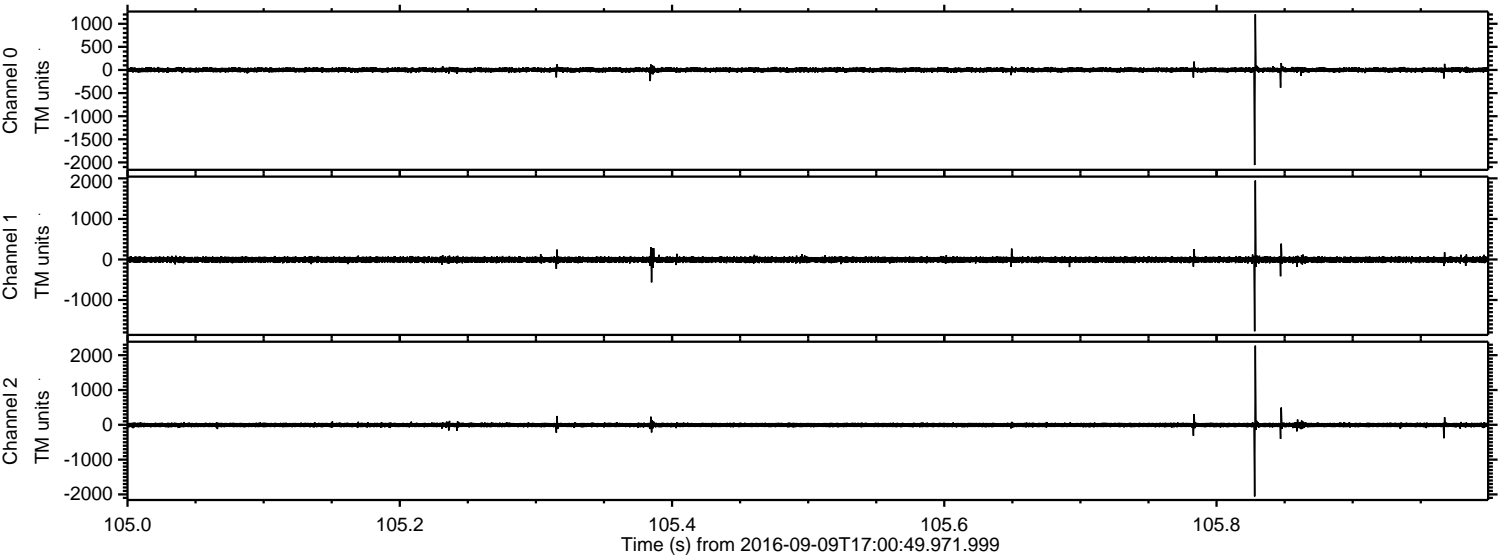
Channel 1  
mn: -612  
mx: 487  
 $\mu$ : -5.7  
 $\sigma$ : 36.1

Channel 2  
mn: -2330  
mx: 2279  
 $\mu$ : -5.4  
 $\sigma$ : 39.3



ELMAVAN 3D WAVEFORMS (Measured data sampled at 50 kHz) 51000 packets of 144 samples from 2016-09-09T17:00:49.971.999. Part 106/147

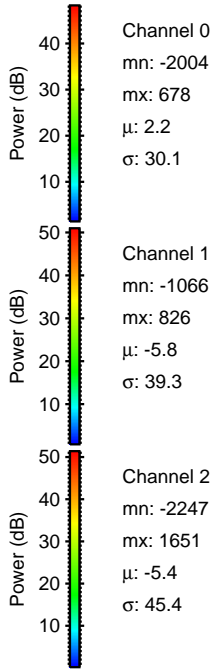
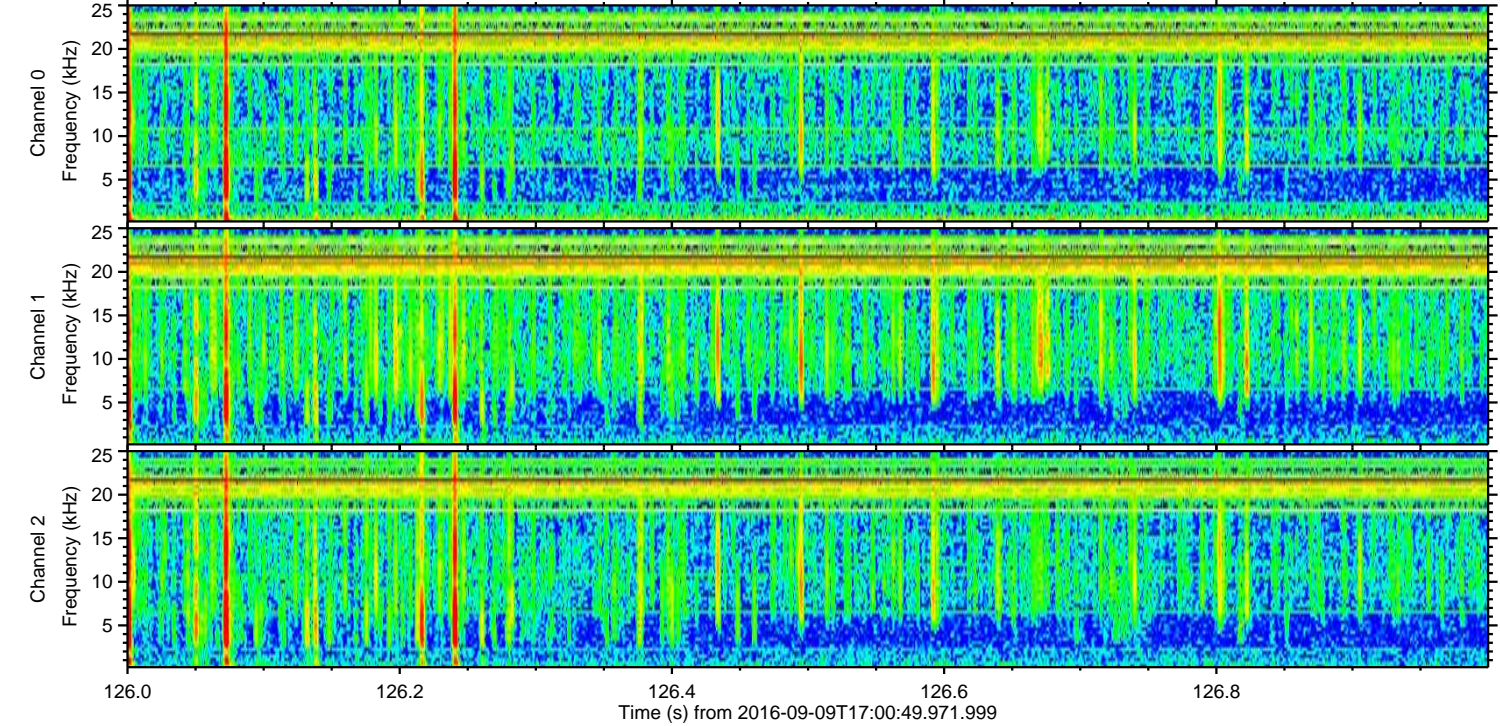
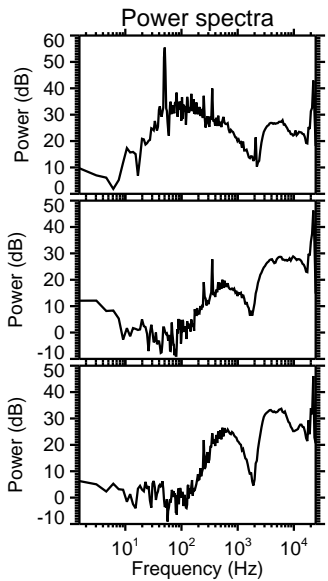
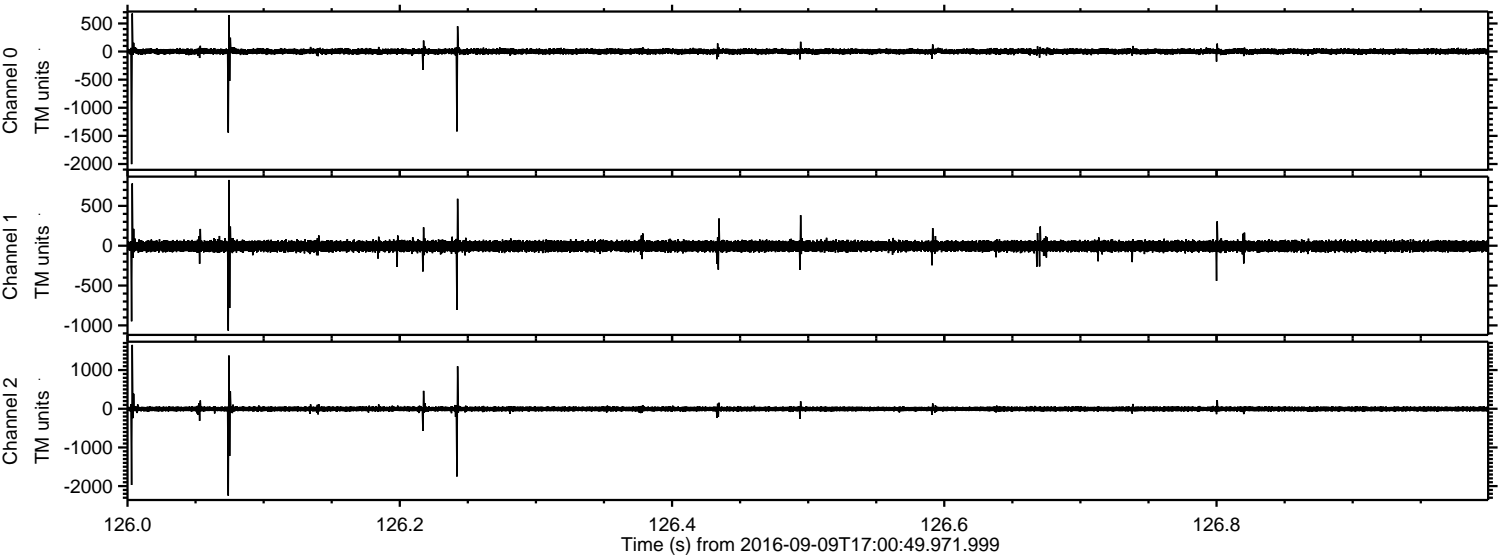
Processed Fri Sep 9 19:09:14 2016 by ELM ver.2012-10-06 from 001\_\_elm20160909\_170048\_\_dat00.bin





ELMAVAN 3D WAVEFORMS (Measured data sampled at 50 kHz) 51000 packets of 144 samples from 2016-09-09T17:00:49.971.999. Part 127/147

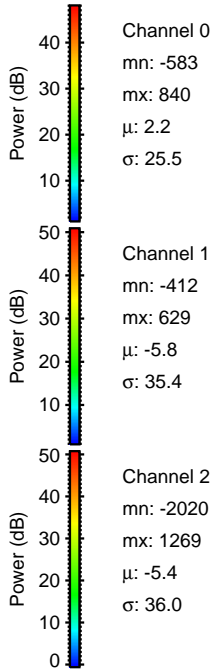
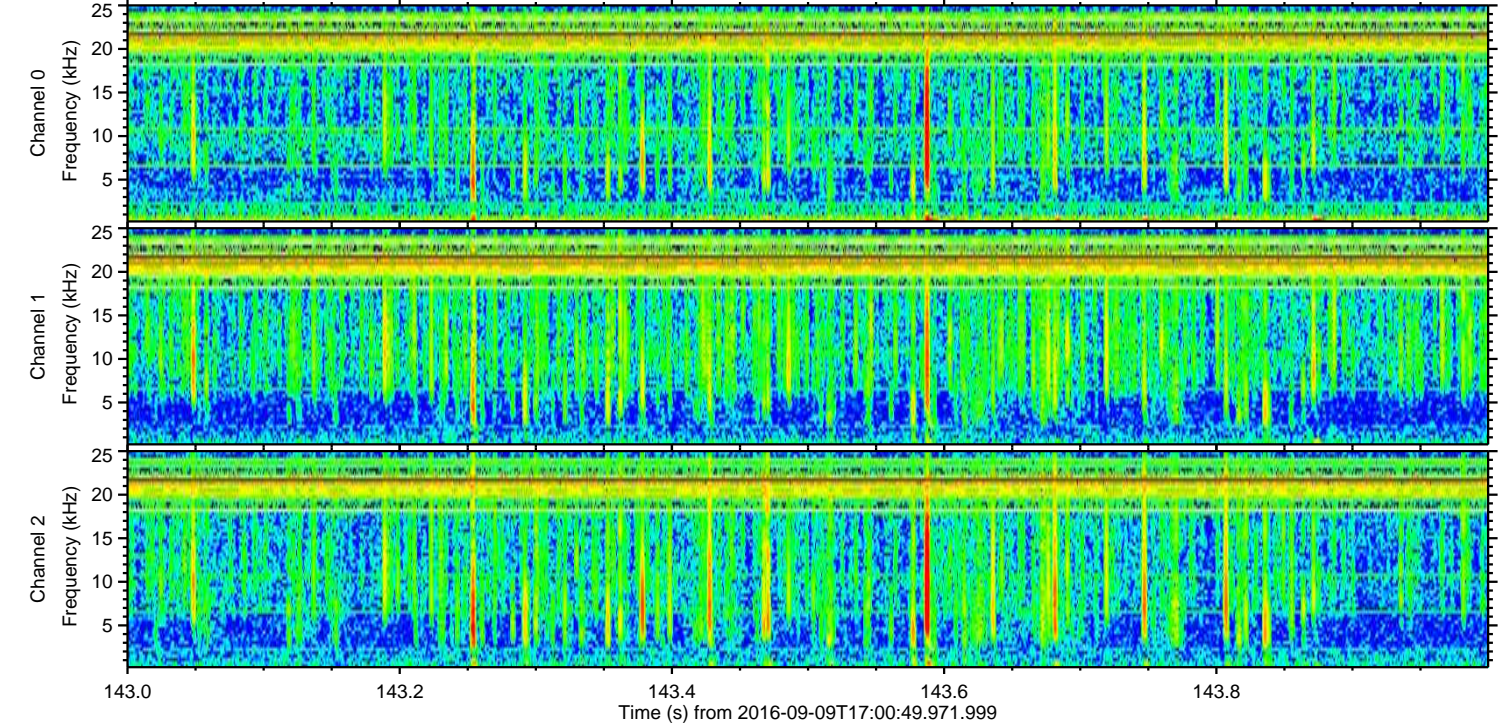
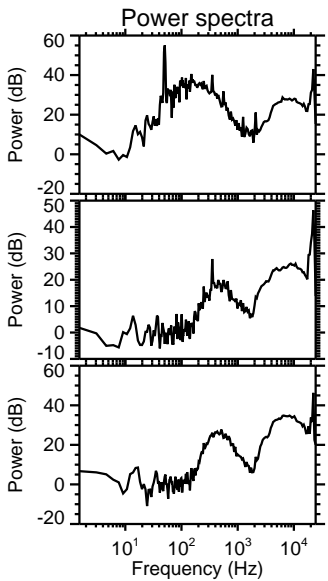
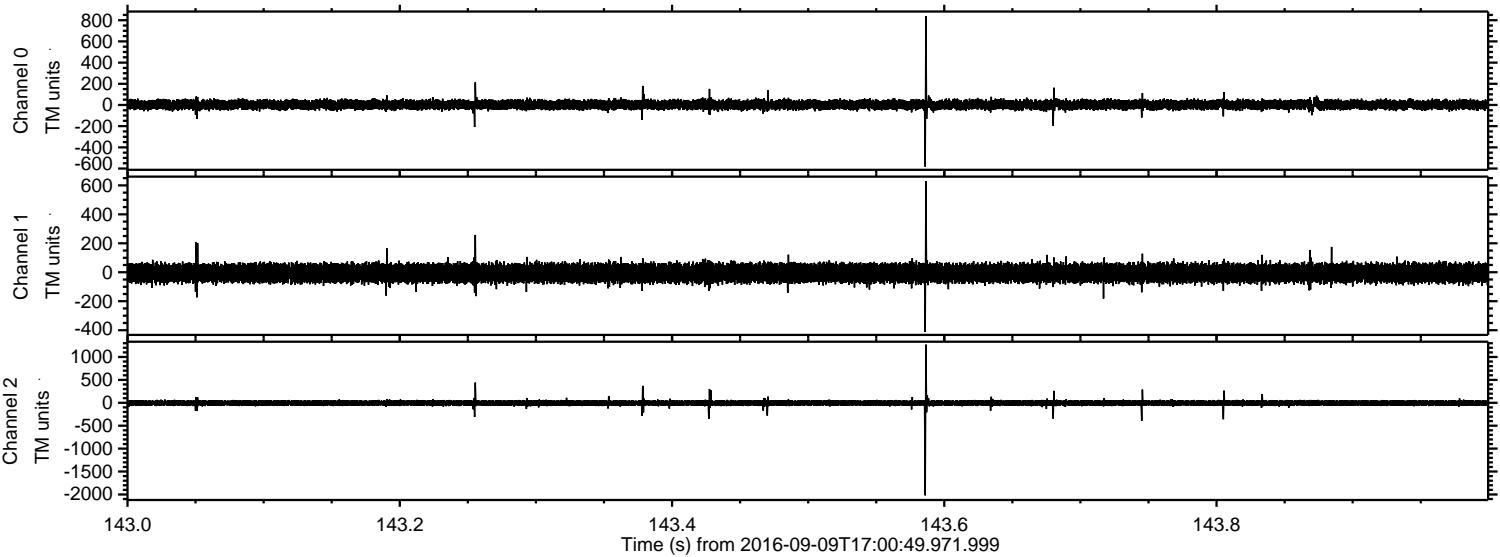
Processed Fri Sep 9 19:09:15 2016 by ELM ver.2012-10-06 from 001\_\_elm20160909\_170048\_\_dat00.bin





ELMAVAN 3D WAVEFORMS (Measured data sampled at 50 kHz) 51000 packets of 144 samples from 2016-09-09T17:00:49.971.999. Part 144/147

Processed Fri Sep 9 19:09:16 2016 by ELM ver.2012-10-06 from 001\_\_elm20160909\_170048\_\_dat00.bin



Channel 0  
mn: -583  
mx: 840  
 $\mu$ : 2.2  
 $\sigma$ : 25.5

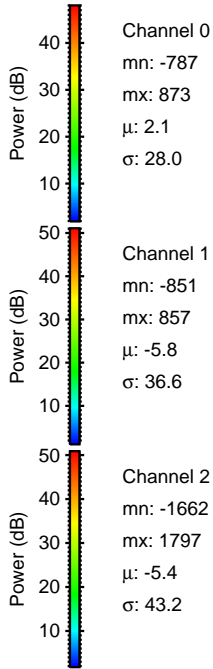
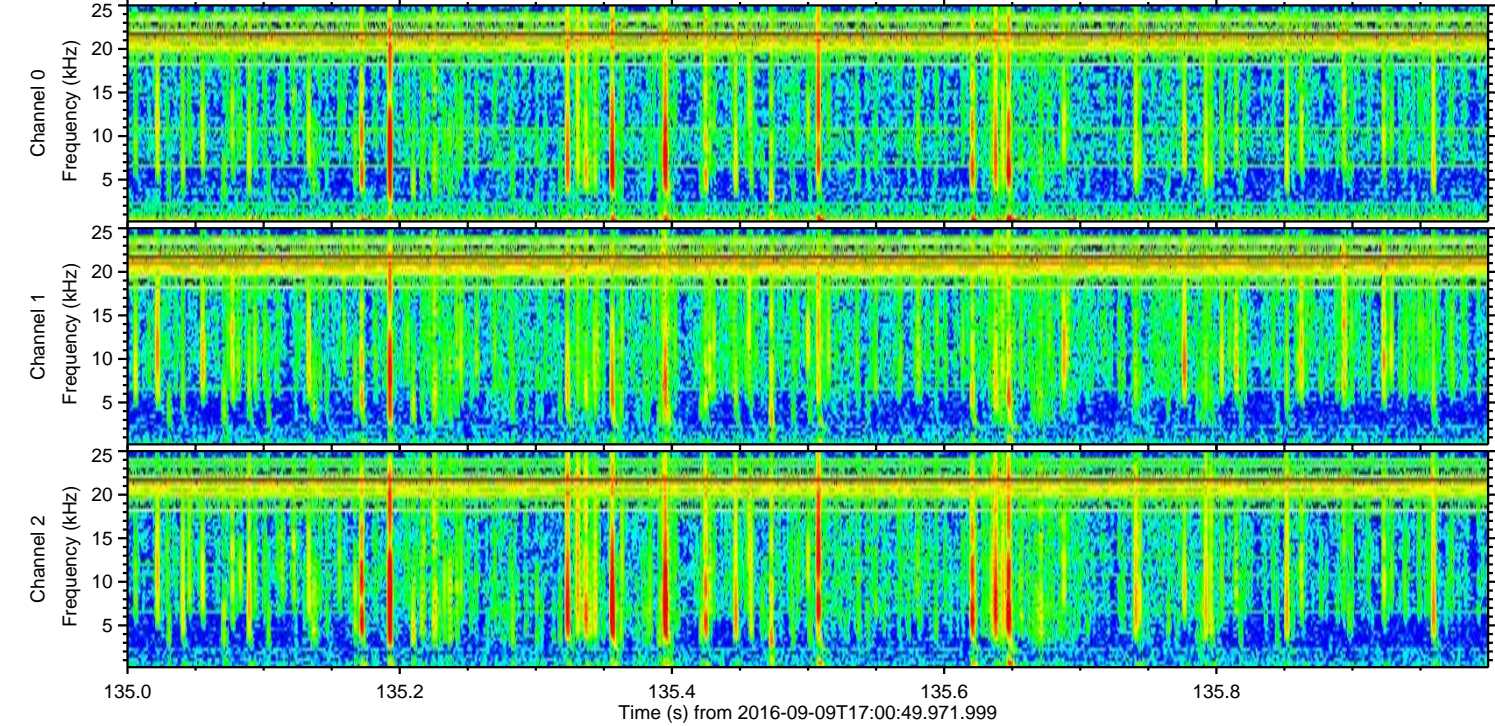
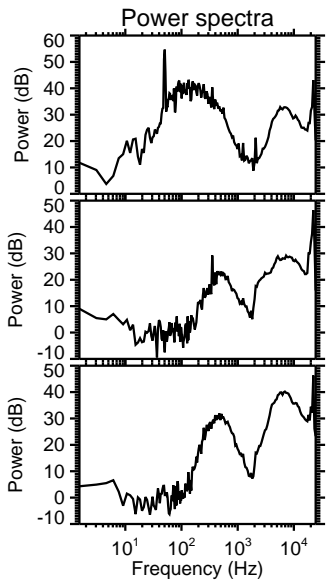
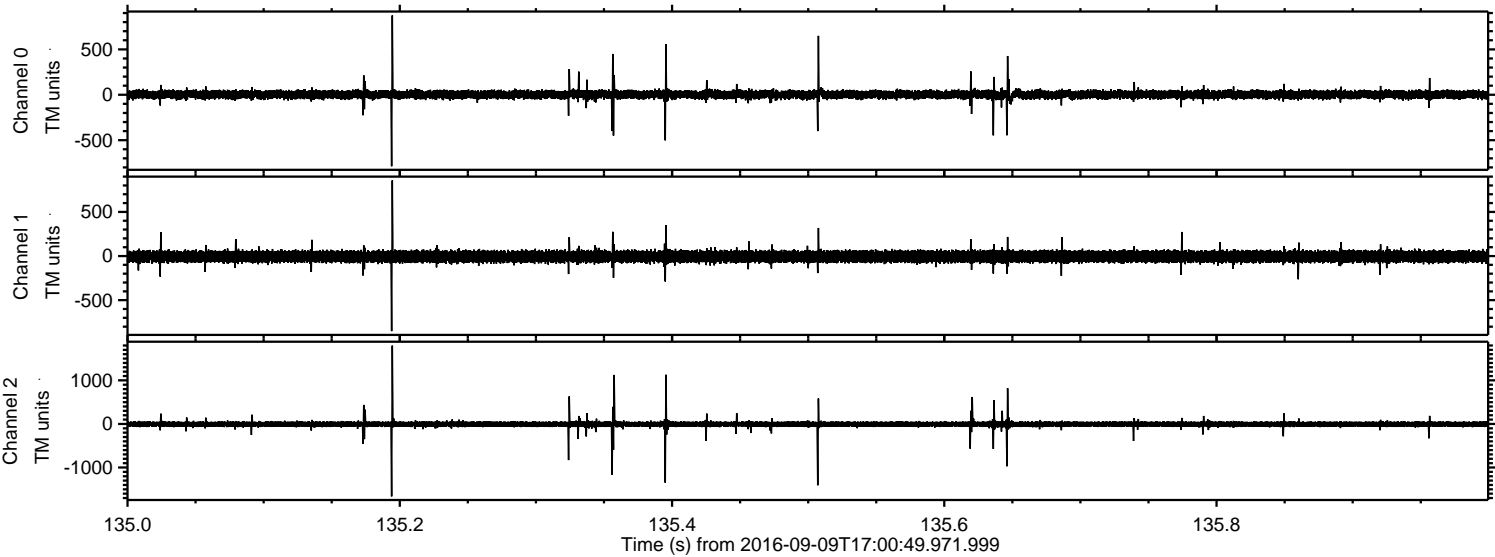
Channel 1  
mn: -412  
mx: 629  
 $\mu$ : -5.8  
 $\sigma$ : 35.4

Channel 2  
mn: -2020  
mx: 1269  
 $\mu$ : -5.4  
 $\sigma$ : 36.0



ELMAVAN 3D WAVEFORMS (Measured data sampled at 50 kHz) 51000 packets of 144 samples from 2016-09-09T17:00:49.971.999. Part 136/147

Processed Fri Sep 9 19:09:17 2016 by ELM ver.2012-10-06 from 001\_\_elm20160909\_170048\_\_dat00.bin





ELMAVAN 3D WAVEFORMS (Measured data sampled at 50 kHz) 51000 packets of 144 samples from 2016-09-09T17:00:49.971.999. Part 117/147

