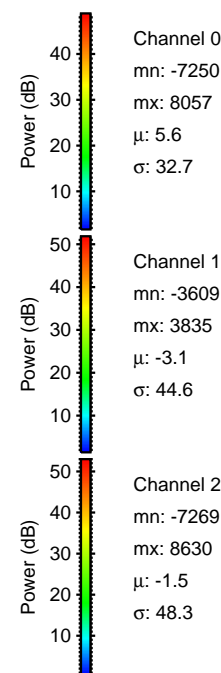
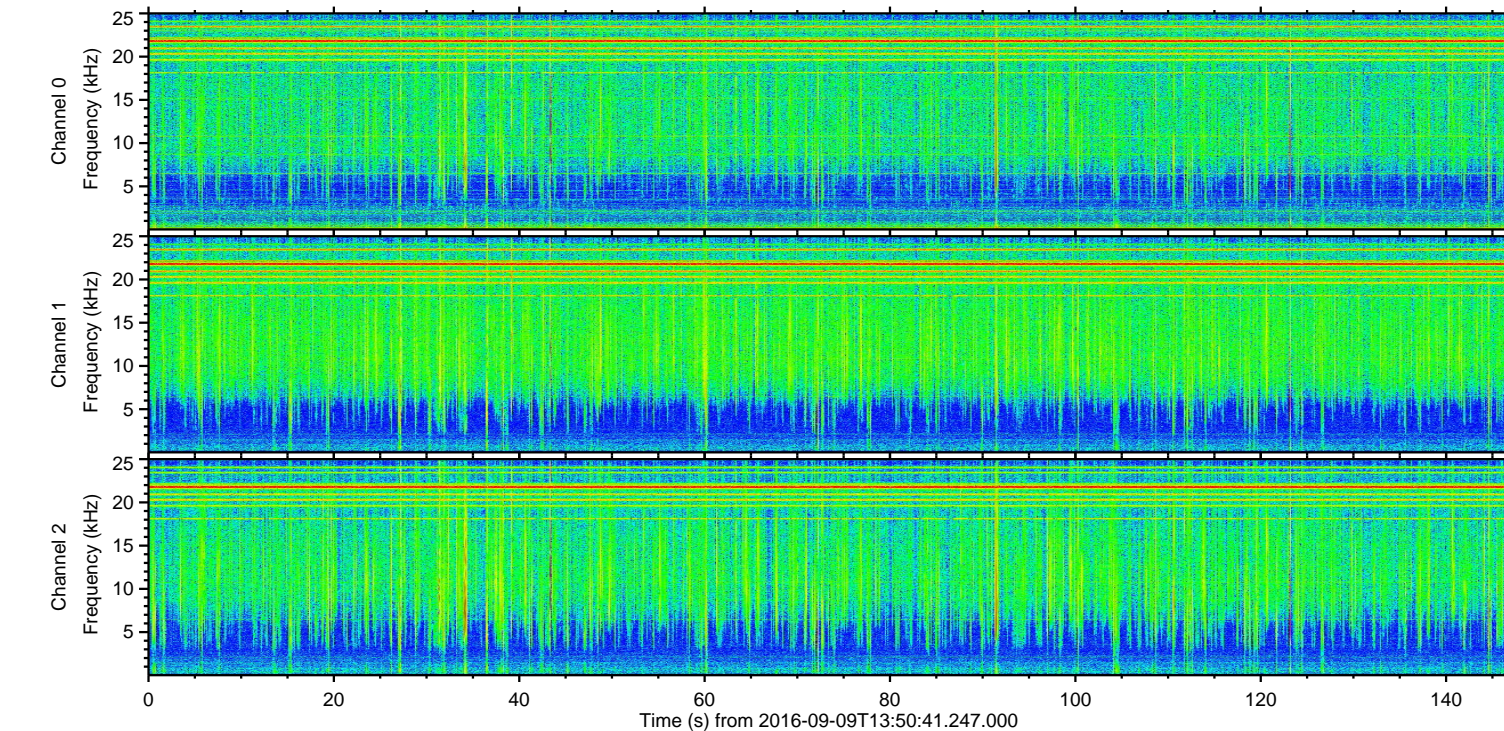
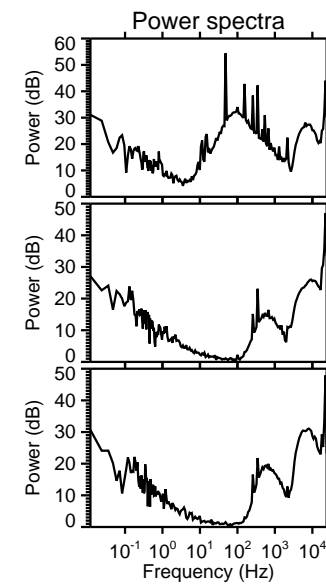
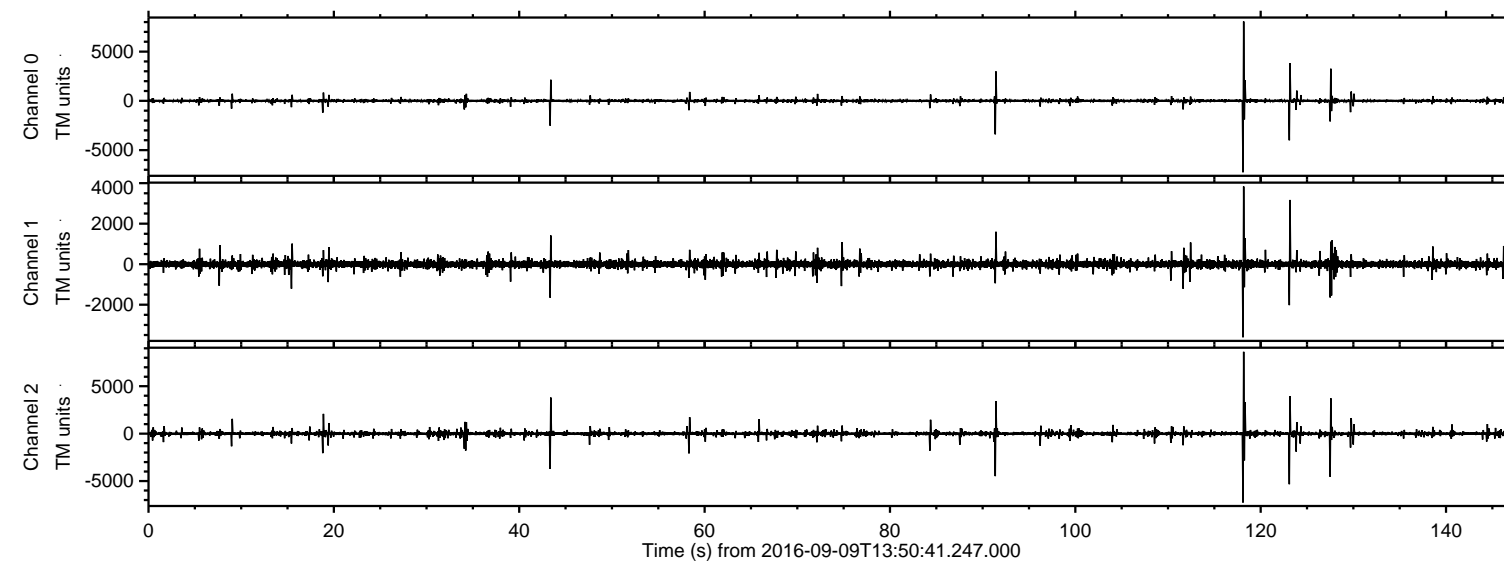


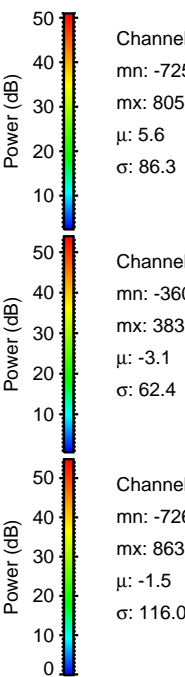
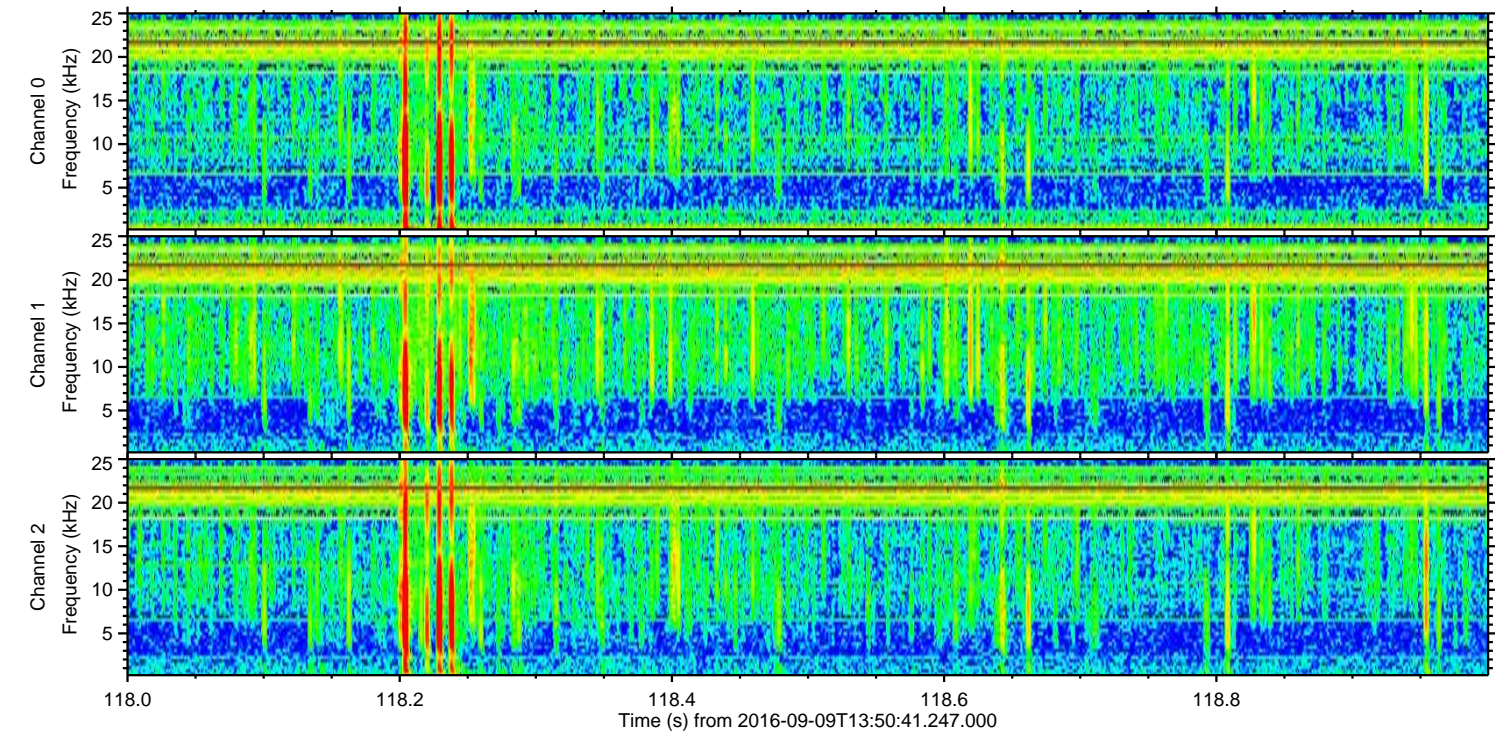
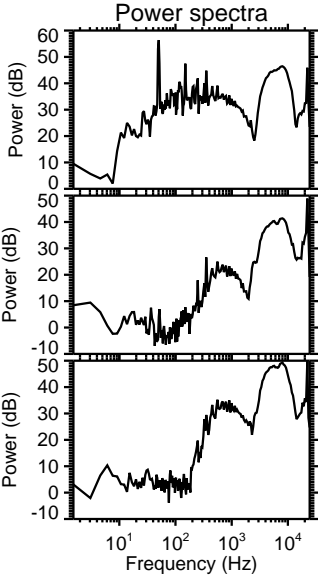
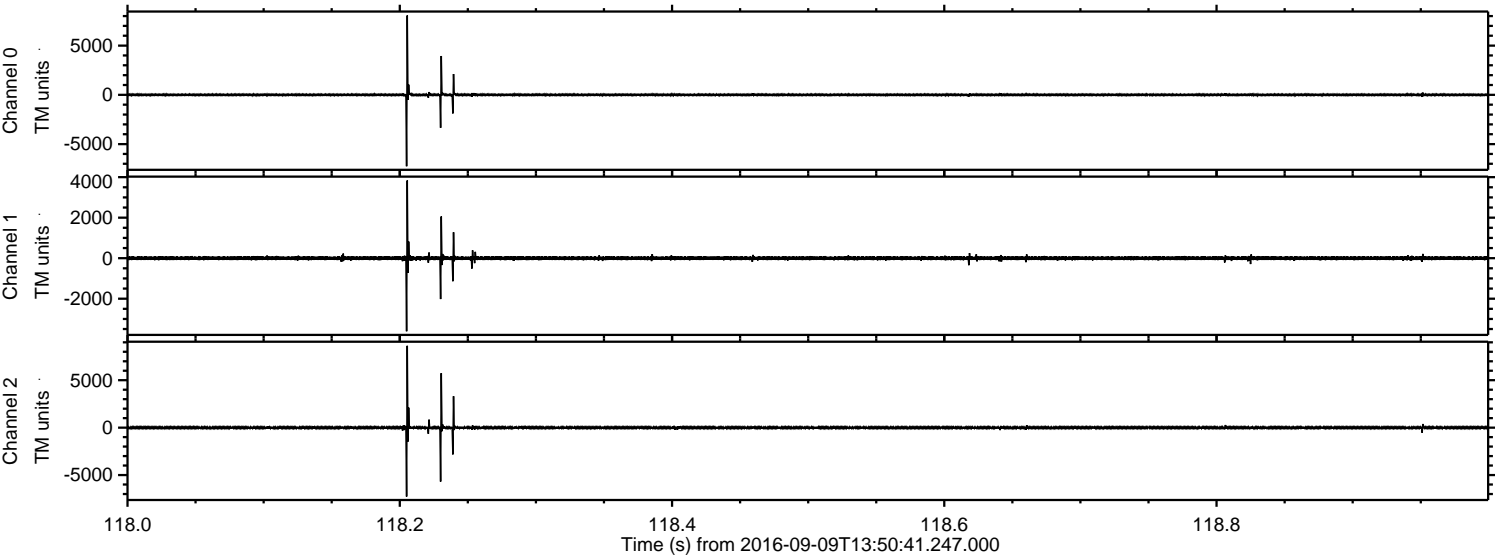
ELMAVAN 3D WAVEFORMS (Measured data sampled at 50 kHz) 51000 packets of 144 samples from 2016-09-09T13:50:41.247.000.

Processed Fri Sep 9 15:58:38 2016 by ELM ver.2012-10-06 from 001__elm20160909_135040__dat00.bin



ELMAVAN 3D WAVEFORMS (Measured data sampled at 50 kHz) 51000 packets of 144 samples from 2016-09-09T13:50:41.247.000. Part 119/147

Processed Fri Sep 9 15:58:50 2016 by ELM ver.2012-10-06 from 001__elm20160909_135040__dat00.bin



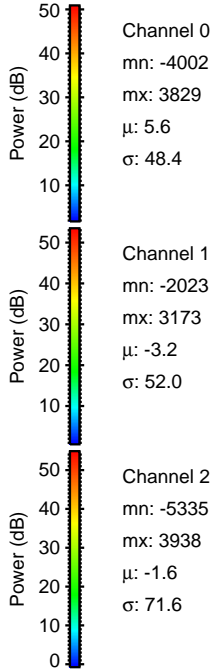
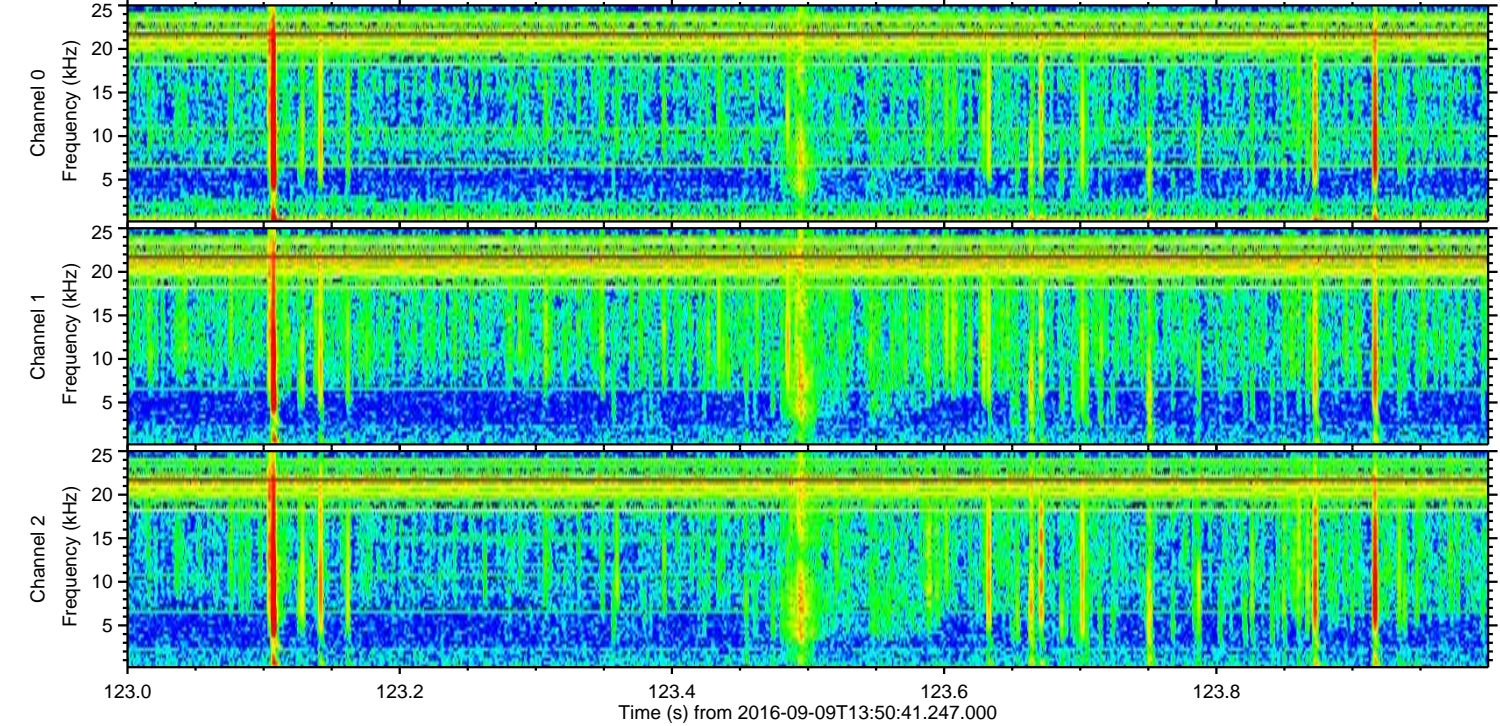
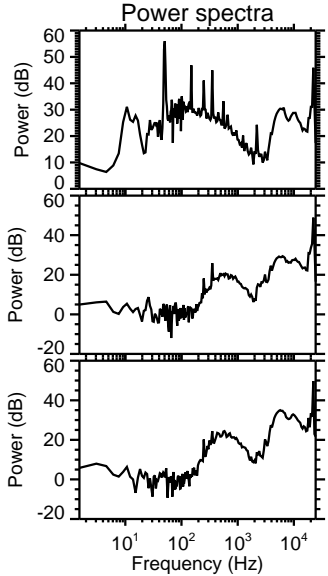
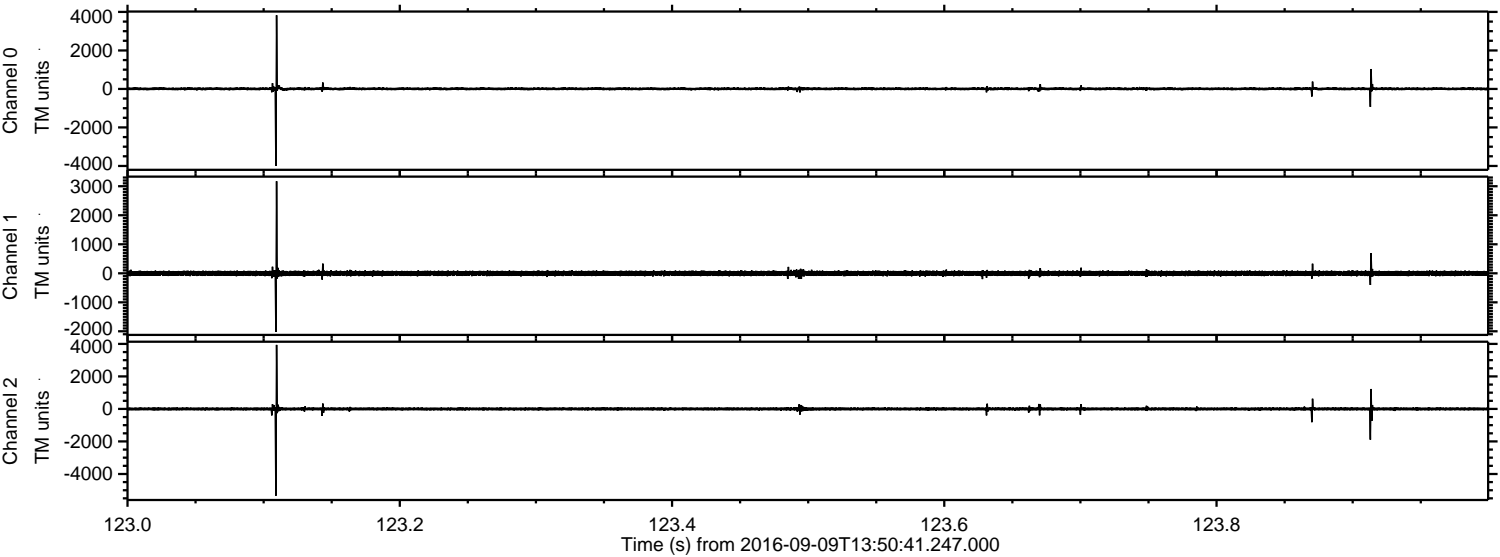
Channel 0
mn: -7250
mx: 8057
 μ : 5.6
 σ : 86.3

Channel 1
mn: -3609
mx: 3835
 μ : -3.1
 σ : 62.4

Channel 2
mn: -7269
mx: 8630
 μ : -1.5
 σ : 116.0

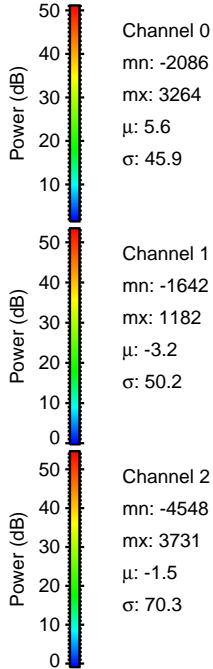
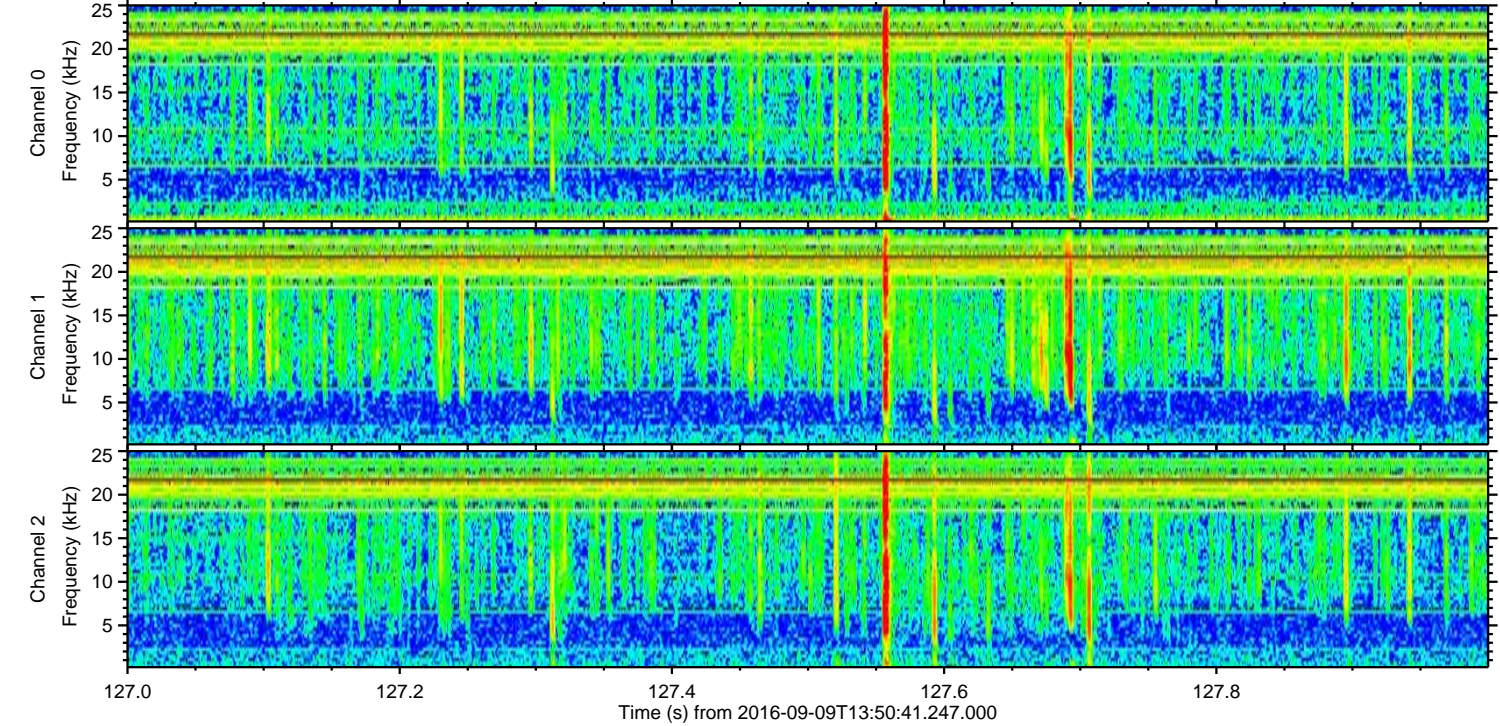
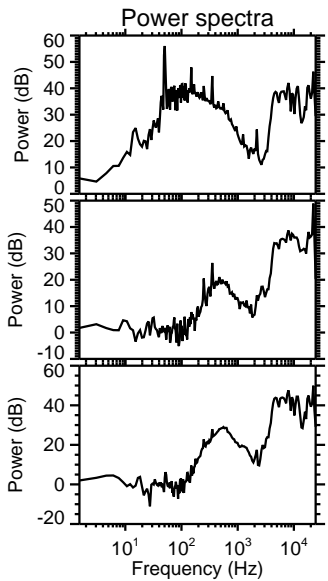
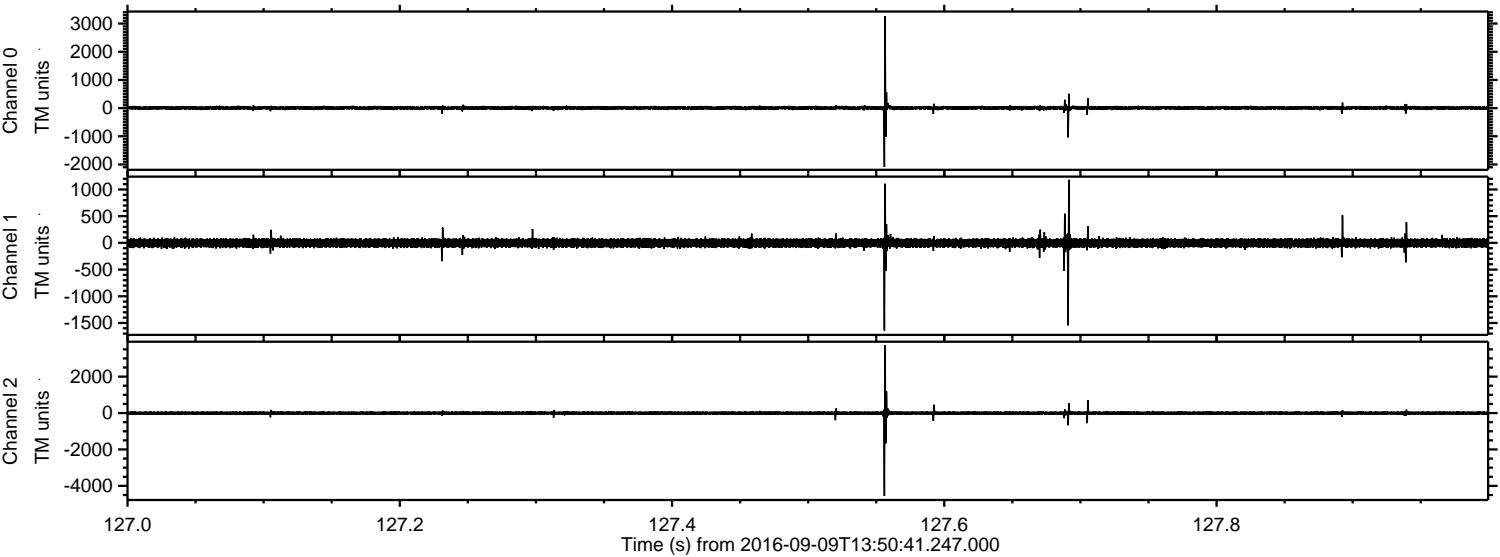
ELMAVAN 3D WAVEFORMS (Measured data sampled at 50 kHz) 51000 packets of 144 samples from 2016-09-09T13:50:41.247.000. Part 124/147

Processed Fri Sep 9 15:58:51 2016 by ELM ver.2012-10-06 from 001__elm20160909_135040__dat00.bin

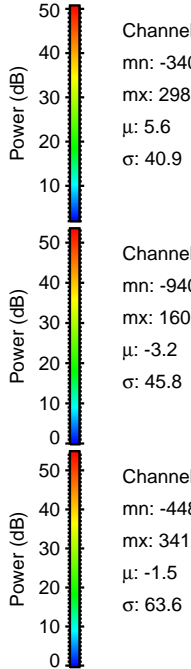
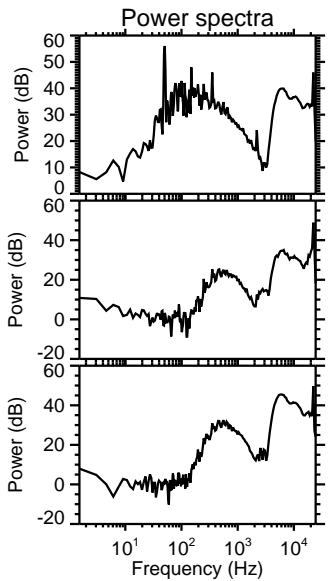
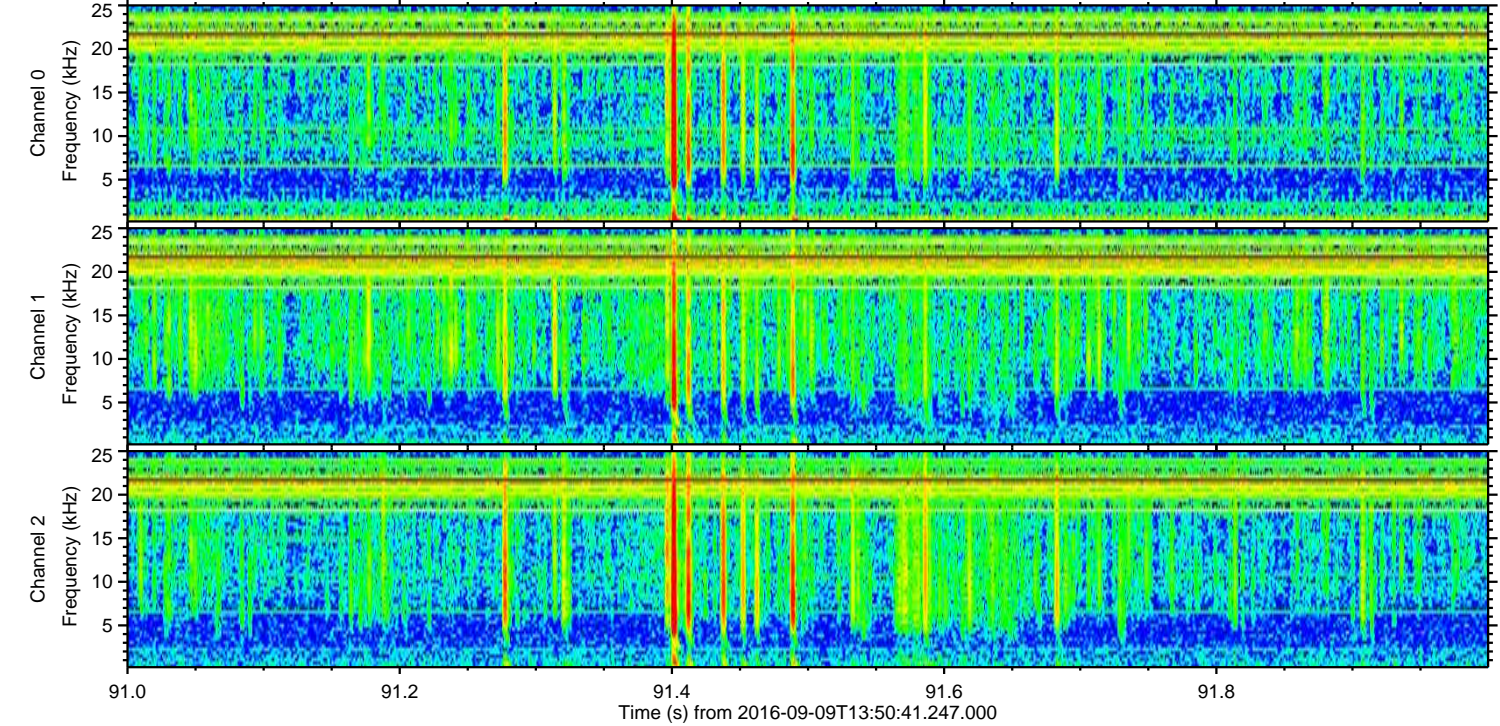
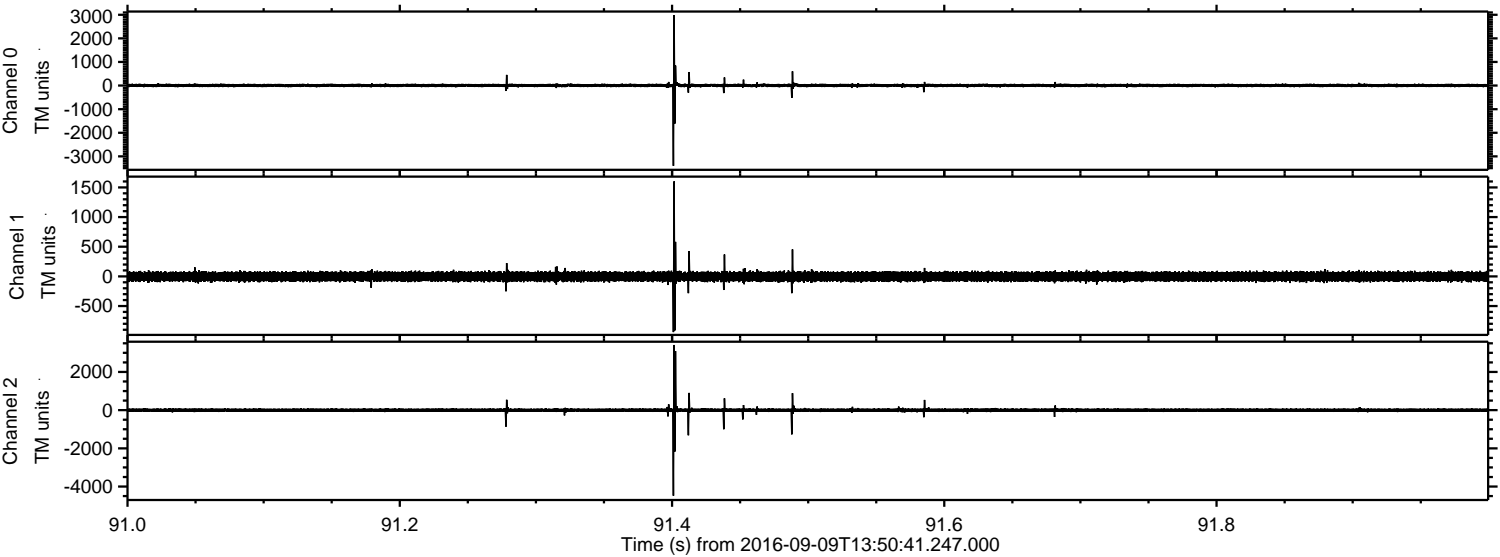


ELMAVAN 3D WAVEFORMS (Measured data sampled at 50 kHz) 51000 packets of 144 samples from 2016-09-09T13:50:41.247.000. Part 128/147

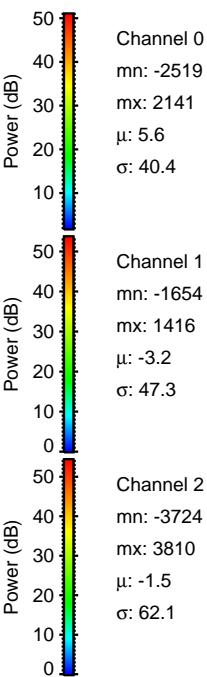
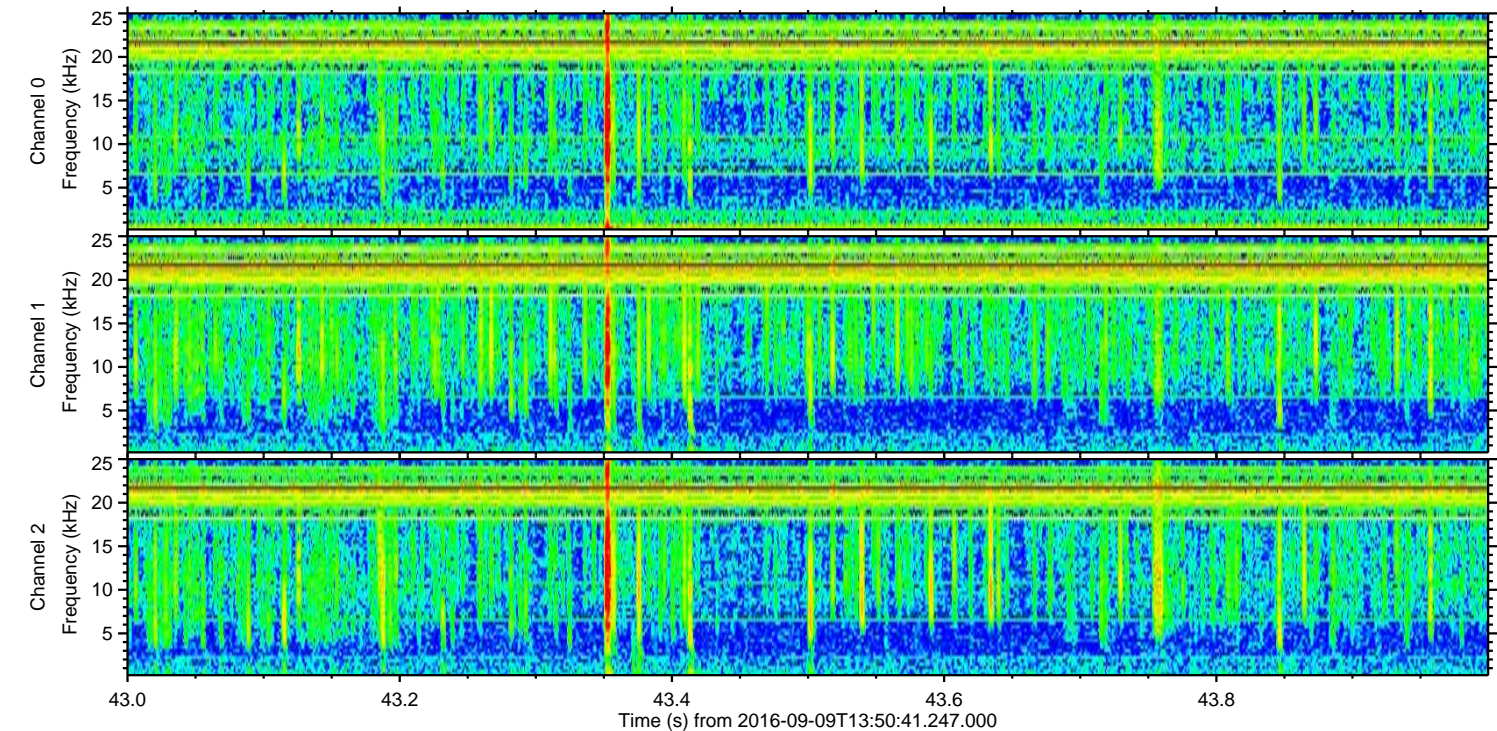
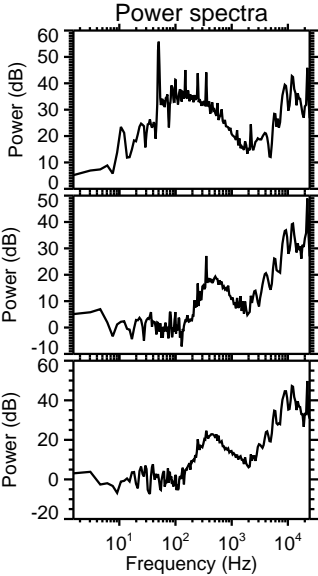
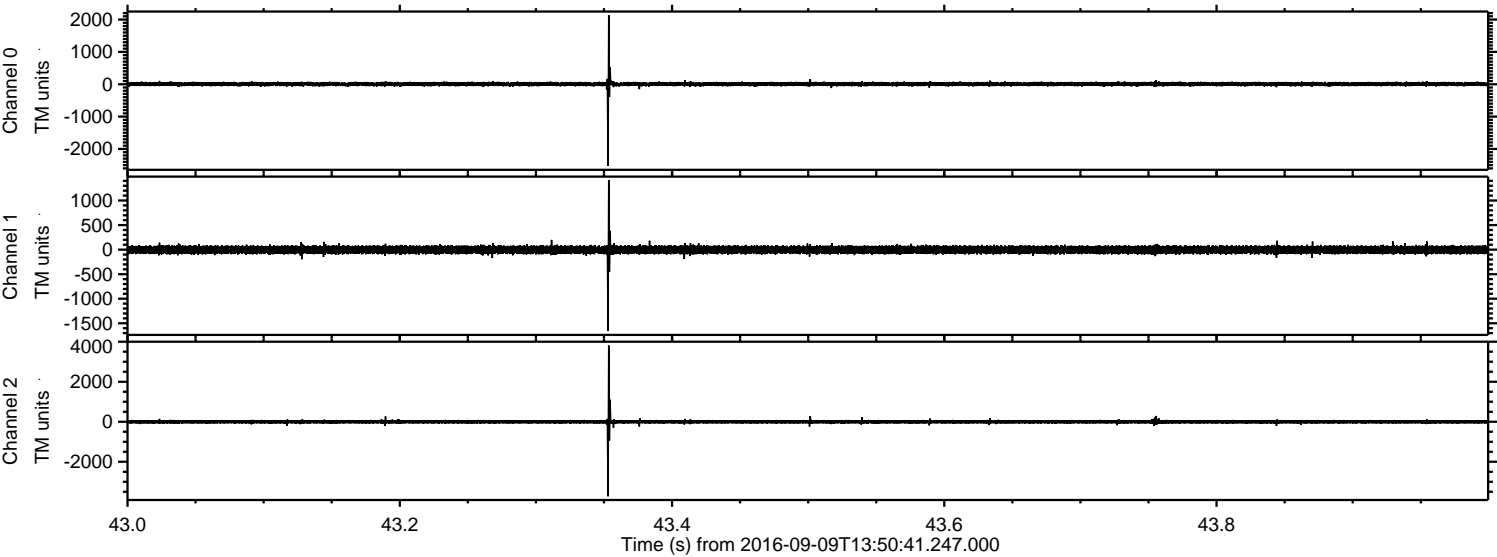
Processed Fri Sep 9 15:58:52 2016 by ELM ver.2012-10-06 from 001__elm20160909_135040__dat00.bin



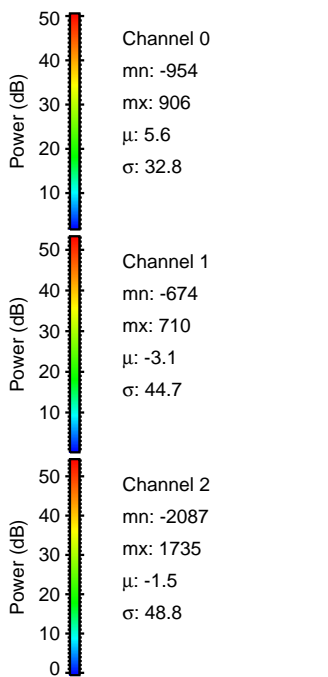
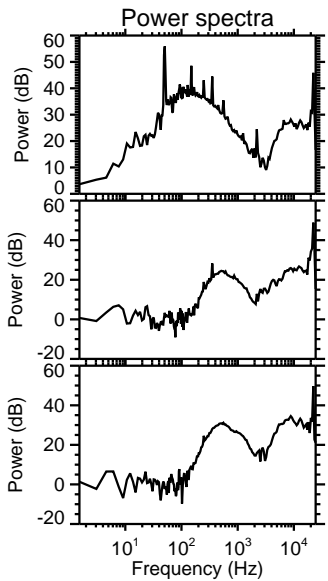
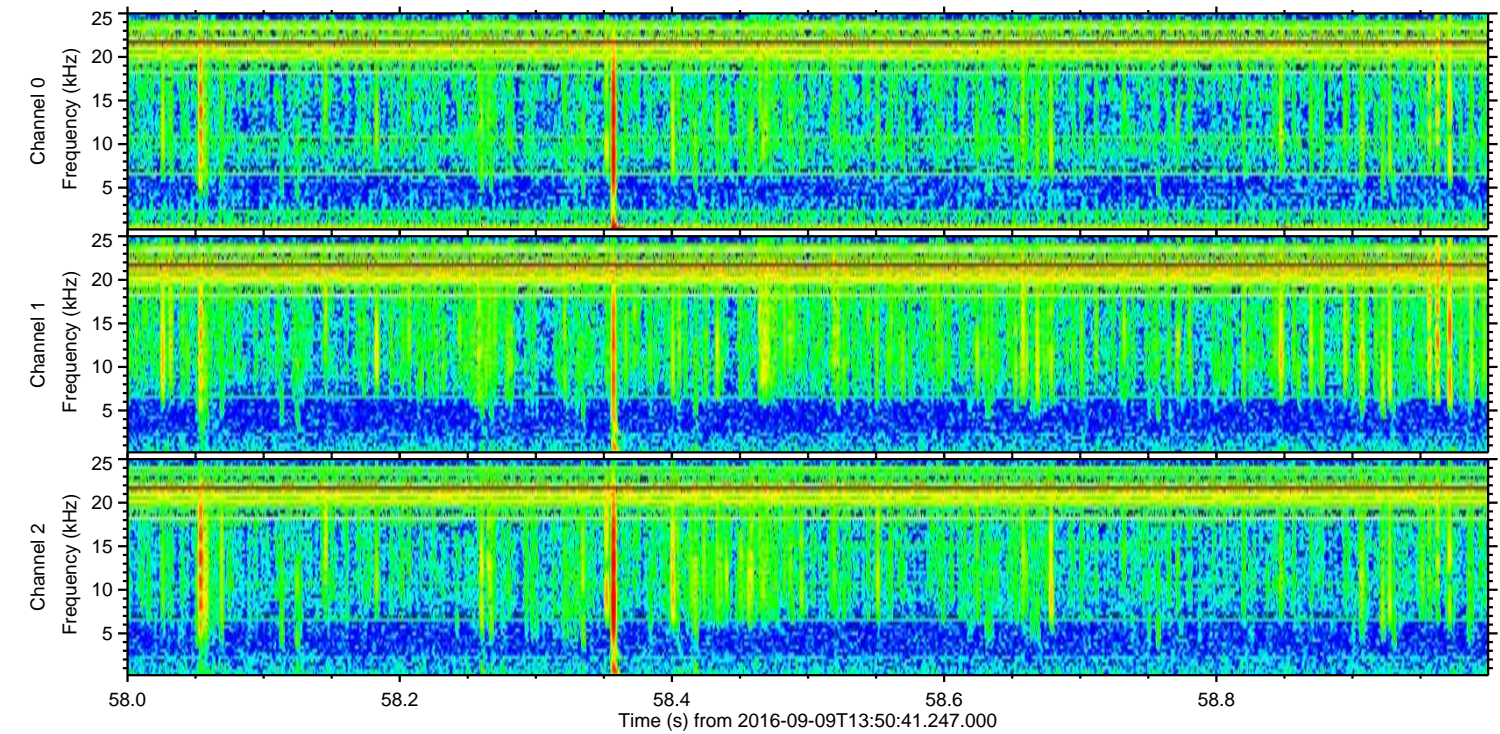
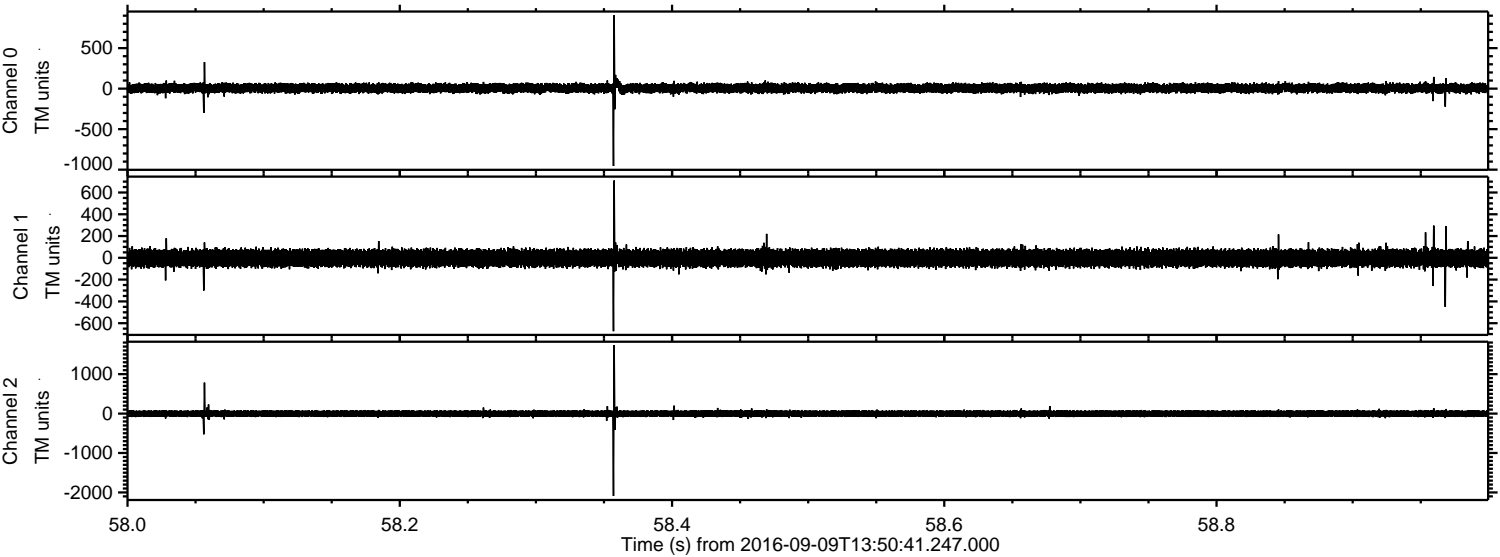
Processed Fri Sep 9 15:58:53 2016 by ELM ver.2012-10-06 from 001__elm20160909_135040__dat00.bin



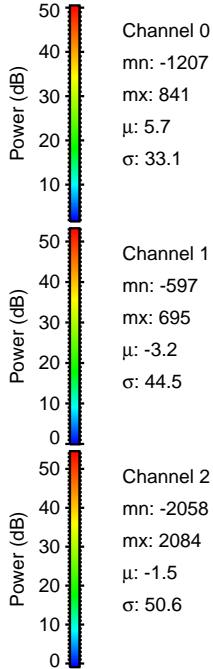
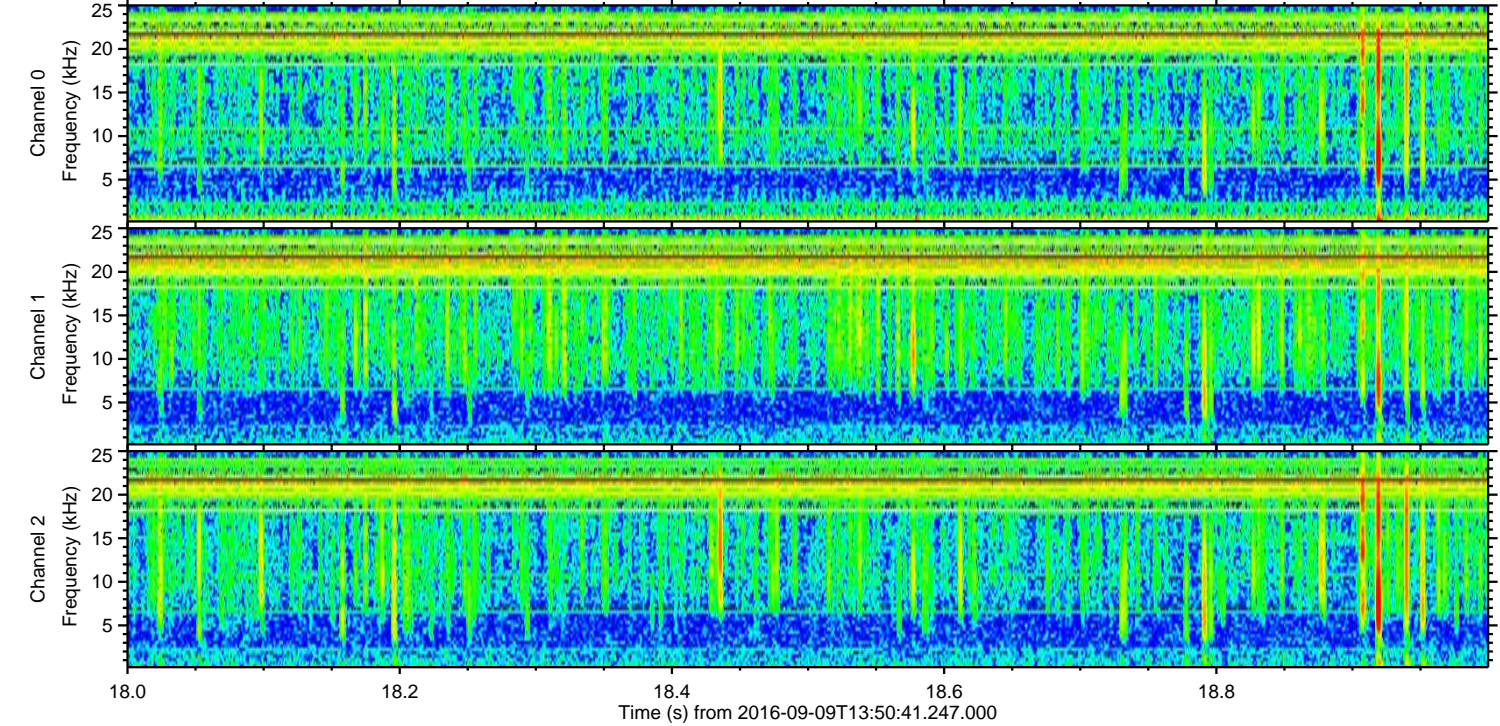
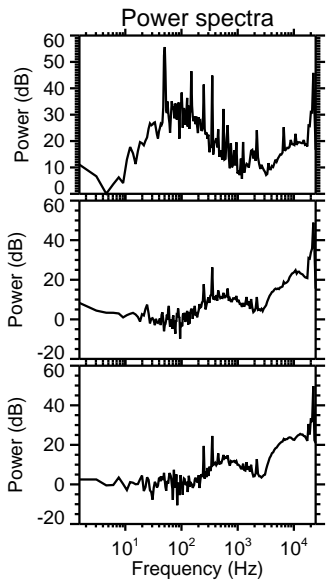
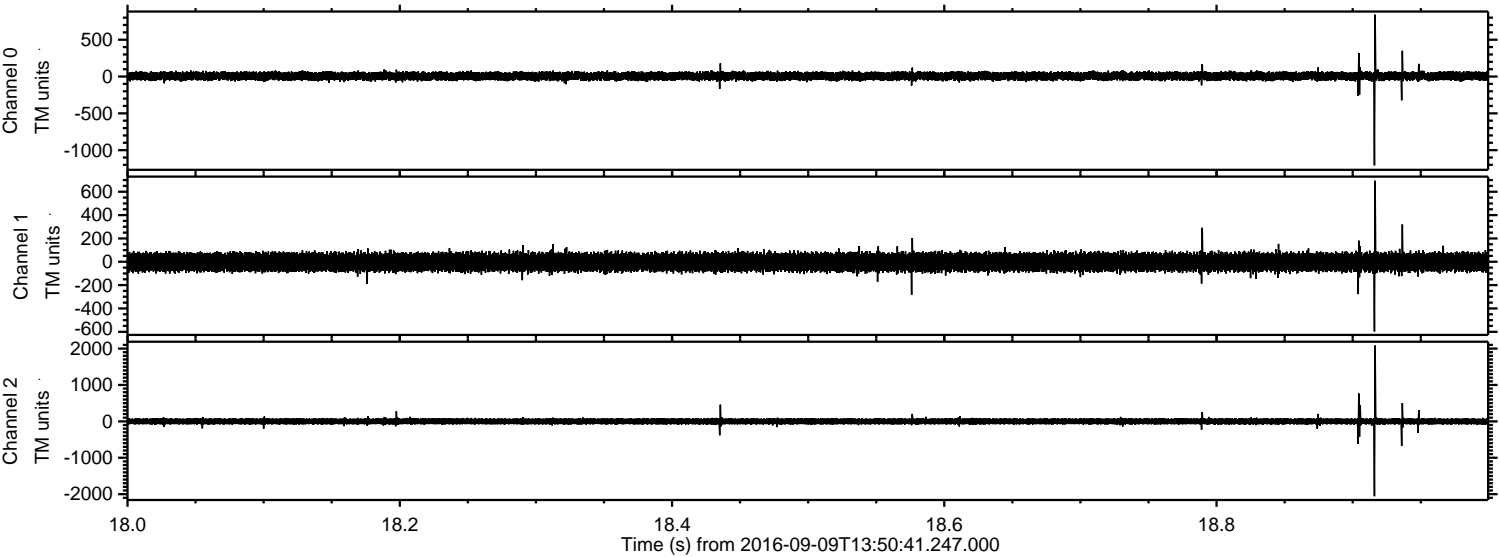
Processed Fri Sep 9 15:58:53 2016 by ELM ver.2012-10-06 from 001__elm20160909_135040__dat00.bin



Processed Fri Sep 9 15:58:54 2016 by ELM ver.2012-10-06 from 001__elm20160909_135040__dat00.bin



Processed Fri Sep 9 15:58:55 2016 by ELM ver.2012-10-06 from 001__elm20160909_135040__dat00.bin

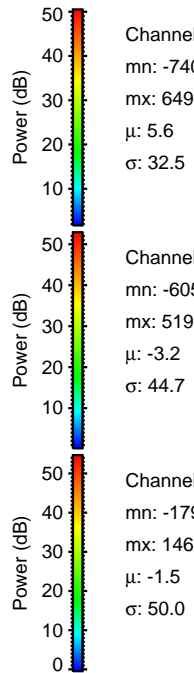
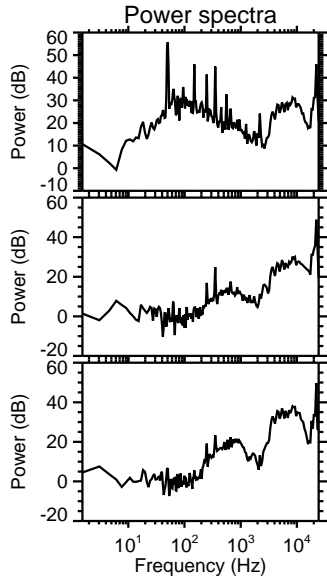
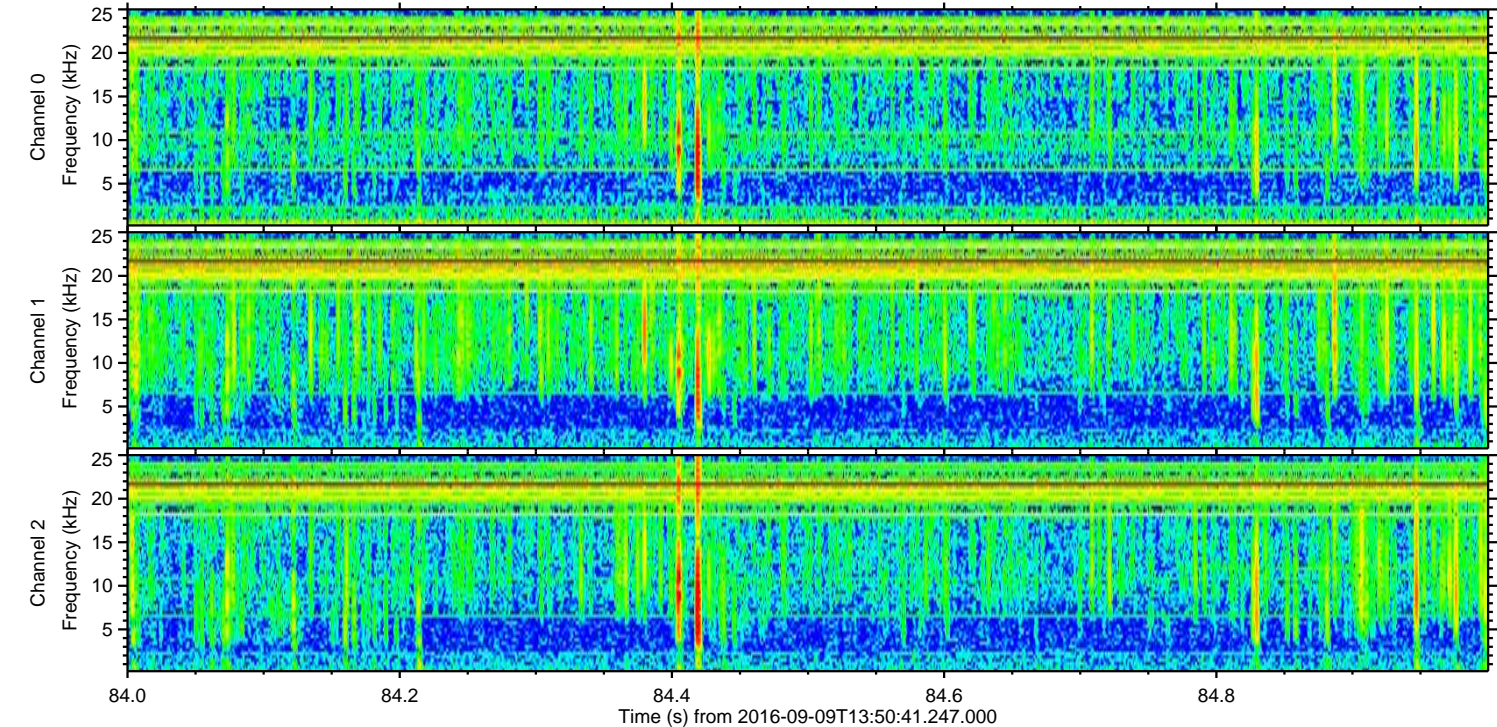
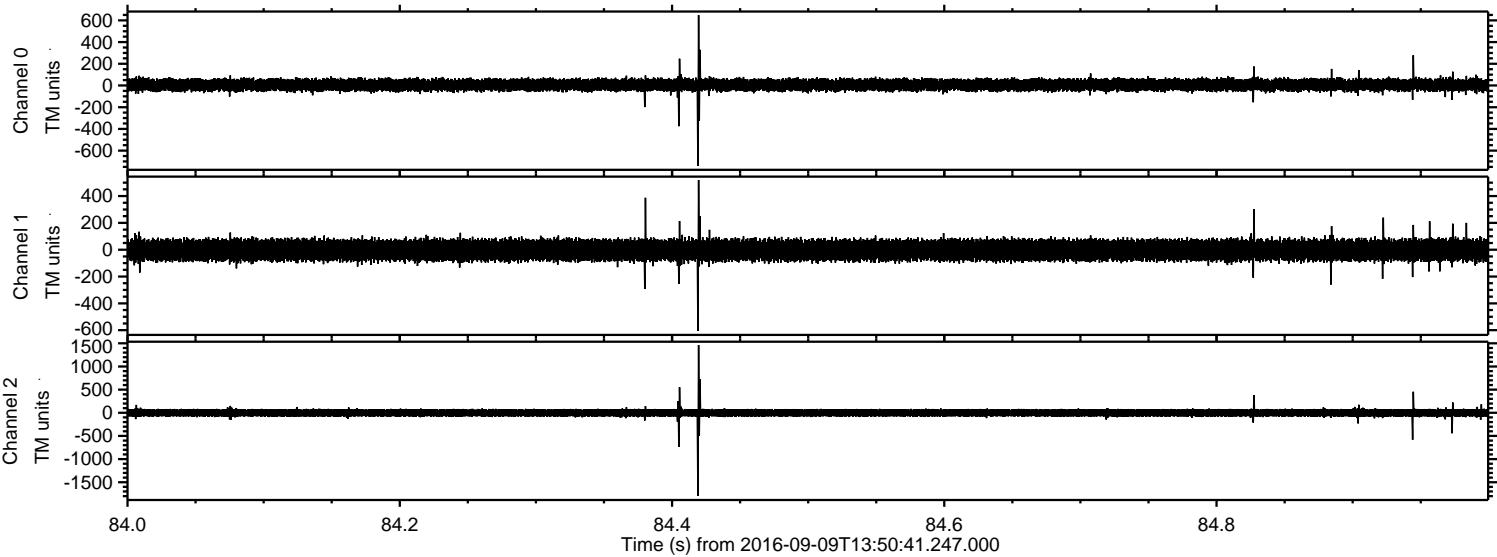


Channel 0
mn: -1207
mx: 841
 μ : 5.7
 σ : 33.1

Channel 1
mn: -597
mx: 695
 μ : -3.2
 σ : 44.5

Channel 2
mn: -2058
mx: 2084
 μ : -1.5
 σ : 50.6

Processed Fri Sep 9 15:58:56 2016 by ELM ver.2012-10-06 from 001__elm20160909_135040__dat00.bin



Power spectra

Channel 0

mn: -740
mx: 649
 μ : 5.6
 σ : 32.5

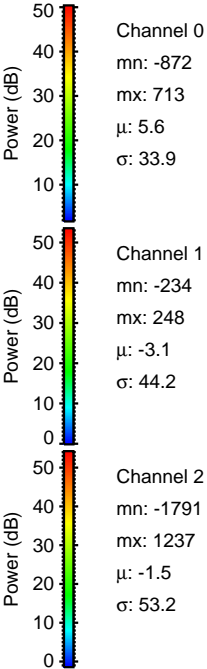
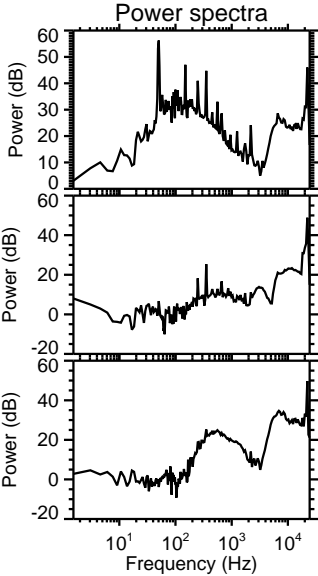
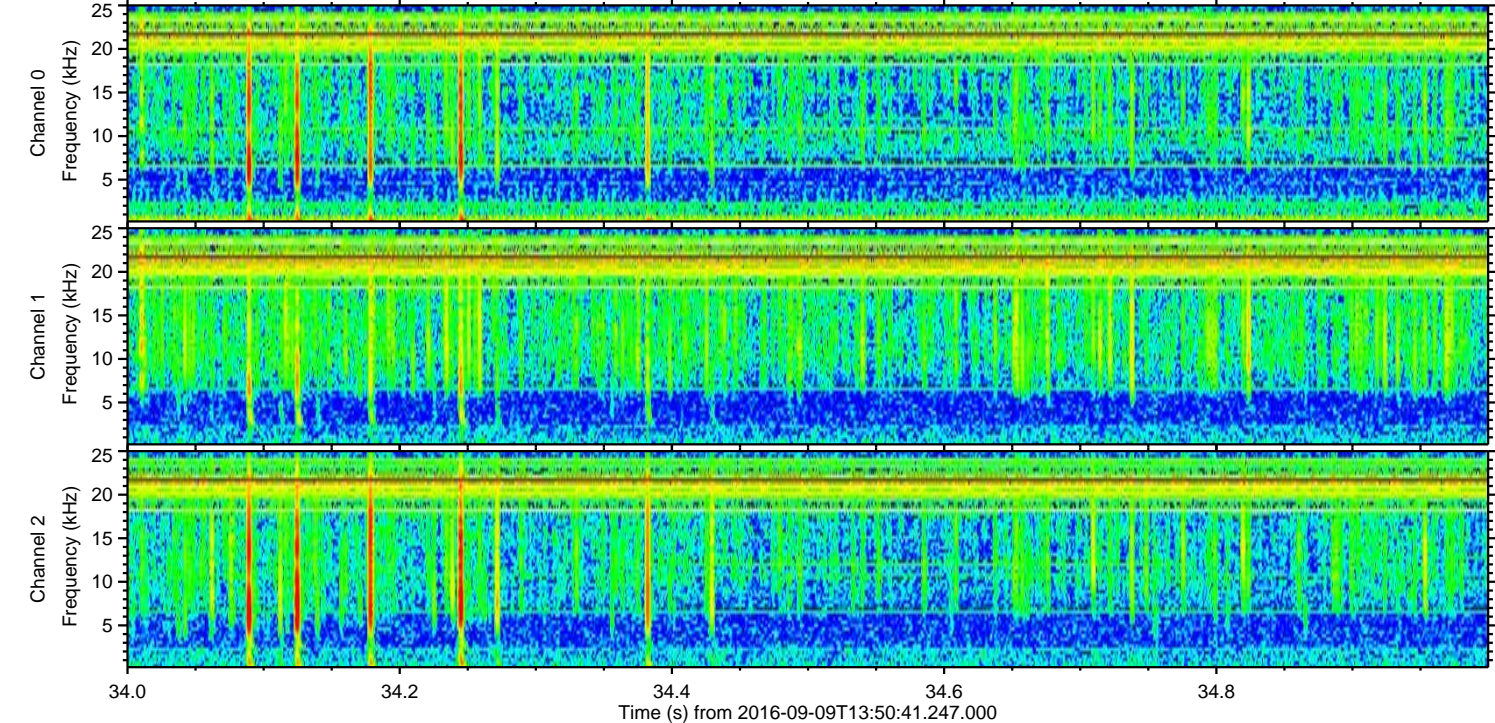
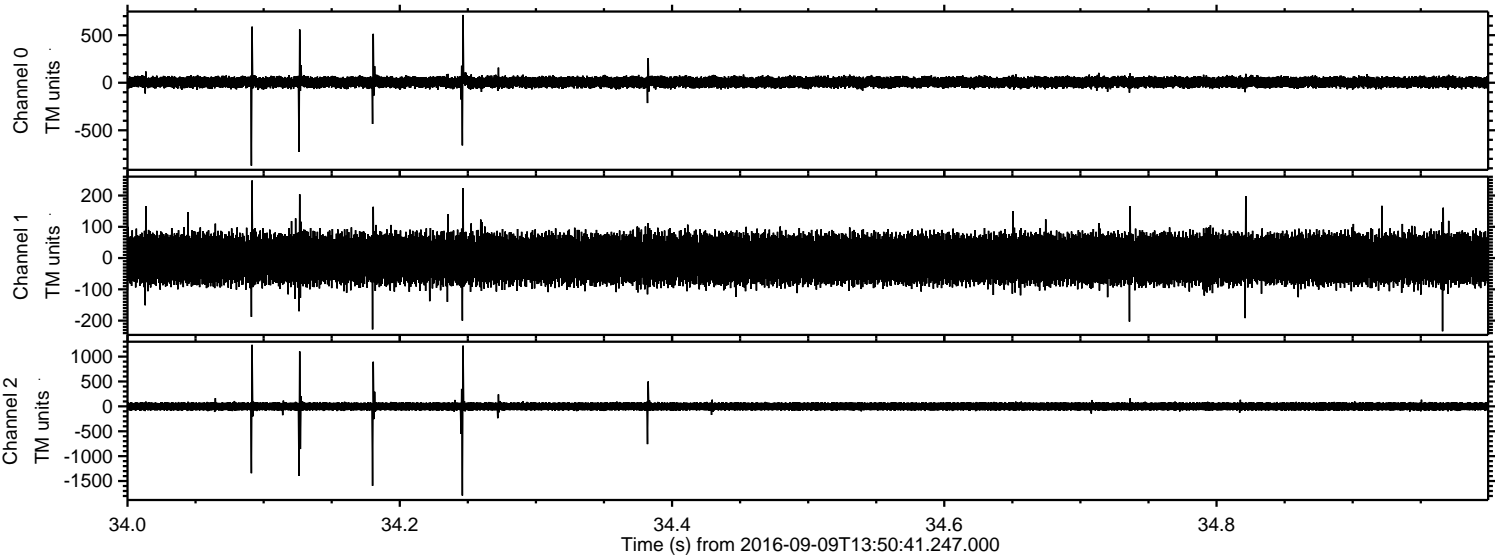
Channel 1

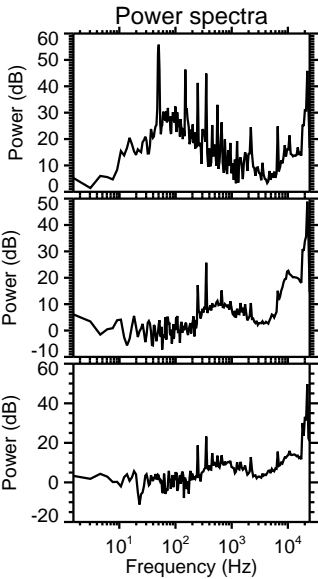
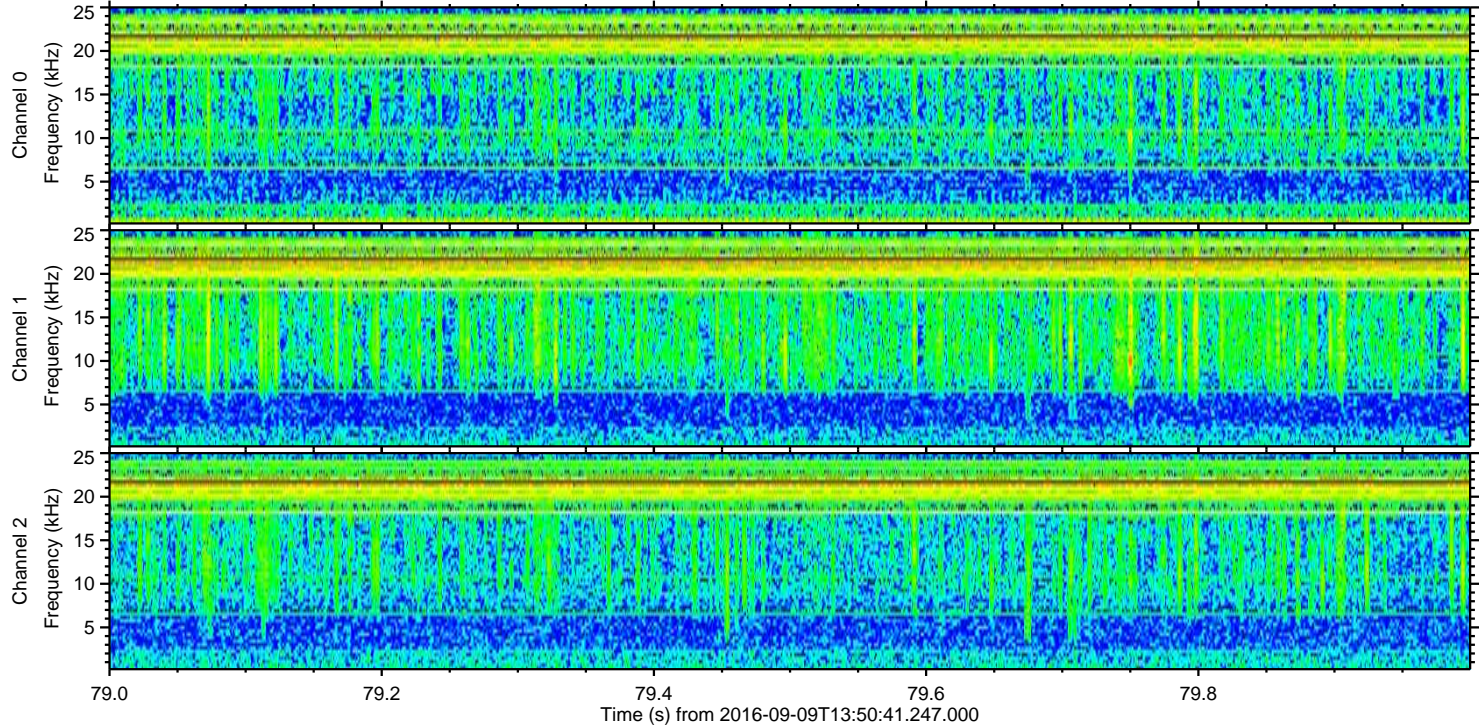
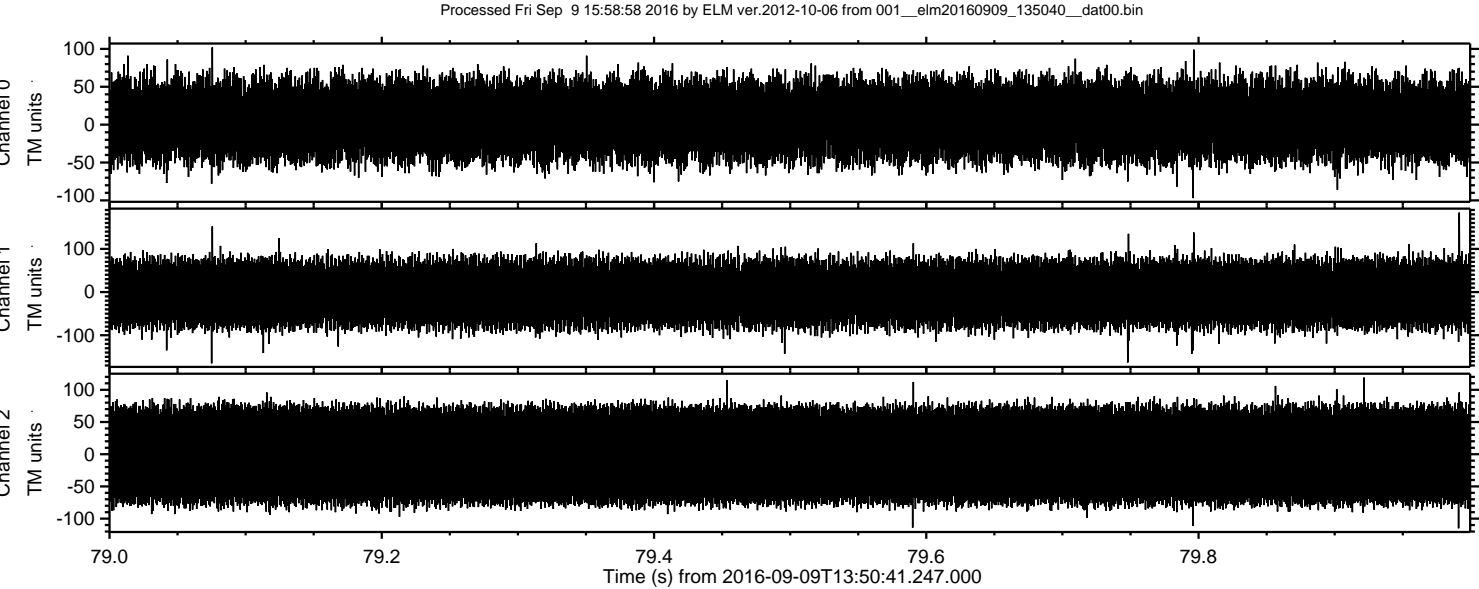
mn: -605
mx: 519
 μ : -3.2
 σ : 44.7

Channel 2

mn: -1794
mx: 1462
 μ : -1.5
 σ : 50.0

Processed Fri Sep 9 15:58:57 2016 by ELM ver.2012-10-06 from 001__elm20160909_135040__dat00.bin





Channel 0
mn: -97
mx: 102
 μ : 5.7
 σ : 31.2

Channel 1
mn: -165
mx: 184
 μ : -3.2
 σ : 43.8

Channel 2
mn: -115
mx: 119
 μ : -1.5
 σ : 46.1