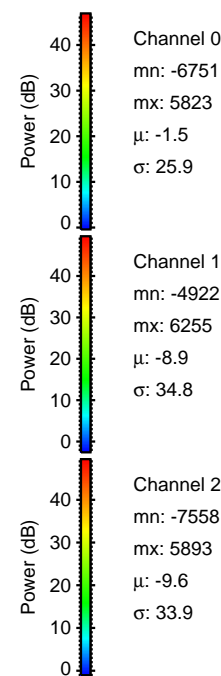
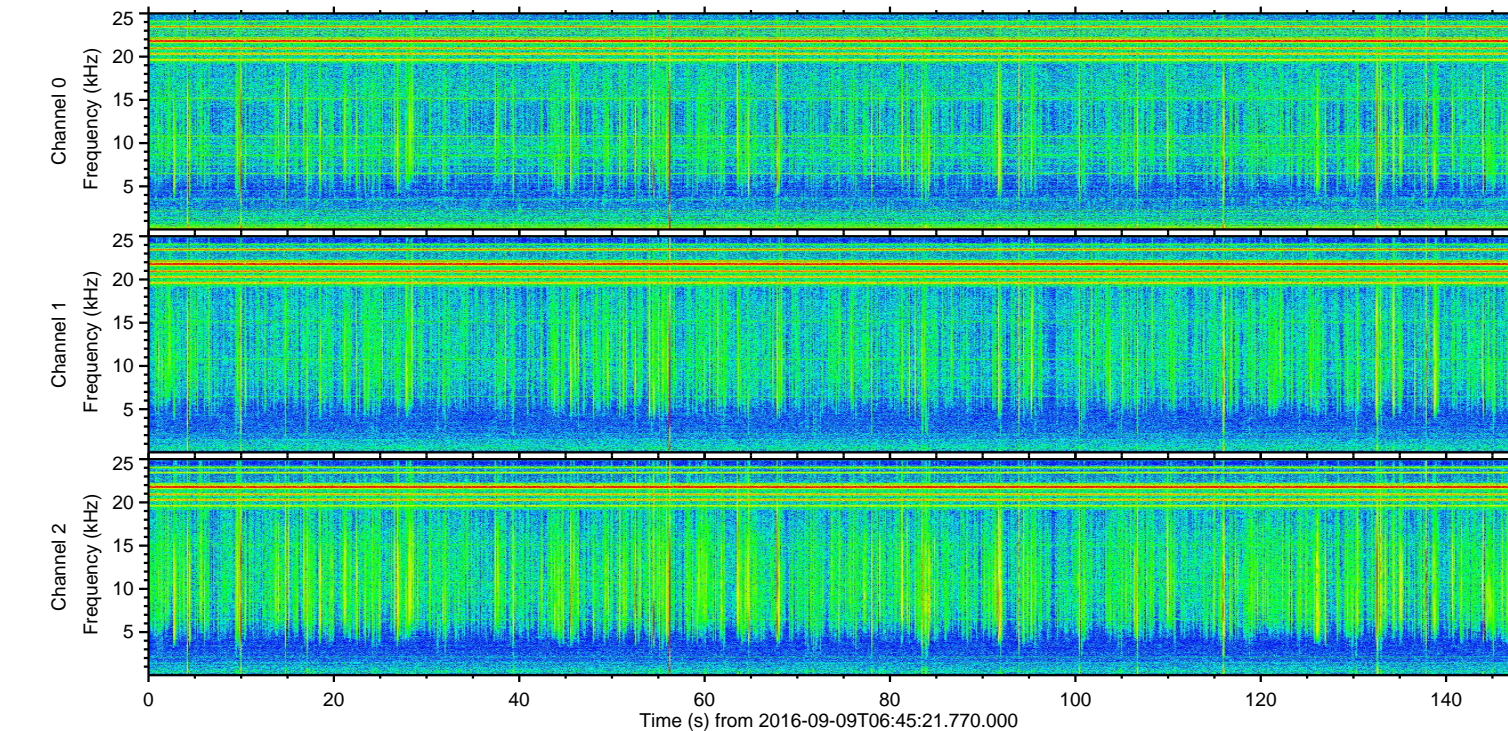
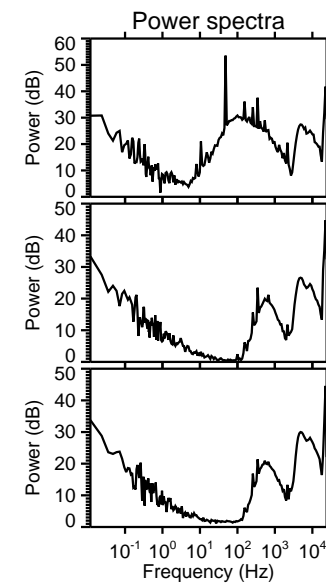
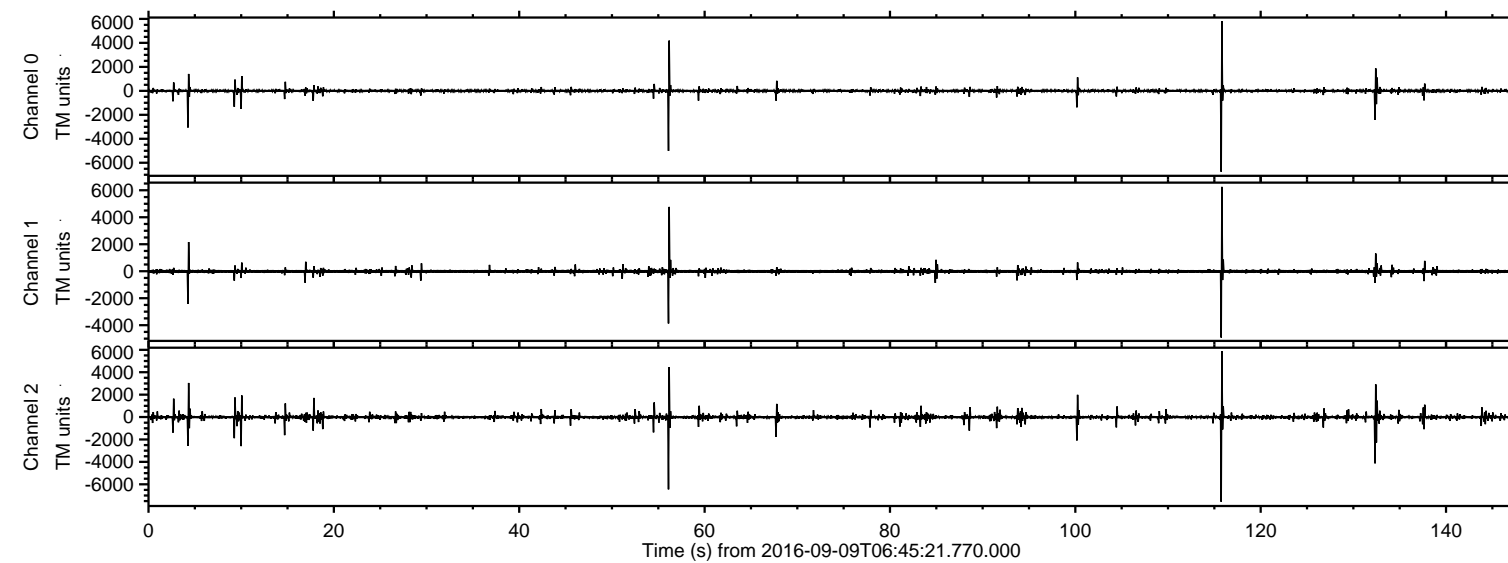


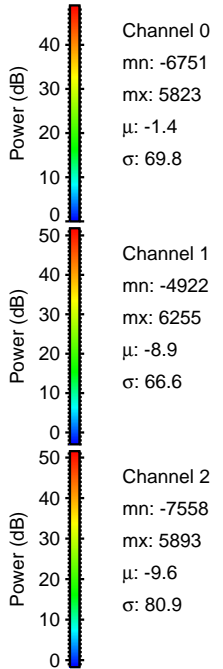
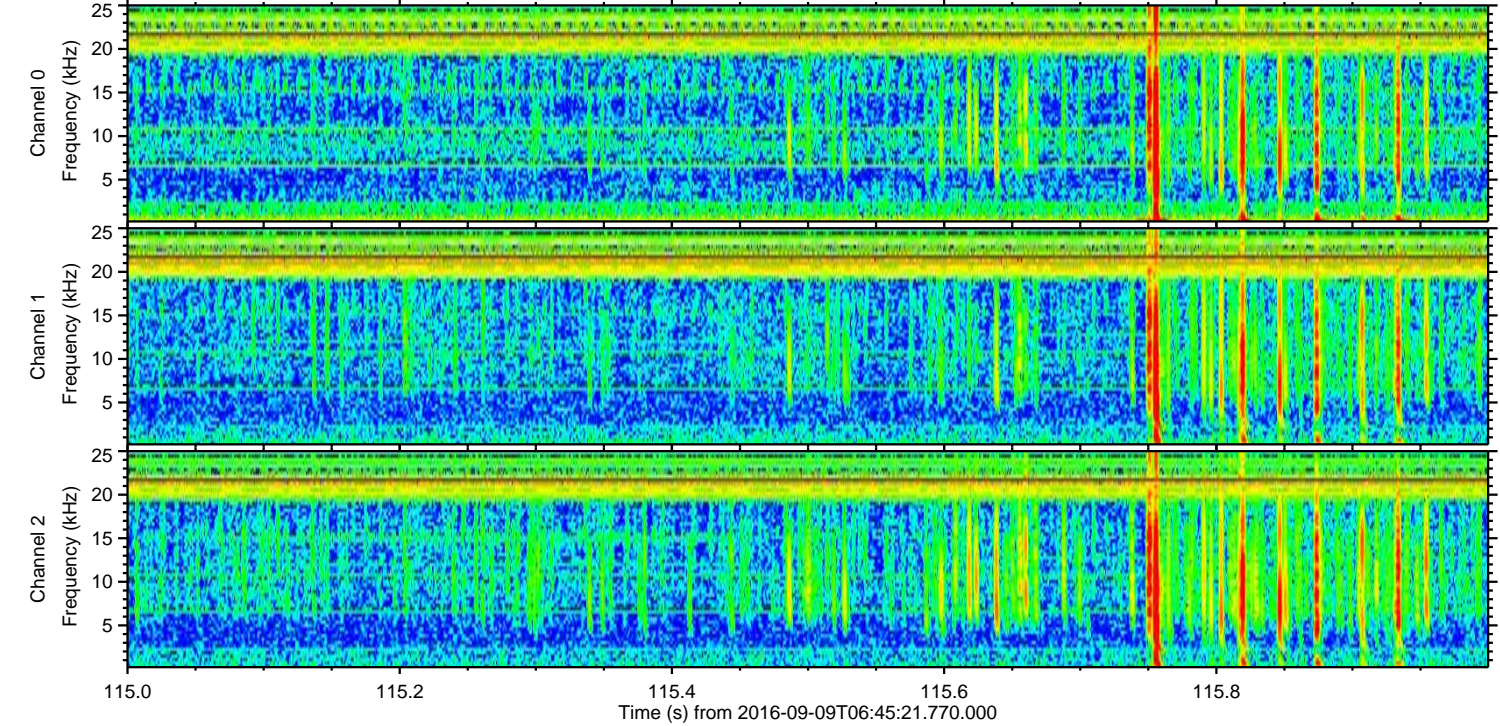
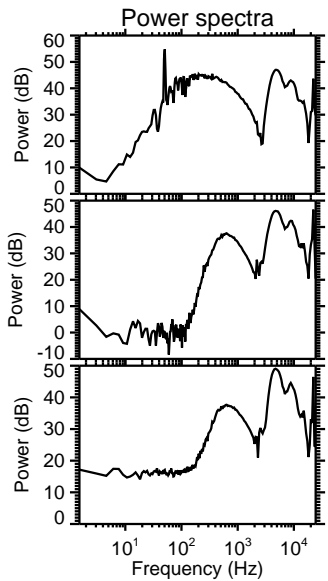
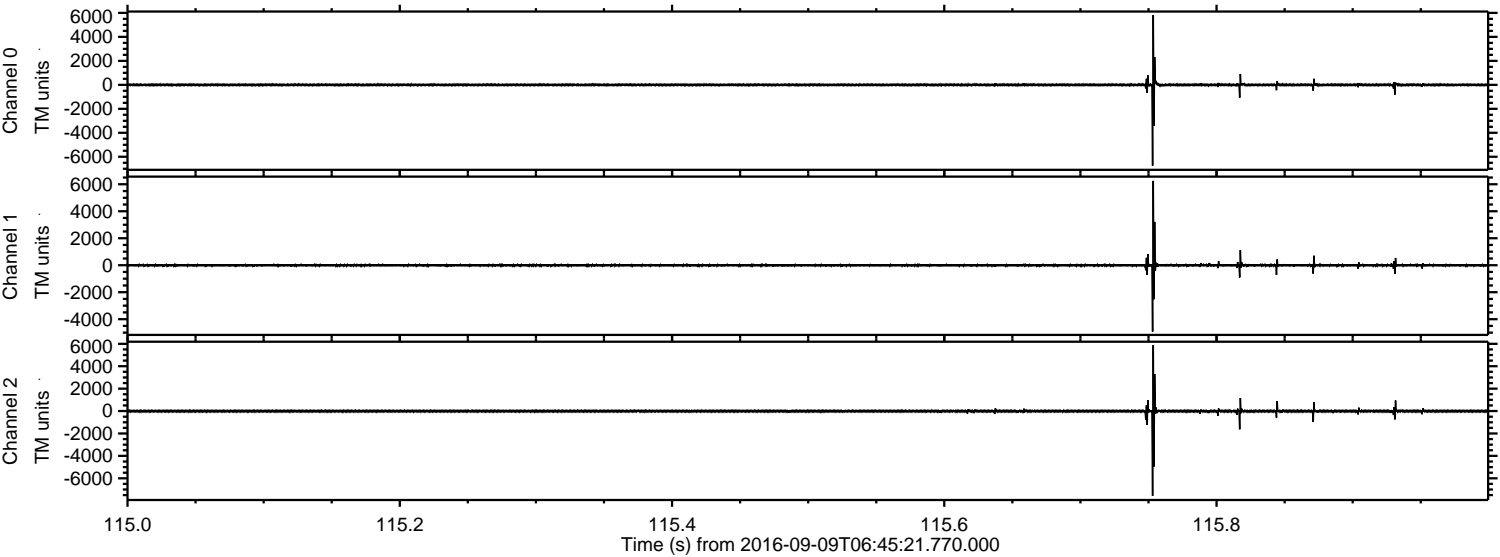
ELMAVAN 3D WAVEFORMS (Measured data sampled at 50 kHz) 51000 packets of 144 samples from 2016-09-09T06:45:21.770.000.

Processed Fri Sep 9 08:53:22 2016 by ELM ver.2012-10-06 from 001__elm20160909_064520__dat00.bin



ELMAVAN 3D WAVEFORMS (Measured data sampled at 50 kHz) 51000 packets of 144 samples from 2016-09-09T06:45:21.770.000. Part 116/147

Processed Fri Sep 9 08:53:33 2016 by ELM ver.2012-10-06 from 001__elm20160909_064520__dat00.bin

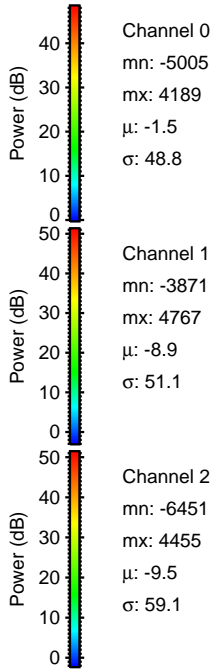
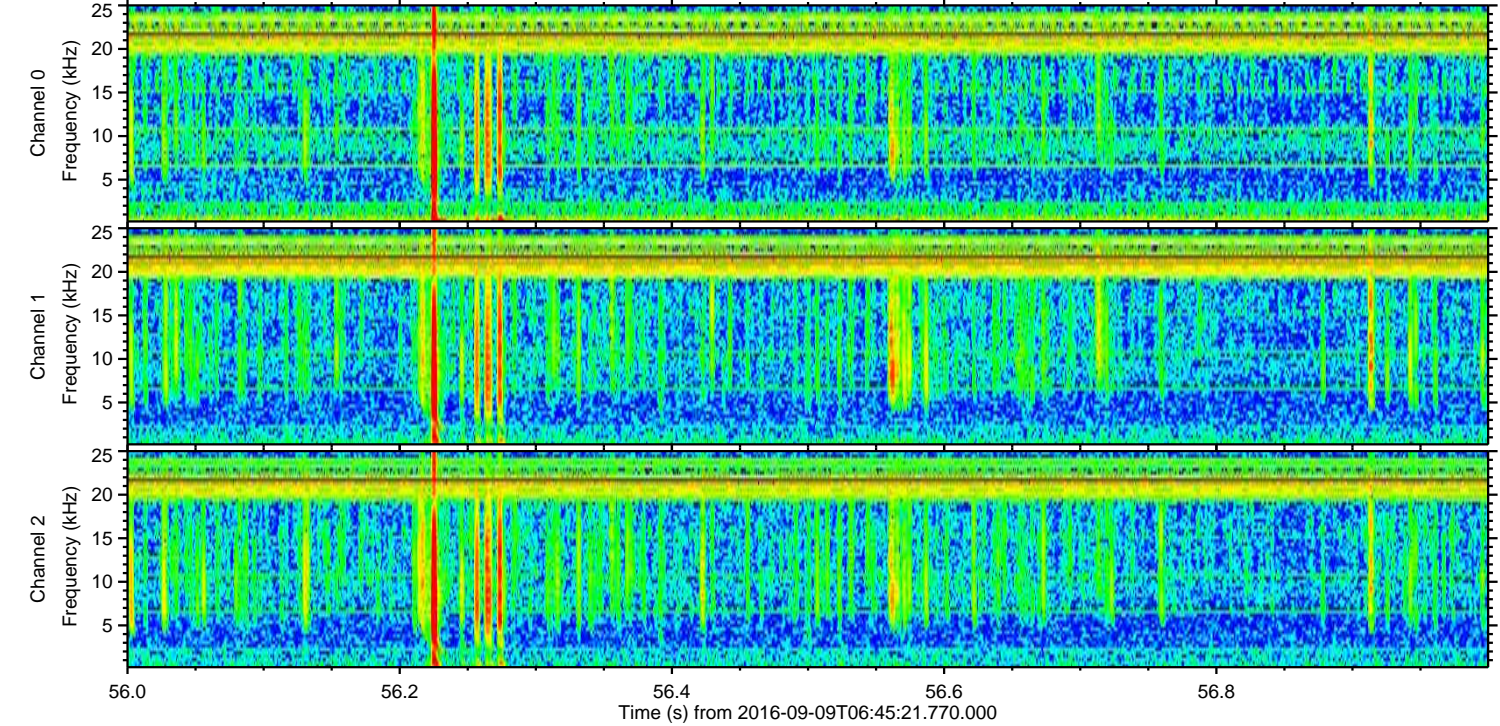
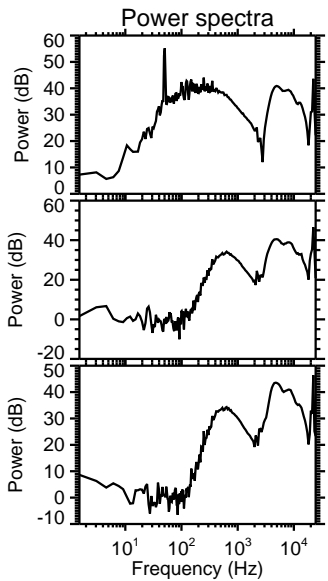
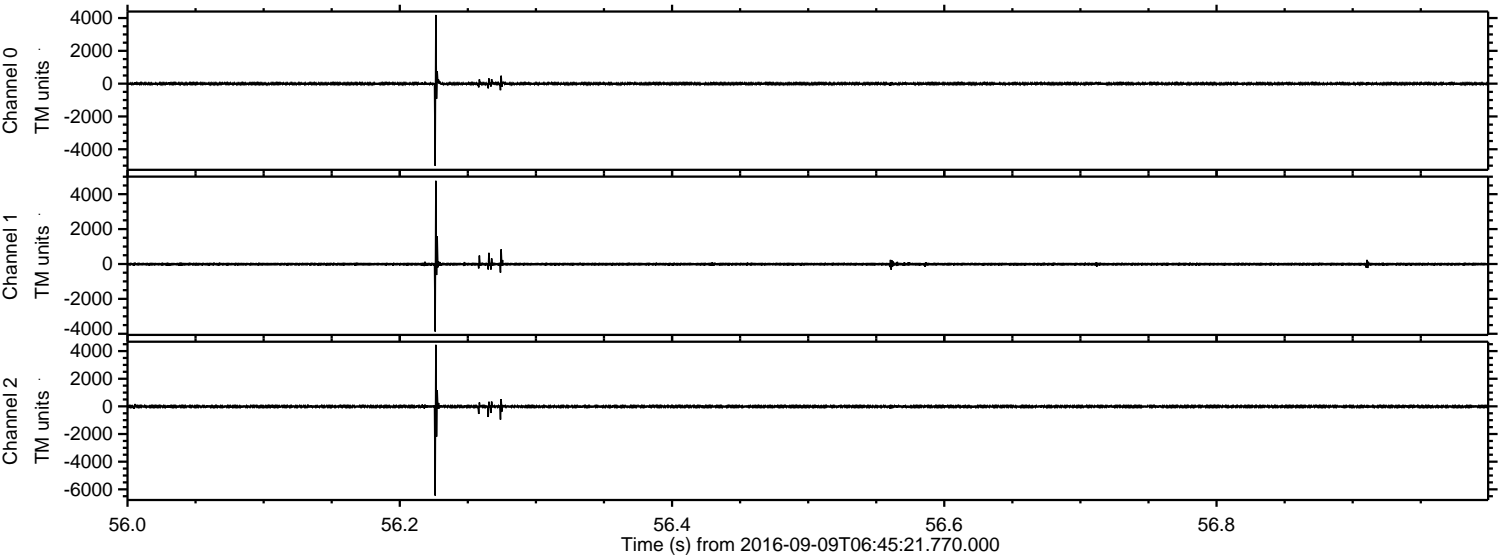


Channel 0
mn: -6751
mx: 5823
 μ : -1.4
 σ : 69.8

Channel 1
mn: -4922
mx: 6255
 μ : -8.9
 σ : 66.6

Channel 2
mn: -7558
mx: 5893
 μ : -9.6
 σ : 80.9

Processed Fri Sep 9 08:53:34 2016 by ELM ver.2012-10-06 from 001__elm20160909_064520__dat00.bin



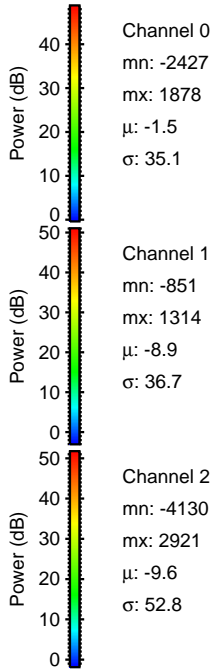
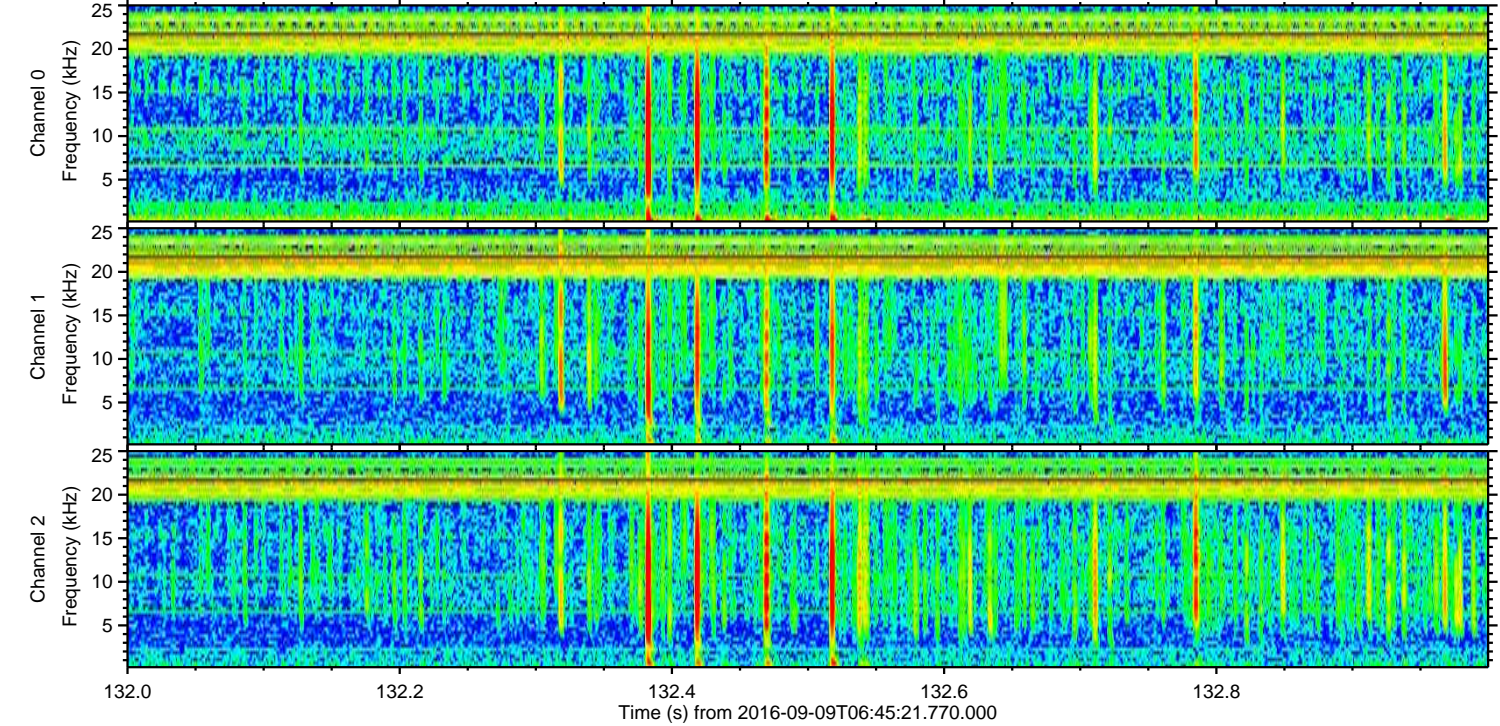
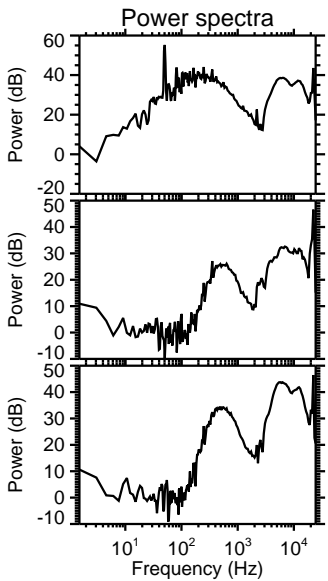
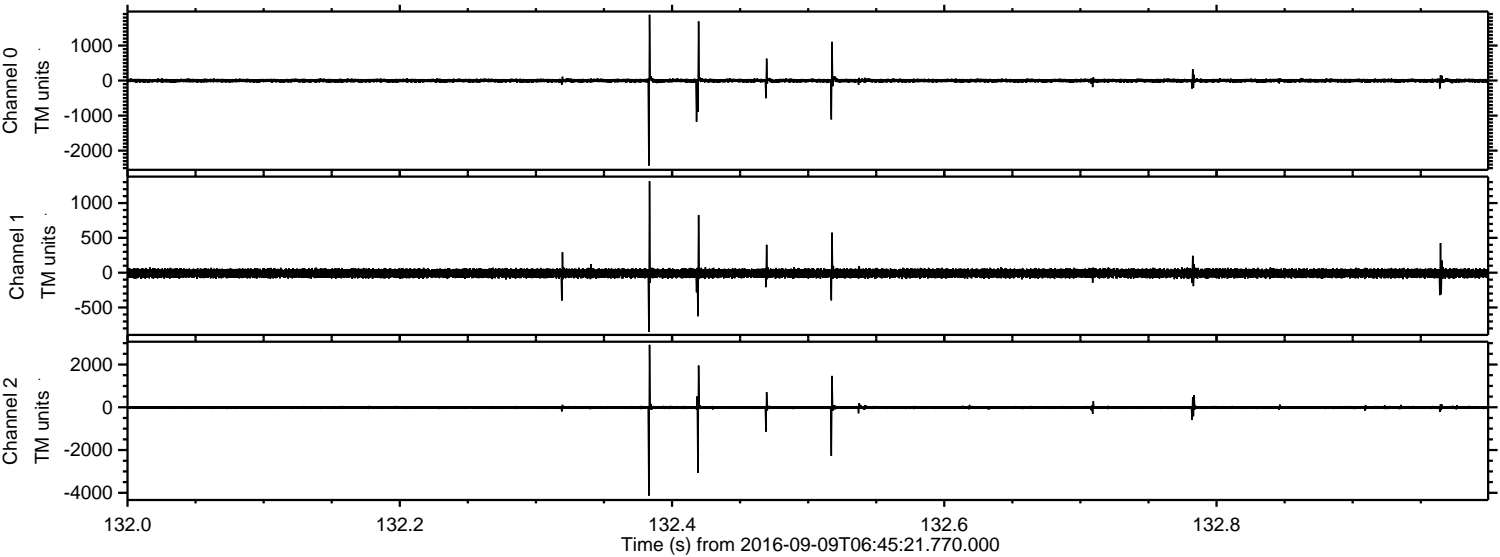
Channel 0
mn: -5005
mx: 4189
 μ : -1.5
 σ : 48.8

Channel 1
mn: -3871
mx: 4767
 μ : -8.9
 σ : 51.1

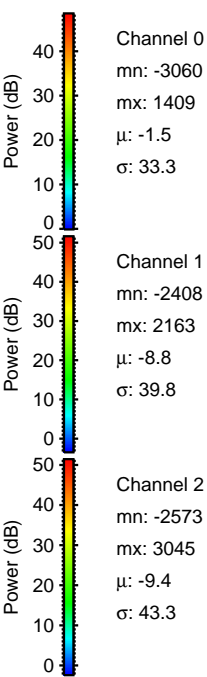
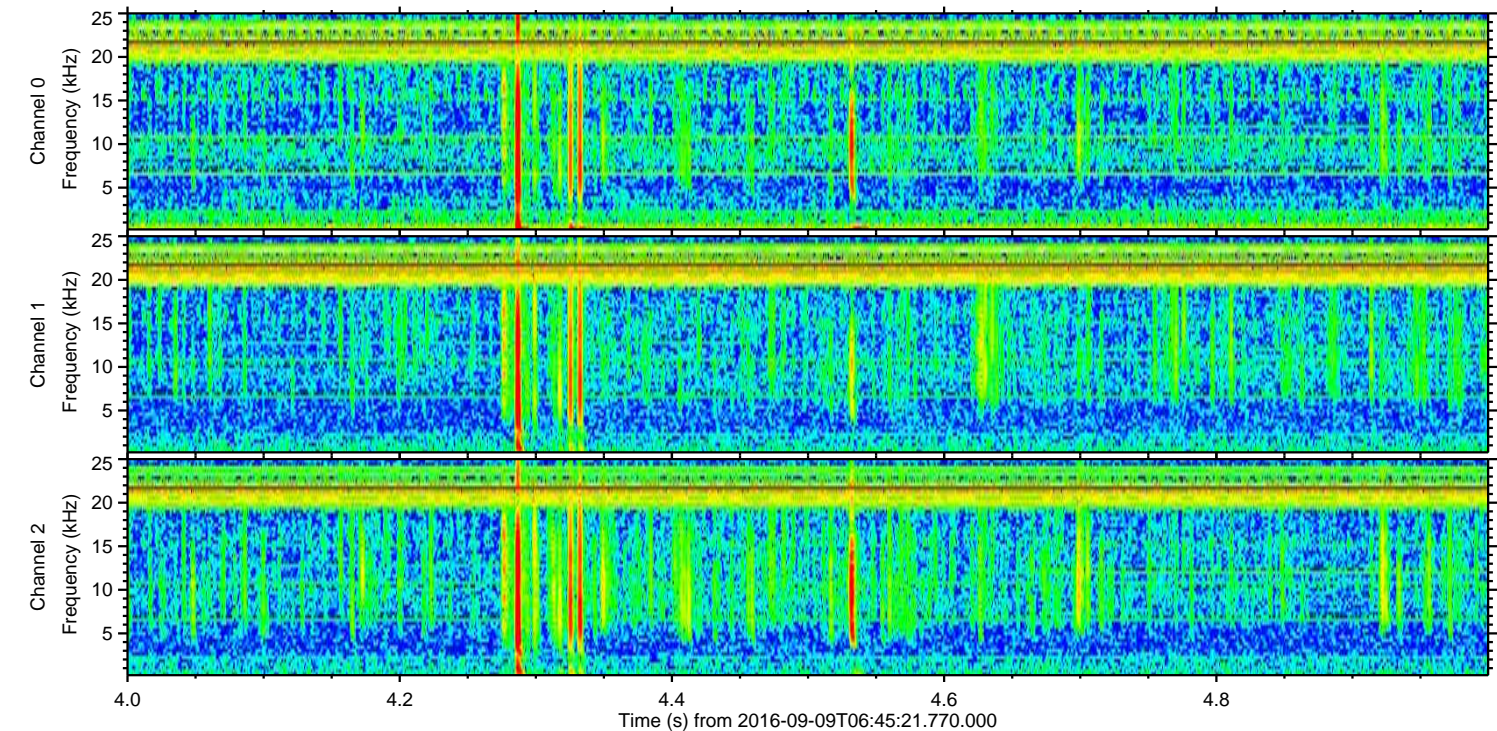
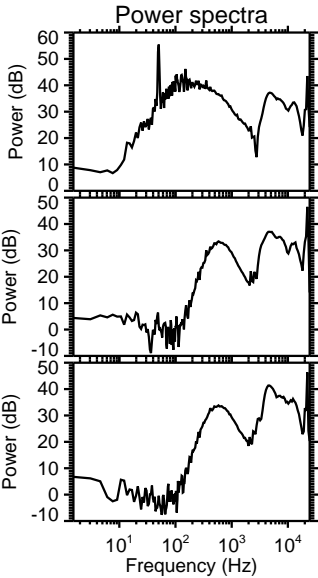
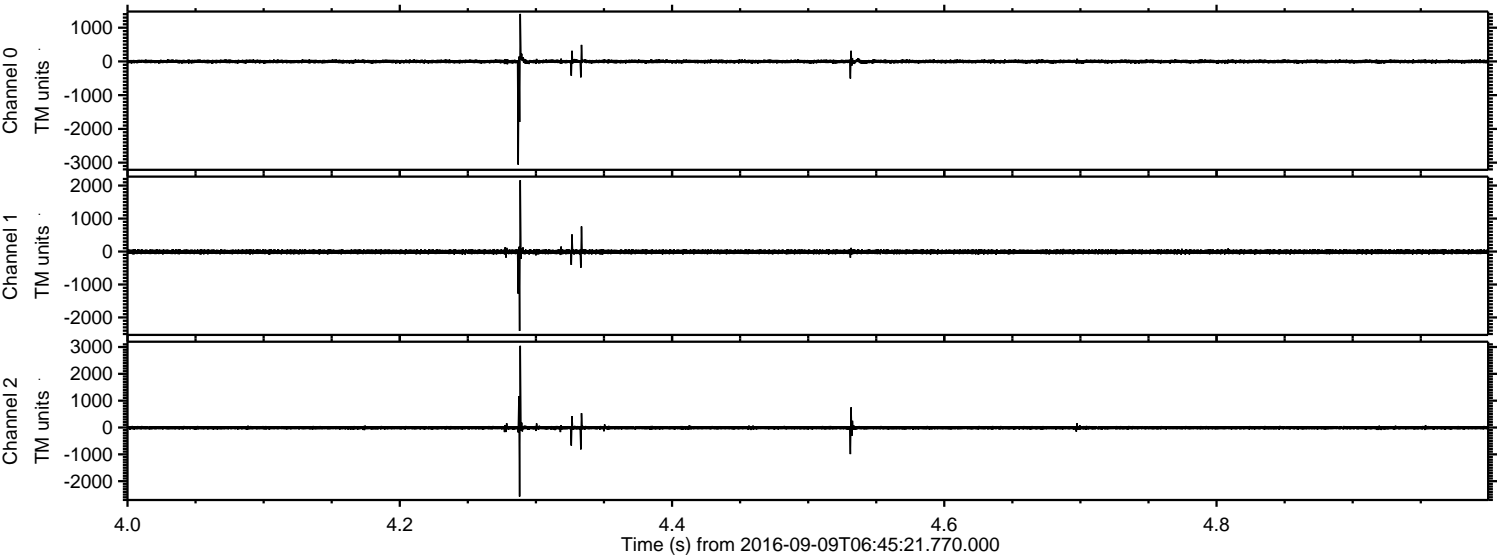
Channel 2
mn: -6451
mx: 4455
 μ : -9.5
 σ : 59.1

ELMAVAN 3D WAVEFORMS (Measured data sampled at 50 kHz) 51000 packets of 144 samples from 2016-09-09T06:45:21.770.000. Part 133/147

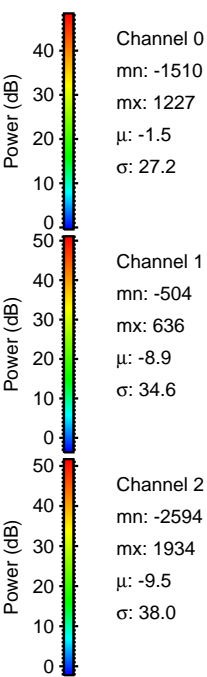
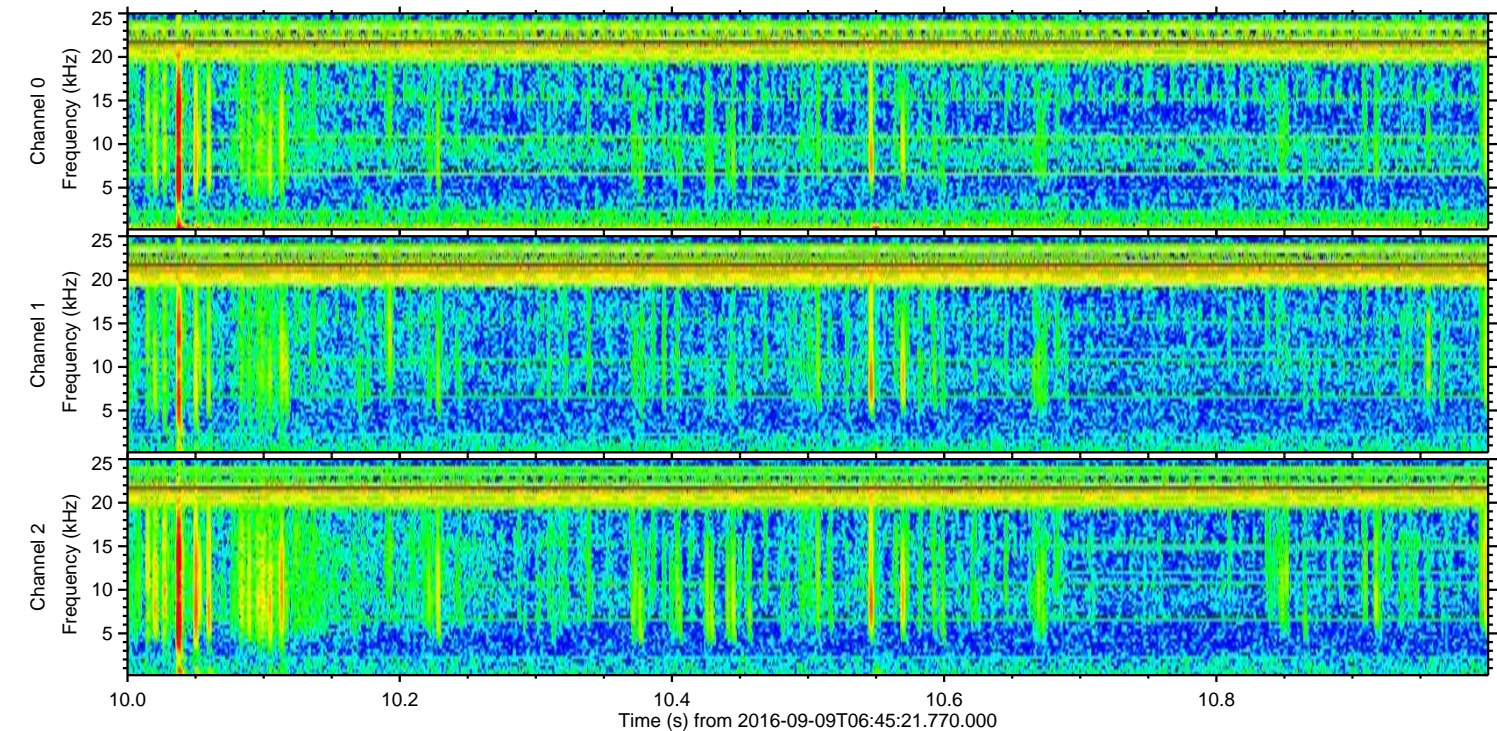
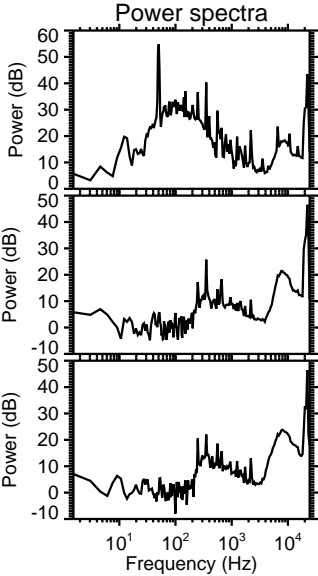
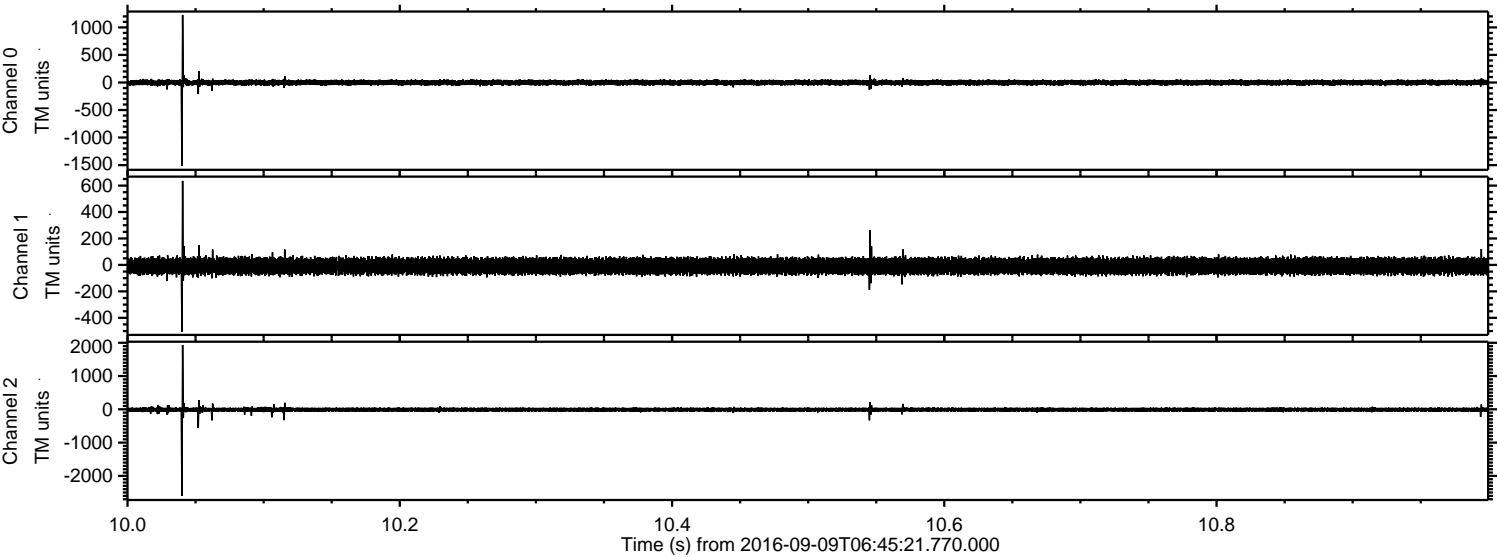
Processed Fri Sep 9 08:53:35 2016 by ELM ver.2012-10-06 from 001__elm20160909_064520__dat00.bin



Processed Fri Sep 9 08:53:36 2016 by ELM ver.2012-10-06 from 001__elm20160909_064520__dat00.bin

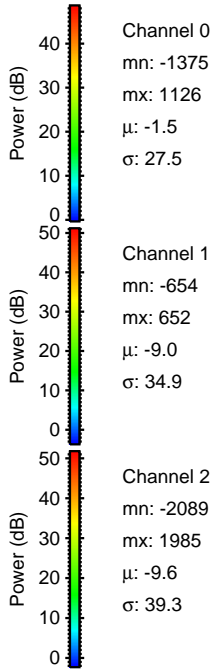
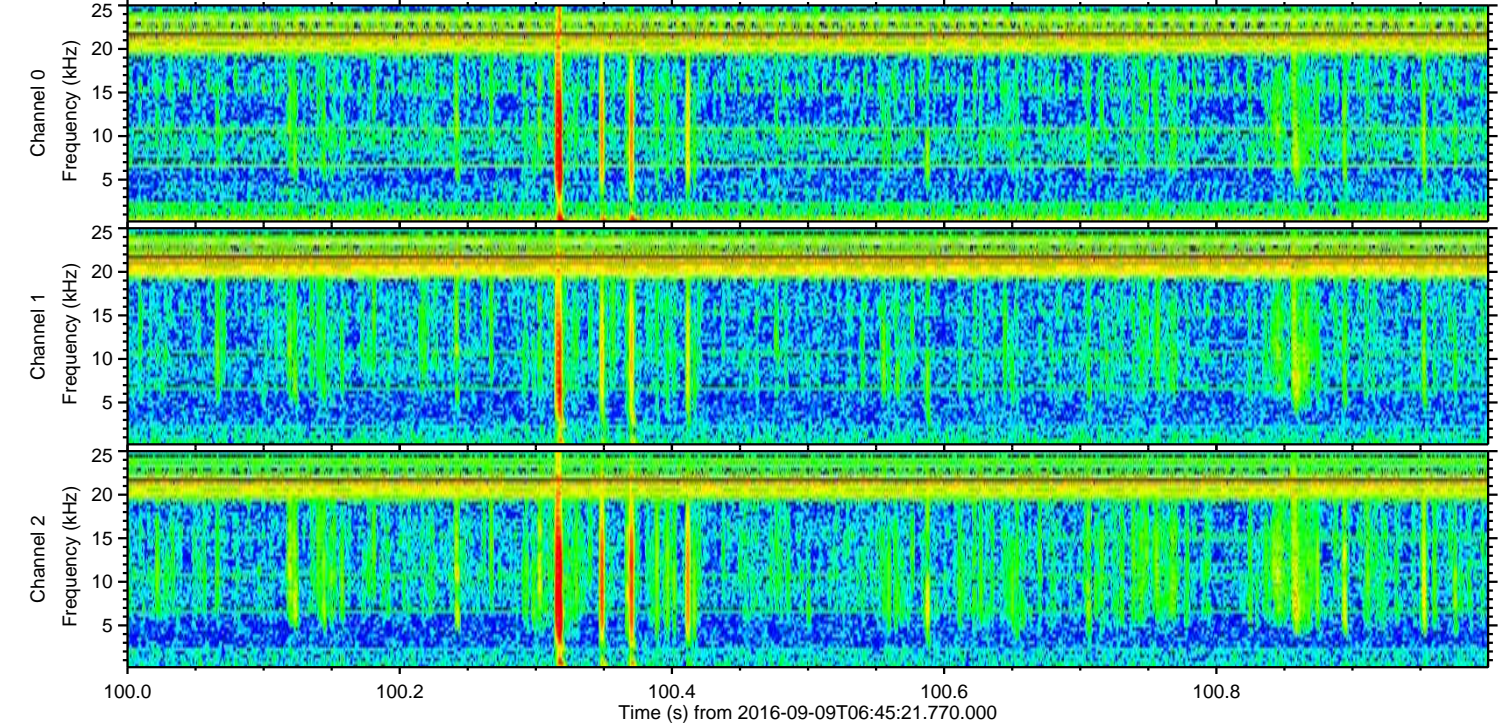
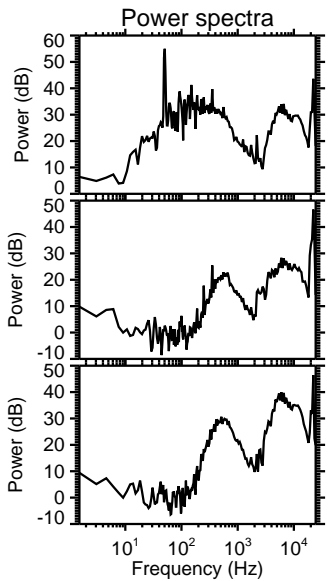
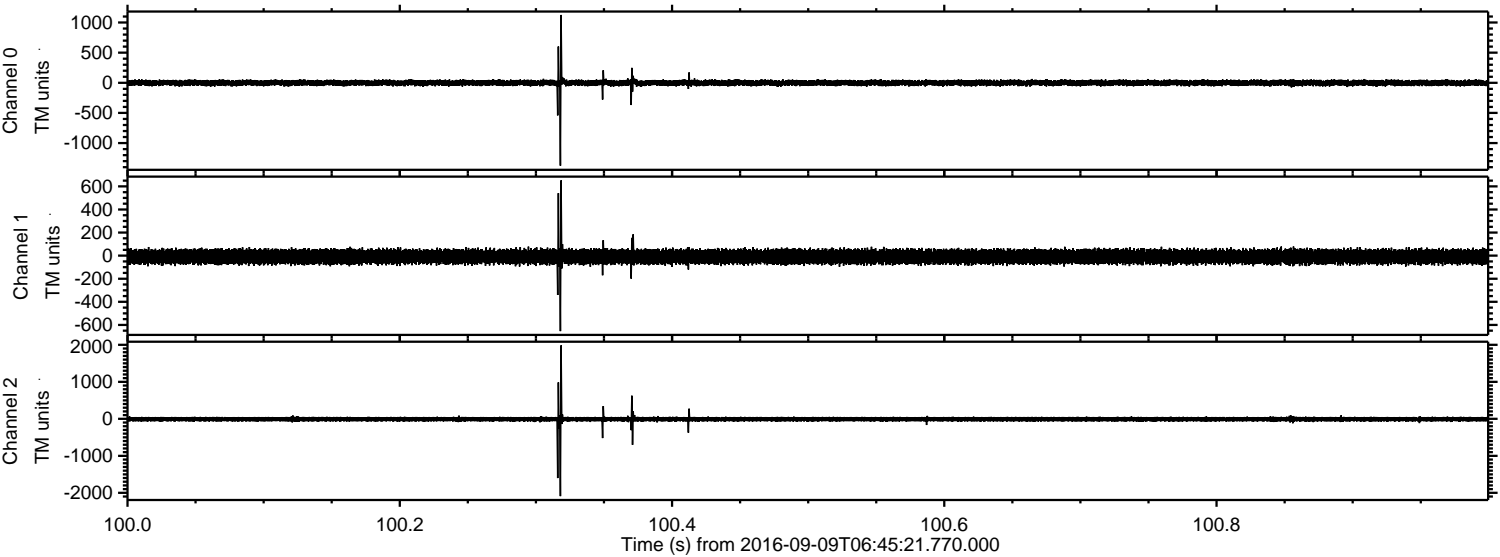


Processed Fri Sep 9 08:53:37 2016 by ELM ver.2012-10-06 from 001__elm20160909_064520__dat00.bin



ELMAVAN 3D WAVEFORMS (Measured data sampled at 50 kHz) 51000 packets of 144 samples from 2016-09-09T06:45:21.770.000. Part 101/147

Processed Fri Sep 9 08:53:38 2016 by ELM ver.2012-10-06 from 001__elm20160909_064520__dat00.bin

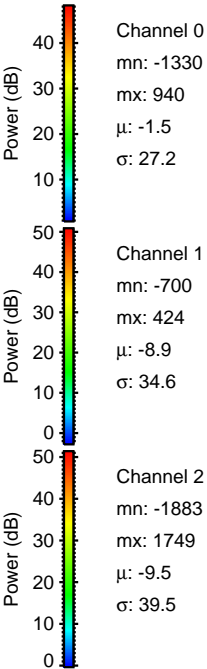
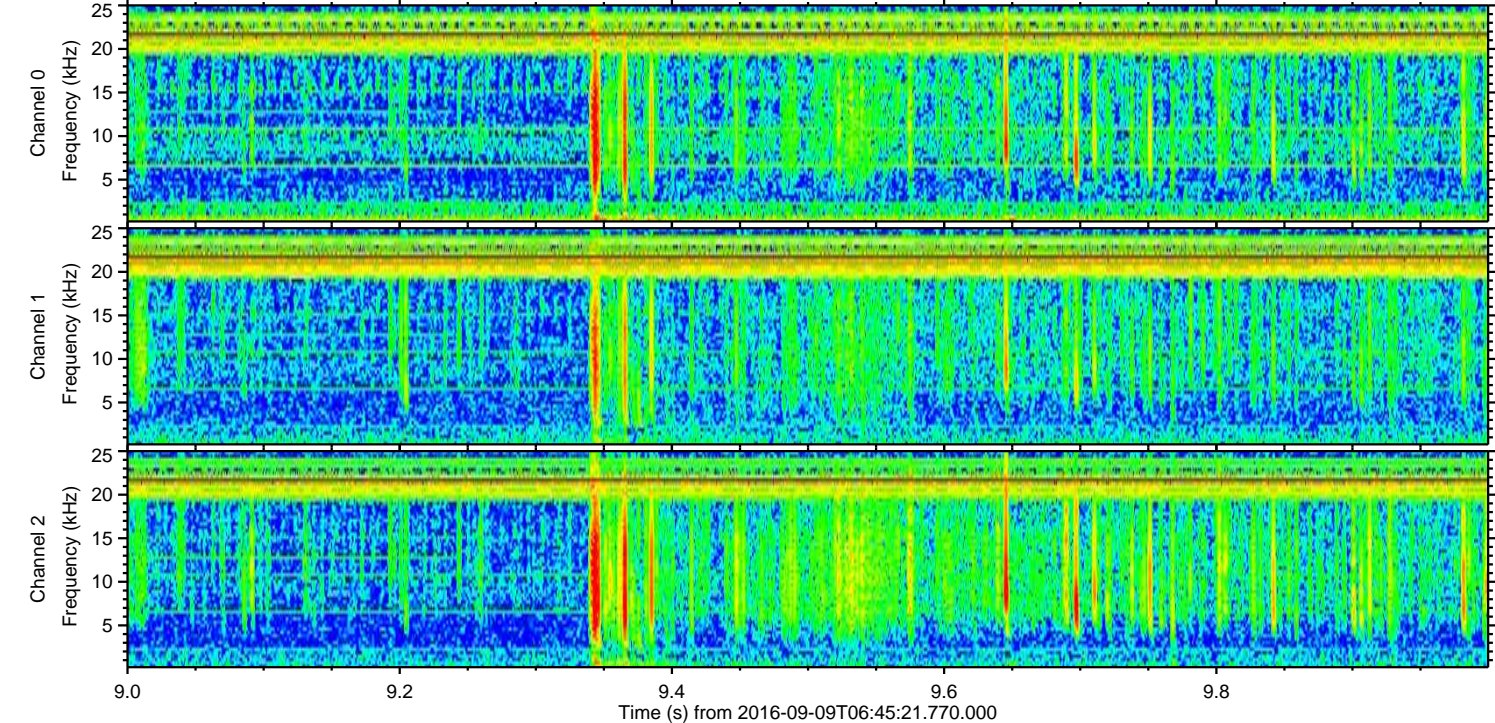
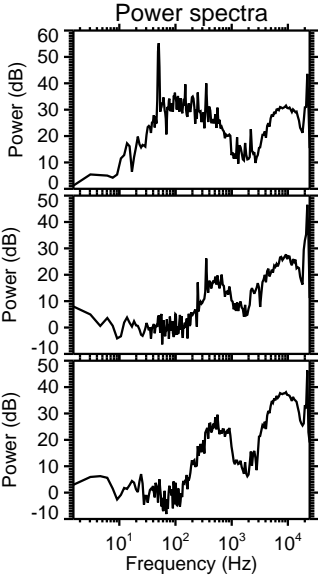
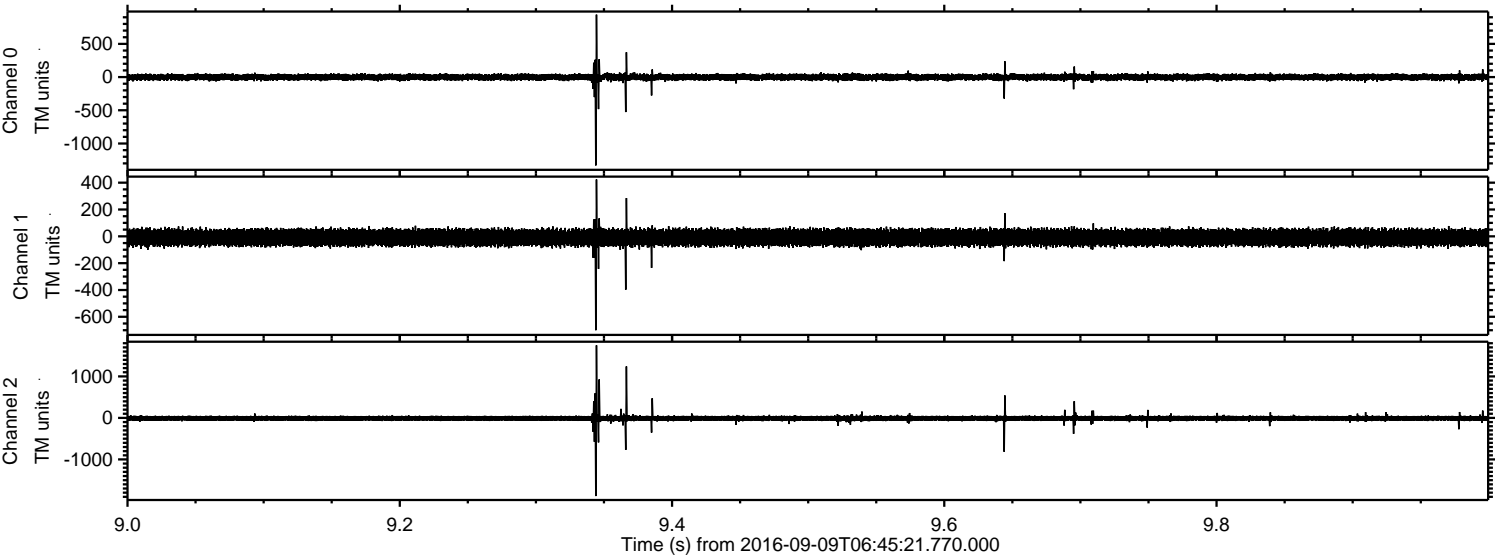


Channel 0
mn: -1375
mx: 1126
 μ : -1.5
 σ : 27.5

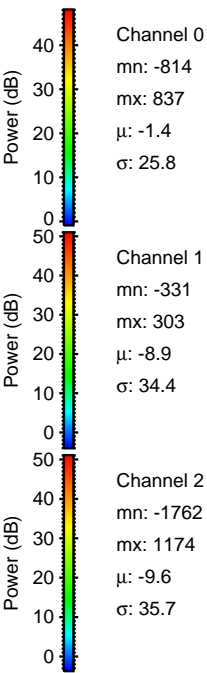
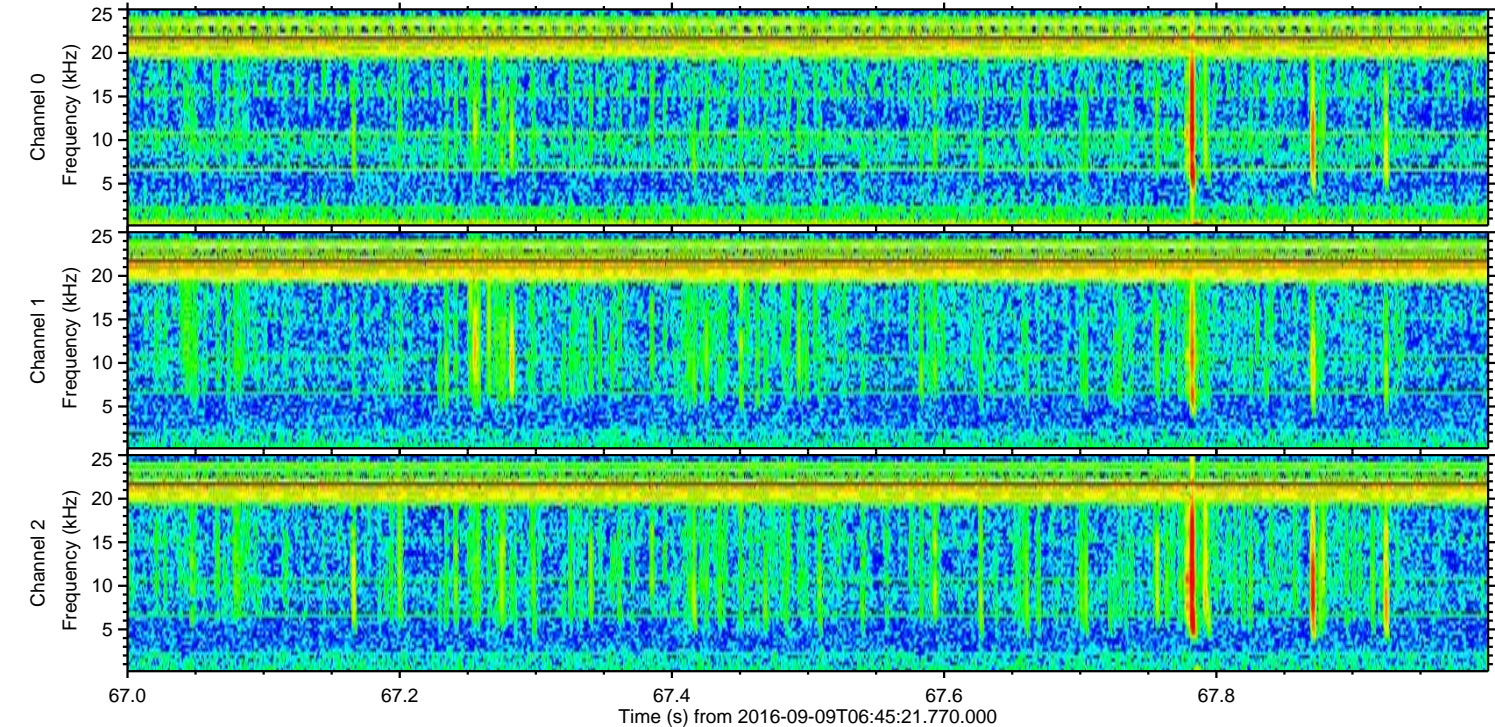
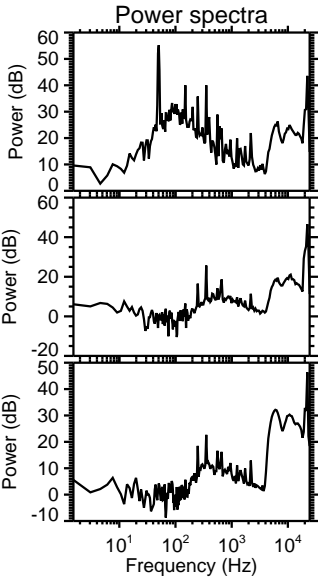
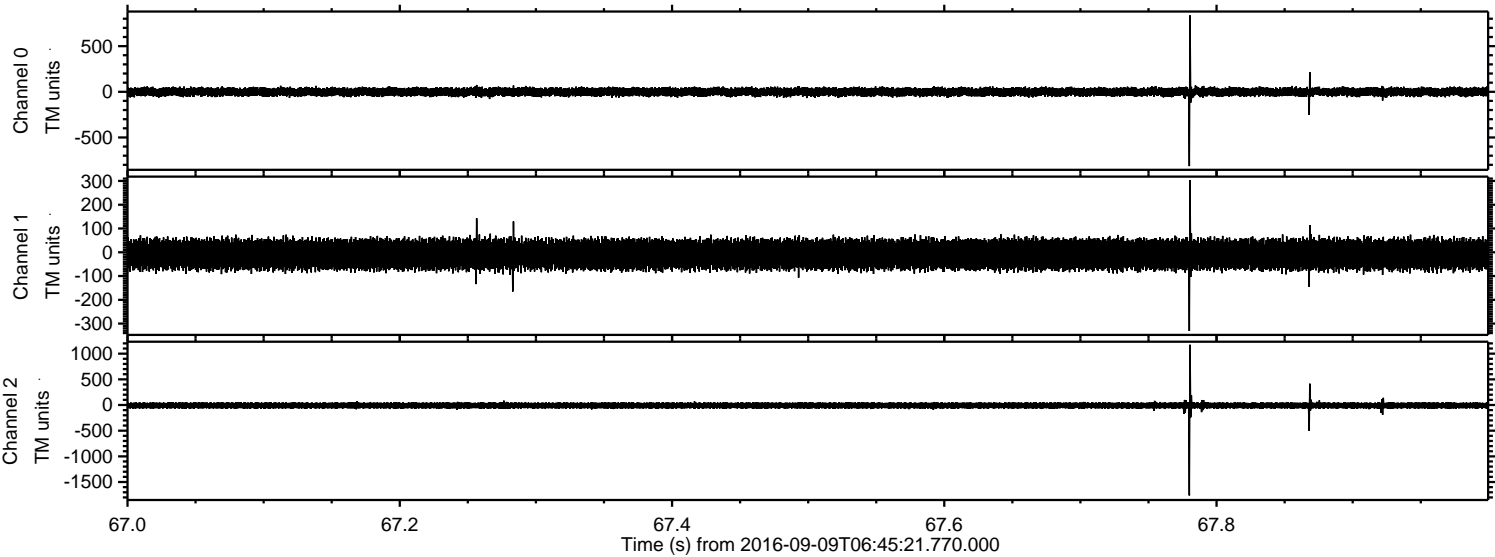
Channel 1
mn: -654
mx: 652
 μ : -9.0
 σ : 34.9

Channel 2
mn: -2089
mx: 1985
 μ : -9.6
 σ : 39.3

Processed Fri Sep 9 08:53:39 2016 by ELM ver.2012-10-06 from 001__elm20160909_064520__dat00.bin



Processed Fri Sep 9 08:53:40 2016 by ELM ver.2012-10-06 from 001__elm20160909_064520__dat00.bin



Processed Fri Sep 9 08:53:41 2016 by ELM ver.2012-10-06 from 001__elm20160909_064520__dat00.bin

