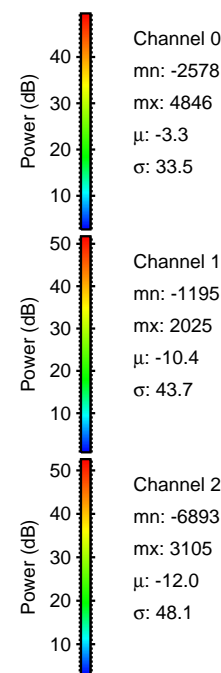
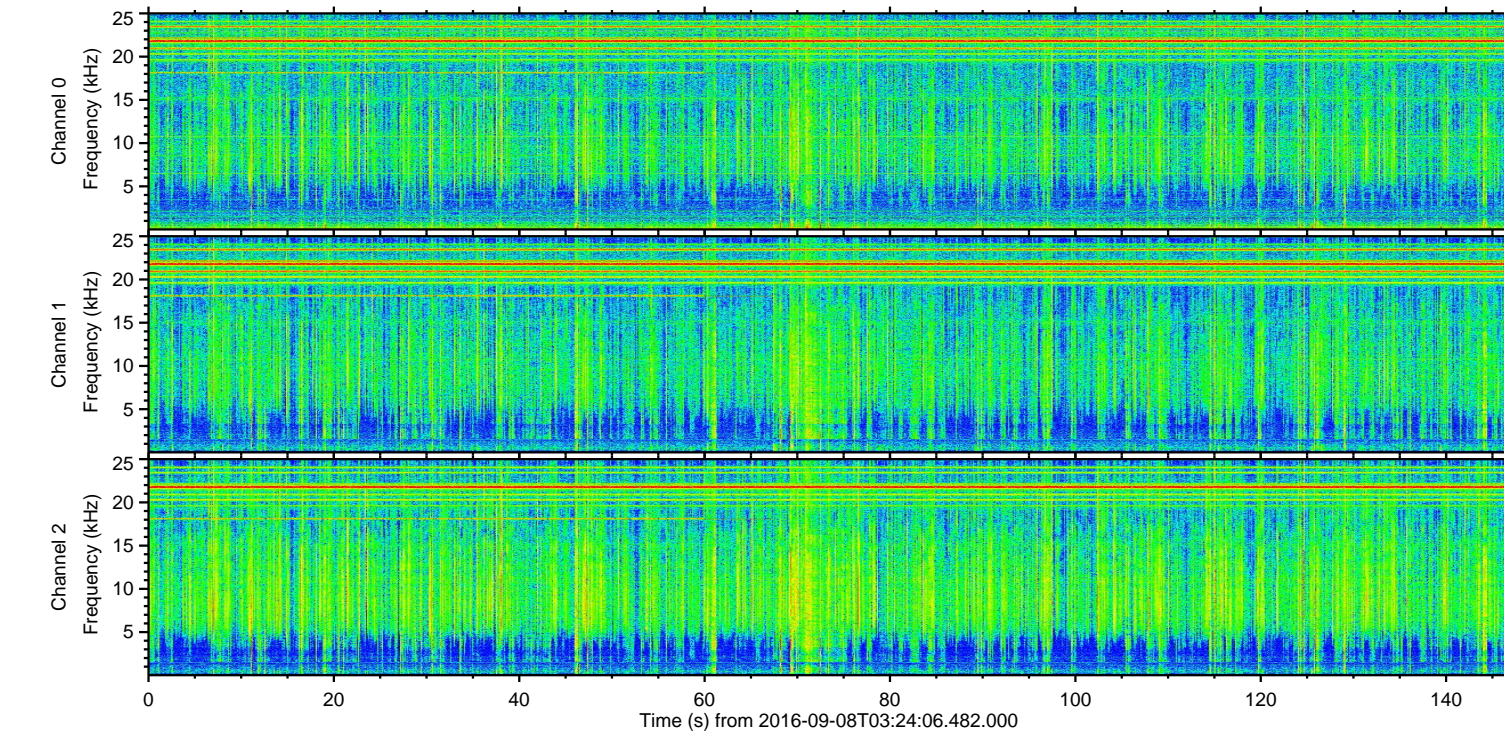
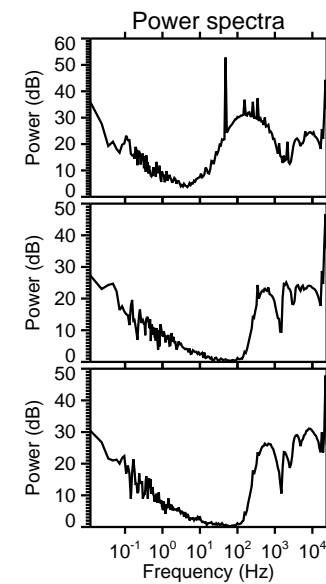
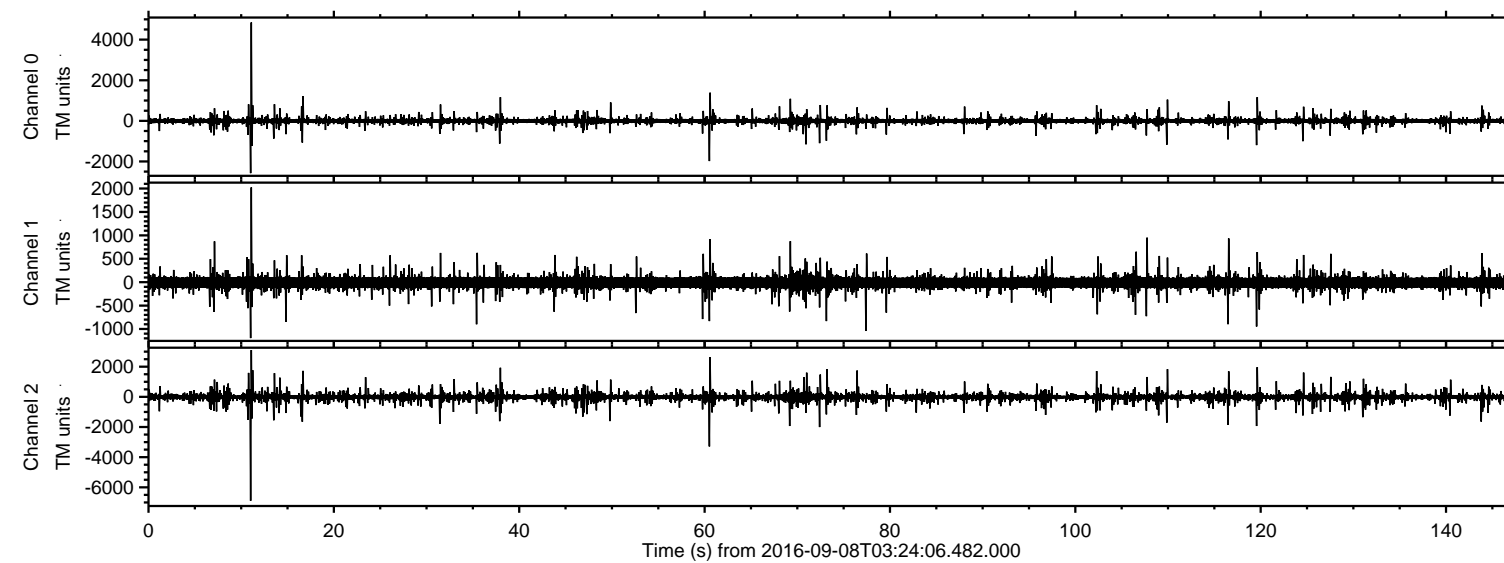
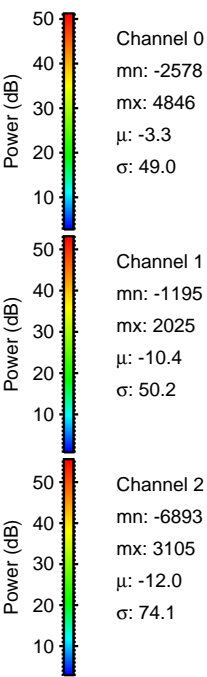
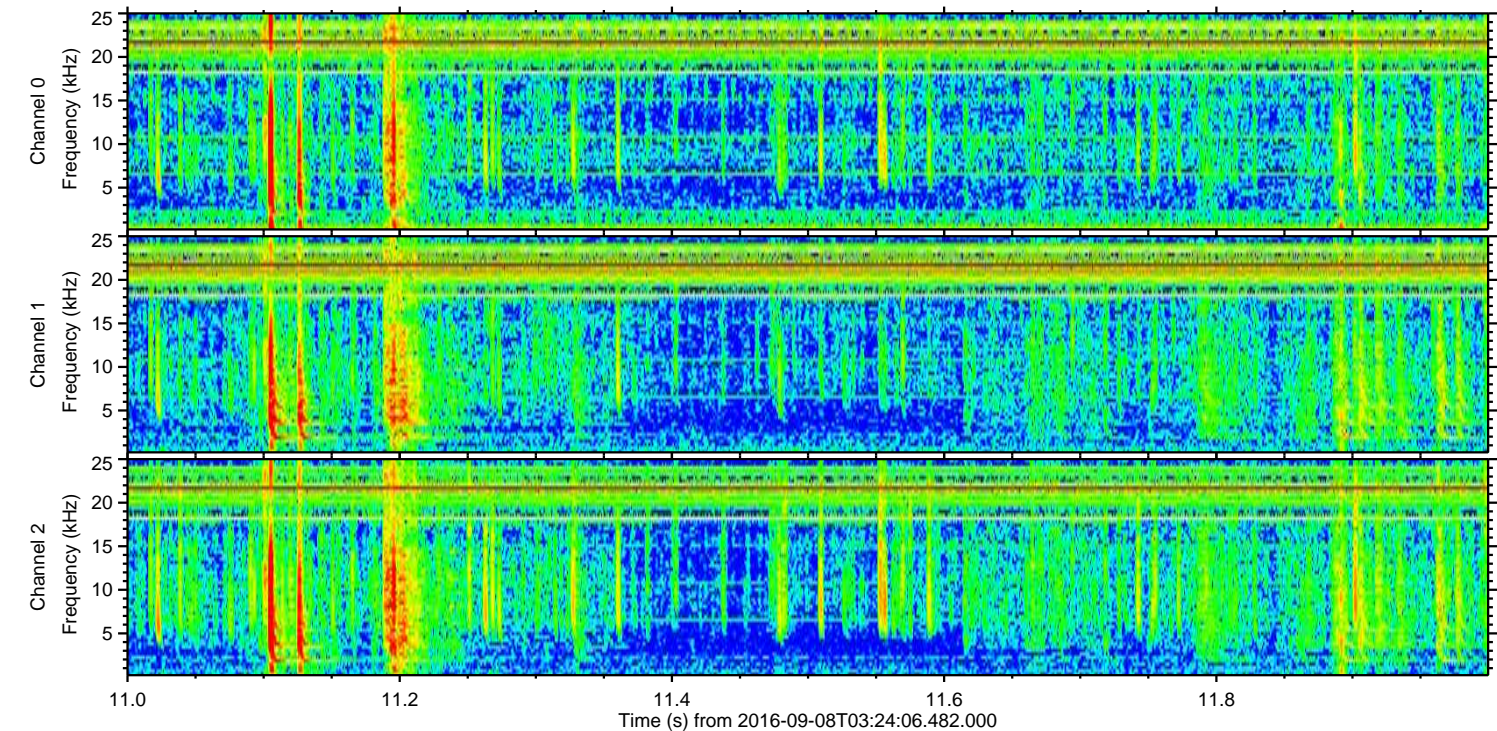
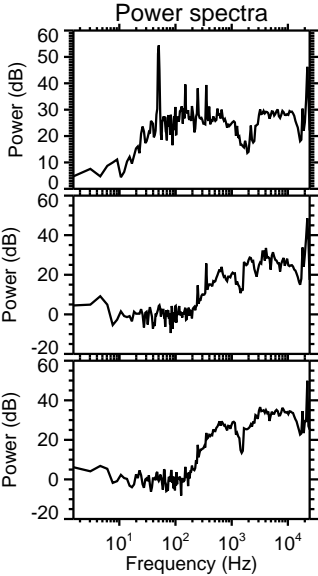
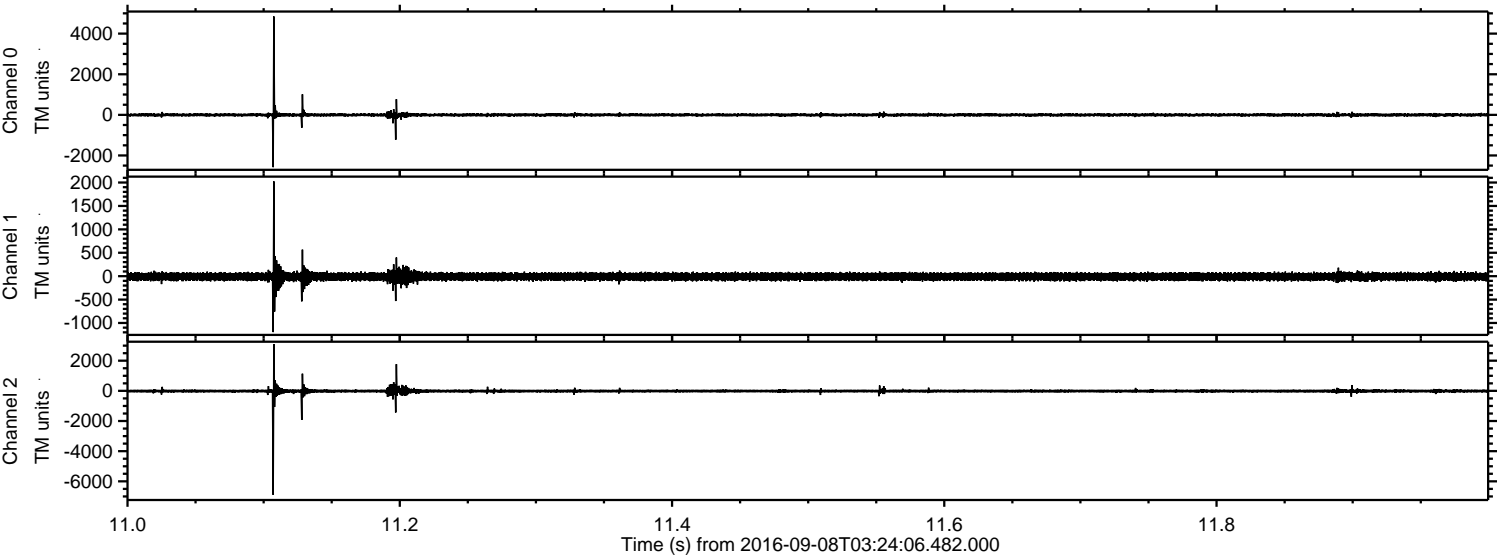


ELMAVAN 3D WAVEFORMS (Measured data sampled at 50 kHz) 51000 packets of 144 samples from 2016-09-08T03:24:06.482.000.

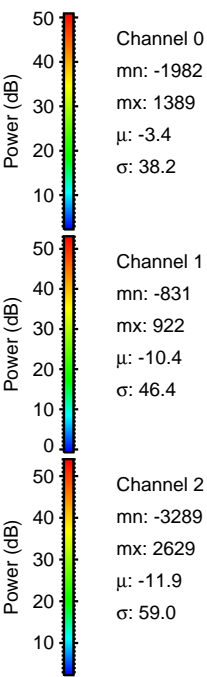
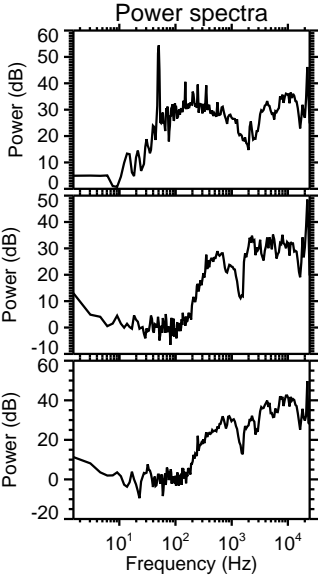
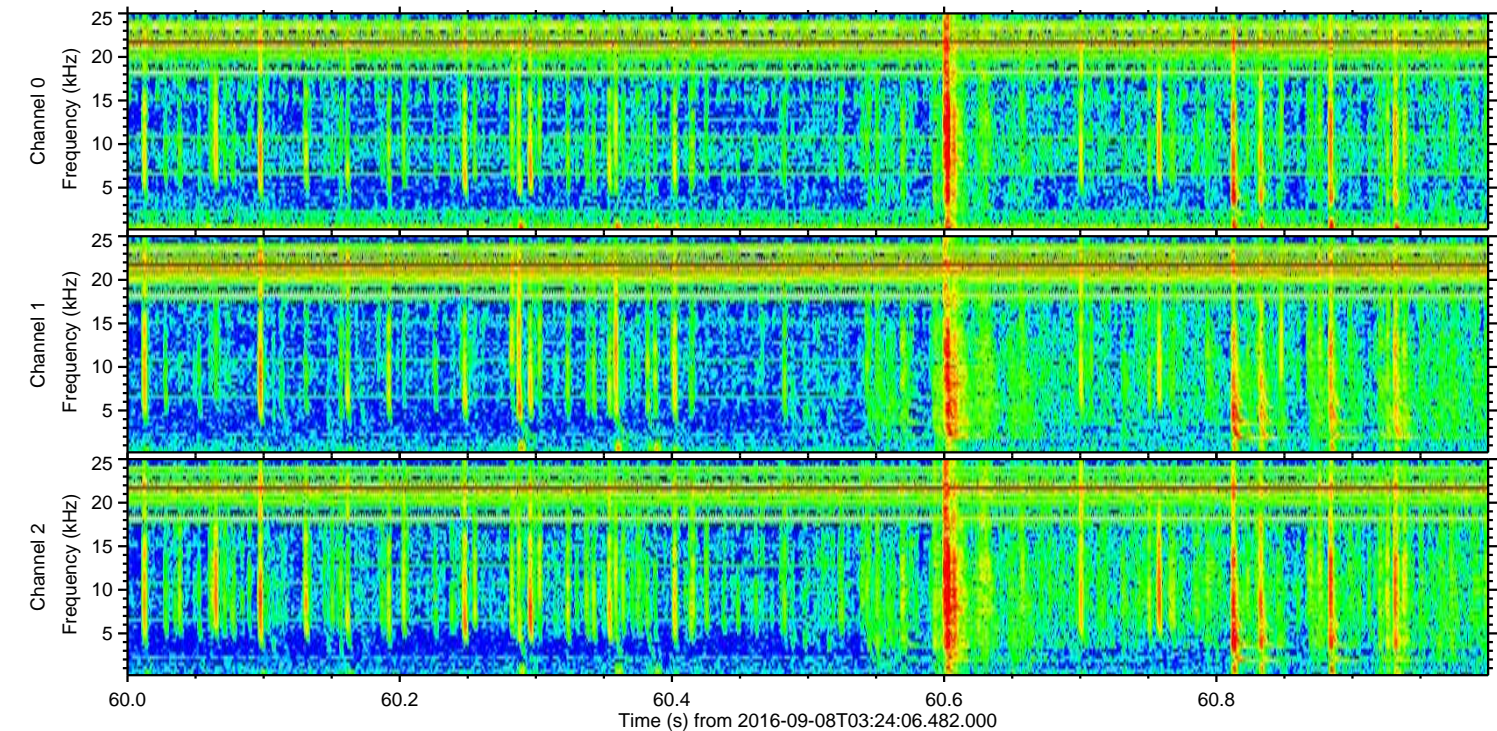
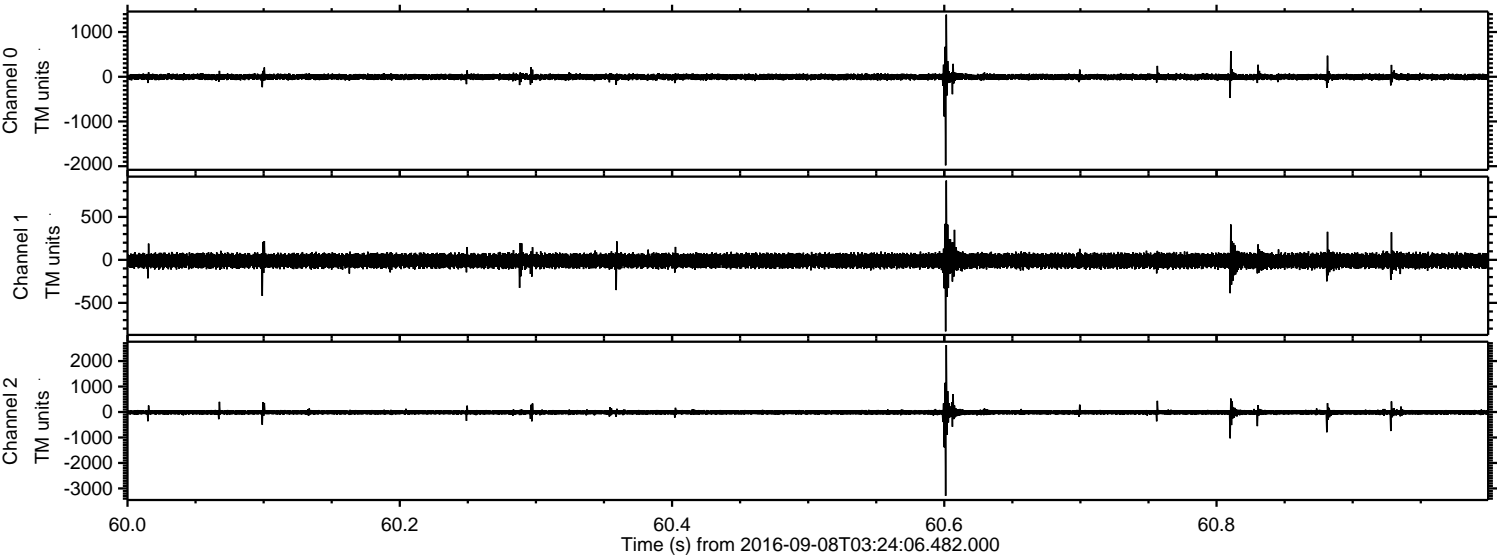
Processed Thu Sep 8 05:31:47 2016 by ELM ver.2012-10-06 from 001__elm20160908_032405__dat00.bin



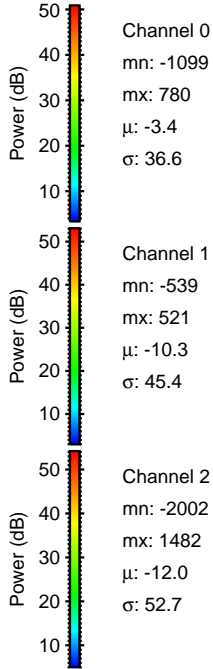
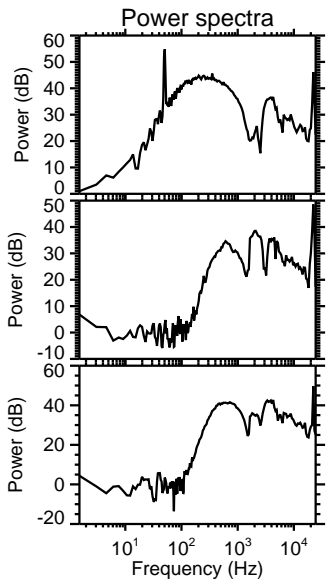
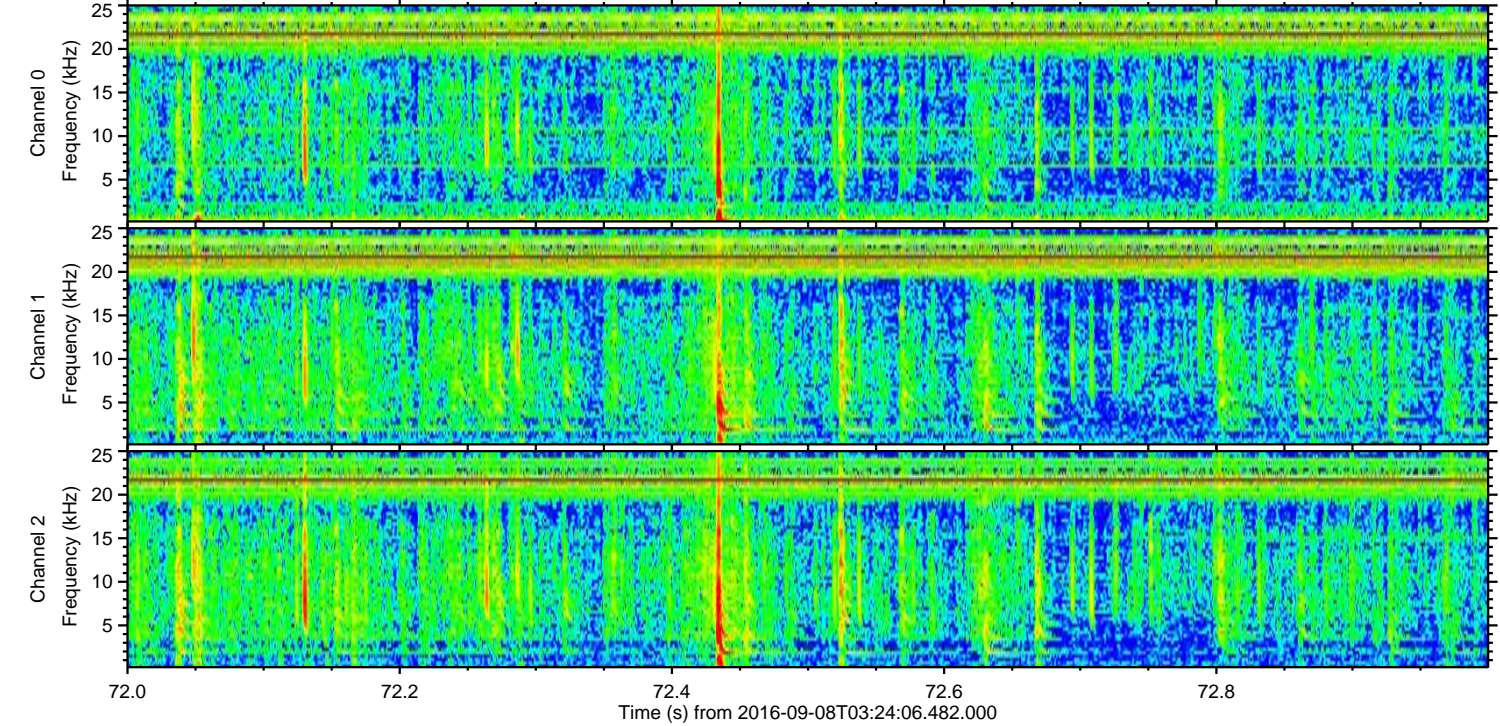
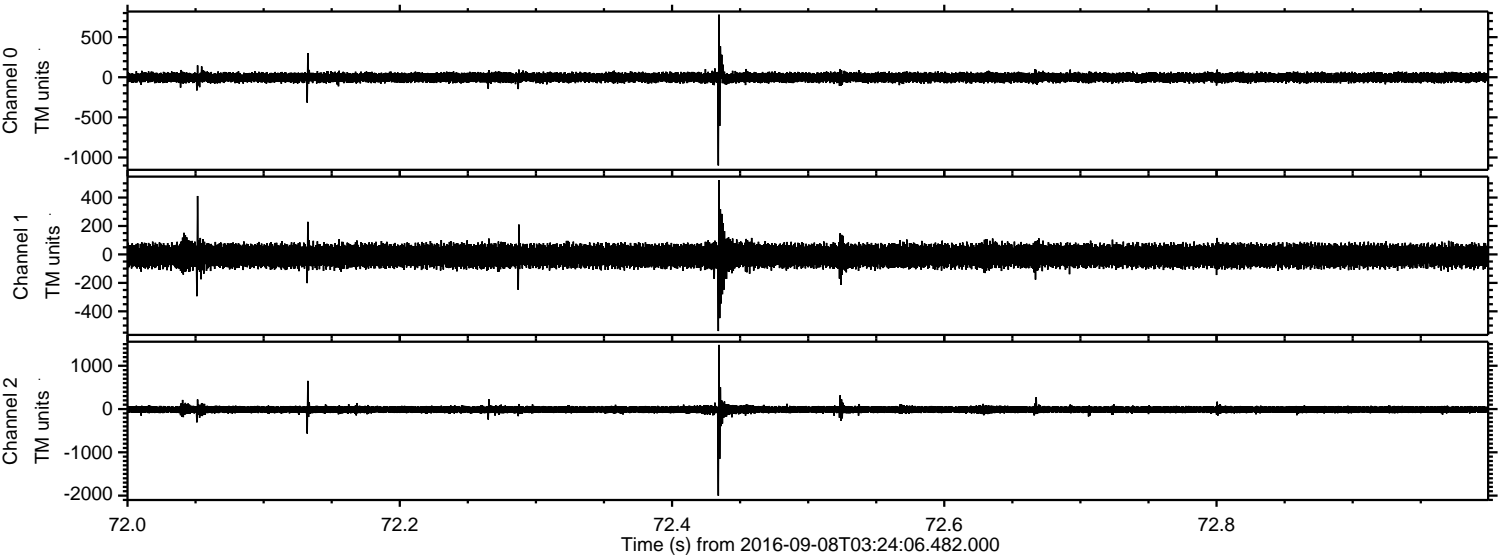
Processed Thu Sep 8 05:31:59 2016 by ELM ver.2012-10-06 from 001__elm20160908_032405__dat00.bin



Processed Thu Sep 8 05:32:00 2016 by ELM ver.2012-10-06 from 001__elm20160908_032405__dat00.bin

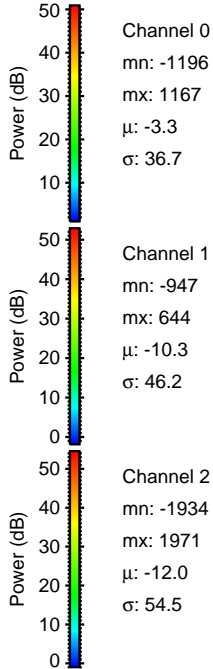
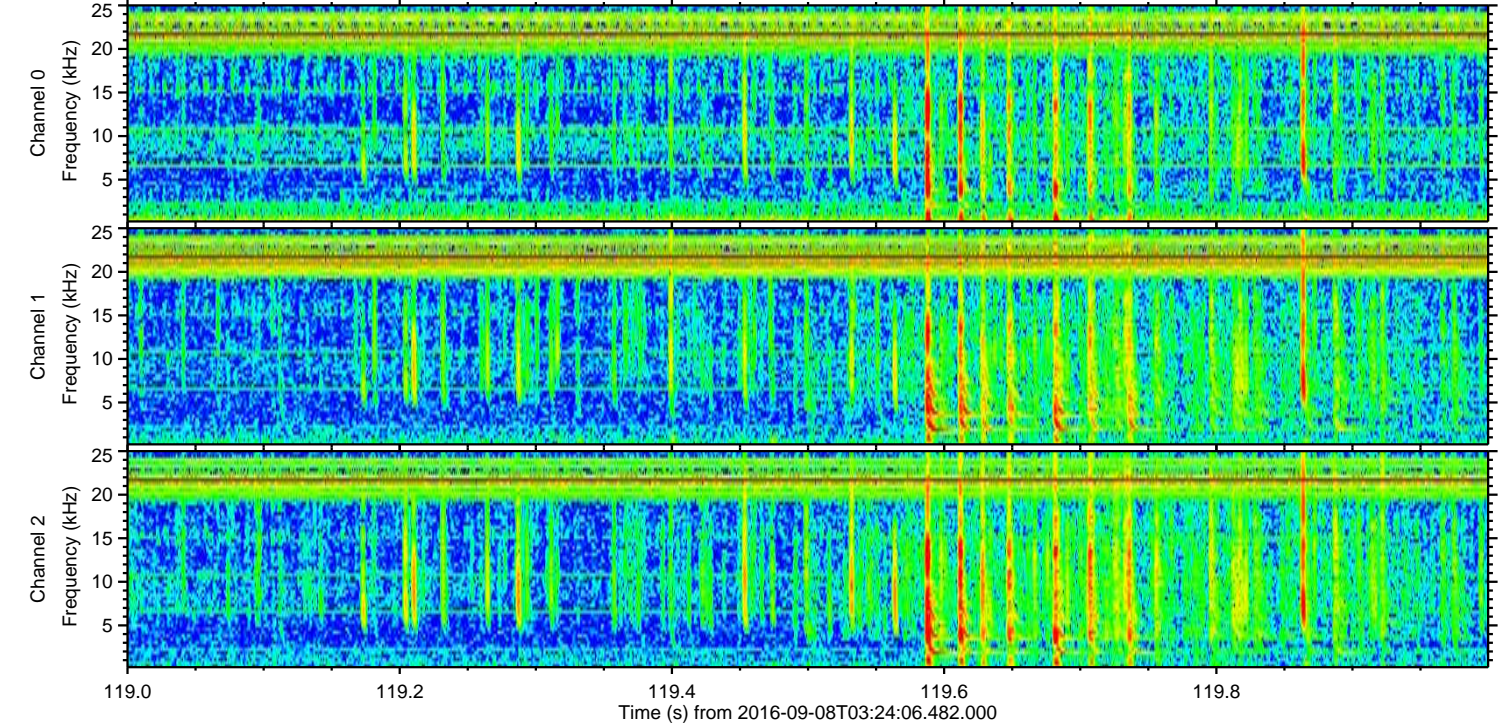
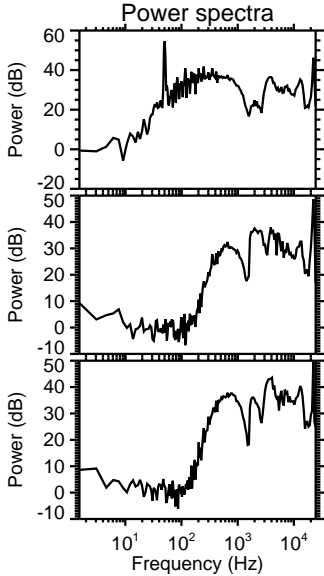
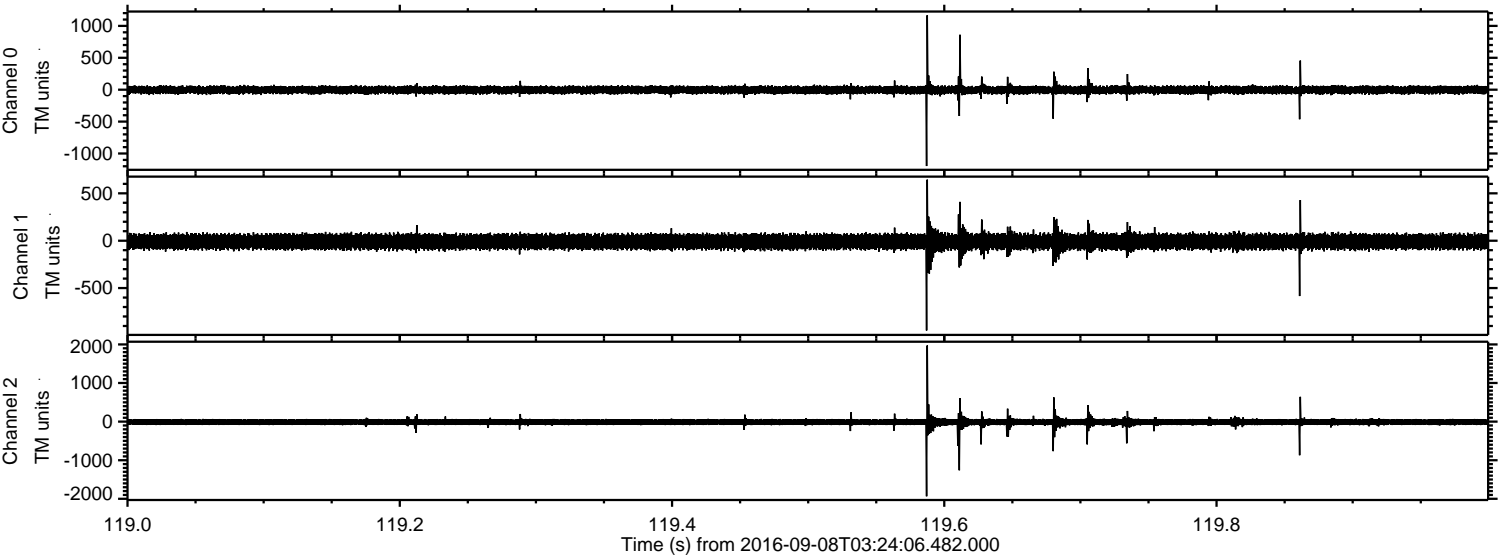


Processed Thu Sep 8 05:32:01 2016 by ELM ver.2012-10-06 from 001__elm20160908_032405__dat00.bin

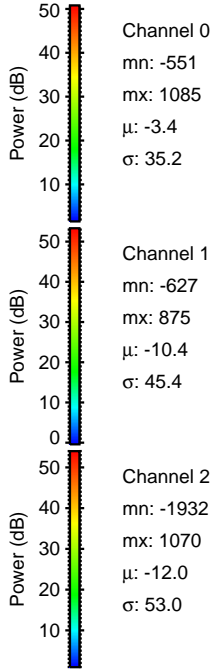
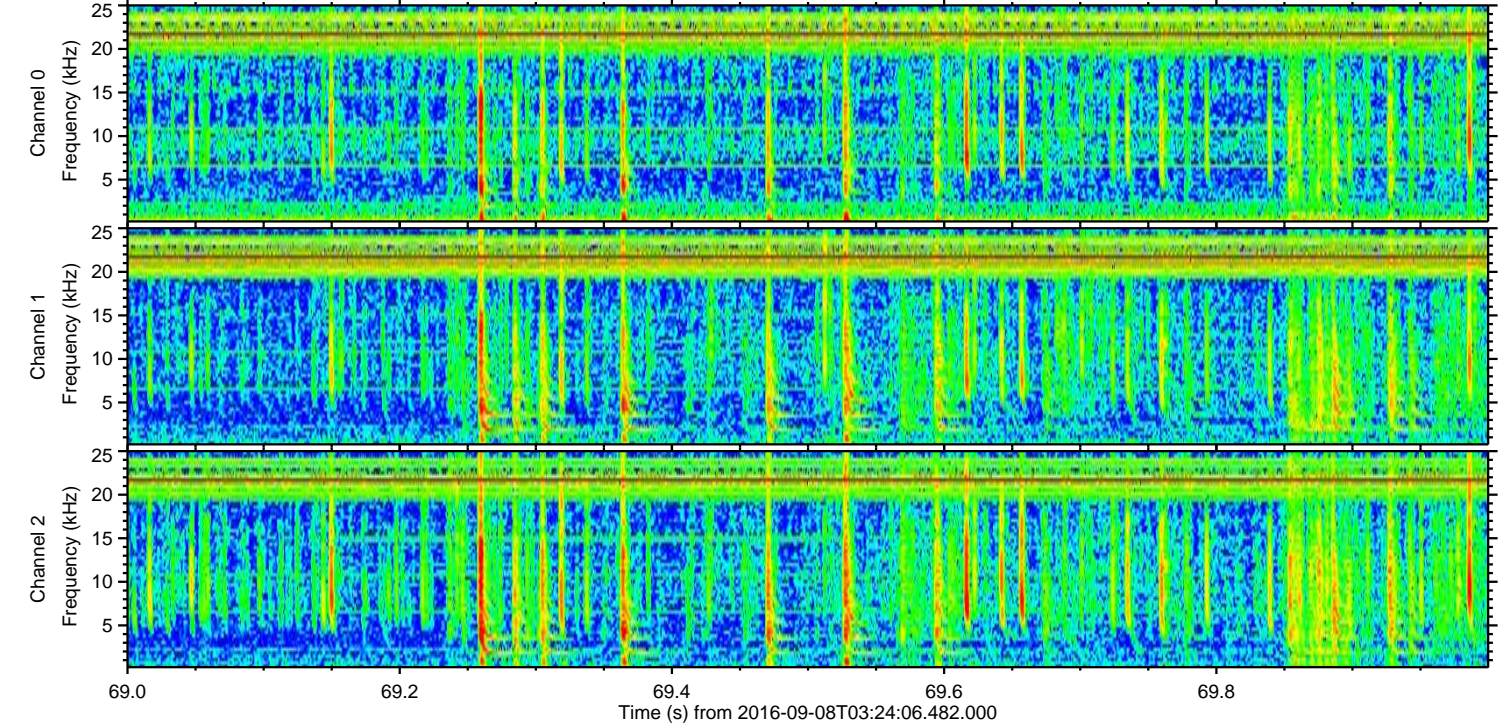
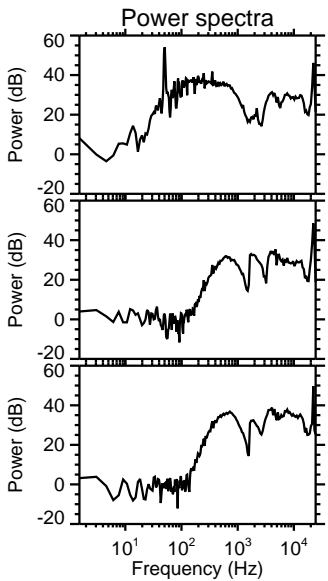
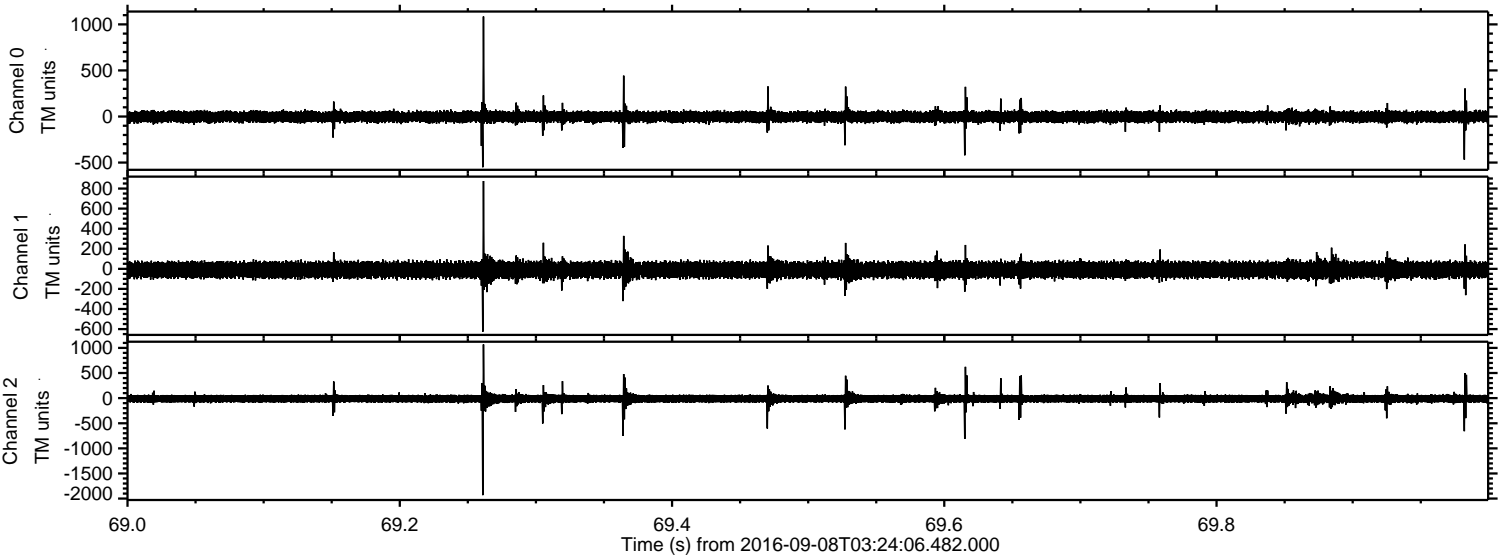


ELMAVAN 3D WAVEFORMS (Measured data sampled at 50 kHz) 51000 packets of 144 samples from 2016-09-08T03:24:06.482.000. Part 120/147

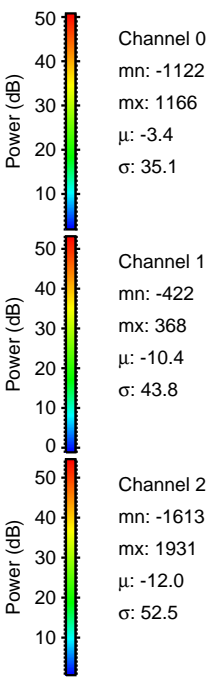
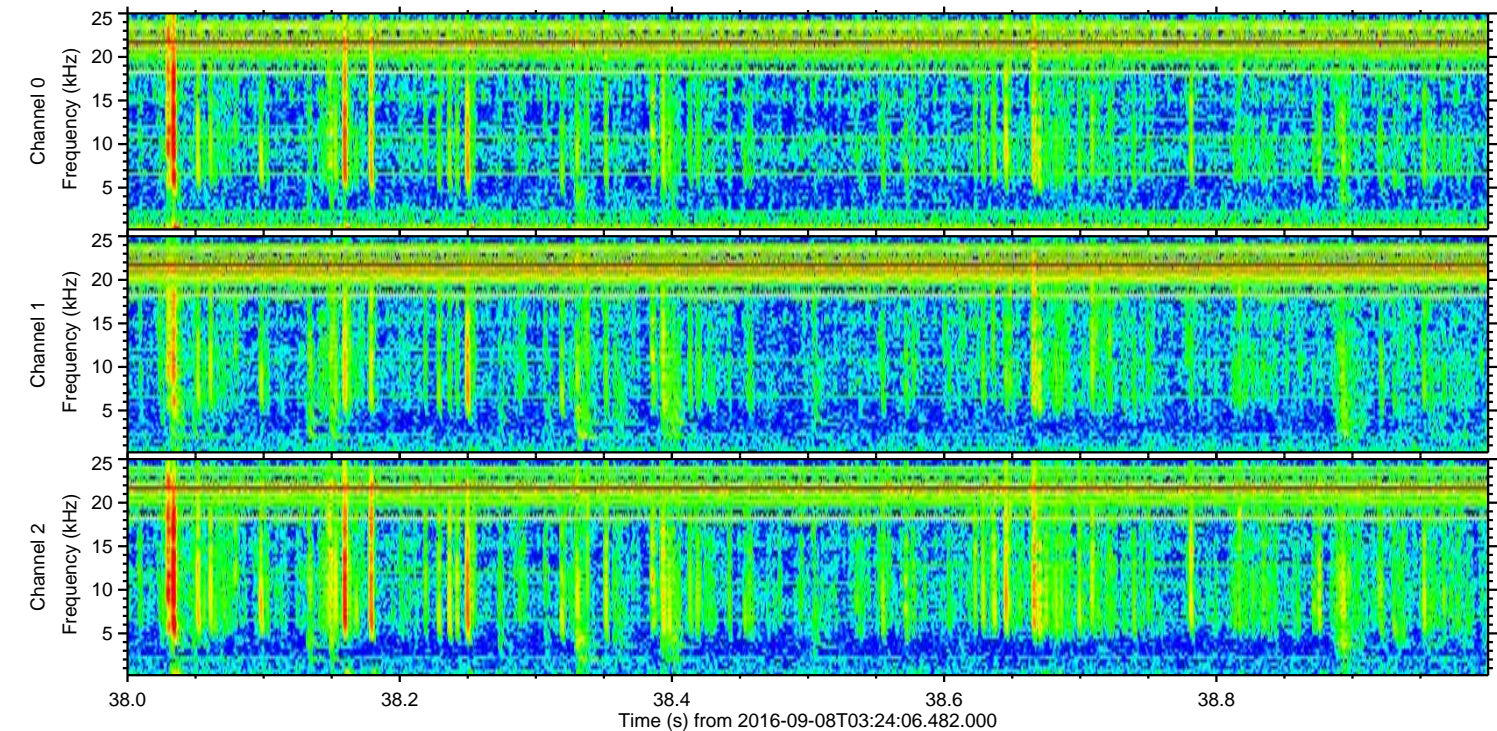
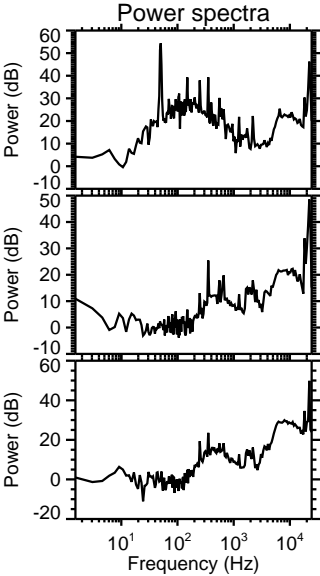
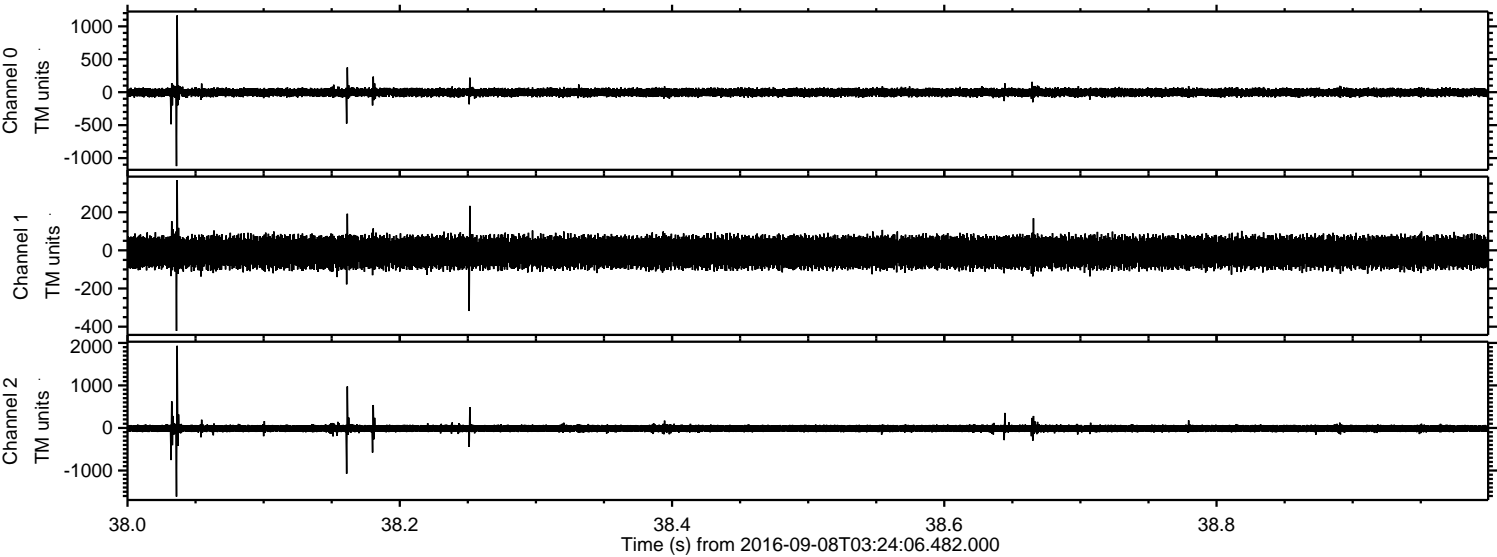
Processed Thu Sep 8 05:32:02 2016 by ELM ver.2012-10-06 from 001__elm20160908_032405__dat00.bin



Processed Thu Sep 8 05:32:03 2016 by ELM ver.2012-10-06 from 001__elm20160908_032405__dat00.bin

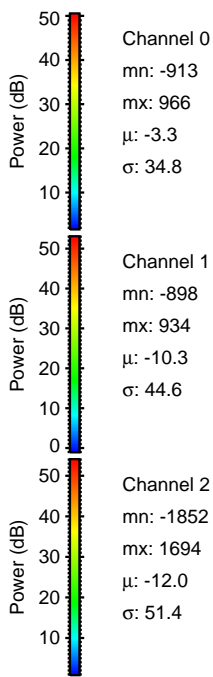
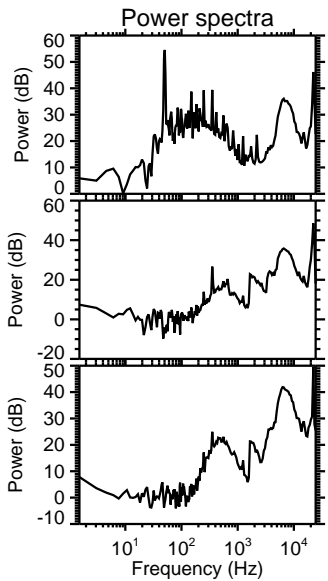
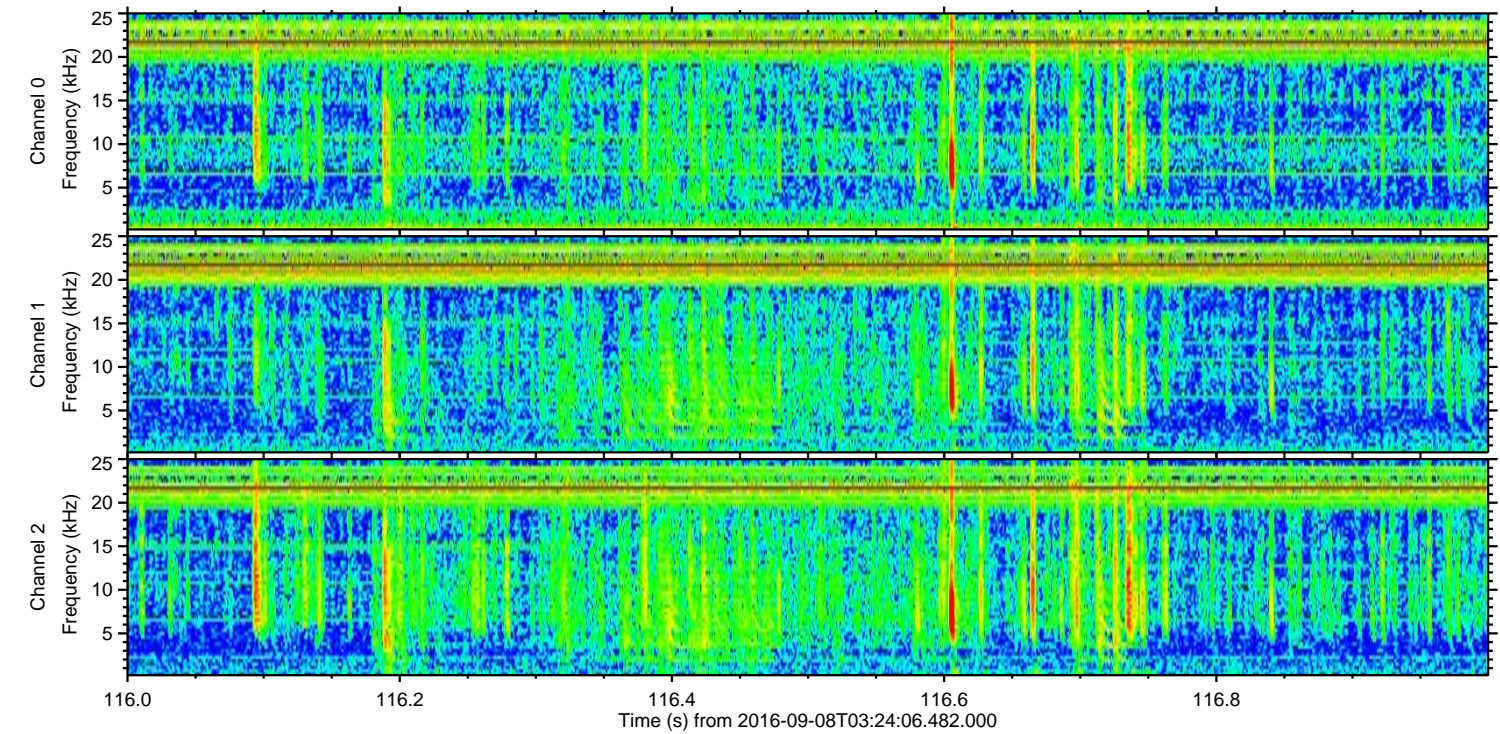
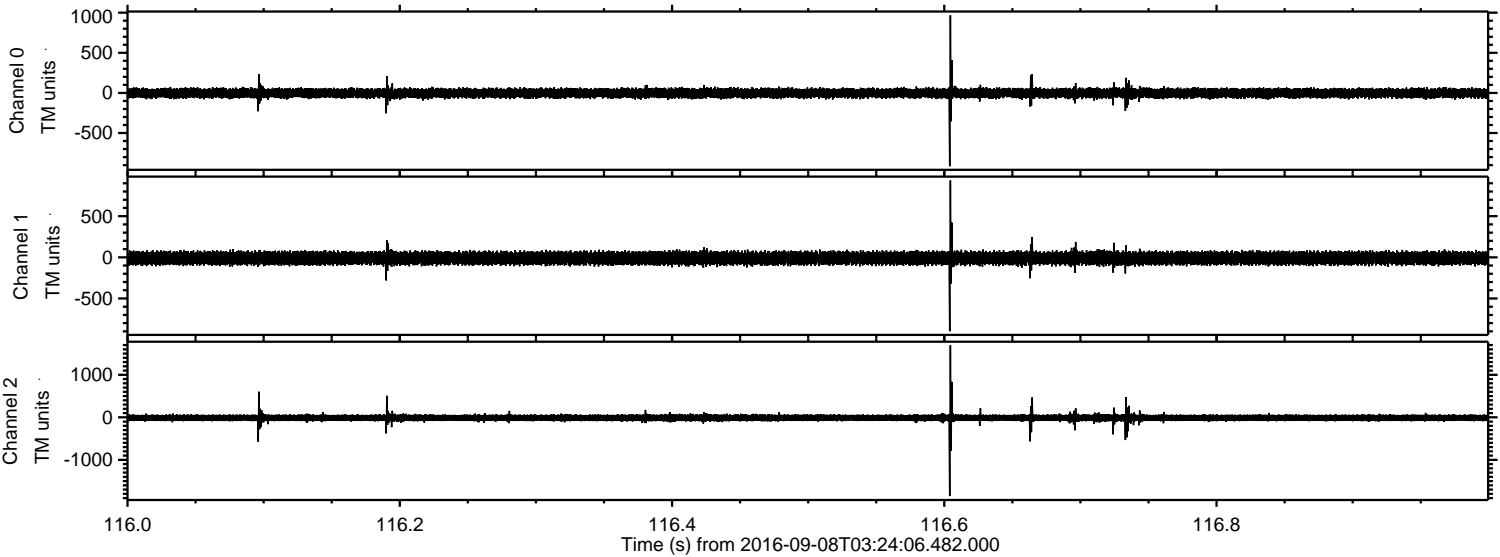


Processed Thu Sep 8 05:32:03 2016 by ELM ver.2012-10-06 from 001__elm20160908_032405__dat00.bin



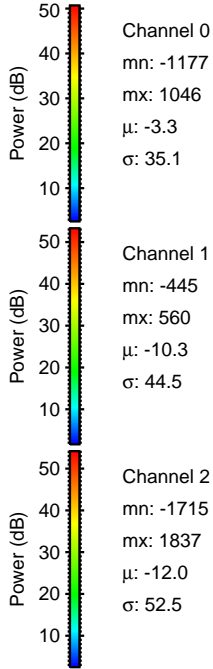
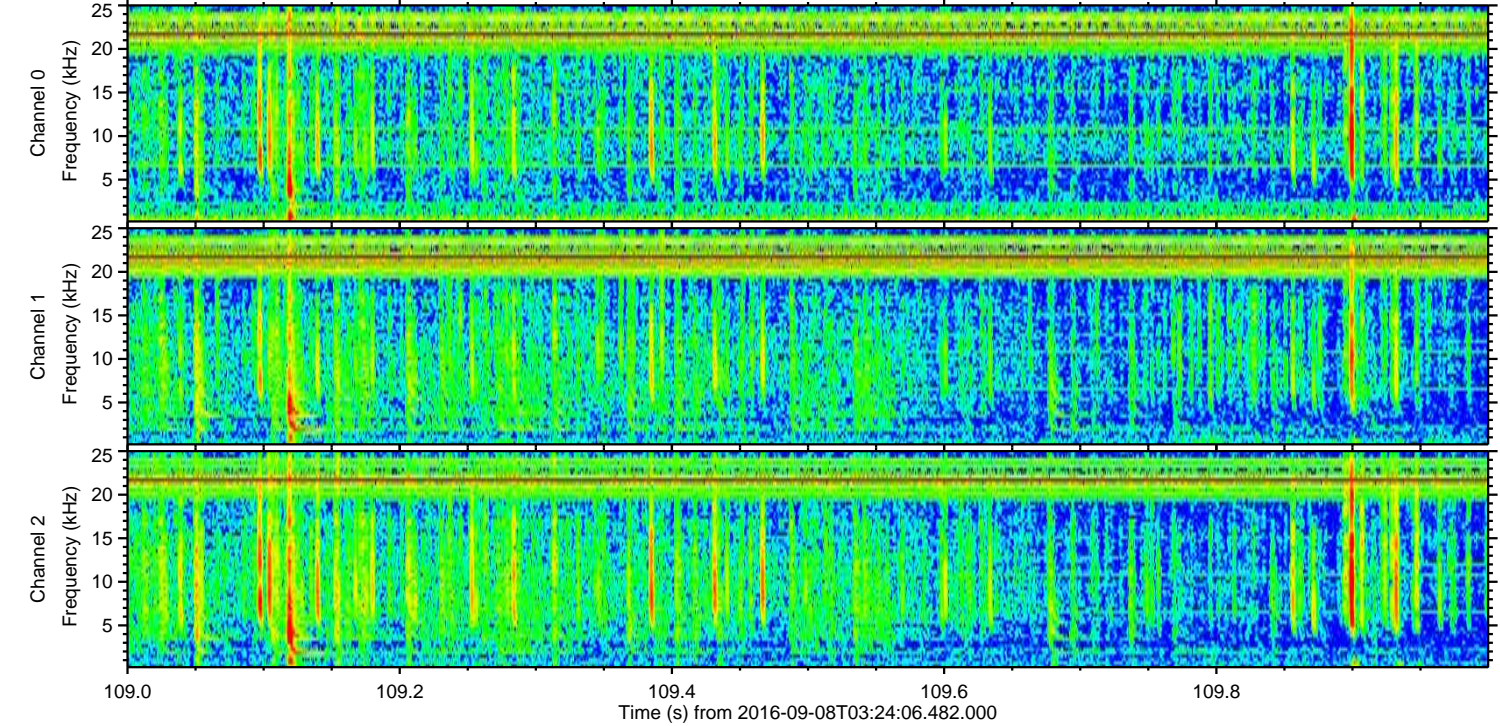
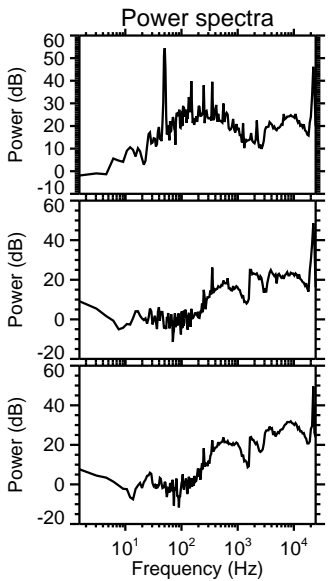
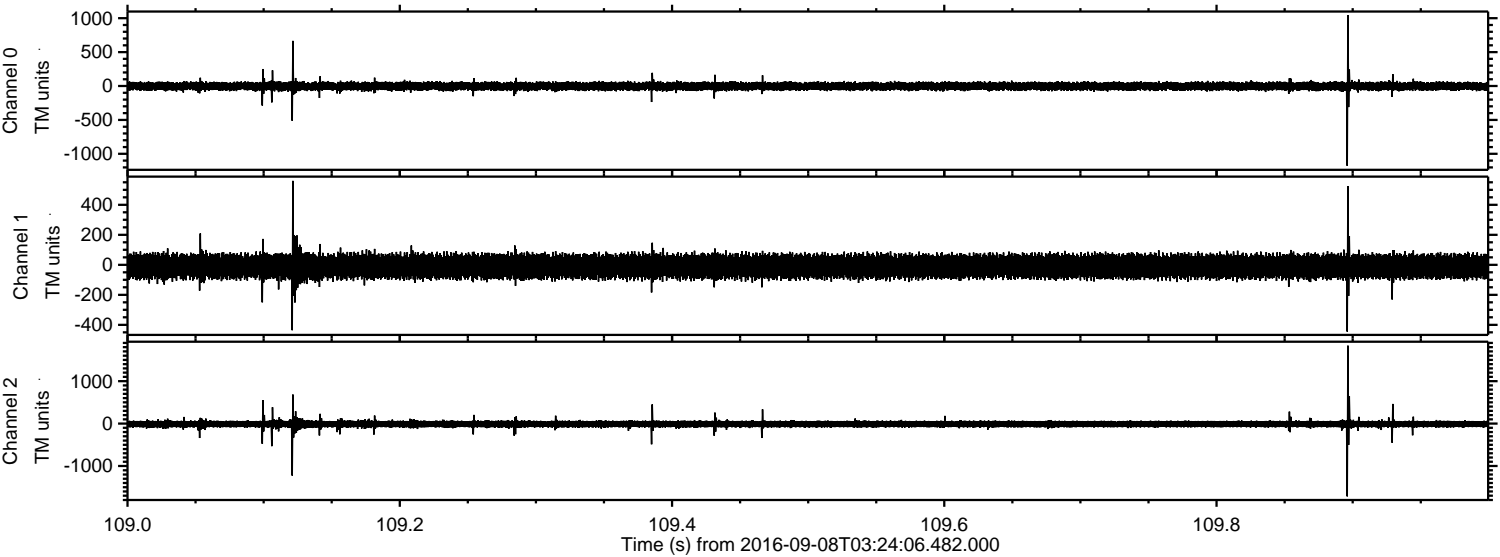
ELMAVAN 3D WAVEFORMS (Measured data sampled at 50 kHz) 51000 packets of 144 samples from 2016-09-08T03:24:06.482.000. Part 117/147

Processed Thu Sep 8 05:32:04 2016 by ELM ver.2012-10-06 from 001__elm20160908_032405__dat00.bin



ELMAVAN 3D WAVEFORMS (Measured data sampled at 50 kHz) 51000 packets of 144 samples from 2016-09-08T03:24:06.482.000. Part 110/147

Processed Thu Sep 8 05:32:05 2016 by ELM ver.2012-10-06 from 001__elm20160908_032405__dat00.bin

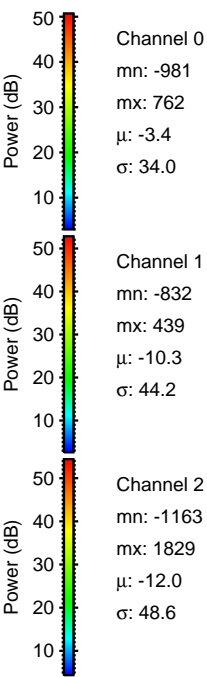
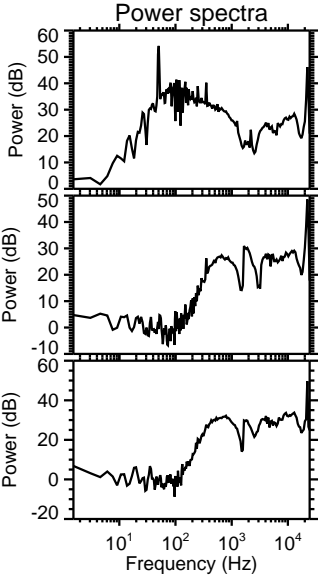
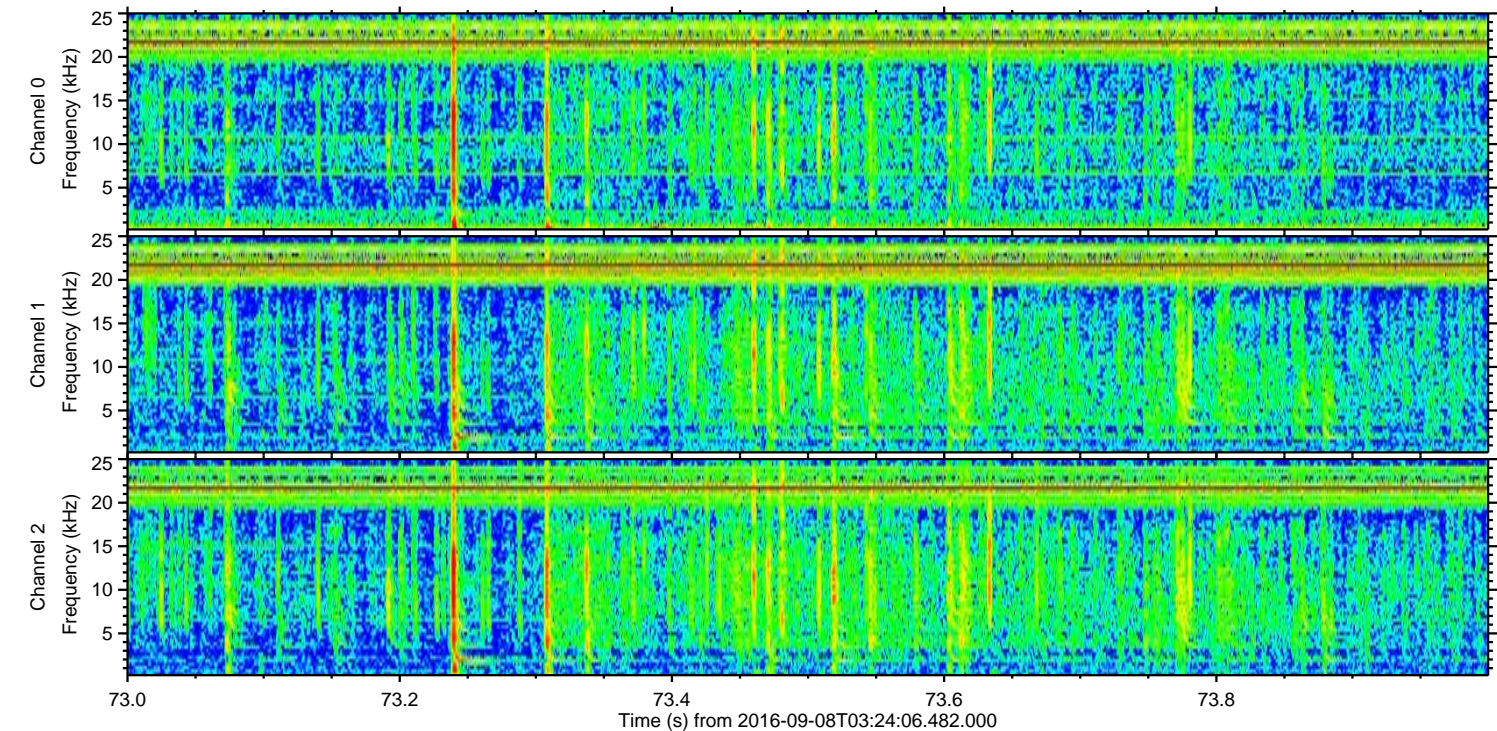
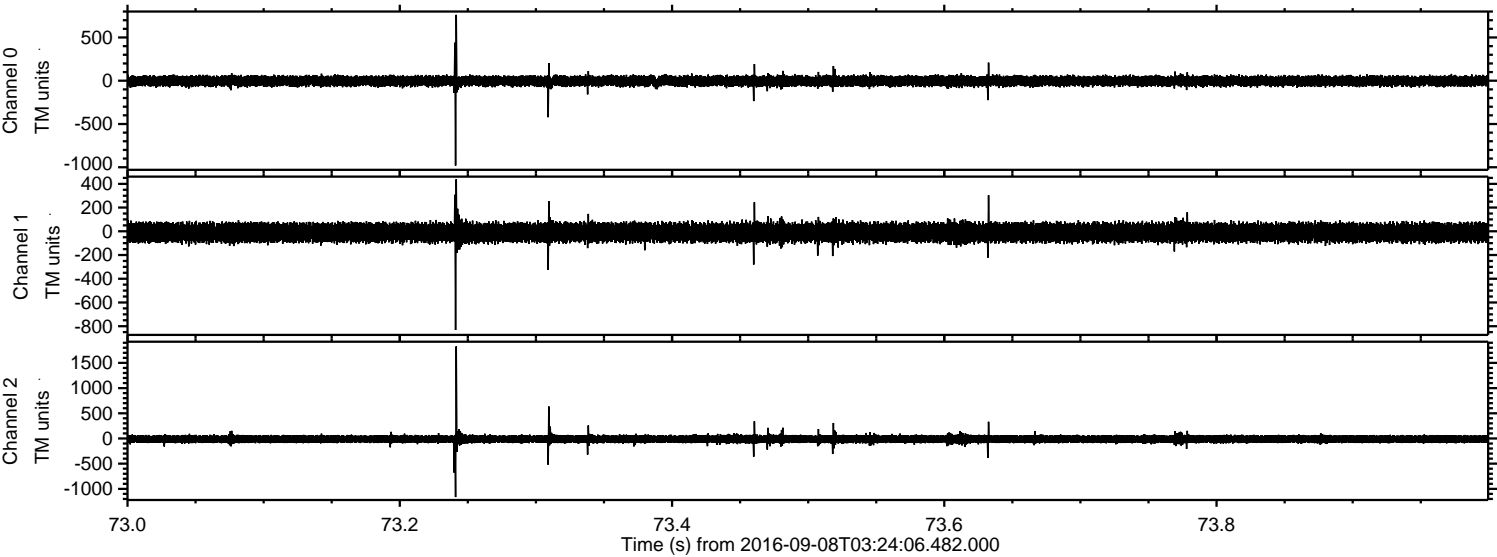


Channel 0
mn: -1177
mx: 1046
 μ : -3.3
 σ : 35.1

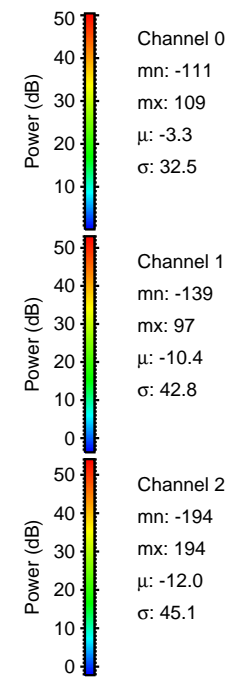
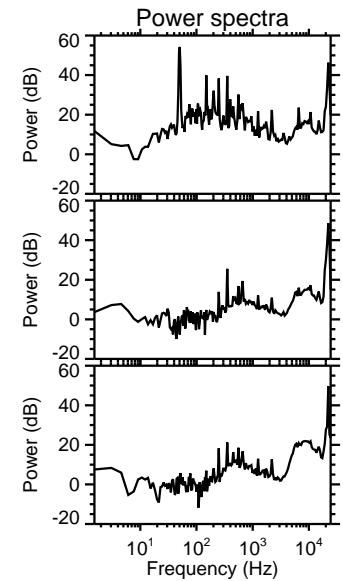
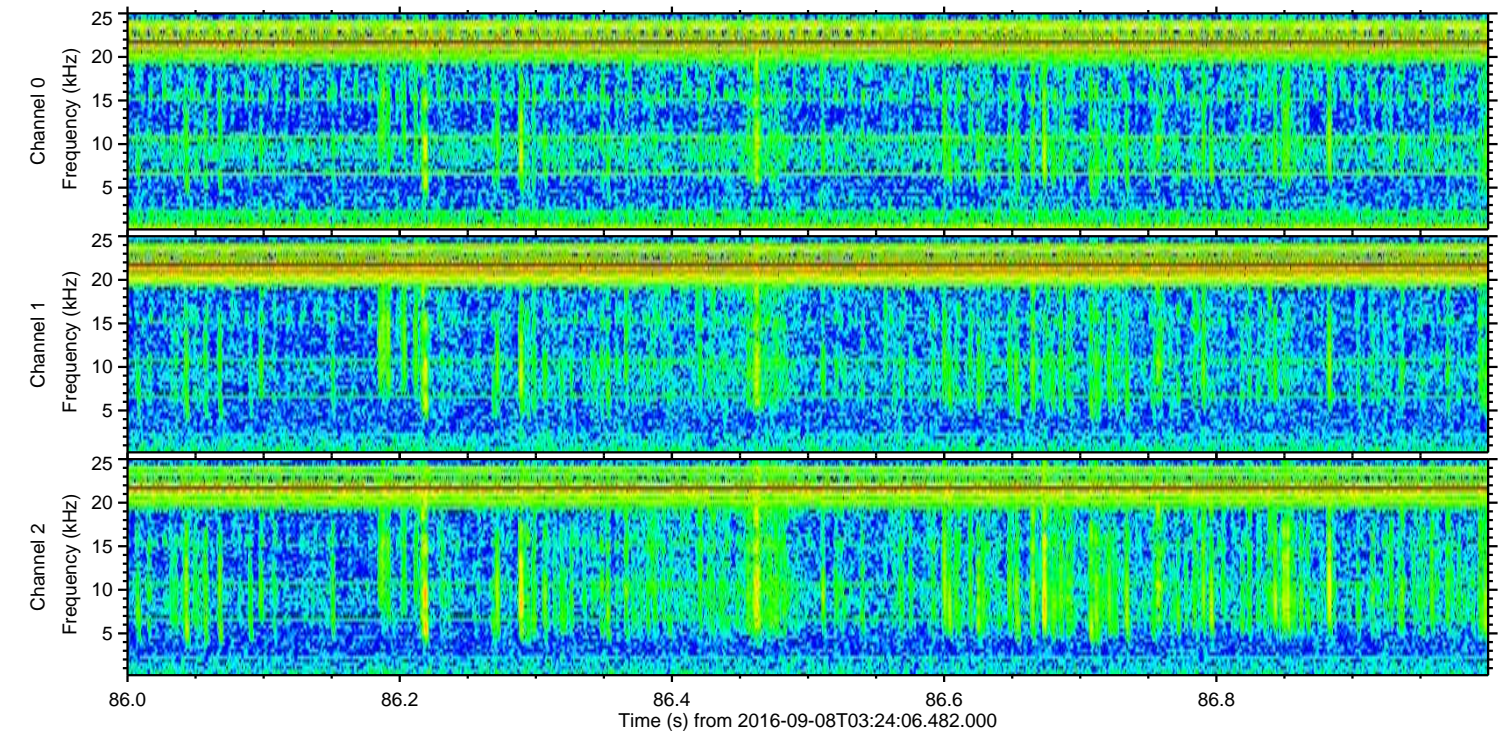
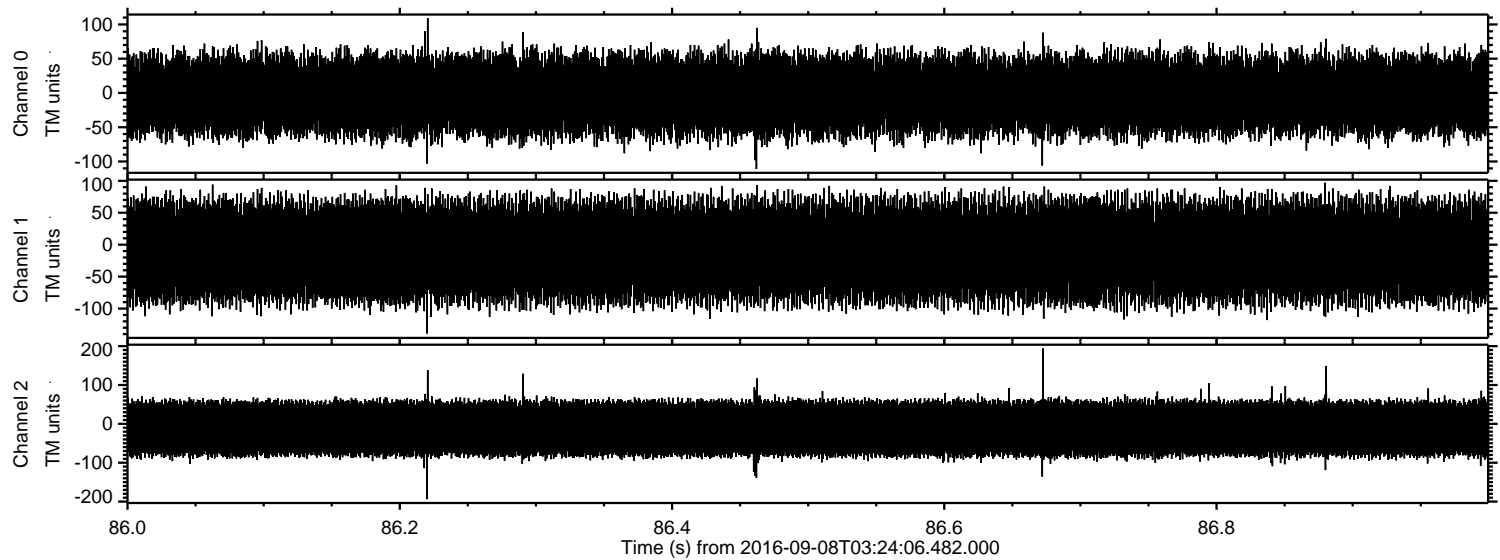
Channel 1
mn: -445
mx: 560
 μ : -10.3
 σ : 44.5

Channel 2
mn: -1715
mx: 1837
 μ : -12.0
 σ : 52.5

Processed Thu Sep 8 05:32:06 2016 by ELM ver.2012-10-06 from 001__elm20160908_032405__dat00.bin



Processed Thu Sep 8 05:32:07 2016 by ELM ver.2012-10-06 from 001__elm20160908_032405__dat00.bin



Channel 0
mn: -111
mx: 109
 μ : -3.3
 σ : 32.5

Channel 1
mn: -139
mx: 97
 μ : -10.4
 σ : 42.8

Channel 2
mn: -194
mx: 194
 μ : -12.0
 σ : 45.1