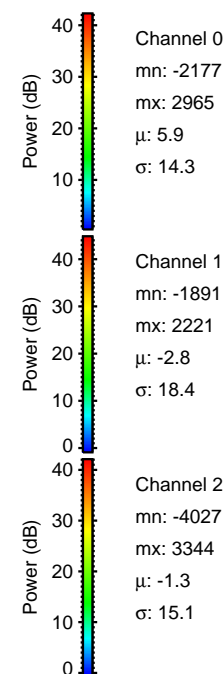
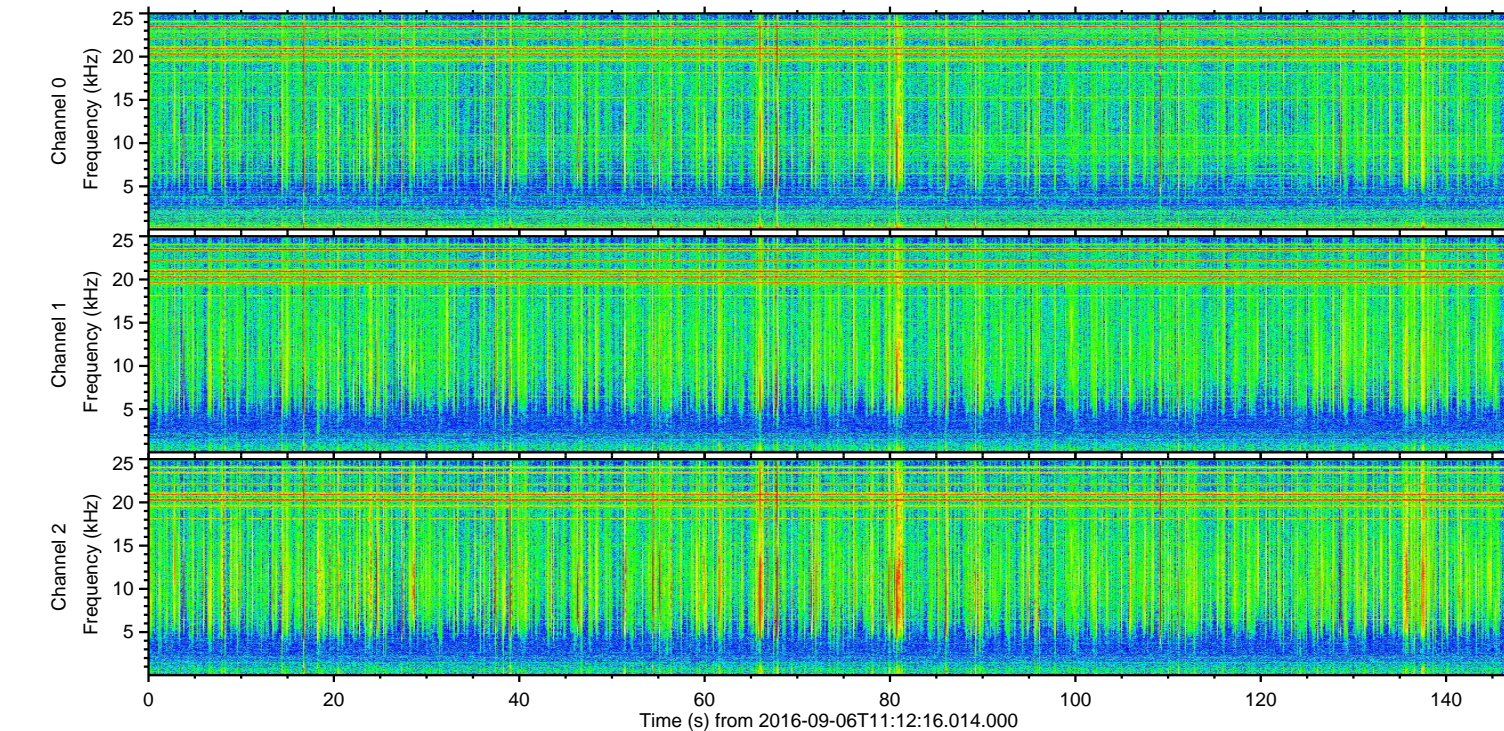
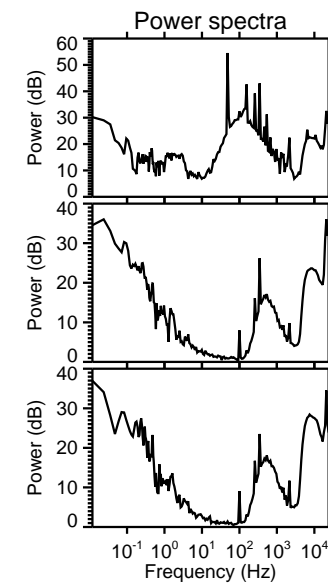
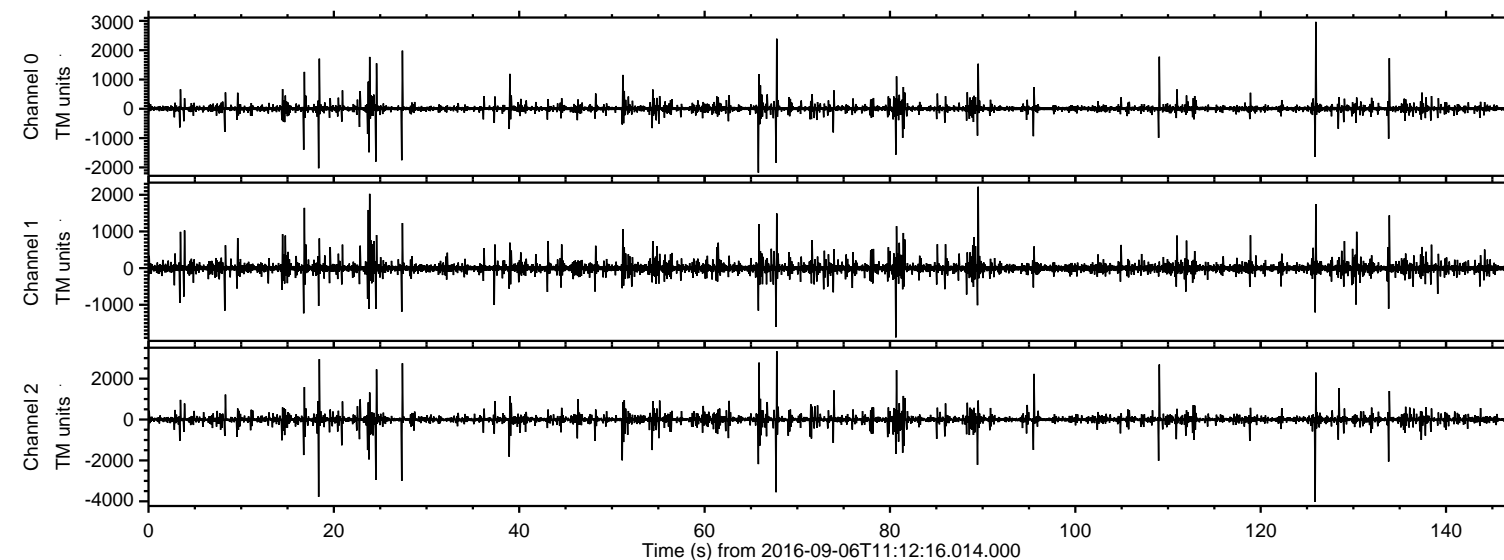


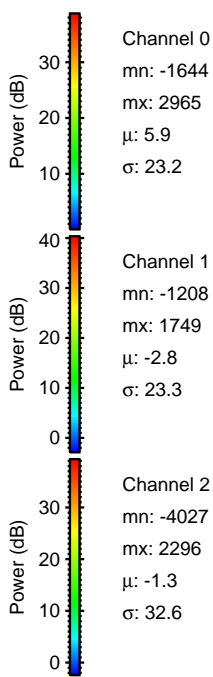
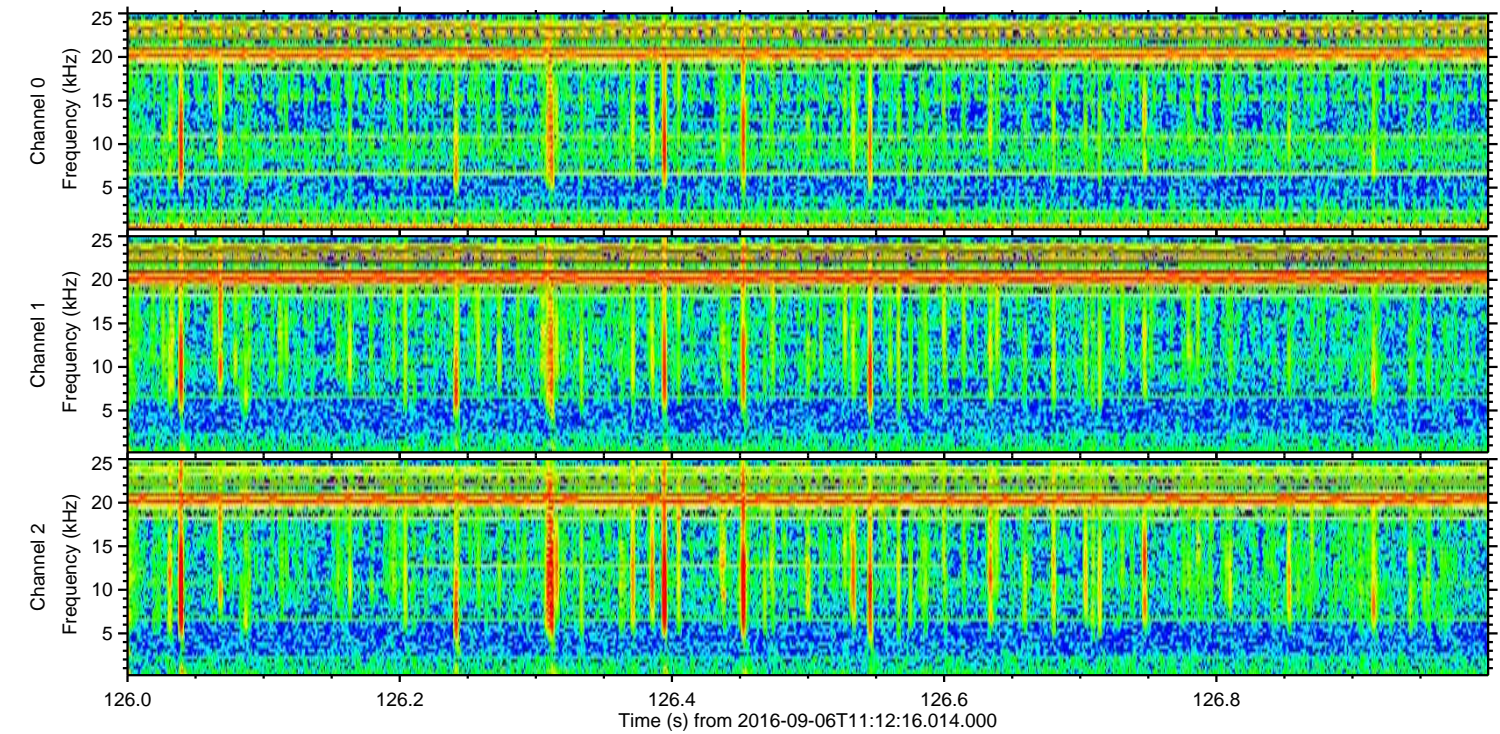
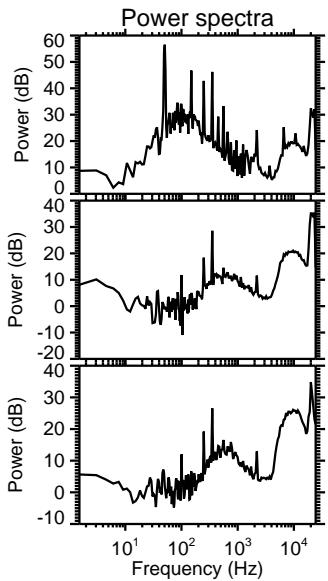
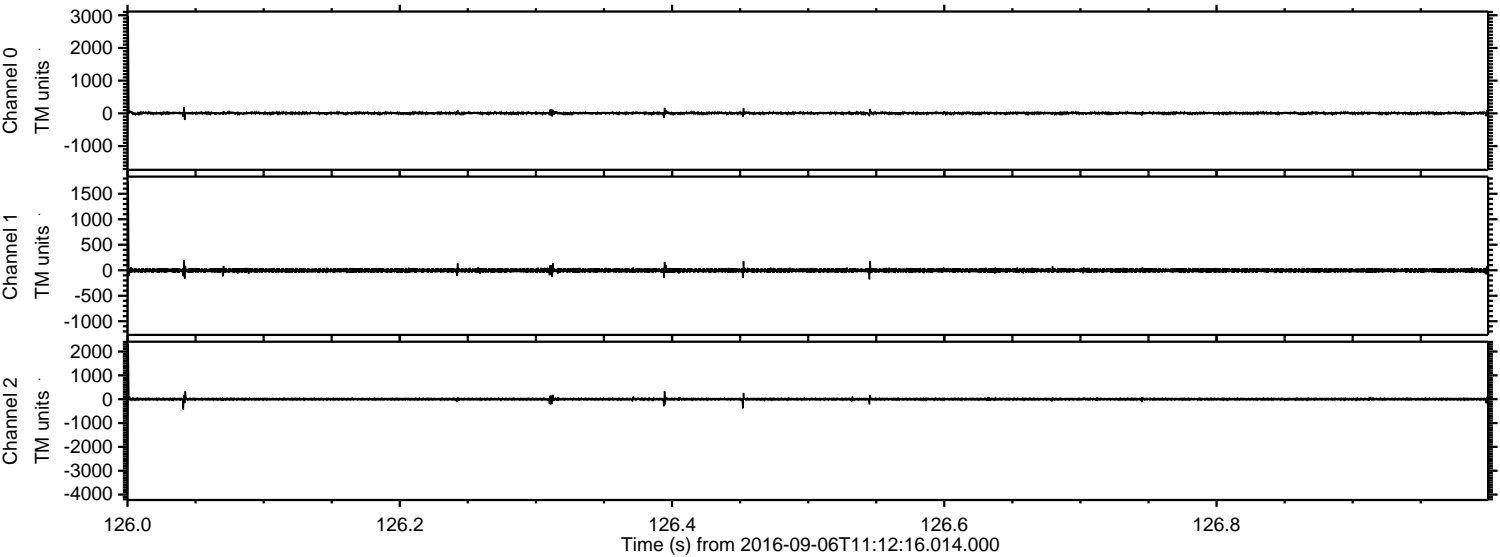
ELMAVAN 3D WAVEFORMS (Measured data sampled at 50 kHz) 51000 packets of 144 samples from 2016-09-06T11:12:16.014.000.

Processed Tue Sep 6 13:20:22 2016 by ELM ver.2012-10-06 from 001__elm20160906_111215__dat00.bin

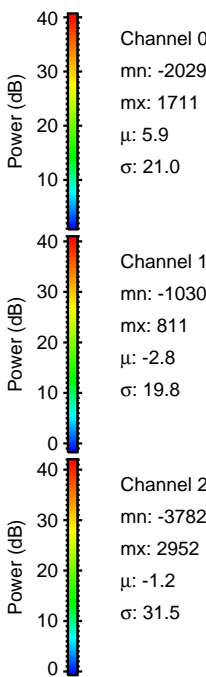
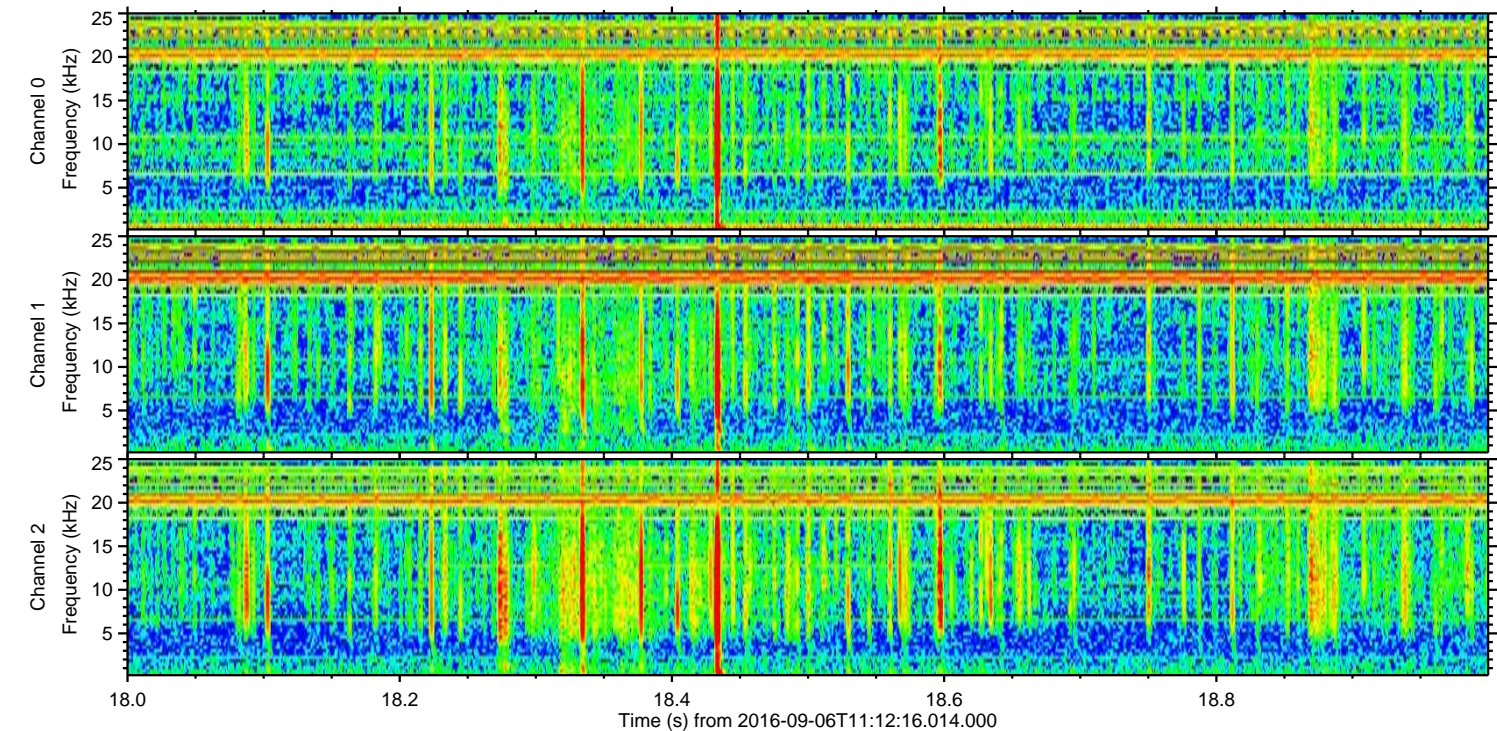
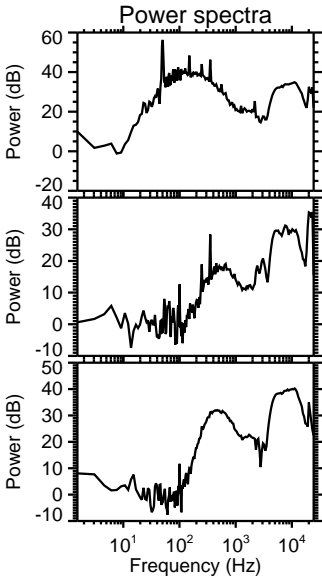
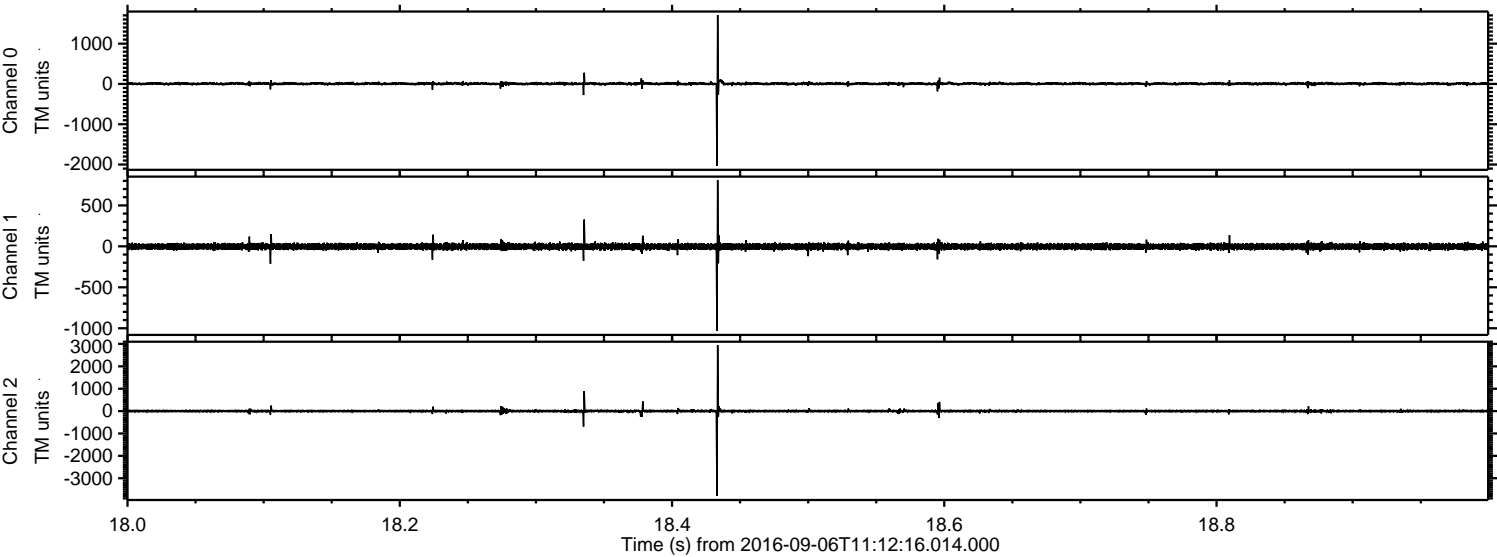


ELMAVAN 3D WAVEFORMS (Measured data sampled at 50 kHz) 51000 packets of 144 samples from 2016-09-06T11:12:16.014.000. Part 127/147

Processed Tue Sep 6 13:20:34 2016 by ELM ver.2012-10-06 from 001__elm20160906_111215__dat00.bin

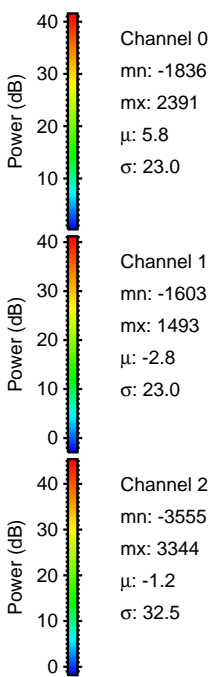
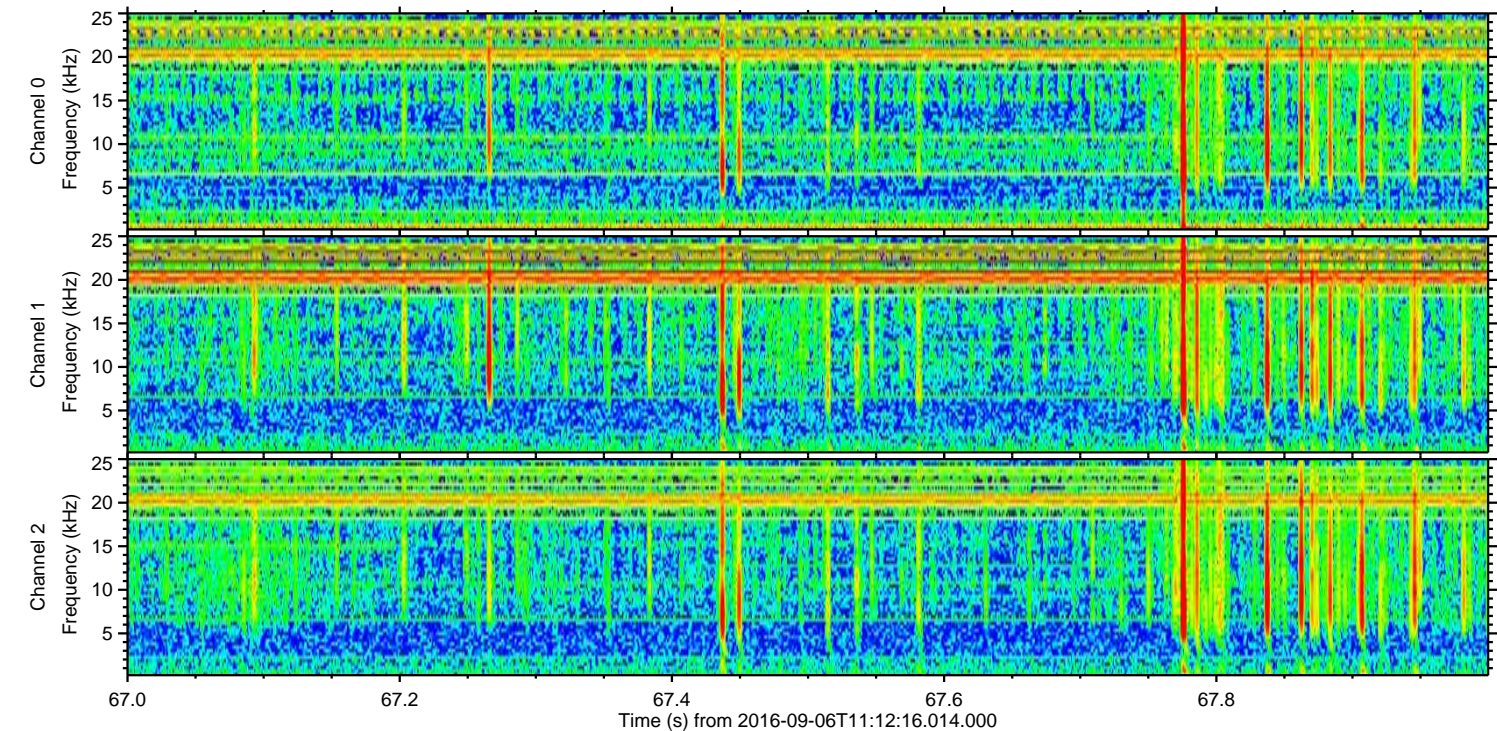
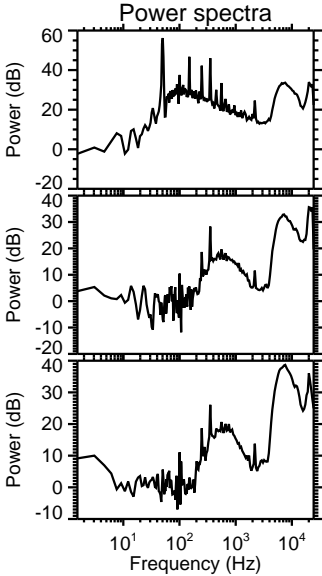
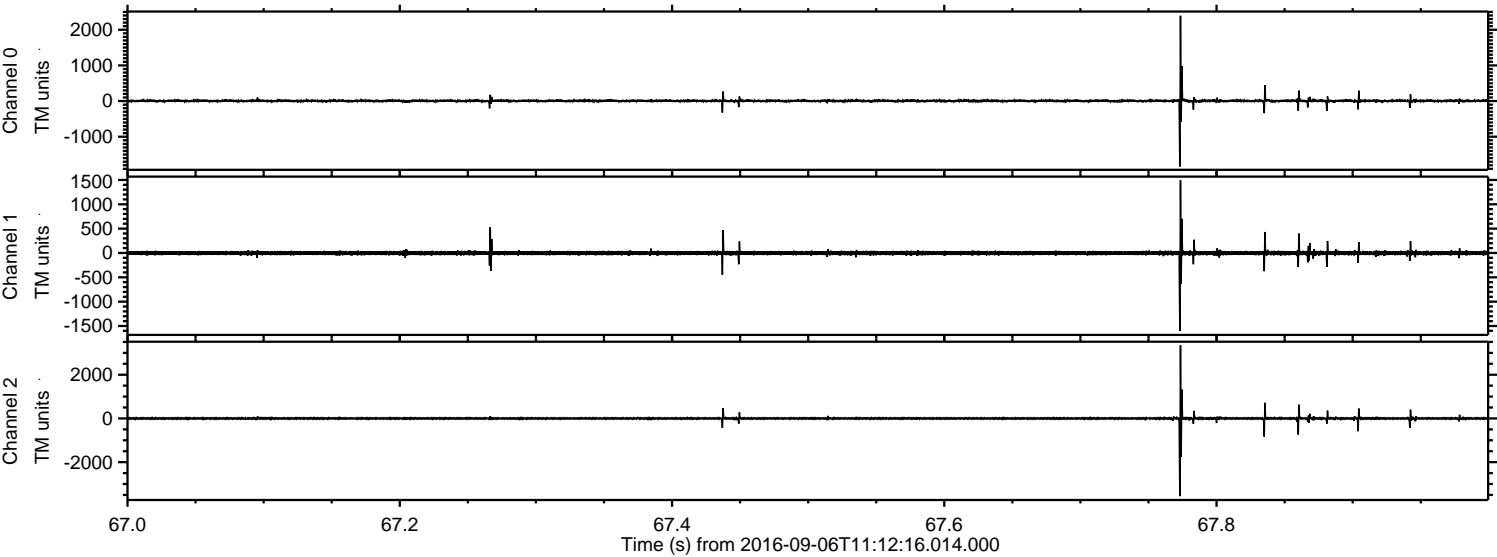


Processed Tue Sep 6 13:20:35 2016 by ELM ver.2012-10-06 from 001__elm20160906_111215__dat00.bin

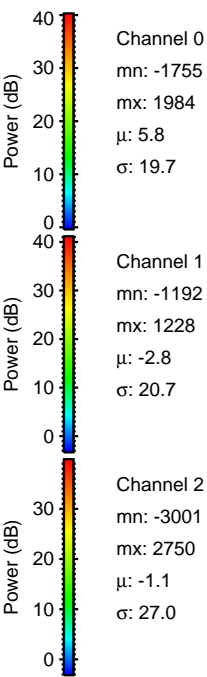
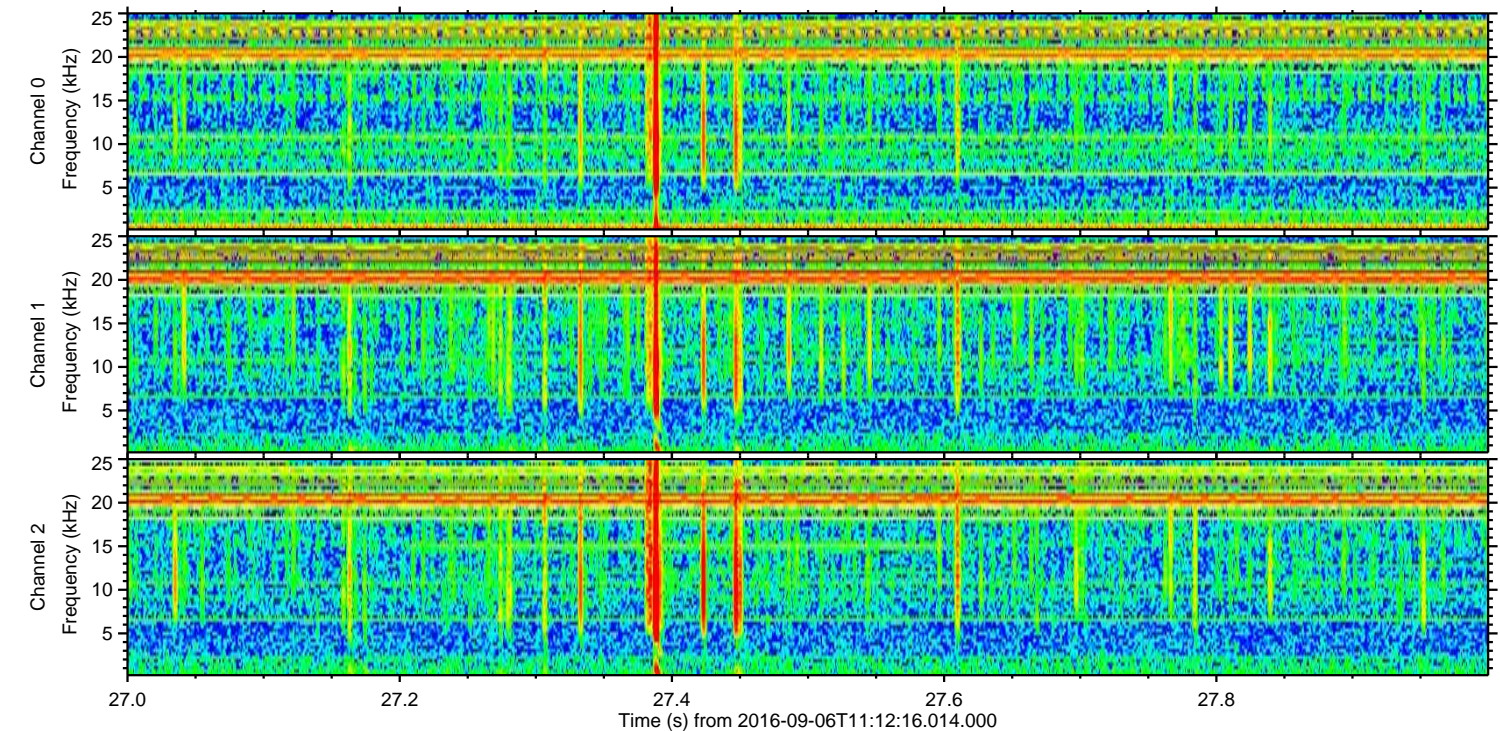
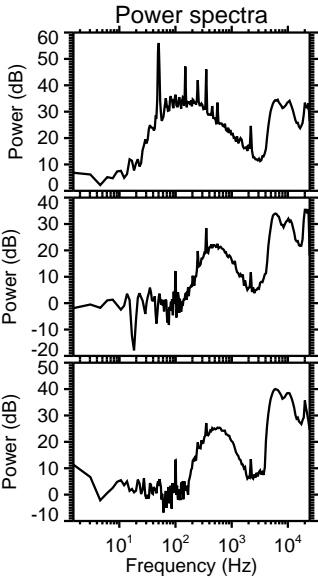
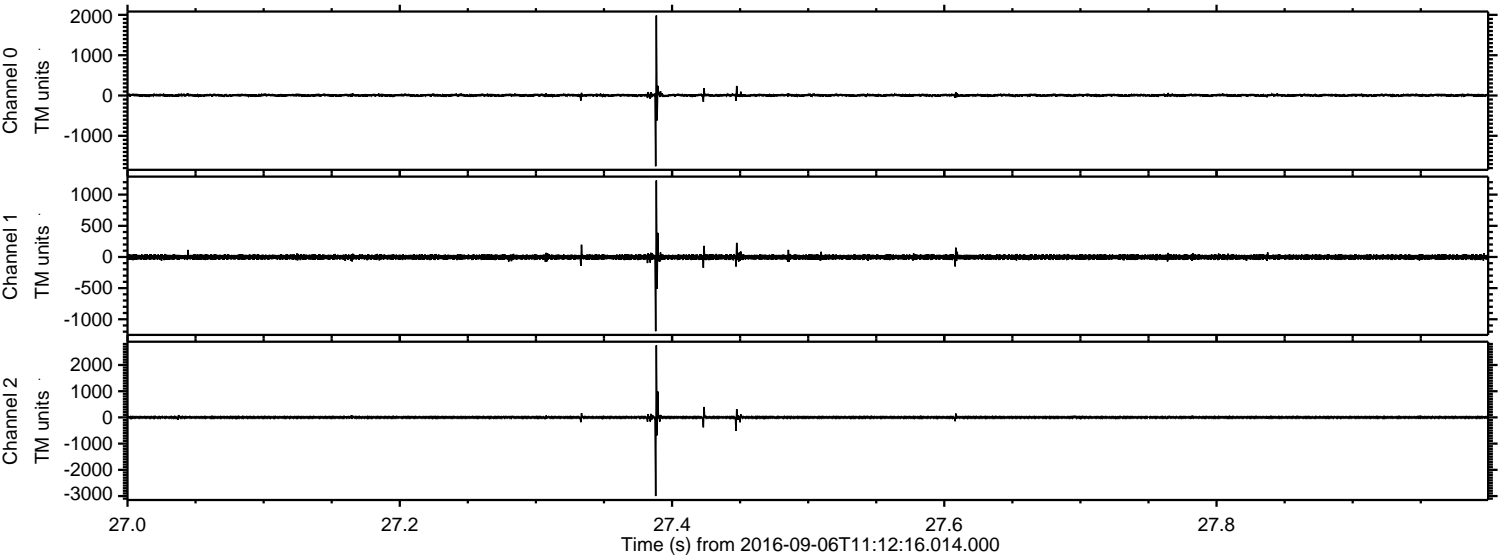


ELMAVAN 3D WAVEFORMS (Measured data sampled at 50 kHz) 51000 packets of 144 samples from 2016-09-06T11:12:16.014.000. Part 68/147

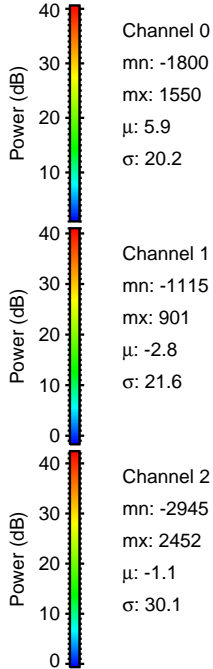
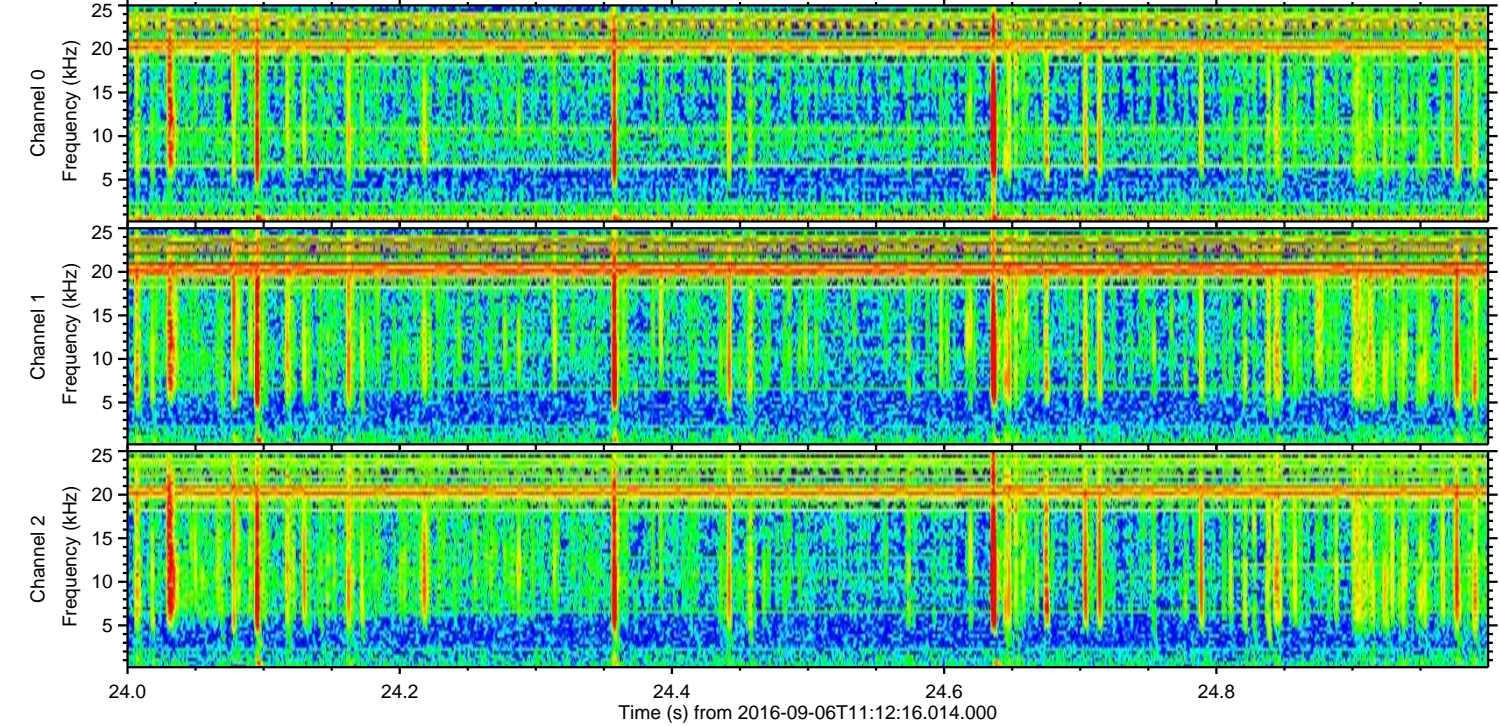
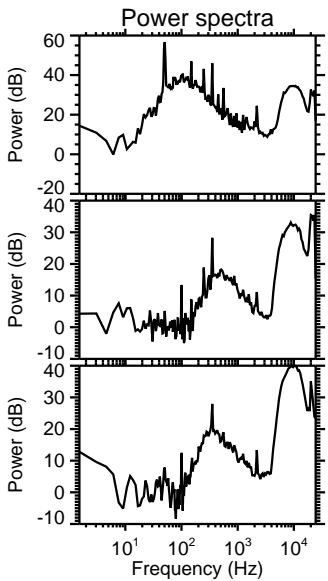
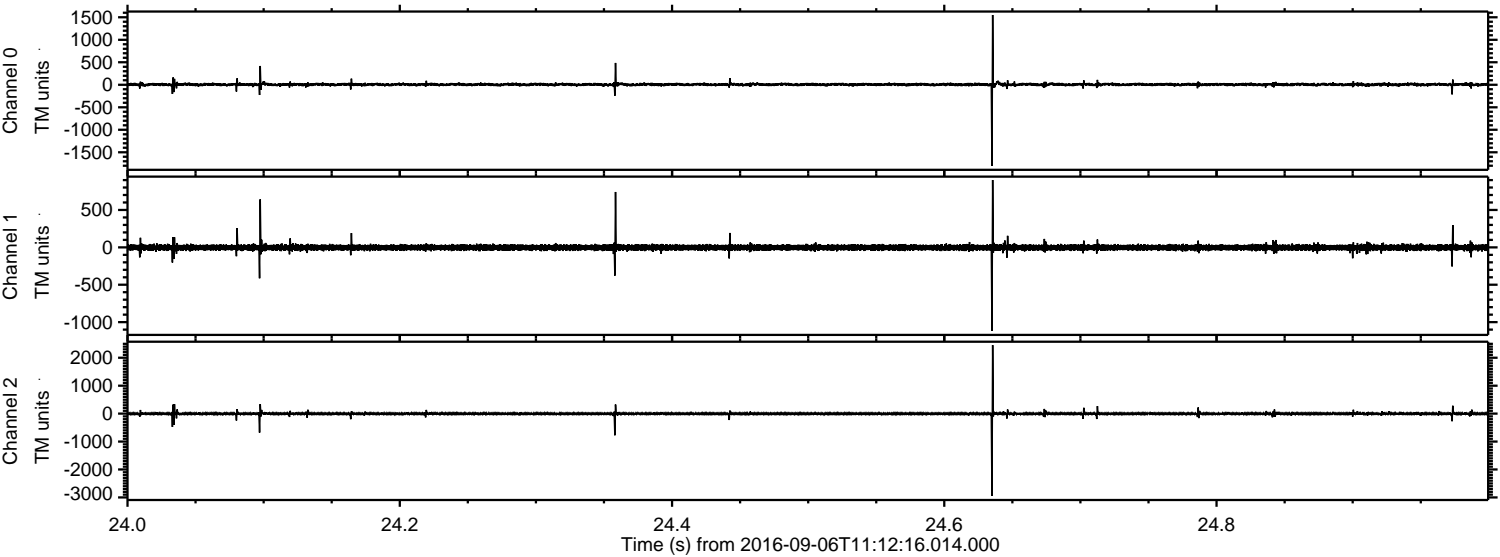
Processed Tue Sep 6 13:20:36 2016 by ELM ver.2012-10-06 from 001__elm20160906_111215__dat00.bin



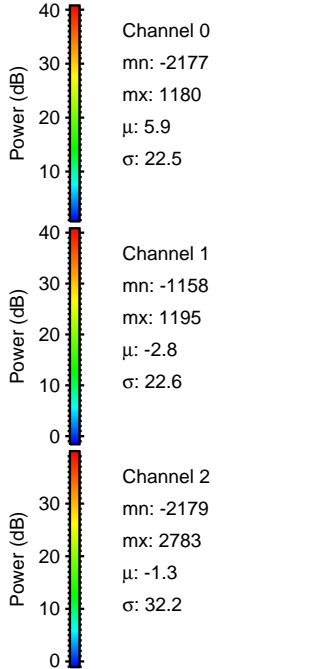
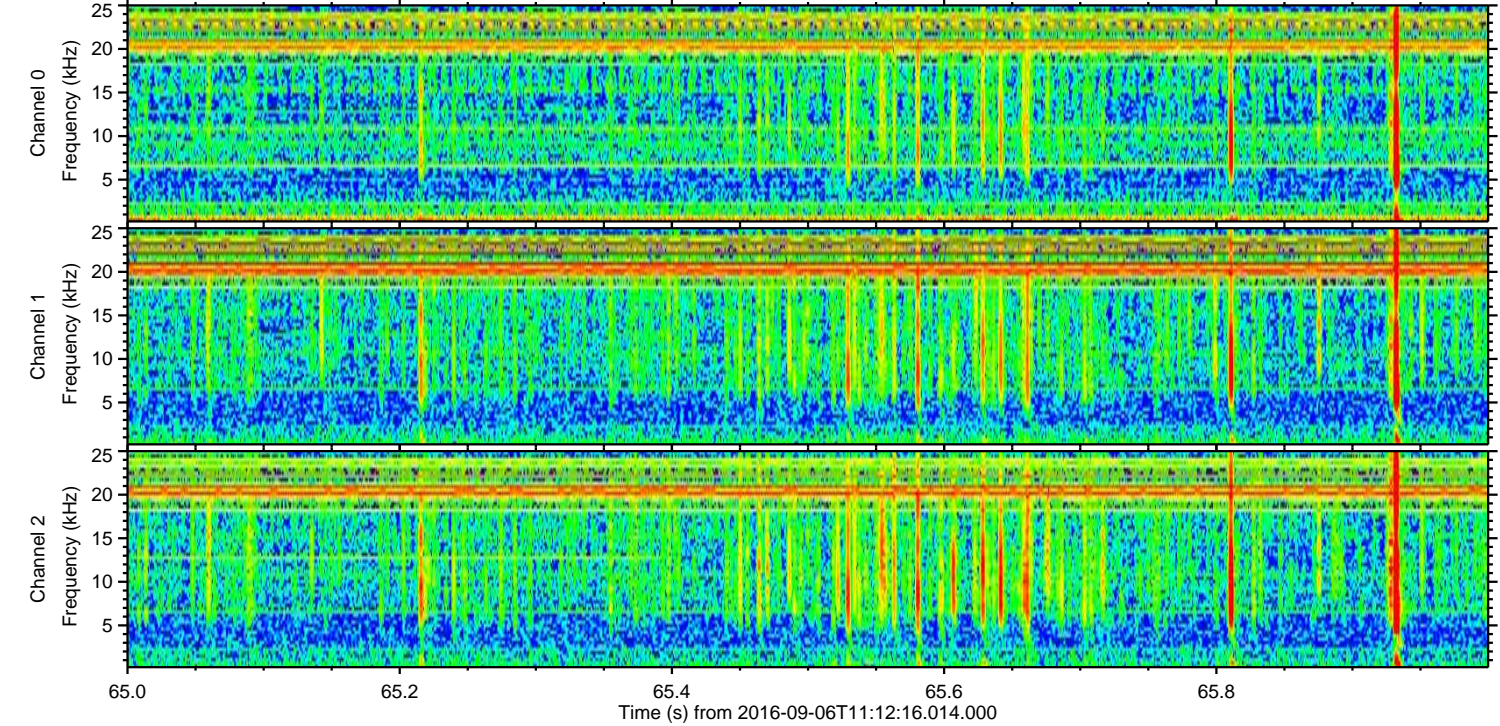
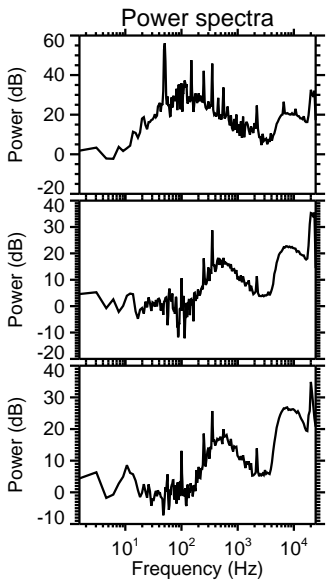
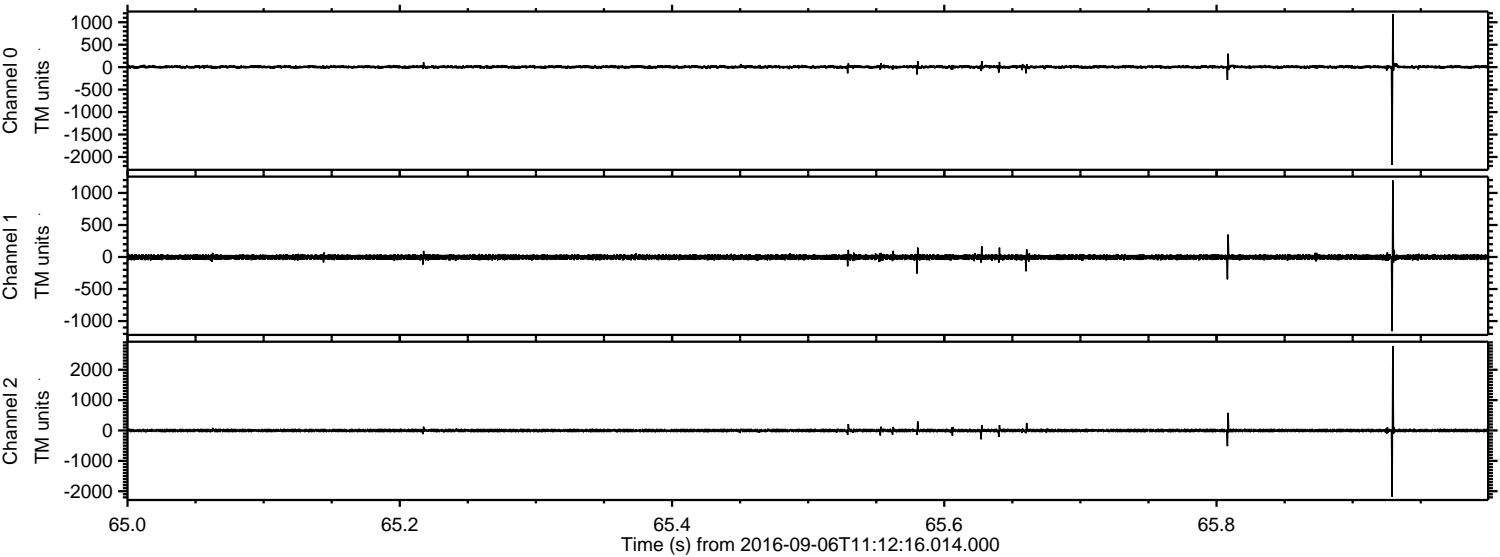
Processed Tue Sep 6 13:20:37 2016 by ELM ver.2012-10-06 from 001__elm20160906_111215__dat00.bin



Processed Tue Sep 6 13:20:37 2016 by ELM ver.2012-10-06 from 001__elm20160906_111215__dat00.bin

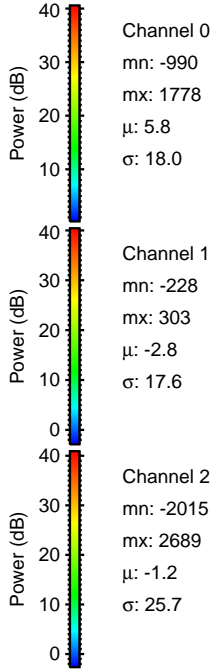
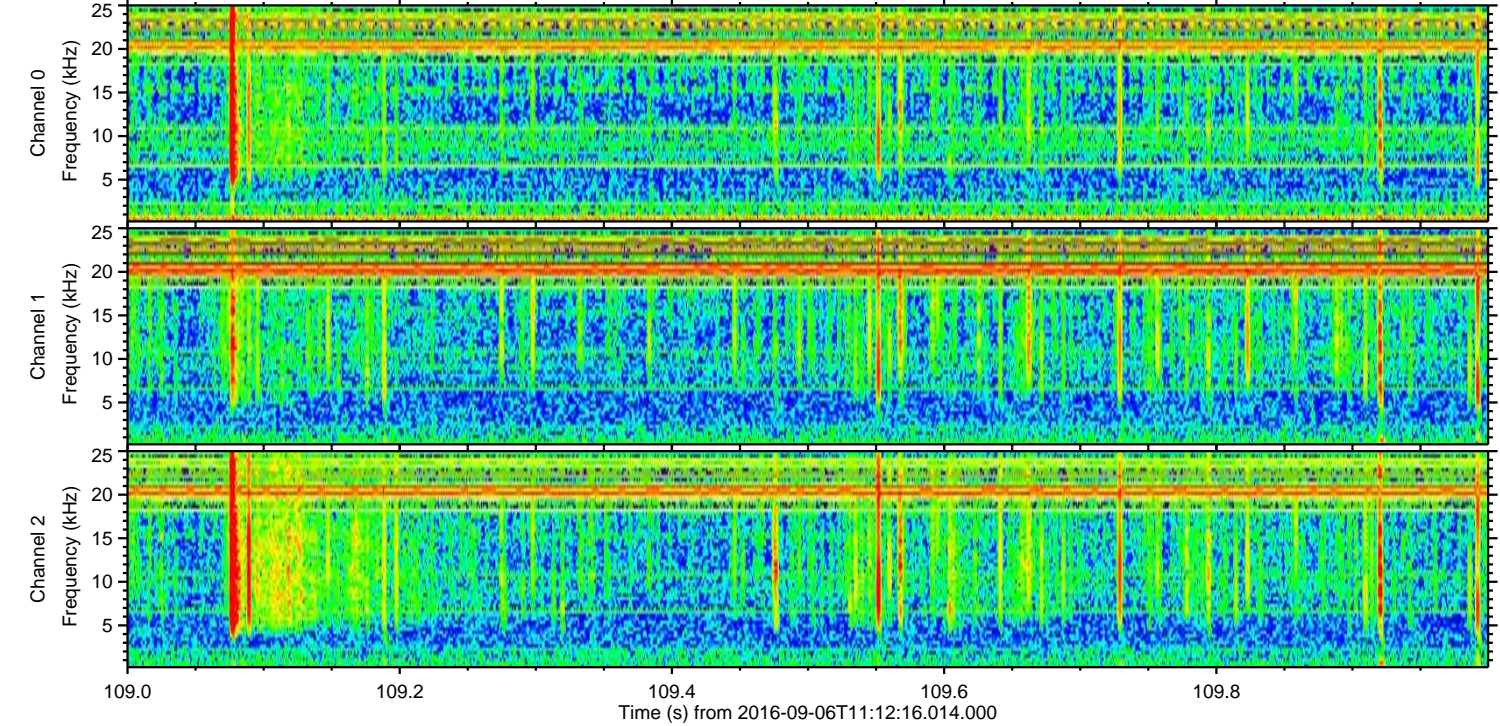
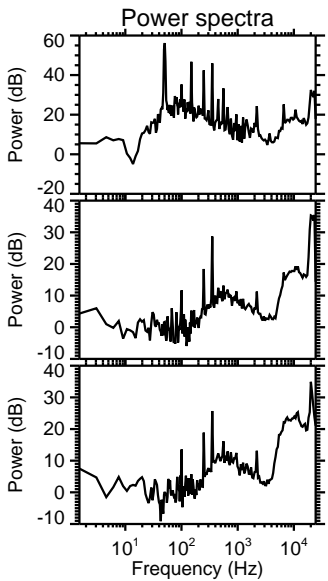
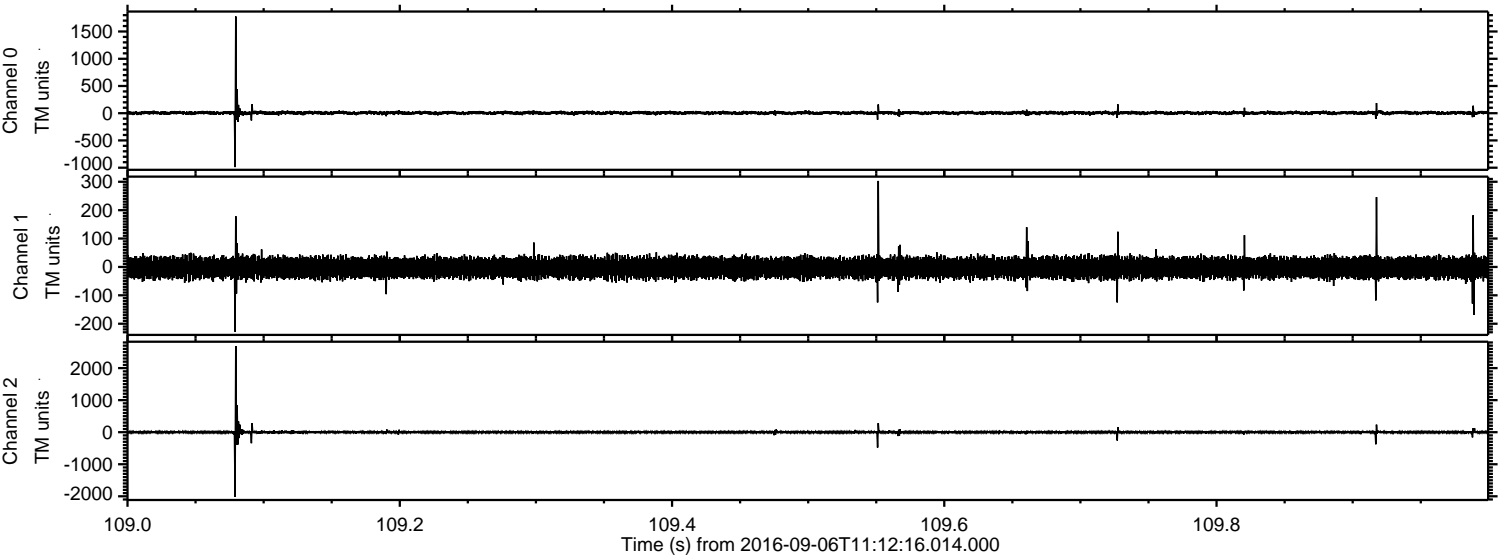


Processed Tue Sep 6 13:20:38 2016 by ELM ver.2012-10-06 from 001__elm20160906_111215__dat00.bin

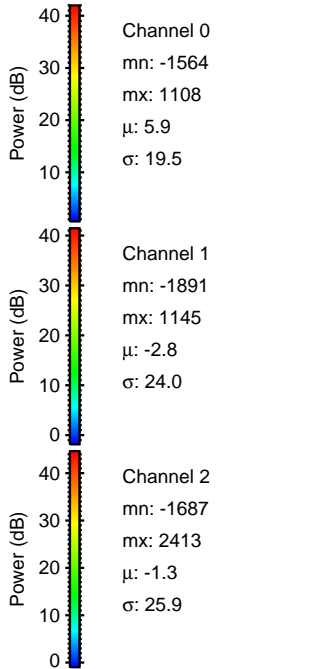
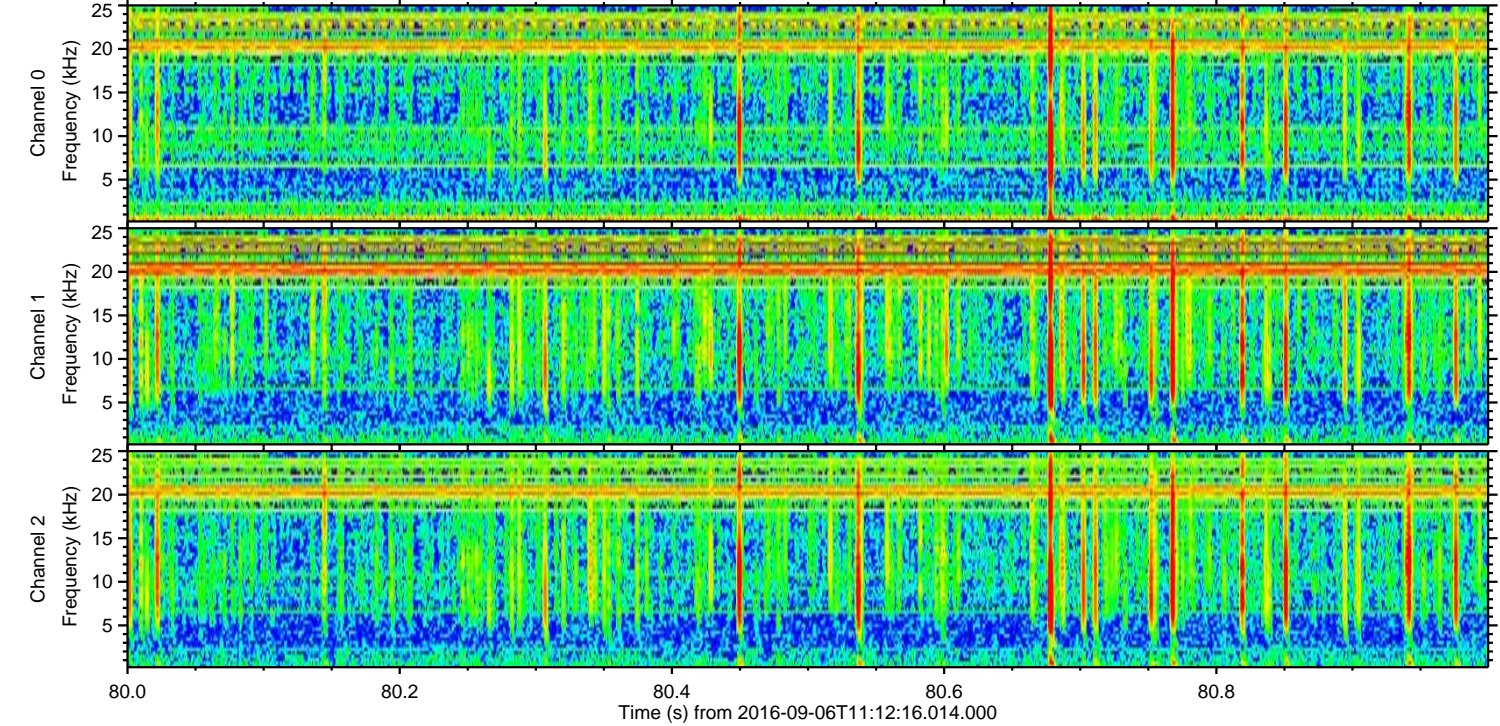
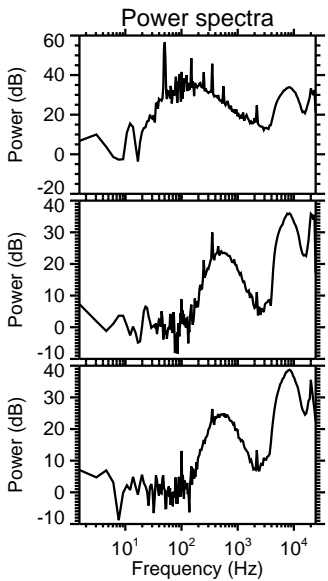
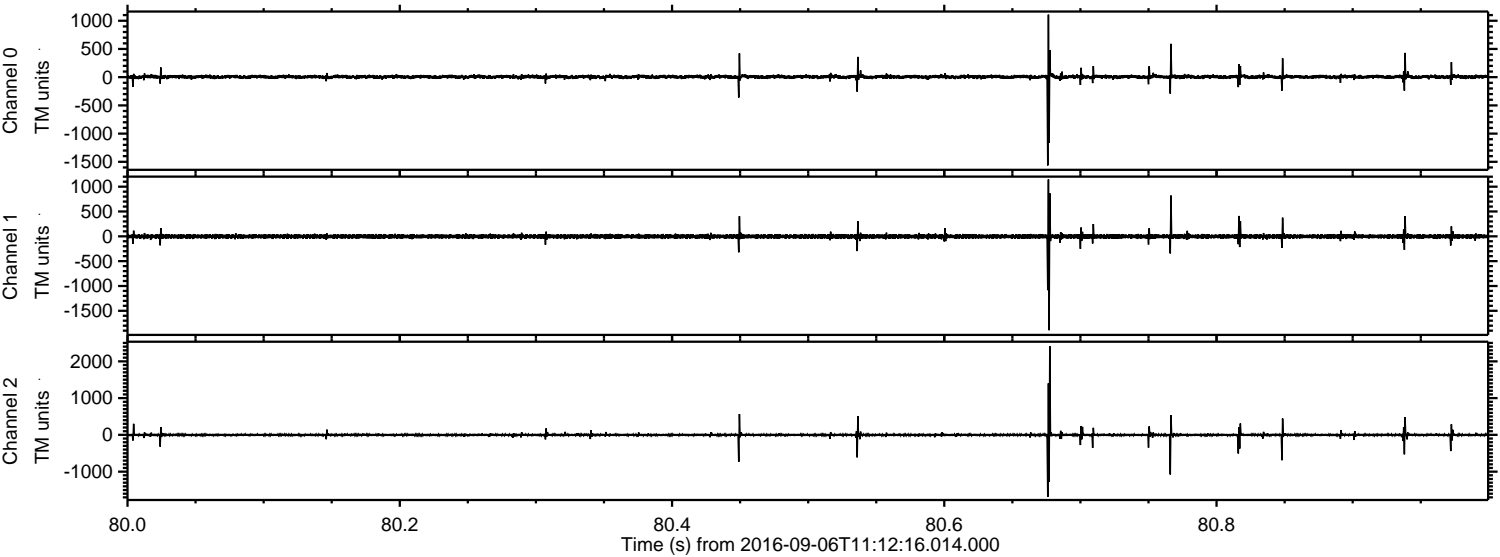


ELMAVAN 3D WAVEFORMS (Measured data sampled at 50 kHz) 51000 packets of 144 samples from 2016-09-06T11:12:16.014.000. Part 110/147

Processed Tue Sep 6 13:20:39 2016 by ELM ver.2012-10-06 from 001__elm20160906_111215__dat00.bin



Processed Tue Sep 6 13:20:40 2016 by ELM ver.2012-10-06 from 001__elm20160906_111215__dat00.bin



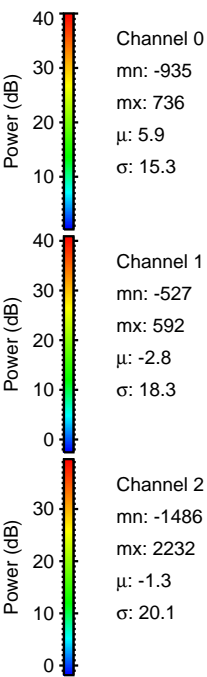
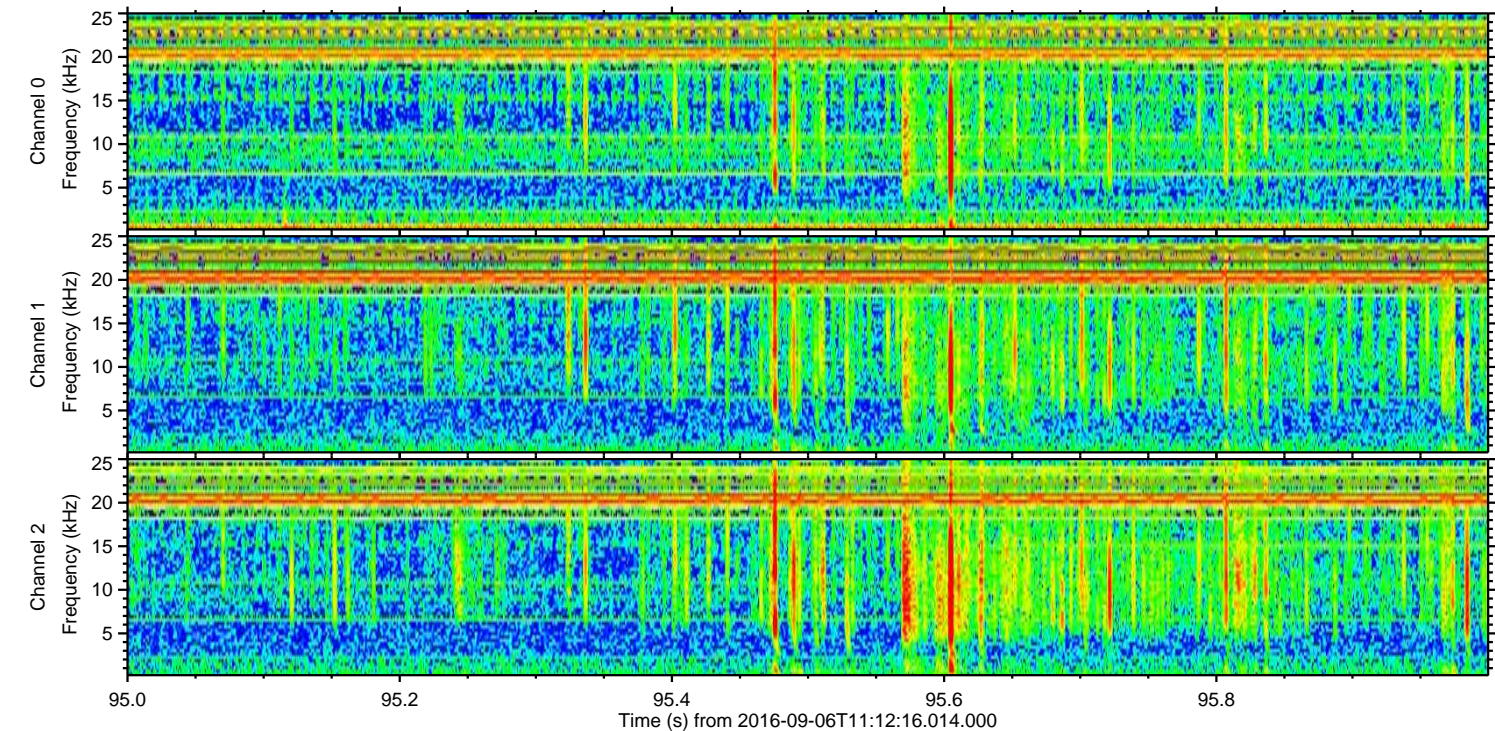
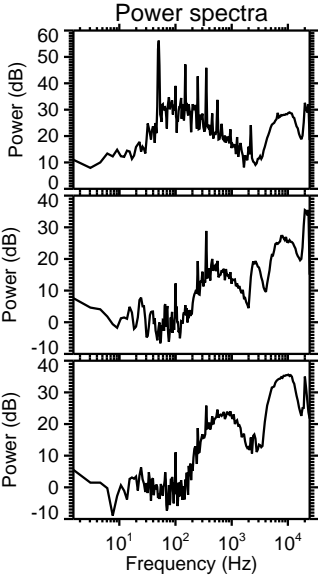
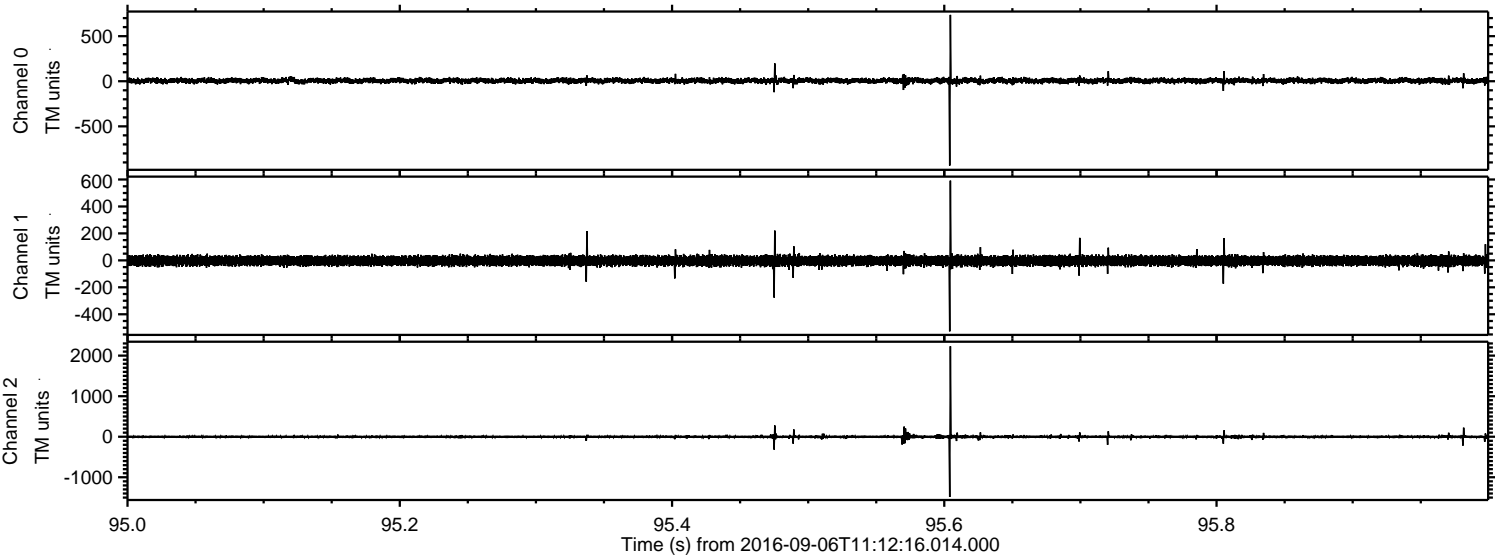
Power spectra

Channel 0
mn: -1564
mx: 1108
 μ : 5.9
 σ : 19.5

Channel 1
mn: -1891
mx: 1145
 μ : -2.8
 σ : 24.0

Channel 2
mn: -1687
mx: 2413
 μ : -1.3
 σ : 25.9

Processed Tue Sep 6 13:20:41 2016 by ELM ver.2012-10-06 from 001__elm20160906_111215__dat00.bin



Channel 0
mn: -935
mx: 736
 μ : 5.9
 σ : 15.3

Channel 1
mn: -527
mx: 592
 μ : -2.8
 σ : 18.3

Channel 2
mn: -1486
mx: 2232
 μ : -1.3
 σ : 20.1

Processed Tue Sep 6 13:20:42 2016 by ELM ver.2012-10-06 from 001__elm20160906_111215__dat00.bin

