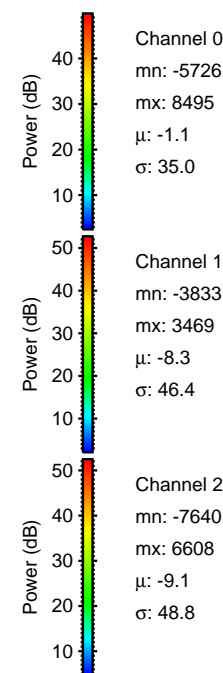
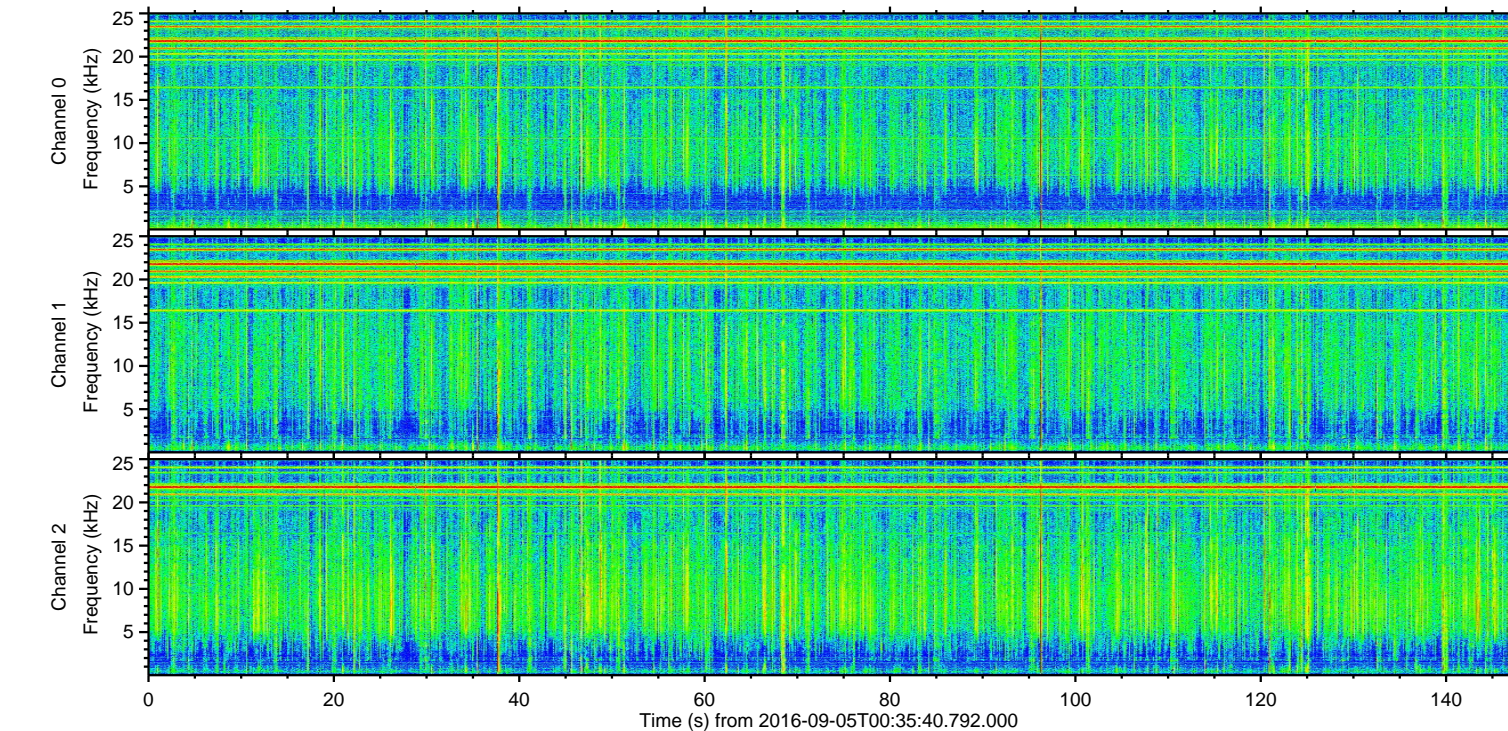
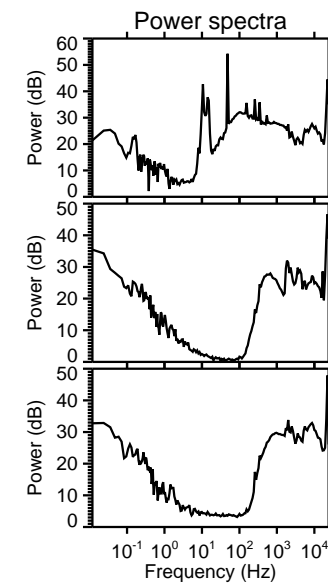
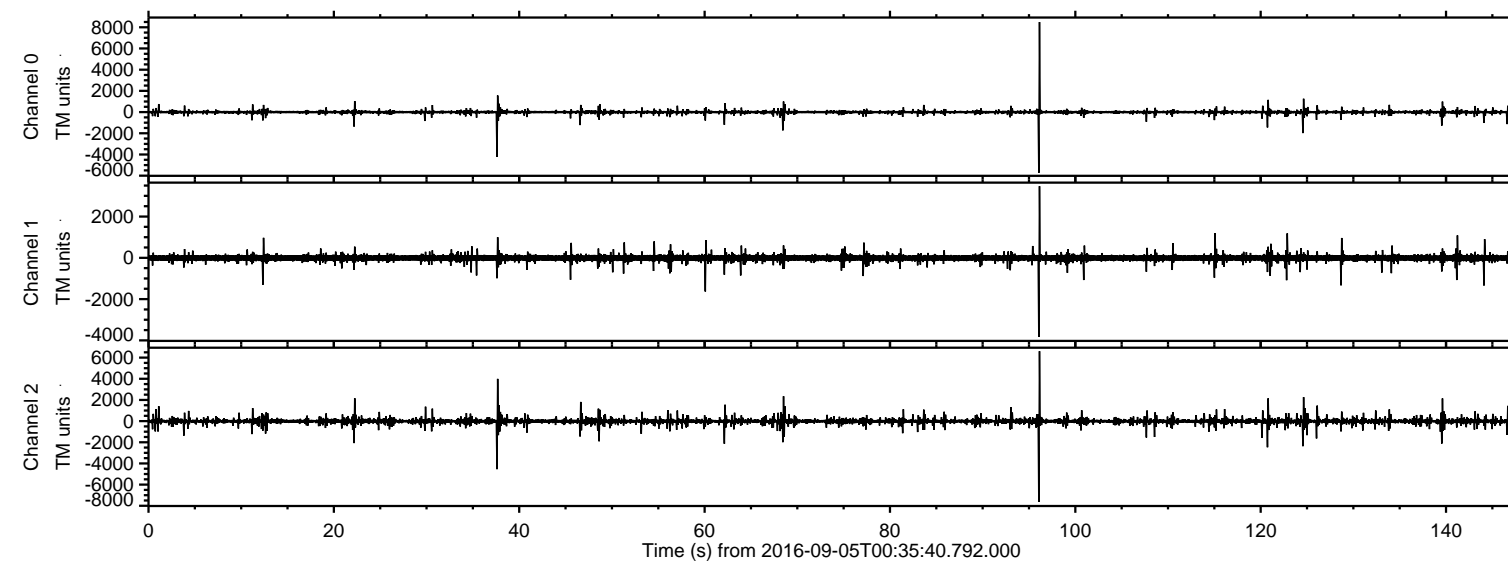


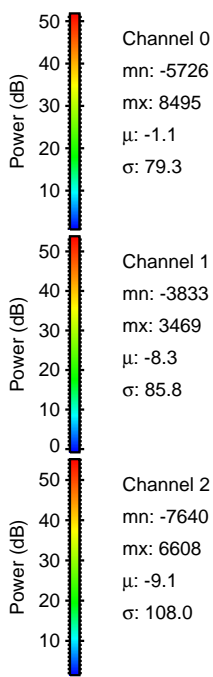
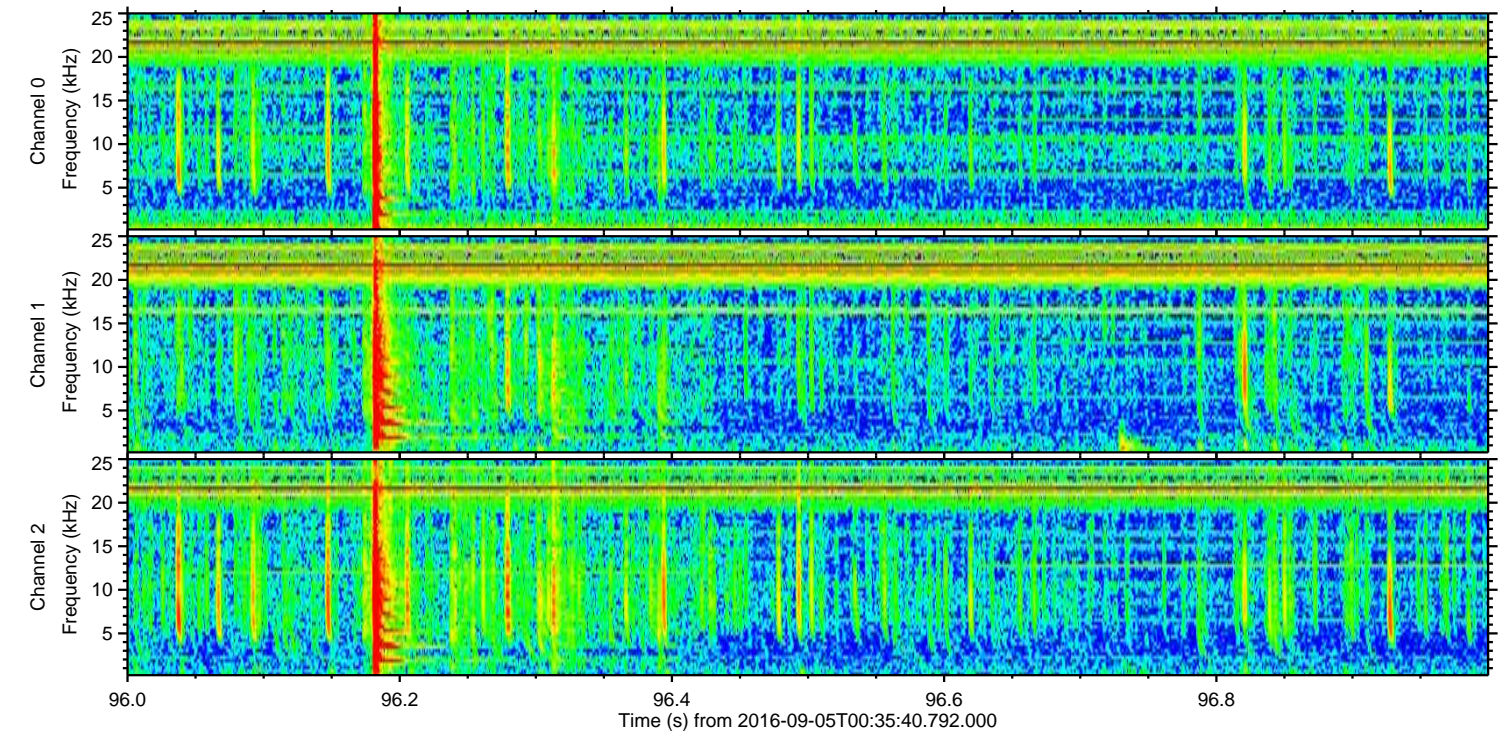
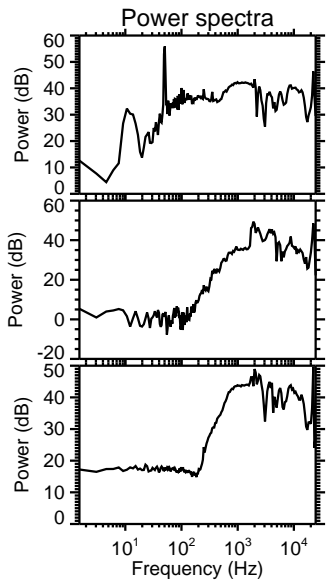
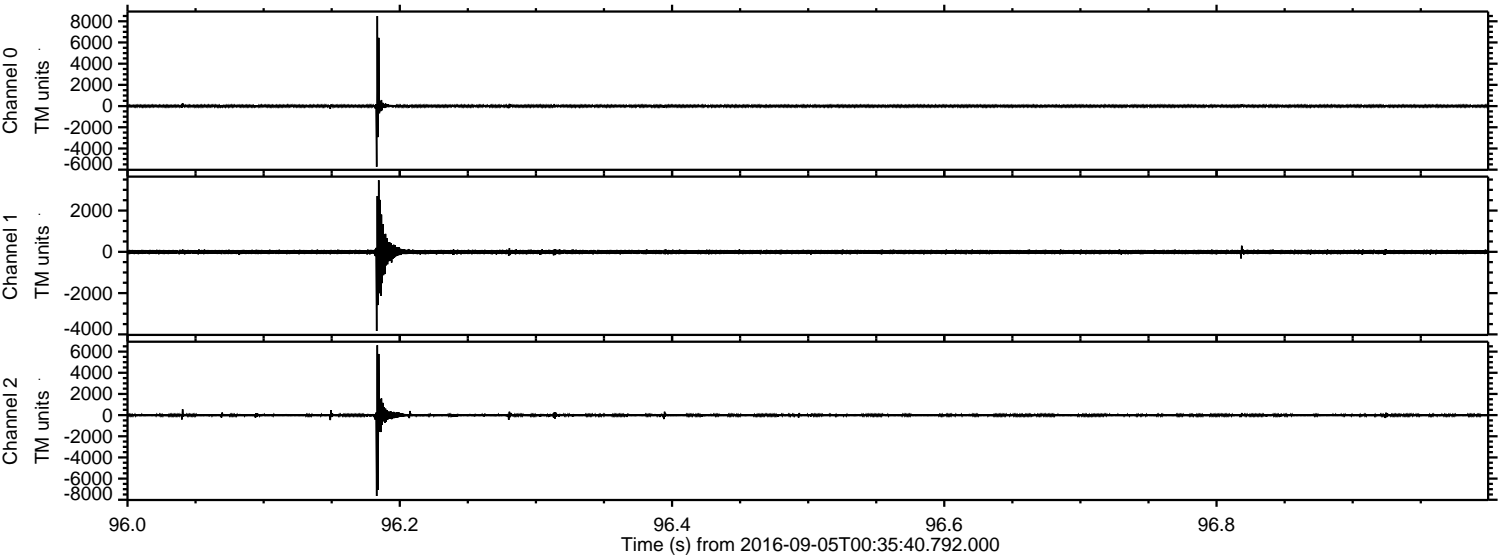
ELMAVAN 3D WAVEFORMS (Measured data sampled at 50 kHz) 51000 packets of 144 samples from 2016-09-05T00:35:40.792.000.

Processed Mon Sep 5 02:43:39 2016 by ELM ver.2012-10-06 from 001\_\_elm20160905\_003539\_\_dat00.bin



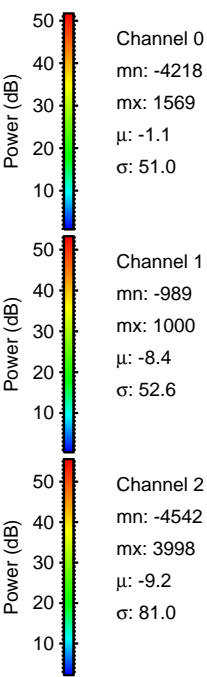
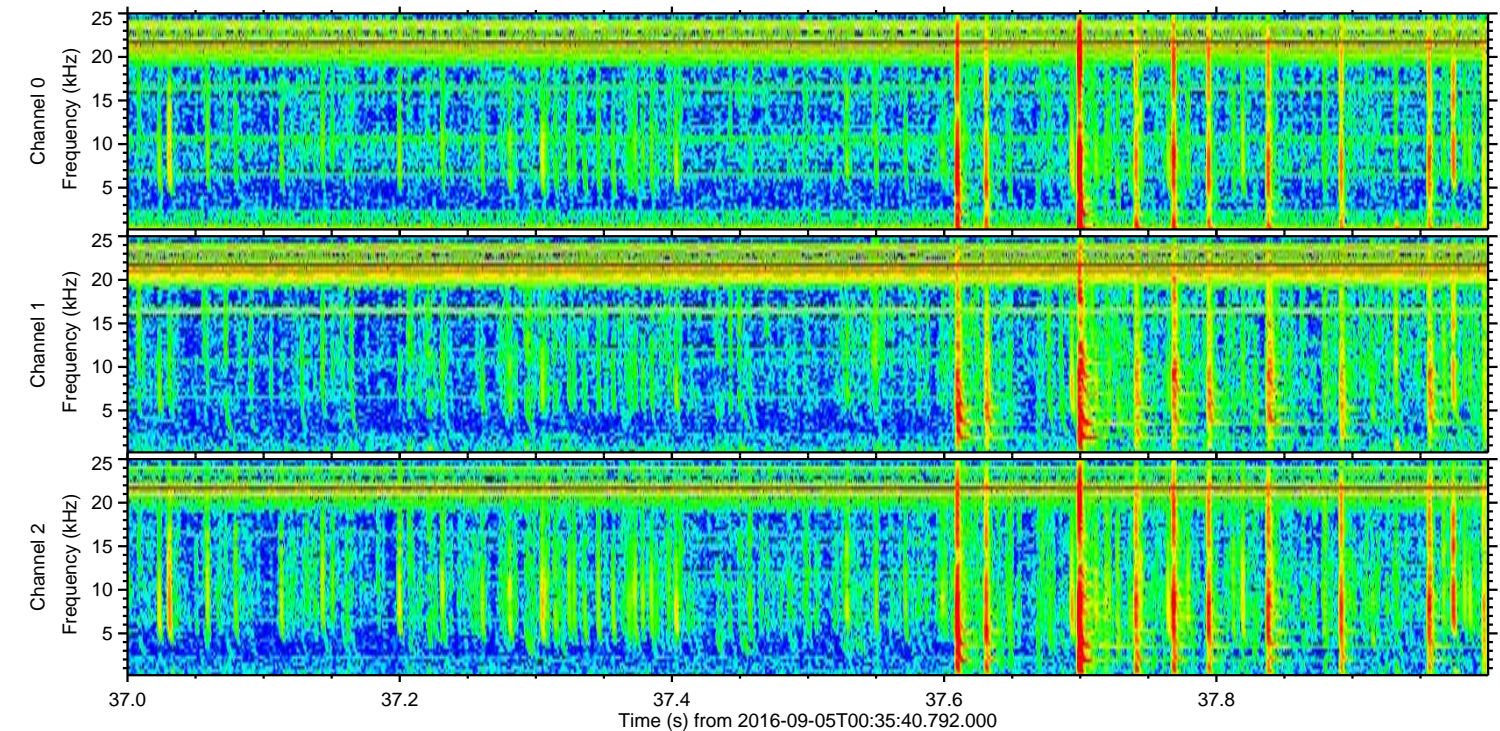
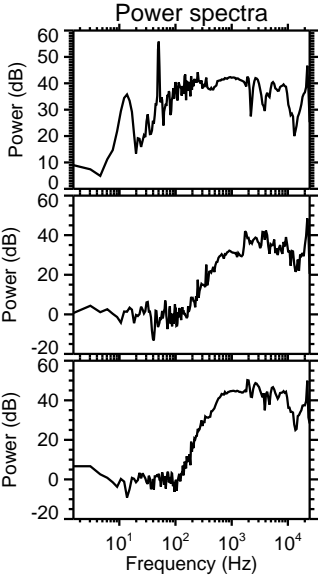
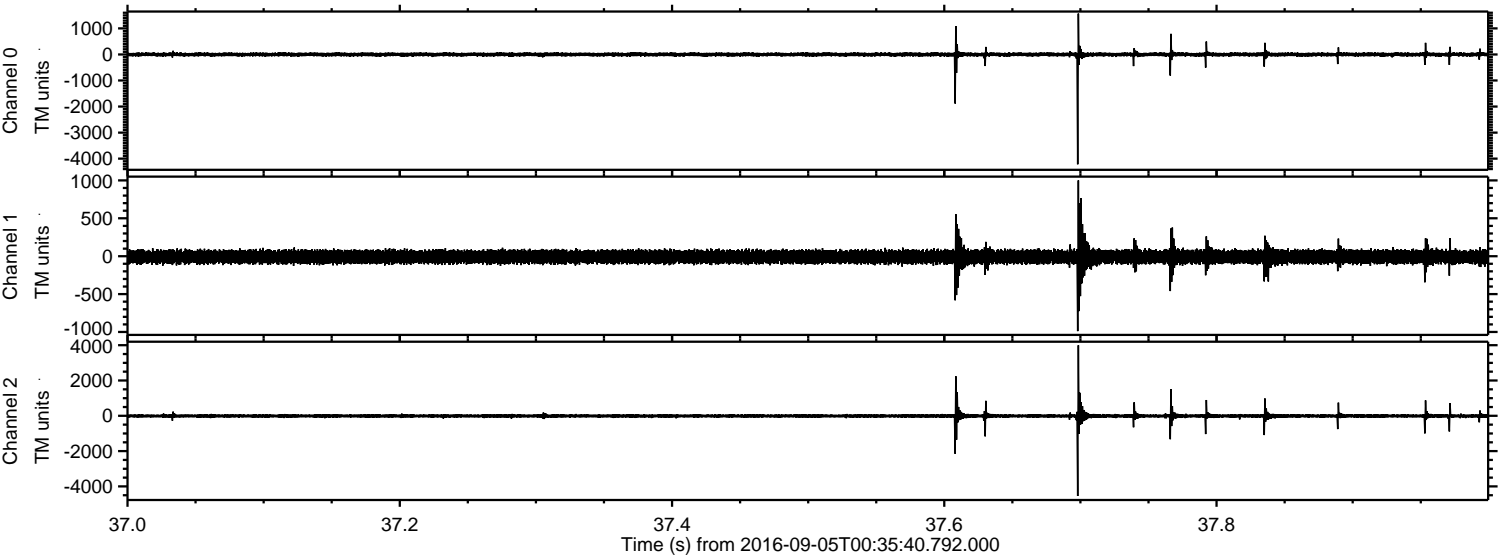


Processed Mon Sep 5 02:43:50 2016 by ELM ver.2012-10-06 from 001\_\_elm20160905\_003539\_\_dat00.bin





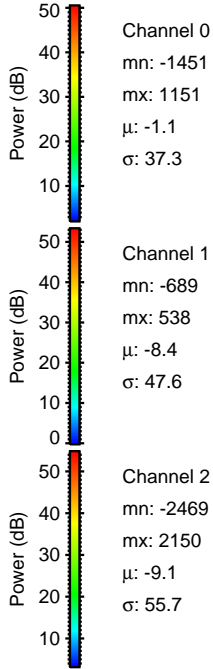
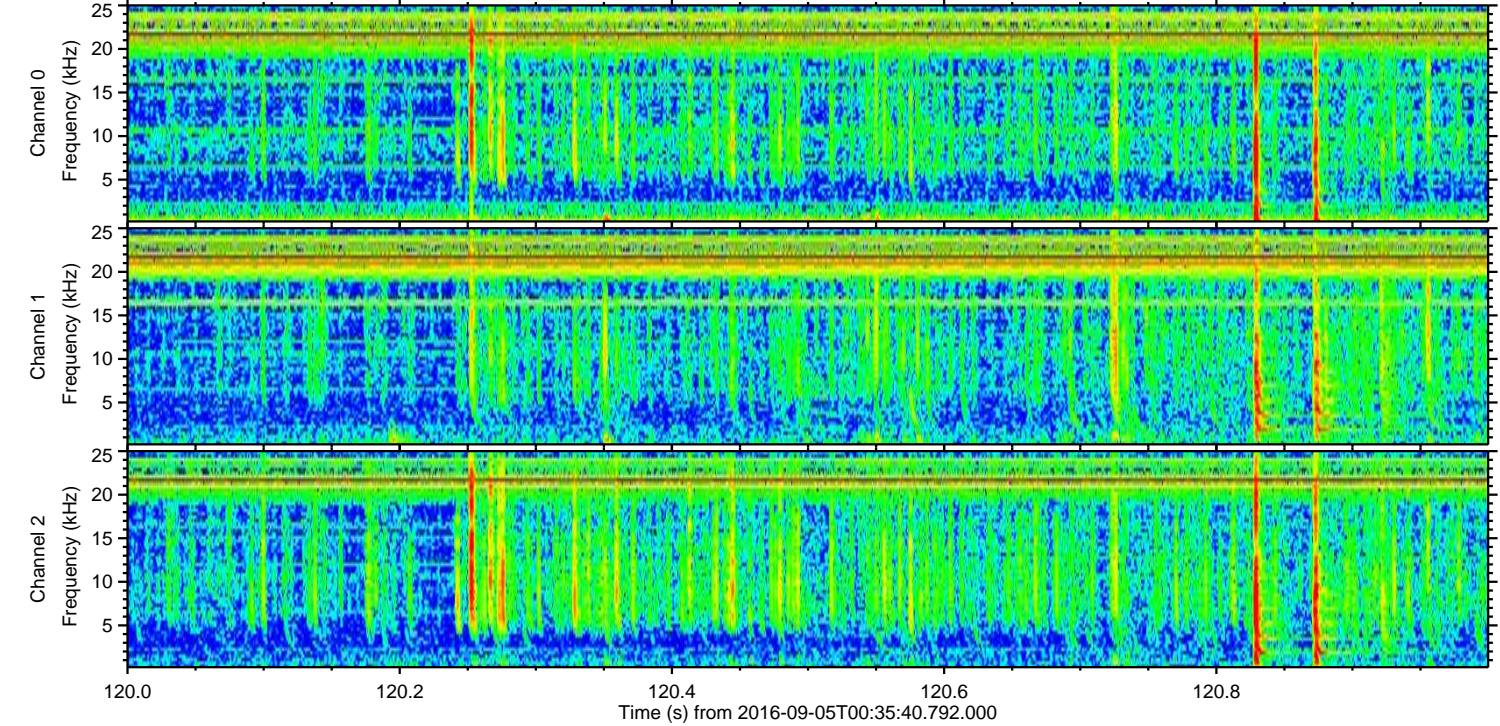
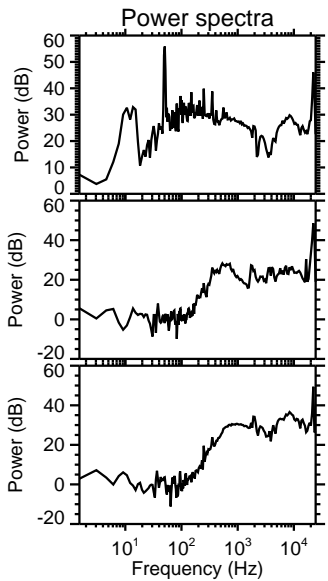
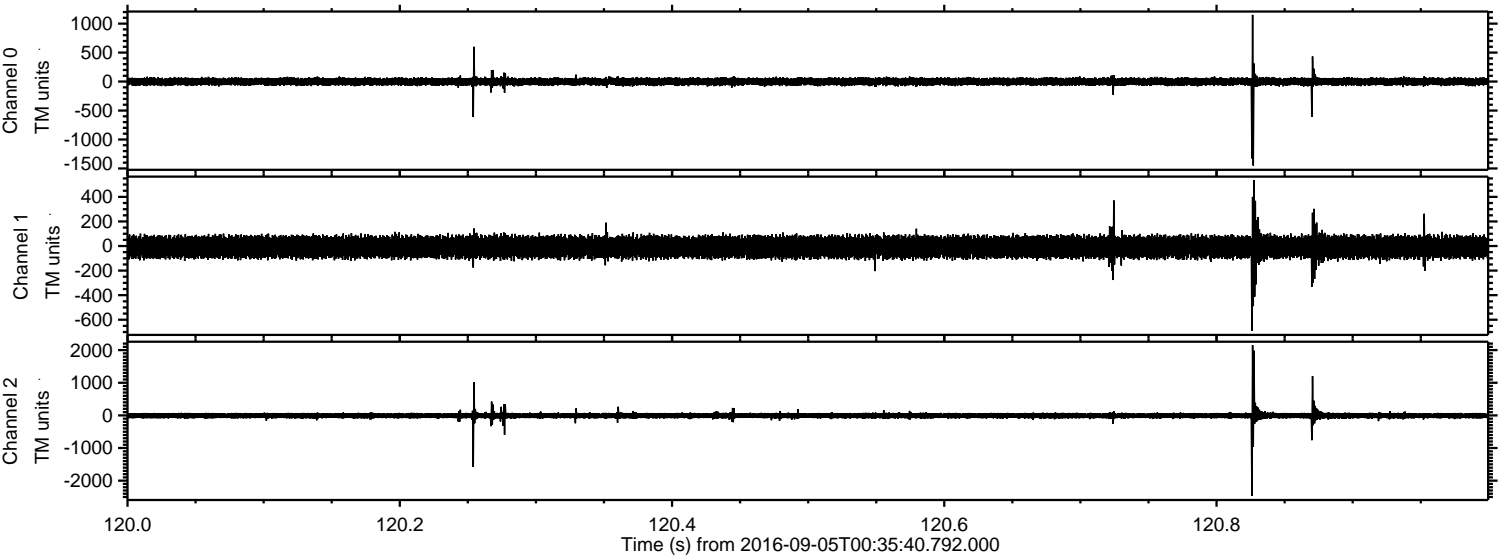
Processed Mon Sep 5 02:43:51 2016 by ELM ver.2012-10-06 from 001\_\_elm20160905\_003539\_\_dat00.bin





ELMAVAN 3D WAVEFORMS (Measured data sampled at 50 kHz) 51000 packets of 144 samples from 2016-09-05T00:35:40.792.000. Part 121/147

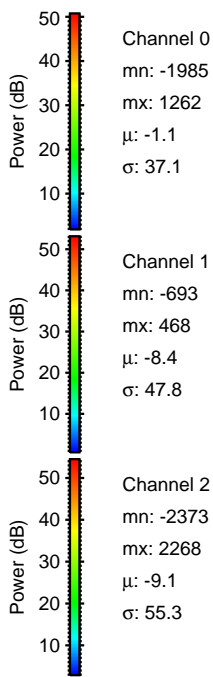
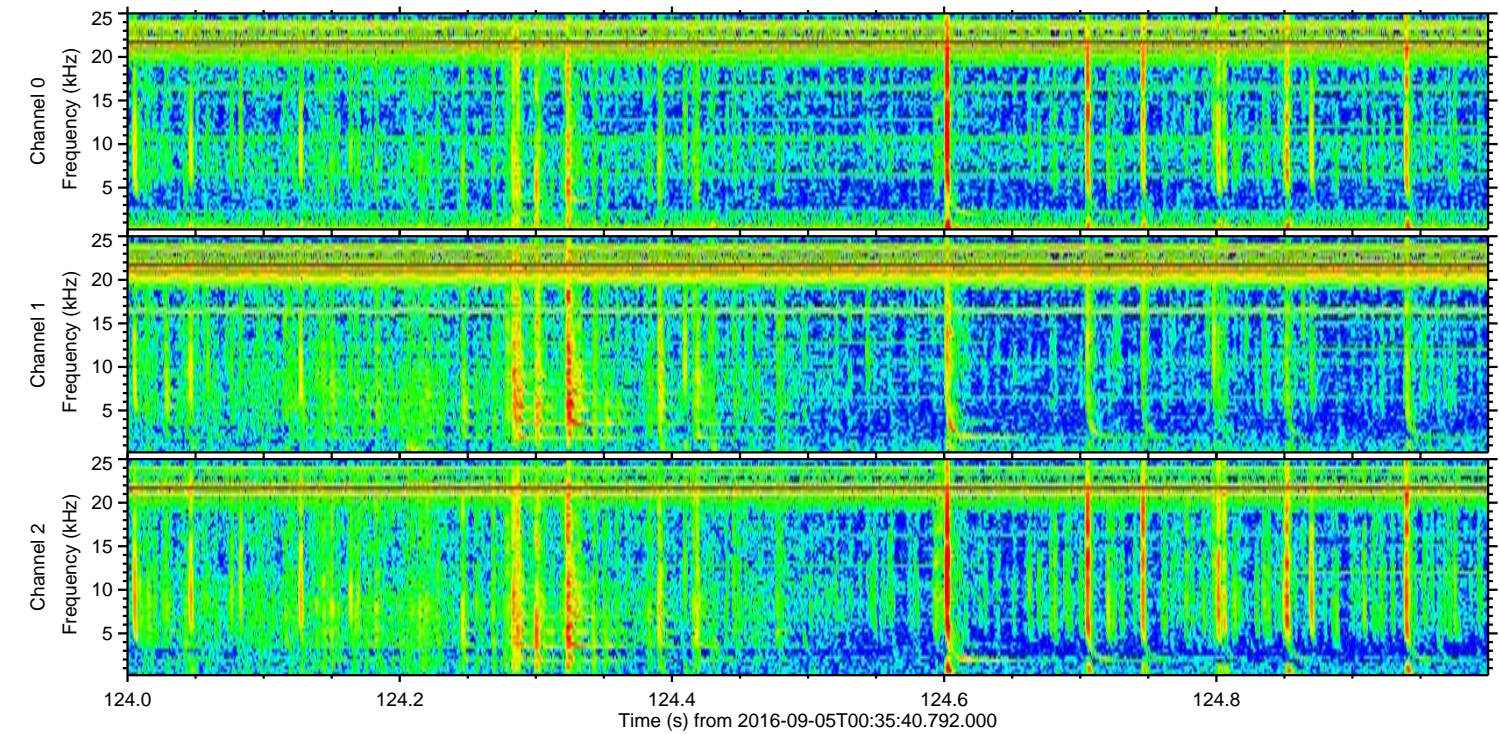
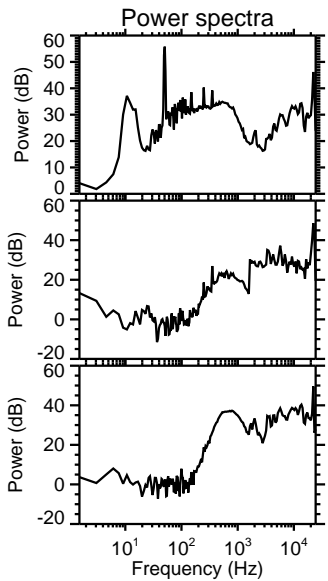
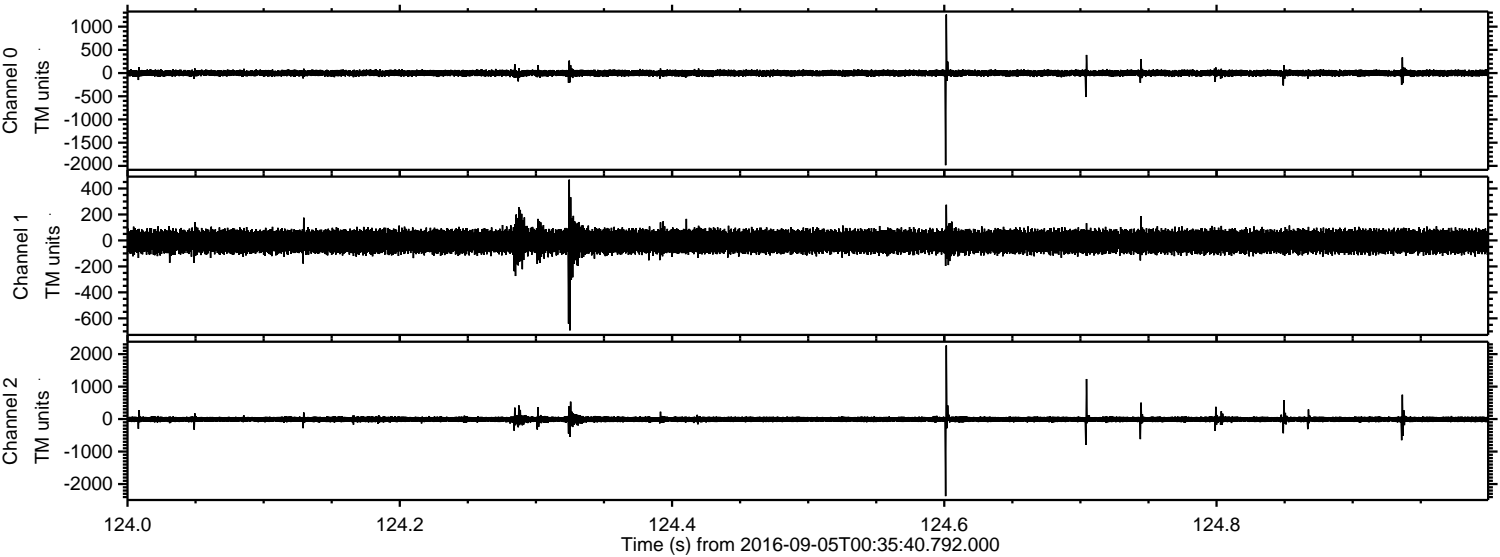
Processed Mon Sep 5 02:43:52 2016 by ELM ver.2012-10-06 from 001\_\_elm20160905\_003539\_\_dat00.bin





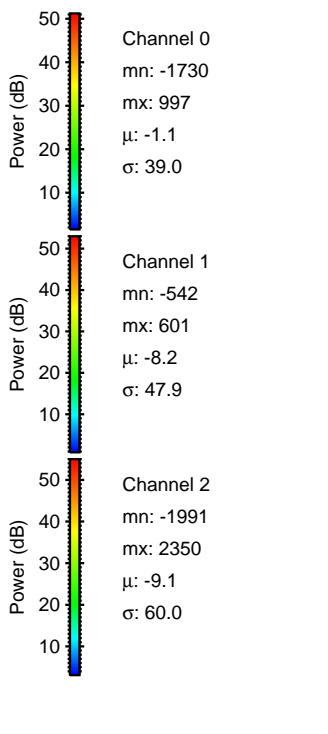
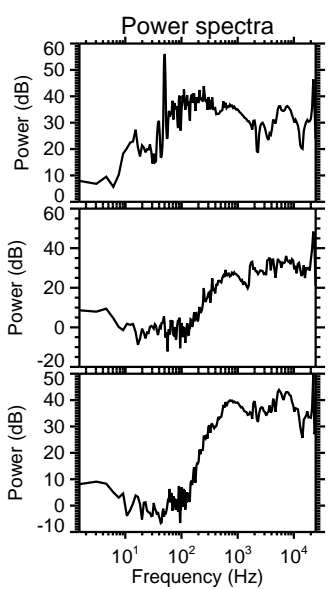
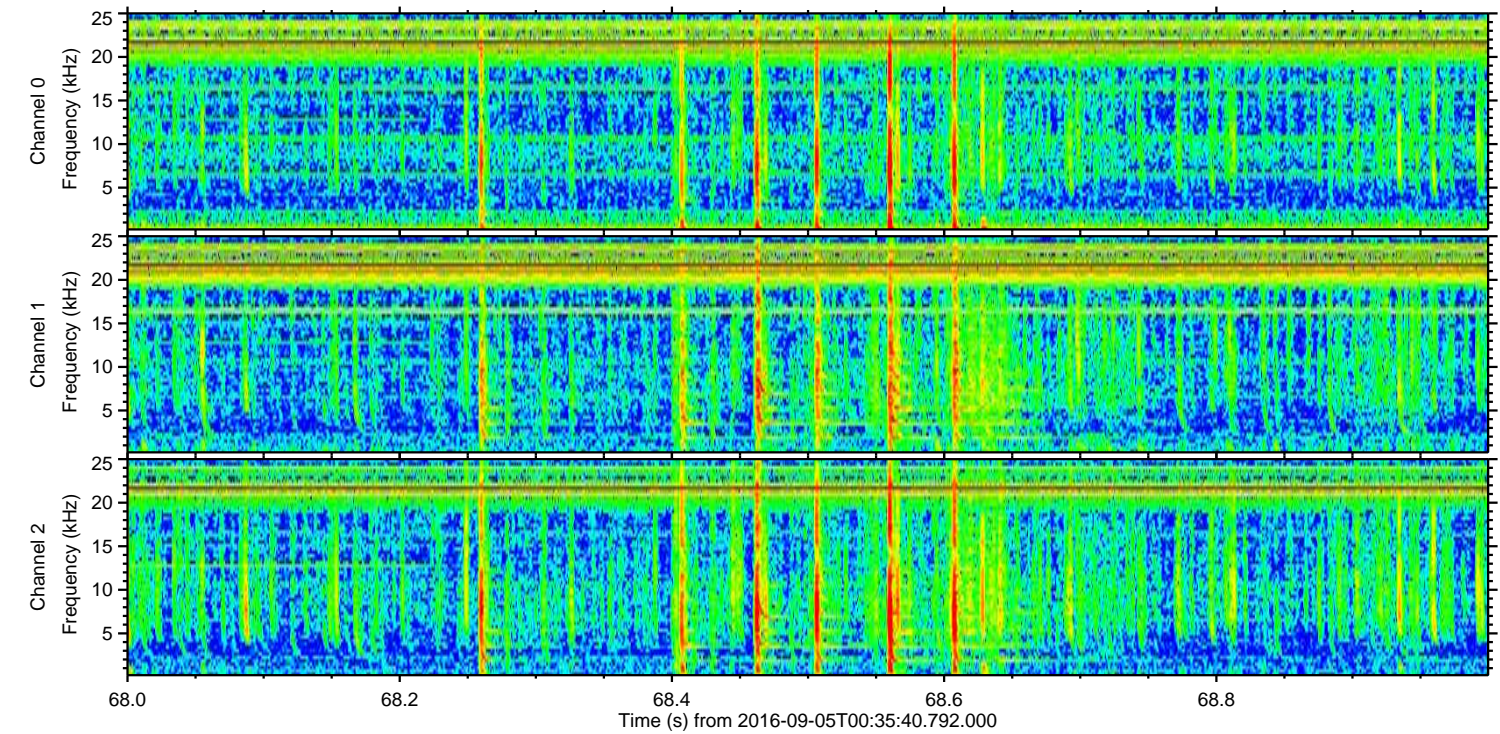
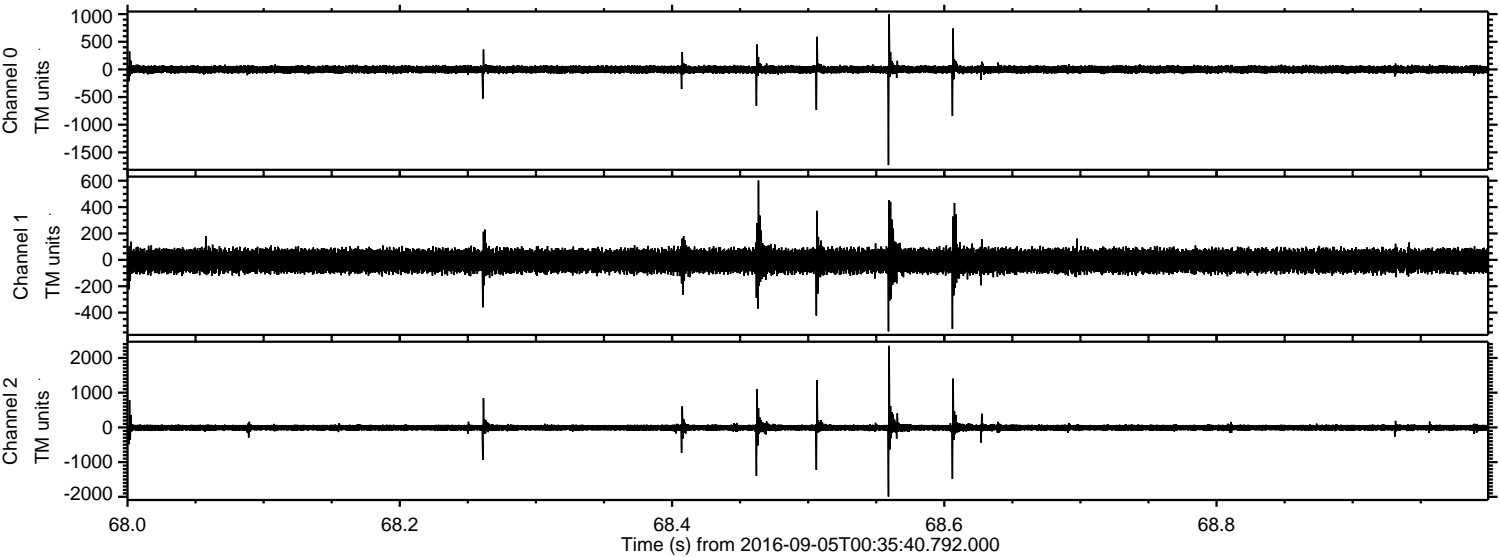
ELMAVAN 3D WAVEFORMS (Measured data sampled at 50 kHz) 51000 packets of 144 samples from 2016-09-05T00:35:40.792.000. Part 125/147

Processed Mon Sep 5 02:43:53 2016 by ELM ver.2012-10-06 from 001\_\_elm20160905\_003539\_\_dat00.bin



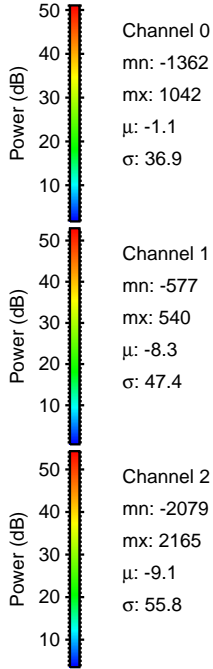
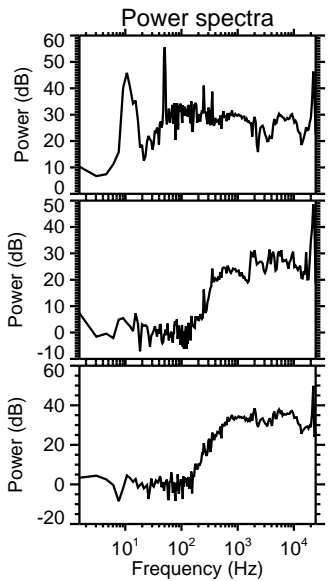
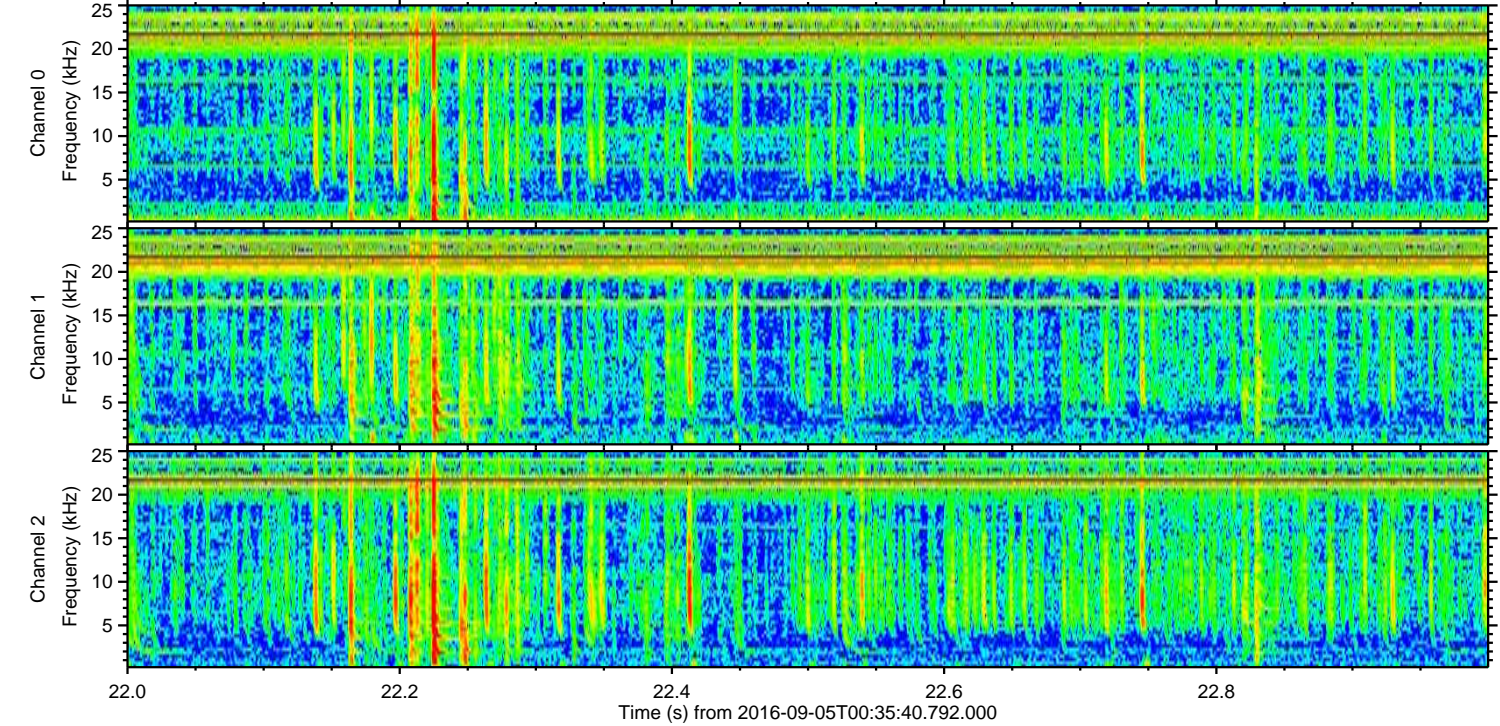
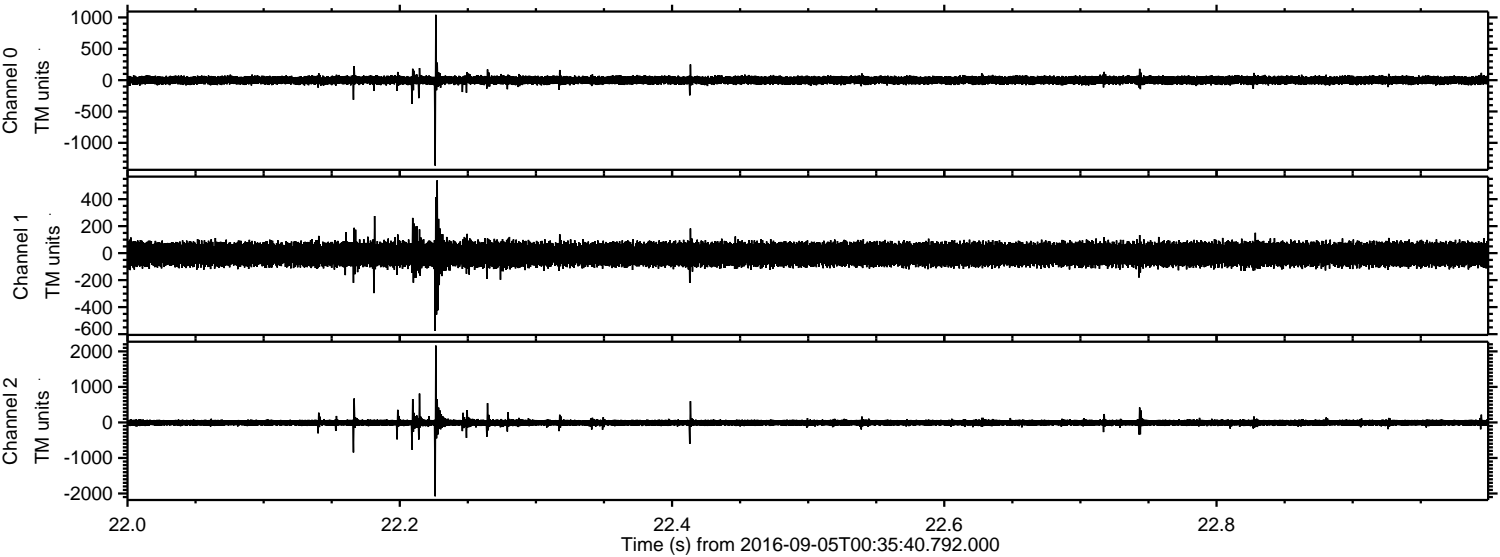


Processed Mon Sep 5 02:43:54 2016 by ELM ver.2012-10-06 from 001\_\_elm20160905\_003539\_\_dat00.bin





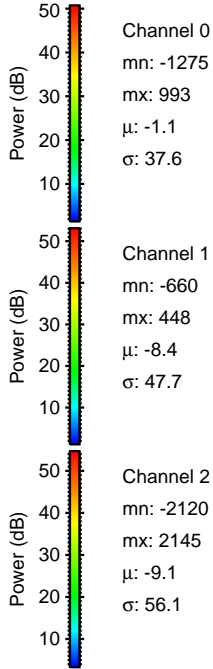
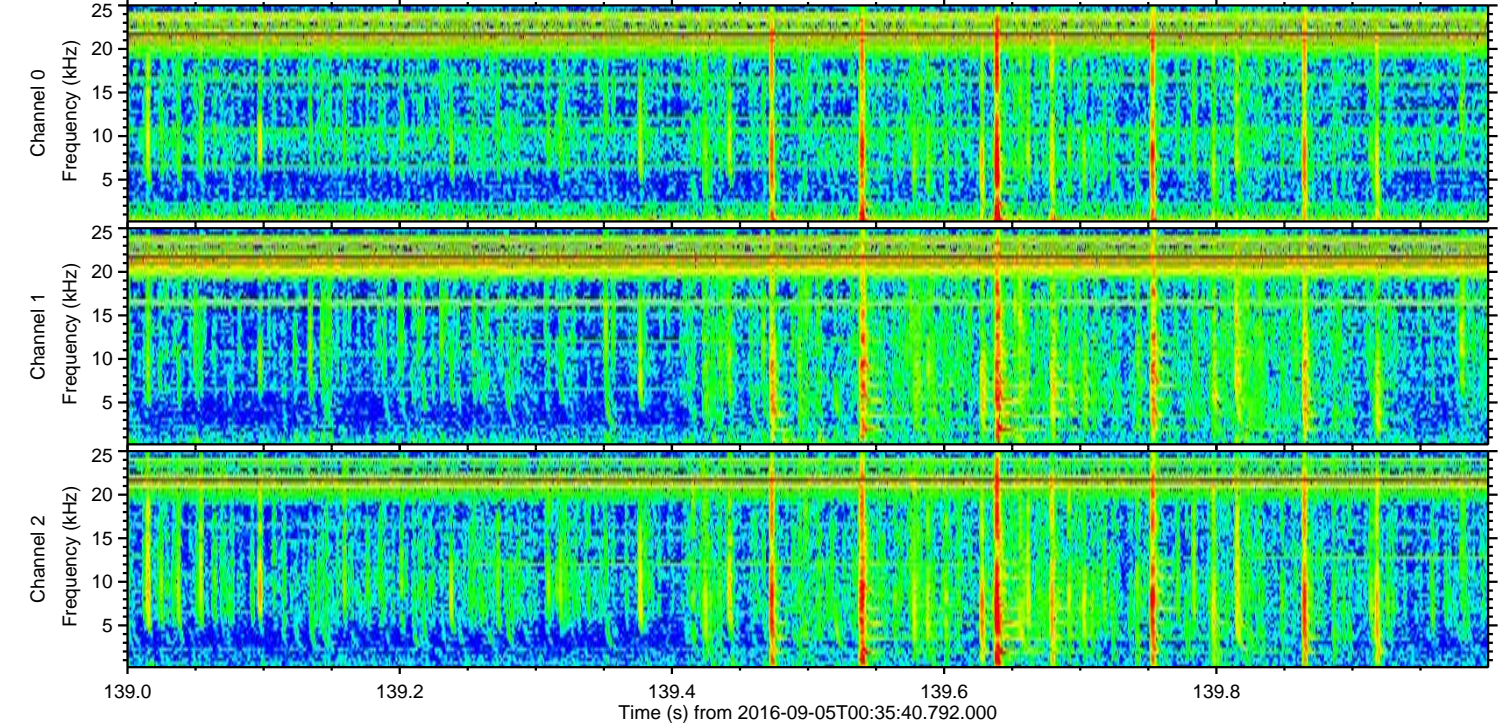
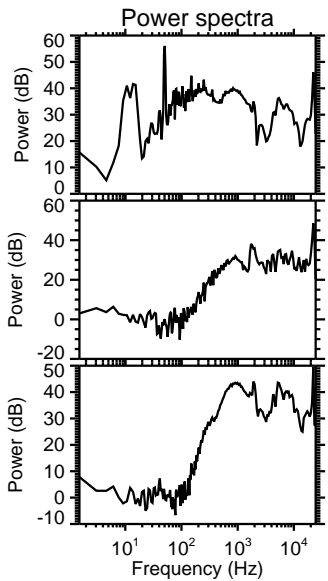
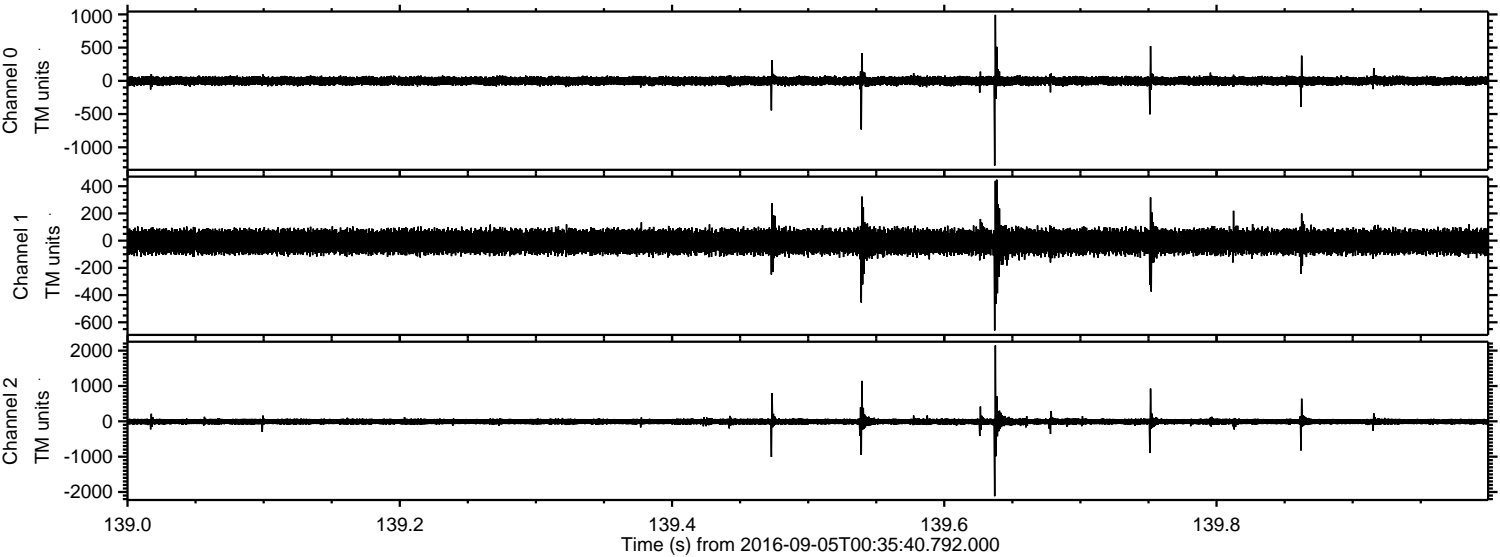
Processed Mon Sep 5 02:43:55 2016 by ELM ver.2012-10-06 from 001\_\_elm20160905\_003539\_\_dat00.bin





ELMAVAN 3D WAVEFORMS (Measured data sampled at 50 kHz) 51000 packets of 144 samples from 2016-09-05T00:35:40.792.000. Part 140/147

Processed Mon Sep 5 02:43:56 2016 by ELM ver.2012-10-06 from 001\_\_elm20160905\_003539\_\_dat00.bin



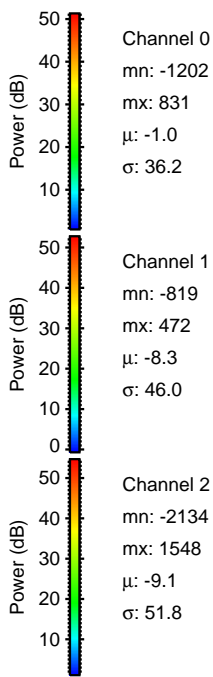
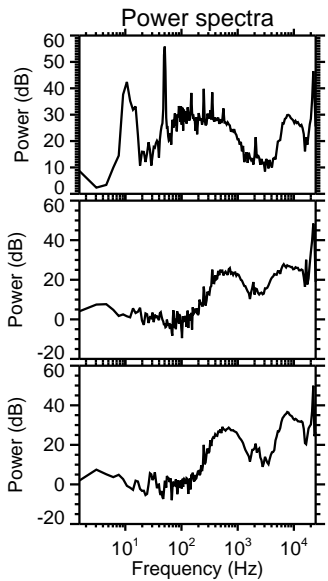
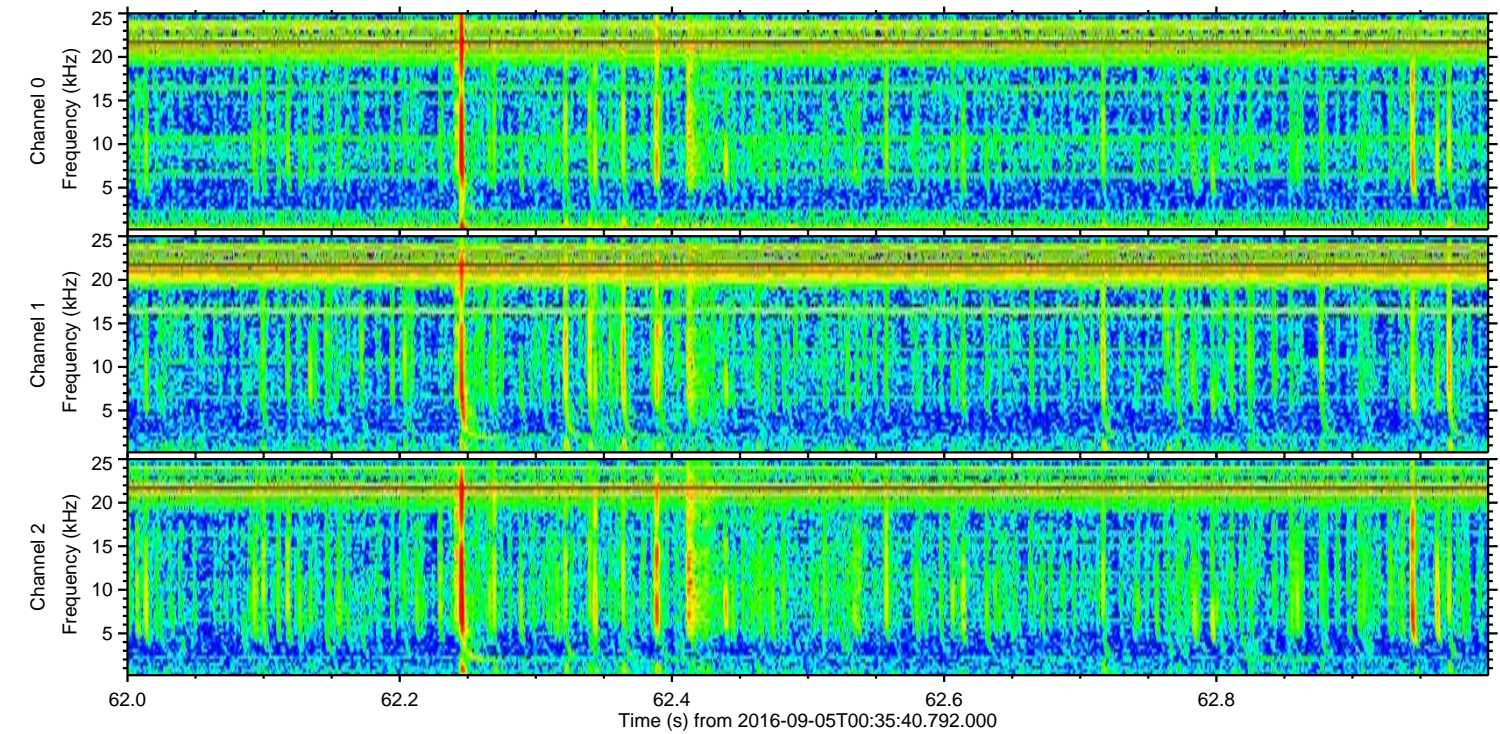
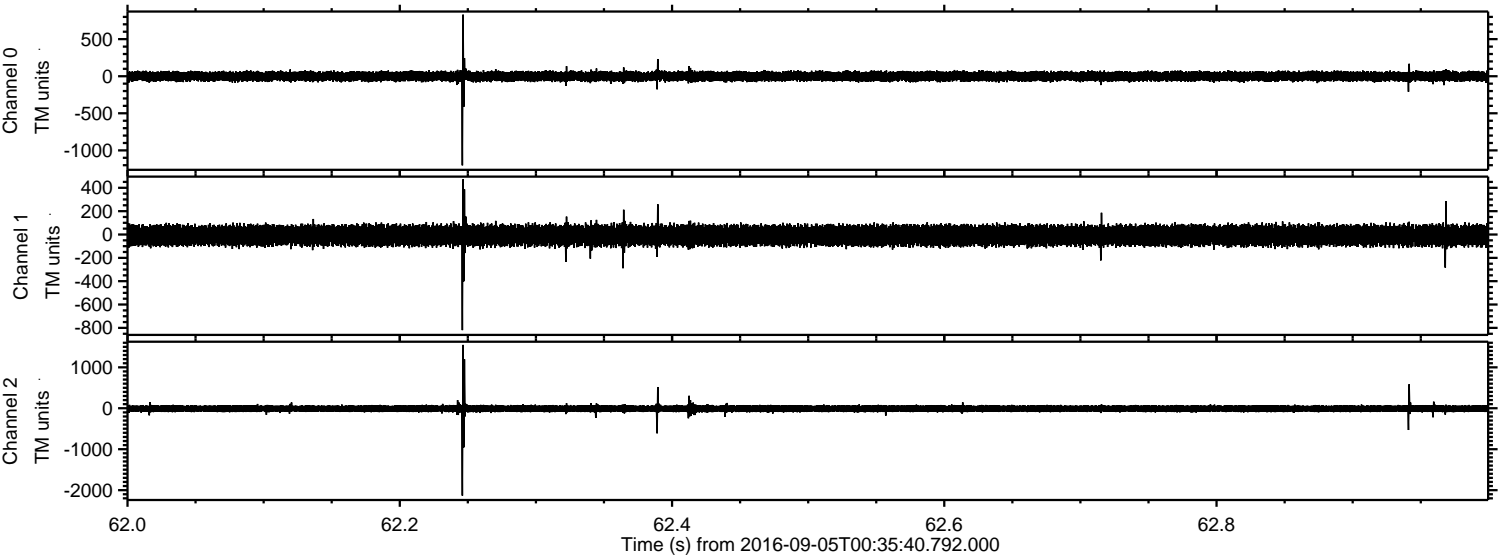
Channel 0  
mn: -1275  
mx: 993  
 $\mu$ : -1.1  
 $\sigma$ : 37.6

Channel 1  
mn: -660  
mx: 448  
 $\mu$ : -8.4  
 $\sigma$ : 47.7

Channel 2  
mn: -2120  
mx: 2145  
 $\mu$ : -9.1  
 $\sigma$ : 56.1



Processed Mon Sep 5 02:43:57 2016 by ELM ver.2012-10-06 from 001\_\_elm20160905\_003539\_\_dat00.bin





Processed Mon Sep 5 02:43:58 2016 by ELM ver.2012-10-06 from 001\_\_elm20160905\_003539\_\_dat00.bin

