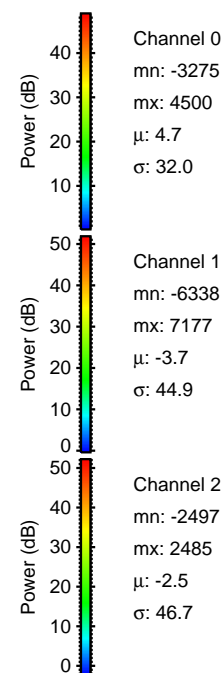
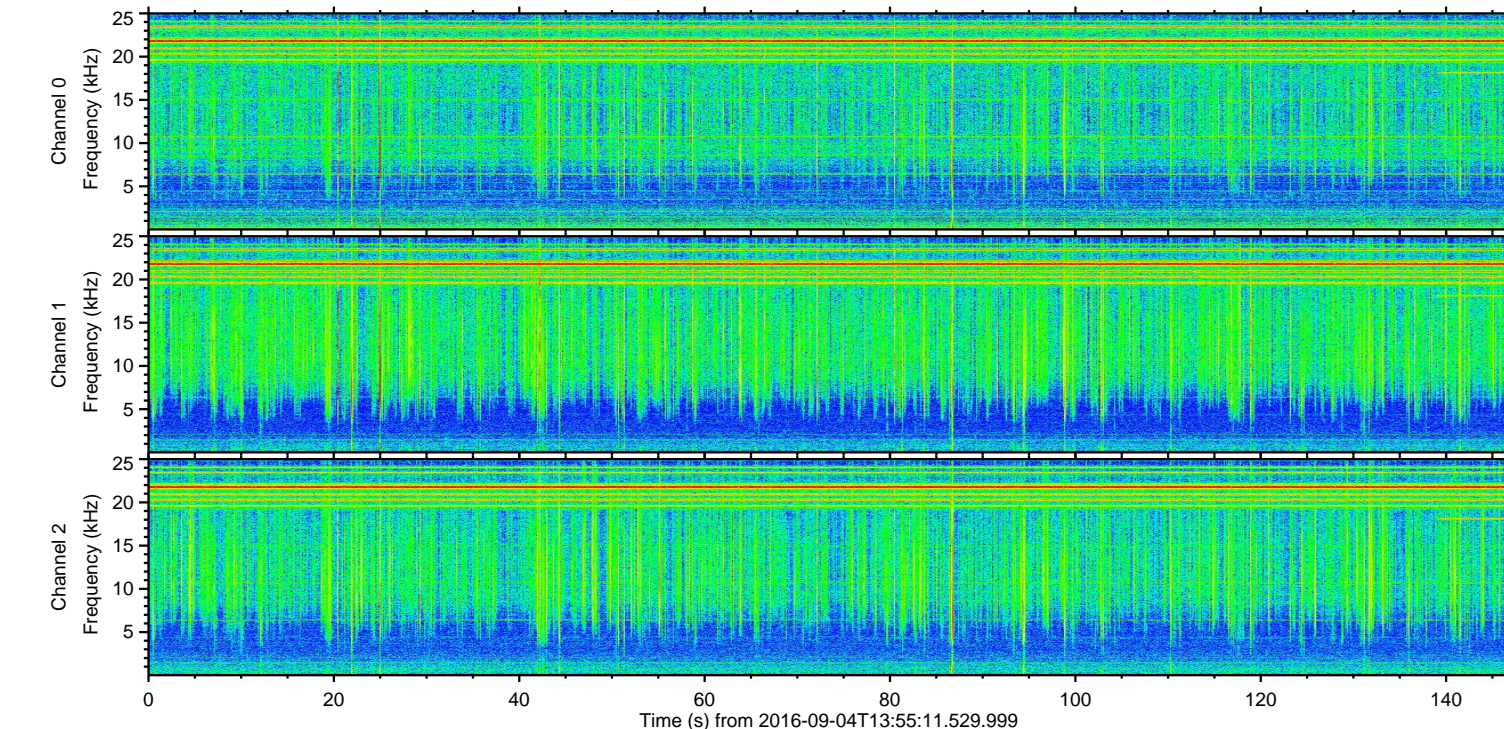
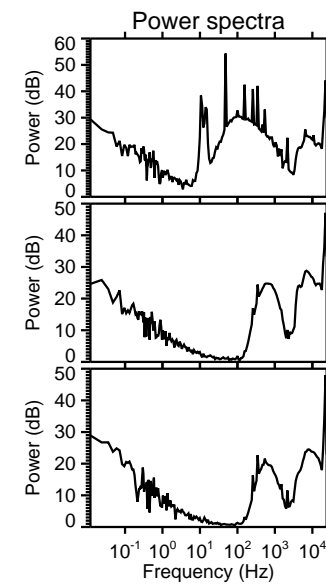
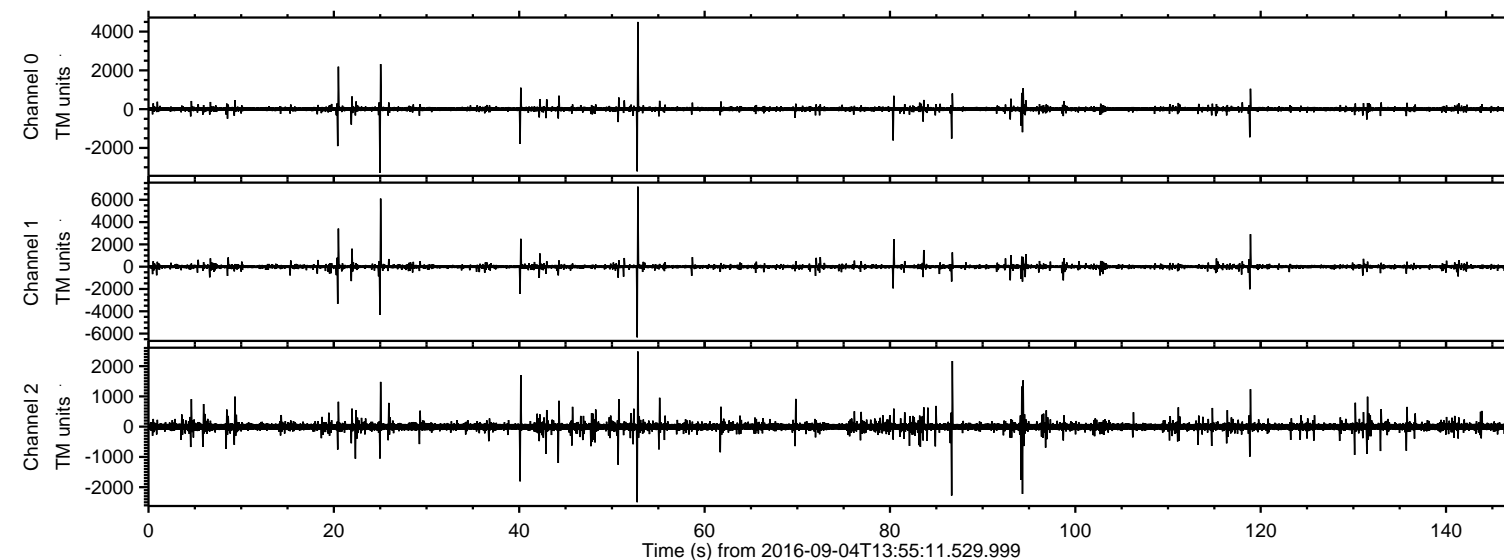


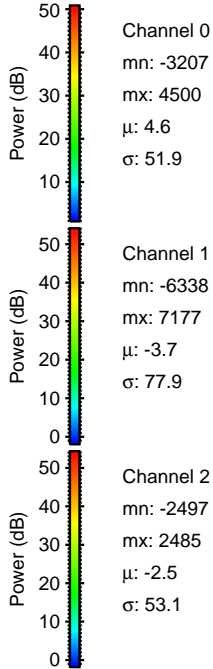
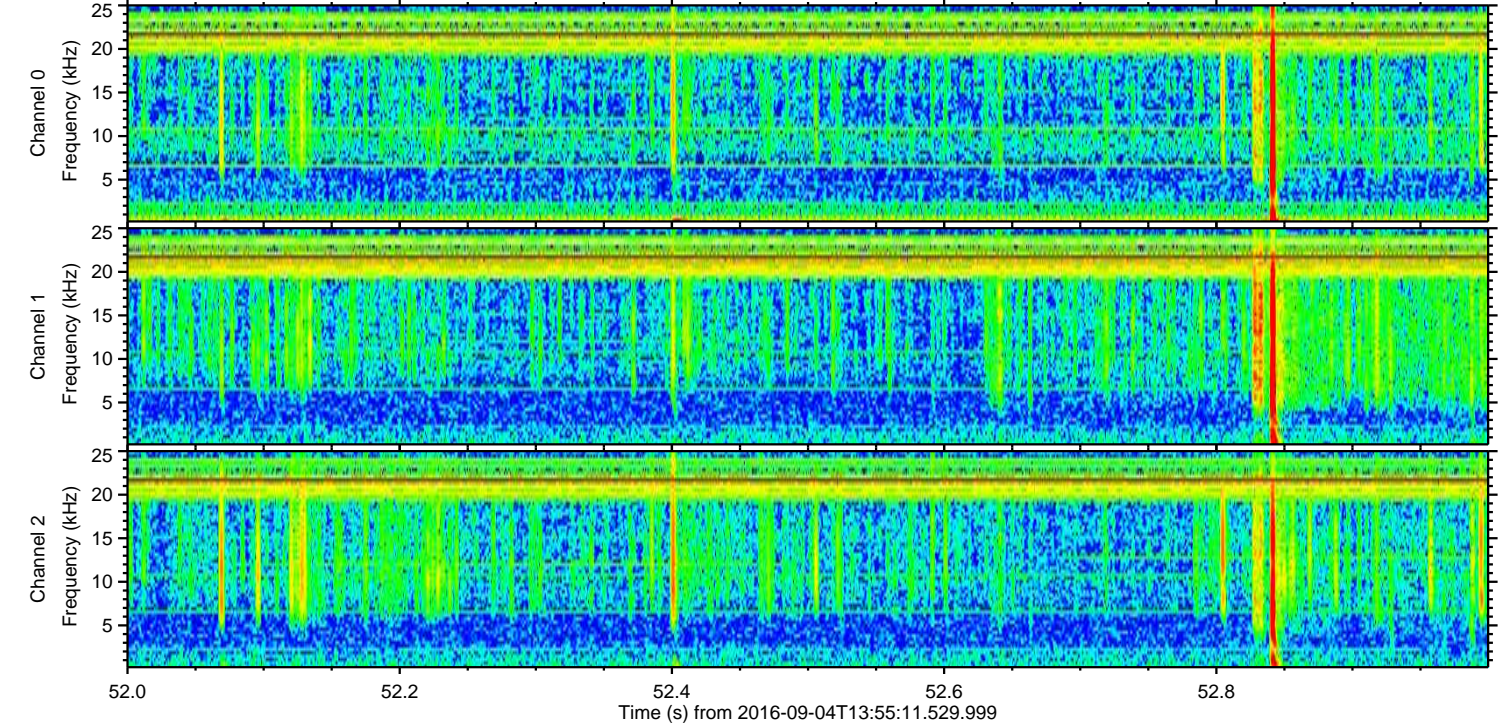
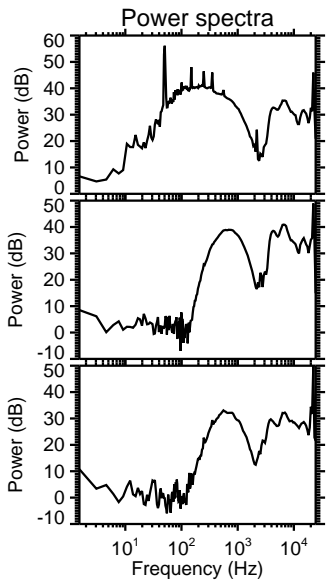
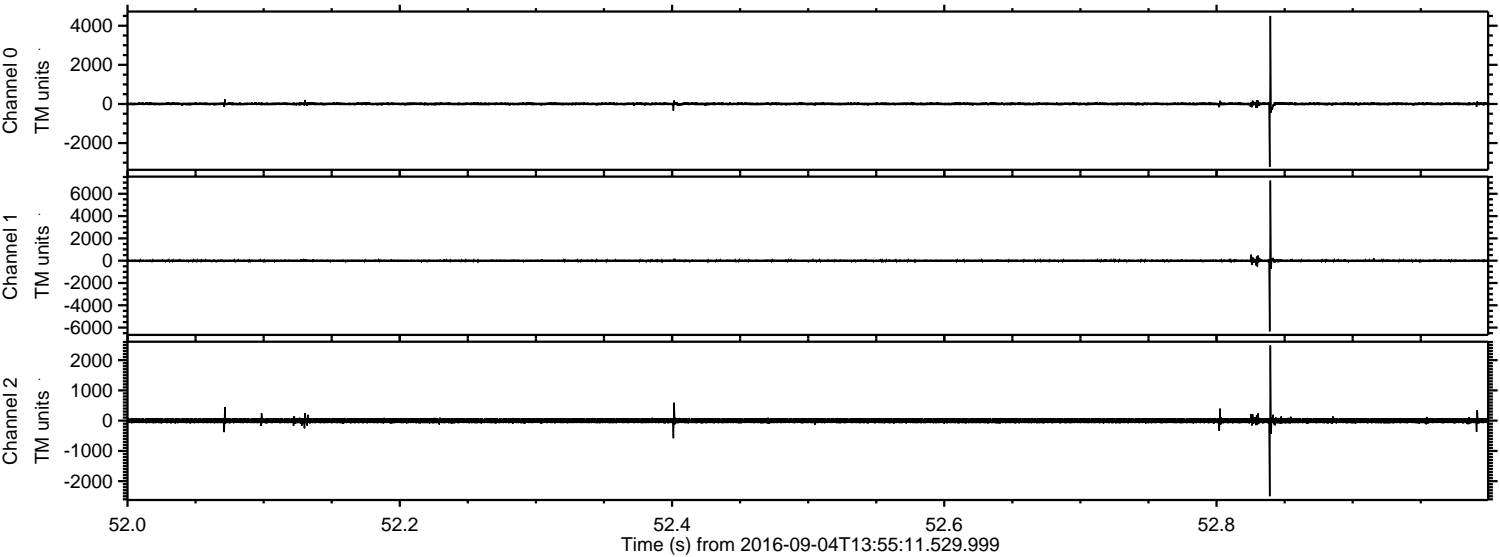
ELMAVAN 3D WAVEFORMS (Measured data sampled at 50 kHz) 51000 packets of 144 samples from 2016-09-04T13:55:11.529.999.

Processed Sun Sep 4 16:02:30 2016 by ELM ver.2012-10-06 from 001\_\_elm20160904\_135510\_\_dat00.bin



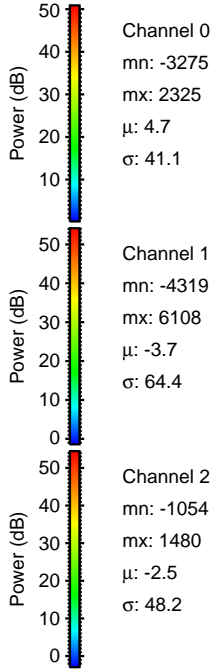
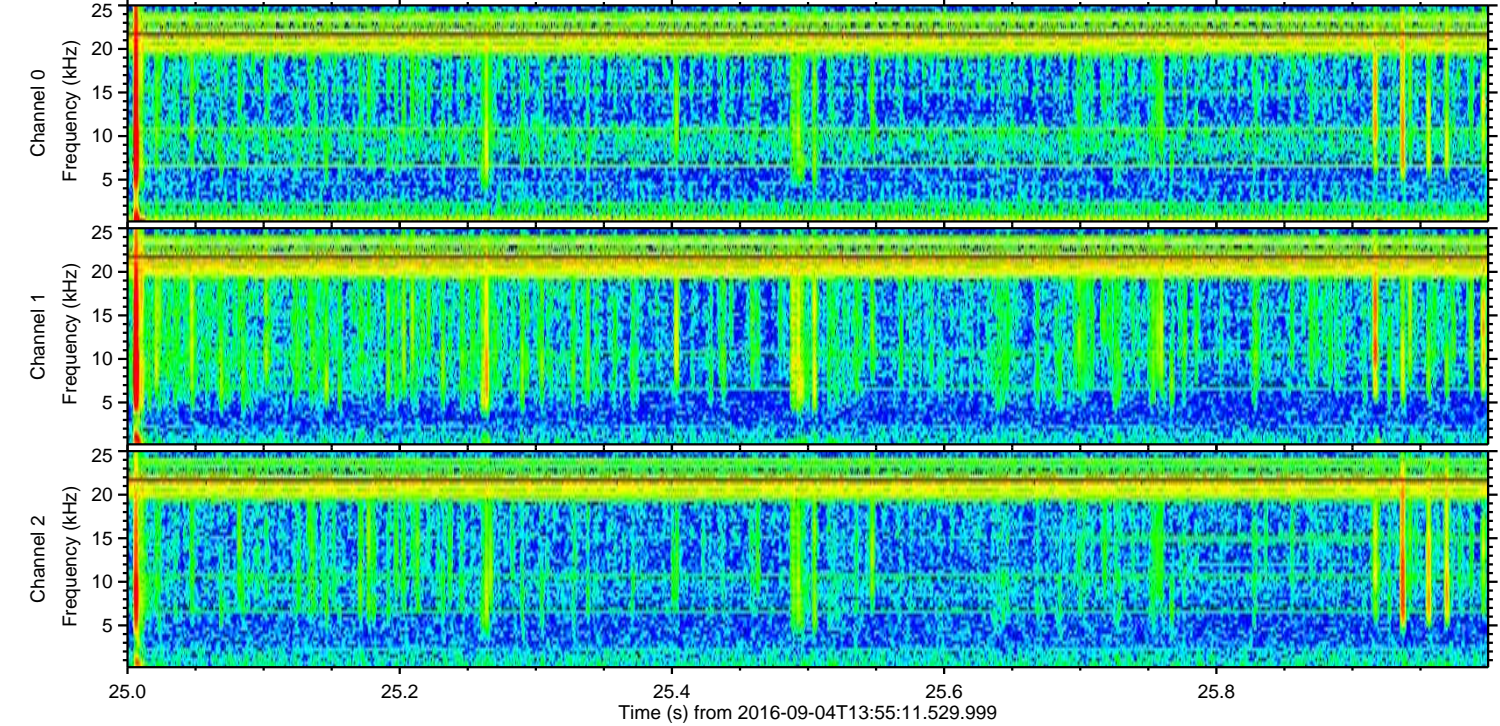
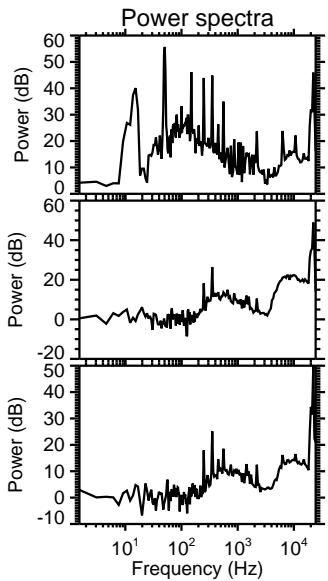
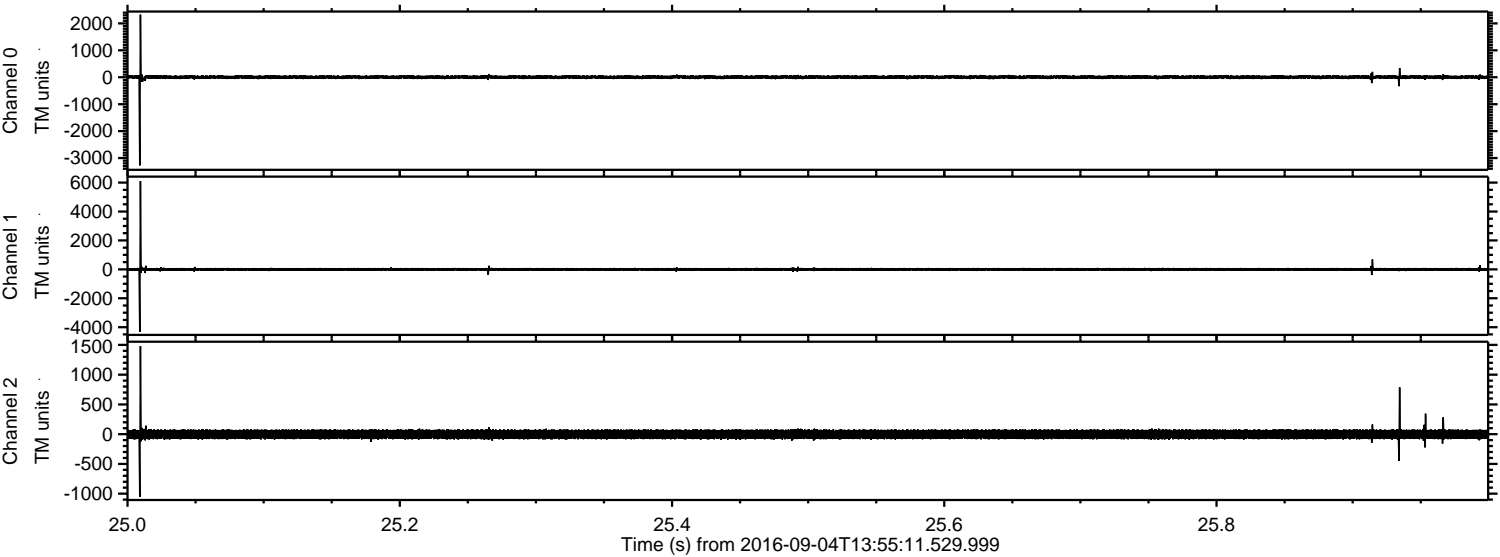


Processed Sun Sep 4 16:02:42 2016 by ELM ver.2012-10-06 from 001\_\_elm20160904\_135510\_\_dat00.bin





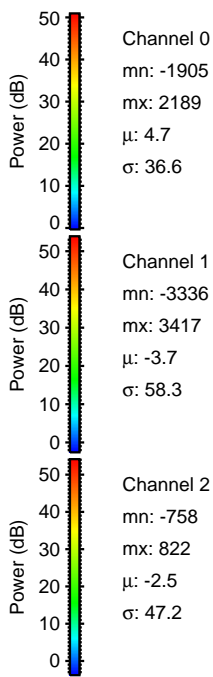
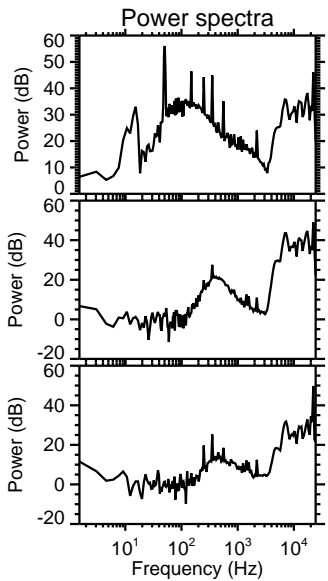
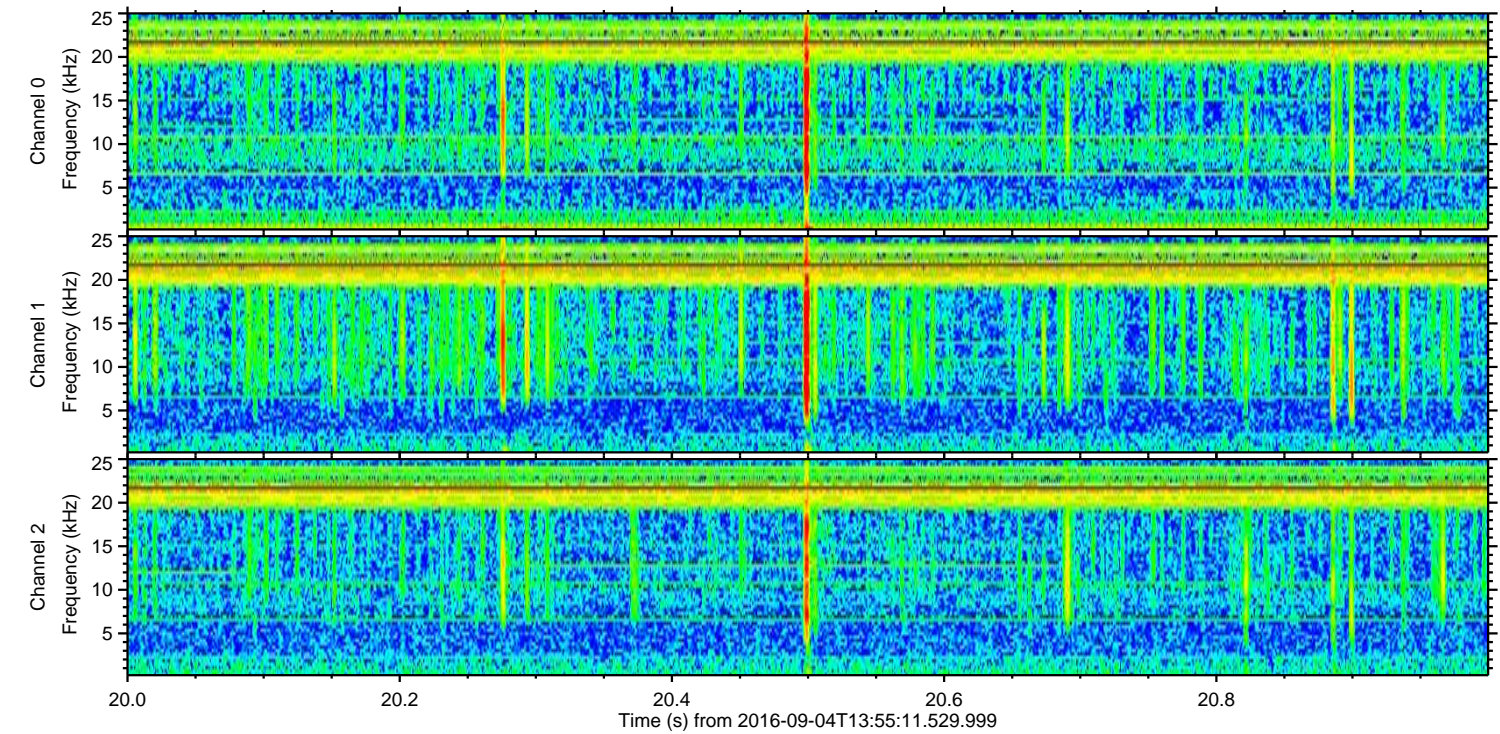
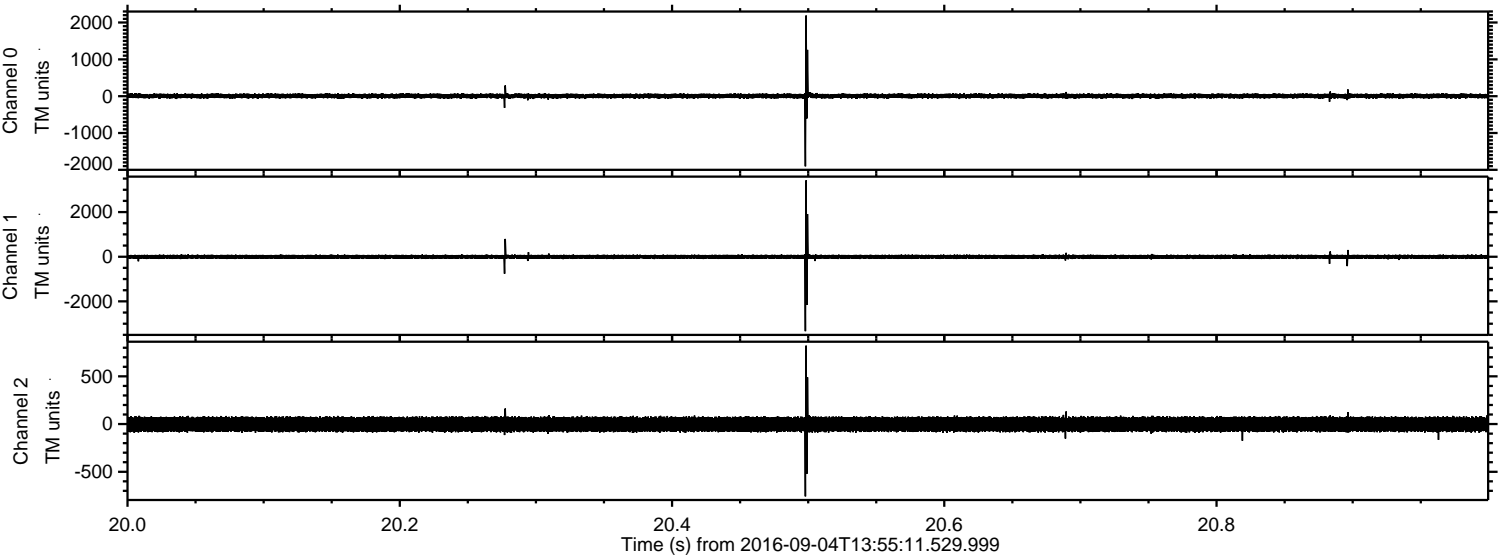
Processed Sun Sep 4 16:02:43 2016 by ELM ver.2012-10-06 from 001\_\_elm20160904\_135510\_\_dat00.bin





ELMAVAN 3D WAVEFORMS (Measured data sampled at 50 kHz) 51000 packets of 144 samples from 2016-09-04T13:55:11.529.999. Part 21/147

Processed Sun Sep 4 16:02:44 2016 by ELM ver.2012-10-06 from 001\_\_elm20160904\_135510\_\_dat00.bin



Channel 0  
mn: -1905  
mx: 2189  
 $\mu$ : 4.7  
 $\sigma$ : 36.6

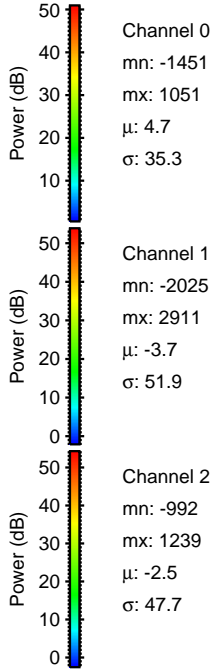
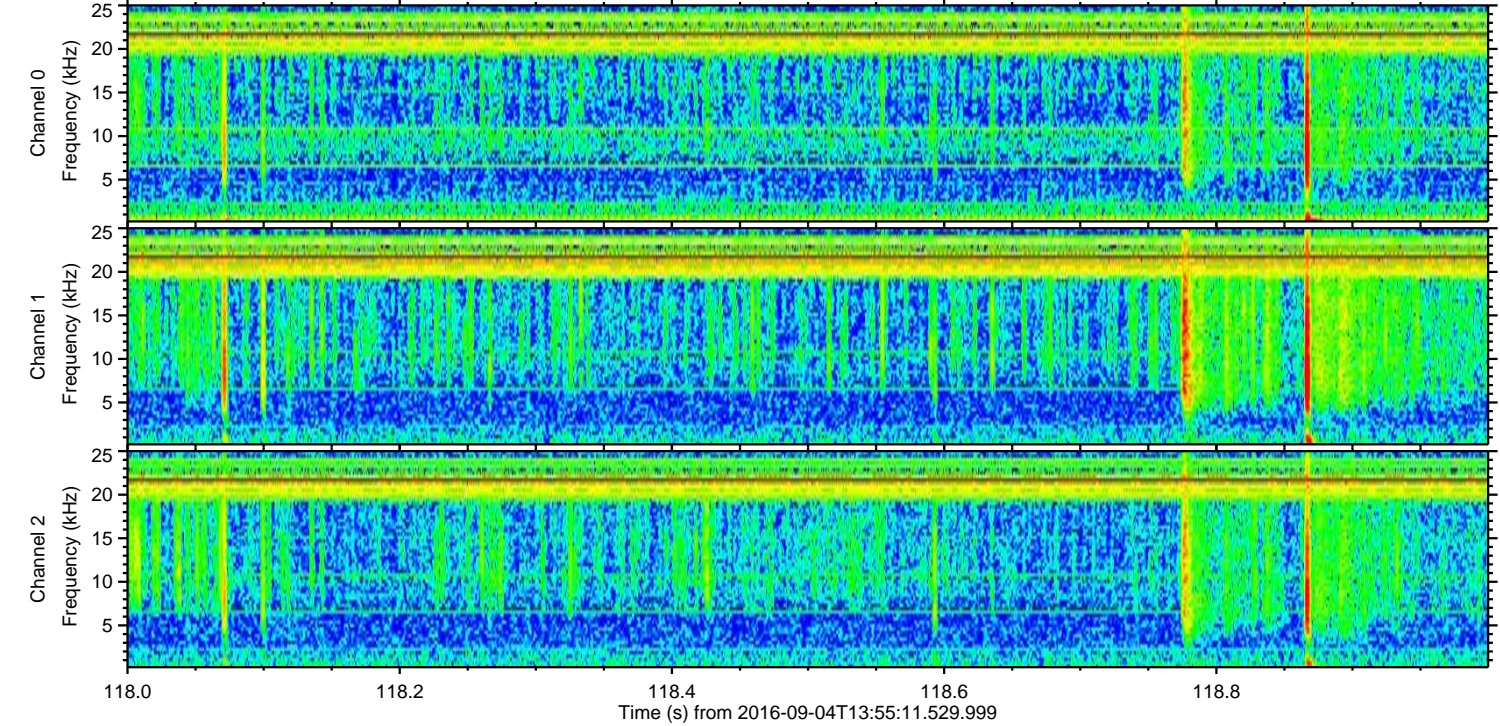
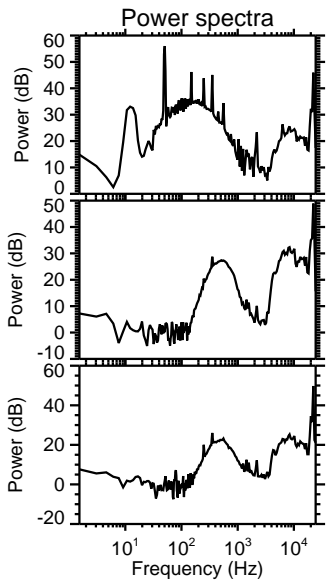
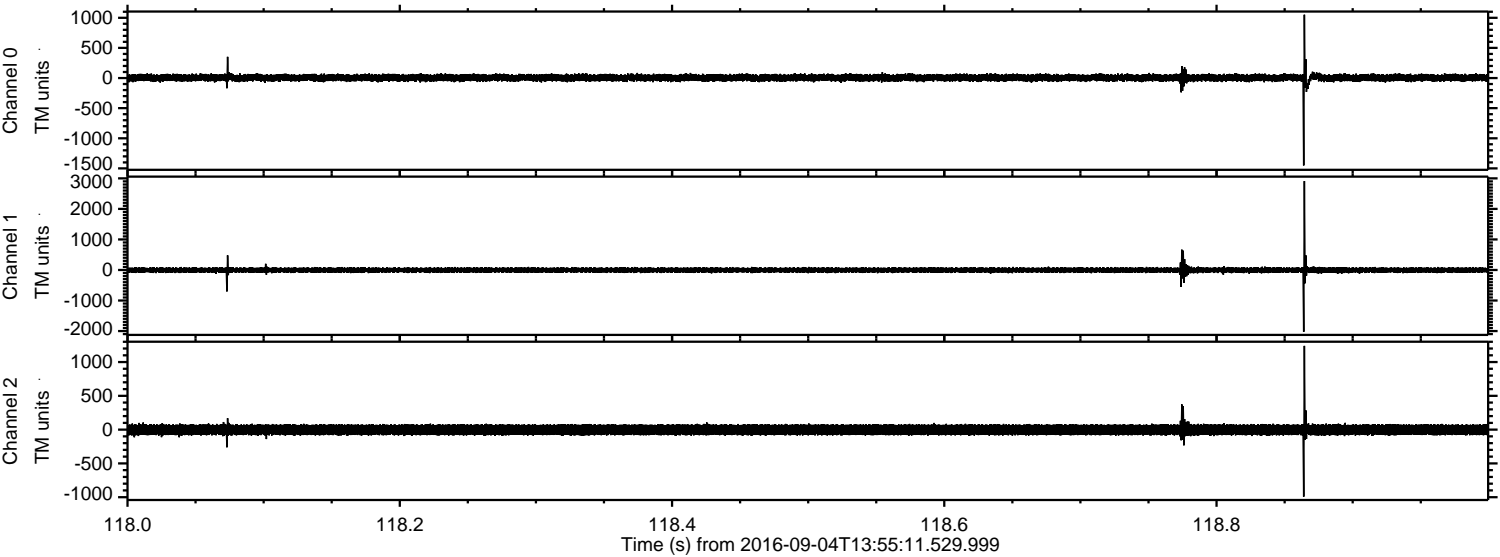
Channel 1  
mn: -3336  
mx: 3417  
 $\mu$ : -3.7  
 $\sigma$ : 58.3

Channel 2  
mn: -758  
mx: 822  
 $\mu$ : -2.5  
 $\sigma$ : 47.2



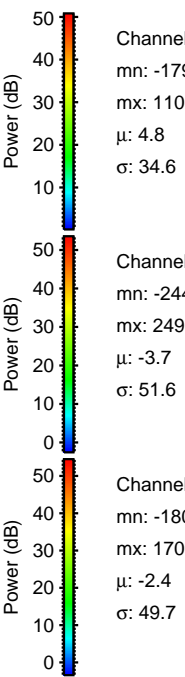
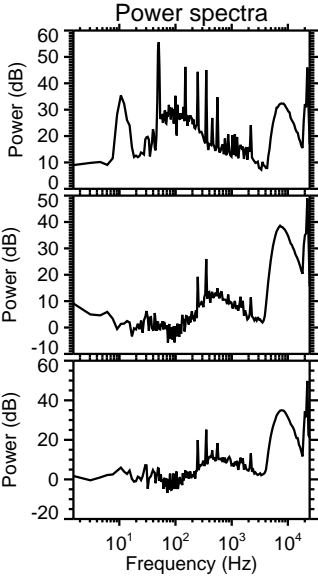
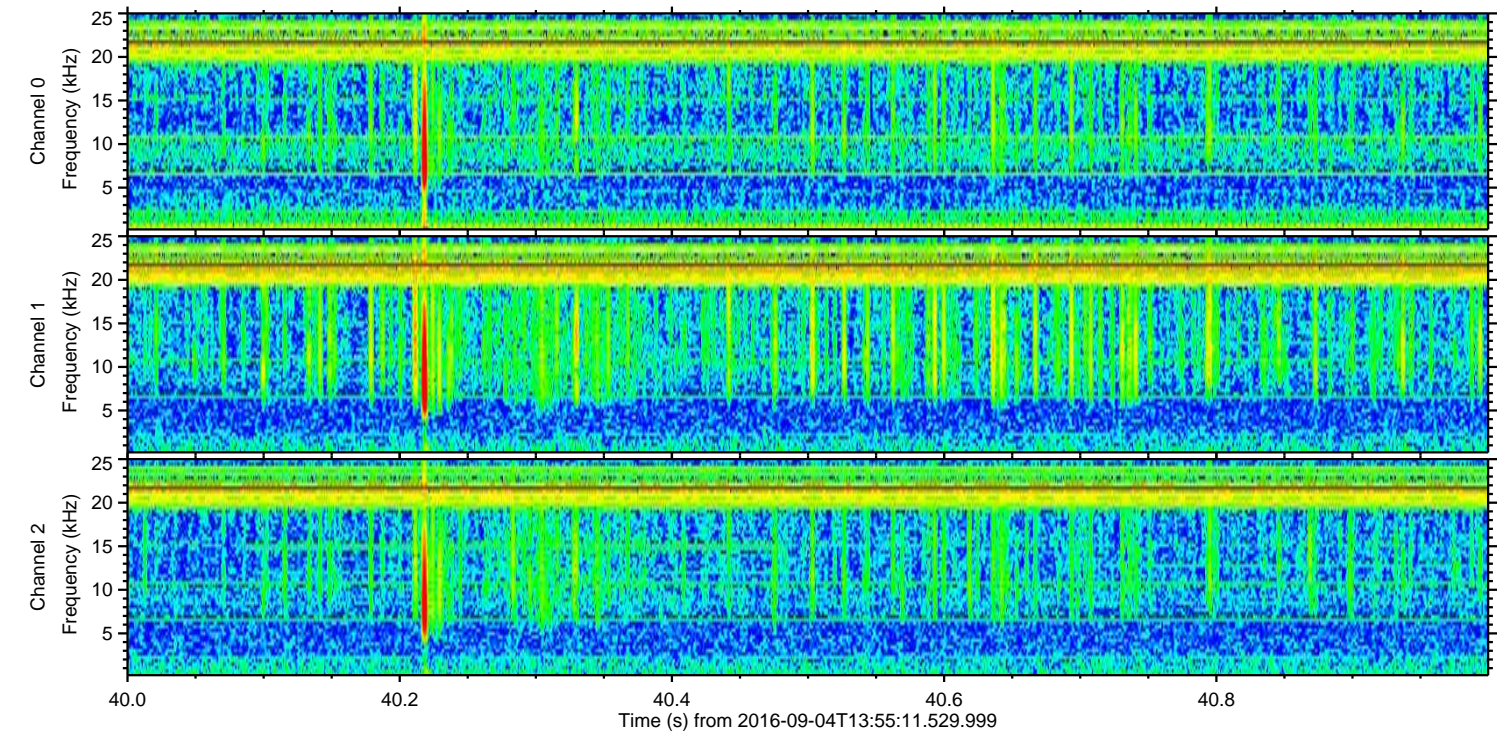
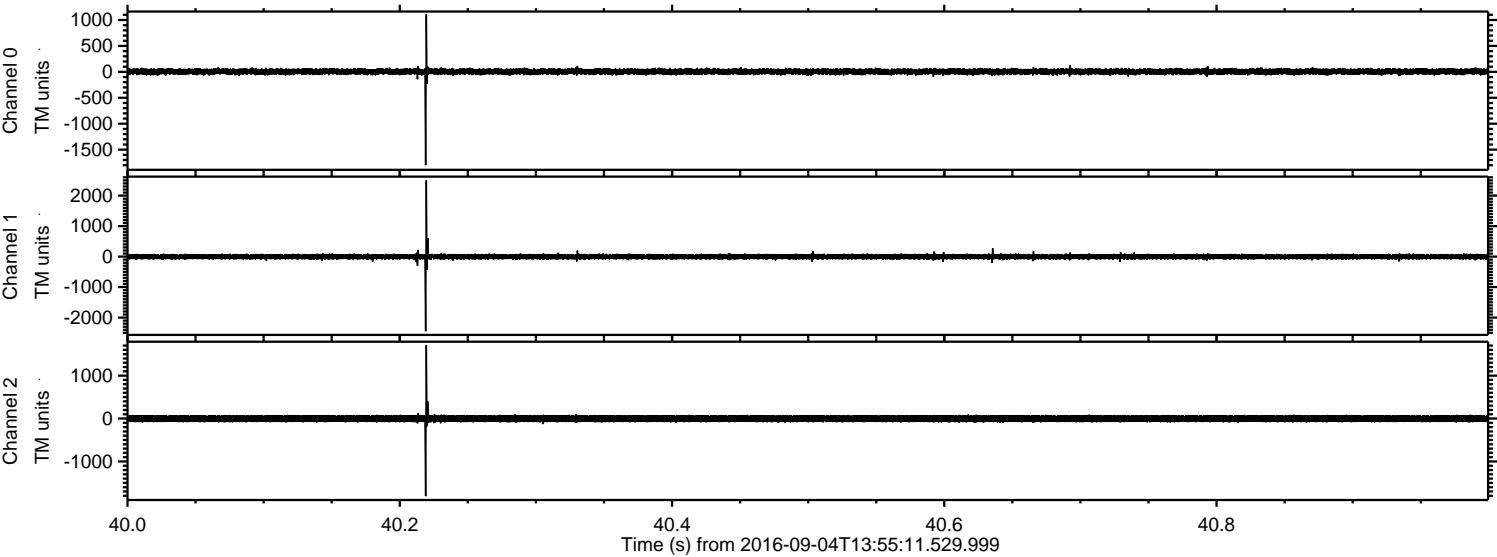
ELMAVAN 3D WAVEFORMS (Measured data sampled at 50 kHz) 51000 packets of 144 samples from 2016-09-04T13:55:11.529.999. Part 119/147

Processed Sun Sep 4 16:02:45 2016 by ELM ver.2012-10-06 from 001\_\_elm20160904\_135510\_\_dat00.bin



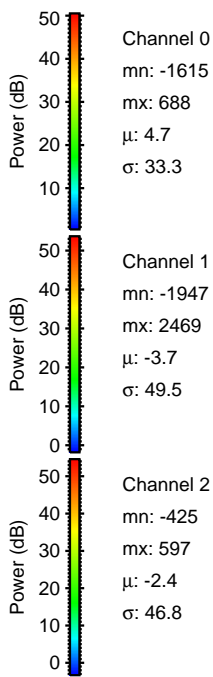
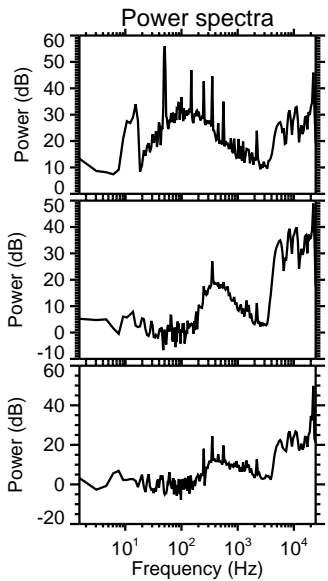
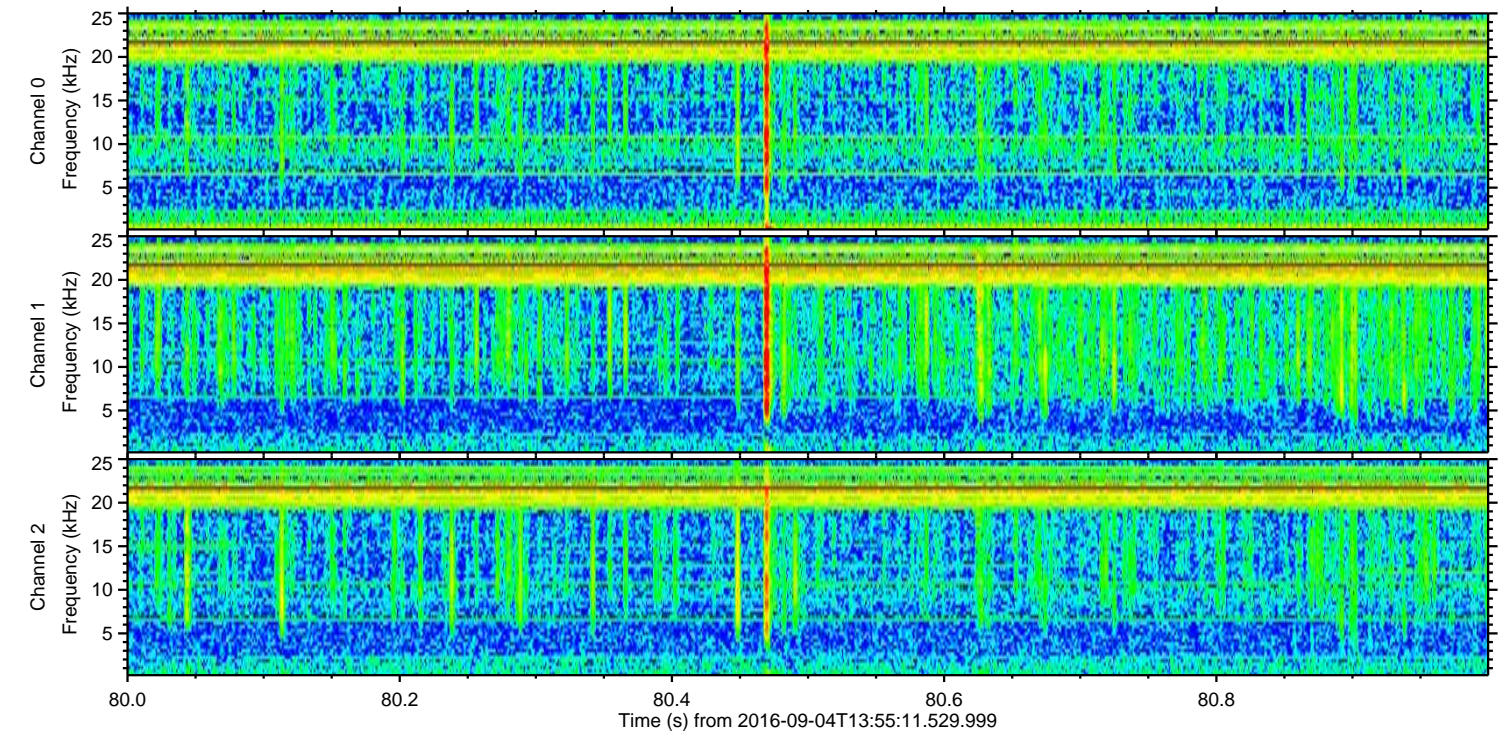
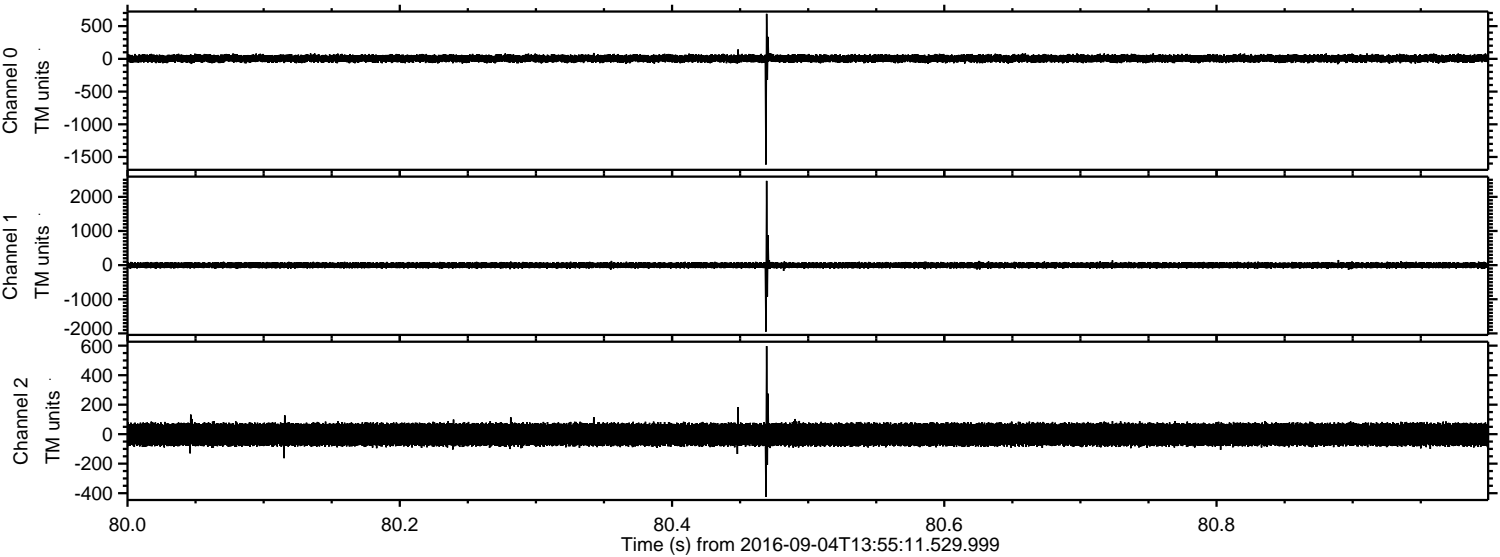


Processed Sun Sep 4 16:02:46 2016 by ELM ver.2012-10-06 from 001\_\_elm20160904\_135510\_\_dat00.bin



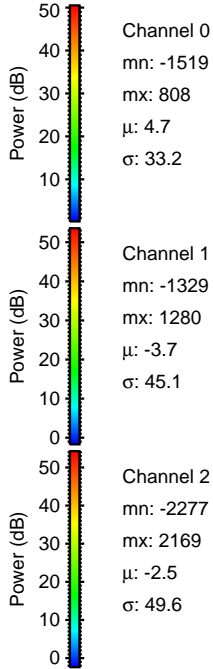
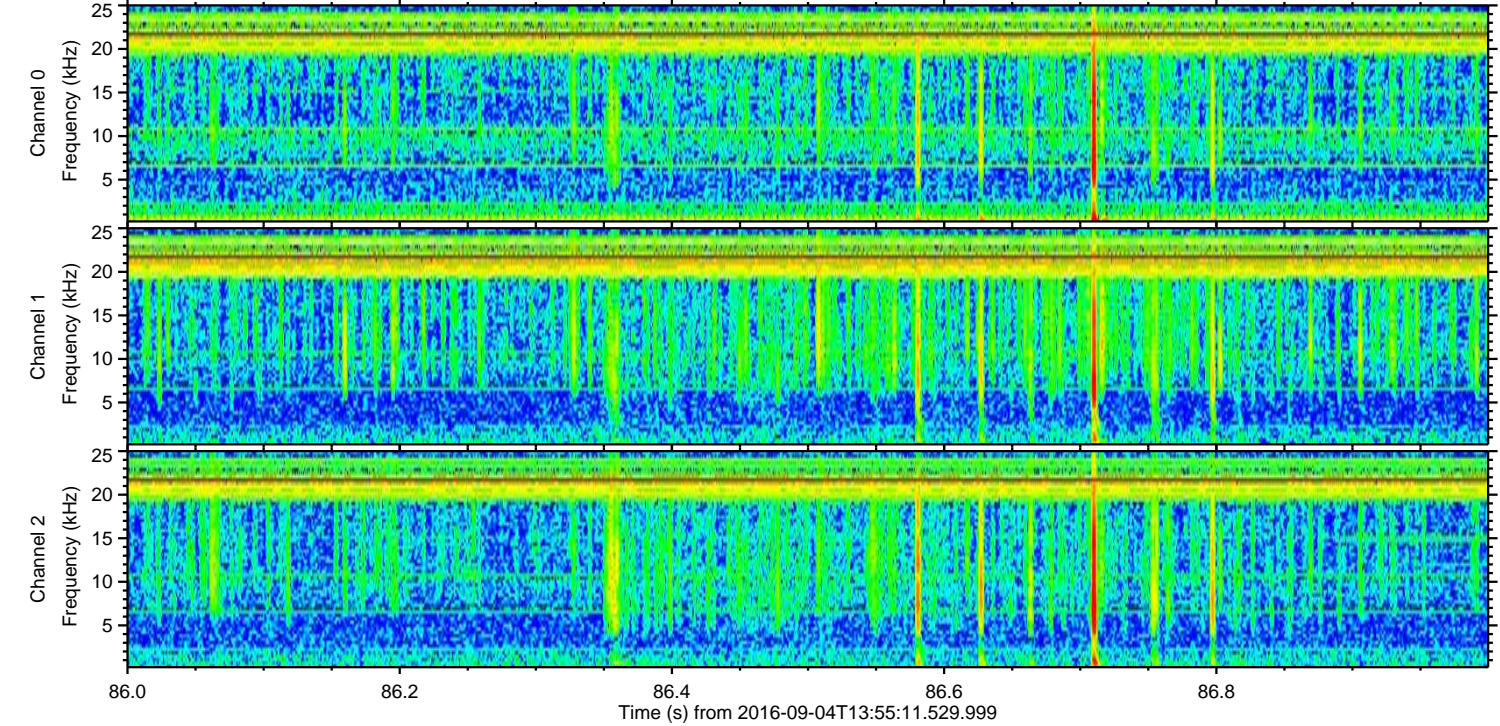
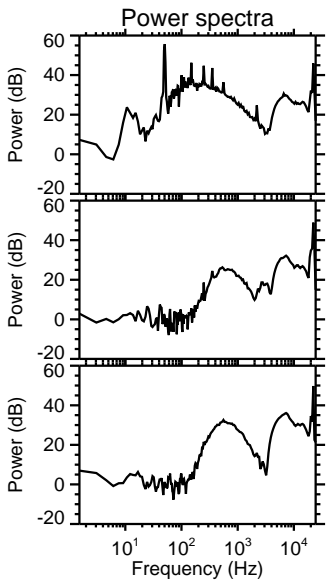
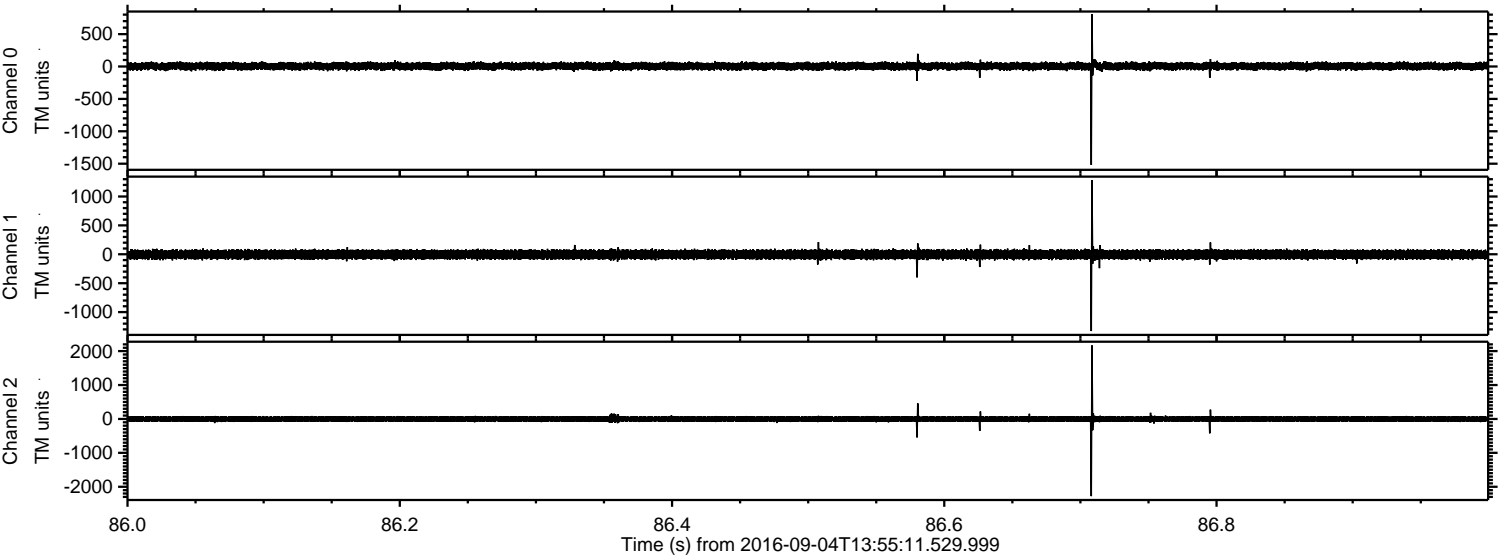


Processed Sun Sep 4 16:02:47 2016 by ELM ver.2012-10-06 from 001\_\_elm20160904\_135510\_\_dat00.bin



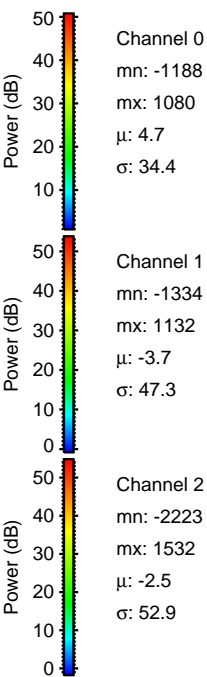
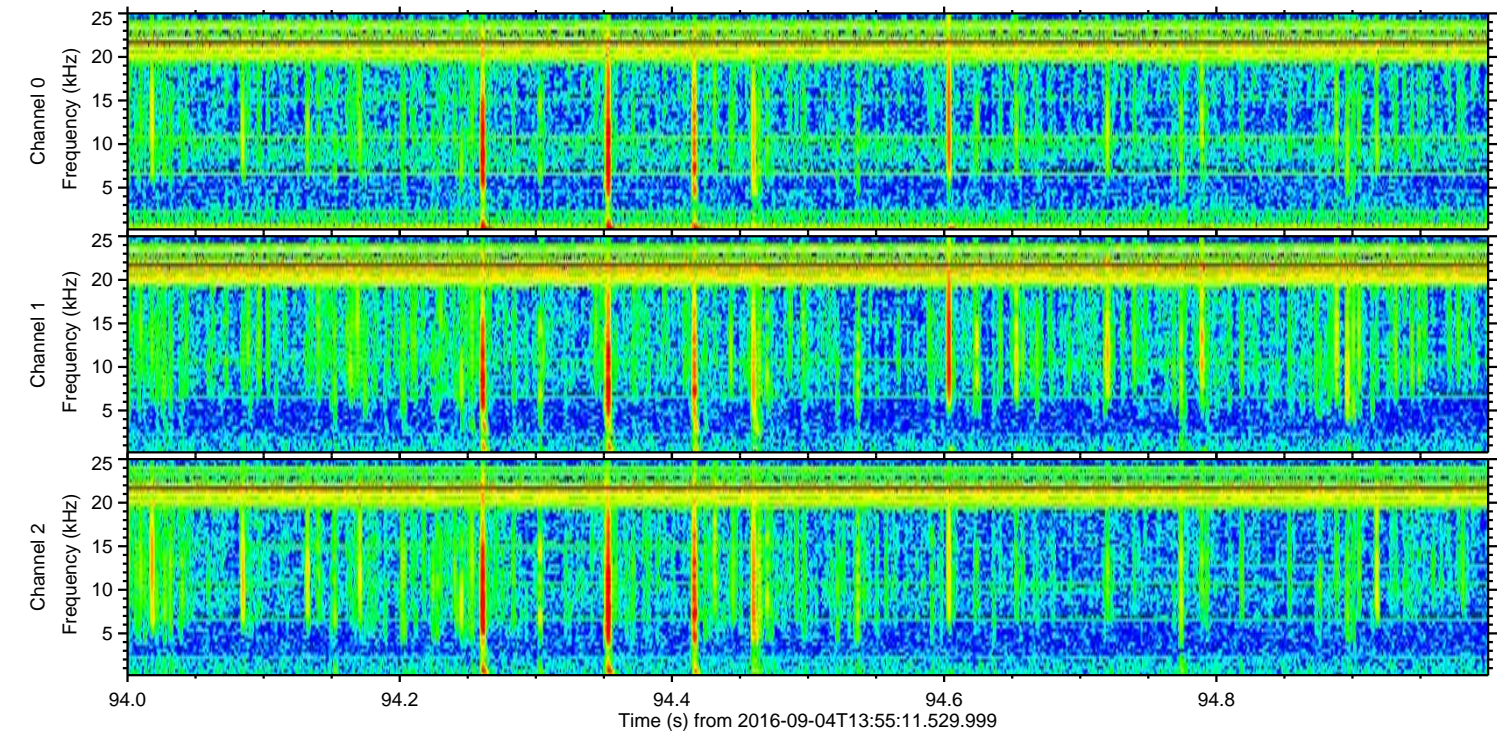
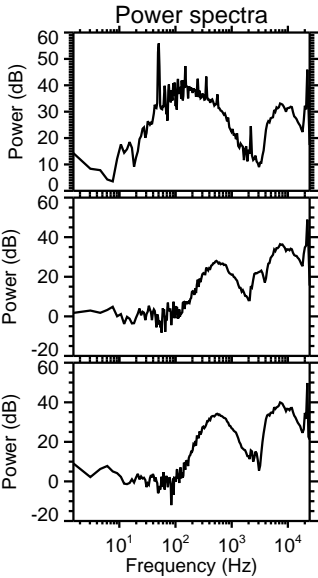
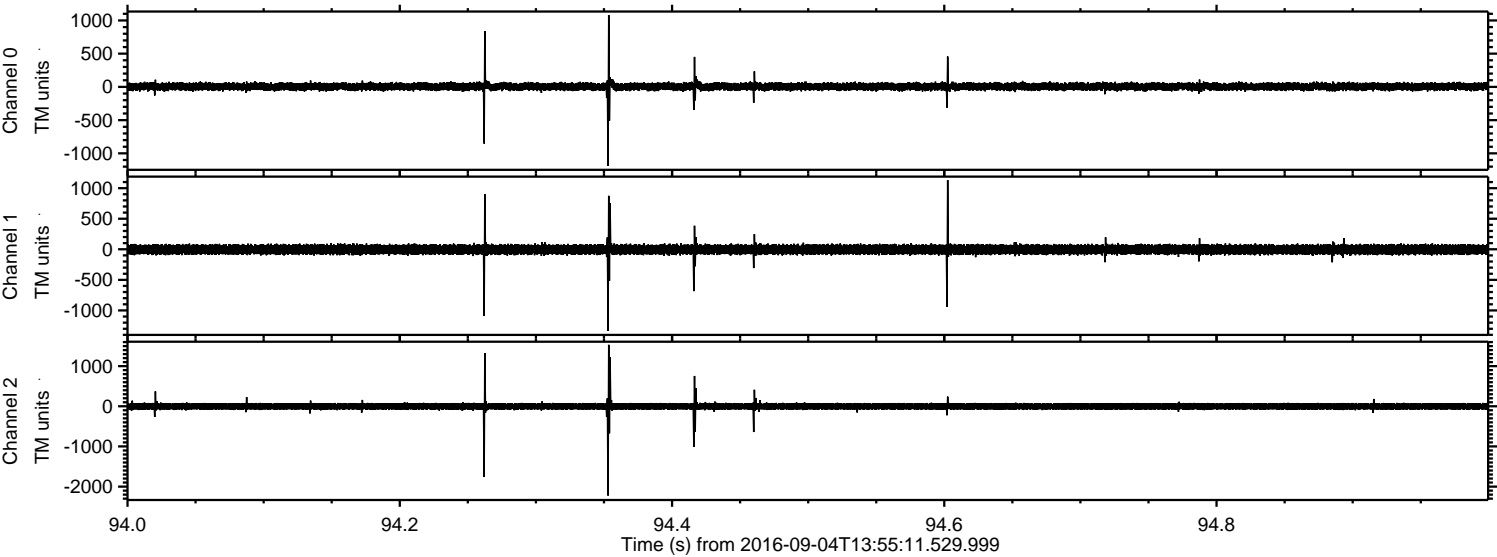


Processed Sun Sep 4 16:02:48 2016 by ELM ver.2012-10-06 from 001\_\_elm20160904\_135510\_\_dat00.bin



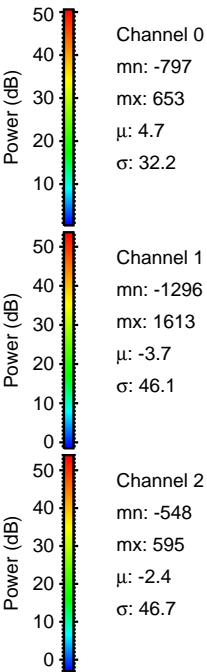
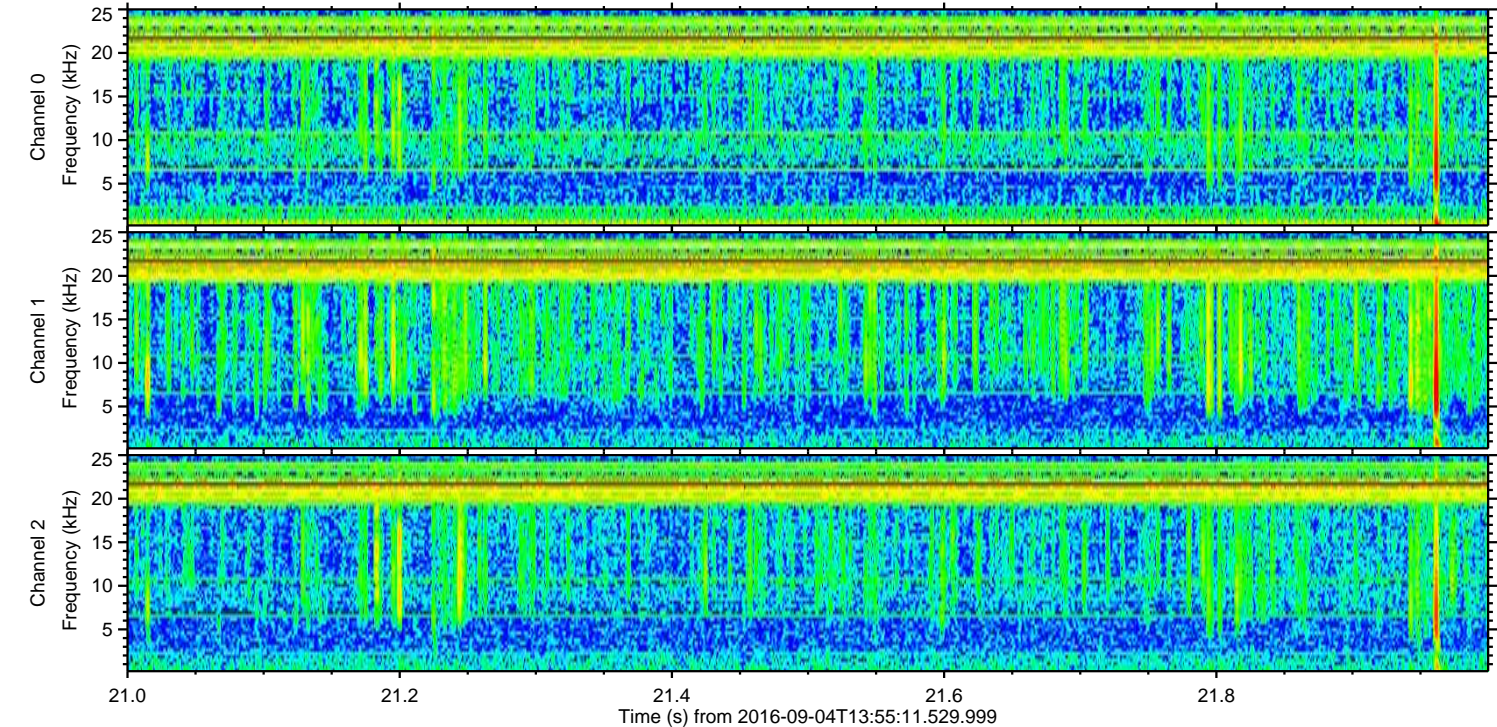
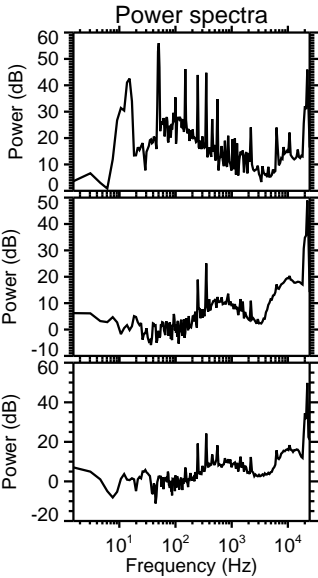
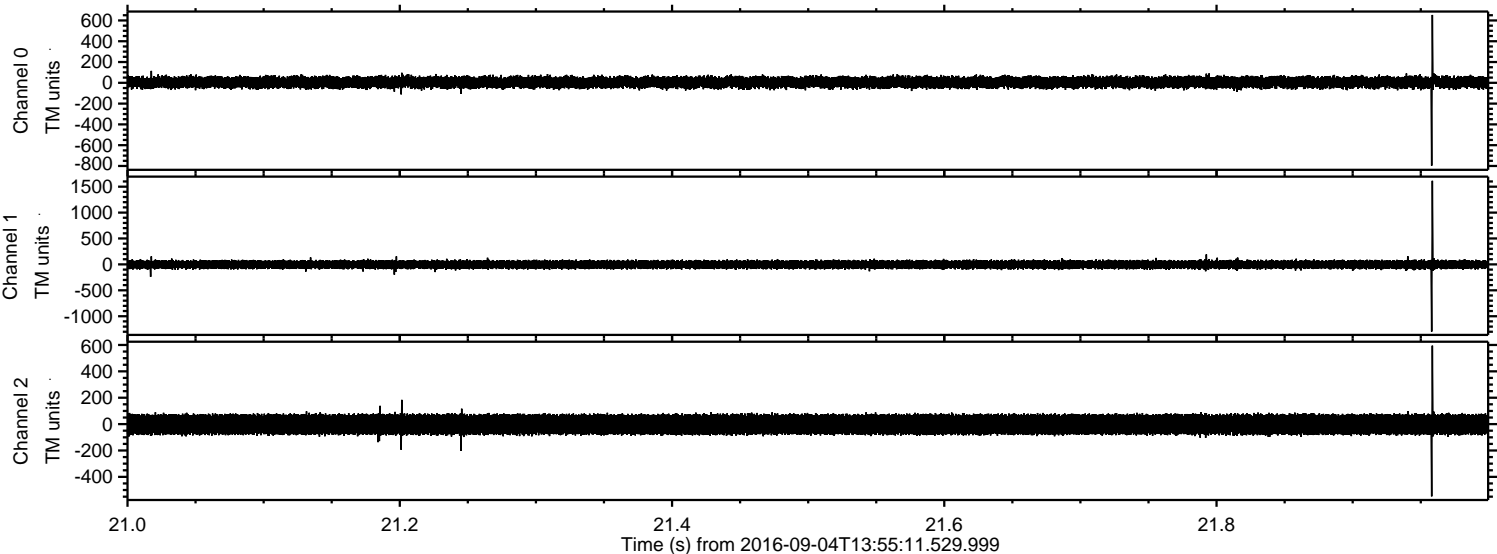


Processed Sun Sep 4 16:02:48 2016 by ELM ver.2012-10-06 from 001\_\_elm20160904\_135510\_\_dat00.bin





Processed Sun Sep 4 16:02:49 2016 by ELM ver.2012-10-06 from 001\_\_elm20160904\_135510\_\_dat00.bin





Processed Sun Sep 4 16:02:50 2016 by ELM ver.2012-10-06 from 001\_\_elm20160904\_135510\_\_dat00.bin

