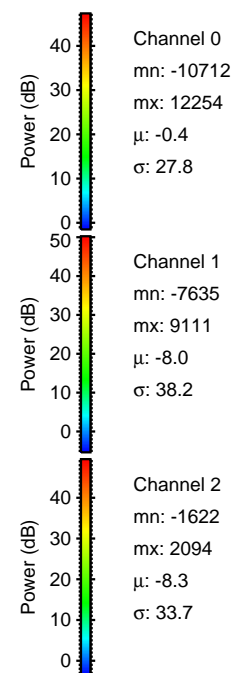
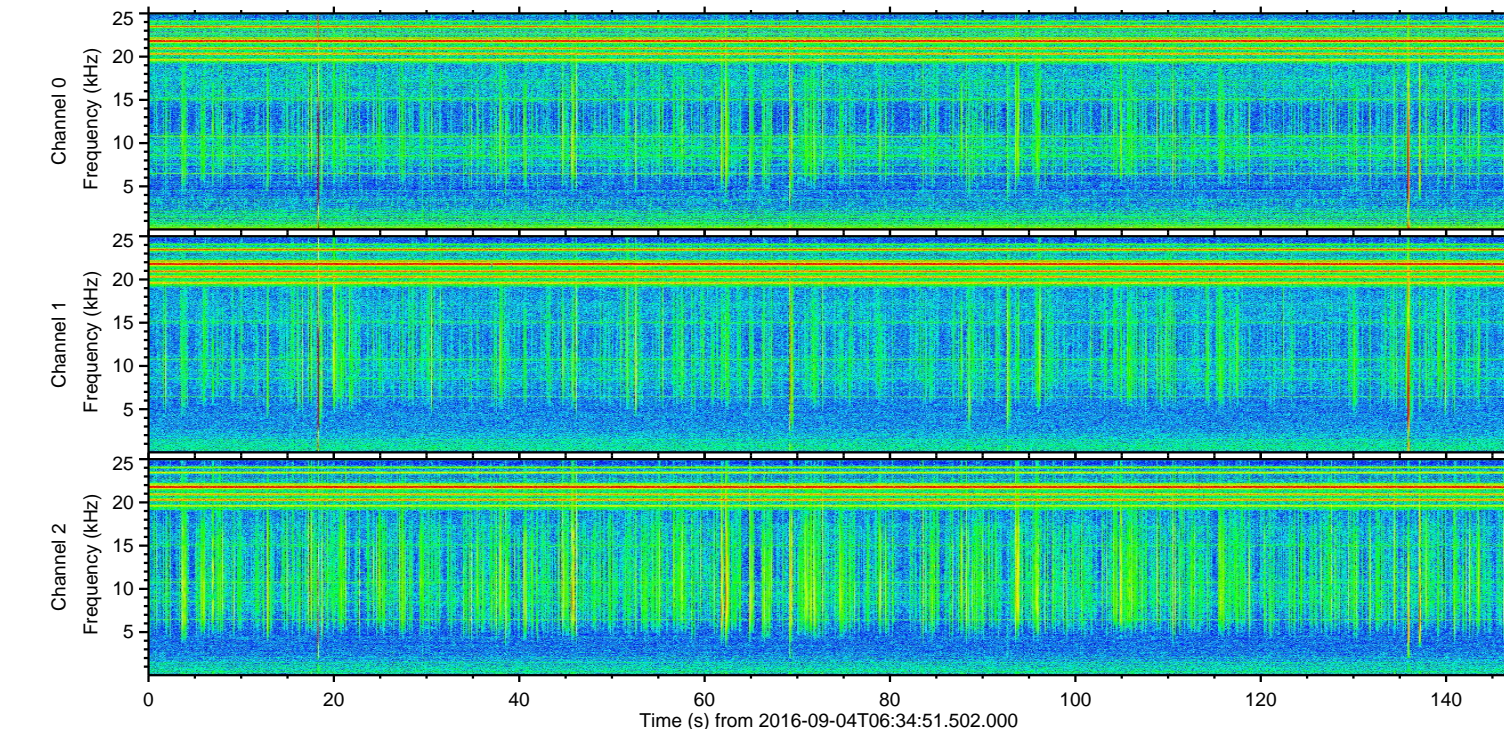
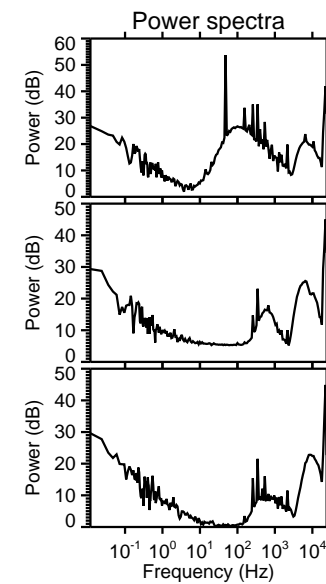
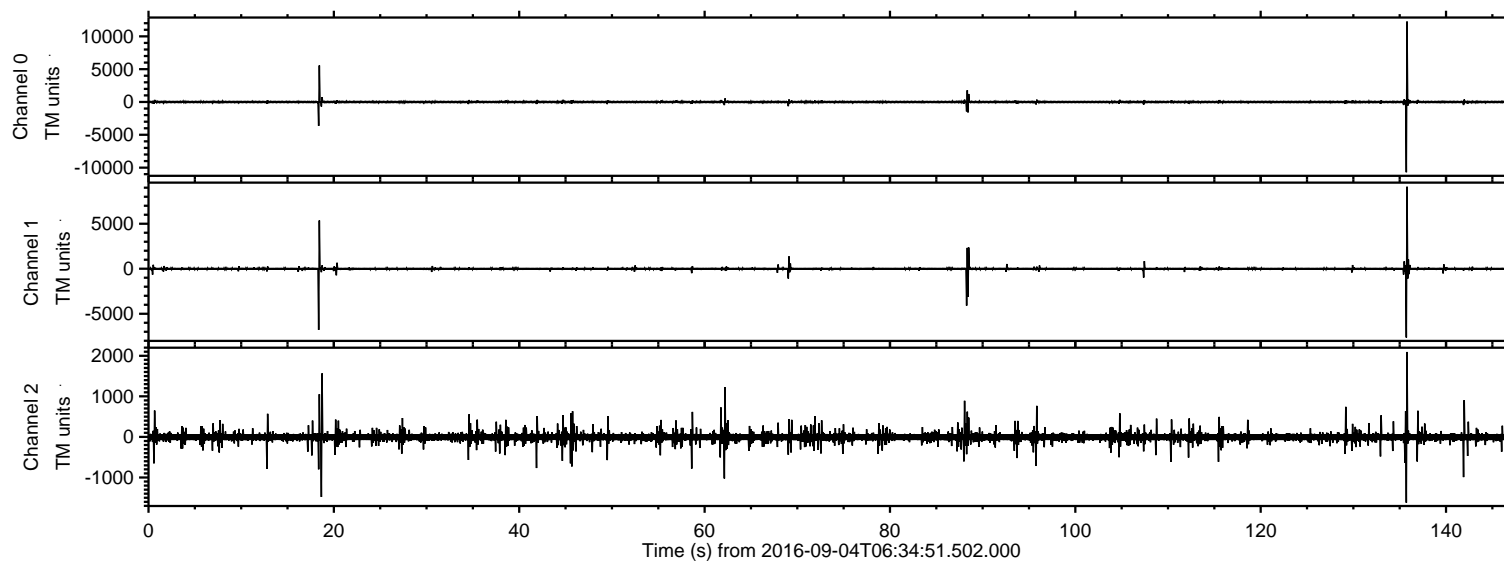


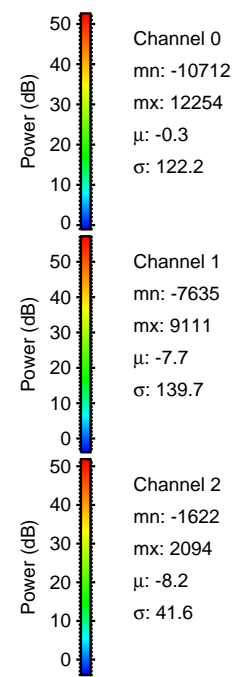
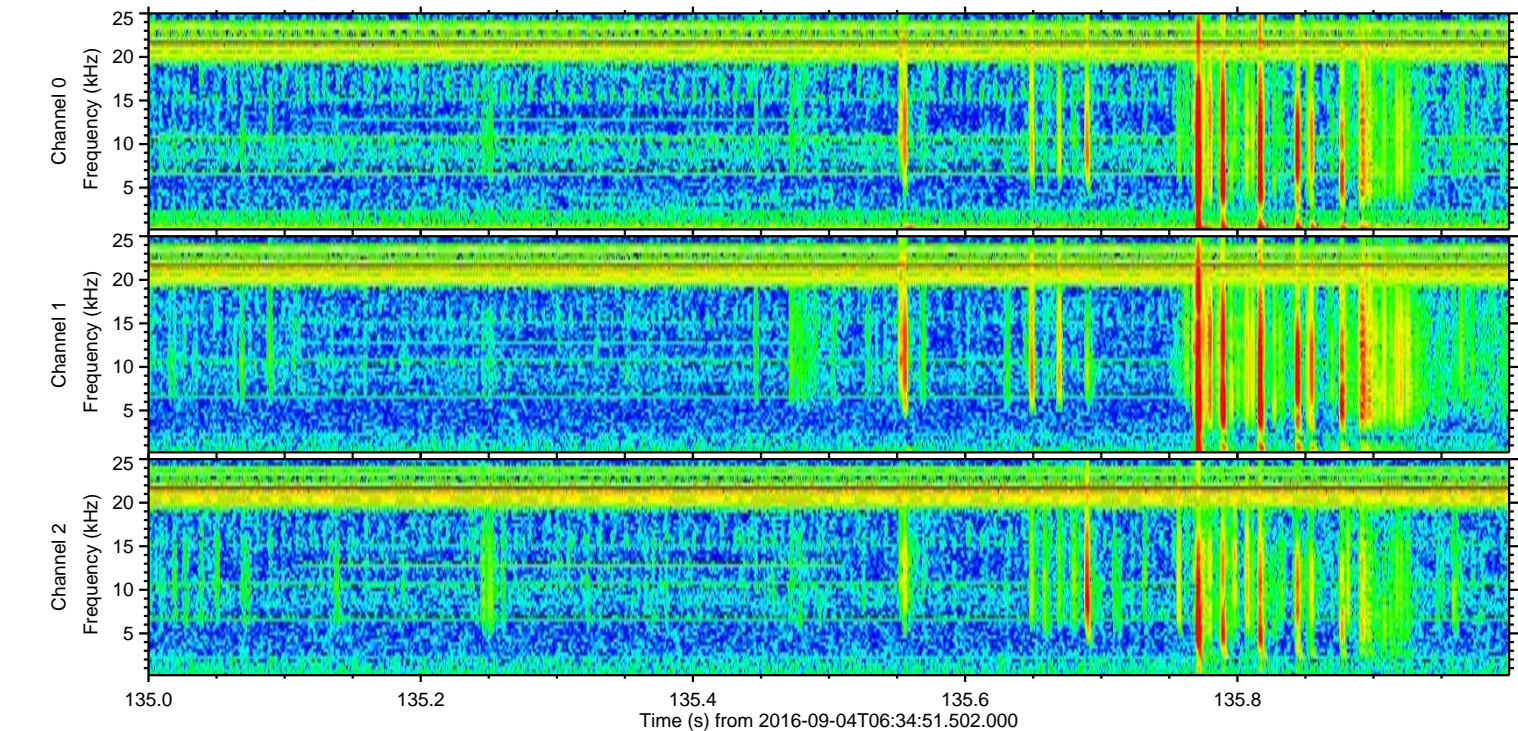
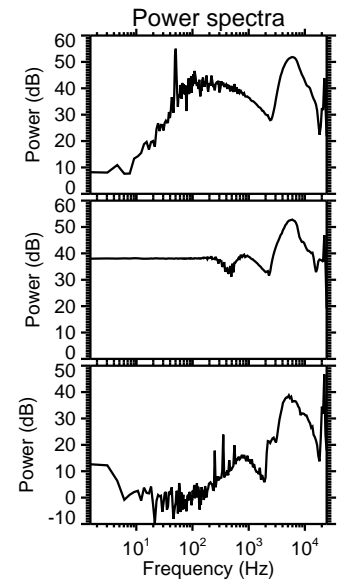
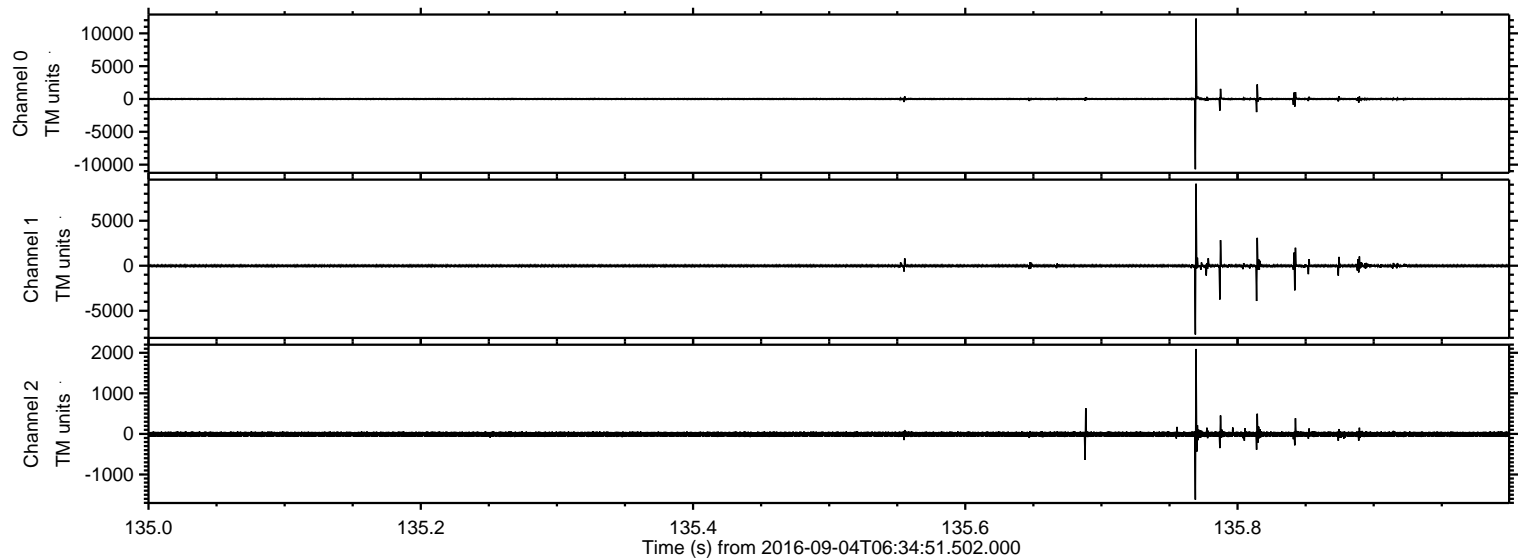
ELMAVAN 3D WAVEFORMS (Measured data sampled at 50 kHz) 51000 packets of 144 samples from 2016-09-04T06:34:51.502.000.

Processed Sun Sep 4 08:42:35 2016 by ELM ver.2012-10-06 from 001__elm20160904_063450__dat00.bin

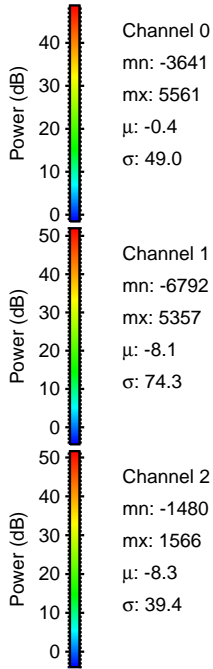
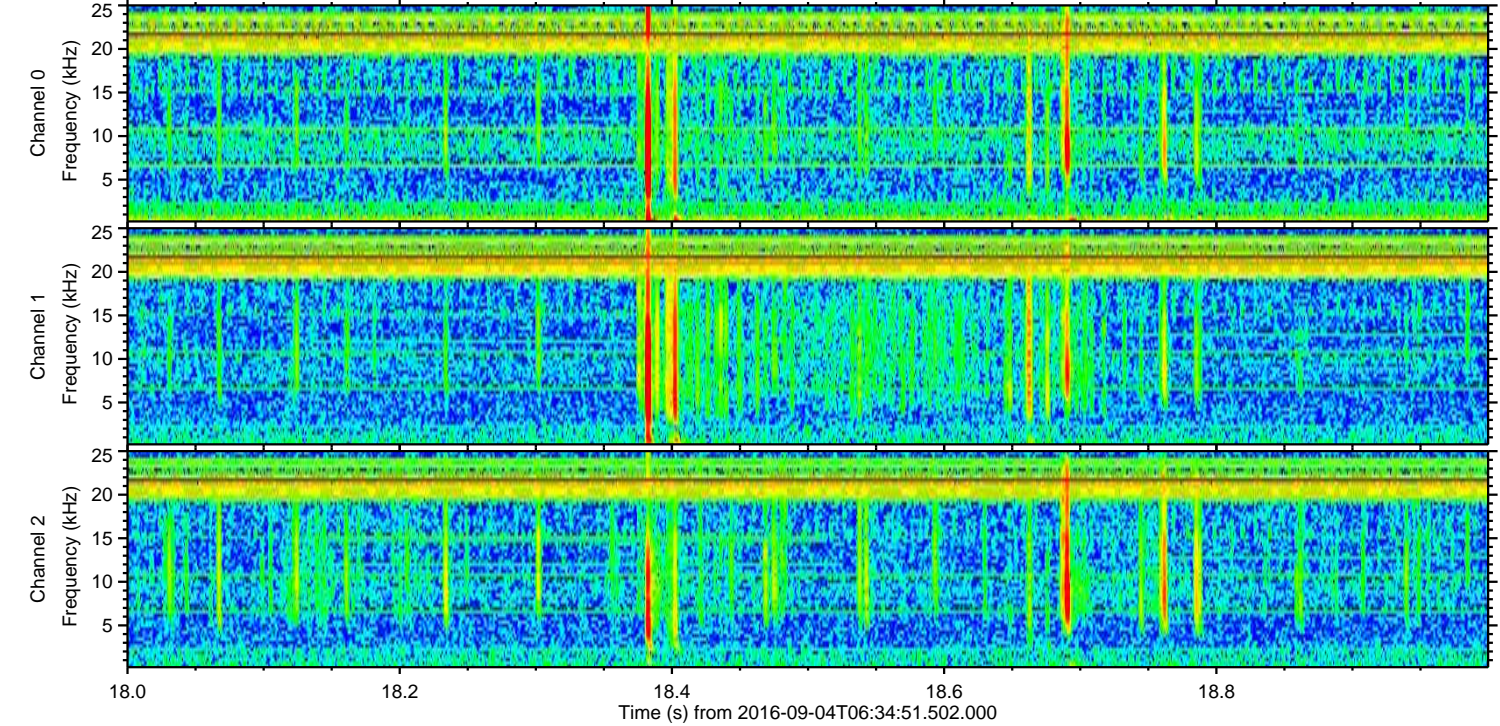
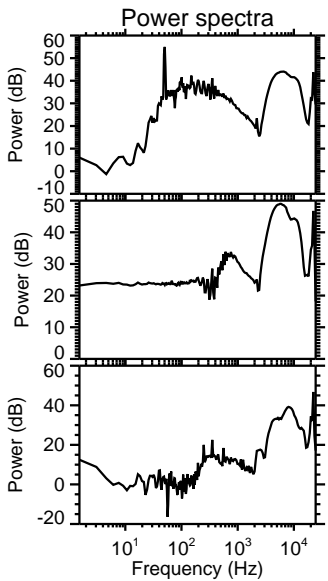
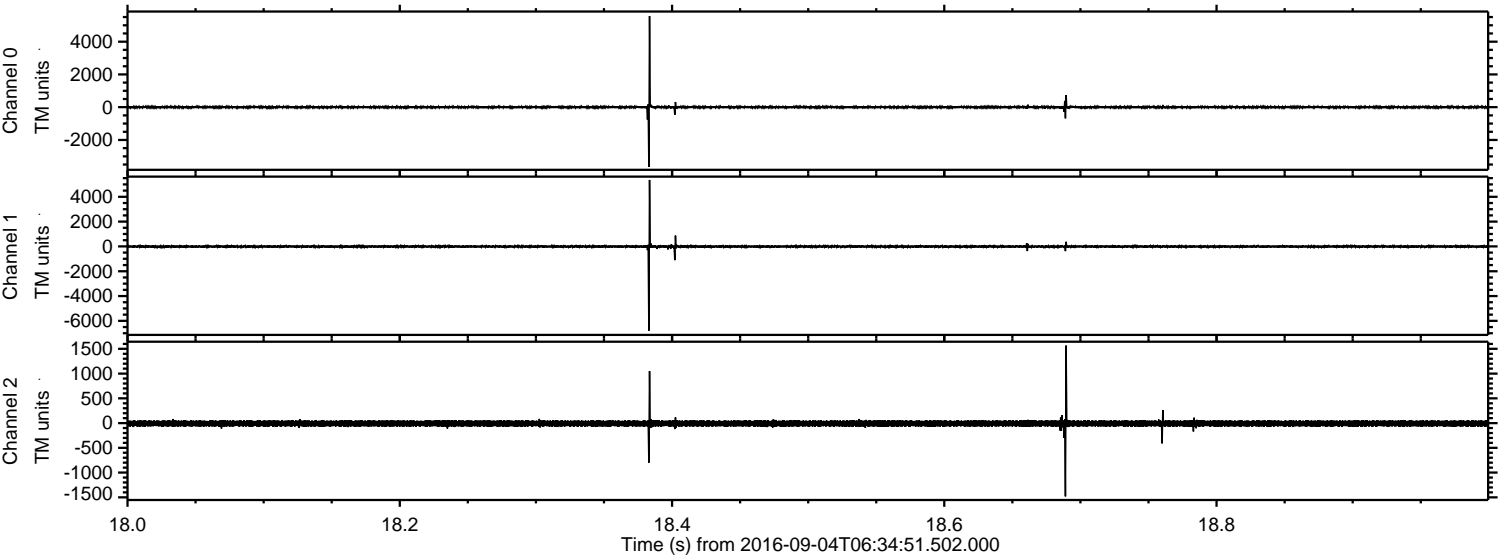


ELMAVAN 3D WAVEFORMS (Measured data sampled at 50 kHz) 51000 packets of 144 samples from 2016-09-04T06:34:51.502.000. Part 136/147

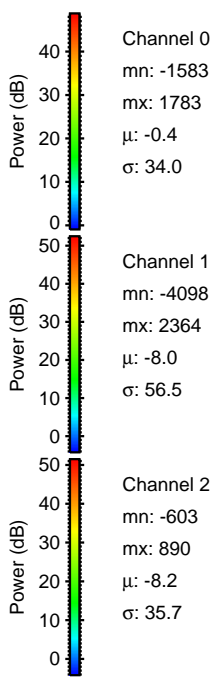
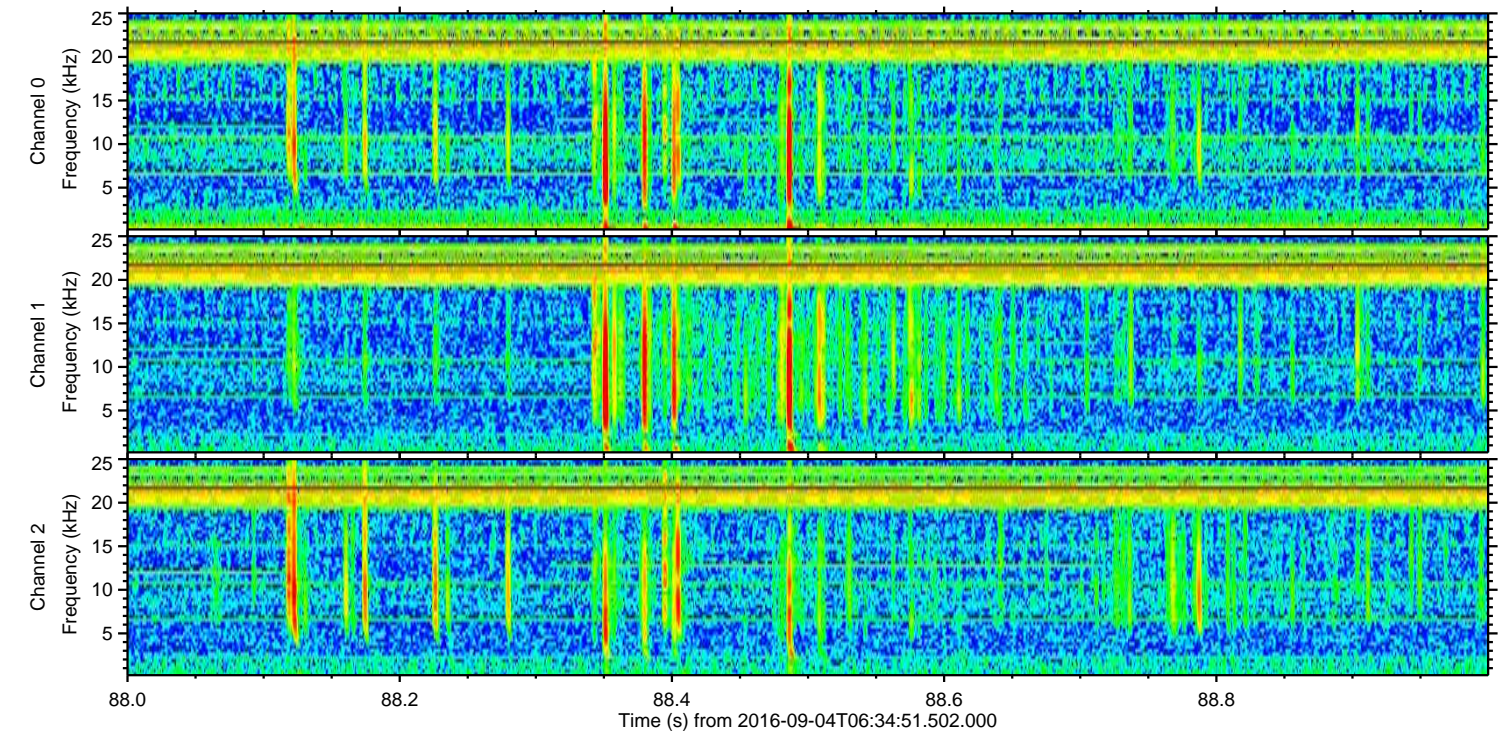
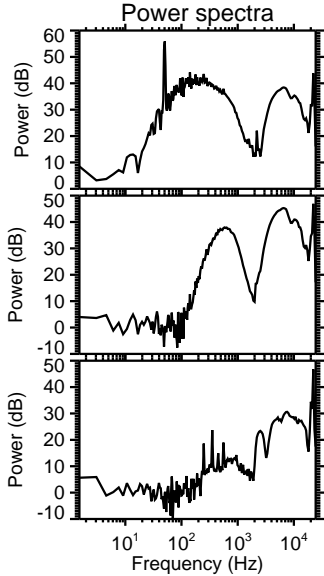
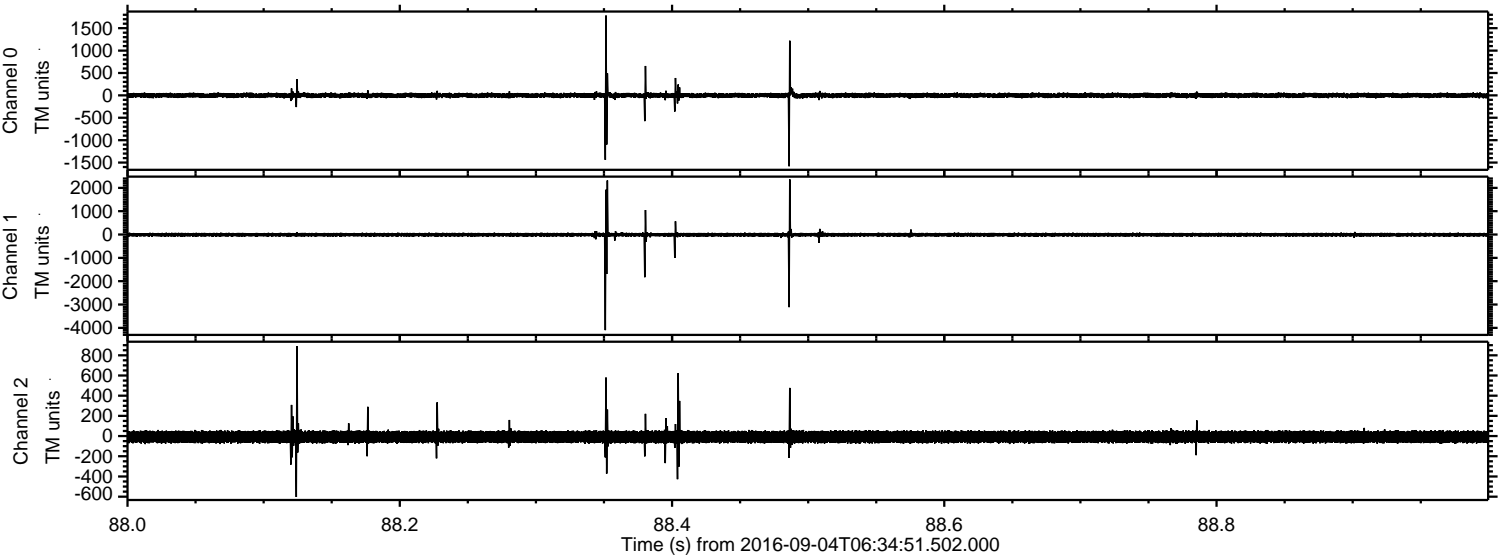
Processed Sun Sep 4 08:42:46 2016 by ELM ver.2012-10-06 from 001__elm20160904_063450__dat00.bin



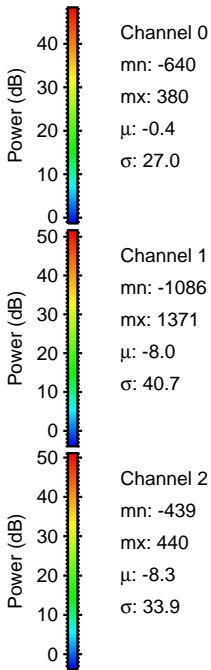
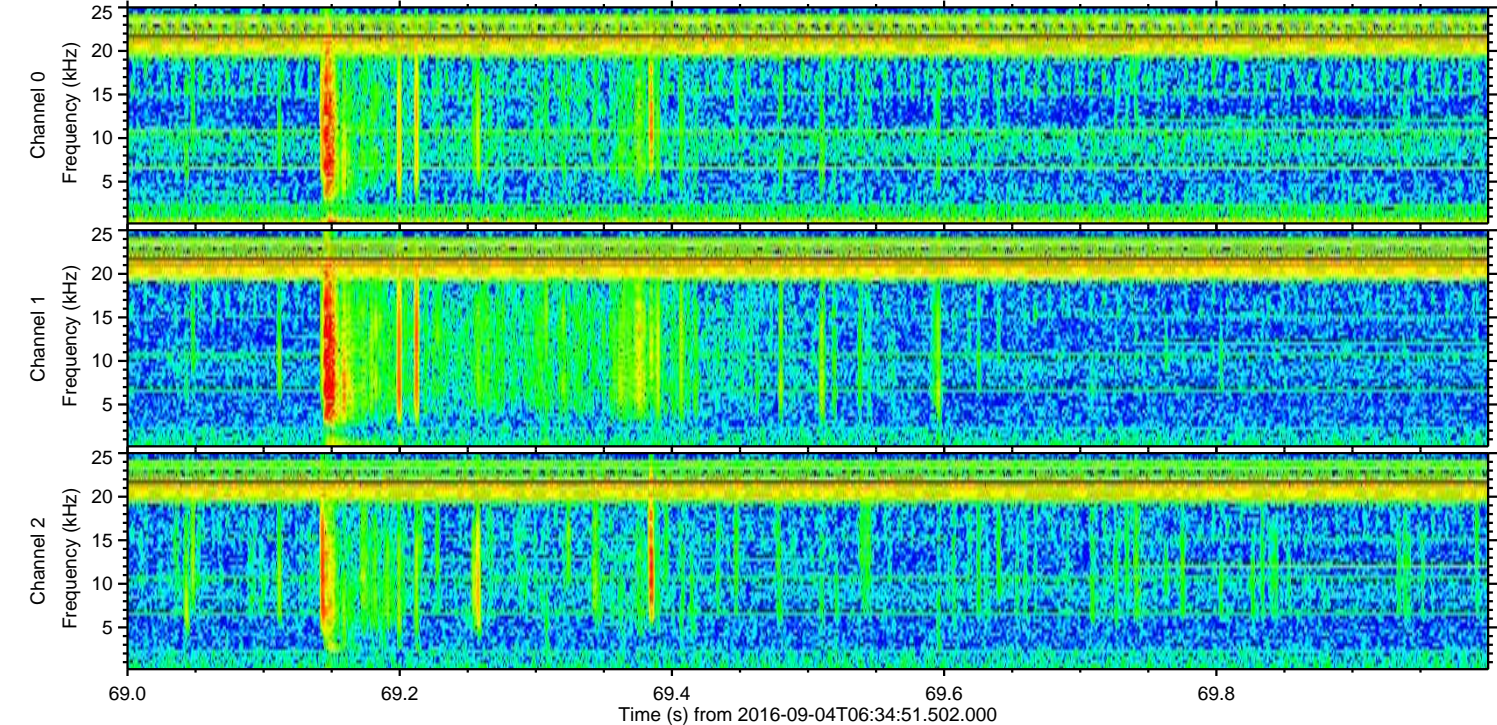
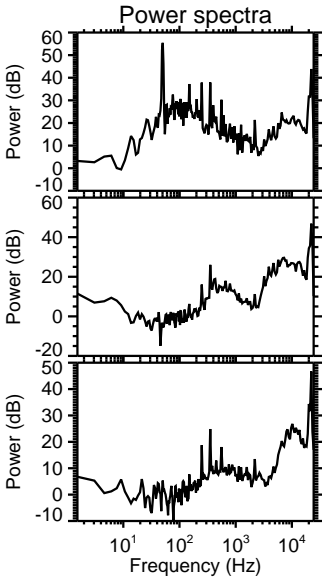
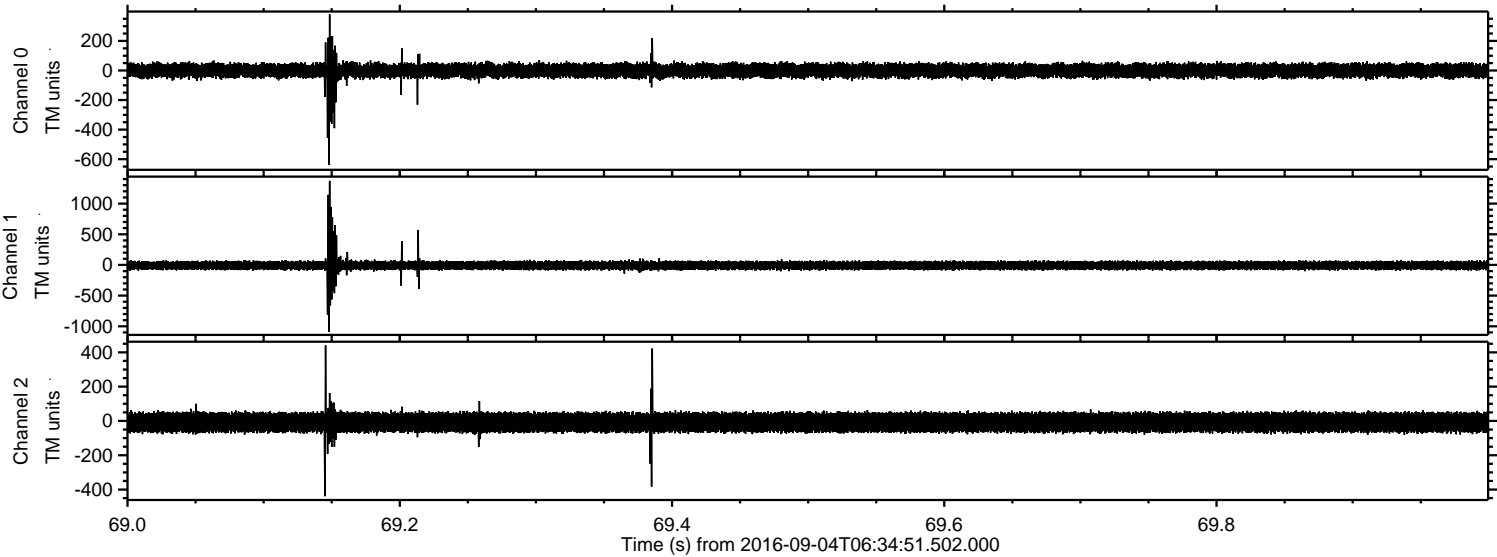
Processed Sun Sep 4 08:42:47 2016 by ELM ver.2012-10-06 from 001__elm20160904_063450__dat00.bin



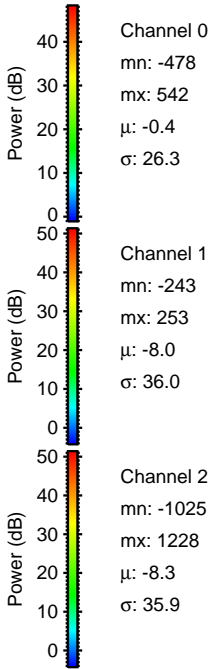
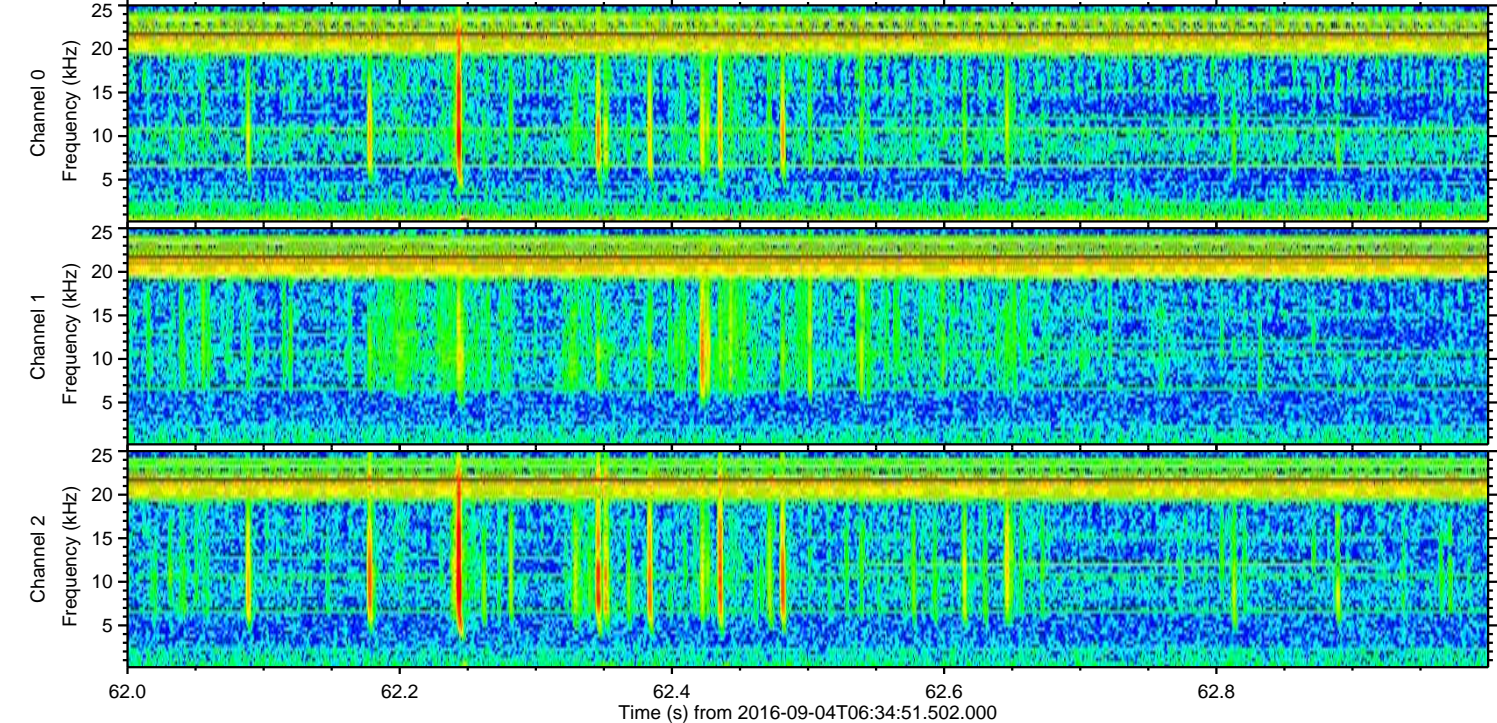
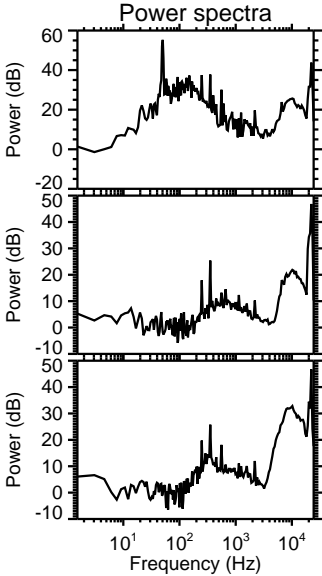
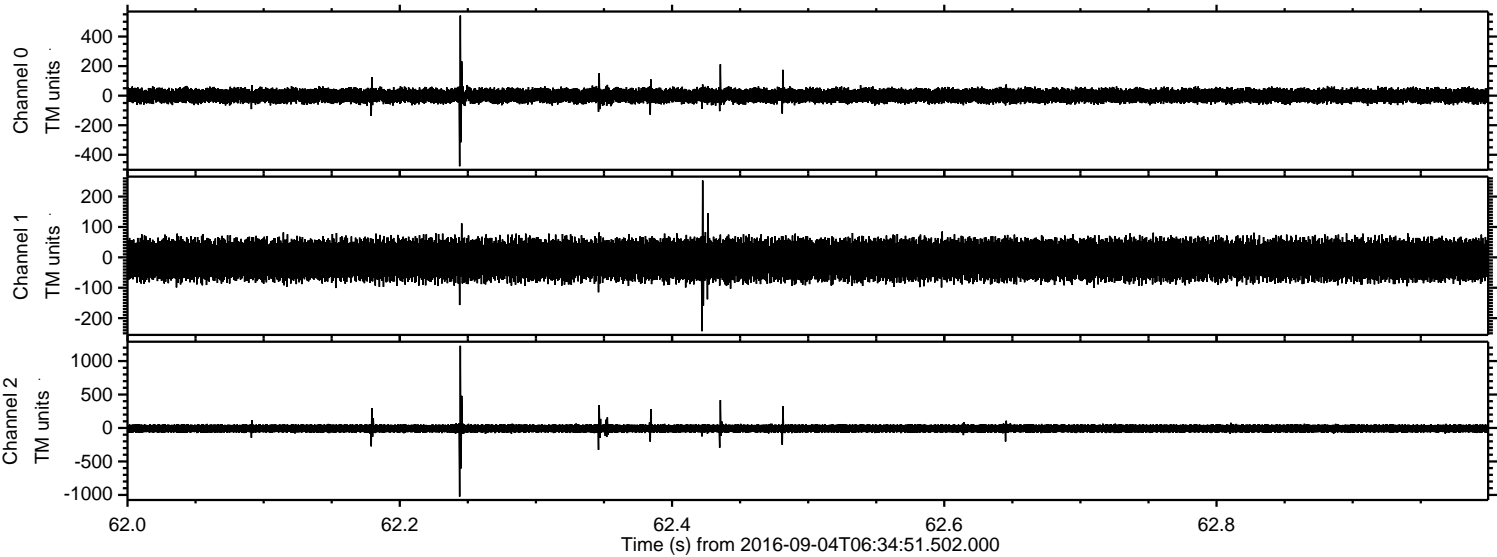
Processed Sun Sep 4 08:42:48 2016 by ELM ver.2012-10-06 from 001__elm20160904_063450__dat00.bin



Processed Sun Sep 4 08:42:49 2016 by ELM ver.2012-10-06 from 001__elm20160904_063450__dat00.bin

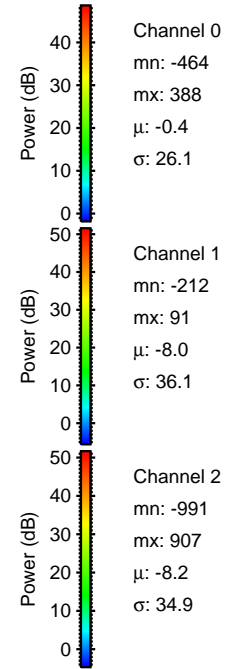
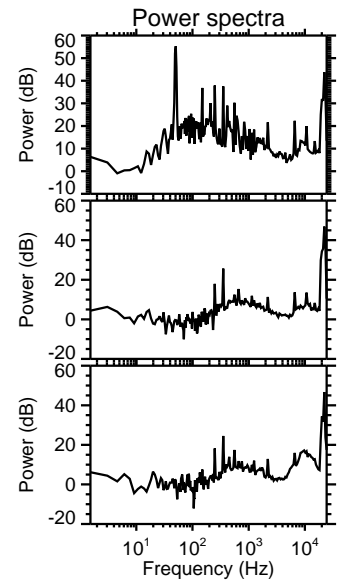
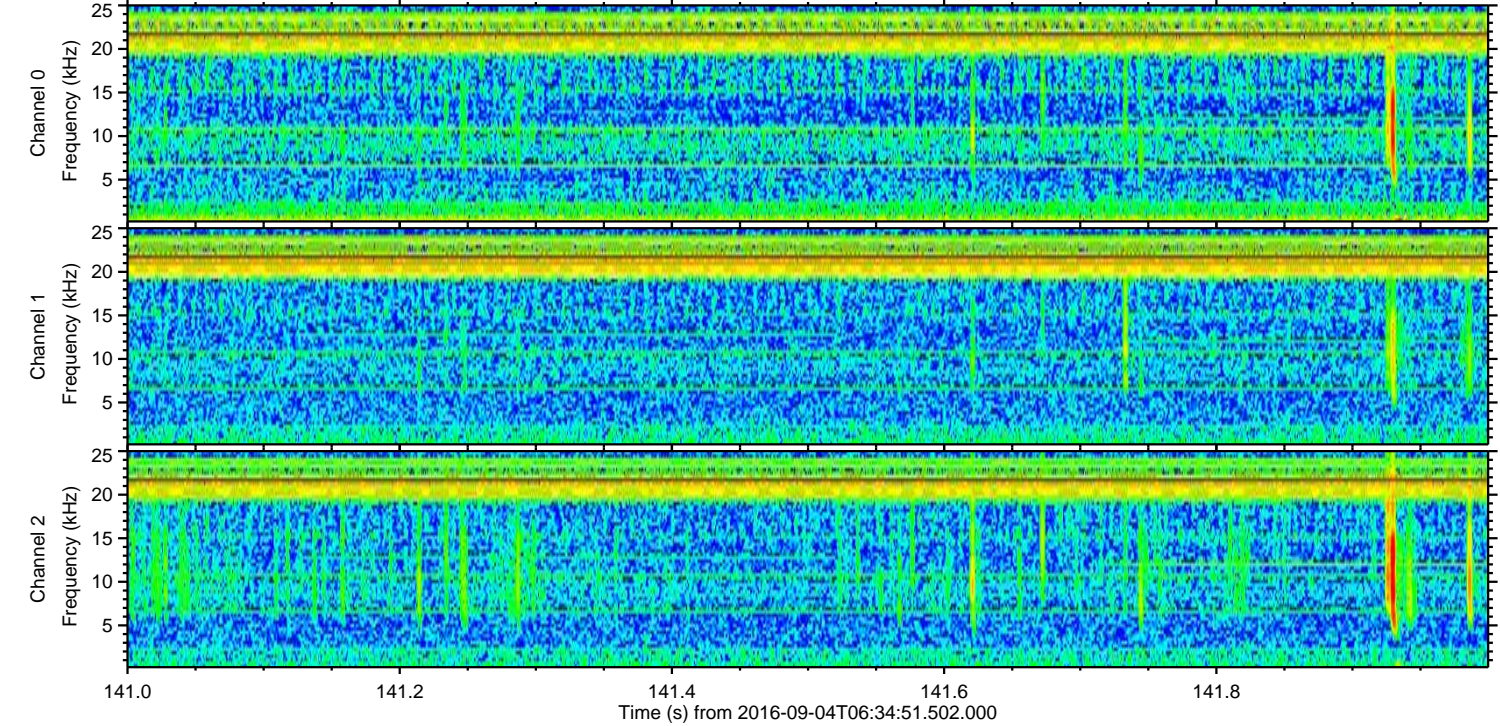
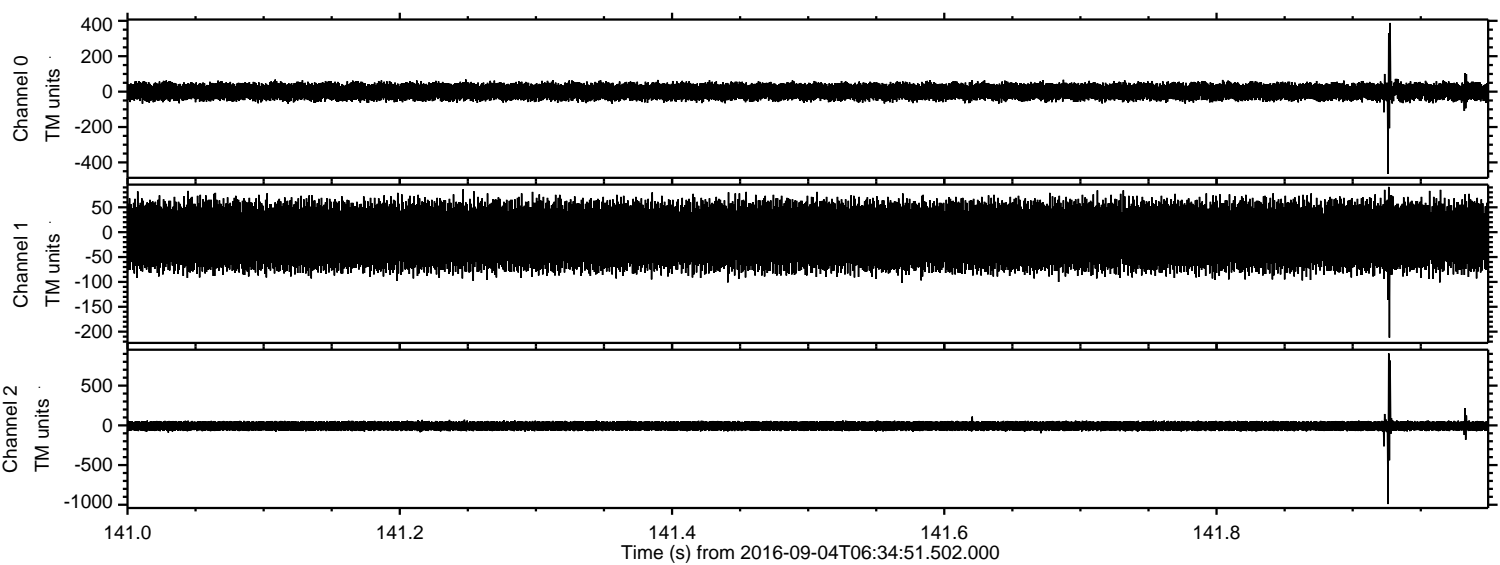


Processed Sun Sep 4 08:42:50 2016 by ELM ver.2012-10-06 from 001__elm20160904_063450__dat00.bin



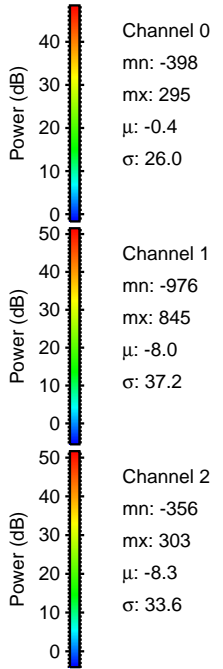
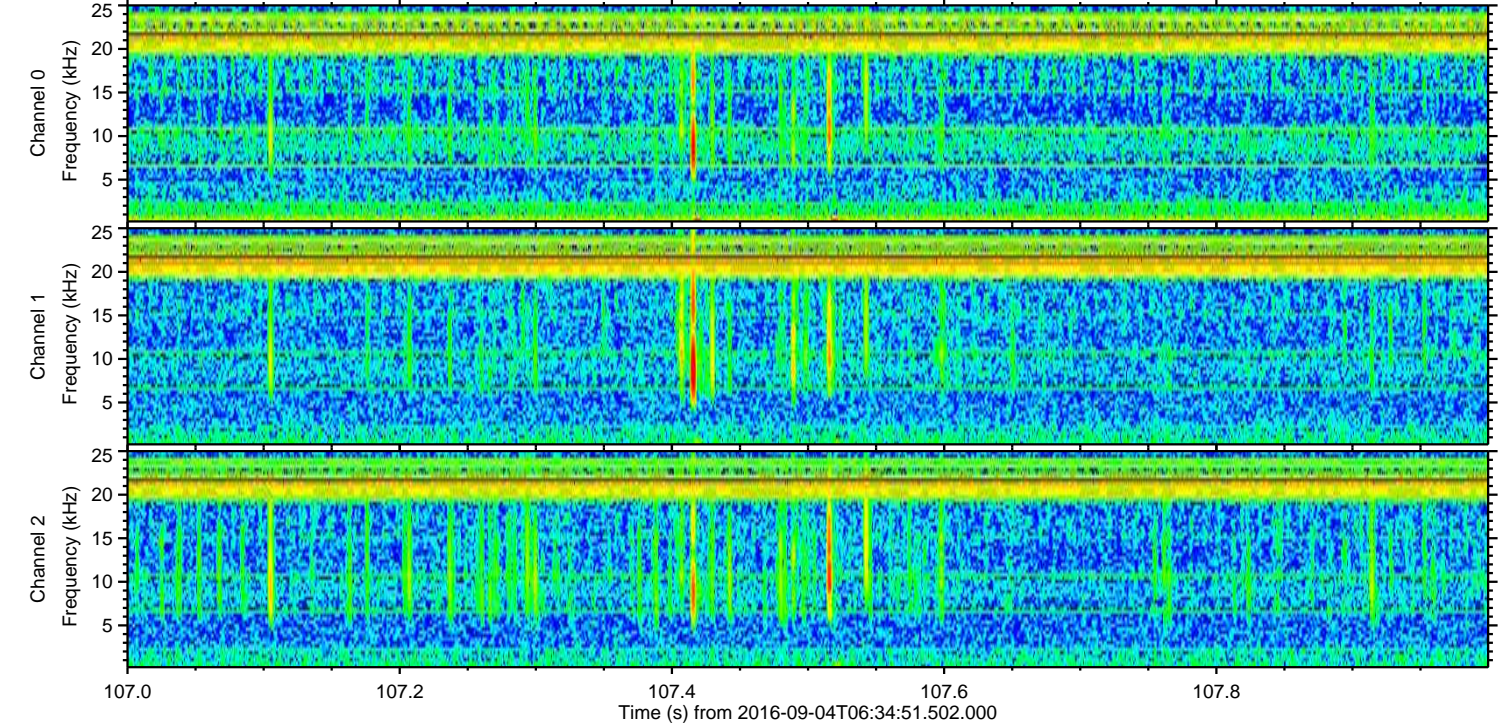
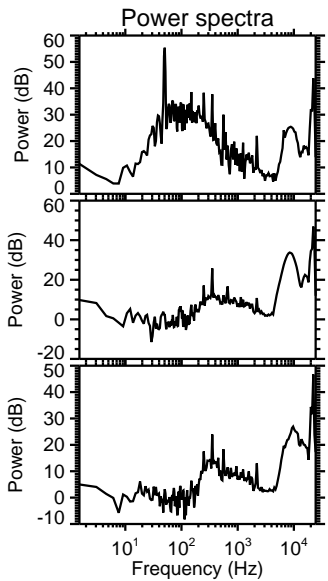
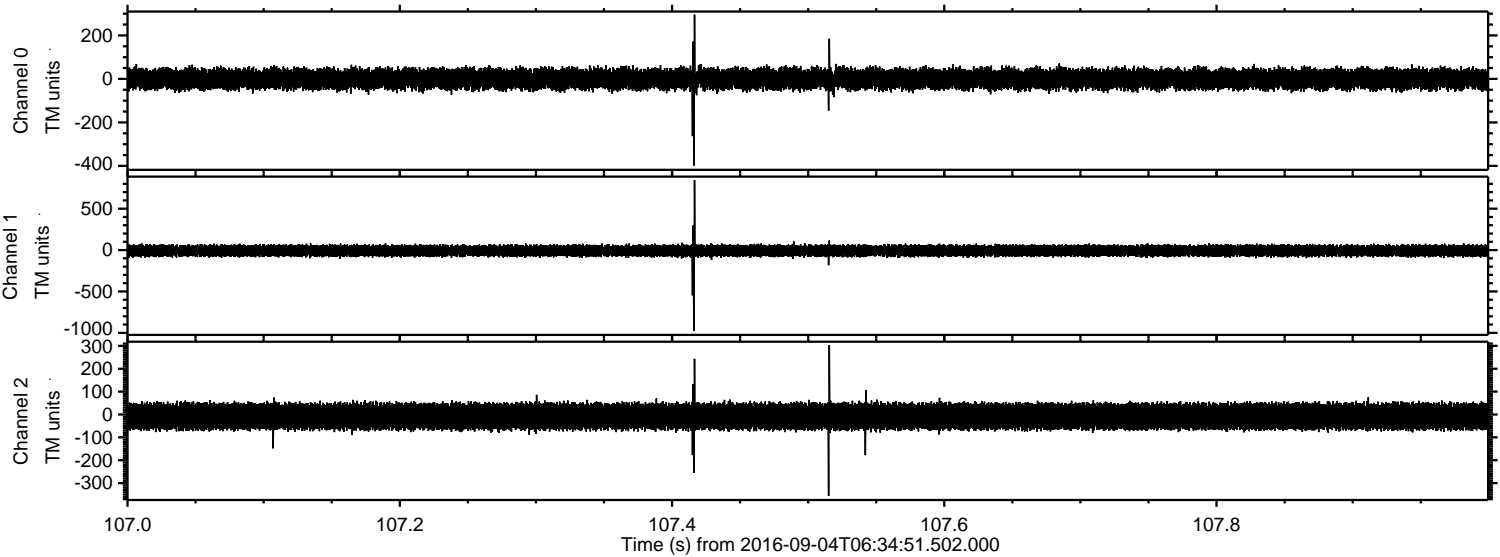
ELMAVAN 3D WAVEFORMS (Measured data sampled at 50 kHz) 51000 packets of 144 samples from 2016-09-04T06:34:51.502.000. Part 142/147

Processed Sun Sep 4 08:42:51 2016 by ELM ver.2012-10-06 from 001__elm20160904_063450__dat00.bin

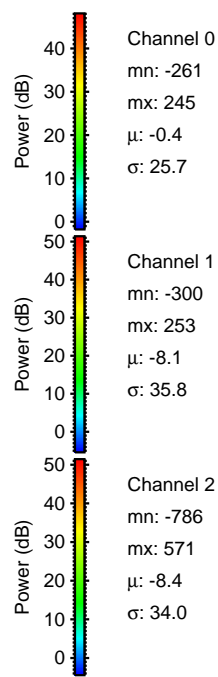
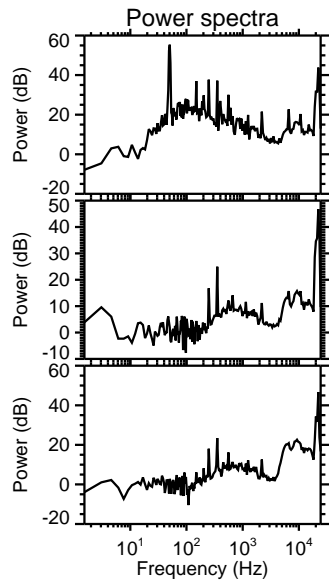
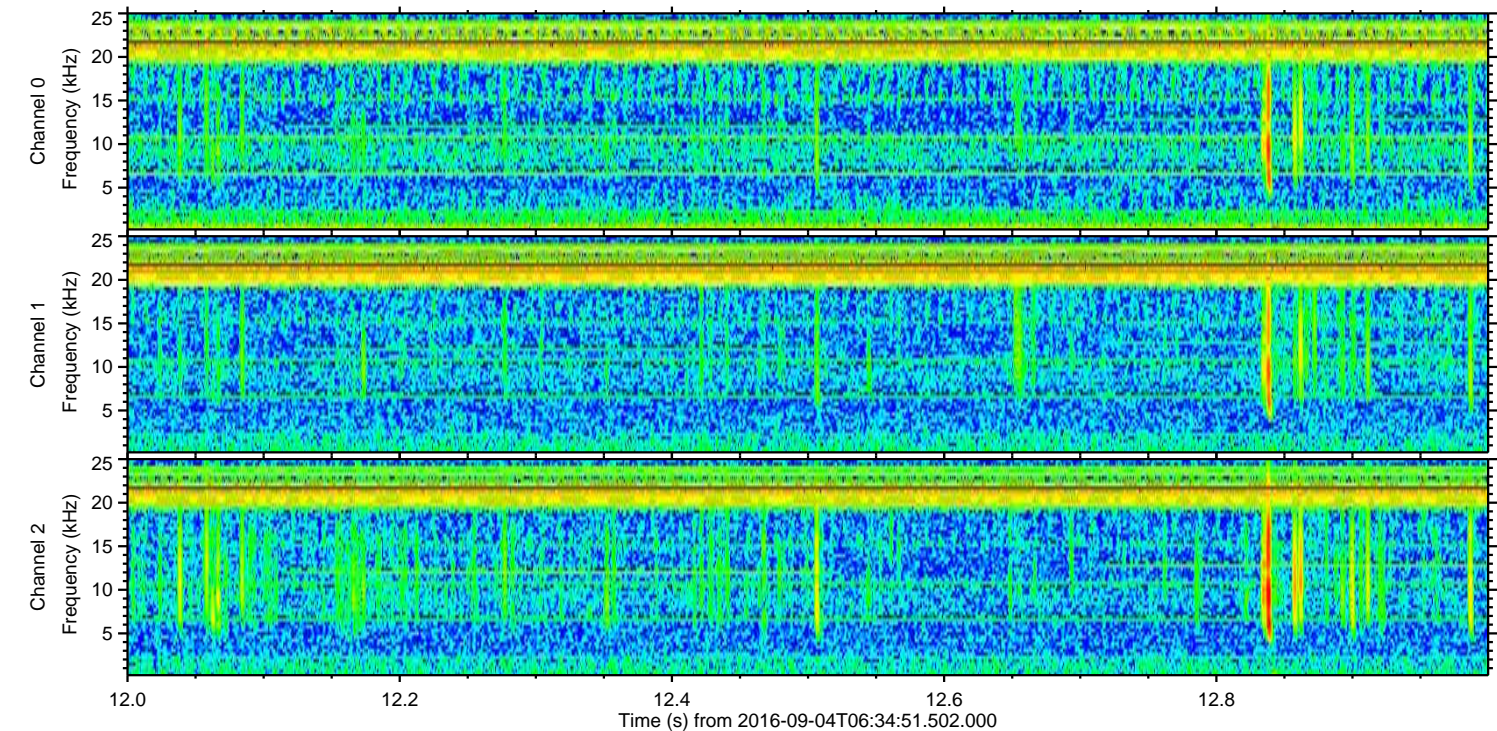
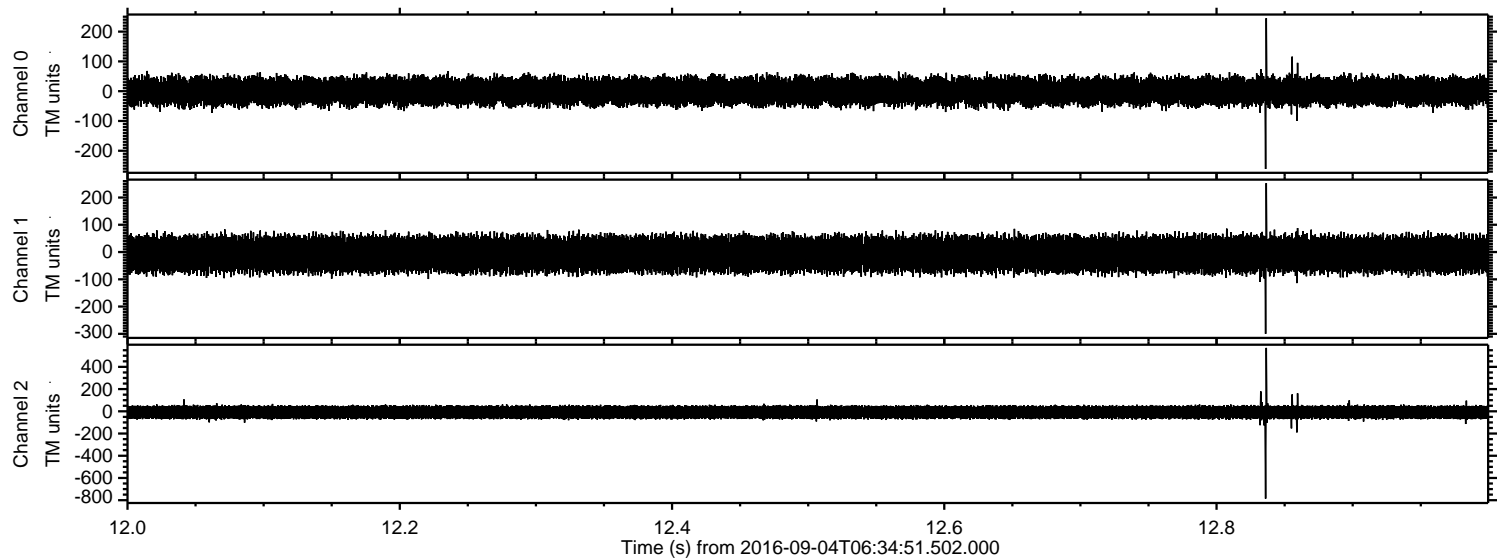


ELMAVAN 3D WAVEFORMS (Measured data sampled at 50 kHz) 51000 packets of 144 samples from 2016-09-04T06:34:51.502.000. Part 108/147

Processed Sun Sep 4 08:42:52 2016 by ELM ver.2012-10-06 from 001__elm20160904_063450__dat00.bin



Processed Sun Sep 4 08:42:53 2016 by ELM ver.2012-10-06 from 001__elm20160904_063450__dat00.bin

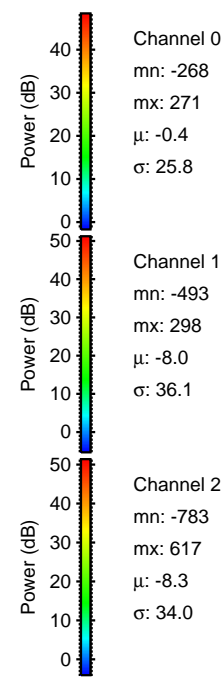
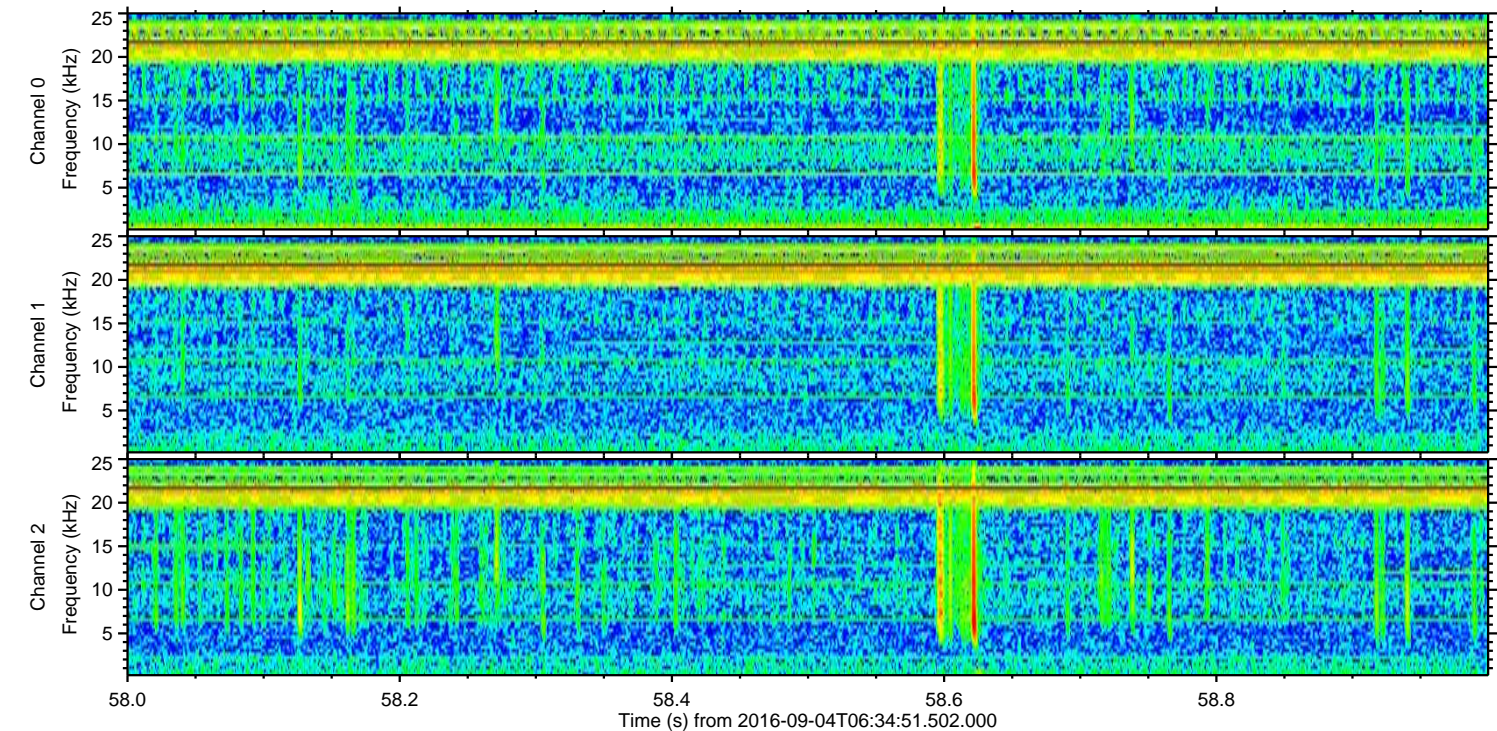
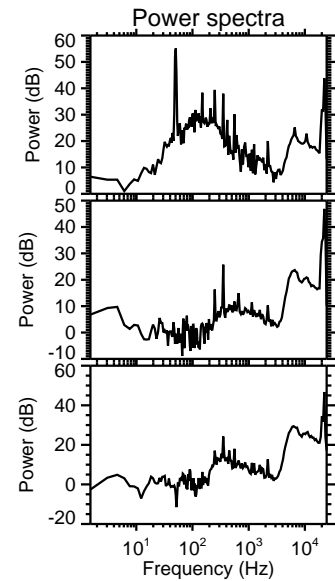
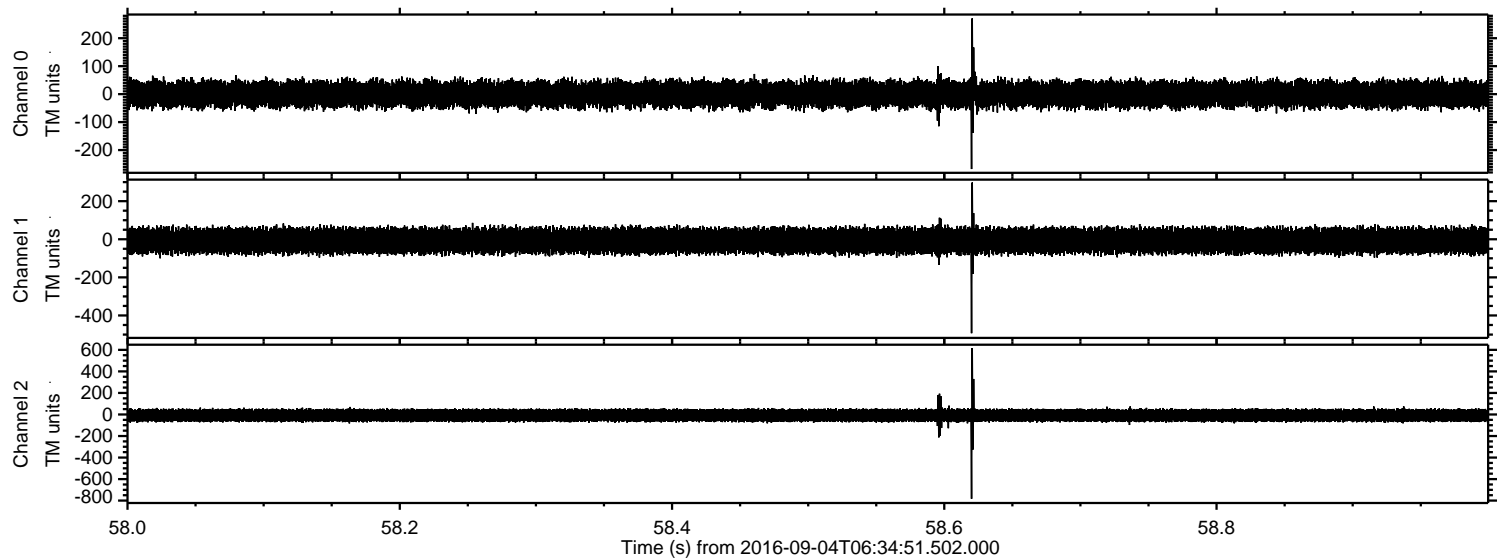


Channel 0
mn: -261
mx: 245
 μ : -0.4
 σ : 25.7

Channel 1
mn: -300
mx: 253
 μ : -8.1
 σ : 35.8

Channel 2
mn: -786
mx: 571
 μ : -8.4
 σ : 34.0

Processed Sun Sep 4 08:42:54 2016 by ELM ver.2012-10-06 from 001__elm20160904_063450__dat00.bin



Processed Sun Sep 4 08:42:55 2016 by ELM ver.2012-10-06 from 001__elm20160904_063450__dat00.bin

