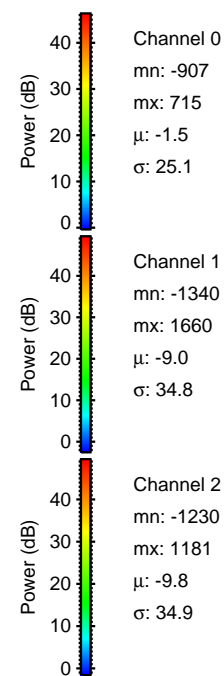
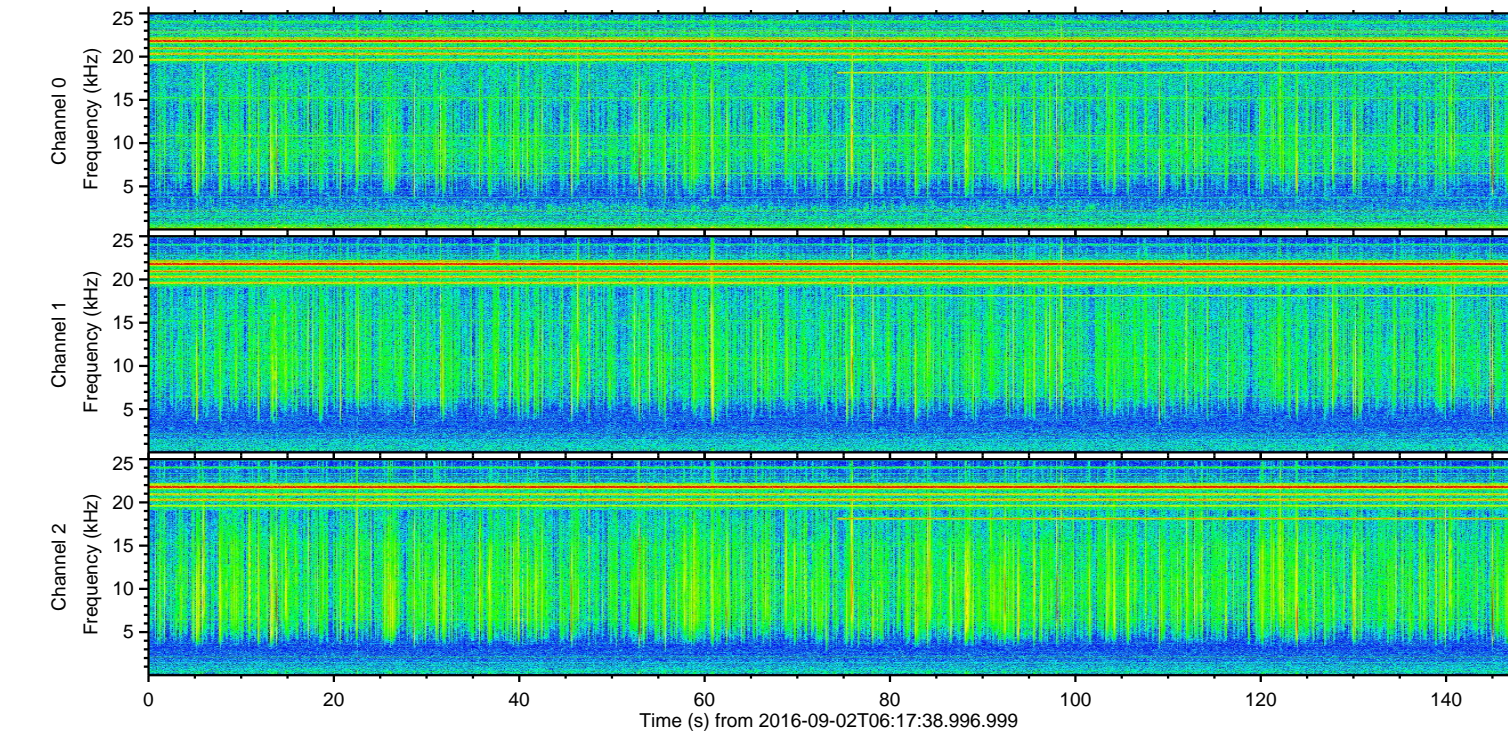
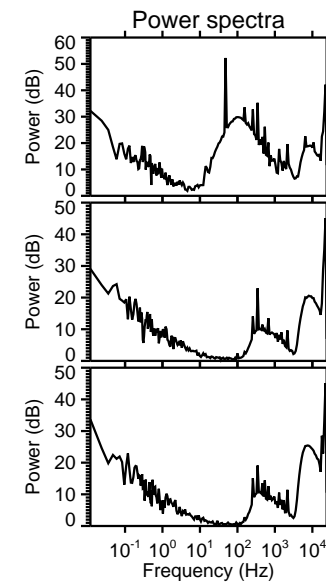
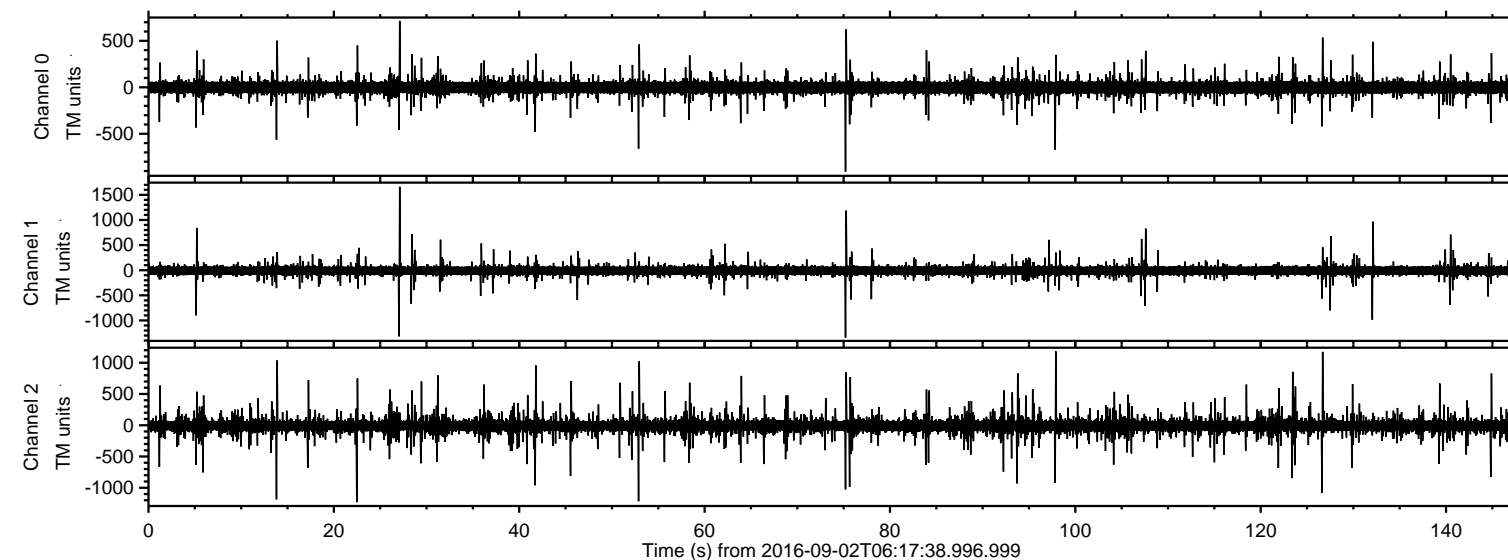


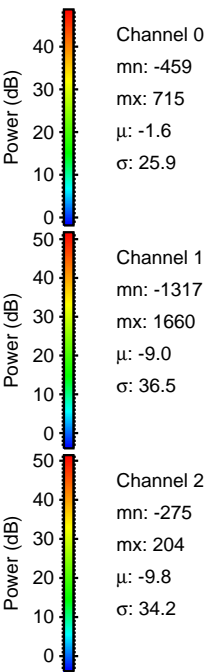
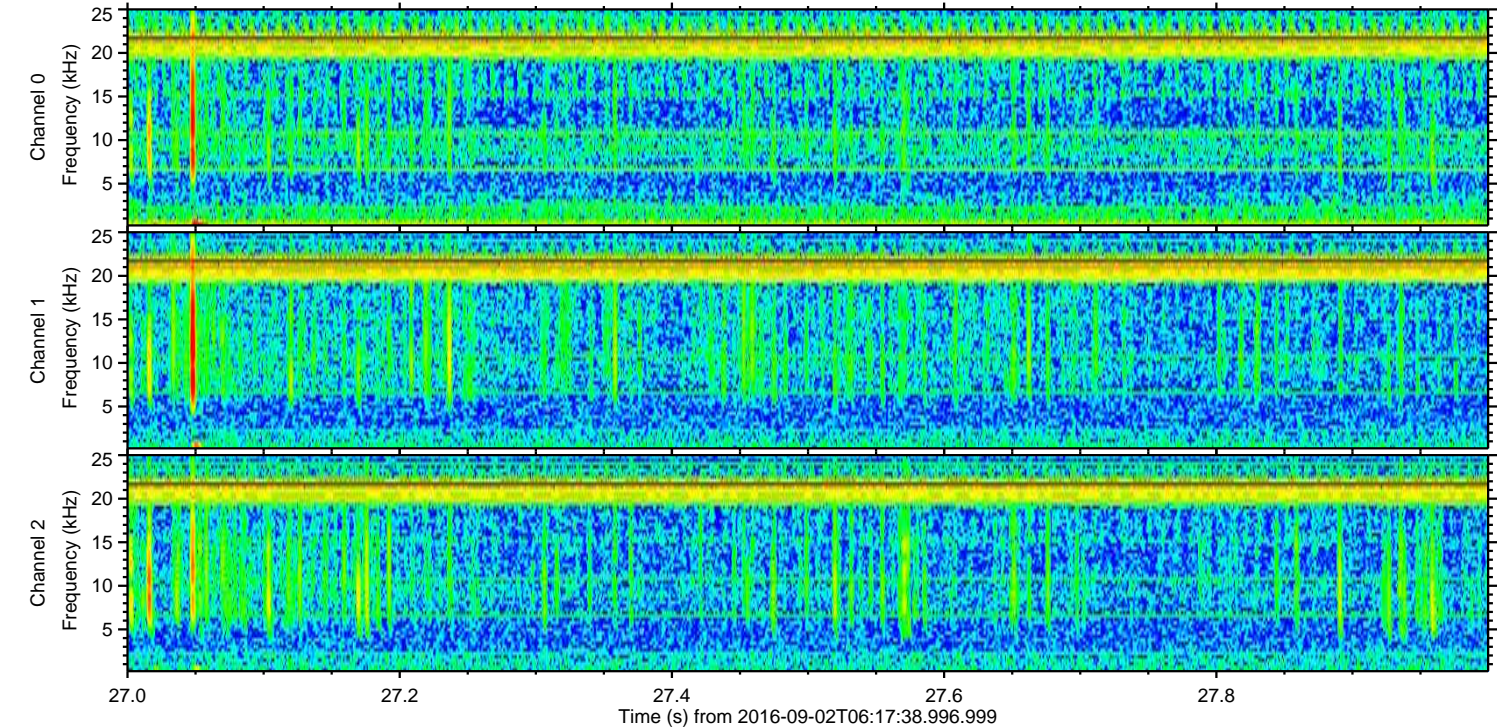
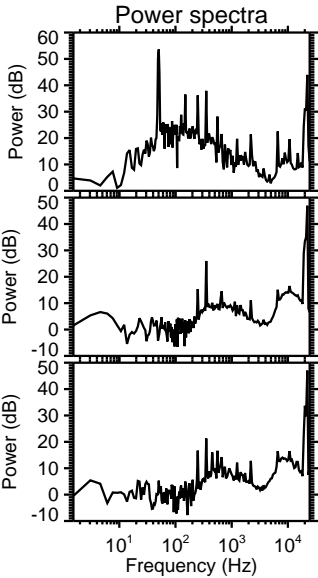
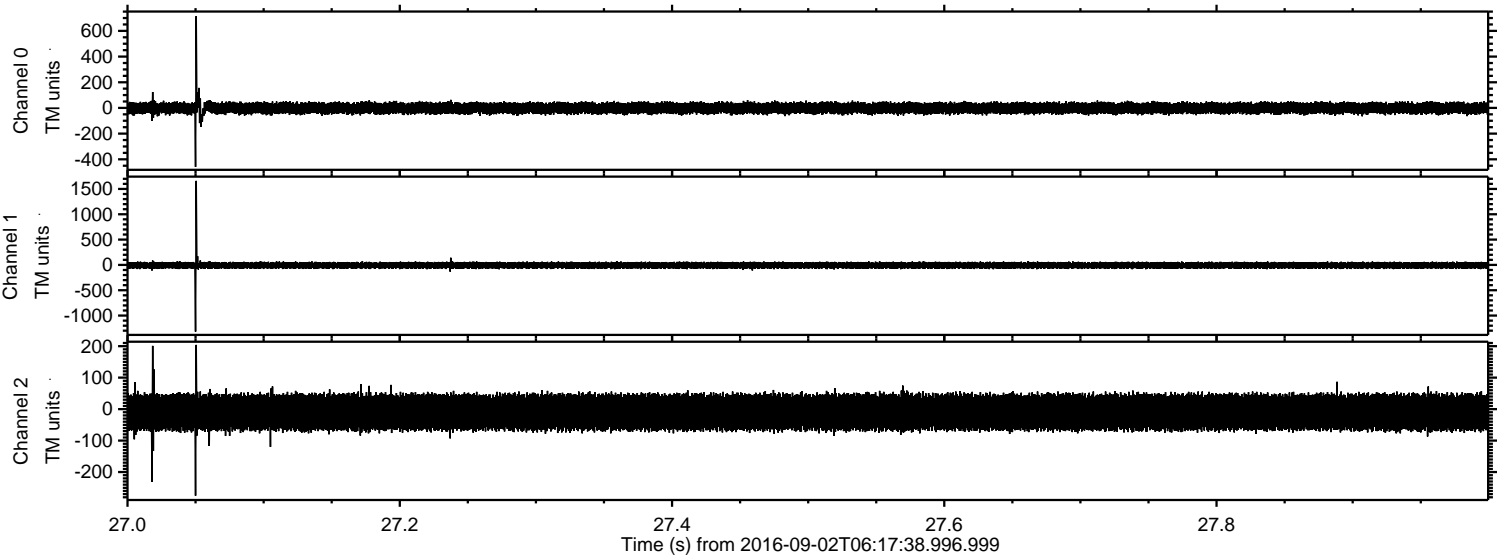
# ELMAVAN 3D WAVEFORMS (Measured data sampled at 50 kHz) 51000 packets of 144 samples from 2016-09-02T06:17:38.996.999.

Processed Fri Sep 2 08:25:17 2016 by ELM ver.2012-10-06 from 001\_\_elm20160902\_061737\_\_dat00.bin



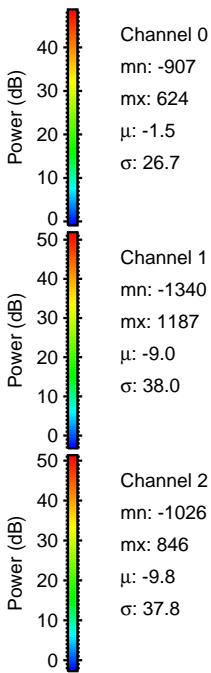
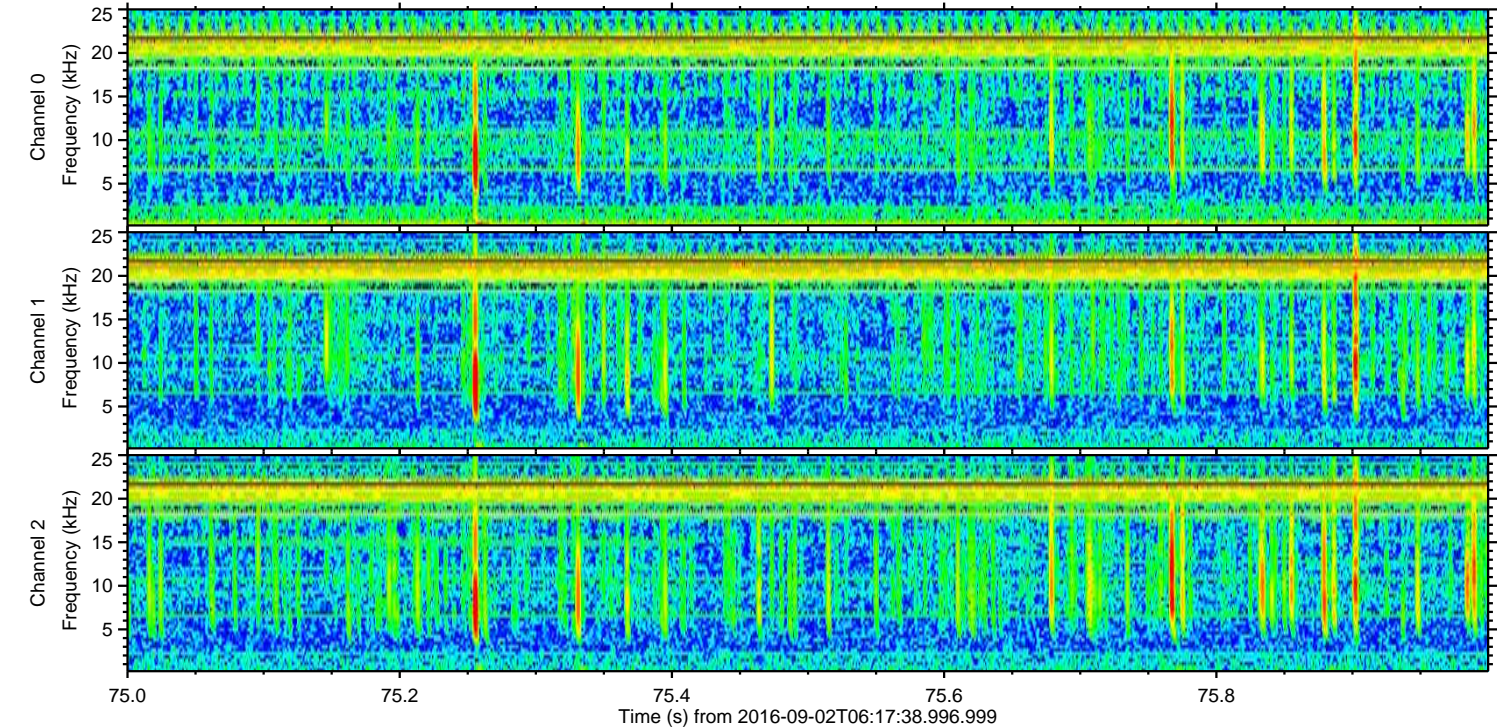
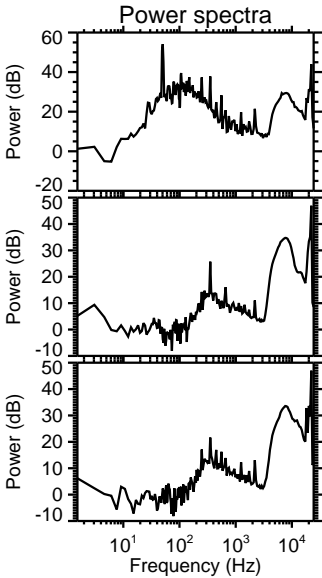
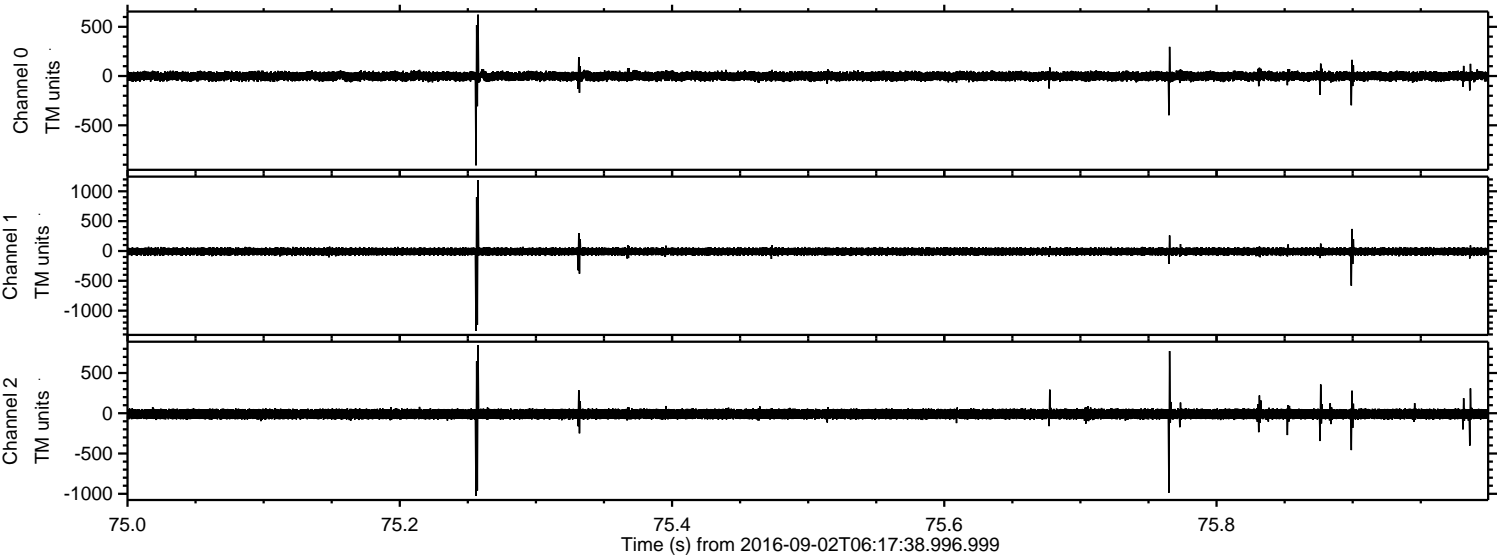


Processed Fri Sep 2 08:25:28 2016 by ELM ver.2012-10-06 from 001\_\_elm20160902\_061737\_\_dat00.bin



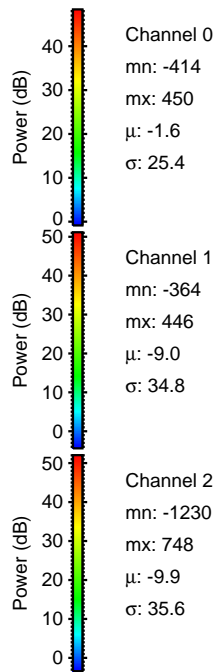
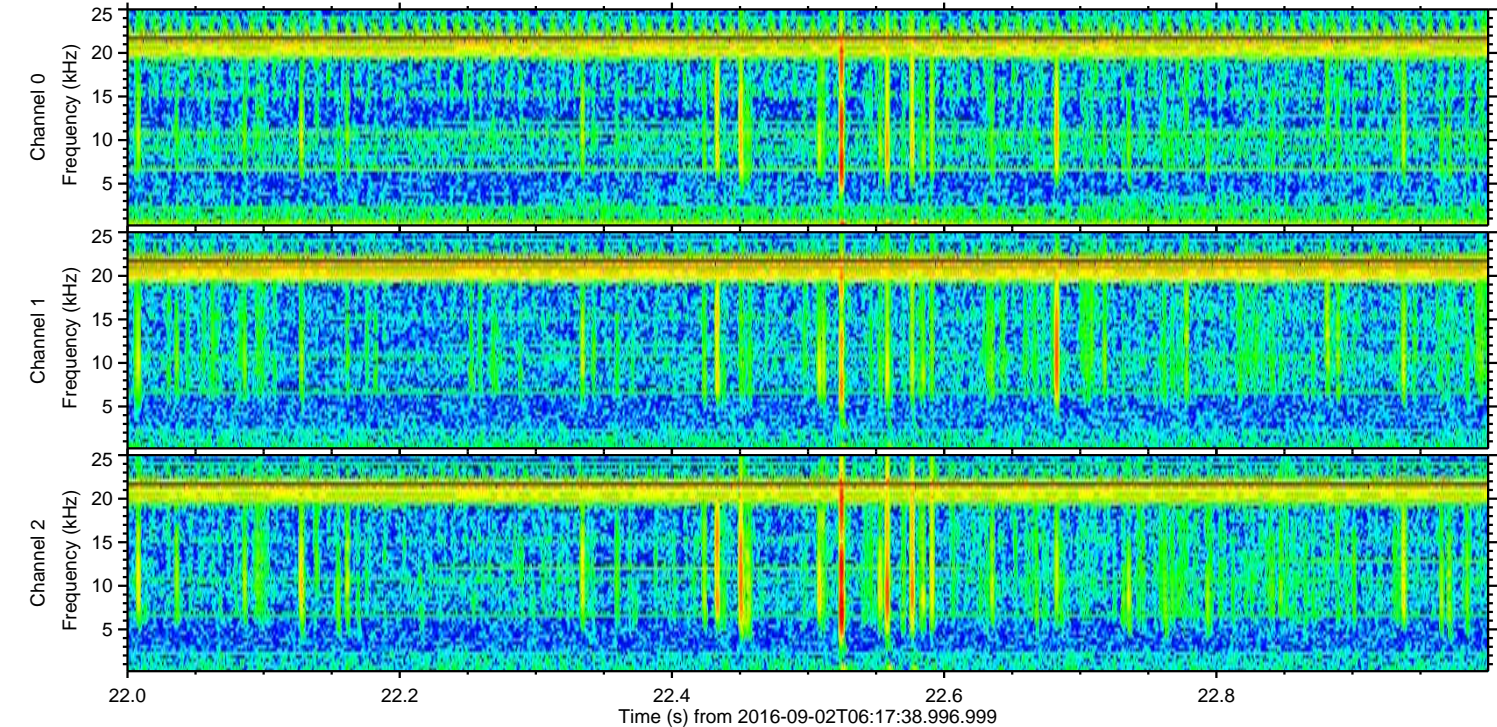
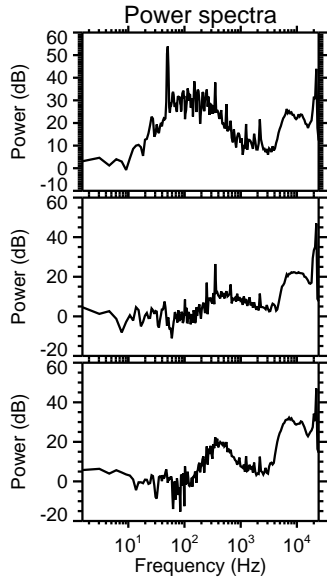
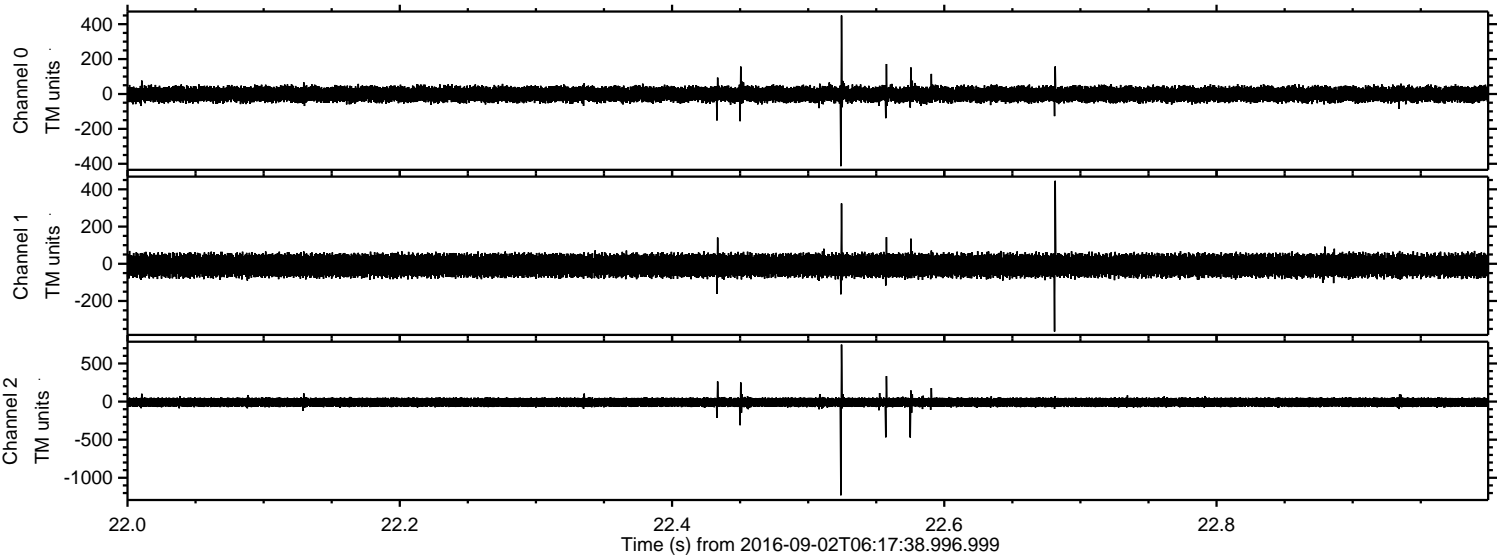


Processed Fri Sep 2 08:25:29 2016 by ELM ver.2012-10-06 from 001\_\_elm20160902\_061737\_\_dat00.bin



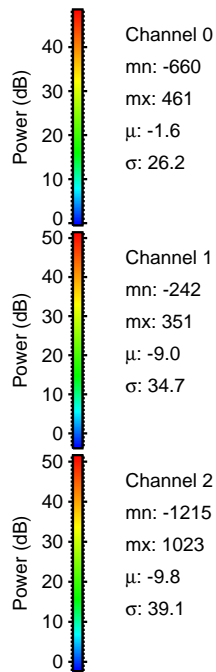
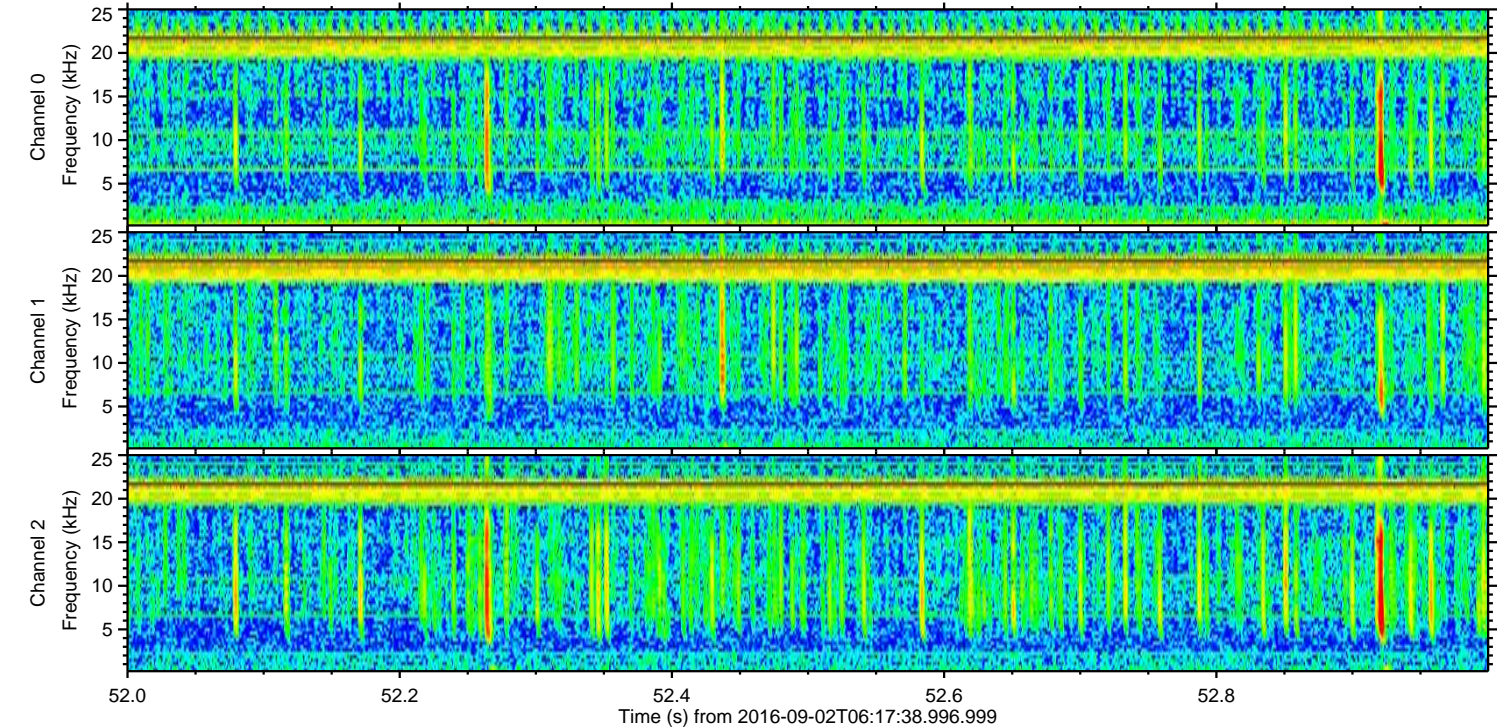
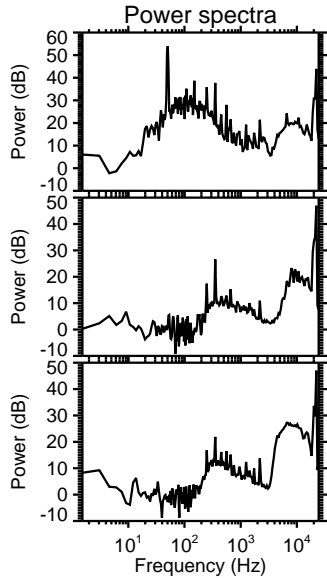
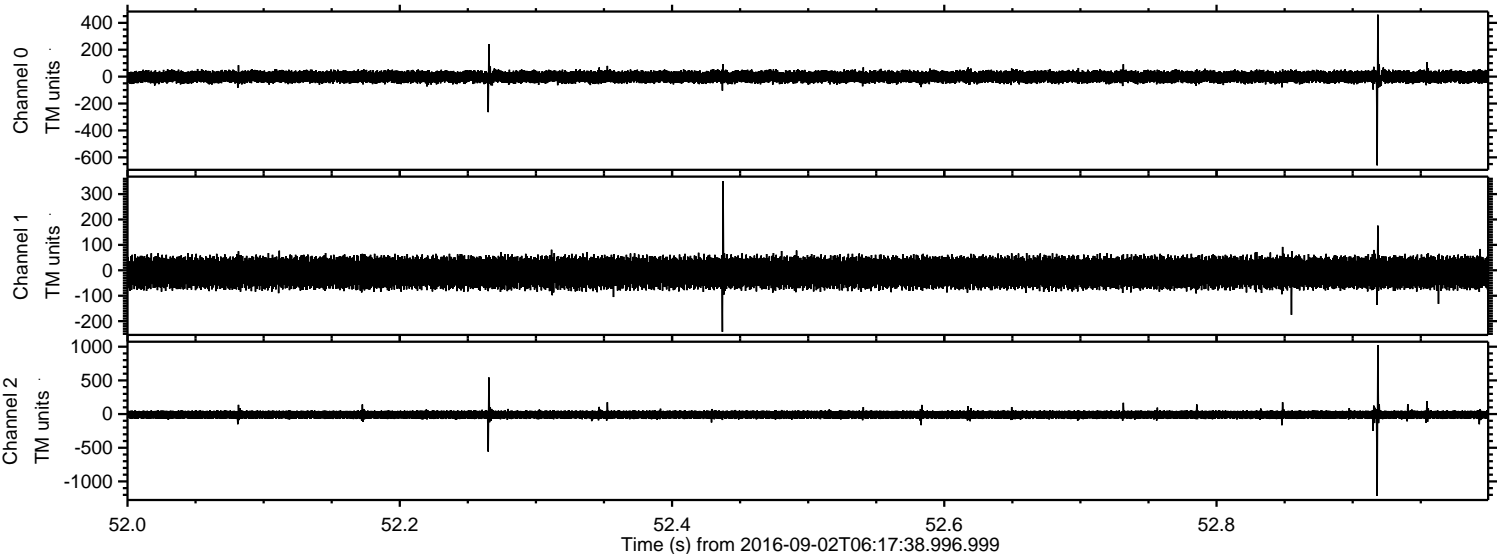


Processed Fri Sep 2 08:25:30 2016 by ELM ver.2012-10-06 from 001\_\_elm20160902\_061737\_\_dat00.bin



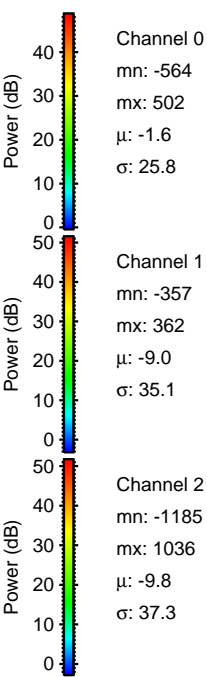
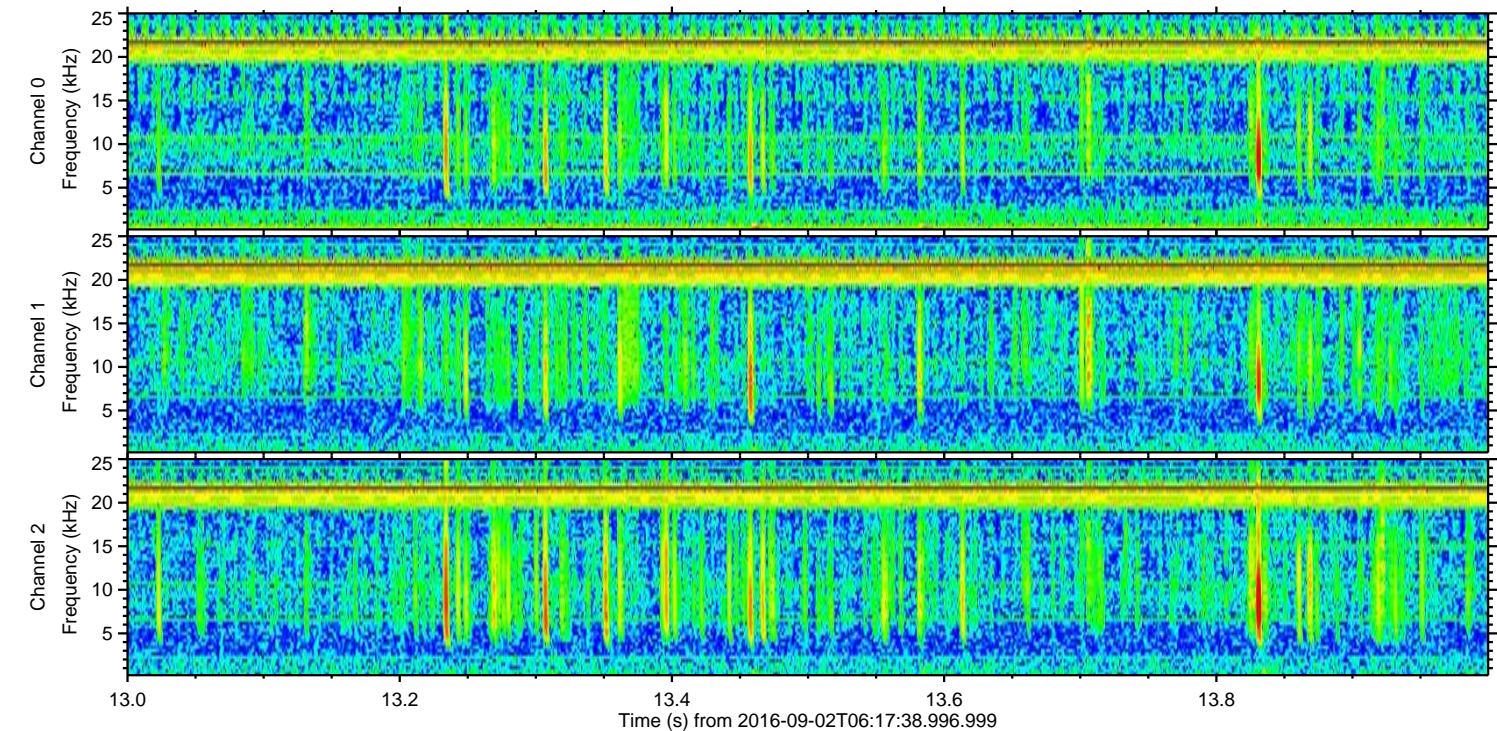
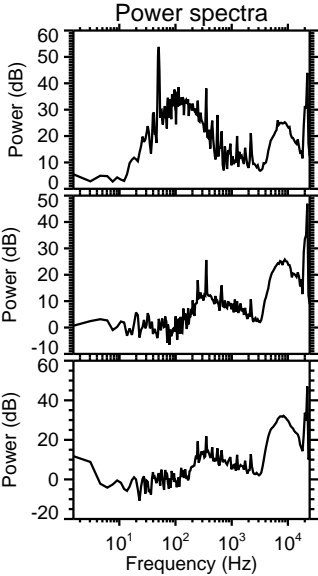
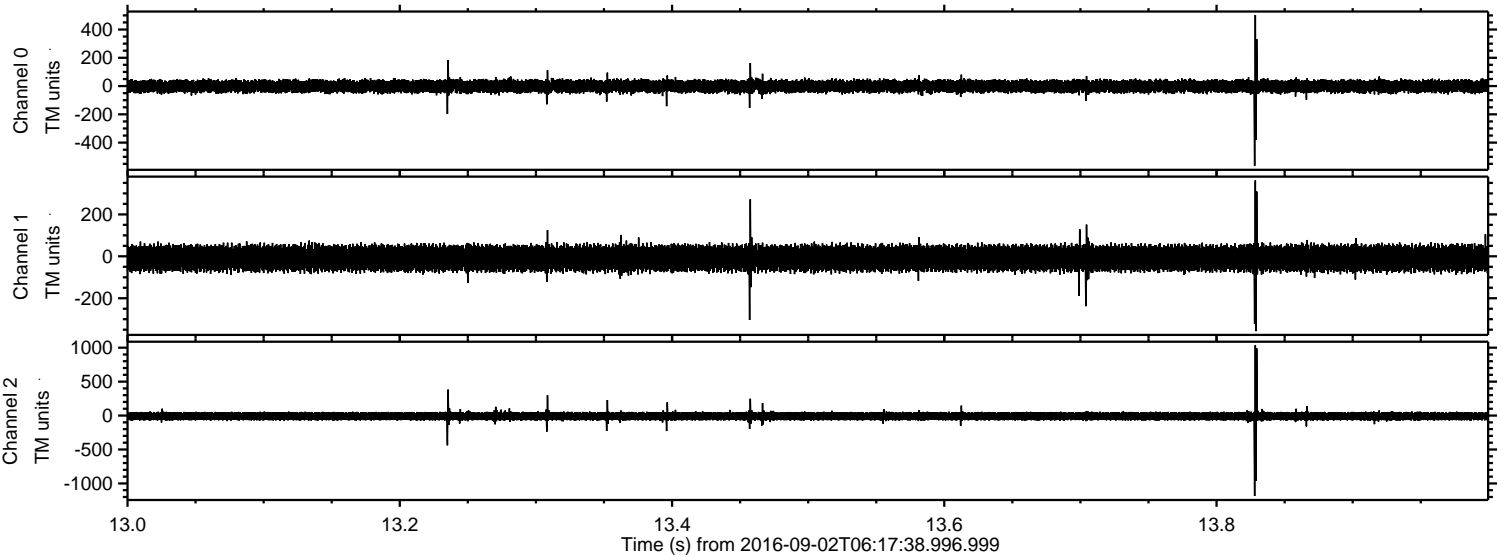


Processed Fri Sep 2 08:25:31 2016 by ELM ver.2012-10-06 from 001\_\_elm20160902\_061737\_\_dat00.bin



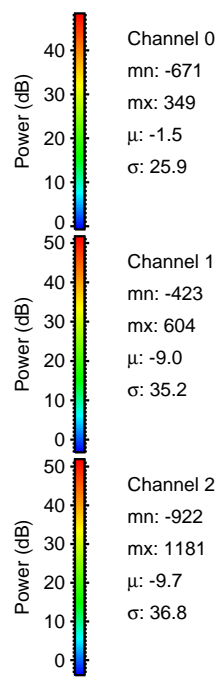
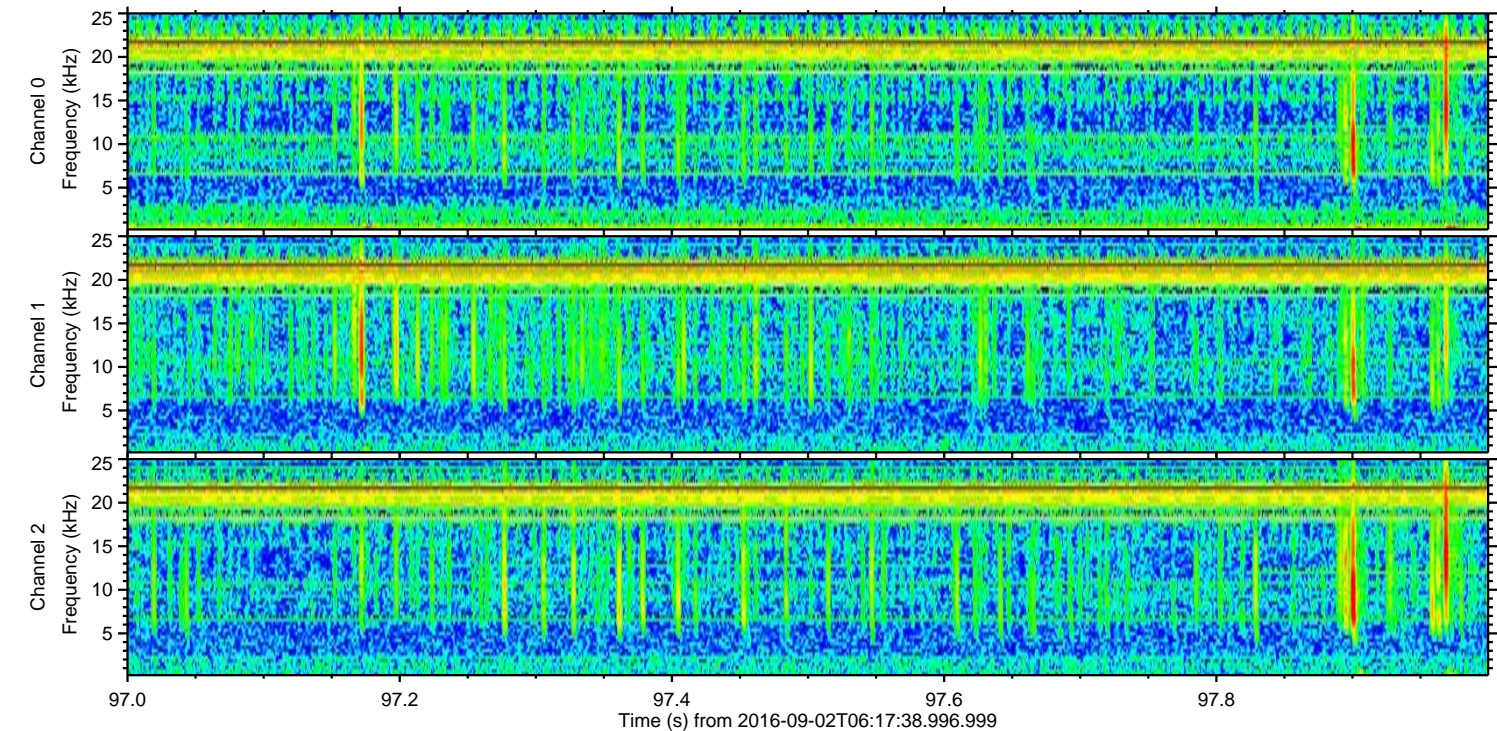
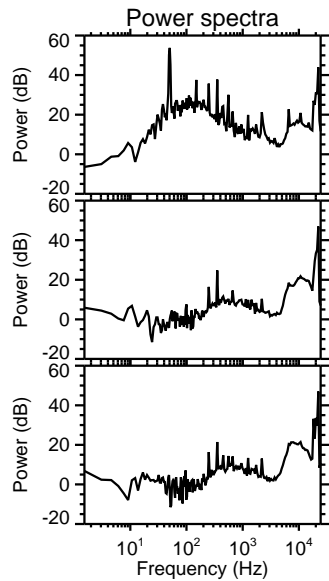
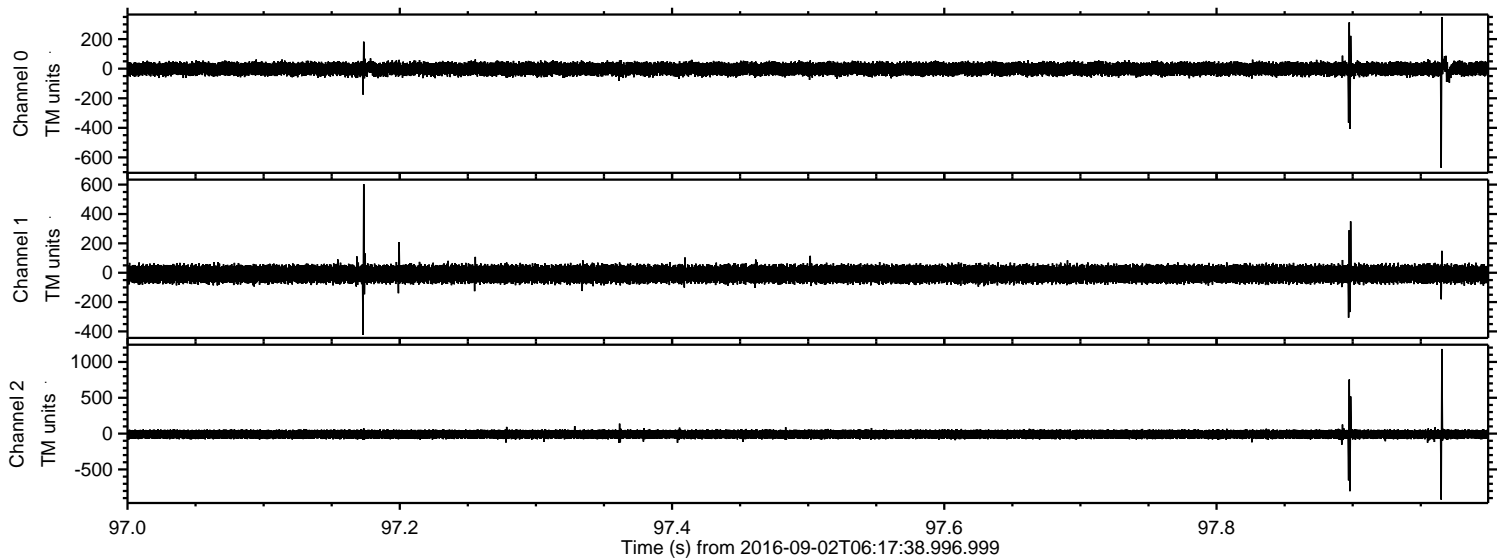


Processed Fri Sep 2 08:25:32 2016 by ELM ver.2012-10-06 from 001\_\_elm20160902\_061737\_\_dat00.bin





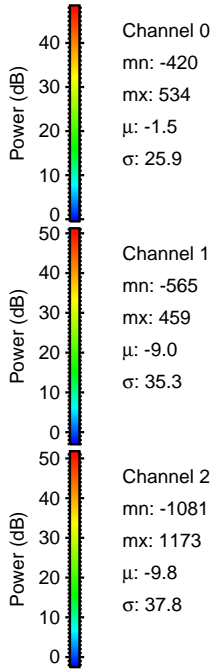
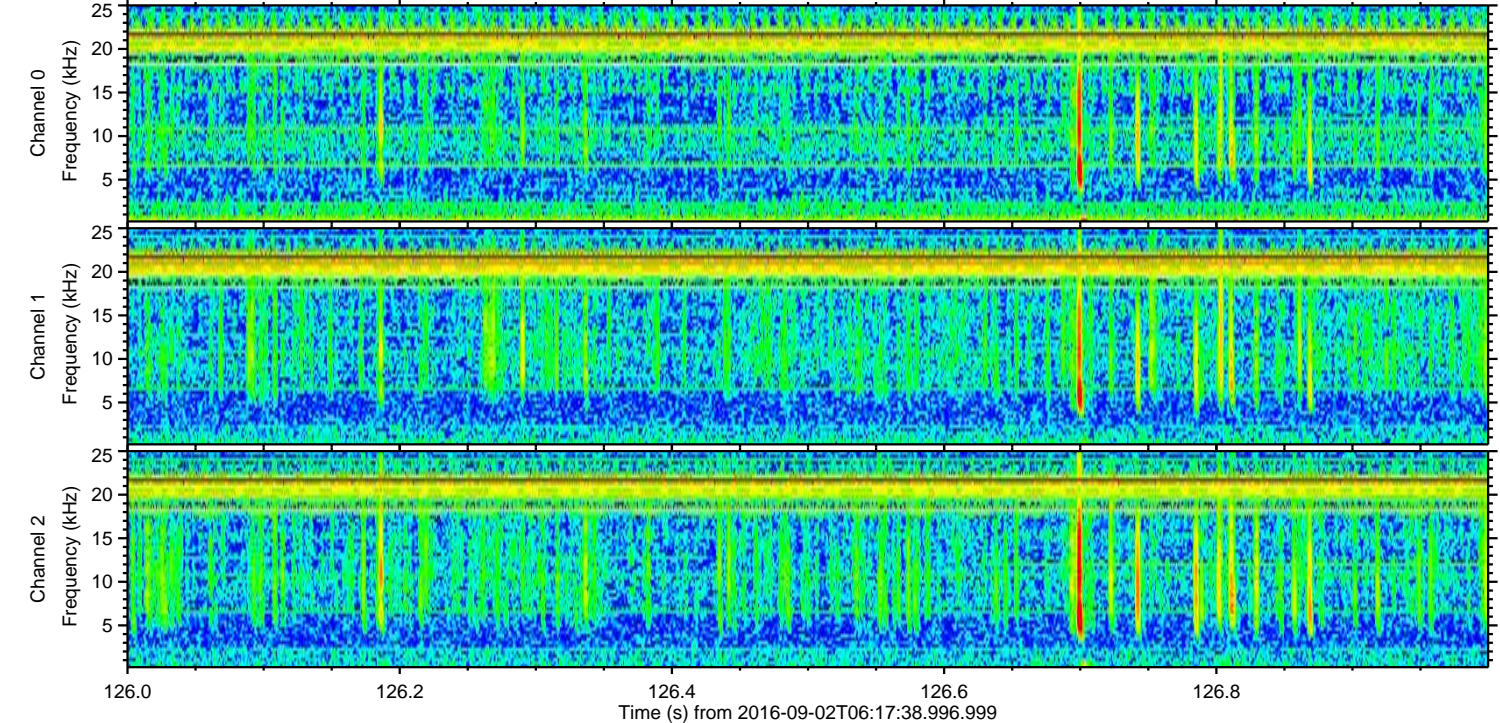
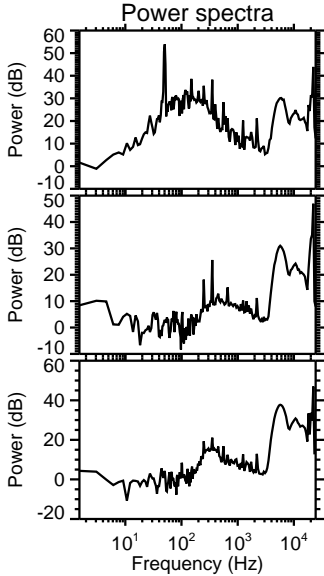
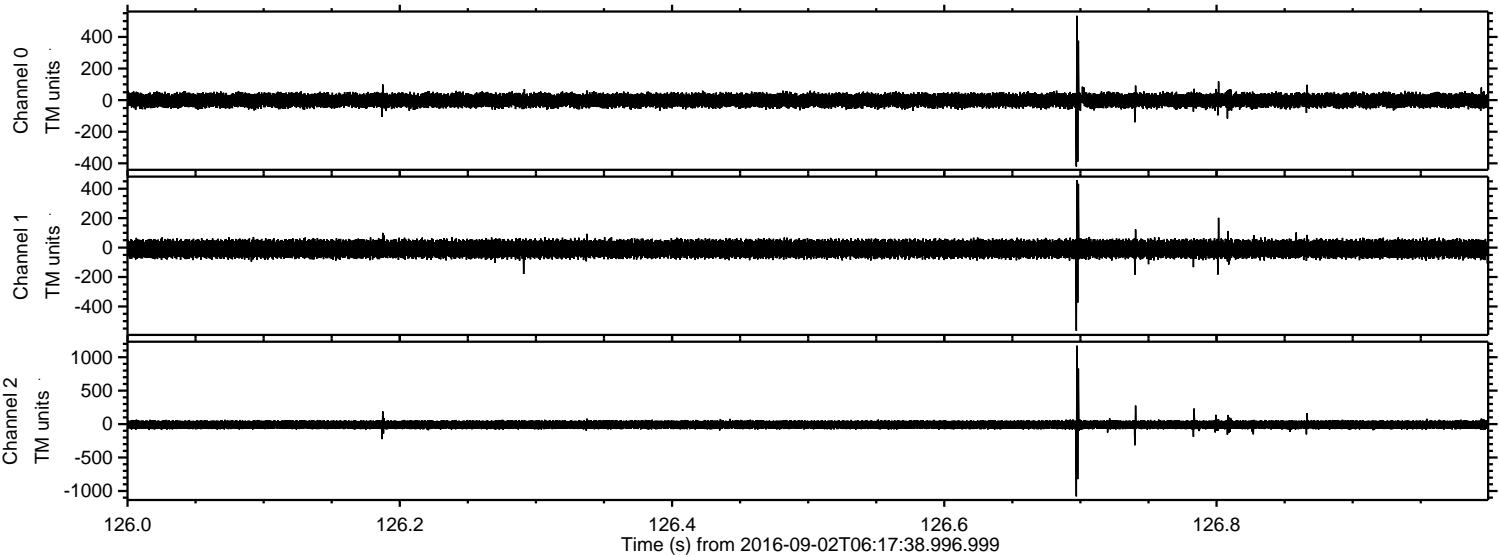
Processed Fri Sep 2 08:25:33 2016 by ELM ver.2012-10-06 from 001\_\_elm20160902\_061737\_\_dat00.bin





ELMAVAN 3D WAVEFORMS (Measured data sampled at 50 kHz) 51000 packets of 144 samples from 2016-09-02T06:17:38.996.999. Part 127/147

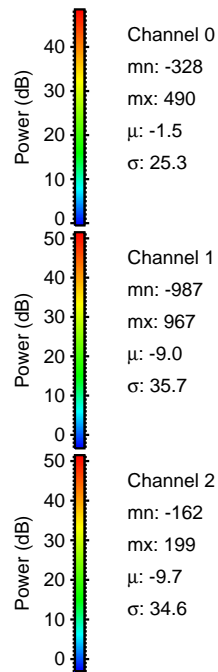
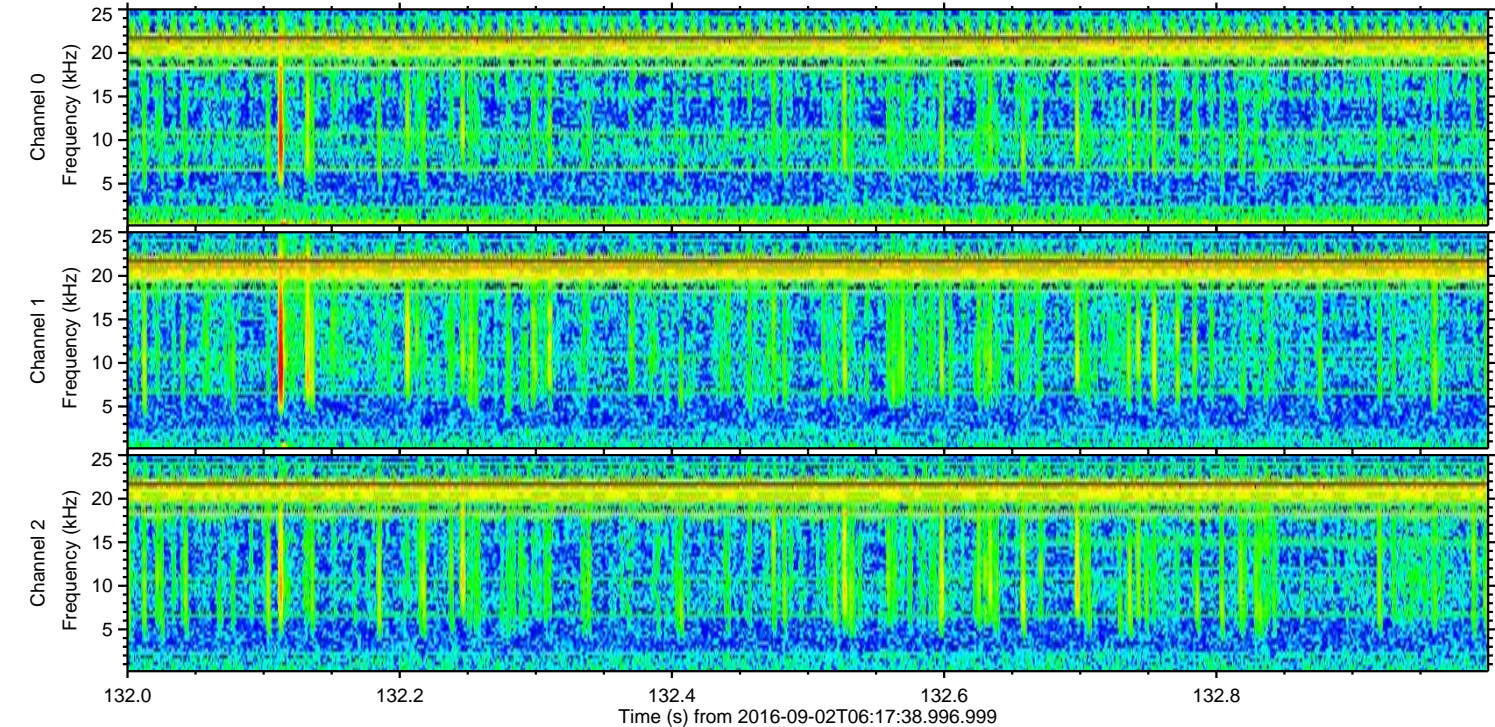
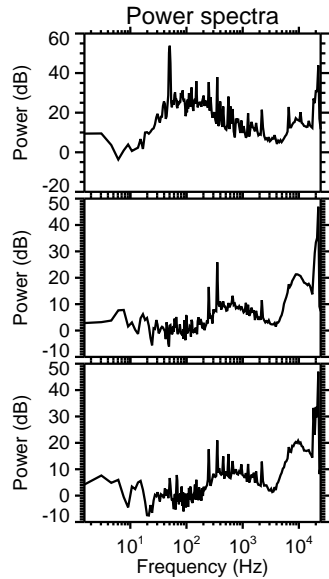
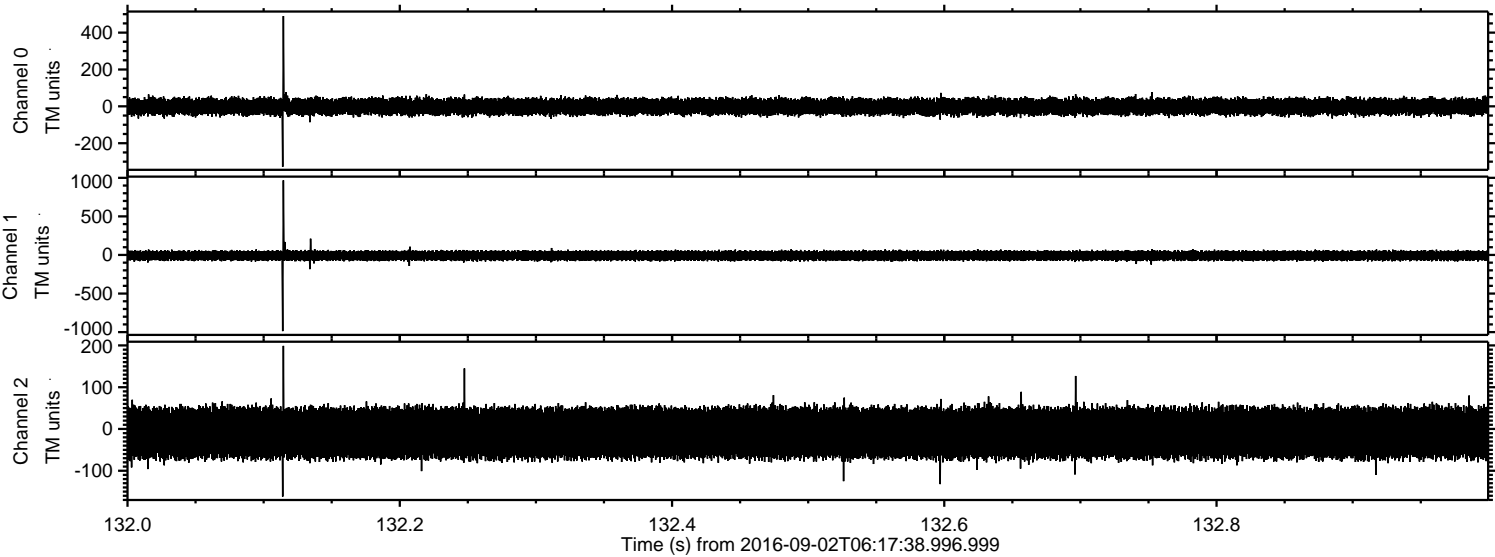
Processed Fri Sep 2 08:25:34 2016 by ELM ver.2012-10-06 from 001\_\_elm20160902\_061737\_\_dat00.bin





ELMAVAN 3D WAVEFORMS (Measured data sampled at 50 kHz) 51000 packets of 144 samples from 2016-09-02T06:17:38.996.999. Part 133/147

Processed Fri Sep 2 08:25:35 2016 by ELM ver.2012-10-06 from 001\_\_elm20160902\_061737\_\_dat00.bin





Processed Fri Sep 2 08:25:36 2016 by ELM ver.2012-10-06 from 001\_\_elm20160902\_061737\_\_dat00.bin

