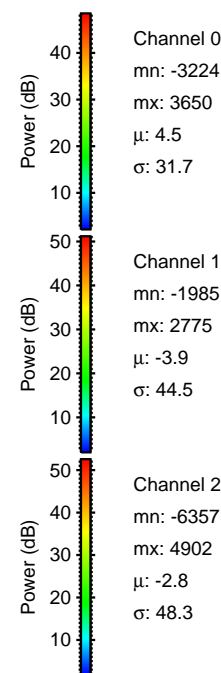
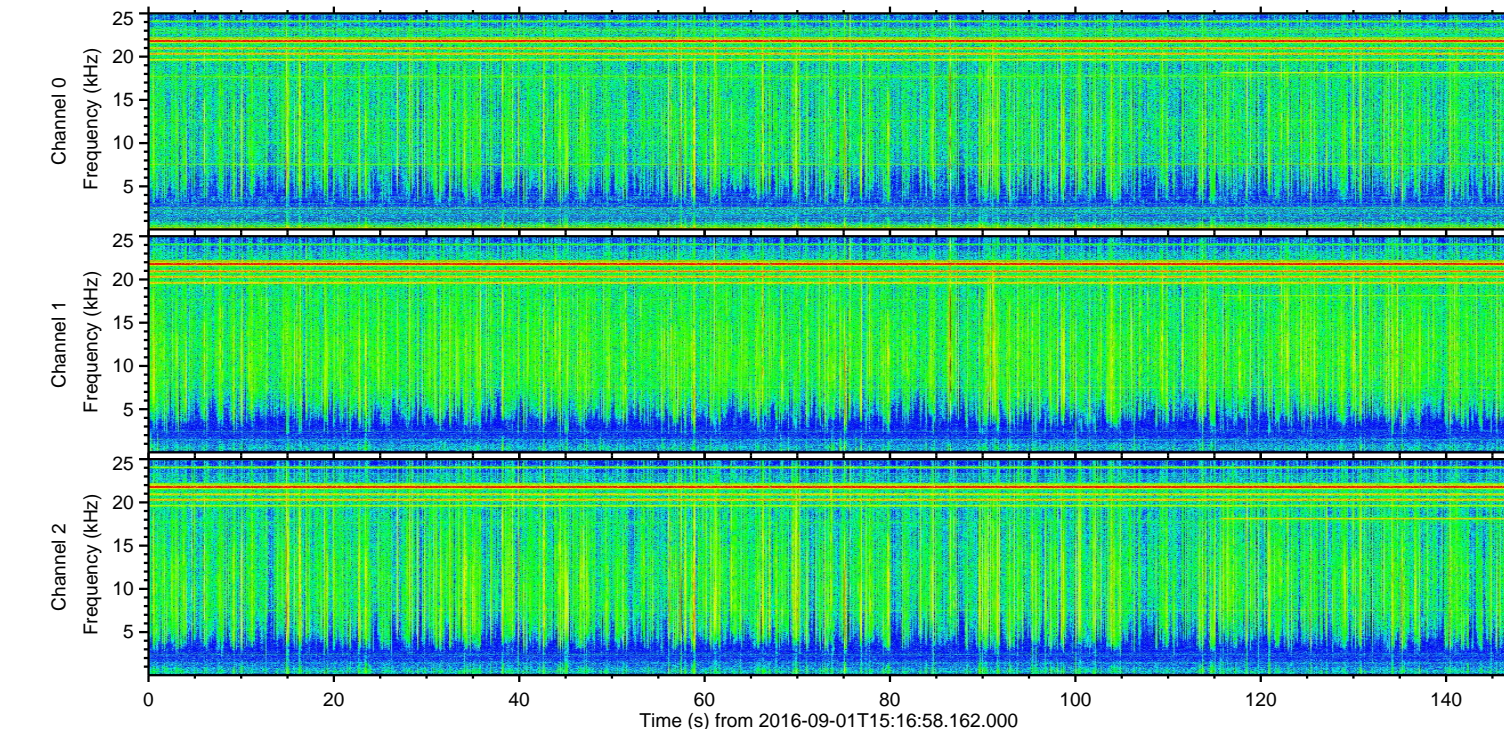
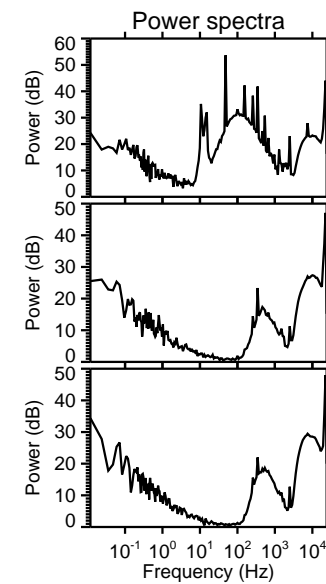
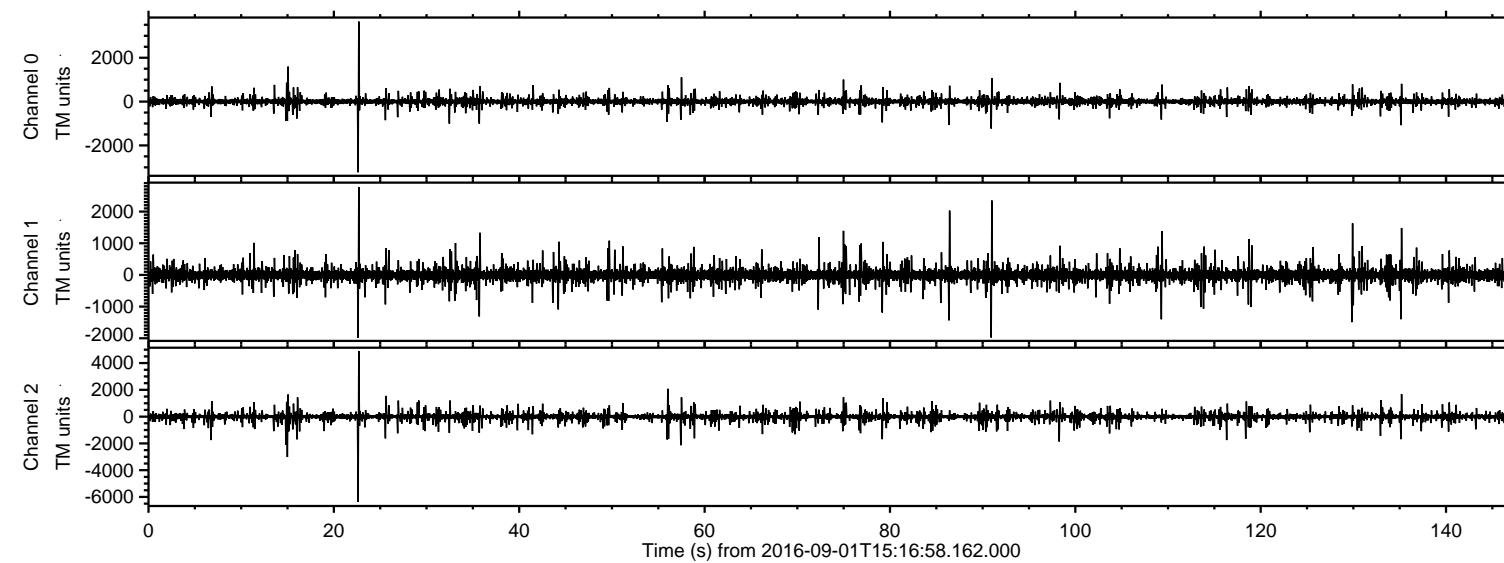
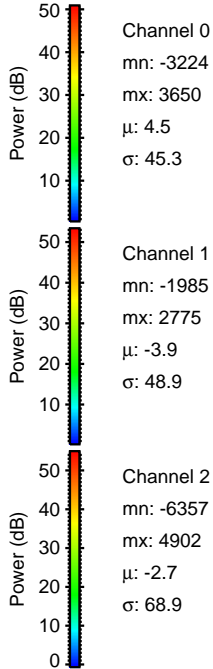
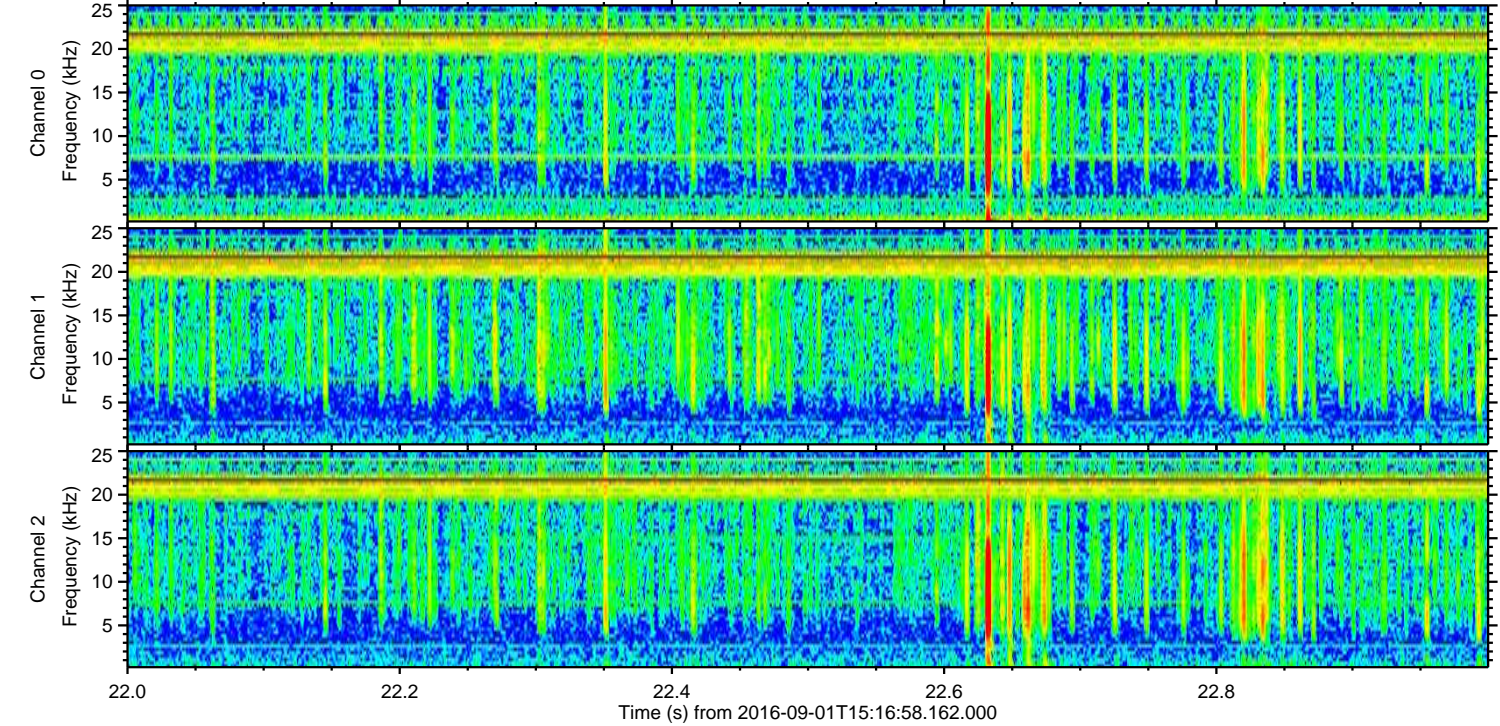
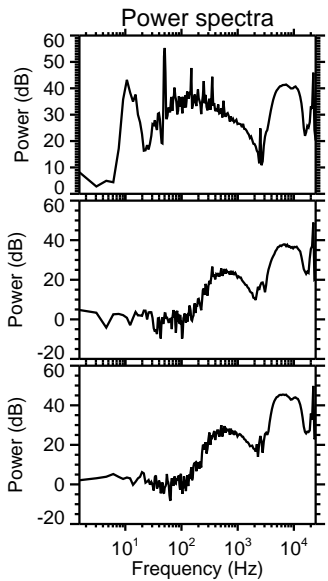
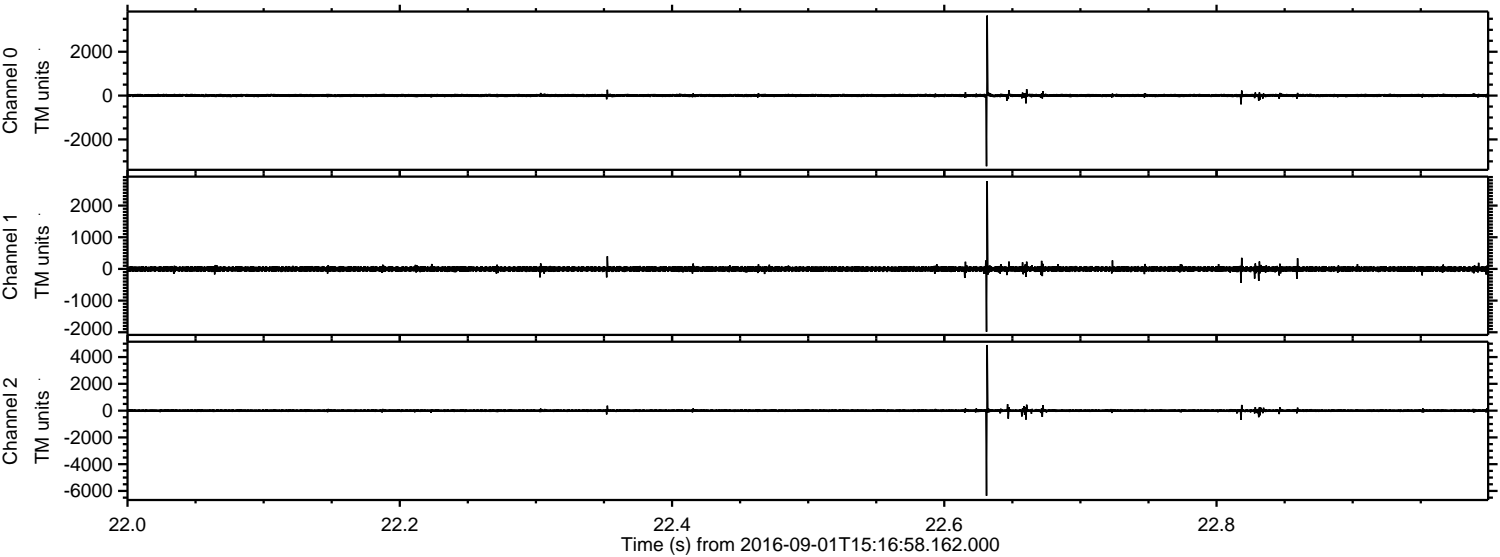


ELMAVAN 3D WAVEFORMS (Measured data sampled at 50 kHz) 51000 packets of 144 samples from 2016-09-01T15:16:58.162.000.

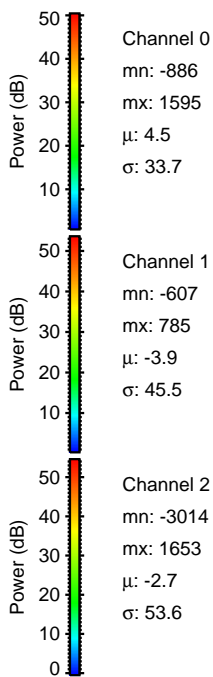
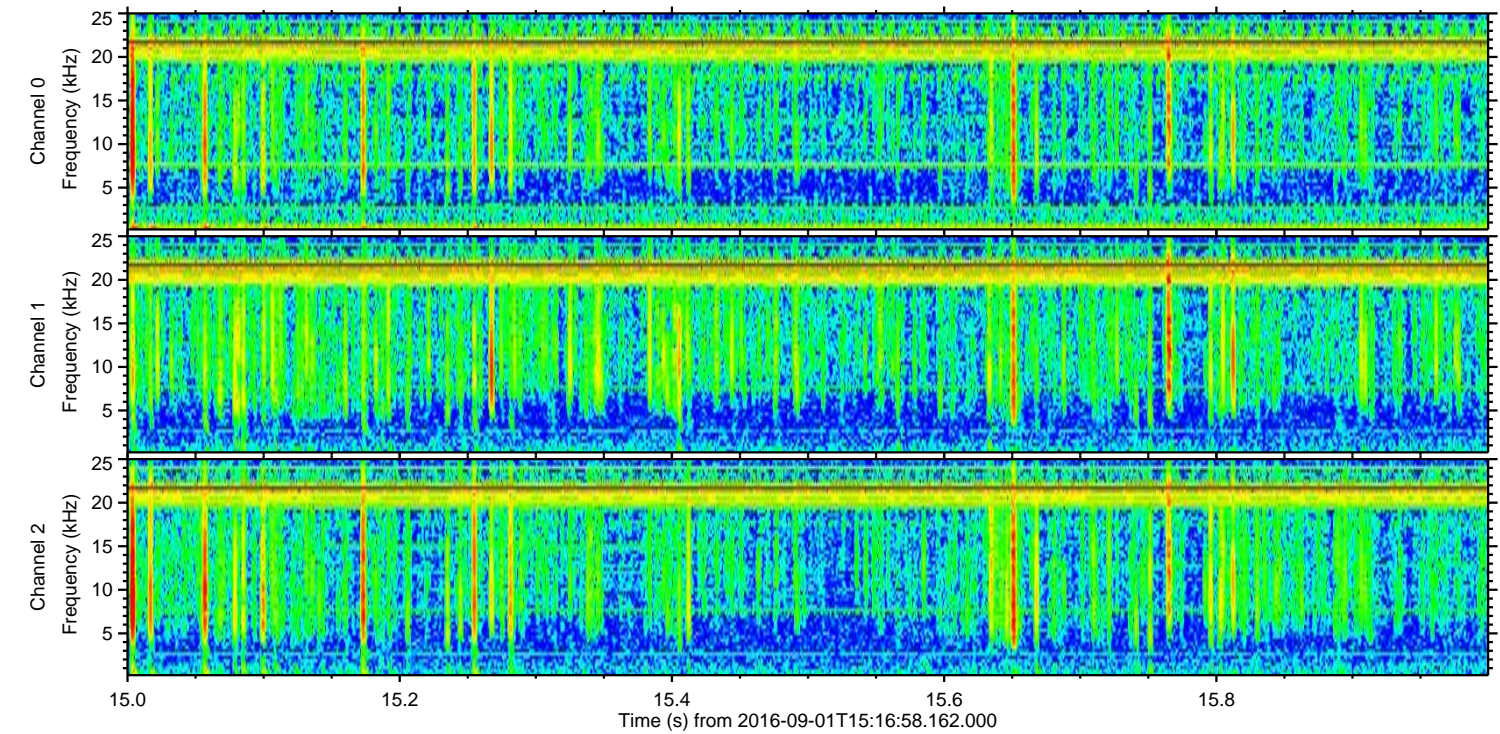
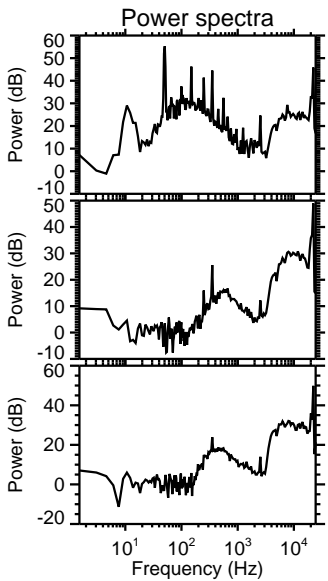
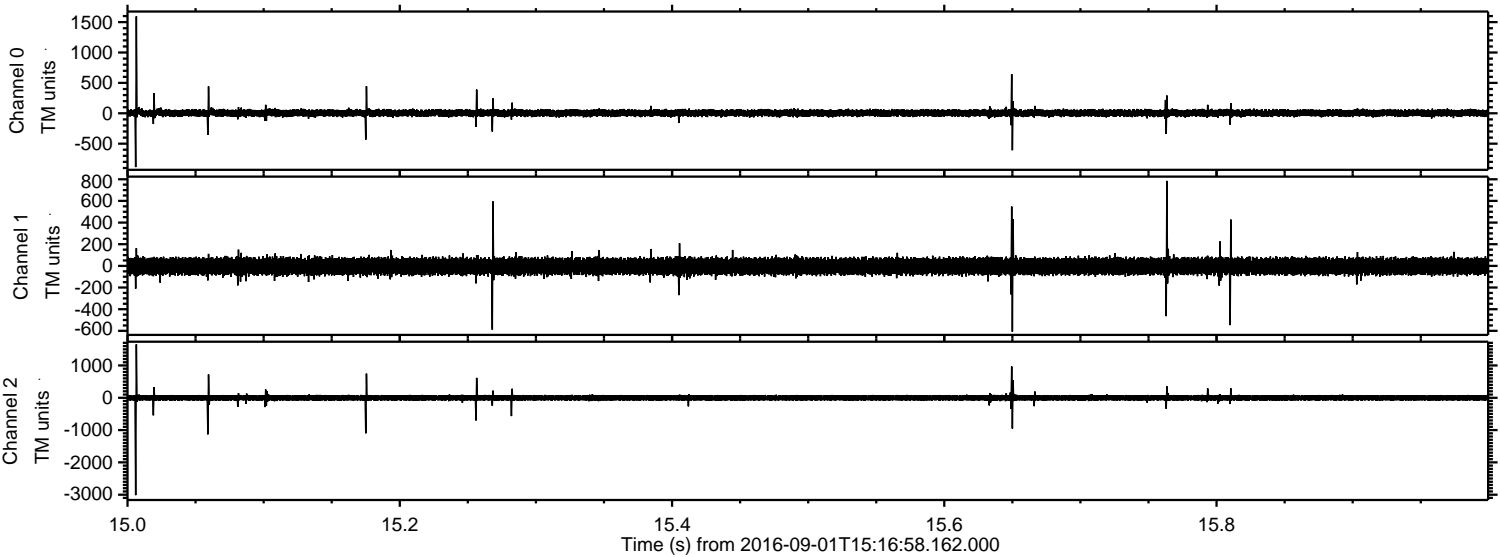
Processed Thu Sep 1 17:24:38 2016 by ELM ver.2012-10-06 from 001__elm20160901_151657__dat00.bin



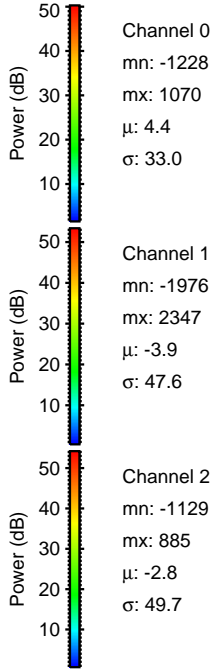
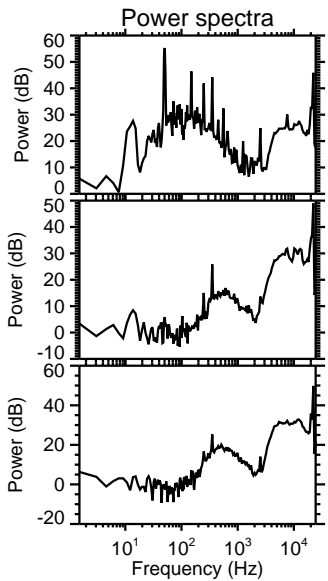
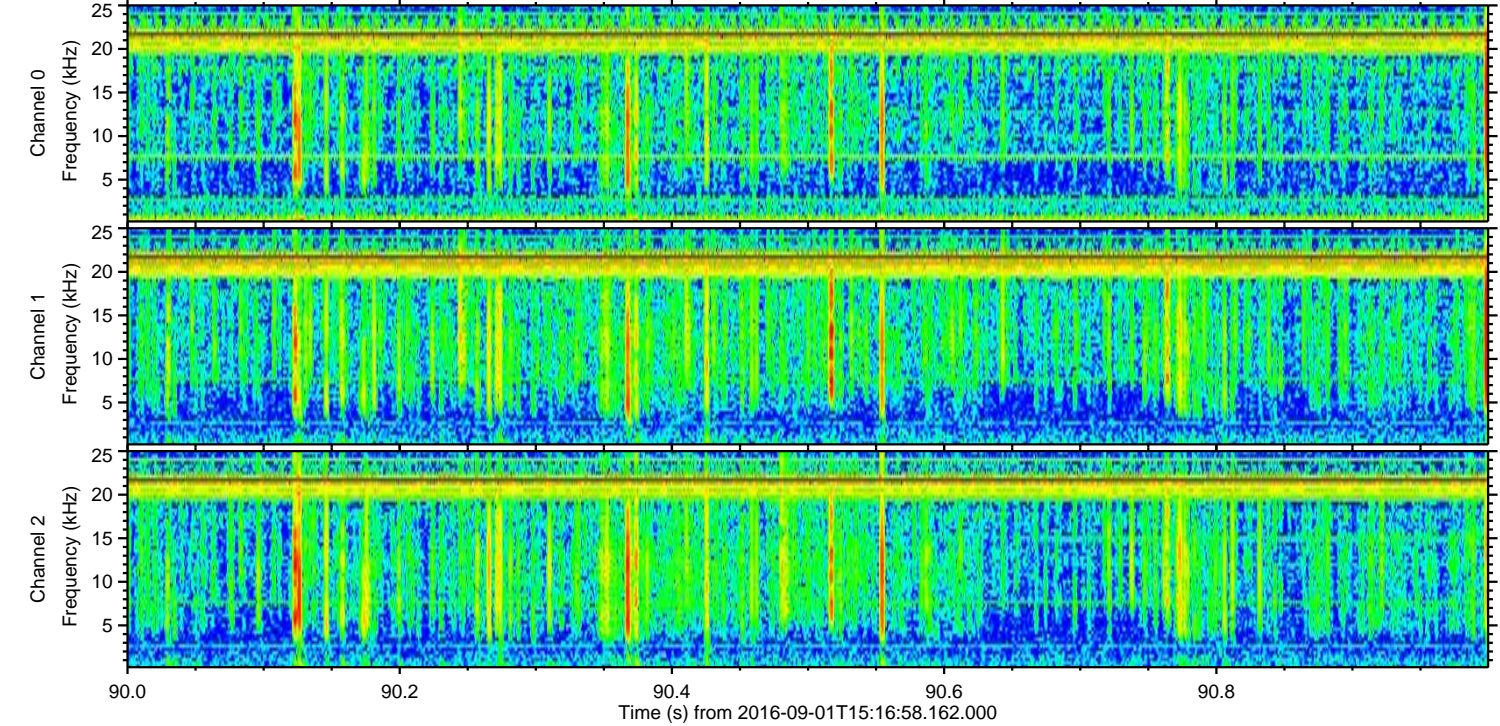
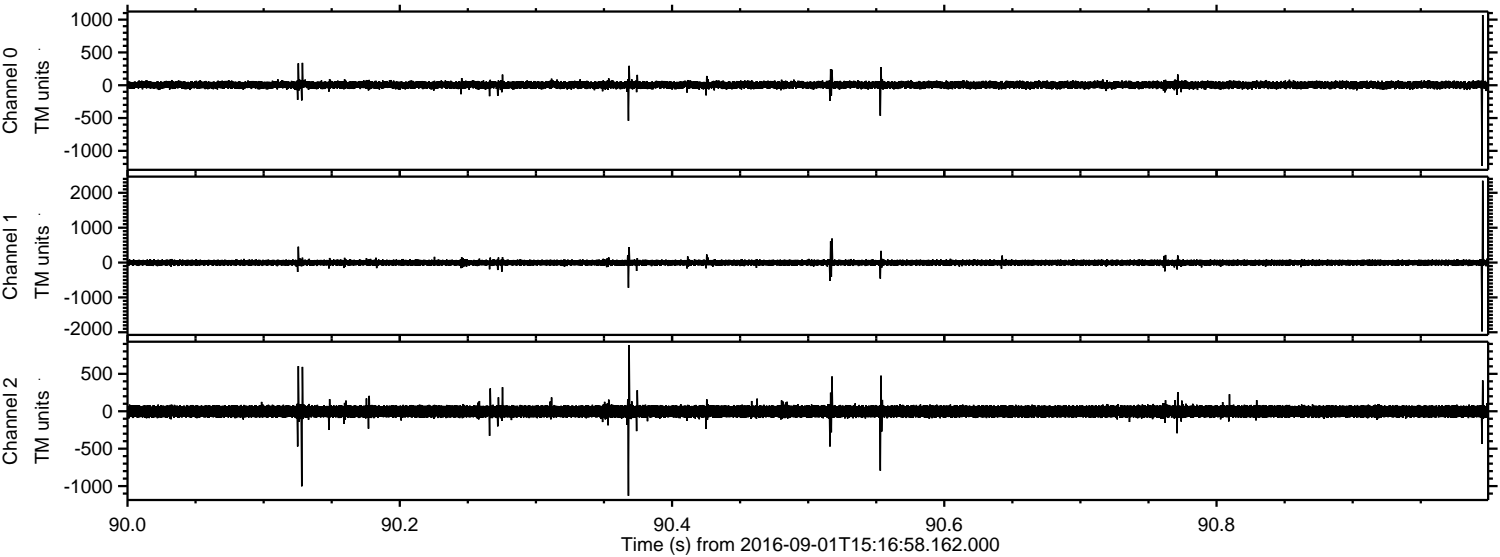
Processed Thu Sep 1 17:24:53 2016 by ELM ver.2012-10-06 from 001__elm20160901_151657__dat00.bin



Processed Thu Sep 1 17:24:54 2016 by ELM ver.2012-10-06 from 001__elm20160901_151657__dat00.bin



Processed Thu Sep 1 17:24:55 2016 by ELM ver.2012-10-06 from 001__elm20160901_151657__dat00.bin

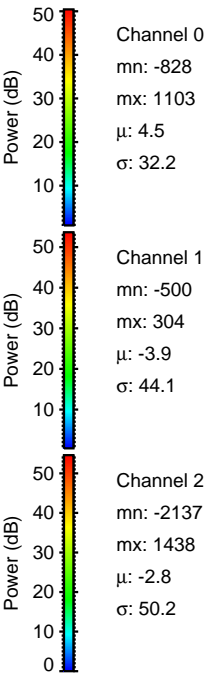
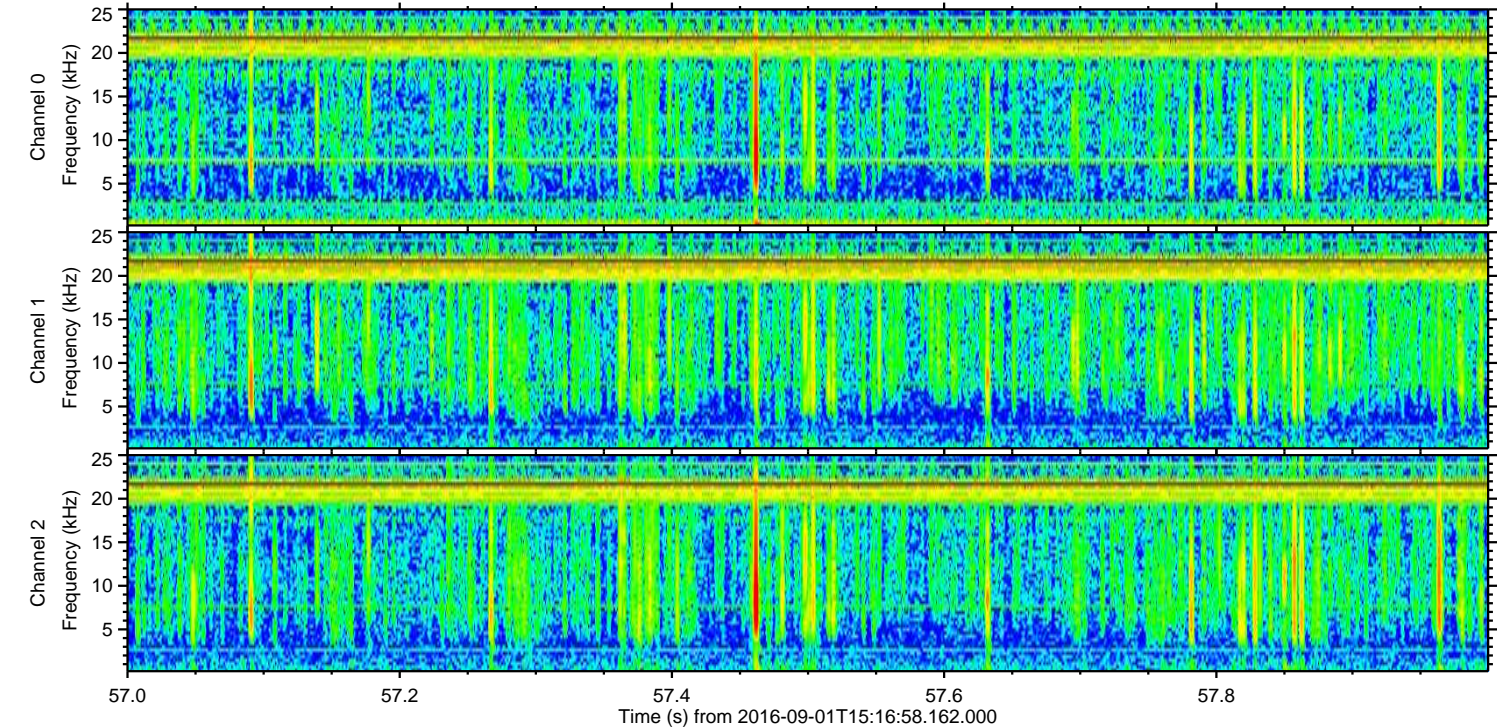
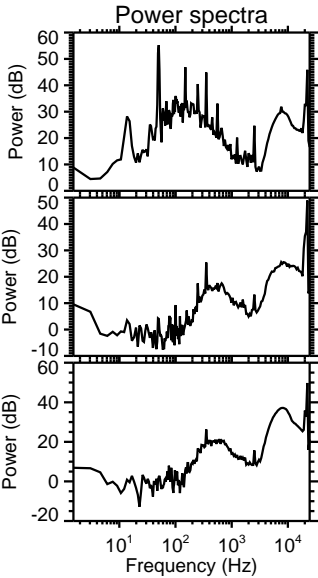
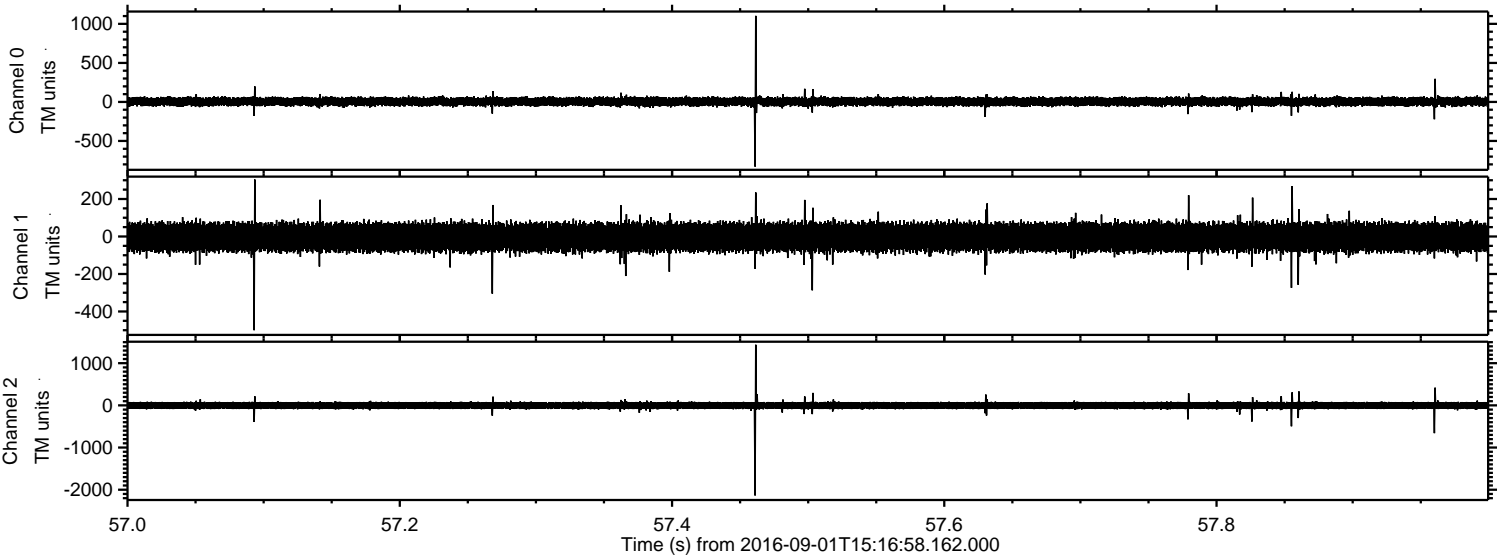


Channel 0
mn: -1228
mx: 1070
 μ : 4.4
 σ : 33.0

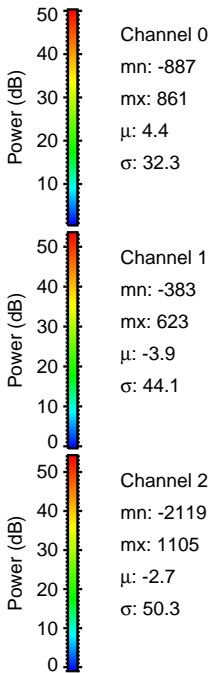
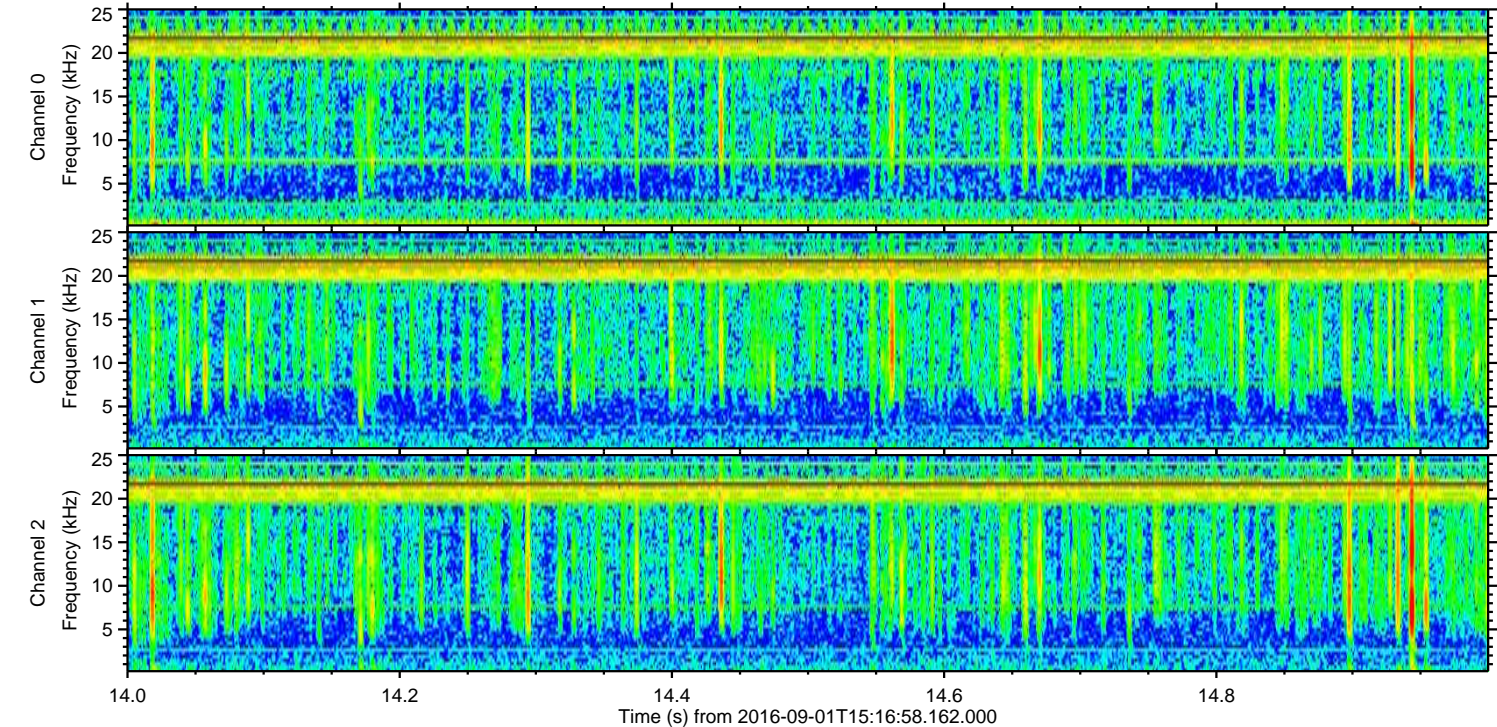
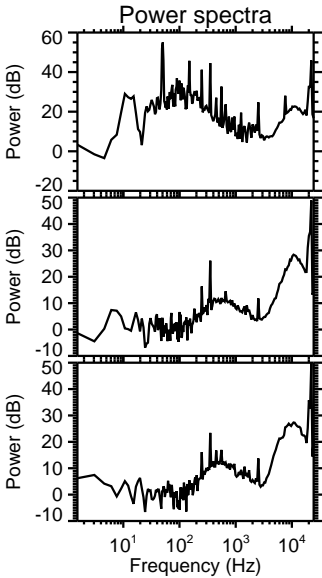
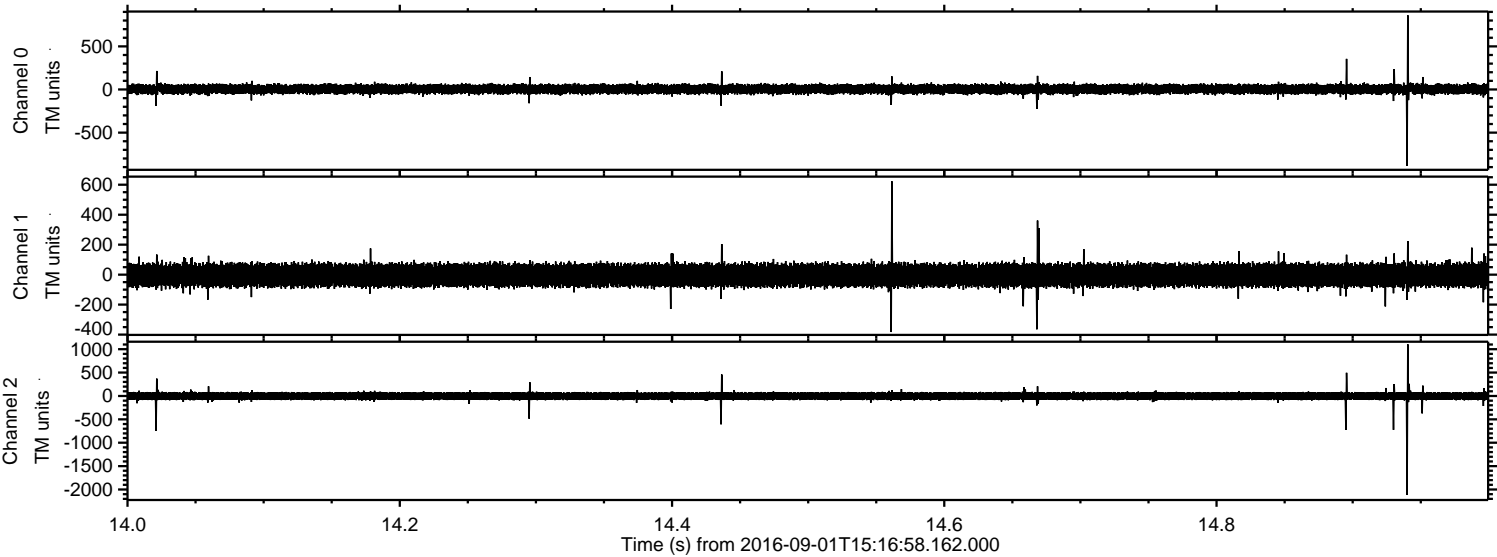
Channel 1
mn: -1976
mx: 2347
 μ : -3.9
 σ : 47.6

Channel 2
mn: -1129
mx: 885
 μ : -2.8
 σ : 49.7

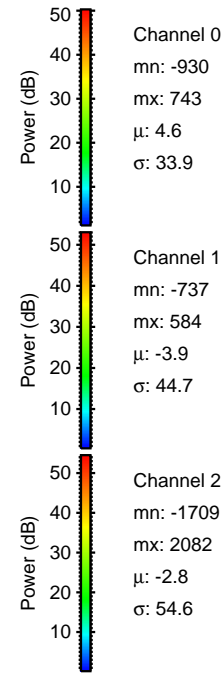
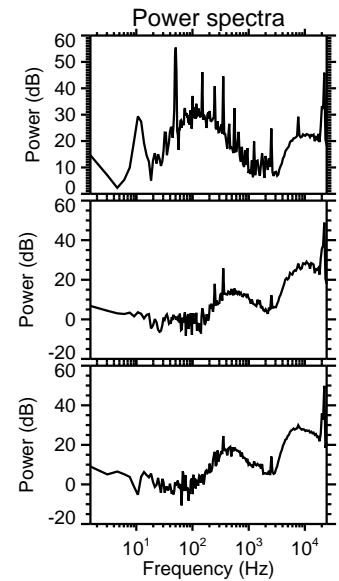
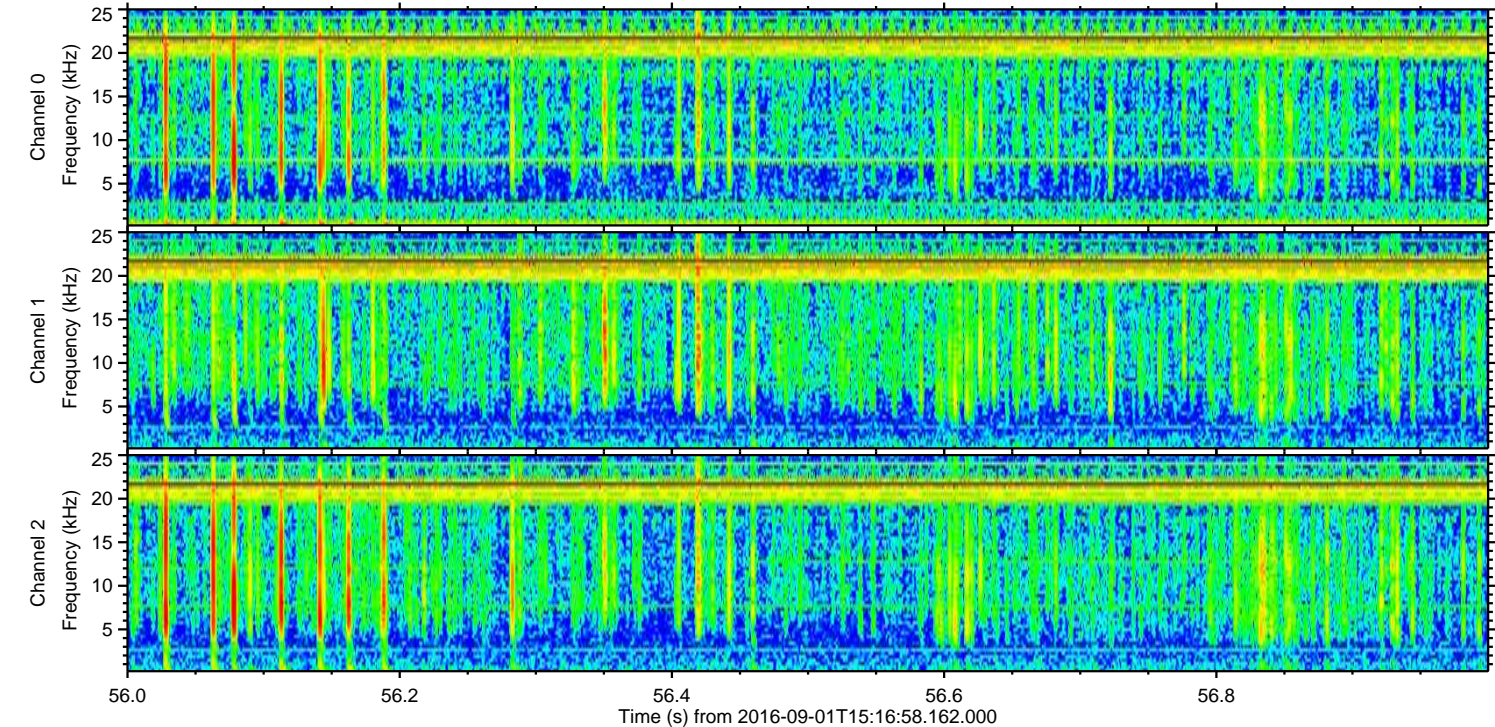
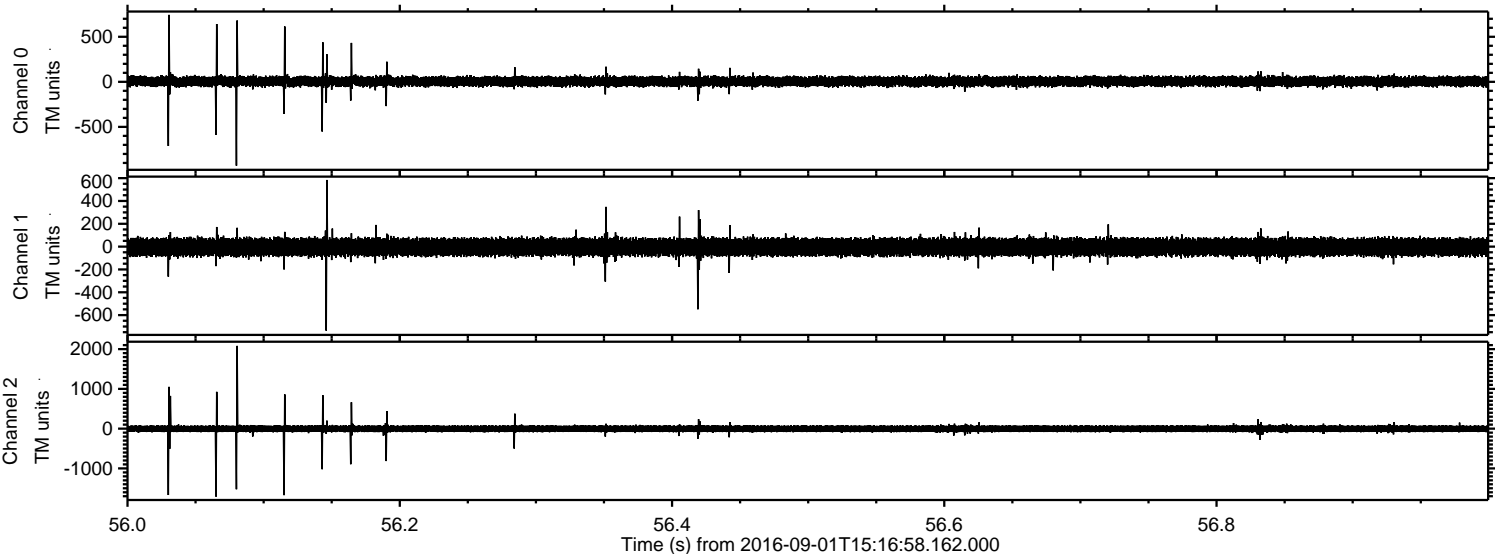
Processed Thu Sep 1 17:24:56 2016 by ELM ver.2012-10-06 from 001__elm20160901_151657__dat00.bin



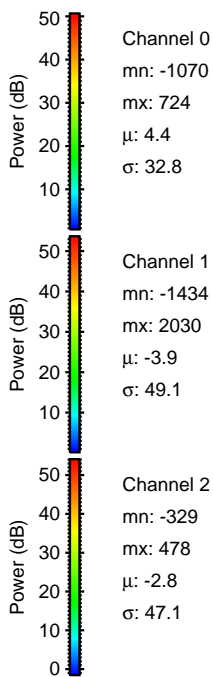
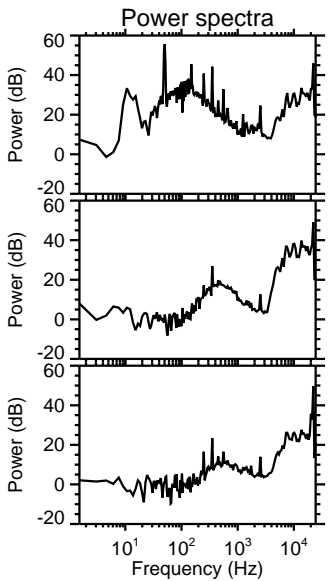
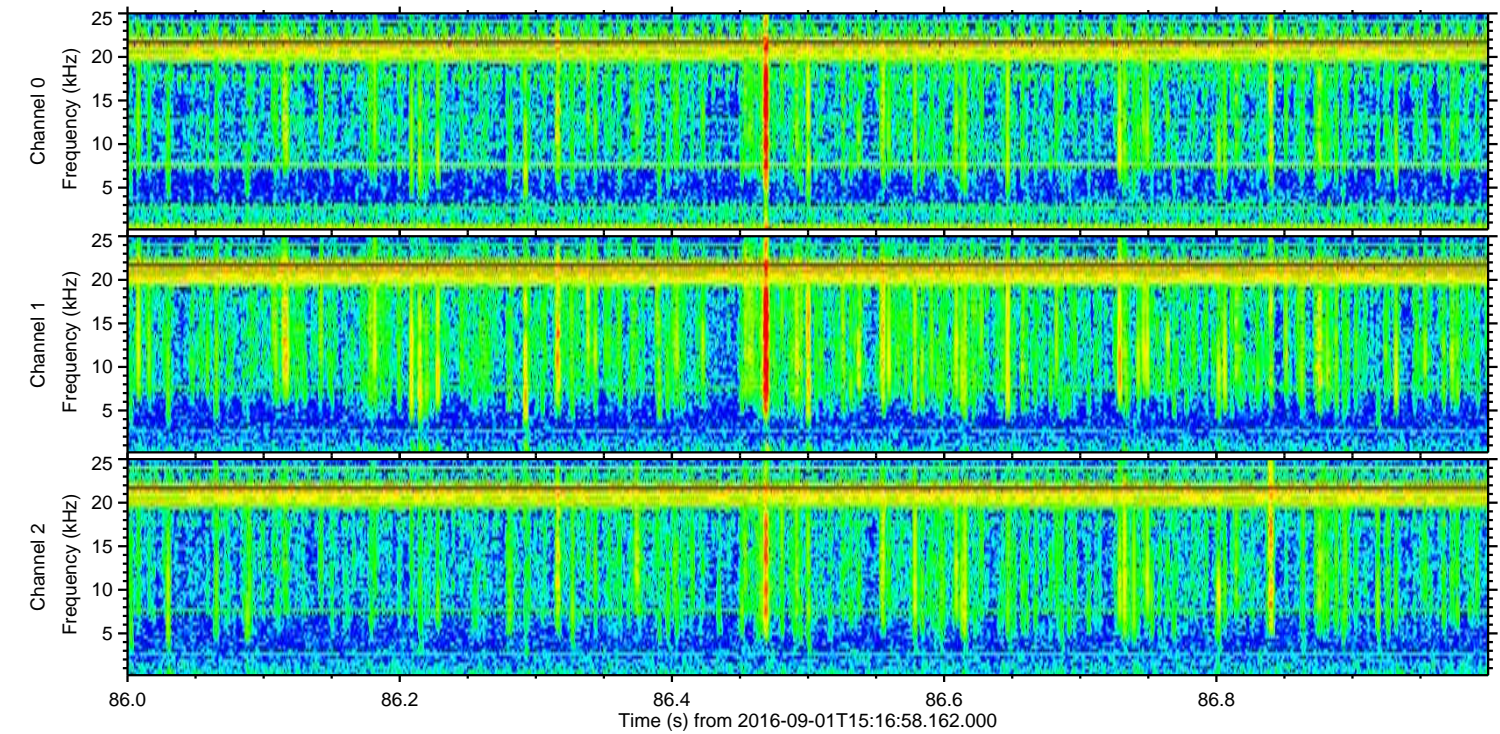
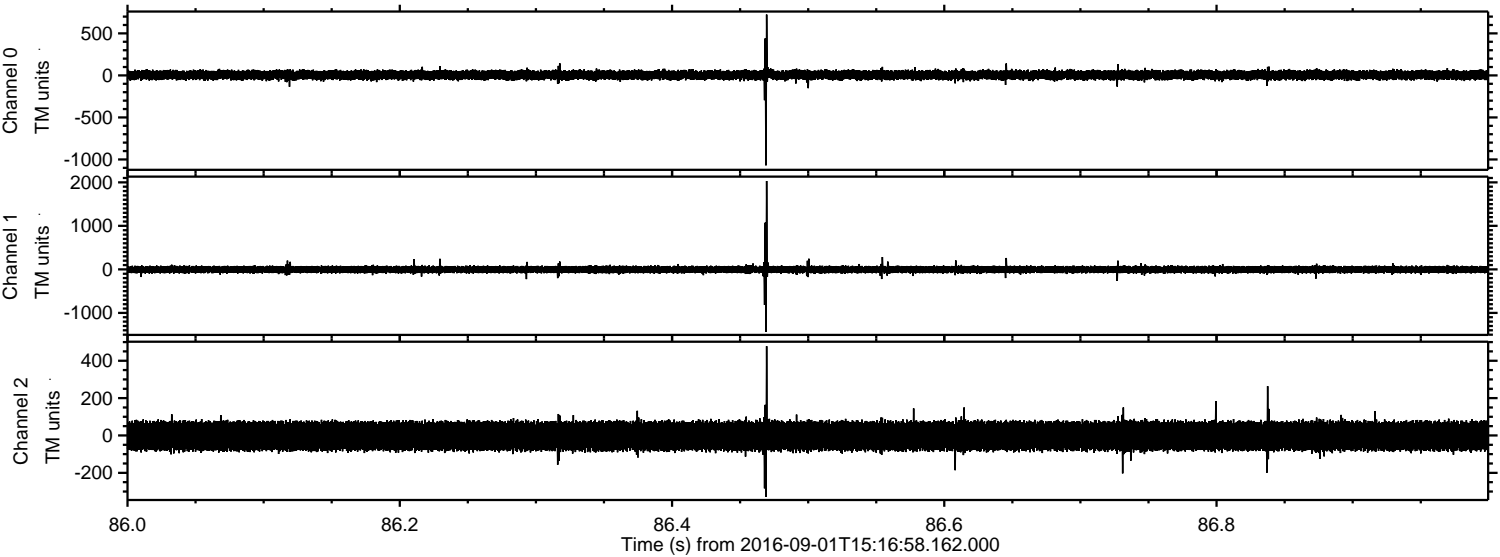
Processed Thu Sep 1 17:24:57 2016 by ELM ver.2012-10-06 from 001__elm20160901_151657__dat00.bin



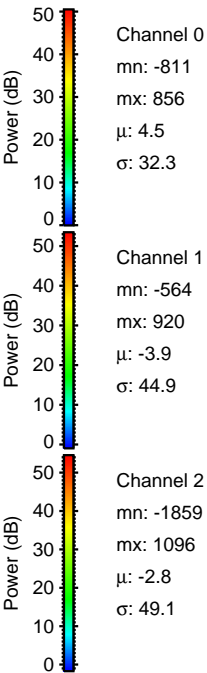
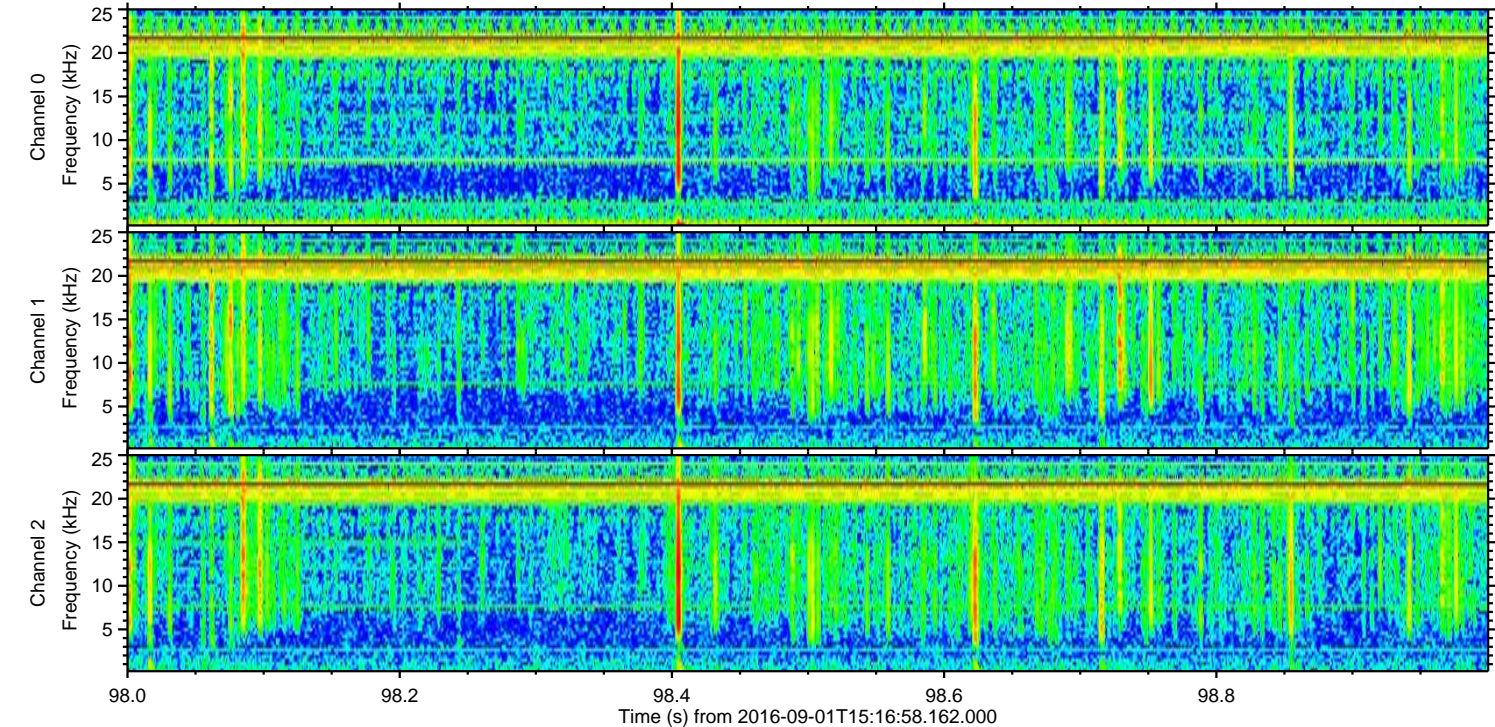
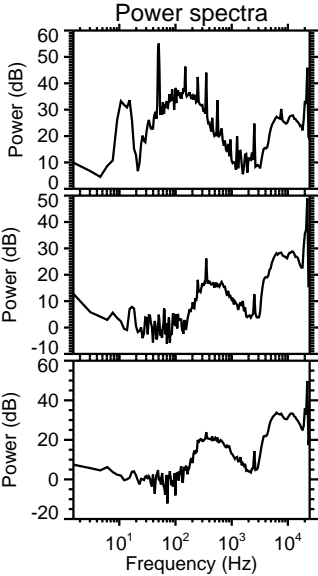
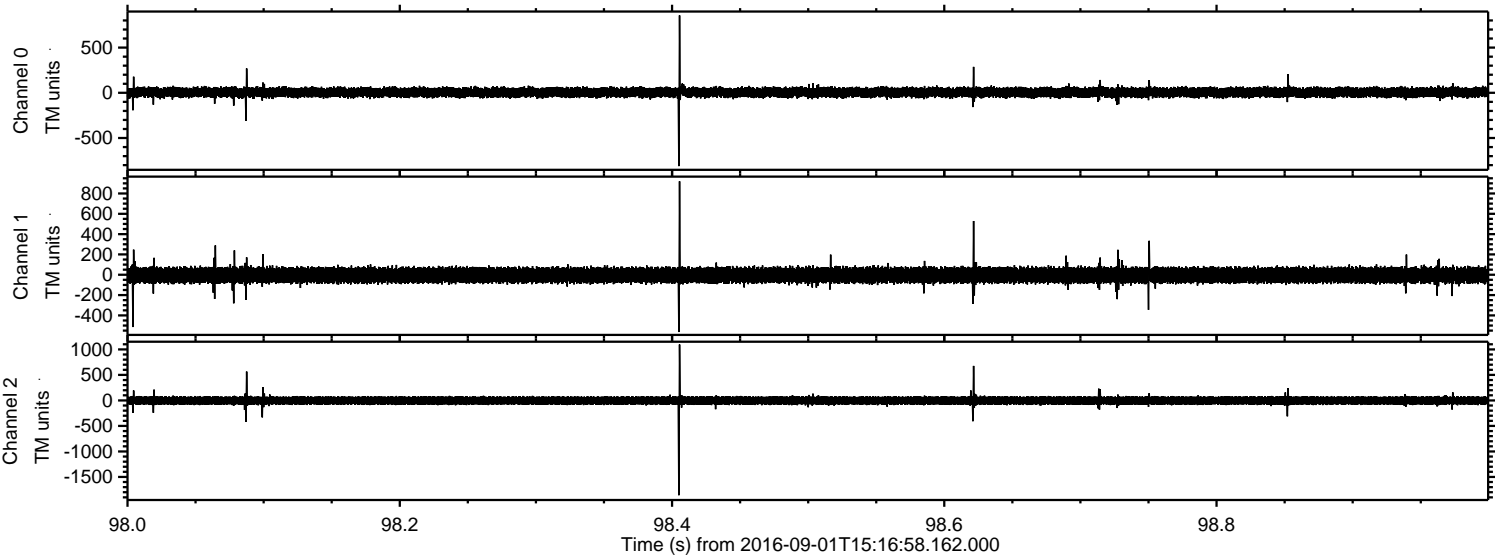
Processed Thu Sep 1 17:24:58 2016 by ELM ver.2012-10-06 from 001__elm20160901_151657__dat00.bin



Processed Thu Sep 1 17:24:59 2016 by ELM ver.2012-10-06 from 001__elm20160901_151657__dat00.bin

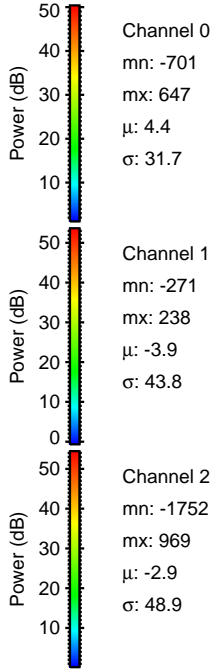
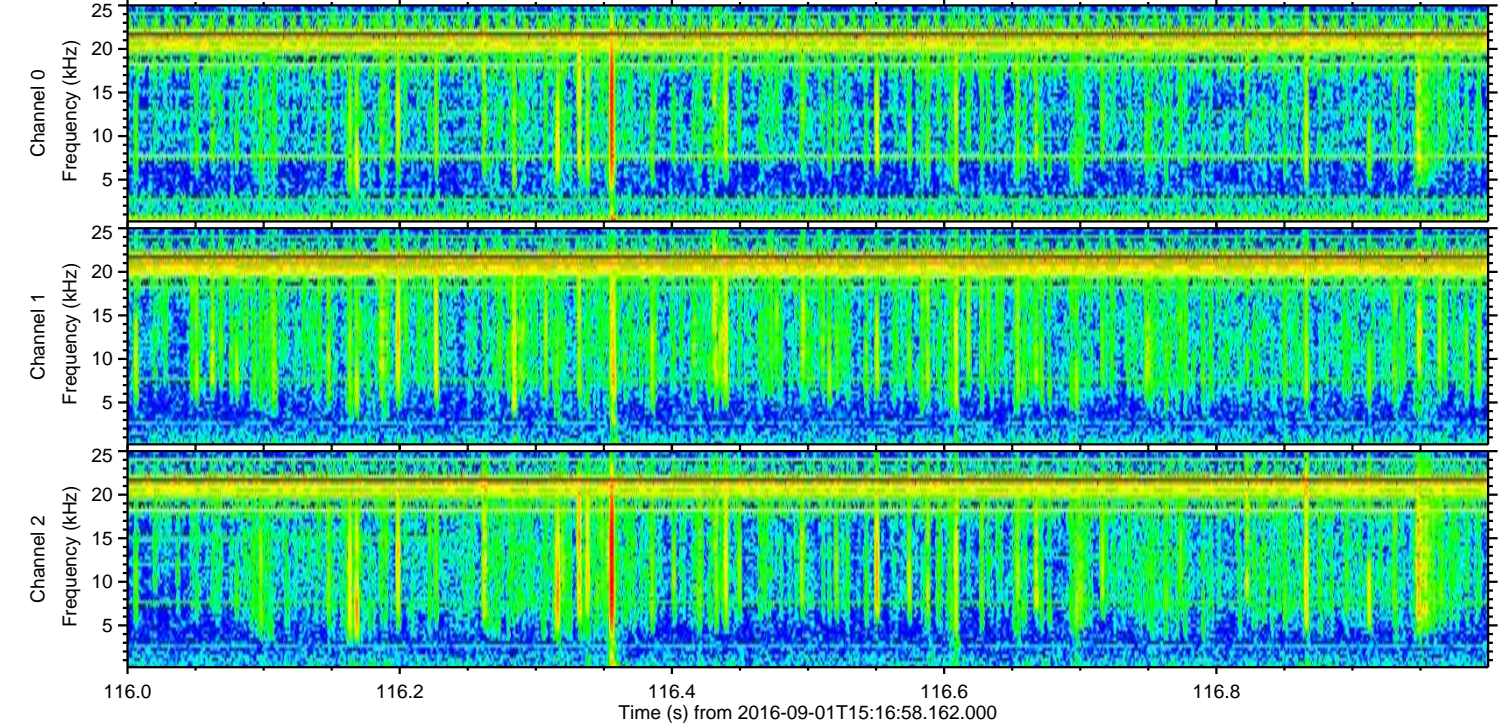
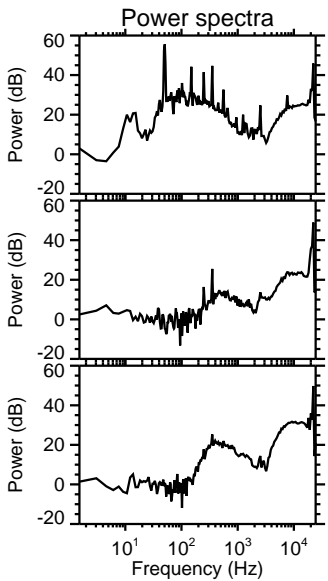
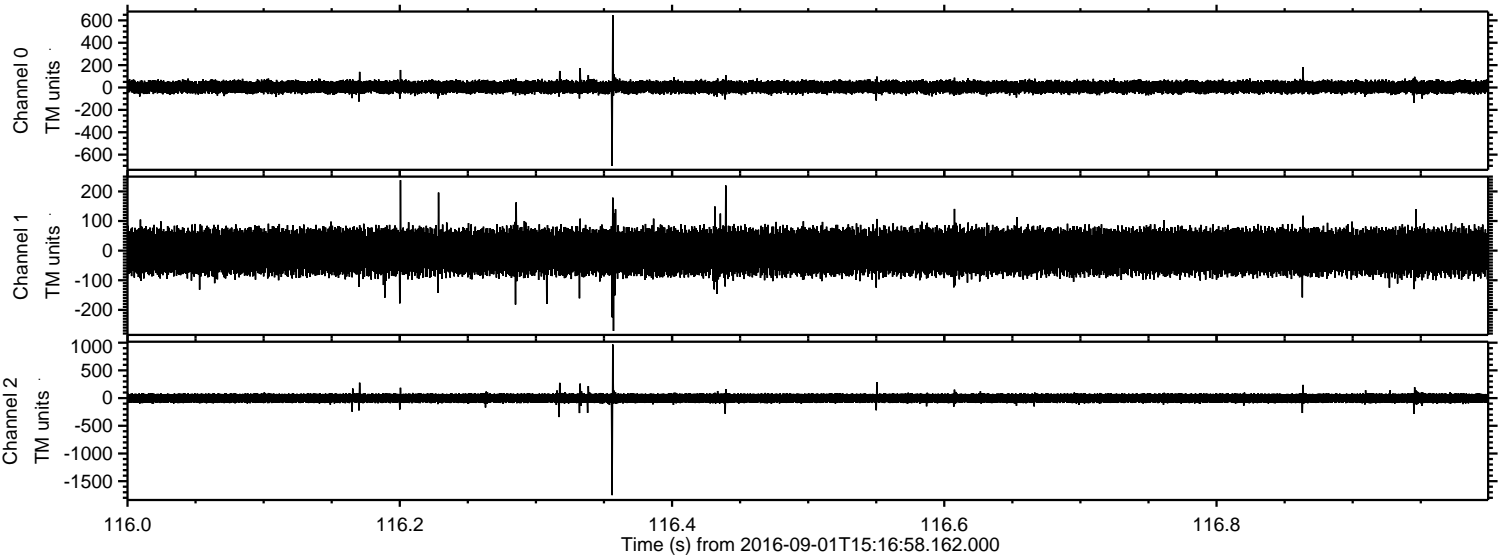


Processed Thu Sep 1 17:25:00 2016 by ELM ver.2012-10-06 from 001__elm20160901_151657__dat00.bin



ELMAVAN 3D WAVEFORMS (Measured data sampled at 50 kHz) 51000 packets of 144 samples from 2016-09-01T15:16:58.162.000. Part 117/147

Processed Thu Sep 1 17:25:01 2016 by ELM ver.2012-10-06 from 001__elm20160901_151657__dat00.bin



Channel 0
mn: -701
mx: 647
 μ : 4.4
 σ : 31.7

Channel 1
mn: -271
mx: 238
 μ : -3.9
 σ : 43.8

Channel 2
mn: -1752
mx: 969
 μ : -2.9
 σ : 48.9

Processed Thu Sep 1 17:25:02 2016 by ELM ver.2012-10-06 from 001__elm20160901_151657__dat00.bin

