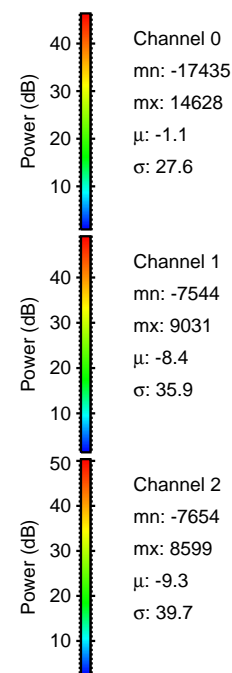
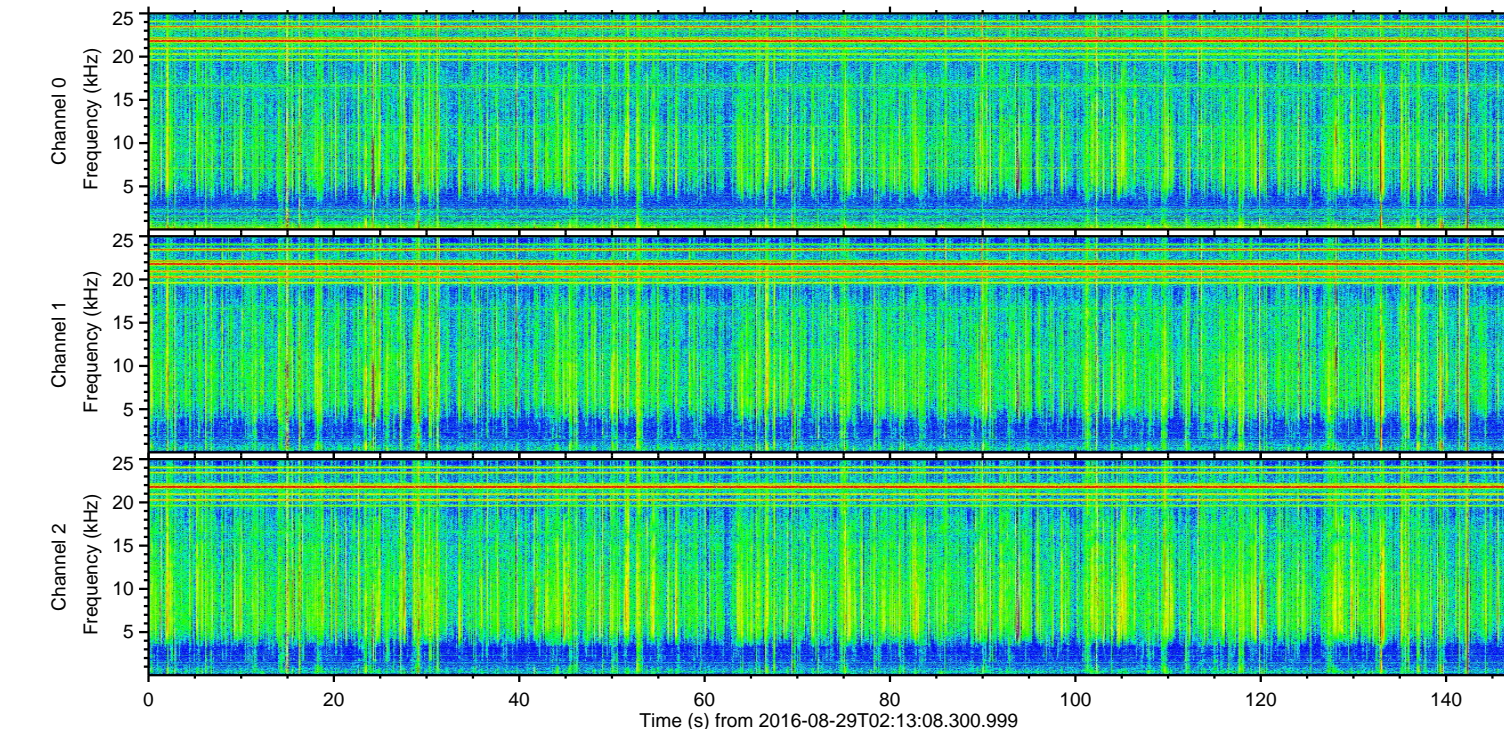
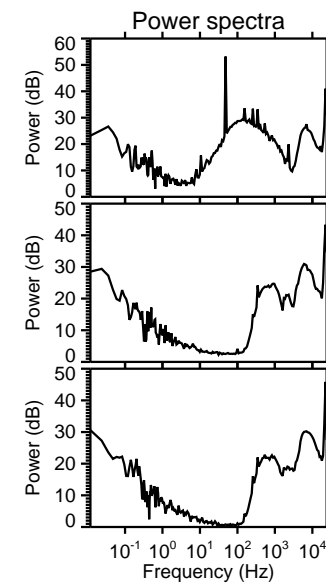
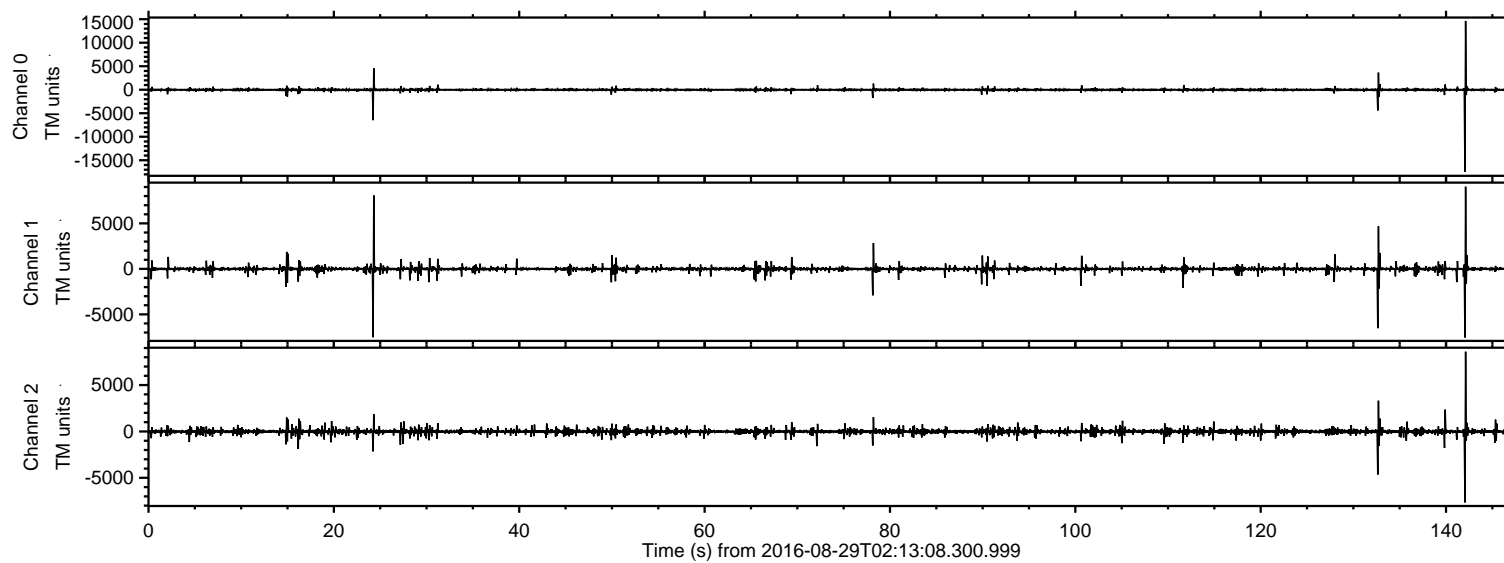


# ELMAVAN 3D WAVEFORMS (Measured data sampled at 50 kHz) 51000 packets of 144 samples from 2016-08-29T02:13:08.300.999.

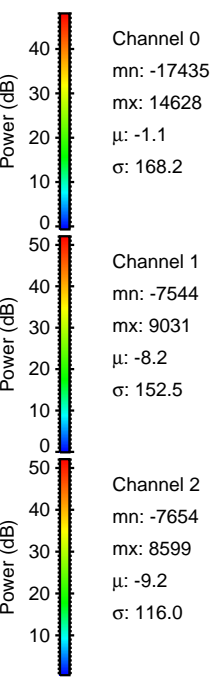
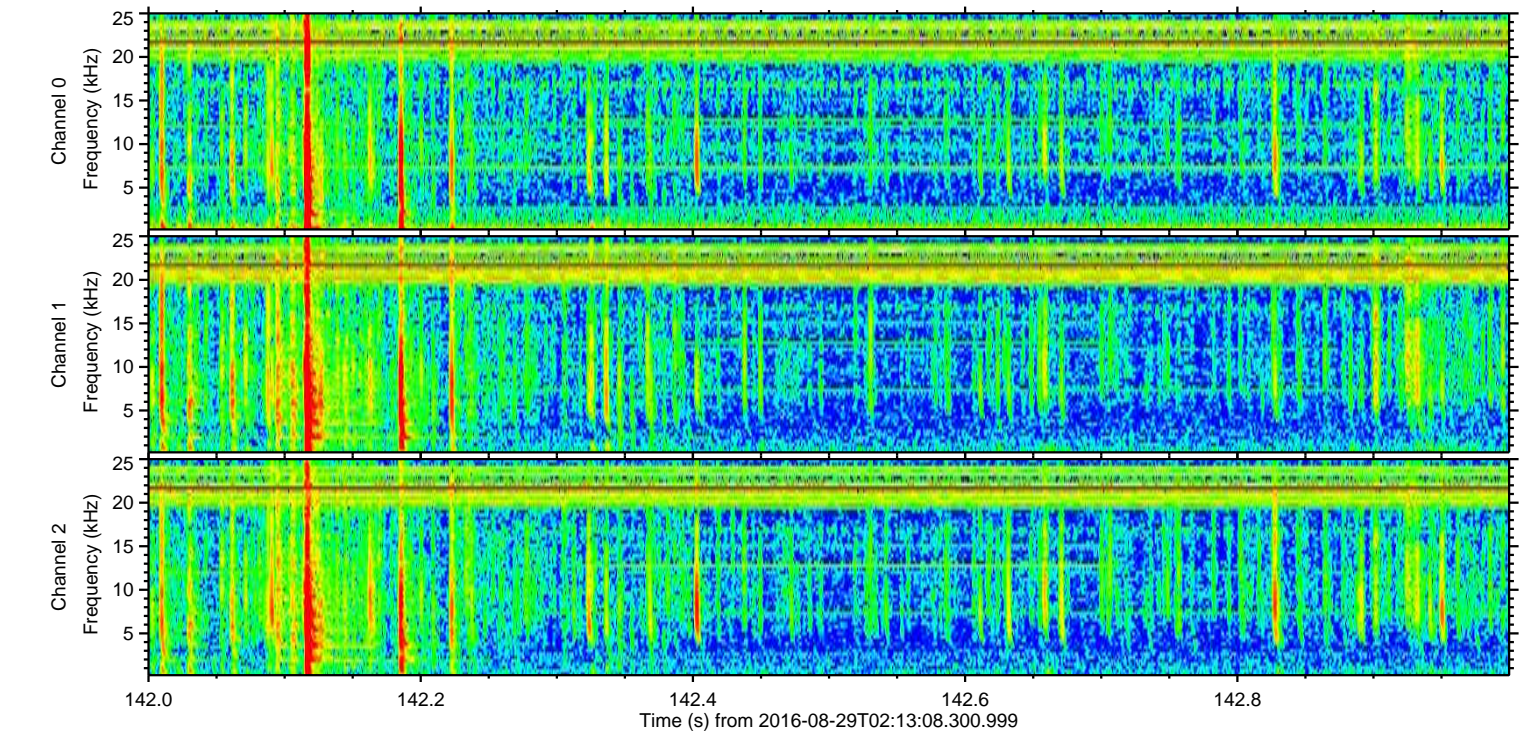
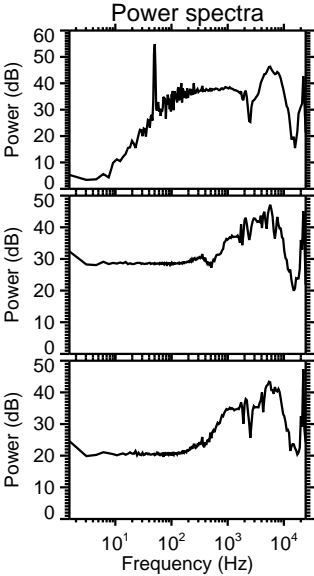
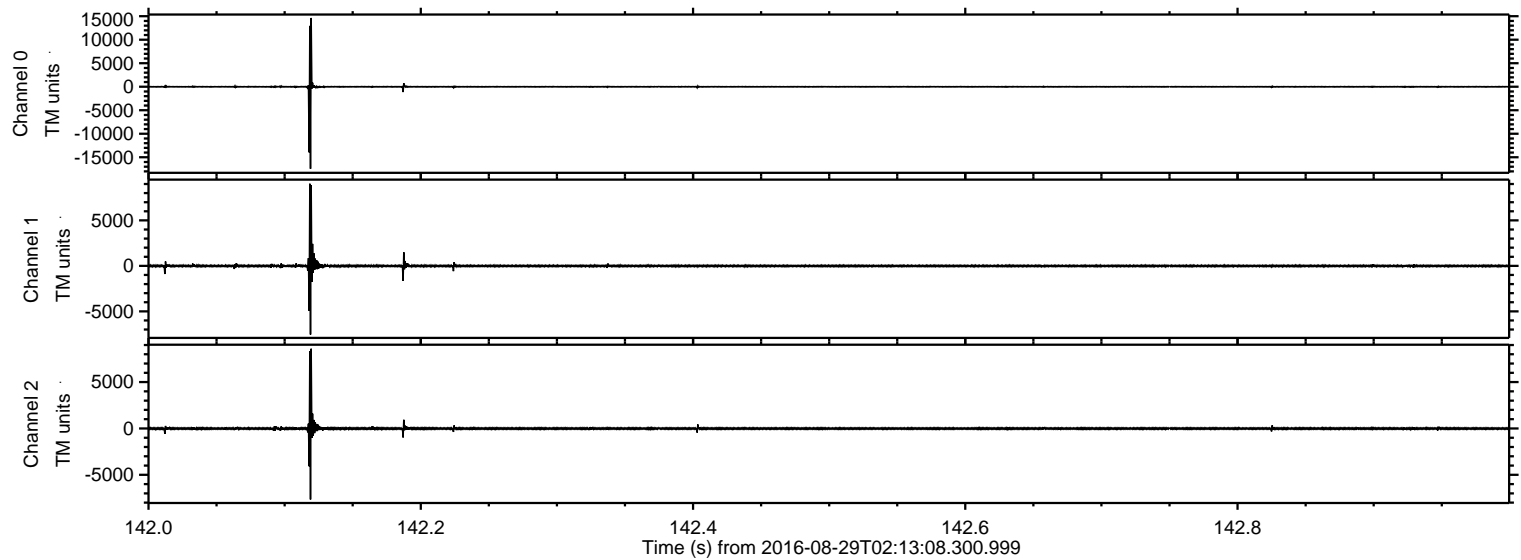
Processed Mon Aug 29 04:20:47 2016 by ELM ver.2012-10-06 from 001\_\_elm20160829\_021307\_\_dat00.bin





ELMAVAN 3D WAVEFORMS (Measured data sampled at 50 kHz) 51000 packets of 144 samples from 2016-08-29T02:13:08.300.999. Part 143/147

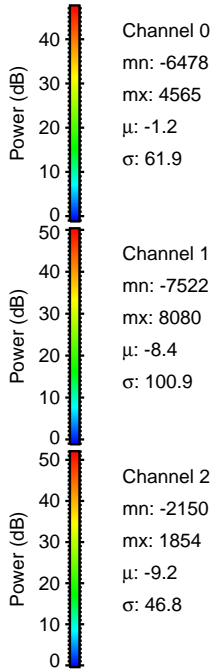
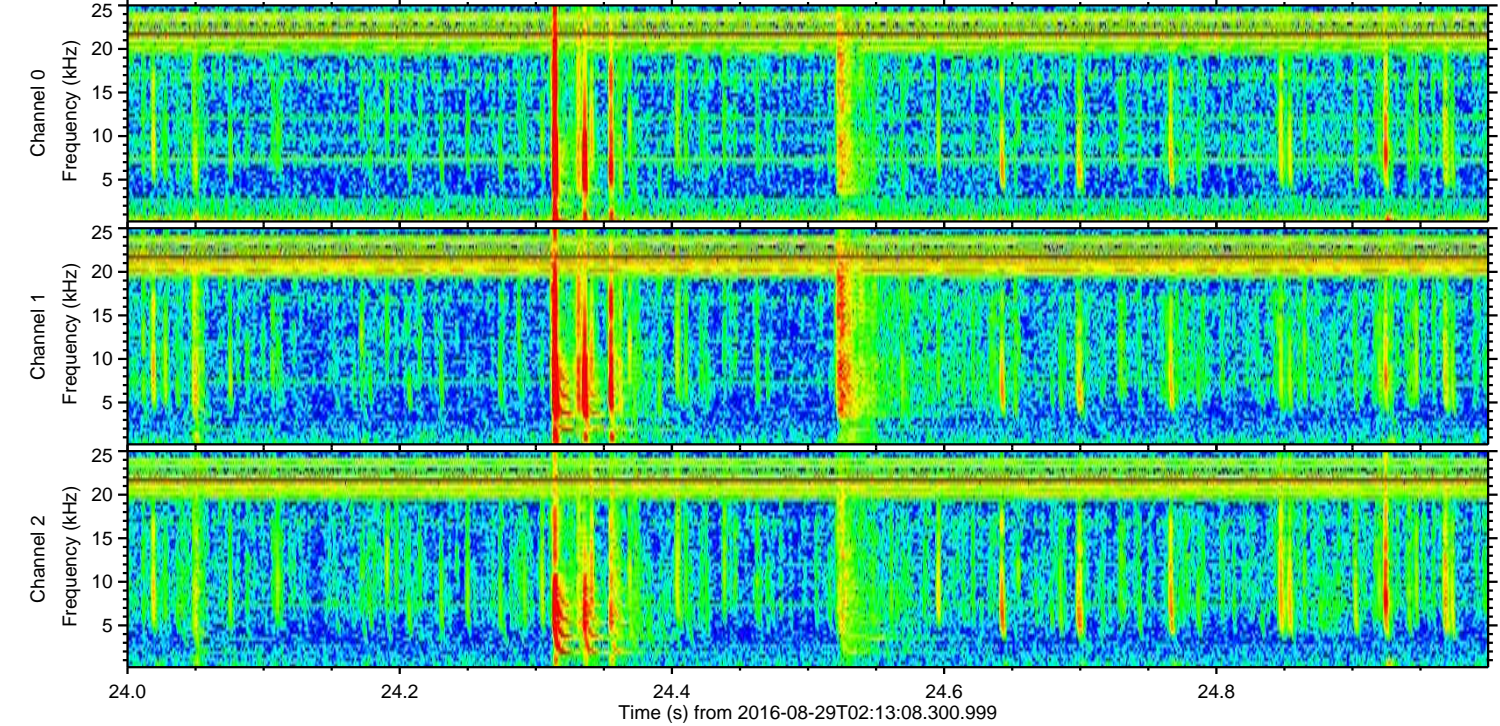
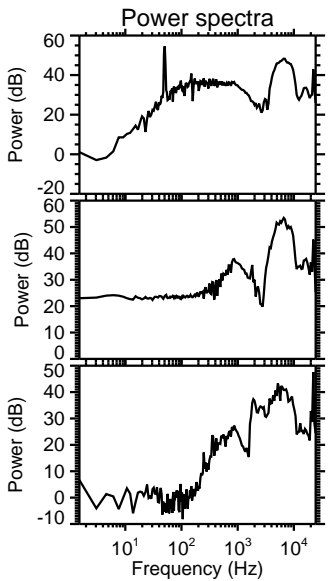
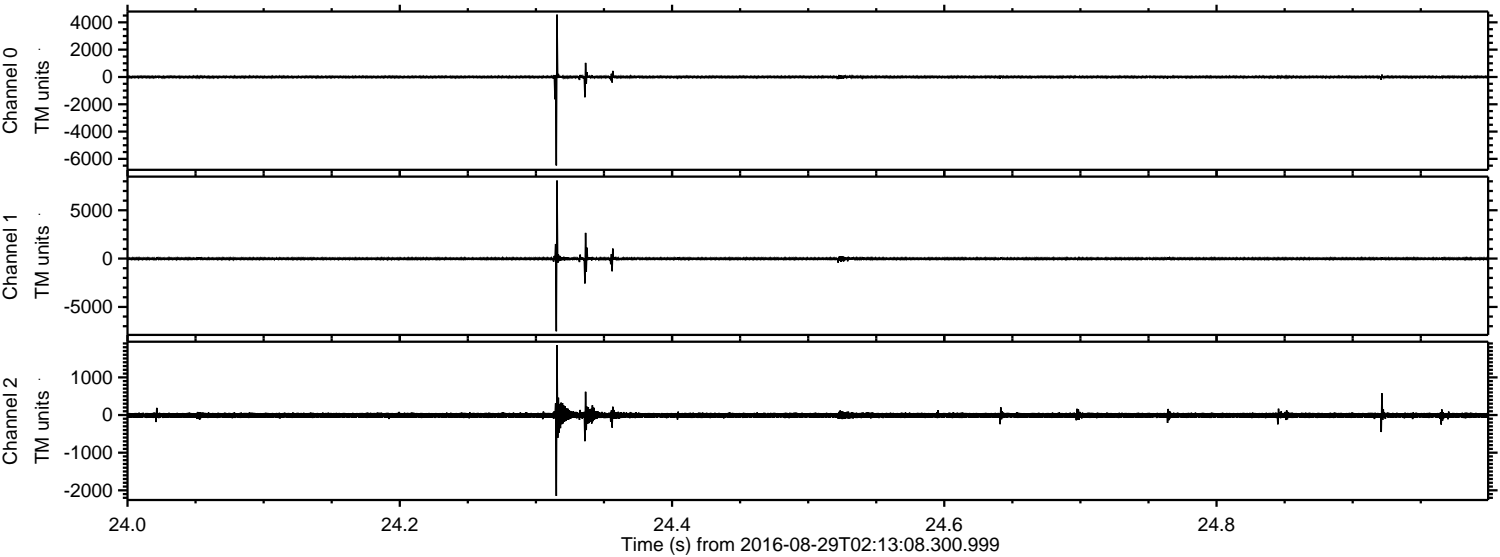
Processed Mon Aug 29 04:20:59 2016 by ELM ver.2012-10-06 from 001\_\_elm20160829\_021307\_\_dat00.bin





ELMAVAN 3D WAVEFORMS (Measured data sampled at 50 kHz) 51000 packets of 144 samples from 2016-08-29T02:13:08.300.999. Part 25/147

Processed Mon Aug 29 04:21:00 2016 by ELM ver.2012-10-06 from 001\_\_elm20160829\_021307\_\_dat00.bin



Channel 0  
mn: -6478  
mx: 4565  
 $\mu$ : -1.2  
 $\sigma$ : 61.9

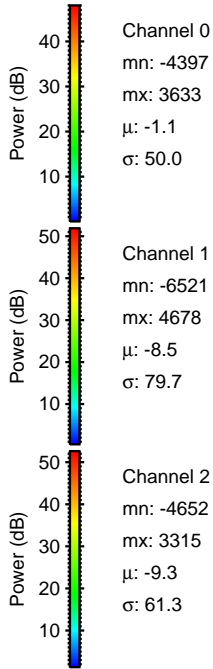
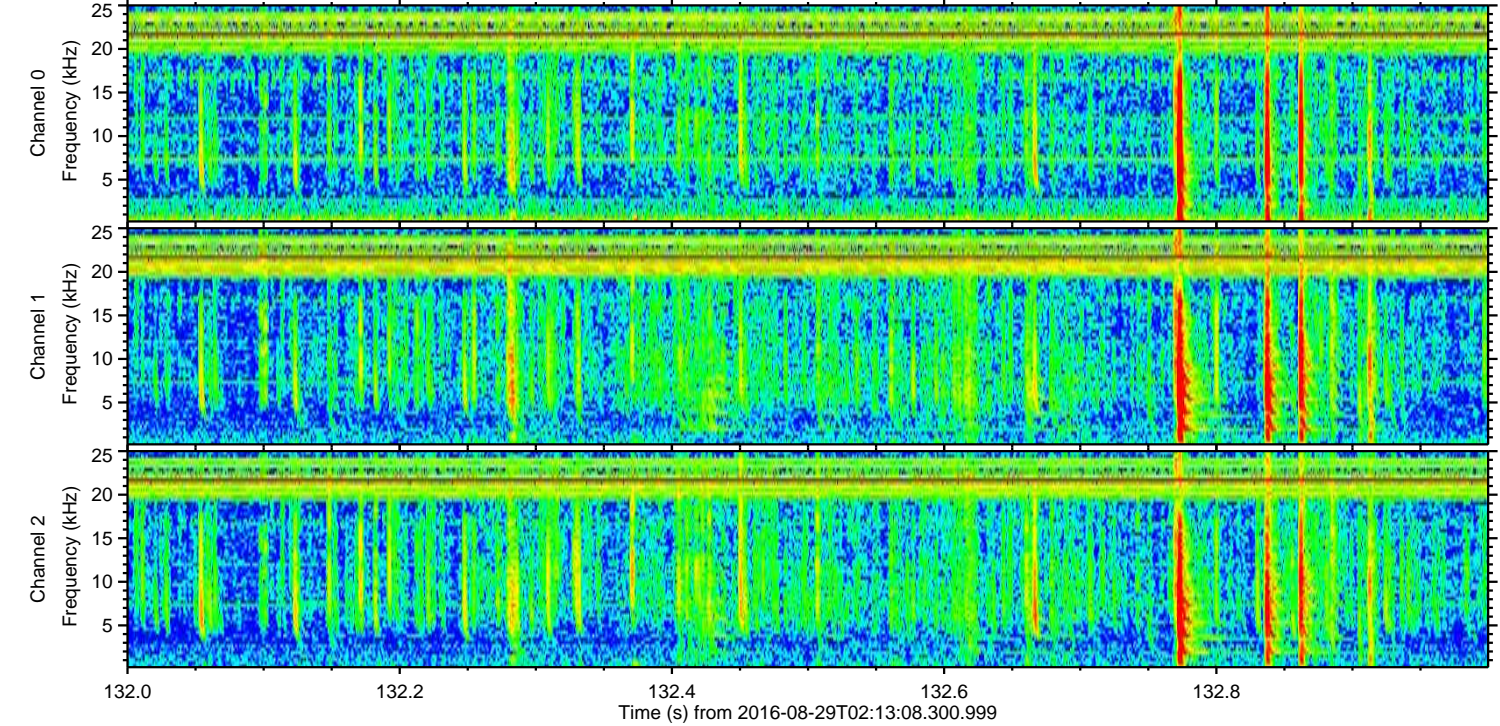
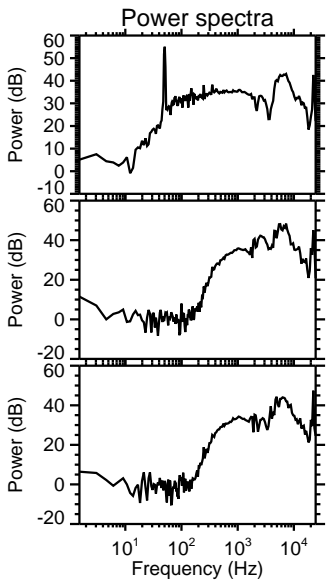
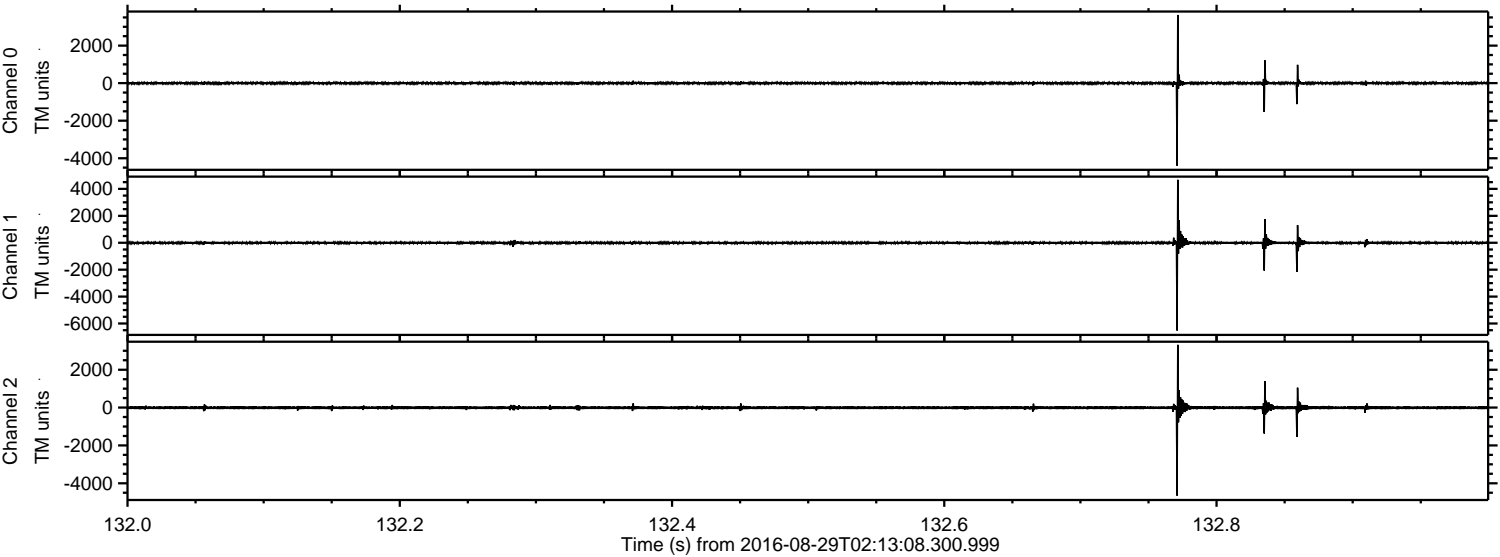
Channel 1  
mn: -7522  
mx: 8080  
 $\mu$ : -8.4  
 $\sigma$ : 100.9

Channel 2  
mn: -2150  
mx: 1854  
 $\mu$ : -9.2  
 $\sigma$ : 46.8



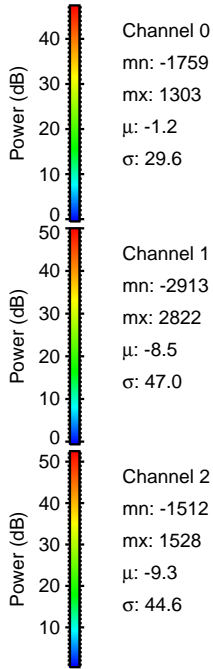
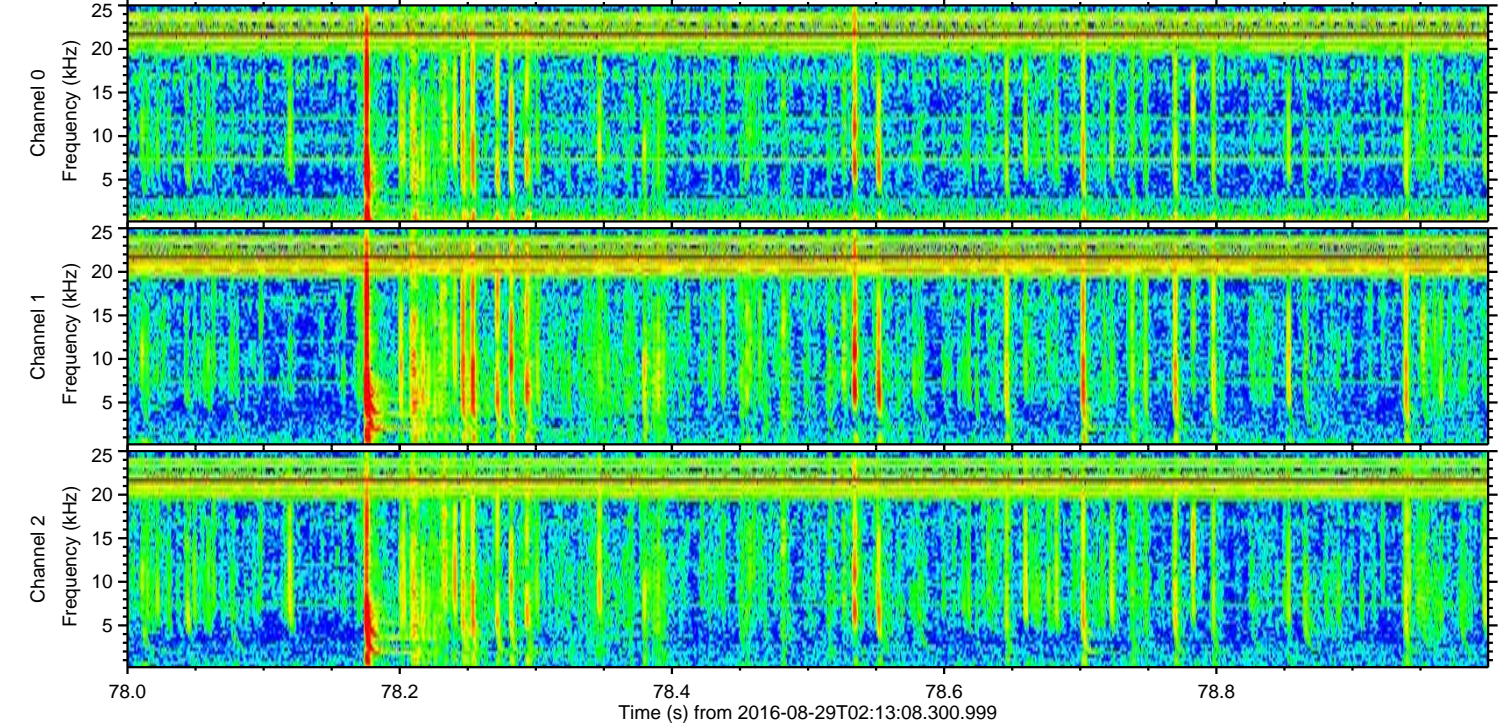
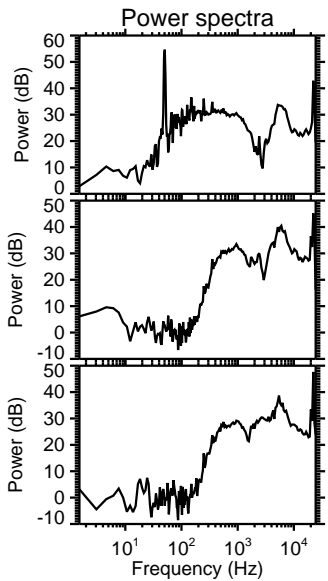
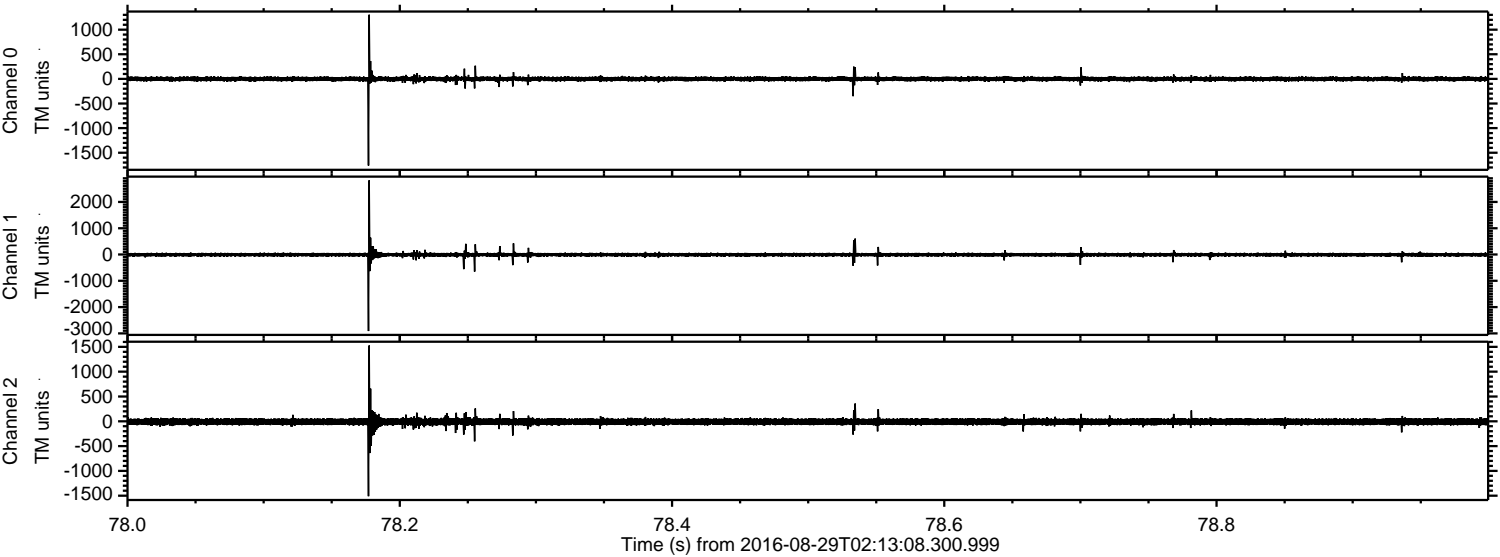
ELMAVAN 3D WAVEFORMS (Measured data sampled at 50 kHz) 51000 packets of 144 samples from 2016-08-29T02:13:08.300.999. Part 133/147

Processed Mon Aug 29 04:21:01 2016 by ELM ver.2012-10-06 from 001\_\_elm20160829\_021307\_\_dat00.bin





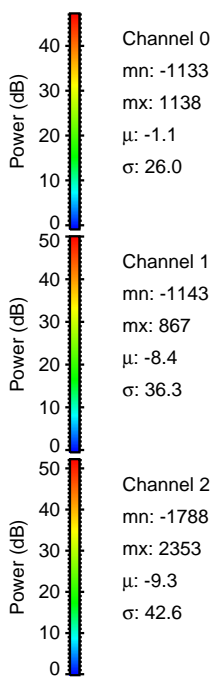
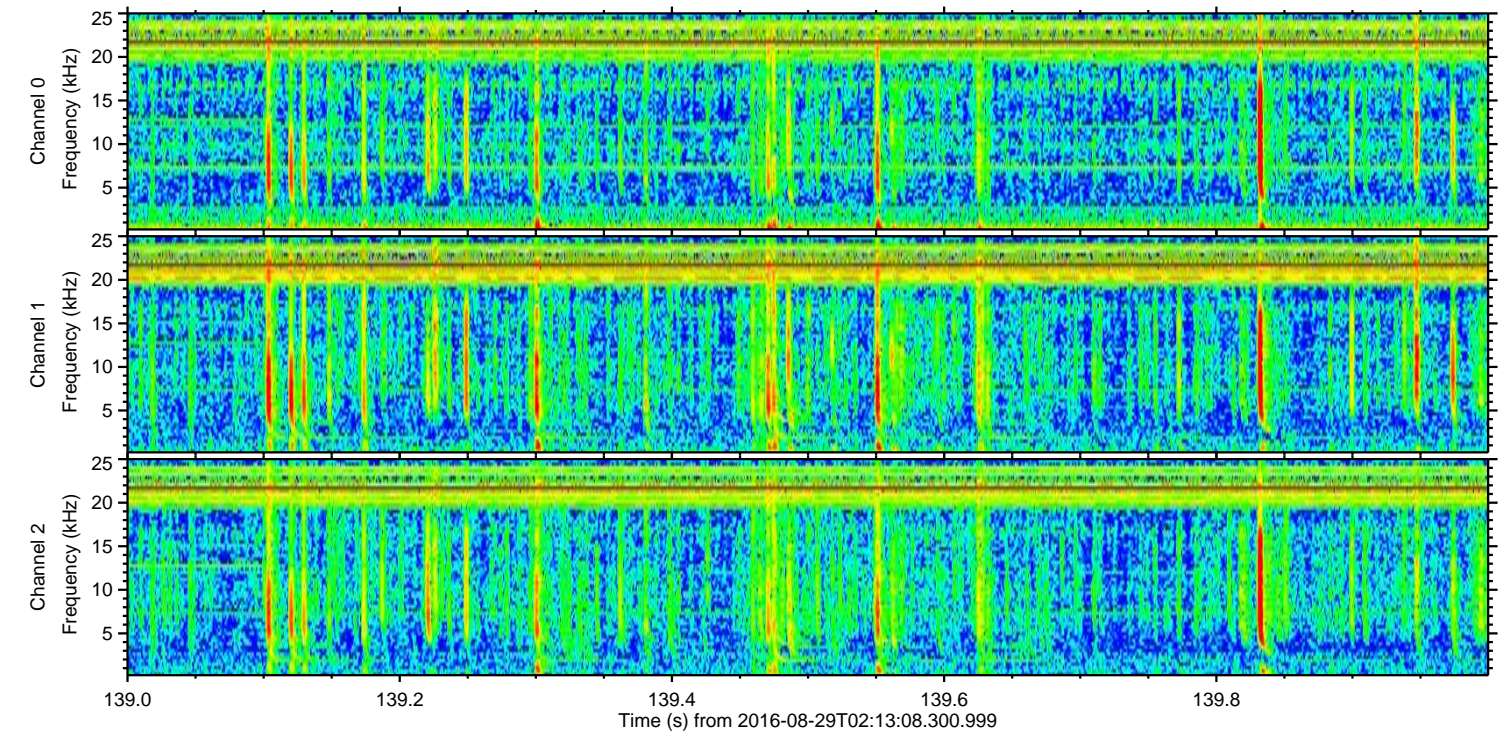
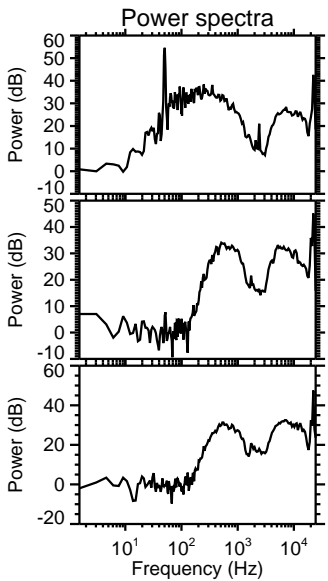
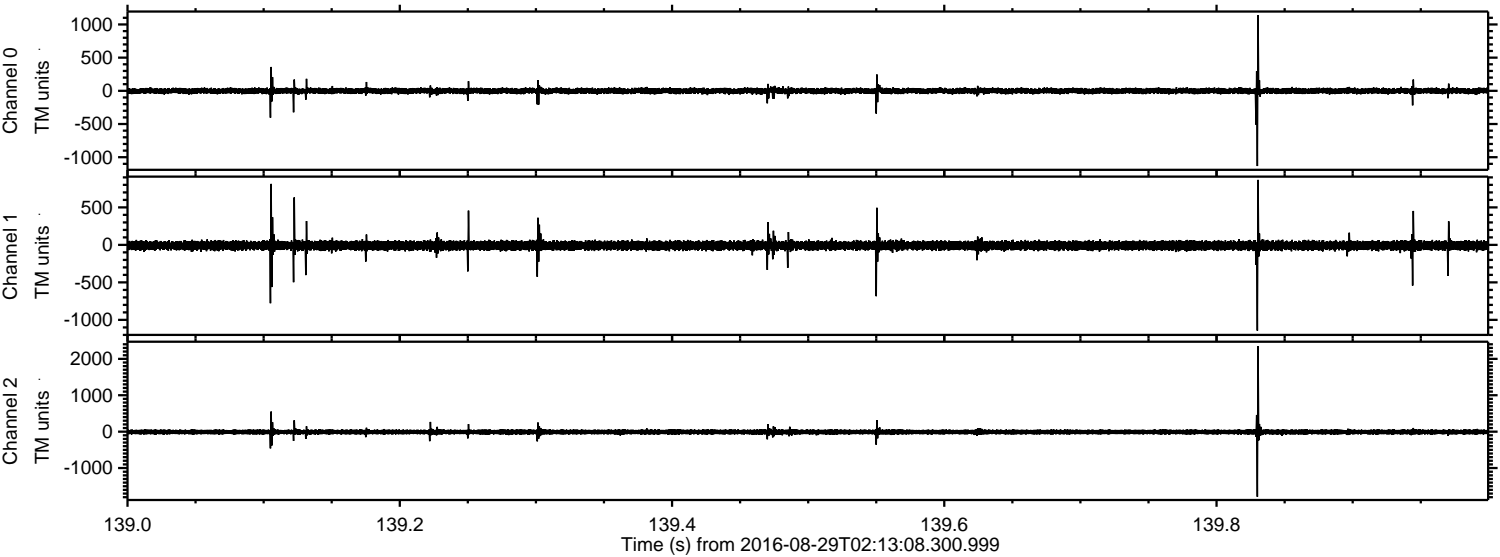
Processed Mon Aug 29 04:21:01 2016 by ELM ver.2012-10-06 from 001\_\_elm20160829\_021307\_\_dat00.bin





ELMAVAN 3D WAVEFORMS (Measured data sampled at 50 kHz) 51000 packets of 144 samples from 2016-08-29T02:13:08.300.999. Part 140/147

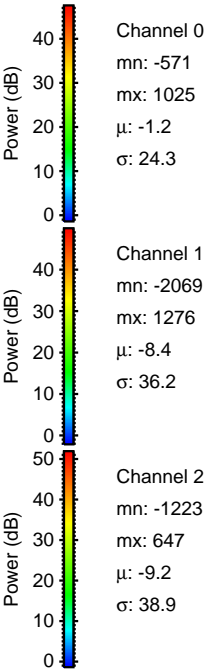
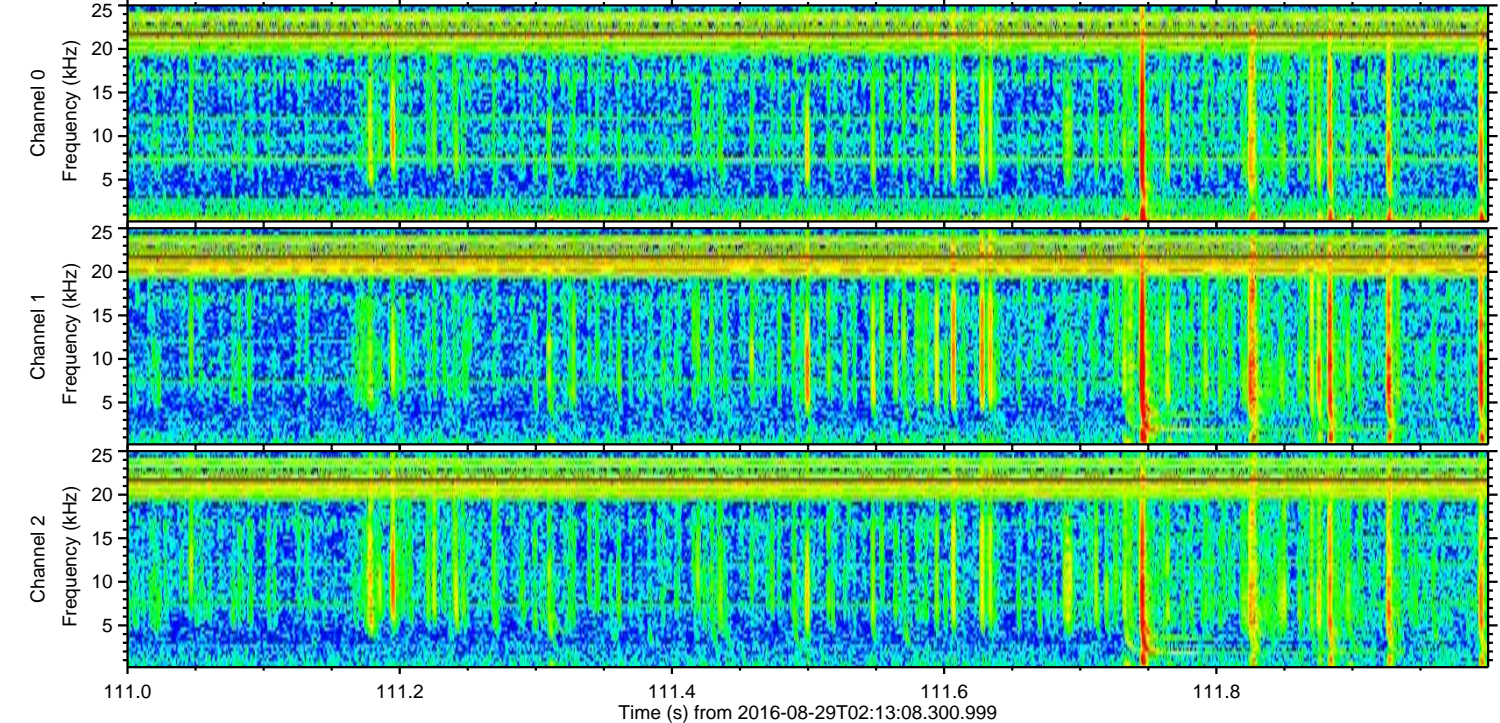
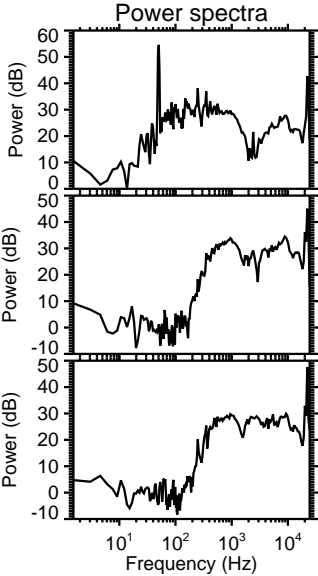
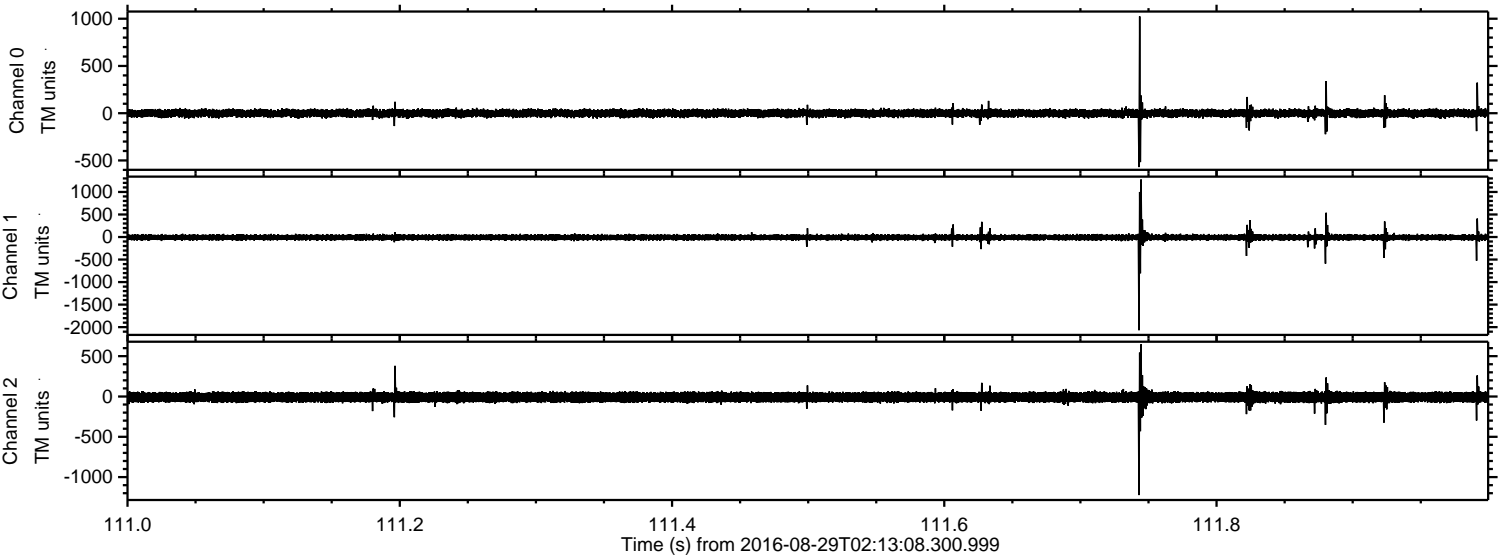
Processed Mon Aug 29 04:21:02 2016 by ELM ver.2012-10-06 from 001\_\_elm20160829\_021307\_\_dat00.bin





ELMAVAN 3D WAVEFORMS (Measured data sampled at 50 kHz) 51000 packets of 144 samples from 2016-08-29T02:13:08.300.999. Part 112/147

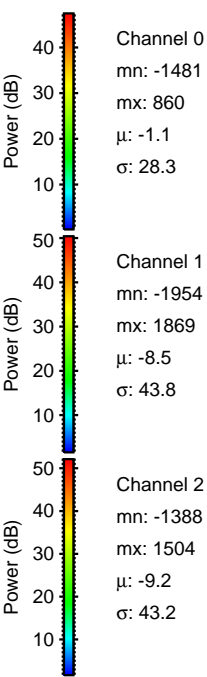
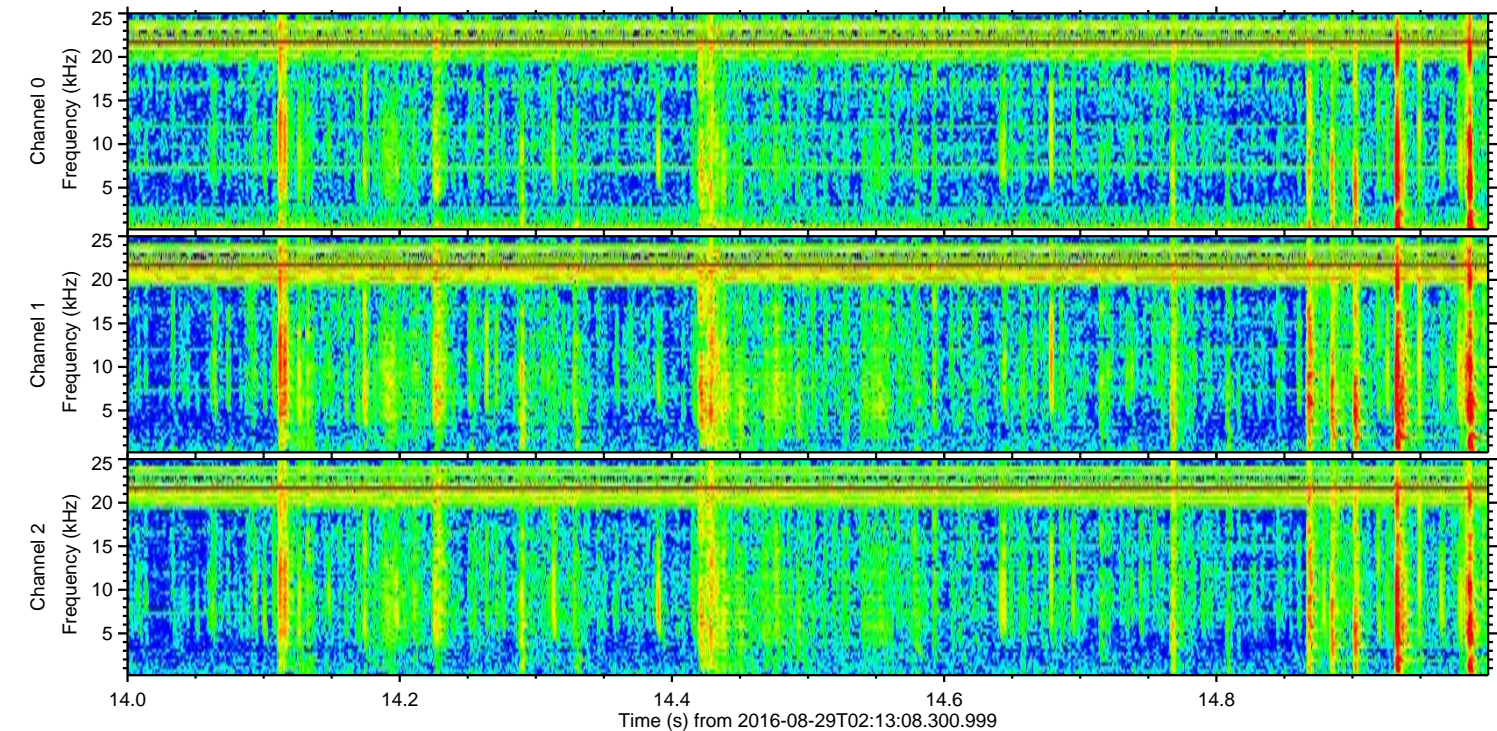
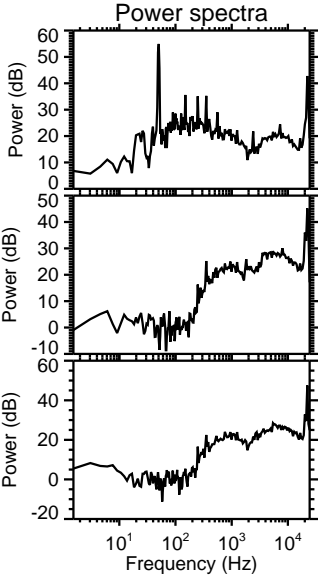
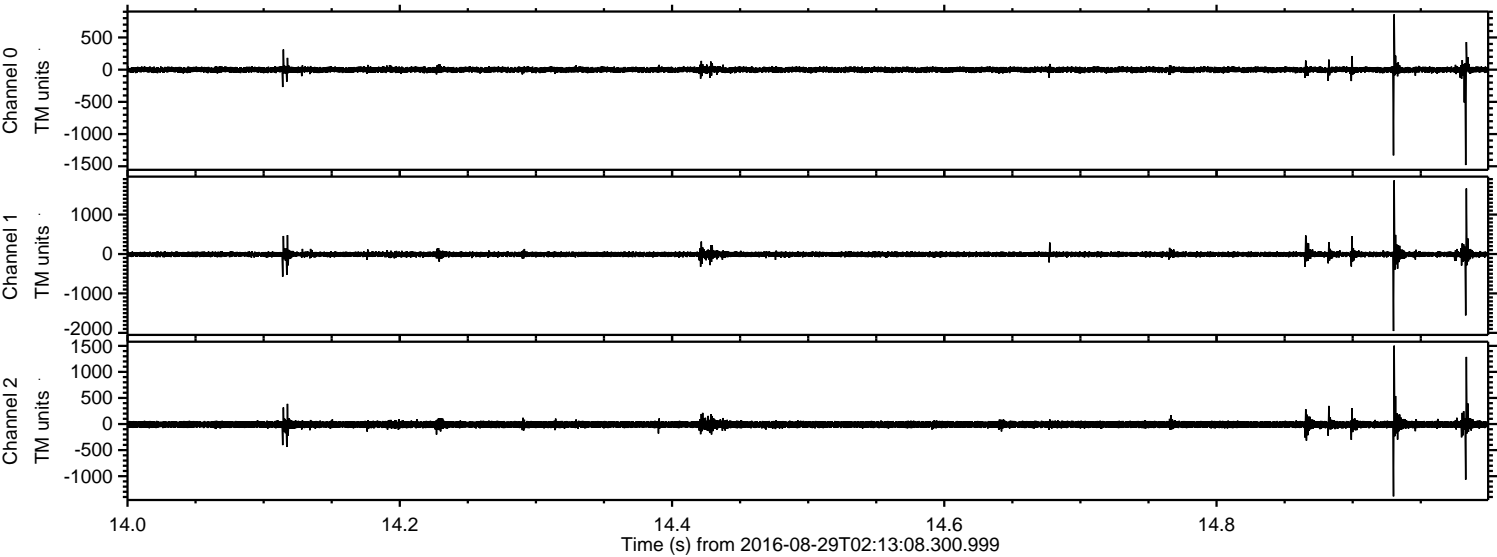
Processed Mon Aug 29 04:21:03 2016 by ELM ver.2012-10-06 from 001\_\_elm20160829\_021307\_\_dat00.bin





ELMAVAN 3D WAVEFORMS (Measured data sampled at 50 kHz) 51000 packets of 144 samples from 2016-08-29T02:13:08.300.999. Part 15/147

Processed Mon Aug 29 04:21:04 2016 by ELM ver.2012-10-06 from 001\_\_elm20160829\_021307\_\_dat00.bin



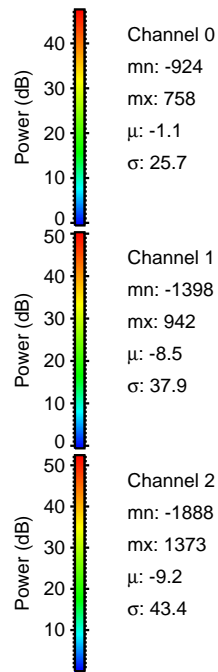
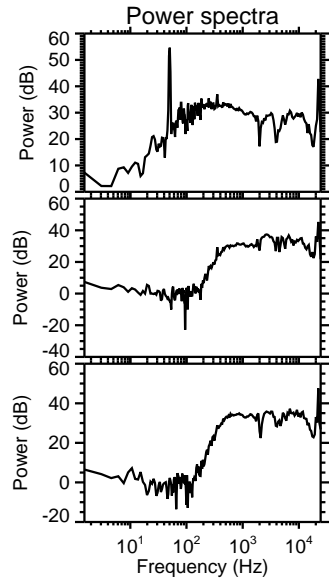
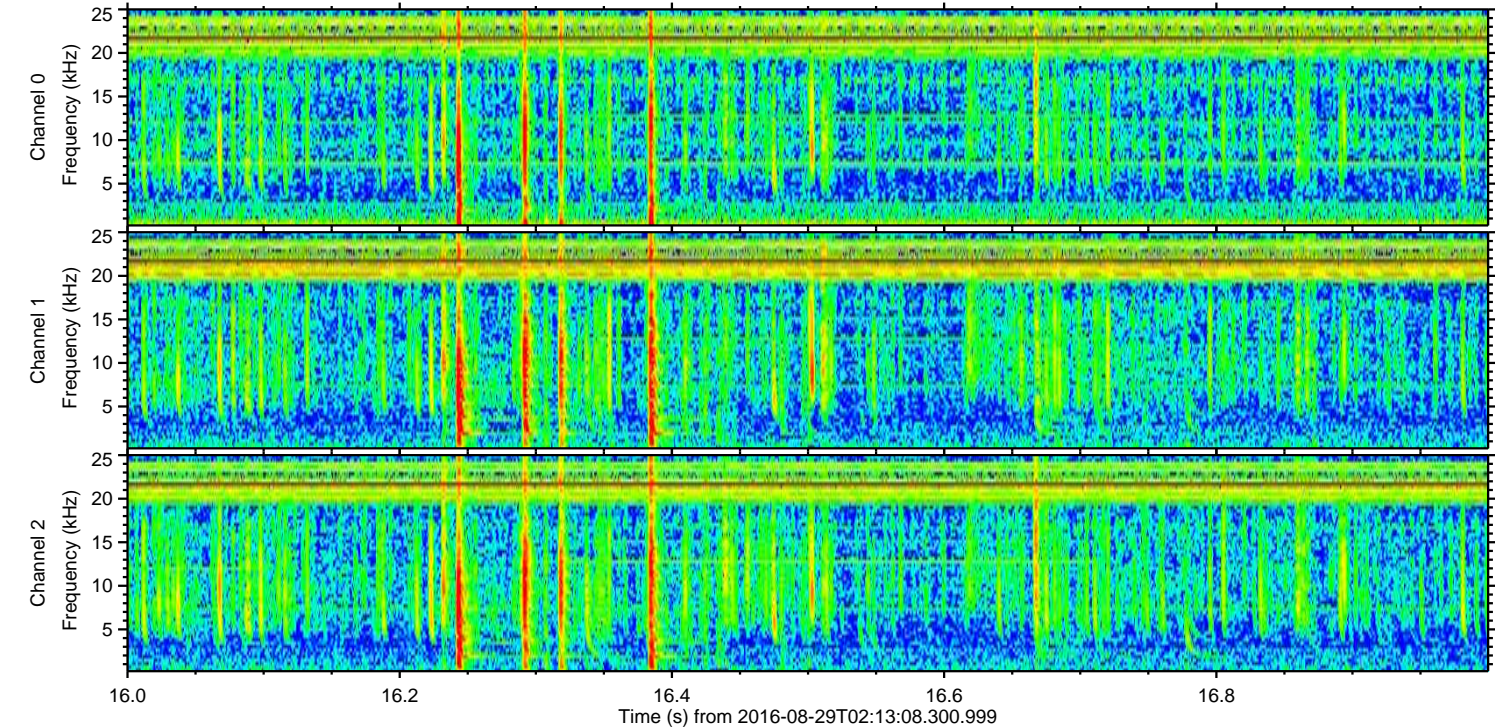
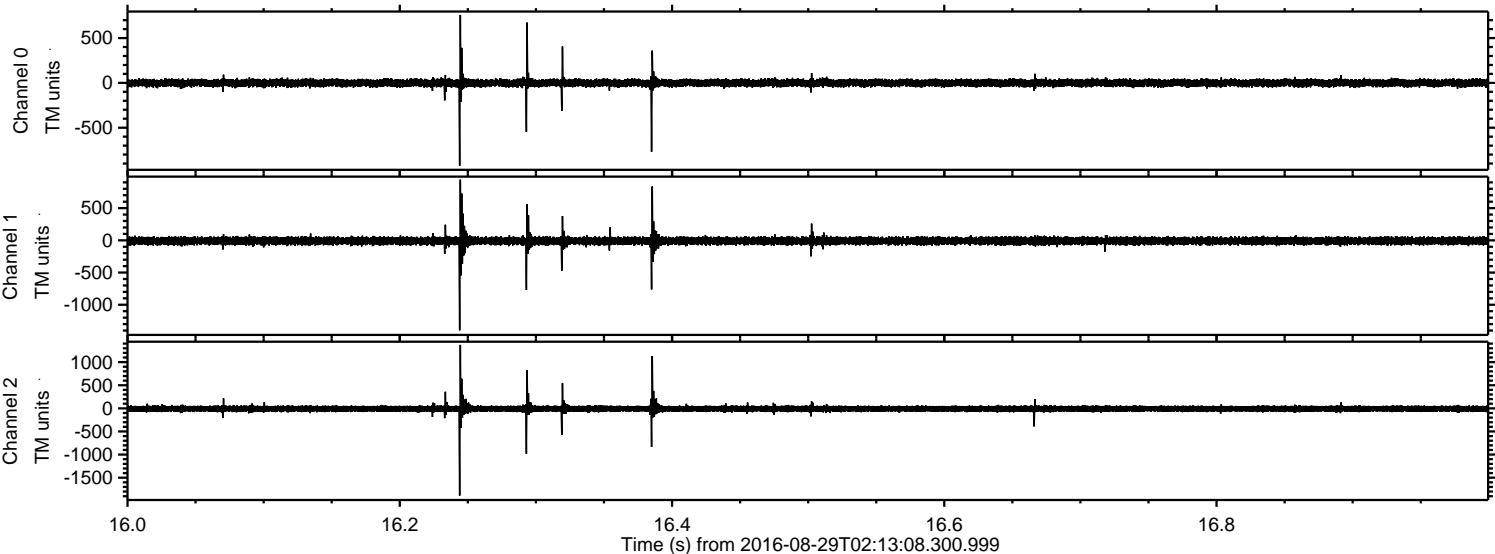
Channel 0  
mn: -1481  
mx: 860  
 $\mu$ : -1.1  
 $\sigma$ : 28.3

Channel 1  
mn: -1954  
mx: 1869  
 $\mu$ : -8.5  
 $\sigma$ : 43.8

Channel 2  
mn: -1388  
mx: 1504  
 $\mu$ : -9.2  
 $\sigma$ : 43.2



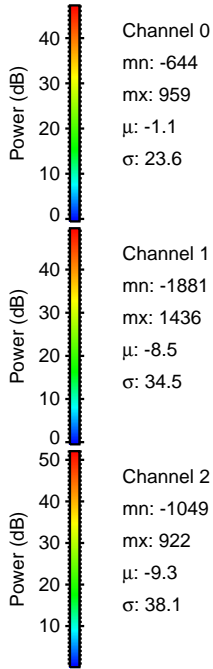
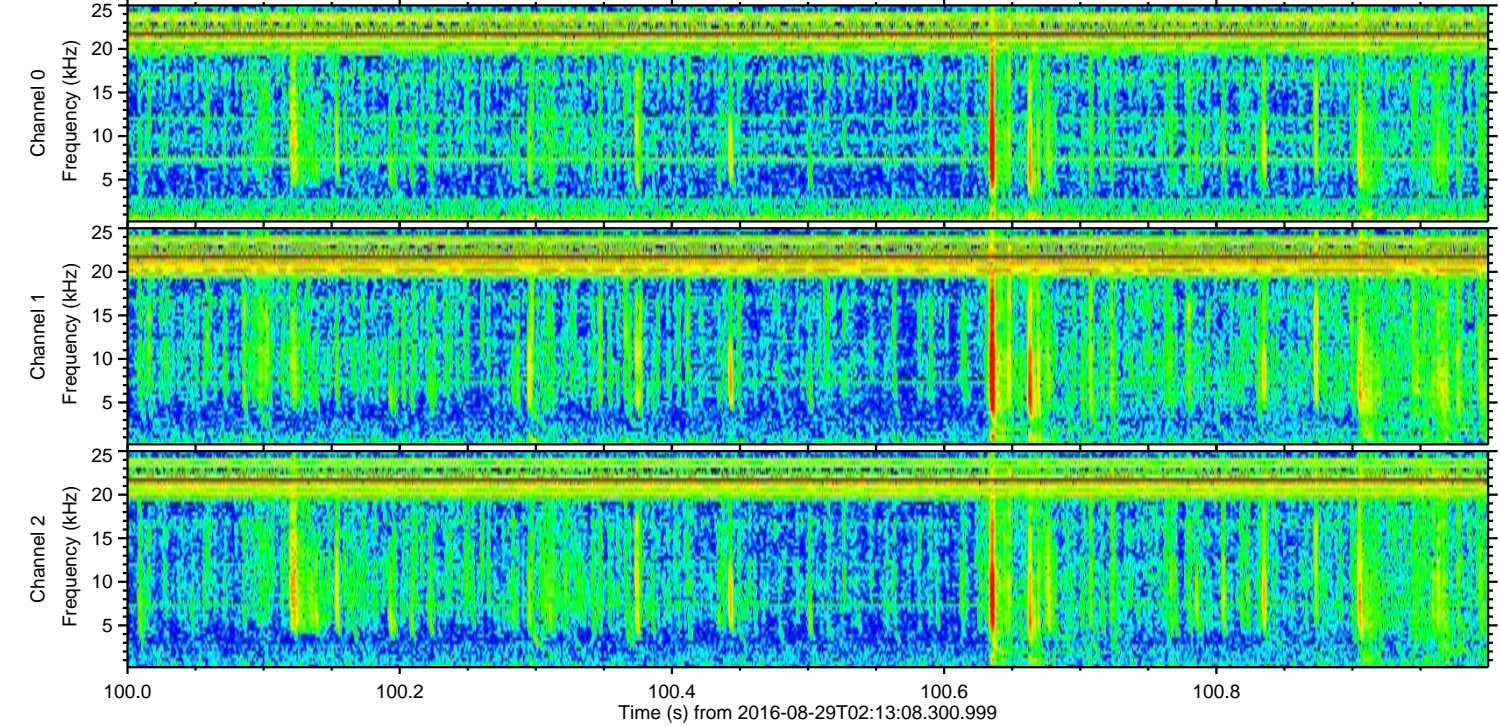
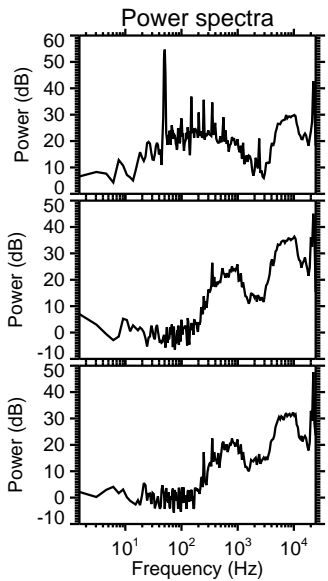
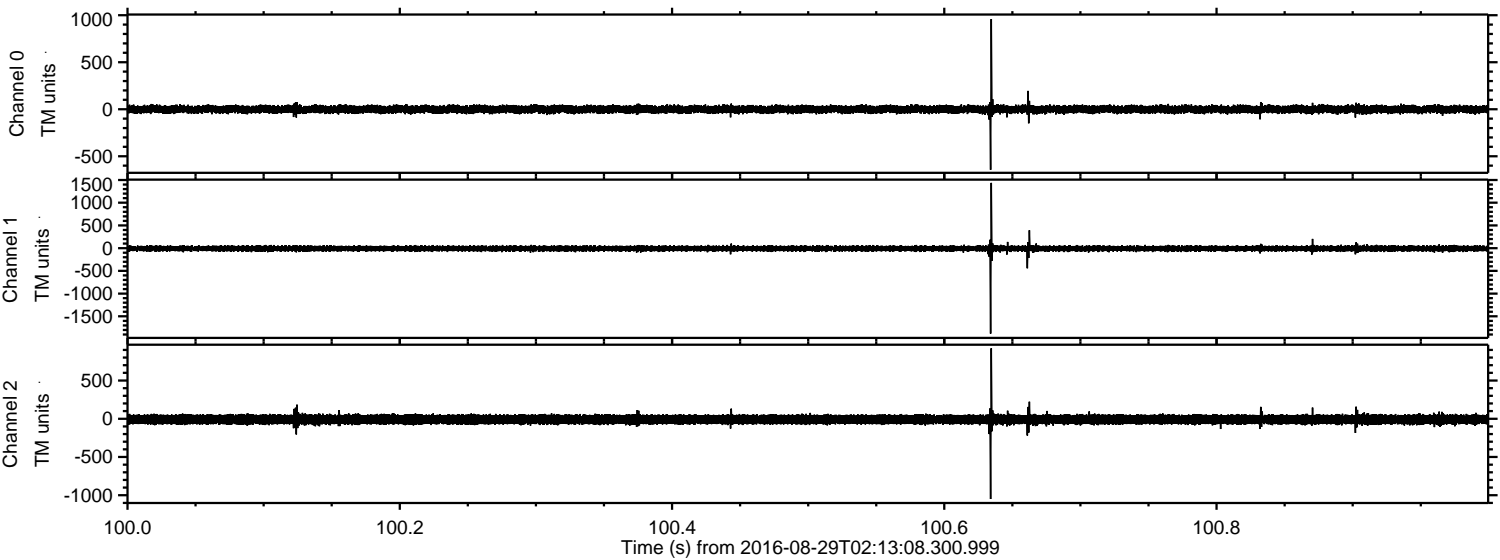
Processed Mon Aug 29 04:21:05 2016 by ELM ver.2012-10-06 from 001\_\_elm20160829\_021307\_\_dat00.bin





ELMAVAN 3D WAVEFORMS (Measured data sampled at 50 kHz) 51000 packets of 144 samples from 2016-08-29T02:13:08.300.999. Part 101/147

Processed Mon Aug 29 04:21:06 2016 by ELM ver.2012-10-06 from 001\_\_elm20160829\_021307\_\_dat00.bin



Channel 0  
mn: -644  
mx: 959  
 $\mu$ : -1.1  
 $\sigma$ : 23.6

Channel 1  
mn: -1881  
mx: 1436  
 $\mu$ : -8.5  
 $\sigma$ : 34.5

Channel 2  
mn: -1049  
mx: 922  
 $\mu$ : -9.3  
 $\sigma$ : 38.1



Processed Mon Aug 29 04:21:07 2016 by ELM ver.2012-10-06 from 001\_\_elm20160829\_021307\_\_dat00.bin

