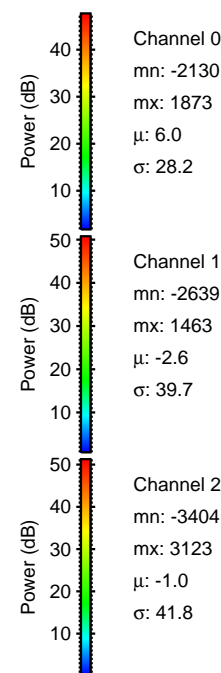
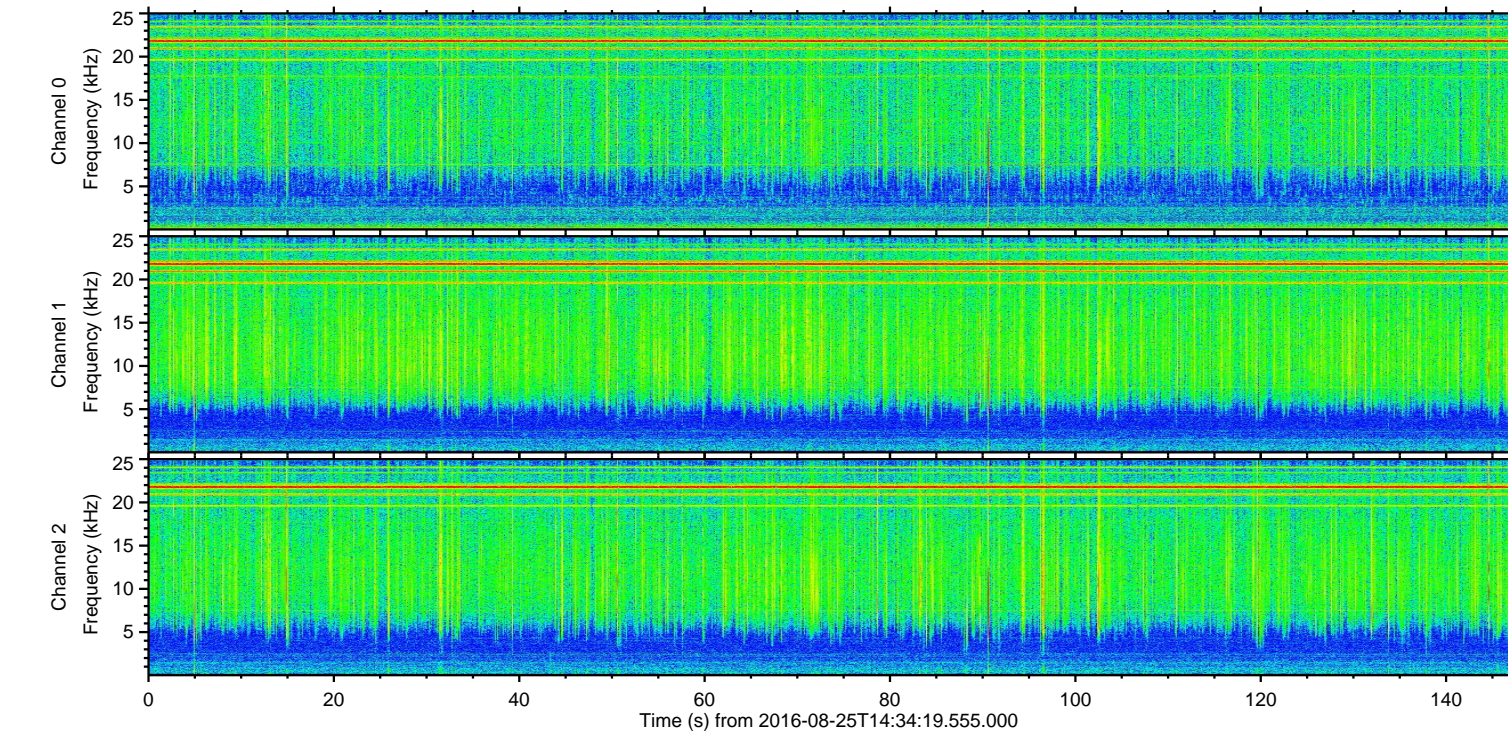
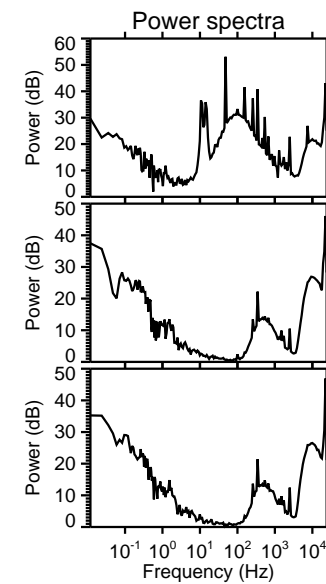
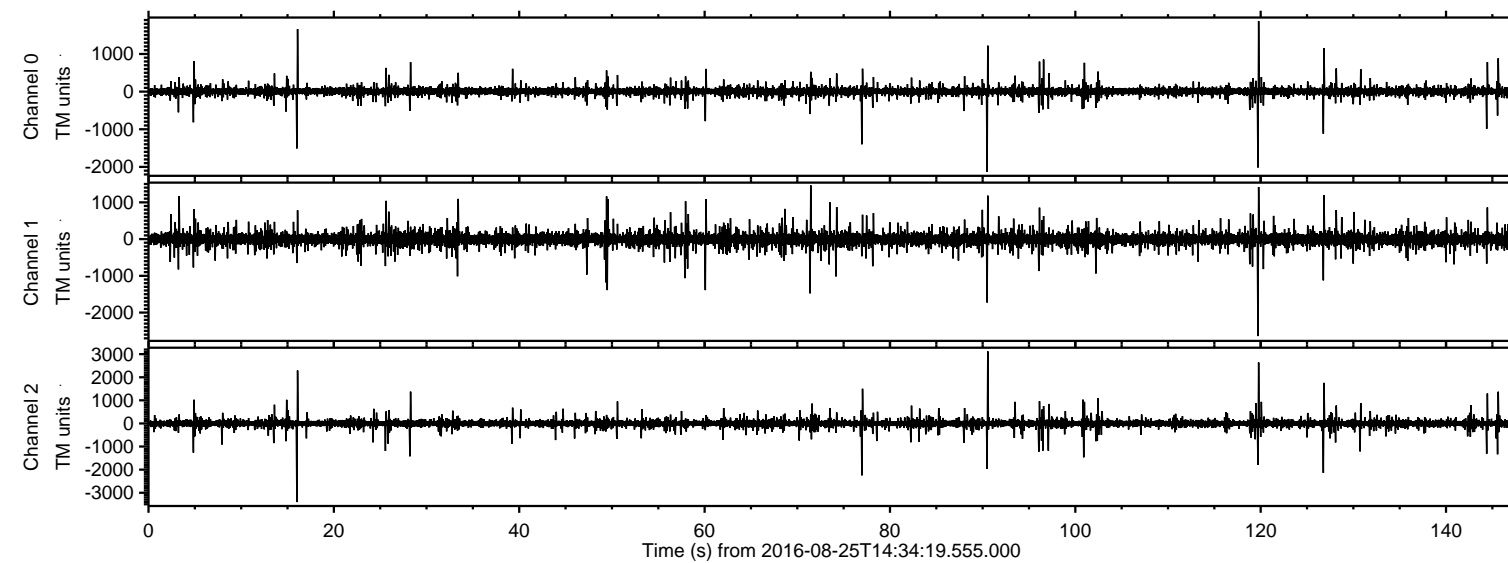


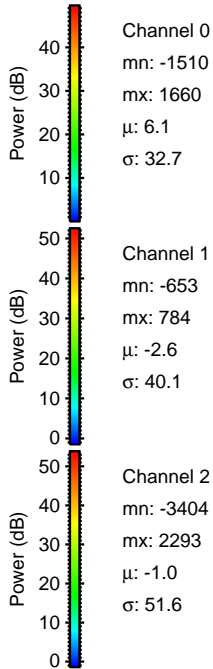
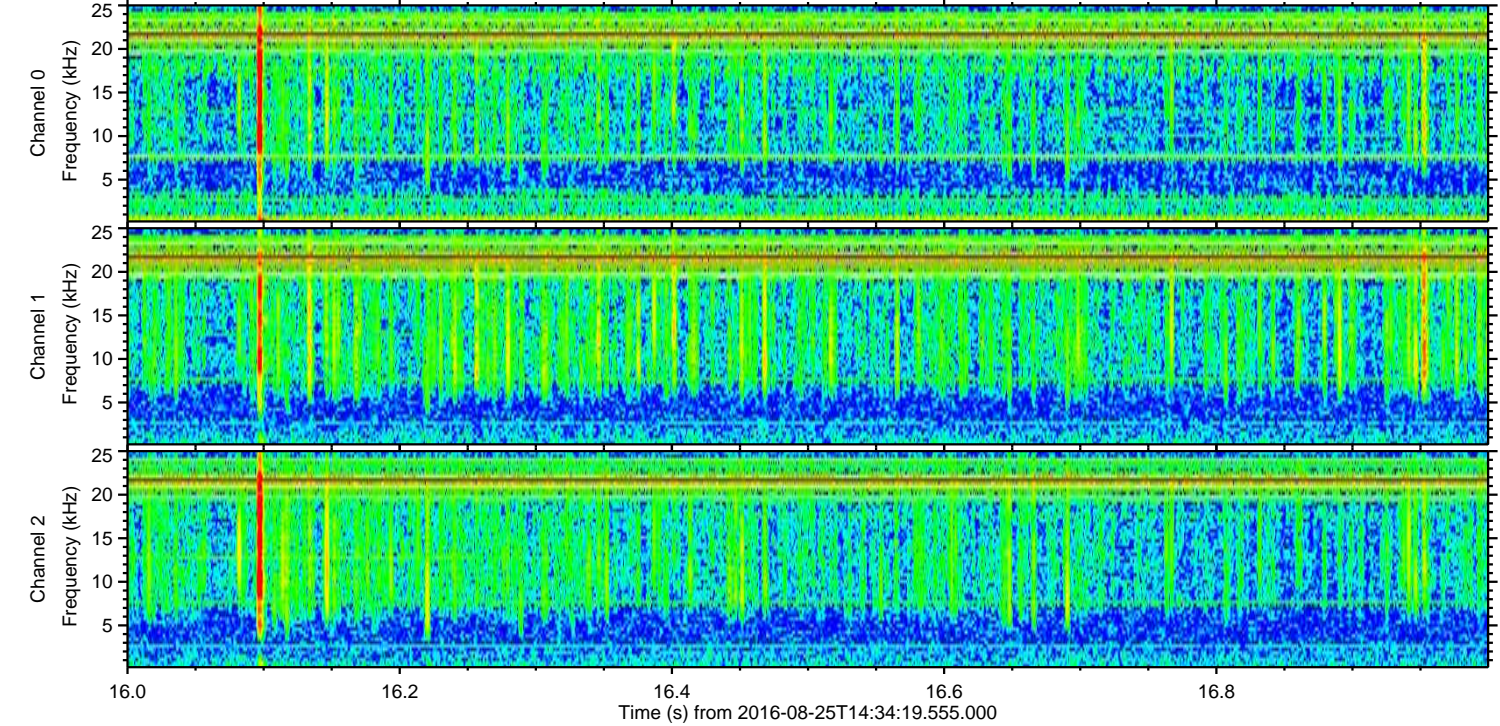
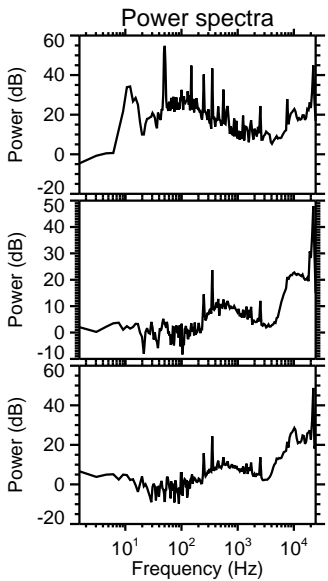
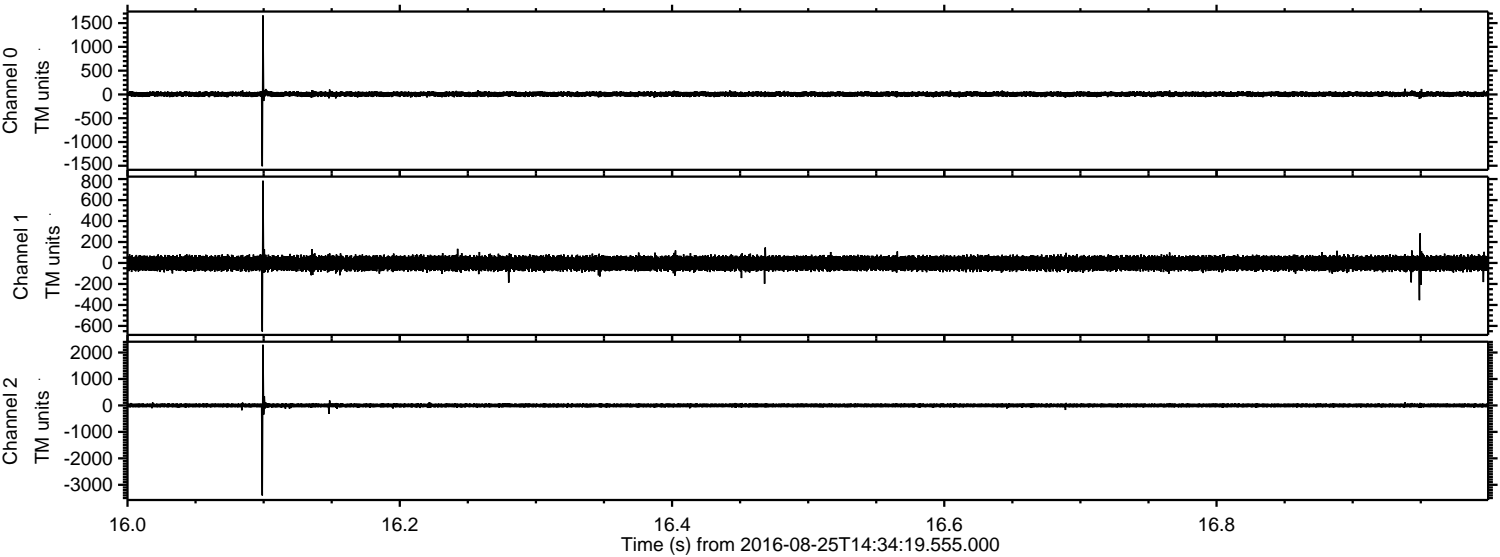
ELMAVAN 3D WAVEFORMS (Measured data sampled at 50 kHz) 51000 packets of 144 samples from 2016-08-25T14:34:19.555.000.

Processed Thu Aug 25 16:42:15 2016 by ELM ver.2012-10-06 from 001__elm20160825_143418__dat00.bin

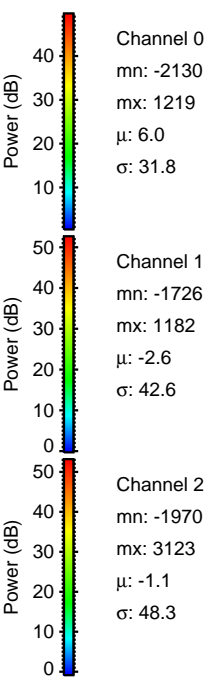
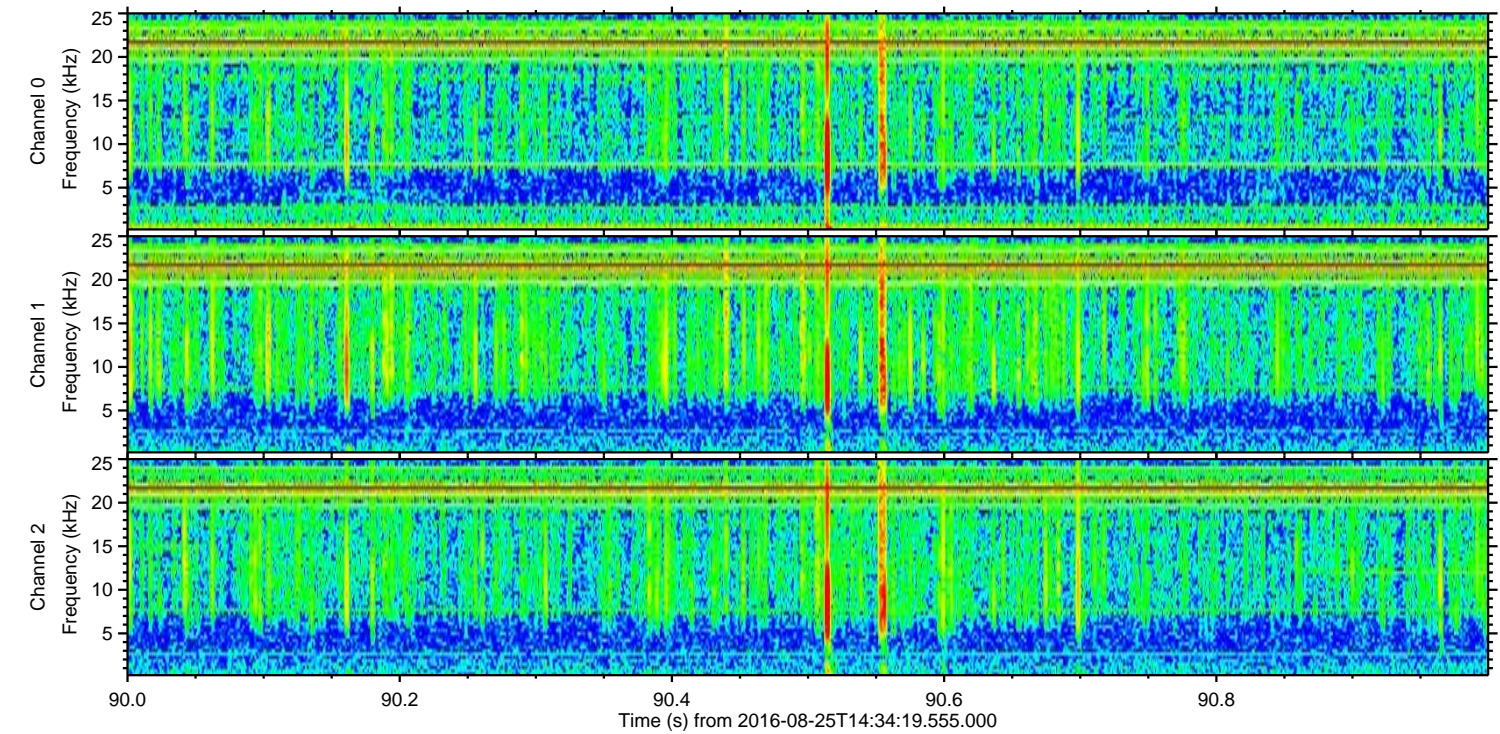
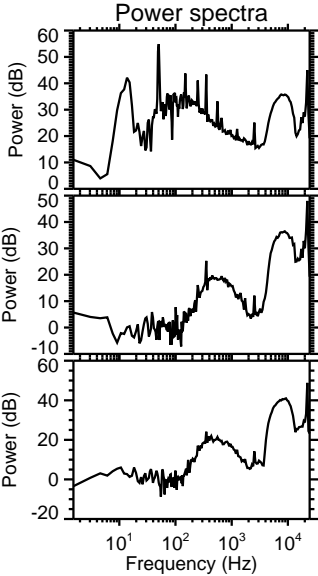
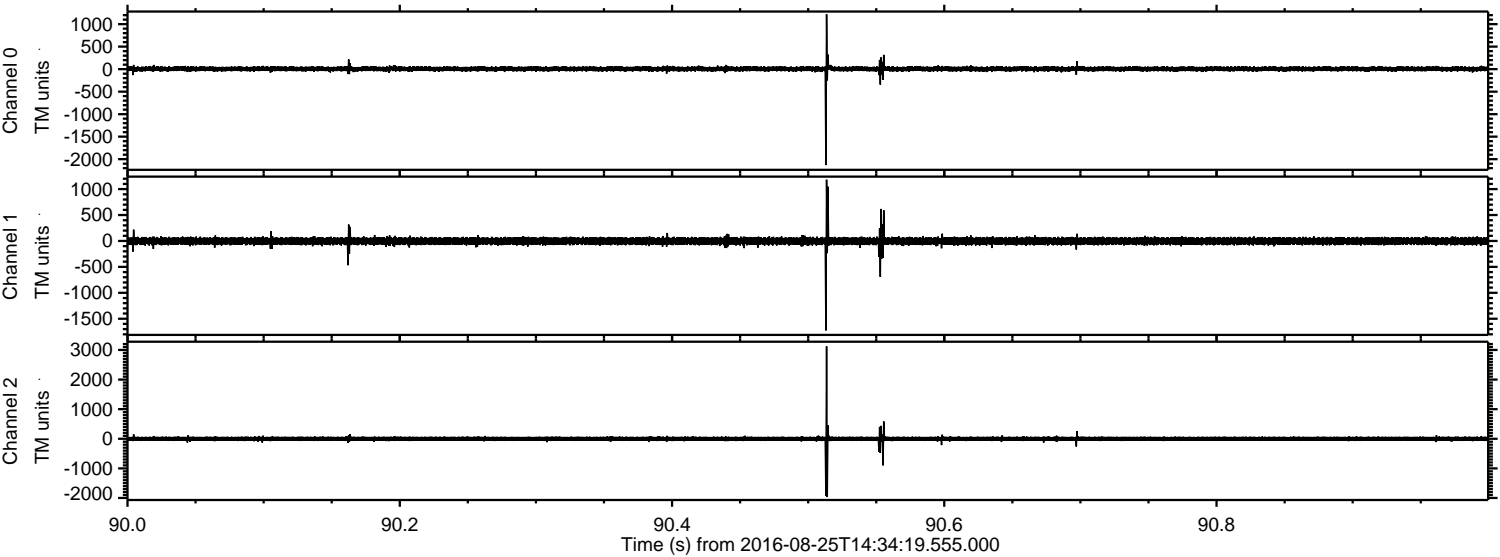


ELMAVAN 3D WAVEFORMS (Measured data sampled at 50 kHz) 51000 packets of 144 samples from 2016-08-25T14:34:19.555.000. Part 17/147

Processed Thu Aug 25 16:42:26 2016 by ELM ver.2012-10-06 from 001__elm20160825_143418__dat00.bin

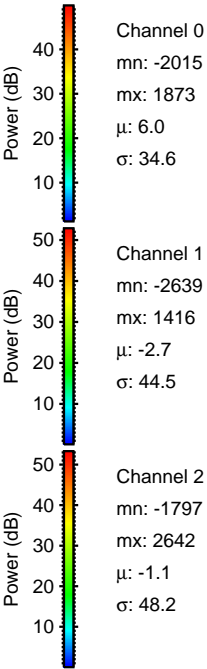
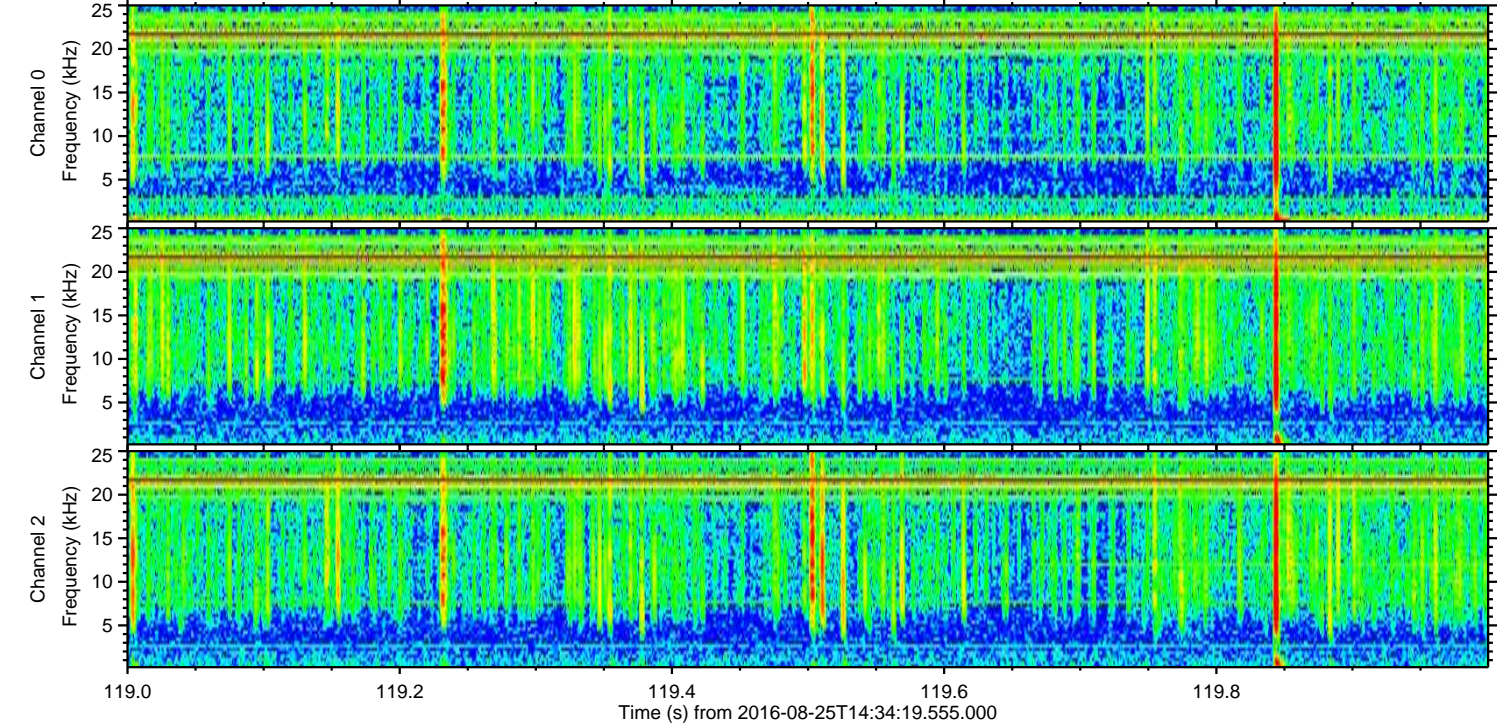
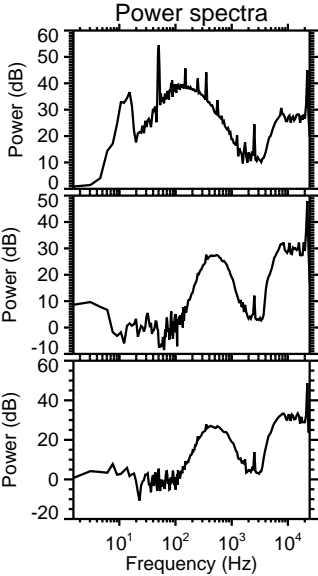
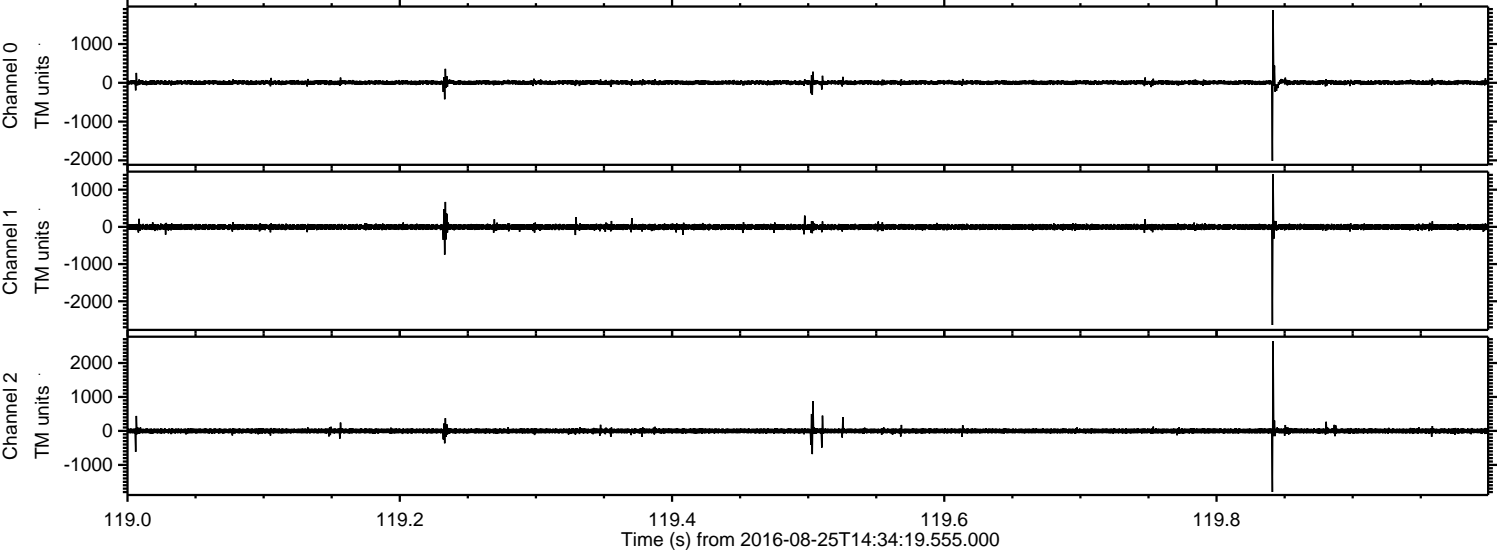


Processed Thu Aug 25 16:42:27 2016 by ELM ver.2012-10-06 from 001__elm20160825_143418__dat00.bin

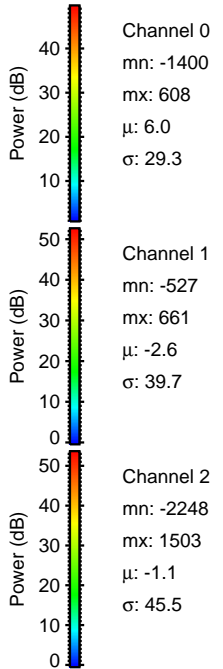
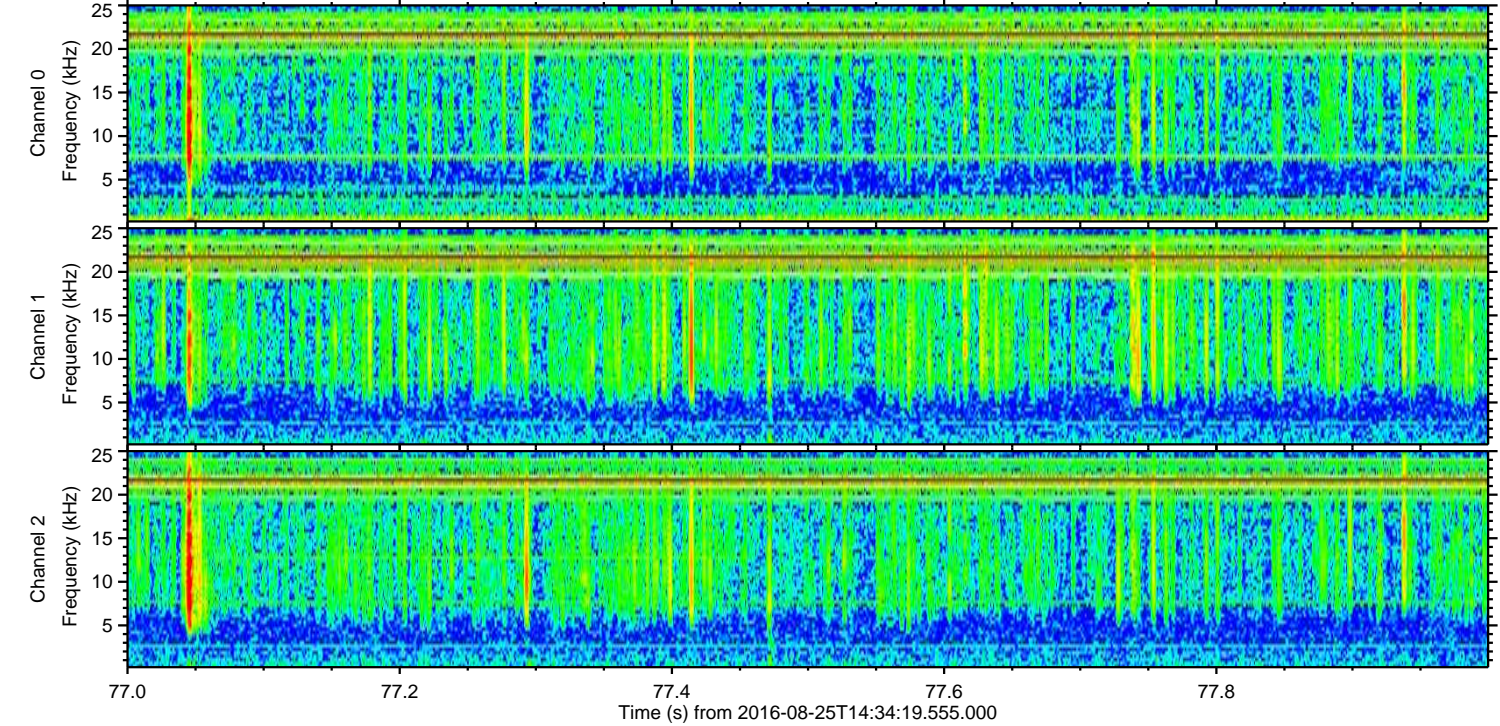
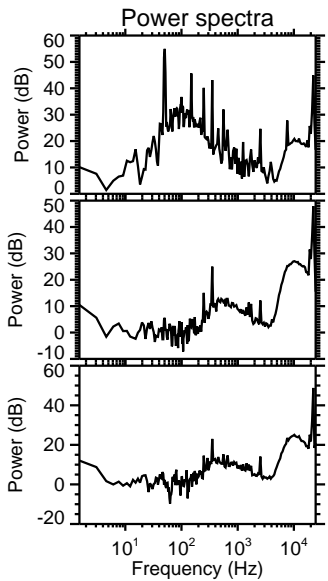
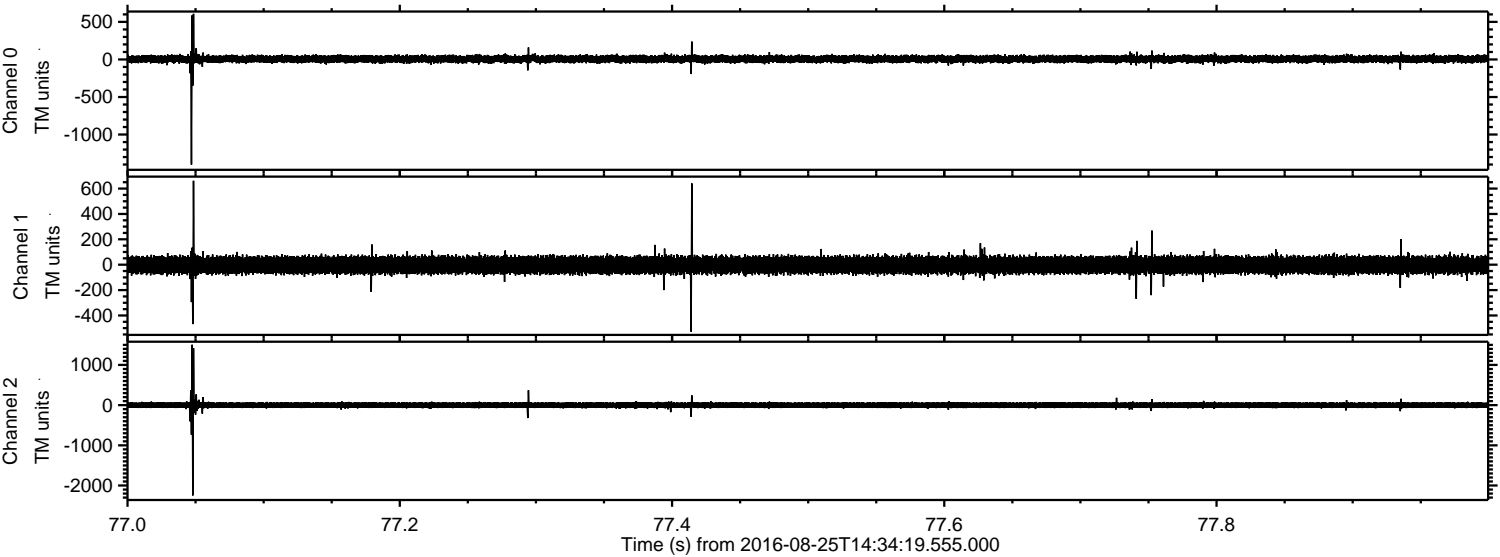


ELMAVAN 3D WAVEFORMS (Measured data sampled at 50 kHz) 51000 packets of 144 samples from 2016-08-25T14:34:19.555.000. Part 120/147

Processed Thu Aug 25 16:42:28 2016 by ELM ver.2012-10-06 from 001__elm20160825_143418__dat00.bin

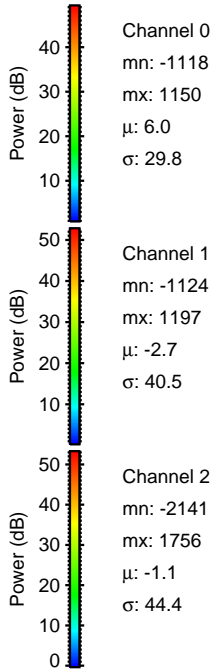
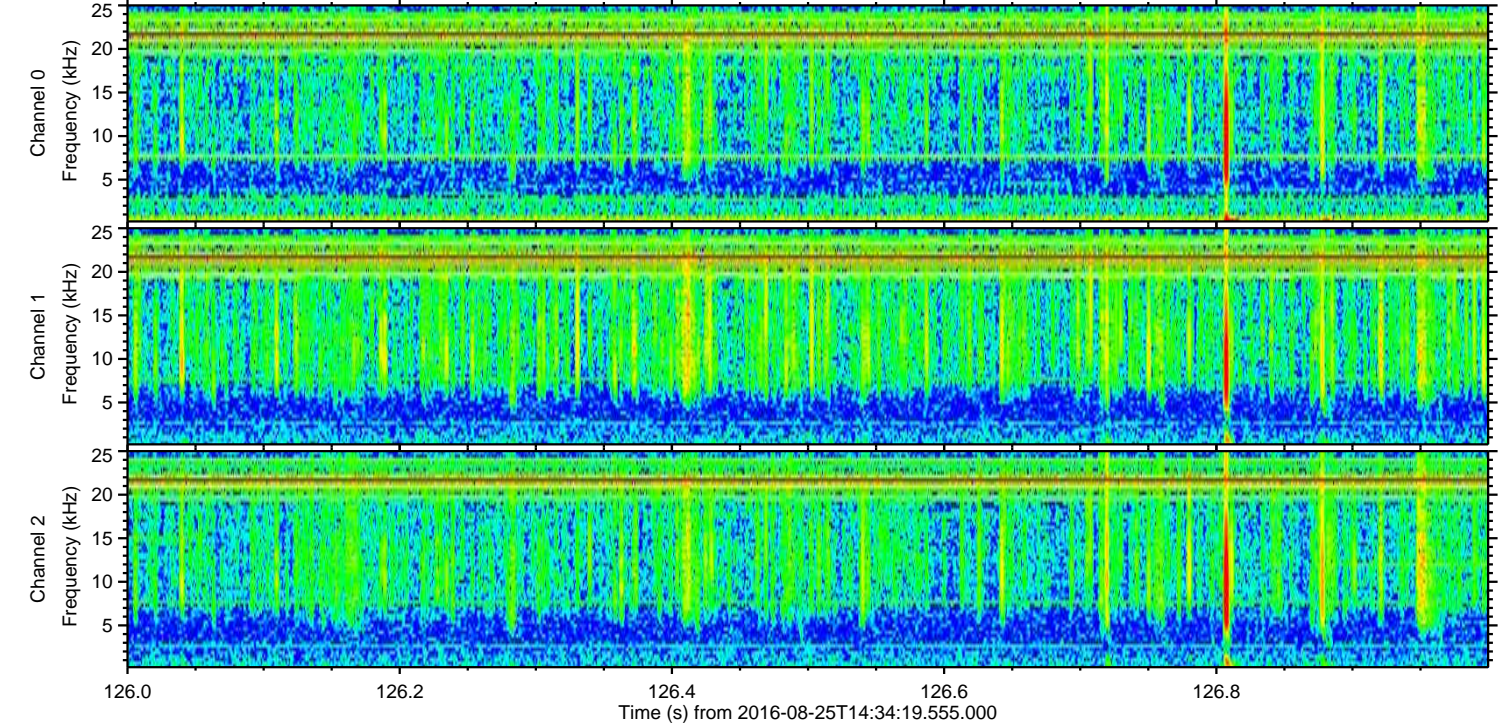
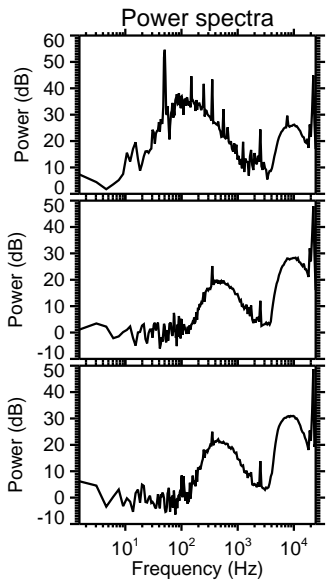
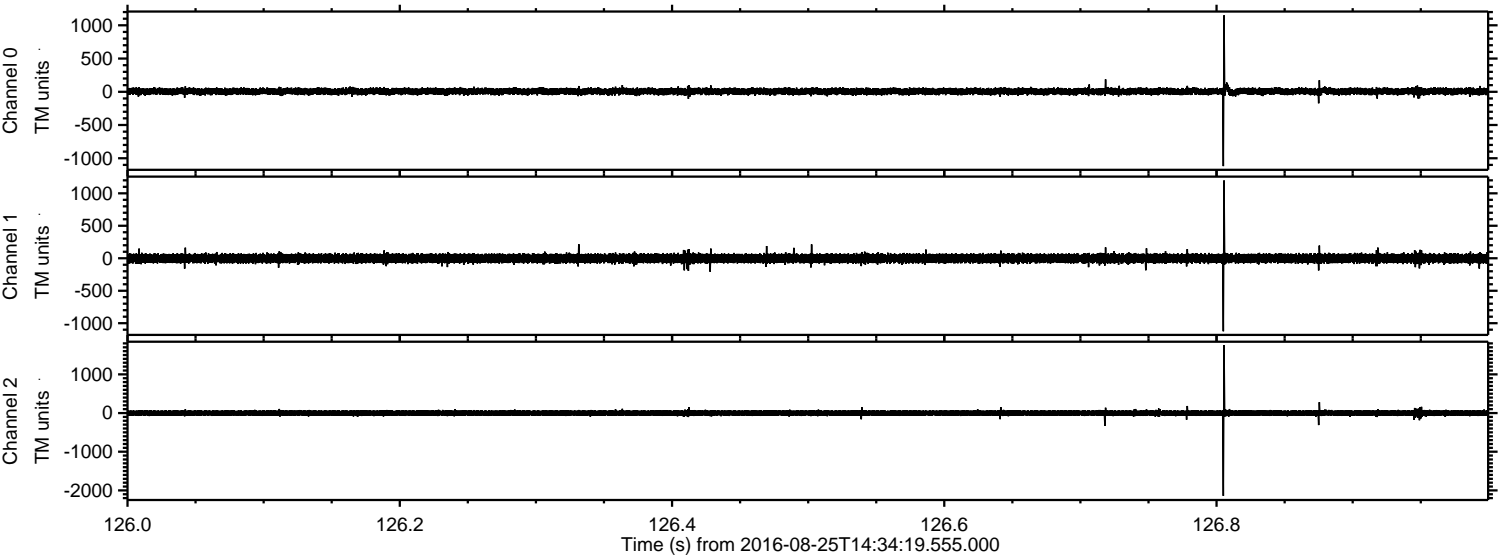


Processed Thu Aug 25 16:42:29 2016 by ELM ver.2012-10-06 from 001__elm20160825_143418__dat00.bin

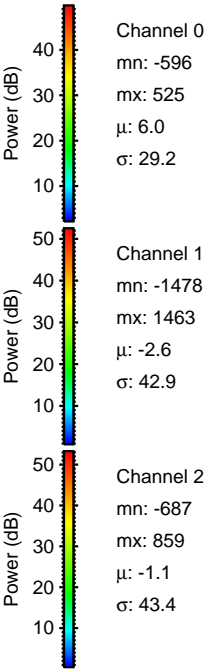
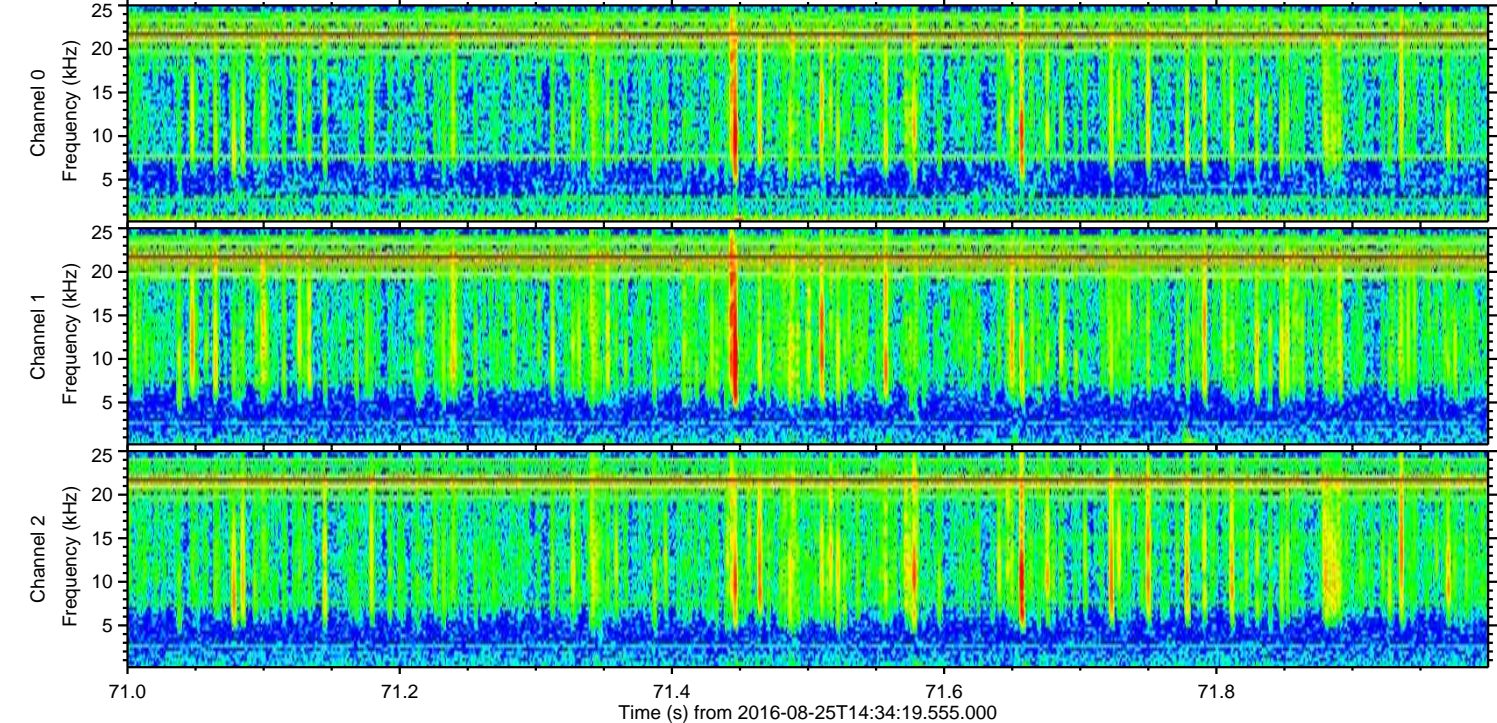
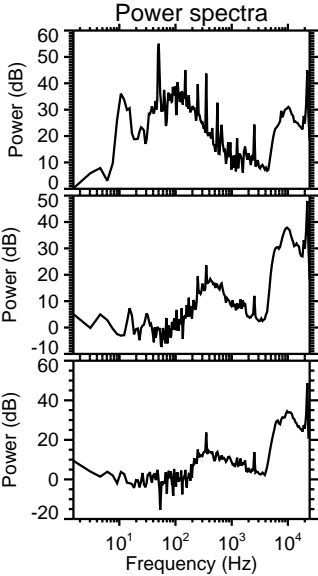
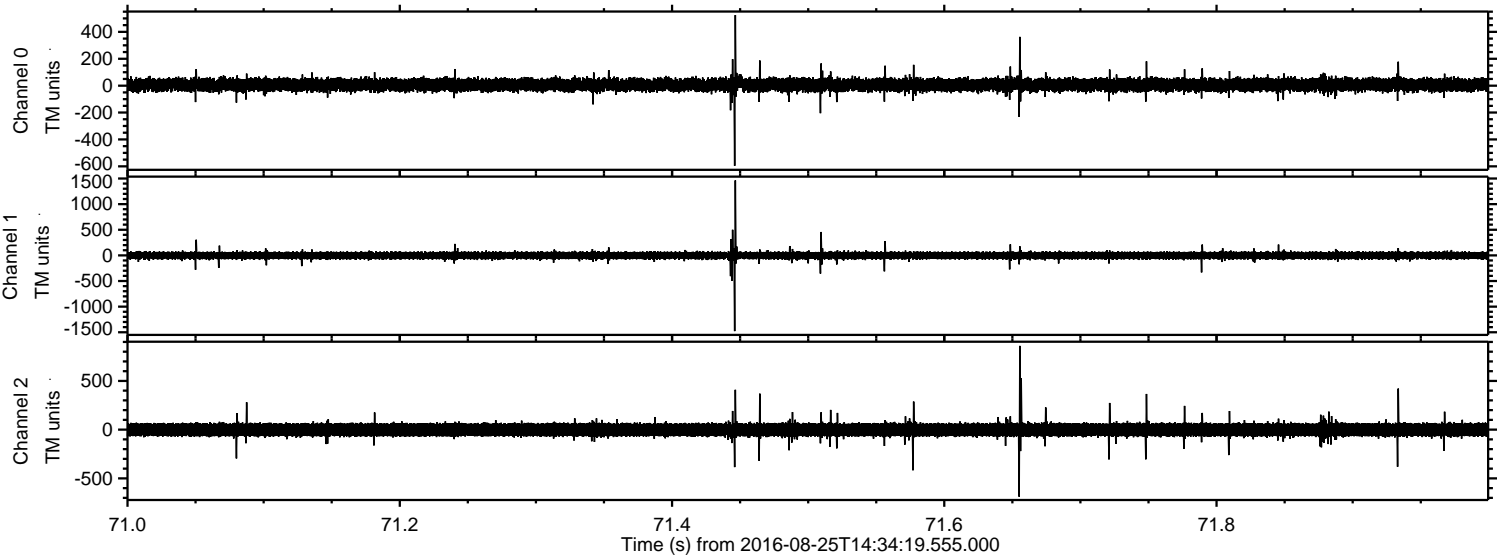


ELMAVAN 3D WAVEFORMS (Measured data sampled at 50 kHz) 51000 packets of 144 samples from 2016-08-25T14:34:19.555.000. Part 127/147

Processed Thu Aug 25 16:42:30 2016 by ELM ver.2012-10-06 from 001__elm20160825_143418__dat00.bin

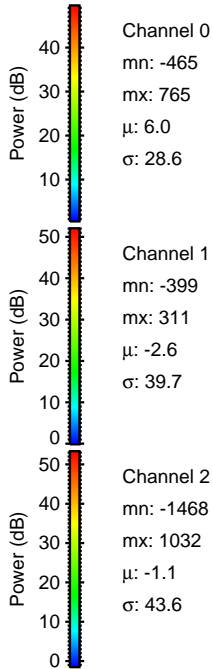
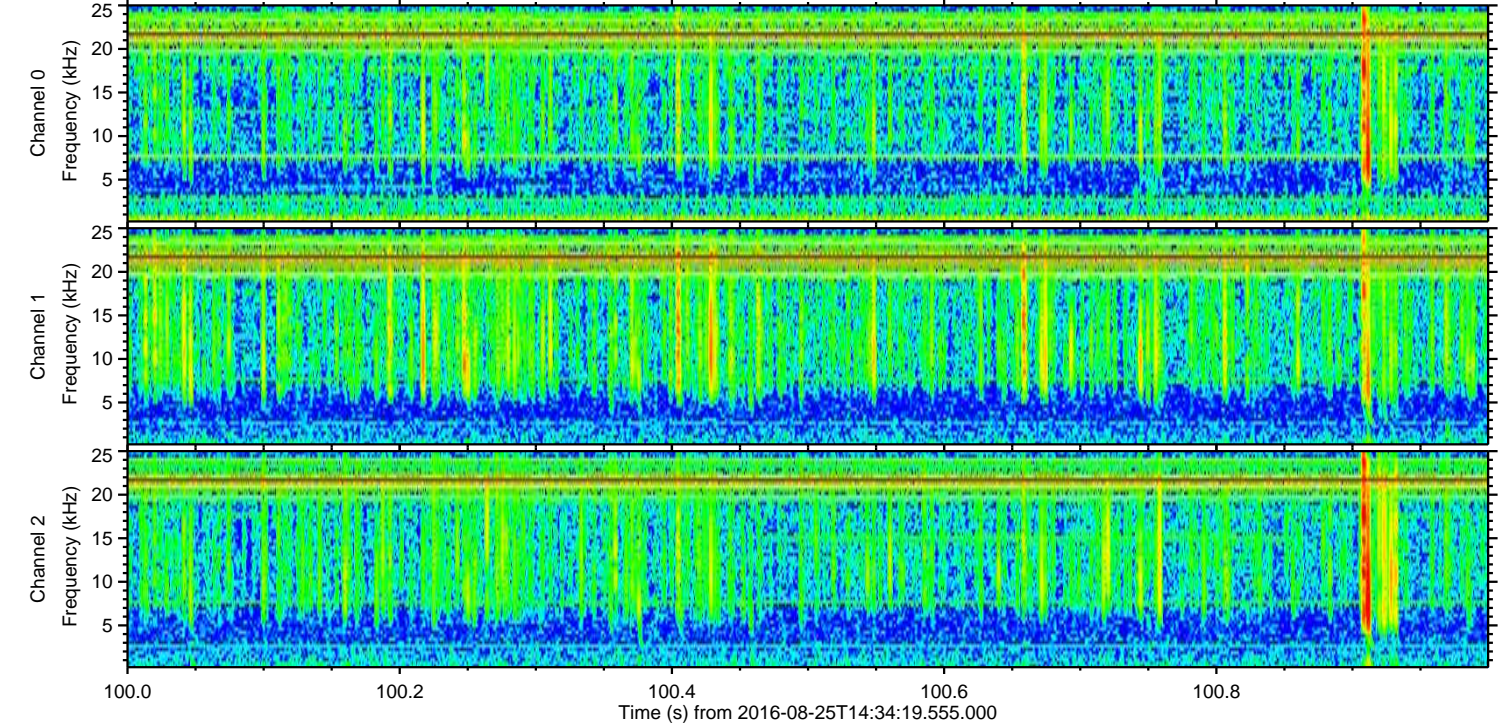
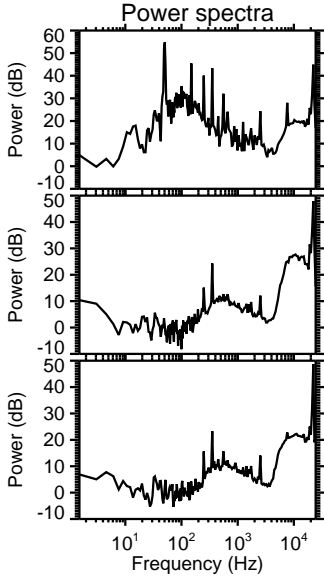
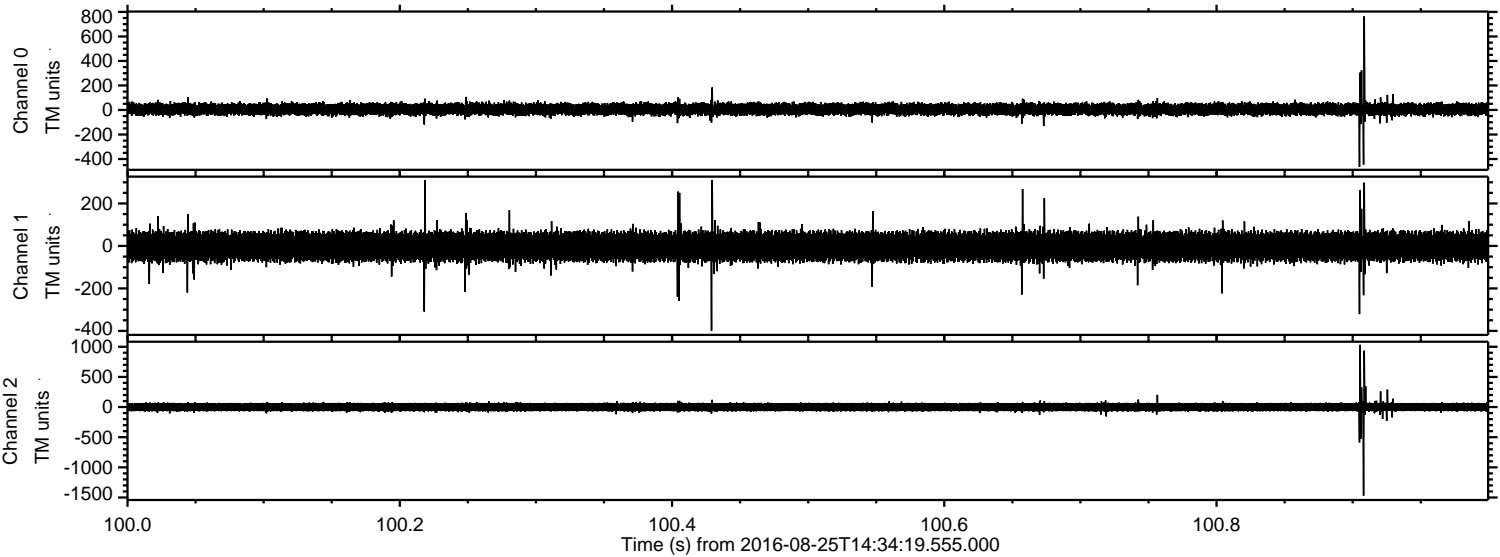


Processed Thu Aug 25 16:42:31 2016 by ELM ver.2012-10-06 from 001__elm20160825_143418__dat00.bin

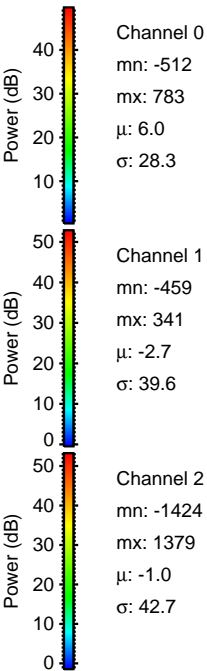
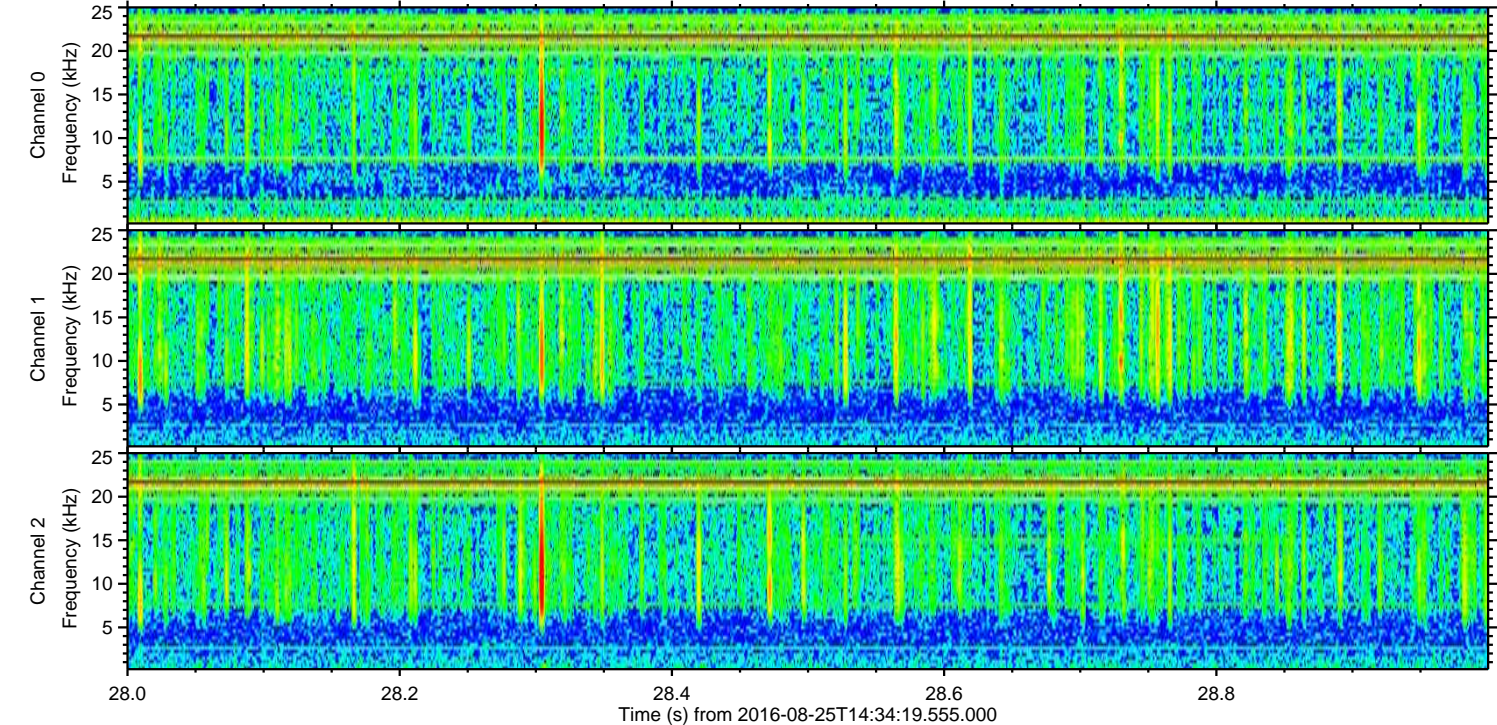
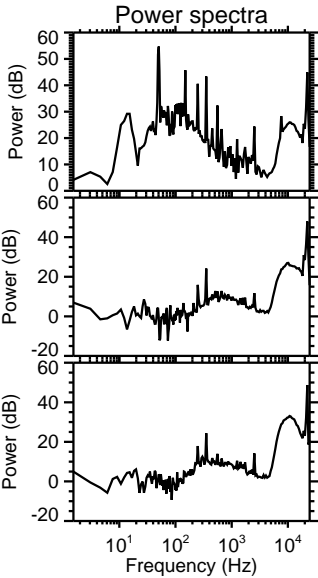
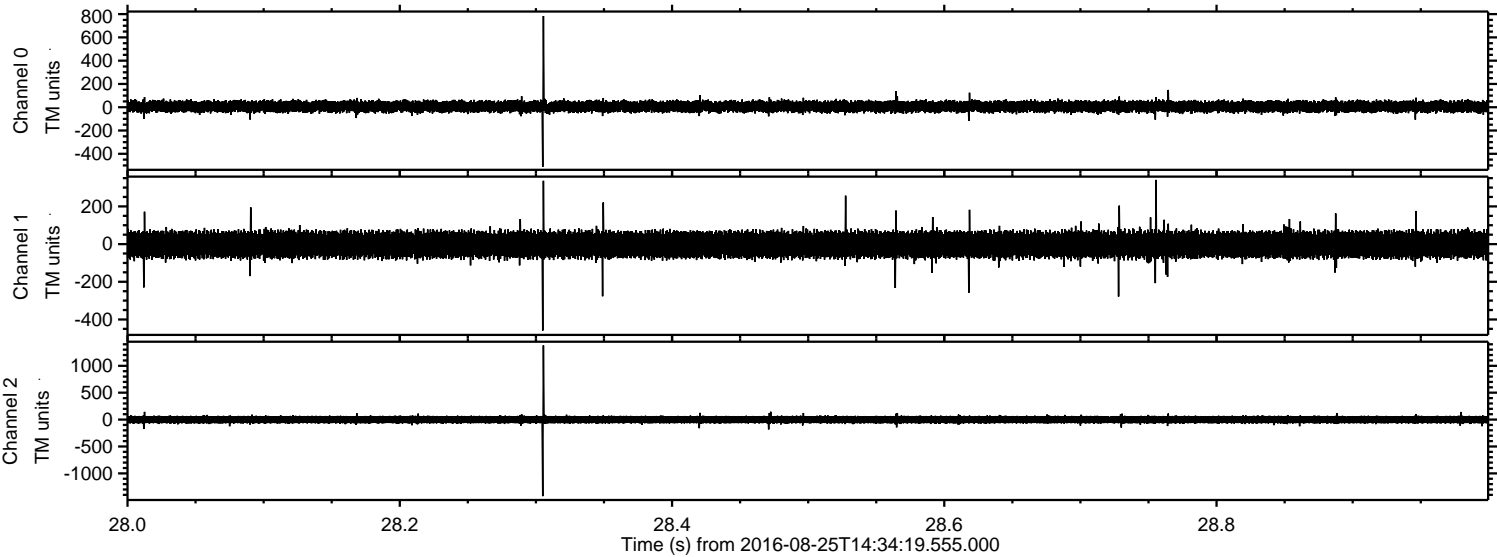


ELMAVAN 3D WAVEFORMS (Measured data sampled at 50 kHz) 51000 packets of 144 samples from 2016-08-25T14:34:19.555.000. Part 101/147

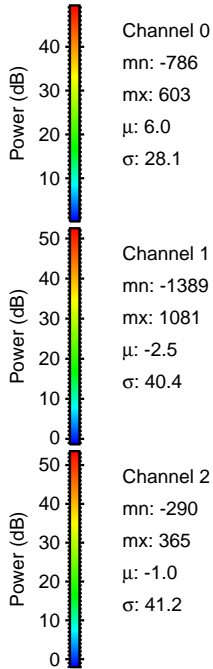
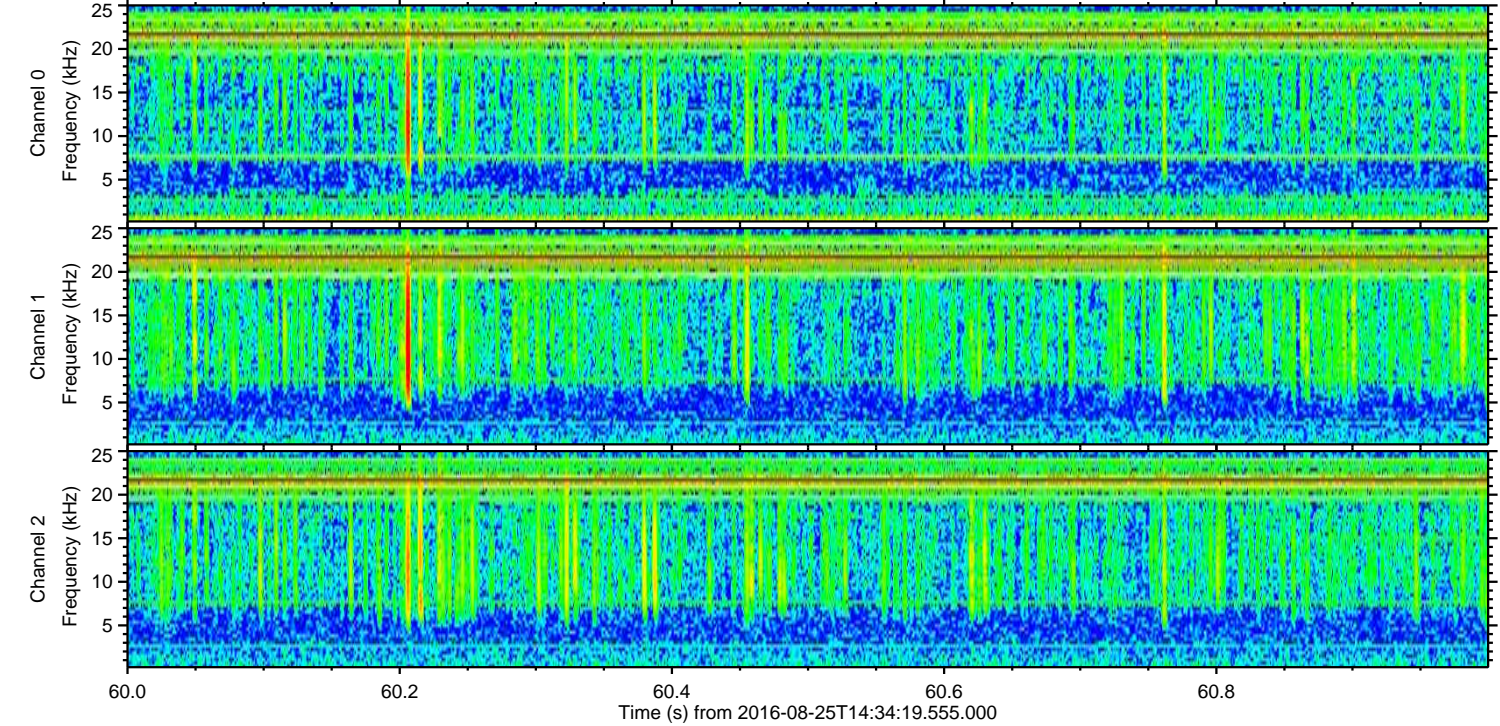
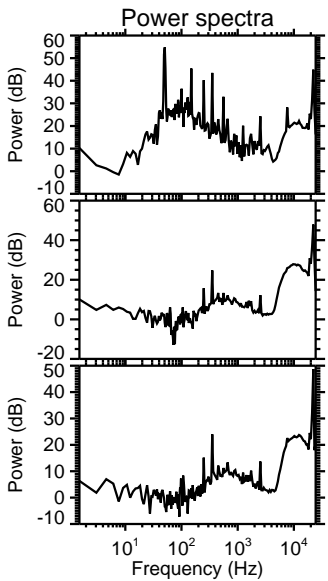
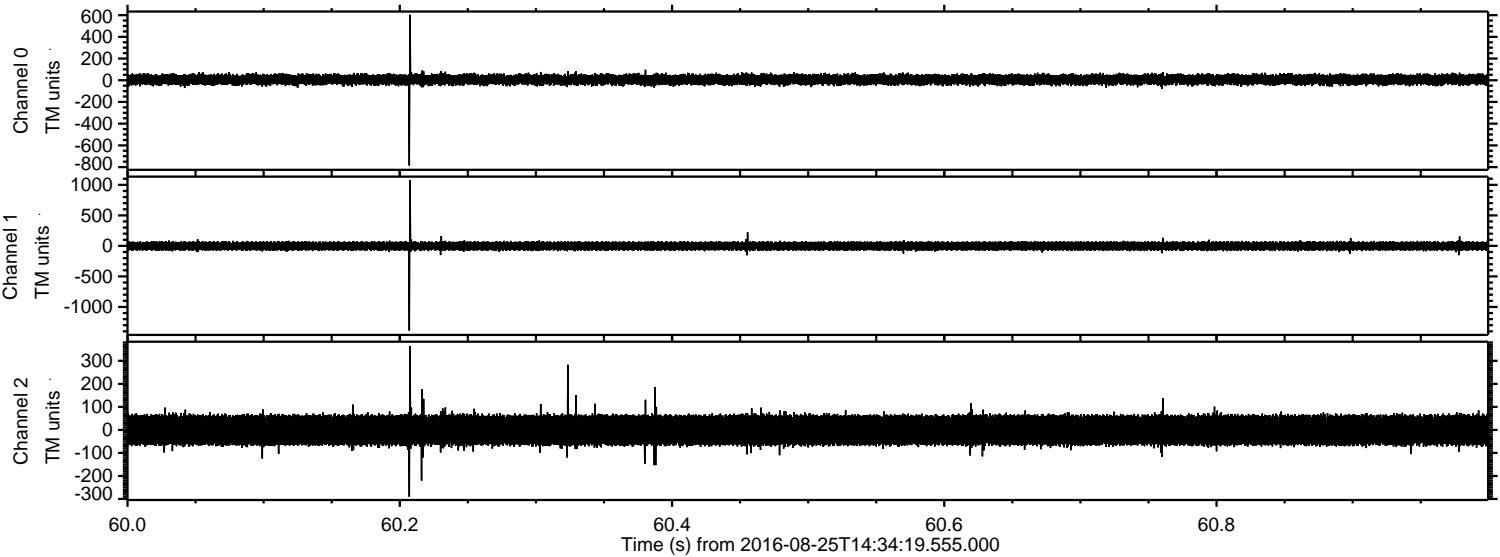
Processed Thu Aug 25 16:42:32 2016 by ELM ver.2012-10-06 from 001__elm20160825_143418__dat00.bin



Processed Thu Aug 25 16:42:33 2016 by ELM ver.2012-10-06 from 001__elm20160825_143418__dat00.bin



Processed Thu Aug 25 16:42:34 2016 by ELM ver.2012-10-06 from 001__elm20160825_143418__dat00.bin



Channel 0
mn: -786
mx: 603
 μ : 6.0
 σ : 28.1

Channel 1
mn: -1389
mx: 1081
 μ : -2.5
 σ : 40.4

Channel 2
mn: -290
mx: 365
 μ : -1.0
 σ : 41.2

