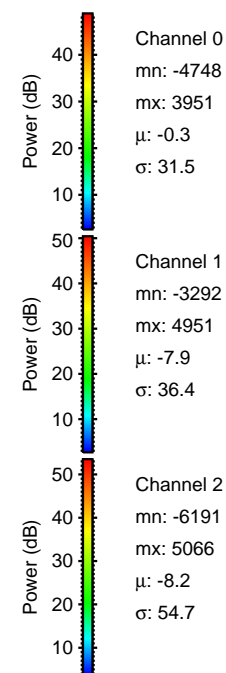
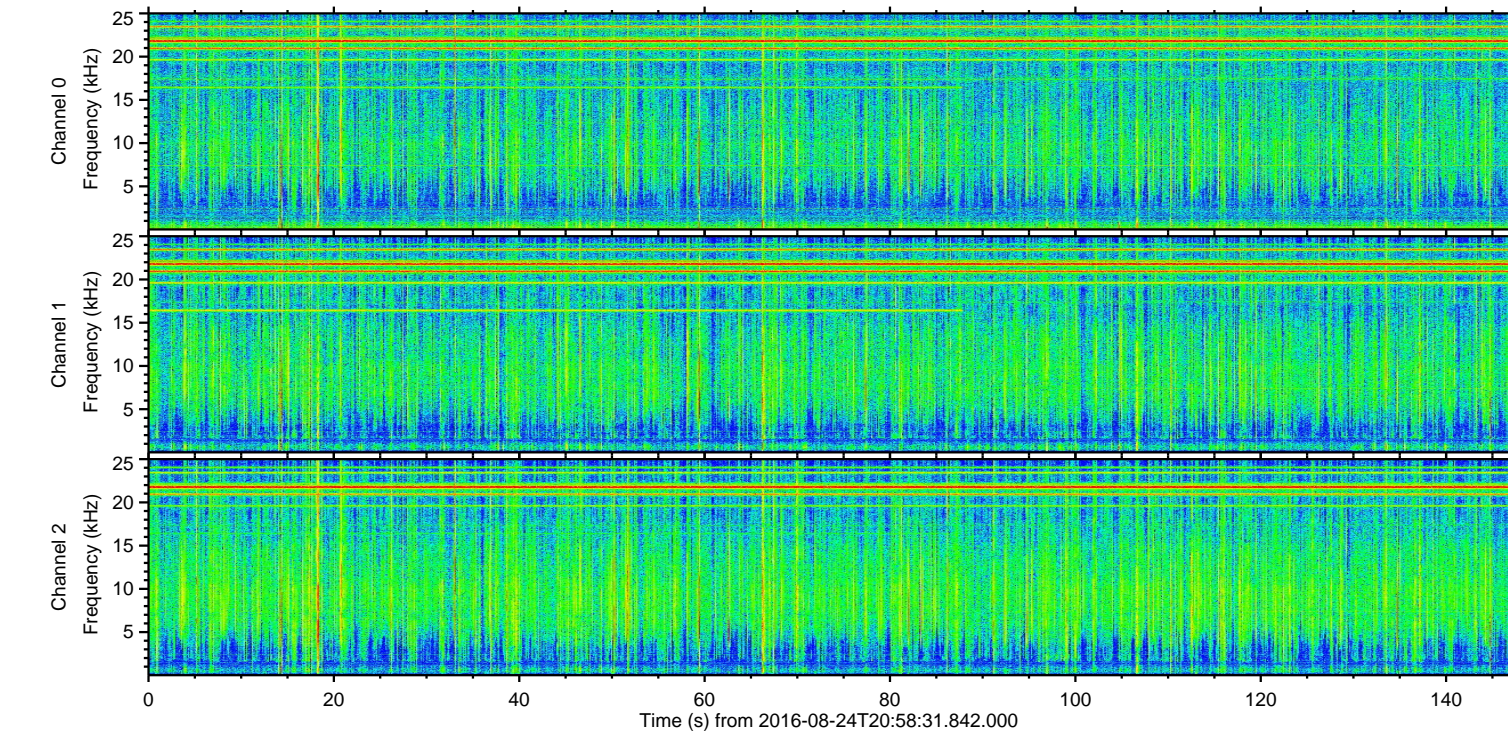
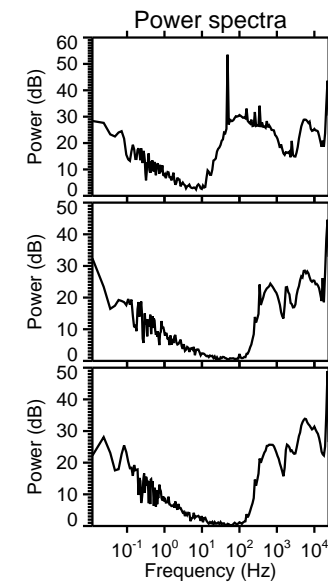
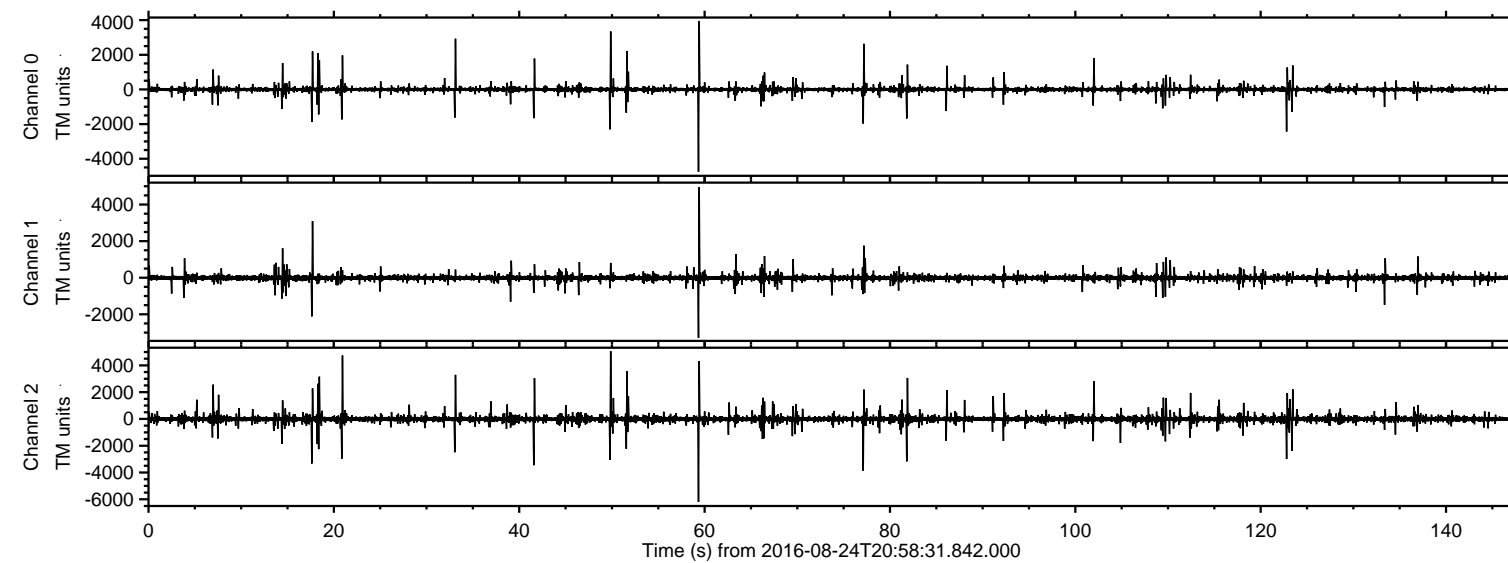


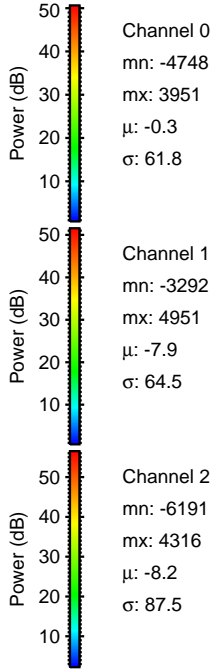
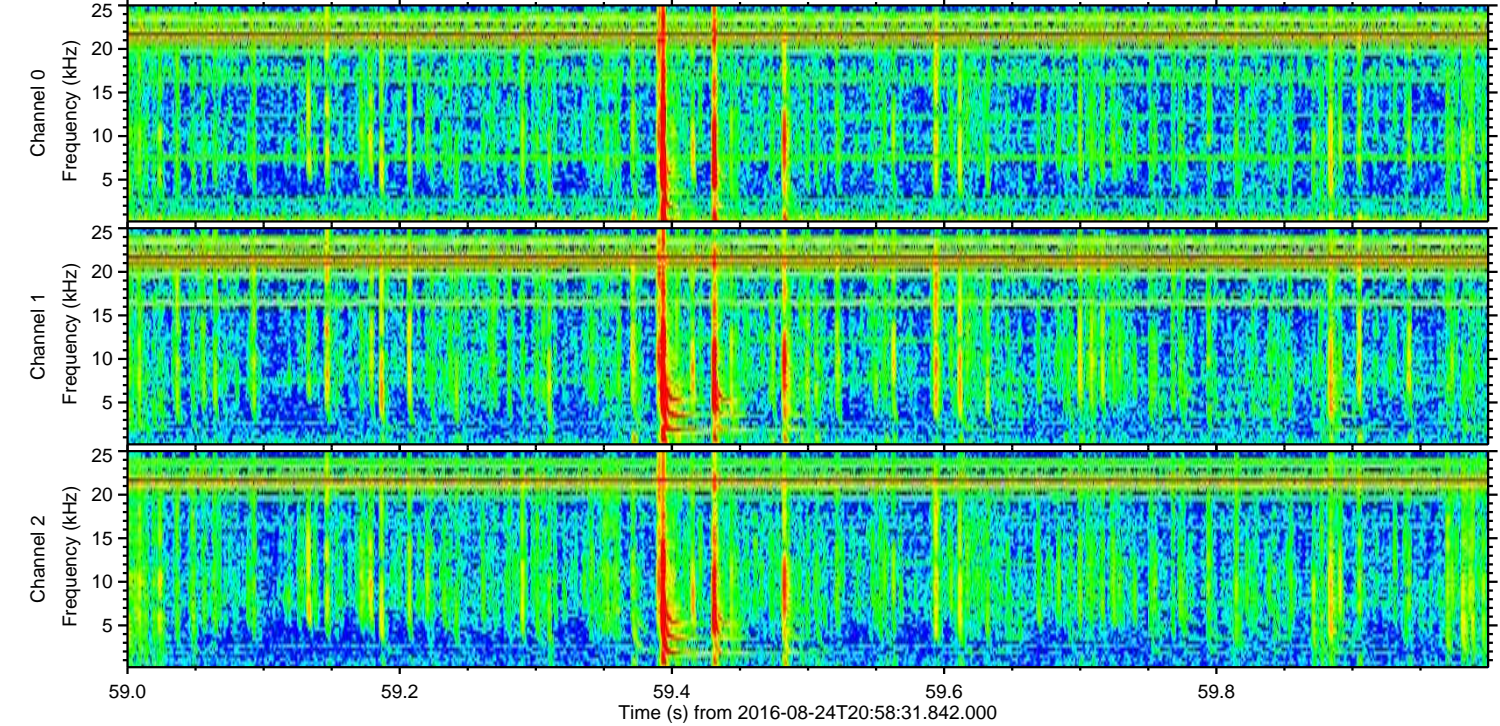
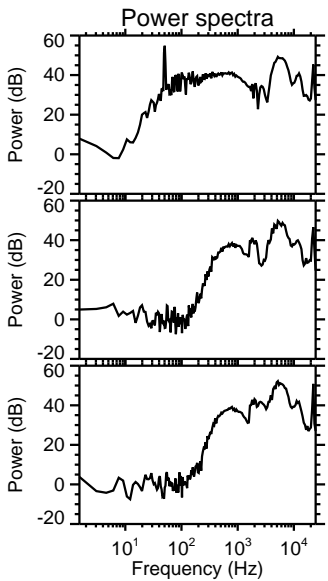
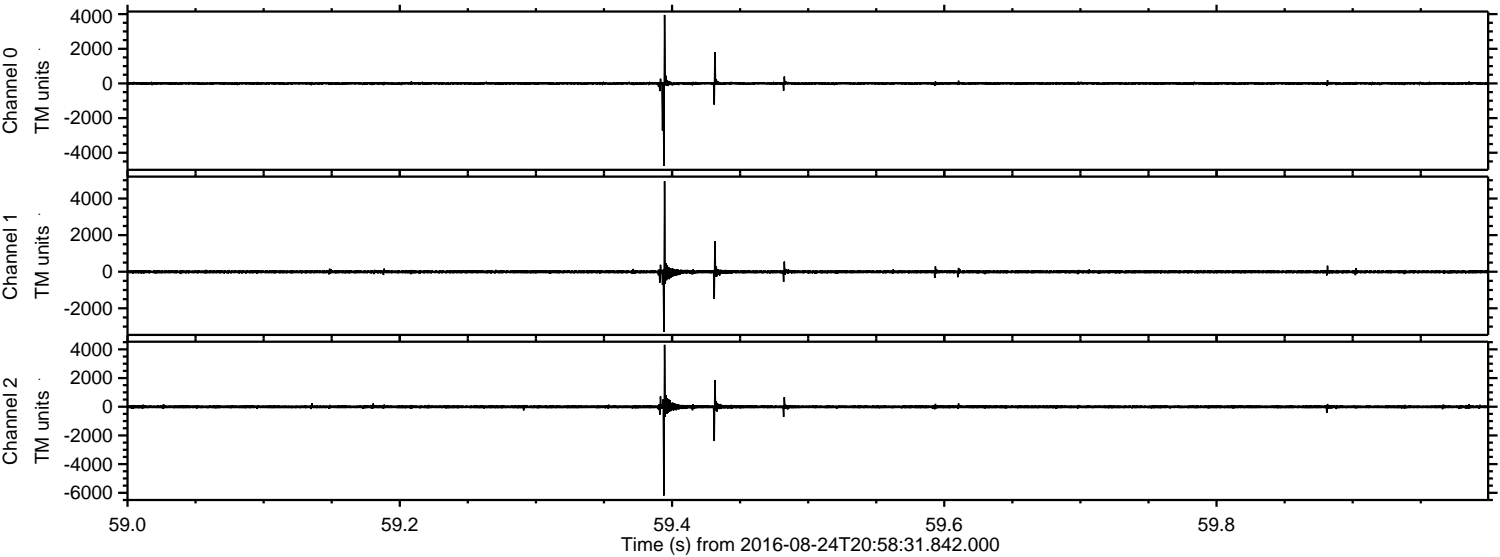
# ELMAVAN 3D WAVEFORMS (Measured data sampled at 50 kHz) 51000 packets of 144 samples from 2016-08-24T20:58:31.842.000.

Processed Wed Aug 24 23:05:50 2016 by ELM ver.2012-10-06 from 001\_\_elm20160824\_205830\_\_dat00.bin



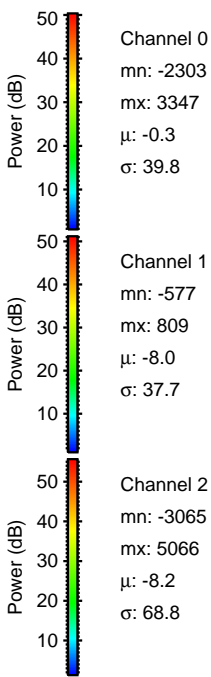
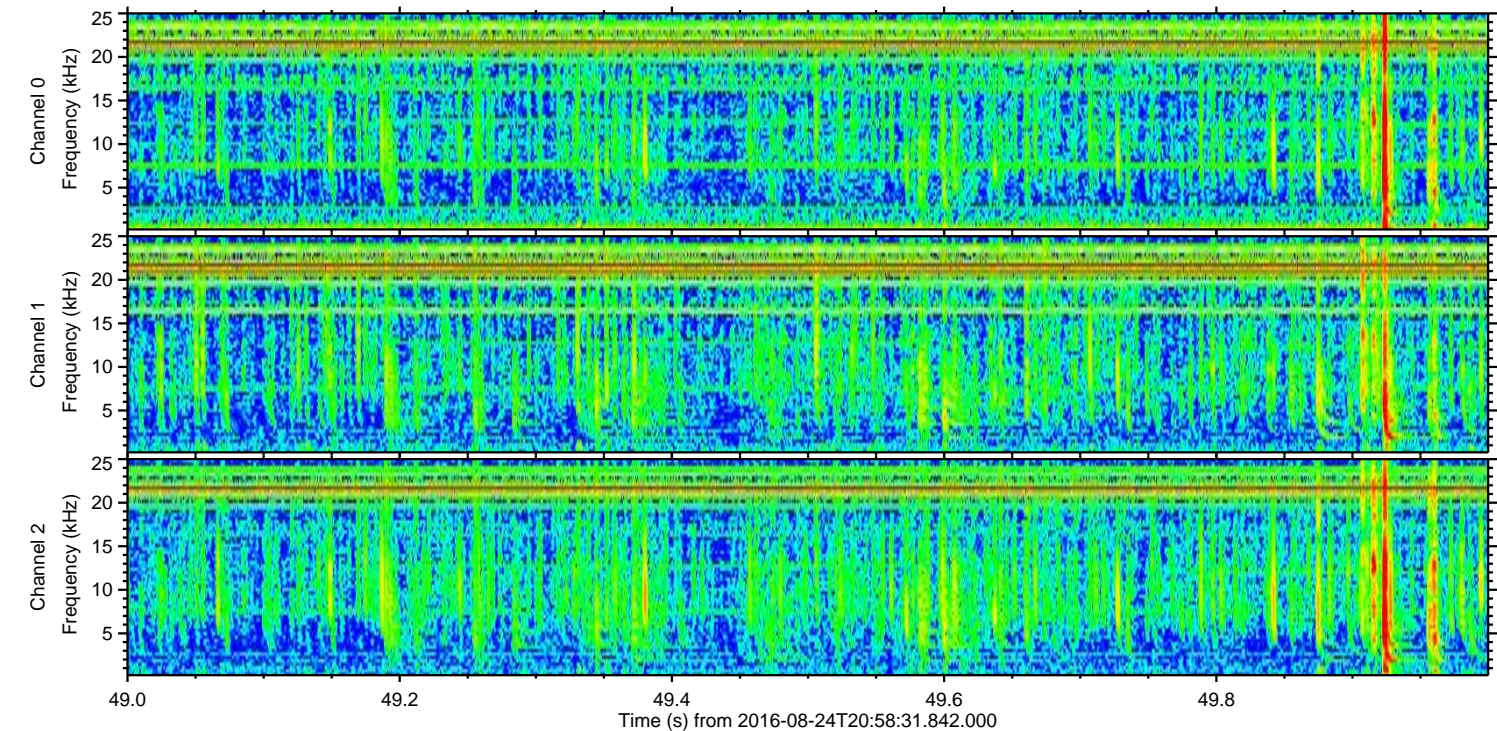
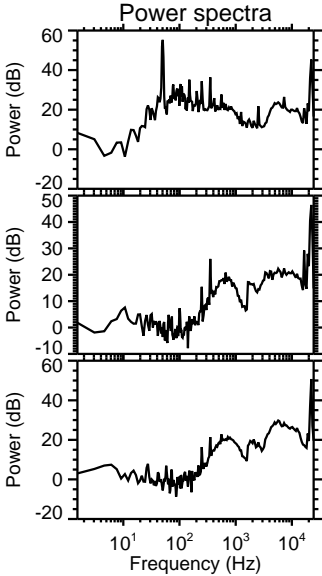
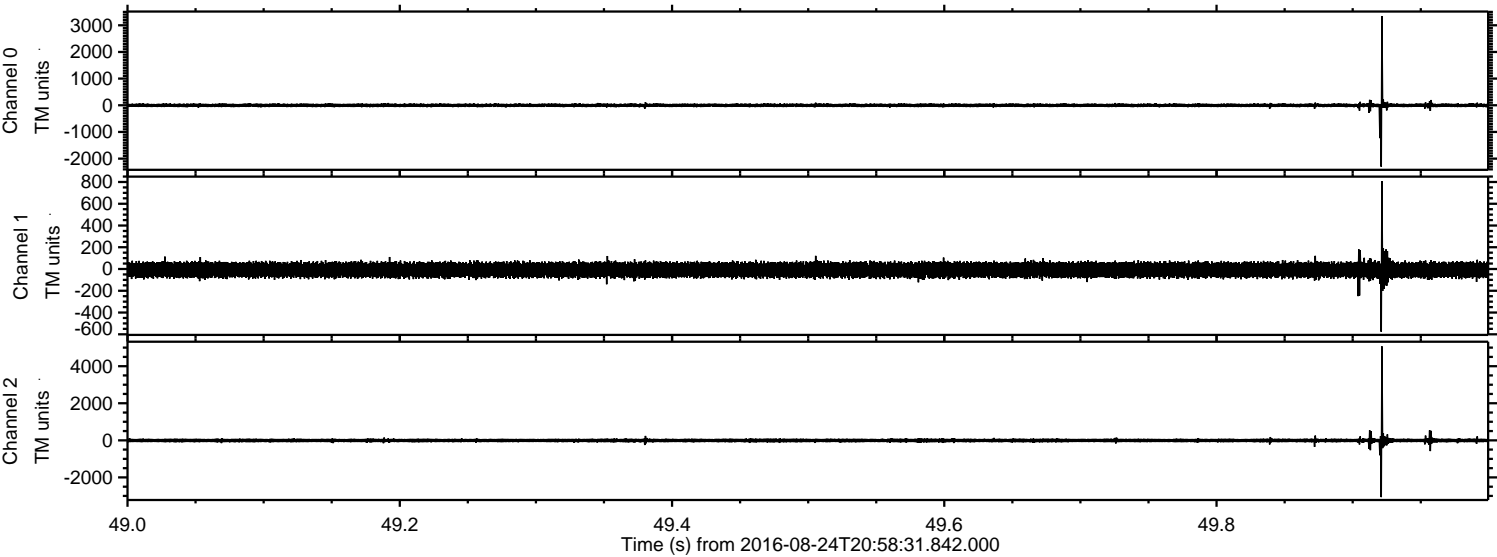


Processed Wed Aug 24 23:06:05 2016 by ELM ver.2012-10-06 from 001\_\_elm20160824\_205830\_\_dat00.bin





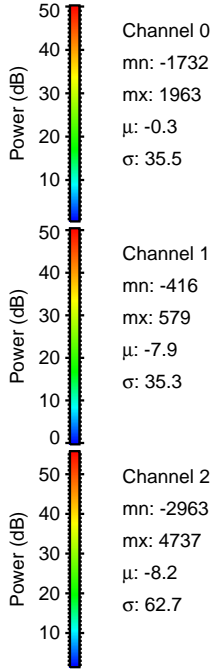
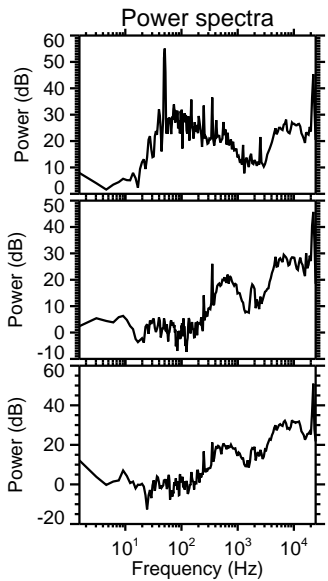
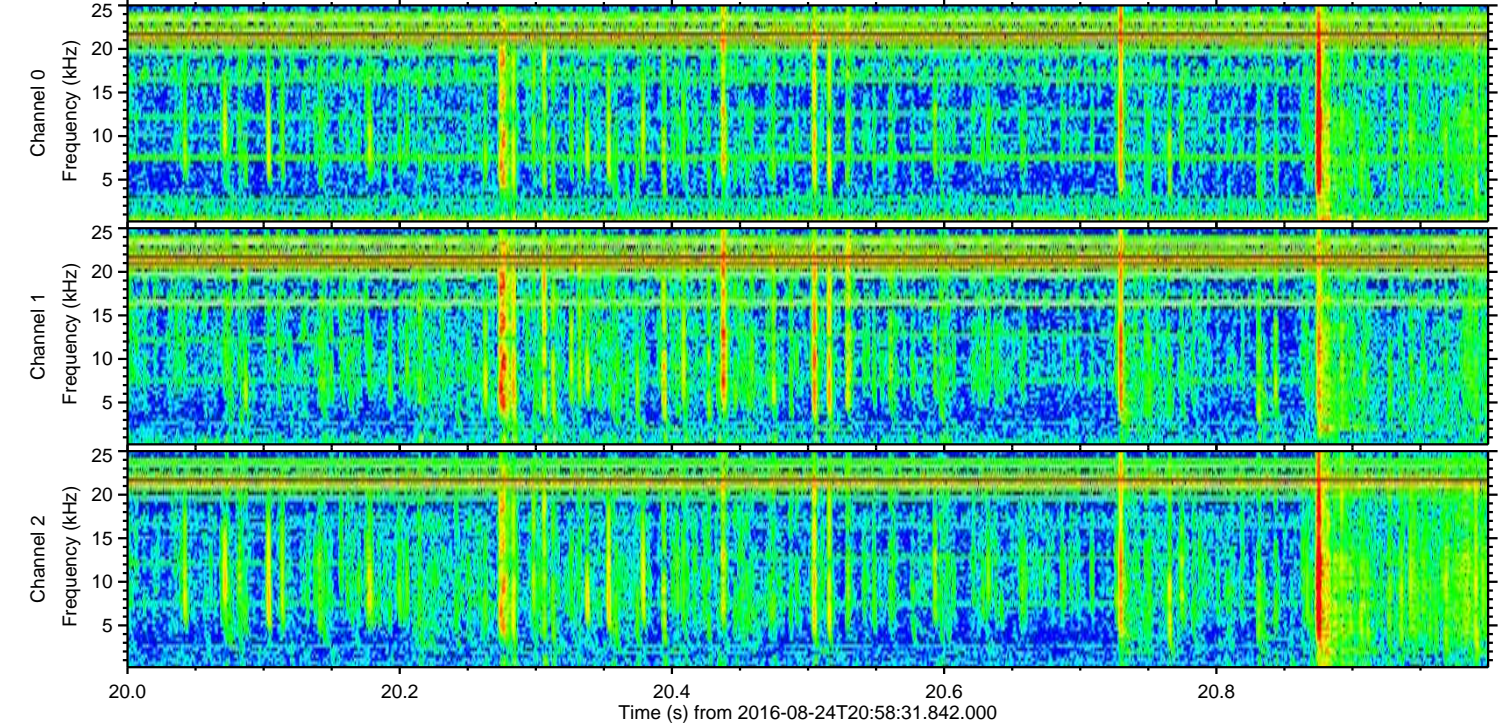
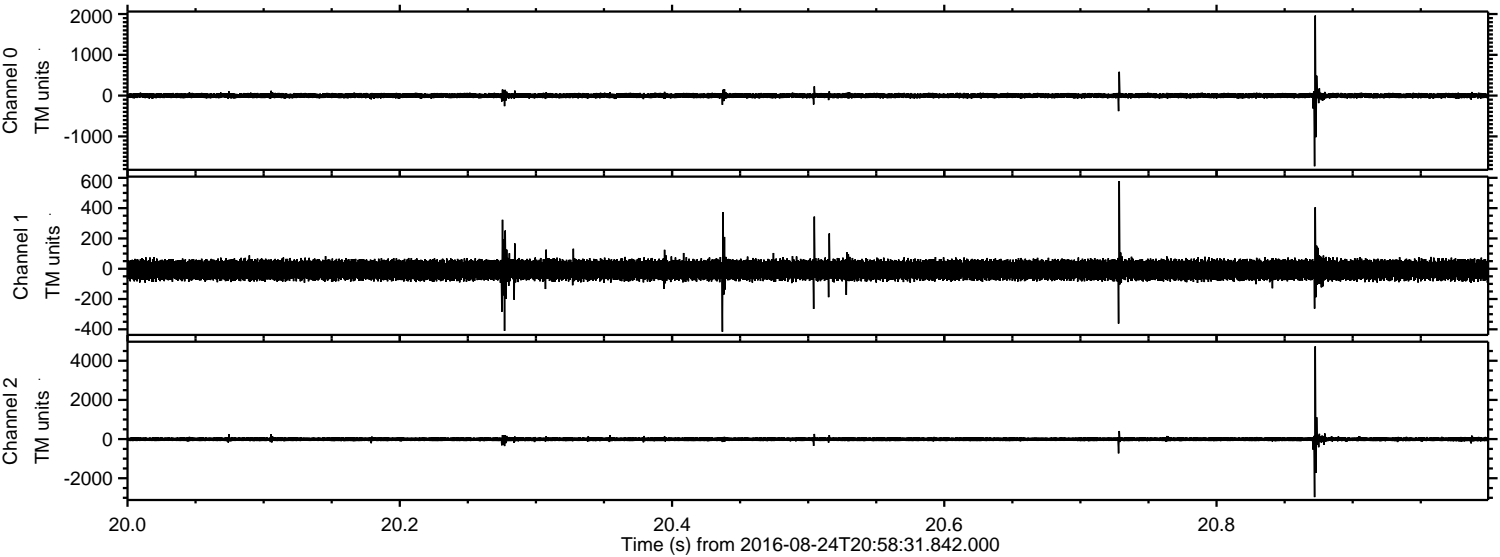
Processed Wed Aug 24 23:06:06 2016 by ELM ver.2012-10-06 from 001\_\_elm20160824\_205830\_\_dat00.bin





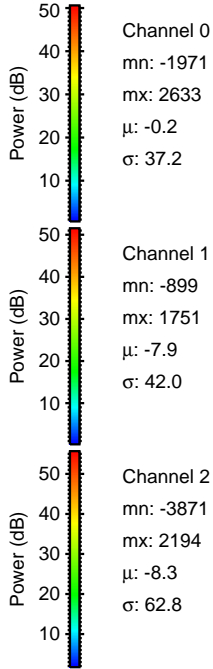
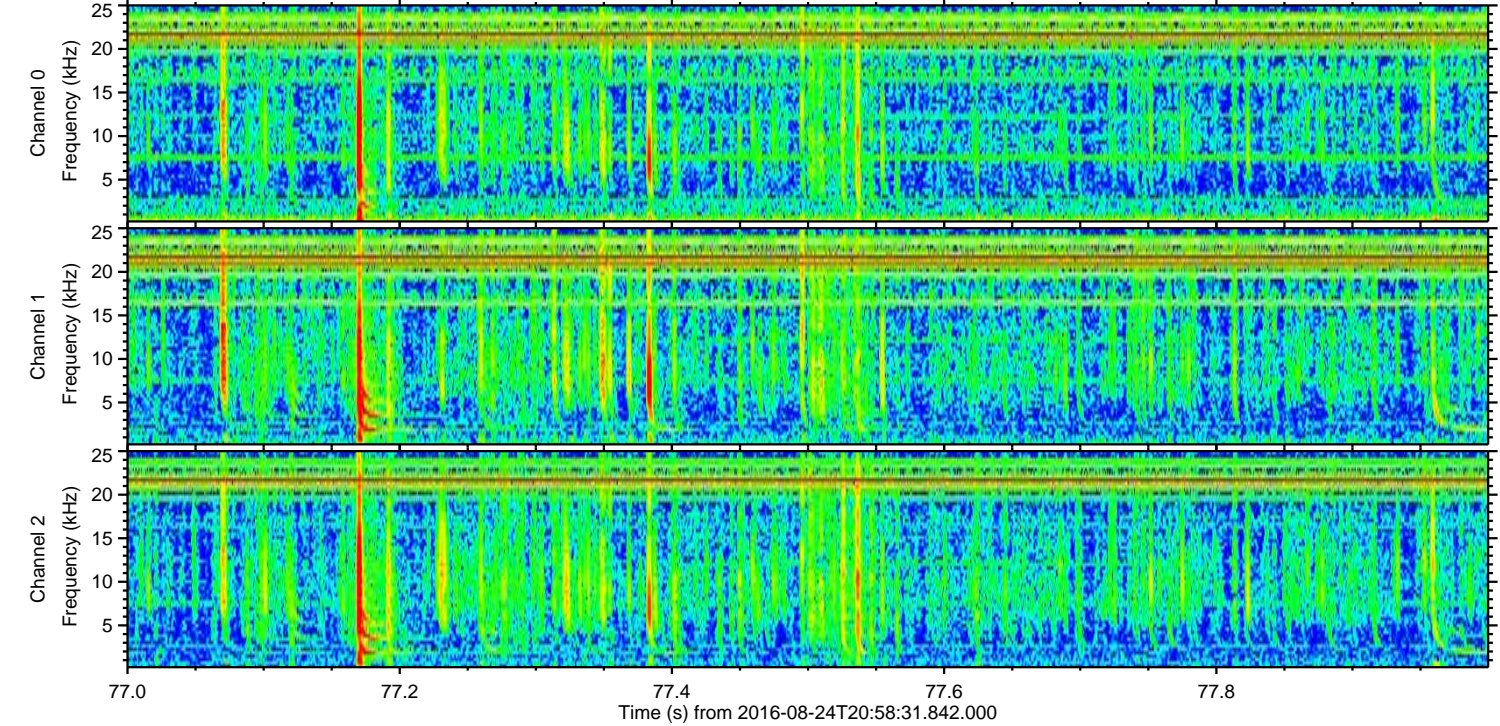
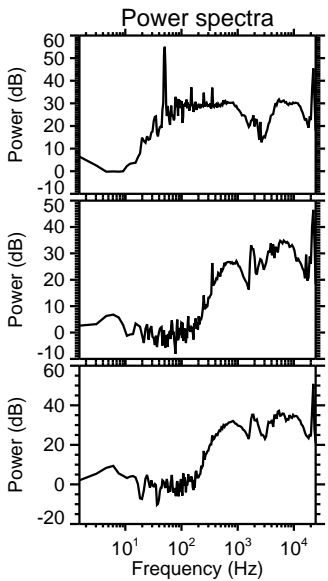
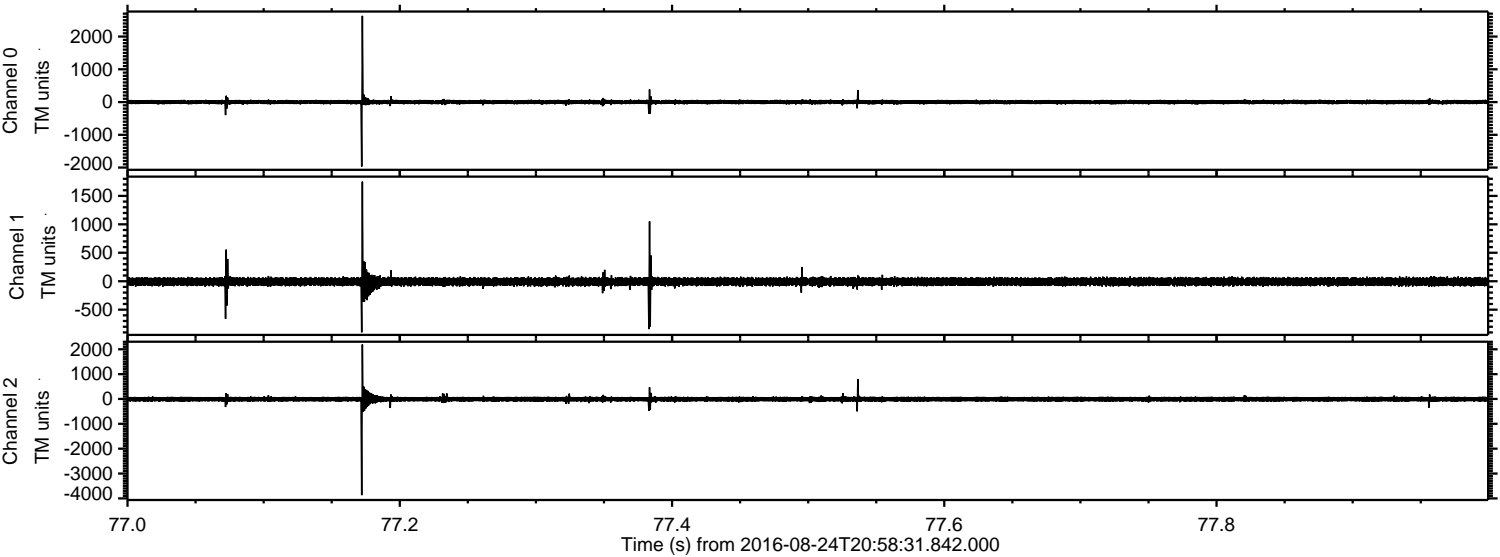
ELMAVAN 3D WAVEFORMS (Measured data sampled at 50 kHz) 51000 packets of 144 samples from 2016-08-24T20:58:31.842.000. Part 21/147

Processed Wed Aug 24 23:06:07 2016 by ELM ver.2012-10-06 from 001\_\_elm20160824\_205830\_\_dat00.bin



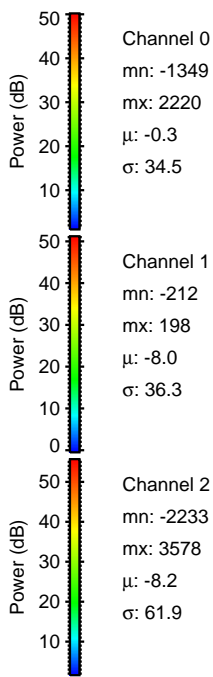
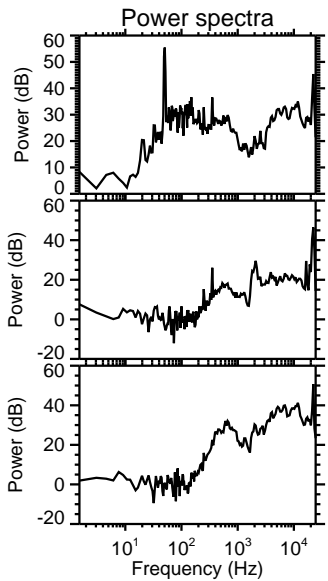
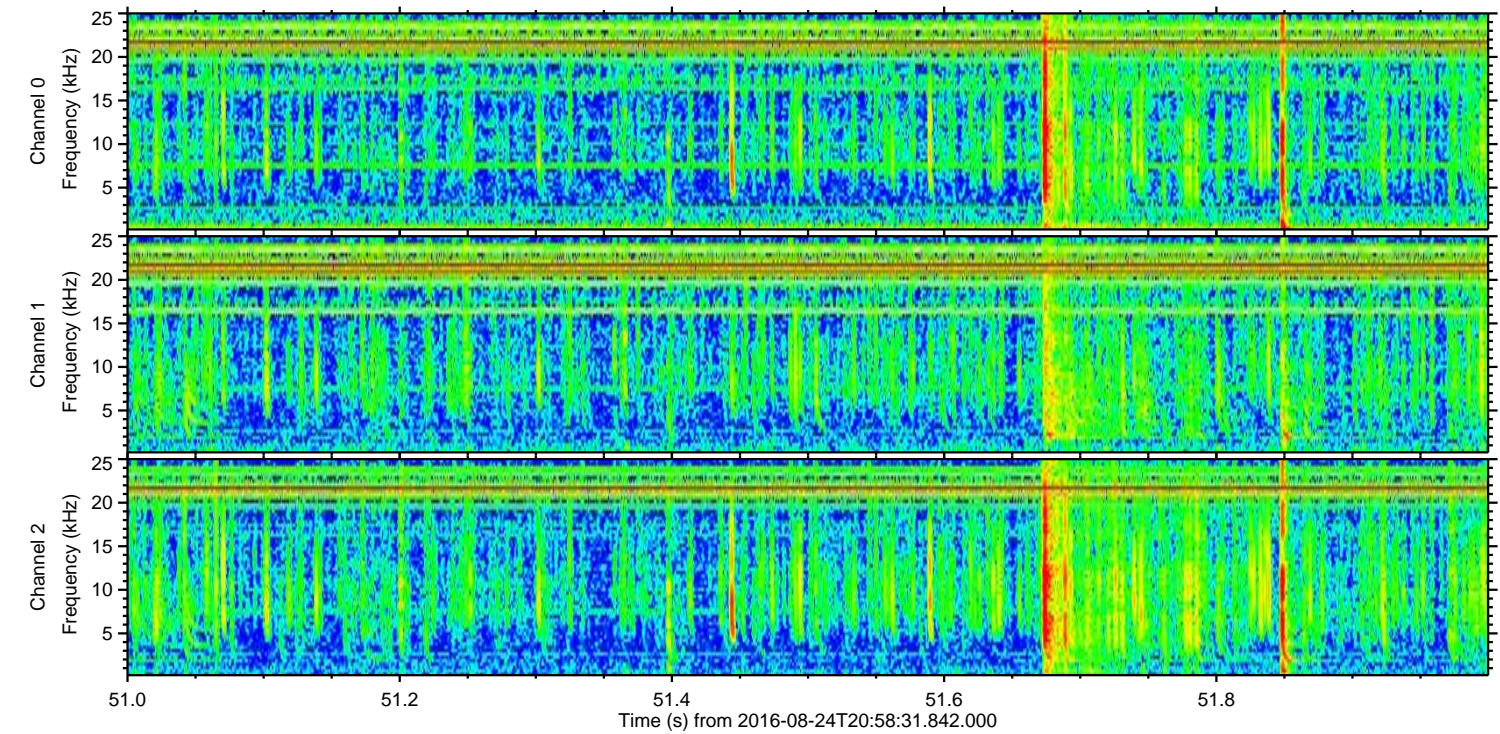
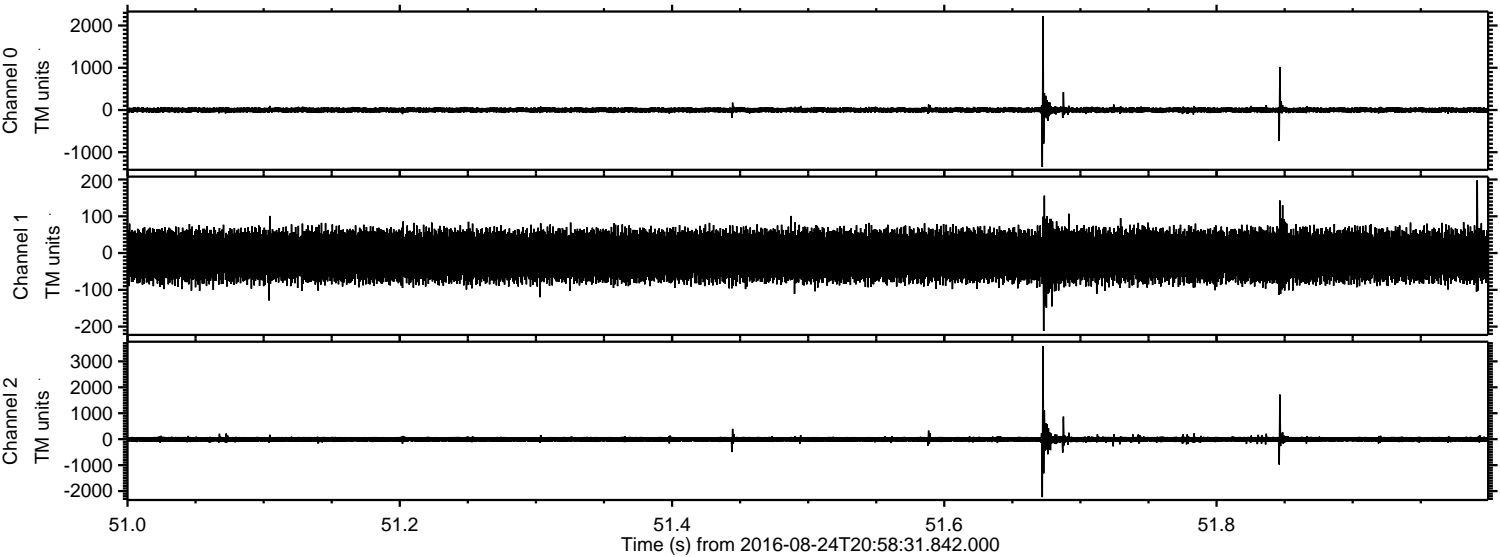


Processed Wed Aug 24 23:06:08 2016 by ELM ver.2012-10-06 from 001\_\_elm20160824\_205830\_\_dat00.bin





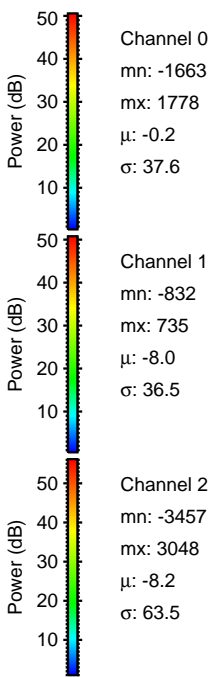
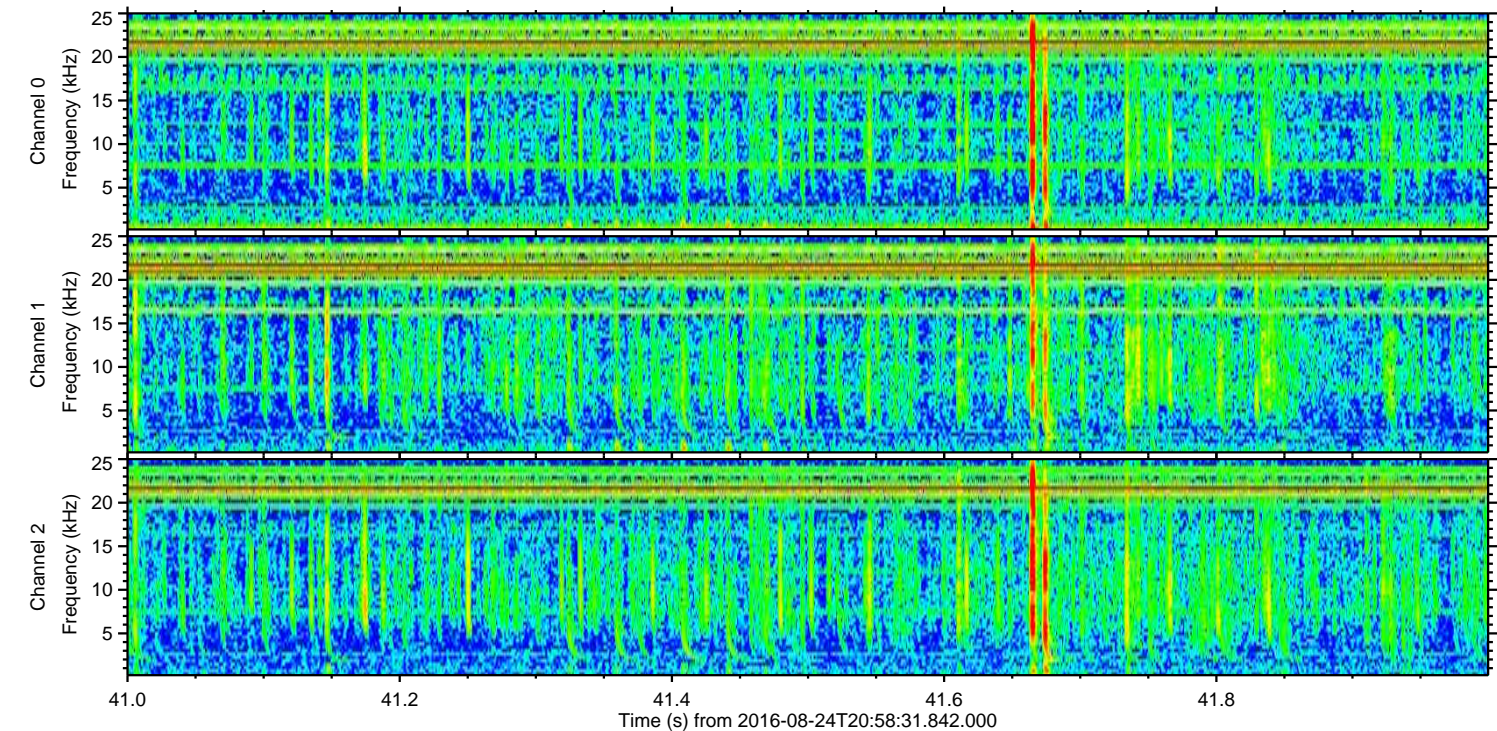
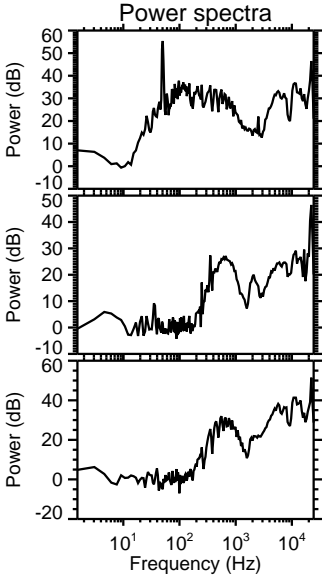
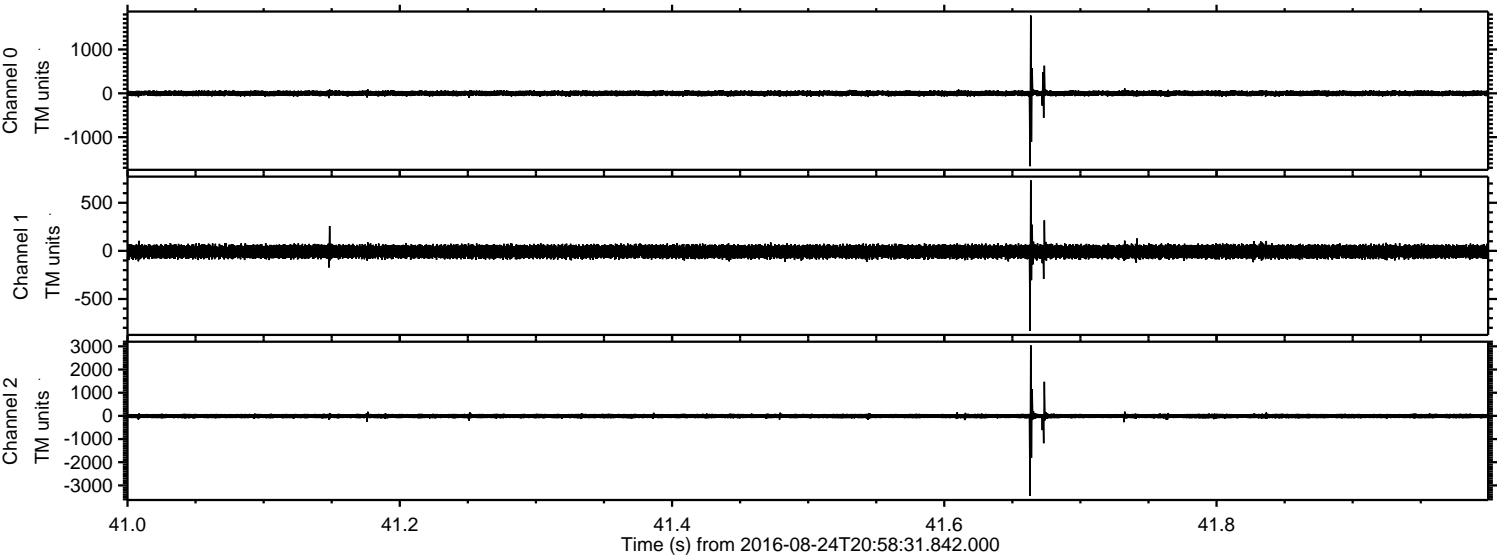
Processed Wed Aug 24 23:06:09 2016 by ELM ver.2012-10-06 from 001\_\_elm20160824\_205830\_\_dat00.bin





ELMAVAN 3D WAVEFORMS (Measured data sampled at 50 kHz) 51000 packets of 144 samples from 2016-08-24T20:58:31.842.000. Part 42/147

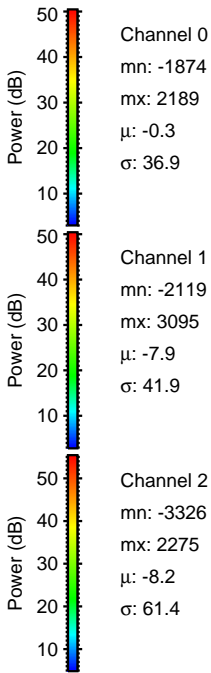
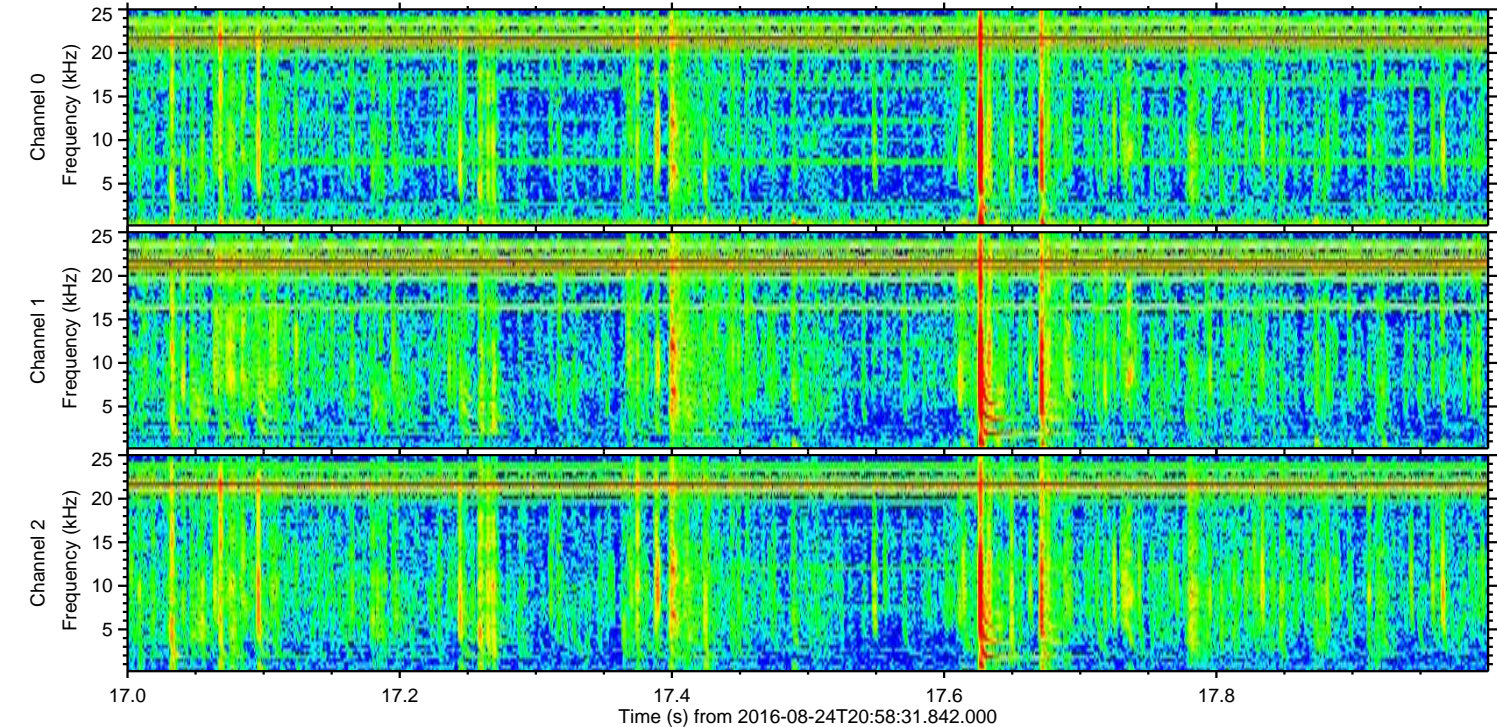
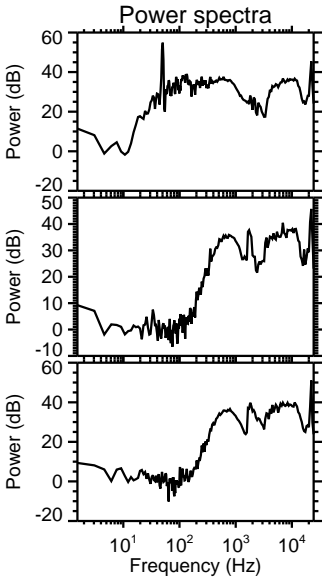
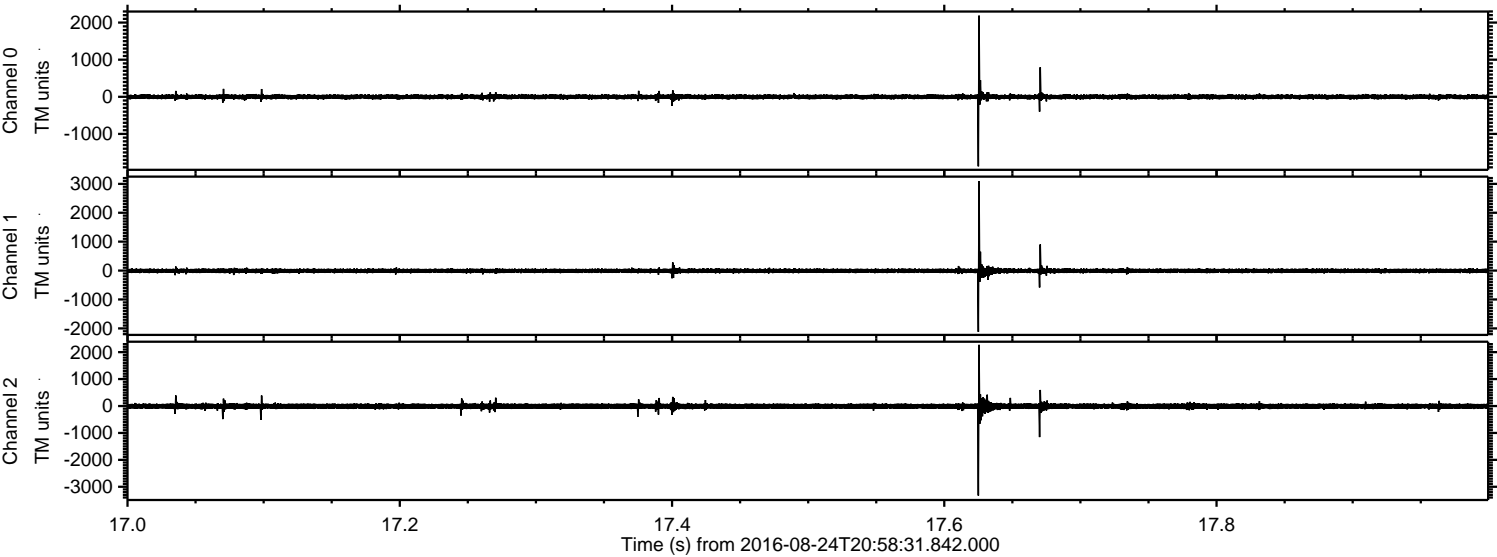
Processed Wed Aug 24 23:06:10 2016 by ELM ver.2012-10-06 from 001\_\_elm20160824\_205830\_\_dat00.bin





ELMAVAN 3D WAVEFORMS (Measured data sampled at 50 kHz) 51000 packets of 144 samples from 2016-08-24T20:58:31.842.000. Part 18/147

Processed Wed Aug 24 23:06:11 2016 by ELM ver.2012-10-06 from 001\_\_elm20160824\_205830\_\_dat00.bin



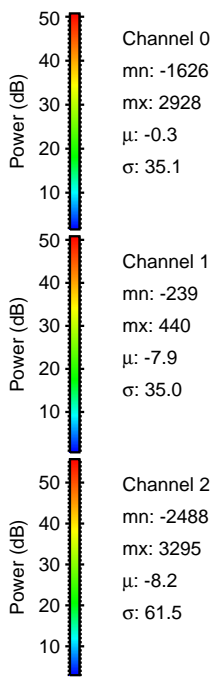
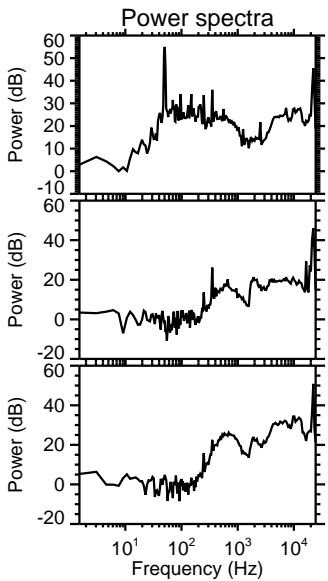
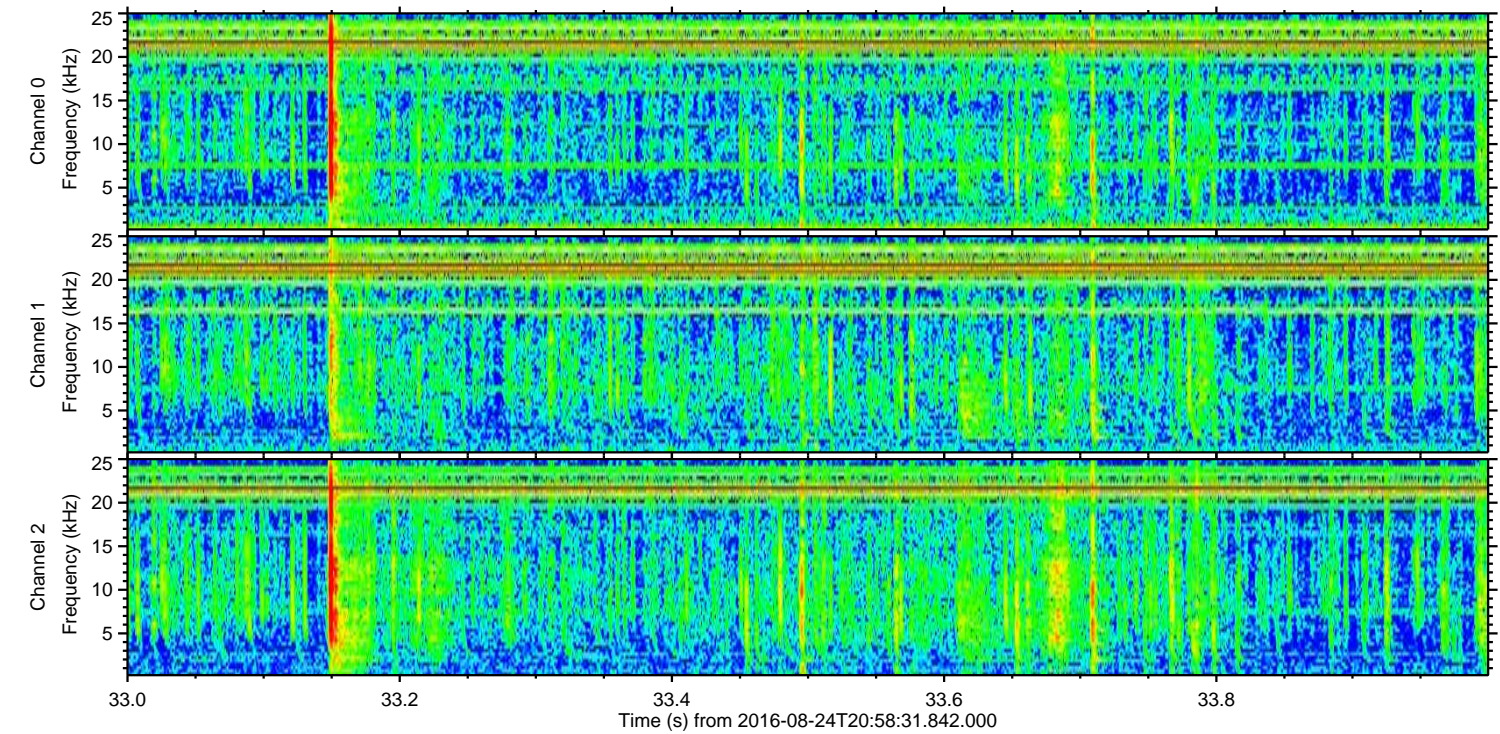
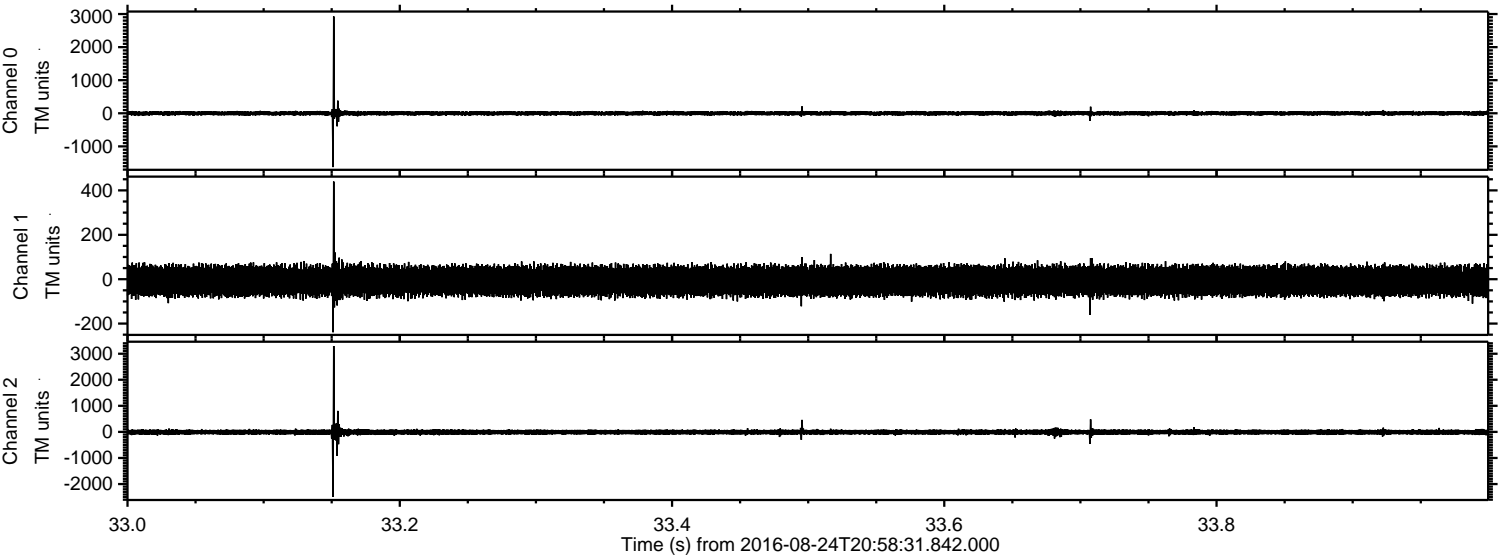
Channel 0  
mn: -1874  
mx: 2189  
 $\mu$ : -0.3  
 $\sigma$ : 36.9

Channel 1  
mn: -2119  
mx: 3095  
 $\mu$ : -7.9  
 $\sigma$ : 41.9

Channel 2  
mn: -3326  
mx: 2275  
 $\mu$ : -8.2  
 $\sigma$ : 61.4



Processed Wed Aug 24 23:06:12 2016 by ELM ver.2012-10-06 from 001\_\_elm20160824\_205830\_\_dat00.bin



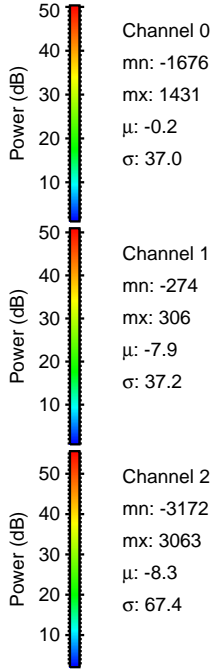
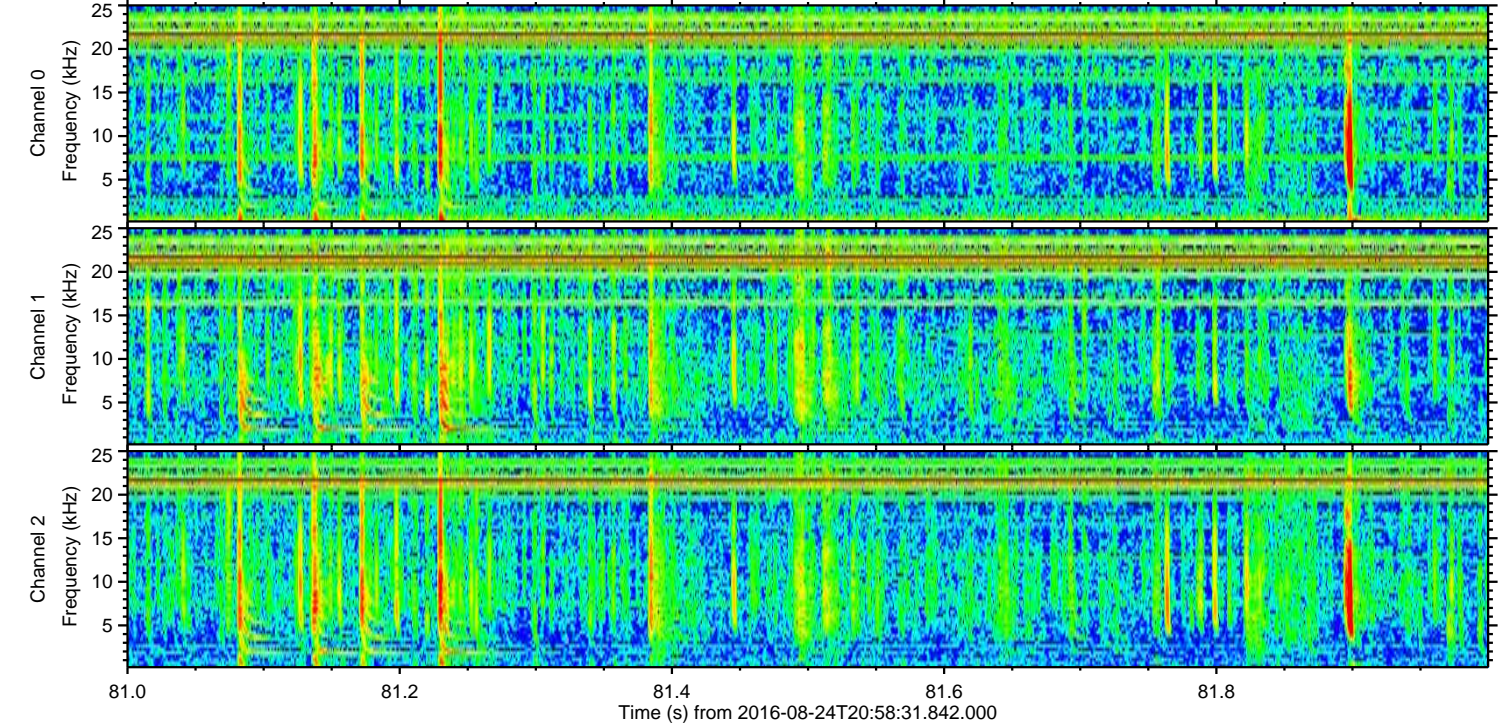
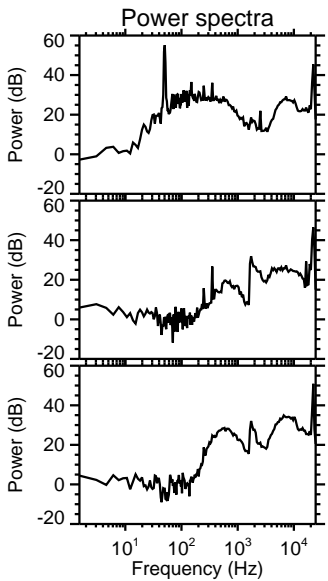
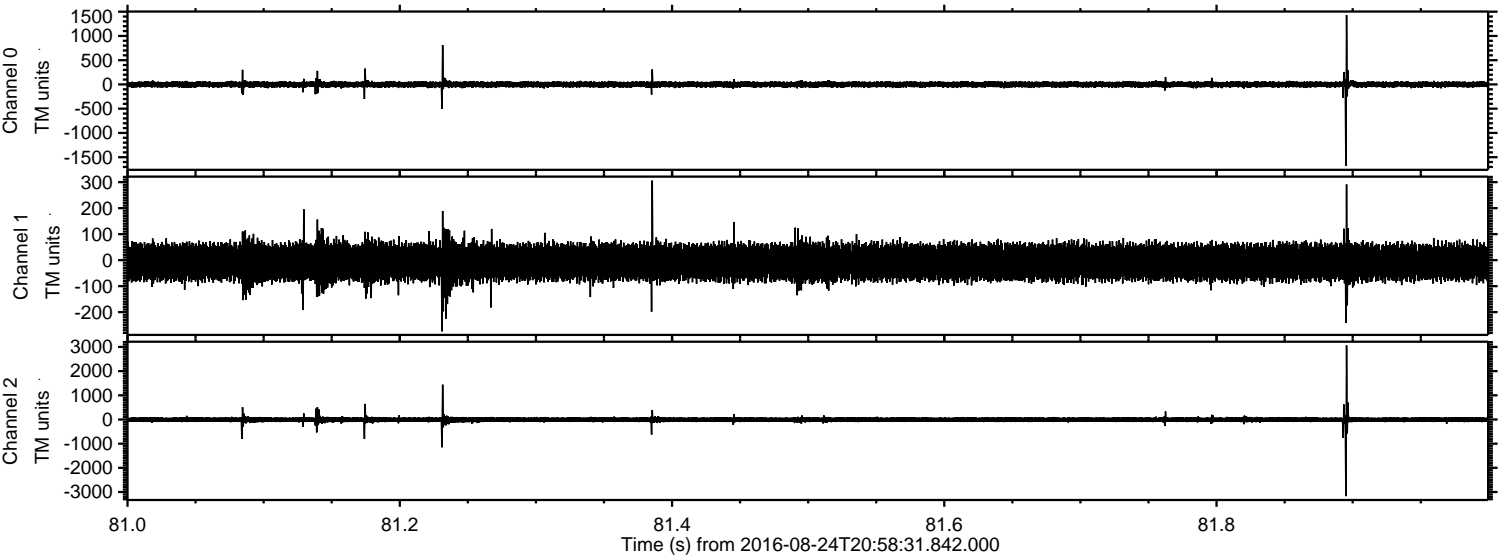
Channel 0  
mn: -1626  
mx: 2928  
 $\mu$ : -0.3  
 $\sigma$ : 35.1

Channel 1  
mn: -239  
mx: 440  
 $\mu$ : -7.9  
 $\sigma$ : 35.0

Channel 2  
mn: -2488  
mx: 3295  
 $\mu$ : -8.2  
 $\sigma$ : 61.5



Processed Wed Aug 24 23:06:13 2016 by ELM ver.2012-10-06 from 001\_\_elm20160824\_205830\_\_dat00.bin





Processed Wed Aug 24 23:06:14 2016 by ELM ver.2012-10-06 from 001\_\_elm20160824\_205830\_\_dat00.bin

