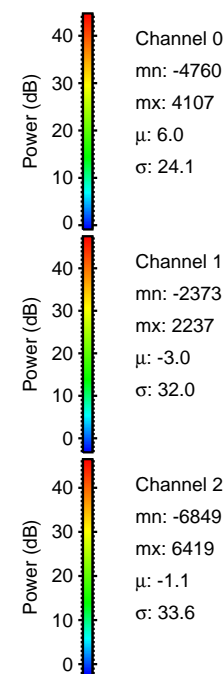
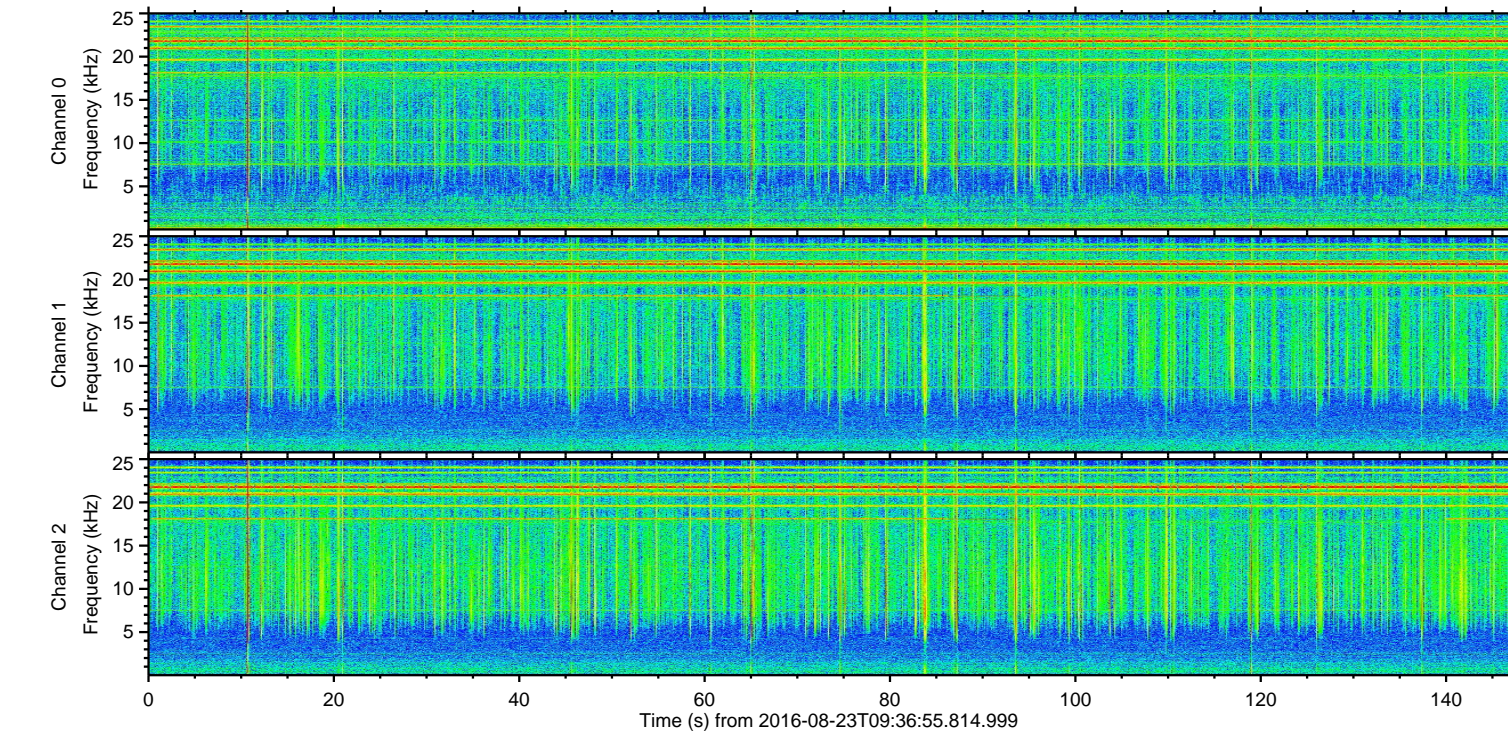
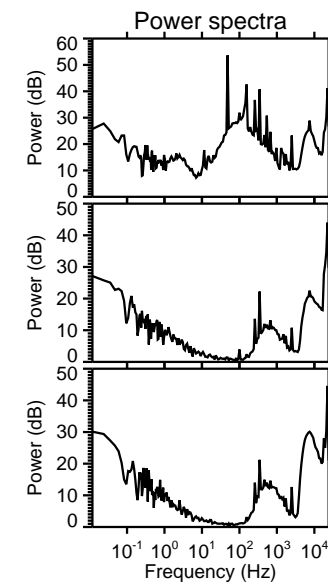
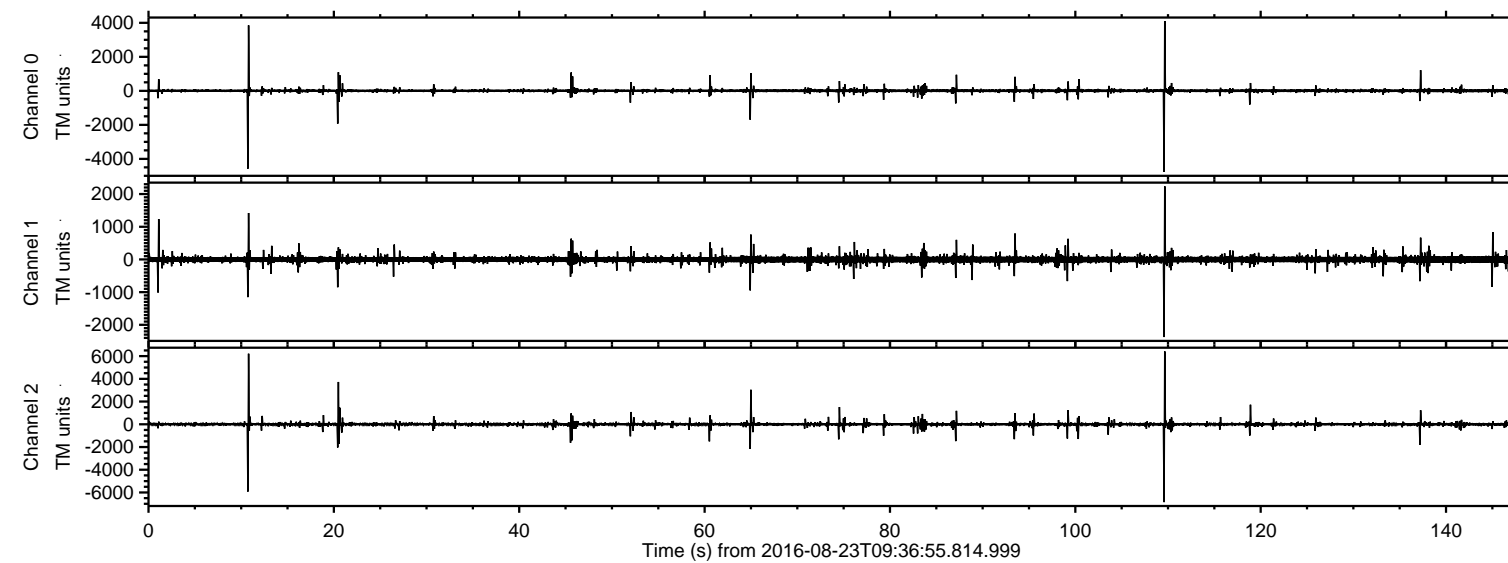


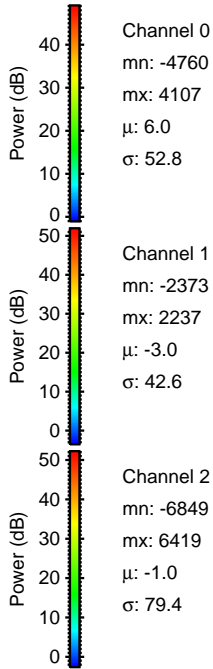
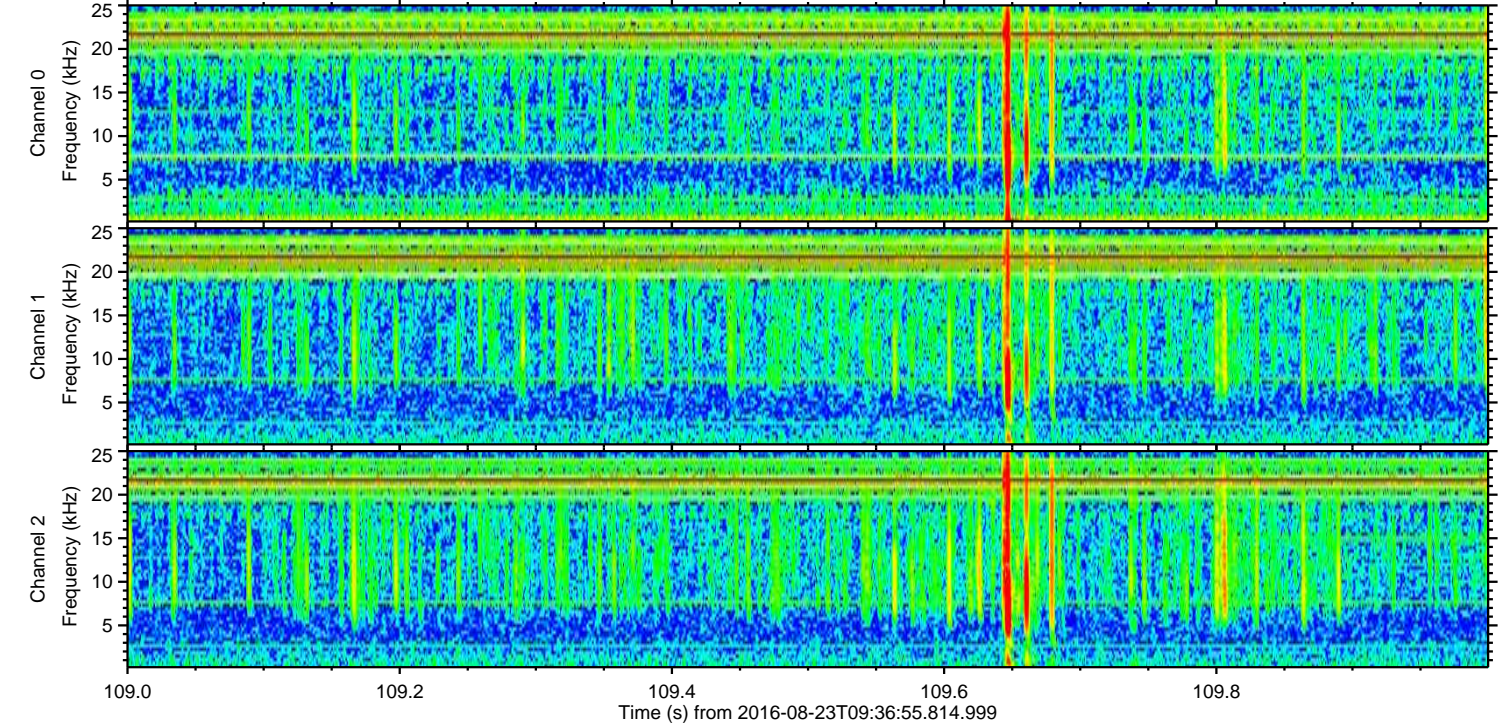
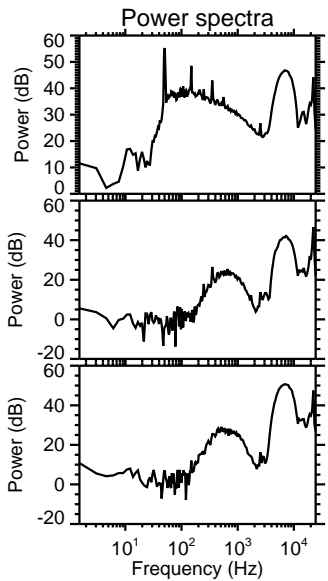
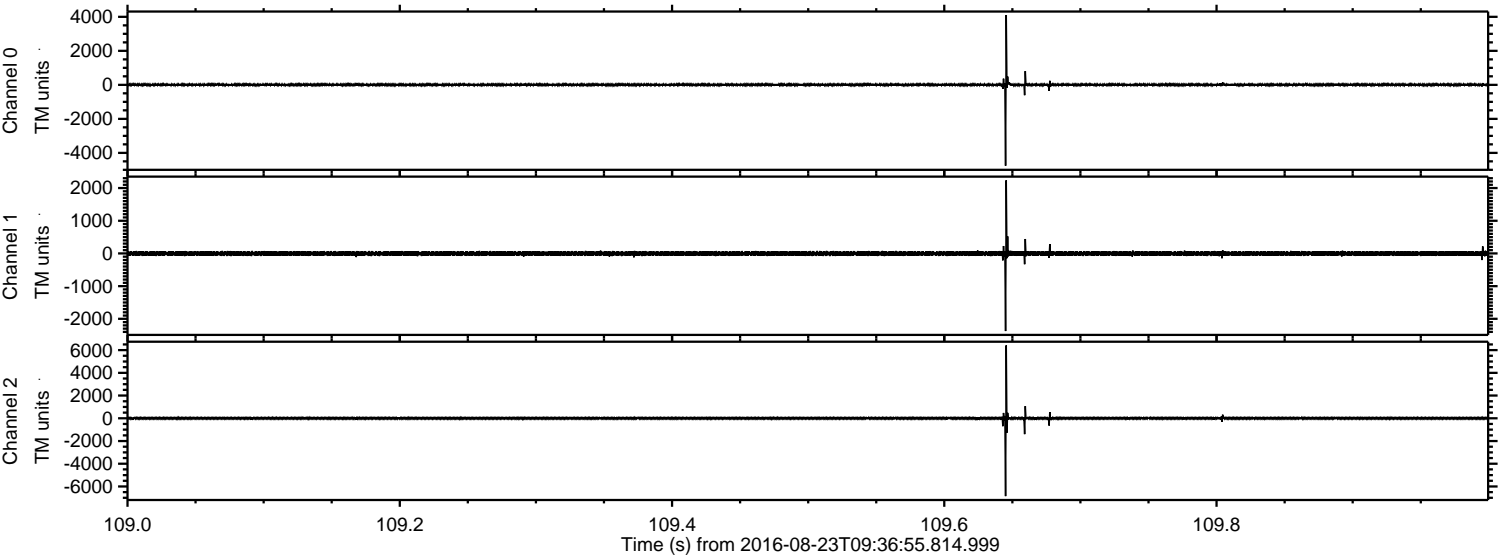
ELMAVAN 3D WAVEFORMS (Measured data sampled at 50 kHz) 51000 packets of 144 samples from 2016-08-23T09:36:55.814.999.

Processed Tue Aug 23 11:45:08 2016 by ELM ver.2012-10-06 from 001__elm20160823_093654__dat00.bin



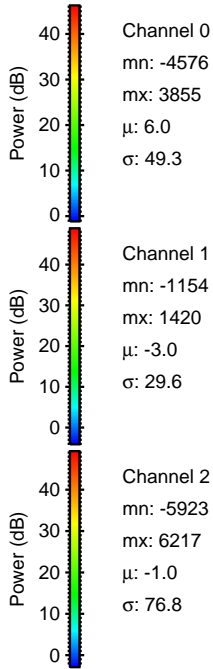
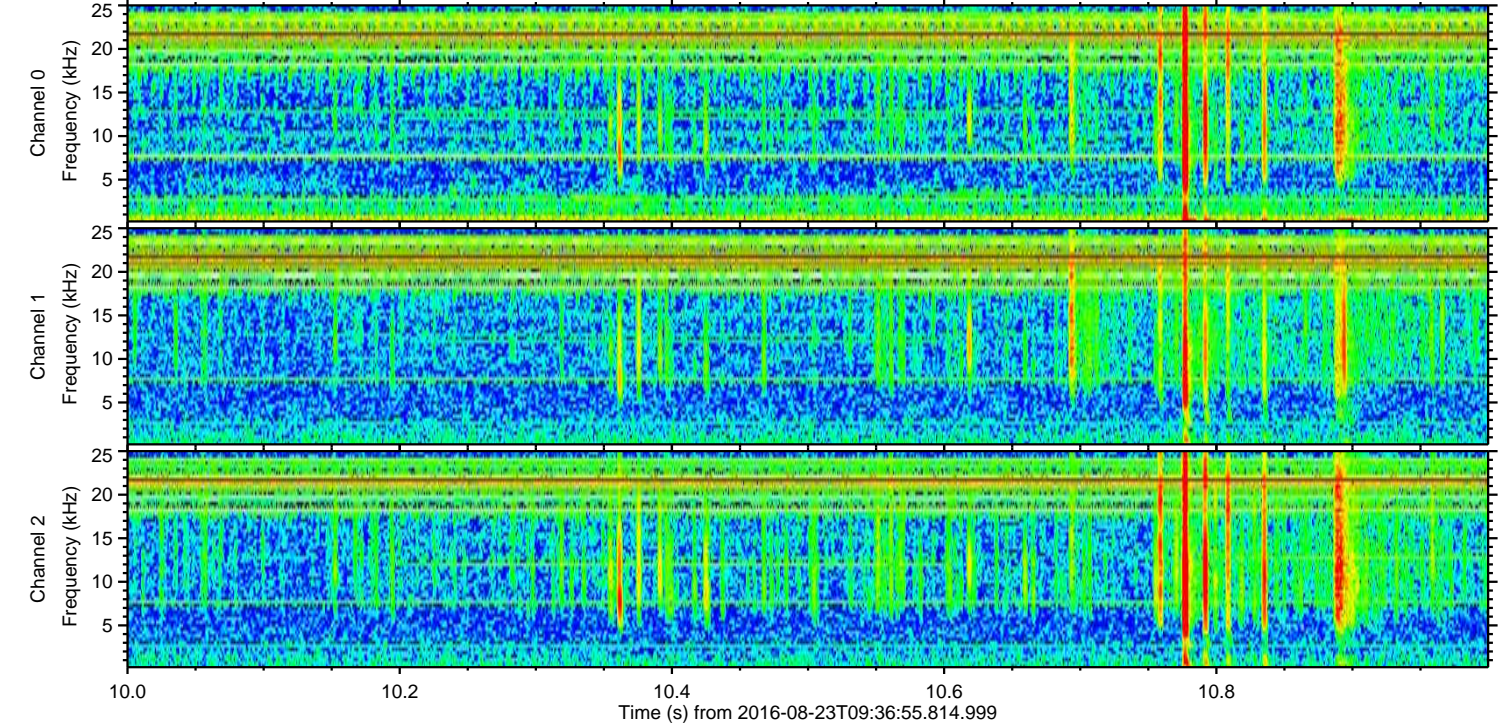
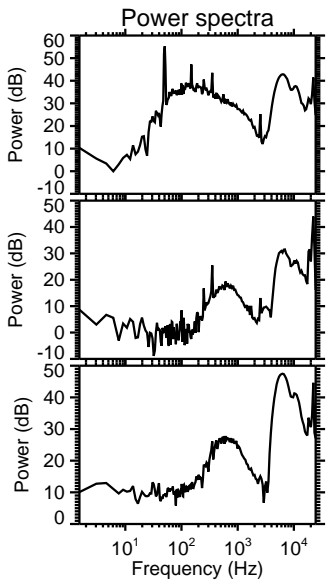
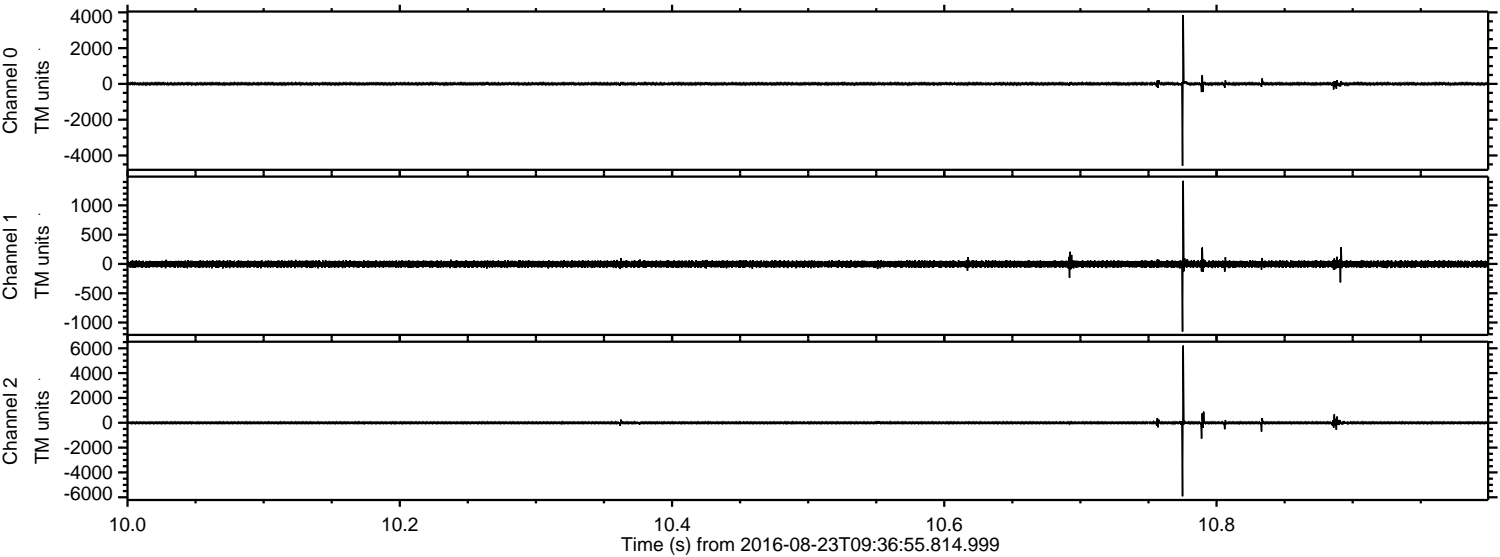
ELMAVAN 3D WAVEFORMS (Measured data sampled at 50 kHz) 51000 packets of 144 samples from 2016-08-23T09:36:55.814.999. Part 110/147

Processed Tue Aug 23 11:45:19 2016 by ELM ver.2012-10-06 from 001__elm20160823_093654__dat00.bin



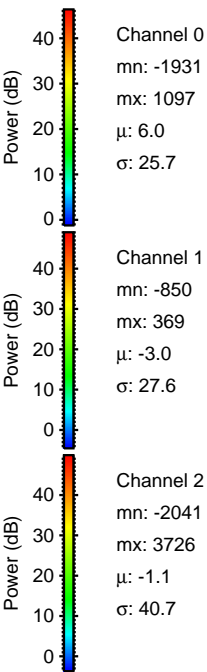
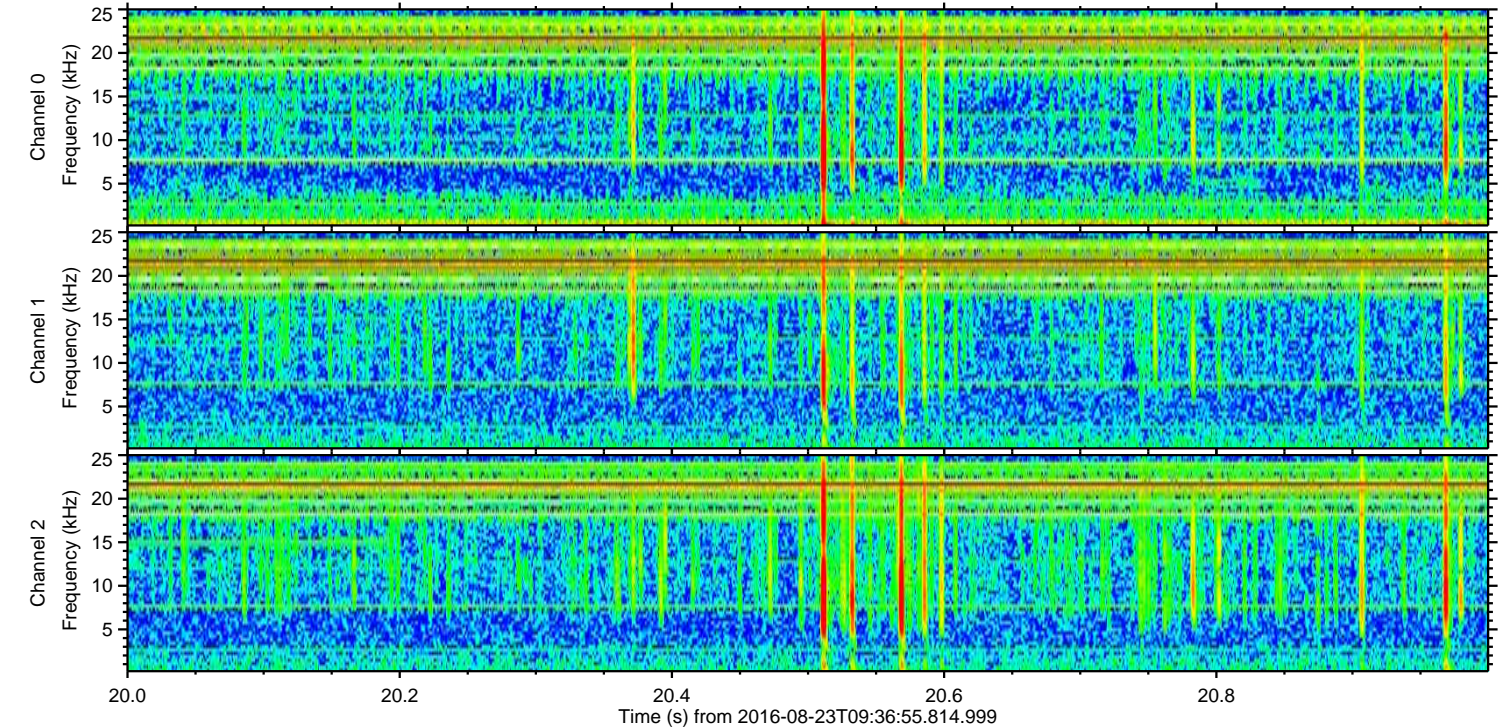
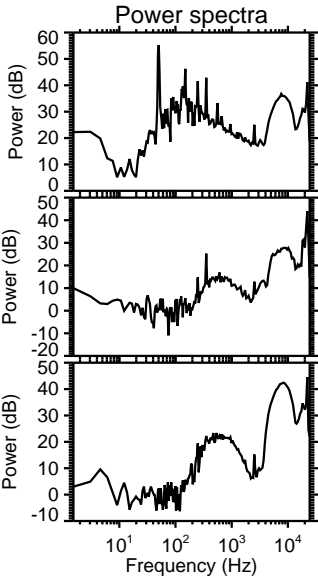
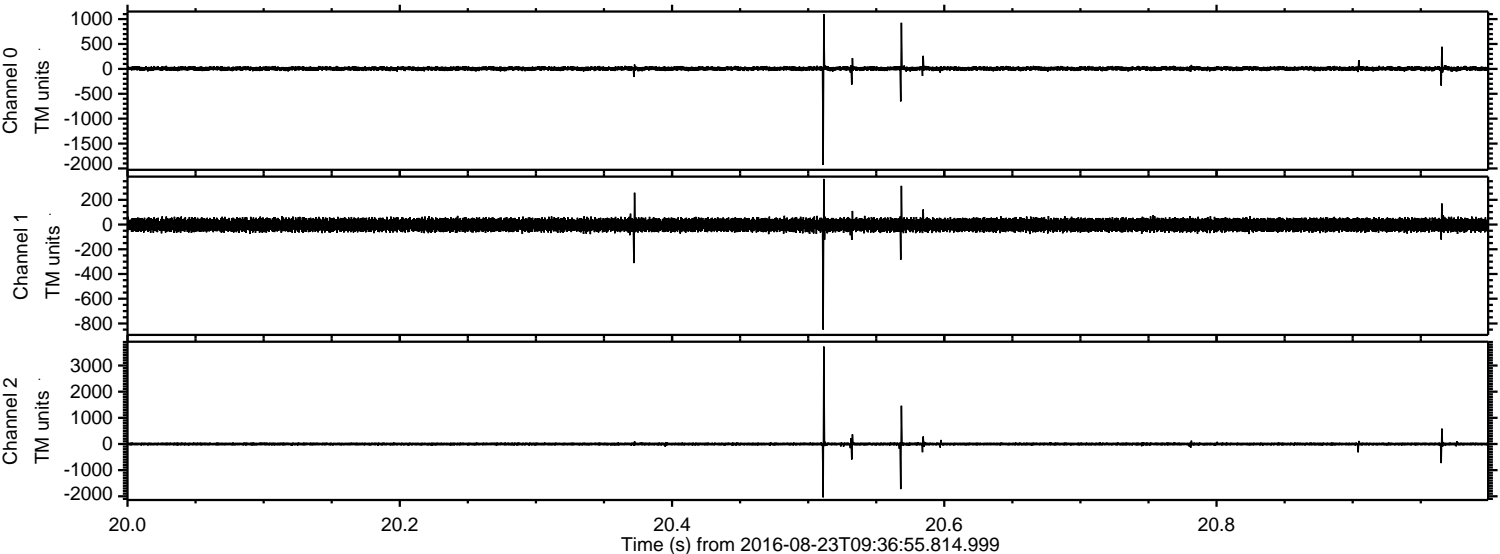
ELMAVAN 3D WAVEFORMS (Measured data sampled at 50 kHz) 51000 packets of 144 samples from 2016-08-23T09:36:55.814.999. Part 11/147

Processed Tue Aug 23 11:45:20 2016 by ELM ver.2012-10-06 from 001__elm20160823_093654__dat00.bin

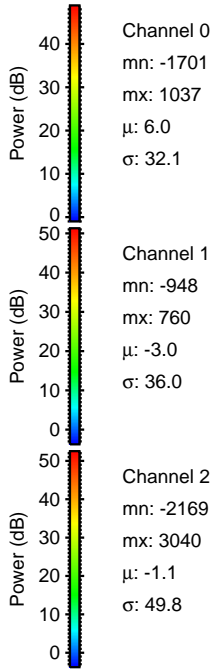
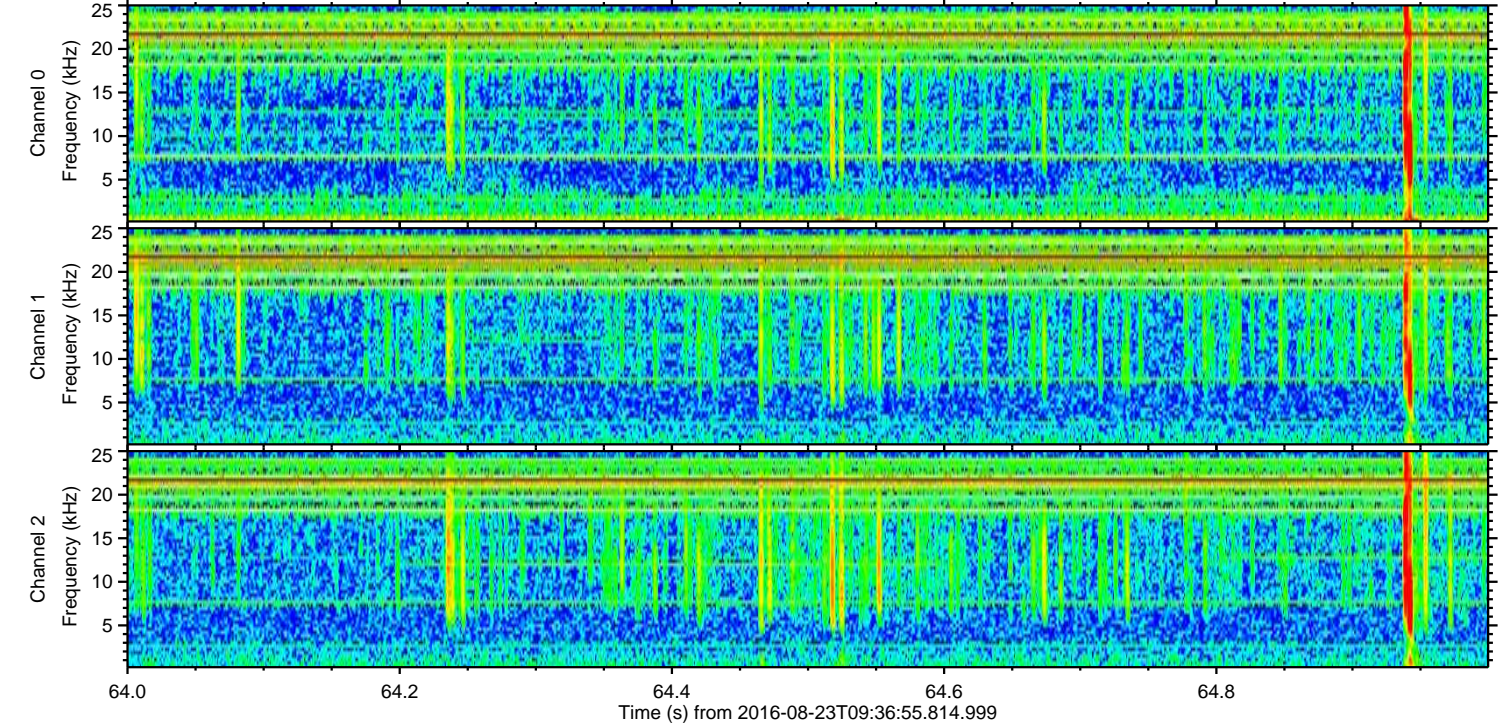
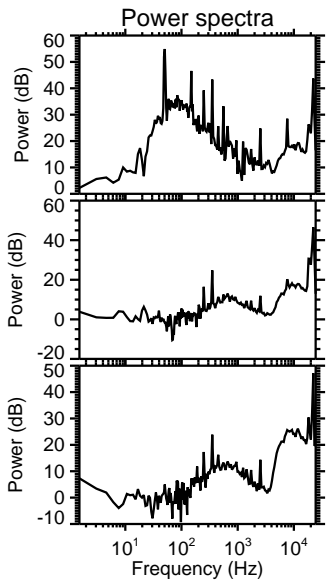
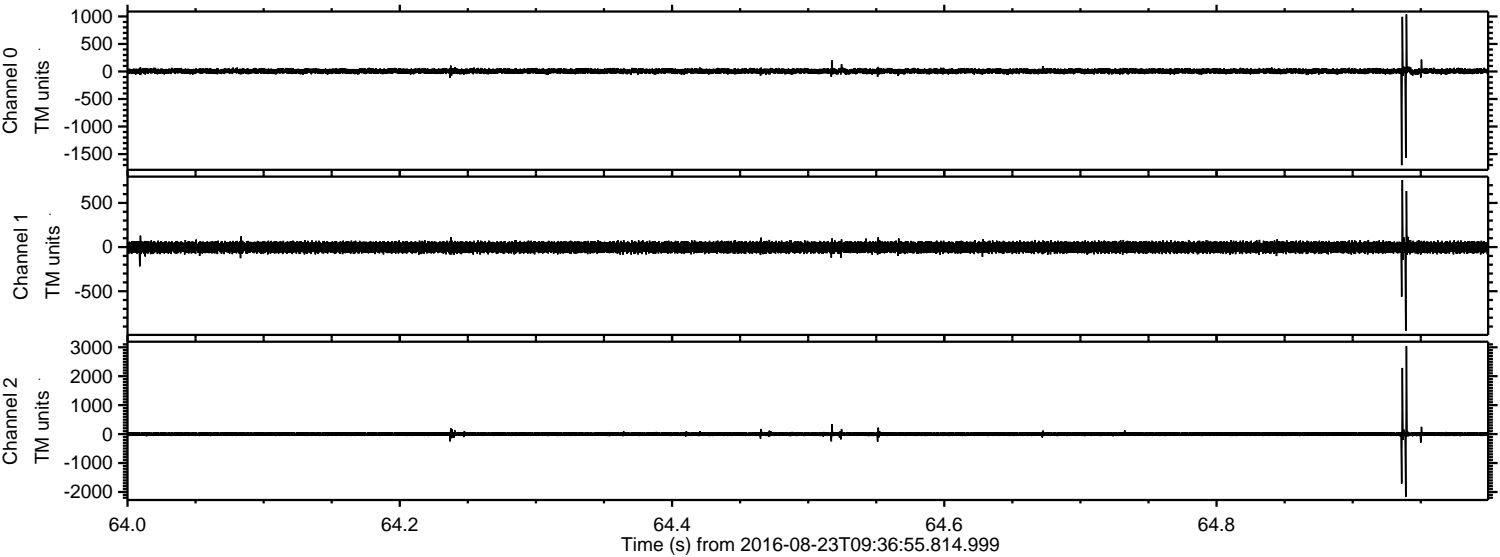


ELMAVAN 3D WAVEFORMS (Measured data sampled at 50 kHz) 51000 packets of 144 samples from 2016-08-23T09:36:55.814.999. Part 21/147

Processed Tue Aug 23 11:45:21 2016 by ELM ver.2012-10-06 from 001__elm20160823_093654__dat00.bin

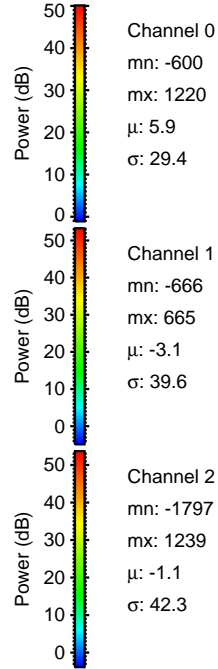
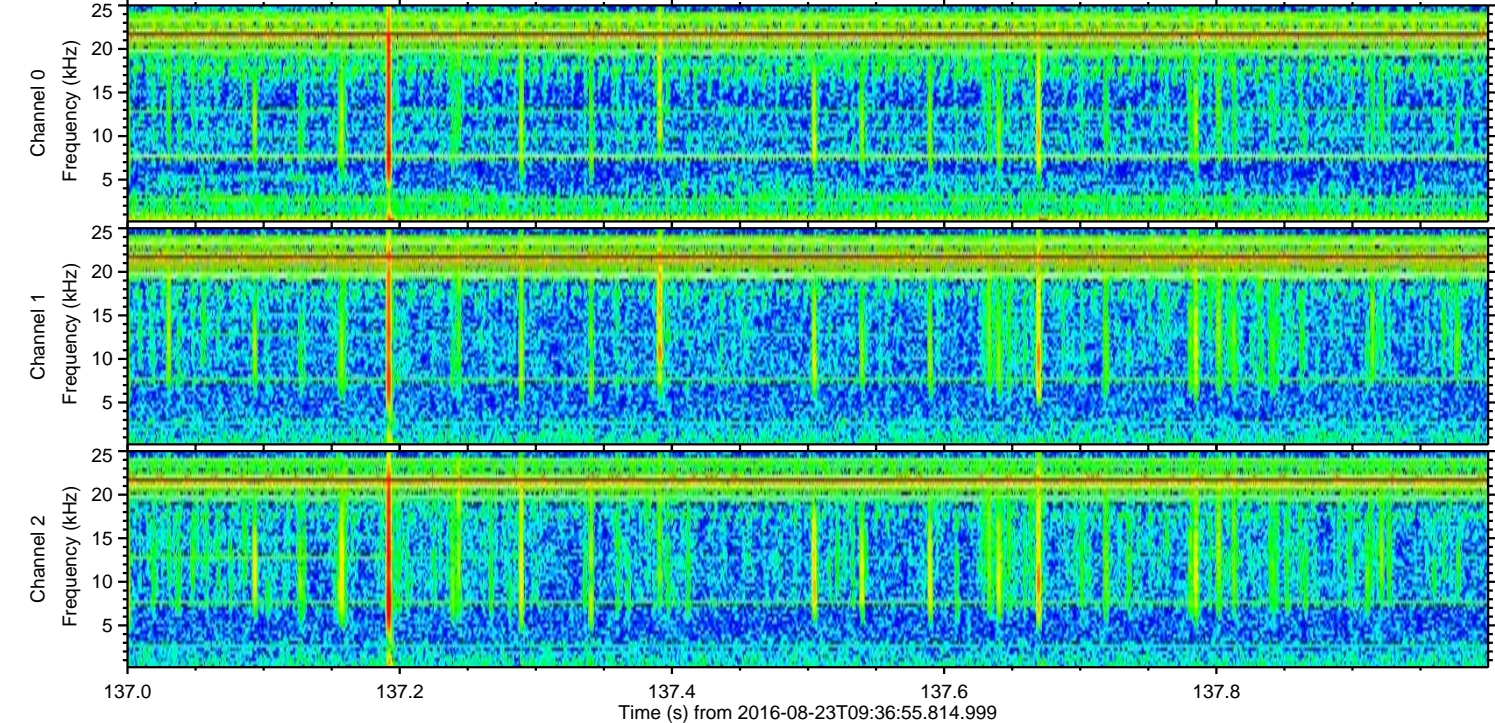
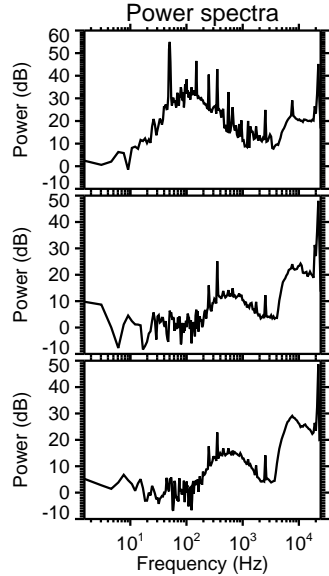
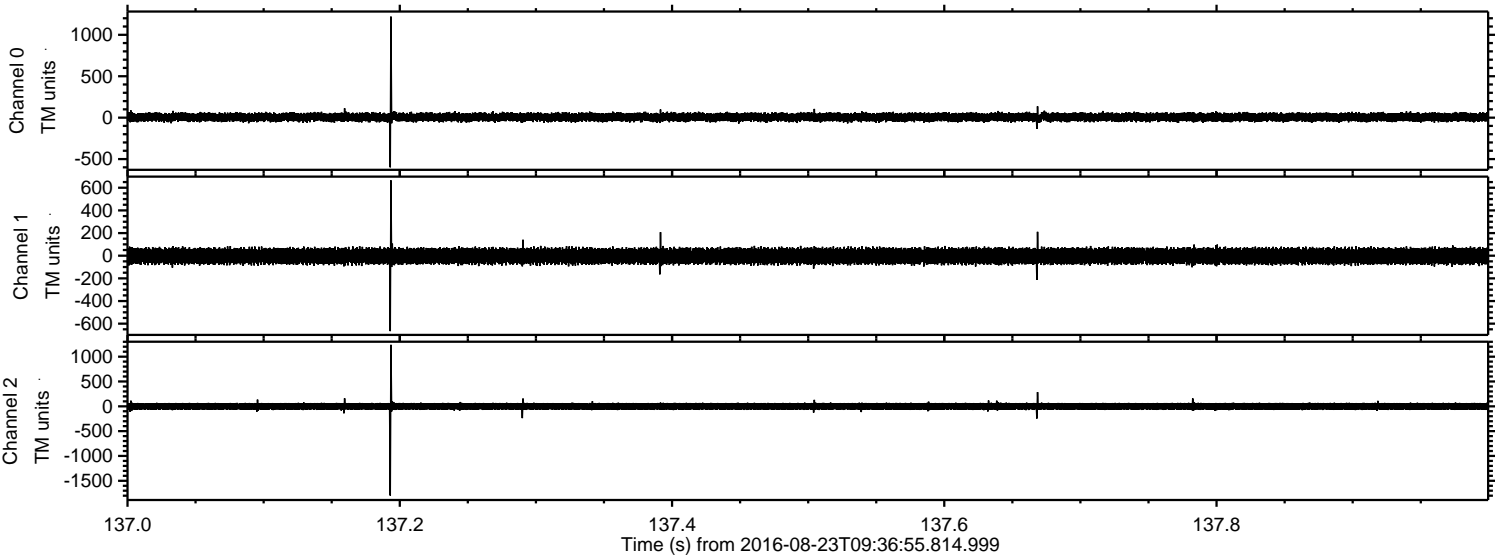


Processed Tue Aug 23 11:45:22 2016 by ELM ver.2012-10-06 from 001__elm20160823_093654__dat00.bin



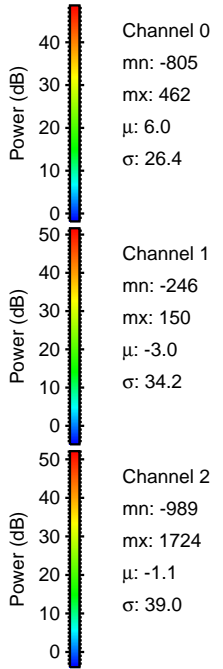
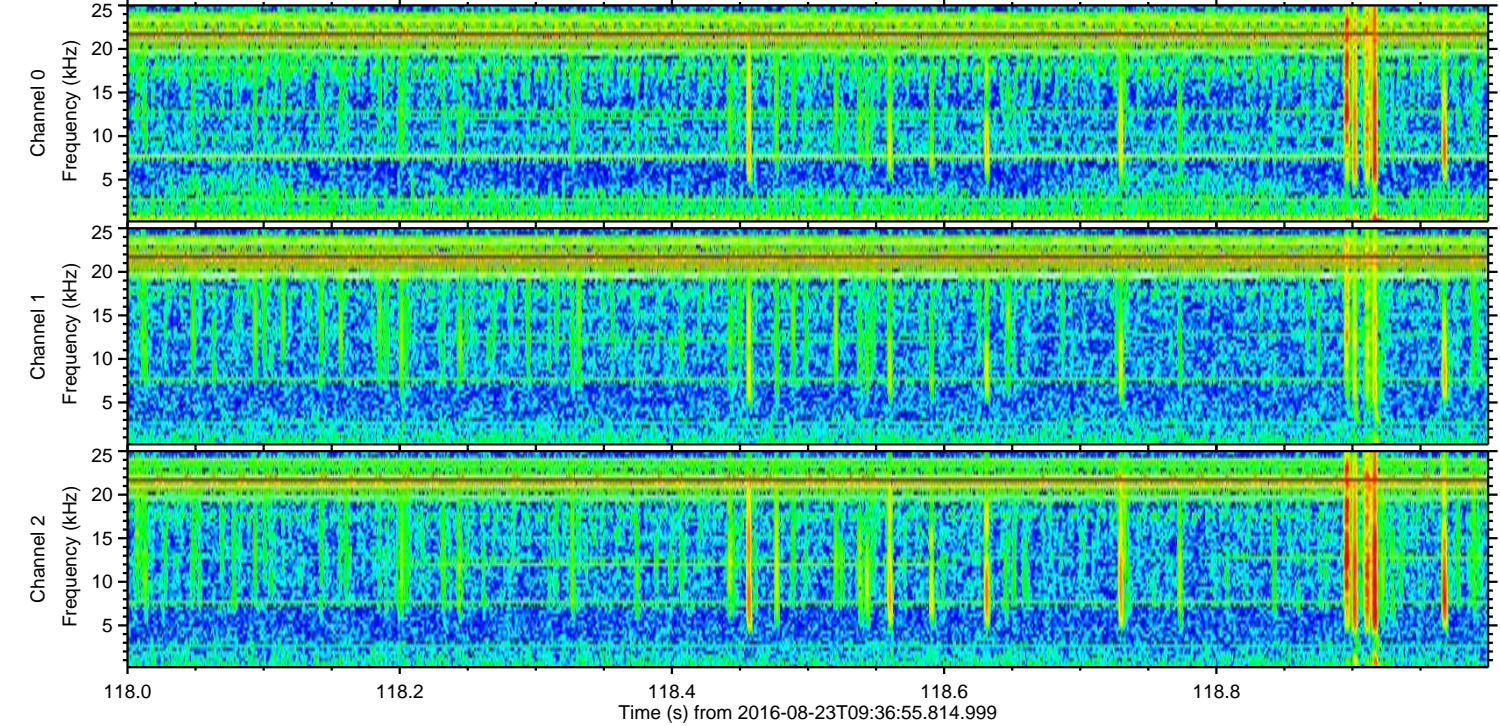
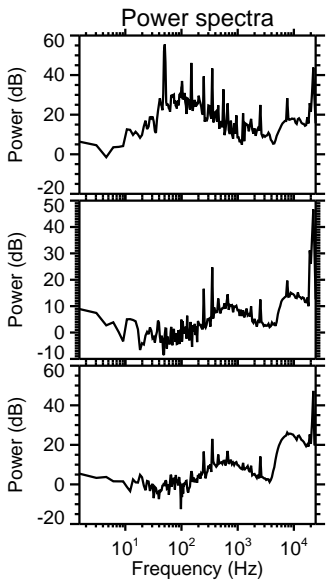
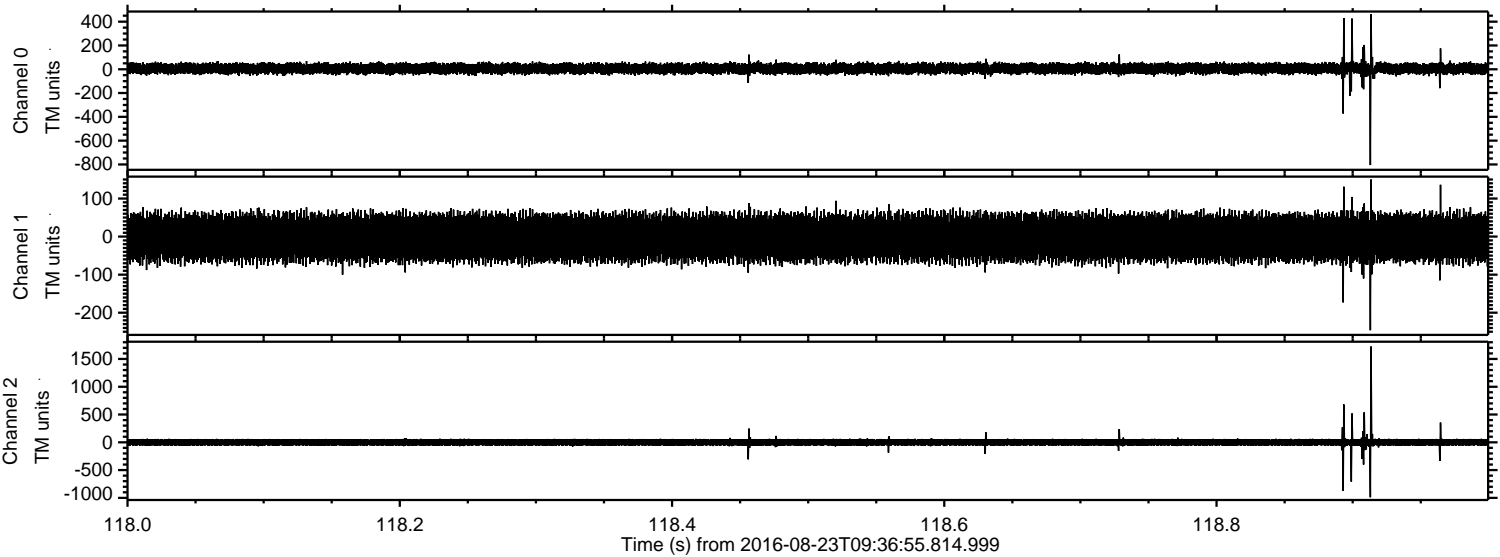
ELMAVAN 3D WAVEFORMS (Measured data sampled at 50 kHz) 51000 packets of 144 samples from 2016-08-23T09:36:55.814.999. Part 138/147

Processed Tue Aug 23 11:45:23 2016 by ELM ver.2012-10-06 from 001__elm20160823_093654__dat00.bin



ELMAVAN 3D WAVEFORMS (Measured data sampled at 50 kHz) 51000 packets of 144 samples from 2016-08-23T09:36:55.814.999. Part 119/147

Processed Tue Aug 23 11:45:24 2016 by ELM ver.2012-10-06 from 001__elm20160823_093654__dat00.bin

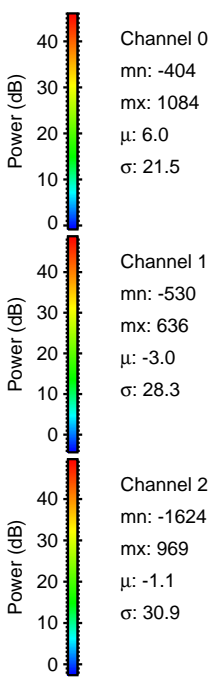
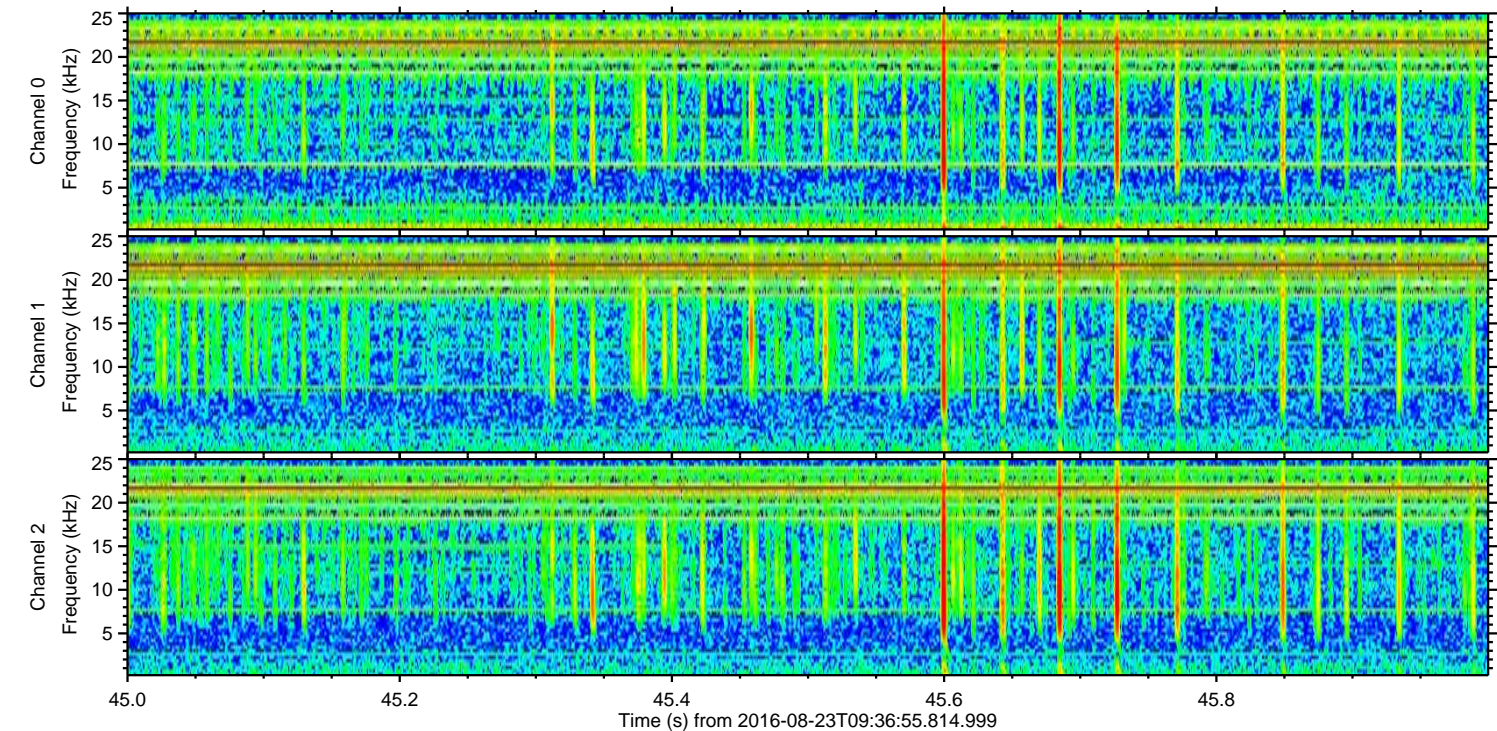
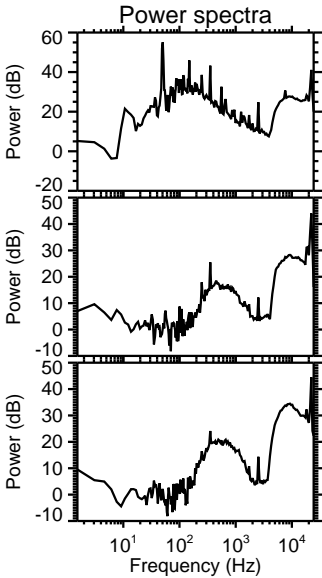
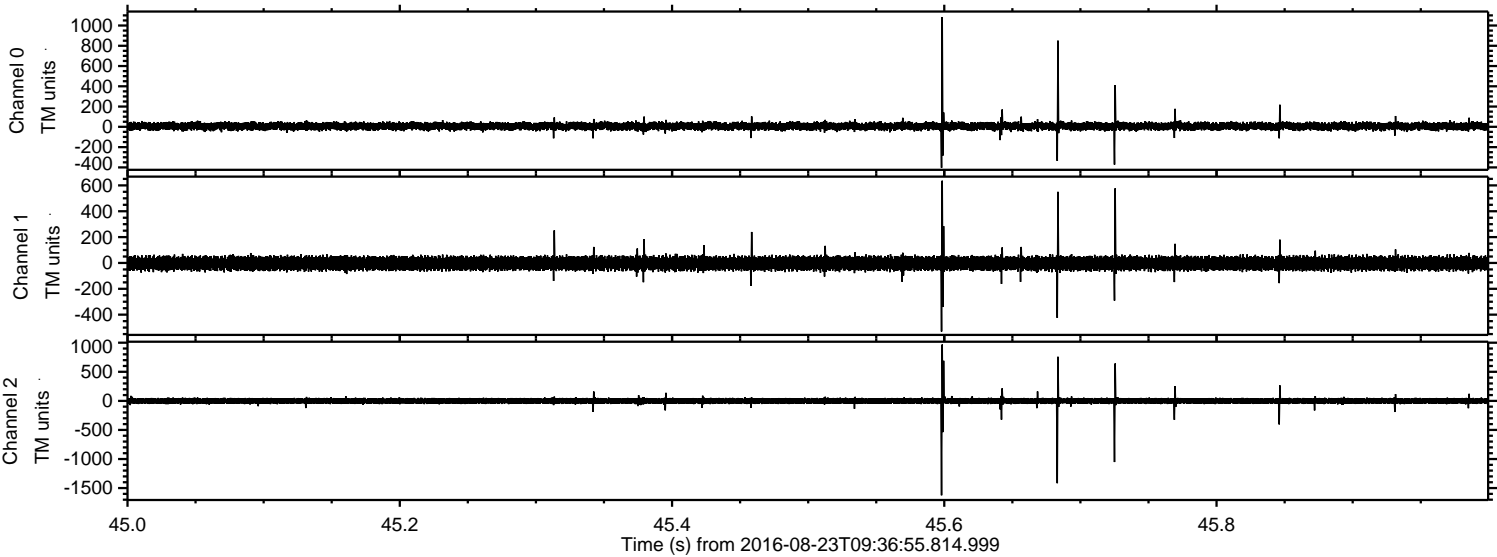


Channel 0
mn: -805
mx: 462
 μ : 6.0
 σ : 26.4

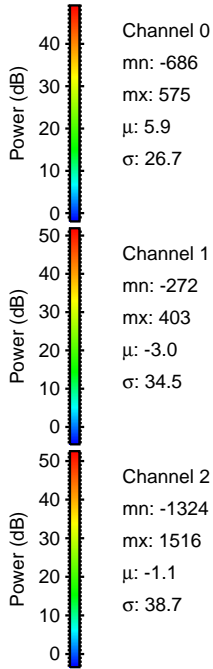
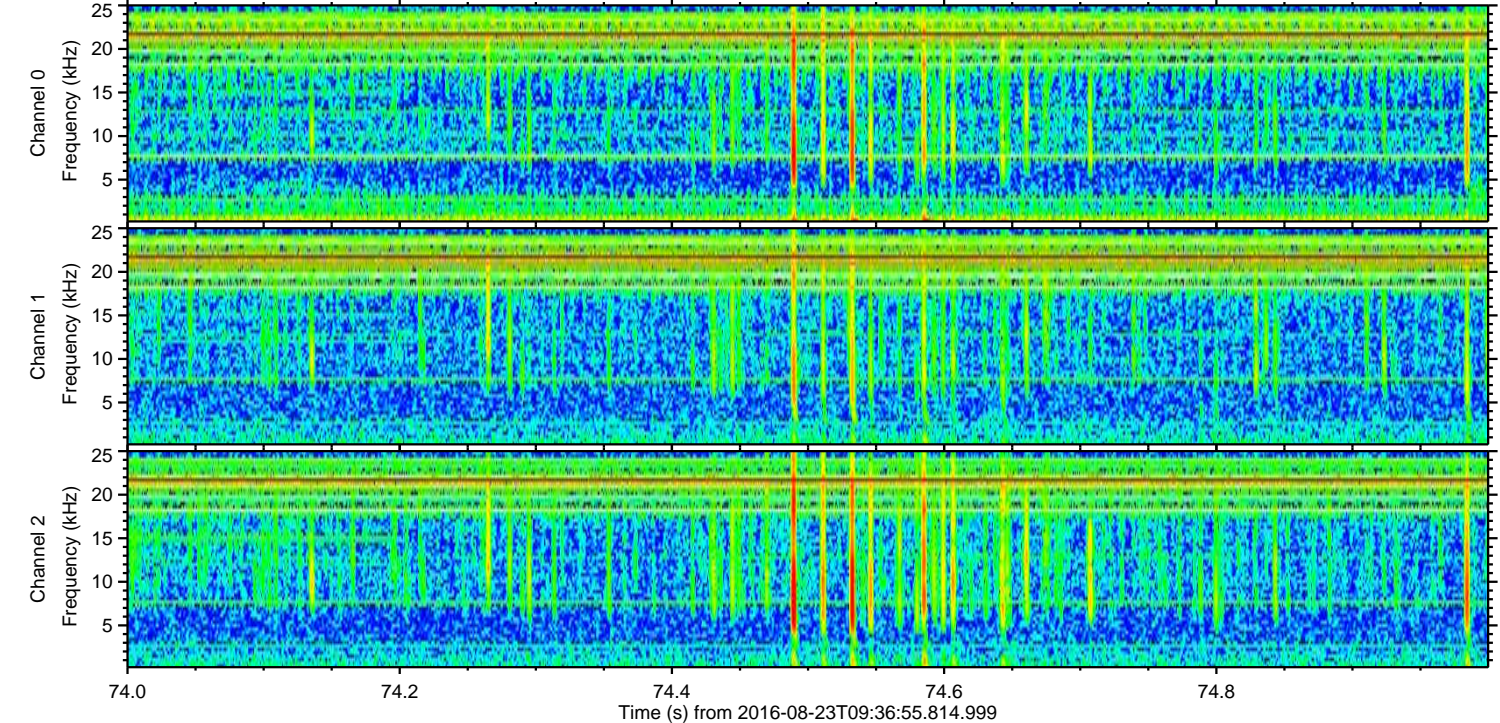
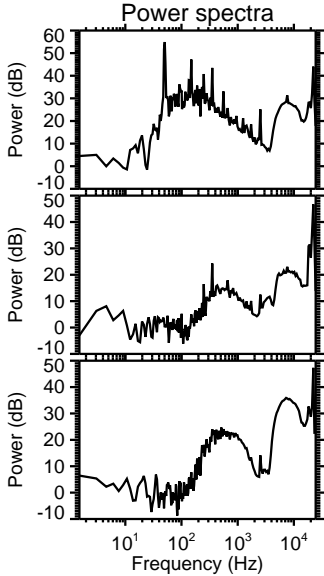
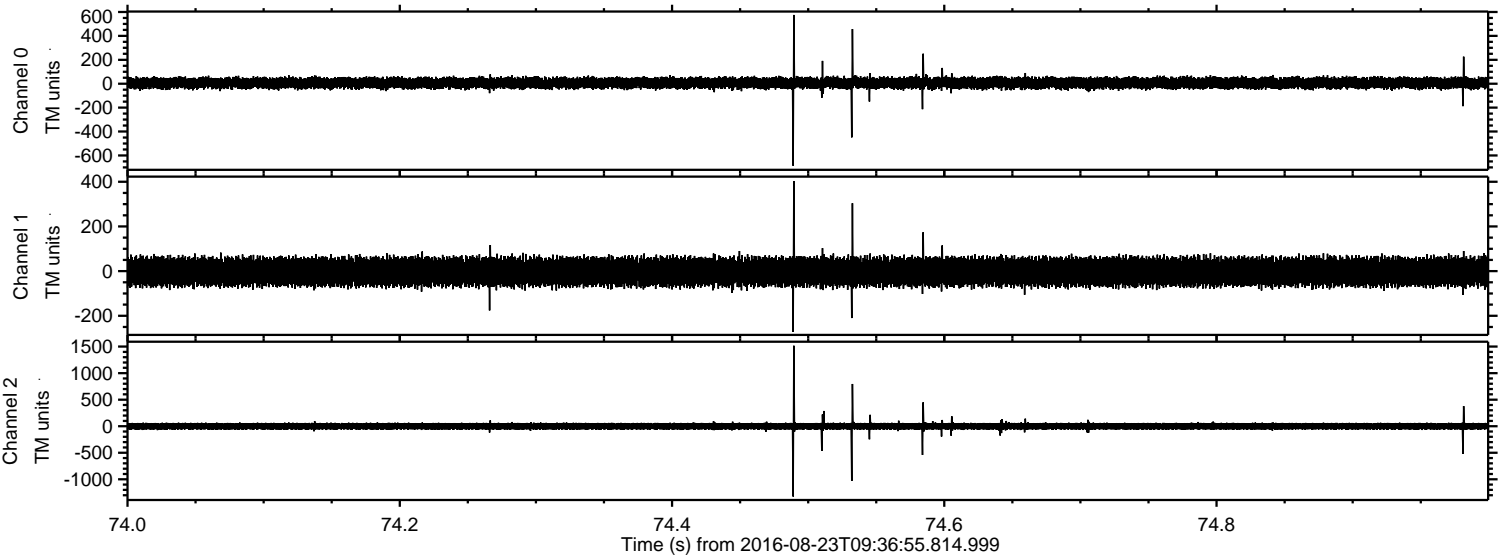
Channel 1
mn: -246
mx: 150
 μ : -3.0
 σ : 34.2

Channel 2
mn: -989
mx: 1724
 μ : -1.1
 σ : 39.0

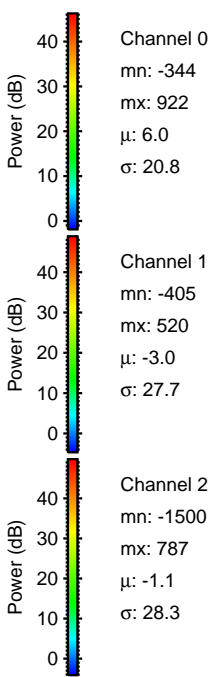
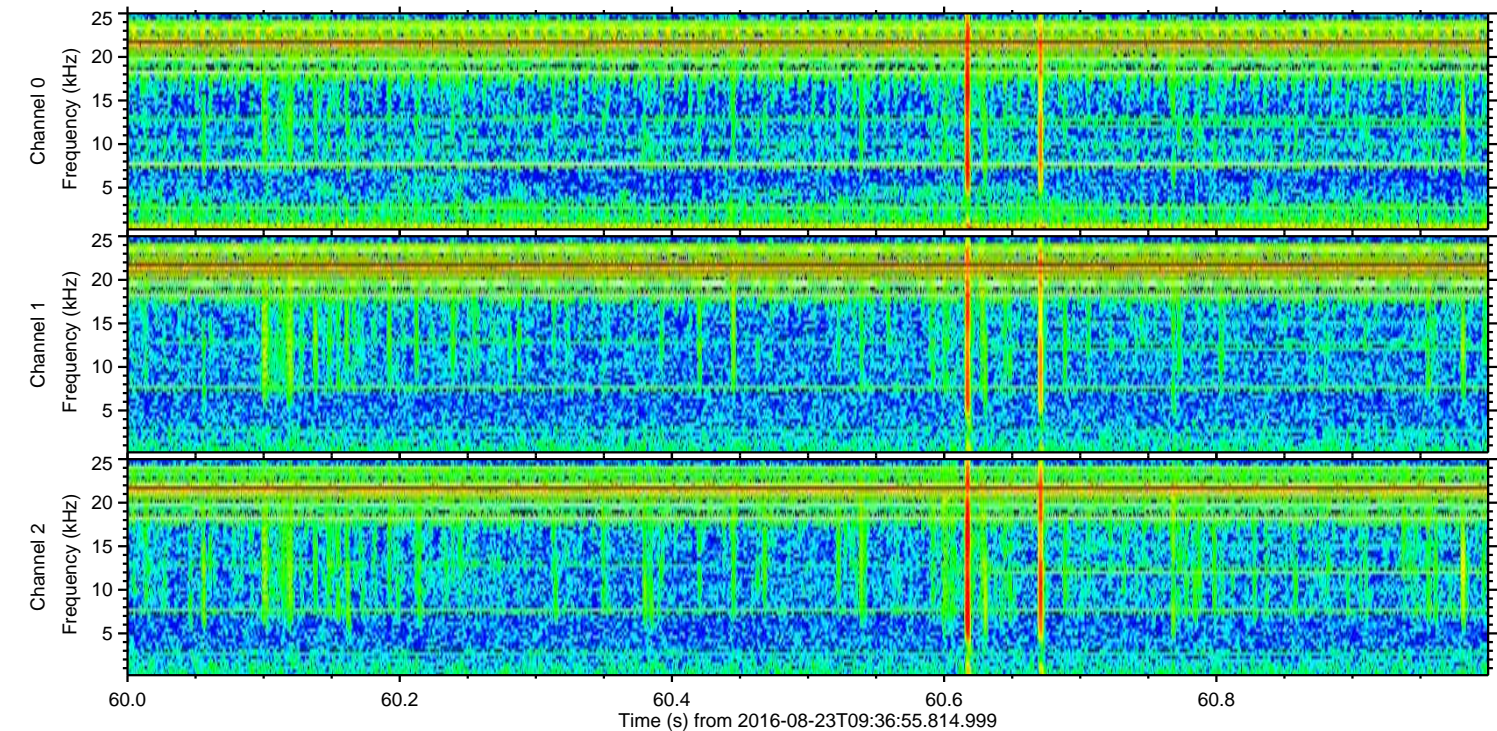
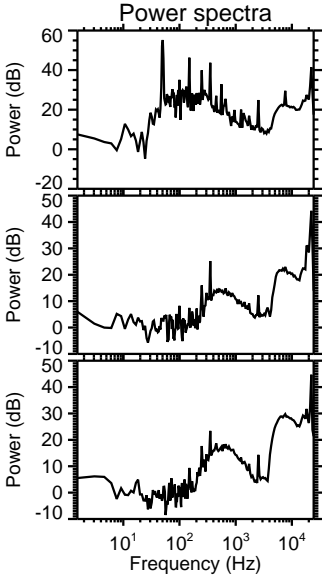
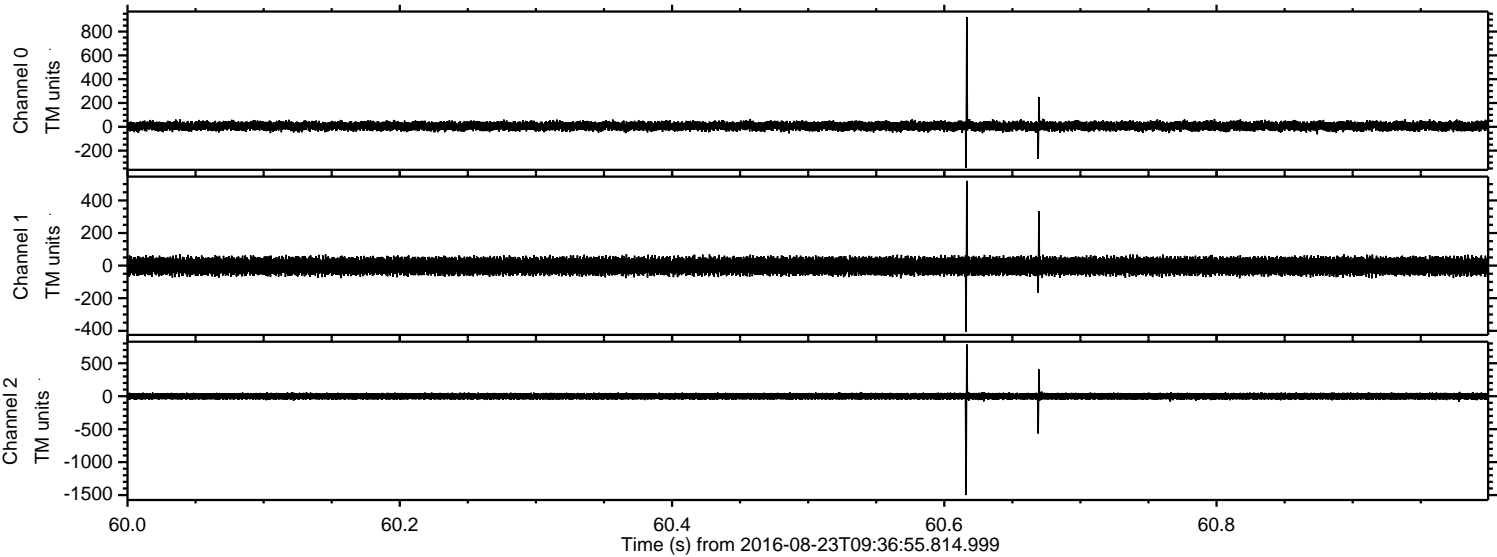
Processed Tue Aug 23 11:45:25 2016 by ELM ver.2012-10-06 from 001__elm20160823_093654__dat00.bin



Processed Tue Aug 23 11:45:26 2016 by ELM ver.2012-10-06 from 001__elm20160823_093654__dat00.bin



Processed Tue Aug 23 11:45:27 2016 by ELM ver.2012-10-06 from 001__elm20160823_093654__dat00.bin



Processed Tue Aug 23 11:45:28 2016 by ELM ver.2012-10-06 from 001__elm20160823_093654__dat00.bin

