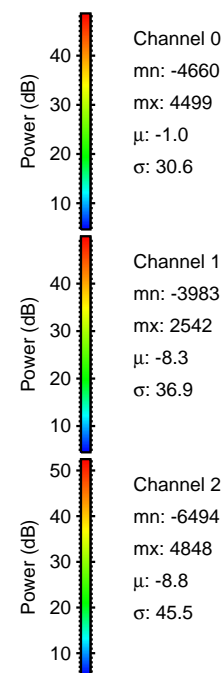
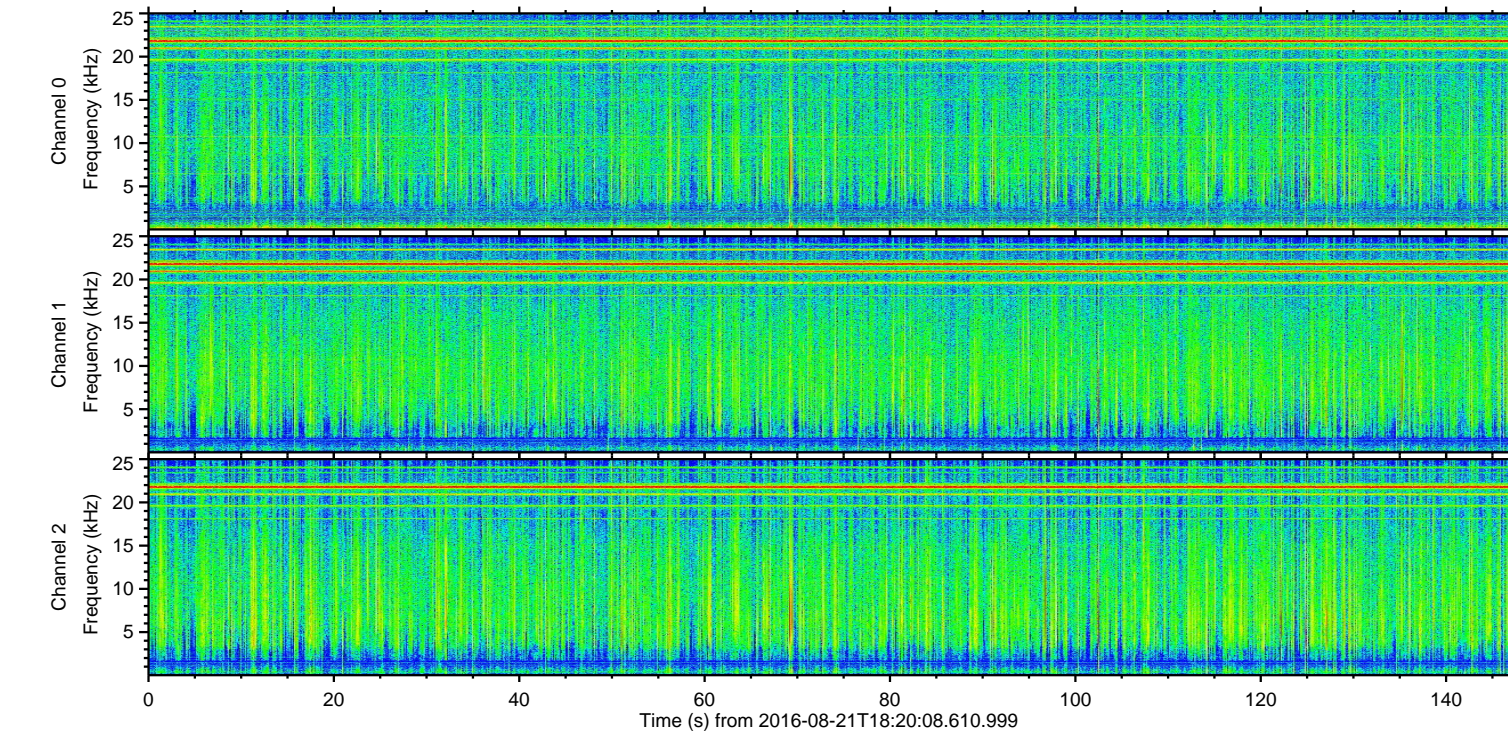
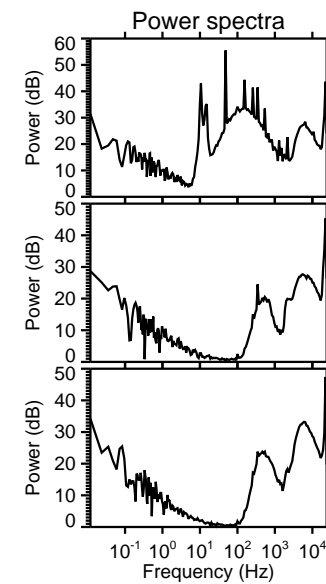
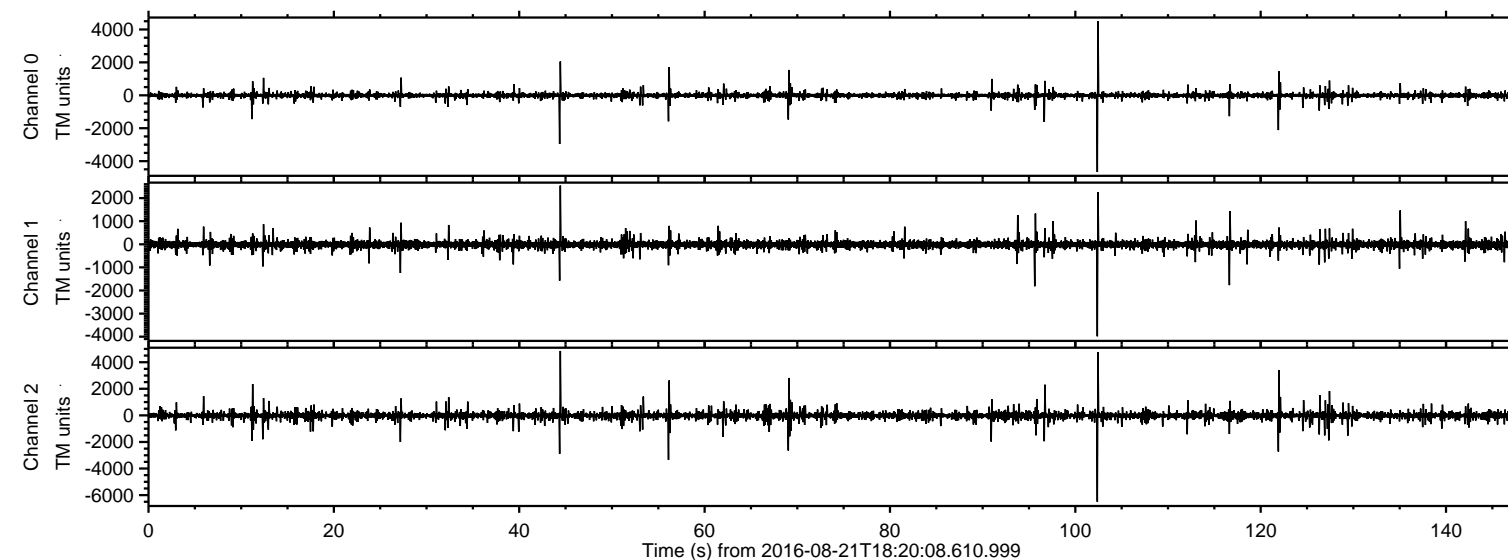


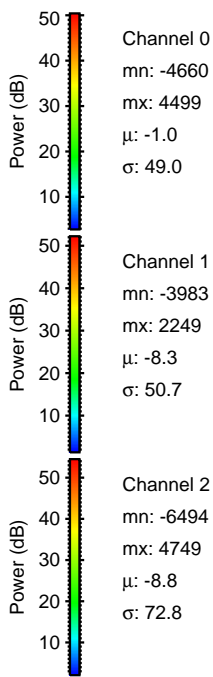
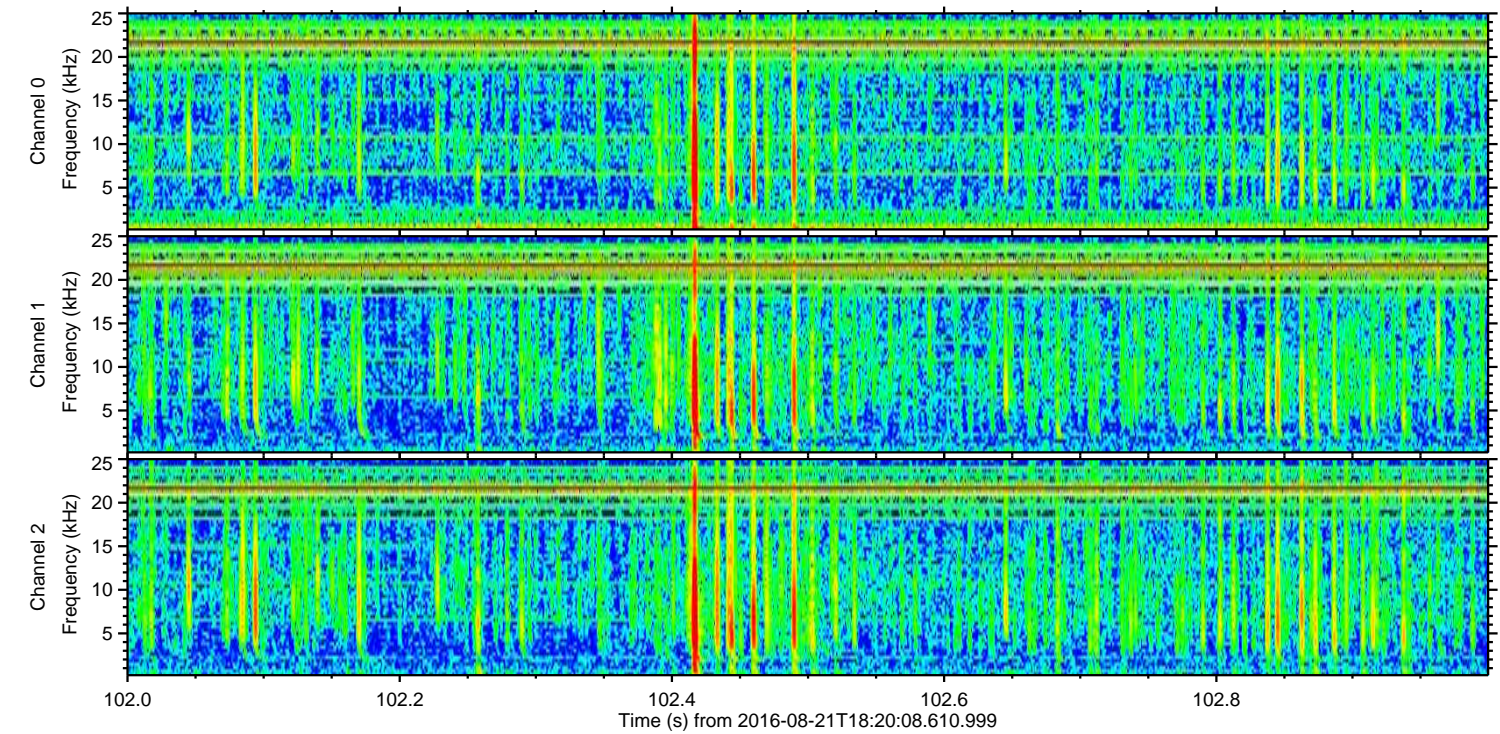
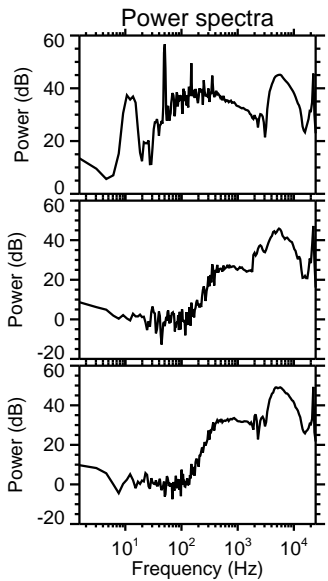
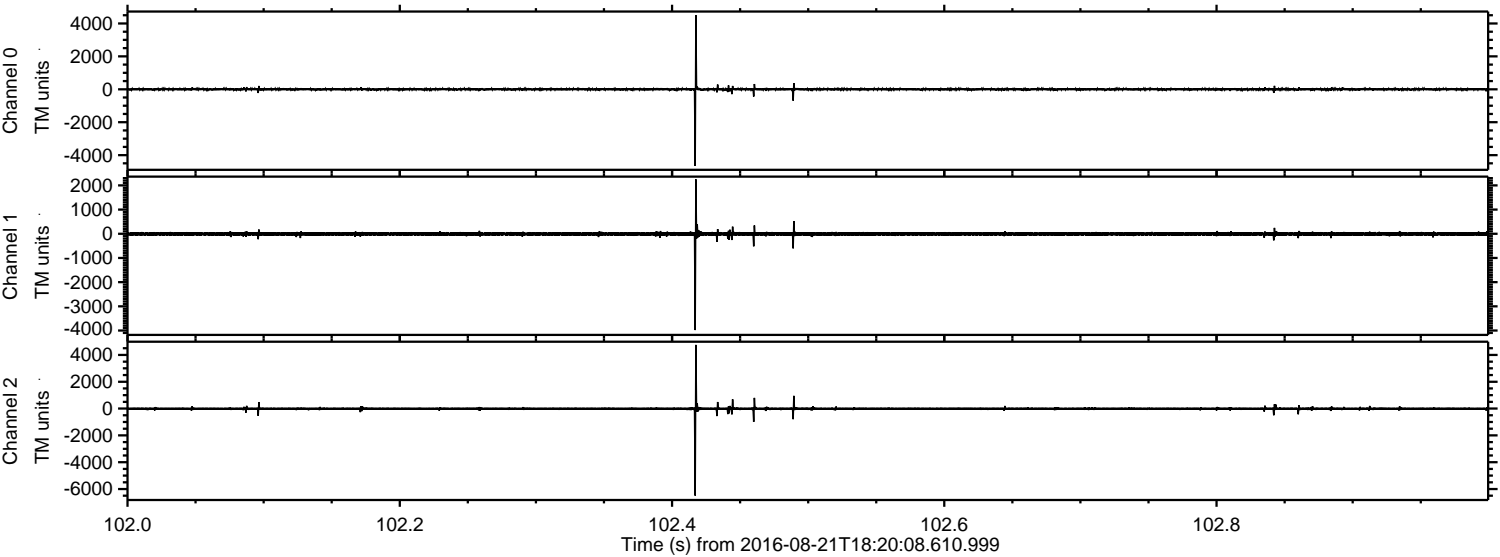
ELMAVAN 3D WAVEFORMS (Measured data sampled at 50 kHz) 51000 packets of 144 samples from 2016-08-21T18:20:08.610.999.

Processed Sun Aug 21 20:28:12 2016 by ELM ver.2012-10-06 from 001__elm20160821_182007__dat00.bin

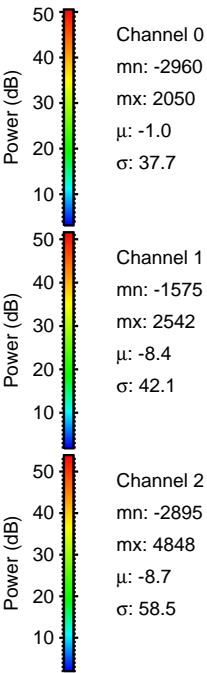
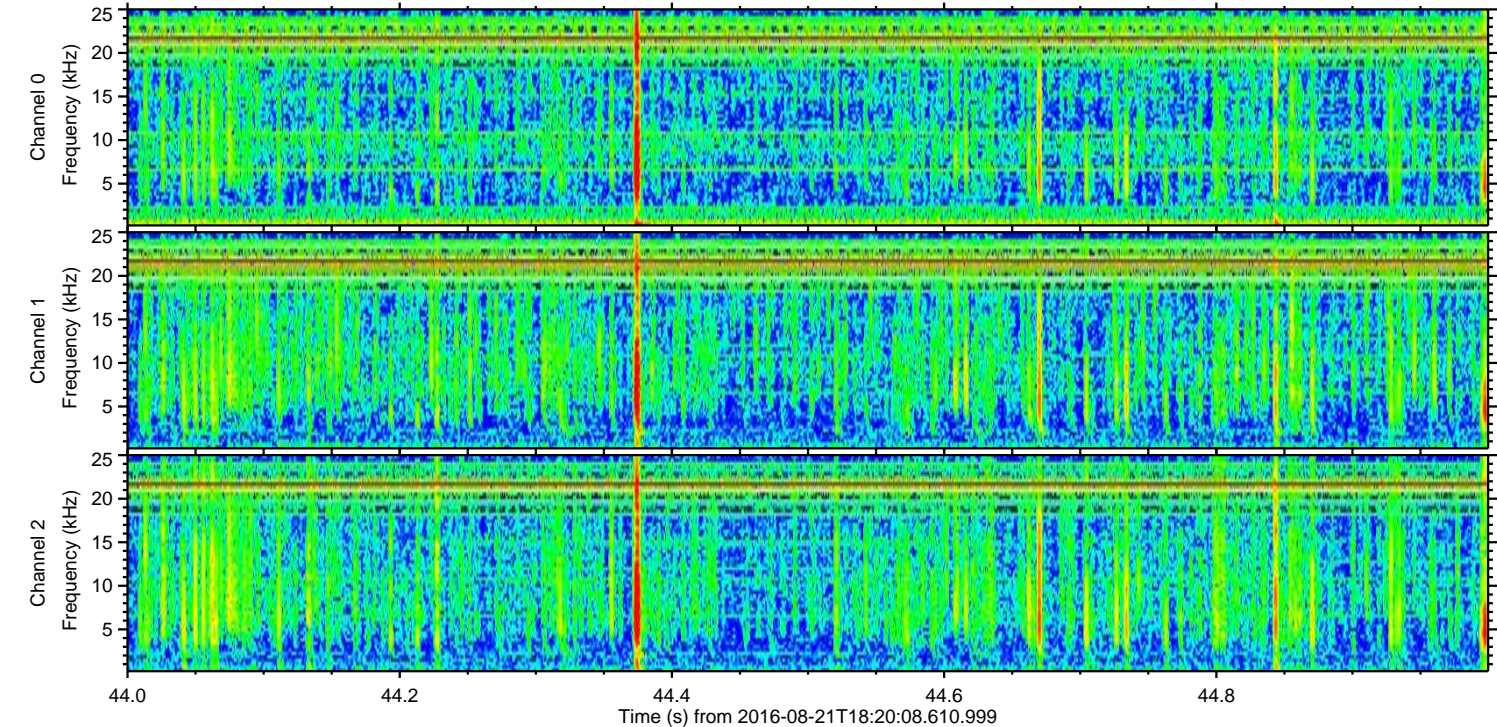
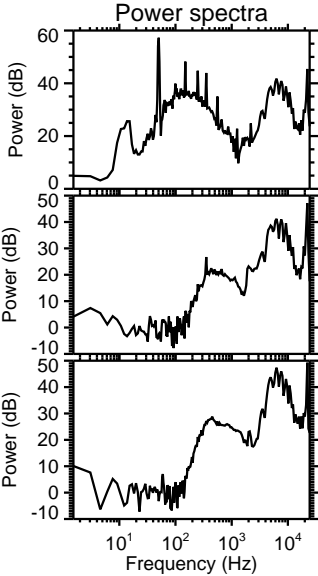
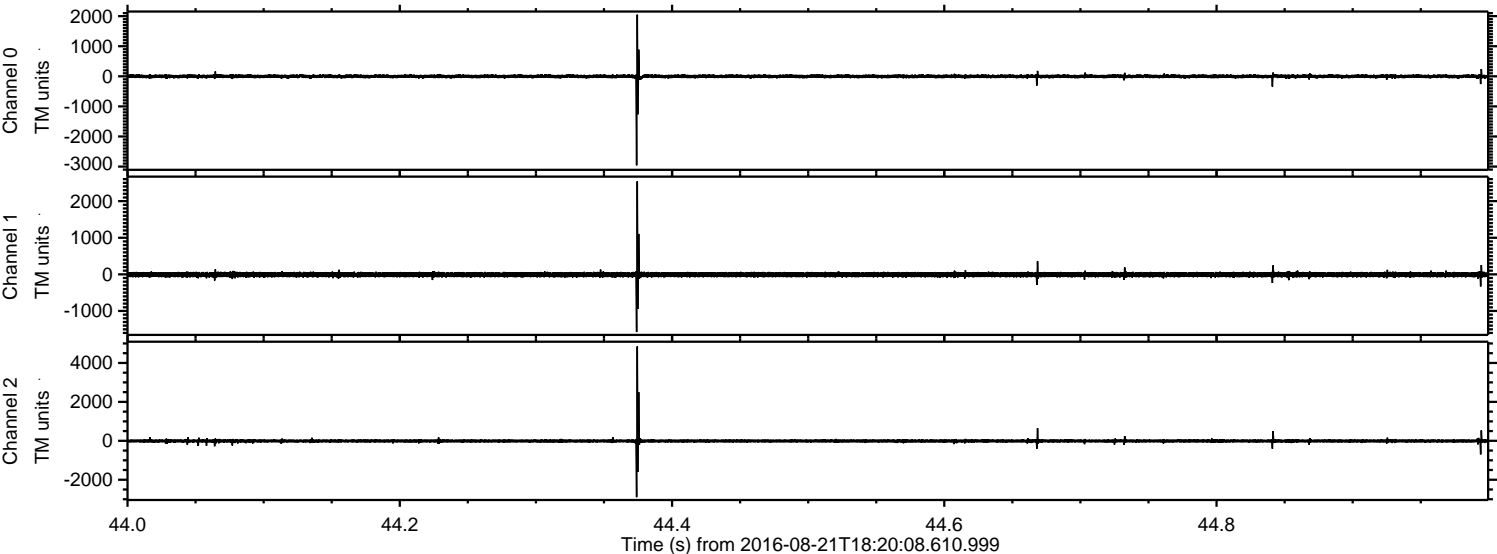


ELMAVAN 3D WAVEFORMS (Measured data sampled at 50 kHz) 51000 packets of 144 samples from 2016-08-21T18:20:08.610.999. Part 103/147

Processed Sun Aug 21 20:28:24 2016 by ELM ver.2012-10-06 from 001__elm20160821_182007__dat00.bin

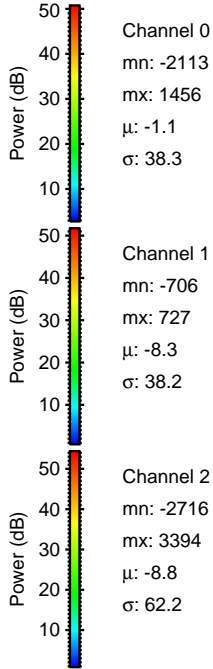
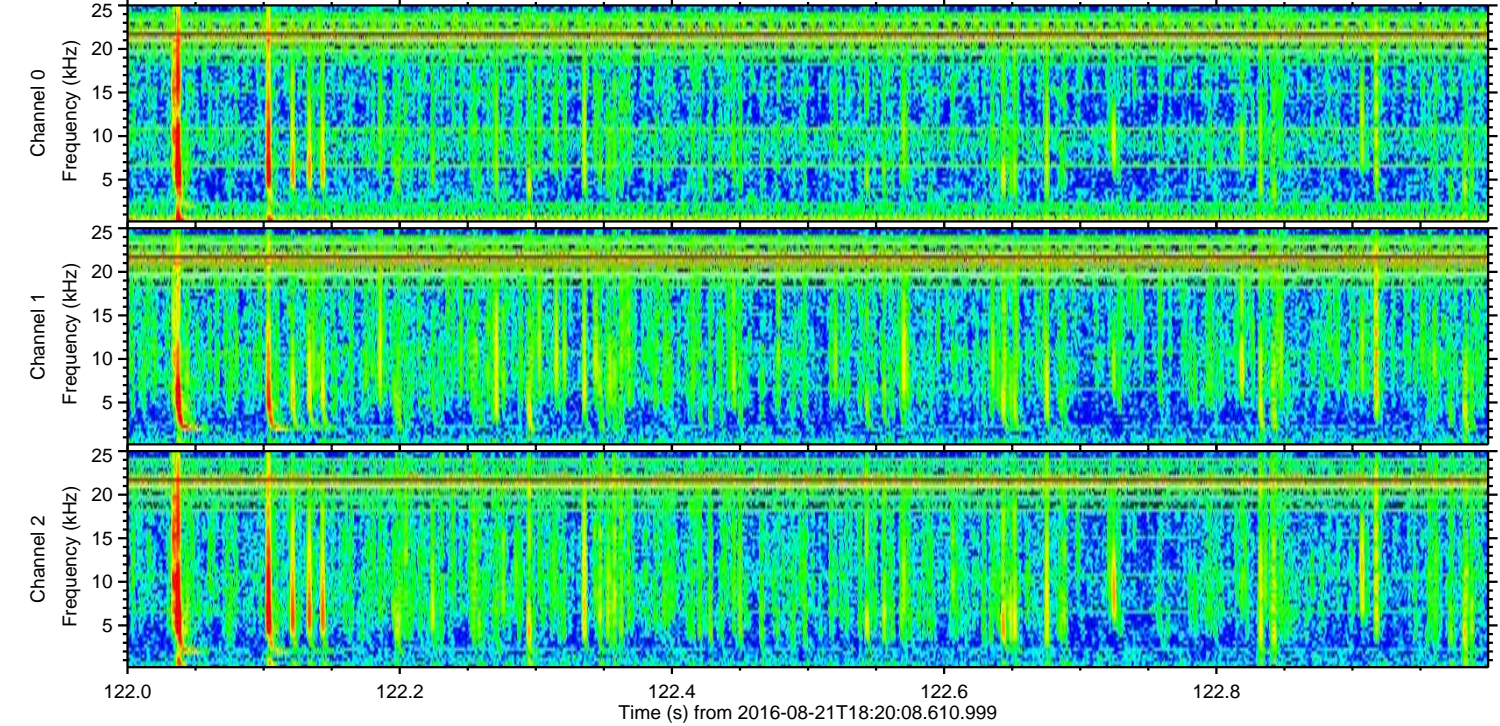
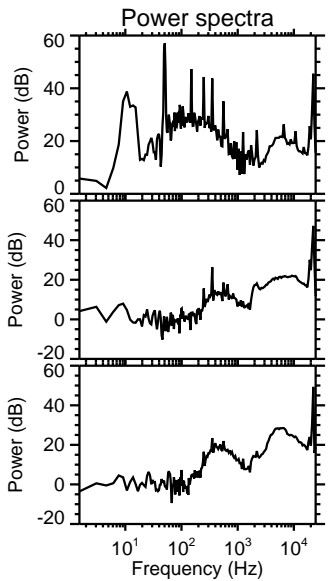
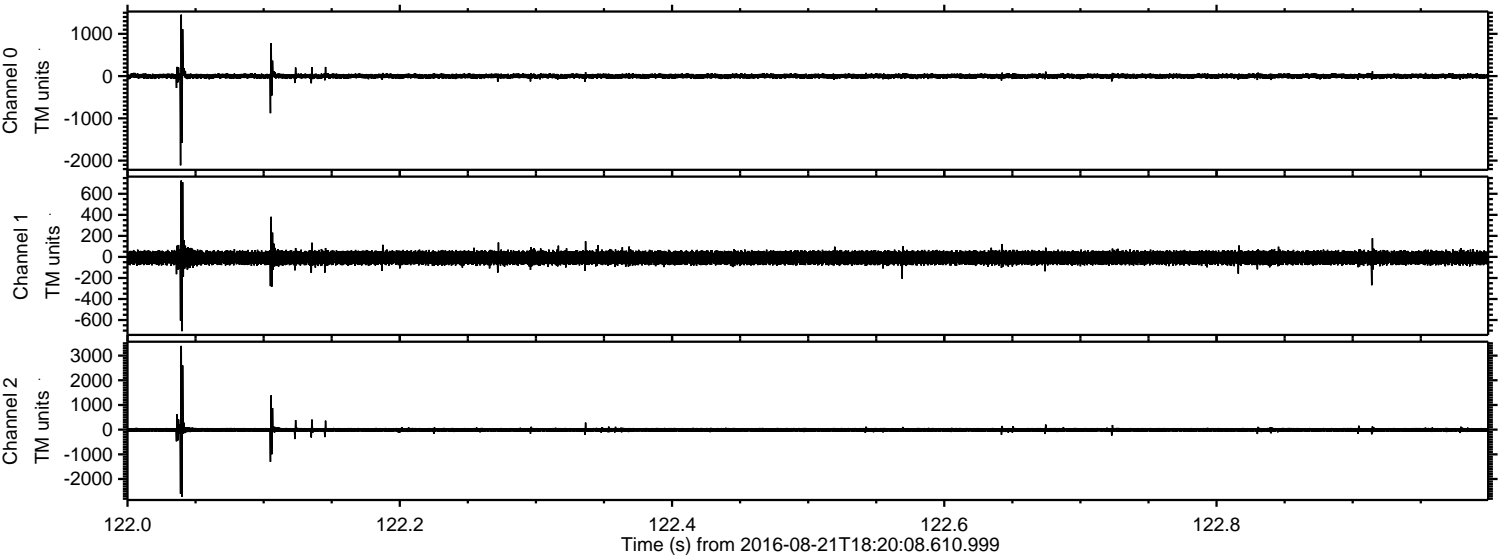


Processed Sun Aug 21 20:28:25 2016 by ELM ver.2012-10-06 from 001__elm20160821_182007__dat00.bin

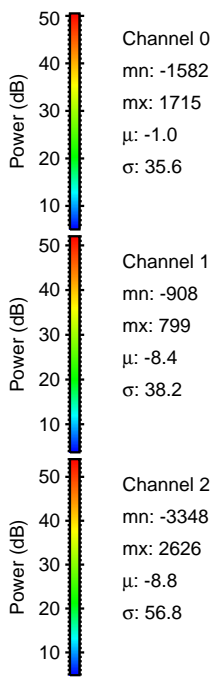
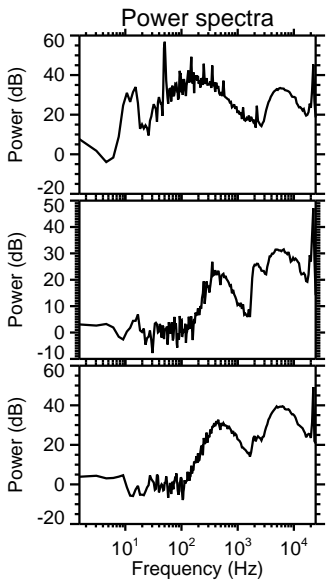
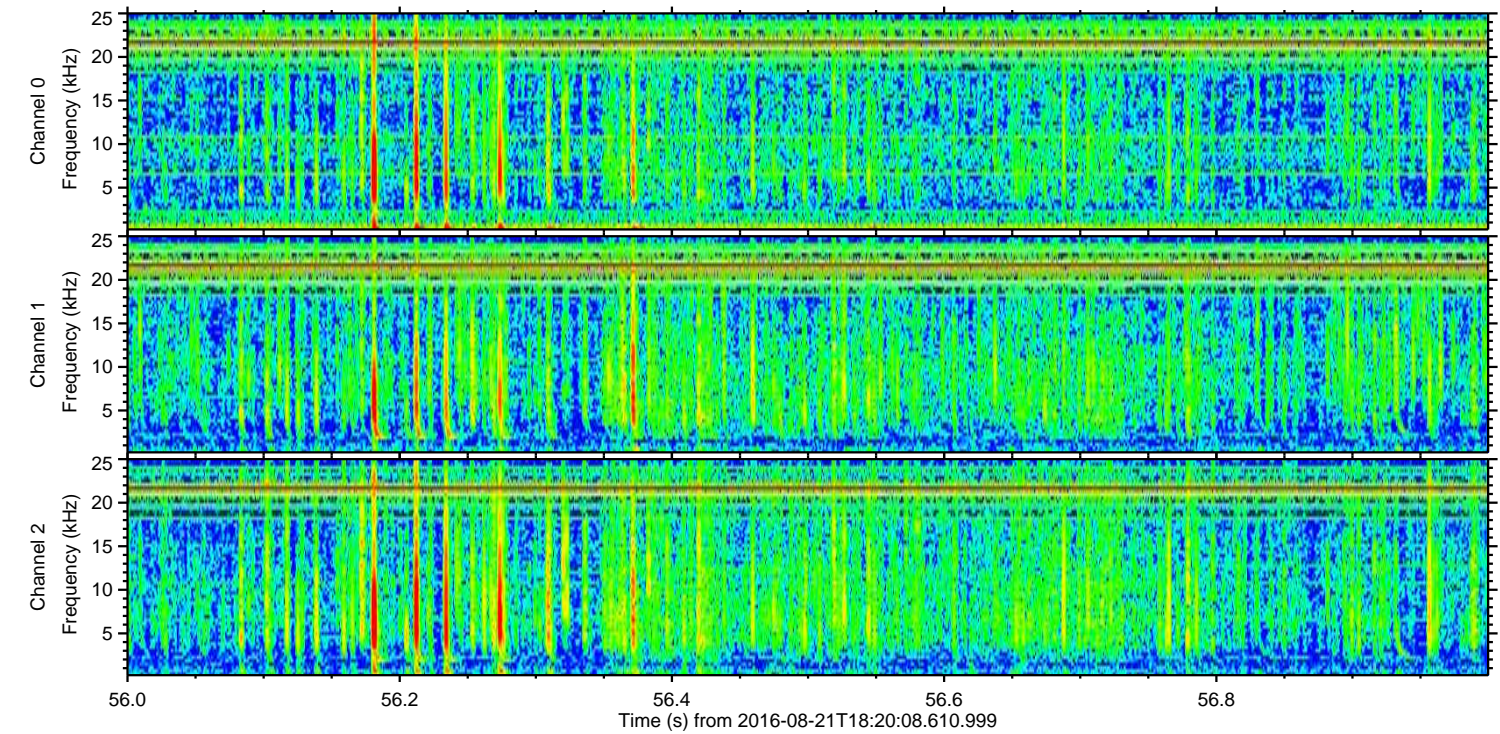
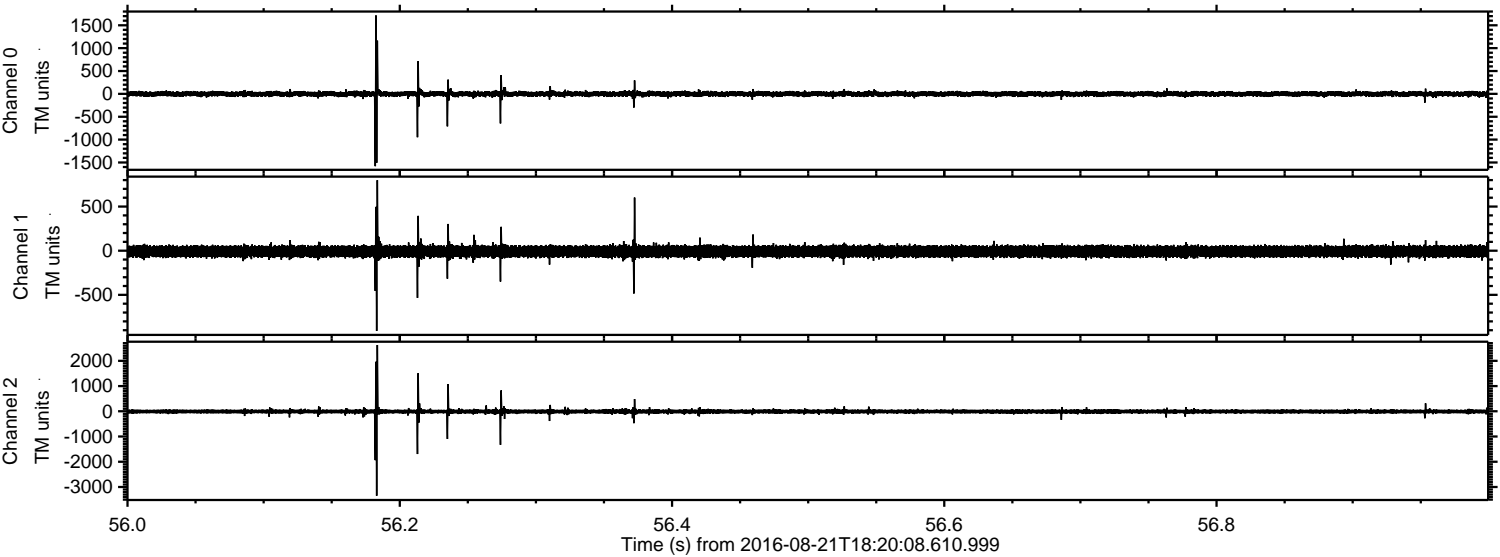


ELMAVAN 3D WAVEFORMS (Measured data sampled at 50 kHz) 51000 packets of 144 samples from 2016-08-21T18:20:08.610.999. Part 123/147

Processed Sun Aug 21 20:28:25 2016 by ELM ver.2012-10-06 from 001__elm20160821_182007__dat00.bin

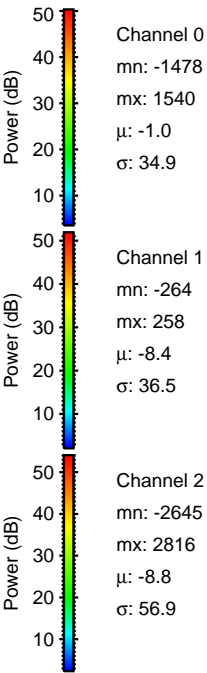
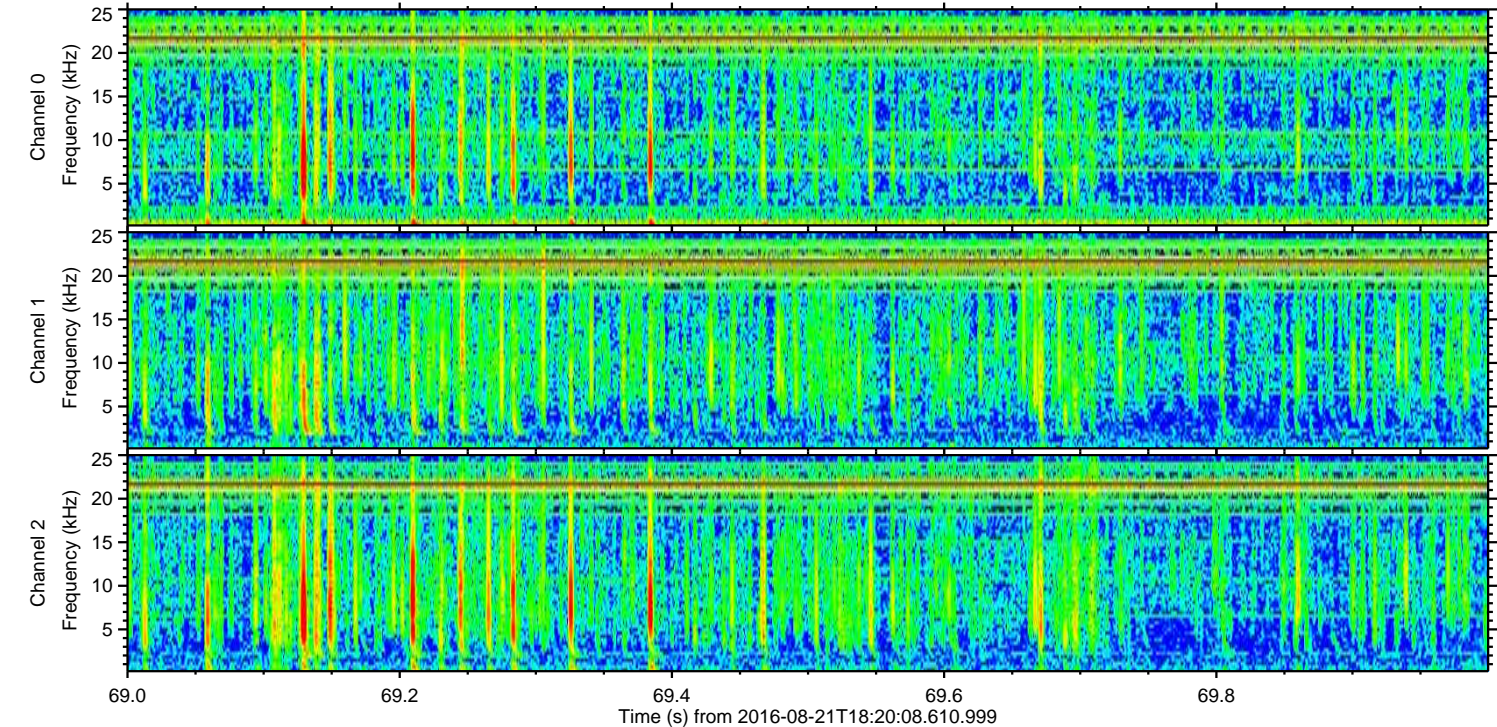
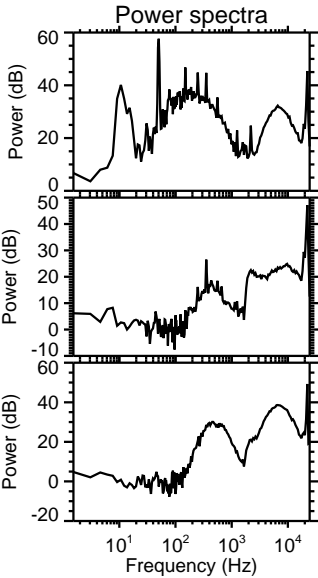
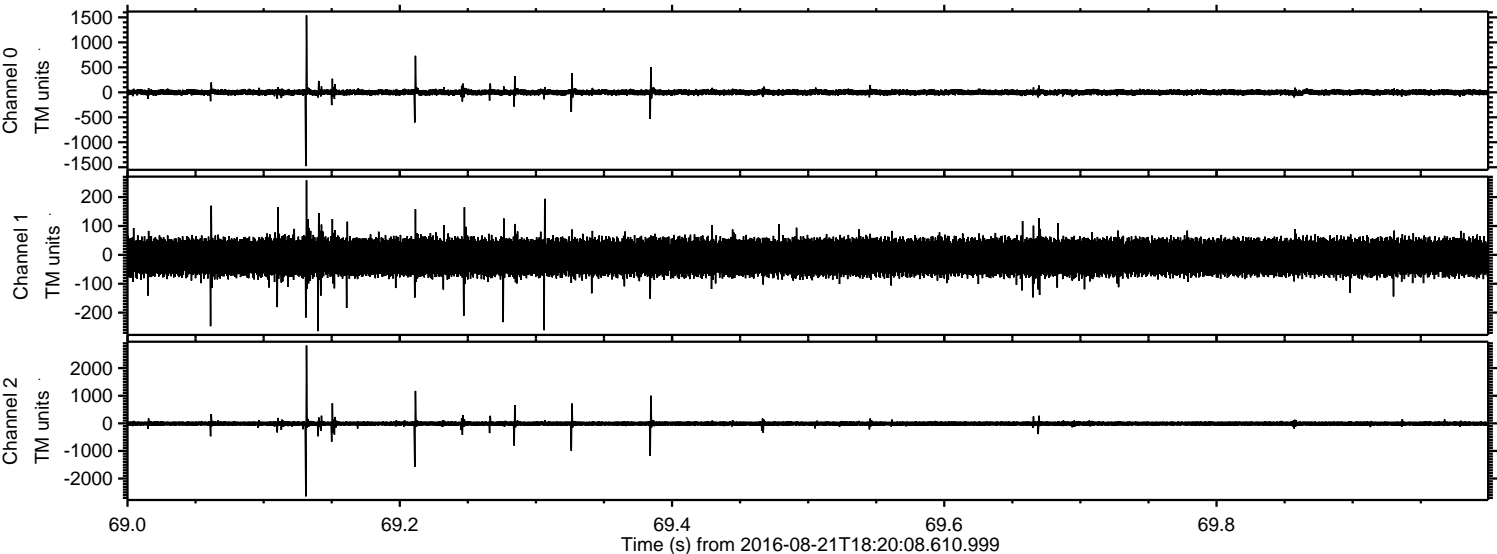


Processed Sun Aug 21 20:28:26 2016 by ELM ver.2012-10-06 from 001__elm20160821_182007__dat00.bin



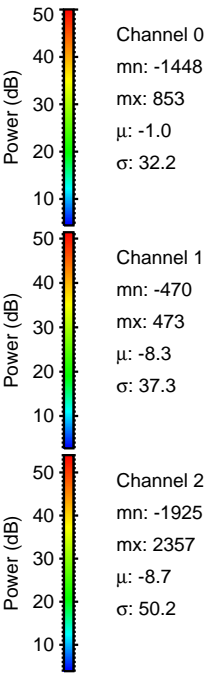
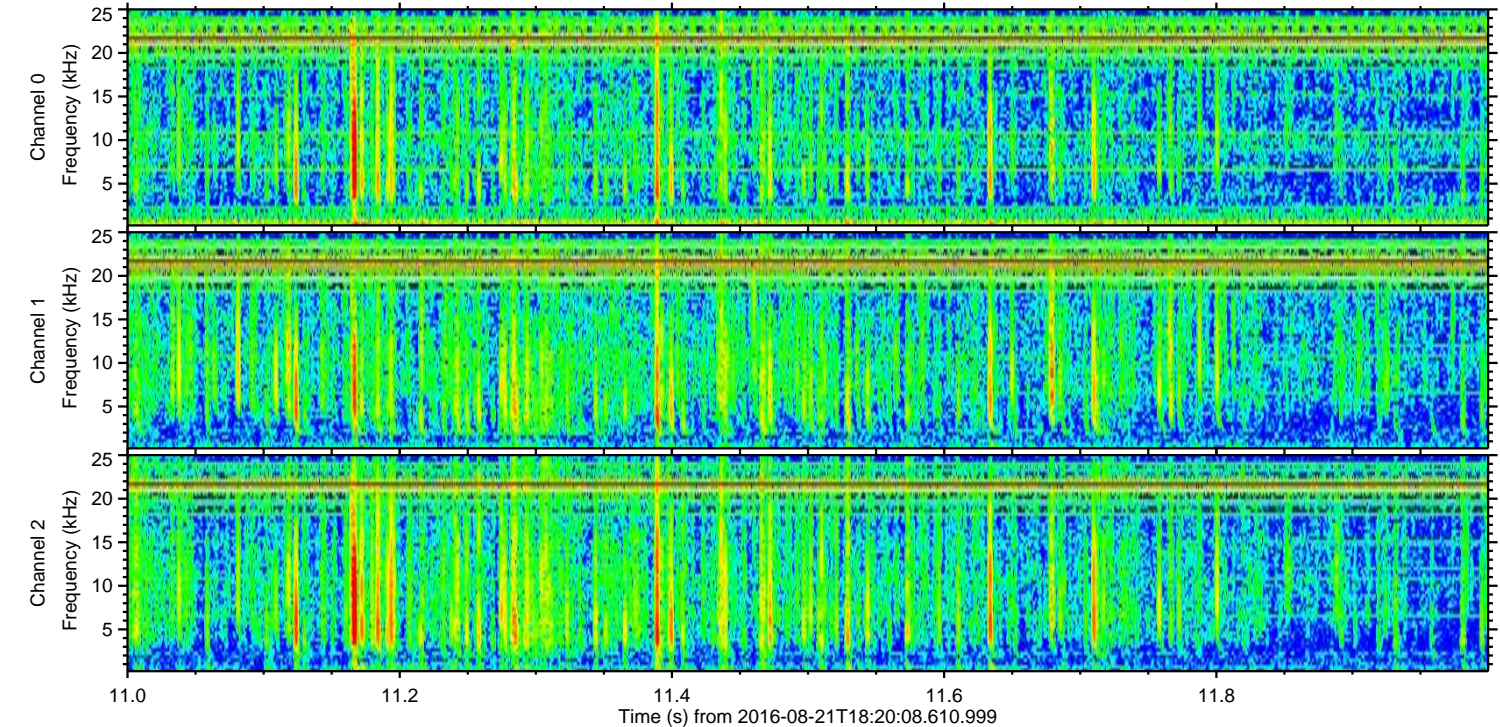
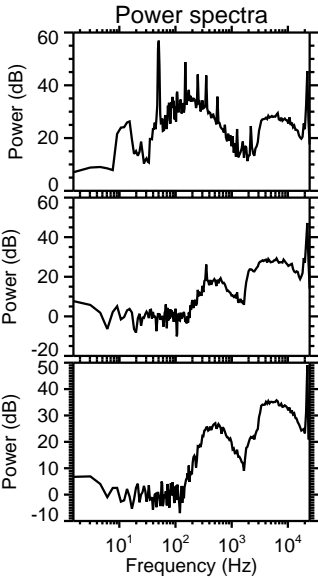
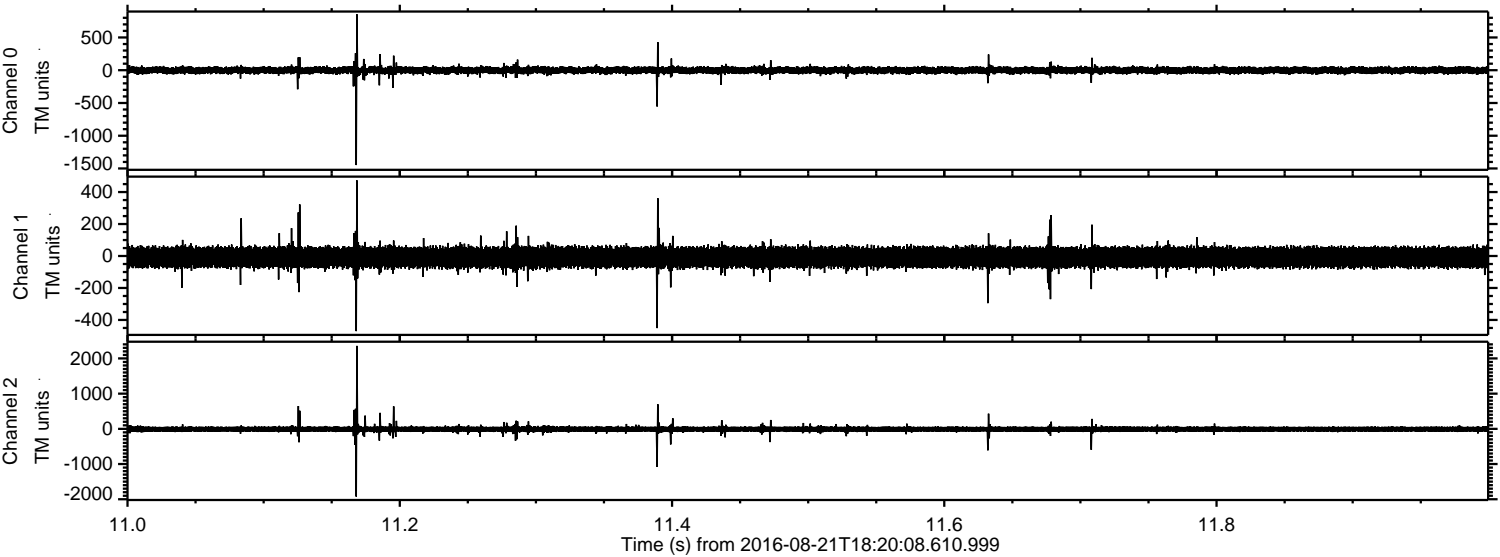
ELMAVAN 3D WAVEFORMS (Measured data sampled at 50 kHz) 51000 packets of 144 samples from 2016-08-21T18:20:08.610.999. Part 70/147

Processed Sun Aug 21 20:28:27 2016 by ELM ver.2012-10-06 from 001__elm20160821_182007__dat00.bin

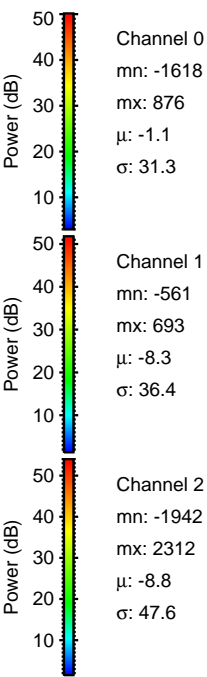
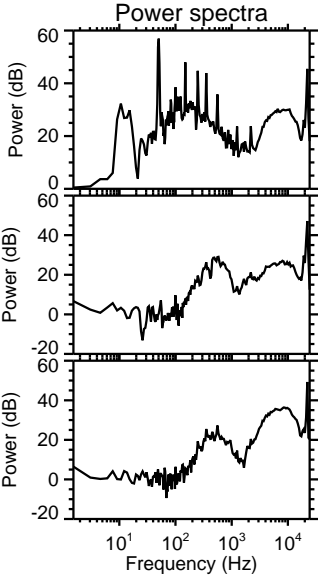
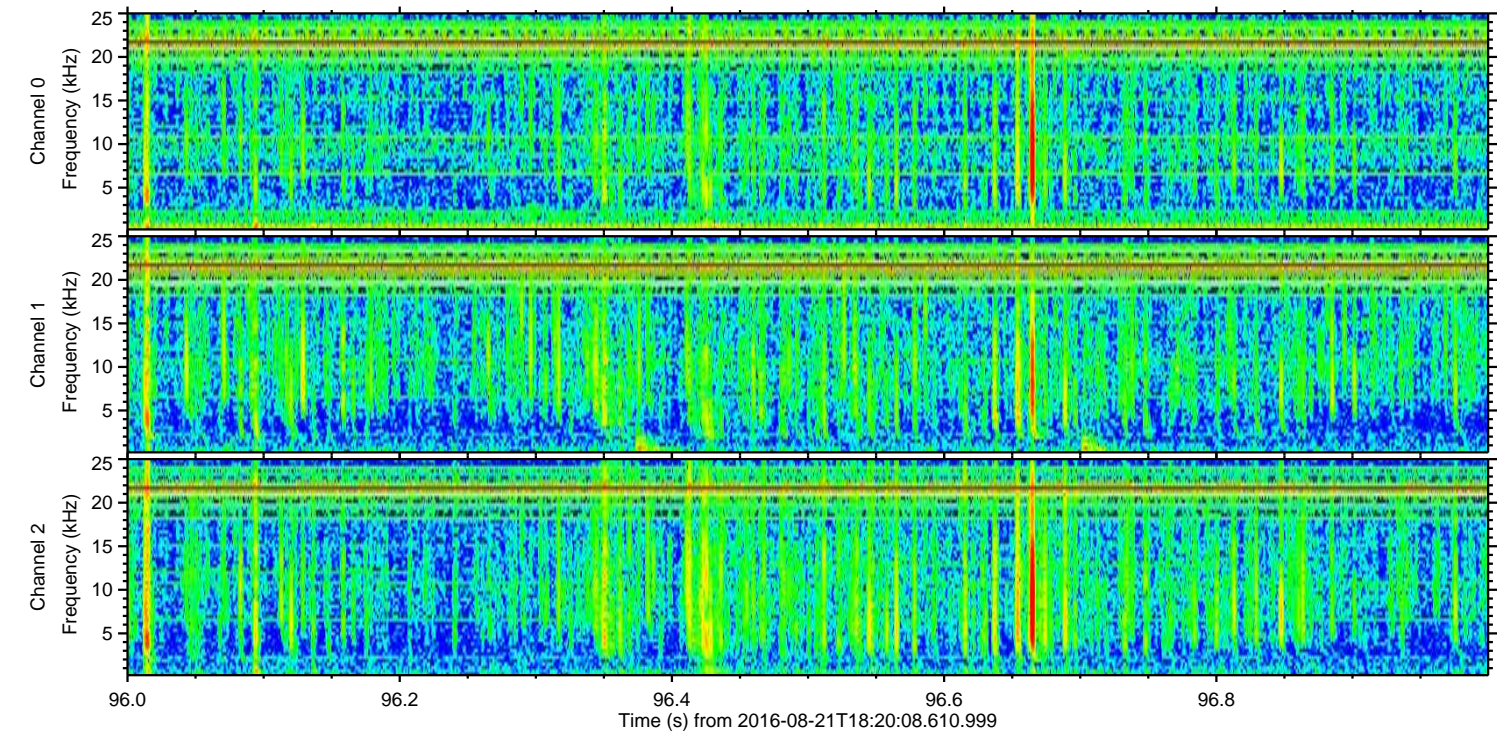
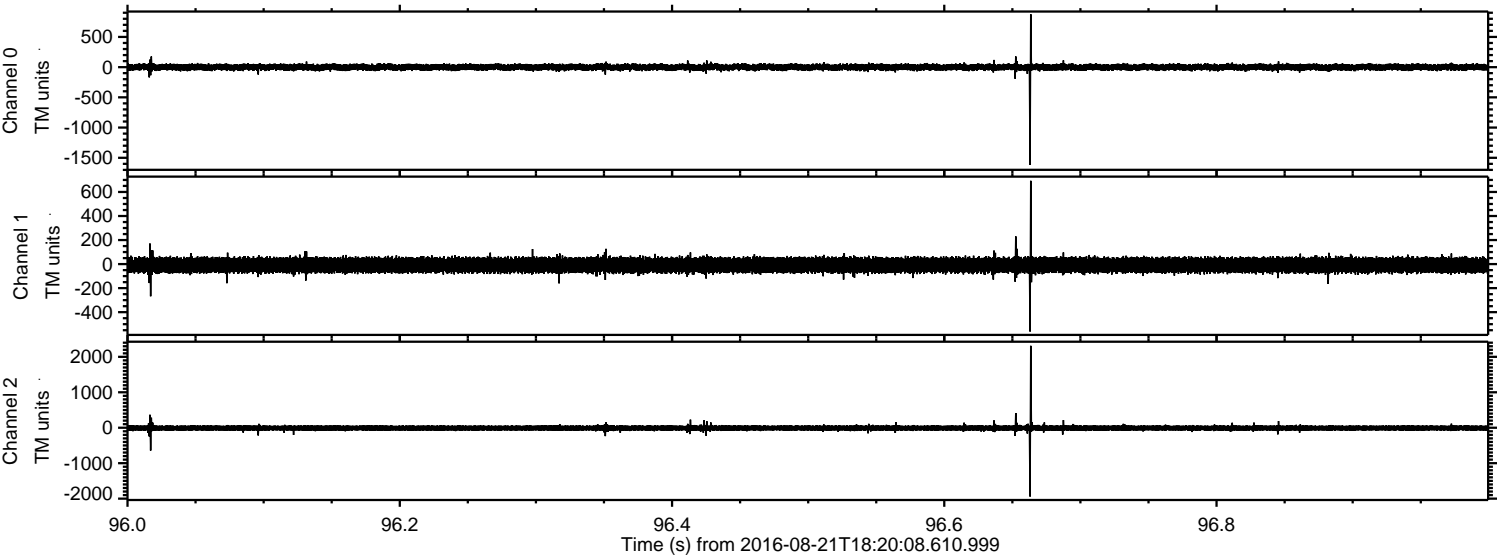


ELMAVAN 3D WAVEFORMS (Measured data sampled at 50 kHz) 51000 packets of 144 samples from 2016-08-21T18:20:08.610.999. Part 12/147

Processed Sun Aug 21 20:28:28 2016 by ELM ver.2012-10-06 from 001__elm20160821_182007__dat00.bin



Processed Sun Aug 21 20:28:29 2016 by ELM ver.2012-10-06 from 001_elm20160821_182007__dat00.bin

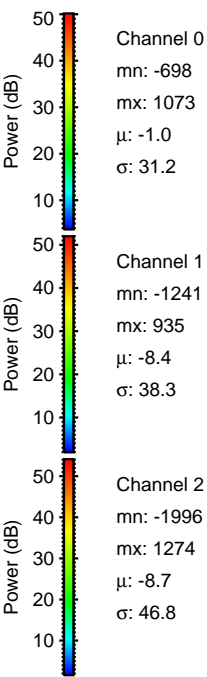
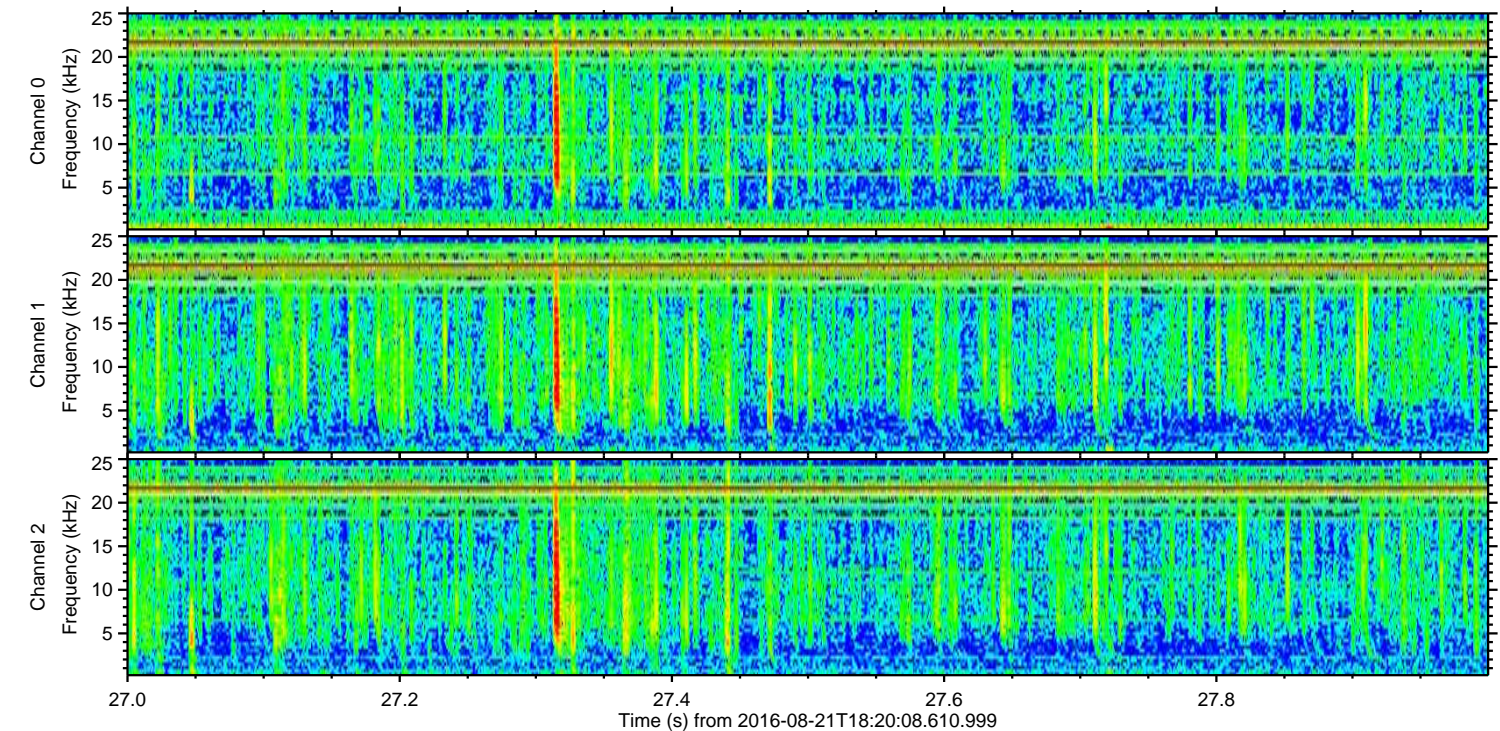
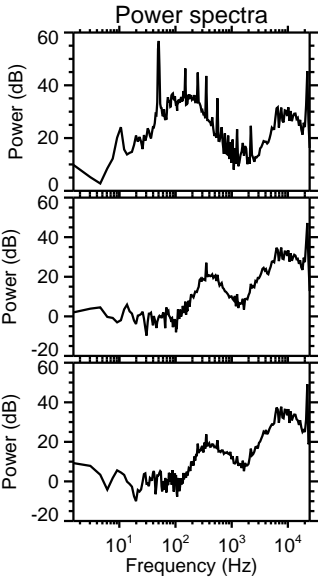
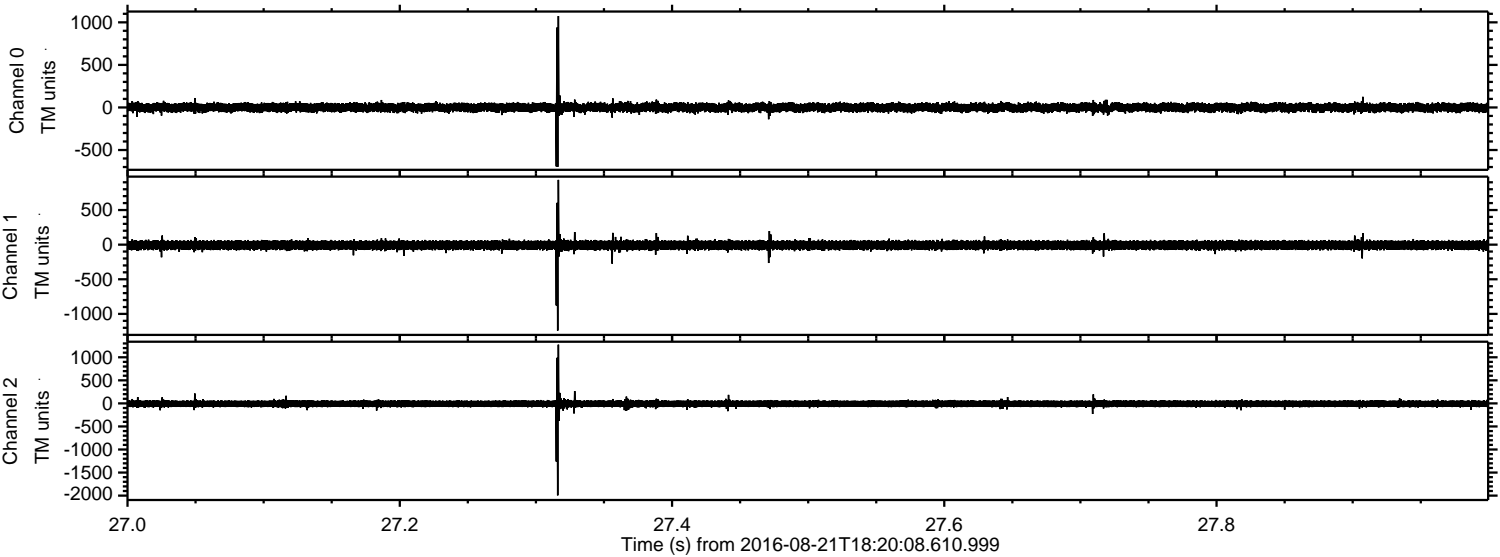


Channel 0
mn: -1618
mx: 876
 μ : -1.1
 σ : 31.3

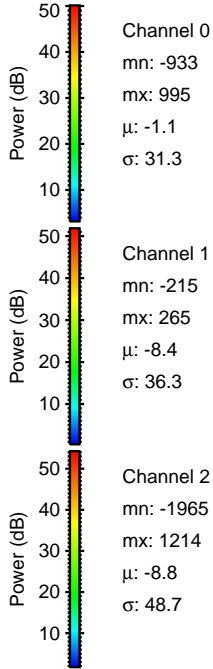
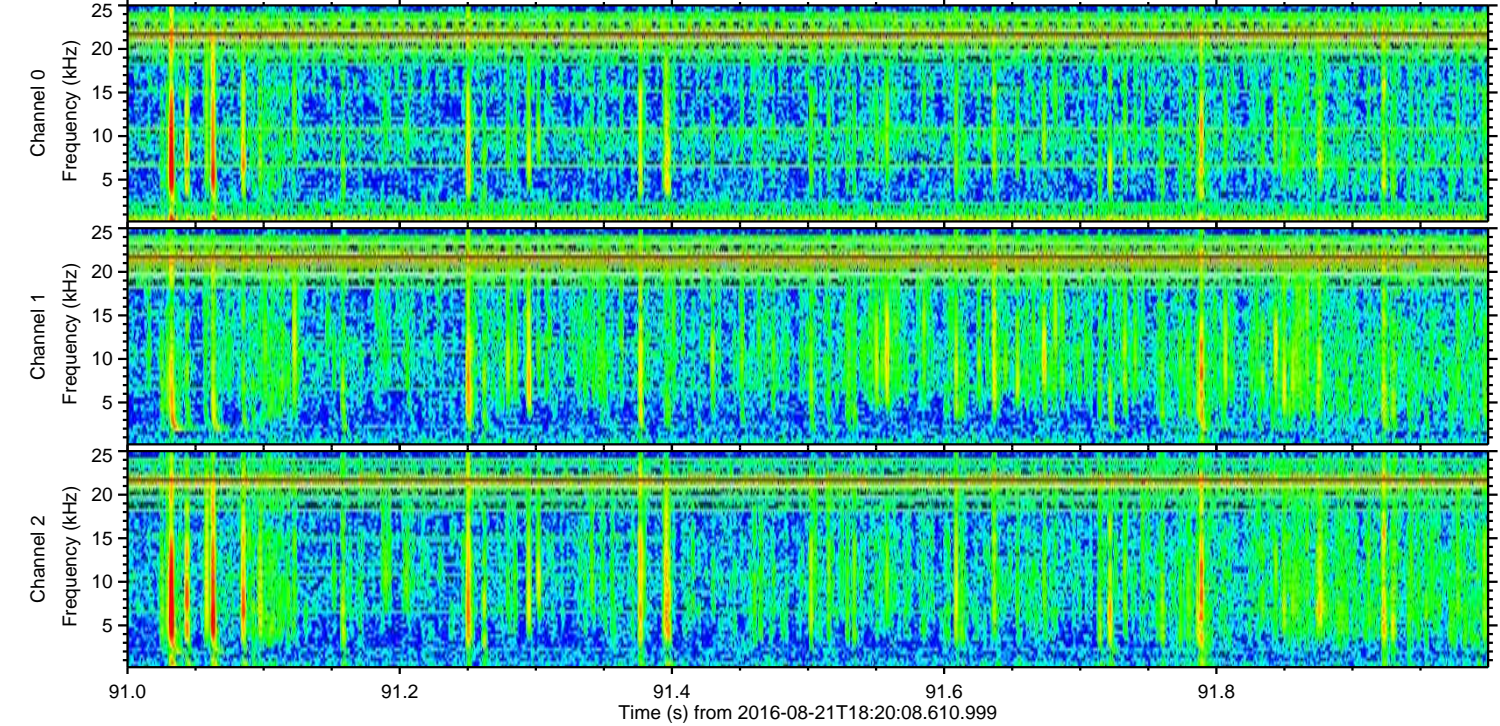
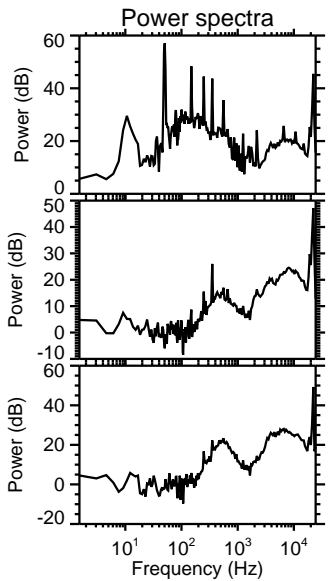
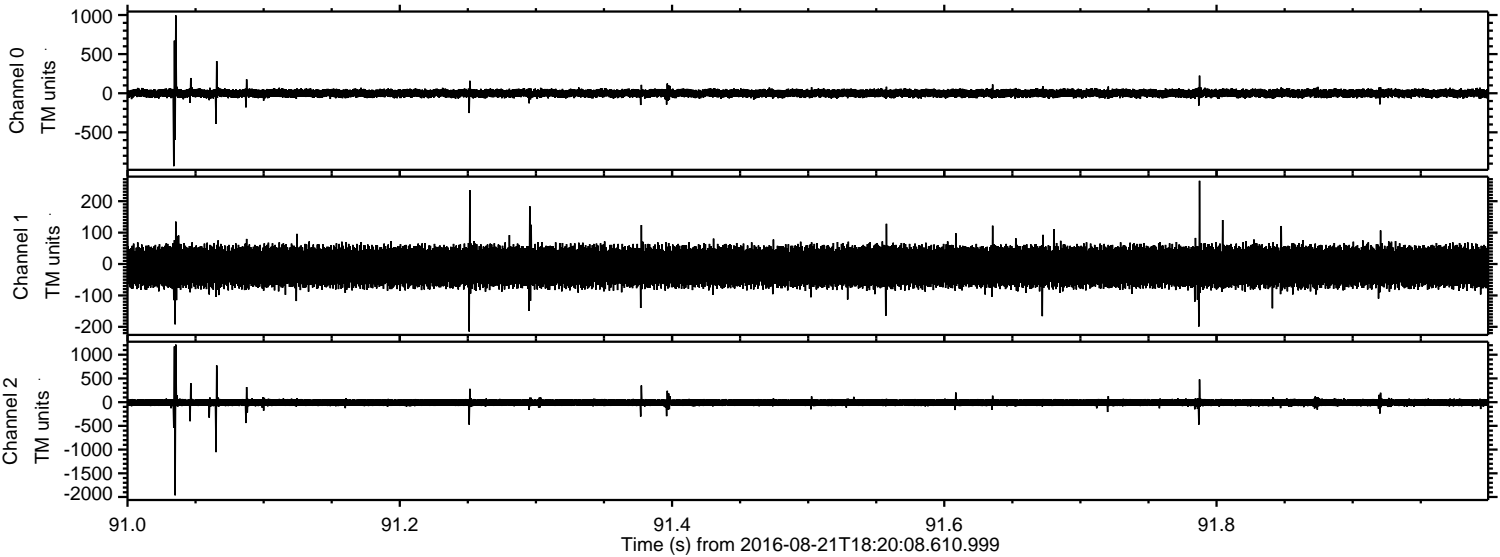
Channel 1
mn: -561
mx: 693
 μ : -8.3
 σ : 36.4

Channel 2
mn: -1942
mx: 2312
 μ : -8.8
 σ : 47.6

Processed Sun Aug 21 20:28:30 2016 by ELM ver.2012-10-06 from 001__elm20160821_182007__dat00.bin



Processed Sun Aug 21 20:28:31 2016 by ELM ver.2012-10-06 from 001__elm20160821_182007__dat00.bin



Processed Sun Aug 21 20:28:32 2016 by ELM ver.2012-10-06 from 001__elm20160821_182007__dat00.bin

