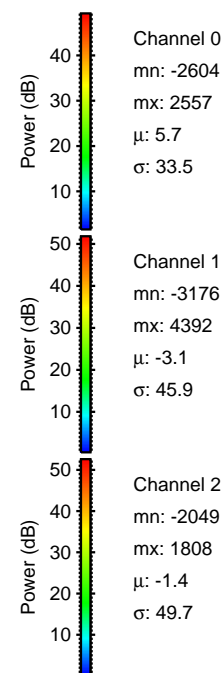
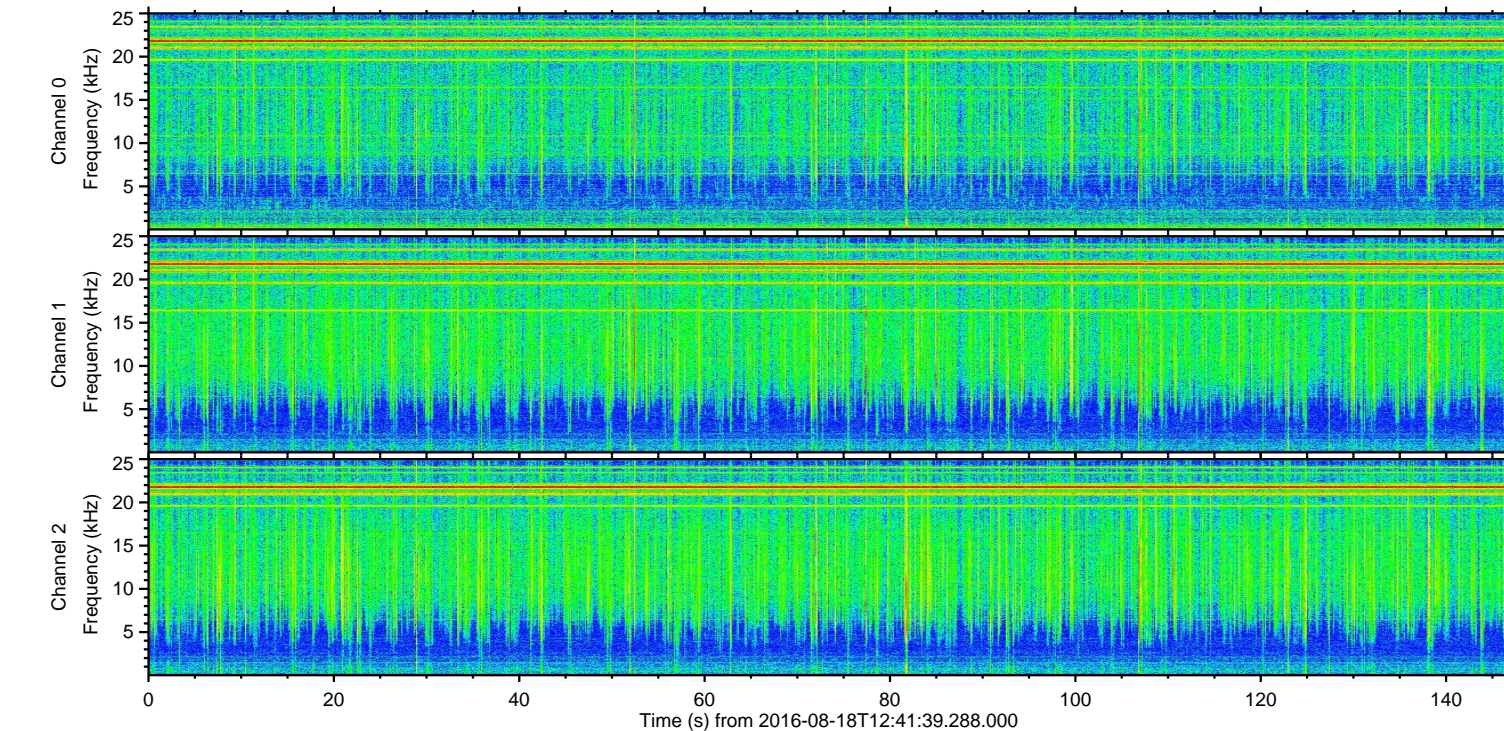
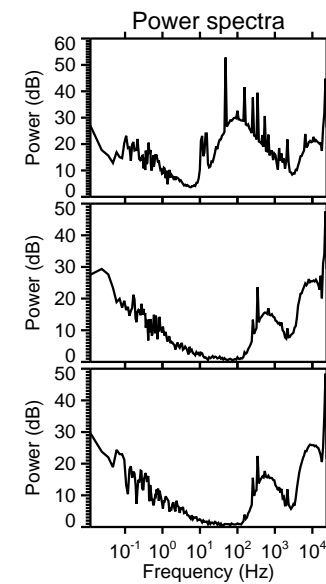
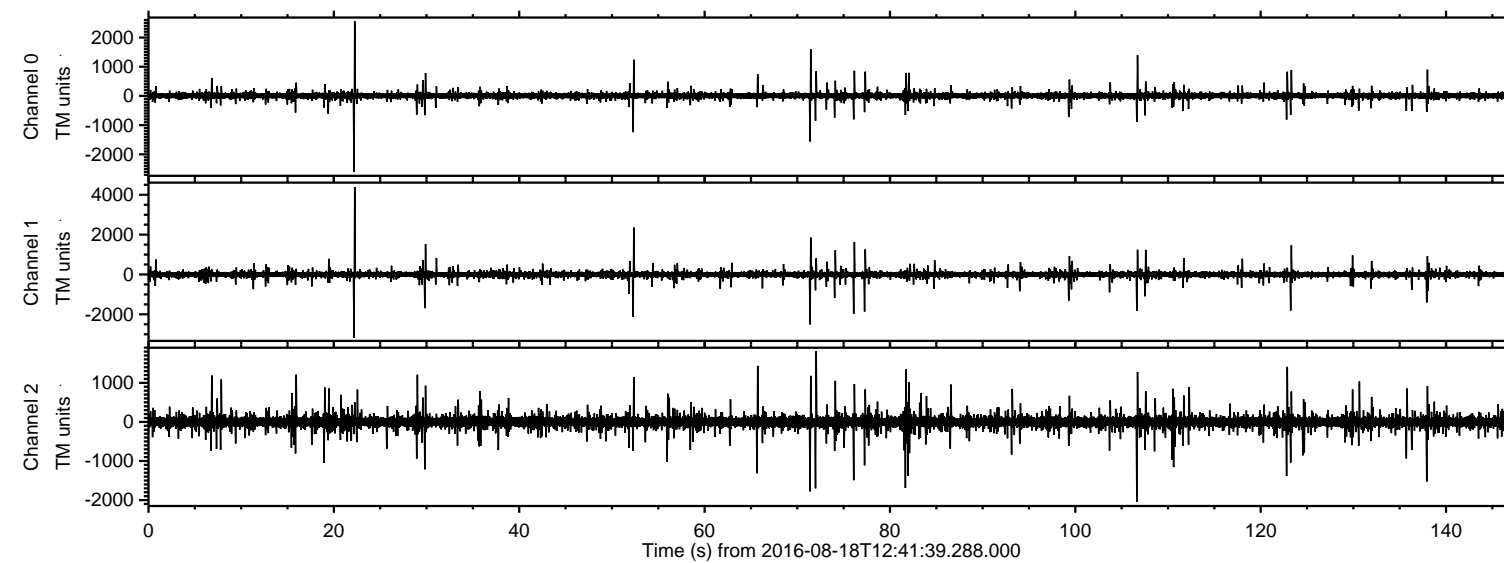
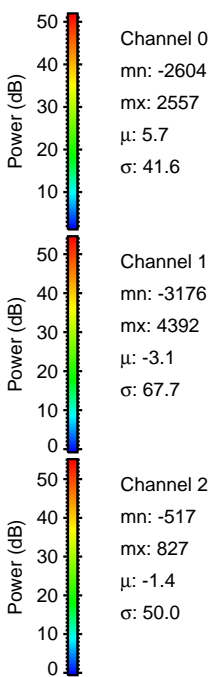
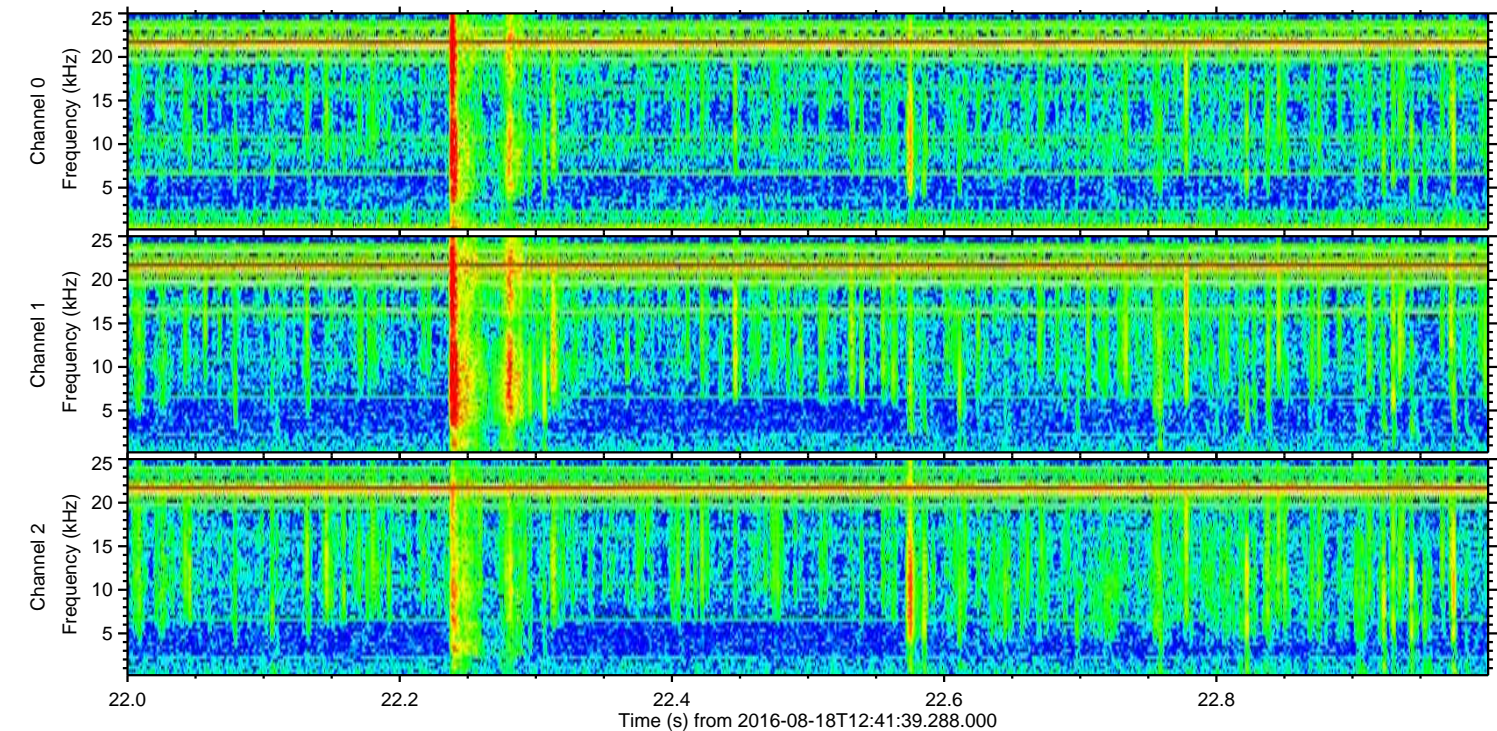
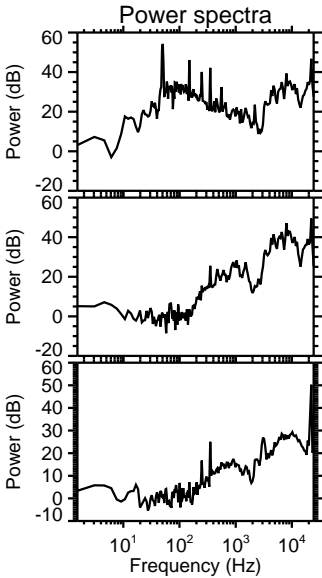
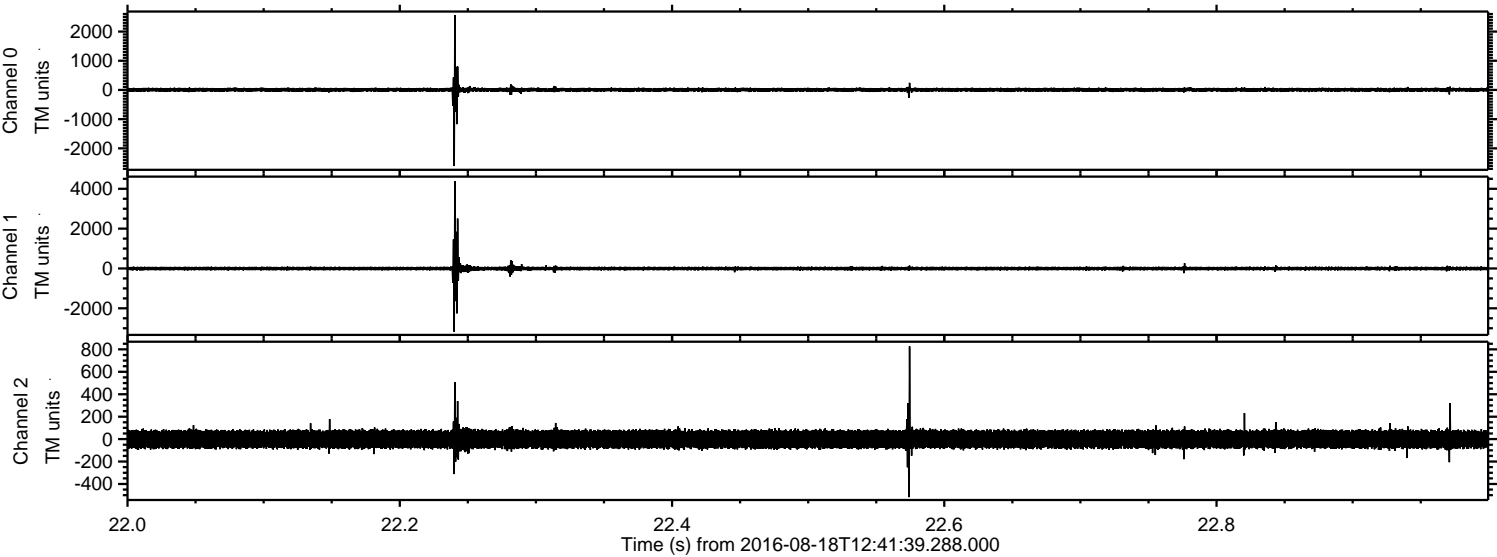


ELMAVAN 3D WAVEFORMS (Measured data sampled at 50 kHz) 51000 packets of 144 samples from 2016-08-18T12:41:39.288.000.

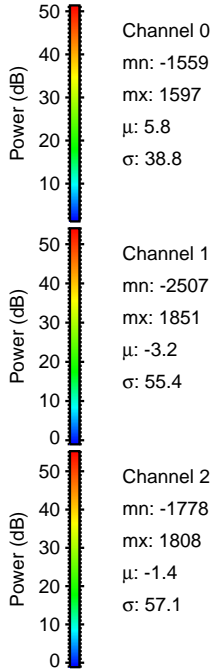
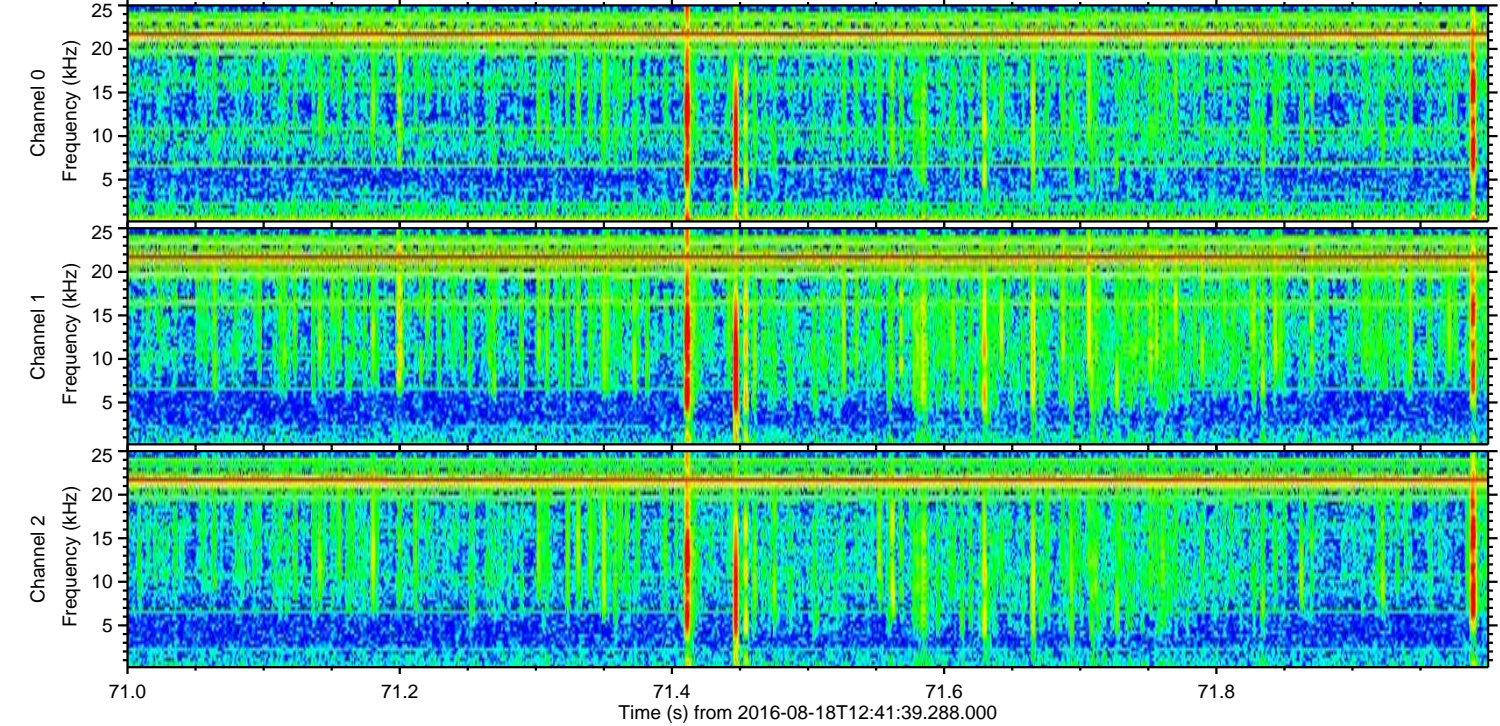
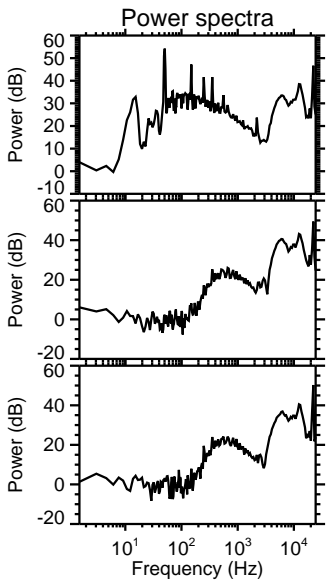
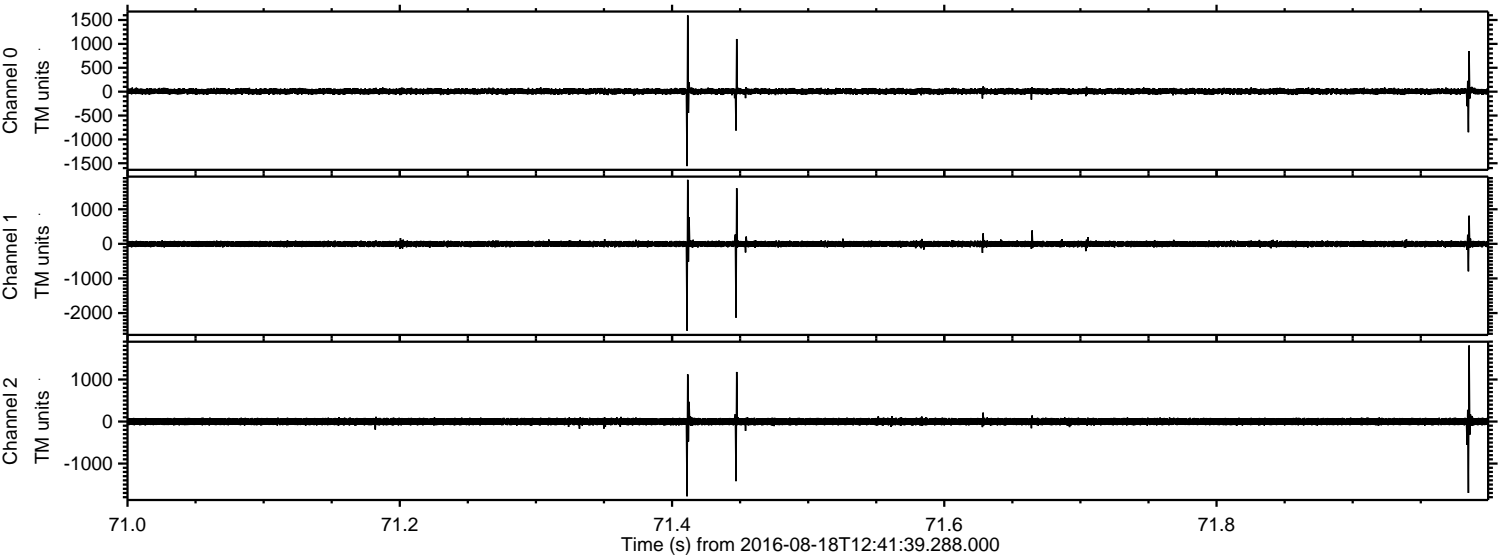
Processed Thu Aug 18 14:49:51 2016 by ELM ver.2012-10-06 from 001__elm20160818_124138__dat00.bin



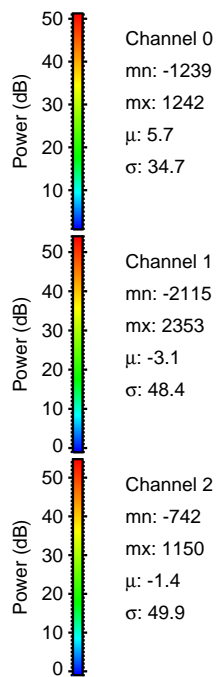
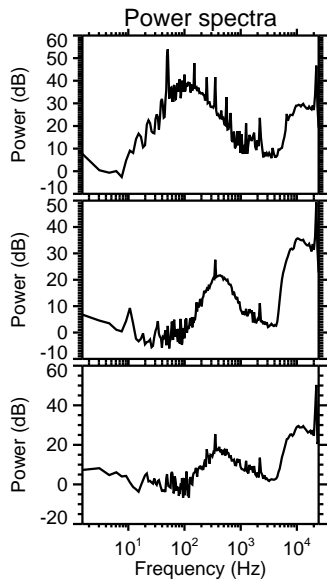
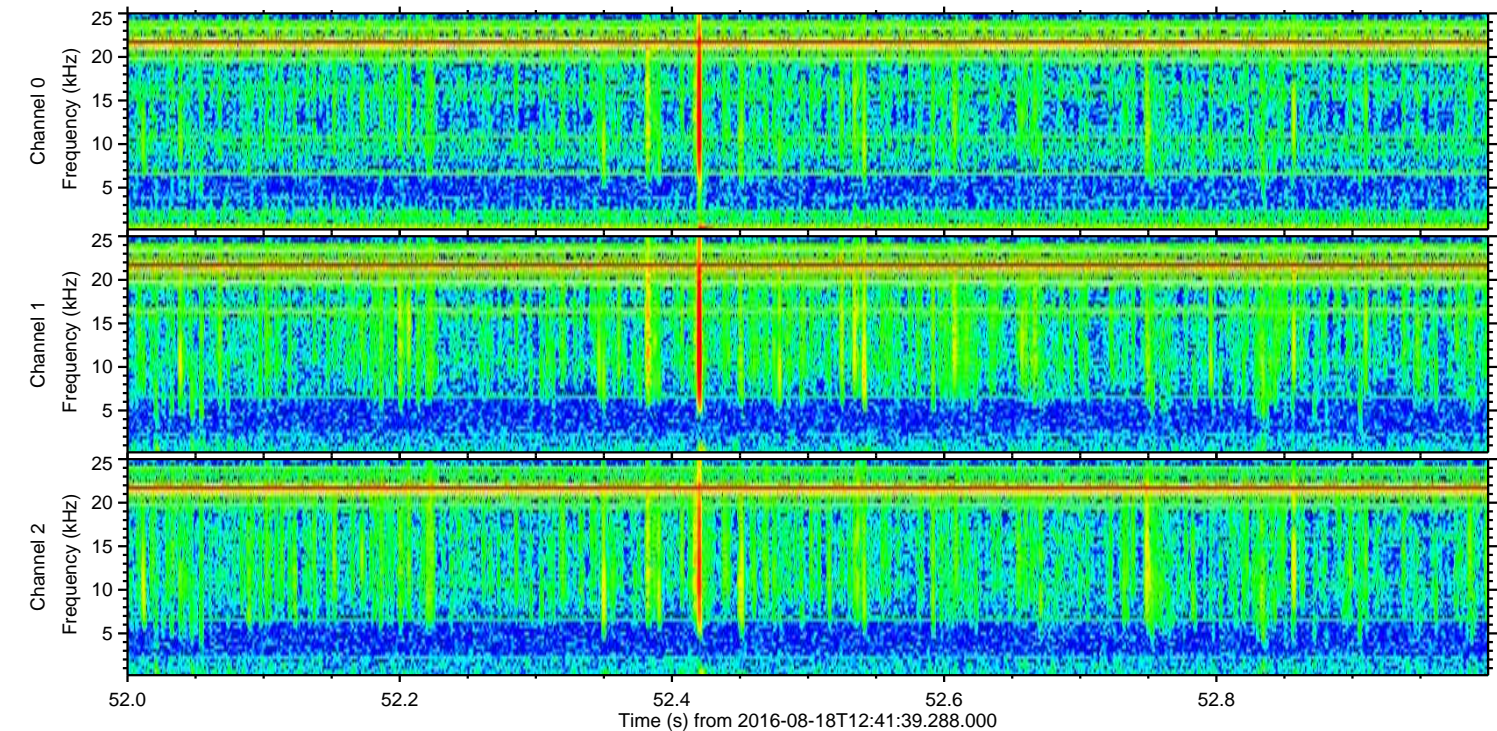
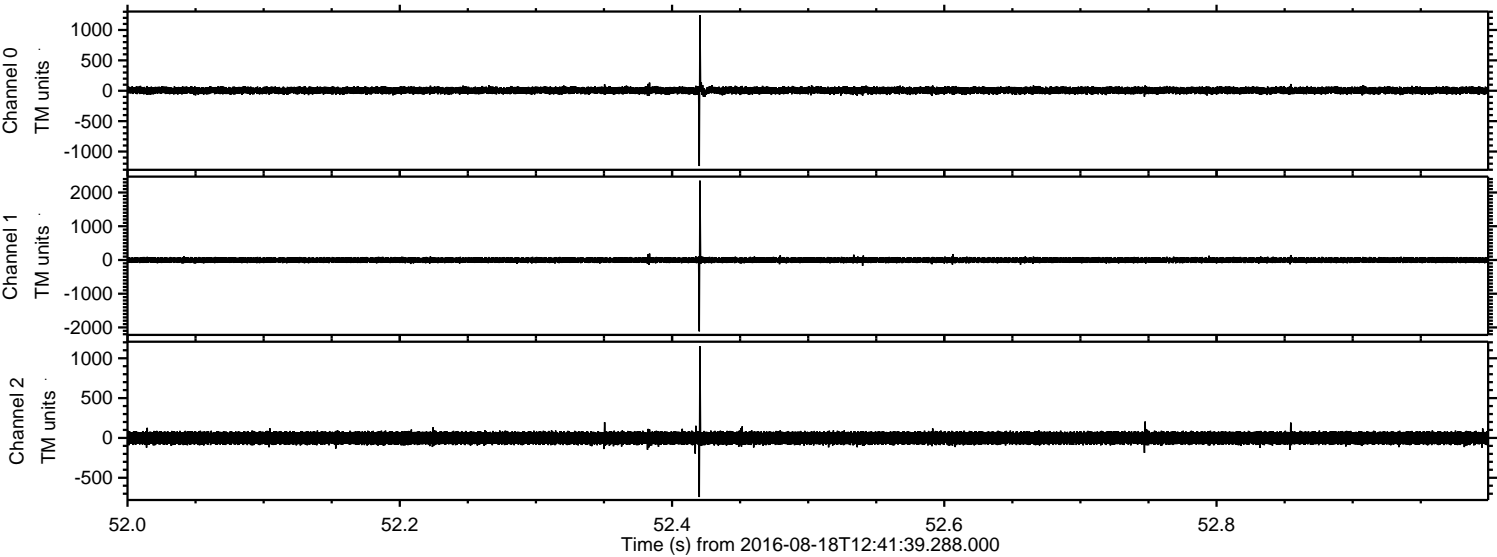
Processed Thu Aug 18 14:50:07 2016 by ELM ver.2012-10-06 from 001__elm20160818_124138__dat00.bin



Processed Thu Aug 18 14:50:08 2016 by ELM ver.2012-10-06 from 001__elm20160818_124138__dat00.bin

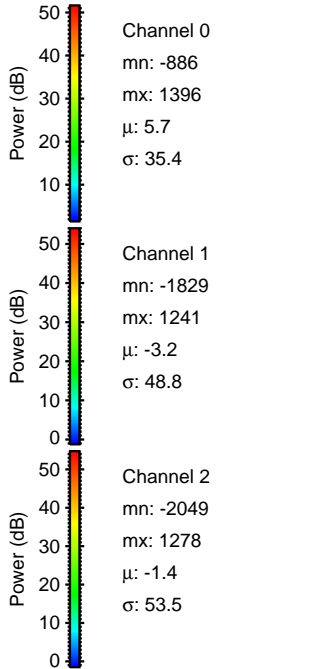
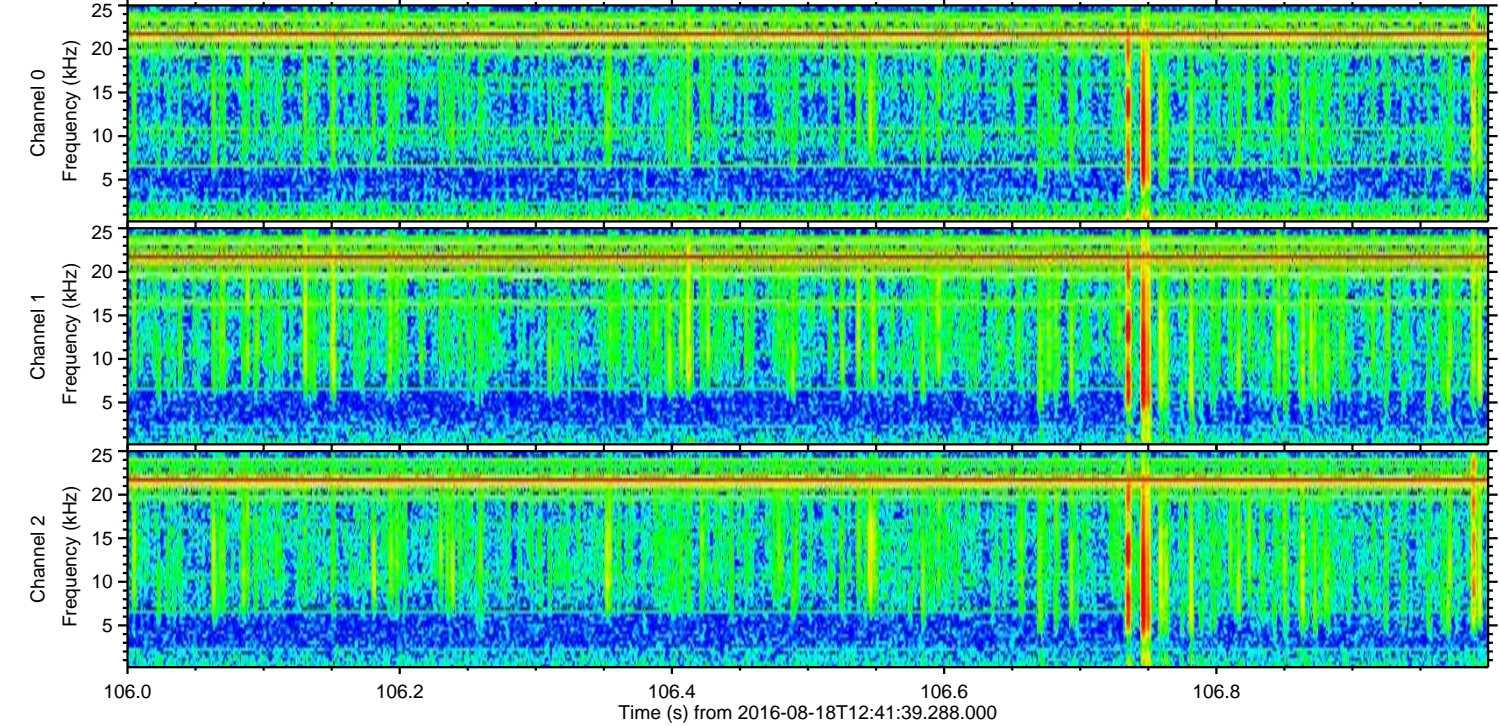
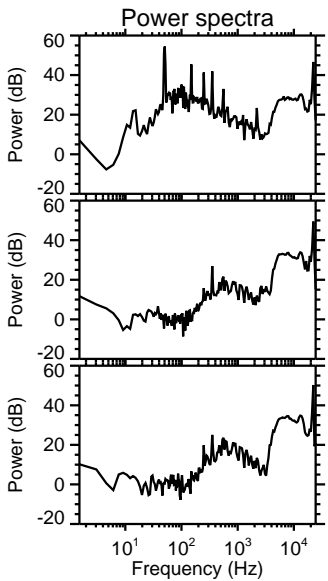
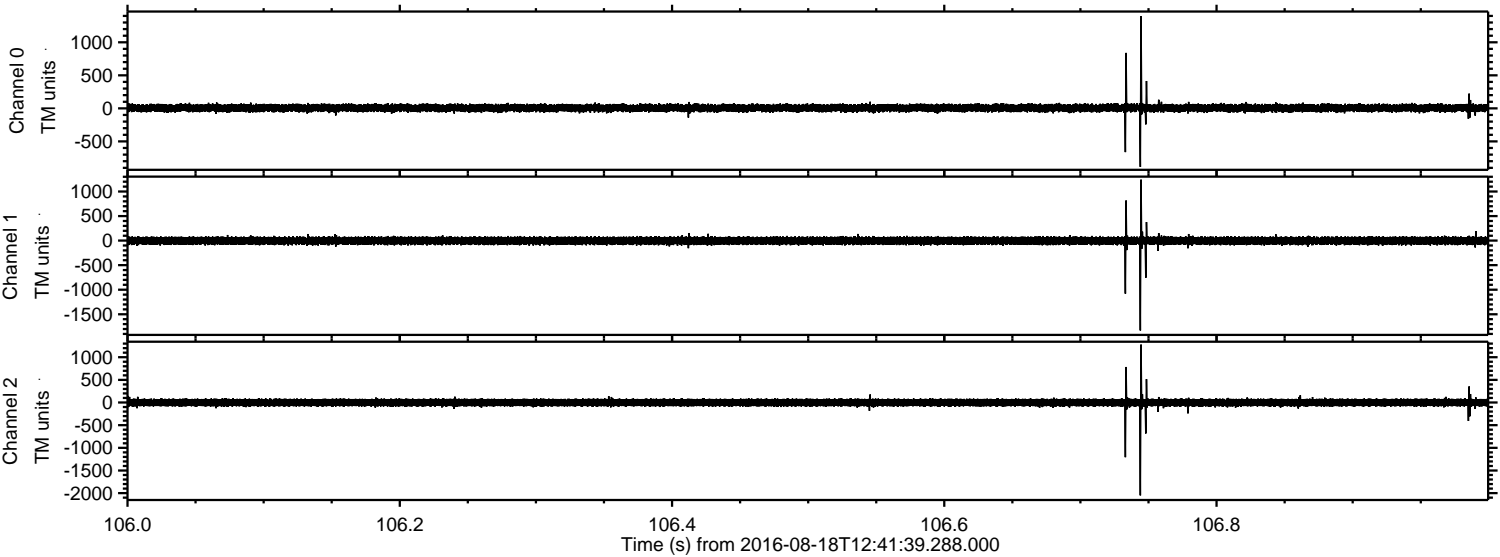


Processed Thu Aug 18 14:50:09 2016 by ELM ver.2012-10-06 from 001__elm20160818_124138__dat00.bin

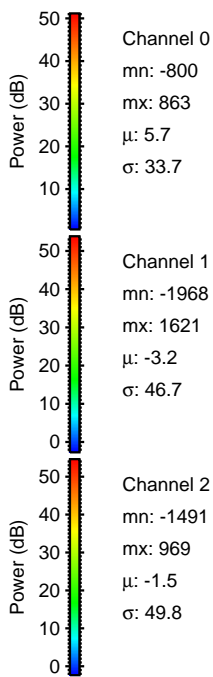
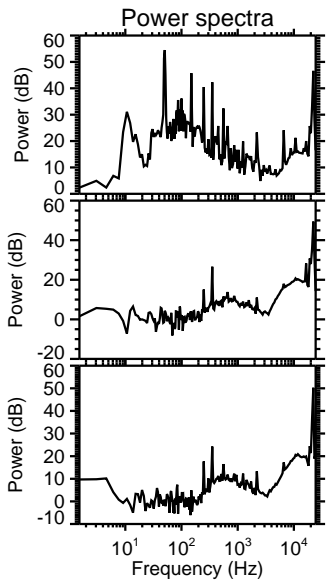
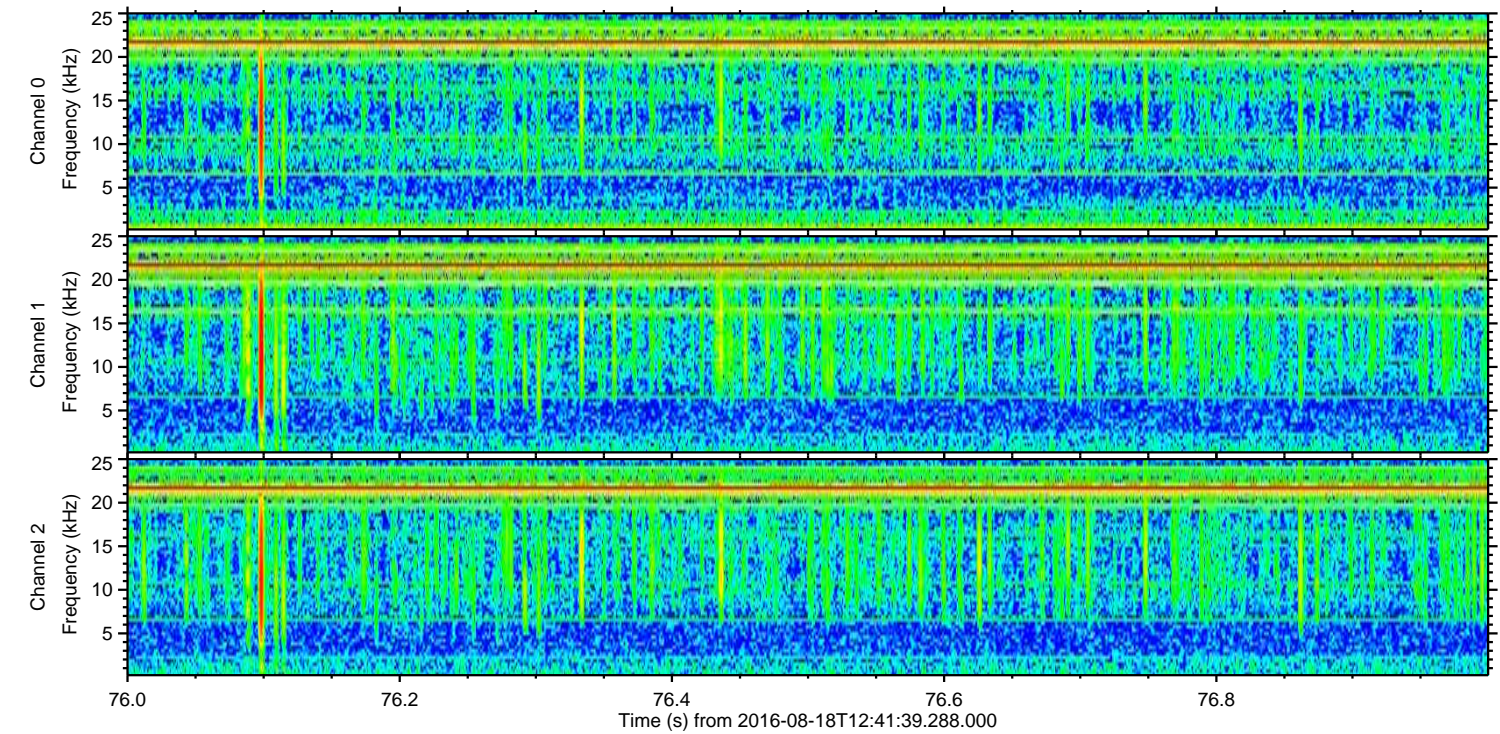
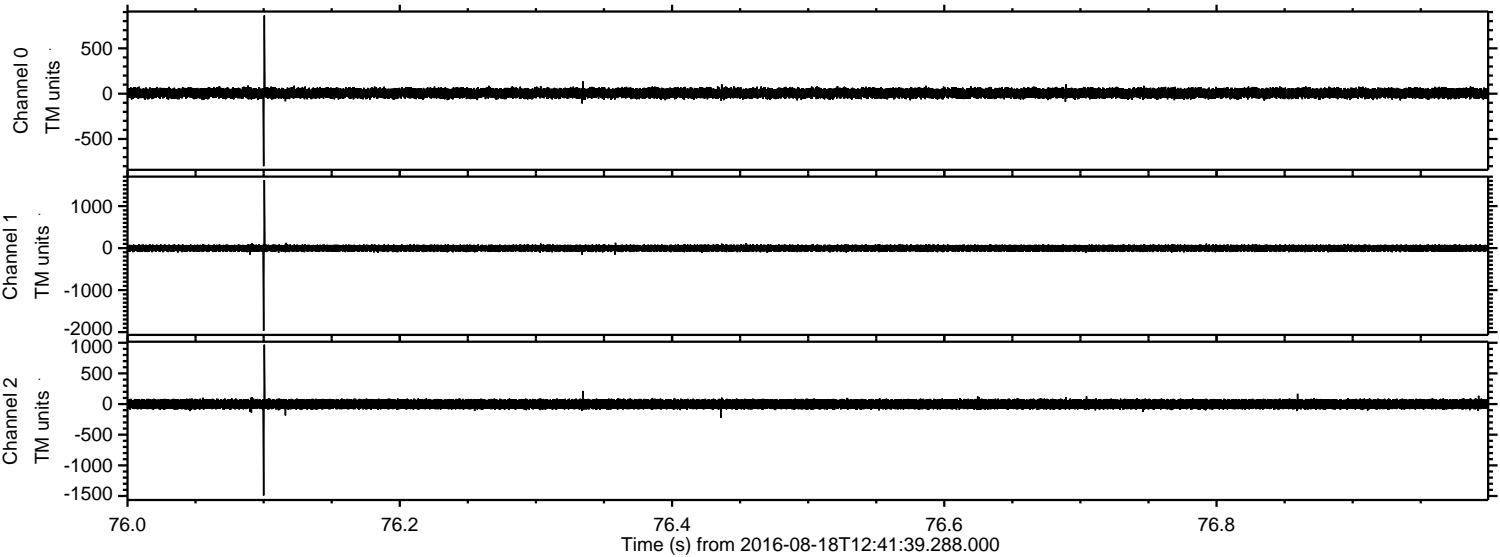


ELMAVAN 3D WAVEFORMS (Measured data sampled at 50 kHz) 51000 packets of 144 samples from 2016-08-18T12:41:39.288.000. Part 107/147

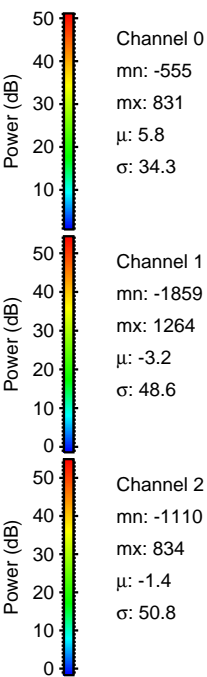
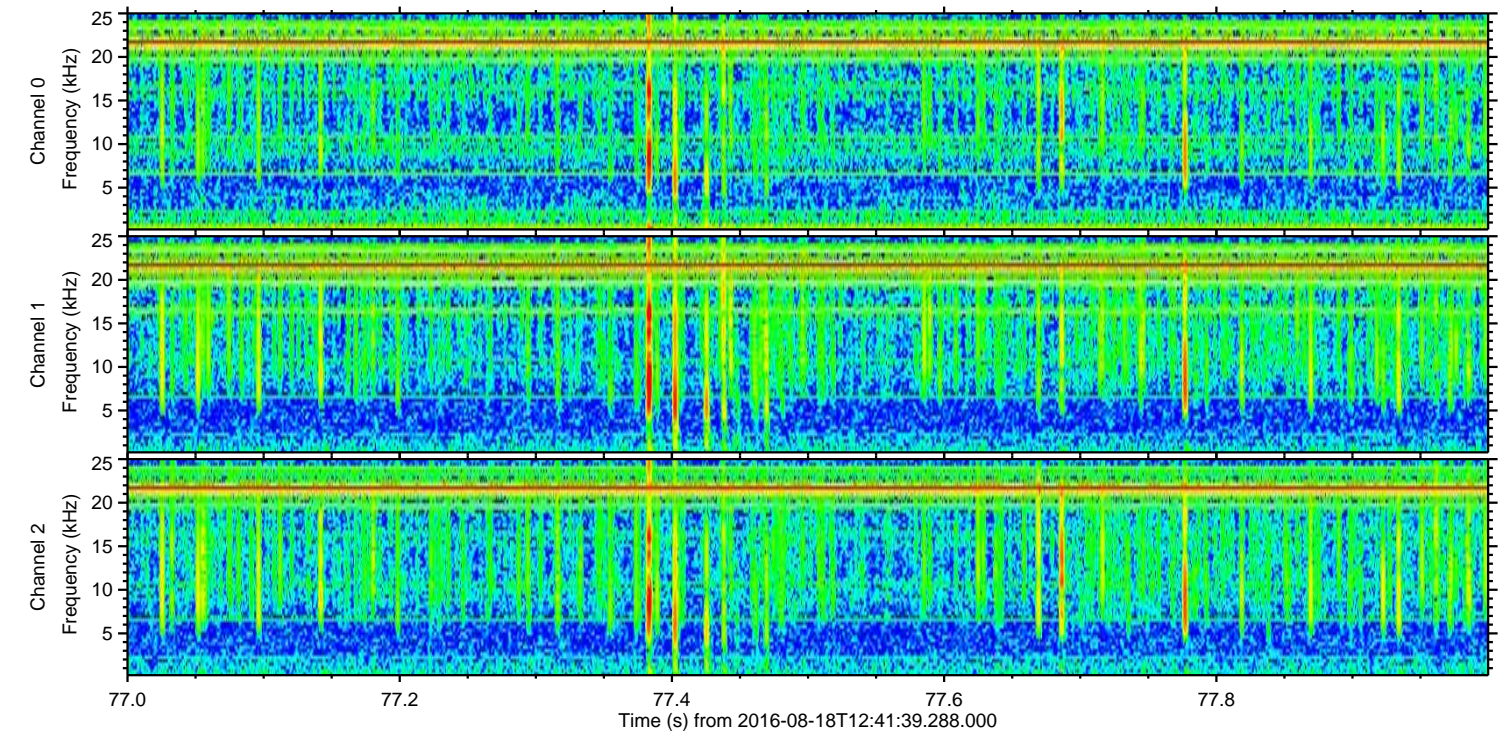
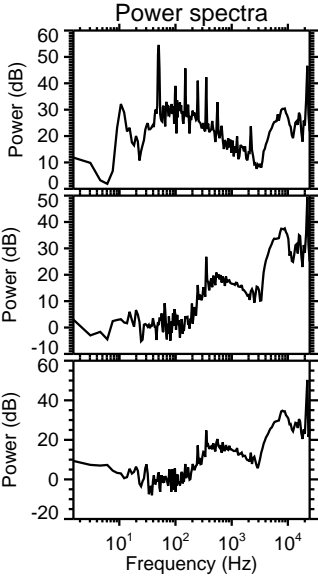
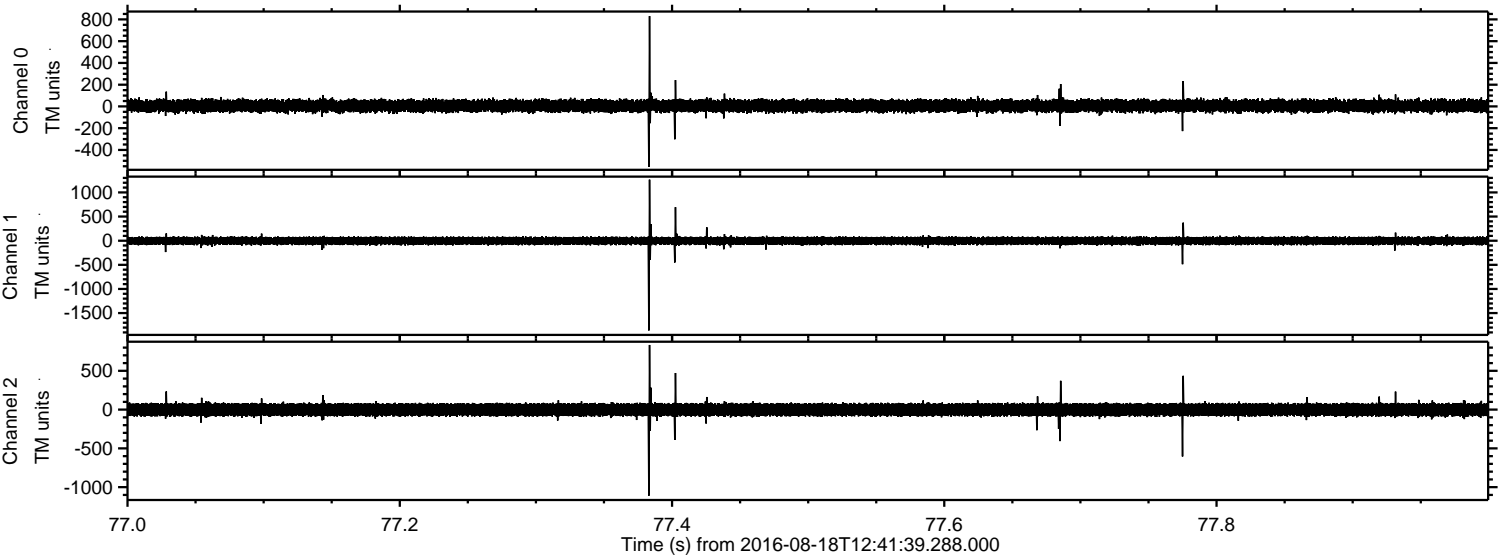
Processed Thu Aug 18 14:50:10 2016 by ELM ver.2012-10-06 from 001__elm20160818_124138__dat00.bin



Processed Thu Aug 18 14:50:11 2016 by ELM ver.2012-10-06 from 001__elm20160818_124138__dat00.bin

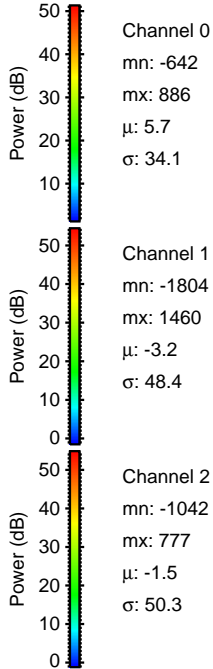
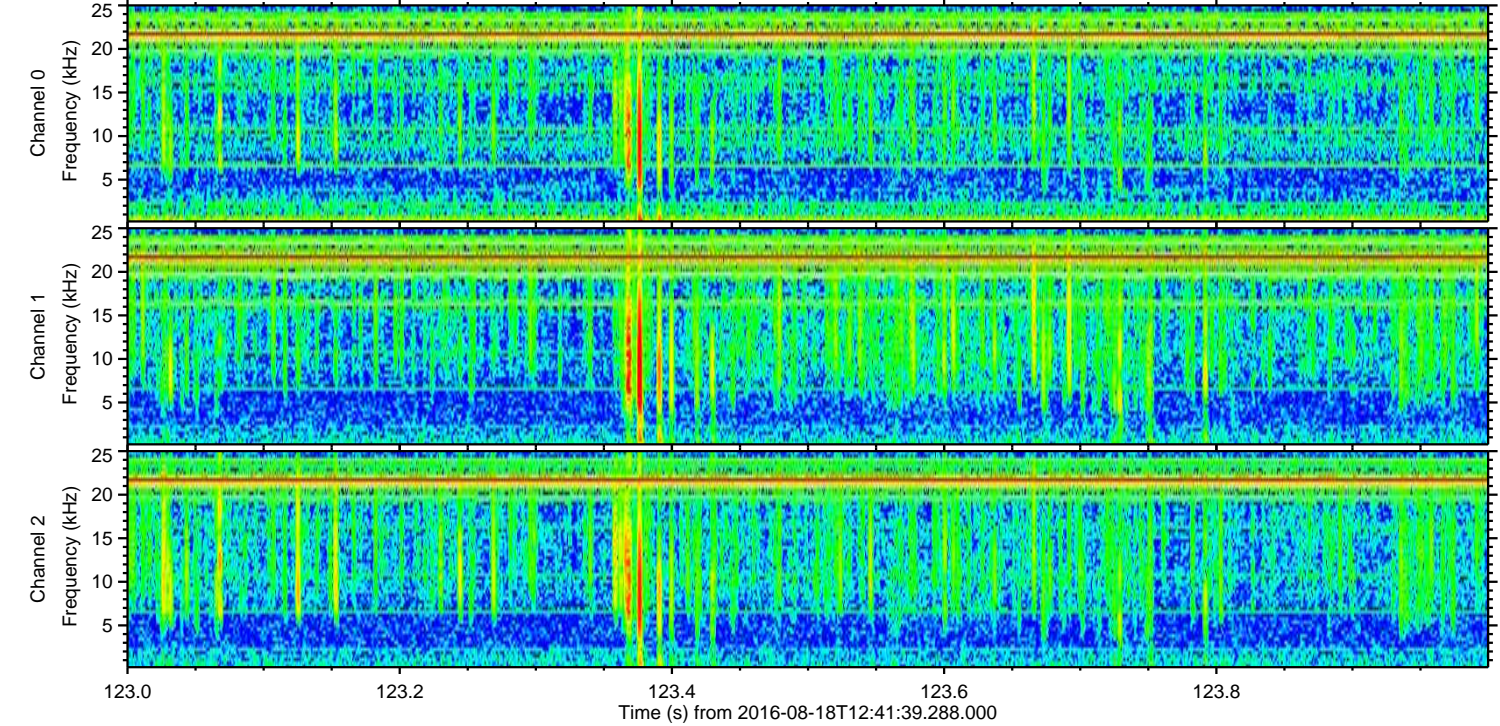
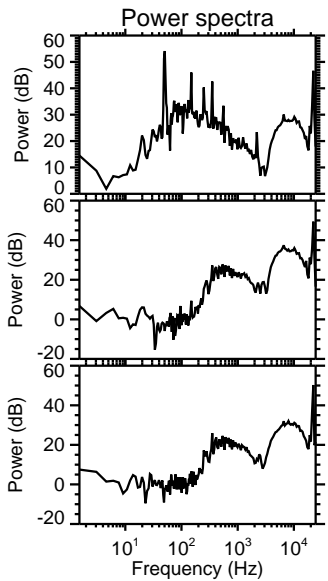
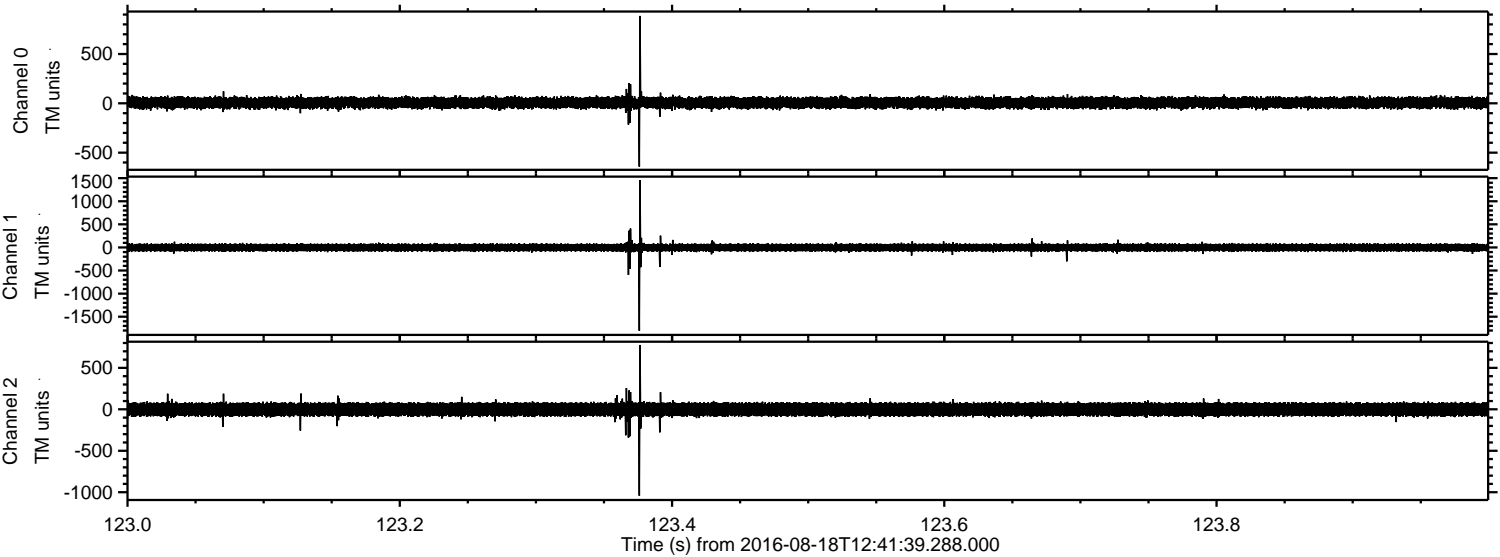


Processed Thu Aug 18 14:50:12 2016 by ELM ver.2012-10-06 from 001__elm20160818_124138__dat00.bin

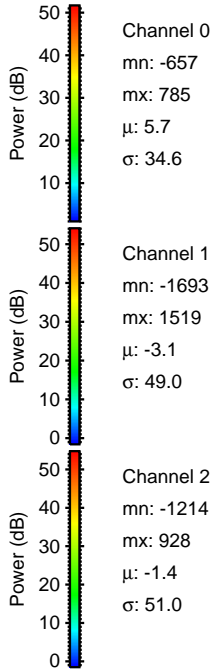
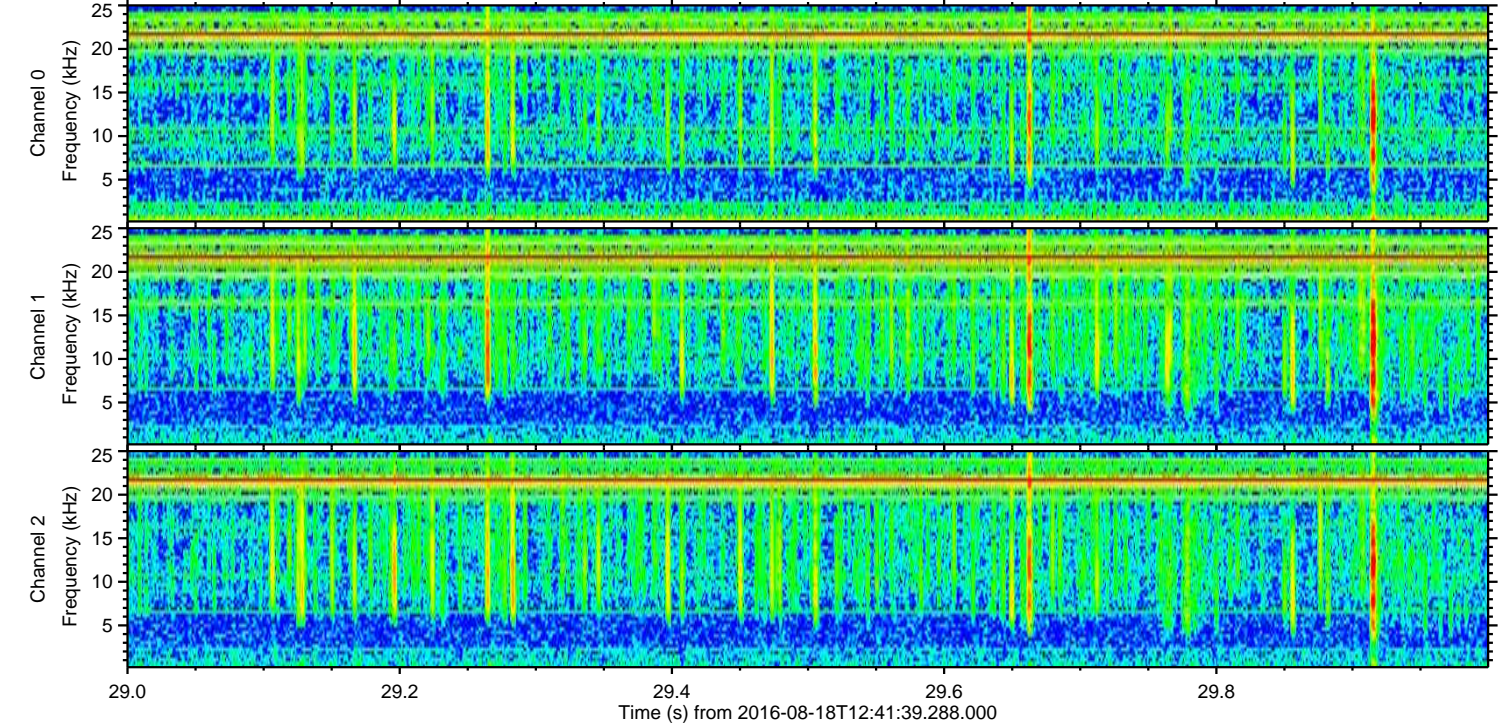
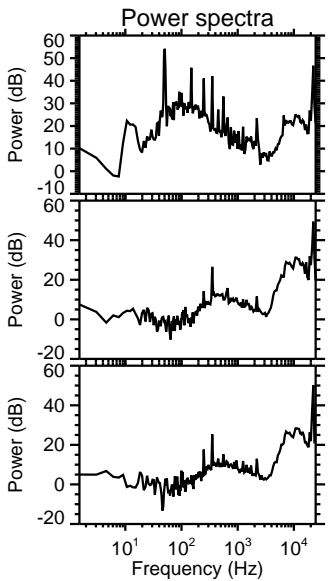
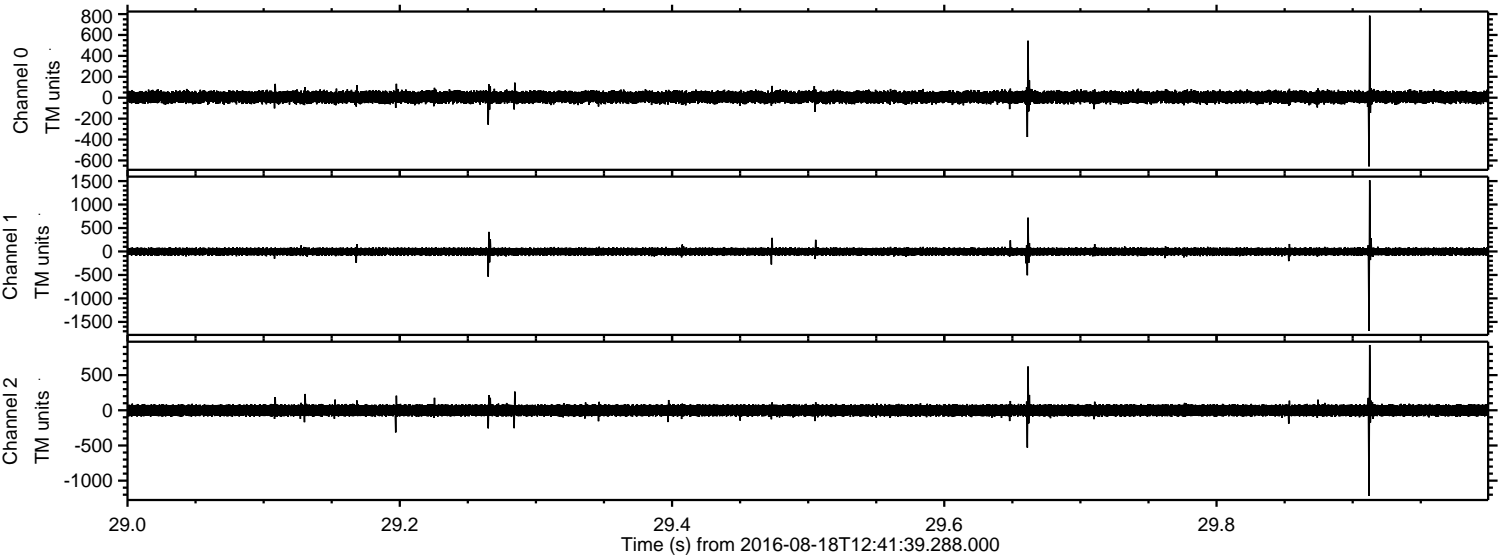


ELMAVAN 3D WAVEFORMS (Measured data sampled at 50 kHz) 51000 packets of 144 samples from 2016-08-18T12:41:39.288.000. Part 124/147

Processed Thu Aug 18 14:50:13 2016 by ELM ver.2012-10-06 from 001__elm20160818_124138__dat00.bin



Processed Thu Aug 18 14:50:14 2016 by ELM ver.2012-10-06 from 001__elm20160818_124138__dat00.bin

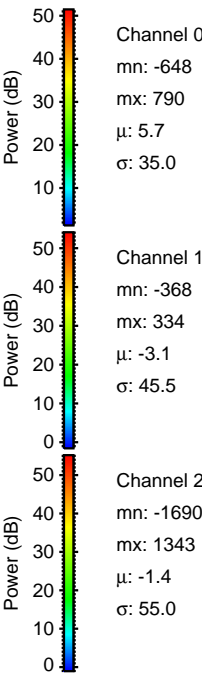
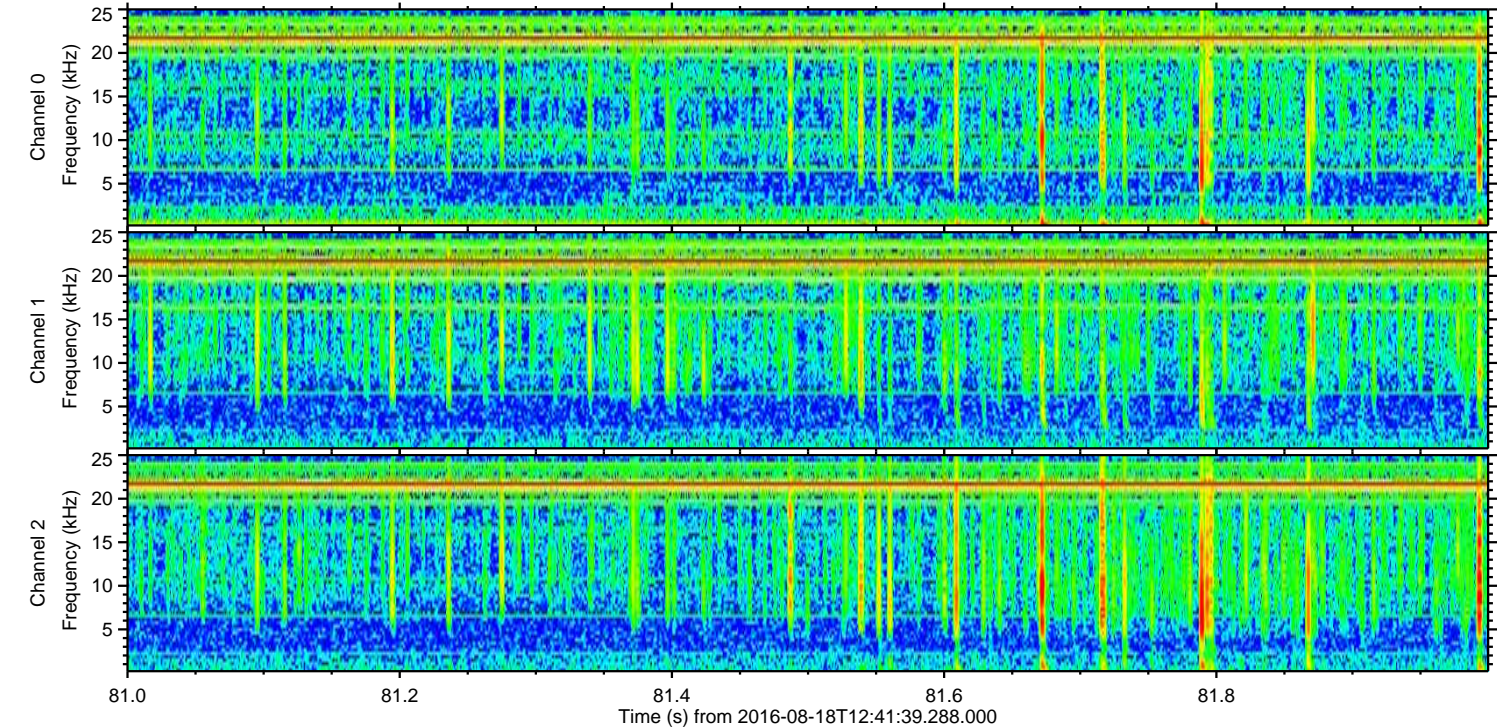
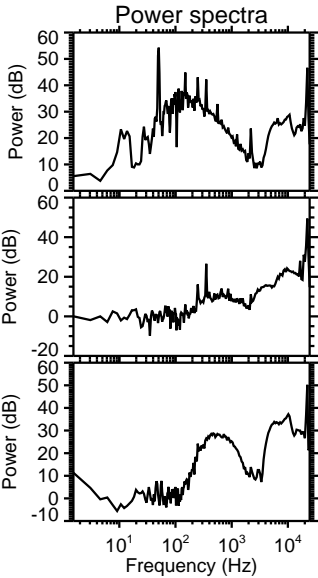
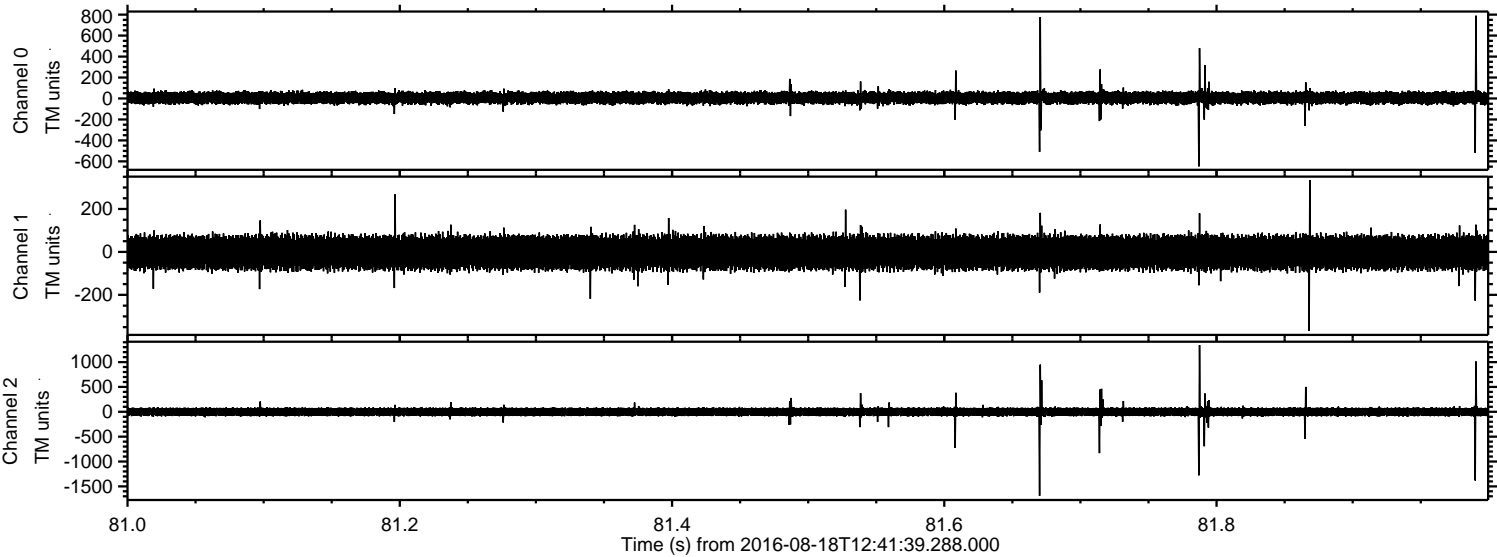


Channel 0
mn: -657
mx: 785
 μ : 5.7
 σ : 34.6

Channel 1
mn: -1693
mx: 1519
 μ : -3.1
 σ : 49.0

Channel 2
mn: -1214
mx: 928
 μ : -1.4
 σ : 51.0

Processed Thu Aug 18 14:50:15 2016 by ELM ver.2012-10-06 from 001__elm20160818_124138__dat00.bin



Processed Thu Aug 18 14:50:16 2016 by ELM ver.2012-10-06 from 001__elm20160818_124138__dat00.bin

