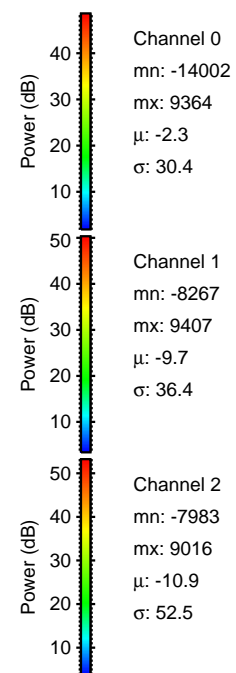
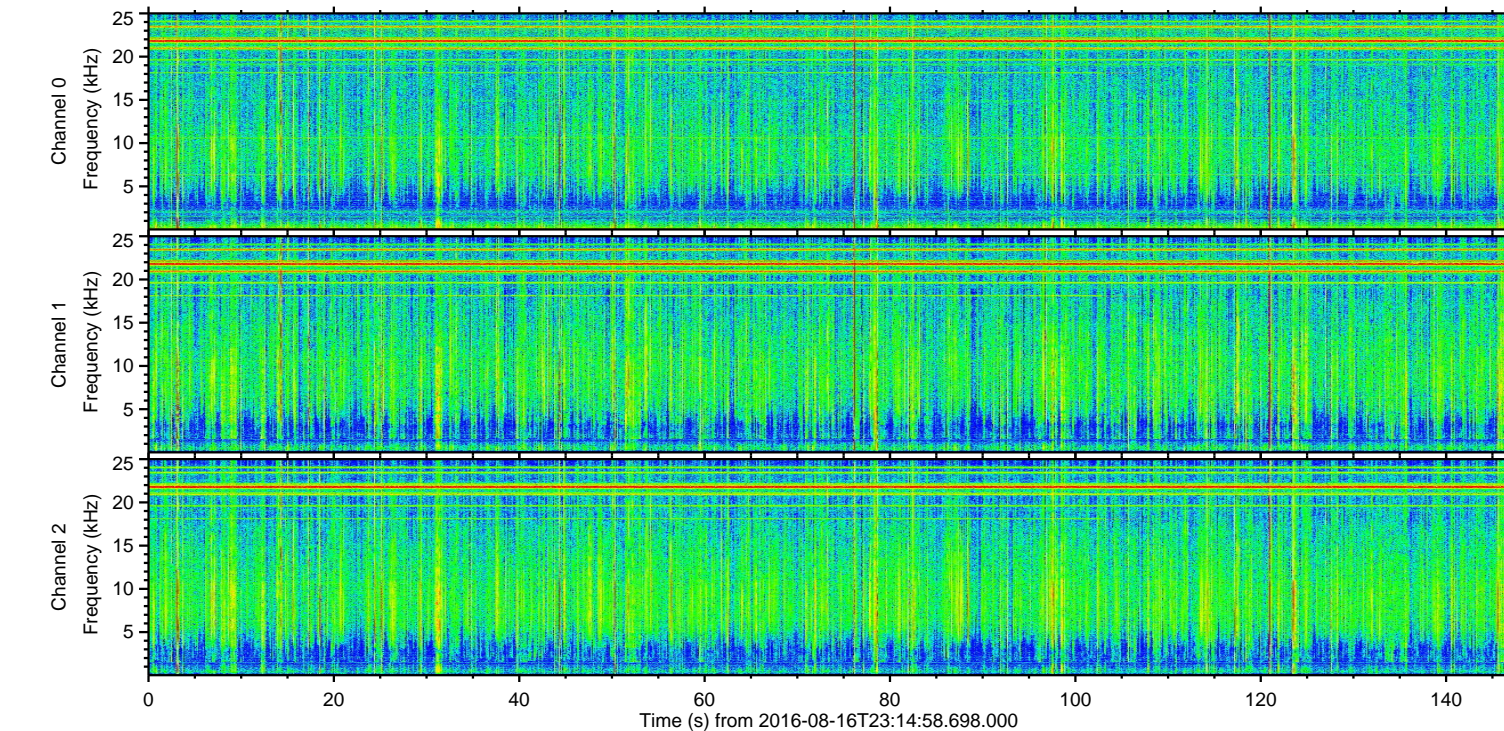
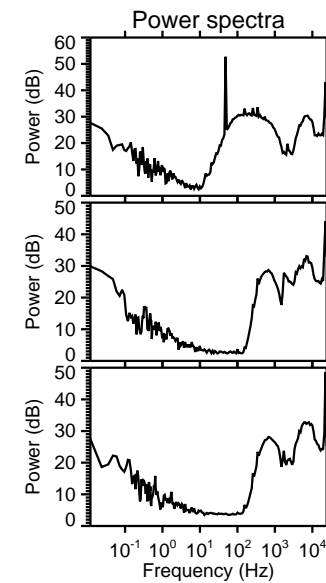
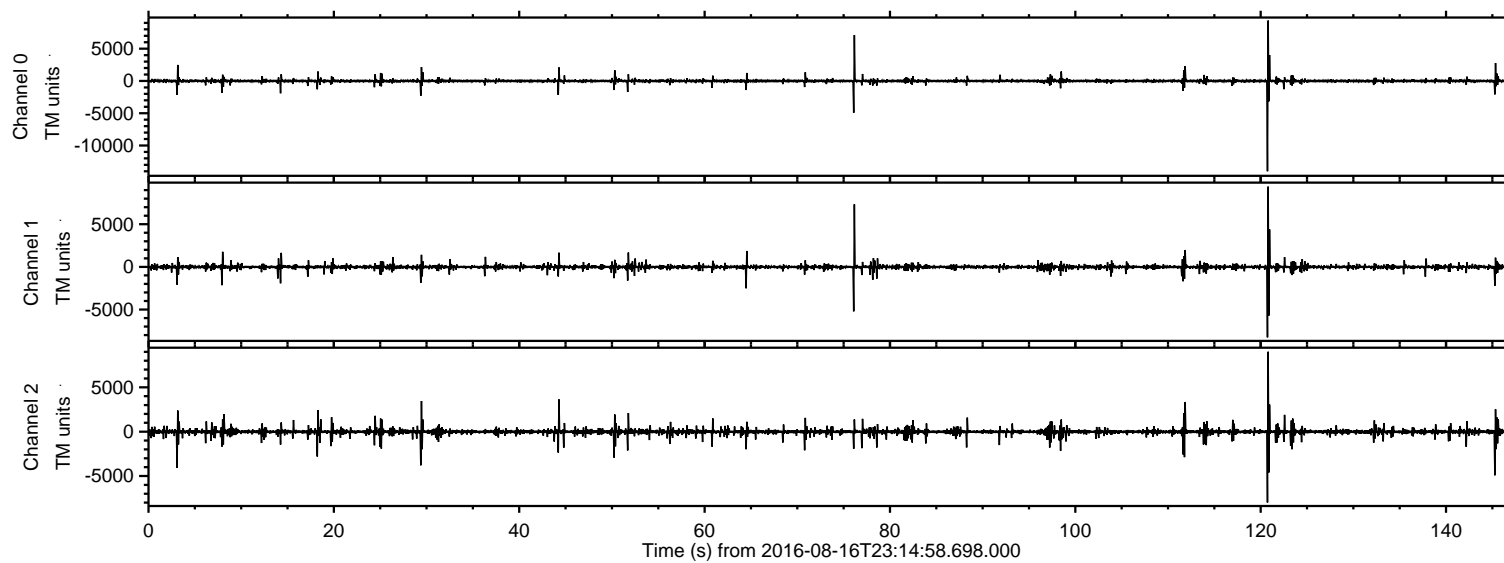


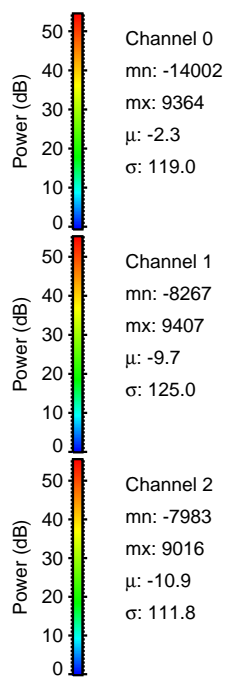
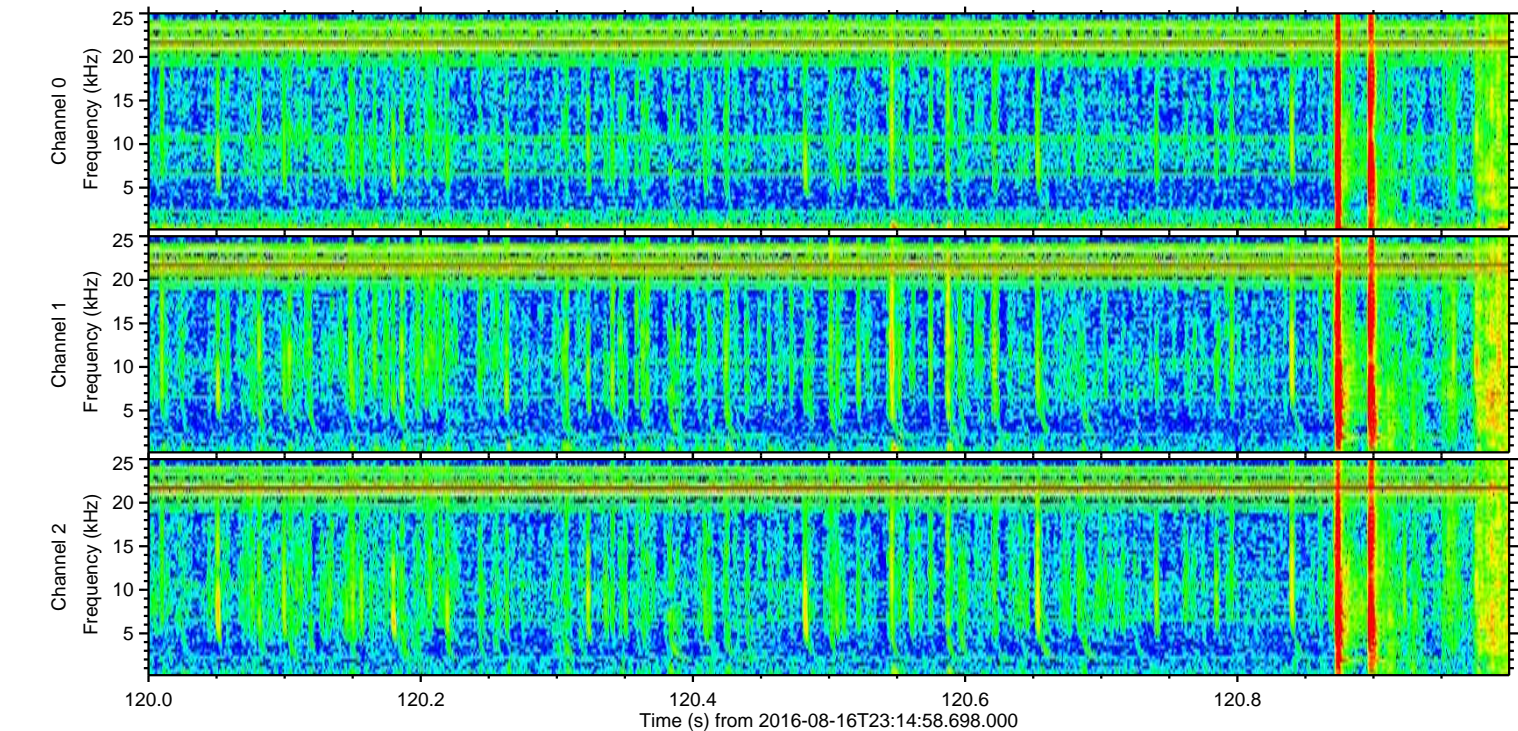
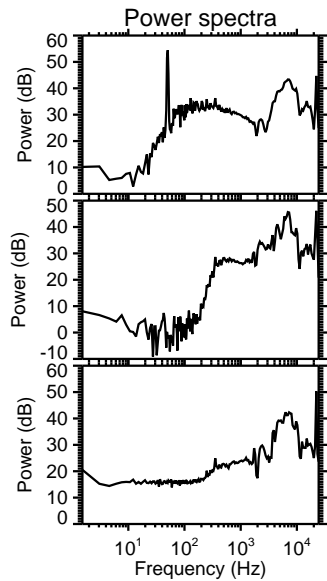
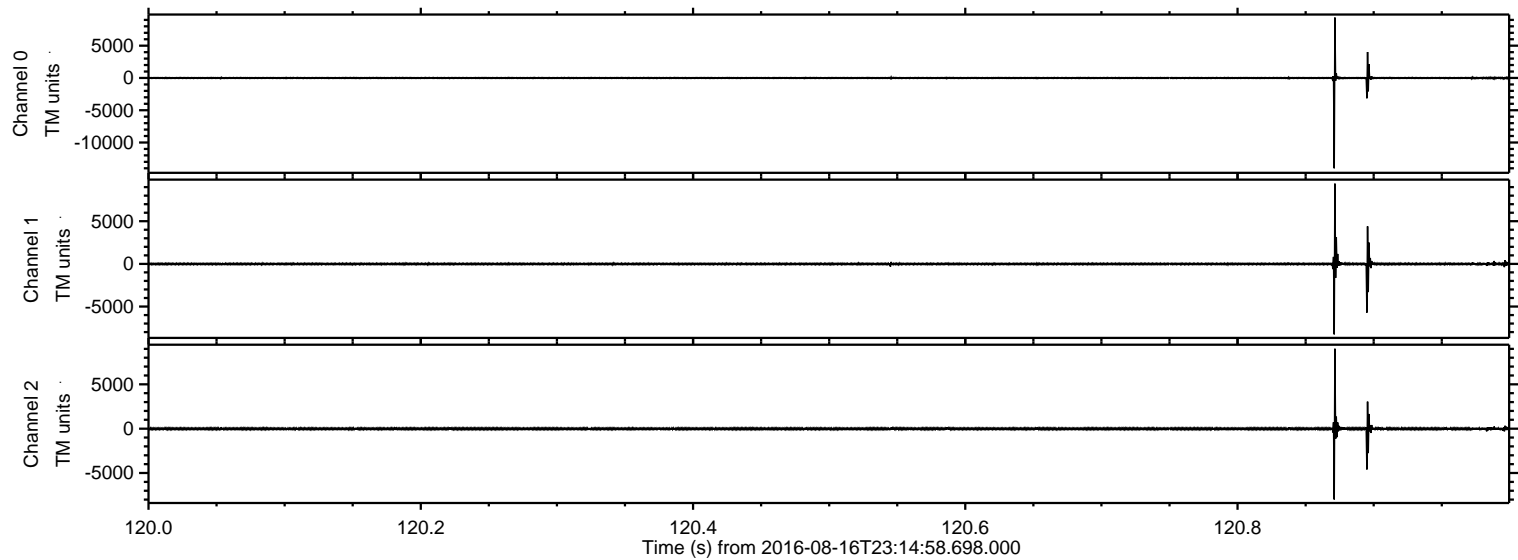
ELMAVAN 3D WAVEFORMS (Measured data sampled at 50 kHz) 51000 packets of 144 samples from 2016-08-16T23:14:58.698.000.

Processed Wed Aug 17 01:22:18 2016 by ELM ver.2012-10-06 from 001__elm20160816_231457__dat00.bin



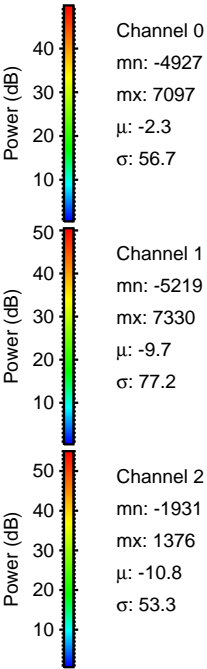
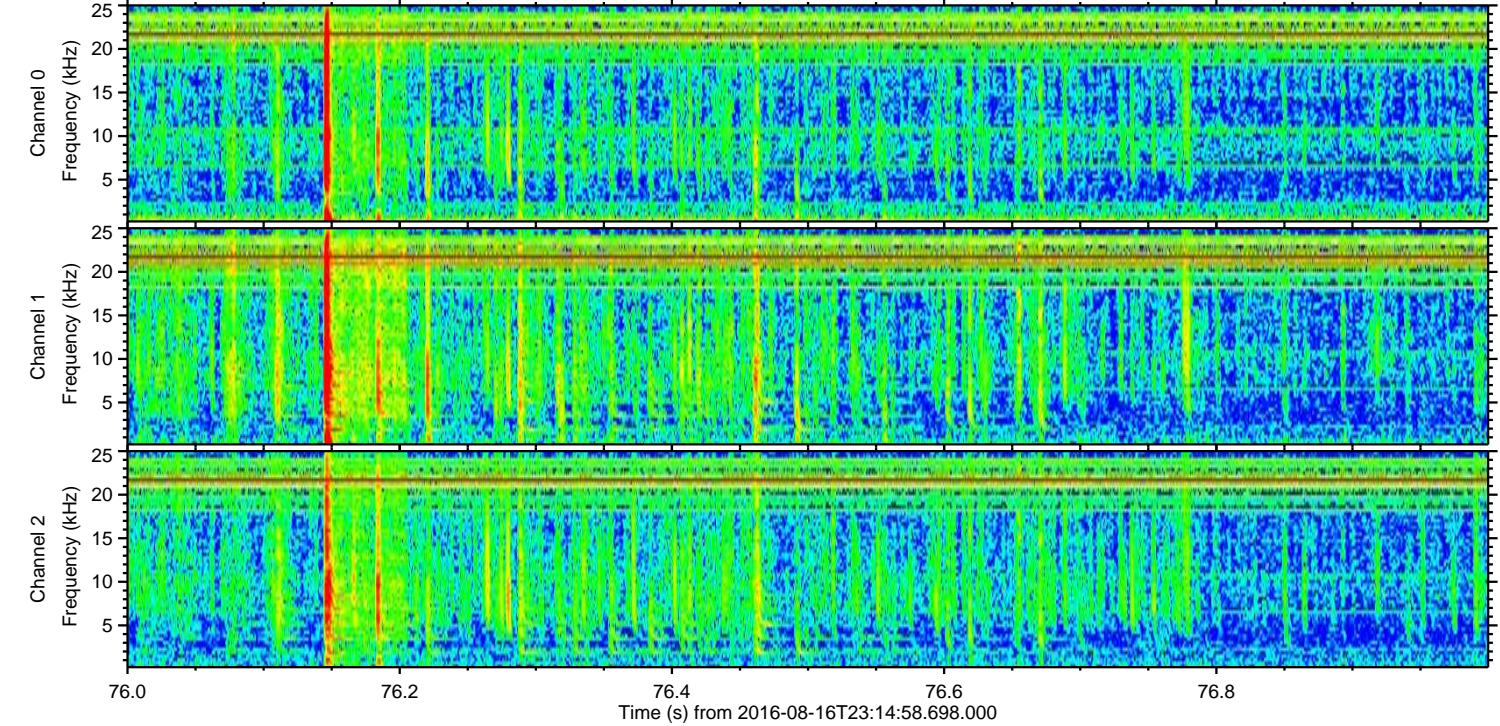
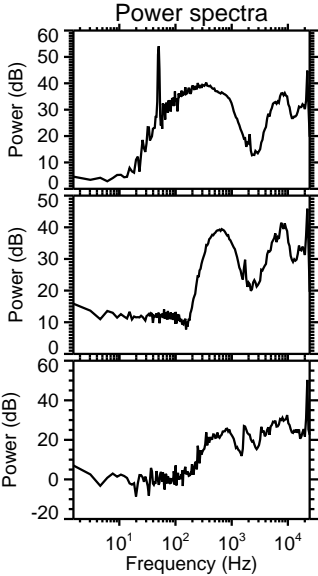
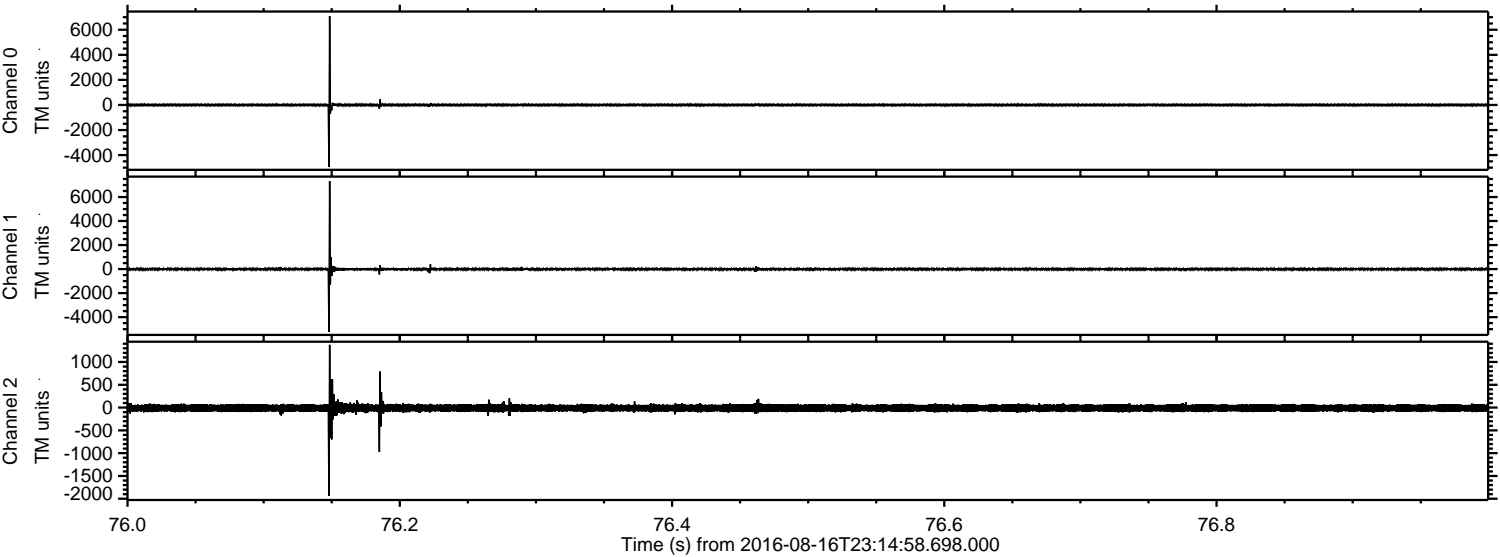
ELMAVAN 3D WAVEFORMS (Measured data sampled at 50 kHz) 51000 packets of 144 samples from 2016-08-16T23:14:58.698.000. Part 121/147

Processed Wed Aug 17 01:22:34 2016 by ELM ver.2012-10-06 from 001__elm20160816_231457__dat00.bin



ELMAVAN 3D WAVEFORMS (Measured data sampled at 50 kHz) 51000 packets of 144 samples from 2016-08-16T23:14:58.698.000. Part 77/147

Processed Wed Aug 17 01:22:35 2016 by ELM ver.2012-10-06 from 001__elm20160816_231457__dat00.bin



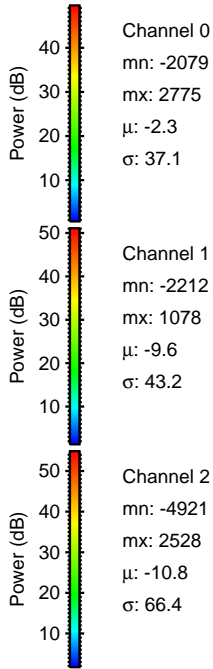
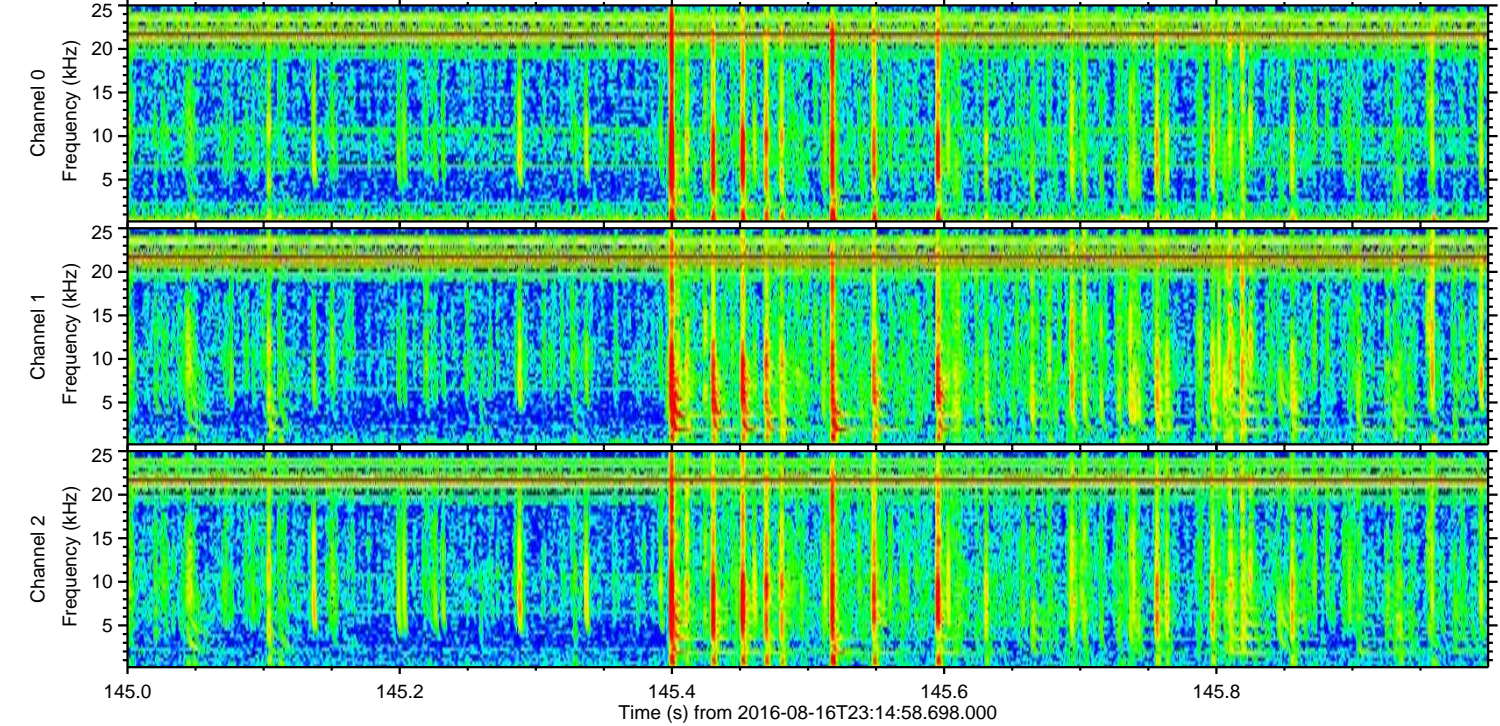
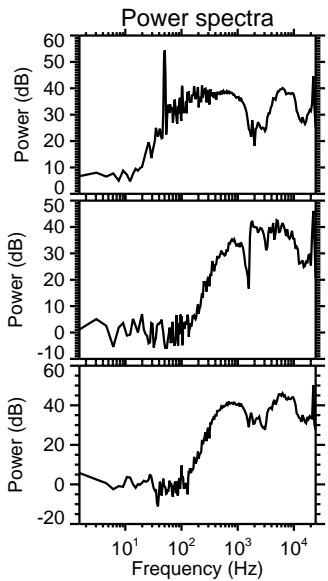
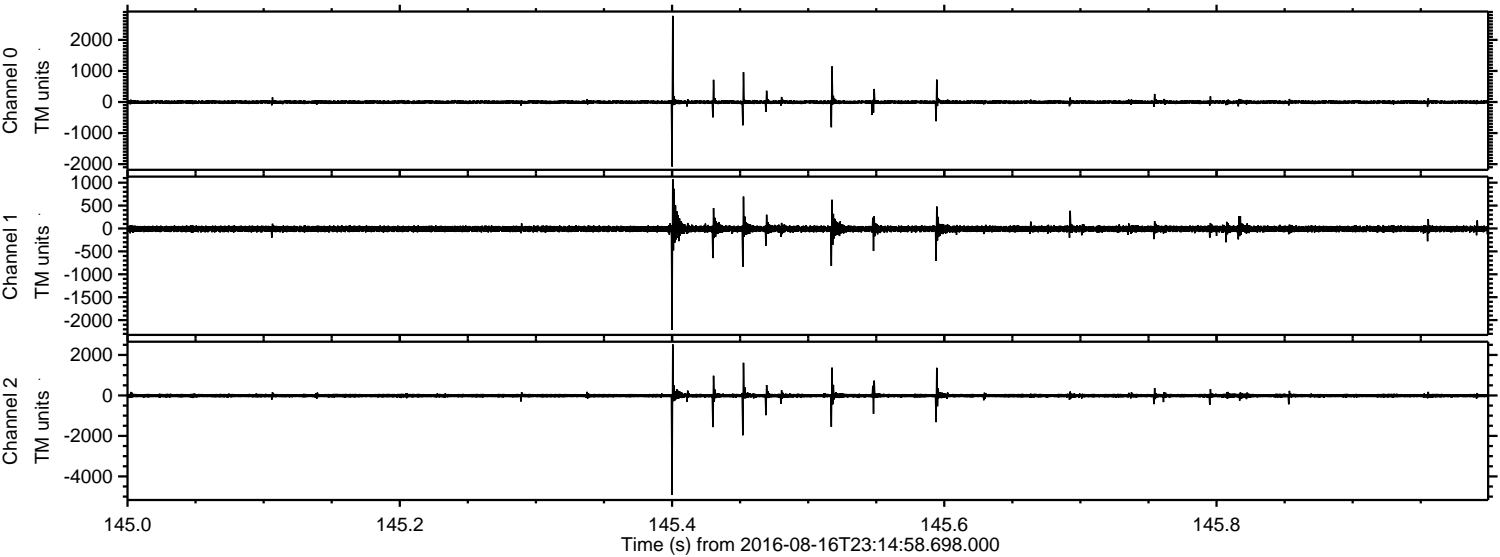
Channel 0
mn: -4927
mx: 7097
 μ : -2.3
 σ : 56.7

Channel 1
mn: -5219
mx: 7330
 μ : -9.7
 σ : 77.2

Channel 2
mn: -1931
mx: 1376
 μ : -10.8
 σ : 53.3

ELMAVAN 3D WAVEFORMS (Measured data sampled at 50 kHz) 51000 packets of 144 samples from 2016-08-16T23:14:58.698.000. Part 146/147

Processed Wed Aug 17 01:22:36 2016 by ELM ver.2012-10-06 from 001__elm20160816_231457__dat00.bin

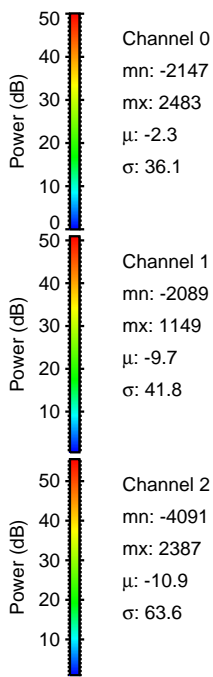
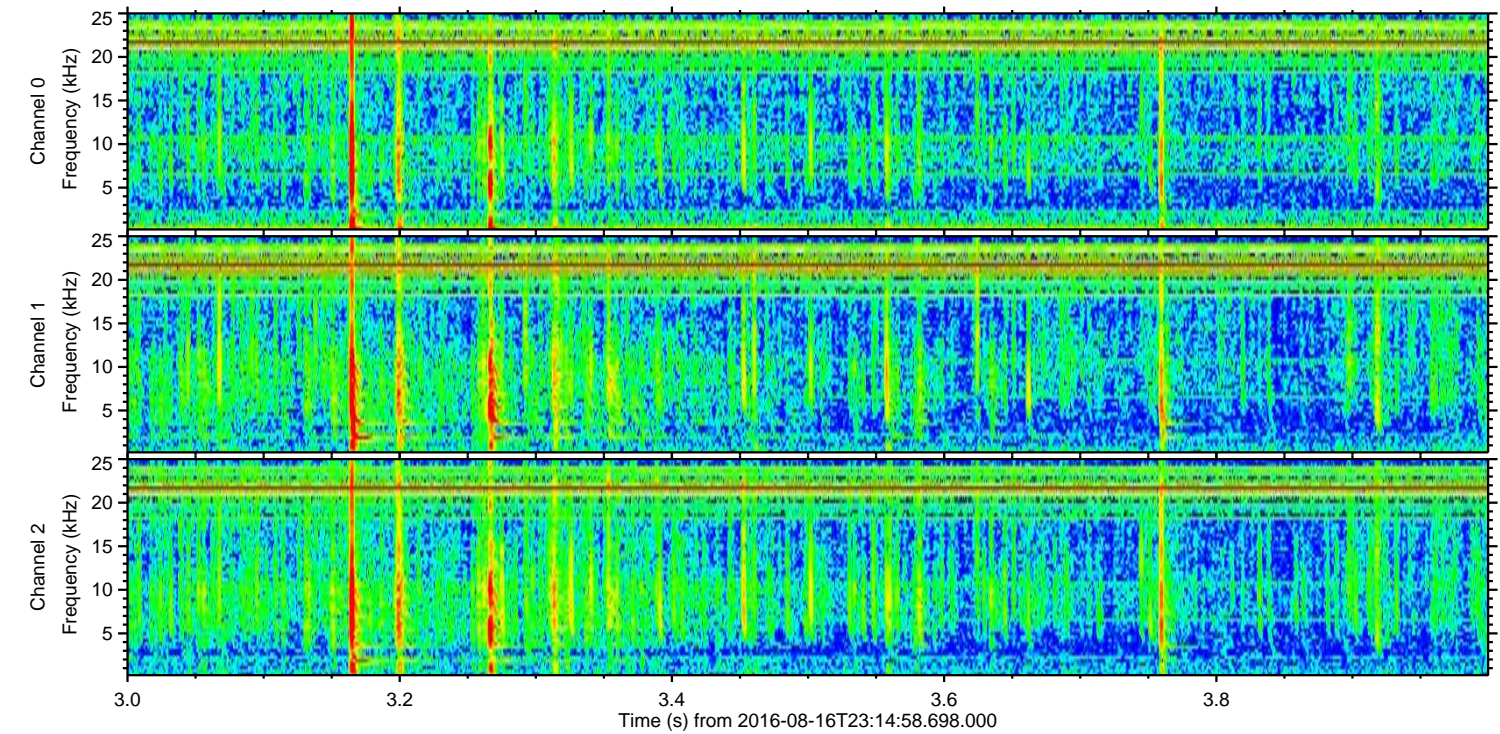
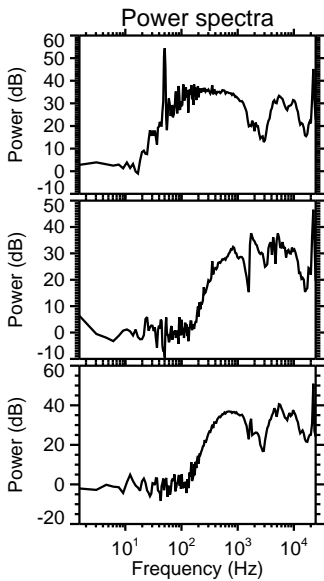
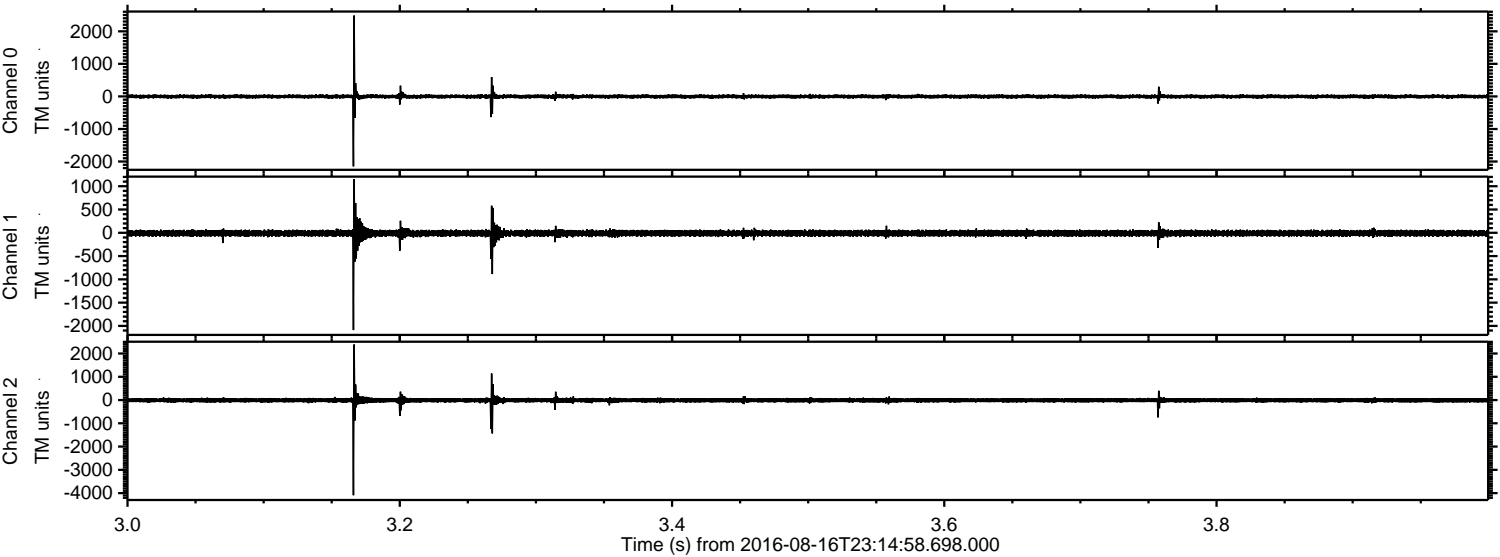


Channel 0
mn: -2079
mx: 2775
 μ : -2.3
 σ : 37.1

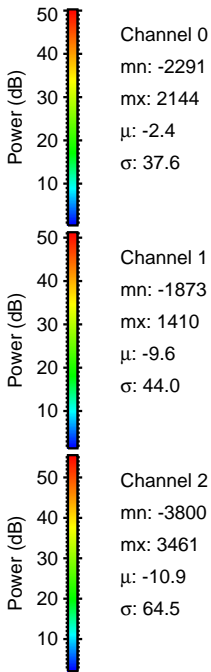
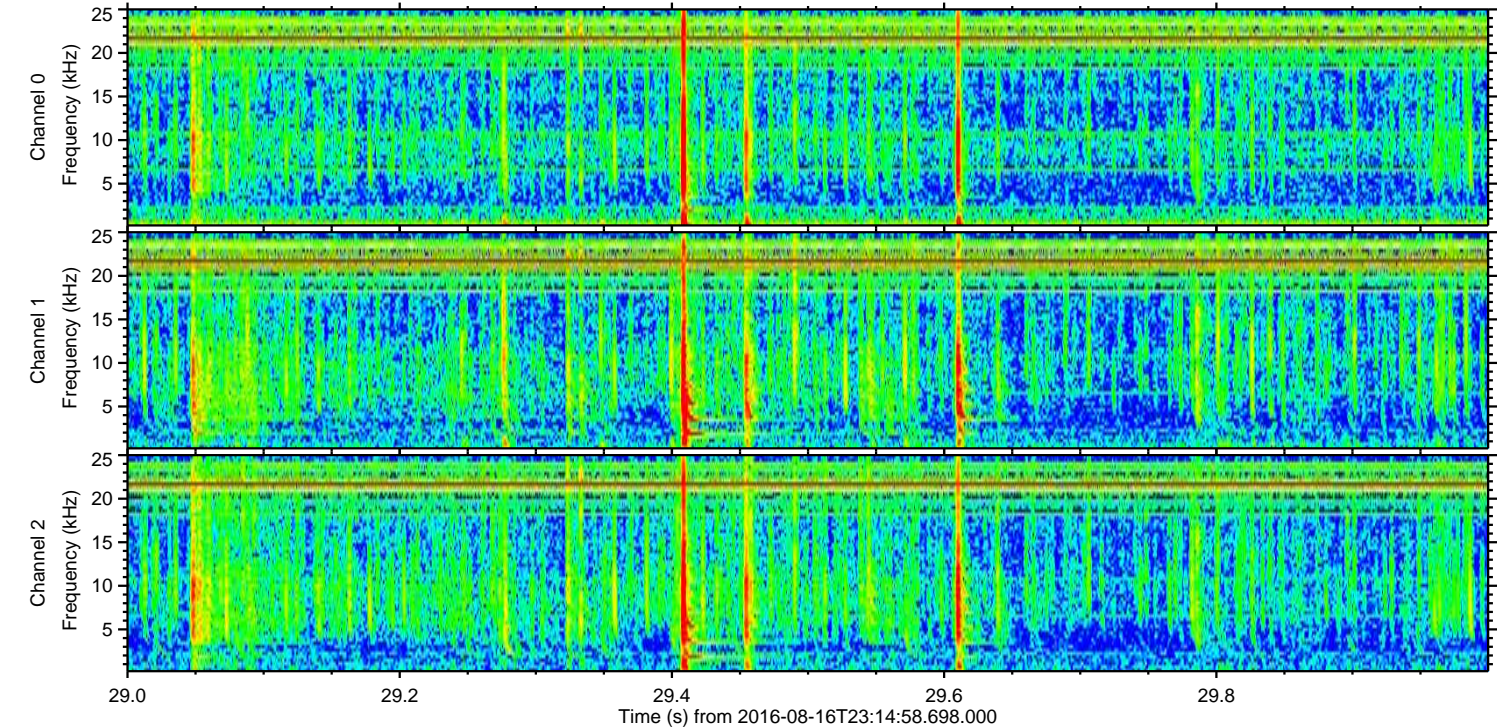
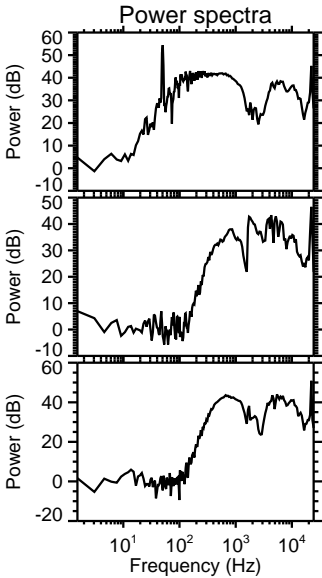
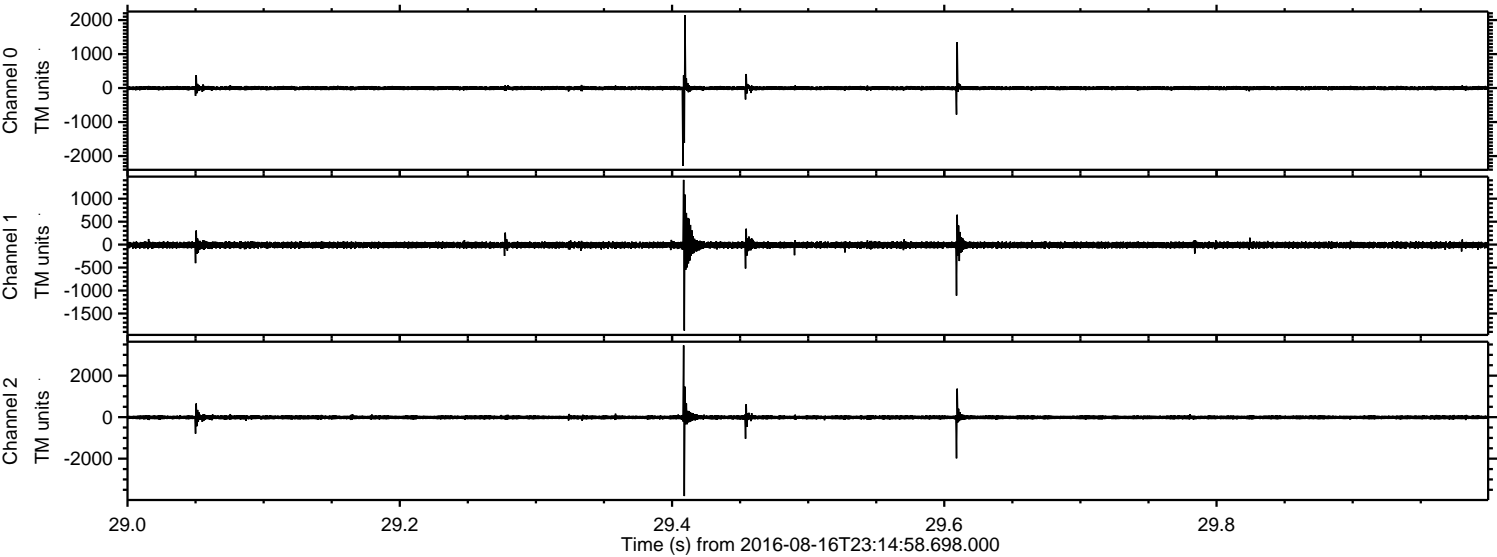
Channel 1
mn: -2212
mx: 1078
 μ : -9.6
 σ : 43.2

Channel 2
mn: -4921
mx: 2528
 μ : -10.8
 σ : 66.4

Processed Wed Aug 17 01:22:37 2016 by ELM ver.2012-10-06 from 001__elm20160816_231457__dat00.bin

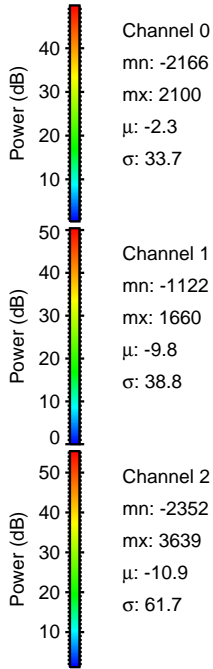
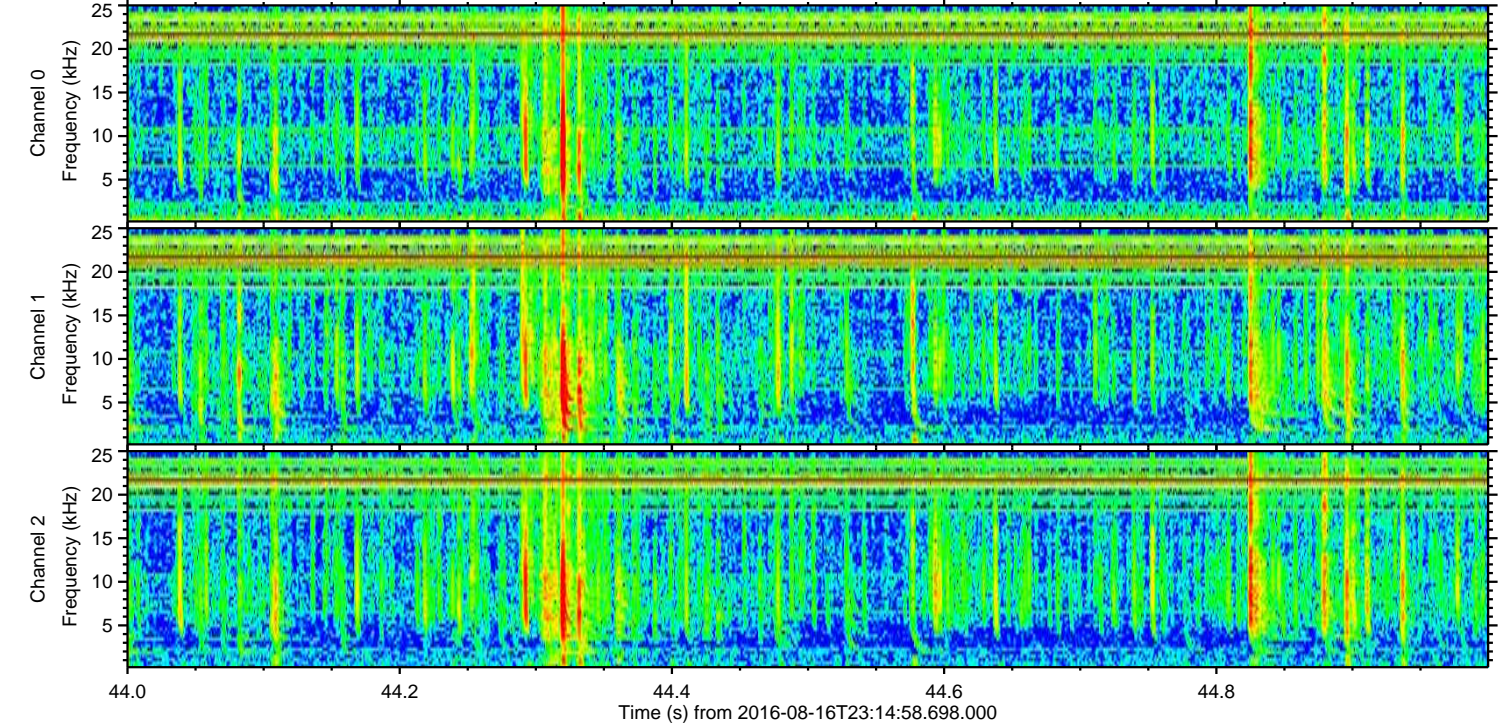
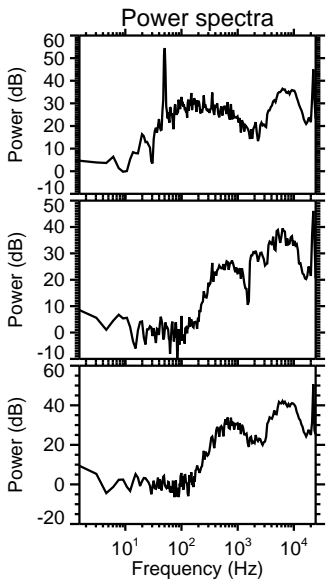
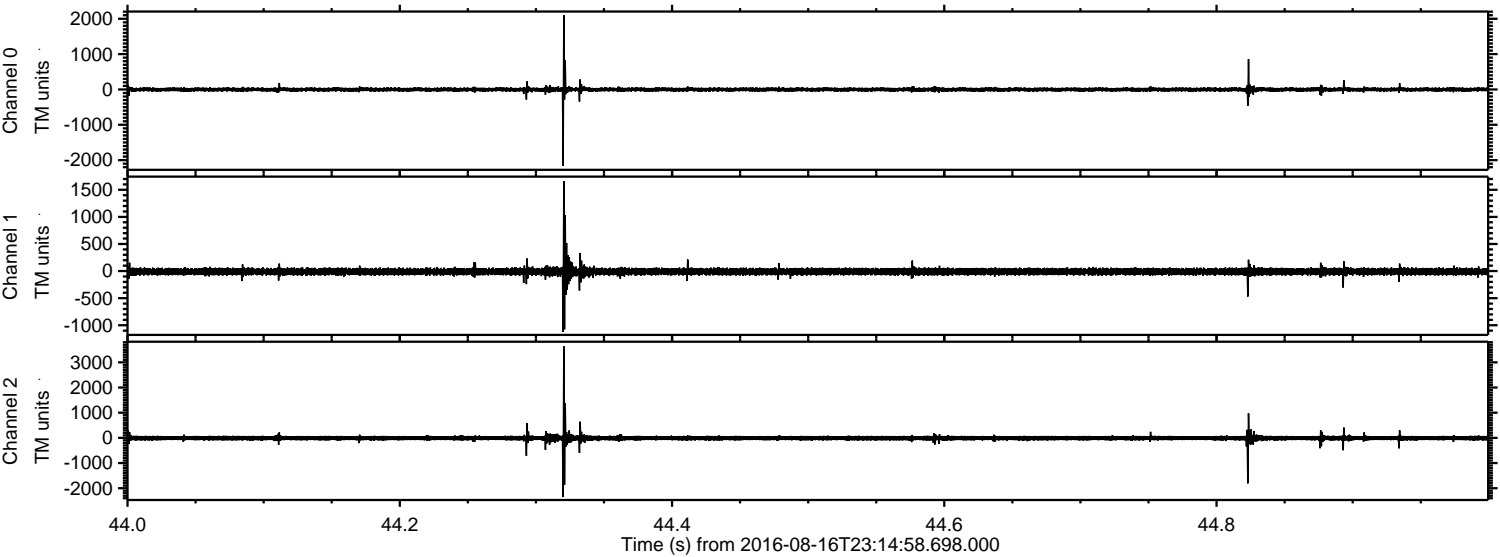


Processed Wed Aug 17 01:22:38 2016 by ELM ver.2012-10-06 from 001__elm20160816_231457__dat00.bin

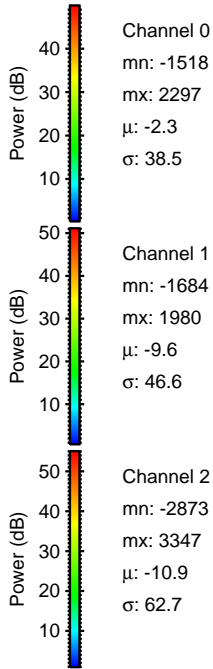
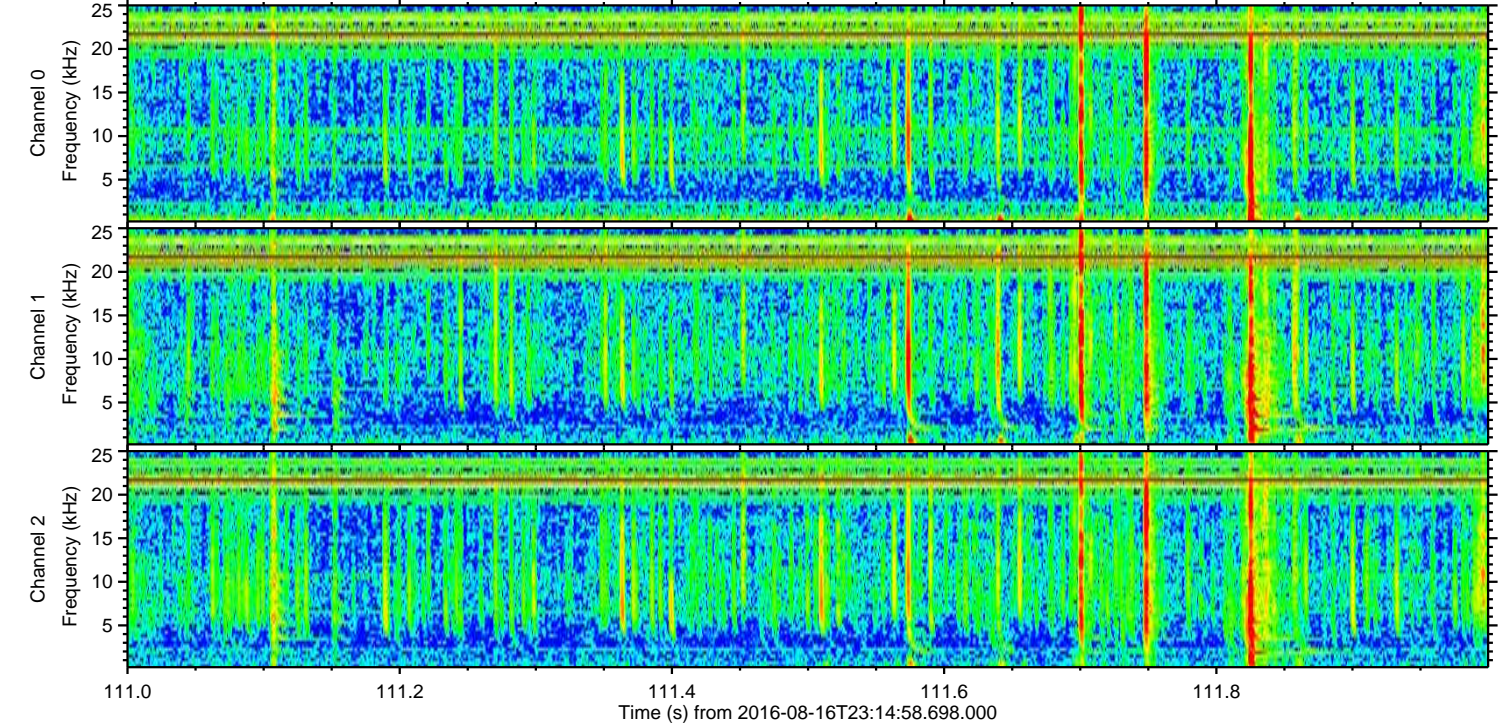
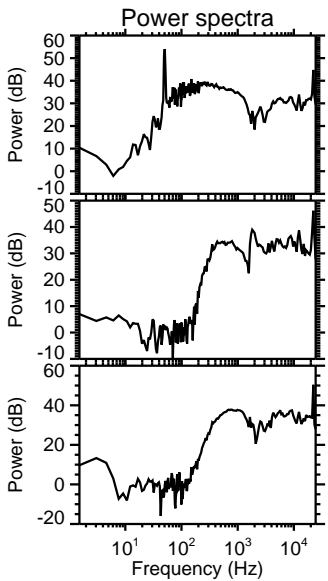
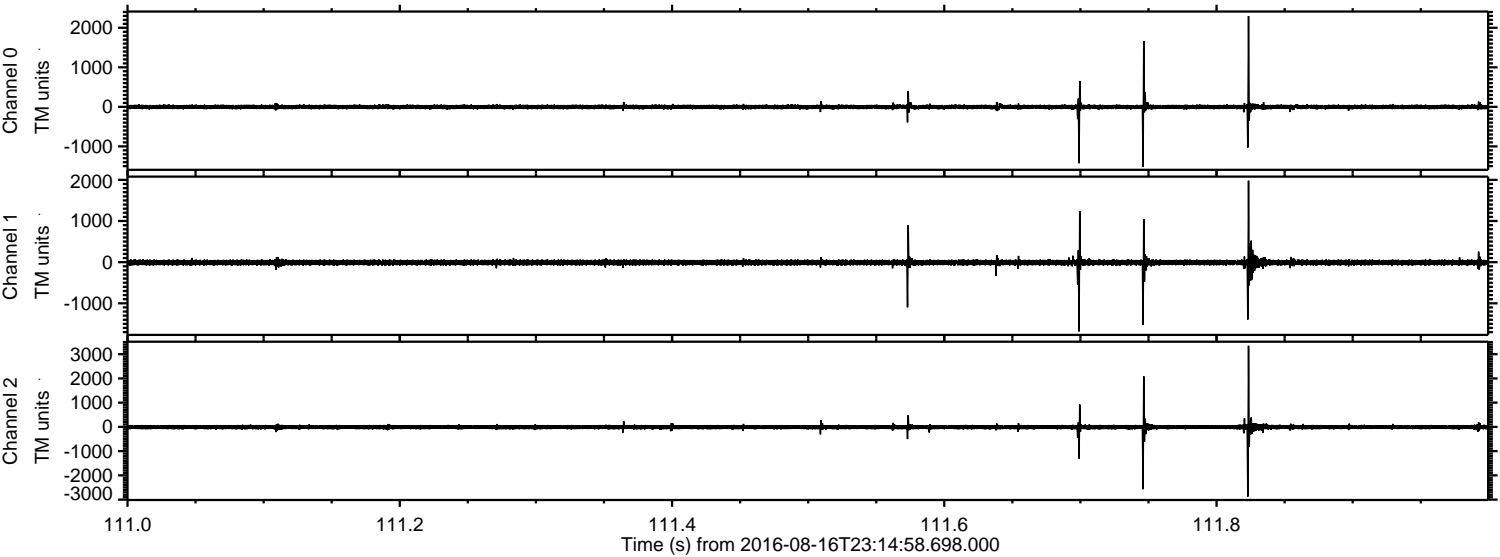


ELMAVAN 3D WAVEFORMS (Measured data sampled at 50 kHz) 51000 packets of 144 samples from 2016-08-16T23:14:58.698.000. Part 45/147

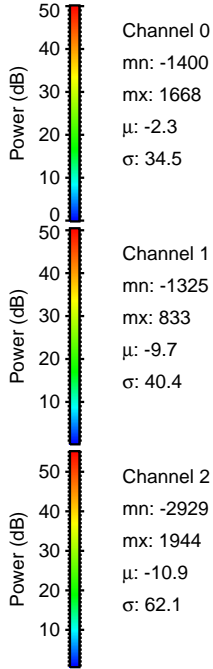
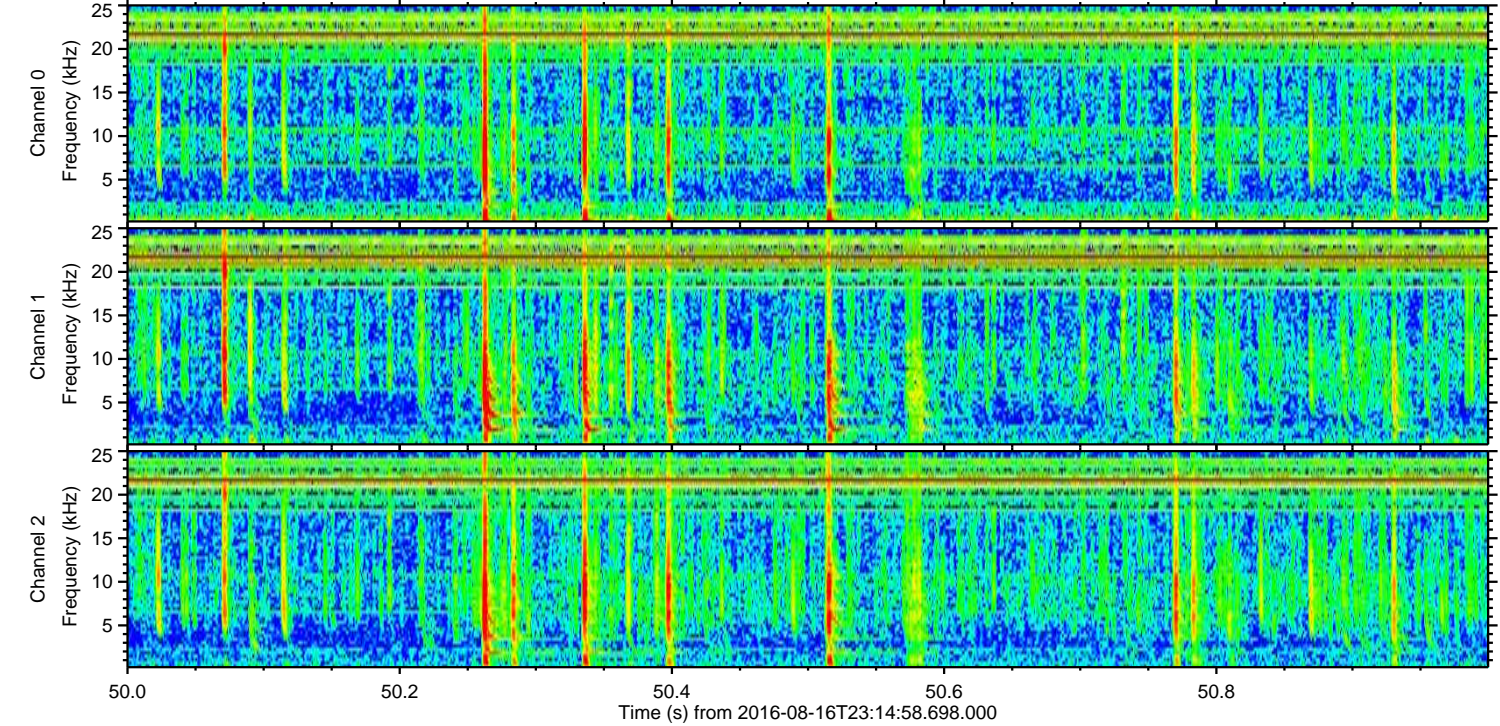
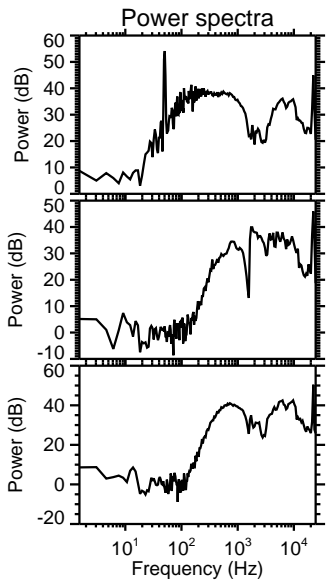
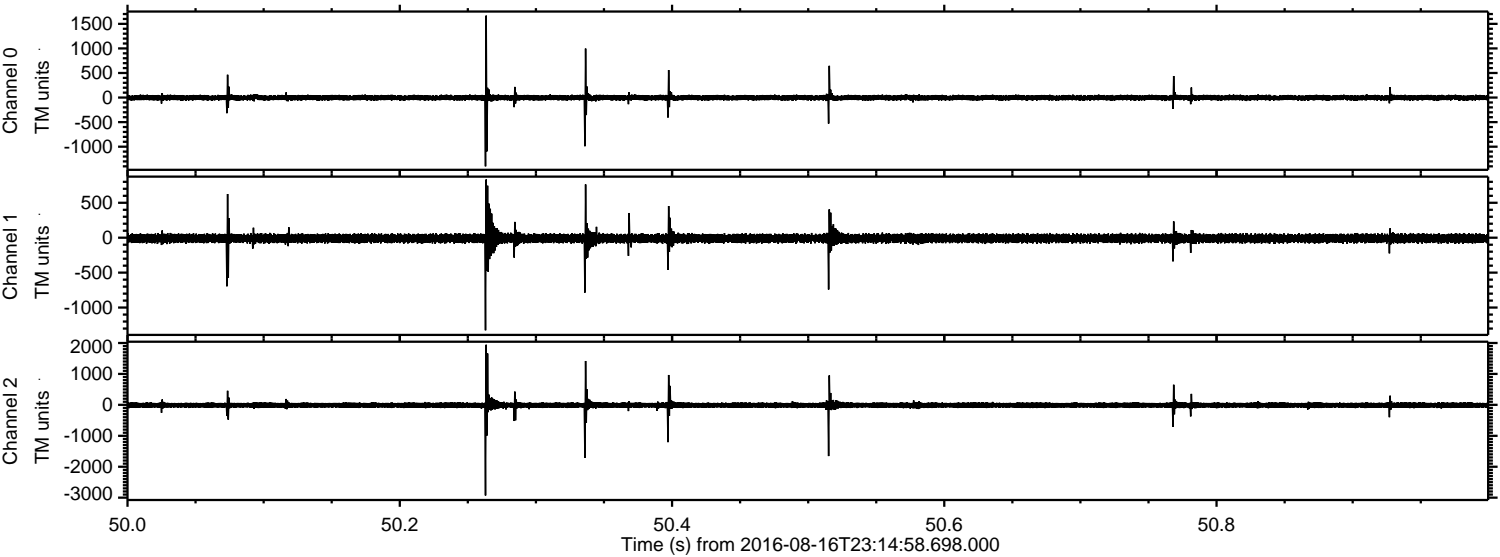
Processed Wed Aug 17 01:22:39 2016 by ELM ver.2012-10-06 from 001__elm20160816_231457__dat00.bin



Processed Wed Aug 17 01:22:40 2016 by ELM ver.2012-10-06 from 001__elm20160816_231457__dat00.bin



Processed Wed Aug 17 01:22:41 2016 by ELM ver.2012-10-06 from 001__elm20160816_231457__dat00.bin

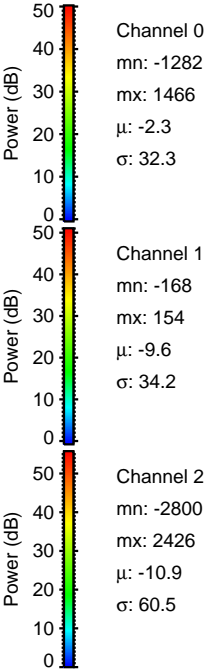
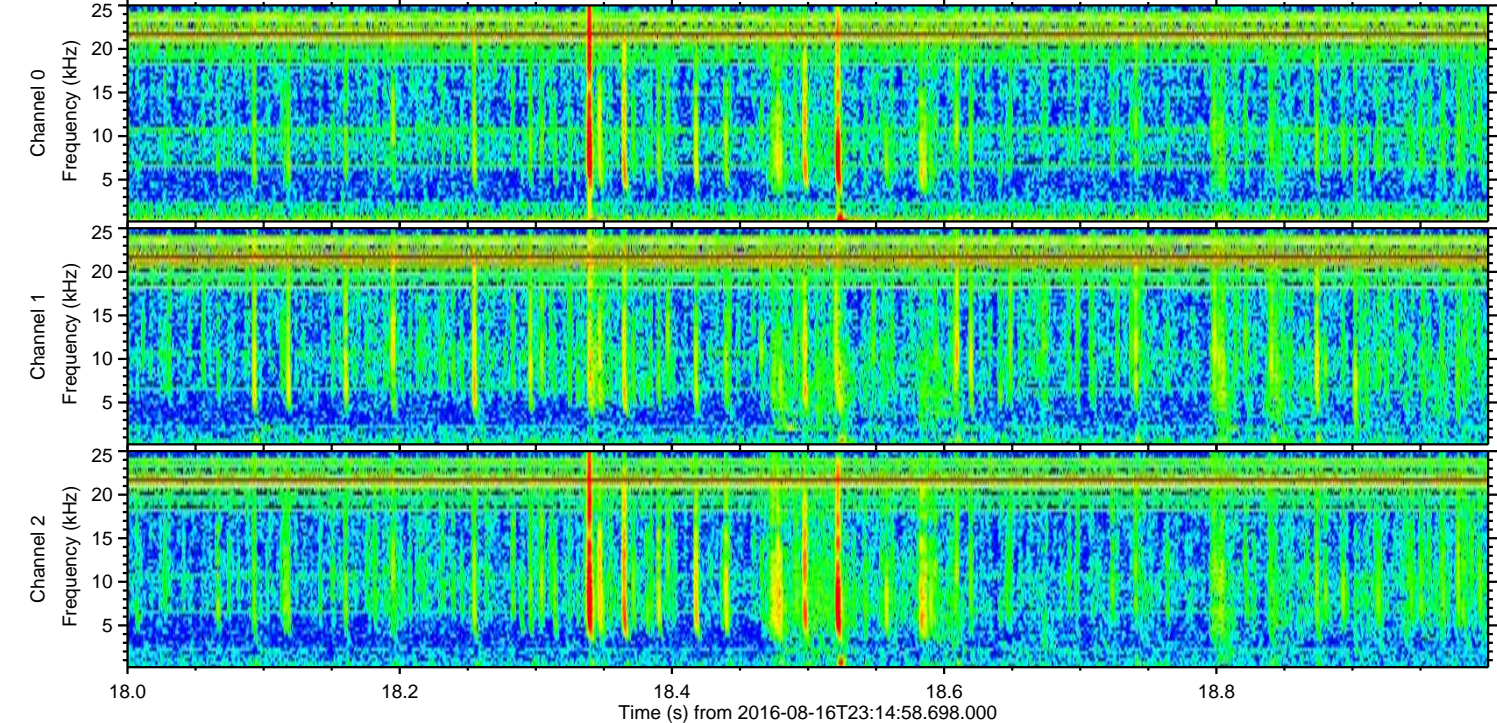
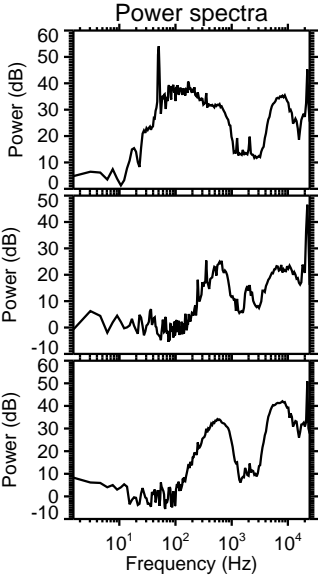
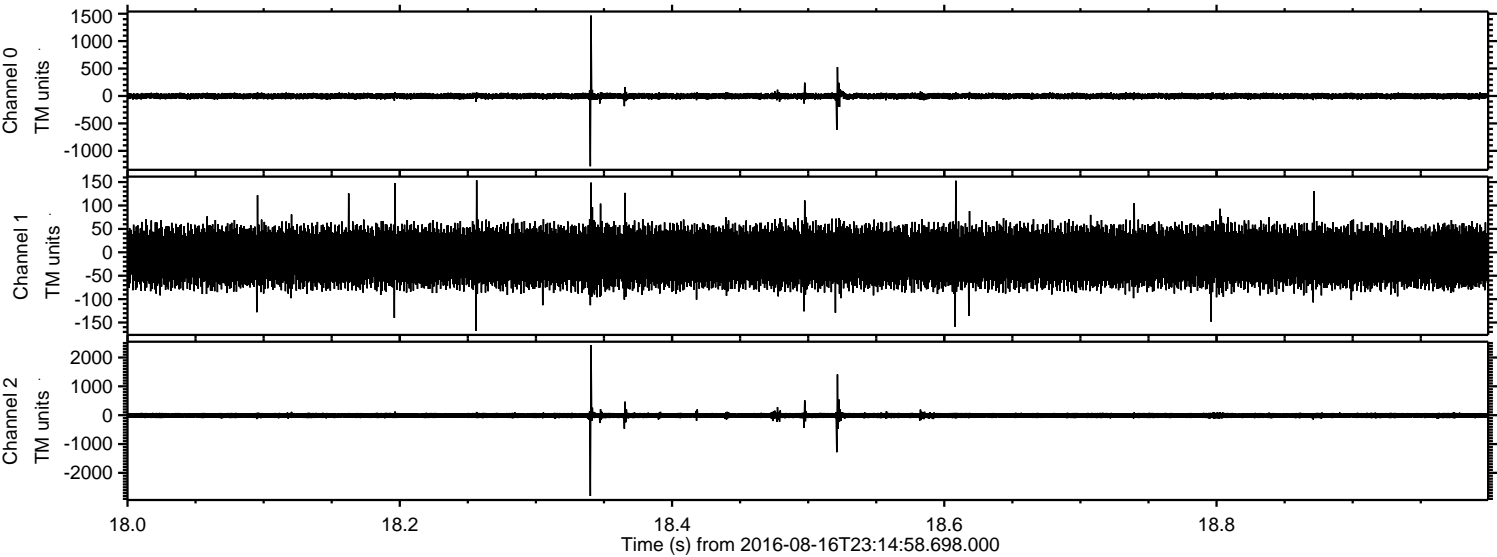


Channel 0
mn: -1400
mx: 1668
 μ : -2.3
 σ : 34.5

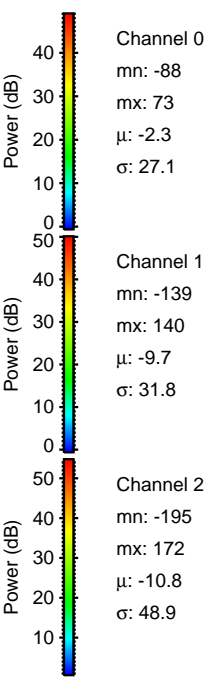
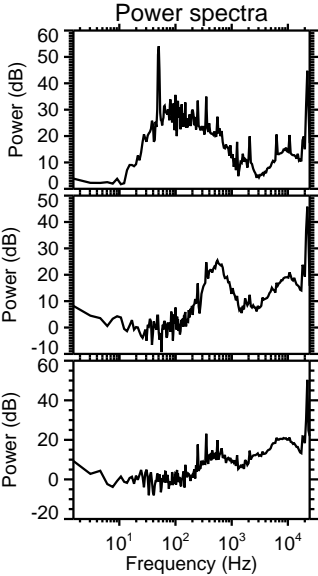
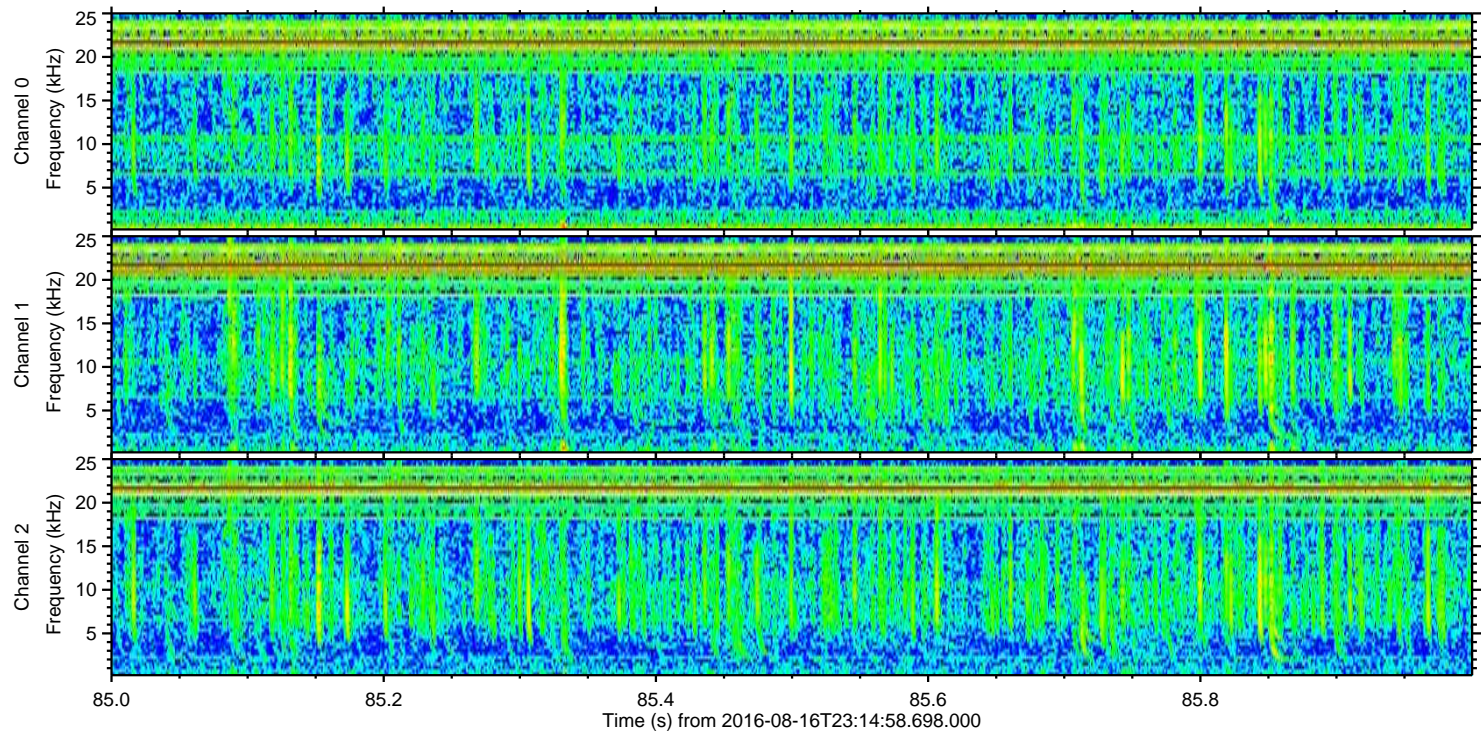
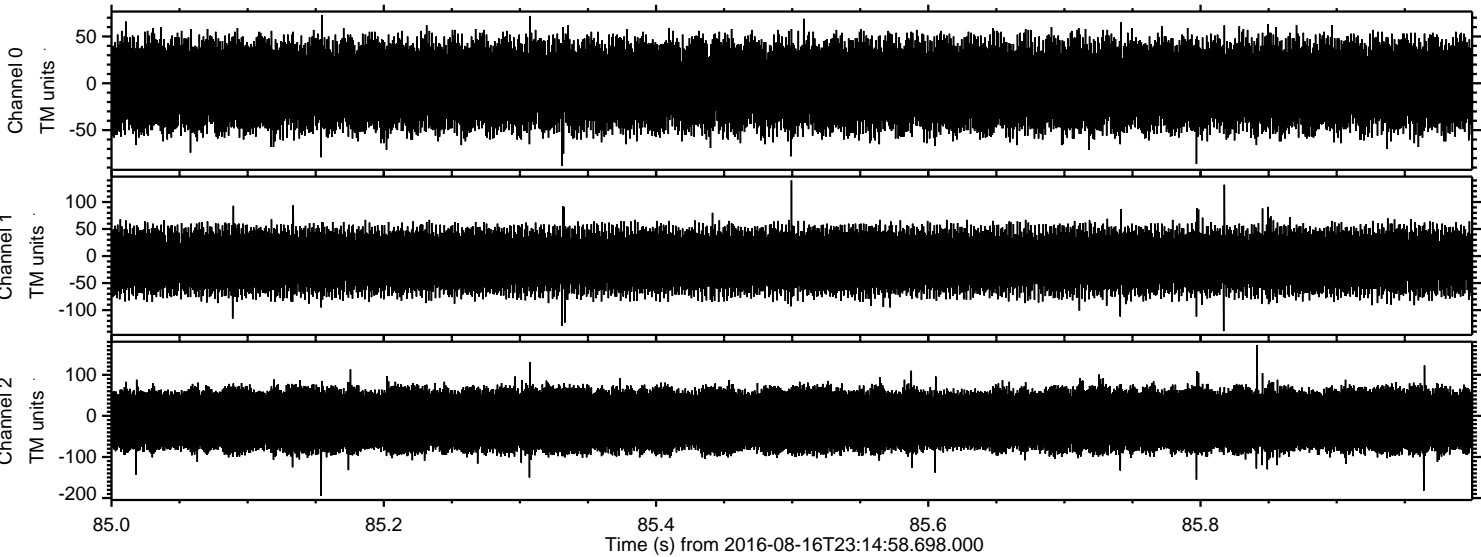
Channel 1
mn: -1325
mx: 833
 μ : -9.7
 σ : 40.4

Channel 2
mn: -2929
mx: 1944
 μ : -10.9
 σ : 62.1

Processed Wed Aug 17 01:22:42 2016 by ELM ver.2012-10-06 from 001__elm20160816_231457__dat00.bin



Processed Wed Aug 17 01:22:43 2016 by ELM ver.2012-10-06 from 001__elm20160816_231457__dat00.bin



Channel 0
mn: -88
mx: 73
 μ : -2.3
 σ : 27.1

Channel 1
mn: -139
mx: 140
 μ : -9.7
 σ : 31.8

Channel 2
mn: -195
mx: 172
 μ : -10.8
 σ : 48.9