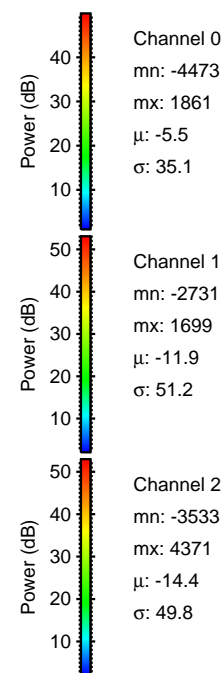
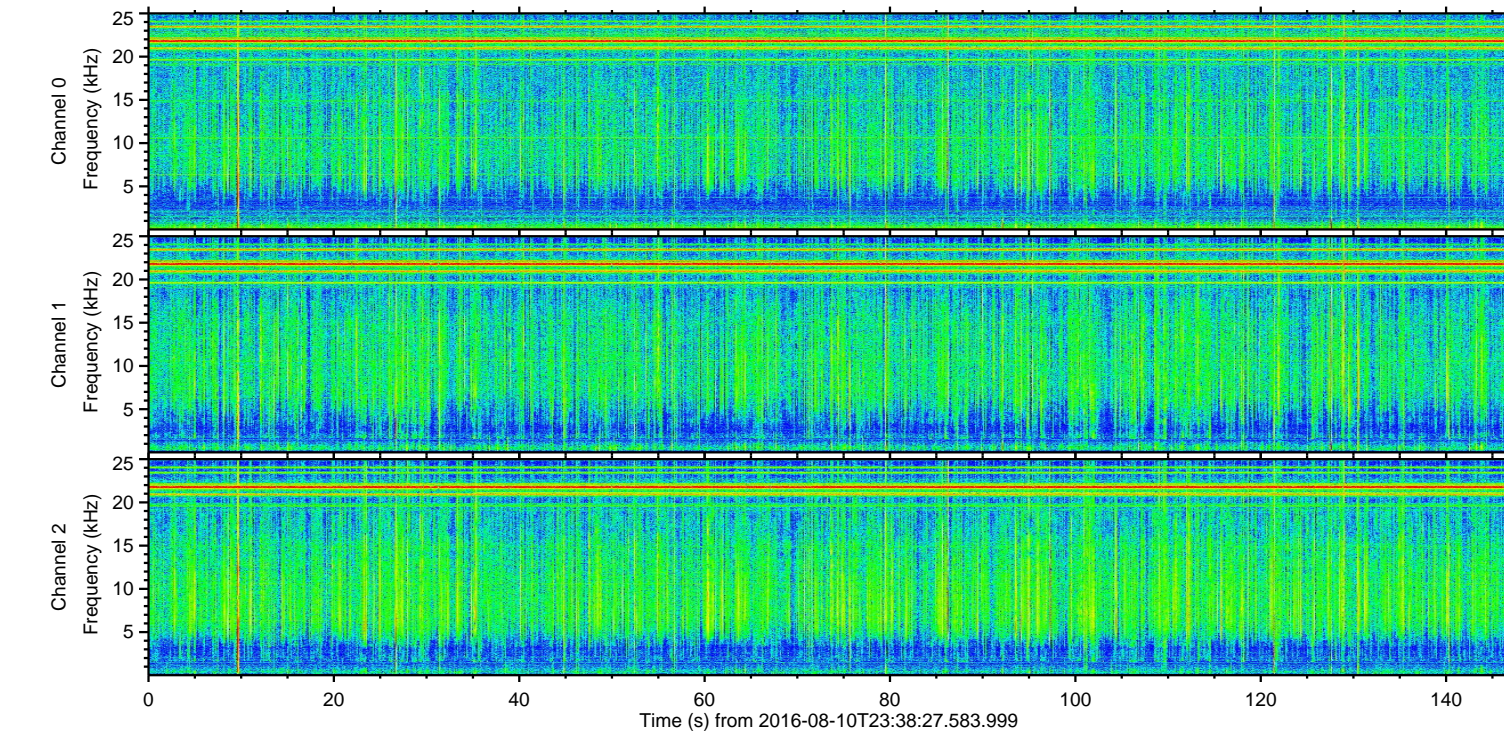
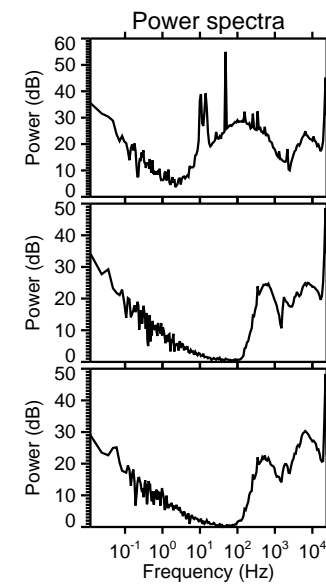
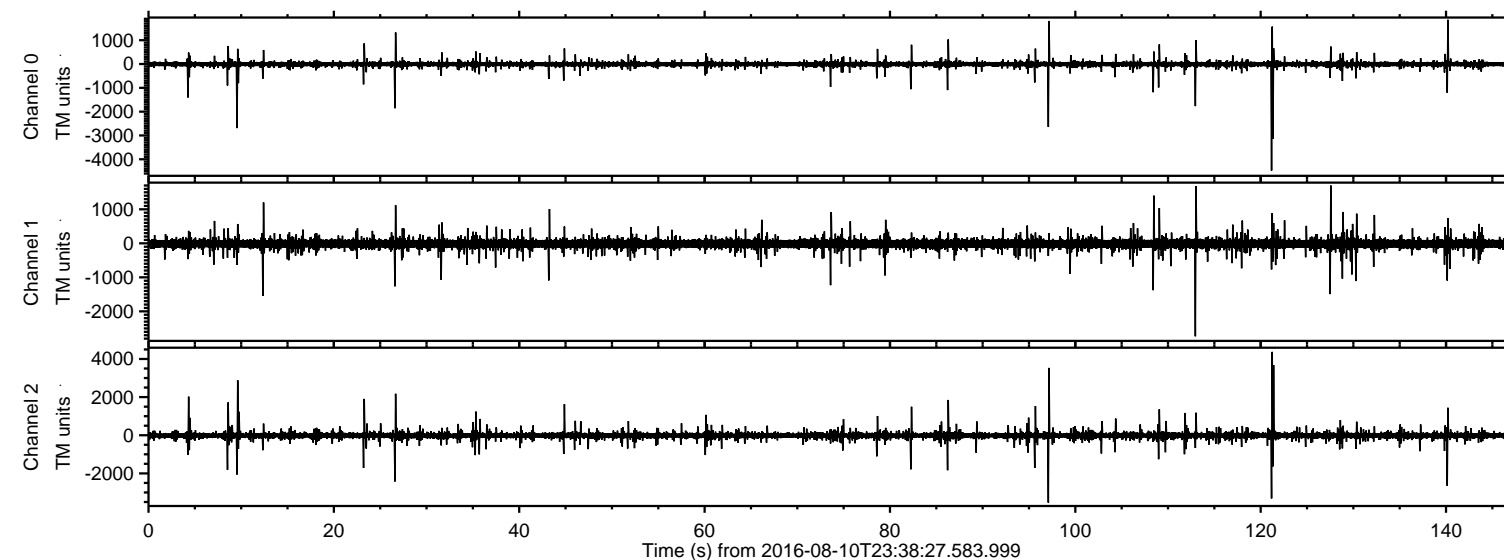


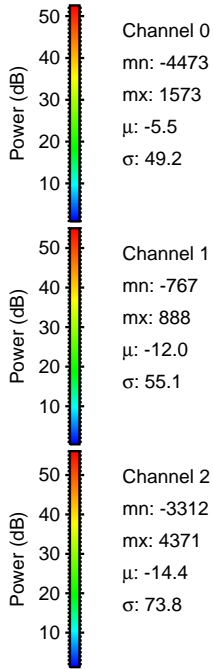
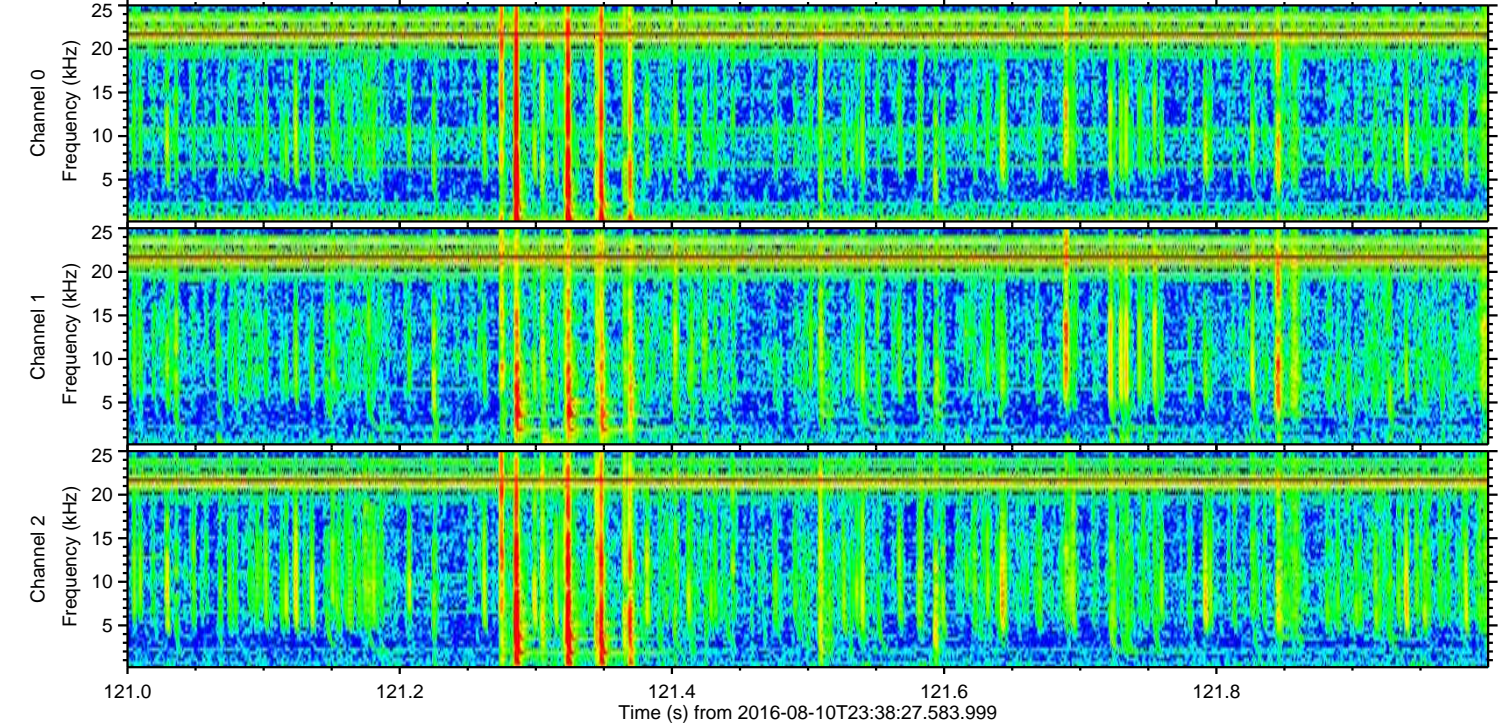
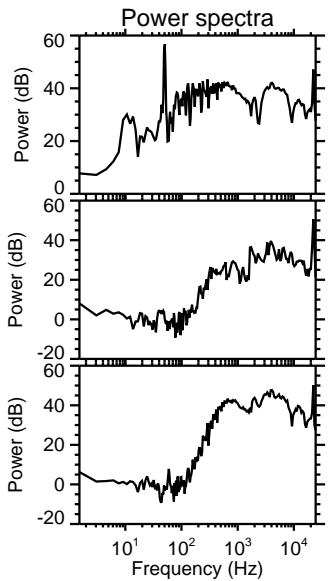
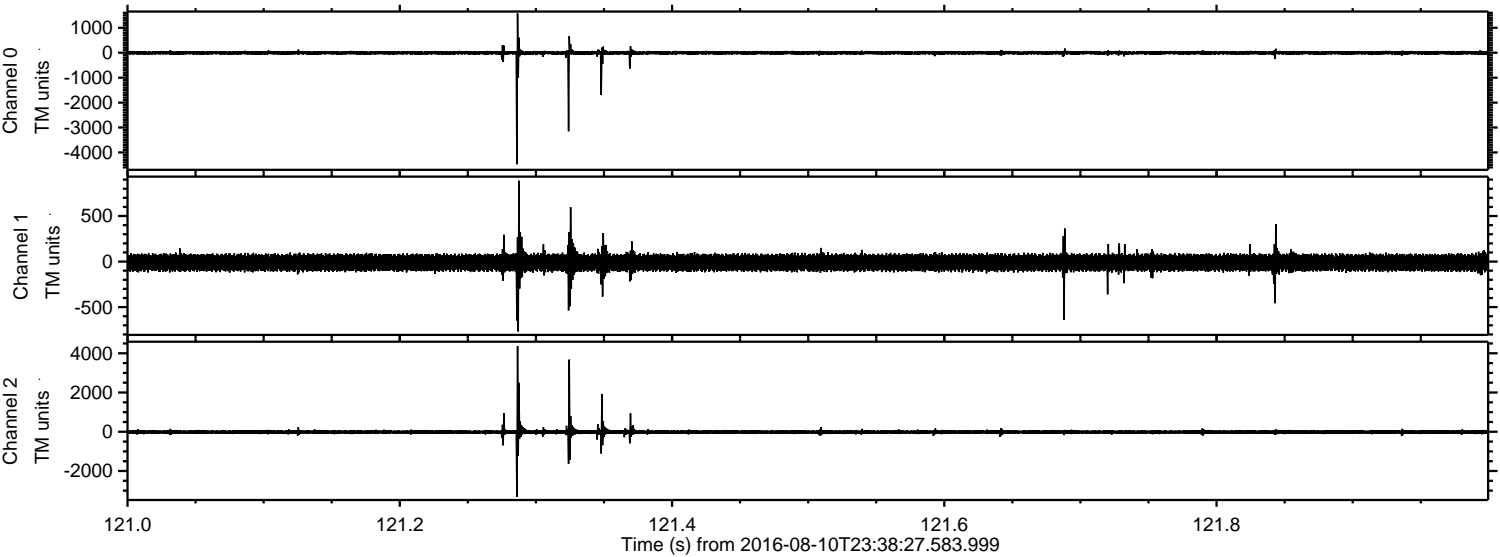
ELMAVAN 3D WAVEFORMS (Measured data sampled at 50 kHz) 51000 packets of 144 samples from 2016-08-10T23:38:27.583.999.

Processed Thu Aug 11 01:45:42 2016 by ELM ver.2012-10-06 from 001__elm20160810_233826__dat00.bin

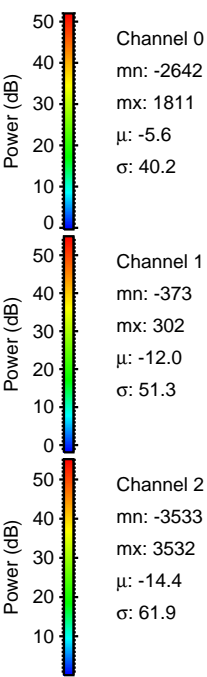
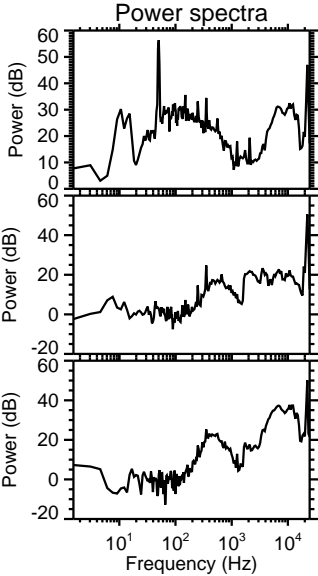
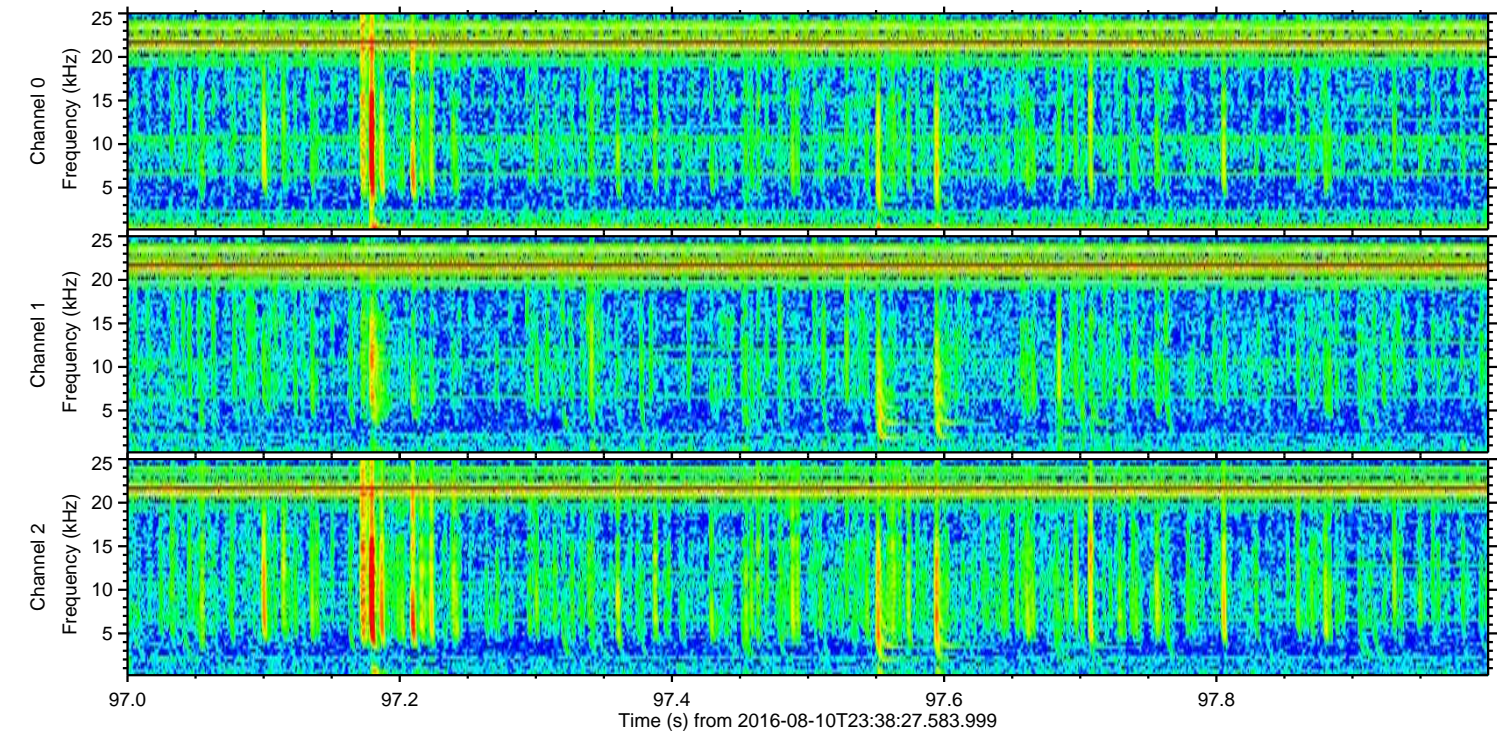
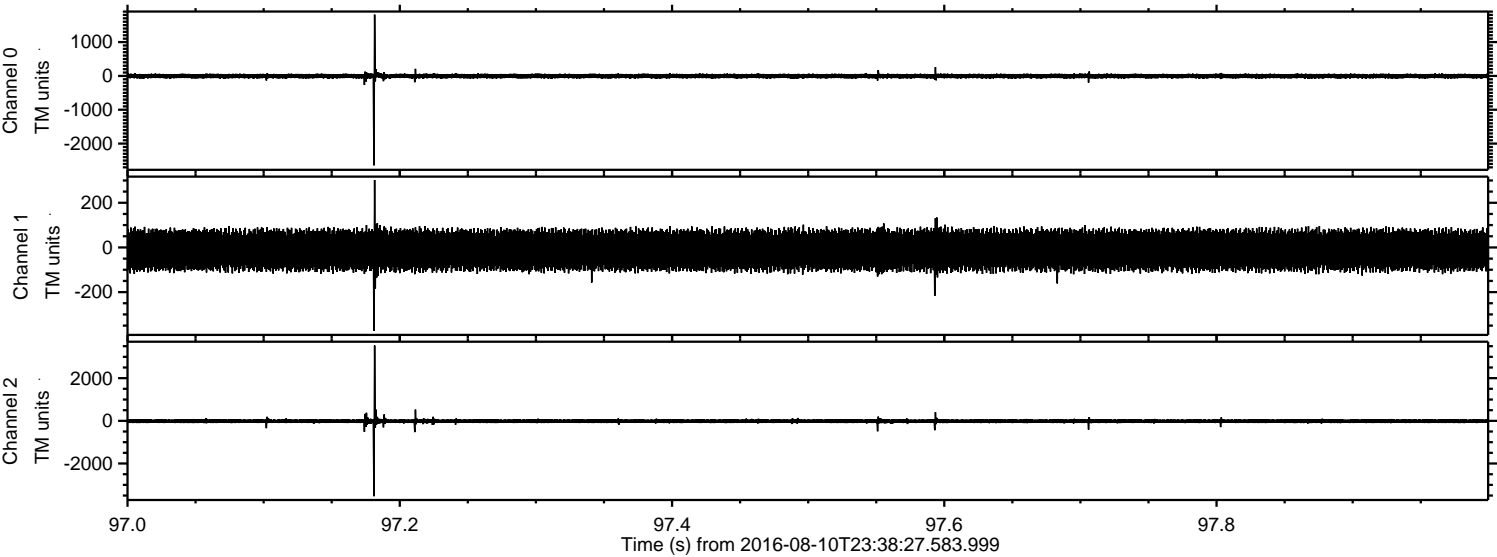


ELMAVAN 3D WAVEFORMS (Measured data sampled at 50 kHz) 51000 packets of 144 samples from 2016-08-10T23:38:27.583.999. Part 122/147

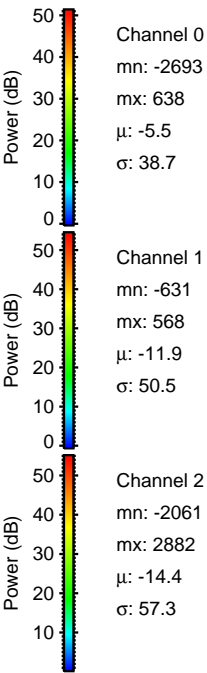
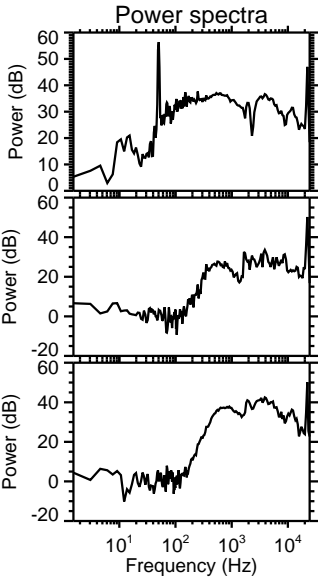
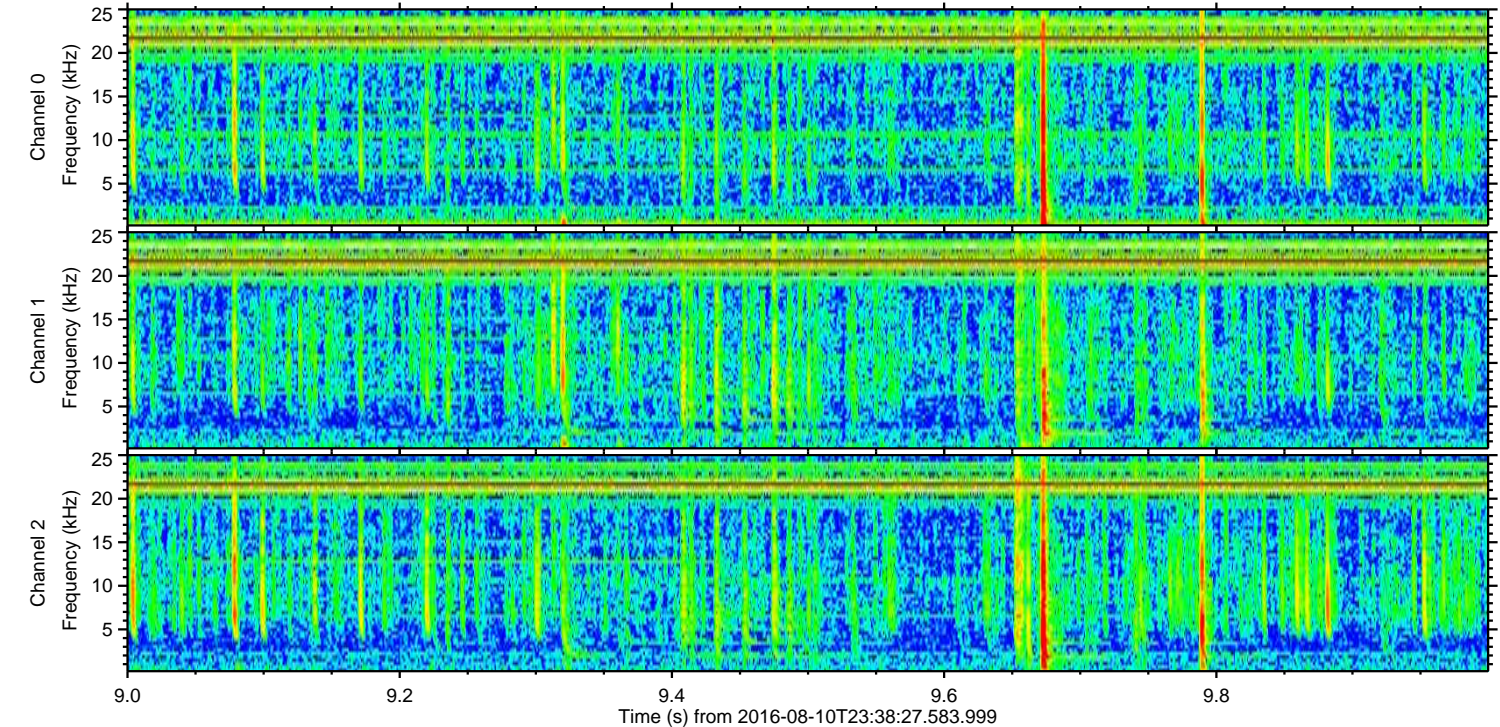
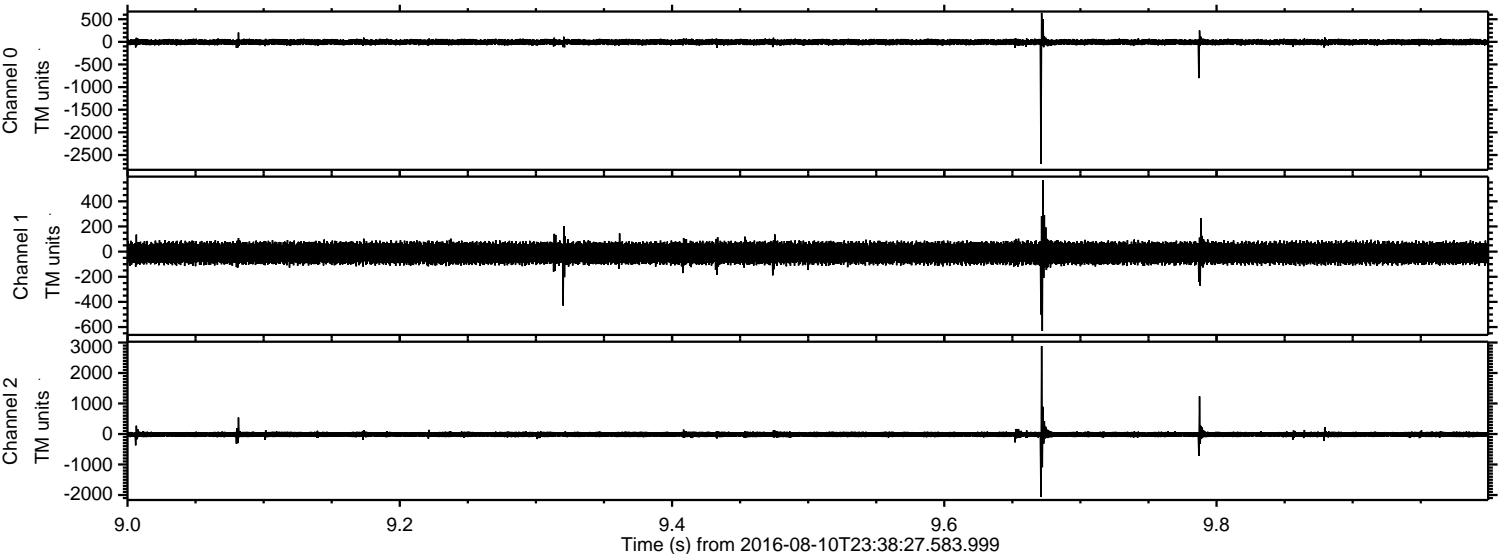
Processed Thu Aug 11 01:45:53 2016 by ELM ver.2012-10-06 from 001__elm20160810_233826__dat00.bin



Processed Thu Aug 11 01:45:54 2016 by ELM ver.2012-10-06 from 001__elm20160810_233826__dat00.bin

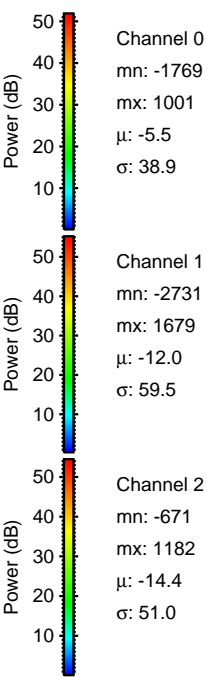
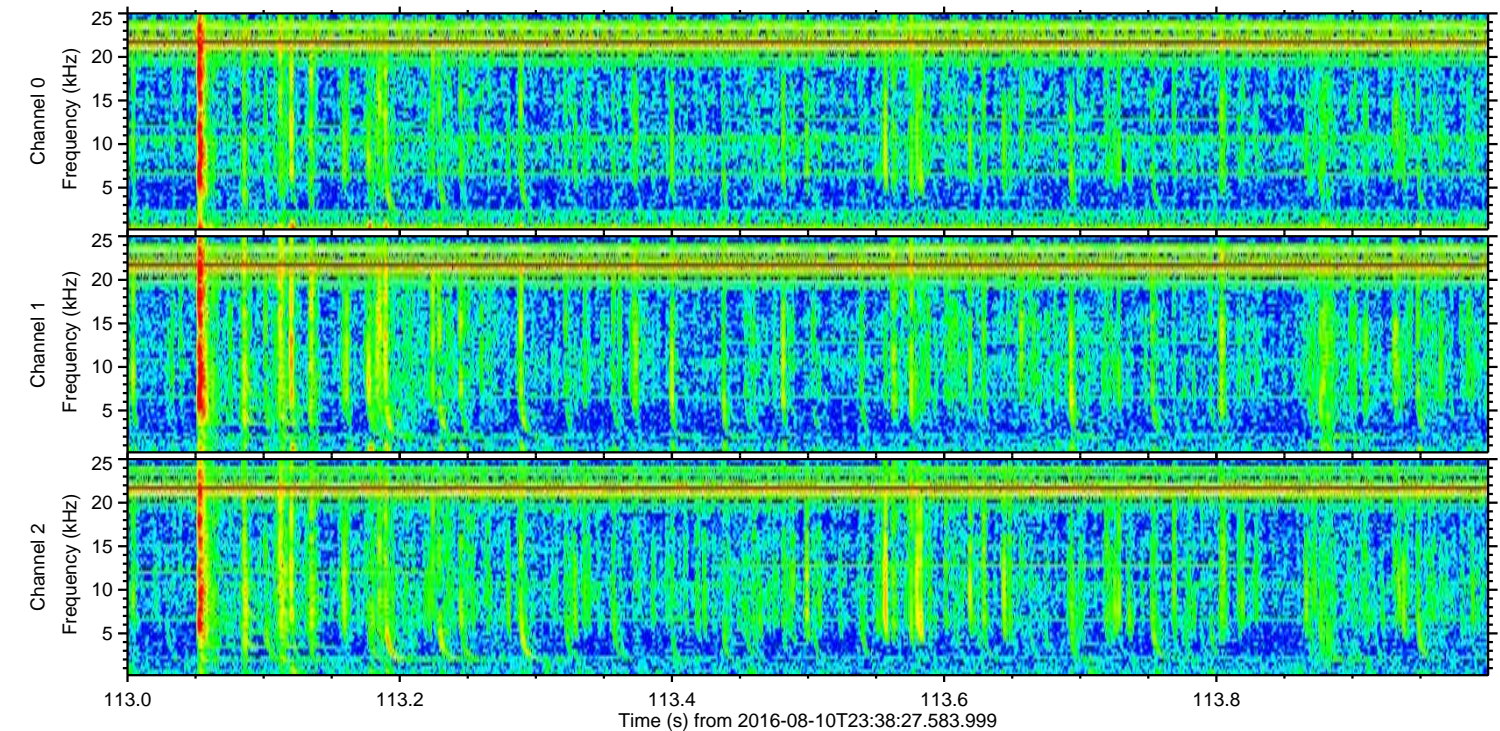
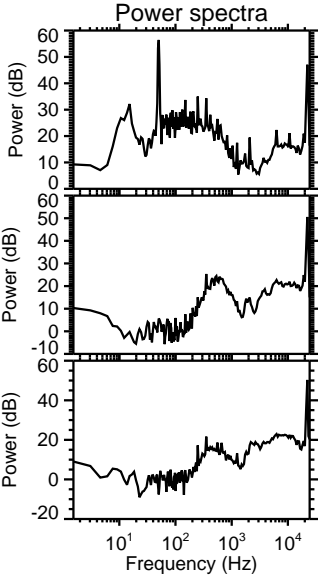
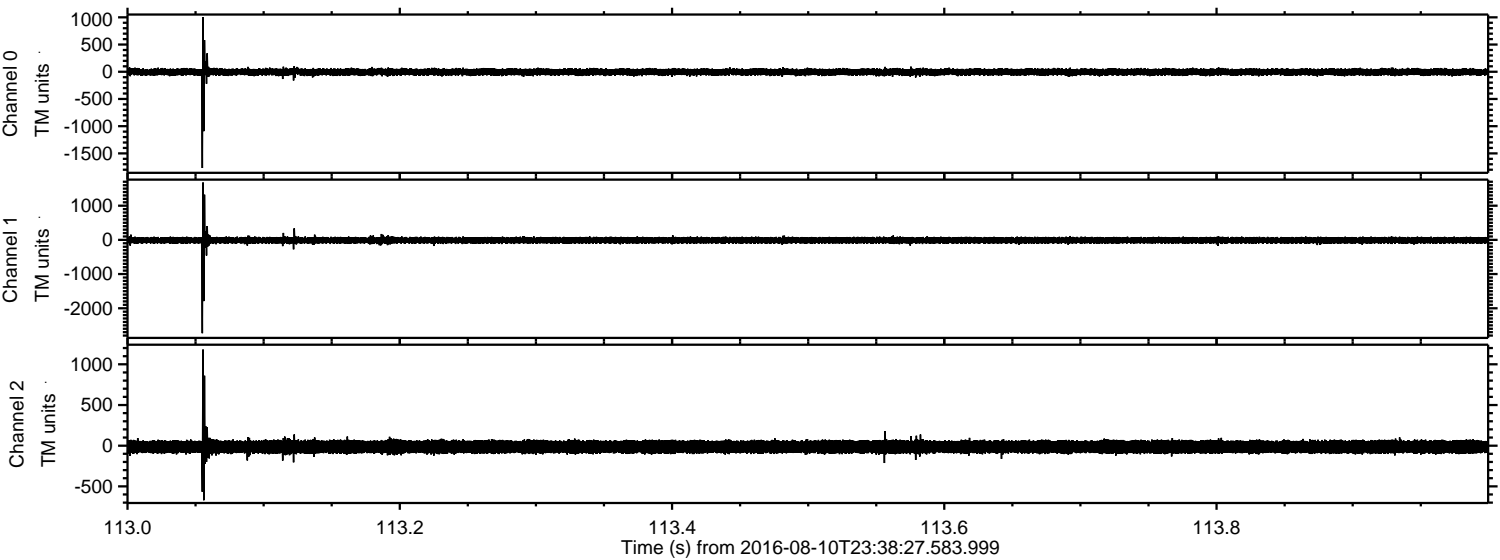


Processed Thu Aug 11 01:45:55 2016 by ELM ver.2012-10-06 from 001__elm20160810_233826__dat00.bin



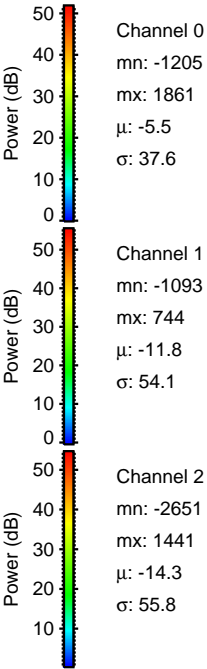
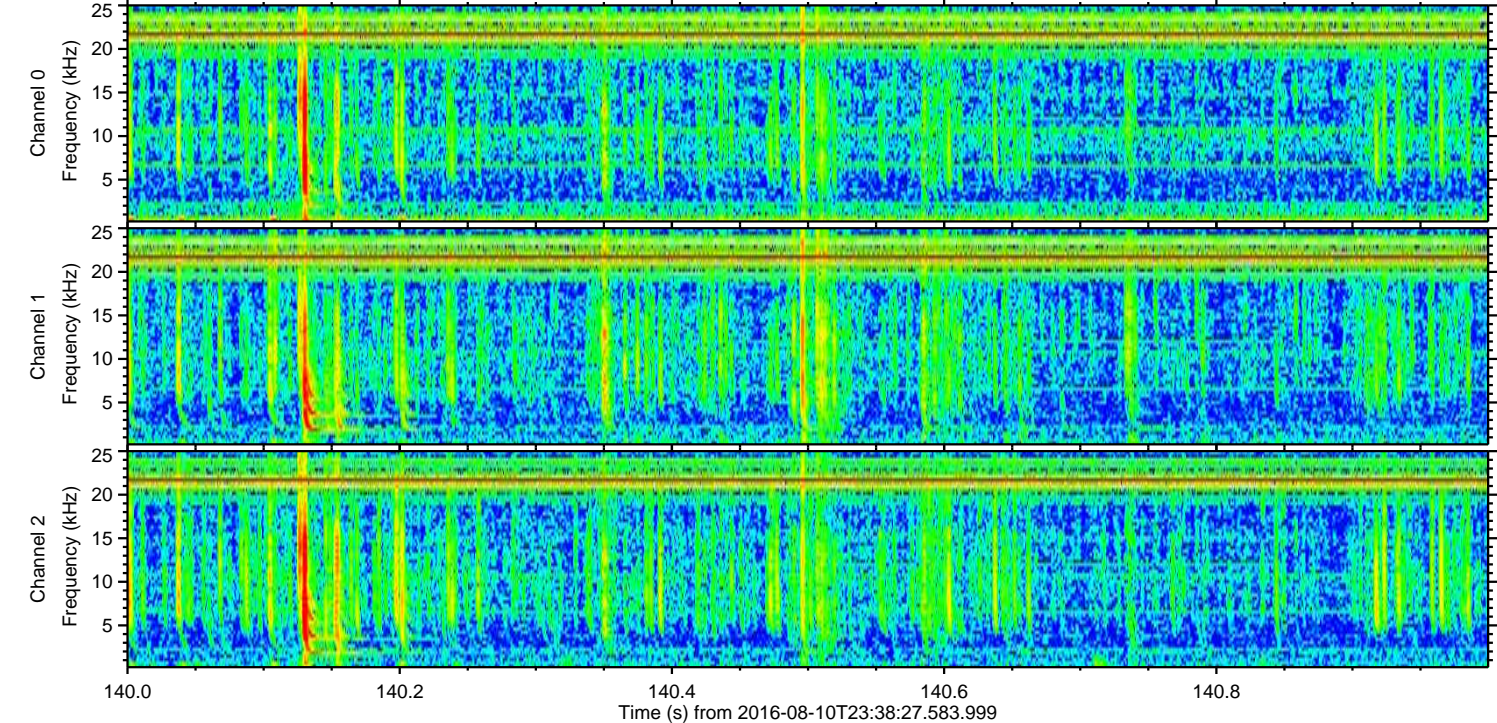
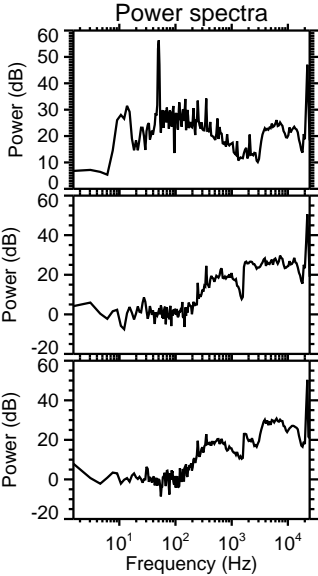
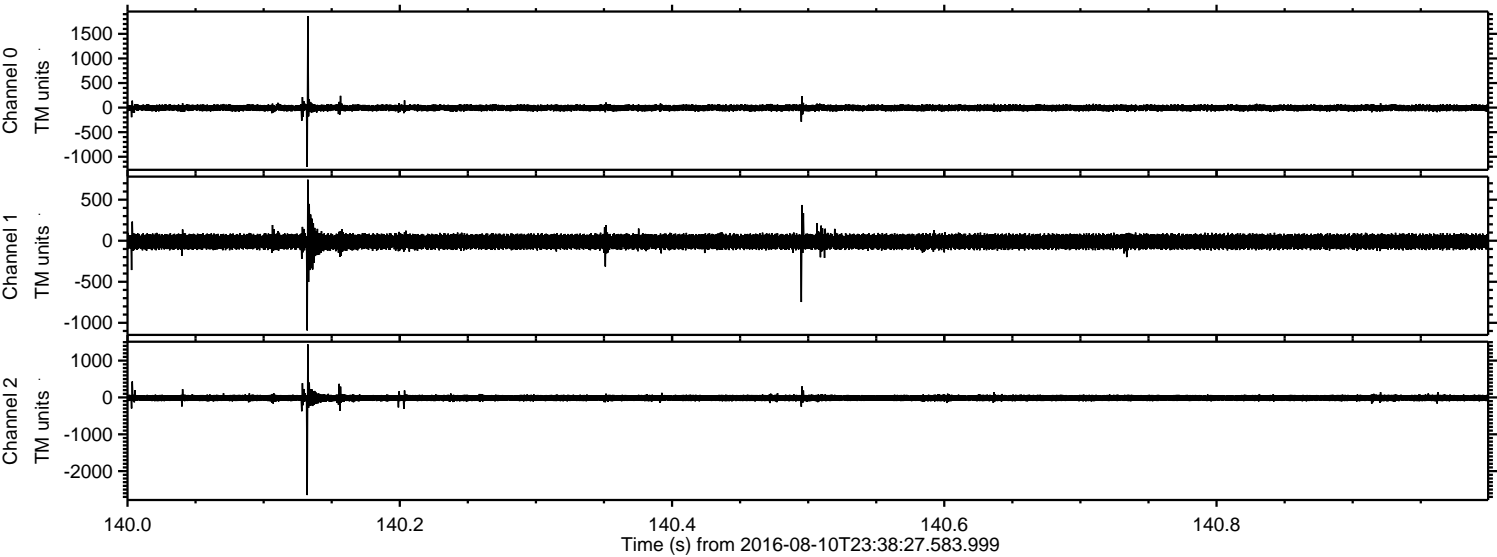
ELMAVAN 3D WAVEFORMS (Measured data sampled at 50 kHz) 51000 packets of 144 samples from 2016-08-10T23:38:27.583.999. Part 114/147

Processed Thu Aug 11 01:45:56 2016 by ELM ver.2012-10-06 from 001__elm20160810_233826__dat00.bin



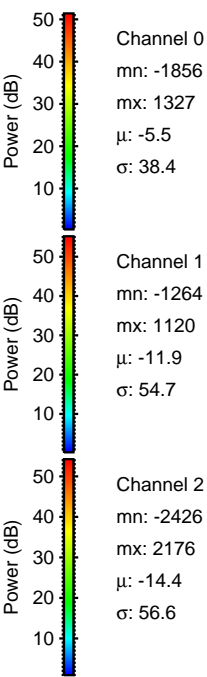
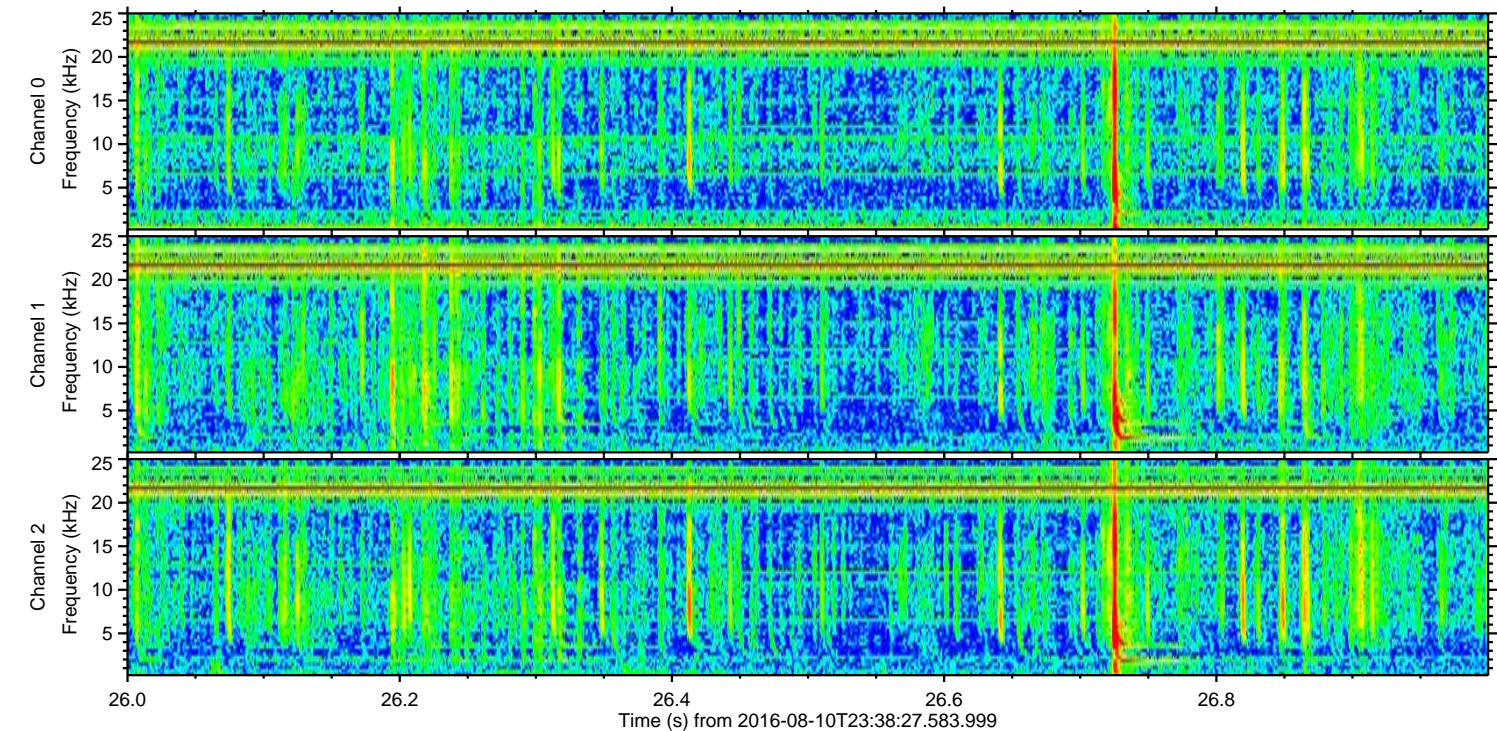
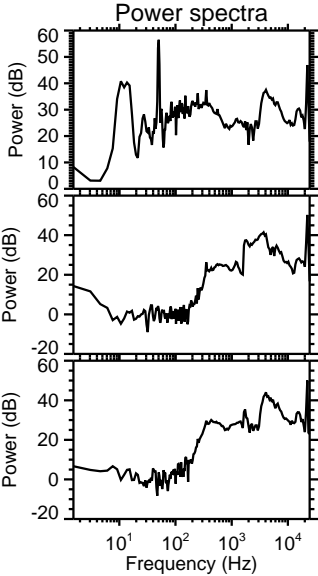
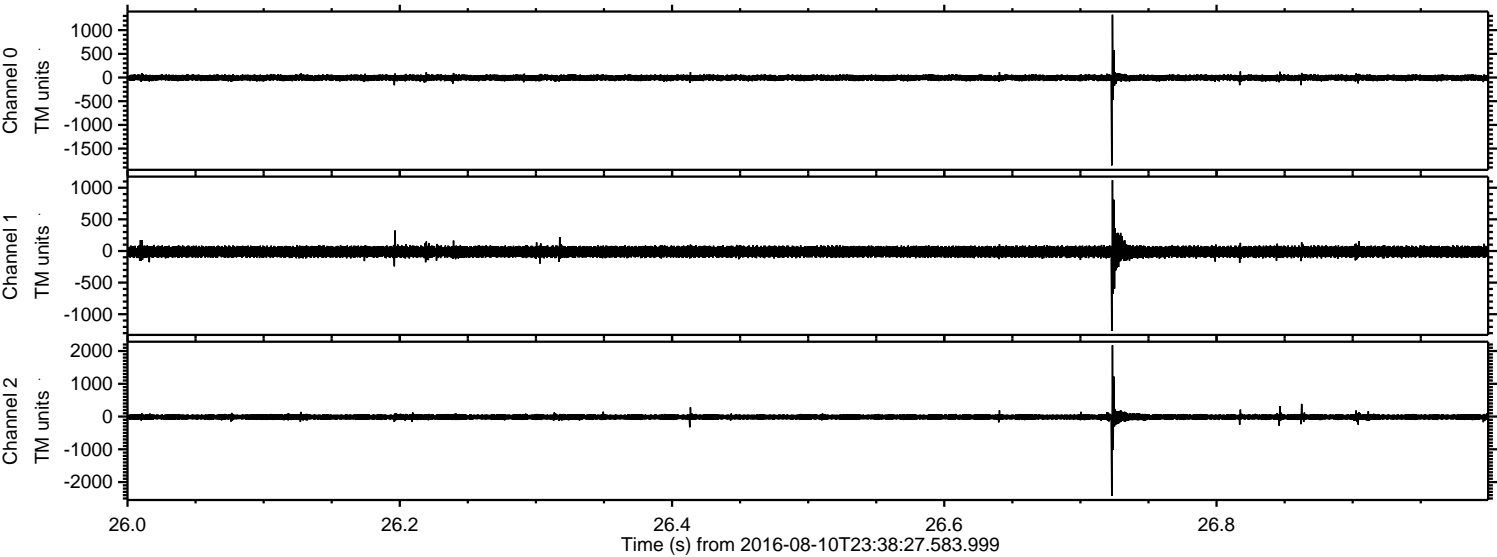
ELMAVAN 3D WAVEFORMS (Measured data sampled at 50 kHz) 51000 packets of 144 samples from 2016-08-10T23:38:27.583.999. Part 141/147

Processed Thu Aug 11 01:45:57 2016 by ELM ver.2012-10-06 from 001__elm20160810_233826__dat00.bin



ELMAVAN 3D WAVEFORMS (Measured data sampled at 50 kHz) 51000 packets of 144 samples from 2016-08-10T23:38:27.583.999. Part 27/147

Processed Thu Aug 11 01:45:58 2016 by ELM ver.2012-10-06 from 001__elm20160810_233826__dat00.bin

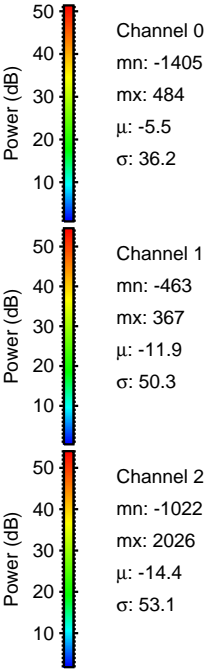
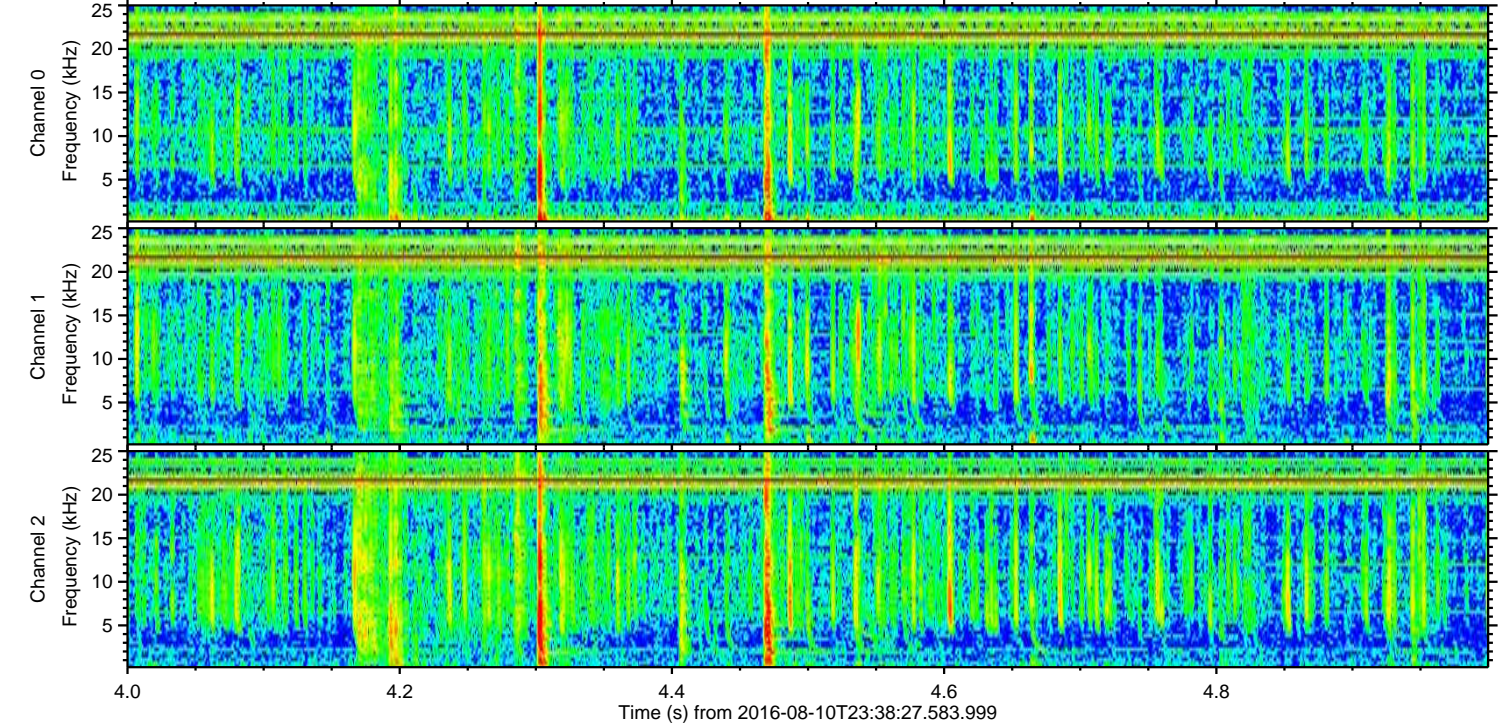
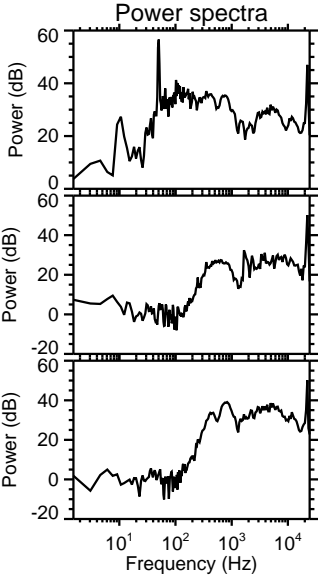
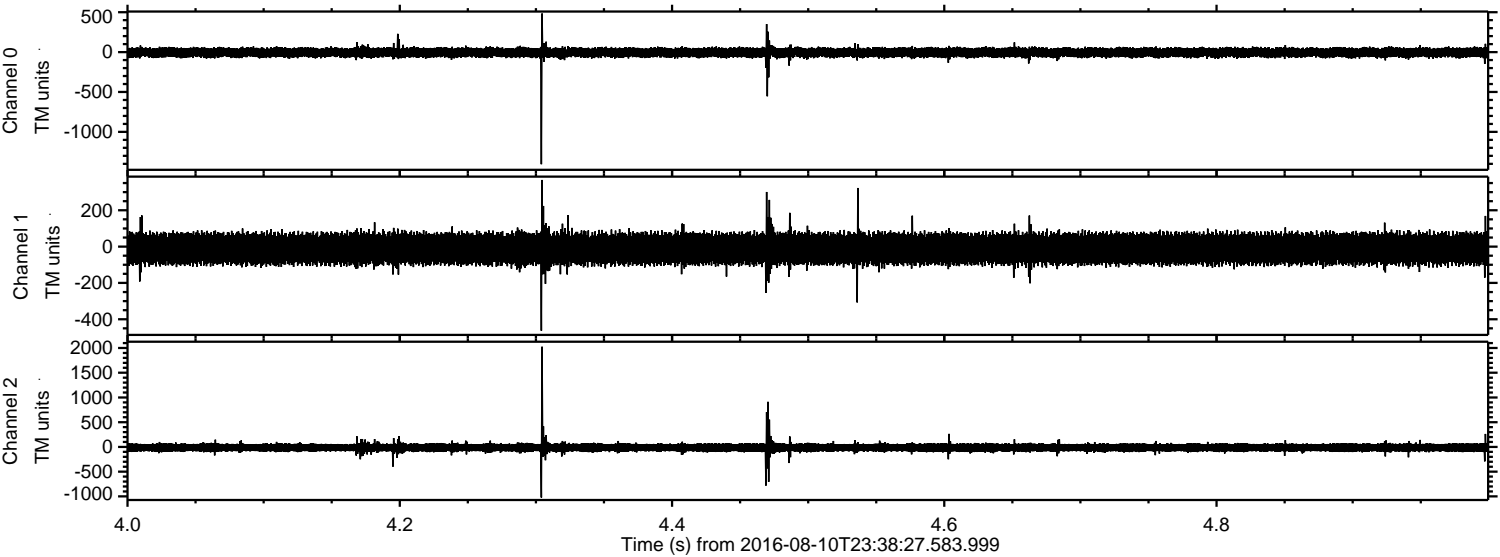


Channel 0
mn: -1856
mx: 1327
 μ : -5.5
 σ : 38.4

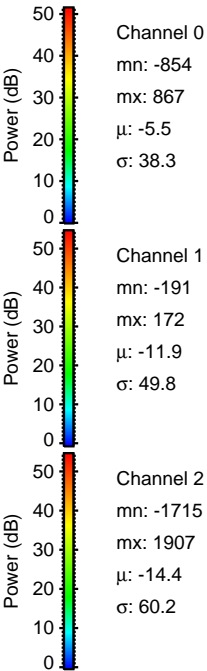
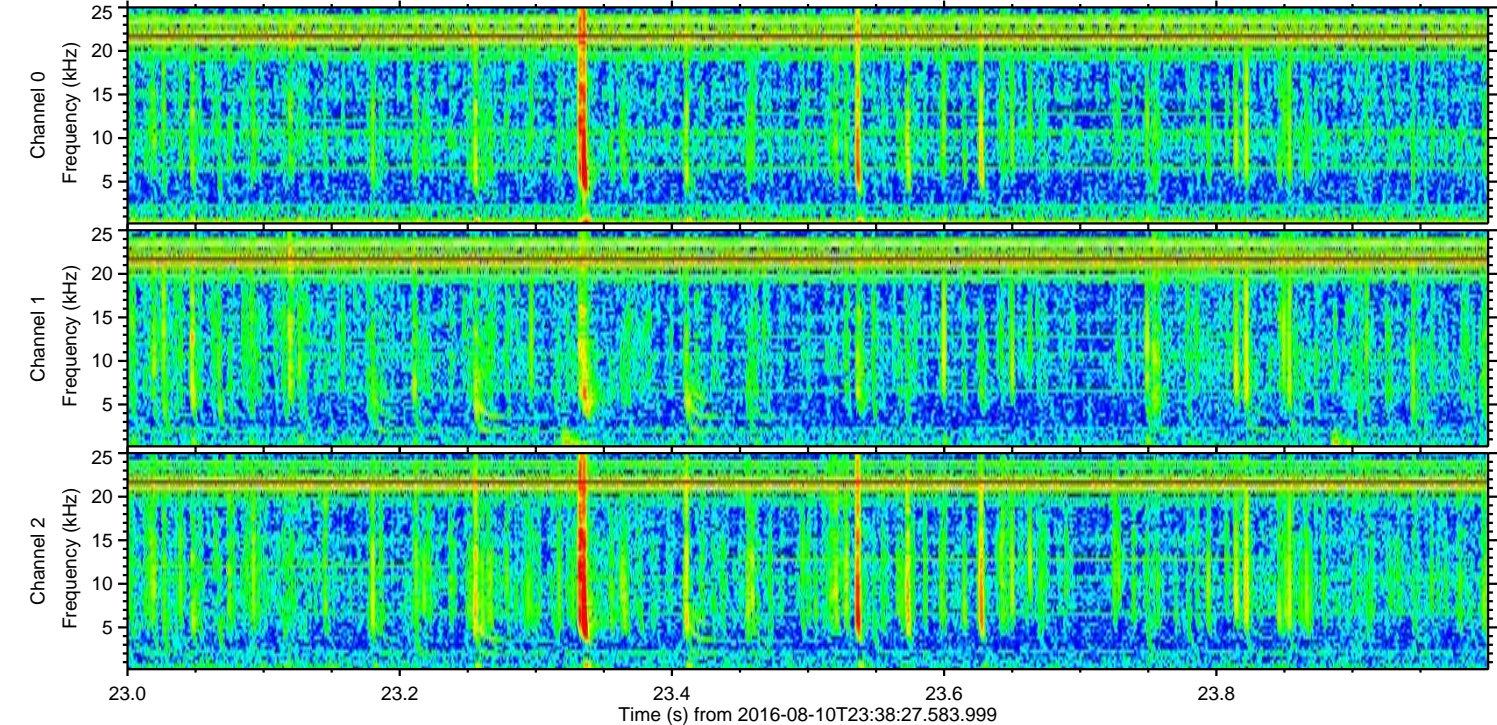
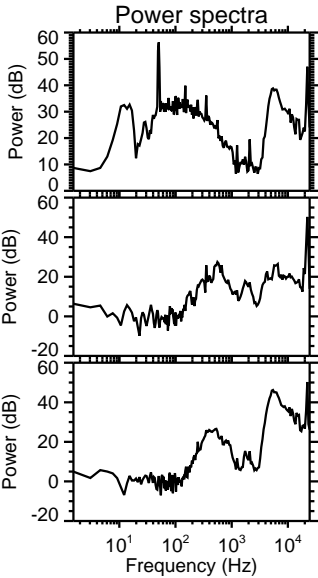
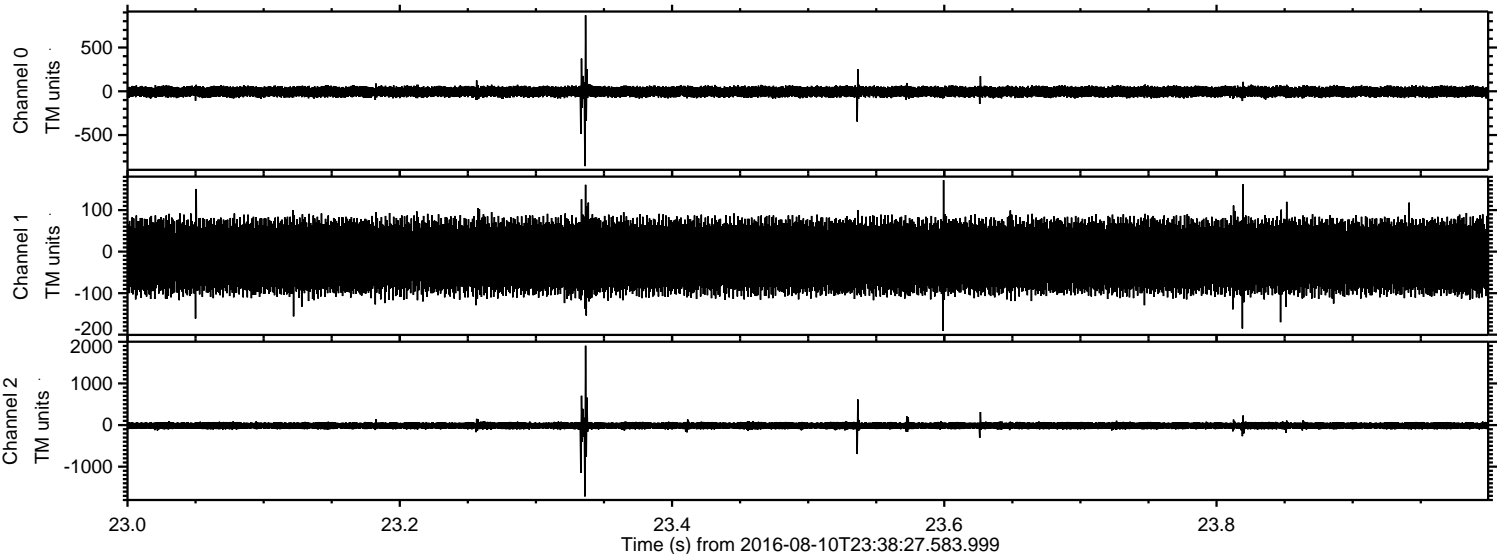
Channel 1
mn: -1264
mx: 1120
 μ : -11.9
 σ : 54.7

Channel 2
mn: -2426
mx: 2176
 μ : -14.4
 σ : 56.6

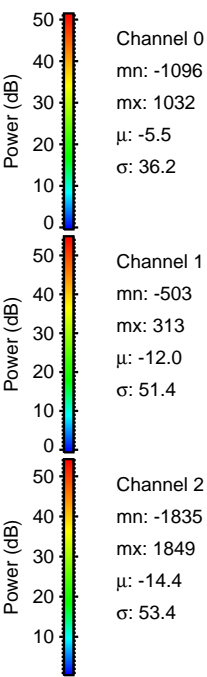
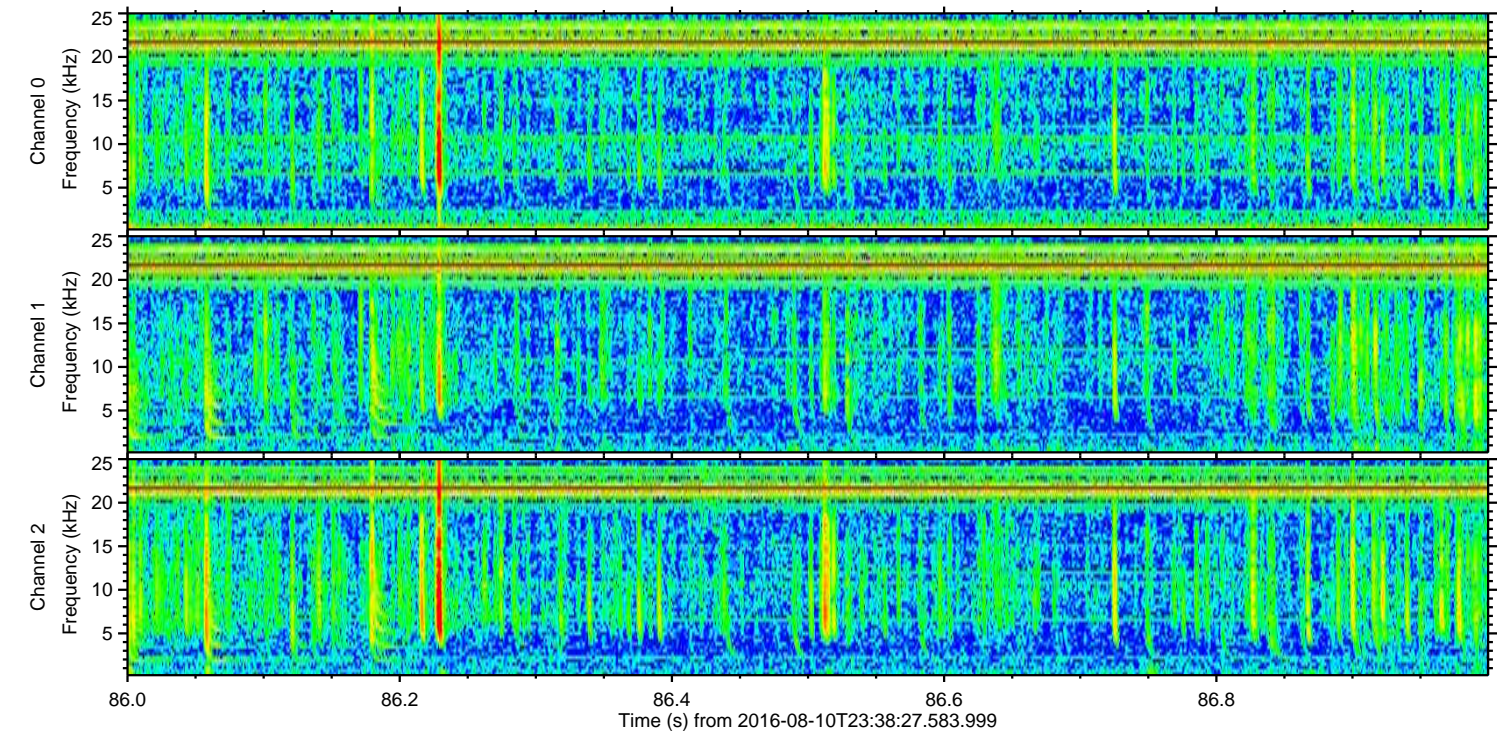
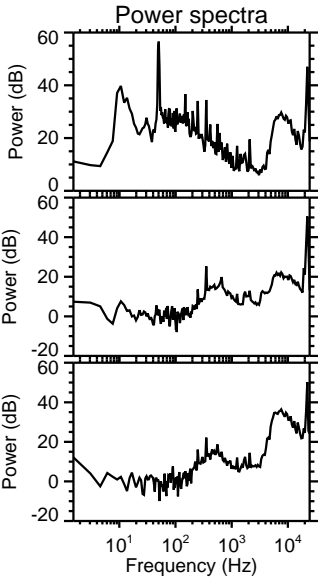
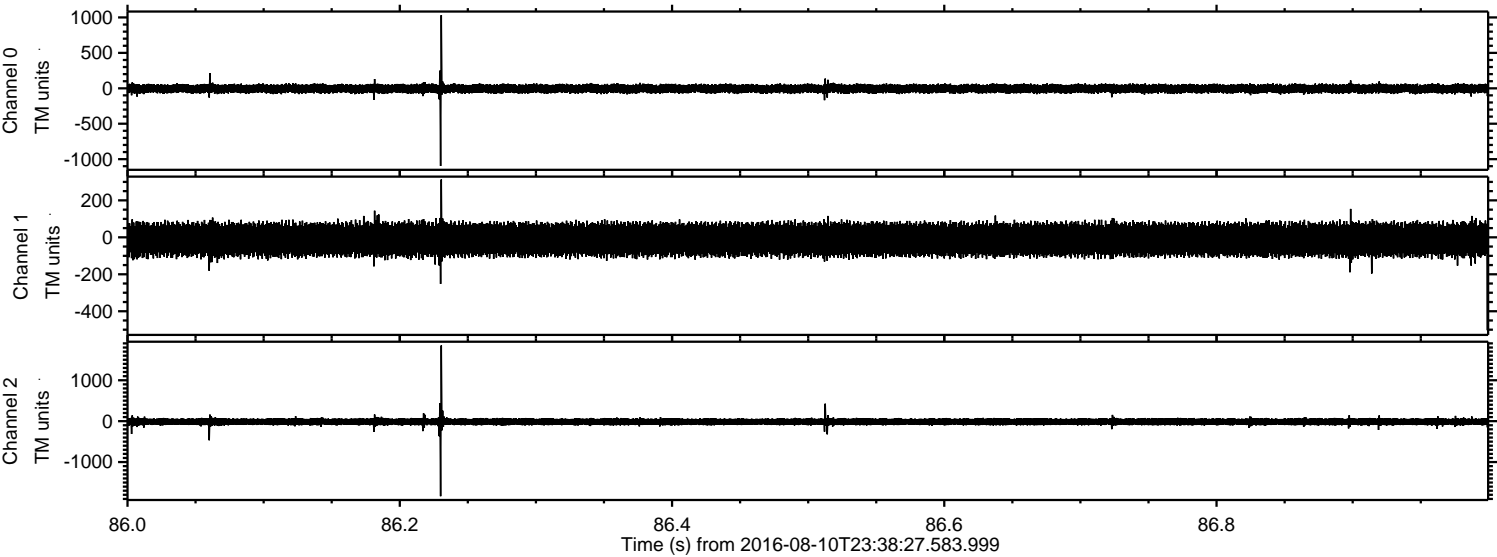
Processed Thu Aug 11 01:45:59 2016 by ELM ver.2012-10-06 from 001__elm20160810_233826__dat00.bin



Processed Thu Aug 11 01:46:00 2016 by ELM ver.2012-10-06 from 001__elm20160810_233826__dat00.bin



Processed Thu Aug 11 01:46:01 2016 by ELM ver.2012-10-06 from 001__elm20160810_233826__dat00.bin



Processed Thu Aug 11 01:46:02 2016 by ELM ver.2012-10-06 from 001__elm20160810_233826__dat00.bin

